



# LIBRARIES

UNIVERSITY OF WISCONSIN-MADISON

## Album of photographs. 1914-1934

Thwaites, F. T. (Fredrik Turville), 1883-1961

[s.l.]: [s.n.], 1914-1934

<https://digital.library.wisc.edu/1711.dl/4QKKQNPRSMX528L>

<http://rightsstatements.org/vocab/UND/1.0/>

For information on re-use see:

<http://digital.library.wisc.edu/1711.dl/Copyright>

The libraries provide public access to a wide range of material, including online exhibits, digitized collections, archival finding aids, our catalog, online articles, and a growing range of materials in many media.

When possible, we provide rights information in catalog records, finding aids, and other metadata that accompanies collections or items. However, it is always the user's obligation to evaluate copyright and rights issues in light of their own use.



NE

1188 Mass of contorted silt and clay shoved into gravel  
of Manitowoc delta 1924.17F8





1367 Looking southeast from Franklin gravel pit over Mankato (Valders)  
ground moraine probably on pitted outwash 1522.30H5



1368 Looking west from Garrity Hill toward Long Lake 1522  
1420.08A8





1369 Looking east of south from Garrity Hill at McMullin Hill and crevasse filling 1420.08A8



1371 Kames on slope of drumlin south of Madison 0609.01B5

*near Badering Plant*



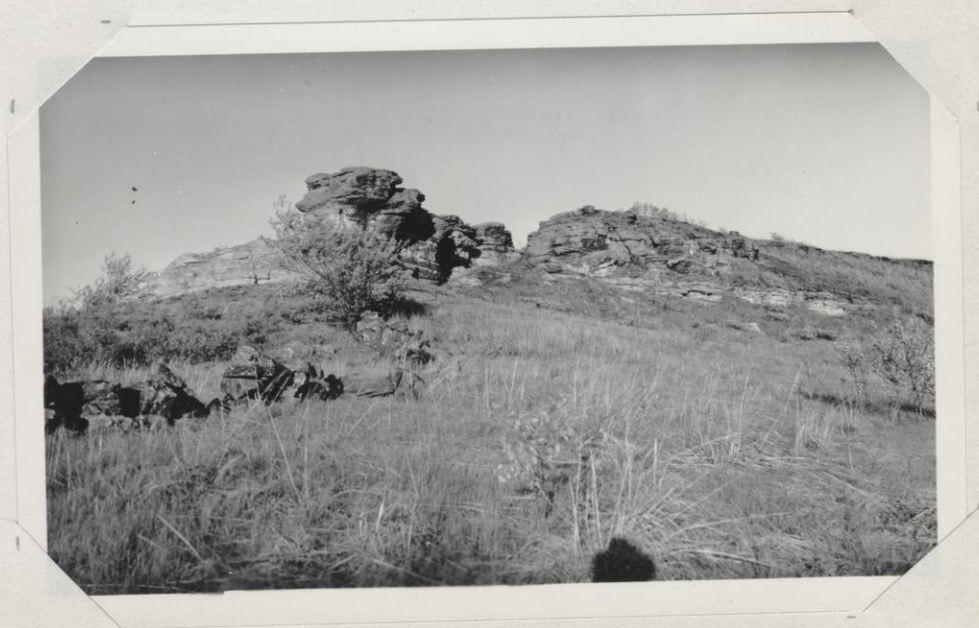


1372 Bedding in outwash fan- County Highway D near Story 0509.17G5





1374 Rock topography in Illinoian drift southeast of  
Monticello 0308.29D1



1376 Post-Illinoian crags-Monticello 0308.29D1



1937



NE

now covered

1498 Red till on disturbed delta-Manitowoc 1924.1706



1499 Same as 1498





1500- Nipissing Beach, Centerville 1723.22B2

*inside of older delta*



1501

1501 Crevasse filling near Glenbeulah- 1621.31A3

*passed some  
ships*



1929



did not  
climb hill  
Zent School  
stop

99 - Hills northeast of Monticello. May 20, 1929 0308.07 h1



Platteville  
(Black River)  
St Peter  
Lower  
Magnesian

Just stop  
Monticello

101 - Hills east of Monticello. May 20, 1929 0308.25 d6

near 1937 route



Holy Hill



not in  
37 or 38  
or same

103 - Holy Hill from hill to north. May 25, 1929 1018.24c5



Red till  
Varved clay  
Gray till

not in  
37 or 38  
or same

105 - Manitowoc clay pit. May 25, 1929 1923, 24 d 2





use the  
 not in 37  
 or 38  
 or since

106 - Cut in drumlin near Clyman Junction, Dodge County, on S. T. H. 60. May 25, 1929 1015.15 hb



1930

not in 37  
 passed N of  
 here in  
 38  
 or since

169 - Glacial drainage outlet north of Darien. 1930 0215.15 b4

not on 1934 White



B



*White Rock*

171 - Illinoian kame with Sharen Moraine in distance, 1930 A 4403.04 c4

*not seen in 1933-34,  
35-36-37  
38-39  
or more*

R



172 - Rock gorge northwest of Belvidere, Illinois, a post-glacial diversion, 1930. A 4403.05 a 2

*not seen in 33-34  
35-36-37-38  
or more*





Tail

Gravel

β

174 - Fontana gravel pit. 1930 0116.15 h1





not in 36  
 37  
 38  
 39  
 or sure

188 - Outwash terraces with kames in distance. NW. NW. 17,  
 T. 11, R. 19 E.



192 - Foreset bedding in delta which was probably formed in  
 kettle hole. Varved silt below to south. 2 miles  
 southwest of Cascade. 1320.0194

not on 1930 route or 1934, 35-36  
 37  
 38  
 or sure 39





196 - Esker-like ridge, looking southwest. 1 mile southwest of Cascade. 1320.0195.  
 = Crevasse filling

not on 1933 route - or 1934 - 35 - 36 - 37/38  
 39 or more



197 - Silts deposited after gray <sup>gravel</sup> ice and plowed up by red <sup>red</sup> ~~gray~~ advance. 1 mile west of Franklin 1622.30 h6

- Red till  
 - Gray fill  
 - gravel





no order?   
 no order later

202 - Well cemented beach gravels overlain by red  
till at Fisher Creek, 2 miles north of St.

Wendell. 1723. 17a see also 633, 806

Folded beds in head of dune & of Fred du Lac



Fall 1930



NE  
orders  
not taken  
see 809

235 - Forest Bed. Looking northwest. General view 2124.11a1  
see also 809



NE

238 - Forest Bed. Shows contact of laminated clays and gray  
till 2124.11a1





246 - Forest Bed. Looking northwest at contorted clays  
and sands containing masses of roots at left of  
camera case. 2224.36a1

1933





NE

A

248 - Forest Bed. Looking west of north at stump in  
Forest Bed. 2124.1(a)

*published*



1931



336 Drainage channel east of Delafield.

337 SW.SW.21, T. 7, R. 18 E. 0718.21 a4







340 - Old railroad cut in interlobate  
southeast of Whitewater. Center  
W. 1/2 24, T. 4, R. 15 E.

0415.2426





345 - Illinoian drift plain with drumlins.  
NW.SW.6, T. 44, R. 3 E. Illinois

*not seen, 1933, 34, 35, 36, 37  
38, 39 or none*



346 - Eroded Illinoian drift plain. NE.NW.  
4, T. 44, R. 3 E. Illinois

*not seen 1933, 34, 35, 36, 37  
38, 39 or none*





355 - Johnstown and Brooklyn Moraine (?)  
NW.NW.21,T.5, R. 9 E.

*seen but  
no stops in 37, 38  
39, 40*

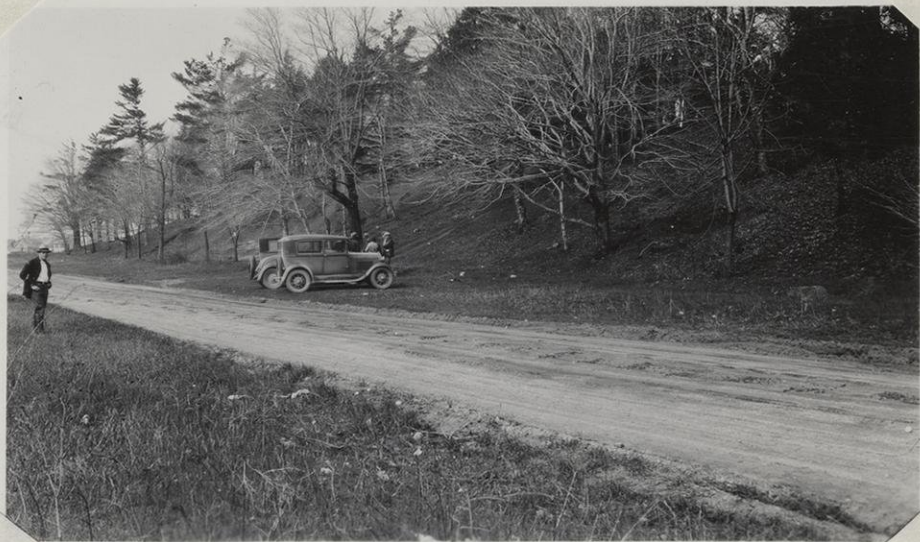


360 - Crystal Lake. SW.SE.31,T.16, R. 21 E.

1621.31a3

*seen - no regular  
stop 38, 39*





361 - Nipissing<sup>17'</sup> beach E. of hospital, Two Rivers. ~~SE-SW~~.31, T.20, R. 25 E.  
SWSW 20 25.31a7

*No stop -  
passed this  
not always seen*



365 - Disturbed lake sediments. Manitowoc gravel pit W. of S.T.H.17. NW.SW.17,T.19, R. 24 E.

1924.17c8

*NE?  
how correct*

+





unconformity <sup>till</sup> absent

NE

for report

A

362 - Beach gravels unconformable on contorted sands and clays. Manitowoc gravel pit W. of S.T.H.17, NW.SW.17,T.19, R. 24 E.

1924.17c8

Elev. 640 = glenwood  
dug away by WPA in 1939!





Red till

folded clay  
thrust fault

varved clay

NE

Gray till

Thin to 3 1/2 in.

not in 37

a 38

a 39

40

a sample

367 - Red till, Glenwood clays, gray till. Manitowoc clay pit. NE. SE. 24, T. 19, R. 23 E.

1923.24 d 2





"Mankato" (Valders)



carry

368 - Red till, gray till. Valders quarry. NE.  
SW. 32, T. 19, R. 22 E.

1922, 32 e4



1932



B

no stop -  
passed here

607 - Terraces on Lake Nagawicka. 0718.20f1

no stop since 1940

out

Remove  
no orders  
Remove

see  
886

608 - State sanitarium terraces right. 0718.33b8





609 - State sanitarium terraces ~~see~~ 0718.33b8  
see also 886

no. stop



610 - Crevasse filling. 0618.17h1

S of wales





no steps  
passed here

611 - Mesa in outwash terraces N. of North  
Prairie. 0618.30gl



612 - Interlobate Moraine NW. of North Prairie.  
0518.06f1

cf 728 3rd terrace level

Prairie View School





no stop in 37  
or more

613 - Moraine with outwash in distance. 0416.14b1



no stop in 37  
or more

614 - Pitted plain from top of moraine hill. Pleasant Lake in distance. 0416.23e2



B



615

615 - Interlobate Moraine with railroad cut. 0415.24e5

731 in better

B



616

616 - Looking SE. from railroad cut at outwash. Darier Moraine at right. *away S.*  
 Heart Prairie 0415.24e5 *Interlobate*



B



617 - Looking W. from railroad cut at Milton Moraine  
and ground moraine. 0415.24e5 *see 730*

P



618 - Marengo Moraine looking SW. A.4406.07h5

*not seen, 1933, 34,  
35, 36, 37  
or some*





not in 36,37  
or later

619 Gravel pit in esker looking south 1015.16g7



not in 36,37  
or later

620

620 Gravel pit in esker looking south 1015.16g7



C



21

not in 36,37  
or later

621 Esker near Clyman Junction looking north 1015.16g7

B



not in 36,37  
or later

622 Drumlins in Hulsford Millpond 1016.09c6





not in 36, 37  
or later

623 Faulted gravel in kame. Polfort Peak or Sugar Loaf,  
east of Hartford 1018.24c5





B

624

last stop!

624 Deltaic moulin gravel northeast of Kewaskum 1319.34el

out

~~625 Forest Bed in sand under red till 2124.02h1.~~

1682 Red till on delta? Fisher Creek





B

628 Much folded sand containing logs, etc. under red till 2124.02h1





B

629

629 629 Much pitted ice contact face of Kettle Range looking west

1520.1428

no stop

out

remove

~~630~~ Left of panoram of big kettle in interlobate outwash terrace of the Kettle Range with kame in distance. Looking south

~~1520.23e8 No. 812 is better~~

1680 Group at Valdres 1939

Northrup

Standing: Thwaiter Pehr Lueth Krumholz Varney Fisher Underwood Arghlen Smalley  
 Mann <sup>Dudley</sup> ~~Brown~~ King Palmer Townsend

Sitting Leith Long Barden Rybeck Davis Hole Porter Goodrich <sup>Brown</sup> ~~Dudley~~ Michelson Solle



out

634 1932 Glacial class in gravel pit of beach of Later Lake Oshkosh, east of Fond du Lac. Back: Turk, Barton, Hunzicker, Isaacson, Burpee, Bent Front: Baker, Hago, Strain, Randall, Stiles, Olson, Thwaites 1518.07d4



635

635 ~~Early~~ <sup>cary</sup> gravel of ~~Early Lake Oshkosh~~ <sup>Mankato</sup> buried by red till and clay. East of Fond du Lac. 1518.07e3

no strip in 1934 or 1935  
or 36 or 37  
or 34  
or since



1933

B



28

728 - North Prairie glacial drainage channel.

0518.06f1

sec 612 which adjoins to left.

Prairie View School

1933 inspection here

out

729 - Helen Trefethen, J.M. Trefethen, Turk, Graetz, King,  
 Reeves, Thern, Blank, Thompson, Wilcox, F.T.T.  
 Lunch at Bird School. 0416.28e1, April 22, 1933

Turk & Wilcox, visitors  
 Fontan & Berg, absent





730

730 - Looking northwest from Whitewater cut.  
0415.24e6 see 617



731

731 + Interlobate Moraine at Whitewater cut, looking  
west. 0415.24e6 see 615





732

732 - Whitewater cut through interlobate.  
0415.24e8



733

733 - Interlobate angle. Richmond. Looking east. *from S. of channel*  
0315.17b5





734 - Close-up of gravel face in Neosho esker,  
Dodge County. 1017.19hl

not in 36, 37, 38

or later

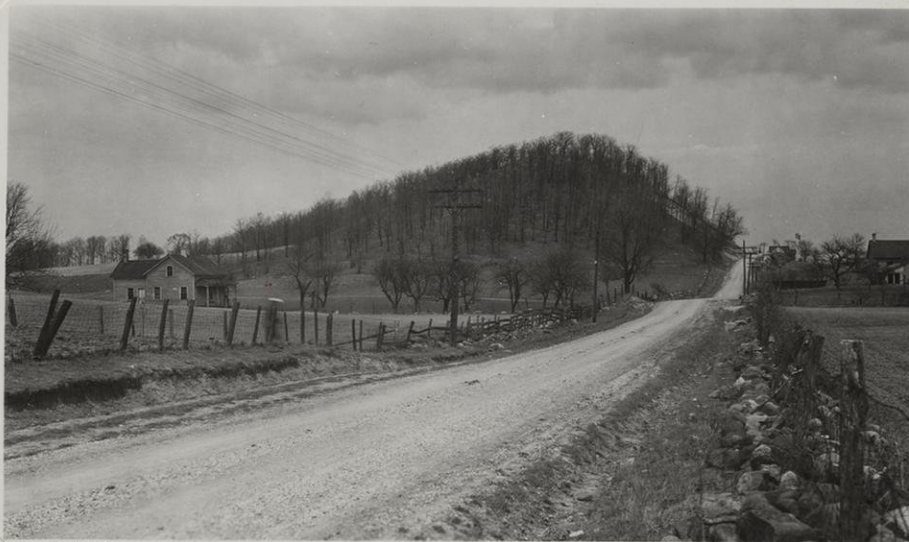




735

735 - Neosho esker, Dodge County. 1017.19h1

not in 36-37  
306  
or later



736

736 - Pulfort Peak (Sugar Loaf) from south in moulin kame. 1018.25h4

not in 36-37  
306  
or later



C



not in 36-37  
36  
or later

737

737 - Interlobate Moraine northeast of Sugar Loaf. Moulin Kames  
1018.24b4

B



not in 36-37  
36  
or later

738

738 - Crevasse filling in Cedar Lake, looking east.  
1119.30e2





739

739 - Crevasse fillings in and near Cedar Lake, looking northeast. 1119.30e2

not in 36-37  
36  
or later



740

740 - Northern Gravel Company pit near Barton. 1219.03c4

not in 36-37  
36  
or later







1185

QUALITY  
McVICAR PHOTO SERVICE  
PRINT







1181

**QUALITY**  
**Mc VICAR PHOTO SERVICE**  
**PRINT**

1-41





742

742 - Glass at Forest Bed, April 30, 1933.  
2124.11a1





743 - Forest Bed. 2124.11&1 (c-filter)



out

774 Holy Hill in Interlobate Moraine from southwest 0918.22cl



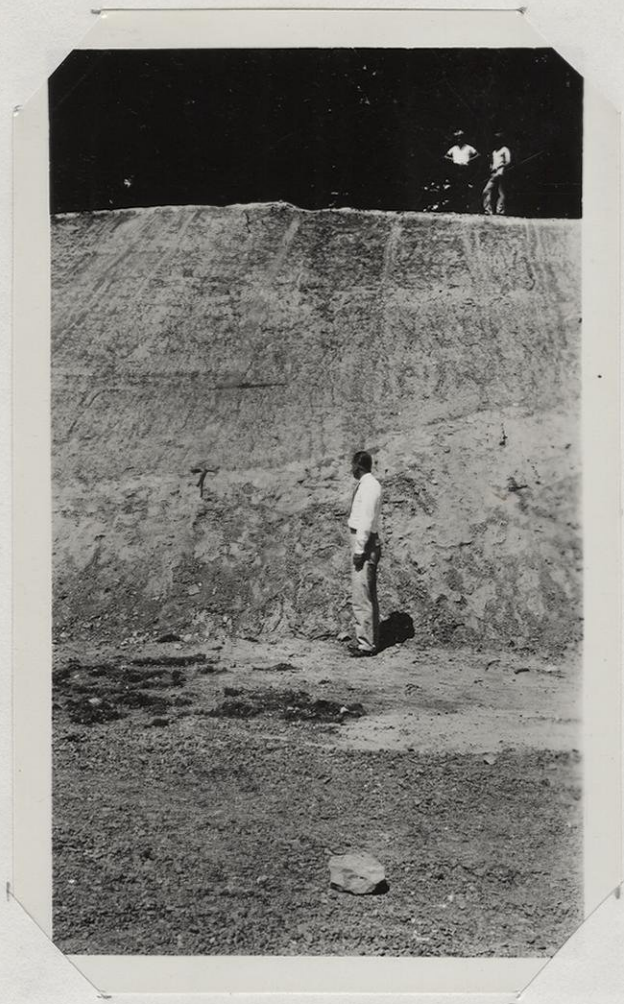
775 Esker between drumlins on Highway 30 0716.17d8





806 Mankato red till on <sup>local stream</sup> ~~Glenwood (?)~~ gravel,  
Fisher Creek, Wis. 1723.17a1





Valders  
Till

SILTS

NE

not in 37, 38  
now under  
grandstand in  
ball park

808 "Mankato" red till on lake silt, Two Rivers park  
2025.31a7

(Valders)





809 Forest Bed between <sup>Valders</sup> Mankato and Cary drifts  
2124.11a1





812 Big kettle in highest terrace of Interlobate  
Moraine with moulin kame beyond. 1520.23e8



1934

B



886

(see 600)

hw slope

886 Interlobate terraces and outlet channel looking west.  
0718.33f7 April 28, 1934 (replaces 600) see 609

B



887

hw slope

887 Looking north at drainage channel. 0718.33f7





888

888 Western edge of interlobate looking NE. Top is Alden's  
No. 1 terrace. G1/5f22. 0517.03f2

*not in 37, 38  
or later  
off route*

*out*

889 1934 class in old railroad cut. Hayes, Michell, Bradley,  
Bays, Zynda, F.T.T. 0415.25h2





890

890 Looking NE. into Turtle Creek outlet. G 1/5 f18  
0215.17a3

Stop in 1940  
1941

~~not seen  
on return~~



891

891 Looking SE. at Darien Moraine (wooded) overlying  
Marengo Moraine (CLEARED) G1/5f14 0116.34e1

Last stop of  
Wahvour trip



B



892

892 Looking W. at Neosho esker and drumlins beyond.  
G15: f18. May 5, 1934 1017.28h5

not in 36-37  
38, 39  
or later

A



893

893 Looking S. at Neosho esker and Rubicon River  
(joins last one) 1017.28h5

not in 36-37  
38, 39  
or later





894

894 Looking S. at older drumlin to right with newer one to left. 1017.28h5

not in 36-37

36, 39

or later

out

896 Moulin filling with probable esker to left looking SE. g1/2 sec. f18 1219.10f7



B



895

895 Northern Gravel Company pit,  
Barton, showing foreset bedding.  
1119.03d5

not in 36-37-38

39

or later





897

(896)  
897 Same as last, looking NE. 1219.10e8

*no stop*

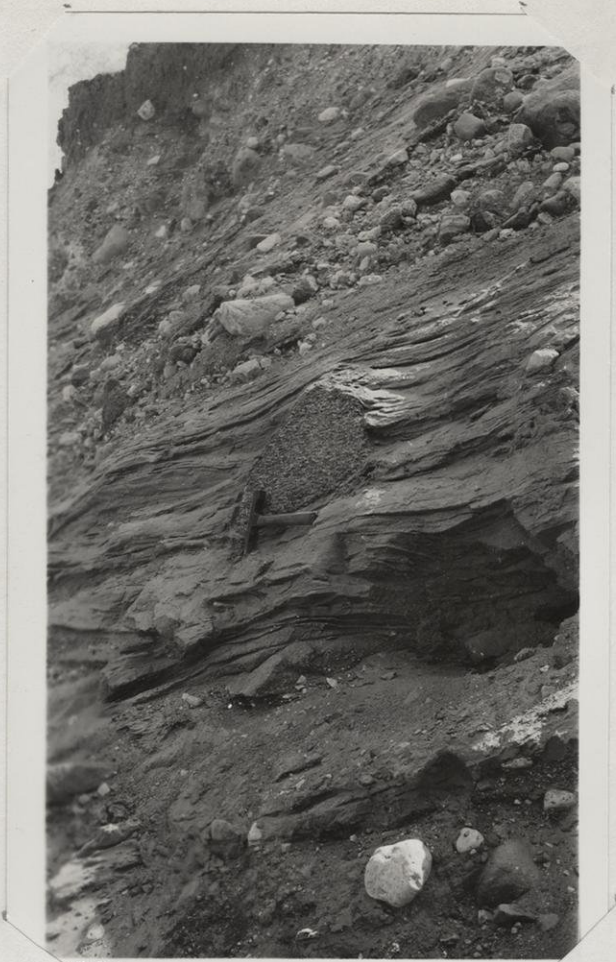


899

899 Garrety, Connor, and Johnson Hills looking NE.  
1420.17c8

*in a dirt storm*





A

last step  
2 Rivers top

898

898 Ice-rafted boulder in silt layer  
of moulin filling. 2 sec.f52.  
1319.34dl





900

900 Meander scar and slip off slope,  
Two Creeks, looking NW. May 6,  
1934 2421.11c1





901

not in 36-37  
38, 39  
or later

901 Looking west at Steinthal in Kettle Range.  
G 1/5 f18 1821.33a6



902 Drumlin at left is north-south, at right north-  
east-southwest (earlier). G1/5f12.7 Looking  
south. 161930h4

off 1941 route

↑ E S  
| F W  
↓





903

903 ~~825~~ foot beach of Later Lake Oshkosh  
overlain by varved clays. Looking  
east. 1/2 f.29 1618.32h6

*near first step  
now graded over*



From the  
Thwaites Estate  
July, 1980



X  
not-  
visited

142 Mazomanie from School Section Bluff 0806.16e5



X

145c Pré-Cambrian under Mt. Simon, Nekoosa  
see 565 - 2105.10 c4

better need one

see 565





144 Banks of Wisconsin at Nekoosa 2105.10e4



151 Black Earth Valley from School Section Bluff 0806.16e5



1929



North

X

138 Looking east of Glovers Bluff, Marquette County.  
1708.03 d 4



North

X

with  
result

1932

No longer a  
route

139 North from Table Bluff, Marquette County.





199 Little Mound. Looking E. at Hamilton Mounds  
2006.34 h 4



214. Hamilton Mounds. Looking N. of W. at Dorro  
Couche Mound. Note forest fire

2006.36 f 2





215. Hamilton Mounds. Looking W. of S. at Friendship  
Mounds. 2006.36 f2



216 Hamilton Mounds. Looking E. of N. at ditch showing  
R. to L. dune sand, Cambrian conglomerate, and  
brecciated quartzite with weathered granite dikes.  
2006.36 e3





X

2

219 Hamilton Mounds. Looking E. at "gravel" pit  
2006.36e3



X

2

282 Petenwell Peak. 1914 see 854





~~not vented~~

258 Upland on quartzite. SW. NE. 21, T. 11, R. 6 E.

beach (?) at right

HAPPY HILL



259 Upland on Baraboo quartzite in <sup>W</sup>SE. SE. 26, T. 11, R. 5 E.

a 3

HAPPY HILL





1316 Weidmanns Falls - see 277, 276

~~260 SW. from Mile Bluff. Magnesian and Franconia benches~~



X N

261 East side Mile Bluff 1503.24 e2





X

N

262 Looking NW from Mile Bluff at Franconia cuesta  
1503.24 e2

7 out

263 Group at Mile Bluff, October 25, 1930



✓  
out

268 Skunk Hill



~~X~~ not in 34  
N

269 Dune on Wisconsin 13. Shows bedding dipping to N.

2006.17a5  
see 857 (better)

---



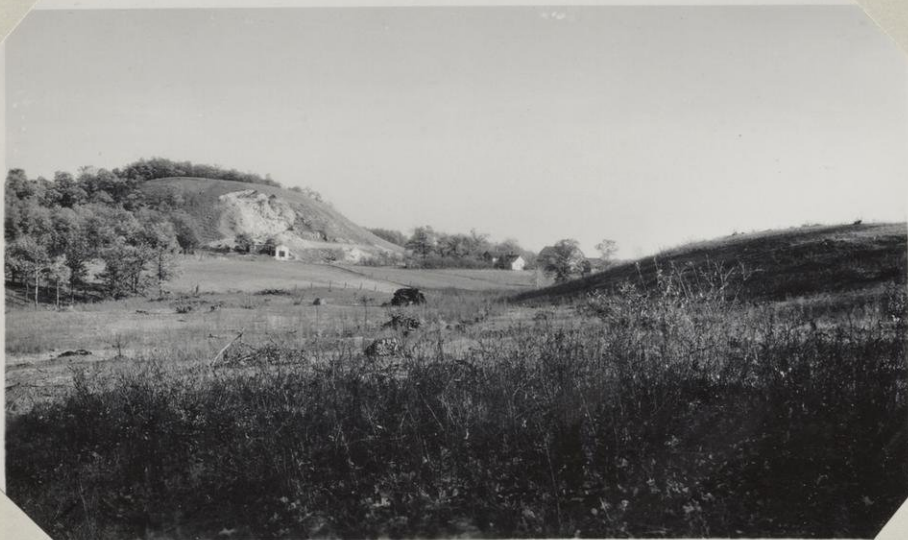


X

N

270 Outwash and terminal looking NW. from Glover Bluff

1708.03b 8



X

N

271 Glover Bluff with outwash terraces 1708.04 b 2





~~not in 34~~  
not seen

274 Looking NE. at mesa near Leland. <sup>Francis</sup> Mazomanie over  
Dresbach. NW. NE. 19, T. 10, R. 5 E.



~~not seen in~~  
1934

not seen

275 Looking NW. at hills N. of Leland. NW. NE. 19,  
T. 10, R. 5 E.





276 Looking S. over Weidman Falls. SE. SE. 35, T. 11,  
R. 4 E.



277 Looking S. along crest of quartzite ridge across Weid-  
man Falls. Icke in foreground. SE. SE. 35, T. 11,  
R. 4 E.





278 Looking N. over valley of Narrows Creek. at benches on Trempealeau, ~~Mazonie~~, and Franconia formations. NW. NE. 36, T. 12, R. 4 E. = 1204.3694

*no stop in 1935  
H or Suel*



*Lower Narrows Prairie*  
279 School yard. Looking E. at gorge of Narrows Creek. NW. SE. 25, T. 12, R. 4 E. = 1204.2503

STOP





X

not on map

319 Baxter Hollow showing quartzite-granite contact  
1106.32b2



not on map

X

320 Terraces in quartzite east of Baxter Hollow  
1106.32b2

For advanced Physiography





353 View north from Tower Hill 0804.20b3



Survey 519 Dunes blocking up lake north of Spring Green  
0803.12b1 E. Steidtmann, photo. 1911





X N

548 Mile Bluff looking SE at Sheep Pasture 1503.24e2



X N

549 Mile Bluff looking SW 1503.24e2





X N

550 Mile Bluff looking SE at meanders 1503.24e2



X N

551 Point Bluff looking NW. 1603.25h1





X N

552 Point Bluff looking SW 1603.25hl



X N

553 Point Bluff looking E. 1603.25hl





exact  
spot N  
not  
visited  
✓ 1933  
1934

( 554 Peneplain west of Skunk Hill 2403.25d2 )



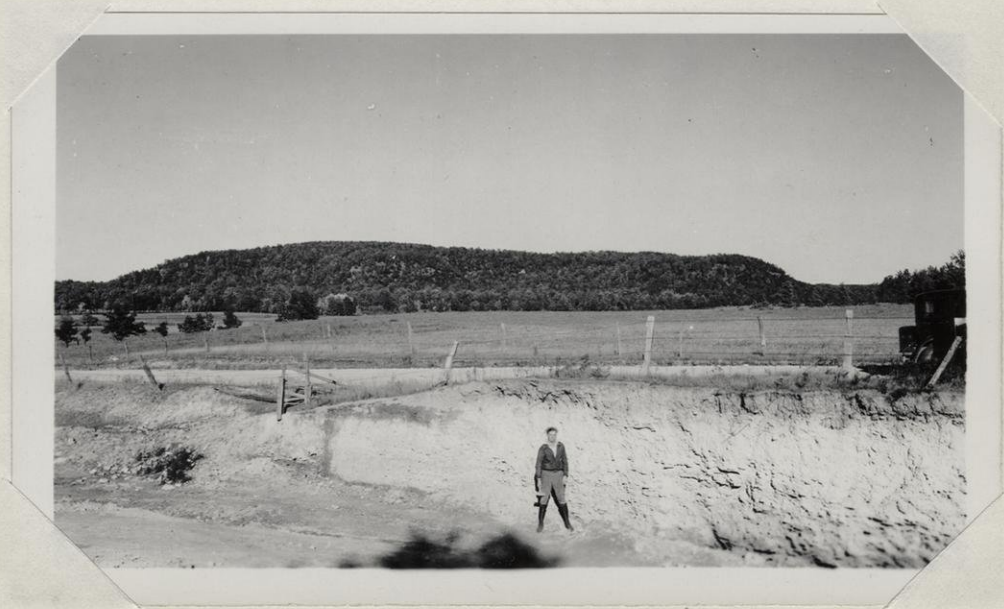
exact N  
spot not  
visited 1932  
✓ ~1933  
~1934

( 555 Skunk Hill from SW 2403.36b4 )



out

556 Group at Hamilton Mounds, Oct. 25, 1931 2006.36e3  
Back row: F. T. T., Pyre, Wilson, Heggblom, Dennis  
Front row: Messer, Kundert, Leiser, Hougen, King, Booth, Barton, Palmer



X N

557 Franconia shale making bench. <sup>Franconia</sup> Mazomanie hill beyond  
1707.11f5





X N

not  
visited  
1932  
or 33  
or 34  
or 35

558 Gray Rock from "Raasch Bluff" 1506.13h8



N

X  
not  
visited  
1932  
or 33  
or 34  
or 35  
or later

559 "Raasch Bluffs", supposed hogbacks. 1506.13f8





X N

560 Necedah Bluff looking SE from west end 1803.24g2



X N

561 Necedah gravel pit beach covered with dune sand  
1803.24h1





X N

562 Looking SE from Petenwell Peak Roche a Cris and Friendship  
Mound in distance 1804.09d2



X N

563 Top of Petenwell Peak 1804.09d2





X N

564 Petenwell Peak looking west at Necedah Mound 1804.09d2



X N

565 Base of Mt. Simon sandstone on pre-Cambrian gneiss,  
decomposed. 2105.1518 Nekoosa dam

10c4





not visited  
1933  
1934  
1935  
or later

Plattville  
566 East Blue Mound with Galena-Black River bench and Lower  
Magnesian Bench seen from Sand Ridge 0706.22h5

near present route



not visited  
1933  
1934  
1935  
or later

567 West Blue Mound and benches to right of 566





not  
visited

1933

1934

1935

568 Looking northeast from Sand Ridge showing Black River,  
St. Peter escarpment with outlier and Lower Magnesian bench  
0706.22h4

*near present route*



not in 1934

1935

569 Looking SW from Natural Bridge 1005.17f7





1314

~~570 Group at Weidman Falls, Nov. 1, 1931~~

~~Standing: F. P. T., Kundert, Wilson, Dennis, King, Pyre, Heggblom, Messer, Palmer,  
Henderson, Thomson~~

~~Sitting: Barton, Hougen, Booth (with moving dog), Leiser~~

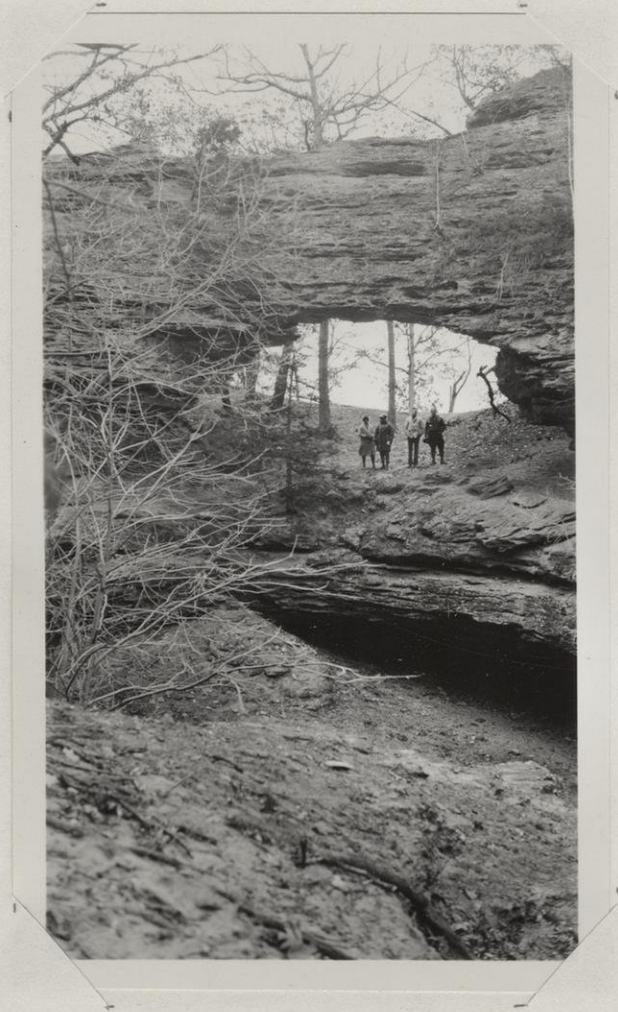
*group at Tower Hill, Nov 2, 1936*



*no  
slip road*

571 Looking west from quartzite knob over valley of Narrows  
Creek and Magnesian upland 1104.14f4





not in 1934  
1935

not visited  
near route

700 Natural Bridge looking east (no filter) 1005.17f7





702 Weidman Falls, Fountain<sup>e</sup> in front. Looking east. Strike N, dip 90 E.  
Note diagonal fractures 1104.35a1





~~no longer  
winter~~

~~no longer seen~~

704 Weidman's "kettle hole" See Bull. 13, p. 102  
1105.03a2

It is now known that the depression is probably an enlarged joint  
plane like at Natural Bridge whose outlet was blocked by glacial  
lake deposits. No drift is known at this place.

+ill



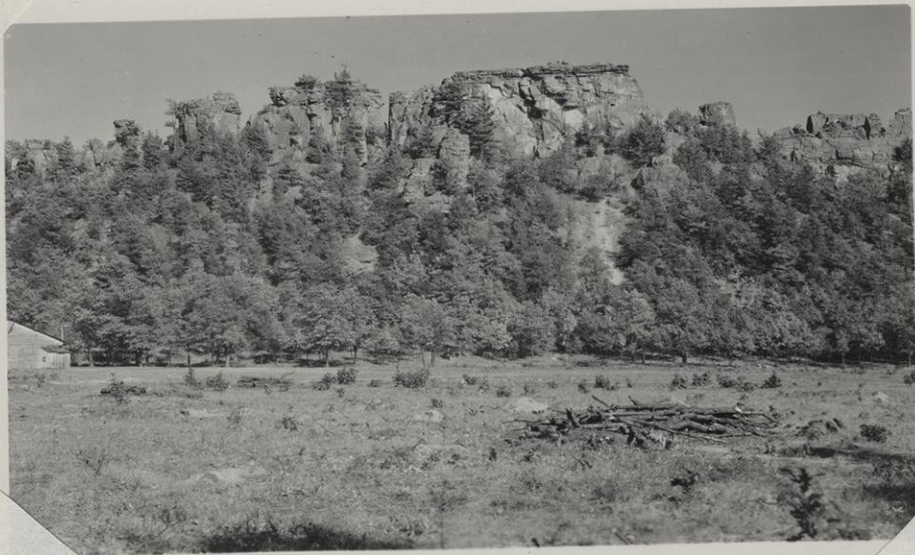


798. Blue Mound from East Blue Mound. Niagara, Maquoketa, Galena. Dodgeville "peneplain" to left. 0606.06bl



799. Looking south from East Blue Mound over upland south of Military Ridge 0606.06bl





X  
N

854. Petenwell Peak from west 1804.09d3 *see 282*



X  
N

855

855. Meander scar of Wisconsin River looking north 2005.02i3





X N

856. Pre-Cambrian peneplain looking northwest from quartzite hill.  
2406.28c8



X N  
T 30

857

857. Big dune on Highway 13 looking east. 2006.17a5





X

859. ~~Class at Weidman Falls, Oct. 21, 1933~~ Back, Prof. Jones,  
1315 ~~Mrs. Jones, F. T. T. Chase, Furrer, front, Sorenson, Meeky,~~  
~~Boys, Filaseta 1104.35a1~~ Nov 2, 1935



here on  
present  
route

864

864. Looking southeast from quartzite knob over Baraboo syncline,  
showing bench on north side of South Range. 1104.14c1





83

853 Necedah beach gravel pit. 1803.24hl

X

N





858. Looking east on crest of Dorro Couche  
Bluff 2006.28b1

X

N





860.  
860. Weidman Falls in flood, Oct. 21, 1933  
1104.35a1  
Sorenson, Chase, Furrer, Filaseta





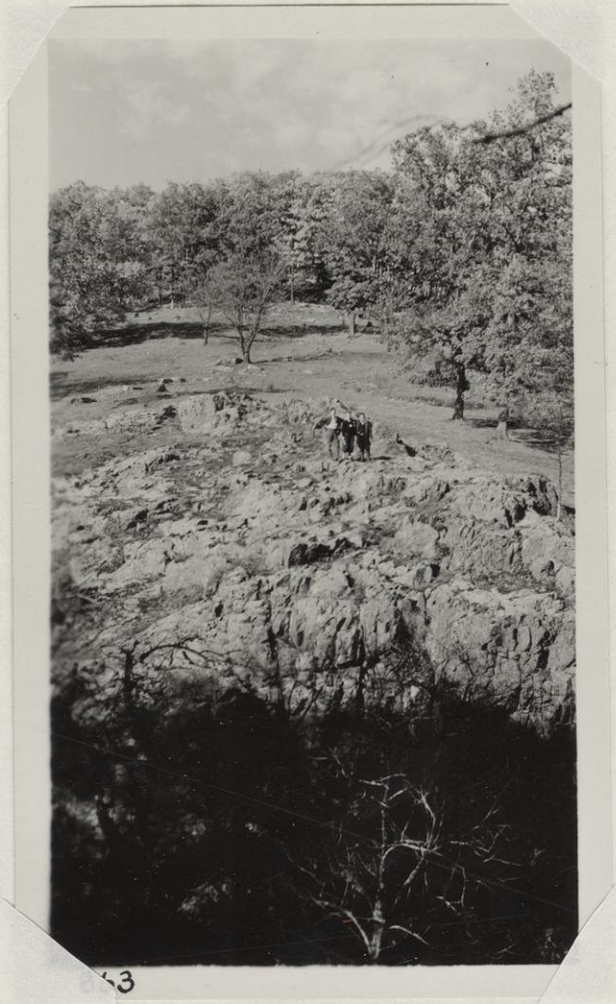
861. Weidman Falls after rain, Oct. 21, 1933 1104.35a1  
Sorenson, Chase, Furrer, Filaseta





862. Weidman Falls looking northeast. 1104.35a1  
Oct. 21, 1933





863. Looking north at Weidman Falls, Oct. 21, 1933  
1104.35a1 (Note shadow intensified by strong  
yellow filter.)





1075 Dresbach-Franconia contact, White  
Mound, Wisconsin. 1004.19h5  
on Wis. 23

*not on map in  
937*





*p*  
*no stop*

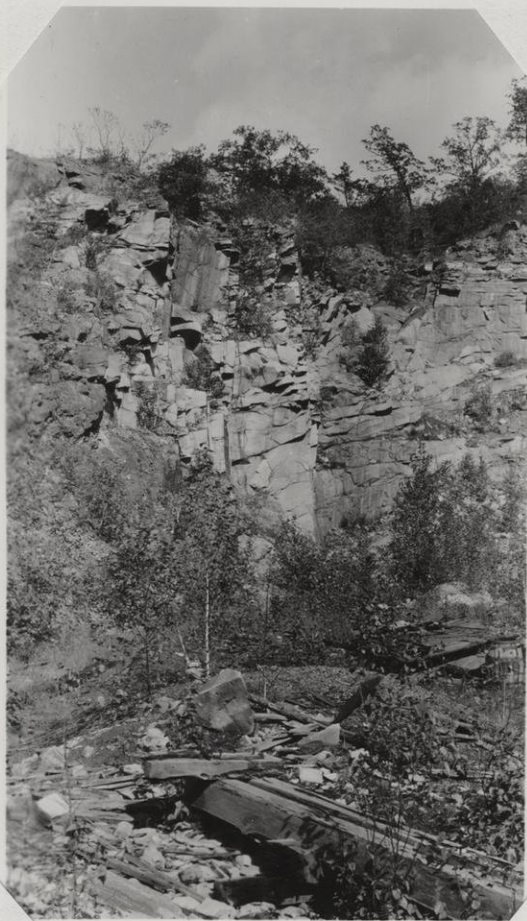
1076 Looking NE. from White Mound Outcrop at hill capped with Trempealeau. 1004.19h5



*La Rue Quarry*  
*X*

1078 La Rue Quarry, Ableman from White Rock Quarry. 1205.23c8



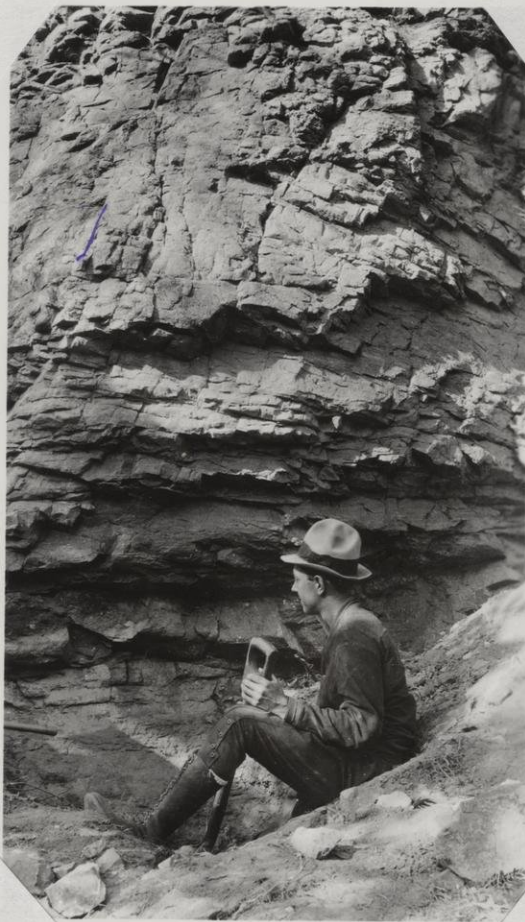


not in 1934



1077 Contact of Dresbach and quartzite. White  
Rock Quarry, Ableman. 1205.28c8



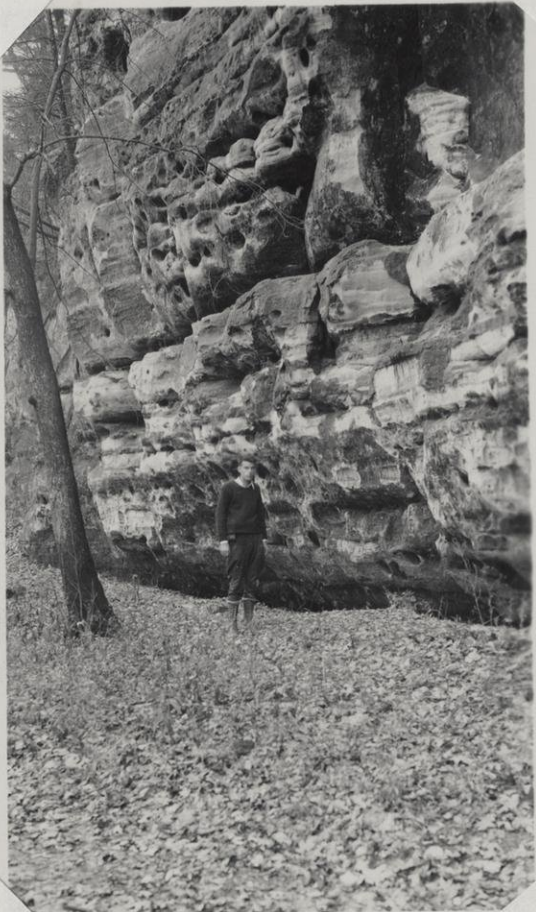


not in 34, 35, 36, 37

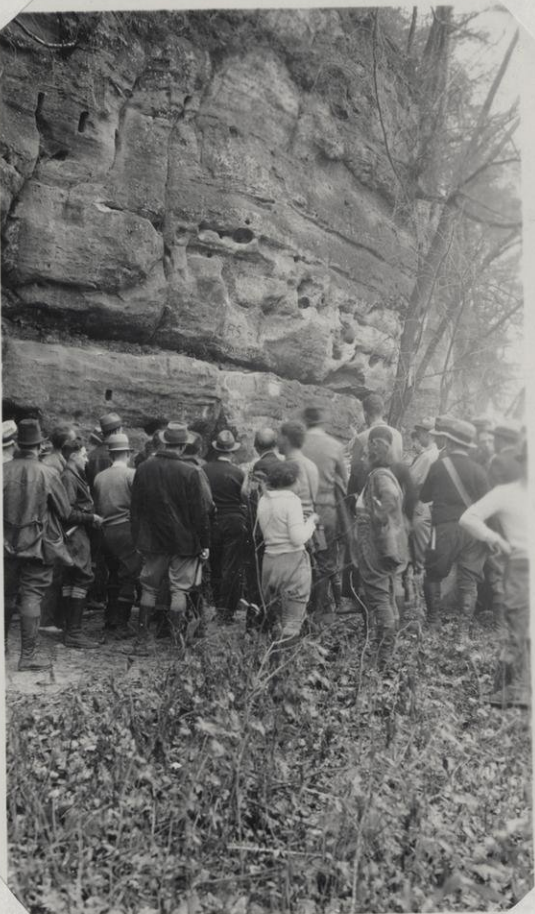
X

1079 Geo. Field digging test pit in basal  
quartzite in Baxter Hollow. 1106.33d8





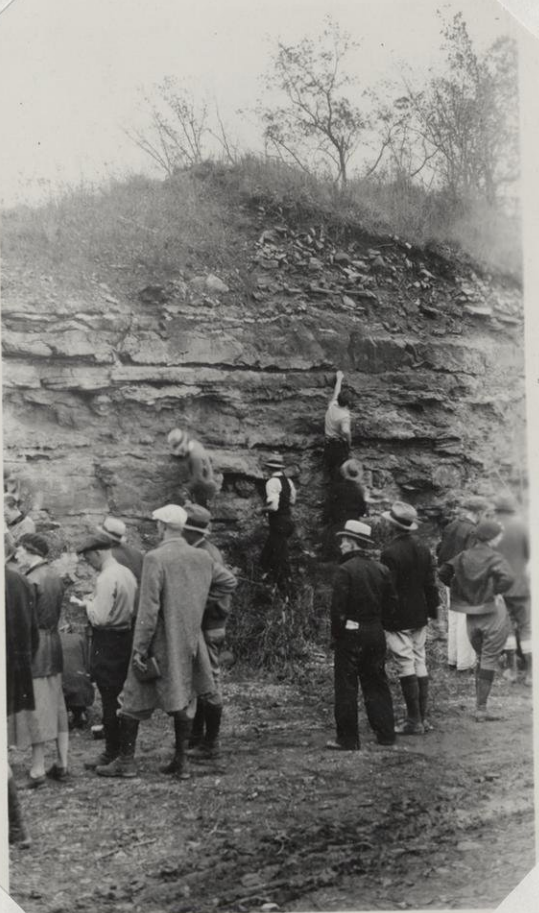
1099 Cliff of Galesville member of Dresbach formation,  
Tower Hill State Park 0804.20b4



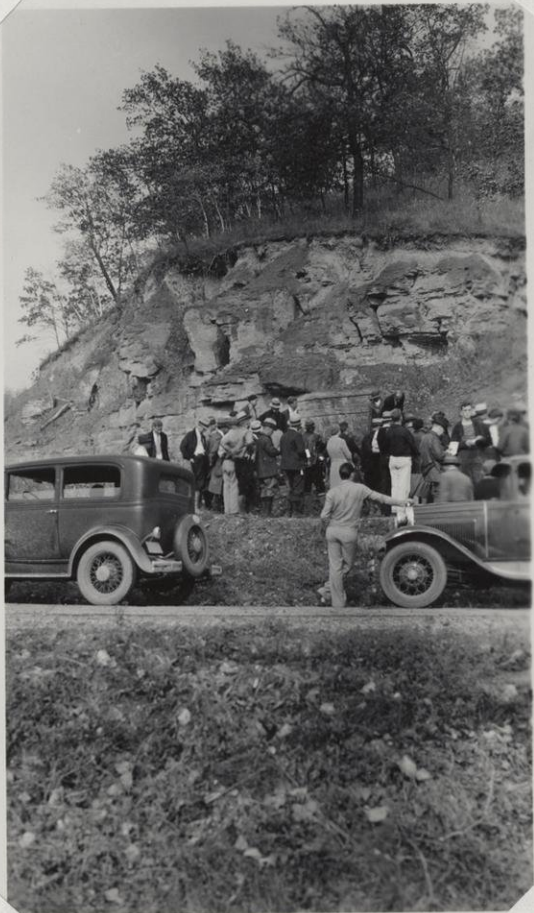
1098 Same as 1099

see 1013





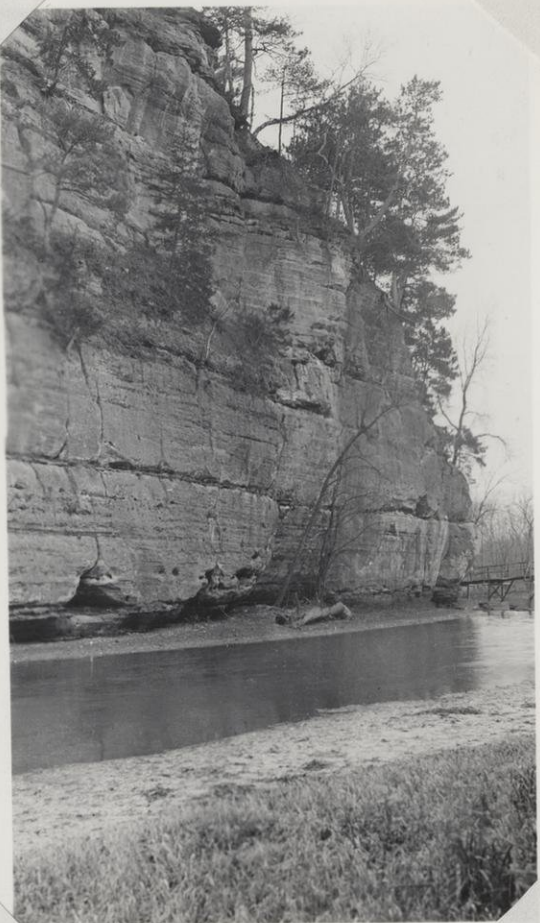
1101 Quarry in Oneota dolomite, north of Spring Green  
0804.07d8



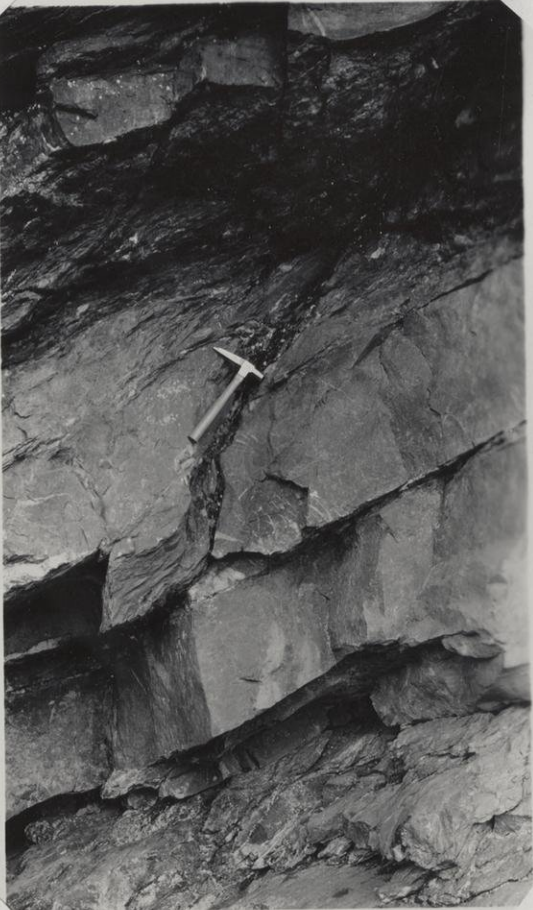
1100 Quarry in St. Lawrence and Lodi members of Trempealeau  
formation, north of Spring Green 0803.12e1

1100





~~1102~~ Schist layer, Skillet Creek gorge 1106. 1466  
1313 *Dorchester & Franconia - Tower Hill*



1103 Schist filling fracture in quartzite,  
Skillet Creek gorge, 1106. 1466

*8*  
*no. 1466*





X

1104 Lower Narrows looking east 1207.23c8

not winter



X

1105 To left of 1104





X

1106 Group on west bluff of Lower Narrows 1207.23c8

not visited

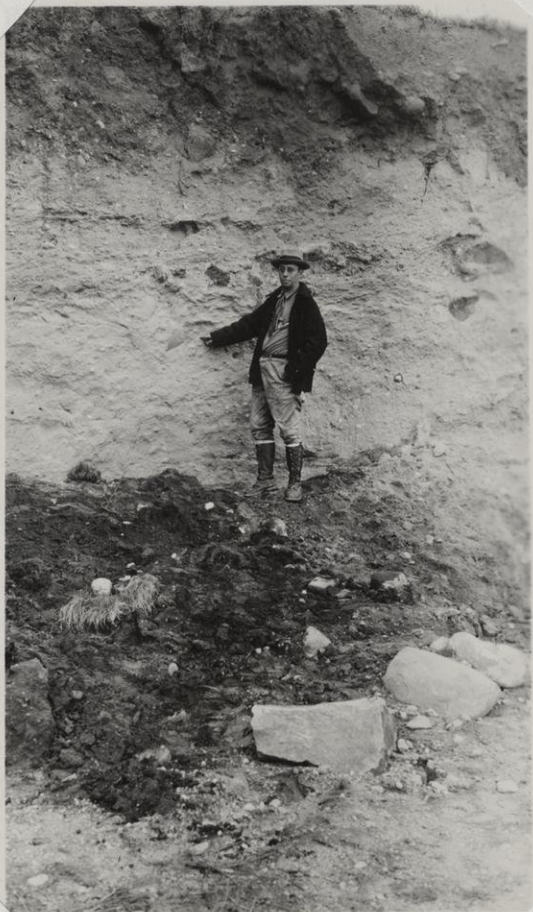


X

1107 Bretz's "Pink n' green" (till and gravel showing effect of shove). 1106.10b5

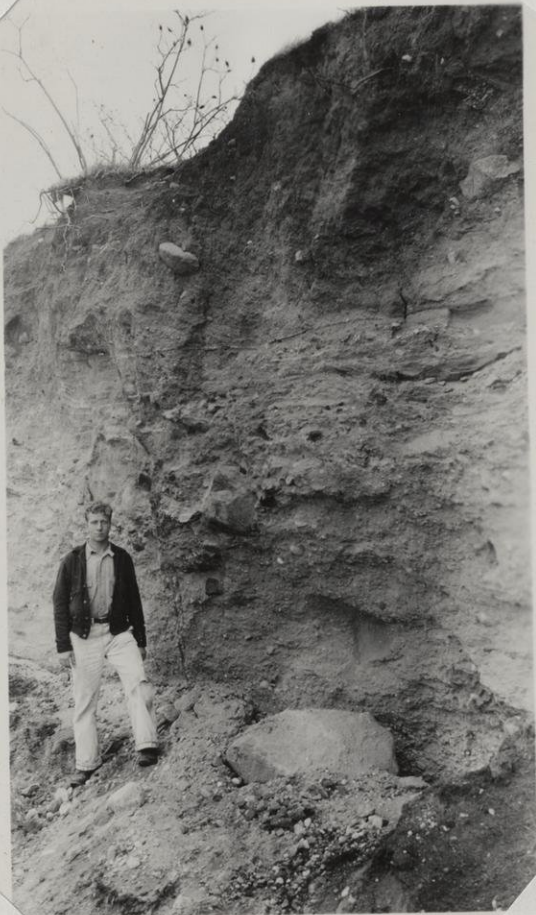


1109 Same as 1107



X

1108 Same as 1107



X

part marked



1110

1111

1112



Blowout. Southeast shore of Lake Michigan.

Itam, Thwaites

X

Same as 1111

Upper row: Lock, Puls, McNowin, Vanatta, Seefeldt, Slighnam

Lower row: Wing, Baker, Pickel, Iglaur, Bernard  
1603.25h1

Bazan



1113 Going down  
McNOWN, Vanet  
1804.09d2



Blowout. Southeast shore of Lake Michigan.

ak

1115 The chimney, Petenwell Peak  
Seefeldt, Vanetta, Iglaur  
1804.09d2

1116 The chimney, Petenwell Peak  
Seefeldt, Vanetta, Iglaur  
1804.09d2

X



1117 Puls on fault  
Dorro Gouche



1119 Same as 1118 looking NE.

1120 NW end of quarry in 1118 Pickel

nds  
ernard

7





Survey 2228 Wisconsin Granite Co. quarry—conglomerate to left.  
Ableman 1205.29e2



Survey 2229 White Rock quarry, Ableman 1205.29e2





X

Survey 2230 Cambrian conglomerate overlying quartzite, Ableman  
1205.29dl



X  
not visited

Survey 3821 Devils Lake from West Bluff 1106.23dl





Don't think but  
no orders later

X

~~the result~~

Survey 2232 LaRue quarry, Ableman 1205.29c2

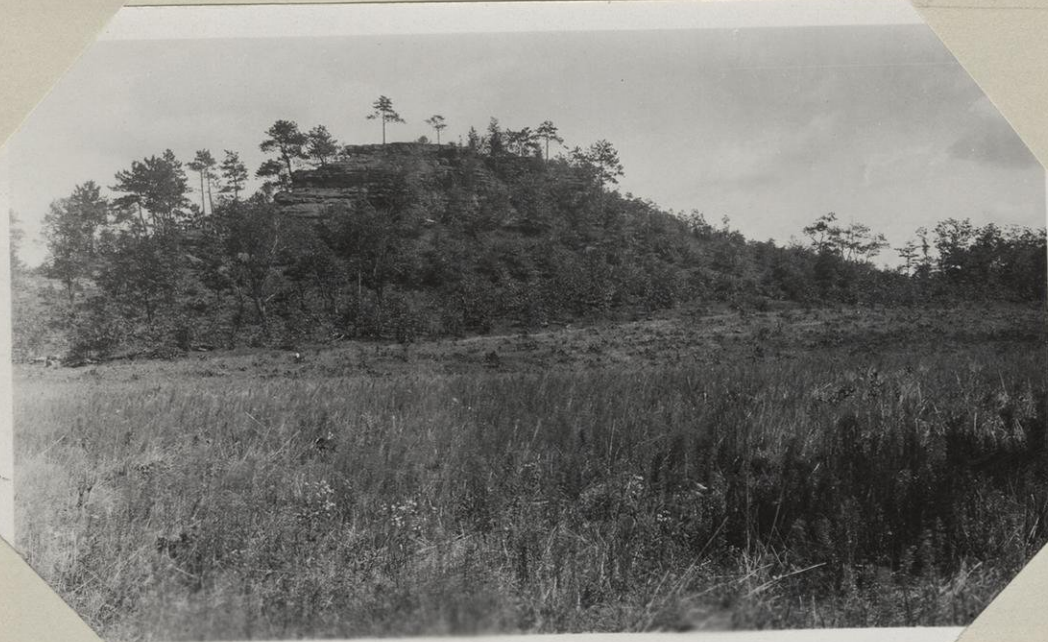


These are survey negatives.



2241 Natural Bridge, 1918

not in 1934  
1935



2442 Table Rock, 1919

not  
visited

1932

or 1933

1935





2570 <sup>Franciscan</sup> Mesquite-Dresbach W. of Leland

10/27  
no map



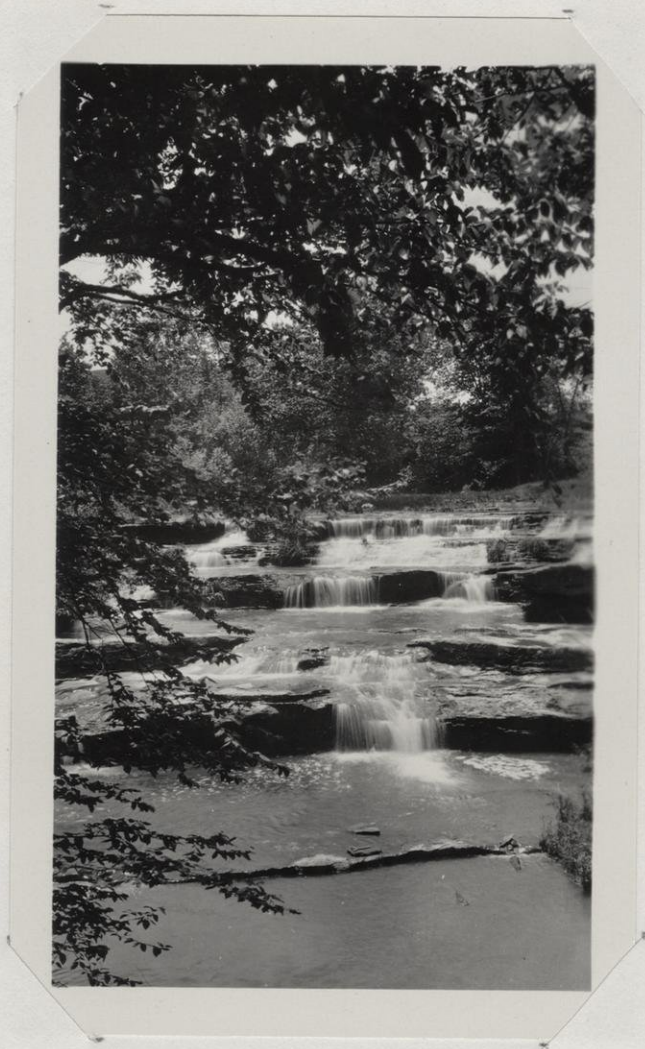


2580  
2508 Weidman Falls, 1920  
90



2581 Quartzite knobs rising above Magnesian upland





not on trip

Survey 3818 Skillet Falls, Dresbach sandstone  
1106.10e6





order not  
taken

X

not needed

Survey 3822 Devils Lake from West Bluff, joins 3821



order  
not taken

X

Survey 3823 Devils Lake from West Bluff, joins 3822





order  
not  
taken  
✓

not needed

Survey 3826 Deer Gap from South Bluff. The presence of such hanging pre-Cambrian valleys indicates that this section of the gorge was deepened by a superimposed stream.





4205 Friendship Mound and Roche a Cris from Pilot Knob

not visited

X 1932

1933

1934

1935



4206 Looking SE. from Pilot Knob

not  
X visited

1932

1933

1934

1935



4208 Inclined strata on Glover Bluff



8  
2

4207 Looking S. from Glover Bluff over pitted outwash



8  
2





X  
N

4211 W. end, Glover Bluff, showing dip of strata



X  
N

4213 Glover Bluff from S.