



LIBRARIES

UNIVERSITY OF WISCONSIN-MADISON

Orchestra parts: The Bowery. No. 761 [ca. 1890-1893]

Gaunt, Percy; Hoyt, Charles H. (Charles Hale), 1859-1900
New York: Arthur W. Tams Musical Library, [ca. 1890-1893]

<https://digital.library.wisc.edu/1711.dl/7RZFS4Y34CXBI8A>

This material may be protected by copyright law (e.g. Title 17, US Code).

For information on re-use see:

<http://digital.library.wisc.edu/1711.dl/Copyright>

The libraries provide public access to a wide range of material, including online exhibits, digitized collections, archival finding aids, our catalog, online articles, and a growing range of materials in many media.

When possible, we provide rights information in catalog records, finding aids, and other metadata that accompanies collections or items. However, it is always the user's obligation to evaluate copyright and rights issues in light of their own use.

A. W. TAMS,
No. 1,
109 W. 28
New York.

NO. 761

① - 14

ARTHUR W. TAMS,
Musical Library,
109 W. 28th St.
NEW YORK.

Intro

Violin *1st* *to Verse*

1st Verse
2nd Verse
Chorus
Last Verse
3rd Chorus
The Power.

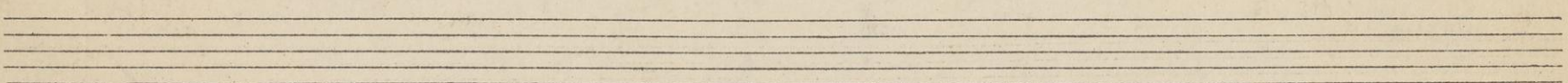
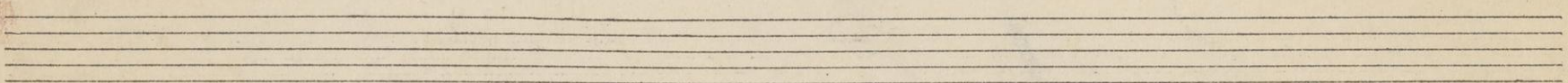
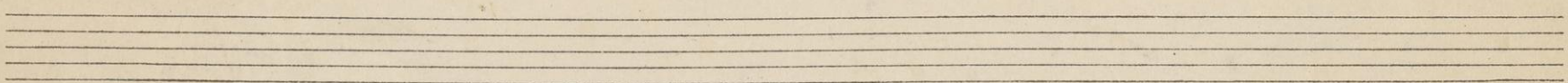
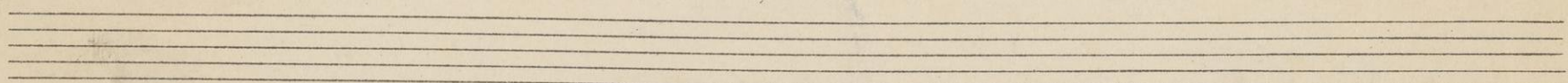
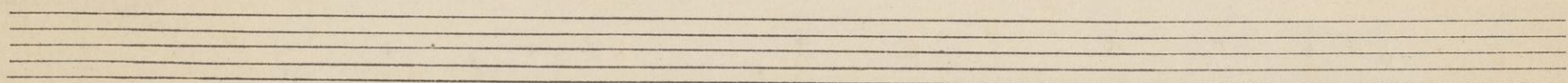
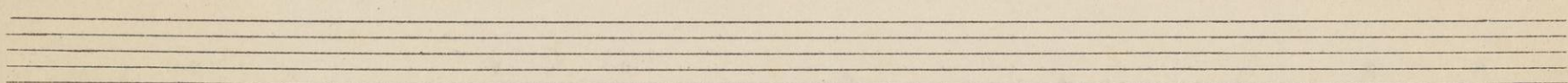
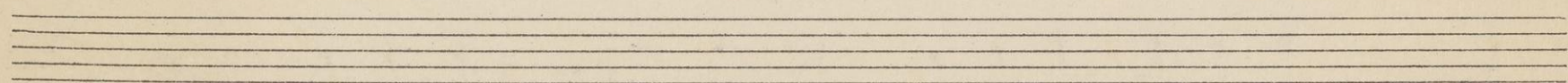
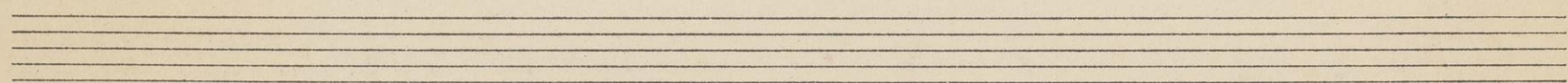
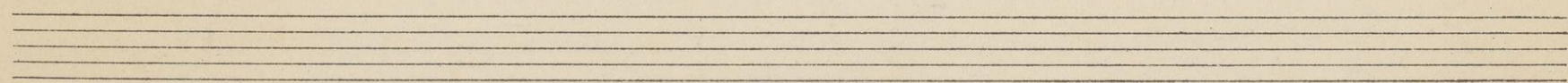
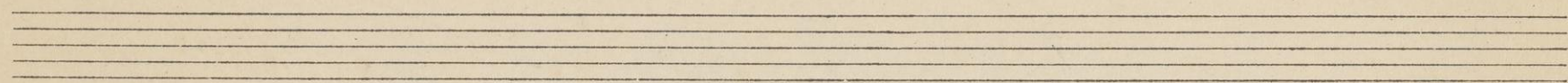
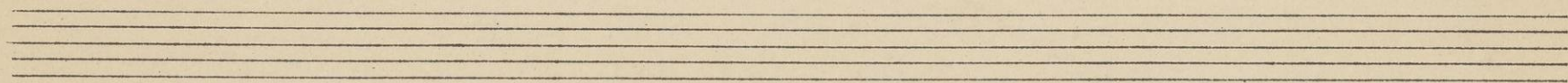
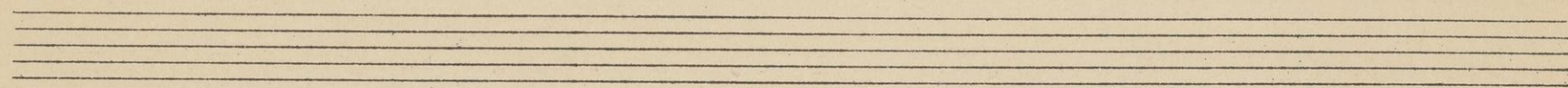
Tempo di Valse. 3/4

Chorus
voice
Curtain Riser

Chorus.
to repeat

After last Verse.
D.C.
cresc.

~~These are to be cut~~



EXCERPTS.

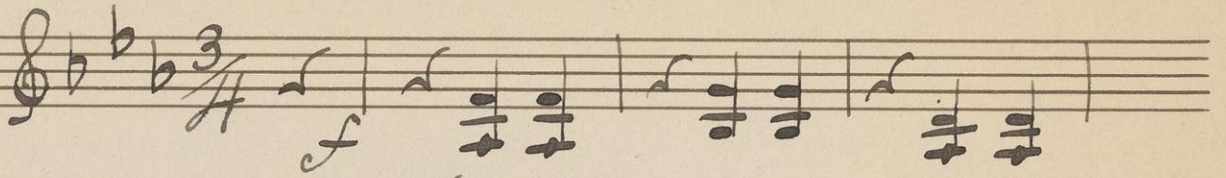
NO. 761

ARTHUR W. TAMS,
Musical Library,
109 W. 28th St.
NEW YORK.

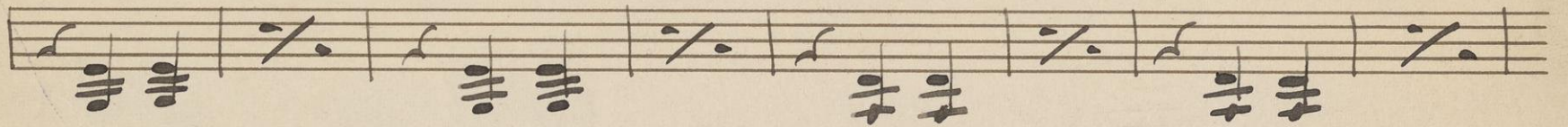
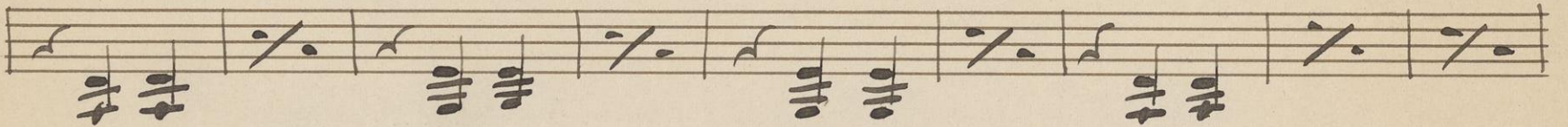
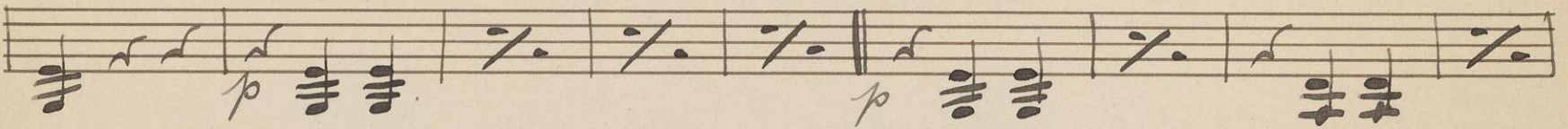
2nd Violin

The Bowers.

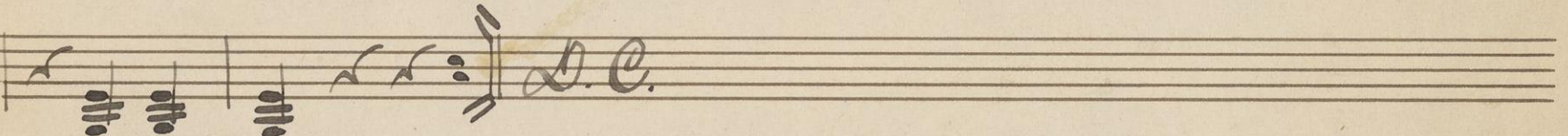
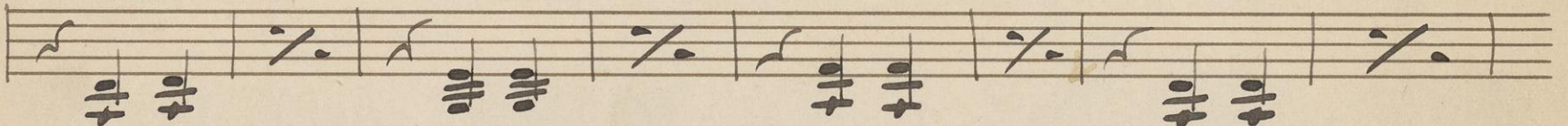
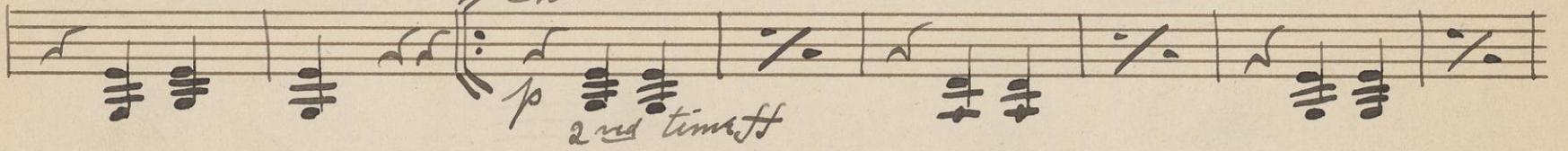
Tempo di Valse.



Vacc.

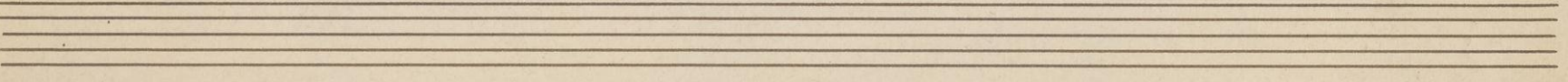
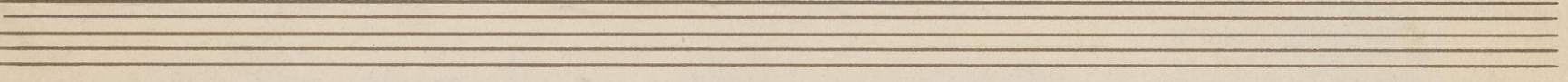
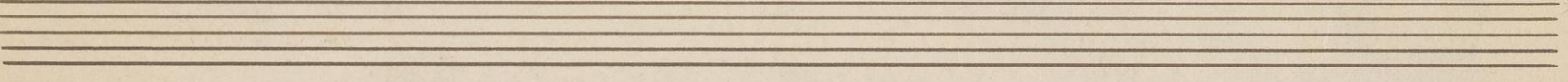
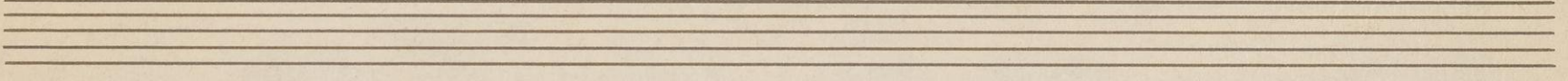
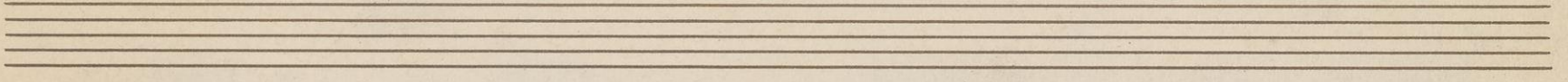
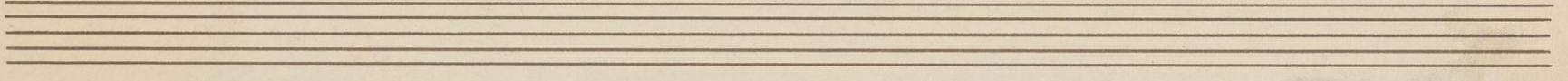
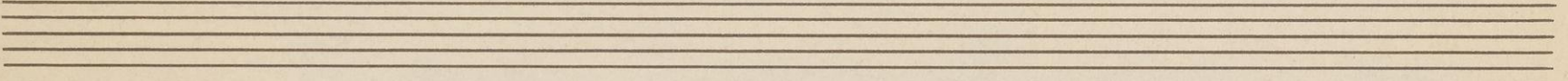
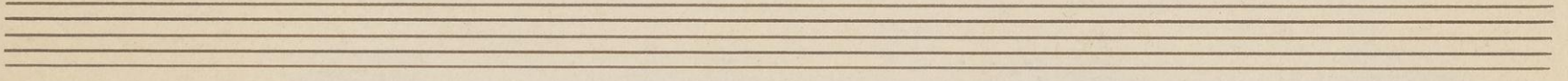
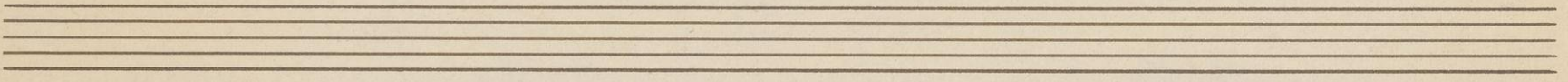
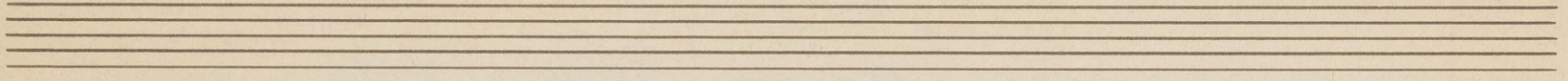
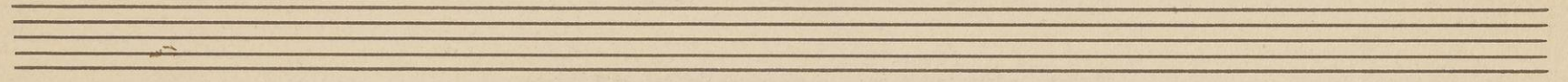
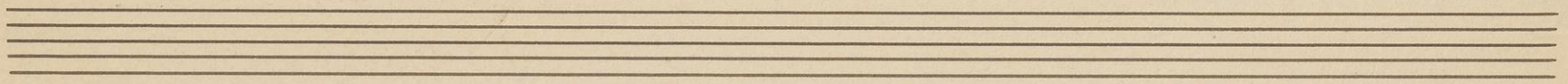


Chorus.



After last verse.





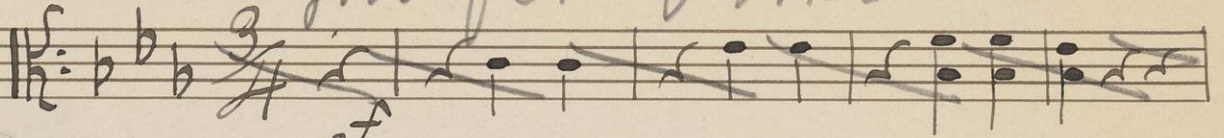
Viola.

①

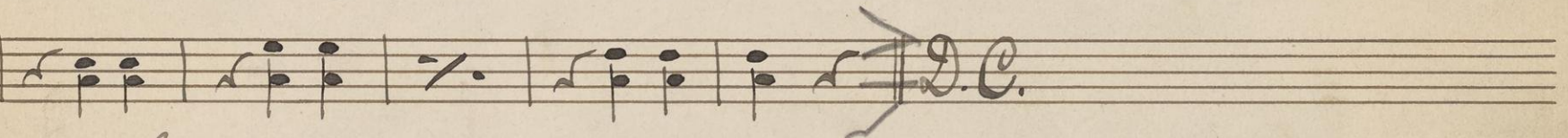
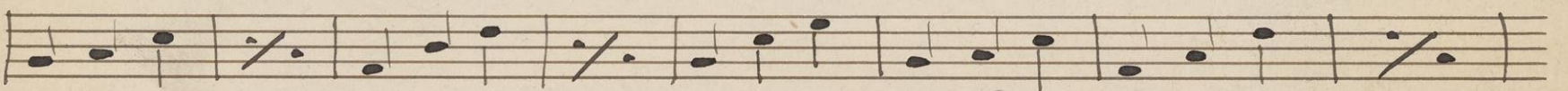
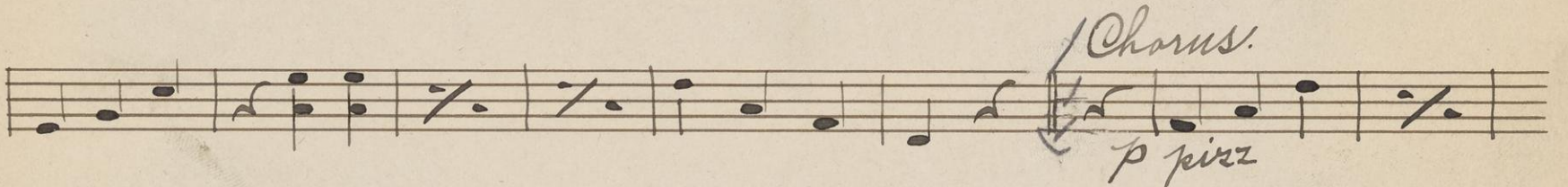
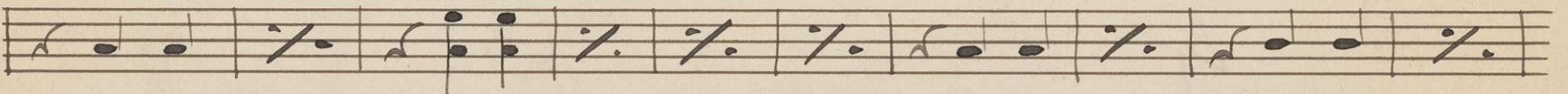
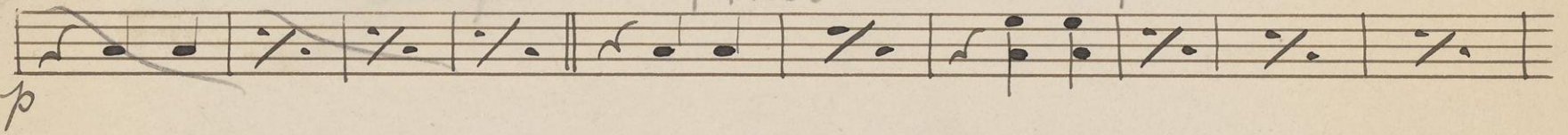
The Bowers.

Tempo di Valse.

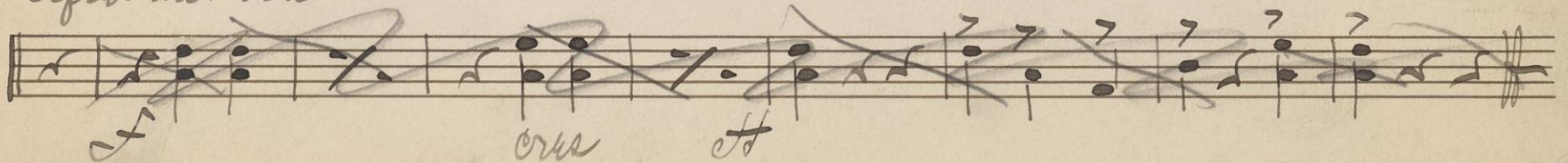
Good for Finale

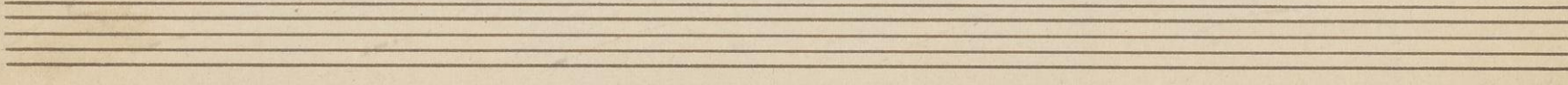
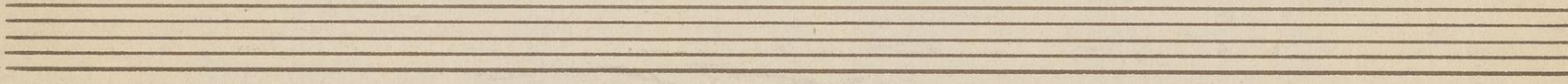
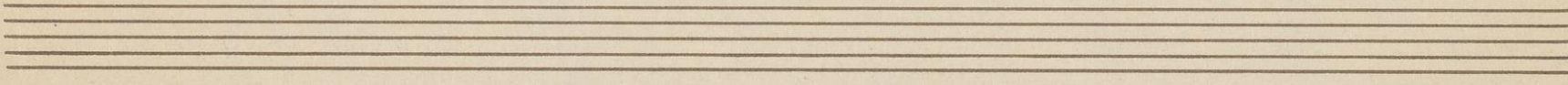
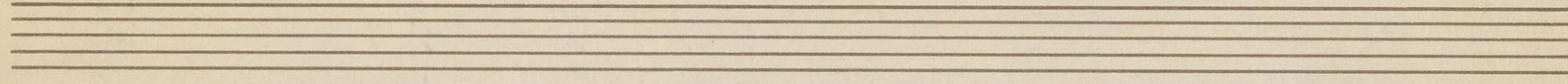
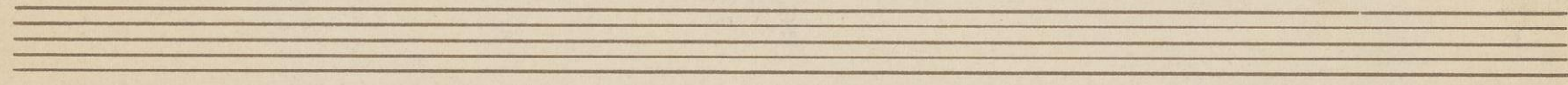
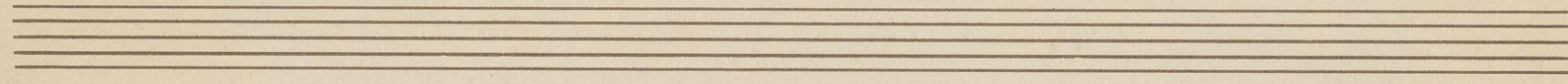
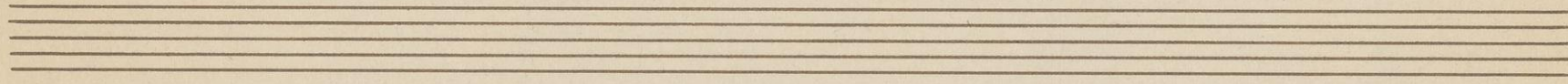
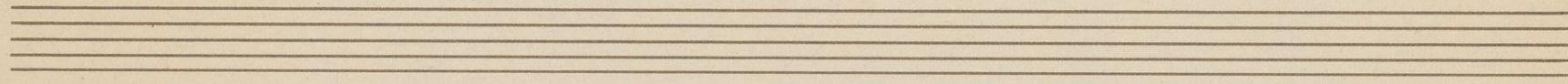
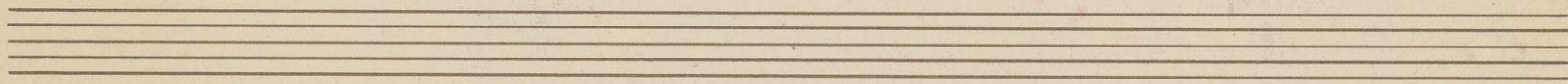
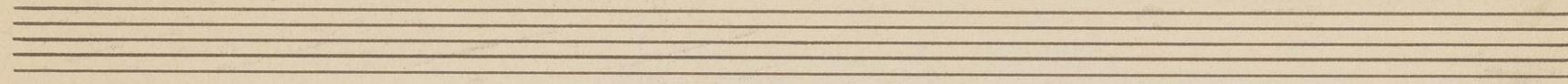
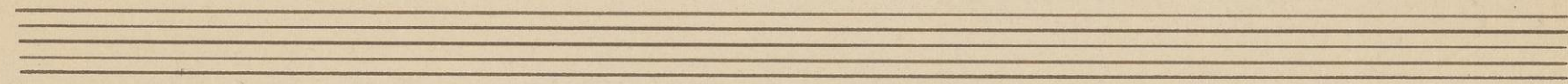
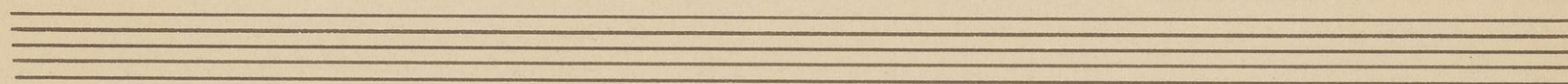


Van Meter. 4 mes. and Camp.



after last Verse.





Bass & Cello.

The Bower.

Tempo di Valer.

~~Violoncello~~

~~Violoncello~~
p

here Voice.

Vamp Forte

here Chorus. pizz

p - 2nd time #

arco.

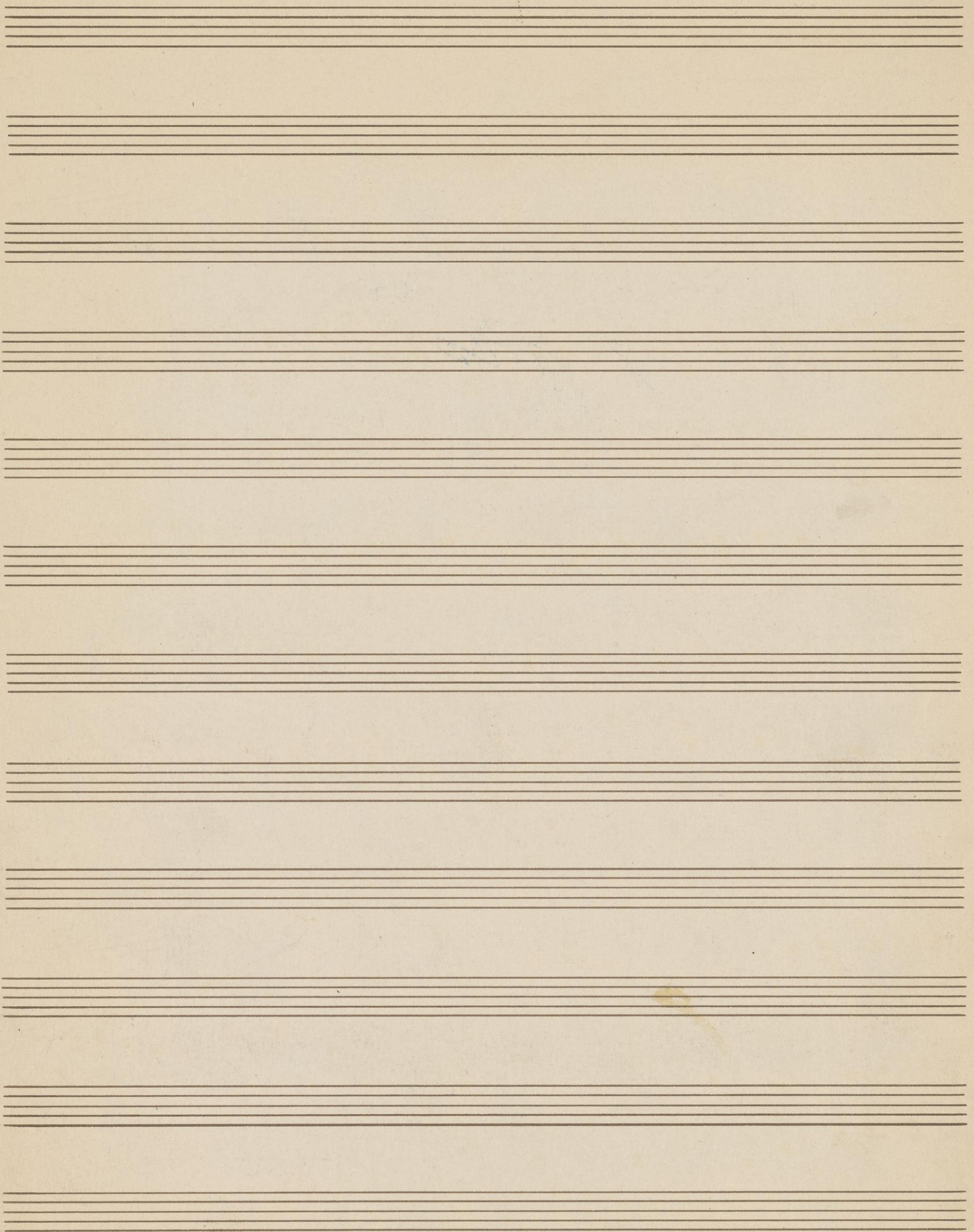
D.C.

after last verse.

crise.

1

3 times



NO. 761

1

Basso.

The Bower.

Tempo di Talse.

p. l.

Vivace.

Tempo

Chorus
2nd time

arco

Q.C.

after last Verse

cresc.

1

64

Buck, Danga

Handwritten musical notation on three staves. The first staff has a 2/4 time signature and contains a melody with various note values and rests. The second staff continues the melody. The third staff shows a few notes followed by a double bar line and the letters "DB" written below it.

Handwritten musical notation on a single staff with a treble clef, a key signature of one sharp (F#), and a 3/4 time signature. The notation is a continuous line of notes with some slurs.

Larg

Handwritten musical notation on a single staff with a treble clef, a key signature of one sharp (F#), and a 3/4 time signature. The notation consists of a series of notes with stems, some with flags, and a final double bar line.

Handwritten musical notation on two staves. The top staff has a treble clef, a key signature of one sharp (F#), and a 3/4 time signature, with notes and stems. The bottom staff has a bass clef and contains a series of notes with stems.

EXCERPTS.

NO. 761

ARTHUR W. TAMS,
Musical Library,
109 W. 28th St.
NEW YORK.

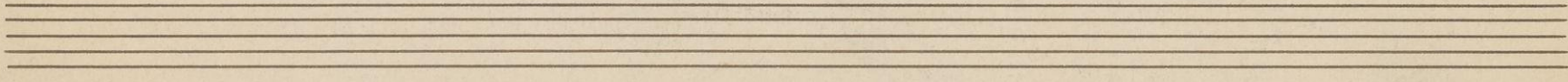
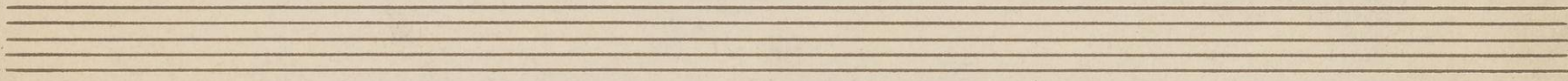
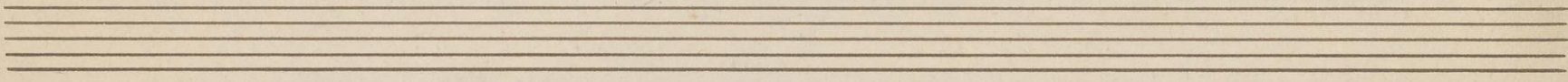
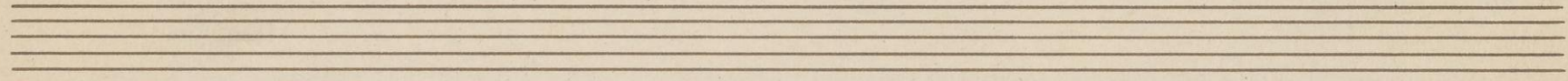
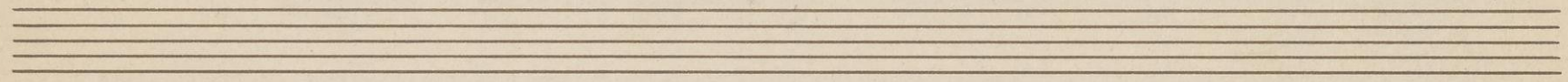
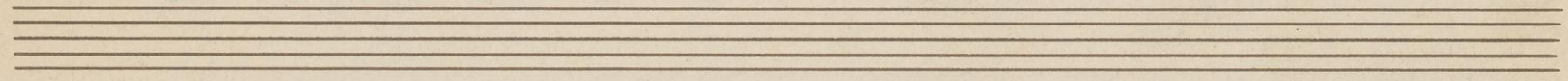
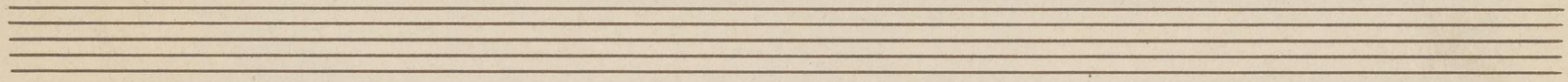
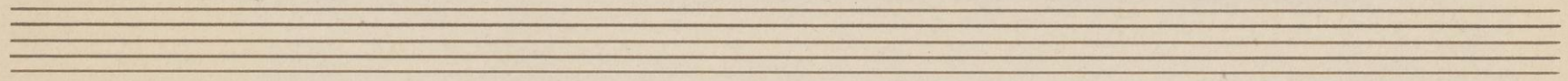
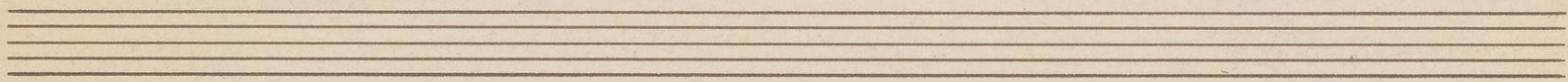
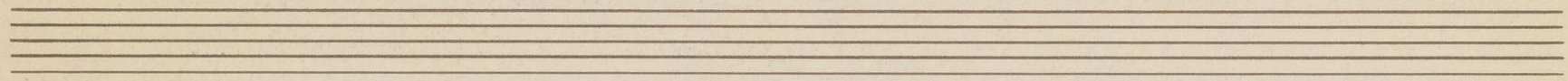
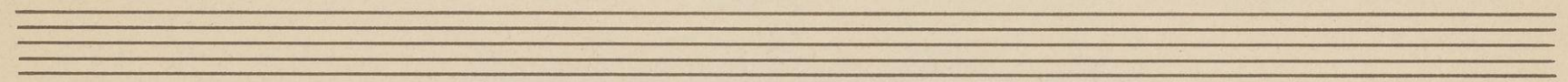
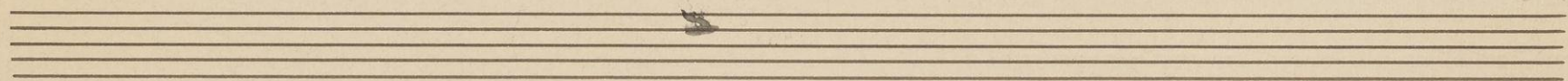
Flute

The Bower.

Tempo di Valse.

D.C.

after last vers.



Clarinet in B \flat

Vamp The Bowers

Tempo di Valer.

Out

f

Voc.
p

Chorus.

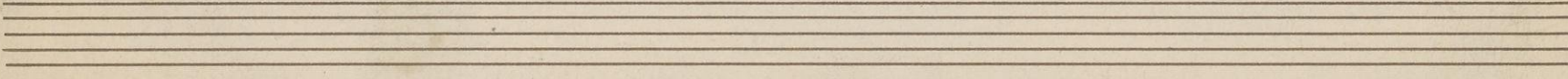
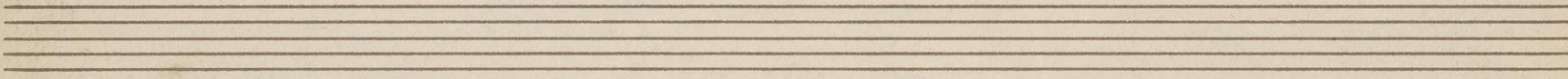
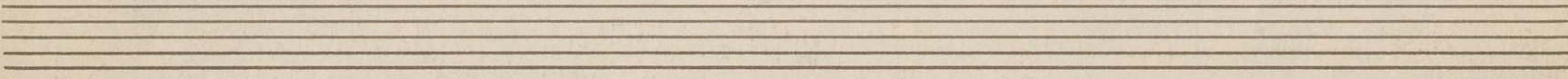
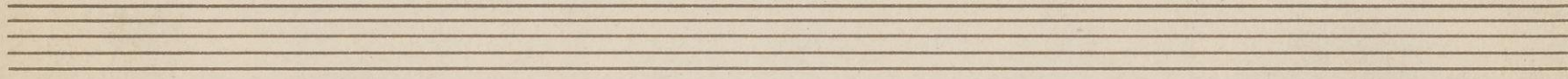
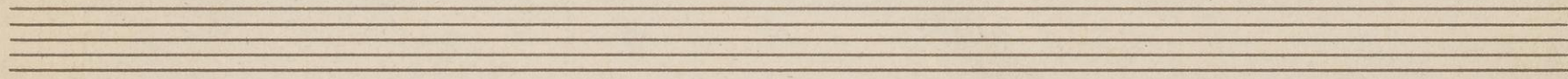
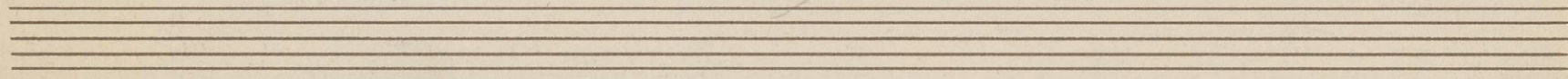
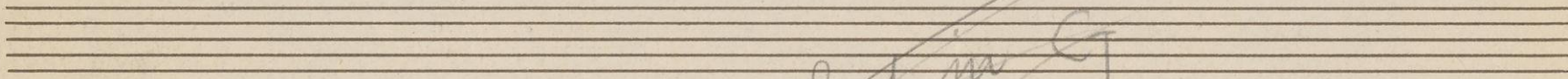
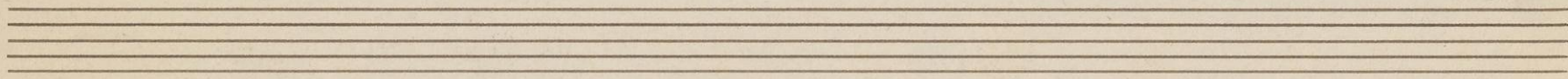
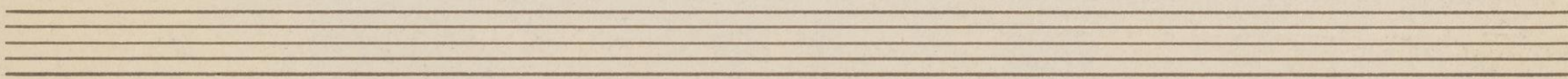
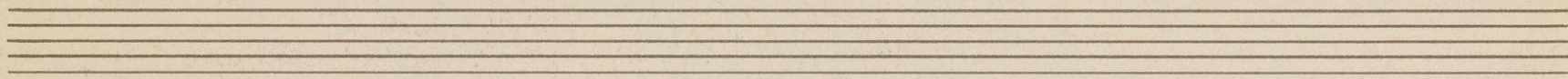
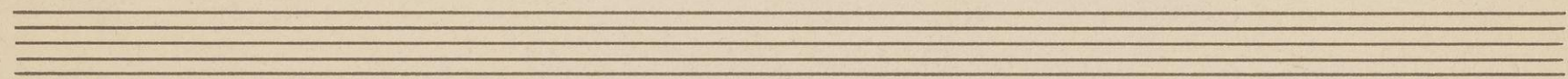
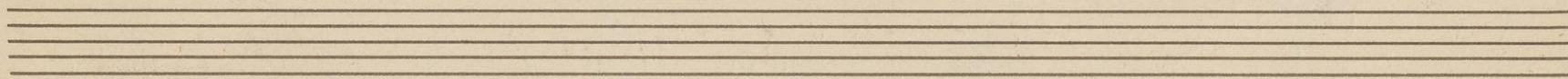
p

B. E. P.

D.C.

after last vers.

f
crus.
f



EXCERPTS.

NO. 761

ARTHUR W. TAMS,
Musical Library,
109 W. 28th St.
NEW YORK.

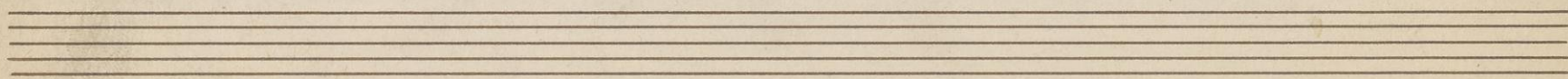
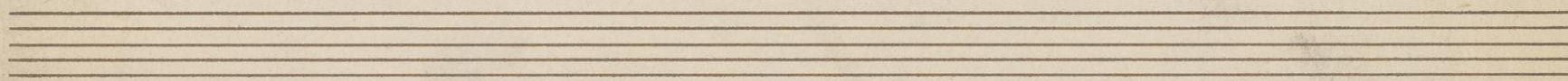
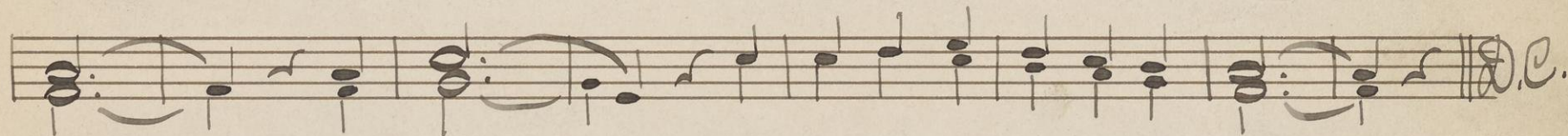
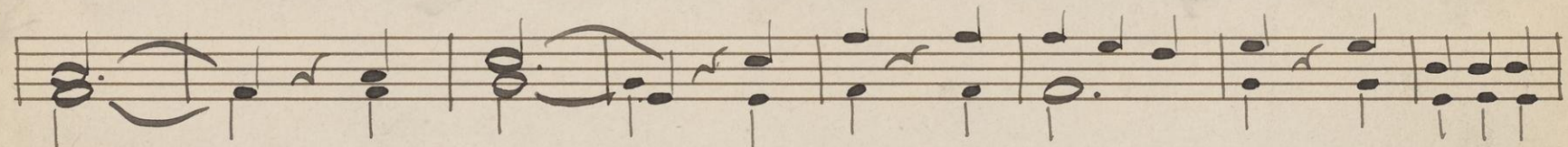
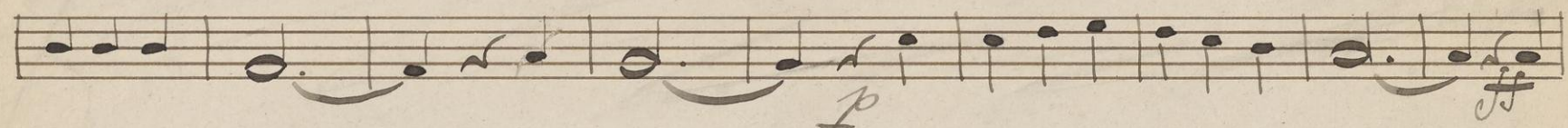
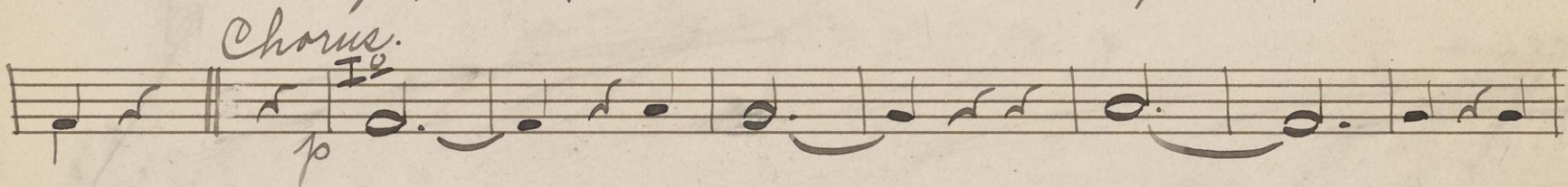
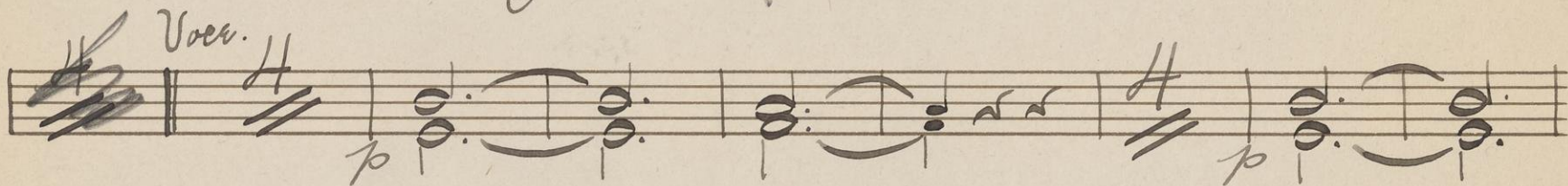
Cornets in B^b

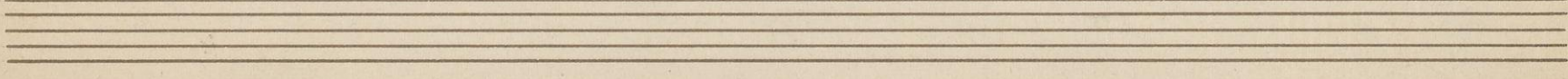
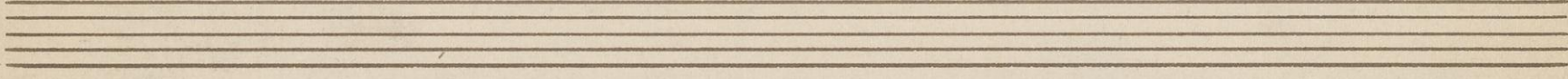
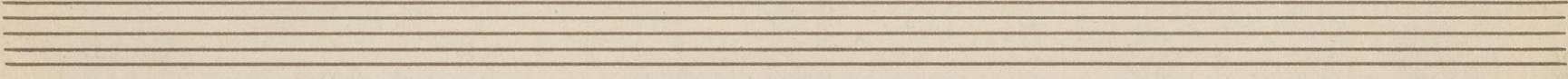
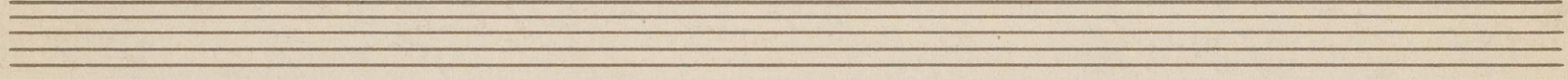
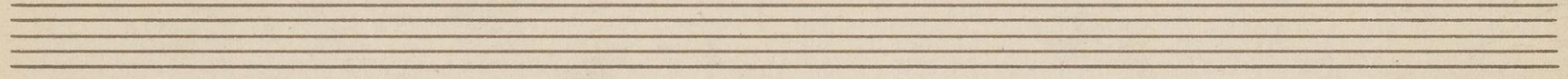
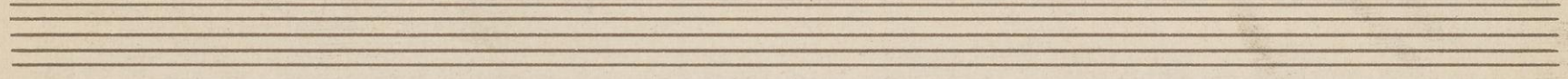
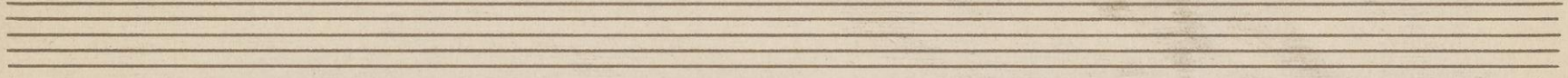
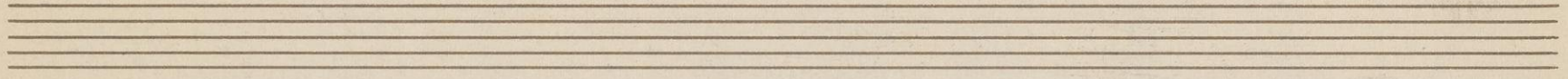
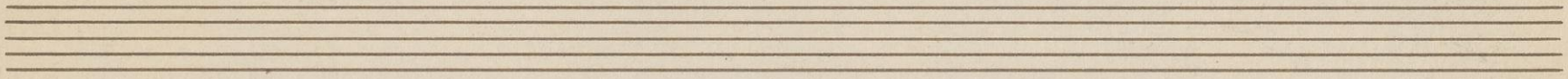
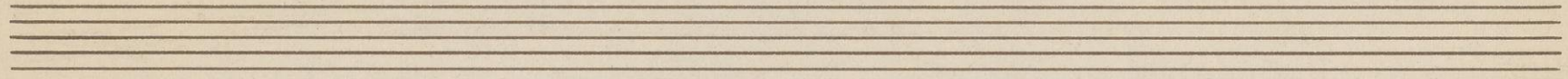
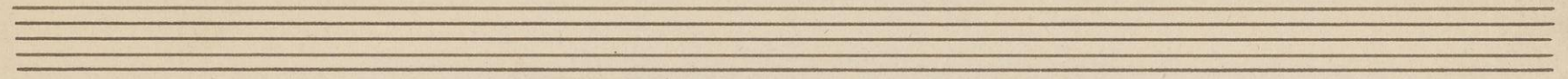
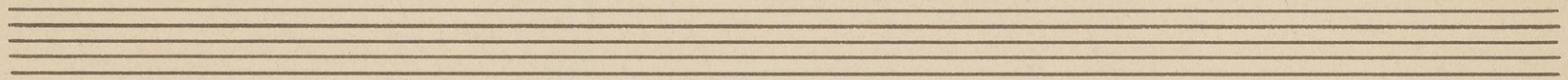
No 1 - and No 18

3-2-1 and 3-C-

The Bower.

Tempo di Valse.





EXCERPTS.

ARTHUR W. TAMS,
Musical Library,
109 W. 28th St.
NEW YORK.

NO. 761

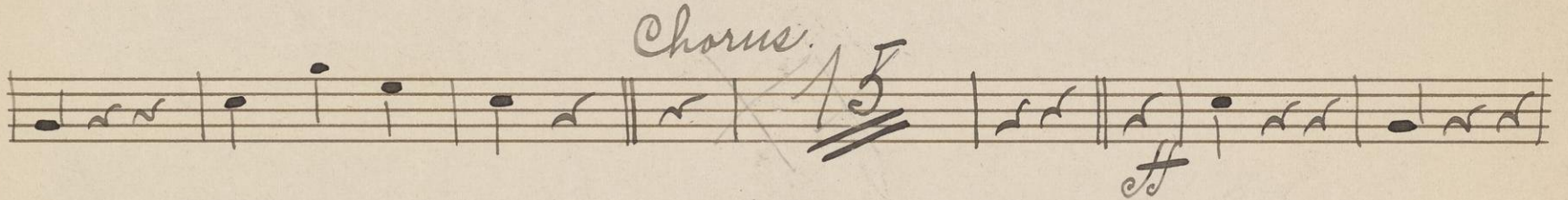
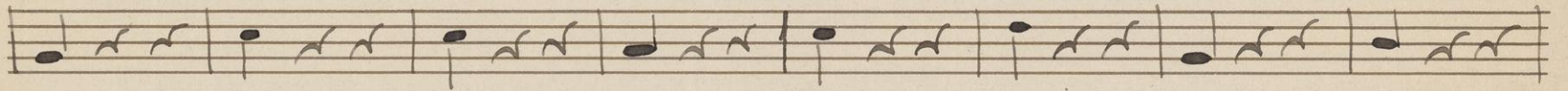
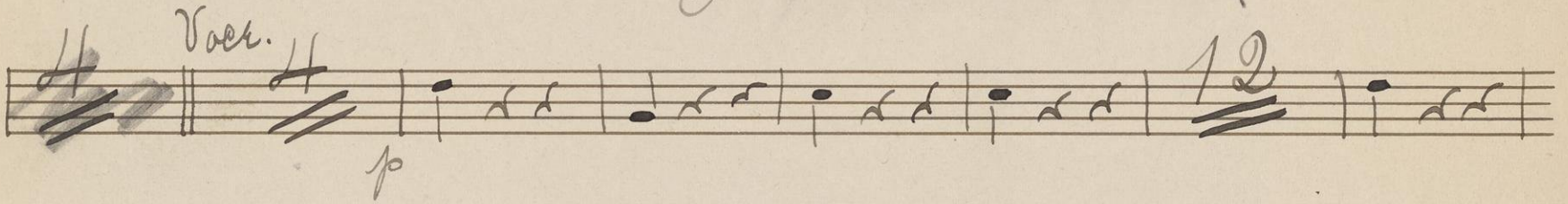
①

Trombone.

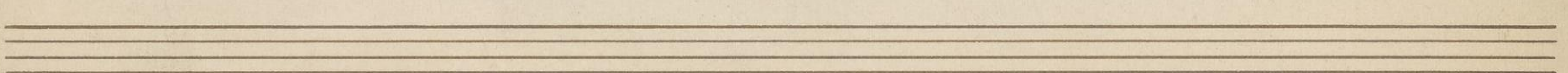
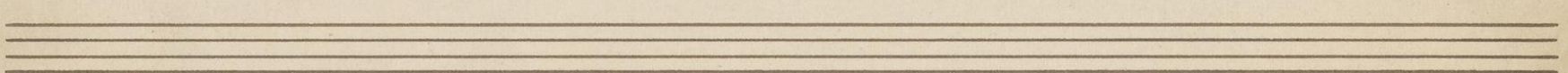
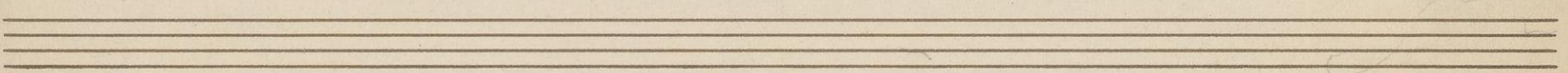
⑧

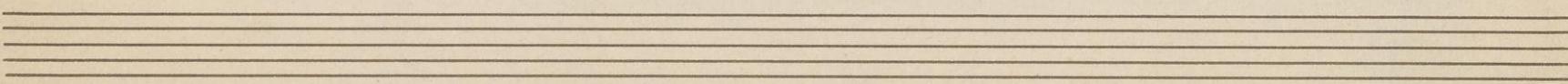
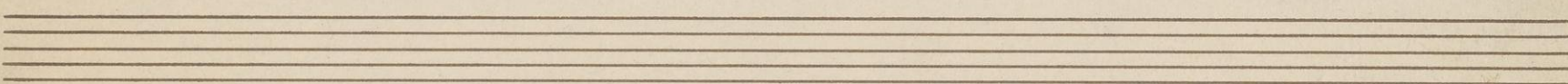
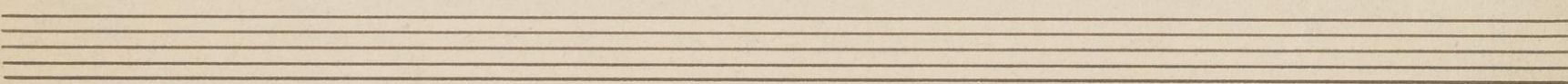
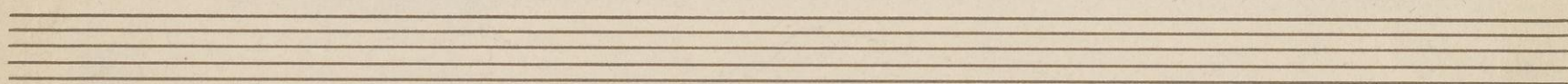
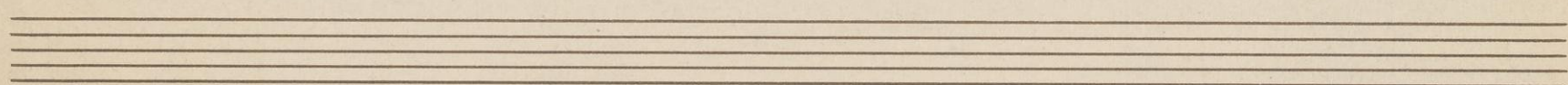
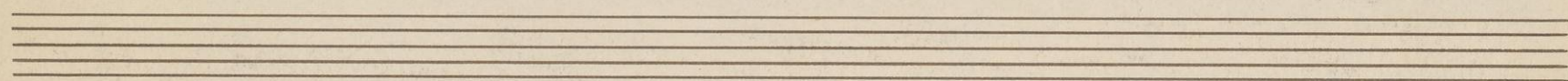
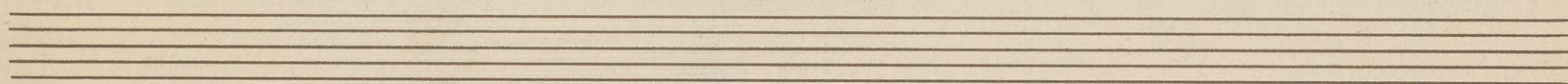
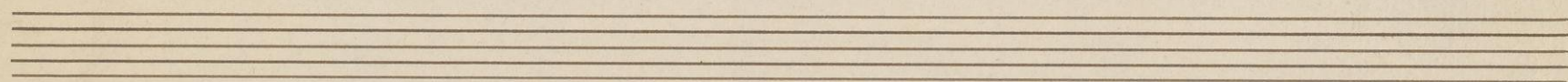
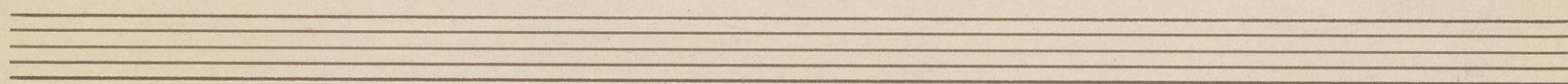
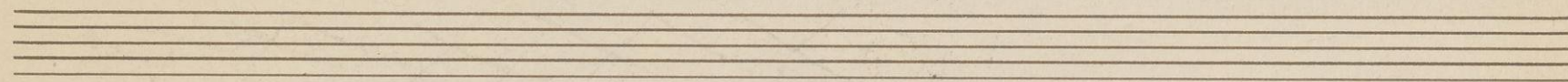
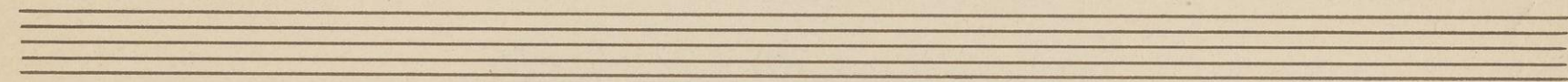
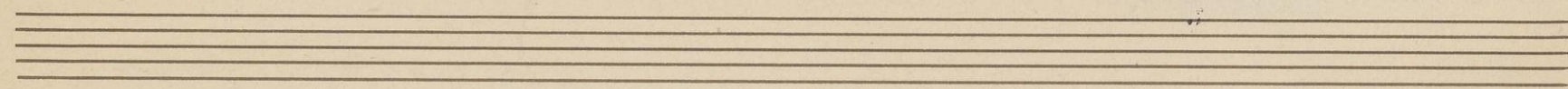
The Bowers.

Tempo di Valse.

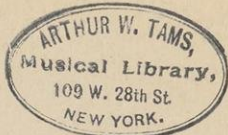


After last verse.





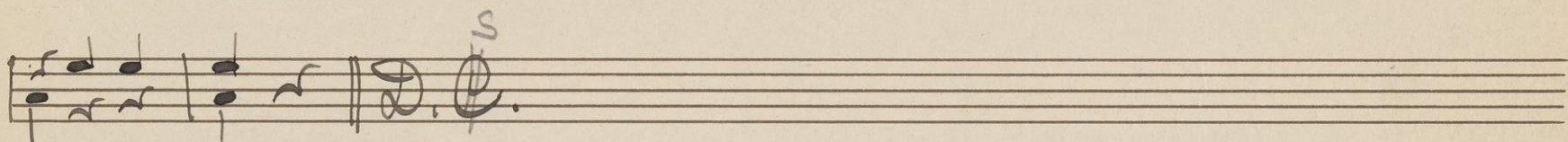
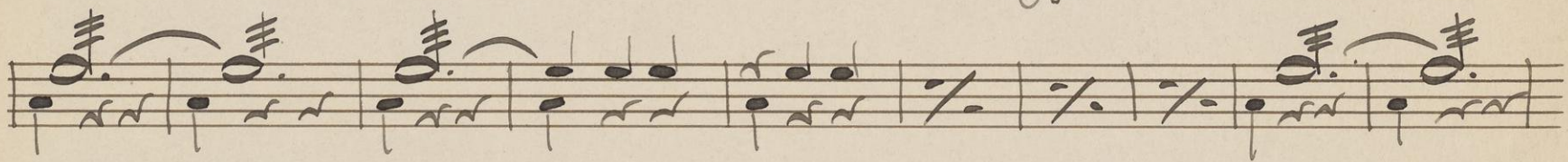
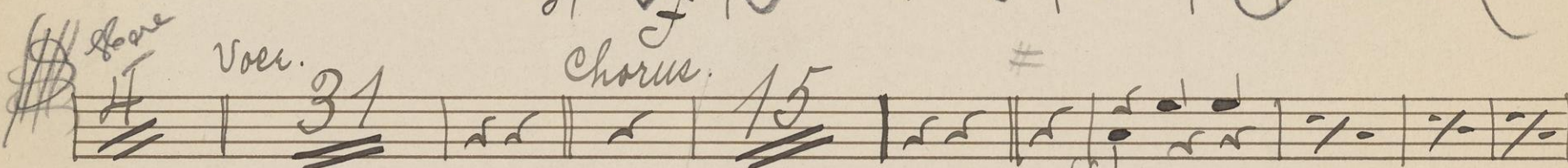
#1. 2 #18



Drums.

The Bowery

Tempo di Valer.



after last verse.

