

Keep the home together.

New York: Spalding & Gray (16 W. 27th St.), 1893

<https://digital.library.wisc.edu/1711.dl/EOL47DIQ4YQS48G>

<http://rightsstatements.org/vocab/NKC/1.0/>

The libraries provide public access to a wide range of material, including online exhibits, digitized collections, archival finding aids, our catalog, online articles, and a growing range of materials in many media.

When possible, we provide rights information in catalog records, finding aids, and other metadata that accompanies collections or items. However, it is always the user's obligation to evaluate copyright and rights issues in light of their own use.

"Let's be helpmates thro' and thro',
And Keep the Home Together."

"KEEP THE HOME
TOGETHER,"

PATHETIC SONG AND CHORUS.

.... BY

CHAS. GRAHAM,

Composer of "Two little Girls in Blue," "A Plain little Irish Girl," etc.



NEW YORK.

... Published by ...

SPAULDING & GRAY.

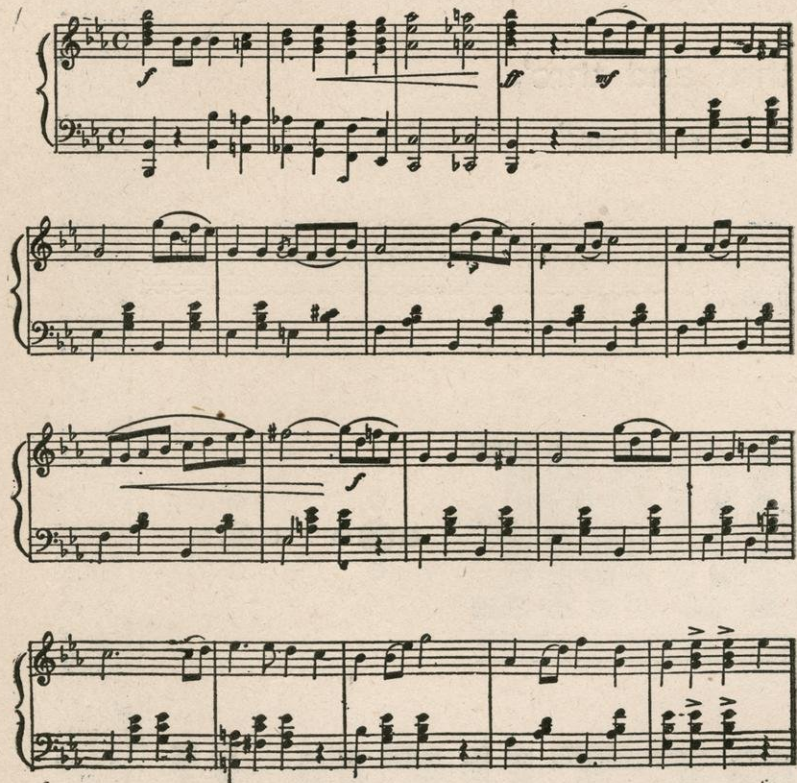
16 West 27th St.

TRY THESE OVER ON THE PIANO.

JOLLY FELLOWSHIP

MARCH

by T. E. TOWNSEND

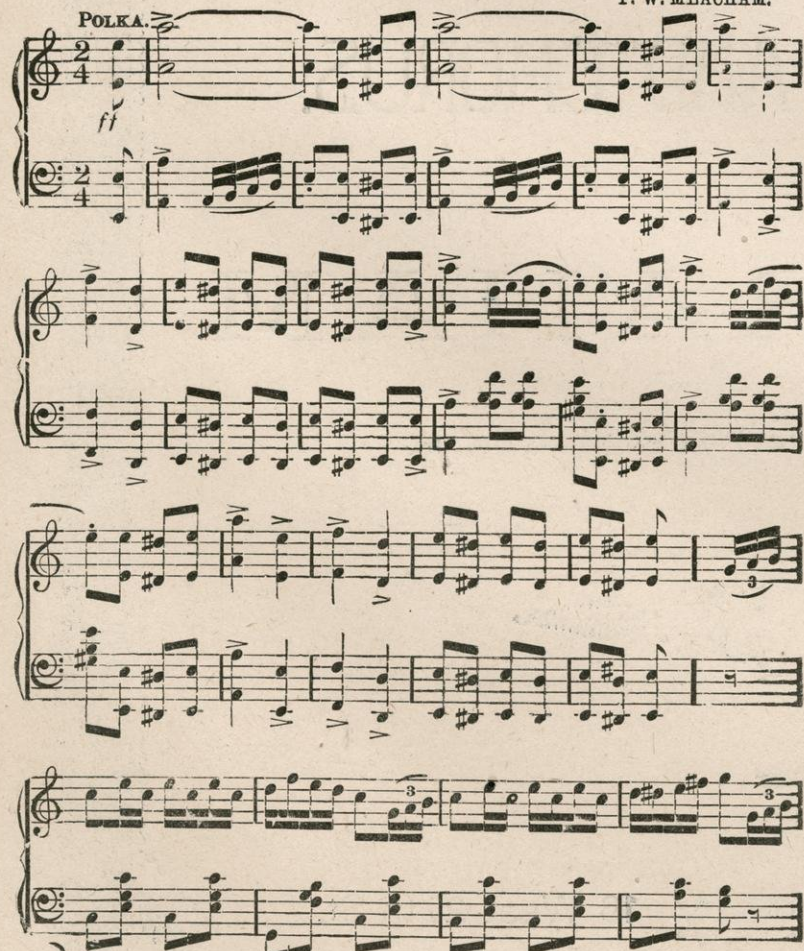


Copyright by Spaulding & Kornder.

"WING DANCE."

POLKA.

F. W. MEACHAM.

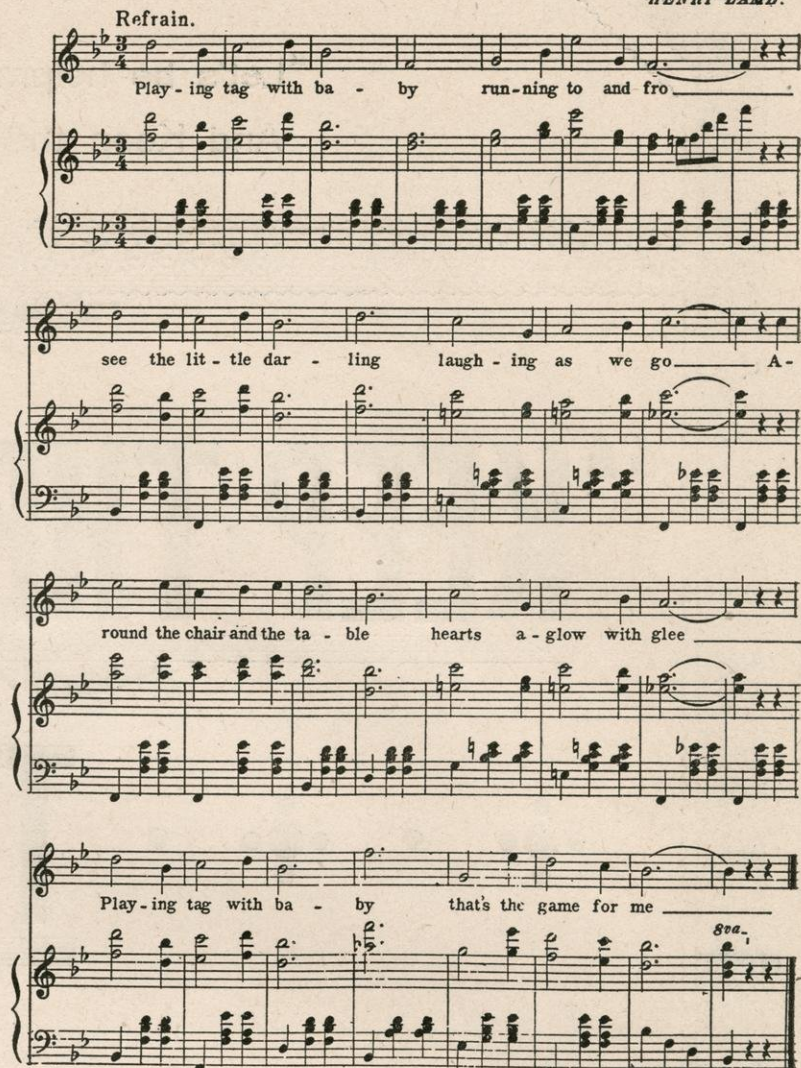


Copyright by SPAULDING & KORNDER.

"PLAYING TAG WITH BABY."

WALTZ SONG.

HENRY LAMB.

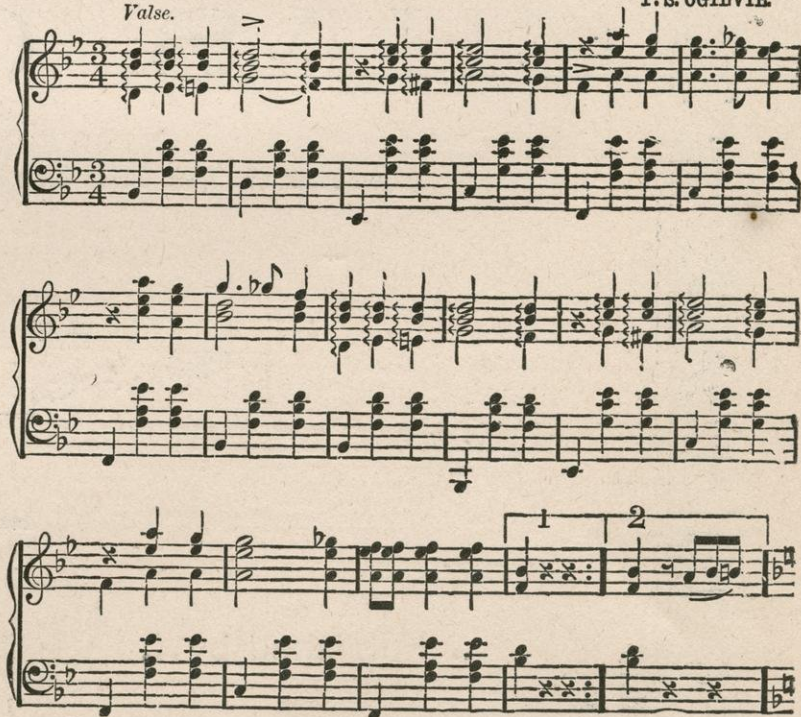


Copyright Melodist by Spaulding & Kornder.

GOLDEN CHORDS WALTZ.

Waltz.

F. S. OGILVIE.



Copyright by DAVID TAYLOR.

Complete Copies at all Music Stores.

KEEP THE HOME TOGETHER.

SONG and CHORUS.

Words and Music by CHAS. GRAHAM.

Composer of "Tom and I'll go too," "Two Little Girls in Blue." &c. &c.

With feeling.



1. An on - ly son was seat - ed at the bed - side of his dad, And
2. Don't leave the lit - tle home-stead, John, the place we've had for years; Its

The piano accompaniment for the first two lines of the song. The right hand (treble clef) plays a melody in G major, starting with a half note G, followed by eighth notes A-B-A, B-C-B, and ending with a half note G. The left hand (bass clef) plays a steady eighth-note accompaniment, starting with G, followed by A-B-A, B-C-B, and ending with G.

down his boy - ish cheeks the tears had start - ed— The
ev - 'ry nook and cor - ner has a sto - ry; The

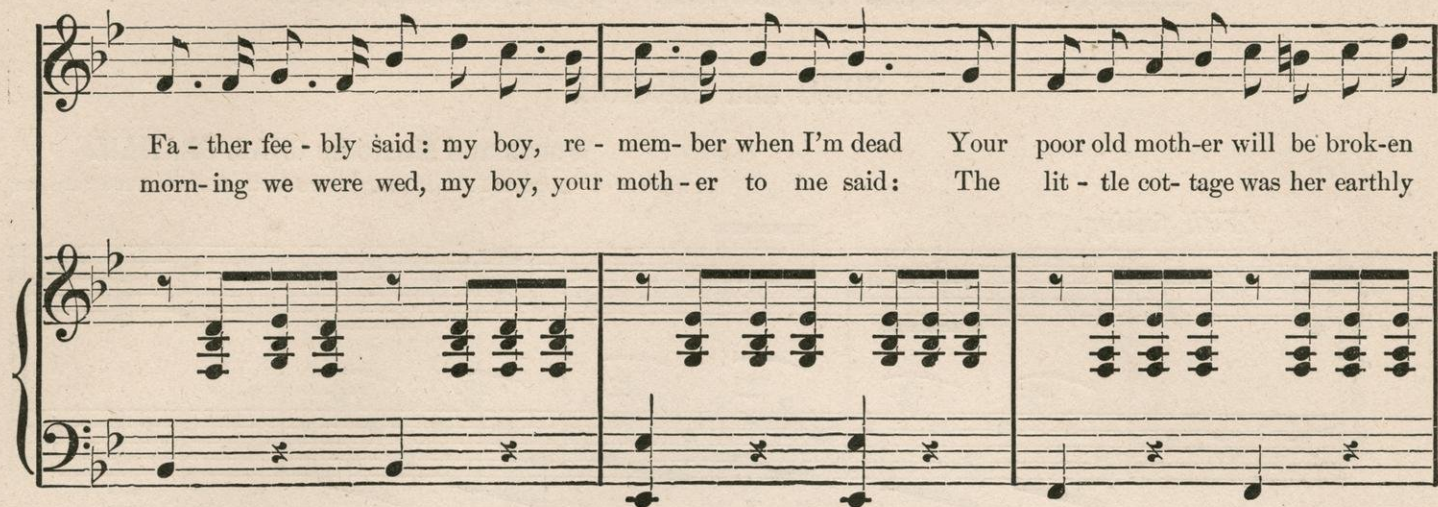
The piano accompaniment for the last two lines of the song. The right hand (treble clef) plays a melody in G major, starting with a half note G, followed by eighth notes A-B-A, B-C-B, and ending with a half note G. The left hand (bass clef) plays a steady eighth-note accompaniment, starting with G, followed by A-B-A, B-C-B, and ending with G.

Copyright, MDCCCXCIII, by SPAULDING & KORNER.

DON'T FAIL TO GET A COPY OF
THE VOLUNTEER ORGANIST.

A SPLENDID SONG.

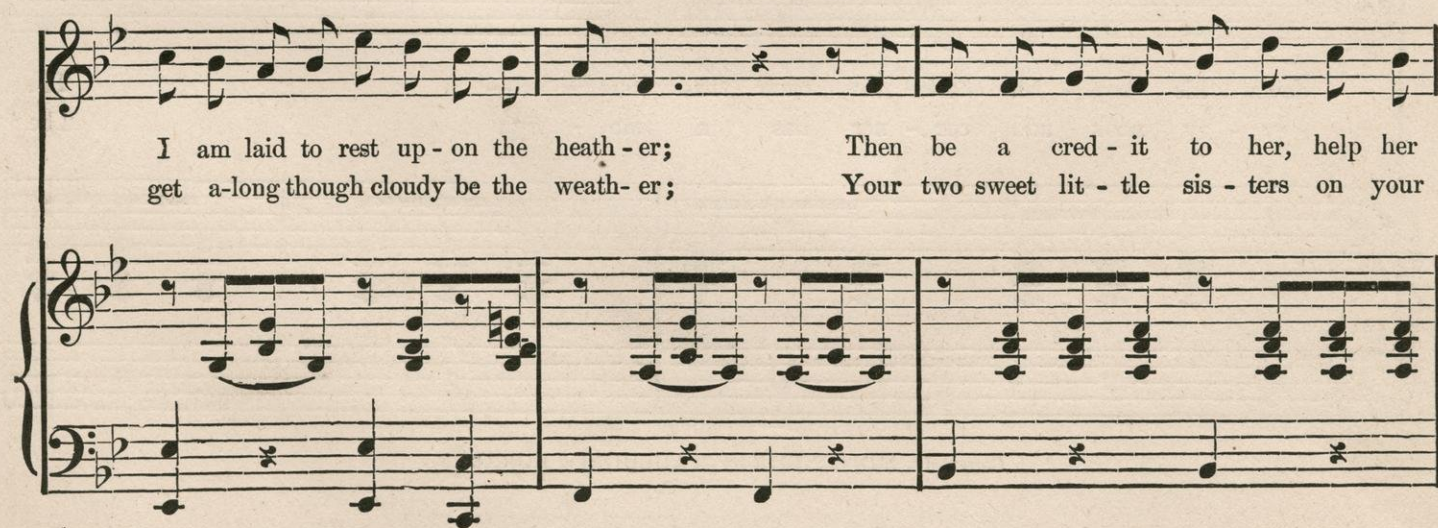
NO PORTFOLIO COMPLETE WITHOUT IT.



Fa - ther fee - bly said: my boy, re - mem - ber when I'm dead Your poor old moth - er will be brok - en
morn - ing we were wed, my boy, your moth - er to me said: The lit - tle cot - tage was her earthly



heart - ed; 'Tis then she'll need your aid, my boy, so act the no - ble man, When
glo - ry; Mis - fort - une may con - front you, but be fear - less to the end; You'll



I am laid to rest up - on the heath - er; Then be a cred - it to her, help her
get a - long though cloudy be the weath - er; Your two sweet lit - tle sis - ters on your

Keep The Home Together.

A BRIGHT, CATCHY WALTZ SONG,
JUST THE GIRL FOR ME.

By the Composer of "Polly O'Neil."

ev-'ry way you can; To pros-per, and to keep the home to-geth-er.
moth-er will de-pend; Be kind to them, and keep the home to-geth-er.

CHORUS.

Keep the home to-geth-er, John, and keep a heart that's will-ing; For

when the home is gone, you know a man's not worth a shill-ing; For-tune may not fa-vor you, but

wait for bright-er weath-er, And help your dear old moth-er, John, to keep the home to-geth-er.

Keep The Home Together

L. A. MESTON & CO. MUSIC TYPEGRAPHERS 710 BROADWAY N. Y. C.

**THE LATEST WALTZ SONG,
PLAYING TAG WITH BABY,**

By the Composer of "My Mary Green."

Vocal and Instrumental Music.

VOCAL.

American Girls—March Song	Heinzman.	40
Am I Awake or Dreaming—Song and Chorus	Skelly.	40
Army of Unknown (The)—Descriptive	Spaulding.	40
Bicycle Fad (The)—Character	Mitchell.	40
Black Thorn (The)—Character	Sullivan.	40
Carrie—Waltz Song	Glenroy-Lamb.	40
Casey's Wife—Comic	Flynn.	40
Christening of Maggie's Baby (The)—Waltz Song	Carroll.	40
Clancy's Trotter—Comic	Glenroy.	40
Come Home, Baby's Dead—Song and Chorus	Long.	40
Come Home to Your Mother, Darling Boy—Pathetic	Skelly.	40
Could the Years Backward Go—Ballad	Graham.	50
Dar's a Watermelon Spoiling Down at Johnson's—Comic	Wheeler.	40
Daylight's a Breakin'—Comic	Fagan.	40
Don't Believe Them, Mary—Pathetic	Gray-Spaulding.	40
Down Went McGinty—Comic	Flynn.	40
Down Went McGinty—(for Banjo)	Converse.	40
Eliza Jane McCue—Waltz Song	Lamb.	40
Ever Be True—Sentimental	Slafer.	40
Fatal Wedding (The)—Descriptive Waltz Song	Davis.	40
Football in Casey's Back-yard—Comic	Wheeler.	40
From the Lowly Manger Beaming—Christmas Carol	Skelly.	10
Get On to the Funny Walk—Comic	Sullivan.	40
Hannah Get the Broom—Darkey Song	Sheffer.	40
Have You Seen Dan McKenna—Comic	Miller.	40
He Got It Again—Topical	Flynn.	40
He Whistled Up a Tune—Comic	Carroll.	40
How Do You Do, Mr. McCue—Comic	Beebe.	40
How I Have Loved Thee—Soprano or Tenor	Koch.	40
If I Could Give—Ballad	Danolds.	40
If the Golden Stairs Break Down—Comic	Davis.	40
I Heard the Voice of Jesus Say—Sacred	Spaulding.	30
I'll Not Forget You, Daddy—Pathetic	Glenroy.	40
I Loaned My Sunday Coat to Maloney—Comic	Skelly.	40
I'll Paralyze the Man That Says McGinty—Comic	Rosenfeld.	40
I'm Sailing Home to Thee—Song and Refrain	Spaulding.	40
I Never Liked O'Ragen—Comic	Flynn.	40
It's Then You'll Know the Value of a Friend—Motto	McCann.	40
I Want to Go Back There Again—Song and Chorus	Westendorf.	40
I Wonder If She's True to Me—Song and Chorus	Ambrister.	40
Jack—Nautical Ballad	Corbett.	40
Jessie Clyde—Serio-Comic	Phelps.	40
Just the Girl For Me—Waltz Song	Glenroy.	40
Just to Be Obliging—Comic	Glenroy-Lamb.	40
Keep the Home Together—Pathetic	Graham.	40
Last Night—Ballad	Kjerulf.	30
Last Sweet Kiss From Mother—Pathetic	Phelps.	40
Let Us Have Another Drink—Comic	Sullivan.	40
Light of Glory (The)—Christmas Carol	Skelly.	10
Lost One's Broken Heart (A)—Pathetic	Skelly.	40
Mandy's Got a Baby—Darkey Song	Kent.	40
Martha Jane Green—Plantation Song and Dance	Sheffer.	40
McGinty's Wake—Comic	Flynn.	40
McNally's First Day On the Force—Comic	Marshall.	40
Michael Slather's Spree—Comic	Flynn.	40
Mother's Love Is True (A)—Ballad	Slafer.	40
Mother's Twilight Song—Waltz Lullaby	Skelly.	40
My Love Will Be Home In the Morning—Waltz Song	Lamb.	40
Nancy Clancy's Beau—Waltz Song	Glenroy.	40
Ned's Farewell—Descriptive	Rosenfeld.	40
Nellie Daily's Dad—Serio-Comic	Dumont.	40
No, Thank You, Tom—Comic	Corbett.	40
Not the Same—Comic	Rice.	40
O'Brannigan Fusileers—March Song	Flynn.	50
Old Album Faces—Pathetic Song	Glenroy.	40
Old Church Gate (The)—Pathetic	Wheeler.	40
Old Table Cloth—Song and Refrain	Oliver.	40
One of His Legs Is Longer Than It Really Ought to Be	Dockstader.	40
Only a Year—Waltz Song	Cunard.	60
Only to See Thee Again—Ballad	Monico.	40
Our Musical Home—Serio-Comic	Hardman.	40
Out in Society To-day—Serio-Comic	Iverson.	40
Perhaps You Know This Man—Topical	Spaulding.	40
Play Ball—Comic	Glenroy.	40
Playing Tag With Baby—Waltz Song	Lamb.	40
Polly O'Neil—Waltz Song	Glenroy.	40
Poor Old Union Soldier (A)—Pathetic	Glenroy.	40
Pretty Kate McShane—Waltz Song	Byrne.	40
Pretty May—Song and Dance	McClain.	40
Saddest Day of All (The)—Pathetic	Gray-Spaulding.	40
Sister Strike the Gong—Topical	Lawson.	40
Sitting On the Hillside—Pathetic	Glenroy-Lamb.	40
Slumber My Darling—Waltz Lullaby	Lindner.	40
So Sleep My Heart—Ballad	Elfaker.	40
Still I Keep You in My Heart—Ballad	Skelly.	40
Surf Echoes—Ballad	Phelps.	40
Sweethearts at School—Waltz Song	Graham.	40
Sweet Little Love—Waltz Song	Bloomfield.	40
That Is Love—Descriptive	McGlennon.	40
That's a Little Question—Serio-Comic	Sutton.	40
That Sweet "Yes" I Longed to Hear—Love Song	Richards.	40
They Wanted Me to Take His Place—Comic	Glenroy.	40
Tom And I'll Go Too—Pathetic	Graham.	40
Too Late, Little Lass Too Late—Pathetic	Graham.	40
Turn In the Tide (A)—Sentimental	Glenroy.	40
Two Little Girls In Blue—Waltz Song	Graham.	40
Two Little Girls In Blue—Guitar	De Janon.	40
Under the Leaves of Green—Sentimental	Skelly.	40

Veteran and Recruit—Baritone Song	Koch.	40
Volunteer Organist (The)—Descriptive	Glenroy-Lamb.	40
We've Both Been There Before—Comic	West.	40
Where Grandmother Sat in the Corner—Sentimental	Goate.	40
Where the Chicken Got the Axe—Topical	Glenroy.	40
Whisper Love—Waltz Song	Saxton.	40
Whoa! Ho! Ruby—End Song	Thompson.	40
*Yea, Boe, Roe—Comic	Barron.	40
You Alone—Ballad	Monico.	40

*Denote Songs having Orchestra parts, 25 Cents extra.

INSTRUMENTAL.

Algonquin Club—Waltzes—3	Peterschen.	50
Alma Mater—March—3	Townsend.	40
American Patrol—4	Meacham.	50
American Patrol—(Four hands)	Meacham.	60
American Patrol—(Mandolin Solo)	Pratt.	30
American Patrol—(Mandolin and Piano)	Pratt.	30
Bridal Polonaise—5	Koch.	50
Caprice (Polka Elegante)—4	Edwards.	50
Caprice (Polka Elegante)—(Four hands)	Meacham.	60
Caprice Oriental—3	Dolane.	40
Children's Games—Lancers—4	Banta.	50
Christmas Greeting—Gavotte—3	Lamb.	40
Chevalier (Le)—Waltzes—4	Howard.	60
Coon's Delight—Polka—3	Lamb.	40
Coon's Delight—Polka—(Mandolin Solo)	Pratt.	20
Coon's Delight—Polka—(Mandolin and Piano)	Pratt.	40
Coon's Delight—Polka—(Banjo and Piano)	Pratt.	40
Coon's Delight—Polka—(Four hands)	Meacham.	50
Comrades True—March—4	Koch.	40
Corinth Galop—3	Spaulding.	40
Cuban Giants—Schottische—3	Townsend.	40
Cunning Pranks—Polka—3	Lamb.	40
Cupid's Revels—(Polka Brillante)	Meacham.	60
Cupid's Revels—(Four hands)	Meacham.	75
Doris Gavotte—4	Goate.	50
Down Went McGinty—Schottische—3	Paxton.	40
Down Went McGinty—(Waltz)—3	Paxton.	40
1894 Galop—4	Phelps.	40
Euphonic Varsouviana—3	Randolph.	40
Exultation—March—3	Phelps.	40
Face the Enemy—March—3	Holst.	60
Face the Enemy—March—(Four hands)	Meacham.	75
Faithful Heart—Waltz—2	Holst.	40
Field Drill—March—3	Townsend.	40
Gaiety—Lancers—3	Townsend.	50
Garrison—March—3	Evans.	40
Gently Glide—Polka—3	Cohen.	40
Golden Chords—Waltz—3	Ogilvie.	50
Golden Chords—Waltz—(Mandolin Solo)	Pratt.	30
Golden Chords—Waltz—(Mandolin and Piano)	Pratt.	60
Golden Chords—Waltz—(Four hands)	Meacham.	60
Ilione—Waltzes—4	Dolane.	60
Ione—Gavotte—3	De Weir.	40
Jolly Fellowship—March—3	Townsend.	40
Juliette—Gavotte—4	Holst.	50
Laurel—Waltz—3	Weiner.	40
Little Annie Rooney—Waltz—3	Paxton.	40
Little Beck—Schottische—2	Franklin.	40
March of the Mystic Shrine—3	Holst.	40
Meta—York Dance—3	De Weir.	40
Nepenthe—Waltz—3	Campbell.	50
Northern Lights—March—3	Dolane.	40
One Heart One Soul—York Dance—4	Strauss.	50
Only a Year—Waltz—4	Fuenkenstein.	50
Only a Year—Waltz—(Mandolin Solo)	Pratt.	30
Only a Year—Waltz—(Mandolin and Piano)	Pratt.	60
Poet's Dream—Waltz—4	Danolds.	50
Poet's Dream—Waltz—(Four hands)	Meacham.	60
Polly O'Neil—Waltz—(for Mandolin Solo)	Pratt.	20
Polly O'Neil—Waltz—(Mandolin and Piano)	Pratt.	40
Pop Corn Dance—3	Meacham.	40
Shot and Shell—March—2	Holst.	40
Skating—Schottische—3	Koch.	40
Somnia Caprice—4	Richards.	40
Southern Belle—Waltz—3	Meacham.	50
Two Little Girls in Blue—Waltz—3	Graham.	40
Two Little Girls in Blue—Waltz—(Banjo and Piano)	Pratt.	40
Two Little Girls in Blue—Waltz—(Mandolin Solo)	Pratt.	20
Two Little Girls in Blue—Waltz—(Mandolin and Piano)	Pratt.	40
Vivian—March—5	Clarke.	50
Volunteer Organist—Waltz—3	Glenroy-Lamb.	40
Volunteer Organist—(Mandolin Solo)	Pratt.	20
Volunteer Organist—(Mandolin and Piano)	Pratt.	40
Wing Dance—Polka—4	Meacham.	40
Wing Dance—Polka—(Mandolin Solo)	Pratt.	30
Wing Dance—Polka—(Mandolin and Piano)	Pratt.	60
Wing Dance—Polka—(Four hands)	Meacham.	60
Who Wins?—Polka—3	Meacham.	40

ORCHESTRA MUSIC.

Carrie—Waltz—10 Parts	Glenroy-Lamb.	60
Jolly Fellowship—March—10 Parts	Townsend.	60
Children's Games—Lancers—14 Parts	Banta.	80
Golden Chords—Waltz—10 Parts	Ogilvie.	60
Two Little Girls in Blue—Waltz—10 Parts	Graham.	40
Volunteer Organist—Waltz—10 Parts	Glenroy-Lamb.	40
One of His Legs Is Longer Than It Really Ought to Be—Schottische	Dockstader.	60

Figures Denote Grade.

THE "MUSICAL HOME."

ISSUED MONTHLY, CONTAINING TWENTY-FOUR PAGES OF POPULAR VOCAL AND INSTRUMENTAL MUSIC. SINGLE COPIES 10 CENTS EACH. YEARLY SUBSCRIPTION, \$1.00. THE "MUSICAL HOME" OR ANY OF THE ABOVE NAMED PIECES CAN BE OBTAINED AT ALL MUSIC STORES OR FROM

SPAULDING & GRAY,

16 WEST 27th STREET,
NEW YORK.