



LIBRARIES

UNIVERSITY OF WISCONSIN - MADISON

Sierra Sheldon Tracheotome advertisement.

[s.l.]: [s.n.], 1955

<https://digital.library.wisc.edu/1711.dl/WU2IM65NKCVBS8L>

<http://rightsstatements.org/vocab/InC/1.0/>

The libraries provide public access to a wide range of material, including online exhibits, digitized collections, archival finding aids, our catalog, online articles, and a growing range of materials in many media.

When possible, we provide rights information in catalog records, finding aids, and other metadata that accompanies collections or items. However, it is always the user's obligation to evaluate copyright and rights issues in light of their own use.

Sierra®-SHELDEN TRACHEOTOME

PAT APPLIED FOR

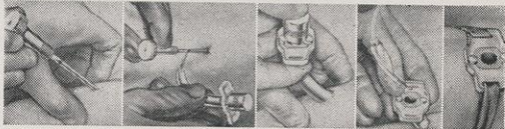
New! Safe! Fast!



Perform
**COMPLETE
TRACHEOTOMY
IN SECONDS!**

Insert
GUIDE NEEDLE;
follow with
TROCAR—TUBE;
Remove NEEDLE,
Remove TROCAR,
THAT'S ALL!

Shown above: Complete assembly and replaceable components



Before using, see complete technic packed with Tracheotome

The Sierra-SHELDEN TRACHEOTOME is a complete instrument. Scientifically designed—precision made—thoroughly tested and proved on hundreds of cases. Safety-guide needle directs protective balled-end of trocar into the trachea.

All parts replaceable. Complete, fully illustrated step-by-step INSTRUCTION BOOKLET packed with each instrument.

"Made for specialists—by specialists."

WRITE FOR FREE CATALOG

Available through Surgical Supply Dealers

DIVISION Sierra Engineering Co.

123 E. MONTECITO AVE., SIERRA MADRE, CALIF.



R.A. HAWKS