



LIBRARIES

UNIVERSITY OF WISCONSIN-MADISON

The Emerald: the Waterford Union High School annual. 1949

Waterford, Wisconsin: [s.n.], 1949

<https://digital.library.wisc.edu/1711.dl/DPEMPOSTSISKE9A>

This material may be protected by copyright law (Title 17, US Code). Original material owned by Waterford Public Library. For information on re-use, contact the Library through the Reference Department, Waterford Public Library, 101 N. River Street, Waterford, Wisconsin 53185, 262-534-3988, (jolliffe@waterford.lib.wi.us).

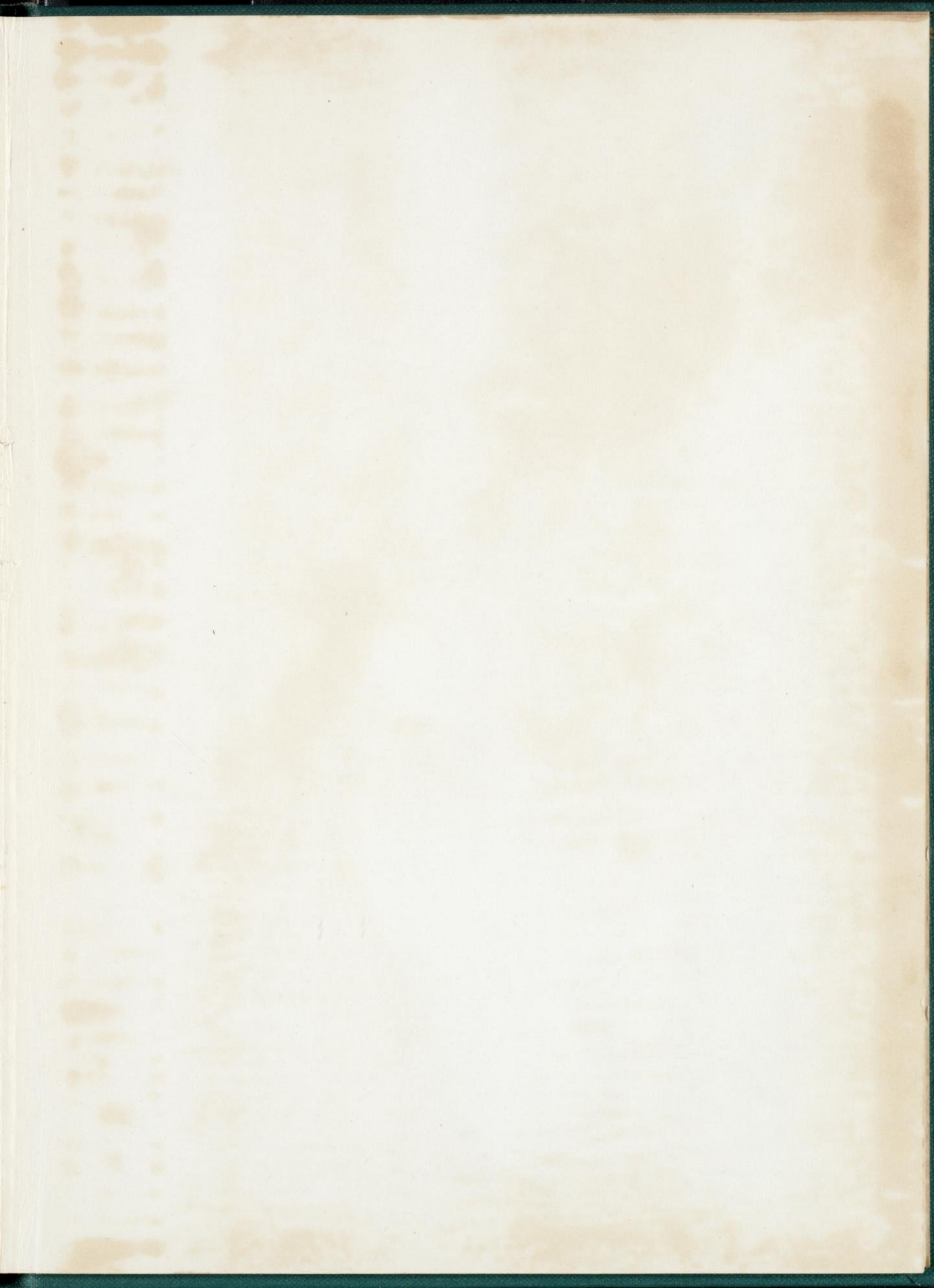
The libraries provide public access to a wide range of material, including online exhibits, digitized collections, archival finding aids, our catalog, online articles, and a growing range of materials in many media.

When possible, we provide rights information in catalog records, finding aids, and other metadata that accompanies collections or items. However, it is always the user's obligation to evaluate copyright and rights issues in light of their own use.



EMERALD

- 1949 -





The 1949 **EMERALD**

Co-Editors —

Marilyn Noll
Donald Rintelmann

Business Manager —

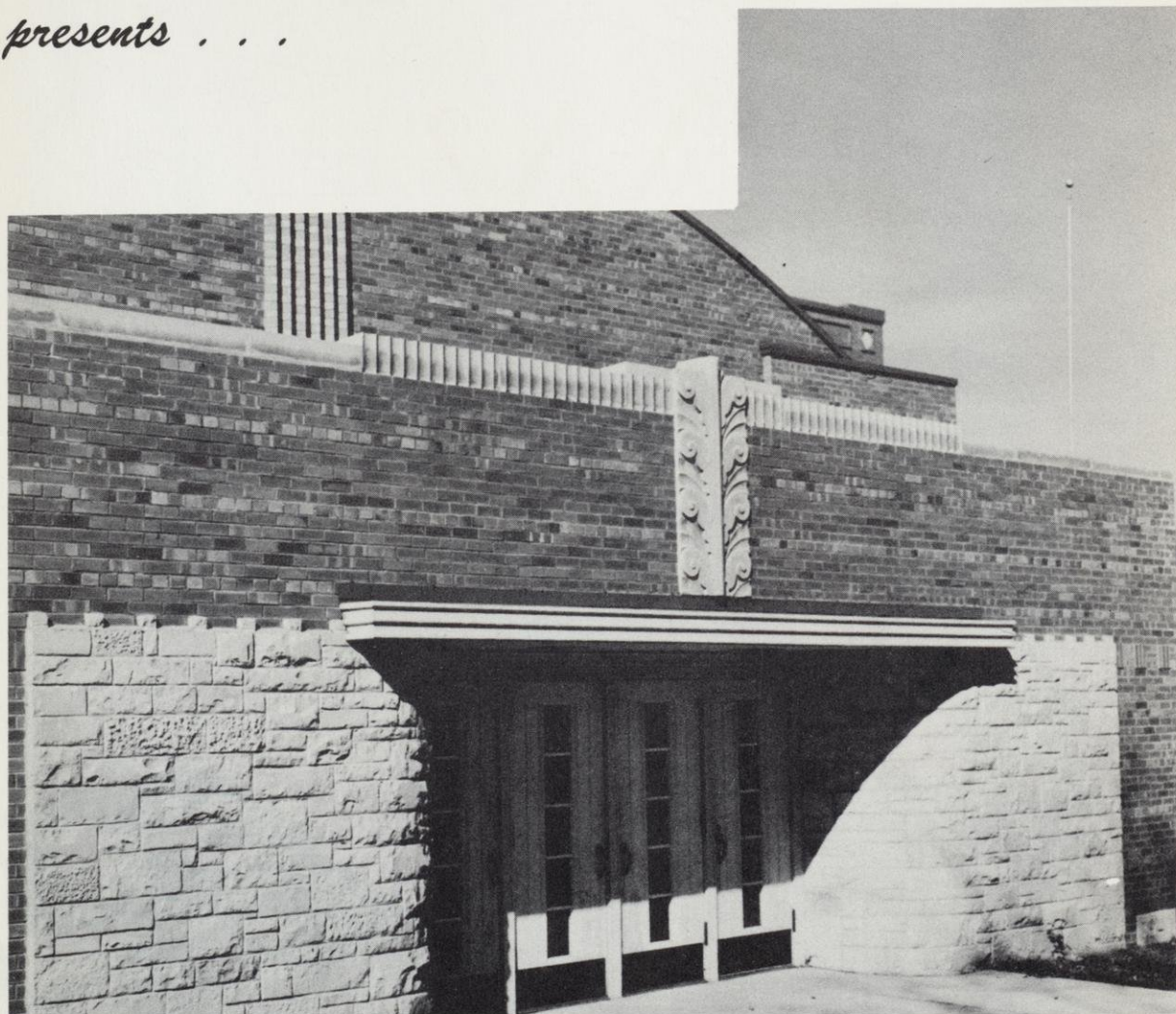
Mary Lou Sykes

The Annual Staff of . . .

WATERFORD HIGH SCHOOL

Waterford, Wisconsin

presents . . .





W

H

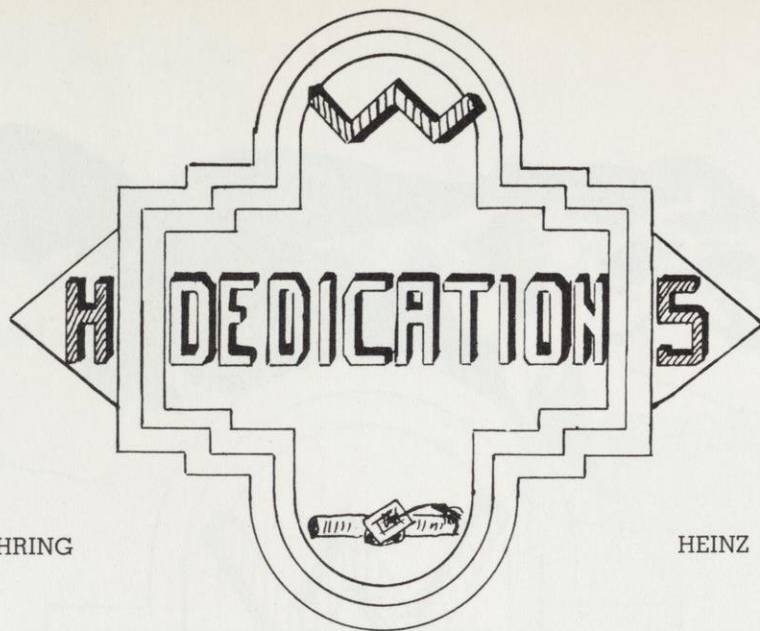
THE
EMERALD

S

1949



VOLUME III



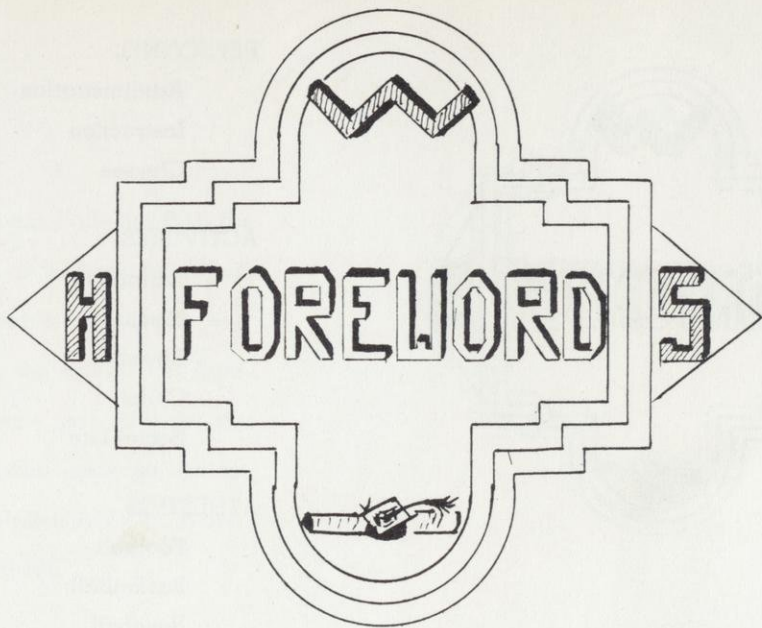
TED MEHRING

HEINZ SCHROEDER

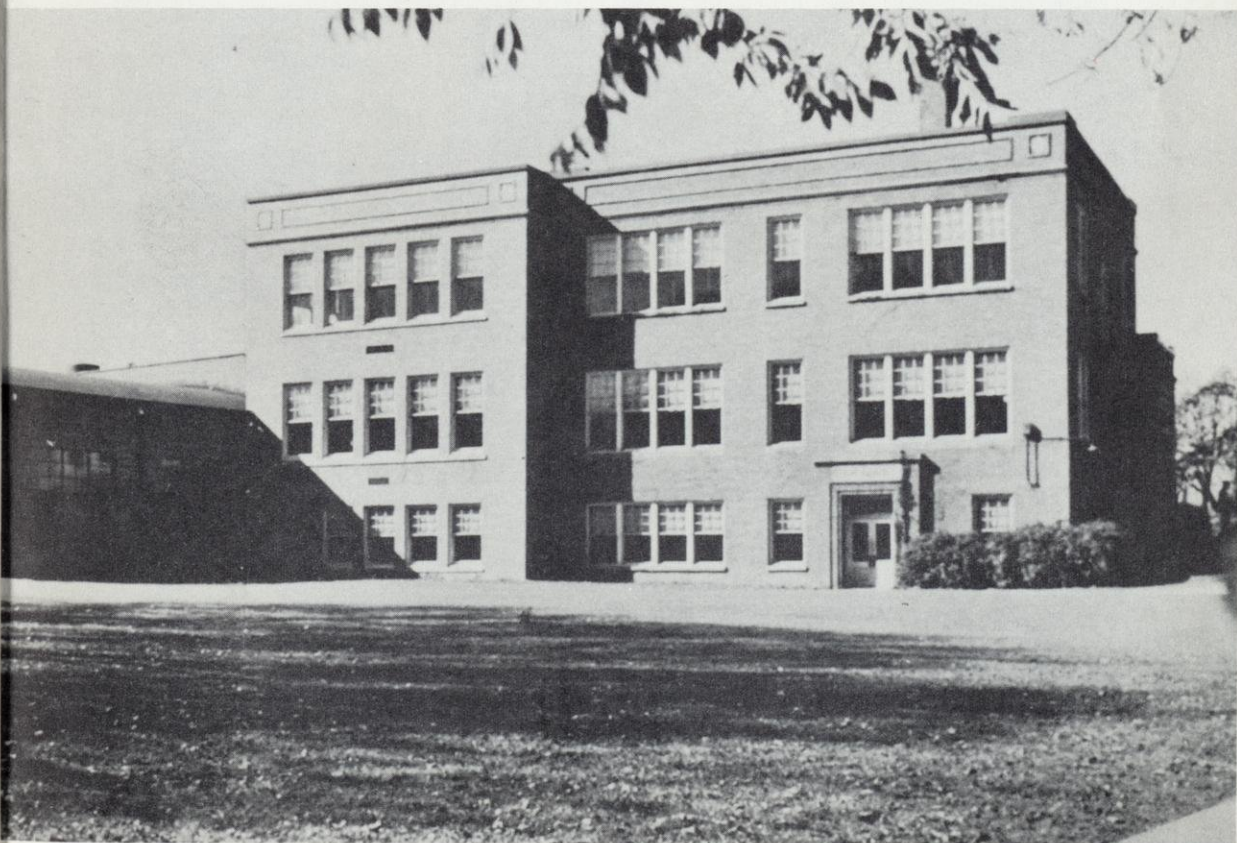
LEROY RYTTER

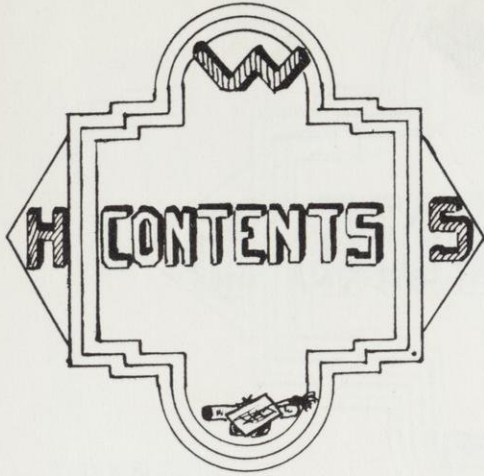
Alumni who gave their lives in World War II





WHITEY GREEN, our Wolverine, will be your guide as you review the scenes that made the school year of 1948-1949 memorable.





PERSONNEL

Administration
Instruction
Classes

ACTIVITIES

Journalism
Music
Speech
Clubs
Social Life

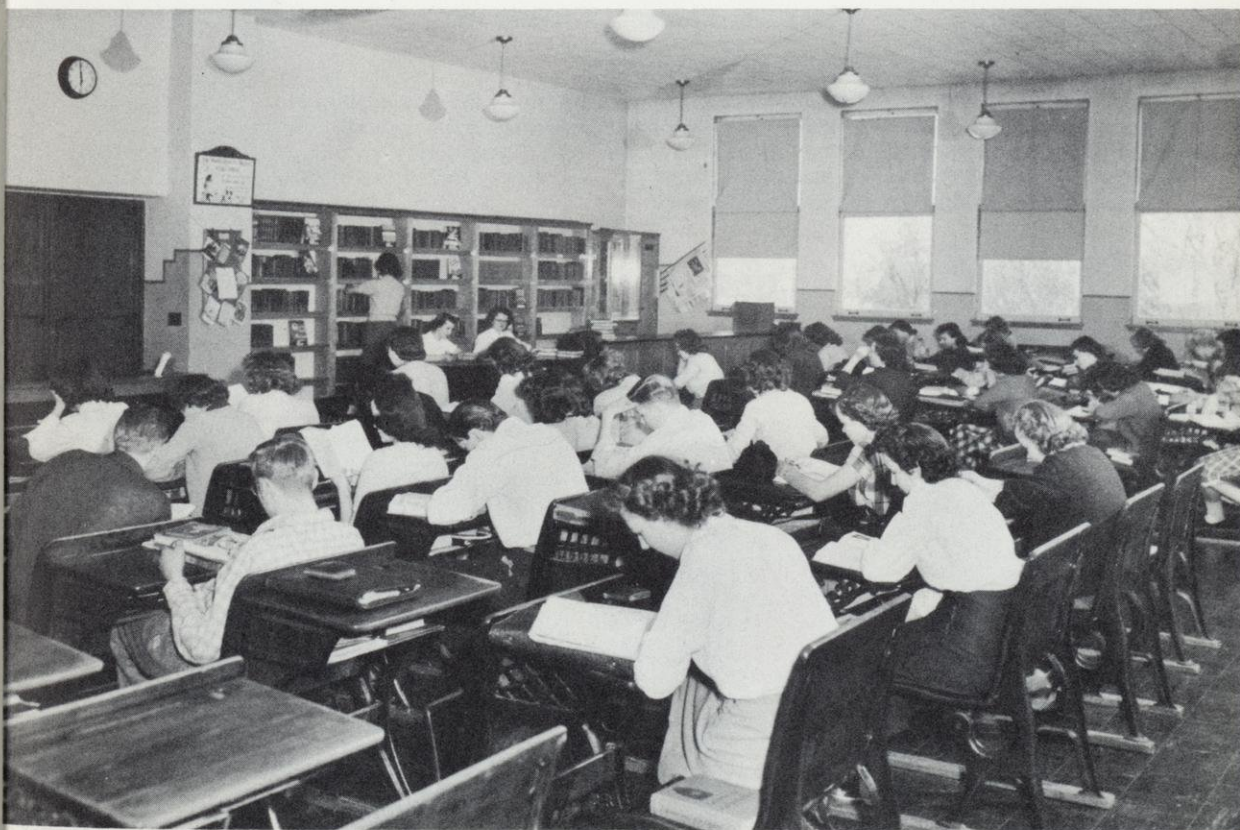
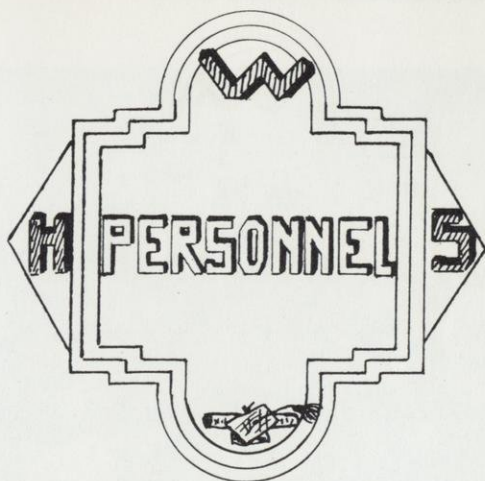
ATHLETICS

Football
Basketball
Baseball

Sponsorships by Our Promoters



No school can be better than the people in it. If they are wise, just, courteous, industrious, loyal, and dependable, the school will flourish. We invite you to meet the individuals who comprise the faculty and student body of Waterford High School.



Administration



W. E. HANSEN

ELLIS EVANS, *Principal*

LYMAN HEALY

NELSON H. JOHNSON

The BOARD OF EDUCATION is at all times keenly interested in every phase of our school life and active in co-operating with us to raise educational standards. They meet usually on the first Wednesday of each

month to discuss problems pertaining to the welfare of the school. Officers are as follows: Lyman Healy, director; W. E. Hansen, secretary; and Nelson H. Johnson, treasurer.

Principal's Message

I wish to congratulate you on the completion of your year's work—for the achievement evidenced in your many scholastic and co-curricular activities.

May you use your high school training in its many phases to develop a sensitivity to the needs of the world in these days of complex problems and confusion. May you be firm in the conviction that your effort will count and determined that you will devote lives to the service of humanity to the end that all people may live in peace and harmony throughout the world.

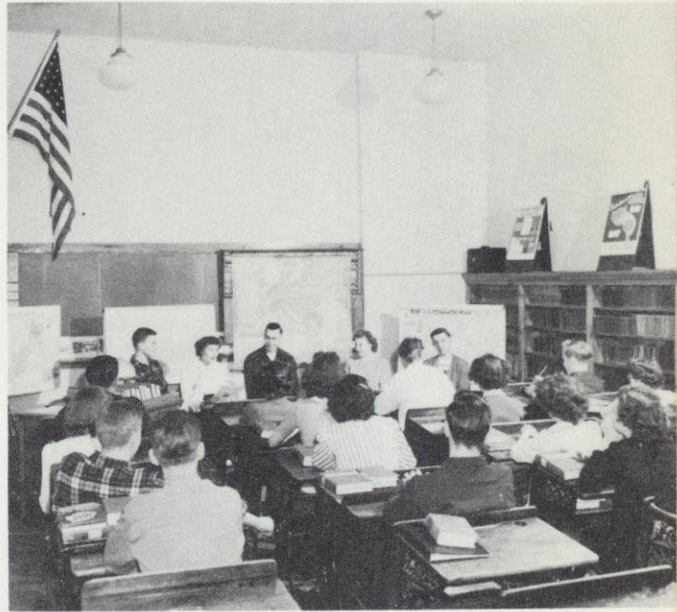
Ellis Evans

Principal Ellis Evans.

Instruction



SARA L. KEELER
Social Science
Student Council
Senior Class Adviser

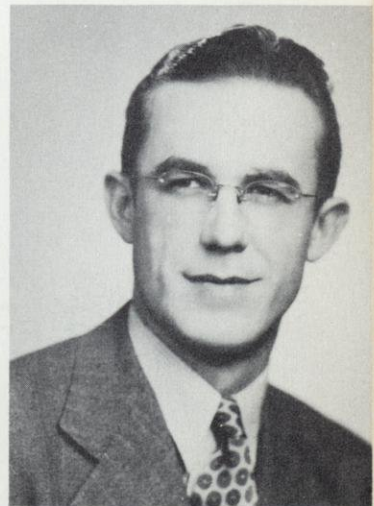


Panel discussions add zest to the study of U. S. History in the picture above, while the class below takes time out during the demonstration of a problem in Geometry to focus their eyes upon the camera.



JEAN G. FRIEDRICH
Mathematics
Dramatics
Sophomore Class Adviser

RALPH W. ZIMDARS
Music
Band
Glee Club



Academic



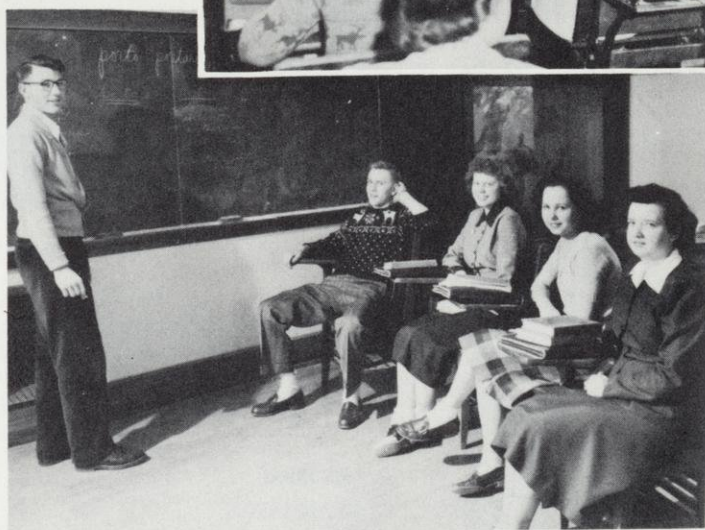
RALPH L. KOSTRZAK

Languages
Library Science
Senior Class Adviser

The Library section of the study hall has convenient tables installed this year under the supervision of Mr. Daugherty and Mr. Kostrzak. Reference work becomes a pleasure under such ideal conditions.

Latin is a class for the privileged few who need special language study in order to proceed into advanced technical and professional careers.

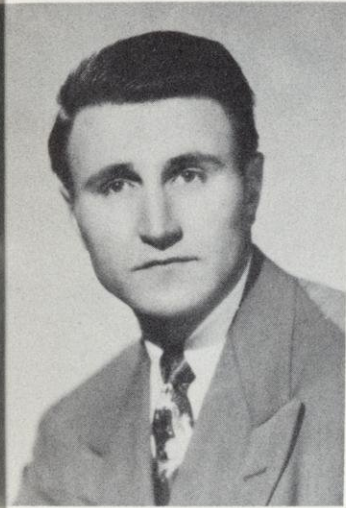
The English IV class is listening to Kathleen Rintelmann's oral topic taken from the current issue of the *Reader's Digest*.



ETHELYN A. HANDRAN

English
Emerald Annual
Forensics
Freshman Class Adviser

Commercial



EDWARD H. ZERNZACH
Science
B Squad Basketball
Freshman Class Adviser



The apron-clad Chemistry class has forsaken books and theories for the moment as they watch a practical demonstration of what happens when acid meets metallic salt.

The over-sized typing class seems intent on reaching the sixty-words a minute record which will enable them to wear the Special Typing medal given for achievement in this field.



LAWRENCE W. STEIN
Commercial
Emerald Echo
Junior Class Adviser

Vocational

CATHRYN FISHER
Home Economics
Junior Prom
G.A.A.
Junior Class Adviser



The happy homemakers in the picture above have studied attractive table settings as well as the consumer's viewpoint on silverware—one unit of the many phases of home life taught in Home Economics III.

C. A. DAUGHERTY
Industrial Arts
Projector Club
Driver Education

In the Manual Arts class below, George Laux, Dick Gross, and Wally Hanson glow with satisfaction and pride as they put the finishing touches on their projects. In the next picture, we see Donny Lewis and Don Rintelmann learning to use the drill press and lathe.



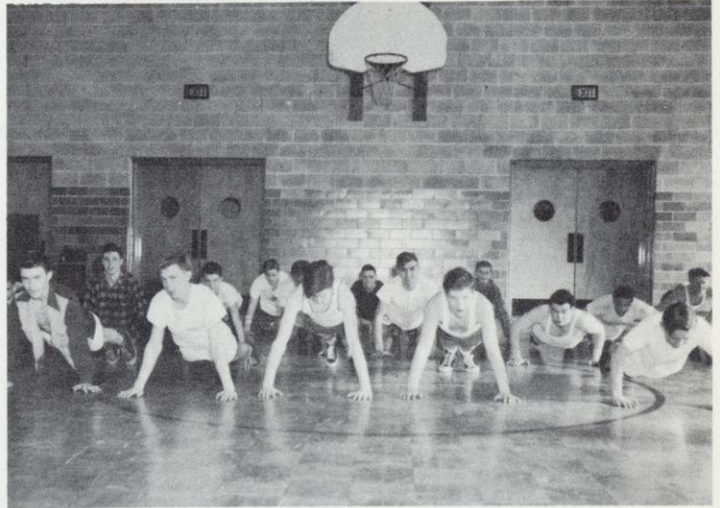
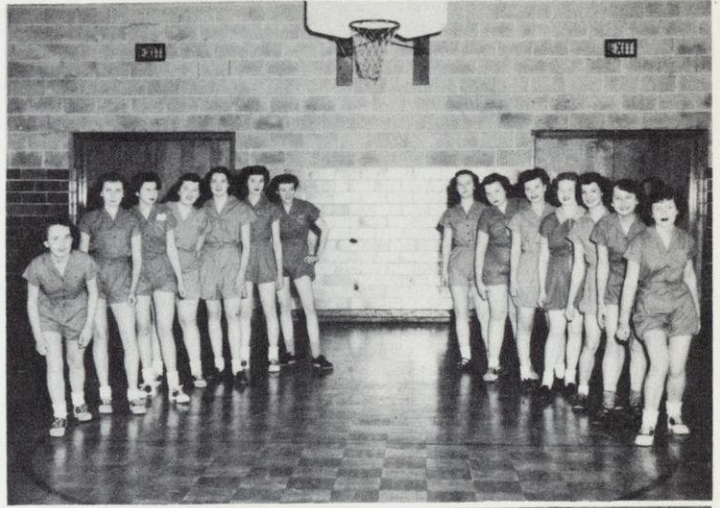
Physical Education

LOYD H. MINGST
Physical Education
Athletics Director
Driver Education
Sophomore Class Adviser



The Girls' Gym classes enjoy a variety of sports and exercises — such as soccer, hiking, folk-dancing, basketball, volleyball — to keep themselves vigorously healthy and cheerful. Calisthenics is also part of the training in the Boys' Gym classes.

Mechanical Drawing is a comparatively new course offered for boys and is designed to make them accurate in handling the instruments of measurement and efficient in the execution of projects in lettering and blue-printing.



Senior

BARBARA ALLEN

Her hands were never idle.

G.A.A. 1, 2, 3, 4; Library Club 2, 3, 4; Emerald Echo 4.



ELAINE BAUER

My interest in the future? Strictly business, of course.

(1)W G.A.A. 1, 2, 3, 4; Glee Club 1, 2, 3; Photography Club 1, 3; Emerald Echo 3, 4.

LYLA BAUMEISTER

Lyla

Where there's life, there's Lyla.

Transferred from Rochester 3; G.A.A. 3, 4; Band 3, 4; Emerald Echo 3; Emerald Annual 3, 4; Forensics 4; Senior Class Play.



RUTH CHRISTENSEN

Chris

She has winning ways.

G.A.A. 1, 2, 3, 4; Glee Club 1, 2, 3, 4; Bowling 2, 3; Band 1, 2; Student Council 2; Emerald Echo 2; Emerald Annual 4; Photography Club 3; Class Vice-President 4.

JOYCE CONRAD

Stick-to-it-iveness—that's our Joyce.

Transferred from Burlington 3; G.A.A. 4; Emerald Echo 4; Editor; Emerald Annual 4; Prom Queen 3; Senior Class Play.



JAMES DUFFRIN

Jim

Reading books and knowing people are his hobbies.

Student Council 2; Badger Boys State 3.

BEVERLY ENGEL

Bev

Sugar and spice and everything nice.

(1)W G.A.A. 1, 2, 3, 4; Glee Club 1, 2, 3, 4; Band 1; Emerald Echo 4.



LYLE FRIES

Uncie Lyle

Is everybody happy?

Glee Club 3, 4; Baseball 4; Class President 3; Prom King.

EVA GEHRAND

Shamrock

She believes that girls were made to take care of boys.

G.A.A. 1, 2, 3, 4; Glee Club 1, 2, 3, 4; (1) W Band 1, 2, 3, 4; Photography Club 1, 3; Forensics 2, 3, 4; Treasurer 3; Jr. Class Play; Sr. Class Play.



DAVID HALBACH

Tex

Prompt? Yes, for basketball.

(1) W Basketball 1, 2, 3, 4; (4) W Baseball 1, 2, 3, 4; Student Council 1, 4; Projector Club 3, 4; Jr. Class Play; Class President 4.

Class

HELEN HEGEMANN

Heggie

Always smiling

G.A.A. 1, 2, 3, 4; Glee Club 1, 2, 3, 4; Band 1, 2; Library Club 2; Emerald Annual 4.



BETTY KLOKNER

Klokner

Cheer up, the worst is yet to come.

G.A.A. 1, 2, 3, 4; Glee Club 1, 2, 3, 4; Band 1, 2; Student Council 3; Photography Club 3; Forensics 1; Junior Class Play; Class Treasurer 4; Senior Class Play.



RAYMOND KNURR

Ray

He knows where he's going.

Transferred from Mukwonago; Basketball 2; Bowling 2, 3; Glee Club 4; Senior Class Play.



GENEVIEVE KOJIS

Genny

A friend to all

(1) W Band 1, 2, 3, 4; G.A.A. 1, 2, 3, 4; Glee Club 4; Library Club 2.



DORIS KRAUSE

Kraus

Short and sweet and hard to bear.

Transferred from Greendale 2; (1) W G.A.A. 2, 3, 4; Glee Club 2, 3, 4; Photography Club 3; Emerald Echo 4; Emerald Annual 4; Senior Class Play.



SYLVESTER KRAUTKRAMER

Kraut

Tall, dark, and easy to please.

(1) W Football 2; (4) W Baseball 1, 2, 3, 4; Glee Club 3, 4; Student Council 1; Projector Club 4.



JOAN KUNZ

Joanie

She knows how to give a man her own way.

(1) W G.A.A. 1, 2, 3, 4; Glee Club 1, 2, 3, 4; Photography Club 1, 3; Emerald Echo 4; Emerald Annual 4.



BETTY LOU LAUX

Lulu

Brown eyes, why are you blue?

G.A.A. 1, 2, 3, 4; Glee Club 1, 2, 3; Emerald Echo 4; Emerald Annual 3, 4; Library Club 2, 3; Jr. class play, Student Coach.



DONALD LEWIS

Louie

Happy go lucky, that's our Lou

(1) W Football 1, 4; (2) W Basketball 1, 2, 3, 4; (4) W Baseball 1, 2, 3, 4; Bowling 2, 3; Glee Club 3, 4; Photography Club 1, 3; Projector Club 1, 2, 3, 4; President 2.



PETER LUKAS

Pete

Stop me if you've heard this one.

Football 1, 2; Basketball 1, 2, 3; (1) W Baseball 2, 3; Band 1, 2; Glee Club 3, 4; Emerald Echo 1, 2; Photography Club 1, 3; Forensics 3; Projector Club 3, 4; Jr. Class Play.



Senior



JOAN MALCHINE
JoJo

If I have to choose between a man and a dog, I'll take the dog.

(1) W G.A.A. 1, 2, 3, 4; Glee Club 1, 2, 3, 4; Emerald Echo 4; Emerald Annual 4; Library Club 2, 3, 4; Forensics 2, 3, 4; Jr. Class Play; Sr. Class Play.

MARJORIE MOORE
Merge

She knows how to enjoy life.

G.A.A. 1, 2, 3, 4; Glee Club 1, 2, 3, 4; (1) W Band 1, 2, 3, 4; Bowling 2, 3; (1) W Cheerleading 1, 2, 3; Library Club 2, 3; Photography Club 1, 3; Student Council 1.



DEWARD NEFF
Dewey

I have so much more than Gregory. Why should I fight it?

Glee Club 4.

BERNICE NELSON
Bernie

Those dimples really get 'em.

(1) W G.A.A. 1, 2, 3, 4; Glee Club 1, 2, 3; Photography Club 1, 3; Student Council 3; Jr. Class Play.



MARILYN NOLL
Mary

A thoughtful and charming personality

G.A.A. 1, 2, 3, 4; Glee Club 1, 2, 3, 4; (1) W Band 1, 3, 4; Bowling 2, 3; Emerald Echo 3, 4; Emerald Annual 3, 4; Library Club 3, 4; Student Council 3; Jr. Class Play; Prom Queen 1.

MARION NORTH
I'm a one-man girl.

Transferred from Rochester 3; G.A.A. 3, 4; Glee Club 3, 4; (1) W Band 3, 4; Emerald Echo 4.

BERNICE OLSON

A friend in need is a friend indeed.

G.A.A. 1, 2, 3, 4; Glee Club 1, 2, 3; Emerald Echo 4.

ELLEN OLSON

Ole

Lots of pep and lots of fun.

G.A.A. 1, 2, 3, 4; Glee Club 1, 2, 3, 4; Band 1, 2; Emerald Annual 4; Photography Club 1, 3; Class Treasurer 2; Class Secretary 3; Cheerleader 4; Jr. Class Play; Senior Class Play; President of G.A.A. 4.

DeLONE ONSGAARD

A girl's will is the wind's will.

G.A.A. 1, 2, 3, 4; Glee Club 1, 2, 3; Photography Club 1, 3; Class Vice-President 1.

ARLA MAE PATTERSON

Brevity is the soul of wit

G.A.A. 1, 2, 3, 4; Glee Club 1, 2, 3, 4; Emerald Echo 4; Emerald Annual 4; Library Club 2, 3, 4; Forensics 2, 4.



Class

MARGARET PATTERSON

Margie

Good looks and personality plus.

G.A.A. 1, 2, 3, 4; Glee Club 1, 2, 3, 4; President of Glee Club 4; Student Council President 4; Emerald Annual 4; Library Club 2; Jr. Class Play; Class Vice-President 3; Class Secretary 4.

GENE RANKE

Krank

Always a good sport.

(1) W Football 3, 4; Basketball 1, 2; Bowling 2; (1) W Band 1, 2, 3, 4; Glee Club 1; Emerald Echo 1; Jr. Class Play; Senior Class Play.



BARBARA REBSTOCK

Barb

Blonde and vivacious.

G.A.A. 1, 2, 3, 4; Glee Club 1, 2, 3, 4; (1) W Band 1, 2, 3, 4; Emerald Echo 4; Emerald Annual 3, 4; Jr. Class Play; Cheerleader 4; Bowling 2, 3; Forensics 3.

DONALD RINTELMAN

Don

Tall, dark, and athletic

(2) W Basketball 1, 2, 3, 4; Baseball 4; Bowling 2, 3; Glee Club 4; Emerald Echo 1; Emerald Annual 4; Photography Club 1; Projector Club 1, 2, 3, 4; Jr. Class Play; Senior Class Play; Student Council 4; Class President 1.



KATHLEEN RINTELMAN

Kathy

Ambition and ability will take her far.

G.A.A. 1, 2, 3, 4; Glee Club 1, 2, 3, 4; Band 1; Cheerleader 4; Emerald Echo 3, 4; Emerald Annual 3, 4; Photography Club 1, 3; Forensics 2, 3, 4; Jr. Class Play.

RAMONA RODER

Quiet and nice.

G.A.A. 1, 2, 3, 4; Emerald Echo 4.



KENNETH RUPERT

Ken

An easy-going guy with a sense of humor.

Transferred from Waukesha High 3.

JEAN SCHWEDLER

An intelligent blonde with artistic talent.

G.A.A. 1, 2, 3, 4; Glee Club 1, 2, 3; Student Council 2; Emerald Echo 3, 4; Emerald Annual 3, 4; Library Club 2, 3; Jr. Class Play, Stage Manager.



MARY LOU SYKES

Let's have a party.

(1) W Band 1, 2, 3, 4; Glee Club 1; Emerald Echo 3, 4; Emerald Annual 4; Library Club 3, 4; Photography Club 3.

BEVERLY WEBER

Beeps

Soft-voiced, kind, and considerate.

G.A.A. 1, 2, 3, 4; Glee Club 1; Emerald Echo 4; Library Club 2, 3.



NELLIE WELCH
Nell

*She'll give you the
busy signal.*

Transferred from McKinley
High, Racine 2; (1) W G.A.-
A. 2, 3, 4; Glee Club 2, 4;
Emerald Echo 4.



JOYCE WHEELER
*Good looks, brains,
sincerity.*

Transferred from Messmer
High 3; G.A.A. 3, 4; Sr.
Class Play.



MARIANNE ZIMMER
Pedro

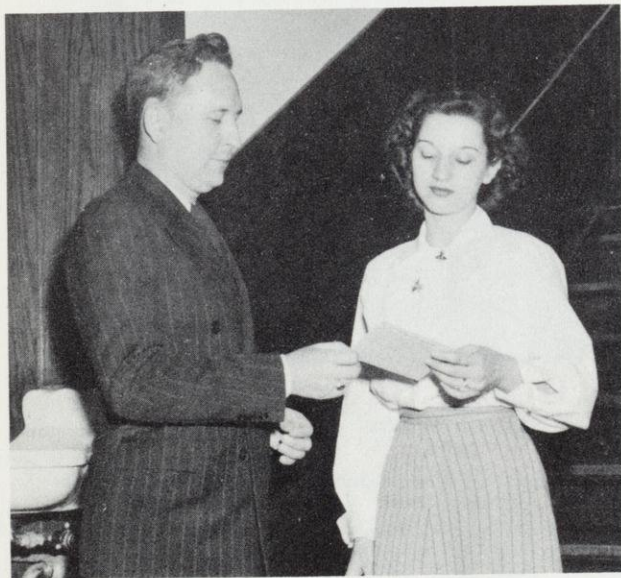
*Cheerful, even when
things go wrong.*

(1) W G.A.A. 1, 2, 3, 4;
Glee Club 1, 2, 3; Bowl-
ing 2, 3; Student Council 3;
Emerald Annual 4; Foren-
sics 2; Class Treasurer 2;
Jr. Class Play.

D. A. R. Award

Margaret Patterson was honored this year by being selected as the school's representative in the state-wide contest sponsored by the Daughters of the American Revolution. The Wisconsin girl who possesses the following qualities in the most marked degree will be given a \$100 United States Savings Bond: Dependability; Service; Leadership; Patriotism. The judges will base their decision on a questionnaire submitted to each high school representative.

Throughout her four years at W.H.S. Margaret has shown exceptional qualities in leadership and dependability. This year, she was president of the Student Council and of the Girl's Glee Club, besides holding numerous class offices and maintaining an A average in her studies. The students and faculty wish to extend their hearty congratulations.



*Greeny bids us all goodbye
With lots of tears and many a sigh*



Senior Honors

JEAN SCHWEDLER

Our salutatorian is the efficient office secretary during first period and an artist of undisputed merit. Some of her artistic skill—the silhouettes from last year's Junior Prom—now form a permanent part of the wall decoration in our gym. Besides these special accomplishments, numerous other activities received her attention and made her an outstanding member of her class.



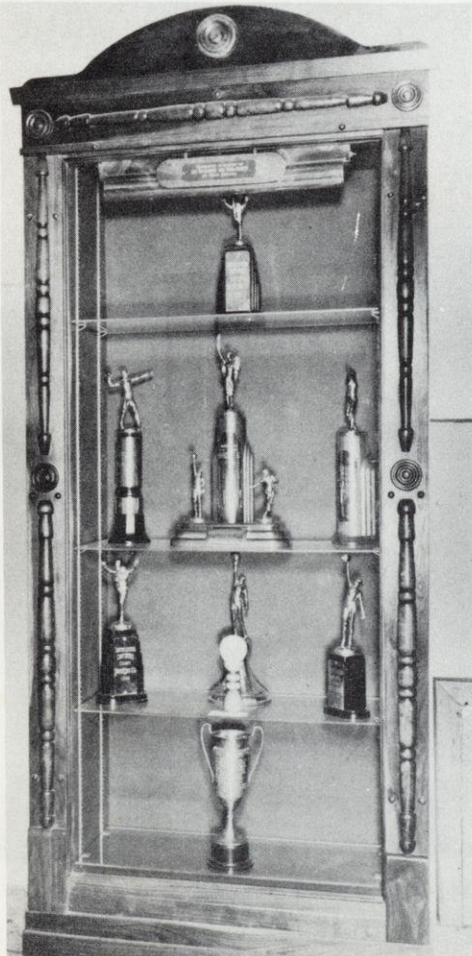
ARLA MAE PATTERSON

Intelligence and thoroughness may have been two of the rungs in the valedictorian's ladder of scholastic success, but we admire her also for her common sense and salty wit. A lover of books, she was active in the Library Club, as well as in G.A.A., Forensics, Journalism, and Glee Club.



ROCHROHR-SKARIE AWARD

A memorial fund was given in 1946 by the families of Jim Rochrohr and Hans Skarie to perpetuate the memory of their excellence in character, scholarship, and athletics. A trophy case, it was thought, might be an inspiration to the student body. Last year this handsomely carved walnut case, the workmanship of C. A. Daugherty, was completed and presented to the school. It contains, among other trophies, the coveted one given each year to an outstanding athlete. The names already recorded are those of Clem Zebrowski, 1946; Richard Beck, 1947; and John Greil, 1948. The 1949 award will be made on Commencement Night.



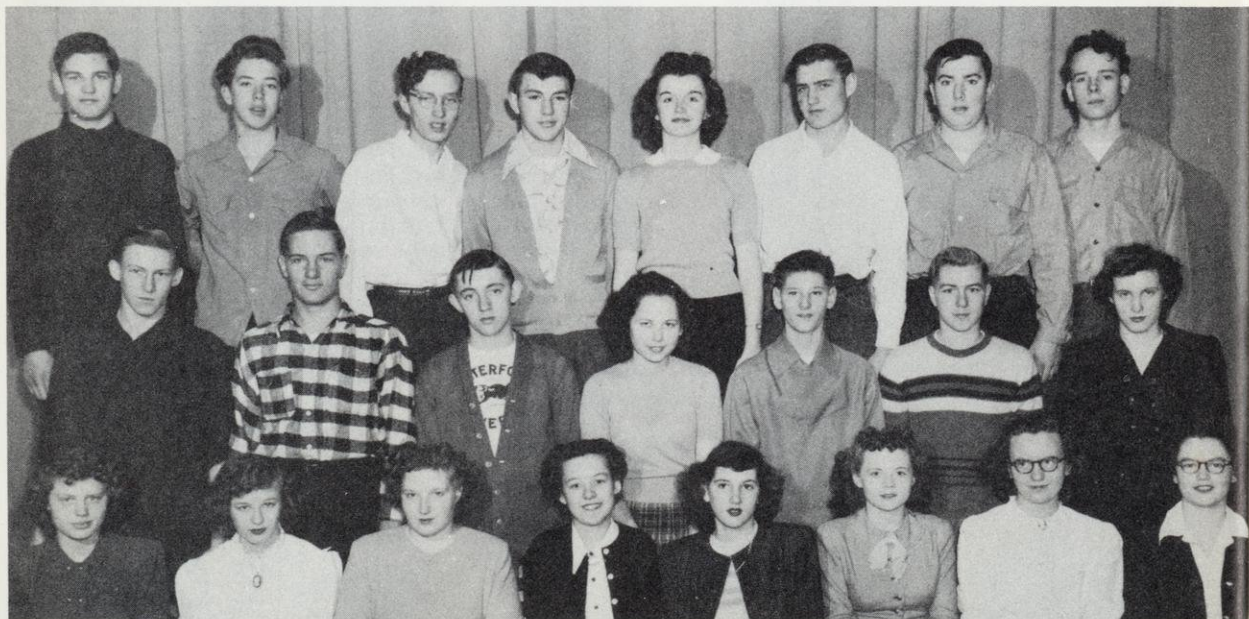
Trophy Case

Juniors

We are Juniors, oh so gray
We always want to have our way . . .



Top row—Gehrand, Johnson, Barthel, Hansen, Brooks, Greil, Buenger, Gross, Huelskamp.
Middle row — Grieser, Curnow, Allard, Popp, Dillar, Bothe, Johnson, Hegemann, Hall.
Bottom row — Callen, Allen, Alleman, M. Brown, Clausen, Alleman, M. Beaumont, Alby.



Top row — Rademacher, Nelson, Woods, Kramer, Kipp, Rupert, Wheeler, Leighton.
Middle row — Lindner, Paschen, Prill, Schwarz, R. Schmidt, Laux, Sleik.
Bottom row — Wiesenthal, Kellner, Mitsch, Sorenson, J. Schmidt, Sheard, Kolm, Neff.

Sophomores

We are Sophomores, oh so brown
By this time we know the town . . .



Top row — Behling, P. Becker, Kaun, Foat, Hoppe, Halbach, Daugherty, Krautkramer.
Middle row — Lukas, N. Becker, Hinkel, Brown, Kopelke, Lindner, Hribar.
Bottom row — Bothe, Dettman, Beaumont, Felton, Breunig, Hulbert.



Top row — Timler, Schopp, Rupert, Morgenroth, Maerzke, VanValin, Woods.
Middle row — Panzika, Mitsch, Sakowski, Malchine, Peterson, Mealy, Mutsch.
Bottom row — Mayer, Sykes, J. Paap, Onsgaard, Ruocco, B. Paap.

Freshmen

We are Freshmen, oh so green
Which, of course, is plainly seen . . .



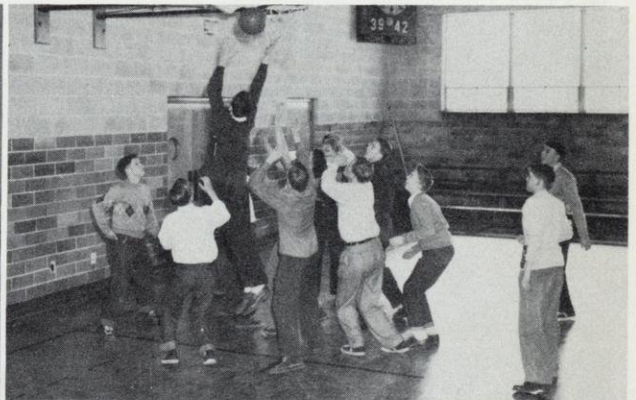
Top row — DeGrave, G. DeGrave, Bolden, Heck, Lindner, Laux, Laupan, Himes, Chapman, Alby.
Middle row — Engel, Huckstorf, Huening, Cahill, Horner, Johncox, Allman, Klokner, Hart, Hegeman, Armes.
Bottom row — Langenfeld, Felton, Dahl, Lidholm, Breiling, Hutton, Gunderson, Allard.



Top row — Stark, Prager, H. Roder, Welch, L. Roder, Sadler, Norton, Paschen, Rader.
Middle row — Maerzke, Popp, Ulseth, C. Ranke, H. Ranke, Paap, Whalen, Roepke, Schwarz, Mitsch, Snoddy.
Bottom row — Marquardt, Semrad, Sakowski, Satterstrom, Thoreson, Smetana, Raasch, Miller.

W H ACTIVITIES S

It shouldn't be hard to find an outlet for one's energy and talent at Waterford High. Music, journalism, drama—tics, forensics, clubs and committees—all of these have a place in our school. During the noon hour, it is always fun to be in the gym as the pictures below indicate.





Annual



Above—BUSINESS STAFF looks over lists for sponsorships.

Left—EDITORIAL STAFF studies annuals sent out by the N.S.P.A.

Below—Typists get the copy ready for printer.

Bottom—Artists and writers appear to enjoy their work.



Whitey Green wore a worried expression right up until the last copy for the annual went to the printer, Hammersmith-Kortmeyer of Milwaukee, late in March. Finances bothered him the early part of the year and deadlines the latter part, but his countenance cleared toward the end.

Mary Lou Sykes and her business staff exerted every effort to ease his mind in regard to sponsorships. Marilyn Noll, co-editor, and her editorial and typing staff prepared the layouts and copy, while co-editor Donald Rintelmann, assisted by Norman Nelson and Ray Knurr, did the art work and mounting. Jean Schwedler typed final copies for the printer. Miss Handran acted as adviser and co-ordinator.



Student Council

The purpose of the organization is to promote student leadership, responsibility, co-operation, and school loyalty. Problems and suggested ideas concerning the student body are discussed and settled here.

Under the leadership of Mrs. Kéeler, faculty sponsor, it arranges for the Homecoming Dance, Magazine Drive, dances after basketball games, and various worthy campaigns.



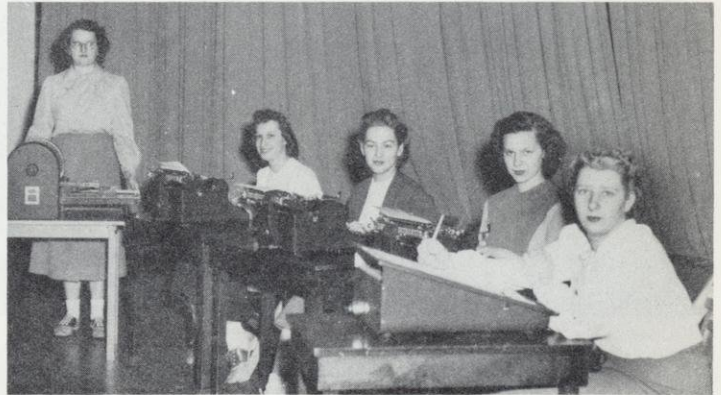
Back row—M. Hinkel, J. Van Valin, E. Olson, D. Rintelmann, M. Kipp, D. Halbach.
Front row—L. Hall, M. Dahl, M. Patterson, R. Welch, J. Sheard.

Emerald Echo

Want to keep up on school events? You had better subscribe for the Emerald Echo. Joyce Conrad was editor-in-chief this year and Mr. Stein was the adviser.

The Typing II Class performed all the editing, correcting, proof reading, and rewriting for the newspaper. Reporters have filled their assignments, but all the work above mentioned and the production of the paper fell to the typing class.

Left to right—Joan Malchine, Joyce Conrad, Betty Lou Laux, Roder, Jean Schwedler.



Library Club

Back row—M. Kipp, P. Neff, J. Sleik, M. Beaumont.
Front row—M. Sykes, J. Conrad, J. Malchine, A. Patterson.

Since our library has achieved the "new look," it is becoming more and more difficult to resist the invitation to read. The shelves are lined with interesting books—fiction and non-fiction. This has been accomplished through the efforts of Mr. Kostrzak and the club members who come to our assistance in locating and checking out books.



Senior Class Play



Standing left to right: Gehrand, Knurr, Baumeister, Ranke, Rintelmann, Olsen, Wheeler, Krause, Conrad, Klakner, Malchine.
Seated: Lukas.

"Don't we look funny." "This make-up feels as if you could scrape it off with a knife." "I just know I'll get out there and forget my lines." These are the usual comments heard backstage just before the curtains open. Members of the cast are everywhere — some quietly sitting, some nervously chewing fingernails, others running around, and still others looking over their lines.

The Senior class presented "The Tin Hero" on March 25. It was a comedy really enjoyed by both young and old.

The cast included Peter Lukas as Douglas Goodyear, the tin hero; Joan Malchine as his very imaginative mother who caused much trouble; and Ellen Olson, as his sister Grace, who has a hard time trying to calm down

her mother's fancy dreams. Joyce Conrad was Virginia, Douglas's fiancée. Raymond Knurr was the meek president of the Hero's Club, and Eva Gehrand was his domineering wife. Donald Rintelmann played Bunny Wheeler, a peppy boy engaged to Grace. Annette, played by Joyce Wheeler, was the only female member of the Hero's Club and Doris Krause as Adelaide, was a friend of Grace. Lyla Baumeister was the diligent newspaper woman, Victoria Esmond, with Betty Klokner as Mlle. Claudette Bordoni, a young French woman. Gene Ranke was Spike Ryder, a champion swimmer. The assistants of Miss Friedrich, the director, were Ruth Christensen as student coach and DeLone Onsgaard as stage manager.

Junior Class Play



Standing — Buenger, Kolm, Hall, Sheard, Gehrand, Miss Friedrich, Johnson.
Seated — Sorenson, Wiesenthal, Kipp, Callen, Allen.
On Floor — Allen, Rebstock.

Ten members of the Junior Class, along with two seventh graders, presented on November 12, a three-act comedy entitled "We shook the Family Tree". The play was directed by Miss Friedrich.

There was constantly some kind of an uproar in the home of Mr. and Mrs. Dolson (played by Joyce Callen and Dick Johnson) all because of their tactless daughter Hildegard (Jean Sheard). She always had some one on the spot, and it was usually her father, although he tried so hard to make his employer and wife, Mr. and Mrs. Shermer (Marilyn Kipp and Dick Gehrand) get the best impression of his family.

Hildegard's mother, Mrs. Dolson, wanting to make it better with the Shermers, decided

that their son, Freddie (Larry Hall) would be just the boy for Hildegard's Prom date. Freddie had always been the laugh of the school because he still had to wear knickers. Hildegard's older brother Bob (Jim Buenger) and her typical little brother Jim (Dave Rebstock), another classmate Jill (Marge Sorenson) and Bob's date, Ellie May (Joanne Kolm) never ceased bothering Hildegard about it. Hildegard had her younger sister Sally (Betty Allen) to agree with whatever she did. A little neighbor girl, Paige (Shirley Allen) didn't help things either.

After all the bickering and activity, Freddie was finally allowed to wear long pants and Hildegard was proud to join Bob and Ellie May with her Prom date.

Band



Top row — Mr. Zimdars, Gehrand, Curnow, Kaun, Woods, Ranke, Johnson, Sykes.

Middle row — Callen, Schwarz, Moore, Wiesenthal, Noll, Sorenson, Mayer, A. Schwarz, J. Paap.

Bottom row — North, Rebstock, Kojis, Baumeister, Smetana, Hulbert, Foat, Kopelke, G. Paap.

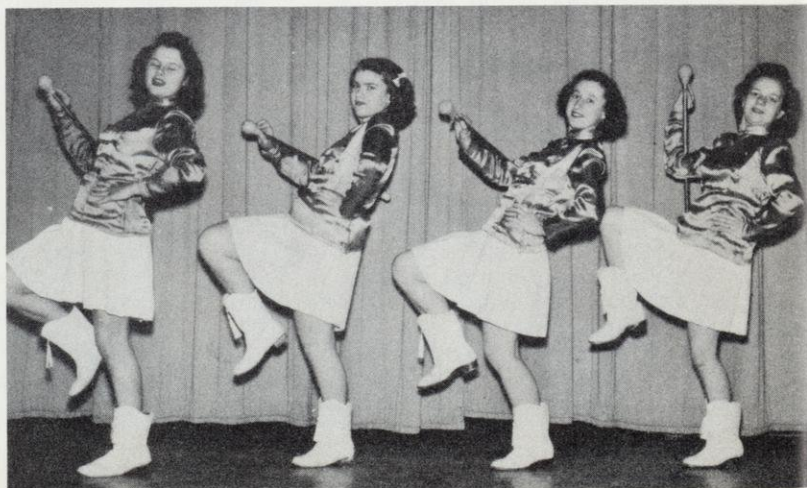
Here comes the Band! Yes, it's the Waterford High School Band, marching and playing to the best of their ability under the able direction of Mr. Ralph W. Zimdars.

This year, besides preparing for the White-water Festival, the Band had charge of some

pep sessions, played at all the "home" basketball games, and gave their annual Spring Concert, February 25.

Band leaders include Marilyn Noll, president; Joan Wiesenthal, vice-president; Eva Gehrand, treasurer.

DRUM MAJORETTES



Felton

Breiling

Alby

Alleman

Glee Club



Top row — Alby, Paschen, Kipp, Allard, Rintelmann, Gehrand, Patterson, Onsgaard, Sleik, Rupert, Maerzke, Foat, De-Grave.

Second row — Hribar, Sheard, Krause, Beaumont, Smetana, Thoreson, Beaumont, Paap, Gunderson, Lidholm, Sykes, Raasch, DeGrave.

Third row — Chapman, Klokner, Breiling, Armes, Sorenson, Paap, Noll, Rebstock, Alby, Patterson, Hulbert, Hart.

Bottom Row — Callen, Wiesenthal, Malchine, Kuntz, Moore, Malchine, Olson, Neff, Welch, Laupan, Kojis.

Strains of music echo through the halls every Wednesday and Thursday morning. Yes, it's the large mixed chorus under the able direction of Mr. Zimdars. This year there were fourteen representatives who sang in the Mass Glee Club at Lake Geneva. The climax for the year will come with the journey to Whitewater for the annual music tournament in April.



Top row — Krautkramer, Greil, Prager, Lukas, Maerzke, Sadler, Heck, Fries, Lewis, Kaun, Rintelmann.

Middle row — Dettman, Mitsch, Snoddy, Alleman, Mayer, Semrad, Paap, Engel, Hinkel, Lindner, Laux, Satterstrom.

Front row — Lindner, Dillar, Roder, Hutton, Allard, Clausen, Ruocco, Schwarz, Schwarz.

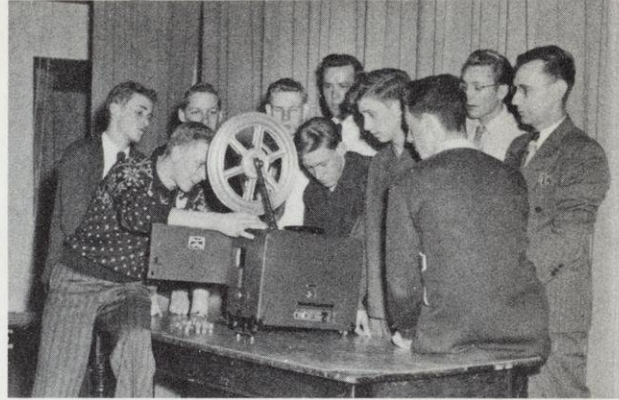




The Projector Club has been re-organized under the supervision of Mr. Daugherty, and officers elected as follows: Donald Rintelmann, president; Dave Halbach, secretary.

These two then took complete charge of showing movies, appointing committees, and taking care of the machine and films.

Projector Club



Top row — D. Woods, P. Lukas, E. Hegemann, S. Krautkramer, D. Halbach, Daugherty.

Bottom row — J. Buenger, H. Lindner, D. Lewis, D. Rintelmann.



Top row — A. Patterson, J. Malchine, Laupan, D. Malchine, Baumeister.

Middle row — Kipp, Behling, Kramer, Buenger, Kaun, R. Rintelmann.

Bottom row — Morgenroth, E. Gehrand, Sheard, Ruocco, Hall.

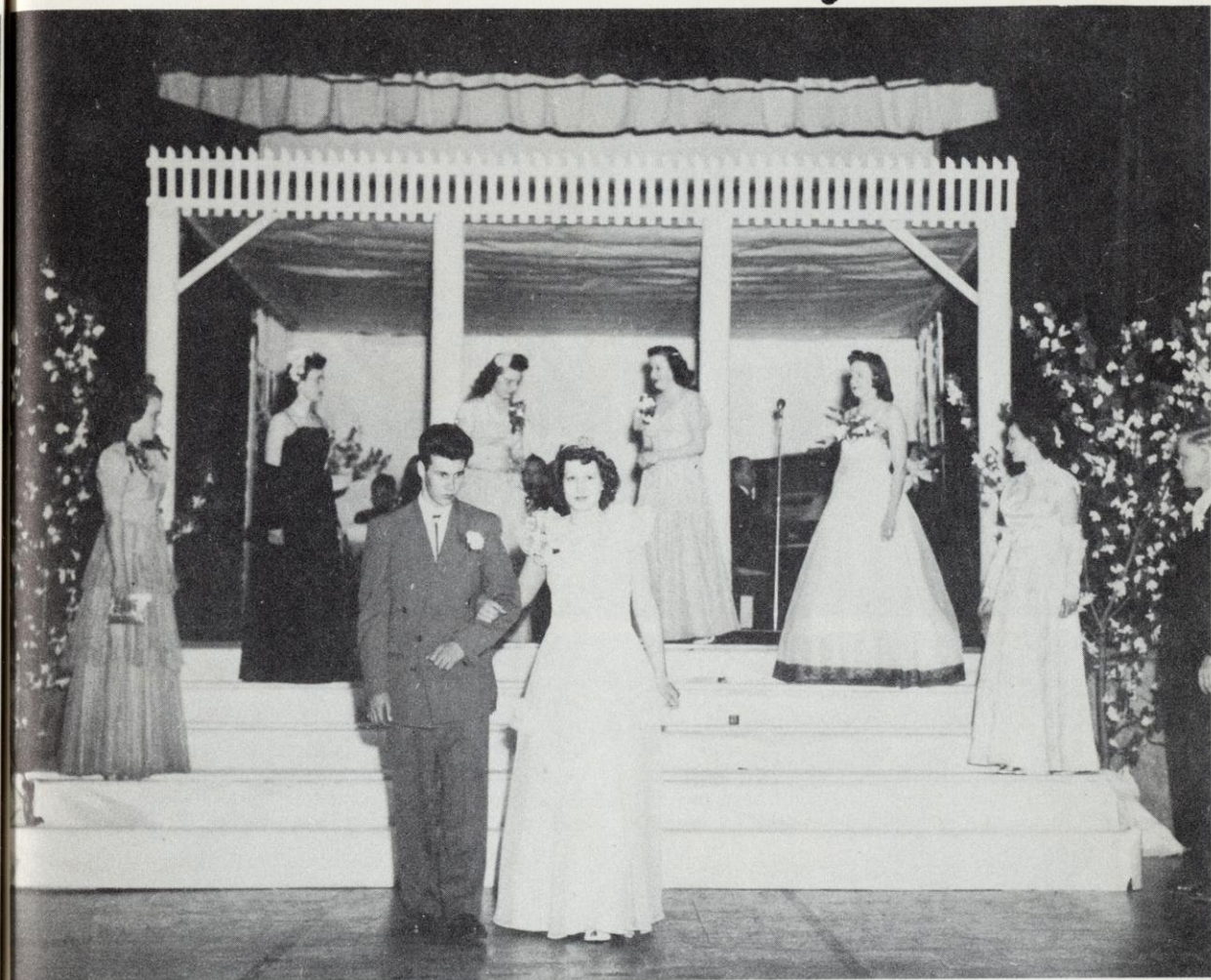
Driver Education

Where's the shift? Is this the brake? Such were the questions asked in Driver Education. All sophomores attended the classes under the able direction of Mr. Daugherty and Mr. Mingst during the first six weeks of the school year. Movies from the State Motor Vehicle Department were shown by Sergeant Cornwall of the Racine Police Department.

Forensics

Early in February, rehearsals for the annual Forensics Contest are in progress. Last year four students competed successfully in League Contest at Palmyra and went on to the District Contest at Whitewater. Here, Irene Schwarz, Jim Buenger, and Joan Malchine were rated "B", while Larry Hall received "A" and journeyed to the State Contest at Madison where he was awarded a "B" rating and a silver medal for his forensic work in humorous declamation. The sixteen students in the picture on the right are out for forensics this year.

Junior Prom



Memories of just one short year ago! The scent of magnolias, the silvery moon, the wide, white veranda! Last year's JUNIOR PROM, "Neath the Southern Moon," was held April 30, 1948; the music was furnished by Bud Wilbur.

Around the pink-blossomed apple tree swirled the gay dancing couples who had been led by King Lyle Fries and Queen Joyce Conrad in the impressive Grand March.

Has your memory been refreshed? Naturally, a really good time is hard to forget!



G. A. A.



Top row — M. Maerzke, Johncox, Hinkel, Snoddy, Lindner, B. Paap, Dettman, Laupan, Malchine, Laux, Becker, Rupert. Middle row — Van Valin, Alleman, Satterstorm, Breunig, C. Felton, Onsgaard, Schwarz, H. Felton, C. Sakowski, Whalen, N. Brown, Sadler. Bottom row — Sykes, Raasch, Breiling, Gunderson, J. Paap, Smetana, Dahl, Thoreson, J. Sakowski, G. Paap, Lidholm, Beaumont.

Under the guidance of Miss Fisher, the Girls' Athletic Association has had another successful year. A mother-daughter tea in the fall started a series of activities which

included talks by prominent business women of Waterford — Mrs. Freda Rebstock, Mrs. Arno Zimmer Sr., and Mrs. Helen Walle. A picnic is planned for the spring.



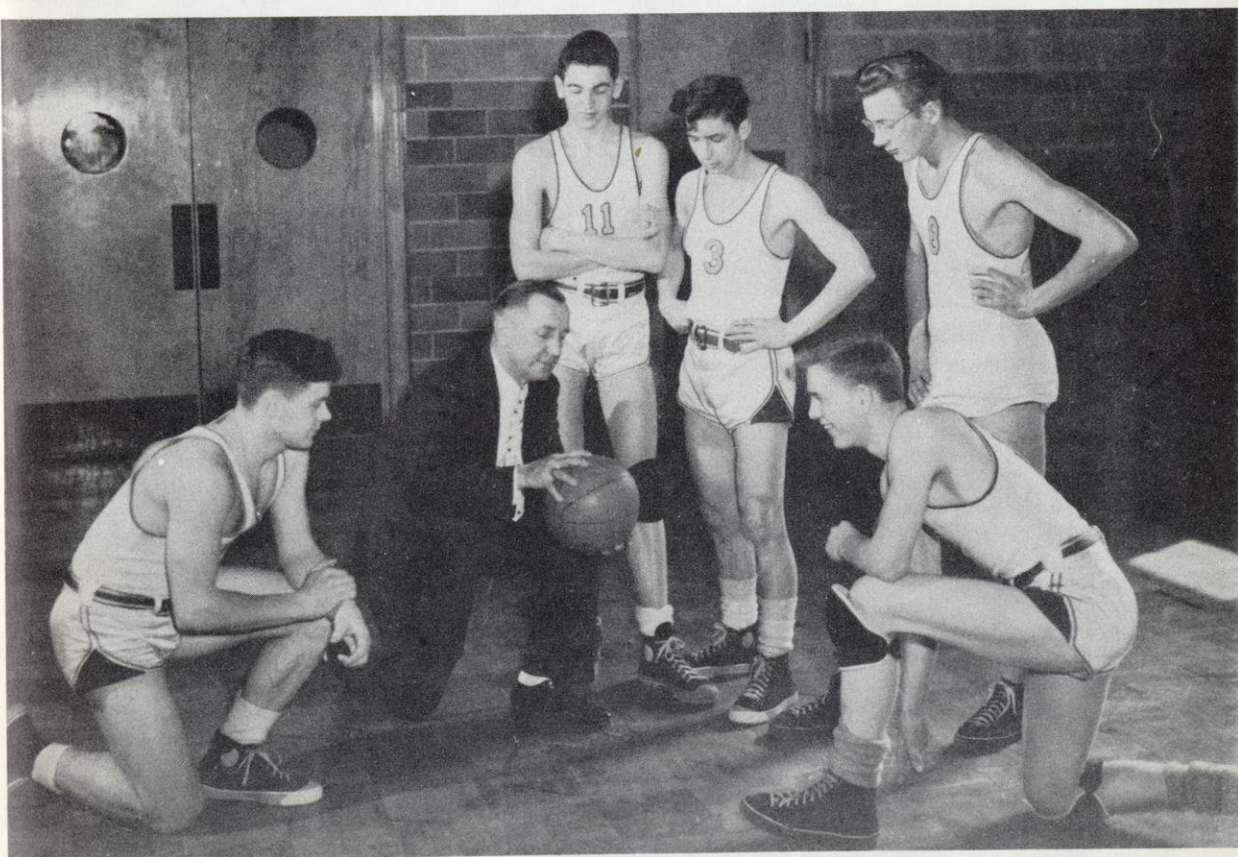
Top row — Kipp, Wheeler, Sleik, Christensen, Gehrand, Mayer, Callen, Wiesenthal, Schwedler, Onsgaard, Rintelmann, Allen, North, Klokner. Second Row — Kellner, M. Brown, A. Patterson, Alby, Krause, Rebstock, Beaumont, Zimmer, Sorenson, Allen, Hegeman, Sheard, Crema. Third row — Kojis, Weber, Bothe, Schwarz, Kuntz, Malchine, Baumeister, Engel, Noll, Clausen, Mitsch, Olson, Kolm, Moore. Bottom Row — Neff, Dillar, Conrad, M. Patterson, Sykes, Roder, Nelson, Laux, B. Olson, Welch, Bauer.

Coach's Message

As Knute Rockne put it: "It isn't the size of the dog in the fight, but the size of the fight in the dog." Our Wolverines show plenty of fight, whether winning or losing, up to the moment that the final whistle blows.

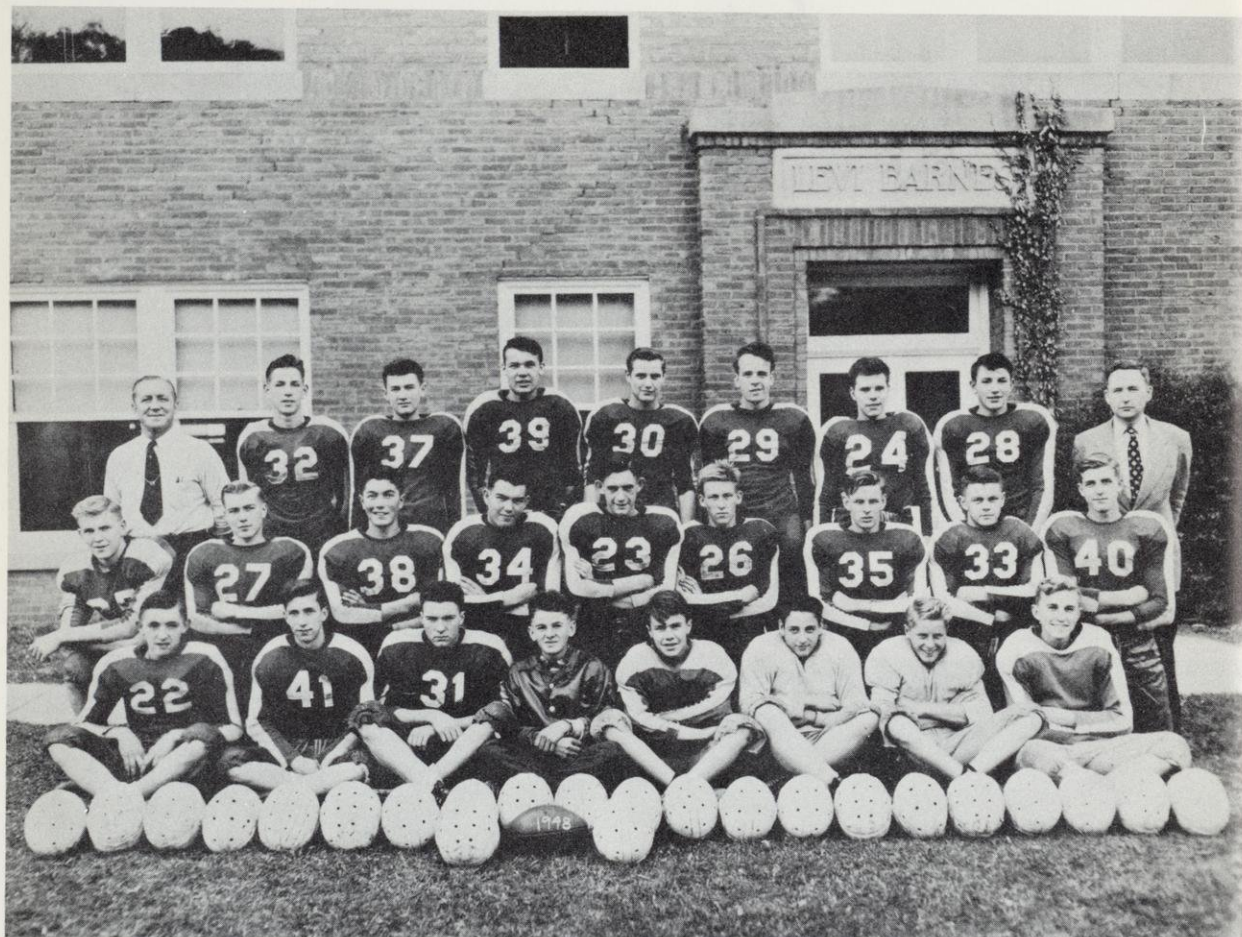
The chief aim of our sports program, however, is to encourage all the boys to take some part in athletics in order to develop physical co-ordination with mental alertness and good sportsmanship.

Lloyd H. Mingst



Standing — Rintelmann, Lewis, Dave Halbach.
On knees — Don Halbach, Coach Mingst, Buenger.

Football



Top row — Coach Mingst, Behling, Daugherty, Roepke, Rupert, Leighton, DeGrave, Kramer, Principal Evans.

Second row — Buenger, Laux, Hansen, Prager, Becker, Lindner, Hegeman, Halbach, Ranke.

Bottom row — Prill, Lewis, Hall, Foat (Manager), DeGrave, Chapman, Alby, Kaun.

The 1948 football season saw the Waterford Wolverines come out fourth in Conference standing. The boys got off to a bad start by losing to Rochester 20-0 on their field. The game started out fairly even but the heavier Rochester line soon began to make itself felt and with their big end Hartmann scoring twice, Rochester won.

Our next opponent, Wilmot, took home a win to the tune of 13-0. This game was scoreless with both teams even until the last five seconds of the first half when Wilmot scored. In the second half Wilmot was again held even until late in the third quarter one of their men slipped around end and broke into the clear for a 55 yard touchdown run.

Waterford chopped the next game to a fast Union Grove team 19-0. During that game Jim Wheeler got his leg broken. After that the Wolverines really came back fighting and trampled Walworth by a score of 25-0. With fine blocking and beautiful pass receiving by Roepke, who went over twice, the team won in a breeze. Buenger went over twice and all in all the team looked great.

The next game at Mukwonago showed two evenly matched teams fight it out to a scoreless tie. Late in the game Waterford started a drive that stalled deep in Mukwonago territory when a costly fumble set the Wolverines far back and the game ended without either side scoring.

For our last game which was our homecoming we met East Troy who were undefeated. The score was 31-0 when the last whistle blew on a very tough season. It showed a final record of 1 win, 1 tie, and 4 losses.



Basketball



Top row — DeGrave, Buenger, Gehrand, Daugherty, Behling, Coach Mingst.
Bottom row — Lindner, Laux, Rintelmann, Dave Halbach, Lewis, Don Halbach.

The Waterford High School cagers went through a fairly successful basketball season. Whether the times were good or bad, they still were in fighting to the best of their ability. They never gave up, which is the most essential quality of a good ball squad.

They began the season with a thrilling non-conference tilt against Lutheran High School of Racine, which they lost 39-38. Don Rintelmann and Dave Halbach shared the scoring honors with 12 points each.

In the conference opener, Wilmot traveled to Waterford to hand the Wolverines a sound trouncing to the tune of 33-16. However, the Wolverines bounced back two weeks later to beat their old-time rivals, the Aggies, by a score of 37-32. Rintelmann again racked up 10 points to take the scoring honors. Four days later, Waterford traveled to Mukwonago to hand the Indians a severe trouncing by an overwhelming score of 60-36. Again Don Rintelmann led the scoring column with a total of 21 points.

Championship hopes rose when Union Grove came to Waterford only to be defeated by the Wolverines 36-25. Dave Halbach led the scoring with 10 points. In a non-conference tilt a day later, Racine Lutheran beat Waterford 42-29. The second string played most of the game with Morgenroth scoring 8 points.

Continuing conference play, the Wolverines handed Norris a 56-41 beating. Don Rintelmann raised his scoring total with 25 points.

During the Christmas vacation Waterford played three non-conference games. They lost the first game to Greendale 55-32. In a holiday double-header they lost to Williams Bay 28-23 the first night. The second night they lost to Walworth, 35-32.

Resuming conference play again, the Trojans of East Troy handed the Wolverines a beating by the score of 57-32. Rintelmann again led the scoring with 13 points. Four days

B Squad

later Wilmot beat Waterford in a tight game 29-23. The scoring was evenly divided. In a return game with Greendale, Waterford lost an exciting overtime game 46-41.

Traveling to Rochester the Wolverines lost to the Aggies 30-19. Don Rintelmann scored 11 points. A week later Mukwonago came to Waterford to fight a close battle. Waterford won by a single point, 29-28. Don Lewis sparked the Wolverines with 14 points.

A few days later Waterford traveled to Union Grove to suffer a defeat 55-32. Dave Halbach and Don Rintelmann each had twelve points. Three days later the Wolverines handed Norris a severe drubbing. The final score was 73-33. Dave Halbach set the pace with a sizzling 29 points. Other members also contributed evenly to the total.

In the last conference engagement Waterford lost a tough battle to the leading East Troy five. The final score was 49-38. This finished the season with 6 wins and 6 defeats in the conference battle.

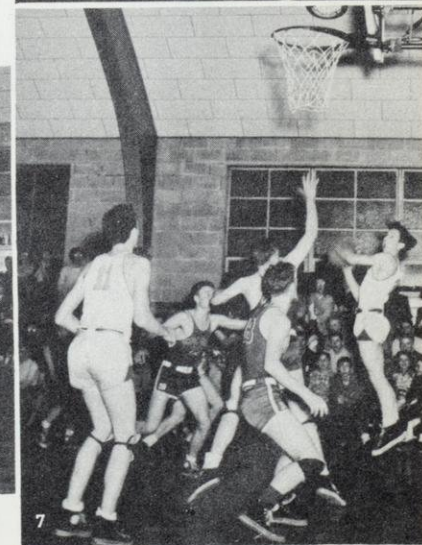
In the tournament Waterford defeated the Aggies the first night. It was a close battle with the final score being 24-22. The second night Union Grove beat the Wolverines 38-30.



Top row — Becker, Hegeman, Hulbert, Gross, Coach Zernzach.
Bottom row — Cahill, Hart, Hall, Mealy, Kramer, Kaun.

Tournament

Before the game with Union Grove, Coach Mingst gives last-minute instructions (1). Union Grove shoots from the side (2). Rintelmann's famous hook-shot in action (3). Jump-ball in game with Rochester (4). "We beat Rochester" (5). Battle under the basket in a mad scramble for the ball (6). "Lewie" tries a jump shot (7). (Pictures by courtesy of Don Rupert).



Baseball



Top row — Rintelmann, Halbach, Ranke, Kramer, Johnson, Kaun, Barthel, Daugherty, Leighton, Krautkramer. Middle row — Wheeler, Paschen, DeGrave, Lewis, Rader, Fries, Buenger, Hansen, Prager. Bottom row — Coach Mingst, Prill, Welch, Chapman, Cahill, Roepke, DeGrave, Paschen, Hegeman.

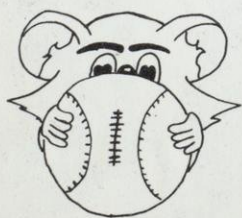
Our spring sport, baseball, found a few veterans out and some inexperienced boys who were intent upon improving the record of last year. While results did not come up to expectations, the sport was enjoyed and the season produced a few thrills as well.

In the first game, the Wolverines lost to Rochester 3-1, despite the brilliant pitching of Mickey Clements who twirled a one-hitter. Norris then defeated Waterford 9-1.

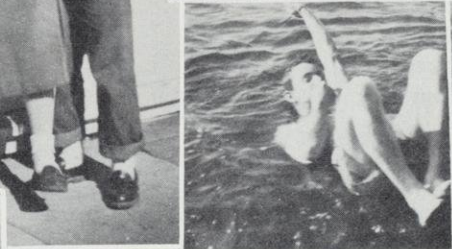
The Wolverines' bats came to life against Mukwonago to the tune of a 10-0 decision following two setbacks. At East Troy, with Waterford leading late in the game, the Trojans rallied and the Wolverines lost 11-10. Wilnot followed suit and beat us 8-3. In the last game of the season, the Wolverines came up with an upset with the help of three homers by Clements, Greil, and Beck, (Clements coming with the bases loaded) to whip Union Grove 7-3.

Cheerleaders

Everybody knows the cheer "We've got the pep!" How true! At pep meetings and at games the cheerleaders led the students in such loud cheering and showed such backing for the team that it's a wonder the rafters didn't fall. With all this pep and cheering under the coaching of Mr. Kostrzak and with our W.H.S. teams, we had a wonderful year in the sports world.



Top row — Rebstock, J. Alby, P. Onsgaard, P. Neff, Whalen, J. Sakowski. Bottom row — E. Olson, C. Ranke, Ruocco, H. Felton, K. Rintelmann.



Sponsorships

Academy Cleaners	Burlington
Alex Engel—IHC Farm Equipment	Waterford
American Legion Bowling Alleys	Waterford
A. M. Rittmann & Son—Clothing, Shoes, Dry Goods	Waterford
Arcade Restaurant, Callen's Restaurant	Waterford
Arthur R. Perry—Optometrist	Burlington
Bakke Electric Co., Your Hotpoint Dealer	Waterford
Bank of Burlington	Burlington
Baumeister Motors	Burlington
B & K Shoe Store	Burlington
Brennan & Otto, Heating Appliances & Sheet Metal	Burlington
Brownie's Store	Wind Lake
Burlington Consumers Cooperative	Burlington
Burlington Floral Shop	Burlington
Burlington Foods Inc.	Burlington
Center Service, Howard B. Scott—Prop.	Raymond Center
Civic Club	Waterford
Don Rupert, Candid Shots and Portraits R. 1	Waterford
Dr. M. T. Huber, Dentist, Phone 25-A	Waterford
Dr. R. J. Dietz	Waterford
Dr. Louis Kohn	Waterford
E. H. Banthin, Florist	Waterford
Elite Sweet Shop	Burlington
Fashion Shop, The	Burlington
Foat Sport Shop	Waterford
Ford Theatre	Waterford
Gamble Dealer, L. R. Wiesenthal, Owner	Waterford
G. Lebrick's General Store	Raymond Center
Graf's Garage	Waterford
36 Grill, Delicious Hamburgers	Waterford
Hall, J. L., D.D.S.	Waterford
Haskell's	Burlington
Herrman, Lee N., Jeweler	Burlington
Hart's Grocery	Wind Lake
Helen's Gift Shop	Waterford
Hersh's "Washerette"	Burlington
Hill's Standard Service	Waterford
Huckstorf's Service	Wind Lake
I.G.A. Super Market	Waterford
John E. Platz, Photographer	Milwaukee
Kebbe's' Food Market	Rochester
Kessler's 5 to \$1.00 Store	Burlington
Kilgore & Easterday, Office Equipment	Racine
Kissinger Motors	Waterford
Korner, The, Mrs. Thorpe & Merrill, Props.	Waterford
Kruckman and Glaser	Burlington
Leighton Hardware Store	Waterford
Loraine's Beauty Shop	Waterford
McCarthy, Rueter & Haas, Phone 76-R	Burlington
Mealy Funeral Home—Ambulance Service	Waterford



Junior Class Play



Make-Up Department



Seniors



Juniors



G.A.A. Officers

C
L
A
S
S

O
F
F
I
C
E
R
S



Sophomores



Freshmen



Arla Mae Patterson, Office Monitor





Cheerleaders of 1949



Masculine Stars Plus Make-Up



*Heinie Paints
His Masterpiece*



Senior Play Cast



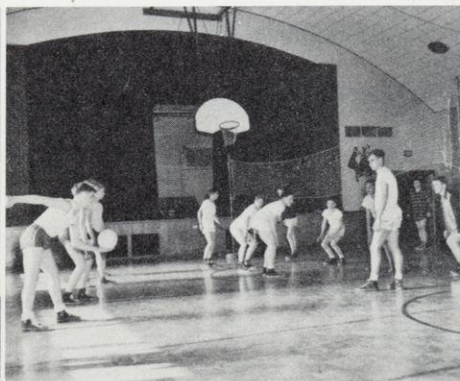
Trophy Case Gazers



Cast Presents Corsage to Miss Friedrich



Basketball Ticket Sellers



Noon Game



G.A.A. Girls Sell Milk

Sponsorships

Meinhardt Bank	Burlington
Moore's Refrigeration and Electrical Service	Waterford
Music Mart	Burlington
Nelson Flower Shop	Burlington & Union Grove
Nelson H. Johnson	Waterford
Noll's Bank	Waterford
Otto Paap Jr., Farm Operating Equipment	Raymond Center
Pet Ice Cream Co.	Burlington
Pieters Bros.	Burlington
Progressive Dairy Products Co.	Racine
Rawleigh's Products, Elmer Browalsky, Prop.	Waterford
Rober's Shell Service	Burlington
Scheele's Plumbing & Heating	Waterford
Scheibe Studio	Burlington
Seidel's Dairy	Waterford
Skinner's Hitching Post	Burlington
Smith-Huening Agency	Waterford
Snow White Laundry	Burlington
Sport Mart, The	Burlington
S. Petersen's Bottled Gas Service	Waterford
Steinke Hardware Co.	Waterford
Schuler's DeNoon Beach	Lake DeNoon
Swenson Jewelry Store	Burlington
Thos. J. Maas & Sons	Waterford
Trimborn Electric Co.	East Troy & Waterford
Union Chevrolet Garage	Burlington
Universal Service Garage, Art Becker, Prop.	Waterford
Vogue Beauty Shoppe	Burlington
Wagner and Juranek	Burlington
Waterford Agency, The	Waterford
Waterford Home Bakery, D. J. Bilitz, Prop.	Waterford
Waterford Mill, The	Waterford
Waterford Oil Co., A. C. Lotsch, Prop.	Waterford
Waterford Post, The	Waterford
West Side Food Market, Dick & Johnnie's Clover Farm Store	Waterford
Wilbur Lumber Co.	Waterford
Wind Lake Bowling Alleys	Wind Lake
Zimmer's Drug Store	Waterford



