



LIBRARIES

UNIVERSITY OF WISCONSIN-MADISON

79 Jeep. [ca. 1979]

[s.l.]: American Motors, [ca. 1979]

<https://digital.library.wisc.edu/1711.dl/HFGJHTFGFWZ2O8F>

This material may be protected by copyright law (e.g., Title 17, US Code)

The libraries provide public access to a wide range of material, including online exhibits, digitized collections, archival finding aids, our catalog, online articles, and a growing range of materials in many media.

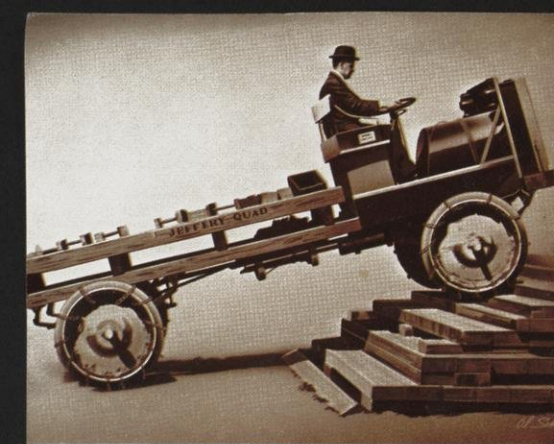
When possible, we provide rights information in catalog records, finding aids, and other metadata that accompanies collections or items. However, it is always the user's obligation to evaluate copyright and rights issues in light of their own use.

79 JEEP®

We wrote the book on 4-wheel drive!



THE JEEP® STORY



1915 Jeffery "Quad" Truck



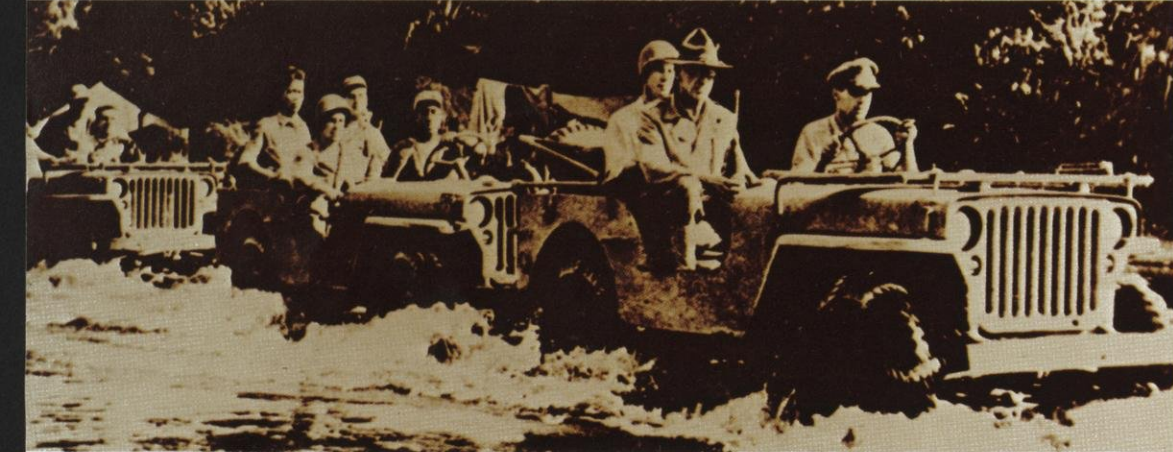
1916 Jeffery Truck



1940 Willys "Quad"



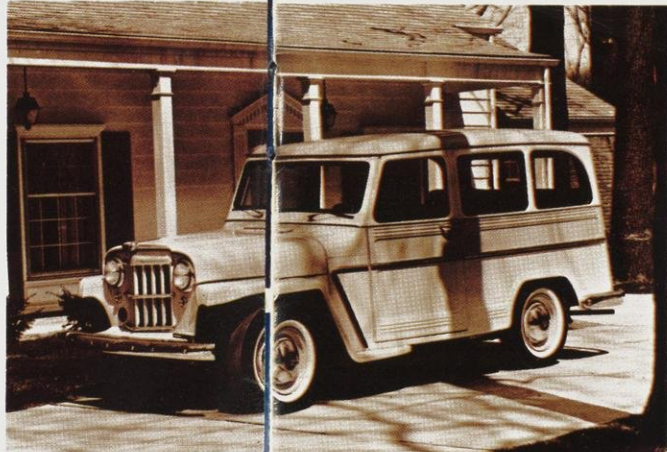
1946 Jeep Station Wagon



Military Jeep, Model MB



1950 Jeep Station Wagon



1959 Jeep Maverick



1954 Jeep CJ-5

▼ 1977 Jeep CJ-7 & CJ-5 Renegades

Any vehicle built to conquer the sands of Africa, mountains of Italy, and jungles of the South Pacific has to be rough and rugged. And, that's exactly where the predecessor of the Jeep CJ first saw action, carrying America's colors on the battlefields of WWII.

The prototype was developed in 1940 by Willys-Overland, in Toledo, Ohio. From there, it was shipped to Camp Holabird, Maryland. The army took an immediate interest in the multi-purpose vehicle, and after extensive testing, selected it over several other competitive models. More than half a million units were built during the war.

On the field of duty, the distinctive olive-drab, quarter-ton truck/utility vehicle was primarily a powerful reconnaissance car. Yet it was versatile enough to carry men and supplies, mount weapons, tow trailers and park airplanes. Needless to say, the soldiers loved their Jeep vehicles, which, time after time, got them out of tight and dangerous situations.

After the war, Willys-Overland developed a line of vehicles related to the military model and registered the Jeep® trademark. With special equipment like snow plows, post hole diggers, trenchers and much more, the Jeep ¼ ton vehicle probably became the most versatile vehicle of all time.

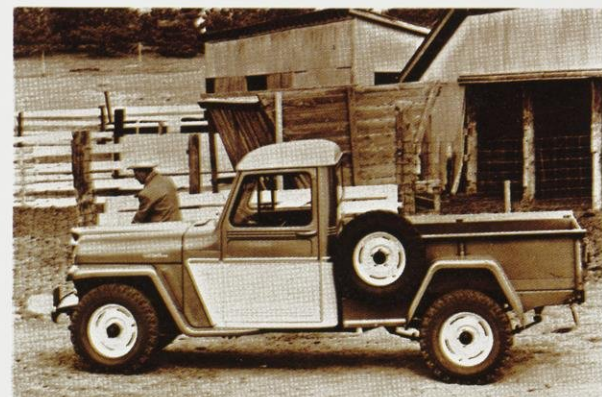
Today, Jeep Corporation is the most experienced producer of 4-wheel drive vehicles, and is a wholly owned subsidiary of American Motors Corporation. And the Jeep vehicles are still as rough, rugged, durable and versatile as ever. Ready to take on the roads and trails all across America. From the rain-slick ranges of Washington's Cascades to the steamy swamplands of Florida's Everglades. In the blazing, blistering heat of a Death Valley summer or the frigid, snow-filled winters of the North, the Jeep vehicles will take you just about anywhere you want to go, under almost any conditions. On the road or off.

In many ways, though, Jeep vehicles—CJ-5, CJ-7, Cherokee, Wagoneer and Pickup—have changed dramatically from that pioneer military model. Obviously, advanced technology and engineering have contributed greatly to improving ride and performance, keeping Jeep in the forefront as a leader in 4-wheel drive vehicles. The modern day Jeep lineup is also much more sleek, colorful and well-equipped than its wartime counterpart—ready to take you to Jeep Country in unexpected style and comfort.

Jeep wrote the book on 4-wheel drive—and the story is about to unfold in the pages ahead. Read how CJ-5, CJ-7, Cherokee, Wagoneer and Pickup—five rugged vehicles, each with its own special appeal—are ready and raring to take you to Jeep Country. Then see the Jeep family in person, at your nearby Jeep Dealer.



1957 Jeep FC-170 Truck



1960 Jeep Pickup



M151 Military Vehicles



▼ 1967 Jeepster Roadster



▼ 1961 Jeep CJ-5



▼ 1965 Jeep Wagoneer



HARRIS MOTORS
WINTHROP HARBOR, ILL.
ILL. 746-1221 — WIS. 658-4040



golden eagle

Jeep

Jeep

GOODYEAR TRACKER A-T

JEEP® CJ-5 AND CJ-7

◀ CJ-5 Golden Eagle



▲ CJ-7 Renegade

▼ CJ-7 Golden Eagle



Jeep wrote the book on 4-wheel drive—and the CJ's were there when the book came out. They're the first rugged, durable off-road performers to blaze the trail to Jeep Country. Each one is backed by 36 years of solid engineering experience. And those 36 years of improvements and refinements have made and kept the CJ's the standard by which other sport-utility vehicles are measured. For sheer driving fun and unparalleled off-road performance, CJ is the way to go.

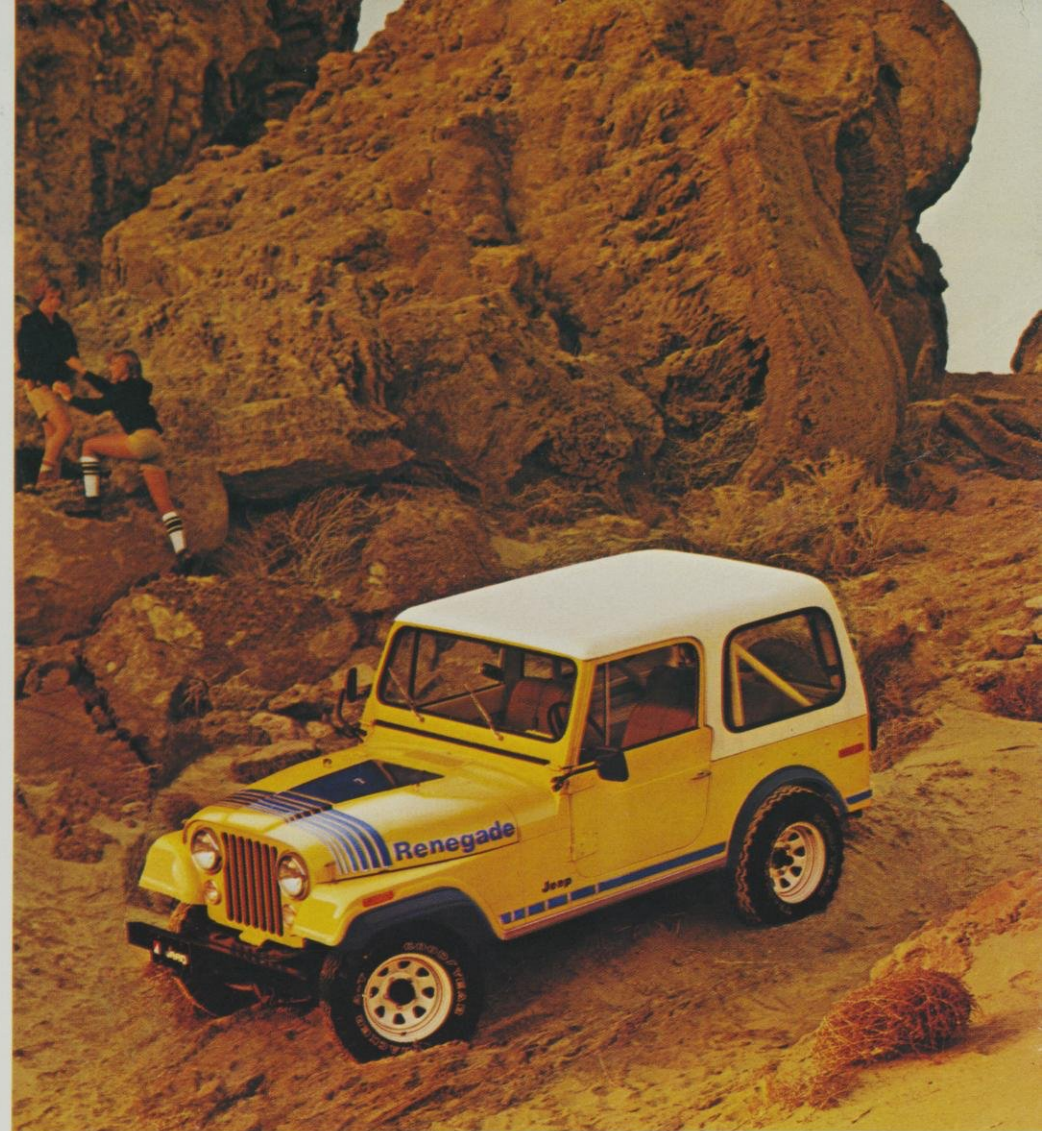
With an 83.5-inch wheelbase and short front and rear overhang, the CJ-5 boasts outstanding maneuverability (33.5-foot turning circle) on or off the road. CJ-7's longer wheelbase (93.5-inches) provides good stability, and with the optional automatic transmission and Quadra-Trac® 4-wheel drive system, the handling is smooth and easy.

Both CJ's have a standard 258-2V 6-cylinder engine, fully synchronized 3-speed transmission, solid-state electronic ignition, front disc brakes and, of course, rugged Jeep 4-wheel drive. Built in, not added on, for rugged durability.

In addition to these and many more standard features, there is also a wide variety of options you can order to tailor your CJ to your own needs and tastes. The sporty Renegade and Golden Eagle appearance/performance packages each include denim front bucket seats, color-keyed interiors, five 8" painted spoked wheels, 9-15 Tracker A-T outline white letter tires (L78 OWL is standard on Renegade), roll bars, distinctive exterior decal and tape treatments and much more. Other options include 304 CID 8-cylinder engine, automatic transmission (CJ-7), cargo area storage box, power steering, air conditioning, tachometer and rally clock and a host of other performance, convenience, protection and special purpose accessories.

But whether you dress it to the hilt or drive the basic model, one thing's for sure: When you drive a CJ, the end of the road is just the beginning of the fun!





◀ CJ-5 Renegade

▲ CJ-7 Renegade

▼ CJ-5



SPECIFICATIONS

CJ Engine Availability

Engine	Carb. Type	Comp. Ratio	Bore & Stroke	Std./Opt.
258 CID Six	2-bbl.	8.0:1	3.75" x 3.90"	Std.
304 CID V-8	2-bbl.	8.4:1	3.75" x 3.44"	Opt.*

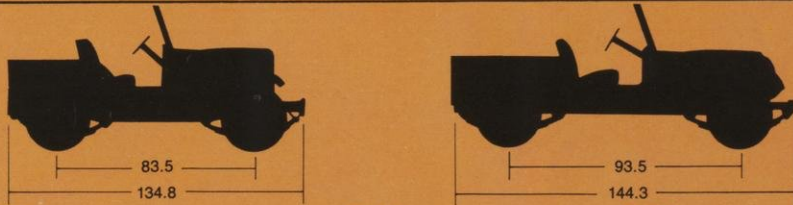
Standard and optional engines for Jeep CJ utilize overhead valve configurations, lightweight compact engine block castings and ambient air intake system for improved engine operation, greater durability and longer life.

*Requires power steering in California.

CJ Specifications

Axle, Front	Full floating open-end; GAW: 2200 lbs.
Rear	GAW: 2700 lbs.
Brakes	Manual front disc, rear drum (power brakes optional)
Clutch, Diameter	10½" (11" with V-8)
Area	106¾ sq. in.
Fuel Tank	14.8 gallons; skid plate standard
Windshield	768 sq. in. total glass area
Gross Vehicle Weight	3750 lbs. (4150 lbs. maximum)
Springs, Front	4 Leaf 170 lbs./in. rate standard
Rear	4 leaf 185 lbs./in. rate standard 5 leaf 185 lbs./in. rate standard (Hardtop)
Steering	Recirculating ball standard 24:1 ratio; Constant ratio power optional 17.5:1 ratio
Transfer Case	2-speed Dana 20 standard with 2:1 low range gear reduction; Quadra-Trac® full-time automatic 4-WD optional on CJ-7 only
Transmission	Fully synchronized 3-speed floor shift (manual) standard; 4-speed manual floor shift optional; column-mounted Turbo Hydra-Matic available on CJ-7
Tires	Five H78-15 Black Polyester Highway (unbelted) are standard; see page 29 for tire options
Wheels	Five 15 x 5.5 5-bolt 5.5" circle standard; optional wheels include 15 x 8 spoked steel 5-bolt on a 5.5" circle

CJ Dimensions (Inches unless otherwise noted)



Exterior	CJ-5	CJ-7
Length	134.8	144.3
Wheelbase	83.5	93.5
Max. Body Width	59.9	59.9
Max. Overall Width	68.6	68.6
Height	67.6	67.6
Tread (Front/rear)	51.5/50.0	51.5/50.0
Overhang (Front/rear)	23.5/27.8	23.5/27.3
Min. Ground Clearance	6.9	6.9
Tailgate Opening Width	35.8	34.5
Curb to Curb Turning Diameter (feet)	34.1	38.0
Interior	CJ-5	CJ-7
Head Room Softtop	39.8	40.6
Hardtop (front/rear)	40.8/40.9	39.9/39.6
Leg Room Max. front	37.9	39.1
Min. rear	30.5	35.0
Hip Room Front	55.4	53.8
Rear	36.0	36.0
Shoulder Room Front	55.4	53.8
Rear	55.4	56.3
Cargo Volume (cu. ft.)	10.2	13.6

FEATURES

CJ-5 and CJ-7 Std. Features

Interior

- Ash Tray — Front
- Cigar Lighter
- Gauges — Oil; Voltmeter; Temp.; Fuel
- Heater & Defroster
- Mirror — 8" Inside Rear View
- Padded Sun Visors
- Passenger Safety Rail
- Seats — Bucket Seats (*Driver & Pass.*) — Front, w/Seat Belts
- Steering Column — Energy-Absorbing w/Anti-Theft Ignition

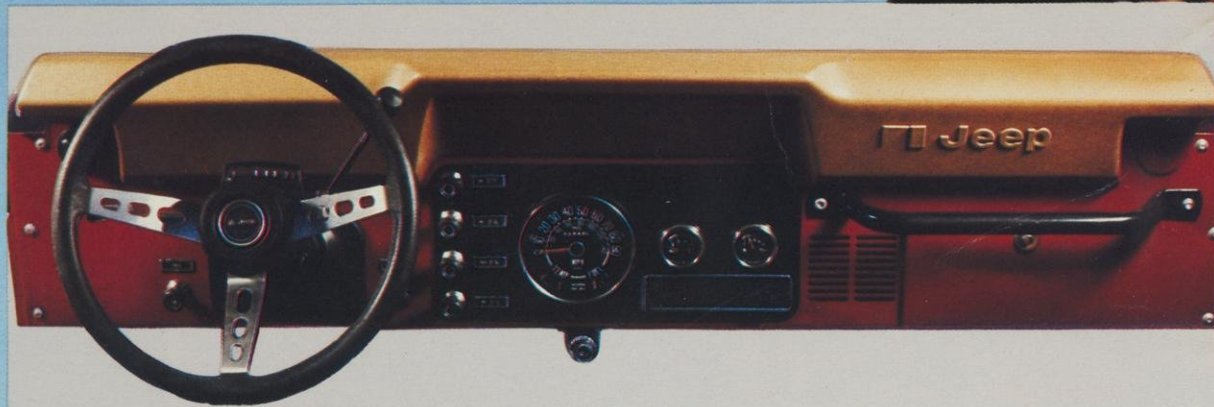
Exterior

- Bumpers — Front, painted
- Lights — Head, Parking, Tail & Stop, Backup, Directional Signals, Side Safety Markers & 4-Way Hazard Flashers
- Mirrors — Outside Right & Left
- Tailgate — Movable (*CJ-7*)
- Solid Back Panel (*CJ-5*)

Functional

- Air Cleaner — Cellulose-Fiber
- Alternator — 12-Volt, 37-Amp.
- Battery — 12-Volt, 45-Amp.

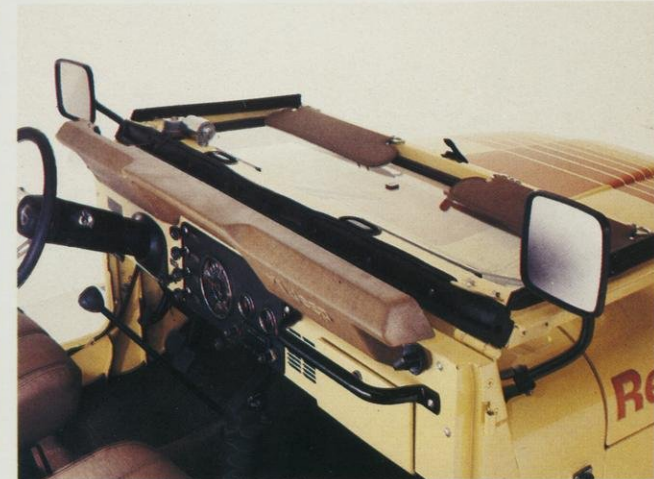
- Brakes, Service — Self-Adjusting w/Split Hydraulic System & Warning Light
- Brakes, Parking — Foot-Lever Actuated w/Warning Light; Operates on Rear Wheels
- Coolant (*Engine*) — Permanent Type w/Hi-Temp Thermostat (*50/50 Mixture*)
- Electronic Ignition System
- Emission Control System — Fuel-Tank Vapor Emission Control; Closed PCV; "Exhaust Gas Recirculation" — (*EGR*); Thermostatically Controlled Air Cleaner; Catalytic Converter
- Exhaust System — Single
- Fuel Filters — Tank & In Line at Carburetor
- Horn — Single
- Oil Filter
- Shocks — Front & Rear
- Spare Tire Rear Mount (*CJ-5*); Inside Floor Mount (*CJ-7*)
- Tools — Jack, Scissor Type; Combined Wheel Wrench & Jack Handle
- Washers — Electric & 2-Speed Electric Wipers



CJ instrument panel (several options shown)



Passenger assist handle



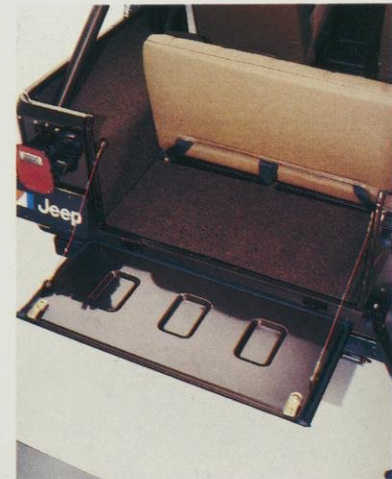
Folding windshield



Front bucket seats



RH mirror



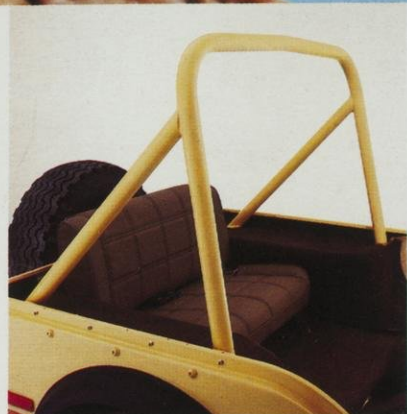
Rear tailgate (CJ-7)

OPTIONS

CJ-5 and CJ-7 Options



"Tracker A-T" tires



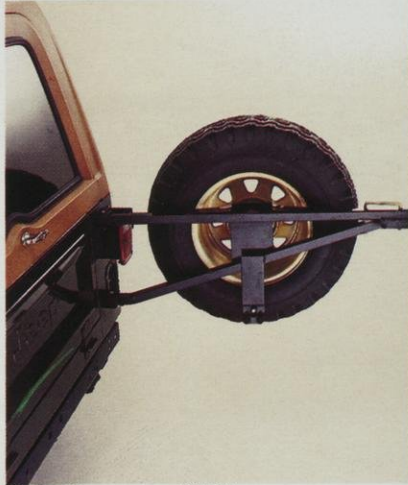
Roll bar



Moonroof



Snow plow (dealer-installed option)



Swing-Away spare (CJ-7)



Rear seat (vinyl trim)



Electric winch

Appearance

- Renegade Package. Includes Denim Vinyl Front Buckets and Rear Bench Seat; Convenience Group; Roll Bar; Decor Group; Fixed Back Panel & Rear-Mounted Spare Tire (CJ-5); Swing-Away Spare Tire Carrier (CJ-7); Hood & Lower Side Stripes (Blue or Orange); "Tracker P-G" L78 x 15 Tubeless Outlined White Letter Tires (5); 15" x 8" White Styled Steel Wheels (5) & Wheelip Extensions; Spare Tire Lock.
- Golden Eagle Package. "Golden Eagle" Hood Decal with Black & Gold Lettering; Body Side & Grille Pin Striping; Gold with Black Accent Stripe on 15" x 8" Styled Steel Wheels (5) & Wheelip Extensions; Spare Tire Lock; "Tracker A-T" 9 x 15 Tubeless Outline White Letter Tires (5); Fixed Back Panel & Rear Mounted Spare Tire (CJ-5) or Swing-Away Spare Tire Carrier (CJ-7); Tan Denim Vinyl Front Buckets & Rear Bench Seat; Tan Denim Vinyl Soft Top; Brown Carpeting; Roll Bar; Convenience Group; Decor Group with Black Rocker Panel Moldings; Tachometer & Electric Clock. (When ordered with Hardtop, includes Tan Hardtop in place of Soft Top and "Bronze-Tone" Tinted Glass in Rear Quarter and Tailgate Windows.)

- Decor Group. Includes Rocker Panel Protection Moldings, Padded Instrument Panel, Instrument Panel Overlay, and Soft Feel Sports Steering Wheel.

- 15" Wheel Covers (4)

- Soft Feel Sports Steering Wheel (Black)

- Soft Top in White or Black Vinyl, Tan or Blue Denim
- Padded Instrument Panel

Convenience

- Convenience Group with Courtesy Lights, Engine Compartment Light, 8" Day/Night Mirror
- Air Conditioning
- Tilt Steering Wheel
- Tachometer and Rally Clock
- Power Steering
- Power Front Disc Brakes
- AM Pushbutton Radio
- Body Side Step
- Moonroof (with Hardtop only)
- Side-Mounted Spare & Tailgate (CJ-5)
- Swing-Away Spare Tire Carrier (CJ-7)

Performance

- 304 CID 2-bbl. V-8
- 4-Speed Manual Transmission, Floor Shift
- Turbo-Hydramatic with Quadra-Trac® (CJ-7)
- Quadra-Trac® Low Range
- Rear Trac-Lok Differential

- Free-Wheeling Hubs
- Heavy-Duty Cooling System
- Extra-Duty Suspension Package
- Steering Damper
- Stabilizer Bar, Front
- Heavy-Duty 70-Amp. Battery
- Heavy-Duty 63-Amp. Alternator
- Cold Climate Group (Heavy-Duty Battery, Heavy-Duty Alternator, Engine Block Heater)

Protection

- Injection Molded Hardtop (with Doors) in Black or White (CJ-7)
- Full Metal Cab (CJ-5)
- Removable Carpet
- Spare Wheel Lock
- Bumperettes, Rear

Special Purpose

- A special dealer-installed snow plow package is available for Jeep CJ models.
- Trailer towing requirements and recommendations are discussed on page 28. See your Jeep Dealer for details on these and other special purpose options available for CJ-5 and CJ-7.



Cherokee Chief

JEEP® CHEROKEE

◀ Cherokee Chief



▲ Cherokee Golden Eagle



▼ Cherokee "S" 4-Dr.

A rough, rocky off-road ride through the foothills for a weekend of backpacking. A quick trip to the lumber yard for a load of wood. A big family picnic at the beach. No matter what the task—or pleasure—Jeep Cherokee is ready and raring to tackle the assignment. For the free-wheeling spirit who wants 4-wheeling fun, Cherokee is the only way to travel!

Cherokee is available in three tough and sturdy models: a 2-door, 4-door and wide-wheel 2-door. All three are loaded with the kind of rugged standard features that have made Cherokee one of the most reliable vehicles and best values in Jeep Country. Like dependable 4-wheel drive, a fully synchronized 3-speed transmission, solid-state electronic ignition and power front disc brakes. And for '79, Cherokee has plenty of great standard features going for it, too. Including a 258-2V 6-cylinder engine, stylish one-piece chrome-plated aluminum bumpers, distinctive new grille and rectangular headlamps, custom 4-spoke steering wheel and many more.

You can also equip your Cherokee with a wide variety of appearance, performance, comfort and convenience options and accessories. Among them are an extra-quiet insulation package, smooth-ride suspension package and intermittent windshield wipers, all new for '79.

There are three unique sport/appearance packages available, too. The Cherokee "S" package includes Hi-Line trim in all-vinyl, or optional vinyl and fabric bucket seats, color-keyed carpeting, sports steering wheel, distinctive body striping and much more.

The Cherokee "Chief" package (available on wide-wheel model only) contains special interior trim items of the "S," plus a special 2-tone paint treatment, flared fenders and five 15 x 8 white painted spoked steel wheels with 10 x 15 Tracker A-T outline white letter tires. And, for the first time, you can now order the Golden Eagle package with unique denim interior on the Cherokee. (Available on the wide-wheel model only; see Options section for package components.)

For versatility, variety and value, the '79 Jeep Cherokee is one vehicle that's hard to beat. In Jeep Country—or anywhere!





▲ Cherokee Chief



▲ Cherokee "S" 2-Dr.

▼ Cherokee "S" 2-Dr. (wide-wheel model)



SPECIFICATIONS

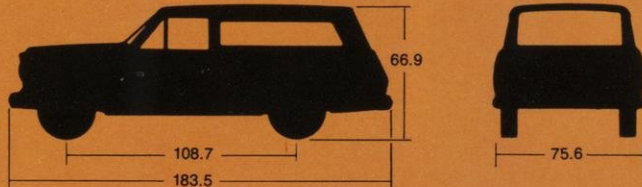
Cherokee Engine Availability

Engine	Carb. Type	Comp. Ratio	Bore & Stroke	Std./Opt.
258 CID Six	2-bbl.	8.0:1	3.75" x 3.90"	Std.
360 CID V-8	2-bbl.	8.25:1	4.08" x 3.44"	Opt.*

Standard and optional engines for Jeep Cherokee utilize overhead valve configurations, lightweight compact engine block castings and ambient air intake system for improved engine operation, greater durability and longer life.

*Only engine available for Jeep Cherokees sold in California; power steering required.

Cherokee Dimensions (Inches unless otherwise noted)



Exterior

Length	183.5
Wheelbase	108.7
Width/(Wide-wheel model)	75.6/(78.9)
Height/(Wide-wheel model)	66.9/(67.6)
Tread (Front/rear)	59.4/57.8
(Wide-wheel model)	65.4/62.3
Overhang (Front/rear)	29.9/44.9
Min. Ground Clearance	7.7
(Wide-wheel model)	8.6
Tailgate Opening Width	54.9
Curb to Curb Turning Diameter (feet)	37.7
(Wide-wheel model)	39.4

Interior

Head Room (Front/rear)	38.0/37.2
Leg Room (Front/rear)	41.9/37.0
Hip Room (Front/rear)	60.5/60.9
Shoulder Room (Front/rear)	58.3/58.3
Cargo Volume (cu. ft.)	95.1*

*Rear seat removed

Cherokee Specifications

Axle, Front Rear	Full floating open-end; GAW: 3215 lbs. GAW: 3215 lbs.
Brakes	Power disc front (12" rotor); rear drum (11" x 2")
Clutch	11" diameter; 111 sq. in. area
Fuel Tank	21.5 gallons
Glass Area	4438 sq. in. (2-dr.); 5142.5 sq. in. (4-dr.)
Gross Vehicle Weight	6200 lbs.
Springs, Front Rear	5 leaf 215 lbs./in. rate standard 5 leaf 165 lbs./in. rate standard
Steering	Recirculating ball standard 24:1 ratio; Variable ratio power optional
Transfer Case	2-speed Dana 20 standard with 2:1 low range gear reduction; Quadra-Trac® full-time automatic 4-WD optional
Transmission	Fully synchronized 3-speed floor shift (manual) standard; 4-speed manual floor shift optional; column-mounted Turbo Hydra-Matic is also available
Tires	Five H78-15 Black Polyester Highway (unbelted); wide-wheel model has five L78-15 Black Fiberglass mud and snow tires
Wheels	Five 15 x 6 6-bolt, 5.5" circle standard; 15 x 8 6-bolt, 5.5" circle white painted spoked steel wheels standard on wide-wheel models; four 15 x 7 6-bolt, 5.5" circle aluminum wheels included in the Cherokee "S" package

FEATURES

Cherokee Std. Features

Interior

- Ash Tray—Front
- Armrests—Front & Rear
- Cigar Lighter
- Floor Covering—Color-Keyed Vinyl (Front & Rear Seat Floor Area); Vinyl Cargo Area Mat
- Gauges—Oil; Voltmeter; Temp.; Fuel
- Glove Box Lock
- Heater & Defroster
- Lap and Shoulder Belt Restraint System
- Mirror—12" Inside Day/Night Rear View
- Padded Instrument Panel
- Padded Sun Visors
- Seats—Bench Front & Rear w/Seat Belts (Retractor Outboard Front & Rear) on 4-Door; Bucket Seats Front & Full Bench Rear w/Seat Belts (Retractor Outboard in Front & Rear) on 2-Doors

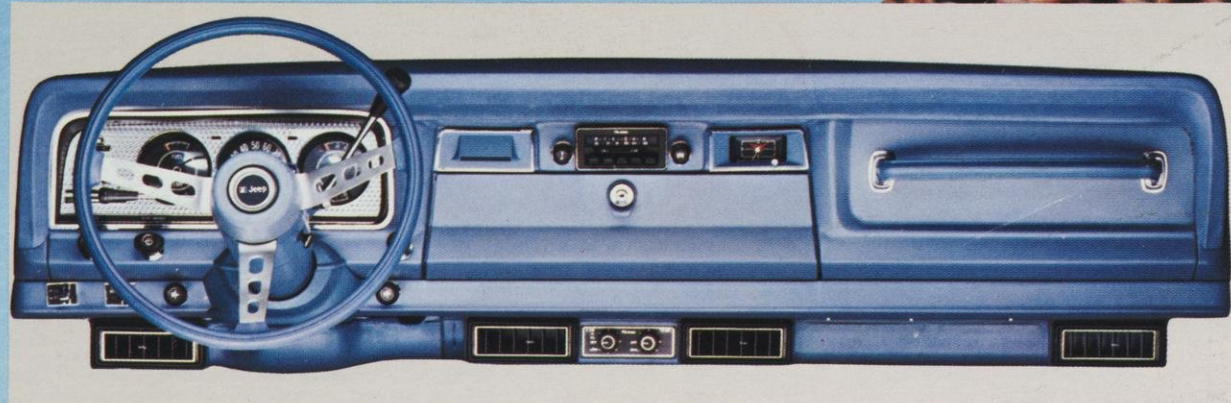
Exterior

- Bumpers—Front & Rear, Chrome-Plated Aluminum
- Lights—Head, Parking, Tail & Stop, Backup, Directional Signals (w/Lane Changer Feature), Side Safety Markers & 4-Way Hazard Flashers
- Mirror—Outside (Left)
- Trim Moldings—Bright Vent Window; Windshield; Tailgate
- Windshield—High Impact Resistant Glass

Functional

- Air Cleaner—Cellulose-Fiber

- Alternator—12-Volt, 37-Amp.
- Battery—12-Volt, 45-Amp. (60-Amp. with 360 V-8)
- Brakes, Service—Self-Adjusting w/Split Hydraulic System
- Brakes, Parking—Foot-Lever Actuated w/Warning Light; Operates on Rear Wheels
- Coolant (Engine)—Permanent Type w/Hi-Temp Thermostat (50/50 Mixture)
- Electronic Ignition System
- Emission Control System—Fuel Tank Vapor Emission Control; Closed PCV; "Air Guard" (V-8 Only); Exhaust Gas Recirculating (EGR); Thermostatically Controlled Air Cleaner; Catalytic Converter
- Exhaust System—Single
- Fuel Filters—Tank & In Line at Carburetor
- Horns—Dual
- Oil Filter
- Shocks—Front & Rear
- Steering Column—Energy-Absorbing w/Anti-Theft Ignition, Steering & Transmission Lock (Auto.)
- Tools—Jack, Bumper Type, 1500 lbs. Capacity; Combined Wheel Wrench & Jack Handle
- Washers—Electric & 2-Speed Electric Wipers
- Wheel Trim—Hub Caps (4) (2- & 4-Door Cherokee)
- Wide Wheels & Tires (Include Wider Axles & Flared Fenders) (wide-wheel Cherokee)



"S" instrument panel (several options shown)



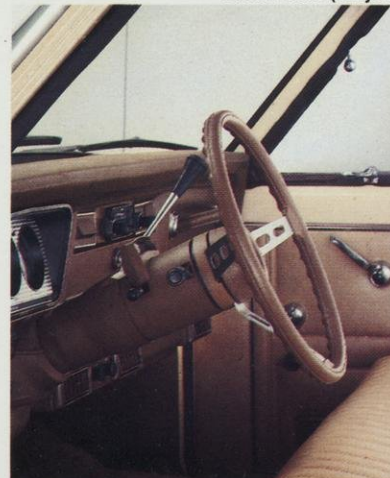
Bucket seats (vinyl trim) Std. 2-door



Bench seat (vinyl trim) Std. 4-door



Styled Steel Wheels (wide-wheel)



Energy Absorbing Steering Column



Integral steel top

OPTIONS

Cherokee Options



Bucket seats (Western Weave fabric)



Tilt steering wheel



Rear window defroster



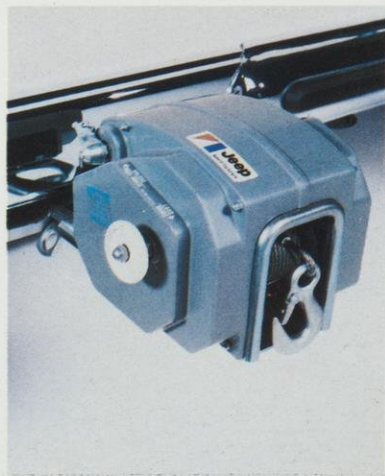
Roof rack



Aluminum wheels



Cargo area carpeting



Portable winch



AM/FM stereo radio

Appearance

- Cherokee "S" Package. Includes Custom Vinyl Bucket Seats; Center Armrest & Cushion; Driver's Folding Seat Back; Passenger Assist Handle; Interior Pillar Covers (4-door); Engine Turned Instrument Cluster Overlay; Custom Door & Rear Quarter Trim Panels; Color-Keyed Carpeting & Carpeted Wheelhouse Covers; Rear Seat Ash Trays; Soft Feel Sports Steering Wheel; Body Side and Tailgate Tape Stripe; Bright Trim in Rear Quarter Window (2-door); Flipper Quarter Window (2-door); "S" Medallions Inside & Out; 15" x 7" Aluminum Wheels (4).
- Cherokee Chief Package. Includes most of the interior features of "S" Package. On exterior, Unique Body Two-Tone Paint in Low Gloss Black replaces tape striping; "Cherokee Chief" Lettering on Lower Body Sides & Tailgate; Bright Drip & Rear Roof Moldings; 10 x 15 Outline White Letter "Tracker A-T" Tires; White Styled Steel Wheels & Flared Fenders replace the wheel/tire offering in the "S" Package. (Chief Package available on wide-wheel model only.)
- Golden Eagle Package. Comprised of Beige Denim Fabric Bucket Seats with Center Armrest; Passenger Assist Handle; Tan Carpets; Tan Soft Feel Sports Steering Wheel; Engine Turned Instrument Cluster Overlay; Driver's Folding Seat; Carpeted Wheelhouse Covers; Rear Seat Ash Trays; Bright Door Frame Moldings; Eagle Decal on Hood; Special Tape Striping on Hood, Cowl, Body Sides, Tailgate; "Golden Eagle" Lettering on Lower Door Panels; Flipper Quarter Windows; "Bronze-Tone" Tinted Rear Quarter Windows; Black Brush Guard; 15" x 8" Styled Steel Wheels (4) Painted Gold w/Black Stripes; 10 x 15 Outline White Letter "Tracker A-T" Tires (5). (Available on wide-wheel Cherokee only.)

Two-Tone Paint

- Soft Feel Sports Steering Wheel
- Leather-Wrapped Sports Steering Wheel
- Wheel Covers (4)
- Aluminum Wheels (4)

Convenience

- Convenience Group with Remote-Control Left Outside Mirror, Electric Clock, Lights-On Buzzer, Intermittent Wipers
- Air Conditioning
- Tinted Glass
- Tilt Steering Wheel
- Power Steering
- Cruise Control
- Power Tailgate Window
- Light Group. Includes Lights in Cargo Area (w/Tailgate Switch), Glove Box, Ash Tray, Engine Compartment, plus Lighted Visor Vanity Mirror, Dome/Map Light, Courtesy Lights
- Rear Window Defroster
- Electric Clock
- Mirrors: Outside Passenger Mirror; Dual Mirrors (Low Profile Type)
- Bucket Seats (4-door) (in Fabric or Vinyl)
- AM Pushbutton Radio
- AM/FM Stereo Radio
- AM/CB Radio (40 Channel)
- AM/FM/CB Stereo Radio
- AM/FM/Tape Stereo Radio
- Inside Spare Tire Mount & Cover
- Roof Rack
- Flipper Rear Quarter Vent Windows
- "Bronze-Tone" Tinted Glass (for "Flipper" windows)

Performance

- 360 CID 2-bbl. V-8
- 4-Speed Manual Transmission, Floor Shift
- Turbo-Hydramatic with Quadra-Trac®
- Quadra-Trac® Low Range
- Rear Trac-Lok Differential
- Free-Wheeling Hubs
- Heavy-Duty Cooling System
- Extra-Ride Suspension Package
- Smooth Ride Suspension (Tuned for On-Road Usage) (N.A. Wide-Wheel)
- Heavy-Duty Shocks (Front & Rear)
- Stabilizer Bar (Front)
- Heavy-Duty 70-Amp. Battery
- Heavy-Duty 63-Amp. Alternator
- Cold Climate Group (Heavy-Duty Battery, Heavy-Duty Alternator, Engine Block Heater)

Protection

- Fuel Tank Skid Plate
- Bumper Guards (Front)
- Brush Guard
- Carpeted Cargo Floor & Insulation
- Protective Floor Mats

Special Purpose

- The Snow Boss Package (a complete snow plow installation including hydraulic controls, plow lights, wiring,)
- Trailer Towing Packages (For package components as well as trailer towing requirements and recommendations, see page 28.) See your Jeep Dealer for details on these and other special purpose options available on Cherokee.



JEEP® WAGONEER

◀ Wagoneer Limited



▲ Wagoneer

▼ Wagoneer Two-Tone



We don't call Jeep Wagoneer the ultimate 4-wheel drive vehicle just to give it a fancy name. Wagoneer is a unique, one-of-a-kind machine! Like all Jeep vehicles, it's rough, rugged and ready to take you anywhere—whether it's a cruise up the interstate or a rocky ride beyond where the road leaves off. But Wagoneer adds a whole new dimension to off-road driving. It takes the "rough" out of roughing it. Because, in a Wagoneer, you're hitting Jeep Country in an atmosphere of luxury, comfort and style you just don't expect from such a rugged, durable vehicle.

Wagoneer's standard features include a responsive 360-2V 8-cylinder engine, newly refined for better performance. Turbo-Hydramatic automatic transmission. Quadra-Trac,® Jeep's exclusive full-time automatic 4-wheel drive system. Variable ratio power steering. Power front disc brakes. Solid-state electronic ignition. Four doors. Up to 95.1 cubic feet of cargo space. Deluxe vinyl bench seats. And many more. New features for '79 include one-piece chrome-plated aluminum bumpers, 4-spoke custom steering wheel, rectangular headlamps and a distinctive, newly styled grille.

Everything is neatly packaged on Wagoneer's 108.7-inch wheelbase, which combines excellent riding comfort and easy handling (a 37.7-foot turning circle for quick maneuverability) in traffic and in demanding off-road situations as well.

You can make your Wagoneer even more comfortable, convenient and luxurious by tailoring it with any of the many options available. Including an extra-quiet insulation package, smooth-ride suspension package, 2-tone paint treatment and corduroy fabric seats, all new for '79. Or, for a cut above excellence, choose the incredible Wagoneer Limited, with rich leather interior, air conditioning, AM/FM/CB radio, extra-quiet insulation, styled aluminum wheels and much more, all standard!

Jeep Wagoneer. We call it the ultimate 4-wheel drive vehicle because it is the ultimate 4-wheel drive vehicle!





▲ Wagoneer



▲ Wagoneer

▼ Wagoneer Limited



SPECIFICATIONS

Wagoneer Engine Availability

Engine	Carb. Type	Comp. Ratio	Bore & Stroke	Std./Opt.
360 CID V-8	2-bbl.	8.25:1	4.08" x 3.44"	Std.

The engine for Jeep Wagoneer utilizes an overhead valve configuration, lightweight compact engine block castings and ambient air intake system for improved engine operation, greater durability and longer life.

Wagoneer Dimensions (Inches unless otherwise noted)



Exterior

Length	183.5
Wheelbase	108.7
Max. Body Width	74.0
Max. Overall Width	75.6
Height	66.7
Tread (Front/rear)	59.4/57.8
Overhang (Front/rear)	29.9/44.9
Min. Ground Clearance	7.7
Tailgate Opening Width	54.9
Curb to Curb Turning Diameter (feet)	37.7

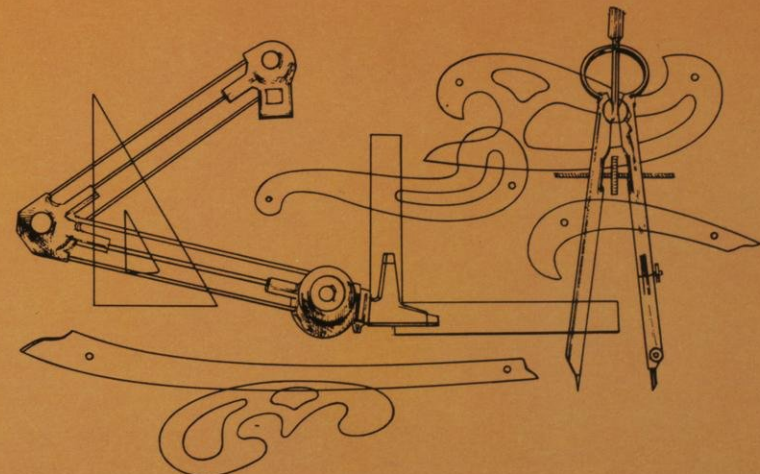
Interior

Head Room (Front/rear)	38.0/37.2
Leg Room (Front/rear)	41.3/37.0
Hip Room (Front/rear)	60.5/60.9
Shoulder Room (Front/rear)	58.3/58.3
Cargo Volume (cu. ft.)	95.1*

*Rear seat removed

Wagoneer Specifications

Axle, Front Rear	Full floating open-end; GAW: 3215 lbs. GAW: 3215 lbs.
Brakes	Power disc front (12" rotor); rear drum (11" x 2")
Fuel Tank	21.5 gallons
Glass Area	5142.5 sq. in. total
Gross Vehicle Weight	6200 lbs.
Springs, Front Rear	6 leaf 210 lbs./in. rate standard 5 leaf 165 lbs./in. rate standard
Steering	Variable ratio power steering standard
Transfer Case	Quadra-Trac® full time automatic 4-WD is standard; Quadra-Trac® with low range 2.57:1 gearing reduction is optional
Transmission	Turbo Hydra-Matic is standard
Tires	Five H78-15 Black Polyester Highway (unbelted); see page 29 for optional tire choices
Wheels	Five 15 x 6 6-bolt, 5.5" circle standard; four 15 x 7 6-bolt, 5.5" circle forged aluminum wheels optional (Wagoneer)



FEATURES

Wagoneer Std. Features

Interior

- Ash Tray—Front
- Armrests—Front & Rear
- Cigar Lighter
- Floor Covering—Carpeting (*Front & Rear Seat Floor Area & Wheelhouse Covers*); Vinyl Cargo Area Mat
- Gauges—Oil; Voltmeter; Temp.; Fuel
- Glove Box Lock
- Heater & Defroster
- Lap and Shoulder Belt Restraint System
- Light Group—Includes Courtesy Lights, Glove Box Light, Ash Tray Light & Cargo Area Light, Engine Compartment Light, Visor Vanity Mirror (*Lighted*), Dome/Map Light
- Mirror—12" Inside Day/Night Rear View
- Padded Instrument Panel
- Padded Sun Visors
- Power Steering—Variable Ratio
- Seats—Bench, Front & Rear w/Seat Belts (*Retractor Outboard in Front & Rear*)
- Trim—Custom Interior, Including Custom Seats & Door Trim Panels, Rear Seat Ash Tray

Exterior

- Bumpers—Front & Rear, Chrome-Plated Aluminum
- Lights—Head, Parking, Tail & Stop, Backup, Directional Signals (*w/Lane Changer Feature*), Side Safety Markers & 4-Way Hazard Flashers
- Mirror—Outside (*Left*)
- Trim, Exterior—Includes Moldings for Windshield, Door & Quarter Window Frames, Rear Roof Rail, Tailgate
- Windshield—High Impact Resistant Glass

Functional

- Air Cleaner—Cellulose-Fiber
- Alternator—12-Volt, 37-Amp.
- Battery—12 Volt, 60-Amp.
- Brakes, Service—Self-Adjusting w/Split Hydraulic System
- Brakes, Parking—Foot-Lever Actuated w/Warning Light; Operates on Rear Wheels
- Coolant (*Engine*)—Permanent Type w/Hi-Temp Thermostat (*50/50 Mixture*)
- Electronic Ignition System
- Emission Control System—Fuel Tank Vapor Emission Control; Closed PCV; "Air Guard" (*V-8 Only*); Exhaust Gas Recirculating (*EGR*); Thermostatically

Controlled Air Cleaner; Catalytic Converter

- Exhaust System—Single
- Fuel Filters—Tank & In Line at Carburetor
- Horns—Dual
- Oil Filter
- Shocks—Front & Rear
- Steering Column—Energy-Absorbing w/Anti-Theft Ignition, Steering & Transmission Lock (*Auto.*)
- Tools—Jack, Bumper Type, 1500 lbs. Capacity; Combined Wheel Wrench & Jack Handle
- Washers—Electric & 2-Speed Electric Wipers
- Wheel Trim—Wheel Covers 15" (4)

Wagoneer Limited includes, in addition to the above equipment, these important extra standard features or variations:

Interior

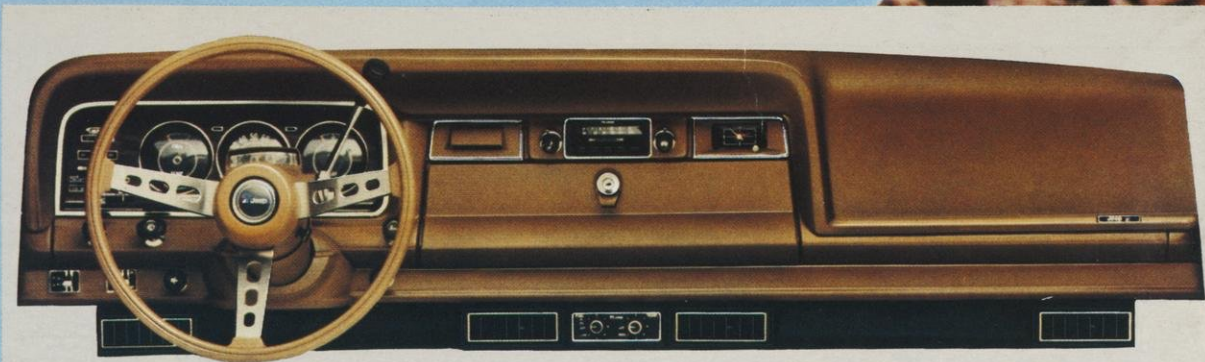
- Bucket Seats with Tan Leather/Cord Trim, Center Armrest & Unique Door Panels
- Tan Leather-Wrapped Steering Wheel
- Extra-Thick 22-oz. Tan Carpeting in Seating Area (*18-oz. in Cargo Area*)
- Dome/Reading Light
- Woodgrain Overlay on Lower Instrument Panel
- "Limited" Nameplate on Instrument Panel
- Protective Floor Mats

Exterior

- Wide Woodgrain Side & Rear with Wide Moldings or Special Two-Tone Paint
- Roof Rack with Woodgrain Inserts
- Bright Drip Rail Overlay
- Front Bumper Guards
- Forged Aluminum Wheels (4) 15" x 7"
- HR78 "American Eagle" Radial Tires
- "Limited" Nameplates

Special Equipment

- Air Conditioning with Tinted Glass
- Power Tailgate Window
- Cruise Control
- Tilt Steering Wheel
- AM/FM/CB Stereo Radio (*AM/FM/Tape a "no-charge" option*)
- Extra Quiet Insulation
- Convenience Group
- Stabilizer Bar



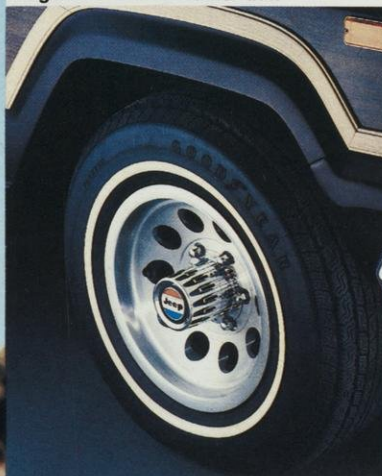
Wagoneer instrument panel (several options shown)



Wagoneer Limited leather trim



Carpeted cargo area (std. Limited)



Aluminum wheels (std. Limited)



Double-folding rear seat



Automatic transmission, power steering

OPTIONS

Wagoneer Options



Wagoneer bucket seats (cloth trim)



Lighted visor mirror



AM/CB radio



Power tailgate window



Scuff moldings



Inside spare tire mount



Aluminum wheels



Cruise Control

Appearance

- Two-Tone Paint
- Leather-Wrapped Sports Steering Wheel
- Woodgrain (Body Side Panels)
- Aluminum Wheels (4)

Convenience

- Convenience Group with Remote Control Left Outside Mirror, Electric Clock, Lights-On Buzzer, Intermittent Wipers
- Air Conditioning
- Tinted Glass
- Tilt Steering Wheel
- Cruise Control
- Power Tailgate Window
- Rear Window Defroster
- Electric Clock
- Mirrors: Outside Passenger Mirror; Dual Mirrors (Low Profile Type)
- Bucket Seats (w/Center Cushion, Folding Armrest)
- AM Pushbutton Radio
- AM/FM Stereo Radio
- AM/CB Radio (40 Channel)
- AM/FM/CB Stereo Radio
- AM/FM/Tape Stereo Radio
- Inside Spare Tire Mount & Cover
- Roof Rack

Exterior

- Trim, Exterior — Includes Moldings for Windshield, Door & Quarter Window Frames, Rear Roof Rail, Tailgate

Performance

- Quadra-Trac® Low Range
- Heavy-Duty Cooling System
- Extra-Duty Suspension Package
- Smooth Ride Suspension
- Heavy-Duty Shocks (Front & Rear)
- Stabilizer Bar (Front)
- Heavy-Duty 70-Amp. Battery
- Heavy-Duty 63-Amp. Alternator
- Cold Climate Group (Heavy-Duty Battery, Heavy-Duty Alternator, Engine Block Heater)

Protection

- Fuel Tank Skid Plate
- Bumper Guards (Front)
- Brush Guard
- Carpeted Cargo Floor & Insulation
- Protective Floor Mats
- Side Scuff Moldings (w/Woodgrain Inserts)

Special Purpose

- The Snow Boss Package (a complete snow plow installation including hydraulic controls, plow lights, wiring, etc.)
- Trailer Towing Packages (For package components as well as trailer towing requirements and recommendations, see page 28.) See your Jeep Dealer for details on these and other special purpose options available on Wagoneer.



JEEP® PICKUP

◀ J-10 Honcho



If you had to describe a Jeep Pickup in one word, it would have to be "rugged." Rugged because Jeep Pickups are designed from the ground up, with the 4-wheel drive built in—not added on. Rugged because Jeep Pickups are built with enough raw strength and ability to tackle the toughest job and tame the wildest terrain. And rugged because Jeep Pickups are ruggedly handsome, with lean, clean, impressive lines.

Jeep Pickups are available in 2 wheelbase lengths—118.7" (7-foot pickup box) and 130.7" (8-foot pickup box). GVW ratings range from 6200 to 8400 lbs., and the cargo capacity is up to 77.7 cubic feet. Standard engines are 258-2V 6-cylinder on the J-10 model and a 360-2V 8-cylinder, redesigned for improved performance, on the J-20 model. Both engines team up with a fully-synchronized 3-speed manual floor shift transmission. Other standard features include power front disc brakes, solid-state electronic ignition, double-wall construction pickup boxes, newly styled bumper, grille and headlamps and much more.

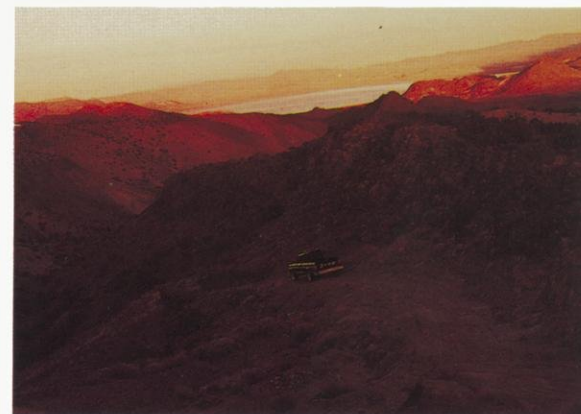
You can put your own mark on your Jeep Pickup by ordering one of the four available sport/appearance packages: the Honcho, Golden Eagle, "10-4" and Custom options. These packages include such special features as roll bars, denim fabric trim, 10-15 Tracker A-T outline white letter tires, spoked steel wheels and a variety of distinctive striping and decal treatments. (See Options section for complete listing.)

Individual options and accessories include Quadra-Trac®, Jeep Corporation's exclusive full-time automatic 4-wheel drive system, a new high style pickup box enclosure (for both 7' and 8' boxes), a noise insulation package, air conditioning, sliding rear window and many more.

The rugged new '79 Jeep Pickups. We make them as good looking as you want them, and as hard-working as any pickup that ever came down the pike.

▲ J-10 Golden Eagle

▼ J-10 "10-4"





▲ J-10 Custom

▲ J-10 Honcho (Pickup Box Enclosure Option)

▼ J-20 Two-Tone



SPECIFICATIONS

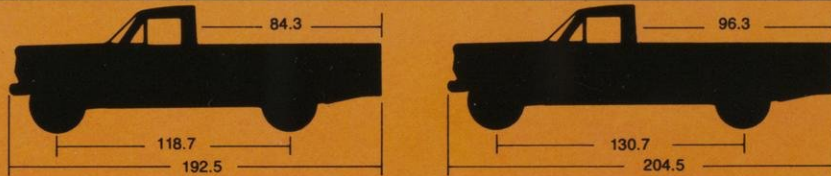
Pickup Engine Availability

Engine	Carb. Type	Comp. Ratio	Bore & Stroke	Std./Opt.	
				J-10	J-20
258 CID Six	2-bbl.	8.0:1	3.75" x 3.90"	Std.	N.A.
360 CID V-8	2-bbl.	8.25:1	4.08" x 3.44"	Opt.*	Std.*

The engines for Jeep Pickups utilize overhead valve configurations, lightweight compact engine block castings and ambient air intake system for improved engine operation, greater durability and longer life.

*Only engine available for Pickups sold in California; power steering required.

Pickup Dimensions (Inches unless otherwise noted)



Exterior	J-10	J-10/20
	Short Wheelbase	Long Wheelbase
Length	192.5	204.5
Wheelbase	118.7	130.7
Max. Body Width	78.9	78.9
Height	69.3/69.9*	69.1/70.7
Tread Front	63.3/65.4*	63.3/64.6
Tread Rear	63.8/64.9*	63.8/65.9
Overhang (Front/rear)	29.9/43.9	29.9/43.9
Min. Ground Clearance	7.7	7.7/8.1
Tailgate Opening	57.2	57.2
Turning Diameter		
Curb to curb in feet	40.6/41.2*	44.5

Interior	J-10	J-10/20
	Short Wheelbase	Long Wheelbase
Head Room	40.2	40.2
Leg Room	41.3	41.3
Hip Room	60.5	60.5
Shoulder Room	58.3	58.3
Cargo Floor Length	84.3	96.3
Cargo Box Volume (cu. ft.)	68.0	77.7

*Wide wheel option

Pickup Specifications

Axle, Front	Full floating open-end; GAW: 3200 lbs. (J-10); 3500 lbs. (J-20)
Rear	J-10: Semi floating, GAW: 3200 lbs. J-20: full floating, 6800 GVW: GAW rating 4090 lbs.; 7600 GVW: GAW rating 4700 lbs.; 8400 GVW: GAW rating 5500 lbs.
Brakes	Power disc front (12" for J-10; 12½" for J-20) Rear drum (11" x 2" for J-10; 12" x 2½" for J-20)
Clutch	11" diameter; 111 sq. in. area
Fuel Tank	18.5 gallons
Glass Area	2883 sq. in. total
Gross Vehicle Weight	6200 lbs. (J-10); 6800 lbs. (J-20); plus optional GVW ratings of 7600 and 8400 lbs. for J-20 Pickup
Springs, Front	5 leaf 215 lbs./in. rate standard (J-10), 7 leaf; 260 lbs./in. rate standard J-20
Rear	5 leaf 165 lbs./in. rate standard for 119" wheelbase J-10; 4 leaf 245 lbs./in. rate standard for 131" wheelbase J-10; 2 leaf tapered 340 lbs./in. rate standard for J-20
Steering	Recirculating ball standard 24:1 ratio; Variable ratio power steering optional
Transfer Case	2-speed Dana 20 standard with 2:1 low range gear reduction; Quadra-Trac® full-time automatic 4-WD optional
Transmission	Full synchronized 3-speed floor shift (manual) standard; 4-speed manual floor shift and column-mounted Turbo Hydra-Matic optional
Tires	Five H78-15 Black Polyester Highway (unbelted) on J-10; four 8.75-16.5 Black Polyester Cushion Miler R. V. on J-20
Wheels	Five 15 x 6 6-bolt, 5.5" circle are standard (J-10); 16.5 x 6 8-bolt, 6.5" circle are standard on J-20

FEATURES

Pickup Std. Features

Interior

- Ash Tray—Front
- Armrests—Left and Right
- Cigar Lighter
- Floor Covering—Color-Keyed Vinyl
- Gauges—Oil; Ammeter; Temp.; Fuel
- Glove Box Lock
- Heater & Defroster
- Lap and Shoulder Belt Restraint System
- Mirror—12" Inside Day/Night Rear View
- Padded Instrument Panel
- Padded Sun Visors
- Seat—Bench w/Seat Belts & Retractors

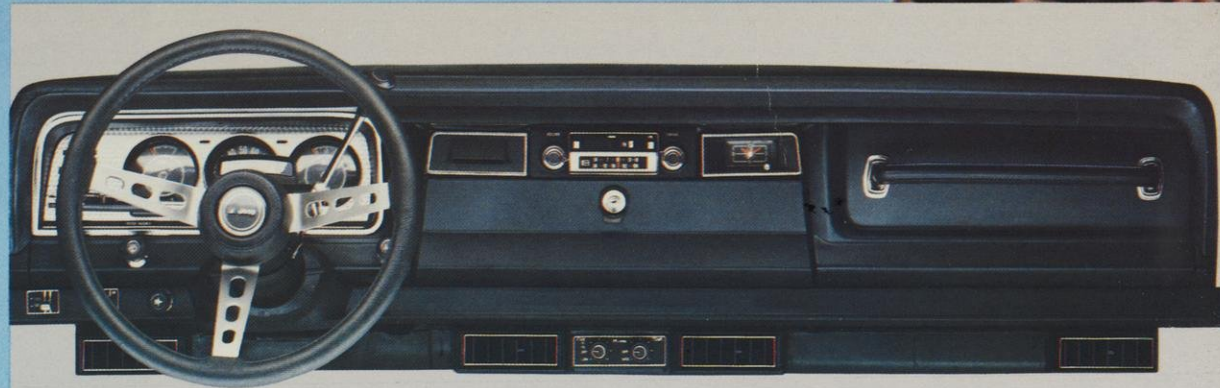
Exterior

- Bumper—Front, Chrome-Plated Aluminum
- Lights—Head, Parking, Backup, Tail & Stop, Directional Signals (*w/Lane Changer Feature*), Side Safety Markers, 4-Way Hazard Flasher
- Mirror—Outside (*Left*)
- Trim Moldings—Bright Vent Window, Windshield
- Windshield—High Impact Resistant Glass

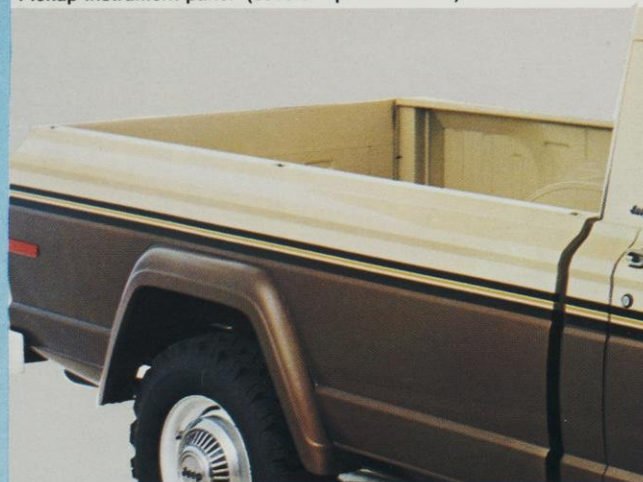
Functional

- Air Cleaner—Cellulose-Fiber
- Alternator—12-Volt, 37-Amp.

- Battery—12-Volt, 45-Amp. (*Six*); 12-Volt, 60-Amp. (*V-8*)
- Brakes, Service—Self-Adjusting w/Split Hydraulic System & Warning Light
- Brakes, Parking—Foot Lever Actuated w/Warning Light; Operates on Rear Wheels
- Coolant (*Engine*)—Permanent Type w/Hi-Temp Thermostat (*50/50 Mixture*)
- Electronic Ignition System
- Emission Control System—Fuel Tank Vapor Emission Control; Closed PCV; "Air-Guard" (*V-8 only*); Exhaust Gas Recirculating (*EGR*); Thermostatically Controlled Air Cleaner; Catalytic Converter
- Exhaust System—Single
- Fuel Filters—Tank & In Line at Fuel Pump
- Horns—Dual
- Oil Filter
- Shocks—Front & Rear
- Steering Column—Energy-Absorbing w/Anti-Theft Ignition, Steering & Transmission Lock (*Auto*)
- Tools—Jack, Screw Type; Combined Wheel Wrench & Jack Handle
- Townside Box—7 Ft. (*J-10 Short Wheelbase*)—8 Ft. (*J-10 Long Wheelbase & J-20*)
- Washers—Electric & 2-Speed Electric Wipers



Pickup instrument panel (several options shown)



Double-wall Townside box



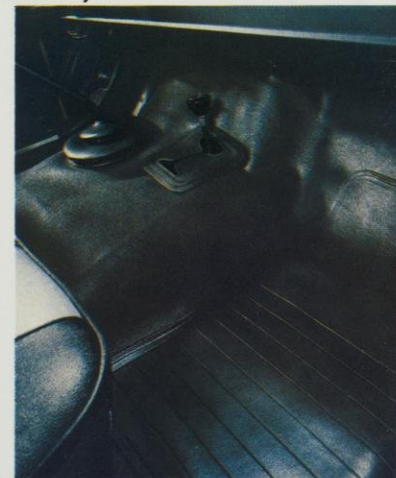
Bench seat in pleated vinyl



Energy Absorbing Steering Column



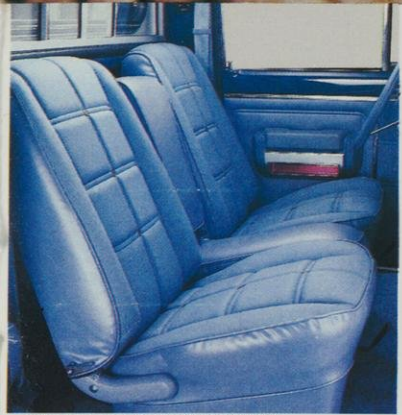
Folding seat back



Vinyl floor covering

OPTIONS

Pickup Options



Bucket seats (denim fabric)



AM/FM/Tape stereo radio



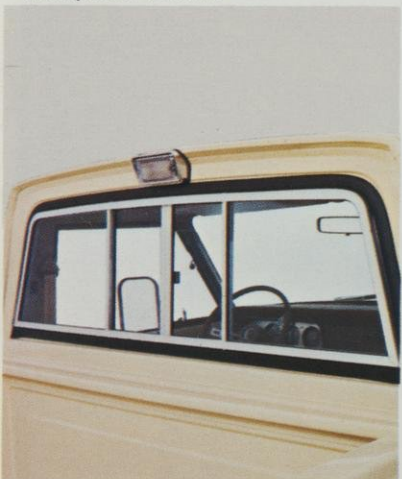
Rear step bumper



Pickup Box Enclosure



"Trucker A-T" tires on spoked steel wheels



Sliding rear window



Tilt steering wheel



Roll bar

Appearance

- Custom Package. Includes Custom Bench Seat in Vinyl Trim; Custom Door Trim Panels; Passenger Assist Handle; Engine Turned Instrument Cluster Overlay; Hood Insulation; Bright Moldings on Door Window Frames & Body Sides;
- Honcho Package. (Available on J-10, 119" Wheelbase only.) Comprised of Denim Fabric Bench Seat (Buckets Available); Denim Door Panel Inserts; Carpeting; Engine Turned Instrument Cluster Overlay; Soft Feel Sports Steering Wheel; Hood Insulation; Bright Moldings on Door Window Frames; Body Side Tape & Tailgate Striping (Orange or Blue); "Honcho" Lettering on Doors; Unique Grille; Rear Step Bumper; 10 x 15 Outline White Letter "Trucker A-T" Tires (5); White Styled Steel Wheels (4); Passenger Assist Handle.
- Golden Eagle Package. (Available on J-10, 119" Wheelbase only.) Comprised of Bucket Seats w/Center Armrests; Custom Beige Denim Door Panels; Carpeting; Soft Feel Sports Steering Wheel; Engine Turned Instrument Cluster Overlay; "Golden Eagle" Hood Decal & Lettering in Black & Gold; Body & Hood Striping; Bright Door Window Frames; Roll Bar (Mounted in Pickup Box); Brush Guard; Off-Road Driving Lights; 15" x 8" Styled Steel Wheels (5) w/Gold & Black Stripes; 10 x 15 Outline White Letter "Trucker A-T" Tires (5); Hood Insulation.
- 10-4 Package. (Available on J-10, 119" Wheelbase only.) Includes Two-Tone Orange w/Black Accent Body Striping; "10-4" Decal on Body Sides; Rear Step Bumper; 15" x 8" Styled Steel Wheels (5), White w/Red Stripes; 10 x 15 Outline White Letter "Trucker A-T" Tires (5); Roll Bar; Passenger Assist Handle.

Performance

- Soft Feel Sports Steering Wheel
 - Leather-Wrapped Sports Steering Wheel
 - Aluminum Wheels (4) (N.A. J-20)
 - 15" Wheel Covers (4) (N.A. J-20)
 - Hub Caps (4) — J20
- ### Convenience
- Convenience Group with Remote Control Left Outside Mirror, Electric Clock, Lights-On Buzzer, Intermittent Wipers
 - Air Conditioning
 - Tinted Glass
 - Tilt Steering Wheel
 - Cruise Control
 - Light Group. Includes Lights for Cargo Box, Glove Box, Ash Tray, Engine Compartment, plus Lighted Visor Vanity Mirror, Dome/Map Light, Courtesy Lights
 - Electric Clock
 - Mirrors: Outside Passenger Mirror; Dual Mirrors (Low Profile Type)
 - Bucket Seats w/Center Cushion & Folding Armrest
 - AM Pushbutton Radio
 - AM/FM Stereo Radio
 - AM/CB Radio (40 Channel)
 - AM/FM/CB Stereo Radio
 - AM/FM/Tape Stereo Radio
 - Rear Step Bumper
 - Sliding Rear Window
 - Cargo Cap (Townside Box)
- ### Protection
- Roll Bar
 - Fuel Tank Skid Plate
 - Bumper Guards (Front)
 - Brush Guard
 - Protective Floor Mats
- ### Special Purpose
- The Snow Boss Package (a complete snow plow installation including hydraulic controls, plow lights, wiring, etc.).
 - Trailer towing requirements and recommendations detailed on page 28. See your Jeep Dealer for details on all the special purpose options available on Pickup.

TRAILER TOWING

Jeep CJ-5 & CJ-7			
Class	I	II	
Maximum loaded trailer weight	2,000	3,500	
Tongue load limit	200	350	
Required equipment			
Extra-duty suspension and sway bar	•	•	
Hitch	Frame or draw bar	Frame or draw bar	
Recommended equipment			
Engine	258 2-bbl. Six	304 2-bbl. V-8	
Cooling	Std.	Extra-duty	
Transmission	Std.	Std.	
Rear axle ratio	3.54:1	3.54:1	
Steering	Constant ratio power	Constant ratio power	
Brakes	Std.	Power	
Alternator	Std.	Heavy-duty	
Battery	Std.	70 amp./hr.	

Jeep CJ-5 & CJ-7 not recommended for towing Class II trailers at highway speeds.

1979 Jeep Vehicle Design Weight Capacities (in pounds)

Caution: Never overload your vehicle beyond these design capacities. Jeep Corporation cannot be responsible for brake performance if the Jeep vehicle and trailer hydraulic brake systems are in any way connected. A separate brake system for all trailers weighing over 1,000 pounds gross is recommended. (State laws should be checked for trailer brake requirements.)

Model	Gross Vehicle Weight Rating	Gross Axle Weight Rating	
		Front	Rear
CJ-5	3750*	2200	2700
CJ-7	3750*	2200	2700
Cherokee	6200	3215	3215
Wagoneer	6200	3215	3215
J-10 Pickup	6200	3200	3200
J-20 Pickup	6800, 7600, 8400	3500, 3500, 3500	4090, 4700, 5500

*4150 is standard with hardtop, optional for open body or soft top models.

Jeep Cherokee & Wagoneer				
Class	I	II	III	IV
Maximum loaded trailer wt.	2,000	3,500	5,000	7,500
Tongue load limit	200	350	750	750
Package includes:				
	Medium Duty		Heavy-Duty	
Frame mounted hitch	•	•	•	•
Wiring harness (5-wire)*	•	•	•	•
Heavy-duty flasher	•	•	•	•
Equalizing hitch receptacle	•	•	•	•
H.D. wiring harness w/relays	•	•	•	•
Wiring harness (7-wire)*	•	•	•	•
Required minimum equipment				
Engine	258 2-bbl. Six (Cherokee)	360 2-bbl. V-8	360 2-bbl. V-8	
Transmission Quadra-Trac	4-spd.† or Auto. Hi Range	4-spd.† or Auto. Hi Range	4-spd. or Auto. Hi Range	
Heavy-duty cooling	•	•	•	
Heavy-duty battery	•	•	•	
Heavy-duty alternator	•	•	•	
Power steering	•	•	•	
Front anti-sway bar	•	•	•	
Cargo carpet & insulation	•	•	•	
3.54:1 Axle ratio (trailers up to 7,500 lbs.)	•	•	•	
Extra-duty suspension package (trailers up to 7,500 lbs.)	•	•	•	
Recommended equipment				
Automatic/Quadra-Trac	•	•	Low Range	Low Range
Power steering	•	•	•	•
Heavy-duty cooling	•	•	•	•
Cargo carpet & insulation	•	•	•	•
Power tailgate window	•	•	•	•
Extra-duty suspension	•	•	•	•
Bias or bias belted tires	•	•	•	•
Front anti-sway bar	•	•	•	•

*Requires body wiring harness used with power tailgate window and/or stereo radio. †Cherokee only.

The charts below are meant to serve as a quick-and-easy reference guide on how to properly equip your Jeep vehicle for all types of towing. For specific details, however, discuss your plans with your Jeep dealer. He will help you select the right equipment to meet your specifications.

Campers For Jeep Townside Pickup				
Camper Type	Low-profile cargo cap	Slide-in	Cab-over	Cab-over with rear overhang
Townside Model	J-10	J-20	J-20	J-20
Camper Body Length	6-8 ft.	8 ft.	8 ft.	11 ft.
Gross Vehicle Wt. requirement	6,200 lbs.	6,800 lbs.	7,600 lbs.	8,400 lbs.
Gross Axle Wt. Rating Front	3,200 lbs.	3,500 lbs.	3,500 lbs.	3,500 lbs.
Rear	3,200 lbs.	4,090 lbs.	4,700 lbs.	5,500 lbs.
Required equipment				
Engine		360 2-bbl. V-8	360 2-bbl. V-8	360 2-bbl. V-8
Engine cooling		Extra-duty	Extra-duty	Extra-duty
Transmission		4-spd. or auto. w/Quadra-Trac	4-spd. or auto. w/Quadra-Trac	4-spd. or auto. w/Quadra-Trac
Steering		Var. ratio power	Var. ratio power	Var. ratio power
Alternator		Heavy-duty	Heavy-duty	Heavy-duty
Battery		70-amp./hr.	70-amp./hr.	70-amp./hr.
Shocks, front and rear		Heavy-duty	Heavy-duty	Heavy-duty
Springs				Heavy-duty rear (8400 GVW)
Stabilizer bar		Front	Front	Front
Tires	H78 x 15-B	9.50 x 16.5-D	9.50 x 16.5-D	9.50 x 16.5-D
Recommended equipment				
Engine	360 2-bbl. V-8	360 2-bbl. V-8	360 2-bbl. V-8	360 2-bbl. V-8
Engine cooling	Extra-duty			
Transmission	4-spd. or auto. w/Quadra-Trac	Automatic w/Quadra-Trac	Automatic w/Quadra-Trac	Automatic w/Quadra-Trac
Brakes	Power front disc	Power front disc	Power front disc	Power front disc
Alternator	Heavy-duty			
Battery	70-amp			
Sliding rear window	•	•	•	•
Mirror arm extensions	•	•	•	•
Dual low profile mirrors	•	•	•	•
Air conditioning	•	•	•	•

Jeep Pickup					
Model	J-10 & J-20	J-10 & J-20	J-10 & J-20	J-10 & J-20	J-20
Class	I	II	III	IV	5th Wheel
Maximum loaded trailer	2,000	3,500	5,000	7,000*	7,000*
Tongue load limit	200	350	750	1,000*	1,450*
Required minimum equipment					
Hitch	Frame or rear step bumper	Frame or rear step bumper	Equalizing	Equalizing	Cargo bed mounted
Cooling Extra-Duty	•	•	•	•	•
Alternator	Std.	Std.	Heavy-duty	Heavy-duty	Heavy-duty
Battery	Std.	Std.	70-amp./hr.	70-amp./hr.	70-amp./hr.
Engine 360 2-bbl. V-8	•	•	•	•	Std.
Axle ratio J-10	3.54	3.54	3.54	3.54	N.A.
J-20	3.73	3.73	3.73	3.73	3.73
Steering Variable ratio power	•	•	•	•	•
Brakes Power front disc	•	•	•	•	•
Front and rear springs	Std.	Std.	Heavy-duty	Heavy-duty	Heavy-duty
Front and rear shocks	Std.	Std.	Heavy-duty	Heavy-duty	Heavy-duty
Tires J-10: H78 x 15	Std.	Std.	Std.	Std.	Std.
J-20: 8.00 x 16.5	Std.	Std.	Std.	Std.	Std.
Recommended equipment					
Transmission Automatic	•	•	•	•	•
4-speed manual	•	•	•	•	•
70-amp./hr. battery	•	•	•	•	•
Heavy-duty alternator	•	•	•	•	•
Quadra-Trac with low range	•	•	•	•	•

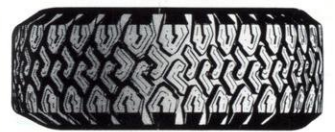
*J-20 (8,400): Maximum loaded trailer weight 10,000 lbs. Tongue load limit 1,200 lbs. for conventional rear mounted trailer. Tongue load limit 2,850 lbs. for bed mounted 5th wheel trailer.

QUADRA-TRAC[®]

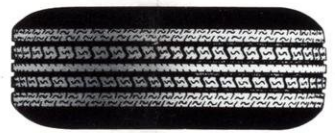
TIRE OPTIONS



A. Cruiser flexible polyester cord diagonal ply tires are strong, smartly styled and provide good traction.



B. Town & Country tires are designed for strength and super pulling power in mud and snow.



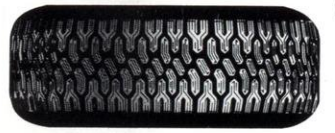
C. Viva tires have two fiberglass cord belts to help hold tread firm against the road, even when wet.



D. Tiempo double steel belted radials have 10,000 biting edges to grip the road in any weather.



E. American Eagle has two strong Flexten cord belts. A new American standard for radial tire performance.



F. F32 All Weather radials are made of Flexten for remarkable adhesion when driving on slippery winter pavement.



G. Tracker PG is a rugged polyglas belted tire that's smooth on the highway—and off! A great 4-WD tire!



H. Tracker A-T tires are a wide, all-terrain, all-weather tire designed for durability and rugged 4-WD use.



I. Cushion Miler tires are made with Tufsyn, the strongest wearing rubber ever used in Goodyear truck tires.



J. Custom Xtra Grip tires feature wide lugs for extra pulling power on ice and snow.

INDEPENDENT TESTS PROVE QUADRA-TRAC'S SUPERIORITY!

THE TEST.

We always felt Quadra-Trac was better than anything the competition had to offer. So we hired an independent testing company to find out once and for all. A company known for its impartial tests for the Federal Government and Military, as well as for the automotive industry.

THE RESULTS.

In each of the on-road tests, Chevrolet, Dodge and Ford all experienced more tire slippage (loss of traction) at both the front and rear wheels than Jeep did. All three wasted more horsepower due to traction loss than Jeep. In an off-road hill climb, Jeep again demonstrated this superiority. In observed and measured tests, with the same driver, the Jeep Pickup experienced far fewer incidents of lost traction than the Chevy, Ford and Dodge Pickups.

HOW THE TEST WAS CONDUCTED.

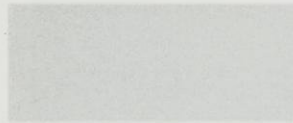
The automatic 4-wheel drive systems of Jeep, Ford, Chevy and Dodge were tested under comparable conditions. All vehicles were tested with maximum loads and unloaded. All had identical tires and comparable engines, transmissions and accessories, with engines tuned to manufacturer's specifications. Jeep Pickup's Quadra-Trac and the automatic 4-wheel drive systems of Ford, Chevy and Dodge were all tested in normal automatic to determine their traction in 2 surface conditions: on pavement and in sand.

Quadra-Trac[®] is Jeep Corporation's exclusive full-time automatic 4-wheel drive system. It has a unique controlled-slip differential that, when you begin to lose traction, automatically distributes engine torque to the axle that has the most traction, thereby pulling or pushing your vehicle out of danger. The overall result is better control, handling and stability on slippery surfaces and bad roads, in turbulence and crosswinds and in off-road situations. Quadra-Trac is smooth, quiet and completely automatic. Unlike conventional systems, there are no levers to shift and no need to leave your vehicle to lock wheel hubs. Available in Hi-Range and both Hi-Range and Low-Range, Quadra-Trac is standard on Wagoneer and available on CJ-7, Cherokee and Pickup vehicles with automatic transmission.

TIRE/RIM	CJ-5/CJ-7	CHEROKEE	WIDE-WHEEL CHEROKEE	WAGONEER	J-10 PICKUP	J-20 PICKUP
Rim size—Inches	5.5; 8.00 with spoked steel wheels.	6.00; 7.00 with aluminum wheels.	8.00 with spoked steel wheels.	6.00; 7.00 with aluminum wheels.	6.00; 7.00 with aluminum; 8.00 with spoked steel wheels.	6.00; 6.75
A H78 x 15—W/W H78 x 15—B/W	NA S	O S	NA NA	O S	O S	NA NA
B H78 x 15—W/W H78 x 15—B/W L78 x 15—B/W	O O O	O O NA	NA NA S	O O NA	O O O	NA NA NA
C H78 x 15—B/W	O	O	NA	O	O	NA
D P225/75R15—W/W	NA	O	NA	O	O	NA
E HR78 x 15—W/W	NA	O	NA	O (5)	NA	NA
F HR78 x 15—W/W	NA	O	NA	O	O	NA
G L78 x 15—OWL	O (1)	NA	NA	NA	NA	NA
H 9 x 15—OWL 10 x 15—OWL	O (2) NA	NA NA	NA O (3)	NA NA	NA O (4)	NA NA
I 8.75 x 16.5—B/W 9.50 x 16.5—B/W	NA NA	NA NA	NA NA	NA NA	NA NA	S O
J 8.75 x 16.5—B/W 9.50 x 16.5—B/W	NA NA	NA NA	NA NA	NA NA	NA NA	O O

KEY: S—Standard. O—Optional. NA—Not Available. B/W—Black Sidewall. W/W—White Sidewall. OWL—Outline White Letter. (1)—Included with Renegade. (2)—Included with Golden Eagle. (3)—Included with "S," Chief and Golden Eagle. (4)—Included with Honcho and Golden Eagle. (5)—Std. on Wagoneer Ltd.

COLORS AND TRIM



Olympic White
(All Models)



Arrowhead Silver, Met.
(NA Golden Eagle,
Wagoneer Ltd., "10-4")



Cara Vinyl
(Std. CJ, Cherokee, Truck)



Cara Vinyl
(Std. Cherokee, Truck)



Cara Vinyl
(Std. Cherokee, Truck)



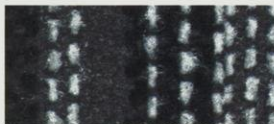
Cara Vinyl
(Std. CJ)



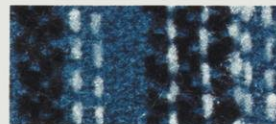
Classic Black
(NA Chief)



Morocco Buff
(All Models)



Western Weave Fabric
(Opt. Cherokee)



Western Weave Fabric
(Opt. Cherokee)



Western Weave Fabric
(Opt. Cherokee)



Western Weave Fabric
(Opt. Cherokee)



Alpaca Brown, Met.
(All Models)



Sable Brown, Met.
(NA Chief)



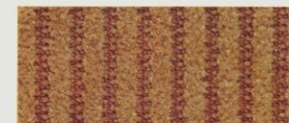
Caberfae Corduroy Fabric
(Opt. Wagoneer)



Caberfae Corduroy Fabric
(Opt. Wagoneer)



Caberfae Corduroy Fabric
(Opt. Wagoneer)



Caberfae Corduroy Fabric
(Opt. Wagoneer)



Cumberland Green, Met.
(NA Chief)



Saxon Yellow
(NA Golden Eagle)



Sport Vinyl
(Std. Wagoneer, Opt. Truck)



Sport Vinyl
(Std. Wagoneer, Opt. Truck)



Sport Vinyl
(Std. Wagoneer, Opt. Truck)



Sport Vinyl
(Std. Wagoneer, Opt. Truck)



Wedgewood Blue
(NA Golden Eagle, Wagoneer
Ltd., "10-4")



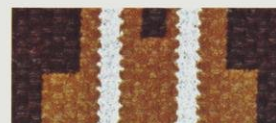
Ensign Blue
(NA Golden Eagle, Chief,
Wagoneer Ltd.)



Print Stripe Vinyl
(Opt. Cherokee)



Print Stripe Vinyl
(Opt. Cherokee)



Print Stripe Vinyl
(Opt. Cherokee)



Print Stripe Vinyl
(Opt. Cherokee)



Mandarin Orange
(NA Wagoneer, Wagoneer Ltd.,
Golden Eagle)



Firecracker Red
(NA Golden Eagle, Wagoneer
Ltd.)



Denim Vinyl
(Opt. CJ)



Denim Vinyl
(Opt. CJ)

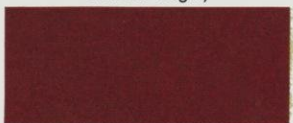


Denim Fabric
(Opt. Truck)

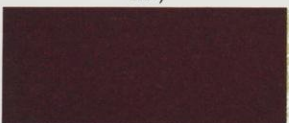


Denim Fabric
(Opt. Truck)

Denim Fabric
(Opt. Truck, Cherokee,
Golden Eagle)



Russet, Met.
(All Models)



Bordeaux, Met.
(NA Chief)



Leather Cord
(Std. Wagoneer Ltd.)

This folder does not constitute an offer or commitment to sell. In order that product improvements may be made at any time, specifications and other data are subject to change without notice. Jeep vehicles meet or exceed all applicable Federal Motor Vehicle Safety Standards at time of manufacture. Some of the Jeep vehicles shown and described in this brochure have optional equipment, available at extra cost. See your authorized Jeep dealer for prices and model availability for this optional equipment. JEEP® CHEROKEE® CJ® GOLDEN EAGLE® HONCHO® QUADRA-TRAC® RENEGADE® and WAGONEER® are trademarks of Jeep Corporation.

In Canada, American Motors (Canada) Limited is a licensed user. ® Reg. TM.

In California, a 258 CID 1-bbl. Six Cylinder engine and 3-speed floor mounted transmission are standard on CJ (4-speed optional). An optional 304 2-bbl. V-8 engine with 4-speed floor mounted transmission is also available. An automatic transmission with Quadra-Trac® is available on CJ-7 models only with either engine. On Cherokee, Wagoneer and Pickup models sold in California the only power team available is a 360 CID 2-bbl. V-8 engine with automatic transmission and Quadra-Trac®.

From a subsidiary of American Motors Corporation

Merchandising/Jeep Sales Promotion

Pub. #: 9-5424-835-01

Litho in U.S.A.

JEEP® RACING

7400-51



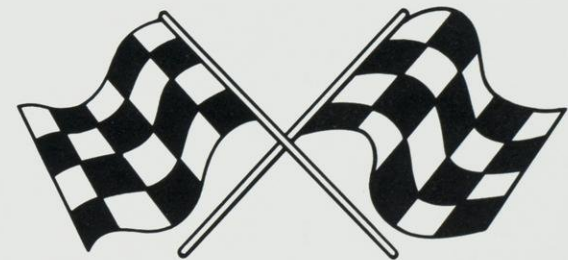
The moon-streaked darkness in the still of a warm, sticky night on the Baja Peninsula. Dust. Rocks. Silence. Then suddenly a roar in the distance! Two bouncing beacons of light pierce the blackness, coming closer. And soon, a CJ-7 roars by, taming the tough terrain. This is the Baja 1000km, the most prestigious and best known of all the off-road races in North America! And naturally, Jeep is there. Just as we are at the Mexicali 300 and 250, the Mint 400 in Las Vegas, the Silverbird Race of Champions, the Riverside Race of Champions and the Parker 400 in Arizona. Wherever there's an off-road challenge, you can count on the rough and rugged Jeep vehicles to be there to meet it.

Jeep Corporation's involvement in SCORE sanctioned off-road racing has been a remarkable success story! Competing in the Class 3 (stock) and Class 4 (modified) 4-wheel drive categories, Jeep vehicles have won just about every off-road race in sight. For example, we recently captured the SCORE series, and we've won the Baja several times. What's more, we're confident we'll continue to dominate off-road racing for years to come.

But Jeep isn't into off-road racing just for the thrill of winning. These rugged, grueling races serve as the most severe of proving grounds, too. What better way is there to prove out engine and suspension components, wheels and axles, than to subject them to the intense punishment of the Baja?

So, it's more than just a little glory that comes out of the Jeep® Racing Program. It's valuable information, too. And ultimately, product improvements that benefit every Jeep vehicle owner.

When we say that more than 36 years of 4-wheel drive experience goes into every Jeep vehicle, we mean it. And racing is a part of that experience!



7900.51



Jeep®