



## **Quarterly : keeping members in touch with the Wisconsin Union. Fall 1997**

Madison, Wisconsin: Wisconsin Union, Fall 1997

<https://digital.library.wisc.edu/1711.dl/I5LHU5BY3ABKK87>

This material may be protected by copyright law (e.g., Title 17, US Code).

For information on re-use, see

<http://digital.library.wisc.edu/1711.dl/Copyright>

The libraries provide public access to a wide range of material, including online exhibits, digitized collections, archival finding aids, our catalog, online articles, and a growing range of materials in many media.

When possible, we provide rights information in catalog records, finding aids, and other metadata that accompanies collections or items. However, it is always the user's obligation to evaluate copyright and rights issues in light of their own use.

Keeping members in touch with the Wisconsin Union

# QUARTERLY

FALL 1997



## A Stable Home

After ten years and numerous attempts to secure a permanent home for the Hooper Riding Club stable, the news from relocation co-chair Denise Sobering is anything but sobering.

No more threat of eviction. No more leasing. No more wondering where the club will hang its reins at the end of the day or week or month. Denise and the rest of the club are focused on their new home secured June 27th: The Hooper Equestrian Center in the township of Montrose.

Denise ticks off the facts like a proud new deedholder. Soon, you realize that something unique and very promising is unfolding here — something to pay attention to.

"It's 40 acres. Just 25 minutes from Memorial Union. Southwest of campus and south of the town of Basco off County Hwy A.

"It's a great rural area and the township intends to stay rural. Some trails exist already; some we'll be developing. We have access to the highest point in the county.

"The Center will convert what is currently a dairy operation into two barns with 46 stalls, an indoor arena, outdoor arena and a cross country course.

"We'll move in October and be settled before the snow flies."

The Hooper Riding Club has served university students and Union members for more than 58 years. Since 1977, the club leased and managed Pleasant View Stables in Middleton. The club developed a reputation for providing quality service at reasonable rates. Members range from freshmen to grandparents. For about \$30 per semester

plus riding and lesson fees, you too can be up in the saddle riding the likes of Marshall, Trooper, Babe, Delta or Conway.

Financial support for the club comes from its lesson programs. The dollars needed to help pay for the purchase of the Equestrian Center came from a variety of sources: donations from club members and supporters, the Memorial Union Building Association, a loan

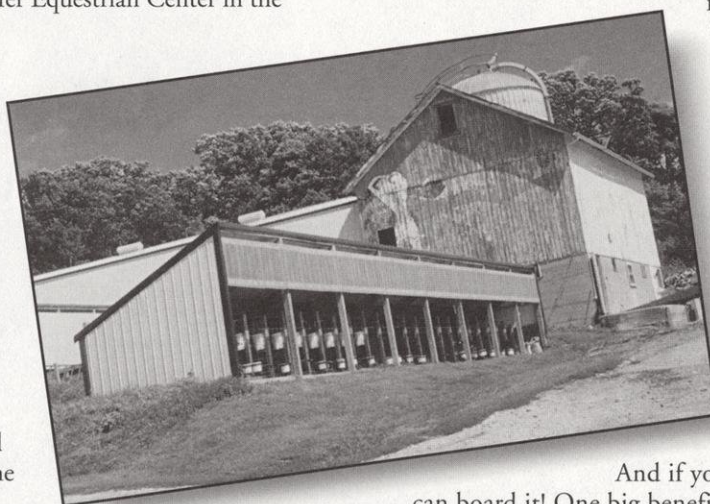
from the Hooper Ski and Snowboard Club and a bank mortgage to be offset by income from boarders. "Fund-raising is ongoing," says Denise, "and we appreciate all support whether it comes in the shape of dollars, horses or tack."

Anyone who is a Wisconsin Union member can join the club and take lessons. Adult beginners comprise the largest group of lesson-takers. Future plans call for expanding lesson options and introducing a children's lesson program next summer. The club will continue to focus on safety, education and having a good time.

And if you own a horse, the Equestrian Center can board it! One big benefit: on-site management at the Center. Live-in residents can feed, turn out and help with general maintenance. That just might seal the deal on sending your child to Madison — the horse goes with!

The fall will be a busy season for Denise and the club as they finalize plans with local architectural firm, ANI, Architecture Network Inc. But they seem up to the challenge. For this group, "nay" is a word best left to the horses.

*For more information about the Hooper Riding Club or the Equestrian Center, call 262-1630.*



THE WISCONSIN UNION

<http://www.wisc.edu/union>





"The Bunker" brat stand

## New & Newsy

### What you didn't know about the Union and would never think to ask.

"I'll take 17,822 brats, please." That's how many went down in the first six weeks of summer at the Terrace brat stand (known to insiders as the "Bunker"). Other Bunker stats during that time period: 4,312 cobs of corn, 8,426 hamburgers and cheeseburgers (75% took the cheese: heigh-ho the derry-o), 21,242 assorted sodas, 4,100 bags of chips and lots of brew. 39% of the Bunker beer purchases were micro-brews. The rest were, well, the rest. Rathskeller Ale ranks #4 in popularity. Cheers.

**One of the largest conferences** at Memorial Union this summer involved nearly 1,000 biologists who gathered for three days to study...worms! C-elegans, to be exact, which are studied for the light they may shed on the general principles of life. No small issue, the conference made the lead article on June 24th in the science section of the *New York Times*.

If we can pull this one off, just imagine what we can do for your private social event. Call 262-2511 to book the room (it's free!). Then, make catering arrangements. Choose from our brand new seasonal catering menus for fall/winter and spring/summer.

**In a recent focus group** with UW residence hall housefellows, the following were one-word descriptions given for the Union: fun, diverse, cool, eclectic, bohemian, events, Rathskeller and meet me at the Union (okay, it's not one word). In a separate UW-Madison survey of undergrads, nearly 95% of the respondents said they are either satisfied or very satisfied with the Wisconsin Union. We, of course, concur with all of the above.

**Just off the press...** a stunning four-color brochure that explains in detail the stories contained within the images of the multicultural murals on display outside the Rathskeller entrance. Free at Essentials Store, first floor, Memorial Union.

**Just alphabetized...** the Union homepage! Easier than ever to find valuable information on the Union's website. On average, we get 47,000 hits per month! Check the "Today in the Union" schedule or view parking maps. Our address: <http://www.wisc.edu/union>. Don't leave home without it.

**Just launched...** a third Union satellite food business called the Ingraham Deli located behind Bascom Hall. Open weekdays serving hot and cold deli items. Ingraham Deli follows in the path of our Medical School ICU Deli and Grainger Hall Blue Chip Deli.

The Quarterly is published four times per year for members of the Wisconsin Union. vol. 51 no. 2

Editor: Margaret Tennessen    Photographers: Kim Sholley, John Maslowski  
Writer: Heidi Anderson    Production: Wisconsin Union Marketing Department

## Live Far Away?

### You're important to us!

Maybe you joined the Union when you graduated. Then, you moved on to a bigger pond. So what value does your membership have now? Plenty. Consider us your headquarters when you visit Madison. Stay overnight in one of our lovely guestrooms. We can provide helpful information on what's up at the Union and in town. Book a meeting room and hold a reunion. You know, all those far flung friends you made on the Terrace. We'll help you arrange a group tour of our buildings. Cruise our website anytime (see directory panel). Stay connected with important memories via this newsletter. We want to hear from you, even if it's just to inform us of an address change. Remember, too, that every membership helps to guarantee that the Union will be here for generations to come. Know that your support counts. Meanwhile, please use us as your Madison/Union resource.

## Distinguished Lecture Series

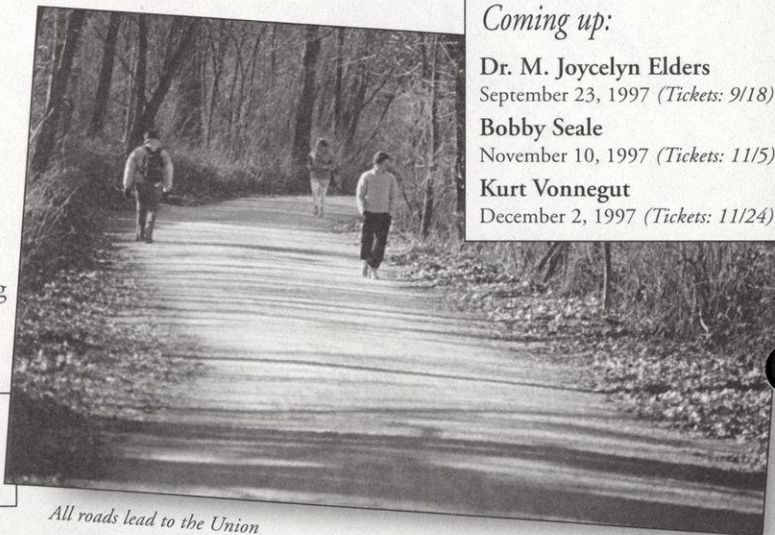
Wisconsin Union Directorate, WUD, proudly announces its 21st year of bringing high-profile, thought-provoking speakers to UW-Madison. All lectures are free with ticket.

The Distinguished Lecture Series is developed by a committee of WUD student volunteers. The students select the speakers, plan the lecture events and coordinate such related programs as class visits, special round-table discussions, receptions and news conferences. On the other side of the podium the audience benefits from hearing the diverse viewpoints of prominent people of the day.

For tickets, Union members step to the front of the line! To obtain free lecture tickets, show your Union card at the Theater Box Office, Memorial Union on ticket dates noted. Box Office hours are 11:30 a.m. - 5:30 p.m. weekdays and noon - 5 p.m. on Saturdays. Due to high demand, there is a limit of one ticket per person.

### Coming up:

**Dr. M. Joycelyn Elders**  
September 23, 1997 (Tickets: 9/18)  
**Bobby Seale**  
November 10, 1997 (Tickets: 11/5)  
**Kurt Vonnegut**  
December 2, 1997 (Tickets: 11/24)



All roads lead to the Union





Dr. M. Joycelyn Elders



Bobby Seale

### Dr. M. Joycelyn Elders — *Health Care in the 21st Century* September 23, 1997

Dr. Elders, a pediatric endocrinologist, was sworn in five years ago as the first African-American Surgeon General. Her views conflicted with the Clinton administration's political goals and, due to rising pressure, she resigned from her post in December, 1994. Dr. Elders currently works at the University of Arkansas Medical School where she divides her time between classroom and clinic.

*Tickets available to Union members beginning September 18.*

### Bobby Seale November 10, 1997

Co-founder and former chairman of the Black Panther Party, Mr. Seale is the last surviving architect of one of the most important movements in U.S. and African-American history. Along with Huey P. Newton, Seale advocated the right of self-defense and spearheaded a "Power to the People" revolution, putting his life on the line against institutionalized racism, discrimination and police brutality. Today, he is the creator and director of R.E.A.C.H.!, an organization that teaches American youth about effective community organizing.

*Tickets available to Union members beginning November 5.*

### Kurt Vonnegut December 2, 1997

As the author of 18 highly acclaimed books and dozens of short stories, Vonnegut has established himself as one of the most important literary figures of this century. His black humor, satiric voice and incomparable imagination within such works as *Slaughterhouse Five* and *Cat's Cradle*, have entertained readers for decades. He is, as Graham Greene has declared, "one of the best living American writers."

*Tickets available to Union members beginning November 24.*

All lectures begin at 7:30 p.m., Wisconsin Union Theater, Memorial Union, 800 Langdon St.

**Cast your vote.** The mission of the Distinguished Lecture Series is to bring prominent speakers with diverse viewpoints to the UW-Madison community. Union members are invited to e-mail their nominations for next year's series to: [ajloewy@students.wisc.edu](mailto:ajloewy@students.wisc.edu)

## Mini Courses

### Easy 24 hour registration!

Beginning this fall, Union members can sign up for Mini Courses 24 hours a day, seven days a week. Thanks to a new registration computer system, all you need is a touch-tone phone and your Visa or MasterCard.

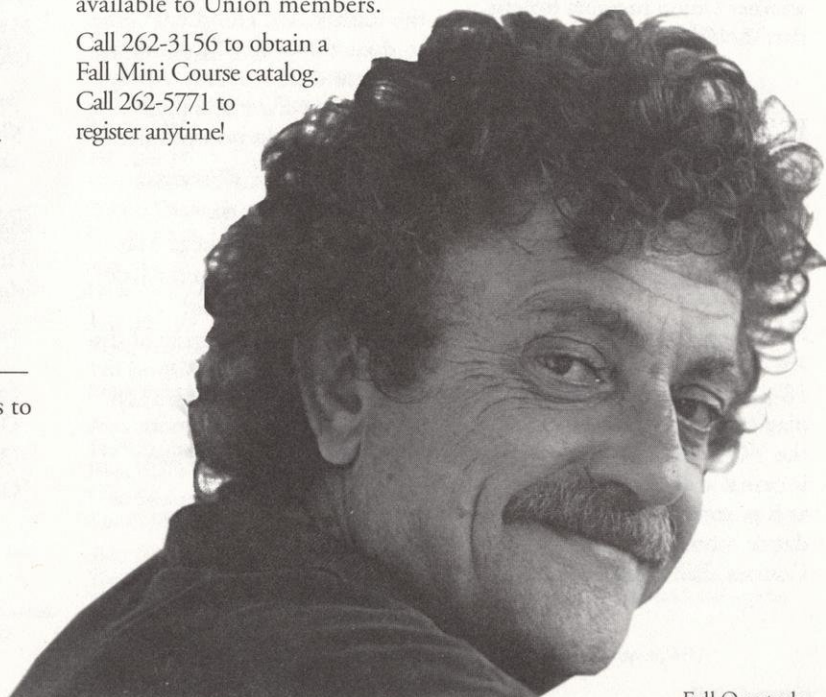
Using the new system is easy. Simply call 262-5771 and follow the touch-tone instructions to select the courses you want. Confirmation notices and receipts will be mailed to you promptly. Of course, if you prefer, you can still register by mail, in-person, fax or email.

The new 24-hour registration system was made possible by a generous gift from the Memorial Union Building Association. Mini Courses gratefully acknowledges their support to help make this new service available to Union members.

Call 262-3156 to obtain a Fall Mini Course catalog.  
Call 262-5771 to register anytime!

## Lunchtime Tour

Take a behind-the-scenes tour of the Memorial Union building! Beginning in October, we are hosting a free tour of the building, its history, grand architecture, hidden hot spots and the general cogs and wheels of this big ship called "the Memorial Union." Tours are offered the first Monday of every month at noon. Meet at the first floor Information Desk near the Essentials Store. Allow for about an hour, but we promise not to sneer if you slip out early. Limited to the first 15 people who sign up at the Info Desk on the day of the tour. Mark your calendar for October 6, November 3 or December 1.



Kurt Vonnegut  
Photograph © 1982 Jill Krementz





*A catered moment*

## Next Stop: Chicago Movies

On average, 1,100 people blow into the Windy City each month via the Union Travel Center. Those Union members know a good deal when they see one. They purchased a VanGelder bus ticket and cruised roundtrip Madison to Chicago or vice versa. Destination: O'Hare Airport (10 buses daily) or downtown (4 daily). ETA: Not much different than if your foot is on the pedal minus the parking hassles and fees, gas, tolls and expressway maneuvers. You've probably passed them on the road — laid back (literally) reading a good novel and traveling in air-conditioned comfort.

*Special Union member roundtrip rate of \$26!* Get your tickets at the Memorial Union Travel Center, 4th floor, 9 a.m. - 5 p.m. weekdays, 262-6200. Just another Union member benefit that shouldn't be kept a secret.

## Free Ballroom Dance

Box step, waltz, fox trot, samba, polka, merengue. Join us when Ballroom Dance Live! returns to Great Hall at the Memorial Union on Thursday, October 16. *Dimensions In Sound*, an 18-piece big band, will be playing dance numbers from the '40s, '50s and '60s. Dress is casual and the music begins at 8 p.m. in Madison's best dance room. Call Mini Courses, 262-3156, for details.

### Memorial Union Movies

Recent releases and "it left town already?!" sleepers show Friday, Saturday and Sunday at the Play Circle Theater, 2nd floor, Memorial Union, at approximately 7 & 9 p.m. plus a 5 p.m. matinee on Fridays. Call the Film Hotline at 262-6333 for exact times and movie descriptions. \$3 admission with Union ID. It's fine to bring a guest!

Sept. 5-7	A Chef in Love
Sept. 12-14	In the Company of Men
Sept. 19-21	Pillow Book
Sept. 26-28	Night Falls on Manhattan
Oct. 3-5	Bliss
Oct. 10-12	Chasing Amy
Oct. 17-19	Shall We Dance?

### Lakeside Film

It's a Monday night tradition in the Rathskeller. Hundreds come to share the spirit of these cult, trendy and classic films. Always free. Always starts at 8 p.m. Members are always welcome.

Sept. 1	The Warriors
Sept. 8	Suspiria
Sept. 15	The Omega Man
Sept. 22	Bonnie and Clyde
Sept. 29	Valley Girl
Oct. 6	The Treasure of the Sierra Madre
Oct. 13	Alice Doesn't Live Here Anymore
Oct. 20	Stranger Than Paradise

### International Cinema

Quality foreign films from around the world, Sundays at 2 p.m., Union South, free.

Sept. 14	Celestial Clockwork; Venezuela
Sept. 21	Window to Paris; Russia/France
Sept. 28	32 Short Stories About Glenn Gould; UK
Oct. 12	Two Friends; Australia
Oct. 19	Cruel Story of Youth; Japan

### Blow Up Cinema

A monthly series of French New Wave and Italian Neo-realist cinema, 7 p.m., Elvehjem Museum of Art.

Sept. 26	Fellini's 8 1/2
----------	-----------------

### Event Cinema

Hollywood classics, 8 p.m., Union Theater, \$3 w/ Union ID.

Sept. 20	Blade Runner
Oct. 11	Rocky
Oct. 19	Taxi Driver

### Starlight Cinema

Thursdays, 9 p.m., Memorial Union, free

Sept. 18	I, Doll, with Time Expired
Sept. 25	Suite Sixteen
Oct. 2	Sonic Outlaws
Oct. 9	Terminal USA
Oct. 16	Paris Was a Woman



*Sign-up for fall sailing*

## Hoofers

### Roll seven and come up a winner!

Seven clubs that do it right year after year. This is the year to get in on the goods. Hoofers is the largest student organization on campus with more than 2,000 members. Union members can get involved in any of the clubs. Find out more at an informal kickoff event — very loose and unimposing. Get active. Get info. Get involved.

### Fall Club Kickoff Events

Memorial Union  
(check the "Today in the Union" posting for room location)

#### Riding

September 3, 7 p.m.

#### Sailing & Windsurfing

September 3, 8 p.m.

#### Scuba

September 4, 7:30 p.m.

#### Outing

September 9, 7 p.m.

#### Gliding

September 10, 7 p.m.

#### Mountaineering

September 11, 7:30 p.m.

#### Ski & Snowboard

October 2, 7:30 p.m.

Call the Hoofers Hotline, 265-4663, for details on how to join, club activities, fees, upcoming events, lessons, etc. Or visit their very creative website: <http://rso.union.wisc.edu/union>



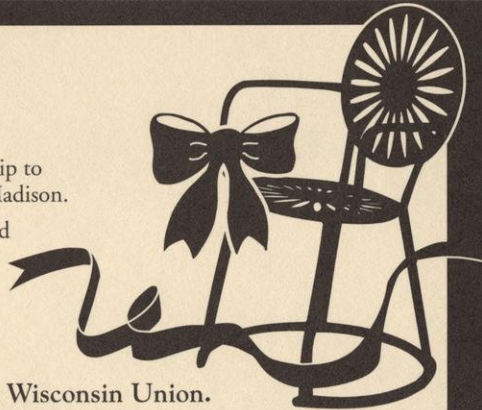
# Great Gift Idea!



## t Idea!

ur Wisconsin Union membership to  
they live beyond 40 miles of Madison.

ID card, welcome brochure and  
olor photo of the Union that  
our name and mail the gift.



e-year membership to the Wisconsin Union.

---

---

---

---

---

---

---

---

- |   |  |
|---|--|
| <input type="checkbox"/> Please bill me later (or)<br><i>(If gift is for a UW-Madison<br/>alum, check here. Savings<br/>may apply.)</i> | <input type="checkbox"/> Check enclosed<br><i>(payable to: Wis. Union)</i>         |
| <input type="checkbox"/> Send gift and card<br>directly to recipient<br>during month of:<br><hr/>                                       | <input type="checkbox"/> I want to add my<br>own note. Send gift<br>package to me. |

**Remember:** All payments are credited toward a lifetime Union membership (\$220 value). Your gift starts them on the way to becoming a lifetime member and supports a great place.

**Thank you.**



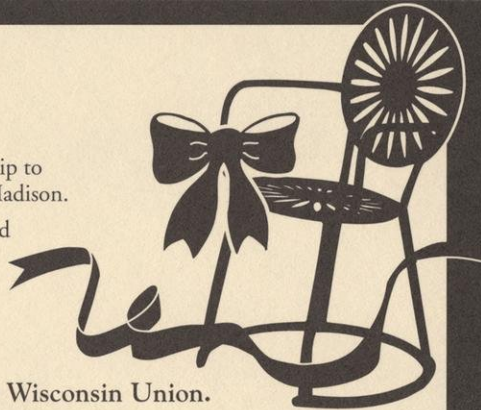
Pitchers on the Terrace,  
newsletters, Mini Courses,  
lectures, film, theater, art,  
music, catering, party rooms,  
hotel rooms, Hoofers, bowling,  
craftshop, Travel Center,  
Terrace T-shirts and a Union  
membership card that says,  
“You belong here.”

# Great Gift Idea!

For just \$50, you can give a one-year Wisconsin Union membership to anyone on your gift list; just \$30 if they live beyond 40 miles of Madison.

It includes a Union membership ID card, welcome brochure and an elegant notecard featuring a 4-color photo of the Union that is suitable for framing. We'll sign your name and mail the gift.

Questions? Call (608)262-2263.



**YES!** I want to give a one-year membership to the Wisconsin Union.

My name \_\_\_\_\_

Address \_\_\_\_\_

City/State/Zip \_\_\_\_\_

Phone \_\_\_\_\_

Gift is for \_\_\_\_\_

Address \_\_\_\_\_

City/State/Zip \_\_\_\_\_

☐ Please bill me later (or) ☐ Check enclosed  
(If gift is for a UW-Madison alum, check here. Savings may apply.) (payable to: Wis. Union)

☐ Send gift and card (or) ☐ I want to add my  
directly to recipient own note. Send gift  
during month of: package to me.

**Remember:** All payments are credited toward a lifetime Union membership (\$220 value). Your gift starts them on the way to becoming a lifetime member and supports a great place.

**Thank you.**



**Thanks.**

Your stamp  
here supports  
the Union.



## Membership Office

The Wisconsin Union

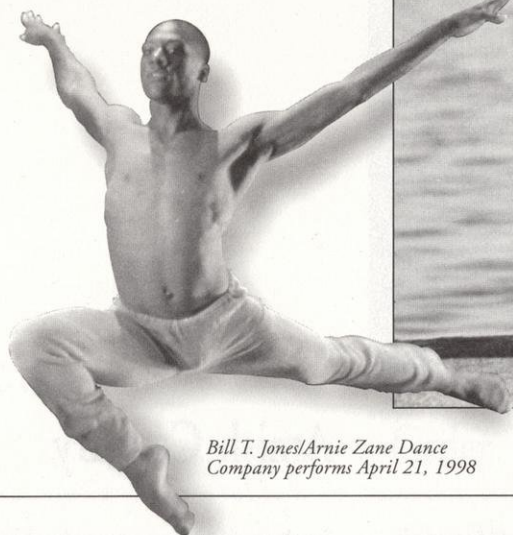
800 Langdon St

Madison WI 53706 - 1495





# Events Calendar



Bill T. Jones/Arnie Zane Dance  
Company performs April 21, 1998



Great book. Perfect place.

Look for more details in stories throughout this newsletter. Check the Union Directory for hotlines and direct phone access to current info on music, films, etc.

MU=Memorial Union • US=Union South

## September

**Thurs., Sept. 4**  
Hooper Scuba Kickoff, 7:30 p.m., MU

**Fri., Sept. 5**  
Film: A Chef in Love, MU  
Music: Clyde Stubblefield, 9 p.m., US  
The Kabalas with Jewbacc, klezmer, 9:30 p.m., MU

**Sat., Sept. 6**  
Badger Bash: pre-game tailgate, US  
Film: A Chef in Love, MU  
Music: Hello Dave, pop!, 9:30 p.m., MU

**Sun., Sept. 7**  
Film: A Chef in Love, MU

**Mon., Sept. 8**  
Film: Suspiria, 8 p.m., MU

**Tues., Sept. 9**  
Hooper Outing Club Kickoff  
(bike, hike, paddle...), 7 p.m., MU

**Wed., Sept. 10**  
Hooper Gliding Kickoff, 7 p.m., MU

**Thurs., Sept. 11**  
Bowling Leagues Sign Up: 7 p.m.  
All welcome! Leagues start 9/14, US  
Hooper Mountaineering  
Kickoff, 7:30 p.m., MU

**Fri., Sept. 12**  
Autumn Art Fair, 10 a.m. - 5 p.m.,  
Library Mall (across from MU)  
Film: Company of Men, MU  
Music: Sky Bob Fly, acid jazz,  
10 p.m., MU

**Sat., Sept. 13**  
Film: In the Company of Men, MU  
Music: Willie Porter, folk rock,  
10 p.m., MU (tentative)

**Sun., Sept. 14**  
Films: Celestial Clockwork;  
Venezuela, 2 p.m., US  
Film: Company of Men, MU

**Mon., Sept. 15**  
Film: The Omega Man, 8 p.m., MU  
New art exhibits open, MU

**Wed., Sept. 17**  
Billiard Leagues Sign Up: 7 p.m.  
All welcome! Leagues start 9/21, US

**Thurs., Sept. 18**  
Film: I, Doll, with Time Expired,  
9 p.m., MU

**Fri., Sept. 19**  
Film: Pillow Book, MU  
Music: Shadow Ring,  
obscure music, 10 p.m., MU

**Sat., Sept. 20**  
Badger Bash, Pre-game tailgate, US  
Films: Pillow Book, MU  
Blade Runner, Union Theater  
Music: Captain Tractor, 10 p.m., MU

**Sun., Sept. 21**  
Films: Window to Paris;  
Russia/France, 2 p.m., US  
Pillow Book, MU

**Mon., Sept. 22**  
Film: Bonnie & Clyde, 8 p.m., MU

**Tues., Sept. 23**  
Volunteer Placement Day, learn  
about community volunteer openings,  
11 a.m. - 4 p.m., MU  
Lecture: Dr. M. Joycelyn Elders,  
7:30 p.m., MU (ticket required)

**Thurs., Sept. 25**  
Film: Suite Sixteen, 9 p.m., MU

**Fri., Sept. 26**  
Films: Night Falls on Manhattan, MU  
8 1/2, 7 p.m., Elvehjem Museum  
Music: Teenage Frames, 10 p.m., MU

**Sat., Sept. 27**  
Badger Bash: pre-game tailgate, US  
Film: Night Falls on Manhattan, MU  
Music: band tba, 10 p.m., MU

**Sun., Sept. 28**  
Films: Night Falls on Manhattan, MU  
32 Short Stories About Glenn Gould,  
2 p.m., US

**Mon., Sept. 29**  
Film: Valley Girl, MU

## October

**Thurs., Oct. 2**  
Hooper Ski & Snowboard  
Kickoff, 7:30 p.m., MU  
Film: Sonic Outlaws, 9 p.m., MU

**Fri., Oct. 3**  
Film: Bliss, MU  
The Guarneri String Quartet,  
8 p.m., Union Theater, \$25  
Music: Savage Aural Hot Bed, industrial  
percussive performers, 10 p.m., MU

**Sat., Oct. 4**  
Film: Bliss, MU  
Music: Braid & Rainer Maria,  
post punk, 10 p.m., MU

**Sun., Oct. 5**  
Film: Bliss, MU

**Mon., Oct. 6**  
Special MU Building Tour,  
noon, MU Info Desk  
Film: The Treasure of the Sierra  
Madre, 8 p.m., MU

**Thurs., Oct. 9**  
Film: Terminal USA, 9 p.m., MU

**Fri., Oct. 10**  
Film: Chasing Amy, MU

**Sat., Oct. 11**  
Badger Bash: pre-game tailgate, US  
Bike Tour: Amish Country: 1-2 nights,  
Mini Courses, 262-3156  
Films: Chasing Amy, MU  
Rocky, Union Theater

**Sun., Oct. 12**  
Films: 2 Friends; Australia, 2 p.m., US  
Chasing Amy, MU

**Mon., Oct. 13**  
New art exhibits open, MU  
Film: Alice Doesn't Live Here Anymore,  
8 p.m., MU

**Thurs., Oct. 16**  
Ballroom Dance Live!  
"Dimensions in Sound," free, 8 p.m.,  
MU Film: Paris Was a Woman,  
9 p.m., MU

**Fri., Oct. 17**  
Film: Shall We Dance?, MU  
Dayton Contemporary Dance Company,  
8 p.m., Union Theater, \$22

**Sat., Oct. 18**  
Film: Shall We Dance?, MU

**Sun., Oct. 19**  
Films: Shall We Dance?, MU  
Taxi Driver, Union Theater  
Cruel Story of Youth; Japan, US

**Mon., Oct. 20**  
The Grand Canyon - Travel Adventure  
Film, 7:30 p.m., Union Theater, \$7.50  
Film: Stranger Than Paradise,  
8 p.m., MU

**Tue., Oct. 21**  
The Grand Canyon - Travel Film,  
7:30 p.m., Union Theater, \$7.50

**Wed., Oct. 22**  
The Grand Canyon - Travel Film,  
7:30 p.m., Union Theater, \$7.50

**Fri., Oct. 31**  
András Schiff & Peter Serkin/Two Piano  
Recital, 8 p.m., Union Theater, \$28

## November

**Sat., Nov. 1**  
Natalie MacMaster, Cape Breton Fiddle,  
8 p.m., Union Theater, \$20

**Mon., Nov. 3**  
MU Bldg Tour, noon, Info Desk  
Cruising the Baltic Sea: Travel Film,  
7:30 p.m., Union Theater, \$7.50

**Tues., Nov. 4**  
Cruising the Baltic Sea: Travel Film,  
7:30 p.m., Union Theater, \$7.50

**Wed., Nov. 5**  
Cruising the Baltic Sea: Travel Film,  
7:30 p.m., Union Theater, \$7.50

**Sat., Nov. 8**  
Badger Bash: pre-game tailgate, US  
New art exhibits open, MU

**Mon., Nov. 10**  
Lecture: Bobby Seale, 7:30 p.m.,  
MU (ticket required)

**Fri., Nov. 14**  
Gary Hoffman, cello & David Golub,  
piano, Union Theater, \$25

**Sat., Nov. 15**  
Badger Bash: pre-game tailgate, US

**Mon., Nov. 24**  
The Eastern & Oriental Express: Travel  
Film, 7:30 p.m., Union Theater, \$7.50

**Tues., Nov. 25**  
The Eastern & Oriental Express: Travel  
Film, 7:30 p.m., Union Theater, \$7.50

**Wed., Nov. 26**  
The Eastern & Oriental Express: Travel  
Film, 7:30 p.m., Union Theater, \$7.50

**Thurs., Nov. 27**  
Thanksgiving Buffet, 11 a.m. -  
1:30 p.m., Lakefront Cafe, MU.

## December

**Mon., Dec. 1**  
MU Bldg Tour, noon, Info Desk

**Tues., Dec. 2**  
Lecture: Kurt Vonnegut, 7:30 p.m., MU  
(ticket required)

**Dec. 3-7 and 9-10**  
Tudor Dinners, 262-0118 (see article)

**Mon., Dec. 8**  
New art exhibits open, MU





*Art exhibition in the making*

## Free Music at Memorial Union

Open Mic — every Thursday, 9 p.m. - midnight, Terrace/Rathskeller  
 Behind the Beat Jazz — every Friday, 5 - 7 p.m., Terrace/Rathskeller  
 Bagels 'n Bach — every Sunday, 10 - 11:30 a.m., Lakefront Cafeteria  
 live classical music to brunch by

- |  |   |
|--|---|
| 8/29 Edith Frost with<br>Mollycuddle, sparse folk,<br>9:30 p.m.      | 9/20 Captain Tractor,<br>jams, celtic & world<br>beat, 10 p.m.            |
| 8/30 Bradley Fish & The<br>Aquarium Conspiracy,<br>improv, 9:30 p.m. | 9/26 Teenage Frames, rock n'<br>roll hipsters, 10 p.m.                    |
| 9/5 The Kabalas with<br>Jewbacca, klezmer,<br>9:30 p.m.              | 9/27 Band tba, 10 p.m.  |
| 9/6 Hello Dave, pop!,<br>9:30 p.m.                                   | 10/3 Savage Aural Hotbed,<br>industrial percussive<br>performers, 10 p.m. |
| 9/12 Sky Bob Fly,<br>acid jazz, 10 p.m.                              | 10/4 Braid and Rainer<br>Maria, post punk/CD<br>release, 10 p.m.          |
| 9/13 Willie Porter,<br>folk rock, 10 p.m.<br>(tentative)             |   |
| 9/19 Shadow Ring, obtuse<br>music, 10 p.m.                           |   |

*Bookings subject to last minute  
changes. Future dates not yet booked.  
Call 262-2215 for current info.*



## Amish Country

Looking for an autumn getaway?  
 Join Mini Courses as they travel  
 to Cashton, Wisconsin for an  
 Amish Country Biking Retreat.  
 Scheduled for the weekend of  
 October 10th, the tour includes  
 rustic accommodations at the trip  
 leader's cottage Friday evening  
 and a Saturday bike ride through  
 Amish country. Participants can  
 choose to stay over on Saturday  
 evening, too. For more details,  
 see the Fall Mini Course catalog  
 or call 262-3156.

## Art Galleries

*Free exhibits, open daily,  
10 a.m. - 8 p.m., 2nd floor,  
Memorial Union.*

### September 15 - October 5

Works in Neon by Todd  
 Berenz and Kimberly Sotelo  
*Porter Butts Gallery*

Midnight Festival  
 by Daniel Richmond  
*Class of 1925 Gallery*

University of Wisconsin Press  
 Celebrates 60th Anniversary  
*Theater Gallery*

### October 13 - November 2

Point of Departure  
 by UW Print Alumni  
*Porter Butts Gallery*

Oil Paintings and Drawings  
 by Thoms Duff  
*Class of 1925 Gallery*

Acrylic Paintings by Steve Perrault  
*Theater Gallery*

### November 8 - December 1

Wisconsin Painters and Sculptors  
 and Wisconsin Artists in All  
 Media Annual Juried Exhibition  
*Porter Butts and Class of 1925 Galleries*

Charcoal Drawings  
 by Clare Stoner  
*Theater Gallery*

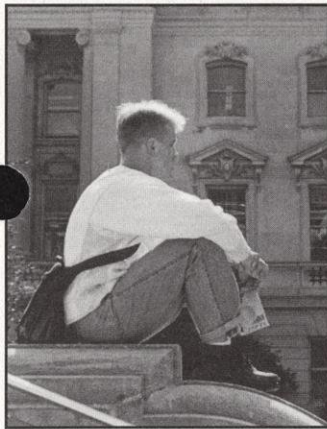
### December 8 - January 18

UW Woodworking  
 Graduate Students  
 including Christopher McNulty,  
 Numjoo Shin, Tolga Benli, Brad Engstrom,  
 Kelli Kadokawa and Aaron Hyman  
*Porter Butts Gallery*

Photography and Performance  
 by Jeffery Byrd  
*Class of 1925 Gallery*

Character Traits: More  
 Art Quilts from the Midwest  
*Theater Gallery*





Meet me  
at the Union

## Why Call It Tripp?

Tripp Commons is named in honor of J. Stephens Tripp (1828-1915), a community leader of Sauk County, Wisconsin. A lawyer, banker and public service leader, Tripp served as village president of Sauk City and Prairie du Sac and was a member of the Sauk County board of supervisors.

Inspired by a story he read about another Wisconsin man who had made a large bequest to UW-Madison, Tripp left most of his sizable estate to the university when he died, though he had never attended the institution. The gift came as a complete surprise to university officials. It was used to fund several projects, including the Tripp Hall dormitories and Tripp Commons in Memorial Union.

*A special thanks to Donald Kindschi for providing the Union with the historical background on Tripp. Kindschi, a local historian, contacted the Union to share his knowledge.*

## Tudor Dinners

### A feast fit for a member

December 3-7 and 9-10  
Great Hall, Memorial Union  
Tudor Dinners celebrates a 64th annual tradition of merry-making, singing and bountiful dining that embraces the pageantry and traditions of Tudor England. Choose from seven nights and enjoy a true spectacle with minstrels, wassail bowl, presentation of the boar's head and music provided by the Philharmonic Chorus of Madison. Often a "sell-out" event, Union members (that's you!) get first dibs on tickets. If your zip code begins 53—, just watch your mailbox for your invitation. If your zipcode begins with anything other than 53—and you'd like Tudor Dinner tickets, simply call 262-2263. We'll make sure you receive a special invitation. For other details about Tudor Dinners, call 262-7518.

## Badger Bash

Show your red and white pride at the biggest pre-game party at Union South before all Badger home games! Doors open four hours before gametime with brats, soda and beer, a rock band, the UW Marching Band and the main man himself... Bucky (but will he do push-ups or save it for those touchdown countdowns?). Union members can reserve a special party room for game day with lots of catering options. Make Union South your game headquarters!

### Badger Bash Schedule

- Sept. 6 Boise State: Hall of Fame Day
- Sept. 20 San Diego State: Band Day
- Sept. 27 Indiana: Parents Day
- Oct. 11 Illinois: Badger Blast
- Nov. 8 Iowa: Homecoming
- Nov. 15 Michigan: W Club Day



Badger Bash

## Order Theater Tickets Today!

We're holding a seat for you. Whether you choose a single Theater event or become a series subscriber, now is the time to act: tickets are moving quickly. Call the Box Office if you're ready to place an order. Or, if you'd like more details including our spring season lineup, we'll send a copy of the 1997-98 Theater brochure. Call 262-2201.

### Wisconsin Union Theater 1997 Fall Events

- CS = Concert Series  
events start at 8 p.m.
- PS = Performance Series  
events start at 8 p.m.
- TS = Travel Adventure Film Series  
events start at 7:30 p.m.

October 3 - CS  
The Guarneri String Quartet

October 17 - PS  
Dayton Contemporary  
Dance Company

October 20, 21 & 22 - TS  
The Grand Canyon

October 31 - CS  
András Schiff and Peter Serkin:  
Two Piano Recital

November 1 - PS  
Natalie MacMaster,  
Cape Breton Fiddle

November 3, 4 & 5 - TS  
Cruising the Baltic Sea

November 14 - CS  
Gary Hoffman, cello  
and David Golub, piano

November 24, 25 & 26 - TS  
The Eastern and Oriental Express



Coming up:  
Cho-Liang Lin  
performs February 6



Address Correction Requested



The Wisconsin Union...  
the heart and soul of the university

## If Walls Could Talk

It was the early 60s. Upstairs, at Memorial Union, Ethel Kennedy rested in one of our guestrooms, waiting for her husband Bobby to finish his meetings. She was nine months pregnant.

Joan Bufton, guestrooms house-keeper for more than 35 years, remembers it all very clearly. "They phoned down and said, 'Mrs. Kennedy would like an egg, poached in milk, on toast.' They didn't stay long. Then, a few days later, we received a letter. It seems Bobby lost some cufflinks while in Wisconsin. They were a treasured gift from John - a memento of the PTO boat JFK served on. We turned the place upside down; never did find them..."

Be a part of history. Stay in our guestrooms at Memorial Union or Union South. A slice of the past with throwback prices to match. Rates start at \$50. Maybe you can find the cufflinks. Call 262-1583 (MU); 263-5666 (US).

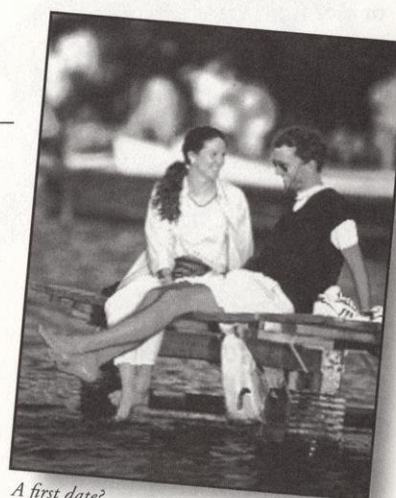
## RSVP

Here's where you get to talk to us. We want to hear from you. About what you like and don't like about the Quarterly. What you want to read about in the future. How this newsletter can better serve you, our members. What you've never understood about the Union. Please, give us a jingle: e-mail: [mtenness@facstaff.wisc.edu](mailto:mtenness@facstaff.wisc.edu); write us: 800 Langdon Street, Madison, WI 53706; fax: (608)262-5487; or call (608)262-2263. Heck, you can even just stop by Room 410, Memorial Union. We'd love to say "hi".

## Question of the Quarterly

How many of you met your mates at the Union?

Tell us about it (see options above) and we'll run an answer poll in the next Quarterly.



*A first date?*

## Construction Zone

The renovation of the Red Gym continues to impact on parking in the lot adjacent to Memorial Union. A few stalls will remain fenced off in the construction zone until the project is complete next summer. Then (hurray!), we get them back. Thanks for bearing with us.

## Union Directory

Catering .....	262-2511
Central Reservations & Meeting Services .....	262-2511
Distinguished Lecture Series .....	262-2216
Games Room .....	MU 262-1330 US 263-2514
Film Hotline .....	262-6333
Hoofers .....	262-1630
Hotel Reservations .....	MU 262-1583 US 263-2600
Information Desk .....	MU 265-3000 US 263-2600
Internet .....	<a href="http://www.wisc.edu/un">http://www.wisc.edu/un</a>
Membership .....	262-2263
Mini Courses .....	262-3156
MU Music .....	262-2215
Outdoor Rentals .....	262-7351
Theater Box Office .....	262-2201