



LIBRARIES

UNIVERSITY OF WISCONSIN-MADISON

Wisconsin Dairymen's Association year book 1946. 1946

Wisconsin Dairymen's Association
Wisconsin: The Association, 1946

<https://digital.library.wisc.edu/1711.dl/YT2UROS NKW5LD8N>

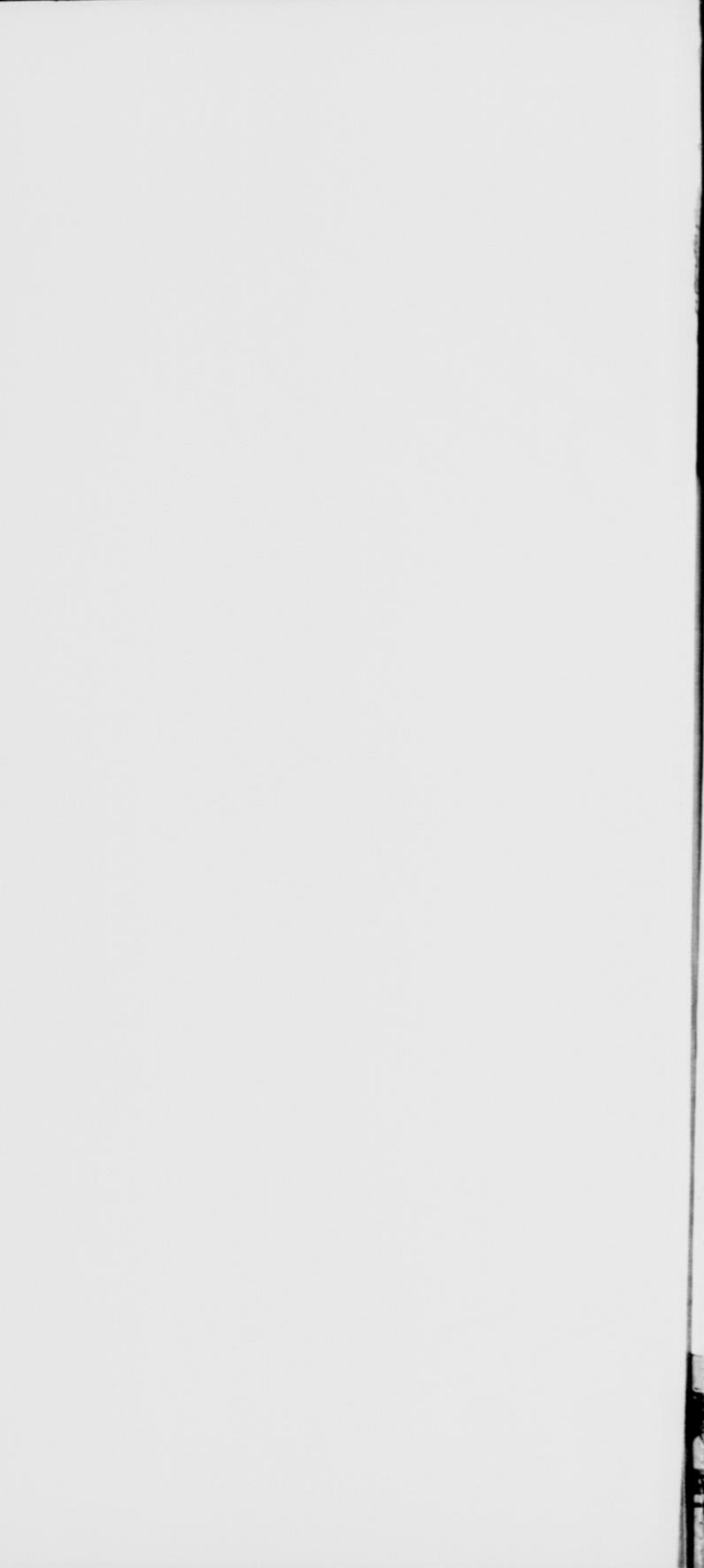
This material may be protected by copyright law (e.g., Title 17, US Code).

For information on re-use, see

<http://digital.library.wisc.edu/1711.dl/Copyright>

The libraries provide public access to a wide range of material, including online exhibits, digitized collections, archival finding aids, our catalog, online articles, and a growing range of materials in many media.

When possible, we provide rights information in catalog records, finding aids, and other metadata that accompanies collections or items. However, it is always the user's obligation to evaluate copyright and rights issues in light of their own use.

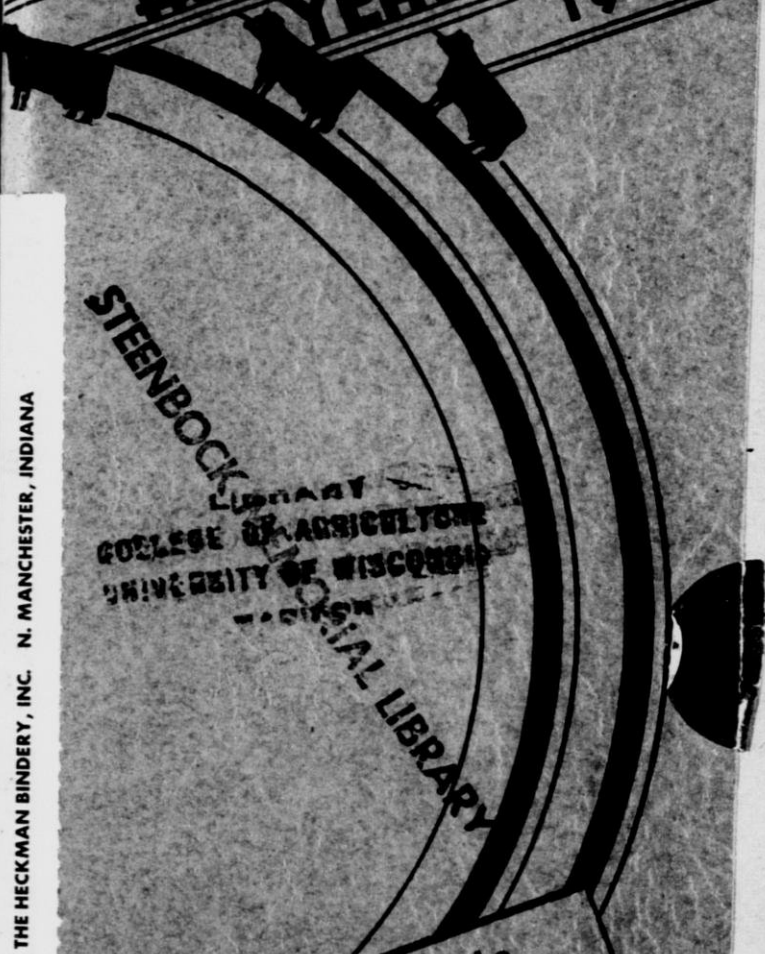


RAW 7
DIS
y
1946

74

WISCONSIN DAIRYMEN'S ASSOCIATION YEAR BOOK

1946



THE HECKMAN BINDERY, INC. N. MANCHESTER, INDIANA

STEENBOCK
LIBRARY
COLLEGE OF AGRICULTURE
UNIVERSITY OF WISCONSIN
SPECIAL LIBRARY

Attend the
Wis. Dairymen's Ass'n
Convention
and
Breed Association
Meetings
Madison, Wis.
Feb. 15 and 16, 1946
COLLEGE
OF AGRICULTURE



*are the Balance Wheel
of Wisconsin Prosperity*



**. . . Therefore, let us build
quality dairy products TO-
DAY so that the reputation
and the national markets
thus established will help
dispose of any surpluses
which may plague Wiscon-
sin's dairy industry TO-
MORROW.**

WISCONSIN

**Department of
Agriculture**

OFFICERS



A. W. Ritchie, New London
President



H. J. Weavers, Madison
Vice President



B. R. Dugdale, Madison
Secretary and Treasurer

DIRECTORS



J. P. Allyn
Delavan



Stanley Jamison
Appleton



R. A. Brackett
Elk Mound



Lawrence Blank
Ripon



Herbert Hochmuth
La Valle



A New Day For Wisconsin Dairy Farmers



As has been the case after every war, our nation has been thrown into a chaos that will take years to overcome, and the dairymen of this state are not exempt.

Probably never in the history of this country, has the Reconstruction Period had such a wide spread effect on all kinds of industry.

It is very important, at this time, that our dairymen of this state and all other states keep their heads.

We still have the same number of people to feed, that we had during the war, and our obligations to the foreign countries seem almost greater than they were then.

We must be careful at this time, that we do not sacrifice quality in our products in any way, as there is sure to come the demand that we have now.

We must create an appetite for our products that can never be substituted.

We must work diligently for a stabilization of price so that each section will receive its just share.

We must not demand a price that will prohibit any one in our nation from getting a fair amount of our most nourishing foods, milk, butter, cheese, etc.

But on the other hand, Agriculture, the basic industry of any country, must have a remuneration such that our wives and children will have an equal chance with the wives and children of any men in this nation.

As President of the Wisconsin Dairymen's Association, it is my sincere hope that 1946 will be a banner year for the Dairy Industry and that each dairyman of the state will make it his personal concern to improve the quality of his products, to help equalize the markets, and stabilize a price that will be satisfactory to both producer and consumer.

Arthur W. Ritchie

President, Wisconsin Dairymen's Association

A Proclamation



Wisconsin and the nation enter the year 1946 rejoicing over peace.

During the four years of war Wisconsin dairymen have made a tremendous contribution to the nation's needs for food, feed, and fibre. Our farms have been geared to a war production program which reached a climax this past year when our farms produced more than 15½ billion pounds of milk. With an 18 per cent decrease in farm population Wisconsin increased its total wartime output by 40 per cent — an accomplishment of which all may feel justly proud.

Among the problems facing the dairy industry are: the need for a constructive program of soil conservation to compensate for the tremendous drain on our soil resources, a carefully planned program of herd culling for peacetime production, a renewed effort towards the control of livestock diseases, and the efficient marketing of dairy products.

NOW, THEREFORE, I, Walter S. Goodland, Governor of the State of Wisconsin, do hereby designate and proclaim February 16, 1946, as

DAIRY DAY

in Wisconsin and urge that the occasion be observed with fitting exercises in recognition of the Wisconsin Dairy Industry and its vital part in the solution of the problems of reconversion to a peacetime economy.

IN TESTIMONY WHEREOF, I have hereunto set my hand and caused the Great Seal of the State of Wisconsin to be affixed. Done at the Capitol in the City of Madison this seventeenth day of January in the year of our Lord one thousand nine hundred and forty-six.

Walter S. Goodland

Governor of Wisconsin

Breed Association Meetings

Friday, February 15



WISCONSIN BROWN SWISS ASSOCIATION

Program

12:00 Noon Luncheon Meeting at Wesley Foundation
All friends of Brown Swiss are invited.
This will be followed with a business
meeting and election of officers.

WISCONSIN JERSEY CATTLE CLUB

BELMONT HOTEL

Program

Thursday Evening, February 14 at 7:00 p. m.

BULL Session (Reservations must be sent to Geo.
Price, Kenosha by Monday, Feb. 11)



Friday, February 15

- 10:30 A. M. Annual Meeting of Wis. Jersey C. C.
Speakers: R. K. Brown, Jersey Bulletin
Charles D. Colvin, Fieldman A.J.C.C..
H. F. Zimmerman, Treas., A.J.C.C.
- 11:30 A. M. Meeting of Board of Directors, Wis.
Jersey C. C.
- 12:30 P. M. Noon Luncheon
4-H Club Awards
Production Awards
Address Chet McCord, Newton, Ill.
Director of A.J.C.C.
- 2:00 P. M. Resume Annual Meeting
Address H. E. Dennison,
East Lansing, Mich.
Wis. Fieldman of A.J.C.C.
Election of officers



Wisconsin Dairymen's Association Convention

Saturday, February 16

COLLEGE OF AGRICULTURE
Auditorium Ag. Hall

Program

A. W. RITCHIE, New London
President of Wisconsin Dairymen's Ass'n
Presiding

10:00 A. M. Welcome I. L. Baldwin
Dean, College of Agriculture

- 10:15 A. M. Association Activities of 1945
 B. R. Dugdale
 Secretary Wisconsin
 Dairymen's Association
- 10:30 A. M. Herd Health as a Management Problem
 Drs. N. N. Allen and V. R. Smith
 Wisconsin College of Agriculture
 Madison
- 12:00 Noon Wisconsin Dairymen's Association Noon
 Luncheon, Wesley Foundation Univer-
 sity Methodist Church
- Irish Songs A. W. Ritchie and
 Mrs. A. W. Ritchie
- Jr. D.H.I.A. Awards B. R. Dugdale
 Sec. Wis. Dairymen's Ass'n
- 4-H Club Awards V. V. Varney
 Asst. State 4-H Club Leader
- New Wrinkles in Dairying
 Wilbur G. Carlson
 Kraft Foods Co.



Afternoon Session

AG. HALL AUDITORIUM

HERBERT HOCHMUTH, LaValle
 Presiding

- 2:00 P. M. Panel Discussion—
- Controlling Brucellosis (Bang's Dis-
 ease) in Dairy Cattle
- Chairman, John B. Jones, Jr., Racine
 Discussants:
- Dr. R. R. Birch, Cornell University,
 Ithaca, N. Y.
- Dr. T. H. Ferguson, Lake Geneva
 Stewart Barlass, Gil-Bar Farms,
 Janesville
- Herman Clausen, Elder Creek Farm,
 Bruce
- John Last, Milford Meadows Farm,
 Lake Mills
- 3:30 P. M. Business Meeting of Wisconsin Dairy-
 men's Association
- 4:00 P. M. Meeting of Directors of Wisconsin Dairy-
 men's Association

Women's Program

- 12:00 Noon Joint Luncheon with Dairymen at Wes-
 ley Foundation University Methodist
 Church
- 2:00 P. M. Program at Wesley Foundation
 Room to be announced
- Chairman Mrs. A. W. Ritchie
 New London
- Song Fest
 Sketches
- Talk May M. Roach
 Central State Teachers College
 Stevens Point

FARMADE PRODUCTS
MASTITIS -- (Garget)

Now Effectively Treated With

"MAM-O-LAC"

T. M. REG. U. S. PAT. OFF. NO. 411053

is a combination of Gramicidin — Tyrocidin and an effective agent for the treatment of Chronic Mastitis due to *Streptococcus Agalactiae* (both on dry and lactating cows), and about 4 out of 5 of such cases may be successfully treated. MAM-O-LAC is injected (40 c.c. dose) through the teat canal into the diseased quarter. Probably half the cases respond from the first injection, while no cases should be considered hopeless until several injections have been tried at seven to ten-day intervals. One injection of dry cows is usually sufficient.

MAM-O-LAC keeps well, even after opening, at ordinary room temperature. A 125 c.c. bottle \$2.75 or 250 c.c. bottle \$5.00. Canula for injection, which fits any standard syringe, costs 25c.

"SYN-EST-OL"

T. M. REG. U. S. PAT. OFF. NO. 415076

For hypodermic injection. Usual dose 10 c.c. Aids in loosening and expulsion of afterbirth; useful in conception by regulating heat periods; an aid in treatment of uterine infections; used also in slow pigging and lambing; aids in restoring milk flow. Single dose bottle 85c; six-dose bottle \$4.00.

"BIG PAY" MINERAL

FOR CATTLE, HOGS, SHEEP and POULTRY

A Bone Meal Products Base with Calcium and necessary amounts of Iron, Copper, Iodine, and Irradiated Yeast (Vitamin D). Pays for itself several times over.

Write for low prices.

Brucella Abortus Vaccine

Strain No. 19

**VACCINATION NOW OFFICIALLY ENDORSED.
WE SELL TO STOCKMEN.**

A Full Line of Government Licensed Biologics for Cattle, Hogs, Horses, Sheep and Poultry. Also Other Supplies. . . . Write for Literature.

CONSIDER US HEADQUARTERS.

Dr. J. H. Oosterhaus, Pres. E. S. Willoughby, Sec.-Treas.

Kansas City Vaccine Company
Stockyards Station Kansas City 15, Mo.



Less Lifting to Load No Lifting to Hitch

YOU don't have to lift the front end of the Case tractor spreader, nor prop it up, to hook on with your tractor. The self-hoisting hitch avoids all that. What's more, it lowers the front of the box for every loading. The whole box is low, and so are the wheels. They don't stick up in your way.

This two-wheel spreader is as handy to back and steer as a two-wheel cart. You can keep it close to the supply, shorten every toss of your fork or shovel. Its rubber-tired speed on the road and in the field shortens the time of every trip.

This extra speed, plus the even feed and spread for which Case spreaders are known, make it practical to put light applications on more acreage . . . the method found to boost total crop yields twice as much as the same amount of manure in heavy application on fewer acres. Start now to get these three-fold gains; see your Case dealer about chances of delivery.

CASE



Send for Free Bulletin on modern management of manure. See how to make manure go twice as far; get details on modern spreaders. Also ask for folders on other machines you may need.

J. I. CASE CO., RACINE, WIS.

DE LAVAL MILKERS

for the best results

The De Laval Magnetic Speedway Milker is different and better in principle and performance. It is the only milker having pulsations for each unit created and controlled at the pulso-pump by magnetic force and assuring perfect uniformity of milking. In every respect the De Laval Magnetic Speedway is the world's best milker.



The De Laval Sterling Milker also provides De Laval quality milking. The wonderful Sterling Pulsator has only two moving parts and provides positive, precise milking speed and action that pleases the cow.

The De Laval Speedway Method of Fast Milking is a simple, common-sense milking routine which saves time, promotes better udder health and improves milk production.

Fast Milking brings improved results from any method of milking but best results with De Laval milkers.

See your nearest De Laval dealer or write us for full particulars.

THE DE LAVAL SEPARATOR CO.

165 Broadway
NEW YORK 6

427 Randolph St.
CHICAGO 6

SECRETARY'S REPORT

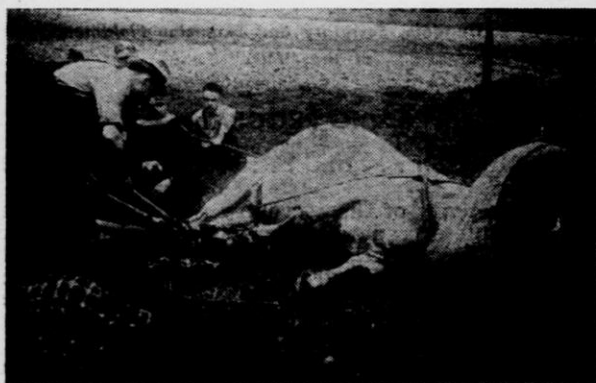
JAN. 1, 1945 — JAN. 1, 1946

BULL ASSOCIATIONS

A major project of your state Dairymen's Association is to promote and encourage Bull Testing Associations and much time is spent in organizing and supervising cooperative associations so that more good bulls will be alive when proven, and greater use made of the great sires when found.

Several new bull associations have been organized the past year in Door county, Douglas county, and Price county. Several more counties are in the process of organization. At the present time there are 30 bull testing associations operating in Wisconsin. Douglas county leads with six associations.

Hoof Trimming Demonstrations were conducted by the secretary in a number of associations the past year.



THE JUNIOR DAIRY HERD IMPROVEMENT PROGRAM IN WISCONSIN

Rapid strides have been taken by students of vocational agriculture in Wisconsin during the past year. A total of 35,524 cows were tested each month the past year by the boys in their farm training program. This work is sponsored jointly by the Rural Division of the State Board for Vocational and Adult Education and the Wisconsin Dairymen's Association. The future of dairying in Wisconsin lies in these Future Farmers and the Dairymen's Association has made the encouragement of these boys one of its major activities. It will continue to do so the next year. A glance at the Activity report of the secretary will show the large amount of supplies that we have furnished, at cost, to the Vocational Agricultural departments to carry on their herd testing program. There are very few departments not taking advantage of the services offered.

A remarkable increase in the number of certificates awarded in 1945 to the boys testing their home herds for two or more years is also evidence of the popularity of this program. In the year 1944 a total of 185

certificates and seals were awarded and for the year 1945 a total of 598 certificates and seals were awarded. An increase of 413. These awards are made jointly by the Wisconsin Dairymen's Association and the Wisconsin Association of Future Farmers of America.



**B. R. Dugdale, Secretary and Extension Fieldman
at the "Mike"**

RADIO PROGRAM

WHA Madison . . . and . . . WLBL Stevens Point

A new activity of the secretary was that of setting up a schedule of radio broadcasts for the entire year. This was done with the cooperation of the acting director of the Farm Program, Mr. Rupert Rasmussen, College of Agriculture, Madison. The first Wednesday of each month was assigned to the Wisconsin Dairymen's Association. A printed leaflet was distributed. This leaflet gave the schedule of program from August 1, 1945 to June 5, 1946. The inside of the leaflet gave some of the high spots of several of the talks being presented. A large number of our members can be reached over the air and a great many of them tell me they listen in regularly.

THE MANAGED MILKING PROGRAM

A new program for farm boys was inaugurated in 1945. The rules were as follows:

1. Any boy between the ages of 15 and 20 years inclusive, who has completed two or more years of dairy herd testing in a department of vocational agriculture or who has carried the dairy production project in 4-H club work for two or more years with production records on the home herd will be eligible to compete for awards.

2. Each applicant must submit an essay of not to exceed 750 words describing what he has done in dairy herd improvement through testing, feeding, weeding, sanitation and managed milking.

3. Essays will be limited to one applicant from any one Vocational Agriculture Department or 4-H club and must be in the offices of the Wisconsin Dairymen's Association, Madison, by *June 1*.

4. A committee will be appointed by the Dairymen's Association to select 6 applicants from each of 5 sections in the state. The sections will be the same as the F.F.A. sections in the state.

5. Selections will be based on the essay and work being done in dairy herd improvement.

6. One applicant from the above 6 will then be picked to represent his section at a demonstration sponsored by the Wisconsin Dairymen's Association at the State Fair provided it is held. All expenses will be paid.

7. If no State Fair is held, the winner in each section will be given a trip to include some of the outstanding dairy enterprises in the state with all expenses paid by the Dairymen's Association. Suitable awards will be made to the other 5 highest participants.

8. Provided no State Fair is held, a sectional contest can be held at the option of a sectional committee of 5 to be selected by the Dairymen's Association. This committee to be responsible for setting up the contest, selecting a suitable time and place at which to hold the contest, and securing necessary equipment and cows for contest. Judges for such a contest shall be appointed by the Dairymen's Association.

SUMMARY OF MANAGED MILKING PROGRAM BY SECTIONS

Section I

Only one boy entered from this section. He was Grant C. Wright of Amery in Polk county. His essay was given 2nd place and since no contest was held he was awarded 6th in milking technique with a total cash award of \$6.25.



Section II

A very good contest was held at the Clark County Fair at Neillsville. There were 5 entries from this section.

James Thomson, Mondovi, pictured above, placed first in milking technique and 2nd with his essay with a cash award of \$9.50. Richard Nedham, Owen, was

second in milking technique and 5th on his essay with \$6.50 cash. Allan Danielson, Cadott, was 3rd in milking and 3rd on essay with a cash award of \$7.00. Raymond Mullen, Bloomer, was 4th in milking and 1st on essay with a cash award of \$8.00. Norman Whitney of Elk Mound did not compete but his essay was judged 4th with an award of \$3.00.

Section III

This contest was held in connection with the Vernon County Fair at Viroqua. It was an outstanding event. Seven entries were sent in for this section. Robert Mosbruch, Platteville, was 1st in both milking and essay and receives a cash award of \$10.00. Allwin Pellett, Viola, placed 2nd in milking and 4th on essay. His award was \$7.00. Dale Nestingen, Westby, was 3rd in milking and 2nd on essay. He was awarded \$7.50 in cash. Paul Basque, Boscobel, was 4th in milking and 5th on essay with an award of \$5.50. Pat Muldowney, Richland Center, Robert Naumann, Lancaster, and Edward Tourdot, Reedsburg, were not able to compete. However Robert was awarded 3rd on his essay and Edward, who is in the Army, was given 6th on his essay.

Section IV

The contest for this section was held at the Winnebago County Fair at Oshkosh. It, too, was an excellent contest. There were 5 entries.

Roy Schermerhorn, Winneconne, placed 1st in milking and 1st on his essay, making a cash award of \$10. Jack Ahrens, Two Rivers, was 2nd in milking and 5th in essay. His award was \$6.50 in cash. Lawrence Pfaffenroth, Oshkosh, was 3rd in milking and 2nd on essay with an award of \$7.50. Eugene Anderson, Oshkosh, was 4th in milking and 3rd on essay with \$7.00. Edward Peterman, Jr., of Pulaski did not compete for milking honors but was given 4th on his essay with \$3.00.

Section V

The contest for this section was held at the Dodge County Fair at Beaver Dam. It, too, was an outstanding contest. There were 8 entries.

Charles Papke, Whitewater, placed first in milking and 3rd on essay with an award of \$9.00. Lloyd Novakowski, Berlin, was 2nd in milking and 2nd on essay with \$8.50. Anthony Loosen, Hartford, placed 3rd in milking with \$3.00. Marvin Krull, Lake Mills, was 4th in milking and 4th on essay with an award of \$6.00. Robert Nehm, West Bend, was 5th in milking with \$2.00. Bernard Sheridan, Fond du Lac, and Gerald Aspinwall, Burlington, did not appear for their milking technique.

Many excellent essays were submitted, showing that the boys who entered the program last spring have done a fine piece of work in their home dairy herds. We hope to sponsor this program again in 1946 and have more Future Farmer and 4-H club boys enter it.

WISCONSIN DAIRYMEN'S ASSOCIATION ACTIVITY REPORT

July 1, 1944

to

July 1, 1945

Days in Office	80½
Days in Field	179¾
Days on Leave	12
Miles Traveled:	
Personal Car	14,718
Bus or Train	4,049
Otherwise	3,608
Total	22,375
Meetings & Conferences Participated in	131
Attendance	8,451
Demonstrations Conducted	18
Attendance	2,985
Farm Visits & Individual Contacts	275
Radio Talks	9
Talks in Agriculture Departments	19
Attendance (Also included in Mtgs. & Conf. above)	888

Office Work

Bulletins & Circulars Prepared & Distributed	12,461
Personal Letters Written	2,038
Barn Cards Sold	5,428
Individual Cow Cards Sold	30,848
Summaries Sold	3,425
Herd Book Covers Sold	998
Quality Cream Books Sold	304
Herd Health Placards Mailed Out	12,561
Feeding & Management Folders Mailed Out	2,061
Victory Milking Folders Mailed Out	3,866
Membership Recognition Cards Sent	1,224
Memberships Received:	
Individual	119
Schools	114
Associations	991
Total	1,224

WISCONSIN DAIRYMEN'S ASSOCIATION INVENTORY OF ASSOCIATION SUPPLIES AND EQUIPMENT

Saleable Supplies On Hand

	July 1, 1944
Two-ring Herd Book Covers, 727 at .09 ea.	\$ 65.43
Monthly Herd Summaries, 2,841 at .92 per 100	26.14
Individual Cow Cards, 21,333 at .78 per 100.....	166.40
	\$257.97
	July 1, 1945
Two-ring Herd Book Covers, 1,715 at .09 ea.....	\$154.35
Monthly Herd Summaries, 8,792 at 1.00 per 100	87.92
Individual Cow Cards, 24,114 at .86 per 100.....	207.38
D.H.I.A. Barn Cards, 6,572 at .67 per 100.....	44.03
Quality Cream Books, 96 at .09 ea.	8.64
D.H.I.A. Pedigrees, 2,000 at .94 per 100	18.80
	\$521.12

Supplies and Equipment Not Saleable

Stenographer's Chair & Desk	\$ 12.00	\$ 11.00
Typewriter & Stand	35.00	34.00
Filing Cabinet 4'x7'	30.00	28.00
One 5-drawer Standard Letter File	10.00	10.00
Two 4-drawer Standard Wooden Letter Files	15.00	15.00
One 8-drawer Card File	5.00	5.00
1 Desk Lamp	6.00	6.00
Miscellaneous Stationery & sup- plies	125.00	200.00
Two-wheel Trailer, Box & Hitch..	15.00	14.00
Miscellaneous Exhibit Material...	No Value	No Value
Charts, Stand, & Cases	7.00	7.00
1 Camera & Case	55.00	55.00
1 Light Meter & Case	20.00	65.00
1 Projector & Case	65.00	20.00
1 Day Light Screen & Case	25.00	25.00
Unused Films	4.00	15.00
2 Slide Cases	4.00	4.00
18 Cardboard Files	4.50	4.00
1 Hoof Trimmer & 2 Farriers Knives	6.65	6.00
1 Butterfat Reader, 1 Strip Cup, & 1 Mastitis Tester	7.50	7.00
2 Game Books & 1 Dictionary	7.00	6.00
1 Tripod	2.80	2.50
Slides	5.36	5.00
1 Public Address System		74.50
Exhibit Material: Teat of Cow, Grubs, Mastitis		5.75
Hoof Trimming Kit and Equip- ment		32.72
1 4-drawer Standard Letter File..		55.64
1 View Finder for Camera		3.50
1 Bull Nose Punch		2.40
3 Reference Books		11.50
3 Minute Milking Demonstration Display		75.00
1 Card File		6.45
1 Desk File		4.50

WISCONSIN DAIRYMEN'S ASSOCIATION FINANCIAL STATEMENT

July 1, 1944, to July 1, 1945

Balance on hand July 1, 1944 \$ 1,440.09

RECEIPTS

State Aid	\$6,000.00
Membership	595.00
Advertising	902.07
Supplies	595.00
State Fair Refunds	594.25

Total Receipts 8,686.32

\$10,126.41

DISBURSEMENTS

Printing and Supplies	\$2,007.97
Prizes and Premiums	30.40
Salaries (Incl. Income Tax)	4,520.00
Travel Expense	1,206.22
All Other Expenses	1,520.97

Total Disbursements \$ 9,285.56

Balance on hand July 1, 1945 \$ 840.85

EXPENSE ANALYSIS

Item 1 (Salaries)

Total Salaries \$ 4,520.00

Item 2 (Travel Expense)

B. R. Dugdale \$ 1,206.22

Item 3 (Analysis of all other expenses)

Postage	\$ 325.83
Annual Meeting	229.61
Directors' Expense	115.82
Telephone and Telegraph	102.36
State Fair Expense (Refunded)	594.25
State Fair Expense (Not refunded)	3.00
Insurance on Camera	5.00
Auditing 1943-44 Books	20.00
Wisconsin Council of Agriculture Membership Dues	100.00
Breed Magazine Subscriptions	17.00
Charitable Contributions	4.00
Barron Co. Membership Refund	2.00
Black River Falls Membership Refund10
U. S. Livestock Sanitary Ass'n Membership	2.00

Total \$ 1,520.97

Arthur W. Ritchie
President

B. R. Dugdale

Secretary and Treasurer

PAST PRESIDENTS OF THE WISCONSIN DAIRYMEN'S ASSOCIATION

1872-4.....	Chester Hazen	Fond du Lac
1875-6.....	Hiram Smith	Sheboygan
1877.....	A. D. Leland	Sheboygan
1878.....	H. F. Dousman	Waukesha
1879.....	Z. G. Simmons	Kenosha
1880.....	Stephen Favill	Walworth
1881-2.....	C. R. Beach	Walworth
1883-6.....	W. H. Morrison	Walworth
1886.....	Stephen Favill	Dane
1887-9.....	H. C. Adams	Dane
1890.....	W. A. Henry	Dane
1891-3.....	W. D. Hoard	Jefferson
1894-5.....	C. H. Everett	Racine
1896-7.....	G. W. Burchard	Jefferson
1898-9.....	H. C. Taylor	Rock
1900-1.....	C. P. Goodrich	Jefferson
1901-3.....	J. Q. Emery	Dane
1904-5.....	Chas. L. Hill	Fond du Lac
1906-7.....	W. J. Gillette	Fond du Lac
1908-9.....	F. H. Schribner	Fond du Lac
1910-11.....	H. D. Griswold	La Crosse
1912-13.....	E. C. Jacobs	Dunn
1914-15.....	M. L. Welles	Fond du Lac
1916-17.....	Math. Michels	Fond du Lac
1918-19.....	Geo. McKerrow	Waukesha
1920-1921.....	Chas. A. Peterson	Fond du Lac
1922-23.....	Geo. C. Humphrey	Dane
1924-5.....	H. F. Schroeder	Washington
1926-27.....	W. J. Dougan	Rock
1928-29.....	S. H. Bird	Fond du Lac
1930-31.....	J. E. Bowen	Barron
1932.....	W. J. Katterhenry	Rock
1933-34.....	P. C. Burchard	Jefferson
1935-36.....	G. W. Vergeront	Dane
1936-37.....	H. E. Hill	Sheboygan
1938-40.....	Richard Brackett	Dunn
1941-42.....	Stanley Jamison	Outagamie
1942-44.....	H. F. Schroeder	Washington

designed . . . developed . . . and proved

in the Heart of Dairyland

CO-OP UNIVERSAL MILKING MACHINES

As much a quality product of Wisconsin as the milk they help produce, CO-OP UNIVERSAL Milking Machines are setting the pace for performance with dairymen who lead the nation. *

Only CO-OP UNIVERSAL makes a COMPLETE line of milking machines — thereby best meeting the individual needs of each dairyman. Whether the need is for pipe line milkers (standard or short tube) or for portable models (floor type or track type), every CO-OP UNIVERSAL outfit is specifically engineered to attain the highest possible level of efficient performance.

Only CO-OP UNIVERSAL is in the unique position of being cooperatively owned and controlled by the dairymen-users themselves — thereby freely permitting a frank meeting of needs all dairymen have in common. All dairymen need to be kept fully informed regarding methods of making most efficient use of their equipment. CO-OP UNIVERSAL renders this service — even though it means less equipment is required to do a given milking job. Outstanding in this respect is CO-OP UNIVERSAL's booklet, "Increased Milk Production by Modern Machine Milking," summarizing the findings and recommendations of the nation's leading dairy authorities regarding milk production. (Copies available, without charge, by writing the factory.)

Outstanding, too, is CO-OP UNIVERSAL's cautioning of dairymen against purchasing more equipment than is needed. Dairymen will find honestly presented advice in CO-OP UNIVERSAL promotional material that the use of too much equipment tends to slow down milking operations, reducing production and wasting time.

**In Waukesha County it is estimated that upwards of 90% of milking machine users use CO-OP UNIVERSALS.*

NATIONAL COOPERATIVES, INC.

Universal Division

Waukesha, Wis.

WHO'S WHO



Alphabetical List of Wisconsin Dairymen's Association Members



Breed Associations



Wisconsin D.H.I.A.



Agriculture Departments and F. F. A. Chapters



Wisconsin Bull Testing Associations

Here's How



Feed **KAFF-A**

- Calves step right out and grow — smooth and thrifty — with the bloom you like to show neighbors and which is always worth dollars when you're selling.
- KAFF-A saves milk, too. It takes over, when the calf is 4 days old. Only 18 lbs. of whole milk are fed after the 4th day, so your milk check is larger.
- Easy to feed — and mighty economical. Just watch this fine piece of nutrition go to work when you open your first pail. Complete feeding instructions inside each pail, so ask your dairy company or feed store for Kaff-A today.

**CONSOLIDATED PRODUCTS
COMPANY**

Makers of Semi-Solid Buttermilk Emulsions

DANVILLE, ILLINOIS



Ayrshire Breeder's

Active Members of the Wisconsin Dairymen's Association

Name	Address	Reg. & Gr.	No.
*Blank, Lawrence, Ripon		Registered	14
*Dalton, J. A., Oconomowoc, R. 1		Registered	23
*Elverman, John, Burlington		Reg. & Gr.	26
Fowler, Horace, Bristol		Reg. & Gr.	26
*Higginson, Edmund, Bryant, R. 1		Registered	50
*Hacker Bros., Brillion		Registered	40
*Henschel, Ray, Sturgeon Bay		Registered	24
*Jones, Cornelius E., Juneau		Registered	33
*Jones, Royal, Darien		Registered	22
*Krenke, Henry F., Fremont, R. 2		Registered	6
*Kressin, Harold, Rockfield		Reg. & Gr.	20
*Michalek, Ted, Kewaunee, R. 1		Reg. & Gr.	16
*Rice, Ora R., Delavan		Registered	18
*Sands, Alex, Racine		Reg. & Gr.	26
*Schroeter, Fred W. & Sons, Grafton....		Reg. & Gr.	40
*Sweeney, J. H., Hudson		Registered	29
*Ula, John D., Blanchardville		Grade	33
*Wald, Christ, Alma		Reg. & Gr.	27
*Wonoski, G. A. & Sons, Dousman		Registered	35

**Also Active Members of the Wisconsin Ayrshire Breeders' Association.*

LAWN HURST FARM

Registered Ayrshires

*Bred for Production and Type . . . Herd on
D. H. I. A. Testing.*

A few choice bull calves for sale. Sired by Ohio
Heart's Desire 72692. Herd Bang's Accredited.

**Lawrence Blank,
Ripon, Wisconsin**

Additional Active Members of The Wisconsin Ayrshire Breeders' Association Not Already Listed.

(Reported by State Secretary as of Dec. 11, 1945)

Name	Address
Bobolz, Fred & Higgins W.	Avalon
Bonney, Millard	Sturgeon Bay, R. 2
Borchardt, Frank D.	Neosho, R. 1
Brown, L. C.	Richland Center
Cupery, Peter	Cambria
Dalke, Walter	Wittenberg, R. 2
Dalton, Mervin	Oconomowoc
Dayton, A. G.	Hancock, R. 1
Dobratz, George	Merrimac
Duovak, Robert A.	Yuba, R. 1
Ewers, Alvin	Richland Center
Ewers, Forrest & Son	Richland Center
Fernholz, Mrs. Elva	Delavan
Fuhrmann, Arnold	Dale
Guenther, Elden J.	Blair, R. 3
Guenther, Henry	Fountain City, R. 1
Hafs, Oscar W. & Sons	Genoa City
Hahn, Perly A.	Harvard, Ill., R. 3
Hanneman, A. Carl	Wautoma, R. 2
Harder, E. J.	Phillips
Hofberger, John	Larsen, R. 1
Ihde, Millard	Neenah
Jacobs, Raymond	Sharon
Knoespel, Allen	Forest Junction
Lambrecht, Roy	Dalton
Lind Bros.	Viroqua
Marquardt, Otto	Tigerton, R. 2
Marquart, E. B.	Knowles
Meyer, Mrs. Myrtle	Whitewater, R. 2
Mitchell, Hugh	Racine, R. 1
Nelson, Elmer	Milltown
Nelson, Wayne	Edgerton, R. 1
Peterson, Louis	Holmen
Reyer, Edmund	Sheboygan, R. 3
Richardson, Harry	Spring Green
Schmidt, Leslie	Greenleaf
Schroeder, Albert	Clintonville, R. 3
Seefeldt, Bernhardt & Sons	Marshfield
Seibel, Henry	Woodstock, Ill., R. 1
Simmons, George	Pewaukee
Starrett, J. & Son	Bloomington
Stattler, W. P.	Lanark, Ill.
Travis, E. L.	Elkhorn
VanderGalien, Willard	Cambria
Vine, Ernest J.	Granton
Westphal, Otto	Kendall
Wilbershide, B. A.	Valders, R. 1
Wilbershide, J. C.	Racine
Wilquet, W. W.	Sawyer
Whitmore, G. G.	Evansville
Wurl, H. L.	Mayville

Select Choice Ayrshire Cattle

from the herd of
Willow-View Stock Farm

OWNED, MANAGED and OPERATED BY

O. R. MARQUARDT & SON

SHAWANO COUNTY, TIGERTON, WIS., R. 2

BUY VICTORY BONDS

The **FIRST** Name in

BARN EQUIPMENT Has ALWAYS Been

LOUDEN



WATER
BOWLS



LITTER CARRIERS



STALLS
AND STANCHIONS

It's vital in wartime to make all your farm animals produce the most . . . on less feed . . . with less help. In peace, it's a necessity . . . if you are to make the most profit. In a Louden equipped barn your animals enjoy clean, comfortable quarters. Sanitary drinking cups furnish temperate water always. There's no food robbing . . . little wasted feed. Warm, fresh air circulates without drafts. Then Louden litter and feed carriers and other equipment help lighten your load . . . enable you to do barn work in about half the time. Your animals produce more—you make the most money. And the years have proved Louden lasts longer. That's why in wartime or peacetime, it's wise to Loudenize your barn. See your Louden dealer today or write us about availability.

THE LOUDEN MACHINERY CO. (Est. 1867)

FAIRFIELD, IOWA

Branches . . . Albany, N. Y.; Toledo, O.; St. Paul, Minn.

A COMPLETE LINE OF MODERN BARN EQUIPMENT—Steel Stalls and Stanchions—Water Bowls—Feed and Litter Carrier Systems—Ventilating Systems—Hay Unloading Tools—Sliding Door Track—Hog House Equipment—Horse Stable Fittings—Barn Plan Service.

LOUDEN

EVERYTHING FOR FARM BUILDINGS

Wisconsin-Balance Sheet for BROWN SWISS

ASSETS

Producing Ability High in Milk and Fat
Quality of Milk 4% Standard
Size and Conformation....Large and Rugged
Vitality and Constitution.....Long Lived
Veal and Beef Qualities..High Market Value
Interest and Demand Always Active

Total Assets Un-Challenged

LIABILITIES

Dissatisfied Breeders None
Outstanding Complaints None
Bad Investments None

Total Liabilities None

*Net Worth . . . There's a
Real Future in Brown Swiss*



For Additional Information Write

The WISCONSIN BROWN SWISS BREEDERS' ASSOCIATION

CARL E. LEE, President

2919 N. Prospect St.

Milwaukee, Wis.

THEODORE KURTZ, Secretary

Cedarburg

Wisconsin

or

THE BROWN SWISS CATTLE
BREEDERS' ASSOCIATION OF THE
UNITED STATES OF AMERICA, INC.

Beloit, Wisconsin



Brown Swiss Breeders

Active Members of the Wisconsin Dairymen's Association

Name	Address	Reg. & Gr.	No.
Allyn, J. P., Delavan		Registered	70
Anderson, Ole E. & Son, Bruce		Reg. & Gr.	25
Badinger, Dexter A., Sr., Eagle, R. 2		Grade	18
Baumgartner, Ernest, & Son, Waukesha, R. 3		Registered	20
Becker, Willis, Appleton, R. 1		Grade	17
Behnke, F. W. & Son, Brillion, R. 2		Registered	22
Behnke, Richard, Hilbert, R. 2		Registered	15
Bentz, Otto, Cedarburg		Registered	32
Berg, Walter, Waukesha, R. 2		Reg. & Gr.	20
Brennecke, C. F., Monroe		Registered	25
Buckingham, C. L., Ridgeway		Registered	20
Casey, Clarence, Hortonville, R. 1		Grade	26
Casey, H. L., Kansasville		Reg. & Gr.	17
Christopher, Chas., Shullsburg		Grade	21
Cooke Estate, George, Racine		Registered	12
Crossman, Dale, Eldorado		Grade	27
Doubler Bros., Warren, Ill.		Reg. & Gr.	60
Drunasky, Geo., Sun Prairie		Reg. & Gr.	22
Evans, Willard R., Waukesha, R. 1		Registered	29
Fromm, Howard, Shullsburg		Registered	18
Gear, Carroll A. & Son, Plainfield, R. 1		Registered	15
Gilbertson, Morris L., Evansville, R. 1		Reg. & Gr.	11
Hansen, Dr. Roy T., Hartland, R. 1		Registered	19
Hazel-Mar Farm, Kenosha, R. 2		Reg. & Gr.	49
Henning, George, Burlington		Reg. & Gr.	21
Hodgson, Franze, Apple River, Ill.		Registered	30
Hughes, Gomer, Waukesha, R. 1		Reg. & Gr.	20
Illing, H. T., Waukesha, R. 3		Registered	35
Jensen, Emil, Menomonie		Registered	21
Kastenmeier, Alois W., Beaver Dam		Registered	75
Krueger, H. E. & Son, Beaver Dam		Reg. & Gr.	160
Kurtz, Theo., Cedarburg		Registered	9
Landwehr, Joseph, Seymour		Reg. & Gr.	27
Laudolff, William J., Fond du Lac, R. 4		Reg. & Gr.	18
Lee, Dr. Carl E., Milwaukee			11
Lentz, Harold, Dallas		Grade	33
Ludlum, Willard, Mineral Point		Registered	20
Meier, Alfred, Monroe, R. 2		Registered	28
Mills, S. J., Union Grove		Reg. & Gr.	29
Mueller, Emil, Seymour, R. 2		Registered	27
Mueller, Herb., Seymour, R. 2		Grade	25
Mueller, Reinhold, Seymour, R. 2		Grade	17
Mullen, Thomas, Apple River, Ill.		Grade	28
Nackers, A. M., W. De Pere, R. 2		Registered	44
Newhouse, Wesley, Kaukauna, R. 2		Registered	20
Noble, Leon, Shullsburg		Registered	18
Ostval Farms, Burlington, R. 2		Registered	68
Peterson, Archie, Oconomowoc, R. 1		Grade	18
Roesler, Ed., Dale		Grade	19
Rothmund, John, Manitowoc, R. 2		Registered	21
St. Francis Monastery, Burlington		Reg. & Gr.	18

Name	Address	Reg. & Gr.	No.
Salmon, Wm., Mineral Point	Registered	19
Schroeder, Charles, Appleton, R. 1	Grade	16
Serley, Jack, Exland	Grade	13
Stauss & Hodgson, Apple River, Ill.	Registered	25
Timm, Ray, Bl. Creek, R. 2	Grade	
Une-Vista Farms, Salem	Reg. & Gr.	22
Van Patten, C. J. & Sons, Black Creek	Registered	50
Voegeli, Jake, Monticello	Registered	52
Voegeli, John R. & Sons, Lodi	Reg. & Gr.	35
Weaver, Roy, Shullsburg	Registered	20
West, Weber, Sarona	Registered	30
Witt, Louis, West Allis 14	Registered	30
Yahnke, George & Leonard, Burlington, R. 4	Grade	25
Yahnke, Otto & John, Burlington, R. 4	Reg. & Gr.	21
Zick, Earl, Forest Jct.	Registered	8

REGISTERED BROWN SWISS

with

Type — Production — Quality

STOCK FOR SALE AT ALL TIMES

Inquiries Invited

C. L. Buckingham

RIDGEWAY, WISCONSIN

Additional Members of the Wisconsin Brown Swiss Association Not Already Listed.

(Reported by State Secretary as of Oct. 31, 1945)

Name	Address
Oster, John	Racine
Hansen, George	Hubertus
Bohn, Leo	West Bend
Greibe, Jerome	Sheboygan Falls
Kaderabek, John	Nashota
Blomgren, C. W.	Glenwood City
Elser, Theo. E.	Beaver Dam
Hounsell, Samuel H. & Sons	Fond du Lac
Hibbard, B. H.	Madison
Marsh, Arbor	Brodhead
Witt, Louis	Milwaukee
Fox, Russell	Waterloo
Olsen, Albert S.	Ettrick
Lyon, Margaret E.	Galesville
Steiger, Adolph	Ladysmith
Magnussen, Karl	Lake Mills
Hilbert, Heinz	Milwaukee
Vye, V. B.	Waukesha
Tanner & Gruber	Mondovi
Fritsch, Emil G.	Monroe
Krueger, Henry E. & Son	Beaver Dam
Moe, Price	Black River Falls
Ames, Gerald	Viola

Name	Address
Manz, A. H.	Eau Claire
Noble & Shaw	Shullsburg
Davis, E. A.	Wentworth
Antholt, Clarence	Brussels
Viney, Frank & Sons	Evansville
Wilhelm, Ambrose	Ogema
Kastenmeier, Joe	Beaver Dam
Klassy, Henry	Monroe
Griggs, Mary L.	Cable
Sauer, L. M.	Sarona
Morke, Harold	Cable
West, Weber	Sarona
Larson, Stanley	Cushing
Huber, Fres	Menomonie
Norden, Clarence M.	Wausau
Faulkner, Art.	Woodruff
Dietrich Bros.	Weyauwega
Steff, Frank	Tilleda
Nehrbass, Fred	Athens
Beyerl, L. M.	Colby
Martin, J. C.	West Salem
Sherry, Orbec D.	Viroqua
Dengenhardt, Leonard	Cashton
Jones, Rowland	So. Milwaukee
Mortenson, J. C.	Franksville
Schram, Carl	Mishicot
Riemer, Otto W.	Underhill
Heller, Kenneth	Cecil
Winters, Fred W.	Pound
Schauer, John	New Franken
Jeske, A. W.	Seymour
Storzer, Chas.	Oneida
Techlin, Alfred	Appleton
Reinke, John A.	Kewanee
Schauer Bros.	New Franken
Behnke, John W.	Hilbert
Green, Ora	Evansville
Damerow, Chas.	Beloit
Cline, Ralph	Janesville
Meier, Alfred J.	Monroe
Clemens, Wallace J.	Dane
Ingold, Fred	Monroe
Fox, Harley	Columbus
Inman, Howard	Beloit
Lang, Frank	Milladore
Edgar, Raymond	River Falls
Kopplin, Emil	Wausau
Joyce, A. J. & Sons	Salem
Dingman, Mr. & Mrs. E. C.	Ridgeway
Brockmeyer, Leroy	Madison
Florang, Wm. & Sons	Oconto
Moore, Roland	Janesville
Schott, Theo. K.	New Franken
Schneider, Henry	Chilton
Maurer, Milton	Sheboygan
Nielsen, Peter C.	Foxboro
Gurgel, Roy	Ableman
Van Kauwenberg, Joe	West de Pere
Grob, Benjamin	Grafton

**ARE YOU A MEMBER OF YOUR STATE
BREED ASSOCIATION?**

**Their work is for your interest. Your
support will prove to be a sound
INVESTMENT.**

JOIN NOW!



*Make Short Work
of
Manure Handling*

with Modern
John Deere Equipment

Cleaning up feed lots and sheds — getting manure onto the fields — is a short, easy job when you have modern John Deere manure handling equipment on your farm.

The husky, easy-to-operate John Deere Power-Driven Loader eliminates forking — loads the biggest spreader in approximately two minutes. All operations are controlled from the tractor seat. It's an ideal loader for big dairymen or for neighborhood use.

Low, easy-loading John Deere tractor — and horse-drawn spreaders are built entirely of steel — stand up under years of heavy-duty service. They have ample drive-wheel traction for successful operation in all field and ground conditions — permit spreading manure throughout the year.

See your John Deere dealer for full information on the money-making line of modern John Deere Manure Handling Equipment.

★ ★ **JOHN DEERE** ★ ★

Moline, Illinois

Concrete Dairy Improvements Aid Milk Production

A concrete milk house, cooling tank, or dairy barn will help you step up milk production. Concrete's sanitary features meet health board requirements; keep your cows healthier; make your work easier.

The Portland Cement Association has prepared design suggestions for these and other farm structures which will give many years of economical service. Concrete is low in first cost and upkeep. Construction is easy. Materials usually available locally.

Write for the Helpful Free Booklet
"Dairy Farm Improvements of Concrete"

PORTLAND CEMENT ASSOCIATION

735 N. Water St., Milwaukee 2, Wis.

**PLAN NOW TO ATTEND
YOUR
BREED ASSOCIATION
MEETINGS**

Friday, February 15

KLENZADE

Chemical specialties for Dairy, Food, and Industrial Sanitation—
Water treatments—Chemical feeding and proportioning equipment
—Engineering, technical and laboratory services.

KLENZADE PRODUCTS

INCORPORATED

BELOIT, WIS.

DISTRIBUTORS IN PRINCIPAL CITIES

PROGRAM WISCONSIN GUERNSEY BREEDERS ASSOCIATION

HEALTHY HERDS . . .

Calfhood vaccination for Bang's, with regular herd tests.

PRODUCTION TESTED HERDS . . .

a—By official testing, featuring AR Herd testing.
b—Certificates issued to owners of Ton Butterfat Cows.

IMPROVED MARKETS . . .

a—For Cattle — Through County Breeders Associations and State Sale.

b—For Product — Through Sale of Golden Guernsey Milk, Under the Copyright Trade Mark.

BETTER SIRES . . .

Selection based on complete information and lifetime production.

YOUTH PROGRAM . . .

a—20 Special cash prizes to 4H Club and FFA members.

b—Showmanship awards.

c—Cooperating with County Associations to give a prize to each 4H Club member that completes project.

WISCONSIN GUERNSEYS . . .

A State Breed Magazine to each member.

OFFICIAL GUERNSEY DIRECTORY

Send for a list of Guernsey Breeders who have been doing Production Testing. Selections from these herds have valuable information as to expected performance.



The American Guernsey Cattle Club
20 Grove St., Peterborough, N. H.



Guernsey Breeders

Active Members of the Wisconsin Dairymen's Association

Name	Address	Reg. & Gr.	No.
Ahrans, Chas. H.,	Two Rivers, R. 2	Grade	13
Allenwood Farm,	Kenosha	Registered	9
Allen, Everett,	Cameron	Reg. & Gr.	10
Amdahl, Ellis,	Dallas	Reg. & Gr.	24
Amundson, Roy,	Cameron	Grade	22
Audley, Thos. B.,	Pewaukee, R. 1	Grade	20
Avery, Charlie,	Cameron	Grade	19
Baird, Collier W.,	Rosendale	Reg. & Gr.	28
Baker, Geo.,	Chetek	Grade	23
Balko, Henry,	Bruce	Grade	15
Balson, Chas. E.,	Fond du Lac, R. 1	Registered	25
Barta, Calvin,	Two Rivers, R. 1	Grade	17
Bartell, E. A.,	Cedarburg	Reg. & Gr.	29
Bascom, Deane S.,	West Bend	Registered	14
Basse, William H.,	Waukesha	Registered	21
Bauernfeind, Robert,	Milwaukee	Reg. & Gr.	25
Becker, Harry J.,	Ft. Atkinson, R. 3	Registered	9
Becker, Walter G.,	Ft. Atkinson, R. 1	Registered	13
Becker, Wilbur,	Ft. Atkinson, R. 1	Registered	19
Behm, Walter F.,	Manitowoc, R. 1	Grade	16
Behrens, Bern.,	Grafton	Reg. & Gr.	22
Bence, Jerome,	Menomonee Falls	Reg. & Gr.	20
Berge, Anton & Son,	Valder, R. 1	Registered	27
Berge, Otis & Orin,	Valders, R. 1	Reg. & Gr.	28
Bernard, Gordon,	Bruce	Grade	14
Bergsmark & Stelse,	Jefferson, R. 1	Grade	16
Beshta, Art.,	Hortonville, R. 1	Grade	12
Beshta, Elmer,	Hortonville	Grade	16
Best, Ted G.,	Downing	Reg. & Gr.	25
Beyer, Emil,	Downing	Reg. & Gr.	22
Biladeau, Ran,	Chetek	Grade	20
Birk, Dr. Benj. J.,	Thiensville	Reg. & Gr.	32
Bjerstedt, Charles,	River Falls	Reg. & Gr.	22
Blomberg, Howard,	Exland	Grade	18
Boese, Wm. & Son,	Ft. Atkinson	Registered	14
Boese, W. R. & Son,	Ft. Atkinson, R. 2	Registered	12
Boetke, Erwin,	So. Milwaukee	Grade	2
Bonek, Harry,	Bruce	Grade	11
Bornschein Bros.,	Jefferson	Grade	24
Bradly, Frank,	Sturtevant	Reg. & Gr.	17
Brauer & Weigert,	Oakfield, R. 1	Grade	28
Breitrick, O. H.,	Appleton	Registered	21
Bremer, Harvey,	Manitowoc, R. 4	Reg. & Gr.	13
Brickson, Alfred,	Ft. Atkinson, R. 3	Registered	17
Brown, Myron,	Cumberland	Reg. & Gr.	8
Brunner, Joseph L.,	Manitowoc, R. 4	Registered	33
Brunner, Urban,	Manitowoc, R. 4	Registered	22
Buck, Wm.,	Prairie Farm	Grade	24
Bumby & Smith,	Rosendale	Reg. & Gr.	37
Burchard & Erdman,	Jefferson, R. 2	Reg. & Gr.	18
Burhop, Fred,	Grafton	Reg. & Gr.	19

Homestead Farm Guernseys

HERD SIRE
PINE MANOR KING'S IDEAL
289285

Grand Champion bull at Wisconsin state fair 1943.
His daughters are large and good type. Those coming into production are doing very good.

SIRE

Coronation King of Pine Manor 250949.
Sire of 10 A. R. daughters.

DAM

Coronation Althea 520571.
12176 milk — 551 fat GG.
12724 milk — 615 fat EE.
1st prize 3 yr. old cow.

Senior and Grand Champion at Indiana, Illinois.
and Iowa state fairs 1940.

JAMISON BROS.

R. 1, APPLETON, WIS.

Name	Address	Reg. & Gr.	No.
Burlingham, Lee, Dousman	Reg. & Gr.	33
Casaw, B. J., Hudson	Grade	26
Coit, Frank, Hudson	Grade	25
Chapin, Arthur, Brandon	Reg. & Gr.	27
Chapple, Jerome, Eden, R. 1	Grade	12
Christianson, Sam, Ft. Atkinson, R. 3	Grade	16
Clausen, Dwight, Ripon	Grade	22
Clausen, Herman & Son, Bruce	Reg. & Gr.	20
Clausing, Alfred, Cedarburg	Reg. & Gr.	23
Clausing, Armin, Grafton	Reg. & Gr.	28
Clausing Bros., Thiensville	Reg. & Gr.	24
Clausing, Elmer, Cedarburg	Registered	17
Clausing Estate, Julius, Grafton	Registered	25
Clausing, Herbert, Grafton	Registered	28
Clausing, Louis, Thiensville	Reg. & Gr.	24
Cole, Peter, Ridgeland	Grade	21
Congdon, Bert C., Galesville	Grade	16
Corium Farm, Fond du Lac	Registered	89
Corsette, Ralph, Black Creek, R. 1	Grade	27
Cramer, Joe, Menomonie	Reg. & Gr.	42
Davies, Dr. E. B., Waukesha	Reg. & Gr.	45
Day, Ed., Hudson	Reg. & Grade	22
Dickinsen, V. L., Augusta	Registered	40
Dietrich, John, Cedarburg	Grade	16
Dietz, Edward, Hortonville, R. 1	Registered	16
Dirkse & Jacqmin, Palmyra	Grade	24
Dodge, Roy, Jr., Chetek	Grade	29
Doorn, Delbert, Bruce	Grade	21
Doorn, Louis, Bruce	Grade	19
Dorn, Leo, Seymour, R. 1	Grade	17
Dougan, W. J., Beloit	Reg. & Gr.	60
Drephal, Elmer, Black Creek, R. 2	Grade	22
Draeger, Clarence, Ft. Atkinson, R. 2	Reg. & Gr.	18
Dusel, Albert, Barron	Registered	23

Edler Creek Guernsey Farm

Guernseys Bred for Production

The home of "Star," highest lifetime
production Guernsey in the state —
6014.9 lbs. of butterfat.

HERMAN CLAUSEN AND SON

Bruce, Wisconsin

Name	Address	Reg. & Gr.	No.
Dwyer Bros., Kendall		Reg. & Gr.	51
Eager, Lloyd, Lake Mills, R. 3		Grade	50
Eggan, Vern, Barron		Grade	17
Elverman, Wm., Burlington, R. 3		Grade	18
Emerson, Orville, Cameron		Grade	19
Engelbrecht, Ealter, Two Rivers, R. 1		Grade	21
Erdman, Louis C., Jefferson, R. 2		Reg. & Gr.	25
Eppler, Ervin, Oconomowoc, R. 3		Grade	25
Evanson, Mrs. Clara, Valders, R. 1		Grade	27
Fahrwald Farm, Oshkosh		Reg. & Gr.	80
Fischer, John, Shiocton, R. 2		Grade	26
Fisher, H. L. & Son, Valder, R. 1		Reg. & Gr.	25
Fladoes, Mrs. M. A., Milwaukee		Registered	13
Ford, Gordon & Donald, Fond du Lac, R. 1		Grade	16
Foss, Otto, Exland		Grade	10
Ford, John, Wilton		Reg. & Gr.	42
Fredricks, John, Appleton, R. 1		Registered	10
Frey Bros., London		Grade	9
Fruit, C. E. & Son, Waukesha		Reg. & Gr.	41
Funk, George, Jr., Watertown, R. 3		Reg. & Gr.	15
Galle, Fred, Fond du Lac, R. 1		Reg. & Gr.	27
Garvens, E. G., Milwaukee, R. 12		Grade	18
Gasper, Leo J., Tomah		Registered	20
Gates, D. F., Amherst, R. 2		Registered	22
Geisler, Harry, Watertown, R. 4		Grade	20
Geizendanner, John, Barron		Reg. & Gr.	20
Gilbertson, George, Manitowoc, R. 1		Grade	13
Gittins, E. J., Estate, Franksville		Registered	20
Golden Prairie Farm, Union Grove		Reg. & Gr.	33
Gonske, Gottlieb, Rice Lake		Registered	20
Gordon, L. E. & Son, Nelsonville		Registered	20
Graf, Waldo, Kiel, R. 1		Grade	29
Graf, Wilmer H., Kiel, R. 1		Grade	29
Graves, Floyd, Bruce		Reg. & Gr.	15
Griffin, Wm., Palmyra, R. 1		Grade	44
Groth, Edgar B., West Bend		Grade	19
Gruber, Erwin, Manitowoc, R. 2		Grade	18
Guderyon, H., Hartland, R. 1		Reg. & Gr.	50
Gums, Donald, Black Creek, R. 1		Grade	22
Haferbecker, Melvin, Appleton, R. 2		Grade	22
Hall, Louis, Thiensville, R. 1		Reg. & Gr.	22
Hammons, Freeman, Clear Lake		Reg. & Gr.	16
Hanson, Jack, Barron		Grade	12
Hanson, Gilbert F., New Holstein, R. 1		Registered	16
Harness, R. W., Neenah		Registered	30
Haugen, Jalmer, Barron		Grade	13
Haugh, John, River Falls		Grade	16
Harshman, Boyd, Elk Mound		Registered	19
Hass, Harry, River Falls		Reg. & Gr.	11
Hasslinger, Cletus D., Hartland		Reg. & Gr.	41
Heffernan, R. C., Oshkosh		Reg. & Gr.	

Hoard's Dairyman Farm

Guernsey Sires

Playhaven's Y. Plymouth

Playhaven's Y. Plymouth, our senior sire, is a son of Douglaston Lady Dorothea 413158, who made 11,341.5 lbs. milk and 629.5 lbs. butterfat as a junior 2-year-old and 15,943 lbs. milk, 809.8 lbs. butterfat in Class AA. She in turn is sired by Imp. Financier of Myrtle Place 166260 whose 63 daughters average 11,300 lbs. milk, 574 lbs. butterfat. The sire of Plymouth is Raemelton Yankee 222777. His daughters are large, roomy heifers that give promise of developing into very desirable cows. One of them has a record of 644 lbs. butterfat in GG, while another produced 13,712 lbs. milk, 688.1 lbs. butterfat in E. His dam, Green Meadow Tranquil 359360, made 801 lbs. butterfat as a junior 3-year-old and is considered one of the outstanding Guernsey cows of today. Plymouth combines both production and individuality.

McDonald Farms Independent

His sire and dam are both by proven sires and out of outstanding dams. Calves by this young bull are now arriving and they look very promising. His sire, McDonald Farms Prediction (a son of Foremost Prediction, 72 AR daughters), is being used extensively. McDonald Farms Enaveve, his dam, has 15,073 lbs. milk, 683 lbs. butterfat, GG, and is a daughter of the famous sire, Myhaven King, whose first nine daughters average 657 lbs. butterfat as two-year-olds.

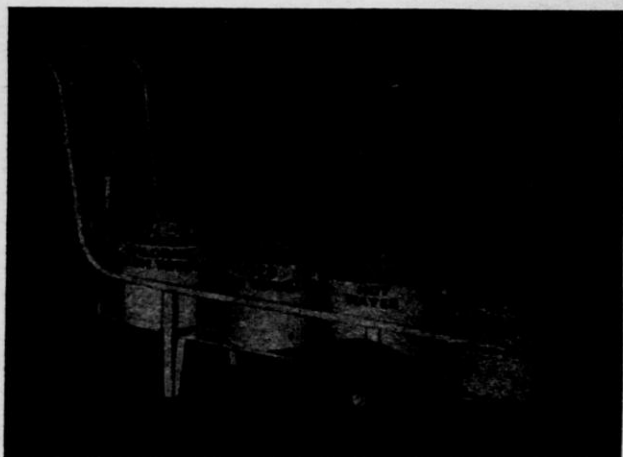
McDonald Farms King's Dairyman

McDonald Farms King's Dairyman, one of our junior sires, is a very typy two-year-old whose pedigree is strong in blood lines that have made good from both a type and production standpoint. Both his sire and the sire of his dam are proven and we are proving this young fellow as quickly as possible. He is a good individual of desirable dairy type and we consider him very promising. His sire, Myhaven King 233983, a son of Langwater King of the Meads 192628 (11 AR sons, 51 AR daughters) has 35 AR daughters whose 44 records average 570.2 lbs. butterfat (41 in immature classes). The dam of Myhaven King is Green Meads Thelma 394034, 13518 lbs. milk, 740.7 lbs. butterfat in Class D; (she also has 3 AR sons and 1 AR daughter). McDonald Farms King's Dairyman's dam, McDonald Farms Dafodil 665297 produced 10353 lbs. milk, 602 lbs. butterfat in GG. She is a daughter of Foremost Prediction 212227 whose 72 AR daughters average 586.6 lbs. butterfat and out of Supreme's Judy 389502, 10202 lbs. milk, 552 lbs. butterfat in G, whose sire Royal Supreme has 9 AR sons and 47 AR daughters.

Bull Calves for Sale

HOARD'S DAIRYMAN FARM
FORT ATKINSON, WISCONSIN

STOP THE SPREAD OF MASTITIS and GARGET ... with a SANI-TRUK



Leading Universities, Dairies, and Dairymen Recommend the Sani-Truk for Faster and More Sanitary Milking. See Your Dealer or Write

The University of Wisconsin has been using a Sani-Truk in their dairy for the past six months in connection with their fast milking program.

DAIRY EQUIPMENT CO.

Sani-Truk Division
1313 University Ave.
MADISON 5, WIS.

JEFFERSON CO. GUERNSEY BREEDERS' ASS'N.

PURE BRED

GRADES

Sires in Use

Langwater Badger, 6 nearest dams ave. 703.8 lbs. bf.

McDonald Farms Independent, 7 nearest dams ave. 704.0 lbs. bf.

Curtiss Candy Levity Fashion, 6 nearest dams ave. 710.3 lbs. bf.

Meadow Lodge Climax Silver, 7 nearest dams ave. 663.5 lbs. bf.

Silver Forrest Royal Blend, 7 nearest dams ave. 648.0 lbs. bf.

Curtiss Candy Deacon, 4 nearest dams ave. 617.4 lbs. fat.

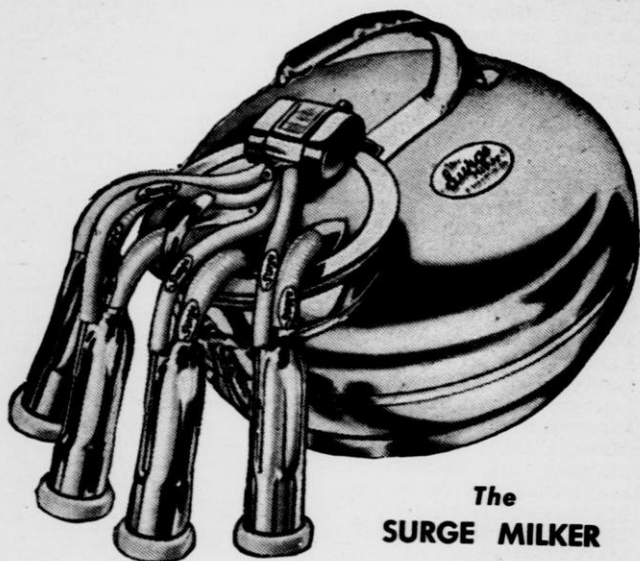
Boulder Bridge Pennant, 5 nearest dams ave. 601.4 lbs. bf.

These bulls, some of their sons, and other bulls just as good are being used by our members. If you need a herd sire or some females, visit or write us.

Wilbur M. Becker, Sec'y, Fort Atkinson

Name	Address	Reg. & Gr.	No.
Hegna, Walter, Chetek		Grade	26
Heine, Edward, Johnson Creek, R. 1		Grade	16
Heitz, Warner & Sons, Ft. Atkinson, R. 1		Grade	49
Heitpas Dairy, Appleton, R. 3		Grade	69
Hendrick, Ray, Campbellsport, R. 1		Grade	14
Henry, Carl, Appleton, R. 2		Grade	10
Herman, Alfred, Black Creek, R. 1		Grade	12
Herman's Farm, Antioch, Ill.		Registered	37
Hermann, Dr. W. C., Hartland		Grade	22
Hilgendorf, Waldemar, Thiensville		Reg. & Gr.	16
Hill, John, Rosendale		Registered	27
Hill, William & Son, Pewaukee, R. 2		Grade	20
Hillman, Erich, Cedarburg		Grade	15
Hilten, Lester, Bruce		Grade	18
Hinkley, Ormel, Eagle		Reg. & Gr.	22
Hintz, Alvin, Cedarburg		Reg. & Gr.	18
Hoard's Dairyman Farm, Ft. Atkinson, R. 1		Registered	39
Hochmuth, Herbert, La Valle		Reg. & Gr.	25
Hoff, Martin I., Barron, R. 1		Reg. & Gr.	21
Holtz, Forrest, Black Creek, R. 2		Grade	18
Holtz, Harry, Black Creek, R. 2		Grade	15
Horton, Ed., Augusta		Registered	22
Horshman, Boyd, Elk Mound		Registered	24
Hovener, Wm., Grafton		Grade	24
Hulbert, Clarence H., Waukesha, R. 5		Registered	21
Iding, Harvey, Eden, R. 1		Grade	22
Jacobson Bros., Chetek		Grade	26
Jahnke Bros., Ft. Atkinson, R. 1		Grade	35
James Farms, Ft. Atkinson, R. 1		Reg. & Gr.	71
Jamison Bros., Appleton, R. 1		Reg. & Gr.	49
Jensen Bros., River Falls		Reg. & Gr.	11
Jerome, Willis, Barron		Grade	20
Jerome, Lewis, Waukesha, R. 3		Reg. & Gr.	18
Johnson, Alfred, Sparta		Reg. & Gr.	26
Johnson & Fryday, Brandon		Reg. & Gr.	28
Johnson, Emil & Graves, Sidney, Bruce		Grade	18
Johnson, Lawrence H., Algoma, R. 2		Reg. & Gr.	16
Johnson, Oscar W., Weyerhauser		Grade	14
Johnson, Thorval, Union Grove		Reg. & Gr.	10
Jurkovic, John, Boyceville		Reg. & Gr.	18
Kahout & Altphilisch, Kenosha, R. 2		Grade	34
Kahl, Harris, Prairie Farm		Grade	32
Kallenback, Stanley, Dallas		Grade	37
Kallenback, Albert, Dallas		Grade	31
Kassilke, Art, Appleton, R. 4		Registered	17
Katner, Ralph, Hudson		Reg. & Gr.	24
Kelley, Mrs. Wm., & Son, Bruce		Grade	15
Kiesling, E. H., Jefferson, R. 2		Reg. & Gr.	24
Kiesling, M. F., Ft. Atkinson, R. 1		Reg. & Gr.	15
Klitzkie, Harry, Whitewater, R. 2		Grade	27
Kimball, Elmer, Seymour, R. 1		Registered	24
Kinney, Donald C., Pewaukee, R. 1		Grade	20
Kinney, Mark, Roberts		Grade	16
Kipp, F. F., North Prairie		Registered	16
Kirschenstein, H. W. & Son, Fond du Lac, R. 3		Grade	15
Kistner, Paul, Downing		Grade	25
Klann Bros., Chilton, R. 4		Registered	25
Klein, Theodore & Sons, Menomonee Falls		Reg. & Gr.	100
Klessig, Walter, Cleveland, R. 1		Grade	27
Klitzkie, Harry, Whitewater, R. 2		Grade	26
Koch, Mike, Mishicot, R. 1		Grade	18
Koehler, Kathryn, Dousman, R. 1		Grade	11
Kolb, Alden, Cleveland, R. 1		Grade	24
Kranzush, Wm., Oneida, R. 1		Grade	12
Krueger, Allen, Cedarburg		Grade	21
Krueger, Fred, Cedarburg		Reg. & Gr.	29
Kreuscher, W. & Sons, Union Grove		Grade	18

**MONEY MAKING MILKING
IS WHAT WE HAVE TO SELL!**



The
SURGE MILKER

A lot of people like the Surge . . . that's why, although we are making more Surge Milkers than ever before, the demand still exceeds production. However, be patient just a little longer and you will have a Surge . . . backed by a national organization of Surge Service Dealers pledged to keep the Surge a good milking machine year in and year out.

*Your
Surge Service Dealer
makes
your Surge Milker
worth more money*



BABSON BROS. CO.

2843 West 19th Street

Chicago, Ill.

SYRACUSE . . . MINNEAPOLIS . . . LOS ANGELES
KANSAS CITY . . SEATTLE . . HOUSTON . . TORONTO

Name	Address	Reg. & Gr.	No.
Krug, John J., Greenbush		Grade	25
Kunz, W. G., Ft. Atkinson, R. 3		Reg. & Gr.	13
Kusilek, Alfred, River Falls		Reg. & Gr.	20
Kutz, Alfred O., Whitewater, R. 3		Grade	22
Laabs, Arthur G., Colby		Registered	14
Lamers, Gordon, Kaukauna, R. 3		Grade	15
Lane, R., Bassett		Reg. & Gr.	54
Laning & Sherwin, Brandon		Grade	32
Larson, Clarence, Algoma, R. 2		Registered	15
Larson, Edwin, Pewaukee, R. 1		Grade	16
Leonard, Dr. C. W., Fond du Lac, R. 2		Grade	36
Lepley, Lynn, Bruce		Grade	18
Leppla, Victor, Appleton, R. 1		Registered	20
Lethlean, Henry & Sons, Shullsburg		Grade	25
Lindholm, Morris, Mineral Point, R. 4		Grade	35
Lobberg, Oscar, Nelsonville		Registered	16
Lohrenz, Ray, Hortonville, R. 1		Grade	
Lohrenz, Wesley, Shiocton, R. 2		Grade	20
Lohrenz, Wilbur, Hortonville		Grade	12
Luebke, Chas. J., Manitowoc, R. 4		Grade	23
Lueder, Walter, Cedarburg		Reg. & Gr.	24
Lurvey Bros., Dousman		Reg. & Gr.	40
Lutzke, Melvin, Kiel, R. 1		Reg. & Gr.	24
Luxerin Farms, Fond du Lac, R. 3		Registered	59
Maas, Emil, Prairie Farm		Grade	20
Malone, Guy, Canton		Grade	20
Magnus, J. F., Appleton		Registered	22
Magnussen, Karl, Lake Mills, R. 1		Grade	20
Manley, Carlyle, Appleton, R. 1		Grade	12
Main, Herbert A., Ft. Atkinson		Registered	15
Marken, Otis, Valders		Registered	20
Martindale, Walter, Bruce		Grade	21
Marzolf, Wm., Hudson		Registered	12
Mathesius & Richter, Burlington, R. 4		Reg. & Gr.	29
Matthys, Walter, Barron		Registered	27
Meehl, Joe, Appleton, R. 2		Grade	17
Meider, Ewald G., Hartland, R. 1		Registered	16
Meltz, Emory, Appleton, R. 1		Registered	24
Messman, Louis, Two Rivers, R. 1		Grade	14
Meyer, Emil & Son, Bruce		Reg. & Gr.	26
Meyer, Frank, Hales Corners		Registered	24
Meyer, Tony, Pewaukee		Grade	22
Mitchell, W. C., Bristol, R. 1		Reg. & Gr.	18
Mode, Albert, Ft. Atkinson, R. 3		Reg. & Gr.	19
Moldenhauer, Wm., Grafton		Grade	17
Monroe, John F., Hartland, R. 1		Grade	30
Morgan, Elton W., Cato, R. 1		Registered	44
Muetzelburg, Erwin, Cleveland, R. 1		Grade	20
Murat, Ray, Scandinavia		Reg. & Gr.	40
Mudd, E. D., Whitewater, R. 3		Grade	44
Murphy, A. C., Chilton, R. 4		Grade	23
Mutz Bros., Trevor		Registered	28
Myhre, I. C., Stanley		Reg. & Gr.	22
McArthur, Lyall, Bruce		Grade	23
McBain, E. L., Seymour, R. 2		Grade	10
McGeoch Land & Houses Inc., Milwaukee		Reg. & Gr.	37
McKee, Clyde C., Hillsdale		Reg. & Gr.	20
Nashotah House Farm, Nashotah		Registered	40
Natchwey, W. J., Bruce		Grade	10
Nelson, Chas., Dousman		Registered	22
Nelson, Elmer, Bruce		Grade	21
Nelson, Manning, Shiocton, R. 2		Reg. & Gr.	14
Nelson & Rush, Richmond, Ill.		Reg. & Gr.	24
Nespodzany, Roman, Manitowoc, R. 3		Grade	24
Nicholas & Tratt, Whitewater, R. 1		Reg. & Gr.	26
Nicoson, LeRoy S., Eagle, R. 1		Grade	18
Nimmer, Henry, Kiel, R. 1		Reg. & Gr.	21
Nokes, Kenneth, Helenville, R. 1		Grade	19
Northey, Wm. & Son, Ft. Atkinson, R. 1		Grade	19
O'Brien, P. R., Baileys Harbor		Registered	30

Name	Address	Reg. & Gr.	No.
Oines, L. E., Galesville		Registered	22
Olson, Gilbert, Chetek		Grade	25
Onasch, A. J., Oconomowoc, R. 4		Registered	18
O'Neil & Hardgrove, Rosendale		Grade	28
Owen, William, Downing		Registered	16
Oynes, M. E., Galesville		Grade	26
Parslow, John, River Falls		Reg. & Gr.	16
Patey, Charles E., Waukesha, R. 2		Reg. & Gr.	18
Pattee, John, Waupun		Registered	15
Paulson Bros., Bruce		Grade	28
Paulson, Blaine G., Melrose		Grade	20
Pearson, Emil, Exland		Grade	9
Pearson, Newton, River Falls		Reg. & Gr.	35
Pett, Reinhold, Mukwonago, R. 1		Grade	28
Piper, Roy M., Eagle		Grade	14
Poetsch, Howard C., Waukesha, R. 1		Grade	13
Portz Bros., Waukesha, R. 1		Reg. & Gr.	30
Priedeman, Gordon O., Waukesha, R. 5.		Reg. & Gr.	16
Pritzl, John A., Cato, R. 1		Grade	24
Pucker, Albert, Rosendale		Grade	23
Purity Farm, Hartland		Registered	14
Quilling, Edwin, Menomonie		Grade	26
Rahr, Guido R., Manitowoc		Registered	19
Rasmussen, Peder, Chetek		Grade	20
Rich, Ralph, Chetek		Grade	16
Riehl, Lloyd, Black Creek, R. 2		Grade	18
Riemer, Erwin, Cedarburg		Reg. & Gr.	24
Riemer, Henry, Thiensville		Reg. & Gr.	36
Riemer, Walter, Nashotah, R. 1		Grade	23
Riesen, Fred G., Oconomowoc, R. 2		Grade	27
Rock, Tony, Dodgeville		Reg. & Gr.	14
Rogers, D. S. & Son, Dallas		Grade	26
Rogers, Bradford, Oconomowoc, R. 1		Grade	12

Elderbrook Farm

Quality Guernseys

since 1918

Production - Tested

HERBERT HOCHMUTH

LAVALLE, SAUK COUNTY, WIS.

Serving The Trade

Since 1889

57 YEARS

FREDMAN BAG COMPANY

330 E. Clybourn St.
MILWAUKEE 2, WIS.

Name	Address	Reg. & Gr.	No.
Roitt, J. M., Kiel, R. 2		Grade	10
Ross, Louis, Roberts		Reg. & Gr.	17
Ross, Wm., Roberts		Grade	27
Ruby Farms, Waukesha, R. 5		Grade	48
Rummler, Henry, Watertown, R. 4		Reg. & Gr.	25
Rustman Farms, Bassett		Reg. & Gr.	68
Ruwoldt, Henry, Appleton, R. 2		Grade	10
Ryall, Ike & Son, Bruce		Grade	19
Sabel, Clarence, Eden, R. 1		Grade	15
Schellhouse Bros., Menomonie		Reg. & Gr.	22
Scherwitz Bros., Ft. Atkinson, R. 3		Reg. & Gr.	29
Schilberg, Carl, Watertown, R. 3		Grade	27
Schlesner Bros., Johnson Creek, R. 1		Registered	22
Schneider, Frank, Kenosha, R. 3		Reg. & Gr.	19
Schroeder, Alvin R., Watertown, R. 3		Reg. & Gr.	13
Schroedl, Alfred, Jefferson, R. 2		Grade	21
Schwemmer, Will, Ft. Atkinson, R. 3		Grade	13
Sengbusch, Royal, Ft. Atkinson, R. 2		Grade	22
Schlesner Bros., Johnson Creek, R. 1		Registered	13
Schmidt, Ottmar H., Sturgeon Bay, R. 5		Reg. & Gr.	20
Schroeder, Ted. & Son, Menomonie		Grade	27
Schultz, Edward, Kenosha, R. 3		Reg. & Gr.	15
Schultz, Harold, Pewaukee, R. 1		Registered	32
Schultz, R. C., Black Creek, R. 1		Registered	21
Schumacher, A. C. & Son, Waukesha, R. 2		Reg. & Gr.	34
Schwanz, Herman G.		Grade	20
Schwemmer, Geo., Mukwonago		Reg. & Gr.	19
Seehaver, Clarence, Ripon		Registered	23
Sheldon, Bernard, Rice Lake		Reg. & Gr.	14
Selinske, Ed., Weyerhauser		Grade	15
Shearer, Morton, Cumberland		Reg. & Gr.	16
Shellhouse Bros., Menomonie		Reg. & Gr.	36
Simon, Maurice, Boardman		Reg. & Gr.	31
Skinner, Gorden, Barron		Grade	14
Skubal, Anton, Mishicot, R. 1		Grade	14
Smithyman, Paul H., Sussex, R. 1		Reg. & Gr.	20
Smithyman, Ralph, Pewaukee		Reg. & Gr.	20
Spoolhoff, Rense, Bruce		Grade	10
Springmeadow Farms, Genoa City		Registered	30
Stallman, John F. & Sons, Elk Mound		Registered	30
Stapleton, Tom, Hartland, R. 1		Reg. & Gr.	20
State Teachers College, Platteville		Registered	28
Stauske, Fred, Cedarburg		Reg. & Gr.	17
St. Bonaventure College, Sturtevant		Grade	21
Steinhoff, A. J., Eagle		Grade	22
Steinhoff, Geo., Wilton		Reg. & Gr.	30
Steinhoff, Mrs. Henry & Sons, Wilton		Reg. & Gr.	40
Steinke & Meilahn, Eldorado		Grade	28
Stewart, Milton, Roberts		Reg. & Gr.	12
Stroh, Donald, Menomonie		Registered	44
Studds, Mary Lindsay, Pewaukee, R. 1		Grade	13
Sugden, Frank, Mukwonago, R. 1		Reg. & Gr.	15
Sunny Lea Farm, Grafton		Reg. & Gr.	30
Suttner, Louis, Appleton, R. 1		Registered	14
Swan, Wm. D., Pewaukee, R. 2		Reg. & Gr.	34
Swendson, E. A., Lake Beulah		Registered	19
Sy, Fred & Son, Kiel, R. 2		Registered	26
Tatro, Guy, Bruce		Grade	25
Taylor, Art, Appleton, R. 2		Grade	10
Taylor, Neal, River Falls		Reg. & Gr.	25
Tecklin, Walter, Appleton, R. 3		Grade	15
Tetzlaff, Weald, Black Creek, R. 2		Grade	13
Thatcher, C. B. & Son, Clear Lake		Registered	30
Thomas, James, Oconomowoc, R. 4		Grade	14
Tiegs, Frank, Bruce		Grade	18
Timm, Art, Appleton, R. 2		Grade	15
Tratt, Ralph & Son, Whitewater, R. 1		Reg. & Gr.	36
Trollen, Martin E., Hudson		Reg. & Gr.	46
Ulness, Orin, Valders, R. 1		Grade	26

ELK MEADOW FARM

REGISTERED GUERNSEYS

John F. Stallman, Elk Mound, Wis., Eau Claire telephone
Federal Accredited for T. B. No. 4738 — Bang's
Certified No. 19478

OUR NEW HERD SIRE IS: Boulder Bridge Insignia 357041
Sire: Green Meads King Don
320501. Dam: Boulder Bridge
Peony 718554 a. r. M-12218.5
lbs., Fat-607.7 lbs., G. G.

WE HAVE YOUNG ANIMALS Sired BY:
McDonald Farms Forceful 308216
Boulder Bridge Sunlight 274911 and out of good dams sired by:
Boulder Bridge Resolute 237261—3 star bull
Boulder Bridge Leviathon 213384—4 star bull

Name	Address	Reg. & Gr.	No.
Utschig, Joe, Appleton, R. 2		Grade	25
Van Liere & Faulke, Bristol		Reg. & Gr.	36
Voigt, Elmer T., Reedsville, R. 2		Registered	25
Vollmer, Carl, Mukwonago, R. 1		Grade	28
Von Rueden, Katherine, Eagle, R. 1		Grade	21
Wagner, Ed. A., Hartland, R. 1		Grade	20
Wagner, Joe, Fond du Lac, R. 1		Reg. & Gr.	35
Wall, Lowell, Dallas		Grade	30
Wanvig, C. O., Milwaukee 1		Grade	16
Ward, Vilas, Waterloo, R. 2		Grade	17
Weaver, Robert, Shullsburg		Grade	12
Webber, Joseph P., Sturtevant		Reg. & Gr.	37
Wein, Otto, Hartland, R. 1		Reg. & Gr.	31
Weis, Rudolph, Waukesha, R. 2		Reg. & Gr.	22
Welch, Edmund T., Grimms		Reg. & Gr.	17
Welles, Theodore, Rosendale		Reg. & Gr.	36
Wellstein, Benjamin, Knapp		Reg. & Gr.	26
Wellstein, Daniel, Menomonie		Reg. & Gr.	18
Werner, Carl, Watertown, R. 3		Grade	14
Wey Acres, Thiensville		Registered	60
Wiepking, Martin, Cedarburg		Grade	23
Wiechman, Jr., Herman, Cedarburg		Grade	23
Wilde, Theo., Thiensville		Grade	22
Wildner, Bertha, Menomonie		Reg. & Gr.	41
Wilkins, Charles & Son, Platteville		Registered	90
Wille, Edgar, Thiensville		Reg. & Gr.	17
Wille, Percy H., Pewaukee		Grade	18
Williams, Arthur, Waukesha, R. 1		Grade	32
Williams, W. D. & Owen, Waukesha, R. 1		Grade	16
Williams & Kallenback, Prairie Farm		Grade	24
Wilson, Harlan J., Rush Lake		Registered	35
Winkler Bros., Burlington, R. 4		Grade	43
Wright, Harold, Johnson Creek, R. 1		Grade	21
Wisch, Herman, Jefferson, R. 2		Registered	13
Woyak, Tom, Neenah, R. 3		Grade	11
Wulff, William, Thiensville		Reg. & Gr.	27
Younggren, Wilmer, River Falls		Reg. & Gr.	19
Zaiser, C. J., Oconomowoc		Registered	10

K. V. FARM

Since 1913

ELKHORN, WIS.

R. 1, Box 332

PUREBRED GUERNSEYS

Pure Bred Guernseys headed by our SR. Herd Sire Corium Slogan Star, 679 lb. fat son of Langwater Slogan, has 3 daughters with 11010 M., 573.6 F., 9658 M., 437.9 F. and 8422 M., 404.7 F., 8 daughters with 195 lbs. M., 4 lbs. Fat more than their dams.

LAKE VALLEY FARM
PAUL ANDERSON, Proprietor

Breeder of

Registered Guernsey Cattle

SINGLE COMB WHITE LEGHORNS

POPLAR, WISCONSIN

MEMBER OF D. H. I. A.

Bulls and Females For Sale

*For the finest
in Milking Machine
Equipment*

LOOK TO YOUR



DEALER

or write

BEN H. ANDERSON MFG. CO.

Madison 3, Wisconsin

**Valuable Information Relative to
Building Herd Efficiency**

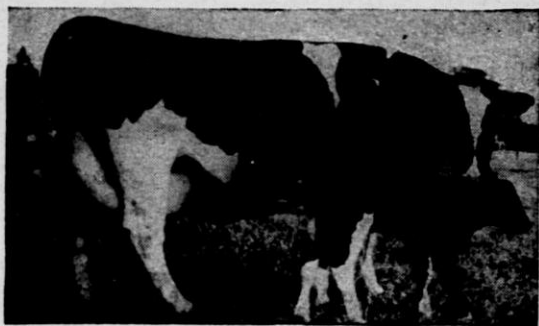
on

**GOOD FEEDING AND
HERD MANAGEMENT
Is Yours for the Asking.**

— Write —

**WISCONSIN DAIRYMEN'S
ASSOCIATION**

Madison, Wisconsin



High Producing Cows Need Minerals

... VITAMINS
... PROTEINS
... ENZYMES

GET THEM ALL IN MIN-A-LAK!

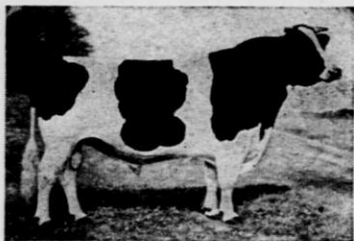
Dairy cows need Min-A-Lak's time-tested ingredients to help produce **MORE MILK**; **RAISE STRONGER CALVES**; **KEEP IN PROFITABLE PRODUCTION MORE YEARS.**

INVESTIGATE MIN-A-LAK

Feed it year 'round. Help get more production out of less feed, the Min-A-Lak way. Only Min - A - Lak gives MIN-A-LAK results.



P A GREAT NAME IN INCREASED FEEDING PROFITS
PURITAN LABORATORIES, INC.
DES MOINES 9 IOWA



with **HOLSTEINS** The Future Is Bright

Few men build more than one dairy herd in a lifetime. It is a task which takes many years. While you are at it, why not build your herd with the very best foundation stock you can obtain?

Large and strong, the rugged Holstein "walks away" with the burden of heavy milk production and calf bearing.

If you are building with purebred Holsteins, your future as a dairyman is bright.

Holstein Leadership Established

Read the records of dairy production — Holsteins lead in every official age class for the production of milk and butterfat by registered cows. The world's record herd average of 731.9 pounds of butterfat and 19,983 pounds of milk is held by a herd of purebred Holsteins. The 13,118 registered Holstein cows completing records in the 1944 official Herd Improvement test year, averaged 391 pounds of butterfat and 11,036 pounds of milk.

Free literature on Holsteins is available for the asking. The Holstein breed is well organized. You will be given ample support if you join the Holstein Family.

**The Holstein-Friesian
Association of America**

BOX 3079

BRATTLEBORO, VERMONT

Holstein Breeder's



Active Members of the Wisconsin Dairymen's Association

Name	Address	Reg. & Gr.	No.
Acheson, Geo. H.,	Oconomowoc, R. 4	Grade	16
Adams, Delbert,	Waukesha	Grade	16
Ahlers, Walter K.,	Grafton	Registered	27
Alexander, John,	Baraboo	Registered	44
Almendinger, John,	Warren, Ill	Grade	34
Ambrose, E. A.,	Jefferson	Grade	12
Anderson, Chas. A.,	Stanley	Grade	40
Anderson Bros.,	Neenah, R. 3	Grade	20
Andrews, A. L.,	So. Wayne	Registered	37
Andres, Kenneth,	Darlington, R. 4	Grade	15
Ansay, Ferd,	Belgium	Registered	11
Anschuetz, Geo. P.,	Cedarburg	Reg. & Gr.	17
Anthes & May,	Ft. Atkinson	Registered	24
Appel, Leo,	Apple River, Ill.	Grade	40
Appleton, Chester,	Kaukauna, R. 2	Grade	20
Arlington Farm,	Bristol	Registered	33
Atwood & Davison,	Brandon	Registered	18
Averbeck, Art,	Van Dyne, R. 1	Reg. & Gr.	19
Baas, Alfred,	Waukesha, R. 3	Grade	19
Baas, Clarence,	Waukesha, R. 3	Grade	15
Bailey, Edwin & Son,	Kenosha, R. 3	Registered	18
Baird Bros.,	Waukesha, R. 2	Registered	50
Baker & Stone,	Ripon	Reg. & Gr.	15
Baker, Lester,	Hudson	Grade	19
Baker, T. S. & Son,	Hudson	Grade	32
Balko, Henry,	Bruce	Grade	15
Ballbach, John,	Milwaukee, Sta. D	Reg. & Gr.	24
Banker, Paul,	Ft. Atkinson, R. 1	Registered	15
Barnes, V. B.,	Darlington, R. 4	Grade	17
Barry, Catharine,	Argyle, R. 2	Grade	30
Bartell, Nathan,	St. Cloud	Grade	21
Barthel, Armin,	Thiensville	Reg. & Gr.	13
Barthel, Wm. & Son,	Salem	Reg. & Gr.	27
Barthels, George, Sr.,	Two Rivers, R. 2	Reg. & Gr.	28
Bathke, Fred H.,	Hudson	Reg. & Gr.	27
Batterman, Elwood,	Rosendale	Reg. & Gr.	22
Bauer, Frank,	Campbellsport	Grade	32
Baumgarten, Joseph,	Oneida, R. 1	Grade	12
Bayley, Ralph H.,	Lake Beulah	Reg. & Gr.	23
Bayley, Wallace,	Lake Beulah	Registered	19
Becker, Edwin,	Ft. Atkinson, R. 1	Registered	9
Beggan, Oliver,	Watertown, R. 2	Reg. & Gr.	14
Behling, Oscar,	Lake Beulah, R. 1	Grade	38
Behrens, Ed.,	Grafton	Grade	32
Beilke, Walter & Son,	Fairwater	Registered	36
Benke, Paul O.,	Hales Corners, R. 2	Grade	18
Bennett Bros.,	River Falls	Grade	27
Bennett, Harold,	Oakfield	Registered	23
Bennett, J. B.,	Burlington	Registered	50
Benson, Amil G.,	Bruce	Grade	17
Benzinger, John,	Mishicot, R. 1	Reg. & Gr.	16
Berge, Mark,	Valders	Grade	13
Bergel, Frank,	Two Rivers, R. 2	Grade	30
Berndt, Emil,	Grafton	Grade	35

One of Our Herd Sires



PABST ROAMER

Pabst Roamer is a son of Wisconsin Admiral Burke Lad, Gold Medal Proven Sire with a mature 3x index of 20,410 lbs. of milk, 4.01% and 818 lbs. of fat on 17 daughter-dam pairs.

Roamer's dam, Pabst Cascade Prilly Wayne, made 644 lbs. of fat, 3.8%, at two years on 4x and is a daughter of the Gold Medal Proven Sire, Carnation Sensation. Her dam is by the Gold Medal Proven Sire, King Segis Alcartra Prilly and the next dam is by the Gold Medal Proven Sire, Creator. Roamer's dam has two record daughters, one with 631 lbs. of fat, 4.1% on 3x at 2½ years, the other with 730 lbs. of fat on 3x at 6 years. This is proof of her transmitting ability. Roamer gets 15/16 of his inheritance through Gold Medal Proven Sires.

Bull Calves by Pabst Roamer are available to head your herd, some of them out of daughters of Wisconsin Admiral Burke Lad. Write us for pedigrees.

Semen from Past Roamer is available to breeders in the Middle West, as is also semen from his ¾ brother, Pabst Regal. Write us for information and plan to breed a few of your good cows to one of these sires.



Pabst Farms, Inc.

Accredited and Negative

OCONOMOWOC, WIS.

Name	Address	Reg. & Gr.	No.
Berres, Alvin,	Campbellsport, R. 2	Grade	25
Beshta, Art.,	Hortonville, R. 1	Grade	12
Beshta, Elmer,	Hortonville	Grade	16
Beule, E. A.,	Fox Lake	Reg. & Gr.	25
Beyrer, Emil C.,	Downing	Reg. & Gr.	23
Bielefeld, Herman,	Grafton	Grade	12
Binversie, Henry,	Kiel, R. 1	Reg. & Gr.	20
Bird, Bennett S.,	Oakfield, R. 2	Registered	18
Bird, Robt. A.,	Oakfield, R. 2	Registered	24
Bird, S. H. & Son,	South Byron	Registered	29
Blackmore Bros.,	Campbellsport, R. 3	Reg. & Gr.	34
Blank, Ray,	Grafton	Reg. & Gr.	22
Bloedorn, Herbert,	Black Creek, R. 2	Grade	18
Blohm, Fred,	Seymour, R. 1	Grade	25
Bohl, George,	Appleton, R. 3	Grade	21
Bohl, Robert,	Beaver Dam	Grade	25
Bohleen, Axel,	Kenosha, R. 2	Reg. & Gr.	22
Boldt, Harold,	Mukwonago, R. 2	Grade	14
Bonness, Jos. D.,	Waukesha, R. 4	Registered	23
Borchardt, Arthur,	Brandon	Grade	16
Borchardt, Herman,	Brandon	Grade	13
Bornschein Bros.,	Jefferson	Grade	24
Boss, U. C.,	Oshkosh	Grade	35
Boyer, A. E.,	Ft. Atkinson, R. 2	Grade	28
Boyle, F. H.,	Peables	Registered	50
Brath & Yankow Bros.,	Campbellsport, R. 3	Grade	33
Braun, A. D.,	Grafton, R. 1	Reg. & Gr.	46
Bray, Elmer,	Van Dyne	Reg. & Gr.	19
Britzman, Elton,	Jefferson, R. 3	Grade	16
Britzman, Louis,	Helenville, R. 1	Grade	15
Bruenig, Raymond,	Mishicot	Grade	32
Brunnquell Bros.,	Port Washington	Registered	16
Bublitz, Ruben,	Cedarburg	Grade	15
Bumby & Smith,	Rosendale	Reg. & Gr.	37
Burcalow, Harry,	Bruce	Registered	15
Burhop, A. F.,	Grafton	Reg. & Gr.	17
Burmeister, Cecil,	Gratiot	Grade	30
Burmeister, Harry,	Gratiot	Grade	25
Burton, Ed.,	Belgium	Grade	26
Busch, Wm. & Sons,	Burlington, R. 3	Grade	61
Buss, Lawrence,	Appleton, R. 2	Grade	17
Buss, Victor,	Appleton, R. 3	Grade	23
Buttles, Lee,	Lake Beulah, R. 1	Grade	25
Byrne, Vincent,	Shullsburg	Grade	25
Byrnes, John,	Appleton, R. 3	Grade	26
Bolander, Walter,	Granton	Grade	12
Calvert, Walker,	Mineral Point, R. 4	Grade	30
Carey, Orville,	Darlington, R. 4	Grade	17
Carnes, Fay,	Ft. Atkinson, R. 2	Registered	26
Carpenter, Charles,	Hortonville, R. 1	Registered	14
Chadek, Chas. J.,	Franksville	Reg. & Gr.	25
Chapman, John,	Mukwonago, R. 1	Grade	20
Chase, Frank,	Waupun	Reg. & Gr.	22
Christianson, Audie,	Weyerhauser	Grade	21
Christianson, Sam,	Ft. Atkinson, R. 3	Grade	16
Clack, Harry,	Boyceville	Grade	19
Clark, B. A.,	Mukwonago, R. 2	Reg. & Gr.	30
Clark, F. T.,	Waupun	Grade	22
Clayton, Raymond,	Mineral Point, R. 4	Grade	26
Clausen Bros.,	Kenosha	Registered	35
Clausen & Hansen,	Sturtevant	Registered	37
Clausen & Roeder,	Sturtevant	Reg. & Gr.	34
Clusen, Reinhold,	Manitowoc, R. 5	Reg. & Gr.	24
Coughlin, Chas. L.,	Saukville	Registered	11
Cowles, Verne,	South Byron	Registered	13
Cuff, O. P.,	Hortonville	Grade	16
Culbertson, Merle,	Medina	Grade	14
Cull, A. J. & Son,	Pewaukee, R. 1	Registered	27
Daley, K. S.,	Dodgeville	Grade	25
Daniels, Emil,	Kansasville	Grade	34
Daniels, Mrs. Laura, & Son,	Bristol	Grade	21



FEMCO ALMAS ONLY SON

Breed artificially to Femco Almas Only Son, the highest record sire in the world over all breeds.
Femco Alma, his dam, a Junior 2-yr.-old, 1,001 lbs. fat; 4.9% test. 3-yr.-old record 1,057.9 lbs. fat, 4.6% test.
Carnation Ormsby Butter King, the sire's dam, only 1,400 lbs. fat cow in the United States. First two dams records average 30,788 lbs. milk; 4% test, 1,229.95 lbs. fat, one a Junior 2-year-old.

VERY REASONABLE SERVICE FEE

All Information Sent Upon Request.

Photographs . . . Pedigree.

J. C. MARLOW

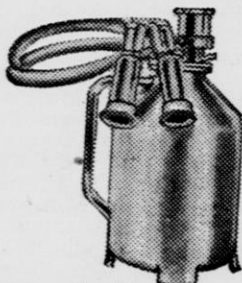
MANKATO

Box 100

MINNESOTA

For Increased Production ... For Healthier Udders

Use A
HINMAN
LOW VACUUM
MILKER!



HINMAN milks faster and drier with perfect safety on even the finest udders because it's a **LOW VACUUM** milker, only 10 inches. **HINMAN** is the **ONLY** true **LOW VACUUM** milker because it's the only one designed to operate on only 10 inches.

*For PROOF, ask any Hinman user,
your local dealer, or write to*

J. C. MARLOW

MANKATO

Distributor

MINNESOTA

Name	Address	Reg. & Gr.	No.
Daniels, Max,	Union Grove, R. 2	Reg. & Gr.	18
Daul, Joseph,	Kaukauna, R. 1	Grade	18
Denow, Archie,	Cedarburg	Grade	17
Dibble, R. A. & Ben,	Pewaukee, R. 1	Registered	15
Dick, Geo.,	Waukesha, R. 4	Grade	40
Didier Bros.,	Port Washington	Grade	11
Dineen, Charles,	Cedarburg	Reg. & Gr.	15
Dineen, Ed. M.,	Cedarburg	Reg. & Gr.	16
Dittmar, Roland,	So. Milwaukee	Registered	30
Dix, Harry,	Menomonie	Registered	24
Dirkse & Jacomin,	Palmyra, R. 1	Grade	17
Dobberpuhl, Fred,	Cedarburg	Reg. & Gr.	17
Dobberpuhl, Oscar,	Thiensville	Reg. & Gr.	22
Dobberstien, John,	Hortonville	Grade	17
Dollert, Edwin,	Saukville	Grade	36
Donovan, Leo,	Van Dyne	Grade	21
Doorn, Delbert,	Bruce	Grade	32
Dorl Farm,	Waukesha, R. 5	Registered	17
Dorn, Leo,	Seymour, R. 1	Grade	27
Dornbrook, A. H.,	Green Lake	Registered	15
Dorschner, Ronald,	Hortonville	Grade	60
Dougan, W. J.,	Beloit	Reg. & Gr.	18
Draeger, Clarence,	Ft. Atkinson, R. 2.	Reg. & Grade	23
Draeger, Emil,	Ft. Atkinson, R. 3	Registered	14
Draeger, Harold,	Ft. Atkinson, R. 1	Registered	27
Dretzke, H. R. & Son,	Manawa	Grade	21
Dudzek, John,	Dousman	Grade	13
Duffek, Frank,	Black Creek, R. 1	Grade	56
Dunn Co. Asylum,	Menomonie	Registered	24
Dusek Bros.,	River Falls	Grade	26
DuVal, Ed.,	Darlington	Reg. & Gr.	31
Dykstra & Lescoheir,	Ft. Atkinson, R. 3.	Reg. & Gr.	50
Eager, Lloyd,	Lake Mills, R. 3	Grade	26
Eastwood, Ralph,	Woodford	Registered	

Arthur W. Ritchie

Donovan A. Ritchie

Greenwood Farm

NEW LONDON, WIS., R. 3

Holstein-Friesian Cattle

*Rich in Ormsby and Homestead
Breeding*

*Continuous Testing, Calf-hood
Vaccination*



*Our Aim — Good Type and
Good Production*

Name	Address	Reg. & Gr.	No.
Ebben, John W., Kaukauna, R. 2		Grade	22
Eble, Roy F., Waukesha, R. 4		Registered	30
Ebersohl, Walter, Ft. Atkinson, R. 1		Registered	31
Eckardt, Herman E., Mishicot		Reg. & Gr.	34
Edge, Lyle, Shullsburg		Grade	30
Edquist, Iver, Somers		Reg. & Gr.	24
Edwards, Wm. K., Nashotah, R. 1		Reg. & Gr.	19
Egan, Simon, Shiocton, R. 2		Grade	20
Ehlers, Edwin, Cedarburg		Reg. & Gr.	17
Ehm, Wm., Greenville		Grade	22
Ehrhardt Bros., Knowles		Grade	24
Eichel, Alvin & Sons, Jefferson, R. 2		Grade	24
Elliott, Marsden J., Delafield		Reg. & Gr.	25
Elverman, John, Burlington, R. 3		Reg. & Gr.	29
Emmert, O. J., Johnson Creek, R. 1		Registered	9
Ennis & Brunn, Shullsburg		Registered	44
Eppler, Raymond, Oconomowoc, R. 3		Grade	25
Erickson, Parnell, Blanchardville		Reg. & Gr.	29
Ernst, Lorenz, Thiensville		Grade	37
Evans, David F., Nashotah		Grade	34
Evans, Ralph V., Dodgeville		Reg. & Gr.	20
Evans, Van W., Whitewater, R. 2		Reg. & Gr.	27
Fassbender, Elmer, Hortonville, R. 1		Grade	18
Feerick, Alexander, Milwaukee, R. 12		Registered	23
Feidler, G. J., Belgium, R. 1		Registered	45
Feller Bros., Roberts		Grade	31
Fetting, Arnold, Appleton		Reg. & Gr.	10
Fickau & Swan, Mukwonago		Grade	38
Figi, Robert, So. Wayne		Grade	18
Filenius, John, Helenville, R. 1		Reg. & Gr.	13
Fischer, Paul, Jefferson, R. 2		Registered	17
Fleming, Clarence, Jefferson, R. 3		Grade	18
Fleming, Charles, Jefferson, R. 2		Registered	23
Flitter, Jos. G., Campbellsport, R. 2		Grade	16
Foley, Francis, Seymour		Grade	16
Foley, Dr. L. J., Cedarburg		Reg. & Gr.	16
Foley, Paul, Cuba City		Grade	15

REGISTERED HOLSTEINS

4% Admiral-Burke Blood Lines. Bred to Produce Good Udders.

HOWARD N. LEHNER

NORTHWAY FARMS Oconto Falls, Wis.

Fond du Lac Co. Asylum, Fond du Lac	Registered	60
Fowler, Horace, Bristol	Reg. & Gr.	26
Freudenberg, Dr. J. A., Markesan	Reg. & Gr.	70
Frey Bros., London, Box 54	Grade	9
Frisbie Bros., Juneau	Reg. & Gr.	36
Fromm, John, Thiensville	Registered	15
Fuller Bros., Hartland, R. 1	Registered	32
Fuller, F. Wm., River Falls	Grade	12
Funk, George, Jr., Watertown, R. 3	Reg. & Gr.	15
Funk, Floyd, Hartland, R. 1	Grade	16
Gafke, Arthur J., Ft. Atkinson, R. 1	Registered	24
Gallman, Woodrow, Ft. Atkinson, R. 2	Reg. & Gr.	15
Gallun, Albert F., Jr., Hartland, R. 1	Reg. & Gr.	50
Gallun, A. F., Hartland	Grade	18
Garvey, Michael, W. De Pere, R. 2	Registered	15
Gehring, Oliver, Appleton	Grade	17
Gengler, E. J., Milwaukee 9	Reg. & Gr.	21
Genz, D. L., Mineral Point	Grade	15
Gerrits, Herbert, Neenah, R. 3	Grade	13
Getschman, Schuyler, Baraboo, R. 4	Registered	22
Gillihan Bros., River Falls	Grade	25
Gilmore, B. J., Bristol	Registered	30
Gilmore & Powell, Kenosha	Reg. & Gr.	28

Name	Address	Reg. & Gr.	No.
Gilson, Leonard,	Mukwonago, R. 1	Grade	16
Glassbrenner, Charles,	Appleton, R. 2	Grade	12
Glenndenning, Will,	Shullsburg	Registered	14
Glover Farms,	Ft. Atkinson, R. 1	Registered	31
Godfrey, Mason,	Mineral Point, R. 4	Grade	23
Graf, Wilmer H.,	Kiel, R. 1	Grade	29
Grahl, Wilbert,	Eden, R. 1	Grade	34
Gramling, Dr. E. H.,	Dousman	Registered	20
Gramling & Longley,	Dousman, R. 1	Registered	34
Granberg, William,	Blanchardville	Registered	12
Greenwald, Victor,	Oconomowoc	Grade	14
Grienert, Harold,	Hortonville, R. 1	Grade	22
Griesbach, Bob,	Hortonville, R. 1	Grade	18
Griesbach, Henry,	Greenville	Grade	10
Griffith, Thos. J.,	Dousman	Grade	20
Groth, Roland,	Watertown, R. 7	Reg. & Gr.	20
Groff, Joe & Sons,	Kenosha, R. 2	Reg. & Gr.	18
Gross, Lloyd,	Knapp	Registered	18
Grosse, L. H. & Son,	Rosendale	Reg. & Gr.	25
Grossen Bros.,	Campbellsport, R. 1	Grade	22
Groth, Erwin,	Grafton	Reg. & Gr.	25
Grover, Albert,	Galesville	Registered	25
Gruenwald, Harry,	Thiensville	Grade	16
Guderyon, H.,	Hartland, R. 1	Reg. & Gr.	50
Guenther, Allen, So.	Milwaukee	Grade	14
Gulla, Emil,	Rice Lake, R. 3	Grade	16
Gunter, Leslie,	Bristol	Reg. & Gr.	12
Gygax Bros.,	Waukesha, R. 2	Registered	25
Green, Peter,	Sturtevant	Grade	32
Haas, Roy E.,	Jefferson, R. 1	Registered	17
Haas, Roy H.,	Hartland, R. 1	Registered	20
Haas, Ellis,	Jefferson, R. 3	Registered	20
Hake, Lloyd & Ben,	Ft. Atkinson, R. 2	Registered	16
Habeck, Mrs. Bertha, & Sons,	Eden, R. 1	Registered	28



A pair of full sisters from one of our proven cow families and our Senior Proven Sire, Tellsdale Ormsby Aaggie Lad 768624. He has done a wonderful job of siring real dairy cows for us. They have production, good udders, size, and type. Many have over 400 lbs. B. F. with a 4% test as 2-year-olds and up to 700 lbs. B. F. as 4-year-olds on 2x milking under wartime farm conditions.

A FEW CHOICE YOUNG BULLS FOR SALE.

Our 1944 Herd Average Was 408 lbs. B. F. on 42 Cows.
H. I. R. and D. H. I. A. Testing.

BRIGHT STAR FARM
GEORGE T. MILLER, Antigo, Wisconsin, R. 2

ALBERT GROVER

GALESVILLE, WIS.

Rag Apple and
Montvic Breeding

Bang's Certified
T. B. Accredited

Herd Headed by Meadowood Lochinvar
Duke

Sire — Montvic Lochinvar 129946

His 12 nearest dams ave. 365d

Milk 20562.5 F. 902.2

Test 4.47%

Dam Frances Dewdrop 364862

5 yearly records ave. 525 lbs. Fat with

4% test

YOUNG BULLS FOR SALE by Meadowood Lochinvar Duke
and out of dams with 2 yr. records up to 500 lbs. Fat
on 2x milking.

Name	Address	Reg. & Gr.	No.
Habermann, Erwin,	Chilton, R. 4	Reg. & Gr.	25
Haferbecker, Melwin,	Appleton, R. 2	Grade	22
Hammen, Allmen,	Ripon	Reg. & Gr.	12
Hammen, Arnold,	Ripon	Registered	10
Hammen, Louis,	Ripon	Registered	14
Hamer, Henry,	Ft. Atkinson, R. 2	Grade	16
Handschke, Alfred,	Hortonville, R. 1	Grade	28
Hansman, H. F. & Brehm, Kenneth,	Knapp	Registered	28
Harper, Hugh A. & Sons,	Lancaster	Registered	30
Harvedale Farms,	Oconomowoc	Registered	16
Harvey, Tom,	Hazel Green	Registered	25
Hasselkus Bros.,	Dousman, R. 1	Reg. & Gr.	27
Hatch & Spoerl,	Campbellsport, R. 1	Grade	22
Hayes, Carl & Sons,	Campbellsport, R. 1	Reg. & Gr.	35
Hayes, Marvin,	Campbellsport, R. 1	Reg. & Gr.	15
Hean, August,	Mishicot, R. 1	Reg. & Gr.	20
Heine, Edward,	Johnson Creek, R. 1	Grade	16
Heinrich, Walter,	Hales Corners	Registered	16
Heins, Lloyd,	Belmont	Grade	20
Heitpas Dairy,	Appleton, R. 3	Grade	69
Heitpas, Wm.,	Kaukauna, R. 1	Grade	14
Helmer, Wayland,	Campbellsport, R. 2	Grade	8
Helms, Kenneth,	Grafton	Reg. & Gr.	23
Henning & Loehr,	Eldorado	Grade	24
Henrizie, Chester,	Menomonee Falls	Reg. & Gr.	12
Herbst, John,	Shullsburg	Grade	28
Hering, Dr. Russell,	Grafton	Reg. & Gr.	13
Herman, Alfred,	Black Creek, R. 1	Grade	12
Herman, Dr. David,	Hartland	Grade	24
Herman, Dr. W. C.,	Hartland	Grade	22
Hesprich, John,	Lomira, R. 1	Reg. & Gr.	28
Hetts, Allen,	Ft. Atkinson, R. 1	Registered	13
Hetts, John,	Ft. Atkinson	Registered	8
Heuer, Clarence,	Dodgeville	Grade	25
Hevey, John,	Jefferson, R. 1	Grade	10
Hicks, Will,	Apple River, Ill.	Grade	20
Hillery, Kenneth,	Darlington	Registered	24
Hinkins, Russell,	Belmont	Grade	20
Hoff, Paul F.,	Cedarburg	Reg. & Gr.	18
Hoffman, Fred,	Pound	Registered	14
Hoffmann, Henry,	Burlington, R. 4	Grade	17
Hoffmann, Walter,	Cedarburg	Grade	28
Hoffman & Schultz,	Watertown, R. 3	Grade	23
Hogan & Merchant,	Genoa City	Reg. & Gr.	28
Holland, Cletus,	Warren, Ill.	Grade	16
Hollander & Crossman,	Rosendale	Grade	22
Hood, Walter,	North Prairie	Reg. & Gr.	39

GOOD HOLSTEINS FOR SALE

Cows . . . Heifers . . . Serviceable Bulls



For good Holsteins, either registered or grades — one or a carload — come to Jefferson County, Wis. Let us quote you prices on quality cattle from healthy herds. Free Fieldman's service.



JEFFERSON COUNTY HOLSTEIN BREEDERS' ASS'N

FORT ATKINSON

WISCONSIN

Name	Address	Reg. & Gr.	No.
Hooyman, Herbert,	Appleton, R. 4	Grade	
Hoppenjan, Chas.,	Cuba City	Grade	30
Howard & Cramer,	Dousman, R. 1	Registered	21
Howard, Henry & Son,	Campbellsport, R. 1	Grade	15
Hughes & Dunham,	Whitewater, R. 2	Grade	14
Hummel, Warner,	Ft. Atkinson, R. 3	Grade	18
Hunter, Clark,	Hudson	Registered	24
Huntoon, Roger,	Salem	Reg. & Gr.	30
Hutchinson, John,	Whitewater, R. 3	Registered	19
Hurtgen, Richard C.,	Pewaukee, R. 1	Registered	20
Huss, Norbert,	Kaukauna, R. 1	Grade	
Iding, Harvey,	Eden, R. 1	Grade	22
Ihlenfeldt, Stanley,	Two Rivers, R. 1	Grade	21
Immel, Albert C. & Son,	Fond du Lac, R. 4	Registered	31
Improved Farms,	Genesee Depot	Grade	20
Jackley, Nick,	Kenosha, R. 3	Grade	22
Jacque, Nic.,	Port Washington	Grade	29
Jaeger Bros.,	Ixonia, R. 1	Registered	25
Jaeger, Theo.,	Ixonia, R. 1	Grade	27
Jaeger, Harley,	Watertown	Reg. & Gr.	22
Jaeger, Arnold,	Ixonia, R. 1	Grade	22
James Farms,	Ft. Atkinson, R. 1	Reg. & Gr.	71
Jefferson Co. Asylum,	Jefferson	Registered	79
Jensen, Chris,	Colfax	Registered	24
Jindra, Alvin,	Mishicot, R. 1	Grade	20
Johannes, Albert, Jr.,	Two Rivers, R. 1	Reg. & Gr.	28
Johns, Harvey,	Oconomowoc, R. 4	Grade	10
Johnson, Elmer,	Ft. Atkinson, R. 1	Reg. & Gr.	15
Jones, Chas. L.,	Dodgeville	Registered	30
Jones & Powers,	Racine	Reg. & Gr.	29
Jorgenson, Clarion,	So. Wayne	Grade	13
June-Roy Farm,	Bristol	Reg. & Gr.	27
Junk, Joe F.,	Manitowoc, R. 5	Reg. & Gr.	35

Great Home Farm

Calves available from dams up to 600 lbs. BF. Sire
by Posch Ormsby Fobes Model Dell and Great Home
Ideal Fobes.

G. J. FEIDER

Belgium, Wis.

Name	Address	Reg. & Gr.	No.
Kaiser Bros.,	Fond du Lac, R. 1	Grade	31
Kampa, E. P.,	Cedarburg	Registered	13
Kappelman, Wm. C.,	Manitowoc, R. 2	Grade	20
Karrels, Arnold,	Belgium	Grade	24
Kasierski, J. F.,	Princeton	Registered	25
Kassilke, Raymond,	Ft. Atkinson, R. 1	Grade	33
Katzenberger, Walter,	Darlington	Grade	50
Kau, George,	Eagle, R. 1	Grade	40
Kelley, Albert,	Warren, Ill.	Registered	13
Kelley, Thos., Farm Corp.,	Menomonie	Reg. & Gr.	39
Kemp, Donald,	Bear Creek, R. 1	Grade	12
Kessler, Harold,	Burlington, R. 4	Grade	29
Kiesler, J. B., Sr.,	Bristol	Reg. & Gr.	36
King, Stephen,	Eden, R. 1	Grade	30
Kinney, Mack, Roberts		Grade	16
Klein, Theodore & Sons,	Menomonee Falls	Reg. & Gr.	100
Klofanda, Reuben,	Racine	Reg. & Gr.	19
Klug, Reinhold & Son,	Thiensville	Grade	19
Klug, Walter & Myron,	Watertown, R. 3	Grade	26
Klussendorf, Fred E.,	Waukesha, R. 5	Registered	16
Knickel, M. R.,	Campbellsport	Grade	28
Knuth, Louis,	Thiensville	Grade	24
Knuth, Wilfred,	Thiensville	Reg. & Gr.	17
Koenig, Jacob,	Valders, R. 1	Grade	21
Kohlwey, Benj.,	Grafton	Registered	33
Kohlwey, Marton,	Grafton	Grade	24
Kohlwey, Otto,	Grafton	Registered	27
Kohn, J. L.,	Medford	Registered	21
Kolback, Jos. N.,	Port Washington	Grade	20
Komp, Edwin,	Hortonville, R. 1	Grade	17
Konop, Charles, Jr.,	Cato, R. 2	Registered	14
Koop, Arthur,	Fredonia	Grade	15
Koopmann, Emily,	Grafton	Grade	33
Korf, David M.,	Kenosha	Reg. & Gr.	26
Kortz, Herman,	Kaukauna, R. 1	Grade	19
Kostechka, Jos. W.,	Cato	Reg. & Gr.	19
Kraft & Magee,	Genoa City	Reg. & Gr.	54
Krahn, Albert,	Seymour, R. 3	Reg. & Gr.	16
Krahn, LaVern,	Seymour, R. 1	Grade	16
Krahn, Lester,	Seymour, R. 1	Reg. & Gr.	22
Krahn, Roy,	Seymour, R. 1	Reg. & Gr.	13
Krenz, A. S.,	Johnson Creek, R. 1	Grade	20
Kressin, Hugo,	Rockfield	Grade	18
Kreuscher, Roy,	Union Grove	Reg. & Gr.	19
Kreuscher, Warren,	Kansasville	Reg. & Gr.	20
Kreuziger Bros.,	Roberts	Grade	24
Krift, Wm., & Lois,	Leonard, Burlington, R. 3	Grade	26
Kroes, George,	Kaukana, R. 1	Grade	22

D. L. CAVEY

ELKHORN, WIS.

Pure Bred Holsteins headed by our Herd Sire Skokie Supreme Mar, sired by the 16,000 King Bessie Supreme Again, 1st Prize 2-yr.-old and Grand Champion Wis. State Fair 1944, 14 near-est dams 933.6 lbs. F. Mar's dam is a paternal sister to his sire and out of Senator Bessie Shalimar 21276 (3.5%) M., 741 F. at 2 years.

Name	Address	Reg. & Gr.	No.
Krueger, Henry, Hartland, R. 1		Reg. & Gr.	20
Krueger, Theo. & Sons, Elk Mound		Reg. & Gr.	24
Krueger, Walter, Appleton, R. 1		Grade	12
Krull, Elmer, Lake Mills, R. 1		Registered	12
Krumhus, Erwin, Thiensville		Grade	26
Kummrow, Edward H., Oconomowoc, R. 4		Grade	27
Kuecher, Wilbur, Burlington, R. 3		Grade	25
Kundert, M. J., Darlington		Grade	30
Kupersmith, Adolph, Warren, Ill.		Reg. & Gr.	17
Kurtze, Lloyd, Hales Corners		Registered	16
Laden Acres Farm, Burlington, R. 3		Reg. & Gr.	42
Laird, George, Black Creek, R. 2		Grade	18
Lake, George C., Grantsburg		Registered	13
Lange & Paine, Ft. Atkinson, R. 2		Registered	26
Lake View Farms, Baileys Harbor, R. 1		Registered	25
Lamberson, R. A., Whitehall		Registered	53
Lamers, Gordon, Kaukauna, R. 3		Grade	15
Lancaster, Hiram, Darlington, R. 4		Registered	13
Laper, John, Jr., Markesan		Grade	16
Larson, Frank, Clayton		Grade	21
Lassig, Theodore, Rhinelander		Grade	30
Laursen, Lauritz, Union Grove		Registered	28
Lautenschlager, Ervin, Black Creek, R. 2		Grade	10
Laverty, Vernon, Mineral Point		Grade	15
Lawson & Hill, Rosendale		Grade	19
Larson, Eugene C., Ft. Atkinson, R. 3		Registered	9
Last & Wethall, Lake Mills, R. 1		Reg. & Gr.	21
Lease, Henry, Dodgeville		Grade	25
Lee, Melvin, Barron		Grade	18
Lehman, Wm. P., Shullsburg		Grade	19
Leith, Ray H., Van Dyne		Reg. & Gr.	17
Lemberger, Harold, Cato, R. 1		Registered	20
Lemberger, Joe, Cato, R. 1		Reg. & Gr.	16
Lemke, Ed., Appleton		Grade	
Lemke, Louis, Thiensville		Grade	17
Lemke, Fred, Barron		Reg. & Gr.	19
Lemmenes, Andrew, Chester		Grade	17
Leonard Bros., Ft. Atkinson, R. 1		Grade	24
Lesch, Leo C., Belgium		Reg. & Gr.	17
Lesselyoung, Louis, Kaukauna, R. 3		Registered	10
Leuthold Bros., Darlington, R. 3		Reg. & Gr.	45
Lewis, Jack W., Dodgeville		Grade	25
Liesener, Arnold, Rockfield		Grade	23
Lindholm, Milton, Belmont		Grade	25
Ling, Chas., Kenosha, R. 2		Grade	16
Lippold, Milton, Hortonville		Grade	19
Lohrenz, Alvin, Black Creek, R. 1		Grade	21
Loth, Walter & Son, Waukesha, R. 5		Grade	18
Lund, Geo., Arcadia		Reg. & Gr.	22
Lundt Bros., Palmyra, R. 1		Registered	16
Lutzke, Melvin, Kiel, R. 1		Reg. & Gr.	24
Maas, Alvin, Ft. Atkinson, R. 1		Registered	22
Maas, Harvey, Seymour		Reg. & Gr.	32
Mack, J. E., Ft. Atkinson		Registered	15
Madans, John, Burlington, R. 4		Reg. & Gr.	36
Magee, L. C., Genoa City		Reg. & Gr.	32
Magarich, Joseph, Hales Corners, R. 2		Grade	18
Magnussen, Karl, Lake Mills, R. 1		Grade	20
Malone, John, West Allis 14		Reg. & Gr.	11
Mann, Samuel L., Waukesha, R. 2		Registered	35
Marien, Nolan, Seymour, R. 1		Grade	21
Markert, Harry, Jefferson, R. 3		Registered	14
Martin, Delbert, Warren, Ill.		Grade	20
Martin, Everett & Son, Mukwonago		Registered	20
Martin, Orville, Darlington		Registered	21
Massie, Joseph, Chetek		Grade	17
Massie, Gomer, Chetek		Grade	20
Matteson, Ike, Cameron		Grade	11
Mattison, Glen, Bruce		Grade	13
Matzek, Edward, River Falls		Grade	51

Albertville Holstein Farm

17 Years Continuous D.H.I.A. Testing

Herd headed by Sensation Montvic Pathfinder, son of Montvic Sensation and from daughter of Pathfinder. Snowball's life production 6156.7 lbs. bf. Her 5-year-old son is our junior herd sire.

STOCK FOR SALE

Accredited, Certified and Calthood Vaccinated.

CHRIS C. JENSEN R. 3 Colfax, Wis.

Name	Address	Reg. & Gr.	No.
Mayer, Elmer,	Port Washington	Reg. & Gr.	39
Mayala, John,	Barron	Reg. & Gr.	22
Melcher, Donald,	Watertown, R. 2	Grade	18
Meier, Clarence,	Browtown	Grade	38
Meisegeier, Charles,	Bruce	Reg. & Gr.	15
Meiselwitz, Wilfred,	Elkhart Lake, R. 1	Reg. & Gr.	20
Meissner, Harold H.,	Hartland, R. 1	Grade	15
Merker, Herman,	Belgium	Registered	12
Merriam, Dale,	Darlington	Reg. & Gr.	20
Merril, Donald,	Shiocton, R. 1	Grade	15
Messman, Alfred,	Two Rivers, R. 1	Grade	17
Messman, Herbert,	Two Rivers, R. 1	Grade	29
Metzig, August,	Fremont, R. 1	Grade	34
Meyer, Hubert C.,	Colgate	Grade	17
Meyer, John P.,	Manitowoc, R. 5	Grade	16
Meythsler, Art,	Woodford	Registered	40
Milford Meadows,	Lake Mills, R. 1	Registered	92
Miltzer, Walter,			
Milwaukee Sta. F.,	R. 1	Reg. & Gr.	23
Miller, B. F.,	Marinette, R. 3	Registered	14
Miller, Francis,	Oconomowoc, R. 2	Grade	22
Miller, George T.,	Antigo, R. 2, Box 268.	Reg. & Gr.	44
Miller, Jack,	Argyle, R. 2	Grade	21
Milw. Co. House of Correction,			
Milwaukee 9		Registered	62
Milw. Co. Inst. Farm,	Milwaukee 13	Registered	125
Moehrke, Oscar G.,	Chilton, R. 1	Registered	33
Mohr, Frank,	Stanley	Registered	22
Moore, Tim,	Shullsburg	Grade	40
Morgan, Robert F.,	Oconomowoc, R. 3	Grade	22
Morris Bros.,	Oconomowoc, R. 4	Grade	31
Moos, Nick,	Bristol	Grade	12
Moser, Leo,	Bristol	Reg. & Gr.	33
Motl Bros.,	Waterloo, R. 2	Grade	19

Clover Lawn Holsteins Satisfy

Good Type — 4.0% Test — High Production.

7 Yr. Herd Ave., 57 Cows, 11,595

3.9 — 452.0.

First Herd in Wisconsin to Receive
Progressive Breeders' Certificate.

Sons Available from Proven Sires . . . Out of Dams

Making Over 800 Lbs. Fat.

A. R. — H. I. R. TESTING

ARTHUR PULS

Certified

Allenton, Wis.

Accredited

Name	Address	Reg. & Gr.	No.
Mueller, Hilmer, Seymour		Registered	26
Mundt Bros., Ft. Atkinson, R. 1		Grade	27
McClain, Robert C., Oakfield, R. 2		Registered	23
McGowan, Harty, Blanchardville		Grade	42
McGraw & Krahn, Woodworth		Reg. & Gr.	31
McKay Nursery Farm, Waterloo		Registered	22
McLachlan & Rieder, Cambridge, R. 1		Reg. & Gr.	22
McVicar, Keith, Bristol		Grade	15
Neck, Wayne, Prairie Farm		Grade	26
Neff, Willard, Apple River, Ill.		Grade	19
Nelson Bros., Nashotah, R. 1		Grade	40
Nelson, Geo., Dousman, R. 1		Grade	21
Nelson, Harvey A., Union Grove		Registered	46
Nelson, Manning, Shiocton, R. 2		Reg. & Gr.	14
Nelson, Stanley, Oconomowoc, R. 1		Grade	18
Neumann, Otto C., Adell		Registered	20
Neuser, Elmer, Manitowoc, R. 4		Grade	21
Newhouse, Emmet, Appleton, R. 4		Grade	21
Newman & Sincock, Shullsburg		Grade	30
Nielsen, Andrew W. & Son, Bruce		Grade	16
Nielsen, Arne, Waukesha, R. 1		Grade	22
Nieman, Edwin J., Cedarburg		Registered	72
Nieman, E. J., Thiensville		Registered	50
Nilsestuen, Julius, Arcadia		Reg. & Gr.	25
Nokes, Kenneth, Helenville, R. 1		Grade	19
Norris Farms, Mukwonago, R. 2		Registered	45
Northey, Richard, Dousman, R. 1		Grade	20
Noyes, Alvin A., Ft. Atkinson, R. 2		Registered	12
O'Brien, George, Eden, R. 1		Reg. & Gr.	
O'Brien, John T., Eden, R. 1		Grade	26
Oestreich, Reno, Watertown, R. 2		Reg. & Gr.	10
Oettmeier, John C., Jefferson, R. 2		Reg. & Gr.	18
Ogie, John C., Fond du Lac, R. 2		Grade	20
Olson, Rudolph, Kenosha, R. 2		Registered	25
O'Neil, Dale & Son, Rosendale		Registered	13
O'Neil & Hardgrove, Rosendale		Grade	28
Osterday, Howard, Darlington		Grade	25
Oswald, Jos., Manitowoc, R. 5			11
Ott, Joe P., Belgium		Grade	20
Oudenhoven, Henry, W. De Pere, R. 2		Grade	26
Outagamie County Asylum, Appleton, R. 1		Grade	57
Owens, Lloyd G., Dousman, R. 1		Grade	15
Owens, Wm. H., Oconomowoc, R. 4		Grade	25
Pabst Farms, Inc., Oconomowoc		Registered	125
Palmbach, George, Appleton, R. 1		Registered	12
Palmer, Alvin, Oakfield		Registered	20
Paltzer, Robert, Appleton, R. 3		Registered	18
Pamperin, Wm., Allenton, R. 1		Registered	23
Panzer, Robert, Kansasville		Reg. & Gr.	20
Parks, Fred, Chetek		Grade	20
Parks, George, Chetek		Grade	15
Parsons, Wm. & Deegan, Ft. Atkinson, R. 2		Grade	36
Paskey & Scholten, Rosendale		Reg. & Gr.	25
Paulus, Edw. N., Belgium		Grade	25
Peebles Bros., Oconomowoc, R. 2		Grade	30
Pehl, Henry, Woodford		Grade	20
Pehrson, Emel, Shullsburg		Grade	17
Perry, J. H., Ft. Atkinson, R. 1		Grade	31
Pester, Clarence, Whitewater, R. 3		Registered	21
Pester, W. J., Whitewater, R. 3		Reg. & Gr.	24
Peters, Clarence, Appleton, R. 4		Grade	16
Peters, Gilbert, Appleton, R. 4		Grade	14
Petersen, Raymond, Oconomowoc, R. 1		Grade	28
Peterson, Maurice, Mukwonago, R. 2		Grade	51
Peterson, Russell, Dodgeville		Grade	35
Peterson, Ted, Dodgeville		Grade	22
Peterson, C. V., Barron		Grade	21
Petesich, Henry, Belgium		Reg. & Gr.	20
Petry, Earl, Waukesha, R. 5		Grade	18
Phelps, Mrs. L. H., Whitewater, R. 2		Reg. & Gr.	23
Pink, Wm., Darlington		Grade	16

For
**Purebred and High Grade
 HOLSTEIN CATTLE**

Selections Made in Ten Best
 Counties in the State.

— Write —

**INTER COUNTY DAIRY CATTLE ASS'N.,
 WAUKESHA, WIS.**

Name	Address	Reg. & Gr.	No.
Piper Farms I, Watertown, R. 4		Registered	26
Piper, George, Watertown, R. 4		Registered	13
Pipkorn, Emil C., Thiensville		Grade	29
Pipkorn, Gustav, Cedarburg		Grade	22
Pipkorn, Louis, Thiensville		Reg. & Gr.	16
Pipping & Krug, Calvary		Reg. & Gr.	38
Poehlman, Kermit, Sugar Bush		Grade	25
Polkinhorn, Clarence, Mineral Point		Grade	20
Ponzer, Reinhart, Bear Creek		Grade	12
Post & Seeman, Barron		Registered	25
Post & Newmann, Hillsdale		Reg. & Gr.	41
Porges, Dr. O., Kenosha, R. 2		Reg. & Gr.	18
Prahl, Ewald, Jackson		Grade	17
Prahl, Helmuth, Thiensville		Reg. & Gr.	14
Preuninger, Clarence Ft. Atkinson, R. 3		Reg. & Gr.	18
Pribyl, George, Tisch Mills		Reg. & Gr.	21
Price Bros., Kenosha, R. 3		Reg. & Gr.	25
Priepke, Ed., Eldorado, R. 1		Grade	33
Prine, Edgar, Argyle, R. 2		Reg. & Gr.	20
Pritzl, Harold, Cato, R. 1		Registered	18
Probert, E. W., Dousman		Grade	24
Pugh, Roland H., Ixonia, R. 1		Grade	18
Prunty, Kimm, Shiocton, R. 2		Grade	17
Punzel, Walter E., Ft. Atkinson, R. 1		Grade	16
Pucker, Albert, Rosendale		Grade	23
Puls, Arthur, Allenton		Registered	66
Quade, Clarence & Son, Bruce		Grade	38
Rabehl, Adolph, Rice Lake		Grade	20
Rabehl, Albert, Rice Lake		Reg. & Gr.	25
Rabehl, Arthur, Rice Lake		Reg. & Gr.	28
Rabenhorst, Raymond, Watertown, R. 3		Grade	15
Race, Elmer, Saukville		Reg. & Gr.	13
Racine County Asylum, Racine		Reg. & Gr.	84
Radichel, Alvin, Hortonville		Grade	16
Radue, Walter, Thiensville		Registered	20
Rahmlow Bros., Appleton, R. 3		Grade	19
Rahmlow, Edw., Appleton,		Registered	18
Rau, Oscar, Saukville		Reg. & Gr.	
Reese, Arbor, Darlington, R. 4		Grade	16
Reese, Mrs. H. H., Madison		Reg. & Gr.	45
Reichers, Leo, Cuba City		Grade	25
Reis, George M., Manitowoc, R. 5		Reg. & Gr.	16
Reiter, Wendolyn, Bristol		Reg. & Gr.	16
Reitzma, Elmer, Union Grove		Grade	12
Reitzma, James, Kansasville		Grade	13
Retzlaff, Henry, Cedarburg		Reg. & Gr.	16
Revers, A. R., Bristol		Grade	20
Richter, Ben H. & Son, Union Grove, R. 3		Grade	24
Richter, Elmer, Burlington		Grade	26
Richter, Frank, Burlington		Grade	27
Richter, John, Bristol		Registered	10

Name	Address	Reg. & Gr.	No.
Riehl, Lloyd,	Bl. Creek, R. 2	Grade	18
Riewesthal, Alfred,	Hales Corners	Registered	16
Ritchie, A. W. & Son,	New London, R. 3.	Registered	40
Robbins, Cethel,	Apple River, Ill.	Grade	15
Robers, Ed.,	Kenosha, R. 3	Reg. & Gr.	19
Roehl, Fred,	Van Dyne	Registered	15
Roets, Joseph E.,	Hartland, R. 1	Grade	20
Rogstad, Lawrence,	Rice Lake	Grade	17
Roitt, J. M.,	Kiel, R. 2	Grade	10
Ronnerude, Augustine,	Woodford	Grade	24
Roquet, Athmel,	Kiel, R. 2	Reg. & Gr.	13
Rosenthal, Wesley,	Fredonia	Reg. & Gr.	16
Rossler, Frank & Son,	Menomonie	Reg. & Gr.	36
Rowe, R. F. & Son,	Union Grove	Reg. & Gr.	33
Ruby Farms,	Waukesha, R. 5	Grade	48
Rudolph, Harold,	Mukwonago, R. 1	Grade	23
Rudy, Fred P.,	Kenosha, R. 2	Reg. & Gr.	27
Running, Arrin,	Cameron	Grade	20
Ruud, Ed. & Son,	Menomonie	Reg. & Gr.	20
Ryder & Klawitter,	Ripon	Registered	14
Sacred Heart College,	Watertown	Registered	9
St. Bonaventure College,	Sturtevant	Grade	21
St. Charles Boys' Home,	Milwaukee	Registered	11
St. Coletta School,	Jefferson	Grade	34
Salisbury, Lloyd,	Dallas	Grade	18
Salter, Arthur,	Fond du Lac, R. 2	Reg. & Gr.	15
Samb, Mrs. Mary,	Hortonville, R. 2	Registered	25
Sampson, Clifford,	Oakfield	Grade	20
Sar Berth Farm,	Hales Corners	Reg. & Gr.	17
Sauer Bros.,	Darlington	Grade	50
Sayre, Wm. & Dean,	Jefferson, R. 2	Registered	20
Scannell, James & Son,	Eden, R. 1	Reg. & Gr.	25
Schaefer, Henry,	Appleton, R. 1	Registered	26
Schansberg, Ralph,	Whitehall	Reg. & Gr.	21
Scharlau, C. A.,	Arcadia	Registered	20

SWOLLEN UDDERS

**PUT VALUABLE HERD
ON BUTCHER BLOCK!**

Records prove that swollen udders resulting in mastitis infection destroy some of America's finest herds. Keep your registered cattle from the butchers' blocks. Scores of testimonials prove the potency of Security Udder Treatment! "Your Udder Salve is sure good," says Leo Hurt, Seiling, Oklahoma. "Used it on two cows that would have lost one or two quarters of their udders. Our veterinarian wants you to send him a 5 lb. jar." And Starline Dairy, Owensville, Mo., says: "Best medicine I ever used for a swollen udder—one application cured it completely." Thousands of leading dairymen depend on Security Udder Treatment to keep cows free from udder trouble. Often it clears up swollen udders between milkings. Especially effective at calving time. This highly potent antiseptic really checks the trouble and quickly clears it up or money refunded.

SECURITY REMEDIES CO.

Dept. W — 144 West 27th St., New York 1

Send me Security Udder Formula: _____

..... 1 lb. Jars — \$2.50

..... 1/2 lb. Jars — \$1.50

Special Offer Saves You \$5.00!

Limited Time Only!

..... 5 lb. Dairy size. Now \$7.50

Money order or check enclosed

Name

Address

Name	Address	Reg. & Gr.	No.
Schlender, John A.,	Oconomowoc, R. 4	Grade	20
Schlicher, Walter H.,	Hartland, R. 1	Registered	15
Schmidt & Stoffel,	Campbellsport, R. 1	Grade	13
Schmidt, Ellis P.,	Bristol	Reg. & Gr.	20
Schmidt, George,	Hillsdale	Registered	16
Schmidt, R. J.,	Watertown, R. 7	Grade	17
Schmist, Roy J.,	Two Rivers, R. 1	Reg. & Gr.	31
Schmitz, Martin,	Fond du Lac, R. 2	Grade	26
Schneider, Ed.,	Grafton	Grade	20
Schoenherr, Herman,	Hales Corners	Registered	24
Schoessow, Bernhard,	Thiensville	Reg. & Gr.	19
Schoessow, Elmer,	Random Lake	Grade	18
Schrieber, Otto,	Milwaukee	Reg. & Gr.	17
Schroeder, Earl,	Jefferson, R. 2	Grade	13
Schroeder Dairy,	West Bend	Registered	48
Schroeder, H. F. & Sons,	West Bend	Registered	52
Schroeder, Hugo,	Mukwonago	Registered	18
Schroeder, Herbert,	Menomonie	Reg. & Gr.	26
Schroeder, Walter,	Appleton, R. 1	Grade	22
Schroedl, Alfred,	Jefferson, R. 2	Grade	21
Schroedl, Frank,	Jefferson, R. 2	Grade	16
Schrubee, Arnold,	Wauwatosa, R. 8	Grade	23
Schueler, Herb.,	Seymour, R. 2	Grade	15
Schuelke, A. R.,	Manawa	Reg. & Gr.	50
Schuerman, Albertus,	Burlington	Reg. & Gr.	25
Schuler, Arnold,	Valders, R. 1	Reg. & Gr.	17
Schultis, Allan,	Waukesha, R. 2	Reg. & Gr.	26
Schultz, Arthur,	Manitowoc, R. 2	Reg. & Gr.	28
Schultz, Arthur,	Warren, Ill.	Grade	12
Schultz Bros.,	Menomonie	Registered	18
Schultz, Chester G.,	Warren, Ill.	Grade	50
Schultz, Lloyd,	Hortonville, R. 2	Grade	16
Schultz, Melvin,	Shullsburg, R. 2	Grade	35
Schultz, Robert,	& Daniels, Roy, Bruce	Grade	13
Schultz, Henry,	Barron	Grade	16
Schuster, Emil E.,	Manitowoc, R. 2	Grade	13
Schutz, Albert,	Dallas	Registered	20
Schuyler, Elias,	Oconomowoc	Grade	22
Schwahn, Carl,	Reedsville, R. 2	Grade	21
Schwanz, Herman G.,	Mukwonago, R. 1	Grade	20
Schwartz, Rudolph,	Watertown	Grade	13
Saffern, Wm.,	Van Dyne	Grade	24
Seffrood, Earl,	So. Wayne	Grade	21
Seffrood, Elmer,	Shullsburg	Grade	30
Severson, Herman,	Cameron	Reg. & Grade	24
Sheldon, Howard,	Rice Lake	Reg. & Gr.	17
Siemers, Harvey R.,	Cleveland, R. 1	Registered	25
Sievert, Howard,	Roberts	Reg. & Gr.	32
Sigler, Otis,	Chetek	Grade	20
Sill, Allen,	Oconomowoc, R. 3	Grade	13
Slotkowski Farm,	Kenosha, R. 3	Grade	31
Simmons, Henry,	Viola	Registered	26
White Star Stock Farm,	Waupaca	Registered	18
Smith, Arthur,	Bear Creek	Grade	30
Smith, John,	Prairie Farm	Grade	13
Smith, C. W.,	Berlin	Reg. & Gr.	70
Smith, George J.,	Eldorado, R. 1	Grade	19
Smith, Sam A.,	Oakfield, R. 1	Registered	27
Smith, Fromader,	Wendorf, Jefferson, R. 3	Grade	16
Smith, Maurice,	Lake Mills, R. 1	Grade	43
Sontag, Mrs. Louise,	Stillwater, Minn.	Grade	27
Sorensen & Dowse,	Kenosha, R. 1	Grade	33
Southcott, Roy,	Oconomowoc, R. 4	Registered	22
Spaeni, Herb.,	Rice Lake	Reg. & Gr.	24
Spaude, Elmer,	Seymour, R. 1	Grade	16
Stadler, Al.,	Belgium	Reg. & Gr.	18
Stahl, John,	Chilton, R. 4	Reg. & Gr.	16
Stangel, Richard,	Mishicott, R. 1	Grade	14
Starkey, Walter,	Rice Lake	Reg. & Gr.	21
Starks, Everett,	Stanley	Grade	21
Stauffacher, Edwin,	Mineral Point, R. 4	Grade	32

Name	Address	Reg. & Gr.	No.
Stauffacher, Roy, Darlington		Reg. & Gr.	20
Steel Bros. & Vogt, Lyons		Grade	25
Steffen, Clarence, Appleton, R. 2		Grade	17
Stephenson, Martin, Hillsdale		Grade	21
Stevens-Melster Farms No. 1, 2			
Ft. Atkinson, R. 1		Grade	53
Steger, Pete J., Jr., Darlington		Grade	19
Steinke, Albert C., Waukesha		Grade	17
Steinke & Meilahn, Eldorado		Grade	28
Stender, Clarence, Mukwonago		Grade	23
Stichtman, H. C., New London		Registered	12
Stollenwerk, Oscar & Sons, Union Grove		Grade	21
Strauss, Erwin, Belgium		Reg. & Gr.	19
Strausburg, Harold, Jefferson, R. 2		Grade	24
Strutz, Fredrich, Two Rivers		Reg. & Gr.	20
Stuckert, Erwin H., Oconomowoc, R. 1.		Registered	19
Sunny Lea Farm, Grafton		Reg. & Gr.	24
Swanson, Marvin, Chetek		Grade	13
Swenson, Alfred, Oconomowoc		Grade	34
Swiggum, Henry, Blanchardville		Grade	22
Sykes, Lewis, Bl. Creek, R. 2		Grade	15
Tans, Lyle W., Waukesha, R. 2		Reg. & Gr.	40
Taylor, Carl, Waukesha, R. 2		Registered	20
Teal, Floyd, Barron		Registered	17
Teasdale, Raymond D., Shullsburg		Registered	25
Tecklin, Walter, Appleton, R. 3		Grade	15
Teschner, Louis, Watertown, R. 4		Grade	15
Tetslaff, Ewald, Bl. Creek, R. 2		Grade	13
Thomad, Walter & Sons, Darlington		Reg. & Gr.	32
Thomas, William D., Dodgeville		Grade	20
Thorsten, Nils, Chicago, Ill.		Grade	25
Tiedt, Alvin, Bl. Creek, R. 2		Reg. & Gr.	23
Timm, Art, Appleton, R. 2		Grade	15
Timm, Norman, Appleton, R. 3		Grade	12
Traeder, Wm., Sullivan, R. 1		Reg. & Gr.	18
Tregonning, Orville, Shullsburg		Grade	20
Trieloff, Clarence C., Ft. Atkinson, R. 1.		Reg. & Gr.	24
Tubbs, Frank, Seymour, R. 2		Grade	20
Turke, A., Ixonia, R. 1		Grade	25
Turke, Wm., Watertown, R. 2		Grade	22
Twohig, Robert, St. Cloud, R. 1		Reg. & Gr.	27
Uecker, Arthur, Johnson Creek		Grade	19
Uhlenbrauch, Melvin, Appleton, R. 3		Registered	18
Uhlenbrauch, Emil, Appleton		Registered	20
U'ren, D. R., Stockton, Ill.		Registered	25
U'ren, Homer, Mineral Point		Grade	33
Vandelaygraaf, John, Kaukauna, R. 1		Grade	16
Vanderwerff, Tim, Bristol		Reg. & Gr.	33
Van Helden, Mrs. Julia, Rice Lake		Grade	12
Van Liere, Mrs. John & Robert, Salem		Reg. & Gr.	26
Ventnor Farms, Oconomowoc		Registered	16
VerBoomen, Andrew, Kaukauna, R. 2		Grade	42
Vick, Orrin, Rice Lake		Grade	18
Voelkering, John J., Burlington		Registered	31
Voelker, Emil, Cameron		Grade	21
Voight & Rhein, Lomira, R. 1		Registered	34
Voland, Erwin, Cedarburg		Registered	15
Volkman, Ed., Bl. Creek, R. 2		Grade	23
Vorpahl, Arthur W., Kiel, R. 2		Grade	23
Vos, Hugo, Burlington		Grade	34
Wachal, Milas, Two Rivers, R. 1		Grade	15
Waechter & Knuth, West Bend		Grade	33
Wagner, Henry J., Calvary		Registered	36
Wagner, Joe, Fond du Lac, R. 1		Reg. & Gr.	35
Waldschmidt, Henry, Campbellsport, R. 1		Grade	26
Waldson, Carl N., Fond du Lac, R. 1		Registered	15
Wampfler, John, Rice Lake		Reg. & Gr.	21
Wanvig, C. O., Milwaukee		Grade	16
Wappler, Ervin, Sullivan, R. 1		Grade	22
Ward Bros., Ft. Atkinson, R. 1		Registered	17
Ward, C. Eugene, Ft. Atkinson, R. 1		Grade	18

Next to a proven bull, select one from a herd where continuous testing is practiced and proven bulls are used.

Your state institutions have such to offer.

For Information Write

FARM DEPARTMENT

State Capitol

Madison, Wis.

Name	Address	Reg. & Gr.	No.
Ward, Vilas,	Waterloo, R. 2	Grade	17
Warner, Wm. H.,	Bristol	Registered	27
Warren, Robert,	Burlington, R. 3	Grade	26
Wasserbach, Leon,	Appleton, R. 1	Grade	18
Watson Bros.,	Oconomowoc, R. 1	Grade	40
Waukesha Co. Asylum,	Waukesha	Registered	40
Weckler, Geo. C.,	Ft. Atkinson, R. 1	Reg. & Gr.	26
Wegeman, Edward,	Cedarburg	Reg. & Gr.	17
Wegner, Harry,	Ripon	Grade	19
Wehrman, Lewis,	Bl. Creek, R. 2	Grade	11
Weidman, George J.,	Cedarburg	Registered	17
Weiffenbach, Howard,	North Lake	Reg. & Gr.	25
Weis, Rudolph,	Waukesha, R. 2	Reg. & Gr.	22
Weiss, Peter,	Saukville	Grade	38
Welker, Jake & Son,	Union Grove	Reg. & Gr.	18
Wendt, Percy,	Watertown, R. 3	Grade	17
Wentker, Edward,	Mishicot	Registered	16
Wenzel Bros.,	Sullivan, R. 1	Grade	19
Wenzel, Roy,	Sullivan, R. 1	Reg. & Gr.	30
Werts, Glenn,	Canton	Grade	14
Westcott & Wolf,	Union Grove	Reg. & Grade	21
Wetzel, George,	Cameron	Grade	17
Weber, Fred & Sons,	Bloomer	Registered	33
Wever, Roy,	Sturtevant	Grade	15
Wever, M. & Sons,	Merton	Reg. & Gr.	35
Weyers, Joe,	Kaukauna, R. 2	Grade	26
Weyers, Wm.,	Seymour, R. 1	Grade	18
Weyker, Ed.,	Dousman	Registered	14
Whitford, Jim,	Barron	Reg. & Gr.	20
Whiting & Hill,	Brandon	Registered	17
Whitney, Raymond,	Eldorado	Grade	17
Wichman, Wm.,	Appleton, R. 3	Grade	25
Wiechert, Henry,	Cedarburg	Reg. & Gr.	19
Wieckert, Walter,	Appleton, R. 2	Registered	25
Wienke, Elmer,	Bristol	Grade	18
Widman, W. E.,	Jefferson, R. 2	Reg. & Gr.	24
Wieman, Mrs. Henry,	Watertown, R. 3.	Registered	22
Wilde, Walter,	So. Wayne	Grade	24
Wilkom, Elmer,	Sturtevant	Reg. & Gr.	21
Wilkomm, Frank,	Bristol	Grade	19
Wilks, Herbert,	Union Grove	Grade	16
Williams, Alvin,	Eagle, R. 2	Grade	26
Williams, Nick,	Barron	Reg. & Gr.	17
Will, Carl, Jr.,	Jefferson, R. 1	Registered	11
Williams, Louis,	Bristol	Reg. & Gr.	20
Wilsie, Walter,	Brandon	Registered	21
Wilson, Earl,	Darlington	Registered	15

Name	Address	Reg. & Gr.	No.
Wilson, Lecil, Darlington, R. 4		Reg. & Gr.	25
Winnebago Dairy, Fond du Lac, R. 4		Reg. & Gr.	42
Wis. Home & Farm School, Dousman, Box 27		Registered	20
Wis. Industrial School for Boys, Waukesha		Registered	65
Wis. Industrial Home for Women, Taycheedah		Registered	33
Wisconsin State Prison Farm, Waupun		Reg. & Gr.	146
Wisnefski, Lawrence, Union Grove		Reg. & Gr.	20
Wisti, William, Barron		Grade	30
Woehler, Wm., Appleton, R. 1		Grade	16
Woodworth, H. G. (Attorney), Cedarburg			
Worcester, E. L. (Groseneck), Waukesha, R. 3		Registered	18
Worm & Stearns, Waupun		Grade	17
Wright, Harold, Johnson Creek, R. 1		Grade	21
Wuethrich, John, Greenwood		Registered	85
Yahnke, George & Leonard, Burlington, R. 4		Grade	26
Yandry, Russel, Ft. Atkinson, R. 2		Grade	14
Yderstad, Thoralf, Mason		Registered	7
Youle, Robert, Shullsburg, R. 2		Grade	25
Zaiser, C. J., Oconomowoc		Grade	22
Zemke, Bert, Dallas		Grade	24
Zickert Bros., Rosendale, R. 1		Grade	36
Ziegler, Ed., Appleton		Grade	22
Zieroth, Jack, Rice Lake		Grade	11
Ziemer, Jasper, Cedarburg		Grade	28
Zimmer, Floyd, Appleton, R. 1		Grade	10
Zimmerman, Ernest, Darlington, R. 4		Registered	14
Zinsmaster, Wm., Jr., Chetek		Grade	23
Zoberlin & Webb, Plymouth		Registered	32



WE'RE HERE TO HELP YOU, SO MAKE YOUR PROBLEM OUR PROBLEM

The purpose of the Wisconsin Dairymen's Association is identical with that of all major dairy breed associations—to assist in every way possible to develop Wisconsin's dairy herds.

WE CAN HELP YOU:

- Locate production bred males and females of your particular breed.
- Work out a breeding program.
- Plan a bull paddock.
- With your herd management problems.
- Organize Cooperative Bull Testing Associations.
- By presenting Hoof Trimming demonstrations.
- Plan a Managed Milking program.

CALL ON US!

MORE Milk, Eggs, Meat

WITH LESS LABOR AND FEED



FORT ATKINSON, WISCONSIN

ADDITIONAL HOLSTEIN BREEDERS

that are Members of Wisconsin Dairymen's Association too late to list alphabetically in above list.

Name	Address	Reg. & Gr.	No.
Ashenbrenner, Marion	Reg. & Gr.	19
Bailey, Norman & Son, Kenosha	Reg. & Gr.	27
Bakken, Tom, Chetek	Grade	17
Barfknecht, Paul, Rice Lake	Registered	14
Barritt, Wm., Barron	Registered	20
Becker, Nick, Almena	Registered	12
Beckwith, Bill, Barron	Grade	26
Berkholtz, Walter, Barron	Grade	14
Biehn Bros., Union Grove	Reg. & Gr.	24
Bosselman, Walter, Burlington	Reg. & Gr.	32
Brachen & Green, Sturtevant	Grade	17
Brown, Harry, Barron	Registered	17
Buergi, Adolph, Rice Lake	Reg. & Gr.	21
Burdick, Harold T., Hillsdale	Registered	22
Carlson Bros., Chetek	Grade	24
Carpenter, Lester, Chetek	Reg. & Gr.	16
Crown Stock Farm, Bassett	Reg. & Gr.	111
Dodge, Roy, Sr., Chetek	Grade	23
Doyle Bros., Rice Lake	Grade	20
Doyle, Joe, Rice Lake	Grade	24
Eves, Harold, Wilmot	Grade	33
Faanes, Louis, Prairie Farm	Grade	15
Frisle, Arnold & Son, Dallas	Grade	22
Garner, Perry, Chetek	Registered	22
Glaser, Harold, Dallas	Grade	24
Gehler, Donald, Cameron	Grade	11
Gehler, Lauren, Cameron	Grade	12
Gehler, Fred, Cameron	Grade	16
Gillmore, Ernest, Kenosha	Reg. & Gr.	18
Granum, Norval, Chetek	Grade	16
Gumbert, Edward, Dallas	Grade	18
Halverson, Oscar, Dallas	Registered	5
Hanson, Harold, Rice Lake	Registered	36
Hanson, Freeman, Chetek	Registered	17
Hanson, Joseph, Chetek	Registered	13
Hanson, Ted, Barron	Grade	14
Hathaway, Sam, Rice Lake	Reg. & Gr.	29
Hegna, Elmer, Cameron	Grade	13
Hewith, Lloyd, Chetek	Grade	11

Name	Address	Reg. & Gr.	No.
Hoegger, Jake, Rice Lake		Grade	11
Holstrum, Nels, Rice Lake		Registered	11
Huiras, John, Canton		Grade	26
Huset, Harold, Chetek		Grade	16
Johnson, Richard, Rice Lake		Grade	22
Johnson, Donald, Rice Lake		Grade	20
Johnson, Walter, Canton		Grade	16
Koepp, Robert, Barron		Registered	15
Koepp, Bill, Barron		Registered	14
Krause, Walter, Dallas		Grade	34
Kringle, Leonard, Rice Lake		Reg. & Gr.	28
Kringle, Ed, Rice Lake		Grade	25
Lichtenwalner, Irvin, Barron		Registered	14
Lind Bros., Cumberland		Registered	10
Mayala, John, Barron		Reg. & Gr.	22
Osberg, Rollin, Chetek		Grade	25
Ward, Harold, Hillsdale		Registered	16



Feed  
FOR THEIR
FUTURE! 

It's how the calf turns out that counts! And what they eat during early weeks may mean the difference between a profitable and an unprofitable animal. You can rely on Security Calf Food. It's a real, tested formula. Nutritious . . . easily digested. Helps build husky frames . . . promotes balanced development.



**GET
A PAIL
TODAY**

Used by
Dairyman
over 40
years!

ELK LAKE FARM JERSEYS

HERD SIRES

Brampton Favorite Royal 382599

CLASSIFIED GOOD PLUS

By Right Royal 79285 C. J. C. C., Gold and Silver Medal. Out of Brampton Favorite Girl 164965 C. J. C. C., Medal of Merit, Gold and Silver, with 1,020 lbs. butterfat.

Brampton Royal Aim High 391550

CLASSIFIED VERY GOOD — JR. CHAMP. MINN. 1939

By Valiant Aim P. S. 7133 H. C. First on Jersey, 1936. Classified Very Good. Out of Brampton Royal Vicki 94606 C. J. C. C. 544 lbs. butterfat as 4-year-old. Reserve Junior Champion, Grouville-St. Saviour.

RICHARD BRACKETT

ELK MOUND, WISCONSIN

PUREBRED JERSEY FIRSTS

IN THINGS MORE IMPORTANT

- First recorded date of recognition of Jersey cattle as a dairy breed — 1734.
- First dairy cow registered in America — a Jersey (Lily No. 1, dropped in 1851).
- First purebred dairy organization in America — American Jersey Cattle Club.
- First to conduct Parish Shows in America — Jersey breeders (1926 in Indiana).
- First in production efficiency in every impartial test — purebred Jersey cattle.
- First (and only) breed with a national butterfat average over 5% — Jerseys.
- First dairy breed in America to adopt Selective Registration — Jerseys (1939).
- First Super Registration ("Star Bull") program initiated by Jerseys (1939).
- First cow choice of 50,000 American dairy breeders — purebred Jerseys.
- First choice of 2,000,000 American dairy farmers — Jerseys (purebreds, grades).

For Breeder's List Write

Wisconsin Jersey Cattle Club

Richard Brackett, President, Elk Mound, Wis.
J. A. Craig, Vice-President, Janesville, Wis.
G. B. Price, Secretary, R. 3, Kenosha, Wis.



Jersey Breeders

Active Members of the Wisconsin Dairymen's Association

Name	Address	Reg. & Gr.	No.
*Amberg, J. C. & Sons,	Hillsboro	Registered	34
*Bartlett Sisters,	Janesville	Registered	35
*Blank, Alvin,	Grafton	Registered	22
*Brackett, R. A.,	Elk Mound	Registered	51
Brunner, Frederick,	River Falls	Grade	15
Cisler, J. E.,	Valders	Grade	46
Clark & Squires,	Sturtevant	Registered	22
*Cropley, W. R.,	Kenosha	Reg. & Gr.	19
Culshaw, John,	Sturtevant	Reg. & Gr.	29
*Eddy, Fred H.,	Beloit, R. 4	Registered	12
*Finn, Chas. B.,	Bridgeport	Registered	22
*Frisinger, Arthur,	Barron	Grade	17
Frisinger, Marshal,	Barron	Grade	11
*Fryda, Ernest A.,	Sussex	Registered	28
*Gil-Bar Farms,	Janesville	Registered	135
*Godfrey, Marvin,	Darlington	Registered	15
Godfrey, Robert,	Mineral Point	Reg. & Gr.	10
Groves, Alba J. & Son,	Viroqua	Registered	14
Hallstrom, Richard W.,	Waukesha	Registered	31
Hahn, Frank,	Salem	Grade	7
Harmeling, J. A.,	Sheboygan	Registered	10
Hartkopf, Morris R.,	Mukwonago	Registered	18
Heebink, Wm.,	Baldwin	Grade	21
*Heitz, Warner & Sons,	Ft. Atkinson	Registered	10
*Hepburn, Howard,	Prairie Farm	Registered	18
Hoffman Farms,	Grafton	Registered	22
*Holloway, Charles,	Union Grove	Reg. & Gr.	24
*Holloway, John,	Union Grove	Reg. & Gr.	25
Holmes, Geo.,	Hudson	Reg. & Gr.	14
*Howell, Harold,	Waukesha	Registered	23
*Jensen, Emmet,	River Falls	Reg. & Gr.	63
*Jensen, Harvey,	River Falls	Reg. & Gr.	53
Jensen, Wm.,	River Falls	Reg. & Gr.	51
*Johnson, Thorval,	Union Grove	Reg. & Gr.	10
Kelley, Charles S.,	Hudson	Registered	17
Keup, Edwin J.,	Cedarburg	Reg. & Gr.	24
Kilpatrick, Bob,	Belmont	Reg. & Gr.	18
Kinney, Robert & Sons,	Hudson	Reg. & Gr.	45
Kirchner, Wm.,	River Falls	Grade	29
*Kolb, John,	Cleveland	Grade	22
Kurschner, Merriel,	Prairie Farm	Grade	18
*La Barre, Kenneth,	Brookfield	Registered	15
Laity, Chas.,	Shullsburg	Reg. & Gr.	50
Larson, A. L.,	Grantsburg	Registered	6
*Ling, Clarence,	Union Grove	Reg. & Gr.	17
Makholm, Austin,	Suring	Registered	
Miller, Gerald,	Prairie Farm	Grade	18
Miller, Clarence,	Prairie Farm	Grade	30
Miller, Geo. O.,	Barron	Grade	20
*Moy, W. S.,	Mondovi	Grade	35
Mueller, E. J.,	Grafton	Grade	13
Nielsen, Sear,	Union Grove	Grade	14

Name	Address	Reg. & Gr.	No.
Neumann, A. W.,	Cleveland	Grade	24
Penguilly, Aldro,	Dodgeville	Registered	20
Peterson, Harley,	Roberts	Reg. & Gr.	19
*Poisl, Wm.,	Union Grove	Registered	16
*Price, George,	Kenosha	Registered	18
Price, Orval,	Kenosha	Grade	24
*Pritzl, Othmar,	Cato	Reg. & Gr.	14
Quilling, Geo. A.,	Menomonie	Reg. & Gr.	27
*Reedal, John,	Phillips	Registered	30
Rheineck, Dr. A. F.,	Oconomowoc	Registered	35
*Saugstad, Ed. J.,	Westby	Registered	20
*Sczepanski, Alfred,	Independence	Reg. & Gr.	36
*Seyfourth, F. J. & Son,	Mondovi	Registered	25
*Shepherd, Fred H.,	Oconomowoc	Reg. & Gr.	20
Smith, Raymond,	River Falls	Grade	14
*Steffanus, P. N.,	Delavan	Registered	40
*Steff, Hilbert,	Mishicot	Grade	21
Steinkraus, Alvin A.,	Mukwonago	Grade	18
Stirn Bros.,	Cochrane	Grade	22
*Stoecker, W. J.,	Mukwonago	Reg. & Gr.	32
*Styer, Grant,	Knapp	Grade	31
Svacina, Roman,	Cato	Reg. & Gr.	24
*Vernon Co. Asylum,	Viroqua	Registered	90
*Wastrack, Dr. W. R.,	Cedarburg	Registered	10
*Wiegand, Kurt T.,	Cleveland	Registered	24
Wiegand, Mrs. Otto R.,	Cleveland	Registered	21
Woestenberg, Henry,	Appleton	Registered	15

**Also active member Wis. Dairy Cattle Club.*

GIL - BAR FARMS

Registered Jerseys

Premier Breeder Wisconsin State Fair
1943 and 1944

STAR HERD FOR PRODUCTION

JANESVILLE, WISCONSIN

Additional Active Members of the Wisconsin Jersey Breeders' Association Not Already Listed.

(Reported by State Secretary as of December 8, 1945)

Name	Address
Albert, V. F.	Sawyer
Ausman, S. A. B.	Elk Mound
Ball, Gerald	Augusta
Barth, Sanford N.	Black Creek
Barth, Emil	Black Creek
Barth, Wm.	Black Creek
Bayere, L. J.	Gilman
Bruins, Clarence	Fairwater
Clark, Wm.	Racine
Christiano, M. A.	Elkhorn
Christensen, Austin	Soldiers Grove
Crawford, R. N.	Delavan
Dedhe, Arvin	Newton
Dimick, Richard	Almena
Dotter, Wm.	Irma
Dykstra, John D.	Randolph

Name	Address	Reg. & Gr. No.
Eckstein Bros.		Oshkosh
Feldman, O. H.		Augusta
Felts, La Vern		Tilleda
Gillingham, Rollin C.		Neenah
Glaeser, Wm. & Son		Montford
Gregerson, Keith		Woodville
Haeuser & Kammueler		Fountain City
Haeuser, Donald L.		Fountain City
Hall, Lindahl & Son		Westby
Harmeling, Dr. J. H.		Sheboygan
Hartman, Anna & Son		Manitowoc
Hasslinger, Carl		Hartland
Houston, Wallace		Comstock
Johnson, J. Clark		Viroqua
Kelsey, Forrest		Delavan
Ketterer, Donald		Fennimore
Kimpel, Phillip E.		Sturtevant
Kirking, Nordahl		Ontario
Latimer, A. J.		Viroqua
La Rue, Louis A.		Osceola
Lorentz, Conrad		Tony
Love & Love		Burlington
Marquardt, Jean		Blair
Martin, Hilmer		Alma
McMahon, Richard		Lancaster
Meyers, Edward		Zion, Ill.
Miller, Edward A.		Ridgeland
Mullen, Steve		Seymour
Nagel, Raymond		Elkhart Lake
Ofstedahl, Walton		Holmen
Oldenberg, Donald		Burlington
Olson, Otto S.		Viroqua
Pauson, Hjalmer		Westby
Pautz, Henry F.		Oconto Falls
Pellet, O. J.		Viola
Peterson, Alvin J.		Shell Lake
Peterson, Chas. A.		Rosendale
Peterson, John H.		Westby
Peterson Bros.		Barronett
Potts, Truman		Waupaca
Reichel, Edward O.		Bullion
Ricket, Lawrence J.		Berlin
Rider, Richard and Dale		Kenosha
Rolph, Herman		Almena
Rolph, Herbert		Almena
Rowley, W. H.		Delavan
Rusdal, Martin		Westby
Santosky, Arthur		Pine River
Scribner, Ervin		Comstock
Schroeder, Edgar		Plymouth
Schneider, Henry		Waunakee
Shafer, W. E. C.		Amery
Stafslie, Melvin		Viroqua
Stockman, August		Turtle Lake
Stuckmann, H. H.		Plymouth
Sturdevant & Williams		Melvina
Tollackson Bros.		Viroqua
Tostrud, J. Orville		River Falls
Van Duine, Dr. W.	2421 Lunt Ave., Chicago	
Vandervort, Rollie		Tomah
Walker, Guy		Fennimore
Wallace, H. M.		Norwalk
Warmington, P. G.		Honey Creek
Washburn, G. E.		Oshkosh
Waste, Geo.		Mondovi
Williams, Chas. N.		Edgerton
Wilkins, Vivian		Livingston
Wilkins, Lee R.		Livingston
Wilson, W. B.		Jefferson
Woestenberg, Henry		Appleton
Yindra, Anton		Maribel

Milking Shorthorns



Active Members of the Wisconsin Dairymen's Association

Name	Address	Reg. & Gr.	No.
Ewing Bros., Benton		Registered	28
Lamb, R. W. & Son, Janesville		Registered	18
Rabensdorf, Fred, Fairchild		Registered	10
Scoles, John, Bruce		Grade	13
Smith, George W., Jr., Burnett		Registered	40
Johnson, Hjalmer F., Barron		Registered	17

Mixed Breeds

Active Members of the Wisconsin Dairymen's Association

Name	Address	No.
Bishop, R. B., Mukwonago, R. 1		100
Bolzenthal, Walter, Two Rivers, R. 2		16
Brookhill Farms, Genesee Depot		400
Cowin, Harold, Hillsdale		15
Cropley & Legler, Kenosha, R. 1		18
Drews, Marvin A., Mukwonago, R. 1		13
Ellison, Carl, Barron		25
Erickson, Peter, Barron		27
Evert, Clarence, Pewaukee, R. 2		14
Fromm, Howard A., Pewaukee, R. 1		16
Grandy, Nelson, Black Creek, R. 1		10
Hanson, Arthur, Chetek		16
Haugen, Lyman, Chetek		26
Hembre, Emil, Cameron		11
Hoffman, H. T., Lake Beulah, R. 1		40
Hutchison, Francis, Rice Lake		16
Johnson, Mrs. Ruth, Dallas		17
Keystone Farms, Waukesha, R. 1		114
King, Chas., Mukwonago		39
Kurshner, Lester, Barron		24
Ladensen & Chadbourne, Kenosha, R. 1		26
Makula, Walter, Chetek		18
Mitchell, John A., Milwaukee, R. 12		11
Neilson, N. P., Bear Creek		21
Parks, George, Rice Lake		23
Petersen, Byron, Oconomowoc, R. 1		16
Schwahn, Ehrfried, Reedsville, R. 2		20
Struck, John, Hartland		14
Swanson, Victor, Chetek		10
Wagner, Ralph, Barron		29
Volk, R. J., Rice Lake		122
Wern Farms, Waukesha, R. 1		450
Wonoski, Albert C., Dousman, R. 1		16

Miscellaneous

Name	Address
Beach, Dr. B. A., College of Agriculture	Madison
Craig, J. A.	Janesville
Cramer, A. J., College of Agriculture	Madison
Engendorff, Sgt. O. H.	Clovis, New Mexico
Harris, Roy T., College of Agriculture	Madison
Klenzade Products Incorporated (C. B. Shogren, Sales Mgr.)	Beloit
Platteville State Teachers College (V. E. Nylin)	Platteville
Rehrauer, Ben, Tester	Milwaukee
Sasman, L. M., Dept. of Voc. & Adult Education	Madison
Vergeront, G. W., College of Agriculture	Madison
Weavers, Harvey, Department of Agriculture.....	Madison

YOUR HANDY SOURCE FOR DAIRY EQUIPMENT

- | | |
|---|---|
| <input type="checkbox"/> Babcock Testers | <input type="checkbox"/> Sulphuric Acid |
| <input type="checkbox"/> Milk & Butterfat Computers | <input type="checkbox"/> Dairy Scales |
| <input type="checkbox"/> Test Bottle Marking Ink | <input type="checkbox"/> Mastitis Detectors |
| <input type="checkbox"/> Milk Sample Dippers | <input type="checkbox"/> D.H.I.A. Jar Boxes |
| <input type="checkbox"/> No. Test Sample Jars | <input type="checkbox"/> Dehorner |
| <input type="checkbox"/> Laboratory Glassware | <input type="checkbox"/> Milk Fever Outfit |

Check the items you are interested in, clip this ad and mail it to the address below. We will send you full information. Ask also for our general catalog. We list more than 1,600 items of specialized agricultural equipment.

NATIONAL AGRICULTURAL SUPPLY

Fort Atkinson

Wisconsin

Counties Operating on the Standard D.H.I.A. Plan

County	County Agent	Address	No. of Ass'n's
Barron	I. O. Hembre	Barron	6
Dane	R. V. Hurley	Madison	1
Douglas	E. E. Anderson	Superior	1
Dunn	J. L. Wenstadt	Menomonie	1
Grant	George Dehnert	Lancaster	1
Iowa	W. B. Noyes	Dodgeville	2
Kewaunee	H. L. Kautzer	Kewaunee	1
Manitowoc	Truman Torgerson	Manitowoc	1
Milwaukee	S. S. Mathisen	Milwaukee	1
Outagamie	J. F. Magnus	Appleton	2
LaFayette	Gordon B. Reuhl	Darlington	1
Racine	E. A. Polley	Rochester	2
Richland	A. V. Miller	Richland Center	2
Rock	R. T. Glassco	Janesville	5
Rusk	Erle Barber	Ladysmith	1
St. Croix	Omer Peck	Baldwin	1
Trempealeau	Arnold Wochos	Whitehall	3
Walworth	J. G. Beattie	Elkhorn	2
Washington	E. E. Skaliskey	West Bend	1
Waukesha	J. F. Thomas	Waukesha	1

Co-op Dairy Herd Improvement Associations Active Nov. 1, 1945

County	County Agent Address
Brown County	
Brown Co. Co-op.....	J. N. Kavanaugh, Green Bay
Calumet County	
Calumet Co. Co-op.....	Orrin Meyer, Chilton
Clark County	
Clark Co. Co-op.....	W. R. Marquart, Niellsville
Chippewa County	
Chippewa Co. Co-op.....	H. G. Horne, Chippewa Falls
Columbia County	
Columbia Co. Co-op.....	O. G. Claffin, Portage
Dane County	
Dane Co. Co-op.....	R. V. Hurley, Madison
Dodge County	
Dodge. Co. Co-op.....	W. H. Henthorn, Juneau
Dunn County	
Dunn Co. Co-op.....	J. L. Wenstadt, Menomonie
Eau Claire County	
Eau Claire Co. Co-op....	Carl M. Johnson, Eau Claire
Fond du Lac County	
Fond du Lac Co. Co-op....	G. F. Massey, Fond du Lac
Green County	
Green Co. Co-op.....	E. O. Baker, Monroe
Jackson County	
Jackson Co. Co-op.....	W. D. Bean, Black River Falls
*Jefferson County	
Jefferson Co. Co-op.....	C. A. Dumond, Jefferson
*Kenosha County	
Kenosha Co. Co-op.....	E. V. Ryall, Kenosha
LaCrosse County	
LaCrosse Co. Co-op.....	Emil Schiesser, LaCrosse
*LaFayette County	
LaFayette Co. Co-op....	Gordon B. Reuhl, Darlington
Langlade County	
Langlade Co. Co-op.....	Ira V. Goodell, Antigo
Lincoln County	
Lincoln Co. Co-op.....	Gus Sell, Merrill
Manitowoc County	
Manitowoc Co. Co-op..	Truman Torgerson, Manitowoc

**Associations now having 100% active membership in Wisconsin Dairymen's Association.*

***Associations now having partial membership in Wisconsin Dairymen's Association.*

Name	Address	Reg. & Gr. No.
Marathon County		
	Marathon Co. Dairy Record Service	W. J. Rogan, Wausau
Monroe County		
	Monroe Co. Co-op.....	A. D. Begley, Sparta
Oconto County		
	Oconto Co. Co-op.....	O. G. Woelfel, Oconto
*Outagamie County		
	Outagamie Co. Co-op.....	J. F. Magnus, Appleton
*Ozaukee County		
	Ozaukee Co. Co-op....	C. C. Gilman, Port Washington
Pierce County		
	Pierce Co. Co-op.....	H. G. Seyforth, Ellsworth
Polk County		
	Polk Co. Co-op.....	Earle Sanford, Balsam Lake
Price County		
	Price Co. Co-op.....	W. D. Rogan, Phillips
Rusk County		
	Rusk Co. Co-op.....	Earle Barber, Ladysmith
Sauk County		
	Sauk Co. Co-op.....	D. H. Williams, Baraboo
Sawyer County		
	Sawyer Co. Co-op.....	Sherman Weiss, Hayward
Shawano County		
	Shawano Co. Better Herds	Kenneth Wallin, Shawano
Sheboygan County		
	Sheboygan Co. Co-op.....	G. W. Lycan, Sheboygan
St. Croix County		
	St. Croix Co. Co-op.....	Omer Peck, Baldwin
Vernon County		
	Vernon Co. Co-op.....	O. G. Johnson, Viroqua
Vilas County		
	Vilas Co. Co-op.....	Eagle River
Washburn County		
	Washburn Co. Co-op.....	W. H. Dougherty, Spooner
Washington County		
	Washington Co. Co-op.....	E. E. Skaliskey, West Bend
*Waukesha County		
	Waukesha Co. Co-op.....	J. F. Thomas, Waukesha
Waupaca County		
	Waupaca Co. Co-op.....	V. H. Quick, Waupaca
Winnebago County		
	Winnebago Co. Co-op.....	V. W. Proutky, Oshkosh

*Associations now having 100% active membership in Wisconsin Dairymen's Association.

**Associations now having partial membership in Wisconsin Dairymen's Association.

Guernsey Bull Testing Associations

Douglas County No. 1—

Organized 1941

Members:

1. Paul Anderson, Poplar
2. Roger Elm, Wentworth
3. Wm. Holm, South Range
4. Erwin C. Alberts, Wentworth

Douglas County-Dairyland—

Organized 1942

Members:

1. James Snelsou, Kingsdale, Minn.
2. C. A. Carlson, Kingsdale, Minn.
3. Henry Souerbrey, Kingsdale, Minn.
4. Elmond Chilstrom, Kingsdale, Minn.
5. Lawrence Johnson, Kingsdale, Minn.
6. Ayner L. Norstrom, Kingsdale, Minn.
7. Al Young, Kingsdale, Minn.

Douglas County-Manitou Falls—

Organized 1942

Members:

1. Abe Britton, Sta. B. R. 1, Superior
2. Lawrence Britton, Foxboro
3. Clyde Will, Foxboro
4. LeRoy Conley, Sta. B-R1, Superior

Door County No. 1—

Organized 1945

Members:

1. Lawrence Johnson, Algoma
2. Ottmar Schmidt, Sturgeon Bay
3. Clarence Larson, Algoma

Manitowoc County-Mishicot No. 1—

Organized 1938

Members:

1. Hans Beyer, Mishicot
2. Oscar Samz, Mishicot
3. Roland Samz, Mishicot
4. Calvin Barta, Two Rivers

Manitowoc County-Valders—

Organized 1939

Members:

1. Otis Marken & Son, Valders
2. Otis I. Berge & Son, Valders
3. Anton O. & Oley E. Berge, Valders
4. H. L. Fisher & Son, Valders

Monroe County-Wilton—

Organized 1936

Members:

1. Dwyer Bros., Kendall
2. John Ford, Wilton
3. Alfred Johnson, Sparta
4. George Steinhoff, Wilton
5. Mrs. Henry Steinhoff & Sons, Wilton

Outagamie County No. 1—

Organized 1939

Members:

1. Melvin Haferbecker, Appleton
2. Otto Zschaechner, Appleton
3. Jamison Bros., Appleton
4. Victor Leppla, Appleton

Outagamie County No. 2—

Organized 1939

Members:

1. Stanley Jamison, Appleton
2. O. H. Breitrick, Appleton
3. Ed. W. Dietz, Appleton
4. John Fredrich, Appleton

Outagamie County No. 3—

Organized 1939

Members:

1. Jamison Bros., Appleton
2. O. H. Breitrick, Appleton
3. Otto Zschaechner, Appleton
4. Victor Leppla, Appleton
5. Ed. W. Dietz, Appleton

Ozaukee County-Mequon—

Organized 1941

Members:

1. Henry W. Riemer, Thiensville
2. Theo. Wilde, Thiensville
3. Edgar Wille, Thiensville
4. Erwin J. Riemer, Cedarburg

Ozaukee County-Pleasant—

Organized 1938

Members:

1. Herbert Clausing, Grafton
2. Mrs. Julius Clausing, Grafton
3. Armin Clausing, Grafton
4. Bernard Behrens, Grafton

Price County-Phil-Park—

Organized 1945

Members:

1. Roy Bodenber, Phillips
2. Carl Hartway, Park Falls
3. Roy Helberg, Butternut
4. Vincent Zellinger, Phillips

St. Croix County No. 1—

Organized 1939

Members:

1. Emmet Jensen, River Falls
2. Newton Pearson, River Falls
3. Bernard Casaw, Hudson
4. Ralph Katner, Hudson

St. Croix County No. 2—

Organized 1943

Members:

1. John Parslow, River Falls
2. Alfred Kusilek, River Falls
3. Mauris Simon, Hudson
4. Ed. Day, River Falls

Trempealeau County-Galesville No. 2—

Organized 1939

Members:

1. M. E. Oynes, Galesville
2. L. E. Oines, Galesville
3. Blaine G. Paulson, R. 3, Melrose
4. Bert C. Congdon, Galesville

Winnebago County No. 1—

Organized 1938

Members:

1. R. W. Harness, Neenah
2. Harlan J. Wilson, Rush Lake
3. Fahrwald Farm, Oshkosh
4. R. C. Heffernan, Oshkosh

Is There A
BULL TESTING ASSOCIATION
In Your Community?

For Detailed Information and Help in Organization, Write

B. R. Dugdale, Extension Fieldman
WISCONSIN DAIRYMEN'S ASSOCIATION
MADISON, WISCONSIN

Holstein Bull Testing Associations

Columbia County-Columbus No. 1— Organized 1938

Members:

1. B. A. Conlin, Columbus
2. Louis Trapp, Columbus
3. Sam Austin, Columbus
4. Arthur Biedermann, Columbus
5. Arthur Weiner, Columbus

Dodge County No. 1— Organized 1938

Members:

1. E. A. Beule, Fox Lake
2. Harley Jaeger, Watertown
3. Frisbie Bros., Juneau

Douglas County-Cloverland— Organized 1942

Members:

1. Fred Hertzog, Maple
2. Ed. Pearson, Maple
3. Carl Pearson, Maple

Douglas County-Black and White— Organized 1945

Members:

1. Sam Plunkett
2. Ralph Hendrickson
3. Martin Carlson & Son

Douglas County-Lakeside— Organized 1945

Members:

1. C. V. Peterson, Poplar
2. Swen Swenson, Poplar
3. Albin Carlson, Poplar

Manitowoc County-Mishicot No. 1— Organized 1941

Members:

1. Alvin Jindra, Mishicot
2. George M. Reis, Cato
3. Herman Echardt, Cato

Manitowoc County-Mishicot No. 2— Organized 1943

Members:

1. John Benzinger, Mishicot
2. August Hean, Mishicot

St. Croix County No. 1— Organized 1941

Members:

1. Clark Hunter, Hudson
2. Mrs. Louise Sontag, Stillwater, Minn.
3. Dusek Bros., River Falls
4. Bennett Bros., River Falls

Trempealeau County No. 1— Organized 1938

Members:

1. Ralph Schansberg, Whitehall
2. C. A. Scharlau, Arcadia
3. Geo. Lund, Arcadia
4. R. A. Lamberson, Whitehall
5. Julius Nilsestuen, Arcadia

Winnebago County No. 1— Organized 1944

Members:

1. U. C. Boss, Oshkosh
2. August Metzsig, Oshkosh

Jersey Bull Testing Associations

St. Croix County No. 1—

Organized 1939

Members:

1. Jensen Bros., River Falls
2. Wm. Jensen, River Falls
3. Wm. Heebink, Baldwin

St. Croix County No. 2—

Organized 1944

Members:

1. Marvin E. Nelson, River Falls
2. Harley Peterson, Hudson
3. George E. Holmes, Hudson
4. Raymond Smith, River Falls
5. Fredrick Brunner, River Falls



**TODAY'S
CALVES are
Tomorrow's
Producers**

**FEED YOUR
BABY CALVES
SECURITY
CALF FOOD**

The right calf feed during the critical early weeks pays big dividends in better production later. Time-tested Security Food is highly nutritious . . . easily digested in young stomachs. It has what it takes to get calves off to a good start. Get a pail today!

DON'T MISS

The 74th Annual Convention of the
Wisconsin Dairymen's Association

CONVENTION THEME

"Controlling Diseases of Dairy Cattle"

When . . . February 15 and 16.

Where . . . College of Agriculture.

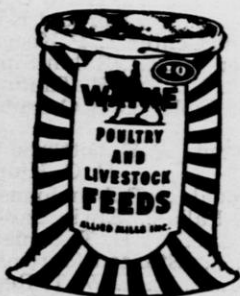
Ag. Hall — Madison We'll Be Seeing You!

Departments of Vocational Agriculture and F.F.A. Chapters

Name of School or Chapter	Address	Instructor or Advisor
Abbotsford, H. S., Abbotsford		Arthur Pynnonen
Albany H. S., Albany		Victor U. Elmer
*Algoma F. F. A., Algoma		Roy R. Koss
*Alma Center F. F. A., Alma Center		F. C. Janisch
*Amery F. F. A., Amery		G. E. Niccum
*Antigo F. F. A., Antigo		V. L. Peterson
*Arcadia Jr. D. H. I. A., Arcadia		Merrill Pinch
Arena H. S., Arena		Ivan H. Ley
Argyle H. S., Argyle		Roy Simpson
Arkansaw H. S., Arkansaw		E. L. Howard
*Ashland H. S., Ashland		Peder Pederson
Ondossagon H. S., Ashland		John Gunning
*Athens H. S., Athens		
Baldwin H. S., Baldwin		N. S. Niccum
*Baraboo F. F. A., Baraboo		Arley Heinze
*Barron Jr. D. H. I. A., Barron		D. A. Hendrickson
Bear Creek H. S., Bear Creek		Irl Poehlman
*Beaver Dam F. F. A., Beaver Dam		L. R. Larson
Belleville H. S., Belleville		R. J. Rensink
*Belmont H. S. & F. F. A., Belmont.....		Maynard Nelson
Beloit V. S., Beloit		R. A. Perkins
*Black River Falls H. S., Black River Falls		
*Blair H. S., Blair		B. M. Smith
*Berlin F. F. A., Berlin		L. A. Blackburn
*Bloomer, F. F. A., Bloomer		C. O. Nenzel
*Bloomington F. F. A., Bloomington		L. W. Dortland
*Blue River F. F. A., Blue River		Frank Halloran
*Bonduel H. S., Bonduel		D. C. Aderhold
*Boscobel F. F. A., Boscobel		O. T. Baker
Bowler H. S., Bowler		
*Brillion F. F. A., Brillion		George Maki
*Bruce, Bruce		Wm. Doyle
*Cadott F. F. A., Cadott		H. W. Duxbury
*Cameron H. S., Cameron		M. S. Murray
*Campbellsport F. F. A., Campbellsport		
		Howard Newman
Cashton H. S., Cashton		Donald Hart
*Chetek F. F. A., Chetek		H. J. Vruwink
*Chilton F. F. A., Chilton		Donovan Hohman
*Chippewa Falls V. S., Chippewa Falls		H. E. Rogers
Clayton H. S., Clayton		S. M. Koenig
*Clear Lake F. F. A., Clear Lake		E. E. McKenzie
*Clintonville F. F. A., Clintonville		E. A. Hutchinson
*Clinton H. S., Clinton		Donald Mullen
Cobb H. S., Cobb		Leon Mitchell
Cochrane H. S., Cochrane		Ray Scholl
*Colby F. F. A., Colby		Arthur Pynnonen
*Colfax H. S., Colfax		Harlan Stone
*Columbus H. S., Columbus		V. W. Matthias
Cuba City H. S., Cuba City		John Sauer
*Cumberland H. S., Cumberland		H. C. Hunt
*Darlington H. S., Darlington		
Deerfield H. S., Deerfield		
*De Forest F. F. A., De Forest		E. H. Abraham
Dodgeville H. S., Dodgeville		Kenneth Fox
Dorchester H. S., Dorchester		
*Durand F. F. A., Durand		O. R. Hanson
*Eau Claire F. F. A., Eau Claire		D. C. Aebischer
Edgar H. S., Edgar		

Name of School or Chapter	Address	Instructor or Advisor
Edgerton H. S., Edgerton		
*Ellsworth F. F. A., Ellsworth		Kenneth Wall
*Ellmwood F. F. A., Ellmwood		
*Elroy F. F. A., Elroy		W. J. Pierick
*Endeavor H. S., Endeavor		Jack Whirry
*Fennimore F. F. A., Fennimore		L. D. Kolar
*Gibraltar F. F. A., Fish Creek		Sidney Telfer
*Ft. Atkinson H.S & F.F.A. Ft. Atkinson		F. M. Ross
*Frederic H. S., Frederic		Lloyd Johnson
*Galesville F. F. A., Galesville		J. O. Beadle
*Gays Mills F. F. A., Gays Mills		A. L. Cummings
*Gilmanton H. S., Gilmanton		Eugene King
*Glenwood City F. F. A., Glenwood City		R. C. Wall
Granton H. S., Granton		
*Grantsburg F. F. A., Grantsburg		Glenn Shearman
Green Lake H. S., Green Lake		
*Greenwood H. S., Greenwood		James Mohr
*Hartford F. F. A., Hartford		Neal Nicholson
Hawkins H. S., Hawkins		
Highland H. S., Highland		Clarence Gabel
Hillsboro H. S., Hillsboro		John Wachter
*Hixton H. S., Hixton		Hiram Thompson
*Holmen H. S., Holmen		Tim Main
*Hortonville H. S., Hortonville		Francis Hanson
Independence H. S., Independence		Logan Creswell
*Janesville H. S., Janesville		J. W. Wiseman
*Jefferson F. F. A., Jefferson		Robert Larson
*Johnson Creek H. S., Johnson Creek		Robert Gearing
*Kaukauna F. F. A., Kaukauna		H. A. Stumpf
Kendall H. S., Kendall		Lewis Ewers
*Kewaunee F. F. A., Kewaunee		H. H. Kasten
*La Farge F. F. A., La Farge		Alvin Jindra
*Lake Geneva F. F. A., Lake Geneva		J. S. Smith
Lake Mills H. S., Lake Mills		A. A. Zurbuch
Lancaster H. S., Lancaster		Paul Oehrlein
Lime Ridge H. S., Lime Ridge		
Lodi H. S., Lodi		Francis Mayfield
Lone Rock H. S., Lone Rock		C. H. Rae
*Loyal F. F. A., Loyal		Carl Lawrenz
*Luck F. F. A., Luck		E. J. Ausderau
*Luxemburg F. F. A., Luxemburg		G. V. Gregor
*Little Wolf F. F. A., Manawa		H. P. Barrington
Marathon H. S., Marathon		
*Marion H. S., Marion		G. P. Williams
Markesan H. S., Markesan		
*Marshfield F. F. A., Marshfield		Erwin Zielke
*Mauston F. F. A., Mauston		Keith Weittenhiller
*Mayville F. F. A., Mayville		Gregory Buechel
Mazomanie H. S., Mazomanie		Ivan Ley

*Active member of Wisconsin Dairymen's Association.



WISCONSIN DAIRYMEN

PREFER

WAYNE

Calf Feeds . . . Wayne
Fitting Ration . . . and
Wayne Dairy Feeds . . .
for efficient, low cost
production.

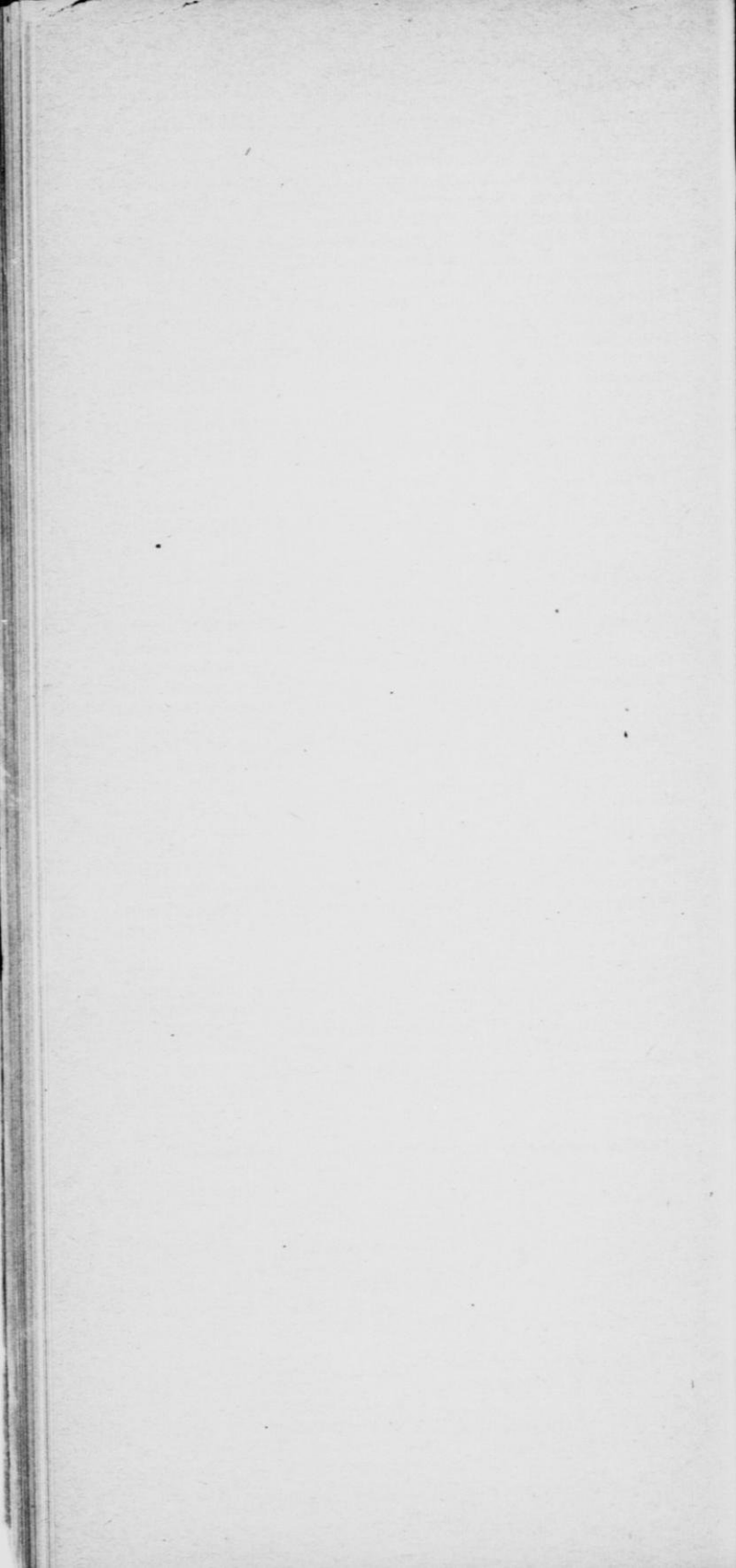
ALLIED MILLS, INC.

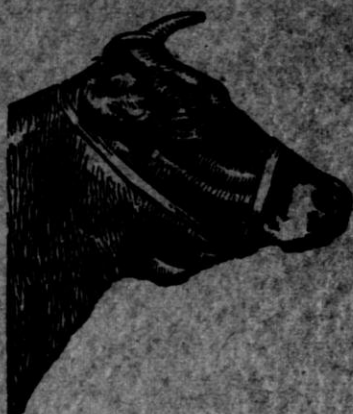
Name of School or Chapter	Address	Instructor or Advisor
*Medford H. S., Medford		William Waterman
*Melrose F. F. A., Melrose		Albert Dickie
*Dunn Co. Agr. F. F. A., Menomonie		George O'Brien
Merill V. S., Merill		M. J. Burkhardt
*Middleton F. F. A., Middleton		V. R. Ulvestad
*Milltown Jr. D. H. I. A., Milltown		Myron Johanson
*Milton F. F. A., Milton		J. P. Green
Mindoro H. S., Mindoro		Tim Main
*Mineral Point F. F. A., Mineral Point		Stanley Hore
*Mishicot H. S., Mishicot		Donald Halada
*Mondovi F. F. A., Mondovi		F. N. Abrams
*Monroe F. F. A., Monroe		Robert Davenport
*Montello H. S., Montello		Jack Whirry
Montfort H. S., Montfort		Leon Mitchell
Mount Hope F. F. A., Mount Hope		
Mount Horeb H. S., Mount Horeb		R. H. Henkel
Muscoda H. S., Muscoda		J. W. Griffiths
*Neillsville F. F. A., Neillsville		J. W. Perkins
*Nelson H. S., Nelson		Ray Scholl
*New Auburn F. F. A., New Auburn		R. W. Gotham
New Glarus H. S., New Glarus		D. F. Doering
New Holstein H. S., New Holstein		R. F. Hemauer
*New London H. S., New London		Leonard Warner
*New Richmond H. S., New Richmond		T. J. Madden
Norwalk H. S., Norwalk		
*Oconomowoc H. S., Oconomowoc		O. W. Dobratz
*Oconto Falls F. F. A., Oconto Falls		Harold Kinyon
*Omro F. F. A., Omro		R. B. Locke
Oregon H. S., Oregon		H. J. Morrissey
Ontario H. S., Ontario		
*Osceola F. F. A., Osceola		Howard Askov
*Oshkosh Jr. D. H. I. A., Oshkosh		F. J. Miller
*Lincoln Hill H. S., Osseo		E. H. Barber
*Owen F. F. A., Owen		Everett Jacobson
Palmyra H. S., Palmyra		Glen Brigham
*Phillips H. S., Phillips		J. J. Polich
Pittsville H. S., Pittsville		
Plainfield H. S., Plainfield		Arthur Mullen
*Platteville F. F. A., Platteville		L. A. Bensed
Plum City H. S., Plum City		
*Plymouth H. S., Plymouth		R. J. Delorit
		A. H. Splitgerber
*Portage F. F. A., Portage		M. J. Framberger
*Port Wing H. S., Port Wing		W. J. Landry
Poynette H. S., Poynette		Ford Thurston
Prairie du Sac H. S., Prairie du Sac		H. T. Shields
*Prairie Farm F.F.A., Prairie Farm		Wilson Penberthy
Prescott H. S., Prescott		A. J. Jepsen
Princeton H. S., Princeton		
*Pulaski H. S., Pulaski		R. D. Jones
*Randolph H. S., Randolph		P. J. Ronnerud
Readstown H. S., Readstown		Newton Boggs
*Reedsburg F. F. A., Reedsburg		T. R. Lathrope
Rib Lake H. S., Rib Lake		Keith Zintz
*Rice Lake F. F. A., Rice Lake		Norman Kahl
*Richland Center F.F.A., Richland Center		L. P. Keegan
*Ithaca F. F. A., Richland Center		Ralph Sippy
*Ripon F. F. A., Ripon		C. H. Tinkham
*River Falls Jr. D. H. I. A., River Falls		C. B. Campbell
Roberts H. S., Roberts		
*Racine Co. Agr. School, Rochester		A. E. Dittbrenner
		H. G. Klumb
*Rosendale Jr. D. H. I. A., Rosendale		Ruben Johnson
*St. Croix Falls H. S., St. Croix Falls		Elwin Larsen
Sauk City H. S., Sauk City		H. T. Schields
Seneca H. S., Seneca		Stanton Martinson
*Seymour F. F. A., Seymour		W. T. Reese
Shawano H. S., Shawano		A. V. Dreier

*Active member of Wisconsin Dairymen's Association.

Name of School or Chapter	Address	Instructor or Advisor
*Shell Lake F. F. A., Shell Lake	Wm. Jackson
Shiocton H. S., Shiocton	Leon Mazur
Shellsburg H. S., Shellsburg	Robert Dalton
*Sparta F. F. A., Sparta	Marion Schwier
*Spoooner H. S., Spooner	R. A. Humphrey
Spring Green H. S., Spring Green	R. C. Melvin
Spring Valley H. S., Spring Valley	Otto Thompson
*Stanley F. F. A., Stanley	Vernon Horne
*Stevens Point H. S., Stevens Point	R. A. Gilbertson
*Stoughton V. S., Stoughton	B. F. Schaefer
*Stratford H. S., Stratford	F. V. Meinke
*Sturgeon Bay H. S., Sturgeon Bay	E. R. Barden
Sevastopol Cons. H. S., Sturgeon Bay	..	C. P. Habermann
Superior V. S., Superior	K. L. Helwig
Taylor H. S., Taylor		
Thorp H. S., Thorp	Roy Swanson
Tomah H. S., Tomah	Arthur Weiner
Tony H. S., Tony		
*Turtle Lake F. F. A., Turtle Lake	Olaf Pederson
*Valders F. F. A., Valders	Lenard Turnell
Viola H. S., Viola	E. J. Baker
*Viroqua F. F. A., Viroqua	C. M. Holtan
Wabeno H. S., Wabeno		
Waterloo H. S., Waterloo		
Watertown H. S., Watertown	C. S. Grundahl
*Waukesha F. F. A., Waukesha	D. N. McDowell
		Orland Born, H. P. Stephan
*Waupaca F. F. A., Waupaca	Howard Deetz
*Waupun H. S., Waupun	Howard Turner
*Wausau V. S., Wausau	Allan Peterson
Wausaukee H. S., Wausaukee		
Wautoma H. S., Wautoma	A. S. Peterson
Wauzeka H. S., Wauzeka		
*West Bend F. F. A., West Bend	A. R. Kurtz
*Westby F. F. A., Westby	R. M. Cooper
Westfield H. S., Westfield	Glen C. Olson
*West Lima H. S., West Lima	Alvin Jindra
West Salem H. S., West Salem	N. N. Rowe
*Weyauwega F. F. A., Weyauwega	Glenn Ketchum
*Weyerhauser H. S., Weyerhauser	Wm. Doyle
Whitehall H. S., Whitehall	W. C. Foth
*Whitewater F. F. A., Whitewater		
*Wilmot H. S., Wilmot	Glenn Pacey
*Wilton F. F. A., Wilton	E. A. Bergemann
*Winneconne H. S., Winneconne	Willis Di Vall
*Wisconsin Dells H. S., Wisconsin Dells	F. D. Weigel
Wis. Rapids H. S., Wisconsin Rapids		
*Wittenberg H. S., Wittenberg	L. E. Dean
Wonewoc H. S., Wonewoc	Hallie Newlun

*Active member of Wisconsin Dairymen's Association.





PURINA CHOWS

... For more than 50 years the
standard of quality for feeding all
kinds of livestock and poultry.

... Buy Purina Dairy Chows from
your local Purina Dealer at the
Store with the Checkerboard Sign.



WISCONSIN
DAIRYMEN'S ASSOCIATION
FORT ATKINSON, WIS.



Organized 1872

BUILDING
WISCONSIN
DAIRY HERD
INCOME

Pres. E. H. Fred

University of Wisconsin

Madison, Wisconsin.

Post. Paid, P. L. & S.
U. S. POSTAGE
PAID
PERMIT NO. 10
St. Albans, Vt.