



# LIBRARIES

UNIVERSITY OF WISCONSIN-MADISON

## **Wisconsin Badger, the Wisconsin art portfolio, part II: groups. Vol. 85 1970**

Madison, Wisconsin: Students of the University of Wisconsin, 1970

<https://digital.library.wisc.edu/1711.dl/NBVOYDIJSV65G8L>

This material may be protected by copyright law (e.g., Title 17, US Code).

For information on re-use, see

<http://digital.library.wisc.edu/1711.dl/Copyright>

The libraries provide public access to a wide range of material, including online exhibits, digitized collections, archival finding aids, our catalog, online articles, and a growing range of materials in many media.

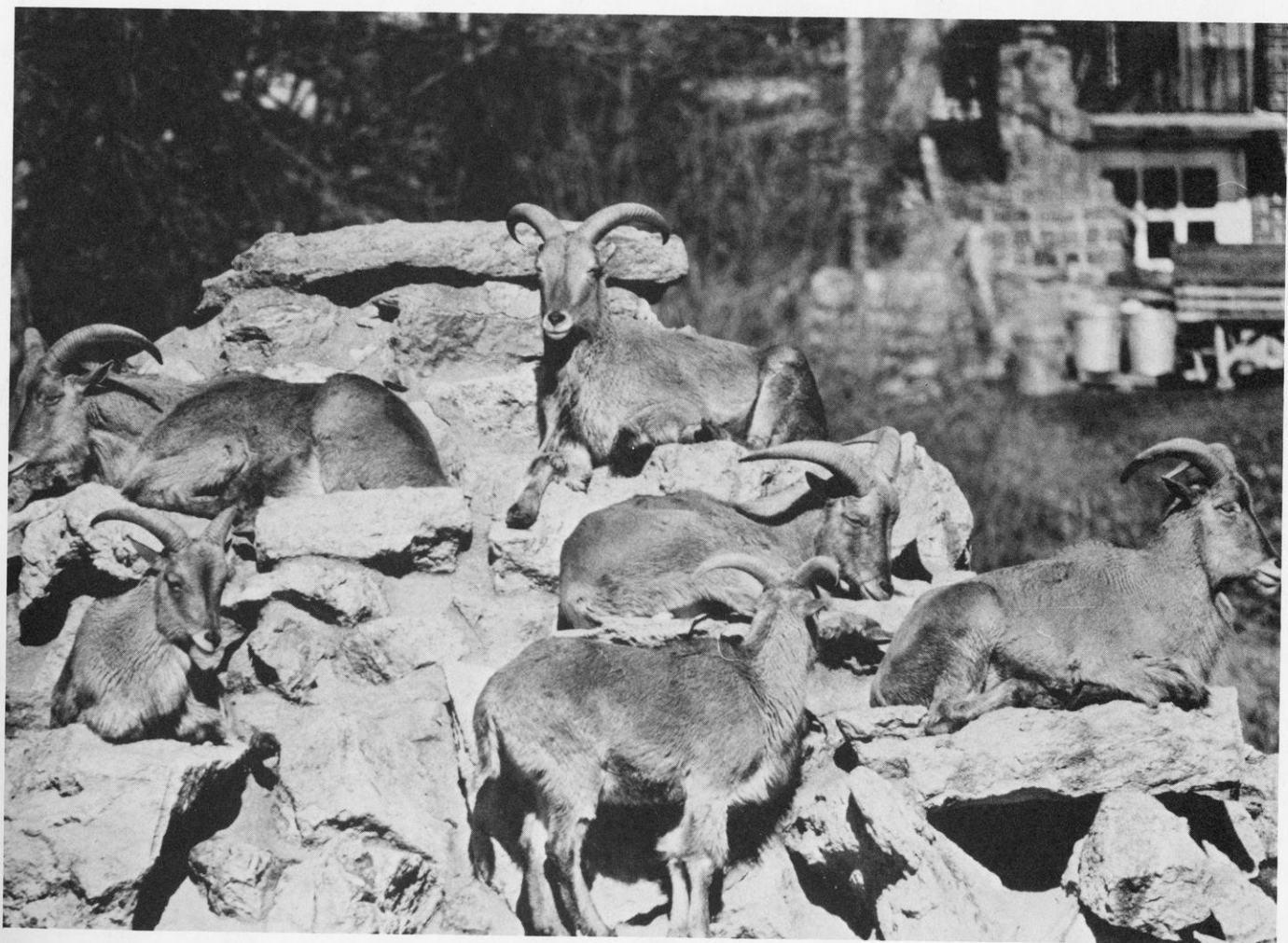
When possible, we provide rights information in catalog records, finding aids, and other metadata that accompanies collections or items. However, it is always the user's obligation to evaluate copyright and rights issues in light of their own use.











PART II  
GROUPS

A B Γ Δ Ε Ζ

G R E E K S

H Θ Ι Κ Λ Μ

N Ξ Ο Π Ρ Σ

Come: Lord Jesus,  
 Be Our Guest,  
 Let This Lunch  
 To Us Be Blest.

And If We Die Before We Sleep,  
 At Least We'll Have Some Grub To Eat.  
 Amen.

# ACACIA



In Front of Table: B. Blandino, M. McLain, H. Irwin. Row 2: M. Meidinger, M. Coughlin, T. Clementi, R. Crystal, P. Moertl, J. Manauer, K. VanDyke, S. Greeter. Row 3: S. Friend, D. Bruder,

G. Mamula, D. Rahn, K. Leeds, V. McIntosh, D. Strand. Row 4: C. Van Abel, J. Porter, Mr. G., L. Quinn.



# ALPHA CHI RHO



Row 1: R. Wickhem, M. Roos, J. Bolingbroke, E. Murphy, J. Stenskie, R. Kleinschmidt, J. Grant, D. Meiling.

Row 2: A. Novy, G. Deverse, G. Thielemann, D. Campbell, H. J. Janis, R. Reichert, R. Otjen, D. Pritzkow, D. Sielaff, M. Spielman, S. Eid.

“... in friendship, all thoughts, all desires, all expectations are born and shared.”

Gibran

# ALPHA GAMMA DELTA

Along the way this year the Alpha Gams have seen many little times become big times through spirit and determination. Alpha Gamma Delta co-sponsored the annual charity benefit, “Campus Carnival” in addition to claiming an overall second place in the event. Also, as other altruistic projects, our house gave a Christmas party for handicapped children at Mendota and provided housing for Indian children.

Hard work and initiative claimed Homecoming with Sigma Phi Epsilon a success with a first place victory in Yell Like Hell and a 3rd overall. The Alpha Gams participated, too, in Sigma Chi Derby Day and Sigma Phi Epsilon’s Winter Carnival.

Big times were shared by individual members as well. Miss Betsy Bennett was crowned Miss Madison, and our Spring Barn Party and Winter Formal at the Chalet on the Lake were enjoyed by all. For Alpha Gamma Delta.

Row 1: E. Durnford, M. Weber, P. Trimberger, A. Wilson, B. Schwermann, K. Harju, M. Wagner, K. Clutter, K. Pfiffner, A. Rodriguez, C. Stanton, K. Scharlao, L. Vacha, B. Jones, N. Goeser. Row 2: K. Mooij, N. Schmoll, D. Ebert, M. Hunt, K. Schloemer, K. Winn, P. Blum, T. Wolverton, G. Emerson, J. Christoph, S. Michaels, M. Sabourin. On Stairs: D. Henning, L. Adams, J. Nolting, S. Boettcher.



# ALPHA EPSILON PHI

These are the girls who light the fire of AEPHI. Their sparks are composed of Martin Luther King Scholarship Fund, Humorology Chairmen, WSA Committees, a very successful philanthropy auction, 3rd place in Homecoming and Humorology with Beta Theta Pi. The Phi's even have a finalist in the Little Miss International Queen contest. Their claim to "flame" is top sorority grades on campus. AEPHI's are active, enthusiastic, creative, spirited, and lots of fun. They are the girls who glow on campus.

Row 1: R. Kamhi, S. B. Mandel. Row 2: I. Rothschild, D. Sher, J. Blutter, S. Schaengold, J. Kaplan, L. Andelman, M. Reisen, R. Miller. Row 3: S. Silver, L. Small, R. Ingber, D. Weiss, M. Ruff, S. Richman, J. Miringoff, R. Burstein. Row 4: E. Slaiman, M. Kent, L. Aland, L. Solin, B. Singer, G. Penn, B. Cooper, B. Baraban, S. Fox, M. Bolotin, J. Rosenthal, A. Herman. Row 5: F. Colton, V. Owens, S. Levy, A. Zimmerman, E. Eisenberg, M. Freedman, S. Baim, S. Cole, S. Fishbein.



# ALPHA PHI

alpha phi is usually alive and human people who speak and walk and take baths regularly and wear lipstick and clothes and pluck their eyebrows and eat.

trophies are inanimate objects with no blood or faculties or dandruff or elbows or diseases or inferiority complexes or feet or nostrils.

those of us with nostrils maintain our individuality by breathing at different speeds.

trophies only shine, sparkle and sometimes glow like lightning, stars, and shiny metal objects and flash bulbs and wet pavement and sequined dresses and fireflies.

this is the only things that alpha phi has in common with them.

the end.

Row 1: B. Bautz, D. Dunn, J. Willert, B. Pool, C. Haglund, P. Pickard, C. Morgan. Row 2: K. Bremer, B. Vanderleest, A. Smith, M. Munte, B. Hufschmidt, S. Anslow, L. VanVleet, J. Thuesen, J. Hawk, J. Mastin, J. Wall. Row 3: N. Nolan, C. Francis, S. Hill, G. Alberts, N. Kraus, D. Catlin, J. Larson, V. Tarnish, L. Kinbaum, S. Boltz, K. Nixon, K. Torgerson, B. Muske, K. Riesberg, P. Werner, K. Skelton, J. Jeffery, W. Kexel.



ALPHA PHI

# CHI OMEGA

Bottom Row: C. Serwer, A. Waddell, F. Haen, N. Nielsen, B. Williams, S. Buchholtz, B. Gonzalez, S. Kerrigan, J. LaDouceur, B. Garnett, C. Graff. Row 2: J. Barkley, J. Foskett, L. Schiess, L. Curtis, S. Sachs, M. Deibel, C. Schmidler, D. Roberts, C. Auxier, N. Lidicker, B. Taylor,

J. Birkhauser, A. Baker. Row 3: J. Lindsey, M. Kennedy, C. Waud, E. Dewel, A. Guis, K. Botsch, S. Delahyde, B. Lonnborg, J. Stubbe, P. Rooney, S. Skagen, P. Lindeke, C. Schmidt, B. Barqger, D. Lowell, P. Mansfield, M. Working.



# ALPHA XI DELTA



The Alpha Xi's take time out to watch their officers hard at work—playing bridge—before they go back to their varied activities. Actives and pledges alike serve their community with projects for both the elderly and the young. There are Menasa and the Big Sister Program for individuals as well as house-wide projects at the side Children's Home and a Madison Convalescent home. Time is found for fun, too. Taking a place on the mid-winter ball court and then steering a pig at "Little I" the week after that all fit into the Alpha Xi schedule. Homecoming with Kappa Sigs, Humorology with the Evans Scholars and Campus Carnival planned with Kappa Eta Kappa, added up to a busy year for Alpha Xi's—and then there was school . . .

Row 1: P. Greene, K. Anderson, C. Janicek, B. Budlong, L. Larkin, J. Ledin, A. Nunemaker, B. Collins, K. Davey. Row 2: B. Paulus, B. Webster, J. Stilwell, L. Patton, P. Nigbor, J. Markotic, B. Stoll, S. Gallagher, J. Schmidt, P. Hammel, D. Deibel, S. Stiles, J. Zandi, S. Bennett. Row 3: L. Garvey, M. Munger, L. Meisenheimer, J. Stoltz, C. Heiser, E. Esch, E. Tarrant, D. Stannard, B. Whitford, N. Roll, C. Novotny, A. Ripple, N. Kraska, J. Storer.

# BETA THETA PI

Since 1873 the men of Alpha Pi chapter of Beta Theta Pi have been combining scholarship, athletic ability, and leadership within their membership. Whether competing for the Badger Bowl, participating in Homecoming and Humorology, giving a Christmas Concert at the Commodore or throwing a party, the Beta's put the same enthusiasm forth. The oldest fraternity at Wisconsin, the Beta's are proud of their long tradition of success and look forward to the future with optimism.

Bottom Row: R. Schmidt, J. Thompson, A. Kaniss, C. Mourn, G. McCartan, S. Condon, C. Vaughn, K. Augustine, D. McLaughlen. Row 2: E. Albright, T. Sanders, A. Kansis, S. Hilmer, S. Nettum, B. Waddell, S. Lord, W. Perrigo, J. Kelly, D. Christianson, J. Aulos, C. Barney, Q. Williams. Row 3: K. Heinz, K. Quinlan, B. Yanakos, P. Stone, R. Speaker, D. Eggelhoff, S.

Dyer, P. Hinderraker, Mom Hines, D. Stahl, R. Taylor, J. Buchanan. Row 4: J. Rogers, A. Brown, G. Scott, R. Rennebohm, G. Markos, J. Dushek, M. Sorenson, R. DeBrain, T. Jones, B. Snyder, G. Nash, J. Giesser, B. Feind, G. Mueller, S. Goettal.



# CHI PHI

Row 1: K. Gahouzzi, H. Katrichis, B. Evans, D. Michelson, M. Brewer, L. Gone, D. Burke. Row 2: K. Aldridge, G. Bartholomew, C. Wright, R. Uihlein, H. Kippers, G. Schuenke, D. Yarger, P. Zeller, P. Uihlein, M. Jastzrembowski, B. Welsh. By Fireplace: B. Traboulsi, T. Tarazi, M. Caruso, E. Wuennenberg.





# DELTA ZETA



Row 1: M. Cobb, T. Tonkin, M. Paynter, S. Behrens, J. Roth. Row 2: L. Leake, B. Kuczmariski, M. Pauly, W. Spafford, D. Zinda, C. Huettner, Mrs. Gunnison, S. Thorson, M. Gower. Row 3: M. Kowerski, J.

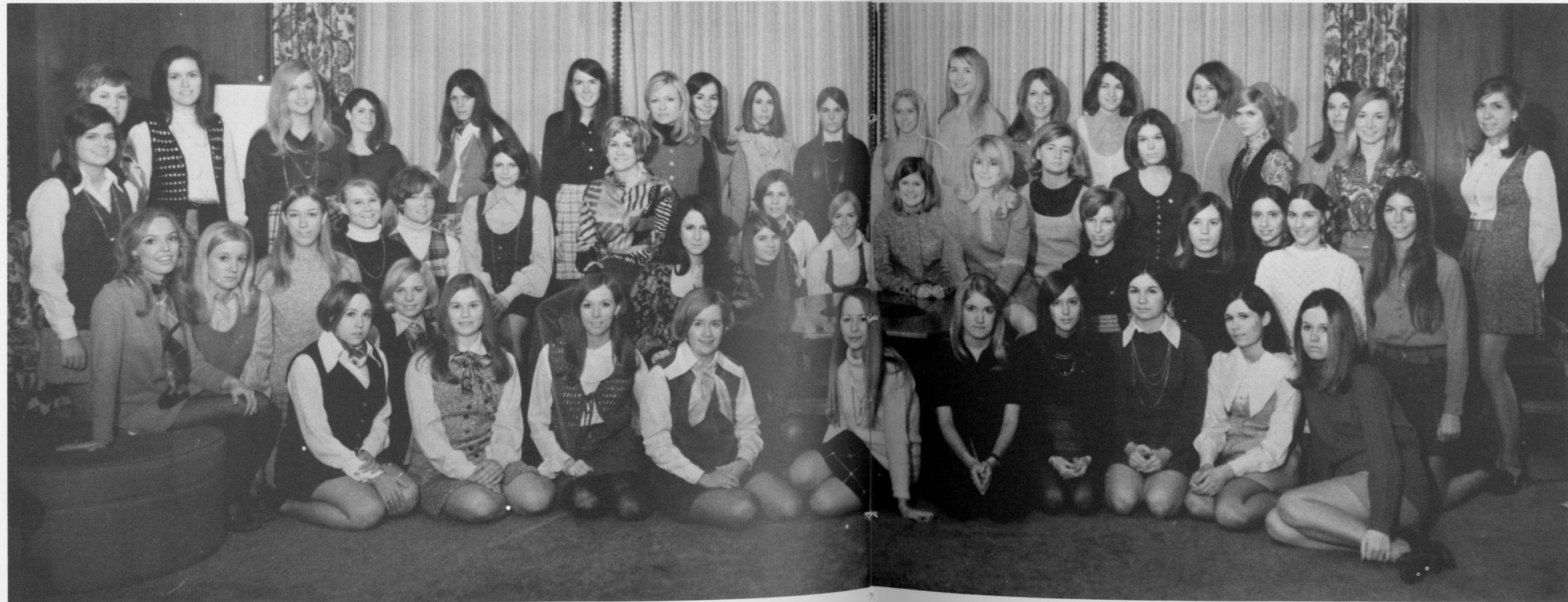
Gilbert, C. Knutson, K. Riley, K. Sprague, J. Kenyon, M. Becker, S. Simonson, K. Madigan, V. Szatalowitz, J. Edlowitz, H. Weisfiedl, N. Nauertz.

The DZ's have been living the year with *Drive* and *Zest*. Homecoming with Alpha Gamma Rho and Campus Carnival with Delta Theta Sigma added highlights to their many exciting activities. The pledges making hand puppets for the children's hospital and the chapter selling Halloween candy for the Wisconsin Kidney Foundation helped to show the community that the Greek system really is beneficial. To the surprise of the Chapter, Mrs. Betty Agler, the National President, graced them with her appearance on Founder's Day. Along with all of this, individuals participating in activities such as Angel Flight, Crucibles, ADT honorary Med-Tech Sorority, Pershing Rifles, University Symphonic Band and the Concert Choir, have proved this year to be happy and productive for Delta Zeta.

# DELTA DELTA DELTA

With the theme of "All Together Now", the Tri Deltas began the year with their second consecutive Homecoming victory, this year with the Evans Scholars. They discovered that Delta Dads Swing when they were hostesses for their fathers on a football weekend. Tri Delta campus activities range from the pompom squad to the Panhel Executive Board, a Theta Chi-Tri Delt philanthropy project, and hosting controversial guest speakers. As thoughts turn to spring, Deltas look forward to their annual Slave Day, Campus Carnival with the DU's, and defending their Sigma Chi Derby Day championship.

Row 1: N. Einnigan, C. Brown, J. Torkelson, P. Freisinger, P. Moore, C. Bauman, C. Satory, B. Blaney, J. Harris, J. Downey, J. Hardiman. Row 2: L. Petzold, S. Kranick, M. Goodsell, C. Russell, C. Lake, A. Steinmetz, D. Morgan, A. Murray, M. Duecker, B. Bradley, J. Roddick, R. Burling, S. Schiller, B. Barlow, P. Allen, D. Landman, C. Brostrum, N. Astrologes, L. Mockrud, S. Schneider. Row 3: P. Vogt, L. Arpe, H. Huber, J. Jueds, F. Guelzow, J. Bamberg, J. Weidenfellen, L. Thomas, P. Taylor, K. Bogart, J. Schmidt, E. Gates, J. Kleinhans, N. Czinsky, N. Latton, C. Evans, J. Blaney, L. Uthmeier, L. Scott, J. Bell.



# DELTA GAMMA



Row 1: B. Keskey, N. Santelle, L. Matschulat, S. Spurgen, L. Anderson, M. Hocking, D. Dix, N. Hagan, P. Wolf, S. Keskey. Row 2: D. Rohrbach, S. Wilson, S. Woodford, S. Wells, A. Norris, K. Skovgaard, M. Nathan, E. Fisher, P. Newhauser, A. Hawkins, S. Gruel, K. Kittle. Row 3: S. Lobeck, L. Getz, P. Rosenberg, J. Abbott, L. Meschter, L. Stockfleth, A. Poser, F. Kohl, C. Kloss, T. Cahalon, S. Weiss. Row 4: B. Forrer, B. Blackburn, C. Finn, D. Carone, M. Arvold, A. Kimberly, S. Wilke, L. Wilson, M. Moudry, J. Delzer, P. Mayland, E. Bittner. Row 5: L. Bell, C. Bishop, A. Gordon.

# DELTA UPSILON

Bottom Row: R. James, B. Hartley, B. Faulks, D. Seifert, S. Warren, J. Voss, G. Neilson.  
Row 2: C. Chabalowski, D. Heileman, S. Miller, D. Johnson, G. Crow. Row 3: J. Sippl, M.  
McGrew, D. Voit, L. Seno, A. Whitmore, J. Harris, D. Kremmel, T. Tieffanthaler, D.  
DelBalso, T. Kruba, S. Holtan. Row 4: D. Marciniak, J. Holland, T. Mahoney, J.  
Blickensderfer, J. Schloemer, G. Weber, D. Day, T. Blau. Row 5: T. Easton, N. Dennis, T.  
Jones, R. Zarling, K. Paape.



# KAPPA DELTA

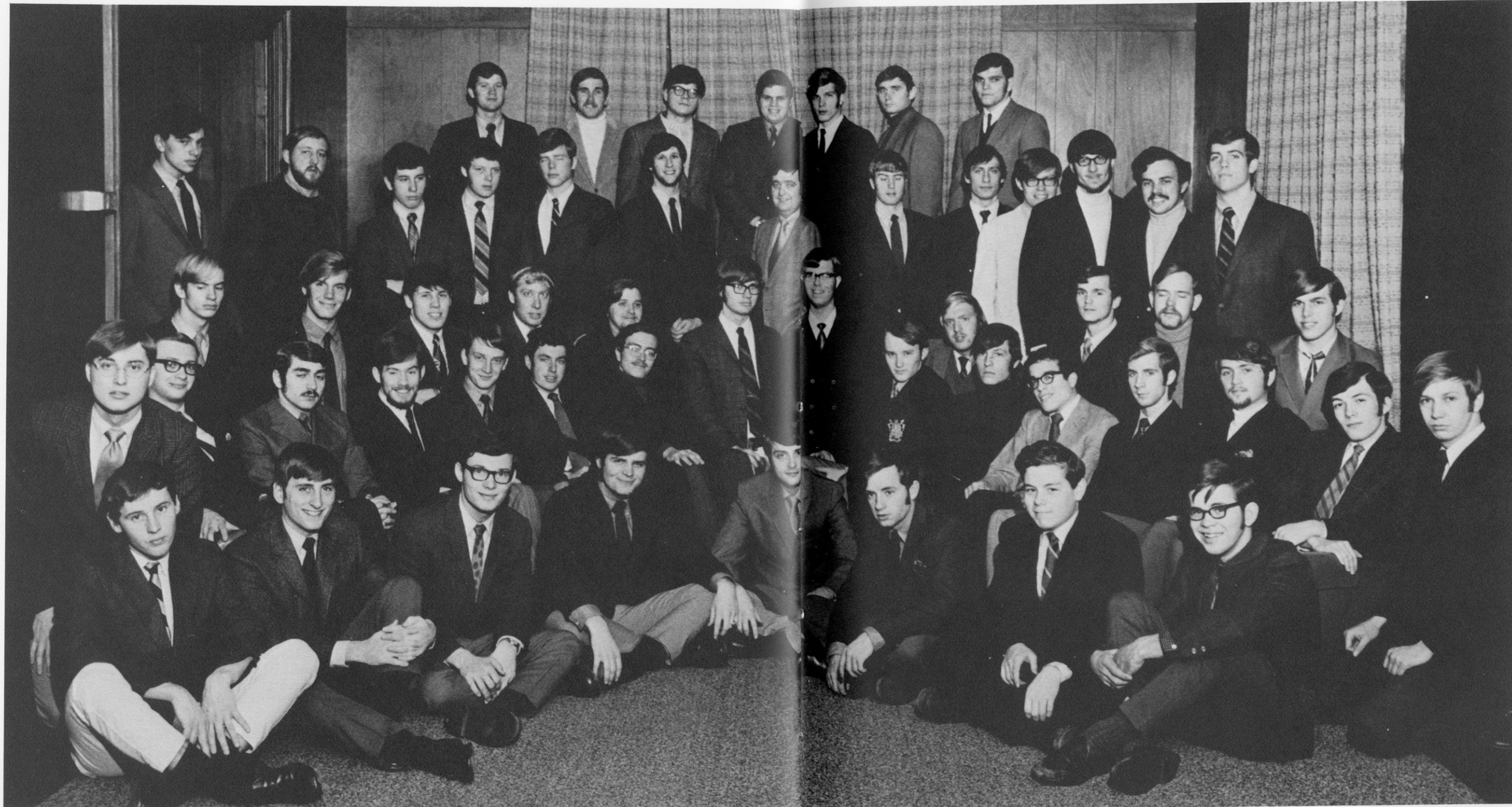


Row 1: N. Chapman, K. Godfrey, L. Barker, S. Kreblein, K. Hammer, L. Schifflin, R. Urbanowicz. Row 2: D. Shouldice, L. Baraga, M. St. Cyr, C. Weberg, T. Croy, D. Liebner, V. Klindt, L. Cady, H. Janis, H. Jackobs. Row 3: M. Redeker, A. Milne, L. Gobis, R. Flegel, K. Galko, P. Donahue, K. Chack, A. Machos, M. Muehleisen, M. Sprechman, J. Krueger.

Homecoming with the Psi U's kicked off the year's activities for the Kappa Delta's—and things just kept going after that. Christmas caroling at the Children's Hospital with the Alpha Delt's and a party with the children at Central Colony kept KD's busy during the winter, while spring brought plans for Campus Carnival booths with the Theta Tau's and a KD Dad's Day. Topping off the year's activities was a celebration commemorating the KD's 50th year at UW.

# EVANS SCHOLARS

Row 1: R. Mullorp, P. Caldarelli, J. Kregel, K. Gahan, R. Walters, G. Lillge, Pledge Class President, S. Rostermundt, D. Vogel. Row 2: A. Brignonne, President, D. Dicchow, L. Valint, T. Fraund, W. Kregel, Vice-President, J. Matthews, T. Osman, D. Schad, D. Neuman, J. Knuteson, D. DeKarske, S. Goldberg, D. Koepke, D. Walters, R. Rickman, J. Anderson. Row 3: M. Philippi, R. Masini, J. Jakubowski, D. Karnsosky, W. Boyden, G. Spaeni, D. Schneider, T. Robinson, T. Farrell. Row 4: R. Marcks, R. Perry, G. Szymczak, B. Bien, T. Scheer, J. Oszewski, J. Rompella, Treasurer.



# GAMMA PHI BETA



Bottom Row: C. Stevens, C. Wheeler, S. Watkins, L. Daggett, M. White, J. Gisenburg, J. Steggert, M. Chapman, M. Finley, J. Scheets, J. Theurer, J. Snell. Row 2: S. Nortman, L. Chesnick, J. Buchanan, K. Togstad, J. Madnuson, G. Hubred, T. Stipich, K. Greib, L. Baker, M. Galaska, C. Dannenfesler, L. van-Brunt. Row 3: T. Bush, B. Peterson, V. Petzko, J. Schaaf, W. McCormick, J. Wollen, C. Helz, B. Collopy, A. Thacher, L. Haimen, K. Saba, N. Seidel, T. Thornton, M. Gerler, H. Cooper. Row 4: Mrs. Lasher, Mrs. Spohn, P. Fitzgerald, T. Lanigan, A. Levine, A. Becker, T. Tormey, K. Legrand. Row 5: B. Lange, A. Hutchinson, M. Thimmesch, B. Moran, S. Cotsirilos, P. Ryan, W. Fenzel, K. Schlimgen, L. Mannegold.

# KAPPA ALPHA THETA

Seated: G. Kelsey, C. Grantz, E. Pederson, P. Fant, K. MacDonald, B. Collins, E. Korst, H. Brinen. Standing: S. Porter, D. Markham, K. Armstrong, A. Milloy, M. J. Sherlin, S. Sharpe, M. Hastings, S. Yahnke, M. Koepke, M. Mansheim, S. Winslow, P. Otis, L. Roeming, A. Trumpf, A. Brinen.





What could be more appropriate than a "family portrait" to mark Theta's centennial year? With a hundred years and nearly a hundred chapters all over the country, Theta sets out to begin another century even better than the first. There have been many high points of this year—service projects with the Sigma Chi's and other Thetas, Homecoming with the Betas, and our Centennial Project. Perhaps the biggest involvement was Humorology, a joint effort with ZBT, just a stone's throw away.

Row 1: S. Browne, P. Knain, S. Kagen, T. Feher. Row 2: R. Wright, D. Taubert, J. Saville, S. Heuer, B. Wilson, G. Books, K. Nelson, J. Manthei, K. Read. Standing: K. Kaufman, P. Phipps, P. Wadzinski, M. Kademian, A. Turley, K. Fowler, P. Schmidt, B. Swartzbaugh, T. Larson, K. Johnson, B. J. Hengleman, L. Johnson, K. Graber, B. West, B. Wentz, B. Greenspoon, S. Smith, H. Reep, S. Hamilton.



# KAPPA KAPPA GAMMA



Bottom Row: B. McEwan, K. Lunney, A. Meissner, L. DeAngelis, C. Larson. Row 2: C. Bjork, M. Gillespie, L. Lawrence, M. Vernon. Row 3: K. Williams, L. Markham, D. Fosdick, J. Altemeier, C. Radford, A. Savage, C. Meiklejohn, N. Schmidt, J. Norris. Row 4: C. Bonady, J.

Alexander. Row 5: J. Leedom, M. Ahern, P. Granger, L. Jeffries, M. Leifert, V. Vollrath, P. Pukkila. Row 6: C. Brenzel, L. Schmidt, C. Starich, C. Collings, S. Hamann, P. Derse.



Kappa Kappa Gamma is a house known for scholarship, service to the community, and fun. (Notice all the books, services and dates in this picture.) This year's activities included homecoming with Alpha Delta Phi, humorology with Chi Psi, and a Christmas party for underprivileged children. The schedule also included a Parent's Weekend, a spring and winter formal, as well as projects concerning the Martin Luther King Scholarship Fund.

Bottom Row: K. Oberly, J. Runft, S. Radick, C. Picone, C. Fulwood. Row 2: M. Grossman, M. Cloutier, P. Manzer, D. Smith. Row 3: C. Enerson, S. Barker. Row 4: L. Haukom. Row 5: M. Swanson. Row 6: B. Mueller. Row 7: L. Giordono, L. Staffacher, B. Ranslow, A. Wachman, E. Hertle, M. Spraker. Row 8: J. Kuinport, D. Rothberg. Row 9: A. Hienze.

# KAPPA SIGMA

Row 1: J. Lee, T. Rammer, S. Wrolstad, D. Oswald, P. Saxe, B. Arndt. Row 2: S. Kolkhorst, D. Youse, T. Shepard, S. Schwenn, J. Anderson, C. Whitaker, R. Reuschlein, P. Primeau. Row 3: B. Hedstrom, J. Muenchow, L. Bergdoll, C. Decker, M. Broihahn, D. Paul, D. Skubal, D. Haseley, M. Grigitis, P. Stenklyft, T. Carr, D. Possin.



Kappa Sigma is a comfortable mixture of fraternal relations, community awareness, and week-end parties. Athletic superiority is no unknown visitor to the Beta Epsilon Chapter either, as strong showings have been displayed in almost every sport. Our famous Hawaiian Party in May annually crowns one of the better social schedules on campus. Formals, pier parties, and impromptu bashes never leave a dull moment. One of the largest pledge classes on campus guarantees that our future will be as bright as our past.

Row 1: T. Baade, R. Krueger, E. Walters, J. Leitner, M. Koshak, T. Grasse. Row 2: E. Hansen, W. Newton, G. Drake, G. Schroeder, B. Hayward, J. McMahon, S. Braden, K. Boxrud. Row 3: D. Vollrath, R. Huebner, N. Didier, D. Stoil, S. Schultz, D. Schoonenberg, R. Selvagg, J. Runtas, R. Friedrich, S. Roof.



# PHI GAMMA DELTA

*Not for college days alone.*

Bottom Row: James Stuart Hake, Frederick Cook Newport, Richard Sierzant, William Michael Lehman, Bruce Milroy Johnson, Thomas Dean Finnigan, Peter Bazan Llewellyn. Row 2: Timothy Joel McGrath, Richard Allen Holten, Thomas Cecil Thompson, Fred Emmett Six, William Groube Lovshin, Richard Andrew Kilinski, George Willard Goodman. Row 3: Neil Floyd Guttormsen, Gary L. Hannah, Thomas Anthony Engles Jr., Scott Raymond Brumbly, Dennis Dean Skogen, James Mark Nania, Todd Robert McGrath, Robert Charles Brannan, William York Schirmacher, Reed Errol Hall.

Unable to make sitting: Theodore Joseph Moreau, Roy Marshall Christianson, George William Cokins, Daniel Robert Drake, Gary Edward Meloy, Fernan Gonzalo Montero, Thomas Arthur Stichman, Richard Neil Bauch, Chris Michael Bauer, Stephen Douglas Harms, Charles Lewis Haworth, Richard Moreau Jr., Robert Gamma Stephens, Bruce Coleman Davidson, Thomas Galoway Godfrey, Robert Charles Hill Jr., Michael Frederick Becker, William Curtis Byram, Steve Wayne Fisher, Hans Anders Johnson, Joseph Damon Johnson Jr., James Michael Kassner, Daniel James Minanan, David Joseph Reichart, Thomas Mars Schmidtkecht, James Allen Schneider, Brian James Shuter, William Robert Cape, Chris Edward Gutschentritter, Roger Edward Huizenga, Edward James Weiss, Frank Joseph Licary, Gregory James Krogstad, Terence Craig Langetieg, Michael Robert Lewis, Thomas Dellwyn Stevens, Brian Richard Nelson, Theodore Edwin Rathert, John Collins Zimedars Jr., John David Center, Keith R. Clotfeller, Thomas Allen Schultz, James Cary Turner, Robert Peter Loepfe, Thomas James Whiting, William Allen Thurwachter, Michael James McInnis, William Tensfeldt.



# PI BETA PHI

These are the girls of the Wisconsin Alpha Chapter of Pi Beta Phi. Who they are is readily apparent. What kind of people they are remains to be determined by those with whom they come into contact. The guys of Delta Upsilon will long remember the Homecoming display the Pi Phi's helped them erect, "Flying the United Way". Then there was the winter formal at Dellview and working on Humorology with the Alpha Delts.

But the Pi Phis have another side. They may be tutors for Madison high school students, volunteers who work with the retarded, campus leaders and Big Sisters. They held a Halloween party for the children at Neighborhood House. This and more was Pi Beta Phi in 1970.



Row 1: M. Robbins, B. Latzko, W. Howie, M. McOuiston, L. Bochert, W. Alexander, S. Shackelford, L. Radloff. Row 2: A. Behnke, B. Stoner, D. Neas, R. Petratter, S. Liebesch, S. Johnson, M. Westing, S. Boeher, L. Latzko, L. Loughlin, V. Kade, C. Hoag. Row 3: Mrs. Lockie, G. Sticka, K. Kelley, M. Mancheski, J. Marfield, W. Williams, V. Valley,

B. Winn, D. Seitz, K. Heise, E. Burns, B. Birk, P. Kohl, M. Marx, L. Shimon, L. Stalle, B. Brown. Not Pictured: A. Alexander, N. Bauch, N. Belvedere, J. Best, S. Best, S. Boysen, H. Broderick, B. Burns, N. Buening, M. Ettinger, G. Faber, L. Hagshand, K. Hill, J. Heurtl, K. Koch, J. Longacher, P. Meyer, A. Snyder, B. Widden, S. Zarnik.

# PSI UPSILON

Alive and well at 222 Lakelawn Place.



Seated: M. Harris, B. Bouda, R. LaFrance, R. Schumann, P. Hauver, G. Hoppe. Second Row: D. Robinson, D. Warner, T. Joern, R. Hale, J. Meser, D. Good, A. Muetterties. Third Row: J. Neitupski, G. Ostermick, G. Anderson, M. Baxter.



# SIGMA ALPHA EPSILON

In eager anticipation of their annual Old Folks Christmas Party, the SAE's gathered to plan their Yuletide strategy. While sifting and winnowing, the SAE's also found time to entertain the mentally retarded children of Madison with the SDT sorority, honor the memory of their dead brother Paddy Murphy, and entertain Dane County's senior citizens with the help of the SAE Little Sisters.

Seated on Floor: B. Kempfert, D. Long, S. Smoth, C. Reimer, J. Etter, R. Carter, T. Harder, J. Loftin, T. Harick. Seated: R. Brown, J. Asher, D. Zutz, J. Fedemia, R. Haagenson, B. Remley, D. Remley, J. Liken, R. Rix, B. Buckley, R. Hanson. Standing: D. Painter, D. Moershel, D. Gorrell, S. Litscher, T. Frisch, B. Thacker, S. Ehle, J. Rauh, T. Wyss, J. Hebel, S. Sayles, L. Klein, D. Frazer, B. Hendricks, W. Shilling, B. Hemke, K. Anderson, D. Fox, K. Conway, T. Arndt, M. Sprenger, B. Foster.





Bottom Row: J. Halverson, J. Wimbo. Row 2: C. Plummer, J. Blackstone, B. Schuh, B. Freedmanstein, R. Hart, J. McCarten. Row 3: P. Cuisiner, J. Rotl, P. Bale, D. Duetsch, S. Halverson, B. Bryson, F. Hogan, B. Anderson, S. Watson, J. Thorne, B. Southworth, B. Newland, C. Palmer. Row 4: K. Westphal, P. Connely, G. Prochel, C. Keene, G. Kieckefer, P. Soldatos, B. Stoffer, B. Spanagel, J. Schaller, T. McCullough, R. Kizewski, G. Phillips, N. Johnson, B. Joern, J. Marth, J. Greenfield, D. Hoff.

# SIGMA DELTA TAU



Row 1: R. Hoffman, F. Fireman, L. Mack, M. Hemschoff, D. Savransky, F. Fishbein. Row 2: J. Pomerantz, O. Krug, J. Kittay, S. Baum, M. Hogan, J. Pluss, N. Blech, M. Greenberg. Row 3: P. Gordon, J. Calmenson, L. Berg, J. Gellman, C. Randy, M. Felix, J. Deutch, P. Radenacher, J. Cohn, M. Krayton. Row 4: B. Jacobs, M. Davis, S. Arbetman, R. Sokol, M. Kornfeld, M. Berwitt, R. Olin, F. Bix.

# THETA DELTA CHI

Row 1: C. Glueck, T. Cobra holding Goliath. Row 2: C. Vollrath, R. Quisling, T. Elf, J. Cochran, J. Eversfield, R. Witt Enwyler, B. Campbell. Row 3: M. Brown, T. Beast, W. J. Koepsell, R. Larson, T. F. Jules, K. Cochran, C. Lindo, F. Langcois. Standing: R. Herb. In Back: J. Schott, T. Meyer, T. Miller.



# THETA CHI

Another year of diversified pursuits for the Theta Chi's. Headed by their second annual Ski for Cancer, where \$1200 was earned for the American Cancer Society and a great party for all participants, spread out their men in all activities. Wild times like the Safari Party and the Lord of the Flies Feast added extra excitement, while more quiet times were spent while studying with dates. The sporting life was highlighted by trophies in basketball, tennis, and volleyball while as usual, plenty of chelobies were always to be found in the grasping hands of all members.



Row 1: M. Sheets, U. Beaver, L. Murphy, R. Rich, T. Mund. Row 2: K. Carlson, M. Arntz, J. Malecki, D. Ballweg, D. Punko, J. Kultgen, T. Dalebroux, R. Johnson, E. Simon. Row 3: M. Marcucci, L. Holden, J. Flood, A. Allen, B. Kubly, W. Seabrook, L. Rhiel, C. Olsen, C. Nemeckay.



Row 1: S. Kirschner, B. Gibbs, R. Flood, L. Walters. Row 2: J. Guenther, M. Goldstein, M. Lehner, R. Sheppard, J. Morsch, P. Mockus, D. Pick, B. Zahn, S. Lesgold, S. Hansen, L. Wenger, G. Klinksiek, T. Small. Row 3: D. Smith, P. Beach, J.V.D., N. Wirtz, M. Norton.

# ALPHA CHI OMEGA

Row 1: G. Isaacson, N. Giericke, I. Krake, D. Murphy, J. Manning, L. Montero.  
Row 2: B. Westfall, M. Bower, L. Lund, K. Heasley, D. Emmerich, M. Terwilliger,  
P. Randolph, K. Remitz. Row 3: K. Kailing, S. Strickler, C. Herbert, S. Speltzer,  
S. Coltman, K. Fisher. Row 4: A. Wilcox, K. Casler, C. Baker, J. Grodbout, M.  
Glise, K. Ohst, P. Konopka, P. Lutzow, Mrs. Smith, C. Hacker, J. Foggy, C.  
Maxwell, D. Rusher, V. Parsons, H. Braeger, L. Rosenberg, J. Christenson, K.  
Swanson, E. Skarston, S. Brausen, L. Lewis.

After returning sunburned from the September ritual, the Alpha Chi's were ready to get cooking on their activities for the year. To a spice of lively dads on Father's Day was added the flavor of the Christmas formal and carolling with the Beta's at the Lake Shore Manor. Hamming it up, Humo with the Sigma Chi's was great. If everything boils out all right, the Alpha Chi's will be ending the year with a flaming finale at Gilligan's Island.



# ZETA BETA TAU

Front Row: B. Ginsberg, E. Alshuler, J. Gershow, H. Fishbein, E. Grossman, G. Lies, A. Pachtman, R. Goldstein, B. Loeb, L. Siegel, H. Simon, S. Safer, F. Hess. Back Row: B. Millman, B. Carpenter, S. Barkan, J. Cohen, B. Natanson, B. Isaacs, B. Steinman, J. Shapiro, H. Serwer, R. Cohen, B. Edison, L. Gilbert, J. Feinblatt, J. Jubelirer, K. Henry, K. Garrod, J. Ernstoff, B. Feldman, C. Gelman.





# ALPHA PHI OMEGA



# KAPPA ETA KAPPA



Bottom Row: J. Hoff, M. Lindlof, Y. Thies, J. Luehrsen. Row 2: R. Meier, J. Christensen, C. Schwartz, E. Bruns, M. Ludwig, G. Wepner, T. Irwin. Row 3: C. Curran, J. Ramaker, B. Patterson, D. Diebel, D. Brown, S. Coule, D. Robbins, D. Mitchell, R. Strauss. Row 4: W. Dumke, D. Gustafson.

# SIGMA ALPHA IOTA



Row 1: B. Weiner, A. Baker, B. McGinnis, B. Lautz. Row 2: E. Thompson, M. McDermott, C. Anderson, S. Haug, P. Diers, L. Kurth, C. Lathrop, J. Wilson, L. Eustice. Row 3: E. Dunne, E. Grimstad, M. Steinhauer, L. St. Pierre, P. Carroll, J. Storer.

# SIGMA PHI

M. Dalmat, R. Oeflein, S. Call, M. Tomczak, M. Gibson, L. Kedzior, T. Peterson, D. Goodman, R. Knox, J. Kunz, G. Gtall, K. Stark, P. Olson, T. Lyttle, D. Frazer, G. Callow, J. Haberstroh, R. Alexander. In Back: J. Marsh, M. Rahn.



# TAU EPSILON PI

The flame of a candle dies in time.  
True brotherhood does not.  
We are the men of Tau Epsilon Phi.  
We are brothers.



# SIGMA EPSILON SIGMA

Bottom Row: D. Hantak, C. Palmer, D. Bauer, K. Rieck, G. Weissenberg, J. Wynboom, C. Teschner. Row 2: K. Kvalheim, W. Nielsen, K. Katecki, S. Baum, M. Peterson, A. Schutts, M. Freidel, S. Mitchell, V. Otto, J. Wick, R. Rubin. Row 3: S. Magnussen, K. Wool, D. Cohen, G. Wagner, K. Teske, B. Otto, K. Burke, K. Capelle, E. Hawkins, M. Gullig.



# SIGMA ALPHA MU



D. Zemel, S. Waite, B. Gershman, D. Sands, Ruke Beast,  
B. Siegrist, T. Ogden-Mork, R. Lindenberg, R. Kaufman,  
H. Hendrix Levinsky, D. Fager.

# KAPPA PSI



Row 1: D. Clasen, D. Draeger,  
B. Finstad, W. Capper, J.  
Good. Row 2: T. Newkirk, P.  
Nelson, D. Koblenki, D.  
Ziarek, L. Schumacher, B.  
Bass, T. Clasen, A. Symbal, G.  
Arneson, P. Ladwig, K. Meyer.  
Row 3: P. Harkins, B. Adams, R.  
Dallmann, J. Deilfuss, S. Klatt,  
D. Brown, M. Sherry, J.  
Hammes, R. Hammes, K. Smer-  
chek, M. Lemberger, V. Gotz,  
J. Sterzinger, D. Galarowicz, K.  
Kotenberg, H. Mason, R.  
Lamm, P. Pratt.

# THETA TAU

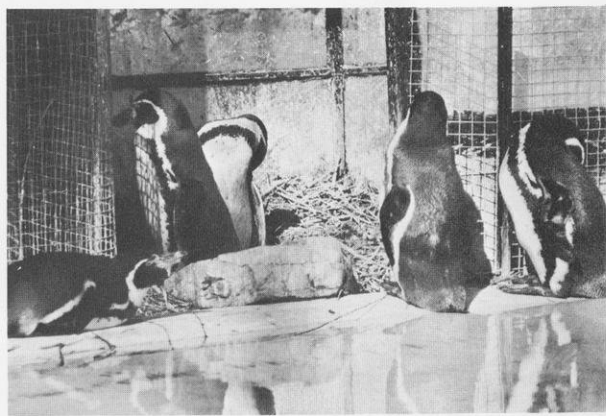
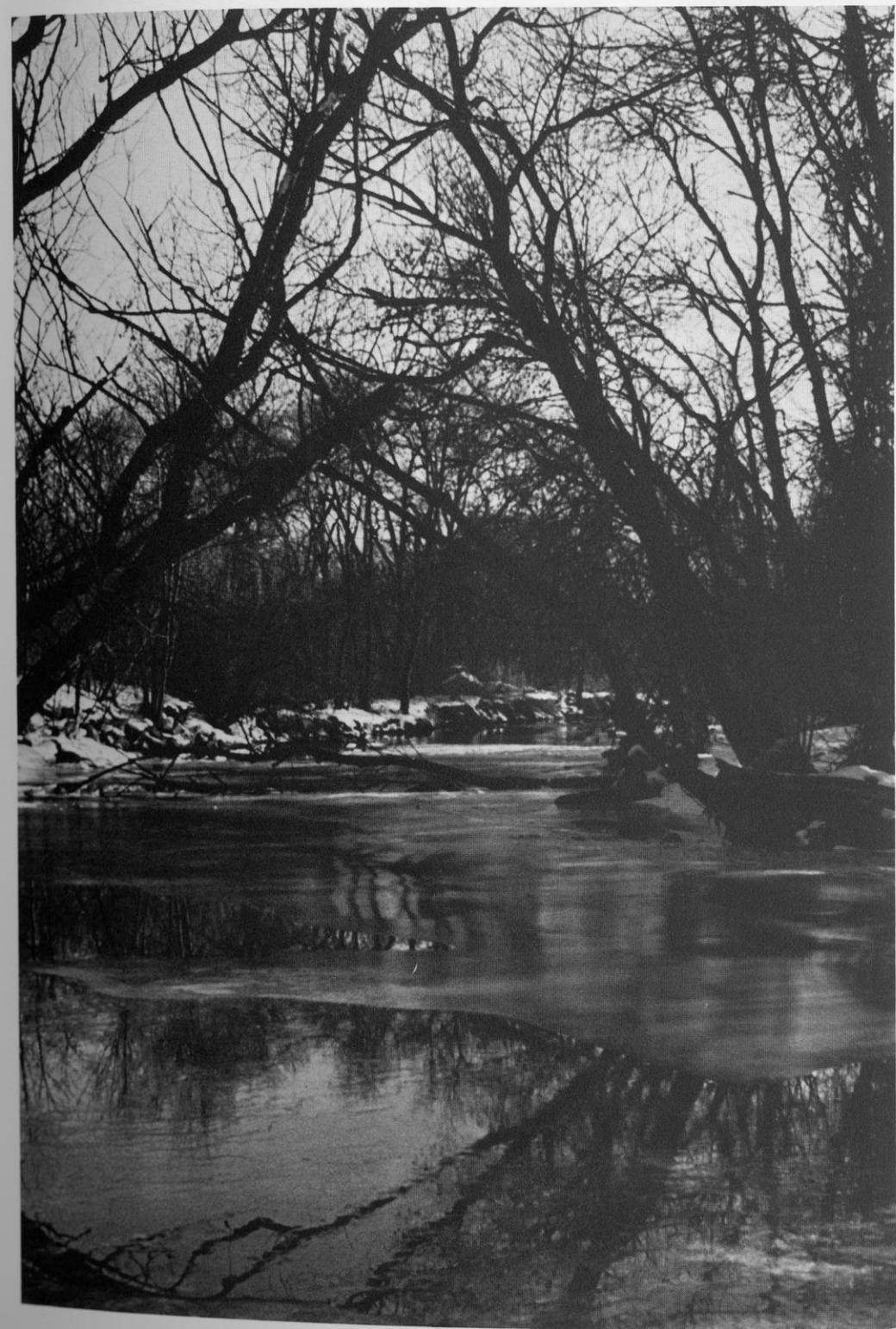


Bottom Row: E. Severson, R. Schoen, D. Jahnke, S. VanVleet, M. McCombie, J. Meidl, J. Witt, L. Schultz. Row 2: R. Jenks, C. Franz, J. Jacques, F. Powers, J. Shirriff, L. Heffernon, R. Wollner, K. Thiele, S. Sauer, N. Eriksson, W. Panzer.

# TRIANGLE



J. Zier, D. Wagner, L. Schrieder, J. Jacobsen, E. Flock, T. Disch, D. Soderberg, J. Poehling, G. Hallman, D. Furlano, B. Rowan, G. Mann.



**DORMS**

# SOUTHEAST STUDENT ORGANIZATION



## SELLERY CALLAHAN



Row 1: Girl, W. Renk, W. Renk, W. Renk, Girl, W. Renk, W. Renk, W. Renk, W. Renk. Row 2: W. Renk, W. Renk, W. Renk, W. Renk, W. Renk, W. Renk, W. Renk, W. Renk. Row 3: W. Renk, W. Renk, W. Renk, Infiltrator, W. Renk, W. Renk, W. Renk.



# SELLERY GILLIN



Bottom Row: D. Dohmen, J. Koshakow, P. Primeau, S. Agnew, S. Greenwald, R. Nixon, J. Steffeit. Row 2: N. Siegel, L. Feiss, M. Warhus, G. Magyera, P. Took, S. Zerbinski, J. Stange. Row 3: R. Estrada, R. Smith, C. Chow, D. Prescott, D. Gerner, P. Worge, J. Hausler.

# SELLERY JACKSON



Row 1: D. Kozak, C. Krasno, J. Schleife, S. Novoy, R. Jaffe, D. Prensky, I. Satinover, D. Schultz, J. Marth. Row 2: S. Stuebbe, D. Prom, T. Baltuch, D. Ewald, T. Waitrovich, R. Wilson, W. Wiese, P. Cannon, G. Kliefoth, R. Dean. Row 3: W. Biel, D. Yuen, G. Bernik, J. Samsal, J. Jungenberg, B. Long, T. Templin, S. Feldman, G. Kopstein, D. Sattler, D. Last, P. Stolberg, P. Runholm. Row 4: R. Page, J. Kallenbach, B. Lang, B. Marcus, S. Glander, R. Aronson, S. Weiner, D. Hulse, J. Vosmek, B. Ziesmer, B. Weisse, T. Fredman.

# WITTE JUAIRE



Bottom Row: D. Hoehn, S. Theisen, K. Marlett, M. Oelmann, K. Laïmm, B. Craft. Row 2: M. Hamilton, A. Gizante, S. Lane, J. Zank, P. Strauss, D. Doenick, B. Parsons, K. Weltler, V. Millis, C. Iverson. Row 3: M. Chapman, M. Phillips, L. Mueller, B. Borchardt, A. Meiling, B. Pendergast, R. Barrett, P. Stys. Row 4: A. Sandreman, C. Tuttle, N. Powell, D. Healy, R. Schuette, S. DeLeers, J. Breitenbach, M. Bluestone, M. Schwier, W. Wilcox, S. Donahoe, B. Reilly, P. Poplawski.

# WITTE MACH- LACHLAN



Bottom Row: C. Gister, M. Olson, M. Haber, L. Scheinfeld, J. Graves, K. Reitman, B. Stoehr, J. VandenHeuvel, C. Beckitt. Row 2: L. Levin, E. Weill, R. Low, S. Stein, K. Maney, R. Landuren, S. Menning, D. Michel. Row 3: R. Goldstein, M. Luhn, G. Lepold, C. Dwyer, G. Darlington, G. Watson, M. Genne, L. Schumacher, L. Golden, J. Tillman, V. Granacki, L. Smits.

# OGG PAGE

Bottom Row: J. Schreiber, B. Soboroff, P. DeMark, M. Stites, D. Ulmen, W. Stroess, K. Mackey, V. King. Row 2: G. Anderson, J. Peabody, K. Beuchel, D. Borowski, B. Dufek, T. Coughlin, S. Brandt, D. Johnson, T. Schraeder, S. Knorr. Row 3: S. Knodle, D. Schuler, P. Hanaway, M. Heger, G. Roman, K. Lonergan, N. Godfried, B. Boardman, J. Riesen.

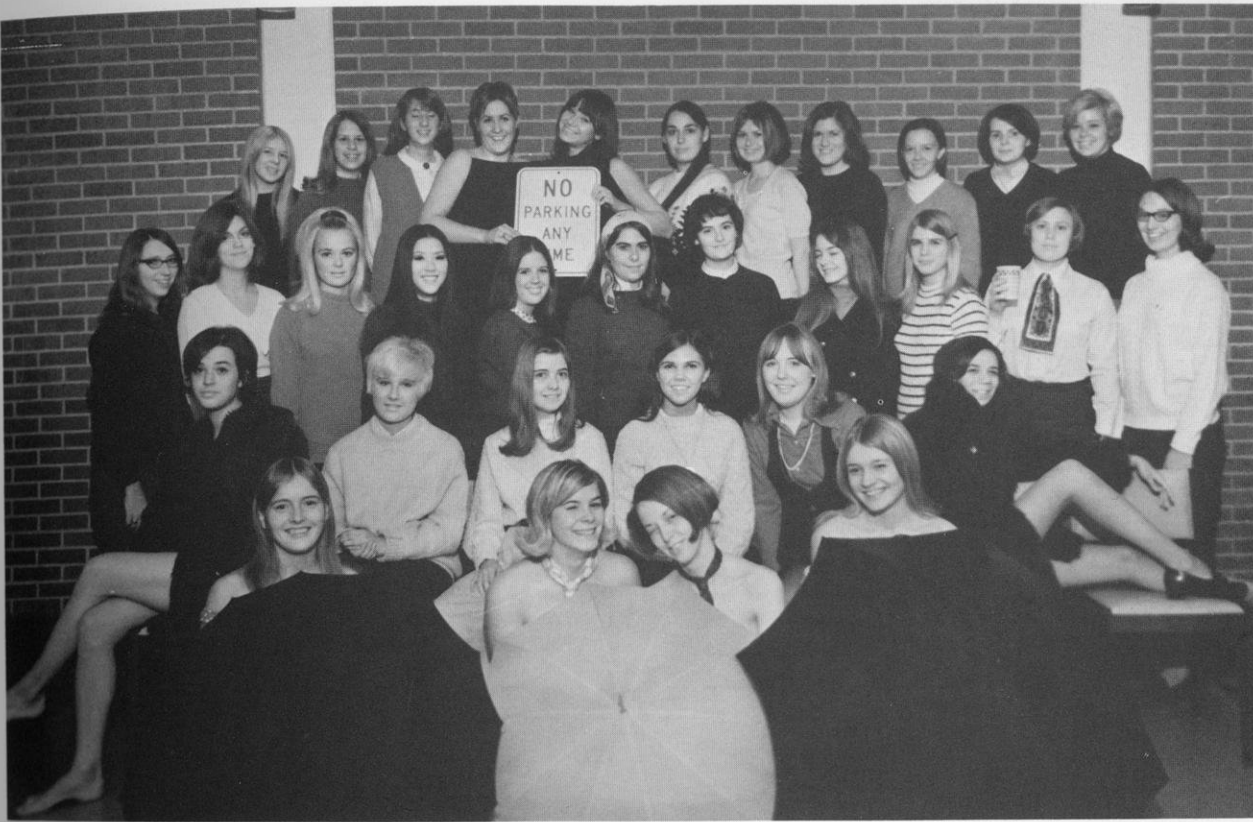


# SELLERY PAXON

Bottom Row: D. Olson, J. C. Killy, F. Bemyman. Row 2: G. Crandall, J. Bobula, M. Schaff, S. Mahan, L. Lunda, J. Ryan, W. Ellman, J. Torgeism. Row 3: B. Hambrecht, M. Wright, E. Laszkowski, M. Akkerman, P. Roettinger, P. Schnake, A. Janisewski, J. Adler, A. Fischman, P. Bernander, D. Chewing. Row 4: M. Mandle, G. Crale, D. Kaiser, I. Weiner, G. Rooney, M. Mesirov, D. Scheraga, J. Kretsch, K. Liesener, B. Rasmussen.



# WITTE MANNING



Bottom Row: K. Krauss, D. Rankin, K. Fellabaum, K. Krauss. Row 2: J. Blumberg, M. Panzer, B. Arnold, S. Haggard, B. Koepel, M. A. Glise. Row 3: M. Beuparlant, K. Beuparlant, A. Grimm, J. Tangye, M. Bourguignon, C. Lathrop, D. Carone, M. Huang, C. Reinke, C. Phillips, J. Schroder. Row 4: S. Eriksson, S. Grindle, K. Davies, B. Brockway, K. Noel, M. Reed, C. Power, S. Holl, H. Rubin, N. Schmoekel, C. Cartier.

# WITTE MARTIN



Bottom Row: L. Pomasi, "P-W", B. Allen. Row 2: S. Siggins, L. Werner, B. Bentz, C. Swed, K. Teske, C. Gevalt, K. Ferris. Row 3: S. Van Groll, M. Maki, M. Epstein, J. Waller, P. Clements, M. Hatchell.

# SELLERY PERKINS

Bottom Row: B. Blainey, M. Reisen. Row 2: J. Harris, S. Grippentrod, B. Sazama, Fred, M. Seidl, S. Knox, Phil, J. Hermann. Row 3: H. I. Holman, M. Moran, K. Keller, M. Thedinga, S. Dolney, J. Gilbert, M. Mason, S. Schutta. Row 4: M. Reynolds, C. Morgan, P. Staalson, S. Frost, B. Gorder, K. Johnson, P. Foster.



# SELLERY PERLMAN



Bottom Row: J. Reybrock, R. Henner, J. Jacobson, T. Swanson, D. Allan, G. Brooks, R. Wetherbee, R. Gleason, W. Renk. Row 2: J. Nohl, L. Lawden, D. Motte, D. Otto, C. Zein, D. Bagenhegen, M. Warn, L. Johnson. Row 3: T. Brush, P. West, T. Kaun, D. Tilly, B. Miller, H. Freedman,

J. Loppnow, K. Nierhd, D. Wiser, G. Gilden, J. Treptow, A. Saul, T. Williams. Row 4: F. Hess, S. Kneubuehl, S. Specht, M. Burda, S. Sloan, D. Cook, E. Herzog, B. Komlo, K. Nimmer, K. Ostrand, H. Potter, B. Rabbit, M. Penkwitz, St. Peter, M. Levinson, M. Bellis.

# WITTE PITMAN



Bottom Row: I. Panagopoulos, M. Quiery, E. Van Zevenbergen. Row 2: M. Van deKamp, P. Sullivan, P. Schrage, K. Frederick, B. Vieth, C. Schmieder, K. Kunkel, K. Burkett, J. Asti. Row 3: M. Swartz, J. Greenberg, M. Ochs, M. Anderson, M. McGinnis, J. Hoffman, D. Rubin, J. Hiekenen. Row 4: S. Foster, D. Schlar, N. Entwhistle, K. Zweifel, S. Arneson, A. Dawson.

# WITTE RAWLINGS



Row 1: K. Kilsdonk, L. Morrison, M. Van Roy, A. Engstrom, L. Eisenberg. Row 2: R. Riehle, N. A. Fallon, C. Wiegand, C. Kovar, M. Wamser, K. Denner, W. Held, J. DiFrancesca, N. Neiland, J. Van Handle. Row 3: B. Chien,

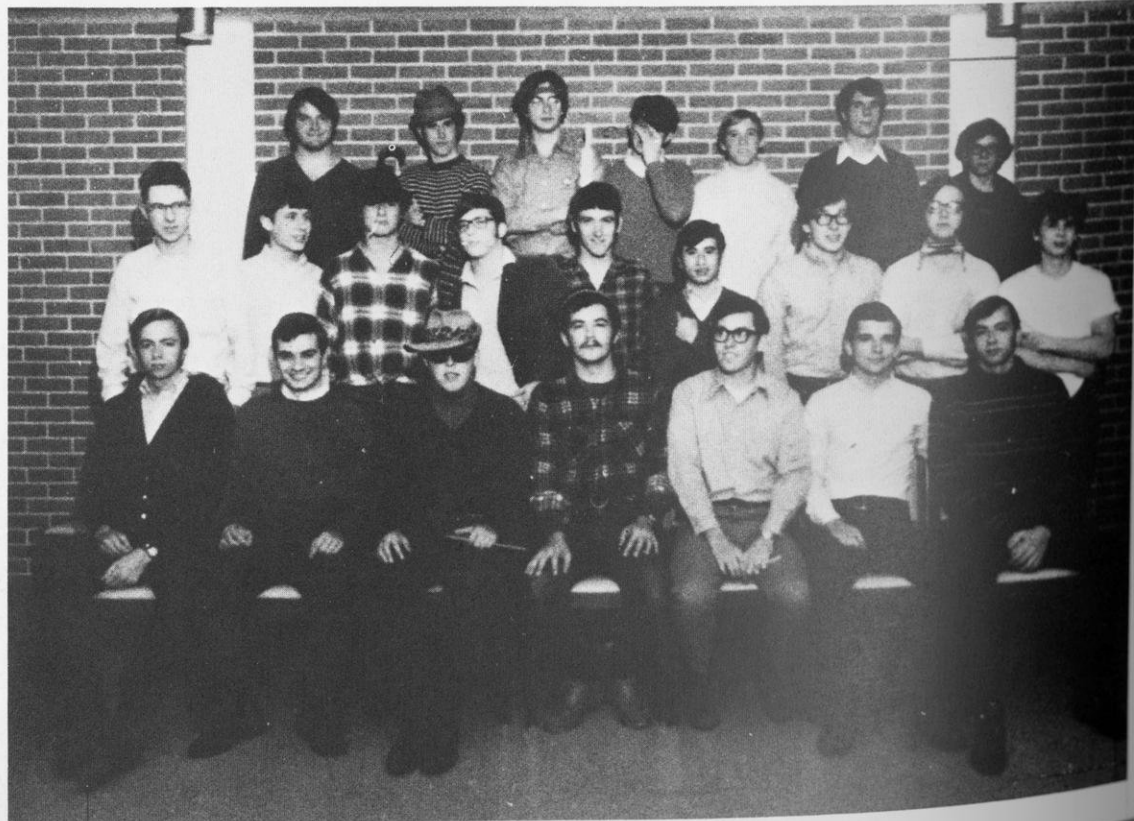
K. Gouze, L. Eyes, P. Thome, G. Bandow, L. Johanning, J. Tracy, V. Murray, J. Heimann. Row 4: M. Bambery, K. Thorson, Wilber, M. Golinki, K. Phelps.

# LEITH SIXTH



Bottom Row: R. Spalenka, D. Rottier, D. Shapiro, M. Stewart, K. Rosner, M. Collins, J. Lendved, J. Byrd. Row 2: C. Grove, R. Schultz, D. Dittmar, B. Wierschem, B. Rhinerson, M. Woicek, P. Whiteland, B. Joern. Row 3: M. Vunes, L. Rubin, J. Malecki, A. Willett, T. Curtis, G. Formella, J. Harkins, P. Heidelberger, L. Schulder.

# LEITH SEVENTH



Row 1: T. Riesing, T. Wolf, J. Poppe, T. Olson, K. DeDecker, J. Huebscher, T. Riesing. Row 2: R. Leonetti, G. Helser, E. Zingler, R. Iken, J. Hahn, R. Gilbert, M. Kamarck, R. Anderegg, S. J. Gilheany. Row 3: T. Constant, K. Peterson, T. Russell, D. Buehl, S. Garvey, R. Binkley, R. Heuser.



# ROE HOUSE

Bottom Row: G. Wegner, D. Sheinberg, D. Chaplin, A. Triboline, J. Hammerly, S. Koche, T. Connolly. Row 2: S. Johnson, D. Pelikan, B. Bland, N. Wong, R. Kanitz, J. McNett, J. Schraeder, G. Rovig, G. Janscha, A. Norton, J. Hasheck. Row 3: J. Schwartzburg, S. Knothe, B. Lange, C. Tiedemann, T. Guequierre, D. White, J. Lanuti, D. Kao, A. Parrish, E. Brown.



# WHITBECK HOUSE

Bottom Row: D. Nelson, R. Nordstrom, R. Pettibone, R. Frankel, J. Sandy, C. Boebel. Row 2: F. Beranek, L. Herro, E. Nielsen, R. Pondell, R. Wolman, R. Vick, A. Kuritzky, S. Berger, B. Steiner. Row 3: B. Tanke, S. Stolper, R. Steil, T. Lonnborg, D. Baumgarten, D. Tolbert, J. Ward, R. Everson, J. Culbertson, D. Giffen, B. Momm, J. Ehnke, B. Toburen. Row 4: L. Strauss, U. Peterson, M. Kelly, D. Fuhrmann, G. Markman, R. Creedy, J. Marx, B. Kastrul, H. Kahn, R. Shaevel, C. Blair, B. Johnson, L. Wall.



# SUSAN DAVIS HOUSE

Bottom Row: L. Burkhardt, M. Dallmann, B. Beilke, N. Hiebing, J. Cremer, V. Hunner, K. Olive.  
Row 2: M. Lynch, M. Margis, M. Keough, E. Frier, S. Perkins, L. Schink, A. Haas, S. Sloniker, G. Reinge, S. Berry, K. Sazama, B. Noyes, D. Wickland, N. Kisselburg, P. Krings. Row 3: N. Johnson, K. Guelzow, T. Lewandowske, M. Zas, S. Davis, B. Lea, S. Hellenbrand, C. Petrusha, K. Capelle.



# 20E BAYLISS HOUSE

Row 1: M. Thoma, T. Buckley, P. Berg, L. Olson, S. Grigg, D. Anderson, S. Leaf. Row 2: C. Bates, B. Knigge, B. Ward, S. Miller, Laddie, D. Ehrenberg, T. Brody, K. Nikolai, K. Lucas, K. Beilke. Row 3: M. Bummer, B. Kretzmann, K. Kvalheim, M. Frier, Z. Massie, J. Ohnlay, D. Dean, S. Graf, A. Goodfriend, L. Moe, D. Voskull, S. Grant, M. Wodenburg.





# BABCOCK HOUSE

Bottom Row: M. Carey, S. Carlson, A. Tralmer, D. Kendall, R. Nusbaum, M. Miller, P. Conlon, T. Furhman, D. Kuhaupt. Row 2: G. Griebenow, J. Sutheimer, G. Miller, M. Richter, J. Wilson, Linda, P. O'Leary, A. Rohn, G. Brooke, Se Sy, R. Williams, T. Heinze, P. Bender, D. Palzkill, B. Thompson. Row 3: D. Peterson, J. Getka, S. Merry, G. Schmidt, K. Marohl, K. Doltz, M. Flickinger, D. Kron, M. Sherry, J. Simon, S. Stark, J. Springer, G. Onan, J. Schmook, R. Elderbrook. Row 4: T. Johnson, R. Pofahl, J. Vanderploeg, G. Travis, D. Wise, R. Schomberg, M. Grundahl, D. Thomas, M. Solverson.

A persistent problem for Wisconsin students is to salvage identity and individuality from the thousands on campus. One choice he has is where he lives, and this can often be a strong factor in the growth of an individual. The men of Babcock have chosen an unconventional place to live. Their activities include campus organization, intramurals, public service and consistently high scholastic average.



# GILMAN HOUSE

L. Maldonado, D. Todman, D. Russel, D. Feldman, L. Johnson, B. Heil, K. Ender, M. Judds, G. Uema, P. Getschell, J. Volz, G. Highland, L. Jansky, D. Loabs, B. Rieckmann (pres.), J. Curler, S. Watrous, A. Hauser, K. Schmidt, H. Nakano, M. Lacy, R. Yeager, L. Eschenbach, D. Wurch, D. Cusimano, D. Soderberg, K. Tesch, K. Dernovsek, J. Gardner, M. Luebke, R. Horstems, J. Perdian, P. Harrison, R. Gunning, D. Demaster, D. Drapes, H. Leventhal, B. Hong.

# LEUDKE-GAVIN HOUSES

Row 1: S. Dopp, C. Townsend, M. Muenkel. Row 2: M. Lauermann, S. Goldschmidt, L. Terlecke, S. Eichman, M. Rednour, M. McIntee, S. Memani, J. DePree. Row 3: J. Ryerson, J. Marquardt, J. Paulson, C. Puhl, S. Carbine, S. Graebner, K. Boyle, S. Glad, J. Babisch, J. Linder, M. Kinney, L. Sale, C. Castal. Row 4: V. Stanelle, N. Weis, G. Wenzel, B. Mutchler.

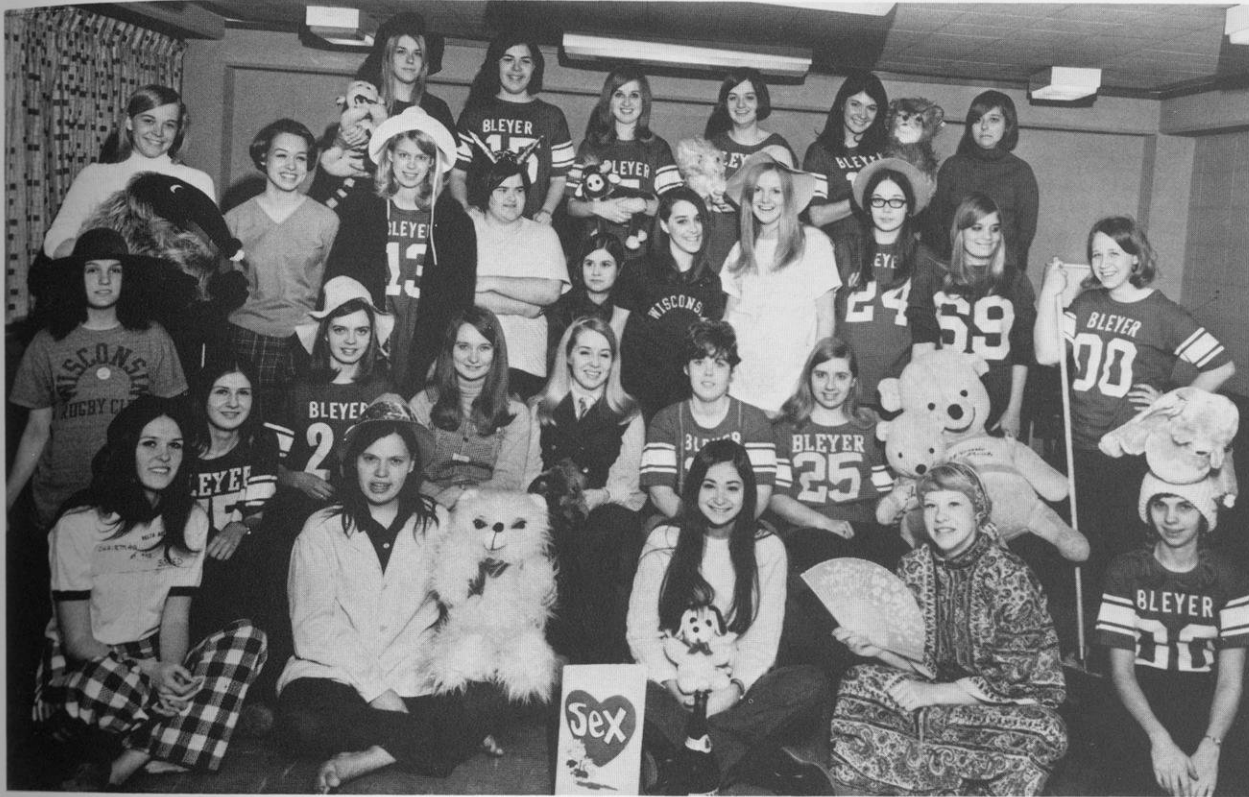


# KRON- SHAGE

Bottom Row: J. Martin, R. Eigen, J. Petzold, A. Gyarmaty, J. Briley, J. Bast, H. Caufield, S. Johnson. Row 2: C. Chow, J. Lee, M. Schmitz, K. Shah, K. Cheng, G. Rogers, J. Harrison, R. Alleva, S. Bruns, S. Yarish, D. Duffelt. Row 3: W. Stott, R. Kent, M. Amy, T. Monk, D. Brescoll, K. Gogans, M. Yack, G. Buher, P. Bergurn. Row 4: M. Burke, C. Loft, P. Partington, M. Wenze, T. Kolody, D. Polzin, B. Zimmer, R. Becker, B. Fehrmann, D. Tang, W. Roaf.



# BLEYER HOUSE



Row 1: S. Johnson, L. Coombs, J. Bast, J. Briley, A. Gyarmaty, J. Petzold, R. Eigen, J. Martin. Row 2: D. Duffeck, S. Bruns, R. Alleva, J. Harrison, G. Rogers, K. Cheng, K. Shah, M. Schmitz, J. Lee, C. Chow. Row 3: S. Yarish, R. Bergum, G. Becker, R. Becher, W. Fehrmann, D. Lun, D. Goggans, M. Yack, W. Raap, D. Brescoll, R. Zimmer, D. Polzin, T. Kolody, T. Monk M. Wenzel, P. Partington, M. Arny, C. Loft, R. Kent, M. Burke, B. Stott.

# WITHEY HOUSE



Bottom Row: J. Schmid, R. Sorkness, D. Deneen, T. Bowar, B. Mills, J. Kunz. Row 2: S. Riederer, R. Croce, N. Russo, K. Luebke, S. Issod, P. Caviale, T. Paradise, C. Dike, R. Munio, Harry Lyons. Row 3: T. Kregel, T. Nondahl, W. Mills, M. Pankrat, J. Babler, B. Giese, B. Knoll, J. Forton, S. Loppnow, M. Adsit, T. Tysver, L. Lane, D. Kirking, P. Wank. Row 4: J. Hohol, R. Hayer, R. Kenyon, T. Huebner, B. Scharnke, L. Meissner, L. Whiting, R. Rasmussen, G. Olson, R. Johnson, K. Bieck, D. Albrecht, J. Stemper.

# KRONSHAGE SHOWERMAN

Bottom Row: S. Stevens, M. Lawlor, C. Goodman, M. Meur, P. Dietz, V. Schmidt, C. Hamilton, S. Berman, S. Fuller, C. Laycock. Row 2: L. Kemmett, P. Tausher, M. Stucki, C. Berger, L. Probst, D. Schwartz. Row 3: F. Kaplan, G. Ypsy, M. Drusl, S. Cauffman, B. Lodde, D. Niemann, S. Seater, T. Quakenbush, P. Corn, M. E. Crawford, K. Ransom, P. Evers.



# KRONSHAGE TURNER



Row 1: P. Jacoby, J. Vareka, J. Cuff, B. Brandt, J. Foth. Row 2: S. McCarthy, J. Kuehl, B. Mueller, B. Markworth, J. Chidsey, T. Condek, H. Kaulfuss, T. Chemp, J. Hertel. Row 3: D. Mills, D. Chan, T. Schneider, N. Tompkins, J. Williams, A. Downes, D. Hoppe, L. Jacoby, D. VerVelde. Row 4: D. Gillis, D. Hafeman, D. Blumke, R. Grusznski, S. Pederson, J. Friske, R. Johnson, J. Ipsen, J. Badtke, J. Larrieu.

# BARNARD



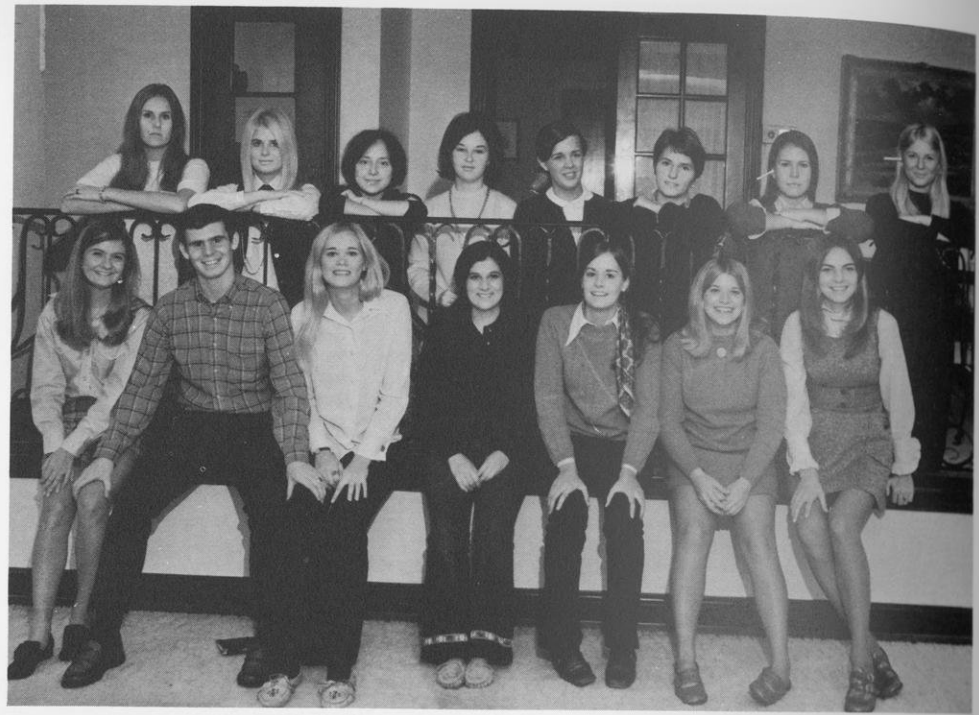
Bottom Row: M. Wick, E. Schneider, A. Gelfand, G. Novenstern, S. Griffiths, J. Teruggi. Row 2: J. Hamamura, B. Mecha, J. Kurth, S. Cook, J. Hintz, B. Luebke, L. Garrison, A. Parker, L. Jorgenson. Row 3: L. Hotson, M. Chan, C. Kot, C. Cogger, P. Anderson, R. Larson. Row 4: S. Pascal, A. Azora, N. Anderson.

Bottom Row: J. Slabis, S. Persha, S. Pascal, A. Azora, C. Derezinski, J. Owens, R. Cary, L. Phillips, L. Washburn. Row 2: P. Epp, M. Drechsel, P. Bean, S. Galles, A. McCormick, C. Tyson, C. Matson, J. Fleet, T. Mangurian, R. Burnett. Row 3: M. Chin, S. Norcross, M. Knutson, H. Kuckkan, S. Schlise, F. Horwitz.



# ANN EMORY HALL

Bottom Row: R. Row, Hans Full, J. Eshilson,  
P. Jafferries, J. Amundson, M. Jenk, S. Keskey.  
Second Row: E. Fisher, P. Wolf, E. Boten, J.  
Carpenter, B. Braasch, J. Byrns, K. Kuss, M.  
Schuetz.



Bottom Row: B. Kuck, A. Rowe, J. Rohloff, K. Nelson, L.  
Smith, M. Mologne, C. Johnson, T. Feher, B. Keskey. Second  
Row: J. Becker, M. MacLaren, D. Kec, D. Rombear, M. C.  
Davies, J. Noback, J. Buchanan, S. Tollaksen, S. Hummel,  
L. Smith, C. Larson. Third Row: C. Schmidler, M. Meier, P.  
Malone, B. Hufschmidt, J. Lovett, L. Johnson, M. Clark, N.  
O'Neill, C. Binn, K. Brodie, S. Radick, S. Norton, S. Wilmeth.

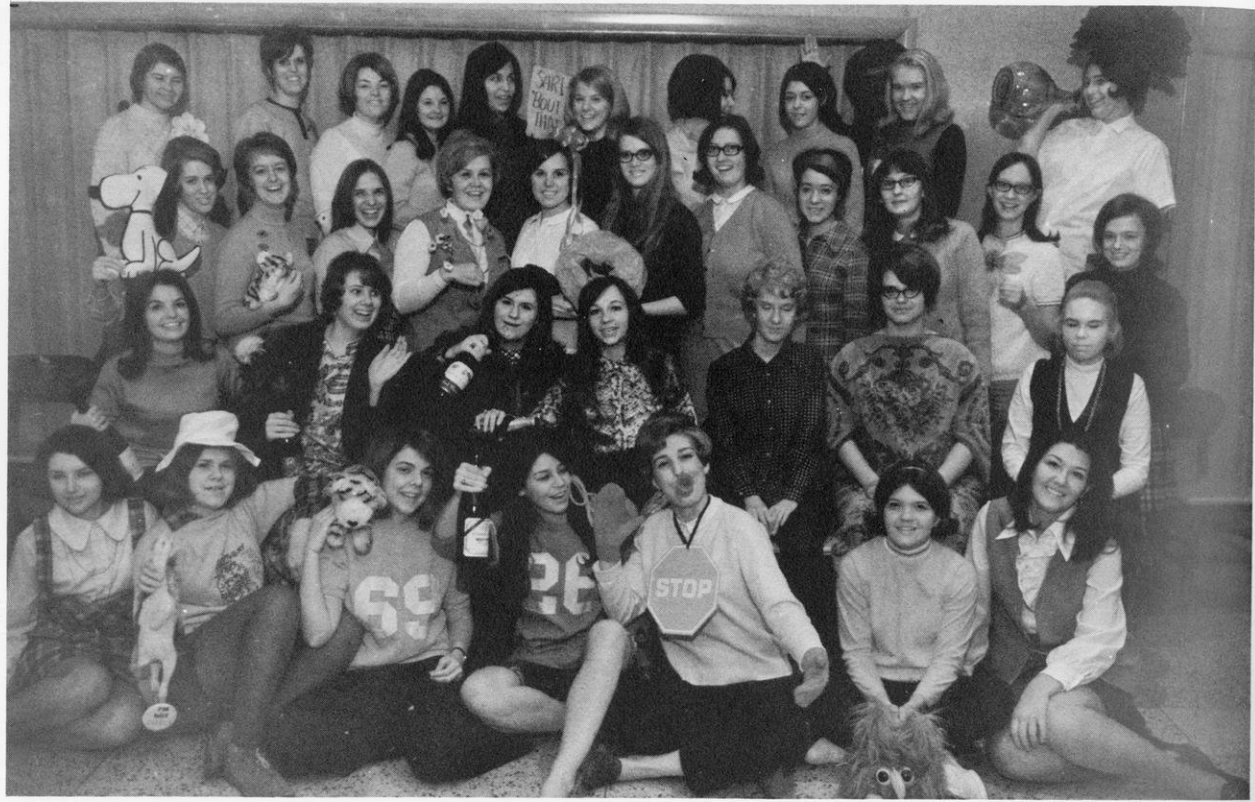


# LOWELL HALL





# BREESE HOUSE



Bottom Row: P. Rucinski, A. Idzikowski, C. Dana, B. Freschl, K. Hoefs, C. Oliver, N. Black. Row 2: N. Wallace, M. Swan, J. McQuade, M. Kirk, M. Grant, D. Kehrberg, S. Arneson. Row 3: S. Dahlquist, S. Behrens, D. Condon, P. Schwister, C. Schoblaski, C. Sokolik, P. Premo, C. Braun, N. Cross, N. Myhr, J. Albee. Row 4: P. Zierke, F. MacLeod, N. Godfrey, B. Coen, S. Becker, P. Giguere, L. Schwingle, T. Schmook, P. Bates, S. Border.

# CAMPBELL HOUSE



Bottom Row: E. Threinen, S. Barasko, S. Riba, S. Braun, C. Jones, J. Poskie, M. Roth. Row 2: W. Backes, M. Mode, J. Gibbons, N. Netzlow, C. Haertlein, N. Gertson, M. Strachota. Row 3: L. Hawkins, J. Olson, W. Wolske, D. Wendling, J. Anderson, N. Copper, C. Hanson, J. Shaw, S. Shaw, L. Tuttle, J. Coomer. Row 4: J. Tarman, M. Doucette, P. Alfonsi, C. Nelson, J. Konkell, C. Teschner, W. Streiff, C. Coghlan, R. Disch.

# HARLATT HOUSE



Bottom Row: J. Murphy, M. Fromstein, C. Due, G. Gibbons, K. Snively.  
Row 2: S. Besserdich, D. Macallister, C. Panagis, R. Schuchman, R. Glazer, P. Griffiths, M. Levis, M. Michels.  
Row 3: L. Lick, M. Kuczer, B. Udell, D. Neske, L. Jabbusch, J. Klein, N. Haden, D. Holt, C. Quackenbush, S. Brennan.  
Row 4: J. Dindorf, L. Smith, M. Barbeau, R. Schultz, A. Hess, M. Steele, L. Valkenaer, J. Jaglowski, L. Gourlie, R. Meade.

# MURRAY HOUSE



Bottom Row: K. Kinney, P. Bruka, A. Langlois, M. Klake, C. Hyland, D. Dwancyzk.  
Row 2: M. Goeble, M. Senfelds, S. Hudkins, G. Hirn, S. Wester, D. Voeltz, J. Dalvit, J. Schader.  
Row 3: D. Holifield, C. Mondragon, K. Wanassek, L. Knutson, M. Nelson, B. Pardowsky, A. Eaton, M. Wolf, M. Fox.  
Row 4: B. Berry, D. Holtz, B. Volke, D. Lunde, J. Huber, P. Stasinoperilos, D. Keys, S. Legois, S. Reinders, M. Mork, S. Polzin, L. Marion.

# ROSEN- BERRY HOUSE

Bottom Row: J. Koos, S. Micheals, S. Zimmerman, D. Bower, M. Haggarty, E. Allan.  
Row 2: E. Bull, S. Meyst, K. Lecus, M. Zimmerman, K. Symons, A. Vale, J. Sutton.



# SCHOEN- LEBER HOUSE

Bottom Row: C. Lardie, J. Lauer, C. Behnisch, B. Wetzel, H. Nee. Row 2: C. Ruxton, J. Stradinger, N. Kelpe, C. Kuester, S. Zieett, F. Pearlman. Row 3: J. Petrashek, B. Murray, M. Lanphier, S. Wedel, C. Haveck, L. Hoganson, A. Moralez. Row 4: V. Kenyon, A. Blihovde, N. Erickson, L. Erickson, S. Lethlean, D. Rifleman, S. Bruett, T. Watrud, M. Morton, M. Machkovech.



# SCOTT HOUSE



Bottom Row: M. Rauhauser, I. Bubernak, K. Marano, R. Jaasted, G. Jensen, Snip. Row 2: C. Dickert, J. Haunschild, S. Buckley, B. Hardzinski, S. Bellman, J. Tillison, P. Fischer, C. Dickert. Row 3: K. Secor, K. Bjurstrom, L. Patton, N. Voss, P. Tennis, C. Mattson, K. Martin, D. Strey, J. Starr, N. Greene, S. Zwickey. Row 4: L. Wolf, M. Kennedy, A. Fisk, W. Lotz, K. Bradshaw, K. Fritz, S. Schultz, A. Wells, W. McCormick, V. Wilds.

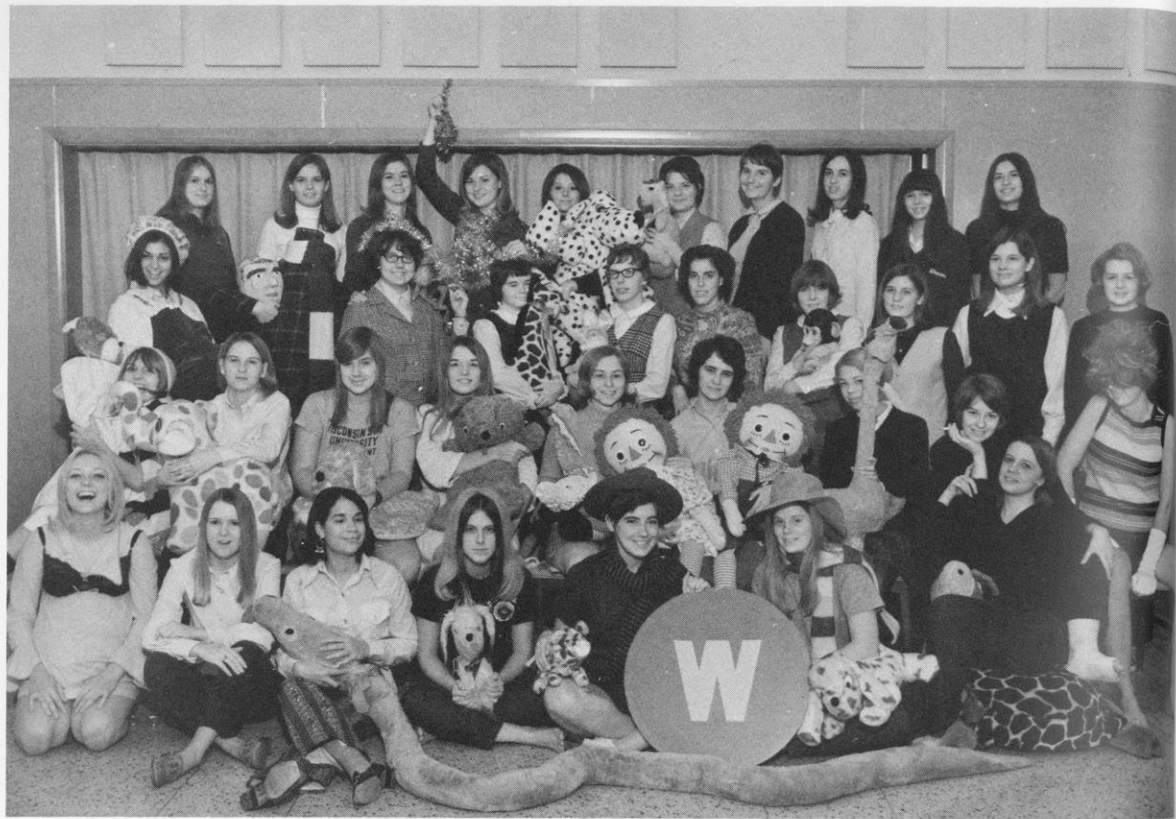


# WALLER- STEIN HOUSE

Bottom Row: A. Booth. Row 2: D. Boyd, F. Clark, M. Wright, M. Myers, B. Zywicki, A. Keller, J. Delahunt, K. Kleinheinz, D. Miller. Row 3: M. Kelter, N. O'Neil, F. Fereman, D. Dorman, J. Ludwig, C. Cleppe, K. Gabrielson, D. Derderian, M. Gregg. Row 4: S. Line, M. Mertz, D. Hans, R. Calvert, N. Harder, C. Ward, S. Gregersen, J. Timons, A. Guis, J. Rubens. Row 5: S. Hanson, J. Schuknecht, J. Petry, J. Angus, C. Casser, S. Bergman, P. Pearson, M. Duecker, C. Mueller, J. Dorfman, J. Pedersen, M. Godshall, E. Wright.

# WILKINSON HOUSE

Bottom Row: J. Baclawski, C. Branch, D. Porter, L. Thom, B. Bodin, R. Shields, S. Sprecher. Row 2: C. Liefert, K. Nielson, M. Lendved, B. List, J. Heim, C. Francke, C. Johnson, Katie Binsfeld, P. Lindl. Row 3: J. Baskin, A. Karolik, W. Arndt, S. Ustruck, C. Swanson, B. Berg, C. Tauton, J. Hogoboom, J. Pamperin, M. Kollath. Row 4: M. Matusinec, J. Smerda, M. Maitland, C. Starich, M. Blaskey, S. Condon, K. Schams, K. Bolton, V. Laatsch, G. Bane.



# WOOD HOUSE

Bottom Row: J. Fischer, H. Holler, S. Thompson, R. Cooper. Row 2: J. Katzel, L. Barlock, T. Henning, M. Gandt, D. Crowe, C. Brown. Row 3: J. Bartle, S. Shibata, D. Zabel, S. Machkovech, R. Pardee, E. Feldman, D. Dralle, J. Munz. Row 4: M. Clark, V. Harrison, K. Hilbert, M. Lene, J. Robson, W. Kailer, L. Fosbender.



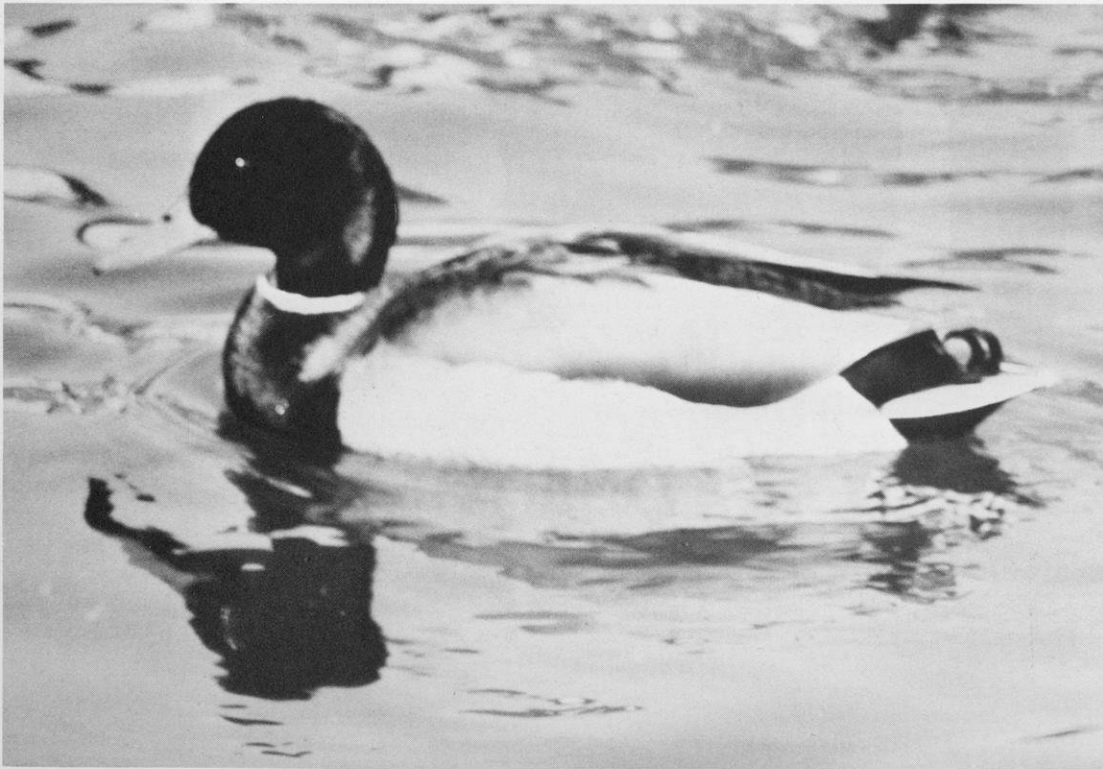
# THE TOWERS



# LANGDON HALL



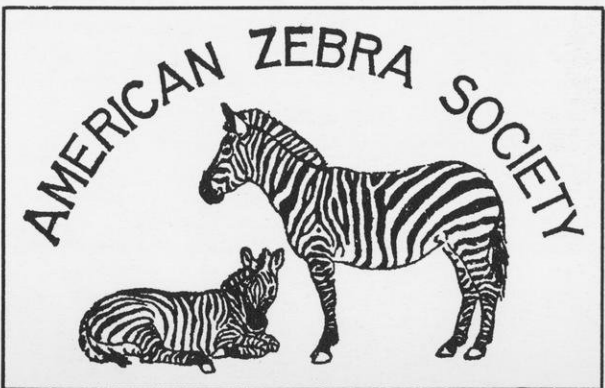
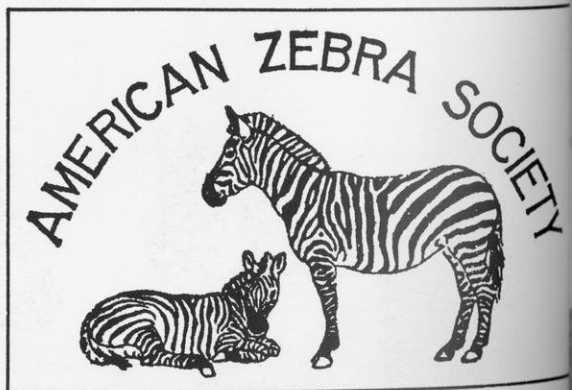
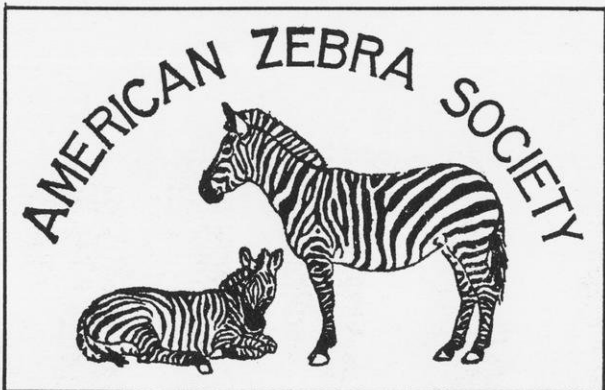
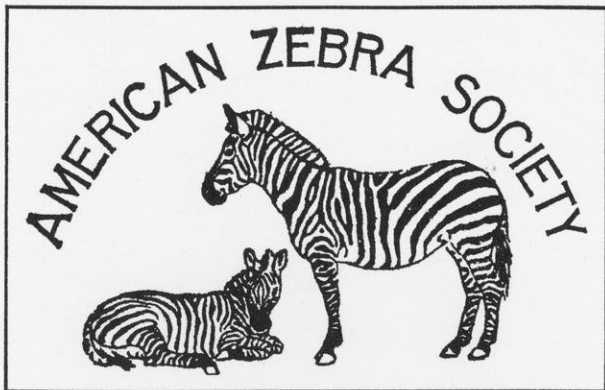
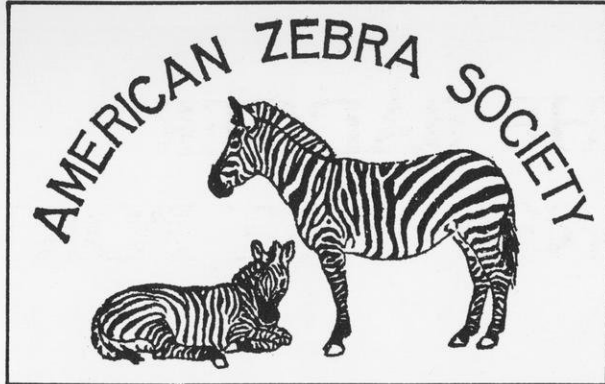
Top Row: J. Struhar, K. Kier, L. Sen-  
erson, M. Stoddard, J. Savin. Middle  
Row: A. Harner, S. Bernhardt, L.  
Simon, P. Grinde, C. Chrenka, P. Perl-  
man. Bottom Row: D. Joslin, P.  
Grove, J. Middle, G. Luchini.







ORGANIZATIONS



# THE BADGER

## THE WISCONSIN ART PORTFOLIO



Cynthia Stewart  
*Editor-in-Chief*



Candace McDermott  
*Assistant Editor*



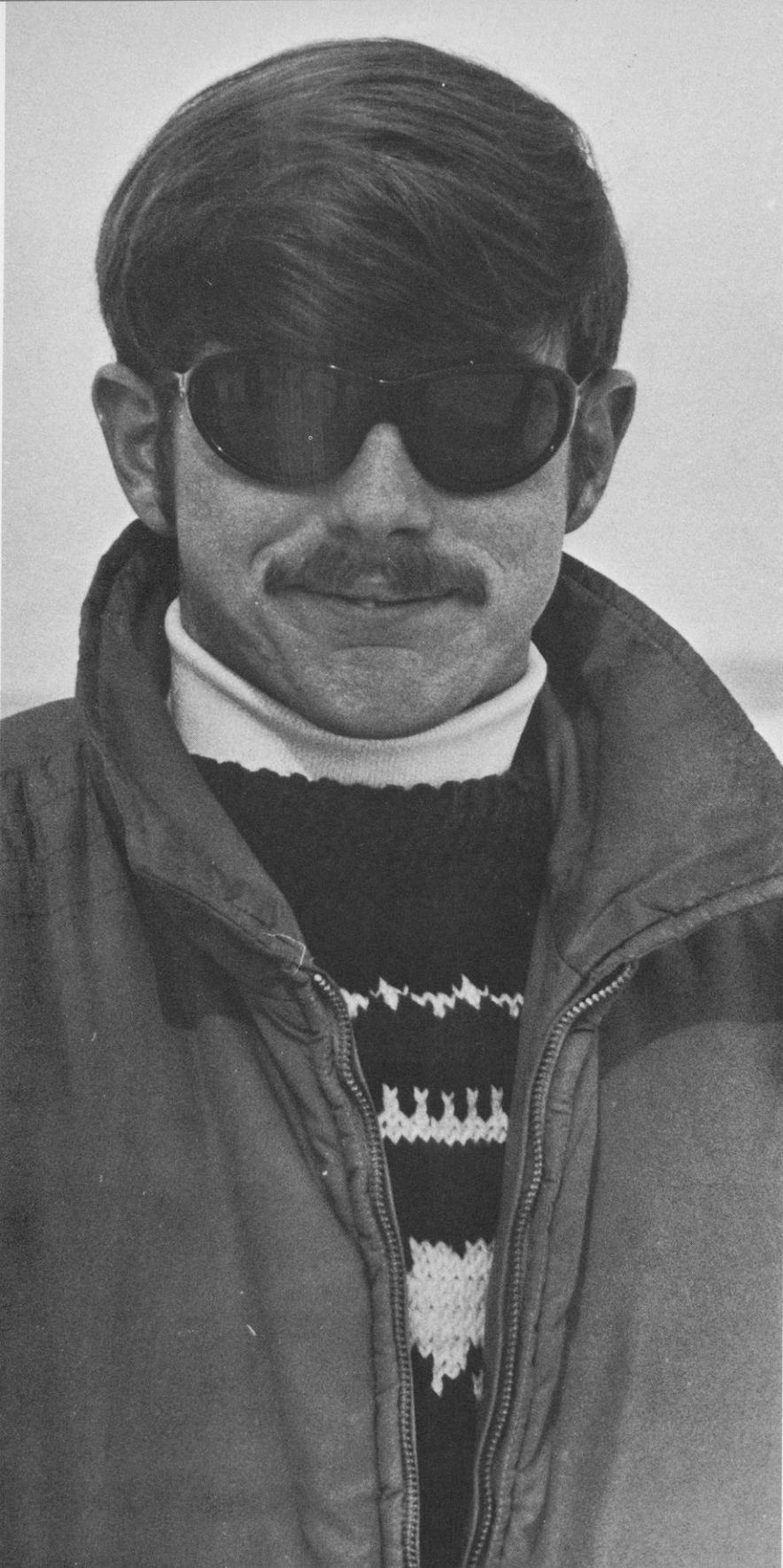
David Guggenheim  
*Design and Photography Editor*



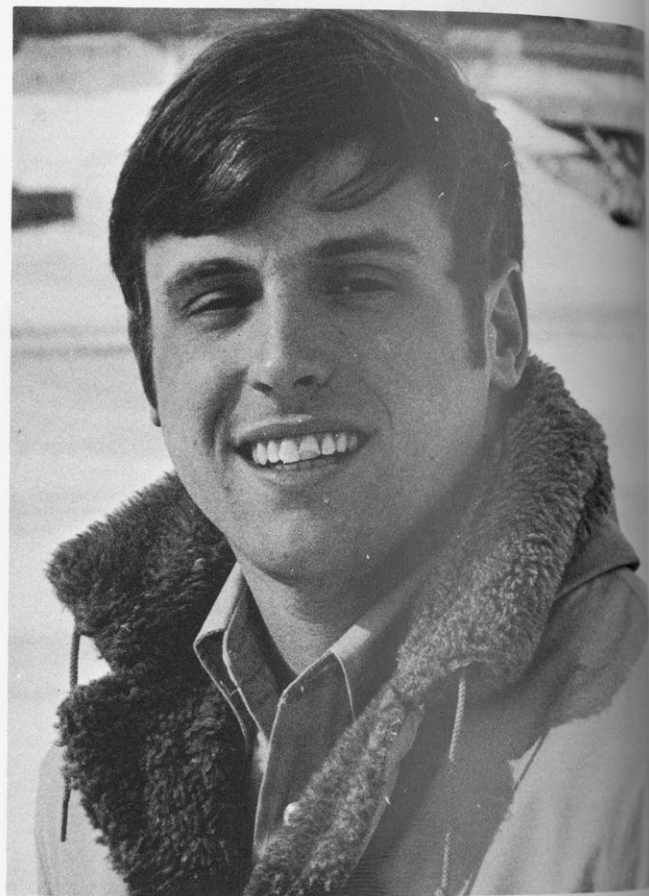
Nancy Schultz  
*Associate Editor*



**W**  
**A**  
**P**  
**1**  
**9**  
**7**  
**0**



Rick Stiphout  
*Business Manager*



*above*

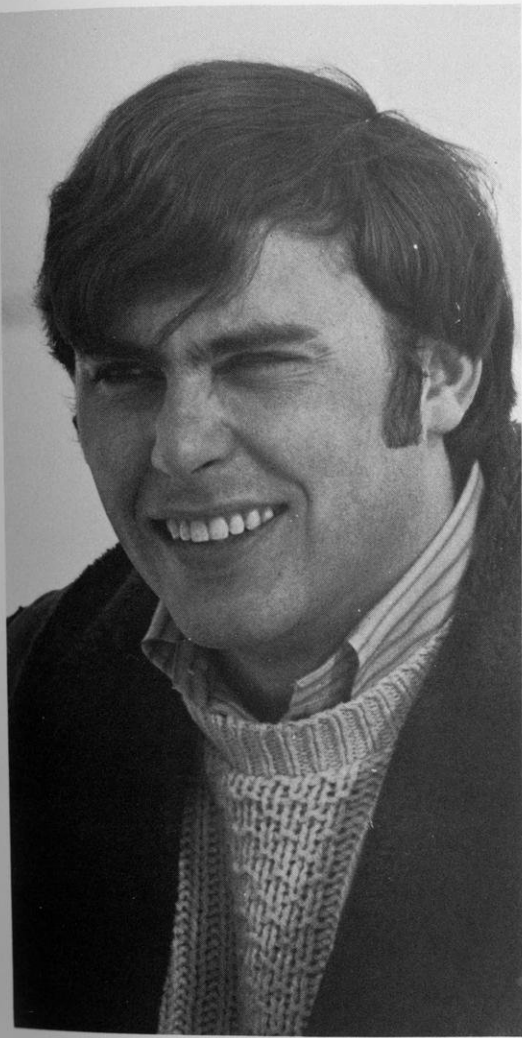
Joe Buchanan  
*Assistant Business Manager*

*right*

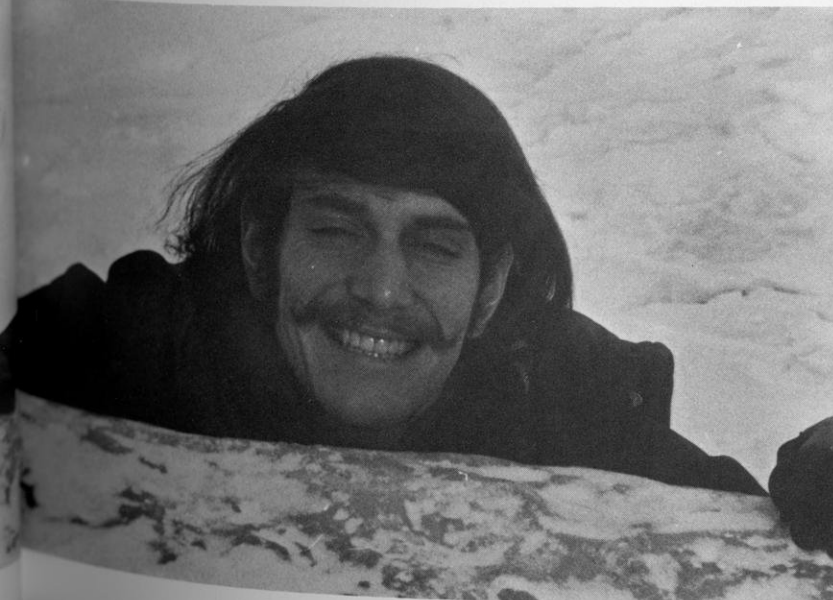
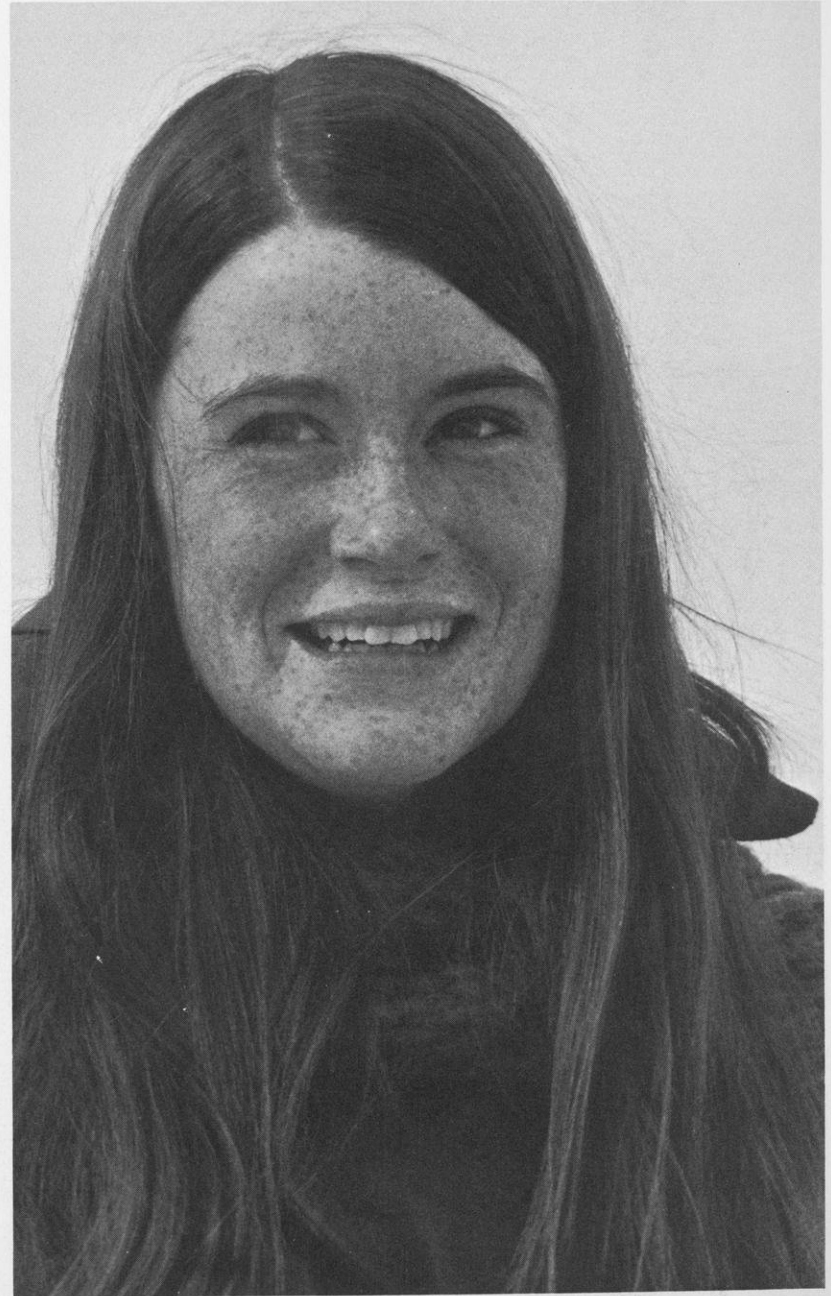
Mark Kaufman  
*Public Relations Manager*



Peter Hitch  
*Sales Manager*



Ellen Hendricks  
*Secretary*



*near right*

Charlene Harris  
*Black Poetry*

*middle right*

Myron Heilbrunn  
*Politics*

*far right*

Ellen Holdstein  
*Dorms*



Deborah Ehrenberg  
*Co-ops*

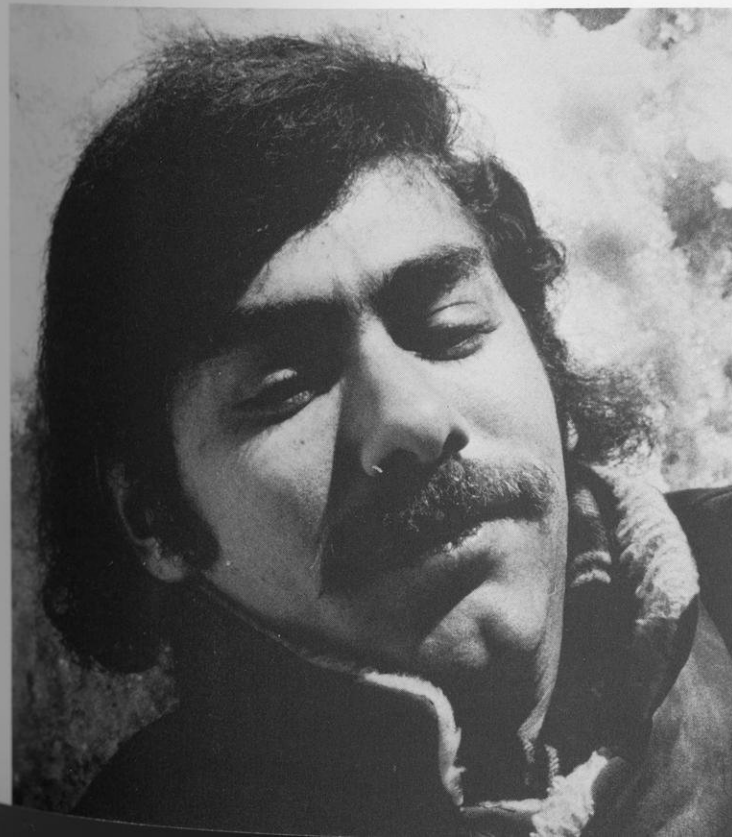


Patricia Knain  
*Greeks*





Thomas Woll  
*The Hill*

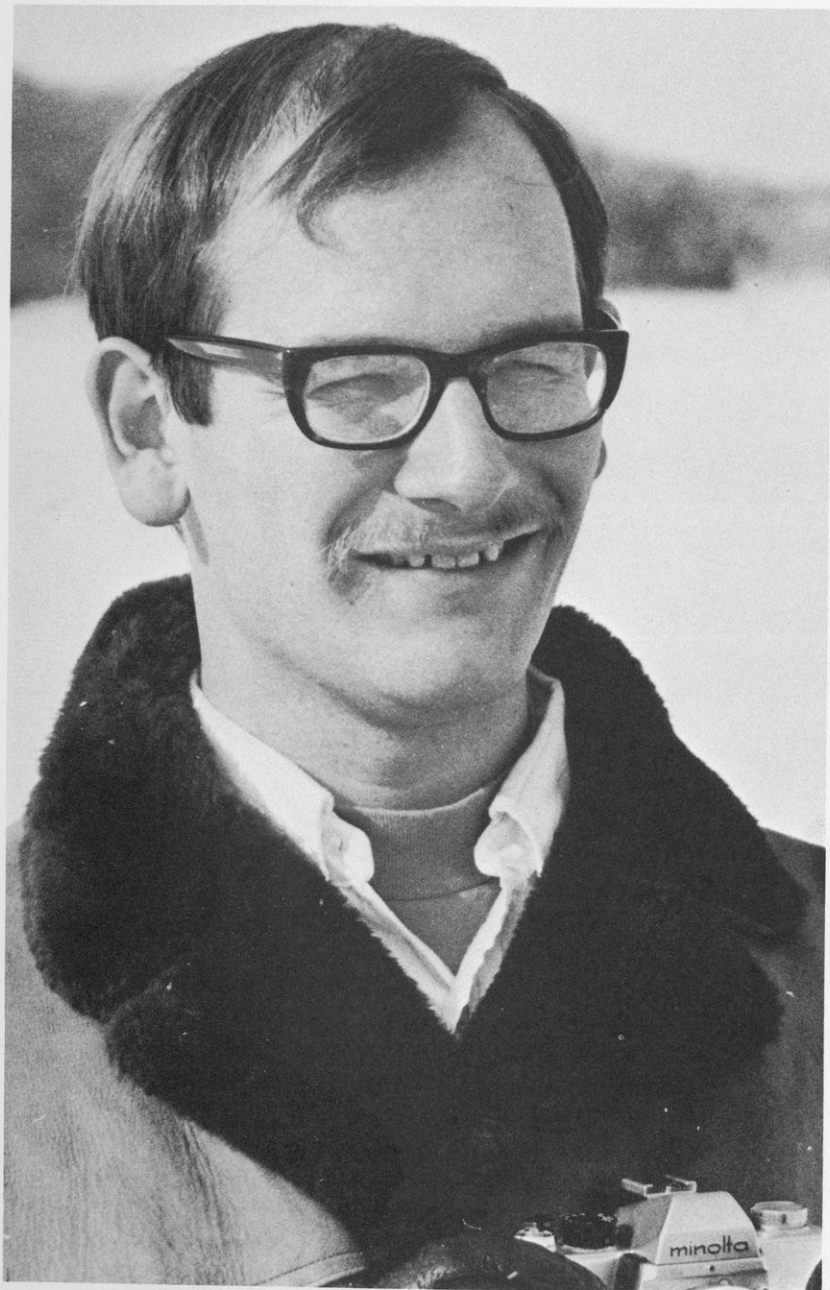


Karen Saba  
*Apartments*



# PHOTOGRAPHERS

Art Luebke



Jack Carlile



*below left*

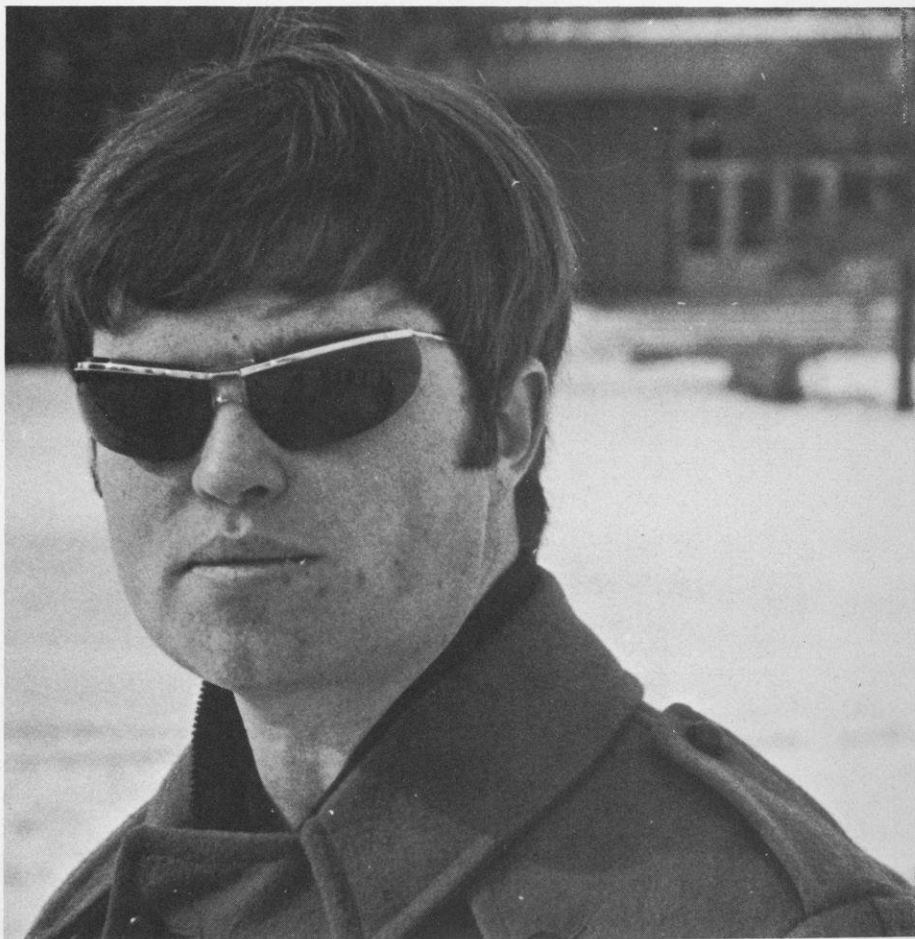
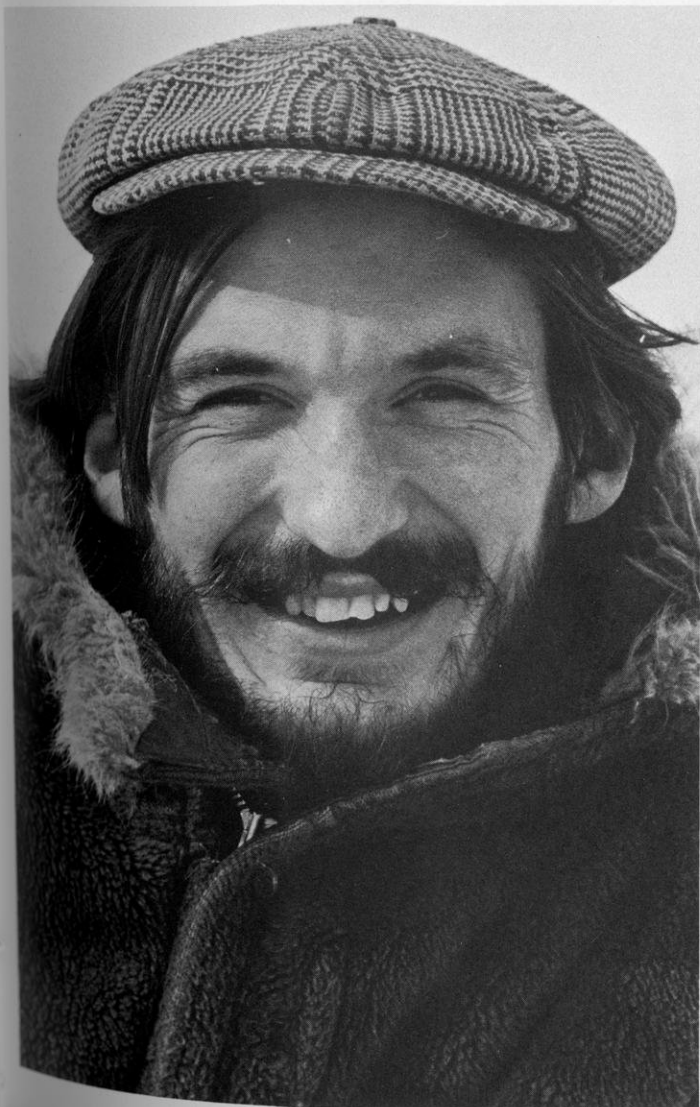
Tom McInvaille

*below right*

Richard Budowle

*right*

J. Keith Reynolds



# 1970 WISCONSIN ART PORTFOLIO STAFF

## EDITORIAL STAFF

Mary Behling  
Jackie Beyer  
Deborah Ehrenberg  
Charlene Harris  
Myron Heilbrunn  
Ellen Holdstein  
Patricia Knain  
Candace McDermott  
Pat Roberts  
Karen Saba  
Nancy Schultz  
Rich Schultz  
Dave Spatola  
C. J. Stewart  
Cindy Taubert  
Joan Torke  
Tom Woll

## BUSINESS STAFF

Joseph Buchanan  
Ellen Hendricks  
Peter Hitch  
Marc Kaufman  
Pat Lampe  
Rick Stiphout

## PHOTOGRAPHY STAFF

Jody Audek  
Monte Bernstein  
Richard Budowle  
Jack Carlile  
Roz Chait  
Marc Cherkausky  
Alan Chute  
Jerry Cousins  
Frank Gloss  
Richard Greenberg  
Tom Groenfeldt  
R. Grossman  
David Guggenheim  
Bob Holzen  
David Kalsen  
F. W. Karnauskas  
Louis Katz  
Don Kosterman  
Bob Krull  
Art Luebke  
Charles McEniry  
Tom McInville  
Geoff Manasse  
Bob Mask  
Richard Mazzarisi  
Donald Moses  
R. Munn  
Thom Murphy  
James Nielsen  
Rick Page  
David Perlmutter  
William Pfefferkorn  
Mickey Pflieger  
J. Keith Reynolds  
Janis Rothbard  
Sara Sharpe  
Dave Spatola  
Peter Sterne  
Alan Swerdlowe  
Doug Vogel  
Jeff Yablon

SPECIAL THANKS TO:

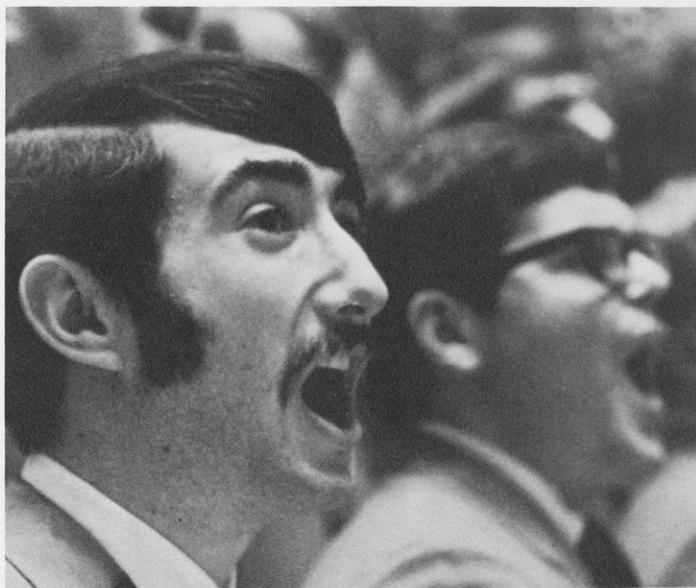
Bob Foss—*U. W. News Service*  
Craig LaRonge—*Ecology materials*  
Frank Iwen—*Permission to photograph a badger*  
Peter Greenberg—*Editorial consultant*  
G. A. Phillips—*Mondo Bizarro*

# BADGER BOARD OF CONTROL

Seated: Bev Leonard, Doug Wertheimer, C. J. Stewart. Standing: Ray Stangeland, Nancy Nielsen, Prof. Hawkes, Mr. Churchill, Rick Stiphout. Not shown: Prof. Fosdick, Prof. Strang.







# INTERFRATERNITY COUNCIL

In an age where the rhetoric so frequently espouses the need—indeed the necessity—for love between men and stresses the importance of living together in harmony, and fraternities of the University of Wisconsin are making it a reality. To praise the intangibles that men deem important is very fashionable; to practice them is to serve as an example for the idealized future. We of the Wisconsin Inter-Fraternity Council are striving to maintain these ideals; to create valuable learning experiences within our realm and to promote their continuance in later life.

Seated: R. Taylor, G. McCartan.  
Standing: C. Olson, D. Schroeder, G.  
Drake, J. Marsch, J. Kunz.





L. Curtis, S. Bucholtz, C.  
Piffner, V. Klindt, M.  
Skagen, L. Scott, A. Murray.

## PAN-HELLENIC COUNCIL

We of the Panhellenic council, along with the members of the Interfraternity Council, urge you to see the system "like it is". We strive to be a constant moratorium on stereotyping and the suppression of the individual.

Reach out and touch the heart of your neighbor

Communication is the first step in understanding

Today, the emphasis of the college student is on maintaining independence and individuality in a massive bureaucratic society, creating a secure environment in an unstable age, and sustaining a feeling of oneness while accepting freedom for each part of the whole.

Today, the purpose of the Greek organization on the Wisconsin campus is to provide a secure, communal living experience amid a massive concrete cell community.

—to allow each individual to express himself through the artistic, literary, oratorical, philosophical and social activities of the system.

—to create a feeling of a large group having separate and individual parts, while maintaining a feeling of wholeness: a feeling of being a Greek.

—to support by means of large group mobilization such programs as well benefit the organization, the campus, and the community.

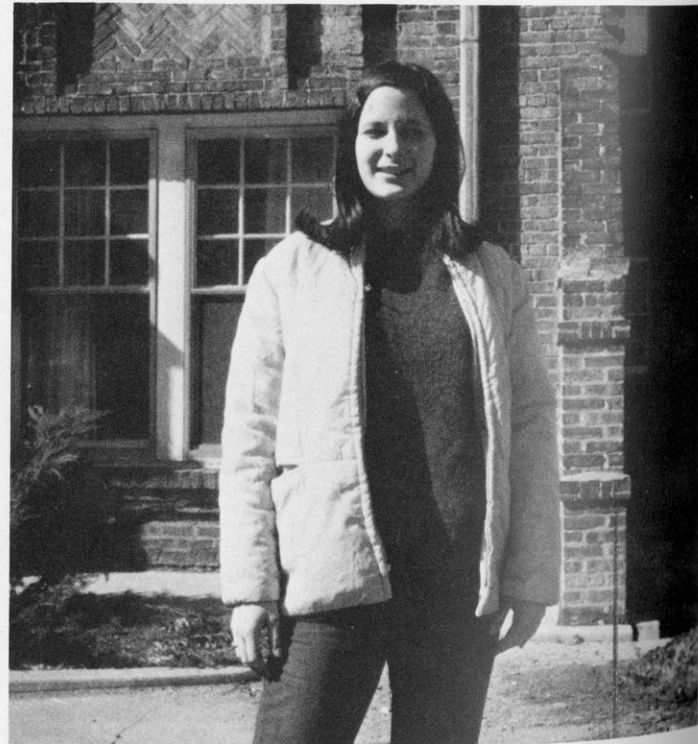
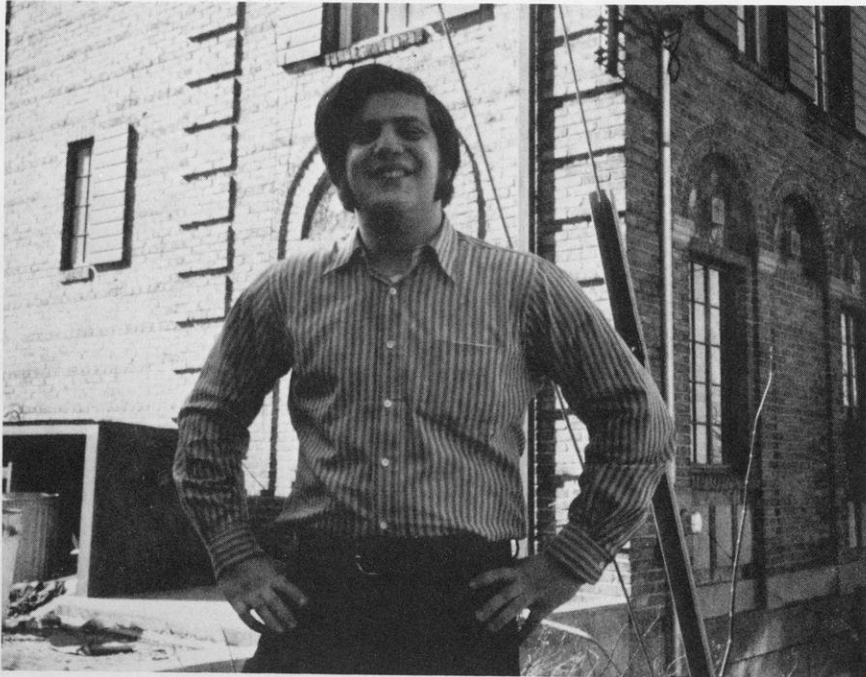


David Zucker

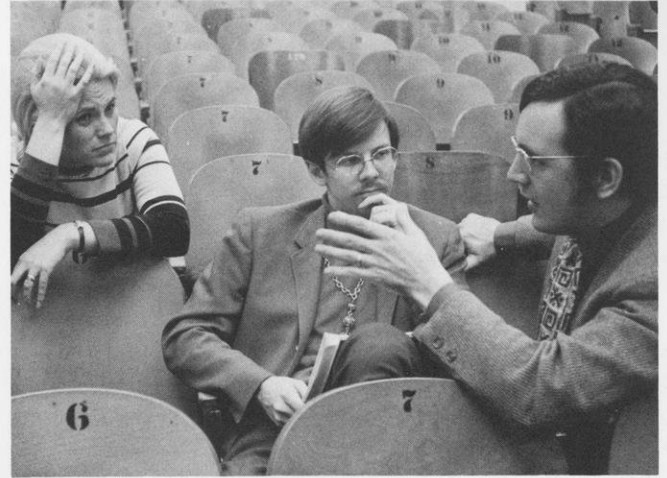
This year's senior class government showed how important it was to the effective functioning of the Senior Class by its members' desire to serve their fellow seniors and their commitment to their purpose. The class council, composed of seniors desperately needing activities to list on their records, was able to meet with all present on only one occasion—a free dinner at the advisor's home. Meanwhile, the officers, in between applying for various jobs and graduate schools, immersed themselves in their various duties, such as planning the Senior Prom, the Senior Scavenger Hunt, the Senior "Freak-Out" etc. To raise money, the class council sold drugs at the graduation reception. Special thanks to Maury Trevillo, Lilo Triki, Campo Lampino, and of course to our friends the Five Flying Amdini's.



Steve "Heinz" Gersten



Fran Fishbein



# SOCCKER CLUB

Row 1: D. Bansback, S. Craw, A. Richter, T. LaVeen, B. Showers, E. Calva, R. Marck  
Row 2: W. Reddan, Coach; N. Brouwer, D. Henderson, M. Woicek, G. Snyders, S. Nwo  
B. Goare, V. Alavian, F. Gohl, D. Frazer.

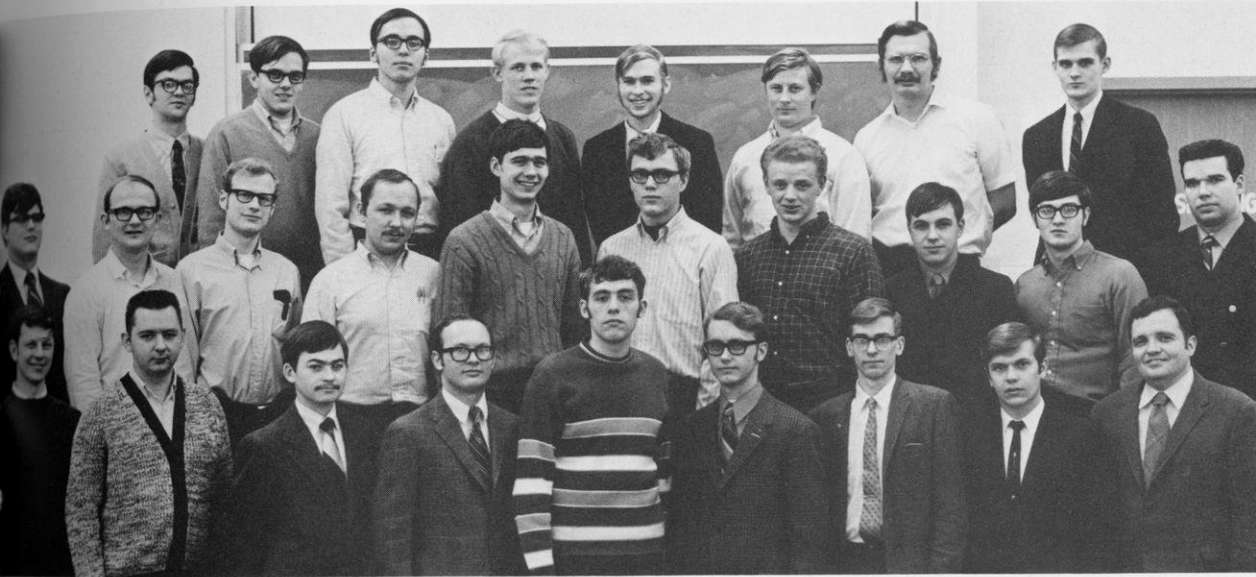


# HOMECOMING COMMITTEE

M. Greenberg, J. Evans, B. Waddell, J. Steggert, L. Floyd, M. Felix. Not Pictured: D. Phillips, D. Metz, B. Brady, K. Zuelke, C. Whitfield, J. Boettcher, J. Slater.



# INSTITUTE OF ELECTRIC AND ELECTRICAL ENGINEERS



Bottom Row: A. Libal, R. Dicke, B. Huggins, J. Secora, D. Pfefferkorn, R. Strauss, B. Peshak, D. Propp, R. Marleau. Row 2: C. Thomas, G. Barber, J. Lund, D. Haas, T. Vanderpool, R. Henderson, F. Muermann, P. Getchell, L. Hudziak. Row 3: D. Robinson, G. Melton, D. Moen, L. Stuckman, R. Ritger, D. Lenz, K. Michler.



## SAE LITTLE SISTERS

Seated: B. Peterson, L. Myerhoffer, L. Letscher, C. Spreuger, F. Middlestead, W. Fenzel. Row 2: H. Lowe, G. Pratt, N. Bauch, T. Lanigan, B. Blaney, M. Jenk, N. Rix.

# BADGER SKYDIVERS



Jim Schmitt poses for Jack Severson at 5000 feet over Madison.



Bugs Eaton pilots his Para-Commander copy into the target. Photo by Tom Vance.

The Badger Skydivers, a campus organization for nearly 12 years, has seen a tremendous growth in interest and activity. During the last few years the club has trained some 40 first jump students annually, while retaining a core of 10 to 15 active jumpers.

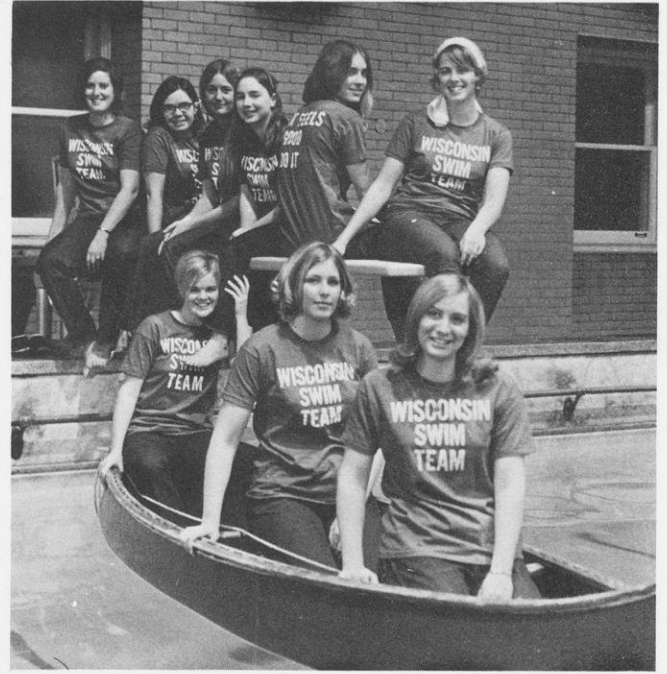
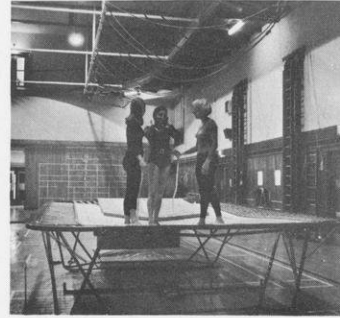
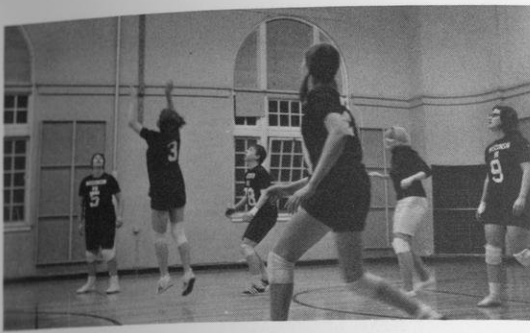
The club's drop zone is located at Richland County Airport, at Sextonville, a 50 mile drive west of Madison. Parachuting activities can be observed nearly any weekend.

Members agree, freefall parachuting and the inevitable post jump socializing make skydiving the exciting and satisfying sport it is.



Bottom Row: J. Turnquist, C. Turnquist, C. Smith, J. Schmitt, M. Langenfeld. Row 2: D. Blake, S. Krugel, K. Clark, D. Patterson, J. Severson, J. Schraeder.

# WOMEN'S RECREATION ASSOCIATION



Seated: T. McFaul, B. Blaser, K. Tritschler, J. Heimann. Standing: K. Weiss, El Mayer, J. Zirbel, L. Fosbender.

# AMERICAN SOCIETY OF CIVIL ENGINEERS

Row 1: R. Hyslop, C. O'Malley, D. Schmidt, J. Schellpfeffer, W. Baudain, A. Voss. Row 2: M. Witt, T. Johnson, K. Ligman, C. Kleunker, T. Keating, G. Cottingham. Row 3: R. M. Fritz, P. Nehm, J. Wurtz, J. Cook, T. Kaeser, R. Voss. Row 4: F. Sieker, B. Corey, B. Sopkowitz, B. Luzon, J. Sevick, W. Babcock.



# AMERICAN SOCIETY OF MECHANICAL ENGINEERS

Bottom Row: K. Blaedel, Prof. Beachley, J. Holman, G. Brady, L. Teunissen, S. Gould. Row 2: S. VanVleet, H. Baldwin, R. Pourian, D. Hanser, R. Klitz, T. Dobbs. Row 3: R. Jenks, J. Tempke, A. Greidanus, D. Colliton, E. Weber, G. Miller, K. Saeger.





# POULTRY CLUB

Bottom Row: A. Dhillon, G. Paton, L. Pennington, J. Toubl, R. Haller, L. Arrington, P. Miller. Row 2: K. Chow, J. Wien-eke, B. Pradhan, S. Stillmak, W. Meyer, K. Maruyama, T. Shen, K. Bhargava, M. Sunde, G. Meyer, N. Goher.



# POLYGON ENGINEERING COUNCIL

With delegate representatives from each of the student chapters of the engineering professional societies, Polygon Engineering Council comprises a central body whose objective is to promote the interests of engineering students and to serve as a liaison to the engineering faculty and administration and to the university community.

Row 1: J. Skerven, L. Stepaniuk, D. Hagen. Row 2: J. Lemke, J. Meidl, A. Vlasak, J. Secora, D. Mitchell, K. Blaedel. Row 3: R. Schmidt, F. Powers, T. VanAkkeren, D. Pfefferkorn, T. Kaeser, D. Colliton, D. Moen, S. VanVleet.



# PISTOL TEAM



Bottom Row: B. Moses, K. Roberts, S. Klosterman, R. Bouma. Row 2: S. Courtney, J. Massey, D. Wineguard, G. Lee, G. Vechinski, L. Christensen. Not Shown: D. Strayer, R. Kautz, T. Bronson.

# RIFLE TEAM



Row 1: J. Meilahn, S. Vowinkel, M. Krembs, R. Donkel, Msg. L. Stifter. Row 2: J. Parch, K. Kent, D. Brooks, S. Jones, G. Habermann, D. Kelly, M. Lentz, D. Capicik.

# PERSHING RIFLES



Row 1: Major Englund, W. Maddox, J. Roth, B Kuhn, D. Schroeder, J. Marsh, Sgm. Schultz. Row 2: D. Nelson, K. Vankleeck, A. Lazarevich, K. Vancleeck, D. Thamos, D. Thorp. Row 3: D. Stahl, S. Stewart, K. Boltz, S. Kuhn, D. Johnson, L. Rouse. Row 4: D. McGonegal, R. Terry, C. Chapman, R. Price, F. Genter. Row 5: J. Ricks, R. Harris, R. Oberlin, T. Wolff, J. Meilahn. Row 6: D. Plzak.

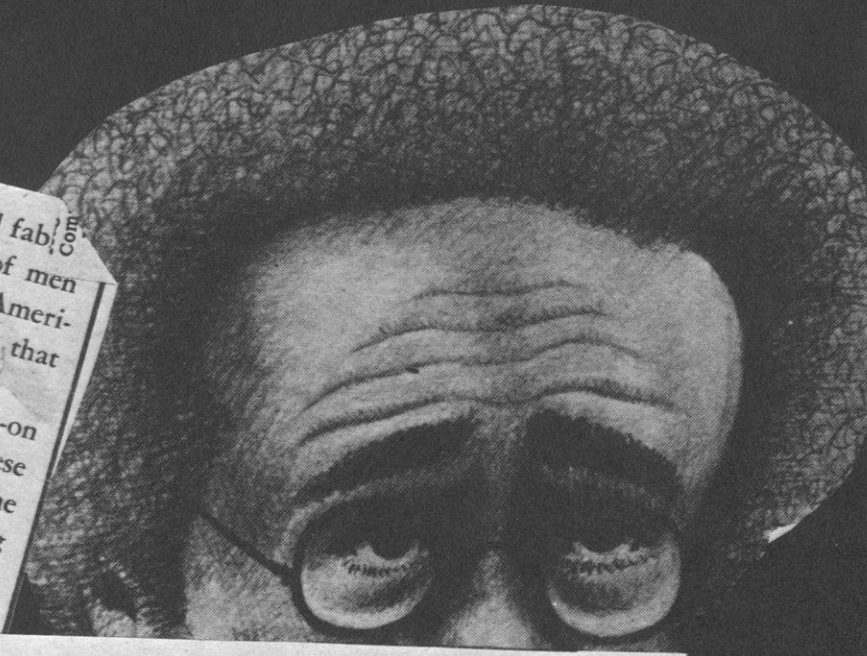


**A Commitment to Peace.**

Vietnam War has wilted and torn the national fabric. ... hundreds of thousands of men ... the brutality of American policies ...

The nightmare visions of the battle ... napalm ... American children, on the faces of broken G.I.'s returning home. And the all too nightmarish vision of a government unfeeling persisting with the war is with us also.

Both visions summon us. They summon us to here and now to commit ourselves to ending the war in Vietnam and opposing any way we can more inhuman exploits by this United States imperialist forces withdrawal. It is a demand for the halt to the peoples of underdeveloped ...



**Capitol Responds To Bomb Threats**



**They Are Your Children**

The reaction to the days of sabotage in the city of Madison and the campus has in many senses revealed as much about our society as did the acts themselves.

Those who talk about the repugnant "terrorism" in Madison don't know what terrorism is. Only the victims of terrorism can know that. But the shock of a type of war, even be it only sabotage of property, coming right to the doorstep of what was always thought of as safe territory is so bewildering and frightening that it can take predominance over daily manifestations of brutal societal terrorism.

We have not seen anything near that terrorism in Madison and we should be

**Protestors Linked**

1969, tons ... United States ... churches and business of the nation.

... teacher and students, ve ... massive call for United States ...

... call is likewise be ... as scheduled ... of understanding ... university have seen to ... on can become almost ... nter, the I ...



**Forgotten**

**WOMEN'S WORK**

**SDS Hits ROTC**

**Budget**

**OCTOBER 15**

**Notes on the American Death Machine**

Reports of murder and death fill the news columns and the airwaves with a frequency so great that such events are beginning to be taken for granted. Indeed with the phenomenon of 6 PM full color body counts death has become a statistical commodity like the liter or the bushel to measure labor.

Inspection of Hampton ... shows that there wa ... coming from the co ... he was, and that ... close range while ... tion. As with the ... raid by Los An ... headquarters wa ... front to trap and ... that instance the police ... that instanced home made ... were hurling home ... there was no evidence ...

**T.D. Young**

**Teachers at Capitol**

... children of violence. ... such a part of Ameri ... ning cartoon program ... the streets of Chicago. And ... that violence that sur ... ignored or sanctioned as ... to protect the greatness of ... anation. Thus, those who have ... have been crushed, ... cificists or Black Panthe ... the past several years, ... ught for change in this co ... turned back time and again

**Education is**

**TAA Strike**

# CRUCIBLE

M. Brody, B. Owen, K. Lunney, M. Terwilliger.  
J. Barkley, J. Jeffery, C. Buck, J. Mann.



## PHI KAPPA PHI HONOR SOCIETY

Phi Kappa Phi is unique among campus honor societies since it elects its members from all colleges and schools in the University and stresses both scholastic achievement and active contributions to the campus and civic community. The local chapter annually gives the B. H. Hibbard Award of \$500 to one of its student members for summer research or travel not generally a part of a formal curriculum. The national Phi Kappa Phi organization grants seventeen \$3,000 fellowships for first-year graduate work.

## 1970 STUDENT INITIATES GRADUATE STUDENTS

MICHAEL LAWRENCE AGIN  
DONALD R. ATKINSON  
PETER ROANE BECKMAN  
JERRY LLOYD DAVIS  
HERMAN JOSEPH DERBORT  
CAROL LOU EROS  
JOHN F. EROS  
HOLLAND COLE FORD  
THOMAS STANLEY FRENTZ  
MARTIN LYN GOSMAN  
THOMAS HENRY HOOVER  
LAWRENCE WALDO HUNTER  
FREDERICK R. JACOBS  
KATHLEEN MARY JAMIESON  
DAVID ANDREW JEPSEN  
CHARLES LAWRENCE LITTERST

DAVID DOLLISON MARSH  
ROBERT HARKER METCALF  
JAMES FREDERICK MILLER  
LYLE DEVON MILLER  
WILLARD AUSTIN MURRAY  
DAVID REA MUSSER  
PAUL NEWBOLD  
JAMES E. PATTON  
RODOLFO E. QUIROS-GUARDIA  
CLYDE STEVENSON ROWLEY, JR.  
JOHN JOSEPH SCHRECK  
WALTER ALVIN SCOTT  
NICHOLAS HANS STENECK  
HOWARD LEE STONE  
FREDERICK CHARLES THOMAS  
MARGARET CHRISTINE WOODS

# SENIORS

MICHAEL PHILIP ANDERSON  
SUSAN RAE ANDERSON  
CHARLOTTE ALICE AUXIER  
JAMES CARL BARTEL  
SHEILA SUE BENDER  
WERNER H. BERGMAN  
RENEE SHARON BINDER  
CHESTER BISCARDI  
JOHN MICHAEL BJELAJAC  
ROBERT F. BLACK  
CEIB PHILLIPS BLACKBURN  
JANE ELLEN BLOOM  
JOSEPH D. BOLTON  
LYNN BORGATTA  
GERALDINE BOTWINICK  
TONY R. BREITCHAFT  
QUENTIN ROBERT BROWN, II  
SUSAN KATHLEEN BRUCKMAN  
SUZANNE BRYANT  
FREDERICK HOWARD BUTTEL  
RONNIE GALE CAPLANE  
JANET M. CARLSON  
KRISTEN ELENA CARPENTER  
ELIZABETH RANDOLPH CARY  
CHENG CHUNG-LIANG  
CHRISTOPHER LEE CODY  
BRUCE HARVEY COHEN  
ELLIOT JAY COHEN  
ROSALYN ANN COHEN  
LYNN PATRICIA COPONY  
KATHLEEN ELIZABETH CORBIN  
LESLIE EVELYN DANZIG  
MARGARET ROSE DRAEGER  
BONNIE BLAKE DRUCKER  
DANA LYNN DUNCAN  
CHARLES WILLIAM EATON  
MARK BINDER EDELSTEIN  
THOMAS DAVID EISELE  
SANDRA RAE ENGLANDER  
MARK EVERS  
RALPH EDWARD FARRELL  
ESTHER LEE FELDMAN  
EDWARD LAWRENCE FLOCK  
ERIC BRUCE FONSTAD  
JANE L. FOSKETT  
DEBORAH IRENE FRANK  
JANE B. FRIEDMAN  
MARIE A. FRIER  
KATHLEEN M. FULLMER  
JANICE RUTH GAUGER  
JEFFREY BRIAN GAYNES

CATHERINE ANN GEHRKE  
ALBERT JOSEPH GEDICKS, JR.  
DAVID CHARLES GOOD  
GARY DAVID GOODMAN  
SUSAN TERRY GREENBLATT  
DALE CALVIN HAGEN  
JAMES WILLIAM HALLE  
BARBARA JO HAMMEN  
DIANE LYNN HARMELINK  
CHRISTINE ANN HEISER  
MARTIN DAVID HELFAND  
JOHN PETER HERMANN  
JAY LESLIE HIMES  
MICHAEL HIRSCHBERG  
LUCERNE A. HOOTKIN  
H. MARSHALL HOWE, III  
BARBARA JEANNE JOHNSON  
JEANINE ALMA KATZEL  
MARILYN JEANNE KAYON  
JUANITA MARGARET KIELLEY  
LAUREL LEE KING  
JUDITH RACHEL KISSEL  
LINDA CATHY KLEIN  
KAY H. KLIPSTINE  
FRANK A. KNOBLOCH  
LINDA LOUISE KNUTSON  
NORMAN HAI-MING KOO  
DOUGLAS C. KRAFT  
CHRISTOPHER LYON KROGH  
ORAH KRUG  
LESLIE JEAN KURTH  
LINDA L. KUSTKA  
CELIA KAY LARSON  
MORDECAI KAMESAR LEE  
STEVEN ALAN LEVINE  
ANDREW LEVISON  
BARBARA ANN LEVY  
MARC ALAN LIBERMAN  
WESLEY ALLEN LIGHT  
RICHARD JOSHUA LIPSON  
ROBERT JAMES LOWE  
BARBARA BEE LUEBKE  
JAMES CARL MACK  
RICHARD ALAN MARKES  
GLORIA ANN MARQUARDT  
PAMELA ANN MASSEL  
MICHAEL J. MASSEY  
MAUREEN ANN MC CARTEN  
EDWARD WAYNE MERRY  
MARGARET L. MILLEN  
PHOEBE AMELIA MILLER  
JOHN HENRY MOSER  
RUTH EVA MULLEN  
WENDY ADAMS NIEM  
SARA ANN NORTH  
CAROLE ANN PARSONS

JILL KIRSTEN PEDERSON  
EDWARD GENE PESKIN  
WENDY BOOKEN PESKIN  
LAWRENCE VICTOR PIERI  
JANE ELLEN POSS  
PATRICIA ANN PREMO  
PETER EUGENE PRIEPKE  
JANE QUADRACCI  
JOHN HOWARD RAMER  
GENEVIEVE RUTH RESCH  
STEVEN R. RICKETTS  
STANLEY EDWARD RITTERBUSCH  
NANCY L. ROSENBLOOM  
MARY ELLEN ROWNTREE  
MICHAEL JON RYAN  
ROBERTA FAYE SATURN  
DAVID R. SCHAEFER  
JAMES ALLEN SCHNEIDER  
PAULA JEAN SCHUETTE  
JEANIE CAROLE SCHUMAKER  
ROBERT JOHN SCHUSTER  
EUGENE KENNETH SEVERSON  
KAREN M. SHEA  
THOMAS JOHN SHEWCZYK  
FREDERICK A. SIEKER  
CAROLINE LOUISE SIMMONS  
G. BRIAN SMITH  
JOHN GOODWIN SMITHYMAN  
DAVID GEORGE SPOERKE, JR.  
MARY KATHERINE SPRAKER  
RAY GREGORY STANGELAND  
JONATHAN CARROLL STAPLETON  
MICHAEL A. STEINMANN  
RICHARD MICHAEL STIPHOUT  
BARBARA ANN STOLHAND  
DAVID HAROLD STORM  
ROBERT HOWARD SWEDLOW  
GEORGE ARTHUR SYLVESTER  
OCTAVIO TEJEDA-GOMEZ  
SUSAN EMILY VOSS  
BARBARA ANN WARD  
AMY CATHERINE WATSON  
JAN RICHARD WEBER  
VERN WILLIAM WEEKS  
PETER MICHAEL WEIL  
LOIS M. WEIS  
CAROLE E. WENER  
DONALD ROY WERNLY  
CYNTHIA ANNE WILLIAMS  
BARBARA JANE WINN  
HOLLY ANN WOLCOTT  
BRYAN DOUGLAS WOODS  
JEFFERY LEE YABLON  
MARY BETH ZAHN  
SUZANNE L. ZAJACKOWSKI  
LINDA ELIZABETH ZINTHEFER

# JUNIORS

BETH ANN BAKER  
JULIE ANN BARKLEY  
DONALD JAMES BARRY  
SUSAN FLORENCE BEHRENS  
MICHAEL J. BINGHAM  
KATHLEEN ANN BREHM  
BARBARA ANN BROWN  
JOHN THOMAS BRUER  
CONSTANCE S. BUCK  
JAMES ROBERT CHAMBERLAIN  
ANDREA LOUISE DICKS  
JOYCE ELIZABETH EDER  
JEROLD A. GILBERT  
EARL WILLIAM GODFREY  
VICKI LOUISE HAGEN  
DOUGLAS FRANCIS HAGER  
GEORGE WAYNE HALLDIN  
SARAH JEAN HAMILTON  
WILLIAM DEAN HASSE  
BARBARA ANNE HINDIN  
BRIAN DONALD HUGGINS  
JAMES CLIFFORD HUHTA  
LOUIE IORIO  
WILLIAM EARL KASDORF  
EARLENE E. KOEHLER  
JEFFREY R. M. KUNZ  
JOHN EDWARD LAABS  
CHARLES RICHARD LEADHOLM  
JAMES NORMAN MEIDL  
STEVEN LEIGH MERRY  
GORDON K. MILLER  
GARY W. ONAN  
JAMES HAROLD ORF  
DAPHNE MARIA PANAGIS  
ANDREW TOM PAPAGEORGE  
GAIL HILL PREUNINGER  
ROBERT LEE SCHOEN  
ELIZABETH VIRGINIA SECORA  
WILLIAM L. SIPPEL  
DIANA JEAN SPERLE  
MARILYN JEAN STEWART  
JOHN B. STUTT  
RICHARD NEAL SWEET  
ELIZABETH LOUISE TAYLOR  
WILLIAM ALLEN THURWACHTER  
CURTIS VICTOR TRINKO  
HAROLD WASHINGTON WILKIE, JR.  
JENNIFER MARY WALL  
JAMES RAYMOND WINKELMAN  
JOHN WILLIAM WITT  
KAREN ELIZABETH ZIEGE



The  
End

