



**LIBRARIES**  
UNIVERSITY OF WISCONSIN - MADISON

## **Third biennial faculty art exhibition : University of Wisconsin Centers, Elvehjem Museum of Art-Madison : March 4-April 1, 1984..**

Elvehjem Museum of Art; University of Wisconsin Centers. Biennial  
Faculty Art Exhibition

Madison, Wisconsin: University of Wisconsin Centers, 1984

<https://digital.library.wisc.edu/1711.dl/K5FDJNU3G3LIQ84>

<https://rightsstatements.org/vocab/InC/1.0/>

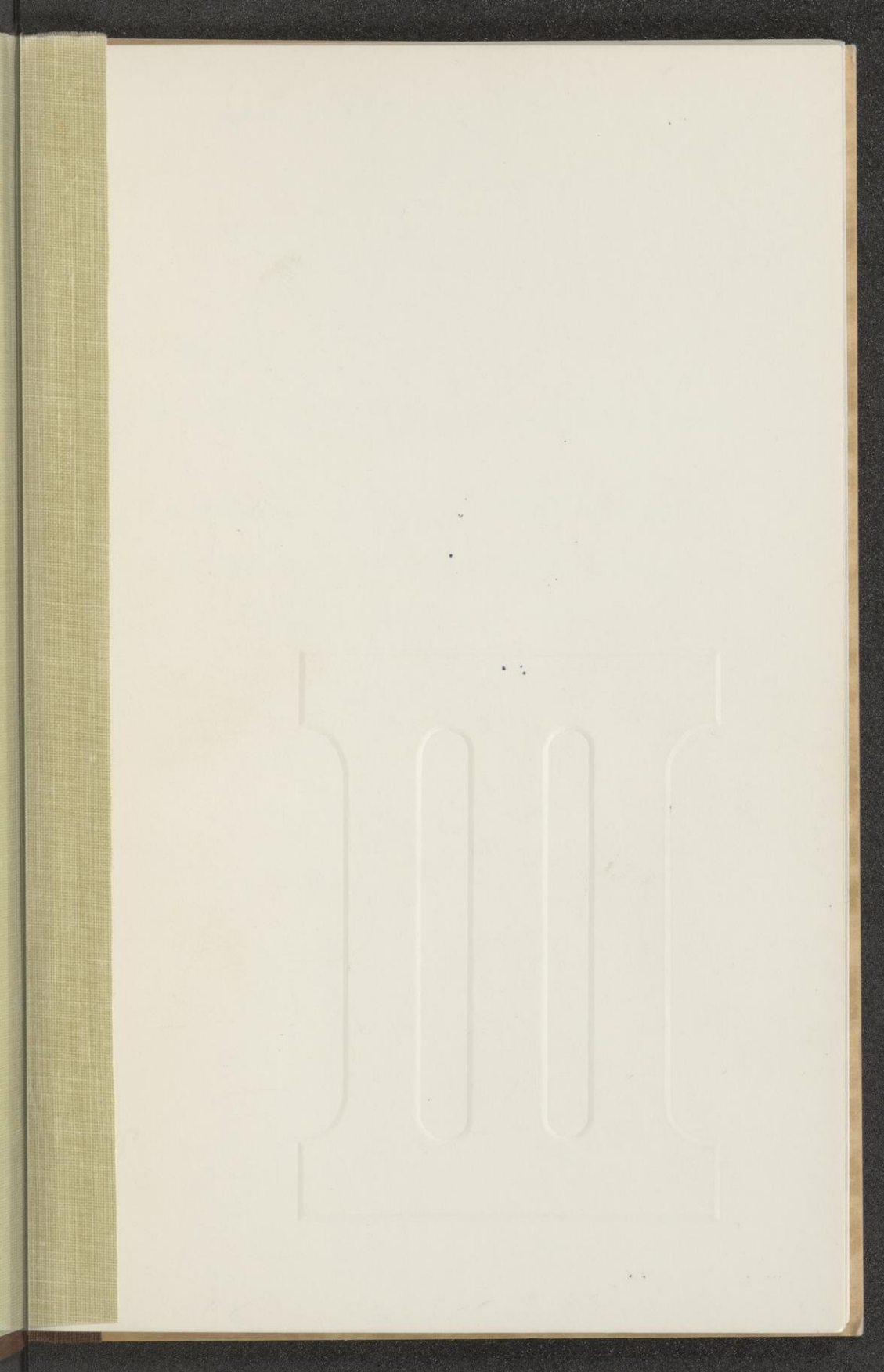
The libraries provide public access to a wide range of material, including online exhibits, digitized collections, archival finding aids, our catalog, online articles, and a growing range of materials in many media.

When possible, we provide rights information in catalog records, finding aids, and other metadata that accompanies collections or items. However, it is always the user's obligation to evaluate copyright and rights issues in light of their own use.

N  
6530  
.W6  
T54  
1984  
2

KOHLER ART LIBRARY







KOHLER ART LIBRARY

Third Biennial Faculty Art Exhibition

University of Wisconsin Centers  
Elvehjem Museum of Art-Madison  
March 4-April 1, 1984

N  
6530  
.W6  
T54  
1984  
2



University of Wisconsin Centers: Baraboo/Sauk County, Barron County, Fond du Lac, Fox Valley, Manitowoc County, Marathon County, Marinette County, Marshfield/Wood County, Richland, Rock County, Sheboygan County, Washington County, Waukesha County.

*art*

The Roman numeral embossed on the cover of this catalogue marks the Third Biennial Faculty Exhibit of the University of Wisconsin Centers Art Department.

A range of interests and styles is evident, comparable to any large art department, but perhaps the viewer should keep in mind this department exists at 13 locations covering the entire state.

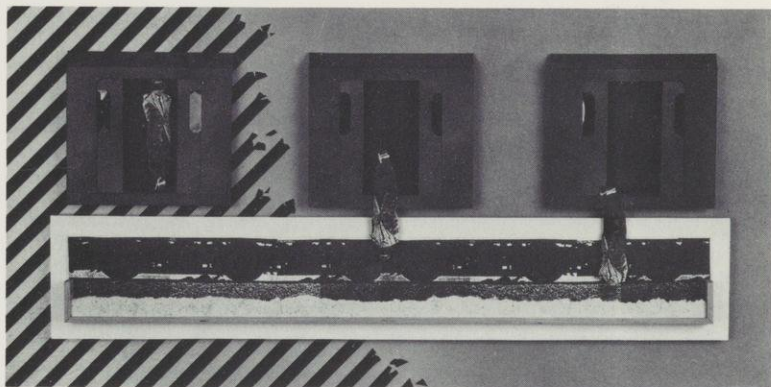
As teachers, these individuals must be generalists who provide a broad foundation for their students — as artists they follow an independent path attempting to explore their own separate frontiers.

There is no conflict in these two roles. Department policy is that only through the continued production of art, one retains the authority to teach art.

R. P. Penkoff  
Chair, UW Centers

Dennis N. Bauer

UWC-Marathon County



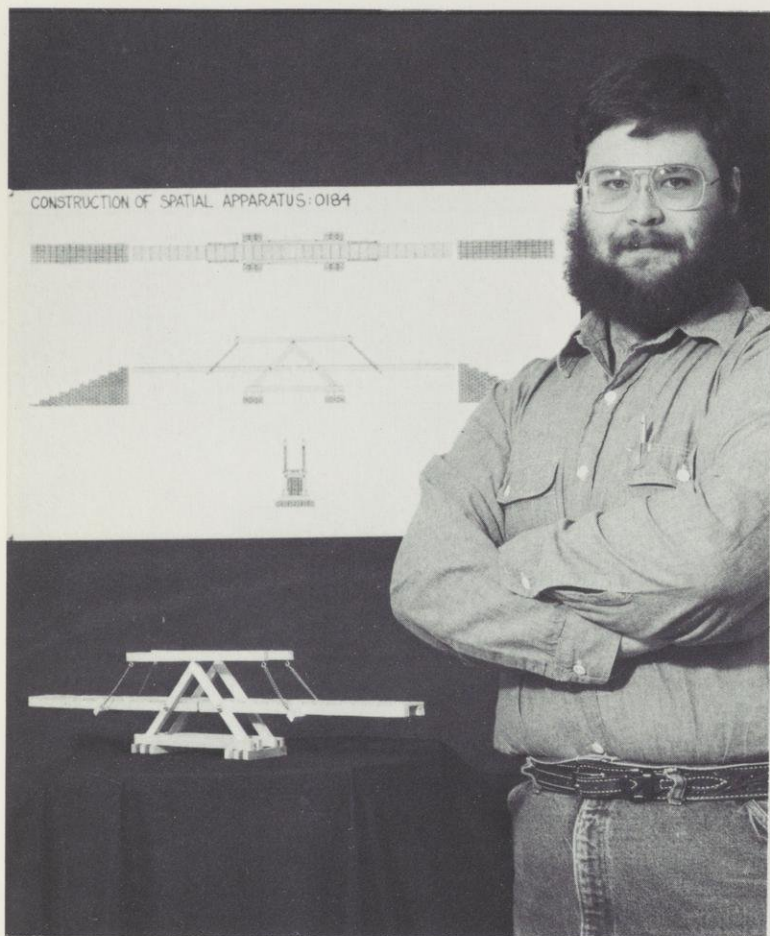
"You can't tell where James Dean is hiding out  
and get away with it" 1981-1982

Medium: various construction materials

Size: 2" x 16" x 32"

Jeff Boshart

UWC-Fox Valley



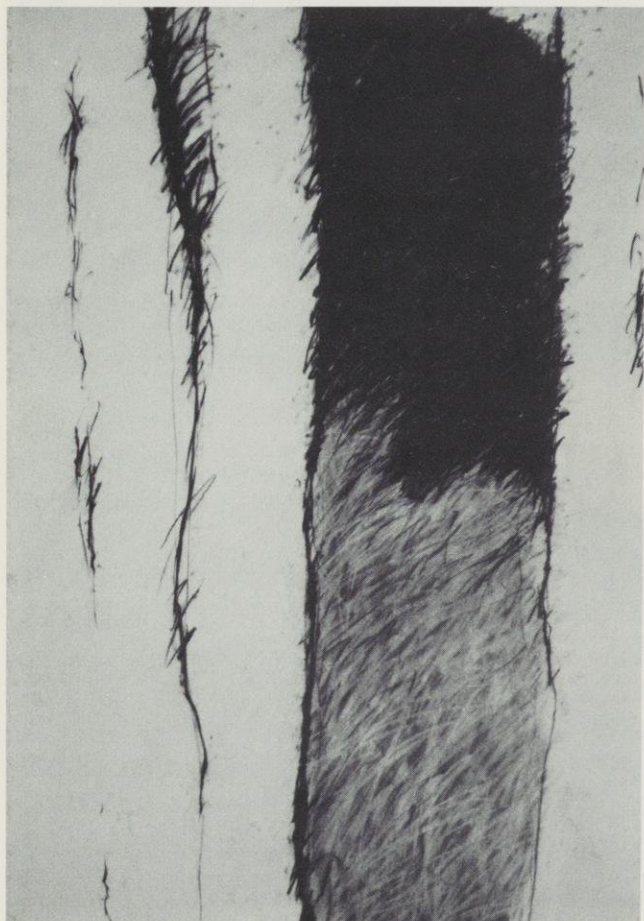
"Construction of Spatial Apparatus: 0184" 1984

Medium: wood, steel, brick

Size: 4.5" x 3" x 53"

Valerie Christell

UWC-Waukesha County



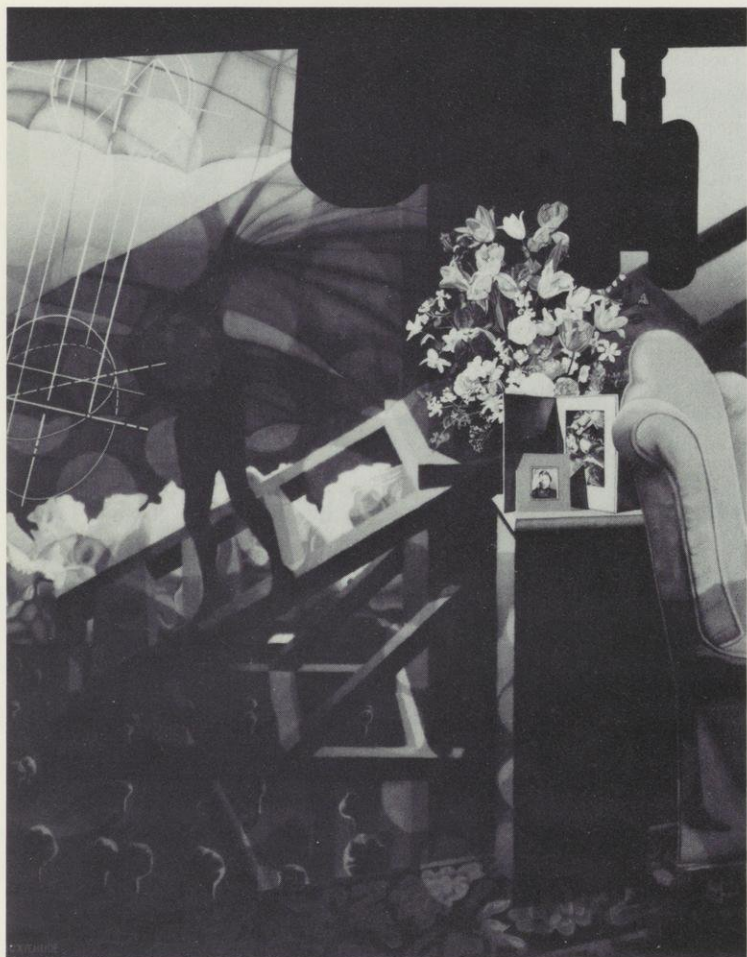
"Revenge for a Hot One" 1982

Medium: pastel

Size: 30" x 44"

Richard Dahle

UWC-Marathon County



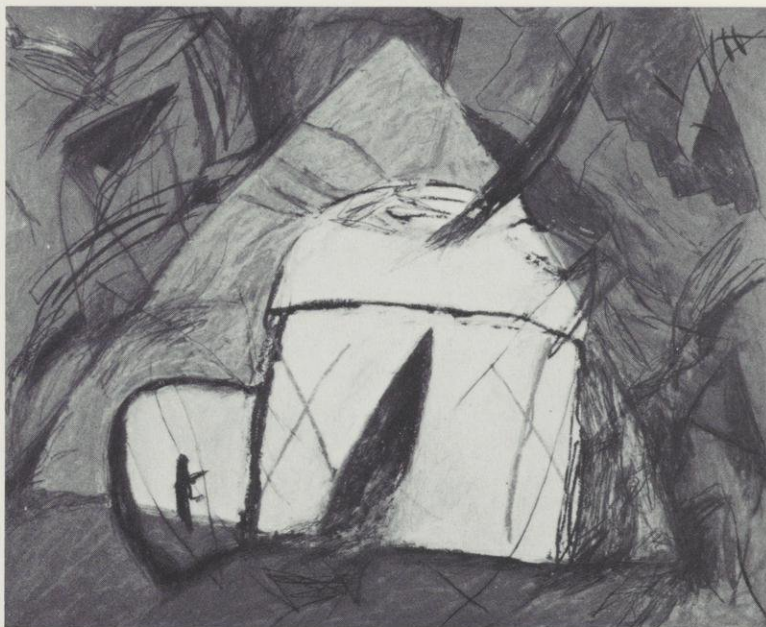
"1 Big 1: Why the Dog Won't Show Its Eyes" 1983

Medium: oil

Size: 48" x 60"

D'Ann de Simone

UWC-Fox Valley



"an hour of bliss and hours of sadness" 1983

Medium: oil/graphite

Size: 22" x 30"

Tom Fleming

UWC-Marathon County, Wausau



“(C.SC21) Talk he-hide shit belong fire” 1983

Medium: lacquer, enamel on ceramic

Size: 20" x 51" x 7"

Kenneth R. Graetz

UWC-Manitowoc County



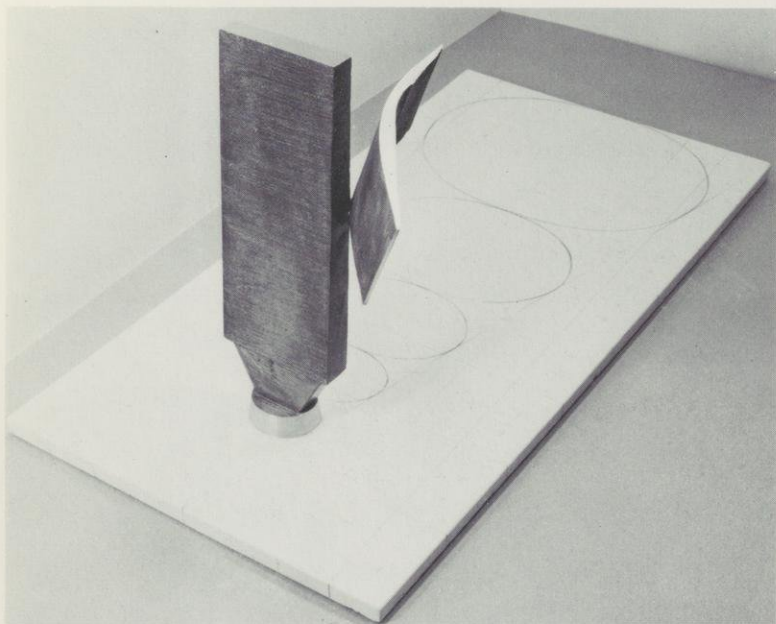
"Colligatus" 1983

Medium: oil on board

Size: 48" x 60"

Thomas Gross

UWC-Washington County

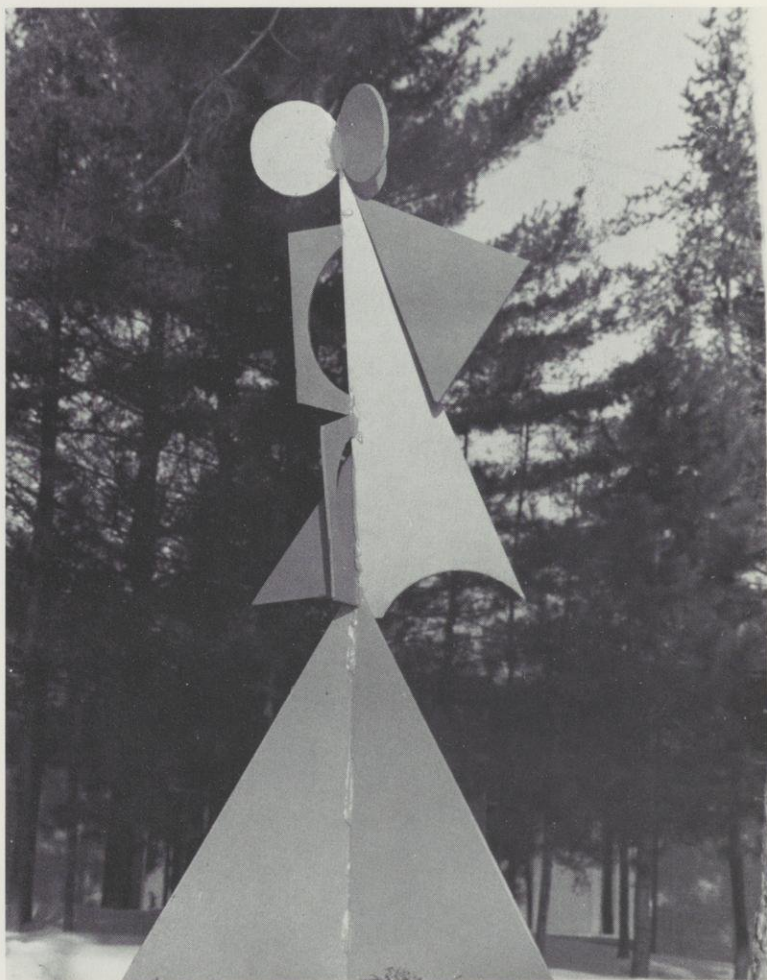


"Untitled" 1983

Medium: cast bronze and ceramic

James LaMalfa

UWC-Marinette County



"Furniture for a dead king's megaron:  
blue terrapod" 1982

Medium: steel

Size 30" x 18"

Biganess Livingstone

UWC-Fox Valley



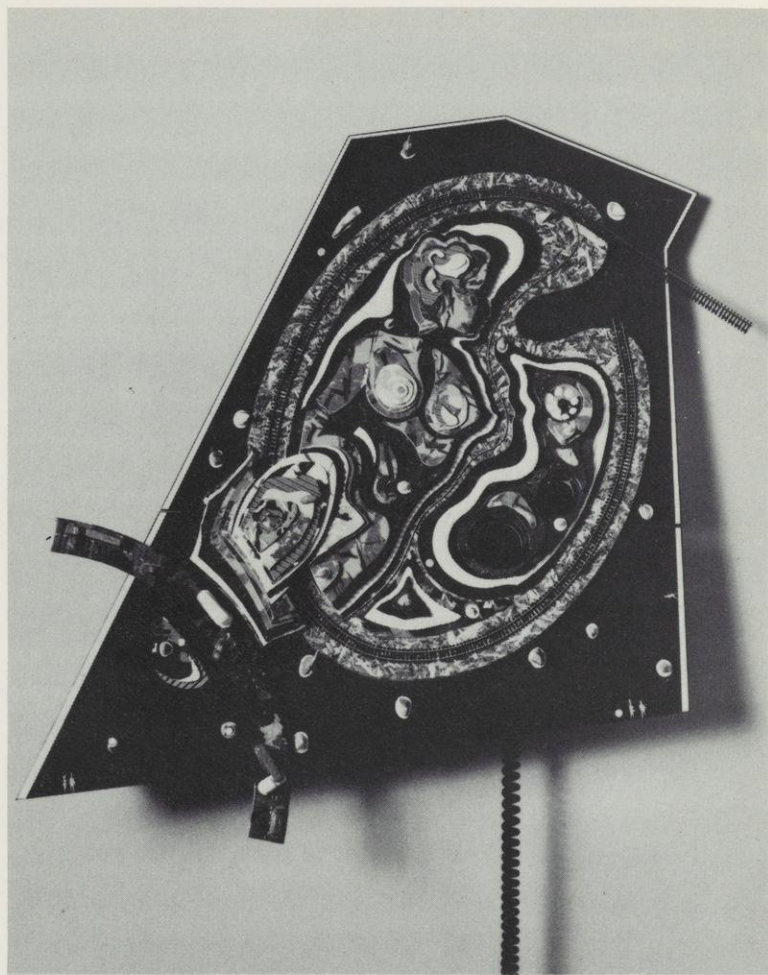
"Documenting Watching TV Nuclear Series" 1983

Medium: oil, acrylic on stretched canvas

Size: 48" x 48"

Robert Mertens

UWC-Marshfield-Wood County



"The Artist's Model" 1983

Medium: acrylic and enamel paint,  
cardboard and plywood

Size: 36" x 28" x 8"

Ronald Penkoff

UWC-Waukesha County



"Study for Sacred and Profane Love"  
1982

Medium: Wash

Size: 4" x 4"

Donald Howard Ruedy

UWC-Barron County



"High Tea" 1983

Medium: oil on canvas

Size: 6' x 5'

Adrienne Michele Sager

UWC-Richland Center



"Les Fleurs à Giverny" 1983

Medium: acrylic on watercolor paper

Size: 22" x 30"

James Schwalbach

Professor Emeritus-UWC-Baraboo/Sauk



"Forest Floor" 1983/84

Medium: serigraph

Size: 16" x 12 1/2"

Everett D. Scott

UWC-Rock County



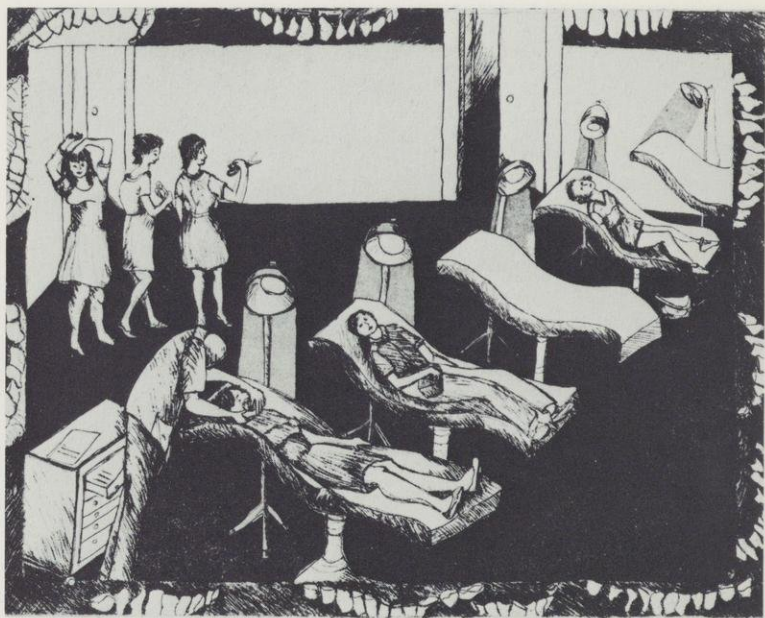
"Terra Lorien" 1983

Medium: oil on canvas

Size: 47 1/2" x 35 1/2"

Stephanie Coupoulos Selle

UWC-Waukesha County



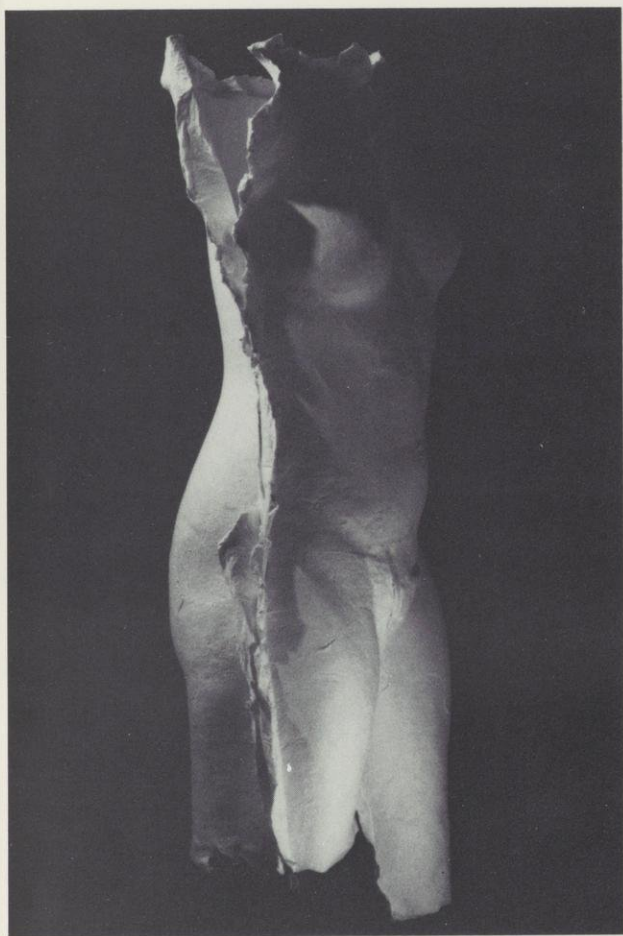
"A Quick Stop at the Orthodontist" 1983

Medium: etching

Size: 11" x 14"

John Whitney

UWC-Baraboo/Sauk County



"IBM-PCI" 1983

Medium: handmade paper

Size: 32" x 14" x 9"

Mary Ellen Young

UWC-Waukesha County



"Snow Window, December 23, 1983"

Medium: Polaroid Photography

Size: 4" x 5"

abl. James Zemba

WU. UWC-Sheboygan



rU' "Untitled" 1983

esM Medium: Cone 10 stoneware

Exhibit handlist

## Dennis N. Bauer

UWC-Marathon County-Wausau  
Education: Chicago Art Institute

"Do you think they do their own laundry?" 1983

Medium: various construction materials

Size: 5" x 11 1/2" x 14"

"They had an uncanny understanding of interior space until television removed the dimension from them." 1983

Medium: various construction materials

Size: 4-1/4" x 18-1/2" x 20-3/4"

## Jeff Boshart

UWC-Fox Valley, Menasha  
Education: B.A., Montana State University  
M.F.A., University of Massachusetts-Amherst

"Working Drawing: Construction of Spatial Apparatus: 0184" 1983

Medium: mixed media drawing on rag paper

Size: 20" x 18"

"Maquette Construction of Spatial Apparatus: 0184" 1983

Medium: maple, grass, steel

Size: 3" x 4.5" x 24" Scale: 3/4" = 1.0"

## Valerie Christell

UWC-Waukesha County  
Education: B.F.A., University of Illinois-Urbana  
M.F.A., University of Wisconsin-Milwaukee

"Strung Out and Along" 1982

Medium: pastel

Size: 30" x 44"

"Foot Loose and Fanny's Free" 1982

Medium: pastel

Size: 30" x 44"

## Richard Dahle

UWC-Marathon County, Wausau  
Education: B.S., University of Wisconsin-Madison  
M.S., University of Wisconsin-Madison

### "1 Big 1: Wes of Camby" 1983

Medium: oil  
Size: 48" x 60"

## D'Ann de Simone

UWC-Fox Valley-Menasha  
Education: B.F.A., Rhode Island School of Design  
M.F.A., University of Massachusetts-Amherst

### "the inevitable movement onward" 1983

Medium: gouache/graphite  
Size: 22" x 30"

### "untitled" 1983

Medium: oil  
Size: 22" x 30"

## Tom Fleming

UWC-Marathon County-Wausau  
Education: B.F.A., Pennsylvania State  
M.F.A., University of Minnesota

### "(b.SC39) Twelfth Night" 1983

Medium: lacquer, underglaze on ceramic  
Size: 32" x 32" x 7"

### "Crigri Cenotaph (c.SC24)"

Medium: enamel on ceramic  
Size: 32" x 15" x 11"

## Kenneth R. Graetz

UWC-Manitowoc County  
Education: B.A., M.S., M.F.A., University of  
Wisconsin-Milwaukee

### "Ribbons" 1983

Medium: oil on board  
Size: 34" x 48"

### "Arrangement" 1983

Medium: oil on board  
Size: 29" x 38"

## Thomas Gross

UWC-Washington County-West Bend  
Education: B.S., M.S., M.F.A., University of  
Wisconsin-Milwaukee

### "Untitled" 1983

Medium: cast bronze and ceramic

### "Untitled" 1983

Medium: slip cast ceramic

## James LaMalfa

UWC-Marinette County  
Education: B.S., M.A., M.F.A., University of Wisconsin,  
Madison

### "Mindscape with red sun"

Medium: watercolor  
Size: 18" x 22"

### "Early growth at springtide germinates under pale blue moon"

Medium: watercolor  
Size: 19" x 16"

## Biganess Livingstone

UWC-Fox Valley-Menasha

Education: B.F.A., Massachusetts College of Art

M.Ph., Newton College

M.F.A., University of Wisconsin-Madison

"Diptych No. 1 Documenting Long Distance  
and Taking Snapshots. Nuclear Series" 1983

Medium: oil and acrylic on stretched canvas

Size: 48" x 96"

"Diptych No. 2 Documenting Washing Clothes  
and Brushing Hair. Nuclear Series" 1983

Medium: oil and acrylic on stretched canvas

Size: 48" x 96"

## Robert Mertens

UWC-Marshfield-Wood County

Education: B.F.A., University of Wisconsin-Madison

M.F.A., University of Illinois

"Time On My Hands" 1982

Medium: graphite drawing and mixed media construction

Size: 28" x 31" x 4"

"Suitability" 1983

Medium: oil and acrylic paint, canvas and wood  
construction

Size: 56" x 48" x 6"

## Ronald Penkoff

UWC-Waukesha

Education: B.F.A., Bowling Green State University  
M.A., The Ohio State University

### "Sacred and Profane Love: Redon's Window" 1983

Medium: oil

Size: 144" x 72"

### "sluggish clod/Great Clod" 1983

Medium: oil

Size: 66" x 42"

## Donald Howard Ruedy

UWC-Barron County-Rice Lake

Education: B.S., University of Wisconsin-River Falls  
M.F.A., University of Wisconsin-Madison

## Adrienne Michel Sager

UWC-Richland

Education: B.S., M.F.A., University of Wisconsin-Madison

### "Les Rêves Spirituels"

Medium: acrylic on canvas, diptych

Size: 126" x 83"

James A. Schwalbach

UWC-Baraboo/Sauk County  
Professor Emeritus

"Three Variations on a Theme-AA Books-  
Records"

Edition A-1983/28

Edition B-1983/30

Edition B-1983/28

Medium: serigraphs

Size: 4" x 5"

Everett D. Scott

UWC-Rock County-Janesville  
Education: B.F.A., University of Utah  
M.A., M.F.A., University of Wisconsin-Madison

"Denasha Arwen"

Medium: oil on canvas

Size: 47-1/2" x 35-1/2"

"Adam at 45, Eve at 44"

Medium: oil on canvas

Size: 67" x 58"

"Goat Boy"

Medium: wood, bronze, granite, textile, and flowers

Size: 39-1/2"

Stephanie Copoulos Selle

UWC-Waukesha County  
Education: B.F.A., M.S., M.F.A., University of  
Wisconsin-Milwaukee

"Medicine for Pneumonia" 1983

Medium: ink

Size: 22" x 30"

"Six Month Check-up at the Pediatrician" 1983

Medium: ink

Size: 22" x 30"

## John Whitney

UWC-Baraboo/Sauk County

Education: B.A., Grinnell College

M.F.A., Rochester Institute of Technology

### "IBM-PC2" 1983

Medium: handmade paper

Size: 50" x 24" x 7"

## Mary Alice Wimmer

UWC-Rock County-Janesville

Education: B.F.A., St. Mary of the Woods College

M.S., M.F.A., University of Wisconsin-Madison

### "Brass and Burl" 1983

Medium: graphite

Size: 22" x 30"

## Mary Ellen Young

UWC-Waukesha County

Education: B.F.A., M.F.A., University of Illinois-Champaign

### "Kitchen Detail" 1983

Medium: Polaroid photograph

Size: 3-1/8" x 3-1/8"

### "Telephone Table" 1983

Medium: red oak

Size: 28" x 24" x 14"

## James Zemba

UWC-Sheboygan

Education: B.S., Western Michigan University

M.F.A., Cranbrook Academy of Art

John Whitney

1850-1851

1852-1853

1854-1855

1856-1857

1858-1859

1860-1861

1862-1863

1864-1865

1866-1867

1868-1869

1870-1871

1872-1873

1874-1875

1876-1877

1878-1879

1880-1881

1882-1883

1884-1885

1886-1887

1888-1889

1890-1891

1892-1893

1894-1895

1896-1897

1898-1899

1900-1901

1902-1903

1904-1905

1906-1907

1908-1909

1910-1911

1912-1913

1914-1915

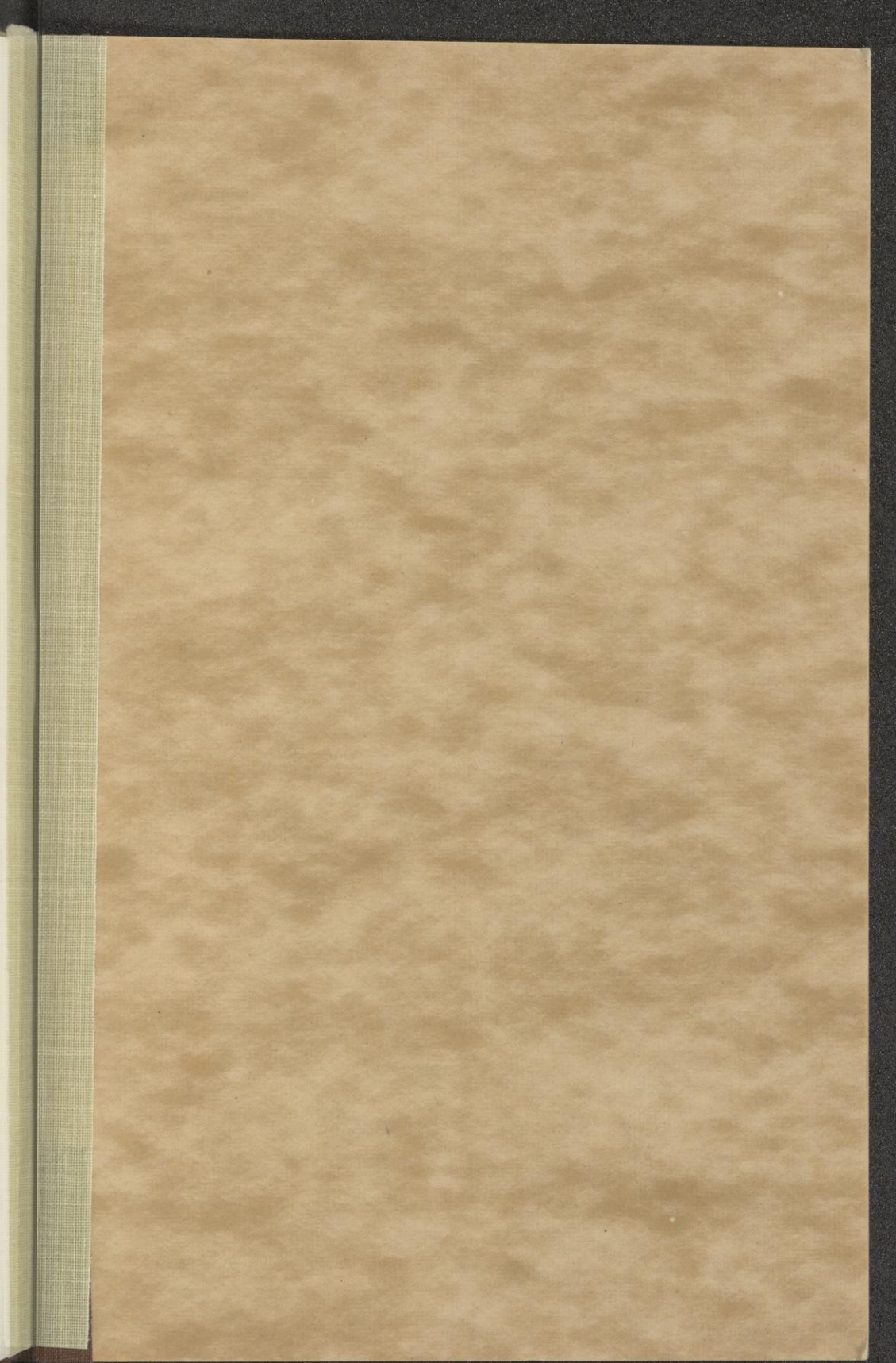
1916-1917

1918-1919

1920-1921







89054431366



b89054431366a