



The daily cardinal. Vol. LXXVII, No. 51

November 19, 1966

Madison, Wisconsin: University of Wisconsin, November 19, 1966

<https://digital.library.wisc.edu/1711.dl/YSX6ORO7MD6K38E>

<http://rightsstatements.org/vocab/InC/1.0/>

The libraries provide public access to a wide range of material, including online exhibits, digitized collections, archival finding aids, our catalog, online articles, and a growing range of materials in many media.

When possible, we provide rights information in catalog records, finding aids, and other metadata that accompanies collections or items. However, it is always the user's obligation to evaluate copyright and rights issues in light of their own use.



RIBBON CUTTING—Mayor Otto Festge did the honors at the opening of the new Johnson St. expressway Thursday. City, state and University officials participated in the brief ceremony for the completion of another step in increased Madison traffic facilities. —Cardinal Photo by Christian J. Madsen

The Daily Cardinal

Complete Campus Coverage

University of Wisconsin, Madison, Wisconsin 53706, Saturday, Nov. 19, 1966
VOL. LXXVII, No. 51 5 CENTS A COPY

Chamber Calls Discounts 'Unfair to Consumers'

By JIM CARLSON
City Reporter

The policy of granting discounts to students faces the general opposition of the Madison Chamber of Commerce, Richard Johnston, manager of the chamber's retail division said Friday.

"We discourage retailers from going into discount programs because they generally are poor ways of advertising and unfair to consumers," Johnston said in a telephone interview.

A committee of the Wisconsin Student Association (WSA) exists for the sole purpose of obtaining discounts for students. Nine retail stores in Madison now offer up to 10 per cent discounts to students due to the efforts of the WSA discounts committee.

The Chamber of Commerce considers discounts for special groups to be unfair to consumers, Johnston said.

Under discount systems "if I work for the Chamber of Commerce and you work for The Daily Cardinal, then I don't get a discount and you do—it isn't fair," he said.

The Chamber of Commerce position, as stated in its bulletin dated Oct. 21, was cited by one retailer as the reason why he didn't choose to give discounts to students, according to Mark Jabbusch, co-chairman of the WSA discount committee.

Jabbusch said that when members of his committee approached the management of Stevens' House of Gifts, 2565 E. Johnson St., about giving discounts to students, the Chamber of Commerce article was cited, and the store did not enter the discount program.

The article stated that giving discounts to special groups is costly for the retailer, that it discourages regular customers because the cost of the discount must be paid by others, and that it gives the public a false idea of a store's

profit margin.

The Chamber of Commerce policy is "not aimed at anyone in particular," Johnston said. "It is a general policy; specifically we haven't come out against student discounts," he said.

Johnston said the chamber's prime concern was the commercial discount enterprises which ask retailers to join a group and then sell coupon books or cards to consumers. The retailers agree

to give a certain discount to card or coupon holders, and the central organization advertises for the whole group of retailers.

The consumer and the retailer rarely get their money's worth in such schemes, Johnston said.

"If the retailer's prices are right he can't afford to give a discount to a special group," Johnston said, "although there are exceptions to this rule."

Group Reviews Calendar

By CINDY VANDENPLAS
Cardinal Staff Writer

Moving the two-day exam study break to the weekend and pushing back the start of the school year one-half or a full week are now being discussed by the Student-Faculty Academic Calendar Committee, according to Prof. Clarence Schoenfeld, journalism chairman.

"The committee is reviewing the calendar with several things in mind including converting the study period from weekdays to Saturday and Sunday," he said.

"Our committee assumes that Saturday and Sunday are as good as Wednesday and Thursday."

He said the committee "will lean over backward" to maintain an interval.

Stanley Goldmark, student member of the committee, said, "the committee wants to streamline the calendar" but that it "certainly does not want to end the break."

"I think the proposed changes are for the better and that no one will be losing anything," Goldmark said.

One main problem the committee has in asking for later starting date is scheduling classes so that the end of the semester would not change.

Many students who have summer jobs that last through labor day object to the present starting date, said Schoenfeld.

He said the committee thinks moving up the beginning date would give these students more time to get "squared away."

Out-of-state students would not have to forego the Labor Day

weekend because they have to get to Madison, Schoenfeld said.

He continued that it would provide the students and staff with the "maximum break between the close of the eight-week summer sessions and the start of the new term, which is now impossible," he said.

Schoenfeld added that the University is one of the few col-

Bruhn Not 'Fired' Claims Remington

By MIKE GOLDMAN
Associate Sports Editor

Athletic Board Pres. Frank Remington said Friday that there was no truth to a Capital Times story saying Wisconsin football coach Milt Bruhn was fired by University Pres. Fred Harvey Harrington.

Remington said Bruhn made his own decision to resign and was not pressured by anyone on the university faculty.

The Capital Times front page story, written by Bonnie Ryan, said there was a secret meeting of faculty members on the Athletic Board Tuesday to discuss the football situation.

No such gathering took place. However, Bruhn and Remington did talk together Thursday morning at the Law School.

"Milt and I talked Thursday," said Remington. "We discussed the future of football at Wisconsin. I gave him no ultimatum telling him to stay on or to resign as football coach. I felt it was Milt's decision to make."

Last year after the Athletic Board voted to keep Bruhn as head football coach, the members decided that Bruhn, Harrington, and Chancellor Robin Fleming were to have a meeting near the end of this season. Even if he had a winning team this year, the board still insisted that Bruhn confer with Harrington and Fleming.

On Wednesday, Remington called Fleming and asked if he could speak with Bruhn instead of Harrington and the Chancellor. Fleming and other faculty members agreed.

"I felt that if somebody had to talk to Milt, I, as president of the Athletic Board, should be the one to do it," said Remington.

Remington called Bruhn and the two agreed to a talk Thursday morning. The meeting lasted about forty-five minutes and Bruhn said that he would call Remington in the afternoon to say if he had decided to resign or stay on as coach.

Bruhn then went to athletic director Ivan Williamson and told him that he would resign as head foot-

ball coach. Bruhn then told his assistants his decision and later in the afternoon called a squad meeting to tell his players. After talking to the team, Bruhn called Remington and told him he was resigning.

"I had no contact with Chancellor Fleming or Harrington," Bruhn said Friday. "Only Remington and myself talked Thursday morning. Nobody else was there."

The conversation between Bruhn and Remington was very friendly, Bruhn said. He added that he has no ill-feelings against either the Athletic Board or the university faculty.

Remington said he doubted that anyone on the faculty had the power to fire a coach.

"I don't see how any faculty member could fire Bruhn," he said.

CAP Must Pay For New Ballots To Get Change

By GREGORY GRAZE
Night Editor

The Campus Action Party (CAP) will have to pay an extra \$40 in order to have Cardinal Board candidate Judy Conant's CAP affiliation indicated on Tuesday's campus election ballots according to a ruling Friday by the Elections Judicial Committee.

The ruling was made as a result of CAP's appeal of an earlier ruling by Elections Commissioner John Varda which did not allow any such change on the ballot.

The Judicial Committee ruled that the Wisconsin Student Association (WSA) should not be penalized for CAP's mistake and gave the party the option of covering the cost of changing the ballots, \$40, or accepting the ballots as they are.

In appealing Varda's decision, CAP and Miss Conant claimed that she failed to indicate her status on the party's slate due to a typographical error on the candidate's filing form.

Although CAP filed a late statement listing her correct status, Varda ruled that he could not accept it since it was submitted after the filing deadline.

Unless CAP pays the necessary \$40, Miss Conant will be listed on the absentee ballot and the regular ballot as an independent instead of as a CAP candidate. The \$40 cannot be counted as a campaign expense.



WHAAAAAAT?—Splashed on with red and white paint, a new creation on the Fence was a puzzle to passers-by Thursday. —Cardinal Photo by Christian J. Madsen

WEATHER

NO SKIS—Partly cloudy. High in 30's. Low tonight 25.

"... that Continual and Fearless Sifting and Winnowing by which alone the truth can be found..."

The Daily Cardinal

A Page of Opinion

Faculty Commits 'Great Disservice'

Last spring several thousand protestors gathered on Bascom Hill and heard Chancellor Robben W. Fleming announce the calling of a special faculty meeting to consider the University's cooperation with the Selective Service System.

That meeting was convened and the faculty disposed of the demands of the students in less than a half hour.

In response to the further complaints of the students, Chancellor Fleming asked for the formation of a Student-Faculty Committee on the Draft to study the problem of deferments and University dealings with the Selective Service System.

On Oct. 25, this committee issued a report—a forty page document containing the results of long hours of discussion and deliberation. The report was published three weeks before the convening of a special faculty meeting to consider the proposals. Students and faculty members were encouraged to comment on the findings of the committee.

Thursday the University faculty met. From a possible attendance of about 1800, fewer than 150 faculty members bothered to come to this special meeting. Less than 10 per cent took the time to register their opinions on the proposals—less than 10 per cent showed any interest in a matter which is of vast importance to the University community and to the nation at large.

It is shocking to consider that the work of the committee on the Selective Service System—the pains the group took to voice both minority and majority proposals—the care that went in to writing the final draft of the suggestions and findings—all were reviewed by a mere fraction of the faculty at this University.

Those who did attend the meeting voted to reverse the present draft policy and to draw deferments from the youngest males rather than the oldest. The group rejected the committee's recommendation for a national lottery system to take the place of the present deferment policy.

Two major decisions were made. The results of the meeting have made headline news in many cities in this country. Yet relatively none of the faculty was interested.

The facts speak for themselves—the University faculty has done a great disservice to the institution it serves and to the students it teaches.

Cardinal Board Candidates

Campus Action Party

The Cardinal Board has traditionally been composed of apathetic, detached members, interested primarily in political advance and only secondarily in the Daily Cardinal. The Campus Action Party slate for Cardinal Board accepts its nomination as a challenge to overcome this tradition.

The Cardinal Board must maintain an active interest in the Daily Cardinal. As board members we will attend staff meetings in order to keep in constant touch with the internal operation of our newspaper and with the people working on it. A competent editor can only be selected if the Board members fully understand the duties and operations of the editor.

In defiance of the tradition of board ignorance of the workings of the newspaper, a member of this slate is a Cardinal staff writer, carrying with him knowledge essential to a responsible Cardinal Board member.

Controversies in all sectors of campus life should be brought into the open by competent Cardinal journalistic investigation. Unfortunately, this truth seeking function of a newspaper can be of little help when a controversy occurs within the newspaper's own organization. In such a situation, the Cardinal Board must assume this responsibility.

As Cardinal Board members we would require open hearings to determine the legitimacy of grievances of one Cardinal staff member against another. Secret, incomplete airings are not in keeping with democratic legal procedure.

The CAP slate for Cardinal Board would like to go on record in favor of more creative campus coverage. The Daily Cardinal should do much more than give superficial accounts of meetings and lectures. In its preoccupation with events that occur once a week or once a month our newspaper

has lost its concern for things which continually affect us, as students and as human beings.

As representatives of the campus, we hope to convey the desire of students for better, more significant coverage of the campus community.

CAP offers responsible leadership in an area of extreme importance in an academic life.

Walter Wochos, junior at large
Gerald Waxler, sophomore man
Judy Conant, sophomore woman
Cardinal Board
Campus Action Party

Student Rights Party

We are running with the Students Rights Party (SRP) for sophomore woman, sophomore man, and junior-at-large on the Cardinal Board. We are representative of various aspects of campus life, and we know we can make the Cardinal Board your liaison with the Cardinal.

The Cardinal Board of Controls exists for student interest, necessity, and convenience. It is the student faculty committee which meets twice a month to determine the financial and administrative policies of the Cardinal. It also appoints the editorial and business staff.

The Cardinal is the only student media on campus, and the market is not willing nor able to support more than one newspaper. Therefore, competitive journalism is not practical. This is the reason for the Cardinal Board. We feel the Cardinal Board of Controls should insure those ideals which competitive journalism would secure—that is the assurance of an objective and complete coverage of student opinion and campus news.

We are running together on the Students Rights Ticket because we

feel it is of the utmost importance that student interest, necessity, and convenience be served in the coming years.

The issues we have originated as our goals for the Cardinal Board are:

- * Reviewing of due process system for hiring and firing of Cardinal Staff,
- * Open hearings of the Cardinal Board,
- * Direct communication between students and the Cardinal Board,
- * More informal communication between the Cardinal staff and the Cardinal Board,
- * More special editions of the Cardinal in the interest of the Student Body.

This is a platform unlike any in recent years for the Cardinal Board. This is the platform the Student Rights Party offers to you. This is the platform of ideals and specifics which we can make the realities of Cardinal Board if you vote for SRP and for us on November 22.

Linda Bronstein, sophomore woman
Bruner Delan, sophomore man
Michael Kirby, junior-at-large
Cardinal Board
Student Rights Party

Discussion

Editors Note: The following is an open letter to Prof. Ranney, Prof. Mosse and students.

The discussion sponsored by the Y-Dems November 13 was a very calm one and was one of the few meaningful discussions I have heard on current controversial issues between opposed constituencies.

Kim Huddleston

CEWVN Decision Indicates Approval Of Unlawful Tactics

To The Editor:

The decision of CEWVN to send aid to those who were arrested for campaigning near the polls on election day is another indication that the committee approves of unlawful tactics.

The Federal and state laws defining the distance from the poll

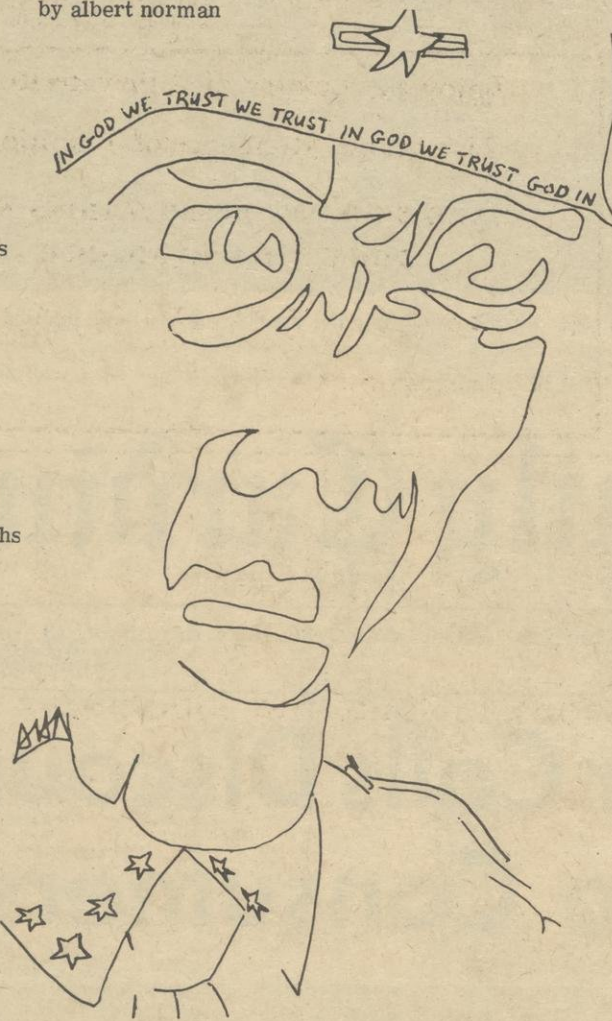
in which campaigning is forbidden protect the free opinions of all, especially of minorities. Maybe there are individuals and groups who do not like these laws and who feel the law discriminates against them. Maybe there are those who feel their cause is more important than the law. Deliber-

WAR

by albert norman

bandages
&
cigarettes
& so many
teeth &
scriptures
dance before
the rising
water.
jackboot necks
& cobbled
skies
&
daughters of
american
retribution
crouch
behind
a
tinsel
podium of
uniformed sighs
& grave
afterevening
faces,
cheering as
the water
rises.
hallways
of laughing
weeds
& barricades
of beds,
at moral
attention
as the water
climbs over.

my country
fills its
pale
with
war.



In the Mailbox

An Open Forum of Reader Opinion

ately breaking the law, they argue that their freedom of speech has been violated. And the CEWVN sends them money.

What disturbs me about CEWVN is not only their endorsement of illegal tactics but their whole overall negative approach. These demonstrators claimed to be protesting the lack of a peace candidate. A far more positive approach, however, would have been for them to run their own candidate. Our system provides that if you disagree with a candidate, you boycott his speeches and organize your own party and try to take away votes from him. But you don't break up his speeches or act as if election laws didn't apply to you. A resort to such measures weakens the CEWVN. It suggests that the CEWVN is unable to win approval in the regular, democratic way, so it has to turn to extra-legal ways.

Joseph Pincus

Is God Dead?

To The Editor:

If God is dead, this is certainly not the case for the women who appeared in the comic on page two of the Nov. 10th issue of The Cardinal. And if God ever will be dead for these men, it is doubtful that U.W.'s fence will be responsible. For as soon as Joe and his friend fill up the hole behind that facade, they are going to get rid of it. Some of us aren't quite sure how to do things like that.

Lois Nathan

ON LETTERS

The Daily Cardinal appreciates letters to the editor on any subject, but we reserve the right to correct a letter or delete it for reasons of insufficient space, decency, or libel. Please triple space your letters, and keep your typewriter margins at 10-78. We will print no unsigned letters, but we will withhold a name upon request.

"one man-one vote" representation from directly elected Senators) on a referendum ballot. I certainly did not disagree with the need for change in the present composition of student senate to reflect more directly elected senators.

Errors like the one I am writing to you about often ruin good news stories. I really begin to wonder whether it would be better to tape record meetings instead of sending reporters who often misinterpret seventy percent of the content of a meeting. I look forward to better quality coverage in the future.

Marvin Levy

Misquotation

To The Editor:

The article concerning the Student Life and Interest Subcommittee investigation of "special interest" seats published in November 12 Cardinal quotes me as follows: "a bill introduced by the speaker to the Senate to eliminate the discrepancies of the present one-man, more than-one vote system, was labeled 'patently unconstitutional' by Committee co-chairman Marvin Levy."

The bill (offered by Mike Lichten) only would have put the question of "special interest" seats on an all-campus referendum. I questioned the constitutionality of placing an unconstitutional question (possible retention on non-directly elected senators whose presence on Senate would dilute

The Daily Cardinal

"A Free Student Newspaper"
FOUNDED APRIL 4, 1892

Official student newspaper of the University of Wisconsin, owned and controlled by the student body. Published Tuesday through Saturday mornings during the regular school session by the New Daily Cardinal corporation, 425 Henry Mall, Madison, Wisconsin 53706. Printed at the Journalism School typography laboratory.

Subscription rates—\$6.00 per year, \$3.50 per semester, by carrier or by mail. Single copies 5 cents each.

Second-class postage paid at Madison, Wis.

Pat Brady Business Manager
David Loken Advertising Manager
Scott Miller Assistant Advertising Manager
Dick Koehler Circulation Manager

EDITORIAL STAFF

Ellen Laskin Editor-in-Chief
Richard Scher Managing Editor
Eileen Alt Associate Editor
Christy Sinks News Editor
Marcie Harrison Assistant Managing Editor
Carol Welch Co-Editorial Page Editor
David Jacobs Co-Editorial Page Editor
Bob McCullough Photography Editor
Gregory Graze Night Editor
Elaine Rhode Day Editor

Campus News Briefs

India Association will celebrate its annual DIWALI program today in the Great Hall of the Union at 8 p.m. A banquet featuring Indian specialties will precede the program at 6:30 p.m. Tickets for the banquet are available at the Union Box Office.

SERKIN IN CONCERT
Pianist Rudolf Serkin, one of the world's most outstanding musical interpreters, will perform at the Union Theater today at 8 p.m. His program will include the Sonata in A Major and four Impromptus by Schubert, and Beethoven's Sonata in B Flat Major.

WINE TASTING PARTY
Law students and their wives will have a wine tasting party today at 8 p.m. at the Ivy Inn. Dancing will follow the tasting of hot spiced wine.

PINK PANTHER
The "Pink Panther" will be in the Union's Tripp Commons today from 9 to 12 p.m. Tickets are \$2 per couple at the door.

FOOTBALL FLICKS
Movies of today's Minnesota vs. Wisconsin football game will be shown Sunday at 7 p.m. in the Union's Stifskeller.

COFFEE HOUR
A discussion of Negro-white relations will be held at the Hillel Graduate Coffee Hour at 1:30 p.m. Sunday.

IRANIAN SUPPER
An Iranian supper will be held Sunday at 5:30 p.m. in the Union's Reception Room. Tickets are on sale at the Union Box Office and cost \$1.25 for International Club members and \$1.50 for non-members.

WHAT IS MATH?
The film "What is Mathematics and How Do We Teach?" will be shown in B-239 Van Vleck at 7:30 p.m. Monday.

ARFEP
Americans for Reappraisal of Far Eastern Policy (ARFEP) will hold a meeting at 4 p.m. on Monday in the Union.

NIGERIA
"Inside Nigeria Today" will be discussed by two University graduate students from Nigeria on Sunday at 8 p.m. in the Old Madison Room.

DUPLICATE BRIDGE
Duplicate bridge will be played Sunday at 7 p.m. in the Union's

Paul Bunyan Room. Admission is 50 cents at the door.

FACULTY MEETING
The Medical faculty will meet at noon Nov. 21 in 227 SMI. The agenda includes a discussion of the curriculum revision proposal and of the department of rehabilitation medicine.

READ DAILY CARDINAL WANT-ADS

PATRONIZE OUR ADVERTISERS

It pays to look well.
WISCONSIN UNION
BARBER SHOP
GROUND FLOOR OF THE
UNION

STOP

DON'T BUY YOUR CHRISTMAS GIFTS DURING
THANKSGIVING VACATION—BUY THEM AT
INTERNATIONAL GIFT FAIR

DEC. 5-10

Imported items from around the world
SPONSORED BY THE UNIVERSITY YMCA & YWCA
306 N. BROOKS

\$1.00 PER DAY CAR IN EUROPE

AVAILABLE FOR STUDENTS ONLY

Drive in a brand-new car under special Low Rate Student Plan . . . Price includes: Unlimited mileage, registration insurance, factory warranty.

Based on 4-passenger occupancy for full summer use. Short periods slightly higher.

FOR FURTHER INFORMATION
CALL STUDENT REPRESENTATIVE

RICHARD STONE 267-6937

CAR TOURS IN EUROPE. INC.

A TOAST

To the sons of love and laughter

(to the visiting chapters of SIGMA ALPHA MU)

From the men of Beta Iota



view from the top!

. . . from the balconies, from the roof top, from the great window walls in each apartment is a wondrous, ever changing panorama. Before you Lake Mendota lies blue and mysterious mirroring the beautiful moods of each season.

CAMPUS-NEWEST APARTMENT

6 FLOORS
ALL WITH A
VIEW OF THE
LAKE & CAMPUS

SURF SIDE

630 N. FRANCES ST.—BETWEEN LANGDON AND THE LAKE
NEXT DOOR TO LOWELL HALL ON FRANCES ST.

— FOR —

MEN and WOMEN — MARRIED COUPLES
OR STUDENTS—WHO ARE ELIGIBLE

OPEN FOR 2nd SEMESTER

MODEL APARTMENT READY SOON — CALL 256-3013

22
2 BEDROOMS
WITH 2 BATHS
IN EACH APT.
CERAMIC TILE

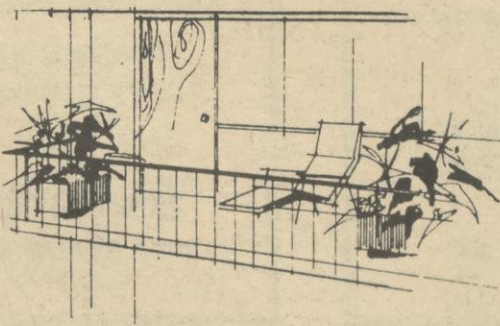
VERY LARGE
LIVING ROOM
WITH
MODERN KITCHEN

EACH APT.
2 AIR-CONDITIONERS
PRIVATE BALCONY
WITH LARGE
PATIO DOORS

"This is not a dormitory type Apt."

Price—\$65 to \$75 per month per person

- Ethan Allen Colonial
- Or Modern Furnishings
- Large Size Rooms
- Unequaled on Campus
- Gold Carpeting
- Master TV Antenna
- Elevator
- Automatic Washer & Dryer
- Special Sound Proofing
- Parking Available
- 1½ Blocks from Library & Union



Private terraces from which to view
the ever changing panorama of the lake.



INSTANT TALK AND BACKTALK

for only \$79⁹⁵
TERMS

NEW! MERCURY CORDLESS, CARTRIDGE TAPE RECORDER

Recording and playback are a snap with the tiny Mercury Recordomatic. Just snap-in the cartridge and go for an hour—anywhere you go. Even in your car or boat. Features solid state circuitry; capstan drive; remote start/stop; VU meter; and AC operation. Complete with omnidirectional mike; patch cord; shoulder strap; cartridge library rack; and blank cartridge. Weighs only 3 lbs., measures only 7¼" x 4½" x 2¼". The handiest tape recorder for business, school or just for the fun of it.

BEECHER'S

STEREO COMPONENTS — TAPE RECORDERS

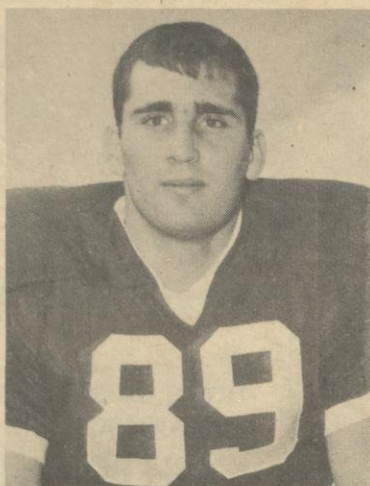
430 State Street

256-7561

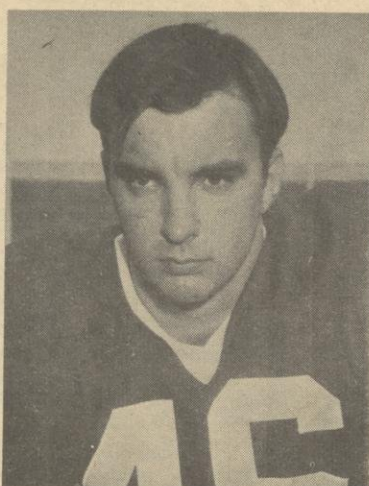
Open Monday & Thursday 'til 9
Open 12 Noon—Mondays



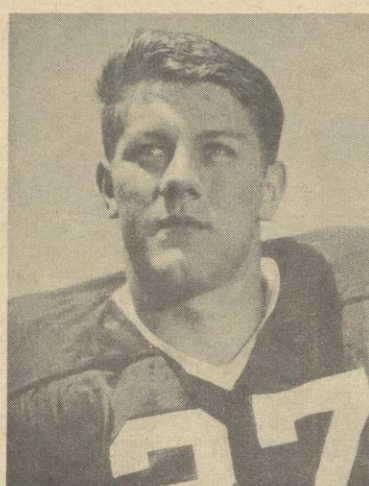
WAYNE KOSTKA
defensive tackle



HANK CUCCIA
defensive end



JIM KUHLEMEIER
offensive halfback



DAVE BERG
defensive halfback



MILT BRUHN
coach



GARY PINNOW
defensive halfback



PHIL PETERSON
offensive guard



VIC JANULE
offensive halfback

WISCONSIN VS

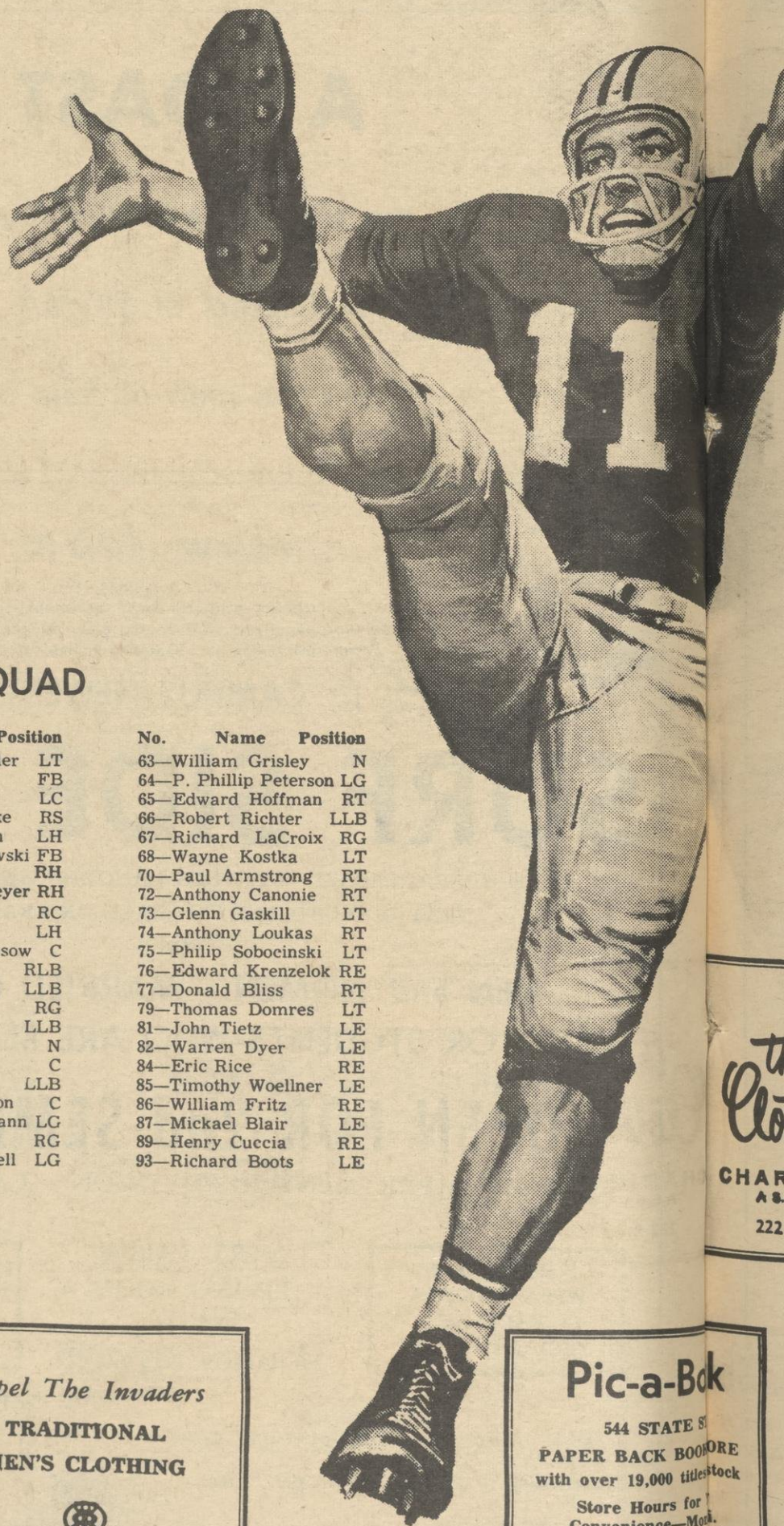
WISCONSIN Probable Starting Lineup WISCONSIN OFFENSE

No.	Wisconsin	Pos.
86	*Bill Fritz	LE
74	*Tony Loukas	LT
64	Phil Peterson	LG
50	Wally Schoessow	C
67	*Dick LaCroix	RG
75	*Phil Sobocinski	RT
18	Tom McCauley	RE
12	John Boyajian	QB
20	Bill Yanakos	LH
38	Kim Wood	RH
30	Wayne Todd	FB

*Denotes major letterwinner

BADGER SQUAD

No.	Name	Position	No.	Name	Position	No.	Name	Position
10	Gary Pinnow	LS	93	Patrick Chandler	LT	63	William Grisley	N
11	Charles Burt	QB	38	John Wood	FB	64	P. Phillip Peterson	LG
12	John Boyajian	QB	41	Gary Reineck	LC	65	Edward Hoffman	RT
13	James Pearce	RS	42	Thomas Schinke	RS	66	Robert Richter	LLB
14	Thomas Briggs	QB	43	Wayne Burbach	LH	67	Richard LaCroix	RG
15	John Ryan	QB	44	Thomas Jankowski	FB	68	Wayne Kostka	LT
16	Donald Schaffner	LC	45	Lynn Buss	RH	70	Paul Armstrong	RT
17	Gary Swalve	RE	46	James Kuhlemeier	RH	72	Anthony Canone	RT
18	Thomas McCauley	RE	48	Robert Fenske	RC	73	Glenn Gaskill	LT
20	William Yanakos	RE	49	Victor Janule	LH	74	Anthony Loukas	RT
21	Robert Grossman	LS	50	Wallace Schoessow	C	75	Philip Sobocinski	LT
22	Richard Schumitsch	RC	51	Sam Wheeler	RLB	76	Edward Krenzelo	RE
23	Michael Cavill	LS	52	Richard Boehm	LLB	77	Donald Bliss	RT
24	Theodore Moreau	LH	53	John Brockett	RG	79	Thomas Domres	LT
25	James Boulware	RS	55	Peter Kroll	LLB	81	John Tietz	LE
26	Walter Ridlon	RS	56	Karl Rudat	N	82	Warren Dyer	LE
27	David Berg	RC	57	James Nowak	C	84	Eric Rice	RE
30	Wayne Todd	FB	58	Gary Pluff	LLB	85	Timothy Woellner	LE
33	Kenneth Criter	RLB	59	Peter Gabrielson	C	86	William Fritz	RE
36	Gale Bucciarelli	LH	60	Richard Klusmann	LG	87	Mickael Blair	LE
37	Lee Trotta	LH	61	John Sander	RG	89	Henry Cuccia	RE
			62	Michael Cantwell	LG	93	Richard Boots	LE



"THE CUE"

437 W. Gilman
WISCONSIN'S FINEST
BILLIARD CENTRE
2 Carom and
18 Pocket Billiard Tables
LADIES FREE EVERY
WED. EVENING
SNACK BAR — COLOUR TV
Air Conditioned—Fully Carpeted
Open 8 A.M. - 1 A.M. Daily
Open Noon Sunday—256-9211

Blast The Opposition

the
university
BOOK STORE

702 STATE ST.

Repel The Invaders

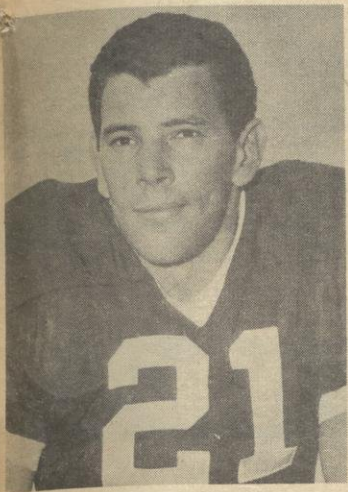
TRADITIONAL
MEN'S CLOTHING

Redwood & Ross

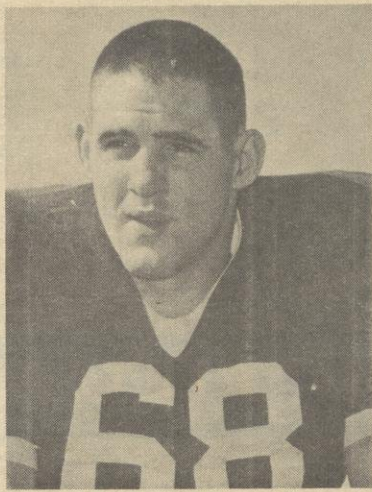
639 STATE ST.

Pic-a-Bok

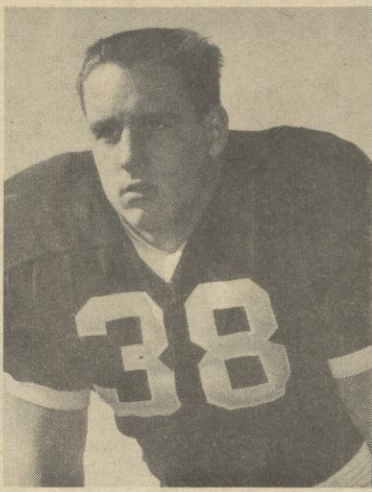
544 STATE ST.
PAPER BACK BOOKSTORE
with over 19,000 titles in stock
Store Hours for
Convenience—Mon.
9:30 - 9:00—SAT., 9:00
The only PL...
corner of Mad...
WE DO LAMINATE



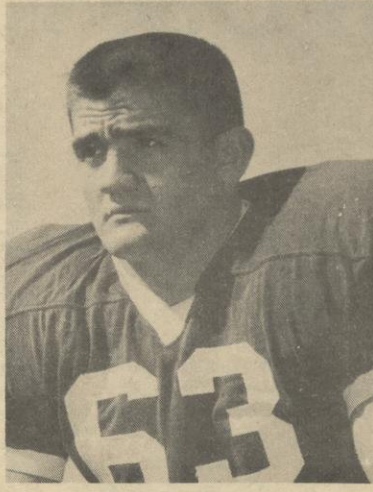
BOB GROSSMAN
defensive halfback



BOB RICHTER
linebacker



TOM JANKOWSKI
fullback



RICH LACROIX
offensive guard



TONY LOUKAS
offensive tackle

MINNESOTA

MINNESOTA Probable Starting Lineup MINNESOTA OFFENSE

No.	Minnesota	Pos.
85	Ken Last	LE
74	Ezell Jones	LT
66	Tom Fink	LG
55	Chuck Killian	C
69	Bill Christison	RG
72	Bob Bedney	RT
88	Chet Anderson	RE
14	Curt Wilson	QB
49	Dick Peterson	LH
20	Ray Whitlow	RH
37	Dennis Cornell	FB



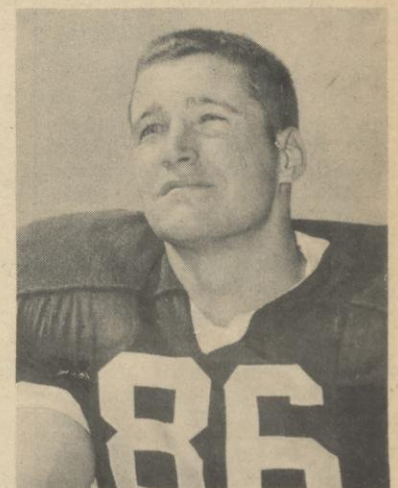
PHIL SOBOCINSKI
offensive tackle

MINNESOTA SQUAD

No.	Name	Pos.	No.	Name	Pos.	No.	Name	Pos.
85	Ken Last	LE	62	John Walsh	RG	47	Dick Seitz	LH
78	McKinley Boston	LT	76	Ron Kamzelski	RT	11	Tom Sakal	RH
66	Tom Fink	LG	87	Charley Sanders	RE	18	Dennis Hale	S
55	Chuck Killian	C	10	Larry Carlson	QB	84	Bob Stein	LE
69	Roger Christison	RG	40	John Wintermute	LH	75	Jerry Hermann	LT
72	Rob Bedney	RT	42	Hubie Bryant	RH	72	Bob Bedney	MG
88	Chet Anderson	RE	38	Mike Danielson	FB	78	McKinley Boston	RT
14	Curt Wilson	QB	87	Charley Sanders	LE	86	Del Jessen	RE
49	Dick Peterson	LH	74	Ezell Jones	LT	54	Wayne King	LB
20	Ray Whitlow	RH	77	Ed Duren	MG	50	Randy Rajala	LB
37	Dennis Cornell	FB	76	Ron Kamzelski	RT	30	Noel Jenke	LB
80	Chip Litten	LE	34	John Williams	RE	21	Gene Hatfield	LH
74	Ezell Jones	LT	33	Tim Wheeler	LE	18	Dennis Hale	RH
67	Dick Enderle	LG	57	Gary Reiersen	LB	44	Gordon Condo	S
59	Steve Lundeen	C	35	Jerry Newsom	LB			



DICK BOOTS
offensive end



ERIC RICE
defensive end

Bump 'em

the
Clothespost

CHARLES SPETH
ASSOCIATES
222 State Street

BURY THE



GOPHERS!

Manchester's
madison



THE PARK BANK
2401 S. PARK STREET
MADISON, WISCONSIN
53713 PHONE 255-3313

**FIRST NATIONAL
BANK
of Madison**
2 LOCATIONS

East Washington at Pinckney
University Avenue at Park

Beat 'em All

**EDWIN O.
OLSON**
and SON

Men's Wear
555 STATE ST.

Go Badgers!

C.W. ANDERES CO.

The Store for Men
702 STATE ST.

Salon of Art Opens Sunday

By ROBERT VILINSKY
Panorama Staff

When the 32nd annual Wisconsin Salon of art opens Sunday, it should be another in a long list of impressive shows that first started in 1934.

The Salon grew out of an idea by present art history professor John Klenitz, then student chairman of the Union Gallery committee, and Porter Butts, Union director, in 1934. Klenitz decided there was a need for an exhibition that would show a cross-section of the work being done by Wisconsin artists. Butts said such an exhibition would serve a double purpose: "to bring the University into a more vital relationship with art activities in the state, and to give artists an opportunity to exhibit their most recent work."

The importance of the Salon became evident when the Union Gallery committee began looking for Wisconsin artists—no one knew who they were. Catalogues, newspapers, and the art schools' list of grad students living in Wisconsin were searched. The committee managed to contact over 500 artists.

Compared to this year's Salon, which offers over \$2500 in total awards and an \$800 purchase prize for a top work to be added to the Union's collection, the first show awarded \$125 in awards and featured a \$75 purchase prize. Ninety-

nine works by 46 artists were displayed in 1934.

The following year there were a hundred more entries and \$150 more in awards.

During the war years the Salon continued, but the mood of the work changed. Harold Taylor, a philosophy instructor, commented during the presentation of awards in 1942 that "the Salon was marked by the absence of the decorative, pictorial, and whimsical in art..."

Since 1934 there has been a show every year, with the exception of 1948 when the 14th Salon was cancelled for the Wisconsin Centennial Exhibition of Contemporary Wisconsin Art.

Many famous artists have served as judges for the show: Grant Wood, John Steuart Curry, Thomas Hart Benton, Reginald Marsh, George Biddle, and Aaron Bohrod, the present artist-in-residence.

Marsh commented in 1936, "I was amazed at how good the watercolor painters are here...I am convinced that your artists are forming the craft as they go along, producing something quite original and independent."

He added, "As for my own part in the show, I have preferred to serve on this jury rather than the one in New York. I would like a good many New Yorkers to see what you are doing here."

Biddle, judging the 1939 Salon said, "Here in Madison the stan-

dard of the watercolors seemed unusually fine; and one could only hazard a guess that this high standard was the result of a local tradition which some day may grow into a local school of national interest."

Prof. Fredrick M. Logan, art and art education, sums up what the Salon has become today: "During the last decade fewer and fewer artists whose work has become important beyond the reaches of local renown, find it worthwhile to meet the jurying of their work. Because of this, the Salon has inevitably become not so much a show of the art of Wisconsin as it is a Salon of young Wisconsin artists."

By CORY GANN
Cardinal Staff Writer

For the past week mystery and excitement have characterized the activity of the Union Gallery Committee as preparations are being completed for the advent of the 1966 edition of the Union Statewide Art Competition in the Art Salon.

Anybody who lives in the state and feels that his works have merit may enter the competition. This year artists vary from students to professors of art, and even to professional artists living in the state.

Approximately 95 pieces ranging from sculpture to graphics to oil painting will be on display. These works are eligible for several cash and purchase awards.

The preliminary judging is done by three judges who have the option of assigning an "in," "out," or "doubtful" label to each of the works presented. Final decisions are made from a composite evaluation where any work receiving two "in's" advances to the finals. A "meritorious vote" from a judge in the field automatically enters the piece into the finals.

The top prize, the \$800 Union purchase award, is awarded to an oil painting which will eventually

be hung in the Union.

In considering the quality of this year's exhibition Preston said that the show is "of unusually high level but that no one particular work is exceptionally outstanding."

It pays to look well.
**WISCONSIN UNION
BARBER SHOP**
GROUND FLOOR OF THE
UNION

THEATRE GO ROUND

Madison's Intimate Theatre • 6th Season • Ample Parking

NOEL
COWARD'S
ROMANTIC COMEDY
Private Lives
IMPISH - INSANE



"PRIVATE LIVES"
FRIDAY - SATURDAY - SUNDAY - 8:30 P.M.
FOR RESERVATIONS
DIAL 238-9713

A COMEDY IN THREE ACTS
TO OUR PATRONS
Your reservation at the T.G.R. is now handled by the Cashier's Office. A tape recording device which automatically tape records your reservation. You may consider it confirmed unless our box office contact you. DIRECTIONS TO THE STAGE
1ST FLOOR ONLY
WISCONSIN UNION
REAR OF THEATRE
HARRIS STREET
HARRIS STREET
HARRIS STREET

THEATRE-GO-ROUND PLAYHOUSE
5005 West Beltline - Between Nakoma and Gilbert Roads

if she doesn't give it to you...
— get it yourself!

JADE EAST



Cologne, 6 oz., \$4.50
After Shave, 6 oz., \$3.50
Deodorant Stick, \$1.75
Buddha Cologne Gift Package, 12 oz., \$8.50
Spray Cologne, \$3.50
Buddha Soap Gift Set, \$4.00
Cologne, 4 oz., \$3.00
After Shave, 4 oz., \$2.50

SWANK, NEW YORK - SOLE DISTRIBUTOR

UNIVERSITY YMCA

presents

"A BRIGHT LITTLE FILM"

"LILIES OF THE FIELD"

starring

SIDNEY POITIER

SATURDAY, NOV. 19

SUNDAY, NOV. 20

7 and 9 P.M.

SINGLE ADMISSION 50c

NOTE: This film ends the 1966 Fall Semester Cinema Arts Festival. Watch for our Spring Festival to be announced soon.

DAILY CARDINAL CLASSIFIED ADVERTISING

RATES: 25c per line per day up to 3 days
20c per line per day 4 days to 20 days
15c per line per day 20 days or more

MINIMUM CHARGE 75c

Approximately 28 spaces per line. In figuring the number of lines in your ad, each letter, number, punctuation mark, and space between words must be counted as a separate space.

CLASSIFIED DISPLAY ADVERTISING \$2 per inch, per insertion
Min. 1 column x 1": Max. 1 column x 3"

All above rates are net. No commissions or discounts.

ALL CLASSIFIED ADS MUST BE PAID IN ADVANCE

NO REFUNDS

FOR SALE

AUTO INSURANCE. Having trouble securing auto insurance? Low rates. Call 238-7898. xxx

GUITAR—Gibson. 1 pick up. 255-9506. 5x19

SAXONY contract, kitch. priv. For info. Call 257-7805. 5x19

1965 HONDA sport 50. Like new. Best offer. 257-1506. 6x22

'65 TRIUMPH 500cc. 256-6609. 10x2

SOLVEIG CONTRACT double or 1/2. 2nd sem. Pam, 256-9261. 5x22

'65 PONTIAC Bonn. Conv. Full power, Low mileage, many extras incl. Air/cond., AM-FM radio. 255-1517 after 6 p.m. 4x19

1961 METROPOLITAN conv. 35 mpg gas—Real Good shape—Good tires—42,000 mi., nearly new top—Asking \$350. Phone 838-7421. 5x22

LOWELL HALL contract—double room. Call 257-7971. 4x19

ELECTRIC ROASTER, \$22.50; electric heater, \$8.50. 238-9966. 3x19

1961 VW Excell. condit. guaranteed new motor. Radio and extras. \$550. 257-6126. 5x23

GUITAR, Gibson sq. special, 2 pcik. up. Perf. cond. \$165. 257-1332. Must sell. 4x22

'64 VW Engine renewed. Sunroof, extras. Very reasonable. 256-6545. 5x23

1953 CHEV. V8. Automatic, 4 door. \$175. 233-5755. 3x22

SAXONY Contract, apt. 2nd sem. Must sell. 256-0480. 2x19

ALLEN HALL contracts for sale—reduced. Large single and 1/2 double. Meals included. Call 257-8881, Ext. 232 or 322. 20x1/4

'59 MGA, clean. \$800. 244-1904. 3x23

FOR RENT

NEAR Hilldale. Avail now. 1 bedroom, unfurnished, heated, stove, refrig., disposal, washer & dryer, parking. \$100. Completely furnished & air-conditioned, \$130. Newer buildings. Call 231-2255 or 238-9311. Madison Properties. xxx

FOR RENT

LAKOTA House, Fall term, (\$900). Women, 515 N. Lake. 256-0867. xxx

ROOMS for girls. Campus. 255-0952. xxx

OFFICE or studio space for rent. Near campus, Gilman St. 255-0952. xxx

ROOM for men, kitchen, parking. 255-5836. 21x23

CAMPUS, now renting for second semester. Sings. dbls., apts. Men and women. C/R Management Agency, 257-4283. xxx

CYCLE STORAGE, inside, heated. \$8 mo. or \$25 winter. Gill Garage. 13 S. Webster, 256-0242. 10x23

2 BDRM. furnished apt., near campus & square. Avail. now. \$160/mo. 257-4076. 10x29

PRIV. rm. with garage in west-side home of deaf couple, for Grad. 257-7852 or 233-8462. 6x23

YOUNG man wants to share fully furn. house in Nakoma with Univ. couple. 233-1968 aft. 6. 6x23

SINGLES—second semester. Sublets. Prices drastically reduced C/R Management Agency. 257-4283. xxx

ROOMMATE wanted 2nd semester. Own room in apartment with 2 others. W. Mifflin. 256-0356. 5x22

MALE Roommate to share apt. 404 Chamberlain Ave. Call Phil between 11 p.m.-12 p.m. 7x29

QUIET single apt. 872 in The Regent. Avail. now. 267-6963. 4x22

SINGLE apt. for female (21) avail. Dec. 1. Langdon. \$85/mo. plus utilities. 255-0868. 2x19

DOUBLE room with kitch. priv., near Camp Randall. \$90. 255-9668. 3x23

SINGLE room with board (Men). Sublet at discount. Wis. Hall, 126 Langdon. Parking, linen. Available immediately or for 2nd semester. 257-8841 (No. 364) or 238-5137. 5x30

LOST

1 BLUE notebook with Zo-101 notes, 1 white with 17c lit. notes. A. Shalit, 256-9996. 3x23

HELP WANTED

EVENING employment, male and female. If you are free from 6 p.m.-10 p.m., 4 evenings/wk. and occasionally on Sats., you can maintain your studies & still enjoy a part time job doing special interview work that will bring you an average income of \$30/wk. or \$120 guaranteed monthly. If you are neat appearing and a hard worker, Call Mr. Heckel 238-9319 betw. 9:30 a.m. & noon. 21x12/8

CAB DRIVERS. Full or part-time. Top earnings. Must be 21. Call 256-5566 for appointment. Badger Cab Company. 21x11

COMEDIAN - ENTERTAINER. Experienced or sharp beginner to work 1-3 nights a week for youthful night club clientele. If you feel you have talent, tell us about yourself. Write: Upstairs at the Gun Club, Cottage Grove, Wis. 6x19

MALE Bar Help, 11:30 a.m.-1:30 p.m., Mon.-Fri. \$2/hr. plus hrs to fit schedule. Apply in person to Carl, 1304 E. Washington Ave. 10x2

MALE—Eves. kitch. help. Start \$1.25/hr. 255-2644, Burgerville. 5x23

WANTED

1, 2, or 3 male grads or Srs. to share furn. house. 257-7518. 7x19

PERSONALS

TO Manus Tiger—Toe-Dah. 6x22
SCHWARTZ, are you there? Kun- en wants to know. 2x19

SERVICES

THESIS Reproduction—xerox, multilith, or typing. The Thesis Center, 257-4886, Miss Jonas. xxx

EXPERT typing, prompt service. 14 yrs. Exp. Mrs. J. White 222-6945. xxx

EXCELLENT typing. Fast. 231-2072. xxx

EXPERT TYPING, 244-3831. xxx
TYPING 30c, 10-5 p.m. 255-9181. xxx

THESIS typing and papers done in my home. 244-1049. 10x1

Scenario: Ann-Margret as Human Paint Brush

By MARK GOLDBLATT
Scenario Staff

It has been many years since I have seen a major Hollywood film which comes close to matching the total ineptitude of THE SWINGER, and I hope that it will be many years before I have a similar experience.

The Swinger of the title is Ann-Margret, who must assume the role of a depraved alcoholic nympho-

maniac, in order to convince the editor of a girlie magazine, that the lurid stories she has written are actually true, and that he should publish them. In so doing, an orgy is staged in which our intrepid heroine acts as a human paint brush, covering her body with paint and crawling around on a huge canvas. This is followed by a Vice-Squad raid, which in reality is staged by her good friend, the lo-

cal police sergeant. "The Swinger" is a comedy.

One of the major faults of the film is that it tries very hard to be hip, but doesn't know how. In one scene, where Ann-Margret's friends are supposed to be dancing to today's "sounds," the choreography resembles jitterbugging, and the music is similar to that which once backed up Chubby Checker as he sang Twist songs. It

leads you to wonder whether Hollywood script writers are really aware of what goes on in the world.

The attempted hip technical effects are also a washout. Pointless use of pseudo-artistic camera angles and "frozen" still shots add nothing to the affair, save heavyhandedness.

Of course the film's most obvious fault is that it is neither amusing nor entertaining. In fact, I cannot think of one good reason for going to see it.

SHORT TAKE AT THE ORPHEUM

Due to space limitations, the review of Billy Wilder's "The Fortune Cookie" will appear in Tuesday's Scenario. From the review: while the contempt Wilder shows for the characters that inhabit his world reaches a new zenith in this film (only matched by "One, Two, Three,") it deserves to be seen.

CONSTITUTIONAL AMENDMENTS

The following proposed amendment to the WSA Constitution will appear on the ballot for the fall elections, November 22, Tuesday. Three-fourths of the votes cast in the election is necessary for the ratification of each of these amendments.

AMENDMENTS (Restated):

Shall the Southeast Student Organization be granted a voting seat on Senate? (Bill 14-SS-107)

Shall the foreign students be granted an at-large Student Senator? (Bill 14-SS-109)

The President of the Wisconsin Student Association may be a graduate or professional student at the University of Wisconsin. (Bill 14-SS-111)

Voters will be asked to cast "yes" or "no" votes on these questions.

It pays to look well.
WISCONSIN UNION
BARBER SHOP
GROUND FLOOR OF THE
UNION

JOE JACKSON
hand made leather goods
custom fabrics & clothing

CHAMELEON
422 W. GILMAN

DEAR REB:

Sports hero loses girl to mild-mannered math major.

DEAR REB:

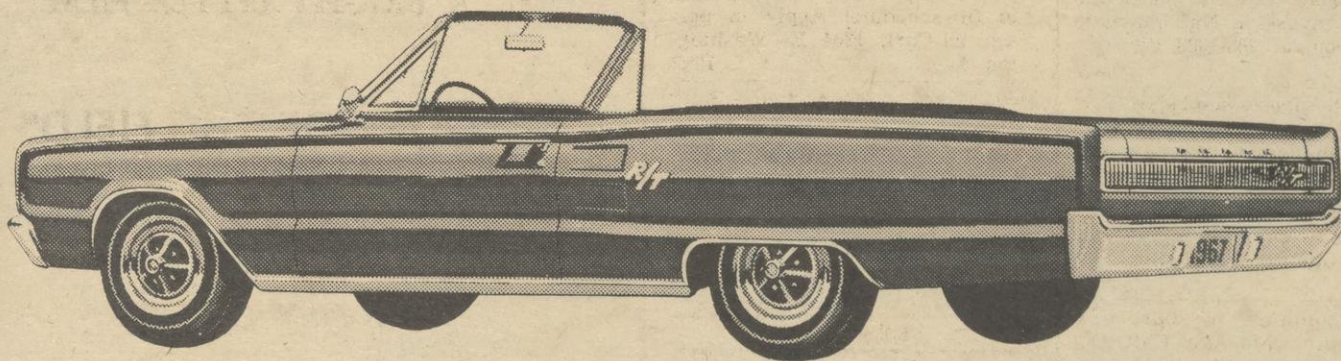
I'm a big football star, and I've found a girl who suits me to a T. But I've been blocked out of the play by a math major. He knows math from $A = \pi R^2$ to $E = MC^2$. Now she says he's found the formula for success with her. All he has to do is mutter "Coronet R/T," and I get thrown for a loss. Believe me, this is no equilateral triangle that I'm in. Outside of telling me to bench myself, have you any advice?

FALLEN STAR

DEAR FALLEN STAR:

Now's the time to plunge. Coronet R/T isn't his exclusive formula. Your nearby Dodge Dealer has it, too. And it comes almost as easily as the cube root of 27. Then how can the girl of your dreams resist two superstars . . . you and your Coronet R/T? From there on out, your math major will be the victim of diminishing returns. Huddle with your Dodge Dealer now, and get your signals straight.

Sincerely, Reb



And why not? Look what you'll have going for you in your Dodge Coronet R/T, convertible or two-door hardtop. All standard, too. 440-cubic-inch Magnum V8 engine. Dual exhausts. Heavy-duty brakes and suspension. High-performance Red Streak tires. And exclusive R/T grille and hood scoop design, full length paint stripes, and nameplates, front, rear and sides. So get with your Dodge Dealer, and your problem will solve itself.

DODGE DIVISION  CHRYSLER
MOTORS CORPORATION

DODGE REBELLION OPERATION '67



Wenn Sie
18 Jahre
oder älter
sind und
einigermassen
mit Ihrem
Deutsch
zurecht-
kommen,
dann senden
Sie diesen
Gutschein
ein.
Er könnte
Ihnen
Vergnügen
und
vielleicht
sogar Nutzen
bringen!

Lufthansa German Airlines, Dept. UX122
410 Park Avenue
New York, N.Y. 10022

Please send me an application
form and brochure about Stu-
dent Summer Jobs in Ger-
many for 1967.

Name

University

Semester

Address

City

State

Zip

 Lufthansa

The Official Statements By Fred Harvey Harrington,

University of Wisconsin President:
and R. W. Fleming,
Madison campus Chancellor:

"In accordance with his wishes, we will recommend to the Regents of the University a change of assignment at the close of this season for football coach Milt Bruhn. We are grateful for the quality of leadership he has provided.

"It should be noted that University of Wisconsin football has flourished under his coaching. The record shows Milt to be the only Wisconsin coach in modern history to achieve two undisputed conference football championships. His teams have twice represented the Big Ten in the Rose Bowl, and the 1963 contest was one of the most memorable in that exciting series.

"Milt Bruhn, as a man, has been a positive influence on young athletes and coaches with whom he has been associated. The teams he has sent out on the gridiron have represented well not only the University of Wisconsin's fine tradition of athletic competition, but also its academic standards."

By Prof. Frank Remington,

Faculty Athletic Board chairman and faculty representative to Big Ten:

"During his eleven years as head coach, Milt Bruhn has conducted our football program in accordance with the highest standards of fairness, honesty and integrity. In doing so, he's made a major contribution to the stature of Wisconsin as an outstanding and respected University. For this the Athletic Board and the faculty are grateful to him.

"We continue to need his help and are relying upon him to play an important part in the future of our intercollegiate athletic program."

Frosh-Varsity Cage Clash Should Be a Good One

"It's going to be quite a game," varsity basketball coach John Erickson remarked—but he didn't seem too concerned.

His varsity is playing the freshmen tonight at the Fieldhouse, and anyway you look at it, he can't lose.

"We have an excellent freshman squad," Erickson said. "Individually they're as good if not better than last year's team. But this time Dave Brown (frosh coach) has had to pull them into a working team—last year all the boys except Jimmy Johnson were from Wisconsin, but this year they're from all over."

Starting for the freshman will be forwards Dave Zink (6-6) and Duke Drayton (6-6), center Al Henry (6-8 1/2), and guards Mel Reddick (6-1 end on the freshman football team) and Dave Black (6-3).

Probably starters from the varsity camp are Joe Franklin (6-4)

and Robb Johnson (6-5) at forward, veteran Tom Schoeneck (6-9) or Eino Hendrickson (7-1) center, and Mike Carlin (6-0) and Jim McCallum (6-3) at guard.

"This lineup is not necessarily the same one I will open with when the season begins," Erickson cautioned, "but I wanted some of my upperclassmen to have a chance at starting."

This will be the first such assignment for junior McCallum and one of the few for senior Schoeneck.

"I think Schoeneck deserves to start," Erickson said, "and so does Johnson. He came on well during the latter part of last year and has looked good in practice. We need a strong rebounder to help Joe on the backboard."

Sophomore John Schell was originally slated to start at guard but he has had the flu this week and Erickson decided to go with McCallum. Hendrickson sprained his ankle last weekend in an exhibition game but will be ready if needed.

An experiment in refereeing will be carried out as three officials will be on hand to call the game.

"The Big Ten is experimenting with this as a cure to critics who accuse officials of never being on the play," Erickson said. "The only danger is the result could be more fouls called. If so, the idea may be rejected."

Erickson welcomes this chance for his varsity, which is a young one with 7 of the 15 cagers sophomores, to play under pressure before the season opens.

"This is going to be a slow developing team because of the lack of experience," Erickson said. "But by watching both teams I think you'll see that we're only a year away from having that team everyone wants."

READ DAILY CARDINAL
WANT-ADS

It pays to look well.
**WISCONSIN UNION
BARBER SHOP**
GROUND FLOOR OF THE
UNION

DO IT TODAY!

*It's not too late
to enroll in the*

**Weaver Real Estate
Course**
at

**MADISON BUSINESS
COLLEGE**

**CLASSES BEGIN NOV.
16 AT 7 P.M.**

CALL 256-7794

or write

**MADISON BUSINESS
COLLEGE**

**215 W. Washington Avenue
Madison, Wisconsin**



**Some young engineers will go through almost
anything for a future with "P.S.E. & G."**

Whether you're a swashbuckler or not, our personalized training program offers you the opportunity to contribute to tomorrow's challenging world. Find out if you can qualify for a stimulating and rewarding career with Public Service.

See our representative when he visits your campus.

INTERVIEWER
ON CAMPUS:

DECEMBER
2

**PUBLIC SERVICE
ELECTRIC AND GAS COMPANY
NEW JERSEY**

EQUAL OPPORTUNITY EMPLOYER

ONE OF AMERICA'S LARGEST AND MOST PROGRESSIVE SUPPLIERS OF ENERGY

THE DANISH SUPER-EGG

The Super-Egg is a sculpture, plaything, amulet. It is a special form of the super ellipse which is an exact curve related to both the circle and the rectangle.

Exhibited and sold at: Tellus Mater Inc.
319 State Street
Madison, Wis.

