



LIBRARIES

UNIVERSITY OF WISCONSIN-MADISON

Annual reports of the officers of the Madison Park and Pleasure Drive Association for the years ending December 31, 1918, and December 31, 1919, respectively, with report of annual meetings held April...

Madison, Wisconsin: [s.n.], [s.d.]

<https://digital.library.wisc.edu/1711.dl/P7NWUZALYHOUB80>

Based on date of publication, this material is presumed to be in the public domain.

Original material owned by Madison Public Library.

For information on re-use see:

<http://digital.library.wisc.edu/1711.dl/Copyright>

The libraries provide public access to a wide range of material, including online exhibits, digitized collections, archival finding aids, our catalog, online articles, and a growing range of materials in many media.

When possible, we provide rights information in catalog records, finding aids, and other metadata that accompanies collections or items. However, it is always the user's obligation to evaluate copyright and rights issues in light of their own use.

MADISON FREE LIBRARY
MADISON, WIS.

**The Madison Park and
Pleasure Drive Association**

ANNUAL REPORTS FOR 1919-1920





CASTING, TENNEY PARK LAGOON

Annual Reports

of the

Officers of the

Madison Park and Pleasure Drive Association

For the Years Ending December 31, 1918, and
December 31, 1919, Respectively

With

Reports of Annual Meetings
Held April 29, 1919, and April 27, 1920



ENGRAVINGS BY
BUREAU OF ENGRAVING
MINNEAPOLIS

The Annual Meeting
of the
**Madison Park and Pleasure Drive
Association**
Held April 29, 1919

The annual meeting of the Madison Park and Pleasure Drive Association was held at the Auditorium in the City Library April 29, 1919.

The meeting was called to order by Ernest N. Warner, President.

On motion of John L. Bourke, chairman of the nominating committee, the following officers were elected for the ensuing year:

President, Ernest N. Warner.

Vice-President, Charles N. Brown.

Secretary, John L. Bourke.

Treasurer, Frank W. Hoyt.

Directors, Corydon G. Dwight, John C. Prien, E. J. Reynolds, F. M. Schlimgen, Frank W. Hoyt.

The report of the treasurer duly audited was read and placed on file.

The report on behalf of the board of directors was made by President Ernest N. Warner.

On motion the meeting adjourned.



HENRY VILAS PARK FROM FOUNTAIN HILL

President's Report

1919

Made on Behalf of the Board of Directors of the Madison Park and Pleasure Drive Association

To the Members of the Madison Park and Pleasure Drive Association:

We meet this year in the twenty-seventh anniversary of the Madison Park and Pleasure Drive Association. Pursuing the policy adopted in 1915, of publishing a report only once in two years, there will be no printed report this year; but this report and the report for 1919 will be published together in 1920.

In common with all other local municipal activities the work of the association was curtailed during the period of the war. The board of directors administered the park fund within the City of Madison, which included the ordinary maintenance of the larger parks and smaller park areas at a total cost, appropriated by the city, of \$55,331.13 as shown by the financial balance sheet of the city auditor. In addition to this it administered a subscription account, expended mostly outside the city, of \$5,751.92, including the \$2,000 appropriated by the city. This balance sheet shows total overdrafts for the year of \$3,583.77. In September, 1918, the council by resolution increased all salaries paid by the city approximately twenty per cent. No provision for this increase had been made in our budget and no increased appropriation to meet it was made by the city, and in this wage increase will be found a large part of the overdraft. The low water in Lake Wingra and the fair open weather in the fall of 1918 were most favorable to the grading of the low portion of Henry Vilas Park, and this grading was done and the expense charged to salaries and wages under Henry Vilas Park maintenance. This extra work and the increased wage referred to above more than account for the overdraft. It is the policy of the board to strictly keep within the limits of its income whether contributed by individuals or by the city. Had this grading in Henry Vilas Park not been done during 1918 it

would have had to be done at some other time and at greater expense, particularly if it should be done with the waters in Lake Wingra raised to their normal level.

Tenney Park and Parkway

No new structures were erected in Tenney Park during the past year. There is a proposal before the park board at the present time for the building of at least two and possibly five concrete surfaced tennis courts in the portion of Tenney Park to the south of the bathhouse. It is estimated that such courts will cost from twelve to fifteen hundred dollars per court. The area in which it is proposed to lay out these courts is not now in use. Those interested in the building of such tennis courts are convinced of the need in Madison of such high class courts. It is proposed to build such courts from contributions specifically raised for such purpose. The courts will be the property of the association but rules and regulations would be adopted which would secure to the contributors of these courts the primary use of them. More people are playing tennis in Madison today than are playing any other popular game. Tennis tournaments could be arranged with tennis players from other cities, were there suitable courts for such tournaments. The time will come when the public will build such courts. In the meantime through private contributions the way can be shown and the means provided for a few surfaced courts. It is proposed by those interested in the best tennis playing to erect similar courts in other portions of the city.

Tenney Park is still in great need of a shelter house on the island and of toilet accommodations adjacent to or in connection therewith. The present toilet accommodations in Tenney Park are quite inadequate for the needs of the park and a shelter house will continue to be an increasing and imperative need until erected. Funds are accumulating for a new and artistic bridge from Sherman Avenue to the island, and provision should be made for the erection of such a bridge at an early date, probably in 1920.

Lake Front and Orton Parks

Lake Front Park and Orton Park have been maintained as a separate unit of the park system, under a foreman who devotes himself to the special care of these two parks. This arrangement assures a closer attention to and care for these parks than would be possible under a system that kept them as adjuncts of some larger park. Additional tables and benches have been placed in these parks and both parks have been made usable and available as playgrounds for the children and the grown-ups of their immediate neighborhoods.

Brittingham Park

In addition to ordinary maintenance, the usual care of the boathouse and bathhouse and of the playgrounds in Brittingham Park, the roads were last year repaired and oiled, a much needed improvement, and from the subscription fund the extension to Brittingham Boulevard beyond the city limits was rebuilt at a cost of nearly \$2,000. This Boulevard extension investment was one that was necessarily made to preserve this driveway, as the macadam drive originally built was almost in total ruin. This Boulevard constitutes a most attractive link between the park system and the concrete surfaced highway leading from Lakeside Street to the Fair Grounds and around Third Lake. Lakeside Street in South Madison is a trunk highway and will at an early date be permanently improved in harmony with the concrete road leading to the Fair Grounds. The viaduct at Harloff's crossing is receiving at this time its concrete surface and a pleasure drive around Third Lake is now almost a thing accomplished.

Henry Vilas Park

The importance of Henry Vilas Park and of the zoo within the park can readily be measured by the expenditures upon the same. For park maintenance there was expended last year \$9,310.25. In this item is included the labor expended in grading, seeding, and planting the extension to the park at a cost of approximately \$500, and in grading the low portion of the park

at a cost of \$1,500. There was expended on Henry Vilas Park zoo \$22,274.20, less than \$2,000 of which is included under real estate and structures, leaving a total cost for maintenance of the zoo at something over \$20,000, more than one-third the total amount expended by the Board for park purposes. As an attraction to children and grown-ups of Madison and vicinity Henry Vilas Park zoo has no equal. The annual common school commencement, at which time the children completing the eighth grade of the district schools throughout the county receive their diplomas of recognition, is held at Henry Vilas Park. A thousand country children and their parents and friends are annually assembled on these occasions. Because Henry Vilas Park is a delightful place for such a meeting and for the games that are held at such a time, it would naturally attract the gathering; but Henry Vilas Park as a park would not permanently hold this gathering as against all other places competing for the event, were it not for the zoo that affords an added attraction for the country children. Pilgrimages from all parts of Dane County and even adjoining counties are made to Henry Vilas Park because of the zoo, and Madison can well afford to continue her liberal appropriation to the maintenance of this zoo, large though it is, because of the educational value it has for the people of our own city and for those who are attracted to Madison by this offer of education and enjoyment. A very considerable extension of sidewalks and the building of the flying cage are the principal items of capital expense in the zoo the past year.

The grading of the low portion of the park has added many acres of useful and attractive landscape. The crowds that gather in Henry Vilas Park from our own city and those that come here from surrounding towns, all indicate the necessity for the early erection of a shelter house in this park. The centrally located permanent lavatory has been completed. The driveway from Erin Street to the bridge and over the island is the most urgent immediate improvement in Henry Vilas Park. This completed road has long been promised. The demand for men and materials by the United States Government during the period of the war has excused the delay for the last year; but now, good faith to Mrs. Vilas who made her final payment to the

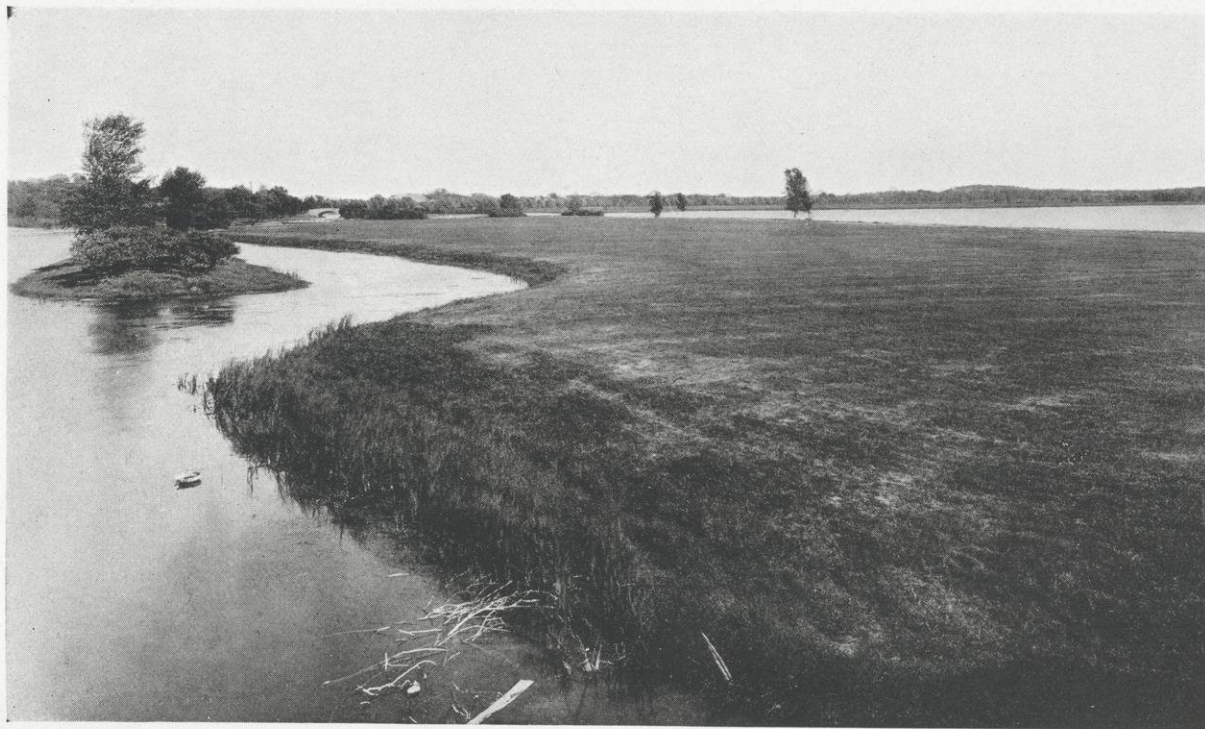
city, on account of the work done in this park, on its promise to complete this road, the congested condition of the drives in Henry Vilas Park for lack of this outlet, and the public urge for the immediate resumption of the delayed works of municipal improvement, all call for the earliest possible construction of this important roadway. Making attractive and accessible the island in Henry Vilas Park will add many additional acres of available area for use by the public, a real demand in Henry Vilas Park.

War conditions delayed the completion of the Annie C. Stewart Memorial Fountain. The board now has assurances that the models for the fountain have been forwarded to the quarries and the marble is being cut for the figures to be placed upon the pedestals already erected.

A contract for a new lock to be erected at the outlet of Lake Wingra has been let at a cost of \$9,846.00. The Railroad Commission in consultation with the city attorney, the president of the board of directors of the Association, members of the council, and representatives of the Lake Forest Company, has authorized the location of the lock near the easterly boundaries of Henry Vilas Park. The Lake Forest Company proposes to redeem a considerable area of swamp land east of Lake Wingra by dredging and diking along the east shore of the lake as it now appears with the water of the lake at its present level. In proposing to the common council this relocation of the lock the Lake Forest Company said, "Our reason for making this offer is that in our opinion the premises lying between the Park and Pleasure Drive Association canal, the lake and the canal of the Lake Forest Company should be acquired by the public for a park or athletic field, and suitably improved for that purpose, including a public street across the premises as shown on our proposed plat and, if this can be brought about before we have started our proposed improvements on our part of said premises we will donate our interest in said premises for that purpose."

The important zoo additions during the past year include Anne, the elephant, and the Polar Bear.

The bird house and aquarium have been given new life the past year. The interior has been redecorated, cages have been rearranged and new cages have been added.) Many beautiful



LARGE ISLAND, HENRY VILAS PARK

birds have been added to the collection. Necessary changes from the use of city to lake water have been made, a system of aeration has been installed in the aquaria, and success now attends this attractive and instructive exhibit of the many varieties of fish, common and rare.

Playgrounds

The public is coming more and more to realize the importance and value of play and playgrounds. This is evidenced by the very large number of tennis courts throughout the city and the increasingly large number of people engaged in this sport. Baseball has always had an attraction for the American people, and in so far as it has been possible to find space in grounds under the jurisdiction of the Park and Pleasure Drive Association the demand for baseball fields for the boys and for grown-ups has been supplied. Competitive league teams are this spring being organized within our city, and so an increased demand has been made upon the board for baseball fields. Kendall Park, which has laid idle since its gift to us by the late Judge Carpenter, has this spring been graded and placed in excellent condition for use as a baseball field, and an area near Lake Front Park in Groveland Plat has also been put in condition by the park force for use as a baseball field. The playgrounds in Tenney Park and Brittingham Park were maintained and the play supervised. Swimming facilities were provided at Tenney Park and Brittingham Park bathhouses and instructions in this sport furnished.

Skating Rinks

During the past winter season the lagoons in Tenney Park and Henry Vilas Park were kept clear of snow for skating and a skating rink was maintained opposite Lake Front Park on Lake Monona and in co-operation with the Street Department of the city the Association kept clear an extensive skating rink on Lake Monona opposite the East Madison railway stations.

Small Park Areas

Wherever a group of people in a neighborhood is interested in beautifying small public spaces, squares or triangles the Asso-

ciation has willingly assisted in planting and caring for such areas.

Approaches to Spooner Street viaduct are cared for by the park force. The areas at the junction of Monroe Street and Regent Street in the tenth ward are under our care. The oval in Hudson Park is being graded and planted and cared for. An invitation is extended by the board to any community gathering or individual to call to its attention, places where this association may assist in beautifying public spots within our city. The improvement of East Washington Avenue is a public enterprise that this board will be only too glad to participate in, and it is to be hoped that a definite plan for the repair and permanent beautification and improvement of the park strip in the center of this Avenue can early be entered upon.

Our Outside Drives

The largest appropriation for any outside drive work the past year was the sum of \$1,958.66 for use in rebuilding, repairing and extending Brittingham Boulevard from Brittingham Park around Monona Bay to South Madison. This expenditure was incurred outside the city limits and in the improvement of the drive from Brittingham Park leading to Lakeside Street and the concrete road around Lake Monona, which improvement was discussed in connection with Brittingham Park.

Edgewood Drive was surfaced with cinders as was also Woodrow Street leading from Edgewood Drive to Monroe Road. As a temporary surfacing these cinders are an improvement over the clay road. Woodrow Street should be permanently improved by the city and proposals are now before the council for such improvement. When the road on the island in Henry Vilas Park is permanently improved, Edgewood Drive and Woodrow Street will be subjected to a heavy pleasure drive use; and with the building of the road about the island and the improvement of Woodrow Street, Edgewood Drive must receive a more permanent improvement. This drive is so intimately a part of the city's park system that the city council should be asked to make an appropriation for its permanent improvement.

Owen Parkway was likewise treated to a cinder surface from the present terminus of the macadam to the Mineral Point road.

Concrete or macadam surfacing was practically out of the question last year, owing to war conditions, and the most that could be done was to give this stretch of road light cinder surfacing. This improvement in Owen Parkway has made this drive useful and usable during all kinds of weather the whole distance from the city through Owen Parkway over Sunset Point and on to the Mineral Point Road. It is probable that a like cinder surfacing would be well worth while from the end of the macadam north to the Sauk Road, a distance of about a half mile.

Lake Mendota Drive

Lake Mendota Drive was graded and rolled, the culverts kept open, projecting limbs trimmed and gutters kept clear of leaves and rubbish at a cost of \$256.94 for last year. The drive has again this spring been graded and rolled. Public traffic other than pleasure driving is bound to make heavy use of Lake Mendota Drive during the season of 1919. The Sauk Road will before the season closes be surfaced with an eighteen foot wide concrete road the entire distance between Madison and Middleton, and when this is done Lake Mendota Drive will be relieved of all heavy teaming and can then be restored to its normal usefulness as a pleasure drive. The County Highway Committee is assisting by grading and by the hauling of cinders and stone chips, in the upkeep of Lake Mendota Drive during the time that public traffic is diverted over it. The Town of Madison at this year's annual meeting appropriated \$500 to assist in repairing Lake Mendota Drive. It will not be the policy of the board of directors to make serious inroads upon its subscription funds in the ordinary upkeep of Lake Mendota Drive during the present season. The board will hope to preserve its funds for use in permanently rebuilding and restoring this drive. To that end it will begin by lengthening the concrete cattleway and culvert on the Merrill Farm, the present culvert making that portion of the drive dangerous because of its narrowness. It is estimated that \$250 or \$300 may be needed to extend and repair this culvert to its needed size. The rustic bridge must have new stringers and new plank surfacing. It is probable that \$250

will have to be expended on this bridge. The drainage of the low ground beyond the Spring Harbor bridge is a permanent improvement, requisite to the maintenance of a drive at this point. These are proposals that will be studied, plans made and work done with reference to the permanent improvement of this drive.

Farwell Drive

Farwell Drive was last year put and left in excellent condition. Both Farwell Drive and Lake Mendota Drive have been closed to public traffic at the seasons of the year when traffic over them would most seriously injure them. Notwithstanding the closing at such periods heavy trucks or automobiles have trespassed upon these drives and have done serious damage. Farwell Drive must have more money expended upon it this year than was anticipated at the close of the season of 1918. A force of men is now at work opening the culverts, clearing the gutters, grading and rolling this drive, and such reasonable expense by way of patching and repair as may be necessary will be incurred to again put Farwell Drive in suitable condition for this year's use. The board hopes, however, that it may not have to expend a large sum on Farwell Drive this year as the greater demand seems to be to restore Lake Mendota Drive as soon as the Sauk Road concrete surfacing is finished and this highway is again open to traffic. There was last year expended on Farwell Drive \$1,160.22.

Subscriptions

For the first time in the experience of the present officers of the Association the entire amount asked for in the circular letter of invitation for subscriptions was pledged in response to this letter. It has been customary and necessary for the board of directors in other years to send out a follow-up letter and additional pledge cards and finally use the 'phone and an occasional personal letter to secure the entire amount of pledges desired. No follow-up letter was sent this year. In answer to the board's request for at least \$2,000 of subscriptions, \$2,211.00

was subscribed. Notice to the common council of this fact brought from the city council an appropriation of \$2,000. Additional subscriptions continue to come in. With the interest from the Hollister Estate, the appropriation of \$500 by the Town of Madison, of \$2,000 by the city of Madison, of subscriptions amounting at the present time to over \$2,200, there will be not less than \$5,000 available for use upon the outside drives during the present season.

Respectfully submitted,

ERNEST N. WARNER,

President.



MARSTON AVENUE



PAGODA AND NEW WALK, SMALL ISLAND, HENRY VILAS PARK

The Annual Meeting
of the
**Madison Park and Pleasure Drive
Association**
Held April 27, 1920

The annual meeting of the Madison Park and Pleasure Drive Association was held at the Auditorium in the city Library April 27, 1920.

The meeting was called to order by Ernest N. Warner, president.

On motion of John C. Prien, chairman of the nominating committee, the following officers were elected for the ensuing year:

President, Ernest N. Warner.

Vice-president, Charles N. Brown.

Secretary, John L. Bourke.

Treasurer, Frank W. Hoyt.

Directors, Corydon G. Dwight, Frank W. Hoyt, Arthur X. Merz, John C. Prien, Fred M. Schlimgen.

The report of the treasurer duly audited was read and placed on file.

The report on behalf of the board of directors was made by President Ernest N. Warner.

On motion the meeting adjourned.

President's Report

1920

Made on Behalf of the Board of Directors of the Madison Park and Pleasure Drive Association

To the Members of the Madison Park and Pleasure Drive Association:

This year marks the twenty-eighth anniversary of the work of the Madison Park and Pleasure Drive Association.

It is still the pleasure of the Madison City Council to have the work of administering park funds done by this voluntary association. A complete report of the work for 1918 was made at last year's annual meeting and will be included in the published report to be issued immediately upon the conclusion of this meeting, together with this report covering the year 1919.

The recapitulation of the total expenditures within the city as drawn off by the city auditor shows appropriations for the year 1919, \$49,367.14 and expenditures \$49,019.19 leaving a net unexpended balance December 31, 1919, \$347.95. The greatest possible care is always exercised by the board of directors of the Madison Park and Pleasure Drive Association to keep within provisions for the park work and in all cases where it is deemed wise and necessary to exceed the original budget provision, the fullest possible statement of facts is given to the city council and its consent first obtained for the expenditure of sums in excess of budget provisions.

The subscription account, administered almost entirely on the drives outside the city limits, was for last year, receipts including balance on hand Jan. 1, 1919, of \$919.86 and an appropriation by the city of \$2,000, \$6,109.52, with an unexpended balance Jan. 1, 1920, as shown by the treasurer's report of \$117.73.

Tenney Park and Parkway

This park was cared for during the past year by the pruning of trees and shrubs, mowing the lawn, caring for the sidewalks

and the water borders, protecting the banks, etc. The bathhouse was maintained as usual, manned as to instructors in swimming by the Board of Education. The popularity of the bathhouse, the tennis courts, and the open field on the island is increasing with each year. A new bridge from Marston Avenue to the island should be provided as soon as the funds can be made available. The board renews the recommendation that a shelter house be provided as soon as possible. In this report appears a photograph of the most interesting practice of casting in the lagoon by a group interested in this sport.

Additional planting has been done at the approaches to the Rutledge Street bridge and during the present season it is planned to plant additional trees and shrubs in the parkway opposite Yahara Place.

Neighborhood Parks

Lake Front Park, Orton Park, and Morrison Street Park have been maintained as usual. Additional facilities for the enjoyment of these Parks and Tenney park have been provided by a distribution of tables and benches through them. The playground circle of considerable area in Elmside Boulevard has been graded, seeded, and cared for, increasing the attractiveness and usefulness of this neighborhood playground.

Brittingham Park

Beyond the ordinary maintenance and care of shrubbery, flower beds, playgrounds, boathouse and bathhouse, no expenditure has been made in Brittingham Park during the past year.

Brittingham Boulevard extending from Brittingham Park around to South Madison was during the past season repaired and oiled.

In co-operation with the Town Board of the Town of Madison public traffic is excluded from entrance to this boulevard at the junction of Lakeside and Whittier Streets and by such exclusion of traffic during the spring break-up the boulevard has been preserved from injury.



MEADOW DRIVE, HENRY VILAS PARK

Henry Vilas Park

During the past year there has been built along the outer edge of the large island a concrete driveway extending from bridge to bridge and across the bridges to connect with the drives heretofore improved. Also there has been built a macadam road, an extension of Erin Street over the crest of the hill, which connects with the macadam driveway at the auto parking place on Warren Street. The construction of the road across the island is the fulfillment of the agreement of the city with Mrs. Vilas and constitutes the last important improvement in the building of this park.

The building of the macadam roadway over the crest of the hill as well as the grading and seeding of the large island, the building of the wooden bridges of attractive design and laying of concrete walks connecting the mainland with the small island and this island with the large island are wholly the contribution of interested individuals through Dr. Dwight, who has expended in these improvements more than \$10,000. It is hoped that a more detailed report of these contributions may be made to the association in order that due credit may be accorded the donors in its acknowledgment of voluntary contributions to its work.

The zoo continues to be a most attractive feature of Henry Vilas Park. Additions to the zoo are noted in the census of the zoo family published in this report.

Progress is being made towards the completion of the Annie C. Stewart Memorial Fountain. Mr. Clasgens, the artist in charge, accompanied to Madison this spring the two side pieces. The main central group has been modeled but has not as yet been shipped from the quarry. It was the privilege of a few interested people to study the two marble figures which have arrived and they with one accord spoke in high praise of the design and execution of these art pieces. It is Mr. Clasgens' earnest hope that the central group may reach Madison this summer and the fountain be completed this season.

The new lock has been built to control the waters of Lake Wingra. The dyke along the easterly boundary of the lake has been thrown up and some eighty acres of cat-tail marsh heretofore low and mostly submerged by the waters of Lake Wingra,

are now free of overflow. The Lake Forest Company has secured the right-of-way and has built the sand and gravel foundation for a roadway across this new area, being an extension of Mills Street to the Plat of Lake Forest on the south side of Lake Wingra. This whole development is of great interest to the locality and to our city as a whole. The Fens Driveway along the Wingra Canal should be permanently improved to connect with the newly built street or roadway of the Lake Forest Company and from this connection to the Fish Hatchery Road. The Fens Driveway has always been popular as a drive but is becoming of increased importance because of the development by the Lake Forest people and the new and extensive surfaced drives through Henry Vilas Park.)

City Plan Commission

There was adopted by the City Council and later approved, February 14, 1920, an ordinance providing for the creation of a City Plan Commission. It provides for a commission consisting of the mayor, the city engineer, the president of the Madison Park and Pleasure Drive Association, one member of the Common Council, and three citizens. The Council elected to this position Alderman George E. Gill and Mayor George C. Sayle appointed as the citizen members for the term of one year, Louis Hirsig; two years, Frank Alford; and three years, Leo T. Crowley.

The Commission met for the first time April 9th, 1920, and organized by electing Mr. E. E. Parker, City Engineer, as Secretary. A copy of the ordinance is included in this report.

Drives

Owen Parkway was last season oiled at an expense of approximately \$500 and needs very little attention this year.

Farwell Drive had expended upon it something over \$1,200 wholly in patching, preparatory to oiling.

Lake Mendota Drive was for a considerable distance put in excellent condition for oiling and there was expended upon it something over \$2,600. Both Farwell and Lake Mendota Drives

have in the past few years sustained an unusual traffic. The completion of the concrete roadway from Madison to Middleton will measurably lift the heavy traffic from off Lake Mendota Drive. Both of these drives will this year be put in condition for oiling and oiled over their entire extent. The Rustic Bridge has already been rebuilt at a cost of approximately \$850.

There will be available for use upon the drives an increased appropriation from the City of Madison of \$1,000 over last year, a total this year of \$3,000, and increased subscription funds by the amount of \$1,000, a total of subscriptions this year of approximately \$3,500. The University, through Mr. Thorkelson, its business manager, has tendered its co-operation in the improvement of the drive through the university grounds. The Town Board of the Town of Madison has agreed to prepare for oiling and oil Capital Avenue at the western terminus of the Lake Mendota Drive. The Dane County Board of Supervisors has not as yet made any specific money contribution but many members of the County Board as well as members of the County Highway Committee have expressed themselves as favorable to a contribution by Dane County towards restoring drives used by the public during the time that the public highway has been under permanent construction and it is probable that some substantial appropriation will be made by the County Board. The board of directors feel confident that with the increased funds which it has to spend upon them the drives can this season be restored to the purpose and be entitled to the name under which they were originally built, "Pleasure Drives."

The work of the Madison Park and Pleasure Drive Association has often been referred to as unique. It attracts the inquiry of other cities and students of park and boulevard development. Its reports are in great demand. This past year several requests have been made for illustrations of its work. The lantern slide plates which had been prepared by Mr. Charles N. Brown and many times used to illustrate the Association's work to the great delight of all who have seen them, have been by the board procured from Mr. Brown, as well as all negatives which he had illustrating the development of the work. The board of directors has preserved in index files all the cuts that have been used in any of the reports of the Association. It has gathered in

fire proof files all deeds, contracts, correspondence, etc., and now has procured for permanent preservation and use the lantern slide pictures and negative plates illustrating the progress through the activities of this Association of Madison's twenty-eight years of park and drive development.

Respectfully submitted,

ERNEST N. WARNER,

President.



BURR OAK DRIVE

City Plan Commission

Adopted by Ordinance of Madison Common Council Feb. 14, 1920

SECTION 1. There is hereby created a city plan commission, with the powers, duties and qualifications as set forth in this ordinance and in the statute of the state relating thereto.

SECTION 2. Such commission shall consist of the mayor, who shall be its presiding officer, the city engineer, the president of the Madison Park and Pleasure Drive Association, one member of the common council, and three citizens.

SECTION 3. At the first meeting after this ordinance shall have taken effect, the common council shall, by a two-thirds vote of its members, elect one of its number as a member of the commission, who shall serve as such member until the next ensuing first day of May, and at the annual meeting in each year the council shall by a two-thirds vote of its members, elect one of its number for a period of one year from and after the first day of May then ensuing, or to fill the unexpired term.

SECTION 4. Immediately after the passage and publication of this ordinance, the mayor shall appoint three citizens, members of such commission, one citizen member to hold office for three years, one citizen member for two years, and one citizen member for one year from the ensuing first day of May. In the month of April of each year thereafter, in which the terms of office of such citizen members respectively expire, the mayor shall appoint one citizen member of such commission for the period of three years from the first day of May next ensuing. Whenever a vacancy shall occur in the term of any citizen member, the mayor shall appoint a citizen as a member to fill such unexpired term.

SECTION 5. All citizen members shall be persons of recognized experience and qualifications. Such members of the commission shall hold office until their respective successors are elected and qualified. No member of any such commission shall receive any compensation for his services as such member.

SECTION 6. The common council shall refer any question concerning the location and architectural design of any public building, the location of any statue or other memorial, the

location, extension, widening, enlargement, ornamentation, and parking of any street, parkway, boulevard, park, playground, or other memorial or public grounds within the city to such commission for its consideration and report before final action is taken thereon by the council. All plats or replats of any lands within the limits of the city or of any lands outside of and within one and one-half miles of the limits of the city shall be submitted to said commission for its recommendation to the council before the same are approved by the council.

SECTION 7. The common council may refer to said commission the construction or carrying out of any public work not expressly within the province of other boards or commissions of the city, and may delegate to said commission all powers which the council deems necessary to complete such work in all details.

SECTION 8. The commission may make or cause to be made a map or maps of the city or any portion thereof, showing locations proposed by it for any new public building, statue, memorial grounds, street, parkway, boulevard, park, playgrounds, or any other public grounds and the grade thereof, and the street building and veranda lines thereof, and for any new square or park, or any changes by it deemed advisable in the present location of any public building, statue, memorial grounds, street, parkway, boulevards, playgrounds, square or park, and may employ expert advice in the making of such map or maps.

SECTION 9. The city, acting through its commission, or otherwise, may acquire by gift, purchase, or condemnation any lands within its corporate limits, for establishing, laying out, widening, enlarging, extending and maintaining memorial grounds, streets, squares, parkways, boulevards, parks, playgrounds, sites for public buildings, and reservations in and about and along and leading to any or all of the same and after the establishment, layout and completion of such improvements, may convey any such real estate thus acquired and not necessary for such improvements, with reservations concerning the future use and occupation of such real estate, so as to protect such public works and improvements, and their environs, and to preserve the view, appearance, light, air and usefulness of such public works, and to promote the public health and welfare.

SECTION 10. The city commission, shall upon request from the common council, recommend boundaries of districts for the location of trades and industries and the location of buildings designed for specified uses, and recommend appropriate regulations and restrictions to be imposed therein. The commission shall first formulate a tentative report and shall hold public hearings thereon before submitting a final report to the common council. After such final report is submitted to the common council, the council may from time to time alter, supplement or change the boundaries or regulations contained in such final report, provided, that not less than ten days' notice of any such proposed changes shall first be published in the official newspaper of the city, and a hearing be granted to any person interested at a time and place to be specified in the notice.

SECTION 11. Each such notice shall be published at least three times during the ten days prior to the date of hearing. In case a protest against a proposed amendment, supplement, or change be presented, duly signed and acknowledged by the owners of twenty per centum or more of the frontage proposed to be altered, or by the owners of twenty per centum of the frontage immediately in the rear thereof, or by the owners of twenty per centum of the frontage directly opposite the frontage proposed to be altered, such amendment shall not be passed except by a three-fourths vote of the council. Such districts and regulations shall be prescribed by ordinances which shall be designed to promote the public health, safety and general welfare. Such ordinances shall not prohibit the continuance of the use of any building or premises for any trade or industry for which such buildings or premises are used at the time such ordinances take effect, but such ordinances may prohibit the alteration of, or addition to, any existing buildings or structures for the purpose of carrying on any prohibited trade or industry within the district where such buildings or structures are located.

SECTION 12. This ordinance shall take effect and be in force from and after its publication.

Appendix

Officers and Members of the Board of Directors of the Madison Park and Pleasure Drive Association Since its Organization*

<p style="text-align: center;">1894.</p> <p>President John M. Olin Vice-President John Hess Secretary Charles N. Brown Treasurer Frank W. Hoyt Directors—C. F. Cooley, Frank G. Brown, Julius Zehnter.</p>	<p>Treasurer Frank W. Hoyt Directors—C. F. Cooley, Frank G. Brown, L. S. Hanks, Frank M. Wootton.</p>
<p style="text-align: center;">1895.</p> <p>President John M. Olin Vice-President John Hess Secretary Charles N. Brown Treasurer Frank W. Hoyt Directors—C. F. Cooley, Frank G. Brown, Julius Zehnter.</p>	<p style="text-align: center;">1899.</p> <p>President John M. Olin Vice-Pres. Andrew R. Kentzler, Jr. Secretary Charles N. Brown Treasurer Frank W. Hoyt Directors—L. S. Hanks, F. M. Wootton, F. G. Brown, C. F. Cooley, W. F. McConnell.</p>
<p style="text-align: center;">1896.</p> <p>President John M. Olin Vice-President Frank S. Warren Secretary Charles N. Brown Treasurer Frank W. Hoyt Directors—C. F. Cooley, Frank G. Brown, L. S. Hanks, Frank M. Wootton.</p>	<p style="text-align: center;">1900.</p> <p>President John M. Olin Vice-Pres. Andrew R. Kentzler, Jr. Secretary Charles N. Brown Treasurer Frank W. Hoyt Directors—L. S. Hanks, F. M. Wootton, W. S. Main, Carl J. Hausmann, Daniel K. Tenney.</p>
<p style="text-align: center;">1897.</p> <p>President John M. Olin Vice-President Frank S. Warren Secretary Charles N. Brown Treasurer Frank W. Hoyt Directors—C. F. Cooley, Frank G. Brown, L. S. Hanks, Frank M. Wootton.</p>	<p style="text-align: center;">1901.</p> <p>President John M. Olin Vice-President Andrew S. Brown Secretary Charles N. Brown Treasurer Frank W. Hoyt Directors—L. S. Hanks, F. M. Wootton, W. S. Main, Carl J. Hausmann, Daniel K. Tenney.</p>
<p style="text-align: center;">1898.</p> <p>President John M. Olin Vice-President Frank S. Warren Secretary Charles N. Brown</p>	<p style="text-align: center;">1902.</p> <p>President John M. Olin Vice-President Andrew S. Brown Secretary Charles N. Brown Treasurer Frank W. Hoyt Directors—W. S. Main, D. K. Tenney, C. J. Hausmann, R. C. Vernon, Halle Steensland.</p>

From January, 1892, until July 10, 1894, a citizen's committee consisting of John M. Olin, Chairman, Prof. C. S. Slichter, Carl Hausmann, John L. Erdahl, L. S. Hanks, C. F. Cooley, M. R. Doxon, J. A. Aylward, M. S. Klauter, H. J. Veerhusen, A. L. Santorn, secured subscriptions and disbursed moneys for the construction of the Bay Road and the Rustic Bridge, Mr. J. J. Suhr, now deceased, acting as treasurer of the committee.

1903.

President John M. Olin
 Vice-President . . . Andrew S. Brown
 Secretary Charles N. Brown
 Treasurer Frank W. Hoyt
 Directors—Carl J. Hausmann,
 Wm. R. Bagley, Halle Steensland,
 Magnus Swenson, Arthur O. Fox.

1904.

President John M. Olin
 Vice-President . . . Andrew S. Brown
 Secretary Charles N. Brown
 Treasurer Frank W. Hoyt
 Directors—Carl J. Hausmann,
 Wm. R. Bagley, Halle Steensland,
 Magnus Swenson, Arthur O. Fox.

1905.

President John M. Olin
 Vice-President . . . Andrew S. Brown
 Secretary Charles N. Brown
 Treasurer Frank W. Hoyt
 Directors—Carl J. Hausmann,
 Wm. R. Bagley, Halle Steensland,
 Magnus Swenson, Arthur O. Fox.

1906.

President John M. Olin
 Vice-President . . . Andrew S. Brown
 Secretary Charles N. Brown
 Treasurer Frank W. Hoyt
 Directors—Wm. R. Bagley, Carl
 J. Hausmann, J. M. Naughtin,
 Halle Steensland, Magnus Swen-
 son,* W. D. Curtis.†

1907.

President John M. Olin
 Vice-President . . . Andrew S. Brown
 Secretary Charles N. Brown
 Treasurer Frank W. Hoyt
 Directors—Mayor J. C. Schubert,
 and Ald. John C. Prien, ex-officio,
 Wm. R. Bagley, Wm. D. Curtis,
 John M. Naughtin, Fred M.
 Schlimgen, Halle Steensland.

1908.

President John M. Olin
 Vice-President . . . Andrew S. Brown
 Secretary Charles N. Brown
 Treasurer Frank W. Hoyt
 Directors—Mayor J. C. Schubert
 and Ald. John C. Prien, ex-officio,
 Wm. R. Bagley, Wm. D. Curtis,
 John M. Naughtin, Fred M.
 Schlimgen, Halle Steensland.

1909.

President John M. Olin
 Vice-President . . . Andrew S. Brown
 Secretary Charles N. Brown
 Treasurer Frank W. Hoyt
 Directors—Mayor J. C. Schubert
 and Ald. C. W. Constantine, ex-
 officio, Wm. R. Bagley, John M.
 Naughtin, Fred M. Schlimgen, Halle
 Steensland, W. D. Curtis.

1910.

President J. C. Schubert
 Vice-President . . . Andrew S. Brown
 Secretary Charles N. Brown
 Treasurer Frank W. Hoyt
 Directors—Ald. Geo. Smith, ex-
 officio, W. D. Curtis, Fred M.
 Schlimgen, F. W. Cantwell, Frank
 W. Hoyt, G. M. Fisk.

1911.

President J. C. Schubert
 Vice-President . . . Andrew S. Brown
 Secretary Charles N. Brown
 Treasurer Frank W. Hoyt
 Directors—Ald. Geo. Smith, ex-
 officio, F. W. Cantwell, W. D. Cur-
 tis, Frank W. Hoyt, Fred M.
 Schlimgen, Ernest N. Warner.

1912.

President Ernest N. Warner
 Vice-President . . . Charles N. Brown
 Secretary E. J. B. Schubring
 Treasurer Frank W. Hoyt
 Directors—Mayor John B. Heim
 and Ald. Milo Kittleson, ex-officio,
 John L. Bourke, Ben F. Mautz,
 Fred M. Schlimgen, F. W. Cant-
 well, Frank W. Hoyt.

* Resigned May 19, 1906.

† Succeeded Magnus Swenson.

1913.

President . . . Ernest N. Warner
 Vice-President . . . Charles N. Brown
 Secretary . . . Eugene C. Smith
 Treasurer . . . Frank W. Hoyt
 Directors—Mayor John B. Heim
 and Ald. Arthur O. Utter, ex-officio,
 John L. Bourke, Ben F. Mautz,
 Fred M. Schlimgen, John C. Prien,
 Frank W. Hoyt.

1914.

President . . . Ernest N. Warner
 Vice-President . . . Charles N. Brown
 Secretary . . . Eugene C. Smith
 Treasurer . . . Frank W. Hoyt
 Directors—Mayor A. H. Kayser
 and Ald. Arthur O. Utter, ex-officio,
 John L. Bourke, Ben F. Mautz,
 Fred M. Schlimgen, John C. Prien,
 Frank W. Hoyt.

1915.

President . . . Ernest N. Warner
 Vice-President . . . Charles N. Brown
 Secretary . . . Eugene C. Smith
 Treasurer . . . Frank W. Hoyt
 Directors—Mayor A. H. Kayser,
 and Ald. Arthur O. Utter, ex-officio,
 John L. Bourke, Ben F. Mautz,
 Fred M. Schlimgen, John C. Prien,
 Frank W. Hoyt.

1916.

President . . . Ernest N. Warner
 Vice-President . . . Charles N. Brown
 Secretary . . . John L. Bourke
 Treasurer . . . Frank W. Hoyt
 Directors—Mayor George C.
 Sayle, and Ald. Arthur O. Utter,
 ex-officio, Corydon G. Dwight,
 John C. Prien, Edward J. Reynolds,
 Fred M. Schlimgen, Frank W.
 Hoyt.

1917.

President . . . Ernest N. Warner
 Vice-President . . . Charles N. Brown
 Secretary . . . John L. Bourke
 Treasurer . . . Frank W. Hoyt
 Directors—Mayor George C.
 Sayle and Ald. Arthur O. Utter,
 ex-officio, Corydon G. Dwight,
 John C. Prien, Edward J. Reynolds,
 Fred M. Schlimgen, Frank W.
 Hoyt.

1918.

President . . . Ernest N. Warner
 Vice-President . . . Charles N. Brown
 Secretary . . . John L. Bourke
 Treasurer . . . Frank W. Hoyt
 Directors—Mayor George C.
 Sayle and Ald. Thomas Quinn, ex-
 officio, Corydon G. Dwight, John C.
 Prien, Edward J. Reynolds, Fred
 M. Schlimgen, Frank W. Hoyt.

1919.

President . . . Ernest N. Warner
 Vice-President . . . Charles N. Brown
 Secretary . . . John L. Bourke
 Treasurer . . . Frank W. Hoyt
 Directors—Mayor George C.
 Sayle and Ald. Thomas Quinn, ex-
 officio, Corydon G. Dwight, John C.
 Prien, Edward J. Reynolds, Fred
 M. Schlimgen, Frank W. Hoyt.

1920.

President . . . Ernest N. Warner
 Vice-President . . . Charles N. Brown
 Secretary . . . John L. Bourke
 Treasurer . . . Frank W. Hoyt
 Directors—Mayor I. M. Kittle-
 son, and Ald. Thomas W. Quinn,
 ex-officio, Corydon G. Dwight,
 Arthur X. Merz, John C. Prien,
 Fred M. Schlimgen, Frank W.
 Hoyt.

Private Contributions, Receipts Since Organization

For the years 1892 and 1893.....		\$6,888 86
Amount contributed by Prof. Owen in 1892, in addition to above.....		3,000 00
For the year 1894.....		655 00
For the year 1895.....		995 00
For the year 1896.....		1,580 00
For the year 1897.....		10,160 23
For the year 1898.....		2,171 32
For the year 1899, excluding gifts for Tenney Park.....	\$3,231 50	
Gifts for Tenney Park, exclusive of the \$1,500 appropriated by the city.....	5,778 00	
		<u>\$9,009 50</u>
For the year 1900.....		5,313 20
For the year 1901.....		5,286 00
For the year 1902.....		5,409 00
For the year 1903, for the general work of the association.....	\$5,036 75	
For the year 1903, for the Yahara River improvement.....	20,621 24	
		<u>\$25,657 99</u>
For the year 1904, for the general work of the association.....	\$5,665 50	
For the year 1904, for the Yahara River improvement.....	4,658 50	
		<u>\$10,324 00</u>
For the year 1904, gift of Mr. and Mrs. Wm. F. Vilas for the purchase of Henry Vilas Park.....		18,000 00
For the year 1904, special subscription for improving Henry Vilas Park.....		10,171 00
For the year 1904, special subscription for improving Monona Lake Park.....		1,100 00
Amount contributed by D. K. Tenney for constructing foot bridge in Tenney Park.....		368 00
Amount contributed by Julius Zehnter for same purpose....		50 00
Amount contributed for all purposes for the year 1905, as follows:		
For general work of the association.....	\$5,663 25	
For the extra work of the association.....	5,338 00	
For securing the addition to Tenney Park..	5,600 00	
For improving Henry Vilas Park, contributed by Wm. F. Vilas.....	10,000 00	
For improving Brittingham Park, contributed by T. E. Brittingham.....	8,000 00	
		<u>\$34,601 25</u>
Amount contributed for all purposes for the year 1906, as follows:		
For the general work of the association....	\$7,841 08	
For improving Henry Vilas Park, contributed by William F. Vilas.....	5,000 00	
For improving triangle, contributed by T. E. Brittingham.....	4,000 00	

Legacy of Mary C. Stewart for constructing drinking fountain.....	\$2,000 00	
		\$18,841 08
Amount contributed for all purposes for the year 1907, as follows:		
For the general work of the association.....	\$8,741 25	
For improving Henry Vilas Park, contributed by William F. Vilas.....	2,000 00	
For improving Brittingham Park and Parkway to South Madison, contributed by T. E. Brittingham subsequent to annual meeting held April 23, 1907.....	5,000 00	
		\$15,741 25
Amount contributed for all purposes for the year 1908, as follows:		
For the general work of the association.....	\$8,066 32	
Amount contributed by D. K. Tenney—five lots which were sold by the association for \$5,000—for improving addition to Tenney Park.....	5,000 00	
Amount contributed by association for improvement of addition to Tenney Park, being the excess realized on sale of fifteen lots over and above the \$5,000 heretofore stated as paid for the land for this addition to the Park.....	9,400 00	
Amount contributed by T. E. Brittingham to erect a public bathhouse in the year 1909.....	\$7,500 00	
		\$29,966 32
Amount contributed in 1909 by 827 subscriber for general work.....	\$7,119 00	
Amount contributed by D. K. Tenney for improvement of addition to Tenney Park	2,500 00	
Amount contributed to secure general city plan.....	1,500 00	
Special contributions for the improvement of Tenney Park.....	1,875 00	
Special subscriptions for macadamizing road to Owen Park.....	350 00	
Value of gift of 12 acres of land under will of George B. Burrows.....	15,000 00	
		\$28,394 50
Amount contributed for 1910, as follows:		
Subscriptions.....	\$5,042 50	
Legacy of Sarah J. Riebsam.....	500 00	
Gift of Mrs. Anna M. Vilas.....	25,000 00	
		\$30,542 50
Amount contributed for 1911, as follows:		
Subscriptions.....	\$3,700 00	
Bequest of A. H. Hollister (estimated).....	10,000 00	
		\$13,700 00
Amount contributed for 1912, as follows:		
Subscriptions.....	\$3,355 00	

Gift of Marston Bridge by D. K. Tenney...	\$3,321 00	
Subscriptions paving Capital Avenue.....	1,146 37	
	<hr/>	\$ 7,822 37
Amount contributed for 1913, as follows:		
Subscriptions.....	\$4,989 50	
Mrs. A. H. Hollister estate confirming A. H. Hollister bequest, and in excess thereof	2,203 09	
	<hr/>	\$7,192 59
Amount contributed for 1914, as follows:		
Subscriptions.....	\$3,925 55	
Dividends and interest.....	233 67	
	<hr/>	\$4,159 22
Amount contributed for 1915, as follows:		
Subscriptions.....	\$2,518 50	
Dividends and interest.....	265 87	
	<hr/>	\$2,784 37
Amount contributed for 1916, as follows:		
Subscriptions.....	\$2,562 00	
Dividends and interest.....	533 95	
Through Madison Zoological and Aquarium Society, Mrs. Anna M. Vilas, bird house and aquarium.....	6,900 00	
	<hr/>	\$10,085 95
Amount contributed for 1917, as follows:		
Subscriptions.....	\$2,664 45	
Dividends and interest.....	372 50	
Through Madison Zoological and Aquarium Society, Dr. Charles H. Vilas, lion house.	15,500 00	
	<hr/>	\$18,536 95
Amount contributed for 1918 as follows:		
Subscriptions.....	\$2,274 50	
Dividends and interest.....	384 11	
Daniel Kent Tenney bequest (annually)....	500 00	
	<hr/>	\$3,158 61
Amount contributed for 1919, as follows:		
Subscriptions.....	\$2,352 00	
Dividends and interest.....	423 00	
Daniel Kent Tenney bequest.....	500 00	
Contributions for special work in Henry Vi- las Park 1918-1919.....	10,000 00	
	<hr/>	\$13,275 00
Total contributions up to 1920.....		\$354,941 06
Contributions for 1920:		
Subscriptions for 1920 to date.....	\$3,254 50	
Daniel Kent Tenney bequest.....	500 00	
	<hr/>	\$3,754 50
Total to date for 1920.....		\$358,695 56
Grand total to date.....		\$358,695 56



INDIAN MOUNDS ON FOUNTAIN HILL, HENRY VILAS PARK

Appropriations by the City of Madison

For land for which no bonds were issued.....		\$8,000 00
For improving streets fronting on parks:		
Main Street.....	\$1,875 00	
Washington Avenue.....	1,500 00	
Drake Street.....	1,935 00	
Johnson Street.....	2,500 00	
Brittingham Park.....	2,326 00	
Brittingham Place.....	1,675 00	
Marston Avenue.....	2,965 00	
Sherman Avenue.....	2,517 00	
		<u>\$17,293 00</u>
For streets within parks:		
Burr Oak Drive, Henry Vilas Park.....	\$2,900 00	
Bay View Drive, Brittingham Park.....	7,153 00	
Bay View Drive, Brittingham Park.....	4,900 00	
		<u>\$14,953 00</u>
For storm sewers extending through parks.....		3,266 00
For boathouse, Brittingham Park.....		5,000 00
		<u>\$48,512 00</u>
Total for permanent improvements.....		\$48,512 00
In addition to this the city has paid out since 1902 for park maintenance including principal and interest on bonds issued.....		\$112,808 00
General maintenance, 1912.....		16,000 00
Filling at Brittingham Park.....		214 50
Taxes on streets abutting park property.....		4,269 75
Improving Henry Vilas Park Addition.....		5,000 00
Tenney Park Bathhouse.....		5,400 00
Filling Burrows Park.....		1,800 00
Reported by city auditor for park purposes for the year 1913.....		32,086 85
Reported by city auditor for park purposes for the year 1914.....		45,512 14
Reported by city auditor for park purposes for the year 1915.....		54,756 30
Reported by city auditor for park purposes for the year 1916.....		51,608 27
Reported by city auditor for park purposes for the year 1917.....		48,276 74
Reported by city auditor for park purposes for the year 1918.....		55,331 13
Reported by city auditor for park purposes for the year 1919.....		49,019 19
		<u>\$530,594 87</u>
Making a total of.....		\$530,594 87

Treasurer's Report

To the Members of the Madison Park and Pleasure Drive Association:

GENTLEMEN: The following is a condensed statement of the financial transactions for the year ending Dec. 31, 1918.

1918

Receipts

Bal. on hand Jan. 1, 1918.....	\$381 72
Reports sold.....	13 75
Interest.....	384 11
1918 subscriptions.....	2,274 50
Trees sold.....	35 50
Appropriation by City of Madison.....	2,000 00
Stewart Memorial Fountain Fund.....	269 32
Work by park men.....	393 02

Disbursements

Farwell Drive.....	\$1,160 22
Owen Parkway.....	247 64
Miscellaneous.....	459 15
University Drive.....	238 70
Lake Mendota Drive.....	256 94
Auto Equipment.....	40 01
Town of Madison.....	138 62
Stewart Memorial Fountain.....	
(Expended in 1918 \$295.12).....	10 20
Brittingham Boulevard Extension.....	1,958 66
Edgewood Drive.....	321 92
Balance Jan. 11, 1919.....	919 86
	<hr/>
	\$5,751 92
	<hr/>
	\$5,751 92
	<hr/>

Mr. and Mrs. A. H. Hollister Park Fund**Statement January 1, 1919, for 1918**

1918			
Jan. 1	By balance from last annual report.....		\$13,898 48
Feb. 19	By interest from Arthur Heilman to Feb. 17, 1918.....	\$55 00	
Mar. 22	By interest from Joseph Hornung to March 22, 1918.....	275 00	
April 19	By interest from A. F. Menges to April 18, 1918.....	27 50	
April 30	By interest from Nellie Halberslaben to April 30, 1918.....	24 79	
Aug. 19	By interest from Arthur Heilman to Aug. 17, 1918.....	55 00	
Sept. 20	By interest from Joseph Hornung to Sept. 22, 1918.....	275 00	
Oct. 19	By interest from A. F. Menges to Oct. 18, 1918.....	27 50	
Oct. 19	By interest from First National Bank on certificate.....	62	
Nov. 1	By interest from Nellie Halberslaben to Oct. 31, 1918.....	27 50	
Nov. 1	By interest from First National Bank on certificate.....	32	
			768 23
	To Paid Madison Park and Pleasure Drive As- sociation one-half of income \$768.23.....	384 11	
	To Balance.....	14,282 60	
		<u>\$14,666 71</u>	<u>\$14,666 71</u>

1919		
Jan. 1	By Balance.....	\$14,282 60

The foregoing balance is invested in the name of the Madison Park and Pleasure Drive Association as Trustee of the Mr. and Mrs. A. H. Hollister Park Fund as follows:

Joseph Hornung, mortgage 5½%.....	\$10,000 00
A. F. Menges, mortgage 5½%.....	1,000 00
A. & R. Heilman, mortgage 5½%.....	2,000 00
Nellie Halberslaben, mortgage 5½%.....	1,000 00
First National Bank, certificate 2½, 3, 4%.....	21 93
First National Bank, certificate 2½, 3, 4%.....	25 52
First National Bank, certificate 2½, 3, 4%.....	27 50
First National Bank, certificate 2½, 3, 4%.....	12 40
First National Bank, certificate 2½, 3, 4%.....	13 75
First National Bank, certificate 2½, 3, 4%.....	12 50
First National Bank, certificate 2½,	

3, 4%.....	\$27 50
First National Bank, certificate 2½,	
3, 4%.....	137 50
	<hr/>
	\$14,282 60
	<hr/>
Original Capital	
Principal Sept. 17, 1913.....	\$12,279 61
Principal Sept. 20, 1917.....	212 75
	<hr/>
	\$12,492 36
One-half of income received to Jan.	
1, 1919.....	1,790 24
	<hr/>
	\$14,282 60
	<hr/>

The Mary C. Stewart Memorial Fountain Fund

1918		
Jan. 1	By balance on hand.....	\$3,110 24
Dec. 31	By interest one year at 4%.....	124 41
Dec. 31	To Paid Madison Park and Pleasure Drive Association for water pipes, tile, digging trenches and for winter house for fountain as follows:	
	Leonard Vetter, digging trench.....	\$13 75
	Wm. Prieve, digging trench.....	13 75
	Henry Schimming, digging trench...	13 75
	Michael Lepke, digging trench.....	5 50
	Ed. Teude, digging trench.....	5 50
	Castle & Doyle, pipe.....	28 08
	Wm. Moehlman, labor, winter house.	21 12
	Louis Moehlman, labor, winter house	22 42
	Weidenbeck-Dobelin Co.....	7 34
	E. W. Polk.....	7 20
	Wolff, Kubly & Hirsig.....	7 09
	Doyon & Rayne Lumber Company..	113 62
	Wm. Owens.....	10 20
		<hr/>
		\$269 32
	To balance.....	2,965 33
		<hr/>
		\$3,234 65
		<hr/>
		\$3,234 65
		<hr/>
1919		
Jan. 1	By Balance.....	\$2,965 33

Respectfully submitted,

FRANK W. HOYT, *Treasurer.*

I hereby certify that I have examined the accounts of Frank W. Hoyt, treasurer, for the year 1918 and find them correct in all particulars.

Dated April 29, 1919.

ROBERT C. O'MALLEY.

Subscriptions for 1918

Ainsworth, H. B.	\$5 00	Drives & Struck	\$10 00
Alford, Frank	5 00	Dudgeon, R. B.	10 00
Allen, C. E.	5 00	Dwight, C. G.	62 50
Allen, Miss Katharine	3 00	Dye, A. A.	25 00
Arnold, Victor H.	10 00		
Babcock, S. M.	10 00	Ela, Emerson	15 00
Badger State Shoe Co.	15 00	Ellman, George	2 00
Bagley, Wm. R.	25 00	Elsom, J. E.	3 00
Baker, N. D.	5 00	Fauerbach Brewing Co.	25 00
Birge, E. A.	5 00	Ferguson, W. F.	5 00
Blackburn, A. C.	10 00	Fischer, Richard	5 00
Boyce, S. R.	5 00	Fish & Schulkamp	5 00
Boyd, Joseph M.	5 00	Fish, Carl Russell	5 00
Boyd, Joseph M. Co.	25 00	Fjelstad, G. J.	5 00
Bradley, Mrs. H. C.	25 00	Flint, Albert S.	5 00
Brady, Littlewood Co.	5 00	Forward Oil Co.	10 00
Breitenbach, G. H.	5 00	Fox, J. H.	5 00
Brittingham, T. E.	25 00	Frautschi, E. J.	5 00
Brown, Charles N.	25 00	Frautschi, C. & Sons	5 00
Buell, Charles E.	10 00	Frederickson, A. D. & J. V.	20 00
Butler, H. L.	25 00	Frish, A. M.	5 00
		Fritz, C. B.	5 00
Cady, Emil C.	3 00	Fuller, E. A.	5 00
Cantwell, J. R.	15 00	Fuller Amusement Co.	10 00
Cantwell Printing Co.	25 00		
Capital Wire Co.	3 00	Gallagher, Arthur J.	5 00
Castle & Doyle	10 00	Gallagher, John	5 00
Chapman, C. B.	10 00	Gary, George E.	10 00
Chase, S. H.	5 00	Geffert, Louis A.	3 00
Chorlog, J. K.	5 00	Giddings, W. E.	25 00
Cnare, George C.	5 00	Gilman, Stephen W.	5 00
Cochran, Joseph W.	5 00	Glasier, Gilson G.	3 00
Cole, Leon J.	3 00	Gregg, George F.	5 00
Collins, W. H.	10 00	Grimm, John J.	5 00
Commons, J. R.	10 00	Grinde, John	10 00
Comstock, George C.	10 00	Groves, John W.	5 00
Conklin & Sons Co.	25 00		
Cook, Jacob	5 00	Halligan, B. J.	10 00
Cork & Holt	5 00	Hammersley, E. C.	15 00
Corscot, John	5 00	Hanks, L. M.	10 00
Crescent Clothing Co.	5 00	Hanks, L. S.	15 00
Critton, J. M.	5 00	Hart, Walter W.	10 00
Crowe, Miss B. C.	5 00	Hastings, E. G.	5 00
Crowley, F. M.	25 00	Hausmann Brewing Co.	25 00
Cudahy Market	10 00	Herfurth, Theodore	10 00
		Hill, Carl N.	10 00
Davis, Frederick A.	5 00	Hinrichs Dry Goods Co.	5 00
Dennis, A. L. P.	10 00	Hoffman Feed Co.	10 00
Doescher, John	2 00	Hokanson, Emil C.	15 00
Doyon, B. H.	15 00	Holmes, George C.	5 00
Drew, Walter	5 00	Hoppman, A. C.	5 00

Hotchkiss, W. O.....	\$5 00	Morris, T. S. Co.....	\$5 00
Hoyt, Frank W.....	25 00	Morris, W. A. P.....	10 00
Hudson, Charles H.....	5 00	Moseley, H. L.....	10 00
Humphrey, George C.....	5 00		
Hurd, R. W.....	5 00	Neckerman, George.....	5 00
Hyland, John G.....	5 00	Nelson, George.....	10 00
		Nelson, M. L.....	5 00
Ingersoll, L. R.....	3 00	Nelson, R. N.....	5 00
		Netherwood, H. C.....	5 00
Jacobs, F. W.....	10 00	New York Store.....	10 00
Jarvis, C. W.....	3 00	Nichols, H. E.....	5 00
Jefferson Transfer Co.....	5 00	Noe, Mrs. W. C.....	10 00
Johnson, Carl A.....	50 00	Norsman, O. S.....	5 00
Johnson, Hobart S.....	25 00		
Jones, Burr W.....	25 00	Oakley, F. W.....	15 00
Jones, L. R.....	5 00	Olbrich, M. B.....	10 00
		Olin, John M.....	25 00
Karstens, F. W.....	5 00	Olson, O. C.....	5 00
Kayser, A. H.....	10 00	Olson & Veerhusen Co.....	25 00
Kenney, A. P.....	2 00	O'Malley, Robert C.....	5 00
Kessenich, Frank.....	15 00	O'Shea, M. V.....	5 00
Kindschi, George W.....	5 00	Overton, J. B.....	10 00
Kingston, Paul.....	3 00	Owen, W. C.....	10 00
Kney, E. O.....	5 00		
Kney, Paul.....	5 00	Parker, W. N.....	5 00
Knox, P. B.....	10 00	Parkinson, J. B.....	5 00
Kornhauser, Alex.....	10 00	Pepper, John W.....	5 00
Krauskopf, Francis C.....	2 00	Pickford, H. W.....	5 00
Kroncke, George.....	10 00	Prien, John C.....	5 00
Kropf, R. R.....	5 00		
Krueger & Tandvig.....	10 00	Qualey, R. N.....	2 00
		Quinn, George.....	5 00
Lacher, Hannibal.....	5 00		
Laird, A. G.....	5 00	Rayne, George T.....	15 00
Larson, A. C.....	10 00	Reber, Louis E.....	5 00
Leonard, Wm. E.....	5 00	Richards, H. S.....	5 00
Lodine, C.....	5 00	Riley, Charles G.....	5 00
Loomis, Mrs. F. S.....	5 00	Roesch, Wm.....	5 00
Lyons, Thomas E.....	10 00	Rogers, Alfred.....	10 00
		Roloff, E. L.....	5 00
McCaffery, M. E.....	5 00	Ross, E. A.....	7 50
Mack, J. A.....	5 00	Runge, A. E.....	5 00
Mack, John G. D.....	5 00		
Madison Gas & Electric Co.....	25 00	Sammis, J. L.....	2 00
Madison Realty Co.....	50 00	Sanborn, A. L.....	25 00
Mansfield-Caughey Co.....	5 00	Sater, M. H.....	5 00
Marlatt, Miss A. L.....	5 00	Sauthoff, Harry.....	5 00
Marling, W. A.....	5 00	Sayle, George.....	10 00
Marschall, A. J.....	10 00	Scanlan Morris Co.....	10 00
Marshall, Wm. S.....	10 00	Scherer, John J.....	5 00
Mason, E. C.....	2 50	Schlingen, Fred M.....	15 00
Mason, Vroman.....	5 00	Schmitz, August J.....	5 00
Mautz Bros.....	15 00	Schoelkopf, L. F.....	25 00
Mayers, Andrew A.....	10 00	Schoen, Frank.....	5 00
Mead, D. W.....	25 00	Schulz, Herman.....	5 00
Menges, A. F.....	10 00	Schumacher, Wm. G.....	5 00
Metz, Anton.....	10 00	Schwogler, Wm.....	5 00
Moore, R. A.....	5 00	Seastone, C. V.....	15 00
Moran, John.....	5 00	Sharratt, H. F.....	5 00

Sherwood & MacWilliams ..	\$5 00	Thorp, Miss Juliet C.....	\$5 00
Siebecker, Robert G.....	5 00	Thwaites, F. T.....	5 00
Simon, Fred N.....	5 00	Thwaites, Mrs. R. G.....	5 00
Smith, Charles Forster.....	5 00	Toepfer, Otto.....	18 00
Smith, Edward H.....	5 00	Tressler, A. W.....	10 00
Smith, Howard L.....	5 00	Turneure, F. E.....	10 00
Smith, Lathrop E.....	5 00		
Smith, Walter M.....	5 00	Van Deusen's.....	5 00
Smythe, H. A.....	5 00	Vilas, Mrs. Anna M.....	25 00
Snow, Benjamin W.....	5 00		
Stebbins, Byron H.....	5 00	Wagner, George.....	10 00
Steensland Land Co.....	30 00	Warner, E. N.....	10 00
Stevens, E. Ray.....	10 00	Wiedenbeck-Doeblin Co.....	25 00
Stidgen, George.....	2 00	Wolcott, W. A.....	5 00
Stitgen, Ben.....	5 00	Wolff, Kubly & Hirsig.....	10 00
Suhr, F. W.....	5 00		
Summer, L. D.....	5 00	Young, Edward J.....	10 00
Taylor, Richard F.....	5 00	Zimmerman, A. G.....	5 00
Teamsters Local Union.....	15 00	Zoelle, F. J.....	5 00
Teckemeyer, W. J.....	15 00		
Thompson, H. L.....	5 00		
Thorkelson, H. J.....	10 00		
		Total.....	\$2,274 00



THE CALL OF WINGRA

Balance Sheet

By City Auditor

STATEMENT OF DETAIL OPERATION, MAINTENANCE, AND OUTLAY EXPENDITURES OF PUBLIC
PARKS AND PLAYGROUNDS FOR PERIOD JANUARY 1, 1918, TO DECEMBER 31, 1918.

Account	Expenditure	Budget Appropriation	Unexpended Balance	Overdraft
ADMINISTRATION				
Salaries and Wages	\$1,999 35	\$1,820 00	\$179 35
Printing and Office Expense.....	688 15	650 00	38 15
General Supplies and Expense.....	4 25	4 25
Legal Expense.....	17 00	17 00
	\$2,708 75	\$2,470 00	\$238 75
TENNEY PARK AND PARKWAY				
Salaries and Wages	\$2,995 58	\$2,810 00	\$185 58
General Supplies and Expense.....	51 94	56 00	\$4 06
Laundry and Janitor Supplies.....	11 88	11 88
Heat and Light.....	48 04	260 00	211 96
Repairs and Replacements.....	142 50	142 50
Real Estate and Structure.....	1,287 46	1,521 21	233 75
	\$4,394 90	\$4,789 71	\$592 27	\$197 46

STATEMENT OF DETAIL OPERATION, MAINTENANCE, AND OUTLAY EXPENDITURES OF PUBLIC
PARKS AND PLAYGROUNDS FOR PERIOD JANUARY 1, 1918, TO DECEMBER 31, 1918, CONTINUED.

Account	Expenditure	Budget Appropriation	Unexpended Balance	Overdraft
TENNEY PARK BATHHOUSE				
Salaries and Wages.....	\$632 90	\$835 00	\$202 10	
Printing and Office Expense.....	13 42	18 00	4 58	
Rent and Insurance.....	28 00	28 00		
General Supplies and Expense.....	68 32	28 05		\$40 27
Laundry and Janitor Supplies.....	82 74			82 74
Heat and Light.....	47 37			47 37
Dry Good, Bedding and Clothing.....		166 80	166 80	
Repairs and Replacements.....		100 00	100 00	
	\$872 75	\$1,175 85	\$473 48	\$170 38
TENNEY PARK LAVATORIES				
Laundry and Janitor Supplies.....		\$17 50	\$17 50	
Medical Supplies.....		4 00	4 00	
Heat and Light.....		90 00	90 00	
Repairs and Replacements.....		10 00	10 00	
		\$121 50	\$121 50	

STATEMENT OF DETAIL OPERATION, MAINTENANCE, AND OUTLAY EXPENDITURES OF PUBLIC
PARKS AND PLAYGROUNDS FOR PERIOD JANUARY 1, 1918, TO DECEMBER 31, 1918, CONTINUED

Account	Expenditure	Budget Appropriation	Unexpended Balance	Overdraft
GENERAL PARK EQUIPMENT				
Salaries and Wages.....	\$414 66	\$150 00		\$264 60
Freight and Express.....	4 60			4 60
General Supplies and Expense.....	266 89	281 20	\$14 31	
Laundry and Janitor Supplies.....	4 31			4 31
Heat and Light.....	12 35	100 00	87 65	
Stable and Garage.....	447 50	1,577 00	1,129 50	
Repairs and Replacements.....	9 27			9 27
Apparatus and Equipment.....	21 85			21 85
	\$1,181 37	\$2,108 20	\$1,231 46	\$304 63
BRITTINGHAM PARK				
Salaries and Wages.....	\$3,355 38	\$2,485 00		\$870 38
Printing and Office Expense.....		33 50	\$33 50	
Laundry and Janitor Supplies.....	90			90
Heat and Light.....	3 55	80 00	76 45	
Repairs and Replacements.....		375 00	375 00	
Real Estate and Structures.....	2,370 00	1,653 14		716 86
	\$5,729 83	\$4,626 64	\$484 95	\$1,588 14

STATEMENT OF DETAIL OPERATION, MAINTENANCE, AND OUTLAY EXPENDITURES OF PUBLIC
PARKS AND PLAYGROUNDS FOR PERIOD JANUARY 1, 1918, TO DECEMBER 31, 1918, CONTINUED

Account	Expenditure	Budget Appropriation	Unexpended Balance	Overdraft
BRITTINGHAM PARK BOATHOUSE				
Salaries and Wages.....	\$630 00	\$600 00	\$30 00
Printing and Office Expense.....	21 02	30 00	\$8 98
Rent and Insurance.....	120 00	120 00
General Supplies and Expense.....	3 24	3 24
Laundry and Janitor Supplies.....	5 60	5 60
Medical Supplies.....	3 50	3 50
Heat and Light.....	60 31	34 00	26 31
Drygoods, Bedding and Clothing.....	8 00	8 00
Repairs and Replacements.....	35 00	35 00
	\$831 33	\$839 34	\$64 32	\$56 31
BRITTINGHAM PARK BATHHOUSE				
Salaries and Wages.....	\$519 50	\$835 00	\$315 50
Printing and Office Expense.....	24 89	18 00	\$6 89
Rent and Insurance.....	51 00	51 00
Laundry and Janitor Supplies.....	49 97	28 55	21 42
Heat and Light.....	95 61	64 00	31 61
Drygoods, Bedding and Clothing.....	2 05	111 80	109 75
Repairs and Replacements.....	42 60	215 00	172 40
Apparatus and Equipment.....	135 00	135 00
	\$802 36	\$1,472 83	\$732 65	\$62 18

STATEMENT OF DETAIL OPERATION, MAINTENANCE, AND OUTLAY EXPENDITURES OF PUBLIC PARKS AND PLAYGROUNDS FOR PERIOD JANUARY 1, 1918, TO DECEMBER 31, 1918, CONTINUED.

Account	Expenditure	Budget Appropriation	Unexpended Balance	Overdraft
HENRY VILAS PARK				
Salaries and Wages.....	\$6,962 34	\$3,220 00		\$3,742 34
Freight and Express.....	7 86			7 86
General Supplies and Expense.....	287 59	79 00		208 59
Heat and Light.....	42 00	211 50	\$169 50	
Drygoods, Bedding and Clothing.....		8 00	8 00	
Repairs and Replacements.....	12 00	127 50	115 50	
Real Estate and Structures.....	1,998 46	1,392 60		605 86
	\$9,310 25	\$5,038 60	\$293 00	\$4,564 65
HENRY VILAS PARK ZOO				
Salaries and Wages.....	\$7,215 48	\$6,018 00		\$1,197 48
Printing and Office Expense.....	53 61	152 50	98 89	
Freight and Express.....	20 04	250 00	229 96	
Rent and Insurance.....	84 50	56 50		28 00
General Supplies and Expense.....	7,512 40	7,850 95	338 55	
Laundry and Janitor Supplies.....	168 52	163 55		4 97
Heat and Light.....	3,735 59	2,285 00		1,450 59
Drygoods, Bedding and Clothing.....		45 00	45 00	
Stable and Garage Expense.....	803 83			803 83
Repairs and Replacements.....	778 41	750 00		28 41
Real Estate and Structures.....	1,863 27	3,466 50	1,603 23	
Medical Supplies.....	5 05	50 00	44 95	
Apparatus and Equipment.....	30 00			30 00
Advertising and Publication.....	3 50			3 50
	\$22,274 20	\$21,088 00	\$2,360 58	\$3,546 78

STATEMENT OF DETAIL OPERATION, MAINTENANCE, AND OUTLAY EXPENDITURES OF PUBLIC
PARKS AND PLAYGROUNDS FOR PERIOD JANUARY 1, 1918, TO DECEMBER 31, 1918, CONTINUED

Account	Expenditure	Budget Appropriation	Unexpended Balance	Overdraft
HENRY VILAS PARK LAVATORY				
Salaries and Wages.....	\$227 36			\$227 36
General Supplies and Expense.....	3 20			3 20
Laundry and Janitor.....		\$25 00	\$25 00	
Medical Supplies.....		2 00	2 00	
Real Estate and Structures.....	2,713 83	2,500 00		213 83
	\$2,944 39	\$2,527 00	\$27 00	\$444 39
ORTON PARK				
Salaries and Wages.....	\$152 21	\$175 00	\$22 79	
Real Estate and Structures.....	28 08	24 00		\$4 08
	\$180 29	\$199 00	\$22 79	\$4 08
WASHINGTON BOULEVARD				
Salaries and Wages.....	\$58 87	\$125 00	\$66 13	

STATEMENT OF DETAIL OPERATION, MAINTENANCE, AND OUTLAY EXPENDITURES OF PUBLIC PARKS AND PLAYGROUNDS FOR PERIOD JANUARY 1, 1918, TO DECEMBER 31, 1918, CONTINUED.

Account	Expenditure	Budget Appropriation	Unexpended Balance	Overdraft
BURROWS PARK				
Salaries and Wages.....	\$137 76	\$65 00	\$72 76
KENDALL FIELD				
Salaries and Wages.....		\$25 00	\$25 00
Real Estate and Structures.....	\$458 89	448 86	\$10 03
	458 89	\$473 86	\$25 00	\$10 03
SPAIGHT STREET PARK				
Salaries and Wages.....	\$132 21	\$132 21
General Supplies and Expense.....	192 00	192 00
Real Estate and Structures.....	8 13	8 13
	\$332 34	\$332 34
OLIVE JONES FIELD				
Salaries and Wages.....	\$2 42	\$25 00	\$22 58
Real Estate and Structures.....	493 66	167 14	\$326 52
	\$496 08	\$192 14	\$22 58	\$326 52

STATEMENT OF DETAIL OPERATION, MAINTENANCE, AND OUTLAY EXPENDITURES OF PUBLIC
PARKS AND PLAYGROUNDS FOR PERIOD JANUARY 1, 1918, TO DECEMBER 31, 1918, CONTINUED

Account	Expenditure	Budget Appropriation	Unexpended Balance	Overdraft
OWEN PARKWAY				
Salaries and Wages.....		\$150 00	\$150 00	
EVERGREEN PARK				
Salaries and Wages.....	\$28 14	\$25 00		\$3 14
BURR JONES FIELD				
Salaries and Wages.....		\$75 00	\$75 00	
Real Estate and Structures.....		349 20	349 20	
		\$424 20	\$424 20	
SPOONER STREET VIADUCT				
Salaries and Wages.....	\$21 47	\$15 00		\$6 47

STATEMENT OF DETAIL OPERATION, MAINTENANCE, AND OUTLAY EXPENDITURES OF PUBLIC
PARKS AND PLAYGROUNDS FOR PERIOD JANUARY 1, 1918, TO DECEMBER 31, 1918, CONTINUED.

Account	Expenditure	Budget Appropriation	Unexpended Balance	Overdraft
LAKE FRONT PARK				
Salaries and Wages.....	\$319 72	\$420 00	\$100 28	
Skating Rink.....		75 00	75 00	
Real Estate and Structures.....		40 00	40 00	
	\$319 72	\$535 00	\$215 28	
SIXTH WARD PARK				
Salaries and Wages.....	\$22 84			\$22 84
Real Estate and Structures.....	60 49			60 49
	\$83 33			\$83 33
MAPLE PARK				
Salaries and Wages.....	\$46 04	\$75 00	\$28 96	
WASHINGTON OVAL				
Salaries and Wages.....	\$27 05	\$73 00	\$47 95	

STATEMENT OF DETAIL OPERATION, MAINTENANCE, AND OUTLAY EXPENDITURES OF PUBLIC
PARKS AND PLAYGROUNDS FOR PERIOD JANUARY 1, 1918, TO DECEMBER 31, 1918, CONTINUED.

Account	Expenditure	Budget Appropriation	Unexpended Balance	Overdraft
LAKE FRONT PARK				
Salaries and Wages.....	\$319 72	\$420 00	\$100 28
Skating Rink.....	75 00	75 00
Real Estate and Structures.....	40 00	40 00
	\$319 72	\$535 00	\$215 28
SIXTH WARD PARK				
Salaries and Wages.....	\$22 84	\$22 84
Real Estate and Structures.....	60 49	60 49
	\$83 33	\$83 33
MAPLE PARK				
Salaries and Wages.....	\$46 04	\$75 00	\$28 96
WASHINGTON OVAL				
Salaries and Wages.....	\$27 05	\$73 00	\$47 95

Treasurer's Report

To the Members of the Madison Park and Pleasure Drive Association:

The following is a condensed statement of the receipts and disbursements of the association for the year ending Dec. 31, 1919.

1919

Receipts

Balance on hand Jan. 1919.....	\$919 86
Trees sold:	17 00
Interest.....	423 00
Reports sold.....	7 50
1919 subscriptions.....	2,352 00
City of Madison appropriation.....	2,000 00
Rebates.....	18 93
Labor by park men.....	239 45
Wood sold.....	6 00
Stewart Memorial Fountain Fund...	125 78

Disbursements

Auto account.....	\$437 21	
Miscellaneous.....	885 79	
Lake Mendota Drive.....	2,619 67	
Henry Vilas Park Island improvement.....	92 40	
Farwell Drive.....	1,212 35	
Forest Hill Cemetery.....	35 95	
Owen Parkway.....	498 31	
Annie C. Stewart Memorial Fountain.....	125 78	
Monona Avenue lake frontage improvement.....	84 33	
	\$6,109 52	\$5,991 79
Balance Jan. 1920.....	117 73	117 73
	\$6,109 52	\$6,109 52

Mr. and Mrs. A. H. Hollister Park Fund**Statement January 1, 1920, for 1919**

1919			
Jan. 1	By balance from annual report.....	\$14,282	60
Feb. 18	By Arthur Heilman, interest to Feb. 17, 1919.....	\$55	00
Feb. 19	By First National Bank, interest on certificate.....	1	10
Mar. 24	By First National Bank, interest on certificate.....	50	
Mar. 25	By Joseph Hornung, interest to March 22, 1919.....	275	00
April 19	By A. F. Menges, interest to April 18, 1919.....	27	50
April 19	By First National Bank, interest on certificate.....	55	
April 20	By First National Bank, interest on certificate.....	4	80
April 20	By Nellie Halberslaben, interest in full.....	27	50
Aug. 18	By Arthur Heilman, interest to August 17, 1919.....	55	00
Sept. 23	By Joseph Hornung, interest to Sept. 22, 1919.....	275	00
Oct. 18	By A. F. Menges, interest to Oct. 18, 1919.....	27	50
Oct. 31	By A. Halberslaben, interest to Oct. 30, 1919.....	41	25
Nov. 26	By Joseph Hornung, interest to Nov. 26, 1919.....	48	89
Nov. 26	By A. Halberslaben, interest to Nov. 28, 1919.....	6	42
			\$846 01
	To Paid Madison Park and Pleasure Drive Association one-half of income \$846.01.....	\$423	00
	To balance.....	14,705	61
		\$15,128	61
		\$15,128	61

1920

Jan. 1 By Balance..... \$14,705 61

The foregoing balance is invested in the name of the Madison Park and Pleasure Drive Association as Trustee of the Mr. and Mrs. A. H. Hollister Park Fund as follows:

Joseph Hornung, mortgage, 5 1/2%...	\$5,000	00
A. F. Menges, mortgage, 5 1/2%.....	1,000	00
A. & R. Heilman, mortgage, 5 1/2%..	2,000	00
Aug. Halberslaben, mortgage, 5 1/2%..	2,000	00
Robert O'Malley, mortgage, 5 1/2%...	4,000	00

John O'Connell, mortgage, 5½%.....	\$700 00	
First National Bank certificate.....	5 61	
		<u>\$14,705 61</u>
Original Capital		
Principal Sept. 17, 1913.....	\$12,279 61	
Principal Sept. 20, 1917.....	212 75	
		<u>\$12,492 36</u>
One-half of income received to Jan. 1, 1920.....	2,213 25	
		<u>\$14,705 61</u>

The Mary C. Stewart Memorial Fountain Fund

1919			
Jan. 1	By balance on hand.....		\$2,965 33
Dec. 31	By interest to date.....		118 60
Dec. 31	To Paid Madison Park and Pleasure Drive Association as follows:		
	Ed. Teude, labor.....	\$3 38	
	Leonard Vetter, labor.....	3 50	
	Charles C. Dreger, labor.....	10 80	
	Wm. S. Nieson, labor.....	10 80	
	Ed. Teude, labor.....	5 00	
	Leonard Vetter, labor.....	12 15	
	Michael Lipke, labor.....	12 15	
	Wm. Owens, plumber.....	61 44	
	Ed. Teude, labor.....	6 56	
		<u>\$125 78</u>	
	To balance.....	2,958 15	
		<u>\$3,083 93</u>	<u>\$3,083 93</u>
1920			
Jan. 1	By Balance.....		\$2,958 15

Respectfully submitted,

FRANK W. HOYT, *Treasurer.*

I hereby certify that I have examined the accounts of Frank W. Hoyt, treasurer, for the year 1919 and find them correct in all particulars.

Dated April 1, 1920.

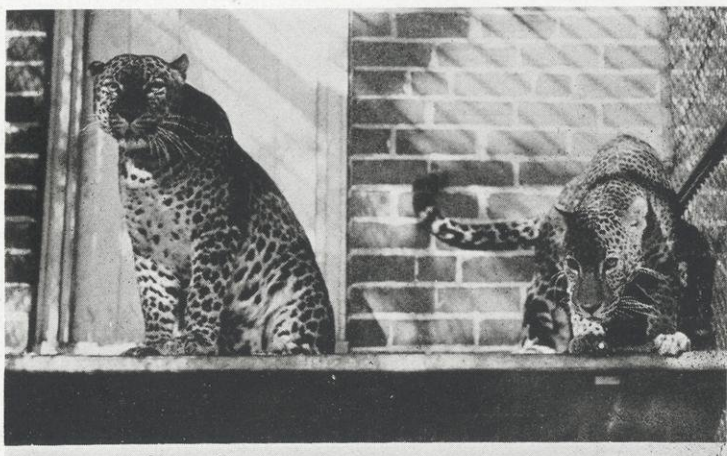
ROBERT C. O'MALLEY.

Subscriptions for 1919

Advance Rumely Thresh. Co	\$10 00	Ela, Emerson	15 00
Ainsworth, H. B.	5 00	Ellman, George	2 00
Allen, C. E.	5 00	Fairchild, Mrs. L.	25 00
Allen, Miss Katharine	5 00	Fauerbach Brewing Co.	25 00
Allison, M. B.	5 00	Ferguson, W. F.	5 00
Arnold, Victor H.	10 00	Fjelstad, G. J.	5 00
Badger State Shoe Co.	15 00	Fischer, Richard	5 00
Bagley, Wm. R.	25 00	Fish & Schulkamp	5 00
Baker, N. D.	5 00	Flint, A. S.	6 00
Bean, E. F.	5 00	Fox, J. H.	5 00
Bergh, M. C.	5 00	Fox, Philip R.	5 00
Birge, E. A.	5 00	Frautschi, E. J.	5 00
Bitterman, J. C.	5 00	Frautschi, C. & Sons	5 00
Blackburn, A. C.	10 00	Frish, A. M.	5 00
Blied Printing Co.	5 00	Fritz, C. B.	5 00
Blied, John J. & Son	5 00	Fuller, Mrs. Jessica H.	10 00
Boyce, S. R.	5 00	Gallagher, John	5 00
Boyd, Joseph M.	5 00	Gary, George E.	10 00
Boyd, Joseph M. Co.	25 00	Geffert, Louis A.	3 00
Bradley, Mrs. H. C.	25 00	Gilman, Stephen	5 00
Brietenbach, George H.	5 00	Grimm, John J.	5 00
Brittingham, T. E.	25 00	Hall, F. W.	5 00
Brown, Charles N.	10 00	Halligan, B. J.	10 00
Brown, E. A.	5 00	Hanks, L. M.	15 00
Brown, Frank G.	25 00	Hanks, L. S.	15 00
Brubaker, H. L.	5 00	Hart, Walter W.	10 00
Burch, L. W.	5 00	Hastings, E. G.	5 00
Burger, Peter	10 00	Hausmann Brewing Co.	25 00
Butler, H. L.	15 00	Hefty, T. R.	5 00
Cady, Emil C.	3 00	Herfurth Theodore	10 00
Cantwell Printing Co.	25 00	Hill, Carl N.	5 00
Castle & Doyle	10 00	Hoebel, Carl F.	5 00
Chapman, C. B.	10 00	Hoffman Feed Co.	10 00
Chase, S. H.	5 00	Hokanson, Emil	15 00
Clarke Publishing Co.	5 00	Holt, J. C.	2 50
Cnare, George C.	5 00	Hopkins, Andrew W.	5 00
Cole, Leon J.	3 00	Hoppman, A. C.	5 00
Collins, W. H.	10 00	Hotchkiss, W. O.	5 00
Commons, J. R.	10 00	Hoyt, Frank W.	25 00
Comstock, George C.	10 00	Hudson, Charles H.	5 00
Corscot, John	5 00	Humiston, F. W.	5 00
Crawford, Robert	2 50	Humphrey, George C.	5 00
Crescent Clothing Co.	5 00	Hurd, R. W.	5 00
Critton, J. M.	5 00	Ingersoll, L. R.	3 00
Crowe, Miss B. C.	5 00	Jacobs, F. W.	10 00
Cudahy Cash Market	10 00	Jarvis, C. W.	3 00
Dithmar, J. F.	5 00	Jefferson Transfer Co.	5 00
Dudgeon, R. B.	5 00		
Dye, A. A.	25 00		

Johnson, C. A.....	\$50 00	Nelson, M. L.....	\$5 00
Johnson, Hobart S.....	25 00	Nelson, R. N.....	5 00
Johnson, Maurice I.....	25 00	Netherwood, H. C.....	5 00
Jones, Burr W.....	25 00	New York Store.....	10 00
Jones, L. R.....	5 00	Nichols, H. E.....	5 00
Karstens, F. W.....	5 00	Noe, Mrs. Jessie B.....	10 00
Kayser, A. H.....	10 00	Norsman, O. S.....	5 00
Kennedy Dairy Co.....	5 00	Oakley, F. W.....	15 00
Kenny, A. P.....	2 00	Olbrich, M. B.....	10 00
Kessenich, Frank.....	15 00	Olin, John M.....	25 00
Kindschi, George W.....	5 00	Olson & Veerhusen Co.....	25 00
Kindschi, M. R.....	5 00	O'Malley, Robert C.....	10 00
Kney, E. O.....	5 00	O'Shea, M. V.....	5 00
Kney, Paul.....	5 00	Owen, W. C.....	10 00
Knox, P. B.....	10 00	Owens, William.....	10 00
Kornhauser, Alexander.....	10 00	Parke, H. J.....	5 00
Krauskopf, Francis C.....	2 00	Parker, W. N.....	5 00
Kroncke, George.....	10 00	Parkinson, E. E.....	5 00
Kropf, R. R.....	5 00	Parkinson, J. B.....	5 00
Lacher, Hannibal.....	5 00	Peabody, Arthur.....	10 00
Laird, A. G.....	5 00	Pepper, John W.....	5 00
Larson, A. C.....	10 00	Pickford, H. W.....	5 00
Lindsay, W. T.....	5 00	Prien, J. C.....	5 00
Lodine, C.....	5 00	Quann, Mike.....	5 00
Loomis, Mrs. Frances.....	5 00	Quinn, Thomas.....	5 00
Lunstrum, Lewis.....	5 00	Ramsay, J. B.....	5 00
Lyons, Thomas E.....	10 00	Rayne, George T.....	15 00
McCarthy, T. C.....	10 00	Reber, Louis E.....	5 00
McKillip, W. L.....	5 00	Reed, Frank D.....	5 00
Mack, J. A.....	5 00	Reynolds, Edward J.....	10 00
Madison Gas & Electric Co.....	25 00	Riley, Charles G.....	5 00
Madison Realty Co.....	50 00	Riley, G. C.....	5 00
Main, W. E.....	5 00	Roesch, Wm.....	3 00
Mansfield-Caughey Co.....	5 00	Rogers, Alfred T.....	10 00
Marlatt, Miss Abbie L.....	5 00	Ross, E. A.....	5 00
Marling, W. A.....	5 00	Roys, W. B.....	5 00
Marschall, A. J.....	10 00	Rundell, Sidney P.....	10 00
Marshall, Wm. S.....	10 00	Ryan, William.....	5 00
Mason, E. C.....	5 00	Sammis, J. L.....	2 00
Mason, Mrs. Max.....	10 00	Sanborn, A. L.....	25 00
Mason, Vroman.....	5 00	Sater, M. H.....	5 00
Mautz Bros.....	15 00	Sauthoff, Harry.....	5 00
Mayers, Andrew A.....	10 00	Sayle, George C.....	10 00
Mead, Daniel W.....	25 00	Scanlan-Morris Co.....	10 00
Menges, A. F.....	10 00	Schenk, H. C.....	5 00
Merz, A. T.....	5 00	Schlingen, Fred M.....	15 00
Meuer, Wm. J.....	10 00	Schmitz, August J.....	5 00
Moore, R. A.....	5 00	Schoelkopf, F. L.....	25 00
Moran, John.....	5 00	Schoen, Frank.....	5 00
Morris, A. B.....	5 00	Schumacher, W. G.....	5 00
Morris, W. A. P.....	10 00	Seastone, C. V.....	10 00
Moseley Book Co.....	10 00	Sellery, G. C.....	5 00
Murray, T. G.....	5 00	Sharratt, H. F.....	5 00
Neckerman, George N.....	5 00	Siebecker, R. G.....	5 00
Nelson, George.....	10 00		

Sigma Alpha Epsilon	\$15 00	Thwaites, Mrs. Jessie T.	\$5 00
Simon, Fred N.	5 00	Toeffer, Otto.....	5 00
Sinaiko, Alex.....	5 00	Tormey, Thomas W.....	5 00
Slichter, Charles S.....	20 00	Tressler, A. W.....	10 00
Smith, Charles Forster.....	5 00	Trumbower, Henry R.....	5 00
Smith, Edward H.....	5 00	Turneure, F. E.....	10 00
Smith, Lathrop E.....	5 00	Van Deusen's.....	5 00
Smith, Walter M.....	5 00	Van Vleck, E. B.....	5 00
Smith & Wilhelm.....	5 00	Vilas, Mrs. Anna M.....	125 00
Smythe, H. A.....	5 00	Wagner, George.....	10 00
Snow, B. W.....	5 00	Warner, Ernest N.....	25 00
St. John, John W.....	10 00	Warner, Mrs. W. W.....	5 00
Stark, P. E.....	10 00	West, J. P.....	5 00
Stebbins, Byron H.....	5 00	Wiedenbeck-Dobelin Co.....	25 00
Steensland Land Co.....	30 00	Wolcott, W. A.....	5 00
Steve, W. F.....	5 00	Wolff, Kubly & Hirsig.....	10 00
Stitgen, Ben.....	5 00	Wood, Kent T.....	5 00
Struck & Irwin Fuel Co.....	10 00	Worcester, E. S.....	5 00
Suhr, F. W.....	5 00	Young, Edward J.....	10 00
Swenson, Magnus.....	25 00	Zimmermann, A. G.....	5 00
Taylor, Richard F.....	5 00	Zoelle, F. J.....	5 00
Teckmeyer, W. J.....	15 00		
Thompson, H. L.....	5 00		
Thorkelson, H. J.....	10 00		
Thorp, Miss Juliet C.....	5 00		
Thwaites, F. T.....	5 00		
		Total.....	\$2,352 00



LEOPARD AND JAGUAR

Balance Sheet

By City Auditor

Madison Park and Pleasure Drive Association

STATEMENT OF DETAIL OPERATION, MAINTENANCE, AND OUTLAY EXPENDITURES OF PUBLIC PARKS AND PLAYGROUNDS FOR PERIOD JANUARY 1, 1919, TO DECEMBER 31, 1919.

Account	Expenditure	Budget Appropriation	Unexpended Balance	Overdraft
ADMINISTRATION				
Salaries and Wages	\$2,285 00	\$2,520 00	\$235 00
Printing, Stationery and Office Expense	181 10	200 00	18 90
	\$2,466 10	\$2,720 00	\$253 90
TENNEY PARK AND PARKWAY				
Salaries and Wages	\$3,345 99	\$3,155 00	\$190 99
General Supplies and Expense	36 46	43 00	\$3 54
Heat and Light	33 55	50 00	16 45
Repairs and Replacements	41 16	125 00	83 84
Furniture and Fixtures	24 00	24 00
Real Estate and Structures	1,099 75	1,199 75	100 00
	\$4,559 91	\$4,596 75	\$227 83	\$190 99

STATEMENT OF DETAIL OPERATION, MAINTENANCE, AND OUTLAY EXPENDITURES OF PUBLIC PARKS AND PLAYGROUNDS FOR PERIOD JANUARY 1, 1919, TO DECEMBER 31, 1919, CONTINUED.

Account	Expenditure	Budget Appropriation	Unexpended Balance	Overdraft
TENNEY PARK BATHHOUSE				
Salaries and Wages.....	\$936 22	\$890 00	\$46 22
Printing, Stationery and Office Expense.....	14 56	18 00	\$3 44
Rent and Insurance.....	36 65	28 00	8 65
General Supplies and Expense.....	39 84	39 84
Laundry and Janitor Supplies.....	150 45	90 40	60 05
Drygoods, Bedding and Clothing.....	11 40	9 80	1 60
Heat, Light, Power and Water.....	101 41	101 41
Repairs and Replacements.....	19 62	90 00	70 38
	\$1,310 15	\$1,126 20	\$73 82	\$257 77
TENNEY PARK LAVATORY				
Laundry and Janitor Expense.....	\$2 75	\$16 00	\$13 25
Medical Supplies.....	2 00	2 00
Heat, Light, Power and Water.....	90 00	90 00
Repairs and Replacements.....	10 00	10 00
	\$2 75	\$118 00	\$115 25

STATEMENT OF DETAIL OPERATION, MAINTENANCE, AND OUTLAY EXPENDITURES OF PUBLIC
PARKS AND PLAYGROUNDS FOR PERIOD JANUARY 1, 1919, TO DECEMBER 31, 1919, CONTINUED.

Account	Expenditure	Budget Appropriation	Unexpended Balance	Overdraft
GENERAL PARK EQUIPMENT				
Salaries and Wages.....	\$431 49	\$150 00		\$281 49
General Supplies and Expense.....	424 87	142 70		282 17
Heat, Light, Power and Water.....	15 80	100 00	\$84 20	
Stable and Garage Expense.....	1,278 70	1,267 00		11 70
Repairs and Replacements.....	90 99			90 99
Apparatus and Equipment.....		48 00		48 00
Laundry and Janitor Supplies.....	10 25			10 25
	\$2,300 10	\$1,659 70	\$84 20	\$724 60
BRITTINGHAM PARK				
Salaries and Wages.....	\$3,168 62	\$2,805 00		\$363 62
General Supplies and Expense.....	7 15	9 00	\$1 85	
Heat, Light, Power and Water.....	13 72	80 00	66 28	
Repairs and Replacements.....		275 00	275 00	
Real Estate and Structures.....	1,214 13	1,210 98		3 15
	\$4,403 62	\$4,379 98	\$343 13	\$366 77

STATEMENT OF DETAIL OPERATION, MAINTENANCE, AND OUTLAY EXPENDITURES OF PUBLIC
PARKS AND PLAYGROUNDS FOR PERIOD JANUARY 1, 1919, TO DECEMBER 31, 1919, CONTINUED.

Account	Expenditure	Budget Appropriation	Unexpended Balance	Overdraft
BRITTINGHAM PARK BOATHOUSE				
Salaries and Wages.....	\$680 00	\$680 00		
Printing, Stationery and Office Expense.....	30 45	30 00		\$0 45
Rent and Insurance.....		120 00	\$120 00	
General Supplies and Expense.....	17 77	3 40		14 45
Laundry and Janitor Supplies.....		5 60	5 60	
Medical Supplies.....		2 00	2 00	
Heat, Light, Power and Water.....	64 63	44 00		20 63
Drygoods, Bedding and Clothing.....		8 00	8 00	
Repairs and Replacements.....		35 00	35 00	
	\$792 85	\$928 00	\$170 60	\$33 45
BRITTINGHAM PARK BATHHOUSE				
Salaries and Wages.....	\$828 50	\$890 00	\$61 50	
Printing, Stationery and Office Expense.....	14 90	18 00	3 10	
Rent and Insurance.....	21 25	51 00	29 75	
General Supplies and Expense.....	62 32	6 48		\$55 84
Laundry and Janitor Expense.....	40 35	64 40	24 05	
Medical Supplies.....		2 00	2 00	
Drygoods, Bedding and Clothing.....		9 80	9 80	
Heat, Light, Power and Water.....	100 33	40 00		60 33
Repairs and Replacements.....	6 52	160 00	153 48	
	\$1,074 17	\$1,241 68	\$283 68	\$116 17

STATEMENT OF DETAIL OPERATION, MAINTENANCE, AND OUTLAY EXPENDITURES OF PUBLIC
PARKS AND PLAYGROUNDS FOR PERIOD JANUARY 1, 1919, TO DECEMBER 31, 1919, CONTINUED.

Account	Expenditure	Budget Appropriation	Unexpended Balance	Overdraft
HENRY VILAS PARK				
Salaries and Wages.....	\$3,686 08	\$3,750 00		\$118 08
Freight and Express.....	2 08			2 08
General Supplies and Expense.....	132 92	63 00		69 92
Heat and Light.....	499 70	200 00		299 70
Drygoods, Bedding and Clothing.....		4 00	\$4 00	
Repairs and Replacements.....		125 00	125 00	
Real Estate and Structures.....	882 10	1,271 51	389 41	
	\$5,384 88	\$5,413 51	\$518 41	\$489 78
HENRY VILAS PARK ZOO				
Salaries and Wages.....	\$9,213 95	\$8,360 00		\$853 95
Printing, Stationery and Office Expense.....	49 75	52 50	2 75	
Freight and Express.....	1 13			1 13
Rent and Insurance.....	128 40	160 00	31 60	
General Supplies and Expense.....	8,995 02	9,131 48	136 46	
Laundry and Janitor Expense.....	56 46	86 00	29 54	
Heat, Light, Power and Water.....	3,097 79	3,871 00	773 21	
Drygoods, Bedding and Clothing.....	2 40	20 00	17 80	
Repairs and Replacements.....	159 35	500 00	340 65	
Apparatus and Equipment.....		15 00	15 00	
Real Estate and Structures.....	94 87	625 00	530 13	
Medical Supplies.....	33 45			33 45
	\$21,832 57	\$22,820 98	\$1,876 94	\$888 53

STATEMENT OF DETAIL OPERATION, MAINTENANCE, AND OUTLAY EXPENDITURES OF PUBLIC PARKS AND PLAYGROUNDS FOR PERIOD JANUARY 1, 1919, TO DECEMBER 31, 1919, CONTINUED.

Account	Expenditure	Budget Appropriation	Unexpended Balance	Overdraft
HENRY VILAS PARK LAVATORY				
Salaries and Wages	\$228 57	\$228 57
General Supplies and Expense.....	95 67	95 67
Laundry and Janitor Expense.....	2 34	\$21 00	\$18 66
Medical Supplies.....	2 00	2 00
Heat, Light, Power and Water.....	61 77	150 00	88 23
	\$388 35	\$173 00	\$108 89	\$324 24
ORTON PARK				
Salaries and Wages.....	\$274 37	\$175 00	\$99 37
WASHINGTON BOULEVARD				
Salaries and Wages.....	\$155 06	\$75 00	\$80 06

STATEMENT OF DETAIL OPERATION, MAINTENANCE, AND OUTLAY EXPENDITURES OF PUBLIC
PARKS AND PLAYGROUNDS FOR PERIOD JANUARY 1, 1919, TO DECEMBER 31, 1919, CONTINUED.

Account	Expenditure	Budget Appropriation	Unexpended Balance	Overdraft
BURROWS PARK				
Salaries and Wages.....	\$52 65	\$50 00	\$2 65
SPAIGHT STREET PARK				
Salaries and Wages.....	\$82 75	\$75 00	\$7 75
KENDALL PARK				
Salaries and Wages.....	\$47 72	\$25 00	\$22 72
Real Estate and Structures.....	446 85	429 15	17 70
	\$494 57	\$454 15	\$40 42
OLIVE JONES FIELD				
Salaries and Wages.....	\$9 51	\$25 00	\$15 49
Real Estate and Structures.....	272 64	160 64	\$112 00
	\$282 15	\$185 64	\$15 49	\$112 00

STATEMENT OF DETAIL OPERATION, MAINTENANCE, AND OUTLAY EXPENDITURES OF PUBLIC PARKS AND PLAYGROUNDS FOR PERIOD JANUARY 1, 1919, TO DECEMBER 31, 1919, CONTINUED.

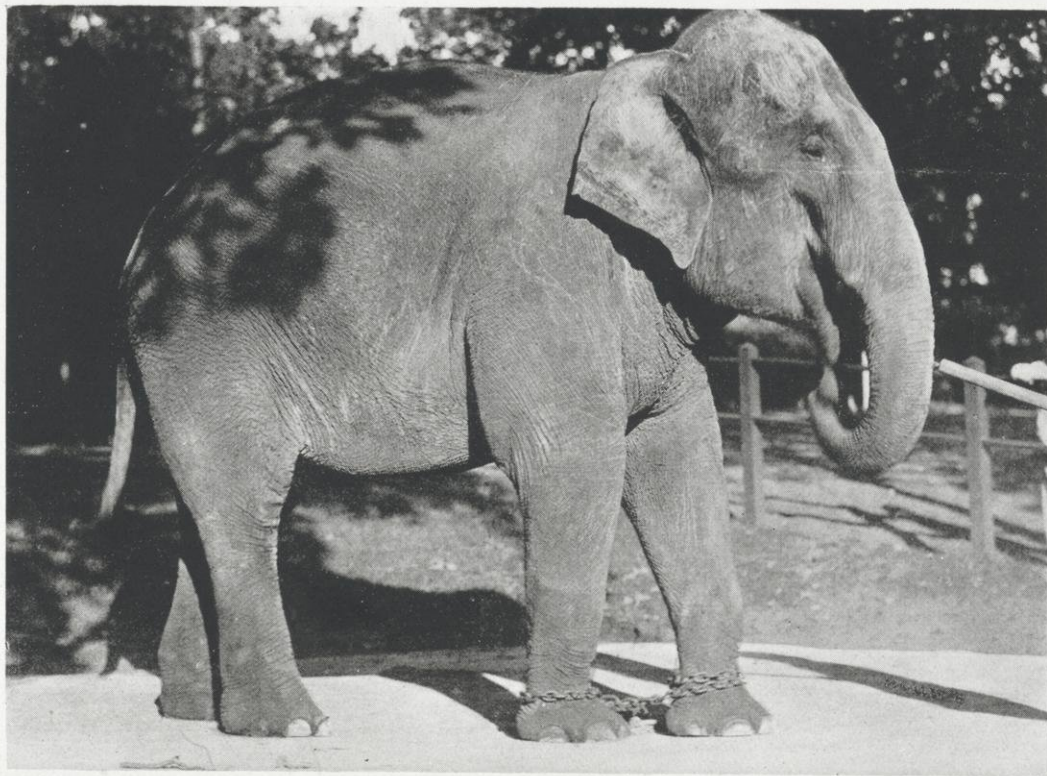
Account	Expenditure	Budget Appropriation	Unexpended Balance	Overdraft
EVERGREEN PARK				
Salaries and Wages.....	\$10 38	\$25 00	\$14 62
BURR JONES FIELD				
Salaries and Wages.....		\$75 00	\$75 00
Real Estate and Structures.....	\$312 69	282 05		\$30 64
	\$312 69	\$357 05	\$75 00	\$30 64
SPOONER STREET VIADUCT				
Salaries and Wages.....	\$20 42	\$15 00	\$5 42
LAKE FRONT PARK				
Salaries and Wages.....	\$482 33	\$470 00	\$12 33

STATEMENT OF DETAIL OPERATION, MAINTENANCE, AND OUTLAY EXPENDITURES OF PUBLIC
PARKS AND PLAYGROUNDS FOR PERIOD JANUARY 1, 1919, TO DECEMBER 31, 1919, CONTINUED.

Account	Expenditure	Budget Appropriation	Unexpended Balance	Overdraft
MORRISON STREET PARK				
Salaries and Wages.....	\$56 14	\$50 00	\$6 14
Real Estate and Structures.....	60 70	57 50	3 20
	\$116 84	\$107 50	\$9 34
MAPLE PARK				
Salaries and Wages.....	\$59 82	\$75 00	\$15 18
WASHINGTON OVAL				
Salaries and Wages.....	\$78 20	\$125 00	\$46 80
PARK PIERS AND BRIDGES				
Salaries and Wages.....	\$40 14	\$40 14

STATEMENT OF DETAIL OPERATION, MAINTENANCE, AND OUTLAY EXPENDITURES OF PUBLIC
PARKS AND PLAYGROUNDS FOR PERIOD JANUARY 1, 1919, TO DECEMBER 31, 1919, CONTINUED.

Account	Expenditure	Budget Appropriation	Unexpended Balance	Overdraft
FARWELL AND LAKE MENDOTA DRIVES Provided from Contingent Fund.....	\$2,000 00	\$2,000 00		
MONONA SKATING RINK Maintenance of Rink	\$41 37			\$41 37
Grand Totals.....	\$49,019 19	\$49,367 14	\$4,223 74	\$3,875 79
TOTAL BUDGET APPROPRIATION.....			\$49,367 14	
TOTAL EXPENDITURES.....				\$49,019 19
UNEXPENDED BALANCE.....				347 95
			\$49,367 14	\$49,367 14



ANNE

Animals in the Zoological Collection at Henry Vilas Park

April 1, 1920

Mammals		
<i>Marsupiala</i>	No. of Specimens	Guinea pig.....12 (<i>Cavia porcellus</i>)
Parma wallaby kangaroo..... 1		<i>Lagomorpha</i>
(<i>Macropus parma</i>)		Domestic rabbit..... 6 (<i>Oryctolagus cuniculus</i>)
<i>Carnivora</i>		<i>Primates</i>
European bear, Russian Brown 2		Gray spider monkey..... 2 (<i>Ateles geoffroyi</i>)
(<i>Ursus arctos</i>)		White-throated capuchin..... 1 (<i>Cebus capucinus</i>)
Grizzly bear..... 2		Margarita capuchin..... 1 (<i>Cebus margaritae</i>)
(<i>Ursus horribilis</i>)		Mandrill..... 1 (<i>Papio sphinx</i>)
Black bear..... 7		Pig-tailed monkey..... 1 (<i>Macaca nemestrina</i>)
(<i>Ursus americanus</i>)		Rhesus monkey.....15 (<i>Macaca rhesus</i>)
Cinnamon bear..... 3		Javan macaque..... 3 (<i>Macaca mordax</i>)
(<i>Ursus americanus cinnamomum</i>)		Sooty mangabey..... 1 (<i>Cercocebus fuliginosus</i>)
Polar bear..... 1		Mona..... 1 (<i>Lasiopyga mona</i>)
(<i>Thalarctos maritimus</i>)		Patas monkey..... 1 (<i>Erythrocebus patas</i>)
Gray wolf..... 2		Blueball..... 1 (<i>Callithrix moloch</i>)
(<i>Canis Nubilus</i>)		<i>Artiodactyla</i>
Coyote..... 4		Llama..... 3 (<i>Lama glama</i>)
(<i>Canis latrans</i>)		Sacred white fallow deer..... 4 (<i>Dama vulgaris</i>)
Red fox..... 3		Barasingha..... 3 (<i>Rucervus duvaucelii</i>)
(<i>Vulpes fulva</i>)		Japanese deer..... 3 (<i>Sika nippon</i>)
Raccoon..... 8		Red European deer..... 3 (<i>Cervus elaphus</i>)
(<i>Procyon lotor</i>)		American elk..... 4 (<i>Cervus canadensis</i>)
Ferret..... 6		Virginia Deer..... 1 (<i>Odocoileus virginianus</i>)
(<i>Mustela furo</i>)		Tahr..... 3 (<i>Hemitragus jemlahicus</i>)
American badger..... 2		Aoudad..... 2 (<i>Ammotragus lervia</i>)
(<i>Taxidea taxus</i>)		Domestic ass..... 1 (<i>Equus domesticus asinus</i>)
African civet cat..... 2		
(<i>Viverra civetta</i>)		
Lion..... 3		
(<i>Felis leo</i>)		
Bengal tiger..... 2		
(<i>Felis tigris</i>)		
Leopard..... 2		
(<i>Felis pardus</i>)		
Jaguar..... 1		
(<i>Felis onca</i>)		
Mountain lion..... 1		
(<i>Felis hipolestes</i>)		
Bay lynx..... 1		
(<i>Lynx ruffus</i>)		
<i>Rodentia</i>		
Woodchuck..... 2		
(<i>Marmota monax</i>)		
Prairie-dog..... 2		
(<i>Cynomys ludovicianus</i>)		
Canadian Porcupine..... 3		
(<i>Erethizon Dorsatus</i>)		

Zebu..... 1	(<i>Bos indicus</i>)	Red-tailed hawk..... 2	(<i>Buteo borealis</i>)
American bison..... 2	(<i>Bison bison</i>)		
<i>Proboscidea</i>			
Indian elephant..... 1	(<i>Elephas indicus</i>)		
Birds			
<i>Ratitae</i>			
South African ostrich..... 2	(<i>Struthio australis</i>)		
Rhea..... 1	(<i>Rhea americana</i>)		
Emu..... 1	(<i>Dromiceius novaehollandiae</i>)		
<i>Ciconiiformes</i>			
American white pelican..... 1	(<i>Pelecanus erythrorhynchos</i>)		
Great blue heron..... 3	(<i>Ardea herodias</i>)		
Black-crowned night heron... 20	(<i>Nycticorax nycticorax naevius</i>)		
<i>Anseriformes</i>			
Mallard duck..... 14	(<i>Anas platyrhynchos</i>)		
Black duck..... 2	(<i>Anas rubripes</i>)		
Pintail..... 2	(<i>Dafila acuta</i>)		
Wood duck..... 3	(<i>Aix sponsa</i>)		
Mandarin duck..... 7	(<i>Dendronessa galericulata</i>)		
Canada goose..... 3	(<i>Branta canadensis</i>)		
Egyptian goose..... 2	(<i>Chenalopex oegyptiaca</i>)		
African goose..... 4	(<i>Anser ganbeli</i>)		
Gray Swedish duck..... 3			
Black Muscovy duck..... 7			
White Muscovy duck..... 4			
Whistling swan..... 2	(<i>Olor columbianus</i>)		
<i>Falconiformes</i>			
Turkey vulture..... 2	(<i>Cathartes aura</i>)		
Golden eagle..... 2	(<i>Aquila chrysaetos</i>)		
Bald eagle..... 2	(<i>Haliaeetus leucocephalus</i>)		
		<i>Galliformes</i>	
		Silver pheasant..... 4	(<i>Gennaues nycthemerus</i>)
		Lady Amherst's pheasant..... 1	(<i>Chrysolophus amherstiae</i>)
		Golden pheasant..... 6	(<i>Chrysolophus pictus</i>)
		Reeves pheasant..... 4	(<i>Symatius reevesi</i>)
		Ring neck pheasant..... 2	(<i>Phasianus torquatus</i>)
		<i>Gruiformes</i>	
		Sandhill crane..... 1	(<i>Grus mexicana</i>)
		Demoiselle crane..... 1	(<i>Anthropoides virgo</i>)
		<i>Charadriiformes</i>	
		Herring gull..... 5	(<i>Larus argentatus</i>)
		Australian crested pigeon..... 2	(<i>Ocyphaps lophotes</i>)
		Bronze-wing pigeon..... 2	(<i>Phaps chalcoptera</i>)
		Mourning dove..... 1	(<i>Zenaidura macroura</i>)
		Zebra dove..... 2	(<i>Geopelia striata</i>)
		Ringed turtle-dove..... 6	(<i>Streptopelia risoria</i>)
		Nicobur pigeon..... 2	(<i>Caloenus nicobarica</i>)
		Domestic pigeon..... 16	
		<i>Psittaciformes</i>	
		Grass paroquet (Green)..... 4	(<i>Melopsittacus undulatus</i>)
		Grass paroquet (Yellow)..... 4	(<i>Melopsittacus undulatus</i>)
		Yellow-headed parrot..... 2	(<i>Amazona ochrocephala</i>)
		Ringneck Paroquet..... 4	(<i>Paleoornis torquatus</i>)
		Australian magpie..... 1	(<i>Gymnor hinatibicen</i>)
		Red-and-blue macaw..... 1	(<i>Ara chloroptera</i>)
		Blue-and-yellow macaw..... 1	(<i>Ara ararauna</i>)
		Sulphur-crested cockatoo..... 2	(<i>Cacatoes galerita</i>)
		Leadbeater's cockatoo..... 1	(<i>Cacatoes leadbeateri</i>)
		Roseate cockatoo..... 4	(<i>Cacatoes roseicapilla</i>)

<i>Coraciiformes</i>		Calico Bass
Giant kingfisher	2	(<i>Pomoxis Sparoides</i>)
(<i>Dacelo gigas</i>)		White Bass
Screech owl	5	(<i>Roccos chrysosps</i>)
(<i>Otus asio</i>)		Rock Bass
Great horned owl	6	(<i>Ambloplites rupestris</i>)
(<i>Bubo virginianus</i>)		Yellow Perch
		(<i>Perca flarescens</i>)
<i>Passeriformes</i>		Common Sunfish
Carrion crow	1	(<i>Eupomotis gibbosus</i>)
(<i>Corvus frugivorus</i>)		Bluegill
Catbird	1	(<i>Lepomis pallidus</i>)
(<i>Dumetella carolinensis</i>)		Wall-eyed Pike
Black bird	1	(<i>Stizostedion Vitreum</i>)
(<i>Sturnus vulgaris</i>)		Muskallunge
Zebra finch	12	(<i>Esox masquinongy</i>)
(<i>Taeniopygia castanotis</i>)		Great Northern Pike
Strawberry finch	15	(<i>Esox immaculatus</i>)
(<i>Amandava amandava</i>)		Pickereel
Canary	10	(<i>Esox lucius</i>)
(<i>Serinus canarius</i>)		Brook Trout
Red-crested cardinal	1	(<i>Salvelinus fontinalis</i>)
(<i>Paroaria cuculata</i>)		Rainbow Trout
Blue jay	1	(<i>Salmo irideus</i>)
(<i>Cyanocetta cristata</i>)		Whitefish
Robin	1	(<i>Coregonus clupeiformes</i>)
(<i>Planesticus migratorius</i>)		Common Chub
Robin Japanese	12	(<i>Semotilus atromaculatus</i>)
(<i>Planesticus Japonica</i>)		German Carp
Gray Java sparrow	4	(<i>Cyprinus carpes</i>)
White Java sparrow	4	Common Sucker
		(<i>Moxostoma aureolum</i>)
		Buffalo
		(<i>Ictiobus cyprinella</i>)
		Black Bullhead
		(<i>Ameiurus Melas</i>)
		Channel Cat
		(<i>Ictalurus punctatus</i>)
		Lake Sturgeon
		(<i>Acipenser rubicundus</i>)
		Dogfish
		(<i>Haleocomorphi</i>)
		Long Nosed Gar
		(<i>Gingly modi</i>)
		Goldfish—several varieties
		Tropical fish—ten varieties, four
		of them live bearing.
Reptiles		
Alligator	12	
(Alligator Mississipiensis)		

The number and variety of fish differs considerably during different seasons of the year. The following varieties are on exhibit some time during the year. On this date more than two hundred specimen are on display:

- Small Mouth Black Bass
(*Micropterus dolomien*)
- Large Mouth Black Bass
(*Micropterus salmoides*)



SMALL ISLAND, HENRY VILAS PARK

Length of Lake and Park Drives

	Miles
Lake Mendota Drive	
University Drive.....	1
Bay Road and Eagle Heights.....	2
Eagle Heights to Merrill Springs.....	1.6
Mendota Beach.....	.7
Capital Avenue.....	.6
Sumac Drive.....	1.3
Total miles.....	<u>7.2</u>
Hammersley Road.....	.9
Owen Parkway.....	1.5
Farwell Drive	
Lakewood Boulevard.....	1.5
Maple Bluff and Woodward's Grove.....	2.8
State Hospital Drive.....	1
Woodward Farm Road.....	.6
Total miles.....	<u>5.9</u>
Tenney Park	
Thornton Avenue.....	1
Sherman Avenue.....	.2
Marston Avenue.....	.5
Total miles.....	<u>1.7</u>
Lake Front Park	
Lake Drive.....	.5
Total miles.....	<u>.5</u>
Brittingham Park	
Brittingham Drive.....	.7
Brittingham Boulevard.....	.8
Total miles.....	<u>1.5</u>
Henry Vilas Park	
Elm Court.....	.1
Burr Oak Drive.....	.7
Meadow Drive.....	.5
Wingra Heights Drive.....	.4
Fenway Drive.....	1
Edgewood.....	.5
Total miles.....	<u>3.2</u>
West Washington Boulevard.....	<u>1</u>
Total miles.....	<u>23.4</u>

Present Park Areas and Water Frontage

Parks.	Acres	Water Frontage
Brittingham Park.....	27	4,370 ft.
Burr Jones Field.....	1.5
Burrows Park.....	12	550 ft.
East Monona.....	6	5,000 ft.
East Washington Ave. Parkway.....	10
Elmside and Lake Front Park.....	5.1	2,000 ft.
Henry Vilas Park.....	62.6	6,000 ft.
Highlands.....	11
Kendall Park.....	1.5
Monona Park (Assembly Grounds).....	30	1,350 ft.
Olive Jones Field.....	1.5
Orton Park.....	3.6
Owen Parkway.....	6
South Madison Boulevard.....	5	4,800 ft.
Spring Harbor.....	1	270 ft.
Spaight Street Park.....	1.5	600 ft.
Tenney Park.....	44.2	3,800 ft.
Washington Oval.....	.9
Wingra Monona Parkway.....	33	6,000 ft.
Yahara Parkway.....	16.9	7,200 ft.
Totals.....	280.3	41,940 ft.



FULFILLMENT OF THE PROPHECY

