



LIBRARIES

UNIVERSITY OF WISCONSIN-MADISON

General catalog, 1924-1925: household and dining room furniture, office-school and hotel chairs. 1925

Crocker Chair Company

[S.l.]: [s.n.], 1925

<https://digital.library.wisc.edu/1711.dl/UY33Q2T7BUAAG8O>

This material may be protected by copyright law (Title 17, US Code).

Original material owned by Mead Public Library.

For information on re-use see:

<http://digital.library.wisc.edu/1711.dl/Copyright>

The libraries provide public access to a wide range of material, including online exhibits, digitized collections, archival finding aids, our catalog, online articles, and a growing range of materials in many media.

When possible, we provide rights information in catalog records, finding aids, and other metadata that accompanies collections or items. However, it is always the user's obligation to evaluate copyright and rights issues in light of their own use.

CROCKER CHAIR COMPANY

1924-1925



S
R
674
C87g

Sheboygan, Wisconsin

SHEB 2FLR/REFERENCE

S R

674 C87g

Crocker Chair Company

General catalog, 1924-1925 :househo
ld and dining room furniture, offic
e and hotel chairs.



9000369068

7010-1 = 3.00
7012 6.50
7014 4.00
7016 4.00
7016-2 5.75
7016-4 6.25
7018
7020 - 4.00
7022
7024
1283-1 = 3.00
1283-2 = 6.00
1285-1 3.25
1285-2 6.25
1287-1 3.25
1287-2 = 6.25
1289-1 = 3.00
1289-2 = 6.00
1297-1 3.75
1297-2 6.25
1299-1 3.75
1299-2 6.25
2201 - 4.15
2203 4.75
2205 4.25
2207 4.90
2209 4.50
2211 4.50
2213 4.25
2215 4.75
2217 4.00



Mead Public Library

CROCKER CHAIR COMPANY

FOUNDED 1880

GENERAL CATALOG 1924-1925

Household and Dining Room
Furniture
Office-School and Hotel Chairs

"A Chair for Every Purpose"



SALESROOMS:

CHICAGO: 1338 S. Michigan Ave. MINNEAPOLIS: 601-5 First Ave., N. E. OAKLAND: Foot of Madison St.

MILLS:

ANTIGO, WIS. -:- ELTON, WIS.

FACTORIES AND EXECUTIVE OFFICES:

SHEBOYGAN, WISCONSIN, U. S. A.

CROCKER CHAIR COMPANY

Find for 100 tables
stain 6.00
large - 26.00
" 26.00
198. orange shellac
1" white
1 gal large
Max 6.00
64.00



39.50

No. 8700

Extension Table

Top 45 x 60 inches, 6, 8 or 10 foot extension
 Base of Solid Walnut—Top 5 ply veneer with Walnut edge

stain and 90.00
antique
shellac 12.80
+ 38 lbs. very sand 16.00
large 12.80
sand 22.50
Max 18.00
168.10
J. labor 84.05
252.15



No. 8704

Buffet

Top 22 x 66 inches

Height 37½ inches

Walnut—American Walnut Waxed or Florentine Finish (Highlighted)
 Tops and Cases 5 ply veneer with Walnut edge

Q A 3 M

WALNUT BUFFET

S
R
674
C87g
c.1

369068

ROCKER CHAIR COMPANY



No. 8701-2

Width between Arms $18\frac{1}{2}$ inches
Height of Back 21 inches



No. 8705

Server
Top 19×42 inches
Height 35 inches



No. 8706 W

China Cabinet
Top 15×42 inches
Height $58\frac{1}{2}$ inches



No. 8701-1

Width of Seat 18 inches
Height of Back 20 inches

Walnut—American Walnut Waxed or Florentine Finish (Highlighted)
Tops and Cases 5 ply veneer with Walnut edge

CROCKER CHAIR COMPANY



No. 7780

Extension Table

Top 45 x 60 inches, 6, 8, or 10 foot extension

Base of Solid Walnut—Top 5 ply veneer with Walnut edge



No. 7782-2UE

Width between Arms 20 inches

Height of Back 25 inches

Spring Seat



No. 7782-1UE

Width of Seat 19½ inches

Height of Back 24 inches

Spring Seat



No. 7784

Buffet

Top 22 x 66 inches

Height 37 inches

Left cupboard has two silver trays

Walnut—Florentine Finish (Highlighted)

Tops and Cases 5 ply veneer with Walnut edge

A rich brown finish, beautifully highlighted, lacquered and rubbed smooth

CROCKER CHAIR COMPANY



No. 7781-1

Width of Seat 18 inches
Height of Back 20 inches



No. 7781-2

Width between Arms 18½ inches
Height of Back 21 inches



No. 7785

Server

Top 19 x 42 inches
Height 35 inches



No. 7786W

China Cabinet

Top 15½ x 42 inches
Height 56 inches



No. 7783-1U

Width of Seat 20½ inches
Height of Back 17¾ inches



No. 7783-2U

Width between Arms 19 inches
Height of Back 19 inches

Walnut—Florentine Finish (Highlighted)
Tops and Cases 5 ply veneer with Walnut edge
A rich brown finish, beautifully highlighted, lacquered and rubbed smooth

CROCKER CHAIR COMPANY



No. 7762-1UE

Width of Seat 19½ inches
Height of Back 24 inches
Spring Seat



No. 7760

Extension Table

Top 45 x 60 inches, 6, 8, or 10 foot extension
Base of Solid Walnut—Top 5 ply veneer with Walnut edge



No. 7764

Buffet

Top 22 x 66 inches
Height 37½ inches



No. 7762-2UE

Width between Arms 20 inches
Height of Back 25 inches
Spring Seat

Walnut—Florentine Finish (Highlighted)

Tops and Cases 5 ply veneer with Walnut edge

All carvings on this suite are of Solid Walnut no composition carvings used
A rich brown finish, beautifully highlighted, lacquered and rubbed smooth

CROCKER CHAIR COMPANY



No. 7765

Server

Top 19 x 42 inches
Height 35 inches



No. 7761-1

Width of Seat 18 inches
Height of Back 20 inches



No. 7761-2

Width between Arms 18½ inches
Height of Back 20½ inches



No. 7766W

China Cabinet

Top 15½ x 42 inches
Height 58½ inches

Walnut—Florentine Finish (Highlighted)

Tops and Cases 5 ply veneer with Walnut edge

All carvings on this suite are of Solid Walnut, no composition carvings used

A rich brown finish, beautifully highlighted, lacquered and rubbed smooth

CROCKER CHAIR COMPANY



+637 Nov. 1924

No. 7734
Buffet
 Top 22 x 66 inches
 Height 37 inches



10.00

+254

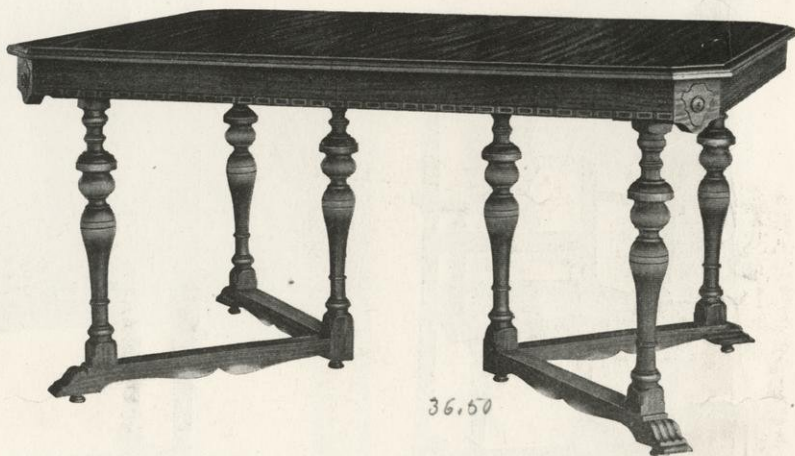
No. 7737-2
 Width between Arms 18 inches
 Height of Back 19½ inches



6.00

+78

No. 7737-1
 Width of Seat 18 inches
 Height of Back 19 inches



36.50

No. 7730
Extension Table
 Top 45 x 60 inches, 6, 8, or 10 foot extension
 Base of Solid Walnut—Top 5 ply veneer with Walnut edge

-200

Walnut—American Walnut Waxed or Florentine Finish (Highlighted)
 Tops and Cases 5 ply veneer with Walnut edge

CROCKER CHAIR COMPANY



No. 7732-1

Width of Seat 18 inches
Height of Back 17½ inches



No. 7732-2

Width between Arms 18 inches
Height of Back 19 inches



No. 7736W

China Cabinet
Top Case 15 x 40 inches
Bottom Case 19 x 42 inches
Height 64 inches



No. 7735

Server
Top 19 x 42 inches
Height 33 inches



No. 7733-1UE

Width of Seat 18 inches
Height of Back 17 inches
Spring Seat



No. 7733-2UE

Width between Arms 18 inches
Height of Back 18 inches
Spring Seat

Walnut—American Walnut Waxed or Florentine Finish (Highlighted)
Tops and Cases 5 ply veneer with Walnut edge

CROCKER CHAIR COMPANY



No. 7720

Extension Table

Top 45 x 60 inches, 6, 8 or 10 foot extension

Base of Solid Walnut—Top 5 ply veneer with Walnut edge



No. 7727-2

Width between Arms 18 inches

Height of Back 19½ inches



No. 7727-1

Width of Seat 18 inches

Height of Back 19 inches



No. 7724

Buffet

Top 22 x 66 inches

Height 37 inches

Walnut—American Walnut Waxed or Florentine Finish (Highlighted)
Tops and Cases 5 ply veneer with Walnut edge

CROCKER CHAIR COMPANY



No. 7722-1

Width of Seat 18 inches
Height of Back 17½ inches



No. 7725

Server
Top 19 x 42 inches
Height 33 inches



No. 7726W

China Cabinet

Top Case 15 x 40 inches
Bottom Case 19 x 42 inches
Height 64 inches



No. 7722-2

Width between Arms 18 inches
Height of Back 19 inches

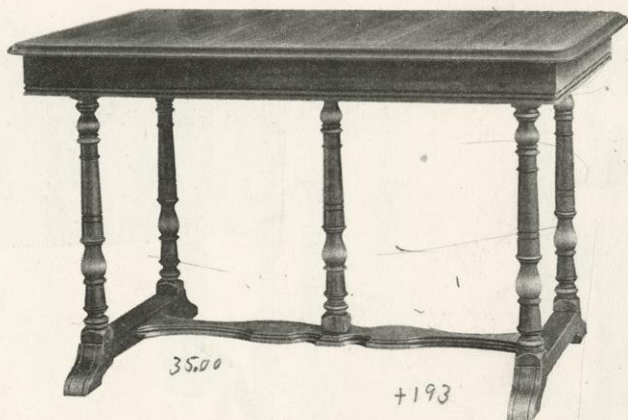
Walnut—American Walnut Waxed or Florentine Finish (Highlighted)
Tops and Cases 5 ply veneer with Walnut edge

CROCKER CHAIR COMPANY



No. 7773-1

Width of Seat 16 inches
Height of Back 18 inches



No. 7770

Extension Table
Top 33 x 48 inches extends to 6 feet
Base remains stationary



No. 7771-1

Width of Seat 17 inches
Height of Back 18 inches



No. 7775

Server

Top 19 x 42 inches
Height 33 inches
Left cupboard has 2 silver Trays



No. 7776

China Cabinet

Top Case 13 x 41½ inches
Bottom Case 19 x 42 inches
Height 63½ inches

Walnut—American Walnut Waxed or Florentine Finish (Highlighted)
Tops and Cases 5 ply veneer with Walnut edge

CROCKER CHAIR COMPANY



No. 7792-1

Width of Seat 17 inches
Height of Back 18 inches



No. 7790

Extension Table
Top 33 x 48 inches extends to 6 feet
Base remains stationary



No. 7793-1

Width of Seat 16 inches
Height of Back 18 inches



No. 7795

Server
Top 19 x 42 inches
Height 33 inches

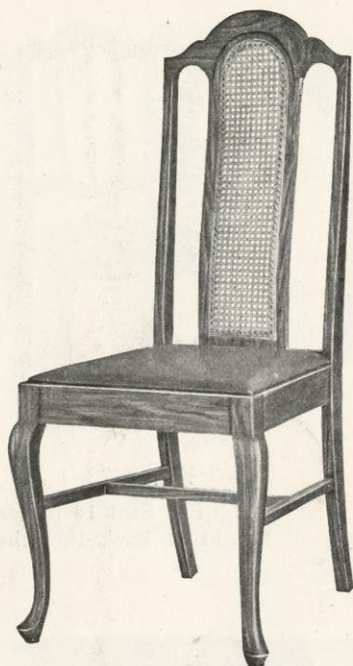


No. 7796

China Cabinet
Top Case 13 x 41½ inches
Bottom Case 19 x 42 inches
Height 62 inches

Birch—Florentine Finish (Highlighted)
American Walnut or Brown Mahogany Dull
Also in Decorated Enamels

CROCKER CHAIR COMPANY



No. 8269-1

Width of Seat 17½ inches
Height of Back 23½ inches



No. 1205-1

Width of Seat 18 inches
Height of Back 20½ inches



No. 1201-1

Width of Seat 18 inches
Height of Back 20 inches



No. 8269-2

Width between Arms 17½ inches
Height of Back 25 inches



No. 1205-2

Width between Arms 18 inches
Height of Back 22 inches



No. 1201-2

Width between Arms 18 inches
Height of Back 21½ inches

Walnut—American Walnut or Brown Mahogany Rubbed

CROCKER CHAIR COMPANY



No. 1209-1

Width of Seat 18 inches
Height of Back 20 inches



No. 8235-1

Width of Seat 17½ inches
Height of Back 23½ inches



No. 1255-1

Width of Seat 17½ inches
Height of Back 20½ inches



No. 1209-2

Width between Arms 18 inches
Height of Back 22½ inches
Walnut—American Walnut or
Brown Mahogany Rubbed



No. 8235-2

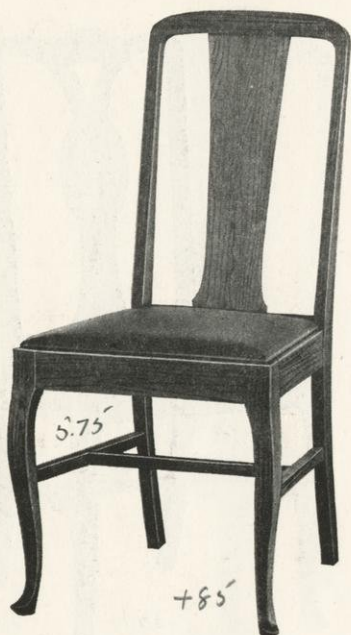
Width between Arms 17½ inches
Height of Back 24 inches
Combination Walnut and
Gum—American Walnut or
Brown Mahogany Rubbed



No. 1255-2

Width between Arms 17½ inches
Height of Back 22 inches
Walnut—American Walnut or
Brown Mahogany Rubbed

CROCKER CHAIR COMPANY



No. 1253-1

Width of Seat $17\frac{1}{2}$ inches
Height of Back $20\frac{1}{2}$ inches



No. 8299-1

Width of Seat $16\frac{1}{2}$ inches
Height of Back $18\frac{1}{2}$ inches



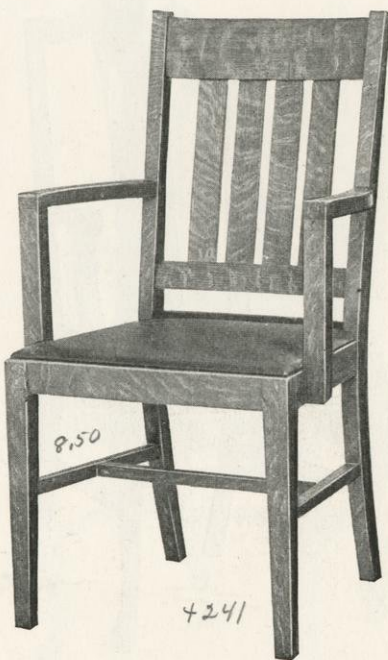
No. 9207-1

Width of Seat $16\frac{1}{4}$ inches
Height of Back $19\frac{1}{2}$ inches



No. 1253-2

Width between Arms $17\frac{1}{2}$ inches
Height of Back 22 inches
Gum—American Walnut or
Brown Mahogany Rubbed



No. 8299-2

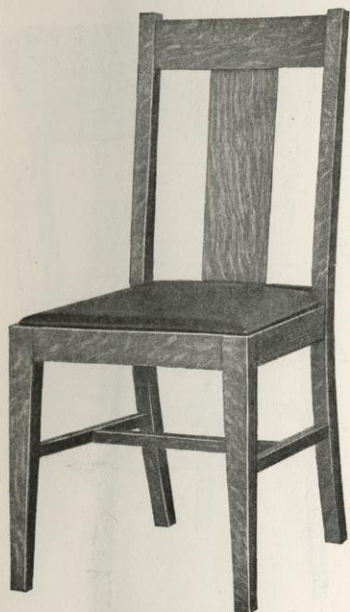
Width between Arms 18 inches
Height of Back 21 inches
Quartered Oak—Fumed or
Waxed



No. 9207-2

Width between arms 21 inches
Height of Back 21 inches
Quartered Oak—Golden Gloss
Waxed or Fumed.
Birch—American Walnut or
Brown Mahogany Rubbed

CROCKER CHAIR COMPANY



No. 9217-1

Quartered Oak
Golden Gloss, Waxed or Fumed



No. 9224-1

Quartered Oak
Golden Gloss, Waxed or Fumed



No. 9216-1

Quartered Oak—Waxed or
Fumed



No. 9217-2

Quartered Oak
Golden Gloss, Waxed or Fumed



No. 778-1

Quartered Oak
Golden Gloss, Waxed or Fumed



No. 6698-1

Oak—Golden Gloss or Light Golden
Finish

CROCKER CHAIR COMPANY



No. 5122-1
Oak—Golden Gloss
Elm Seat



No. 5120-1
Golden Gloss



No. 1300-1
Golden Gloss



No. 6122-1
Oak—Golden Gloss Waxed, or
Fumed



No. 5196-1
Golden Gloss or Fumed Finish



No. 5146-1
Golden Gloss or Fumed Finish

CROCKER CHAIR COMPANY



No. 453V

O a k—Golden Gloss or Rubbed
Mahogany Finish, Gloss or Rubbed
Veneer Seat

No. 453-1

Same as above with Cane Seat



No. 1350-1

Golden Gloss



No. 6126-1

O a k—Golden Gloss or Waxed



No. 756-1

Golden Gloss



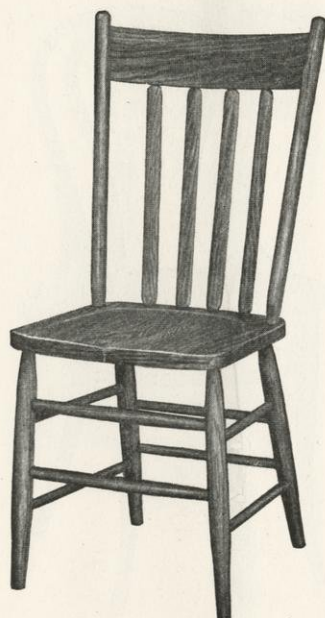
No. 5088-1

Golden Gloss

CROCKER CHAIR COMPANY



No. 6010-1
Golden Gloss



No. 5090-1
Golden Gloss



No. 6006-1
Golden Gloss



No. 1
Golden Gloss



No. 200
Golden Gloss or White Enamel

CROCKER CHAIR COMPANY

HOTEL CHAIRS

Wash. finish

dip water stain	2.80
sand	5.00
dip oil stain	2.00
Shellac	4.50
Sand	4.00
Spray (varnish)	3.00
Spray (haze)	2.00
	<u>23.30</u>
Indirect labor	11.65
	<u>34.95</u>



+48 Dec. 1924 gl.
+35 Wash.

Col. finish

dip 160 in 10 hrs.	2.80
Fill & dry. 250 hrs.	4.60
Sand	4.00
Spray Varnish	1.85
" Haze	1.37
	<u>14.62</u>
Indirect L.	7.31
	<u>21.93</u>

No. 6692-1

Width of Seat 17 inches
Height of Back 17 inches



No. 6692-2

Width between Arms 19 inches
Height of Back 21½ inches



No. 6692-4

Width between Arms 19 inches
Height of Back 21½ inches

Quartered Oak—Golden Oak Dull or Birch—American Walnut or Brown Mahogany Finish Dull

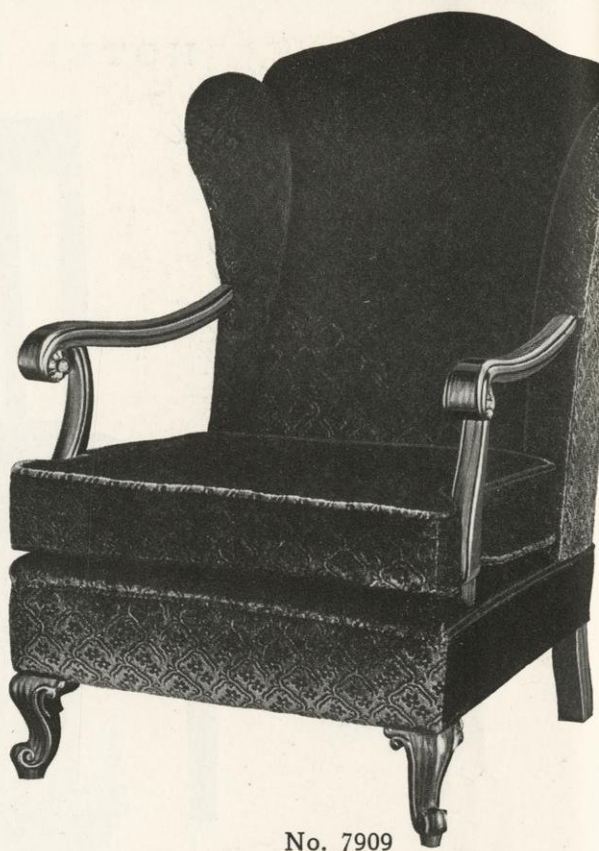
CROCKER CHAIR COMPANY



No. 7901

Width between Arms 23 inches
Height of Back 20 inches

Seat—Kapok (Silk Floss), filled Cushion over double Cone Springs. Back—Marshall Spring Cushion over Pillow Springs.
Solid Mahogany—Brown Mahogany Finish, Rubbed



No. 7909

Width between Arms 22½ inches
Height of Back 28 inches



No. 7485-2UE

Width between Arms 20 inches—Height of Back 20 inches. Spring Edge Seat

Solid Walnut—Florentine Finish (Highlighted) American Walnut or Brown Mahogany Waxed
A rich brown finish, beautifully highlighted, lacquered and rubbed smooth



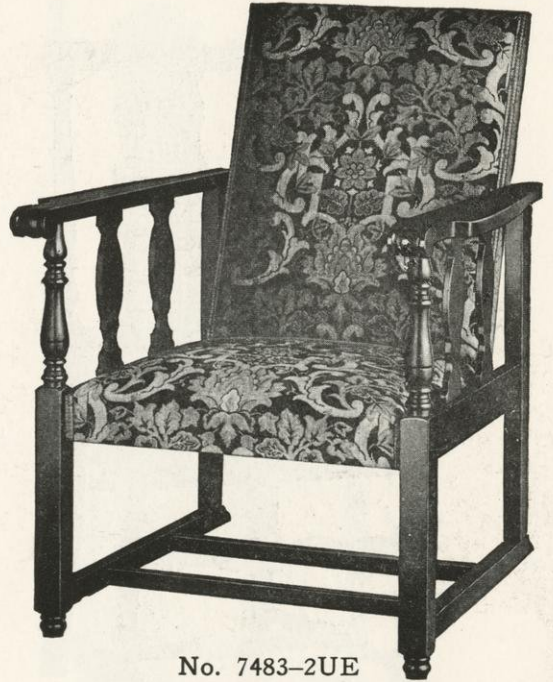
No. 7485-4UE

CROCKER CHAIR COMPANY



No. 7481-2UE

Width between Arms 19 $\frac{3}{4}$ inches
Height of Back 22 inches
Birch—American Walnut or Brown
Mahogany, Rubbed



No. 7483-2UE

Width between Arms 19 $\frac{3}{4}$ inches
Height of Back 22 inches
Solid Walnut—American Walnut
or Brown Mahogany, Rubbed



No. 9271-1UE

Width of Seat 20 inches
Height of Back 27 $\frac{1}{4}$ inches



No. 9271-2UE

Width between Arms 20 inches
Height of Back 27 $\frac{1}{2}$ inches

Solid Walnut—Florentine Finish (Highlighted)

A rich brown finish, beautifully highlighted, lacquered and rubbed smooth

CROCKER CHAIR COMPANY



No. 9271-1
Width of Seat 20 inches
Height of Back 27 inches



No. 9271-2
Width between Arms 20 inches
Height of Back 28 inches



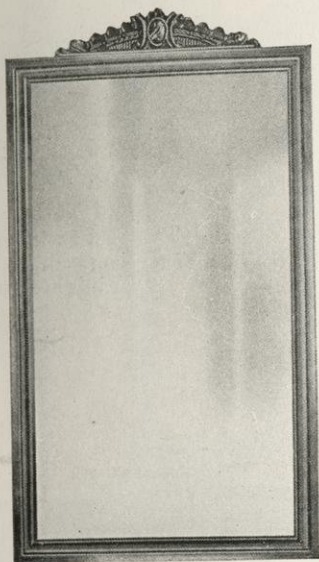
No. 9265-1
Width of Seat 20 inches
Height of Back 27 inches



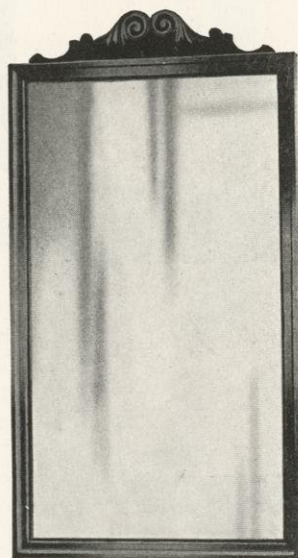
No. 9265-2
Width between Arms 20 inches
Height of Back 28 inches

Solid Walnut—Florentine Finish (Highlighted)
A rich brown finish, beautifully highlighted, lacquered and rubbed smooth

CROCKER CHAIR COMPANY



No. 8805
Console Mirror
16 x 28 inches



No. 8801
Console Mirror
16 x 28 inches



No. 7805
Console Table
Top 26 x 12½ inches



No. 7803
Console Table
26 x 12 inches

Solid Walnut—Florentine Finish (Highlighted)
A rich brown finish, beautifully highlighted, lacquered and rubbed smooth

CROCKER CHAIR COMPANY



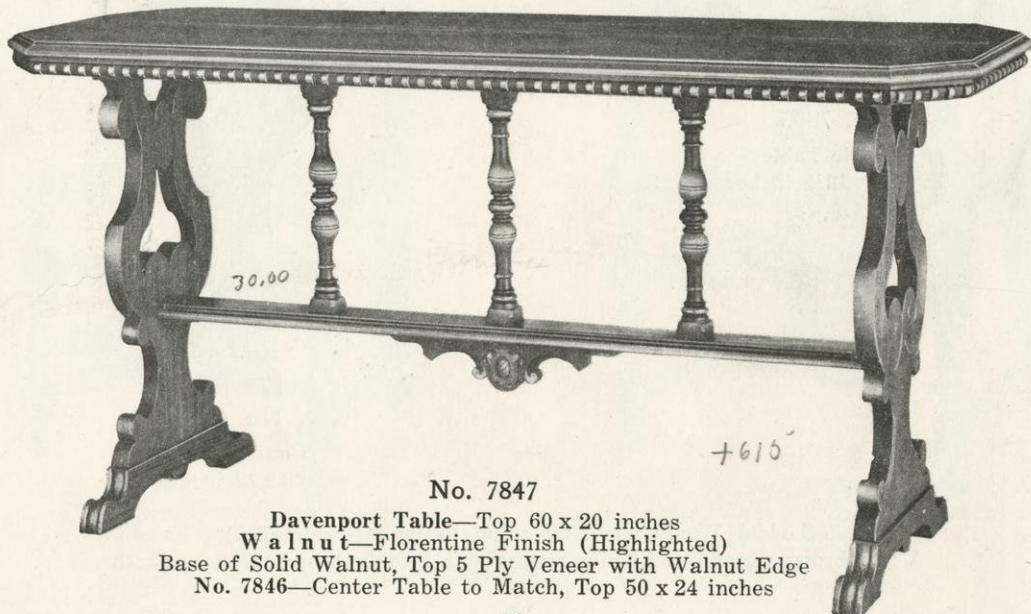
No. 7828
End Table
Top 26 x 12 inches
Solid Walnut—Florentine Finish
(Highlighted)



No. 7848
End Table
Top 26 x 12 inches
Solid Walnut—Florentine Finish
(Highlighted)

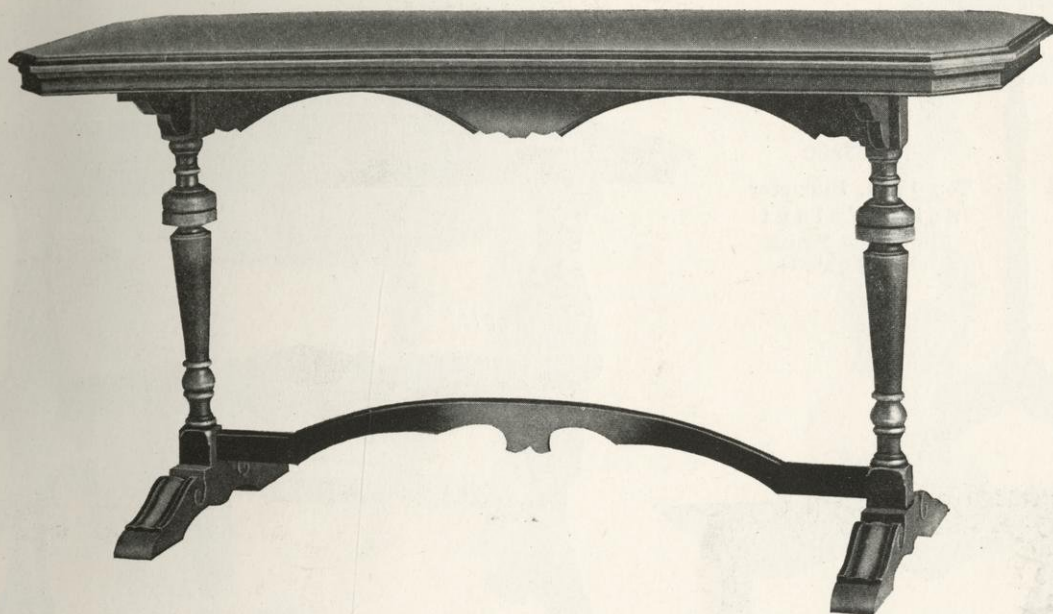


No. 7838
End Table
Top 26 x 12 inches
Solid Walnut—Florentine Finish
(Highlighted)



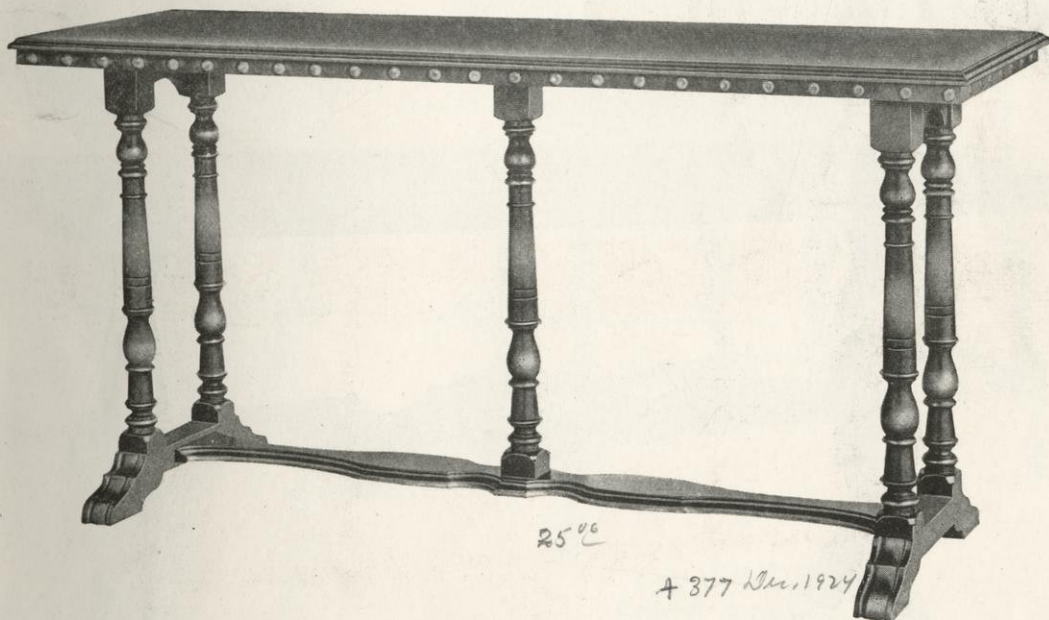
No. 7847
Davenport Table—Top 60 x 20 inches
Walnut—Florentine Finish (Highlighted)
Base of Solid Walnut, Top 5 Ply Veneer with Walnut Edge
No. 7846—Center Table to Match, Top 50 x 24 inches

CROCKER CHAIR COMPANY



No. 7837

Davenport Table—Top 60 x 20 inches
 Walnut—Florentine Finish (Highlighted)
 Base of Solid Walnut, Top 5 Ply Veneer with Walnut Edge
 No. 7836—Center Table to Match, Top 50 x 24 inches



No. 7827

Davenport Table—Top 60 x 20 inches
 Walnut—Florentine Finish (Highlighted)
 No. 7826—Center Table to Match, Top 50 x 24 inches
 A rich brown finish, beautifully highlighted, lacquered and rubbed smooth

CROCKER CHAIR COMPANY



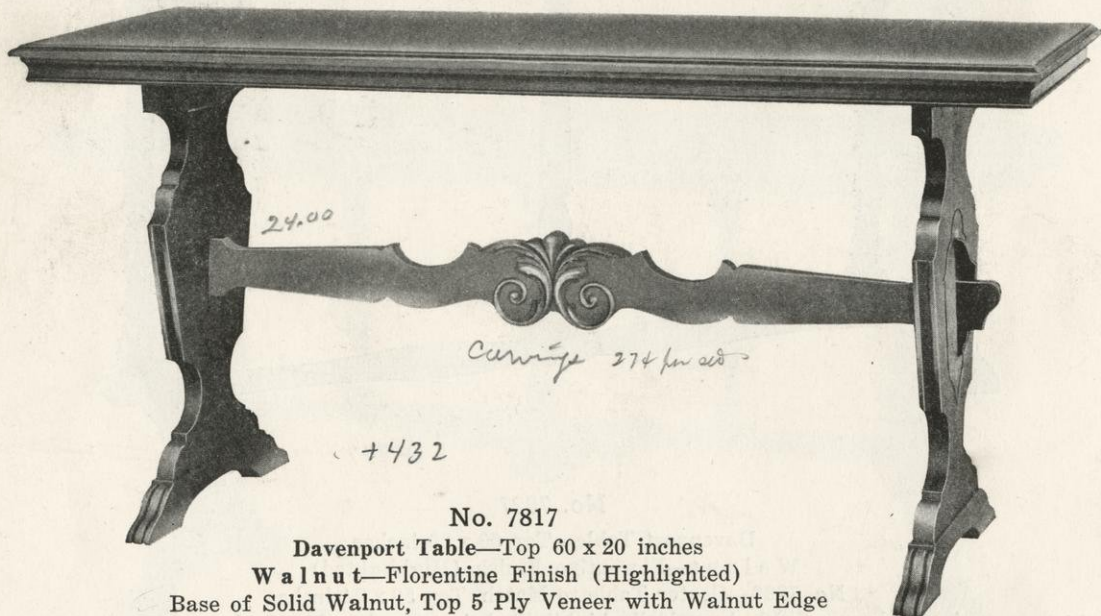
No. 7800
Top 12 in. Diameter
Solid Walnut
Florentine Finish
(Highlighted)



No. 7818
End Table
Top 24 x 12 in.
Solid Walnut
Florentine Finish
(Highlighted)



No. 7813
Hall Table
Top 40 x 17 inches
Solid Walnut—Florentine Finish (Highlighted)



No. 7817
Davenport Table—Top 60 x 20 inches
Walnut—Florentine Finish (Highlighted)
Base of Solid Walnut, Top 5 Ply Veneer with Walnut Edge
No. 7816—Center Table to Match, Top 50 x 24 inches
A rich brown finish, beautifully highlighted, lacquered and rubbed smooth

CROCKER CHAIR COMPANY



No. 7753

Gate Leg Table

Top 36 x 42 inches open
Top 36 x 12 inches closed



No. 8810

Top 18 x 18 inches



No. 8809

Clover Leaf Table

Top 21 inches



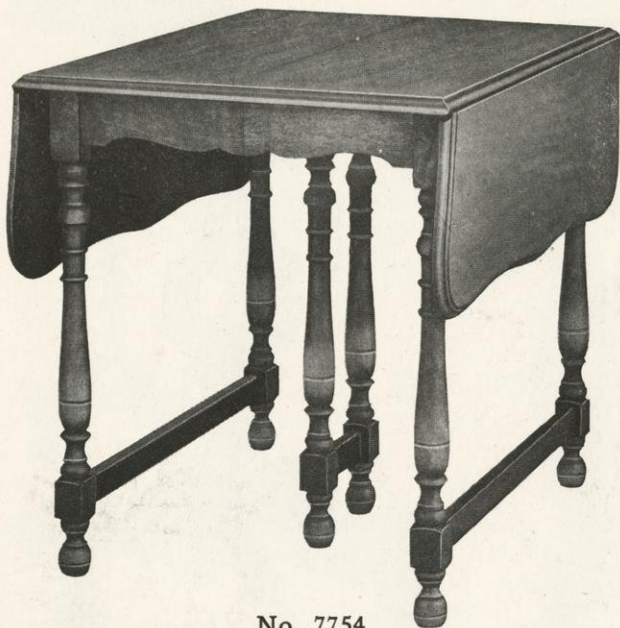
No. 7752

Butterfly Drop Leaf Table

Top 36 inches diameter
Top 36 x 12 inches closed

Solid Walnut—Florentine Finish (Highlighted)
A rich brown finish, beautifully highlighted, lacquered and rubbed smooth

CROCKER CHAIR COMPANY



No. 7754

Extension Drop Leaf Table. Top 36 x 48 open
Extends to 6 ft. Top 36 x 26 inches closed
Birch—Florentine Walnut Finish (Highlighted)
American Walnut Finish Dull or Decorated Enamel



No. 7804

Drop Leaf Table
Top 28 x 28 inches
Solid Walnut—Florentine Finish (Highlighted)



No. 7809

Gate Leg Table
Top 36 x 42 inches
Solid Walnut—Florentine Finish (Highlighted)



No. 7759

Extension Drop Leaf Table
Top 36 x 48 inches open
Extends to 6 feet. Top 36 x 26 inches closed
Birch—Florentine Finish (Highlighted)
American Walnut or Brown Mahogany Dull or
Decorated Enamels

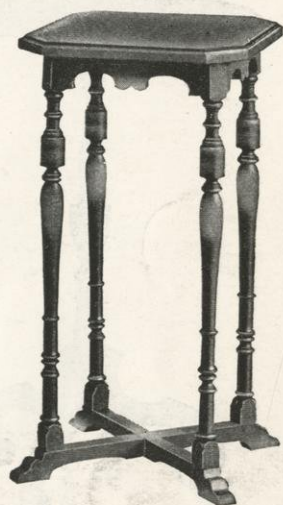
CROCKER CHAIR COMPANY



No. 7802
Telephone Stand
Top 20 x 14 inches



No. 7801
Telephone Chair
Width of Seat 13 1/4 inches
Height of Back 13 inches



No. 7806
Stand
Top 13 x 13 inches



No. 8803
Telephone Stand
Top 24 x 14 inches



No. 8804
Bench
Seat 18 x 11 1/2 inches

Solid Walnut—Florentine Finish (Highlighted)
A rich brown finish, beautifully highlighted, lacquered and rubbed smooth

CROCKER CHAIR COMPANY



No. 8808
Tilting Top Table
Oval Top 19 x 14 inches
Solid Walnut—Florentine
Finish (Highlighted)



No. 8806
Telephone Stand
Top 24 x 13½ inches



No. 8807
Stool
Width of Seat 17 inches
Depth of Seat 12 inches

Birch—Brown Mahogany Finish Rubbed



No. 7807
Ladies' Desk
Top 30 x 16 inches



No. 8812-1
Desk Chair
Width of Seat 16 inches
Height of Back 15 inches

Solid Walnut—Florentine Finish (Highlighted)



No. 7809
Gate Leg Table
Top 36 x 42 inches

No. 8812-1
Chair
Width of Seat 16 inches
Height of Back 15 inches

Solid Walnut—Florentine Finish (Highlighted)
A rich brown finish, beautifully highlighted, lacquered and rubbed smooth

CROCKER CHAIR COMPANY



No. 6396-2

Width between Arms $18\frac{1}{2}$ inches
Height of Back 20 inches



No. 6396-4

Width between Arms $18\frac{1}{2}$ inches
Height of Back 20 inches



No. 6398-2

Width between Arms 19 inches
Height of Back 22 inches



No. 6398-4

Width between Arms 19 inches
Height of Back 22 inches

Birch—American Walnut or Brown Mahogany Rubbed

CROCKER CHAIR COMPANY



No. 7304-1

Width of Seat 16 inches
Height of Back 20½ inches



No. 7304-3

Width of Seat 16 inches
Height of Back 20½ inches



No. 7304-2

Width between Arms 19 inches
Height of Back 22 inches



No. 7304-4

Width between Arms 19 inches
Height of Back 22 inches

Birch—American Walnut or Brown Mahogany Rubbed

CROCKER CHAIR COMPANY



No. 7302-1

Width of Seat 16 inches
Height of Back 20½ inches



No. 7302-3

Width of Seat 16 inches
Height of Back 20½ inches



No. 7302-2

Width between Arms 19 inches
Height of Back 22 inches



No. 7302-4

Width between Arms 19 inches
Height of Back 22 inches

Birch—American Walnut or Brown Mahogany Rubbed

CROCKER CHAIR COMPANY

*Amor rubbing coat 6 small knobs } 45¢
5 arm " " }*



No. 6392-2

Width between Arms 19 inches
Height of Back 22 inches



No. 6392-4

Width between Arms 19 inches
Height of Back 22 inches



No. 6382-2

Width between Arms 18 inches
Height of Back 15 inches



No. 6394-2

Width between Arms 19 inches
Height of Back 23 inches



No. 6394-4

Width between Arms 19 inches
Height of Back 23 inches

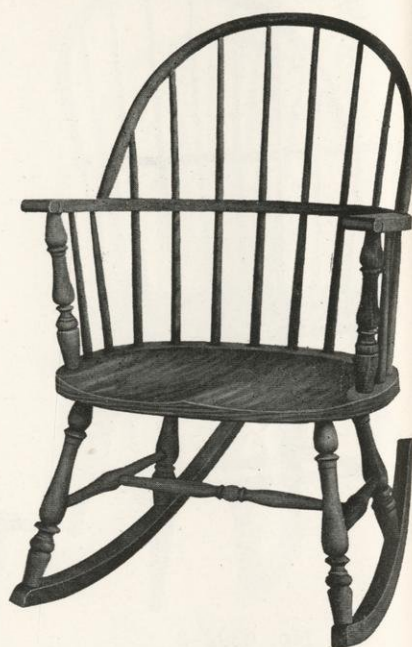
Birch—American Walnut or Brown Mahogany Rubbed

CROCKER CHAIR COMPANY



No. 6384-2

Width between Arms $18\frac{1}{2}$ inches
Height of Back 22 inches



No. 6384-4

Width between Arms $18\frac{1}{2}$ inches
Height of Back 22 inches



No. 6086-1

Width of Seat $19\frac{1}{2}$ inches
Height of Back $16\frac{1}{2}$ inches



No. 6086-2

Width between Arms 19 inches
Height of Back 23 inches



No. 6086-4

Width between Arms 19 inches
Height of Back 23 inches

Birch—American Walnut or Brown Mahogany Dull

CROCKER CHAIR COMPANY



No. 6084-1
Width of Seat 18 inches
Height of Back 17 inches

No. 6084-2



No. 6084-2
Width between Arms 18 inches
Height of Back 22½ inches



No. 6084-4
Width between Arms 18 inches
Height of Back 22½ inches

Birch—American Walnut or Brown Mahogany Dull
Banister Decorated in Dull Gold

CROCKER CHAIR COMPANY



No. 6386-2

Width between Arms 19 inches
Height of Back 19 inches



No. 6386-4

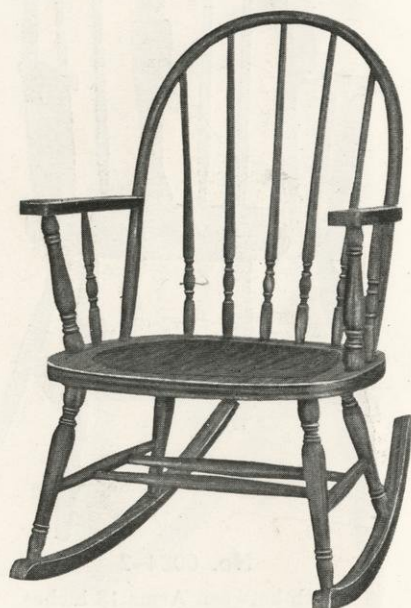
Width between Arms 19 inches
Height of Back 19 inches

Birch—American Walnut or Brown Mahogany Dull



No. 6072-2

Width between Arms 18½ inches
Height of Back 22½ inches



No. 6072-4

Width between Arms 18½ inches
Height of Back 22½ inches

Birch—American Walnut or Brown Mahogany Dull

CROCKER CHAIR COMPANY



No. 6072-1

Width of Seat 18 inches
Height of Back 16½ inches

Dip stain 40 per hr. 1.00
Sand 5¢ 5.00
Dip oil stain . 2¢ 2.00
Shellac . (10 per hr) 4.50
Sand . 4.00
Spray (varnish 30 per hr) 3.00
helper 50
Spray (haze) 40 per hr. 2.00
helper
21.50
10.7
32.20



No. 6072-3

Width of Seat 18 inches
Height of Back 16½ inches



No. 6074-1

Width of Seat 16 inches
Height of Back 18½ inches



No. 7000-1

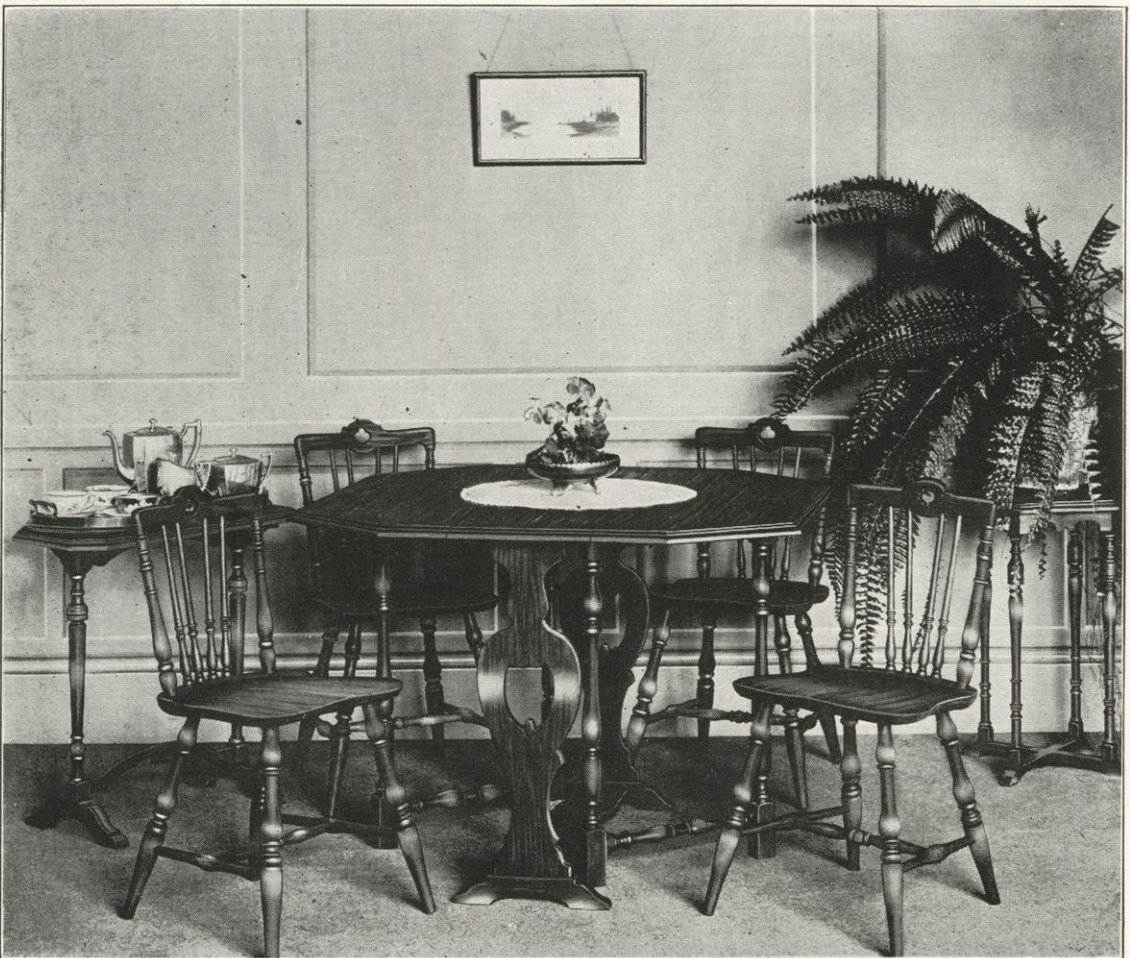
Width of Seat 15¾ inches
Height of Back 17 inches
Oak—Silver Grey Finish
Birch—Mahogany Finish Dull with Gold Striping
Also in Decorated Enamels

Birch—American Walnut or Brown Mahogany Dull
Decorated Enamels

CROCKER CHAIR COMPANY

COMBINATION ENAMELS

- Combination No. 1—Ivory—trimmed with Lavender and striped in Blue.
Combination No. 3—French Grey—trimmed with Blue and striped in Black.
Combination No. 4—Ivory—trimmed with Blue and striped in Black.
Combination No. 5—Ivory—trimmed with Mahogany Enamel and striped in Sage Green.
Combination No. 6—Ivory—trimmed with Tan and striped in Autumn Brown.
Combination No. 7—Pearl Grey—trimmed with Old Rose and with double striping in Violet and Old Rose.
Combination No. 8—Pearl Grey—trimmed with Blue and with double striping in Black and Blue.
Combination No. 9—Dawn Grey—trimmed with Antique Silver and striped in Silver and Deep Grey.
Combination No. 10—Colonial Buff—trimmed with Light Blue and striped in Black.
Combination No. 11—Ebony—trimmed with Gold and Flower Decoration on table top.
Combination No. 20—Green—trimmed with Old Rose and striped with Old Gold.
Combination No. 21—Antique Silver and striped in Blue.
Combination No. 22—Black Enamel and striped with Orange.

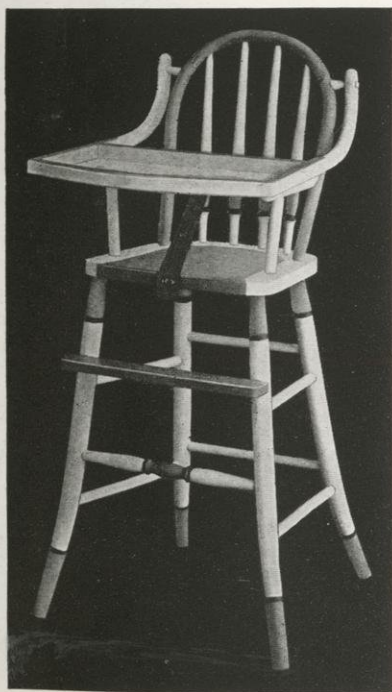


Breakfast Suites in Attractive Enamels
Also in American Walnut or Brown Mahogany Finish Rubbed

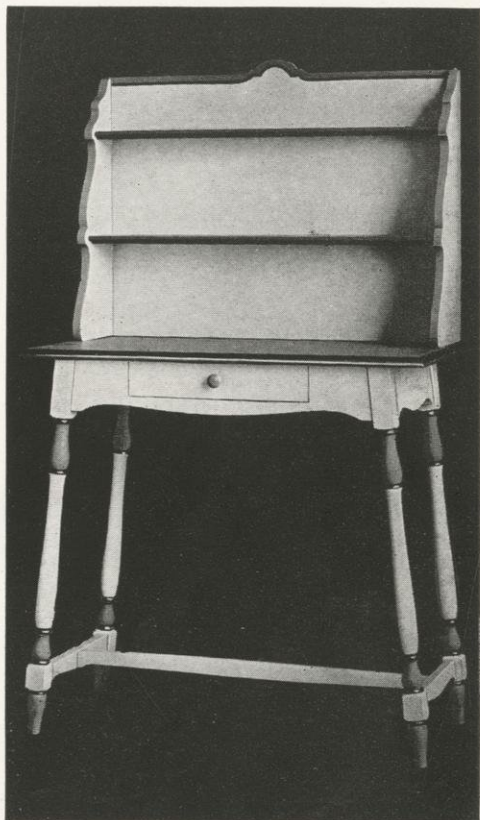
CROCKER CHAIR COMPANY



No. 7744
Server
Top 18 x 36 inches



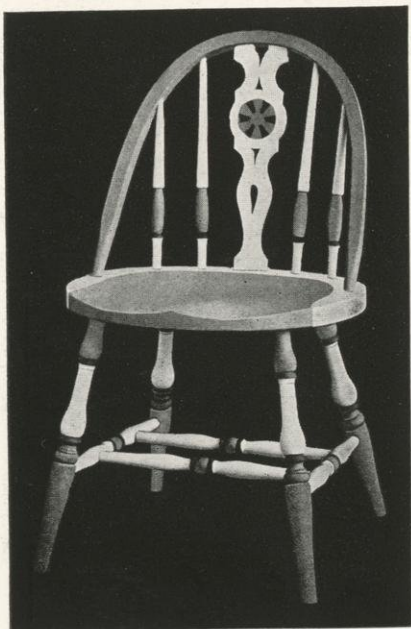
No. 5752-10
No. 5752-46—Same but with Removable Enameled Metal Sanitary Tray
No. 5752-48—Same but with Removable Aluminum Tray



No. 7745
China Cabinet
Top 18 x 36 inches

Birch—American Walnut or Brown Mahogany Rubbed
Also in Decorated Enamel Combinations
Refer to Page 42

CROCKER CHAIR COMPANY



No. 6086-1

Width of Seat 19½ inches
Height of Back 16½ inches



No. 7746

Gate Leg Table

Top Open 42 inches Diameter
Top 12 x 42 inches Closed



No. 7740

Drop Leaf Table

Top 33 x 48 inches Open
Top 33 x 24 inches Closed

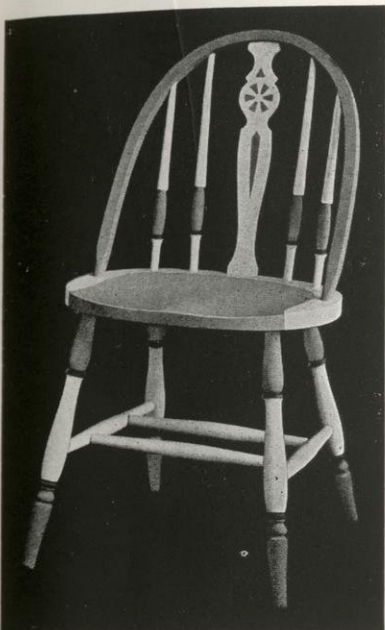


No. 6094-1

Width of Seat 14¾ inches
Height of Back 15 inches

Birch—American Walnut or Brown Mahogany Rubbed
Also in Decorated Enamel Combinations
Refer to Page 42

CROCKER CHAIR COMPANY



No. 6084-1

Width of Seat 18 inches
Height of Back 17 inches



11.50

No. 7741

Round Table
Top 36 inches Diameter

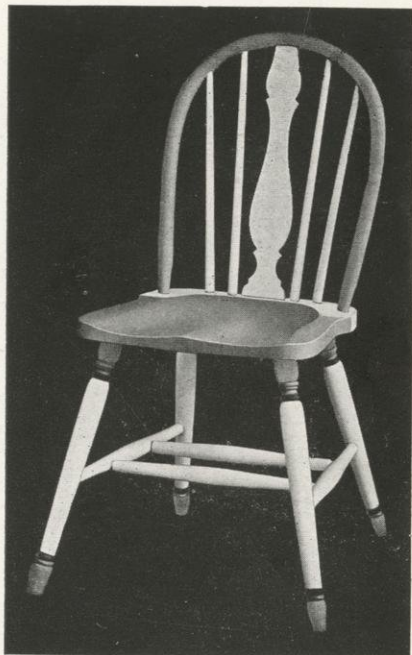


No. 7743

Drop Leaf Table

Top 33 x 42 inches Open
Top 33 x 22 inches Closed

6072
square top



No. 6074-1

Width of Seat 16 inches
Height of back 18½ inches

Birch—American Walnut or Brown Mahogany Rubbed
also in Decorated Enamel Combinations
Refer to Page 42

CROCKER CHAIR COMPANY



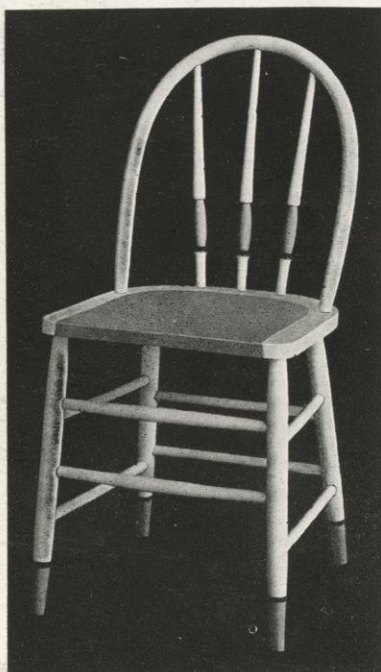
No. 7742

11.50

Oblong Table

Top 30 x 36 inches

Birch—American Walnut or Brown Mahogany Rubbed
also in Decorated Enamel Combinations
Refer to Page 42



3.00

No. 6096-1

+59

Width of Seat 15 $\frac{1}{4}$ inches
Height of Back 16 $\frac{1}{2}$ inches
Decorated Enamels



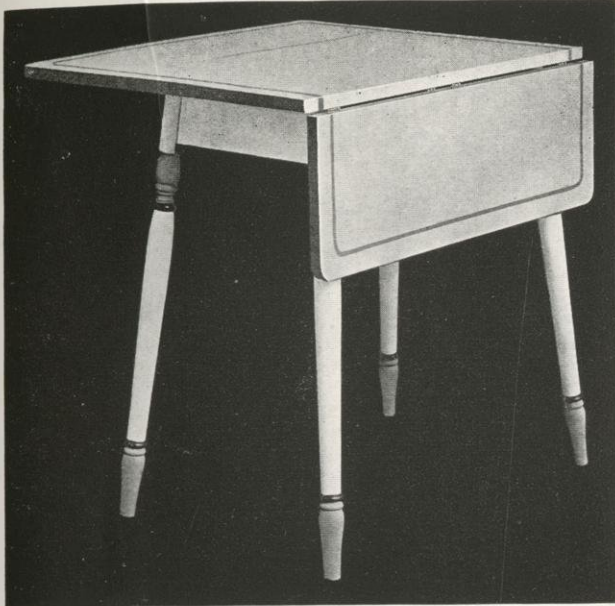
3.25

5.00

No. 7002-1

Width of Seat 15 $\frac{1}{4}$ inches
Height of Back 16 inches
Decorated Enamels

CROCKER CHAIR COMPANY

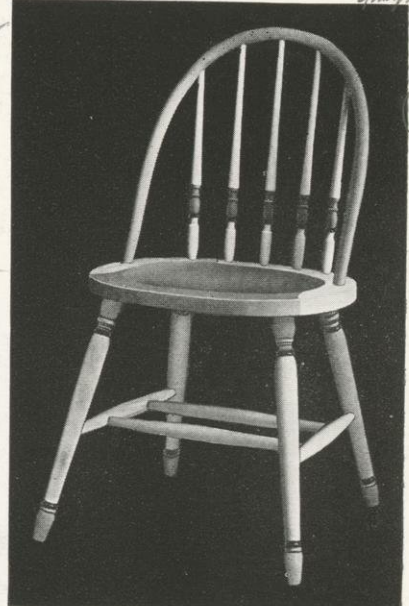


2 coats color
for spindles,
legs, seat
etc.
9 per hr.
each coat.
stripping
13 per hr.

No. 7757^{9.00} + 114 Dec. 1924

Top 30 x 36 inches Open
Top 30 x 16 inches Closed

Birch—American Walnut or Brown
Mahogany Dull
Also in Deco't'd Enamel Combinations
Refer to Page 42



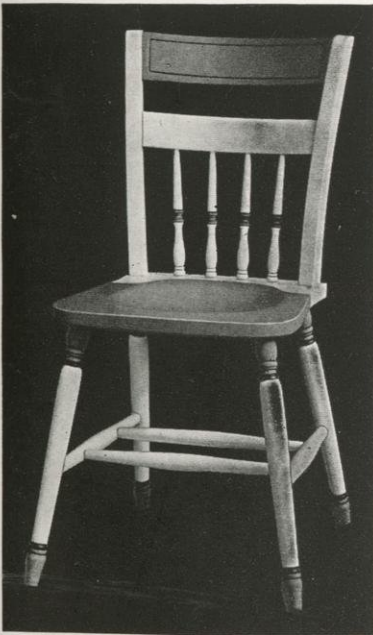
25 per
1 coat
2nd
1 coat
39 per
help

Medium
End

No. 6072-1 + 79 Nov. 1924

Width of Seat 18 inches
Height of Back 16½ inches

Oak—Silver Grey Finish
Birch—American Walnut or Brown
Mahogany Dull
Also in Deco't'd Enamel Combinations
Refer to Page 42



5.00 No. 7000-1 + 154

Width of Seat 15¼ inches
Height of Back 17 inches

Oak—Silver Grey Finish
Birch—American Walnut or Brown Mahogany Dull
Also in Decorated Enamel Combinations
Refer to Page 42



No. 7758 10.00 + 134 Dec. 1924

Top 32 x 40 inches Open
Top 32 x 20 inches Closed

CROCKER CHAIR COMPANY



No. 7513
Cane Seat



No. 7513-35
Cane Seat



No. 7513-3
Cane Seat



No. 7512



No. 7512-35



No. 7512-3

Gum—American Walnut or Brown Mahogany Rubbed
Old Ivory or White Enamel

CROCKER CHAIR COMPANY



No. 7525
Cane Seat

No. 7524—Same with Wood Seat



No. 7525-35
Cane Seat

No. 7524-35—Same with Wood Seat



No. 7525-3
Cane Seat

No. 7524-3—Same with Wood Seat

Gum—American Walnut or Brown Mahogany Rubbed
Ivory or White Enamel



No. 7511
Cane Seat



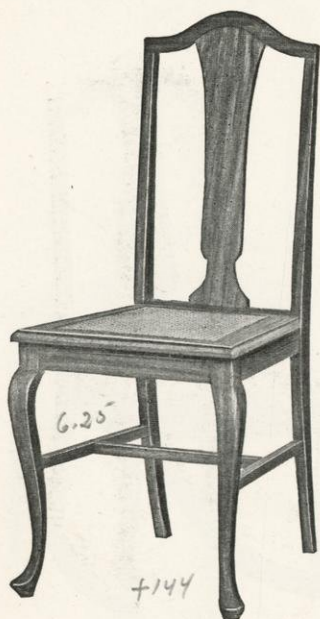
No. 7509-35
Cane Seat



No. 7511-3
Cane Seat

Walnut—American Walnut or Brown Mahogany Rubbed

CROCKER CHAIR COMPANY



No. 6595
Cane Seat

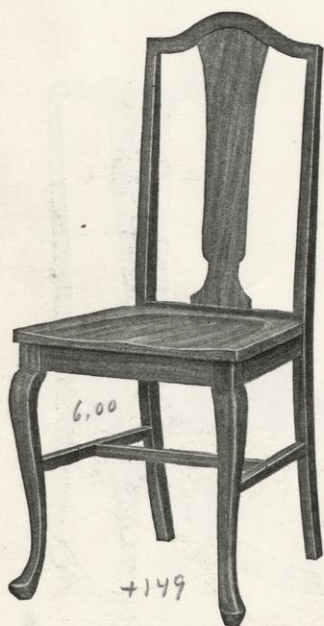


No. 6591-35
Cane Seat



No. 6595-3
Cane Seat

Gum—American Walnut or Brown Mahogany Rubbed



No. 6594



No. 6590-35



No. 6594-3

Gum—American Walnut or Brown Mahogany Rubbed
Birdseye Maple

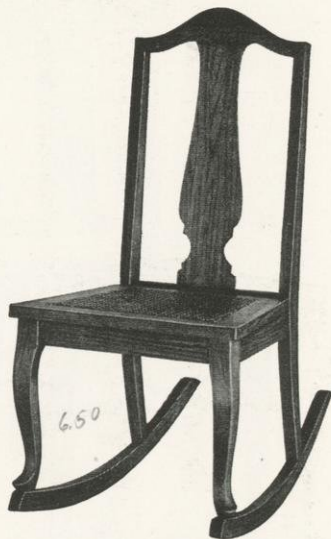
CROCKER CHAIR COMPANY



No. 7555
Cane Seat



+103
No. 7557-35
Cane Seat



No. 7555-3
Cane Seat



No. 7554



No. 7556-35



No. 7554-3

Gum—American Walnut or Brown Mahogany Rubbed

CROCKER CHAIR COMPANY



No. 7530



No. 6586-35



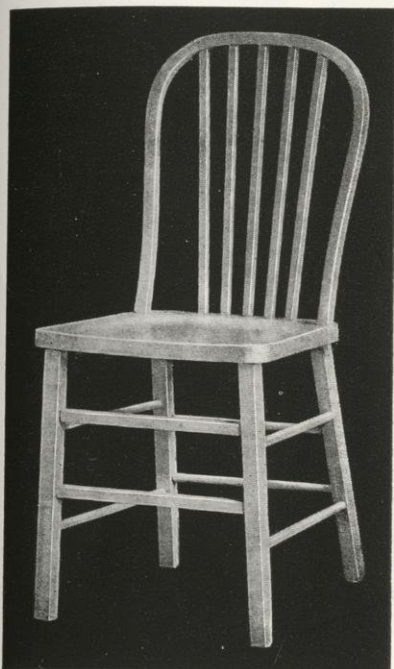
No. 7530-3



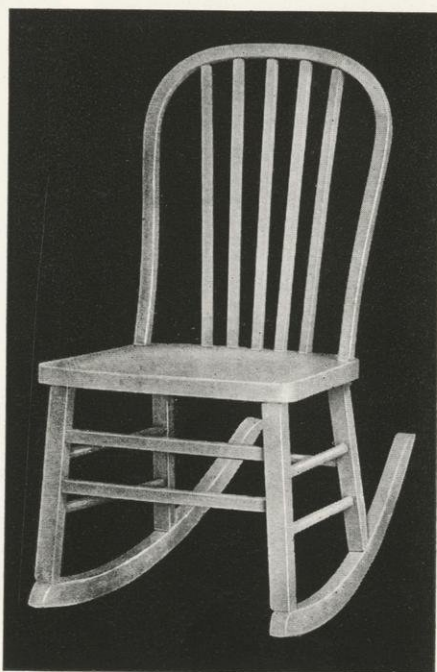
No. 7530 1/2

Quartered Oak—Golden Polished
 Gum—American Walnut or Brown Mahogany Rubbed
 Natural Gum Finish
 Birdseye Maple
 Ivory or White Enamel

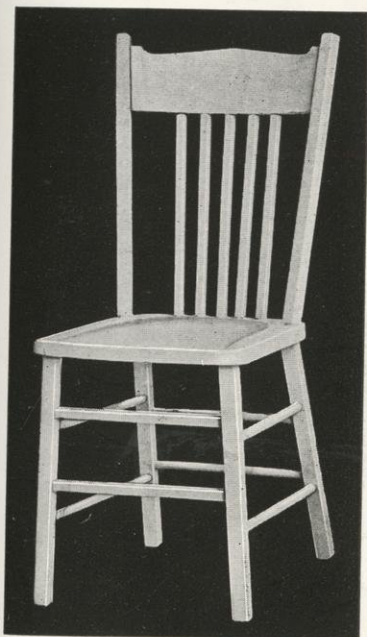
CROCKER CHAIR COMPANY



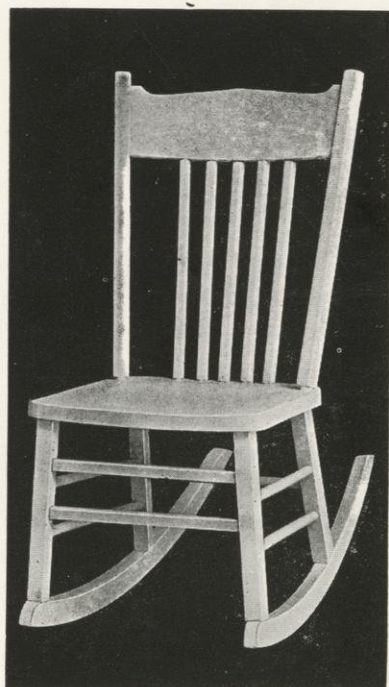
No. 5026-1



No. 5026-3



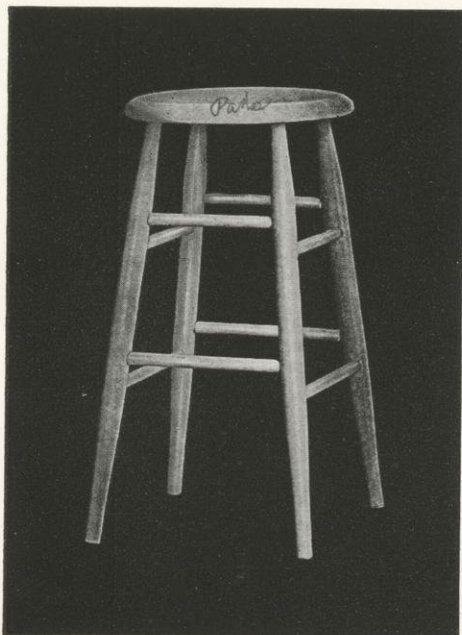
No. 120-1



No. 120-3

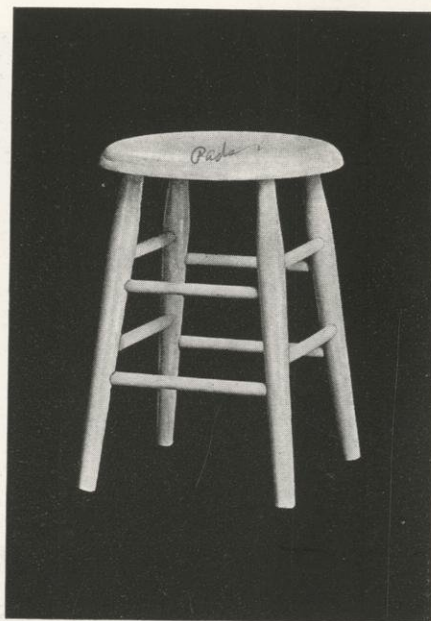
Ivory or White Enamel

CROCKER CHAIR COMPANY



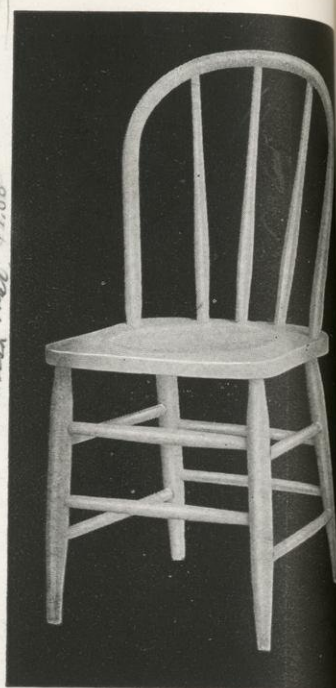
No. 70A

Height 24 inches
Wood Seat, Diameter 12½ inches

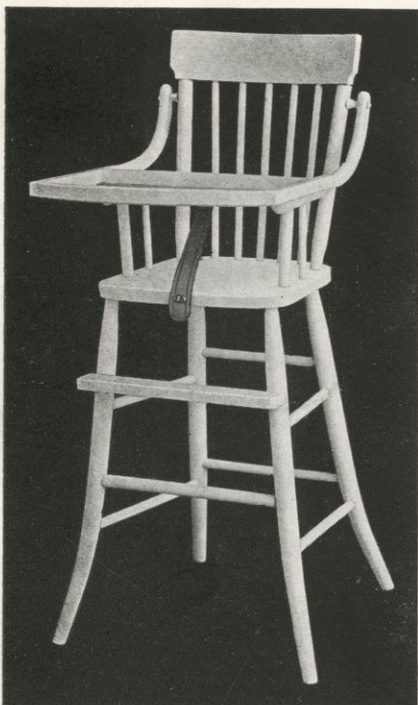


No. 70B

Height 18 inches
Wood Seat, Diameter 12½ inches

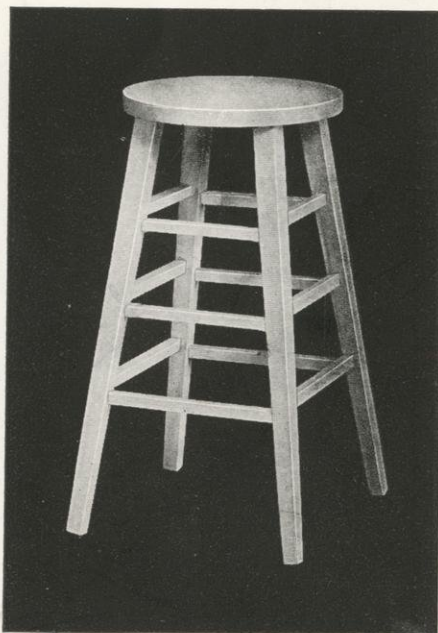


No. 200



No. 5754-10

No. 5754-46—Same but with Removable Enameled Metal Sanitary Tray
No. 5754-48—Same but with Removable Aluminum Tray



No. 36A

White Enamel or Golden Gloss
Height 26 inches
Wood Seat, Diameter 13 inches



No. 5756-10

No. 5756-46—Same but with Removable Enameled Metal Sanitary Tray
No. 5756-48—Same but with Removable Aluminum Tray

White Enamel

CROCKER CHAIR COMPANY

3.50

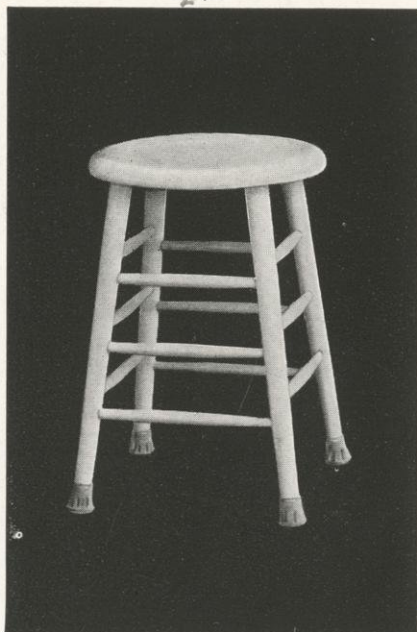


No. 15BT

Height 15 inches
Rubber Tips

Cork Seat, Diameter 14 inches

2.50



No. 20BT

Height 18 inches
Rubber Crutch Tips
Wood Seat, Diameter 13 inches

Primes - 2.25
Sands - 1.60
Crown - 2.25
Dress - 6.00
Material 6.00

No. 235BT

Height 15 inches
Rubber Tips

Cork Seat, Diameter 12½ inches

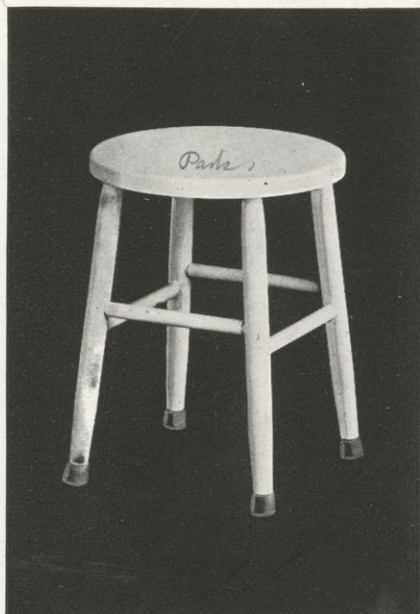


No. 2001

Height 16 inches
Rubber Crutch Tips

Wood Seat, Diameter 12 inches

Park



1.50

No. 2002T

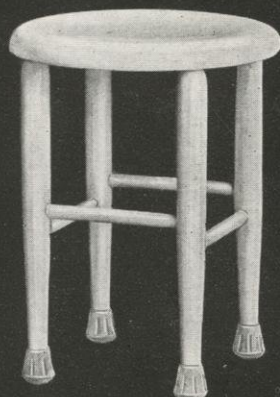
+22

Height 15 inches
Rubber Crutch Tips
Wood Seat, Diameter 13 inches
No. 2002—Same without rubber tips

White Enamel

55

Park 1.50 + 22 = 1.72



2.00

No. 244BT

Height 15 inches
Rubber Crutch Tips

Wood Seat, Diameter 13 inches

+39

CROCKER CHAIR COMPANY

READING CHAIRS



No. 7483-2UE

Width between Arms 19 $\frac{3}{4}$ inches
Height of Back 22 inches

Solid Walnut—American Walnut
or Brown Mahogany Rubbed
Stationary Back



No. 7481-2UE

Width between Arms 19 $\frac{3}{4}$ inches
Height of Back 22 inches

Birch—American Walnut or Brown
Mahogany Rubbed
Stationary Back

CROCKER CHAIR COMPANY



No. 7477-4

Width between Arms 19 inches
Height of Back, 25 inches

Quartered Oak—Golden Dull or Fumed
Birch—American Walnut or Brown
Mahogany Dull
Auto Spring Cushion



No. 7471-4

Width between Arms 19 inches
Height of Back 20½ inches

Quartered Oak—Golden Dull or Fumed
Auto Spring Cushion



No. 7473-4

Width between Arms, 19 inches
Height of Back 20 inches

Quartered Oak—Golden Dull or Fumed
Birch—American Walnut or Brown Mahogany
Finish Dull, Auto Spring Cushion

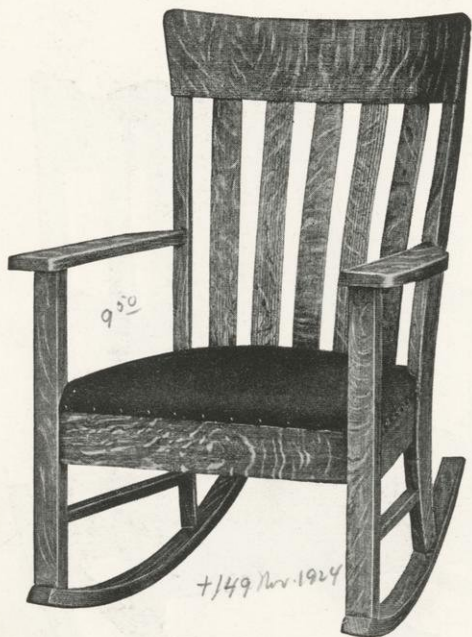


No. 7475-4

Width between Arms 19 inches
Height of Back 21 inches

Quartered Oak—Golden Dull or Fumed
Auto Spring Cushion

CROCKER CHAIR COMPANY



No. 7487-4

Width between Arms 19 inches
Height of Back 23 inches

Quartered Oak—Golden Dull or Fumed

Birch—American Walnut or Brown Mahogany Dull, Spring Seat

+ 149 Nov. 1924



No. 7469-4

Width between Arms 19 inches
Height of Back 20½ inches

Quartered Oak—Golden Dull or Fumed
Auto Spring Cushion

+ 18 Nov. 1924



No. 7486-4

Width between Arms 19 inches
Height of Back 24½ inches

Quartered Oak—Golden Dull or Fumed

Birch—American Walnut or Brown Mahogany Rubbed



No. 7306-4

Width between Arms 20½ inches
Height of Back 23 inches

Quartered Oak—Golden Dull or Fumed

Birch—American Walnut or Brown Mahogany Dull
Rodded from Arms to Seat

CROCKER CHAIR COMPANY



No. 7308-4

Width between Arms 19 inches
Height of Back $21\frac{1}{2}$ inches
Golden Gloss or Fumed
Rodded from Arms to Seat



No. 7310-4

Width between Arms $19\frac{1}{2}$ inches
Height of Back $22\frac{1}{2}$ inches
Birch—American Walnut or Brown
Mahogany Dull or Golden Gloss



No. 6092-4

Width between Arms 19 inches
Height of Back $28\frac{1}{2}$ inches
Golden Gloss



No. 6092-3

Width of Seat $15\frac{3}{4}$ inches
Height of Back $21\frac{1}{2}$ inches
Golden Gloss

CROCKER CHAIR COMPANY

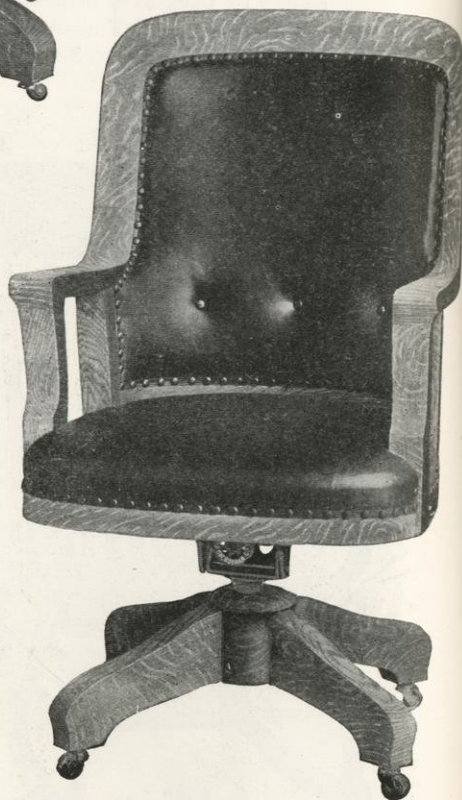


No. 6619-6E
 Width between Arms
 22 inches
 Height of Back
 29½ inches
 Leather Spring Seat
 Quartered Oak
 Light Office Golden
 Finish or
 Solid Mahogany



No. 6661-6CE

Width between Arms 19½ inches
 Height of Back 27 inches
 Loose Leather Cushion over Cane Seat
 Quartered Oak—Light Office Golden
 Finish or
 Birch—Mahogany Finish



No. 5661-6E

Width between Arms 19 inches
 Height of Back 27 inches
 Leather Spring Seat
 Quartered Oak—Light Office Golden
 Finish or Solid Mahogany

CROCKER CHAIR COMPANY



No. 6685-2CE

Width between Arms 19 inches
Height of Back 18 inches
Loose Leather Cushion over Cane Seat



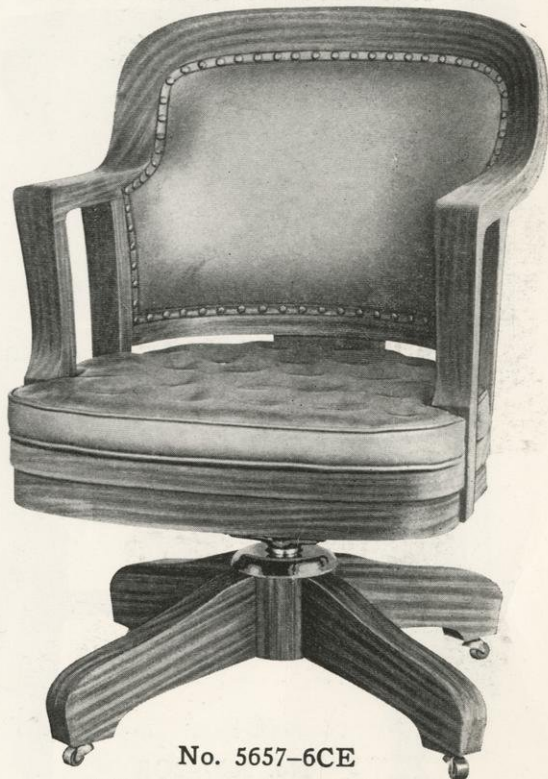
No. 6685-6CE

Width between Arms 19 inches
Height of Back 18 inches
Loose Leather Cushion over Cane Seat



No. 5657-2CE

Width between Arms
19 inches
Height of Back 18 inches
Loose Leather Cushion
over Cane Seat



No. 5657-6CE

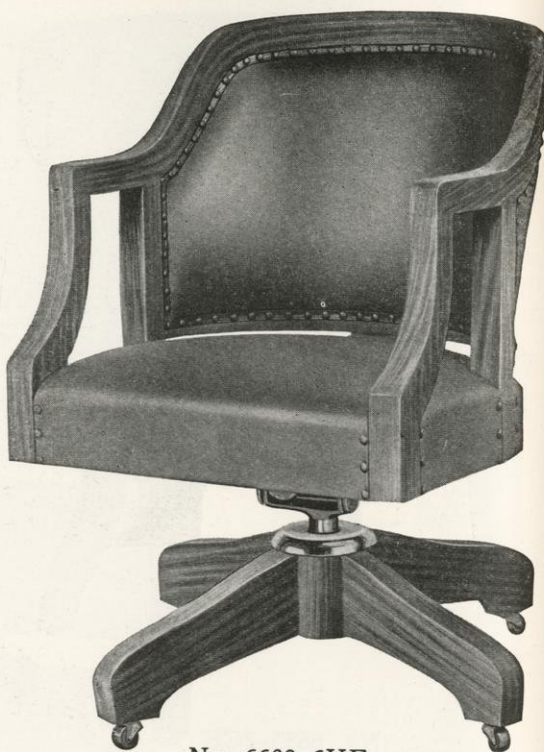
Width between Arms 19 inches
Height of Back 18 inches
Loose Leather Cushion over Cane Seat

Quartered Oak—Light Office Golden Finish
Solid Walnut or Solid Mahogany

CROCKER CHAIR COMPANY



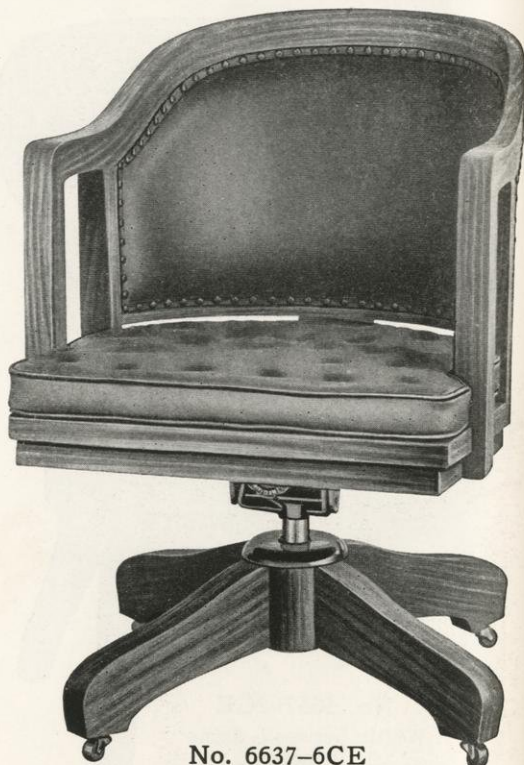
No. 6639-2UE
Width between Arms 19¼ inches
Height of Back 18 inches. Leather Spring Seat



No. 6639-6UE
Width between Arms 19¼ inches
Height of Back 18 inches. Leather Spring Seat



No. 6637-2CE
Width between Arms 20 inches
Height of Back 17½ inches
Loose Leather Cushion over Cane Seat
No. 6637-2PE—Perforated Leather Seat over Cane
Quartered Oak—Light Office Golden Finish or Solid Mahogany



No. 6637-6CE
Width between Arms 20 inches
Height of Back 17½ inches
Loose Leather Cushion over Cane Seat
No. 6637-6PE—Perforated Leather Seat over Cane

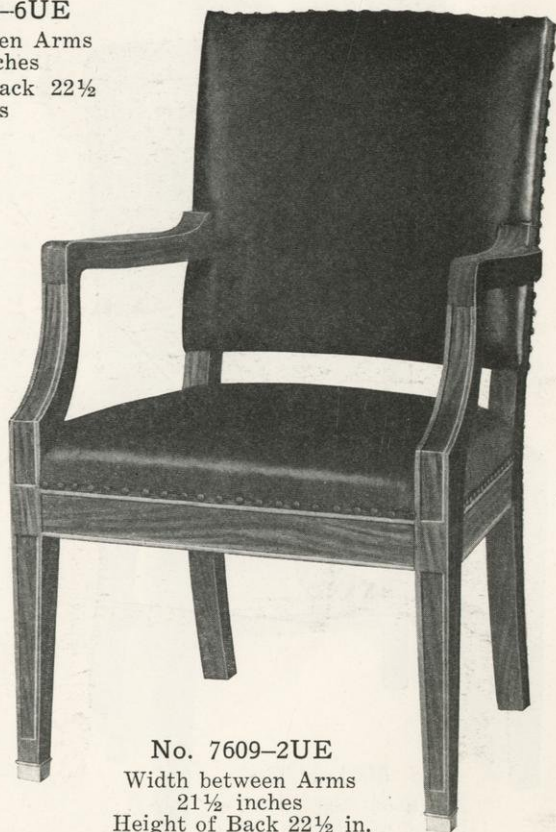
CROCKER CHAIR COMPANY



No. 7609-6UE

Width between Arms
21½ inches

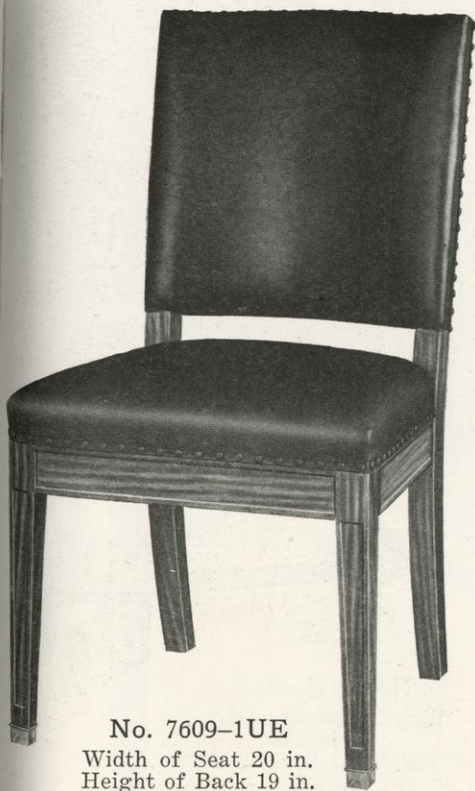
Height of Back 22½
inches



No. 7609-2UE

Width between Arms
21½ inches

Height of Back 22½ in.



No. 7609-1UE

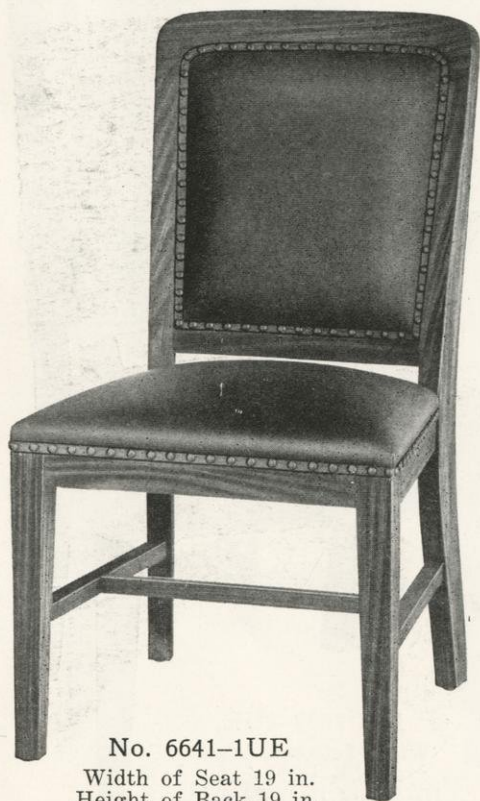
Width of Seat 20 in.
Height of Back 19 in.

Quartered Oak—Light Office Golden Finish
Solid Walnut or Solid Mahogany
Leather Spring Seats

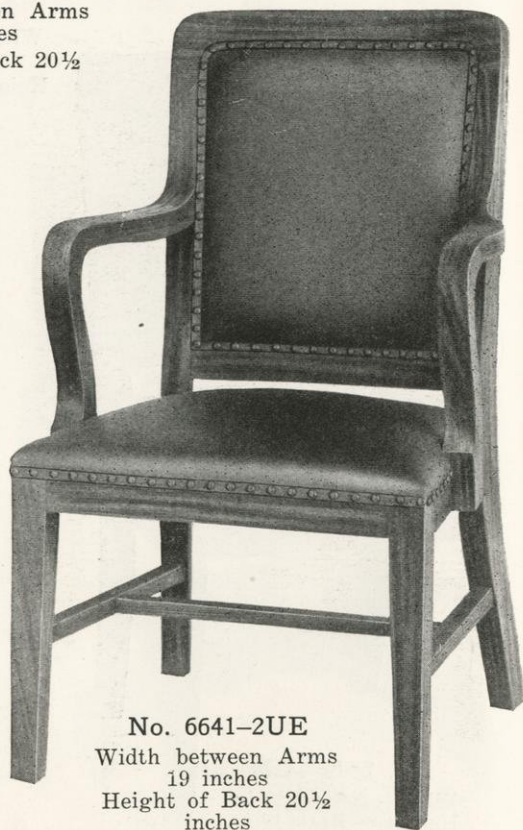
CROCKER CHAIR COMPANY



No. 6641-6UE
Width between Arms
19 inches
Height of Back 20½
inches



No. 6641-1UE
Width of Seat 19 in.
Height of Back 19 in.



No. 6641-2UE
Width between Arms
19 inches
Height of Back 20½
inches

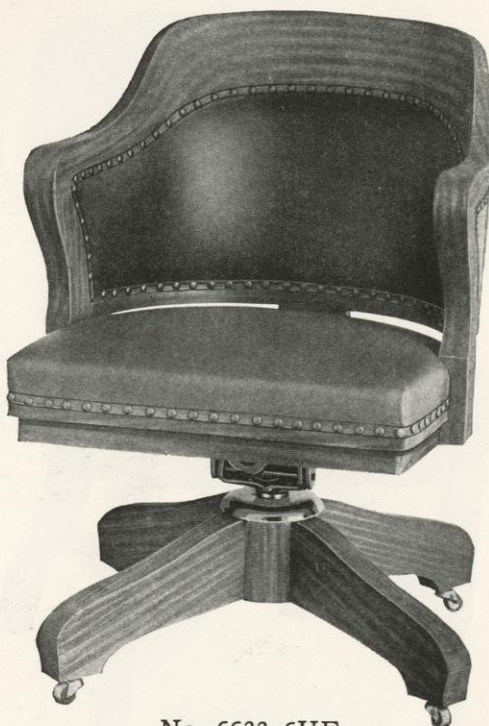
Quartered Oak—Light Office Golden Finish
Solid Walnut or Solid Mahogany
Leather Spring Seats

CROCKER CHAIR COMPANY



No. 6633-2UE

Width between Arms $19\frac{1}{2}$ inches
Height of Back 17 inches
Leather Spring Seat



No. 6633-6UE

Width between Arms $19\frac{1}{2}$ inches
Height of Back 17 inches
Leather Spring Seat



No. 6632-2E

Width between Arms $19\frac{1}{2}$ inches
Height of Back 17 inches
No. 6633-2PE—Perforated Leather
Seat over Cane



No. 6632-6E

Width between Arms $19\frac{1}{2}$ inches
Height of Back 17 inches
No. 6633-6PE—Perforated Leather
Seat over Cane

Quartered Oak—Light Office Golden Finish or Solid Mahogany

CROCKER CHAIR COMPANY



No. 6695-2CE

Width between Arms 19 inches
Height of Back 17½ inches
Loose Leather Cushion over Cane Seat



No. 6695-6CE

Width between Arms 19 inches
Height of Back 17½ inches
Loose Leather Cushion over Cane Seat



No. 7615-2CE

Width between Arms 19 inches
Height of Back 17½ inches
Loose Leather Cushion over Cane Seat

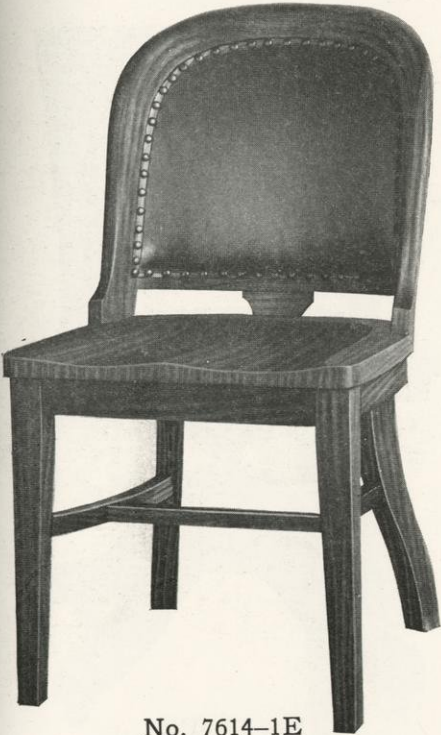


No. 7615-6CE

Width between Arms 19 inches
Height of Back 17½ inches
Loose Leather Cushion over Cane Seat

Quartered Oak—Light Office Golden Finish
Solid Walnut or Solid Mahogany Leather Spring Seats

CROCKER CHAIR COMPANY



No. 7614-1E

Width of Seat 18 inches
Height of Back 17½ inches

No. 7615-1PE

Perforated Leather Seat over Cane



No. 7614-5E

Width of Seat 18 inches
Height of Back 17½ inches

No. 7615-5PE

Perforated Leather Seat over Cane



No. 7614-2E

Width between Arms 19 inches
Height of Back 17½ inches

No. 7615-2PE

Perforated Leather Seat over Cane



No. 7614-6E

Width between Arms 19 inches
Height of Back 17½ inches

No. 7615-6PE

Perforated Leather Seat over Cane

Quartered Oak—Light Office Golden Finish

Solid Walnut or Solid Mahogany

CROCKER CHAIR COMPANY



No. 27-1P

Width of Seat $17\frac{1}{2}$ inches
Height of Back 16 inches

No. 27-1PE—Same as above and with
Leather Back



No. 27-5PE

Width of Seat $17\frac{1}{2}$ inches
Height of Back 16 inches

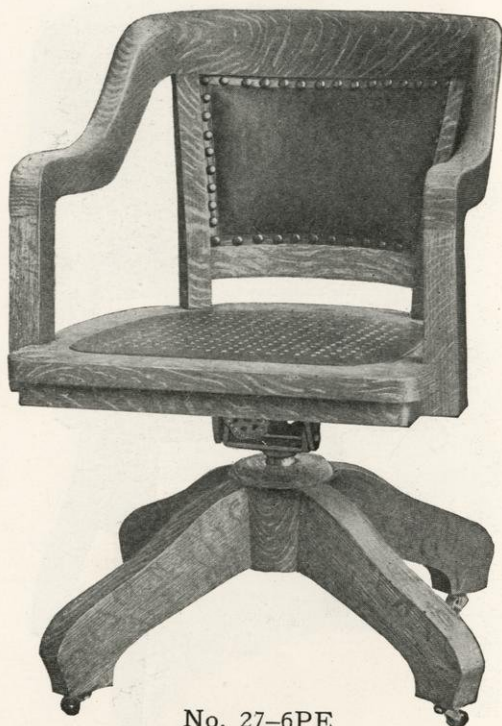
No. 27-5P—Same as above with
Spindle Back



No. 27-2P

Width between Arms $19\frac{1}{4}$ inches
Height of Back $16\frac{1}{2}$ inches

No. 27-2PE—Same as above and with
Leather Back



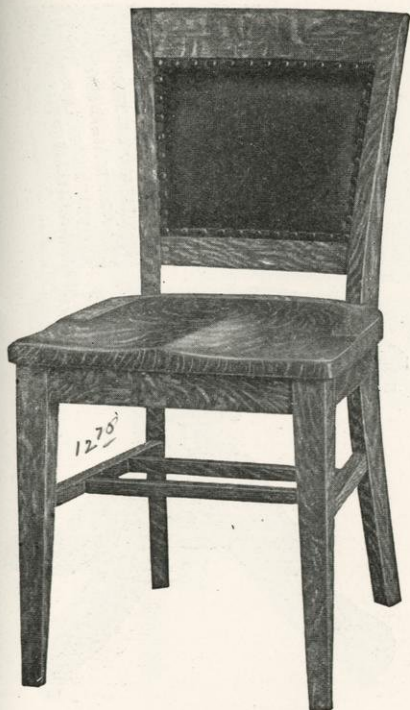
No. 27-6PE

Width between Arms $19\frac{1}{4}$ inches
Height of Back $16\frac{1}{2}$ inches

No. 27-6P—Same as above with
Spindle Back

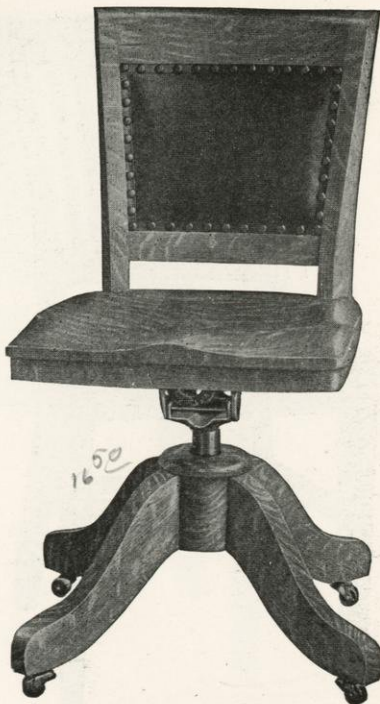
Quartered Oak—Light Office Golden Finish or Solid Mahogany
Perforated Leather Seats over Cane

CROCKER CHAIR COMPANY



No. 26-1E

Width of Seat $17\frac{1}{2}$ inches
Height of Back 16 inches



No. 26-5E

Width of Seat $17\frac{1}{2}$ inches
Height of Back 16 inches



No. 26-2E

Width between Arms $19\frac{1}{4}$ inches
Height of Back $16\frac{1}{2}$ inches

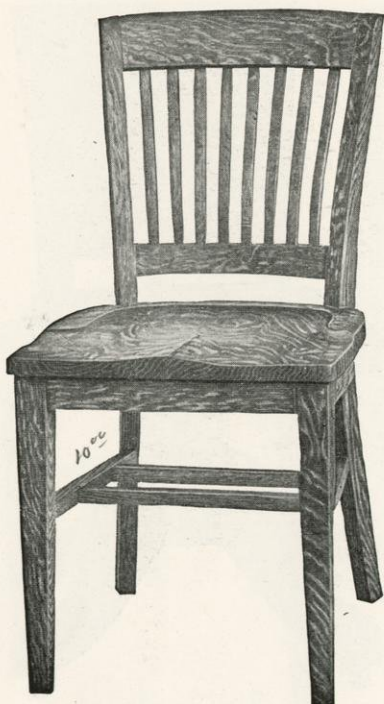


No. 26-6E

Width between Arms $19\frac{1}{4}$ inches
Height of Back $16\frac{1}{2}$ inches

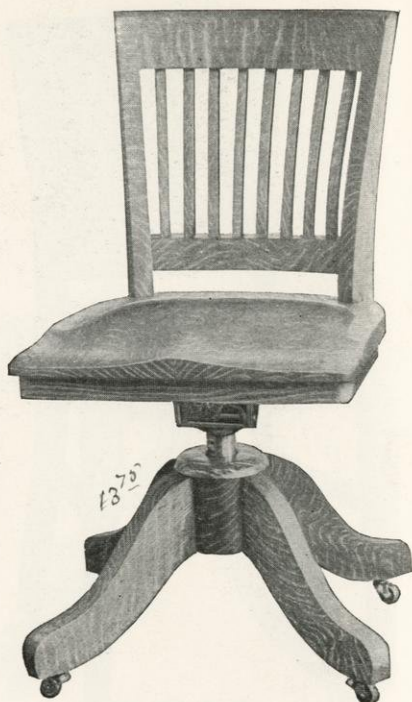
Quartered Oak—Light Office Golden Finish or Solid Mahogany

CROCKER CHAIR COMPANY



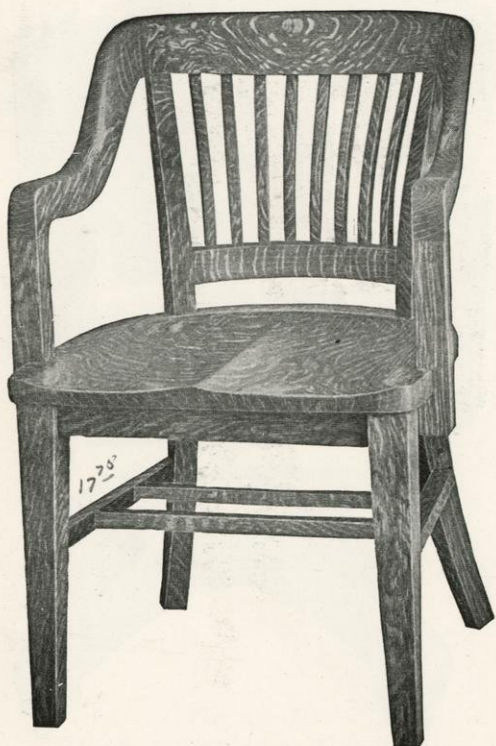
No. 26-1

Width of Seat $17\frac{1}{2}$ inches
Height of Back 16 inches



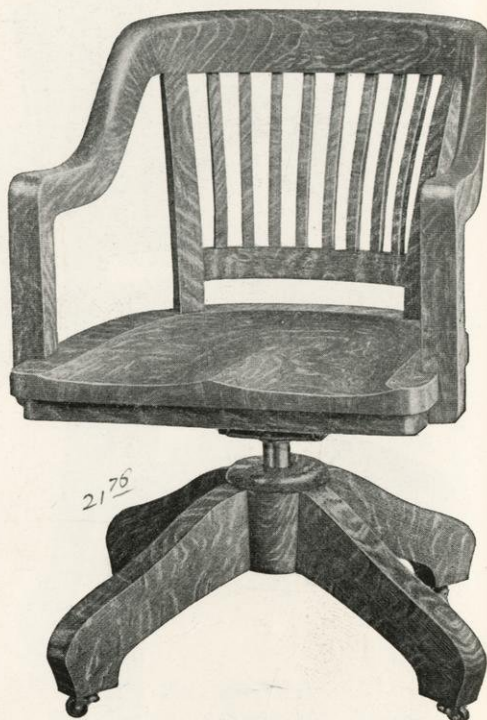
No. 26-5

Width of Seat $17\frac{1}{2}$ inches
Height of Back 16 inches



No. 26-2

Width between Arms $19\frac{1}{4}$ inches
Height of Back $16\frac{1}{2}$ inches

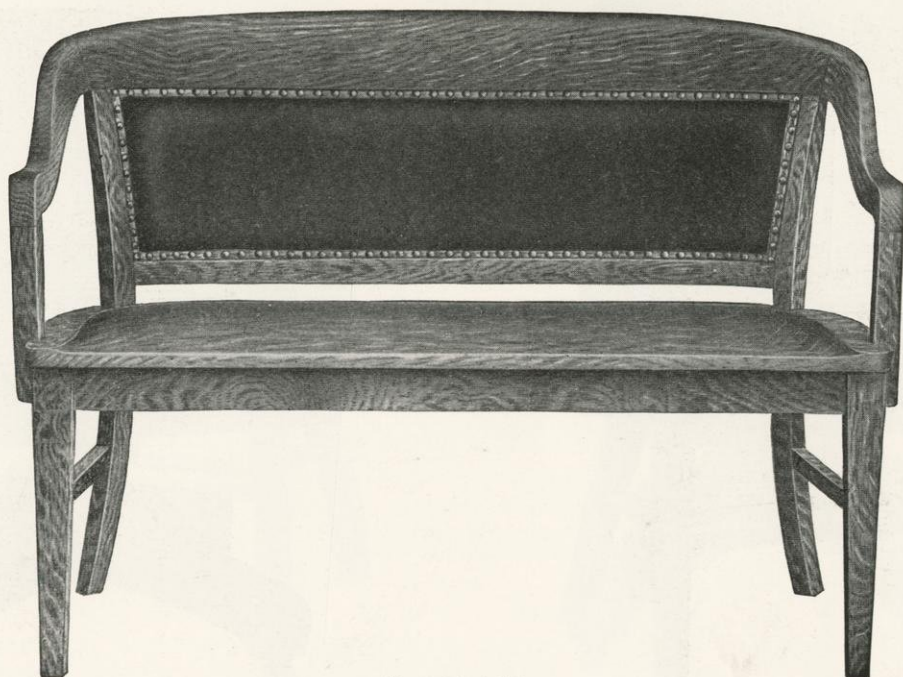


No. 26-6

Width between Arms $19\frac{1}{4}$ inches
Height of Back $16\frac{1}{2}$ inches

Quartered Oak—Light Office Golden Finish or Solid Mahogany

CROCKER CHAIR COMPANY



No. 26-19E



No. 26-19

Quartered Oak—Light Office Golden Finish or Solid Mahogany
4 and 6 foot lengths

CROCKER CHAIR COMPANY



No. 6667-2CE

Width between Arms 19 inches
Height of Back 16 inches
Loose Leather Cushion over Cane Seat



No. 6667-6CE

Width between Arms 19 inches
Height of Back 16 inches
Loose Leather Cushion over Cane Seat



No. 6667-2C

Width between Arms 19 inches
Height of Back 16 inches
Loose Leather Cushion over Cane Seat



No. 6667-6C

Width between Arms 19 inches
Height of Back 16 inches
Loose Leather Cushion over Cane Seat

Quartered Oak—Light Office Golden Finish. Solid Walnut
Solid Mahogany or Birch, Mahogany or Walnut Finish

CROCKER CHAIR COMPANY



No. 6666-2E

Width between Arms 19 inches
Height of Back 16 inches

No. 6667-2PE—Perforated Leather Seat
Over Cane

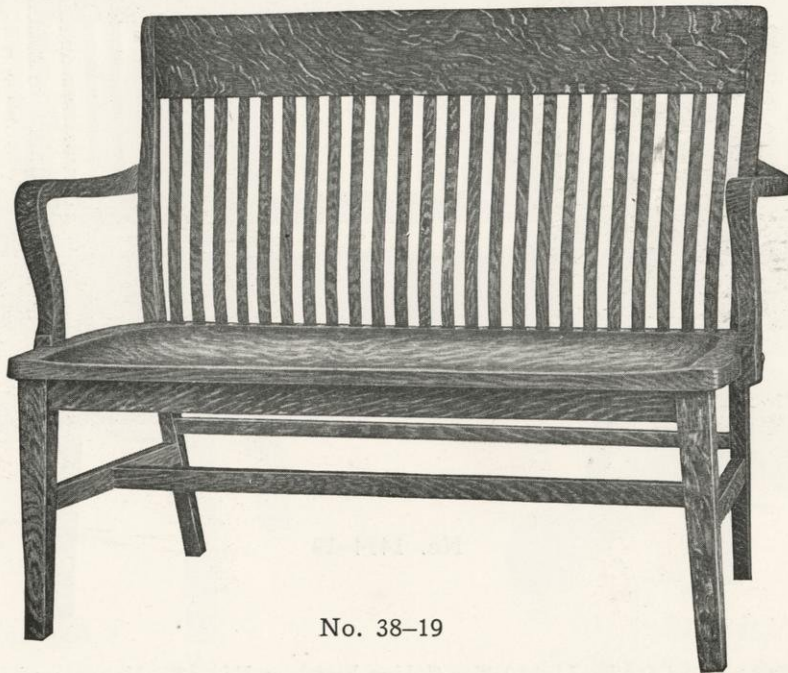


No. 6666-6E

Width between Arms 19 inches
Height of Back 16 inches

No. 6667-6PE—Perforated Leather Seat
Over Cane

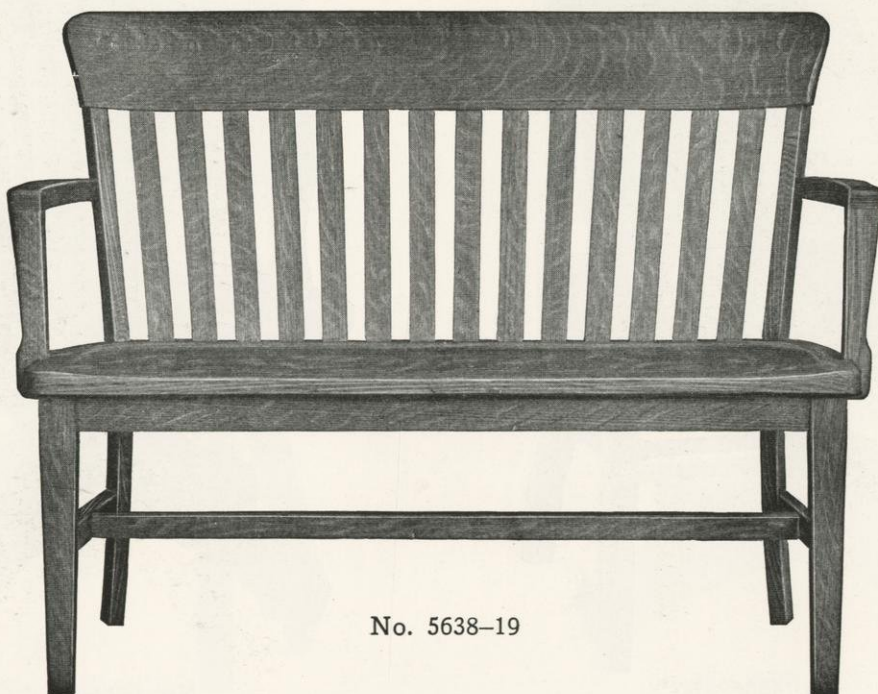
Quartered Oak—Light Office Golden Finish. Solid Walnut
Solid Mahogany or Birch, Mahogany or Walnut Finish



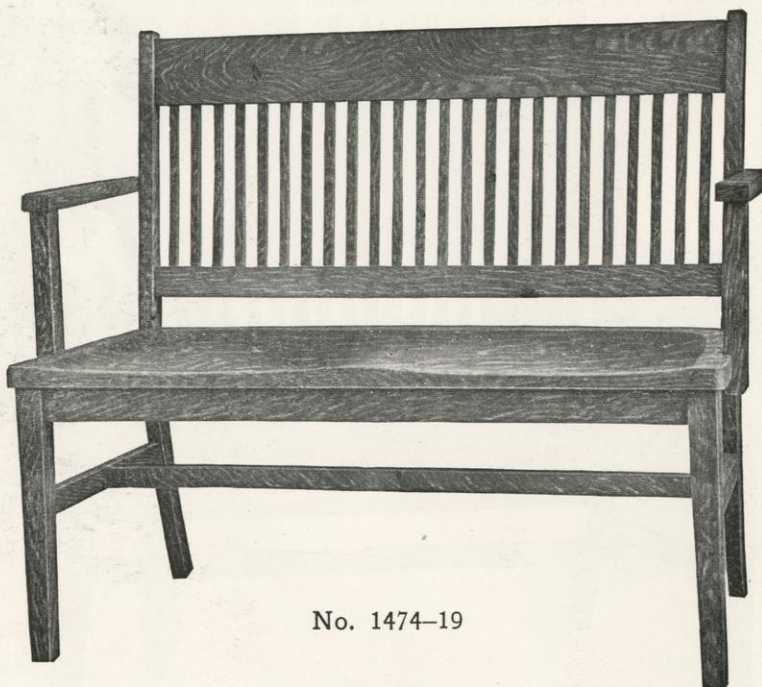
No. 38-19

Quartered Oak—Light Office Golden Finish or Birch—Mahogany Finish
4 and 6 foot lengths

CROCKER CHAIR COMPANY



No. 5638-19



No. 1474-19

Quartered Oak—Light Office Golden Finish or Birch—Mahogany Finish
4 and 6 foot lengths

CROCKER CHAIR COMPANY



No. 6666-1

Width of Seat $18\frac{1}{2}$ inches
Height of Back $17\frac{1}{2}$ inches

No. 6667-1P—Perforated Leather Seat
Over Cane



No. 6666-5

Width of Seat $18\frac{1}{2}$ inches
Height of Back $17\frac{1}{2}$ inches

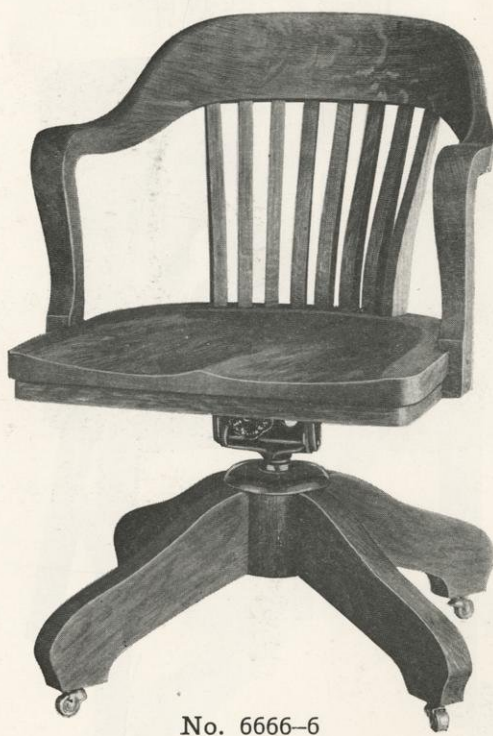
No. 6667-5P—Perforated Leather Seat
Over Cane



No. 6666-2

Width between Arms 19 inches
Height of Back 16 inches

No. 6667-2P—Perforated Leather Seat
Over Cane



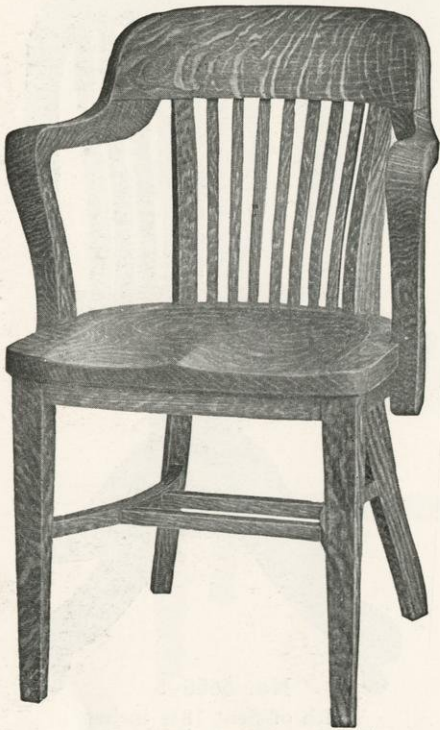
No. 6666-6

Width between Arms 19 inches
Height of Back 16 inches

No. 6667-6P—Perforated Leather Seat
Over Cane

Quartered Oak—Light Office Golden Finish. Solid Walnut
Solid Mahogany or Birch, Mahogany or Walnut Finish

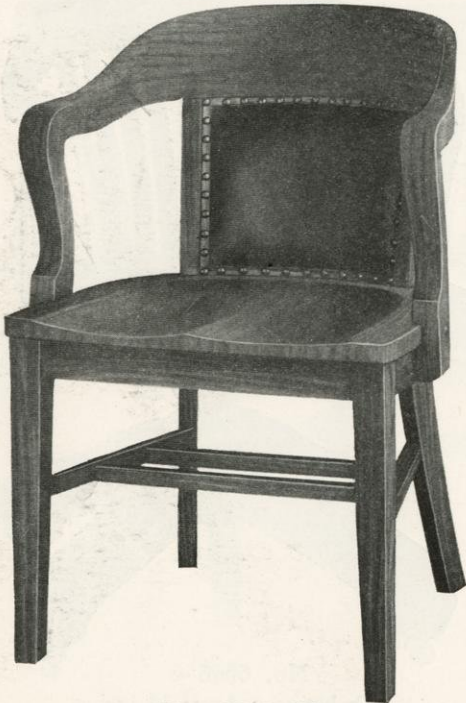
CROCKER CHAIR COMPANY



No. 258-2
Width between Arms 18 inches
Height of Back 16 inches



No. 258-6
Width between Arms 18 inches
Height of Back 16 inches



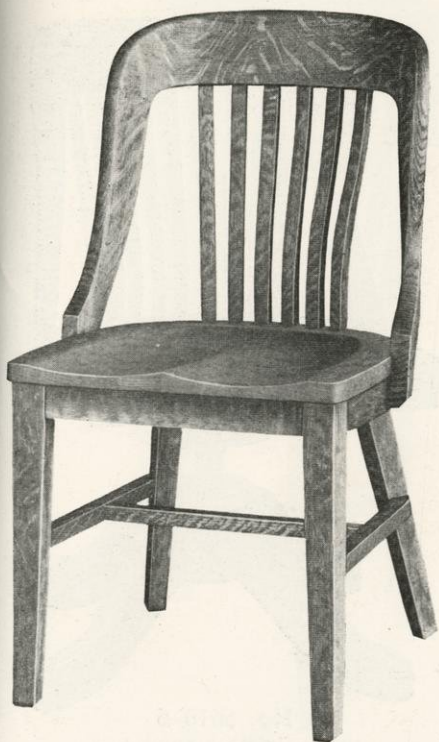
No. 6696-2E
Width between Arms 19 inches
Height of Back 15 inches



No. 6696-6E
Width between Arms 19 inches
Height of Back 15 inches

Quartered Oak—Light Office Golden Finish or Birch—Mahogany Finish

CROCKER CHAIR COMPANY



No. 6696-1

Width of Seat $17\frac{3}{4}$ inches
Height of Back $17\frac{1}{2}$ inches



No. 6696-5

Width of Seat $17\frac{3}{4}$ inches
Height of Back $17\frac{1}{2}$ inches
No. 6697-5P—Perforated Leather Seat
Over Cane



No. 6696-2

Width between Arms 19 inches
Height of Back 15 inches

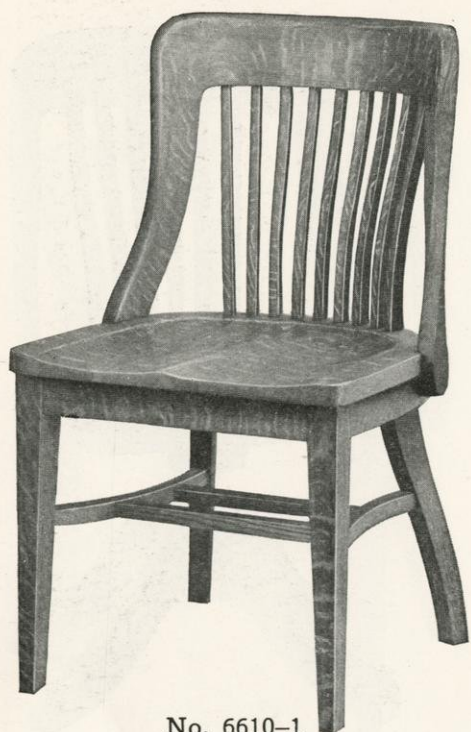


No. 6696-6

Width between Arms 19 inches
Height of Back 15 inches

Quartered Oak—Light Office Golden Finish or Birch—Mahogany Finish

CROCKER CHAIR COMPANY



No. 6610-1
Width of Seat 19 inches
Height of Back 17 inches



No. 6610-6
Width of Seat 19 inches
Height of Back 17 inches
No. 6611-6P—Perforated Leather Seat
Over Cane



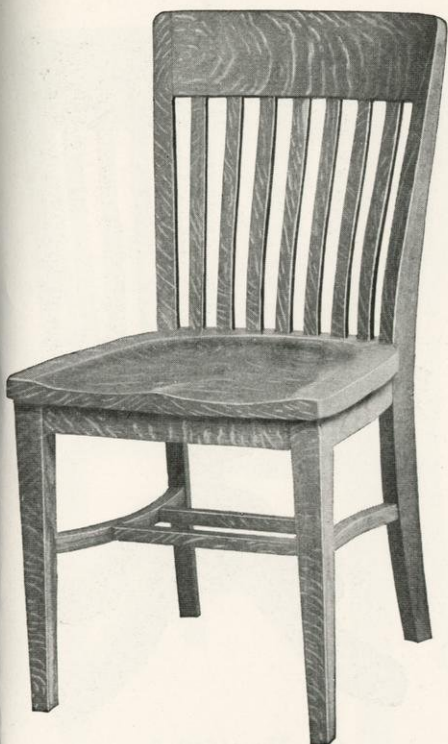
No. 282-1
Width of Seat 17 inches
Height of Back 16½ inches



No. 282-5
Width of Seat 17 inches
Height of Back 16½ inches

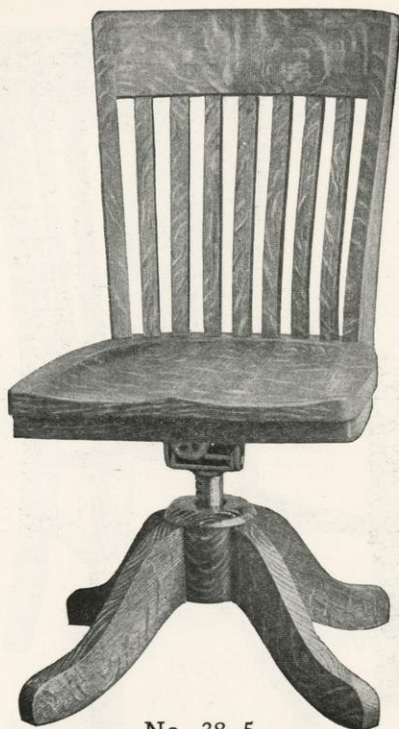
Quartered Oak—Light Office Golden Finish or Birch—Mahogany Finish

CROCKER CHAIR COMPANY



No. 38-1

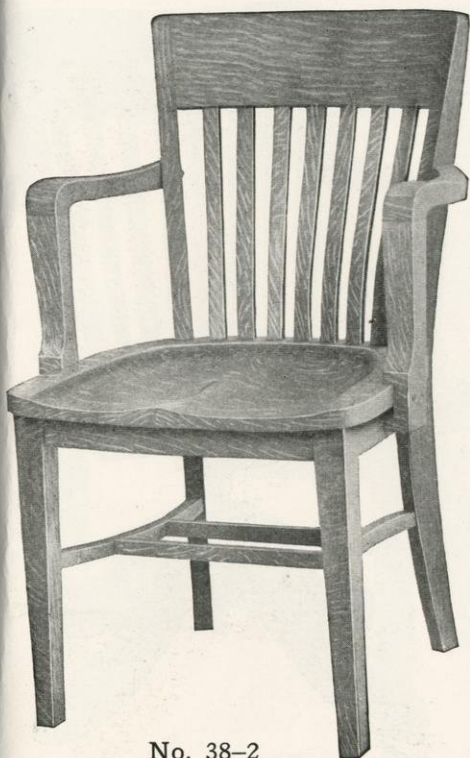
Width of Seat 18 inches
Height of Back 18 inches



No. 38-5

Width of Seat 18 inches
Height of Back 18 inches

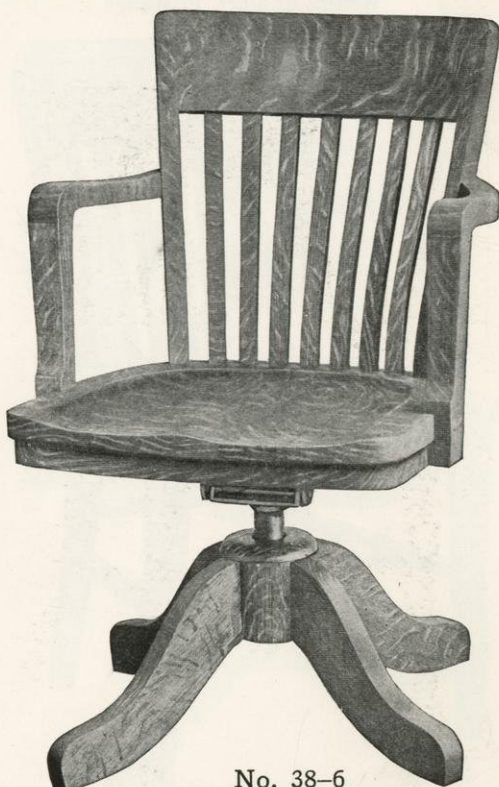
No. 39-5P—Perforated Leather Seat Over Cane



No. 38-2

Width between Arms $18\frac{1}{2}$ inches
Height of Back $18\frac{1}{2}$ inches

No. 39-2P—Perforated Leather Seat Over Cane



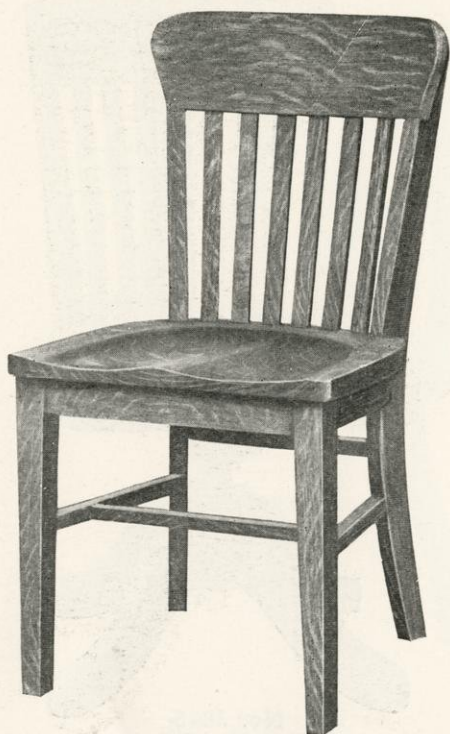
No. 38-6

Width between Arms $18\frac{1}{2}$ inches
Height of Back $18\frac{1}{2}$ inches

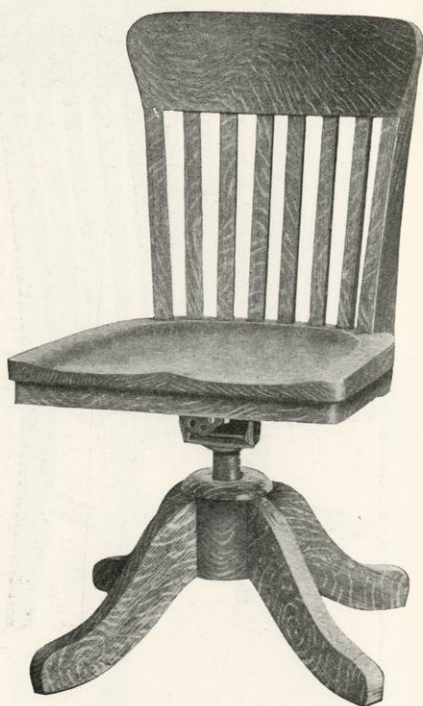
No. 39-6P—Perforated Leather Seat Over Cane

Quartered Oak—Light Office Golden Finish or Birch—Mahogany Finish

CROCKER CHAIR COMPANY



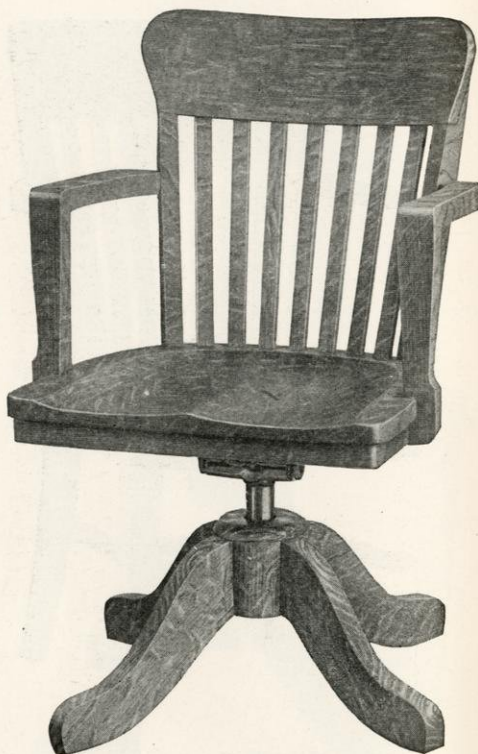
No. 5640-1
Width of Seat 18 inches
Height of Back 17 inches



No. 5640-5
Width of Seat 18 inches
Height of Back 17 inches



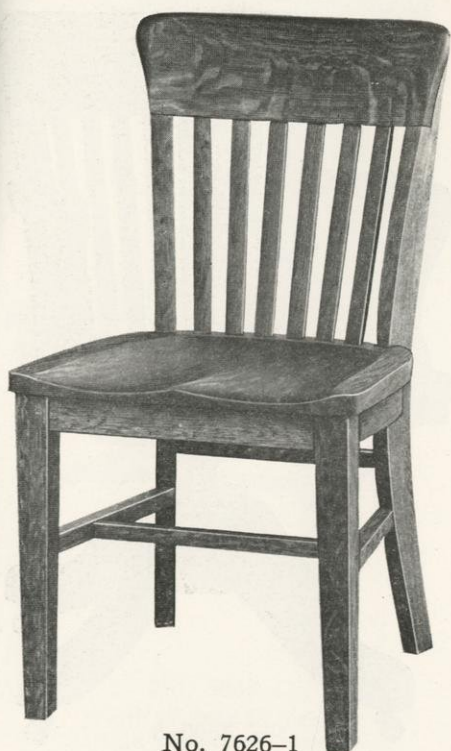
No. 5640-2
Width between Arms 18½ inches
Height of Back 18 inches



No. 5640-6
Width between Arms 18½ inches
Height of Back 18 inches

Quartered Oak—Light Office Golden Finish or Birch—Mahogany Finish

CROCKER CHAIR COMPANY



No. 7626-1

Width of Seat 18 inches
Height of Back 17½ inches



No. 7626-5

Width of Seat 18 inches
Height of Back 17½ inches



No. 7626-2

Width between Arms 18½ inches
Height of Back 18½ inches



No. 7626-6

Width between Arms 18½ inches
Height of Back 18½ inches

Quartered Oak—Light Office Golden Finish or Birch—Mahogany Finish

CROCKER CHAIR COMPANY



No. 7600-2

Width between Arms $18\frac{1}{2}$ inches
Height of Back 18 inches



No. 7600-6

Width between Arms $18\frac{1}{2}$ inches
Height of Back 18 inches

Solid Walnut



No. 5639-5P

Width of Seat 18 inches
Height of Back 17 inches

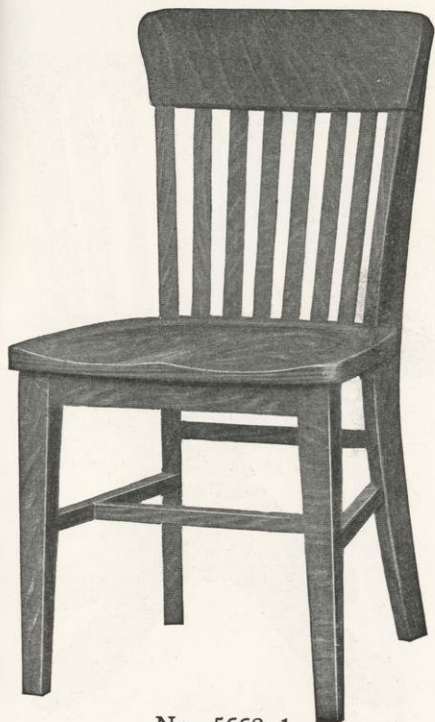


No. 5639-6P

Width between Arms $18\frac{1}{2}$ inches
Height of Back 18 inches

Quartered Oak—Light Office Golden Finish or Birch—Mahogany Finish

CROCKER CHAIR COMPANY



No. 5668-1

Width of Seat 18 inches
Height of Back 17 inches



No. 5668-5

Width of Seat 18 inches
Height of Back 17 inches



No. 5668-2

Width between Arms 18½ inches
Height of Back 18 inches



No. 5668-6

Width between Arms 18½ inches
Height of Back 18 inches

Quartered Oak—Light Office Golden Finish or Birch—Mahogany Finish

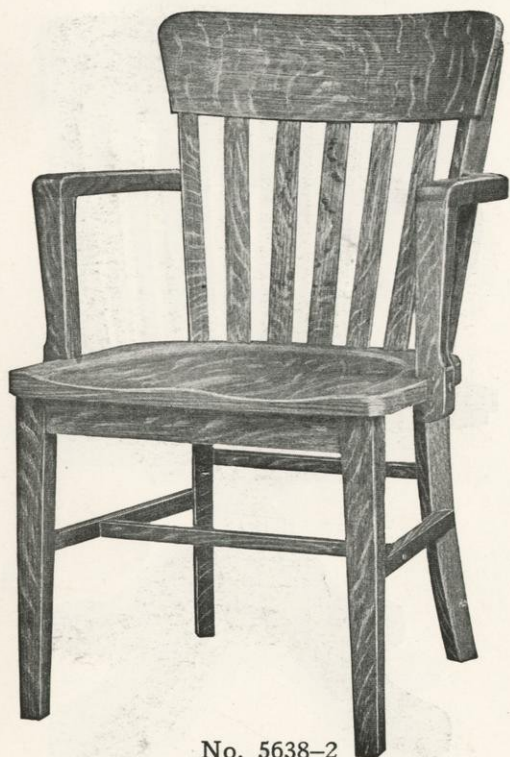
CROCKER CHAIR COMPANY



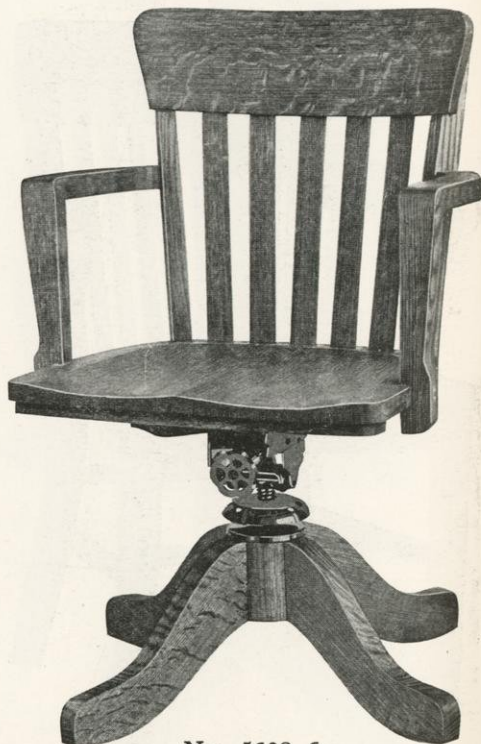
No. 5638-1
Width of Seat 18 inches
Height of Back 17 inches



No. 5638-5
Width of Seat 18 inches
Height of Back 17 inches



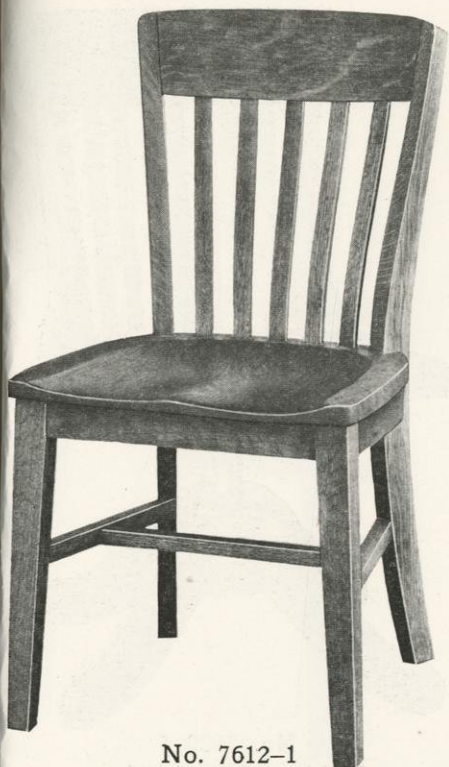
No. 5638-2
Width between Arms 18½ inches
Height of Back 18 inches



No. 5638-6
Width between Arms 18½ inches
Height of Back 18 inches

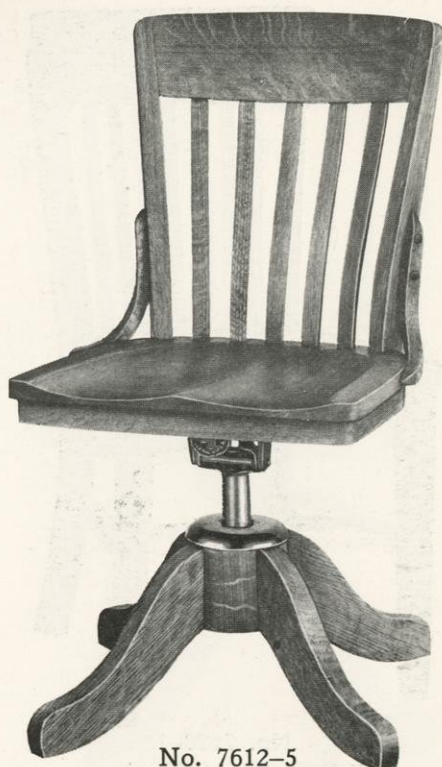
Quartered Oak—Light Office Golden Finish or Birch—Mahogany Finish

CROCKER CHAIR COMPANY



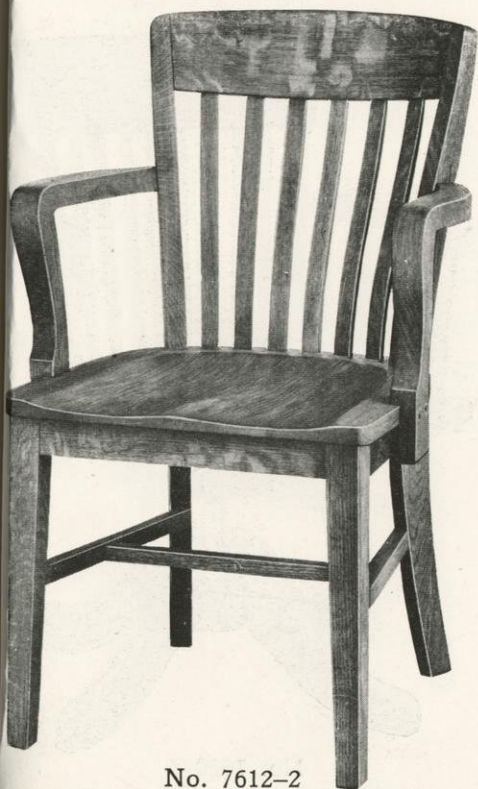
No. 7612-1

Width of Seat 17 inches
Height of Back 18 inches



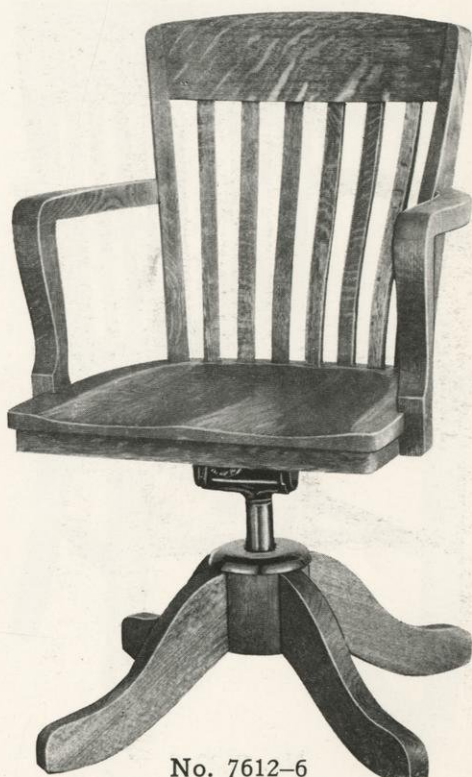
No. 7612-5

Width of Seat 17 inches
Height of Back 18 inches



No. 7612-2

Width between Arms 18½ inches
Height of Back 19 inches

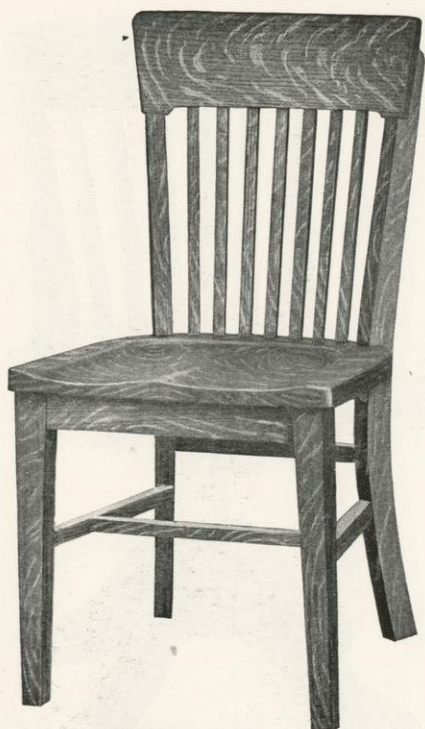


No. 7612-6

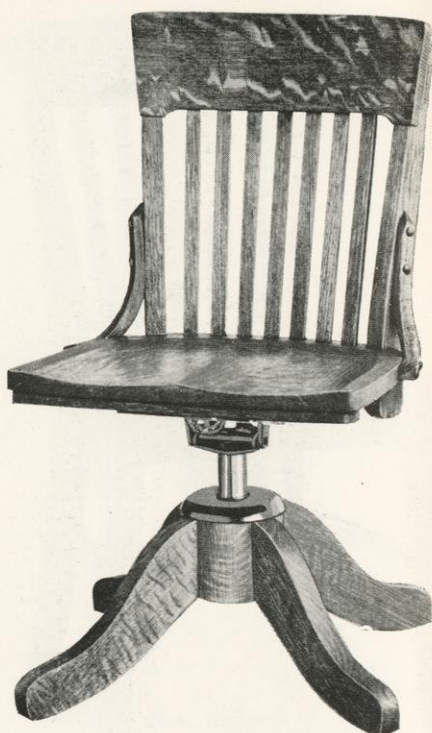
Width between Arms 18½ inches
Height of Back 19 inches

Quartered Oak—Light Office Golden Finish or Birch—Mahogany Finish

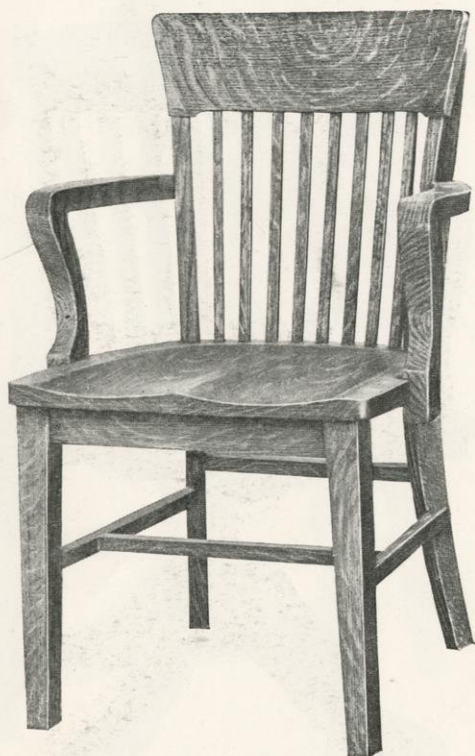
CROCKER CHAIR COMPANY



No. 7620-1
Width of Seat 18 inches
Height of Back 17½ inches



No. 7620-5
Width of Seat 18 inches
Height of Back 17½ inches



No. 7620-2
Width between Arms 18½ inches
Height of Back 18½ inches



No. 7620-6
Width between Arms 18½ inches
Height of Back 18½ inches

Quartered Oak—Light Office Golden Finish or Birch—Mahogany Finish

CROCKER CHAIR COMPANY



No. 6680-1

Width of Seat 17 inches
Height of Back 17½ inches



No. 6680-5

Width of Seat 17 inches
Height of Back 17½ inches



No. 6680-2

Width between Arms 18½ inches
Height of Back 17¾ inches



No. 6680-6

Width between Arms 18½ inches
Height of Back 17¾ inches

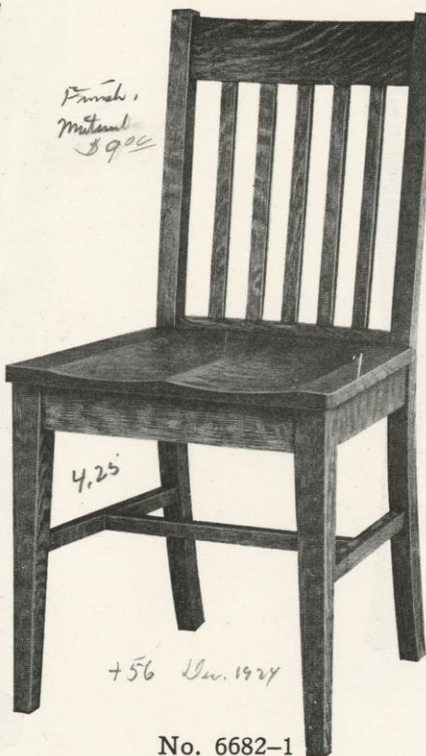
Quartered Oak—Light Office Golden Finish or Birch—Mahogany Finish

CROCKER CHAIR COMPANY



No. 6698-1

Width of Seat $16\frac{1}{2}$ inches
Height of Back 18 inches



No. 6682-1

Width of Seat $17\frac{1}{2}$ inches
Height of Back 17 inches



No. 6698-5

Width of Seat $16\frac{1}{2}$ inches
Height of Back 18 inches



No. 6698-2

Width between Arms $18\frac{1}{2}$ inches
Height of Back 19 inches

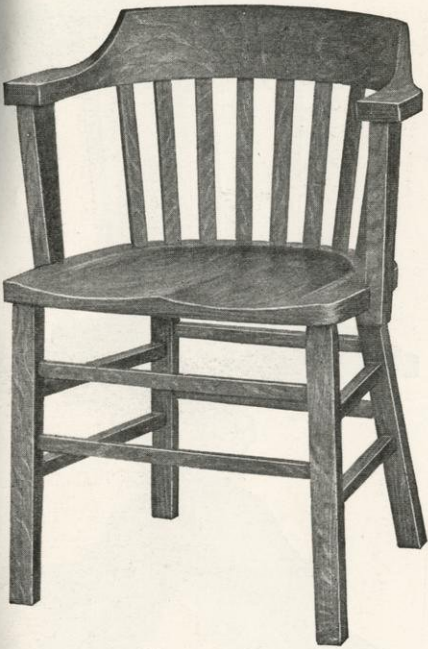


No. 6698-6

Width between Arms $18\frac{1}{2}$ inches
Height of Back 19 inches

Quartered Oak—Light Office Golden Finish or Birch—Mahogany Finish

CROCKER CHAIR COMPANY



No. 6612-2

Width between Arms $17\frac{3}{4}$ inches
Height of Back 14 inches

Quartered Oak—Light Office Golden Finish or Birch—Mahogany Finish



No. 6612-6

Width between Arms $17\frac{3}{4}$ inches
Height of Back 14 inches



No. 55

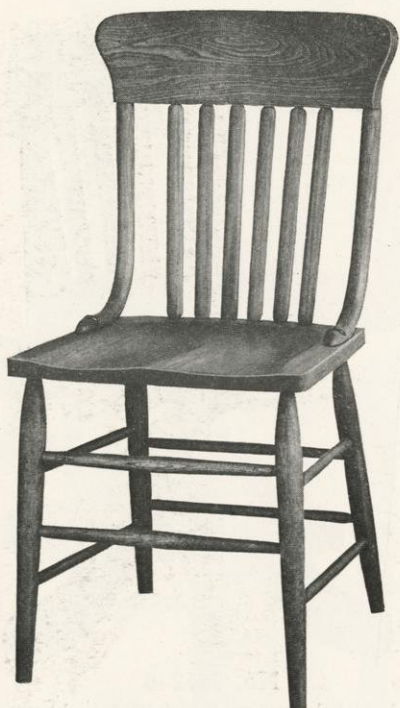
Width between Arms 18 inches
Height of Back 13 inches
Elm—Golden Gloss



No. 55R

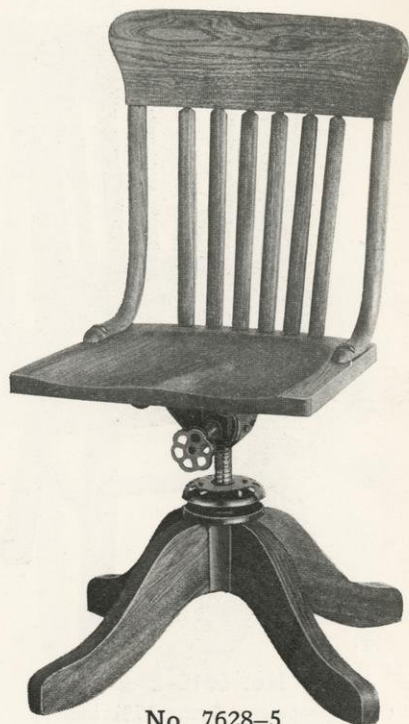
Width between Arms 18 inches
Height of Back 13 inches
Roded from Bow to Seat and from
Seat to Stretcher
Elm—Golden Gloss

CROCKER CHAIR COMPANY



No. 7628-1

Width of Seat $16\frac{1}{2}$ inches
Height of Back 18 inches



No. 7628-5

Width of Seat $16\frac{1}{2}$ inches
Height of Back 18 inches



No. 890-2X

Width between Arms 18 inches
Height of Back 25 inches



No. 890-6X

Width between Arms 18 inches
Height of Back 25 inches

Elm—Light Office Golden Finish

CROCKER CHAIR COMPANY

The "ATWOOD"

Patented Two-Post

TYPEWRITER CHAIR

Descriptive Circular
on Request



No. 6625-16PE

Width of Seat 15½ inches
Height of Back 17½ inches
Perforated Leather Seat over Cane
and Leather Back



No. 6624-16E

Width of Seat 15½ inches
Height of Back 17½ inches
Leather Back



No. 6624-16

Width of Seat 15½ inches
Height of Back 17½ inches



No. 6625-16P

Width of Seat 15½ inches
Height of Back 17½ inches
Perforated Leather Seat over Cane



No. 6625-16

Width of Seat 15½ inches
Height of Back 17½ inches
Cane Seat

Quartered Oak—Light Office
Golden Finish or Birch—
Mahogany Finish

CROCKER CHAIR COMPANY



No. 6627-16UE
Width of Seat 16 inches
Height of Back 17½ inches
Leather Spring Seat, Leather Back



No. 6626-16
Width of Seat 16 inches
Height of Back 17½ inches



No. 5635-16P
Width of Seat 15½ inches
Height of Back 17½ inches
Perforated Leather Seat over Cane



No. 5635-16PE
Width of Seat 15½ inches
Height of Back 17½ inches
Perforated Leather Seat over Cane
and Leather Back



No. 5635-16E
Width of Seat 15½ inches
Height of Back 17½ inches
Cane Seat and Leather Back

Quartered Oak—Light Office
Golden Finish or Birch—
Mahogany Finish

CROCKER CHAIR COMPANY



No. 5634-16E

Width of Seat 15½ inches
Height of Back 17½ inches
Leather Back



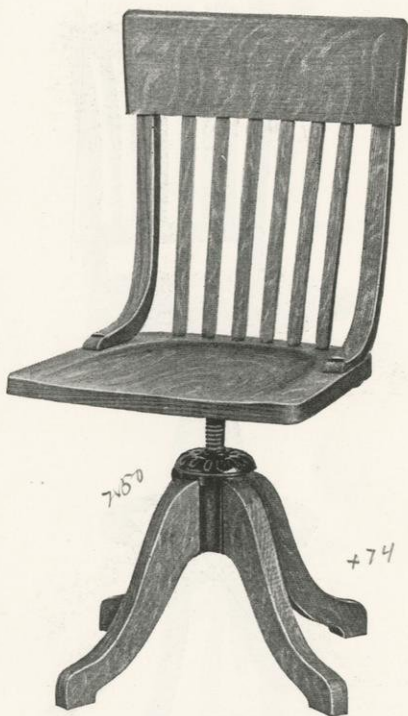
No. 5634-16

Width of Seat 15½ inches
Height of Back 17½ inches



No. 5635-16C

Width of Seat 15½ inches
Height of Back 18 inches
Cane Seat and Back



No. 6614-16

Width of Seat 17 inches
Height of Back 19 inches
Quartered Oak—Light Office
Golden Finish



No. 5635-16

Width of Seat 15½ inches
Height of Back 17½ inches
Cane Seat

CROCKER CHAIR COMPANY



No. 38-9 $\frac{1}{4}$
Width of Seat 18 inches
Height of Back 18 inches
31 inches High

The "ATWOOD" Patented Two-Post BOOKKEEPER STOOL

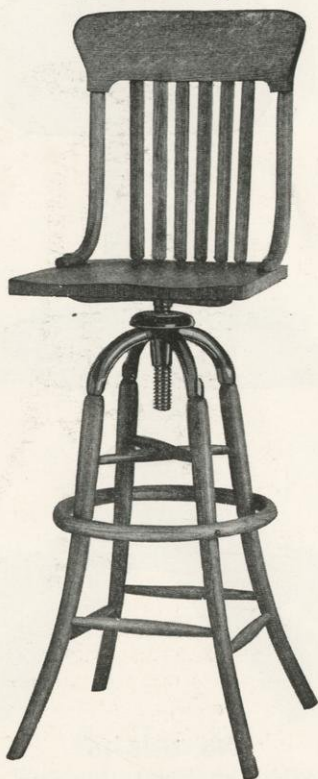
Descriptive Circular
on Request



No. 6624-9 $\frac{1}{4}$
Width of Seat 15 $\frac{1}{2}$ inches
Height of Back 17 inches
31 inches High
Also Furnished in Adding Machine
Height (25 inches High)



No. 5638-9 $\frac{1}{4}$
Width of Seat 18 inches
Height of Back 17 inches
31 inches High



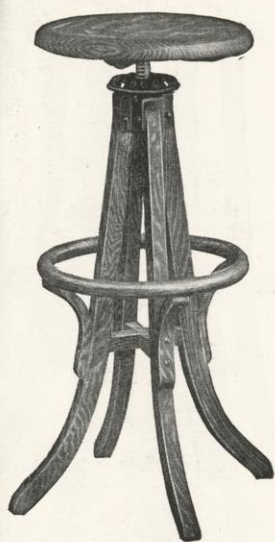
No. 6622-7 $\frac{1}{4}$
Width of Seat 16 $\frac{1}{2}$ inches
Height of Back 18 inches
32 inches High



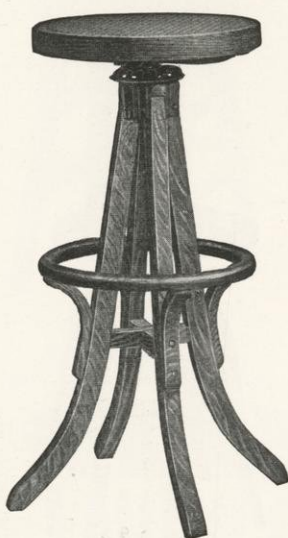
No. 5632-8 $\frac{1}{4}$
Width of Seat 18 inches
Height of Back 17 $\frac{1}{2}$ inches
31 inches High

Note—No. 6622-7 $\frac{1}{4}$ Furnished only
in Quartered Oak
Quartered Oak—Light Office
Golden Finish or Birch—
Mahogany Finish

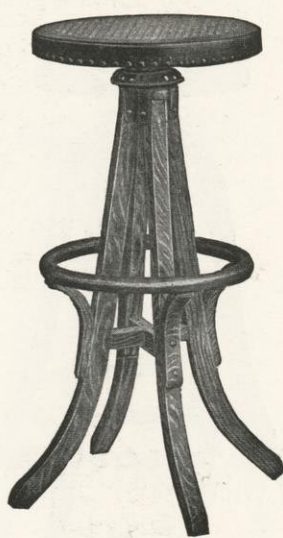
CROCKER CHAIR COMPANY



No. 908-9 $\frac{1}{4}$
Seat, 14 inches Diameter



No. 909-9 $\frac{1}{4}$
Seat, 14 $\frac{1}{2}$ inches Diameter
Cane Seat



No. 909-9 $\frac{1}{4}$ PX
Seat, 14 $\frac{1}{2}$ inches Diameter
Perforated Leather Seat over
Cane

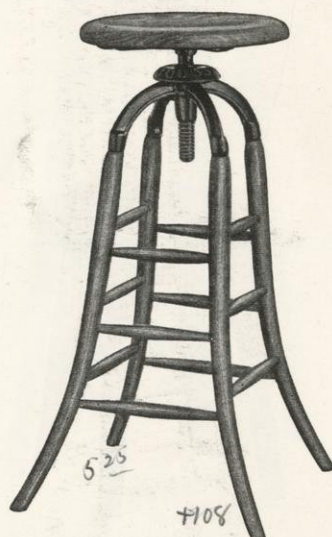
Quartered Oak—Light Office Golden Finish or Birch—Mahogany Finish
30 inches High



No. 5630-8 $\frac{1}{4}$
30 inches High
Seat, 14 inches Diameter
Quartered Oak—Light Office
Golden Finish or Birch—
Mahogany Finish



No. 6616-7 $\frac{1}{4}$
31 inches High
Seat, 14 inches Diameter
Quartered Oak
Light Office Golden Finish



No. 6616-7
31 inches High
Seat, 14 inches Diameter
Quartered Oak
Light Office Golden Finish

CROCKER CHAIR COMPANY



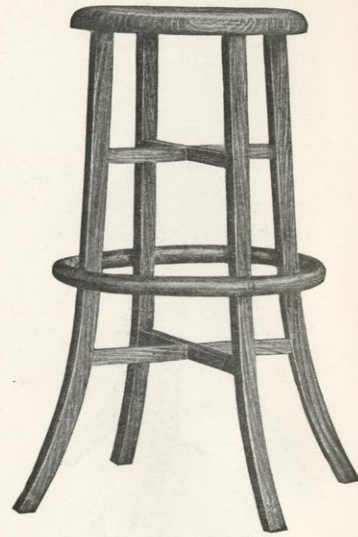
No. 6616A

26 inches High
Seat, 13 inches Diameter
Quartered Oak
Light Office Golden Finish



No. 6616B

18 inches High
Seat, 13 inches Diameter
Quartered Oak
Light Office Golden Finish



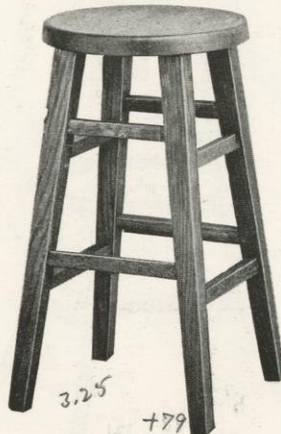
No. 5630¹/₄

30 inches High
Seat, 14 inches Diameter
Quartered Oak—Light Office
Golden Finish or Birch—
Mahogany Finish



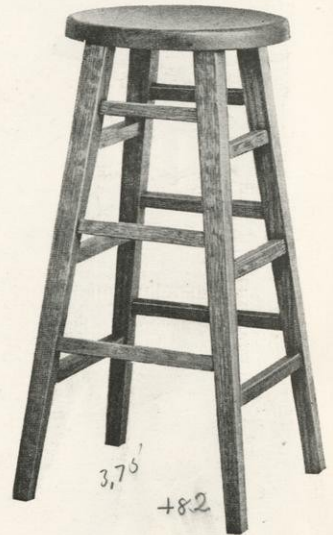
No. 7622B

18 inches High
Seat, 13 inches Diameter



No. 7622A

24 inches High
Seat, 13 inches Diameter

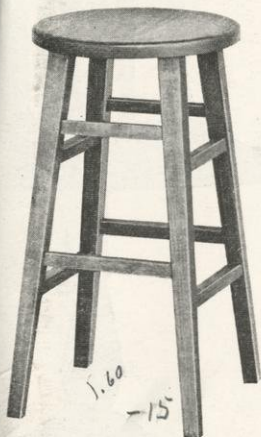


No. 7622AA

30 inches High
Seat, 14 inches Diameter

Quartered Oak—Light Office Golden Finish or Birch—Mahogany Finish

CROCKER CHAIR COMPANY



No. 7624A

24 inches High

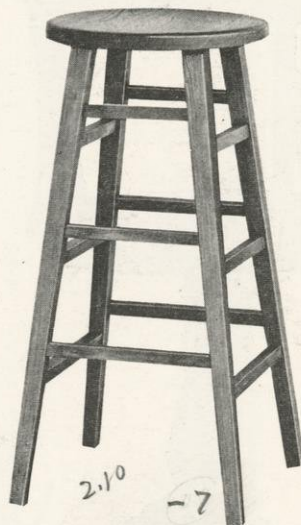
Seat, 13 inches Diameter



No. 7624B

18 inches High

Seat, 13 inches Diameter



No. 7624AA

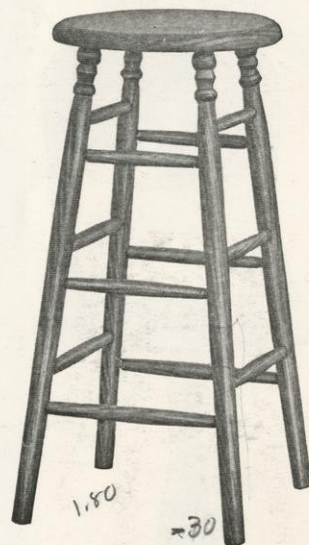
30 inches High

Seat, 14 inches Diameter



No. 630-23

Width of Seat $14\frac{1}{2}$ in. Height of
Back 15 inches Rodded
Seat, 28 inches from floor
Golden Gloss. Factory Stool



No. 821 $\frac{1}{2}$ X

30 inches High

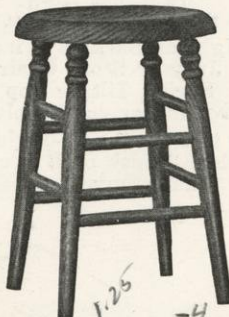
Seat, $13\frac{3}{4}$ inches Diameter



No. 81X

25 inches High

Seat, 13 inches Diameter



No. 80X

18 in. High. Seat 13 in. Diameter

Elm—Light Office Golden Finish

CROCKER CHAIR COMPANY



No. 1406-17

Height, 17, 21, 25 or 30 inches
Width of Seat 17 inches
Height of Back 16½ inches
Quartered Oak—Light Office
Golden Finish or Birch—
Mahogany Finish



No. 236-17

Height 17, 21, 25 or 30 inches
Width of Seat 14½ inches
Height of Back 15 inches
Quartered Oak—Light Office
Golden Finish or Birch—
Mahogany Finish



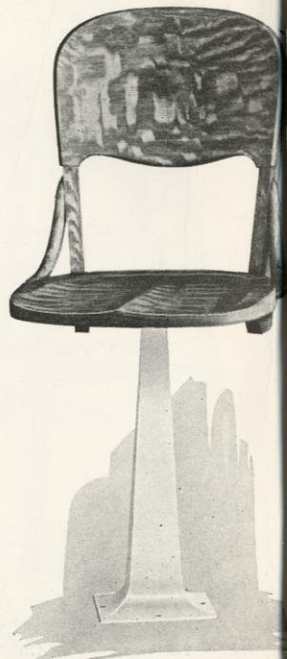
No. 38-18

18 inches High
Width between Arms 18½ inches
Height of Back 18½ inches
Jury or Store Chair
Spring Tilting Top
Revolving or not Revolving
Quartered Oak—Light Office
Golden Finish or Birch—
Mahogany Finish



No. 6622-17

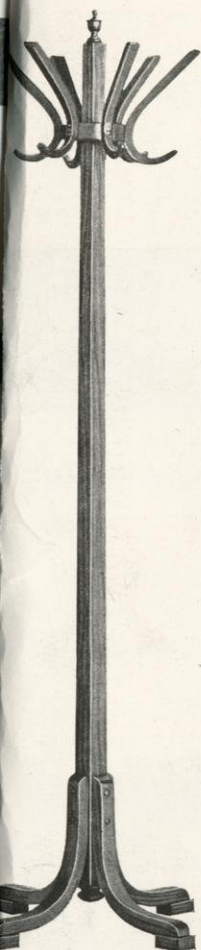
Height 17, 21, 25 or 30 inches
Wid. Seat 16½ in. Hgt. Back
Quartered Oak
Light Office Golden Finish



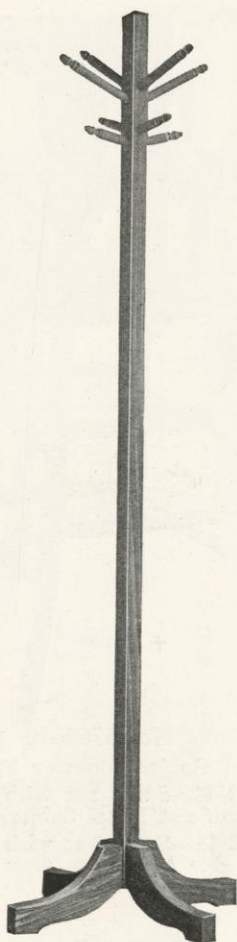
No. 236-30

Height 17, 21, 25 or 30 inches
Width of Seat 14½ inches
Height of Back 15 inches
Quartered Oak—Light
Golden Finish or Birch—
Mahogany Finish
Base, Porcelain Enameled

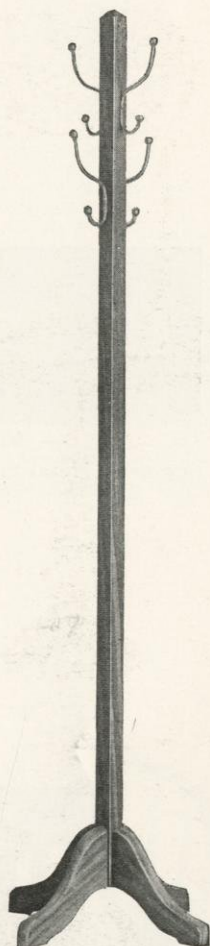
CROCKER CHAIR COMPANY



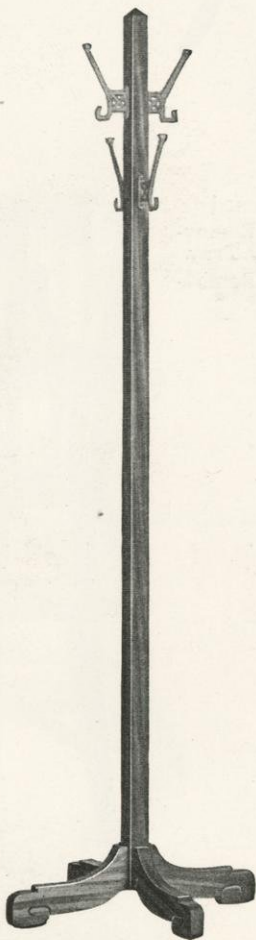
No. 112



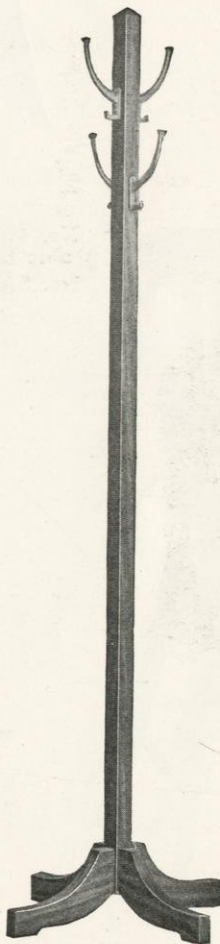
No. 5604-32



No. 5603-32



No. 5600-32

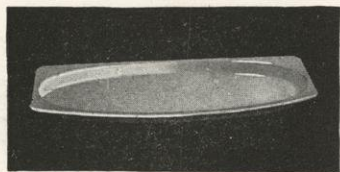


No. 5601-32

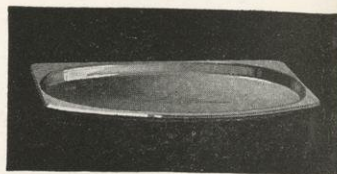
Height 72 inches

Quartered Oak—Light Office Golden Finish or Birch—Mahogany Finish

CROCKER CHAIR COMPANY



— 46
Enameled Metal Sanitary Tray



— 48
Aluminum Sanitary Tray



No. 5760-10

Oak—Golden Gloss or Fumed

No. 5760-46—Same but with Removable Enameled Metal Sanitary Tray

No. 5760-48—Same but with Removable Aluminum Tray

Diff stain 2.00
Fill 2.50
Diff varnish 1.40
Cane rub. 2.00
Diff Croch 1.70
Stripe 1.60
Disinfect 11.20
Indestruct 5.60
16.80



No. 5758-10

Oak—Golden Gloss or Fumed

No. 5758-46—Same but with Removable Enameled Metal Sanitary Tray

No. 5758-48—Same but with Removable Aluminum Tray



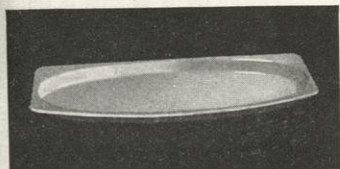
No. 5756-10

Elm—Golden Gloss, Fumed or White Enamel

No. 5756-46—Same but with Removable Enameled Metal Sanitary Tray

No. 5756-48—Same but with Removable Aluminum Tray

CROCKER CHAIR COMPANY



— 46

Enameled Metal Sanitary Tray



+135 Mr. 1/24

No. 6084-10

Birch—American Walnut or Brown Mahogany Dull

Decorated or Plain Enamel

Banister Decorated in Dull Gold

No. 6084-46—Same but with Removable Enameled Metal Sanitary Tray

No. 6084-48—Same but with Removable Aluminum Tray

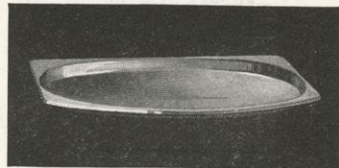
2.00 Dip stain (oil)
1.40 Dip Varnish
2.00 Came rub + sand
1.70 Dip. Wash varnish

1.60 Stripe (2 doz per hr.)

8.70 Direct labor

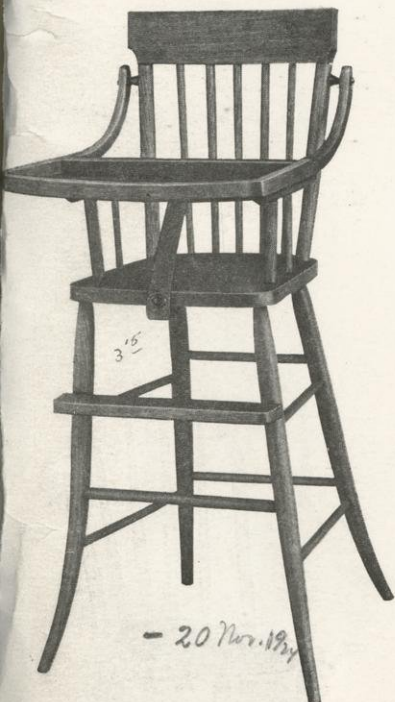
4.30 Indirect

13.00



— 48

Aluminum Sanitary Tray



3.15

- 20 Mr. 182

No. 5754-10

Elm—Golden Gloss, White Enamel

No. 5754-46—Same but with Removable Enameled Metal Sanitary Tray

No. 5754-48—Same but with Removable Aluminum Tray



3.00

+17 Mr. 192

No. 5752-10

Elm—Golden Gloss

Birch—Am. Walnut or Br. Mahogany Fin. Dull. Comb. Enamels

No. 5752-46—Same but with Removable Enameled Metal Sanitary Tray

No. 5752-48—Same but with Removable Aluminum Tray

CROCKER CHAIR COMPANY



No. 6182-1

Height 18 inches
Width of Seat 15½ inches
Height of Back 17½ inches



No. 6182-1

Height 16 inches
Width of Seat 15 inches
Height of Back 16 inches
Quartered Oak
Golden Dull or Fumed



No. 6182-1

Height 14 inches
Width of Seat 15 inches
Height of Back 16 inches



No. 180

Height 11 or 14 inches
Golden Gloss or Vermilion



No. 180½

Height 14 inches
Golden Gloss or Vermilion



No. 182

Height 11 inches
Golden Gloss or Vermilion

CROCKER CHAIR COMPANY

*Green
Brush stain,
Shellac all over
sand
Brush flat varnish*



+ 12 Nov. 1924

No. 5764

Height 12 or 14 inches
Width of Seat 13½ inches
Height of Back 12 inches

Golden Gloss or
Green Finish

*Sol.
dip
Shellac seat and face of slat,
Sand.
Dip varnish.*



No. 165

Height 12 inches

Golden Gloss or Vermilion



100

-9.46

No. 164

Height 10 inches

Golden Gloss or Vermilion

Folding Chair

An unusual value. Chair will not
open or close of its own accord.
Easily stacked. Does not tip—is
strong and comfortable

*Index
Oak - 1.80
Sand 2.00
Pure shellac 1.00
Varnish (dip) 1.20*

*Sand 5.00
Dip varnish 2.50
Total 7.50*



-22 Nov. 1924

No. 527

Width of Seat 13¼ inches
Height of Back 16½ inches

Golden Gloss or
Natural Finish

Patent Applied For



*26
2*

+ 52

No. 122

Nursery Chair

Golden Gloss or Vermilion



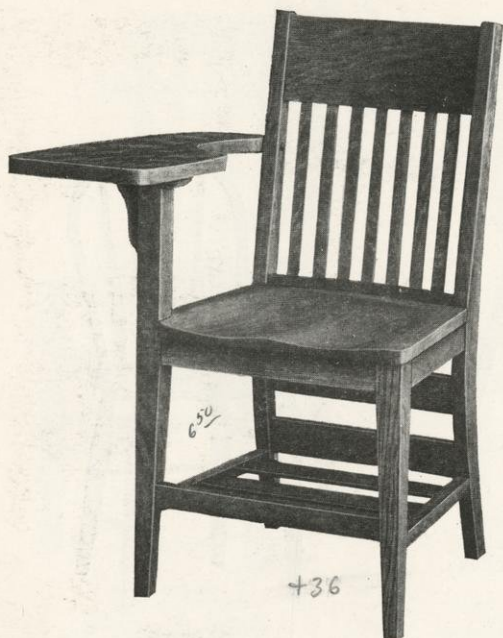
40

+12

No. 145

Golden Gloss or Vermilion

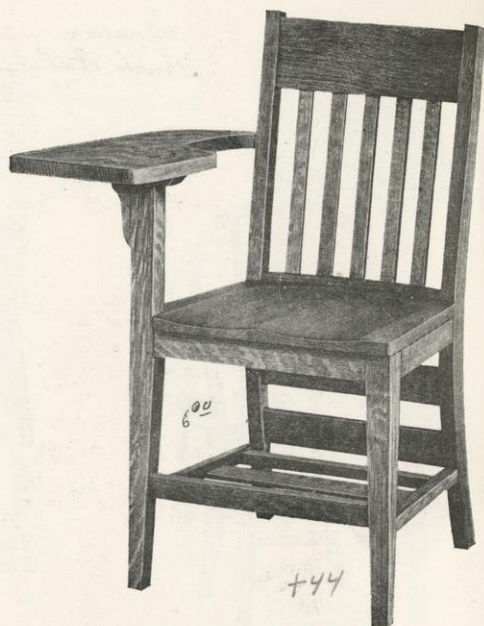
CROCKER CHAIR COMPANY



No. 1268-1RSK

Width of Seat $17\frac{1}{2}$ inches
Height of Back 18 inches
Tablet Arm $9\frac{1}{2} \times 23\frac{1}{2}$ inches

No. 1268-IS—Same but without Book Rack or Kickboards



No. 1266-1RSK

Width of Seat $17\frac{1}{2}$ inches
Height of Back 18 inches
Tablet Arm $9\frac{1}{2} \times 23\frac{1}{2}$ inches

No. 1266-IS—Same but without Book Rack or Kickboards

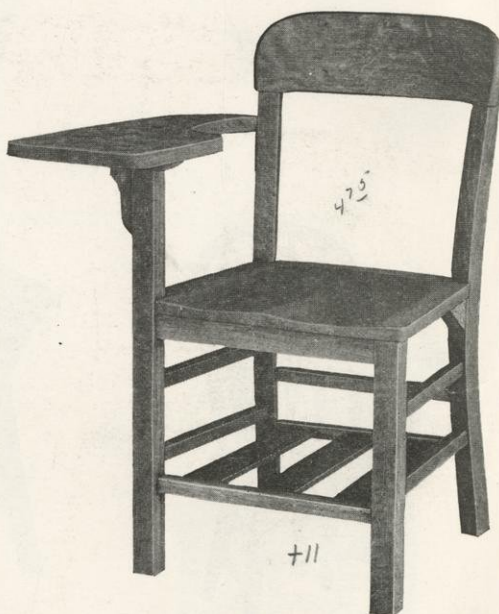
6160-1RS. 6.75 = +113



No. 6180-1S

Width of Seat 18 inches
Height of Back 17 inches
Tablet Arm $9\frac{1}{2} \times 23\frac{1}{2}$ inches

*Dip stain
Filled
Sand on filler
spray varnish
Haze coat.
Fall arm 2nd time.*

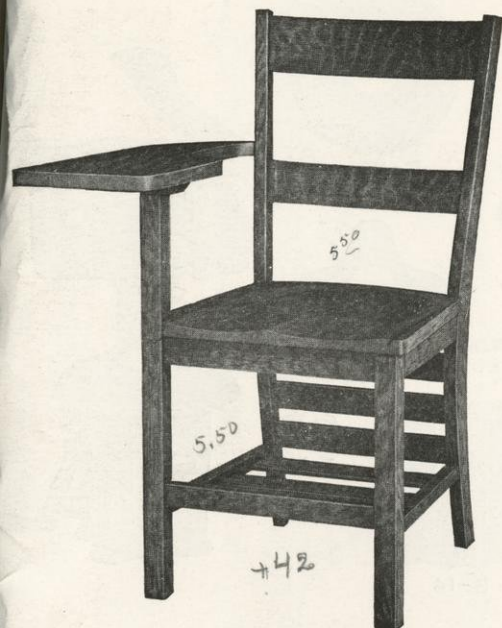


No. 6180-1RS

Width of Seat 18 inches
Height of Back 17 inches
Tablet Arm $9\frac{1}{2} \times 23\frac{1}{2}$ inches

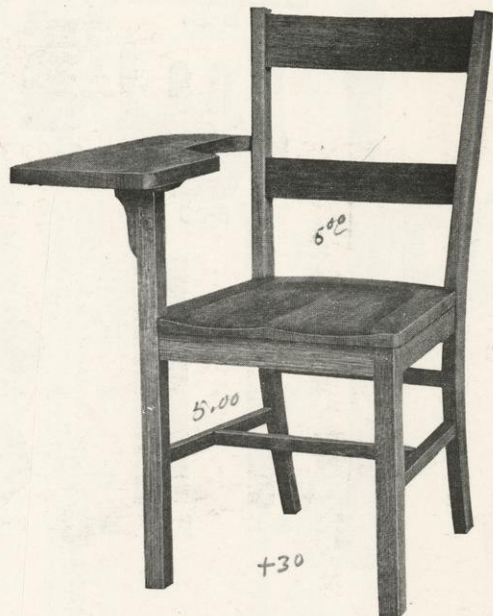
Quartered Oak—Golden Dull, Fumed and Special Finishes

CROCKER CHAIR COMPANY



No. 6178-1RSK

Width of Seat $17\frac{1}{2}$ inches
 Height of Back 18 inches
 Tablet Arm $9\frac{1}{2} \times 23\frac{1}{2}$ inches
Quartered Oak—Golden Dull
Birch—Walnut Finish and
Special Finishes



No. 6178-1S

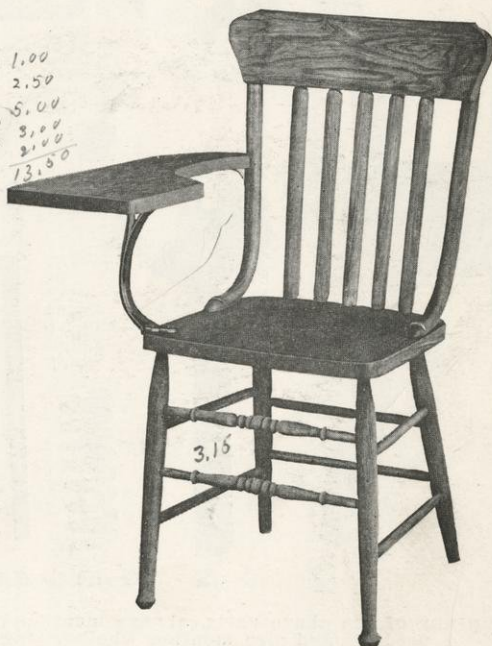
Width of Seat $17\frac{1}{2}$ inches
 Height of Back 18 inches
 Tablet Arm $9\frac{1}{2} \times 23\frac{1}{2}$ inches
Quartered Oak—Golden Dull
Birch—Walnut Finish and
Special Finishes
No. 6178-1—Same without Tablet
Arm



No. 6080-1S

Width of Seat 17 inches
 Height of Back $16\frac{1}{2}$ inches
 Tablet Arm 9×23 inches
Quartered Oak—Golden Dull
Fumed and Special Finishes

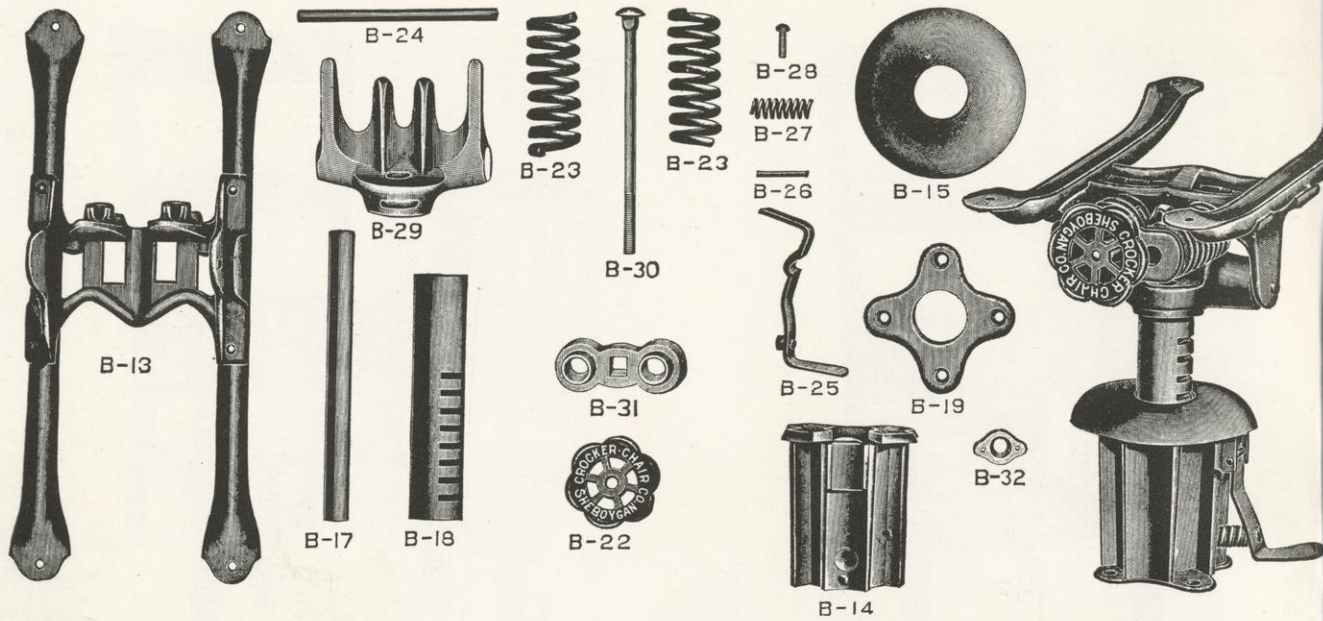
*Up stain 1.00
 Filled 2.50
 sand on filler 5.00
 spray varnish 3.00
 Hoze coat 2.00
 13.50*



No. 6078-1S

Width of Seat 16 inches
 Height of Back 19 inches
 Tablet Arm 9×23 inches
Elm—Golden Gloss

CROCKER CHAIR COMPANY



In ordering any of the above parts, always mention length of Spider the part is to be used on, and also mention whether single or double spring

No. B-13—Steel Spider
No. B-14—Hub
No. B-15—Bell
No. B-17—Pivot

No. B-18—Pivot Sleeve
No. B-19—Plate
No. B-22—Hand Wheel
No. B-23—Springs

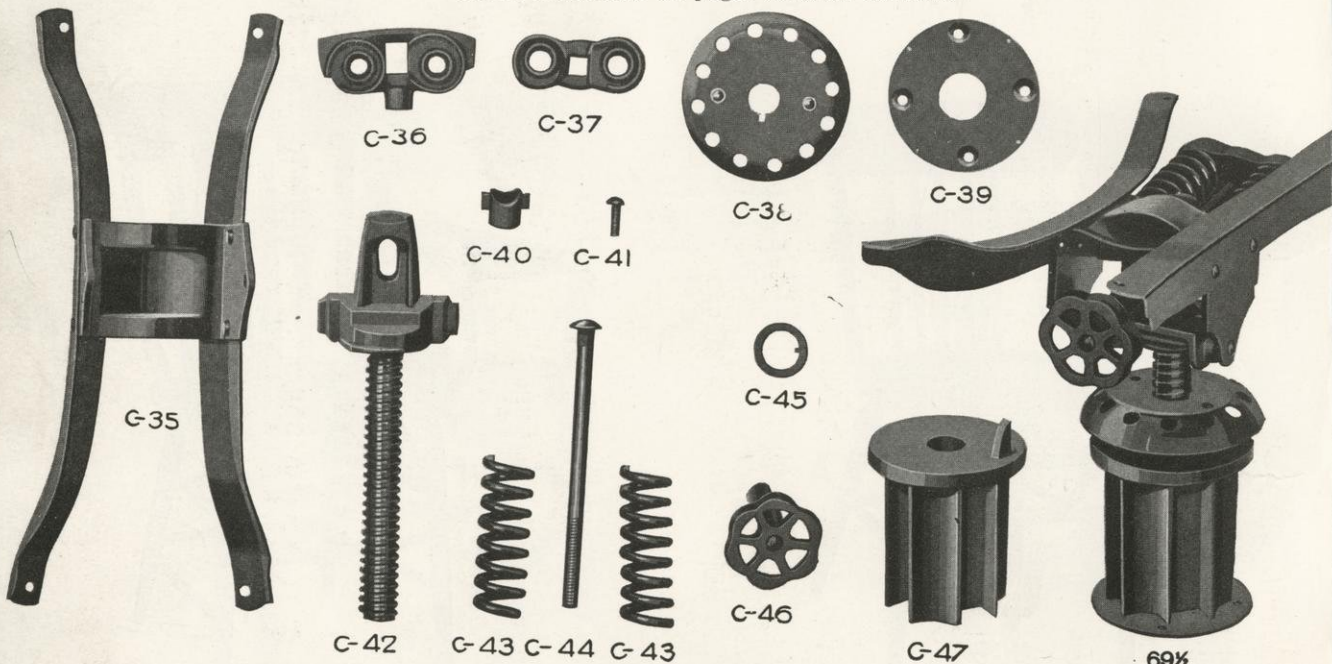
No. B-24—Crab Rivet
No. B-25—Foot Lever
No. B-26—Lever Pin
No. B-27—Lever Spring

No. B-28—Set Screw
No. B-29—Crab
No. B-30—Bolt
No. B-31—Spring Holder
No. B-32—Crab Washer

No. 67½. Chair Iron with Steel Spider

In ordering, always mention the extreme outside measurement of Spider Arms (not the distance between screw holes); also mention whether single or double spring.
Weight per dozen, 275 pounds.

Extra heavy iron with foot treadle raising and lowering device, used on all screw and spring chairs illustrated on pages 60 to 82 inclusive



In ordering any of the above parts, always mention length of Spider the part is to be used on, and also mention whether single or double spring

C-35—Steel Spider
C-36—Front Spring Holder
C-37—Rear Spring Holder
C-38—Bell

C-39—Plate
C-40—Bolt Washer
C-41—Set Screw
C-42—Screw and Cup

C-43—Springs
C-44—Bolt
C-45—Washer
C-46—Hand Wheel
C-47—Hub

No. 69½. Chair Iron with Steel Spider.

In ordering, always mention the extreme outside measurement of Spider Arms (not the distance between screw holes); also mention whether single or double spring.

Heavy iron with adjustable wheel attachment for raising and lowering, used on all screw and spring chairs illustrated on pages 82 to 90 inclusive

INDEX

Pattern Number	Page in Cat.	Pattern Number	Page in Cat.	Pattern Number	Page in Cat.	Pattern Number	Page in Cat.	Pattern Number	Page in Cat.
1	20	5146-1	18	6392-4	37	7304-1	35	7742	46
15BT	55	5196-1	18	6394-2	37	7304-2	35	7743	45
20BT	55	5600-32	99	6394-4	37	7304-3	35	7744	43
26-1	70	5601-32	99	6396-2	34	7304-4	35	7745	43
26-1E	69	5603-32	99	6396-4	34	7306-4	58	7746	44
26-2	70	5604-32	99	6398-2	34	7308-4	59	7752	29
26-2E	69	5630 1/4	96	6398-4	34	7310-4	59	7753	30
26-5	70	5630-8 1/4	95	6586-35	52	7469-4	58	7754	29
26-5E	69	5632-8 1/4	94	6590-35	50	7471-4	57	7757	47
26-6	70	5634-16	93	6591-35	50	7473-4	57	7758	47
26-6E	69	5634-16E	93	6594	50	7475-4	57	7759	47
26-19	71	5635-16	93	6594-3	50	7477-4	57	7760	30
26-19E	71	5635-16C	93	6595	50	7481-2UE	23	7761-1	6
27-1P	68	5635-16E	92	6595-3	50	7481-2UE	56	7761-2	7
27-1PE	68	5635-16P	92	6610-1	78	7483-2UE	23	7762-1UE	6
27-2P	68	5635-16PE	92	6610-6	78	7483-2UE	56	7762-2UE	6
27-2PE	68	5638-1	84	6611-6P	78	7485-2UE	22	7764	6
27-5P	68	5638-2	84	6612-2	89	7485-4UE	22	7765	7
27-5PE	68	5638-5	84	6612-6	89	7486-4	58	7766W	7
27-6P	68	5638-6	84	6614-16	93	7487-4	58	7770	12
27-6PE	68	5638-9 1/4	94	6616A	96	7509-35	49	7771-1	12
36A	54	5638-19	74	6616B	96	7511	49	7773-1	12
38-1	79	5639-5P	82	6616-7	95	7511-3	49	7775	12
38-2	79	5639-6P	82	6616-7 1/4	95	7512	48	7776	12
38-5	79	5640-1	80	6619-6E	60	7512-3	48	7780	4
38-6	79	5640-2	80	6622-7 1/4	94	7512-35	48	7781-1	5
38-9 1/4	94	5640-5	80	6622-17	98	7513	48	7781-2	5
38-18	98	5640-6	80	6624-9 1/4	94	7513-3	48	7782-1UE	4
38-19	73	5657-2CE	61	6624-16	91	7513-35	48	7782-2UE	4
39-2P	79	5657-6CE	61	6624-16E	91	7524	49	7783-1U	5
39-5	79	5661-6E	60	6625-16	91	7524-3	49	7783-2U	5
39-6P	79	5668-1	83	6625-16P	91	7524-35	49	7784	4
46	100	5668-2	83	6625-16PE	91	7525	49	7785	5
48	100	5668-5	83	6626-16	92	7525-3	49	7786W	5
55	89	5668-6	83	6627-16UE	92	7525-35	49	7790	13
55R	89	5752-10	101	6632-2E	65	7530	52	7792-1	13
67 1/2	100	5752-10 Comb. Ena.	43	6632-6E	65	7530-3	52	7793-1	13
69 1/2	100	5752-46	101	6633-2PPE	65	7530 1/2	52	7795-1	13
70A	54	5752-46 Comb. Ena.	43	6633-2UE	65	7554	51	7796	13
70B	54	5752-48	101	6633-6PPE	65	7554-3	51	7800	28
80X	97	5752-48 Comb. Ena.	43	6633-6UE	65	7555	51	7801	31
81X	97	5754-10	54	6637-2CE	62	7555-3	51	7802	31
82 1/2 X	97	5754-10	54	6637-2PPE	62	7556-35	51	7803	25
112	99	5754-46	101	6637-6CE	62	7557-35	51	7804	30
120-1	53	5754-46	101	6639-2UE	62	7600-2	82	7805	25
120-3	53	5754-48	54	6639-6UE	62	7600-6	82	7806	31
122	103	5754-48	101	6641-1UE	64	7609-1UE	63	7807	32
145	103	5756-10	54	6641-2UE	64	7609-2UE	63	7809	30
164	103	5756-10	100	6641-6UE	64	7609-6UE	63	7809	33
165	103	5756-46	54	6661-6CE	60	7612-1	85	7813	28
180	102	5756-46	100	6666-1	75	7612-2	85	7816	28
180 1/2	102	5756-48	54	6666-2	75	7612-5	85	7817	28
182	102	5756-48	100	6666-2E	73	7612-6	85	7818	28
200	20	5758-10	100	6666-5	75	7614-1E	67	7826	27
200 Ena.	54	5758-46	100	6666-6	75	7614-2E	67	7827	27
235BT	55	5758-48	100	6666-6E	73	7614-5E	67	7828	26
236-17	98	5760-10	100	6667-1P	75	7614-6E	67	7836	27
236-30	98	5760-48	100	6667-2C	72	7615-1PE	67	7837	27
244BT	55	5760-48	100	6667-2CE	72	7615-2CE	66	7838	26
258-2	76	5764	103	6667-2P	75	7615-2PE	67	7846	26
258-6	76	6006-1	20	6667-2PE	73	7615-6PE	66	7847	26
282-1	78	6010-1	41	6667-5P	75	7615-6PE	66	7848	26
282-5	78	6072-1	40	6667-6C	72	7615-6PE	67	7901	22
453-1	19	6072-1	40	6667-6CE	72	7620-1	86	7909	22
453V	19	6072-2	40	6667-6P	75	7620-5	86	8235-1	15
527	103	6072-3	41	6667-6PE	73	7620-6	86	8235-2	15
630-23	97	6072-4	41	6680-1	87	7622A	96	8269-1	14
756-1	19	6074-1	45	6680-2	87	7622AA	96	8269-2	14
778-1	17	6074-1	106	6680-5	87	7622B	96	8299-1	16
890-2X	90	6078-1S	106	6680-6	87	7624A	96	8299-2	16
890-6X	90	6080-1S	106	6682-1	88	7624AA	97	8701-1	3
908-9 1/4	95	6084-1	39	6685-2CE	61	7624B	97	8702-2	3
909-9 1/4	95	6084-2	39	6685-6CE	61	7626-1	81	8704	2
909-9 1/4 PX	95	6084-4	102	6692-1	21	7626-2	81	8705	3
1201-1	14	6084-10	102	6692-2	21	7626-6	81	8706W	3
1201-2	14	6084-48	102	6692-4	21	7628-1	90	8801	25
1205-1	14	6086-1	38	6695-2CE	66	7628-5	90	8803	31
1205-2	14	6086-2	38	6695-6CE	66	7720	10	8804	31
1209-1	15	6086-4	38	6696-1	77	7722-1	11	8805	25
1209-2	15	6086-6	38	6696-2	77	7722-2	11	8806	32
1253-1	16	6092-3	59	6696-2E	76	7724	10	8807	32
1253-2	16	6094-1	44	6696-5	77	7726W	11	8808	32
1255-1	15	6096-1	46	6696-6	77	7727-1	10	8809	29
1255-2	15	6122-1	18	6696-6E	76	7727-2	10	8810	29
1266-1RSK	104	6126-1	19	6697-5P	77	7730	8	8812-1	33
1266-1S	104	6178-1	105	6698-1	17	7732-1	9	8812-2	33
1268-1RSK	104	6178-1RSK	105	6698-2	88	7732-2	9	9207-1	16
1268-1S	104	6180-1S	104	6698-5	88	7733-1UE	9	9207-2	16
1300-1	18	6180-1S	104	6698-6	88	7733-2UE	9	9216-1	17
1350-1	19	6182-1	102	7000-1	41	7734	9	9217-1	17
1406-17	98	6382-2	37	7000-1 Comb. Ena.	47	7735	8	9217-2	17
1474-19	74	6384-2	38	7002-1	46	7736W	9	9224-1	17
2001	55	6384-4	38	7302-1	36	7737-1	8	9265-1	24
2002	55	6386-2	40	7302-2	36	7737-2	8	9265-2	24
2002T	55	6386-4	40	7302-3	36	7740	44	9271-1	24
5026-1	53	6392-2	37	7302-4	36	7741	45	9271-2	24
5026-3	53	6392-2	37					9271-1UE	23
5088-1	19	6392-2	37					9271-2UE	23
5090-1	20	6392-2	37						
5120-1	18	6392-2	37						
5122-1	18	6392-2	37						

1281 Luv.
1285 Luv.
1287 Luv.
1289 Luv.
1290 Luv.

longer time 30 $\frac{1}{2}$ over 6072

1293 rub. front. 5 min per chair: \$.045

1297 face rub.
1299 face rub.

628 - face rub.

2200 line face rub.

1287-2 = + 88

534 =

2201.4¹⁰ = +46 Dec. 1924

7010-1 ³³ = +33

7012-1 ⁵⁰ = +51

7020-1 ⁴⁰⁰ = +66

300 = +367

1285-1 = -10

1285-2 = +84

1287-1 = -9

1287-2 = +88

1289-1 = -20

1289-2 = +90

1297-1 = +20

1297-2 = +77

1299-1 = +11

1299-2 = +75

9216-1-16" = +27

9216-1-18" = -24

9216-1-14" = -3

5768 = +12

5774 = +1

3 months
for 80-000

008
100613
82
✓ 001090

100/00

