



LIBRARIES

UNIVERSITY OF WISCONSIN-MADISON

Dialogue part: Eagle. [between 1860-1890?]

Burnand, F. C. (Francis Cowley), 1836-1917; Connelly, Michael
[s.l.]: [s.n.], [between 1860-1890?]

<https://digital.library.wisc.edu/1711.dl/HOYB6XRDT4XF78H>

Based on date of publication, this material is presumed to be in the public domain.

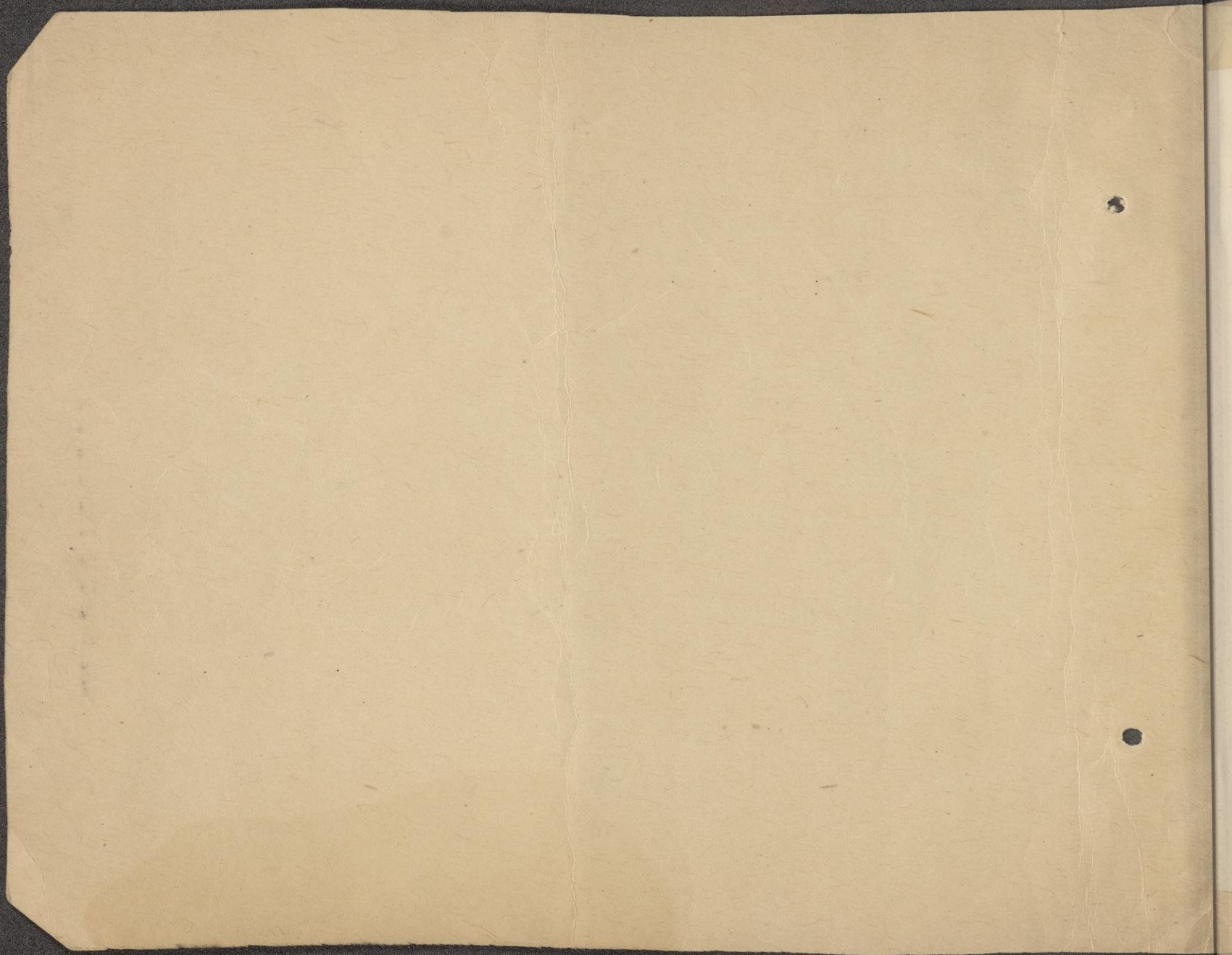
For information on re-use see:

The libraries provide public access to a wide range of material, including online exhibits, digitized collections, archival finding aids, our catalog, online articles, and a growing range of materials in many media.

When possible, we provide rights information in catalog records, finding aids, and other metadata that accompanies collections or items. However, it is always the user's obligation to evaluate copyright and rights issues in light of their own use.

IXION

EAGLE.



EAGLE.

-----the gods can provide.
(Enter Eagle after Mercury.)

-----H.P. with you.

Come Mercury don't chatter.

-----A cracker.

Cah.

