



# LIBRARIES

UNIVERSITY OF WISCONSIN-MADISON

## Map of the city of Oshkosh. 1858

[s.l.]: [s.n.], 1858

<https://digital.library.wisc.edu/1711.dl/3DYTVHVGNA7RH8S>

Based on date of publication, this material is presumed to be in the public domain.

Original material courtesy Oshkosh Public Museum.

For information on re-use, see

<http://digital.library.wisc.edu/1711.dl/Copyright>

The libraries provide public access to a wide range of material, including online exhibits, digitized collections, archival finding aids, our catalog, online articles, and a growing range of materials in many media.

When possible, we provide rights information in catalog records, finding aids, and other metadata that accompanies collections or items. However, it is always the user's obligation to evaluate copyright and rights issues in light of their own use.



LAKE BUTTE DES MORTS

CHURCHES.

- A. Welsh Congregational Methodist Church
- B. St. Peter's Catholic Church
- C. Trinity Episcopal Church
- D. Congregational Church (new)
- E. Congregational Church (old)
- F. Wesleyan Methodist Church
- G. Wald's Methodist Church
- H. German Catholic St. Mary's
- I. German Lutheran
- J. German Methodist
- K. High School

POPULATION.

1849 Official 480  
 1857 " 4118  
 1857 " 3044  
 1857 Estimate 9200

HOTELS.

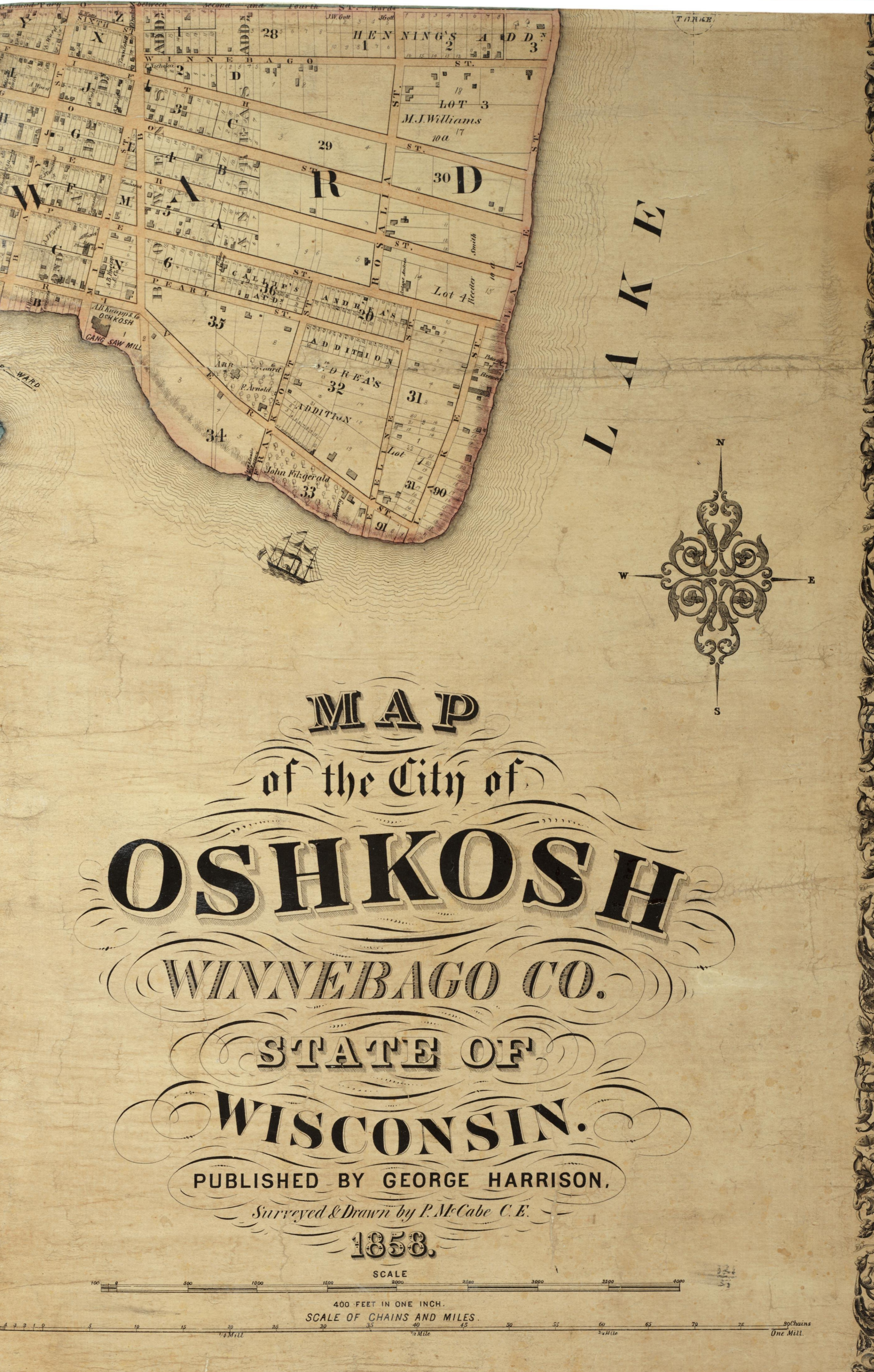
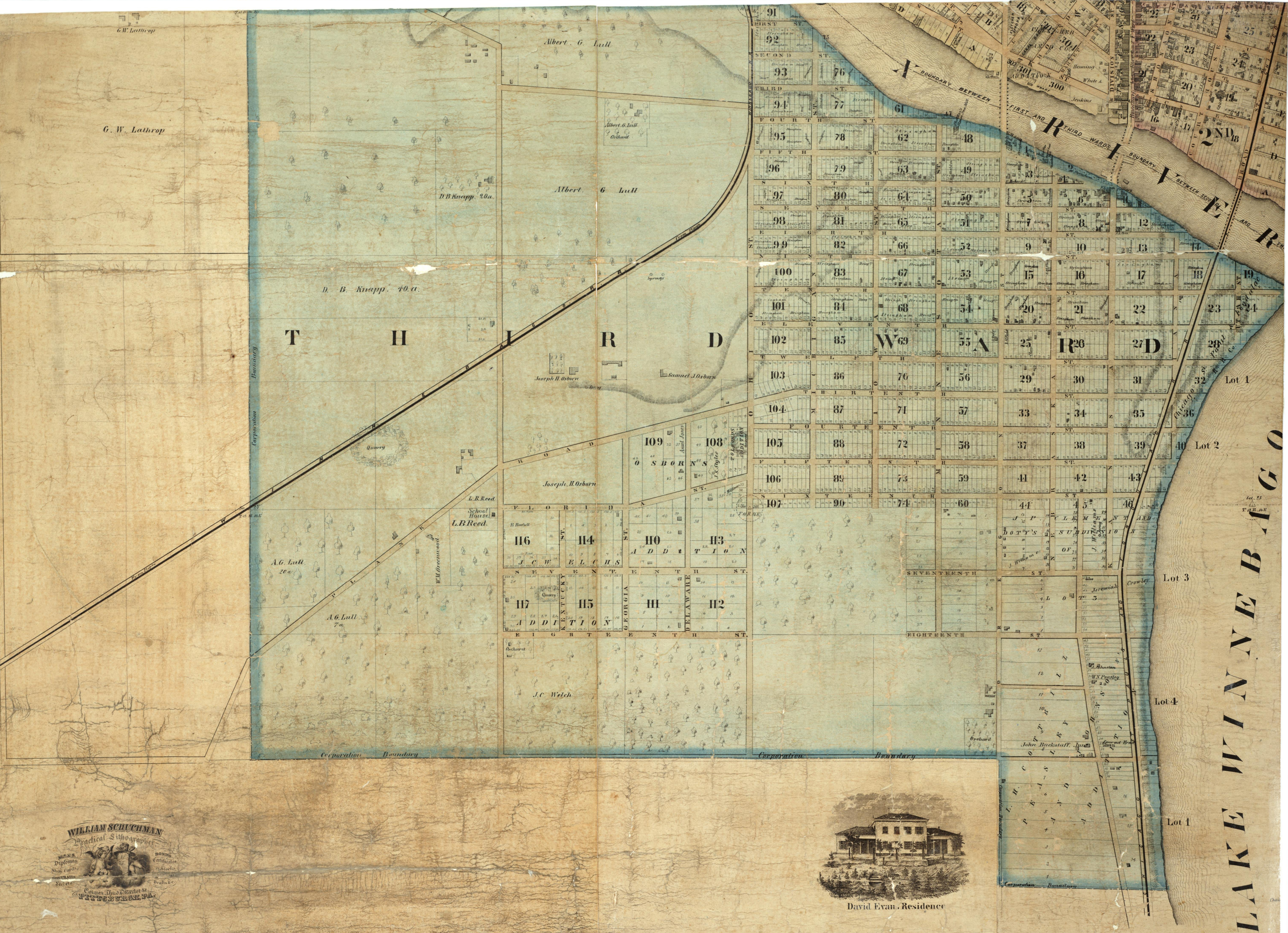
- Winnabago Hotel, E. Side Ferry between Wings and Otter St.
- Osborn House " " " " " "
- Adams House " " " " " "
- Wisconsin " " " " " "
- Fox River " " " " " "
- City Hotel, W. side Ferry " " " "
- Washington House, E. side Ferry " " " "
- Brooklyn " " " " " "
- Green Bay " " " " " "
- Algonquin Hotel, N. side Main, corner of Mill St. Algonquin.

HALLS.

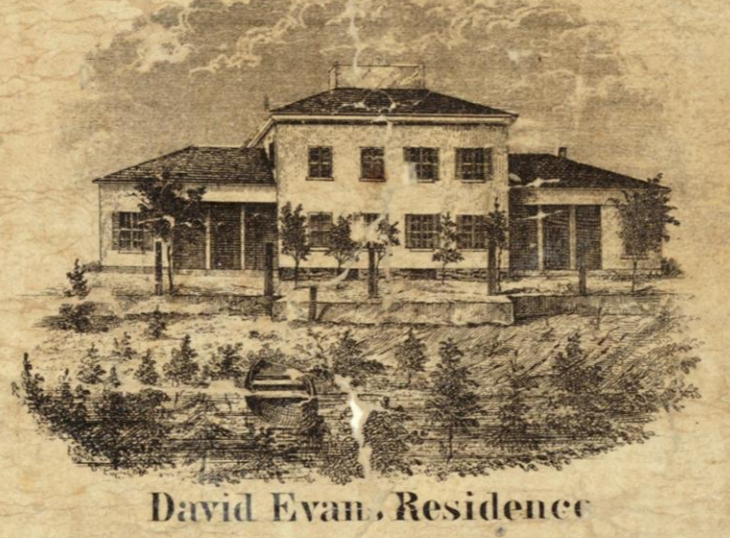
- Mark's Hall, Ferry St. corner of Cass St.
- McArthur's Hall, W. side of Ferry St. opposite Cass St.
- Gill's Hall, Market St. near High St.
- Ward's Hall, Sheldon St. between Otter St. and Cass St.
- Joseph's Hall, 6th St. near Kansas St. & West
- German Theatre, E. side of Ferry St. between Merritt St. and Park St.

FOX RIVER.

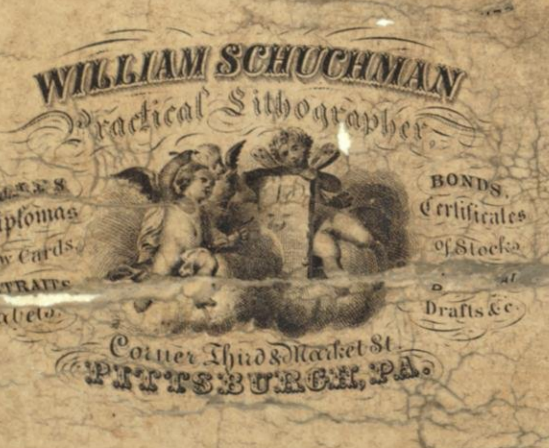
The Fox River improvement commences on Lake Michigan, and crosses the State in a south-westerly direction, passing through and along thirteen of the most productive and wealthy counties in the State. From the head of Green Bay (a harbor as large as Long Island Sound) the line of the improvement passes up the Lower Fox, a river 600 feet wide, three-three miles to Lake Winnabago. This sheet of water is forty-five miles long and ten miles wide. From this Lake it extends along the Upper Fox, a distance of 115 miles to Fort Winnebago and from that point by a Canal two miles in length it is connected with the Wisconsin and so that River in a distance of 112 miles with the Mississippi at Prairie du Chien; the aggregate length is about 300 miles. The Upper Fox, 10 miles above Oshkosh, is joined by the Wolf River, a stream navigable for steam-boats 100 miles into the Pine regions of Northern Wisconsin.



MAP  
 of the City of  
**OSHKOSH**  
 WINNEBAGO CO.  
 STATE OF  
**WISCONSIN.**  
 PUBLISHED BY GEORGE HARRISON.  
 Surveyed & Drawn by P.M. Cobb, C.E.  
 1853.



David Evans' Residence



WILLIAM SCHUCHMAN

SCALE  
 400 FEET IN ONE INCH.  
 SCALE OF CHAINS AND MILES



MAP

of the City of

OSHKOSH

WINNEBAGO CO.

STATE OF

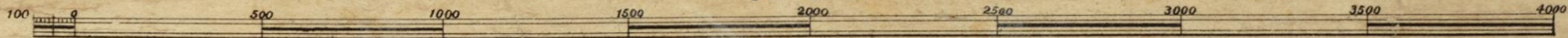
WISCONSIN.

PUBLISHED BY GEORGE HARRISON,

*Surveyed & Drawn by P. McCabe C. E.*

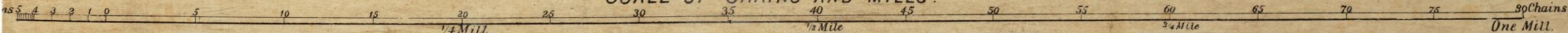
1858.

SCALE



400 FEET IN ONE INCH.

SCALE OF CHAINS AND MILES.



324  
57



**WILLIAM SCHUCHMAN**

Practical Lithographer



MADE  
Diplomas  
Show Cards  
PORTRAITS  
Labels

BONDS,  
Certificates  
of Stocks  
at  
Drafts &c.

Corner Third & Market St.  
**PITTSBURGH, PA.**





David Evan, Residence



# CHURCHES.

# POPULATION.

<b>A.</b>	Welch Congregational Methodist on Church Street.		
<b>B.</b>	St. Peter's Catholic Church,	" High	"
<b>C.</b>	Trinity Episcopal Church	" Main	"
<b>D.</b>	Congregational Church (new)	" "	"
<b>E.</b>	Congregational Church (old)	" Ferry	"
<b>F.</b>	Wesleyan Methodist	" Church	"
<b>G.</b>	Welsh Methodist	" Division	"
<b>H.</b>	German Catholic St. Mary's	" Merritt	"
<b>I.</b>	German Lutheran,	" Powan	"
<b>J.</b>	German Methodist,	" Bay	"
<b>K.</b>	High School	" Merritt	"

1849	<i>Official</i>	486.
1855	"	4118
1857	"	8041
1858	<i>Estimate</i>	9200



# HOTELS.

- Winnebago Hotel E. Side Ferry between Waugo and Otter Sts.  
Oshkosh " " " " Otter and Ceape.  
Adams House " Shondan, Corner of Otter St.  
Wisconsin " " " " of Ceape St.  
Fox River " " Broad " "  
City Hotel, W. side Ferry " Main St.  
Washington House, E. Side Ferry " Merritt.  
Green Bay " " " between Polk and Irringe.  
Brooklyn " " Kansas St. corner of 8th St. 3d Ward.  
Algoma Hotel, N. side Main, corner of Mill St. Algoma.

# HALLS.

- Mark's Hall, Ferry St. corner of Ceape St.  
McCourt's Hall, W. side of Ferry St. opposite Ceape St.  
Gill's Hall, Market St. near High St.  
Ward's Hall, Shondan St. between Otter St. and Ceape St.  
Jones's Hall, 6th St. near Kansas St. 3d Ward.  
German Theatre, E. side of Ferry St. between Merritt St. and Polk St.

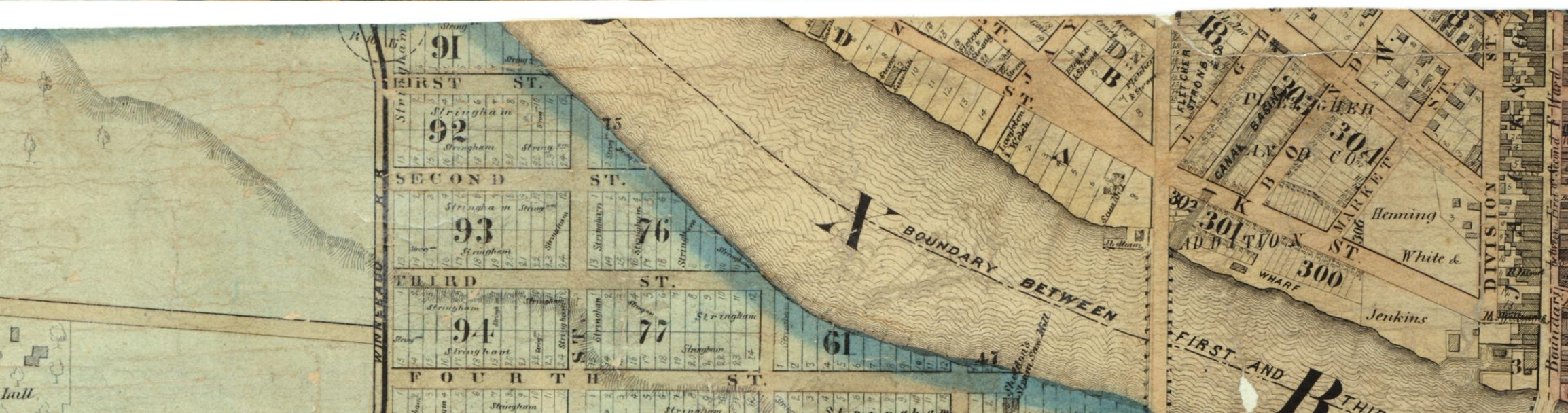


## FOX RIVER.

The Fox River improvement commences on Lake Michigan, and crosses the State in a south-westerly direction, passing through and along thirteen of the most productive and wealthy counties in the State. From the head of Green Bay (a harbour as large as Long Island Sound) the line of the improvement passes up the Lower Fox, (a river 600 feet wide,) thirty-three miles to Lake Winnebago. This sheet of water is thirty-five miles long and ten miles wide. From this Lake it extends along the Upper Fox, a distance of 115 miles to Fort Winnebago, and from that point by a Canal two miles in length it is connected with the Wisconsin and that River in a distance of 112 miles with the Mississippi at Prairie du Chien: the aggregate length is about 300 miles.

The Upper Fox, 10 miles above Oshkosh, is joined by the Wolf River, a stream navigable for steamboats 150 miles into the Pine regions of Northern Wisconsin.













David Evan. Residence

LAKE WINNEBAGO

THIRD

Albert G. Lull

D.B. Knapp. 20a.

Albert G. Lull

D. B. Knapp. 10. a.

Joseph H. Osborn

Samuel J. Osborn

Joseph H. Osborn

School House.  
L.B. Reed.

A.G. Lull  
20a

A.G. Lull  
7a

J.C. Welch

John Backstaff, Junr.

W. Buckley

Lot 4

Lot 3

Lot 2

Lot 1

Lot 1

Corporation Boundary

Boundary Corporation

Boundary Corporation

SEVENTEENTH ST.

EIGHTEENTH ST.

Corporation Boundary

Corporation Boundary

BOUNDARY BETWEEN FIRST AND THIRD WARDS

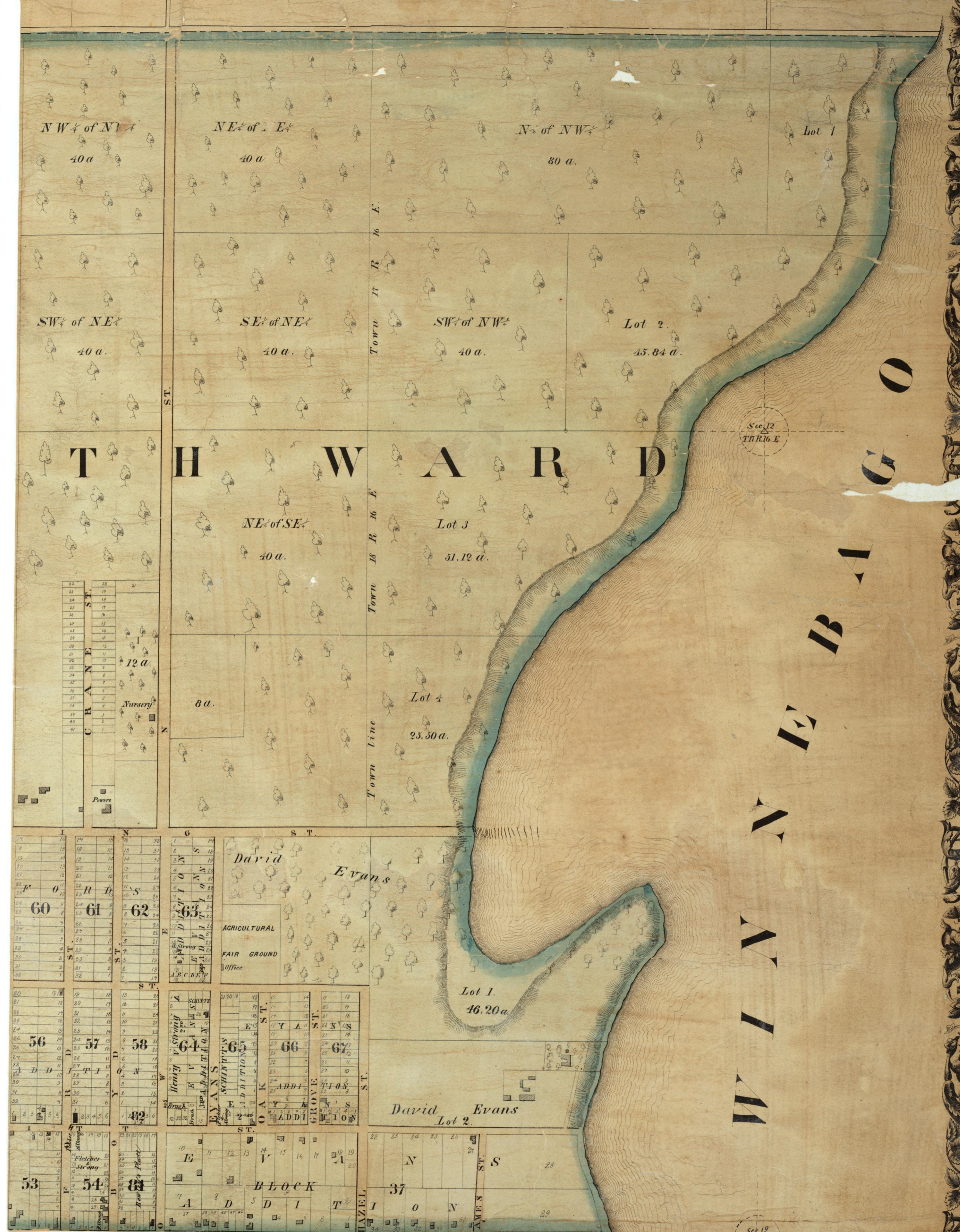
BOUNDARY BETWEEN FIRST AND THIRD WARDS

Boundary between the Third and Fifth Wards

Sec. 25  
T. 48. N. R. 6. E.

Chil.







**KE BUTTE DES MORTS**

**CHURCHES.**

**POPULATION.**

- A. Welch Congregational Methodist on Church Street.
- B. St. Peter's Catholic Church, "High "
- C. Trinity Episcopal Church "Main "
- D. Congregational Church (new) " " "
- E. Congregational Church (old) "Ferry "
- F. Wesleyan Methodist "Church "
- G. Welsh Methodist "Division "
- H. German Catholic St. Mary's "Merritt "
- I. German Lutheran, "P. van "
- J. German Methodist "Bay "
- K. High School "Merritt "

Year	Official	Population
1849	Official	486
1855	"	4118
1857	"	8041
1858	Estimate	9200

of Sec. 10



Edwin Wheeler  
 Lot 3  
 Sec. 18  
 34.38 a

O. B. & L. B. Reed.

Boundary between First and Fifth Wards

BOUNDARY BETWEEN FIRST AND FIFTH WARD

B. T. Goofs  
 B. 102

Block N<sup>o</sup> 103  
 N<sup>o</sup> 2  
 36 a.

Peleg Jones  
 Peleg Jones

A. G. Lutt

B. S. Henning

WRIGHTS PARK  
 6.16  
 34  
 CEMETERY

G. F. Wright

G. F. Wright

B. S. Henning

B. S. Henning

B. S. Henning

John Williams

H. Rogers

H. Rogers

P. Sawyer

H. Weed

C. Kolkman  
 C. Petersen

Sec. 14

G. F. Wright

J. R. Forbes

Ashkosh Race Course

Boundary between the Third and Fifth Wards

Sec. 22 T18