



The daily cardinal. Vol. LXXVIII, No. 67

January 10, 1968

Madison, Wisconsin: University of Wisconsin, [s.d.]

<https://digital.library.wisc.edu/1711.dl/YSX6ORO7MD6K38E>

The libraries provide public access to a wide range of material, including online exhibits, digitized collections, archival finding aids, our catalog, online articles, and a growing range of materials in many media.

When possible, we provide rights information in catalog records, finding aids, and other metadata that accompanies collections or items. However, it is always the user's obligation to evaluate copyright and rights issues in light of their own use.

National Grant Cut Near 50 % Predicted In Grad Research

By JOEL PECK
Cardinal Staff Writer

1968 federal research grants to the University of Wisconsin have been severely cut, in some cases by 50 per cent compared to last year, according to Graduate School Dean Robert Bock.

Noting that graduate education has been growing rapidly over the past decade, Dean Bock said that a slowdown in research monies would have an extremely adverse affect on the future of graduate school. According to the dean, graduate school enrollment will be up 10 per cent this year. This increase should be met by a proportional increase in federal grants. Correcting for this increase, Bock estimated that federal grants would be \$5 million below what is necessary for 1968 graduate programs at the University of Wisconsin.

The full brunt of this year's cutbacks will not be felt for some time, according to Bock. This is because most grants are funded for a period of two to seven years. Therefore, it is when previous grants run out that the cutbacks will be most severely felt.

This time lapse is especially evident in building programs, which should not feel the effects of the 1968 reductions for three to five years, according to Bock.

Dean Bock explained the reason for the cutbacks: "While we're expending at the current rate in Viet Nam, we can't move ahead at the pace we'd like in the Great Society programs."

He emphasized that the cutbacks are not due to a slowdown in the national economy, which Bock called "very vigorous."

Bock added that "there is no indication that there will be a quick change in the situation that led to this year's cutbacks. We can expect the extremely large defense expenditures to continue."

The discrepancy between the future graduate school financial needs and the actual federal monies forthcoming may be reduced by increased private grants, according to Bock.

The dependency on private foundations will increase over the next few years, given the projected insufficiencies in federal grants. This might make it necessary for the foundations to dip into their endowments, according to Bock.

One private foundation has already salvaged a discarded federal program. The Ford Foundation has "bailed out" the Woodrow Wilson Fellowship program, according to Bock.

Bock also noted that the cutbacks will be most severely felt in the social sciences, "which had hoped for vigorous federal support," with the health-science programs less affected. He did estimate, however, that the Medical Center Development on campus might be adversely affected by the building grant reductions.

One of the most drastically cut programs is the National Defense and Education Act fellowships. In 1967 NDEA awarded 85 fellowships to Wisconsin. Only 45 have been authorized for 1968. This is so severe a reduction that Bock fears the program is nearing its end.

The immediate effect of this reduction is that 40 graduate students will go unsupported this year, said Bock. There are no fellowships to replace them.

According to Bock, "the new, young professors throughout the country are going to be hardest hit in reduced research support". New programs are not being initiated.

Another program which has been affected by the cutbacks is the National Institute of Health. According to Bock, this program is maintaining their fellowship grants, but they are cutting back on spending

(continued on page 4)

The Daily Cardinal

VOL. LXXVIII, No. 67

University of Wisconsin, Madison, Wisconsin 53706, Wednesday, Jan. 10, 1968

5 CENTS

Committee Silent About Dow Fiasco

By MICHELE BERDY
Cardinal Staff Writer

"Mode of Response to Obstruction, Interview Policies and Other Matters" is the imposing title of the committee created to explore the problems created by the Dow fiasco of last October. Law Prof. Samuel Mermin is chairman of the group comprised of seven students and seven faculty members. The composition of the committee is diverse and includes professors from several departments and students from both the Letters and Science and Business schools.

Mermin refused to divulge to The Daily Cardinal any of the specific discussions or stands taken by members of the committee. He stated that all recommendations given to the committee by concerned students and professors and minutes of meetings were strictly confidential. The committee adopted a policy of secrecy because it feared that the inconsistencies apparent through many hours of debate might prejudice the positions of some members if publicized.

"This is an opportunity for the University to think its way through a number of decisions. The issues we are dealing with are paramount to the whole University community and to neglect any of these points would be detrimental. We would be missing an opportunity that won't arise again," Prof. Mermin asserted. Clearly, the situation being dealt with is a complex one and the committee will not jeopardize its chance to make some actual policy changes by careless and hurried debate. The group has been meeting twice a week since early November and Mermin refused to speculate about when their report will be issued.

Mermin said, "We are not concerned with who was the guilty party during the Dow demonstrations. Rather, we would hope that a general policy could evolve from our discussions which would set up certain guidelines for both the administration and the students."

He made it quite clear that the committee is not interested in specific accounts of 'Dow Day.' Discussion centers around suggestions which would lead to practical responses to the problems at hand.

(continued on page 4)

Motor Vehicle Safety Laws Effective Jan. 11

Recent highway safety regulations signed by Wisconsin Governor Warren P. Knowles go into effect Thursday January 11 and include raising the minimum penalties for certain sections of the Motor Vehicle Laws.

Conviction for driving after license revocation or suspension will now net the offender imprisonment from five days to six months and may result in an additional fine of from \$50 to \$500. A third violation of this statute will mean a mandatory jail sentence of six months.

A new provision of Wisconsin law requires blood samples to be taken from deceased drivers and pedestrians in motor vehicle accidents to determine any amount of alcohol in the blood.

(continued on page 4)

'Can't Take Academic Freedom Lightly'

By HELGA FUHRMANN
Cardinal Staff Writer

Prof. Merle Curti, history, in his remarks following the Sifting and Winnowing film Tuesday night, stated that one can never take academic freedom for granted.

The film depicted the case of Prof. Richard T. Ely, who was accused of teaching socialism and anarchy and was subjected to a Board of Regents hearing in 1894. His vindication was the occasion for the famous "sifting and win-

nowing" statement issued by the Board in support of academic freedom.

Prof. Curti, in his supplemental remarks, stated that the film made Prof. Ely a much greater man of courage than the records actually show. The incident should be looked at in a broader context.

Prof. Ely was actually uncertain of what he should do and took his stand on the inaccuracy of the accusations made against him. Throughout the proceedings Ely was concerned with demonstrating



A NOT TOO FOND EMBRACE—Defencemen meet, as Wisconsin's Doug McFadyen and Minnesota's Dick Paradise embrace in a typical confrontation during the Gopher's 5-2 victory over Wisconsin at the Dane County Coliseum Tuesday night.

—Cardinal Photo by Dick McElroy

Purdue Clobbers U By 20 in Basketball

By LEN SHAPIRO
Sports Editor

Rick Mount, Purdue's sensational sophomore, was all they said he was and more as he poured in 40 points to lead the Boilermakers to a 99-79 Big Ten basketball victory over Wisconsin Tuesday night.

The loss gave the Badgers a

1-1 conference record and an overall mark of 7-4. Purdue is also 1-1, and 6-5 overall.

Mount, celebrating his first big 10 game in Purdue's new 14,000 seat arena, hit for 24 points in the first 20 minutes to give Purdue a 52-33 first half lead.

The Boilermakers jumped out in front 10-6 after seven minutes of play, but the Badgers reeled off 10 straight points to lead 18-12 at 12:54 of the first half.

Purdue came right back however and broke the game open on the shooting of Mount and forward Herm Gilliam, who finished with 16 points for the night.

Purdue was also aided by numerous Badger turnovers and missed shots from close range.

Wisconsin showed signs of coming back in the second half and at one point cut the Purdue lead to 10 points. Joe Franklin and Chuck Nagle led the Badger surge, but Wisconsin could never get closer than the 10 point spread.

Franklin and Nagle led Wisconsin

(continued on page 4)

Gophers Top Outmuscled Skaters, 5-2

By STEVE KLEIN
Contributing Sports Editor

Unable to outplay Wisconsin, Minnesota's not so "Golden" Gophers outmuscled the Badgers, 5-2, before 2,254 fans at the Dane County Coliseum Tuesday night.

It was a game referee Ken Johanson lost control of in the second period, resulting in questionable action in the corners and along the boards. The game ended with some justice, though, when Gopher "Jungle Jim" Carter was given 5 minute fighting and game misconduct penalties.

Twenty-three penalties were called in all, 15 against the "Golden" Gophers, including a 10 minute bench misconduct penalty against Minnesota coach Glen Sonmore for swearing at the referee.

Wisconsin's Bert DeHate scored the only goal of the first period at 5:02 as he beat the Gopher's superb goalie, Murray McLachlan with a wrist shot on a pass from Terry Lennartson.

Gary Gambucci tied the game at 1:34 of the second period on a rebound shot following a faceoff deep in the Wisconsin end. Rob Shattuck put the Gophers ahead, 2-1, at 3:13, just one second after the Badgers had seemingly fought off a two-minute penalty.

Pet Fichuk gave the Gophers a two goal lead at 10:16 as he slipped the puck in the right corner of the net making the score 3-1, Minnesota.

The game got out of hand at 16:42 of the second period when "Jungle Jim" ran rough-shod through the Badger crease, sending goalie Bob Vroman sprawling on the ice. No penalty was called.

Shattuck was called for high sticking at 17:02. The penalty brought a rush of choice language from Sonmore, and the misconduct penalty was called.

The Badgers drew within one goal of the Gophers at 3:04 of the third period on a power play goal by Lennartson from Tony Metro and Doug McFadyen, but the Gophers pulled away with Gambucci's second goal of the night at 4:28 and Scott Buchan's goal at 7:30.

Wisconsin outshot Minnesota, 33-32, as both Wisconsin's Vroman and Minnesota's McLachlan staged the best goaltender's duel of the season at the Coliseum.

Vroman was especially brilliant with stops on breakaways by Gambucci and Shattuck, but his best save of the night came when Carter took a shot and Vroman rolled in front of the net and caught between his leg pads.

WEATHER

COLD—No snow, partly cloudy (?), high near 15.

The Daily Cardinal

A Page of Opinion

The Law and the Press

The clash between the press and the law was renewed again this week when the editors of the student newspaper on the Milwaukee campus of the University, the UW-M Post, were threatened by the District Attorney with summonses to appear in court unless they revealed their sources of information for their recent supplement on drug use at the University.

In a 20-page supplement published last Sunday, the Post reported that of the five per cent of the students and one and a half per cent of the faculty questioned, roughly 20 per cent admitted using drugs other than alcohol, tobacco, or caffeine for nonmedical purposes.

The DA wants to know who the users are; the editors of the Post say they're not talking—in or out of court.

The problem is that most states do not have laws protecting a journalist's sources from such harassment, with the result that a writer may have to face harsh consequences or betray his information-giver if he writes in controversial areas. Doctors cannot be forced to reveal a patient's record,

but journalists do not share this legal immunity.

Fully aware of this, the Post published information that it must have known would be interesting to the DA, but which would have been inaccessible to the public had their writers not promised their sources to keep silent.

Because they published timely and revealing information about the use of drugs on their campus, the editors of the Post may find themselves in serious trouble with the law. This happened last year with the editor of the student newspaper at the University of Oregon in a strikingly similar situation. If the law is not changed, the readers cannot help but end up the losers, for they will be denied information that ought to be public knowledge.

A journalist's sources, who are also the people's sources, must be protected. The law of this State should be changed to that effect, and the Post is to be commended not only for its handling of a difficult issue and for its decision to keep silent under pressure.

Cardinal columnists for the second semester will be chosen before the end of January. All interested writers are requested to submit a sample column of 80 lines or less, triple spaced, to The Daily Cardinal, c/o the Editorial Page Editor. The deadline is January 17.

The Daily Cardinal would like cartoons or graphics on the draft, ROTC, draft boards, recruitment, or any phase of the Selective Service. Work should be submitted by Monday, Jan. 15, the best will be published.



"The city auto tax will naturally also apply to student vehicles. And, of course, if they're registered out-of-state ..."

The Daily Cardinal

"A Free Student Newspaper"
FOUNDED APRIL 4, 1892

Official student newspaper of the University of Wisconsin, owned and controlled by the student body. Published Tuesday through Saturday mornings during the regular school session by the New Daily Cardinal corporation, 425 Henry Mall, Madison, Wisconsin 53706. Printed at the Journalism School typography laboratory.

Subscription rates—\$6.00 per year, \$3.40 per semester, by carrier or by mail. Single copies 5 cents each.

Second-class postage paid at Madison, Wis.

Member: Inland Daily Press Association; Associated Collegiate Press; Collegiate Press Service.

EDITORIAL STAFF

Joel Brenner	Editor-in-Chief
Matthew Fox	Managing Editor
Gregory Graze	News Editor
Phyllis Rausen	Associate Editor
Pat McCall	Editorial Page Editor
Rob Gordon	Assistant News Editor

BUSINESS STAFF

Business Manager	David Loken
Advertising Manager	Scott Miller
Assistant Ad Manager	Kim Sniffin
Account Executive	Richard Goedjen
Account Executive	Tony Mullen
Saleswoman	Dale Rosen
Salesman	Roy Jaeger
Salesman	Jim Glazer

Faculty Focus

Beyond One's Grasp

Prof. Hakeem, Sociology

To the Editor:

I wonder what it would take to shame professors and make them reasonably humble, as befits those who never tire of bragging that they are the "intellectuals" and "the best minds."

These professors are peddling their wares as soothsayers at the same old stand. They are telling people what presidential candidate to vote for if they seek peace.

Only those with short memories will have forgotten that the professors—soothsayers did the same thing in 1964. They promised almost hysterically and most of the time with unblushing certitude that if we want peace the way to get it is to vote for Johnson. Johnson won and war followed almost immediately.

What these professors have yet to learn is a very simple lesson: war is an infinitely complicated business which the human race has not yet learned to live without. War is far beyond the powers of one man alone to start or stop, no matter who he is. The President is only one factor in a vast sea of complex, unstable, interrelated, and unpredictable variables and currents that determine peace and war. He can contribute only in a limited way, if at all, to the outcome.

It would not be at all surprising if a president won as a peace candidate and yet saw himself involved in a catastrophic war his first day in office, so beyond one's grasp are such events. President Wilson and President Roosevelt repeatedly gave their most solemn promise—right up to the time the first American troops were dispatched—that they would keep the United States out of war.

President Eisenhower was the man on a white horse in 1952. He ran on the promise to end the Korean conflict. No sooner did he end it—to put it in the terms of hero-worshippers—than he proceeded to give the United States a big push toward involvement in the Indochina war as he was avowing that he would not do so.

The professors who are again beating the drums for a savior are too naive to realize that even if their peace candidate won and "ended" the Vietnam War, to speak in the same vein they do, he may be only laying the groundwork for a war that would make Vietnam look like a picnic—just as those who continue the war may be doing.

I hope nobody—I am particularly concerned about students—is fooled by professors. There is no evidence that if all the most vocal and arrogant professors in the country—those who have been most noisily and immodestly hawking their insistence that they know how to solve the Vietnam issue—were given the power to run the world things would be any different or any better, there or elsewhere.

Michael Hakeem
Professor of Sociology

ON LETTERS

The Daily Cardinal welcomes letters to the editor on any subject. Letters should be triple spaced with typewriter margins set at 10 - 70, and signed. Please give class and year although a name will be withheld by request. We reserve the right to edit letters for length, libel, and style. While long letters may be used for the On the Soapbox column, shorter letters are more likely to be printed.

Windmills

Our Garden of Earthly Delights

Craig Friedrich

In my unceasing struggle to rake more muck I have made a discovery that could drive in loco parentis crazy. (Special note to leftist readers: I was unable, try as I might, to implicate the CIA in this dastardly scandal. I know this may well destroy your beautifully simple view of Evil in America by introducing some agent other than the CIA and its parent, the national government, as the villain, but reality must be faced. Sorry.)

It is axiomatic that the University attempts to do what our parents hopefully accomplished before we ever reached this University; namely, to give us a moral code consistent with the values of twentieth century America. It seems obvious to me that such things are pretty well set in any person competent to study here before they arrive, regardless of what one's parents did. There may be some rather significant changes in belief, but the basis for this was laid long ago. This University is coming to realize the futility of this and its lack of relevance to the purpose of the University—to educate, not dictate. Some visages of this nonsensical paternalism still exist. Residence Halls perpetuates this anarchism in some of its policies, particularly with regard to women's dorms. Thus, my discovery of a state-run living unit on this campus that violates most, if not all, of Res Halls rules is shocking. How an operation this big could escape the watchful gaze of the guardians of student morals is beyond belief. This scandal could rock the legislature, but, to protect the students from themselves, it must be exposed.

Living in a building that is about to collapse does keep me busy, but I do occasionally venture forth to find out how others live. Thus, I have managed to acquire some idea of what life is like in those nunneries known as women's dorms. Males are not supposed to go beyond certain well-defined areas like the lounges except during those Roman holidays known as visitation when they wander the sacrosanct halls to the very rooms of female dorms. And after 11 p.m. on weekdays and 1 a.m. on weekends they are not to be even in the lounges. This is different than the way things are in the evil place I discovered.

In the place I discovered there are no hours whatsoever. Residents would come and go as they please were it not for the restraint that they submit to with no threat of punitive action held over them. The building is vast and divided into parts,

but division by sex is done only by room—it is quite possible for females to have males on both sides. Imagine this happening in Liz Waters. I know of one instance where a girl shared a bathroom with the boy in the next room. Imagine the shock of that poor guy when this coed knocks on his bathroom door and then enters announcing "I'm the girl who lives in your bathroom." Of course, there is unlimited visitation with only a shadow of an attempt at supervision—I wonder if the personnel even care what goes on. The rooms are very sparsely furnished with a bed being the only significant piece of furniture. Additional furnishings like chairs are only incidental. It may come as a surprise that residents in this place wear a uniform of sorts—two rather flimsy pieces of cotton (top and bottom).

In the wake of these sensational disclosures I can see Res Halls preparing to search the campus brick by brick; I can see our noted state legislature preparing to investigate; and I can see hoards of students trying to discover how to get into this place after they find out where it is. To the first two groups I say forget it. But I shall attempt to help the students, as if they need it. You will be happy to know that each student is entitled to free room and board in this apparent Garden of Earthly Delights and that the turnover of residents is unbelievably rapid. There is room for you. But there is a catch, of course. To get into this palace of potential pleasures one must either be or be able to fake very well being sick. You see this den of vice operating under the nose of Res Halls is known to all as the University Hospital; specifically, the Student Infirmary contained therein. All a girl living in Cole need do to be released from her cloistered life is to get sick and come to the Infirmary and convince someone she really is sick. Thereby all the rules by which our parent the University tries to protect us are suspended even though I find it rather hard to believe that an upper-respiratory infection is that effective as a suppressant of one's libido.

This double standard is absurd. It's as absurd as the whole notion of in loco parentis. Students should be educated, not protected. This University has made substantial progress in divining this essential difference and I hope it will soon see to the rest of the way.

Violinist Review

Perlman Electrifies; Ashkenasi Flops

By KAAREN M. PLANT
Music Reviewer

Itzhak Perlman gave an electrifying performance at the Union Theater Saturday that brought the enthusiastic audience to its feet. There can be no doubt that Perlman is one of the leading violinists whose career has entered a period of successful maturation. His characteristic flamboyance needs no tempering as he is a musician whose technique is magnificently blended with a clear understanding of the works he performs.

The program opened with the Vercacini Sonata for Violin and Piano. The four dance movements of the Sonata were characterized by a lightness interrupted only by the melodic and sustained second movement. Although not an intricate work, Perlman admirably captured the nuances of the Minuet and Gavotte and allowed the Gigue to almost skip along.

Beethoven's "Kreutzer" Sonata is a most difficult work which can be mastered by only the exceptional violinist. Utilizing a wide vibrato, each movement glowed with clarity and precision. The sudden emotional changes of the Andante were always smooth and well controlled and the dynamic subtleties of the Finale were never forced as is often the case with the "Kreutzer." Perlman's interpretation showed a maturity and refinement that can elude the most experienced of performers.

The second half of the program was a technical "tour de force" with the Debussy Sonata in G minor and three pieces by Wieniawski. Both the Debussy and the Wieniawski were played with obvious relish by Perlman who astounded the audience with what appeared to be a total lack of effort but was clear-

ly the result of exceptional technical ability. Despite the intricacies of the Wieniawski pieces, Perlman's intonation never wavered. The Debussy was played with great vivacity and the long melodic lines of the second movement flowed freely.

Samuel Sanders was the excellent accompanist in this most satisfying performance.

Shmuel Ashkenasi, the young Israeli violinist, made his first appearance at the Union Theater Friday where he received a lukewarm reception. Only the exceptional soloist is able to overcome the inexcusable acoustical difficulties of the Union Theater and unfortunately Ashkenasi was not up to the task.

The program opened with Schubert's Rondo Brillante which was missing the varied undertones which are so characteristic of Schubert. Ashkenasi's tone was

thin throughout and the tempo was even to the point of tedium.

Bartok's Sonata No. 2 for violin and piano provided the highpoint of the evening. Playing with sensitivity, Ashkenasi captured the singing themes of the sonata admirably and maintained an excellent balance of the many contrasts. The lyricism of the sonata was well moderated so that the intricacies were noticeable without being intrusive.

Bach's Sonata No. 1 for solo violin seems to be regarded by most violinists as a necessary part of every program. Perhaps a moratorium on the work for a few years would serve the interests of both the musician and his audience, but judging from the reception the work received Friday night, the likelihood is that we will be hearing it again. And again, and again. Ashkenasi's interpretation of the sonata was overly mechanical and lacking in those subtleties which

distinguished Bach from so many of his contemporaries. The fugue and the presto were especially brittle as everything was sacrificed for clarity.

Ernest Bloch's "Nigun," one of the more popular of the composer's works, was played with just the right amount of schmaltz befitting the piece. It's not a composition

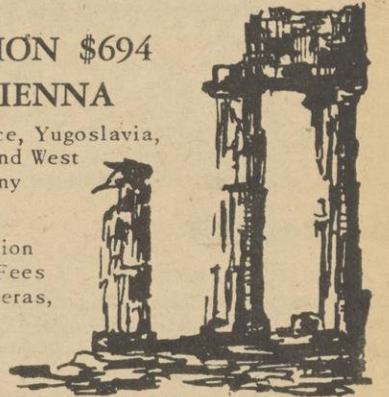
worth getting excited about. Paganini's "La Campanelle," another popular work tended at times to be heavy, but demonstrated the technical abilities of the young violinist.

Considering the advance notices given to Ashkenasi, his performance Friday night was indeed disappointing.

9th Annual Summer: EUROPE EXPLORATION \$694 UNIVERSITY of VIENNA

France, Switzerland, Italy, Greece, Yugoslavia, Czechoslovakia, Sweden, East and West Berlin, Denmark, Austria, Germany

All Transportation Within Europe
Three Meals/Day Without Exception
All Hotels, Guide and Entrance Fees
24 Special Events (Concerts, Operas, Etc.)



For Full Itinerary Send Coupon to Europa House, 802 W. Oregon, Urbana, Ill.

Name
Address
City

Convenient Service to ST. PAUL-MINNEAPOLIS

Motor coaches between Madison and Columbus
connecting with Super Dome Hiawathas.

2:05 pm	11:10 am	Lv	Madison	Ar	2:00 pm	5:36 pm
2:50 pm	11:55 am	Ar	Columbus	Lv	1:15 pm	4:51 pm
PM	AM				AM	PM
Hiawatha	Hiawatha				Hiawatha	Hiawatha
2:59 pm	1:15 pm	Lv	Columbus	Ar	12:04 pm	4:51 pm
4:50 pm	3:40 pm	Ar	LaCrosse	Lv	10:13 am	2:55 pm
5:26 pm	4:21 pm	Ar	Winona	Lv	9:39 am	2:20 pm
6:28 pm	5:31 pm	Ar	Red Wing	Lv	8:43 am	1:18 pm
7:15 pm	6:25 pm	Ar	St. Paul	Lv	8:05 am	12:40 pm
7:50 pm	7:10 pm	Ar	Minneapolis	Lv	7:30 am	12:15 pm

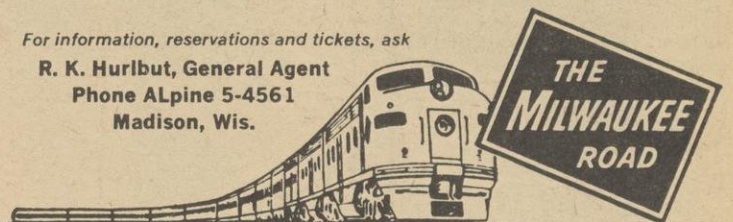
Connecting bus service at Winona for Rochester

HIAWATHAS have Super Domes and Cafe Lounges,
dining cars and reclining chair coaches;
Skytop Lounge for parlor car passengers.

Low Family Plan fares on sale daily.

For information, reservations and tickets, ask

R. K. Hurlbut, General Agent
Phone ALpine 5-4561
Madison, Wis.



THURSDAY — FRIDAY — SATURDAY ONLY



1/2 price

BOOT
SALE

- GOLO, AND OTHER FINE FASHION BOOTS
- ANKLE TO KNEE HIGH ... ALL HEEL HEIGHTS
- ALL FROM REGULAR STOCK ... REG. \$19 to \$30
- A SPECTACULAR THREE DAY EVENT ... DON'T MISS IT!

AND A GOOD SELECTION OF SALE SHOES TOO

GAMINS
PALIZZIO

were
\$14-\$38

1/2

Now \$7-\$19
Price

DE ANGELO
VanEli
NINA

Woldenberg's
5 NORTH PINCKEY STREET

Sorry,
all sales final

Entire stock
not included

1c CARTRIDGE SALE with purchase of Garrard MODEL SL95



- 3 Speed Synchro-Lab Automatic Transcription
- Turntable • Automatic Play of Single Record • Counter-balance gimballed wooden arm • 2 Audio Cables • Cartridge Clip Holder

BOTH ONLY \$129.51 TERMS & TRADES

BEECHER'S

STEREO COMPONENTS
30 State Street

TAPE RECORDERS
256-7561

Open Mon & Thurs. til 9. Open 12 noon Mondays

Motor Vehicle

(continued from page 1)

An accident review committee in all counties will review accident spot check maps and suggest recommendations and improvements on traffic trouble spots.

Motorcycles also come under the regulations of the "omnibus" traffic safety law (Chapter 292) going into effect Thursday. Headlamps on motorcycles must be turned on—day or night—whenever the vehicle is in operation. Motorcyclists will be required to wear protective face shields, glasses or goggles; wearing helmets will be mandatory.

Other changes motor vehicle regulations will bring increased penalties for improper passing, failing to yield right of way, following too closely and stopping, parking, and pedestrian violations.

Basketball

(continued from page 1)

sin scorers with 24 and 23 points respectively. Mount led all scorers with 40 points while guard Bill Keller had 18 and Gilliam 16.

Wisconsin's next encounter comes Thursday night when they travel to the Milwaukee Arena to play Marquette University. This will be Wisconsin's last non-league game of the season. But in the team's last outing, Wisconsin defeated Marquette 80-72 to win the Milwaukee Classic championship.

ADMINISTRATIVE ANALYST

Challenging position in recently organized Department of Finance offers ground floor opportunity for professional growth and development in analytical studies and policy the planning-programming-budgeting of governmental systems. Responsible for management analysis, budget development and execution to assist municipal departments in furnishing their programs and services as efficiently as possible, and provide management information. Starting salary \$9,888-11,930 depending on qualifications. Degree in public administration or other social science and one year's responsible experience in public budgeting and/or organization and management analysis required.

SYSTEMS AND PROCEDURES ANALYST

Analyst needed to define present operating procedures; determine data requirements; develop new systems and procedures; develop detailed costs on existing and proposed systems; and write procedural documents for personnel in various positions. Salary range \$9,880 to \$11,930 plus liberal fringe benefits. Degree in Public Administration, Mathematics, or related field.

CLASSIFICATION ANALYST II

Experienced classification analyst for professional level work in personnel classification and compensation for over 2000 municipal employees. College degree in economics, business administration, personnel or related fields. Salary range \$9,418 to \$11,384 plus liberal fringe benefits.

SECRETARY I

Responsible secretarial work for Director of Public Works. One girl office. Must be capable of independent performance of secretarial duties. High school graduate with three years' experience. \$441 to \$534 monthly.

CLERK STENOGRAPHER

High school graduate with typing and shorthand skills for employment at Madison Municipal Airport. \$400 per month to start and scheduled raises to \$486 monthly.

CLERK TYPIST II

High school graduate with ability to type 50 w.p.m. and one year experience or training beyond high school. \$367 to \$441 monthly.

The above are all permanent City Civil Service positions with sick leave, vacation, pension, social security, health insurance and other fringe benefits. Wisconsin Residence Not Necessary. Apply:

Personnel Department
505 City-County Building
266-4615



CITY OF MADISON
An Equal Opportunity
Employer

U Grants Cut

(continued from page 1)

by deferring building grants.

The National Aeronautics and Space Administration grants have also been drastically reduced, said Bock.

Bock added that some federal agencies have not yet been able to announce their grants for 1968. This is explained by the fact that, although the Congress has voted the money, the Bureau of the Budget has not determined as yet how much they will allow the agencies to spend. The National Science Foundation, and some programs of the National Institute of Health are in this category.



RIDE
BADGER COACHES
Fast Express
TO
MILWAUKEE

Via HIGHWAY I-94



BADGER COACHES, Inc.

Mermin Forum

(continued from page 1)

An essential question to which the members addressed themselves at the outset was whether the university has a responsibility to take a moral stand on an issue or was its character such that it should remain neutral. If the members believed that the university is in fact obligated to take a moral stand they had to determine who would make these moral decisions.

Questions arose such as:

* On what would these decisions be based?

* What would happen if a majority of students opposed the decisions? and

* Who would decide which issues required the university to take a position?

The question debated by the committee largely fall into two categories; those dealing with the placement policy of the university and those aimed at formulating a practicable method of dealing with obstructors.

Prof. Mermin cited his belief that there is even a constitutional issue involved because the University is a state institution and the state could not discriminate through its institutions.

* Should there be a placement service at all?

* Who is to handle the responsibilities of the service if it were to be abolished?

* If there is a placement service should it be open to any legal employer?

* What constitutes a legal employer?

* Should student obstructors only be subject to civil punishment, university punitive action, or both?


The preceding questions represent only a small part of those being discussed by the committee.

Interestingly, the Crow Committee (investigating the student power report) is also dealing with the question of whether academic sanctions should be imposed on those who obstruct. One of the primary responsibilities of the Mermin Committee is to delineate guidelines with which the university could respond to obstructors.

The reports of both committees will go to the University Committee which will append its own recommendations to the reports and send them to the faculty.

IN PERSON

The
Comedy
of
Bill
Cosby



WITH SPECIAL GUEST STARS

THE PAIR EXTRAORDINAIRE

SUNDAY, JAN. 14, 7:30 P.M.

DANE COUNTY MEMORIAL COLISEUM

Price \$6.50 - \$5.50 - \$4.50 - \$3.50 Tax Incl.

Good Seats Still Available

TICKETS ON SALE AT COLISEUM TICKET OFFICE,
AND MAY ALSO BE ORDERED AT MONTGOMERY
WARD, HILLDALE STATE BANK AND FOX BLDG.
(No. Sherman Ave.)

A SAH ENTERPRISES, INC. PRODUCTION

Corvette Sting Ray Convertible with removable hardtop. Its running mate: Camaro SS Coupe.



You wouldn't expect
anything to match
Corvette's sports car ride
and handling.

'68
Corvette

But when you
drive "The Hugger"...
will you
be surprised!

'68
Camaro

CHEVROLET

Be smart. Be sure. Buy now at your Chevrolet dealer's.

News Briefs

NET Picasso Documentary

National Education Television Festival documents the birth of a work of art by Pablo Picasso when it presents "The Chicago Picasso: Greatness in the Making" at 9 p.m. today, on WHA-TV, Channel 21. The hour-long color special focuses on the Chicago Picasso, the largest sculpture work by the artist and his first major permanent outdoor sculpture in the United States. The work was designed and built for Chicago's Civic Center Plaza.

STUDENTS FOR ROMNEY
Students for Romney, "The New Majority," will hold their meeting tonight at 7:30 in the Union. Governor Romney's campaign aide will speak on student campaigning and campaign organization. All interested students are urged to attend.

PHOTO CONTEST
The 21st Annual Camera Concepts black and white photo contest will be held in February. Rule brochures are now available in the Union workshop. Entries are due February 12-16. The contest is sponsored by the Union Crafts Committee.

CONNECTIONS
Connections will go on sale around campus, at Discount Rec-

ords, The Electric Eye, Pic-A-Book, and The No-Hassle Shop today and Thursday. This issue features an article on Joseph Heller by Carl Oglesby and comments on the State University System.

SPANISH CLUB
The Spanish Club will present Hernan Fuenzalida, Professor of Law from Chile, at its meeting at 7:30 p.m. in the Reception Room of the Union. Fuenzalida will give a talk in Spanish on "Student Power in Latin America." All interested students and faculty are invited to attend.

ENGINEERING
Prof. Alwtn Scott, engineering, will speak today at 4:15 p.m. in room 2535 Electrical Engineering. Coffee and donuts are available.

HOOFERS
The Hoofers Riding Club will meet at 7 p.m. in Hoofers Quarters today.

CAMELOT
There will be a production meeting for "Camelot" at 7 p.m. in the Union. All those interested in crew work are invited to attend. The room will be posted on the Union bulletin board.

CO-OP HELP NEEDED
The University Community Co-op is starting a people-pool for all those interested in helping out by working for the Co-op at any time. Call Robin at 262-8100.

PROTEST AGAINST IBM
A meeting to discuss plans for a protest against IBM will be held at 7:30 p.m. in the Union. The meeting is sponsored by the University Young Americans for Freedom.

ISRAEL INFORMATION
Are you interested in going to


Israel to study, work, travel, or just go? If so, come to the information table in the Union today between 10 a.m. and 4 p.m., with information on the different opportunities available now and for this summer. For further assistance, contact Mrs. Ring at Hillel (256-8361).

BUILDINGS OPEN
The following buildings will be open until midnight until Jan. 26: Bascom, Van Hise, Commerce, Ag Hall, and Psychology.

VARSITY GLEE CLUB
Auditions for second semester membership in the University Varsity Glee Club will be held all day today and Thursday, in the Music Annex at 209 S. Brooks—see Mr. Clark. Membership in the Club is open to all undergraduate and graduate men of the University. The group meets Mondays, Wednesdays and Fridays at 12:05 p.m. One (1) academic credit may be earned per semester.

MEN'S CHORALE
Auditions for second semester (continued on page 6)

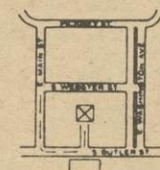
SPECIALIZED VOLKSWAGEN SERVICE
Experienced, Schooled VW Mechanics
Discount to Students



Open: Mon.-Fri. 7 A.M. - 5:30 P.M.
Sat. 7 - 11:30 A.M.
Closed Sunday

16 S. Butler St.
255-3990
255-6135
Nights 244-3337

Import auto SERVICE



NOW RENTING FURNISHED APARTMENTS



view from the top!

... from the balconies, from the roof top, from the great window walls is a wondrous, ever changing panorama. Before you Lake Mendota lies blue and mysterious mirroring the beautiful moods of each season.

WOMEN ONLY

(Qualified For Apartment Living)

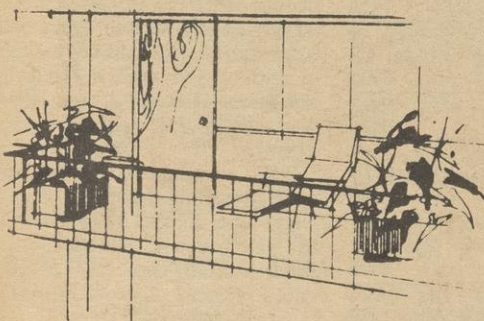
Model Unit for Both Ready for Showing
AT SURFSIDE—630 N. Francis—256-3013

Interior of Both Bldgs. Are Identical in Size & Decoration

**EACH APT. HAS
2 AIR CONDITIONERS
PRIVATE BALCONY
WITH LARGE
PATIO DOORS**

**VERY LARGE
LIVING-DINING ROOM
All-Electric Kitchens
With Island Barrette
and Bucket Seats**

**EACH APT. HAS
2 BEDROOMS
AND 2 BATHS WITH
CERAMIC TILE**



Private terraces from which to view
the ever changing panorama of the lake.

PROFESSIONALLY DECORATED & FURNISHED WITH QUALITY TASTE AND ORIGINALITY

Security door in each unit, is equipped with a peep-hole so you
can see on the inside who is on the outside.

THE CAMPUS - NEWEST

1 Block From Library & Mem. Union

SURF SIDE

AND

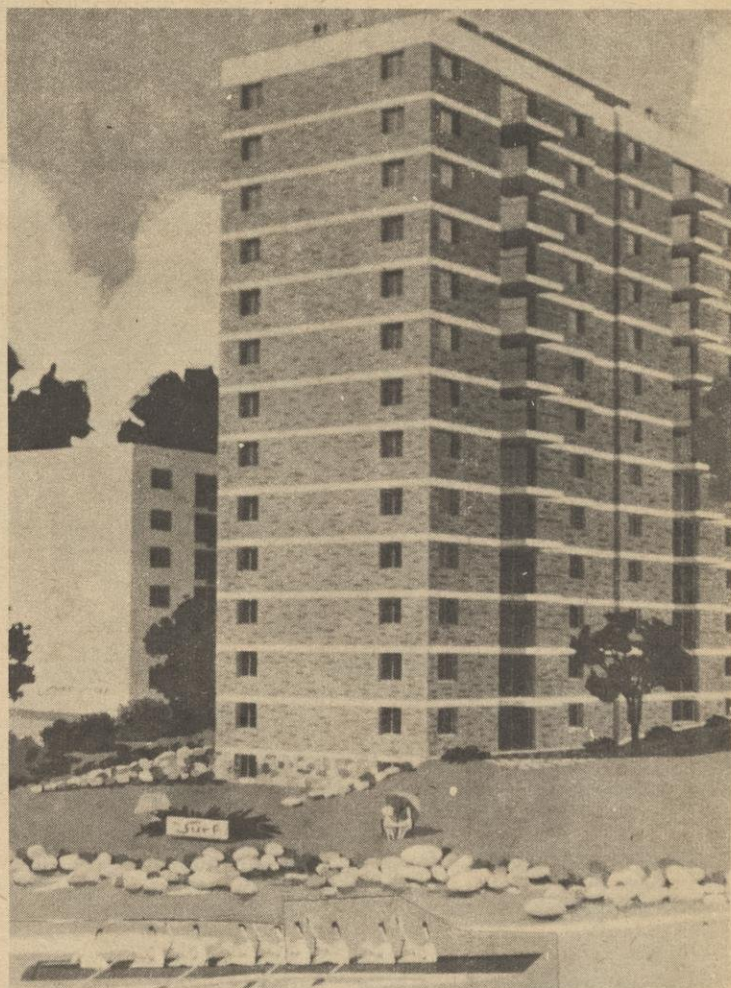
GENERAL ELECTRIC

6 STORIES OF BEAUTIFUL APARTMENT LIFE

630 N. FRANCIS | Now Renting for
Next Lowell Hall | Summer & Fall '68



Price Range
\$720. to \$820. A Person
For Academic Year



Tallest Privately Owned Apt. Bldg. on Campus

THE NEW

SURE

14 FLOORS OF CAMPUS LIVING

661 MENDOTA CT. | Now Renting for
Behind Lowell Hall | Fall '68



DAILY CARDINAL CLASSIFIED ADVERTISING

RATES: 25c per line per day up to 3 days
20c per line per day 4 days to 20 days
15c per line per day 20 days or more

MINIMUM CHARGE 75c

Approximately 28 spaces per line. In figuring the number of lines in your ad, each letter, number, punctuation mark, and space between words must be counted as a separate space.

CLASSIFIED DISPLAY ADVERTISING \$2 per inch, per insertion

Min. 1 column x 1": Max. 1 column x 3"

All above rates are net. No commissions or discounts.

ALL CLASSIFIED ADS MUST BE PAID IN ADVANCE

FOR SALE

'64 XL. 427. 4 spd. 251-1487. 20x4
SKIIS—New & Used, lge. selec-
tion. Boots \$6.95-49.95. Complete
Ski packages \$49.95. Ski Cloth-
ing. Charge-lay-a-way or trade.
Wes Zulty Sports, 1440 E. Wash-
ington. 20x10

PROJ. 16mm. sound. 256-7112. 20x13

REGENT Contract. Must sell. 267-6786. 5x17

MOBILE HOME. Must sell. On priv. rented wooded lot. 2 bdrms. 1 yr. old. Furn. option-
al. Best offer. 837-3184. 10x17

CONTRACTS @ Cochrane House. Sm. dbrm. 257-7505. 9x17

2 VILLA Contracts @ discount! Can be sold as Dble. Call 256-7731, ext. 357 or 379. 10x18

'58 BORGWARD. Snow tires. Best offer. 255-1580 eves. 10x18

STROBELIGHTS Deus Ex. Ma-
china. 256-6312 Frank. 3x10

ICE BOAT, 2 sails, 2 sets of run-
ners, must sell. Exc. cond. Best
offer. 255-0785. 3x10

TOWERS Contracts. Very cheap. 257-0701, Ext. 231. 10x6

CONTRACT—Sgle. rm. Ann Em-
ery Hall. Sec. sem. Discount.
256-5531, Ext. 223. 5x12

CONTRACT—LANGDON HALL.
Undersell. Cheap. 255-2921, No.
627. 5x12

2 LANGDON HALL Contracts. Re-
duced price. Call 255-2921. Rms.
218 & 625. 5x12

CHICAGO - GENEVA Air-ticket.
Jan. 26. Best offer. 257-7771. 3x10

LANGDON Hall Single. 2nd. sem.
contract. Under sell. 255-2921.
Rm. 633. 6x13

REGENT Contract. 2nd sem.
Dsc. 267-6706. 5x12

'63 RENAULT R-8. Exc. cond.
Best offer. 257-8738 after 6. 4x11

SKI-Skate Sale. New & Used Lge.
selection at tremendous sav-
ings! Wes Zulty Sports. 1440 E.
Washington. 249-6466. 5x13

CONKLIN House. 1/2 Dble. Avail.
2nd. sem. \$200. 255-5651. 5x13

CONTRACT. 1/2 Dble. Langdon
Lodge. 256-6741. Cathy. 8x18

'60 RAMBLER. Good cond. Auto.
trans. Pwr. strng. 257-3351. 8x18

CYCLE S-90. 255-5085. \$250. 3x11

REGENT Contracts. 1 or 2 bdrm.
Apts. 267-6628. 5x13

CONTRACT. 2nd. Sem. 1/2 dble.
Priv. bath. Frig. Disc. 257-3250
or 257-6639. 3x11

NEW-SKIS. '63". Boots sz. 8.
McDonald at 244-8890 or 2-3370.
5x13

CONTRACT—Lakelawn. Sngl. Dis-
count. Roni at 255-6158. 10x7

LANGDON Hall Sgle. 255-2921. R.
219 will undersell. 7x17

ALPINE SUNBEAM '67 Racing
green. 8,000 mi. 5 yr. 50,000 mi.
Chrysler warranty. 255-3061. 3x11

CONTRACT at discount. Co-ed
Apt. bldg. 267-6695. 5x16

CONTRACT: Kent Hall. Disc. 2nd.
sem. 255-8560. 3x12

BARGAIN: Winter coat. Mocha-
colored corduroy. Fur collar.
Vogue & very warm. Call 257-
2309 after 5. 3x12

SILVERTONE Guitar. \$30. 238-
0843. 5x17

FOR RENT

N. HENRY ST. Dble. 2nd sem.
Men—kit. & bath. 251-1294 or
255-2338. 10x12

SUBLET for 2nd sem. 1 rm. in
girl's residence. 15 S. Charter
St. Contact Miss Loreda or Miss
Grieb—257-298. 5x6

LOVELY Effic. & 1 bdrm. units.
Avail. Feb. 1. Util. & laundry.
222-8007. 10x17

UNFURN. Apt. 1 bdrm. Avail.
now. 415-Wisc. Ave. Carpeted,
appliances, heat & water. \$150.
255-7849. 3x6

RM. to sublet. Male Priv. 2 blks.
from library. Avail now. 255-
4968. 8x13

SUBLET Sec. sem. Share kit. &
bath w/3 Jr. boys. 256-3460. 5x11

LVG. for Antarctica. Must sublet.
dble. near Kroger's. Kit. priv.
255-2889 or 256-6440. 3x10

STRATFORD—Sgle. Avail for sec.
sem. Kit. priv. 256-7619. 7x13

FOR RENT

SGLES. for women. Avail. sec.
sem. Act Now! See C/R Prop-
erty Management. 606-Univ.
Ave. xxx

ACCOMODATIONS. For woman
to share. Priv. bath. & kit. \$40./
mo. & up. See C/R Property
Management. 606-Univ. Ave. xxx

ART STU: Unlimited space avail.
for studio—100 sq. ft. per per-
son. Excel. lighting 24 hr. ac-
cess. 255-2476. 7x16

MEN ONLY: Sgles. & dbles. Rm.
Avail for 2nd sem. Includes
board. Call 255-1378 or 256-9676
after 6 p.m. 237-Lakelawn Pl.
9x18

111 N. ORCHARD. Rm. for rent.
\$10./wk. incl. kit. priv. Call Tom
Atwell 255-1017. 20x20

STATE ST. Apt. avail. Rm. for 2
males. 255-5748 after 8. 9-18

SUBLET Apt. Men. Dble. Randall
Tower. 1314 W. Johnson Apt.
308. 5x12

UW 3 blks. 1022 College Court. 2
rm. Full kit. & lge. living-
bdrm. Simmon's Hideabed.
Heat, Light & gas pd. Sgle.
girl. Feb. 1. \$65. 256-4246. 6x13

APT. or Rms. 2nd sem. 2 lg.
bdrms. Furn. carpeted, dispos-
al, air-cond. laundry. Cheap.
\$210/mo. incl. util. 262-5218. 5x13

SUBLET Furn. Apt. kit. fac. 2nd.
sem. 3-4 girls. Ideal loc. W.
Johnson. 257-1598. 4x12

APT. 2nd. sem. for 3. Male or
female. Wall to wall carp. 1
blk. from campus. Randall Tow-
ers. 256-5649. 5x13

SINGL. Furn. Apt. Avail. 2/1.
\$85 mo. incl. util. 256-8443. 5x13

MEN: 1/2 Dbl. rm. 1 blk. from li-
brary. 256-9432, Apt. 2. eves.
3x11

APT. to sub-let. Furn., small, 1
(person. Walking distance to)
campus. Avail. Feb. 2. 257-6639
or 257-3250. 3x11

RM. 2 men. 2nd. sem. 257-6378.
3x11

SUBLET 1 bdrm. furn. apt. N.
Pinckney St. All util. Fireplace.
Lake priv. Feb. 1st. 257-7264/
222-6917. 6x16

STATE ST. 1 bdrm. Apt. Mod.
Avail now. \$140. 257-9879. 3x11

LGE. 3 bdrm. home, new mod.
furnishings. Walking distance to
hospital & campus. Prefer nurs-
es or grad. students. 257-0744,
231-2737, 233-2242. 5x13

APT. for 2 or 3 girls. 2nd. sem.
2 bl. from campus. 255-0637. 5x13

SUBLET for 2nd. sem. 1 rm. w/
bath & cooking. 3 blks. from
campus. 255-7565 after 7 p.m.
3x11

MOD. Apt. for girl. Share w/2.
\$47./mo. 238-0843. 5x17

3 BDRM. Apt. Avail. yesterday.
1 1/2 blk. from lib. 257-3236. 5x16

SUBLET for 2nd. sem. Male.
Priv. 636 Langdon. Olson 255-
1331. 7x18

LGE. Apt. Enuf for 2. 2nd. sem.
Call after 10 p.m.—233-6740. 5x16

COVERED Parking space. 1301
Spring St. Call 238-7549. 6x17

S. 3 Bdrm. Furn home. Univ.
approved on bus line. Off st.
parking. \$250. Util pd. 238-0184.
4x13

1 BDRM. for 1 or 2 people. 5
min. walk to Bascom at dis-
count. 255-6574. 5x16

BEAUTIFUL Georgian Town-
house Apt. to sublet. 1 or 2.
Share. on Univ. Ave. Busline.
2nd. sem. Madison Prop. 238-
9311 or 231-2965 eves. 5x16

FOR RENT—1631 Madison St.
Furn. rm. with kit. priv. All
util. furn. Parking space for
car incl. \$50./mo. Quiet neigh-
borhood. Close to campus. 255-
9467 days; 233-4817 eves &
weekends. Avail. Feb. 1. xxx

SUBLET at discount. Apt for 2.
Saxony West. 257-3991. 7x18

LGE. Sgle. rm. male. Avail. now
for 2nd sem. \$40./mo. 10 min.
from campus. Call Rich 256-
0008. 4x13

HELP WANTED

NEED Money? Reputable firm of-
fers unlimited opportunity for
student, church or service or-
ganizations. Contact Mr. Wall at
255-7948. 7x16

GO-GO Dancers. St. ting out \$4.00
/hr. 238-1232. 6x10

HELP WANTED

TYPIST II
UNIVERSITY PRESS SEEKS
Alert Civil Service addition to
clerical staff.
Challenging & interesting ful-
time position open now.
Ph. Mr. Diman at 262-1116
for appointment. xxx

PART-TIME 10-15 hrs. weekly.
Guaranteed \$2./hr. plus comm.
Cordon Bleu Co. Call 257-0279 &
222-0314, 9 a.m.-9 p.m. xxx

DIXIE LAND BAND for Fri. &
Sat. Call 238-1232. 6x10

\$35.00

If you are 21 yrs. of age, have
a good driving record, & could
use more money, you can
make \$35. a wk. or more driv-
ing a BADGER CAB during
your spare time. Call us at 256-
5566 for an appt. to fill you in
on one of the finest part-time
jobs in Madison.

BADGER CAB COMPANY
12 N. FEW STREET 5x10

SALES ORIENTATED Student
wanted to work part-time Afts.
& Sat. Must have driver's li-
cense & excellent driving rec-
ord. For personal interview con-
tact C/R Property Management.
606 Univ. Ave. No phone calls.
xxx

1 FULLTIME TYPIST II to work
in J-School Type Lab on the
production of The Daily Cardi-
nal. Monday night through Fri-
day night from 7 p.m. to 3:30
a.m. When there is no Cardinal
being published at night work
day would start at 8 a.m. Must
take Civil Service Ex. for
Typist II. xxx

MODELS—Figure study. \$2-10.
per hr. & up. No experience
necessary. Call The Attic Stu-
dio—251-1493. 3x11

PART-TIME Babysitter. Hrs. flex-
ible. Some light housework.
Girls 4 & 6. My home, Univ.
houses. 238-8793 weekends &
after 5. 7x17

4 MEN needed. Eves. \$3./hr. &
up. Sales & mgmt. Neat appear-
ing, car nec. For details ph.
Dennis 7:30-9:30 p.m. Mon.,
Tues., Th. 257-6886. 6x16

CLERK TYPIST needed. 40 hr.
week. Exc. starting salary. For
details contact Mrs. Mills, Daily
Cardinal—262-5854. xxx

MEAL—Job. Fraternity. 255-3725
night or day. 5x16

CHICKEN DELIGHT drivers with
own car preferred. Short order
cooks & food processors needed.
All for part-time. 222-1029. 8x18

WANTED

GIRL to share Apt. W. Wash. w/
2. \$55. 256-3441. 12x10

TYPING—Thesis, term papers. 20
yrs. exp. 839-4675, 839-4420. 5x15

GIRL to share 7 rm. apt. w/3.
Priv. bdrm. 255-9528. 10x11

1 GIRL to share Mod. Apt. w/3.
Reas. Marsha. 257-7676. 7x16

GIRL to share Apt. w/2. 2nd.
sem. Hawthorne Ct. 256-3404.
5x12

GIRL to share w/3. Campus. \$60.
267-5159. 5x12

SUBLET Saxonly Contr. Apt. w/3.
Girl. Best offer. 251-1777. 5x12

1 GIRL to share lge. Apt. w/3.
Campus. \$52. 233-2050. 9x18

1 or 2 GIRLS for Apt. w/2. Close.
Reas. 255-6880, 257-7277. 9x18

GIRL to share 2 bdrm. Mod. Apt.
w/2. 2nd sem. 255-4491. 10x16

1 or 2 GIRLS to share Apt. w/2.
\$45. Stadium area. 231-2357 or
267-5231. 8x13

MALE to share State St. apt.
w/2. 2nd. sem. \$45. 257-5851. 6x12

MALE to share Mod. Apt. w/3.
\$65. Near campus. 256-0347 or
251-0053. 7x13

1 or 2 GIRLS to share Apt. w/2.
2nd. sem. Campus area. Janice
Isley @ 238-6125. 5x11

GIRL to take over Rm./brd. Con-
tract @ Towers for 2nd. sem.
Reduced rate. 2 meals a day.
257-0701, Ext. 217. 5x10

NO REFUNDS

WANTED

GIRL to share campus Apt. w/3.
2nd sem. Own rm. 256-5342.
13x6

GIRL to share N. Francis. Apt.
w/3. Lg. bdrm. 255-2347. 5x10

1 GIRL to share w/2. N. Henry
St. Call 257-6943. 3x10

1 MALE to share Apt. w/1. Colo-
nial Heights. Avail. 1/26. \$65/
mo. 255-0668. 5-7 p.m. 3x10

GIRL to share Apt. Near Gilman
& State. 257-6231. 5x12

GIRL to share 1 Bdrm. Apt. w/1.
W. Johnson. \$62. 255-0985. 9x18

MALE Grad. student with car
wants rm. in apt. for 2nd. sem.
Call 256-7380. 5x13

1-2 GIRLS—Share State St. Apt.
2nd sem. \$50. 257-7750. 6x16

RIDE to Denver. Sem. brk. Can
leave the 26th. 257-9483. 2x11

2-3 GIRLS to share or sublet Mod.
Johnson St. Apt. 2nd. sem. 255-
8386. 7x17

GIRL to share 2 rm. suite w/2
or 3. Good loc. Kit. priv. & maid
service. Avail. now. Only \$200.
to end of 2nd sem. 837-6364 af-
ter 6. 2x10

BOY to share Apt. for 3 behind
Krogers on Univ. \$50./mo. 267-
5153. 6x16

MEN to live in Frat. house. 2nd.
sem. Meals incl. 255-9345. 5x13

1 GIRL to share lrg. 3 bdrm.
Apt. 2nd. sem. Campus area.
\$48. 257-2759. 4x12

GIRL to share 4 Bdrm. house
w/3. Mifflin St. 257-1875. 3x11

GIRL to take Rm.-Brd. Contr. at
Towers. 2nd. sem. Reduced
rate. 1 meal & kit. 257-5976. 5x13

1 or 2 GUYS. 118 E. Dayton. 256-
5804. 2x10

1 or 2 to share Mod. campus 2
Bdrm. Apt. for 4. 267-6634. 5x12

GIRL to share Mod. Apt. w/2.
Near U.W. Hosp. Call 233-0083
5:30-7 p.m. Avail. now. 2x10

GIRL Grad. to share Langdon
St. Apt. Priv. Bdrm. \$53. 267-
5145. 3x11

1 GIRL to share 6 Rm. Apt.
Own Bdrm. \$44/mo. 257-9374.
5x13

3 GRAD Girls to share lovely 4
bdrm. apt. Fireplace. Near
campus. 256-7621. 7x18

1 GIRL to share apt. w/3. Own
room. 430 W. Gorham St. 257-
5248. 7x18

APT. to sublet. Male students.
New. Indoor pool. Campus. Call
Bob 238-8936 after 6 p.m. 5x16

1 MALE to share apt. w/4 soph.
207 N. Frances. 255-1566. 7x18

GRAD. Girl to share apt. w/2. 10
min. walk from stadium on U.
Ave. Call 233-9304. 3x12

MALE. 2 bdrm. kit. priv. \$55./
mo. 255-9864. 5x16

2 GIRLS to share Apt. w/1. 2nd.
sem. 2 blks. from campus. \$57./
mo. 255-4335. 6x18

SHARE Apt. w/3 girls. \$58. incl.
util. Near stadium. 255-8141.
Susan. 4x16

MALE—Grad. to share lge. mod.
2 bdrm. apt. w/1. 262-4894. 7x18

GIRL to share house w/4. Own
bdrm. \$50. 257-6821. 4x13

GRAD. Woman to share mod. apt.
w/2. Sampson Plaza. \$53. Many
extras. 255-8925 eves. 7x18

REGENT Apt. to share w/2 girls.
Will take loss. 267-6739. 7x18

MISCELLANEOUS

ASPEN. Semester break, round
trip Jet. 8 days. Ex. accom-
modations, free tow tickets.
Free ski instructin. Only \$188.
For info Call or contact John
Koblik 256-2968, Phil Fitzgerald
257-7880, Mike Feiner, 256-2968.
8x18

JACKSON Hole, Wyo. Sem. brk.
All trans. Tram lift & lodging.
\$129. Call Denny 257-5283, Marty
257-7231. 5x12

CONSIDERING EUROPE? Con-
sider S. T. O. P. Student tours.
Call Barb. Lieberman 256-7848.
8x18

ENJOY Sem. Brk. You stay home.
I register at Asgn. Comm. \$3.
chg. 238-2489 aft. 5:30. 4x12

MAKE Money! Sublet your rm. or
Apt. during break. Debra 256-
7731, ext. 347. 4x12

REGISTER by Proxy. Enjoy a
longer break. Bev. 25

Student Films Make Shaky Union Debut

By CHRIS MORRIS
Fine Arts Staff

There is a prominent cliché concerning student underground films. In general, they are considered plotless, dimly lighted, rapid fire, obscure, and held together by equal portions of Elmer's Glue and Double Bubble. The cliché materialized Sunday at a Wisconsin Union Film Committee showing of ten student films. At times stimulating and humorous, the films were generally vague and pretentious. The films were seemingly split into three general categories; the first being the "editorial" group. R. Baenzinger's "Plant" and "Momentum" by Jeff Zych (also a member of the Union Film Committee) were cleanly edited, with good coordination of music, but the ability of a montage to make anything but the pithiest point is uncertain. In both cases, the films never rose above the experimental level.

The next type is probably the most familiar. They may be classified as "profound" films. They are rich in image and symbol, but rather off target in presentation. Jean Moss' "Cool Reflections," Debbie Mirot's "Carpe Diem," and Ron Policy's "Remembrance of Tomorrow" were all content to present themselves unexplained, leaving the viewer perplexed by the jumble of technique they present.

Undoubtedly the best received body of the showing were the more humorous ventures. Bill Donnelly's "Blow-Out," Peter Bel-sito's "Greasy Meat," Ron De-Woskin's "Hide and Seek," and Bruce Bentz's "Rough Cuts" all came down to the fundamentals of humor and succeeded. Coherence was again jilted; nevertheless, this segment of the evening's show provided an abundance of enjoyment.

The Sunday showing was marred by some technical problems, which probably could have been foreseen in a screening of this type. A four-minute film, "Breathless," by Paul Taplin, was ruined by a jumpy projection. The same machine nearly made a shambles of Donnelly's "Blow-Out." Separate-tape sound was also poorly coordinated again in the case of Donnelly's film.

Despite its qualitative faults, the Committee showing played before a large audience, willing to watch and enjoy. The screening should be classified as a tentative success, and future events of the same nature could bring some pleasure to University filmmakers and filmgoers alike.

Subscribe Subscr
ibe, Subscribe Su
bscribe Subscribe
What's A Few Bucks!

Enjoy, Enjoy!
Read The Cardinal
Nice, Huh!

IT'S
GENNA'S
FOR DRINKS
614 U. AVE.

STAMP IT!
IT'S THE RAGE
REGULAR
MODEL
ANY \$2
3 LINE TEXT
The finest INDESTRUCTIBLE METAL
POCKET RUBBER STAMP. 1/2" x 2".
Send check or money order. Be
sure to include your Zip Code. No
postage or handling charges. Add
sales tax.
Prompt shipment. Satisfaction Guaranteed
THE MOPP CO.
P. O. Box 18623 Lanox Square Station
ATLANTA, GA., 30326



Bill Cosby



PIZZA
Italian
FOOD

"Lowenbrau Beer"
LIGHT or DARK
on
draught

"I Spy " Regular Here Sunday

Comic, recording star and half of the "I Spy" television series team, Bill Cosby arrives at the Dane County Coliseum for one performance this Sunday at 7:30 p.m. Tickets are still on sale at the Coliseum boxoffice and may be ordered at Ward's, the Hilldale State Bank and the Fox Building. A solo television series, the hour-long "Bill Cosby Show," debuts on NBC in March.

Read The Cardinal-It's Good For U

ONE WAY . . . MODERN MOVE

TRAILER RENTAL

to any point in U.S.A.

- Low day or week rates.
- Professional loading available

PHONE
244-6211
238-6000



SALE

OVERSTOCKED SKI ITEMS

\$45.00 VOLKI WOOD SKI
PLASTIC TOP & EDGES
Now \$33.33

\$28.00 BECONTA SKI PANTS
Now \$19.99

\$13.00 RACING SKI GLOVES
Now \$8.88

\$3.95 METAL BOOT TREE
Now \$2.99

AT
WENGER'S SPORTING GOODS, INC.
2430 UNIV. AVE.
OPEN NITES

SAVE At Your **ERICKSON** Service Station

Fast, Friendly Service

<p>Hamm 12 Ft.</p> <p>TOW ROPE</p> <p>\$5.95 Value</p> <p>\$2⁸⁸</p>	<p>Hankscraft</p> <p>VAPORIZER</p> <p>MODEL 202B</p> <p>\$7.95 Value</p> <p>\$3⁶⁶</p>
<p>New</p> <p>ICE REM</p> <p>98c Value</p> <p>59c</p> <p>5 LBS.</p>	<p>A.O.K.</p> <p>STARTING FLUID</p> <p>98c Value</p> <p>49c</p>
<p>STEEL</p> <p>SNOW SHOVEL</p> <p>\$1.98 Value</p> <p>\$1²⁹</p>	<p>BATTERIES</p> <p>D OR C SIZE</p> <p>40c Value</p> <p>9c A PAIR</p> <p>With \$4.00 Gas Purchase</p>

COUPON

Pacquins

HAND
LOTION

10 1/2 OZ. SIZE

\$1.00 Value

59c

LIMIT 1

Coupon Expires 1-17-68

REFINERY TO YOU

OIL

ERICKSON

PRODUCTS

WILLIAM L. KAPKE
Manager

2216 University
Avenue



CAN'T WAIT TO GET OUT—Mel Walker is back in Madison after spending over a month in a Minneapolis hospital recovering from amputatory surgery on his left knee. Like most hospital patients, especially student patients, he can't wait to get out. —Photo by Anton Margis

Mel Walker Comes Back To Await His New Start

By MARK SHAPIRO

Mel Walker, the Badger sophomore defensive back who had his left leg amputated below the knee because of a severe injury suffered against Minnesota is now back "home" in Madison.

The man who was the subject of numerous headlines in the nation's newspapers now lies quietly on the third floor of the Student Health Clinic awaiting the start of a new phase in his life.

Walker expects to stay in the student clinic for about three weeks. At that time, he will receive his artificial leg.

"It won't be very long before I'll be able to walk again," he said. "It's great to be back. I've seen all my buddies on the football team and they've treated me great."

"I can get out everyday if I want to. I know my way around here and I can see all the people I want to."

When Walker gets his new limb, he anticipates doing almost everything he did before the accident except play football.

"When I get my new leg I'll be able to do anything but play contact sports," he said. "I can run and play almost all sports. I'll have to judge just how far I can go."

As of now, Walker expects to earn his degree at Wisconsin. He is a physical education major with a minor in sociology. Mel is not sure of what he'd like to do after college as yet, although he indicated that it might be in the commercial field.

Walker anticipates one difference now.

"I'll have to do a lot more studying now just to stay here," he said.

"It hasn't really bothered me that much," said Mel of his ordeal. "I knew I would lose something."

At this moment Mel says that he is comfortable in the Student Hospital, his home until next semester.

"It's more modern than the hospital in Minneapolis," he said. "It gets cold here sometimes but it's okay."

The fanfare for Walker is over. He must now wait for his new limb and start afresh.

APARTMENTS

MEN OR WOMEN

NOW FOR

SUMMER & FALL

Reduced Summer Rates

C PROPERTY
R MANAGERS

606 UNIV. AVE., 257-4283

THE MOTION PICTURE THAT SHOWS WHAT AMERICA'S ALL-TIME #1 BEST-SELLER FIRST PUT INTO WORDS!

Valley of the Dolls



20th CENTURY FOX Presents A MARK ROBSON DAVID WEISBART PRODUCTION

BARBARA PARKINS PATTY DUKE PAUL BURKE SHARON TATE TONY SCOTT LEE GRANT JOEY BISHOP GEORGE JESSEL SUSAN HAYWARD

Now Playing

Orpheum
255-6005

Features:

1:00-3:15-

5:30-7:40-

and 10:00



SUGGESTED FOR
MATURE AUDIENCES

Any similarity
between
any person,
living or dead,
and the
characters
portrayed
in this film
is purely
coincidental
and not
intended.

Daily
Cardinal

SPORTS

Grapplers Lose Iowa, Defeat Illinois State

By KEN KIRSCH

Wisconsin's varsity wrestling team defeated Illinois State 21-10 after losing to Iowa 19-10 Saturday at Iowa City. The dual meets left the Badgers with an 0-2 Big Ten mark and an overall record of 5-4.

Iowa jumped to a 9-0 lead before Wisconsin's Bob Nicholas (145) defeated Bob Mahacek 8-2 and co-captain Mike Gluck (152) registered a take down in the last period to beat Joe Wells 3-2.

Lud Kroner and Rick Heinzelman then wrestled draws to put the Badgers behind by 3 at 13-10. The Hawkeyes then clinched the meet with victories at 177 and heavyweight.

Iowa is now 2-1 for the season in the Big Ten, with victories over Illinois and Wisconsin after losing to Indiana.

Against Illinois State the Badgers pulled away from a 5-5 tie as Nicholas took a 7-2 decision and Gluck clobbered Rick Mann 19-2.

Kroner then pinned Jay Few in 5:23 at 160 pounds and Heinzelman manhandled Ron Pirello 11-2 in the 167 pound division to gain a 21-10 team victory.

DO YOU HATE

SECOND RATE ART?

If you do, you'll love the

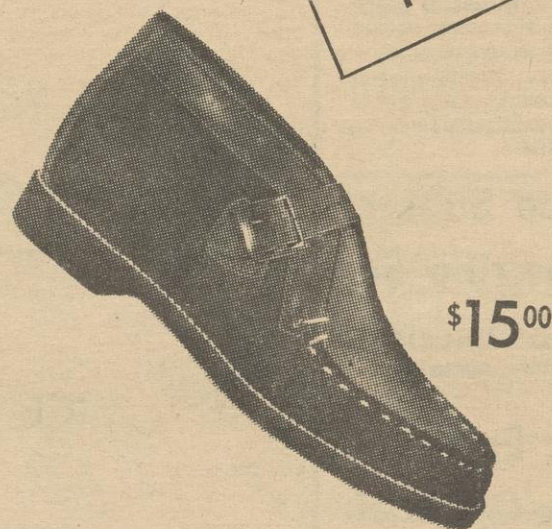
JANE HASLEM GALLERY

638 STATE ST.

HOURS: 1:00 - 4:30 P.M. TUES. THRU SAT.

JUST ARRIVED!

SPECIAL
PURCHASE
PRICE



\$15.00

FLEECE LINED
CHUCKA

- HAND SEWN MOC
- TOF-SON SOLE
- FLEECE LINED
- A \$19.00 VALUE

LIMITED QUANTITY AT

C. W. ANDERES

606 STATE ST.