



The daily cardinal. Vol. LXXI, No. 36 October 29, 1960

[Madison, Wisconsin]: [s.n.], October 29, 1960

<https://digital.library.wisc.edu/1711.dl/YSX6ORO7MD6K38E>

<http://rightsstatements.org/vocab/InC/1.0/>

The libraries provide public access to a wide range of material, including online exhibits, digitized collections, archival finding aids, our catalog, online articles, and a growing range of materials in many media.

When possible, we provide rights information in catalog records, finding aids, and other metadata that accompanies collections or items. However, it is always the user's obligation to evaluate copyright and rights issues in light of their own use.

The Daily Cardinal

Complete Campus Coverage

VOL. LXXI, No. 36

University of Wisconsin, Madison, Wisconsin, Saturday, October 29, 1960

5 CENTS A COPY

Chest Aided By Auction

By FRED FEDLER

Well over \$400 was contributed to Campus Chest by the enthusiastic crowd of approximately 300 which took part in the Persian Market in Union Great hall last night.

With several items still to be sold, the \$400 goal was reached by 11 p.m. Proceeds from the various booths and several items to be auctioned were not yet tabulated, however.

A FAILURE of the public address system did not hamper the work of a professional auctioneer, who donated his services for the event and appeared to be one of the major factors in the auction's success, as he obtained excellent prices for all the commodities offered.

Dean of Men Theodore Zillman's services as a den speaker on the topic, "What All Young Ladies Should Know About Men," the first item bid upon, and it went for \$25. An opening bid of five cents was offered for the next commodity, barber services offered by Wallerstein house (Chadbourne); however, this was quickly raised to the final bid of \$6.50.

A \$42 bid, offered for Chi Phi's Dixie Land Combo by Alpha Epsilon Pi, was the evening's highest.

THE CROWD, as they wandered about the floor inspecting goods provided by both private individuals and Madison businesses, was continually besieged by a group of roving fortune tellers. (continued on page 8)

French Students' Actions Explained

By DAN DROSDORFF

An Algerian refugee rebel studying at the university, Larbi Madaci, said in an interview last night that the current student-led demonstrations in France protesting the Algerian conflict were a result of a series of suppressions by the French government.

THURSDAY NIGHT students in France, led by the National Union of French Students, peacefully demonstrated in a large number of cities, in spite of government orders to halt. Many were arrested and injured in clashes with police and right-wing students.

According to Madaci, the demonstrations were a result of a series of suppressions by the French government. (continued on page 8)

Badgers, Wolverines Meet

By JOHN BUBOLZ

The Badgers of Wisconsin tangle with Michigan's Wolverines in Camp Randall Stadium this afternoon, game time set for 1:30. Fifty-eight thousand fans, the largest crowd ever to see these two teams play in Madison, are expected to be on hand for the come-what-may contest.

ODDS-MAKERS are having a tough time picking a favorite. Both teams will be striving to get back on the winning trail after being defeated in slam-bang games. A little added incentive for the two squads is the fact that both units will be out to improve upon their identical records of 3-2. The all time series record between the Badgers and Wolverines reveals a 13 game Michigan advantage (18-5) with one tie since the rivalry started back in 1892.

THIS WILL be the first appearance between the Badgers and a Michigan team in Madison since 1947, when the Wolverines whipped Wisconsin, 40-6, on their way to a Big Ten title and unbeaten season. It is interesting to note that the Badgers have yet to beat the men from Michigan in games played at Madison.

Coach 'Bump' Elliott, in his second season as Michigan head coach, is hoping for another Michigan victory at Camp Randall, and is sending a passing accented offense onto the field for the attempt. Of last week's loss to Minnesota, coach Elliott commented, "We had a bad day and never got going," then added, "I'm sure we'll come back all right."

THE WOLVERINES comeback will depend heavily on the showing of quarterback Dave Glinka. At Minnesota, Glinka's passing attempts were harried and hurried most of the time, but he didn't panic under this pressure, completing seven of 13 passes. Glinka's over-all completion mark to date is an impressive 42.9 per cent.

Other Wolverines to watch for are sophomore right halfback Dave Raimy, Michigan's leading scorer with 24 points; Bob Johnson, senior right end; and left end; and left half Bernie McRae, who has averaged 4 yards per

carry rushing and also lugged three passes for a total of 67 yards.

COACH MILT Bruhn will send his sophomore sparked charges into battle seeking the first Badger win in two weeks. The eyes of the fans will be on the huge 6-6, 230 pound frame of Pat Richter, as the Badger sophomore end needs to catch only two passes to break the school's all-time one season pass catching record of 25 set in 1952 by Jerry

Richard E. Goranson, a university student, was struck by a student-driven car last night as he was riding a motorcycle on Langdon st. An ambulance called to the scene at 8:44 p.m. took Goranson to University hospital, where officials reported he received a broken left ankle. Robert Loppnow was driving the car, in which Carol Jautz, a third university student, was a passenger.

Witt. Richter has 24 receptions to date, totaling 326 yards.

Ron Miller, back in top condition after his Iowa injury, has caused misery to Wisconsin opponents thus far, and today's games should be no exception. His talent has caused considerable worry to Michigan's coaching staff, who stressed pass defense in practice this week, expecting Badger passes to fill the air a good portion of the game today. Nothing would be more pleasing to Wisconsin fans than to see Ron also display his running talent, keeping the Michigan Wolverines off balance. (continued on page 8)



OVER THE GOAL—Bidders at last night's Persian Market gave more than the \$400 set as the auction's goal. The money will be given to Campus Chest, the all-university charity drive. A professional auctioneer donated his services for the event. —Cardinal photo

Casadesus Thrills Audience With Spellbinding Music

By PERRY HACKETT

Last night a capacity audience remained spellbound while a galaxy of beautiful music cascaded from the skillful, efficient fingers of French pianist Robert Casadesus.

HIS PROGRAM, "In homage to Robert Schumann and Frederic Chopin," was about equally divided between the two young composers. Schumann's fluttering "Papillons" served as an entree. These twelve short dances depict a masked ball, and were influenced by Schubert's waltzes. The pianist dissected "Papillons" with sharp insight, making them fresh, engrossing music.

When Schumann was still a young man he composed "Symphonic Etudes," the next item on the program. Opening with a powerful melody on which the composer wrote variations, full of intricacies that are maddening to any pianist, they might very well be labeled "fireworks." Casadesus presented them with unantic-

pated freedom in which he displayed dazzling technique.

AN EVENING of Chopin, a 11 wrapped up in forty-five minutes, was presented following intermission. It started off with a bang; Casadesus used his blow torch on the B flat minor Sonata, welding it together in a masterful manner.

Leaving the audience hanging on the ropes, Casadesus resumed his playing with the Polonaise, Opus 26, No. 2. In Chopin's day this was new music. It was a Polish dance peppered with lots of technique. Today it is old music, but a sure-fire composition. He ended the program on a gay note with Tarentelle; this was catchy, and could be termed music for fun.

Students Give Their Opinions Of Candidates

By GAYLE GRIMSRUD

A recent opinion survey on the forthcoming Presidential election shows various stages of enlightenment and enthusiasm, and not the strong Kennedy backing that might be expected in the last strides of the campaign on this liberal-minded campus.

ON HIS WAY to turn in his absentee ballot, George Stevens said, "I just voted for Nixon because he's my kind of people! Besides, when I get up in the morning and see Kennedy buttons all over the place, it irritates the hell out of me." Barb Lickus and Dorothy Finnegan prefer Kennedy, because "With a Democratic Congress we need a Democratic President for a unified government and avoidance of a stalemate."

Steve Whitmarsh said, "I just want the best man to win. This election is going to be too close, and I think it is impossible for the man on the street to predict who will win."

"THE REPUBLICANS will win—I like em!" declared Steve Den. (continued on page 8)



PLAY REHEARSAL—Several members of Phi Beta, professional speech organization, rehearsed last night for a play reading to be presented tonight. Left to right, they are Lucia Sinke, Lois Engelman, Harriet Levine, Ed Pierce, Julie Church, Barb Pinter, and Sandra Silberman. —Cardinal photo by Fred Fago

World News Briefs

FAIR—sunny and a little warmer today. High today, mid 50's; low tonight, about 35.

U.S. ACCUSES CUBA

Washington—The U.S. has charged that Cuba has been receiving thousands of tons of Soviet bloc war material and may be using Anti-American propaganda as a cover-up for its own military preparations. The charge, which was made in a note to the Organization of American States, came as the U.S. Navy announced that nearly 1500 marines will land at the Guantanamo Naval base in Cuba tomorrow for weekend liberty. The Navy issued the announcement in advance to counter any claims the Marines constituted an invasion force.

KENNEDY SLAPS NIXON

En Route with Kennedy in Pennsylvania — Senator Kennedy has thrown a slap at Vice President Nixon's pledge for a good will visit to Soviet satellite countries of Eastern Europe. Kennedy said the answer to the promise is a "strong America" . . . not "parades." Said Kennedy, "Our chances to extend freedom around the world stand on one factor—a strong progressive, forward-looking America committed to freedom."

PLANE CRASH

Missoula, Montana—Officials have recovered the bodies of the 12 persons aboard a Northwest Orient Airlines plane which crashed into a mountain near Missoula. The plane, bound from Portland, Oregon, to Minneapolis, was to have made a brief stop-over in Missoula.

'NIXONLAND'

Berkeley, California—Former President Harry Truman has plans for Vice President Nixon, as he put it . . . "after the election returns are in." The former President sees the Vice President in charge of an amusement park called "Nixonland." In a speech in Berkeley, Mr. Truman said Nixon would do very well as a guide for the Nixonland rides as he has been taking the American people for a ride for several years.

"... that Continual and Fearless Sifting and Winnowing by which alone the truth may be found ..."

The Daily Cardinal Comment

A PAGE OF OPINION

All This Politics...

Quite a Bother

Politics is a bothersome business. Ever since the beginning of this school year the **Daily Cardinal** and all university students have been in the center of two competing major political parties.

Madison papers have had little news except that of Republicans charging Democrats with irresponsibility and Democrats asserting that Republicans don't know what responsibility is. The **Cardinal** has been flooded with at least 10 news releases a day from the various candidates—material that we glance at and then throw away. We get much material also from campus groups whose members are presently worshipping either Kennedy or Nixon, and it seems that there is always a Young Republican or Democrat in our office every day wanting something.

All this is a necessary part of our democratic way of government, of course, and it is not a good idea to criticize it as a mere inconvenience. But still, we'll be glad when the election is over.

Trouble is, then campus politics will come into full swing, and they're even worse. Well, we will just have to wait for the peace of Thanksgiving vacation.—B.T.

HUAC Still an Issue

Vote of Thanks

To the Editor:

Perplexing as it is to be called a BMOC and a Beatnik in the same breath by Richard Wheeler and Roger Claus, I feel that rather than assuming a vindictive air toward their childish maneuverings, I and the NSA committee as a whole, owe the gentlemen a vote of thanks.

IT WAS THE purpose of the NSA committee, however badly misconstrued by Wheeler and Claus, to bring the House Un-American Activities committee and its actions to the attention of the campus as an issue. It was toward this end that we presented the HUAC film along with the views of the elements opposing the film and the HUAC in general.

That this preliminary effort has succeeded beyond our expectations in bringing the four letters, HUAC, into the public eye is in a good part due to the unwitting actions of the two aforementioned children.

NOT ONLY did we present a successful program, but the publicity and attention given the grade school antics of Wheeler and Claus were more than we could have hoped to receive by simply presenting the film. Thus, Master's Wheeler and Claus, you have aided considerably our efforts to arouse a campus interest

in the HUAC, and you have our appreciation.

ON NOVEMBER 10, the Union Union Forum committee will present a debate on the HUAC. This will be followed soon after by a WSA program of a similar nature. We hope the campus will show a continued interest in the HUAC and that the individual student will be able to develop an informed opinion concerning its activities. We also hope that "Dickey" and "Rogey" will continue their interest in the matter, but if possible in a slightly more mature manner.

NSA Committee Chairman
Pete Mueller

Job Not Done

To the Editor:

Why get rid of the Un-American Activities committee? Now that it has done such a grand job of silencing Communists, fellow travellers, socialists, radicals, liberals, and non-partisan dogooders, it should not be squelched with its job only half done. There are 20 million Baptists in the United States who similarly should be ferreted out of public acceptance, and made to cower

(continued on page 3)

In the Mailbox Annex...

Truth on Cuba

To the Editor:

Bud Bauder, in his review of the currently available issue of the **New Idea**, has condemned my study of Cuba in revolution as a "ridiculous" piece of "tripe."

Probably Mr. Bauder has based his opinions upon the reporting of Cuba made available to the American public by the wire services, AP and UPI. What Mr. Bauder clearly does not know, nor does the great majority of the American public, is that we are being misinformed and misled on this issue as never before.

THE TRUTH of what is happening in Cuba is one thing, and what the U.S. press says of Cuba is something very different. We are the victims of a massive propaganda campaign, of a big lie. Most of us are unknowing victims, just as most newspapers which carry the slanted articles are probably innocent of bad intentions. Nevertheless, the lies and distortions are a fact.

To aid the open-minded American in making up his own mind, the Fair Play for Cuba committee has been formed. I would like to call the attention of students who want the truth to the talk by the Fair Play committee's national secretary this Sunday.

Mr. Richard Taber will speak and show a film on Cuba in Tripp Commons of the Union at 8 o'clock. A university graduate student in history, Saul Landau, has become head of the Student Council of Fair Play for Cuba; he will also speak.

Mr. Bauder, you are invited to attend and to hear views on Cuba which are not approved by U.S. corporate interests.

Lee Baxandall

SLIC Rule

To the Editor:

I do not think that Mr. Church is an irritable irascible old man. Rather, I agree with him on the matter of the SLIC rule on apartments for men students. When a male student reaches the age of eighteen or nineteen, they have enough responsibility to maintain their own living quarters without the outside influence of the university.

I do not know if the university has looked at the situation or not, but if they look in their own college catalogue they will see that about 21 per cent of the male students on campus live in apartments. Figuring that about half of these students are over the age of 21, where are the other ten per cent of the students going to live?

AGAIN, I should like to quote from the college catalogue, "No housing shortage is anticipated, but it is not possible for all students to live within walking distance of the campus." Since

many of the apartments which students now rent are near the campus, this new rule will add a new headache to the university, student's cars.

I think that answer to this problem is requiring students to present a signed letter from their parents stating that they have their parents' permission to have an apartment and that their parents also approve of them having parties in their apartment.

I feel that the sooner the university realizes that its prime purpose is to offer its students a place to learn and to be educated, the sooner students are going to respect the university and its wishes. The various riots and raids that have been staged are nothing more than a case of the students rebelling against the restrictions that are being placed on them.

FINALLY, I feel that if the university were to conduct a survey such as the one conducted at the University of Pennsylvania, they would find that most of the female students parents do not mind their daughters attending apartment parties and trust their daughters enough. Also, a survey directed at the parents of the male students would show that they approve of their sons having apartments even though

they can have girls in these apartments.

Name Withheld

On Lewis

To D. Lewis:

At first I was tempted to completely ignore your article on fraternities, but unfortunately my pride in my "Mickey Mouse club" (obviously an original analogy) overcame me.

In the first place, Mr. Lewis, you are such a poor writer that you do not even pretend to follow any of the basic principles of criticism, one of which is to support generalizations with facts.

IN YOUR article you also are committing one of the basic fallacies of logic—that individual characteristics are indigenous to the whole. This is very apparent in your statement that all you have to do is talk to a fraternity man and his shallowness of character becomes obvious. This is true of some fraternity people, I will grant, but it has been my observation that it is true of non-fraternity members also.

The "normalization of the Rat" movement which you speak of is something new to me, and also to many fraternity members I have

(continued on page 3)

Three 'Chest' Agencies on Campus

(EDITOR'S NOTE: This is the last in a series about the agencies that benefit from the Campus Chest. The drive ends today.)

Three of the five Campus Chest agencies are right on campus. The university Young Men's Christian association service budget is used for foreign student programs, student counselling, emergency loans, leadership sessions, provision for assembly rooms, and fellowships. It is supposedly separate from the operating budget.

"The university YMCA is a fellowship of students, faculty members, and friends who wish to discover for themselves the highest ideals of Christian living and service and to have a part in making these ideals operate on the campus and throughout the world," a statement of purpose reads.

To carry out their ideals and goals the YMCA provides financial assistance to about 100 student yearly "who would not ordinarily qualify for university loans," according to the YMCA.

THE UNIVERSITY YMCA student service and program budget funds provide for international weekends, a freshman camp, faculty firesides, coffee hours, discussions, conferences, retreats, and intercollegiate events.

"In order to make coeds aware

of their role as educated women," the YMCA, located in the YMCA building, 306 N. Brooks, provides many activities.

THE MADISON Friends of International Students, the third Campus Chest local agency, serves over 500 foreign students.

The groups with the support of University league, an organization of faculty wives, provides home hospitality and other programs to aid international students adjust to a strange country.

Students are given the opportunity to meet Madison families to see how American families live. Coffee hours, a picnic, welcome service during registration week, trips throughout the state, and a foreign student wives group, are Madison Friends projects.

THE WISCONSIN Student association allocations board established the following distribution for the current Campus Chest campaign. All agencies "give help to only university communities and students."

The agencies and distributions are World University service, 45 per cent; National Scholarship Service and Fund for Negro Students, 25 per cent;

University YMCA, 15 per cent; university YWCA, 12 per cent; and Madison Friends, three per cent.

The Daily Cardinal

FOUNDED APRIL 4, 1892

Official student newspaper of the University of Wisconsin, owned and controlled by the student body. Published Tuesday through Saturday mornings during the regular school session, by the New Daily Cardinal Corporation, Journalism Hall, Madison. Printed at the Journalism School typography laboratory. Subscription rate—\$6.00 per year, \$3.50 per semester, by carrier or by mail. Single copies 5 cents each. Second-class postage paid at Madison, Wis.

Member, Inland Daily Press Association Editorial and Business offices—Journalism School, North wing. Office hours: Editorial 2 p.m.-12 p.m.; Business 8 a.m.-3:30 p.m.

Bruce Thorp Editor-in-Chief
Dick Norton .. Business Manager
Dyann Rivkin Adv. Mgr.
Avi Bass Editorial Ass't.
Louis J. Haugh ... Assoc. Editor
John Kellogg .. Managing Editor
Kay Pofahl .. Ass't. Mg. Editor
Kathleen McGinley .. Univ. Editor
Betty Flynn Ass't. Univ. Editor
Alice Siegel Feature Editor
Barbara Fox Society Editor
Viv Balkansky Ass't. Soc. Editor
Jerry Shea &
Pat Zier Co-Sports Editors
Bob Schmidt Photo Editor

Today,
Tomorrow
continuous
from 12 noon
call
AL 5-9000

FROM
THE
PRODUCERS
OF
GATE
OF
HELL

THE MISTRESS
STARRING JAPAN'S LEADING ACTRESS
HIDEKO TAKAMINE
Directed by SHIRO TOYODA • Based on a famous novel by MORI OGAI
A DAIJICHI PRODUCTION • Presented by EDWARD HARRISON

MOVIE TIME
IN THE UNION PLAY CIRCLE

Security First

National Bank

serving

Southern California

will have a representative on Campus

November 3

to discuss:

- Accelerated Management Training
- Immediate Responsibility
- Outstanding Promotional Possibilities
- Ideal Living Conditions in a Stimulating Environment.

He would like to interview Graduate Students in Accounting, Business Administration, Economics or Finance.

Please make necessary arrangements at your Placement Office.

The Week's Doings At The University

OCTOBER 31 - NOVEMBER 6, 1960

Conferences at the Wisconsin Center

- Oct. 31-Nov. 4—Human Relations
Nov. 1-3—State Staff Meeting—division for children and youth
1—Personnel conference
2-3—Mutual Sales conference
2-4—Certified Public Accountant examination
2—Office Management for Small Offices
2-4—Wisconsin Pharmaceutical society (central reservation)
2—Accident Prevention in Construction
2-4—Wisconsin Pharmacy institute
3-4—Plastics—Basic Chemistry and Technology
4—School Transportation Safety institute
4—Purchasing conference
5—Wisconsin AP-Radio-TV News Editors conference

Saturday, October 29, 1960

- 9 a.m.—Judging: Camera Concepts 14—Color Slide Contest—Union Popover
10 a.m.—Michigan Alumni Greeting headquarters — Union Main Lobby
1:30 p.m.—Football: Wisconsin vs. Michigan—Camp Randall
4 p.m.—Jazz in the Rat—Union
8 p.m.—Phi Beta Play Reading—Wis. Center
8 p.m.—Robert Casadesus Concert—Union Theater
9 p.m.—Union Club 770—Tripp Commons
9 p.m.—Danskeller—Union Rathskeller
9 p.m.—Grad Club Party Night—Union Old Madison

Sunday, October 30, 1960

- 2 p.m.—Grad Club Bridge and Coffee—Union
2 p.m.—Lecture by Mohammed Sahnoun on "Algerian Situation"—Union Great hall
3 p.m.—Tournament of Song—Union Theater
4 p.m.—Carillion Recital, John Harvey, Carillonneur, Memorial Carillion
4:30 p.m.—Grad Club Coffee Hour—Union Reception
5 p.m.—Smorgasbord—Tripp Commons
5:30 p.m.—Bahai Youth Group—Union Rosewood
5:30 p.m.—"Dinner with a Professor"—Prof. Lowell Noland, guest—Union Popover
8 p.m.—Recital: Donald Whitaker, trumpet and Dale Gilbert, baritone—Music Hall
8 p.m.—Union Folk Fiesta—Great Hall
8 p.m.—International Friendship Hour—Union
8:15 p.m.—Peace Center—Tripp Commons

Monday, October 31, 1960

- 12m-2 p.m.—Geography Department—Union Lex
12m-1:30 p.m.—Football Movie Preview—Wis. vs. Michigan—Union Play Circle
3:15 p.m.—Union forum comm. soapbox—Union Front steps
7:30-9:30 p.m.—Homecoming Decorations—Union
7:30-9:30 p.m.—Hoofers Outing Club—First Aid Class—Union Loft
8-10 p.m.—Free Slide Show and announcement of awards, Camera Concepts 14 in color—Union Play Circle
8:30-10 p.m.—Student Council for Civil Rights—Union Old Madison

Tuesday, November 1

- 6:30 p.m.—Air Power banquet—Union Great hall
7 p.m.—Student senate meeting—Dorms
7:30 p.m.—Football movie: Michigan vs. Wisconsin—Union
7:30 p.m.—Wisconsin Film society—B-10 Commerce
8 p.m.—Faculty panel: "Do the People or the Press Pick the President"—Union

PLANETARIUM DEDICATED

The Fox Valley Center, a new \$520,000 "arm" of the university, will be dedicated Sunday in ceremonies held at Menasha High school. The program will be an open house at the rambling, one-story center building located on the edge of this Fox Valley city.

AIR POWER DINNER

The Madison Chamber of Commerce will present the Air Power banquet next Tuesday. The event will be held in the Union Great hall starting at 6:30 p.m. and will be highlighted by the appearance of Major Alexander de Seversky.

HUAC...

(continued from page 2)

in the shadow of disrepute.

Baptists are an odd collection of people. In Providence, R. I., they hold membership in the cream of local sophistication, tracing their ancestry to the band of migrants who followed Roger Williams when he left the colony of Puritans in search of religious freedom shortly after the Puritans had landed in Massachusetts, also in search of religious freedom.

THE POPULAR conception of Baptists (or at least my conception) is a swarming mass of folk, especially dense in the southern states, who are led into fervent song and un-American activities by a collection of preachers who feel themselves to be more American than any of the 40 million American Roman Catholics.

Most Baptists are white, but there are a lot of colored Baptists, also. The mixed company is peculiar in light of the feelings of the white toward the colored brethren, but it is stanger still that many of the colored Baptists are following the lead of their former masters in condemning the candidacy of Senator Kennedy.

The field is ripe for plowing by the omnipotent committee. I am sure that the Baptist committee members will not prejudice their fellows against conducting an investigation. After all, the representatives of American communism on the committee did not deter it from investigating their group.

Oh, you say there are no Communists on the Un-American Activities committee? That's as it should be. Communists are not very good Americans.

Ira Sharkansky

In the Mailbox...

(continued from page 2)

talked to. To my knowledge, neither the I-F, nor the Pan-Hel council (spokesmen for all the greek organizations on campus) have recommended this, and therefore it seems this is definitely a minority action not indicative of the fraternity system at all. The 'Rat' and the people therein may act just as they please, as far as I am concerned.

I'm social chairman of one of the fraternities which sponsors insipidly dull parties, and I would welcome some new ideas. How about letting me in on your secrets for lively, interesting par-

Saturday, October 29, 1960

THE DAILY CARDINAL—3

ties? Or better still, invite me to one to see for myself.

ALONG THAT same line, what are your original (?) ideas (in contrast to p a n t y raids, water fights, etc.). It has come to my attention that many of these non-original pastimes were perpetrated in the dorm area which is conspicuously populated by non-fraternity members.

And Dear Mr. Lewis, are you so woefully ignorant as to attempt to suggest that because a person belongs to a fraternity he has no intellectual pursuits? I can name any number of fraternity and sorority members who participate in theater, debate, music, writing, and other intellectual activities.

By your tenth point, you imply that only non-fraternity members are capable of wit, but anyone who reads your letter can see the fallacy in this supposition.

"BY THEIR innate hate of the Cardinal." What a profound statement! Obviously you are prepared to prove that a majority of fraternity members are of this

feeling. I personally am very much in favor of the Cardinal, for it provides an outlet for all of us to air our opinions, and for others to refute them.

If then, there is any point of your malicious, fallacious, article you wish to correct me on, I will be more than willing to listen, and may be found any noon, eating lunch in the 'Rat,' obviously a place where non-normal people hang out.

Carl N. Marquardt
Sigma Nu Fraternity

OPEN BOWLING

AT

THE LARK

EVERY EVENING

2550 University Avenue
CE 8-1133

Only Wisc.
Engagement

ORPHEUM

2 Performances
Only

SUNDAY—NOV. 13th

MATINEE 5 P.M. — EVENING 8:15 P.M.

Seats Now at Box Office

DIRECT FROM CHICAGO ENGAGEMENT

AMERICA'S MOST HONORED MUSICAL COMEDY

N.Y.
DRAMA
CRITICS'
AWARD

PULITZER
PRIZE

ANTOINETTE
PERRY
AWARD

fiorello!

Never such a must-see!
The exclusive national
tour of Broadway's
hottest smash hit.

A bandwagon of song,
merriment, and
dances. It's your kind
of musical comedy.

MATINEE—\$5.50 - \$4.50 - \$3.50 - \$2.50 - \$2.00
EVENING—\$6.00 - \$5.00 - \$4.50 - \$3.50 - \$2.50

Have a real cigarette—have a **CAMEL**



"For real taste, nothing like a Camel"

Orin Murray
FIELD SURVEY ENGINEER,
GLEN CANYON DAM, ARIZONA

The best tobacco makes the best smoke!

R. J. Reynolds Tobacco Company, Winston-Salem, N.C.

THE VILLA DANCE TO LIVE MUSIC

No other place
closer to campus
**THE DANNY
ROBERTS' TRIO**
FRI. & SAT. NITE

also for the best in college
atmosphere, Tony has . . .

- Dancing Nitely
- Charcoal Grill—Pizza—Fireplace
- Never an admission or cover charge
- Huge parking lot
- Dim Lighting!
- Open Nitely

AL 7-3048 **THE VILLA** 2330 S. PARK ST.

Campus Radio

the week ahead

WHA
970 k.c.

WHA-FM
88.7 m.c.

Monday, October 31

8 a.m.—Morning Concert (Monday through Saturday)
11 a.m.—History of Religions No. 9—Early Hinduism—Prof. Boardman
3 p.m.—Music of the Masters—Bruch: Concerto No. 1 in G Minor, Violin and Orch.
8:50 p.m.—FM Concert—Brandos: Goyescas; Falla; Seven Popular Spanish Songs; Albeniz: Iberia; Arriaga: Symphony in D major 3 in G

Tuesday, November 1, 1960

9 a.m.—Quiz the Professor
11 a.m.—Freshman Forum No. 13—The Significance of Political Oratory Today, Frederick W. Haberman
8:50 p.m.—FM Concert—Mozart: Concerto in C, Koechel 503; Haydn: Symphony No. 91 in E-Flat; Bach: Brandenburg Concerto No. 3 in G

Wednesday, November 2, 1960

3 p.m.—Music of the Masters—Busoni: Sonata No. 2 in E Minor, Violin and Piano
8:30 p.m.—FM Concert—Opera Night—Verdi: Il Trovatore

Thursday, November 3, 1960

11 a.m.—Freshman Forum No. 16—Felman Discussion
8 p.m.—Freshman Forum No. 11—The Norms of Rational Discourse, Haskell Fain
8:50 p.m.—FM Concert—Handel: Flute Sonata in B Minor; Vivaldi: Two Concertos from The Seasons; Cimarosa: Flute Concerto

Friday, November 4, 1960

3 p.m.—Music of the Masters—Mozart: Quintet in G Minor, K. 516
8 p.m.—Freshman Forum No. 12—Fain Discussion
8:50 p.m.—FM Concert—Falla: El Amor Brujo; Debussy: Three Nocturnes; Walton: Symphony 1935

Saturday, November 5, 1960

2 p.m.—Saturday Afternoon Concert

WBLB AND FM NETWORK

1:15 p.m.—Northwestern-Wisconsin Football Game (FM)

Sunday, November 6, 1960

9 a.m.—Music for Sunday
10 a.m.—Chamber Concert
10:30 a.m.—Music in Stereo
8:30 p.m.—FM Concert—Schoenberg: Gurrelieder; Bloch: Concerto Grosso No. 2

Wayne State Drops Delta Theta Pi

(UPS) Wayne State university has withdrawn recognition from the legal fraternity Delta Theta Phi.

The expulsion, which means the fraternity may not use Wayne State facilities for any purpose, was caused by a restrictive clause in the fraternity's national constitution limiting membership to white christians.

The decision was based on a 1954 faculty ruling which gave Wayne State fraternities and sororities until 1960 to eliminate restrictive clauses.

Wayne State President Clarence

B. Hillberry wrote a warning letter to Larry Fowler, fraternity president, this summer. When no action was taken on the letter, the fraternity withdrew recognition.



Who isn't at exam time? But the dog days will soon be over and (so they tell us) a new era awaits. When that breathing spell comes, maybe you should take a glance at the future. Have you given much thought to financial planning?

Probably not. That's why we suggest a talk with our campus representative. Starting your life insurance program now gives you a head start, and offers the advantage of lower premiums!

Richard C. Walker
214 N. Hamilton, Madison
AL 6-1928

PROVIDENT MUTUAL
Life Insurance Company
of Philadelphia

Campus Chest Solicitors Kick Off Active Campaign

Campus Chest solicitors have campaigned this week for the five benefitting agencies.

The World University service, the National Scholarship Service and Fund for Negro Students, the university Young Men's Christian association service fund, the university Young Women's Christian association service fund, and the Madison Friends of International Students receive portions of the collections.

The solicitors represented the majority of the living units on campus.

The solicitors were: Ellen Brandt, Nancy Deming, Tridi Stalle, Betsy Pohle, Beth Peterson, Karen Muench, Dale St. John, Priscilla Freitag;

Pam Nolting, Bonnie Arrief, Molly Hamel, Rita Wendt, Mary Anderson, Kathy Johnson, Colleen Flanagan, Jane Carlstein, Louise Gammell, Anita Ainsworth, Lois Hellmund, Charlene Figger, Pam Grassman, Jean Rowan, Sue Gordon, Sandra Glazer, Carol Berg, Judy Stephani;

Jeri Woznak, Betty Jues, Dery Strauch, Kathy Knueppel, Beth Schoenhoffer, Roberta Dobbbs, Nancy Blacklow, Adele Miller, Liz Finley, Sue Finley, Pam Tegatz, Marlene Knutson, Karen Kapplinger;

Shirley Spranger, Laurie Alexander, Mickey Hunter, Martha Christerson, Ulla Nielson, Kathy Stellter, Terry Forsberg Sheila Sullivan, Judy Lawson, Karen Knocke, Cindy Knobloush, Mary Dempsey;

Karen Hansen, Kathy Guzzetta, Dinny Sweet, Marty Kaugh, Sally Murphy, Mill Dushek, Dave Axel,

Jim Van Metre, John Gigliotti, Glen Klotz, John Kranig, Al Thompson, Leslie Lane;

Jim Evans, Urban Jenquin, Ken Kirt, Randy Facklam, Jake Moelk Bob Hetzel, Ron Hickey, Allen Ravine, James Carpenter, Bough Jones, Ed Sabish, James Carpenter, Ed Sabish, Vic Schaffer John Roecker;

Steve Kailing, Bob Henderson, Bob Trepa, Dave Krivan, Mike Winderbaum, Dave Verhulst, Bill Dyrema, Ken Kloehn, Jack Clark, Peter Calhaly, Dave Carrisch, Peter Lange;

Mark Deighton, Bill Blatz, Lowell Woodward, Joe Kappl, Russell Williams, Mr. Tuct, Jerry Beck, Rich Rutherford, Bob Thiede, Ted Pamperin, Warren Askov, Joe Scherner, Tom Ladousse, Gene Dennis, Peter Arvedson, Eugene Coats.

It was the job this week of these solociters to personally contact all the people living in their respective residences and to inform them of the workings of Campus Chest.

SPEECH REBROADCAST

The speech given by Prof. Bergen Evans in the Union Thursday night will be rebroadcast tomorrow at 2 p.m. on radio station WHA. Evans, author and humorist, spoke on "The Responsibility of Being Intelligent."

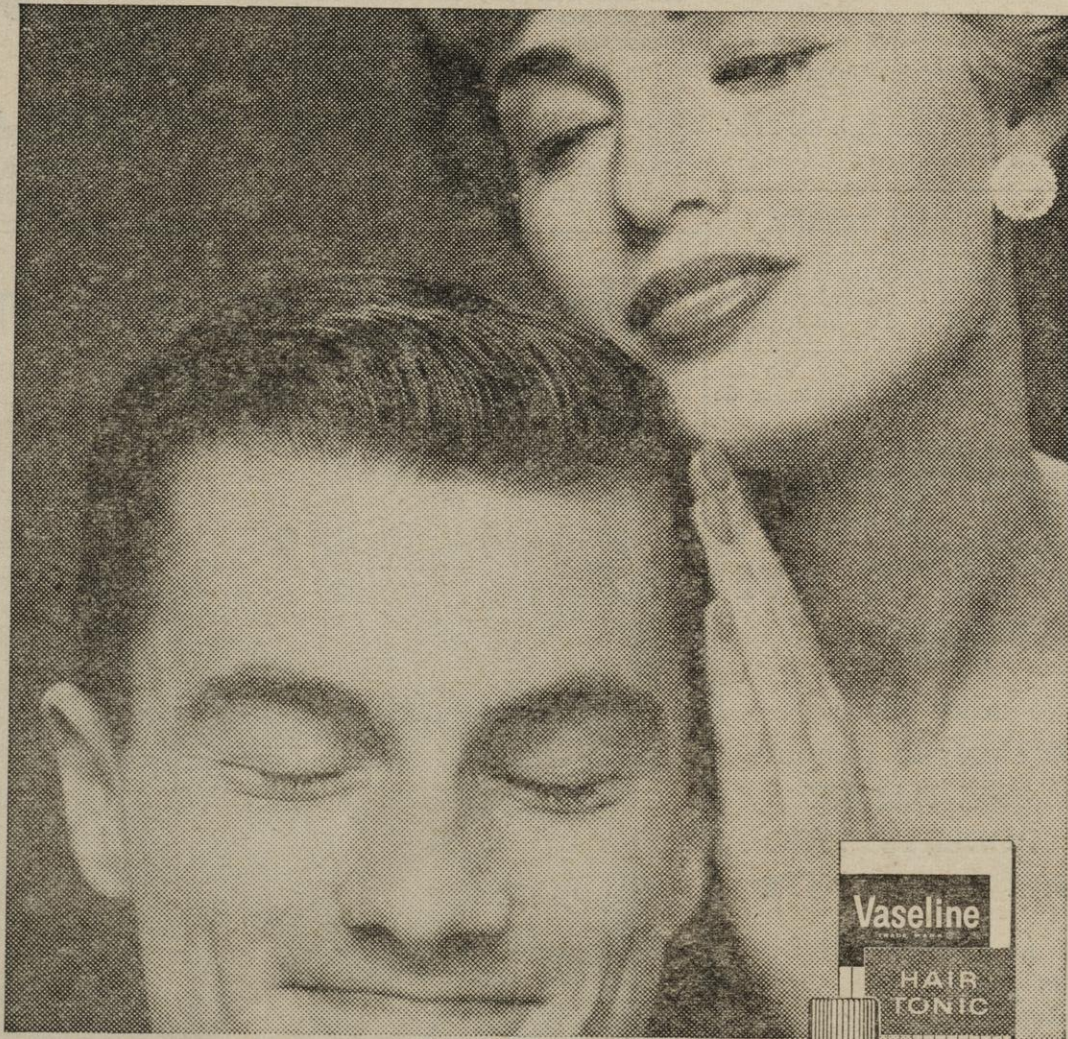
NATIONAL TEACHER EXAMINATIONS

The National Teacher examinations, prepared and administered by Educational Testing service, will be given at 160 testing centers throughout the United States on Feb. 11.

STATE STREET WEE WASH IT

We Specialize in Student Laundry
SHIRTS DRY CLEANING

State at Gilman St.



do girls go to your head?

Or do they just go? If so try 'Vaseline' Hair Tonic—made specially for men who use water with their hair tonic (and who doesn't!). 'Vaseline' Hair Tonic's 100% pure, light grooming oil replaces oil that water removes. It will not evaporate — will stay clear and clean. Your hair looks great, stays neater longer. Just a little does a lot!

IT'S CLEAR IT'S CLEAN IT'S **VASELINE** HAIR TONIC

VASELINE IS A REGISTERED TRADEMARK OF CHESEBROUGH-POND'S INC.

Sheridan To Tell Democratic Stand On Middle East

The Democratic party's stand on the Middle East will be presented by Dave Sheridan, former president of the Young Democrats and vice-president of the Wisconsin Student association, at the Student Zionist organization at 4 p.m. Sunday at Hillel, 611 Langdon st.

Sheridan will discuss the Kennedy-Johnson stand on such issues as the blockade of Israeli shipping through the Suez canal by the United Arab Republic, the Eisenhower doctrine for the Middle East, and general aid for economic development.

The Young Republicans declined to provide a participant in the originally scheduled debate, "The Donkey, the Elephant, and the Middle East." The Y-GOP said that the Middle East was not a major campaign issue.

Tickets may be purchased at the meeting for a Thanksgiving weekend trip to Chicago for the Israeli Philharmonic orchestra. There will be an SZO regional get-together following the concert, Nov. 26.

'JAZZ IN THE RAT'

Doc De Haven's combo returns to the Rathskeller to provide jazz after the football game today. Part of the "Jazz in the Rat" series the band will begin playing at 4 p.m.

CLASSIFIED ADS

— RATES —

For Three Days or Less—
25c per line or fraction of line per day.

For Four Days or more—
20c per line or fraction of line per day.

75c minimum charge

Above rates are net. No commissions or discounts on Classified Ads.

FOR SALE

BICYCLES—New, \$36.95 up, used \$10 up. We take trades. Sherman Ave. Cycle Shop. 464 N. Sherman. CH. 4-4648. Open Mon. & Fri. eves. 'til 9 p.m. xxx

RECORDS, Pre-Recorded Tapes, Voice of Music Phonos and Tape Recorders. Your On Campus Music Center. Josheff Music 670 State St. xxx

WILLMORE'S Zenith guaranteed used TVs. Most popular makes. 3059 E. Washington. 10x29

STUDEBAKER 1953 V-8 coupe, sporty, good mileage and tires. 2425 Elmwood, Middleton. TE 6-5678. 5x29

FOR RENT

PARKING—1 block from Union. \$8.50 a month. AL. 6-3013. xxx

SPACE for 1 or 2 men to share 5 Rm. Apt. with 2 others. 309 N. Frances. AL. 6-5808.

PERSONNELS

FOR pen repair & Rubber Stamps made to order it's King Pen Shop 312 State Street in Madison, Wis. 23x19

HEY Minnewancans! Call CE 3-3148 10x5

WILL person who took Gray Boycoat, Warren of Stafford label, by mistake from Old Madison Room Oct. 20 return for her Gray Boycoat. U. 2562, Mary Lynn. 3x29

LOST

BLACK wallet with picture, receipts, and money in vicinity of N. Mills St. Reward AL 5-9260. 2x29

WANTED

1 or 2 girls to share apartment—living room, 3-bedrooms, kitchen, bath. 218 N. Lake. Contact party on 2nd floor after 6 p.m. 5x2

HELP WANTED

NEEDED 2 smiling igrls with pleasant speaking voices to work 4 hrs. daily in our down town office. Hours arranged to your convenience. Salary. Call Mon. AL 7-4436. 3x2

Who's Got The Button? . . .



HOMEcoming—The co-chairman of the Homecoming buttons committee, a Barbara Fox, right, and George Kotsonis, and the winner of the button contest, Lynn Penner, left, presented a complimentary button to President Conrad Elvehjem. Homecoming buttons are now on sale at all living units.
—Cardinal photo by Bob Schmidt

Halloween Theme Prevails at Parties

"Double, double toil and trouble, fire burn and caldron bubble." Witches, ghosts, and goblins plus a variety of other costumed students will celebrate an early Halloween tonight.

Parties with a Halloween theme will be held by Faville house, Botkin house, Kappa Psi, Kappa Eta Kappa, Groves Women's Co-op, Zeta Beta Tau, Alpha Delta Phi, Alpha Chi Sigma, Phi Chi, Villas house, Sigma Phi Epsilon, and Badger Christian Fellowship.

Delta Tau Delta will have a "Haunted House" party. Other themes are Alpha Chi Rho, "Halloween in Hades"; Jones house, "Halloween Beatnik"; Tau Kappa Epsilon, "Hogan's Ghost House"; and Triangle "Turn Around". The "Victory Celebration" will be held by Chi Psi and Lambda Chi Alpha will hold an "After the Game" party. Additional parties include: Alpha Epsilon Pi, "Pillow Talk"; Alpha Xi Delta, "Roaring 20's"; Gilman house, "Casino Party"; Sigma Phi Society, "Pajama Party"; High house, "Square Dance"; and Delta Sigma Pi, "Founder's Day party". Both Phi Sigma Kappa and the Evans' Scholars will have hayrides. Phi Sigma Delta is having their initiation dance.

Informal parties will be held by Beta Theta Pi, Delta Upsilon, Kappa Sigma Phi Kappa Theta, Theta Delta Chi, Phi Delta Theta, Sigma Alpha Epsilon, Phi Gamma

Delta, Alpha Tau Omega, Sigma Chi, Chi Phi, Alpha Gamma Rho, Acacia, Delta Theta Sigma, Spika Lodge, and Lochdale Co-op.

Open house and coffee hours will be held by: Lakota house, Lake Lawn house, Oshsner house and Liz 4, Tabard Inn, Villa Maria, Shepard Hall, and Theta Delta Chi. Showerman house and Elizabeth Waters will have a workbee. Chi Phi and Alpha Phi will will have a joint open house.

Club 770 Features Combo, Floor Show

The doors of Tripp Commons will open again tonight for the second Club of the year, to be held from 9-12 p.m. Tickets are on sale at the Union box office for \$2 per couple or they may be purchased at the door.

Saturday night's Club 770 will feature the Norm Kingsley Combo, a floorshow, and the traditional cosmopolitan atmosphere that has distinguished the club as the dean of college night clubs.

Club 770 is sponsored by the Union social committee.

CORRECTION

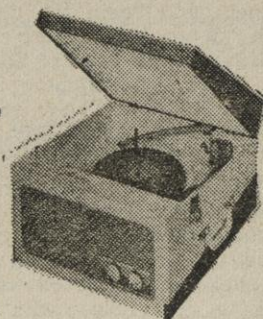
The Phi Sigma Delta beer supper last night was erroneously listed as a "Panty Raid." The party was a "Pantry Raid."

Society and Features

WEBCOR Hi-Fi Phono

Pay \$2.50 Per Week \$49⁹⁵
BMCAS Charge Service

Anyone would be proud to own the Maestro — both for its excellent reproduction and for its distinctive attractiveness. In this tastefully styled model, Webcor designers have demonstrated that a portable's appearance can match its performance.



BEECHER'S

FOR RECORDS AND STEREO
430 State St. AL 6-7561

NOW APPEARING IN PERSON

FOR THREE WEEKENDS ONLY

BOB SCOBEY

AND HIS GREAT NEW BAND



OF THE **BADGER ROOM** IN THE **TOWNE CLUB**

306 W. Mifflin — Madison

Your favorite Foreign and Domestic Brands of Beer at Popular Prices

ADMISSION—Thurs. \$1.00, Fri. and Sat.—\$1.50

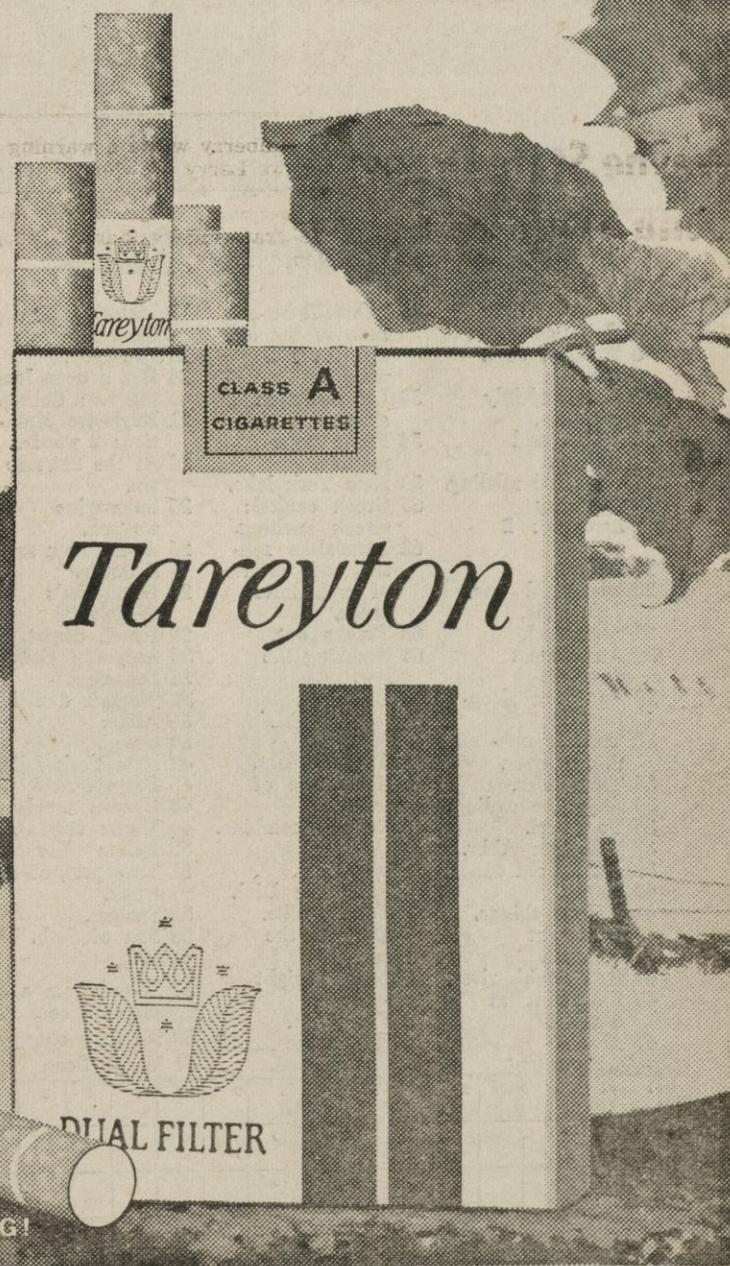
FIRST SHOW 8:30 P. M.

Filters for flavor

—finest flavor by far!



THE TAREYTON RING MARKS THE REAL THING!



Tareyton has the taste—

Dual Filter does it!



HERE'S HOW THE DUAL FILTER DOES IT:

1. It combines a unique inner filter of ACTIVATED CHARCOAL... definitely proved to make the taste of a cigarette mild and smooth...
2. with a pure white outer filter. Together they select and balance the flavor elements in the smoke. Tareyton's flavor-balance gives you the best taste of the best tobaccos.

NEW DUAL FILTER Tareyton

Product of The American Tobacco Company—"Tobacco is our middle name" © A. T. Co.

"THE BRIGHTEST, LIVELIEST COMEDY THIS YEAR!"—N. Y. TIMES

NOW-HELD-OVER

FOR A 2ND BIG LAFF WEEK!!

'I'M ALL RIGHT JACK

Starring **PETER SELLERS**
IAN CARMICHAEL-TERRY-THOMAS

—ADDED EXTRA—
"Wonders of New Orleans"
"Polygamous Polonius"
• NOW PLAYING •

STANLEY WARNER
MAJESTIC

Song Meet To Be 'Sung Off' In Union Theater Tomorrow

The finals in the annual Tournament of Song will be "sung off" in the Union theater Sunday afternoon beginning at 3 p.m.

Women of Murray house, co-winners of the open division for women, will begin the program with "Were You There" and "Dites-moi." Women of Zoe Bayliss house, also winners in this division, will follow with "A Faithful Shepherd is My Lord" and "The Halls of Ivy."

SWENSON house, winner of the men's open division, will sing "Roadways" and "Swing Low, Sweet Chariot." Alpha Phi sorority, ahead in the Greek women's division, will follow with "Adavanius te Christe" and "Black is the Color of My True Love's Hair."

Two fraternities tied in the Greek division; Sigma Phi Epsilon men will sing "Lord Bless You" and "I Ain't Gonna Grieve My Lord No More" and Theta Chi men will sing "Crusaders' Hymn" and "The Rill Song."

In the mixed division, the Lutheran Student association choir

Soapbox To Air Foreign Policy

Foreign policy in the election will be discussed by representatives of the political organizations on campus and any interested students at Union Forum committee's first soapbox Monday, Oct. 31 on the Union steps at 3:15 p.m.

The soapbox is designed to increase student interest in the election. Following it on Tuesday will be the all-campus Mock Election.

Soapboxes were begun some years ago to enable students to express their opinions on controversial subjects.

In case of bad weather the soapbox will be held in the Union Trophy room.

will present "O, Be Joyful All Ye Lands" and "Aaina-a That Good News."

JUDGES for the finals are Profs. Warren Wooldridge and Orville Shetney of the Music school. During the judging, the Wesley Foundation choir will sing "Let Us Break Bread Together" and "The Ash Grove."

President Calls School Editor Red

(UPS) CCNY President Buell Gallagher issued a report last week documenting his charges that the campus paper **Observation Post** is Marxist oriented and that its editor, Peter Steinberg, is "sympathetic to communism."

Steinberg replied that "basically the report is intellectually dishonest because it takes a disagreement on views on different

questions and attaches labels to them."


Dr. Gallagher cited Steinberg's activities in connection with the '57 and '59 World Youth Festivals in Moscow and Vienna and his "uncritical" comments on the Hungarian Revolution, to support his charges.

He also noted a newspaper column written by Steinberg which gave a complimentary account of the Vienna festival.

As further evidence, Gallagher

reprinted a copy of the final editorial in the **Post** of last semester. The editorial took issue with his view that a class struggle did not exist at the college.

WE BUY — WE SELL Shop
IT IT
• typewriters
• Single & bunk beds
• miscellaneous items
304 E. Main AL 7-3956

ORPHEUM PRE-HALLOWEEN
SEPARATE TICKET
ADMISSION \$1.00
TONIGHT at Midnight
SUSPENSE SENSATION

DORIS DAY · REX HARRISON
JOHN GAVIN
Midnight Lace
In Eastman COLOR
MYRNA LOY · RODDY McDOWALL

You Are Cordially Invited To
Tournament of Song
Sunday, October 30
UNION THEATER
At 3 p.m. admission \$1

ANSWER TO PREVIOUS PUZZLE

| | | | | | | | | | | | | |
|---|---|---|---|---|---|---|---|---|---|---|---|---|
| G | A | L | A | S | P | R | I | G | S | M | O | G |
| E | R | E | C | T | H | O | B | O | T | O | D | O |
| T | O | T | H | E | P | O | I | N | T | I | T | E |
| T | A | I | T | O | T | S | A | T | T | H | A | T |
| O | R | N | I | T | H | O | P | L | A | C | E | |
| | B | I | S | | B | L | O | W | H | A | R | D |
| H | A | V | E | N | C | L | A | N | S | T | O | O |
| A | P | E | X | | G | O | I | N | G | P | E | O |
| S | I | R | | F | R | I | S | K | | B | U | N |
| H | A | S | B | E | E | N | S | | C | A | N | |
| | L | E | A | N | S | | M | A | R | G | A | T |
| S | H | I | N | T | O | | S | E | R | B | | M |
| T | U | B | S | | B | A | T | T | L | E | D | O |
| A | G | R | O | | L | I | A | R | | L | U | N |
| B | E | E | N | | E | R | G | O | | L | E | G |

Daily Crossword Puzzle

ACROSS

- 1 Card game.
- 8 Dreamy, as a look.
- 15 Fourth-of-July speakers.
- 16 White and smooth.
- 17 Repeated rattling.
- 18 Ordinary hematite: 2 words.
- 19 Lump.
- 20 Dispirited one.
- 22 Jap coins.
- 23 Scoundrel.
- 26 An outcast samurai.
- 29 European sleeping car.
- 33 Turn (something) over.
- 34 Time-killer.
- 35 Adjective ending.
- 36 To jewel.
- 37 Delegate: Abbr.
- 38 Stately old dance.
- 40 Anger.
- 41 Unique things.
- 43 Important incident.
- 44 Red Bank's river.
- 46 Entertains at a meal.
- 47 Alaska's achievement.

- 50 "There'll be time in the old town...": 2 words.

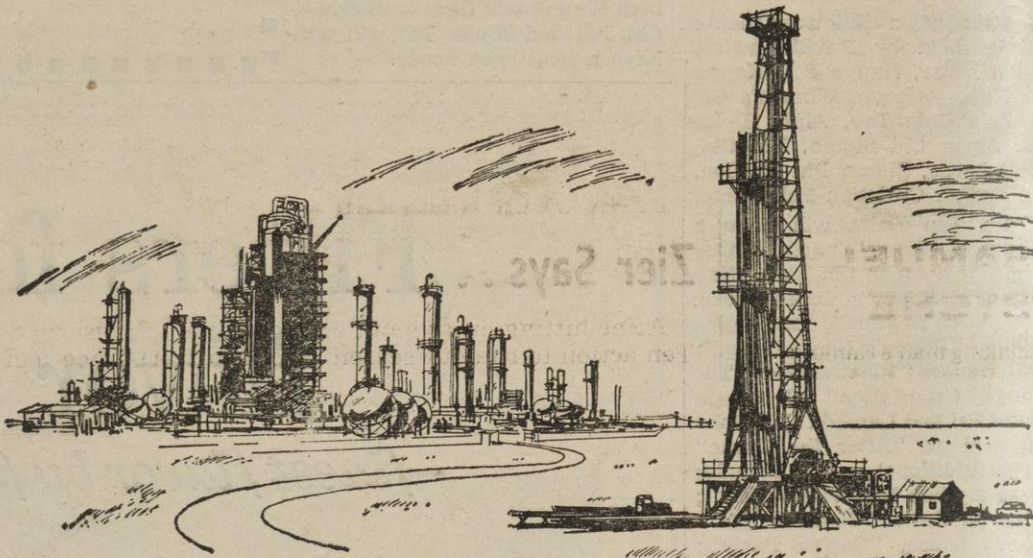
- 53 Leg-of-mutton sleeve.
- 54 Front page matters.
- 58 New York lake.
- 60 Greek capital: Greek spelling.
- 62 Iguanalike reptile, only survivor of prehistoric order.
- 63 Thinks out.
- 64 Breaking the law.
- 65 Chemises.

DOWN

- 1 Angler's float.
- 2 Noted isle of Ireland.
- 3 Defense combine.
- 4 Quinine substitute.
- 5 Stubborn: Dial.
- 6 Take a hike.
- 7 Mary of the movies.
- 8 Large, bright meteors.
- 9 The mean.
- 10 "Spare the —": 11 Out of bed.

- 12 Material for fences.
- 13 Presently.
- 14 Has a deep longing for: Colloq.
- 21 Explosive situation: 2 words.
- 24 At the extreme tip.
- 25 Submarine weapon.
- 26 Apply, as a salve: 2 words.
- 27 Beethoven's "Fidelio."
- 28 Israeli desert.
- 30 Animate: Colloq.
- 31 Senseless.
- 32 Summer dwellings.
- 34 Alike.
- 39 Greed.
- 42 New York falls.
- 45 Property.
- 48 Hidden supply.
- 49 Water animal.
- 50 Italian wine city.
- 51 Transport, as by truck.
- 52 Spoken.
- 55 Son of Seth.
- 56 Ebb.
- 57 Sound from a pressure cooker.
- 59 No fiery charger.
- 61 Have; Scot.

| | | | | | | | | | | | | | |
|----|----|----|----|----|----|----|----|----|----|----|----|----|----|
| 1 | 2 | 3 | 4 | 5 | 6 | 7 | 8 | 9 | 10 | 11 | 12 | 13 | 14 |
| 15 | | | | | | | 16 | | | | | | |
| 17 | | | | | | | 18 | | | | | | |
| 19 | | | | | 20 | | 21 | | | 22 | | | |
| | | | 23 | 24 | | | | | 25 | | | | |
| 26 | 27 | 28 | | | | | 29 | | | 30 | 31 | 32 | |
| 33 | | | | | | 34 | | | | | 35 | | |
| 36 | | | | | | 37 | | | | 38 | 39 | | |
| 40 | | | | | | | | | | 43 | | | |
| 44 | | | | 45 | | | | | | 46 | | | |
| | | | | | | | | 48 | 49 | | | | |
| 50 | 51 | 52 | | | | 53 | | | | 54 | 55 | 56 | 57 |
| 58 | | | | | | 59 | | | 60 | 61 | | | |
| 62 | | | | | | | | | 63 | | | | |
| 64 | | | | | | | | | 65 | | | | |



Humble will interview on the Campus October 31

Interviewing teams from Humble Oil & Refining Company will be on the campus October 31 to interview advanced degree Chemical Engineers and PhD Chemists graduating in 1961.

Young men at Humble share in the dynamic progress and growth of a leader in the petroleum industry. Humble is one of the leading producers of crude oil in the United States and is a completely integrated oil company. Humble's Baytown Refinery, one of the largest in the world, is engaged in Refining and Petrochemical Manufacturing. Research centers in Houston, for development of better methods of exploration and production, and at Baytown, for research in manufacturing, are making valuable contributions to the petroleum industry.

A Quick Look at the Humble Company

Area of Operation: Texas, Louisiana, California, Mississippi, New Mexico, Florida, Alabama, Arizona, Georgia, Washington, Oregon, Alaska.

Refining Capacity: 282,000 barrels daily.

Retail Sales: Texas, New Mexico, and Arizona. Leading Texas Marketer of tax-paid gasoline.

Humble Pipe Line Co.: Operates crude oil and products pipe lines in Texas; has capacity to transport more than 700,000 barrels daily.

HUMBLE

HUMBLE OIL & REFINING CO.

For a rewarding career in the petroleum industry, discuss your future with the Humble Company interviewing team. Check at your Placement Bureau for time and place of interview.



In This Corner

By JERRY SHEA

Shea Says . . .

Due to limited space this week we have only one sentence to brag about our sterling record of last Saturday which resulted in a perfect Big Ten forecast. So armed with our newly presented hero's badge we once more venture forth with what promises to be a most difficult slate of games. The following prognostications were made with the expert assistance of such noted gridiron analysts as Wm. (Blob) Mitchell (not to be confused with Miller) and Richard (Stout) Johnson.

NORTHWESTERN OVER INDIANA — The undermanned 'Cats should get by Indiana's punchless Hoosiers, mainly on the generalship of Dick Thornton.

PURDUE OVER ILLINOIS — The Illini seem to be on the upsurge at last, but Purdue should prove tougher than Penn State. The Boilermakers are out of the Big Ten race, but they still are among the most bruising teams in captivity.

OHIO STATE OVER MICHIGAN STATE — A real big game for both teams with the winner still in title contention. We like Ohio mainly because of their consistent attack and home field advantage.

IOWA OVER KANSAS — The Hawks may get dumped if they look ahead to Minnesota, but we don't think Evy will let a possible National Title slip away that easily.

MINNESOTA OVER KANSAS STATE — The Wildcats are strictly an inferior brand X team and Minnesota should be able to give its deep reserves a workout. The Gophers may have been lucky this season, but they won't need any luck against K-State.

WISCONSIN OVER MICHIGAN — A strict tossup but a sound Ron Miller could make the difference. This game will probably go right down to the wire and we'd feel a lot better if the Badgers had a healthy Jim Bakken ready to boot a few field goals.

NORTHLAND OVER LAKELAND
LEHIGH OVER BUCKNELL
PENN OVER HARVARD

Zier Says . . .

After hitting on five out of six winners in last week's Big Ten action to run our season record to 21-11-2, we feel brave enough to go out on a limb and pick a few upsets this time.

NORTHWESTERN OVER INDIANA — One of these weeks the Wildcat's offense is going to explode against somebody and the Hoosiers may feel the brunt of it this Saturday.

ILLINOIS OVER PURDUE — We don't think the Boilermakers are as good as they've looked and we don't think Illinois is as bad as a lot of people think.

IOWA OVER KANSAS — One of the best in the Big Ten meets one of the best in the Big Eight. Iowa won't stumble here though, and will still be the nation's best when the games over.

MICHIGAN OVER WISCONSIN — The Wolverines have enough depth to match the Badgers and more experience. Wisconsin isn't out of this one by a long shot, however.

OHIO STATE OVER MICHIGAN STATE — The Buckeyes are title conscious and the Spartans are out of the picture because they don't play enough games. Ohio State is a toughie.



Among the fine crop of Michigan ends performing today in Camp Randall will be junior letterman Jim Korowin. He is one of the prime targets of quarterback Jim Glinka, the Wolves sophomore answer to Ron Miller.

campus character:



PSAMUEL PSYCHE

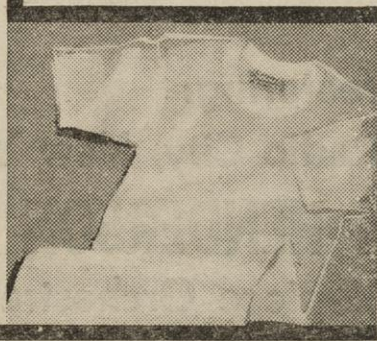
A thinking man's thinking man, Psamuel finds that thoughts come easiest when he is most comfortable.

That's why he always wears Jockey brand T-shirts. He likes the way the fine combed cotton feels next to his skin. He likes the way the twin-stitched, nylon-reinforced collar keeps its shape. And he likes the full-proportioned body and extra long tail that never creeps.

You, too, will like yourself better when you enjoy the comfort of Jockey brand T-shirts. Your favorite campus store has them. \$1.50

COOPER'S, INCORPORATED • KENOSHA, WIS.

Jockey
® BRAND
T-shirts



COMPLETE SELECTION

OF

JOCKEY

UNDERWEAR

at

EDWIN O. OLSON & SON

555 State at Frances

FREE CUSTOMER PARKING Town/Campus Bldg.

Nowhere But
NOWHERE
Except

McDonald's
10¢

McDonald's
Custom Built
HAMBURGERS

COAST TO COAST

FRENCH FRIES
Crisp, Golden, Hot

Open Year Around

2201 S. PARK ST.
3317 University Ave.

MAIL BOX DAMAGE

With Halloween only a short time off the Post Office department has issued a warning that it is a federal offense to willfully or maliciously injure, tear down or destroy any receptacle used for the receipt or delivery of mail. In the past, rural mail boxes have been frequent targets of Halloween pranksters. However, the department stated that before such pranksters attack a

rural mail box it might be well for them to consider that their activities could net them a \$1,000 fine or three years imprisonment.

HAIRCUT

4 BARBERS
WISCONSIN UNION BARBER
SHOP
Ground Floor—Union

PHILADORA'S for PIZZA & SPAGHETTI CARRY-OUTS

AL 6-9829

945 S. Park St.



On Campus with Max Shulman

(Author of "I Was a Teen-age Dwarf", "The Many Loves of Dobie Gillis", etc.)

A FRAT TO REMEMBER

Every year, as we all know, the Benevolent and Protective Order of Collegiate Fraternities awards a highly coveted prize to the fraternity house which, in its judgment, has done the most to promote and enhance the fraternity way of life. The prize this year—eight hundred pounds of white putty—goes to the Signa Phi Nothing chapter of the South Dakota College of Dentistry and Renaissance Art.

The award this year is exceptionally richly deserved, for the Signa Phi Nothing house is the very model of all a fraternity should be. It is, first of all, a most attractive house physically. The outside walls are tastefully covered with sequins. Running along the upper story is a widow's walk, with a widow stationed every three feet. Moored to the chimney pot is the Graf Zeppelin.

Indoors, the house gives an impression of simple, casual charm. The chapter room is furnished in homey maple and chintz, with a dash of verve provided by a carp pool three hundred feet in diameter. A waterspout rises from the center of the pool with the housemother bouncing on the top.

Members' rooms are gracious and airy and are provided with beds which disappear into the wall—permanently. Each room also has a desk, a comfortable chair, a good reading lamp, and a catapult for skeetshooting. Kidney-shaped desks are available for kidney-shaped members.

Perhaps the most fetching feature of the house are the packs of Marlboros stacked in heaps wherever one goes. If one wishes to settle back and enjoy a full-flavored smoke, one needs only to reach out one's hand in any direction and pick a pack of Marlboros—soft pack or flip-top box—and make one's self comfortable with a filtered cigarette with an unfiltered taste—that triumph of the tobaccoist's art, that paragon of smokes, that acme of cigarettes, that employer of mine—Marlboro!



The decor, the grace, the Marlboros, all combine to make Signa Phi Nothing a real gas of a fraternity. But a fraternity is more than things; it is also people. And it is in the people department that Signa Phi Nothing really shines.

Signa Phi Nothing has among its members the biggest BMOs on the entire campus of the South Dakota College of Dentistry and Renaissance Art. There is, for instance, William Makepeace Sigafoos, charcoal and bun chairman of the annual Stamp Club outing. Then there is Dan Rovin, winner of last year's All-South Dakota State Monopoly Championship, 135 Pound Class. Then there is Rock Schwartz, who can sleep standing up. Then there is Tremblant Placebo, who can crack pecans in his armpits. Then there is Ralph Tungsten, who went bald at eight.

But why go on? You can see what a splendid bunch of chaps there is in Signa Phi Nothing, and when one sees them at the house in the cool of the evening, all busy with their tasks—some picking locks, some playing Jacks-or-Better, some clipping Playboy—one's heart fills up and one's eyes grow misty, and one cannot but give three cheers and a tiger for Signa Phi Nothing, fraternity of the year!

© 1960 Max Shulman

And while you're cheering, how about a huzzah for the newest member of the Marlboro family of fine cigarettes—unfiltered, mild, delightful Philip Morris king-size Commander! Have a Commander—welcome aboard!

Opinions . . .

(continued from page 1)

Dooven. "Besides, the president of the Young Republicans is my next-door neighbor." Ken Killman, another Nixon backer, said, "Why do I like Dick? I've never backed a loser yet. Anyway I wouldn't like to see Jackie Kennedy lying around in the East Room in her tight pink slacks."

Kathleen McGinley thinks that "Kennedy should win. Nixon is too much against criticism. I believe that if a man has faith in his country, he will let it stand a little criticism. Nixon's stand on Quemoy is ridiculous. Kennedy feels the government should be responsible to the people, rather than the people being responsible to the government." Winnie Rosen is for neither, as "I can't see how either one can win," while Betsey Lebenson feels that "Kennedy is the lesser of two evils."

"I LIVE IN an all-Republican house, and I guess I'm a Republican at heart, but I don't think Kennedy really has any competition in this one," remarked Bob Coney. "It's a race between personalities, and I'm not swayed by slogans and banners." Marge more versed in international affairs, and that's what will be important in the next four years."

"I like Lodge, but for President it should be Kennedy, because he won't just sit around," observed Paul Olson. "He's got a dynamic personality, and he'll do something." Ruth Harrington agreed, saying, "Judging by campus feeling, I think Kennedy will win."

"I LIKE NIXON he's Republican," said Judy Caple. "Also, we're used to older, more stable people in the White House—not these young society gadabouts. I hear Kennedy's got the poorest voting record of all, and I think that's indicative of how important he might think a Summit Meeting would be."

"What election? Who's running?" asked Jim Friedlander and Ken Sunshine.

"If anything influenced me, it was the papers and the T.V. debates," said Tom Schlick. "But I won't know who for sure until I pull that lever in the booth." Steve Berman decided that "Kennedy's more liberal. Besides, he's got a cool wife!"

"LARRY FEINBERG is for Nixon because he 'has a more conservative foreign policy, and since I'm 24 and classified 1a, I don't want any war.' Carol Caldwell wants Nixon 'because he's so cute! What has influenced me against Kennedy? Just knowing the Democrats!'"

"Nixon definitely," declared Jim Doolittle. "If Kennedy wins,

he'll have Stevenson for Secretary of State, and we don't need a liberal in that office." Eileen Gerhardt believes that "Kennedy has more confidence, and he's less vacillating."

French . . .

(continued from page 1)

monstrations were spurred by the recent actions of the French government to induct students, even those still in high school, into the army. Faced with the dilemma of not wanting to fight an unjust war or betray their country, many students have deserted to Switzerland, Madaci said.

THE FRENCH students protested as early as 1956, when the government outlawed the Algerian Union of Students, Madaci explained, and as soon as six months ago the students established contact with the Algerians.

The French government in retaliation has taken away all student scholarships, Madaci said. He added that the demonstrations signify the general disillusionment with the De Gaulle regime. He said that De Gaulle has never tried to uphold the promises of self-determination and cease fire, which the Algerians want.

"WHEN MEMBERS of the Nation Liberation Front (FLN) met with the French three months ago in Melan, France, they were held virtually prisoners and no agreement was reached," Madaci explained, "and De Gaulle has said that he would never meet with the president of the Algerian Republic, Ferhad Abbas."

Larbi Madaci is studying here on a scholarship from the United States National Student association, of which the university is a member. He fled from Algeria in 1956, after being captured and tortured by French paratroopers for his underground activities.

Chest . . .

(continued from page 1)

The services and goods offered varied from a six pack of beer to a chocolate pie with whipped cream to an offer by Lois Gall and Mary Martins to shave any two roommates.

Funds obtained through the Persian Market are added to those of the Campus Chest, a project of the Wisconsin Student association and the only all-campus fund raising event. This money is divided among the World University Service, the YMCA and YWCA, Madison's Friends of International Students, and the National Service and Scholarship Fund for Negro Students.

DINNER WITH A PROF.

Zoology professor and ILS instructor Lowell Noland will be the guest this Sunday at the first in the series of "Dinner with a Professor." The informal dinner will take place at 5:30 p.m. in the Popover room. Students may sign up for it at the main desk. The only charge is the cost of the meal in the cafeteria.

Football . . .

(continued from page 1)

gan defense honest.

BOTH THE Badgers and Wol-

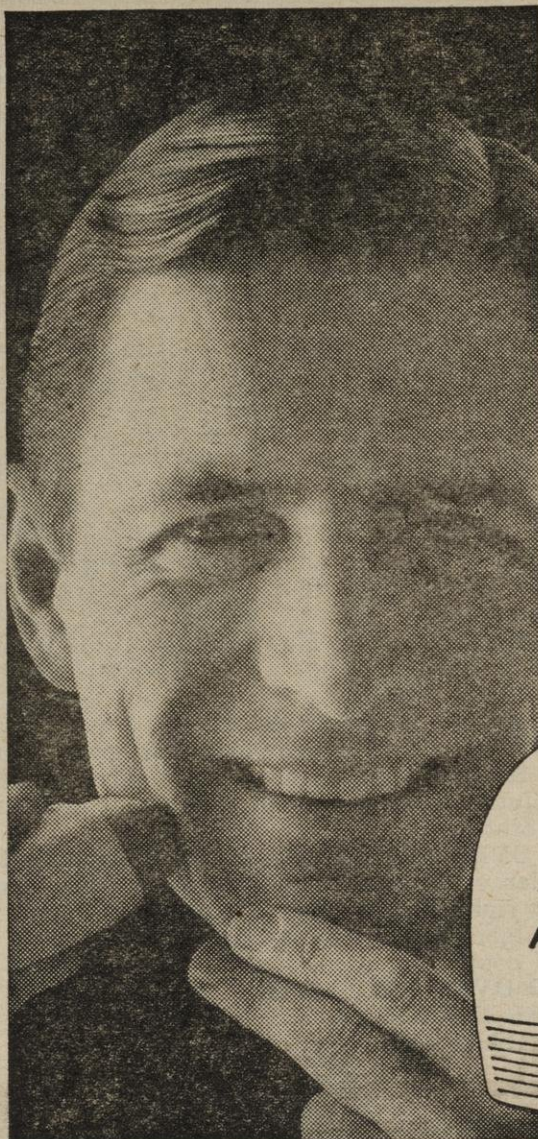
verines will be unhampered by injuries. The big problem facing both coaches is one of rallying their squads for comeback roles.

PARKING AVAILABLE

3 Blocks from Lower Campus
\$7 PER MONTH

Newly Paved Parking Lot
\$72 PER YEAR

Inquire at General Beverage Sales Co.,
114 N. Murray or call AL 6-3126 days



Mister...
you're going to wear
that shave all day!

START WITH THIS NEW FORMULA BEFORE-SHAVE LOTION, stop 4 o'clock stubble trouble!

You can shave blade-close, all-day clean, without "tenderizing" your face, when you use Pro-Electric Before-Shave Lotion. It contains ISOPHYL® to give your shaver extra glide-power—refreshes you with that brisk, bracing Old Spice scent. 1.00 no federal tax.



SHULTON

Only One Week Left
To Buy Tickets For
Homcoming Ball
Saturday, November 5

9 p.m. - 1 a.m.

Union Great Hall - Cafeteria - Tripp Commons - Rathskellar

featuring:

Direct from Radio City, New York

SKITCH HENDERSON

and his 12-piece Orchestra

PLUS

The Saints of Dixieland

Bob Leyson's Orchestra

Rock and Roll Combo

Tickets \$3.00 per couple

NOW ON SALE

at the Union Box Office

ORPHEUM

NOW

THRU
THURS.



MAGNIFICENT
The stand they made!

MAGNIFICENT
Seven who
fought like
seven hundred!

MAGNIFICENT
Seven notches
above the ordinary!

YUL BRYNNER

The Magnificent Seven

STARRING ELI WALLACH • STEVE MCQUEEN • CHARLES BRONSON • ROBERT VAUGHN • HORST BUCHHOLZ
FILMED IN PANAVISION AND COLOR