



LIBRARIES

UNIVERSITY OF WISCONSIN-MADISON

Graham and Morton Line, 1914.

[s.l.]: [s.n.], 1914

<https://digital.library.wisc.edu/1711.dl/GR6PLLQ2DKGO48Y>

<http://rightsstatements.org/vocab/UND/1.0/>

The libraries provide public access to a wide range of material, including online exhibits, digitized collections, archival finding aids, our catalog, online articles, and a growing range of materials in many media.

When possible, we provide rights information in catalog records, finding aids, and other metadata that accompanies collections or items. However, it is always the user's obligation to evaluate copyright and rights issues in light of their own use.

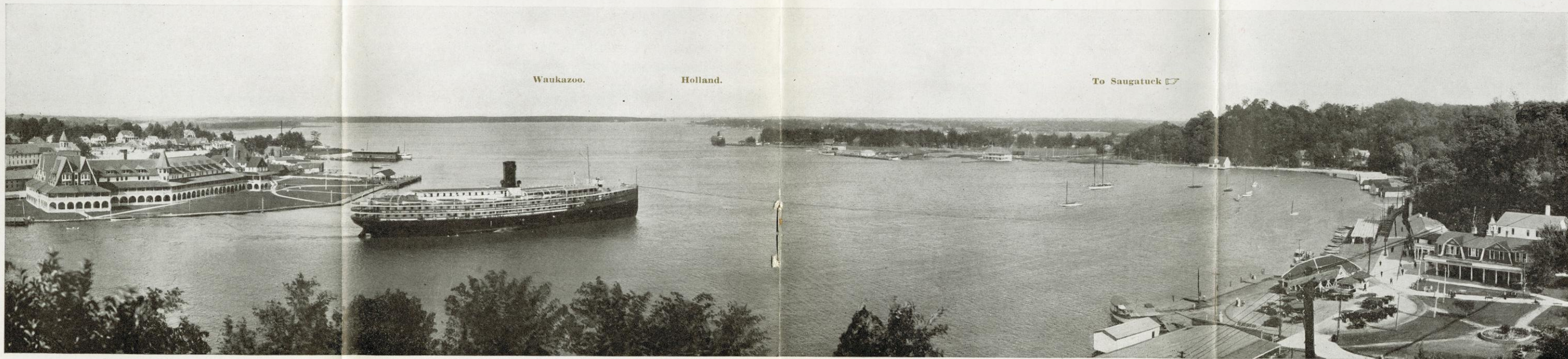
SAFETY FIRST

GRAHAM AND MORTON LINE





Bird's Eye View of St. Joseph Harbor



Ottawa Beach

S. S. City of Grand Rapids.

S. S. Puritan.

Interurban Pier.

Macatawa Park.

The Graham & Morton Passenger Fleet



THE steamship "City of Grand Rapids," launched March 16, 1912, is a marvel in marine architecture, a floating hotel of steel construction as safe as modern ingenuity can build. Every appointment is complete and especially arranged for the pleasure-seeking public.

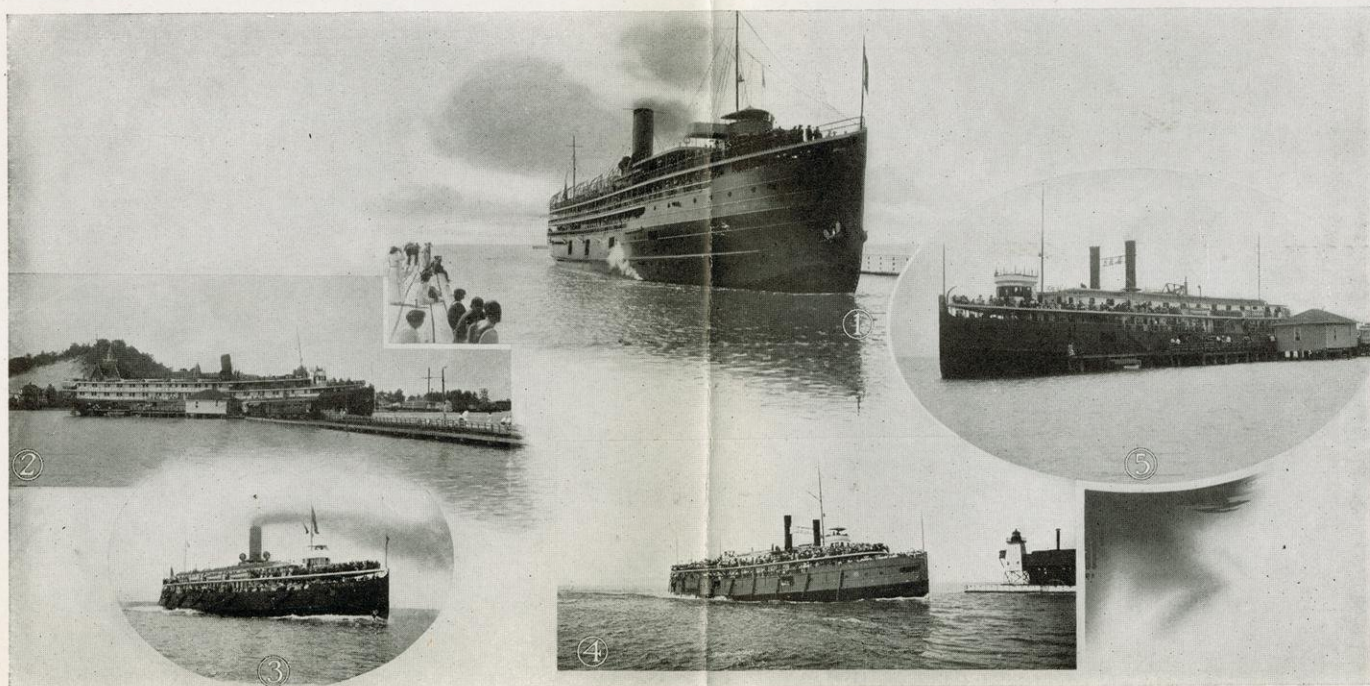
This ship is 310 feet in length; 48 feet in breadth; has five decks, two of which are for freight, three for passenger cabins and promenades. Her triple expansion engine can develop 4,500 horse power, showing a speed of twenty miles per hour. In the hold are seven water-tight compartments, any one of which can float the ship. The steel freight decks are covered with composition asphalt, while the social halls and toilet rooms are laid with smooth surface asbestone, making it impossible for sound to disturb the sleeping passengers.

There are 210 staterooms and 26 parlors, giving sleeping accommodations for 650 passengers, which is by far greater than any other ship crossing Lake Michigan. Each room is fitted with electric lights, call bells, running water and large, comfortable berths, with the latest improved mattresses and springs. A large dining room seating 100 people as well as two private dining compartments, are located in the forward end of the main cabin.

This ship, together with her sister ship, "Puritan," which is fitted equally as well with sleeping accommodations for 400 people, will make two trips daily between Chicago, Grand Rapids, Holland, Macatawa Park, Ottawa Beach and Saugatuck.

The three largest side-wheeled steamers on Lake Michigan, "City of Benton Harbor," "City of Chicago" and "Holland," fitted with all the conveniences that make travel by water a pleasure, each with a capacity of more than 2,000 persons, will make three trips daily between Chicago and St. Joseph-Benton Harbor.

The elegant steamer "Holland" has been arranged for private excursions. It has a large dance floor, spacious promenade decks and cabins. We will charter this ship to private parties, societies and clubs for a trip of a day, afternoon or evening. Every attention is given for the comfort and enjoyment of our patrons.



1—City of Grand Rapids

2—Puritan.

3—City of Benton Harbor.

4—City of Chicago.

5—Holland

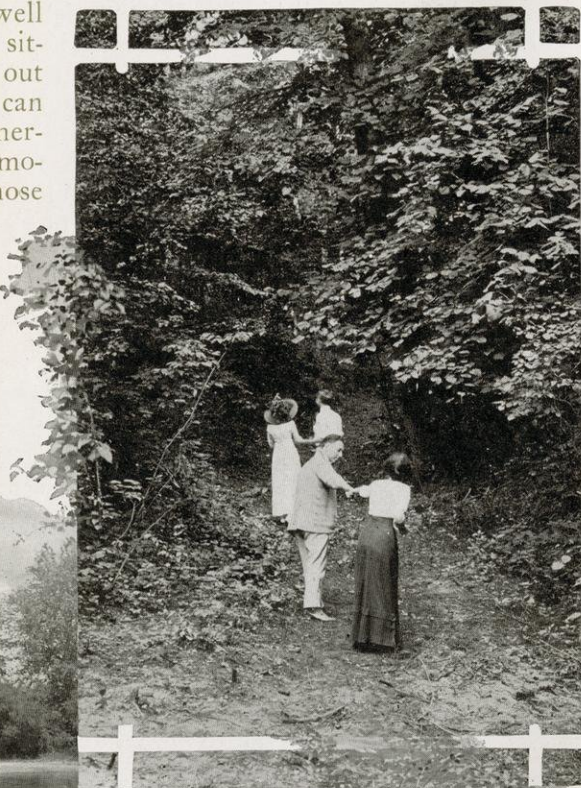


ENJOY YOUR WEEK-END IN NATURE'S GARDENS.

Vaudeville, moving picture shows, dancing, roller skating and many other features are opened to the pleasure seekers.

The hotel accommodations are of the best, among which is the Whitcomb Hotel with its wonderful baths for the treatment of rheumatism and nervous diseases, where remarkable cures are effected. Every attention is given to the comfort of the guests and it is well patronized throughout the year. The Lake View Hotel is situated directly across the street, overlooking Silver Beach, out on the broad expanse of Lake Michigan; no better service can be had anywhere than at this pleasant hotel. There are numerous other smaller hotels and boarding houses where accommodations may be had at very reasonable rates, though to those who prefer private life, many of the best families have spare rooms they will let to desirable people.

The St. Joseph river flows through a luxurious valley, flanked on both sides for miles with verdant forests, terraced vineyards and beautiful farms. A trip up the river on one of the many boats is enjoyed by thousands, becoming to some an annual pilgrimage. On the St. Joseph side of this river is a delightful automobile drive called the "Peach Belt Way," running for sixteen miles along the bank of the river to Berrien Springs, passing numerous resorts, such as Royaltown Heights, Scottdale, Beech Wood Camp, Twin Springs, Lake Chapin, Niles and Buchanan.



On the Indian Trail at Macatawa.



The Milton D. on the St. Joe River.

*All Ships of the
Graham & Morton
Company
are Equipped with
Wireless Telegraph*