



LIBRARIES

UNIVERSITY OF WISCONSIN-MADISON

Lake Superior. 1966

Niedecker, Lorine

[s.l.]: [s.n.], 1966

<https://digital.library.wisc.edu/1711.dl/TPIMZ3QU6LZIR8Y>

This material may be protected by copyright law (e.g., Title 17, US Code).

Original material owned by Dwight Foster Public Library.

For Permission to use contact Bob Arnold Longhouse, publishers & booksellers P.O. Box 2454 West Brattleboro, Vermont 05303 email: poetry@sover.net

The libraries provide public access to a wide range of material, including online exhibits, digitized collections, archival finding aids, our catalog, online articles, and a growing range of materials in many media.

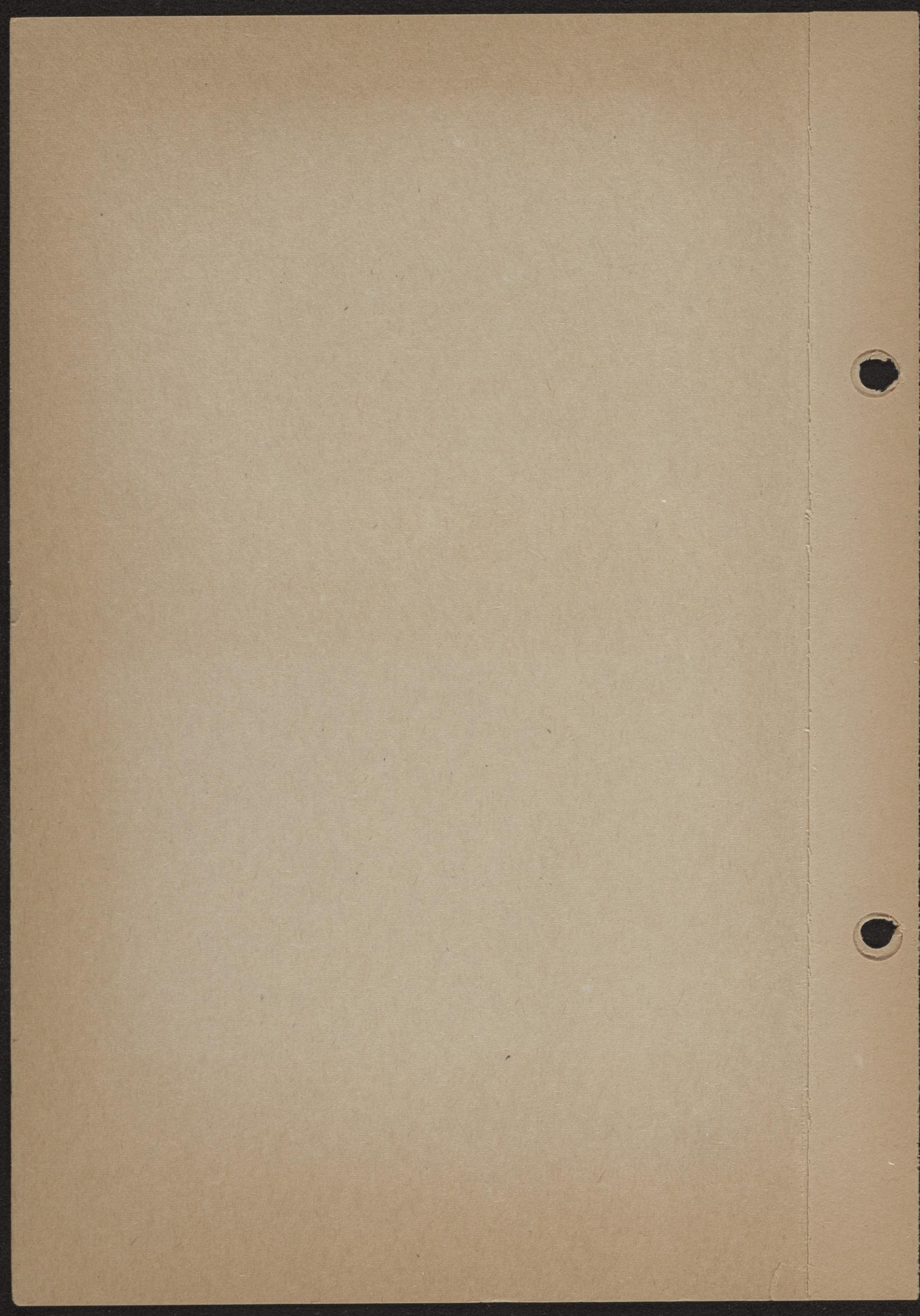
When possible, we provide rights information in catalog records, finding aids, and other metadata that accompanies collections or items. However, it is always the user's obligation to evaluate copyright and rights issues in light of their own use.

Lake Superior



003.19.2.52

Canada
and
Minnesota
'66





L. Michigan



L. Superior

Indian carvings on the rocks
north from Sault Ste. Marie



Church on Sault Ste. Marie Mich.
Sign on it (lower right): 'For
Sale. Seven Day Adventist



Indian Agency House + home of
Henry Ross Schoolcraft, Sault
Ste. Marie Mich. built by
himself. By now all colonial
tracts obliterated.

JUL • 66 •

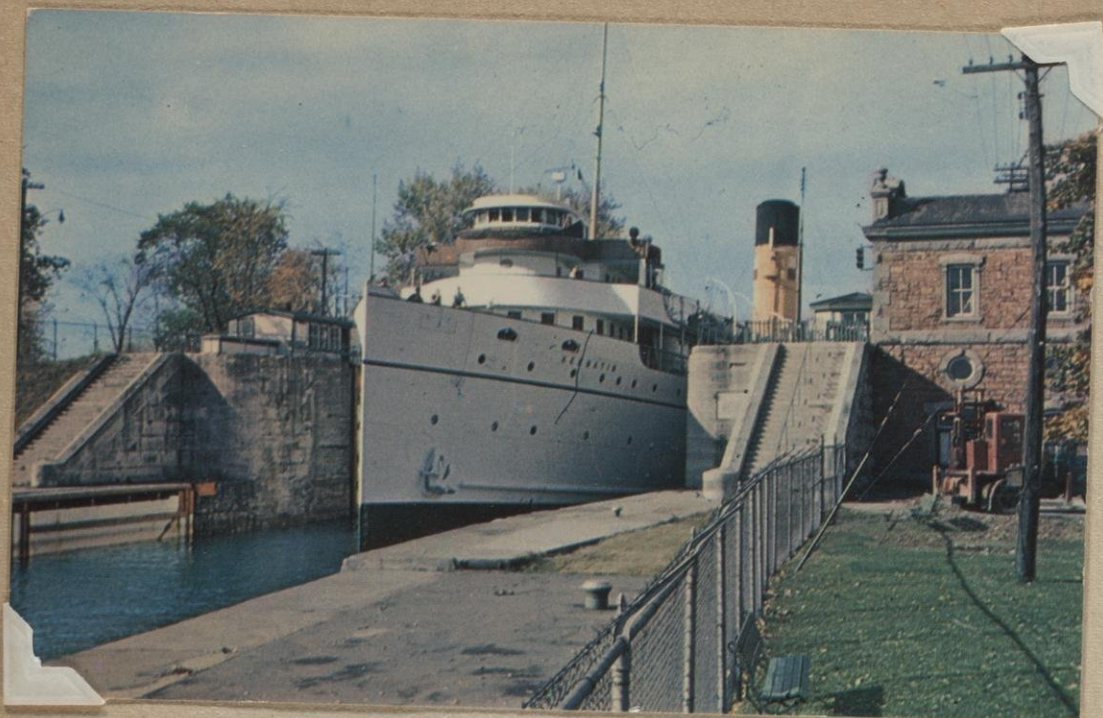


Ore boat
at the locks,
Brady Park,
Sault Ste. Marie,
Mich.

JUL • 66



Rest rooms
Brady Park,
Locks, Sault Ste.
Marie, Mich.



Cruise boat entering the locks,
Sault Ste. Marie, Canada



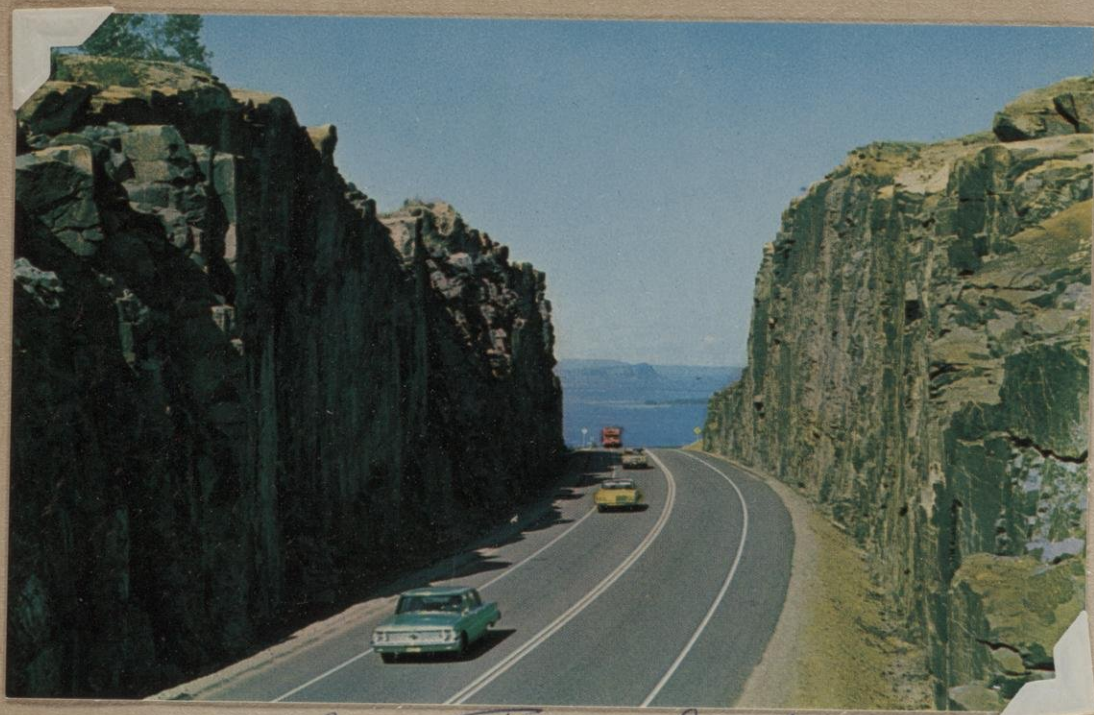
International Bridge
Sault Ste. Marie



Sault Ste. Marie, Canada



*Courthouse, Queen St.
Sault Ste. Marie, Canada*



Rock Cut in Trans-Canada Hwy.





Nawa, Canada





Nipigon River Bridge



Historic chapel of St. Jerome of Payer's Plateau.
A hundred years ago a Jesuit mission



Cameron Falls, Lake Nipigon
Beside the falls a sluiceway for
sticks for pulp mfg.



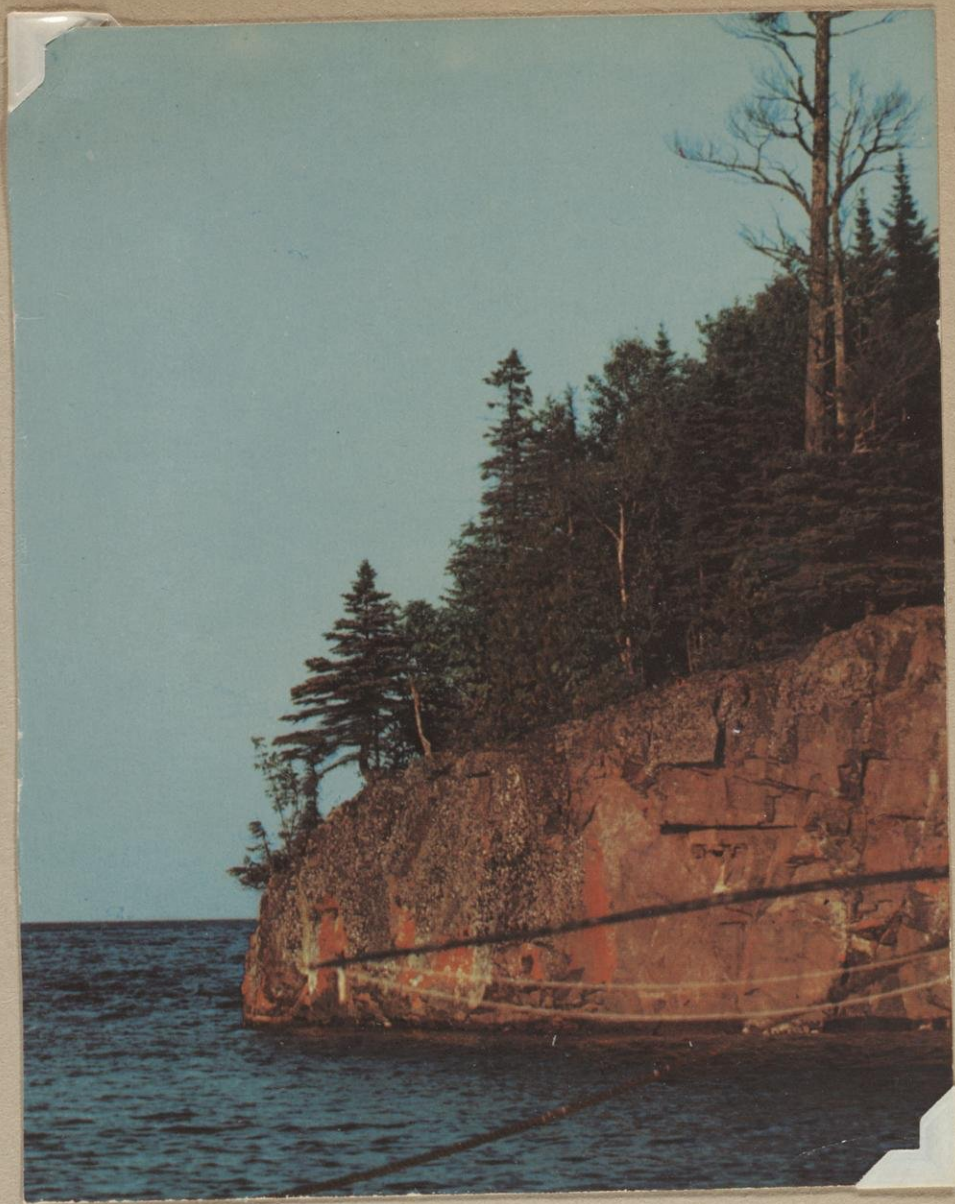
Aubrey Falls (not on our route)



Rocks for color - toward Rock City
and Ripiron



Cave of the Waves
North Shore about 60 miles
from Duluth.



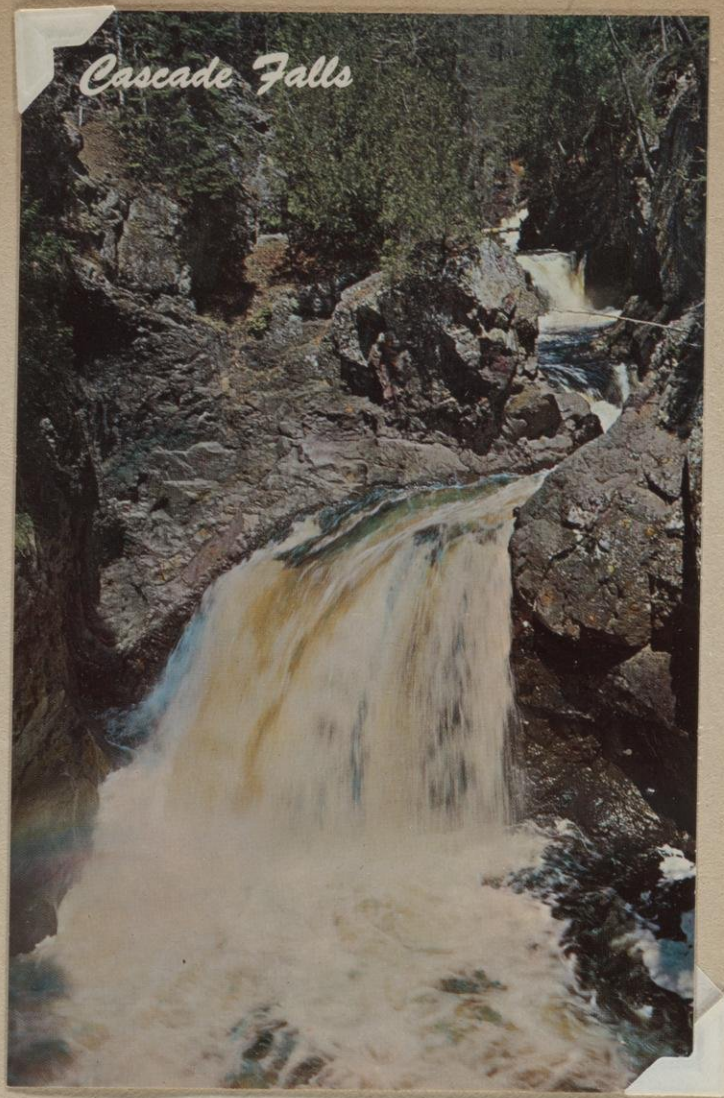
at Split Rock Lighthouse, north shore



Minnesota, North Shore



*Cross Falls Cross R.,
at Schroeder, North Shore*



*Gooseberry State Park
Lower Falls North Shore*



Root cellar at Swan River, Minn.



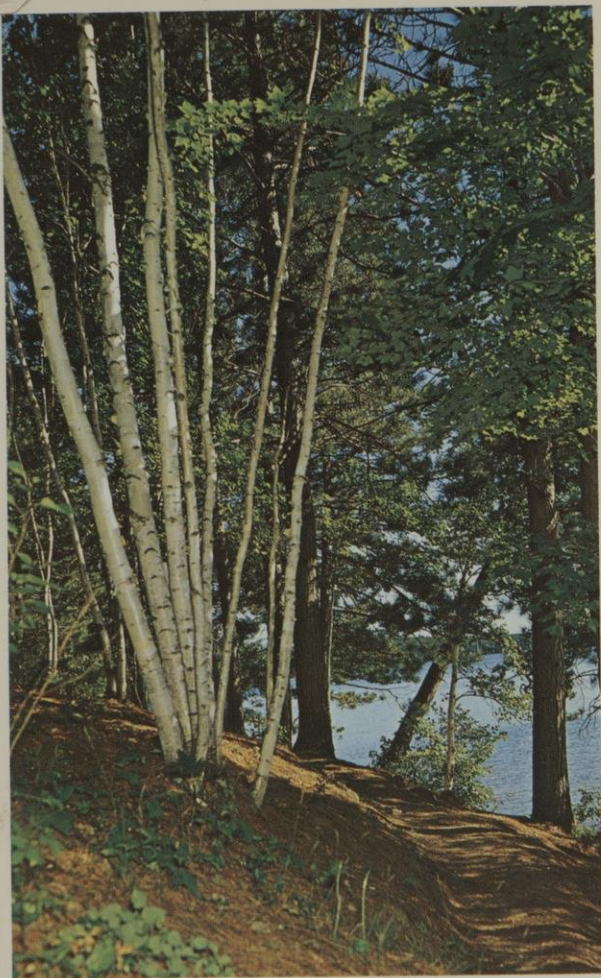
L. Grass, Minn.



*Where the Mississippi River begins,
Itasca Lake, Minnesota*



Headwaters of Mississippi River - Itasca State Park



Trail Thru The Pines



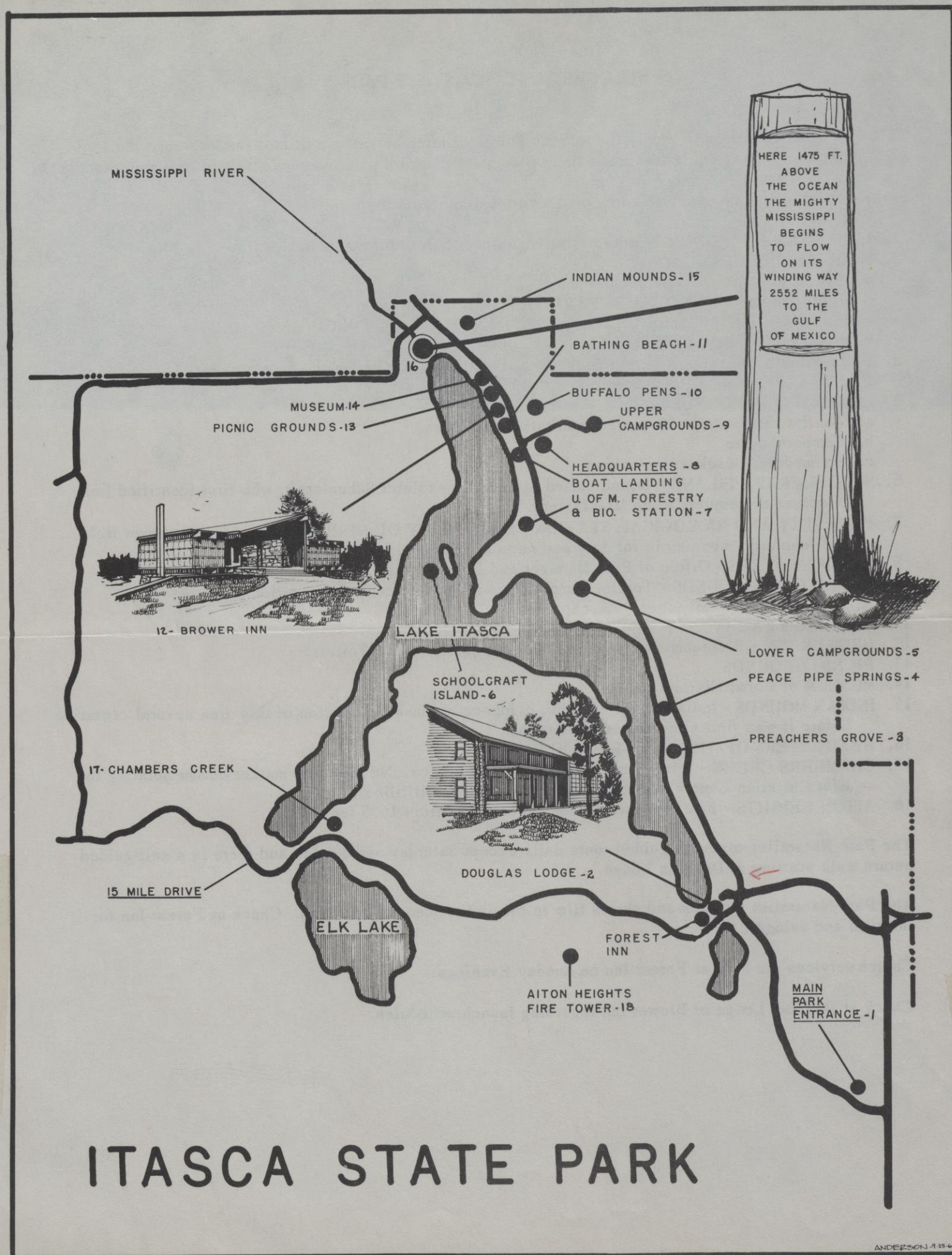
Beautiful Lady's Slipper - Minnesotas State Flower

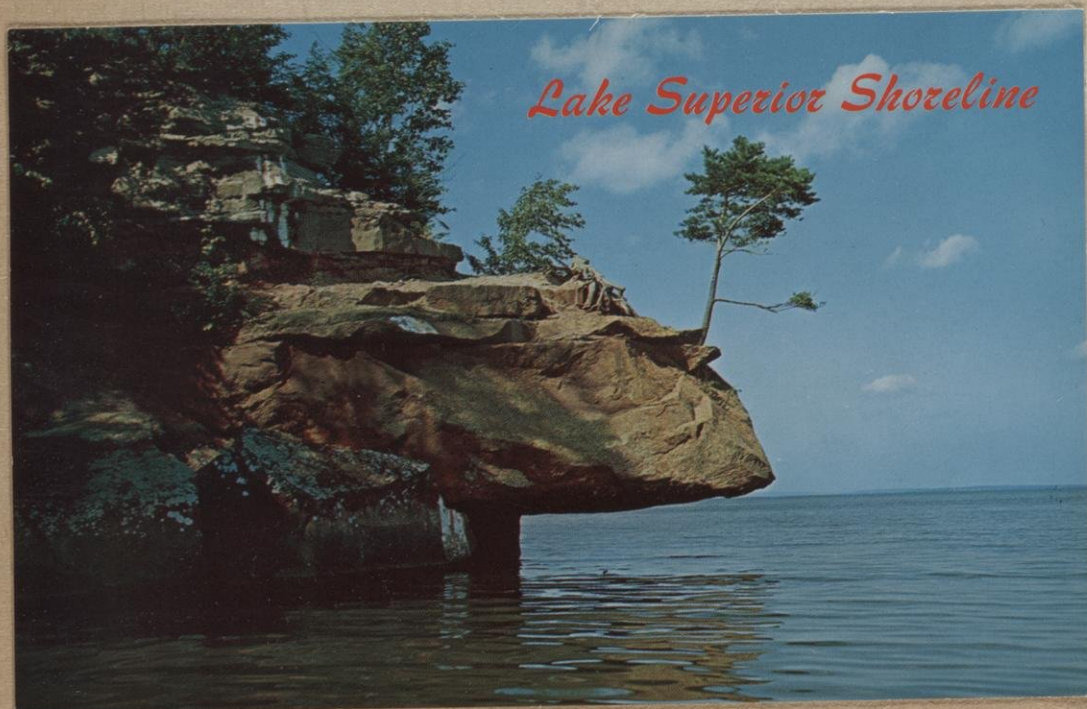
WELCOME TO ITASCA STATE PARK

This map will enable you to locate the various points of interest to the tourist driving through the Park. A more detailed map showing foot trails and spots inaccessible by car may be obtained from the attendant.

Following is an outline of the features of the various points on the map:

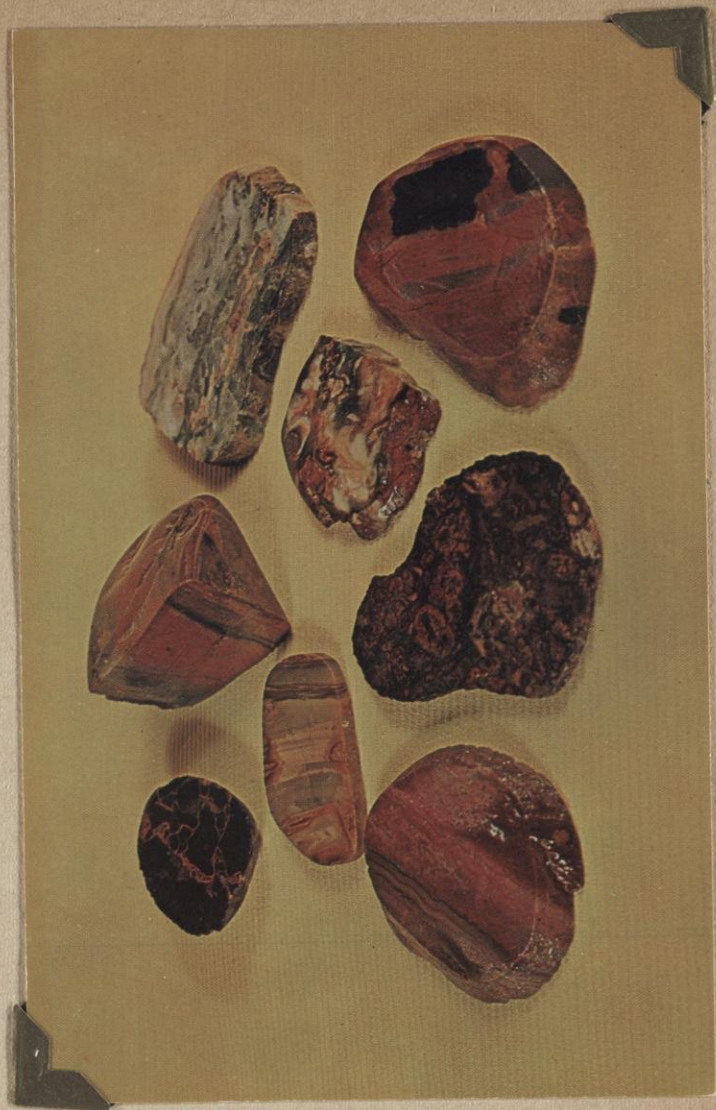
1. MAIN PARK ENTRANCE - Contact Station, Sicker Sales, Information.
2. DOUGLAS LODGE AREA
 - a. Rooms and cabins. (European Plan)
 - b. Dining room - OPEN TO ALL PARK VISITORS
Breakfast 8:00 to 9:30 Lunch 12:00 to 2:00 Dinner 6:00 to 8:00
 - c. Forest Inn - Souvenir Mart and Lunch Counter.
3. PREACHERS GROVE - A Virgin Grove of Norway Pine, one of the finest in the Park.
4. PEACE PIPE SPRINGS - A scenic vista of Lake Itasca.
5. LOWER CAMPGROUNDS
 - a. Tourist camp sites with modern sanitation facilities.
 - b. Campers' store
 - c. Six modern housekeeping cabins.
6. SCHOOLCRAFT ISLAND - Island named in honor of explorer Schoolcraft, who first identified Lake Itasca as the source of the Mississippi.
7. FORESTRY AND BIOLOGICAL STATION - UNIVERSITY OF MINNESOTA conducts summer field and laboratory courses in forestry and natural sciences.
8. HEADQUARTERS - Office of Park Manager and Boat Landing - Rental boats and bait.
9. UPPER CAMPGROUNDS - Tourist camp sites with modern central sanitation facilities.
10. BUFFALO PENS - Only animals in captivity in the Park.













Watch for the red granite Dragon's Head near Esrey Park, M-26.

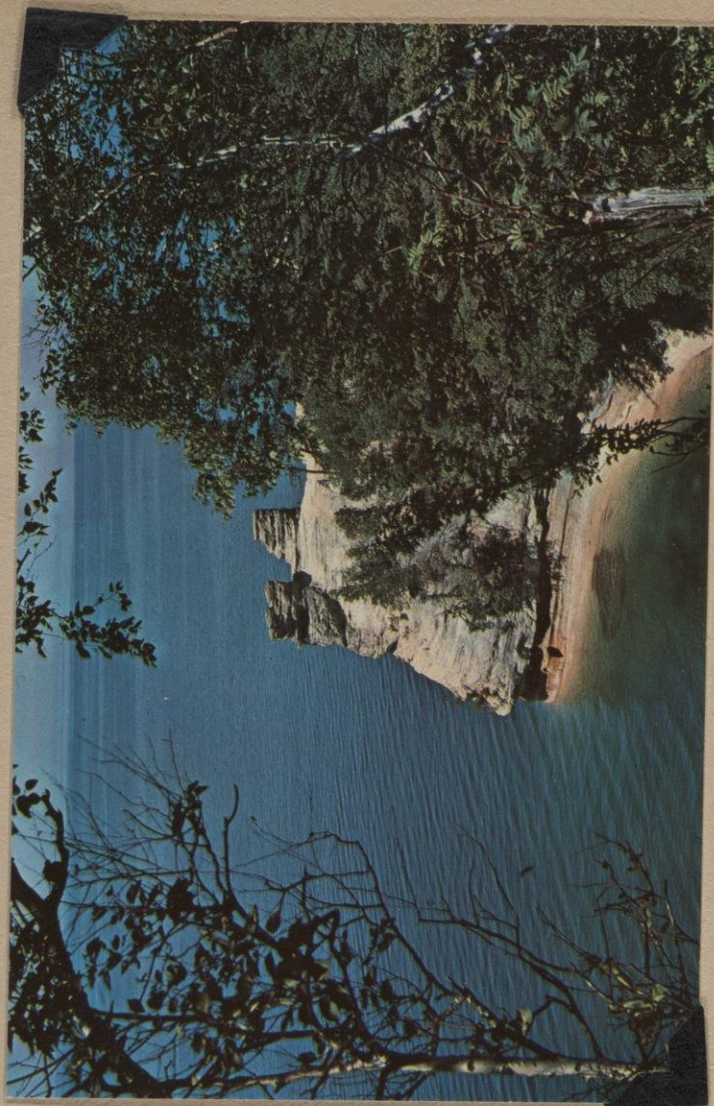




Lake Superior, Painting, Mel Richner



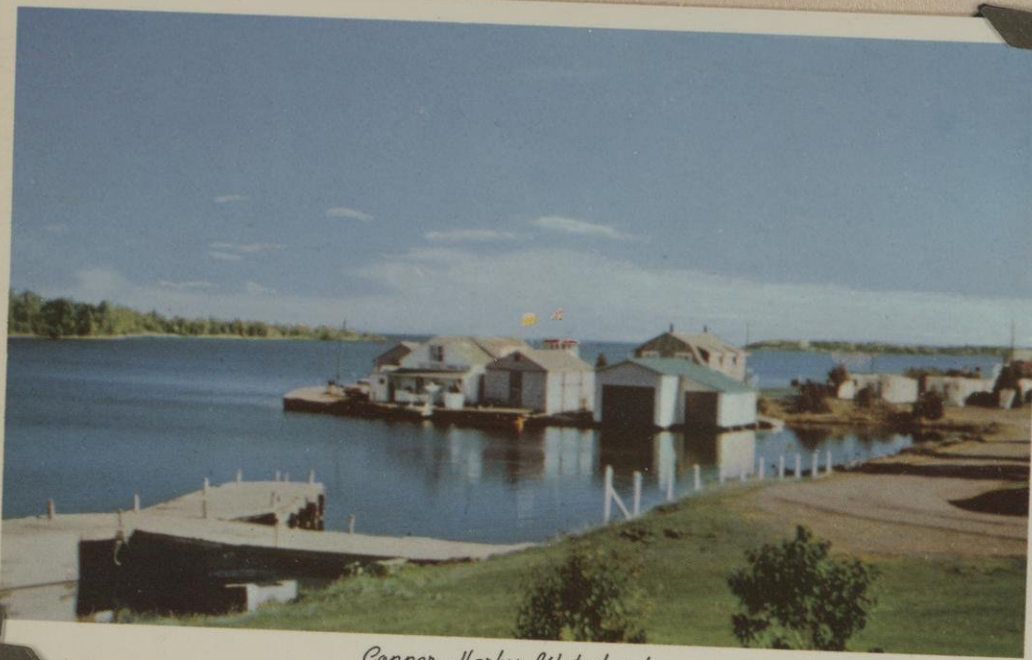
Launching of the Griffon by French explorer La Salle—one of the paintings George Catlin produced for the king of France and for which he never was paid.



condotone - brine's castle







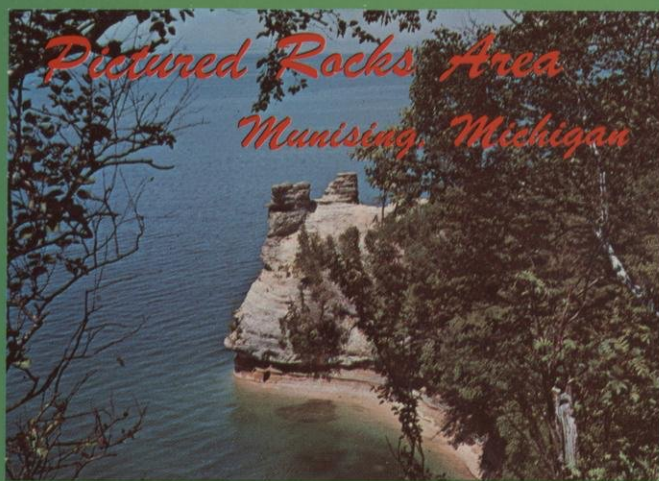
Copper Harbor Waterfront



FORT WILKINS

As soon as miners began to enter the Copper Country, appeals were made to the army for protection from resentful Indians. Thus, in 1844, Fort Wilkins was built. Two companies of infantry stood guard at this early copper mining and shipping center. In 1846, during the Mexican War, the force was withdrawn. It was replaced only from 1867 to 1869.

MICHIGAN HISTORICAL COMMISSION, REGISTERED SITE NO. 33



sandstone cliffs
stained by copper
and iron seepage

← Cover

1182V

MINER'S CASTLE

Munising, Michigan

In Michigan's Upper Peninsula

A spectacular rock formation overlooking the blue waters of Lake Superior. It is a part of the famous Pictured Rocks.

70819

1186V

INDIAN HEAD ROCK

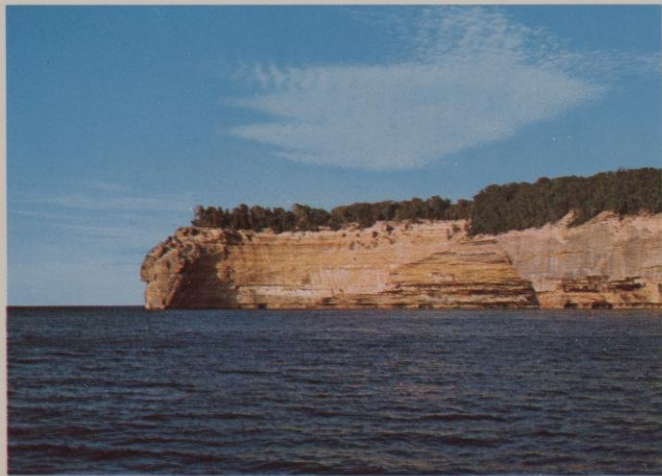
Munising, Michigan

In Michigan's Upper Peninsula

The gigantic Indian Head Rock formation rises 300 feet above the water. One of the Pictured Rock formations that can be seen from cruise boats.

70818

→



1185V

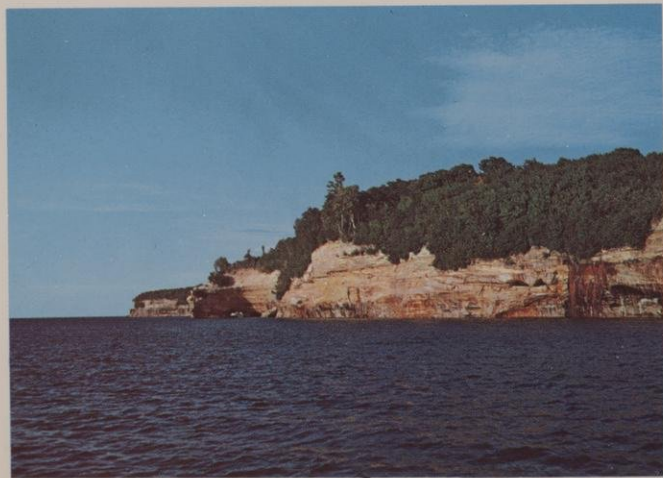
LOVER'S LEAP
Munising, Michigan

In Michigan's Upper Peninsula

This formation was named "Lover's Leap" because an Indian Maiden jumped to her death after her lover failed to return from a hunting trip.



70817



1183V

RAINBOW CAVE
Munising, Michigan

In Michigan's Upper Peninsula

These beautifully colored rock formations were formed by
Glaciers which covered this area during the Ice-Age.



70820



1184V

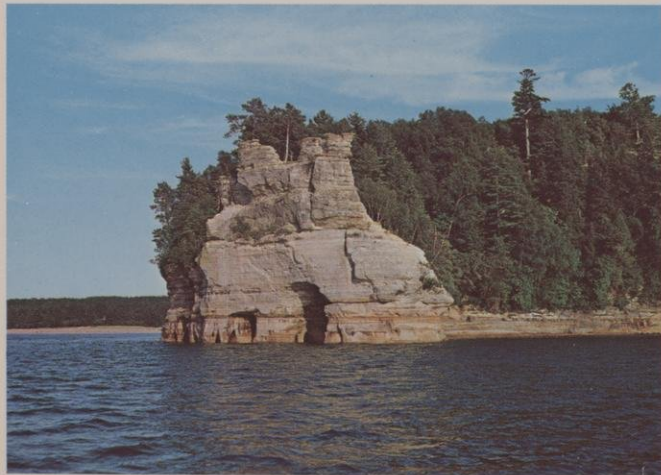
MINER'S CASTLE
Munising, Michigan

In Michigan's Upper Peninsula

One of the most beautiful attractions in the State. This
spectacular rock formation can be seen by car or boat.



70816



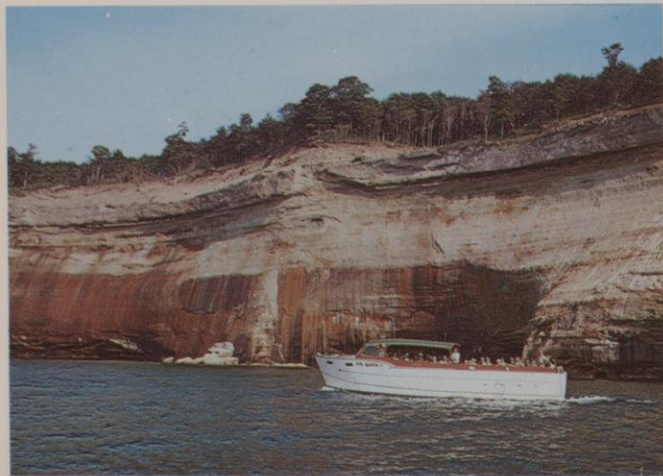
637V

PICTURED ROCKS
Munising, Michigan

These beautifully colored rock formations were formed by Glaciers which covered this area during the Ice-Age. Metallic Oxides filter through the porous sandstone to give the rock its brilliant hues. Daily boat trips are available during the season.



44772



158T

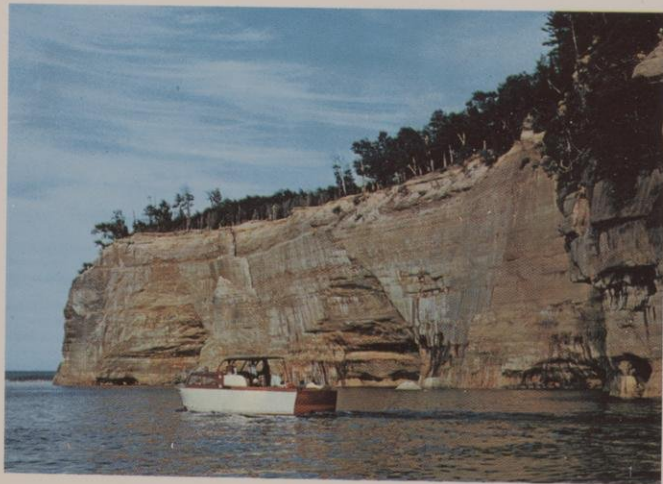
PICTURED ROCKS
Near Munising

In Michigan's Upper Peninsula

These rock formations are best viewed from the Lake. However, they are accessible by land also. The ever-changing colors are caused by metallic oxides filtering through the porous rock, thus leaving their stains on the rocks.



25944



156T

PICTURED ROCKS
Near Munising

In Michigan's Upper Peninsula

At several points along the cliffs waterfalls cascade over the rocks. Bridal Veil Falls is the most picturesque of all and drops more than 200 ft. into beautiful Lake Superior.



25945



1187V

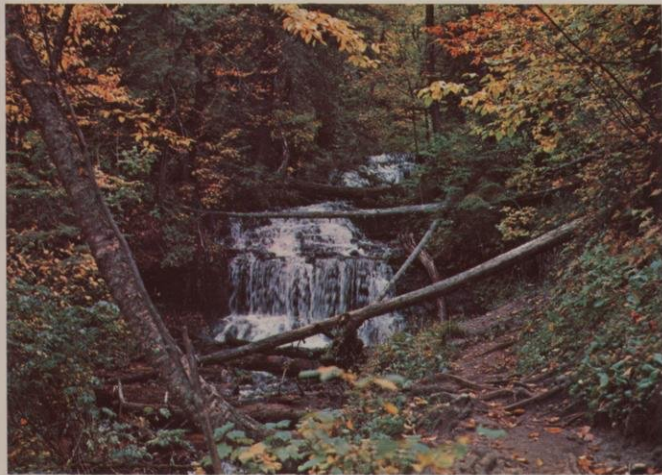
WAGNER FALLS
Munising, Michigan

In Michigan's Upper Peninsula

Wagner Falls is found on Hwy. M94 just outside the city limits. It is one of several falls which make this area famous for waterfalls.



70821



1181V

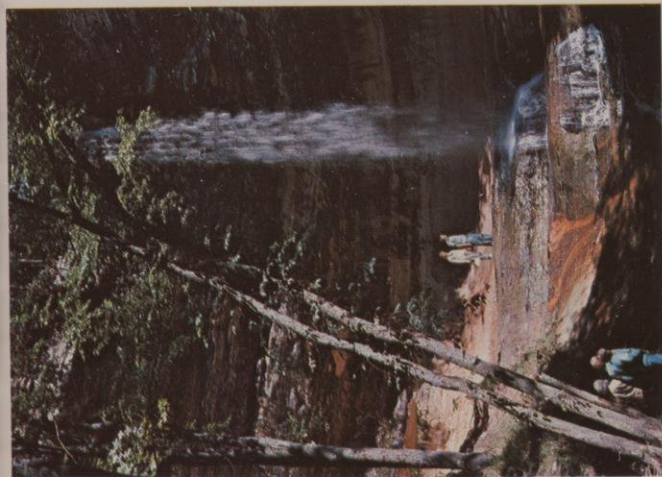
MUNISING FALLS
Munising, Michigan

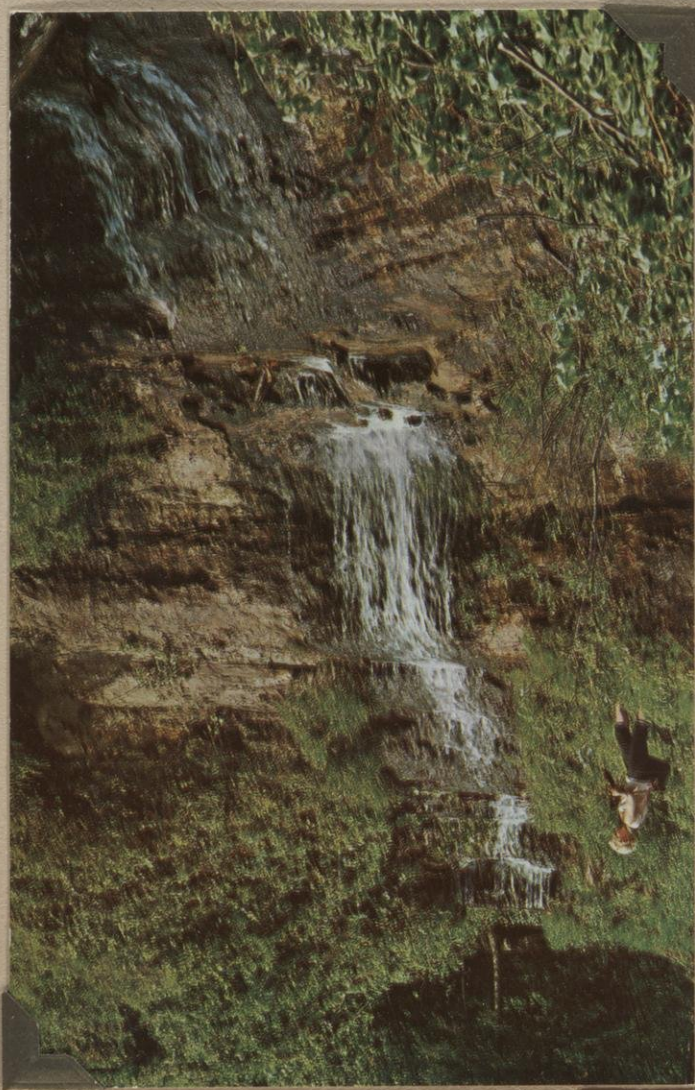
In Michigan's Upper Peninsula

The Munising area has more than its share of waterfalls, all beautiful in their primitive settings and easily accessible. The Falls pictured here are located within the City Limits in a cathedral-like gorge.



70815





Upper Tahquamenon Falls ↑

AUG • 67



A Houghton, Mich.
church

AUG • 67



Lac du Flambeau, Wis-

Dear County
Sept. 16, 1917



OCT • 67



OCT • 67



OCT • 67





OCT • 67













A photograph of a dirt path in a forest. On the left, a wooden signpost has three signs. The path leads to a small wooden bridge and then disappears into the trees. In the background, a small white building with a red roof is visible through the trees. A utility pole stands on the right side of the path.

Flowers

*Flowers are lovely at
where they grow*

*Love them enjoy them
but leave them so*







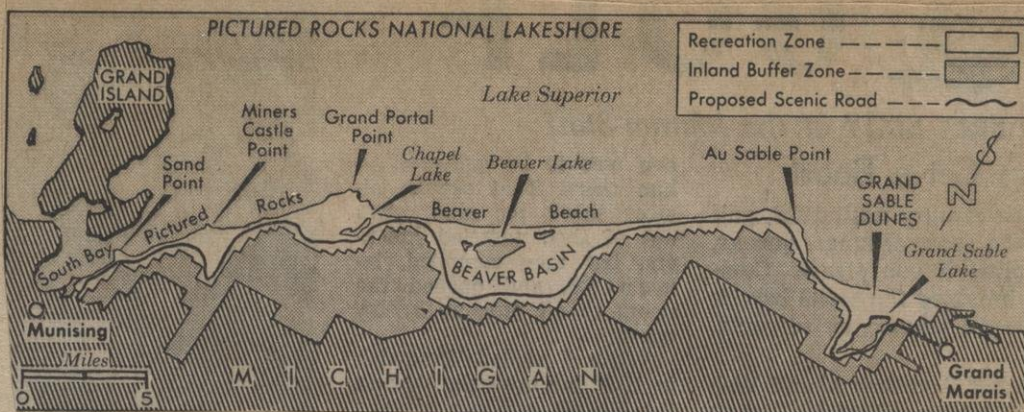








Miner's Falls



Henry Wadsworth Longfellow supposedly wrote "Hiawatha" while living in a hermit's shack on Grand island in Lake Superior a few miles from Munising, and Ernest Hemingway used the mysterious Big Two

Hearted river, not far from Grand Marais, as the scene of one of his unforgettable stories.

Pictured Rocks

Mineral filled water seeping through the porous sandstone has given these wood crested cliffs their name. Iron and copper have stained the banded rock faces blue,

green, orange, red, brown and yellow.

Lake
Hass
Miss. R.

Benedict

Cass L.

Winnipeg Lake

Bowstring L.

Leach L.

Grand Rapids

Swan River

Miss. R.

@ Brainard

St. Louis R.

Leuluth

003.119.252

