



LIBRARIES

UNIVERSITY OF WISCONSIN-MADISON

The Sphinx. [Vol. 10, No. 13] May 10, 1909

Madison, Wisconsin: University of Wisconsin, May 10, 1909

<https://digital.library.wisc.edu/1711.dl/VLDRVFMTZUMQR8S>

Based on date of publication, this material is presumed to be in the public domain.

For information on re-use, see

<http://digital.library.wisc.edu/1711.dl/Copyright>

The libraries provide public access to a wide range of material, including online exhibits, digitized collections, archival finding aids, our catalog, online articles, and a growing range of materials in many media.

When possible, we provide rights information in catalog records, finding aids, and other metadata that accompanies collections or items. However, it is always the user's obligation to evaluate copyright and rights issues in light of their own use.



THE LADY

SPIRIT



F. f. Roehm



DANIELSON MUELLER & SIMPSON

TAILORS,
CLOTHIERS &
MEN'S FURNISHERS.

TWENTY THREE
SO. PINCKNEY ST.
MADISON, WIS.

THE HOME OF FIRST CLASS CLOTHES

KOEPP = MUELLER

COMPANY

Interior Furnishers

Draperies, Curtains,
Rugs, Furniture

105 Wisconsin St.
MILWAUKEE, WIS.

KIRCH

THAT'S ALL

The Finest Equipped Billiard Parlor
in the Northwest.

College Men

Do not forget to visit the
New Model Shop for

LATEST HABERDASHERY

Harry S. Rohrbach

219 STATE STREET

First National Bank

of Milwaukee

Capital - - - \$2,000,000

Surplus and Undivided Profits 750,000

When a man leaves college and contemplates entering into business life, a most important consideration is the forming of his banking connections. It is essential that he form this connection with a conservatively managed bank whose officers and directors have the public's confidence.



Brown Bros.
Livery

*Party Carriages a
Specialty*

Corner Broom and Gorham Sts.
MADISON, - WISCONSIN

Phones: Standard 53, Bell 1165

Kentzler Bros. LIVERY

Keep the "Best Equipped Liv-
ery" in the state (no exception)
and meet all the requirements
of Fashionable Driving, and to
this fact is due their wide spread
popularity. A fine stock of ve-
hicles and well-bred horses con-
stantly on hand for your pleas-
ure. : : : : :

BOTH TELEPHONES No. 85

Telephones: Office 718 Residence 7529

Dr. J. B. Baker
Dentist
MENDOTA BLOCK

Painters and Decorators
GET YOUR PICTURES FRAMED AT

Mautz Bros.

**THE "UP-TO-DATE"
BARBER SHOP**

WE CATER TO STUDENT TRADE

J. C. MCFARLIN, PROP.

COR. MAIN & CARROLL STS.

CHESTER A. TAYLOR
Men's Furnishings

The pen of the past and future

Waterman's Ideal Fountain Pen

THE SPOON FEED AND THE CLIP-CAP

SOLD BY THE BEST DEALERS EVERYWHERE

W. L. Waterman Co., 173 Broadway, N.Y.

*Make
Your Dates
Early*

At Keeley's

for
Dancing and Banquets.
Two Halls,
the Best in the City.

Our Lunch Rooms Are
Now Open

OLSON...

The Students' Tailor
Snappy Clothes

213 STATE ST.

W. J. GAMM
JEWELER AND OPTICIAN

Fine Watch Repairing

3 West Main St.

Telephone 685

William Owens
PLUMBER

118 North Pinckney Street
Telephone No. 121 Madison, Wis.

The Mueller & Son Co.

445-475 CANAL STREET

Milwaukee, Wis.

MANUFACTURERS

WOODEN BOXES

FOR ALL PURPOSES

OUR SPECIALTIES:

CIGAR BOXES, BOTTLERS BOXES
CANNERS BOXES

Write them—they are right.—Ed.

Every Engineer Should Know

THAT

CRAWLEY
FEED WATER HEATERS

Constitute the best dividend
paying investment in any
steam power plant

Manufactured by

MANTHEY-SIEKER CO.
MILWAUKEE, WIS.

LEWIS Drug Store

507 STATE ST.

GEO. T. STEHLING

Manufacturer of

Wagons-Buggies-Carriages

10th and Walnut

...MILWAUKEE...

All Breakfast
Foods are Good
but

SPENCER'S BREAD
Is The Best

607 University Ave.

Get Your Cutlery
THE KEEN==KUTTER==KIND
AT
Wolff, Kubly & Hirsig

Cor. State and Gilman

A. G. Elsner
HARNESS AND HORSE
FURNISHING GOODS

417 CHESTNUT STREET
MILWAUKEE

CUSTOM TAILORING

Woolens carefully selected for Fall and Winter Wear from the best manufacturers, both foreign and domestic are now on exhibition. Never were the blending of colors more beautiful than this season. Your early inspection is invited.

SCHMEDEMAN & BAILLIE
25 EAST MAIN STREET

Ester Oyster Co.
Fish, Oysters and
Cheese

That's All 206 East Main
Street

Baumbach - Reichel Co.
HOPS AND MALT

Agent for National Ammonia, for
Ice Machines and other purposes

89 HURON STREET
Milwaukee, Wis

Capital City Fruit Store

GEO. ELLMAN, Prop.

Standard Telephone No. 1021 402 STATE ST.
Bell Telephone No. 732

Badger Creamery

Pasteurized Cream and Milk,
Butter and Eggs

Phones: { Stand. 2633 610 Univ. Ave.
Bell 778

PHONE 9-9-9

Law & Every Stables
Phone 9-9-9 313-317
W. Johnson St.
Madison, Wis.

L I V E R Y

The New
St. Nicholas Restaurant

BEN. STITGEN, PROPRIETOR
Phones: Standard 2703
Bell 922

118-120 WEST MAIN ST.

Our Garage and Autos
Speak for Themselves
We Solicit Your Patronage
HOKANSON AUTO CO.

M. DIEDERICH
FANCY GROCER

CANDY - FRUITS - OLIVES
PICKLES, ETC.
816 UNIVERSITY AVENUE

The Curtiss Studio

WISCONSIN BLOCK, OVER PALACE OF SWEETS

Duplicates printed from E. R. Curtiss,
A. C. Isaacs, and F.W. Curtiss negatives

Joseph M. Boyd, Pres't and Cashier. Frank W. Hoyt, Vice Pres't. Chas. O'Neil, Ass't Cashier. W. B. Roys, Ass't Cashier at Branch Bank

BANK OF WISCONSIN

MADISON, WISCONSIN

Capital \$100,000.00. Surplus and Undivided Profits \$100,000.00. Additional Liabilities of Stockholders \$100,000.00

SAVINGS DEPARTMENT. Safety Deposit Boxes For Rent at Reasonable Prices.

(Branch Bank Located Corner State, Johnson and Henry Streets)

DIRECTORS: A. L. SANBORN, FRANK W. HOYT, A. O. FOX, EUGENE EIGHMY, JOEL BOLEY, GEO. SOELCH, FRANK KESSENICH, R. R. KROPE, JOSEPH M. BOYD, H. L. RUSSELL, GEO. E. GARY.

The Model Creamery

FANCY ELGIN BUTTER, PURE
PASTEURIZED CREAM and MILK,
BUTTERMILK and all DAIRY PRO-
DUCTS

207 State Street

TELEPHONES

Standard 1150 Bell 979

Princess Ladies' Cafe Beautiful

Princess Candies

TOOTHsome WHOLESOME GETsome

Alhambra Building

Milwaukee

William Franzen & Son

Milwaukee, Wis.

(INCORPORATED)

PROPRIETORS

P. O. Address, Station D, Milwaukee
Furnaces on Lincoln Avenue

NEAR KINNICKINNIC RIVER

Northern Glass Works

Output, 300,000 Gross Per Year

AUL HAMMERSMITH,
PRES & GEN. MGR.

BENJAMIN KORTMEYER,
SEC'Y & TREAS.

Hammersmith Engraving Co.

116 Michigan Street, MILWAUKEE

ARTISTS, DESIGNERS,
ENGRAVERS

BY ALL KNOWN PROCESSES

Makers of Fine Half-tones, Lithogravures, Zinc
Etchings, Wood Cuts, Electrotypes
and Color Plates

We make a specialty of Fine Die
and Engraved Stationery, Invitations,
Programs, Cards, Etc., Etc.

"Good Clothes"

Are an essential part of your
education. That's the only
kind we make. :: :: :: ::

E. J. SOUTHWICK
MERCHANT TAILOR

116 STATE ST., 2nd FLOOR

Palace of Sweets Annex

THE PARK BOWLING ALLEYS

GEORGE PALTZ COMPANY

A. G. SPALDING & BROS.

The Largest Manufacturers in the World
of Implements and Uniforms for



**Base Ball, Lawn Tennis
Basket Ball
Golf, Track and Field Sports**

Spalding's Trade Mark on
what you purchase is a
Guarantee of Quality.



*Spalding's New Spring and Summer 1909 Catalogue,
complete edition, 144 pages; about 2000 illustrations,
etc. Copy mailed to any address on receipt of request.*

A. G. SPALDING & BROS.

147 Wabash Avenue

CHICAGO

When Down Town

Do not forget to visit Madison's
finest and most up-to-date

**Clothing, Furnishing and
Tailoring Establishment**

You can find all the latest and
up-to-the-minute Haberdashery
shown by all the swell shops in
the large cities.



27 NORTH PINCKNEY ST.

Sam Elzas

Men's Furnisher

Pabst Bldg.

(Milwaukee)

Good-Bye To Freak Clothes

We were originators of ex-
treme styles in Clothing for
the University men.

And how they did sell for a
few seasons—But all America
copied them.

The young man of Madison
must have something **differ-
ent**.— We have it in our
Spring Models.

**Smart, Snappy and Yet
no Freaks. See them.**

THE HUB
MADISON, WIS.

50 FEET

Clothes

Have nothing to do with a man's
morals or mentality, yet there is
no denying the fact that they're
everywhere accepted as a pass-
port to good society—

**Here's the Passport
Kaufman's Clothes**

are preshrunk and guaranteed
to satisfy

\$15 and Up

The best thing "to top" off with
and always look well is the

Roswelle Hat

Sold only at "50 Feet" for

\$2.50

FIFTY FEET

from Capitol Square 112 E. Mifflin St.
S. A. Woldenberg, Prop.

When in Milwaukee do not fail to visit the beautiful

FOUNTAIN INN

RESTAURANT

CUISINE UNSURPASSED

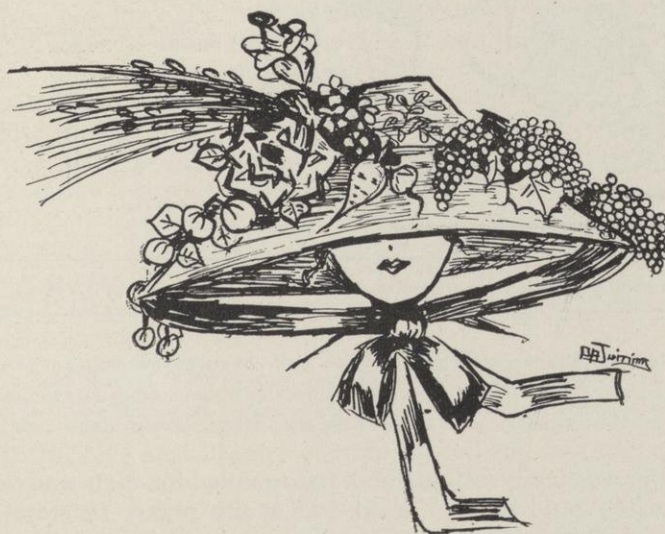
Fred L. Herwig, Prop.

147-149 Third Street **Milwaukee**

The Sphinx

Natamora

The Hat of Size



One more unfortunate
All out of breath
From lugging the thing around
Tired most to death.
Hatpins jabbed numerously
Balanced with care
Trimmed so atrociously
Not at all fair!

Look at the vegetables
Foliage and fruit
Like a walking truck-garden.
How can she do it?
Apples and plumbs and grapes
Flowers and a vine;
Dish-pan, coal-scuttle shapes
Truly sublime!

Gaze not so scornfully
Look at it mournfully
Gently and kindly—
It is the style you know
So it is "all the go"
She wears it blindly.

Where then is all her hair?
And her face, is it fair?
Or is she ugly?
One cannot see forsooth
Whether it's Jane or Ruth
Hat fits so snugly!

But then she might as well
Almost be dead
As wear a last year's hat
Over her head!
Hair-less and head-less
She is for awhile;
The one thing her hat can't hide
Is her satisfied smile.



THE SPHINX.

*Published fortnightly during the College Year
by Students of the University of Wisconsin.*

Entered at the Postoffice of Madison, Wis., as
Second-Class Matter, September 28, 1901.

SUBSCRIPTION, \$1.00 PER ANNUM.

(If not paid before January 1st, \$1.50 per annum
will be charged.)

Single copies on sale at the news stands and
book stores.

ADVERTISING RATES MADE KNOWN ON APPLICATION

Address all communications, subscriptions
and remittances for same to Business Manager,
644 Francis St.

Address contributions to Editor, 740 Langdon
St. Phone No. 3063.

Edith Swenson, Editress

Florence Roehm	Phoebe Twining
Dorothy Marie Burnham	Ruth Hayes
Rowe Wright	Harriet Maxon

Always remember that this is only pretence, so that you are not to believe a word of it, even if it is true.—*Kingsley*

Dear People—Please don't blame Mr. Birchard. Really it isn't his fault. We called one day when he was out and coaxed the SPHINX to follow us by offering her fudge and Welch-rarebit. She was quite ill for a couple of days, but is now able to sit up and make faces at herself in the glass, a sure sign that she is once more taking notice. Being a woman she greatly prefers the society of the boys, so we are never able to keep her with us very long at a time, and for this reason we always try to make the most of her during her brief visit. We sincerely hope you won't think she has been badly spoiled while we looked after her.

WISCONSIN being originally established and founded for men and women on terms of perfect equality, and having developed or prospered for fifty or sixty years in a most satisfactory manner under those conditions, any discussion of the *status quo* seems a little beside the mark. The first appropriation for a University building made by a state legislature was for a home for the girls, and any suggestion that we do not entirely belong here savors of impertinence. The suggestion having been made, however, first the regents and latter the legislature, both speaking as the representatives of the people of Wisconsin, have re-proclaimed absolute equality of right and opportunity. In our enthusiasm we sometimes forget that we do not really own the University, and that the men and women of the state are the real arbiters of her destiny. They have spoken through properly accredited representatives and it remains for us respectively to make the best of it, and the most of it.

WE hate to be thought morbid on the subject, but it's almost enough to make one a pessimist—this continual criticism. We would like to suggest in passing that it is most decidedly your own fault if you are displeased with us. Had Man kept awake and had his wits about him instead of lazily napping at the critical moment, he could have overseen the job of manufacturing Woman himself, then perhaps he would have been better satisfied with the outcome. As for girls being in your school, in your classes and incidentally, in your way, we beg to meekly suggest that we believe it was Eve who first recognized the value of a higher education. Being wide-awake, energetic and of an inquiring turn of mind, she once set about to secure this education for herself and her descendants, while Adam thought only of tickling his palate. Of course Adam didn't like it when he had to leave his pleasant occupation and investigate the Tree of Knowledge with Eve. So the modern Adam is much distressed when the co-ed, in many different ways, interferes with that pleasant pastime, tickling his palate. And like the Adam of old, you lay the blame for every conceivable trouble you may have upon our shoulders.

We are perfectly willing to take the blame for those faults which are ours. We admit we have faults. We are not perfect. Who is? But we decline with thanks to be responsible for the idiosyncrasies of "the bunch," or for the follies of the "Fusser." We don't ask to be worshiped. We have no use in the business of daily life for an aureole or pedestal; they are both troublesome to tote around. We would rather any time be first-rate human beings than any poor second-rate goddesses. But for goodness sake, try to be a little human yourselves and remember we can't help being co-eds, and if there are traits in our exceedingly complex characters which seem to you to need nitro-glycerine blasts in order to clear them away, at all events after the explosion be a little jolly about it!



On The University Extension



UR UNIVERSITY in its great generosity not only spreads a bountiful table, and offers a feast of good things to all comers, without money and without price, but is now sending out basketsful of mental pabulum into the highways and byways of the State, that all those unable to come to the feast may still sample the viands. Now that we have undertaken to give all the people all they need all the time, and teach everything to everybody everywhere would it not be wise to

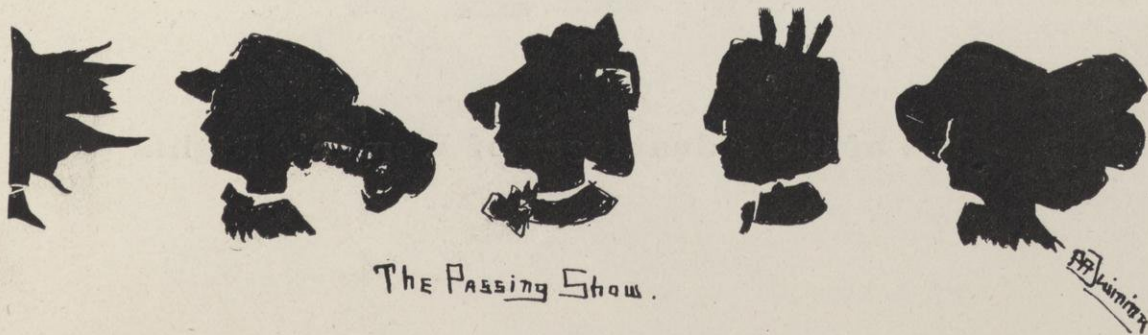
establish a few new courses to meet new demands? It is not enough that we treat lawyers, engineers and other professions *in absentia*, but we are now reaching out to create butchers, bakers and candlestick makers according to the latest scientific methods. This is most excellent and paternal, but why neglect the maternal? Why not courses of instruction for dairy-maids, house-maids, stenographers and milliners? If we can not teach millinery, surely a course in ethics adapted to the latter class would be of incalculable benefit. Every dollar expended along these lines would surely return to the pockets of the state increased a hundred fold.

We need also a chair of humor. We take ourselves too seriously and a lightening of the load of our own importance would be a blessed relief. The traditions of the "Greatest State University" rest upon our shoulders and when in addition to that we must maintain the welfare of the very best literary society in college, and the greatest fraternity in the country, to say nothing of our responsibilities to the crew and the teams, we need to relax now and then or the strain will be too great. To be sure we have the SPHINX but it is asking much of her that she alone and unaided shall create both demand and supply in humor for the entire University. By all means let us instruct the people in the gentle art of seeing the point.



Wisconsin girls are just a little bit tired of so much criticism. Of course we are perfectly willing to furnish material for *Cardinal* editorials and feature stories when advertisements are scarce, and we are sincerely glad if our hats and our hair afford any innocent amusement to our little boy

friends. Still, we think that there are plenty of other subjects for masculine peevishness to be vented on. Then there is that old story about the mote and the beam. Of course we know comparisons are odious, but—!



The Passing Show.

SPHINX



One of the Advantages of Women's Rights

Society

One of the novel ways of entertaining at the University of Wisconsin was introduced by Naskel Hoyes who gave a pink tea this last season. The reception room was elaborately decorated in pink and gold with tiny dincidessent lights casting soft shadows about the room. Punch was served in one corner, the table being beautifully adorned with 'lavender and old lace.' Mellow strains of music came from behind a bank of palms and an odor of violets filled the room.

Mr. Cunningham, too, gave something new in the form of a common dandelion picking. Prizes were offered for the largest bunch picked and Mr. Cunningham himself took the first prize, but out of curtesy to his guests gave Billy Bertles the cup who got second.

Because of Teddy Stempfel's cleverness as a clown he entertained his feminine worshipers with a dual preformance of his circus tricks and clownish pranks.



The Ladies

They're always abusing the women,
As a terrible plague to men.
They say we're the root of all evil,
And repeat again and again.
Now the plague is surely a thing to fear,
A thing to shun and to dread,
Yet to every man some plague is dear;
He's in love with it heels over head.



Ye Coy Lo-ed.

The Way (some) Others See Us



We take great delight in replying to the article (please note that we refrain from adjectives) on co-education in the *April Lit*, by one Th. St. To answer properly all the writer's misguided statements we would require at least two columns in the *Cardinal*, but we feel that we would thereby be paying altogether too much attention to so puerile an outburst.

From this article the casual reader would conclude that the Wisconsin co-ed resembles the infant robin clamoring incessantly for food. The amount of candy and Love's Delights which we force our reluctant admirers to pay for must be phenomenal.

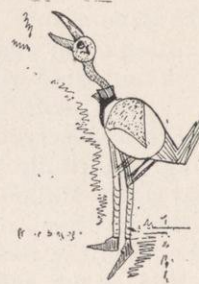
We admit that about one girl in twenty actually prefers the Typical Fusser to the man who Does Things, probably because he is useful, liberal, and doesn't make one use one's brains in carrying on a conversation. This one girl is about as much admired by the other nineteen as the chronic fusser is by men in general. It is hardly fair, then, to attribute to Wisconsin girls as a whole, the undesirable characteristics peculiar to a very small minority. We might just as reasonably select the most incurable fusser in college as a representative Wisconsin man.

We tremble at saying it for fear of being called "unladylike" or "vulgar;" but we could almost fancy that the embittered author has been sadly strung or stung, either is trying to a man's vanity. If so, we urge him to cheer up and forget it. We're not all like that.

Who was she, anyway, Ted?

The Sad Tale of the Gilligaloo

There's a rare birdie known as the Gilligaloo.
If you went to the Circus, then you've
seen him too;
He feeds upon T squares and compasses
true,
And many strange things can this cunning
bird do.

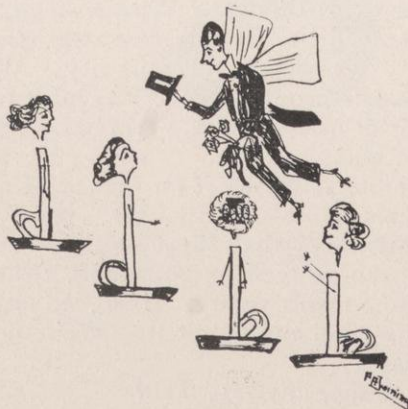
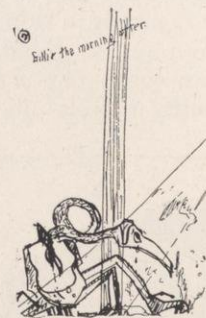


"So listen, my children," and then you
shall hear
How he sang like a nightingale, boldly
and clear,
From a telephone-pole he surveyed far
and near
For the Gilligaloo was a young engineer.



But after the Circus, a very small boy
Quite delighted at having this novel
young toy,
Stuck it up on a pole, and danced round
with joy,
Admiring its charms and its graces so
coy.

And the rain, it came down, and the
wind, how it blew!
And the birdie, forsaken, oh what could
it do?
Down it fell, plumage ruffled, with hail-
stones pierced through,
And that was the end of the Gilligaloo.
—E. S.



If Stempf would really like to be
As popular as Carl C.
He ought to pose eternally
As a cute little clown.

For at the circus, it was said
He was adored by each co-ed!
"Isn't he SWEET?" the murmur spread.
You are the Adjuncts' Idol, Ted.



THE FIRST STEP

There was a young actor named Blair,
Who was so exceedingly fair *
That Wisconsin co-eds
Lost their hearts and their heads
And flocked to the Fuller to stare!

* Good looking, not blonde.



I have often heard that women
Are really perfect fools—
At least (it has been stated)
When it comes to using tools
But I've noticed very lately
And the subject has its thrills—
That the women at Wisconsin
Are real interested in drills.



Haskell Noyes is inspecting the Peach crop
at the U,
And when he's found the "one best peach,"
what do you think he'll do?
He'll take up Floriculture, orange-blossoms
to perfect,
Then raise a peach-crop all his own; what
else can one expect?

Those Ridiculous Questions

At the foot of the Hill they met;
She bowed her head.
"Going up the Hill?" he asked,
And then she said:
"Oh, no, I'm planting ripe tomato seeds in
S. Africa just now."

The bill-collector stopped him in the street,
By curiosity led;
The eager fellow said: "Have you come
back?"
And then he said:
"Oh, no, I'm hunting dill pickles with a
shot-gun."

His old professor met him at the train
And said, "Why, John,
It cannot be that you, with all your brain,
Should get a *con*?"
John said: "Oh, no, I'm going to Boston
for my master's degree."



Here lie the bones of dear Lucille
Who one day slipped on a church bell peal
How do I know—don't be so bold,
How do you think? Why the church bell tolled.

"Springtrala" == An Attempt

BY VERA FEEBLE.

I.

When books were even bookier than any book should be,
And girls grow daily prettier (as any one can see),
When the sparrows scrap right merrily away up on the trees,
And you have "that tired feeling" in head and hands and knees,
When you ask for nothing better than to just sit still and smoke,
Or play at bridge and poker 'til your bank account goes broke,
When you hit the pike to Middleton, your latest crush in tow,
And think you'd rather hoof it 'cause hoofing it is slow,
When e'en the bull-frogs croaking is a pleasant song to hear,
You've got a dangerous malady, and we feel for you, poor dear!
What is this foolish sickness, this life-worth-living thing?
Why just a very serious case of Springtralasweetspring!



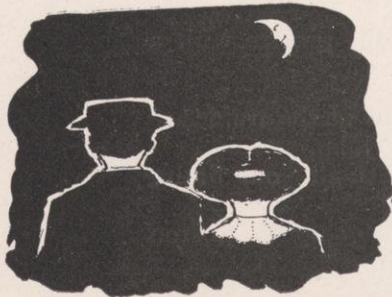
II.

Ah Springtralasweetspringtrala it gets the Normalite;
He ceases grinding for his Ex and notes the bright moonlight!
It gets the Delts, the Sigma Chis, the Betas and Psi U,
The Alpha Delts, the Kappa Sigs, the Phi Delts and D. U.,
Phi Kappa Psi and Theta Delt and D K E as well,
And even Chi Psi feels the thrill of Springtrala's strange spell!
Phi Gamma Delt, Phi Kappa Sig, S A E, Sigma Nu,
All have it pretty bad, I guess, and seem to like it too!

III.

Professors, you had best beware, think not that you're immune,
This fever's always bad, dear sirs, in April, May and June!
And if this dire, this dread disease should catch you unaware,
You'll find that you'll forget to Con, and give instead a fair;
The Agrics and the Commerce, the Laws and eke the Hill,
The Engineers and Medics all will indeed be ill!
We greatly fear there it no hope, no possible escape,
From the awful devastation that travels in Spring's wake.

IV.



Ah, Springtralasweetspringtrala,
We'd like to take your part,
For we enjoy we must confess that tickling round the heart,
We have a kindly feeling for the moon, the birds, the trees,
We do not mind your freckling sun your curl-destroying breeze—
We like to walk to Middleton, to paddle a canoe,
We like to think "the only girl" and all that stuff, is true,
In fact we like the germs you give so very, very well,
That we seek not for a toxin from Professor Ravenel.
But the effects of Springtrala upon the girls is queer;
It causes them to all break out in the form of new head-gear.
The truth indeed should now be told, I wrote this lengthy Sonnet
So I could break out like the rest, in a spandy new spring bonnet!

Extracts from the new book on NATURAL RESEARCH, showing How to Tell the Profs. from the Buds and the Flowers and Other Things, by F. S. Brandenburg, Professor of Birdology, at the University of Wisconsin.



MISHELL



SEA-SHELL



GESE



GIESE



ROE



ROSE

Shall I show you how to tell
The sea-shell from the Prof.
Michell;
You can only hear the sea-shell
when you put it to your ear.
But you can hear the teacher's
tie even if he isn't near.

The likeness of these two is this,
That all wise geese possess a hiss,
And if this *geese* is not a miss,
Then his possessive too, is "his."

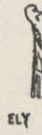
The difference between the Roe
and the Rose
Not every single student knows,
Though roses often grow in rows
Each day 'tis true that Roe has
rose.



The Beet



The Beatty



ELY



EEL



The Woolley



The mooly

The likeness is indeed complete
Between the Beatty and the Beet,
*For in Beatty's class who would
beat a retreat,
And who of high class would treat
to a beet.

To see that Ely and Eels are alike
Is really not such a pipe:
That eels slip through the water
is true,
But water thing for a prof. to do.

The Woolley and the mooly
Stand before you hand in hand;
Their similarity is slight,
As you may understand.



OWEN, AIR RESTRICTOR



BOWEN CONSTRUCTOR



BODE

NO BODY

As you can see by what has been
drew,
The similarities here are most
few;
Still Owen was once a beau and a
trickster,
Now indeed he sure *air* a re-
restrictor.

The similarity here is so great
That 'twill penetrate any young
pate,
And it will be no hard study,
For surely nobody is like Prof.
Bode.



SOMETHING STU-PAN-DOUS

On Shipboard

Julia just from college speaks to her neighbor as they sit on board watching the people pass by.

"It's awful down stairs, so I've strolled up here

Just to get some fresh air, don't you know. No, it's not that the motion annoys me

My dear,
But, I simply can't stand it below.

I don't just remember your name, but I see
That *that* will not hinder; for here
On the ocean one's friendly with everybody,
(No, I just felt a little bit queer.)

Yes, I'm just out of school, just this spring,
—no, not quite—

Yes, I went the four years, but somehow—
The course that I took wasn't just the right
thing—

But a sheep-skin don't matter just now.

Just look at that woman,—the one with the
hat,

That looks like it's been thru the wars,
And the hair fixed so funny—and reddish
at that—

Why! I never have seen her before.

Oh yes, I know every one—that is—I mean
All those that you'd speak to at all.—

Well, that man is surely the worst I have
seen

To stare so—*now I call that gall!*

Why, of *course* it is Jimmy, I'd know *him*
all right.

(Yes, the end of my sophomore year.)

They say he's engaged to a girl that's a
fright,

But! no it's not so—(no, just queer.)

Why, he was in love with each girl that
he'd meet,

In fact he said once that he loved me,
And to see the old monkey act up was a
treat.

Engaged? Just collegiately.

But you can't make me think he is actually
now—

Engaged as they say, to a fright,
For I know if old Jimmy should marry he'd
take

A good-looking girl—just for spite.

Why, here he is coming, what's that did I
hear?

"*Your husband!*" so *you* are the fright,

I mean you—yes, of course I *do* feel
a bit queer,

Those big waves—no—but just
not quite right.

You think you are a botanist, but really don't you know,
You truly are quite ignorant about the flowers that grow.

Even though the violet is modest, shy and sweet
Stick to the "common garden" kind which gives you greens to eat.

"The coed of yesterday," said
Carl Cunningham, '99, "resembles
the coed of today as the modest
violet resembles the common or
garden dandelion."



Drowning Her Trouble

SOLEMN WARNING

Billy knows them all by name,
Elsie, Gertrude, Kit and Mame,
Rushes a la P. D. Q.
Just to see what girls will do—
But when he finds them much the same,
He loses interest in the game.
Still Billy tires not of this life,
With all its heartburns and its strife,
He never gives up in despair
And moans and weeps and wrings his hair—
His life is just one glad sweet song.
For new girls always come along.
He never has the blues and creeps;
Instead, he wide-eyed vigil keeps,
And when the old girls bore him some,
He hunts him up another one—
Snuffs out the old flame, lights a new
Which flickers for a day or two,
But kidders just as wise, dear lad,
Have come to endings very sad.
We warn you, that beyond a doubt
Some flame'll scorch you

If

you
don't
watch
out!

Spring Song—"A Shiverree"

A Serenade by the Glee Club

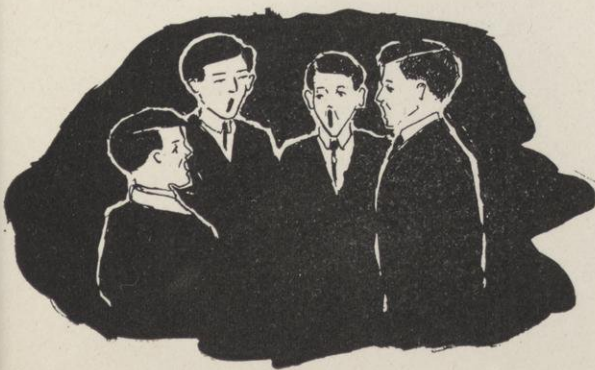
I.

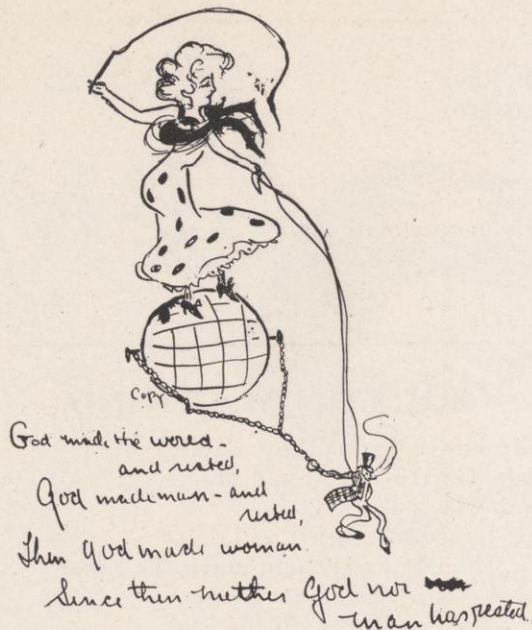
W--wake up, w--wake up, the hour is l-l-late,
And lo, the drowsy whippoorwill
D--doth whip unto his d-drowsy mate,
And we are c-c-catching quite a c-c-c-chill;
Our f-f-faithful hearts for you do b-b-b-beat,
For ne'er have they a factor lacked,
P-p-please hand out something we can e-eat;
We'll have to s-stop, our throats are c-c-c-
cracked!



II.

We'll come again tomorrow night;
It's too b-b-blamed cold to l-linger h-h-here,
We'd gladly sing more if we m-m-might,
B-b-but our voices aren't exactly c-c-clear!
So if --, aschew, you all d-don't mind,
We'll say farewell, likewise a-a-a-adieu,
The g-g-grub looks good, you sure are k-k-
kind;
G-g-good-night, s-s-s-sweet dreams---as-
chew! ---aschew!!





"Please pass a *Sellery Root*," said a *Gay Young Smith* as he *Slaughtered* some *Catell* which the *Cook* had just *Cerf-ed* up *Van Hise Coles*. "Anything *Moore*," said the waitress. "No," replied the *Mann*. "I am *Owen* here and I haven't the *Pence* to pay the *Price*." "Well, anyone as *Sharp* as you ought to be able to *Dodge* the cashier," she called as she *Chased* into the *Hall*. "*O Shea* (say) don't let *Hear-tel* (her tell) on you. She is too *Klein* to be *Kind*." Some one said "I *Gies-e* (guess he) will all right," said some one else clattering the *Sterling*. "Great *Scott*," cried our *he-Roe* (hero) to the waitress who was not *Common(s)* "Look at the *Mayhew* (hue) of the *Mead*." "Yes," she answered, "I think we will have a *Shower*, *Mann*, or else it will *Snow*." And then he *Slatt-er* (her) such a one that she nearly died a *Coffin* (coughing)."



To Know a Veil

MIXED PROVERBS

The course of smooth love never did run true.

As she sews, so shall she rip.

A woman is the bitter half of man.

A little college is a dangerous thing.

Don't hide your light hair under a basket!

It's a long worm that has no turning.

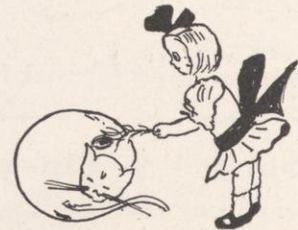
All is not girl that titters.

Make dates when the moon shines.

Little marks sink big guys!

It's an ill prof. that gives nobody "good."

A girl by the hand is worth two bye and bye.



Awakening the Mu

"It's the little things in life that cause"—
Quoth the fair maid with pride,
Just then her speech was verified
A mouse ran up by her side.

When lovely woman buys a bonnet,
Constructed of some shredded hay,
She piles a lot of fruit upon it,
And walks along the Gay White Way.
—N. Y. Evening Mail.

When lovely woman writes a story
Covering seven hundred pages,
She fills it full of love and glory,
And sends it thundering down the
ages.
—Chicago Daily Tribune.

When lovely woman goes to college
And studies there to get through,
The boys scoff at her thirst for knowl-
edge,
And say "She's here to see who she
can do."
—Us.

Picture Page for the Children



A Future Agric Student.

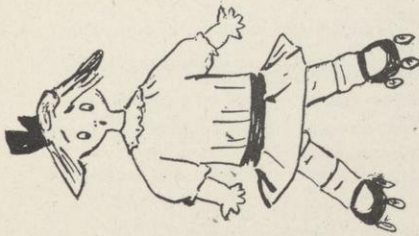


THIS STORE squarely meets the views of college men who demand fashion plus quality in footwear. We invite an inspection of the new spring Oxfords.

\$3.50 and Up
Correspondence Solicited

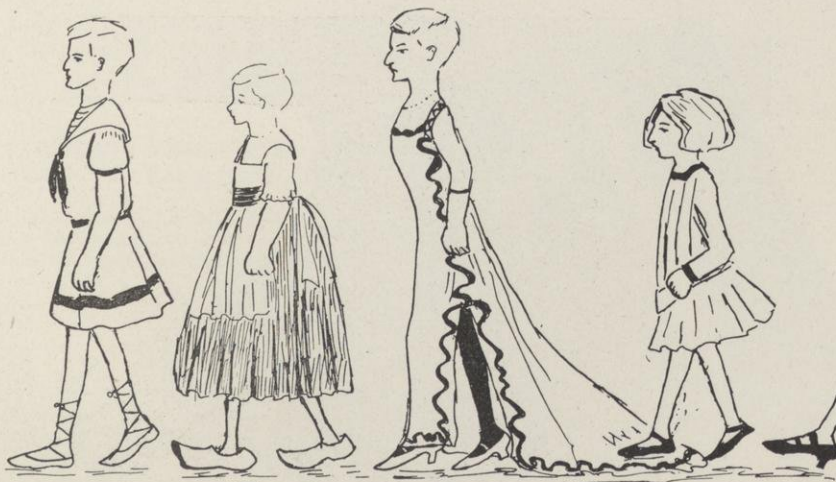
We have consolidated our Grand Ave. Men's Shoe Shop with our Wisconsin Street headquarters, where we shall be pleased to meet "Wisconsin Boys" in future.

SCHUMACHER'S
93 WISCONSIN STREET
MILWAUKEE, WISCONSIN



I met my love on some roller skates,
Or rather on the ground,
And her combs, and puffs and pins, and
things
Were scattered all around.
I had to help her up, and then,
It couldn't end just there,
She promised to be mine, if I
Would surely get a pair.

There once was a young Delta Tau
Who believed that he hadn't a flaw;
So he acted the clown,
And won such renown,
That at all times a crowd he could draw.



The Dancing Doll

"All out for the Opening Chorus!"

FULLER OPERA HOUSE

Now playing

The Virginia Keating
Stock Company

Every Night
Sunday Too

Matinee Wednesday and Saturday

SUMMER PRICES



Net Results

"No doubt we all can get along
Without the ballad and the song,
For after all, the merry jest
Is best."

Life.

"Do you believe in love at first sight?"
asked the coy young thing.
I certainly do," replied the brute. "If
men were gifted with second sight they
would never fall in love."

Does one necessarily have fishing-
tackle on the brain when it reels?

"He's quite a shining light isn't he?"
"Yep—same as the moon."
"How's that?"
"Brighter the fuller he gets."

"Do you believe in heredity?"
"Certainly. I know a barber, who has
three little shavers!"

"Why do all fairy-tales begin, "Once
upon a time?"
"They don't. Some begin 'I'm awfully
sorry, Jack, but we had a quiz sprung
for tomorrow and as I have to buck, I
won't be able to keep that date tonight,
and—"

"I understand drinking is one of his
failings."
"You have been misinformed. It's his
most pronounced success."

The Last Resort

"Tell me, where is fancy bred?" said
her poetic lover.

"Let's try for it at some good restaur-
ant," replied the girl of the period, hun-
grily.—*Harper's Bazar.*

Miss Wouldbe—Now tell me how you
pronounce directoire?

Miss Can'tbe—I pronounce it indecent.

"What was Prof. Greene's lecture
about, today?"

"He neglected to state."

"Mention some by-product of petrole-
um."

"Chicago University."

"Did her electrical engineer Molly
marry?"

"Yes, and it was a great shock to
everyone."

"What do you put on your face after
shaving?"

"Court-plaster."

"You love me I know."

"How do you know?"

"Why, I love you; therefore I'm in
love. All the world loves a lover, and
you're all the world to me."

—Q. E. D.





“The Fair Co-Ed”

— and the college man — and every other one who likes “good eats,” will find

Sorority Chocolates “Taylor-Made”

the Cream of Creams — the Chocolates De Luxe.

Named in honor of the college girl, because *she knows* good candy.

Sorority Chocolates are the candy hit of the year. They leaped to the lead from the first.

They are our “private stock” long made by us for a certain discriminating trade which wanted something fine — and finer still. Now offered on general sale.

Always pure, fresh, unbroken.

Sold at the best candy places in dainty craftsmanship boxes 60 cents the pound.

Or send \$1.00 and we will send a full pound box with three

Artists’ Duplicates of Our Famous Sorority Girls

— Just the thing for framing — for your den.
Size 11"x24" — in full colors without printing —
absolutely free — packing and delivery pre-
paid. Address

TAYLOR BROS. COMPANY,
341 Taylor Bldg., Battle Creek, Mich.

Makers of the famous Taylor-Made Candies;
Taylor-Made Honey Comb Chocolate Chips;
Taylor-Made Chocolate Marshmallows, etc.



They're
Delicious —
“Different”

Merely—A Girl

Many a throne has had to fall
For a girl
Just a girl;
Many a king has had to crawl
For a girl
Just a girl.

When the hero goes to war,
He may battle for the right,
But 'tis likelier by far
That he sallies forth to fight
For a girl
Just a girl.

When the doctor turns to say
"It's a girl,
"Just a girl."
Papa murmurs with dismay
"What! a girl
"Just a girl!"

Oh, but why the sadness there?
Why the bitterness displayed?
Some day some strong man will swear
That great round world was made
For that girl,
Just that girl.

Why did Adam take the bite?
For a girl,
Just a girl;

Why was Troy swept out of sight?
For a girl,
Just a girl;

O would heaven still be bright,
And would any good man care
To achieve it if he might
Never claim forever there
Just a girl,
Glorious girl?

Mr. Smith ordered chicken broth at the Fatted Cafe, and after tasting it he called the waiter and said: "Will you kindly tell me how you make this chicken soup?"
"Jes tak de boilin' hot watah and run de chicken fru, mistah."
"Well, Rastus, I think this chicken must have had his rubbers on."

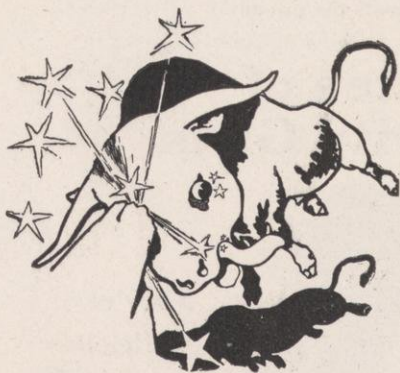
John Rea Woolley

Photographic
Portraits . . .

509 STATE STREET

BY APPOINTMENT ONLY

Bell 3030



THE BULL

The bull is not easy to convince. It takes hard facts to influence him. There are hard facts about the superiority of that \$3.⁰⁰ hat of ours that must convince you. Let us show you some of the "New Ones"

NICOLAI COMPANY

67 Wisconsin Street

"Near the bridge"

MILWAUKEE.

The largest display of New High Grade Furniture ever shown in Madison

Bailey Mercantile Co.

418 State Street

and at display room over College Book Store

BETTER FURNITURE AT LOWER PRICES



Use a
Parker Pen
One Week
Free

If you can get
along without it
then your money
refunded.

COLLEGE BOOK STORE
412 STATE STREET

HOTEL CUMBERLAND

NEW YORK

*S. W. Corner Broadway at 54th Street
Near 50th St. Subway Station and 53d St. Elevated*

KEPT BY A COLLEGE MAN

HEADQUARTERS FOR COLLEGE MEN

SPECIAL RATES FOR COLLEGE TEAMS

Ideal Location

Near Theatres, Shops

Central Park



New

Modern and Absolutely

Fireproof

MOST ATTRACTIVE HOTEL IN NEW YORK. TRANSIENT RATES \$2.50
WITH BATH, AND UP. ALL OUTSIDE ROOMS

HARRY P. STIMSON, Formerly with Hotel Imperial

R. J. BINGHAM, Formerly with Hotel Woodward

10 Minutes Walk to 20 Theatres

HEADQUARTERS FOR WISCONSIN MEN

SEND FOR BOOKLET

Milwaukee National Bank of Wisconsin

Cor. E. Water and Michigan Sts.

CAPITAL AND SURPLUS, \$550,000.00

Solicits your business Does Banking in all its branches

DIRECTORS AND OFFICERS:

J. F. WM. INBUSCH FERD. MEINECKE CARL PENSCHORN
GEO. W. STROHMEYER, Pres. JOHN P. MURPHY, Vice-Pres. L. M. ALEXANDER, 2d Vice-Pres.
WM. F. FILTER, Cashier JNO. F. STROHMEYER, Asst. Cashier

Olson & Veerhusen Co.

have given much of their attention to satisfying the clothing demands of college men. How well they have succeeded is amply shown by the fact that **Wisconsin College Men** are the best dressed college men in the west and the **Best Dressed Men in College** wear Olson & Veerhusen Co.'s Clothing

The Finest Repository in the State

When in the Market for a
First Class Vehicle don't
forget to call on

CHAS. ABRESCH CO.

4th and Poplar Sts.

MILWAUKEE, WIS.

Where People Buy Their Carriages

PIPER BROS.

5 STORES

Wholesale & Retail GROCERS

Hackendahl and Schmidt Co.

Structural Steel and
Architectural Iron
Works

1513-1521 St. Paul Ave.

MILWAUKEE, WIS.

Grimm's BOOK BINDERY

Book Binders, Rulers and Blank
Book Manufacturers

Telephone 469, Third Floor, 119 and 121
East Washington Ave., Madison, Wis.

Fashion Livery

Corner East Washington Ave.
and Butler Street
MADISON, WIS.

Closed carriages and light livery a
specialty. Student and city trade
solicited.

E. S. BURWELL, PROP.

L. L. ROWE Grocer

334 STATE STREET



EVERY LILLEY UNIFORM

is guaranteed in
quality, true mili-
tary style, fit and
the highest grade
of workmanship.
We are making
the best uniforms
for the best Col-
leges in America.

Send for Catalog

THE
M. C. Lilley & Co.
COLUMBUS, O.

CARDINAL

Tailoring & Pressing Shop

Suits from \$17.50 to \$60.00

PHONES: BELL 1500, STANDARD 3255
623 University Ave., Madison, Wis.



The
Quick Laundry



MILWAUKEE, WIS.

C. A. BECK & SON

MANUFACTURERS — WHOLESALE — RETAILERS

FACTORY AND YARDS

1-30 East Street MILWAUKEE, WIS.

Lumber, = Boxes,

Diamond Steel Finished

Hardwood Flooring

Tracy, Gibbs & Co.

THE PARTICULAR
PRINTERS

are prepared to execute in a first-class
and satisfactory manner all kinds of
Printing. Particular attention given to

All Kinds of
Commercial Work
Books, Periodicals
Theses, Catalogues
Announcements
Invitations,
Programmes

Correspondence solicited
Estimates furnished : : :

TRACY, GIBBS & CO.
119 EAST WASHINGTON AVENUE
PHONE 296 :: MADISON, WIS.

North Side Carriage Works

F. J. GIESE, Prop.

Manufacturer of

Fine Carriages, Wagons,
Sleighs

4th and Sherman Sts.
MILWAUKEE



When the cows come home
ON

GAY'S
Stock ^A_N Dairy
Farm

THE UNIVERSITY OF WISCONSIN

THE COLLEGE OF LETTERS AND SCIENCE offers a General Course in Liberal Arts; a Course in Commerce; a Course in Pharmacy; a Course in Music; Courses Preparatory to Journalism; Library Training Courses in connection with the Wisconsin Library School; the Course for the Training of Teachers, and the Course in Chemistry.

THE COLLEGE OF MECHANICS AND ENGINEERING offers courses of four years in Mechanical Engineering, Electrical Engineering, Civil Engineering, Applied Electrochemistry, and Mining Engineering.

THE COLLEGE OF LAW offers a course extending over three years, which leads to the degree of Bachelor of Laws, and which entitles graduates to admission to the Supreme Court of the state without examination.

THE COLLEGE OF AGRICULTURE offers (1) a course of four years in Agriculture; (2) a middle course of two years; (3) a short course of one or two years in Agriculture; (4) a Dairy Course; (5) a Farmers' Course.

THE COLLEGE OF MEDICINE offers a course of two years in Pre-clinical Medical Work, the equivalent of the first two years of the Standard Medical Course. After the successful completion of the two years' course in the College of Medicine, students can finish their medical studies in any medical school in two years.

THE GRADUATE SCHOOL offers courses of advanced instruction in all departments of the University.

THE SUMMER SESSION embraces the Graduate School, and the Colleges of Letters and Science, Engineering and Law. The session opens the fourth week in June and lasts for six weeks, except in the College of Law, which continues for ten weeks. The graduate and undergraduate work in letters and science is designed for high school teachers who desire increased academic and professional training and for graduates and undergraduates generally. The work in Law is open to those who have done two years' college work in letters and science or its equivalent. The Engineering courses range from advanced work for graduates to elementary courses for artisans.

THE LIBRARIES include the Library of the University of Wisconsin, the Library of the State Historical Society, the Library of the Wisconsin Academy of Sciences, Arts and Letters, the State Law Library, and the Madison Free Public Library, which together contain about 276,000 bound books and over 150,000 pamphlets.

THE GYMNASIUM, Athletic Field, Boating Facilities, and Athletic Teams give opportunity for indoor and outdoor athletic training, and for courses in physical training under the guidance of the athletic director.

Detailed information on any subject connected with the University may be obtained by addressing **W. D. HIESTAND, REGISTRAR, MADISON, WIS.**

Millinery

Fashions latest styles
can be had at this
store

Veilings

Popular meshes in
Novelty and Staple
lines

Burdick & Murray Co.

17 and 19 E. Main St.

CARL THOMAS Photographer

GROUPS A SPECIALTY

J. F. NEWMAN

11 JOHN STREET
NEW YORK

College Fraternity Jewelry

IN

FINE GRADE ONLY

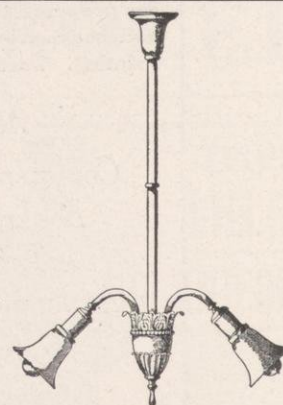
CARBOLINEUM WOOD PRESERVING CO.

Sole U. S. Agents for

AVENARIUS CARBOLINEUM WOOD PRESERVING PAINT STAIN

126-128 Reed Street

Milwaukee, - Wis.



Chas. Polacheck & Bro. Co.
MILWAUKEE, WIS.

MANUFACTURERS OF

Lighting Chandeliers

DEALERS IN

Everything Lightable

Drugs
Perfumes
Cigars

Sumner & Cramton

502 State Street

Photo Supplies
Developing
Printing

*"The handiest Printing
Office in the city"*

PARSONS PRINTING AND
STATIONERY CO
24 N. Carroll St.

Kaiser's

*The store that serves you
best at all times*

MIFFLIN & PINCKNEY STS.

Capital City Fuel Co.

GENUINE

D. L. & W. SCRANTON
BEST COAL ON EARTH

HOEVELER'S ORCHESTRA

PLAYS THE LATEST MUSIC

JOHN A. HOEVELER, U. W. '10, Mgr.
S. Phone 6634 412 Francis St.

Theo. O. Vilter, Pres. & Supt.
Edward F. Goes, Vice-Pres.
Wm. O. Vilter, Sec'y & Treas.

— THE —

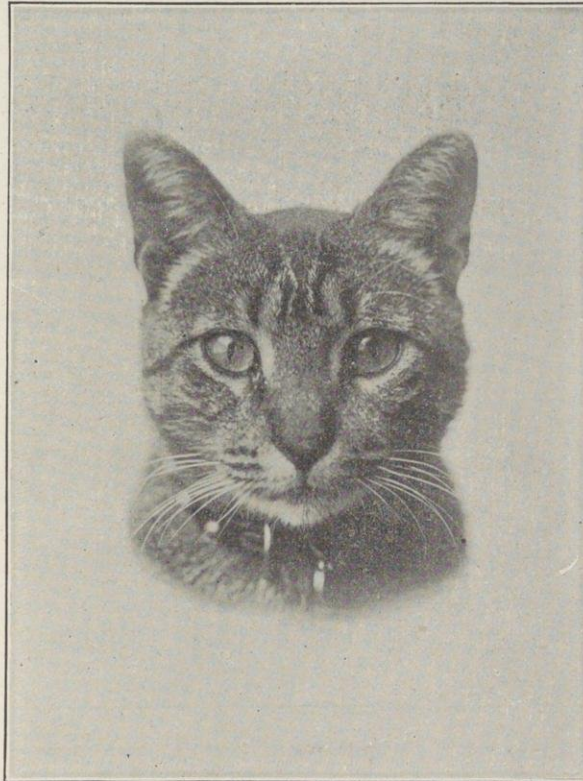
Vilter Manufacturing Co.

Builders of

CORLISS ENGINES

Pumps, Heaters, Boilers,
Machinery for Brewers and Bottlers,
Ice Making and Refrigerating
Machinery.

968 Clinton St., MILWAUKEE, WIS



"Had my picture taken at Ford's"

STUDIO OPEN DAILY

ATHLETES

and others who desire a tonic

TAKE

Blatz MALT-VIVINE

A Non-Intoxicant

With Meals and at Bed Time

Don't accept a SUBSTITUTE

VAL. BLATZ BREWING CO.
MILWAUKEE

C. DICK, Dealer.

PHONE STAND. 18.

THE RESOURCES and MANAGEMENT of the Commercial National Bank assure Strong Protection to its depositors. It is required that every investment and loan is amply secured. Your account and banking business respectfully solicited.

THE COMMERCIAL NATIONAL BANK

Commercial National Bank Bldg.



Capital \$200,000



MADISON, WIS.



Ladies' Hat Shop

Madison, Wis.

A Rendezvous for College girls



GO TO Waltzinger's

For Exquisite Ice Cream
Sherbets and Confectionery

19 N. PINCKNEY ST.

Coyne Hats

Distinguished for
Quality and Design

Students may come
and Students may go
but

Charlie's Lunches

At the new Kennel Club

Are all the go



Known East and West as one of America's handsomest Furniture Establishments. Here one can get all modern Furniture, Carpets, Rugs, Curtains, Draperies, Art Pictures, Ranges, Heaters

C. NISS & SONS, Inc. MILWAUKEE
ESTABLISHED 1867

80,000 Square feet of Floor Space, Fire Proof Building

“*THE College*”

Billiard Hall

225 STATE ST.

The Exclusively “Students’ Place”

NECTARINE

NECTARINE is one of the most nutritious and healthful malt tonics on the market to-day. It is prescribed by physicians for convalescents and many assert that their return to perfect health is due alone to NECTARINE. We deliver it to the home in the city, and ship in cases and barrels.

BOTH PHONES 17

FAUERBACH

Archibald
228 STATE ST.

Originator & Designer of College Clothes

Suits to order from \$25 to \$40

Gas and Electric Appliances

Always on display
at our salesroom

Madison Gas & Electric Co.

120-126 E. Main St.

Phones: Standard 23
Bell 144

Funny Thing

Not one complaint from
our many student cus-
tomers last year

The Menges Pharmacies

PHONES: BELL 1840 STAND. 1677

Palace Livery

GILL BROS., Props.

213-215 E. Washington Ave.
MADISON

Standard Phone 164

ANTON METZ

PLUMBER

113 W. Mifflin St., Madison, Wis.

Billiard, Pool and Combination Tables

For Sale

Matt R. Cronin, Madison, Wis.

Repairs and Supplies for all
kinds of Tables. Estimates
made on Billiard and Parlor
Furnishings.

Dr. E. A. Brown

Mendota Block

Standard Phone 1307

Bell Phone 720

CUDAHY CASH MARKET

The Best of

Fresh and Salt Meats

Club and Fraternity
Trade Solicited

William Hupprich, Mgr.

111 W. MIFFLIN ST.

Barrett's Dept. Store Retailers of Everything Milwaukee

Northwestern Litho. Co.

ART LITHOGRAPHERS

ORIGINATORS, DESIGNERS, ENGRAVERS OF
Stocks, Bonds, Letterheads, Billheads,
Cards, Etc. Etc.

Cor. 15th and Clybourn Streets

MILWAUKEE, WIS.

A. E. PROUDFIT, Pres.
M. E. FULLER; Vice-Pres.

WAYNE RAMSAY, Cashier
M. C. CLARKE, Asst. Cashier

U. S. DEPOSITORY FIRST NATIONAL BANK OF MADISON, WISCONSIN

Interest Paid on Certificates of Deposits
Capital, \$100,000.00

Foreign and Domestic Exchange
Surplus, \$100,000.00

A. E. Proudfit
James E. Moseley

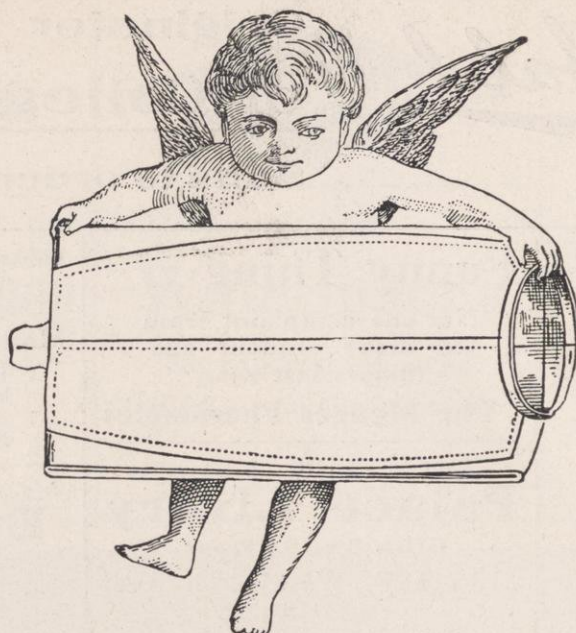
M. E. Fuller

DIRECTORS:

R. M. Bashford
Halle Steensland

Frank G. Brown
Wayne Ramsay

**Both
Phones
172**



**Wagons
Call**

The society man and the dainty summer girl alike have their linen laundered at this establishment. We launder delicate shirt waists, and linen collars, cuffs, and shirts with conscientious care, and without tear or fray, and never fail to give general satisfaction to our patrons.

ALFORD BROS.

113 AND 115 NORTH CARROLL STREET, - MADISON, WISCONSIN

NEW
Spring Styles

....OF....

FOOTWEAR

**Schumacher's
Big Shoe Store**

21 S. PINCKNEY ST.

KERNS' SUCCESS FLOUR

Finest Produced

Made by
JOHN B. A. KERN & SONS
Milwaukee, Wis.



**SHOE UPPER
and Sole**

HARNESS and GLOVE LEATHER

Calf, Cow, Horse and Kid
Chrome and bark tannages

**PFISTER & VOGEL
LEATHER CO.**

Milwaukee, Wis.



**Student's Desk
and Book Case**

Combined. Saves space in your room and makes a most artistic and desirable piece of student's furniture that can be added to as the library grows. Because

It is Globe-Wernicke

it is easily moved and adjusted to meet varied conditions.

Send for our Catalogue

Northwestern Furniture Co.
271-73 West Water St. Milwaukee, Wis.

IRMAL

IRON AND MALT

IRON AND MALT

A MOST EFFICIENT, GENERAL AND NERVE TONIC.

When Body and Brain Protest

at the strain imposed upon them,
the timely use of

IRMAL

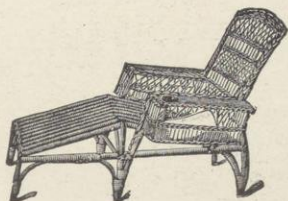
Malt and Iron Tonic

quickly and gently supplies the needful
energy to the over-worked tissues,
and restores the necessary
stock of reserve force

Prepared by

JUNG

Milwaukee



A. MEINECKE & SON

MANUFACTURERS OF

ENGLISH
WICKER

LAWN and

Veranda Furniture

WOODEN TOYS and
CHILDREN'S VEHICLES

MILWAUKEE,

WISCONSIN

Mayer's
HONORBILT
Shoes for Men

These elegant, stylish and up-to-date shoes are made of the finest leather. They are built over "foot form" lasts that insure a perfect fit and are guaranteed to wear better than most shoes sold at higher prices. Every piece of material used is honest. The workmanship is perfect; style correct.

They are built on honor.

Let your next pair of shoes be "Honorbilt." Your shoe dealer will supply you. If he refuses write to us. See that the name "Honorbilt" and Mayer trade-mark appear on the sole. It is a guarantee of quality. We make the "Western Lady" and the "Martha Washington Comfort Shoes."

F. MAYER BOOT & SHOE CO.,
MILWAUKEE, WIS

FOWNES

on the clasps means quality
in the

GLOVES

702 University Avenue

405 State Street

PANTORIUM COMPANY

CLEANERS AND DYERS

Agents for Strauss Bros.' Celebrated
Custom Made Clothing

Phones: Standard 978, 868
Bell 1180

SPALDING'S

*Base Ball, Lawn Tennis, Basket
Ball, Golf, Track and Field Sports*

*Spalding's New Spring and Summer 1909 Catalogue, complete
edition, 144 pages, 2000 illustrations. Call and get a copy. x x*

===== **THE CO-OP.** =====