



LIBRARIES

UNIVERSITY OF WISCONSIN-MADISON

Madison, Wisconsin. 1900

Madison, Wisconsin: Pickarts & Nicodemus, 1900

<https://digital.library.wisc.edu/1711.dl/7UCRCMESETOX38A>

<http://rightsstatements.org/vocab/NoC-US/1.0/>

For information on re-use, see

<http://digital.library.wisc.edu/1711.dl/Copyright>

The libraries provide public access to a wide range of material, including online exhibits, digitized collections, archival finding aids, our catalog, online articles, and a growing range of materials in many media.

When possible, we provide rights information in catalog records, finding aids, and other metadata that accompanies collections or items. However, it is always the user's obligation to evaluate copyright and rights issues in light of their own use.

Madison,
Wisconsin.



MADISON,
WISCONSIN.



PICKARTS & NICODEMUS,
PUBLISHERS.

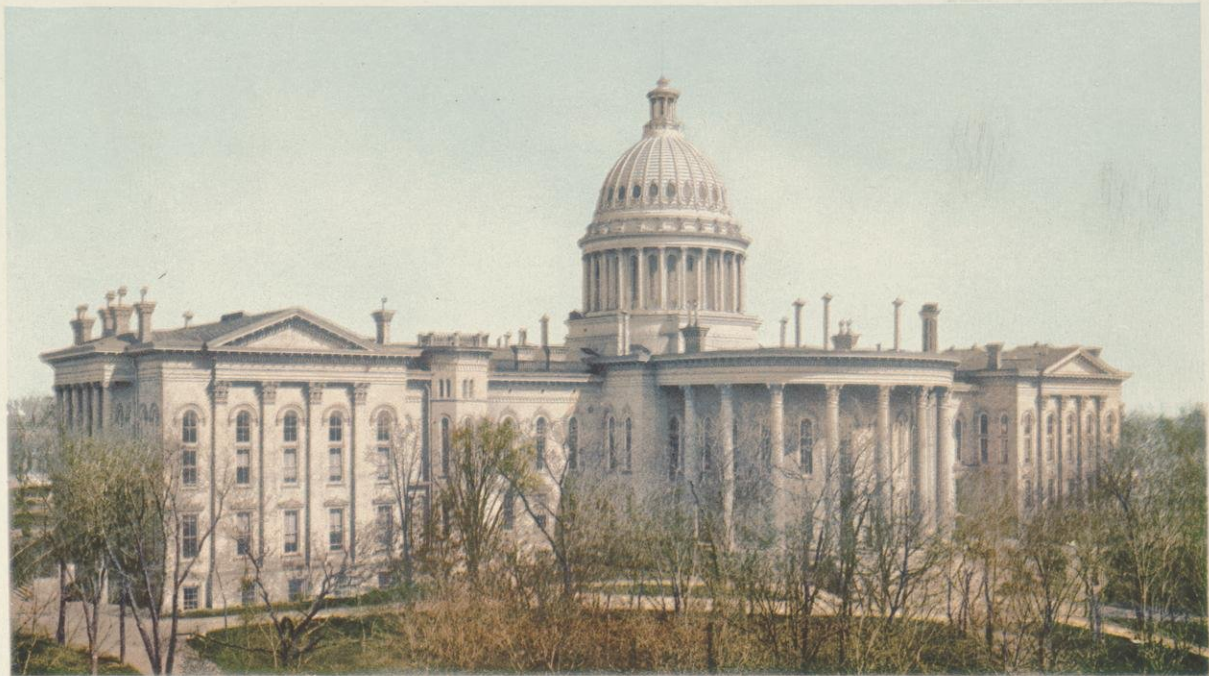
COPYRIGHT, 1900, BY
DETROIT PHOTOGRAPHIC CO.



PANORAMA FROM THE CAPITOL.



PANORAMA FROM THE CAPITOL.



THE CAPITOL.



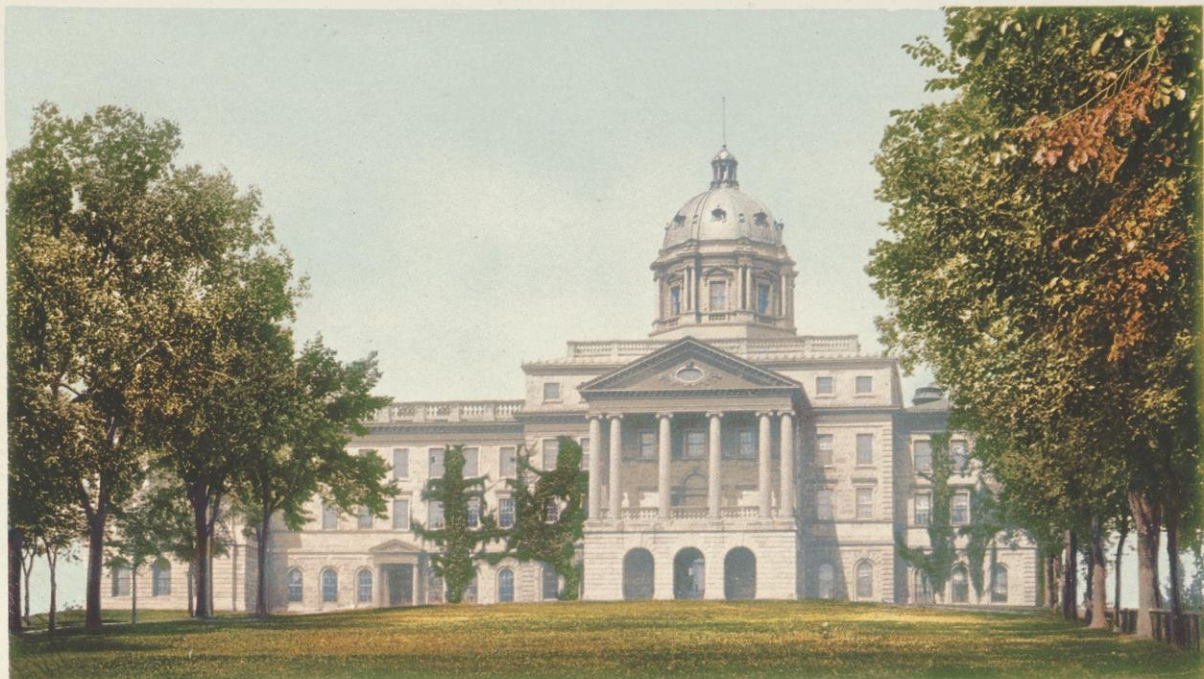
ON UNIVERSITY DRIVE.



GOVERNOR'S RESIDENCE.



VIEW FROM THE UNIVERSITY.



THE MAIN HALL, UNIVERSITY OF WISCONSIN.



SCIENCE HALL.

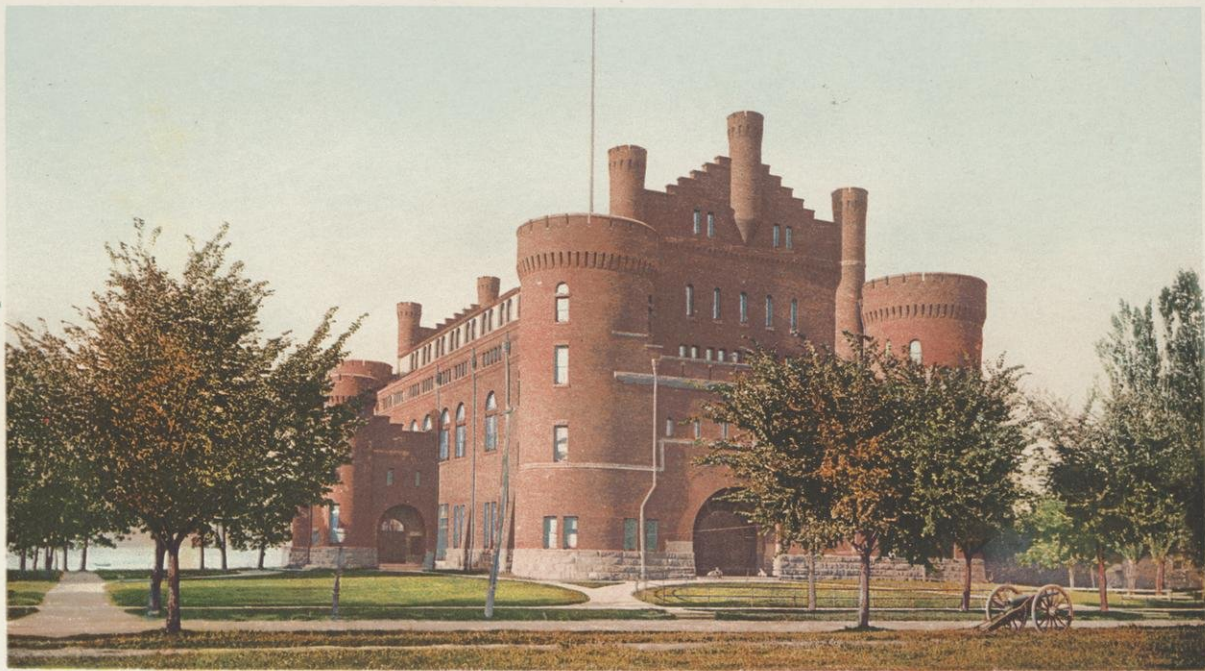


CHEMICAL LABORATORY AND SCIENCE HALL.

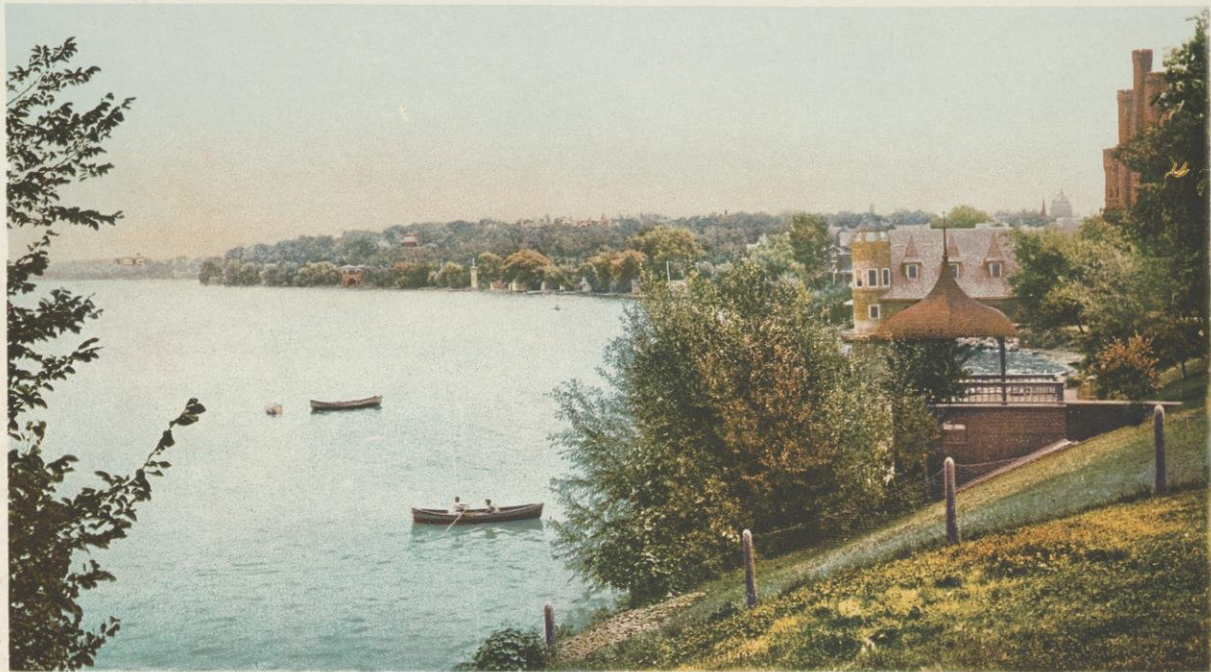
UNIVERSITY OF WISCONSIN.



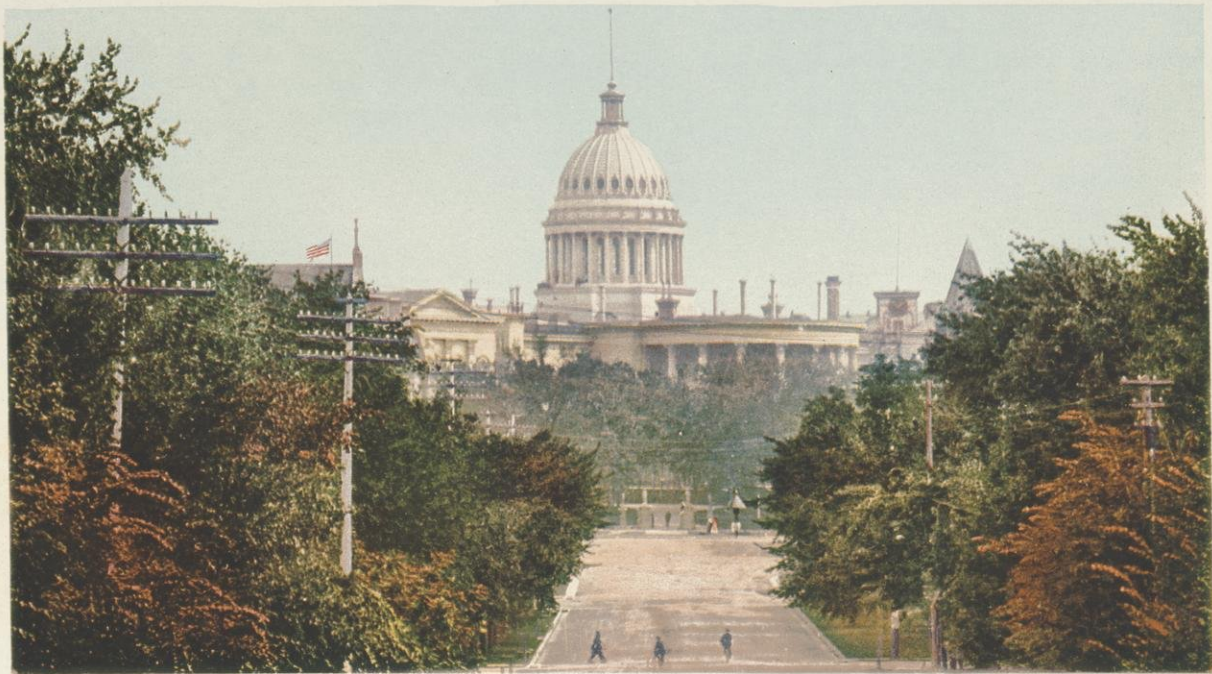
LADIES' HALL.



ARMORY AND GYMNASIUM, UNIVERSITY OF WISCONSIN.



LAKE MENDOTA.



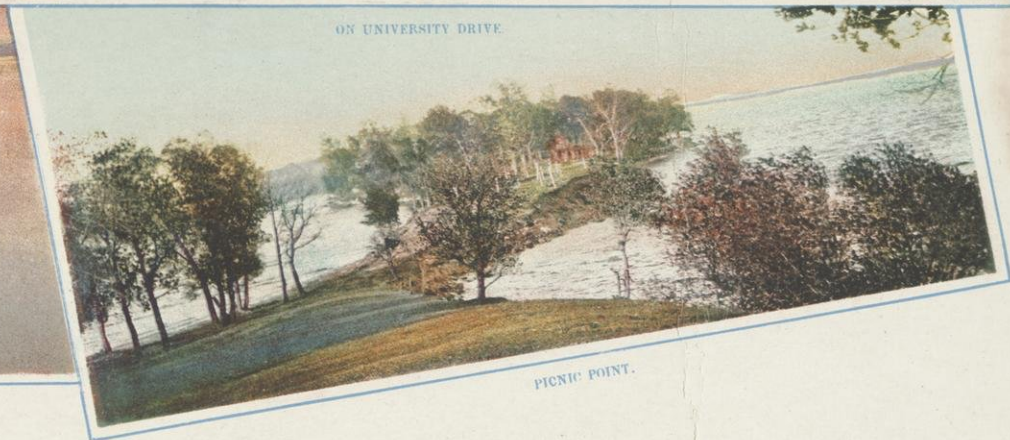
THE CAPITOL, FROM WISCONSIN AVENUE.



ON UNIVERSITY DRIVE.



ALONG THE LAKE.



PICNIC POINT.



PUBLISHED BY

PICKARTS & NICODEMUS,

BOOKS, STATIONERY, MUSIC, ATHLETIC GOODS,

15 EAST MAIN STREET,

MADISON, WISCONSIN.