



LIBRARIES

UNIVERSITY OF WISCONSIN-MADISON

Site 0110: Chiwaukee Country Club, Kenosha County, Township 1N, Range 23E, Section 32. 1951-08-20

[s.l.]: [s.n.], 1951-08-20

<https://digital.library.wisc.edu/1711.dl/5XTVFVY4DZY6U9B>

This material may be protected by copyright law (Title 17, US Code).

For information on re-use see:

<http://digital.library.wisc.edu/1711.dl/Copyright>

The libraries provide public access to a wide range of material, including online exhibits, digitized collections, archival finding aids, our catalog, online articles, and a growing range of materials in many media.

When possible, we provide rights information in catalog records, finding aids, and other metadata that accompanies collections or items. However, it is always the user's obligation to evaluate copyright and rights issues in light of their own use.

Data inadequate.

Do not put in Post Index
file

Presence List
(Uncommon species)

PRAIRIES

Stand No. 110

Locality: Chiwaukee Country Club

County: Kenosha

NEW 1/4 (also northward for 2 miles)
Sec: 32 T: N R: 23 E

Date: Aug 20, 1951

Observers: HCG & JTC

Size of Stand: 2 1/2 square miles

Size of Area Sampled: 100 acres

Condition of Stand: Excellent - undisturbed for 25 years or possibly for ever
Series of abandoned beaches, with sloughs approx 1'-2' lowerWeb -
Type: Mesic-Sand
Mesic on Riser
Wet in Sloughs

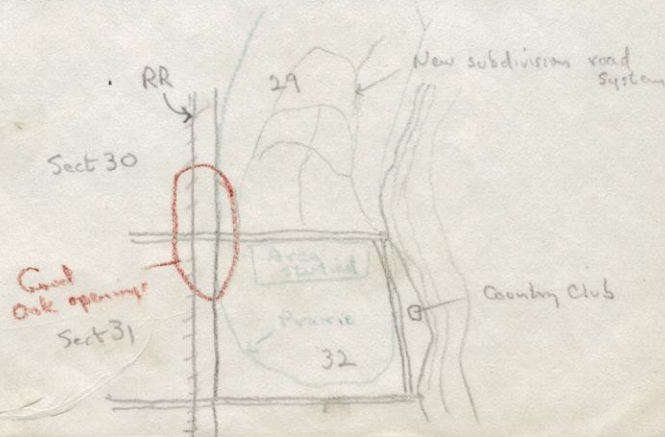
- | | | | |
|-----------------------|----------------------|--------------------------------|----------------------|
| Acer negundo | Celastrus scandens | ✓ L. spicata (aspect dominant) | Prenanthes alba |
| Agoseris cuspidata | Chrysopsis villosa | ✓ Lobelia kalmii | P. aspera |
| Agropyron subsecun | Cirsium hillii | Lupinus perennis | Prunella vulgaris |
| ✓ Aletris farinosa | C. undulatum | ✓ Lycopus americanus | Psoralea argophyll |
| Allium canadense | Crataegus sp. | L. uniflorus | Pteridium latiuscul |
| ✓ A. cernuum abundant | Cypripedium candid | Lysimachia ciliata | Pyrus ioensis |
| Amphicarpa monoica | C. pubescens | L. lanceolata | Rudbeckia subtomen |
| Anemone quinquefol | Draba reptans | ✓ L. quadriflora | Sanicula sp. |
| A. virginiana | ✓ Dryopteris thelypt | L. quadrifolia | ✓ Scleria triglomera |
| Apios americana | Echinacea pallida | ✓ Lythrum alatum | Scrophularia lance |
| Aquilegia canadens | E. virginicus | Mirabilis nyctagin | Selaginella rupest |
| ✓ Arabis lyrata | Equisetum hyemale | ✓ Monarda punctata | Senecio aureus |
| Artemisia ludovici | ✓ Erigeron philadelp | Napaea dióica | ✓ S. pauperculus |
| A. serrata | E. pulchellus | Oenothera perennis | Silene antirrhina |
| ✓ Asclepias incarnat | Eupatorium altissi | O. rhombipetala | S. stellata |
| A. lanuginosa | Galium tinctorium | Onoclea sensibilis | Silphium perfoliat |
| A. longifolia | Gaura biennis | Orobanche fascicul | Smilacina racemosa |
| A. ovalifolia | ✓ Gentiana crinita | O. uniflora | ✓ Solidago riddellii |
| ✓ A. purpurascens | G. flavida | Panicum praecocius | Specularia perfoli |
| A. sullivantii | ✓ G. procera | ✓ Parnassia glauca | ✓ Spiranthes ochrole |
| Aster linariifoliu | G. quinquefolia | Parthenium integri | Sporobolus asper |
| A. pilosus | ✓ Gerardia aspera | Parthenocissus ins | ✓ S. cryptandrus |
| A. sagittifolius | G. gattingeri | Pedicularis canade | S. vaginiflorus |
| A. umbellatus | G. grandiflora | ✓ P. lanceolata | ✓ Stachys palustris |
| ✓ Astragalus candens | ✓ Gnaphalium obtusif | Pentstemon digital | Symphoricarpos occ |
| Blephilia ciliata | Grindelia squarros | Petalostemum villo | Taenidia integerr |
| ✓ Bromus kalmii | ✓ Habenaria leucopha | Phalaris arundinac | Thaspium aureum |
| Cacalia atriplicif | Hieracium canadens | ✓ Phlox glaberrima | Triosteum perfolia |
| Cacalia suaveolens | ✓ Hierochloe odorata | Plantago rugelii | ✓ Valeriana ciliata |
| Callirhoe triangul | Houstonia caerulea | Polemonium reptans | Verbena hastata |
| ✓ Calopogon pulchell | H. longifolium | ✓ Polygala polygama | ✓ Vernonia fascicula |
| Carex muhlenbergii | Hystrix patula | P. sanguinea | ✓ Vicia angustifolia |
| C. pensylvanica | Lathyrus ochroleuc | ✓ P. verticillata | V. villosa |
| C. vulpinoidea | ✓ Lechea tenuifolia | Polygonatum commut | ✓ Viola sagittata |
| ✓ Castilleja coccine | Leptoloma cognatum | Populus tremuloide | Wulfenia bullii |
| C. sessiliflora | Liatris ligulostyl | ✓ Potentilla frutico | Zigadenus elegans |
| Ceanothus ovatus | | | |

Additional species:

Helenium autumnale
Campanula aparivider
Teucrium canadense
Tuftieldia glutinosa
Solidago dridenis
Potentilla anserina

Cyperis filiculmis
Lobelia cardinalis

o Many other species



o Additional Species seen in 1938 in Sect. 20

Data Form No. 35

Plant Ecology Research

Univ. of Wisconsin

Presence or Frequency
(Common species only)

PRAIRIES

Stand No. 110 29a
Quadrat No.

- ✓ Achillea millefolium
 ✓ Ambrosia artemisifolia
 Ambrosia psilostachya
 ✓ Amorpha canescens
 ✓ Andropogon gerardi
 ✓ Andropogon scoparius (glaucescens form & common)
 Anemone canadensis
 ✓ Anemone cylindrica
 Anemone patens
 ✓ Antennaria sp.
 Apocynum androsaemifolium
 ✓ Apocynum cannabinum
 o Arenaria stricta
 o Artemisia caudata
 Asclepias amplexicaulis
 ✓ Asclepias syriaca
 o Asclepias tuberosa
 ✓ Asclepias verticillata
 o Asclepias viridiflora
 o Aster azureus
 ✓ Aster ericoides
 Aster laevis
 ✓ Aster novae-angliae
 Aster oblongifolius
 ✓ Aster ptarmicoides
 Aster sericeus
 Baptisia leucantha
 Baptisia leucophaea
 Bouteloua curtipendula
 Bouteloua hirsuta
 Cacalia tuberosa
 ✓ Calamagrostis canadensis
 Ceanothus americanus
 Cicuta maculata
 Cirsium discolor
 ✓ Comandra richardsiana
 Convolvulus sepium
 o Coreopsis palmata
 Cornus femina
 Corylus americana
 Desmodium canadense
 Desmodium illinoense
 ✓ Dodecatheon meadia
 ✓ Elymus canadensis
 Equisetum arvense
 ✓ Equisetum kansanum
 ✓ Erigeron strigosus
 o Eryngium yuccifolium
 o Euphorbia corollata
- ✓ Fragaria virginiana
 Galium boreale
 Gentiana andrewsii
 ✓ Gentiana puberula (abundant)
 Geranium maculatum
 Geum triflorum
 Hedeoma hispida
 Helianthemum sp.
 o Helianthus grosseserratus
 Helianthus laetiflorus
 o Helianthus occidentalis
 Helianthus strumosus
 Heliopsis helianthoides
 ✓ Heuchera richardsonii
 Hieracium longipilum
 o Hypoxis hirsuta
 ✓ Iris virginica
 ✓ Koeleria cristata
 o Krigia biflora
 Kuhnia eupatorioides
 o Lactuca canadensis
 Lactuca ludoviciana
 o Lathyrus palustris
 Lathyrus venosus
 o Lespedeza capitata
 o Liatris aspera
 o Liatris cylindracea
 Liatris pycnostachya
 o Lilium michiganense
 o Lilium philadelphicum
 Linum sulcatum
 ✓ Lithospermum canescens
 o Lithospermum croceum
 ✓ Lithospermum incisum
 ✓ Lobelia spicata
 ✓ Monarda fistulosa
 Muhlenbergia cuspidata
 Muhlenbergia racemosa
 ✓ Oenothera biennis
 Oxalis violacea
 ✓ Oxypolis rigidior
 Panicum leibergii
 ✓ Panicum virgatum
 o Petalostemum candidum
 ✓ Petalostemum purpureum
 o Phlox pilosa
 ✓ Physalis heterophylla
- Physalis subglabrata
 Physalis virginiana
 Polygala senega
 Polytaenia nuttallii
 ✓ Potentilla arguta
 Potentilla canadensis
 o Prenanthes racemosa
 Psoralea esculenta
 ✓ Pycnanthemum virginianum
 Pyrus melanocarpa
 Quercus macrocarpa
 ✓ Ratibida pinnata
 Rhus glabra
 Rhus radicans
 Rosa sp.
 ✓ Rudbeckia hirta
 Salix humilis
 Saxifraga pensylvanica
 ✓ Scutellaria parvula
 ✓ Silphium integrifolium
 o Silphium laciniatum
 o Silphium terebinthinaceum
 o Sisyrinchium campestre
 Smilacina stellata
 Solidago altissima
 ✓ Solidago gigantea
 ✓ Solidago graminifolia
 Solidago juncea
 ✓ Solidago missouriensis
 ✓ Solidago nemoralis
 ✓ Solidago rigida
 o Solidago speciosa
 ✓ Sorghastrum nutans
 ✓ Spartina pectinata
 Spiraea alba
 ✓ Sporobolus heterolepis
 Stipa spartea
 Tephrosia virginiana
 ✓ Thalictrum dasycarpum
 ✓ Tradescantia ohioensis
 Verbena stricta
 ✓ Veronicastrum virginicum
 o Vicia americana
 ✓ Viola pedata
 Viola pedatifida
 Vitis vulpina
 Zizia aptera
 o Zizia aurea

Additional species:

Soil a melanized sand

 52 on p.1 +29
 33 on p.2 +33
 85 on both

 81
 66
 147 total

Echinacea pallida		✓	Lactuca canadensis
Elymus canadensis	✓		Lactuca ludoviciana
Elymus virginicus			Lathyrus ochroleucus
Epilobium adenocaulon		✓	Lathyrus palustris
Equisetum arvense			Lathyrus venosus
Equisetum hyemale		✓	Lechea tenuifolia
Equisetum kansanum	✓		Leersia virginica
Erigeron philadelphicus	✓		Leptoloma cognatum
Erigeron pulchellus	✓	✓	Lespedeza capitata
Erigeron strigosus	✓		Lespedeza violacea
Eriophorum virginicum		✓	Liatris aspera
Eryngium yucifolium	✓	✓	Liatris cylindracea
Eupatorium altissimum			Liatris ligulistylis
Eupatorium maculatum			Liatris punctata
Eupatorium perfoliatum			Liatris pycnostachya
Eupatorium rugosum			Liatris spicata
Euphorbia corollata	✓	✓	Lilium michiganense
Fragaria virginiana	✓	✓	Lilium philadelphicum
Galium boreale			Linum sulcatum
Galium labradoricum			Liparis loeselii
Galium tinctorium		✓	Lithospermum canescens
Gaura biennis		✓	Lithospermum croceum
Gentiana andrewsii			Lithospermum incisum
Gentiana crinita	✓	✓	Lobelia kalmii
Gentiana flavida			Lobelia siphilitica
Gentiana procera	✓	✓	Lobelia spicata
Gentiana puberula	✓		Lupinus perennis
Gentiana quinquefolia		✓	Lycopus americanus
Gentiana saponaria			Lycopus uniflorus
Geranium maculatum			Lysimachia ciliata
Gerardia aspera	✓		Lysimachia lanceolata
Gerardia gattingeri		✓	Lysimachia quadriflora
Gerardia grandiflora			Lysimachia quadrifolia
Geum triflorum		✓	Lythrum alatum
Glyceria striata			Mentha arvensis
Gnaphalium obtusifolium	✓		Mimulus ringens
Grindelia squarrosa			Mirabilis nyctagineus
Habenaria flava		✓	Monarda fistulosa
Habenaria leucophaea	✓	✓	Monarda punctata
Hedeoma hispida			Muhlenbergia cuspidata
Helenium autumnale	✓		Muhlenbergia mexicana
Helianthemum canadense			Muhlenbergia racemosa
Helianthus grosseserratus	✓		Napaea dioica
Helianthus laetiflorus		✓	Oenothera biennis
Helianthus occidentalis	✓		Oenothera perennis
Helianthus strumosus			Oenothera rhombipetala
Heliopsis helianthoides			Onoclea sensibilis
Heuchera richardsonii	✓		Onosmodium hispidissimum
Hieracium canadense			Onosmodium occidentale
Hieracium longipilum			Ophioglossum vulgatum
Hierochloa odorata	✓		Opuntia humifusa
Houstonia caerulea			Orobanche fasciculata
Houstonia longifolia			Orobanche uniflora
Hypericum mutilum			Oxalis violacea
Hypericum canadense		✓	Oxypolis rigidior
Hypoxis hirsuta	✓		Panicum implicatum
Hystrix patula			Panicum leibergii
Iris virginica	✓	✓	Panicum oligosanthos
Juncus dudleyi			Panicum perlongum
Juncus tenuis			Panicum praecocius
Juniperus communis		✓	Panicum virgatum
Juniperus virginiana		✓	Parnassia glauca
Koeleria cristata	✓		Parthenium integrifolium
Krigia biflora	✓		Parthenocissus inserta
Krigia virginica			Pedicularis canadensis
Kuhnia eupatorioides		✓	Pedicularis lanceolata

110

<i>Pentstemon digitalis</i>		<i>Senecio aureus</i>
<i>Pentstemon gracilis</i>	✓	<i>Senecio pauperculus</i>
<i>Pentstemon grandiflorus</i>		<i>Silene antirrhina</i>
<i>Petalostemum candidum</i>	✓	<i>Silene stellata</i>
<i>Petalostemum purpureum</i>	✓	✓ <i>Silphium integrifolium</i>
<i>Petalostemum villosum</i>		✓ <i>Silphium laciniatum</i>
<i>Phalaris arundinacea</i>		<i>Silphium perfoliatum</i>
<i>Phlox glaberrima</i>	✓	✓ <i>Silphium terebinthinaceum</i>
<i>Phlox pilosa</i>	✓	✓ <i>Sisyrinchium campestre</i>
<i>Physalis heterophylla</i>	✓	<i>Sium suave</i>
<i>Physalis subglabrata</i>		<i>Smilacina racemosa</i>
<i>Physalis virginiana</i>		<i>Smilacina stellata</i>
<i>Physocarpus opulifolius</i>		<i>Smilax herbacea</i>
<i>Physostegia virginiana</i>		<i>Solidago altissima</i>
<i>Plantago purshii</i>		<i>Solidago canadensis</i>
<i>Plantago rugelii</i>		✓ <i>Solidago gigantea</i>
<i>Polemonium reptans</i>		✓ <i>Solidago graminifolia</i>
<i>Polygala polygama</i>	✓	<i>Solidago juncea</i>
<i>Polygala sanguinea</i>		✓ <i>Solidago missouriensis</i>
<i>Polygala senega</i>		✓ <i>Solidago nemoralis</i>
<i>Polygala verticillata</i>	✓	✓ <i>Solidago ohioensis</i>
<i>Polygonatum commutatum</i>		✓ <i>Solidago riddellii</i>
<i>Polygonum amphibium</i>		✓ <i>Solidago rigida</i>
<i>Polygonum tenue</i>		✓ <i>Solidago speciosa</i>
<i>Polytaenia nuttallii</i>		✓ <i>Sorghastrum nutans</i>
<i>Populus tremuloides</i>		✓ <i>Spartina pectinata</i>
<i>Potentilla arguta</i>	✓	<i>Specularia perfoliata</i>
<i>Potentilla canadensis</i>		<i>Spiraea alba</i>
<i>Potentilla fruticosa</i>	✓	<i>Spiranthes cernua</i>
<i>Prenanthes alba</i>		<i>Spiranthes gracilis</i>
<i>Prenanthes aspera</i>		✓ <i>Spiranthes ochroleuca</i>
<i>Prenanthes racemosa</i>	✓	<i>Sporobolus asper</i>
<i>Prunella vulgaris</i>		✓ <i>Sporobolus cryptandrus</i>
<i>Prunus americana</i>		✓ <i>Sporobolus heterolepis</i>
<i>Prunus pumila</i>		<i>Sporobolus vaginiflorus</i>
<i>Prunus serotina</i>		✓ <i>Stachys palustris</i>
<i>Prunus virginiana</i>		<i>Stellaria longifolia</i>
<i>Psoralea argophylla</i>		<i>Stipa spartea</i>
<i>Psoralea esculenta</i>		<i>Symphoricarpos occidentalis</i>
<i>Pteridium latiusculum</i>		<i>Taenidia integerrima</i>
<i>Pycnanthemum virginianum</i>	✓	<i>Tephrosia virginiana</i>
<i>Pyrus ioensis</i>		✓ <i>Teucrium canadense</i>
<i>Pyrus melanocarpa</i>		✓ <i>Thalictrum dasycarpum</i>
<i>Quercus macrocarpa</i>		<i>Thaspium aureum</i>
<i>Ranunculus fascicularis</i>		✓ <i>Tofieldia glutinosa</i>
<i>Ranunculus rhomboideus</i>		✓ <i>Tradescantia ohiensis</i>
<i>Ranunculus septentrionalis</i>		<i>Triosteum perfoliatum</i>
<i>Ratibida pinnata</i>	✓	✓ <i>Valeriana ciliata</i>
<i>Rhus glabra</i>		<i>Verbena hastata</i>
<i>Rhus radicans</i>		<i>Verbena stricta</i>
<i>Rosa spp.</i>		✓ <i>Vernonia fasciculata</i>
<i>Rubus spp.</i>		✓ <i>Veronicastrum virginicum</i>
<i>Rudbeckia hirta</i>	✓	✓ <i>Vicia americana</i>
<i>Rudbeckia laciniata</i>		<i>Vicia augustifolia</i>
<i>Rudbeckia subtomentosa</i>		<i>Vicia villosa</i>
<i>Rumex verticillatus</i>		<i>Viola cucullata</i>
<i>Salix humilis</i>		<i>Viola lanceolata</i>
<i>Sanicula gregaria</i>		✓ <i>Viola pedata</i>
<i>Sanicula marilandica</i>		<i>Viola pedatifida</i>
<i>Sanicula sp.</i>		✓ <i>Viola sagittata</i>
<i>Saxifraga pensylvanica</i>		<i>Vitis aestivalis</i>
<i>Scleria triglomerata</i>	✓	<i>Vitis riparia</i>
<i>Scrophularia lanceolata</i>		<i>Wulfenia bullii</i>
<i>Scutellaria epilobiifolia</i>		<i>Xanthoxylum americanum</i>
<i>Scutellaria parvula</i>	✓	<i>Zigadenus elegans</i>
<i>Selaginella apoda</i>		<i>Zizia aptera</i>
<i>Selaginella rupestris</i>		✓ <i>Zizia aurea</i>