



LIBRARIES

UNIVERSITY OF WISCONSIN-MADISON

The Wisconsin Union quarterly. Fall 1988

Madison, Wisconsin: Wisconsin Union, Fall 1988

<https://digital.library.wisc.edu/1711.dl/I5LHU5BY3ABKK87>

This material may be protected by copyright law (e.g., Title 17, US Code).

For information on re-use, see

<http://digital.library.wisc.edu/1711.dl/Copyright>

The libraries provide public access to a wide range of material, including online exhibits, digitized collections, archival finding aids, our catalog, online articles, and a growing range of materials in many media.

When possible, we provide rights information in catalog records, finding aids, and other metadata that accompanies collections or items. However, it is always the user's obligation to evaluate copyright and rights issues in light of their own use.



THE WISCONSIN UNION

Quarterly

A Communique for Wisconsin Union Members

FALL 1988

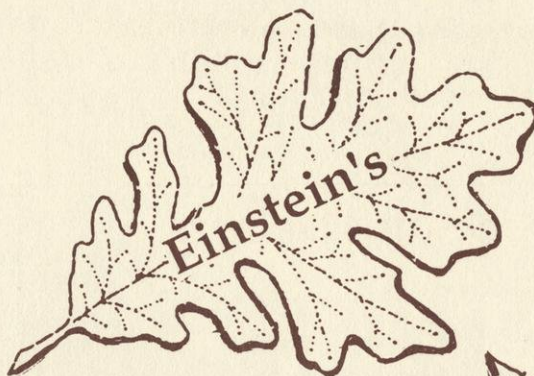
A CHANGE OF SCENERY AT THE UNION

New Names and Reconstruction

Say good-bye to Union Station ... at least, the name. Yes, that's right Union Station in Union South has been renamed "Einstein's". The name was chosen for its uniqueness and relativity to the South neighborhood and its science-related pursuits.

The addition of a staircase in the Union South atrium will provide easy, central access to all floors. Due for completion by this fall, the staircase will go from the basement to the third floor.

The lower level of Memorial Union has now been named "The Alley." Although Campus Outfitter no longer exists, the exciting new alley will offer Union members a variety of services including: check cashing, parcel delivery, stamp sales, video and VCR rentals, billiards, games, pizza, and gifts. This name stems from the original use of the lower level as a bowling alley. Stop in and see our newest operation!



KEEP US POSTED!!

If you move after receiving this Fall Quarterly, we need your cooperation. With changes in postal regulations and the increasing cost of postage, we will need for you to update your address with us to continue receiving our mailings. To update your address with us in the future, write to Membership Office, Wisconsin Union, 800 Langdon St., Madison, WI 53706, or Call us at (608) 262-2263. Remember to keep us posted!

All phone numbers and Union addresses referred to in the articles are listed in the Wisconsin Union Phone Directory on page 8.

Share outdoor experiences with the Wisconsin Hoofers! This unique group of clubs not only allows you to learn new outdoor skills, but also gives you the opportunity to meet a community of people with similar interests.

Sailing Regatta

The annual Hooper Alumni Tech Intergalactic sailing regatta will take place on Oct. 29 & 30. Those interested in participating or observing should call Hoofers for further information.

Ski Resale

Sat. and Sun., Dec. 3 and 4, Tripp Commons, Memorial Union (Equipment Drop-off: Thurs. and Fri., Dec. 1 and 2, same location)

Hooper Kick-off Meetings

RIDING

Old members Aug. 31, 7 p.m.,
New members Sept. 7, 6 p.m.,
Hooper Lounge, Memorial Union

ALL HOOVERS

Sept. 8, 7 p.m., Tripp Commons,
Memorial Union

SAILING

Sept. 12, 7:30 p.m., Tripp Commons,
Memorial Union

OUTING

Sept. 13, 7 p.m., Tripp Commons,
Memorial Union

MOUNTAINEERING

Sept. 15, 8 p.m., Hooper Lounge,
Memorial Union

SCUBA

Sept. 15, 7:30 p.m., check TITU,
Memorial Union

SKI

Oct. 6, 7:30 p.m., Great Hall,
Memorial Union

Hoopers Reunion

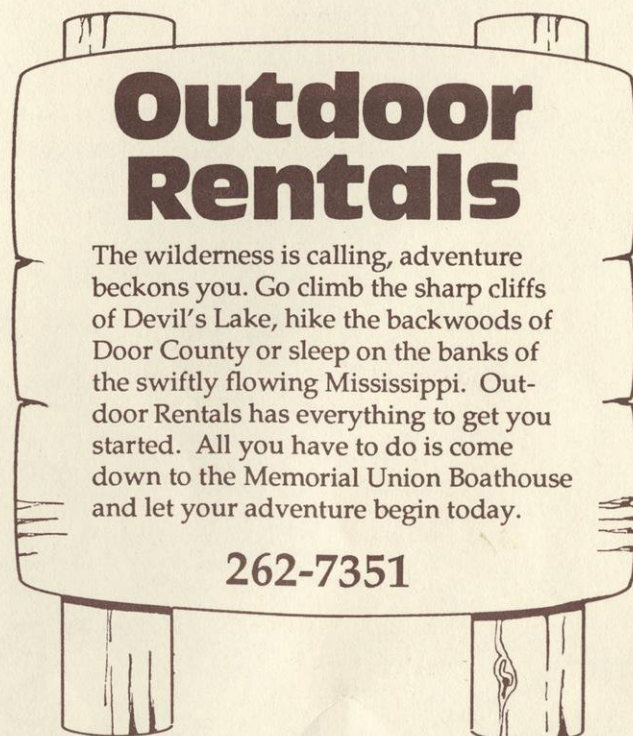
Come back to the place where many great opportunities were experienced and good friendships developed. Celebrate the 50th Anniversary of the Hooper Quarters, but not until next year, Oct. 6-8, 1989.

There will be an informal reception that Friday evening in the Hooper Lounge to welcome everybody. Saturday's events will include the showing of Dr. Harold Bradley's films of early Hooper outings, paging through Hooper scrapbooks, tours of the current facilities, demonstrations by the clubs, sailboat rides and plenty of time to chat with old friends. A catered dinner will be offered Saturday evening.

Bring your photos and favorite Hooper anecdotes ... we will light the fire in the fireplace.

For more information contact the Hooper Reunion Committee at Memorial Union, 800 Langdon St., Madison, WI 53706.

Reunion Committee: Dale Bender, Chris Robaidek, Jennifer Bancroft, Boris Frank, Stan DuRose, Cal Williams, Jack Lussien.



The Mini Course Program is once again trying to make your choices hard by offering so many good classes from which to choose. There will always be something new for you!!

This fall is no exception as you will see from the following new classes. We have the practical like Electrical Repairs and "Stuff" Management: Getting Your Life in Order (organizing your home). A moonlight Canoe Trip on the Sugar River is being offered for the first time for the adventuresome. Musically inclined? How about Violin/Viola class or Lead Guitar Class? Or try something creative like Paper Marbling, Making Your Own Soap or Crocheting a Lace Collar. Our exotic selection has expanded to include Reincarnation and Karma, Spanish Cooking and Beginning Genealogy. We even have some new classes for children of all ages.

If you haven't received your Fall Mini Course Catalog please call us and we will mail one right out. Fall classes start September 17 so make your choices now and enjoy the fun ...

"Ballroom Dance Live!" Returns

Tired of gliding around your kitchen imagining it to be a ball room? Or does listening to the big band on the radio leave a lot to be desired? Well, on Tuesday, October 25, Great Hall in Memorial Union will come alive with the big band sound of the 18 piece DIMENSIONS IN SOUND ORCHESTRA. For only \$3.50 per person, you can practice the waltz, fox trot or cha-cha from 8 p.m. to 10:30 p.m. Tickets are available in advance through the Mini Course office or at the door.



Welcome New Members

The Membership Office would like to take this opportunity to welcome all the new Wisconsin Union Members who signed up during our Community Campaign this summer. Whether you heard of us through our TV or newspaper ads, saw us at Farmer's Market on the Square, or just picked up one of our new, yellow brochures in the Union, we're glad you've joined our Union family. We hope the Union becomes a social, recreational and educational center for you. You will be receiving The Quarterly three times a year - spring, summer and fall - to keep you informed of events and any changes taking place at both Memorial Union and Union South. Remember, this is YOUR newsletter, so if there's information you would like to read about in The Quarterly please let us know in the Membership Office. Once again, welcome to the Wisconsin Union and please tell your friends about us.



New

Travel Center

The Wisconsin Union is pleased to announce the selection of **Adelman Travel Systems** as the new travel agency in the Memorial Union. A full service branch office of the Milwaukee headquartered company is scheduled to open in September on the first floor, next to the barbershop.

Adelman guarantees travelers the lowest available air fare on all flights, discounts on hotels throughout the country, and special discount vacation packages. The agency will handle domestic and international air travel, cruises, rail and bus travel, including charter and VIP services, and make virtually all travel arrangements, in addition to providing passengers with boarding passes and seat assignments, passports and visas.

The new office is staffed by professional travel agents under the direct supervision of Adelman management and will be geared to faculty, staff, students and Union Members. They will also have a special 24-hour, year-round emergency service.

Perspective travelers can contact the new office at 263-8810 or 263-8811.

Interim Multicultural Center

UW-Madison has opened a Multi-Cultural Center at Memorial Union. The center will aim "to create an atmosphere of warmth and identity among minorities, greater understanding between minority and majority communities, and stronger links with the institution and with the Madison community..." (The Report to the Chancellor on a Multicultural Center, April, 1988, p.5).

The Wisconsin Union offered to provide interim space for the center until larger, permanent space can be located on campus. The center is located in The Browsing Library, 2nd floor.

The Multicultural Center will have its own identity and program separate from the Wisconsin Union, yet have the benefits of being housed within an organization that has similar goals and direction.

The Wisconsin Union reaffirms its commitment towards providing a multicultural educational experience in its facilities and to do all it can to assist in fulfilling the University's commitment to achieving a multicultural environment.



Adelman Travel Systems

Craftshop

The Craftshop at Memorial Union is sponsoring a variety of fall sales. Visit to browse and buy.

Sept. 5-9	<i>Art Poster Sale</i> Inn Wisconsin Room
Sept. 12-16	<i>Rock Album Poster Sale</i> Popover Room
Sept. 19-23	<i>Original Movie Poster Sale</i> Popover Room
Oct. 17-21	<i>Rock 'n Roll Poster Sale</i> Popover Room
Oct. 24-28	<i>Glass Fabrications Sale</i> Commons Lobby
Nov. 7-11	<i>Greek Sweater Sale</i> Popover Room
Nov. 28-Dec. 2	<i>British Music Poster Sale</i> Popover Room
Dec. 1-4	<i>Annual Camera/Stereo Resale</i> Inn Wisconsin

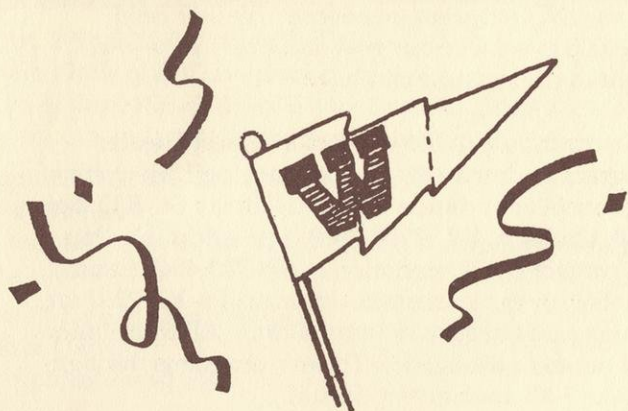
Don't forget to also visit the Craftshop - a complete craft facility for woodworking, ceramics, photography, batik, silk screen, art metals, stained glass and more - on 4th floor in Memorial Union. The shop is open to UW students, faculty, staff and Wisconsin Union members who have a valid Craftshop permit. A permit costs \$25/semester for members and can be purchased at the Craftshop store.

Hours: Sunday-Thursday 1-10 p.m.
Friday-Saturday 1-5 p.m.

Party Time

New Year's Eve Party

Bring in 1989 with style. Attend the 3rd Annual Wisconsin Union New Year's Eve Extravaganza. The event will take place Saturday, Dec. 31 from 8:30 p.m. to 1 a.m. The Allen Chase Orchestra will provide the big band dance music and Union catering will provide an elaborate dessert and hors d'oeuvre buffet. At midnight, you can toast the new year with free champagne! Remember, Union members have first priority for tickets. Call Bill Mann at 262-0887 for more information.



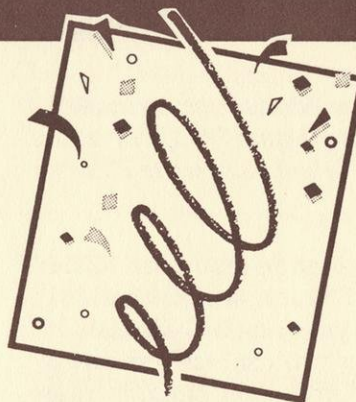
Tudor Dinner 1988

Once again the ever popular Tudor Dinner Concerts are being hosted by The Wisconsin Union. The dates will be Nov. 30, Dec. 1, 2, 3, 4, 6 and 7. There will be no show on Dec. 5th. Due to the popularity of the Tudor Dinners, we cannot guarantee tickets to everyone; however, members whose ticket requests we could not fill last year will be put on a priority list to receive an early mailing.

Notification of the Tudor Dinners is mailed to area resident members (40 mile radius) in Wisconsin who are not students. If you are a non-resident member or a UW-Madison student, call in or write for information to Membership Office, Memorial Union. Area resident members who do not receive a mailing by Oct. 25th should do the same.

Students can stop in to order tickets but must do so on Mon., Oct. 31st, the date the tickets will be processed.

All ticket orders, including walk-ins, must be accompanied by a stamped, self-addressed envelope. Early orders received before Oct. 31st will not be processed.



Badger Bashes

Get ready for the Wisconsin Badgers to take to the field and get ready to join us at Union South for some pre-game cheering and a post-game victory party.

The U.W. Marching Band, pom pon girls and cheerleaders will bring the Wisconsin spirit out in you as they escort you from Union South to Camp Randall Stadium. Brats will also be available for you hungry Badger fans before the game.

After the game, you can return to Union South to be entertained by the LOST CENTURY jazz band in Carousel Cafeteria or if you want to pick up the pace a bit, Einstein's will be hosting POOR RICHARD'S BAND which plays a wide variety of danceable, funk and rhythm and blues tunes.

Festivities will be underway by 10:30 a.m. and will continue after the game from 4 to 7 p.m. Badger Bashes will be held on Sept. 3, 17, Oct. 1, 15, 29 and Nov. 12. All entertainment is free along with popcorn and pretzels. Other refreshments will be sold in both Carousel Cafeteria and Einstein's.



If you've been waiting to buy tickets for individual events for the Wisconsin Union Theater 1988/89 Performance Series, Concert Series or Travel Adventure Film Series, wait no longer.

Tickets for individual events can be purchased at The Theater Box Office between 11:30 a.m. and 5:30 p.m. weekdays. But be advised — your best bet still is to subscribe to an entire series (or two). Subscribers save a bundle - up to 47% - and most important, subscribers are assured a seat when the event sells out.

Concert Series:

PAILLARD CHAMBER ORCHESTRAWed., Oct. 12
 PETER SERKIN (PIANO) &
 YOUNG UCK KIM (VIOLIN)Thurs., Oct. 20
 MONTREAL SYMPHONY ORCHESTRA.....Tues., Jan. 24
 THE BORODIN TRIO (violin, piano & cello) ... Fri., Feb. 10
 STEPHEN HOUGH, piano Fri., April 7

Performance Series:

CARLA BLEY SEXTET (7:30 p.m.).....Fri., Oct. 7
 MURRAY LOUIS DANCE COMPANY &
 THE DAVE BRUBECK QUARTETFri., Nov. 4
 NEGRO ENSEMBLE COMPANY:
 FROM THE MISSISSIPPI DELTASat., Feb. 4
 RICHARD STOLTZMAN & FRIENDS:
 NEW YORK COUNTERPOINTSat., Feb 25
 KODO: ONE EARTH TOURWed., Mar 1

Travel Adventure Film Series:

GLORIES OF THE ALPSOct. 24, 25, 26
 PEERLESS NEW ZEALANDNov. 14, 15, 16
 BELGIUM TODAYDec. 5, 6, 7
 CHINA—THE DRAGON AWAKESJan. 30, 31, Feb. 1
 CANADA'S NATIONAL PARKSFeb. 20, 21, 22
 UNKNOWN AFRICAApril 3, 4, 5

All performances begin at 8 p.m. except for the Carla Bley Sextet.

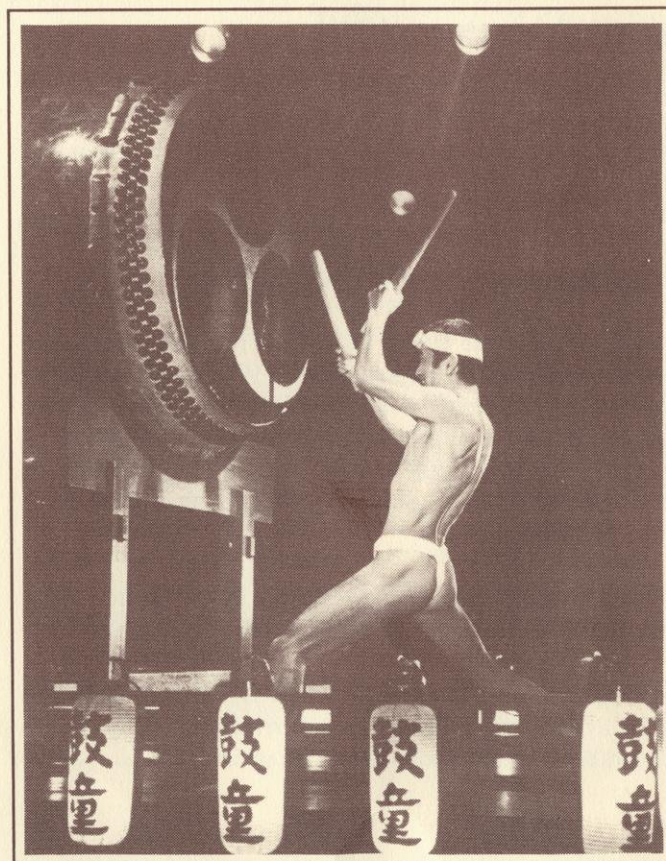
If you choose not to become a Union Theater subscriber, but wish to purchase tickets to a few events, you are encouraged to order as soon as possible. Only tickets for events occurring between September and December 1988 may be purchased on an individual basis at this time.

It's up to you:

Wisconsin Union Theater Endowment Fund

With a little over a year to go and a \$500,000 goal to reach by December 1, 1988, the Endowment Fund effort depends on Union members to contribute. Large or small, your contributions will determine the success of this campaign to maintain affordable ticket prices AND program excellence. We still need \$130,000 to achieve our goal and every penny will count in the last mile climb.

To contribute to the Wisconsin Union Theater Program Endowment fund, contact the University of Wisconsin Foundation, 150 East Gilman St., P.O. Box 8860, Madison, WI 53708-8860 (new address). You can contact UW Foundation at 608-263-4545 (same number) or the Wisconsin Union at 608-262-2263 for pledge cards or further information. All contributors will be acknowledged in Theater programs throughout the 50th anniversary season.



Art

The Wisconsin Union has planned a variety of art exhibitions this fall to please everyone's artistic interests. Stop in and enjoy the creative work of others.

Gallery Hours:

Class of '25 (Memorial Union)	10 a.m. - 8 p.m.
Main Gallery (Memorial Union)	10 a.m. - 8 p.m.
Theater Lobby (Memorial Union)	Building Hours
Susan B. Anthony (Union South)	10 a.m. - 6 p.m.

Aug 26-Sept. 26 *Frances Myers*

Theater Lobby

Prints based on architecture of Frank Lloyd Wright -

Sept. 1-Oct. 9 *Drop-A-Line*

Susan B. Anthony

Postcards from summer sent to the Wisconsin Union by UW-Mad City Travelers

Sept. 2-Oct. 2 *Artists of Taliesin*

Main Gallery & Class of 1925

Two & three dimensional art by Cornelia Brierly, Heloise Crista, Susan Jacobs Lockart and Ling Po.

Sept. 30-Oct. 30 *Dickey Lee Stafford*

Theater Lobby

Handmade paper, cut paper, pencil by Madison Designer Sculptural.

Oct. 7-Nov. 7 *Dan Peterman*

Main Gallery

Sculptural installation.

Oct. 7-Nov. 7 *Asian Art Exhibition*

Class of 1925

Three-dimensional works.

Oct. 14-Nov. 13 *Mixed Media*

Susan B. Anthony

UW-Madison Graduate student exhibition.

Nov. 4-Dec. 4 *Catch-Cause, Caution-Cease*

Theater Gallery

Handmade paper works by Jackie Hefty, Baraboo.

Nov. 10-Dec. 11 *Camera Concepts*

Main Gallery

40th Annual Photography Competition open to all UW-Madison students.

Nov. 10-Dec. 11 *Aping Humans*

Class of 1925

Painted, ceramic sculpture by Bill Grover, Madison.

Nov. 10 *Reception*

Class of 1925

Camera Concepts, Bill Grover, 7-9 p.m.

Dec. 9-Jan. 22 *Bob Miller*

Theater Lobby

New work Batik paintings by South Dakota Artist.

Dec. 16-Jan. 15 *Large Works*

Main Gallery & Class of 1925

Large works highlighted from the Wisconsin Union Collection.

Music

These programs run from Aug. 31 through Dec. 14 with the exception of Nov. 23 - 27, Thanksgiving week. MU indicates that a program occurs at Memorial Union; US indicates Union South.

Sundays

Bagels 'n Bach - classical music during brunch, 9:30-11 a.m., Lakefront Cafeteria, MU.

Tuesdays

Mornings with Mozart - classical music in the mornings, 9-10:30 a.m., Lakefront Cafeteria, MU.

Wednesdays

Jazz Juggernaut - afternoon jazz, 3:30-5 p.m., Rathskeller, MU.

Open Mic - talented amateurs take the stage, 8-10:30 p.m., Stiftskeller, MU.

Thursdays

Diverse Music - 4 p.m., Red Oak Grill, US.

Cookin' Music - folk tunes 9p.m.-midnight, Stiftskeller, MU.

Fridays

TGIF I - music to start the weekend, 4p.m.-6p.m., Rathskeller, MU.

TGIF II - the weekend music continues, 9p.m.-midnight, Rathskeller, MU.

Saturdays

Saturday Night Special - music and dancing, 9p.m.-midnight, Rathskeller, MU.

Movie Series

Movie Time

Fri/Sat/Sun, Fredric March Play Circle
Memorial Union, Admission-\$2.50

9/9-11	<i>Broadcast News</i>	7 & 9:30 p.m.
9/16-18	<i>Moonstruck</i>	7 & 9:15 p.m.
9/23,25	<i>Jean De Florette</i>	7 & 9:30 p.m. (only 7 on Sun.)
9/24,25	<i>Manon of the Spring</i>	7 & 9:30 p.m. (only 9:30 on Sun.)
9/30-10/2	<i>Shool Daze</i>	7 & 9:15 p.m.
10/7-9	<i>Bull Durham</i>	7 & 9:15 p.m.
10/14-16	<i>Hairspray</i>	7 & 9 p.m.
10/21-23	<i>Tampopo</i>	7 & 9:15 p.m.
10/28-30	<i>Barfly</i>	7 & 9:15 p.m.
11/4-6	<i>Manchurian Candidate</i>	7 & 9:30 p.m.
11/11-13	<i>The Unbearable Lightness of Being</i>	6 & 9:15 p.m.
11/18-20	<i>Colors</i>	7 & 9:30 p.m.
12/2-4	<i>Sammy & Rosie Get Laid</i>	7 & 9:15 p.m.
12/9-11	<i>The Last Emperor</i>	6 & 9:15 p.m.

Lakeside Cinema

Tuesdays, 8 p.m.,
Rathskeller, Memorial Union,
Admission - FREE!

8/30	<i>Airplane</i>
9/6	<i>Five Easy Pieces</i>
9/13	<i>Repo Man</i>
9/20	<i>The Day the Earth Stood Still</i>
9/27	<i>The Producers</i>
10/4	<i>The Natural</i>
10/11	<i>Polyester</i>
10/18	<i>Something Wild</i>
10/25	<i>The Blob</i>
11/1	<i>Blue Velvet</i>
11/8	<i>All the Presidents Men</i>
11/15	<i>Sunset Blvd</i>
11/22	<i>Breathless</i>
11/29	<i>Chariots of Fire</i>
12/6	<i>It Happened One Night</i>
12/13	<i>Chitty Chitty Bang Bang</i>

Starlight Cinema

Thursdays, 8 p.m.,
Room 109, Union South
Admission - FREE!

9/1	<i>Man Facing Southeast</i>
9/8	<i>Best Animation of the 80's</i>
9/15	<i>Street of Crocodiles/ Nocturna Artificiala</i>
9/22	<i>Hell in the Pacific</i>
9/29	<i>Emitai</i>
10/6	<i>Oblomov</i>
10/13	<i>Company Limited</i>
10/20	<i>The Funeral</i>
10/27	<i>The Haunting</i>
11/3	<i>"Z"</i>
11/10	<i>The Killing</i>
11/17	<i>Elevator to the Gallows</i>
12/1	<i>The Hit</i>
12/8	<i>Point Blank</i>




WISCONSIN UNION DIRECTORY

Catering	MU 262-7819 US 263-2561
Craftshop	262-1282
Games Desk	MU 262-1330 US 263-2514
Hoofers	262-1630
Hotel	MU 262-1583 US 263-2600
Information Desk	MU 262-1331/ 262-2511 US 263-2600
Membership	262-2263
Mini-Courses	262-3156/ 262-5771
Outdoor Rentals	262-7351
Room Reservations	MU 262-2511 US 263-2543
Theater Box Office	262-2201
Travel Center	262-6200
Video Break	262-1245
Union Retail Store Corner Store-US	263-3960

Memorial Union
800 Langdon St.,
Madison WI 53706-1495

Union South
227 N. Randall Ave.,
Madison, WI 53715-2236

Editors: Linda Bishop
Mary Jaskolski
Production: Bill Hamilton

 THE WISCONSIN UNION

University of Wisconsin-Madison
Memorial Union, 800 Langdon St.
Madison, WI 53706-1495

Non-Profit Org.
U.S. Postage
PAID
Madison, Wisconsin
Permit No. 84