



# LIBRARIES

UNIVERSITY OF WISCONSIN-MADISON

## **Report of the board of commissioners of the school and university lands. Madison, Wisconsin, Jan. 1, 1851. 1851**

Wisconsin. Commissioners of the Public Lands  
Madison, Wisconsin: R. B. Wentworth, Public Printer, 1851

<https://digital.library.wisc.edu/1711.dl/NZQIOFKA2HJFR9D>

Based on date of publication, this material is presumed to be in the public domain.

For information on re-use, see  
<http://digital.library.wisc.edu/1711.dl/Copyright>

The libraries provide public access to a wide range of material, including online exhibits, digitized collections, archival finding aids, our catalog, online articles, and a growing range of materials in many media.

When possible, we provide rights information in catalog records, finding aids, and other metadata that accompanies collections or items. However, it is always the user's obligation to evaluate copyright and rights issues in light of their own use.

59033  
2002

1<sup>st</sup> **R E P O R T**

**OF THE BOARD OF COMMISSIONERS**

**OF THE**

**SCHOOL AND UNIVERSITY LANDS.**

**JANUARY 1, 1851.**

*for 1850.*

**State Historical Society  
OF WISCONSIN.**

**MADISON, - WIS.**

028

# 1<sup>st</sup> REPORT

OF THE

## BOARD OF COMMISSIONERS

OF THE

## SCHOOL AND UNIVERSITY LANDS.

---

MADISON, WISCONSIN, JAN. 1, 1851.

---

R. B. WENTWORTH, PUBLIC PRINTER.

MADISON, 1851.



REPORT

BOARD OF COMMISSIONERS

SCHOOL AND UNIVERSITY LANDS

MADISON, WISCONSIN, JAN. 1, 1881.

R. H. WESTWORTH, PUBLIC PRINTER.

MADISON, 1881.

W1  
A  
Lan  
11  
1850  
-1864

# REPORT.

*Office of the Commissioners of the  
School and University Lands,*  
MADISON, January 1st, 1851.

To His Excellency, NELSON DEWEY, Governor of the State of Wisconsin :

By section 7 of article 10 of the constitution of the State of Wisconsin, the Secretary of State, Treasurer and Attorney General are made a board of commissioners for the sale of the school and university lands, and for the investment of the monies arising therefrom.

The legislature at its annual session in 1849, passed an act entitled "An act in relation to the school and university lands, the sale and superintendence thereof, and the powers and duties of commissioners of said lands"—which said act was approved April 2d, 1849.

By the 56th section of said act it is made the duty of said commissioners, to report annually to the legislature, of their official proceedings under its provisions.

By a subsequent act, approved January 28th 1850, it was made the duty of the commissioners to make said report to the legislature through the executive.

In compliance with the provisions of the constitution and the act above referred to, we have the honor to submit the following

## REPORT:

The commissioners, agreeably to the provisions of the act, commenced the sale of the school and university lands, and the investment of the proceeds arising therefrom, in the county of Waukesha, on the first day of May 1850, and continued the sales without intermission, until the 13th day of November, 1850—during which period all the school and university lands in the following counties, were offered for sale, to wit: Waukesha, Walworth, Kenosha, Racine, Milwaukee, Washington, Sheboygan, Fond du Lac, Marquette, Columbia, Dodge, Jefferson, Rock and Dane.

Accompanying this report will be found abstracts by which it fully appears what quantity of land has been sold or leased, the amount received therefor; the amount of money received, the amount of money loaned in each county, and on what terms, and the amount of purchase money unpaid.

By the accompanying abstracts marked A and B, it will appear that the total quantity of school lands in all the counties in which lands have been offered by the commissioners is 148,021 44/100 acres.

Which was appraised at the sum of \$682,044 84

Of which there has been sold by the commissioners 89,757 70/100 acres, for the sum of \$444,265 19

Being an advance on the appraisal, of \$24,323 69

Leaving unsold of the lands offered, 58,263 30/100 acres, which are appraised at \$262,103 34

The total amount of principal paid down on said sales is \$57,617 38

Leaving the total amount of principal unpaid, \$386,539 87

The total amount of interest paid to 1st Jan'y 1851, on the unpaid principal, is \$11,830 05

And the amount of interest paid as aforesaid, in advance for the year 1851, is \$1,078 50

The amount received from the U. S. Treasury, as five per cent on the sales of government lands, is \$22,537 56

Which amount has been loaned to the state university, and interest received thereon, to the amount of \$1,577 63

The total amount received from all other sources, belonging to the school fund, is \$343 09

Making a sum total of principal for 1850, of \$467,057 90

From which should be deducted amount paid for appraisal of lands, \$2,466 46

Leaving a balance of \$464,571 44

The total amount of money received for lands sold, and loaned by the commissioners in 1850, is \$57,453 64

Upon which sum interest in advance was received to the amount of \$4,075 05

To which should be added the amount of interest received on loan to university, \$577 63

Together with amount of interest paid on balance of principal to Jan. 1 1851, \$11,830 05

# Abstract of sales of School Lands by Commissioners in 1850.

Section.	Whole No. of Acres.	Appraised value of Whole.	Number of Acres unsold.	Appraised value of unsold.	Number of Acres sold.	Appraised value of lands sold.	Amount sold for.	Amount of Principal received.	Amount of interest rec'd.	Amount unpaid on sales, and drawing 7 per cent. interest.	REMARKS.
16	640	1218 24									
"	640	2668 24			640	1218 24	1431 98	463 75	43 05	968 28	
"	640	2768 24			640	2668 24	3433 28	685 86	128 19	2747 42	
"	640-98	2373 77			640	2768 24	2770 10	621 50	100 64	2148 00	
"	588-93	640 61			640 98	2373 77	2509 03	468 18	97 17	2040 85	
"	640	2138 24			588 93	640 61	714 77	89 23	32 81	625 54	
"	640	6358 02	90	802 37	640	2138 24	2491 12	343 10	100 39	2148 02	
"	640	3098 24			550	6555 65	6060 00	809 69	238 01	6190 81	
"	509-88	3079 21			640	3098 24	3812 12	775 22	141 28	8036 90	
"	511-87	1384 29			509 88	3079 21	3434 73	799 44	123 71	2635 29	
"	640	1858 24			511 87	1384 29	1384 29	140 29	68 08	1244 00	
"	640	3198 44			640	1858 24	3347 14	400 67	134 71	2856 27	
"	638-90	1444 92			640	3198 44	4104 12	1257 12	132 92	2847 00	
"	500-14	2027 88			638 90	1444 92	1453 78	2207 95	53 00	1149 82	
"	640	2108 24			500 14	2027 88	2194 10	229 16	89 66	1927 47	
"	640	2518 24			640	2108 24	2552 10	399 16	86 89	1964 94	
	9790-70	38,883 06	90	802 37	9700 70	38080 69	43900 61	6217 01	1063 39	55683 60	
16	640-68	3764 90	120-8	724 39	520 60	3040 51	3040 51	335 29	95 75	2705 23	
do	632-24	5582 34	118 1	597 33	514 20	2985 01	2985 01	303 01	117 96	2682 00	
do	639-52	2670 38	401 78	1544 58	237 74	1125 86	1125 86	113 20	44 46	1012 60	
do	633 16	4161 94	196-62	1740 46	436 54	2451 46	2477 12	251 12	92 03	2226 00	
do	638-85	5020 79	459-25	3617 67	179 60	1403 12	1403 12	176 12	48 04	1227 00	
do	651-52	6305 93	79-43	767 13	572 9	5548 60	5558 55	563 90	214 84	4994 65	
do	631-58	5693 12	78-61	709 99	552 97	2983 13	2993 13	413 13	108 89	2580 00	
do	639-91	4358 34			639 91	5558 34	5604 59	840 59	201 83	4764 00	
do	635-77	5578 92	615-77	5417 67	20	161 25	161 25	16 25	4 73	145 00	
do	640	4761 35	220	1807 60	420	2953 75	2953 75	396 75	97 75	2557 00	
do	640	3260 00	380	2291 25	280	998 75	998 75	67 75	37 77	871 00	
do	640	5666 13	280	3130 00	380	2536 13	2536 13	561 13	87 14	1985 00	
do	638-51	2387 02			638 51	2387 02	2387 02	271 02	91 44	2116 00	
do	634-55	2251 06	90	8 25	633 65	2242 81	2313 06	323 06	87 65	1990 00	
do	640	5820 00	520	5016 25	120	803 75	803 75	80 75	31 74	723 00	
do	644	3315 59			544	3315 59	3917 93	610 84	182 49	3007 09	
	10118-29	67597 86	3450-48	27332 57	6667 81	40265 29	40929 47	5343 91	1404 44	35585 56	



# Abstract of sales of School Lands by Commissioners in 1850.

COUNTY.	Section.	Whole No. of Acres.	Appraised value of Whole.	Number of Acres unsold.	Appraised value of unsold.	Number of Acres sold.	Appraised value of lands sold.	Amount sold for.	Amount of Principal received.	Amount of interest rec'd.	Amount unpaid on sales, and drawing 7 per cent. interest.	REMARKS.
Waukesha.	5 17 16	640	1218 24			640	1218 24	1431 98	463 75	43 05	968 23	
	5 18 "	640	2668 24			640	2668 24	3433 28	685 86	128 19	2747 42	
	5 19 "	640	2768 24			640	2768 24	2770 10	621 50	100 64	2143 60	
	5 20 "	640-98	2373 77			640 98	2373 77	2509 03	408 18	97 17	2040 85	
	6 17 "	588-93	640 61			588 93	640 61	714 77	89 23	32 81	625 54	
	6 18 "	640	2138 24			640	2138 24	2491 12	343 10	100 39	2148 02	
	6 19 "	640	6358 02	90	802 37	550	5555 65	6060 00	809 69	238 01	5190 81	
	6 20 "	640	3098 24			640	3098 24	3812 12	775 22	141 28	3036 90	
	7 17 "	509-88	3079 21			509 88	3079 21	3434 73	799 44	123 71	2635 29	
	7 18 "	511-87	1384 29			511 87	1384 29	1384 29	140 29	68 08	1244 00	
	7 19 "	640	1858 24			640	1858 24	3347 14	490 87	134 71	2856 27	
	7 20 "	640	3198 44			640	3198 44	4104 12	1257 12	132 92	2847 00	
	8 17 "	638-90	1444 92			638 90	1444 92	1453 78	303 96	63 00	1149 82	
	8 18 "	500-14	2027 88			500 14	2027 88	2207 95	280 48	89 65	1927 47	
	8 19 "	640	2108 24			640	2108 24	2194 10	229 16	86 89	1964 94	
	8 20 "	640	2518 24			640	2518 24	2552 10	399 16	102 89	2152 94	
		9790-70	38,883 06	90	802 37	9700 70	38080 69	43900 61	8217 01	1063 39	55683 80	
Walworth.	1 15 16	640-68	3764 90	120-8	724 39	520 60	3040 51	3040 51	335 29	95 75	2705 23	
	1 16 do	632-24	3582 34	118 1	597 33	514 20	2985 01	2985 01	303 01	117 96	2682 00	
	1 17 do	639-52	2670 38	401-78	1544 58	237 74	1125 89	1125 80	113 20	44 40	1012 60	
	1 18 do	633 16	4161 94	190-62	1710 46	436 54	2451 46	2477 12	251 12	42 03	2226 00	
	2 15 do	638-65	5020 79	450-25	3617 67	179 60	1403 12	1403 12	176 12	49 04	1227 00	
	2 16 do	651-52	6305 93	79-43	757 13	572 9	5548 80	5558 55	563 90	214 94	4994 65	
	2 17 do	631-68	3698 12	78-61	709 99	552 97	2983 13	2993 13	413 13	108 89	2580 00	
	2 18 do	639-01	4858 34			639 91	5358 34	5604 59	840 59	201 83	4704 00	
	3 15 do	635-77	5578 92	615-77	5417 67	20	161 25	161 25	16 25	4 73	145 00	
	3 16 do	640	4761 35	220	1807 60	420	2953 75	2953 75	396 75	67 58	2557 00	
	3 17 do	640	3220 00	360	2291 25	280	968 75	968 75	97 75	37 77	871 00	
	3 18 do	640	5666 13	280	8130 00	380	2536 13	2536 13	561 13	87 14	1985 00	
	4 15 do	638-51	2387 02			638 51	2387 02	2387 02	271 02	91 44	2116 00	
	4 16 do	634-55	2251 06	90	8 25	638 65	2242 81	2318 06	323 06	87 65	1990 00	
	4 17 do	640	5220 00	520	5016 25	120	803 75	803 75	80 75	31 74	723 00	
	4 18 do	641	3815 59			544	3315 59	3617 93	610 84	132 40	3007 09	
		10118-29	67597 86	3450-48	27332 57	6687 81	40265 29	40929 47	5343 91	1404 44	35585 56	
Kenosha.	1 10 16	636-68	3740 00			636 86	3760 00	4042 50	540 50	147 37	3493 00	
	1 11 do	646-93	5220 00	198-18	1624 00	438 75	3436 00	2502 00	699 00	75 98	1803 00	
	1 12 do	637-4	5880 00	39-56	382 50	567 48	5517 50	5535 00	875 00	194 62	4690 00	
	1 13 do	634	3980 00			634	3980 00	4264 00	456 00	160 79	3308 00	
	2 10 do	632-34	4370 00	395-55	2755 00	236 79	1615 00	1615 00	163 00	60 51	1452 00	
	2 11 do	643-19	3560 00	160-55	950 00	482 64	2610 00	2610 00	272 00	97 77	2338 00	
	2 12 do	646-55	4920 00	80-31	605 00	566 24	4515 00	4733 00	475 50	179 36	4257 50	
		4376 91	32729 00	874-15	6496 50	3502 76	25233 50	25301 50	3490 00	916 40	21611 50	
Racine.	2 10 16	629-32	2900 00	117-61	807 50	511 71	2592 50	2592 50	282 50	95 16	2330 00	
	3 10 do	635-5	3070 00			635 5	3070 00	3667 50	570 50	126 48	3097 00	
	3 11 do	633-85	3623 51			633 85	3623 51	3775 26	434 26	136 41	3341 00	
	3 12 do	640	8720 08			640	3720 08	3826 00	385 00	140 47	3440 00	
	4 10 do	628-25	6277 00			628 25	6277 00	6642 00	668 00	243 66	5974 00	
	4 11 do	644-54	2650 00	201-46	1392 50	443 8	1257 50	1257 50	128 50	46 09	1129 00	
	4 12 do	694	777 00			594	777 00	1068 00	115 00	38 94	953 00	
	4 13 do	640	3940 00			640	3940 00	3640 00	396 00	144 73	3544 00	
	4 14 do	640	4270 13			640	4270 13	4276 13	435 13	162 78	3841 00	
	4 15 do	138 89	1123 12			138 89	1123 12	1123 12	136 12	40 31	987 00	
	4 City lots	113 00				113 00	588 00	588 00	53 00	19 67	485 00	
		1823-00	35099 84	310-7	1700 00	5504 83	30709 84	32705 01	3584 01	1184 90	29121 00	
Milwaukee.	5 21 16	640	2613 28			640	2613 28	3140 05	322 98	107 65	2618 00	
	5 22 do	640	6773 35	400	5789 97	240	8983 98	8983 98	496 98	127 43	3487 00	
	7 21 do	640	10631 12			640	10631 12	10631 12	2005 12	324 94	8626 00	
	7 22 do	640	6813 33	280	3123 34	360	3689 99	3786 04	692 66	107 49	3094 00	
	6 23 do	609-57	37554 25	542 10	31857 00	67 41	5677 25	5677 25	572 24	179 83	5105 01	
	6 24 do	639-90	15683 02			639 90	15683 02	15683 02	2105 02	496 49	13578 00	
	8 23 do	536-19	2155 64			536 19	2155 64	2229 02	239 83	75 67	1989 19	
	8 24 do	640	3990 00			640	3880 00	3938 50	597 50	123 37	3341 00	
		4985 66	80083 99	1222 16	40770 31	3763 50	48314 28	49070 53	7023 3	1642 77	42048 20	
Rock.	1 10 16	640	2336 32	480	1739 92	160	646 40	646 40	67 40	19 24	579 00	
	1 11 do	640	4145 00			640	4145 00					
	1 12 do	640	4465 60	600	4144 00	40	321 00	321 00	32 00	9 54	269 00	
	1 13 do	640	5895 60	566	5212 40	80	683 20	683 20	60 20	20 27	614 00	
	1 14 do	640	4825 00	480	3619 20	160	1206 40	1206 40	122 40	35 76	1084 00	
	2 10 do	640	2516 80	280	1100 80	360	1410 00	1410 00	144 00	41 46	1272 00	
	2 11 do	640	1245 00			640	1245 60	1245 60	131 60	36 54	1114 00	
	2 12 do	640	3625 60			640	3625 60	4804 40	485 40	141 68	4319 00	
	2 13 do	640	4385 60	440	2977 60	200	1408 00	1408 00	143 00	41 50	1258 00	
	3 10 do	640	2405 60	160	546 40	480	3165 60	3178 00	325 00	83 02	2853 00	
	3 11 do	640	2905 60			640	1859 20	1859 20	192 20	54 83	1667 00	
	3 12 do	640	4355 60			640	2905 60	2905 60	297 60	85 84	2608 00	
	3 13 do	640	5693 60	200	2156 80	440	4355 60	5067 80	511 80	149 50	4556 00	
	3 14 do	640	2476 84	620	2235 16	20	8536 80	8536 80	359 80	104 00	3177 00	
	4 10 do	640	2895 60	249	969 60	400	241 68	241 68	61 68	5 92	180 00	
	4 11 do	640	2625 60			640	1926 00	2013 20	376 20	51 95	1637 00	
	4 12 do	640	6040 70			640	2625 60	2625 60	279 60	80 40	2346 00	
	4 13 do	640	8236 80	400	2288 80	180	6040 70	8136 80	864 80	238 84	7272 00</	

# Abstract of sales of School Lands by Commissioners in 1850--Continued.

COUNTY.	Town.	Range.	Section.	Whole No. of Acres.	Appraised value of Whole.	Number of Acres unsold.	Appraised value of unsold.	Number of Acres sold.	Appraised value of lands sold.	Amount sold for.	Amount of Principal received.	Amount of interest rec'd.	Amount unpaid on sales, and drawing 7 per cent. interest.	REMARKS.
Marquette.	14	10	16	640	1862 00									
	14	11	do	640	1102 00	240	512 00	400	1350 00	1350 00	143 00	20 31	1207 00	
	14	12	do	640	1102 00	200	290 00	440	902 00	902 00	99 00	12 49	803 00	
	14	13	do	640	1072 23	234	553 36	394 20	1118 87	1118 87	344 87	33 36	774 00	
	15	10	do	640	2394 70	120	407 00	520	1987 70	2201 50	229 50	13 61	1972 00	
	15	12	do	462 44	908 02			462 44	908 02	908 02	101 02	7 50	445 00	
	15	13	do	629	1202 00	429	704 50	200	497 50	2465 93	256 93	36 96	2209 00	
	16	13	do	627 95	2247 06			627 95	2247 06	2465 93	248 73	13 55	800 00	
	16	12	do	631	1386 89	236 25	338 16	394 75	1048 73	1048 73	460 30	131 02	4149 20	
	17	13	do	645 75	4465 59	124	435 10	521 75	4030 40	1878 79	197 79	28 52	1681 00	
	17	13	do	495 00	1878 79	Not rep 4 lots.		495 00						
				6046 94	19209 28	1587 25	3240 12	4459 69	15069 16	6986 84	2139 64	310 90	14847 20	
Dane.	5	6	16	640	1283 92	640	1283 92							
	5	7	do	640	1593 92	640	1593 92							
	5	8	do	640	1673 92	640	1673 92							
	5	9	do	640	1793 92	400	948 70	240	845 22	865 22	89 22	7 02	796 00	
	5	10	do	640	2253 92	400	1349 57	240	1085 22	1085 22	113 22	8 53	972 00	
	5	11	do	640	2653 92	160	643 48	480	2010 44	2010 44	244 44	14 95	1706 00	
	5	12	do	640	2933 92	240	765 22	400	2168 70	2168 70	224 70	18 07	1944 00	
	6	6	do	640	1673 92	500	1371 28	80	201 74	201 74	21 74	1 70	180 00	
	6	7	do	640	1773 92	640	1773 92							
	6	8	do	640	1993 92	80	261 74	560	1732 18	1732 18	208 18	14 95	1524 00	
	6	9	do	640	3333 92	160	803 48	480	2530 44	2530 44	258 44	18 04	2272 00	
	6	10	do	640	2063 92	640	2063 92							
	6	11	do	640	2463 92	240	985 25	400	1478 70	1478 70	155 70	12 30	1323 00	
	6	12	do	640	1732 18	500	1490 44	80	241 74	241 74	25 74	1 16	216 00	
	7	6	do	640	653 92	640	653 92							
	7	7	do	640	1393 92	640	1393 92							
	7	8	do	640	2113 92	600	1933 05	40	180 87	180 87	18 87	1 51	102 00	
	7	9	do	640	2653 92			640	2653 92	3449 57	354 57	28 78	3095 00	
	7	10	do	640	3253 92			640	3253 92	3955 00	600 00	49 73	3355 00	
	7	11	do	640	1961 92	440	1220 57	200	732 35	732 35	75 35	4 82	656 00	
	8	6	do	640	2764 57	200	704 35	440	2060 22	2060 22	211 22	17 18	1849 00	
	8	7	do	640	1713 92	500	1472 18	80	241 74	241 74	25 74	1 54	216 00	
	8	8	do	640	1273 05	640	1273 05							
	8	9	do	640	2713 92	240	2713 92	400	1317 83	1317 83	246 83	9 28	1071 00	
	8	10	do	640	1813 92	400	1088 70	240	725 22	725 22	77 22	6 00	648 00	
	8	11	do	640	2533 92	600	2373 05	40	100 87	100 87	16 87	1 34	144 00	
	8	12	do	640	3213 92	400	1848 70	240	1365 22	1365 22	141 22	11 38	1224 00	
	9	7	do	640	2033 92	500	1772 18	80	261 74	261 74	27 74	2 17	234 00	
	9	8	do	640	2153 92	520	1831 31	120	322 61	322 61	34 61	2 07	288 00	
	9	9	do	640	1653 92	640	1653 92							
	9	10	do	640	1613 92	640	1613 92							
	9	11	do	640	1913 92	640	1913 92							
	9	12	do	640	2623 92	160	663 48	480	1990 44	1990 44	198 44	16 29	1792 00	
				21720	71847 55	15160	44407 09	6560	27561 33	29098 06	8371 06	248 61	25727 00	
Columbia.	10	7	16	640	1456 24	520	1811 32	120	364 92	364 92	37 92	4 29	327 00	
	10	8	do	640	2346 24	640	2346 24							
	10	9	do	640	946 24	600	904 60	40	41 64	41 64	4 64	49	37 00	
	10	10	do	645 82	1637 99			640 82	1637 99	1637 99	183 79	18 61	1484 00	
	10	11	do	662 32	1392 81	495 4	1040 96	167 28	351 75	351 75	36 75	4 22	315 00	
	10	12	do	638 10	2482 42	558 24	2159 54	79 86	322 88	322 88	32 88	2 20	290 00	
	11	8	do	626 55	1124 04	626 55	1124 04							
	11	9	do	640	1826 24	560	1562 06	80	263 28	263 28	27 28	3 20	236 00	
	11	10	do	640	1382 24	440	874 04	200	508 20	508 20	53 20	6 08	455 00	
	11	11	do	634 16	1538 35	634 16	1538 35							
	11	12	do	633 6	1565 46	119	242 86	514 6	1322 60	1322 60	138 60	15 85	1184 00	
	12	8	do	565 26	1736 19	114 51	447 11	400 75	1299 08	1299 08	135 60	15 52	1155 00	
	12	9	do	393 47	1968 18	393 47	1968 18							
	12	10	do	629 53	3696 48	377 14	2417 24	252 39	1279 24	1307 96	135 96	15 73	1172 00	
	12	11	do	616 7	2240 98	312 4	1132 44	304 3	1108 54	1108 54	114 54	13 34	994 00	
	12	12	do	679 93	2624 00	261 1	879 06	388 92	1744 94	1744 94	179 94	20 20	1565 00	
	13	9	do	136 29	895 94	136 29	895 94							
	13	10	do	618 23	2629 68	618 23	2629 68							
	13	11	do	633 23	1727 78	593 71	1528 54	39 62	199 24	199 24	20 24	2 40	179 00	
	13	12	do	620 39	4928 31	325 63	2920 92	294 70	2007 39	2007 39	210 39	22 53	1797 00	
				11942 41	40235 71	8555 2	27794 02	3587 39	12441 60	12501 82	1311 82	144 66	11190 00	

## RECAPITULATION.

WAUKESHA.	9790 70	38883 06	90	802 37	9700 70	38080 60	43900 61	8217 61	1663 39	35683 60	
WALWORTH.	10208 29	67597 86	3540 48	27332 57	9067 81	40265 29	40929 47	5343 91	1464 44	35685 56	
KENOSHA.	4376 91	32729 00	874 15	7395 50	3502 76	25233 50	25301 50	3490 00	916 40	21811 50	
RACINE.	5823 90	35009 84	319 7	4240 00	5504 83	30709 84	32705 01	3584 01	1184 00	20121 00	
MILWAUKEE.	4985 66	89083 09	1222 16	40769 71	3703 50	48314 28	49070 53	7032 33	1542 77	42038 20	
ROCK.	12800	71549 46	5160	30856 28	7640	40693 18	44779 88	4863 88	1312 23	29916 00	
WASHINGTON.	12647 95	60846 57	7538	32399 72	5109 95	28446 85	28819 72	3487 72	738 04	25332 00	
DODGE.	14918 62	43683 82	3124 54	9646 01	11794 8	34037 81	36903 13	5218 03	817 66	31685 10	
JEFFERSON.	12282 30	32846 16	1633 12	3902 97	8649 18	26943 19	30894 00	3032 00	641 64	26962 00	
SHEBOYGAN.	4440	36085 14	7760	26556 65	1880	6528 49	9581 62	964 67	173 30	8586 95	
FOND DU LAC.	1337 76	42437 40	3000	7125 40	10037 70	35312 00	38448 80	4185 00	660 62	34263 80	
COLUMBIA.	846 94	19209 28	1587 25	3240 12	4459 69	15909 16	16980 84	2180 64	310 00	14847 20	
MARQUETTE.	1142 41	40235 71	8355 2	27794 02	3587 39	12441 60	12501 82	1311 82	144 66	11190 00	
DANE.	2720	71847 55	15160	44286 22	6560	27561 33	29098 06	8371 06	248 61	25727 00	
	A 14921 44	\$682044 84	A 59363 79	\$266447 54	A 88667 65	\$415597 30	\$439920 94	\$57171 08	\$11819 56	\$382749 01	
FOND DU LAC.	D't al's fm Dec 9	O	1100 5			120	403 00	403 00	40 10	1 41	362 90
DANE.	D't ap. val. do	P		434 20		520	2091 31	2091 31	219 31	5 25	1872 00
SHEBOYGAN.						100	308 28	308 28	37 28	1 33	331 00
COLUMBIA.						19 85	100 89	100 89	10 89	29	90 00
WALWORTH.						40	401 25	401 25	40 25	1 25	361 00
WASHINGTON.						200	846 00	846 00	85 00	73	781 00
DODGE.						40 20	133 47	133 47	13 47	23	120 00
TOTAL,	A 14921 44	\$682044 84	A 58263 74	\$262103 34	A 89757 70	\$419941 50	\$444205 19	\$57617 38	\$11830 05	\$386647 81	Additional sales from Dec 9 to 31, inclusive See supplementary report of sales marked B.



# of School Lands by Commissioners in 1850--Continued.

COUNTY.	Range.	Section.	Whole No. of Acres.	Appraised value of Whole.	Number of Acres unsold.	Appraised value of unsold.	Number of Acres sold.	Appraised value of lands sold.	Amount sold for.	Amount of Principal received.	Amount of interest rec'd.	Amount unpaid on sales, and drawing 7 per cent. interest.	REMARKS.	
Washington.	9	18 16	640	3052 80	40	121 20	600	2931 60	2931 60	291 60	75 85	2640 00		
	9	19 do	640	2559 20	120	603 60	520	2255 60	2155 60	237 60	60 78	2018 00		
	9	20 do	640	4720 60	40	321 20	600	4378 00	4399 40	557 40	113 76	3842 00		
	9	21 do	640	4219 20	40	201 20	600	4018 00	4220 40	542 40	108 32	3678 00		
	9	22 do	140	724 80	120	603 60	40	121 20	121 20	12 20	2 09	109 00		
	9	23 17	160	644 80	160	644 80								
	10	18 16	640	3279 20	200	886 00	440	2393 20	2427 00	244 00	64 79	2183 00		
	10	19 do	640	2699 20	640	2699 20								
	10	20 do	640	1299 20	240	327 20	400	972 00	972 00	117 00	20 79	855 00		
	10	21 do	640	2659 20	240	1127 20	400	1532 00	1532 00	154 00	41 53	1378 00		
	10	22 do	640	5040 80	218	2226 70	420	2814 10	2814 10	308 10	74 63	2506 00		
	11	18 do	640	2959 20	640	2959 20								
	11	19 do	640	2819 20	640	2819 20								
	11	20 do	640	2179 20	440	1573 20	200	606 00	606 00	133 00	14 25	473 00		
	11	21 do	640	3149 20	640	3149 20								
	11	22 do	640	5833 72	40	324 62	600	5509 10	5624 37	757 37	141 77	4867 00		
	12	18 do	640	2379 20	640	2379 20								
	12	19 do	640	2259 20	560	2016 80	80	242 40	242 40	24 40	4 01	218 00		
	12	20 do	640	3139 20	640	3139 20								
	12	21 do	640	1839 20	600	1778 00	40	61 20	61 20	6 20	1 05	55 00		
	12	22 do	640	2499 20	640	2499 20								
	12	23 18	169 95	612 45			169 95	612 45	612 45	102 45	13 82	510 00		
			12647 95	60846 57	7538	32399 72	5109 95	28446 85	28819 72	3407	738 04	26382 00		
Bodge.	13	17 16	630 4	2315 41	39 34	160 12	590 70	2155 29	2155 29	233 29	50 68	1922 00		
	9	13 do	640	1251 20	120	119 60	520	1131 60	1131 46	132 60	26 19	999 00		
	9	14 do	108 91	188 47	98 99	85 87	39 92	102 60	102 60	10 60	2 50	92 00		
	9	15 do	637 31	2336 53			637 31	2336 53	2399 80	368 88	53 54	2032 92		
	9	16 do	648 98	1144 53	119 88	148 34	529 10	1573 06	1573 06	349 98	35 23	1223 08		
	9	17 do	635 72	1086 96			635 72	1086 96	1109 16	147 16	26 07	962 00		
	10	13 do	640	2933 20	400	1841 00	240	1097 20	1097 20	113 20	23 44	984 00		
	10	14 do	630 26	1919 82			630 26	1619 80	1982 47	206 47	48 26	1776 00		
	10	15 do	633 6	726 06			633 6	726 06	839 21	106 21	18 13	674 00		
	10	16 do	631 84	2480 11	218 94	923 48	412 96	1556 63	1556 63	142 61	34 04	1414 12		
	10	17 do	644 94	2251 73			644 94	2251 73	2629 98	725 98	61 73	1904 00		
	11	13 do	672 16	717 01	477 12	654 55	195 4	62 46	62 46	9 46	1 40	63 00		
	11	14 do	646 70	1286 90	285 11	685 20	361 59	601 70	601 70	56 09	10 18	545 61		
	11	15 do	655 50	2815 66			655 50	2615 56	2624 21	639 21	53 95	1966 00		
	11	16 do	642 08	1174 37	161 27	424 05	481 41	614 95	614 95	60 95	12 68	548 00		
	11	17 do	639 93	3165 16	439 93	2170 45	200	994 71	994 71	101 71	24 28	893 00		
	12	13 do	435 98	1275 96	113 90	205 26	322 8	1070 70	1070 70	111 70	25 04	959 00		
	12	14 do	635 4	2640 64	396 90	1619 38	238 14	1021 26	1021 26	106 26	23 80	915 00		
	12	15 do	648 51	1372 05			648 50	1872 05	1825 15	191 15	44 63	1684 00		
	12	16 do	244 86	590 94			244 86	590 94	590 94	73 61	15 92	617 38		
	12	17 do	635 45	1718 70	40 28	43 10	595 17	1675 60	1675 60	221 60	80 43	1454 00		
	13	13 do	654 56	1361 68	163 64	186 97	490 92	1174 50	1174 59	122 59	24 01	1082 00		
	13	14 do	629 76	2570 44			629 76	2570 44	2570 44	264 44	61 38	2306 00		
	13	15 do	665 11	2927 15			665 11	2927 15	3814 92	385 92	92 53	3429 00		
	13	16 do	631 32	1927 77	79 24	243 27	552 8	1684 50	1684 50	274 46	20 12	1410 04		
			14918 62	43683 82	3124 54	9511 54	11704 8	34037 81	36003 13	5218 03	617 66	31685 10		
Jefferson.	5	13 16	486 80	1408 53	40	122 30	446 80	1286 23	1446 14	140 14	81 52	1297 00		
	5	14 do	632 80	2808 14			632 80	2808 14	3468 18	501 18	71 07	2967 00		
	5	15 do	640	1316 80			640	1316 80	1546 40	186 40	33 79	1890 00		
	5	16 do	632 16	1918 45	79	152 05	553 16	1768 40	1768 40	182 40	38 52	1684 00		
	6	13 do	655 73	2682 99			655 73	2682 99	2688 93	274 93	58 88	2414 00		
	6	14 do	640	8036 80			640	3036 80	3370 20	504 20	69 60	2666 00		
	6	15 do	640	1086 80	640	1086 80								
	6	16 do	283	812 38	227 50	698 05	55 50	114 33	114 33	12 33	79	102 00		
	7	13 do	637	1786 28	80	64 60	557	1721 68	2226 10	223 10	48 68	2003 00		
	7	14 do	637 80	2475 94			637 80	2475 94	2533 44	256 44	55 34	2377 00		
	7	15 do	651 76	2727 33	205 12	79233	446 64	1935 00	1935 00	197 00	42 21	1738 00		
	7	16 do	640	2026 80			640	2026 80	2026 80	277 80	42 53	1740 00		
	8	13 do	640	906 80	120	126 90	520	779 90	779 90	98 90	18 62	681 00		
	8	14 do	643 27	1967 65	202	617 64	441 27	1350 21	1350 21	137 21	18 22	1213 00		
	8	15 do	640	8236 80			640	3236 80	3236 80	364 80	68 67	2873 00		
	8	16 do	682 48	2647 47	40	242 30	642 48	2405 17	2405 17	598 17	43 50	1809 00		
			10282 30	32846 16	1633 12	3209 97	8649 18	28943 19	30894 00	3032 00	641 64	20062 00		
Shelby.	13	20 16	640	1817 21	520	1000 81	120	316 40	316 40	34 45	6 02	281 95		
	13	21 do	640	1977 05	640	1977 05								
	13	22 do	640	2210 00	640	2210 00								
	13	23 8	120	836 55	120	627 14	40	209 38	209 38	21 38	1 01	188 00		
	14	20 16	640	1360 00	640	1360 00								
	14	21 do	640	3067 51	640	3067 51								
	14	22 do	720	3009 90	640	3009 90								
	14	23 do	640	3259 56	640	3259 56								
	15	20 do	640	1677 51	400	982 08	240	695 43	740 05	76 05	10 12	664 00		
	15	21 do	640	2411 63	80	258 80	560	2123 03	2123 03	225 03	38 60	1826 00		
	15	22 do	640	2483 24	640	2483 24								
	15	23 do	640	5800 70										
	16	20 16	390	997 62	320	997 62	320	997 62	997 62	997 62	112 04	8280 00		
	16	21 do	640	1287 64	640	1287 64								
	16	22 do	640	2175 28	560	1890 80								



# SUPPLEMENTARY REPORT, including sales from Dec. 10 to Jan. 1.

## FOND DU LAC COUNTY.

DATE.	TO WHOM SOLD.	No. of Lot.	Town	R'nge	Sec.	No. of Acres.	Appraised Value.	Amount sold for.	Amount Principal paid.	Amount interest paid.	Total amount Principal due.
Dec. 10.	Samuel O' Hara,	11	16	19	16	40	121 00	121 00	12 00	44	109 00
	do	14	do	do	do	40	121 00	121 00	12 00	44	109 00
12	Nathan Martin,	15	do	do	do	40	161 00	161 00	16 10	53	144 90
						120	403 00	403 00	40 10	1 41	362 90

## DANE COUNTY.

Samuel Baird,	12	9	12	16	40	140 87	140 87	14 87	56	126 00
do	13	do	do	do	do	200 87	200 87	20 87	72	180 00
do	14	do	do	do	do	180 87	180 87	18 87	65	162 00
Jacob Langworthy,	2	5	do	do	do	60 87	60 87	6 87	20	54 00
do	3	do	do	do	do	180 87	180 87	18 87	59	162 00
Sebastin B. Basford.	3	8	8	do	do	160 87	160 87	16 87	47	144 00
do	4	do	do	do	do	140 87	140 87	14 87	41	126 00
John Oleson,	3	5	11	do	do	80 87	80 87	8 87	19	72 00
William Smith,	5	8	12	do	do	200 87	200 87	20 87	35	180 00
Henry J. Jackson,	8	do	do	do	do	200 87	200 87	20 87	35	180 00
do	13	do	do	do	do	200 87	200 87	20 87	35	180 00
J. E. Heinrich & G. E. Reuter	14	7	8	do	do	160 87	160 87	16 87	19	144 00
do	15	do	do	do	do	180 87	180 87	18 87	22	162 00
					520	2691 31	2691 31	219 81	5 25	1872 00

## SHEBOYGAN COUNTY.

Aaron Bender,	7	15	20	16	40	102 30	102 30	10 30	37	92 00
do	8	do	do	do	do	61 38	61 38	6 38	22	55 00
do	9	do	do	do	do	102 30	102 30	10 30	37	92 00
do	10	do	do	do	do	102 30	102 30	10 30	37	92 00
					160	368 28	368 28	37 28	1 33	331 00

## COLUMBIA COUNTY.

John O. Jones,	7	12	12	16	19 85	100 89	100 89	10 89	23	90 00
----------------	---	----	----	----	-------	--------	--------	-------	----	-------

## WALWORTH COUNTY.

James Baird,	1	4	17	16	40	401 25	401 25	40 25	1 25	361 00
--------------	---	---	----	----	----	--------	--------	-------	------	--------

## WASHINGTON COUNTY.

William Foote,	1	12	19	16	40	161 20	161 20	16 20	14	146 00
Jefferson Eggleston,	2	do	do	do	40	161 20	161 20	16 20	14	146 00
Allen Foote,	3	do	do	do	40	161 20	161 20	16 20	14	146 00
do	4	do	do	do	40	161 20	161 20	16 20	14	146 00
Gottlieb Klug, & F. Bartalt,	6	do	do	do	40	201 20	201 20	20 20	17	181 00
					200	846 00	846 00	85 00	73	761 00

## DODGE COUNTY.

Benj. Fuller,	8	11	16	16	40	133 47	133 47	13 47	23	120 00
					1100 85	4344 20	4344 20	446 80	10 49	3897 90

# Statement of Loans made by the Commissioners for the sale of School and University Lands in 1850.

## WAUKESHA COUNTY.

Bernard Burk	300 00
Orson Reed	400
John Kelley, Jr.	100
John Murray	100
Ala. M. Hackley	400
James King	200
Benjamin Hunkins	400
James Broyan	150
Thomas Welch	150
W. D. Babcock	100
Henry Tew	150
Robert Charley	150
George Whitmore	300
Charles Howard	100
Thomas Cole	200
Andrew Snyder	150
Wad Atwater	100
F. A. Sprague, Jr.	450
Asa C. Barnes	200
David Fink	300
Patrick Carbury	150
Bernard Flanagan	100
Jacob H. Kemble	125
Samuel Reed	150
Nathan Warfield	150
Joseph Kay	200
John Finley	300
William Costigan	150
William H. Thomas	490
John D. McDonald	300
George C. Pratt	480
Adam Proudfit	500
Kaw. B. Kelsey	200

\$7785 00

## WASHINGTON COUNTY.

George C. Rossman	500 00
Frederick W. Horn	300
Adolphus Zimmerman	290
Oliver D. Norton	500
Charles H. Larrabee	300
Henry Schmitz	200
William Richards	200
Henry A. Douglass	375
Patrick Toland	500
Ernest A. Ockriling	100

\$3175 00

## WALWORTH COUNTY.

Edwin Brainard	500 00
Archibald Woodward	250
Rufus Cheney	500
Daniel S. Benton	200
George Gale	500
William Pierce	500
Olney Herrington	300
Ebenezer Dayton	300
Thomas W. Miller	300
Jesse Windsor	400
Willard Blanchard	200
Lyman Cowdry	400
William McDougald	300
William H. Moore	166

\$4816 00

## KENOSHA COUNTY.

George Vinton	300 00
Andrew B. Jackson	300
James C. McKesson	241
Benjamin Judd	157
Galusha J. Pease	137
Julius L. Gilbert	250
Haynes French	200
Anson Pierce	200
Robert P. Man	250
Charles Leet	300
Peter Martin	250
Regwell Bourne	122 50

Emma Way	100
Joseph Bishop	100
William O'Brien	160
William B. Castle	110
	\$3207 50

## DODGE COUNTY.

Daniel C. Van Brunt	100 00
Whitman Sayles	300
Almeron Chapman	200
Solomon Juneau	400
Joseph Pothier	150
George W. Green	250
W. Z. P. Blake	100
Dorastus K. Cady	100
Narcisse Juneau	200
Conner Dempsey	150
Hollister M. Wright	100
James Rogers	150
Allen Nickerson	200
Bernard Marmion	100
John Martin	100
George B. Hotchkiss	100
William A. Ives	300
James Hanrahan	100
Reed Parker	300
George H. Beers	150
John Colligan	100
Martin Quick	100
Barber Randall	100
Michael Ames	100

\$3950 00

## RACINE COUNTY.

Maurice L. Ayres	500
Nelson R. Norton	500
James D. Reymert	500
Archibald Cooper	300
Orra Van Vleet	225
Levi Fink	500
John Bush	225
Caleb P. Barnes	500
Delos C. Harrington	200
Jos. Adams	200
John Pearson	200
Jonathan Hulbert	400
Julius Wooster	500
Mathew Mortaff	250
George F. Roberts	500
Alfred Cary	300
Gilbert L. Billings	200
Samuel Steele	300
Levi Blake	200
John W. Carey	500
John Ramsdell	350
Martin Clancy	300
Henry B. Roberts	200
William E. Worden	250
Salmon F. Heath	350
Orlando Seccr	500
Milton Moore	400
Isaac Haight, Jr.	300
Augustus B. Hanchett	200
William L. Utley	300
James M. Titus	300
John Spence	350
Mark Bump	200

\$10800 00

## MILWAUKEE COUNTY.

Henry Dyson	500
Enoch Chase	275
Timothy O'Brien	500
Horace Chase	100
Leonard S. Curtiss	300
John E. Cameron	500
James B. Cross	500
Barzilla Throop	500
Michael Hanrahan	100

Francis Heuschman	300
James Riorden	100
John J. Orton	500
Edward M. Hunter	500
Erastus B. Wolcott	500
William Brown	200
Abram D. Smith	500
Herman Haertell	200

\$6078 00

## ROCK COUNTY.

Alfred P. Blakeslee	300 00
Maxson Hall	125
Franklin Whittaker	300
George R. Atherton	300
Lucius Burnham	225
Thomas Winch	200
Josiah F. Willard	500
Samuel B. Goos	300
Guy Stoughton	250
Ezra Miller	400
John W. Inman	250
David Noggle	500
John A. Brown	250
John A. Brown	150

\$4050 00

## SHEBOYGAN COUNTY.

Horatio N. Smith	500
------------------	-----

\$500 00

## JEFFERSON COUNTY.

James E. Breakenridge	102 14
Samuel Geary	400
Daniel Dobbs	300
Austin Kellogg	350
Charles Rockwell	100
Lyman F. Higbee	150
Kara H. Bingham	100
John T. Haight	400
Enoch G. Darling	200
Alonso Wing	200
Norman Pratt	400
Peter Rogan	400
William T. Butler	300

\$3402 14

## FOND DU LAC COUNTY.

Charles Ribbel	200 00
Henry A. Stewart	100
C. Perry Dunning	100
Harvey Buell	100
Lyman Town	275
George D. Ruggles	350
Daniel D. Trelevan	100
William C. Green	350
Charles Crownhart	250
Lafayette S. Brown	250
Alonso Raymond	150
Madison Kelley	400
H. C. Eggleston	250
Harvey Carter	225
Elisha Bates	225
Erastus W. Drury	350
James M. Hawkins	250
Daniel Wilcox	200

\$4125 00

## MARQUETTE COUNTY.

Asa Kinney	400
Peter H. Fame	200
Thomas Noyes	225
Silas H. Palmer	200
Charles Van Valkenburgh	100
William T. Ward	500
Lucius Mosley	100

\$1775

## COLUMBIA COUNTY.

John P. Converse	200
William T. Bradley	300
Francis G. Randall	175
Frederick F. Farnham	150
	625

## DANE COUNTY.

James Lemon	115
Abram Wolf	100
George B. Smith	300
Justin Pinney	150
Thomas Rathbone	300
Jeremiah Sullivan	130
Hans Pederson	145
Deming Fitch	150
Thomas Arland	100
Mathew Haase	150
Thomas Dally	115
Edward Campbell	350
Andrew Bishop	150
William H. Angell	250
John Myers	100

2055

Wisconsin University	10513 20
do do	12024 27
	26192 50
A. M. Hanchett	300
	\$25492 50

## University Fund Loans.

### WAUKESHA COUNTY.

John Bidwell	400
Truman L. Smith	200
John Dorey	400
	\$1000

### ROCK COUNTY.

Charles Chipman	100
	\$100

## County Recapitulation.

### SCHOOL FUND.

Waukesha	7785
Walworth	3810
Washington	3175
Kenosha	3367 50
Dodge	3850
Racine	10800
Milwaukee	6078
Rock	4080
Jefferson	3402
Fond du Lac	4125
Marquette	1775
Columbia	625
Dane	25492 50

Sheboygan	\$7000 00
	500
	\$7500 00

### UNIVERSITY FUND.

Waukesha	1000
Rock	100
	\$1100



**Statement of Interest received upon money loaned out of the School Fund by the Commissioners in 1850.**

**WAUKESHA COUNTY.**

Bernard Burk	21 00
Orson Reed	28 00
John Kelley, Jr.	7 00
John Murray	7 00
Ala. M. Hackley	28 00
James King	14 00
Benjamin Hunkins	28 00
James Broyan	10 50
Thomas Welch	10 50
W. D. Babcock	7 00
Henry Tew	10 50
Robert Charley	10 50
George Whitmore	21 00
Charles Howard	7 00
Thomas Cole	14 00
Andrew Snyder	10 50
W. A. Atwater	7 00
F. A. Sprague, Jr.	31 50
Asa C. Barnes	14 00
David Fink	21 00
Patrick Carbury	10 50
Bernard Flanagan	7 00
Jacob H. Kemble	8 75
Samuel Reed	10 50
Nathan Warfield	17 50
Joseph Kay	14 00
John Finley	21 00
William Costigan	10 50
William H. Thomas	33 60
John D. McDonald	21 00
George C. Pratt	33 60
Adam Proudft	55 00
Edw. B. Kelsey	14 00

\$544 95

**WASHINGTON COUNTY.**

George C. Rossman	35 00
Frederick W. Horn	21 00
Adolphus Zimmerman	14 00
Oliver D. Norton	35 00
Charles H. Larrabee	21 00
Henry Schmitz	14 01
William Richards	14 00
Henry A. Douglass	26 25
Patrick Toland	35 00
Ernst A. Oekring	7 00

\$222 25

**WALWORTH COUNTY.**

Edwin Brainard	35 00
Archibald Woodward	17 50
Rufus Cheney	35 00
Daniel S. Benton	14 00
George Gale	35 00
William Pierce	21 00
Olney Herrington	21 00
Ebenezer Dayton	21 00
Thomas W. Miller	28 00
Jesse Windsor	14 00
Willard Blanchard	28 00
Lyman Cowdry	21 00
William McDougald	11 62
William H. Moore	

\$337 12

**KENOSHA COUNTY.**

George Vinton	21 00
Andrew B. Jackson	21 00
James C. McKesson	16 87
Benjamin Judd	10 99
Galusha J. Pease	9 59
Julius L. Gilbert	17 50
Haynes French	14 00
Anson Pierce	14 00
Robert P. Man	17 50

Charles Leet	21 00
Peter Martin	24 50
Roswell Bourne	8 58
Emma Way	7 00
Joseph Bishop	7 00
William O'Brien	10 50
William B. Castle	7 70

\$228 73

**DODGE COUNTY.**

Daniel C. Van Brunt	7 00
Whitman Styles	21 00
Almeron Chapman	14 00
Solomon Juneau	28 00
Joseph Potlier	10 50
George W. Green	17 50
W. Z. P. Bake	7 00
Dorastus K. Cady	7 00
Narcisse Juneau	14 00
Conner Dempsey	10 50
Hollister M. Wright	7 00
James Rogers	10 50
Allen Nickerson	14 00
Bernard Marmion	7 00
John Martin	7 00
George B. Hotchkiss	7 00
William A. Ives	21 00
James Haurahan	7 00
Reed Parker	21 00
George H. Beers	10 50
John Colligan	7 00
Martin Quick	7 00
Barber Randall	7 00
Michael Ames	7 00

\$276 50

**RACINE COUNTY.**

Maurice L. Ayres	21 00
Nelson R. Norton	35 00
James D. Reymert	35 00
Archibald Cooper	21 00
Orra Van Vliet	15 75
Levi Fink	35 00
John Bush	15 75
Caleb P. Barnes	35 00
Delos C. Harrington	14 00
Jos. Adams	14 00
John Pearson	14 00
Jonathan Hulburt	28 00
Julius Wooster	35 00
Mathew Mortaff	17 50
George F. Roberts	35 00
Alfred Cary	21 00
Gilbert L. Billings	14 00
Samuel Steele	21 00
Levi Blake	14 00
John W. Carey	35 00
John Ramsdell	24 50
Martin Clancy	21 00
Henry B. Roberts	14 00
William E. Worden	17 50
Salmon F. Heath	24 50
Orlando Secor	35 00
Milton Moore	28 00
Isaac Haight, Jr.	21 00
Augustus B. Hanchett	14 00
William L. Utley	21 00
James M. Titus	21 00
John Spence	24 50
Mark Bump	14 00

\$756 00

**MILWAUKEE COUNTY.**

Henry Dyson	35 00
Emoch Chase	18 46
Timothy O'Brien	35 00

Horace Chase	7 00
Leonard S. Curtiss	21 00
John E. Cameron	25 00
James B. Cross	35 00
Barzilla Throop	35 00
Michael Hanrahan	7 00
Francis Heuschman	21 00
James Riorden	7 00
John J. Orton	35 00
Edward M. Hunter	35 00
Erastus B. Wolcott	35 00
William Brown	14 00
Abram D. Smith	35 00
Herman Haertell	14 00

\$424 46

**ROCK COUNTY.**

Alfred P. Blakeslee	21 00
Maxson Hall	8 75
Franklin Whittaker	21 00
George R. Atherton	21 00
Lucius Burnham	15 75
Thomas Winch	14 00
Josiah F. Willard	35 00
Samuel B. Goss	21 00
Guy Stoughton	17 50
Ezra Miller	28 00
John W. Inman	17 50
David Noggle	35 00
John A. Brown	17 50
John A. Brown	10 50

\$283 50

**SHEBOYGAN COUNTY.**

Horatio N. Smith	35 00
------------------	-------

\$35 00

**JEFFERSON COUNTY.**

James E. Breakenbridge	7 14
Samuel Geary	28 00
Daniel Dobbs	21 00
Austin Kellogg	24 50
Charles Rockwell	7 00
Lyman P. Higbee	10 50
Ezra H. Bingham	7 00
John T. Haight	28 00
Enoch G. Darling	14 00
Alonzo Wing	14 00
Norman Pratt	28 00
Peter Rogan	28 00
William T. Butler	21 00

\$239 14

**FOND DU LAC COUNTY.**

Charles Ribbel	14 00
Henry A. Stewart	7 00
C. Perry Dunning	7 00
Harvey Buell	7 00
Lyman Town	19 25
George D. Ruggles	24 50
Daniel D. Trevelan	7 00
William C. Green	24 50
Charles Crownhart	17 50
Lafayette S. Brown	17 50
Alonzo Raymond	10 50
Nadison Kelley	23 00
H. C. Eggleston	17 50
Harvey Carter	15 75
Elisha Bates	15 75
Erastus W. Drury	24 50
James M. Hawkins	17 50
Daniel Wilcox	14 00

\$283 75

**MARQUETTE COUNTY.**

Ara Kinney	23 00
Peter H. Fame	14 00
Thomas Noyes	15 75
Silas H. Palmer	14 00
Charles Van Valkenburgh	7 00
William T. Ward	35 00
Lucius Mosley	7 00

\$120 75

**COLUMBIA COUNTY.**

John P. Converse	14 00
William T. Bradley	21 00
Francis G. Randall	12 25
Frederick F. Farnham	10 50

57 75

**DANE COUNTY.**

James Lemon	8 05
Abram Wolf	7 00
George B. Smith	21 00
Justin Finney	10 50
Thomas Rathbone	21 00
Jeremiah Sullivan	8 40
Hans Pederson	10 15
Deming Fitch	10 50
Thomas Arland	11 20
Mathew Hause	10 50
Thomas Daily	8 05
Edward Campbell	24 50
Andrew Bishop	10 50
William H. Angell	17 50
John Myers	7 00
A. M. Hanchett	21 00

\$206 85

Wisconsin University 1577 62

**County Recapitulation.**

**SCHOOL FUND.**

Waukesha	541 95
Walworth	537 12
Racine	756 00
Kenosha	228 73
Washington	222 25
Dodge	276 50
Jefferson	238 14
Sheboygan	35 00
Fond du Lac	288 75
Marquette	120 75
Columbia	57 75
Dane	206 85
Milwaukee	424 46
Rock	283 50

\$4020 75

University 1577 62

\$5598 37

Interest received on account of University Fund loans.

**WAUKESHA COUNTY.**

John Bidwell	23 00
Truman L. Smith	14 00
John Dorety	29 40

\$71 40

**ROCK COUNTY.**

Charles Chipman	10 50
-----------------	-------

\$81 90

*Statement of expense incurred by the commissioners in conducting the sales of School Lands  
and paid by the State Treasurer.*

May, 1850—	To cash paid George Hyer for advertising land sales in Waukesha County,	5 00	do	Wisconsin Banner,	do	do	14 00
	To cash paid George Hyer for Blanks,	50 00	do	Washington County Blade,	do	& handbills	13 50
	do do Advertising and Blanks,	41 50	do	Blank Book,			31
	do do Blanks,	5 00	do	Sending to Chicago for stolen chest of Books,			11 50
	do John Casper, for chest for books,	3 25	do	Trans. of books from Rock to Wash. co.			5 00
	do Stationery,	50	August 10, 1850—	do	Volks Freund for advertising sales in Dodge county,		11 00
	do Office rent, fuel. and lights, in Waukesha county,	12 10		do	Wisconsin Banner	do	do
15	do Western Star office, for advertising sales in Walworth county,	6 85		do	State Register,	do	do
	do Same office,	3 85		do	do for Pre-emption Blanks,		10 00
24	do Kenosh Telegraph, advertising land sales in Kenosha county,	6 60	Sept. 1—	do	Trans. books from Milwaukee to Dodge co.		5 00
	do Kenosha Democrat, do do	4 20		do	Express from Madison to Dodge, with Maps,		12 00
	do C. C. Sholes, do do	4 00		do	Watertown Chronicle for advertising sales in Jefferson county,		15 00
	do Transportation of Books, &c. from Walworth to Kenosha county,	4 00		do	State Register	do	do
	do Trunk for Books and Blanks,	2 00		do	Transportation of Books from Dodge to Watertown, and Jefferson,		6 00
	do Office rent, &c. in Kenosha,	9 00		do	Stage, for transportation of Blanks,		50
June 1—	do Langland & Halstead, for advertising sales in Racine county,	3 65		do	Wisconsin Banner, for advertising sales in Jefferson county,		11 00
	do Norwegian paper, do do	5 50	10	do	Volks Freund	do	do
	do E. Bliss, Oaken Bucket do do	5 00		do	Transportation of Books from Jefferson to Sheboygan,		9 42
	do Bunner & Stafford, do do	14 00		do	Sheboygan Mercury for advertising sales in Sheboygan county,		6 60
	do do do for Blanks,	3 00		do	Sheboygan Democrat,	do	do
	do Office Rent,	10 00		do	do Newsbode,	do	do
	do Stationery,	1 00		do	Wisconsin Banner,	do	do
15	do Free Democrat for advertising sale in Milwaukee county,	9 00	20	do	Fountain City, for advertising sale in Fond du Lac county,		10 80
	do Commercial Advertiser, do do	21 00		do	Fond du Lac Journal,	do	do
	do Sentinel & Gazette, do do	21 00		do	Wisconsin Banner,	do	do
	do Wisconsin, do do	21 00		do	Transportation of Books from Sheboygan to Fond du Lac,		2 50
	do Volks Freund, do do	16 00	27	do	Wisconsin Banner, for advertising sale in Marquette county,		3 00
	do Wisconsin Banner, do do	16 00		do	River Times,	do	do
	do Commercial Advertiser, for Loan Blanks,	5 00		do	Transportation of Books from Fond du Lac to Marquette,		1 50
	do do do for 280 quire Duplicate Certificates,	280 00	Oct. 22—	do	River Times, for advertising sale in Columbia,		14 00
	do do do 280 quires Original Certificates,	280 00	Nov. 12—	do	J. L. Enos, for advertising sales in Dane co.		4 00
	do do do 40 do School Mortgages,	40 00		do	Norwegian paper,	do	do
	do Rood & Whittemore for books, stationery and binding,	238 21		do	Wisconsin Express	do	do
July 15—	do Rock County Badger, for advertising sales in Rock county,	9 75		do	Transportation of books, &c. from Marquette co. to Madison,		3 00
	do To same, for Blanks,	5 00		do	Sundry postages and telegraphing,		7 44
	do Janesville Gazette for advertising sales,	8 25		do	57 days work copying plats to replace plat book stolen,		142 50
	do Beloit Journal, do do	8 25		do	Tibbitts, Gordon, & Co. for Iron Trunk for School money. and Clark for rib. work,		16 00
	do Wisconsin Banner, do do	6 00		do	Paid to Jonas Southwick for error in Walworth county sales,		21 13
	do Trans. of Books from Milwaukee to Janesville,	5 00		do	B. Brown, for printing done in 1849,		120 00
28	do Volks Freund, for advertising sales in Washington county,	14 00		Total,			\$1,818 75

## Sales of University Lands in Wisconsin.

COUNTY.	Town	Range	Sec.	No. of Acres	Appraised value.	Amount sold for.	Amount principal paid	Amount interest paid.	Total amount due.
WAUKESHA, WALWORTH, RACINE, ROCK, COLUMBIA, DANE,	7	20	10	560	5615 96	5615 96	1015 96	215 61	4600 00
	3	15	21	39 77	399 02	399 02	40 02	15 71	359 00
	3	21	25	157 99	1583 80	1583 80	161 80	55 03	1422 00
	2, 1 & 2	12, 14, 10	6, 9, & 14	10 lots & 200 A	2200 00	2200 00	234 00	62 95	1966 00
	10	10	6	40	486 56	486 56	50 56	5 85	436 00
	7	11	6	61 22	613 94	613 94	120 94	4 62	493 00
				1058 98	10899 28	10899 28	1623 28	359 77	9276 00





And the amount of interest paid in advance for the year  
1851, 1,078 30

Making a total amount of interest, 18,561 03

The total amount of the sale of the school section in  
Racine, in 1849, was 74,474 72

Upon which there was paid down as principal \$9,511 86

And amount of instalment of principal paid  
in June 1850, 7,200 91 \$16,712 77

Leaving a balance unpaid of principal, 57,761 95

There was loaned of the principal received by the com-  
missioners in 1849, \$8,400 00

And paid at the same time, for appraisal of  
land 951 75 9,451 75

There was received by the commissioners as interest in  
advance on money loaned, \$588 00

Which was apportioned among the several  
counties by the state superintendent for the  
support of common schools in the year  
1850.

There was received from the sale of said section in 1850,  
on account of instalment of principal due, the sum of 7,200 91

For interest on the unpaid balance of the purchase  
money, \$4,469 44

For interest on loans made in 1849, 518 00

To which should be added the amount of interest due in  
June next, on the unpaid balance of purchase  
money, 4,043 34

Also the amount above mentioned as received by com-  
missioners in 1850, 18,561 03

And the amount of interest due in the course of the  
present month in all the counties, on unpaid purchase  
money, 23,022 01

Making a total amount of interest received, \$50,613 82

From which deduct amount above mentioned as interest  
in advance for the year 1851, \$1,078 30



And amount paid by commissioners for books,  
advertising, &c.

1,818 75      2,897 05

Leaving a total balance of interest, of \* 47,716 77

Which will be subject to apportionment by the state superintendent, for the support of common schools during the year 1851.

The total amount of the school fund arising from the lands already sold, will appear from the following figures :

Total amount of lands sold in 1850, \$444,265 19

do do do 1849, 74,474 72

Amount of money received from U. S. Treasury, 22,537 56

do do do from all other sources, 343 09

\$541,620 56

From which should be deducted the total amount paid  
for appraisal of lands, 3,526 15

Total amount of school fund 1st Jan'y 1851, \$538,094 41

Herewith, marked F, will be found an abstract of the sales of university lands, showing the total quantity sold to be 1,058 98-100 acres, for the gross sum of 10,899 28

On which there was paid by purchasers as first installment the sum of \$1,623 28

Showing a balance unpaid of \$9,276 00

Of the amount paid on account of purchase money, the following sum was loaned by the commissioners in pursuance of law \$1,170 00

Amount paid for appraisals, 16 40

Total amount loaned and paid for appraising, \$1,186 40

Leaving in the treasury subject to be loaned, 436 88

Interest to 1st January 1851, was received on the unpaid purchase money, amounting to the sum of 359 77

do on account of loans, 81 90

Total income to 1st January, 1851, \$441 67

\* Of this amount it is probable there will only be subject to apportionment the balance which is left after deducting the interest mentioned as due on the Racine school section; being one year's interest on the sum of \$57,761 95, amounting to the sum of \$1,143 34, which is not due until June 1851.

To the above may be added the amount of interest due during present month on unpaid portion of purchase money,

649 32

Total amount subject to be drawn by state university for the present year,

\$1,090 99

The statement submitted herewith, marked C, exhibits the entire amount of moneys loaned by the commissioners, including the loans to the university, showing the amount loaned in each county, and to whom.

Total amount loaned from the school fund, \$79,991 20  
do do from university fund, 1,170 00

Total amount of interest received, \$81,161 20

The statement marked D, shows the amount of interest received for money loaned, and from whom.

Total amount received in 1850, on loans from school fund, \$5,598 37  
do do do from university fund, 81 90

Total amount of interest received on loans, \$5,680 27

Statement marked F, shows the expenditures made by the commissioners for books, stationery, printing, advertising, &c., in the transaction of the business connected with the sale of land, and loan of the money, amounting to the sum of 1,818 75

In the general statement of receipts on account of the principal of the school fund, there appears to have been received from "all other sources," the sum of \$343 09

Which sum is made up of the following items:  
Amount of fines paid over by county treasurers, 143 09  
do do collected from bidders in pursuance of  
sec. 13, chap. 24, revised statutes, 200 00

\$343 09

In addition to the above, fines have been assessed against bidders, under the provisions of the law above referred to, amounting to \$1,125 00

Which the commissioners have been unable to collect, as yet, owing to want of sufficient time to remain in the places where the same

were assessed. Prompt measures, will, however, be taken at the earliest opportunity to enforce a payment of the same.

While it has been the care of the commissioners that all the title intended to be conveyed by the legislature to the purchasers, has in each instance been fully vested in them, they have so framed the certificates required to be given, (reference being made to duplicates of the same, on file in the office of the secretary of state) as to guard sufficiently the rights and interests of the fund and carry out the intention of the statute.

The commissioners deeming the statute in reference to the form of the mortgage given, merely directory, considered themselves at liberty and believed it to be their duty to adopt a form containing all the substance of the one given in the statute, together with all the covenants usually contained in the safest and most approved forms of mortgages. By so doing they were not imposing any hardship upon the mortgagor, and as far as the form of the mortgage is concerned, placing the security of the loan beyond any contingencies that can arise.

Owing to the imperfect manner in which records were kept in former years after the organization of a territorial government, and the loose way in which all transactions relative to real estate were conducted, and the erection of new counties out of old ones, rendered necessary by the increase of population, the neglect of the new counties to transcribe to their books records properly belonging there, rendered the loaning of a large amount of money in small sums exceedingly vexatious and somewhat hazardous.

The 79th section of the act referred to, requires the person applying for a loan, among other things, to produce and file with the commissioners the certificate of the clerk of the circuit court and register of deeds of the county in which the lands were situated, showing that there was no incumbrance, &c., upon the lands offered as security.

Had the commissioners been satisfied merely to comply with the letter of the statute and require simply the certificate of the said officers of the county in which the land was located, the security in many instances would have been imperfect, and in some cases entirely worthless. -We would therefore suggest the propriety of so amending the law as to require the person applying for a loan, to produce certificates from the proper officers of every county where a lien upon his land might exist.

The commissioners in every instance, where a loan of the school fund has been made, have required all the evidence necessary in their judgment to be presented to them, prior to the loan; without restricting themselves in cases where any doubt could exist to the requirements of the statute, and it affords them great pleasure to state that in every instance they have required and obtained the most ample security for the re-payment of the sum borrowed.

By section 10, a discretionary power is vested in the commissioners, relative to the amount of the percentage to be paid down at the time of the sale, authorizing them to demand and receive upon the sale any amount in their discretion, ranging from 10 to 75 per cent of the purchase money.

The commissioners considered it their duty, under this section, in each instance to receive as small a percentage as they deemed prudent to secure the permanency of the sale; believing that the land itself furnished as perfect security for the balance left unpaid as could be otherwise obtained, thus diminishing the expense of securing the fund against loss, and at the same time extending to the purchaser a long credit at a moderate rate of interest, thereby increasing the number of sales, at enhanced prices.

By the provisions of the act before referred to, authorizing the sale of the school and university lands, the pre-emption right to purchase certain portions of said lands at their appraised value, was secured to all persons who had brought themselves within the provisions of that portion of the act referring to pre-emptions.

The legislature at its last annual session passed an amendatory act establishing ten dollars per acre as the minimum price of the university lands; the appraised value of said lands being much less in most instances under the old act than the minimum price fixed by the amendatory act.

It frequently occurred during the sales in the different counties that applications were made for pre-emptions under the old act, by persons who had entered upon the land prior to the passage of the act amending the same; and the question presented to the commissioners was, whether the person who had entered upon the land and claimed a pre-emption by virtue of his entry under the old act, was entitled to pre-empt the land upon the payment of the amount at which the same was originally appraised; or whether the minimum price fixed by the amendatory act was the least sum which the commis-

sioners were authorized to receive. Settlers had gone on the land in good faith and made valuable improvements thereon, relying for the protection of their rights, upon the then existing law of the land. Clearly, if the lands are sold according to the provisions of the new act great hardship and injustice will be done to that class of our honest and deserving citizens. Taking into consideration the fact that perhaps the settler had acquired a vested right in the land, which ought not and which could not be safely disturbed, we deemed it but prudent in all cases when those questions were raised and urged, to withdraw the lands from market. We invite the attention of the legislature to the fact, and leave them to take such action in the premises as they in their discretion shall deem proper. We also submit herewith a communication from Hon. Stoddard Judd, relating to the subject of university lands, to which your attention is invited.

Our experience has taught us that that portion of the act which confers upon the commissioners the power of granting pre-emption rights, is imperfect and incomplete. The 58th section of the act provides that any person or persons at any time before the day of sale may prove up their right of pre-emption before the commissioners, by the affidavits of two or more disinterested persons, who are citizens of the state. It has frequently occurred during the sale of the lands, that different parties have appeared before the commissioners, and claimed the right of pre-emption to the same lot of land—each party presenting affidavits sufficient under the law to entitle him to such right.

The commissioners by the act not having power to receive counter affidavits, or to call witnesses upon the stand, found themselves placed in exceedingly perplexing situations—it being difficult, and in many instances impossible, to determine in a manner satisfactory to themselves, what were the real rights of the respective parties.

We would therefore suggest to the legislature the propriety of amending the act so as to confer upon the commissioners powers similar to those possessed by the officers of the general land office.

By an act entitled "an act to provide for the appraisal and sale of school lands," approved Feb'y 9th, 1850, the legislature empowered the secretary of state, treasurer and attorney general to offer for sale, whenever in their judgment it would be for the best interests of the school fund so to do, certain portions of the five hundred thousand acres of land referred to in the act. The said lands could not be of-



ferred for sale until they had been duly appraised, and the legislature which passed the act, reserved to themselves alone the right to appoint the appraisers at their then session, which they neglected to do. Hence the act was, and still is, inoperative.

In view of the depredations constantly being committed in the now thickly inhabited portions of the state, either by trespass or otherwise, upon the school and university lands, (the timber and material upon many of which form no small portion of their value) the difficulty and expense of preventing such depredations, or of prosecuting persons committing them, and the benefits to be derived from a rapid settlement of the country, we would suggest the propriety of offering such lands at an early day, considering that the loss by trespasses committed upon the same will be greater than the enhanced value created by the lapse of time.

The importance of the school and university funds as regards the future prospects and welfare of our state can scarcely be estimated; and the commissioners would respectfully suggest that the careful attention of the legislature be directed to the law relative to the sale of the lands and the investment of the proceeds, so that nothing which their wisdom and experience can suggest as necessary to secure the safety and permanency of the fund may be left undone.

By attaining this result, the more rapid developement of our natural resources will be secured, and an addition, which must increase with time, made to our favorable and already wide spread reputation abroad.

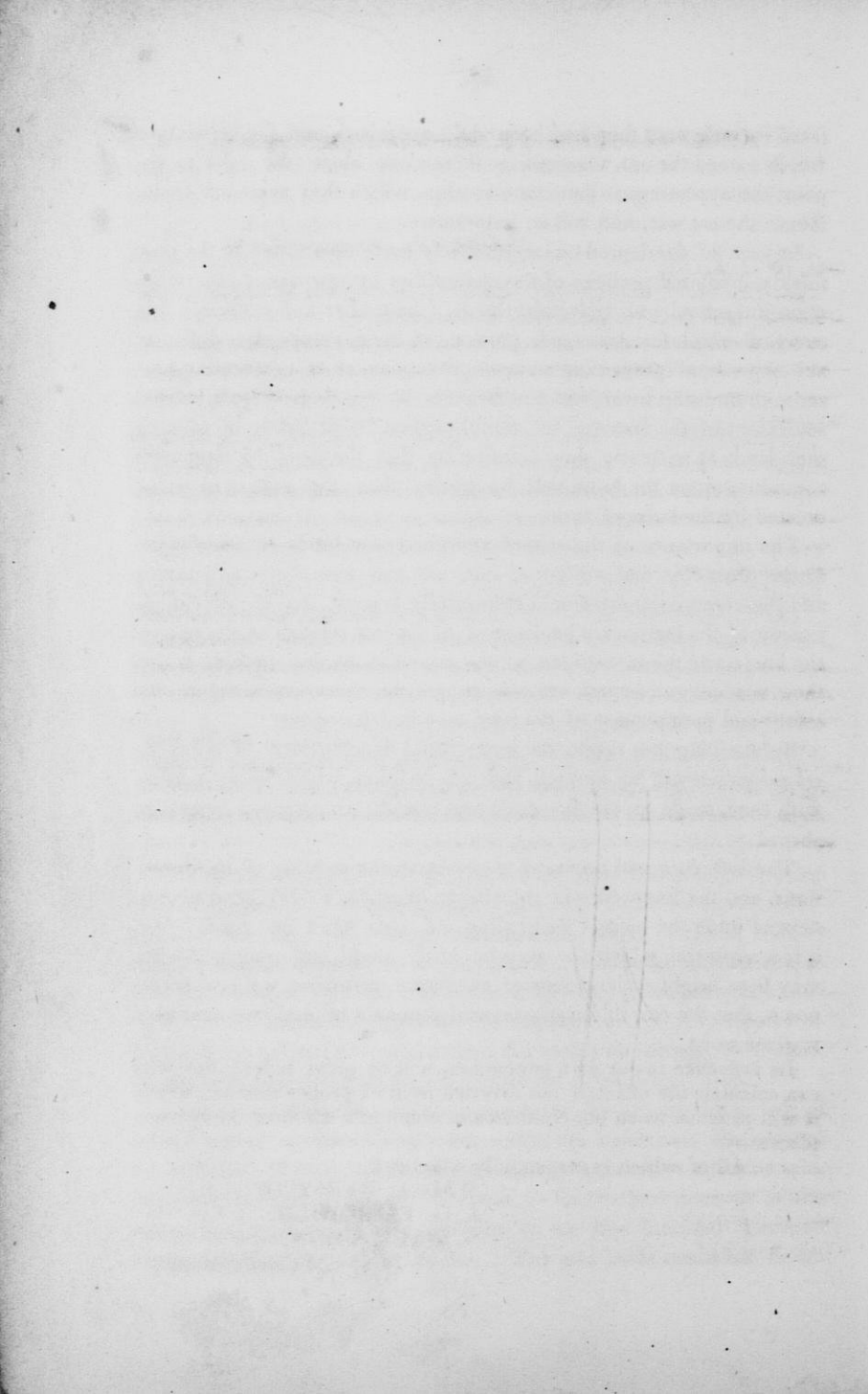
The influence and power of every state, the stability of its institutions, and the happiness of the citizen, must to a very great extent, depend upon the mental cultivation and training of its youth; and it is a matter of which we may be justly proud, and upon which we may base bright anticipations of our future greatness, welfare and renown, that the control for educational purposes of such vast resources is given to us.

Its influence in our own generation, will be great indeed, but who can calculate the effect, if not diverted from its proper channel, which it will produce when our children and children's children occupy our places.

All of which is respectfully submitted.

WM. A. BARSTOW,  
J. C. FAIRCHILD,  
S. PARK COON,

*Commissioners.*





## COMMUNICATION FROM STODDARD JUDD.

WAUSHARA, November 25, 1850.

Hon. W. A. Barstow :

SIR—Your letter of the 16th inst., making sundry inquiries in relation to the University lands located near this place, has been received.

There are about three thousand acres of these lands lying near this village, and within this town and the town of Trenton. The general character of these lands is good, being one-half, or perhaps a little more than one-half, prairie, and the balance mostly thin openings. They are without water, or marsh at all.

Probably one-third, or nearly one-half of this tract is claimed and held by pre-emption, under the provisions of sec. 57, chap. 24, title viii, of the revised statutes.

The names of the pre-emptors, (about thirty) it is not considered necessary to insert here, because it is presumed they will appear upon the original appraisal of these lands, as the improvements of said pre-emptors were appraised at the same time that the land was appraised.

In regard to the value of these lands, at this time, I will state, that it is quite certain that *very* few tracts or lots, if any, would sell for more than the appraised value of the same, while no man at all acquainted with the country, entertains the opinion that any of them will bring *ten dollars per acre* within ten or fifteen years. The general belief is, that they were estimated rather above their value, by the commissioners that appraised them.

The pre-emptors occupying these lands, claim that they have a right to hold them under the pre-emption above referred to, at their *appraised value*, notwithstanding the provisions of chap. 176, of the session laws of 1850.

It is not believed that that law, either applies to, or includes land held or claimed under the pre-emption law. The words of the act are : "The minimum price of the university lands, shall be, and the same is hereby established at ten dollars per acre, and none of said land shall be sold for less than said minimum price."

I have italicised the last clause of this section, for the purpose of calling your attention particularly to its phraseology "shall be sold."

Now, it is contended, that *all laws claimed by valid pre-emption rights, are already sold*; and that the subsequent performance of the law, by proving up, before the lands are offered at public sale, and paying such a percentage on their appraised value as may be required, *is not a sale*; but, is merely a consummation of the sale made and created by the pre-emption law itself. Or, in other words, the *passage* of the pre-emption law, *vested a right*, to the land claimed under its provisions, upon a compliance with its requirements, on the part of the pre-emptors.—Can a subsequent legislature deprive those pre-emptors of those rights? or can they change the terms without the consent of the other party? Can the state authorities, abrogate a solemn contract with any of its citizens—by its own power and will, without the consent, and against the remonstrance of, such citizens? and if so, then what shall hinder a subsequent legislature, after the present commissioners shall

have invested the school moneys at 7 per cent interest for a term of ten years—from enacting a law requiring those persons with whom such moneys have been invested—to pay interest at twenty-five per cent? Surely there would be as much equity and justice in this latter case as in the former. Nay, it may be confidently asserted, that the former would be, by far, the most oppressive.

These lands were appraised three years ago—at which time every pre-emptor had his improvements appraised also—so that, in case he did not become the purchaser, and his lot was purchased by another person, he might be entitled to the value of his appraised improvements, from such purchaser. Now, in almost all cases, these improvements have been materially enlarged and extended since their appraisal—in many instances entire new houses have been erected, and in some cases, the additional improvements have amounted to several hundred dollars. The pre-emptor is able to pay the appraised value of the land, but cannot afford to pay ten dollars per acre—and another purchaser, can afford to pay that price—because he gets several hundred dollars worth of improvements, for which he is not required to pay anything!—can anything more unjust, be contrived? and is it possible that the state legislature ever intended such a thing? and will they insist upon the continuance of such a law?

In view therefore, of all these, and many other considerations, I understand it to be the intention of the pre-emptors to insist upon their right to the land, at the appraised value thereof—and that they will resist all attempts to dispossess them.

Under these circumstances, the question presents itself what ought to be done?

I have no hesitation in giving it as my opinion, that every interest, the state university, the public, and the claimants—would be, both now, as well as hereafter, promoted by an entire and complete repeal of the law of the last session of the legislature above referred to.

But—if this should not be considered advisable—then perhaps it would answer all purposes, so far as the interests of the pre-emptors, are concerned, to pass an act declaring, that the said act should not be so construed as to effect or apply to, any lot claimed under the provisions of the pre-emption law—of the revised statutes.

I have the honor to be most

Respectfully your

Obedient Servant,

STODDARD JUDD.