



# LIBRARIES

UNIVERSITY OF WISCONSIN-MADISON

## University of Wisconsin photographic history. Vol. 17 1931/1932

[Madison, Wisconsin]: [Photoart House], 1931/1932

<https://digital.library.wisc.edu/1711.dl/334CMRFHULELP80>

<http://rightsstatements.org/vocab/InC/1.0/>

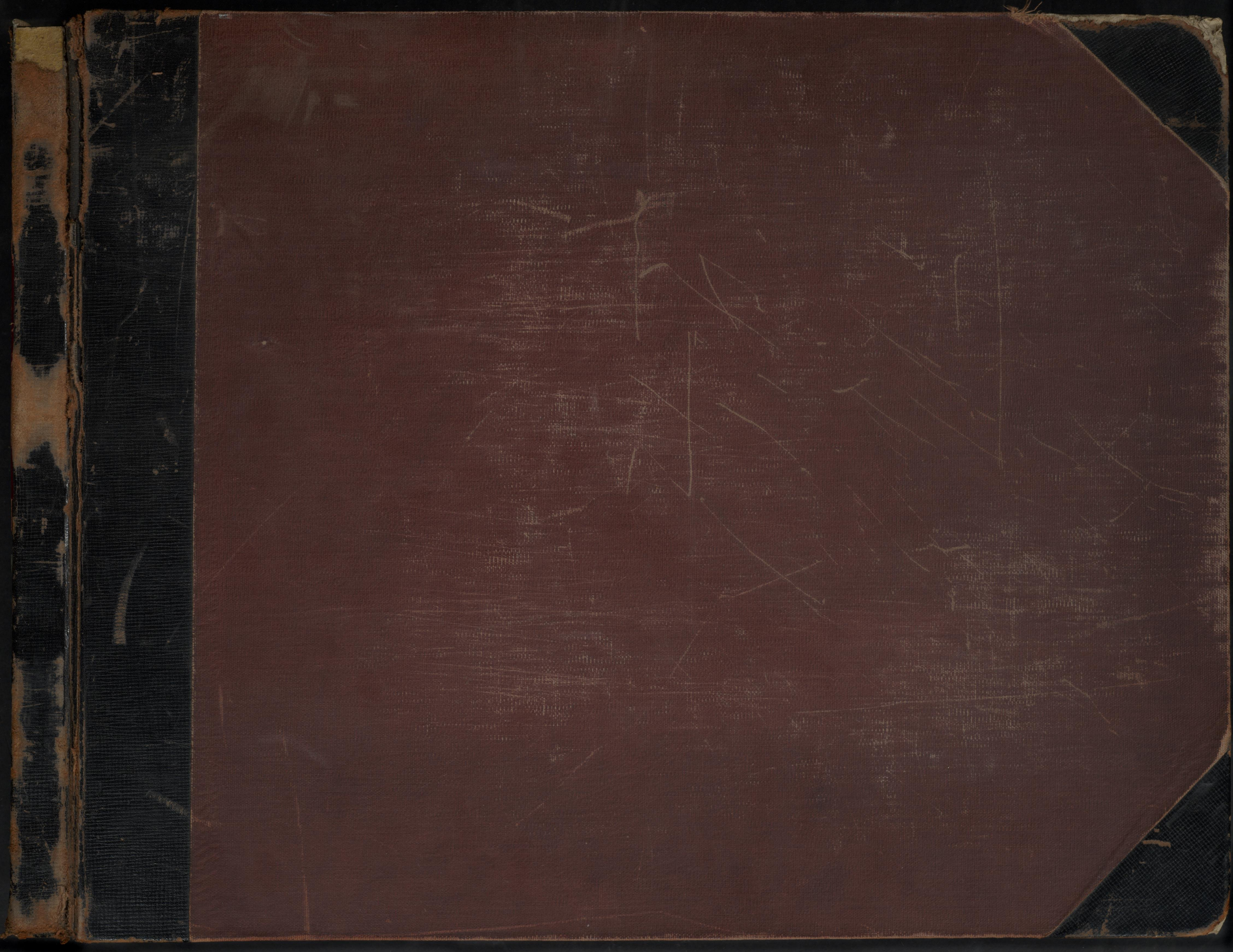
For information on re-use, see

<http://digital.library.wisc.edu/1711.dl/Copyright>

The libraries provide public access to a wide range of material, including online exhibits, digitized collections, archival finding aids, our catalog, online articles, and a growing range of materials in many media.

When possible, we provide rights information in catalog records, finding aids, and other metadata that accompanies collections or items. However, it is always the user's obligation to evaluate copyright and rights issues in light of their own use.







WILM BINDERY  
STATIONERY  
OFFICE SUPPLIES  
LIBRARY BINDING  
MADISON, WISCONSIN





U. of W. FOOTBALL SQUAD ~ 1931 ~

PHOTOGRAPH HOUSE  
MADISON, WIS.





T-12-6-E  
HANDING OUT Time Schedules



T-12-6-F  
INFORMATION



T-12-6-D  
MORE INFORMATION



T-12-6-G  
FRESHMAN GIRLS



T-12-7-F  
Glenn 200 the Tackles



T-12-7-S  
Coach Swan - This Way!



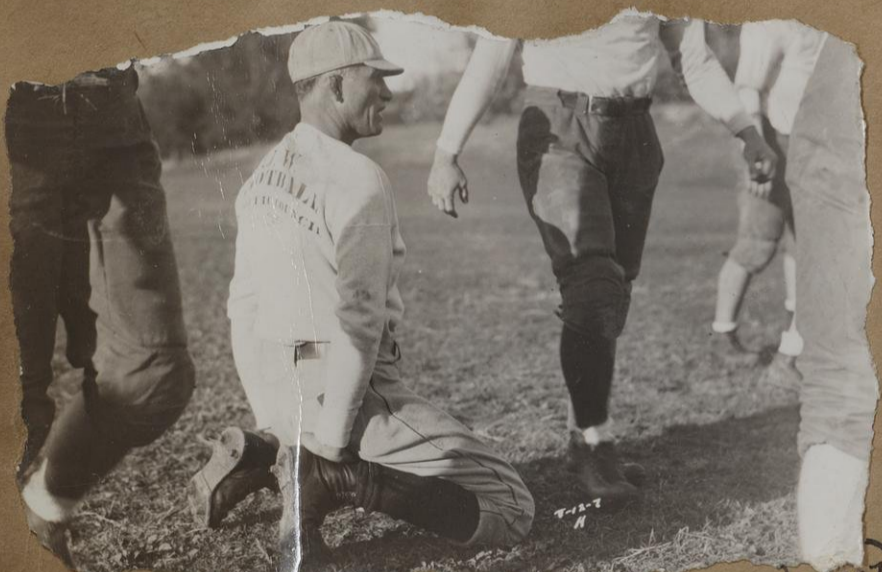
T-12-7-R  
Sundt runs thru' signals



T-12-7-J  
Workout in the line



T-12-7-M  
More signals



T-12-7-H  
Glenn Watches the line Workout



T-12-7-R  
Swan and the Centers



T-12-7-I  
Schneller Fullback



T-12-7-P  
Coach Swan



T-12-7-L  
Guy Sundt with the Backfield



T-12-7-E  
Wis. vs N. DAKOTA



T-12-7-K  
Hubert



T-12-7-K  
Ed. Persson



T-12-7-N  
Squads Together!





H-53-4 C

CAPTAIN "HAL" SMITH



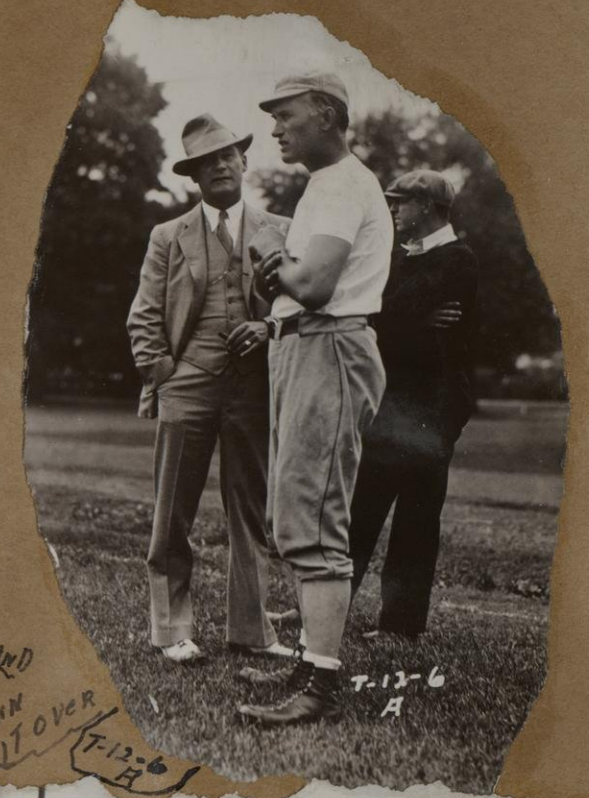
H-53-4 B



PHOTOART H-54-44 C

H-54-44 C

Varsity Football Squad - First Day Practice



Joe and Glenn Zeigler 7-12-6 A



PHOTOART H-54-44 D

H-54-44 D

GLENN'S ANNUAL ADDRESS



BACKFIELD AT WORK 7-12-6-H



7-12-6 B

GLENN CALLS THEM TOGETHER



H-53-4 E

CAPTAIN "HAL" SMITH



PHOTOART H-53-4 D

H-53-4 D



PHOTOART H-54-44 A

H-54-44 A

THE SQUAD DURING GLENN'S ADDRESS



7-12-6 C

PASSING PRACTICE



"MOOSE" WANEGER'S DRILL 7-12-6 E



YEA WELCOME BACK  
GANG "Shorty"



PHOTOART H-54-45 B  
"Shorty" Bartz



PHOTOART H-54-45 A  
"Shorty"



T-12-7 A  
Strain Passes The Ball



T-12-7 C  
Scheller AT Work



T-12-7 D  
Glenn Tells Them How



T-12-6  
Russ Rebholz



T-12-7 B  
Senior Manager  
Jack Thompson



T-12-7 E  
Ray Schmelzer  
Fan



"Moose"  
Krugger



T-12-11 H



T-12-11 I

Practice

The Line



PHOTOART H-54-47 B  
The Court Field House from North end of Stadium



PHOTOART H-54-47 A

New Bleachers





H-54-46 Association Hall-Meeting



H-54-41 Dr. Mathews-Chemistry  
J Howard



H-54-41 Dr. Mathews-Chemistry



Dr. Cole T-12-11 L



Bob DUNNEN Geo. DOWNEN T-12-11 A  
Bill Fallon



"Rube" Wagner With The Line T-12-11 D



Joe and Bill T-12-11 C



Glenn T-12-11 F



Line T-12-11 J



Dowden Mills-Holt T-12-11 B



"MOOSE" KRUGER T-12-12 R



STRAIN T-12-12 G



Schneller T-12-12 H





T-12-10  
D



T-12-10  
P



T-12-10  
Z



T-12-10  
C



T-12-10  
A



T-12-10  
K



T-12-10  
E



T-12-10  
G



T-12-10  
M



T-12-10  
B

KAPPA-  
PLEDGING



T-12-10  
L



T-12-10  
H



T-12-10  
J



T-12-10  
N



T-12-10  
F





CORONTO

PHOTOART  
H-54-60



TR1 - DELTS

PHOTOART  
H-54-61



Alpha Xi Delta

PHOTOART  
H-54-69



KAPPA Alpha Theta

PHOTOART  
H-54-68





Gamma Phi Beta

H-54-64



Alpha Gamma Delta

H-54-59



Phi Mu

H-54-63



Chi Omega

H-54-58





ALPHA PHI

H-54-88



ALPHA EPSILON PHI

H-54-78



CHI OMEGA

H-54-87



PHI SIGMA SIGMA

H-54-76

M 223





H-54-74

KAPPA DELTA



H-54-75

ALPHA OMIKRON PI



H-54-79

PHI OMEGA PI



H-54-80

THE LETTER MEN.





PRES. FRANK - PLEDGE TAG.



Wis. vs BRADLEY

T-12-12 C



Wis. vs BRADLEY

T-12-12 D



FANS - Wis. vs N. DAKOTA GAME

T-12-12



AUBURN vs Wisconsin

T-12-18 L



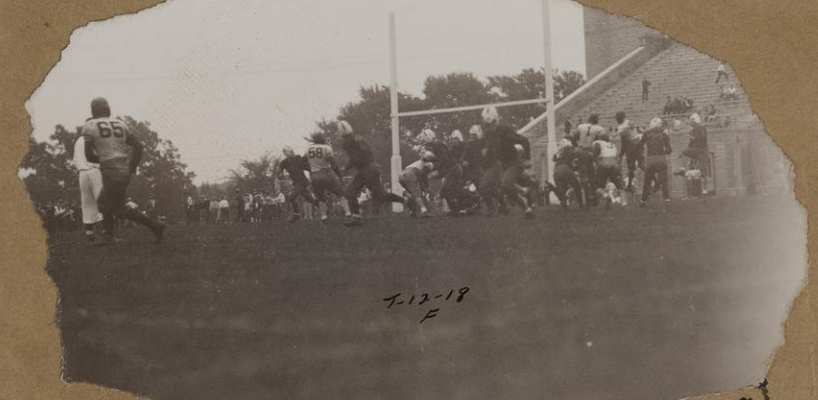
AUBURN vs Wisconsin

T-12-18 G



AUBURN vs Wisconsin

T-12-18 K



AUBURN - 7 Wisconsin - 7

T-12-18 F



AUBURN vs Wisconsin

T-12-18 E



PURDUE - 14 Wisconsin - 21

T-12-13 Z



PURDUE vs Wis.

T-12-13 H



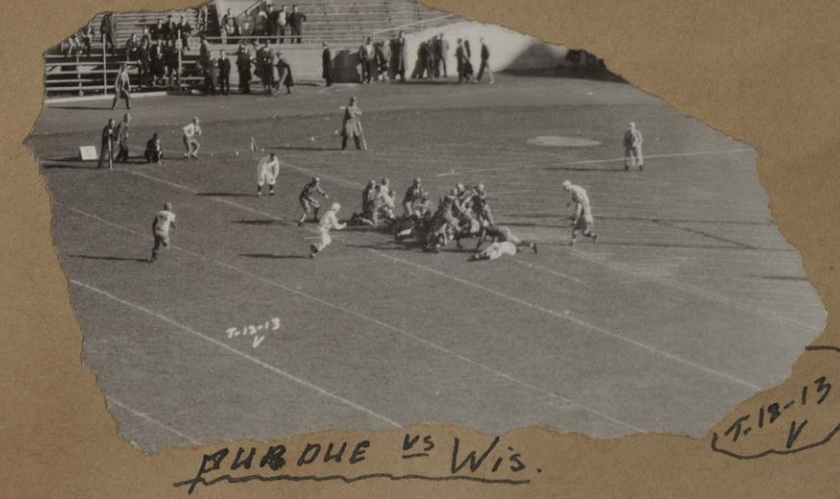
THE BAND - DA'S DAY

T-12-13 E



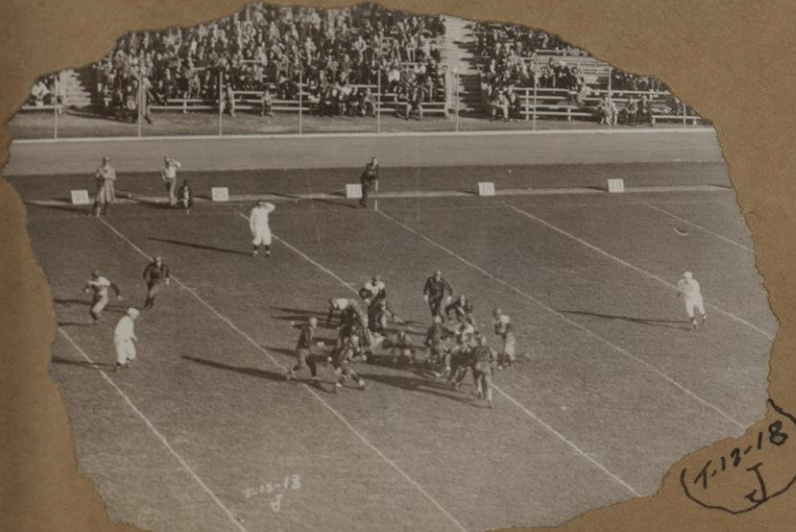
PURDUE vs Wis.

T-12-13 S



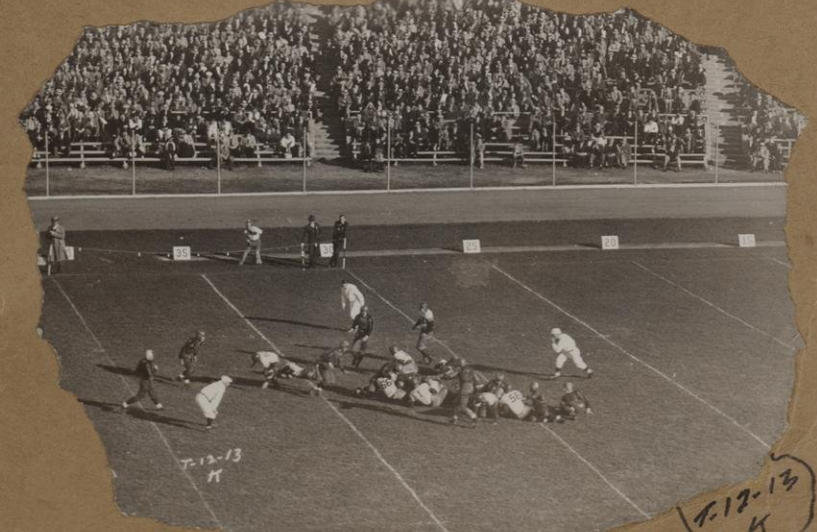
PURDUE vs Wis.

T-12-13 V



PURDUE vs Wis.

T-12-13 J



PURDUE vs Wis.

T-12-13 K



PURDUE vs Wis.

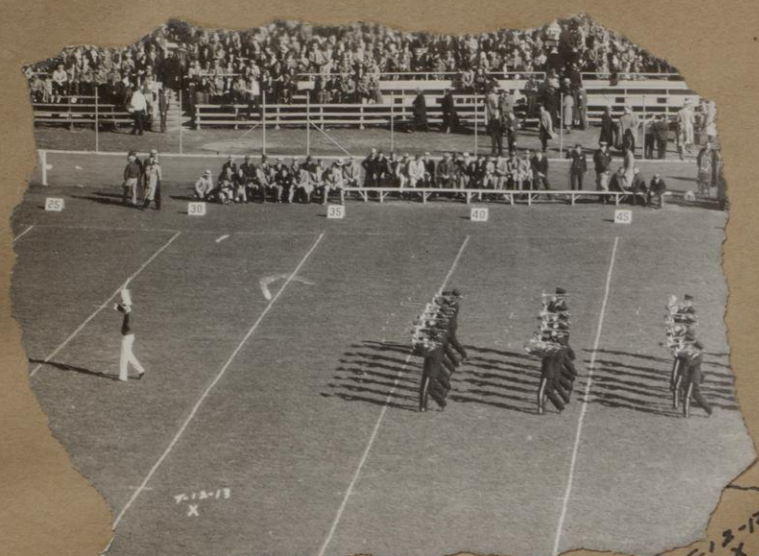
T-12-13 B



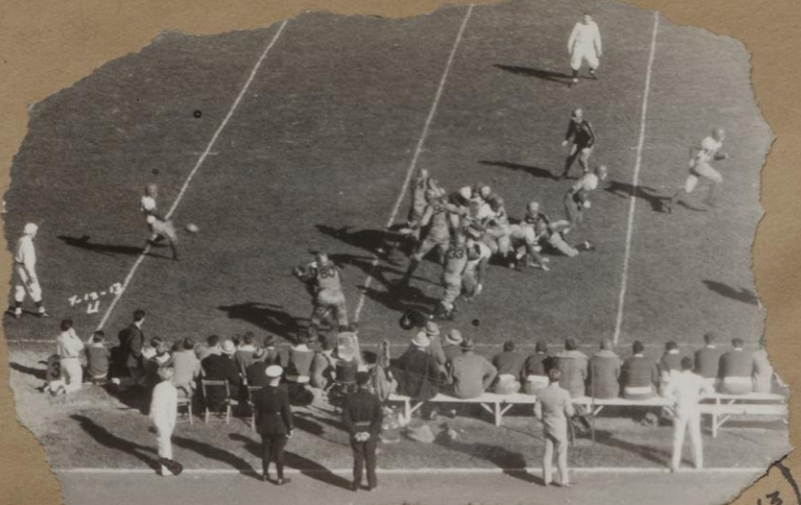
PURDUE vs Wis.

T-12-13 P

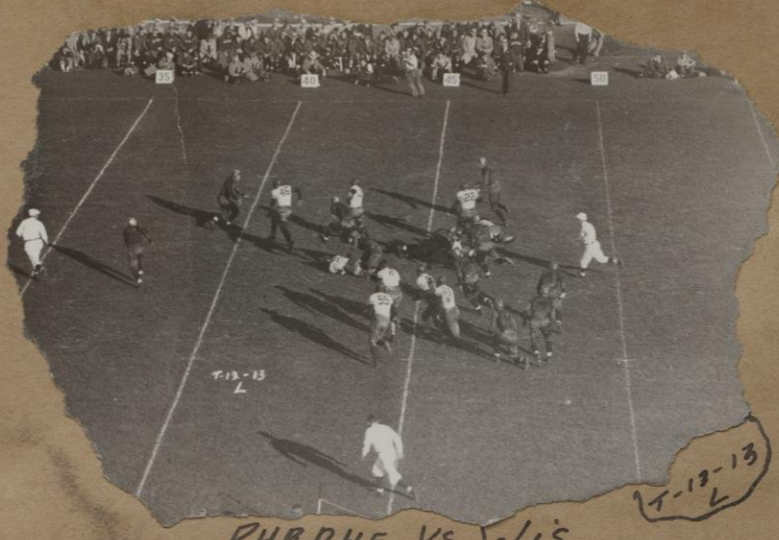




DRUM MAJOR and BAND



PURDUE vs Wis.



PURDUE vs Wis



LINFOR MAKES GOOD FOR EXTRA POINT  
PURDUE vs Wis



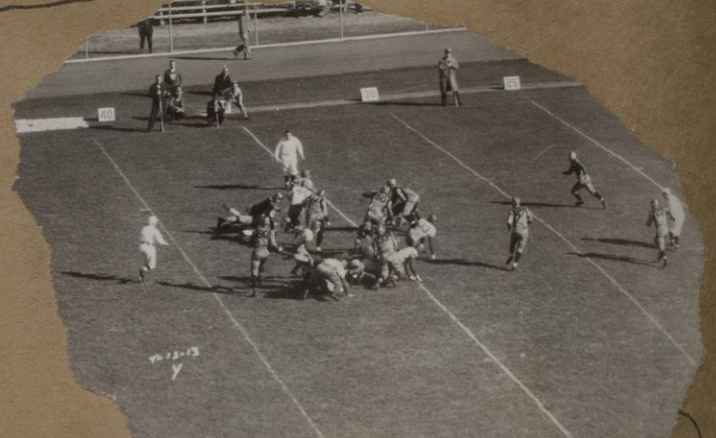
The "M" in DAD-DAD'S DAY  
PURDUE vs Wis.



The BAND-DAD'S DAY



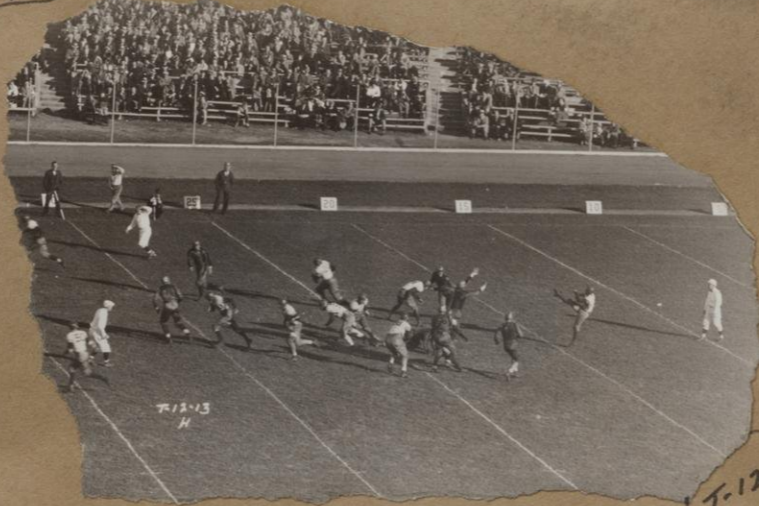
FROM WTMJ PRESS BOX  
PURDUE GAME



PURDUE-14-WIS-21



PURDUE vs Wis.



Schneller PUNTS to PURDUE



SOME TACKLE -  
AUBURN vs Wis



PURDUE-14-WIS-21



AUBURN vs Wis.



PURDUE vs Wis.



AUBURN vs Wis



AUBURN vs Wis-7



TOUCHDOWN - PURDUE vs Wis.



Bobby O'DAIR



DAD'S  
DAY  
BANQUET



GREAT HALL  
MEM. UNION BLDG.  
OCT. 17<sup>TH</sup> 1931



PHOTOART HOUSE - MADISON - WIS.





ANDERSON HOUSE

H-54-92



CHARTER HOUSE

H-54-93



FALLOWS HOUSE

H-55-10



CLEVELAND HOUSE

H-54-94





H-54-90

THETA PHI ALPHA



H-54-89

ALPHA CHI OMEGA



H-55-7

ALPHA CHI OMEGA ~ DAD'S DAY



H-54-97

SIGMA KAPPA





H-54-98  
A

PI BETA PHI PLEDGES



H-54-98  
B

PI BETA PHI



H-55-5

SIGMA KAPPA DAD'S DAY



H-55-8

ALPHA DELTA PI





INTERNATIONAL CLUB PARTY - TRIPP COMMONS

H-55-2



PHI SIGMA DELTA FATHERS DAY

H-55-6



KAPPA KAPPA GAMMA

H-55-17



ACACIA

H-55-13



CHI PHI

H-55-31





ALPHA KAPPA LAMBDA

H-55-12



DELTA TAU DELTA

H-55-19



CHI PSI PLEDGES

H-55-22 B



CHI PSI LODGE

H-55-23 A





PHI KAPPA PSI-PLEDGES

H-55-25



SIGMA PHI

H-55-20



DELTA ZETA

H-54-95



ALPHA DELTA PHI

H-55-14





H-55-9  
A

Alpha Epsilon Pi



H-55-9  
B

Alpha Epsilon Pi FATHER'S DAY GROUP



H-55-33

Alpha Chi Rho



H-55-32

LAMBDA Chi Alpha





Delta Kappa Epsilon

H-55-27  
A



Delta Kappa Epsilon Pledges

H-55-27  
B



Alpha Tau Omega

H-55-29



Delta Chi

H-55-28





PHOTOGRAPH  
H-55-64

H-55-64

Chi Psi Lodge



H-55-48

Sigma Kappa



PHOTOGRAPH  
H-55-67

H-55-67

Pi Beta Phi



H-55-52

Kappa Kappa Gamma





H-55-30

Joe Steinauer With The Police School



H-50-68

Phi Kappa Tau



H-55-69

Phi Sigma Delta



H-55-61

Phi Gamma Delta





H-55-62

Phi Kappa



H-55-58

Chemistry Staff



H-55-53

Phi Kappa Sigma



H-55-47

Delta Upsilon





Phi Delta Theta

H-55-46



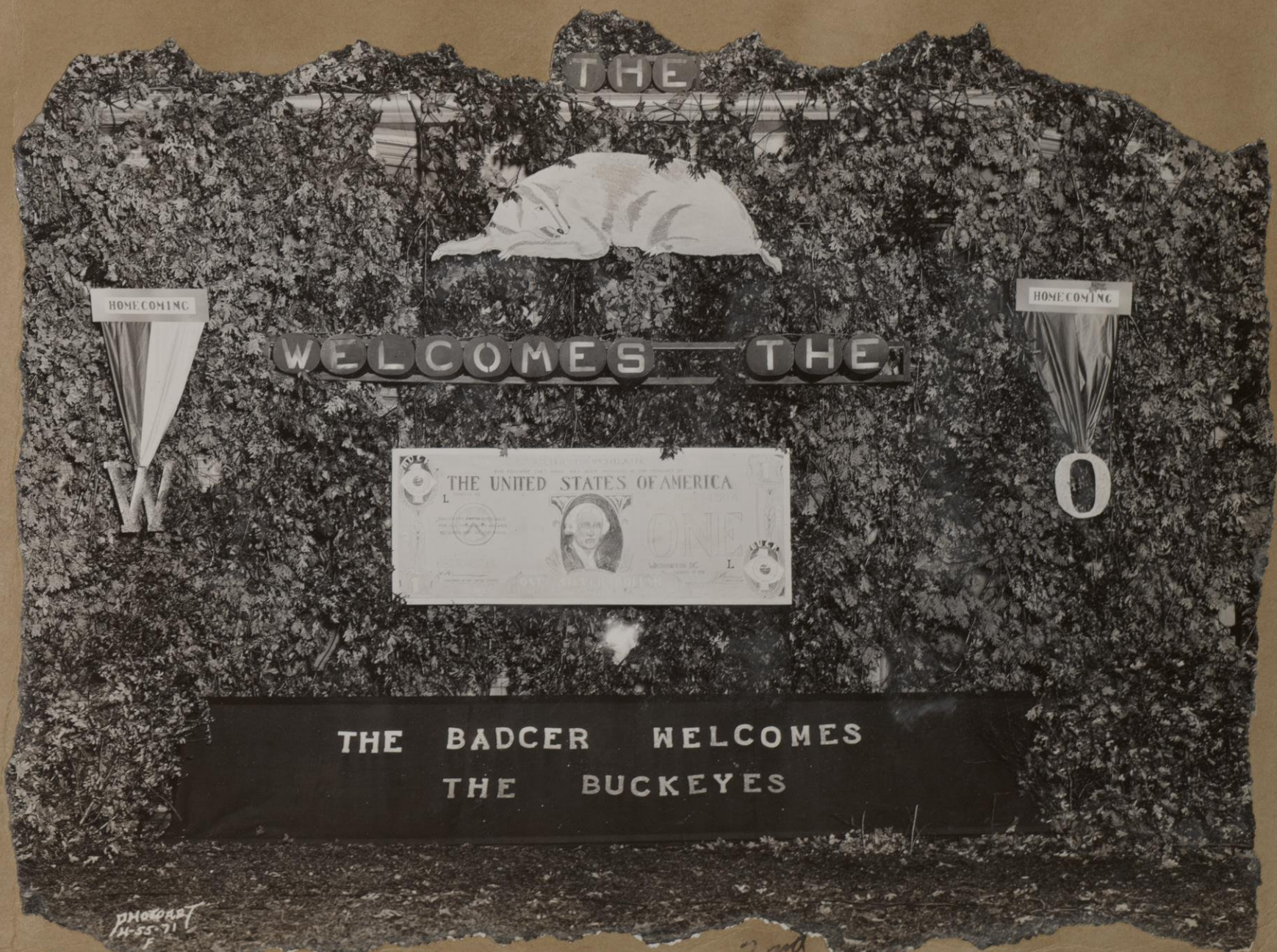
Phi Epsilon Pi

H-55-55



1st  
Delta Sigma Phi

H-55-71  
B



Phi Kappa

H-55-71  
F





<sup>Lat</sup>  
KAPPA ALPHA Theta

H-55-71  
H



Phi GAMMA DELTA

H-55-71  
E



<sup>Lat</sup>  
Ann Emery Hall

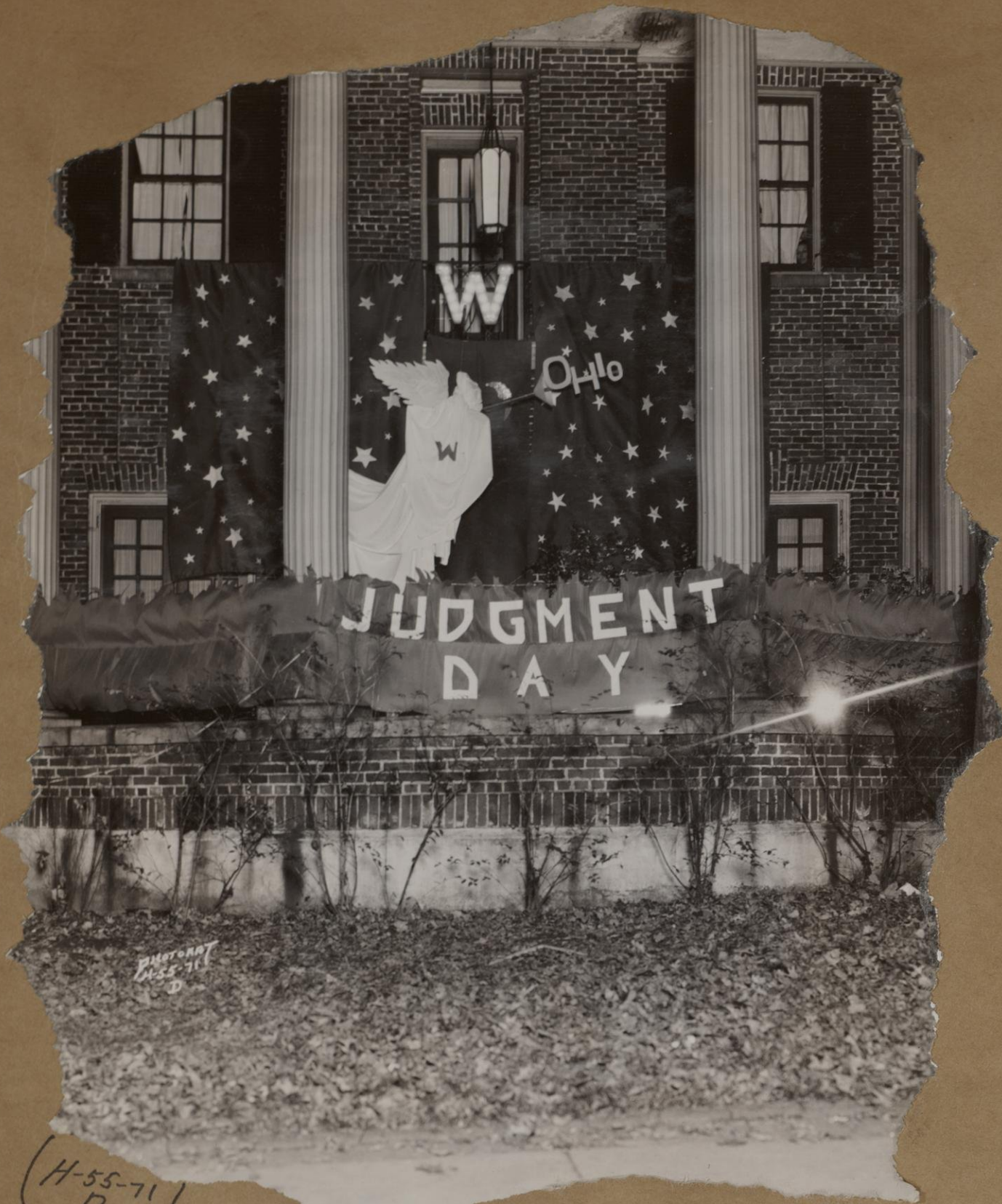
H-55-71  
C



TAN KAPPA EPSILON

H-55-71  
G





H-55-71  
D

Phi Omega Pi



H-55-72

Zeta Beta Tau



H-55-78

Sigma Phi Sigma Convo.



H-55-71  
R

Pi Beta Phi





(H-55-83) Sigma Alpha Epsilon



(H-55-82) Sigma Phi Epsilon



(H-55-80) Pi Kappa Alpha



(H-55-81) Sigma Chi





*Intramural Trophy Display*



*H-56-14  
B*

*Varsity Cheerleaders*



*Delta Upsilon*

*H-56-19*

*D. U. Letter Men*



*H-56-14  
A*

*Varsity Cheerleaders in Action*





PHOTOART  
H-55-34

Intramural Cross Country



PHOTOART

The long & the Short at Lawrence's



PHOTOART  
H-55-35  
B

H-55-35  
B

Union Board Dance Orchestra



Fraternity Play Contest





H-56-15  
B French Play - Bascom Hall

H-56-15  
A French Play - Bascom Hall



H-56-10  
Phi Delta Epsilon

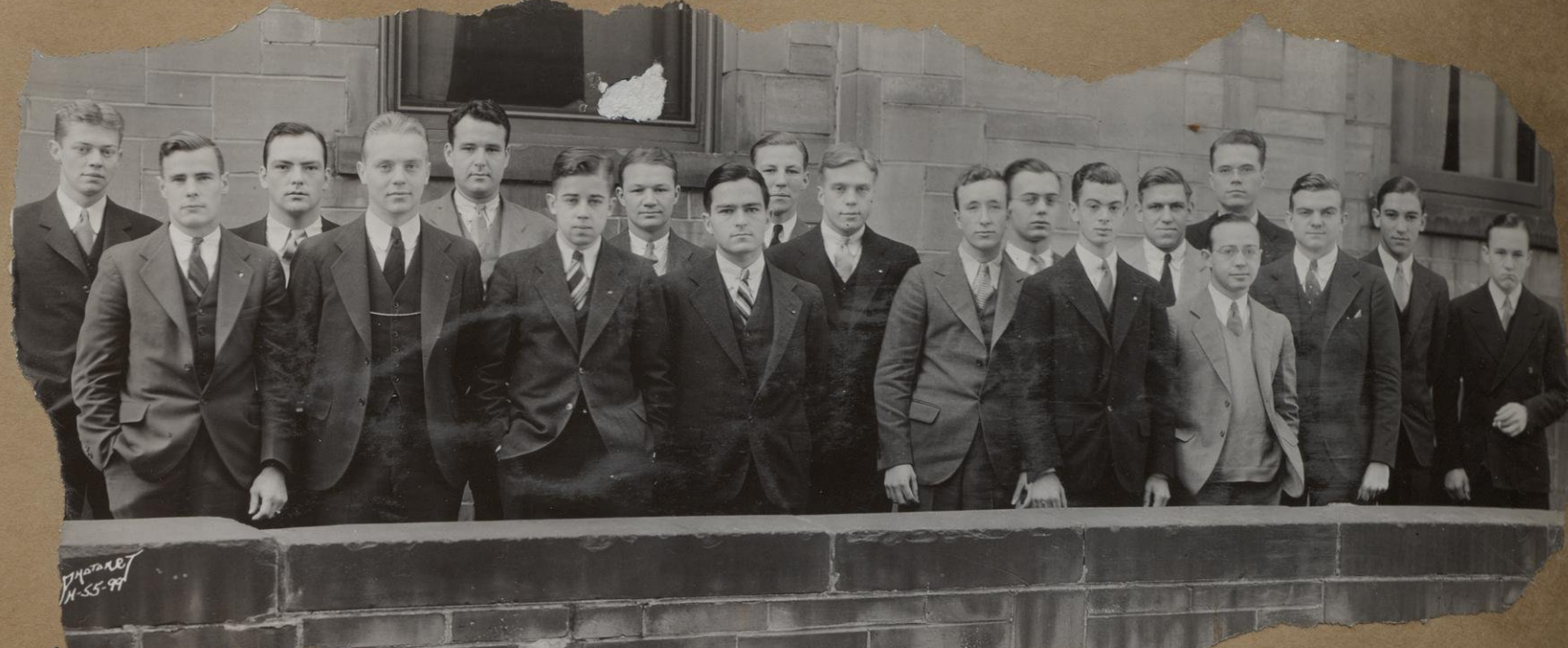
H-56-20  
Alpha Epsilon Pi





H-56-1

Phi Sigma Sigma M224



H-55-99

Psi Upsilon



H-56-9  
H

Alpha Epsilon Pi Initiation



H-56-13

Zeta Psi





PHOTOGRAPH  
H-55-96

Theta Chi



PHOTOGRAPH  
H-56-8

Phi Delta Epsilon



PHOTOGRAPH  
H-56-17

(H-56-17)

Sigma Nu



PHOTOGRAPH  
H-56-24

(H-56-24)

Theta Xi





(H-56-25)

Sigma Pi



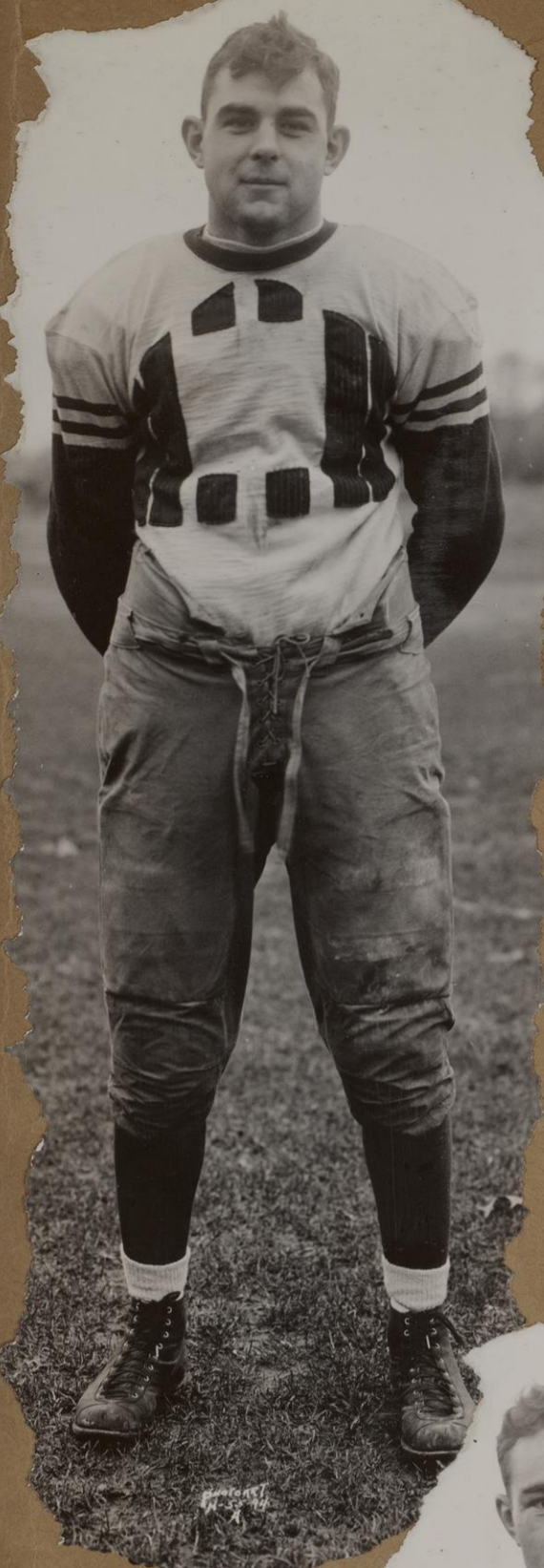
(H-56-26) - Charity Loan Fund



(H-56-39)

SPANISH PLAY





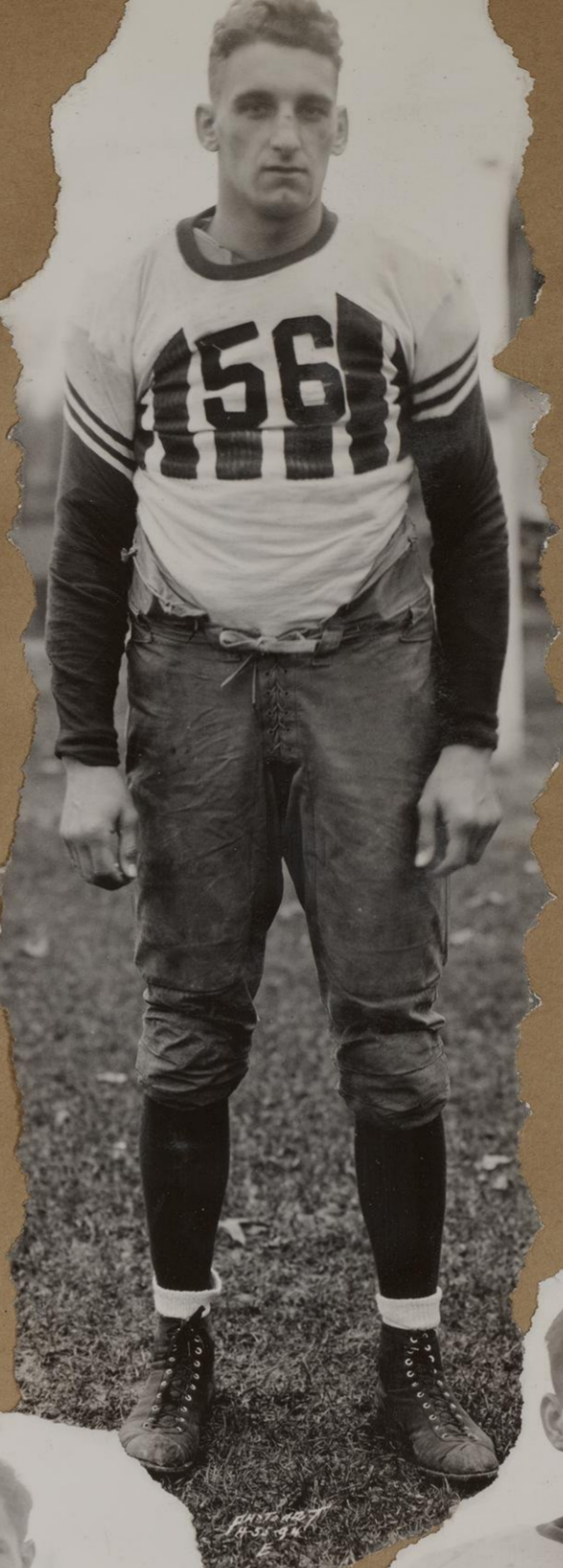
*Capt. Smith*



*Kluger*



*Linfor*



*Pike*



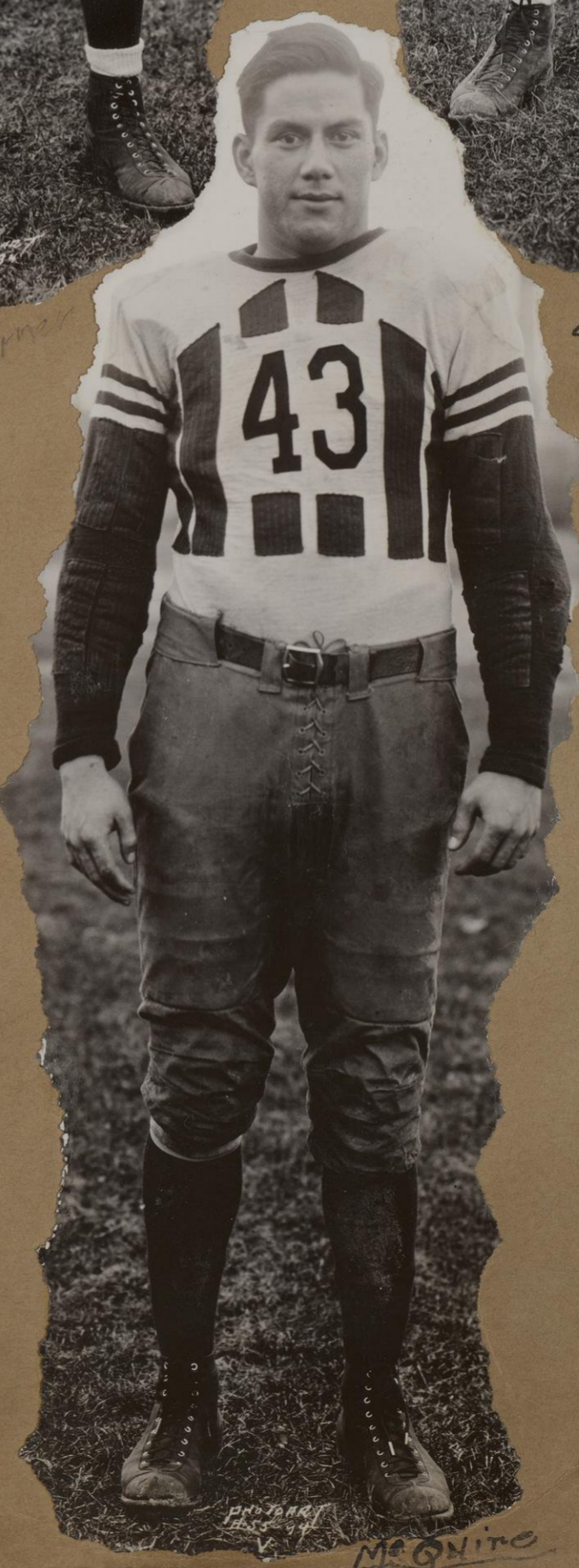
*McGinnis*



*Nelson*



*Facetti*



*McGinnis*



*McGinnis*





Simmons



Kabot



Lovshin



Leithan



Stout



PHOTO BY  
MRS. J. W.



Lutbert



Rehholz



Edwards



PHOTO BY  
MRS. J. W.

Callin





BARNARD HALL 1931

PHOTOART HOUSE



U. & W. CONCERT ORCHESTRA 1931

PHOTOART HOUSE





~ SHADBOURNE HALL 1931 ~

PHOTOART HOUSE  
MADISON, WISC.



H-56-34

TORONTO XMAS FORMAL



H-56-32

SIGMA PHI EPSILON XMAS FORMAL





(H-56-36)

GAMMA ETA GAMMA BANQUET



(H-56-33)

PHI KAPPA SIGMA XMAS FORMAL



(H-56-29)  
A

T.K.E. HOUSE INTERIOR



(H-56-29)  
B

T.K.E. HOUSE INTERIOR



neg. M 61

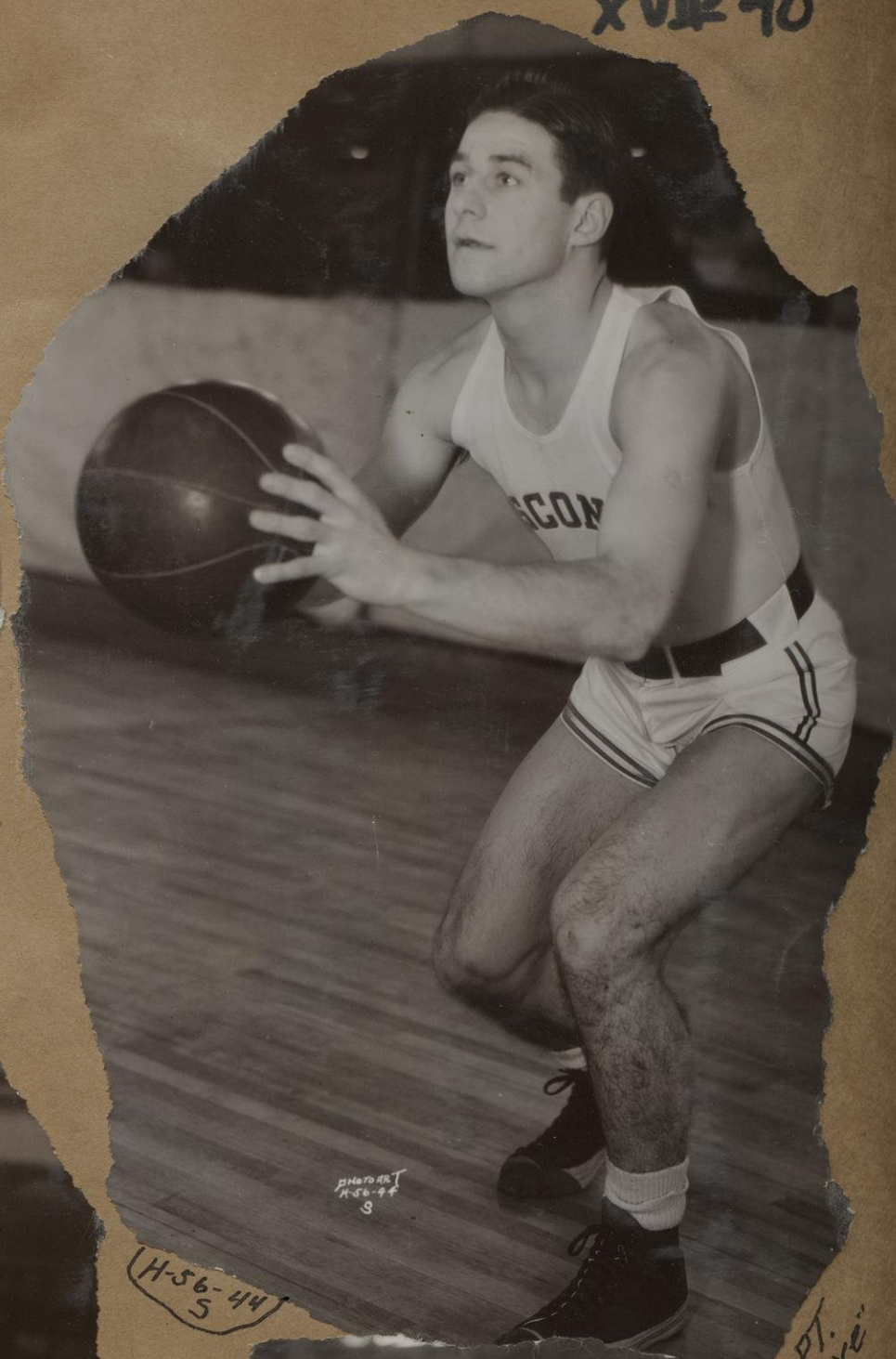


H-56-44  
Vociferwell



H-56-44  
X

YARSIY BASKETBALL SQUAD



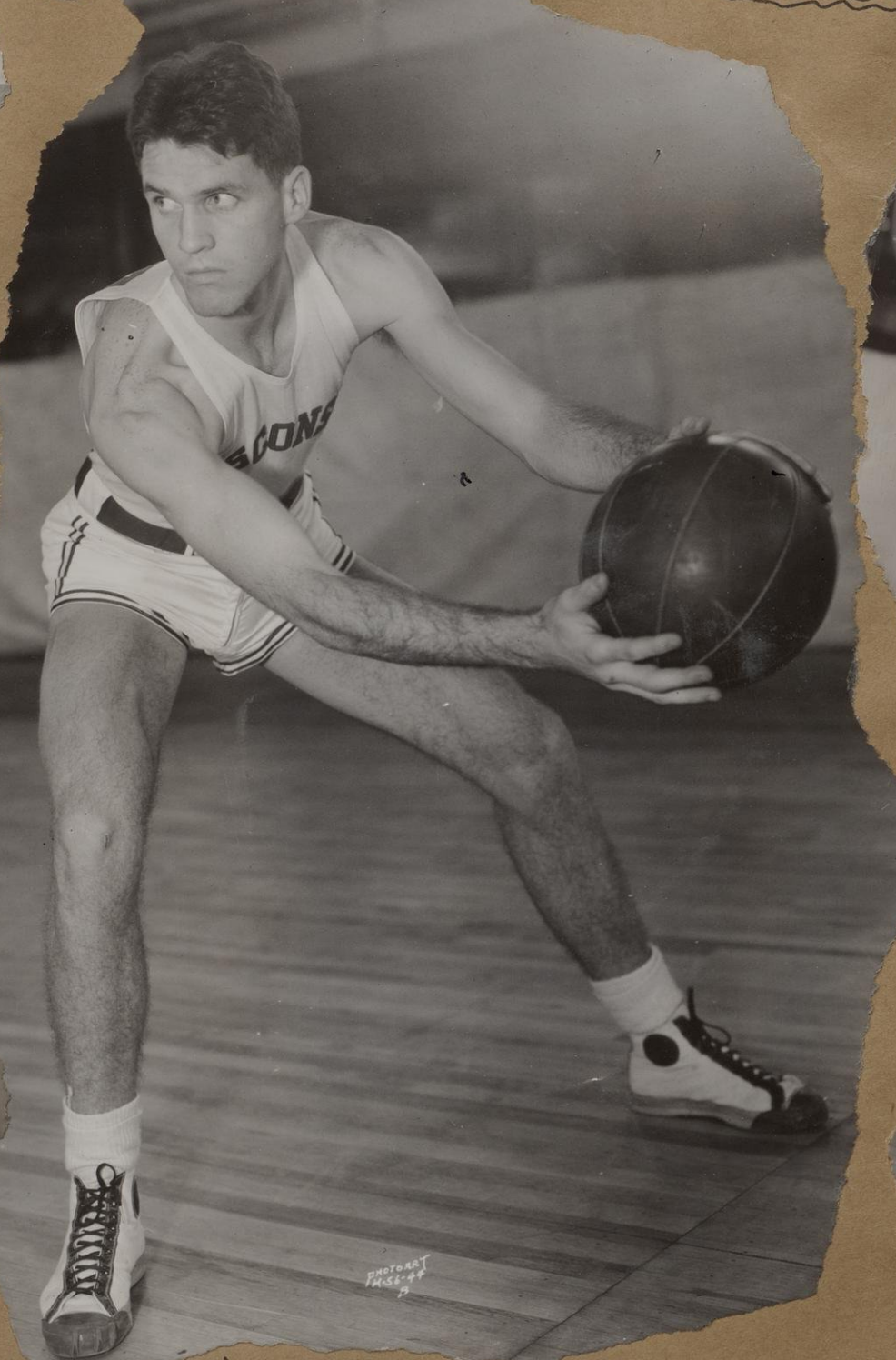
H-56-44  
5

Capt. Marvin Steen



H-56-44

Doug Nelson



H-56-44  
B

Rewey



H-56-44  
I

Roy Oakes

BASKETBALL



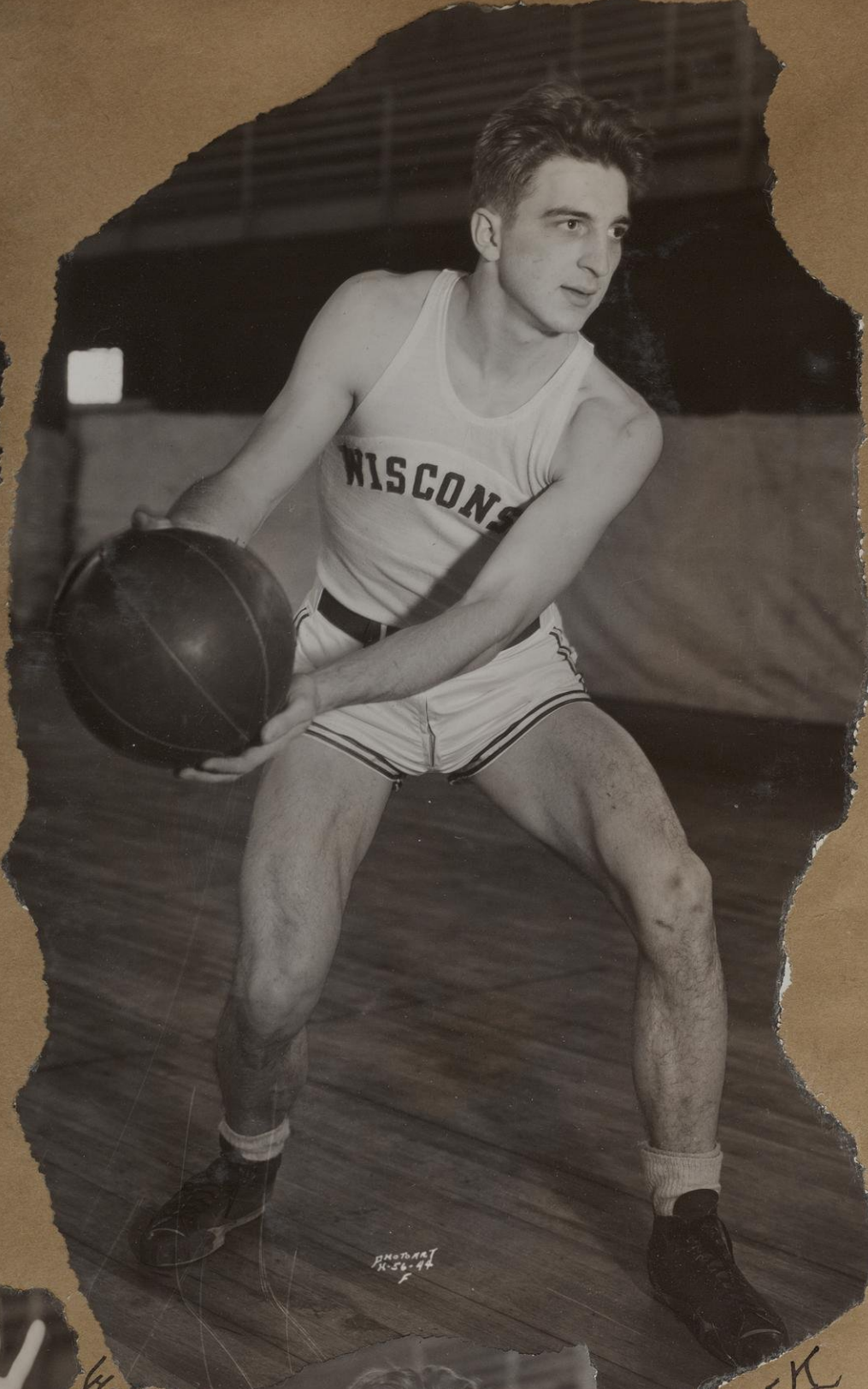
H-56-44  
0

Smith





H-56-44 A ST. PETER

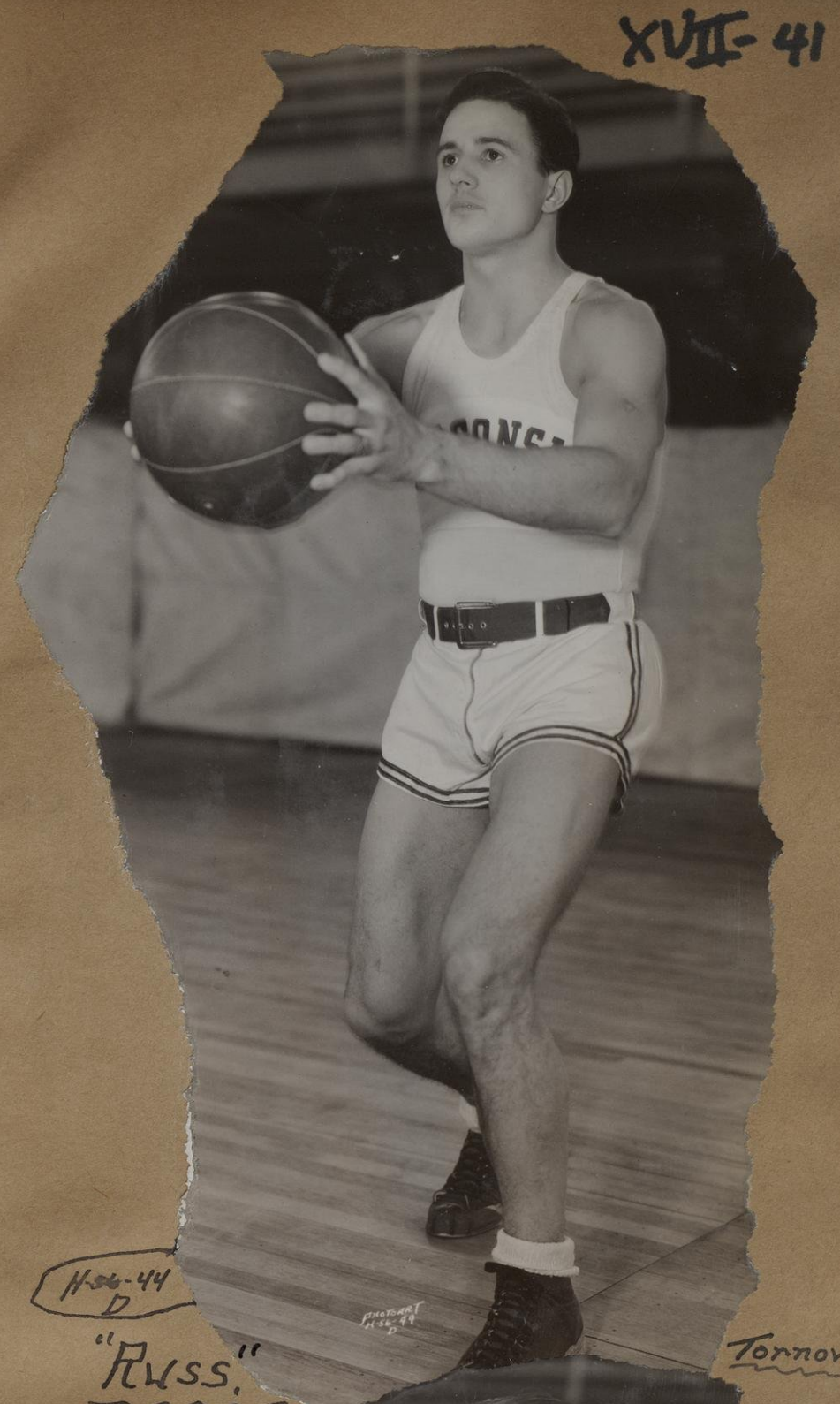


BOSEK



H-56-44-0

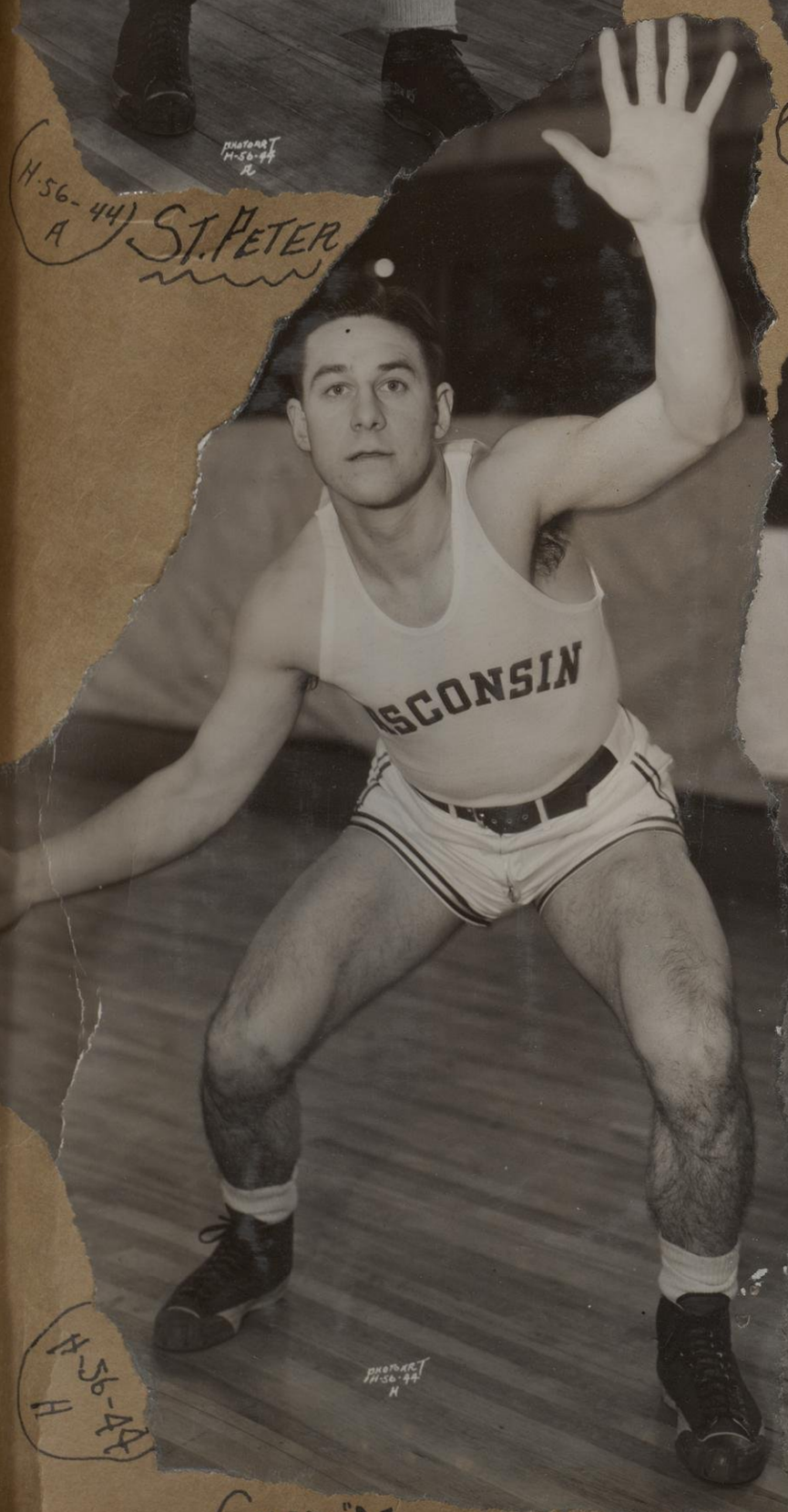
"Bobby" Poser



H-56-44 D

"RUSS"

Tornowski

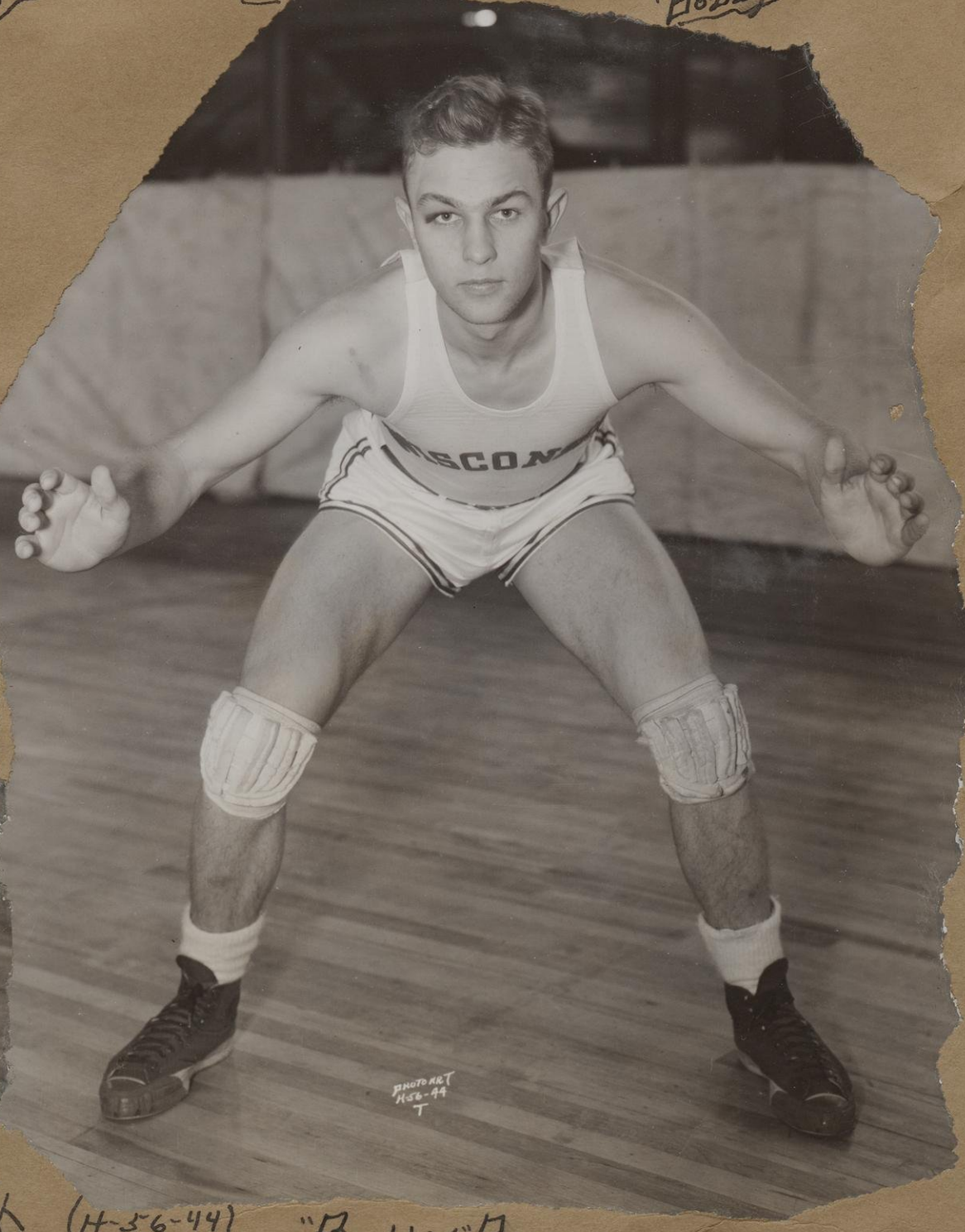


H-56-44 B

CAPT. "MARVE" STEEN

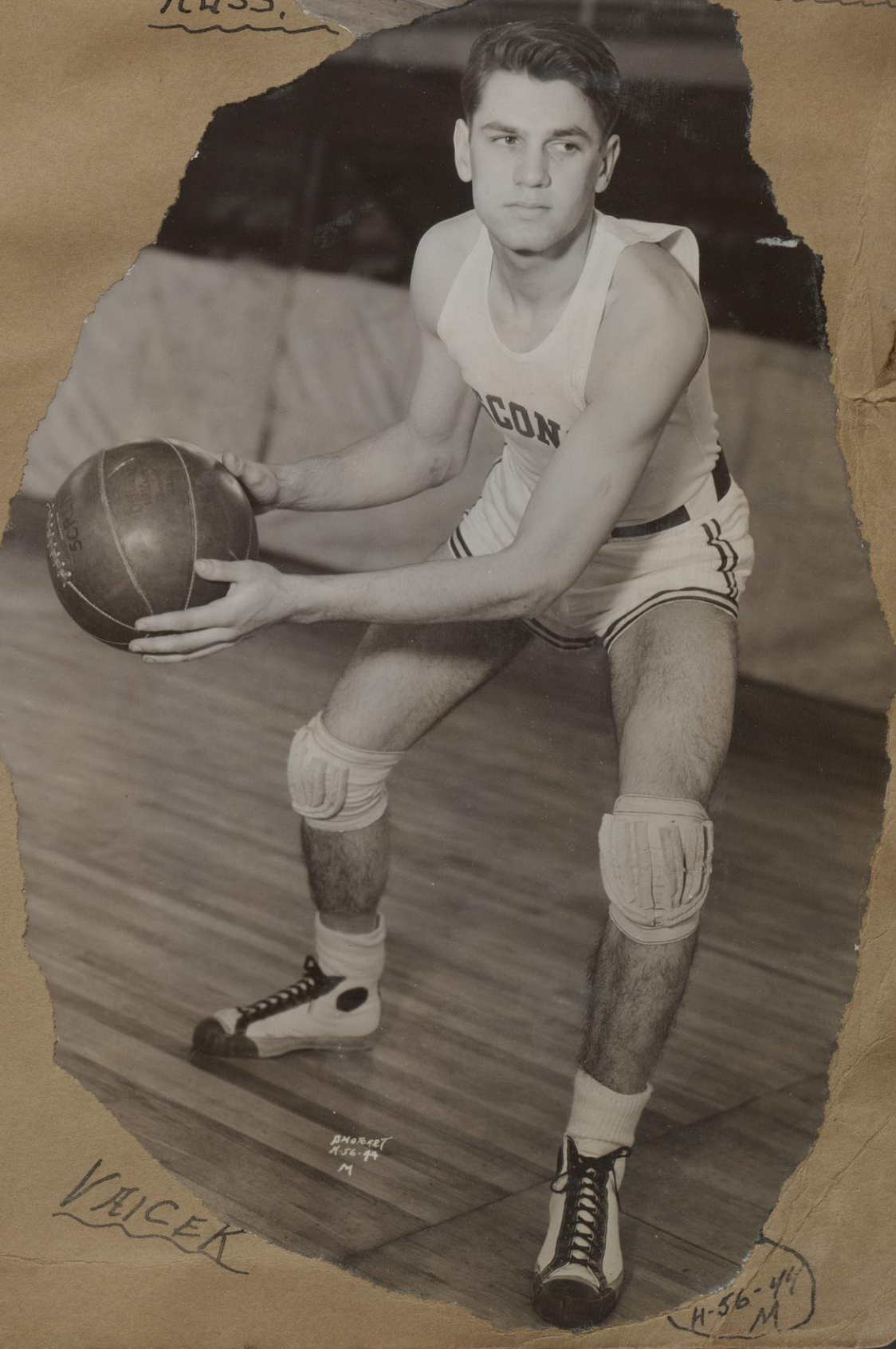


H-56-44-E BOSEK



H-56-44 T

"Bobby" Poser



VAICEK

H-56-44 M



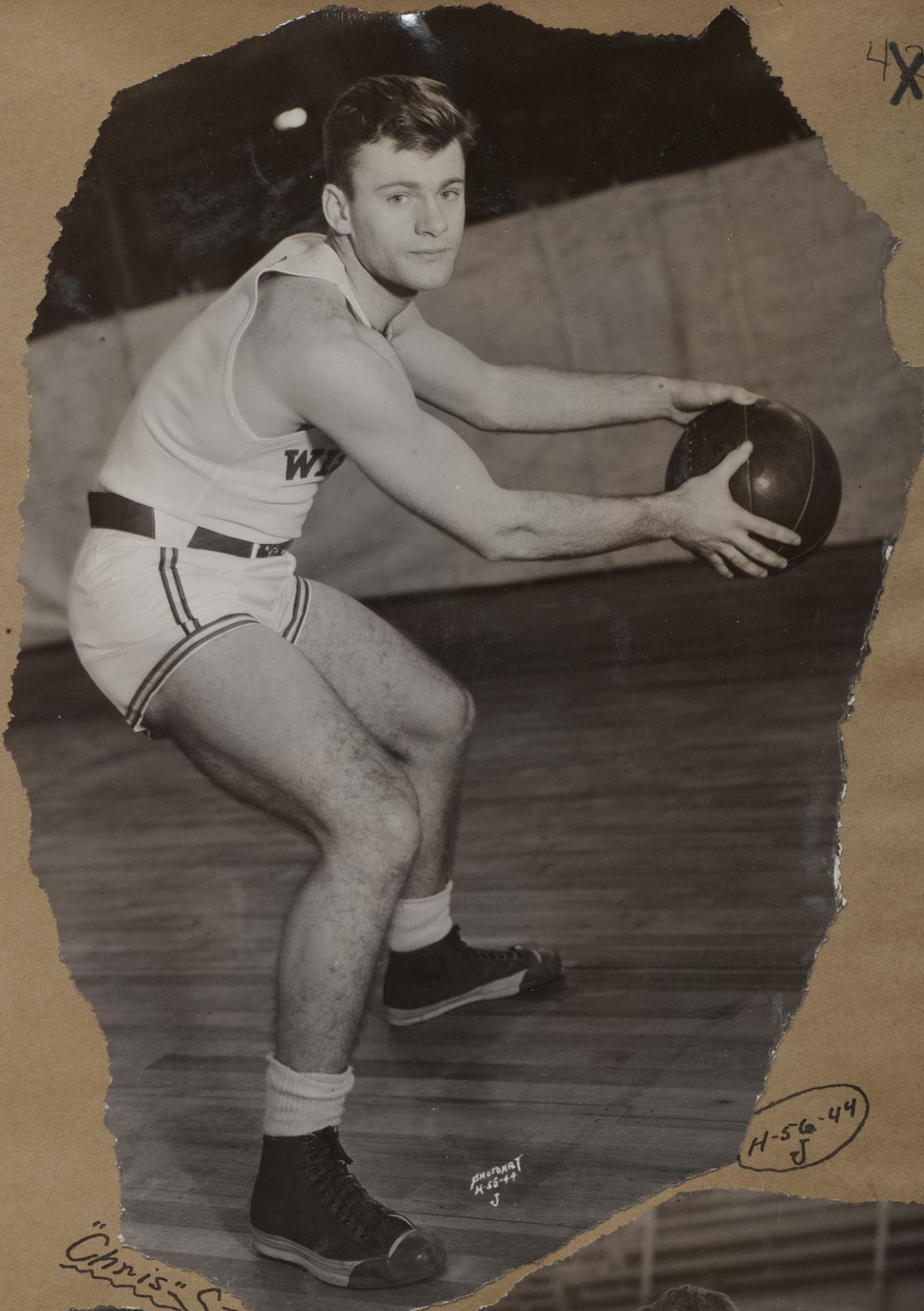


H-56-44  
R. ST. PETER



H-56-44  
V

ST. PETER

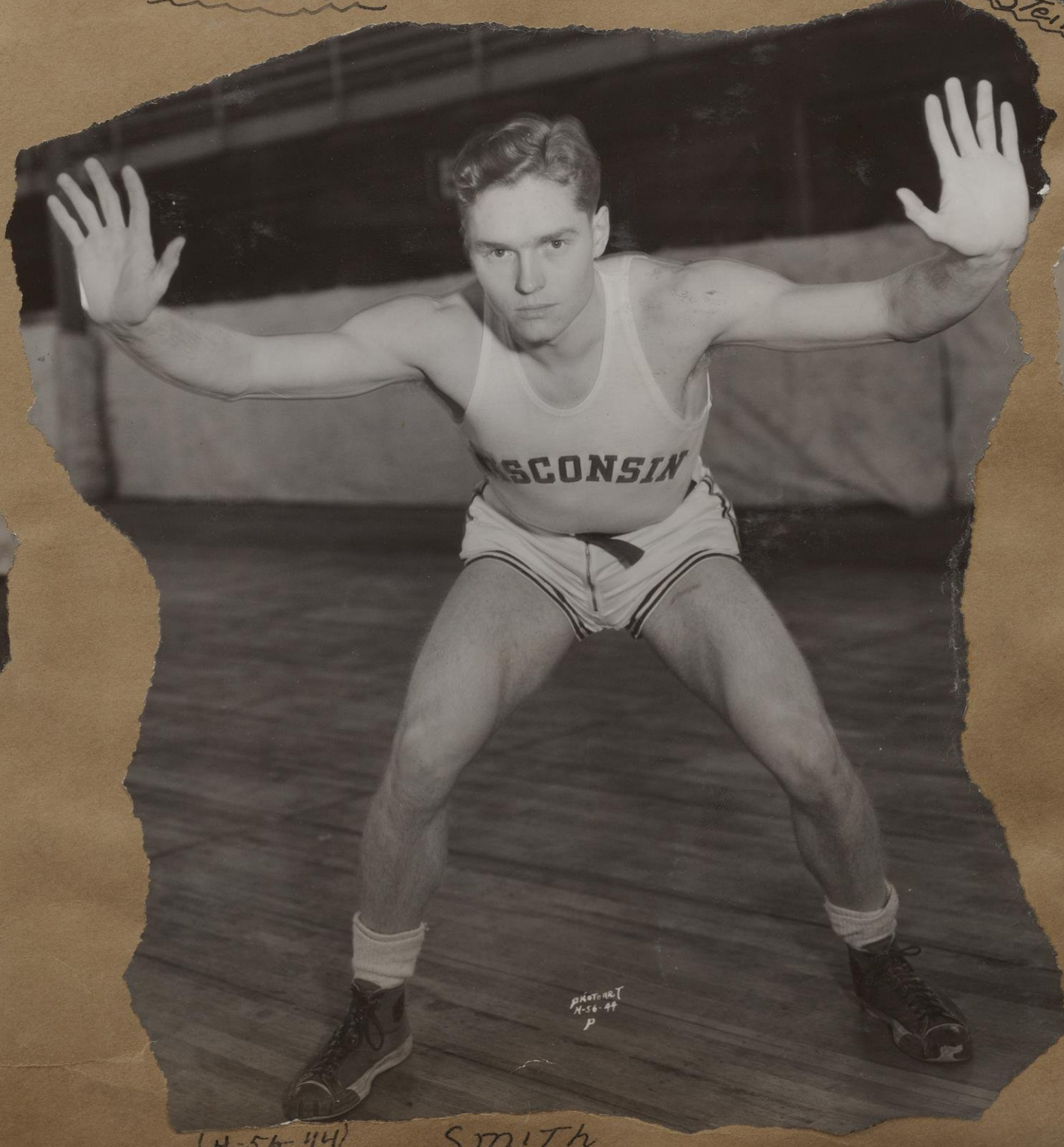


H-56-44  
J

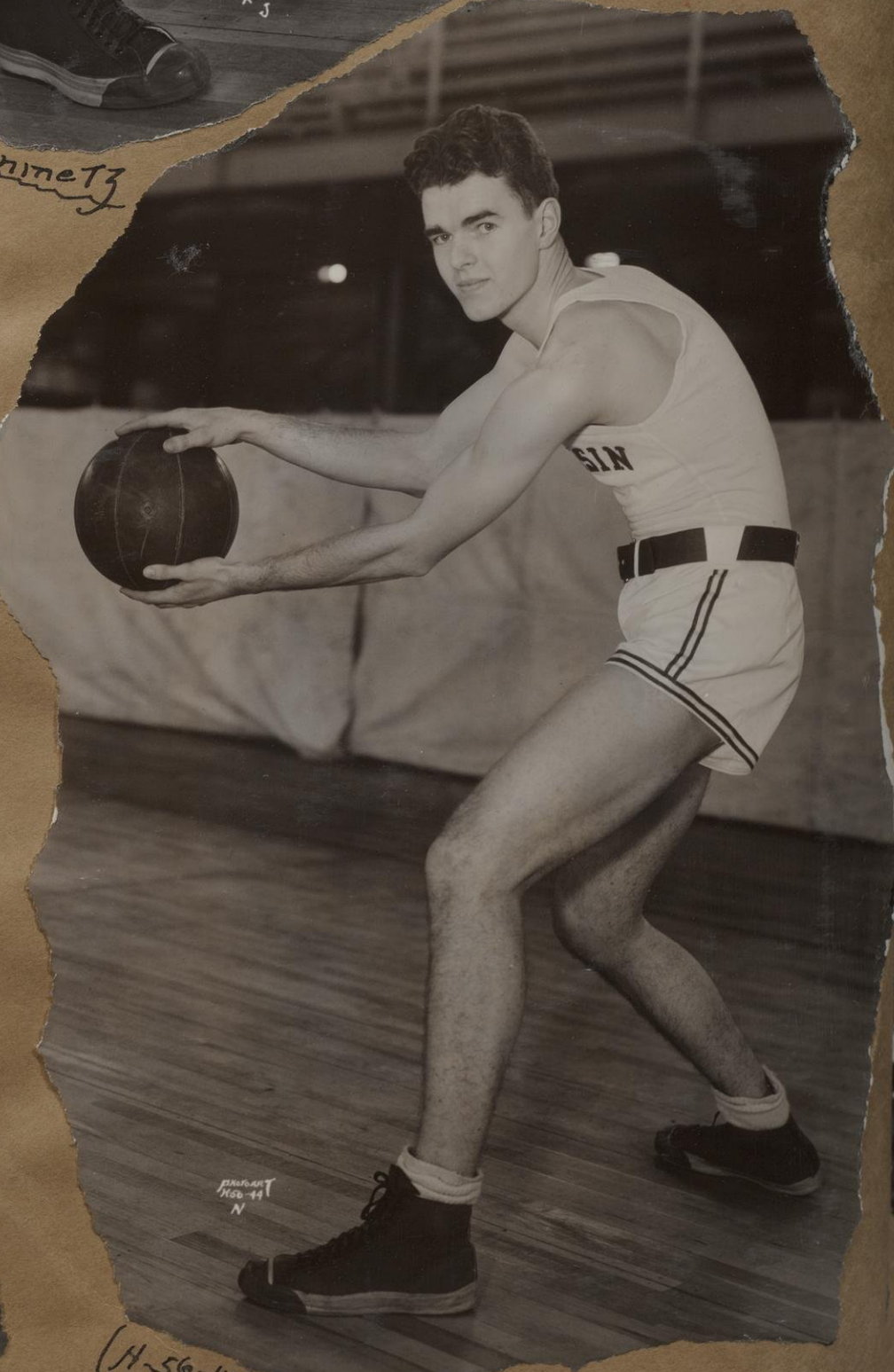
"Chris" Stennetz



H-56-44  
E "Doug" Nelson



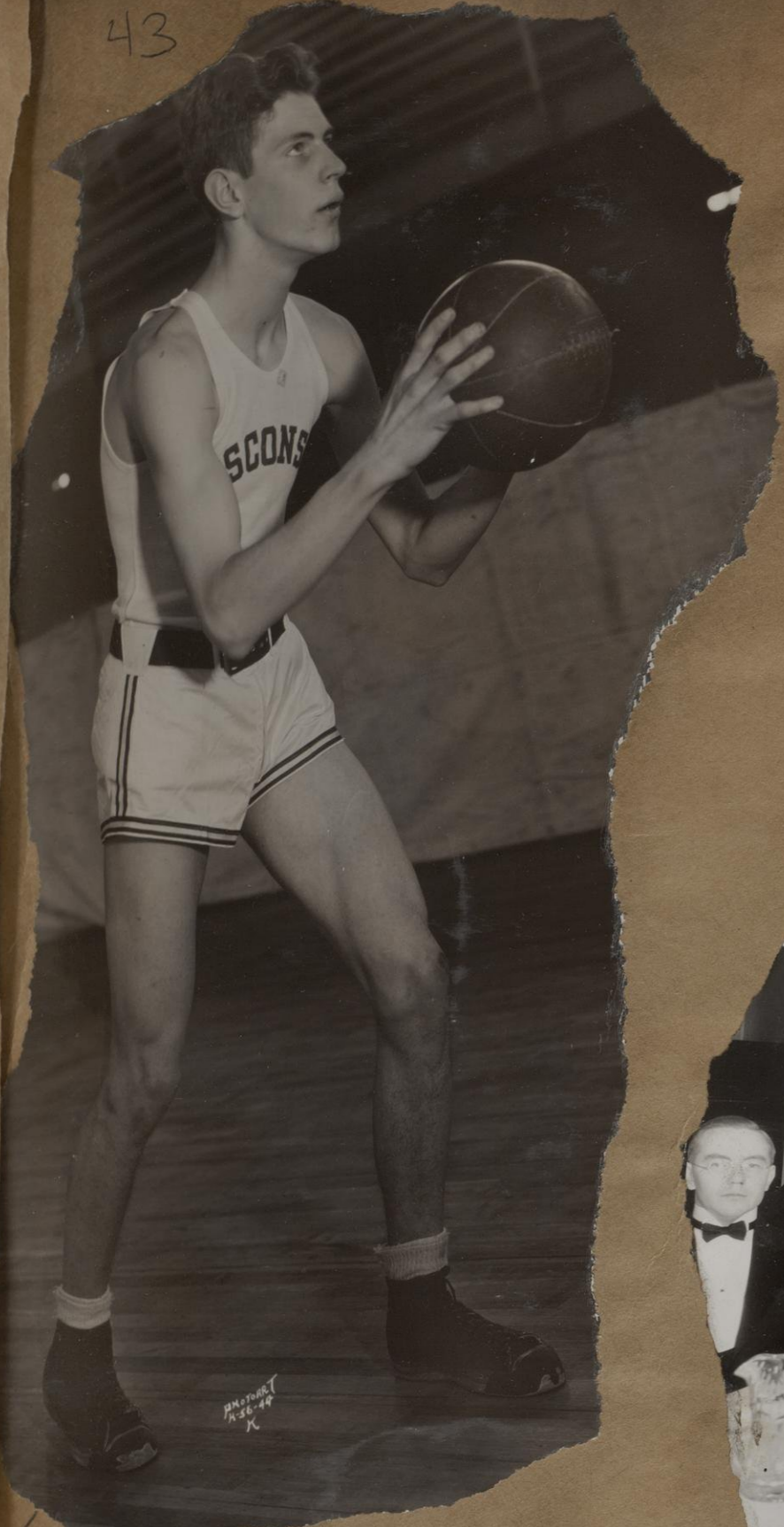
H-56-44  
P SMITH



H-56-44  
N

SWAN





H-56-44  
K KASTERN



H-56-35  
C Theta Xi Xmas Formal



H-56-55  
B Theta Xi Intramural Football Champs



H-56-36  
D GAMMA Eta GAMMA Xmas Formal Banquet



H-56-37  
E GAMMA Eta GAMMA Xmas Formal



H-56-53  
A Theta Xi Intramural Football Champs





(H-56-58)

U. of W. HUNT CLUB



(H-56-66)

U. of W. Nurses



(H-56-68)

Phi Lambda Phi



Dean Christiansen



Dean Christiansen





PRE-PROM DANCE  
JAN. 10 1932





H-56-73  
H

ANN EMERY HALL



H-56-73  
B

ANN EMERY HALL



H-56-68

PHI LAMBDA CHI



H-56-90

Sigma Chi - Phi Gamma Delta

The 1933 JUNIOR PROM

© PHOTOART HOUSE MADISON



ED. KINSLEY Chairman

QUEEN LOUISE DYDRAK



H-56-77  
G



H-56-77  
C



1933

Junior

Prom

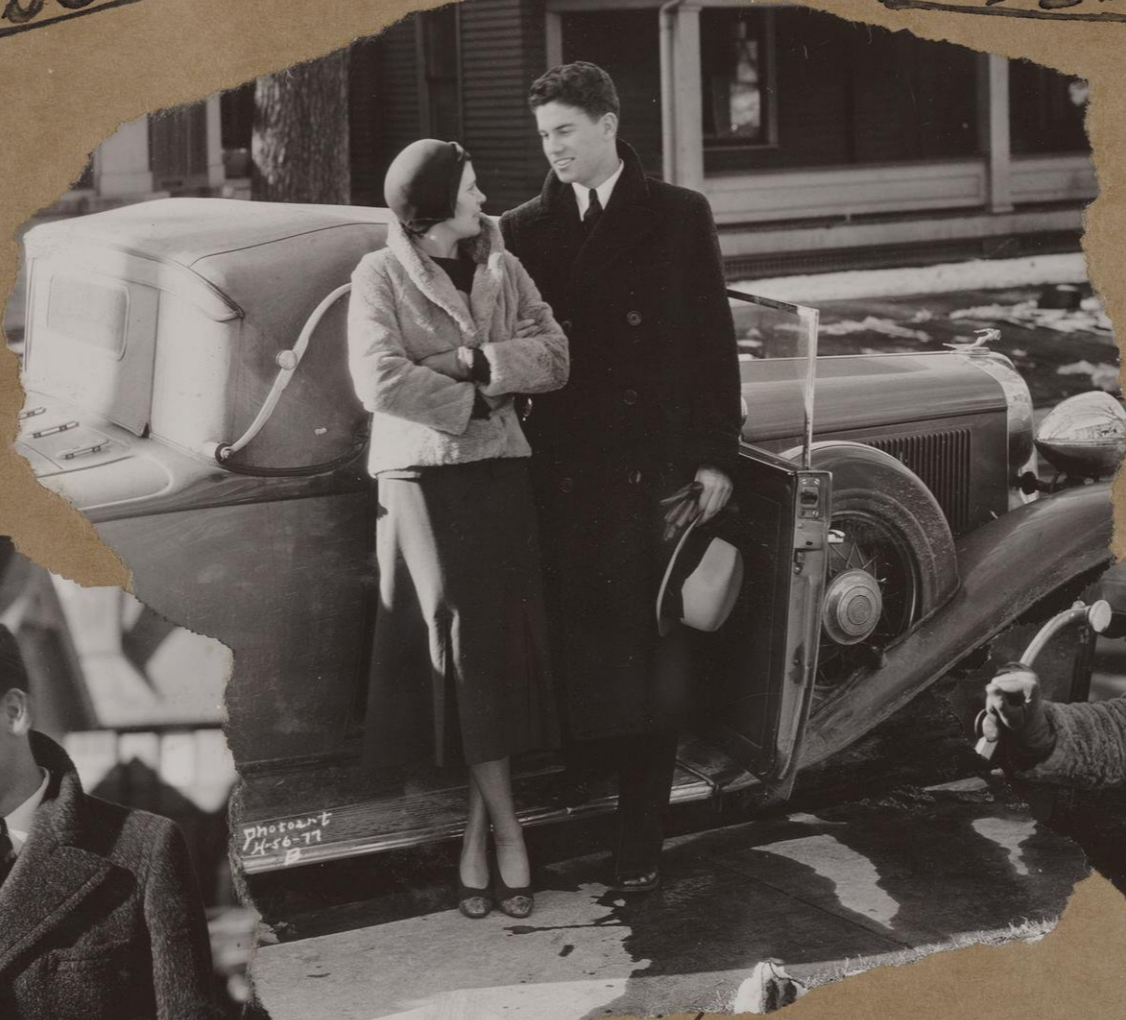
H-56-77  
K



H-56-77  
J



H-56-77  
D



H-56-77  
B

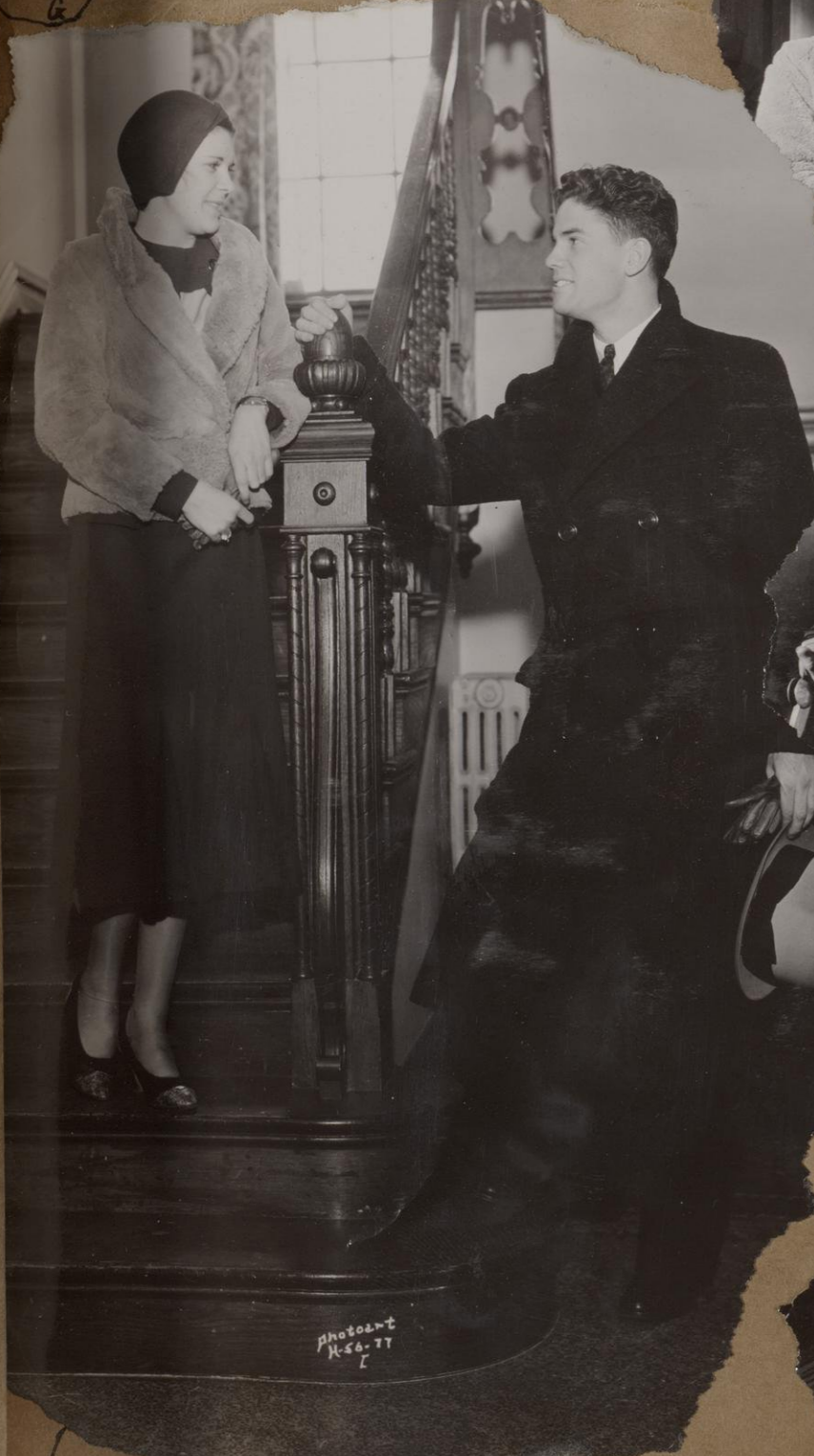


Photo  
H-56-77  
I

H-56-77  
I



Photo  
H-56-77  
E

H-56-77  
E



H-56-77  
L



H-56-77  
F



Photo  
H-56-77  
H

H-56-77  
H





The 1933 JUNIOR PROM

Phi Delta Theta

H-56-88

S.A.E.

Betas



Chi Psi

The 1933 JUNIOR PROM

H-56-87

PHOTOART HOUSE MADISON



Kappa Sigma

H-56-85



Alpha Sigma Phi - Phi Beta Pi

H-56-86



The 1933 JUNIOR PROM

Alpha Delta Phi - Beta Sigma Chi

H-56-89

PHOTOART HOUSE MADISON



The 1933 JUNIOR PROM

Phi Delta Theta S.A.E.

Betas

PHOTOART HOUSE MADISON





The 1933 JUNIOR PROM

© PHOTOART HOUSE, MADISON

wwcms-5) 192



H-57-9  
H

(H-57-9  
H

Mem. Union Library



H-57-9  
B

(H-57-9  
B

Mens Quarters - Mem. Union

M5-5 148 ← also → ww(m5-5) 193 ↓





H-57-8  
MENS Union Council - Mem. Union Bldg.



H-57-7  
Dean TURNER - Engineering



H-56-99



Psi W Ppsilon O

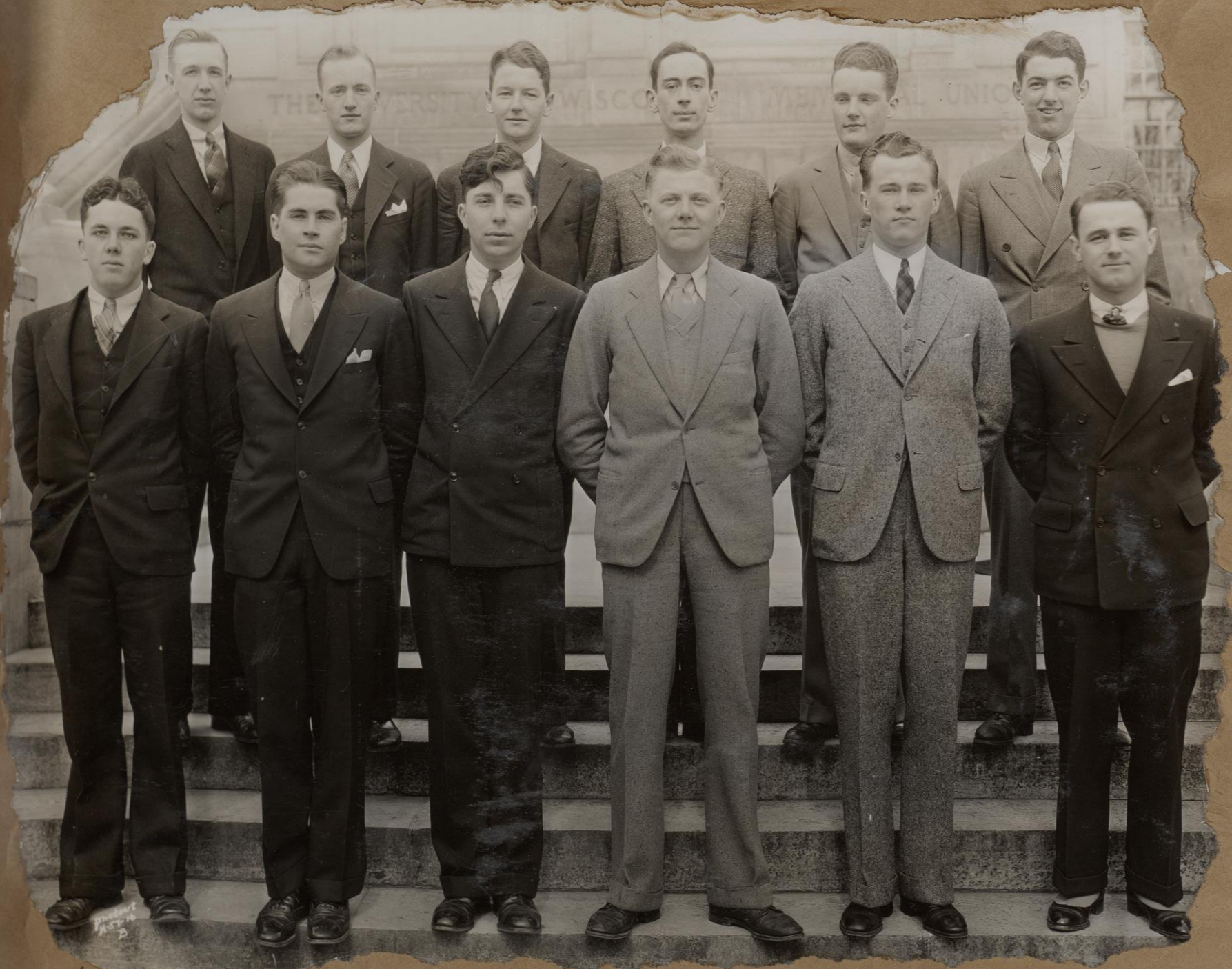
U.W. GIRLS PHYSICAL EDUCATION DEPT.





U. W. SOPHOMORE SHUFFLE  
FEB. 26, 1932

PHOTOART  
HOUSE



Union Council

(H-57-16)  
B



Union Board

(H-57-16)  
A





Photostudio House  
H-57-29



St. Francis House Vestry Group



H-57-29

Alpha Chi Omega

Phi Delta Theta Bowery Party



Sigma Nu Bowery Party

Photostudio House  
H-57-31



H-57-22  
D

Georgian Grill

Mem. Union



Graduate Club Group

H-57-40





Daley & Bassett



H-57-11

Matrix Committee



PHOTOART  
H-57-19

Wadsworth-Theibot-Bauer-Griswold

H-57-38



PHOTOART  
HOWE

Seventh Annual Matrix Table - March 10, 1932

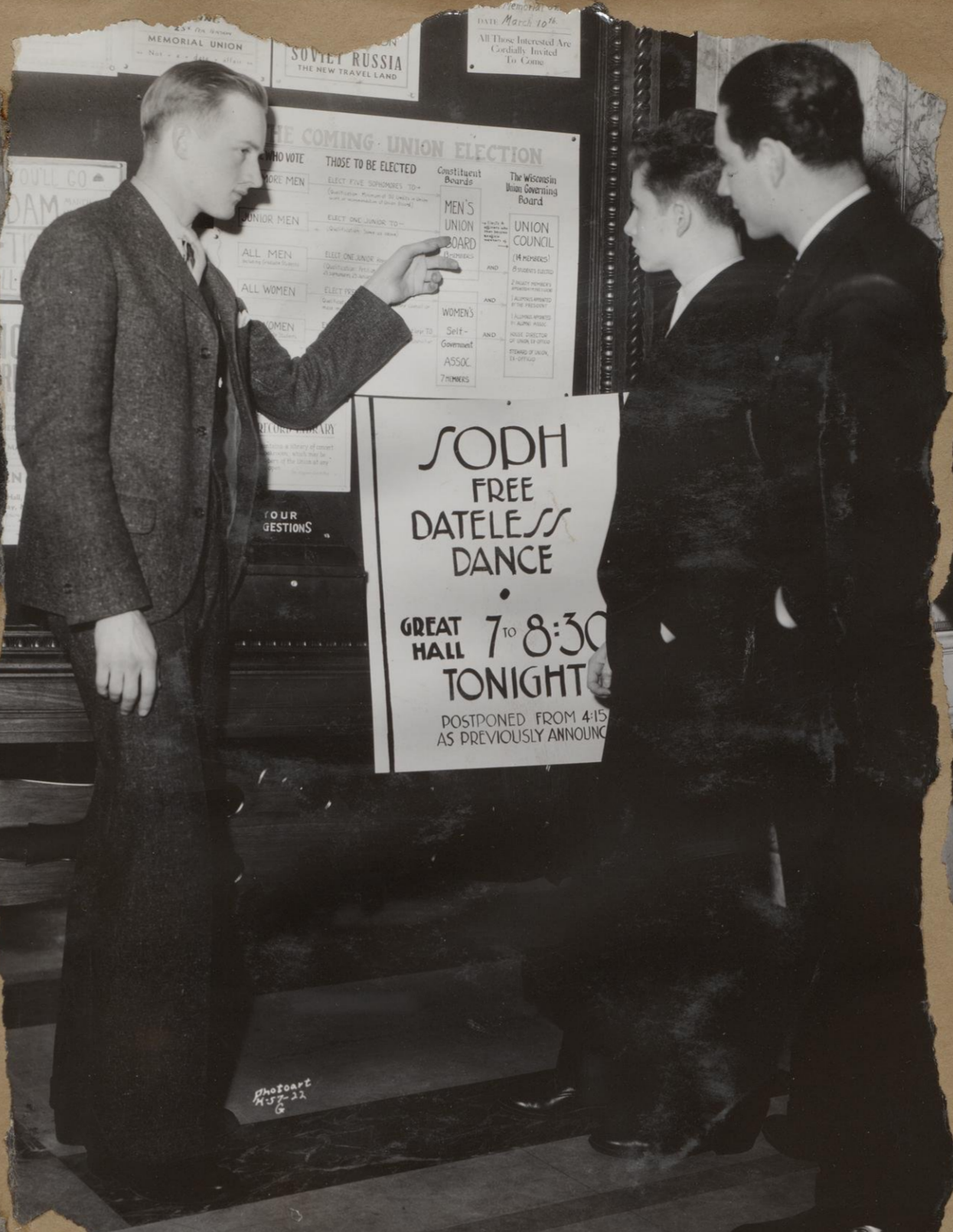
Seventh Annual Matrix Table  
Great Hall - Mem. Union





Grad. Club

H-57-22 C



SODH  
FREE  
DATELESS  
DANCE  
GREAT HALL 7 to 8:30  
TONIGHT  
POSTPONED FROM 4:15  
AS PREVIOUSLY ANNOUNCED



H-57-22 B Art Room



H-57-22 A Library



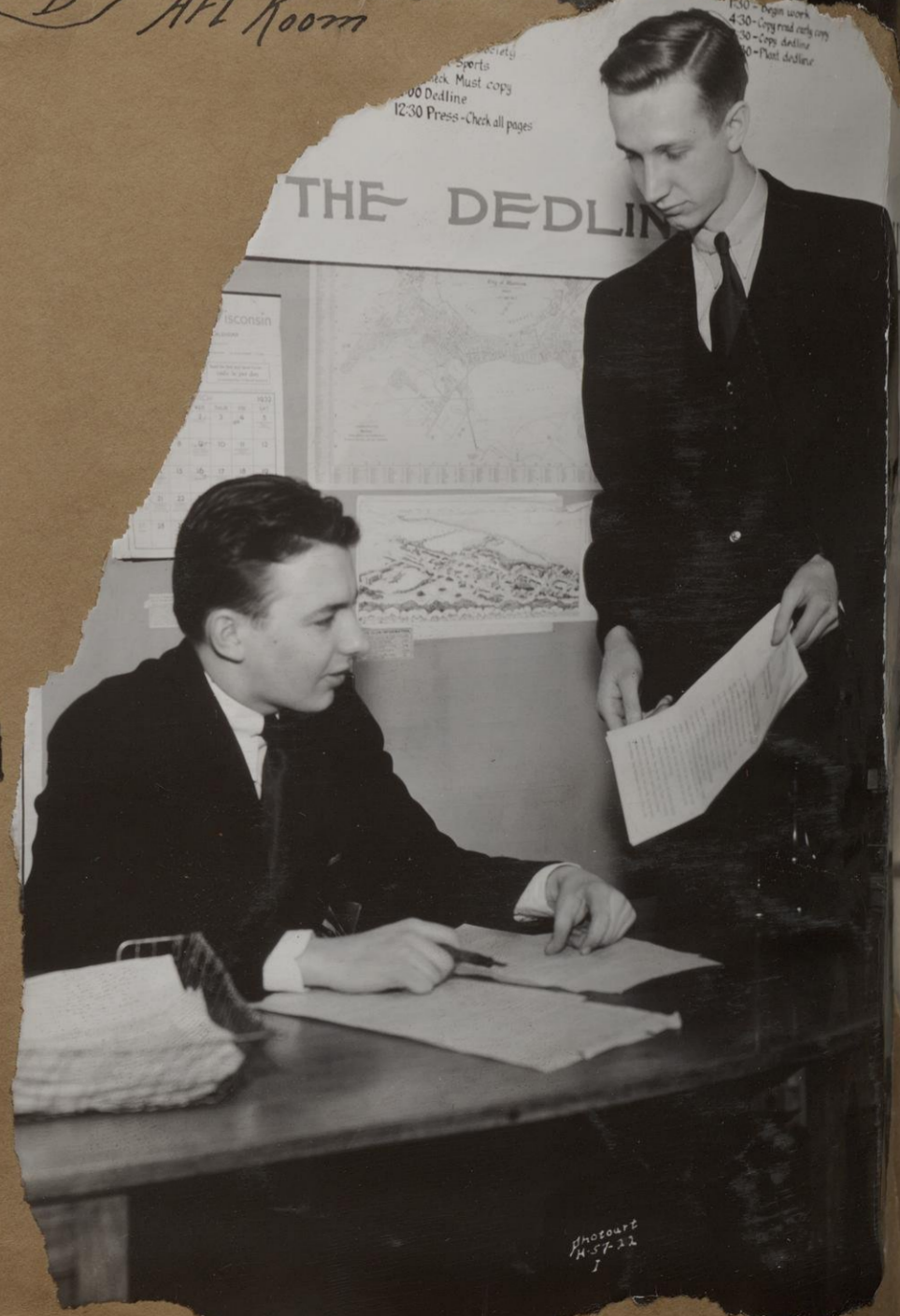
Alex Carmon

H-57-22 G

House Director



H-57-22 E "Ocky" Office



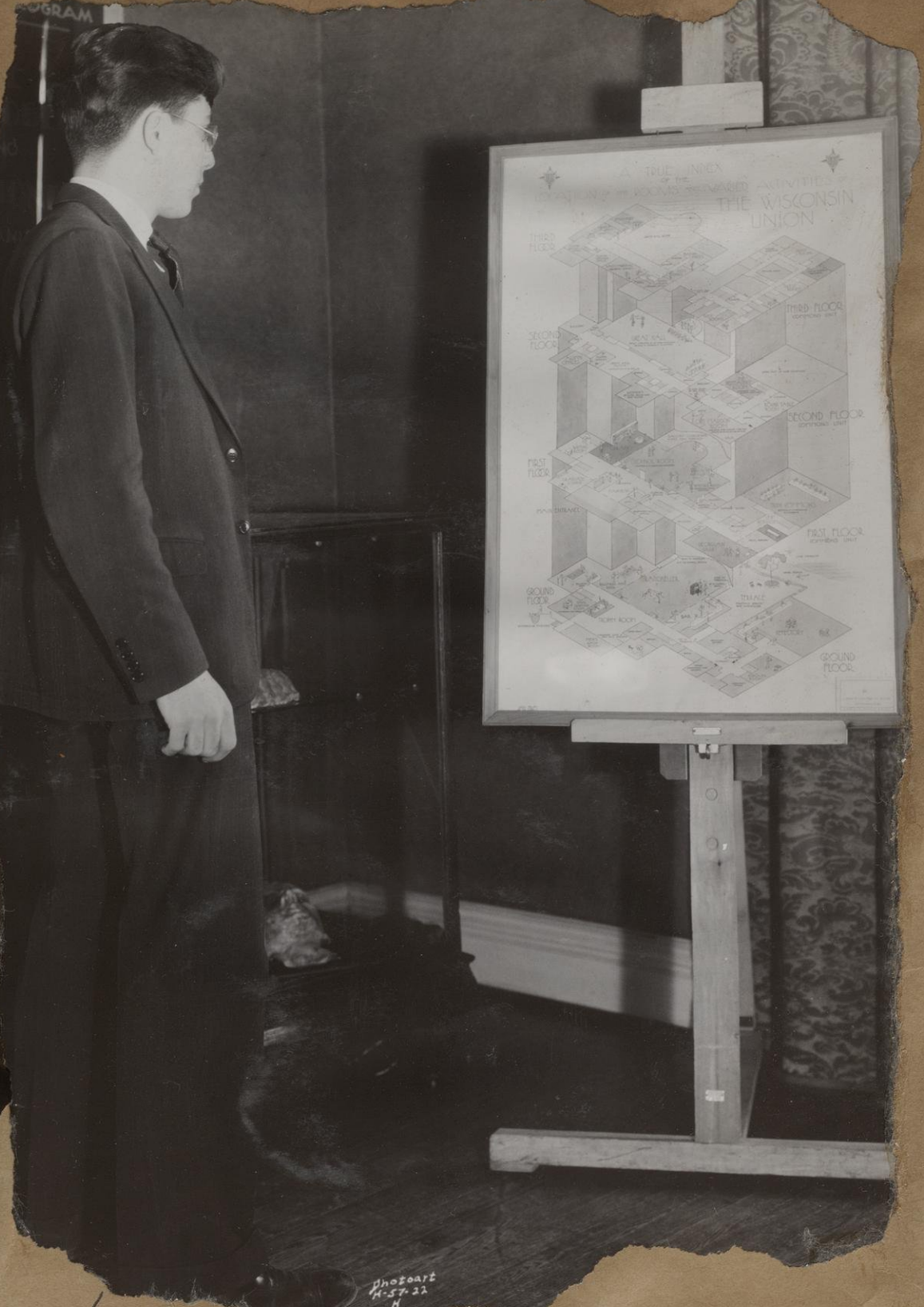
Cardinal office

THE DEDLINE





(H-57-33) Dorms Recreation



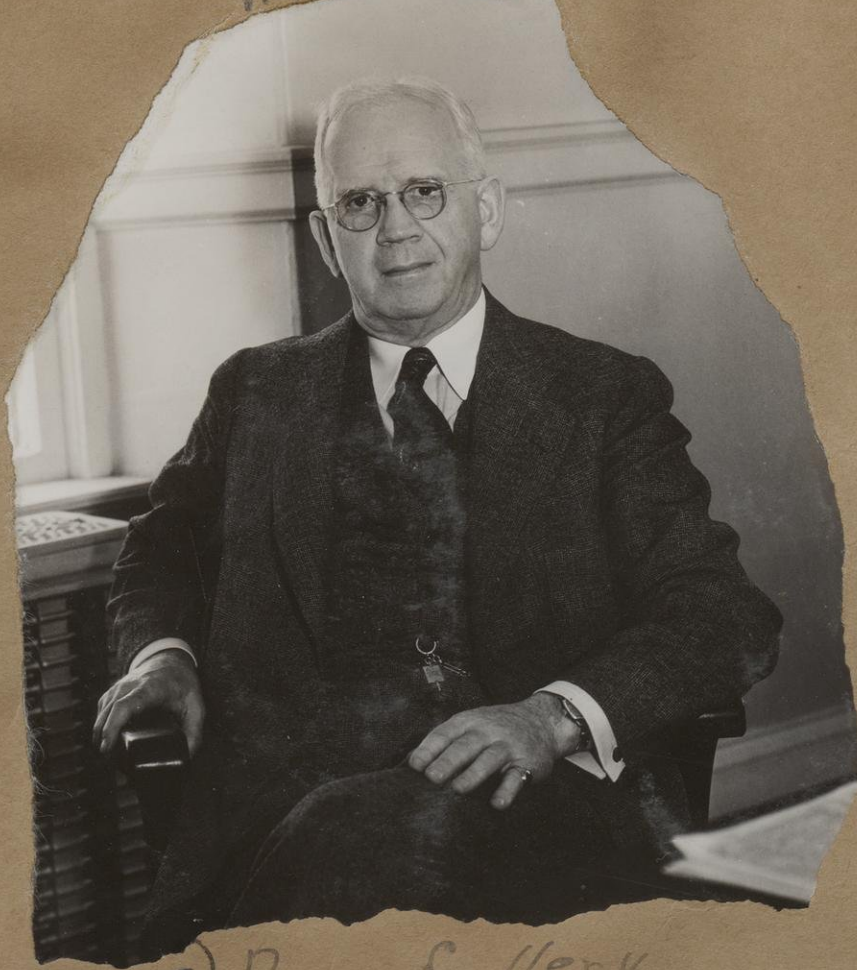
(H-57-22) Blue Room



(H-57-22) Forum



The Photo I House



(H-57-7) Dean Sallery



(H-57-22) Kitchen





$\Sigma N$

Bob A'dair

T.H.E.



H-57-83 Mother's Day Mail Invites  
Mrs. Shade Grossarth Cannon Sorenson Strecker Wimer Bolender  
Stewart, Hanley Hill, Reid  
see Cardinal  
Apr 27, 1932



y.m.c.a. Board

Sigma Chi





THE PHOTOART HOUSE Madison, Wis.

U. S. W.  
20th ANNUAL MILITARY BALL - APRIL 15, 1932



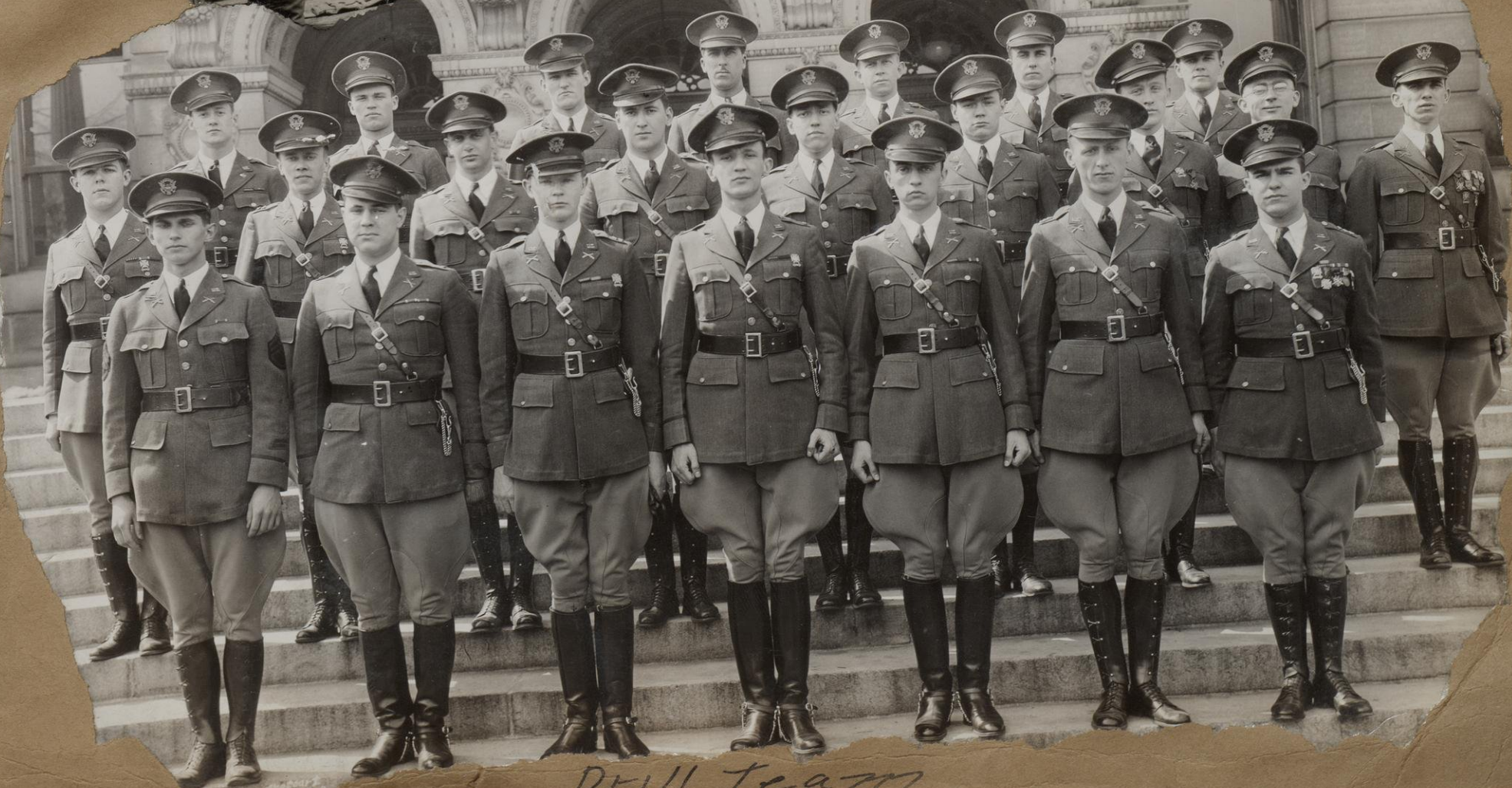
Advanced Corpses



Mil. Ball -  
window



Wis. Gen. Has. P.



Drill Team





H-57-59

Delta

Sigma

Phi

Bowery Party



H-57-61

Girls Athletic Repl.



H-58-9

ΔΣΠ Badger Bowl Winners



H-57-87

Varsity Tennis Team



H-57-97B

W. Boxing Team



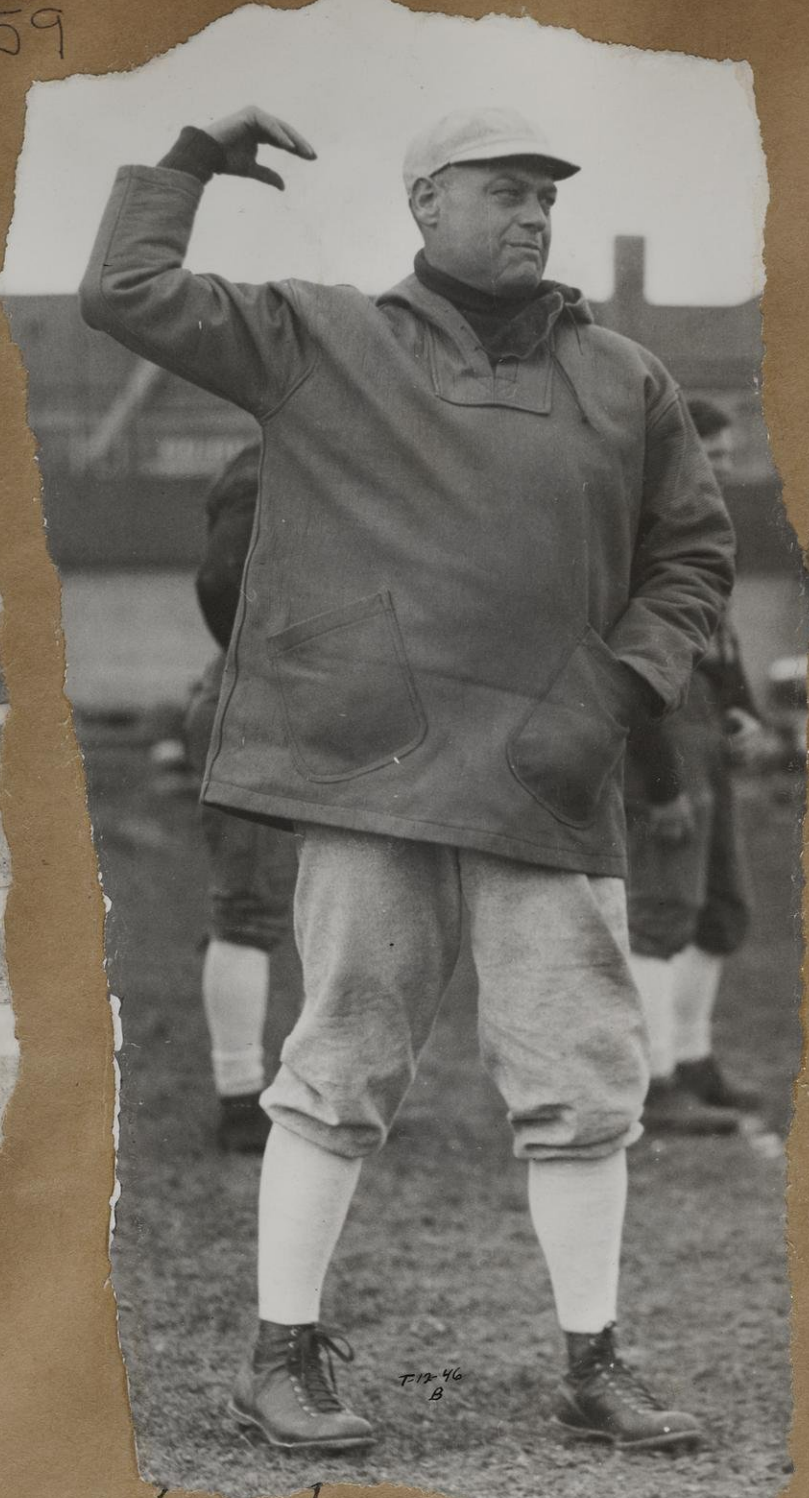
H-57-84

'W' Club





(H-57-91) Athletic Board



(F-12-46) B Spears



(H-58-4) Alpha Gamma Rho



(F-12-46) F



(F-12-46) H



(F-12-46) E



(F-12-46) C

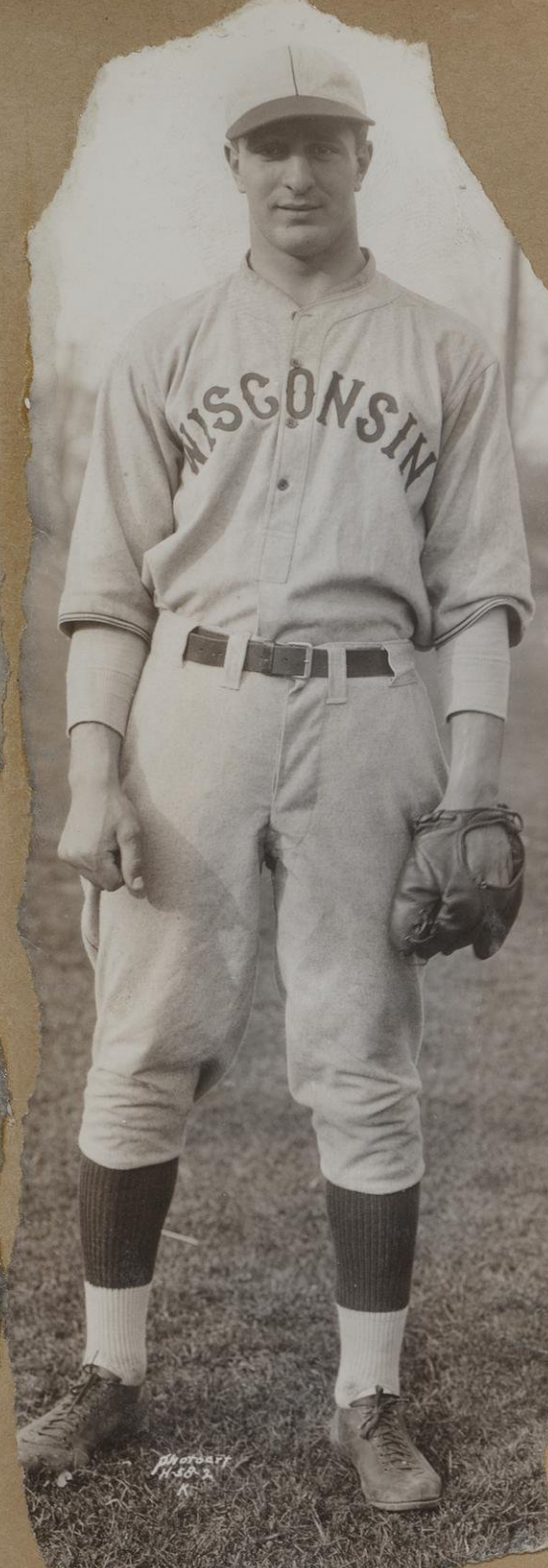


(F-12-46) D





Wickman



Pasetti



Griswold



Cuisinier



H-58-2  
H

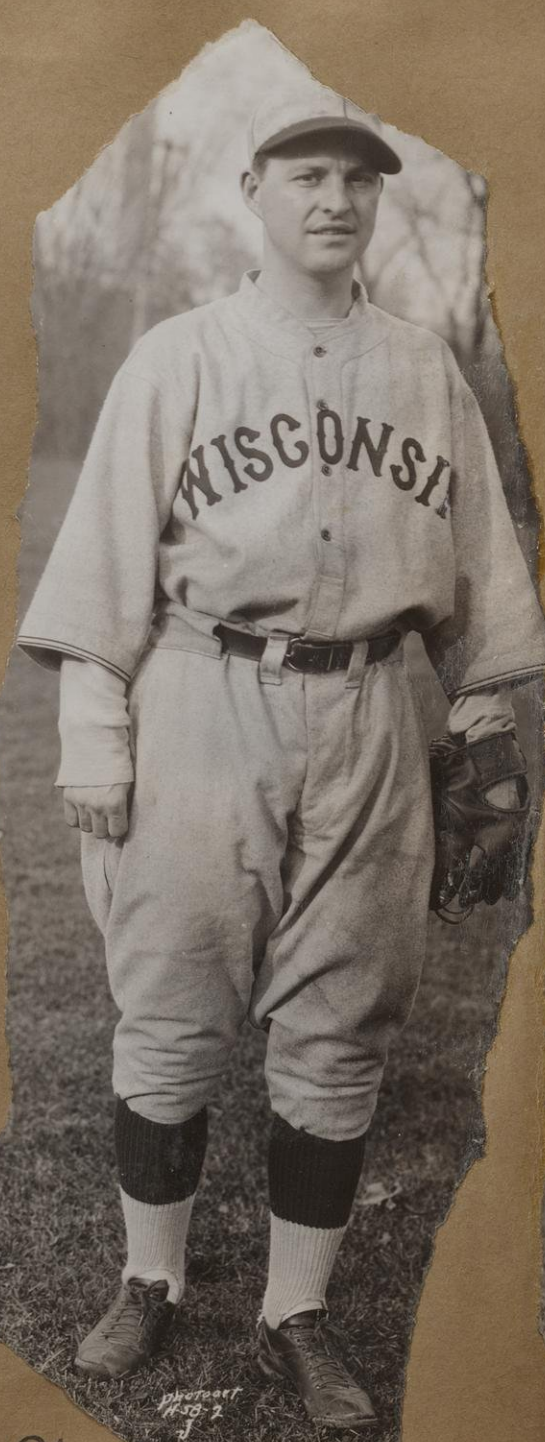
Varsity Baseball Squad



Olson



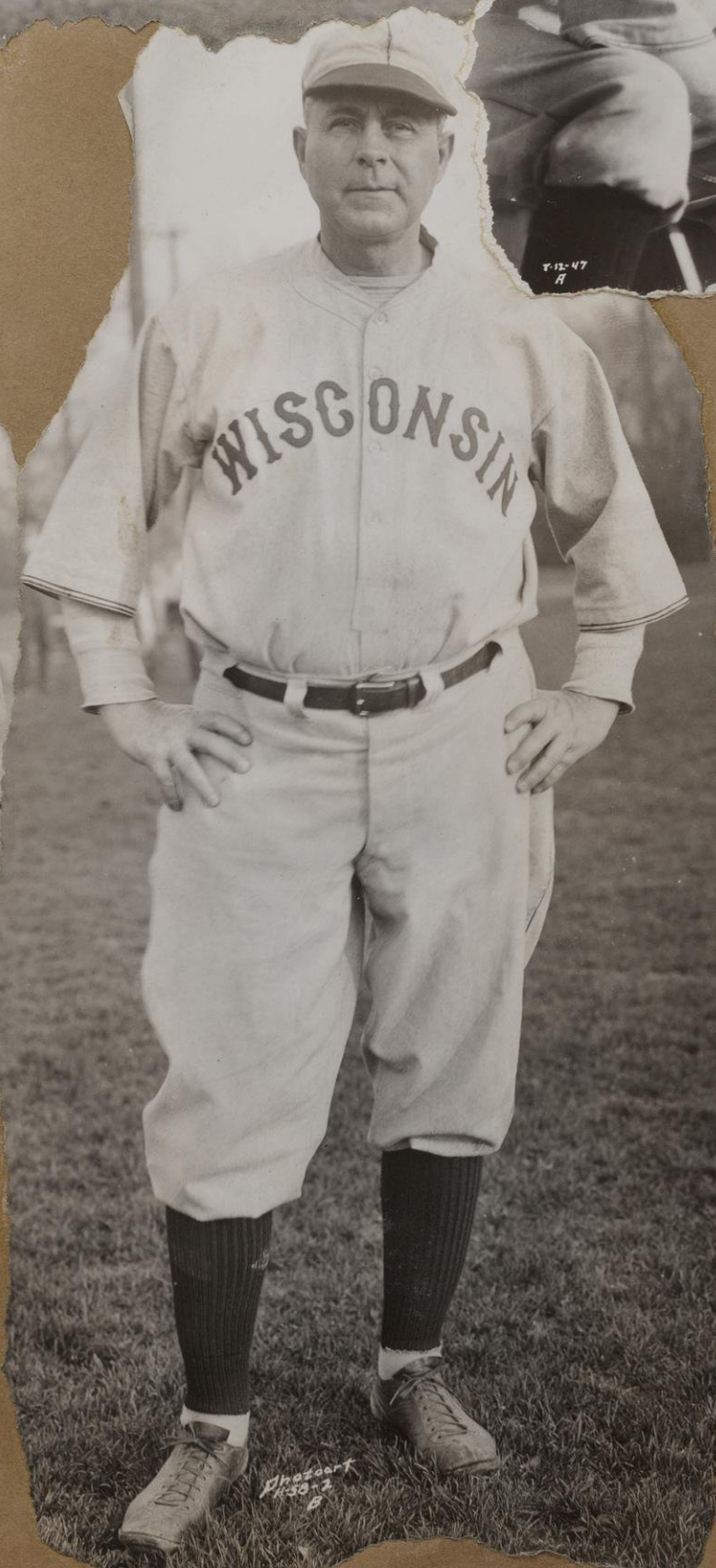
Smilgoff



Plankey



Summerfield



Coach Lowman

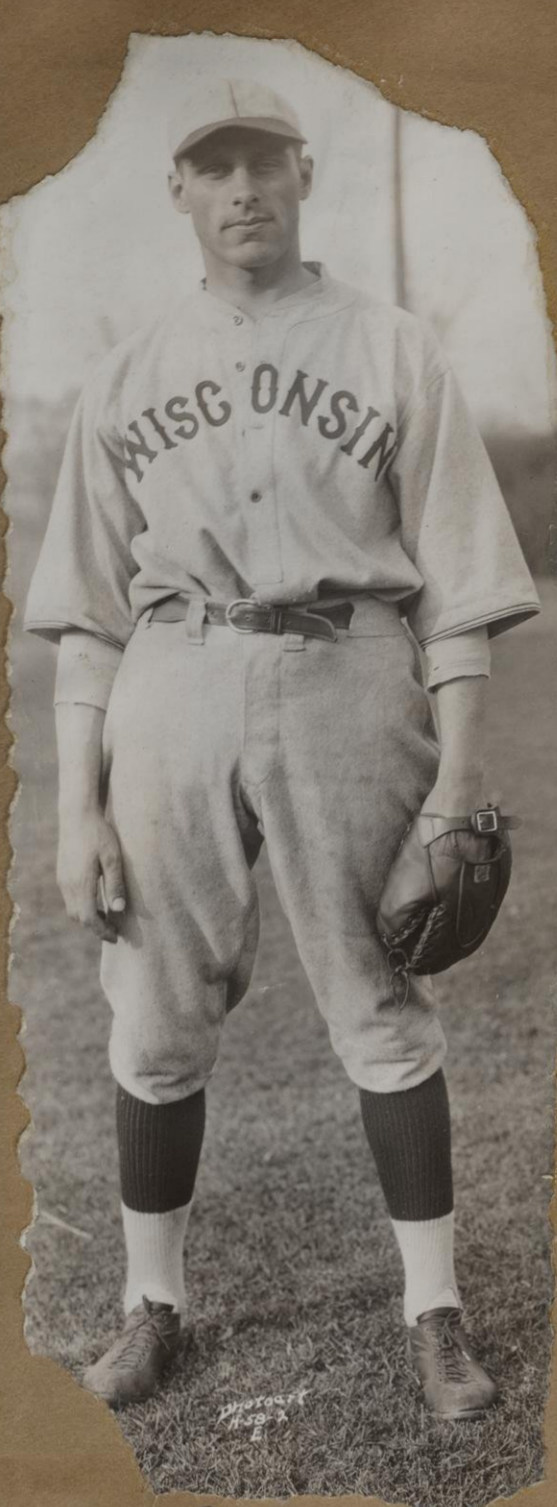


Ross





Phendel



Schneider



Nordstrom



H-58-14

Alpha Epsilon Pi Spring Formal



H-58-15

Phi Delta Theta Spring Formal



H-58-8

Delta Zeta Spring Formal



H-58-12

Gamma Eta Gamma Spring Formal



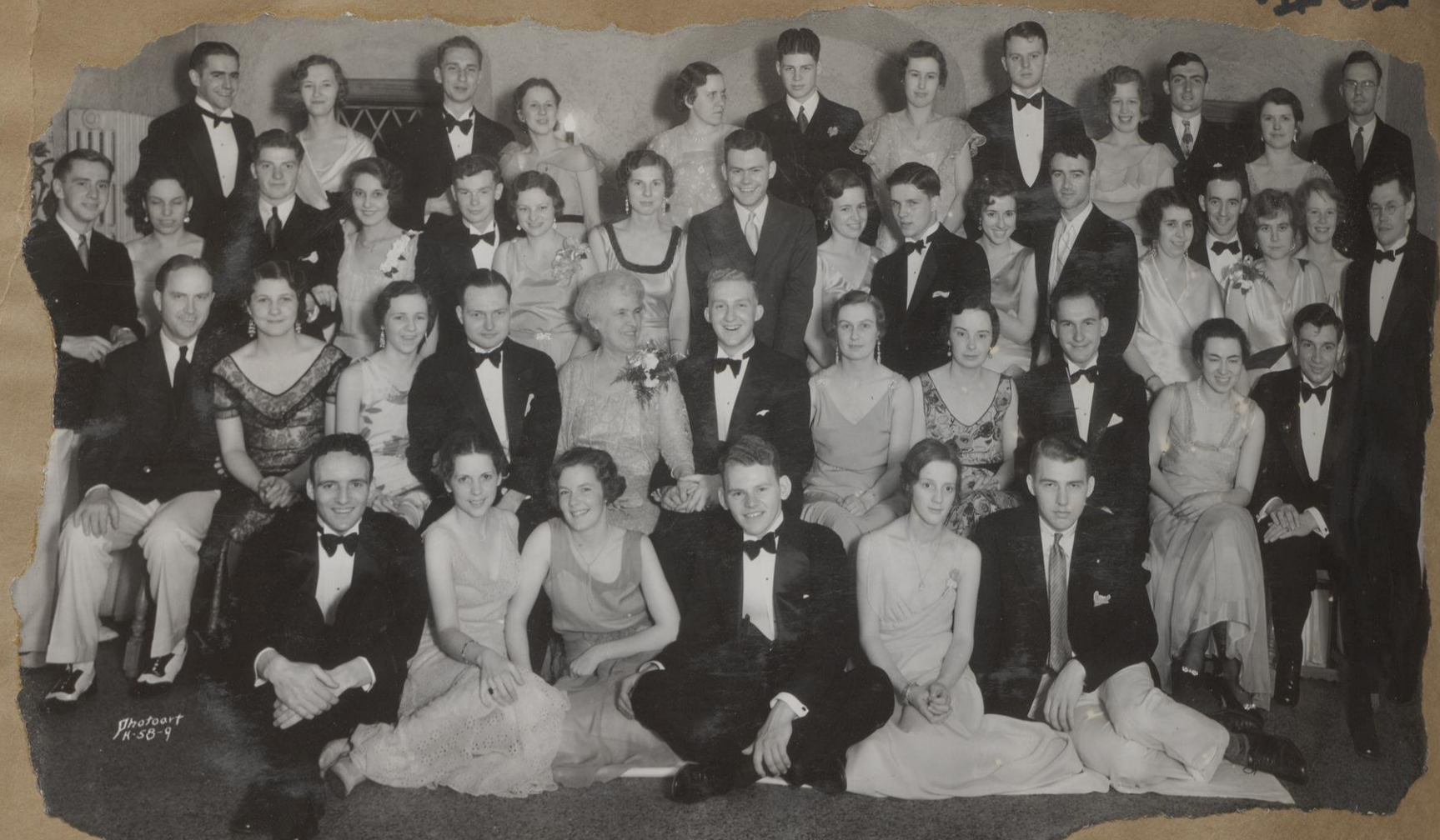
H-58-13

Kappa Alpha Theta Spring Formal





H-58-14 Alpha Phi Spring Formal



H-58-9 Phi Tau Spring Formal



H-58-11 Tau Epsilon Alpha Spring Formal



H-58-6 Phi Gamma Delta Spring Formal



H-58-7 Phi Sigma Delta Spring Formal



H-58-16 Alpha Tau Omega Mothers Day Group





PHOTOART HOUSE  
Wm. J. Meuer, pres.

Barnard Hall Senior Swingout  
May 19th 1932.



H-58-45 Tau Epsilon Rho



H-58-37

Geology Club





K.E. Group

H-58-36



H-58-28 Chadbourne Spr. Formal



Alpha Chi Rho Spr. Formal

H-58-24



Alpha Gamma Delta Spr. Formal

H-58-25



Theta Delta Chi Spr. Formal

H-58-27



Delta Y. Spring Formal

H-58-33





H-58-32 Zeta Phi Eta Group



H-58-26 Phi Psi Spring Formal



H-58-31 Phi Kappa Tau Spring Formal



H-58-50 Alpha Gamma Rho Spr. Formal







H-58-52 Kappa Psi Spr. Formal



H-58-53 M.K. Gamma Spr. Formal Band  
B



H-58-47 A.X.S. Spring Formal



H-58-49 T.K.E. Spr. Formal



H-58-51 S.A.E. Spr. Formal



H-58-53 K. Kappa Gamma Spr. Formal





E. X. Spr. Formal

H-58-48



H-58-80

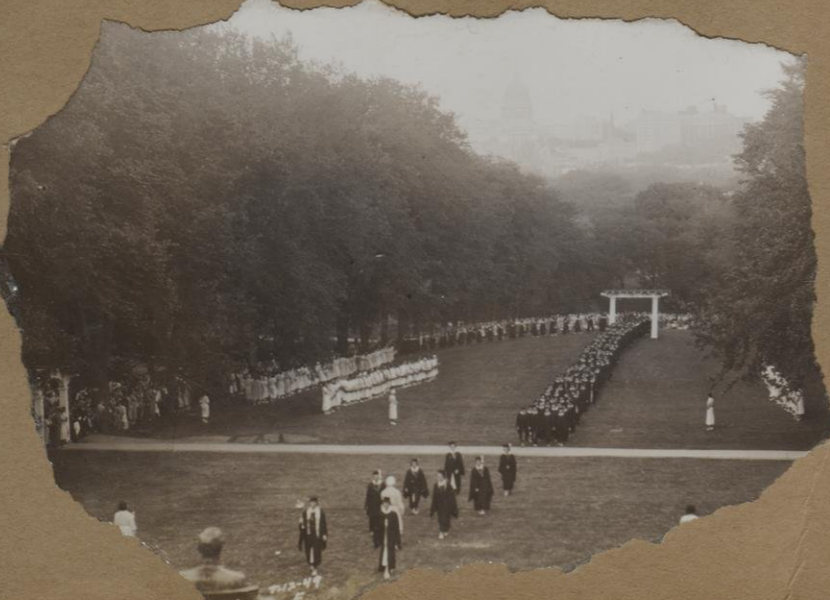
Kappa Psi



H-59-23



A.E.T.



Senior Swingout





T-12-51-J



T-12-51-F



# Memorial Day Exercises

XVII-68



T-12-51-D



Freshman  
Baseball

H-58-74  
B



H-58-74  
C

Varsity Baseball



H-58-74-A





H-58-61 Varsity Track



H-58-57 Alpha Chi Omega Mothers Day Group



H-58-56 Chadbourne Mothers Day Group



H-58-53 M.K. Gamma Mothers Day Group



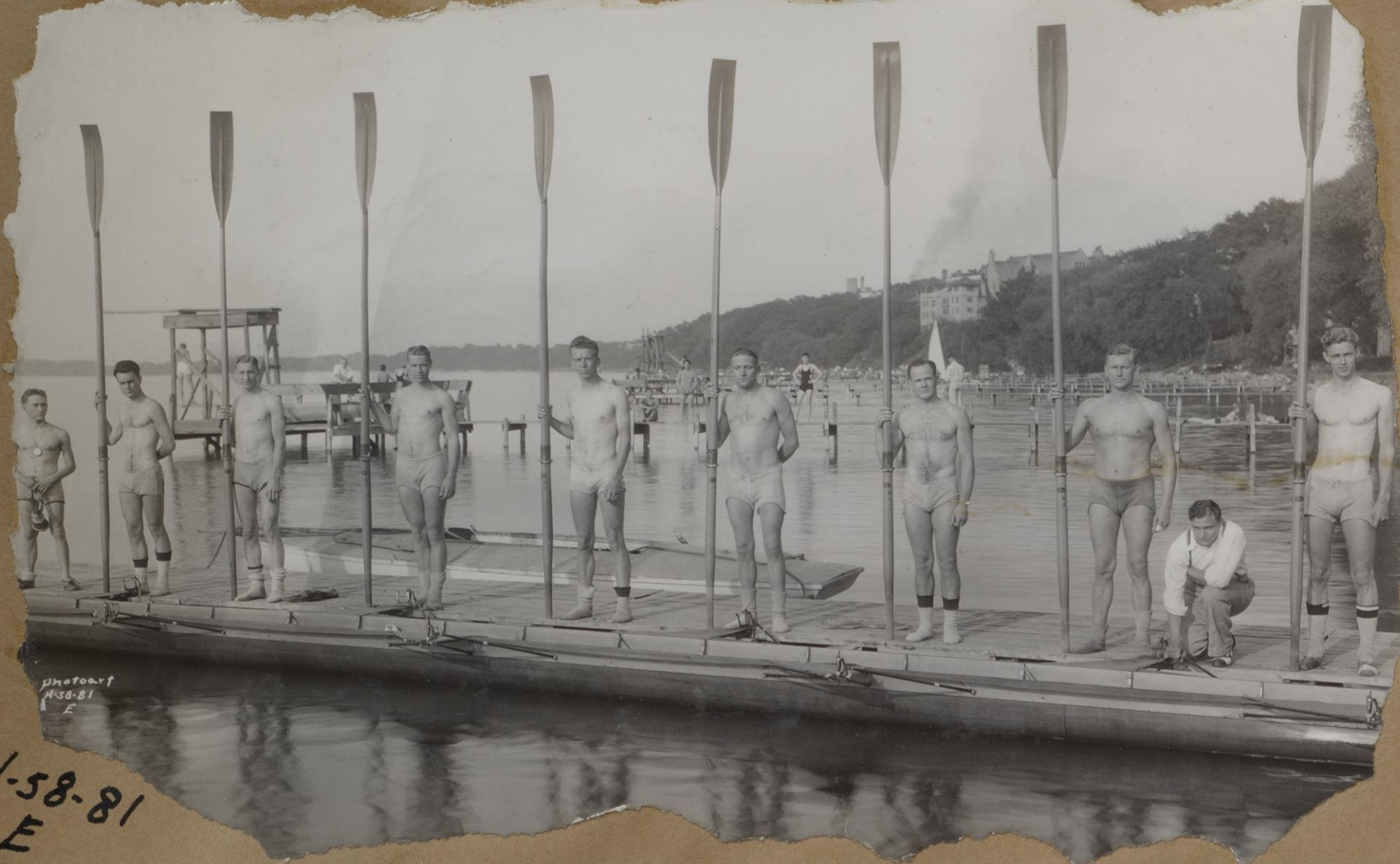
H-58-54 Delta Z Mothers Day Group



Barnard Mothers



XVII 70



H-58-81  
E



H-58-81 "Mike"  
A



Chitani House  
H-58-99

Class 1910

Varsity Crew



71



Photostat  
Novel  
H-59-1

H-59-1

Class 1907



Photostat  
H-59-2

H-59-2

Class 1902



H-59-5

Grad. Nurses.



Reunion Band Concert

Photostat  
H-59-3





H-59-6 Baccalaurrette



H-59-7 B Commencement



H-59-19

Phi MU Summer Group



H-59-28

ΔΔΔ. Summer Group





H-59-29 H-Δ Summer Group



H-59-24 Prom Committee & Candidates



H-59-31



James Blair

Summer Prom  
Yrnq-Queen



Marion Twohig





H-59-41 Colonial Lodge Summer Group



M5-5 20

Prof. Ross.



H-59-33 German House



SUMMER PROM 1932

Larry O'Brian







