



LIBRARIES

UNIVERSITY OF WISCONSIN-MADISON

The 1943 meletean. Vol. 32 1943

[River Falls, Wis]: [Wisconsin State University, River Falls], 1943

<https://digital.library.wisc.edu/1711.dl/23FQSF6EQ7IJF8P>

This material may be protected by copyright law (e.g., Title 17, US Code).

For information on re-use, see

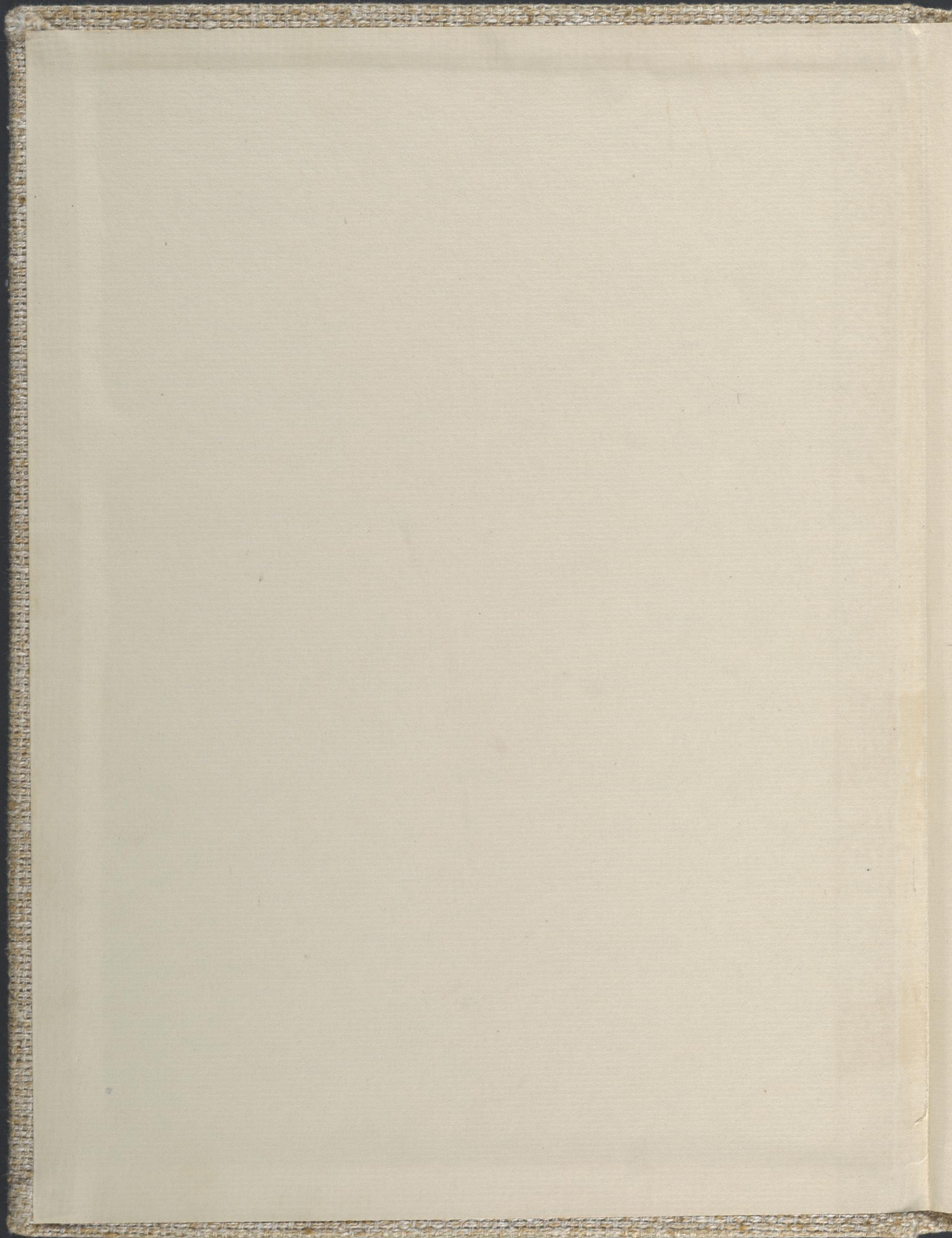
<http://digital.library.wisc.edu/1711.dl/Copyright>

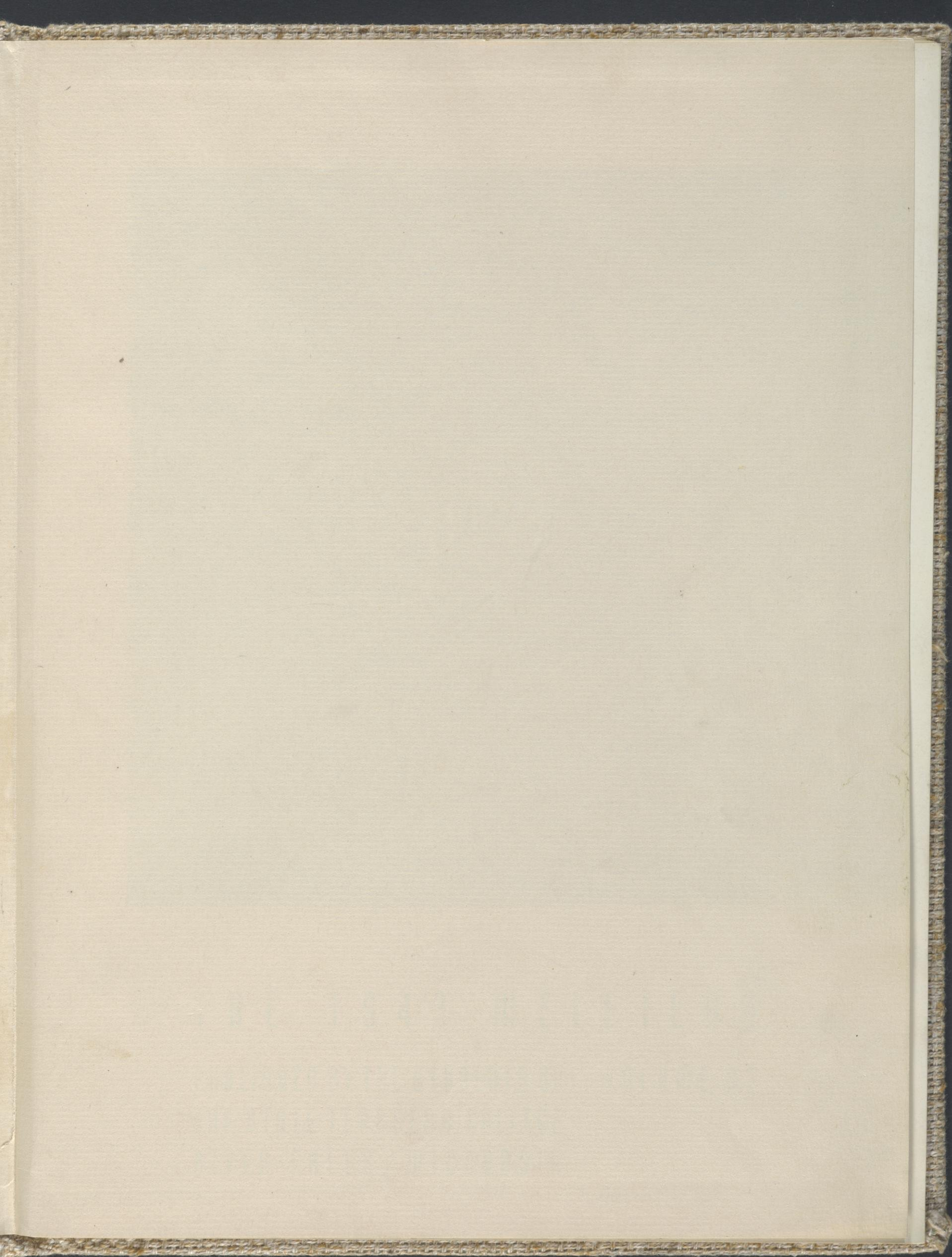
The libraries provide public access to a wide range of material, including online exhibits, digitized collections, archival finding aids, our catalog, online articles, and a growing range of materials in many media.

When possible, we provide rights information in catalog records, finding aids, and other metadata that accompanies collections or items. However, it is always the user's obligation to evaluate copyright and rights issues in light of their own use.



The 1943 Meletean

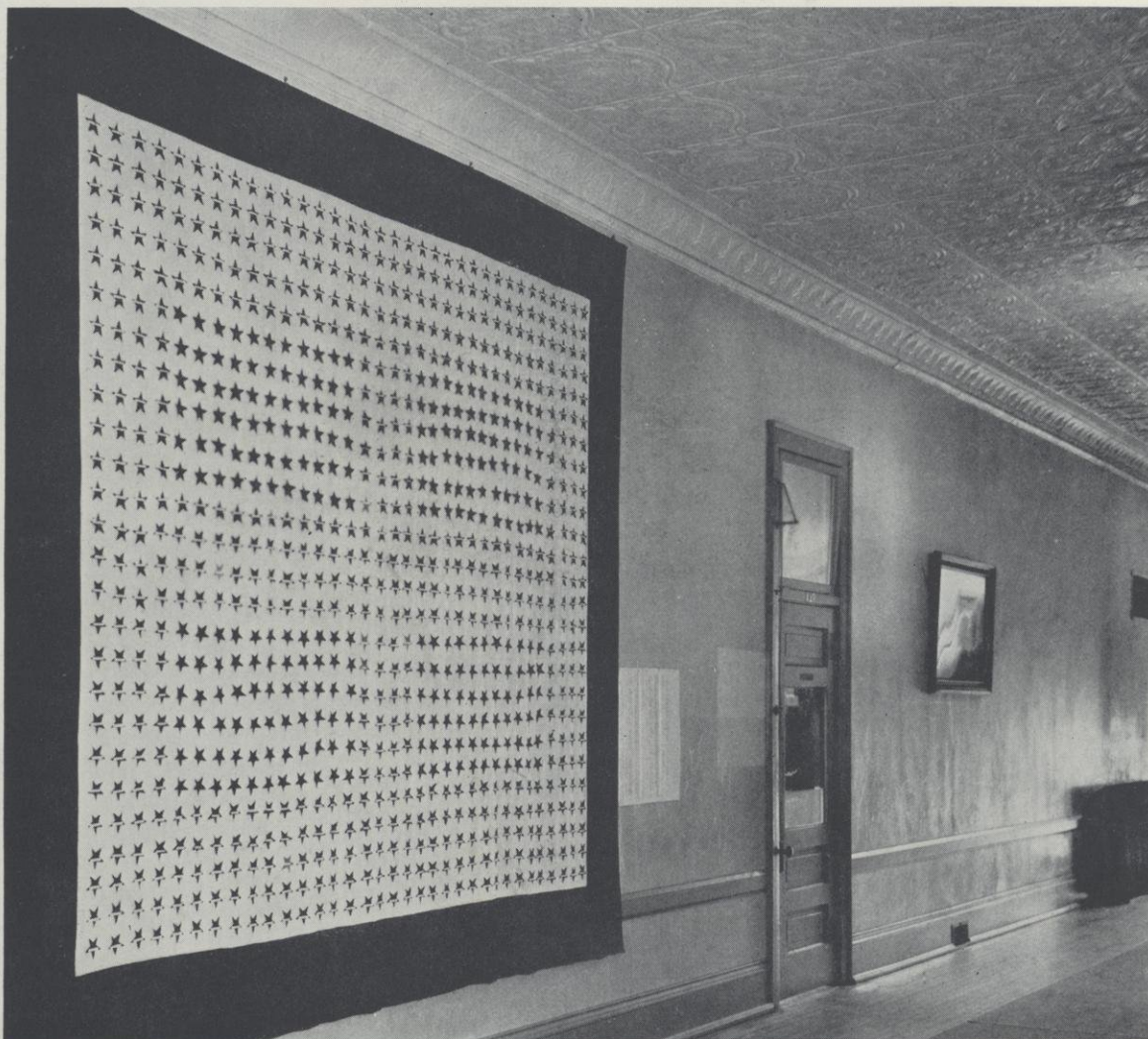






THE 1943 MELETEAN

PUBLISHED BY THE STUDENTS OF VOLUME 32
THE STATE TEACHERS COLLEGE
RIVER FALLS, WISCONSIN



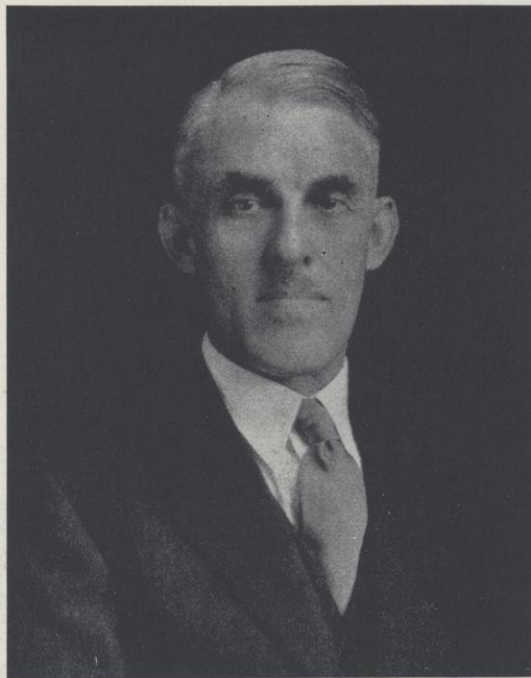
THE 1943 MELETEAN PROUDLY HAILS ALUMNI, STUDENTS, AND FACULTY WHO HAVE ENTERED THE ARMED FORCES OF OUR COUNTRY. IN YOUR ABSENCE WE PLEDGE TO DO OUR UTMOST TO UPHOLD THOSE PRINCIPLES AND IDEALS FOR WHICH YOU ARE FIGHTING.

WE PAY SPECIAL TRIBUTE TO THOSE WHO HAVE GIVEN THEIR LIVES IN THE SERVICE:

VOYLE JOHNSON
ROBERT MRAZ

FRANK WINTERLING

STANLEY PALM
ROBERT THORESON



PRESIDENT J. H. AMES

BOARD OF REGENTS

OFFICERS

EDWARD J. DEMPSEY	President
EDGAR G. DOUDNA	Secretary
JOHN M. SMITH	State Treasurer

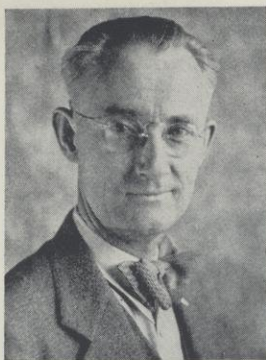
PERSONNEL

EDWARD J. DEMPSEY	Oshkosh
JOHN CALLAHAN, State Superintendent, ex-officio	Madison
ELTON S. KARRMANN	Platteville
DR. G. N. SUNDQUIST	Superior
JAMES A. RICHARDS	River Falls
PETER J. SMITH	Eau Claire
WILSON DELZELL	Stevens Point
MRS. DORRIS D. MARKS	Milwaukee
DR. R. H. DIXON	Whitewater
THOMAS H. SKEMP	La Crosse

FACULTY



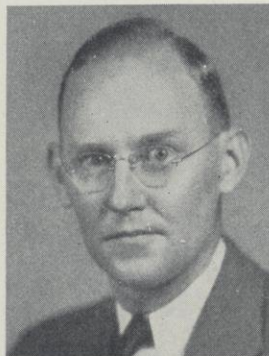
RUDOLPH A. KARGES
Ph.B., Ph.M. University of Wisconsin
Ph.D. University of Iowa
Chemistry



JAMES P. JACOBSON
B.S. Beloit College
M.S. University of Wisconsin
Physics

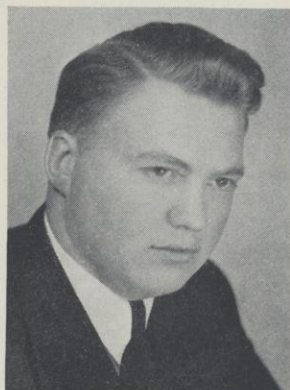


THEODORE SETTERQUIST
A.B. Carleton College
A.M. University of Wisconsin
Chemistry



BENJAMIN H. KETTELKAMP
A.B., A.M. University of Kansas
Ph.D. University of Pittsburgh
Zoology

BERGER KOLBERG
B.S. River Falls State Teachers College
Graduate Student, University of Wisconsin
Chemistry



CATHARINE LIENEMAN
A.B. University of Nebraska
A.M. Washington University
Ph.D. University of Nebraska
Botany

CHARLES G. STRATTON
A.B. Michigan Normal College
Geography, Geology, Dean of Men



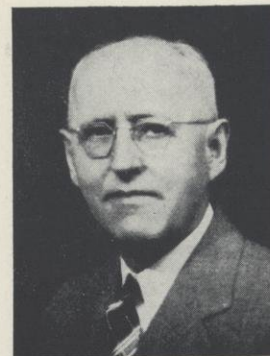
JOHN G. MOSHER, JR.
A.B. University of Illinois
Geography



MARGARET CHAPMAN EIDE
A.B., A.M. University of Wisconsin
Mathematics



GLEN P. JUNKMAN
Ph.B. University of Wisconsin
M.S. University of Iowa
Mathematics



FACULTY

JOHN M. MAY

B.S. Kansas State Agricultural College
M.S. Cornell University
Agricultural Education



E. J. PRUCHA

B.S., M.S. University of Wisconsin
Agronomy, Registrar

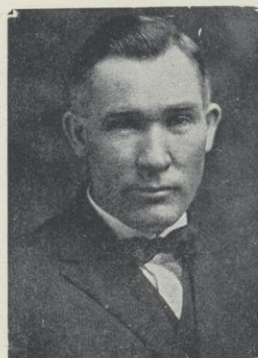
MELVIN WALL

B.S., M.S. University of Wisconsin
Crops, Soils



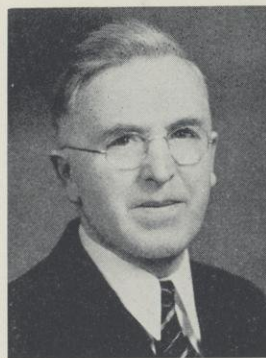
ARTHUR N. JOHNSON

B.S. University of Wisconsin
M.S. Iowa State Agricultural College
Animal Husbandry



ROY E. SPRIGGS

B.S. Kansas State Agricultural College
M.S. Iowa State Agricultural College
Agricultural Engineering



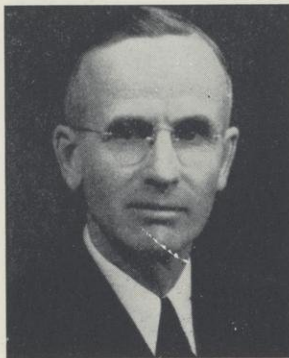
WILLIAM SEGERSTROM

B.S.M. Stout Institute
M.S. University of Minnesota
Manual Arts



MARVIN D. GEERE

Pennsylvania Conservatory of Music
Warren Conservatory of Music
Music



CLYDE B. CAMPBELL

B.S. Iowa State Agricultural College
M.S. University of Minnesota
Teacher Training in Agriculture



B. J. ROZEHNAL

B.M., M.M. Northwestern University
Music, Band, Orchestra



CARA AMELIA WHARTON

B.Mus. Gunn School of Music and Dramatic Arts,
Chicago
Piano

FACULTY



WALKER D. WYMAN
B.Ed. Illinois State Normal University
A.M., Ph.D. University of Iowa
American History and Government



MAUD A. LATTA
A.B. University of Wisconsin
A.M. University of Chicago
European History



CARLETON C. AMES
B.S., A.M. University of Minnesota
Social Science



HELEN LOEB
B.S. State Teachers College, De Kalb, Illinois
M.A. Northwestern University
Speech

ORVILLE M. HANNA*
A.B. Franklin College
A.M. University of Chicago
English



CHESTINE B. KNIGHT
B.A., M.A. University of Minnesota
English



VERA M. MOSS
A.B. Kalamazoo State Teachers College
A.M. University of Michigan
English



RHEA GIBSON
A.B. University of Wisconsin
Librarian



MARY BRADLEY
Library School, University of Wisconsin
Assistant Librarian



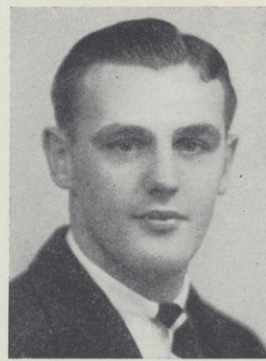
AMY FULLER
B.Ed. River Falls State Teachers College
A.B. in L.S. University of North Carolina
Assistant Librarian



*Died November 4, 1942

FACULTY

CLIFFORD B. JUEDES
B.S. La Crosse State Teachers College
Physical Education



MARY LOUISE BRANSTAD
A.B. University of Nebraska
A.M. Teachers College
Columbia University
Physical and Health Education

GERALD MANION
B.S. River Falls State Teachers College
Athletic Director



O. J. SJOWALL
B.S., M.E. University of Minnesota
Physical Education

ERNST JURGENS
A.B., A.M., Ph.D. University of Iowa
German, Philosophy



MABEL F. ARBUTHNOT
B.A. Milton College
M.A., Ph.D. University of Wisconsin
Latin, French



ALBERTA M. GREENE
B.S. Teachers College, Columbia University
Art

B. LOUISE HILDER
B.S. University of Minnesota
A.M. Teachers College
Columbia University
Art in the Training School



JAMES I. MALOTT
A.B., A.M. University of Missouri
Psychology, Education

IRMA HATHORN
A.B. University of Minnesota
A.M. Teachers College
Columbia University
Education, Dean of Women



RUSSELL JOHNSTON

A.B. Washington and Jefferson
College
A.M. University of Minnesota
Education, Director Teacher
Training



MABEL L. BRIDGES

A.B. University of Nebraska
A.M. Teachers College
Columbia University
Elementary Education,
Geography



MABEL JORSTAD

Ph.B. University of Wisconsin
A.M. University of Minnesota
Rural Education



NATHALIE DELANDER

B.S., A.M., University of
Minnesota
Secondary Education, Social
Science



ALICE G. SWANSON

B.Ed. Superior State Teachers
College
Primary Education



ADELINE C. PATTON

Ph.B. University of Wisconsin
Elementary Education



AUGUSTA M. THOMAS

B.S., M.A. University of
Minnesota
Elementary Education



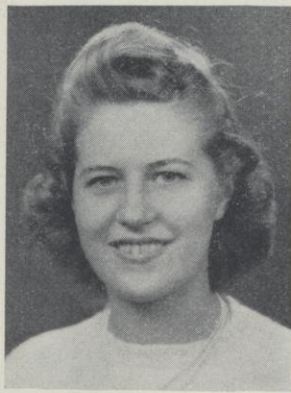
GLADYS M. ZAK

Ph.B. University of Chicago
Teachers College
Columbia University
Primary Education



LILLIAN R. HOFFMANN

B.S. Colorado State College
M.A. University of Wyoming
Secondary Education, English



**MARGERY KENALL,
R.N.**

St. Joseph's Hospital
Red Wing, Minnesota
College Nurse



HELEN JOHNSON

Stenographer



ETHEL WEST

Secretary



MILDRED CRANE

Stenographer



ESTHER MURPHY

Secretary, Training Department



★ C L A S S E S

By applying ourselves to our college work with the utmost patience and seriousness, we are doing our greatest service to our country in this time of war.



AFDAHL	ANDREA	BARIBO	BERG
BROOKE	BURMEISTER	CHINNOCK	COLLIER
DAHLQUIST	DEVINE	DOSCH	DREHMEL
DYER	EDKINS	ERICSON	FROST
GOBLE	GREENFIELD	HARLESS	HOEFT
HOLVERSON	HOPHAN	HORN	HOWE
JAMES	JAROLIMEK	JERDEE	JEWSON

KENNETH AFDAHL, Hammond. Agricultural Education and Science; F. F. A. 1, 2, 3, 4; Honor Society 4; Y. M. C. A. 1; Class President 4; Homecoming Committee 2, 4; Student Senate 4 **JOHN ANDREA, River Falls.** Mathematics and Science; Mathematics Club 2, 3, 4; Intramural Sports 1, 2, 3, 4; Tennis 3 **LESTER BARIBO, Exeland.** Agricultural Education and Science; F. F. A. 1, 2, 3, 4; Honor Society 4; Intramural Sports 4; Senior Class Play 4 **VERNON BERG, Bloomer.** Agricultural Education and Science; F. F. A. 1, 2, 3, 4; Y. M. C. A. 1, 2, 3, 4; Intramural Sports 1, 2, 3, 4; Football 1.

COLBURN BROOKE, Spring Valley. Agricultural Education and Science; F. F. A. 1, 2, 3, 4; Basketball 1, 4; Football 1; Intramural Sports 1, 2, 3, 4; Student Voice 1, 2; Homecoming Committee 2, 3; Prom Committee 3 **MARTIN BURMEISTER, Marathon.** Agricultural Education and Science; F. F. A. 1, 2, 3, 4; Y. M. C. A. 1, 2, 3, 4, Secretary 4 **BETTY CHINNOCK, River Falls.** English, History, and Mathematics; Y. W. C. A. 1, 2, 3, 4; Co-ed Band 2, 3 **JOHN COLLIER, New London.** Agricultural Education and Science; F. F. A. 1, 2, 3, 4, Secretary 4; Intramural Sports 1, 2, 3, 4; Volleyball 1, 2, 3; Homecoming Committee 1, 2, 3, 4; Prom Committee 3; Winter Carnival Committee 4.

MARJORIE DAHLQUIST, River Falls. Elementary Education, Art, and Music; A. C. E. 3, 4; Y. W. C. A. 1, 2, 3, 4, Cabinet 3, 4; Masquers 1, 2, 3, 4; A Cappella Chorus 3, 4; Women's Chorus 1, 2, 3, 4; Women's Quartet 1, 2, 3, 4; Women's Sextette 1, 2, 3, 4; Party Committee 1, 2; Prom Committee 3; Student Senate 3, 4; Secretary 4; War Council 4, Treasurer 4; Homecoming Queen 4 **ROCHELLE DEVINE, Ellsworth.** English and History; Latin Club 3; Orchestra 1, 2, 3 **LEE DOSCH, Amery.** Science, Mathematics, and Social Science; Mathematics Club 2; "R" Club 2, 3, 4, Secretary and Treasurer 4; Science Club 2; Badminton 2; Baseball 4; Basketball 1, 2, 3, 4; Intramural Sports 1, 2, 3, 4; Prom Committee 3 **GERALD DREHMEL, Fall Creek.** Agricultural Education and Science; F. F. A. 1, 2, 3, 4, Secretary 4; "R" Club 3, 4; Baseball 1, 2, 3, 4; Intramural Sports 1, 2, 3, 4; Homecoming Committee 4.

LESTER DYER, Fond du Lac. Agricultural Education and Science; F. F. A. 1, 2, 3, 4, President 4; Honor Society 4; Class Treasurer 2, Class President 3; Baseball 2; Football 3; Intramural Sports 1, 2, 3, 4; Volleyball 2, 3, 4; Assembly Programs 3, 4; Homecoming Committee 1, 2, 3, 4; Party Committee 1, 2, 3, 4; Prom Committee 3; Student Faculty Relations 2, 3, 4; Student Senate 2, 3, 4 **DOROTHY EDKINS, River Falls.** English, History, and Music; Honor Society 2, 3, 4; Sigma Chi Sigma 4; Y. W. C. A. 1, 2, 3, 4; Band 1, 2, 3, 4; Orchestra 3, 4; Women's Chorus 1, 2, 3, Sextette 1, 2, 3; Party Committee 4; Prom Committee 3 **MARGERY ERICSON, Frederic.** English and Social Studies; Bethel Junior College 1, 2; Sigma Chi Sigma 3, 4, Secretary 4; Y. W. C. A. 3, 4; Debate 1, 2; Women's Chorus 3; Student Voice 3; Co-Editor 4; Senior Class Play **FERN BELLE FROST, Burlington.** Science, English, and Social Science; Science Club 2, 3; Y. W. C. A. 1, 2, 3, 4.

CAROLYN GOBLE, River Falls. Mathematics, Music, and Science; Honor Society 1, 2, 3, 4; Mathematics Club 1, 2, 3, 4; Concert Band 1, 2, 3, 4; Co-ed Band 3; Orchestra 2, 3, 4; War Council 4 **MARY GREENFIELD, River Falls.** Elementary Education, Art, and English; A. C. E. 2, 3, 4; Y. W. C. A. 1, 2, 3, 4; Women's Chorus 2, 3, 4 **MARGARET HARLESS, Stanley.** History and English; Masquers 3, 4; W. A. A. 1; Y. W. C. A. 1, 2, 3, 4; Basketball 1, 2, 3; Women's Chorus 1, 2, 3; Homecoming Committee 3; Prom Committee 3 **RAYMOND HOEFT, Berlin.** Agricultural Education, and Science; F. F. A. 1, 2, 3, 4; Y. M. C. A. 1, 2, 3, 4, President 4; Intramural Sports 1, 2; Senior Class Play.

MARIE HOLVERSON, Glenwood City. English, History, and Latin; Latin Club 2, 3, 4, Secretary and Treasurer 3, Vice-President 4; Sigma Chi Sigma 3, 4, President 4; Y. W. C. A. 2, 3; Senior Class Play; Who's Who in American Colleges 4 **IRENE HOPHAN, Maiden Rock.** Elementary Education, Music, and Art; Honor Society 4; Palette Club 1, 2, 3, 4, Secretary and Treasurer 3; Y. W. C. A. 1, 2, 3, 4, Cabinet 3, Vice-President 4; Midgardians 2, 3, 4; Women's Chorus 1, 2; A Cappella Chorus 1, 2, 3, 4 **DONALD HORN, New Auburn.** Mathematics, Science, and Social Science; Mathematics Club 1, 2, 3, 4; "R" Club 2, 3, 4; Y. M. C. A. 1, 2, 3, 4, Cabinet 3; Baseball 1, 2, 3; Intramural Sports 1, 2, 3 **NORMA HOWE, Cumberland.** Elementary Education, Art, Music; A. C. E. 2, 3, 4; Honor Society 4; Y. W. C. A. 1, 2, 3, 4; Badminton 4; Tennis 3; Band 1, 2, 3, 4; Orchestra 2, 3, 4; Women's Chorus 2; A Cappella Chorus 4; Homecoming Committee 2, 3; Prom Committee 3.

GENEVIEVE JAMES, Downing. Elementary Education, History, and Geography; Honor Society 4; Y. W. C. A. 1, 2, 3 **JOHN JAROLIMEK, Merillan.** Elementary Education, Music and Geography; Band 1, 2, 3, 4; A Cappella Chorus 3, 4; Men's Chorus 3; Prom Committee 3 **MARGARET JERDEE, Deer Park.** Social Science, English, and Latin; Honor Society 1, 2, 3, 4; Latin Club 2, 3, 4, Vice-President 3; Sigma Chi Sigma 3, 4; 1941 Meletean; Who's Who in American Colleges 3 **JANE JEWSON, Wausau.** Elementary Education, Geography, and English; A. C. E. 2, 3, 4, President 4; Masquers 1, 2, 3, 4; Y. W. C. A. 3, 4; Basketball 1, 2; Women's Chorus 3; Prom Committee 3; "Back to Your Knitting" 2; "Elmer" 3.

SENIORS

YVONNE JOHNSON, Baldwin. History, English, and German; Lawrence College 1; Die Deutsche Gesellschaft 2, 3, 4; Y. W. C. A. 2, 3, 4; Band 3, 4; Women's Chorus 2; Student Voice 2, 3, 4; Homecoming Committee 3; Prom Committee 3; Who's Who in American Colleges 4 **JOSEPH KLUCARICH, Ashland.** Mathematics, Science, and Mechanics; Masquers 3, 4; Alpha Psi Omega 4; Mathematics Club 1, 2, 3, 4; "R" Club 4; Y. M. C. A. 3, 4; Baseball 1; Football 4; Intramural Sports 1, 2, 3, 4; Homecoming Committee 3; "Seven Keys to Baldpate" 3; "Lost Horizon" 4 **STANTON MARTINSON, Colfax.** Agricultural Education and Science; Eau Claire State Teachers College 1, 2; F. F. A. 3, 4; Baseball 3, 4 **MERLE MICHAELSON, Hudson.** Science and Mathematics; Honor Society 1, 2, 3, 4; Masquers 2, 3, 4; Vice-President 4; Mathematics Club 1, 2, 3, 4; Secretary 3; President 4; Y. M. C. A. 4; Cabinet 4; Alpha Psi Omega 4; Band 1, 2, 3, 4; Orchestra 1, 2, 3, 4; Men's Chorus 3; "Back to Your Knitting" 2; "Swamp Spirit" 3; "Seven Keys to Baldpate" 3; Senior Class Play.

JOYCE MORTON, Mondovi. English and History; Sigma Chi Sigma 2, 3, 4; W. A. A. 1; Y. W. C. A. 2, 3, 4; A Cappella Chorus 2, 3, 4; Student Voice 2, 3; Prom Committee 3; Homecoming Queen 3 **DOROTHY NELSON, River Falls.** Elementary Education and Music; MacPhail School of Music 1; Palette Club 2; Y. W. C. A. 2, 3; Midgardians 1, 2, 3; Women's Chorus 2 **MARCIA NELSON, River Falls.** History, Music, and English; Honor Society 2; Rural Life Club 1, 2; Sigma Chi Sigma 4; Y. W. C. A. 1, 2; Orchestra 1, 3, 4; Women's Chorus 1, 2, 3, 4; Vice-President 4; Student Voice 3, 4 **ROBERT NICOL, Sparta.** Agricultural Education and Science; F. F. A. 1, 2, 3, 4; Watchdog 4; "R" Club 3, 4; Science Club 1, 2, 3; Y. M. C. A. 1, 2; Intramural Sports 1, 2, 3, 4; Tennis 1, 2, 3, 4; Track 1; Student Voice 2, 3, 4; Business Manager 4; Homecoming Committee 1, 2, 3, 4; Party Committee 3, 4; Chairman 4; Prom Chairman 3.

ROLF NILSESTUEN, Cashton. Mathematics, Music, and Science; Die Deutsche Gesellschaft 1, 2, 3; Band 1, 2, 3; Orchestra 1, 2, 3; Men's Chorus 2, 3 **MARY CATHERINE O'CONNELL, Roberts.** English, Music, and History; Honor Society 3, 4; President 4; Masquers 1, 2, 3, 4; Treasurer 2; President 3; Alpha Psi Omega 4; Sigma Chi Sigma 3, 4; Class Treasurer 4; Band 1, 2, 3, 4; Co-Ed Band 2, 3; Women's Chorus 1, 2, 3; A Cappella Chorus 4; Sextette 1, 2, 3; Student Voice 2, 3; "Facing Facts" 1; "Night Must Fall" 2; "Thank You, Doctor" 2; Senior Class Play **PAULINE OLSON, Chetek.** Junior High School, Mathematics, and Geography; Mathematics Club 1, 2, 3, 4; Y. W. C. A. 2, 3; Women's Chorus 1, 2, 3, 4 **MURIEL PEARSON, River Falls.** English, Latin, and Music; Honor Society 1, 2, 3, 4; Latin Club 3; Sigma Chi Sigma 3, 4; Y. W. C. A. 3; Women's Chorus 1, 2, 3, 4; A Cappella Chorus 3, 4; Sextette 1, 2, 3, 4.

EARL PETERSON, River Falls. Mathematics, Geography, and Science; Die Deutsche Gesellschaft 1; Science Club 3; Homecoming Committee 4 **ALBENA PLESZCZYNSKI, Weyerhaeuser.** Elementary Education, English, and Music; A. C. E. 2, 3, 4; President 4; Y. W. C. A. 1; Band 1, 2, 3, 4; Co-ed Band 1, 2, 3; Orchestra 3, 4; Y. W. C. A. Orchestra 1; Homecoming Committee 2, 3; Prom Committee 3 **EVELYN PLOMBON, Stanley.** Junior High School and English; Masquers 3, 4; Sigma Chi Sigma 4; W. A. A. 2; Y. W. C. A. 1, 2, 3, 4; Cabinet 4; Class Secretary 1; Badminton 4; Basketball 2; Tennis 2, 3; Women's Chorus 2, 3; Homecoming 2, 3, 4; Party Committee 4; Prom Committee 3 **FRANCIS PTACEK, River Falls.** Agricultural Education and Science; F. F. A. 1, 2, 3, 4; President 4; "R" Club 2, 3, 4; Baseball 2, 4; Football 2, 3, 4; Prom Committee 3.

HELEN RUSTIN, New Richmond. Elementary Education, Geography, and English; Midgardians 2, 3, 4; W. A. A. 1; Y. W. C. A. 1, 2, 3; Cabinet 3; Student Voice 2, 3; Homecoming Committee 3; Prom Committee 3 **BERNARD SCHUMITSCH, Antigo.** Agricultural Education and Science; F. F. A. 1, 2, 3, 4; Vice-President 4; Mathematics Club 2, 3; Science Club 1, 2; Y. M. C. A. 1, 2, 3; Intramural Sports 1, 2, 3, 4; Homecoming Committee 3, 4 **MARGY SKAGEN, Emerald.** Elementary Education, Music and English; Midgardians 2, 3, 4; Y. W. C. A. 1, 2, 3, 4; Band 1, 2, 3, 4; Co-ed Band 2, 3; Orchestra 1, 2, 3, 4; A Cappella Chorus 1, 2, 3, 4; Women's Chorus 1, 2; Homecoming Committee 3 **PETER SKROCH, Independence.** Agricultural Education and Science; F. F. A. 1, 2, 3, 4; Class Treasurer 3; Intramural Sports 1, 2, 3, 4; Prom Committee 3.

HERMAN SMITH, Beldenville. Agricultural Education and Science; F. F. A. 1, 2, 3, 4; Watchdog 4; Y. M. C. A. 3; Baseball 4; Boxing 1, 4; Track 2, 3; Swimming 4; Volleyball 1, 2, 3, 4; Homecoming 3, 4 **MARGARET STRONKS, Baldwin.** Elementary Education, Music, and Art; Lawrence College 1; Honor Society 2, 3, 4; Midgardians 2, 3, 4; President 3; Palette Club 2, 3, 4; President 3; Sigma Chi Sigma 3, 4; W. A. A. 2, 3; Vice-President 3; Y. W. C. A. 2, 3, 4; Cabinet 3; Co-ed Band 2, 3; A Cappella Chorus 3, 4; Women's Chorus 2, 3; Student Voice 2, 3; Prom Committee 3 **LOREN THOMPSON, Chetek.** Junior High School, History, and Geography; Honor Society 2, 3, 4; Science Club 1; Y. M. C. A. 2, 3; Cabinet 3; Debate 4; Student Voice 2, 3; Business Manager 3; Prom Committee 3; Student-Faculty Relations Committee 3; Student Senate 3 **LEONE TIMMERMAN, River Falls.** English, Latin, and History; Die Deutsche Gesellschaft 1, 2; Honor Society 2, 3, 4; Latin Club 2, 3, 4; Sigma Chi Sigma 2, 3, 4; Secretary 3; Class Secretary 2; 1942, 1943 Meletean; Homecoming Committee 3, 4; Prom Committee 3.

JEANNE TREADWELL, Friendship. Elementary Education, English, and Geography; Masquers 2, 3, 4; Secretary 3, 4; Sigma Chi Sigma 3, 4; Y. W. C. A. 1, 2, 3, 4; Vice-President 3; President 4; Midgardians 2, 3, 4; Student Voice 2, 3; Assembly Program Committee 4; Homecoming Committee 3; "Elmer" 3 **ROBERT VAN KEUREN, New Richmond.** Agricultural Education, and Science; F. F. A. 1, 2, 3, 4; Treasurer 4; Honor Society 2, 3, 4; Y. M. C. A. 1, 2, 3, 4; Treasurer 4; Intramural Sports 3, 4 **RALPH L. VAN SICKLE, Cumberland.** Mathematics, and Science; Mathematics Club 3, 4; Y. M. C. A. 2 **DAWN WHEELER, Nelson.** English, Music, and History; Honor Society 3, 4; Secretary-Treasurer 4; Pi Kappa Delta 4; President 4; Sigma Chi Sigma 2, 3, 4; Debate 2, 3, 4; Co-ed Band 3; Orchestra 1, 2, 3, 4; Women's Chorus 2; 1943 Meletean, Editor; Homecoming Committee 2; Prom Committee 3; Student Senate 4, Treasurer 4.

Senior Officers

Kenneth Afdahl President
Raymond Hoefft Vice-President
Mary Catherine O'Connell Secretary
Margaret Stronks Treasurer
Helen Loeb }
Carleton C. Ames } Advisers



JOHNSON
MORTON
NILSESTUEN
PETERSON
RUSTIN
SMITH
TREADWELL

KLUCARICH
D. NELSON
O'CONNELL
PLESZCZYNSKI
SCHUMITSCH
STRONKS
VAN KEUREN

MARTINSON
M. NELSON
OLSON
PLOMBON
SKAGEN
THOMPSON
VAN SICKLE

MICHAELSON
NICOL
PEARSON
PTACEK
SKROCH
TIMMERMAN
WHEELER



E. ANDERSON
CERNOHOUS
DE JONG
FESKE
GRONLUND
HEALY
HOVDE

K. ANDERSON
CHINNOCK
DEMPSEY
FLEMING
GUTZLER
HEDLUND
HUBER

BAGAN
CLARK
DENEEN
GOODSPEED
HANSON
HOLT
JACOBSON

BAIRD BURKHOLDER
CROWNHART
DIFFENDARFER
GRESCHNER
HARMELING
HOTAL
JENSEN

EILEEN ANDERSON, *Prairie Farm*. History, and English; La Crosse State Teachers College 1; Sigma Chi Sigma 3; W. A. A. 2, 3; Y. W. C. A. 2, 3; Prom Committee 3 **KATHERINE ANDERSON**, *Osceola*. Junior High School; Y. W. C. A. 1, 2, 3; Homecoming Committee 3 **BERNARD BAGAN**, *Menomonie*. Agricultural Education; F. F. A. 1, 2, 3; Football 1, Prom Committee 3 **WAYNE BAIRD**, *River Falls*. Science, and Mathematics; Badminton 1; Intramural Sports 1, 2, 3; Volleyball 1; Homecoming Committee 2; Party Committee 2 **EVERETT BURKHOLDER**, *St. Paul, Minnesota*. Pre-engineering; Honor Society 1, 2; Mathematics Club 1, 2, 3; Science Club 1; Y. M. C. A. 1; Intramural Sports 3.

ROGER CERNOHOUS, *River Falls*. Science and Mathematics; "R" Club 1, 2, 3; Football 1, 2, 3 **HOWARD CHINNOCK**, *River Falls*. Agricultural Education and Science; F. F. A. 2; Intramural Sports 1, 2, 3 **VIRGIL CLARK**, *Osceola*. Elementary Education; Midgardians 2, 3, President 3; Palette Club 3; Y. W. C. A. 1, 2, 3; Homecoming Committee 1, 2, 3; Prom Committee 3 **BEULAH CROWNHART**, *Frederic*. Mathematics, Physics, and Social Science; Y. W. C. A. 1, 2, 3, Secretary 3; Prom Committee 3.

HUGO DE JONG, *Herbster*. Agricultural Education and Science; F. F. A. 1, 2, 3; Volleyball 1, 2, 3; Prom Committee 3 **MARJORIE DEMPSEY**, *Hillsdale*. Elementary Education, History and English; Midgardians 2; W. A. A. 2, 3, President 3; Y. W. C. A. 1; Intramural Sports 2, 3; Homecoming Committee 3; Prom Committee 3; Athletic Council 3 **EILEEN DENEEN**, *Hammond*. Elementary Education; A. C. E. 1, 2, 3, Secretary 3; Honor Society 2, 3; Co-ed Band 1; Women's Chorus 1; A Cappella Chorus 3; Student Voice 1, 2, 3; Prom Committee 3 **JARL DIFFENDARFER**, *Downing*. Mathematics, Physics, and German; "R" Club 3; Y. M. C. A. 2, 3; Football 1, 2, 3; Prom Committee 3.

RUTH ANN FESKE, *Osceola*. Elementary Education, Art and Geography; A. C. E. 1, 2, 3; Honor Society 3; Y. W. C. A. 1, 2, 3; Women's Chorus 1, 3; Homecoming Committee 2, 3; Party Committee 3; Prom Committee 3 **MILDRED FLEMING**, *Frederic*. History and English; Honor Society 3; Sigma Chi Sigma 3; Y. W. C. A. 1, 2, 3, Cabinet 2, 3, Treasurer 3; Women's Chorus 1, 2; Student Voice 2, 3; Prom Committee 3 **NEIL GOODSPEED**, *Clear Lake*. Science and Mathematics; Masquers 1, 2, 3; "R" Club 3; Football 1, 2, 3; Volleyball 1, 2, 3; "Elmer" 2; "Seven Days to Baldpate" 2; "Blackout Mystery" 3 **EDWARD GRESCHNER**, *Clayton*. Agricultural Education; F. F. A. 1, 2, 3; "R" Club 2, 3; Baseball 1, 2, 3; Intramural Sports 1, 2, 3; Homecoming Committee 3; War Council Chairman 3.

JANE GRONLUND, *Cushing*. English, History, and Latin; Latin Club 1, 2, 3, Secretary and Treasurer 3; Sigma Chi Sigma 2, 3, Treasurer 3; Y. W. C. A. 1, 2, 3, Cabinet 3; Class Secretary 2; Homecoming Committee 3; Prom Committee 3 **PHILIP GUTZLER**, *River Falls*. Pre-Medicine; Class Treasurer 1 **DOLORES HANSON**, *River Falls*. Elementary Education, Art, and Music; A. C. E. 2, 3; Palette Club 3; Y. W. C. A. 1, 3; Prom Committee 3 **LOIS HARMELING**, *Baldwin*. Elementary Education, Music, and Art; Palette Club 1, 2, 3, Board 2, Chairman 3; Sigma Chi Sigma 3; Y. W. C. A. 1, 2, 3, Finance Chairman 3; Midgardians 1, 2, 3, Secretary and Treasurer 3; A Cappella Chorus 1, 2, 3; Student Voice 1, 2; Homecoming Committee 2.

JUNE HEALY, *River Falls*. Elementary Education, English, and Geography; Masquers 1, 2, 3, Treasurer 3; Y. W. C. A. 1; Midgardians 2, 3; Homecoming Committee 3; "Night Must Fall" 1; "Elmer" 2; "Thank You, Doctor" 2 **ELMER HEDLUND**, *Siren*. History and English; F. F. A. 1; Y. M. C. A. 1, 2, 3, Cabinet 3; Intramural Sports 1, 2, 3; Debate 2, 3; Student Voice 3; Homecoming Committee 3; Prom Committee 3 **RUTH HOLT**, *Elmwood*. Elementary Education, Art, and English; Honor Society 3; Palette Club 2, 3; Y. W. C. A. 1, 2, 3; Midgardians 1, 2, 3 **ROBERT HOTAL**, *Robbinsdale, Minnesota*. Mathematics, and Science; Die Deutsche Gesellschaft 1, 2; Masquers 1, 2; Concert Band 1, 2, 3; Marching Band 1, 2, 3; Orchestra 1, 2, 3.

GERALDINE HOVDE, *River Falls*. Elementary Education, History, and Geography; W. A. A. 1, 2, 3; Y. W. C. A. 1, 2; Intramural Sports 1, 2, 3; Women's Chorus 1, 2, 3; Homecoming Committee 1 **ROSCOE HUBER**, *Ellsworth*. Science and Mathematics; Die Deutsche Gesellschaft 1, 2; Science Club 1, 2, 3; Y. M. C. A. 1, 2, 3; Intramural Sports **WILLARD JACOBSON**, *Hixton*. Science, Mathematics, and Geography; Science 1, 2, 3; Y. M. C. A. 1, 2, 3, Vice-President 3; Class Vice-President 3; Baseball 1, 2; Intramural Sports 1, 2, 3 **ELROY JENSEN**, *Dorchester*. Agricultural Education and Science; F. F. A. 2, 3; Intramural Sports 1, 2, 3.

JUNIORS

ANNA JOHNSON, Grantsburg. Science, Mathematics, and Foreign Language; Die Deutsche Gesellschaft 1; Honor Society 1, 2, 3; Mathematics Club 2; Sigma Chi Sigma 3; Y. W. C. A. 1, 2, 3; Party Committee 3; Prom Committee 3 **ROBERT KULSTAD, River Falls.** Mathematics and Science; Die Deutsche Gesellschaft 1, 2; Mathematics Club 1, 2, 3; Science Club 1, 2, 3; Y. M. C. A. 1, 2, 3; Cabinet 3; Band 1, 2, 3; Marching Band 1, 2, 3; A Cappella Chorus 3 **CALVIN LARSON, Weyauwega.** English and History; Class Secretary 3; Student Voice 3, Editor 3 **HUGH MC CARDLE, Spring Valley.** Mathematics, and History; Mathematics Club 1, 2; "R" Club 2, 3; Basketball 1, 2, 3; Golf 1, 3; Intramural Sports 1, 2, 3; 1943 Meletean; Student Voice 3; Homecoming Committee 2 **RUDOLPH MEEHAN, Ellsworth.** History and Mathematics; "R" Club 2, 3, President 3; Basketball 1; Football 1, 2, 3; Intramural Sports 2, 3; Volleyball 2, 3; Debate 3; Chairman of Prom Committee 3.

CLAIRE MILLIREN, Arkansaw. Agricultural Education; F. F. A. 1, 2, 3; Honor Society 1, 2, 3; Intramural Sports 1, 2, 3 **LYLE NELSON, River Falls.** History and Science; "R" Club 1, 2, 3; Baseball 1, 2; Band 1, 2 **LORRAINE OFTEN, Clayton.** Junior High School, Science, and English; Die Deutsche Gesellschaft 1; Y. W. C. A. 1, 2, 3; Women's Chorus 3 **FRANK OLOCKI, Stanley.** History and Science; Mathematics Club 3; Y. M. C. A. 2, 3.

JOSEPH OTT, Chilton. Biology, History, and Geography; "R" Club 3; Baseball 2; Football 2, Captain 2; Intramural Sports 3; Prom Committee 3 **MARGARET PEPPER, Glen Flora.** Junior High School English, and History; University of Wisconsin 1; Y. W. C. A. 3; Cheerleader 2, 3; Women's Chorus 2, 3; Student Voice 3 **KENNETH POPPY, New London.** History and Geography; Honor Society 2, 3; "R" Club 1, 2, 3; Baseball 1, 2, 3; Basketball 1, 2, 3; Football 1, 2; Volleyball 1, 3; Homecoming Committee 3; Prom Committee 3; Student-Faculty Relations Committee 3; Student Senate 3, Vice-President 3; Who's Who in American Colleges 3 **DONALD QUALMAN, Iron Ridge.** Agricultural Education; F. F. A. 1, 2, 3; Intramural Sports 1, 2, 3.

PATRICIA RYAN, Hudson. History and English; Honor Society 3; Sigma Chi Sigma 2, 3, Vice-President 3; Class Treasurer 1; Homecoming Committee 2, 3 **DOROTHY SAMPSON, River Falls.** Elementary Education; W. A. A. 2, 3; Y. W. C. A. 1, 2, 3; Basketball 1, 2, 3; Soccer 1, 2, 3; Volleyball 1, 2, 3; Women's Chorus 2 **INEZ SANFORD, Sheldon.** Elementary Education; A. C. E. 1, 2, 3; W. A. A. 2, 3, Vice-President 3; Women's Chorus 1; Homecoming Committee 1 **RICHARD SHEA, Pickett.** Agricultural Education; F. F. A. 1, 2, 3; Intramural Sports 1, 2, 3; Prom Committee 3.

MARGARET SIMONSON, Hudson. English, Music, and History; Die Deutsche Gesellschaft 2; Y. W. C. A. 1, 2, 3, Program Chairman 3; Band 1, 2, 3; Co-ed Band 1, 2; Orchestra 1, 2, 3; Y. W. Dance Orchestra 1; Prom Committee 3; War Council 3, Secretary 3 **ESTHER SOLHEIM, Hudson.** English and History; Sigma Chi Sigma 2, 3; Y. W. C. A. 1, 2, 3, Cabinet 2; Class Treasurer 2; Student Voice 1, 2, 3; Homecoming Committee 1, 2, 3; Prom Committee 3 **JAMES SPARR, Marshfield.** Mathematics, Science, and History; Mathematics Club 1, 2, 3; Y. M. C. A. 3; Student Voice 3 **JOHN STORZER, Oconto Falls.** Science and Mathematics; La Crosse State Teachers College 1; "R" Club 2, 3; Science Club 2; Baseball 2, 3; Basketball 2, 3; Boxing 3; Volleyball 2, 3

WILLIAM STRATTON, River Falls. Mathematics and Science; Die Deutsche Gesellschaft 1, 2, President 2; Honor Society 1, 2, 3; Mathematics 1, 2, 3; Concert Band 1, 2, 3; Marching Band 1, 2, 3; Orchestra 1, 2, 3; Homecoming Committee 1, 2; Student Senate 3; Student-Faculty Relations Committee 3 **LOIS SWENSON, River Falls.** Elementary Education; A. C. E. 1, 2, 3; Palette Club 3; Y. W. C. A. 1, 2; Women's Chorus 1 **ROBERT THAYER, Whitewater.** Agricultural Education and Science; F. F. A. 1, 2, 3; Honor Society 2, 3; "R" Club 2, 3, Student Representative on Athletic Council 3; Class President 3; Baseball 1, 2, 3; Boxing 3; Football 1, 2, 3; Intramural Sports 1, 2, 3; Prom Committee 3; Student Senate 3; Who's Who in American Colleges 3 **FRED UBBELOHDE, New Richmond.** History and Mathematics; "R" Club 2, 3, Vice-President 3; Baseball 1, 2, 3; Football 1, 2, 3; Volleyball 1, 2, 3.

DONALD VRUWINK, Hammond. History and Social Science; Honor Society 2, 3; Y. M. C. A. 1, 2; Intramural Sports 1, 2, 3; 1942, 1943 Meletean; Student Voice 1, 2; Homecoming Committee 2, 3 **AMY WEBB, Roberts.** Elementary Education; A. C. E. 2, 3; Y. W. C. A. 1, 2, 3; Band 1, 2, 3; Co-ed Band 1, 2; Student Voice 1, 2, 3; Prom Committee 3; 1943 Winter Carnival Queen **CAROL WHITAKER, Chetek.** English, History, and Music; Sigma Chi Sigma 3; Y. W. C. A. 1, 2, 3; A Cappella Chorus 3; Student Voice 1, 2, 3, Co-editor 3; Prom Committee 3 **CATHERINE YANISCH, Ellsworth.** Elementary Education, English, and History; Midgardians 1, 2, 3; Class Treasurer 3; Allocation Committee.

Junior Officers

Robert Thayer President
Willard Jacobson Vice-President
Calvin Larson Secretary
Mary Catherine Yanisch Treasurer
Walker D. Wyman Adviser



JOHNSON
MILLIREN
OTT
RYAN
SIMONSON
STRATTON
VRUWINK

KULSTAD
NELSON
PEPPER
SAMPSON
SOLHEIM
SWENSON
WEBB

LARSON
OFTEN
POPPY
SANFORD
SPARR
THAYER
WHITAKER

MC CARDLE
OLOCKI
QUALMAN
SHEA
STORZER
UBBELOHDE
YANISCH



BETTY JANE AASTERUD, Spring Valley. Secondary GLEN ANDERSON, River Falls. Secondary EDWARD AUSDERAU, Colfax. Agricultural Education DONALD BAIRD, River Falls. Secondary.

GLENN BARNES, Spring Valley. Pre-Professional ROBERT BERGHOLZ, Chetek. Pre-Professional DALE BIRKEL, Ellsworth. Rural ALICE BOARDMAN, New Richmond. Secondary.

EDNA BRIESENMEISTER, Almena. Elementary RAMON BRIGGS, Holmen. Agricultural Education ELVA CAIRNS, River Falls. Pre-Professional GLENN COLE, Chili. Agricultural Education.

LA VERN DAHLBY, Osseo. Pre-Professional ROBERT DARWIN, Grand View. Secondary FRANCIS DEVINE, Ellsworth. Secondary DUANE DOOLITTLE, Ellsworth. Secondary.

LORRAINE ERICKSON, Plum City. Elementary JEAN ERLANDSON, River Falls. Secondary CAROL FINSTAD, Beldenville. Secondary BERNICE FOLLANSBEE, Elmwood. Rural.

RUTH FROILAND, Dallas. Secondary GERTRUDE GERAETS, Elmwood. Rural CATHERINE GLUMSKE, Spring Valley. Rural. . . . MURIEL GRIFFITH, River Falls. Pre-Professional

WILLIAM GUTZLER, River Falls. Pre-Professional ROBERT HAILE, Knapp. Agricultural Education WILLIAM HANSEN, Balsam Lake. Pre-Professional ILENE HARDY, Hager City. Rural.

AASTERUD	ANDERSON	AUSDERAU	BAIRD
BARNES	BERGHOLZ	BIRKEL	BOARDMAN
BRIESENMEISTER	BRIGGS	CAIRNS	COLE
DAHLBY	DARWIN	DEVINE	DOOLITTLE
ERICKSON	ERLANDSON	FINSTAD	FOLLANSBEE
FROILAND	GERAETS	GLUMSKE	GRIFFITH
GUTZLER	HAILE	HANSEN	HARDY

SOPHOMORES

VIVIAN HARRIGAN, Maiden Rock. Rural ANNA HENRIKSEN,
Luck. Elementary WILLARD HINES, Ellsworth. Rural
DOLORES HOLDEN, Arkansaw. Rural.

MERLE HUNTER, Hudson. Elementary ARVILLA JACOBSON,
Hammond. Rural CLARICE JACOBSON, Wilson. Rural
LLOYD JILOT, Forestville. Secondary.

LILA JOHNSON, Ellsworth. Rural REUBEN JOHNSON,
Grantsburg. Agricultural Education DALE KELLY, Centuria.
Pre-Professional ROBERT KROPP, Cable. Secondary.

BEULAH KYLE, Osceola. Pre-Professional DORIS LANDBERG,
Glenwood City. Secondary JEAN LARSON, Spring Valley.
Elementary WILBUR LARSON, Downing. Secondary.

JAMES LEADHOLM, Amery. Pre-Professional HAROLD LE
JEUNE, Posken. Agricultural Education DAVID LINEHAN,
River Falls. Pre-Professional ELAINE MARTIN, River Falls.
Elementary.

VIRGIL MARTINSON, Colfax. Agricultural Education RUTH
MATTISON, Blair. Secondary WALLACE MEHLBERG, Mar-
ion. Agricultural Education BERNICE METCALF, Arkansaw.
Rural.

PATRICIA MILBRATH, River Falls. Pre-Professional BEULAH
MILLER, Clayton. Rural CLARK MOE, Whitehall. Agricultural
Education BETTY JANE MOSS, River Falls. Secondary.

Sophomore Officers

Donald Baird President
Duane Doolittle Vice-President
Virginia Stronks Secretary
Glen Nelson Treasurer
Nathalie Delander Adviser



HARRIGAN
HUNTER
L. JOHNSON
KYLE
LEADHOLM
MARTINSON
MILBRATH

HENRIKSON
A. JACOBSON
R. JOHNSON
LANDBERG
LE JEUNE
MATTISON
MILLER

HINES
C. JACOBSON
KELLY
J. LARSON
LINEHAN
MEHLBERG
MOE

HOLDEN
JILOT
KROPP
W. LARSON
MARTIN
METCALF
MOSS



GLENN NELSON, Spring Valley. Secondary THOMAS O'BRIEN, Hudson. Pre-Professional LEMOYNE OLSON, Osceola. Pre-Professional JULIA PATTON, Cornell. Elementary.

ETHEL PEPPER, Shiocton. Rural MARVIN PETERSON, Ellsworth. Pre-Professional ALLEN PIRUS, Stanley. Pre-Professional RAYMOND POLZIN, Cadott. Agricultural Education.

JOHN PRUCHA, River Falls. Secondary RITA SALMON, New Richmond. Pre-Professional RALPH SCHAFFER, Clayton. Pre-Professional HOWARD SCHULTZE, Stanley. Secondary.

HELEN SOLHAUG, Glenwood, Minnesota. Pre-Professional EDRIA SONTAG, Stillwater, Minnesota. Rural VIRGINIA STRONKS, Baldwin. Elementary CORRINE SWANSON, Glenwood City. Secondary.

HARRIET SWEET, Barronette. Rural DELOISE TRINDLE, New Richmond. Elementary LEONARD VIK, River Falls. Secondary GORDON VINE, Granton. Agricultural Education.

GEORGE WEBB, Baldwin. Agricultural Education WILLIAM WEBSTER, Amery. Secondary NORENE WELDON, Plum City. Elementary WILLIAM WILCOX, River Falls. Secondary.

NELSON	O'BRIEN	OLSON	PATTON
PEPPER	PETERSON	PIRUS	POLZIN
PRUCHA	SALMON	SCHAFFER	SCHULTZE
SOLHAUG	SONTAG	STRONKS	SWANSON
SWEET	TRINDLE	VIK	VINE
WEBB	WEBSTER	WELDON	WILCOX
	WOOD	ZIGNEGO	

BLANCHE WOOD, Bay City. Rural VERNON ZIGNEGO, Wilson. Pre-Professional.

SOPHOMORES

MADOLYN ANDERSON, Maiden Rock. Rural. . . . PALMER ANDERSON, New Richmond. Pre-Professional HOWARD BAKER, Kennan. Agricultural Education ELAINE BALL, New Richmond. Rural JAMES BEHLING, Amery. Pre-Professional.

FRANCES BERGER, Barron. Elementary OLIVE BERGMAN, Hudson. Rural LOIS BERND, New Richmond. Pre-Professional ROBERT BERND, New Richmond. Pre-Professional FAYE BIGNELL, Pepin. Rural.

DORIS BOLES, River Falls. Pre-Professional BYRON BROOKE, Spring Valley. . . . Pre-Professional ELLEN BROOKE, Spring Valley. Rural MELVA CERNOHOUS, River Falls. Pre-Professional MARIE CHRISTENSON, Amery. Elementary.

GRACE CHURCHILL, Rock Elm. Rural CHARLES CLAY, Amery. Pre-Professional LOYAL CRESWELL, River Falls. Pre-Professional DAVID CULLEN, New Richmond. Pre-Professional WILLIAM DAWSON, River Falls. Pre-Professional.

EUGENE DEISS, River Falls. Pre-Professional BETTY DODGE, River Falls. Elementary ROBERT DOPKINS, River Falls. Pre-Professional LLOYD DURST, Algoma. Secondary ORA FOGERTY, White Butte, South Dakota. Elementary.

GEORGE FRENCHICK, Weyerhaeuser. Agricultural Education SHERMAN FRINAK, Stanley. Pre-Professional HARRY FROKJER, Centuria. Agricultural Education DONALD GENRICH, Dorchester. Pre-Professional AUDREY GILSTAD, Baldwin. Elementary.

MARJORIE GILSTAD, Baldwin. Elementary DONALD GRAHAM, St. Croix Falls. Pre-Professional MERLIN GROSSKOPP, Grantsburg. Pre-Professional LEONARD GUNDERSON, Hockings. Pre-Professional LOUELLA HALLING, River Falls. Elementary.



M. ANDERSON
BERGER
BOLES
CHURCHILL
DEISS
FRENCHICK
M. GILSTAD

P. ANDERSON
BERGMAN
B. BROOKE
CLAY
DODGE
FRINAK
GRAHAM

BAKER
L. BERND
E. BROOKE
CRESWELL
DOPKINS
FROKJER
GROSSKOPP

BALL
R. BERND
CERNOHOUS
CULLEN
DURST
GENRICH
GUNDERSON

BEHLING
BIGNELL
CHRISTENSON
DAWSON
FOGERTY
A. GILSTAD
HALLING

FRESHMEN



DOROTHY HAMMELMAN, Deer Park. Rural HOWARD HANNON, Green Bay. Secondary MARJORIE HANSEN, Balsam Lake. Pre-Professional EDWARD HANSON, River Falls. Pre-Professional BARBARA HARRIS, River Falls. Pre-Professional.

MARY HAWKINS, Roberts. Elementary ELEANOR HAYES, Rice Lake. Secondary ALFRED HEICHEL, Osceola. Agricultural Education SHIRLEY HENRICH, Rice Lake. Pre-Professional KENNETH HILLESTAD, Amery. Pre-Professional.

CALVIN HOPHAN, Plum City. Pre-Professional ROBERT HOPHAN, Plum City. Pre-Professional LESTER HORN, New Auburn. Secondary ANNA MAE HOSEID, River Falls. Elementary WADE HUBERT, Deronda. Secondary.

EVELYN HUMPHREY, Sparta. Rural MAXINE HUPPERT, Hager City. Elementary BEVERLY IVERSON, Grantsburg. Pre-Professional SYLVIA JAROLIMEK, Merrillan. Secondary DOROTHY JOHNSON, Baldwin. Pre-Professional.

NORMAN JOHNSON, River Falls. Pre-Professional FELICE JORSTAD, Hudson. Pre-Professional DOROTHY KAY, River Falls. Pre-Professional DEAN KITTEL, Clayton. Agricultural Education GEORGE KLECKNER, Chippewa Falls. Secondary.

LAWRENCE KLUG, Almena. Pre-Professional DENNIS LARSON, River Falls. Pre-Professional HERBERT LARSON, Menomonie. Pre-Professional LLOYD LARSON, Madison. Secondary GLADYS LEADHOLM, Amery. Elementary.

RICHARD LE JEUNE, Poskin. Secondary ROBERT LOVELL, River Falls. Pre-Professional AUDREY LUBERG, River Falls. Elementary KENNETH LUEBKE, Hudson. Pre-Professional MARION LYNCH, Amery. Elementary.

HAMMELMAN
HAWKINS
C. HOPHAN
HUMPHREY
N. JOHNSON
KLUG
LE JEUNE

HANNON
HAYES
R. HOPHAN
HUPPERT
JORSTAD
D. LARSON
LOVELL

M. HANSEN
HEICHEL
HORN
IVERSON
KAY
H. LARSON
LUBERG

E. HANSON
HENRICH
HOSEID
JAROLIMEK
KITTEL
L. LARSON
LUEBKE

HARRIS
HILLESTAD
HUBERT
D. JOHNSON
KLECKNER
LEADHOLM
LYNCH

FRESHMEN

NONA McCOLLOW, River Falls. Elementary ELIZABETH MALMO, New Richmond. Elementary NICK MALUEG, River Falls. Secondary JOYCE MEIER, Prescott. Rural LOUISE MELBYE, Cameron. Secondary.

MARILYN MERCORD, Prescott. Secondary LOIS MEULEMANS, Glenwood City. Secondary WILLARD MILLER, Spring Valley. Secondary MOLBERG ELEANOR NELSON, River Falls. Pre-Professional.

EMOGENE NELSON, River Falls. Rural MARLYS OLIGNEY, River Falls. Elementary MARSHALL OLSON, River Falls. Secondary MARY PAULSON, Clear Lake. Secondary NORMAN PAUTZ, Hilbert. Agricultural Education.

RUTH PEDERSON, Wilson. Elementary DOROTHY PEROFF, Clayton. Pre-Professional KERMIT QUINNELL, Kennan. Agricultural Education KENNETH RACKMAN, Clam Falls. Secondary PAUL REGORRAH, Cable. Pre-Professional.

RUSSELL ROSEN, Downing. Agricultural Education DAVID RUSHAM, New London. Secondary ELIZABETH SAMPSON, River Falls. Pre-Professional PAUL SATTERLUND, Amery. Pre-Professional SHIRLEY SCHILLBERG, Osceola. Elementary.

WILLIAM SCRUTON, River Falls. Pre-Professional WAYNE SINNEN, St. Paul, Minnesota. Secondary ARDITH SMITH, New Richmond. Rural KATHERINE SMITH, Wilson. Rural KATHERINE SNEESBY, Amery. Secondary.

JOHN SOLIE, Stanley. Pre-Professional MARY SOMSEN, Baldwin. Elementary WALLACE STOUFFER, Roberts. Pre-Professional JOHN SULLIVAN, Royalton. Secondary OLIVE SUMMERS, Siren. Rural.

Freshman Officers

Sherman Freenak President
 Paul Swenby Vice-President
 Barbara Harris Secretary
 David Cullen Treasurer
 Chestine B. Knight } Advisers
 Melvin Wall }



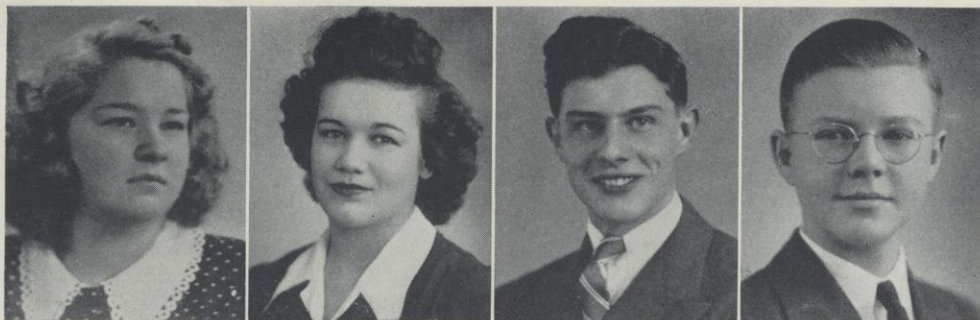
McCOLLOW
 MERCORD
 E. NELSON
 PEDERSON
 ROSEN
 SCRUTON
 SOLIE

MALMO
 MEULEMANS
 OLIGNEY
 PEROFF
 RUSHAM
 SINNEN
 SOMSEN

MALUEG
 MILLER
 OLSON
 QUINNELL
 SAMPSON
 A. SMITH
 STOUFFER

MEIER
 MOLBERG
 PAULSON
 RACKMAN
 SATTERLUND
 K. SMITH
 SULLIVAN

MELBYE
 E. NELSON
 PAUTZ
 REGORRAH
 SCHILLBERG
 SNEESBY
 SUMMERS



FAY SWANKE, New Richmond. Elementary FELICIA TURNER, Milltown. Rural LESTER VAN LOON, Holmen. Agricultural Education GERALD WALLEN, River Falls. Secondary.



SHIRLEY WIFF, Spring Valley. Secondary SHIRLEY WOODS, Webster. Rural EDMUND YOSTEN, Almena. Pre-Professional.

FRESHMEN

SWANKE

WIFF

TURNER

S. WOODS

VAN LOON

YOSTEN

WALLEN





A C T I V I T I E S

To develop every talent we possess in order that we may become more efficient leaders now and in the future is to serve our country and our school.

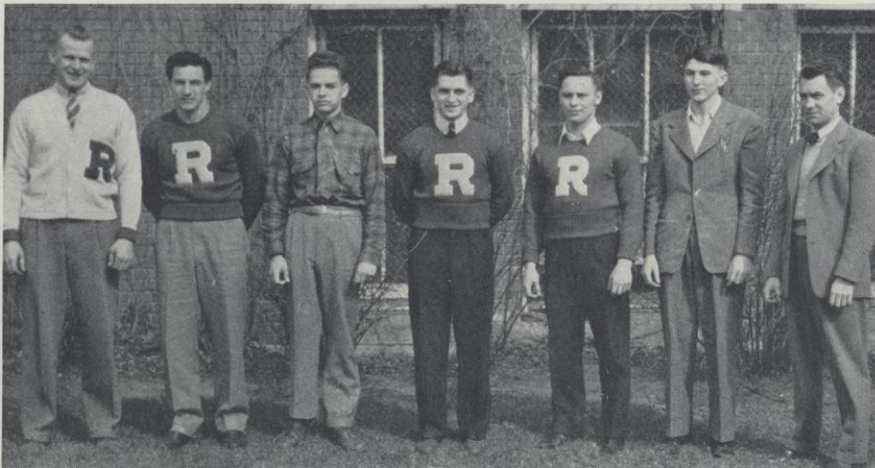
THE ATHLETIC BOARD

R. A. Karges, A. N. Johnson
G. P. Junkman, Gerald Manion
O. J. Sjowall

Robert Thayer, Marjorie Dempsey
Student Members

CAPTAINS 1942-1943

Rasmussen, basketball; Ott, football; Prucha, golf; Dosch, football; Storzer, baseball; Andrea, tennis; Coach Manion



"R" CLUB 1943

Back row: Meehan, Olson, Wickman, Ruhsam, Deiss, C. Brooke, Prucha, Greschner, Ptacek, Nelson . . Middle row: Ott, Vine, Klucarich, Poppy, Mehlberg, Heikel, Thayer, Rasmussen . . Front row: Le Jeune, Linster, Dosch, Goodspeed, Drehmel, Storzer, Larson, McCardle, Frokjer

Letter Awards Voted by the Athletic Board in Football for the 1942 Season

Major Letters

Cretney	LeJeune	R. Olson	Sinnen
Diffendorfer	Linehan	Ott	Storzer
Dosch	Linster	Ptacek	Sullivan
Frokjer	Meehan	Rasmussen	Thayer
Kramer	Nelson	Ruhsam	Ubbelohde
Larson			Wilcox

Minor Letters

Boles	Goodspeed	Klucarich	Wickman
Brooke	Heikel	L. Olson	

Conference Standings

	Won	Lost
La Crosse	4	0
River Falls	2	2
Superior	2	2
Stout	2	2
Eau Claire	0	4

Players Named on All-Conference Second Team

Rasmussen—Tackle Thayer—Guard Ott—Halfback

THE COACHING STAFF

Gerald Manion
Clifford Juedes (resigned)

O. J. Sjowall

THE "R" CLUB

Rudolph Meehan President
Fred Ubbelohde Vice-President
Lee Dosch Secretary-Treasurer

This organization is made up of those men who have won major or minor awards in some varsity sport. Most notable of their achievements was the "R" Club Carnival. It was an all-school affair held in North Hall, and it proved to be one of the social highlights of the entire school year.

Football

Byron Brooke	*Velmo Nelson
Roger Cernohous	Lemoine Olson
*Robert Cretney	*Robert Olson
Jarl Diffendorfer	Joseph Ott
Lee Dosch	Kenneth Poppy
Harry Frokjer	Francis Ptacek
Neil Goodspeed	Kenneth Rasmussen
Alfred Heikle	David Ruhsam
*Emmett Kelly	Wayne Sinnen
Joseph Klucarich	John Storzer
*John Kramer	*John Sullivan
Lloyd Larson	Robert Thayer
Harold LeJeune	Fred Ubbelohde
Allen Linster	Carl Wickman
*Robert Lovell	*William Wilcox
Rudolph Meehan	

Basketball

*Donald Baird	Hugh McCardle
Byron Brooke	Kenneth Poppy
Colburn Brooke	Kenneth Rasmussen
Eugene Deiss	John Storzer
Duane Doolittle	*John Sullivan
Lee Dosch	Gordon Vine
Lloyd Larson	

Baseball

Gerald Drehmel	Kenneth Poppy
Edward Greschner	John Storzer
Wallace Mehlberg	Robert Thayer
Lyle Nelson	Fred Ubbelohde
Joseph Ott	

Golf

John Prucha

*Members who were in school one or two terms.

Results of the Season

Conference

River Falls	15	Eau Claire	7
River Falls	0	La Crosse	27
River Falls	14	Superior	6
River Falls	0	Stout	26

Non-Conference

River Falls	6	Winona	22
River Falls	0	Macalester	19



Back row: Devine, Jilot, Klucarich, Eichinger, Qualman, Diffendorfer, Goodspeed, Brooke . . Third row: Assistant Coach Juedes, Le Jeune, Wilcox, Meehan, Olson, Heikle, Boles, Nelson, Coach Manion . . Second row: Linster, Sullivan, Ruhsam, Kramer, Frokjer, Linehan, Larson . . Front row: Storzer, Cretney, Co-captain Dosch, Co-captain Ott, Thayer, Ubbelohde

FOOTBALL 1942

The Falcons opened the season against Winona at Ramer Field on September 26 with six lettermen in the starting lineup. Several changes were made as the season went on, and the boys finished in a second place tie in the conference standings.

The game with Winona was the first game played under the lights installed at Ramer Field the past summer. The contest was played in a driving rain which slowed up the play considerably and kept a large prospective crowd at home. The Manionmen couldn't get going, and Ott was tackled behind the goal line for a safety midway in the first quarter. Fritz, Winona fullback, went over from the 1-yard line to end the first half scoring. Winona scored two more touchdowns in the third quarter. "Shorty" Le-Jeune scored for River Falls late in the game. The final score: 22-6.

A vastly improved Falcon eleven played host the following Friday to Eau Claire in the initial conference game. The boys in Red and White defeated the Zornmen in a convincing manner, 15-7. Surprisingly enough Eau Claire led at the half, 7-0, by virtue of a pass interception. The passing duo of Ott to Dosch made it all River Falls in the second half.

On October 9 River Falls journeyed to La Crosse. The Falcons couldn't match the Indians' superior manpower. At the half the conference champions were leading 7-0. Then the Falcon defense fell apart with the Indians pushing

across three more tallies before the final gun. The Manionmen fought all the way, but were simply outmanned.

The boys in Red and White hoped to bounce back against Macalester of St. Paul. However, the Macs were the largest team the Falcons faced all year, and they used this superiority to good advantage. Macalester marched down the field to its scores on sheer power alone; penalties and fumbles thwarted the efforts of the Falcons.

In the homecoming game the Falcons celebrated at the expense of the highly touted Superior Yellowjackets. They went out to "Scrap Superior" and did just exactly that to the tune of 14-6. Late in the second quarter Nechak passed to Zell, Yellowjacket halfback, in the end zone. Once more the Falcons found themselves behind at the half, 6-0. Then a 70-yard sustained drive was climaxed with Larson going over from the one. Rudy Meehan's kick was good. To make the victory more emphatic, Joe Ott intercepted a Superior last minute desperation pass on the 30 and sped 70 yards down the sidelines to pay dirt. Meehan converted again to make the score, 14-6.

For the final game of the season River Falls went to Menomonie. The Falcons completely outplayed Stout for three periods, but the score remained 0-0. Storti led a Blue Devil attack that netted four touchdowns in the final ten minutes. The final score: 26-0.

Dosch skirts end



Meehan converts





Back row: Coach Manion, Dosch, Larson, Ruhsam, Doolittle, Durst, B. Brooke, Peterson
Front row: Vine, Sullivan, McCardle, Captain Rasmussen, Storzer, Deiss, C. Brooke

BASKETBALL 1942-1943

Letter Awards Voted by the Athletic Council in Basketball for the 1942-43 Season

Major Letters

B. Brooke	Doolittle	McCardle	Sullivan
C. Brooke	Dosch	Rasmussen	Vine
Deiss	Larson	Storzer	

Results of the Season

Conference

River Falls.....	50	Superior	68
River Falls.....	37	Stout	64
River Falls.....	32	La Crosse	38
River Falls.....	42	Eau Claire	39
River Falls.....	36	La Crosse	50
River Falls.....	50	Stout	52
River Falls.....	44	Superior	55
River Falls.....	48	Eau Claire	40

Non-Conference

River Falls.....	31	Macalester	51
River Falls.....	38	St. Olaf	45
River Falls.....	31	St. Thomas	64
River Falls.....	34	Macalester	33
River Falls.....	30	St. Thomas	40
River Falls.....	47	St. Olaf	55
(Overtime)			

Conference Standings

	Won	Lost
Stout	7	1
Superior	5	3
Eau Claire	4	4
River Falls	2	6
La Crosse	2	6

Player named on All-Conference Second Team:

Kenneth Rasmussen, Center

The Falcons opened the 1942-43 season with but four former lettermen. These veterans included Rasmussen, McCardle, Poppy, and Baird. The squad received many setbacks, as quite a number of men were lost to the armed services. Don Baird, last year's center, enlisted around Christmas time.

The opening game found the Falcons walking in on a Macalester practice session. Through a mix-up in the schedule the Red and White had arrived a day early. However, as soon as a couple of referees could be found, the game got under way. The game was disappointing with River Falls losing, 51-31. Deiss made good nine free throw attempts

and led the scoring with 11 points. DeLapp, who led his conference in scoring, picked up 16 points.

A much improved Falcon club dropped a 45-38 contest to St. Olaf at Northfield. The score was close all the way with the Falcons on the short end of a 22-19 halftime score. The River Falls scoring was evenly divided, with Poppy getting 8, C. Brooke 7, Storzer and Baird 6 each.

On the road again the Manionmen lost to St. Thomas, 62-31. The score was 22-16, but the Falcons lost three men on fouls early in the second half. There were many substitutions made in an effort to find a winning combination. Deiss got 7 points; Hogan led St. Thomas with 12.

The first home game brought a thrilling victory over undefeated Macalester. McCardle and Deiss led a fourth quarter rally that overcame the Mac lead and turned defeat into a win. Deiss garnered 14, and McCardle got 7 in the last quarter.

After the holiday respite the Falcons played brilliant ball against a highly touted St. Thomas five that had lost only one game and that to the Great Lakes. The score was Falcons 15, Tommies 14 at halftime, but the Red and White faded in the last quarter to lose, 40-30. McCardle set the Falcon season high with seven baskets and six free throws for 20 points. Faxvog followed with 16.

In the next home game the Manionmen were edged out in an overtime, 55-47. St. Olaf scored 11 points in this extra session after the regular game had ended in a 44-44 deadlock. Deiss led with 10 points. Ellingson got 27 and Guse 16 for 43 of St. Olaf's 55.

The Falcons opened conference play at Superior and lost a fast-moving, free-scoring affair, 68-50. By the way, the temperature was —39° at the same time this hot shooting was taking place. Rasmussen and C. Brooke led the scoring with 12 and 11 points respectively. Titus and Morris, Superior guards, were on a scoring spree, collecting 23 and 18 points.

River Falls was walloped to the tune of 64-37 on the home floor at the hands of Stout, conference champions. The Falcons looked tired after their Superior trip. Sullivan picked up 9 points. Hesselman had 16 points for Stout.

The Manionmen journeyed to La Crosse and lost, 38-32. It was a well-played game, but the Falcons were badly off form in shooting. Rasmussen and C. Brooke each connected for 9 points.

The Falcons pulled the upset of the year at Eau Claire by defeating the previously undefeated and conference-leading Bluejays, 42-39. At the half River Falls was leading, 24-10.

They held Eau Claire to two field goals the first half. Deiss and McCardle paced the scoring with 13 and 10 points. The Falcons almost lost the ball game in the closing minutes when Rasmussen, McCardle, Poppy, and Storzer were ejected on personal fouls. Rasmussen held the Eau Claire center, Lehman, to 6 points.

Playing LaCrosse at home, the Falcons were again off form in shooting and lost to the Indians, 50-36. La Crosse's shooting percentage was uncanny, and River Falls was almost miserable. McCardle got 9, and Storzer 8 points. Novak chalked up 20 markers for La Crosse.

The Falcons went to Stout and almost repeated last year's upset of the conference champions, but finally dropped a thriller, 52-50. Stout was leading at the half, 28-24. River Falls was leading with less than two minutes to play, but lost in the closing seconds on free throws by Hesselman and Chartrow. Sullivan led the Falcons scoring with 13 points; Deiss followed with 11. Hesselman had 18 for Stout.

River Falls had another high-scoring game with the Superior Yellowjackets. The score was deadlocked at the half, 25-25. However, Deiss and McCardle had three fouls early in the game with Deiss later getting the fourth one. The final score was 55-44 for the Yellowjackets. McCardle picked up 18 points as did Nechak for Superior.

The Falcons defeated Eau Claire for the second time, 48-40, in the final game of the season. River Falls was the only team to turn the trick. Rasmussen again checked Lehman, this time with two field goals. Deiss and McCardle had 15 and 13 points respectively.

Rasmussen, C. Brooke, and Dosch have completed their college careers. Captain Rasmussen was one of the most outstanding rebound and defensive men in the league. C. Brooke and Dosch, first year men on the varsity, played fine ball. No doubt this will be the last basketball for most of this year's squad.



FRESHMAN TEAM

Back row: Franko, Genrich, Malueg, Gunderson, Hophan
Front row: Wickman, Ruhsam, Le Jeune, Durst, Peterson



BASEBALL 1943

1942 LETTERMEN

Ubbelohde, Mehlberg, Thayer, Ott, Storzer, Poppy, Drehmel, Greschner, Nelson, Coach Manion

BASEBALL 1943

Back row: Ubbelohde, S. Martinson, Linsinger, V. Martinson, Molberg, Horn, Rackman, Johnson . . . Middle row: Smith, Dosch, Durst, Dyer, Vine, Qualmann, Franko, Peterson, Coach Manion . . . Front row: Klucarich, Ptacek, Mehlberg, Thayer, Ott, Captain Storzer, Poppy, Drehmel, Greschner, Nelson, Schumitsch

It has been decided that due to the war situation the baseball conference will be unable to operate this year. However, this does not mean the end of Falcon baseball. Far from it, because apparently the Red and White will be tough to beat this season. There are nine lettermen still around and with a group of promising newcomers the situation is well in hand. Veteran pitchers, Poppy and Ott, plus catcher Stor-

zer, who hit .400 last year, give the Falcons an outstanding battery. The other lettermen include infielders, Drehmel, Greschner, Mehlberg, and Nelson, a veteran of '38; outfielders, Ubbelohde and Thayer. Many men who would have been back are in the services. Greatest loss was Don Horn, veteran of three campaigns, who hit an even .400 last season.

1943 Schedule

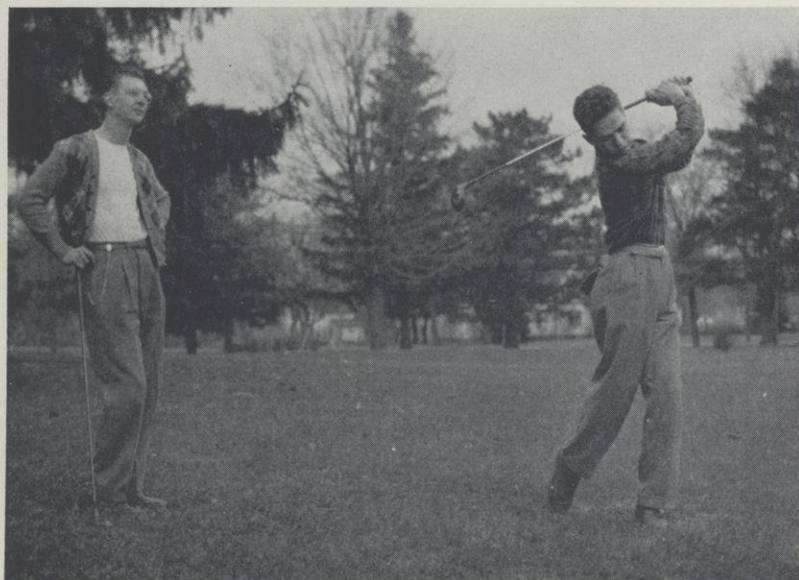
May 4—Eau Claire (2) There
May 5—Concordia There
May 8—Stillwater (Minnesota Prison) There

May 12—Concordia Here
May 14—Eau Claire (2) Here
May 17—St. Olaf (2) There

Golf and Tennis

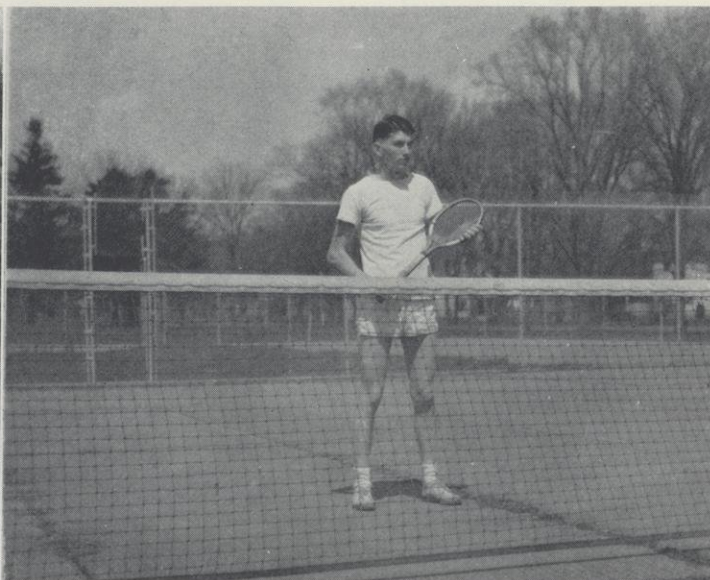
Both golf and tennis squads were heavily hit by graduation and men entering the armed services. There is not one veteran returning for tennis competition, and John Prucha is the only experienced man on the golf team. However, school tournaments are being held to select the members for this year's teams, and matches are being arranged. "Booty" Deiss, a dangerous man with a golf club, and Hugh

McCardle are prominent prospects. Bilderbach and Anderson round out the squad. The conference tournament will be held at La Crosse, May 15, and River Falls will have a team entered. Andrea, B. Brooke, and Vine are the most promising tennis players. They are in the midst of the school tournament at this time and later will compete against outside schools.

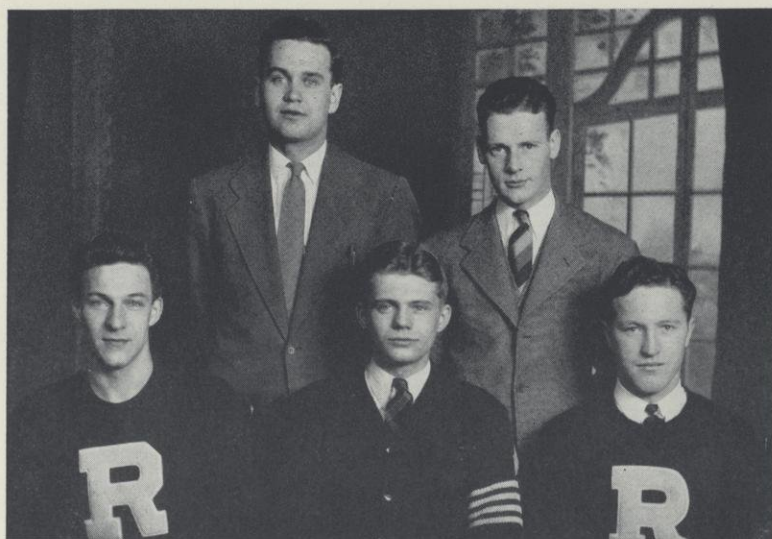


Bilderbach

Prucha



Andrea



"FLYING TIGERS"—CHAMPIONS

Back row: Skroch, Collier . . Front row: Ott, Genrich, Thayer

1943 INTRAMURAL SPORTS

Under the able leadership of physical education instructors, Juedes and Sjowall, the intramural program and "keep fit" training was a huge success. The men were more serious about getting in shape this year than ever before.

As in previous years the program was operated on a point basis with points awarded for participation and additional points for winning.

Touch football was in full swing the first two months. The G-B's took the title, and the P-47's came in second.

A class table tennis tournament was held, and there was an enthusiastic response. D. Johnson won handily in the senior division; Hugh McCardle topped the juniors; Ed Frawley waded through all sophomore competition, and Don Boles was king of the frosh.

The Cribbage tournament was vigorously contested with Paul Swenby emerging the winner. He was followed by John Prucha, John Andrea and Regorra.

Drehmel took the checker tournament with Malueg second and Curler third.

Ed Schmitz made the best time in the indoor obstacle test. Leonard Whitmore and Norman Pautz were right behind him. The Flying Tigers went through the entire basketball schedule without suffering a defeat. Joe Ott was their big gun and got 37 points in one game. Bob Weaver set the season record with 42 points in a single game.

Volleyball, softball, track and horseshoe are the chief interests of intramural enthusiasts during the spring term.

Boxing

The "R" Club sponsored an all-school boxing tournament which aided in the "keep fit" program. The tournament uncovered some men who were pretty handy with the gloves.

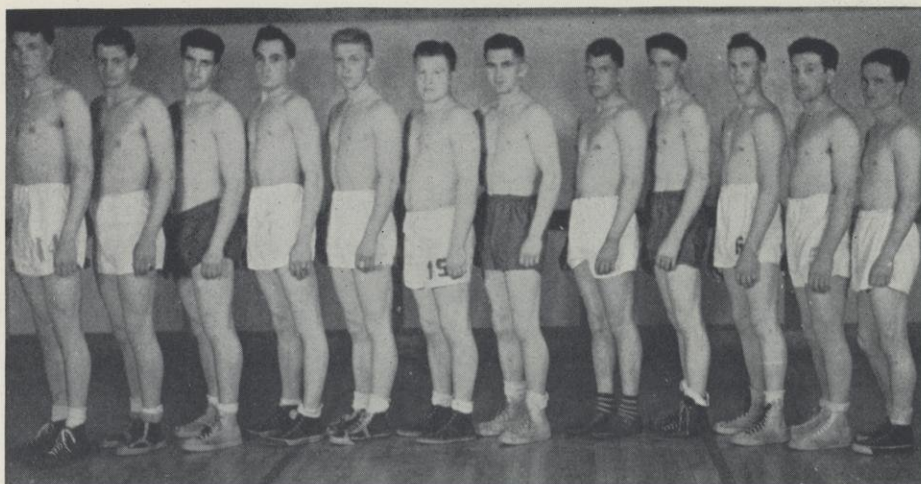
A large crowd attended the fights with the proceeds going for basketball sweaters. Wayne Sinnen outpointed Kenneth Rasmussen in the feature fight of the evening.

The results:

R. LeJeune	decisioned	J. Hoffman	D. Qualman	decisioned	B. Schumitsch
C. Brooke	drew with	W. Mehlberg	H. Smith	decisioned	G. Webb
L. Klug	decisioned	F. Ubbelohde	A. Heikel	decisioned	H. Frokjer
R. Huber	decisioned	J. Storzer	L. Olson	decisioned	R. Thayer
L. Dosch	decisioned	V. Martinson	W. Sinnen	decisioned	K. Rasmussen



Bilderbach jacknifes



Huber, Smith, Captain Sinnen, Schumitsch, Qualmann, Heikle, Dosch, Olson, Mehlberg, Brooke, Klug, Le Jeune



SPORTS HEADS AND OFFICERS

Sanford, Martin, Griffith, Anderson, Sampson, Dempsey, Nelson

TENNIS

Dempsey, Stronks



WOMEN'S ATHLETIC ASSOCIATION

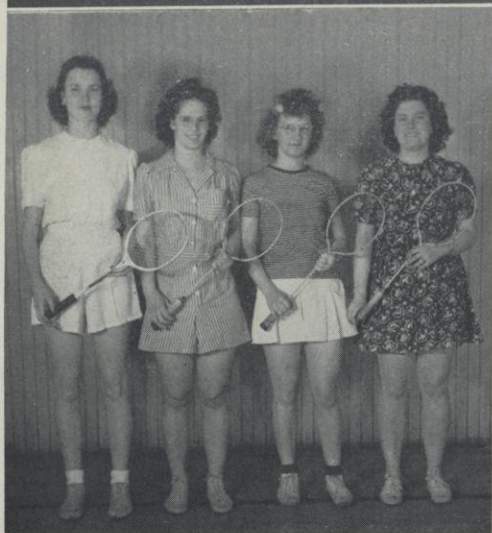
OFFICERS

Marjorie Dempsey President
Inez Sanford Vice-President
Muriel Griffith Secretary-Treasurer
Eileen Anderson Point Secretary
Miss Branstad Adviser

MEMBERS

Rietta Bergman
Eileen Anderson
Elva Cairns
Marie Christenson
Grace Churchill
Marjorie Dempsey
Jean Erlandson
Melva Cernohous
Eleanor Hayes
Shirley Henrich
Geraldine Hovde
Merle Hunter
Muriel Griffith

Gladys Leadholm
Audrey Luberg
Elaine Martin
Nona McCollow
Emogene Nelson
Julia Patten
Rita Salmon
Dorothy Sampson
Elizabeth Sampson
Inez Sanford
Kathryn Sneesby
Leona Woods
Shirley Woods



BADMINTON

Griffith, Dempsey, Linehan, Sanford



Eva Jean Linehan
does a swan dive

The W. A. A., as in previous years, has directed the usual intramural sports program for women. This year, however, it has added a new feature to the regular Tuesday and Thursday organized sports meetings. Physical fitness, including calisthenics, rope climbing, and obstacle races, has been stressed to a great extent. Also, the W. A. A. encourages participation in individual sports and swimming.

Members of the W. A. A. are awarded points for participation in sports. When a girl has earned 500 points, she is awarded a letter. Eileen Anderson, Elva Cairns, Julia Patten, and Dorothy Sampson each received her letter this year.

The group sports are organized, directed, and supervised by a sports manager chosen from the W. A. A. The sports season began this fall with speedball outdoors until the weather forced the girls to confine their sports to inside activities. The winter season consisted of hitpin baseball, basketball, and volleyball. In the spring an enthusiastic group again reported outside for softball.

PINBALL

Back row: Sanford, Sneesby, Salmon, Bergman, Morgan, Patten, Cairns, Dempsey . . Front row: Linehan, Nelson, Sampson, Anderson, Martin



BASKETBALL

Back row: Sanford, Morgan, Griffith, Bergman, Martin, Nelson, Sampson, Anderson, Sneesby . . Front row: Henrich, Hunter, Linehan, Patten, Dempsey, Salmon, Cairns

ORCHESTRA

B. J. Rozehnal . . DIRECTORS . . Ingwelde Fitzner

First Violins

Robert Hotal
Dawn Wheeler
Margy Skagen
Betty Dodge

Second Violins

Marcia Nelson
Rolf Nilsestuen
Emogene Nelson
Albena Pleszczynski

Violas

Carolyn Goble
Edna Briesmeister

Cello

Margaret Simonson

Bass

Merle Michaelson

Baritone

Kenneth Bilderbach

Flutes

Norma Howe
Dorothy Edkins
Norman Johnson
Jean Larson

Clarinets

William Stratton
Calvin Hedlund

Trumpets

John Jarolimek
Gerald Wallen

Horn

Dorothy Johnson

Trombones

Edward Schmitz
George Kleckner

Piano

Lois Bernd



CONCERT BAND

B. J. Rozehnal . . DIRECTORS . . Ingwelde Fitzner

Flutes

Norma Howe
Dorothy Edkins
Jean Larson
Norman Johnson
Felice Jorstad

Oboe

Mary Jean Somsen

Bassoon

Robert Hotal

Saxophones

Yvonne Johnson
Robert Darwin
Albena Pleszczynski
Paul Satterlund

Percussion

Margy Skagen
John Jarolimek
Duane Doolittle

Flutes

Raman Briggs
Sylvia Jarolimek

Clarinets

Merle Michaelson
William Stratton
Carolyn Goble
Mary Catherine O'Connell
Marshall Olson
Calvin Hedlund
Virginia Stronks
Robert Dopkins
Lois Meulemans
Rolf Nilsestuen

Alto Clarinet

Amy Webb

Bass Clarinet

John Prucha

Basses

James Behling
Lester Van Loon

Trumpets

Richard Laue
Glen Anderson
Sherman Frenak
Gerald Wallen
Charles Clay
Coral Banek

Horns

Margaret Simonson
Dorothy Johnson
Calvin Larson

Baritones

Kenneth Bilderbach
Anna Mae Hoseid

Trombones

George Kleckner
Edward Schmitz
Robert Kulstad
Muriel Griffith



Froiland Bernd



Nelson Wiff

WOMEN'S CHORUS

Cara Wharton.....	Director
Lois Bernd.....	President
Bernadine McDonald.....	Secretary-Treasurer First Term
Barbara Harris.....	Secretary-Treasurer Second and Third Terms
Margaret Pepper.....	Librarian
Shirley Wiff.....	Pianist

The Women's Chorus was formed several years ago by Miss Wharton. Its purpose is to furnish an opportunity for all college women to sing. There are no try-outs, but all can come to sing once a week. The chorus always takes part in

several concerts during the year, this year appearing in the Christmas Concert and also at one given March 7 under the direction of Miss Wharton.

The members for 1942-43 and the number of terms they have sung are as follows:

Madalyn Anderson 1
Frances Berger 1, 2
Lois Bernd 1, 2, 3
Melva Cernohaus, 1, 2, 3
Betty Dodge 1, 2, 3
Lorraine Erickson 3
Ora Fogarty 1, 2, 3
Ruth Froiland 1, 2, 3
Marjorie Gilstad 1

Luella Halling 1
Dorothy Hammelmann 1, 2, 3
Vivian Harrigan 1
Barbara Harris 1, 2, 3
Mary Frances Hawkins 1, 2
Maxine Huppert 1, 2, 3
Dorothy Mae Johnson 2
Doris Landburg 3
Bette Malmo 1

Bernadine McDonald 1
Joyce Meier 1, 2
Marilyn Mercord 3
Lois Mueleman 2
Marcia Nelson 1, 2
Lorraine Offen 1
Marlys Oligney 1, 3
Muriel Pearson 1, 2, 3
Ruth Pederson 1, 2

Margaret Pepper 1, 2, 3
Katherine Smith 1, 2
Shirley Schillberg 2, 3
Kathryn Sneesby 1, 2, 3
Mary Somsen 1, 2
Fay Swanke 1, 2
Carol Whitaker 1, 2
Shirley Whiff 1, 2, 3

A CAPPELLA CHORUS

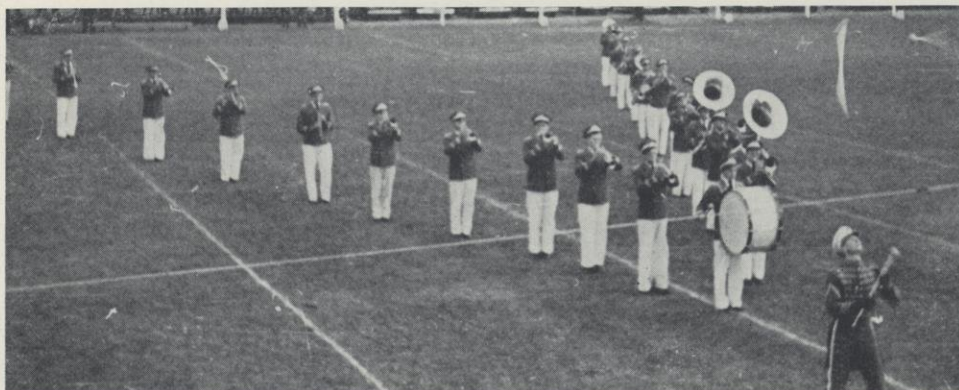
Marvin D. Geere.....	Director
Julia Patton.....	Accompanist

Lois Bernd
Marjorie Dahlquist
Robert Darwin
Eileen Deneen
Duane Doolittle
Ruth Froiland
Muriel Griffith

Luella Halling
Howard Hannon
Lois Harmeling
Irene Hophan
Georgia Hopkins
John Jarolimek

Robert Kulstad
Marilyn Merchord
Joyce Morton
Glenn Nelson
Rolf Nilsestuen
Mary C. O'Connell

Marlys Oligney
Muriel Pearson
Jack Russel
Mary Somsen
Margaret Stronks
Ruth Vigerust
Carol Whitaker



The Marching Band



ALPHA PSI OMEGA

Back row: Michaelson, Mr. Ames, Klucarich, Cole . . Front row: Hopkins, Treadwell, O'Connell

THE COLLEGE MASQUERS

The College Masquers is the only dramatic organization on the campus, and it is the duty of the members to foster all dramatic events of the college year. New members were taken into the organization in the fall after a careful survey of each one's dramatic ability. To retain membership each person must maintain a high scholastic record; he must also attain a required number of points throughout the year by his participation in plays and other functions of the organization.

James Hilton's **Lost Horizon** was presented as the chosen three-act play for the outstanding production of the year. Because of the severe shortage of men, the play, **Ghost Train**, was forced to be discontinued after rehearsals were well under way. The Masquers have worked with the Assem-

bly Committee this year to contribute their talent for programs. An old-fashioned melodrama, **Fireman Save My Child!** was a one-act play given for an assembly program.

The highlight of the year for the Masquers was the initiation of nine outstanding members of the organization into the national dramatic fraternity, Alpha Psi Omega. The local chapter or cast on the River Falls campus will be known as Iota Beta. Members of Zeta Beta, the dramatic chapter of Stout Institute, came to the local campus to perform the impressive initiation rites. Georgia Hopkins, Mary Catherine O'Connell, Jeanne Treadwell, Evelyn Plombon, Merle Michaelson, Glenn Cole, Joseph Klucarich, and Mr. Carleton Ames, the Masquers' adviser, became the charter members of Iota Beta.



LOST HORIZON

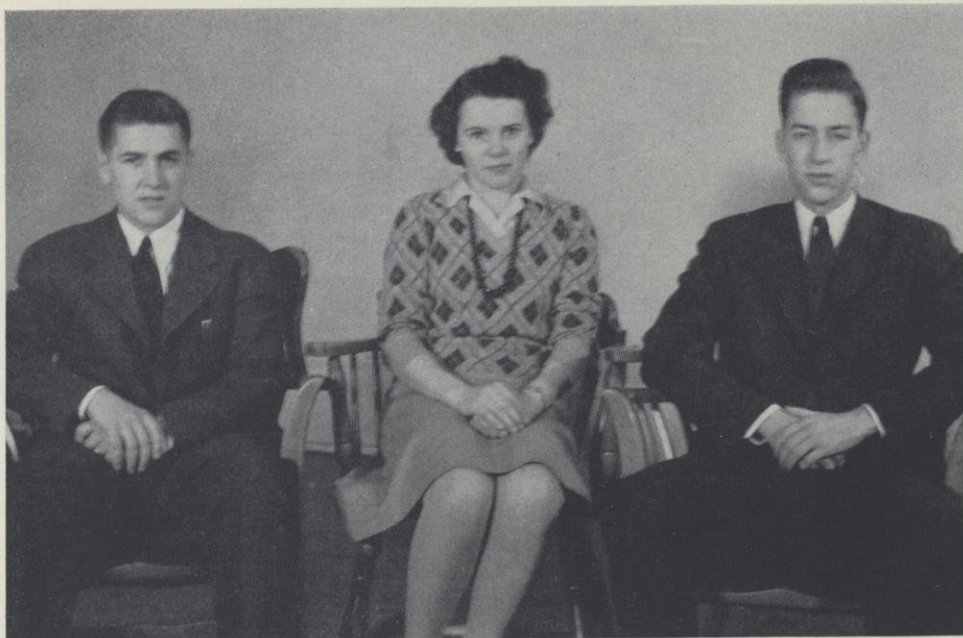
OFFICERS

Georgia Hopkins.....President
Merle Michaelson.....Vice President
Jeanne Treadwell.....Secretary
June Healy.....Treasurer
Mr. Carleton Ames.....Adviser

MEMBERS

Robert Baker	Dean Kittel
Elaine Ball	Joe Klucarich
Lois Bernd	Betty Malmo
Alice Boardman	Nona McCollow
Melva Cernohous	Lois Meulemans
Glen Cole	Merle Michaelson
Marjorie Dahlquist	Betty Jane Moss
William Dawson	Glenn Nelson
Jean Erlanson	Ralph Nordstrom
Margaret Harless	Mary Katherine O'Connell
Mary Frances Hawkins	Evelyn Plombon
June Healy	Kathryn Sneesby
Georgia Hopkins	Margaret Stronks
Maxine Huppert	Jeanne Treadwell
Sylvia Jarolimek	Ruth Vigerust
Jane Jewson	Norman Johnson

DEBATE



PI KAPPA DELTA

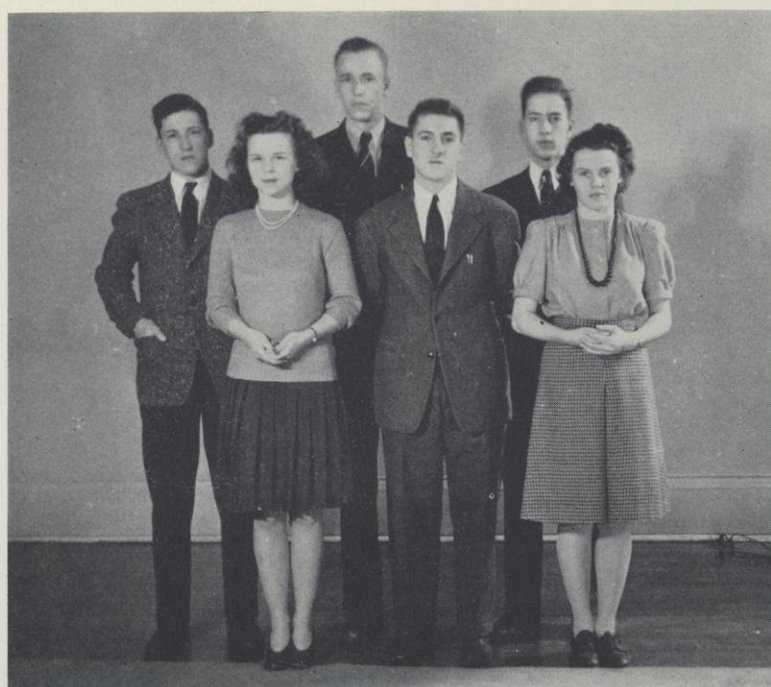
Bernd Wheeler Behling

February 5 and 6..... Red River Valley Tournament Moorhead, Minn.
 February 16 and 27..... Wisconsin Valley Debate Tournament Stevens Point
 March 27..... Pi Kappa Delta Provincial Tournament St. Paul, Minn.

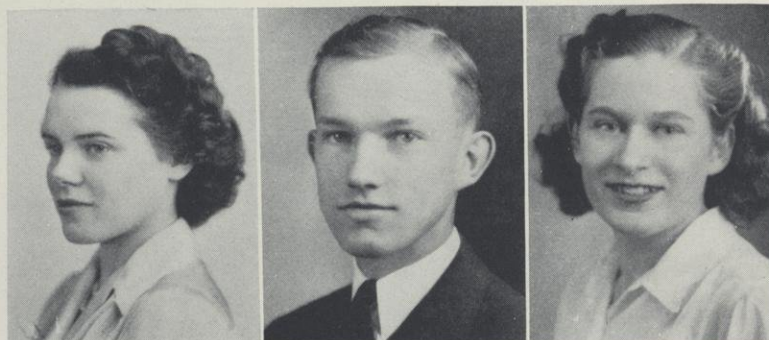
During the 1943 season, River Falls debaters participated in three tournaments, defending or opposing the proposition, Resolved, that the United Nations should establish a permanent federal union with power to tax and regulate international commerce, to maintain a police force, to settle international disputes and to enforce such settlements, and to provide for the admission of other nations which accept the principles of the union. Behling and Bernd won second place in the Moorhead tournament. Other teams entered in this tournament were Hedlund-Rackman, and Aasterud-Wheeler. Behling and Bernd also attended the Wisconsin Valley tour-

nament. Others out for debate were Loren Thompson, Robert Baker, Edward Hanson, and Rudolph Meehan.

The members of the national honorary forensic fraternity participated in the Pi Kappa Delta Provincial tournament at Macalester College where Bernd and Behling placed second in debating and Behling tied for first in men's extemporaneous speaking. This year's Pi Kappa Delta membership consists of Dawn Wheeler, and two new members, Robert Bernd and James Behling. Miss Loeb, the debate coach and sponsor of the local Pi Kappa Delta chapter, was reelected Governor of the Upper Mississippi Province.



Rackman Hedlund Behling
 Aasterud Bernd Wheeler



Wheeler

Vruwink

Timmerman

THE 1943 MELETEAN

EDITOR

Dawn Wheeler

ASSOCIATE EDITORS

Leone Timmerman

Jean Larson

Helen Rustin

BUSINESS MANAGER

Donald Vruwink

ATHLETICS

Hugh McCardle

PHOTOGRAPHY

Melvin Wall

ADVISER

Maud A. Latta

THE STUDENT DIRECTORY

Donald Vruwink

Leone Timmerman

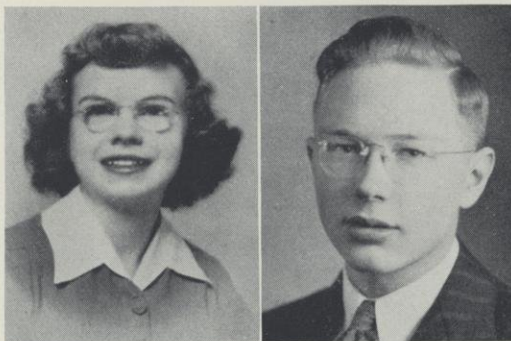
Dawn Wheeler



Rustin

McCardle

Larson



Johnson

Larson

THE STUDENT VOICE

STAFF

Co-Editors.....Margery Ericson, Carol Whitaker
 Feature Editor.....Essie Solheim
 Copy Editor.....Muriel Griffith
 Business Manager.....Patricia Milbrath
 Sports Editors.....Hugh McCardle, Robert Weaver

NEWS REPORTERS

Marcia Nelson, Peg Pepper, Ruth Froiland, Audrey Luberg, Madolyn Anderson,
 Katheryn Sneesby, Louella Halling, Louise Melby, Ora Fogerty, Frances Berger
 Business Staff.....Louella Halling, Helen Rustin

FEATURE WRITERS

Nona McCollow, Pat Milbrath, Elmer Hedlund, James Sparr, Mildred Fleming
 Copy Readers.....Betty Aasterud, Corrine Swanson
 Special Reporter.....John Prucha
 Faculty Adviser.....Walker D. Wyman



Griffith, Milbrath, Ericson, Whitaker, McCardle, Solheim



HOMECOMING

OCTOBER 23 and 24, 1942

Friday evening	Mass meeting Torchlight parade Bonfire
Saturday morning	Parade Judging of house decorations
Saturday afternoon	Game Faculty-alumni reception
Saturday evening	Dance

The 1942 homecomers were faced with two problems: the war and the Superior "Yellow Jackets." The responsibility of overcoming these obstacles was placed upon Chairman "Pete" Skroch, Queen Marjorie Dahlquist, and Coach Mansion and his "Falcons."

Lapels and sweaters displayed red and white ribbons reading "Scrap Superior." Red and white, yellow and black paper streamers decorated the campus. The big, whitewashed

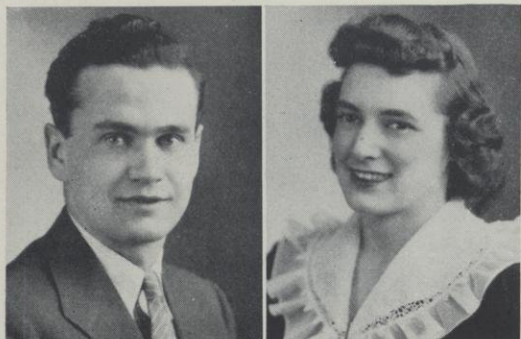
"R" gleamed from the mound. Window displays on Main street all told of the coming battle between River Falls and Superior.

Friday night came the mass meeting, at which the toastmaster, Dr. Kettelkamp, presided. The audience was entertained by personalities such as Baby Snooks, Kate Smith, and Dick Laue and his trumpet. First prize was awarded the Junior Class for its presentation of the Statue of Liberty and what it should mean to us. An effective close of the mass meeting was the coronation of the queen by the homecoming chairman. After the coronation, the band led the torchlight parade to the bonfire, which was large, thanks to "Pep" Hanson, in spite of the fact that the first pile of boxes had been burned the night before by pranksters.

Saturday morning the paraders and the on-lookers splashed up and down Main street. Wesley League's horse and buggy, S. P. Q. R.'s Roman chariot and the "royal" floats were highlights of the parade.

And then the game, with "Rudy" Meehan's final touchdown which made the victory one for River Falls at 14-7. Following the game, faculty and alumni visited over coffee and doughnuts.

Dancing to the music of Dough Perrin at the all-school party was an appropriate finale to a successful homecoming.



Skroch

Dahlquist



WINTER CARNIVAL

FEBRUARY 5 and 6, 1942

The first winter carnival held at River Falls for several seasons was successfully managed by the chairman, Willard Jacobson, who was elected by the student body. They also chose Amy Webb as the carnival queen and John Collier and Lee Dosch as assistant chairmen. The main events of this festival were:

Friday evening	Skating events Coronation of the queen
Saturday morning	Judging of the snow sculpturing
Saturday afternoon	Skiing events
Saturday night	Game with La Crosse School dance

Winners of the speed races held at the skating rink were Harold Le Jeune and Dorothy Kay, of the skiing events were Reuben Johnson, ski jumping; Gerald Wallen, slalom; and Gene Bjerstadt, cross country race. In the snow sculpturing contest, Palette Club's polar bear and reindeer won first place. Jack Pratt's orchestra played for the informal dance Saturday night.





Thayer

Wright

THE JUNIOR PROM

MARCH 6, 1943

The Junior prom, led by Junior class president, Robert Thayer, and Barbara Wright from La Crosse, was held in the North Hall gymnasium decorated in a patriotic manner. In carrying out this theme, the decoration committee, under the direction of chairman, Amy Webb, Eileen Deneen, Virgil Clark, Margaret Simonson, Essie Solheim, and Eileen Anderson painted large insignia from the various branches of the service and in colors red, white, and blue. In spite of the war, the girls wore corsages of real flowers.

Early in the evening, the grand march was led by the King and Queen, and Lester Dyer, senior class president, and Dorothy Kay. The music of Red Melgren's orchestra helped to make the prom of 1943 a successful one.

VISITOR'S DAY

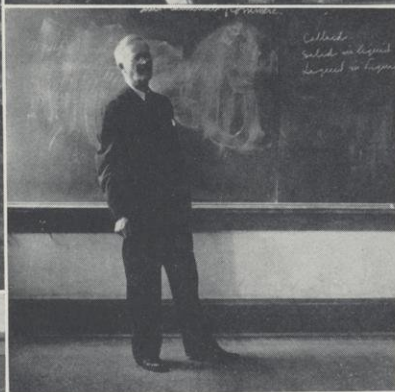
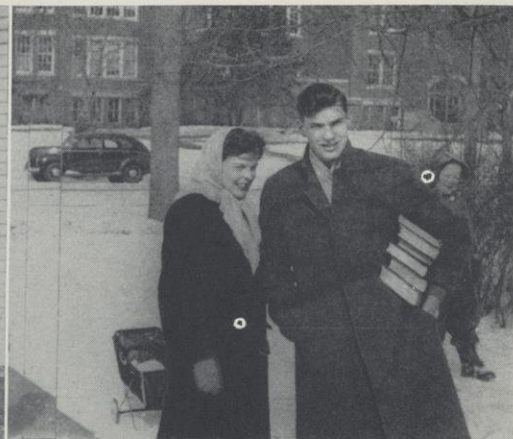
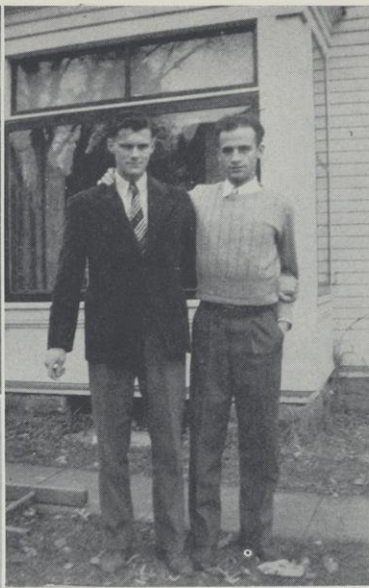
MAY 7, 1943

For the past several years, students have invited their dads to "Dad's Day," one of the outstanding events of the fall term. The students escorted their fathers to various classrooms on the campus, and introduced them to members of the faculty. Dads were guests at a football game in the afternoon.

Because "Dad's Day" was successful, the girls of the campus, with the assistance of Miss Hathorn, decided to entertain the students' mothers. The programs consisted of

meeting the members of the faculty, getting acquainted with the campus, a noon luncheon, and an afternoon program.

The recent gas and tire rationing has made a separate day for each parent an impossibility, so a "Visitors' Day" has been inaugurated for 1943, at which parents and friends will become acquainted with the faculty and the campus of River Falls State Teachers College.



HERE AND THERE

House of Frye . . . Buddies . . . Dolores and Sherm . . . Bon Voyage, Elmer . . . Frosh Dyer . . . Amy . . . Where's the "ref"?
 . . . Virgie . . . Dr. Karges in action . . . The uninvited guests . . . What big "R's" you have . . . Virgie goes aesthetic . . .
 Journeymen



Back row: Frinak, Poppy, Dyer, Afdahl, Prucha, Doolittle . . Front row: Dahlquist, Thayer, Stronks, Stratton, Wheeler

THE STUDENT SENATE

Officers

John Prucha	President
Kenneth Poppy	Vice-President
Marjorie Dahlquist	Secretary
Joyce Morton, Dawn Wheeler	Treasurers

Members

Kenneth Afdahl
Donald Baird
Marjorie Dahlquist
Duane Doolittle
Lester Dyer
Sherman Frinak

Joyce Morton
Kenneth Poppy
John Prucha
William Stratton
Virginia Stronks
Robert Thayer

Dawn Wheeler

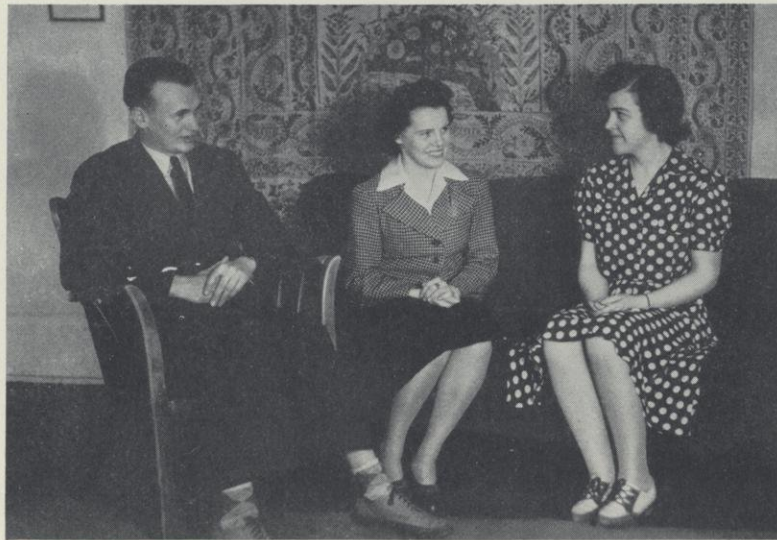
STUDENT SENATE

STUDENT SENATE. The Student Senate, composed of members elected by the student body last spring and of class presidents, is the student governing body of the college. Among the duties performed are the sponsorship of the Freshman Handbook, Homecoming, the Winter Carnival, and Recognition Day. It appointed, promoted, and organized such groups as the social committee, student-faculty relations committee student representatives, health committee members, assembly program committee representatives, school publications editors, and the war council directors. This organization also nominated members for the 1943-1944 Student Senate.

THE WAR COUNCIL. The War Council, under the direction of Edward Greschner, has been an active new organization during the past school year. Its activities have been the sale of war bonds and stamps, the promotion of student and faculty participation in Red Cross work, and the attempt to make everyone on the campus more conscious of the part that he had to play in this war. Mr. Greschner was sent to Northfield where he represented River Falls in a convention held for the purpose of making colleges more aware of what is being done on other campuses in this war

effort, and to give them all assistance in directing college war work. Virginia Stronks was appointed by the Student Senate as the permanent representative to the Victory War Assembly which has its headquarters in Macalester College. Mr. Greschner and his committee have worked among the college students and faculty, and also among the various clubs and organizations on the campus. The council is composed of Dr. Kettelkamp, adviser, Edward Greschner, chairman, Marjory Dahlquist, Virginia Stronks, Margaret Simonson, Sylvia Jarolimek, John Collier, Howard Hannon, Hugo De Jong, and Delois Trindle.

THE PARTY COMMITTEE. To make week-ends more enjoyable for those students who remain in River Falls, the social committee has sponsored many all-school dances this past year. Because of transportation difficulties students have danced to favorite recorded bands, as well as to Jack Pratt's band, composed of students from college and high school. The party committee was under the chairmanship of Wayne Baird, who was assisted by Robert Nicol, Evelyn Plombon, Ruth Ann Feske, Muriel Griffith, Duane Doolittle, Marshall Olson, Peter Skroch, Dorothy Edkins, and Kathryn Sneesby.



Peterson, Wheeler, O'Connell

THE HONOR SOCIETY

Officers

Mary Catherine O'Connell	President
Marvin Peterson	Vice-President
Dawn Wheeler	Secretary-Treasurer
Mrs. Eide	Adviser

The Honor Society is made up of those students who have received two and one-half honor points per credit hour for one term or more. Upon graduation a gold "R" is awarded

to those who have had two and one-fourth honor points per credit hour and have received no grade below "C."

GOLD "R"

Margaret A. Jerdee	Social Science
Merle E. Michaelson	Science-Mathematics
Muriel R. Pearson	English
Beverly White Rasmus	English

Margaret A. Stronks	Elementary
Leone M. Timmerman	English
Robert W. Van Keuren	Agriculture
Dawn W. Wheeler	English

SILVER "R"

Edward Ausderau
Kenneth Afdahl
Robert Baker
Carol Banek
Lester Baribo
Everett Burkholder
Eileen Deneen
Lester Dyer
Dorothy Edkins
Ruth Ann Feske
Ruth Froiland
Mildred Fleming
Gertrude Geraets
Carolyn Goble
Muriel Griffith

Margaret Harless
Barbara Harris
Anna Henriksen
John Hoffman
Ruth Holt
Irene Hophan
Georgia Hopkins
Lester Horn
Wade Hubert
Clarice Jacobson
Genevieve James
Margaret Jerdee
Anna Johnson
Norman Johnson
Calvin Larson

Ruth Mattison
Louise Melby
Merle Michaelson
Patricia Milbrath
Claire Milliren
Clark Moe
Joyce Morton
Mary C. O'Connell
Marshall Olson
Julia Patten
Muriel Pearson
Dorothy Peroff
Marvin Peterson
Kenneth Poppy
John Prucha

Patricia Ryan
Elizabeth Sampson
Anton Sendelbach
Kathryn Sneesby
Edria Sontag
William Stratton
Margaret Stronks
Virginia Stronks
Robert Thayer
Leone Timmerman
Loren Thompson
Robert Van Keuren
Ralph Van Sickle
Donald Vruwink
Dawn Wheeler
Francis Wikle



Y. M. C. A. CABINET

Back row: Michaelson, Cole, Olocki

Front row: Hoeft, Hedlund, Van Keuren, Burmeister, Diffendarfer, Mr. Jacobson, Johnson

THE YOUNG MEN'S CHRISTIAN ASSOCIATION

Officers

Raymond Hoeft.....President
Willard Jacobson.....Vice-President
Martin Burmeister.....Secretary

Robert Van Keuren.....Treasurer
Mr. J. P. Jacobson.....Adviser

Cabinet

Merle Michaelson.....Music Department
Wilbur Larson.....Department of Discussions
Robert Kulstad.....Junior High-Y
Elmer Hedlund.....Department of Church Relations
Jarl Diffendarfer.....Freshman Orientation

Donald Horn.....Department of Publicity
Reuben Johnson.....Social Chairman
Frank Olocki.....Men's Union
Willard Jacobson.....Program Chairman
Robert Haile.....Junior Cabinet



Y. W. C. A. CABINET

Back row: Hophan, Crownhart, Harmeling

Front row: Dahlquist, Simonson, Treadwell, Patten, Gronlund, Rustin, Stronks

YOUNG WOMEN'S CHRISTIAN ASSOCIATION

Officers

Jeanne Treadwell.....President
Irene Hophan.....Vice-President

Beulah Crownhart.....Secretary
Mildred Fleming.....Treasurer

Advisory Board

Mrs. Donald Elert Mrs. Jesse Symes Miss Chestine Knight Miss Irma Hathorn

Lois Harmeling.....Finance Chairman
Marjorie Dahlquist.....Music Chairman
Evelyn Plombon.....Program Chairman
Margaret Simonsen }.....Project Chairmen
Margaret Stronks }

Jane Gronlund }.....Publicity Chairmen
Jane Jewson }
Virginia Stronks }.....Social Chairmen
Yvonne Johnson }
Julia Patten }.....Social Service Chairmen
Helen Rustin }

THE MIDGARDIANS

Officers

Virgil Clark.....President
 Lois Harmeling.....Secretary-Treasurer
 Dorothy Nelson.....Program Chairman
 Miss Bridges.....Adviser

Members

Edna Briesmeister	Anna Henriksen	Nona McCollow	Fay Swanke
Marie Christensen	June Healy	Dorothy Nelson	Jeanne Treadwell
Virgil Clark	Ruth Holt	Helen Rustin	Deloise Trindle
Lorraine Erickson	Irene Hophan	Margy Skagen	Ruth Vigerust
Lois Harmeling	Genevieve James	Mary Somsen	Norene Weldon
Mary Hawkins	Audrey Luberg	Margaret Stronks	Catherine Yanisch

Harmeling

Clark

Nelson



ACE Story Hour

A. C. E.

Officers

Jane Jewson.....President
 Albena Pleszczynski.....Vice-President
 Eileen Deneen.....Secretary
 Virginia Stronks.....Treasurer
 Amy Webb.....Publicity Chairman
 Miss Zak.....Adviser

Members

Marjorie Dahlquist	Jane Jewson
Eileen Deneen	Jean Larson
Betty Dodge	Gladys Leadholm
Ruth Ann Feske	Marian Lynch
Louella Halling	Betty Malmo
Dolores Hanson	Elaine Martin
Anna Mae Hoseid	Albena Pleszczynski
Norma Howe	Inez Sanford
Merle Hunter	Virginia Stronks
Maxine Huppert	Lois Swenson

Amy Webb

THE MATHEMATICS CLUB

Officers

Merle Michaelson.....Chairman
 Carol Finstad.....Secretary-Treasurer
 Mrs. Eide.....Adviser

Members

John Andrea
 Everett Burkholder
 Robert Darwin
 Jarl Diffendarfer
 George Frenchick
 Carol Finstad

Carolyn Goble
 Donald Horn
 Lester Horn
 Lloyd Jilot
 Norman Johnson
 Dale Kelly

Joe Klucarich
 Bob Kulstad
 Wilbur Larson
 Ruth Mattison
 Merle Michaelson
 Frank Olocki

Pauline Olson
 John Prucha
 James Sparr
 William Stratton
 Ralph Van Sickle

Finstad

Michaelson



S. P. Q. R.

Officers

Betty Aasterud.....President
 Marie Holverson.....Vice-President
 Jane Gronlund.....Secretary-Treasurer
 Miss Arbuthnot.....Adviser

Members

Betty Aasterud
 Kane Cramer
 Jane Gronlund
 Barbara Harris
 Eleanor Hayes
 Shirley Henrick

Marie Holverson
 Wade Hubert
 Margaret Jerdee
 Muriel Pearson
 Elizabeth Sampson
 Leone Timmerman



Gronlund

Aasterud

PALETTE CLUB

Officers

Lois Harmeling Chairman
Ruth Holt Secretary-Treasurer

Board

Irene Hophan
Madolyn Anderson
Miss Greene Adviser
Vivian Harrigan
Norene Weldon

Members

Madolyn Anderson	Anna Henriksen	Norene Weldon
Elva Cairns	Ruth Holt	Virgil Clark
Lorraine Erickson	Irene Hophan	Shirley Schillberg
Delores Hanson	Audrey Luberg	Marjorie Gilstad
Lois Harmeling	Lois Swenson	Ruth Pederson
Vivian Harrigan		Deloise Trindle

Back row: Holt, Harmeling
Front row: Hophan, Weldon



Ericson, Gronlund, Holverson, Ryan

SIGMA CHI SIGMA

Officers

Marie Holverson President
Patricia Ryan Vice-President
Jane Gronlund Secretary
Margery Ericson Treasurer

Advisory Board

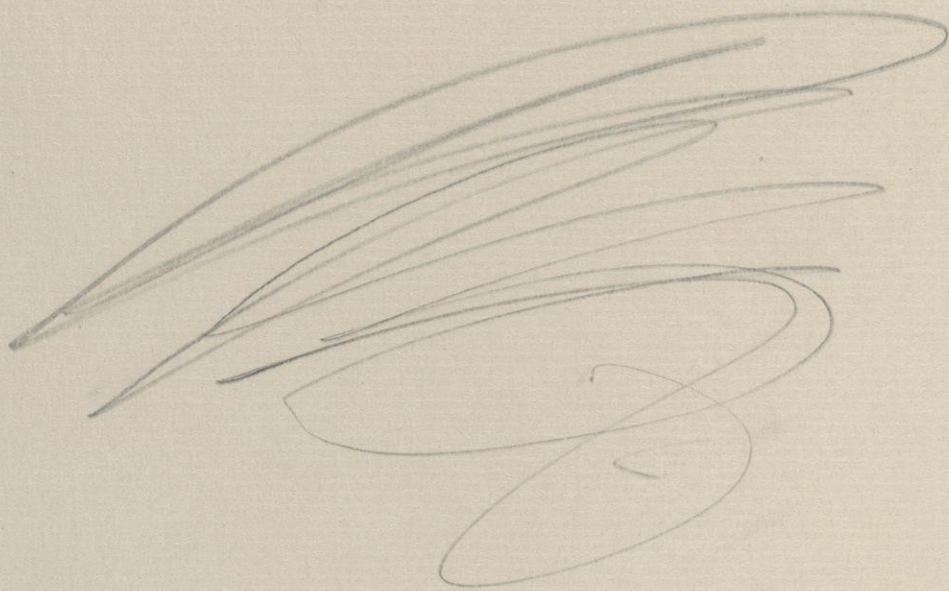
Mrs. Walker D. Wyman
Miss Moss
Miss Lieneman

Members

Betty Aasterud	Ruth Mattison
Eileen Anderson	Patricia Milbrath
Dorothy Edkins	Joyce Morton
Margery Ericson	Marcia Nelson
Carol Finstad	Mary C. O'Connell
Mildred Fleming	Muriel Pearson
Ruth Froiland	Evelyn Plombon
Muriel Griffith	Beverly Rasmus
Jane Gronlund	Patricia Ryan
Lois Harmeling	Esther Solheim
Marie Holverson	Margaret Stronks
Margaret Jerdee	Virginia Stronks
Jane Jewson	Corrine Swanson
Anna Johnson	Leone Timmerman
Yvonne Johnson	Jeanne Treadwell
Jean Larson	Dawn Wheeler
Doris Landberg	Carol Whitaker



BUREAU OF ENGRAVING, INC.
MINNEAPOLIS MINNESOTA



Donated by Michael Milliken, June 29, 2012

6

