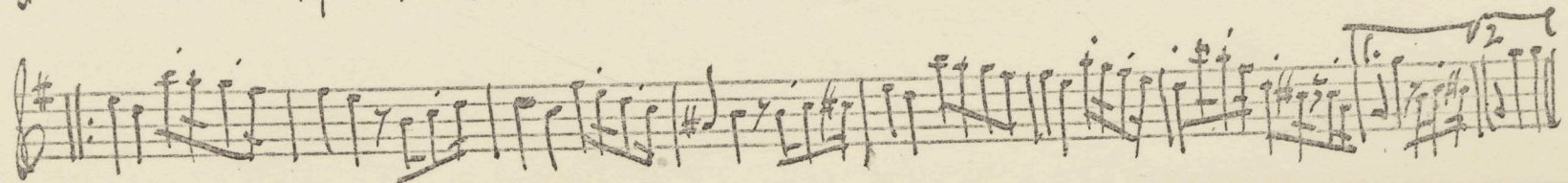
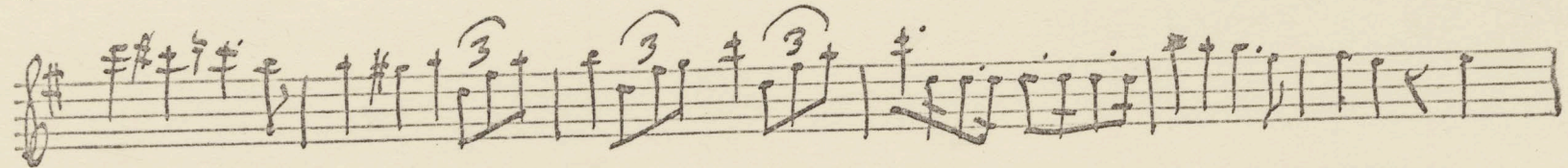
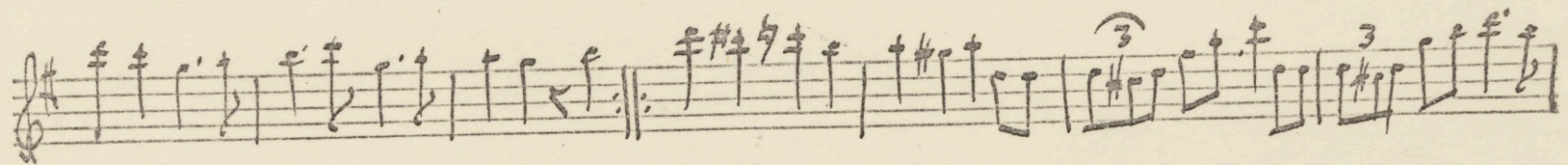
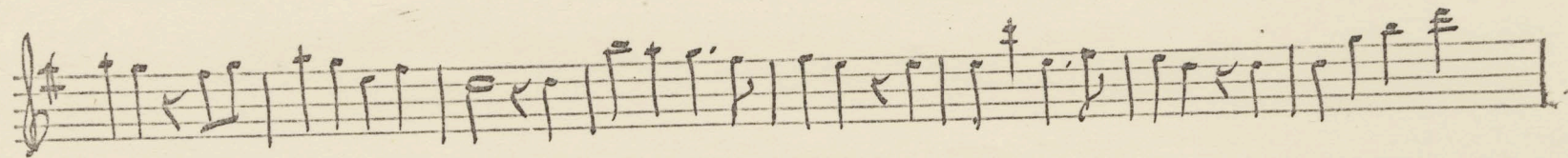
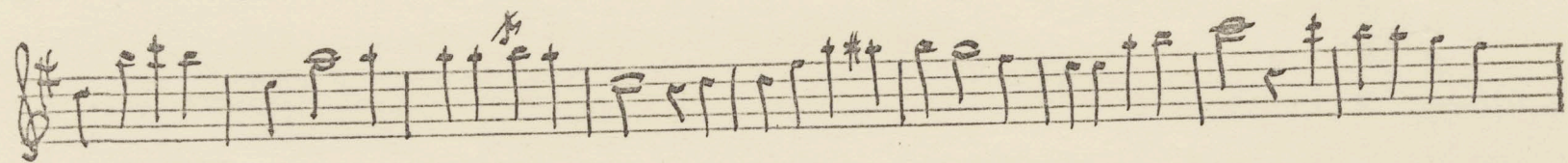
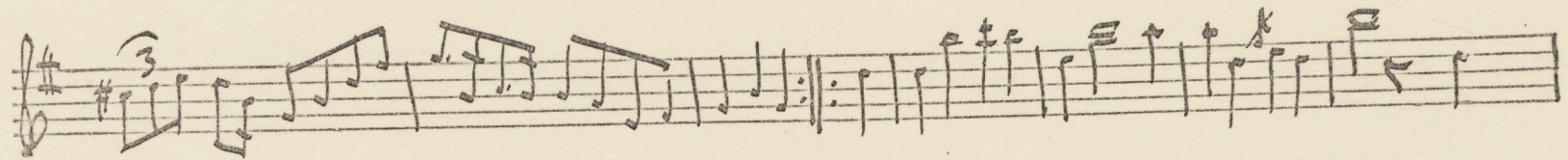


Bright are the Lights
of the Big City Nights.
Go play there and do not mind Me!

I sleep in the Breeze Trees.
by the whispering Trees.
Friends of the Forest will find Me.

Q.R.

Schottische No. 1



Waltz by O.R. '66

Fine

To 2nd Part.

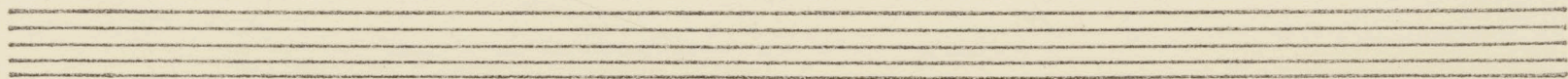
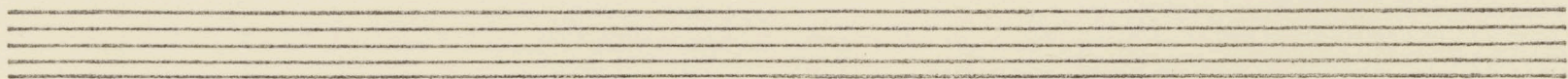
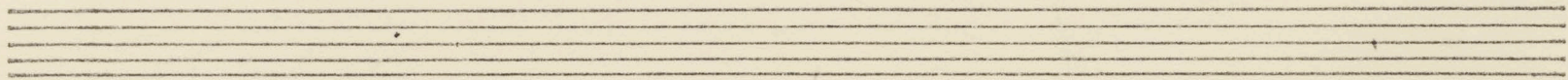
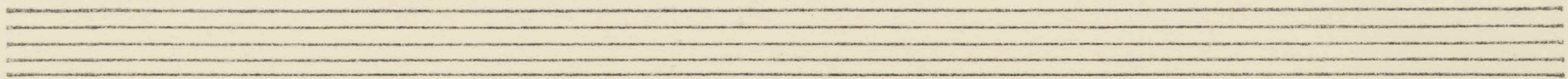
To Trio -

D.C. then Trio.

D.C. 1st Part.

Reel O.R. 1966

Handwritten musical notation for a reel in G major (one sharp) and 2/4 time. The piece consists of four staves of music. The first staff begins with a treble clef, a key signature of one sharp (F#), and a 2/4 time signature. The melody is written in a single line, with a bass line indicated by a downward-pointing stem. The second staff continues the melody and includes a fermata over the final note. The third and fourth staves continue the piece, with the fourth staff ending with a double bar line and repeat dots. The notation is clear and legible, showing various rhythmic values and melodic contours.



Breakdown

OR '67

