



LIBRARIES

UNIVERSITY OF WISCONSIN-MADISON

Orchestra part: trombone. No. 2677 [between 1910 and 1930?]

[s.l.]: [s.n.], [between 1910 and 1930?]

<https://digital.library.wisc.edu/1711.dl/EXM2Y6LAVX4558V>

This material may be protected by copyright law (e.g. Title 17, US Code).

For information on re-use see:

<http://digital.library.wisc.edu/1711.dl/Copyright>

The libraries provide public access to a wide range of material, including online exhibits, digitized collections, archival finding aids, our catalog, online articles, and a growing range of materials in many media.

When possible, we provide rights information in catalog records, finding aids, and other metadata that accompanies collections or items. However, it is always the user's obligation to evaluate copyright and rights issues in light of their own use.

NO. 2677

Trombone.

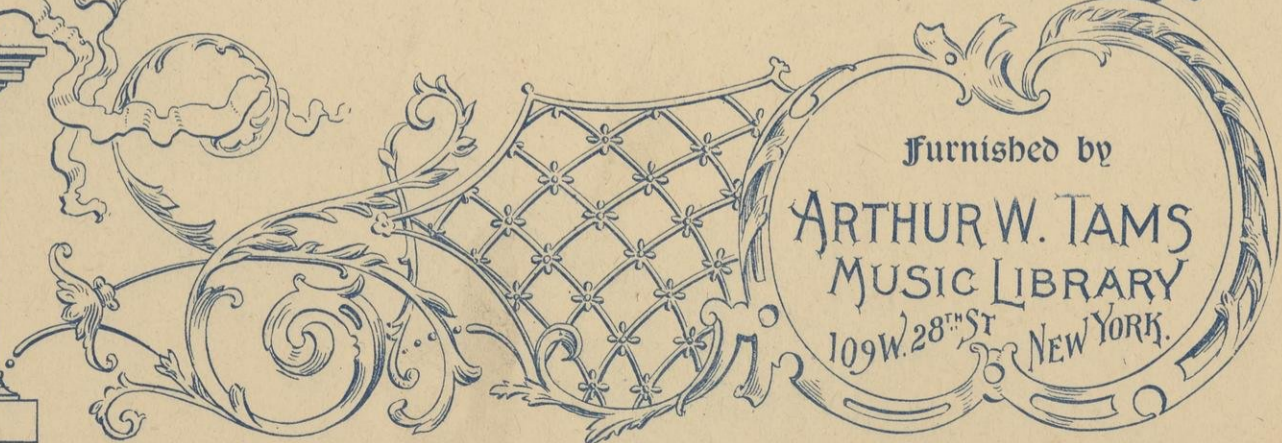
Orchestration

of

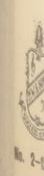
STREETS OF NEW YORK

Set No.

No Copying of this Work Allowed Under Any Circumstances.



"GDC LEGGE" (None Genuine without Watermark.) M. WITMARK & SONS, Selling Agts., New York & Chicago.



Streets of New York

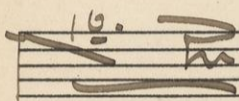
Act 1st

Trombone

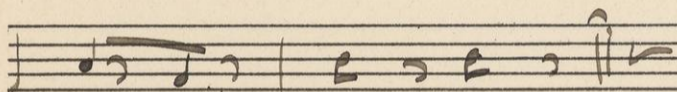
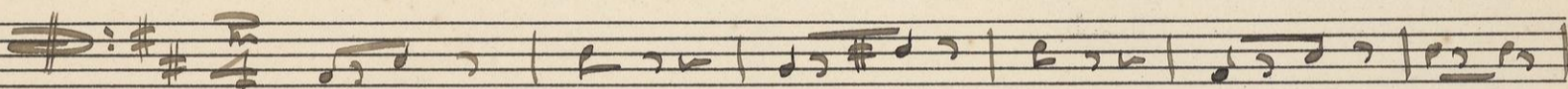


Rit

Tacet



all^o



and

No. 4

Tacet

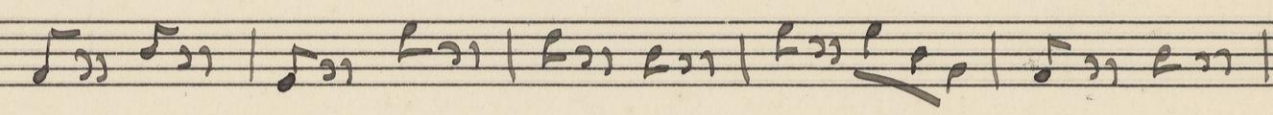
Curtain

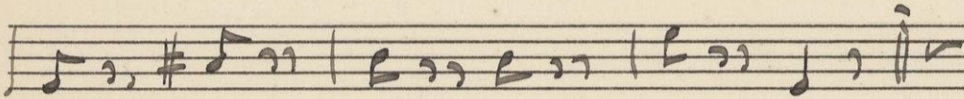
V.S



Ad P mo

No. 5

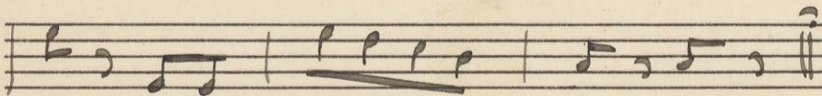
All^o $\text{F}\sharp 6$
8 



No. 6 and No. 7 Tacit

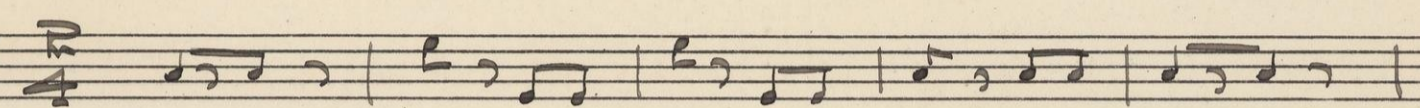
No. 8

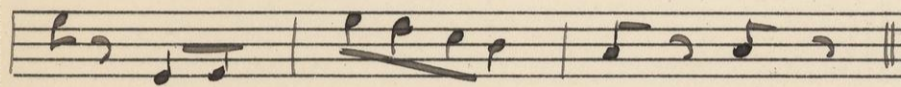
All^o $\text{F}\sharp 4$
4 



No. 17 Tacit

No. 18

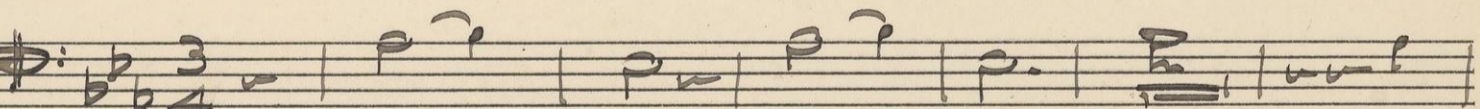
all^o ♩ $\frac{4}{4}$ 




Segue

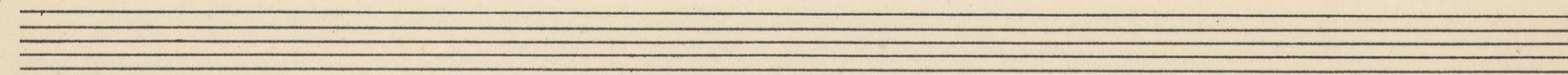
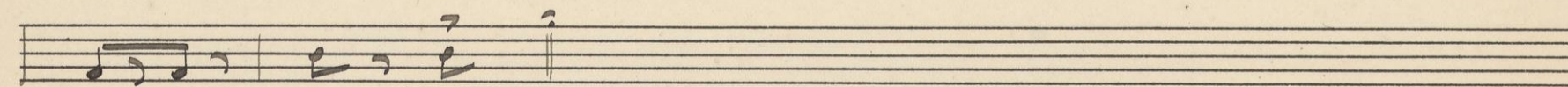
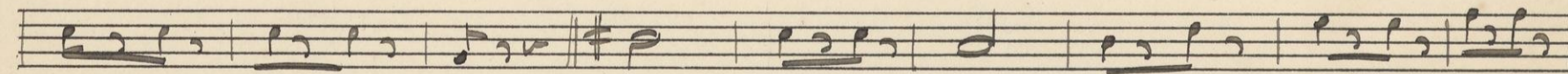
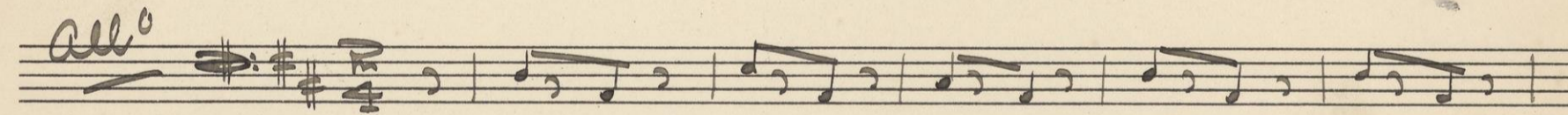
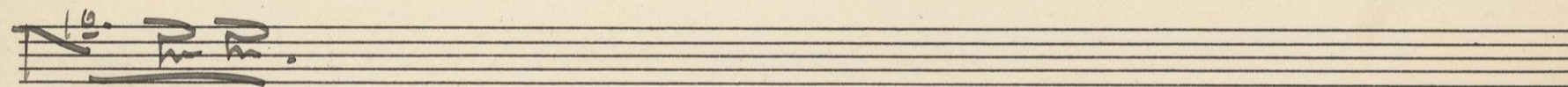
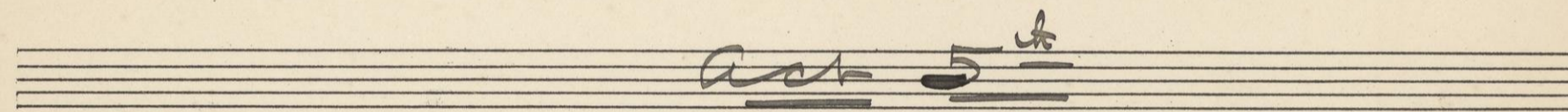
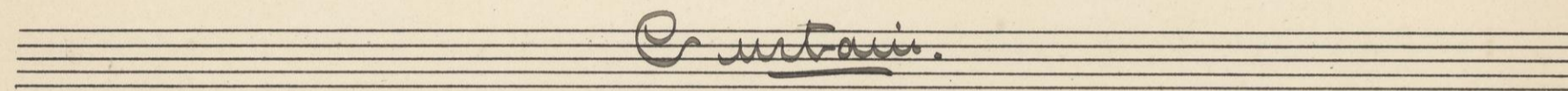
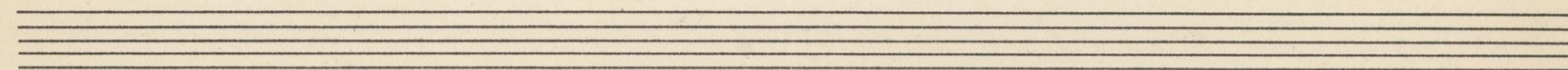
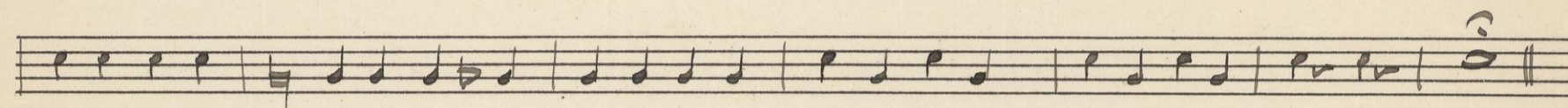
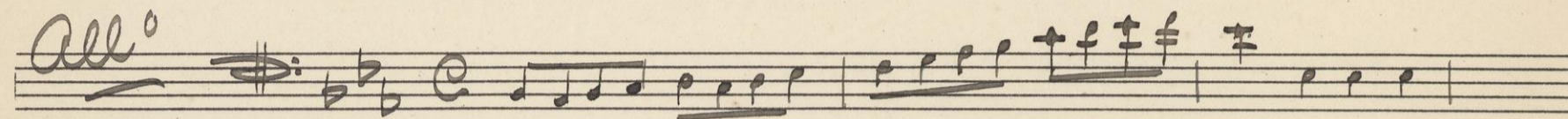
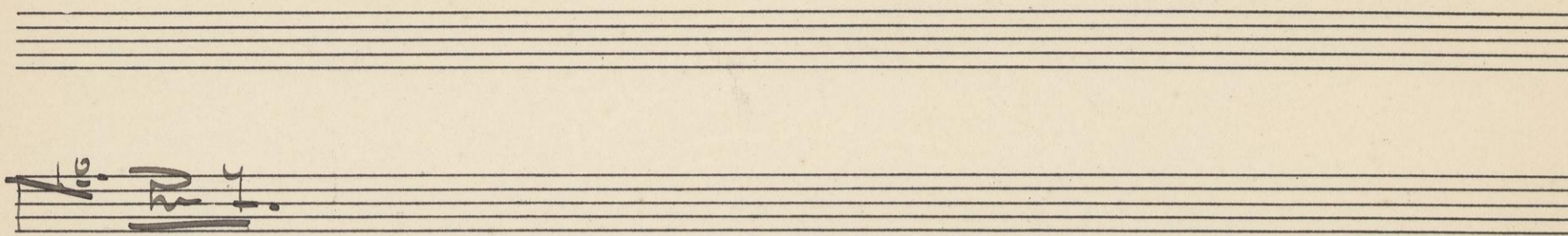
No. 19 Tacit

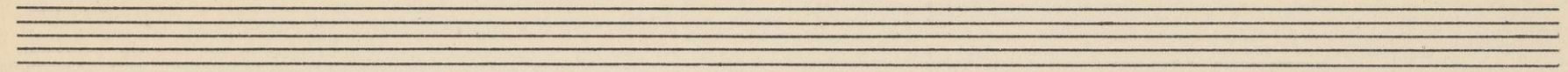
No. 20

Audant ♩ $\frac{3}{4}$ b b 
pp



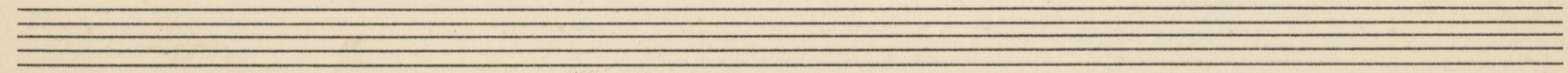
F.S





No. 23

All^o



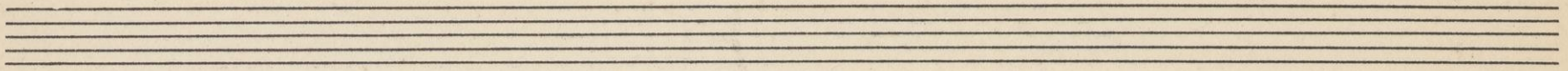
Curtain

Act 6th

No. 24 Qui Tacit

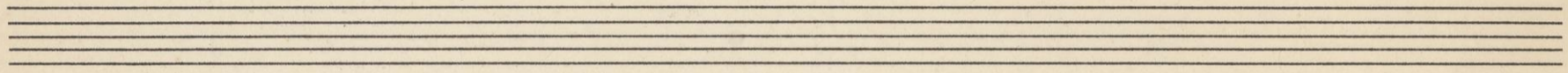
V.S.





No. 25

All^o $\text{♩} : \text{♯} \text{♯} \frac{2}{4}$



No. 26

Repeat No. 25 *tu*

Fine

Jud P. Chaplin
Copy

