



LIBRARIES

UNIVERSITY OF WISCONSIN-MADISON

Camp Gallistella historic documentation (1912-1961). 1942/1961

[Madison, Wisconsin]: [s.n.], 1942/1961

<https://digital.library.wisc.edu/1711.dl/IBE6VDHHD4OWJ84>

<http://rightsstatements.org/vocab/InC/1.0/>

For information on re-use, see

<http://digital.library.wisc.edu/1711.dl/Copyright>

The libraries provide public access to a wide range of material, including online exhibits, digitized collections, archival finding aids, our catalog, online articles, and a growing range of materials in many media.

When possible, we provide rights information in catalog records, finding aids, and other metadata that accompanies collections or items. However, it is always the user's obligation to evaluate copyright and rights issues in light of their own use.

UNIVERSITY OF WISCONSIN
COLLEGE OF AGRICULTURE
MADISON, WISCONSIN

Mrs. A. F. Gallistel:

Just to remind you that you
are to appear on the Homemakers'
Hour over state stations WHA-
WLBL.

Day Thursday Date July 27

Your subject is A Trip to the
Tent Colony (camp Gallistela)

Place - Radio Hall - at the West
end of Langdon street and direct-
ly back of Science Hall.

The Homemakers' program is
broadcast from 10 to 10:45 a. m.

Your time on the program is

from 10:00

to 10:30

Will you please report to the announcer of the program at least 10 minutes before your broadcast begins? Please enter the studio during the musical interlude, if possible. This courtesy will be appreciated.

May we have _____ advance copies of your talk at least days before you are to appear? This is important.

We appreciate your cooperation and want to thank you for the contribution which you are making to the state educational program.

Aline Hazard,
116 Agricultural Hall,
Telephone U-112

Mrs. ^uallistel:

Here is the copy that I find in our files.

Wish I could have it copied for you, but our office force is depleted, and I am afraid that you will need it right away. Use this as is if you care to, but if there is a way of getting it again I would like to keep it in the files.

If you go to New York (and I hope you will) bring back your script, it would be fun to study it from a producers point of view.

Please let me know if you go as I would surely be an interested listener and would write you
fam mail

Good Luck and Congratulations'.

~~What date in August so you think would be convenient for our " Tent Colony" broadcast?~~

July 27.

Gallistel, Mrs. A. F. - "Let's Visit the Tent Colony" - July 6, 1938

RADIO TALK

Given over WHA

UNIVERSITY OF WISCONSIN

Madison

Camp Gullistela
The University first colony.
We hear about it this morning

Annette Then I'm just in time, for I've
been interested in that camp ever
since we came to Madison twenty
years ago just when it started. +

Eleanor. No, Mrs. Vinje, you're not quite
right. Twenty-six years ago, Scott #
Goodnight, kind and thoughtful dean
of the University summer school,
got the idea of having a camp for
the benefit of school men who
might want to but could not
afford the expense of attending
the summer session and at the
same time maintain their families.

Ann. As long ago as that. in 1912? //

Eleanor yes he chose a certain beautiful strip of wooded slope on the shore of Lake Mendota, had a study Hall and platforms built //

Ann. The platforms interest me because living on the ground is hard enough even for a week let alone for a six or nine weeks session. But how did you happen to become part of the Tent Colony? //

Eleanor There is a cottage on the land where they always let some one live who would look after the camp. In

1918 my husband took charge of the
 Department of Buildings and Grounds
 but the house we were to live in
 wasn't ready so we got permission to
 use the cottage at the Tent Colony
 It was wild and lovely and most
 wholesome for my two little children,

Ann. Oh! Nature lovers. But weren't
 you lonesome so far from town?
 Clean not at all. Because the
 campers were polite and pleasant. 16
 of our 18 platforms were occupied.

Ann. I imagine conditions were
 quite different in those early days.
 there were ^{so} few cars then. /

Eleanor. you are right. They all rode bicycles or walked the 2 miles to the campus. Or went in on the old launch that came when the weather permitted and brought our mail and groceries,

Ann. How you get your mail by auto and it gets there every day!

Eleanor. Always! It never falls into the lake as in the early days when if it was too rough for the boat to make the pier, the man would throw the bundle, sometimes the wind took it out of reach or the cord broke and we all ran into the water - clothes and all - to rescue the precious letters!

Ann

I can see you had your thrills
even then. But why all the
responsibility. Was that Dean Good-
night's idea too?

El No, but living in the cottage meant
looking after camp but no one ever
told me what the duties were so
I just did any thing that seemed to
promise any general good,

Ann Such as -

El Oh I cleaned and filled the lamps
in the study hall every day, met the
foot sorted the mail and delivered it.
If a storm blew up I went around
closing tent flaps and ^{making} things safe because
everybody was at class!

Ann I am afraid the first year would have discouraged me. How did the second year go - were all the platforms filled?

El. Yes, indeed, and we had three women, all of them brass souls with delicate children who would be the bitter for an out door summer their doctors said and so they were.

Ann Then there are only 18 platforms?

El. Dear no, The third year and every year after that we had to build more platforms until there were 26 and all the spaces in the woods were used.

Ann Couldn't you have more land to take care of the increasing demand?

Yes, the daisy field came in and we built 24 platforms there but even this was outgrown and camp expanded still farther west into the Walnut Grove

~~ann.~~ accomodating 10 more. So now we have 60 families - about 200 people.

ann. With such a large group you must have had to add many modern improvements.

El Ann Very few. It is a beautiful place, swimming, boating and fishing are excellent but conditions are purposely primitive so the fee can be kept at a minimum.

Annelle What does it cost to live there all summer?

ll The University charges \$5 residence fee and the individual ^{spends} whatever he cares to on his equipment. The sole purpose of the Colony is to provide an opportunity for families to live cheaply while one or more members attend the summer session.

The University provides 2 screened electric lighted study halls, 2 deep wells, a swimming pier and life guard, a fishing pier, board platforms 12' x 20', garbage collection and comfort stations.

ann. That is very generous but how about their supplies, meat, milk and ice?

cl They are delivered every day. Also bakery, laundry and two newspapers.

ann Summer is certainly your busy time but you can forget it the rest of the year.

cl I don't because the care and supervision of camp is an all year hobby with me, for the letters come and go always.

ann Is that the way you get next years reservations?

cl Some of them. But always toward the end of summer school we send out

9

blanks for tentative reservations for the next year, present occupants having preference. So the platforms are all reserved a year ahead. But there are always some cancellations, vacancies being filled from the waiting list, which begins to grow early in the summer. Already I have two on this list for 1939.

ann aren't there many problems of discipline and rules with so many people?

El. Oh, they take care of that themselves.

When they have all come, put up their tents, registered and arranged for their classes and find they have time to take a long breath, a meeting is called. Everyone goes to vote for the camp officers,

19.
Q. Oh a regular village set up. Besides
a mayor clerk and treasurer what others
do you have?

A. Street commissioner, constable, conservator
commissioner, sports director, Post-
mistress, Census taker, Editor of Gullstela
Breezes and 4 aldermen, who with the
mayor, clerk and treasurer meet
weekly in council and settle all
local concerns.

Q. Do your campers come from far away?

A. They come from all parts of the country,
including Alaska and Hawaii. This
year we have members from 15 states,
Georgia, Illinois, Ind. Iowa. Kans.
Mich. Mo. New York, Ohio, Okla.
Washington and Wisconsin.

Q. You sound like a train caller. But
tell me what they do when they are

at home.

High school teachers, school superintendents, university teachers, working for higher degrees. It takes 4 summers to earn a degree so most of them return at least that often.

ann. The cottage is very interesting. Did the University build it?

J. No, it is very old. It was there when the University bought the land. There are no modern conveniences, except electric lights and a telephone. Both of these we have had for about 10 years.

ann. The phone could be a cause of lots of running for you. How is that taken care of?

El Well, the phone did create a rather overwhelming problem because each of our students is listed in the summer school directory with their

number. I am ¹¹ glad to take the calls but
could not possibly get the messages to the
people - especially if they live at the
other end of camp 4 or 5 blocks away /

ann You needed a messenger service. What
did you do? /

El I asked one of the older boys to
organize all of the children who
were willing to be messengers. /

ann Could he get any to help him? /

El. With no trouble at all. The idea was
carried out by the children. They
worked out a schedule where by a
messenger came to me twice a day,
delegated a child near by for emergency
calls and telegrams. Arranged with the
telegraph company for me to take
wires and have regular telegraph hooks
to write them on. The system has and
does work perfectly. /

am So far our visit ^{13.} has been a little on
the give and take. Can't you end on
a lofty tone? Sort of sum up in
style? Just what is Camp Gallistela?
e. All right. How is this. Camp Gallistela is
truly a cosmopolitan city - tho small -
and yet our citizens are wonderfully
united by common ties of interest,
purpose and activity. The University
located on the lake, offers unusual
opportunities for intensive work and
wholesome play and at no other
point are these possibilities so
concentrated as at the Kent Colony.
A summers study and vacation here
can be what you care to make it.

Imagine a city where there is no
pudge nor court, no jail nor jailor, no

wealth nor poverty. ¹⁸ Where all are friendly
 and helpful. a city where the main
 concern of the officers is to arrange
 a fine pic nic and other forms of
 simple enjoyment. Sir Thomas More
 might call this city Utopia but
 we call it Camp Galveston.

End

$\frac{1}{2}$ c B } mix
 1 c S }
 2 egg beater }
 $\frac{1}{3}$ dry oil }
 1 T cur
 1 $\frac{1}{2}$ c flour
 1 $\frac{1}{2}$ T B P
 1 $\frac{1}{2}$ c cherries
 1 $\frac{1}{2}$ c brand
 1 $\frac{1}{2}$ dry
 3
 Bal 90 m
 950

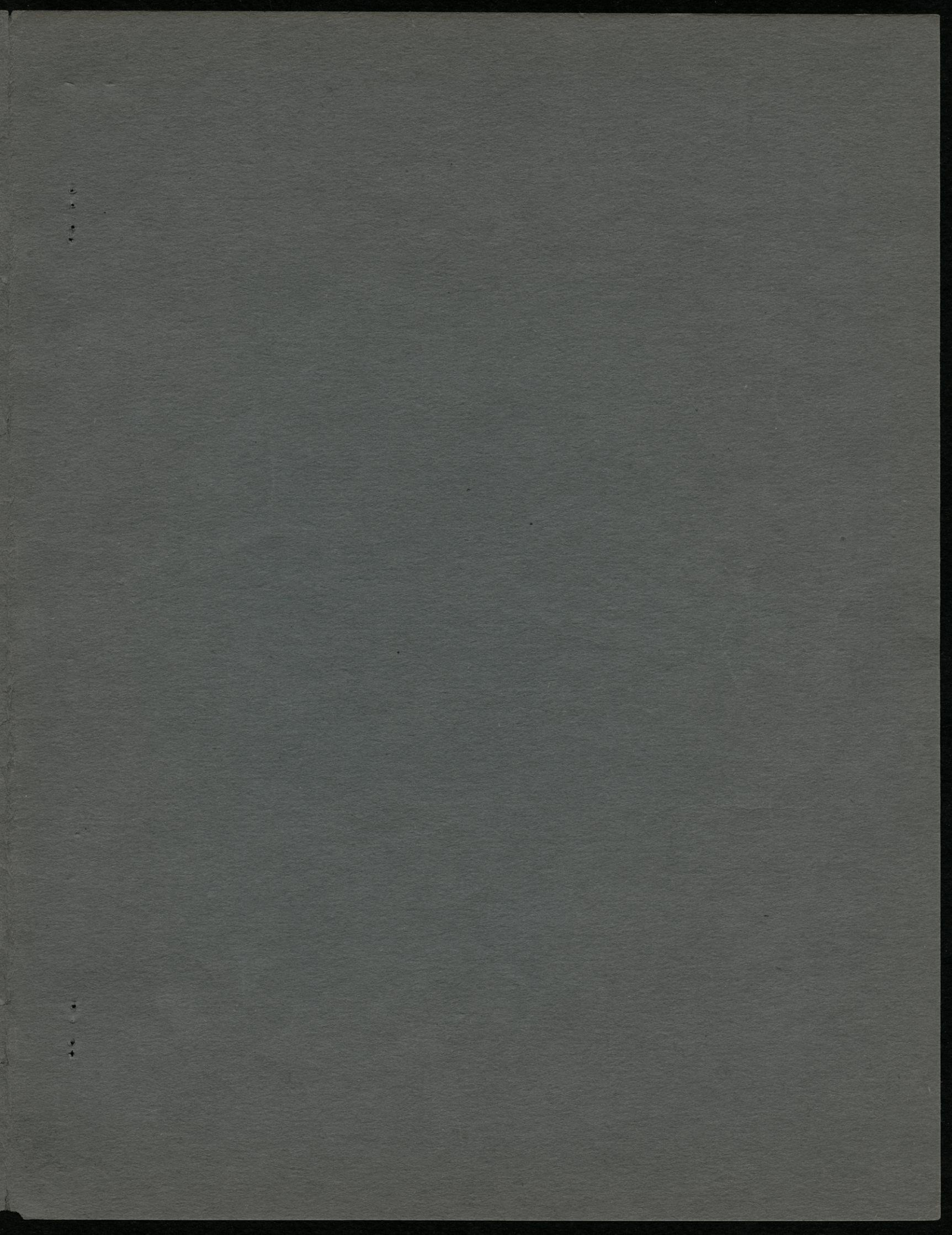
Sept

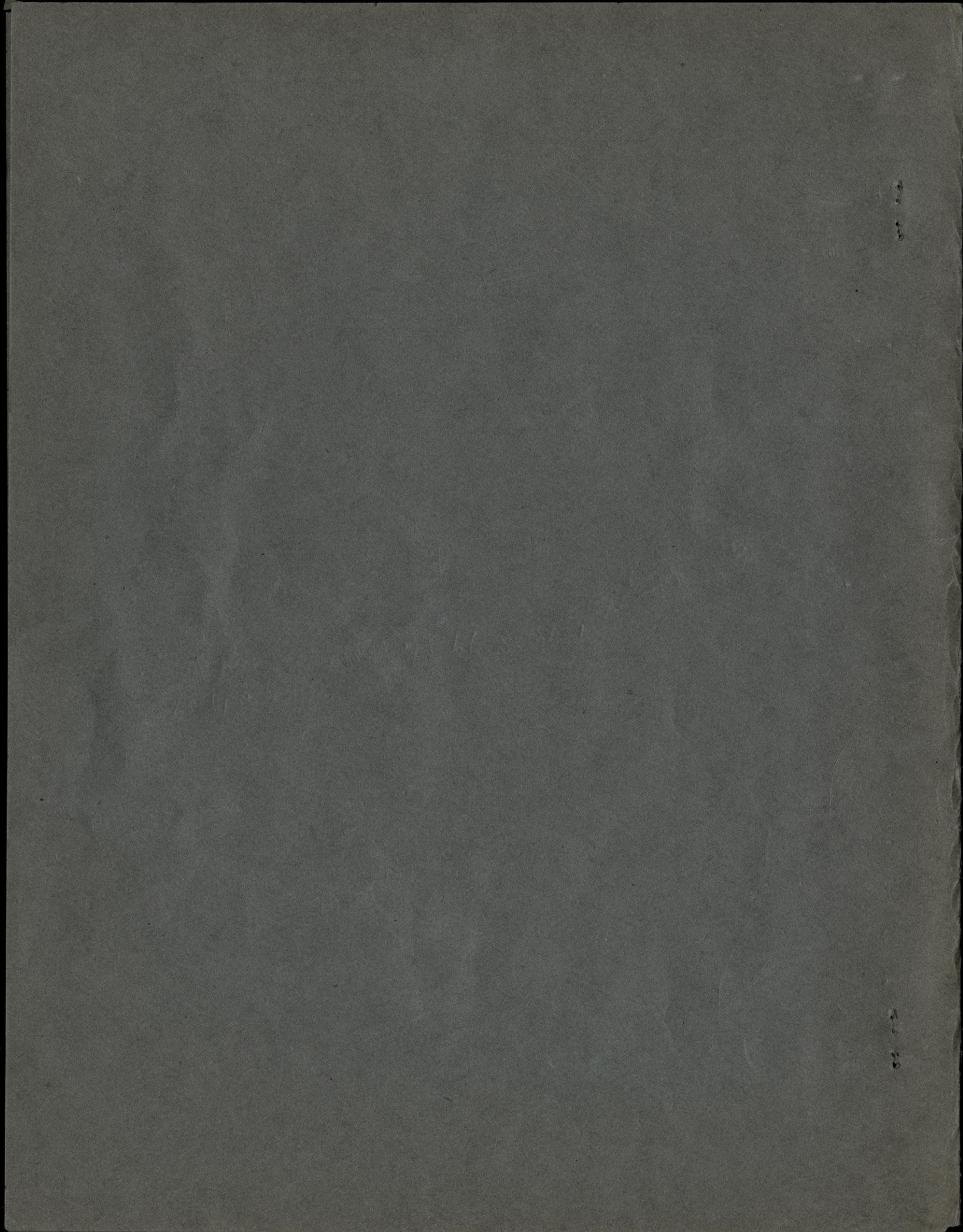
12 min 4

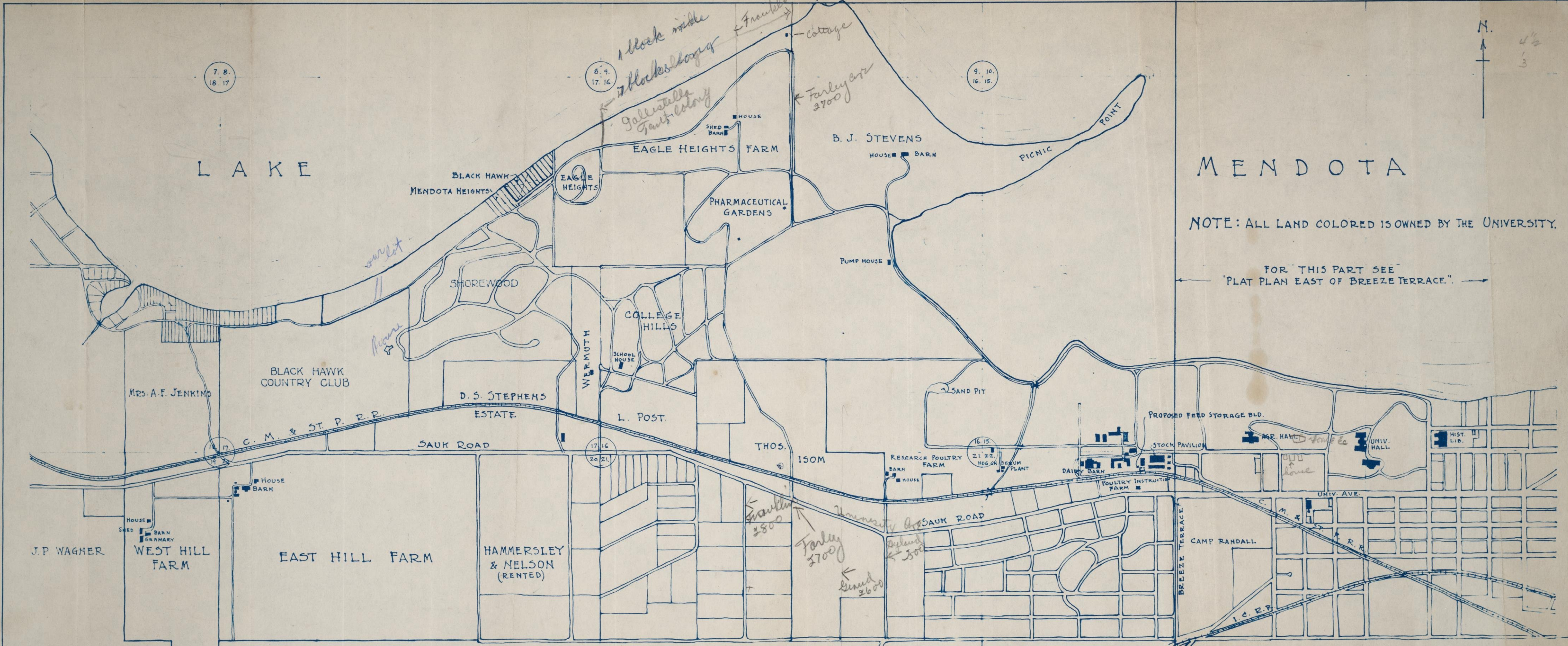
Guile

October 21 -
Nov - - -

End





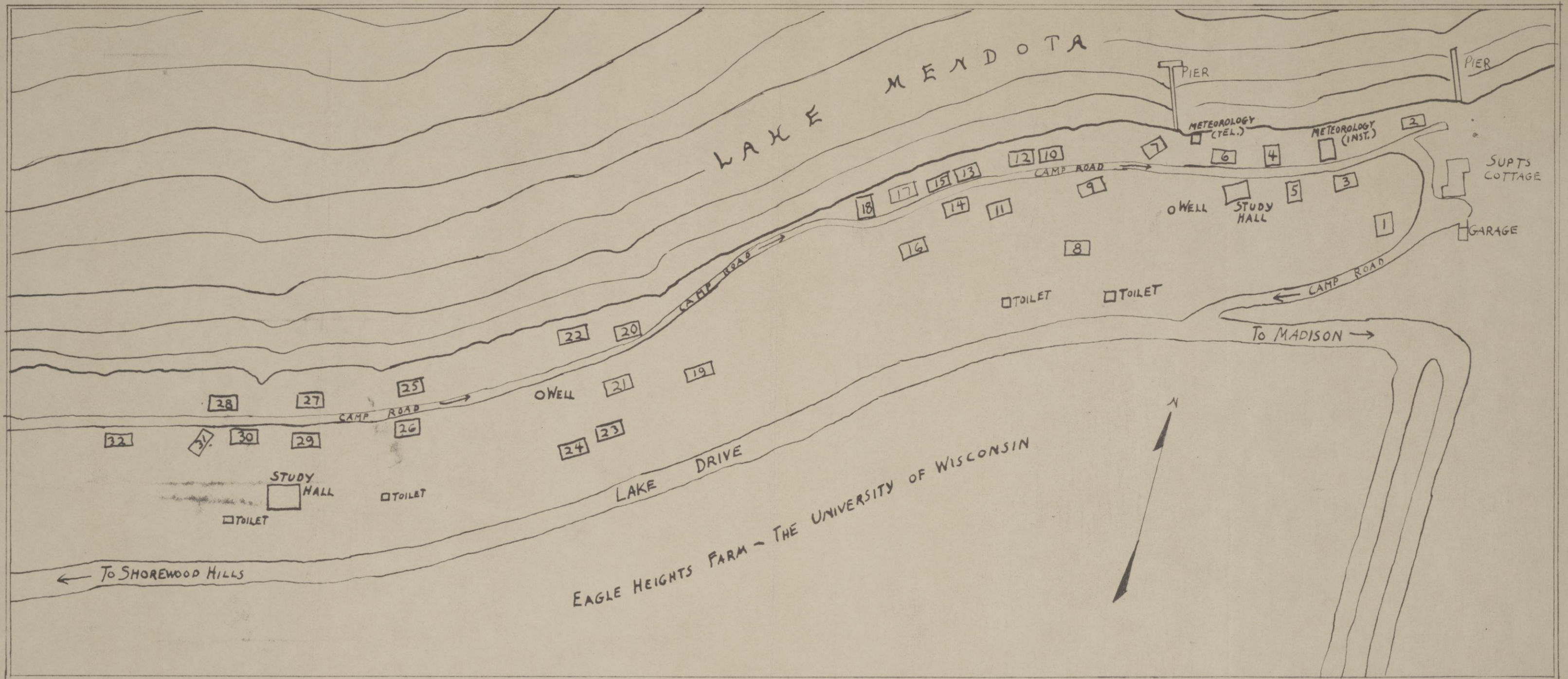


MENDOTA

NOTE: ALL LAND COLORED IS OWNED BY THE UNIVERSITY.

FOR THIS PART SEE "PLAT PLAN EAST OF BREEZE TERRACE."

PLAT PLAN - WEST OF BREEZE TERRACE - UNIVERSITY OF WISCONSIN - ARTHUR PEABODY; STATE ARCH'T.
 DRAWN BY: H. LOEPRICH. SCALE: 1" = 1000'-0".
 JUNE 18, 1919. REVISED: DEC. 12, 1924.

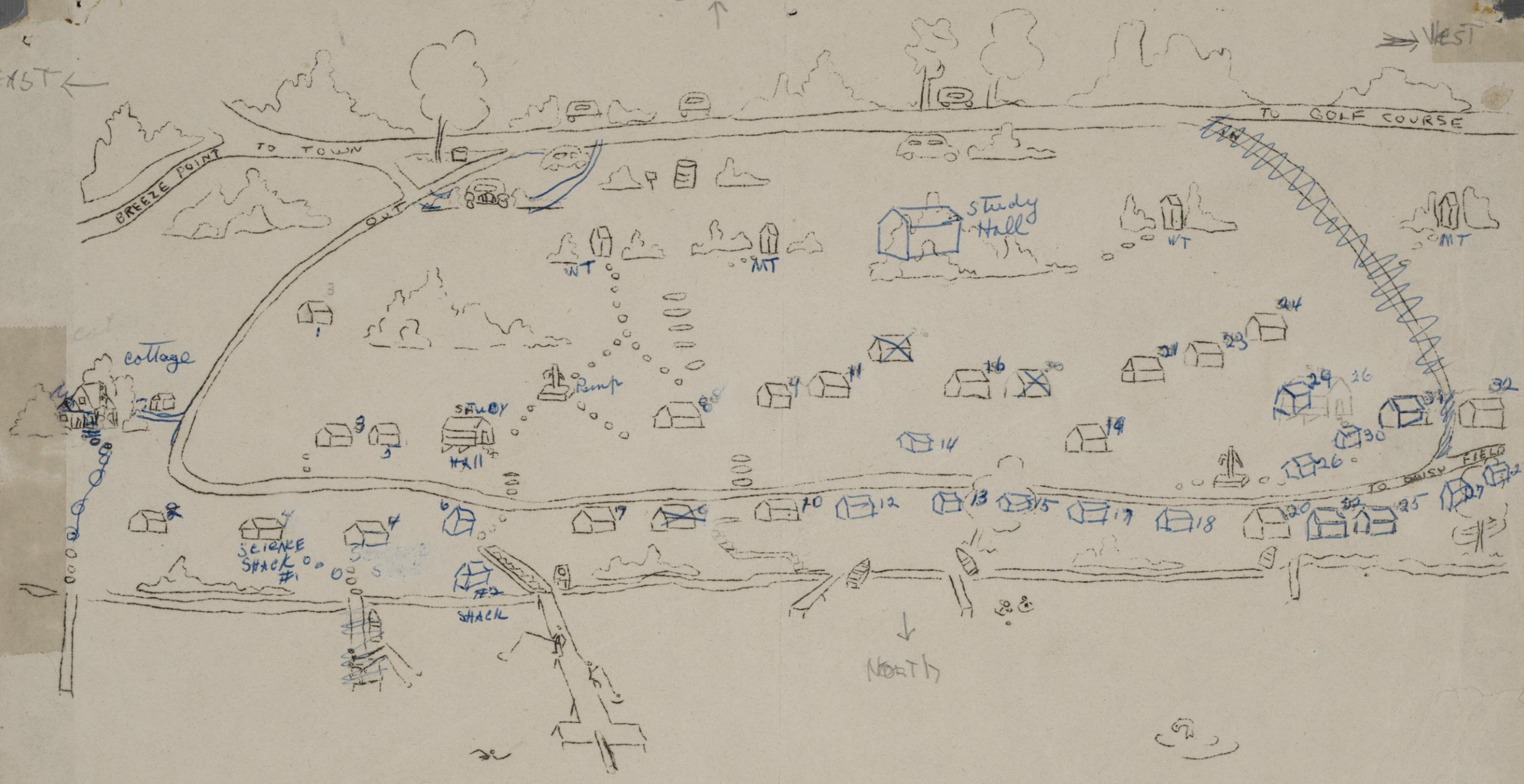


PLAT OF TENTING COLONY
 THE UNIVERSITY OF WISCONSIN-MADISON
 SCALE 1"=80'
 (July 1960)
 L.H.

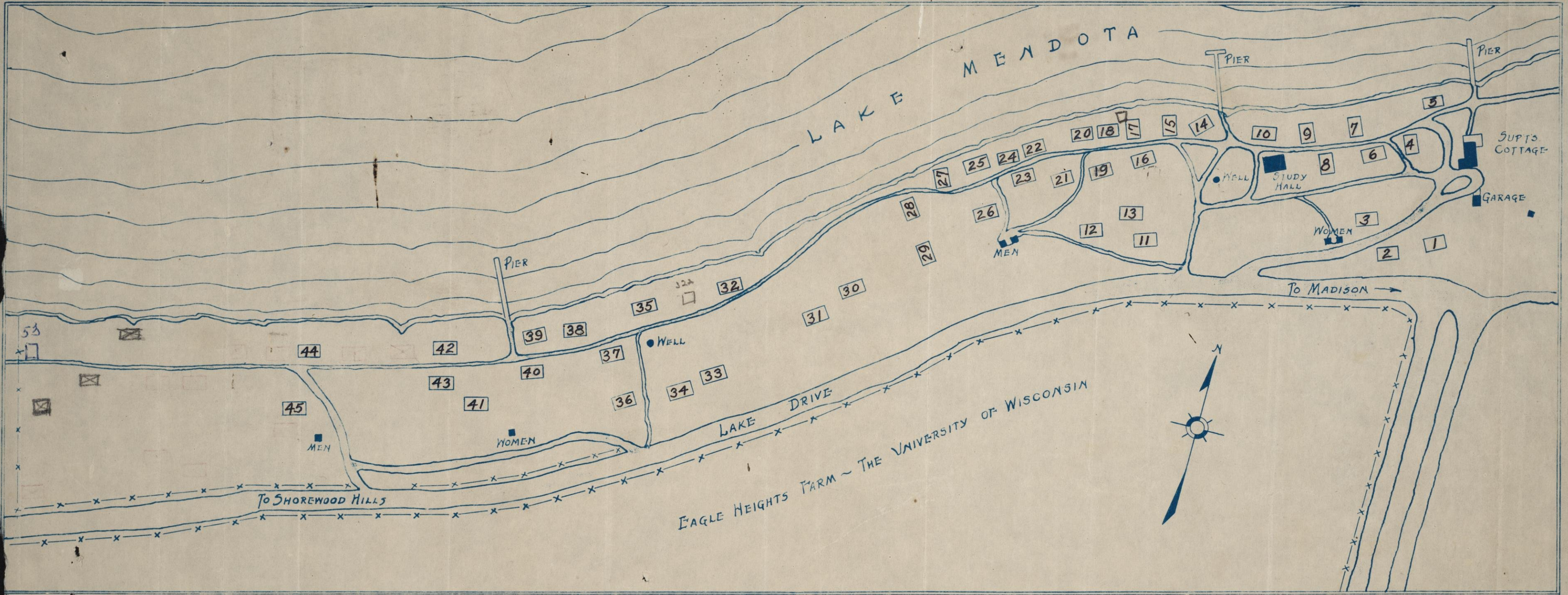
← EAST

SOUTH ↑

→ WEST



With Martin's Breezes 1959 articles



SUMMER SESSION - 1929.

PLAT OF TENTING COLONY
 THE UNIVERSITY OF WISCONSIN - MADISON
 SCALE 1" = 80'

*Additional reservations
 without Platforms*

THE DEPT OF BLDGS & GROUNDS
 THE UNIVERSITY OF WISCONSIN
 - MADISON - WIS.
 A. F. GALLISTEL - SUPT

7/29
 T.B.W.

THE UNIVERSITY OF WISCONSIN
SUMMER SESSION 1913

A TENTING COLONY FOR FAMILIES

FAMILIES who desire to combine outing life with summer session work will be given opportunity to tent upon University property on Lake Mendota about two miles from the University (between the drive and the lake, just north of the Raymer farm house). The spot is a beautiful one and the fishing, boating, and bathing are excellent. A regular launch service on the lake furnishes transportation facilities. A mail-boat plies regularly each day, and city grocers supply campers with provisions which are delivered by boat or wagon.

The University will provide a well, pier, and public conveniences. Campers will furnish their own equipment, such as tents, cots, bed clothing, chairs, boats, cooking utensils, dishes, etc.

For those who desire to rent, The John Gallagher Tent and Awning Company, 9-13 S. Bedford St., Madison, an old and reliable firm, agrees to provide first-class, water-proof tents and good cots, hammocks, and camp stools at the following rates. Those who desire to make use of this service should correspond directly with the firm after having complied with rule 3 below.

14x34 Family Compartment Tents,	\$3.75 per wk.
14x21 Family Compartment Tents,	3.00 per wk.
12x19 Family Compartment Tents,	2.00 per wk.
10x15 Lawn Tents,	1.50 per wk.
10x12 Wall Tents	.75 per wk.
12x14 Wall Tents,	1.00 per wk.
14x16 Wall Tents,	1.25 per wk.
Gold Medal Cots,	.50 per mo.
Hammocks,	.50 per mo.
Camp Chairs or Stools,	.10 per mo.

If desired, the Gallagher Company will pitch the tent upon the grounds and remove the same at the close of the session, furnishing transportation both ways, for \$5 in addition to the rental of the tent. They will also provide a platform floor for each tent—a desirable precaution in case of heavy rain—at a figure covering the labor and rental value of the lumber. Tents pitched by the company will be ready for occupancy on Saturday, June 21, and be removed Saturday, August 1. Special arrangements should be made with the company for such service at other times. Mr. Gallagher is prepared to furnish transportation of passengers and baggage from city to camp for those who wish to bring part or all of their own equipment.

The University imposes the following rules:

1. The privilege of camping in the colony is restricted to families, i. e., married couples, or children accompanied by one or both parents. The head of each family will be held responsible for the conduct of its members.

2. One or more members of each family must be regularly enrolled in the Summer Session.

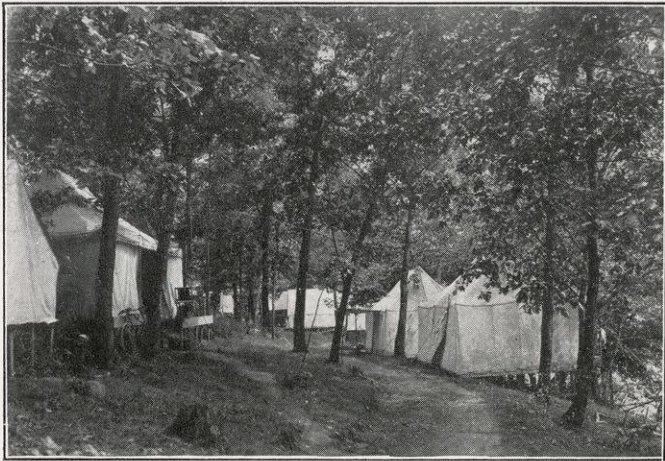
3. An advance deposit of \$15 per family is required, which will be regarded as payment of one Summer Session fee. This deposit must reach the Director before June 15th. In case of withdrawal it will be refunded after the opening of the session. The Gallagher Tent and Awning Company will fill no orders until advance deposit has been made and authorization has been given by the Director.

4. The University reserves the right to withdraw at any time the privilege of remaining in the colony from families whose presence there shall for any reason prove undesirable.

5. Campers are entirely responsible for their own business arrangements. The University assumes no liability for the care or custody of camp goods, and campers may not call upon university employees for service or assistance.

71923

THE UNIVERSITY OF WISCONSIN
SUMMER SESSION



A Tenting Colony for Families

Families who desire to enjoy camp life while one or more members do summer session work will be permitted to tent upon University property on Lake Mendota two to two and a half miles from the campus (between the drive and the lake, just north of the University farm house.) The spot is a beautiful one, and boating, bathing, and fishing are excellent.

The grounds are not provided, however, with the conveniences of a summer park or chautauqua camp, such as electricity, gas, water-mains, sewers, tele-

phone and street car service. Conditions are primitive, and prospective campers should reckon in advance with the inconveniences incident thereto. For example, transportation facilities are not available at all hours. In this connection it might be said that a bicycle is very useful. The distance is not great and the road, which is a beautiful lake shore drive, is well paved. Launches touch at the pier on round-the-lake trips three or four times each day. The fare for a round-the-lake trip is 40c; from the tenting colony to the University pier or vice versa, direct, 25c. A mail boat plies regularly each day (address: University Tenting Colony, Marine Service, Madison, Wis.,) and city grocers supply campers with provisions which are delivered by boat or wagon.

The University provides a screened study hall, a deep well, a pier, board floors for tents, and comfort stations. Campers furnish their own equipment, such as tents, cots, bed-clothing, chairs, boats, stoves, cooking utensils, dishes, fuel, etc.

For those who desire to rent, the Madison Tent and Awning Company, 319 E. Wilson St., Madison, agrees to provide water-proof tents, cots, hammocks, and camp stools. Those who desire to make use of this service should correspond directly with the firm after having complied with rule 3 below.

The rental prices here quoted are for the session of six weeks:

14x21 Family Compartment Tents.....	\$26.00
12x19 Family Compartment Tents.....	20.00
10x15 Lawn Tents	15.00
10x12 Wall Tents	7.50
12x14 Wall Tents	10.00
14x16 Wall Tents	14.00
Gold Medal Cots	1.50
Hammocks	1.50
Camp Chairs or Stools25

If desired the company will pitch the tent upon the grounds and remove the same at the close of the session, furnishing transportation both ways. For this service, the Madison Tent and Awning Company charges \$8 for a single tent or \$5 each when more than one tent is taken at one trip. Tents pitched by the company will be ready for occupancy on the Saturday before the opening of the session and be removed on the Saturday after it closes. Special arrangements should be made for such service at all times. The company is prepared to furnish transportation of



passengers and baggage from city to camp for those who wish to bring a part or all of their own equipment.

Former patrons of the John Gallagher Tent and Awning Company, 305 So. Bedford St., who desire to continue their connection, will be served by them at the former rates.

The University imposes the following rules:

1. The privilege of camping in the colony is restricted to men or to families, viz., married couples,

or children accompanied by one or both parents. The head of each family will be held responsible for the conduct of its members.

2. One or more members of each family must be regularly enrolled in the Summer Session.

3. An advance deposit of \$22 per family is required which will be regarded as payment of one Summer Session fee. This deposit must reach the Director before June 20th. In case of withdrawal it will be refunded after the opening of the session. The Tent and Awning Company will fill no orders until advance deposit has been made and authorization has been given by the director.

4. The University reserves the right to withdraw at any time the privilege of remaining in the colony from families whose presence there shall for any reason prove undesirable.

5. Campers are entirely responsible for their own business arrangements. The University assumes no liability for the care or custody of camp goods, and campers may not call upon university employees for service or assistance.



THE UNIVERSITY OF WISCONSIN

SUMMER SESSION

CAMP GALLISTELLA

A Tenting Colony for Families

For the benefit of school men wishing to attend Summer Session and at the same time have their families with them, the University maintains a tenting colony on the shore of Lake Mendota, two miles from the campus. The spot is very beautiful, the boating, swimming, and fishing are excellent.

The University provides individual board platforms, two screened, electric-lighted study halls, two deep wells (tested), garbage collection, and outdoor comfort stations. Campers furnish all their own needs. There is daily mail and periodic milk and ice delivery. There is a telephone available at headquarters. Bottle gas is supplied by a local company for those who wish to purchase it. The grounds are kept as natural as possible to preserve their beauty and keep down expense. Mail address, University Tenting Colony, Marine Service, Madison, Wisconsin.

The Colony was founded in 1912 and has been very popular. Early application for space is advisable.

Children are especially fond of camp, although there is no formal program for them.

Self-government is practiced, and all cooperate in that and the social activities.

A. F. Gallistel, Director of Physical Plant Planning, who lives in camp with his family during the summer, is the administrative officer in charge.

Super markets and elaborate shopping centers are within one mile. A city bus runs within one-half mile.

Campers furnish their own transportation (very good roads), and all equipment. The main path is lighted until 10:30 p.m., but current is not available to platforms.

The University imposes the following rules:

1. Privilege of camping in the colony is restricted to men or families, that is, married couples or children with one or both parents.

2. At least one member of each family must be regularly enrolled in the Summer Session.

3. An advance fee of fifteen dollars (\$15) per platform is required, and no space will be assigned until fee is received. If written notice of cancellation is received before June 1, fee will be refunded.

4. The University reserves the right to withdraw at any time the privilege of remaining in the colony from those whose presence shall prove undesirable for any reason.

5. Campers are entirely responsible for their own business arrangements. The University assumes no responsibility for the welfare of residents of the camp, or the protection of their property, and campers may not ask for service or assistance from University employees.

6. The terrain is not suitable for house

trailers.

There are two Tent and Awning companies in Madison:

The John Gallagher Company
305 South Bedford Street

The Capital City Tent Company
2065 Helena Street

Camp Regulations

Cooperation of all residents of the group in the observance of the following regulations is absolutely necessary for the good of all.

1. All waste paper, boxes, etc. must be burned.
2. No waste material of any kind is to be thrown in the lake.
3. Bottles, cans, etc. must be deposited in barrels near roadway.
4. Garbage should be wrapped and free from cans. It must be deposited in covered cans near roadway. Do not burn garbage.
5. No trees or shrubbery are to be cut or mutilated.
6. The use of firearms is forbidden.
7. Extinguish fires when through with them.
8. Cooperate in maintaining toilets, study halls and grounds in clean, sanitary condition.
9. Quiet must be maintained after 8:00 p.m.

except on Friday and Saturday, and before 6:00 a.m. at all times.

10. All cars must be parked at top of hill.

11. Platforms are assigned to designated party for duration of the Summer Session. Garbage collection, use of Study Halls, etc., will not be available after close of session. Campers are not to rent their platforms or request accommodations for other parties. The camp is maintained solely for the use of Summer Session students.

12. Wisconsin State Law requires that non-residents obtain licenses before fishing in Wisconsin waters. Failure to do this makes one liable to heavy fine.

13. Piers are built primarily for accommodation of swimmers and boat users. No fishing will be allowed from piers when swimmers are present.

14. No domestic animals will be permitted in camp.

15. Persons with communicable disease will be quarantined under direction of the University Clinic. Report all cases of sickness at once.

16. No liquor of more than 3.2 alcoholic content is permitted on University property.

A. F. Gallistel
Director of Physical
Plant Planning

ARE YOU PLANNING TO ATTEND

SUMMER SCHOOL AT WISCONSIN ?



IF SO, COME WHERE SUMMER'S COOL

UNIVERSITY TENT COLONY

(Camp Gallistella - On the Shores of Lake Mendota)

The University provides tent platforms (12' x 20')

Bring your own equipment - simple or elaborate

For reservations and further information write:

Mrs. A. F. Gallistel
1315 Linden Drive
Madison 6, Wisconsin

LOW COST

SCENIC

FRIENDLY

"CLOSE TO NATURE"

MADISON NEWS

FROM THE UNIVERSITY OF WISCONSIN NEWS SERVICE, MADISON 6, WISCONSIN

8/27/57 vh

RELEASE:

Immediately

MADISON--An affection held in common--for the University of Wisconsin Tent Colony--brought together some 60 persons for a reunion picnic at Olin Park on Monday evening (Aug. 26).

The picnickers--including many 1957 student campers, alumni of the lake-shore summer colony, their families, and honored guests--was the climax of a three-day get-together. Alumni came from as far away as New York for the sentimental event.

The UW Tent Colony, a woodland summer camp under canvas, spread along the shores of Lake Mendota, has long offered married students a rare opportunity for study while their wives and children enjoyed an out-of-doors vacation. Begun in 1912 and continuing through the years, it numbered 35 families as residents this year.

Most honored of the honored guests at the picnic-dinner were Albert F. Gallistel, the University's director of physical plant planning, and Mrs. Gallistel. Year after year the Gallistels have occupied a summer cottage at the camp and served as its guardian angels. It was in their honor that the lakeshore village was formally named Camp Gallistella. Highlight of the picnic was the presentation of a moving picture on the Tent Colony to the couple. The movie was made by a UW class in audio-visual education.

Other honored guests included Mrs. Ira Baldwin, wife of UW Vice Pres. Baldwin; Atty. Fred Risser and Mrs. Risser; Lowell Gerretson, secretary of the State Builders Assn., and Mrs. Gerretson; and Delmar Anderson, engineer with the UW department of buildings and grounds, and Mrs. Anderson.

-more-

ad one--Tery Colony

Old timers from Tent Colony summers who spoke briefly of their experiences and showed their growing or grown families included: UW Commerce Prof. and Mrs. Charles Center; Malcolm Salinger, director of the UW Veterans Administration Guidance Center, and Mrs. Salinger, Harvey Waffle, teacher in industrial arts, Sterling, Ill., and Mrs. Waffle; Robert McCain, management consultant, Milwaukee, and Mrs. McCain; Roscoe Hastings, art supervisor, Freeport and Winslow, Ill., and Mrs. Hastings; Dale Durnford, school principal, Beloit, and Mrs. Durnford; Prof. Virgil Betts, University of Michigan, Ann Arbor, and Mrs. Betts; Prof. Alfred Johnson, Akron University, Ohio, and Mrs. Johnson; Duke Elkow, UW visiting lecturer in education, and Mrs. Elkow; and Arthur Willett, science teacher at Markesan, and Mrs. Willett.

Willett served as mayor for the tent village this summer.

After the supper and speaking, Tent Colony children performed some close-harmony numbers. The group sang old favorites, then cleared the assembly hall floor for square dancing.

###

THE UNIVERSITY OF WISCONSIN

SUMMER SESSION

1959

Twenty-five #

CAMP GALLISTELLA

Thirty-five

A Tenting Colony for Families

1960

For the benefit of school men wishing to attend Summer Session and at the same time have their families with them, the University maintains a tenting colony on the shore of Lake Mendota, two miles from the campus. The spot is very beautiful, the boating, swimming, and fishing are excellent.

The University provides individual board platforms, two screened, electric-lighted study halls, two deep wells (tested), garbage collection, and outdoor comfort stations. Campers furnish all their own needs. There is daily mail and periodic milk and ice delivery. There is a telephone available at headquarters. Bottle gas is supplied by a local company for those who wish to purchase it. The grounds are kept as natural as possible to preserve their beauty and keep down expense. Mail address, University Tenting Colony, Marine Service, Madison, Wisconsin.

The Colony was founded in 1912 and has been very popular. Early application for space is advisable.

Children are especially fond of camp, although there is no formal program for them.

Self-government is practiced, and all cooperate in that and the social activities.

A. F. Gallistel, Director of Physical Plant Planning, who lives in camp with his family during the summer, is the administrative officer in charge.

Super markets and elaborate shopping centers are within one mile. A city bus runs within one-half mile.

Campers furnish their own transportation (very good roads), and all equipment. The main path is lighted until 10:30 p.m., but current is not available to platforms.

The University imposes the following rules:

1. Privilege of camping in the colony is restricted to men or families, that is, married couples or children with one or both parents.

2. At least one member of each family must be regularly enrolled in the Summer Session.

3. An advance fee of fifteen dollars (\$15) per platform is required, and no space will be assigned until fee is received. If written notice of cancellation is received before June 1, fee will be refunded.

4. The University reserves the right to withdraw at any time the privilege of remaining in the colony from those whose presence shall prove undesirable for any reason.

5. Campers are entirely responsible for their own business arrangements. The University assumes no responsibility for the welfare of residents of the camp, or the protection of their property, and campers may not ask for service or assistance from University employees.

6. The terrain is not suitable for house

trailers.

There are two Tent and Awning companies in Madison:

The John Gallagher Company
305 South Bedford Street

The Capital City Tent Company
2065 Helena Street

Camp Regulations

Cooperation of all residents of the group in the observance of the following regulations is absolutely necessary for the good of all.

1. All waste paper, boxes, etc. must be burned.
2. No waste material of any kind is to be thrown in the lake.
3. Bottles, cans, etc. must be deposited in barrels near roadway.
4. Garbage should be wrapped and free from cans. It must be deposited in covered cans near roadway. Do not burn garbage.
5. No trees or shrubbery are to be cut or mutilated.
6. The use of firearms is forbidden.
7. Extinguish fires when through with them.
8. Cooperate in maintaining toilets, study halls and grounds in clean, sanitary condition.
9. Quiet must be maintained after 8:00 p.m.

except on Friday and Saturday, and before 6:00 a.m. at all times.

10. All cars must be parked at top of hill.

11. Platforms are assigned to designated party for duration of the Summer Session. Garbage collection, use of Study Halls, etc., will not be available after close of session. Campers are not to rent their platforms or request accommodations for other parties. The camp is maintained solely for the use of Summer Session students.

12. Wisconsin State Law requires that non-residents obtain licenses before fishing in Wisconsin waters. Failure to do this makes one liable to heavy fine.

13. Piers are built primarily for accommodation of swimmers and boat users. No fishing will be allowed from piers when swimmers are present.

14. No domestic animals will be permitted in camp.

15. Persons with communicable disease will be quarantined under direction of the University Clinic. Report all cases of sickness at once.

16. No liquor of more than 3.2 alcoholic content is permitted on University property.

A. F. Gallistel
Director of Physical
Plant Planning

THE UNIVERSITY OF WISCONSIN
TENT COLONY

Camp Regulations

Cooperation of all residents of the group in the observance of the following regulations is absolutely necessary for the good of all.

1. All waste paper, boxes, etc. must be burned.
2. No waste material of any kind is to be thrown in the lake.
3. Bottles, cans, etc. must be deposited in barrels near roadway.
4. Garbage should be wrapped and free from cans. It must be deposited in covered cans near roadway. Do not burn garbage.
5. No trees or shrubbery are to be cut or mutilated.
6. The use of firearms is forbidden.
7. Extinguish fires when through with them.
8. Cooperate in maintaining toilets, study halls and grounds in clean, sanitary condition.
9. Quiet must be maintained after 8:00 P.M., except on Friday and Saturday, and before 6:00 A.M. at all times.
10. All cars must be parked at top of hill.
11. Platforms are assigned to designated party for duration of the Summer Session. Garbage collection, use of Study Halls, etc. will not be available after close of session. Campers are not to rent their platforms or request accommodations for other parties. The camp is maintained solely for the use of Summer Session students.
12. Wisconsin State Law requires that non-residents obtain licenses before fishing in Wisconsin waters. Failure to do this makes one liable to heavy fine.
13. Piers are built primarily for accommodation of swimmers and boat users. No fishing will be allowed from piers when swimmers are present. *Loud shouts - especially "Help" by swimmers or boaters is?*
14. No domestic animals will be permitted in camp. *forbidden*
15. Persons with communicable disease will be quarantined under direction of the University Clinic. Report all cases of sickness at once.
16. The University assumes no responsibility for the welfare of residents of the camp, or the protection of their property.

A. F. Gallistel
Director of Physical Plant Planning

16. No liquor with over 3.2 alcoholic content
is permitted on University property

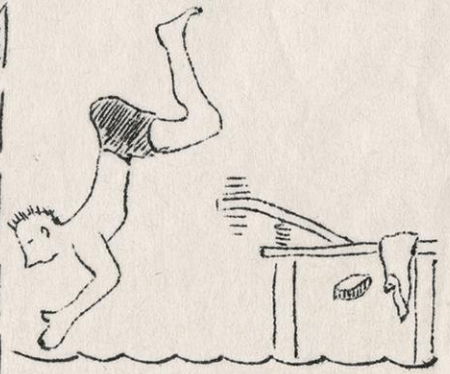
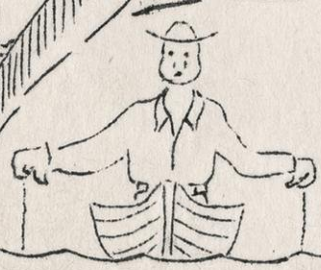
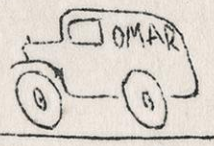
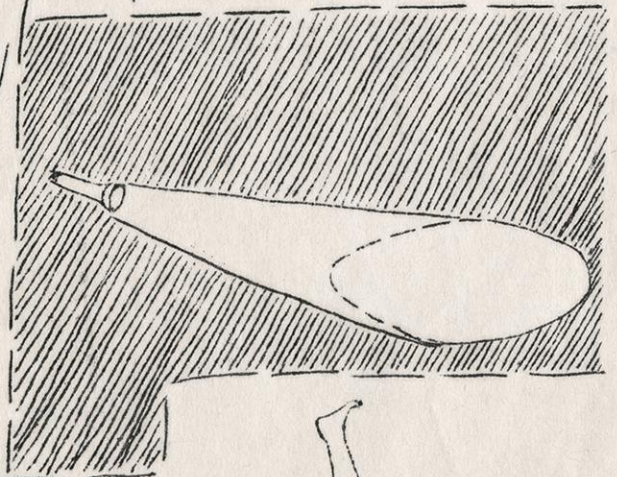
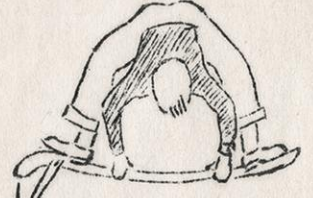
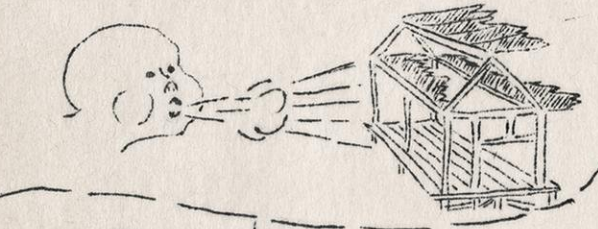
Mr. Stocking

Cooperation of all residents of the group in the observance of the following regulations is absolutely necessary for the good of all.

1. All waste paper, boxes, etc., must be burned.
2. No waste material of any kind is to be thrown in the lake.
3. Bottles, cans, etc., must be deposited in barrels near roadway.
4. Garbage should be wrapped and free from cans. It must be deposited in covered cans near roadway. Do not burn garbage.
5. No trees or shrubbery are to be cut or mutilated.
6. The use of firearms is forbidden.
7. Extinguish fires when through with them.
8. Cooperate in maintaining toilets, study halls and grounds in clean, sanitary condition.

no liquor of over 3.2 alcoholic content
permitted on University property.

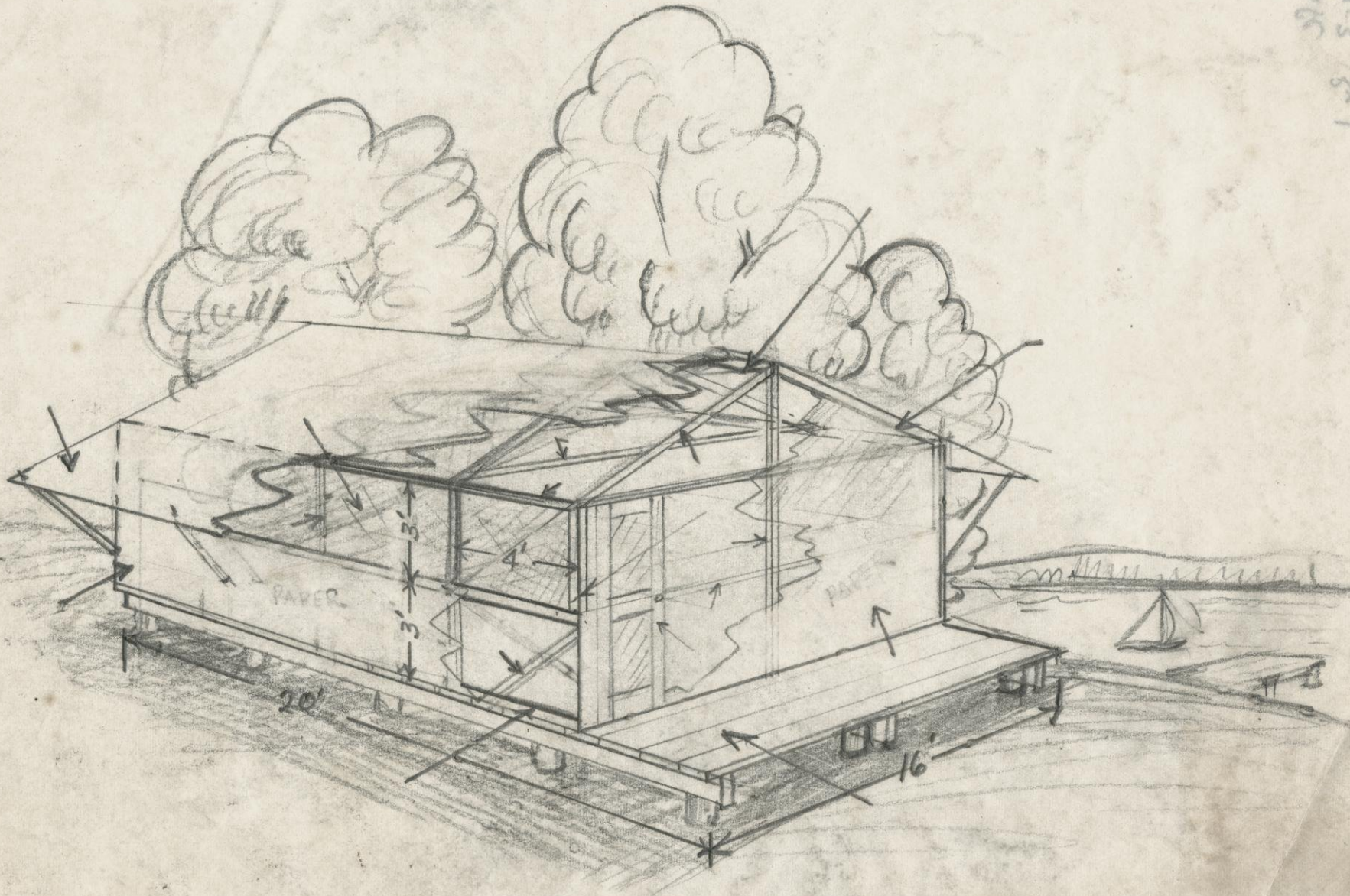
10. All camp property is to be returned to the University at the end of the session.
11. Platforms are assigned to designated party for use during the Summer Session. Garbage collection, use of Study Halls, etc., will not be available after close of session. Campers are not to rent their platforms or request accommodations for other parties. The camp is maintained solely for the use of Summer Session students.
12. Wisconsin State law requires that non-residents obtain licenses before fishing in Wisconsin waters. Failure to do this makes one liable to heavy fine.
13. Piers are built primarily for accommodation of swimmers and boat users. No fishing will be allowed from piers when swimmers are present.
14. No domestic animals will be permitted in camp.
15. Persons with communicable disease will be quarantined under direction of the University Clinic. Report all cases of sickness at once.
16. The University assumes no responsibility for the welfare of residents of the camp, or the protection of their property.

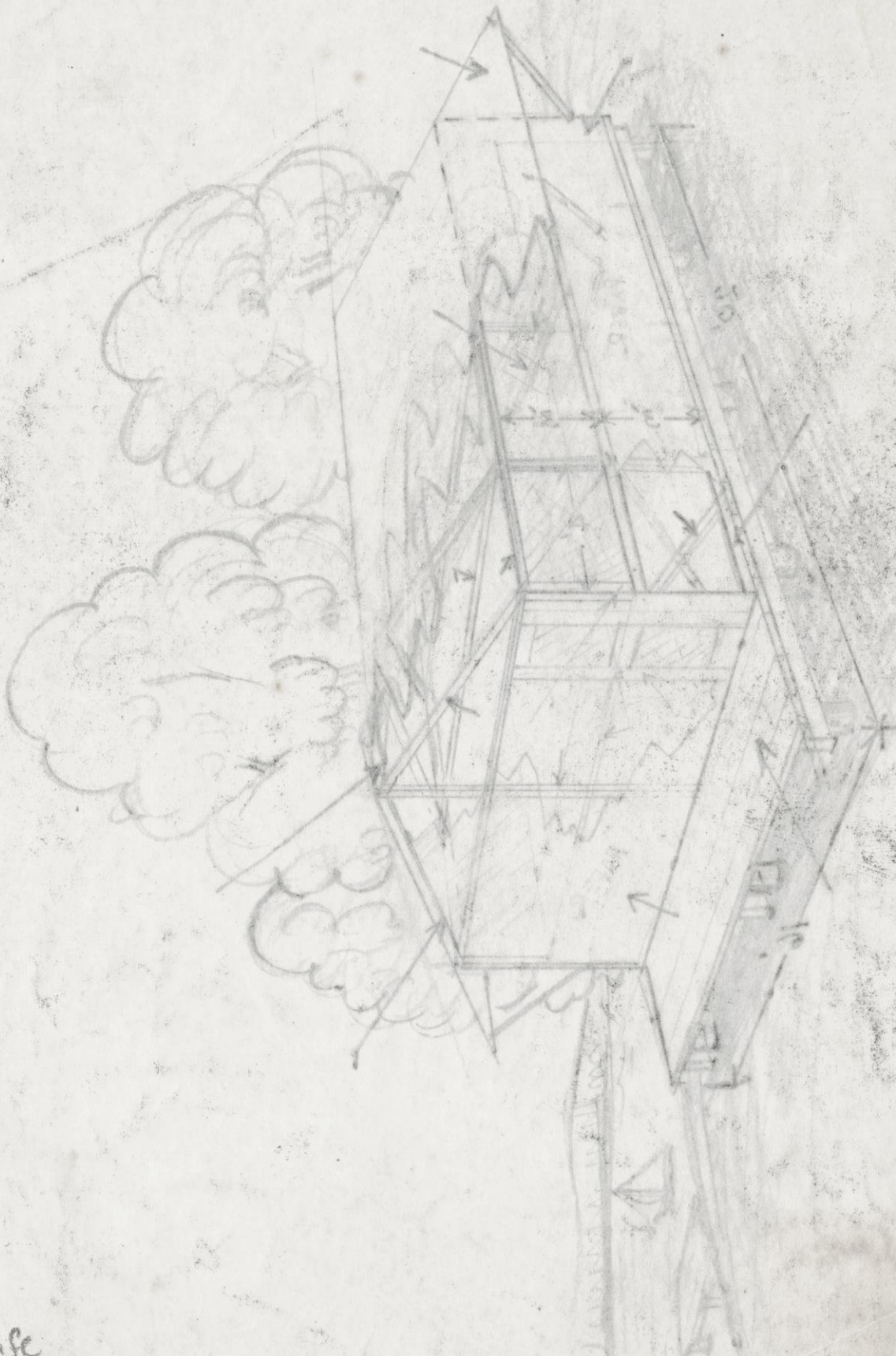


TRAILERS

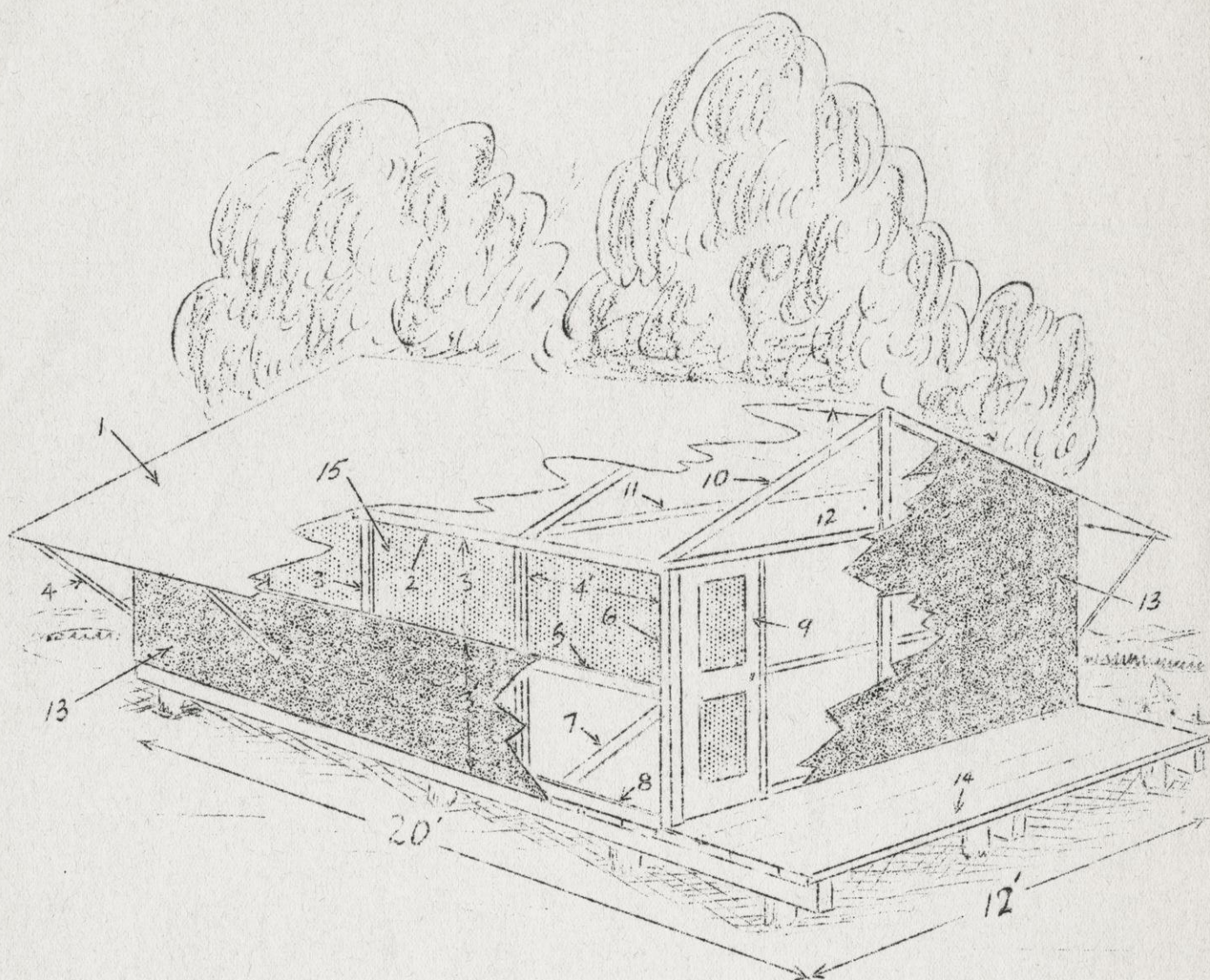
The tent colony of the University of Wisconsin is not well adapted for trailers. The lake shore slopes at such an angle that there is difficulty in bringing trailers in and out of the camp. Further, the Department of Grounds and Buildings is unwilling to assume the responsibility of making electrical connections for trailers or of safeguarding property against prowlers. Trailer owners can probably find more suitable accommodations at city tourist camps by addressing inquiries to the Association of Commerce, Power and Light Building, Madison. If they desire, however, to live in the Tent Colony, because of its associations, they should call in person and interview Superintendent Gallistel before making final arrangements.

5/18/11-3
Camp #16

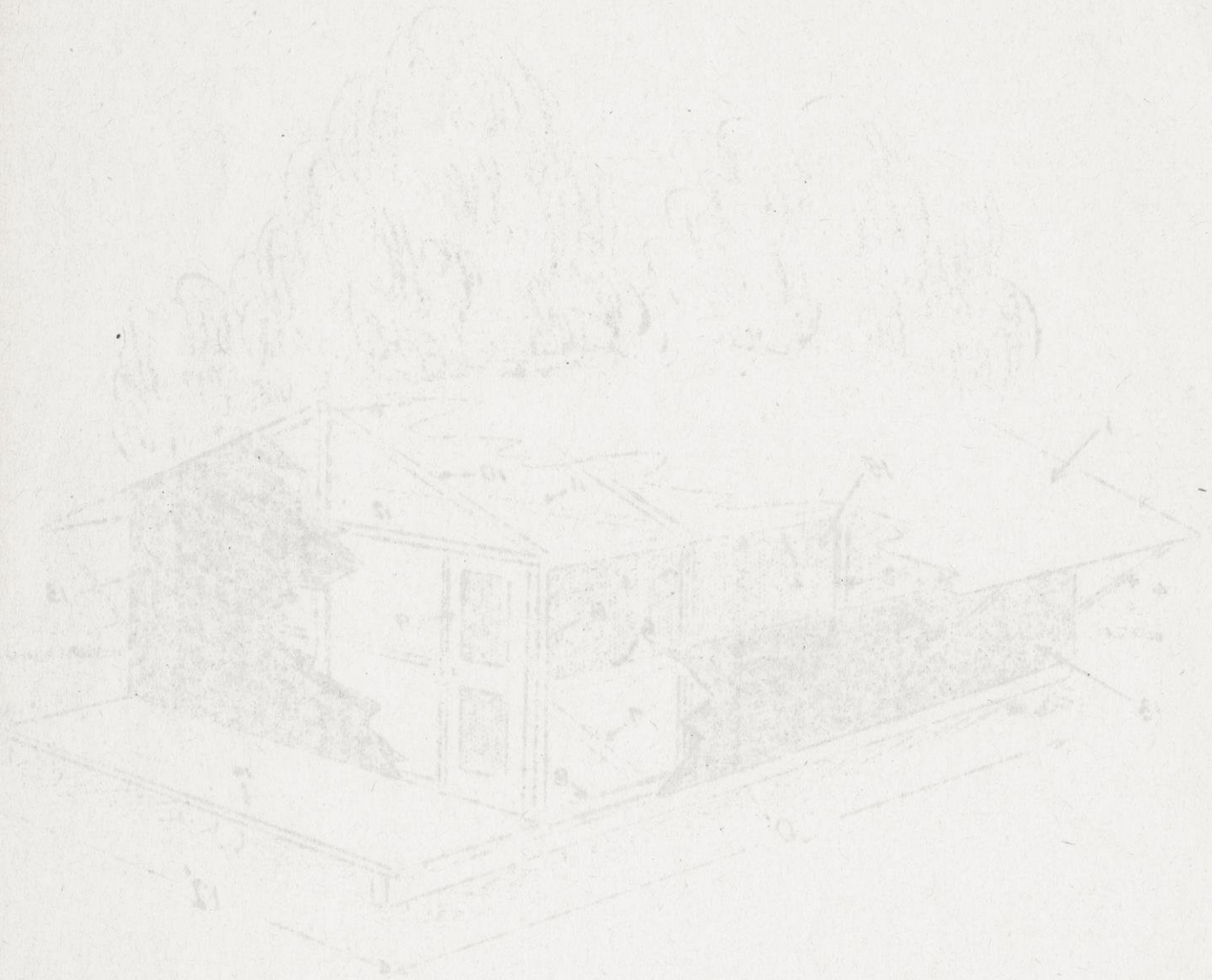




Camp Life
24/8/11-3 3x1



- | | |
|----------------------------|---|
| 1. Waterproof tarpaulin | 9. Screen door |
| 2. Plate 1 x 2 | 10. Rafter 1 x 4 |
| 3. Stud 2 x 2 | 11. Rafter tie 1 x 2 |
| 4. Awning support | 12. Ridge pole 1 x 4 |
| 5. Mid-rail 1 x 2 or 1 x 4 | 13. Sisalkraft paper |
| 6. Corner post 2 x 4 | 14. Wood platform (Furnished by U. of W.) |
| 7. Brace 1 x 2 | 15. Fine mesh window screen |
| 8. Kick plate 1 x 4 | |



- 9. Screen door
- 10. Rafter 1 x 4
- 11. Rafter tie 1 x 3
- 12. Ridge pole 1 x 4
- 13. Sheetrock paper
- 14. Wood planks (laminated by U. of W.)
- 15. Five inch window screen

- 1. Waterproof tarpaulin
- 2. Plate 1 x 3
- 3. Stud 2 x 3
- 4. Laming supports
- 5. Mid-rail 1 x 2 or 1 x 4
- 6. Corner post 2 x 4
- 7. Brace 1 x 3
- 8. Kick plate 1 x 4

Camp L. S.
 Bx 1
 24/8/11-3

NOTICE TO CAMP RESIDENTS

The following suggestions have been submitted in the Camp Name Contest. Each family may check not more than two names indicating preference. Deposit slip in ballott box in Study Hall before 6 P.M. Monday:

Camp Uniteco	Camp Goodnights' Rest
University Lakeside Camp	University Lake View Camp
Badger Colony	Campus Camp Colony
University Campus Colony	Summer Students' Camp
Summer School Camp	Camp Badger
University Tent Colony	Mendota Student Colony
Student Camp Colony	Student Camp Grounds
Suitus Tent Colony	University Camp Colony
Mendota Summer Camp	Lakeside Summer Camp
University Lakeside Camp	Wisconsin Lakeside Camp
Camp Gallinight	Lakeside Student Colony
Black Hawk	Camp Goodnight
Wisconsin University Camp	Madison Varsity Camp
Eagle Heights Varsity Camp	Breeze Bank Camp
Boulder Beach	Green Brea
South Shore Varsity Camp	University Hillside Camp
Numen Lumen Camp	Camp Sunset
Wisuni Camp	Uniwis Camp
Goodnight Colony	

*Submitted
1952-11-21-1952*

NOTICE TO CAMP RESIDENTS

The following suggestions have been submitted in the Camp Name Contest. Each family may check not more than two names indicating preference. Deposit slip in ballot box in Study Hall before 6 P.M. Monday.

Camp Unitedo	Camp Goodnight's Rest
University Lakeside Camp	University Lake View Camp
Badger Colony	Campus Camp Colony
University Campus Colony	Summer Students' Camp
Summer School Camp	Camp Badger
University Tent Colony	Mendota Student Colony
Student Camp Colony	Student Camp Grounds
Swiss Tent Colony	University Camp Colony
Mendota Summer Camp	Lakeside Summer Camp
University Lakeside Camp	Wisconsin Lakeside Camp
Camp Galinight	Lakeside Student Colony
Black Hawk	Camp Goodnight
Wisconsin University Camp	Madison Varsity Camp
Eagle Heights Varsity Camp	Breeze Bank Camp
Boulder Beach	Green Bree
South Shore Varsity Camp	University Hillside Camp
Women Lamen Camp	Camp Sunset
Wisani Camp	Univia Camp
Goodnight Colony	

Camp Life
24/8/11-3 R & 1