



# LIBRARIES

UNIVERSITY OF WISCONSIN-MADISON

## **The Emerald: the Waterford Union High School annual. 1950**

Waterford, Wisconsin: [s.n.], 1950

<https://digital.library.wisc.edu/1711.dl/DPEMPOSTSISKE9A>

This material may be protected by copyright law (Title 17, US Code). Original material owned by Waterford Public Library. For information on re-use, contact the Library through the Reference Department, Waterford Public Library, 101 N. River Street, Waterford, Wisconsin 53185, 262-534-3988, (jolliffe@waterford.lib.wi.us).

The libraries provide public access to a wide range of material, including online exhibits, digitized collections, archival finding aids, our catalog, online articles, and a growing range of materials in many media.

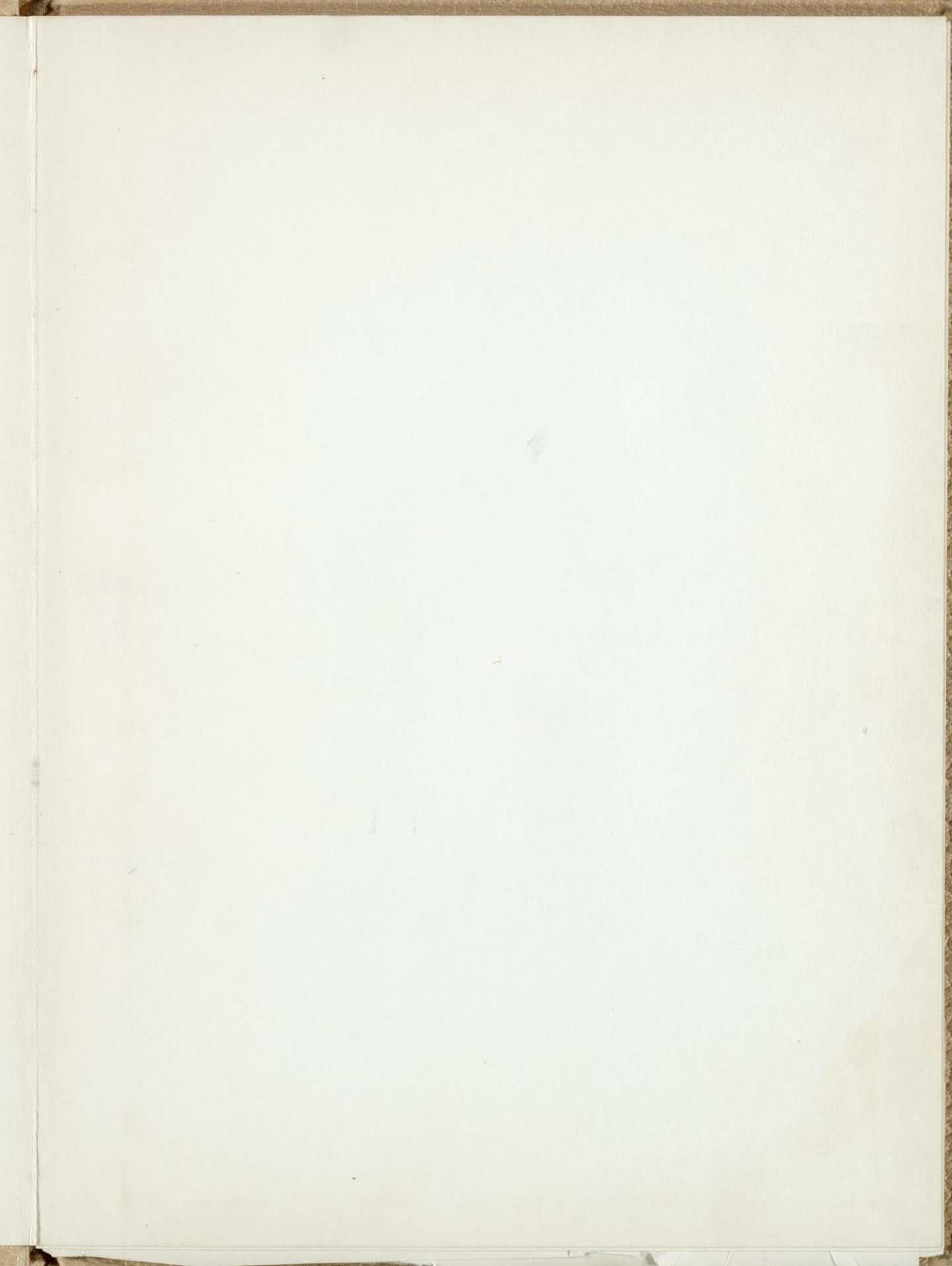
When possible, we provide rights information in catalog records, finding aids, and other metadata that accompanies collections or items. However, it is always the user's obligation to evaluate copyright and rights issues in light of their own use.

**E  
M  
E  
R  
A  
L  
D**

**1950**



WATERFORD HIGH SCHOOL LIBRARY















THE  
EMERALD

Co-EDITORS

Joyce Callen-Larry Hall

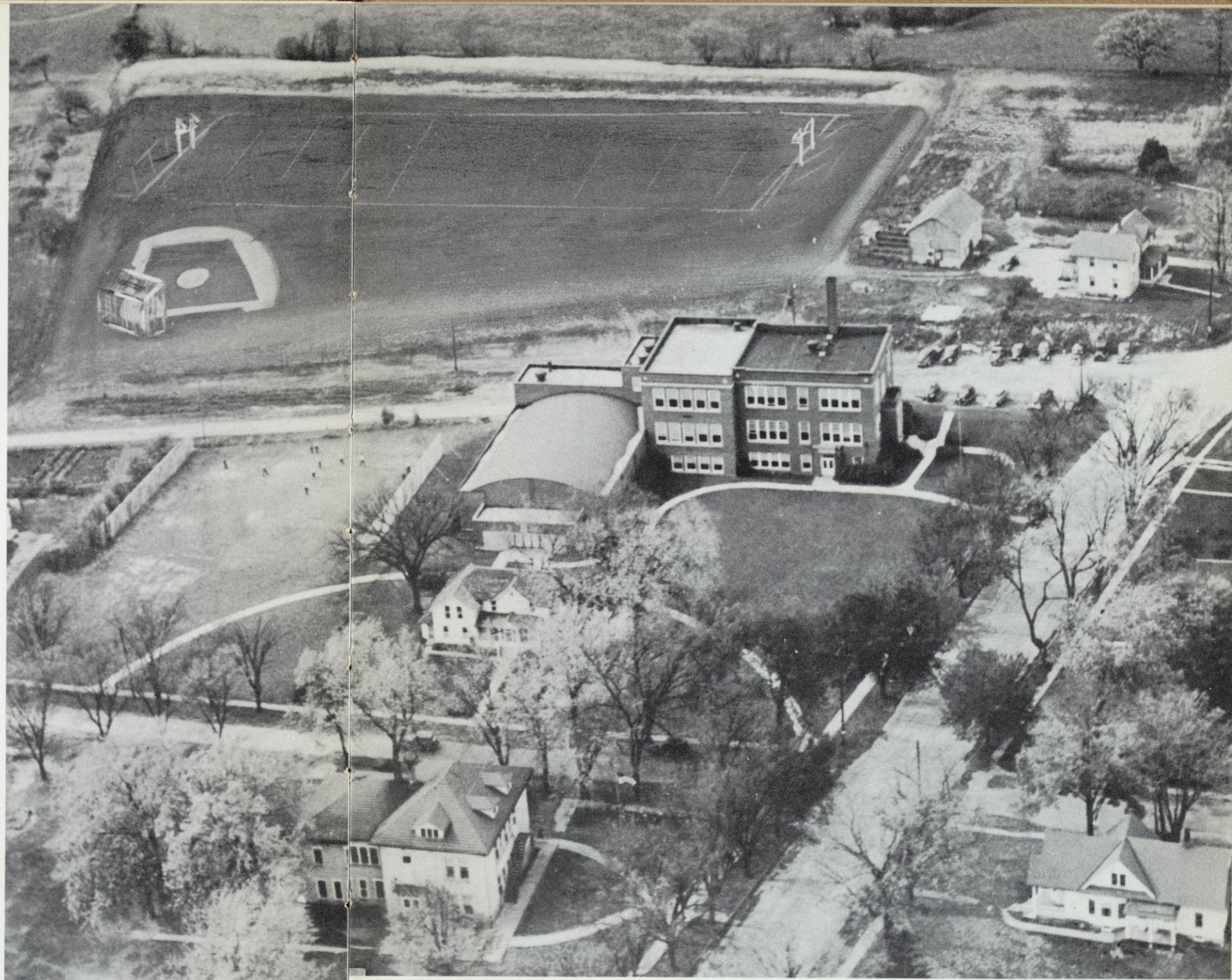
BUSINESS MANAGER

Marilyn Kipp

WATERFORD HIGH SCHOOL LIBRARY



*The*  
1950  
EMERALD



Volume IV  
Waterford High School, Waterford, Wisconsin

This air view of our high school and its environs stimulates one's imagination with regard to the future when the new athletic field, now in its initial stages, will have become an integral source of pleasure and pride to the school and to the community.

WATERFORD HIGH SCHOOL LIBRARY



Intermingled with our plans for this book, there were thoughts of one who—no longer with us—had worked faithfully and joyfully on the art staff of last year's EMERALD. Inevitably, an art theme became our choice. Life, indeed, offers to each of us a picture to paint, and we all paint as best we can, adding our little touch of originality to make the picture exclusively our own as we hang it in our school's long gallery of successful lives.

## FOREWORD







I IN MEMORIAM

II CLASSES

III ACTIVITIES

IV SPORTS

V SPONSORSHIPS

# CONTENTS





*In Memory*  
*of*  
**NORMAN  
NELSON**

BOY SCOUT of AMERICA  
TROOP 33

Died . . . February, 1950

*Heaven Is Sweeter  
For Friends Gone Before*

You were all sunshine, like a morning  
in June.

Shadow and sorrow — you escaped from  
them quickly

With a song and a smile and a gay  
whistled tune,

Or you picked up a pen and set to work  
briskly

To sketch all the fancies that crowded so  
thickly.

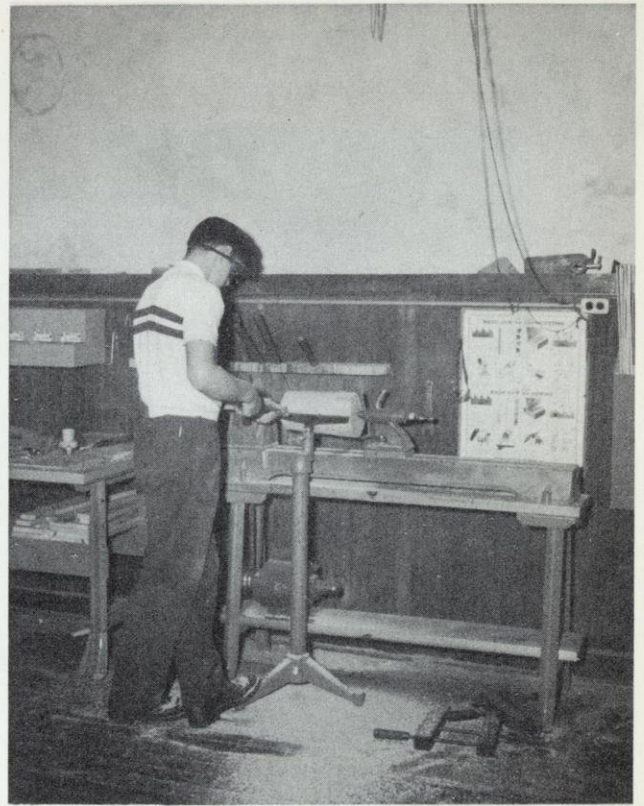
"A picture you want? I'll do it this  
noon."

No one more willing — a pal to work  
for;

Yes, heaven is sweeter for friends gone  
before.





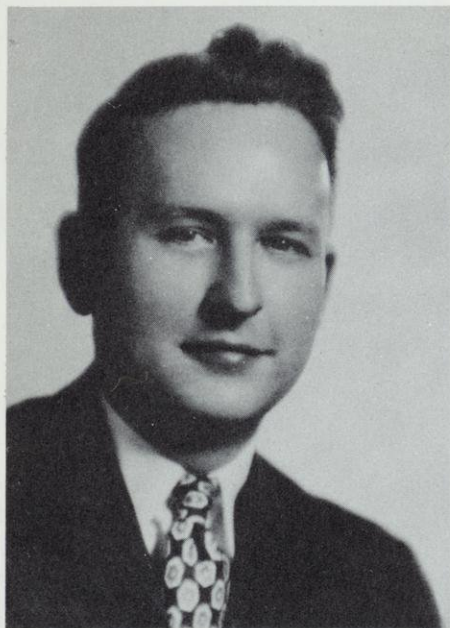


## CLASSES



WATERFORD HIGH SCHOOL LIBRARY

## *Administration*



Principal Ellis Evans

### PRINCIPAL'S MESSAGE

It is of prime importance that our schools provide successful experiences for our youths, giving them the opportunity to develop to the maximum all the capabilities which they possess.

In the chaotic world in which we find ourselves, a better type of education than ever before becomes increasingly necessary. We propose to continue the well-tried activities of our school, with constant evaluation, to the end that our students may be better fitted to meet the contemporary world.

I wish to express my personal wishes to the class of 1950 as its members take their places as participants in this challenging period.

## *Board of Education*



W. E. HANSEN

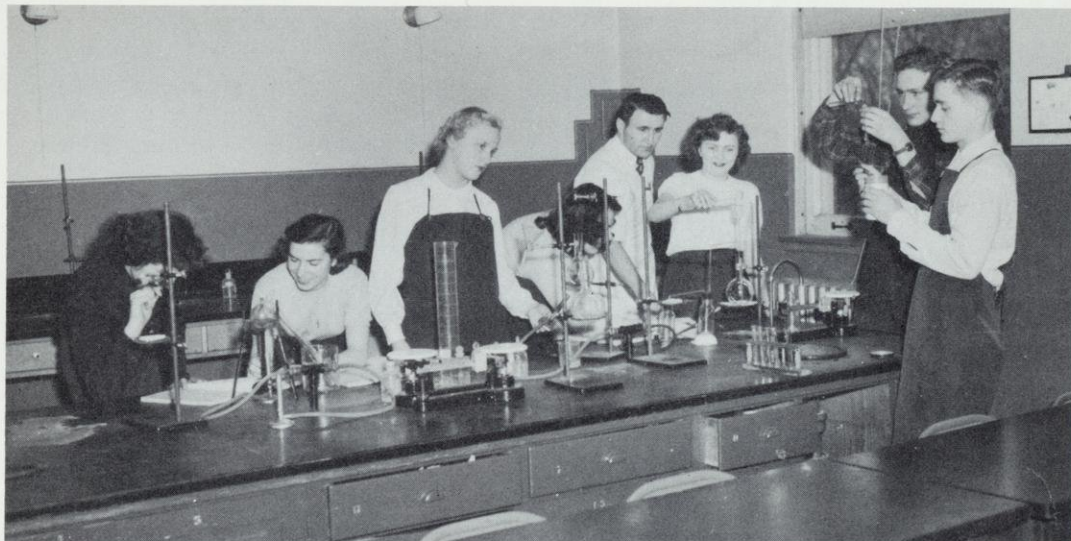
ELLIS EVANS, *Principal*

LYMAN HEALY

NELSON H. JOHNSON

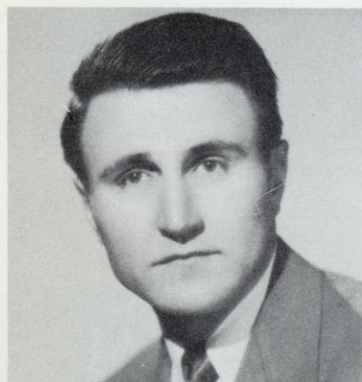


## Science . . . Mathematics



These students of chemistry have varied assignments depending upon their ability to construct chemical set-ups in the synthesis of nitrates, the production of gases, and the testing of mixtures and compounds for their composite elements.

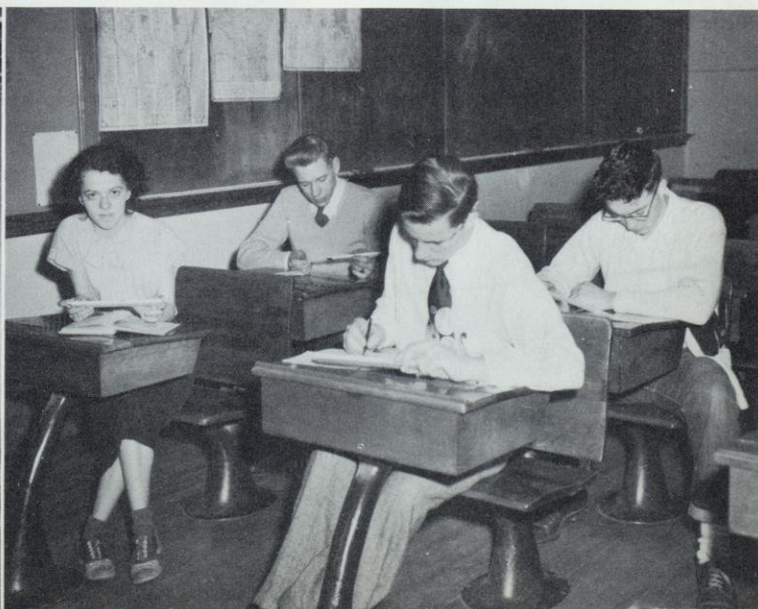
Like everyone else, the class in advanced algebra is interested in shortcuts, and the most important of these shortcuts is the use of the slide-rule.



Edward H.  
Zernzach  
Science  
B Squad Basketball  
Sophomore Class  
Adviser

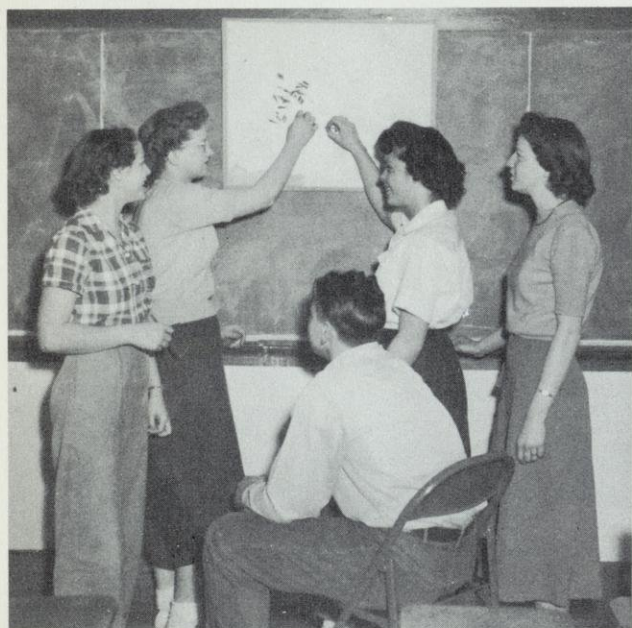


Esther M. Klemp  
Mathematics  
G.A.A.  
Junior Class Adviser





# History . . . Languages



In accordance with progressive methods, visual aids were used more extensively in the English program this year, two classes frequently combining to see a movie showing a new approach to spelling, composition, or reading. Authors' lives depicted on the screen enhanced appreciation of the literature studied.

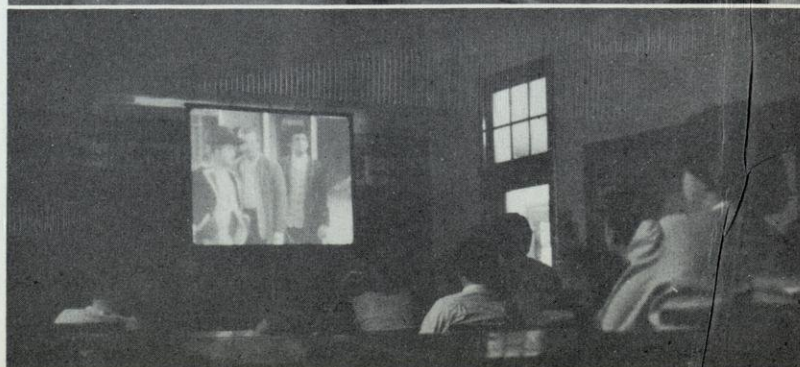
Students in this history class realize that we are indeed living in One World as they study the units designed to bring the world into focus and broaden their outlook on life.



Vera Jennings  
Social Science  
Dramatics  
Freshman Class Adviser



Ethelyn A. Handran  
English  
Emerald Annual  
Forensics  
Freshman Class Adviser





## Music . . . Commercial



Lawrence W. Stein  
Commercial  
Emerald Echo  
Junior Class Adviser

Student interest in shorthand attained a new high this year with introduction of the new Gregg Simplified Shorthand in beginning classes. Advanced classes worked hard to prepare for next year's opportunities in the business world.



Joseph G. Lombardo  
Music  
Band  
Glee Club



Ralph L. Kostrzak  
Languages  
Library Science  
Cheerleaders  
Drivers' Education  
Senior Class Adviser

The clarinet ensemble, pictured below, include from left to right in the top row — Paulson, I. Schwarz, Kopelke, G. Paap. Bottom row — Heck, Johncox, Callen.



Latin II students are particularly happy over the stories, puzzles, and jokes they decode in "Res Gestae", a Latin newspaper they subscribed for this year. The beginning classes have a new book "Latin for Americans". Supposedly a dead subject, Latin, is really one of the most interesting courses in school.



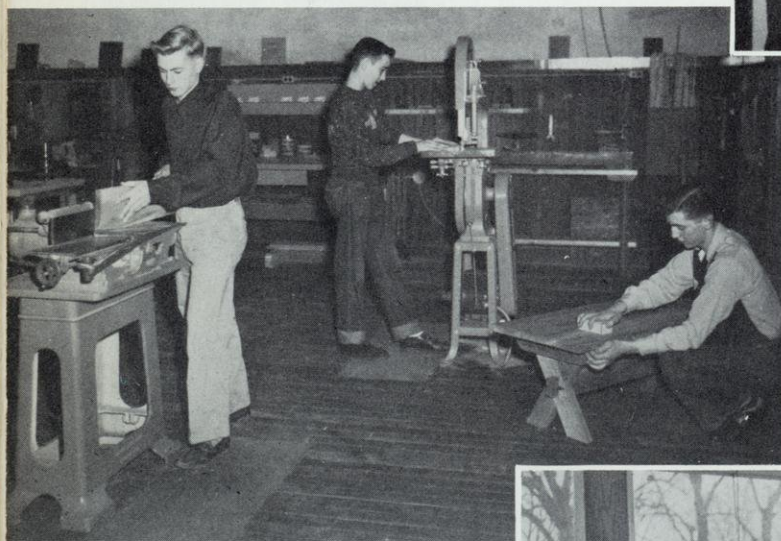


# Vocational



The study of color, line, and design as applied to clothing, is a vital part of garment construction.

An innovation in Home Economics III this year was the study of Home and Family Relations. Here the bulletin board is being thumbtacked with clippings on the course.



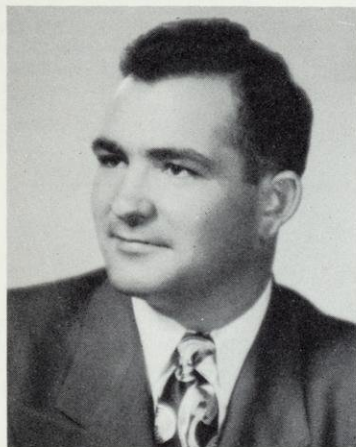
George Laux, Robert Cahill, and Don Prill seem to find machine wood working a fascinating occupation if we are to judge by their earnest expressions.

This class in mechanical drawing is an elective course for seniors.





# Physical Education



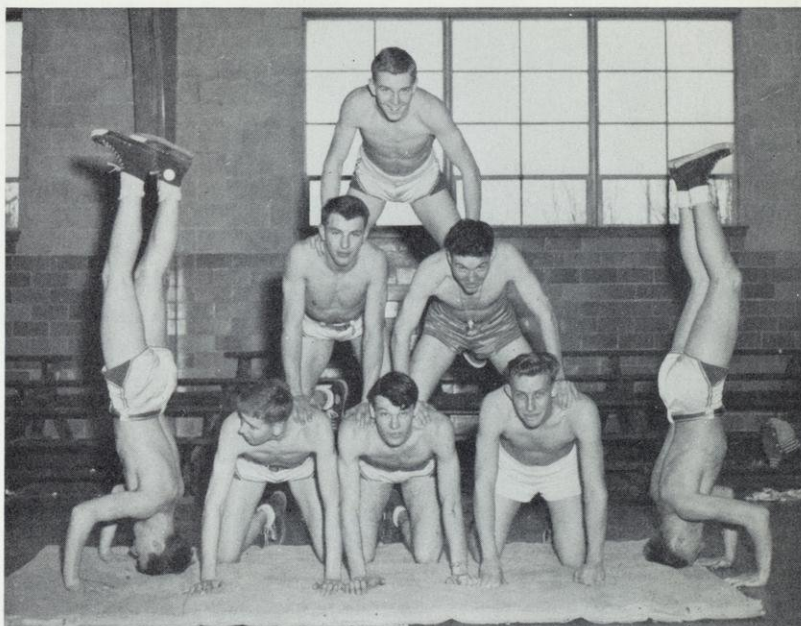
Lovell McCulloch  
Physical Education  
Athletics Director  
Senior Class Adviser



Cathryn Fisher  
Home Economics  
Junior Prom  
Junior Class Adviser



C. A. Daugherty  
Industrial Arts  
Projector Club  
Driver Education



Tumbling in the physical education courses helps to keep muscles and circulation in healthy condition. A feature enjoyed by both boys and girls was the lesson in square dancing.



# Seniors



JOAN ALBY

*In singing and dancing she rates high.*

Band 1, 2, 3, 4; Glee Club 1, 2, 3, 4; Cheerleading 3, 4; G.A.A. 1, 2, 3, 4; Library Club 1.

GERALDINE ALLARD

*I believe in the old adage—  
"Be a friend to man".*

Transferred from Roxbury High School 3; Emerald Echo 4; G.A.A. 3, 4; Glee Club 3, 4; Forensics 4; Class Play 4.



JEAN ALLEMAN

*Infinite riches in a little room.*

Glee Club 4; Library Club 4.

BETTY ALLEN

*Short and sweet.*

Glee Club 1, 2, 3; G.A.A. 1, 2, 3; Emerald Echo 1, 2, 3; Library Club 1, 2, 3; Vice-president 2; Class Play 3.



CLARENCE BARTHEL

*His future's in farming.*

Basketball 1, 2; Baseball 2, 3, 4; "W" 3; Emerald Echo 1, 2, 3, 4; Emerald Annual 4; Class Play 4.

MARY BEAUMONT

*Intelligent and reliable.*

Glee Club 1, 2, 3, 4; G.A.A. 1, 2, 3, 4; Library Club 1, 2, 3, 4; Valedictorian.



DELORES BOTHE

*Her sprightly looks enclose a lively mind.*

G.A.A. 1, 2, 3, 4.

GERALD BROOKS

*What next? I'm prepared.*

Football 4, "W" 4; Bowling 2, 3; Emerald Echo 4; Projector Club 4.



MARILYN BROWN

*Good things come in small packages.*

Glee Club 4; G.A.A. 1, 2, 3, 4.

JAMES BUENGER

*Wit and Wisdom are born with a man.*

Football 1, 2, 3, 4; "W" 3; Basketball 1, 2, 3, 4; "W" 3; Baseball 1, 2, 3, 4; "W" 4; Bowling 3; Glee Club 2, 3, 4; Student Council 1, 2; Emerald Echo 1, 2; Emerald Annual 4; Forensics 2, 3, 4; Projector Club 3, 4; Class Play 3, 4.





## JOYCE CALLEN

*Diligent, ambitious, reliable—  
that's Joyce.*

Band 1, 2, 3, 4; "W" 2; Student Council 1, 2, 3, 4; President 4; G.A.A. 1, 2, 3, 4; Treasurer 3, Pres. 4; Emerald Echo 3, 4; Emerald Annual, Co-Editor 4; Forensics 1; Class Play 3, 4; D.A.R.; Salutatorian.

## ELAINE CLAUSEN

*A friend as true as the sun.*

Glee Club 1, 2, 3; G.A.A. 1, 2, 3, 4; Emerald Annual 4.



## ERNEST CURNOW

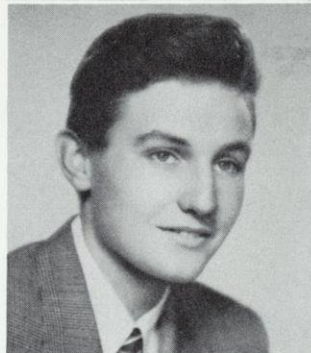
*He can make that sax sing.*

Basketball 3; Band 3, 4; Transferred from South Lyons, Michigan 3.

## BETTY DILLAR

*Ask Betty what's so funny.*

Glee Club 1, 2, 3; G.A.A. 1, 2, 3.



## NANCY DOYLE

*She got acquainted fast.*

Glass Play 4; Glee Club 4; G.A.A. 4; Transferred from Mercy High



## RICHARD GEHRAND

*He's a foot ahead of us all.*

Football 2, 3, 4; "W" 4; Basketball 1, 2, 3, 4; "W" 3, 4; Bowling 3; Glee Club 4; Emerald Annual 4; Class President 4; Class Play 3.



## LAWRENCE GREIL

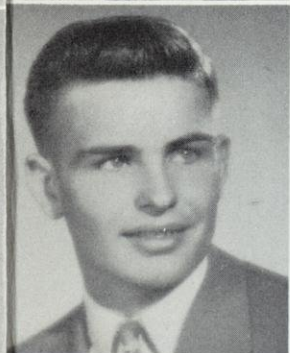
*Three strikes; you're out!*

Glee Club 3, 4; Student Council 2; Class Secretary 3; Prom King 3.

## RICHARD GROSS

*Quiet, but oh, my!*

Football 2; Basketball 1, 3; Bowling 1.



## LAWRENCE HALL

*Hit him again; he's Irish.*

Football 1, 2, 3, 4; "W" 3; Basketball 3; Bowling 2; Glee Club 3, 4; Student Council 1, 2; Emerald Echo—Bus. Manager 4; Emerald Annual—Co-Editor 4; Forensics 2, 3, 4; Projector Club 4; Class Pres. 2, 3; Class Play 3, 4; Badger Boys State 2.

## WALTER HANSEN

*Pass me the pigskin.*

Football 2, 3, 4; "W" 2, "W" 3, "W" 4; Baseball 2, 3; "W"; Student Council—Vice-Pres. 4; Football Captain 4; Homecoming King 4.





EVERETT HEGEMANN JR.

*He's everybody's friend.*

Football 1, 3, "W" 3; Basketball 2, 3; Baseball 1, 3; Bowling 2, 3; Student Council 2, 4; Emerald Annual 4; Projector Club 3, 4; Class Vice-Pres. 4.

RALPH HUELSKAMP

*It's a bird! It's a plane!  
No, it's Ralph's car!*

Football 4; Bowling 1, 2; Glee Club 4.

RICHARD JOHNSON

*A quiet man but quite a man.*  
Football 4; Bowling 3; Band 1, 2, 3, 4; Forensics 4; Class Sec. 4; Class Play 3.

DIANE KELLNER

*Still water runs deep.*

G.A.A. 1, 2, 3, 4.



MARILYN KIPP

*Happy as the day is long,  
she never lacks a friend.*

Bowling 2, 4; Glee Club 1, 2, 3, 4; Student Council 1, 3; Cheerleading 4; Treasurer; G.A.A. 1, 2, 3, 4; "W"; Emerald Annual; Business Manager 4; Library Club 1, 2, 3, 4; Forensics 2, 4; Class Officer 1, 2, 3; Class Play 3, 4; Prom Queen 1.



IRENE KOJIS

*Nice to know all the time.*

Band 1, 2, 3, 4; Glee Club 1, 2, 3, 4; G.A.A. 1; Emerald Echo 1, 2.



JOANNE KOLM

*A friend in need is a friend indeed.*

Glee Club 4; Student Council 2; Treasurer; G.A.A. 2, 3, 4; Emerald Annual 4; Class Play 3.

DONALD KRAMER

*He'd stop St. Peter's roll call to argue.*

Football 2, 3, 4; "W" 2; Basketball 2, 3, 4; "W" 1; Baseball 2, 3, 4; Glee Club 4; Emerald Echo 1; Emerald Annual 4; Forensics 3; Projector Club 4; Class Play 4.



GEORGE LAUX

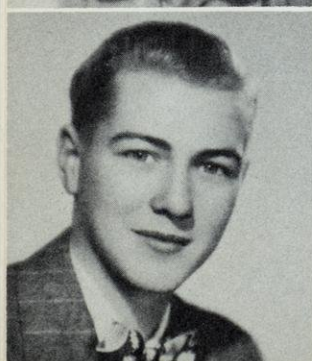
*The A-bomb was small, too.*

Football 1, 2, 3, 4; "W" 3; Basketball 1, 2, 3; "W" 1; Baseball 1; "W" 1; Bowling 1, 2; Glee Club 4; Emerald Annual 4; Projector Club 4.

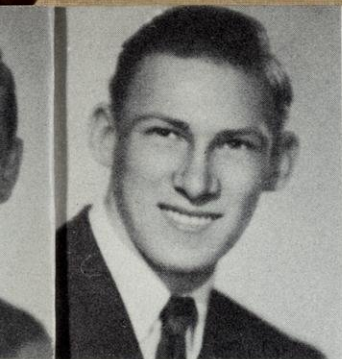
DONALD LEIGHTON

*Full of fun and fancy free.*

Football 2, 3, 4; "W" 3, 4; Baseball 2, 3; Glee Club 2; Emerald Annual 1.







HERBERT LINDNER  
*"Don't push me; I've got lots  
of time."*

Football 1, 3, 4; "W" 3, 4;  
Basketball 1, 2, 3, 4; "W" 4;  
Student Council 2; Projector  
Club 1, 2, 3, 4, President.



GLORIA MAYER  
*A winning smile always  
greets you.*

Glee Club 1, 2, 3, 4; G.A.A.  
1, 2, 3, 4.



IRENE MITSCH  
*Always willing and ever  
so able.*

Glee Club 1, 2, 4; G.A.A. 1,  
2, 3; Emerald Echo Editor 4;  
Emerald Annual 4.



CHARLES PASCHEN  
*Of all his loves, knowledge  
comes first.*

Transferred from St. Francis  
and Divine Heart College;  
Baseball 3, 4; Glee Club 4;  
Forensics 3, 4.



MARY POPP  
*Her dreams are of the future.*  
Transferred from St. Mary's,  
Burlington.

DONALD PRILL  
*Is there a beep-beep muffler  
in the school?*

Football 2, 3, 4; "W" 4; Bas-  
ketball 1, 2; Baseball 2, 3, 4;  
"W" 3, 4; Glee Club 4.



WILLIAM RADEMACHER  
*I'm not great—yet; I'm simply  
elevated. But wait!*  
Transferred from Kenosha  
High 3; Bowling 3; Glee Club  
4.

SHIRLEY RATH  
*Silence is golden.*  
Transferred from Mukwonago;  
Emerald Annual 4.



ROGER ROEPKE  
*Tall, dark, and handsome.*  
Football 1, 2, 3, 4; "W" 3;  
Basketball 1, 2, 3, 4; Bowling  
1; Band 1; Glee Club 4; Class  
Treasurer 1.

IRENE SCHWARZ  
*With a song in her heart.*  
Band 1, 2, 3, 4; "W" 2; Glee  
Club 1, 2, 3, 4; G.A.A. 1, 2,  
3, 4, Vice-President 4; Emer-  
ald Echo 1, 2, 3, Business  
Manager 3; Emerald Annual  
4; Library Club 1; Forensics  
1, 2; Class Treasurer 4.







#### JEAN SHEARD

*Brains, talent, charm! What more could a redhead want?*

Glee Club 1, 2, 3, 4; Student Council 3; Cheerleading 2, 4; "W" 4; G.A.A. 1, 2, 3, 4; Secretary 3; Emerald Echo 1, 2; Emerald Annual 4; Library Club 1, 2; Secretary 2; Forensics 1, 2; Class Vice-President 3; Class Play.

#### JOYCE SIEBERS

*Short stuff! Most people like them like her.*

Transferred from Seymour 4; Glee Club 4; Student Council 4; Emerald Echo 4; Forensics 4.

#### GERALDINE SLEIK

*Happy-go-lucky, that's Gerry!*

Bowling 4; Glee Club 1, 2, 3, 4; G.A.A. 1, 2, 3, 4; Emerald Echo 4; Emerald Annual 4; Library Club 3, 4; Forensics 4; Class Play 4.

#### MARJORIE SORENSON

*She likes friends, and has them.*

Band 1, 2, 3, 4; "W" 3; Glee Club 1, 2, 4; G.A.A. 1, 2, 3, 4; Emerald Echo 1, 2, 3, 4; Emerald Annual 4; Class Play 3, 4.

#### HAPPY FAREWELL

By Charles Paschen

The time has come finally  
For us Seniors to leave;  
But our parents are happy,  
And our teachers won't grieve!

#### JOAN WIESENTHAL

*She was formed for sweet attractive grace.*

Vice-President 3; Band 1, 2, 3, 4; Student Council 2; G.A.A. 1, 2, 3, 4; Emerald Echo 1, 2, 3, 4; Emerald Annual 4.

## D. A. R. Award

Joyce Callen, in the opinion of the faculty, was the outstanding senior girl of the year to be given the Daughters of American Revolution Award for 1950. Dependability, leadership, service, and patriotism were the important factors in making the decision.

Each girl named for the award submits answers to ten questions. Upon these answers is based the selection of the winner, who receives a \$100 U.S. Savings Bond.



Principal Ellis Evans, R. Kostrzak, Joyce Callen, C. Fisher.



## Senior Honors

### MARY BEAUMONT

Maintaining on A average throughout her high school career, Mary Beaumont has earned the honor of being named valedictorian. In addition to her marked interest in her subjects, she was also a conscientious and valuable member of the Library Club, the Glee Club, and the G.A.A.



### JOYCE CALLEN

The 1950 salutatorian, Joyce Callen, was an all-around good student and a leader in every worth-while activity. Active in journalism, class plays, Band, and Glee Club, Joyce has used her intelligence and abilities for the good of the school. She was named co-editor of the annual and was the faculty choice for the D.A.R. award.



### ROCKROHR-SKARIE AWARD

The beautiful trophy on the right occupies the central position in the handsome trophy case located in the entrance hall to our school. The boys whose names are inscribed on this memorial were selected as most fitting to carry on in the spirit of Jim Rockrohr and Hans Skarie of the Class of '46. Following is a list of the recipients of the trophy so far:

1946 . . . . .	Clem Zebrowski
1947 . . . . .	Richard Beck
1948 . . . . .	John Greil
1949 . . . . .	Donald Lewis

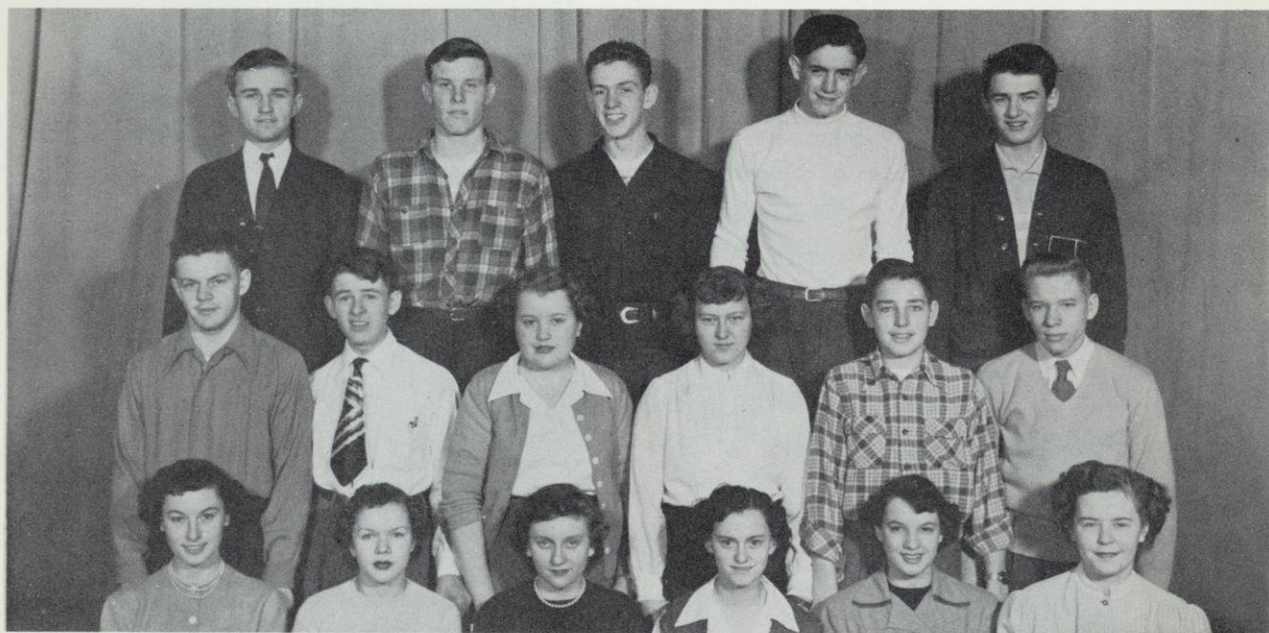
The award for 1950 will be made on Commencement Night.





# Juniors

"Enjoy Yourselfs — It's Later Than You Think"



Top Row: Kaun, Krautkramer, Behling, P. Becker, Daugherty.  
 Second Row: Halbach, Foat, N. Brown, S. Lindner, Hulbert, Lukas.  
 Bottom Row: Hinkel, Breunig, Pittman, J. Beaumont, Kopelke, N. Becker.

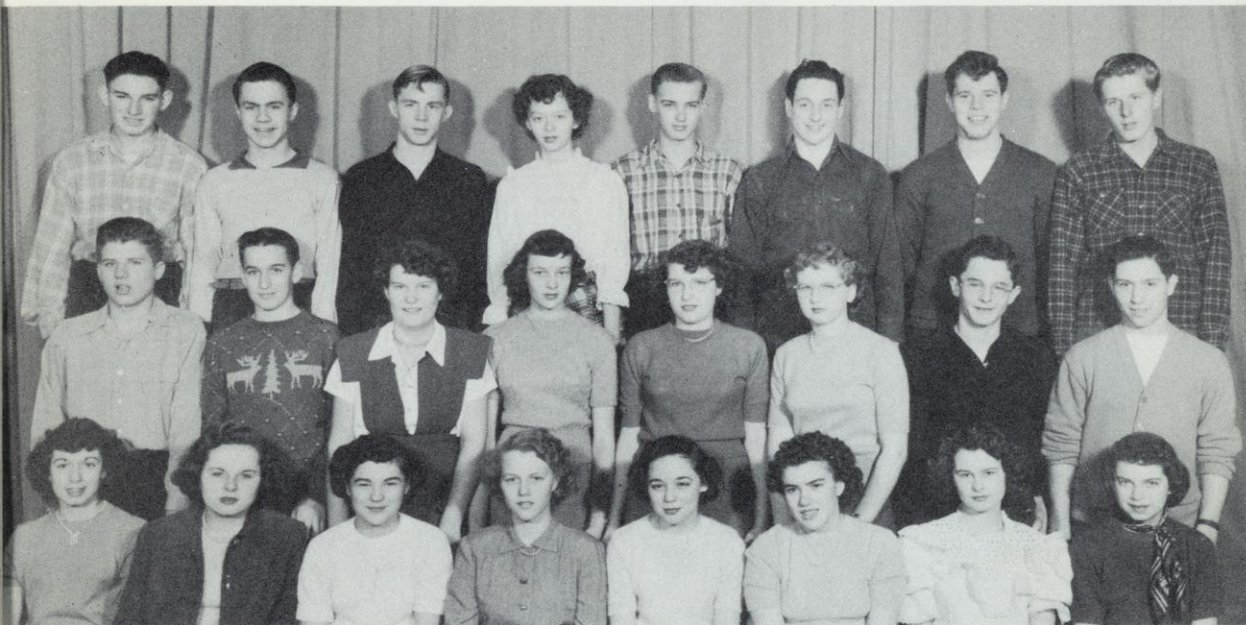


Top Row: Wells, Shepard, Schopp, Woods, Panzica, Mealy, Novitzke, Morgenroth.  
 Second Row: Petersen, Malchine, Maerzke, Van Valin, B. Paap, Rupert, Mutsch.  
 Bottom Row: Widmer, Schimp, Sykes, Schmidt, J. Paap, Onsgaard, Mayer, C. Sakowski.



# Sophomores

"We Want Music — Music — Music"



Top Row: Bersch, Gerald DeGrave, Bowen, Capman, Huckstorf, Chapman, Gilbert DeGrave, Alby.  
 Second Row: Hart, Cahill, Laupan, Heck, Johncox, D. Laux, Klokner, Huening.  
 Bottom Row: N. Lindner, Hutton, S. Allard, Gunderson, Dahl, Breiling, Felton, Engel.



Top Row: Rader, Prager, H. Roder, Himes, Sadler, Woomer, Ronald Roepke, Norton, Stark.  
 Second Row: L. Mitsch, Satterstrom, Whalen, L. Roder, Marquardt, Ulseth, Popp, Ranke, Snoddy.  
 Bottom Row: A. Schwarz, Raasch, Vancil, Wolf, J. Sakowski, Smetana, Thoreson, Semrad, C. Ranke, G. Paap.



# Freshmen

*"If I'd Known You Were Coming, I'd a-baked a Cake"*



Top Row: Boettcher, Burns, Boehles, Boelter, Bosch, LaCombe, Bork, Daniels.

Second Row: K. Hegemann, Amann, J. Doyle, Billings, Greil, Hendricks, Hoppe.

Bottom Row: D. Huelskamp, C. Hegeman, N. Christensen, Duve, Fletcher, P. Fitzgerald, Wiza.



Top Row: J. Paschen, Pringle, Rockrohr, Nelson, Paulson, E. Rath, D. Peterson, Modrak, Mayer.

Second Row: E. Thoreson, I. Petersen, Saltzman, Natalie, E. Post, Schopp, R. Smetana, Mehring, Tuinstra.

Bottom Row: B. Stelzner, Miller, Murray, Meyers, Sykes, M. Mahnke, C. Schimp, Matthias.



ke"



## ACTIVITIES





# Annual Staff

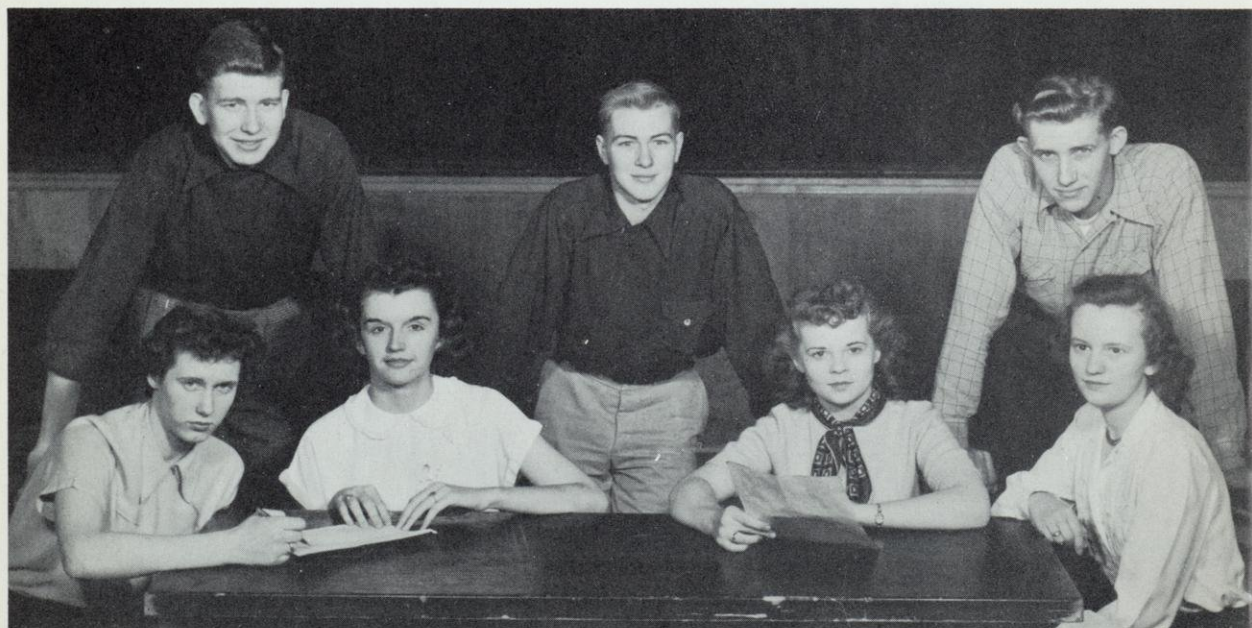


J. Van Valin, I. Schwarz, C. Paschen, L. Hall, J. Callen, J. Buenger, E. Clausen,  
M. Sorenson, J. Wiesenthal.

The Emerald for 1950 presented the accustomed challenge to the financial wizardry and editorial genius of the seniors, and they responded with a will. When sufficient sponsorships seemed to indicate a safe financial margin, work on the dummy began, pictures were taken, and copy was

turned in to the editors.

June Van Valin was our artist; Richard Gehrand mounted the senior panels. All the staff members assisted in writing, typing, and editing the copy which went to the printer in March. The faculty adviser for the annual was Miss Handran.



Standing: R. Gehrand, G. Laux, C. Barthel.  
Sitting: G. Sleik, M. Kipp, J. Sheard, J. Kolm.



Last fall Irene Mitsch became editor and Connie Sakowski, assistant editor, of our attractive school newspaper, the "EMERALD ECHO". Two new positions — Assignment Editor, Joyce Siebers, and Rewrite Editors, Geraldine Allard and Donna Malchine — were added to the staff. Clarence Barthel wrote "Sports" and June Van Valin was the full time artist. Mr. Stein is the very able faculty adviser.

On the list of new articles added this year are "Song Dedications" and "Melody Lane". The gossip page is now called "The Party Line".

Important improvements of the "Echo" were the ruling of the pages, the small sketches, and the eight page rotogravure.

Much work and time is required to edit a paper. The staff did their best to publish a good paper and hope you enjoyed reading it as much as they enjoyed writing it.

## Student Council

This year the Student Council, using the money earned by the magazine drive of '49, sponsored all-school activities such as the Homecoming Parade and Dance, the Mid-Winter Hop, and a series of speeches to the student body. The first of these was by Lieutenant James Whittaker, co-pilot when Eddie Rickenbacker and his crew crashed at sea. Mr. Evans was faculty adviser this year. Officers elected were as follows: Joyce Callen, president; Walter Hansen, vice-president; Viola Kopelke, secretary; and Connie Sakowski, treasurer.



Top Row: Bosch, Behling, Prager, Rockrohr, Chapman.

Bottom Row: Siebers, Kopelke, Callen, Hansen, C. Sakowski.





## Library Club

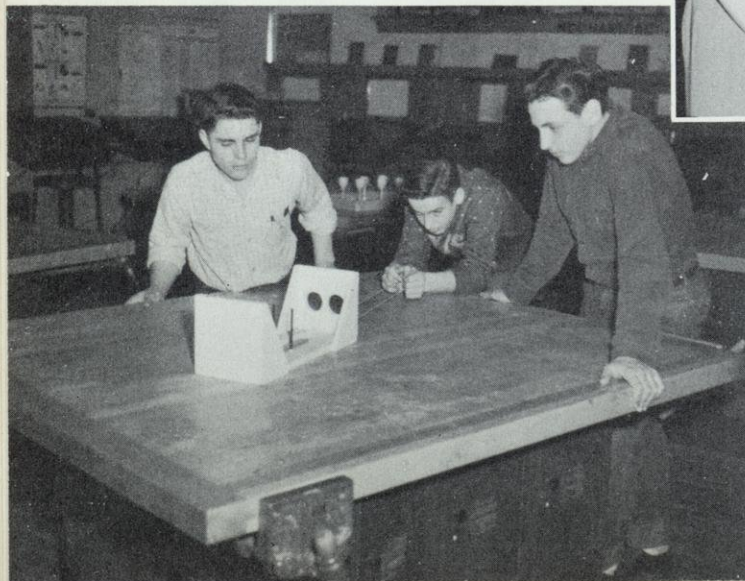


Each period cheerful assistant librarians are on duty. They check out books for students, keep the library neat, and help those who wish to find books. In their meetings, they learn how the system for checking out books works, how to use the card catalogue, and how to locate books by the use of the Dewey decimal system.

The officers this year are Marilyn Kipp, president; Marlene Laupan, vice-president; Jean Alleman, secretary-treasurer; and Darlene Lidholm, reporter. Mr. Kostrzak is the faculty adviser.

## High School Notes

Editors Larry Hall and Charles Paschen assisted by Sports writer Clarence Barthel, Typist Shirley Rath, and the reporters met the deadline each week at the Waterford Post with High School Notes, the weekly column devoted to school news of interest to the public. Instruction on journalistic articles is given in a two-week newspaper unit during the junior year in English. The column in the Waterford Post gives all who desire it a practical outlet for applying this knowledge.



## Drivers' Education

This year Driver's Education was taught to the sophomore girls by Mr. Kostrzak while Mr. Daugherty taught the sophomore boys. The students were given tests to discover eye weaknesses and to determine hand steadiness. At the end of the course, they were given final tests from the State Motor Vehicle Division. The students who passed the course were given a card recognizing their course in Driver's Education.



## Dramatics



On November 15, fifteen members of the Junior Class presented a three-act comedy entitled "Papa Says No". It was directed by Miss Jennings.

The scene was the lobby of a small hotel in Florida. Miss Luella Watts (Jeannette Schimp) was an old maid who seemed to be able to get into everybody's business, especially that of Janet Page (June Van Valin) who was in love with Jack Prescott (Donald Woods) but couldn't marry him because her wealthy father (Larry Behling) objected. Her father had brought her to the hotel with the idea of sending her to South America but it didn't work out, thanks to Pete Carter (Keith Hulbert), who was at the hotel with his widowed mother, Mrs. Helen Carter (Peggy Widmer). He played the part of a girl and changed Mr. Page's ideas about love. The hotel staff consisted of the desk clerk (Dick Lukas), Joe, the bellhop, (Spud Mealy), Toots, the elevator girl (Jean Sykes), and the two waitresses (Bernice Paap and Nancine Rupert). Mrs. Hawkins (Donna Malchine) and her daughter (Jackie Paap) furnished some laughs in their attempt to get a hotel room.

Art Morgenroth, who played the detective, had the pleasure of taking Miss Watts to jail for stealing Mr. Page's passport, even though she didn't really steal it. It had been put in her coat by mistake. The play ended well, though, with Jack marrying Janet and Mr. Page marrying Helen Carter.

### "Papa Says No"





# Glee Club



Top Row: Kipp, Rupert, Maerzke, Snoddy, Mehring, Bothe, N. Brown, Laupan, Laux, Sleik, Allard. Third Row: J. Doyle, D. Huelskamp, Billings, S. Allard, Siebers, Smetana, Alby, Sykes, C. Felton, Hegemann, Clausen, Schwarz. Second Row: Sheard, Fletcher, Sorenson, Murray, J. Paap, M. Beaumont, M. Brown, Onsgaard, Schmidt. Bottom Row: Hutton, Kolm, Malchine, B. Paap, Wiesenthal, Amann, Natalie, Callen, Mayer, Dillar, Mayer, Widmer.

A welcome respite from first hour study hall is furnished twice a week to the members of the Boys' and Girls' Glee Clubs

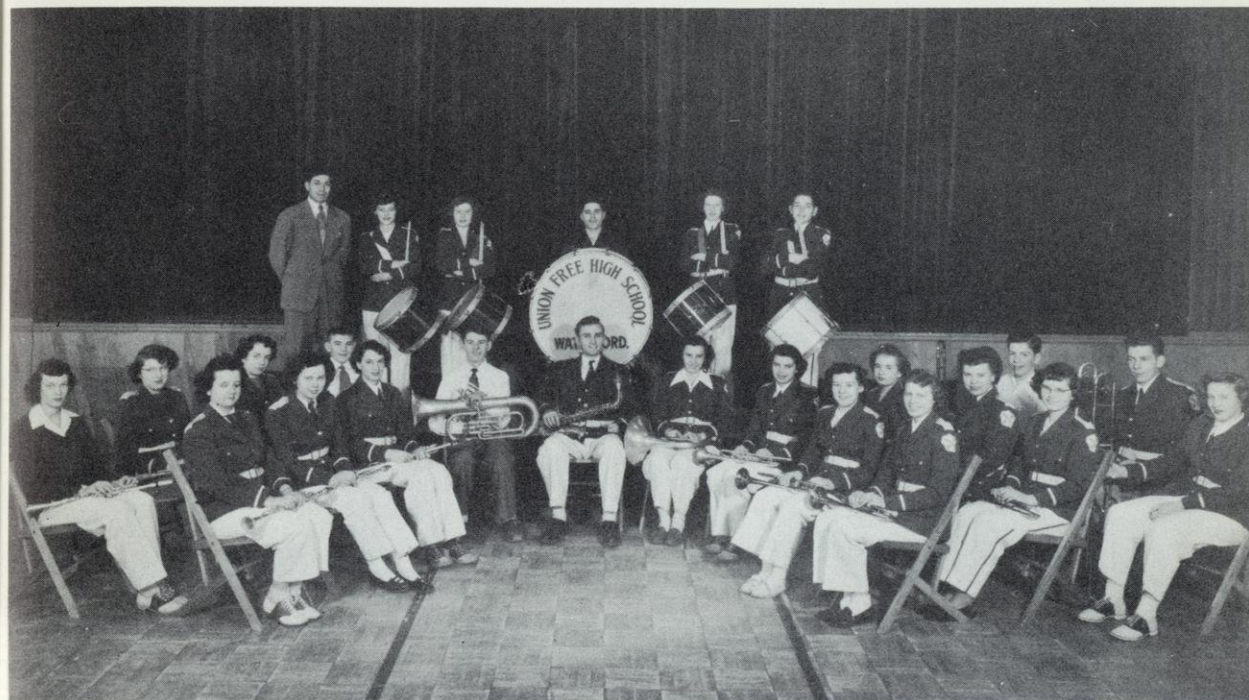
which meet separately under the direction of our new music director, Joseph G. Lombardo.



Top Row: Hall, Modrak, Prager, DeGrave, Roepke, Pribyl, Heims, Peterson, Chapman, Behling, Paschen. Middle Row: Prill, Mutsch, Cahill, LaCombe, Smetana, Ranke, Laux, Nelson, Panzica, Hart. Bottom Row: Huelskamp, Roepke, Kramer, Greil, DeGrave, Buenger, Mayer, Stark, Gehrand.



# Band



Top Row: Director Joseph G. Lombardo, B. Smetana, Miller, Marquardt, Ranke, Hulbert. Second Row: Heck, Johnson, G. Paap, Paulson, J. Paap, Mayer, A. Schwarz. Outer Row: Rockrohr, Johnson, L. Mitsch. Bottom Row: Callen, I. Schwarz, Kopelke, Foat, Kaun, Kojis, Engel, Sorenson, Wiesenthal.

Felton, Mehring, Laux, Billings  
Alby, Breiling

Our band got under way this year when the second semester brought Mr. Lombardo, a very capable band leader. Approximately thirty members comprise the band, which meets twice each week on Mondays and on Wednesdays. On Mondays the children from the Graded School who are taking lessons on some band instrument join the high school band.

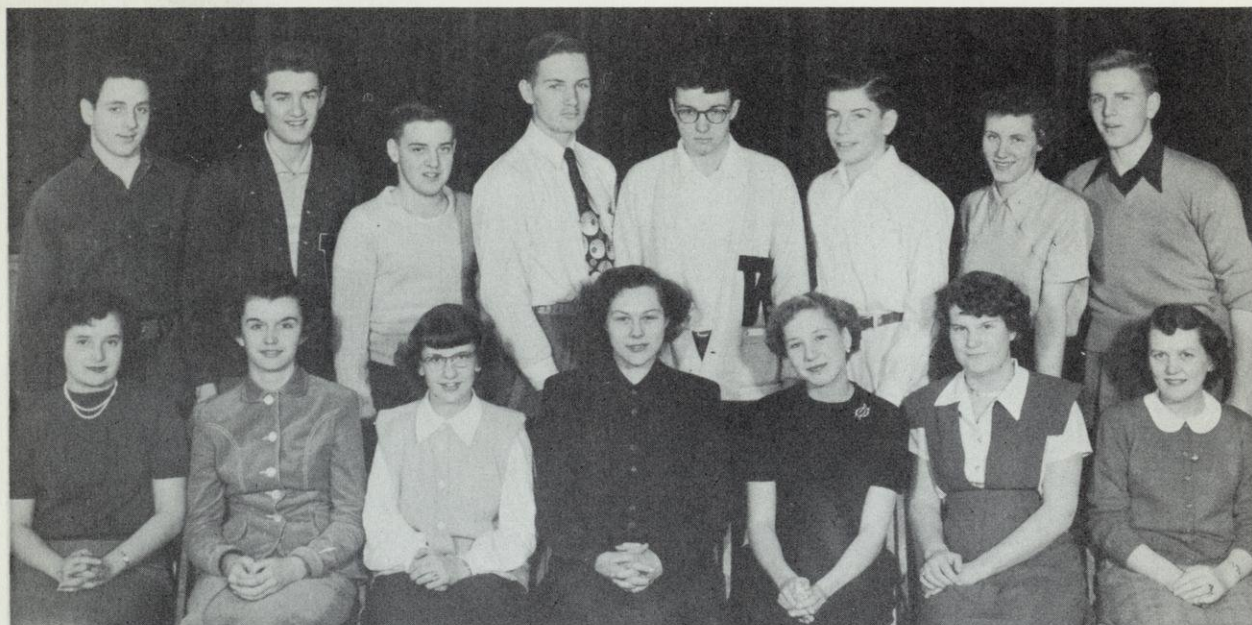
Those who wished to take part in the solo and ensemble tournament went to Whitewater on Saturday, March 25; in April the entire band participated in the annual music festival.

During the school year the band played for the first two basketball games, during the Basketball Tournament at Waterford, for some of the pep sessions, and for an assembly program.





## Forensics



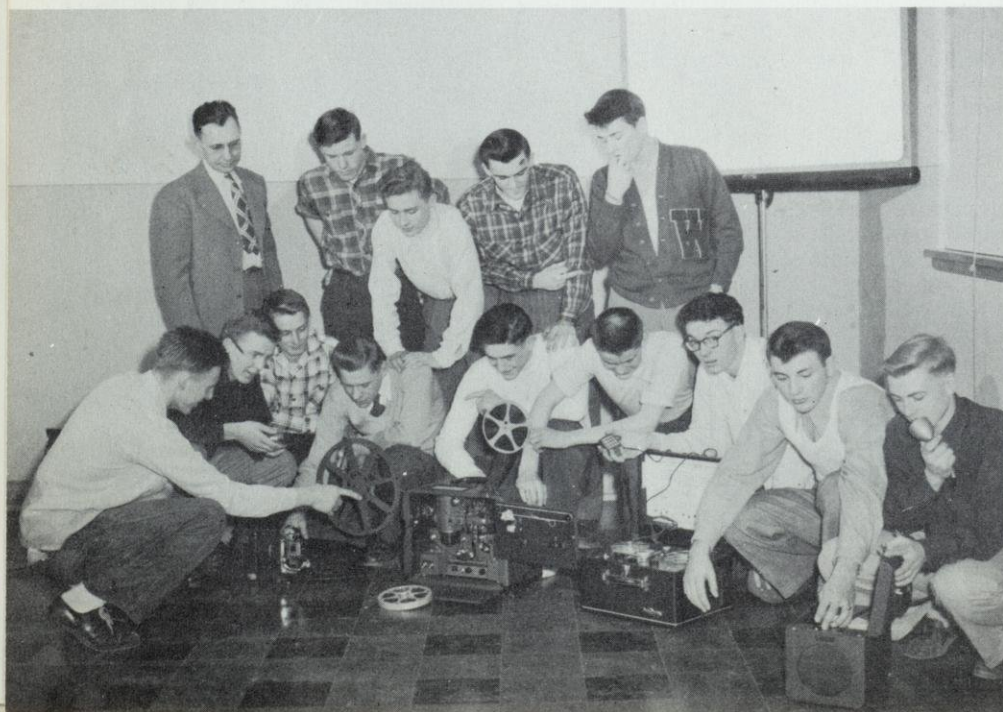
Top Row: Chapman, Daugherty, LaCombe, C. Paschen, Hall, Rockrohr, Sleik, Buenger.  
Bottom Row: Bosch, Kipp, Siebers, G. Allard, Widmer, Laupan, J. Schimp.

At the League Contest held March 8 at Palmyra, Waterford topped rival schools by garnering four A's and six B's. The four who went on to the District Contest at Fort Atkinson were Larry Hall in humorous declamation, Peggy-Jo Widmer in serious declamation, Jim Buenger in oratory, and Irving

Petersen in original oratory. Last year, Joan Malchine received B in humorous declamation at the District Contest, and Jim Buenger progressed to the State Contest at Madison where he was awarded a silver medal in oratory.

Top Row: C. A. Daugherty, Krautkramer, Woods, Brooks, Daugherty.

Bottom Row: Lindner, Buenger, Shepard, Lukas, Becker, Mealy, Hall, Kramer, Laux.



## Projector Club

With Herbert Lindner as president, Everett Hegemann as vice-president, and Jim Buenger as secretary, the Projector Club took charge of the visual aids program in the high school. Equipment now includes a movie projector, film-strip projector, and a tape-recorder. Mr. C. A. Daugherty is the sponsor for these junior and senior boys who are eligible for the club.



## Junior Prom



The Senor from Mexico pulled his hat over his eyes, wrapped his colorful sarong more tightly about him, and proceeded to doze beside his lilac-filled cart. He had stopped to get a drink at the water hole in the oasis, laid down his mandolin, and decided to take a short siesta.

Suddenly he wakened enough to realize it was no longer twilight but still his beloved Mexico. It had become sparkling and alive with beauty and color and music. Very quietly he watched. A large crowd had assembled, so large that he could no longer see his desert gardens, the blooming cactuses or the purple foothills. The adobe house, hung with water jugs, gourds and richly colored Mexican clothing, now housed live, gay and busy señoritas.

Suddenly all was very quiet and far away on the hill behind the goats, musicians began to play. Then a court of honor consisting of Margaret Patterson, Marjorie Moore, Beverly Engel, and Ellen Olson awaited the arrival of Prom King Lawrence Greil and his lovely Queen Marilyn Henkel. With the crowning of the queen, the royalty descended the stairs and were joined by other señoritas and their escorts.

"Truly a Fiesta in Heaven" muttered the peon at the water hole as he watched the graceful march perfectly executed. Then when the couples passed, he sighted a diminutive couple—Tommy Mucci and Roberta Allard—brown eyed, dark skinned, and picturesque in their costumes—What were those people taking from them? He watched quietly, attentively, and then became overjoyed, for every person on the floor was receiving a picture of himself.

"Truly a beautiful party," he thought and went sound asleep.

The people who created this Mexican promenade of South of the Border were the Juniors of Waterford High School. The date was May the twelfth, 1949, and the co-sponsors were Cathryn Fisher and Lawrence Stein.





# G. A. A.



Bottom Row: Hutton, Kolm, Malchine, B. Paap, Wiesenthal, Amann, Natalie, Callen, Mayer, Dillar, Mayer, Widmer.

Second Row: Sheard, Fletcher, Sorenson, Murray, J. Paap, M. Beaumont, Dahl, J. Beaumont, M. Brown, Onsgaard, Schmidt.

Third Row: J. Doyle, Huelskamp, Billings, S. Allard, Siebers, Smetana, Alby, Sykes, Felton, Hegemann, Clausen, Schwarz.

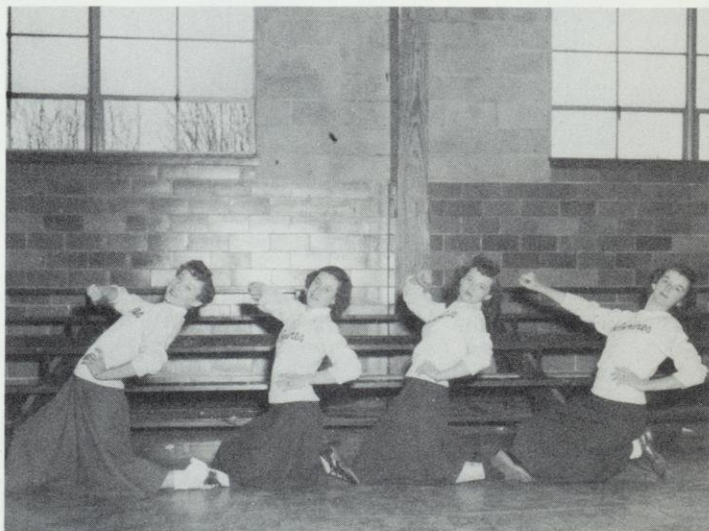
Top Row: Kipp, Rupert, Maerzke, Snoddy, Mehring, Bothe, N. Brown, Laupan, Laux, Sleik, Allard.

## Cheer Leaders

At tryouts held in the gymnasium early in the year, the student body balloted on the cheerleaders of their choice, subject to the approval of the faculty.

Those who qualified were rewarded with the handsome new uniforms pictured above. They did their part by appearing faithfully at every game and leading cheers for pep session in the gym. Mr. Kostrzak is faculty adviser.

Dahl, Ranke, Amann



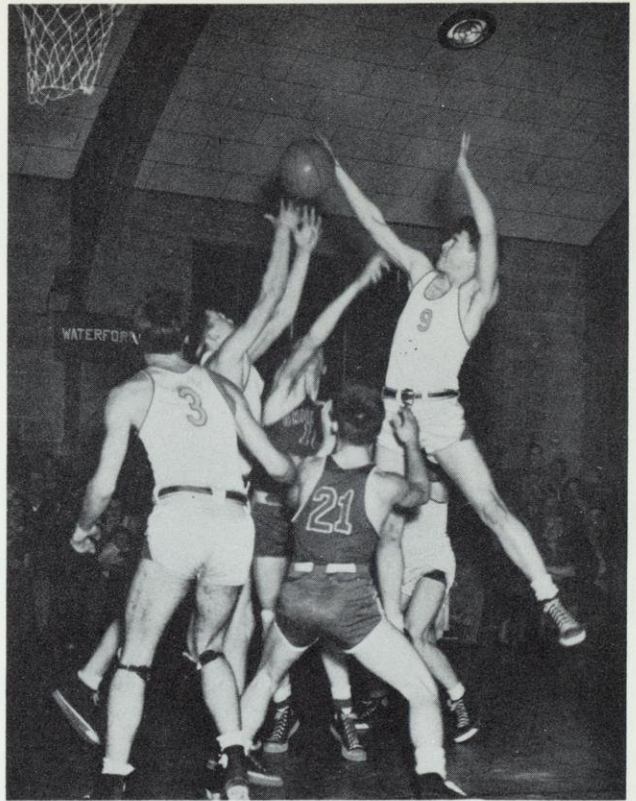
Van Valin, Alby, Sheard, Kipp

Rockrohr

Volleyball, Tennis, Badminton — these were the sports chiefly enjoyed by the active members of the G.A.A., sponsored by Miss Esther Klemp. Officers for the club included Joyce Callen, president; Irene Schwarz, vice-president; Elaine Breunig, secretary; and Joan Wiesenthal, treasurer.







# SPORTS





# Football



Top Row: Smetana (Mgr.), Paulson, Alby, Krautkramer, Johnson, Rader, Lindner, Bowen, Modrak, Gerald DeGrave.

Second Row: LaCombe, (Mgr.), Klokner, Gilbert DeGrave, Kaun, Chapman, Prill, Schopp, W. Petersen, Halbach, Behling, Coach McCulloch.

Bottom Row: Buenger, Leighton, Roger Roepke, Stark, Hansen (Captain), Kramer, Gehrand, Daugherty, Hall, Becker.

The 1949 football season saw a fighting Waterford eleven win four games and lose three. This year's Wolverines' team came out fourth in the conference standings.

In the first game of the season the squad traveled to Pewaukee for a non-conference tilt which saw the Wolverines pull the game out of the fire in a thrilling second half. Pewaukee scored late in the first half and led 6-0 at the end of the first half. Then the Green and White eleven came back with a roar and late in the third quarter drove 81 yards only to be stopped on the 4 yd. line. Pewaukee kicked. Again the Wolverines drove deep and this time scored. Alby kicked the extra point and the Wolverines won, 7-6.

The first conference game pitted Waterford against Rochester at Waterford. The Green and White eleven, working smoothly, swept to its first conference win, 25-0.

Waterford drew first blood in the initial period with an off-tackle smash by Hansen, good for 19 yards. In the second half, the Aggies threw two passes which were both intercepted and run back for touchdowns. Then early in the final period an unexpected

end-run caught the Aggies flatfooted, and Halbach raced to the final touchdown with Alby again adding the final point.

The next game saw a championship Wilmot team take advantage of a Wolverine eleven which fumbled three times inside the ten yard line in the first quarter. It was Wilmot's Homecoming, and the final whistle found the Wolverines on the short end of a 26-0 score.

A fighting-mad Waterford team bounced back in the next contest. The Wolverines' first string, playing only half the game, made 34 points to swamp Union Grove on the Grover's Homecoming. In the first quarter, Lindner scored twice and Hansen once. The regulars were then rested, while a scrappy second string played the second quarter. In the third quarter, the regulars again scored two quick touchdowns.

Walworth was the next opponent and they too were downed. Heads up line play and good team work made possible a victory over a strong Walworth aggregation. The highlight of the game came when one of the Wolverine backs drove through a huge hole in the line and twisted and turned

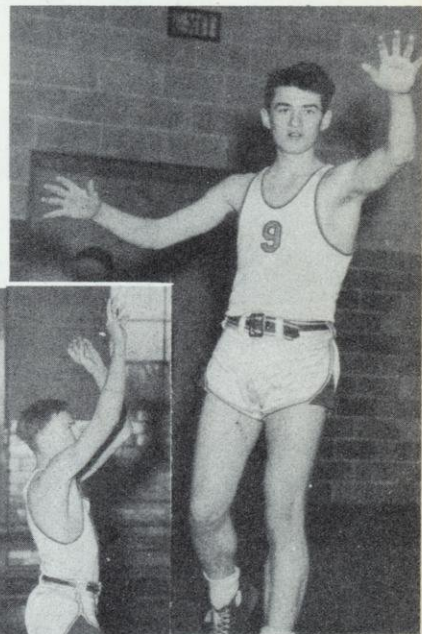
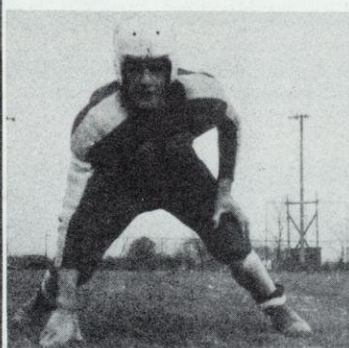


50 yards to score. The final score Waterford 19, Walworth 0.

The Homecoming game showed a Wolverine team, decidedly off their stride, lose to a strong Mukwonago eleven, 13-0.

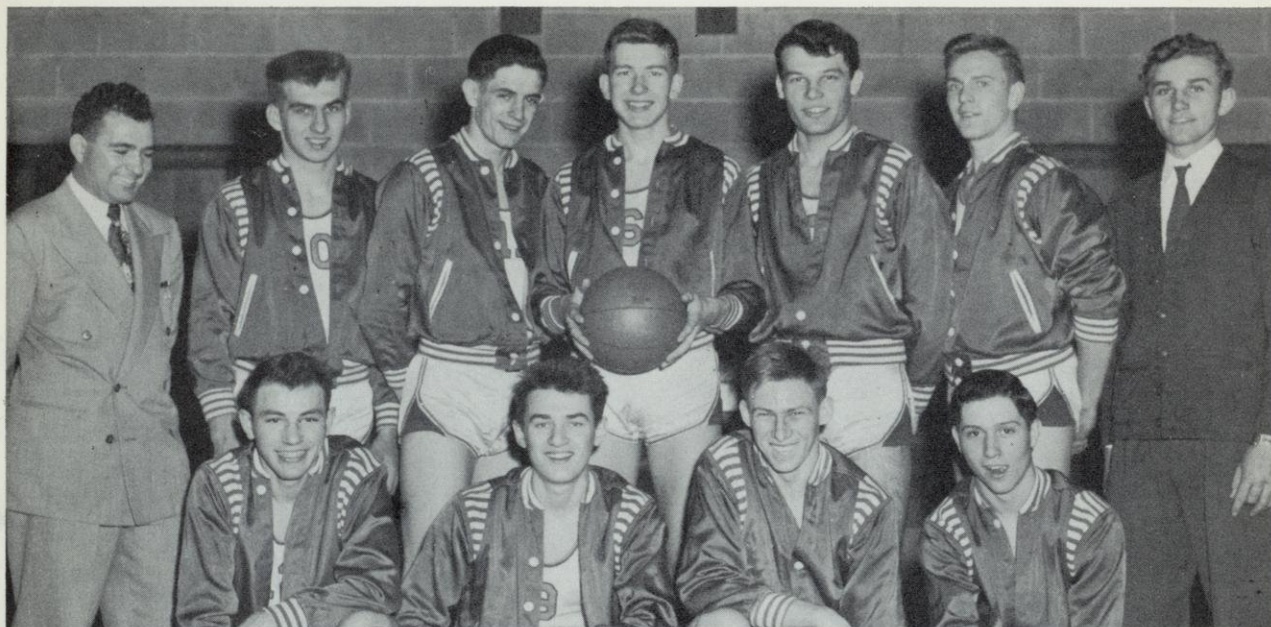
Then on Nov. 2 the Wolverines' squad played its final conference tilt and lost a heartbreaker to East Troy. Waterford took the kick-off, on a bitter cold, snowy day, and

marched 70 yards down the field to score on a 12 yard pass from Buenger to Roepke, for the Wolverines' lone tally. The rest of the half was a see-saw battle. The last half saw the Green and White drives continually stopped by penalties. Then with five minutes remaining in the fourth and final period, Metzke, East Troy's huge end, caught another pass for the extra point and the margin of victory.





# Basketball



Top Row: Coach McCulloch, Stark, Becker, Gehrand, Roepke, Buenger, Kaun (Mgr.)  
Bottom Row: Kramer, Daugherty, Lindner, Huening.

The golden touch of Lady Luck was denied a scrapping Wolverine Quintet throughout the '49-'50 basketball season. Despite the loss of three key men by graduation, the squad showed up well and developed into a fine defensive unit.

In the season opener a large home crowd saw the boys play a good game, only to lose to East Troy, 36-31. In the next conference tilt, Waterford lost to an experienced, championship-bound Wilmot five, 54-21.

The first non-conference contest with St. Mary's was a seesaw battle which was won in the last two minutes by the Saints, 32-26.

Again on a strange court, the Green and White five lost to a strong and undefeated Rochester team, 45-20. Spurred on by four defeats, the Wolverines then bounced back to a well-earned victory by downing a highly rated Muwkonago five, 28-21.

Union Grove was the next opponent in the season's most exciting game which was decided by a free throw during an over-time period. The Grovers won 35-34.

In the second non-conference tilt the Green and White turned back a strong Racine Lutheran team, 36-31.

Things were beginning to look better now and returning to conference play, the Wolverines, not to be denied this time, took

things into their own hands and severely trounced a game Norris team 45-33.

On the return contest with East Troy their center provided the attack and led the Trojans to a 49-28 victory. After a rough and hard fought battle with Wilmot the Wolverines found themselves on the short end of a 42-19 score.

The Wolverines then played the last non-conference tilt and lost by a narrow margin of 4 points to a red hot St. Mary's team. The final score was 35-31.

The Racine County Aggies team was our next foe in a rough and tumble battle which saw Rochester shade the Wolverines, 37-27. The team then journeyed to Mukwonago where the sharp shooting Indians edged Waterford, 36-33. Union Grove visited the Wolverines in their own den and went home victorious by a score of 37-20. Still fighting, however, the Wolverine quintet came back to take the last conference game with 45-42.

Then playing host to four schools in the sub-district tournament, Waterford came in fourth with their best game of the year by completely snowing under Union Grove 43-13 to avenge two previous losses at the Grover's hands. The following night the Wolverines went down fighting against the Rochester Aggies 36-22, to bring down the curtain on a rugged season.



## B Squad

Waterford's B team had a very good 1949-50 season, finishing a close second to Rochester. In conference play, the Cubs won 9 and lost 3 and in non-conference games won 1 and lost 2.

In the first game, the Cubs encountered East Troy. Staving off a last quarter rally, the Cubs won 16-15 with a balanced scoring attack. Going to the road for the first time, the Cubs beat Wilmot 28 to 7 on fine defensive play. Alberts led with 11 points.

Playing the first non-conference game with St. Mary's at home, the Cubs won 23-21, but their pennant hopes were shattered when they journeyed to Rochester and lost 35-12. Becker was high with 6.

The Cubs played host to Mukwonago. Cracking a tough man-to-man defense, the Cubs squeezed out a 22-18 win. Then they met Union Grove on the latter's home floor and won easily 42-23. Becker and Ranke netted 13 and 10 respectively.

The Cubs met Racine Lutheran at home in a non-conference tilt. The score was 26-19 with Becker registering 11 points.

The Cubs played the All-stars, made up of players from different teams, in the intramurals and lost 31-13. In conference play again, the Cubs played host to Norris Farm, winning easily 31-21. Paulson was high with 8.

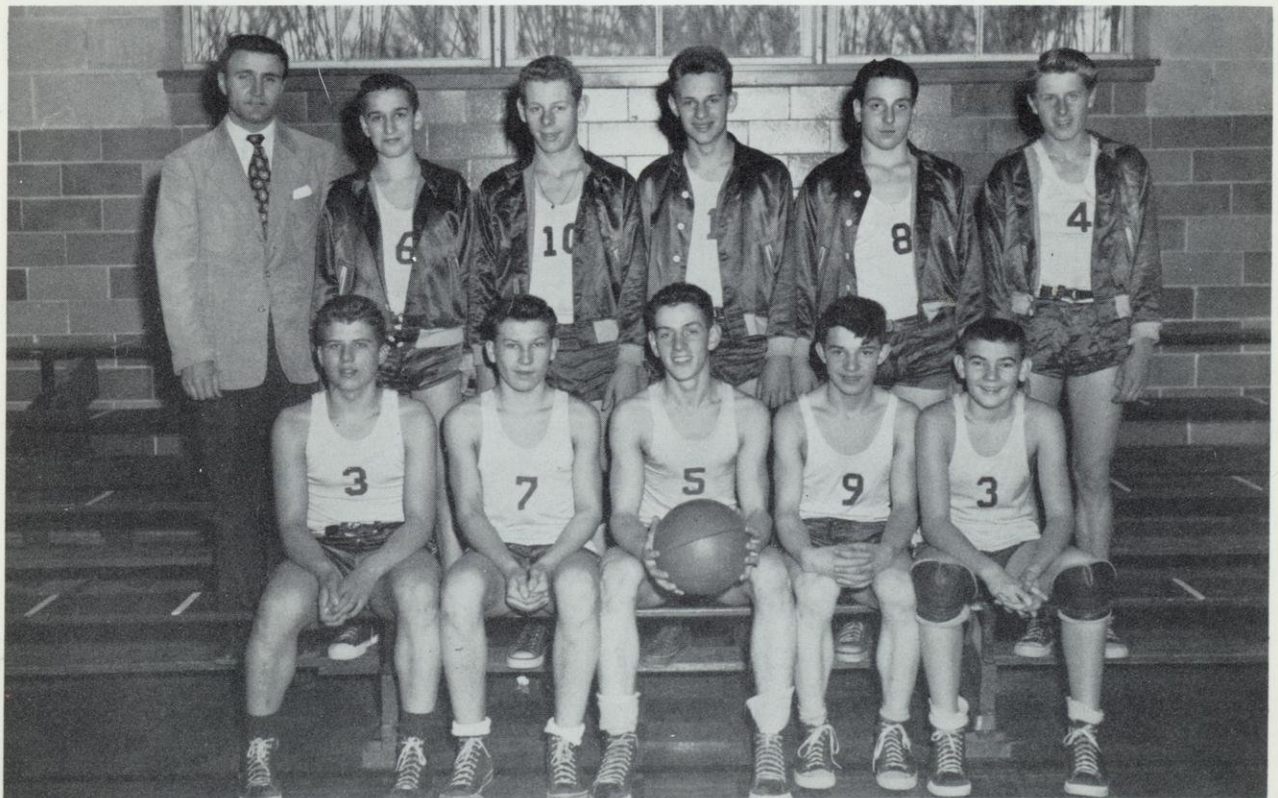
Rounding the half point of the season, the Cubs met East Troy and won 19-15 in a nerve tingling game. Kransel led with 12.

The Cubs met Wilmot at home and won 19-13. Ranke was high with 6 points.

In the return game, the Cubs found St. Mary's very tough on their own floor and lost 30-18. Mealy was high with 8 points.

In hopes of obtaining at least a share of the title, the Cubs played host to undefeated Rochester. Although tied at the end of the third quarter, the Cubs lost 29-24. The Cubs journeyed to Mukwonago but lost 23-12. Morgenroth caged 6 points. At home, they met Union Grove and won 26-12. Behling and Kransel led the scoring with 7 and 6.

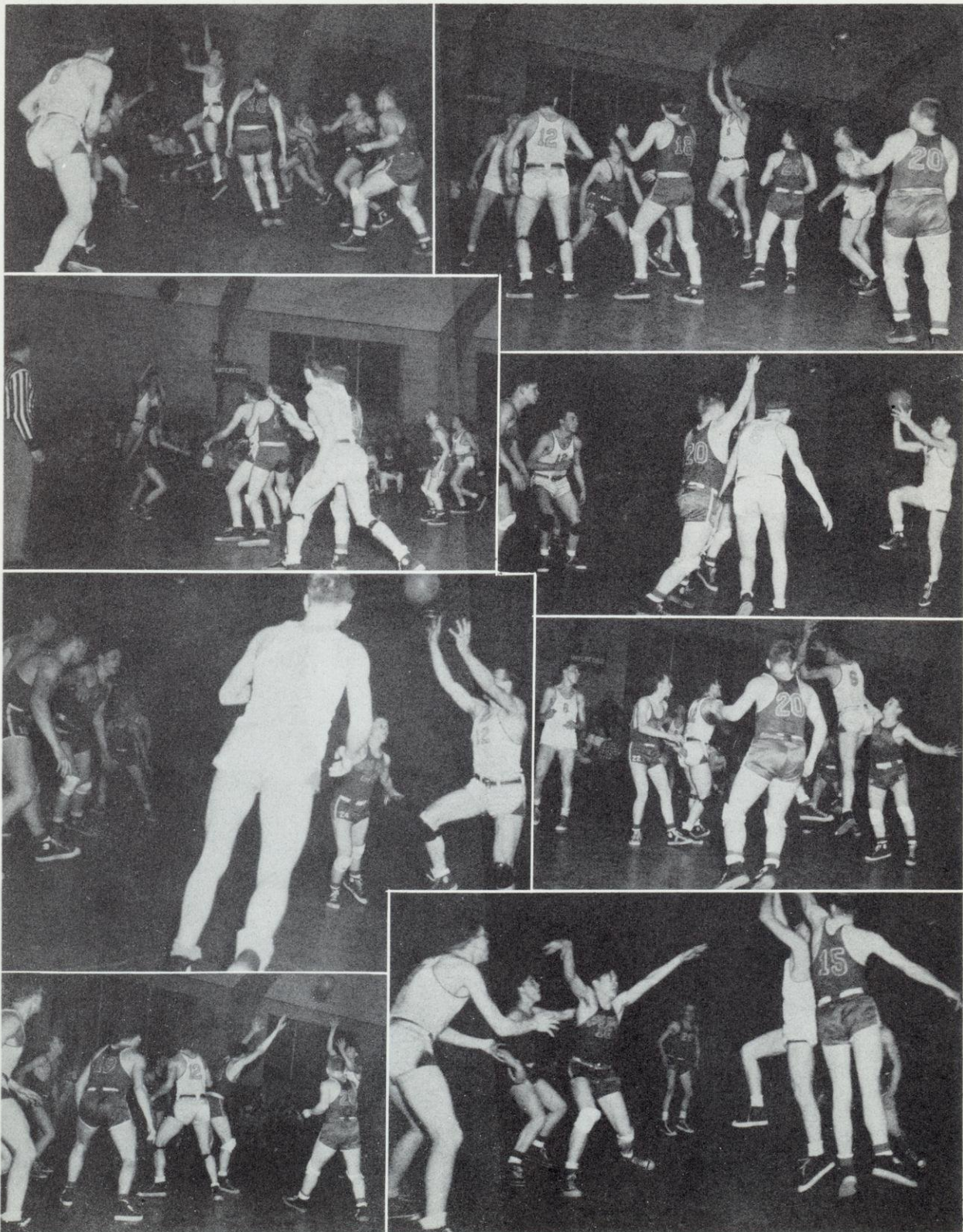
Climaxing the season, the Cubs met Norris Farm and won 35-29. This entitled them to second place in the conference. Huening and Behling were high with 10 each.



Top Row: Coach Zernzack, Cahill, Modrak, J. Paschen, Chapman, Alby.  
Bottom Row: Hart, Roepke, Behling, Ranke, Paulson.



# Tournament





# Baseball



*Standing:* Coach McCulloch, Barthel, Hansen, Daugherty, Buenger, Krautkramer, Gerald DeGrave (Mgr.).

*Kneeling:* Cahill, Prill, C. Paschen.

The fighting nine from Waterford came through with two wins and four losses in the 1949 season. The Wolverines started the season strong by winning two of the first three games. The first game was a no-hitter pitched by Sylvester Krautkramer, with the Union Grove pitcher allowing only one hit. The final score was 4 to 1. Waterford lost the second game to Rochester in extra innings. In the ninth inning, with a man on second and third, Taylor hit a line-drive to Rintlemann, who dropped the ball to allow the winning run to score. The final count was 5 to 4 in Rochester's favor. A week later Waterford came back to trounce Norris 7 to 5 in a game which Waterford went on a hitting spree.

From here on to the finish of the season, Waterford had some trouble getting back

into the win column. The next game was lost to Mukwonago 10 to 6. Waterford then went to East Troy to lose 6 to 5 after coming from behind only to be outscored by East Troy. In the last game of the season, the Waterford team was beaten by Wilmot, 8 to 0.

The team for the 1949 season was made up of the following players: first base, Glen Drojes; second base, Don Lewis; short stop, Jim Buenger; third base, Don Rintlemann; catcher, Gene Daugherty; pitcher, Sylvester Krautkramer, and also captain of the team; left field, Larry Krautkramer; center, Clarence Barthel; and in right was Walter Hansen. Some of the substitutes who saw action were Bob Cahill, Don Prill, Bill Rademacher, Charles Paschen, Gene Ranke, and Harry Ranke.



# Sponsorships

## WATERFORD

Aber Engineering Co. Inc.  
 Archie's Shell Service  
 Bakke Electric Co., Your Hotpoint Dealer  
 E. H. Banthin, Florist  
 Bilitz, Waterford Home Bakery  
 Callen's Restaurant-Arcade Restaurant  
 Waterford Civic Club  
 Dr. R. J. Dietz  
 Alex Engel, McCormick-Doering  
 Sales & Service  
 Ford Theatre  
 Gamble Store, L. R. Wiesenthal, Prop.  
 Graf's Garage  
 J. L. Hall, D.D.S.  
 Hill's Standard Station  
 Dr. M. Huber  
 I.G.A. Super Market  
 Nelson H. Johnson, Insurance Agency  
 Kissinger Motors  
 Leighton Hdwe. Co.  
 Loraine's Beauty Shop  
 Thos. J. Maas & Son  
 Mealy's Funeral Home & Ambulance  
 Noll's Bank  
 Peerless Cleaners  
 Rittmann's Dept. Store  
 Scheele's Plumbing & Heating  
 Smith-Huening  
 Steinke Hdwe. Co.  
 Trimborn Electric Co.  
 The Waterford Agency  
 The Korner  
 The Waterford Post  
 Universal Service Garage  
 Waterford Mills  
 Waterford Oil Company,  
 A. C. Lotsch, Prop.  
 West Side Food Market  
 Wilbur Lumber Co.  
 Zimmer's Drug Store  
 Dr. J. H. Bultema, M.D.  
 Cecil Mehring, General Contractor  
 Everett J. Hegemann, General Contractor  
 Eugene's Beauty Shop

## ROCHESTER

H. J. Howe & Sons  
 Rochester Mills

## BURLINGTON

Academy Cleaners  
 Bank of Burlington, Member F.D.I.C.

Kilgore and Easterday, Office  
 Equipment, Racine

B. & K. Shoe Store  
 Bramucci Motors  
 Brennan & Otto, Heating Appliances  
 & Sheet Metal  
 Burlington Automobile Dealers  
 Burlington Floral Shop  
 Burlington Foods Inc.  
 Dardis Lumber & Fuel Co.  
 Dick's Market & Lockers  
 Haskell's  
 Lee N. Herrman  
 McCarthy Rueter Haas  
 Meinhardt Bank, Burlington, Wis.  
 Montgomery Ward & Co.  
 Music Mart  
 Old Town Pump  
 A. W. Perry  
 Pieters Brothers Dry Goods Since 1913  
 Scheibe Photographic Studio  
 Sno White Laundry Inc.  
 The Sport Mart  
 L. J. Stang, Ladies' and Gents' Furnishings  
 Steffen's Radio, Refrigeration, Television  
 Wagner & Juranek, Home of  
 Clipper Craft Clothes  
 Winkler Warren Dairy

## WINDLAKE

Ev-Lo Frozen Custard  
 36 Grill  
 Hait's Grocery  
 Windlake Bowl  
 Brownie's Food Market

## RAYMOND CENTER

G. Lebrick's General Store  
 Center Service, Howard B. Scott, Prop.  
 Otto Paap, Jr., Farm Operating Equipment

## MUSKEGO

Horn Bros., Feeds, Seeds & Fertilizer  
 Muskego Implement Co.  
 Johnny's D-X Service  
 Pet Ice Cream Co., Waukesha  
 Progressive Dairy Co., Racine  
 Victor A. Nowak Co. Jewelers,  
 Milwaukee

## TICHIGAN

Alpner's Resort  
 Tichigan Lake Canteen

Singer Sewing Machine Co.,  
 Milwaukee





A quiet corner of the study hall



Juniors were tops in selling magazines



Panthers win intramurals



Selling milk at noon



New Lockers, Huh?



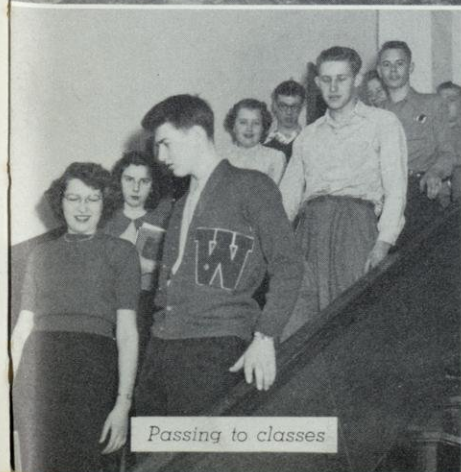
Bus Loading at 3:10



Keeping in step



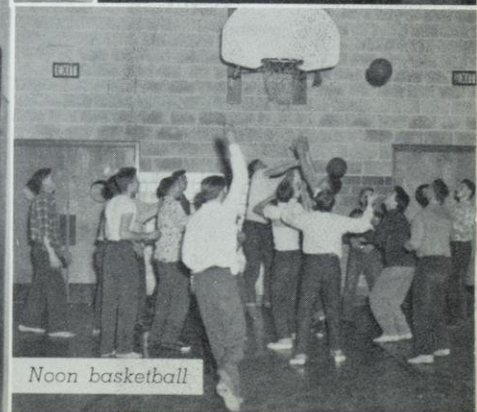
Office monitor, Irene



Passing to classes



Noon rush

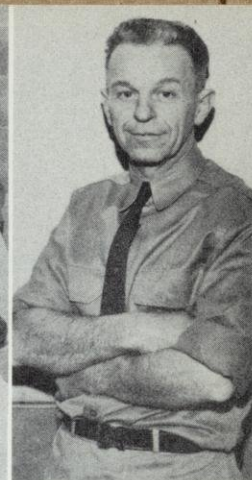


Noon basketball

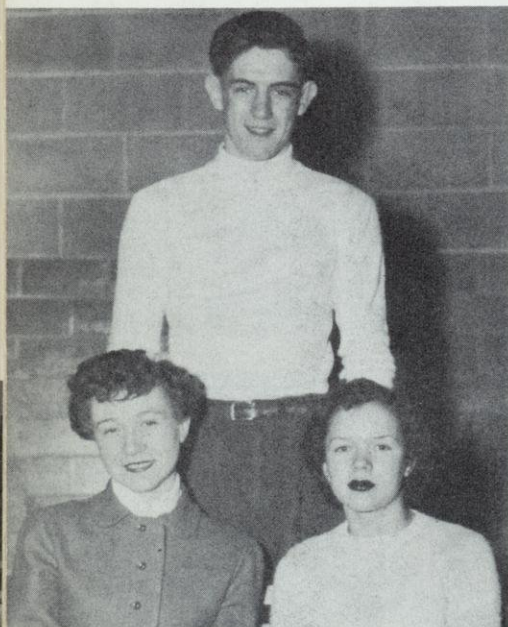




*Girls' Bowling Team*



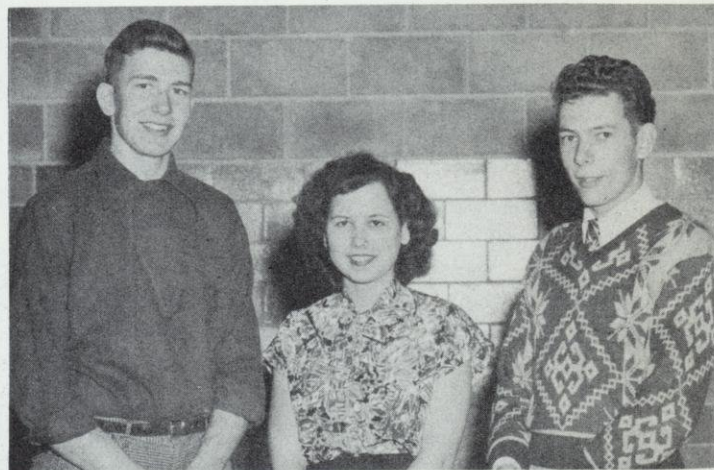
MR. ANGSTEN



*J  
u  
n  
i  
o  
r  
s*

*Class Officers*

*Seniors*



*Sophomores*



*Freshmen*









# Class Prophecy



The crystal ball revealed many promising careers among the Seniors of 1950.

For instance, Larry Hall is going to compete with Bob Hope as comedian of Hollywood. But he isn't the only one in Hollywood. Betty Allen and Dick Johnson will be there, too, as an actress and an actor. Joanne Kolm is going to be a cover girl and Marilyn Kipp, a TV star.

George Laux will own a night club in Hollywood and Vine and Gerry Allard will be employed as cigarette salesgirls.

When we come to more serious things of life, we see Diana Kellner as an artist; Mary Beaumont, an author; Gloria Mayer, an interior decorator; Shirley Rath, president of Whitewater State Teachers' College; Marilyn Brown and Jean Alleman are librarians; and Elaine Clausen is a Home Economics teacher.

To liven things up a bit Wally Hansen will turn Mealy's into a jazz center; Dick Gross will ride in the motorcycle races at the Worlds Fair; Larry Greil will invent paper airplanes equipped with radar; and Joan Alby will be a rich fortune teller.

When we go to church we will see Gerald Brooks. He was found to be the reincarnation of some ancient Tibetan llama and was converted. Joyce Callen will own a chain of restaurants, and Clarence Barthel will be the baker.

Herbie Lindner will manufacture bubble gum, and we will find Dick Gehrand as his

salesman. Don Leighton will paint the signs for advertising.

When Jean Sheard is Secretary to the Admiral of a Fleet, she will send important news to Waterford and Irene Mitsch will publish it in the Waterford Post, of which she is the editor.

Delores Bothe and Irene Kojis will be on a famous square dance team and they will be accompanied by Irene Schwarz, a nationally known pianist. Joan Wiesenthal is Irene's teacher.

Bill Rademacker is a dress designer, and his wife, Joyce Siebers, is his model.

Charles Paschen, who will invent a cure for freckles, will be a famous chemist, and Don Kramer will be the doctor at the hospital of which Gerry Sleik is superintendent.

Roger Roepke will compose an invisible textbook, while Ernie Curnow is a Professor of Relaxation.

Nancy Doyle, Marjorie Sorenson, and Mary Popp, as housewives, will often visit Betty Dillar in her own Beauty Shop.

We can't leave Don Prill and Ralph Huelskamp out of this, even if they are bachelors.

Jim Buenger will be the Daniel Webster of the 20th century and Everett Hegemann will build dog houses, his millions being made through this project.

We do not see any more futures in the crystal ball, so we will finish saying the best of luck to you and your careers.

