



LIBRARIES
UNIVERSITY OF WISCONSIN - MADISON

Zyplast Implant advertisement.

[s.l.]: [s.n.], 1976

<https://digital.library.wisc.edu/1711.dl/5M3IFYODQAQJT8W>

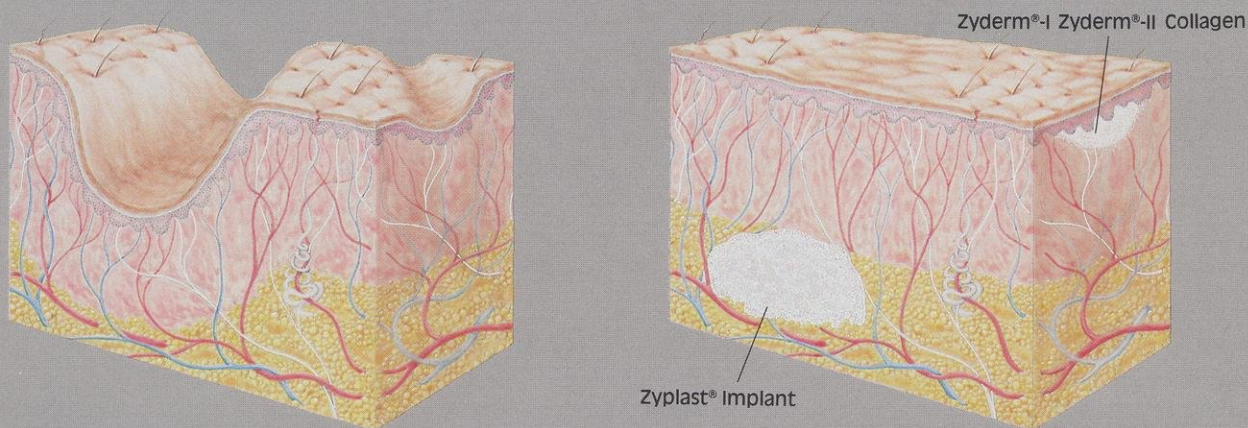
<http://rightsstatements.org/vocab/InC/1.0/>

The libraries provide public access to a wide range of material, including online exhibits, digitized collections, archival finding aids, our catalog, online articles, and a growing range of materials in many media.

When possible, we provide rights information in catalog records, finding aids, and other metadata that accompanies collections or items. However, it is always the user's obligation to evaluate copyright and rights issues in light of their own use.



Introducing Zyplast® Implant A Stable Solution to Deeper Problems



Collagen Implants in Soft Tissue Defects	Peri-oral Lines	Peri-orbital Lines	Glabellar Lines	Nasolabial Lines	Transverse Forehead Lines	Glabellar Furrows	Acne Scars	Nasolabial Furrows	Rhinoplasty Irregularities	Peri-implant Contouring	Malar Enhancement	Subdermal Atrophies	Graft Elevation	Nipple Projection
Zyderm®-I Collagen (superficial intradermal)	■	■	■	■	■	■	■	■	■	■	■	■	■	■
Zyderm®-II Collagen (intradermal)	■	■	■	■	■	■	■	■	■	■	■	■	■	■
Zyplast® Implant (subdermal)	■	■	■	■	■	■	■	■	■	■	■	■	■	■

The availability of ZYPLAST® Implant allows more options and, when combined with your experience, more solutions.

ZYPLAST® Implant is a cross-linked form of injectable collagen that provides new opportunities for soft tissue contour enhancement. Cross-linking affords the stability required for subdermal placement, thereby making it suitable for deeper defects.

This innovative material has been used for a wide range of indications, including smoothing post-rhinoplasty irregularities, peri-implant contouring, post-mastectomy nipple projection, raising of depressed surgical grafts, malar enhancement, and elevation of rhytids and scars.

ZYPLAST Implant provides significant contour improvement after just one treatment, and in clinical trials, demonstrates a low rate of hypersensitivity response.

A videotape on ZYPLAST Implant, which describes the injection technique and indications for the material, is available by calling Collagen Corporation at (800) 227-8933.

Collagen Corporation



Please see next page for a brief summary of product safety information.

8005-01-1285

© 1986 Collagen Corp.



ZYPLAST® IMPLANT

Package Insert Summary

INDICATIONS AND USAGE

Zyplast® Implant is indicated for the correction of soft tissue contour deficiencies including: distensible acne scars, atrophy from disease or trauma, glabellar frown lines, nasolabial folds, rhinoplasty, skin graft or other contour irregularities.

CONTRAINDICATIONS

Therapy must not be initiated if the patient has:

1. an untoward response to the Collagen Test Implant (non-cross-linked collagen);
2. a personal history of autoimmune disease;
3. a history of anaphylactoid reactions;
4. a known hypersensitivity to lidocaine or injectable collagen.

Zyplast Implant is not indicated for use in breast augmentation, or implantation into bone, tendon, ligament or muscle.

WARNINGS

A Collagen Test Implant must be administered and evaluated prior to soft tissue correction with Zyplast Implant. Implantation into dermal vessels may cause vascular occlusion, infarction or embolic phenomena. NOTE: The Collagen Test Implant is non-cross-linked collagen, while Zyplast Implant is cross-linked collagen.

PRECAUTIONS

Use is cautioned in patients with allergic reactions to other substances. Transcutaneous procedures have inherent risk of infection. Use in site of active inflammatory process or infection should be avoided. The safety of Zyplast Implant for use during pregnancy or in infants has not been established.

TREATMENT REACTIONS

Transient or minimal swelling, mild redness, and discomfort may occur immediately following implantation. Bruising or discoloration has been observed in some patients. Patients treated intradermally with Zyplast Implant have reported temporary palpable lumpiness or visible white patches at injection sites.

ADVERSE REACTIONS

Sensitizing responses to injectable collagen have occurred in fewer than 1.3% of treated patients. Systemic complaints of nausea, rash, arthralgia, myalgia and headache have been reported by fewer than 0.03% of treated patients. An anaphylactoid response has occurred and included an acute episode of hypotension and breathing difficulty. As with other injectable preparations, forceful injection into superficial dermal arteries could cause retrograde movement of the material resulting in retinal vascular occlusion. There has been one incident of sudden and permanent partial loss of vision in one eye under these circumstances.

See physician package insert for complete information concerning indications, contraindications, warnings, precautions, adverse reactions, administration of test implant and directions for use.

Collagen Corporation



2500 Faber Place, Palo Alto, California 94303

Printed in U.S.A. ©1986 Collagen Corp.

8005-01-1285