



LIBRARIES

UNIVERSITY OF WISCONSIN-MADISON

Site 1015: Waukesha County, Township 5N, Range 19E, Section 14. 1948-07-17

[s.l.]: [s.n.], 1948-07-17

<https://digital.library.wisc.edu/1711.dl/ZT4TNOVBDFDMA8E>

This material may be protected by copyright law (Title 17, US Code).

For information on re-use see:

<http://digital.library.wisc.edu/1711.dl/Copyright>

The libraries provide public access to a wide range of material, including online exhibits, digitized collections, archival finding aids, our catalog, online articles, and a growing range of materials in many media.

When possible, we provide rights information in catalog records, finding aids, and other metadata that accompanies collections or items. However, it is always the user's obligation to evaluate copyright and rights issues in light of their own use.

1015

Stand No: H5 Name: _____
 County: Waukesha-Vernon T: 5N R: 19E Sec: 14 Locality: Big Bend
 Date: July 17 Observers: as me
 Size of Stand: 40 acres Size of Area Sampled: 40 pts - 201 m quad.
 Forest Type: Maple - ? Soil Type: Miami Loam
 Topography: Slope - 50
 Condition of Stand: Excellent - little cutting mostly oak!

Open Grown Trees: white (?)

Stumps:

- 1. ash 95 6.
- 2. 7.
- 3. 8.
- 4. 9.
- 5. 10.

Soil

| Sample No: | pH | N | P | K | Colloids | Vol/wt | WHC |
|----------------|------------|---|-----------|------------|----------|--------|-------------|
| A ₀ | <u>6.0</u> | — | <u>70</u> | <u>220</u> | — | — | <u>42.7</u> |
| A ₁ | <u>6.0</u> | — | <u>40</u> | <u>180</u> | — | — | <u>58.1</u> |
| A ₂ | <u>5.4</u> | — | <u>60</u> | <u>90</u> | — | — | <u>34.2</u> |

Depth 12" Characteristics (Color, texture, etc.)

A₀ 1"

A₁ 3.5

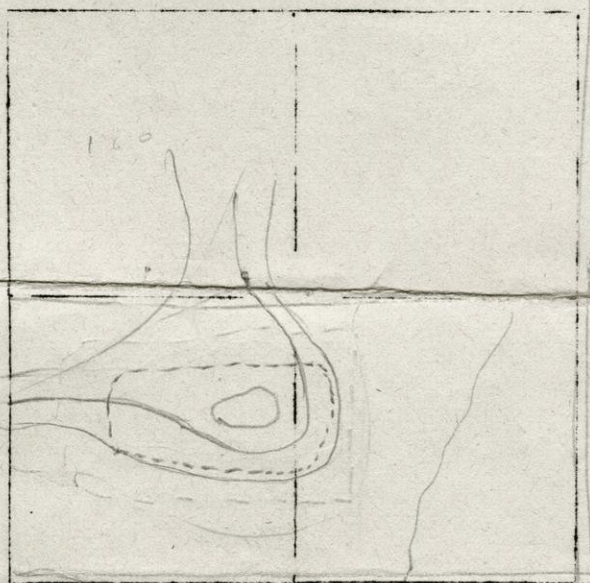
A₂ 2

B 5.5"

Parent Material:

Remarks:

Map



| Tree | BA | S | Tree | BA | S | Tree | BA | S |
|-----------------|--------|---|----------------|-----|---|----------------|-----------|---|
| Acer negundo | | | Fagus grandif. | | | Prunus virgin. | | |
| A. rubrum | | | Fraxinus amer. | | | Quercus alba | | |
| A. saccharinum | | | F. nigra | | | Q. bicolor | | |
| A. saccharum | | | F. pennsylvan. | | | Q. ellipsoid. | | |
| Amelanchier sp. | | | Juglans cinere | | | Q. macrocarpa | | |
| Betula lutea | | | J. nigra | | | Q. rubra | 150, 160 | |
| B. nigra | | | Ostrya virgin. | | | Q. velutina | | |
| B. papyrifera | | | Populus deltoi | | | Robinia pseudo | | |
| Carpinus carol | | | P. grandident. | | | Sorbus americ. | | |
| Carya cordifor | | | P. tremuloides | | | Tilia american | | |
| C. ovata | | | Prunus americ. | | | Ulmus american | | |
| Celtis occiden | | | P. pennsylvan. | | | U. fulva | | |
| Crataegus sp. | | | P. serotina | | | | | |
| | | | | | | Distance: | 19 1/2 ft | |
| Acer negundo | | | Fagus grandif. | | | Prunus virgin. | | |
| A. rubrum | | | Fraxinus amer. | | | Quercus alba | | |
| A. saccharinum | | | F. nigra | | | Q. bicolor | | |
| A. saccharum | 35, 65 | | F. pennsylvan. | | | Q. ellipsoid. | | |
| Amelanchier sp. | | | Jugland cinere | | | Q. macrocarpa | | |
| Betula lutea | | | J. nigra | | | Q. rubra | | |
| B. nigra | | | Ostrya virgin. | | | Q. velutina | | |
| B. papyrifera | | | Populus deltoi | | | Robinia pseudo | | |
| Carpinus carol | | | P. grandident. | | | Sorbus americ. | | |
| Carya cordifor | | | P. tremuloides | | | Tilia american | | |
| C. ovata | | | Prunus americ. | | | Ulmus american | | |
| Celtis occiden | | | P. pennsylvan. | | | U. fulva | | |
| Crataegus sp. | | | P. serotina | | | | | |
| | | | | | | Distance: | 15 ft | |
| Acer negundo | | | Fagus grandif. | | | Prunus virgin. | | |
| A. rubrum | | | Fraxinus amer. | | | Quercus alba | | |
| A. saccharinum | | | F. nigra | | | Q. bicolor | | |
| A. saccharum | 35 | | F. pennsylvan. | | | Q. ellipsoid. | | |
| Amelanchier sp. | | | Juglans cinere | | | Q. macrocarpa | | |
| Betula lutea | | | J. nigra | | | Q. rubra | | |
| B. nigra | | | Ostrya virgin. | | | Q. velutina | | |
| B. papyrifera | | | Populus deltoi | | | Robinia pseudo | | |
| Carpinis carol | | | P. grandident. | | | Sorbus americ. | 35 | |
| Carya cordifor | | | P. tremuloides | | | Tilia american | | |
| C. ovata | | | Prunus americ. | | | Ulmus american | | |
| Celtis occiden | | | P. pennsylvan. | | | U. fulva | | |
| Crataegus sp. | | | P. serotina | | | | | |
| | | | | | | Distance: | 12 1/2 ft | |
| Acer negundo | | | Fagus grandif. | | | Prunus virgin. | | |
| A. rubrum | | | Fraxinus amer. | | | Quercus alba | | |
| A. saccharinum | | | F. nigra | | | Q. bicolor | | |
| A. saccharum | | | F. pennsylvan. | 180 | | Q. ellipsoid. | | |
| Amelanchier sp. | | | Juglans cinere | | | Q. macrocarpa | | |
| Betula lutea | | | J. nigra | | | Q. rubra | | |
| B. nigra | | | Ostrya virgin. | | | Q. velutina | | |
| B. papyrifera | | | Populus deltoi | | | Robinia pseudo | | |
| Carpinus carol | | | P. grandident. | | | Sorbus americ. | | |
| Carya cordifor | | | P. tremuloides | | | Tilia american | | |
| C. ovata | | | Prunus americ. | | | Ulmus american | | |
| Celtis occiden | | | P. pennsylvan. | | | U. fulva | 35 | |
| Crataegus sp. | | | P. serotina | | | | | |
| | | | | | | Distance: | 17 ft | |

III Hardwood Survey

Station Record-Trees

Stand No.

2

| Tree | BA | S | Tree | BA | S | Tree | BA | S |
|-----------------|----|---|----------------|-----|---|----------------|-----------|---|
| Acer negundo | | | Fagus grandif. | | | Prunus virgin. | | |
| A. rubrum | | | Fraxinus amer. | 85 | | Quercus alba | | |
| A. saccharinum | | | F. nigra | | | Q. bicolor | | |
| A. saccharum | | | F. pennsylvan. | | | Q. ellipsoid. | | |
| Amelanchier sp. | | | Juglans cinere | | | Q. macrocarpa | | |
| Betula lutea | | | J. nigra | | | Q. rubra | 140 | |
| B. nigra | | | Ostrya virgin. | | 1 | Q. velutina | | |
| B. papyrifera | | | Populus deltoi | | | Robinia pseudo | | |
| Carpinus carol | | | P. grandident. | | | Sorbus americ. | | |
| Carya cordifor | | | P. tremuloides | | | Tilia american | | |
| C. ovata | | | Prunus americ. | | | Ulmus american | | |
| Celtis occiden | | | P. pennsylvan. | | | U. fulva | | |
| Crataegus sp. | | | P. serotina | | | | | |
| | | | | | | Distance: | 14ft | |
| Acer negundo | | | Fagus grandif. | | | Prunus virgin. | | |
| A. rubrum | | | Fraxinus amer. | 300 | | Quercus alba | | |
| A. saccharinum | | | F. nigra | | | Q. bicolor | | |
| A. saccharum | | | F. pennsylvan. | | | Q. ellipsoid. | | |
| Amelanchier sp. | | | Jugland cinere | | | Q. macrocarpa | | |
| Betula lutea | | | J. nigra | | | Q. rubra | | |
| B. nigra | | | Ostrya virgin. | 18 | | Q. velutina | | |
| B. papyrifera | | | Populus deltoi | | | Robinia pseudo | | |
| Carpinus carol | | | P. grandident. | | | Sorbus americ. | | |
| Carya cordifor | | | P. tremuloides | | | Tilia american | | |
| C. ovata | | | Prunus americ. | | | Ulmus american | | |
| Celtis occiden | | | P. pennsylvan. | | | U. fulva | | |
| Crataegus sp. | | | P. serotina | | | | | |
| | | | | | | Distance: | 15 1/2 ft | |
| Acer negundo | | | Fagus grandif. | | | Prunus virgin. | | |
| A. rubrum | | | Fraxinus amer. | | | Quercus alba | 145 | |
| A. saccharinum | | | F. nigra | | | Q. bicolor | | |
| A. saccharum | | 2 | F. pennsylvan. | | | Q. ellipsoid. | | |
| Amelanchier sp. | | | Juglans cinere | | | Q. macrocarpa | | |
| Betula lutea | | | J. nigra | | | Q. rubra | | |
| B. nigra | | | Ostrya virgin. | 30 | | Q. velutina | | |
| B. papyrifera | | | Populus deltoi | | | Robinia pseudo | | |
| Carpinis carol | | | P. grandident. | | | Sorbus americ. | | |
| Carya cordifor | | | P. tremuloides | | | Tilia american | | |
| C. ovata | | | Prunus americ. | | | Ulmus american | | |
| Celtis occiden | | | P. pennsylvan. | | | U. fulva | | |
| Crataegus sp. | | | P. serotina | | | | | |
| | | | | | | Distance: | 22ft | |
| Acer negundo | | | Fagus grandif. | | | Prunus virgin. | | |
| A. rubrum | | | Fraxinus amer. | 190 | | Quercus alba | | |
| A. saccharinum | | | F. nigra | | | Q. bicolor | | |
| A. saccharum | | | F. pennsylvan. | | | Q. ellipsoid. | | |
| Amelanchier sp. | | | Juglans cinere | | | Q. macrocarpa | | |
| Betula lutea | | | J. nigra | | | Q. rubra | 185 | |
| B. nigra | | | Ostrya virgin. | | 1 | Q. velutina | | |
| B. papyrifera | | | Populus deltoi | | | Robinia pseudo | | |
| Carpinus carol | | | P. grandident. | | | Sorbus americ. | | |
| Carya cordifor | | | P. tremuloides | | | Tilia american | | |
| C. ovata | | | Prunus americ. | | | Ulmus american | | |
| Celtis occiden | | | P. pennsylvan. | | | U. fulva | | |
| Crataegus sp. | | | P. serotina | | | | | |
| | | | | | | Distance: | 12ft | |

| Tree | BA | S | Tree | BA | S | Tree | BA | S |
|-----------------|----|---|----------------|-----|---|----------------|-------|---|
| Acer negundo | | | Fagus grandif. | | | Prunus virgin. | | |
| A. rubrum | | | Fraxinus amer. | 110 | | Quercus alba | | |
| A. saccharinum | | | F. nigra | | | Q. bicolor | | |
| A. saccharum | | | F. pennsylvan. | | | Q. ellipsoid. | | |
| Amelanchier sp. | | | Juglans cinere | | | Q. macrocarpa | | |
| Betula lutea | | | J. nigra | | | Q. rubra | | |
| B. nigra | | | Ostrya virgin. | 16 | | Q. velutina | | |
| B. papyrifera | | | Populus deltoi | | | Robinia pseudo | | |
| Carpinus carol | | | P. grandident. | | | Sorbus americ. | | |
| Carya cordifor | | | P. tremuloides | | | Tilia american | | |
| C. ovata | | | Prunus americ. | | | Ulmus american | | |
| Celtis occiden | | | P. pennsylvan. | | | U. fulva | | |
| Crataegus sp. | | | P. serotina | | | | | |
| | | | | | | Distance: | 16 ft | |
| Acer negundo | | | Fagus grandif. | | | Prunus virgin. | | |
| A. rubrum | | | Fraxinus amer. | | | Quercus alba | 225 | |
| A. saccharinum | | | F. nigra | | | Q. bicolor | | |
| A. saccharum | | | F. pennsylvan. | | | Q. ellipsoid. | | |
| Amelanchier sp. | | | Jugland cinere | | | Q. macrocarpa | | |
| Betula lutea | | | J. nigra | | | Q. rubra | | |
| B. nigra | | | Ostrya virgin. | 1 | | Q. velutina | | |
| B. papyrifera | | | Populus deltoi | | | Robinia pseudo | | |
| Carpinus carol | | | P. grandident. | | | Sorbus americ. | | |
| Carya cordifor | | | P. tremuloides | | | Tilia american | 110 | |
| C. ovata | | | Prunus americ. | | | Ulmus american | | |
| Celtis occiden | | | P. pennsylvan. | | | U. fulva | | |
| Crataegus sp. | | | P. serotina | | | | | |
| | | | | | | Distance: | 13 ft | |
| Acer negundo | | | Fagus grandif. | | | Prunus virgin. | | |
| A. rubrum | | | Fraxinus amer. | 85 | | Quercus alba | | |
| A. saccharinum | | | F. nigra | | | Q. bicolor | | |
| A. saccharum | | | F. pennsylvan. | | | Q. ellipsoid. | | |
| Amelanchier sp. | | | Juglans cinere | | | Q. macrocarpa | | |
| Betula lutea | | | J. nigra | | | Q. rubra | | |
| B. nigra | | | Ostrya virgin. | 18 | | Q. velutina | | |
| B. papyrifera | | | Populus deltoi | | | Robinia pseudo | | |
| Carpinus carol | | | P. grandident. | | | Sorbus americ. | | |
| Carya cordifor | | | P. tremuloides | | | Tilia american | | |
| C. ovata | | | Prunus americ. | | | Ulmus american | | |
| Celtis occiden | | | P. pennsylvan. | | | U. fulva | | |
| Crataegus sp. | | | P. serotina | | | | | |
| | | | | | | Distance: | 18 | |
| Acer negundo | | | Fagus grandif. | | | Prunus virgin. | | |
| A. rubrum | | | Fraxinus amer. | 80 | | Quercus alba | | |
| A. saccharinum | | | F. nigra | | | Q. bicolor | | |
| A. saccharum | | | F. pennsylvan. | | | Q. ellipsoid. | | |
| Amelanchier sp. | | | Juglans cinere | | | Q. macrocarpa | | |
| Betula lutea | | | J. nigra | | | Q. rubra | 180 | |
| B. nigra | | | Ostrya virgin. | | | Q. velutina | | |
| B. papyrifera | | | Populus deltoi | | | Robinia pseudo | | |
| Carpinus carol | | | P. grandident. | | | Sorbus americ. | | |
| Carya cordifor | | | P. tremuloides | | | Tilia american | | |
| C. ovata | | | Prunus americ. | | | Ulmus american | | |
| Celtis occiden | | | P. pennsylvan. | | | U. fulva | | |
| Crataegus sp. | | | P. serotina | | | | | |
| | | | | | | Distance: | 21 | |

III Hardwood Survey

Station Record-Trees

Stand No. 115
1015

| Tree | BA | S | Tree | BA | S | Tree | BA | S |
|-----------------|-----|---|----------------|-----|---|----------------|------|---|
| Acer negundo | | | Fagus grandif. | | | Prunus virgin. | | |
| A. rubrum | | | Fraxinus amer. | | | Quercus alba | | |
| A. saccharinum | | | F. nigra | | | Q. bicolor | | |
| A. saccharum | 120 | | F. pennsylvan. | | | Q. ellipsoid. | | |
| Amelanchier sp. | | | Juglans cinere | | | Q. macrocarpa | | |
| Betula lutea | | | J. nigra | | | Q. rubra | 330 | |
| B. nigra | | | Ostrya virgin. | | 2 | Q. velutina | | |
| B. papyrifera | | | Populus deltoi | | | Robinia pseudo | | |
| Carpinus carol | | | P. grandident. | | | Sorbus americ. | | |
| Carya cordifor | | | P. tremuloides | | | Tilia american | | |
| C. ovata | | | Prunus americ. | | | Ulmus american | | |
| Celtis occiden | | | P. pennsylvan. | | | U. fulva | | |
| Crataegus sp. | | | P. serotina | | | | | |
| | | | | | | Distance: | 21.5 | |
| Acer negundo | | | Fagus grandif. | | | Prunus virgin. | | |
| A. rubrum | | | Fraxinus amer. | 120 | | Quercus alba | | |
| A. saccharinum | | | F. nigra | | | Q. bicolor | | |
| A. saccharum | 120 | | F. pennsylvan. | | | Q. ellipsoid. | | |
| Amelanchier sp. | | | Jugland cinere | | | Q. macrocarpa | | |
| Betula lutea | | | J. nigra | | | Q. rubra | | |
| B. nigra | | | Ostrya virgin. | | 1 | Q. velutina | | |
| B. papyrifera | | | Populus deltoi | | | Robinia pseudo | | |
| Carpinus carol | | | P. grandident. | | | Sorbus americ. | | |
| Carya cordifor | | | P. tremuloides | | | Tilia american | | |
| C. ovata | | | Prunus americ. | | | Ulmus american | | |
| Celtis occiden | | | P. pennsylvan. | | | U. fulva | | |
| Crataegus sp. | | | P. serotina | | | | | |
| | | | | | | Distance: | 18.5 | |
| Acer negundo | | | Fagus grandif. | | | Prunus virgin. | | |
| A. rubrum | | | Fraxinus amer. | 120 | | Quercus alba | | |
| A. saccharinum | | | F. nigra | | | Q. bicolor | | |
| A. saccharum | 55 | | F. pennsylvan. | | | Q. ellipsoid. | | |
| Amelanchier sp. | 26 | | Juglans cinere | | | Q. macrocarpa | | |
| Betula lutea | | | J. nigra | | | Q. rubra | | |
| B. nigra | | | Ostrya virgin. | | | Q. velutina | | |
| B. papyrifera | | | Populus deltoi | | | Robinia pseudo | | |
| Carpinis carol | | | P. grandident. | | | Sorbus americ. | | |
| Carya cordifor | | | P. tremuloides | | | Tilia american | | |
| C. ovata | | | Prunus americ. | | | Ulmus american | | |
| Celtis occiden | | | P. pennsylvan. | | | U. fulva | | |
| Crataegus sp. | | | P. serotina | | | | | |
| | | | | | | Distance: | 18.5 | |
| Acer negundo | | | Fagus grandif. | | | Prunus virgin. | | |
| A. rubrum | | | Fraxinus amer. | | | Quercus alba | | |
| A. saccharinum | | | F. nigra | | | Q. bicolor | | |
| A. saccharum | 24 | | F. pennsylvan. | | | Q. ellipsoid. | | |
| Amelanchier sp. | | | Juglans cinere | | | Q. macrocarpa | | |
| Betula lutea | | | J. nigra | | | Q. rubra | | |
| B. nigra | | | Ostrya virgin. | | | Q. velutina | | |
| B. papyrifera | | | Populus deltoi | | | Robinia pseudo | | |
| Carpinus carol | | | P. grandident. | | | Sorbus americ. | | |
| Carya cordifor | | | P. tremuloides | | | Tilia american | 240 | |
| C. ovata | | | Prunus americ. | | | Ulmus american | | |
| Celtis occiden | | | P. pennsylvan. | | | U. fulva | | |
| Crataegus sp. | | | P. serotina | | | | | |
| | | | | | | Distance: | 16 | |

| Tree | BA | S | Tree | BA | S | Tree | BA | S |
|-----------------|----|----|----------------|-----|---|----------------|----|------|
| Acer negundo | | | Fagus grandif. | | | Prunus virgin. | | |
| A. rubrum | | | Fraxinus amer. | | | Quercus alba | | |
| A. saccharinum | | | F. nigra | | | Q. bicolor | | |
| A. saccharum | | | F. pennsylvan. | | | Q. ellipsoid. | | |
| Amelanchier sp. | | | Juglans cinere | | | Q. macrocarpa | | |
| Betula lutea | | | J. nigra | | | C. rubra | | |
| B. nigra | | | Ostrya virgin. | | | Q. velutina | | |
| B. papyrifera | | | Populus deltoi | | | Robinia pseudo | | |
| Carpinus carol | | | P. grandident. | | | Sorbus americ. | | |
| Carya cordifor | | | P. tremuloides | | | Tilia american | | |
| C. ovata | | | Prunus americ. | | | Ulmus american | | |
| Celtis occiden | | | P. pennsylvan. | | | U. fulva | | |
| Crataegus sp. | | | P. serotina | | | | | |
| | | | | | | Distance: | | 34 |
| Acer negundo | | | Fagus grandif. | | | Prunus virgin. | | |
| A. rubrum | | | Fraxinus amer. | 250 | | Quercus alba | | |
| A. saccharinum | | | F. nigra | | | Q. bicolor | | |
| A. saccharum | | 16 | F. pennsylvan. | | | Q. ellipsoid. | | |
| Amelanchier sp. | | | Jugland cinere | | | Q. macrocarpa | | |
| Betula lutea | | | J. nigra | | | Q. rubra | | |
| B. nigra | | | Ostrya virgin. | | | Q. velutina | | |
| B. papyrifera | | | Populus deltoi | | | Robinia pseudo | | |
| Carpinus carol | | | P. grandident. | | | Sorbus americ. | | |
| Carya cordifor | | | P. tremuloides | | | Tilia american | | |
| C. ovata | | | Prunus americ. | | | Ulmus american | | |
| Celtis occiden | | | P. pennsylvan. | | | U. fulva | | |
| Crataegus sp. | | | P. serotina | | | | | |
| | | | | | | Distance: | | 16.5 |
| Acer negundo | | | Fagus grandif. | | | Prunus virgin. | | |
| A. rubrum | | | Fraxinus amer. | | | Quercus alba | | |
| A. saccharinum | | | F. nigra | | | Q. bicolor | | |
| A. saccharum | | 30 | F. pennsylvan. | | | Q. ellipsoid. | | |
| Amelanchier sp. | | | Juglans cinere | | | Q. macrocarpa | | |
| Betula lutea | | | J. nigra | | | C. rubra | | 230 |
| B. nigra | | | Ostrya virgin. | | | Q. velutina | | |
| B. papyrifera | | | Populus deltoi | | | Robinia pseudo | | |
| Carpinis carol | | | P. grandident. | | | Sorbus americ. | | |
| Carya cordifor | | | P. tremuloides | | | Tilia american | | |
| C. ovata | | | Prunus americ. | | | Ulmus american | | |
| Celtis occiden | | | P. pennsylvan. | | | U. fulva | | |
| Crataegus sp. | | | P. serotina | | | | | |
| | | | | | | Distance: | | 16 |
| Acer negundo | | | Fagus grandif. | | | Prunus virgin. | | |
| A. rubrum | | | Fraxinus amer. | | | Quercus alba | | |
| A. saccharinum | | | F. nigra | | | Q. bicolor | | |
| A. saccharum | | 65 | F. pennsylvan. | | | Q. ellipsoid. | | |
| Amelanchier sp. | | | Juglans cinere | | | Q. macrocarpa | | |
| Betula lutea | | | J. nigra | | | Q. rubra | | -110 |
| B. nigra | | | Ostrya virgin. | | | C. velutina | | |
| B. papyrifera | | | Populus deltoi | | | Robinia pseudo | | |
| Carpinus carol | | | P. grandident. | | | Sorbus americ. | | |
| Carya cordifor | | | P. tremuloides | | | Tilia american | | |
| C. ovata | | | Prunus americ. | | | Ulmus american | | |
| Celtis occiden | | | P. pennsylvan. | | | U. fulva | | |
| Crataegus sp. | | | P. serotina | | | | | |
| | | | | | | Distance: | | 18.5 |

Moore

Field Notes

I Hardwood Survey

Presence & Station Record

Stand No.: 115

1015

| Tree | BA | S | Tree | BA | S | Tree | BA | S |
|-----------------|----|---|----------------|----|---|----------------|----|---|
| Acer negundo | | | Fagus grandif. | | | Prunus virgin. | | |
| A. rubrum | | | Fraxinus amer. | | | Quercus alba | | |
| A. saccharinum | | | F. nigra | | | Q. bicolor | | |
| A. saccharum | | | F. pennsylvan. | | | Q. ellipsoid. | | |
| Amelanchier sp. | | | Juglans cinere | | | Q. macrocarpa | | |
| Betula lutea | | | J. nigra | | | Q. rubra | | |
| B. nigra | | | Ostrya virgin. | | | Q. velutina | | |
| B. papyrifera | | | Populus deltoi | | | Robinia pseudo | | |
| Carpinus carol | | | P. grandident. | | | Sorbus americ. | | |
| Carya cordifor | | | P. tremuloides | | | Tilia american | | |
| C. ovata | | | Prunus americ. | | | Ulmus american | | |
| Celtis occiden | | | P. pennsylvan. | | | U. fulva | | |
| Crataegus sp. | | | P. serotina | | | | | |

Big Bend
Waubesa
Vernon
+ 5N-R19E
See 14

Distance: 32

- Actaea sp. w.
- Adiantum pedat.
- Agrimonia gryp.
- Allium tricocc.
- Amphicarpa brac.
- Anemone quinque.
- A. virginiana
- Anemonella thal.
- Antennaria sp.
- Aplectrum hiem.
- Apocynum andros.
- Aquilegia canad.
- Aralia nudicaul.
- A. racemosa
- Arenaria later.
- Arisaema atror.
- Asarum canad.
- Aster macrophyll.
- A. sagittifolius
- A. shortii
- Athyrium angust.
- Aureolaria grandif.
- Botrychium vir.
- Brachyelytrum
- Campanula amer.
- Carex albursina
- C. pennsylvan.
- Caulophyllum thal.
- Celastrus scan.
- Circaea latif.
- Claytonia virg.
- Cornus altern.
- C. femina
- C. rugosa
- Corylus americana
- Cryptotaenia canad.
- Cypripedium pubesc.
- Cystopteris frag.
- Dentaria laciniata
- Desmodium acumin.
- D. nudiflorum
- Dicentra cucullaria
- Dodecatheon meadia
- Dryopteris spinulosa
- Erigeron pulchellus
- Erythronium albidum

- Shrubs & Herbs
- Eupatorium purpur.
 - Eupatorium rugosum
 - Festuca obtusa
 - Fragaria virgin.
 - Galium aparine
 - G. circaezans
 - G. concinnum
 - G. lanceolatum
 - G. triflorum
 - Geranium macul.
 - Geum canadense
 - Goodyera pubesc.
 - Habenaria bract.
 - Hamamelis virg.
 - Helianthus strum.
 - Hepatica acutil.
 - Heuchera richard.
 - Hydrastis canad.
 - Hydrophyllum virg.
 - Hystrix patula
 - Impatiens biflora
 - I. pallida
 - Isopyrum bitern.
 - Lactuca spicata
 - Laportea canad.
 - Lapaula virgin.
 - Lathyrus ochrol.
 - Lonicera prolif.
 - Lysimachia quadr.
 - Maianthemum can.
 - Menispermum can.
 - Mitella diphylla
 - Monarda fistulosa
 - Orchis spectab.
 - Oryzopsis racem.
 - Osmorhiza clayton.
 - O. longistylis
 - Osmunda clayton.
 - Panax quinquef.
 - Panicum latifolium
 - Parietaria pennsylv.
 - Parthenocissus vit.
 - Phlox divaricata
 - Phryma leptostachya
 - Podophyllum pelt.
 - Polemonium reptans

- Polygonatum commut.
- Polygonatum pubesc.
- Polygonum virgin.
- Potentilla simpl.
- Prenanthes alba
- Pteridium aquil.
- Pyrola elliptica
- Ranunculus abort.
- R. recurvatus
- R. septentrion.
- Rhus radicans
- Ribes americanum
- R. cynosbati
- R. missouriense
- Rosa sp.
- Rubus alleghen.
- R. occidentalis
- R. strigosus
- Sambucus canad.
- Sanguinaria can.
- Sanicula gregaria
- S. marilandica
- Smilacina racemosa
- S. stellata
- Smilax ecirrhata
- S. herbacea
- S. hispida
- Solidago altissima
- S. latifolia
- S. ulmifolia
- Thalictrum dioicum
- Trillium cernuum
- T. flexipes
- T. grandiflorum
- T. recurvatum
- Triosteum perfoliatum
- Uvularia grandiflora
- Veronicastrum virg.
- Viburnum acerifolium
- V. affine
- Viola cucullata
- V. pubescens
- Vitis aestivalis
- V. riparia
- Zanthoxylum americ.
- Zizia aurea

Presence

II Hardwood Survey

Presence & Station Record

Stand No.: 115
1015

Agastache scrophul.
 Allium canadense
 Amorpha canesc.
 Anaphalis marg.
 Anemone cylindrica
 Arabis canadensis
 A. laevigata
 A. lyrata
 A. perstellata
 Aralia hispida
 Arisaema dracont.
 Asclepias ovalif.
 A. phytolaccoides
 Aster azureus
 A. paniculatus
 A. prenanthoides
 Athyrium thelypter.
 Besseyia bullii
 Boehmeria cylindr.
 Botrychium multif.
 Bromus purgans
 Camptosorus rhizop.
 Carex convoluta
 Ceanothus americ.
 Chimaphila umbell.
 Cirsium altissim.
 Clematis virgin.
 Clintonia boreal.
 Comandra umbellata
 Conopholis americ.
 Corallorrhiza mac.
 Corydalis semperv.
 Cynoglossum offic.
 Cystopteris bulbif.
 Desmodium bracteos.
 D. canadense
 Dicentra canad.
 Diervilla lonicera
 Dioscorea villosa
 Dirca palustris
 Elymus villosus
 Epifagus virgin.

Erigeron philadel.
 Erythronium americ.
 Evonymus atropur.
 Floerkea prosperp.
 Fragaria vesca
 Galium boreale
 Gaultheria procumb.
 Gaylussacia baccata
 Gentiana quinquef.
 Geum virginianum
 Hedeoma hispida
 Hepatica americana
 Heracleum lanatum
 Hieracium canad.
 H. scabrum
 Hydrophyllum append.
 Hypoxis hirsuta
 Ilex verticillata
 Juncus tenuis
 Juniperus communis
 J. virginiana
 Krigia biflora
 Lathyrus venosus
 Lilium philadel.
 Liparis liliifolia
 Lobelia cardinalis
 Lonicera dioica
 L. hirsuta
 Luzula acuminata
 L. Multiflora
 Miliun effusum
 Mitchella repens
 Monotropa uniflora
 Onoclea sensibilis
 Cryzopsis asperif.
 Osmunda cinnamomea
 Oxalis violacea
 Panax trifolium
 Paronychia canad.
 Pedicularis canad.
 Physocarpus opul.
 Phytolacca decand.

Pilea pumila
 Polymnia canad.
 Polypodium vulgare
 Prunella vulgaris
 Pteretis nodulosa
 Pyrus coronaria
 P. ioensis
 Ranunculus fascicul.
 R. rhomboideus
 Rhus glabra
 R. typhina
 Rubus hispidus
 R. pubescens
 Rudbeckia laciniata
 Salix sp.
 Sambucus pubens
 Saxifraga pennsylv.
 Scrophularia lan.
 S. marilandica
 Senecio balsamitae
 Silene stellata
 Solanum nigrum
 Solidago speciosa
 Staphylea trifolia
 Steironema ciliatum
 S. lanceolatum
 Streptopus roseus
 Symplocarpus foet.
 Taenidia integerr.
 Taxus canadensis
 Thalictrum dasycarp.
 Thaspium aureum
 Tradescantia ohio.
 Uvularia sessilif.
 Vaccinium canad.
 Veronica serpyllif.
 Viburnum lentago
 V. trilobum
 Vicia americana
 Viola conspersa
 V. incognita

Additional Species:

Woodsia glabella

No signs of *C. canadensis*

Jeffersonia

Small cutting mostly Oak too rotten to count

Stump: - *Eraximus* sp. 95

Open grown white oak. 1

A₀ - 1

A₁ - 3.5

A₂ - 2

B₁ +

D.P.M. 1'

| Tree | : BA | : S | Tree | : BA | : S | Tree | : BA | : S |
|-----------------|------|-----|--------------------|------|-----|----------------|------|-----|
| Acer negundo | | | Fagus grandif. | | | Prunus virgin. | | |
| A. rubrum | | | Fraxinus amer. 170 | | | Quercus alba | | |
| A. saccharinum | | | F. nigra | | | Q. bicolor | | |
| A. saccharum | | | F. pennsylvan. | | | Q. ellipsoid. | | |
| Amelanchier sp. | | | Juglans cinere | | | Q. macrocarpa | | |
| Betula lutea | | | J. nigra | | | Q. rubra 180 | | |
| B. nigra | | | Ostrya virgin. | | | Q. velutina | | |
| B. papyrifera | | | Populus deltoi | | | Robinia pseudo | | |
| Carpinus carol | | | P. grandident. | | | Sorbus americ. | | |
| Carya cordifor | | | P. tremuloides | | | Tilia american | | |
| C. ovata | | | Prunus americ. | | | Ulmus american | | |
| Celtis occiden | | | P. pennsylvan. | | | U. fulva | | |
| Crataegus sp. | | | P. serotina | | | | | |

Distance: 185

| Shrubs & Herbs | | |
|----------------------|----------------------|-----------------------|
| Actaea sp. | Eupatorium purpur. | Polygonatum commut. |
| Adiantum pedat. | Eupatorium rugosum | Polygonatum pubesc. |
| Agrimonia gryo. | Festuca obtusa | Polygonum virgin. |
| Allium tricocc. | Fragaria virgin. | Potentilla simpl. |
| Amphicarpa brac. | Galium aparine | Prenanthes alba |
| Anemone quinque. | G. circaezans | Pteridium aquil. |
| A. virginiana | G. concinnum | Pyrola elliptica |
| Anemonella thal. | G. lanceolatum | Ranunculus abort. |
| Antennaria sp. | G. triflorum | R. recurvatus |
| Aplectrum hiem. | Geranium macul. | R. septentrion. |
| Apocynum andros. | Geum canadense | Rhus radicans |
| Aquilegia canad. | Goodyera pubesc. | Ribes americanum |
| Aralia nudicaul. | Habenaria bract. | R. cynosbati |
| A. racemosa | Hamamelis virg. | R. missouriense |
| Arenaria later. | Helianthus strum. | Rosa sp. |
| Arisaema atror. | Hepatica acutil. | Rubus alleghen. |
| Asarum canad. | Heuchera richard. | R. occidentalis |
| Aster macrophyll. | Hydrastis canad. | R. strigosus |
| A. sagittifolius | Hydrophyllum virg. | Sambucus canad. |
| A. shortii | Hystrix patula | Sanguinaria can. |
| Athyrium angust. | Impatiens biflora | Sanicula gregaria |
| Aureolaria grandif. | I. pallida | S. marilandica |
| Botrychium vir. | Isopyrum bitern. | Smilacina racemosa |
| Brachyelytrum | Lactuca spicata | S. stellata |
| Campanula amer. | Laportea canad. | Smilax ecirrhata |
| Carex albursina | Lappula virgin. | S. herbacea |
| C. pennsylvan. | Lathyrus ochrol. | S. hispida |
| Caulophyllum thal. | Lonicera proclif. | Solidago altissima |
| Celastrus scan. | Lysimachia quadr. | S. latifolia |
| Circaea latif. | Maianthemum can. | S. ulmifolia |
| Claytonia virg. | Menispermum can. | Thalictrum dioicum |
| Cornus altern. | Mitella diphylla | Trillium cernuum |
| C. femina | Monarda fistulosa | T. flexipes |
| C. rugosa | Orchis spectab. | T. grandiflorum |
| Corylus americana | Oryzopsis racem. | T. recurvatum |
| Cryptotaenia canad. | Osmorhiza clayton. | Triosteum perfoliatum |
| Cypripedium pubesc. | O. longistylis | Uvularia grandiflora |
| Cystopteris frag. | Osmunda clayton. | Veronicastrum virg. |
| Dentaria laciniata | Panax quinquef. | Viburnum acerifolium |
| Desmodium acumin. | Panicum latifolium | V. affine |
| D. nudiflorum | Parietaria pennsylv. | Viola cucullata |
| Dicentra cucullaria | Parthenocissus vit. | V. pubescens |
| Dodecatheon meadia | Phlox divaricata | Vitis aestivalis |
| Dryopteris spinulosa | Phryma leptostachya | V. riparia |
| Erigeron pulchellus | Pedophyllum pelt. | Zanthoxylum americ. |
| Erythronium albidum | Polemonium reptans | Zizia aurea |

Carex x 2

| | | |
|---------------------|----------------------|----------------------|
| Agastache scrophul. | Erigeron philadel. | Pilea pumila |
| Allium canadense | Erythronium americ. | Polymnia canad. |
| Amorpha canesc. | Evonymus atropur. | Polypodium vulgare |
| Anaphalis marg. | Floerkea proserp. | Prunella vulgaris |
| Anemone cylindrica | Fragaria vesca | Pteretis nodulosa |
| Arabis canadensis | Galium boreale | Pyrus coronaria |
| A. laevigata | Gaultheria procumb. | P. ioensis |
| A. lyrata | Gaylussacia baccata | Ranunculus fascicul. |
| A. perstellata | Gentiana quinquef. | R. rhomboideus |
| Aralia hispida | Geum virginianum | Rhus glabra |
| Arisaema dracont. | Hedeoma hispida | R. typhina |
| Asclepias ovalif. | Hepatica americana | Rubus hispidus |
| A. phytolaccoides | Heracleum lanatum | R. pubescens |
| Aster azureus | Hieracium canad. | Rudbeckia laciniata |
| A. paniculatus | H. scabrum | Salix sp. |
| A. prenanthoides | Hydrophyllum append. | Sambucus pubens |
| Athyrium thelypter. | Hypoxis hirsuta | Saxifraga pennsylv. |
| Besseyia bullii | Ilex verticillata | Scrophularia lan. |
| Boehmeria cylindr. | Juncus tenuis | S. marilandica |
| Botrychium multif. | Juniperus communis | Senecio balsamitae |
| Bromus pürgans | J. virginiana | Silene stellata |
| Camptosorus rhizop. | Krigia biflora | Solanum nigrum |
| Carex convoluta | Lathyrus venosus | Solidago speciosa |
| Ceanothus americ. | Lilium philadel. | Staphylea trifolia |
| Chimaphila umbell. | Liparis liliifolia | Steironema ciliatum |
| Cirsium altissim. | Lobelia cardinalis | S. lanceolatum |
| Clematis virgin. | Lonicera dioica | Streptopus roseus |
| Clintonia boreal. | L. hirsuta | Symplocarpus foet. |
| Comandra umbellata | Luzula acuminata | Taenidia integerr. |
| Conopholis americ. | L. Multiflora | Taxus canadensis |
| Corallorrhiza mac. | Milium effusum | Thalictrum dasycarp. |
| Corydalis semperv. | Mitchella repens | Thaspium aureum |
| Cynoglossum offic. | Monotropa uniflora | Tradescantia ohio. |
| Cystopteris bulbif. | Onoclea sensibilis | Uvularia sessilif. |
| Desmodium bracteos. | Oryzopsis asperif. | Vaccinium canad. |
| D. canadense | Osmunda cinnamomea | Veronica serpyllif. |
| Dicentra canad. | Oxalis violacea | Viburnum lentago |
| Diervilla lonicera | Panax trifolium | V. trilobum |
| Dioscorea villosa | Paronychia canad. | Vicia americana |
| Dirca palustris | Pedicularis canad. | Viola conspersa |
| Elymus villosus | Physocarpus opul. | V. incognita |
| Epifagus virgin. | Phytolacca decand. | |

Additional Species:

| Tree | : BA | : S | Tree | : BA | : S | Tree | : BA | : S |
|------|------|-----|------|------|-----|------|------|-----|
|------|------|-----|------|------|-----|------|------|-----|

| | | | | | | | | |
|-----------------|----|--|-----------------|--|--|----------------------|--|--|
| Acer negundo | | | Fagus grandif. | | | Prunus virgin. | | |
| A. rubrum | | | Fraxinus amer. | | | Quercus alba | | |
| A. saccharinum | | | F. nigra | | | Q. bicolor | | |
| A. saccharum | 80 | | F. pennsylvan. | | | Q. ellipsoid. | | |
| Amelanchier sp. | | | Juglans cinere | | | Q. macrocarpa | | |
| Betula lutea | | | J. nigra | | | Q. rubra | | |
| B. nigra | | | Ostrya virgin. | | | Q. velutina | | |
| B. papyrifera | | | Populus deltoi. | | | Robinia pseudo | | |
| Carpinus carol | | | P. grandident. | | | Sorbus americ. | | |
| Carya cordifor | | | P. tremuloides | | | Tilia american - 460 | | |
| C. ovata | | | Prunus americ. | | | Ulmus american | | |
| Celtis occiden | | | P. pennsylvan. | | | U. fulva | | |
| Crataegus sp. | | | P. serotina | | | | | |

Distance: 22

Shrubs & Herbs

| | | |
|----------------------|----------------------|-----------------------|
| Actaea sp. | Eupatorium purpur. | Polygonatum commut. |
| Adiantum pedat. | Eupatorium rugosum | Polygonatum pubesc. |
| Agrimonia gryp. | Festuca obtusa | Polygonum virgin. |
| Allium tricocc. | Fragaria virgin. | Potentilla simpl. |
| Amphicarpa brac. | Galium aparine | Prenanthes alba |
| Anemone quinque. | G. circaezans | Pteridium aquil. |
| A. virginiana | G. concinnum | Pyrola elliptica |
| Anemonella thal. | G. lanceolatum | Ranunculus abort. |
| Antennaria sp. | G. triflorum | R. recurvatus |
| Aplectrum hiem. | Geranium macul. | R. septentrion. |
| Apocynum andros. | Geum canadense | Rhus radicans |
| Aquilegia canad. | Goodyera pubesc. | Ribes americanum |
| Aralia nudicaul. | Habenaria bract. | R. cynosbati |
| A. racemosa | Hamamelis virg. | R. missouriense |
| Arenaria later. | Helianthus strum. | Rosa sp. |
| Arisaema atror. | Hepatica acutil. | Rubus alleghen. |
| Asarum canad. | Heuchera richard. | R. occidentalis |
| Aster macrophyll. | Hydrastis canad. | R. strigosus |
| A. sagittifolius | Hydrophyllum virg. | Sambucus canad. |
| A. shortii | Hystrix patula | Sanguinaria can. |
| Athyrium angust. | Impatiens biflora | Sanicula gregaria |
| Aureolaria grandif. | I. pallida | S. marilandica |
| Botrychium vir. | Isopyrum bitern. | Smilacina racemosa |
| Brachyelytrum | Lactuca spicata | S. stellata |
| Campanula amer. | Laportea canad. | Smilax ecirrhata |
| Carex albursina | Lappula virgin. | S. herbacea |
| C. pennsylvan. | Lathyrus ochrol. | S. hispida |
| Caulophyllum thal. | Lonicera prolif. | Solidago altissima |
| Celastrus scan. | Lysimachia quadr. | S. latifolia |
| Circaea latif. | Maianthemum can. | S. ulmifolia |
| Claytonia virg. | Menispermum can. | Thalictrum dioicum |
| Cornus altern. | Mitella diphylla | Trillium cernuum |
| C. femina | Monarda fistulosa | T. flexipes |
| C. rugosa | Orchis spectab. | T. grandiflorum |
| Corylus americana | Oryzopsis racem. | T. recurvatum |
| Cryptotaenia canad. | Osmorhiza clayton. | Triosteum perfoliatum |
| Cypripedium pubesc. | O. longistylis | Uvularia grandiflora |
| Cystopteris frag. | Osmunda clayton. | Veronicastrum virg. |
| Dentaria laciniata | Panax quinquef. | Viburnum acerifolium |
| Desmodium acumin. | Panicum latifolium | V. affine |
| D. nudiflorum | Parietaria pennsylv. | Viola cucullata |
| Dicentra cucullaria | Parthenocissus vit. | V. pubescens |
| Dodecatheon meadia | Phlox divaricata | Vitis aestivalis |
| Dryopteris spinulosa | Phryma leptostachya | V. riparia |
| Erigeron pulchellus | Podophyllum pelt. | Zanthoxylum americ. |
| Erythronium albidum | Polemonium reptans | Zizia aurea |

NOS

 : : : : : : : : : : : :
 Tree : BA : S : Tree : BA : S : Tree : BA : S

Acer negundo
 A. rubrum
 A. saccharinum
 A. saccharum ⁵⁵
 Amelanchier sp.
 Betula lutea
 B. nigra
 B. papyrifera
 Carpinus carol
 Carya cordifor
 C. ovata
 Celtis occiden
 Crataegus sp.

Fagus grandif.
 Fraxinus amer.
 F. nigra
 F. pennsylvan.
 Juglans cinere
 J. nigra
 Ostrya virgin.
 Populus deltoi
 P. grandident.
 P. tremuloides
 Prunus americ.
 P. pennsylvan.
 P. serotina

Prunus virgin.
 Quercus alba
 Q. bicolor
 Q. ellipsoid.
 Q. macrocarpa
 Q. rubra
 Q. velutina
 Robinia pseudo
 Sorbus americ.
 Tilia american
 Ulmus american
 U. fulva

110

Distance:

31

Actaea sp.
 Adiantum pedat.
 Agrimonia gryp.
 Allium tricocc.
 Amphicarpa brac.
 Anemone quinque.
 A. virginiana
 Anemonella thal.
 Antennaria sp.
 Aplectrum hiem.
 Apocynum andros.
 Aquilegia canad.
 Aralia nudicaul.
 A. racemosa
 Arenaria later.
 Arisaema atror.
 Asarum canad.
 Aster macrophyll.
 A. sagittifolius
 A. shortii
 Athyrium angust.
 Aureolaria grandif.
 Botrychium vir.
 Brachyelytrum
 Campanula amer.
 Carex albursina
 C. pennsylvan.
 Caulophyllum thal.
 Celastrus scan.
 Circaea latif.
 Claytonia virg.
 Cornus altern.
 C. femina
 C. rugosa
 Corylus americana
 Cryptotaenia canad.
 Cyripedium pubesc.
 Cystopteris frag.
 Dentaria laciniata
 Desmodium acumin.
 D. nudiflorum
 Dicentra cucullaria
 Dodecatheon meadia
 Dryopteris spinulosa
 Erigeron pulchellus
 Erythronium albidum

Shrubs & Herbs

Eupatorium purpur.
 Eupatorium rugosum
 Festuca obtusa
 Fragaria virgin.
 Galium aparine
 G. circaezans
 G. concinnum
 G. lanceolatum
 G. triflorum
 Geranium macul.
 Geum canadense
 Goodyera pubesc.
 Habenaria bract.
 Hamamelis virg.
 Helianthus strum.
 Hepatica acutil.
 Heuchera richard.
 Hydrastis canad.
 Hydrophyllum virg.
 Hystrix patula
 Impatiens biflora
 I. pallida
 Isopyrum bitern.
 Lactuca spicata
 Laportea canad.
 Lappula virgin.
 Lathyrus ochrol.
 Lonicera prolif.
 Lysimachia quadr.
 Maianthemum can.
 Menispermum can.
 Mitella diphylla
 Monarda fistulosa
 Orchis spectab.
 Oryzopsis racem.
 Osmorhiza clayton.
 O. longistylis
 Osmunda clayton.
 Panax quinquef.
 Panicum latifolium
 Parietaria pennsylv.
 Parthenocissus vit.
 Phlox divaricata
 Phryma leptostachya
 Pedophyllum pelt.
 Polemonium reptans

Polygonatum commut.
 Polygonatum pubesc.
 Polygonum virgin.
 Potentilla simpl.
 Prenanthes alba
 Pteridium aquil.
 Pyrola elliptica
 Ranunculus abort.
 R. recurvatus
 R. septentrion.
 Rhus radicans
 Ribes americanum
 R. cynosbati
 R. missouriense
 Rosa sp.
 Rubus alleghen.
 R. occidentalis
 R. strigosus
 Sambucus canad.
 Sanguinaria can.
 Sanicula gregaria
 S. marilandica
 Smilacina racemosa
 S. stellata
 Smilax ecirrhata
 S. herbacea
 S. hispida
 Solidago altissima
 S. latifolia
 S. ulmifolia
 Thalictrum dioicum
 Trillium cernuum
 T. flexipes
 T. grandiflorum
 T. recurvatum
 Triosteum perfoliatum
 Uvularia grandiflora
 Veronicastrium virg.
 Viburnum acerifolium
 V. affine
 Viola cucullata
 V. pubescens
 Vitis aestivalis
 V. riparia
 Zanthoxylum americ.
 Zizia aurea

1105

| Tree | BA | S | Tree | BA | S | Tree | BA | S |
|-----------------|----|---|----------------|----|---|--------------------|----|---|
| Acer negundo | | | Fagus grandif. | | | Prunus virgin. | | |
| A. rubrum | | | Fraxinus amer. | | | Quercus alba | | |
| A. saccharinum | | | F. nigra | | | Q. bicolor | | |
| A. saccharum 16 | | | F. pennsylvan. | | | Q. ellipsoid. | | |
| Amelanchier sp. | | | Juglans cinere | | | Q. macrocarpa | | |
| Betula lutea | | | J. nigra | | | Q. rubra | | |
| B. nigra | | | Ostrya virgin. | | | Q. velutina | | |
| B. papyrifera | | | Populus deltoi | | | Robinia pseudo | | |
| Carpinus carol | | | P. grandident. | | | Sorbus americ. | | |
| Carya cordifor | | | P. tremuloides | | | Tilia american 2/0 | | |
| C. ovata | | | Prunus americ. | | | Ulmus american | | |
| Celtis occiden | | | P. pennsylvan. | | | U. fulva | | |
| Crataegus sp. | | | P. serotina | | | | | |

Distance: 15

| Shrubs & Herbs | | |
|----------------------|----------------------|-----------------------|
| Actaea sp. | Eupatorium purpur. | Polygonatum commut. |
| Adiantum pedat. | Eupatorium rugosum | Polygonatum pubesc. |
| Agrimonia gryp. | Festuca obtusa | Polygonum virgin. |
| Allium tricocc. | Fragaria virgin. | Potentilla simpl. |
| Amphicarpa brac. | Galium aparine | Prenanthes alba |
| Anemone quinque. | G. circaeazans | Pteridium aquil. |
| A. virginiana | G. concinnum | Pyrola elliptica |
| Anemonella thal. | G. lanceolatum | Ranunculus abort. |
| Antennaria sp. | G. triflorum | R. recurvatus |
| Aplectrum hiem. | Geranium macul. | R. septentrion. |
| Apocynum andros. | Geum canadense | Rhus radicans |
| Aquilegia canad. | Goodyera pubesc. | Ribes americanum |
| Aralia nudicaul. | Habenaria bract. | R. cynosbati |
| A. racemosa | Hamamelis virg. | R. missouriense |
| Arenaria later. | Helianthus strum. | Rosa sp. |
| Arisaema atrop. | Hepatica acutil. | Rubus alleghen. |
| Asarum canad. | Heuchera richard. | R. occidentalis |
| Aster macrophyll. | Hydrastis canad. | R. strigosus |
| A. sagittifolius | Hydrophyllum virg. | Sambucus canad. |
| A. shortii | Hystrix patula | Sanguinaria can. |
| Athyrium angust. | Impatiens biflora | Sanicula gregaria |
| Aureolaria grandif. | I. pallida | S. marilandica |
| Botrychium vir. | Isopyrum bitern. | Smilacina racemosa |
| Brachyelytrum | Lactuca spicata | S. stellata |
| Campanula amer. | Laportea canad. | Smilax ecirrhata |
| Carex albursina | Lappula virgin. | S. herbacea |
| C. pennsylvan. | Lathyrus ochrol. | S. hispida |
| Caulophyllum thal. | Lonicera proclif. | Solidago altissima |
| Celastrus scan. | Lysimachia quadr. | S. latifolia |
| Circaea latif. | Maianthemum can. | S. ulmifolia |
| Claytonia virg. | Menispermum can. | Thalictrum dioicum |
| Cornus altern. | Mitella diphylla | Trillium cernuum |
| C. femina | Monarda fistulosa | T. flexipes |
| C. rugosa | Orchis spectab. | T. grandiflorum |
| Corylus americana | Oryzopsis racem. | T. recurvatum |
| Cryptotaenia canad. | Osmorhiza clayton. | Triosteum perfoliatum |
| Cypripedium pubesc. | O. longistylis | Uvularia grandiflora |
| Cystopteris frag. | Osmunda clayton. | Veronicastrum virg. |
| Dentaria laciniata | Panax quinquef. | Viburnum acerifolium |
| Desmodium acumin. | Panicum latifolium | V. affine |
| D. nudiflorum | Parietaria pennsylv. | Viola cucullata |
| Dicentra cucullaria | Parthenocissus vit. | V. pubescens |
| Dodecatheon meadia | Phlox divaricata | Vitis aestivalis |
| Dryopteris spinulosa | Phryma leptostachya | V. riparia |
| Erigeron pulchellus | Podophyllum pelt. | Zanthoxylum americ. |
| Erythronium albidum | Polemonium reptans | Zizia aurea |

nos.

| Tree | : BA | : S | : Tree | : BA | : S | : Tree | : BA | : S |
|-----------------|------|-----|----------------|------|-----|----------------|------|-----|
| Acer negundo | | | Fagus grandif. | | | Prunus virgin. | | |
| A. rubrum | | | Fraxinus amer. | | | Quercus alba | | |
| A. saccharinum | | | F. nigra | | | Q. bicolor | | |
| A. saccharum | 75 | | F. pennsylvan. | | | Q. ellipsoid. | | |
| Amelanchier sp. | | | Juglans cinere | | | Q. macrocarpa | | |
| Betula lutea | | | J. nigra | | | Q. rubra | 120 | |
| B. nigra | | | Ostrya virgin. | | | Q. velutina | | |
| B. papyrifera | | | Populus deltoi | | | Robinia pseudo | | |
| Carpinus carol | | | P. grandident. | | | Sorbus americ. | | |
| Carya cordifor | | | P. tremuloides | | | Tilia american | | |
| C. ovata | | | Prunus americ. | | | Ulmus american | | |
| Celtis occiden | | | P. pennsylvan. | | | U. fulva | | |
| Crataegus sp. | | | P. serotina | | | | | |

Distance: 22

| Shrubs & Herbs | |
|----------------------|-----------------------|
| Actaea sp. | Eupatorium purpur. |
| Adiantum pedat. | Eupatorium rugosum |
| Agrimonia gryp. | Festuca obtusa |
| Allium tricocc. | Fragaria virgin. |
| Amphicarpa brac. | Galium aparine |
| Anemone quinque. | G. circaezans |
| A. virginiana | G. concinnum |
| Anemonella thal. | G. lanceolatum |
| Antennaria sp. | G. triflorum |
| Aplectrum hiem. | Geranium macul. |
| Apocynum andros. | Geum canadense |
| Aquilegia canad. | Goodyera pubesc. |
| Aralia nudicaul. | Habenaria bract. |
| A. racemosa | Hamamelis virg. |
| Arenaria later. | Helianthus strum. |
| Arisaema atror. | Hepatica acutil. |
| Asarum canad. | Heuchera richard. |
| Aster macrophyll. | Hydrastis canad. |
| A. sagittifolius | Hydrophyllum virg. |
| A. shortii | Hystrix patula |
| Athyrium angust. | Impatiens biflora |
| Aureolaria grandif. | I. pallida |
| Botrychium vir. | Isopyrum bitern. |
| Brachyelytrum | Lactuca spicata |
| Campanula amer. | Laportea canad. |
| Carex albursina | Lappula virgin. |
| C. pennsylvan. | Lathyrus ochrol. |
| Caulophyllum thal. | Lonicera prolif. |
| Celastrus scan. | Lysimachia quadr. |
| Circaea latif. | Maianthemum can. |
| Claytonia virg. | Menispermum can. |
| Cornus altern. | Mitella diphylla |
| C. femina | Monarda fistulosa |
| C. rugosa | Orchis spectab. |
| Corylus americana | Oryzopsis racem. |
| Cryptotaenia canad. | Osmorhiza clayton. |
| Cypripedium pubesc. | O. longistylis |
| Cystopteris frag. | Osmunda clayton. |
| Dentaria laciniata | Panax quinquef. |
| Desmodium acumin. | Panicum latifolium |
| D. nudiflorum | Parietaria pennsylv. |
| Dicentra cucullaria | Parthenocissus vit. |
| Dodecatheon meadia | Phlox divaricata |
| Dryopteris spinulosa | Phryma leptostachya |
| Erigeron pulchellus | Podophyllum pelt. |
| Erythronium albidum | Polemonium reptans |
| | Polygonatum commut. |
| | Polygonatum pubesc. |
| | Polygonum virgin. |
| | Potentilla simpl. |
| | Prenanthes alba |
| | Pteridium aquil. |
| | Pyrola elliptica |
| | Ranunculus abort. |
| | R. recurvatus |
| | R. septentrion. |
| | Rhus radicans |
| | Ribes americanum |
| | R. cynosbati |
| | R. missouriense |
| | Rosa sp. |
| | Rubus alleghen. |
| | R. occidentalis |
| | R. strigosus |
| | Sambucus canad. |
| | Sanguinaria can. |
| | Sanicula gregaria |
| | S. marilandica |
| | Smilacina racemosa |
| | S. stellata |
| | Smilax ecirrhata |
| | S. herbacea |
| | S. hispida |
| | Solidago altissima |
| | S. latifolia |
| | S. ulmifolia |
| | Thalictrum dioicum |
| | Trillium cernuum |
| | T. flexipes |
| | T. grandiflorum |
| | T. recurvatum |
| | Triosteum perfoliatum |
| | Uvularia grandiflora |
| | Veronicastrum virg. |
| | Viburnum acerifolium |
| | V. affine |
| | Viola cucullata |
| | V. pubescens |
| | Vitis aestivalis |
| | V. riparia |
| | Zanthoxylum americ. |
| | Zizia aurea |

nos

| | | |
|---------------------|----------------------|----------------------|
| Agastache scrophul. | Erigeron philadel. | Pilea pumila |
| Allium canadense | Erythronium americ. | Polymnia canad. |
| Amorpha canesc. | Evonymus atropur. | Polypodium vulgare |
| Anaphalis marg. | Floerkea prosperp. | Prunella vulgaris |
| Anemone cylindrica | Fragaria vesca | Pteretis nodulosa |
| Arabis canadensis | Galium boreale | Pyrus coronaria |
| A. laevigata | Gaultheria procumb. | P. ioensis |
| A. lyrata | Gaylussacia baccata | Ranunculus fascicul. |
| A. perstellata | Gentiana quinquef. | R. rhomboideus |
| Aralia hispida | Geum virginianum | Rhus glabra |
| Arisaema dracont. | Hedeoma hispida | R. typhina |
| Asclepias ovalif. | Hepatica americana | Rubus hispidus |
| A. phytolaccoides | Heracleum lanatum | R. pubescens |
| Aster azureus | Hieracium canaden. | Rudbeckia laciniata |
| A. paniculatus | H. scabrum | Salix sp. |
| A. prenanthoides | Hydrophyllum append. | Sambucus pubens |
| Athyrium thelypter. | Hypoxis hirsuta | Saxifraga pennsylv. |
| Besseyia bullii | Ilex verticillata | Scrophularia lan. |
| Boehmeria cylindr. | Juncus tenuis | S. marilandica |
| Botrychium multif. | Juniperus communis | Senecio balsamitae |
| Bromus pургans | J. virginiana | Silene stellata |
| Camptosorus rhizop. | Krigia biflora | Solanum nigrum |
| Carex convoluta | Lathyrus venosus | Solidago speciosa |
| Ceanothus americ. | Lilium philadel. | Staphylea trifolia |
| Chimaphila umbell. | Liparis liliifolia | Steironema ciliatum |
| Cirsium altissim. | Lobelia cardinalis | S. lanceolatum |
| Clematis virgin. | Lonicera dioica | Streptopus roseus |
| Clintonia boreal. | L. hirsuta | Symplocarpus foet. |
| Comandra umbellata | Luzula acuminata | Taenidia integerr. |
| Conopholis americ. | L. Multiflora | Taxus canadensis |
| Corallorrhiza mac. | Milium effusum | Thalictrum dasycarp. |
| Corydalis semperv. | Mitchella repens | Thaspium aureum |
| Cynoglossum offic. | Monotropa uniflora | Tradescantia ohio. |
| Cystopteris bulbif. | Onoclea sensibilis | Uvularia sessilif. |
| Desmodium bracteos. | Oryzopsis asperif. | Vaccinium canad. |
| D. canadense | Osmunda cinnamomea | Veronica serpyllif. |
| Dicentra canaden. | Cxalis violacea | Viburnum lentago |
| Diervilla lonicera | Panax trifolium | V. trilobum |
| Dioscorea villosa | Paronychia canad. | Vicia americana |
| Dirca palustris | Pedicularis canad. | Viola conspersa |
| Elymus villosus | Physocarpus opul. | V. incognita |
| Epifagus virgin. | Phytolacca decand. | |

Additional Species:

| Tree | : BA | : S | Tree | : BA | : S | Tree | : BA | : S |
|-----------------|------|-----|----------------|------|-----|----------------|------|-----|
| Acer negundo | | | Fagus grandif. | | | Prunus virgin. | | |
| A. rubrum | | | Fraxinus amer. | | | Quercus alba | 400 | |
| A. saccharinum | | | F. nigra | | | Q. bicolor | | |
| A. saccharum | 60 | | F. pennsylvan. | | | Q. ellipsoid. | | |
| Amelanchier sp. | | | Juglans cinere | | | Q. macrocarpa | | |
| Betula lutea | | | J. nigra | | | Q. rubra | | |
| B. nigra | | | Ostrya virgin. | | | Q. velutina | | |
| B. papyrifera | | | Populus deltoi | | | Robinia pseudo | | |
| Carpinus carol | | | P. grandident. | | | Sorbus americ. | | |
| Carya cordifor | | | P. tremuloides | | | Tilia american | | |
| C. ovata | | | Prunus americ. | | | Ulmus american | | |
| Celtis occiden | | | P. pennsylvan. | | | U. fulva | | |
| Crataegus sp. | | | P. serotina | | | | | |

Distance: 21.5

Shrubs & Herbs

| | | |
|----------------------|----------------------|-----------------------|
| Actaea sp. | Eupatorium purpur. | Polygonatum commut. |
| Adiantum pedat. | Eupatorium rugosum | Polygonatum pubesc. |
| Agrimonia gryp. | Festuca obtusa | Polygonum virgin. |
| Allium tricocc. | Fragaria virgin. | Potentilla simpl. |
| Amphicarpa brac. | Galium aparine | Prenanthes alba |
| Anemone quinque. | G. circaezans | Pteridium aquil. |
| A. virginiana | G. concinnum | Pyrola elliptica |
| Anemonella thal. | G. lanceolatum | Ranunculus abort. |
| Antennaria sp. | G. triflorum | R. recurvatus |
| Aplectrum hiem. | Geranium macul. | R. septentrion. |
| Apocynum andros. | Geum canadense | Rhus radicans |
| Aquilegia canad. | Goodyera pubesc. | Ribes americanum |
| Aralia nudicaul. | Habenaria bract. | R. cynosbati |
| A. racemosa | Hamamelis virg. | R. missouriense |
| Arenaria later. | Helianthus strum. | Rosa sp. |
| Arisaema atror. | Hepatica acutil. | Rubus alleghen. |
| Asarum canad. | Heuchera richard. | R. occidentalis |
| Aster macrophyll. | Hydrastis canad. | R. strigosus |
| A. sagittifolius | Hydrophyllum virg. | Sambucus canad. |
| A. shortii | Hystrix patula | Sanguinaria can. |
| Athyrium angust. | Impatiens biflora | Sanicula gregaria |
| Aureolaria grandif. | I. pallida | S. marilandica |
| Botrychium vir. | Isopyrum bitern. | Smilacina racemosa |
| Brachyelytrum | Lactuca spicata | S. stellata |
| Campanula amer. | Laportea canad. | Smilax ecirrhata |
| Carex albursina | Lappula virgin. | S. herbacea |
| C. pennsylvan. | Lathyrus ochrol. | S. hispida |
| Caulophyllum thal. | Lonicera prolif. | Solidago altissima |
| Celastrus scan. | Lysimachia quadr. | S. latifolia |
| Circaea latif. | Maianthemum can. | S. ulmifolia |
| Claytonia virg. | Menispermum can. | Thalictrum dioicum |
| Cornus altern. | Mitella diphylla | Trillium cernuum |
| C. femina | Monarda fistulosa | T. flexipes |
| C. rugosa | Orchis spectab. | T. grandiflorum |
| Corylus americana | Oryzopsis racem. | T. recurvatum |
| Cryptotaenia canad. | Osmorhiza clayton. | Triosteum perfoliatum |
| Cypripedium pubesc. | O. longistylis | Uvularia grandiflora |
| Cystopteris frag. | Osmunda clayton. | Veronicastrum virg. |
| Dentaria laciniata | Panax quinquef. | Viburnum acerifolium |
| Desmodium acumin. | Panicum latifolium | V. affine |
| D. nudiflorum | Parietaria pennsylv. | Viola cucullata |
| Dicentra cucullaria | Parthenocissus vit. | V. pubescens |
| Dodecatheon meadia | Phlox divaricata | Vitis aestivalis |
| Dryopteris spinulosa | Phryma leptostachya | V. riparia |
| Erigeron pulchellus | Podophyllum pelt. | Zanthoxylum americ. |
| Erythronium albidum | Polemonium reptans | Zizia aurea |

1105

| Tree | : BA | : S | Tree | : BA | : S | Tree | : BA | : S |
|-----------------|------|-----|--------------------|------|-----|----------------|------|-----|
| Acer negundo | | | Fagus grandif. | | | Prunus virgin. | | |
| A. rubrum | | | Fraxinus amer. 350 | | | Quercus alba | | |
| A. saccharinum | | | F. nigra | | | Q. bicolor | | |
| A. saccharum | | | F. pennsylvan. | | | Q. ellipsoid. | | |
| Amelanchier sp. | | | Juglans cinere | | | Q. macrocarpa | | |
| Betula lutea | | | J. nigra | | | Q. rubra 300 | | |
| B. nigra | | | Ostrya virgin. | | | Q. velutina | | |
| B. papyrifera | | | Populus deltoi | | | Robinia pseudo | | |
| Carpinus carol | | | P. grandident. | | | Sorbus americ. | | |
| Carya cordifor | | | P. tremuloides | | | Tilia american | | |
| C. ovata | | | Prunus americ. | | | Ulmus american | | |
| Celtis occiden | | | P. pennsylvan. | | | U. fulva | | |
| Crataegus sp. | | | P. serotina | | | | | |

Distance: 19.5

| Shrubs & Herbs | |
|----------------------|-----------------------|
| Actaea sp. | Eupatorium purpur. |
| Adiantum pedat. | Eupatorium rugosum |
| Agrimonia gryp. | Festuca obtusa |
| Allium tricocc. | Fragaria virgin. |
| Amphicarpa brac. | Galium aparine |
| Anemone quinque. | G. circaezans |
| A. virginiana | G. concinnum |
| Anemonella thal. | G. lanceolatum |
| Antennaria sp. | G. triflorum |
| Aplectrum hiem. | Geranium macul. |
| Apocynum andros. | Geum canadense |
| Aquilegia canad. | Goodyera pubesc. |
| Aralia nudicaul. | Habenaria bract. |
| A. racemosa | Hamamelis virg. |
| Arenaria later. | Helianthus strum. |
| Arisaema atror. | Hepatica acutil. |
| Asarum canad. | Heuchera richard. |
| Aster macrophyll. | Hydrastis canad. |
| A. sagittifolius | Hydrophyllum virg. |
| A. shortii | Hystrix patula |
| Athyrium angust. | Impatiens biflora |
| Aureolaria grandif. | I. pallida |
| Botrychium vir. | Isopyrum bitern. |
| Brachyelytrum | Lactuca spicata |
| Campanula amer. | Laportea canad. |
| Carex albursina | Lappula virgin. |
| C. pennsylvan. | Lathyrus ochrol. |
| Caulophyllum thal. | Lonicera prolif. |
| Celastrus scan. | Lysimachia quadr. |
| Circaea latif. | Maianthemum can. |
| Claytonia virg. | Menispermum can. |
| Cornus altern. | Mitella diphylla |
| C. femina | Monarda fistulosa |
| C. rugosa | Orchis spectab. |
| Corylus americana | Oryzopsis racem. |
| Cryptotaenia canad. | Osmorhiza clayton. |
| Cypripedium pubesc. | O. longistylis |
| Cystopteris frag. | Osmunda clayton. |
| Dentaria laciniata | Panax quinquef. |
| Desmodium acumin. | Panicum latifolium |
| D. nudiflorum | Parietaria pennsylv. |
| Dicentra cucullaria | Parthenocissus vit. |
| Dodecatheon meadia | Phlox divaricata |
| Dryopteris spinulosa | Phryma leptostachya |
| Erigeron pulchellus | Podophyllum pelt. |
| Erythronium albidum | Polemonium reptans |
| | Polygonatum commut. |
| | Polygonatum pubesc. |
| | Polygonum virgin. |
| | Potentilla simpl. |
| | Prenanthes alba |
| | Pteridium aquil. |
| | Pyrola elliptica |
| | Ranunculus abort. |
| | R. recurvatus |
| | R. septentrion. |
| | Rhus radicans |
| | Ribes americanum |
| | R. cynosbati |
| | R. missouriense |
| | Rosa sp. |
| | Rubus alleghen. |
| | R. occidentalis |
| | R. strigosus |
| | Sambucus canad. |
| | Sanguinaria can. |
| | Sanicula gregaria |
| | S. marilandica |
| | Smilacina racemosa |
| | S. stellata |
| | Smilax ecirrhata |
| | S. herbacea |
| | S. hispida |
| | Solidago altissima |
| | S. latifolia |
| | S. ulmifolia |
| | Thalictrum dioicum |
| | Trillium cernuum |
| | T. flexipes |
| | T. grandiflorum |
| | T. recurvatum |
| | Triosteum perfoliatum |
| | Uvularia grandiflora |
| | Veronicastrum virg. |
| | Viburnum acerifolium |
| | V. affine |
| | Viola cucullata |
| | V. pubescens |
| | Vitis aestivalis |
| | V. riparia |
| | Zanthoxylum americ. |
| | Zizia aurea |

1105

9

 Tree : BA : S : Tree : BA : S : Tree : BA : S

Acer negundo
 A. rubrum
 A. saccharinum
 A. saccharum 190
 Amelanchier sp.
 Betula lutea
 B. nigra
 B. papyrifera
 Carpinus carol
 Carya cordifor
 C. ovata
 Celtis occiden
 Crataegus sp.

Fagus grandif.
 Fraxinus amer.
 F. nigra
 F. pennsylvan.
 Juglans cinere - 350
 J. nigra
 Ostrya virgin.
 Populus deltoii
 P. grandident.
 P. tremuloides
 Prunus americ.
 P. pennsylvan.
 P. serotina

Prunus virgin.
 Quercus alba
 Q. bicolor
 Q. ellipsoid.
 Q. macrocarpa
 Q. rubra
 Q. velutina
 Robinia pseudo
 Sorbus americ.
 Tilia american
 Ulmus american
 U. fulva

Distance:

32

Actaea sp.
 Adiantum pedat.
 Agrimonia gryp.
 Allium tricocc.
 Amphicarpa brac.
 Anemone quinque.
 A. virginiana
 Anemonella thal.
 Antennaria sp.
 Aplectrum hiem.
 Apocynum andros.
 Aquilegia canad.
 Aralia nudicaul.
 A. racemosa
 Arenaria later.
 Arisaema atror.
 Asarum canad.
 Aster macrophyll.
 A. sagittifolius
 A. shortii
 Athyrium angust.
 Aureolaria grandif.
 Botrychium vir.
 Brachyelytrum
 Campanula amer.
 Carex albursina
 C. pennsylvan.
 Caulophyllum thal.
 Celastrus scan.
 Circaea latif.
 Claytonia virg.
 Cornus altern.
 C. femina
 C. rugosa
 Corylus americana
 Cryptotaenia canad.
 Cyripedium pubesc.
 Cystopteris frag.
 Dentaria laciniata
 Desmodium acumin.
 D. nudiflorum
 Dicentra cucullaria
 Dodecatheon meadia
 Dryopteris spinulosa
 Erigeron pulchellus
 Erythronium albidum

Shrubs & Herbs

Eupatorium purpur.
 Eupatorium rugosum
 Festuca obtusa
 Fragaria virgin.
 Galium aparine
 G. circaezans
 G. concinnum
 G. lanceolatum
 G. triflorum
 Geranium macul.
 Geum canadense
 Goodyera pubesc.
 Habenaria bract.
 Hamamelis virg.
 Helianthus strum.
 Hepatica acutil.
 Heuchera richard.
 Hydrastis canad.
 Hydrophyllum virg.
 Hystrix patula
 Impatiens biflora
 I. pallida
 Isopyrum bitern.
 Lactuca spicata
 Laportea canad.
 Lapoula virgin.
 Lathyrus ochrol.
 Lonicera prolif.
 Lysimachia quadr.
 Maianthemum can.
 Menispermum can.
 Mitella diphylla
 Monarda fistulosa
 Orchis spectab.
 Oryzopsis racem.
 Osmorhiza clayton.
 O. longistylis
 Osmunda clayton.
 Panax quinquef.
 Panicum latifolium
 Parietaria pennsylv.
 Parthenocissus vit.
 Phlox divaricata
 Phryma leptostachya
 Podophyllum pelt.
 Polemonium reptans

Polygonatum commut.
 Polygonatum pubesc.
 Polygonum virgin.
 Potentilla simpl.
 Prenanthes alba
 Pteridium aquil.
 Pyrola elliptica
 Ranunculus abort.
 R. recurvatus
 R. septentrion.
 Rhus radicans
 Ribes americanum
 R. cynosbati
 R. missouriense
 Rosa sp.
 Rubus alleghen.
 R. occidentalis
 R. strigosus
 Sambucus canad.
 Sanguinaria can.
 Sanicula gregaria
 S. marilandica
 Smilacina racemosa
 S. stellata
 Smilax ecirrhata
 S. herbacea
 S. hispida
 Solidago altissima
 S. latifolia
 S. ulmifolia
 Thalictrum dioicum
 Trillium cernuum
 T. flexipes
 T. grandiflorum
 T. recurvatum
 Triosteum perfoliatum
 Uvularia grandiflora
 Veronicastrum virg.
 Viburnum acerifolium
 V. affine
 Viola cucullata
 V. pubescens
 Vitis aestivalis
 V. riparia
 Zanthoxylum americ.
 Zizia aurea

105

10

Tree : BA : S : Tree : BA : S : Tree : BA : S

Acer negundo
A. rubrum
A. saccharinum
A. saccharum
Amelanchier sp.
Betula lutea
B. nigra
B. papyrifera
Carpinus carol
Carya cordifor
C. ovata
Celtis occiden
Crataegus sp.

114

2

Fagus grandif.
Fraxinus amer.
F. nigra
F. pennsylvan.
Juglans cinere
J. nigra
Ostrya virgin.
Populus deltoi
P. grandident.
P. tremuloides
Prunus americ.
P. pennsylvan.
P. serotina

Prunus virgin.
Quercus alba
Q. bicolor
Q. ellipsoid.
Q. macrocarpa
Q. rubra
Q. velutina
Robinia pseudo
Sorbus americ.
Tilia american
Ulmus american
U. fulva

Distance: 15

Actaea sp.
Adiantum pedat.
Agrimonia gryp.
Allium tricocc.
Amphicarpa brac.
Anemone quinque.
A. virginiana
Anemonella thal.
Antennaria sp.
Aplectrum hiem.
Apocynum andros.
Aquilegia canad.
Aralia nudicaul.
A. racemosa
Arenaria later.
Arisaema atror.
Asarum canad.
Aster macrophyll.
A. sagittifolius
A. shortii
Athyrium angust.
Aureolaria grandif.
Botrychium vir.
Brachyelytrum
Campanula amer.
Carex albursina
C. pennsylvan.
Caulophyllum thal.
Celastrus scan.
Circaea latif.
Claytonia virg.
Cornus altern.
C. femina
C. rugosa
Corylus americana
Cryptotaenia canad.
Cypripedium pubesc.
Cystopteris frag.
Dentaria laciniata
Desmodium acumin.
D. nudiflorum
Dicentra cucullaria
Dodecatheon meadia
Dryopteris spinulosa
Erigeron pulchellus
Erythronium albidum

Shrubs & Herbs

Eupatorium purpur.
Eupatorium rugosum
Festuca obtusa
Fragaria virgin.
Galium aparine
G. circaezans
G. concinnum
G. lanceolatum
G. triflorum
Geranium macul.
Geum canadense
Goodyera pubesc.
Habenaria bract.
Hamamelis virg.
Helianthus strum.
Hepatica acutil.
Heuchera richard.
Hydrastis canad.
Hydrophyllum virg.
Hystrix patula
Impatiens biflora
I. pallida
Isopyrum bitern.
Lactuca spicata
Laportea canad.
Lappula virgin.
Lathyrus ochrol.
Lonicera prolif.
Lysimachia quadr.
Maianthemum can.
Menispermum can.
Mitella diphylla
Monarda fistulosa
Orchis spectab.
Oryzopsis racem.
Osmorhiza clayton.
O. longistylis
Osmunda clayton.
Panax quinquef.
Panicum latifolium
Parietaria pennsylv.
Parthenocissus vit.
Phlox divaricata
Phryma leptostachya
Podophyllum pelt.
Polemonium reptans

Polygonatum commut.
Polygonatum pubesc.
Polygonum virgin.
Potentilla simpl.
Prenanthes alba
Pteridium aquil.
Pyrola elliptica
Ranunculus abort.
R. recurvatus
R. septentrion.
Rhus radicans
Ribes americanum
R. cynosbati
R. missouriense
Rosa sp.
Rubus alleghen.
R. occidentalis
R. strigosus
Sambucus canad.
Sanguinaria can.
Sanicula gregaria
S. marilandica
Smilacina racemosa
S. stellata
Smilax ecirrhata
S. herbacea
S. hispida
Solidago altissima
S. latifolia
S. ulmifolia
Thalictrum dioicum
Trillium cernuum
T. flexipes
T. grandiflorum
T. recurvatum
Triosteum perfoliatum
Uvularia grandiflora
Veronicastrum virg.
Viburnum acerifolium
V. affine
Viola cucullata
V. pubescens
Vitis aestivalis
V. riparia
Zanthoxylum americ.
Zizia aurea

7-1105

| Tree | BA | S | Tree | BA | S | Tree | BA | S |
|-----------------|----|---|----------------|----------|---|----------------|----|---|
| Acer negundo | | | Fagus grandif. | | | Prunus virgin. | | |
| A. rubrum | | | Fraxinus amer. | | | Quercus alba | | |
| A. saccharinum | | | F. nigra | | | Q. bicolor | | |
| A. saccharum | | | F. pennsylvan. | | | Q. ellipsoid. | | |
| Amelanchier sp. | | | Juglans cinere | 140, 170 | | Q. macrocarpa | | |
| Betula lutea | | | J. nigra | | | Q. rubra | | |
| B. nigra | | | Ostrya virgin. | | | Q. velutina | | |
| B. papyrifera | | | Populus deltoi | | | Robinia pseudo | | |
| Carpinus carol | | | P. grandident. | | | Sorbus americ. | | |
| Carya cordifor | | | P. tremuloides | | | Tilia american | | |
| C. ovata | | | Prunus americ. | | | Ulmus american | | |
| Celtis occiden | | | P. pennsylvan. | | | U. fulva | | |
| Crataegus sp. | | | P. serotina | | | | | |

Distance:

22 ft

Shrubs & Herbs

| | | |
|----------------------|------------------------|-----------------------|
| Actaea sp. | Eupatorium purpur. | Polygonatum commut. |
| Adiantum pedat. | Eupatorium rugosum | Polygonatum pubesc. |
| Agrimonia gryp. | Festuca obtusa | Polygonum virgin. |
| Allium tricocc. | Fragaria virgin. | Potentilla simpl. |
| Amphicarpa brac. | Galium aparine | Prenanthes alba |
| Anemone quinque. | G. circaeazans | Pteridium aquil. |
| A. virginiana | G. concinnum | Pyrola elliptica |
| Anemonella thal. | G. lanceolatum | Ranunculus abort. |
| Antennaria sp. | G. triflorum | R. recurvatus |
| Aplectrum hiem. | Geranium macul. | R. septentrion. |
| Apocynum andros. | Geum canadense | Rhus radicans |
| Aquilegia canad. | Goodyera pubesc. | Ribes americanum |
| Aralia nudicaul. | Habenaria bract. | R. cynosbati |
| A. racemosa | Hamamelis virg. | R. missouriense |
| Arenaria later. | Helianthus strum. | Rosa sp. |
| ✓ Arisaema atror. | Hepatica acutil. | Rubus alleghen. |
| Asarum canad. | Heuchera richard. | R. occidentalis |
| Aster macrophyll. | Hydrastis canad. | R. strigosus |
| A. sagittifolius | Hydrophyllum virg. | Sambucus canad. |
| A. shortii | Hystrix patula | Sanguinaria can. |
| Athyrium angust. | Impatiens biflora | Sanicula gregaria |
| Aureolaria grandif. | I. pallida | S. marilandica |
| Botrychium vir. | Isopyrum bitern. | ✓ Smilacina racemosa |
| Brachyelytrum | Lactuca spicata | S. stellata |
| Campanula amer. | Laportea canad. | Smilax ecirrhata |
| Carex albursina | Lappula virgin. | S. herbacea |
| C. pennsylvan. | Lathyrus ochrol. | S. hispida |
| Caulophyllum thal. | Lonicera prolif. | Solidago altissima |
| Celastrus scan. | Lysimachia quadr. | S. latifolia |
| Circaea latif. | Maianthemum can. | S. ulmifolia |
| Claytonia virg. | Menispermum can. | Thalictrum dioicum |
| Cornus altern. | Mitella diphylla | Trillium cernuum |
| C. femina | Monarda fistulosa | T. flexipes |
| C. rugosa | Orchis spectab. | T. grandiflorum |
| Corylus americana | Oryzopsis racem. | T. recurvatum |
| Cryptotaenia canad. | Osmorhiza clayton. | Triosteum perfoliatum |
| Cypripedium pubesc. | O. longistylis | Uvularia grandiflora |
| Cystopteris frag. | Osmunda clayton. | Veronicastrum virg. |
| Dentaria laciniata | Panax quinquef. | Viburnum acerifolium |
| Desmodium acumin. | Panicum latifolium | V. affine |
| D. nudiflorum | ✓ Parietaria pennsylv. | ✓ Viola cucullata |
| Dicentra cucullaria | Parthenocissus vit. | ✓ V. pubescens |
| Dodecatheon meadia | Phlox divaricata | Vitis aestivalis |
| Dryopteris spinulosa | ✓ Phryma leptostachya | V. riparia |
| Erigeron pulchellus | Podophyllum pelt. | Zanthoxylum americ. |
| Erythronium albidum | Polemonium reptans | Zizia aurea |

105

12

Tree : BA : S : Tree : BA : S : Tree : BA : S

Acer negundo
A. rubrum
A. saccharinum
A. saccharum
Amelanchier sp.
Betula lutea
B. nigra
B. papyrifera
Carpinus carol
Carya cordifor
C. ovata
Celtis occiden
Crataegus sp.

Fagus grandif.
Fraxinus amer.
F. nigra
F. pennsylvan.
Juglans cinere
J. nigra
Ostrya virgin.
Populus deltoi
P. grandident.
P. tremuloides
Prunus americ.
P. pennsylvan.
P. serotina

Prunus virgin.
Quercus alba
Q. bicolor
Q. ellipsoid.
Q. macrocarpa
Q. rubra
Q. velutina
Robinia pseudo
Sorbus americ.
Tilia american
Ulmus american
U. fulva

24

320

23 ft

Distance:

Actaea sp.
Adiantum pedat.
Agrimonia gryp.
Allium tricocc.
Amphicarpa brac.
Anemone quinque.
A. virginiana
Anemonella thal.
Antennaria sp.
Aplectrum hiem.
Apocynum andros.
Aquilegia canad.
Aralia nudicaul.
A. racemosa
Arenaria later.
Arisaema atror.
Asarum canad.
Aster macrophyll.
A. sagittifolius
A. shortii
Athyrium angust.
Aureolaria grandif.
Botrychium vir.
Brachyelytrum
Campanula amer.
Carex albursina
C. pennsylvan.
Caulophyllum thal.
Celastrus scan.
Circaea latif.
Claytonia virg.
Cornus altern.
C. femina
C. rugosa
Corylus americana
Cryptotaenia canad.
Cypripedium pubesc.
Cystopteris frag.
Dentaria laciniata
Desmodium acumin.
D. nudiflorum
Dicentra cucullaria
Dodecatheon meadia
Dryopteris spinulosa
Erigeron pulchellus
Erythronium albidum

Shrubs & Herbs

Eupatorium purpur.
Eupatorium rugosum
Festuca obtusa
Fragaria virgin.
Galium aparine
G. circaezans
G. concinnum
G. lanceolatum
G. triflorum
Geranium macul.
Geum canadense
Goodyera pubesc.
Habenaria bract.
Hamamelis virg.
Helianthus strum.
Hepatica acutil.
Heuchera richard.
Hydrastis canad.
Hydrophyllum virg.
Hystrix patula
Impatiens biflora
I. pallida
Isopyrum bitern.
Lactuca spicata
Laportea canad.
Lapoula virgin.
Lathyrus ochrol.
Lonicera prolif.
Lysimachia quadr.
Maianthemum can.
Menispermum can.
Mitella diphylla
Monarda fistulosa
Orchis spectab.
Oryzopsis racem.
Osmorhiza clayton.
O. longistylis
Osmunda clayton.
Panax quinquef.
Panicum latifolium
Parietaria pennsylv.
Parthenocissus vit.
Phlox divaricata
Phryma leptostachya
Podophyllum pelt.
Polemonium reptans

Polygonatum commut.
Polygonatum pubesc.
Polygonum virgin.
Potentilla simpl.
Prenanthes alba
Pteridium aquil.
Pyrola elliptica
Ranunculus abort.
R. recurvatus
R. septentrion.
Rhus radicans
Ribes americanum
R. cynosbati
R. missouriense
Rosa sp.
Rubus alleghen.
R. occidentalis
R. strigosus
Sambucus canad.
Sanguinaria can.
Sanicula gregaria
S. marilandica
Smilacina racemosa
S. stellata
Smilax ecirrhata
S. herbacea
S. hispida
Solidago altissima
S. latifolia
S. ulmifolia
Thalictrum dioicum
Trillium cernuum
T. flexipes
T. grandiflorum
T. recurvatum
Triosteum perfoliatum
Uvularia grandiflora
Veronicastrum virg.
Viburnum acerifolium
V. affine
Viola cucullata
V. pubescens
Vitis aestivalis
V. riparia
Zanthoxylum americ.
Zizia aurea

Agastache scrophul.
 Allium canadense
 Amorpha canesc.
 Anaphalis marg.
 Anemone cylindrica
 Arabis canadensis
 A. laevigata
 A. lyrata
 A. perstellata
 Aralia hispida
 Arisaema dracont.
 Asclepias ovalif.
 A. phytolaccoides
 Aster azureus
 A. paniculatus
 A. prenanthoides
 Athyrium thelypter.
 Besseyia bullii
 Boehmeria cylindr.
 Botrychium multif.
 Bromus purgans
 Camptosorus rhizop.
 Carex convoluta
 Ceanothus americ.
 Chimaphila umbell.
 Cirsium altissim.
 Clematis virgin.
 Clintonia boreal.
 Comandra umbellata
 Conopholis americ.
 Corallorrhiza mac.
 Corydalis semperv.
 Cynoglossum offic.
 Cystopteris bulbif.
 Desmodium bracteos.
 D. canadense
 Dicentra canad.
 Diervilla lonicera
 Dioscorea villosa
 Dirca palustris
 Elymus villosus
 Epifagus virgin.

Erigeron philadel.
 Erythronium americ.
 Evonymus atropur.
 Floerkea prosperp.
 Fragaria vesca
 Galium boreale
 Gaultheria procumb.
 Gaylussacia baccata
 Gentiana quinquef.
 Geum virginianum
 Hedeoma hispida
 Hepatica americana
 Heracleum lanatum
 Hieracium canad.
 H. scabrum
 Hydrophyllum append.
 Hypoxis hirsuta
 Ilex verticillata
 Juncus tenuis
 Juniperus communis
 J. virginiana
 Krigia biflora
 Lathyrus venosus
 Lilium philadel.
 Liparis liliifolia
 Lobelia cardinalis
 Lonicera dioica
 L. hirsuta
 Luzula acuminata
 L. Multiflora
 Milium effusum
 Mitchella repens
 Monotropa uniflora
 Onoclea sensibilis
 Oryzopsis asperif.
 Osmunda cinnamomea
 Oxalis violacea
 Panax trifolium
 Paronychia canad.
 Pedicularis canad.
 Physocarpus opul.
 Phytolacca decand.

Pilea pumila
 Polymnia canad.
 Polypodium vulgare
 Prunella vulgaris
 Pteretis nodulosa
 Pyrus coronaria
 P. ioensis
 Ranunculus fascicul.
 R. rhomboideus
 Rhus glabra
 R. typhina
 Rubus hispidus
 R. pubescens
 Rudbeckia laciniata
 Salix sp.
 Sambucus pubens
 Saxifraga pennsylv.
 Scrophularia lan.
 S. marilandica
 Senecio balsamitae
 Silene stellata
 Solanum nigrum
 Solidago speciosa
 Staphylea trifolia
 Steironema ciliatum
 S. lanceolatum
 Streptopus roseus
 Symplocarpus foet.
 Taenidia integerr.
 Taxus canadensis
 Thalictrum dasycarp.
 Thaspium aureum
 Tradescantia ohio.
 Uvularia sessilif.
 Vaccinium canad.
 Veronica serpyllif.
 Viburnum lentago
 V. trilobum
 Vicia americana
 Viola conspersa
 V. incognita

Additional Species:

Jeffersonia florum leaf (P.)

| Tree | : BA | : S | Tree | : BA | : S | Tree | : BA | : S |
|------|------|-----|------|------|-----|------|------|-----|
|------|------|-----|------|------|-----|------|------|-----|

Acer negundo
 A. rubrum
 A. saccharinum
 A. saccharum
 Amelanchier sp.
 Betula lutea
 B. nigra
 B. papyrifera
 Carpinus carol
 Carya cordifor
 C. ovata
 Celtis occiden
 Crataegus sp.

16

Fagus grandif.
 Fraxinus amer.
 F. nigra
 F. pennsylvan.
 Juglans cinere
 J. nigra
 Ostrya virgin.
 Populus deltoi
 P. grandident.
 P. tremuloides
 Prunus americ.
 P. pennsylvan.
 P. serotina

Prunus virgin.
 Quercus alba
 Q. bicolor
 Q. ellipsoid.
 Q. macrocarpa
 Q. rubra
 Q. velutina
 Robinia pseudo
 Sorbus americ.
 Tilia american
 Ulmus american
 U. fulva

350

13

21.5

Distance:

Actaea sp.
 Adiantum pedat.
 Agrimonia gryp.
 Allium tricocc.
 Amphicarpa brac.
 Anemone quinque.
 A. virginiana
 Anemonella thal.
 Antennaria sp.
 Aplectrum hiem.
 Apocynum andros.
 Aquilegia canad.
 Aralia nudicaul.
 A. racemosa
 Arenaria later.
 Arisaema atror.
 Asarum canad.
 Aster macrophyll.
 A. sagittifolius
 A. shortii
 Athyrium angust.
 Aureolaria grandif.
 Botrychium vir.
 Brachyelytrum
 Campanula amer.
 Carex albursina
 C. pennsylvan.
 Caulophyllum thal.
 Celastrus scan.
 ✓ Circaea latif.
 Claytonia virg.
 Cornus altern.
 C. femina
 C. rugosa
 Corylus americana
 Cryptotaenia canad.
 Cyripedium pubesc.
 Cystopteris frag.
 Dentaria laciniata
 Desmodium acumin.
 D. nudiflorum
 Dicentra cucullaria
 Dodecatheon meadia
 Dryopteris spinulosa
 Erigeron pulchellus
 Erythronium albidum

Shrubs & Herbs

Eupatorium purpur.
 Eupatorium rugosum
 Festuca obtusa
 Fragaria virgin.
 Galium aparine
 G. circaezans
 G. concinnum
 G. lanceolatum
 G. triflorum
 Geranium macul.
 Geum canadense
 Goodyera pubesc.
 Habenaria bract.
 Hamamelis virg.
 Helianthus strum.
 Hepatica acutil.
 Heuchera richard.
 Hydrastis canad.
 Hydrophyllum virg.
 Hystrix patula
 Impatiens biflora
 I. pallida
 Isopyrum bitern.
 Lactuca spicata
 Laportea canad.
 Lappula virgin.
 Lathyrus ochrol.
 Lonicera prolif.
 Lysimachia quadr.
 Maianthemum can.
 Menispermum can.
 Mitella diphylla
 Monarda fistulosa
 Orchis spectab.
 Cryzopsis racem.
 Osmorhiza clayton.
 O. longistylis
 Osmunda clayton.
 Panax quinquef.
 Panicum latifolium
 Parietaria pennsylv.
 Parthenocissus vit.
 Phlox divaricata
 ✓ Phryma leptostachya
 Podophyllum pelt.
 Polemonium reptans

Polygonatum commut.
 Polygonatum pubesc.
 Polygonum virgin.
 Potentilla simpl.
 Prenanthes alba
 Pteridium aquil.
 Pyrola elliptica
 Ranunculus abort.
 R. recurvatus
 R. septentrion.
 Rhus radicans
 Ribes americanum
 R. cynosbati
 R. missouriense
 Rosa sp.
 Rubus alleghen.
 R. occidentalis
 R. strigosus
 Sambucus canad.
 Sanguinaria can.
 Sanicula gregaria
 S. marilandica
 ✓ Smilacina racemosa
 S. stellata
 Smilax ecirrhata
 S. herbacea
 S. hispida
 Solidago altissima
 S. latifolia
 S. ulmifolia
 Thalictrum dioicum
 Trillium cernuum
 ✓ T. flexipes
 T. grandiflorum
 T. recurvatum
 Triosteum perfoliatum
 Uvularia grandiflora
 Veronicastrum virg.
 Viburnum acerifolium
 V. affine
 Viola cucullata
 ✓ V. pubescens
 Vitis aestivalis
 V. riparia
 Zanthoxylum americ.
 Zizia aurea

| | | |
|---------------------|----------------------|-----------------------|
| Agastache scrophul. | Erigeron philadel. | Pilea pumila |
| Allium canadense | Erythronium americ. | Polymnia canad. |
| Amorpha canesc. | Evonymus atropur. | Polypodium vulgare |
| Anaphalis marg. | Floerkea prosperp. | Prunella vulgaris |
| Anemone cylindrica | Fragaria vesca | Pteretis nodulosa |
| Arabis canadensis | Galium boreale | Pyrus coronaria |
| A. laevigata | Gaultheria procumb. | P. ioensis |
| A. lyrata | Gaylussacia baccata | Ranunculus fascicul. |
| A. perstellata | Gentiana quinquef. | R. rhomboideus |
| Aralia hispida | Geum virginianum | Rhus glabra |
| Arisaema dracont. | Hedeoma hispida | R. typhina |
| Asclepias ovalif. | Hepatica americana | Rubus hispidus |
| A. phytolaccoides | Heracleum lanatum | R. pubescens |
| Aster azureus | Hieracium canad. | Rudbeckia laciniata |
| A. paniculatus | H. scabrum | Salix sp. |
| A. prenanthoides | Hydrophyllum append. | Sambucus pubens |
| Athyrium thelypter. | Hypoxis hirsuta | Saxifraga pennsylv. |
| Besseyia bullii | Ilex verticillata | Scrophularia lan. |
| Boehmeria cylindr. | Juncus tenuis | S. marilandica |
| Botrychium multif. | Juniperus communis | Senecio balsamitae |
| Bromus purgans | J. virginiana | Silene stellata |
| Camptosorus rhizop. | Krigia biflora | Solanum nigrum |
| Carex convoluta | Lathyrus venosus | Solidago speciosa |
| Ceanothus americ. | Lilium philadel. | Staphylea trifolia |
| Chimaphila umbell. | Liparis liliifolia | Steironema ciliatum |
| Cirsium altissim. | Lobelia cardinalis | S. lanceolatum |
| Clematis virgin. | Lonicera dicica | Streptopus roseus |
| Clintonia boreal. | L. hirsuta | Symplocarpus foet. |
| Comandra umbellata | Luzula acuminata | Taenidia integerr. |
| Conopholis americ. | L. Multiflora | Taxus canadensis |
| Corallorrhiza mac. | Milium effusum | Thalictrum dasycarp. |
| Corydalis semperv. | Mitchella repens | Thaspium aureum |
| Cynoglossum offic. | Monotropa uniflora | Tradescantia ohio. |
| Cystopteris bulbif. | Onoclea sensibilis | Uvularia sessilif. —? |
| Desmodium bracteos. | Oryzopsis asperif. | Vaccinium canad. |
| D. canadense | Osmunda cinnamomea | Veronica serpyllif. |
| Dicentra canad. | Oxalis violacea | Viburnum lentago |
| Diervilla lonicera | Panax trifolium | V. trilobum |
| Dioscorea villosa | Paronychia canad. | Vicia americana |
| Dirca palustris | Pedicularis canad. | Viola conspersa |
| Elymus villosus | Physocarpus opul. | V. incognita |
| Epifagus virgin. | Phytolacca decand. | |

Additional Species:

| Tree | : BA | : S | Tree | : BA | : S | Tree | : BA | : S |
|--------------------|------|-----|---------------------|------|-----|----------------|------|-----|
| Acer negundo | | | Fagus grandif. | | | Prunus virgin. | | |
| A. rubrum | | | Fraxinus amer. | | | Quercus alba | | |
| A. saccharinum | | | F. nigra | | | Q. bicolor | | |
| A. saccharum — 150 | | | F. pennsylvan. | | | Q. ellipsoid. | | |
| Amelanchier sp. | | | Juglans cinere | | | Q. macrocarpa | | |
| Betula lutea | | | J. nigra | | | Q. rubra | | |
| B. nigra | | | Ostrya virgin. — 12 | | | Q. velutina | | |
| B. papyrifera | | | Populus deltoi | | | Robinia pseudo | | |
| Carpinus carol | | | P. grandident. | | | Sorbus americ. | | |
| Carya cordifor | | | P. tremuloides | | | Tilia american | | |
| C. ovata | | | Prunus americ. | | | Ulmus american | | |
| Celtis occiden | | | P. pennsylvan. | | | U. fulva | | |
| Crataegus sp. | | | P. serotina | | | | | |

Distance:

24ft

Shrubs & Herbs

| | | |
|----------------------|------------------------|-----------------------|
| Actaea sp. | Eupatorium purpur. | Polygonatum commut. |
| Adiantum pedat. | Eupatorium rugosum | Polygonatum pubesc. |
| Agrimonia gryp. | Festuca obtusa | Polygonum virgin. |
| Allium tricocc. | Fragaria virgin. | Potentilla simpl. |
| Amphicarpa brac. | Galium aparine | Prenanthes alba |
| Anemone quinque. | G. circaezans | Pteridium aquil. |
| A. virginiana | G. concinnum | Pyrola elliptica |
| Anemonella thal. | G. lanceolatum | Ranunculus abort. |
| Antennaria sp. | G. triflorum | R. recurvatus |
| Aplectrum hiem. | Geranium macul. | R. septentrion. |
| Apocynum andros. | Geum canadense | Rhus radicans |
| Aquilegia canad. | Goodyera pubesc. | Ribes americanum |
| Aralia nudicaul. | Habenaria bract. | R. cynosbati |
| A. racemosa | Hamamelis virg. | R. missouriense |
| Arenaria later. | Helianthus strum. | Rosa sp. |
| Arisaema atror. | Hepatica acutil. | Rubus alleghen. |
| Asarum canad. | Heuchera richard. | R. occidentalis |
| Aster macrophyll. | Hydrastis canad. | R. strigosus |
| A. sagittifolius | Hydrophyllum virg. | Sambucus canad. |
| A. shortii | Hystrix patula | Sanguinaria can. |
| Athyrium angust. | Impatiens biflora | Sanicula gregaria |
| Aureolaria grandif. | I. pallida | S. marilandica |
| Botrychium vir. | Isopyrum bitern. | Smilacina racemosa |
| Brachyelytrum | Lactuca spicata | S. stellata |
| Campanula amer. | Laportea canad. | Smilax ecirrhata |
| Carex albusina | Lappula virgin. | S. herbacea |
| C. pennsylvan. | Lathyrus ochrol. | S. hispida |
| ✓ Caulophyllum thal. | Lonicera prolif. | Solidago altissima |
| Celastrus scan. | Lysimachia quadr. | S. latifolia |
| Circaea latif. | Maianthemum can. | S. ulmifolia |
| Claytonia virg. | Menispermum can. | Thalictrum dioicum |
| Cornus altern. | Mitella diphylla | Trillium cernuum |
| C. femina | Monarda fistulosa | T. flexipes |
| C. rugosa | Orchis spectab. | T. grandiflorum |
| Corylus americana | Oryzopsis racem. | T. recurvatum |
| Cryptotaenia canad. | Osmorhiza clayton. | Triosteum perfoliatum |
| Cypripedium pubesc. | O. longistylis | Uvularia grandiflora |
| Cystopteris frag. | Osmunda clayton. | Veronicastrum virg. |
| Dentaria laciniata | Panax quinquef. | Viburnum acerifolium |
| Desmodium acumin. | Panicum latifolium | V. affine |
| D. nudiflorum | ✓ Parietaria pennsylv. | Viola cucullata |
| Dicentra cucullaria | Parthenocissus vit. | V. pubescens |
| Dodecatheon meadia | Phlox divaricata | Vitis aestivalis |
| Dryopteris spinulosa | Phryma leptostachya | V. riparia |
| Erigeron pulchellus | Podophyllum pelt. | Zanthoxylum americ. |
| Erythronium albidum | Polemonium reptans | Zizia aurea |

| | | |
|---------------------|----------------------|----------------------|
| Agastache scrophul. | Erigeron philadel. | Pilea pumila |
| Allium canadense | Erythronium americ. | Polymnia canad. |
| Amorpha canesc. | Evonymus atropur. | Polypodium vulgare |
| Anaphalis marg. | Floerkea prosperp. | Prunella vulgaris |
| Anemone cylindrica | Fragaria vesca | Pteretis nodulosa |
| Arabis canadensis | Galium boreale | Pyrus coronaria |
| A. laevigata | Gaultheria procumb. | P. ioensis |
| A. lyrata | Gaylussacia baccata | Ranunculus fascicul. |
| A. perstellata | Gentiana quinquef. | R. rhomboideus |
| Aralia hispida | Geum virginianum | Rhus glabra |
| Arisaema dracont. | Hedeoma hispida | R. typhina |
| Asclepias ovalif. | Hepatica americana | Rubus hispidus |
| A. phytolaccoides | Heracleum lanatum | R. pubescens |
| Aster azureus | Hieracium canad. | Rudbeckia laciniata |
| A. paniculatus | H. scabrum | Salix sp. |
| A. prenanthoides | Hydrophyllum append. | Sambucus pubens |
| Athyrium thelypter. | Hypoxis hirsuta | Saxifraga pennsylv. |
| Besseyia bullii | Ilex verticillata | Scrophularia lan. |
| Boehmeria cylindr. | Juncus tenuis | S. marilandica |
| Botrychium multif. | Juniperus communis | Senecio balsamitae |
| Bromus purgans | J. virginiana | Silene stellata |
| Camptosorus rhizop. | Krigia biflora | Solanum nigrum |
| Carex convoluta | Lathyrus venosus | Solidago speciosa |
| Ceanothus americ. | Lilium philadel. | Staphylea trifolia |
| Chimaphila umbell. | Liparis liliifolia | Steironema ciliatum |
| Cirsium altissim. | Lobelia cardinalis | S. lanceolatum |
| Clematis virgin. | Lonicera dioica | Streptopus roseus |
| Clintonia boreal. | L. hirsuta | Symplocarpus foet. |
| Comandra umbellata | Luzula acuminata | Taenidia integerr. |
| Conopholis americ. | L. Multiflora | Taxus canadensis |
| Corallorrhiza mac. | Milium effusum | Thalictrum dasycarp. |
| Corydalis semperv. | Mitchella repens | Thaspium aureum |
| Cynoglossum offic. | Monotropa uniflora | Tradescantia ohio. |
| Cystopteris bulbif. | Onoclea sensibilis | Uvularia sessilif. |
| Desmodium bracteos. | Oryzopsis asperif. | Vaccinium canad. |
| D. canadense | Osmunda cinnamomea | Veronica serpyllif. |
| Dicentra canad. | Oxalis violacea | Viburnum lentago |
| Diervilla lonicera | Panax trifolium | V. trilobum |
| Dioscorea villosa | Paronychia canad. | Vicia americana |
| Dirca palustris | Pedicularis canad. | Viola conspersa |
| Elymus villosus | Physocarpus opul. | V. incognita |
| Epifagus virgin. | Phytolacca decand. | |

Additional Species:

| Tree | : BA | : S | Tree | : BA | : S | Tree | : BA | : S |
|-----------------|------|-----|----------------|------|-----|----------------|------|-----|
| Acer negundo | | | Fagus grandif. | | | Prunus virgin. | | |
| A. rubrum | | | Fraxinus amer. | | | Quercus alba | | |
| A. saccharinum | | | F. nigra | | | Q. bicolor | | |
| A. saccharum | 95 | | F. pennsylvan. | | | Q. ellipsoid. | | |
| Amelanchier sp. | | | Juglans cinere | | | Q. macrocarpa | | |
| Betula lutea | | | J. nigra | | | Q. rubra | 85 | |
| B. nigra | | | Ostrya virgin. | | | Q. velutina | | |
| B. papyrifera | | | Populus deltoi | | | Robinia pseudo | | |
| Carpinus carol | | | P. grandident. | | | Sorbus americ. | | |
| Carya cordifor | | | P. tremuloides | | | Tilia american | | |
| C. ovata | | | Prunus americ. | | | Ulmus american | | |
| Celtis occiden | | | P. pennsylvan. | | | U. fulva | | |
| Crataegus sp. | | | P. serotina | | | | | |

13

Distance:

19ft

Shrubs & Herbs

| | | |
|----------------------|----------------------|------------------------|
| Actaea sp. | Eupatorium purpur. | Polygonatum commut. |
| Adiantum pedat. | Eupatorium rugosum | Polygonatum pubesc. |
| Agrimonia gryp. | Festuca obtusa | Polygonum virgin. |
| Allium tricocc. | Fragaria virgin. | Potentilla simpl. |
| Amphicarpa brac. | Galium aparine | Prenanthes alba |
| Anemone quinque. | G. circaezans | Pteridium aquil. |
| A. virginiana | G. concinnum | Pyrola elliptica |
| Anemonella thal. | G. lanceolatum | Ranunculus abort. |
| Antennaria sp. | G. triflorum | R. recurvatus |
| Aplectrum hiem. | Geranium macul. | R. septentrion. |
| Apocynum andros. | Geum canadense | Rhus radicans |
| Aquilegia canad. | Goodyera pubesc. | Ribes americanum |
| Aralia nudicaul. | Habenaria bract. | R. cynosbati |
| A. racemosa | Hamamelis virg. | R. missouriense |
| Arenaria later. | Helianthus strum. | Rosa sp. |
| Arisaema atror. | Hepatica acutil. | Rubus alleghen. |
| Asarum canad. | Heuchera richard. | R. occidentalis |
| Aster macrophyll. | Hydrastis canad. | R. strigosus |
| A. sagittifolius | Hydrophyllum virg. | Sambucus canad. |
| A. shortii | Hystrix patula | Sanguinaria can. |
| Athyrium angust. | Impatiens biflora | Sanicula gregaria |
| Aureolaria grandif. | I. pallida | S. marilandica |
| Botrychium vir. | Isopyrum bitern. | Smilacina racemosa |
| Brachyelytrum | Lactuca spicata | S. stellata |
| Campanula amer. | Laportea canad. | Smilax ecirrhata |
| Carex albursina | Lappula virgin. | S. herbacea |
| C. pennsylvan. | Lathyrus ochrol. | S. hispida |
| Caulophyllum thal. | Lonicera proclif. | Solidago altissima |
| Celastrus scan. | Lysimachia quadr. | S. latifolia |
| ✓ Circaea latif. | Maianthemum can. | S. ulmifolia |
| Claytonia virg. | Menispermum can. | Thalictrum dioicum |
| Cornus altern. | Mitella diphylla | Trillium cernuum |
| C. femina | Monarda fistulosa | ✓ T. flexipes |
| C. rugosa | Orchis spectab. | T. grandiflorum |
| Cerylus americana | Cryzopsis racem. | T. recurvatum |
| Cryptotaenia canad. | Osmorhiza clayton. | Triosteum perfoliatum |
| Cypripedium pubesc. | O. longistylis | ✓ Uvularia grandiflora |
| Cystopteris frag. | Osmunda clayton. | Veronicastrum virg. |
| Dentaria laciniata | Panax quinquef. | Viburnum acerifolium |
| Desmodium acumin. | Panicum latifolium | V. affine |
| D. nudiflorum | Parietaria pennsylv. | Viola cucullata |
| Dicentra cucullaria | Parthenocissus vit. | ✓ V. pubescens |
| Dodecatheon meadia | Phlox divaricata | Vitis aestivalis |
| Dryopteris spinulosa | Phryma leptostachya | V. riparia |
| Erigeron pulchellus | Podophyllum pelt. | Zanthoxylum americ. |
| Erythronium albidum | Polemonium reptans | Zizia aurea |

1105

 Tree : BA : S : Tree : BA : S : Tree : BA : S

Acer negundo
 A. rubrum
 A. saccharinum
 ✓ A. saccharum — 70
 Amelanchier sp.
 Betula lutea
 B. nigra
 B. papyrifera
 Carpinus carol
 Carya cordifor
 C. ovata
 Celtis occiden
 Crataegus sp.

Fagus grandif.
 Fraxinus amer.
 F. nigra
 F. pennsylvan.
 Juglans cinere
 J. nigra
 Ostrya virgin.
 Populus deltoi
 P. grandident.
 P. tremuloides
 Prunus americ.
 P. pennsylvan.
 P. serotina

Prunus virgin.
 Quercus alba
 Q. bicolor
 Q. ellipsoid.
 Q. macrocarpa
 Q. rubra
 Q. velutina
 Robinia pseudo
 Sorbus americ.
 Tilia american
 Ulmus american
 ✓ U. fulva — 95

Distance:

19 ft

Actaea sp.
 Adiantum pedat.
 Agrimonia gryp.
 Allium tricocc.
 Amphicarpa brac.
 Anemone quinque.
 A. virginiana
 Anemonella thal.
 Antennaria sp.
 Aplectrum hiem.
 Apocynum andros.
 Aquilegia canad.
 Aralia nudicaul.
 A. racemosa
 Arenaria later.
 ✓ Arisaema atror.
 Asarum canad.
 Aster macrophyll.
 A. sagittifolius
 A. shortii
 Athyrium angust.
 Aureolaria grandif.
 Botrychium vir.
 ✓ Brachyelytrum
 Campanula amer.
 Carex albursina
 C. pennsylvan.
 Caulophyllum thal.
 Celastrus scan.
 ✓ Circaea latif.
 Claytonia virg.
 Cornus altern.
 C. femina
 C. rugosa
 Corylus americana
 Cryptotaenia canad.
 Cypripedium pubesc.
 Cystopteris frag.
 Dentaria laciniata
 Desmodium acumin.
 D. nudiflorum
 Dicentra cucullaria
 Dodecatheon meadia
 Dryopteris spinulosa
 Erigeron pulchellus
 Erythronium albidum

Shrubs & Herbs

Eupatorium purpur.
 Eupatorium rugosum
 Festuca obtusa
 Fragaria virgin.
 Galium aparine
 G. circaezans
 G. concinnum
 G. lanceolatum
 G. triflorum
 Geranium macul.
 Geum canadense
 Goodyera pubesc.
 Habenaria bract.
 Hamamelis virg.
 Helianthus strum.
 Hepatica acutil.
 Heuchera richard.
 Hydrastis canad.
 Hydrophyllum virg.
 Hystrix patula
 Impatiens biflora
 I. pallida
 Isopyrum bitern.
 Lactuca spicata
 Laportea canad.
 Lappula virgin.
 Lathyrus ochrol.
 Lonicera prolif.
 Lysimachia quadr.
 Maianthemum can.
 Menispermum can.
 Mitella diphylla
 Monarda fistulosa
 Orchis spectab.
 Cryzopsis racem.
 Osmorhiza clayton.
 O. longistylis
 Osmunda clayton.
 Panax quinquef.
 Panicum latifolium
 Parietaria pennsylv.
 Parthenocissus vit.
 Phlox divaricata
 Phryma leptostachya
 Podophyllum pelt.
 Polemonium reptans

Polygonatum commut.
 Polygonatum pubesc.
 Polygonum virgin.
 Potentilla simpl.
 Prenanthes alba
 Pteridium aquil.
 Pyrola elliptica
 Ranunculus abort.
 R. recurvatus
 R. septentrion.
 Rhus radicans
 Ribes americanum
 R. cynosbati
 R. missouriense
 Rosa sp.
 Rubus alleghen.
 R. occidentalis
 R. strigosus
 Sambucus canad.
 Sanguinaria can.
 Sanicula gregaria
 S. marilandica
 Smilacina racemosa
 S. stellata
 Smilax ecirrhata
 S. herbacea
 S. hispida
 Solidago altissima
 S. latifolia
 S. ulmifolia
 Thalictrum dioicum
 Trillium cernuum
 ✓ T. flexipes
 T. grandiflorum
 T. recurvatum
 Triosteum perfoliatum
 Wularia grandiflora
 Veronicastrum virg.
 Viburnum acerifolium
 V. affine
 Viola cucullata
 V. pubescens
 Vitis aestivalis
 V. riparia
 Zanthoxylum americ.
 Zizia aurea

WOS

| Tree | : BA | : S | Tree | : BA | : S | Tree | : BA | : S |
|-----------------|------|-----|----------------|------|-----|----------------|------|-----|
| Acer negundo | | | Fagus grandif. | | | Prunus virgin. | | |
| A. rubrum | | | Fraxinus amer. | | | Quercus alba | | |
| A. saccharinum | | | F. nigra | | | Q. bicolor | | |
| A. saccharum | | | F. pennsylvan. | | | Q. ellipsoid. | | |
| Amelanchier sp. | | | Juglans cinere | | | Q. macrocarpa | | |
| Betula lutea | | | J. nigra | | | Q. rubra | 440 | |
| B. nigra | | | Ostrya virgin. | 1 | | Q. velutina | | |
| B. papyrifera | | | Populus deltoi | | | Robinia pseudo | | |
| Carpinus carol | | | P. grandident. | | | Sorbus americ. | | |
| Carya cordifor | | | P. tremuloides | | | Tilia american | | |
| C. ovata | | | Prunus americ. | | | Ulmus american | | |
| Celtis occiden | | | P. pennsylvan. | | | U. fulva | 65 | |
| Crataegus sp. | | | P. serotina | | | | | |

Distance:

29 ft

| Shrubs & Herbs | | |
|----------------------|----------------------|-----------------------|
| Actaea sp. | Eupatorium purpur. | Polygonatum commut. |
| Adiantum pedat. | Eupatorium rugosum | Polygonatum pubesc. |
| Agrimonia gryp. | Festuca obtusa | Polygonum virgin. |
| Allium tricocc. | Fragaria virgin. | Potentilla simpl. |
| Amphicarpa brac. | Galium aparine | Prenanthes alba |
| Anemone quinque. | G. circaeazans | Pteridium aquil. |
| A. virginiana | G. concinnum | Pyrola elliptica |
| Anemonella thal. | G. lanceolatum | Ranunculus abort. |
| Antennaria sp. | G. triflorum | R. recurvatus |
| Aplectrum hiem. | Geranium macul. | R. septentrion. |
| Apocynum andros. | Geum canadense | Rhus radicans |
| Aquilegia canad. | Goodyera pubesc. | Ribes americanum |
| Aralia nudicaul. | Habenaria bract. | R. cynosbati |
| A. racemosa | Hamamelis virg. | R. missouriense |
| Arenaria later. | Helianthus strum. | Rosa sp. |
| Arisaema atror. | Hepatica acutil. | Rubus alleghen. |
| Asarum canad. | Heuchera richard. | R. occidentalis |
| Aster macrophyll. | Hydrastis canad. | R. strigosus |
| A. sagittifolius | Hydrophyllum virg. | Sambucus canad. |
| A. shortii | Hystrix patula | Sanguinaria can. |
| Athyrium angust. | Impatiens biflora | Sanicula gregaria |
| Aureolaria grandif. | I. pallida | S. marilandica |
| Botrychium vir. | Isopyrum bitern. | Smilacina racemosa |
| Brachyelytrum | Lactuca spicata | S. stellata |
| Campanula amer. | Laportea canad. | Smilax ecirrhata |
| Carex albursina | Lappula virgin. | S. herbacea |
| C. pennsylvan. | Lathyrus ochrol. | S. hispida |
| Caulophyllum thal. | Lonicera prolif. | Solidago altissima |
| Celastrus scan. | Lysimachia quadr. | S. latifolia |
| Circaea latif. | Maianthemum can. | S. ulmifolia |
| Claytonia virg. | Menispermum can. | Thalictrum dioicum |
| Cornus altern. | Mitella diphylla | Trillium cernuum |
| C. femina | Monarda fistulosa | T. flexipes |
| C. rugosa | Orchis spectab. | T. grandiflorum |
| Corylus americana | Oryzopsis racem. | T. recurvatum |
| Cryptotaenia canad. | Osmorhiza clayton. | Triosteum perfoliatum |
| Cypripedium pubesc. | O. longistylis | Uvularia grandiflora |
| Cystopteris frag. | Osmunda clayton. | Veronicastrum virg. |
| Dentaria laciniata | Panax quinquef. | Viburnum acerifolium |
| Desmodium acumin. | Panicum latifolium | V. affine |
| D. nudiflorum | Parietaria pennsylv. | Viola cucullata |
| Dicentra cucullaria | Parthenocissus vit. | V. pubescens |
| Dodecatheon meadia | Phlox divaricata | Vitis aestivalis |
| Dryopteris spinulosa | Phryma leptostachya | V. riparia |
| Erigeron pulchellus | Podophyllum pelt. | Zanthoxylum americ. |
| Erythronium albidum | Polemonium reptans | Zizia aurea |

Nos.

Tree : BA : S : Tree : BA : S : Tree : BA : S

Acer negundo
A. rubrum
A. saccharinum
A. saccharum
Amelanchier sp.
Betula lutea
B. nigra
B. papyrifera
Carpinus carol
Carya cordifor
C. ovata
Celtis occiden
Crataegus sp.

Fagus grandif.
Fraxinus amer.
F. nigra
F. pennsylvan.
Juglans cinere
J. nigra
Ostrya virgin.
Populus deltoi
P. grandident.
P. tremuloides
Prunus americ.
P. pennsylvan.
P. serotina

Prunus virgin.
Quercus alba
Q. bicolor
Q. ellipsoid.
Q. macrocarpa
Q. rubra
Q. velutina
Robinia pseudo
Sorbus americ.
Tilia american
Ulmus american
U. fulva

14

165

Distance:

12 ft

Shrubs & Herbs

Actaea sp.
Adiantum pedat.
Agrimonia gryp.
Allium tricocc.
Amphicarpa brac.
Anemone quinque.
A. virginiana
Anemonella thal.
Antennaria sp.
Aplectrum hiem.
Apocynum andros.
Aquilegia canad.
Aralia nudicaul.
A. racemosa
Arenaria later.
Arisaema atror.
Asarum canad.
Aster macrophyll.
A. sagittifolius
A. shortii
Athyrium angust.
Aureolaria grandif.
Botrychium vir.
Brachyelytrum
Campanula amer.
Carex albursina
C. pennsylvan.
Caulophyllum thal.
Celastrus scan.
Circaea latif.
Claytonia virg.
Cornus altern.
C. femina
C. rugosa
Corylus americana
Cryptotaenia canad.
Cypripedium pubesc.
Cystopteris frag.
Dentaria laciniata
Desmodium acumin.
D. nudiflorum
Dicentra cucullaria
Dodecatheon meadia
Dryopteris spinulosa
Erigeron pulchellus
Erythronium albidum

Eupatorium purpur.
Eupatorium rugosum
Festuca obtusa
Fragaria virgin.
Galium aparine
G. circaeans
G. concinnum
G. lanceolatum
G. triflorum
Geranium macul.
Geum canadense
Goodyera pubesc.
Habenaria bract.
Hamamelis virg.
Helianthus strum.
Hepatica acutil.
Heuchera richard.
Hydrastis canad.
Hydrophyllum virg.
Hystrix patula
Impatiens biflora
I. pallida
Isopyrum bitern.
Lactuca spicata
Laportea canad.
Lappula virgin.
Lathyrus ochrol.
Lonicera prolif.
Lysimachia quadr.
Maianthemum can.
Menispermum can.
Mitella diphylla
Monarda fistulosa
Orchis spectab.
Oryzopsis racem.
Osmorhiza clayton.
O. longistylis
Osmunda clayton.
Panax quinquef.
Panicum latifolium
Parietaria pennsylv.
Parthenocissus vit.
Phlox divaricata
Phryma leptostachya
Podophyllum pelt.
Polemonium reptans

Polygonatum commut.
Polygonatum pubesc.
Polygonum virgin.
Potentilla simpl.
Prenanthes alba
Pteridium aquil.
Pyrola elliptica
Ranunculus abort.
R. recurvatus
R. septentrion.
Rhus radicans
Ribes americanum
R. cynosbati
R. missouriense
Rosa sp.
Rubus alleghen.
R. occidentalis
R. strigosus
Sambucus canad.
Sanguinaria can.
Sanicula gregaria
S. marilandica
Smilacina racemosa
S. stellata
Smilax ecirrhata
S. herbacea
S. hispida
Solidago altissima
S. latifolia
S. ulmifolia
Thalictrum dioicum
Trillium cernuum
T. flexipes
T. grandiflorum
T. recurvatum
Triosteum perfoliatum
Uvularia grandiflora
Veronicastrum virg.
Viburnum acerifolium
V. affine
Viola cucullata
V. pubescens
Vitis aestivalis
V. riparia
Zanthoxylum americ.
Zizia aurea

165

20

 Tree : BA : S : Tree : BA : S : Tree : BA : S

Acer negundo
 A. rubrum
 A. saccharinum
 A. saccharum — 55
 Amelanchier sp.
 Betula lutea
 B. nigra
 B. papyrifera
 Carpinus carol
 Carya cordifor
 C. ovata
 Celtis occiden
 Crataegus sp.

Fagus grandif.
 Fraxinus amer.
 F. nigra
 F. pennsylvan.
 Juglans cinere
 J. nigra
 Ostrya virgin.
 Populus deltoi
 P. grandident.
 P. tremuloides
 Prunus americ.
 P. pennsylvan.
 P. serotina

Prunus virgin.
 Quercus alba — 130
 Q. bicolor
 Q. ellipsoid.
 Q. macrocarpa
 Q. rubra
 Q. velutina
 Robinia pseudo
 Sorbus americ.
 Tilia american
 Ulmus american
 U. fulva

Distance:

13 1/2 ft

Actaea sp.
 Adiantum pedat.
 Agrimonia gryp.
 Allium tricocc.
 Amphicarpa brac.
 Anemone quinque.
 A. virginiana
 Anemonella thal.
 Antennaria sp.
 Aplectrum hiem.
 Apocynum andros.
 Aquilegia canad.
 Aralia nudicaul.
 A. racemosa
 Arenaria later.
 Arisaema atror.
 Asarum canad.
 Aster macrophyll.
 A. sagittifolius
 A. shortii
 Athyrium angust.
 Aureolaria grandif.
 Botrychium vir.
 Brachyelytrum
 Campanula amer.
 Carex albursina
 C. pennsylvan.
 Caulophyllum thal.
 Celastrus scan.
 ✓ Circaea latif.
 Claytonia virg.
 Cornus altern.
 C. femina
 C. rugosa
 Corylus americana
 Cryptotaenia canad.
 Cypripedium pubesc.
 Cystopteris frag.
 Dentaria laciniata
 Desmodium acumin.
 D. nudiflorum
 Dicentra cucullaria
 Dodecatheon meadia
 Dryopteris spinulosa
 Erigeron pulchellus
 Erythronium albidum

Shrubs & Herbs

Eupatorium purpur.
 Eupatorium rugosum
 Festuca obtusa
 Fragaria virgin.
 Galium aparine
 G. circaezans
 G. concinnum
 G. lanceolatum
 G. triflorum
 Geranium macul.
 Geum canadense
 Godyera pubesc.
 Habenaria bract.
 Hamamelis virg.
 Helianthus strum.
 Hepatica acutil.
 Heuchera richard.
 Hydrastis canad.
 Hydrophyllum virg.
 Hystrix patula
 Impatiens biflora
 I. pallida
 Isopyrum bitern.
 Lactuca spicata
 Laportea canad.
 Lappula virgin.
 Lathyrus ochrol.
 Lonicera prolif.
 Lysimachia quadr.
 Maianthemum can.
 Menispermum can.
 Mitella diphylla
 Monarda fistulosa
 Orchis spectab.
 Oryzopsis racem.
 Osmorhiza clayton.
 O. longistylis
 Osmunda clayton.
 Panax quinquef.
 Panicum latifolium
 Parietaria pennsylv.
 Parthenocissus vit.
 Phlox divaricata
 Phryma leptostachya
 Podophyllum pelt.
 Polemonium reptans

Polygonatum commut.
 Polygonatum pubesc.
 Polygonum virgin.
 Potentilla simpl.
 Prenanthes alba
 Pteridium aquil.
 Pyrola elliptica
 Ranunculus abort.
 R. recurvatus
 R. septentrion.
 Rhus radicans
 Ribes americanum
 R. cynosbati
 R. missouriense
 Rosa sp.
 Rubus alleghen.
 R. occidentalis
 R. strigosus
 Sambucus canad.
 ✓ Sanguinaria can.
 Sanicula gregaria
 S. marilandica
 Smilacina racemosa
 S. stellata
 Smilax ecirrhata
 S. herbacea
 S. hispida
 Solidago altissima
 S. latifolia
 S. ulmifolia
 Thalictrum dioicum
 Trillium cernuum
 ✓ T. flexipes
 T. grandiflorum
 T. recurvatum
 Triosteum perfoliatum
 Uvularia grandiflora
 Veronicastrum virg.
 Viburnum acerifolium
 V. affine
 Viola cucullata
 ✓ V. pubescens
 Vitis aestivalis
 V. riparia
 Zanthoxylum americ.
 Zizia aurea

NOS

