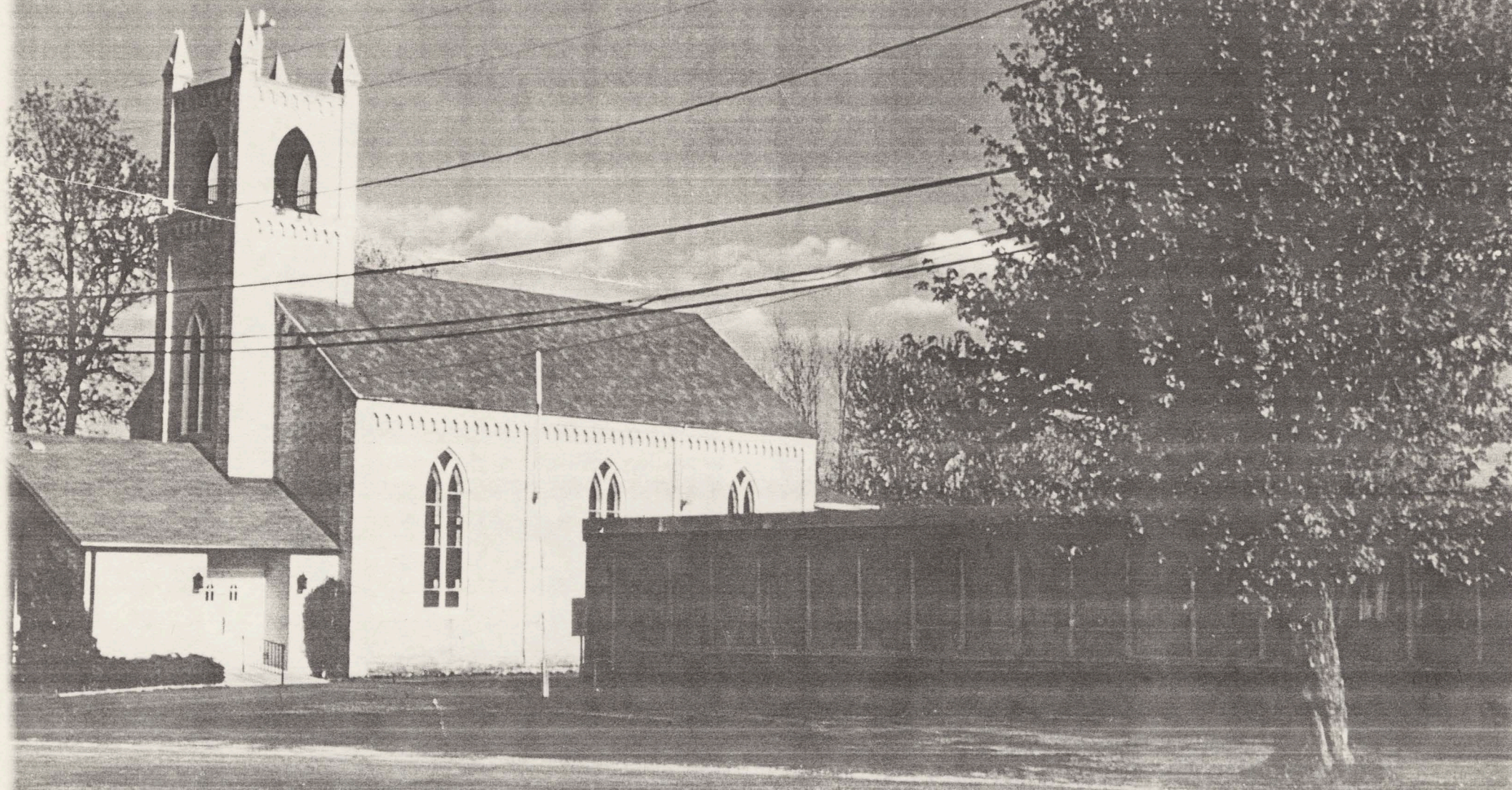


St. Peter's Lutheran Church
Lebanon, Wisconsin



1881

1981

1905 St. Peter's Band



St. Peter's Band

Band

The band which led early singing was directed by William Tietz until he was succeeded by Rev. Theodore Eggers when he was our pastor. In 1939, St. Peter's Band merged with Immanuel's to form the Lebanon Band. This group has been active from the time of its twin beginnings to the present, with a reputation greater than its small-town heritage.

It is interesting to note that the band included several multi-generation families. Three generations of the Braasch family have played basshorn. There have been three generations of Schiewes also, Theodore, Edwin, and Wayne.

One can hardly find a better example of the German people's love for music than in the Lebanon Band.



*Officers Of The Congregation
Then and Now*

Many dozens of devoted men have served in the various offices of the congregation and given hundreds of hours of their time to further the work of the Lord. "Whatsoever ye do, do it to the glory of God."

Only the first and the last will be named.

Then, 1881:

Vorsteher William Christian
Trustees Joh. Uttech
 Carl Braunschweig
 G. Dobbratz

Now, 1981:

Chairman Lyle Hildebrandt
Secretary Howard Budewitz
Treasurer Wayne Schlieve
Elders Wallace Maas
Don Kuehl

Board of Education Wilmer Christian
Wilfred Nehls
Robert Pieper

Duane Paswaters
Hilbert Schoenike
Alvin Hildebrandt

Trustees Armin Tessman
Vernon Schwartz
Harold Stark

Financial Sec'y.Gene Hildebrandt
Asst. Fin. Sec'y.Jon Schoenike