



LIBRARIES

UNIVERSITY OF WISCONSIN-MADISON

Wisconsin Dairymen's Association year book 1945. 1945

Wisconsin Dairymen's Association
Wisconsin: The Association, 1945

<https://digital.library.wisc.edu/1711.dl/YT2UROS NKW5LD8N>

This material may be protected by copyright law (e.g., Title 17, US Code).

For information on re-use, see

<http://digital.library.wisc.edu/1711.dl/Copyright>

The libraries provide public access to a wide range of material, including online exhibits, digitized collections, archival finding aids, our catalog, online articles, and a growing range of materials in many media.

When possible, we provide rights information in catalog records, finding aids, and other metadata that accompanies collections or items. However, it is always the user's obligation to evaluate copyright and rights issues in light of their own use.

R BW7
D15
Y
73

WISCONSIN DAIRYMEN'S ASSOCIATION • YEAR BOOK

1945



STEENBOCK MEMORIAL LIBRARY

LIBRARY
COLLEGE OF AGRICULTURE
UNIVERSITY OF WISCONSIN
MADISON

Attend the
Wis. Dairymen's Ass'n
ALL Convention

~~CANCELED~~ & EXCEPT
Breed Association
Meeting

Jersey Meeting
Fond du Lac, Wis.
Feb. 5 & 6, 1945
RETLAW HOTEL



DAIRYMEN'S HEADQUARTERS

RETLAW HOTEL

FOND DU LAC, WIS.

Room Rates

From \$1.75 Per Day Single
From \$3.00 Per Day Double

POPULAR PRICED COFFEE SHOP
COCKTAIL LOUNGE

WALTER SCHROEDER, Pres.

M. J. ESSEX, Mgr.

A Sincere "THANK YOU"

**to all those whose cooperative efforts
have made possible the 73rd Annual
Convention and Breed Association
Meetings.**

Convention Headquarters RETLAW HOTEL

We suggest that you
MAKE YOUR RESERVATIONS EARLY
if you are planning to stay in Fond du
Lac at the time of the convention —
February 5 and 6, 1945.

**The Wisconsin Dairymen's
Association**

Wisconsin Dairymen's Association
Fort Atkinson, Wis. Organized 1872 Incorporated 1917
OFFICERS



A. W. Ritchie New London
President



H. J. Weavers, Madison
Vice President



Doris Trieloff, Fort Atkinson
*Secretary and
Office Secretary*



B. R. Dugdale, Fort Atkinson
*Treasurer and
Extension Fieldman*

DIRECTORS



J. P. Allyn
Delavan



Stanley Jamison
Appleton



R. A. Brackett
Elk Mound



Ben Dibble
Pewaukee



Herbert Hochmuth
La Valle



Let QUALITY Be Our Motto



Never in the history of this grand state of ours have the Dairymen been confronted with a need of a more concerted effort to maintain the quality of both our dairy cattle and the dairy products which we are putting on the market.

We have increased the number of dairy cattle in this state within the past few years, almost what would seem impossible for us to maintain, but on the other hand, have we been as anxious to better the quality of our cattle and products as we have been to increase the quantity?

Our incomes from cattle and dairy products have been quite satisfactory which is proven by the fact that farm mortgages and indebtedness are decreasing each year.

Let us not plunge into unwise investments in either real estate or livestock which would create obligations that might be hard to meet in the postwar reconstruction period which is sure to follow.

Wisconsin, with its thousands of dairy cattle, with acres upon acres of productive farm land, with its varied industries and factories, its wealth in natural resources, can always be depended upon to bear her fair share in the reconstruction of our country.

Arthur W. Ritchie

President, Wisconsin Dairymen's Association

A Proclamation



Once more Wisconsin's dairymen have accomplished what a few years ago would have seemed impossible. In the face of a marked drop in farm manpower they have again increased the state's total production of milk. This has been one of our great contributions to the need for better food for our fighting men and our allies.

Records show that Wisconsin in 1943 produced 14,334,000,000 pounds of milk. In 1944 we increased that production approximately 186 million pounds to a total of 14,500,000,000. This is a record of which we can all feel justly proud.

During this period when the demands for greater and greater volumes of food have put an ever-increasing drain on our soil, the dairy industry has played another important, but frequently overlooked role. For dairying is the chief agricultural industry which improves rather than depletes the soil fertility of the nation, putting back into the soil the elements which otherwise would be lost through continuous crop production.

In the development of this food-producing and soil-conserving industry the Wisconsin Dairymen's Association has exerted a major influence. Its leadership has given to this important part of our agricultural economy a forward-looking and progressive course.

Your 73rd annual convention, to be held in Fond du Lac, February 6, will provide another timely occasion for reminding the people of Wisconsin of the splendid contribution dairying has made to the nation's war effort.

Now, therefore, I, Walter S. Goodland, Governor of the State of Wisconsin, do hereby designate and proclaim February 6, 1945, as

DAIRY DAY

in Wisconsin and urge that the occasion be observed with fitting exercises in recognition of the Wisconsin Dairy Industry and its vital part in the Food for Victory program.

In testimony whereof, I have hereunto set my hand and caused the Great Seal of the State of Wisconsin to be affixed. Done at the Capitol, in the City of Madison, this twenty-eighth day of November, in the year of Our Lord, one thousand nine hundred and forty-four

Walter S. Goodland

Acting Governor of Wisconsin

PAST PRESIDENTS OF THE WISCONSIN DAIRYMEN'S ASSOCIATION

1872-4	Chester Hazen	Fond du Lac
1875-6	Hiram Smith	Sheboygan
1877	A. D. Leland	Sheboygan
1878	H. F. Dousman	Waukesha
1879	Z. G. Simmons	Kenosha
1880	Stephen Favill	Walworth
1881-2	C. R. Beach	Walworth
1883-6	W. H. Morrison	Walworth
1886	Stephen Favill	Dane
1887-9	H. C. Adams	Dane
1890	W. A. Henry	Dane
1891-3	W. D. Hoard	Jefferson
1894-5	C. H. Everett	Racine
1896-7	G. W. Burchard	Jefferson
1898-9	H. C. Taylor	Rock
1900-1	C. P. Goodrich	Jefferson
1901-3	J. Q. Emery	Dane
1904-5	Chas. L. Hill	Fond du Lac
1906-7	W. J. Gillette	Fond du Lac
1908-9	F. H. Schribner	Fond du Lac
1910-11	H. D. Griswold	La Crosse
1912-13	E. C. Jacobs	Dunn
1914-15	M. L. Welles	Fond du Lac
1916-17	Math. Michels	Fond du Lac
1918-19	Geo. McKerrow	Waukesha
1920-21	Chas. A. Peterson	Fond du Lac
1922-23	Geo. C. Humphrey	Dane
1924-25	H. F. Schroeder	Washington
1926-27	W. J. Dougan	Rock
1928-29	S. H. Bird	Fond du Lac
1930-31	J. E. Bowen	Barron
1932	W. J. Katterhenry	Rock
1933-34	P. C. Burchard	Jefferson
1935-36	G. W. Vergeront	Dane
1936-37	H. E. Hill	Sheboygan
1938-40	Richard Brackett	Dunn
1941-42	Stanley Jamison	Outagamie
1942-44	H. F. Schroeder	Washington

Breed Association Meetings

MONDAY, FEBRUARY 5

HOTEL RETLAW -- FOND DU LAC, WIS.

Program

WISCONSIN AYRSHIRE BREEDERS' ASSOCIATION

- 12:00 Noon Luncheon Meeting
 1:00 P. M. Annual Business Meeting
 1:30 P. M. Address by C. T. Conklin, Brandon, Vt.
 Sec'y, National Ayrshire Breeders Assn.

WISCONSIN BROWN SWISS ASSOCIATION

- 10:00 A. M. Directors' Meeting
 12:00 Noon Luncheon Meeting
 All friends of Brown Swiss are invited. This will be followed with business meeting and election of officers

WISCONSIN JERSEY CATTLE CLUB

- 10:00 A. M. Directors' Meeting; Discussion of 1945 program
 11:00 A. M. Annual meeting of Wis. Jersey Cattle Club
 Annual reports of President and Secretary-Treasurer.
 Appointment of committees—nominations, resolutions, etc.
 12:00 Noon Jersey Luncheon
 Introduction of 4-H winners

Breed Association Meetings

(CONTINUED)

1:30 P. M. Resume Annual Meeting

Adoption of 1945 Program

Address—H. E. Dennison, new A.J.C.C. Fieldman for Wis.
East Lansing, Mich.

Jersey Movies

Election of five Directors

Adjournment

Meeting of Board of Directors to reorganize and elect officers

7:00 P. M. Official Bull Session

Wisconsin Dairymen's Association Convention

TUESDAY, FEBRUARY 6

HOTEL RETLAW -- FOND DU LAC, WIS.

Program

A. W. Ritchie, New London, President,
Wisconsin Dairymen's Assn., presiding.

10:00 A. M. Association Activities of 1944

B. R. Dugdale, Extension Fieldman, Wis. Dairymen's Ass'n

10:15 A. M. Feeding Dairy Cattle in Wartime

Gus Bohstedt, College of Agriculture, Madison

10:45 A. M. Panel Discussion on Controlling Disease in
Dairy Cattle

Chairman: John D. Jones, Jr., Associate Editor,
Hoard's Dairyman, Fort Atkinson

Discussants: Herbert Lothe, D.V.S., Waukesha
Owen Rowlands, Keystone Farms, Waukesha
Stewart Barlass, Gil-Bar Farms, Janesville
Herman Clausen, Elder Creek Farm, Bruce
John Fast, Mgr. Milford Meadow Stock Farm,
Lake Mills

12:00 Noon WISCONSIN DAIRYMEN'S ASSN. LUNCHEON

A. W. Ritchie, President, in Charge of Program

What Lies Ahead for the Dairy Farmers John D. Jones, Jr.
Farmer and Asso. Editor Hoard's Dairyman, Ft. Atkinson

Irish Songs.....A. W. Ritchie, New London
Accompanied by Mrs. A. W. Ritchie

Jr. D.H.I.A. Awards.....B. R. Dugdale
Extension Fieldman, Wisconsin Dairymen's Assn.

4-H Club Dairy Honor Awards.....V. V. Varney
Assistant State 4-H Club Leader, Madison

1:30 P. M. Short Business Meeting of Wisconsin Dairymen's Assn.

AFTERNOON SESSION

Herbert Hochmuth, LaValle, Chairman

2:00 P. M. Breeding Dairy Cattle.....M. H. Fohrman
Dairy Husbandman, U.S. Dept. of Agr., Washington, D.C.

3:00 P. M. Selecting Proved Sires.....Prof. S. J. Brownell
Extension Dairyman, Cornell University, Ithaca, N. Y.

4:00 P. M. Meeting of Directors of Wis. Dairymen's Assn.

WOMEN'S PROGRAM

1:30 P. M. Speakers to be arranged for

MASTITIS -- (Garget)

Can Now Be Effectively Treated

MAM-O-LAC

(Tyrothricin) formerly Strepto-Lac

is a combination of Gramicidin - Tyrocidin and an effective agent for the treatment of Chronic Mastitis due to Streptococcus Agalactiae (both on dry and lactating cows), and about 4 out of 5 of such cases may be successfully treated. MAM-O-LAC is injected (40 c.c. dose) through the teat canal into the diseased quarter. Probably half the cases respond from the first injection, while no cases should be considered hopeless until several injections have been tried at seven to ten day intervals. One injection of dry cows is usually sufficient.

MAM-O-LAC keeps well, even after opening, at ordinary room temperature. A 125 c.c. bottle \$2.75 or a 250 c.c. bottle, \$5.00. Canula, which fits any standard syringe, costs 25c. It's well worth trying.

OESTEROL for retained **AFTERBIRTH**
Hypodermic injection of one 10 c.c. dose Oesterol usually results in expulsion of retained after-birth. Costs 90c. Six-dose bottle \$4.00. The clean scientific method.

Brucella Abortus Vaccine

**STRAIN
NO. 19**

**VACCINATION OF HEIFERS 5 TO 8 MONTHS
OLD NOW OFFICIALLY ENDORSED**

WE SELL TO STOCKMEN

A full Line of Government Licensed Biologics for Cattle, Hogs, Horses, Sheep and Poultry. Also Other Supplies.

FARMADE PRODUCTS

Write for Literature

Consider Us Headquarters

DR. J. H. OESTERHAUS, Owner

Kansas City Vaccine Co.
Stockyards Station, Kansas City 15, Mo.



Less Lifting to Load No Lifting to Hitch

YOU don't have to lift the front end of the Case tractor spreader, nor prop it up, to hook on with your tractor. The self-hoisting hitch avoids all that. What's more, it lowers the front of the box for every loading. The whole box is low, and so are the wheels. They don't stick up in your way.

This two-wheel spreader is as handy to back and steer as a two-wheel cart. You can keep it close to the supply, shorten every toss of your fork or shovel. Its rubber-tired speed on the road and in the field shorten the time of every trip.

This extra speed, plus the even feed and spread for which Case spreaders are known, make it practical to put light applications on more acreage . . . the method found to boost total crop yields twice as much as the same amount of manure in heavy application on fewer acres. Start now to get these three-fold gains; see your Case dealer about chances of delivery.

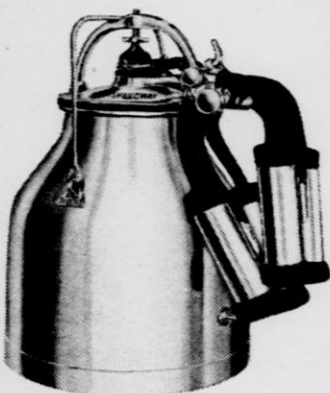
CASE



Send for Free Bulletin on modern management of manure. See how to make manure go twice as far; get details on modern spreaders. Also ask for folders on other machines you may need.

J. I. CASE CO., RACINE, WIS.

The De Laval Speedway Method of Fast Milking



- MORE MILK
- TIME SAVING
- LESS STRIPPING
- HEALTHIER UDDERS
- BETTER SANITATION
- PLEASES THE COW

The De Laval Speedway Method of Fast Milking, consisting of six easy steps, is the greatest advance in the science of milking since the introduction of the modern milking machine.

It accomplishes all of the highly important results shown above—by fitting the milking operation to the cow's natural principles of milk "let-down" and ejection.

Any dairyman using a milking machine can improve his results by following the De Laval Speedway Method of Fast Milking although it is most effective when used with the fast milking De Laval Milkers.

*Consult your nearby De Laval Dealer
or write us for catalog.*

**THE DE LAVAL SEPARATOR
COMPANY**

165 Broadway
New York 6

427 Randolph St.
Chicago 6

SECRETARY'S REPORT

JANUARY 1, 1944 — JANUARY 1, 1945

The Wisconsin Dairymen's Association in its 73rd year has continued to assist Wisconsin dairy farmers in an educational way by directing its activities toward the interest of better dairying to better the homes, the income, and the living of all Wisconsin farm families. Cooperation has been extended to all agencies in Wisconsin devoted to the interest of the "Badger" dairy farmer, i. e., University of Wisconsin, Vocational Agricultural Department of the State Board of Vocational and Adult Education, State Department of Agriculture, and the various Breed Associations.

RECORD ATTENDANCE AT 1944 CONVENTION

The 72nd Annual Convention of the Wisconsin Dairymen's Association, held February 7 at the Park Hotel, Madison, brought dairymen from every corner of the state. Back to their communities they took valuable information gathered from Dr. Burr Beach's discussion on "Herd Health"; "Proper Milking Methods" as outlined by George Werner; "Looking Ahead at Wisconsin Agriculture"—E. B. Fred's address as given by W. W. Clark, (all of these men being from the College of Agriculture, Madison); "Post War Marketing" as related by your Director of Agriculture, Milton Button; "Mastitis, What It Is, and What To Do About It" so excellently explained by none other than Dr. C. S. Bryan, Michigan State College of Agriculture. A very worthwhile and entertaining movie on Farm Safety was shown by R. C. Swanson, Farm Safety Specialist, College of Agriculture, Madison. The Seymour F.F.A. Quartet, winners of the 1943 state F.F.A. contest, rendered several pleasing numbers at the noon luncheon.

NOON LUNCHEONS

The Wisconsin Jersey, Brown Swiss, and Ayrshire Associations held their Annual Meetings and individual noon luncheons in connection with the State Dairymen's Association Convention.

WLS DINNERBELL PROGRAM

Mr. Art Page and Mrs. Della Loui, Wisconsin Field Representative for WLS and Prairie Farmer were on deck to broadcast the WLS Dinnerbell Program direct from the Convention. Representatives of each of the five major dairy breeds appeared on the program.

F.F.A. and 4-H AWARDS

As in the past, the Wisconsin Dairymen's Association presented Certificates of Merit to F.F.A. boys completing five years of continuous Jr. D.H.I.A. Testing Work. Those honorary guests included: Elmer Ferg and Mervin Marquardt, Bloomer; Arthur Peterson, Jr., Fish Creek; Donald Stuhr, Galesville; Anthony Loosen, Hartford; Jerome Johnson and Ananias G. Henry, La Farge; Marvin Beuthin, Mazomanie; Marvin Schuette and Carl Beth, Jr., Reedsburg; Hubert H. Petrich, Rosendale; and Charles Steffanus, Stevens Point.

Each year, 10 4-H Dairy Honor Members are guests of the Dairymen's Association at the Noon Luncheon and receive their award. This group consisted of: Royal Clausung, Grafton; Michael Dineen, Cedarburg; William Harrison, Chippewa Falls; Clifford Jurgens, Milton Jct.; Blake Lawrence, La Valle; Walton Ofste-

dahl, Holmen; Lester Pautz, Horicon; Helen Sherburne, Rusk; Gene Stanchfield, Fond du Lac; Marguerite Wieckert, Appleton.

COUNTY KEY-DAIRYMEN AWARDS

In accordance with a program launched in the spring of 1943 by the Wisconsin Dairymen's Association in cooperation with the College of Agriculture and the Wisconsin Agriculturist and Farmer, Key-Dairymen were chosen from 46 Wisconsin counties and honored at the 1944 Convention. Nominations were made by ballot appearing in the Wisconsin Agriculturist and Farmer, and a Key-Dairyman for each county was then chosen on the basis of leadership, and one who had done an outstanding job in his community in building dairy and agricultural interest.

The Board of Directors of the Dairymen's Association, at the annual meeting in July 1944, voted to discontinue this program.

PROGRAM OF WORK

Following is the program of work adopted by the Association's Board of Directors.

GOALS:

1. Organize ten new bull associations.
2. Three county bull programs.
3. Exhibits at twenty production shows and county fairs.
4. Make one state fair exhibit.
5. Promote at least five F. F. A. and 4-H Bull Sales in cooperation with breeders and Service clubs.
6. Dairy schools—25 counties.
7. 150 vocational agriculture departments keeping complete records.
8. Visit all Vocational Agricultural Instructors.

I. BETTER SIRES PROGRAM:

A. Bull Associations.

1. Visit farms of all Association members with county agent or vocational agricultural instructor in charge.
2. Make permanent record of bulls in use and results of Association bulls previously used.
3. Attend annual meetings when possible.
4. Assist in locating replacement bulls.
5. Make recommendations on better practices.
6. Organize new associations.
7. Bull Health.

B. County Bull Program.

1. Educational meetings.
 - (a) Bull Placement cooperative.
 - (b) Bull Associations.
 - (c) Artificial insemination.
 - (d) Junior bull clubs.
 - (e) Proved sires and offspring.
 - (f) Health.
2. Committees.
 - (a) To hold bull meetings.
 - (b) For demonstrations on hoof trimming.
 - (c) County Shows.
3. County bull display days.

II. SHOWS AND EXHIBITS:

A. Breed Production Shows.

1. Assist in organization.
2. Assist in conducting.
3. Provide educational exhibits.
4. Encourage educational features.

B. County and State Fairs.

1. Assistance in exhibits.
2. Provide educational exhibits.
3. Assist with dairy day program at State Fair.
4. Provide cooperative dairy educational exhibit at State Fair.

III. EDUCATIONAL MEETINGS:

A. Summer Meetings.

1. Develop plans for summer dairy tour.
2. 4-H Clubs and F. F. A. Chapters.

B. Fall and Winter Schools.

1. Work with college faculty in conducting feeding, breeding and management schools.
2. Assist with farm institutes.
3. Hold meetings with vocational agricultural departments and 4-H Clubs.

IV. SALES—CLASSIFICATIONS—PICNICS—ETC.:

A. Cooperation with breed fieldmen.

1. Attend and assist with herd classification.
2. Attend major sales where possible.
3. Attend and assist with summer picnics.
4. Attend annual meetings of breed groups.

B. Attend F. F. A. and 4-H Bull Sales.

V. TESTING PROGRAM:

A. Production record keeping.

1. Cooperate with College on D. H. I. A. program.
2. Encourage continuous testing of herds.
3. Herd analysis to get greater use of records.
4. Junior D. H. I. A.

VI. HERD HEALTH:

A. Plan of work.

1. Make up placard and supply to D. H. I. A. herds.
2. Recognition for herd owners following herd health program; both vocational agriculture and D. H. I. A.

VII. DAIRY SCHOOLS:

- A. Breeding, Feeding and Management schools conducted in cooperation with other existing agencies: College of Agriculture, Breed Associations, Vocational Agricultural groups and County Agricultural Agents.**

VIII. ANNUAL CONVENTION:

- A. Arrange and hold annual meeting of the Association.**

IX. ORGANIZATION:

A. Membership.

1. Junior members.
2. D. H. I. A. members.
3. Other members.

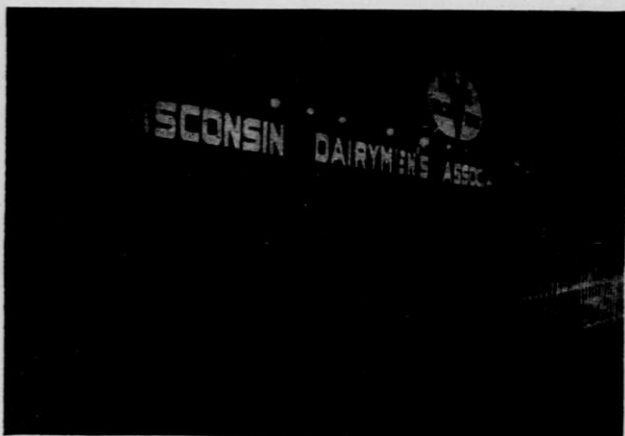
B. Awards.

1. Junior.
2. Senior.

BULL ASSOCIATIONS

A major project of your state Dairymen's Association is to promote and encourage Bull Testing Associations and much time is spent in organizing and supervising cooperative associations so that more good bulls will be alive when proven, and greater use made of the great sires when found.

STATE FAIR EXHIBIT



"Milk The Victory Way"

The 1944 Wisconsin State Fair Exhibit, provided for through the cooperation of the Wisconsin Dairymen's Association, Wisconsin College of Agriculture, and Wisconsin State Fair, is one that will be long remembered by the thousands of people who witnessed the daily demonstrations on "Proper Milking Methods".

A sincere "Thank You" to R. A. and Ben Dibble, Pewaukee and Allen Hetts, Fort Atkinson, who furnished the cattle for the exhibits; to Larry Pew of the Hinman Milker Company for his untiring efforts in presenting the milking demonstration each day for the State Fair Visitors; to the 4-H and F. F. A. boys who demonstrated the care and operation of the milking machine and the proper milking technique at various intervals during the day; and to the De Laval Co., who furnished equipment for the boys to demonstrate with.

A model milk house was constructed at the east end of the exhibit so that visitors could see the equipment necessary to produce a quality product.

The purpose of the entire exhibit was to show Wisconsin dairymen how they could Save Time, Increase Milk Production, and Help Control Mastitis.

NOTE: You will find the Proper Milking Procedure as demonstrated at the State Fair illustrated especially for your benefit on the center pages of this Year Book.

DAIRY HONOR ROLL

Again this year, the Department of Dairy Husbandry and the Wisconsin Dairymen's Association will award certificates and seals to Wisconsin D. H. I. A. members having made a herd average of 350 lbs. butterfat production or above for each of the past three or more consecutive years. This year there are 167 dairymen eligible for this recognition.

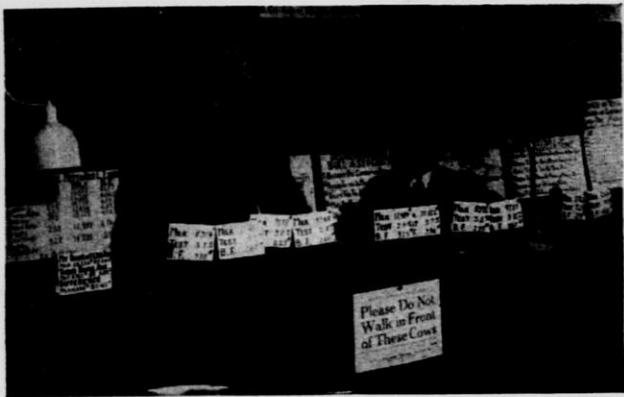
JUNIOR D. H. I. A. SUPPLIES

The Wisconsin Dairymen's Association has continued to cooperate and encourage Jr. D. H. I. A. activities in High School Vocational Agricultural Departments during the past year.

Herd book covers, cow record sheets, and monthly summaries which were furnished by the Wisconsin Dairymen's Association at approximate cost has been the principal way in which our cooperation supported this activity. The number of copies of this material

furnished through this office, as stated in the Activity Report, indicates the importance of this phase of work in the Wisconsin Dairymen's Association program. A correlation between the Jr. D. H. I. A. and the regular organized D. H. I. A. work has been encouraged in every way possible.

EDUCATIONAL TALKS



B. R. Dugdale at Monroe Department Where Robert Davenport is Instructor

During the past year, Mr. B. R. Dugdale, Fieldman for the Association, visited and presented talks on Dairy Herd Management, Proven Sires, and Jr. D. H. I. A. Testing Program in 34 Wisconsin Vocational Agricultural Departments with a total attendance of 1,347 boys. This service is available free of charge to all Agriculture Departments in Wisconsin, as well as for 4-H Club meetings, and any county or community meeting in the interest of dairying. Other Fieldman's services available to anyone so desiring are as follows:

- Assist in Conducting 4-H and F.F.A. Bull Sales.
- Help Locate and Select Foundation Breeding Stock—all dairy breeds.
- Assist in Organizing and Supervising Cooperative Bull Testing Associations.
- Conduct Hoof Trimming Demonstrations.
- Assist in Planning a Bull Paddock.
- Help in Solving Herd Management Problems.
- Help Select Production Bred Herd Sires.

APPRECIATION

The Wisconsin Dairymen's Association, its officers and directors, truly appreciate the cooperation afforded by all those who assisted in making the past year's work possible.

ACTIVITY REPORT

July 1, 1943 — July 1, 1944

Mr. B. R. Dugdale, Extension Fieldman

Days Spent in Office	98
Days Spent in Field	161½
Days on Leave	20
Miles Traveled:	
Personal Car	13,460
Bus or Train	4,607
Otherwise	2,066
Total	20,133
Meetings and Conferences Participated in....	111
Attendance	9,685

Farm Visits and Individual Contacts	734
Radio Talks	10
Talks Given at Vocational Agriculture Departments	34
Attendance (Also included in Meetings and Conferences Above)	1,347

RECORD OF OFFICE WORK

Bulletins and Circulars Prepared and Distributed	8,370
Personal Letters Written	1,843
Individual Cow Cards Distributed	30,225
Summaries Distributed	2,102
Herd Book Covers Distributed	1,205
Herd Health Placards Mailed Out	4,896
Feeding and Management Folders Mailed Out	395
Members Recognition Cards Distributed ...	529
Memberships Received	
Individual	40
Schools	117
Associations	372
	<u>529</u>

INVENTORY OF ASSOCIATION SUPPLIES AND EQUIPMENT

SALABLE SUPPLIES ON HAND

	Quantity July 1, 1943	Value	Quantity July 1, 1944	Value
2-ring Herd Book Covers	112	\$ 10.08	727	\$ 65.43
Monthly Herd Summaries	1,943	16.52	2,841	26.14
Individual Cow Cards.....	24,683	185.62	21,333	166.40
2-Ring Herd Book Covers	100	9.00	None	
		<u>\$221.22</u>		<u>\$257.97</u>

SUPPLIES AND EQUIPMENT NOT SALABLE

	Estimated Value July 1, 1942	Estimated Value July 1, 1943
Stenographer's Chair and Desk	\$15.00	\$ 12.00
Typewriter and Stand	40.00	35.00
Filing Cabinet—4'x7'	30.00	30.00
1 5-Drawer Standard Letter File	10.00	10.00
2 4-Drawer Standard Wooden Letter File	15.00	15.00
1 8-Drawer Card File	5.00	5.00
1 Desk Lamp	7.95	6.00
Miscellaneous Stationery and Supplies	25.00	125.00
Two-wheel Trailer and Box.....	15.00	15.00
Miscellaneous Exhibit Material	No. Value	No Value
Charts, Stands and Cases	5.00	7.00
1 Camera and Case	57.50	55.00
1 Projector and Case	68.80	65.00
1 Light Meter and Case	20.50	20.00
1 Day Light Screen and Case....	25.75	25.00
Unused Films	25.00	4.00
2 Slide Cases		4.00
18 Cardboard Files		4.00
1 Hoof Trimmer		4.95
1 Butterfat Reader and 1 Mastitis Tester		6.25
1 Strip Cup		1.25
2 Game Books and 1 Dictionary		7.00
1 Tripod		2.80
Slides		5.36
2 Farriers Knives		1.70
2104 Health Placards (2 given each new member)		21.04

WISCONSIN DAIRYMEN'S ASSOCIATION FINANCIAL STATEMENT

July 1, 1943 to July 1, 1944

Balance on hand July 1, 1943 \$ 979.33

Receipts:

State Aid	\$6,000.00
Memberships Collected	301.55
Sale of Agricultural School Supplies	536.81
Sale of Advertising in Year Book	710.89
State Fair Expenses Refunded.....	151.65

Total Receipts \$7,700.90

Total Funds to be Accounted for \$8,680.23

Expenditures:

Salaries (Including Income Tax).....	\$3,880.00
Travel Expense	1,005.93
Printing and Supplies	1,260.32
Postage	240.23
Annual Meeting	219.10
Directors Expenses	97.94
Awards and Premiums	159.05
Telephone and Telegraph	91.55
State Fair Expense	151.65
Wisconsin Council of Agriculture Membership Dues	60.00
Audit of 1942-1943 Association Records	20.00
All Other Miscellaneous Expenses	54.37

Total Expenditures \$7,240.14

Cash Balance July 1, 1944 \$1,440.09

Outstanding Obligations July 1, 1944

Accounts Payable	\$.06
Accounts Receivable	17.22

We, the undersigned officers of the Wisconsin Dairymen's Association, in accordance with Chapter 94.80 of the statutes, hereby certify that the within statement of the financial affairs of the said association is accurate to the best of our knowledge and belief and that the business of said association has been efficiently conducted during the preceding fiscal year, and in the interest of and for the promotion of the special agricultural interests of the state and for the purpose for which the association was organized.

Arthur W. Ritchie

President

Nois Zeloff

Secretary

B. R. Dugdale

Treasurer

Service

for your

CO-OP UNIVERSAL

milker

We at the Universal Milking Machine Company are always trying to better our service to Co-op Universal milking machine users. The long established policy of offering free repair service for our pulsators is still in effect (charging only for replacement of worn or broken parts).

We have genuine Co-op Universal rubber replacement parts including Calf Nose inflations which we consider the fastest, most efficient inflations available to dairymen. Calf Nose inflations do not creep up on the teat and udder and choke off the milk flow. This condition, called "milk lock" when the milk line becomes clogged with milk, is effectively prevented. And your Calf Nose equipment when your herd is properly trained, will complete the job making hand stripping or machine stripping unnecessary.

Keep your milker at top efficiency to produce more milk and to aid the war effort.

UNIVERSAL

MILKING MACHINE COMPANY
Waukesha, Wisconsin

*Owned and controlled by National Cooperatives.
The farmer-users own cooperative organization.*

WHO'S WHO



Alphabetical List of Wisconsin Dairymen's Association Members



Breed Associations



Wisconsin D.H.I.A.



Agriculture Departments and F. F. A. Chapters



Wisconsin Bull Testing Associations



Wisconsin Ayrshires are noted for their freedom from disease, heavy production and good type—many herds from which to choose.

Why...

The AYRSHIRE

Is the Cow for

Wisconsin Farmers

1. Heaviest Producer of 4% Milk — at least feed cost.
2. Wears like iron — more 100,000 pound producers of 4% milk than any other breed.
3. Milk in demand for special market purposes.
4. Good grazers — hardy — rugged.
5. Correct type . . . sound udders — the buyer's choice.

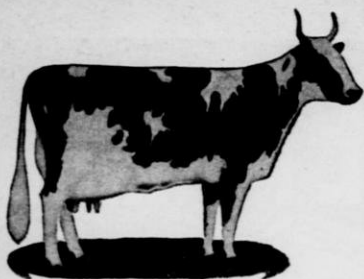


For Literature or Help in Locating Stock Write

Ayrshire Breeders' Association

41 Center Street

Brandon, Vermont



Ayrshire Breeder's

Active Members of the Wisconsin Dairymen's Association

Name	Address	Reg. & Gr.	No.
*Blank, Lawrence, Ripon	Registered	14
*Dalton, J. A., Oconomowoc, R. 1	Registered	23
Fowler, Horace, Bristol	Reg. & Gr.	26
*Sweeney, J. H., Hudson	Registered	29
*Rice, Ora R., Delavan	Registered	18

*Also active member of the Wisconsin Ayrshire Breeders' Association.

Additional Active Members of the Wisconsin Ayrshire Breeders' Ass'n Not Already Listed.

(Reported by State Secretary as of November 15, 1944)

Name	Address	Name	Address
Bobolz, Fred, and Higgins, W., Avalon		Marquart, E. B., Knowles	
Bonney, Millard C., R. 2, Sturgeon Bay		Meyer, Mrs. Myrtle J., R. 2, Whitewater	
Borchardt, Frank D., R. 1, Box 87, Neosho		Mishalek, Ted., R. 1, Kewaunee	
Brown, L. C., Richland Center		Nelson, Elmer, Milltown	
Cupery, Peter, Cambria		Nelson, Wayne, R. 1, Edgerton	
Dalke, Walter, R. 2, Box 73, Wittenberg		Peterson, Louis, Holmen	
Dobratz, George, Merrimac		Reyer, Edmund, R. 3, Sheboygan	
Duovak, Robert A., Box 138-B., R. 1, Yuba		Richardson, Harry, Spring Green	
Elverman, John, Burlington		Sands, Alex, R. 1, Box 290, Racine	
Ewers, Alvin, Richland Center		Schmidt, Leslie, Greenleaf	
Ewers, Forrest & Son, Richland Center		Schroeder, Albert, R. 3, Clintonville	
Fernholz, Mrs. Elva, Delavan		Schroeter, Fred, Grafton	
Fuhrmann, Arnold, Dale		Seefeldt, Bernhardt & Sons., R. 1, Box 98, Marshfield	
Guenther, Elden J., R. 3, Blair		Selbel, Henry, R. 1, Woodstock, Ill.	
Guenther, Henry, R. 1, Fountain City		Seltz, Louis, 11133 Blue Mound Rd., Wauwatosa	
Hacker Bros., Brillion		Simmons, George, Pewaukee	
Hafs, Oscar W., & Sons, Genoa City		Starrett, J., & Son, Bloomington	
Hahn, Perly A., R. 3, Harvard, Ill.		Travis, E. L., Elkhorn	
Henschel, Ray, Sturgeon Bay		Ula, John D., Blanchardville	
Higginson, Edmund, 2815 N. Harding Ave., Chicago, Ill.		VanderGallen, Willard, Box 13, Cambria	
Hofberger, John, R. 1, Larsen		Vine, Ernest J., Granton	
Ihde, Millard, Neenah		Wald, Christ, Alma	
Jacobs, Raymond, Sharon		Westphal, Otto, Kendall	
Jones, Cornelius, Juneau		Wilbershide, B. A., R. 1, Valders	
Jones, Royal, Darien		Wilbershide, J. C., 401 Arcade Bldg., Racine	
Knoespel, Allen, Forest Jct.		Wonoski, Gustave & Sons, Dousman	
Krenke, Henry F., R. 2, Fremont		Wurl, H. L., Mayville	
Kressin, Harold, Rockfield			
Lind Bros., Viroqua			
Marquardt, Otto, R. 2, Tigerton			

SURGE Milking



SURGE Service

*A Combination
You Can COUNT on!*

Genuine SURGE Milking is FAST milking — gets the most milk sooner. And SURGE Tug and Pull that speeds up milking means Safe Milking. This pull prevents the teat cups from creeping to draw in and pinch any portion of the udder. Cleaner Milking too, because there's less of the SURGE to keep clean.

Genuine SURGE Service by local factory-trained service men is your assurance that the SURGE is working and will continue to work its best. If you'd like to know more about the SURGE, or already have a SURGE that you want to be sure is doing its best, write direct to

Surge

BABSON BROS. CO.

2843 W. 19th St., Chicago 23, Ill.

QUALITY ALWAYS

BOTH now and in the post-war period **QUALITY** comes first in Wisconsin's dairy production program.

WE are depending on the members of the *Wisconsin Dairymen's Association* to offer leadership not only in quality production but in helping solve other post-war problems of the dairy industry.

**WISCONSIN
DEPARTMENT
of AGRICULTURE**

IT'S THE FARMERS

AND

THEIR HERDS

**That Make Wisconsin
America's Dairyland**

So It Is, with Brown Swiss.

IT'S the GOOD BREEDERS

AND

THEIR GOOD CATTLE

That make Wisconsin a leading Swiss State, and probably one of the best Brown Swiss markets of any state in the union.

There has always been a good market for Wisconsin Brown Swiss Cattle—and this popular demand will continue. Start your foundation herd now, and grow with the breed that's always in demand.

FOR ADDITIONAL INFORMATION

write

**The WISCONSIN BROWN SWISS
BREEDERS' ASSOCIATION**

Carl E. Lee, Pres.
2919 N. Prospect St.
Milwaukee, Wis.

Theodore Kurtz, Sec'y
Cedarburg
Wisconsin

OR

**THE BROWN SWISS CATTLE
BREEDERS' ASSOCIATION OF THE
UNITED STATES OF AMERICA, INC.
BELOIT, WISCONSIN**



Brown Swiss Breeder's

Active Members of the Wisconsin Dairymen's Association

Name	Address	Reg. & Gr.	No.
*Allyn, J. P., Delavan		Registered	70
Badinger, Dexter A., Sr., Eagle, R. 2		Grade	18
*Baumgartner, Ernest, & Son, Waukesha, R. 3		Registered	20
Becker, Willis, Appleton, R. 1		Grade	17
*Behnke, F. W., & Son, Brillion, R. 2		Registered	22
*Behnke, Richard, Hilbert, R. 2		Registered	15
Berg, Walter, Waukesha, R. 2		Reg. & Gr.	20
Casey, Clarence, Hortonville, R. 1		Grade	26
Casey, Henry L., Union Grove, R. 2		Reg. & Gr.	27
*Cooke Estate, George, Racine		Registered	12
Crossman, Dale, Eldorado		Grade	27
*Evans, Willard R., Waukesha, R. 1		Registered	29
Hansen, Dr. Roy T., Hartland, R. 1		Registered	19
Hazel-Mar Farm, Kenosha, R. 2		Reg. & Gr.	48
*Henning, George, Burlington		Reg. & Gr.	21
*Hughes, Gomer, Waukesha, R. 1		Reg. & Gr.	20
*Illing, H. T., Waukesha, R. 3		Registered	35
*Jensen, Emil, Menomonie		Registered	21
*Landwehr, Joseph, Seymour		Reg. & Gr.	27
Laudolff, William J., Fond du Lac, R. 4		Reg. & Gr.	18
Mills, S. J., Union Grove, R. 2		Reg. & Gr.	32
Mueller, Emil, Seymour, R. 2		Registered	27
Mueller, Herb., Seymour, R. 2		Grade	25
Mueller, Reinhold, Seymour, R. 2		Grade	17
*Nackers, A. M., West De Pere, R. 2		Registered	44
*Newhouse, Wesley, Kaukauna, R. 2		Registered	20
Ostval Farms, Burlington, R. 2		Registered	68
Peterson, Archie, Oconomowoc, R. 1		Grade	18
Roesler, Ed., Dale		Grade	19
St. Francis Monastery, Burlington		Reg. & Gr.	17
Schroeder, Charles, Appleton, R. 1		Grade	16
Timm, Ray, Black Creek, R. 2		Grade	
Une-Vista Farms, Salem		Reg. & Gr.	19
Witt, Louis, West Allis 11		Registered	30
Yahnke, George & Lenard, Burlington, R. 4		Grade	25
Yahnke, Otto & John, Burlington, R. 4		Reg. & Gr.	21
*Zick, Earl, Forest Jct.		Registered	8

*Also active member of the Wisconsin Brown Swiss Breeders' Ass'n.

ARE YOU A MEMBER OF YOUR STATE BREED ASSOCIATION?

Their work is for your interest. Your
support will prove to be a sound
INVESTMENT.

JOIN NOW!

Additional Active Members of the Wis- consin Brown Swiss Breeders' Associa- tion Not Already Listed.

(Reported by State Secretary as of November 15, 1944)

Name	Address	Name	Address
Ames, Gerald, R. 3, Viola		Boss, Fred, Monroe	
Behnke, John, Hilbert		Brennecke, C. F., Monroe	
Beyerl, L. M., R. 1, Colby		Brockmeyer, Leroy, R. 1,	
Blise, Harvey, Ridgeland		Madison	
Bohac, Joseph, Jr., Black		Buckingham, C. L., Ridgeway	
River Falls		Cline, Ralph, R. 5, Janesville	
Borowski, O. C., Almena		Damerow, Chas., Beloit	

Name	Address	Name	Address
Dargel, Edmund H.,	Reedsburg	Morgan, Clifford, R. 1, Box	116, Sparta
Dittmar, Herman, R. 3,	Wausau	Mortenson, J. C.,	Franksville
Drollinger, Wilmer,	Auburndale	O'Brien, George,	Antigo
Drunasky, Geo.,	Sun Prairie	Osterhaus, J. H.,	Bloomington
Ebert, Francis E.,	Tomah	Owen, Wayne L.,	Nelson
Elmer Bros. Co., Inc.,	R. 4, Monroe	Pfaff, Wallace Dean,	Melrose
Elser, Theodore,	Beaver Dam	Reimer, Otto W.,	Underhill
Fox, Harley, R. 3,	Columbus	Reinke, John,	Kewaunee
Fox, Russell,	Waterloo	Renner, John H.,	Elkhorn
Franciscan Fathers, c/o Rev.		Reuter, Fred,	Middleton
Dismas Treder, O.F.M.,	Pulaski	Rothmund, John, R. 2,	Manitowoc
Fritsch, Emil G.,	Box 42, R. 5, Monroe	Sandley, Ole,	Box 142, Browntown
Gear, Carroll A., & Son, R. 1,	Plainfield	Schams, Wm.,	New Lisbon
Gehler, Rudolph, Jr., R. 4,	Monroe	Schauer Bros.,	New Franken
Gilbertson, Morris L., R. 1,	Evansville	Schlappl, John,	Browntown
Gross Bros.,	Wis. Rapids	Schmeisser, Herbert, R. 1,	Valders
Hensel Estate, Wm. J., & Son, Alma Center		Schott, T. K.,	New Franken
Ingold Estate, John, R. 5,	Monroe	Schram, Carl,	Mishicot
Inman, Howard,	Beloit	Schultz, Harvey J.,	Merrill
Jacobson, J. A.,	Caledonia	Sharp, Manley,	Mauston
		Sherman, Miss Florence, R. 1,	Jefferson
		Sherry, Orbec D., R. 2,	Viroqua
		Sorenson, Bernard L., R. 1,	Franksville

ARE YOU A MEMBER OF THE WISCONSIN DAIRYMEN'S ASSOCIATION?

You can be by sending just \$1.00 with your name, address, breed of cattle, whether registered or grade, and number of milking cows in your herd to

WISCONSIN DAIRYMEN'S ASSOCIATION

Fort Atkinson, Wisconsin

Joyce, A. J., & Sons, Salem	Stefl, Frank, Tilleda
Kastenmeyer, Alois W.,	Strauss & Hodgson, Apple
Beaver Dam	River, Ill.
Klassy, Henry, R. 3, Monroe	Techlin, Alfred, R. 3,
Kluge, Norbert, R. 2,	Appleton
Cumberland	Van Kauwenberg, Joe, R. 2,
Kopplin, Emil, R. 1, Wausau	West De Pere
Krueger, H. E., & Son,	Van Patten, C. J., R. 1,
Beaver Dam	Black Creek
Kurtz, Theo. J., Cedarburg	Voegell, Jacob, Monticello
Lee, Carl E., 2919 N. Prospect	Voegell, John R., Lodi
Ave., Milwaukee	Vosen, Peter, Cross Plains
Lenz, H. C., & Son, Tomah	Vye, V. B., Waukesha
Loverude, Victor, Barron	Weaver, Roy E., Shullsburg
Martin Bros., West Salem	Wendt, Marvin, Pine River
Meyer, Alfred, R. 2, Monroe	Wendt, Oscar, Mazomanie
Menneke, Alice Miller, R. 2	West, Weber & Von Dee,
Box 30, New Lisbon	Sarona
Meyer, Frank C., Wilton	Winters, Frederick W., Pound
Moe, Price, Black River Falls	Woodmoore Farms, Janesville

Heart of Wisconsin Brown Swiss

**Bull Calves for sale from The Best
of Bulls mated to cows producing
better than 400 lbs. B.F. per year.**

LOU-QUES FARM

WISCONSIN RAPIDS, WIS.

TOWER FARM

AUBURNDALE, WISCONSIN

W. A. Drollinger, Supervisor

OSTVAL FARMS

Registered

Brown

Swiss

Where

Type Is Essential

But

PRODUCTION

Is

PARAMOUNT

Inquiries Invited

R. 2 -- BURLINGTON, WIS.



Feed-makers in ONE!



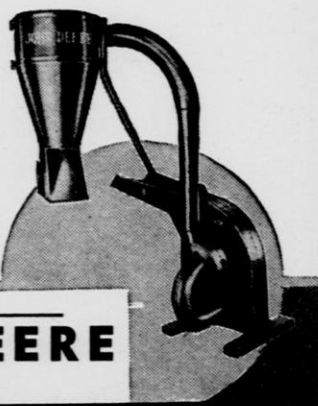
★ *With a John Deere Roughage Mill and Feed Grinder you feed into one end to (1) chop hay and (2) fill trench or upright silo. Feed into the hammer mill end and (3) you grind all kinds of small grain and shelled or ear corn. Feed roughage into one end and grain, minerals and other supplements in the other and (4) you have a feed mixer.*

★ Built in 10- and 14-inch sizes with wagon box or sacking feed collector.

For Straight Grinding

John Deere builds 10- and 14-inch hammer mills, also a 6-inch mill for operation with electric motor.

You can get the type and size of mill you want in a John Deere.



— See Your —
JOHN DEERE
DEALER

**ENLIST YOUR MILK
FOR SERVICE!**



**FEED YOUR
BABY CALVES**

SECURITY

CALF FOOD

MILK is the very life-stream of wartime nutrition. Every additional gallon you market is a service to your country . . . So sell your milk and feed your baby calves new, improved Security Calf Food. It's cheaper and Security has been a dairy aid for 4 decades. Send for our **FREE Folder!**

SECURITY FOOD COMPANY

MINNEAPOLIS 15, MINNESOTA

*Specialists In
Modern Cleaning Aids*

KLENZADE

LET THE NAME REMIND YOU — Back of every Klenzade product is the skill, research and experience of trained laboratory technicians and sales personnel thoroughly familiar with your cleaning problems. Klenzade covers every cleaning need in the dairy industry including Wetting Agents, Phosphate and Chlorine Products, and Organic Detergents in addition to feeding and spraying equipment. If you have a cleaning problem, let the Klenzade name remind you of our specialized cleaning service. Write us without obligation.

KLENZADE PRODUCTS, INC.

BELOIT, WISCONSIN

WISCONSIN

A Guernsey Nursery for The Nation . . .

From the early Guernsey development in Wisconsin, the nation has turned to quality breeding.

Call the roll of states today and more Guernseys are purchased each year in 16 states than any other breed. Guernseys are first or second in 43 states. **No other breed carries this stamp of national approval.**

IN THE EAST, GUERNSEYS LEAD IN . . .

Maine	New Jersey
Massachusetts	Delaware
Connecticut	Maryland
Rhode Island	

IN THE SOUTH, GUERNSEYS FIRST IN . . .

Virginia	North Carolina
West Virginia	South Carolina

IN THE MIDWEST AND SOUTHWEST . . .

Guernseys are first in Indiana and North Dakota and are second in others, closely crowding for first in many states.

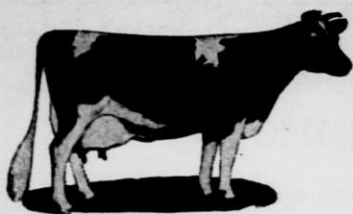
IN THE MOUNTAIN AND PACIFIC COAST . . .

Guernseys are first in California, Washington, and New Mexico, and second in other states.

THESE ARE GOOD HOME MARKETS FOR
REGISTERED GUERNSEYS AND QUALITY
WILL PLAY A BIG PART IN POSTWAR
AMERICA.

**THE AMERICAN GUERNSEY
CATTLE CLUB**

PETERBOROUGH, N. H.



Guernsey Breeder's

Active Members of the Wisconsin Dairymen's Association

Name	Address	Reg. & Gr.	No.
Ahrens, Chas. H., Two Rivers, R. 2	Grade	13
Allenwood Farm, Kenosha	Registered	8
Audley, Thos. B., Pewaukee	Grade	20
Balrd, Collier W., Rosendale	Reg. & Gr.	28
Balson, Chas. E., Fond du Lac, R. 1	Registered	25
Barta, Calvin, Two Rivers, R. 1	Grade	17
Basse, William H., Waukesha, R. 3	Registered	23
Behm, Walter F., Manitowoc, R. 1	Grade	16
Berge, Anton, & Son, Valders, R. 1	Registered	27
Berge, Otis, & Orin, Valders, R. 1	Reg & Gr.	28
Beshta, Art, Hortonville, R. 1	Grade	12
Beshta, Elmer, Hortonville	Grade	16
Best, Ted G., Downing	Reg. & Gr.	24
Birk, Colonel, Thiensville	Reg. & Gr.	28
Bjerstedt, Charles, River Falls	Reg. & Gr.	25
Boese, Wm., & Son, Fort Atkinson	Reg. & Gr.	14
Brauer & Welgert, Oakfield, R. 1	Grade	28
Breitrack, O. H., Appleton	Registered	21
Bremer, Harvey, Manitowoc, R. 4, Box 65	Reg. & Gr.	13
Brunner, Joseph L., Manitowoc, R. 4	Registered	33
Brunner, Urban, Manitowoc, R. 4	Registered	22
Bumby & Smith, Rosendale	Reg. & Gr.	37
Burlingham, Lee, Dousman	Reg. & Gr.	33
Casaw, Bernard & Colt, Frank, Hudson	Grade	25
Chapin, Arthur, Brandon	Reg. & Gr.	27
Chapple, Jerome, Eden, R. 1	Grade	12
Clausen, Dwight, Ripon	Grade	22

GUERNSEY HILL FARM

HERD SIRE

BOULDER BRIDGE PROPHET 330247

**Sire — Boulder Bridge Distinction,
Grand Champion Minnesota
State Fair 1941.**

**Dam — Boulder Bridge Grateful,
644.4 lb. fat class GG, 715.3
lb. fat class CC. First prize pro-
duce of dam Minnesota State
Fair 1940.**

Our milking herd consists of cows that have popular blood lines, type, size and production. Gardenius' Valiant's Queen was top cow at the Wisconsin State Guernsey sale at Waukesha in 1941.

Accredited 6528

Certified 10124

When in need of a young bull or foundation females,
write us.

ARTHUR G. LAABS

COLBY, WISCONSIN

Homestead Farm Guernseys

HERD SIRE

PINE MANOR KING'S IDEAL
289285

Grand Champion bull at Wisconsin state fair 1943.
His daughters are large and good type. Those
coming into production are doing very good.

SIRE

Coronation King of Pine Manor 250949.
Sire of 10 A. R. daughters.

DAM

Coronation Althea 520571.
12176 milk -- 551 fat GG.
12724 milk -- 615 fat EE.
1st prize 3 yr. old cow.
Senior and Grand Champion at Indiana, Illinois
and Iowa state fairs 1940.

JAMISON BROS.

R. 1, APPLETON, WIS.

Name	Address	Reg. & Gr.	No.
Clausing, Armin, Grafton	Reg. & Gr.	30
Clausing, Louis, Thiensville	Reg. & Gr.	24
Congdon, Bert C., Galesville	Reg. & Gr.	17
Corium Farm, Inc., Fond du Lac	Registered	89
Corsette, Ralph, Black Creek, R. 1	Grade	27
Cramer, Joe, Menomonie	Reg. & Gr.	42
Davies, Dr. E. B., Waukesha	Reg. & Gr.	45
Day, Ed., Hudson	Reg. & Gr.	21
Dietz, Edward, Hortonville, R. 1	Registered	16
Dorn, Leo, Seymour, R. 1	Grade	17
Drephal, Elmer, Black Creek, R. 2	Grade	22
Engelbrecht, Walter, Two Rivers, R. 1	Grade	21
Erdman, L. C., Jefferson	Registered	23
Evenson, Mrs. Clara, Valdars, R. 1	Grade	27
Fahrwald Farm, Oshkosh	Reg. & Gr.	80
Fisher, H. L., & Son, Valdars, R. 1	Reg. & Gr.	25
Fischer, John, Shiocton, R. 2	Grade	26
Fladoes, Mrs. M. A., Milwaukee, Sta. F.	Registered	10
Ford, Gordon & Donald, Fond du Lac, R. 1	Grade	16
Fredricks, John, Appleton, R. 1	Registered	10
Fruit, C. E., & Son, Waukesha, R. 2	Reg. & Gr.	41
Galle, Fred, Fond du Lac, R. 1	Reg. & Gr.	27
Garvens, E. G., Milwaukee, R. 12	Grade	18
Gilbertson, George, Manitowoc, R. 1	Grade	13
Gittins, E. J., Estate, Franksville	Registered	20
Graf, Waldo, Kiel, R. 1	Grade	29
Graf, Wilmer H., Kiel, R. 1	Grade	29
Gruber, Erwin, Manitowoc, R. 2	Grade	18
Guderyon, H., Hartland, R. 1	Reg. & Gr.	50
Gums, Donald, Black Creek, R. 1	Grade	22
Haferbecker, Melvin, Appleton, R. 2	Grade	22
Hammons, Freeman, Clear Lake	Reg. & Gr.	16
Hanson, Gilbert F., New Holstein, R. 1	Registered	16
Harness, R. W., Neenah	Registered	30
Harshman, Boyd, Elk Mound	Registered	19
Hass, Harry, River Falls	Reg. & Gr.	11
Hasslinger, Cletus D., Hartland	Reg. & Gr.	41
Heitpas Dairy, Appleton, R. 3	Grade	69
Hendrick, Ray, Campbellsport, R. 1	Grade	14
Henry, Carl, Appleton, R. 2	Grade	10
Herman, Alfred, Black Creek, R. 1	Grade	12
Hermann, Dr. W. C., Hartland, Wis.	Grade	22
Hill, John, Rosendale	Registered	27
Hill, William, & Son, Pewaukee	Grade	20
Hinkley, Ormel, Eagle	Reg. & Gr.	22
Hoard's Dairyman Farm, Ft. Atkinson	Registered	31
Hochmuth, Herbert, La Valle	Registered	18
Holtz, Forrest, Black Creek, R. 2	Grade	18
Holtz, Harry, Black Creek, R. 2	Grade	15

Name	Address	Reg. & Gr.	No.
Hulbert, Clarence H.,	Waukesha, R. 5	Registered	21
Iding, Harvey,	Eden, R. 1	Grade	22
James Farms,	Ft. Atkinson	Reg. & Gr.	69
Jamison Bros.,	Appleton, R. 1	Reg. & Gr.	49
Jensen Bros.,	River Falls	Reg. & Gr.	11
Jerome, Lewis,	Waukesha, R. 3	Reg. & Gr.	18
Johnson & Fryday,	Brandon	Reg. & Gr.	28
Johnson, Thorval,	Union Grove	Reg. & Gr.	10
Kassilke, Art.,	Appleton, R. 4	Registered	17
Katner, Ralph,	Hudson,	Grade	24
Klesling, E. H.,	Jefferson	Registered	26
Klesling, M. F.,	Fort Atkinson, R. 1	Reg. & Gr.	18
Kimball, Elmer,	Seymour, R. 1	Registered	24
Kinney, Donald C.,	Pewaukee, R. 1	Grade	20
Kinney, Mark,	Roberts	Grade	25
Kipp, F. F.,	North Prairie	Registered	16
Kirschenstein, H. W., & Son,	Fond du Lac, R. 3	Grade	15
Kistner, Paul,	Downing	Grade	28
Klann Bros.,	Chilton, R. 4	Registered	25
Klessig, Walter,	Cleveland, R. 1	Grade	27
Klitzkie, Harry,	Whitewater, R. 2	Grade	26
Koch, Mike,	Mishicot, R. 1	Grade	18
Koehler, Kathryn,	Dousman, R. 1	Grade	11
Kohout & Altfilisch,	Kenosha, R. 2	Grade	35
Kolb, Alden,	Cleveland, R. 1	Grade	24
Kranzush, Wm.,	Oneida, R. 1	Grade	12
Krug, John J.,	Greenbush	Grade	25
Kusilek, Alfred,	River Falls	Reg. & Gr.	20
Laabs, Arthur G.,	Colby	Registered	14
Lamers, Gordon,	Kaukauna, R. 3	Grade	15
Laning & Sherwin,	Brandon	Grade	32
Larson, Edwin,	Pewaukee, R. 1	Grade	16
Leonard, Dr. C. W.,	Fond du Lac, R. 2	Grade	36
Leppla, Victor,	Appleton, R. 1	Registered	20
Lohrenz, Ray,	Hortonville, R. 1	Grade	
Lohrenz, Wesley,	Shlocton, R. 2	Grade	20
Lohrenz, Wilbur,	Hortonville	Grade	12

ELDERBROOK FARM

Quality	SINCE	Continuous
Guernseys	1918	Testing
HERBERT HOCHMUTH		LaValle, Wis.

Luebke, Chas. J.,	Manitowoc, R. 4	Grade	23
Lurvey Bros.,	Dousman	Reg. & Gr.	40
Lutzke, Melvin,	Kiel, R. 1	Reg. & Gr.	24
Luxerin Farms,	Fond du Lac, R. 3	Registered	59
Magnus, J. F.,	Appleton	Registered	22
Manley, Carlyle,	Appleton, R. 1	Grade	12
Marken, Otis,	Valders	Registered	20
Marzolf, Wm.,	Hudson	Registered	12
Mathesius & Richter,	Burlington, R. 4	Reg. & Gr.	25
Meehl, Joe,	Appleton, R. 2	Grade	17
Melder, Ewald G.,	Hartland, R. 1	Registered	16
Meltz, Emory,	Appleton, R. 1	Registered	24
Messman, Louis,	Two Rivers, R. 1	Grade	14
Meyer, F. J.,	Hales Corners	Registered	20
Meyer, Tony,	Pewaukee	Grade	22
Mitchell, W. C.,	Bristol, R. 1	Reg. & Gr.	18
Monroe, John F.,	Hartland, R. 1	Grade	30
Morgan, Elton W.,	Cato, R. 1	Registered	44
Muetzelburg, Erwin,	Cleveland, R. 1	Grade	20
Murat, Ray,	Scandinavia	Reg. & Gr.	40
Murphy, A. C.,	Chilton, R. 4	Grade	23
Mutz Bros.,	Trevor	Reg. & Gr.	25
McBain, E. L.,	Seymour, R. 2	Grade	10
McGeoch Land & Houses, Inc.,	320 E. Mich. St., Milwaukee	Reg. & Gr.	37
Nashotah House Farm,	Nashotah	Registered	40
Nelson, Chas.,	Dousman	Registered	22
Nelson, Manning,	Shlocton, R. 2	Reg. & Gr.	14
Nespodzany, Roman,	Manitowoc, R. 3	Grade	24
Nicholas & Tratt,	Whitewater, R. 1	Reg. & Gr.	26
Nicoson, LeRoy S.,	Eagle, R. 1	Grade	18
Nimmer, Henry,	Kiel, R. 1	Reg. & Gr.	21
Oines, L. E.,	Galesville	Reg. & Gr.	23
Onasch, A. J.,	Oconomowoc, R. 4	Registered	18
O'Neil & Hardgrove,	Rosendale	Grade	28
Owen, William,	Downing	Registered	16
Oynes, M. E.,	Galesville	Grade	25
Parslow, John, & Haugh, John,	River Falls	Reg. & Gr.	16
Patey, Charles E.,	Waukesha, R. 2	Reg. & Gr.	18
Pattee, John,	Waupun	Registered	15
Paulson, Blaine G.,	Melrose, R. 2	Reg. & Gr.	17
Pearson, Newton,	River Falls	Reg. & Gr.	30

Hoard's Dairyman Farm

Guernsey Sires

Playhaven's Y. Plymouth

Playhaven's Y. Plymouth, our senior sire, is a son of Douglaston Lady Dorothea 413158, who made 11,341.5 lbs. milk and 629.5 lbs. butterfat as a junior 2-year-old and 15,943 lbs. milk, 809.8 lbs. butterfat in Class AA. She in turn is sired by Imp. Financier of Myrtle Place 166260 whose 63 daughters average 11,300 lbs. milk and 574 lbs. butterfat. The sire of Plymouth is Raemelon Yankee 222777. His daughters are large, roomy heifers that give promise of developing into very desirable cows. One of them has a record of 644 lbs. butterfat in GG, while another produced 13,712 lbs. milk, 688.1 lbs. butterfat in E. His dam, Green Meadow Tranquil 359360, made 801 lbs. butterfat as a junior 3-year-old and is considered one of the outstanding Guernsey cows of today. Plymouth combines both production and individuality.

McDonald Farms Independent

His sire and dam are both by proven sires and out of outstanding dams. Calves by this young bull are now arriving and they look very promising. His sire, McDonald Farms Prediction (a son of Foremost Prediction, 53 AR daughters), is being used extensively. McDonald Farms Enaveve, his dam, has 15,073 lbs. milk, 683 lbs. butterfat, GG, and is a daughter of the famous sire, Myhaven King, whose first nine daughters average 657 lbs. butterfat as two-year-olds.

Playhaven's C. Paul

Playhaven's C. Paul, one of our junior sires, is a very typy four-year-old which we confidently expect will prove to be a most satisfactory sire. His sire, Broadland Challenger, is by a son of Green Meadow Coronation Prince and from a very good granddaughter of Green Meadow Coronation King. Paul's dam, Playhaven Pauline, is one of the outstanding daughters of Raemelon Sunny Triumph, a proven son of Green Meadow Tranquil, bred, developed and proved in the Raemelon herd. Playhaven Pauline was one of a number of outstanding foundation cows selected by Gordon Hall for H. W. Mercer's Hominy Hill Farm, New Jersey, where she recently completed a Class BBB record of 13,508.7 lbs. milk and 636.6 lbs. butterfat (305 days, milked twice daily).

Sons of the above three sires out of the steady, good producing daughters of Allen's Show Boy now in our herd, will help both your production and type. Write us for prices and descriptions of our bull calves before purchasing your next herd sire. We have several that are priced for quick sale.

HOARD'S DAIRYMAN FARM
FORT ATKINSON, WISCONSIN

SHANTITUCK FARM REGISTERED GUERNSEYS

BRED FOR PRODUCTION AND TYPE QUALITIES

25 Years' Continuous D.H.I.A. and A.R. Herd Testing.
All Records Made on 2x Milking, Ordinary Farm Care.
1942 Herd Average—9,022 lbs. Milk—453 lbs. B.F.
1943 Herd Average—8,134 lbs. Milk—467 lbs. B.F.

Young Bulls for sale from outstanding dams and sired
by outstanding bulls from proven sires.

WALTER MATTHYS & SONS

BARRON, WISCONSIN

Name	Address	Reg. & Gr.	No.
Pett, Reinhold,	Mukwonago, R. 1	Grade	28
Piper, Roy M.,	Eagle	Grade	14
Poetsch, Howard C.,	Waukesha, R. 1	Grade	13
Portz Bros.,	Waukesha, R. 1	Reg. & Gr.	30
Priedeman, Gordon O.,	Waukesha, R. 5	Reg. & Gr.	16
Pritzl, John A.,	Cato, R. 1	Grade	24
Pucker, Albert,	Rosendale	Grade	23
Purity Farm,	Hartland	Registered	14
Rahr, Guido R.,	Manitowoc, Waldo Blvd.	Registered	19
Riehl, Lloyd,	Black Creek, R. 2	Grade	18
Riemer, Erwin,	Cedarburg	Reg. & Gr.	18
Riemer, Walter,	Nashotah, R. 1	Grade	23
Rlesen, Fred G.,	Oconomowoc, R. 2	Grade	27
Rogers, Bradford,	Oconomowoc, R. 1	Grade	12
Rolitt, J. M.,	Kiel, R. 2	Grade	10
Ross, Louis,	Roberts	Grade	20
Ross, Wm.,	Roberts	Grade	27
Ruby Farms,	Waukesha, R. 5	Grade	48
Rustman Farms,	Bassett	Reg. & Gr.	68
Ruwoldt, Henry,	Appleton, R. 2	Grade	10
Sabel, Clarence,	Eden, R. 1	Grade	15
St. Bonaventure College,	Sturtevant	Grade	21
Schlesner Bros.,	Johnson Creek, R. 1	Registered	13

PROGRAM OF WISCONSIN GUERNSEY BREEDERS ASSOCIATION

1. HEALTHY HERDS . . .

Featuring the Abortion Testing Plan.

2. PRODUCTION TESTED HERDS . . .

By official Testing, featuring A. R. Herd Testing Associations.

3. IMPROVED MARKETS . . .

a. For Cattle — Through County Breeders Associations and State Sale.

b. For Product — Through Sale of Golden Guernsey Milk, under the Copyright Trade Mark.

4. BETTER SIRES . . .

Selection based on complete information and lifetime production records.

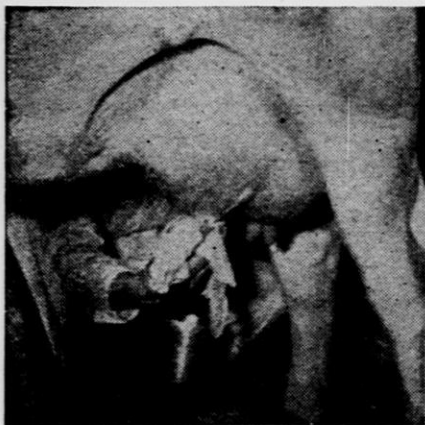
WISCONSIN GUERNSEY BREEDERS ASSOCIATION

Pewaukee, Wis.

Clarence Sheridan, Pres.; Gavin McKerrow, Sec'y.
Geo. D. Britts, Ass't. Sec'y.

GIVE "BOSSY" A BREAK

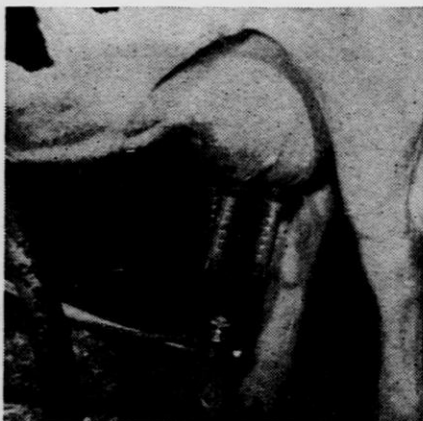
And You Will--SAVE TIME-INCREASE M



Massage Teats and Udder



Use Strip Cup



Start Milking Immediately

1.

Wipe and massage udders with clean, warm, damp cloth to stimulate let down of milk. A good grade of paper towel can be used and thrown away after washing each udder. Some authorities recommend using very warm (130° F) chlorine water (250 parts of chlorine per million).

2.

Use a strip cup to detect abnormal milk. This preparation aids in producing clean milk and "spots" cows giving abnormal milk. These cows should then be milked last to avoid spreading mastitis or other infectious udder diseases.

3.

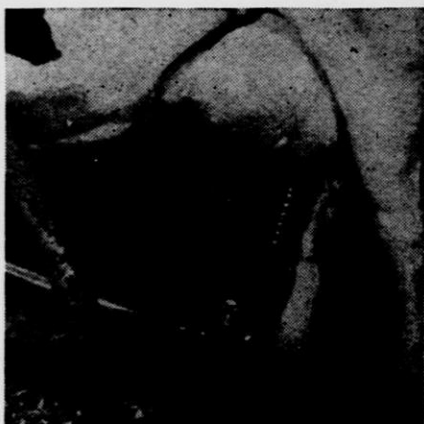
Attach milking unit immediately after preparing the cow. A three-minute egg timer can be used to indicate when the unit should be removed. Any other suitable timing device can be used.

K—MILK HER PROPERLY

MILK PRODUCTION—HELP to CONTROL MASTITIS

4.

Remove the machine after three to four minutes. Most cows will milk out in that time, but a few will take longer. The main thing to watch is not to let the teat cups crawl up as this injures the delicate tissues of the udder and provides a place for bacteria to lodge and start infection.



Don't Let Teat Cups Crawl

5.

Some dairymen like to strip with a machine. If machine stripping is done, pull the teat cup part way down and with the free hand massage the udder. Take the machine off as soon as the milk ceases to flow.



Strip by Machine

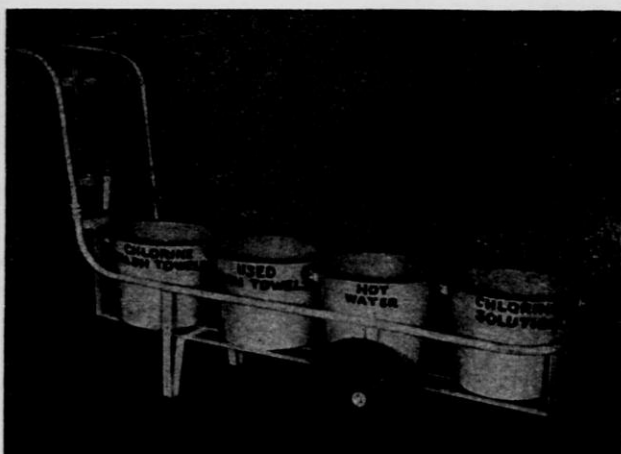
6.

Other dairymen strip by hand. The point to remember in hand stripping is not to strip too long—quit when the cow quits.



Strip by Hand

STOP THE SPREAD OF MASTITIS and GARGET ... with a SANI - TRUK



Leading Universities, Dairies, and Dairymen Recommend The Sani-Truk for Faster and More Sanitary Milking. See Your Dealer or Write

The University of Wisconsin has been using a Sani-Truk in their dairy for the past six months in connection with their fast milking program.

DAIRY EQUIPMENT CO.

Sani-Truk Division
1313 University Ave.
MADISON 5, WIS.

Name	Address	Reg. & Gr.	No.
Schroeder, Ted., & Son,	Menomonie	Grade	27
Schultz, Edward,	Burlington, R. 4	Reg. & Gr.	17
Schultz, Harold,	Pewaukee, R. 1	Registered	32
Schultz, R. C.,	Black Creek, R. 1	Registered	21
Schumacher, A. C., & Son,	Waukesha, R. 2	Reg. & Gr.	34
Schwanz, Herman G.,	Mukwonago, R. 1	Grade	20
Schwemmer, Geo.,	Mukwonago	Reg. & Gr.	19
Seehaver, Clarence,	Ripon	Registered	23
Shellhouse Bros.,	Menomonie	Reg. & Gr.	13
Sherburne, V. K.,	Menomonie	Reg. & Gr.	39
Simon, Maurice,	Boardman	Grade	16
Skubal, Anton,	Mishicot, R. 1	Grade	14
Smithyman, Paul H.,	Sussex, R. 1	Reg. & Gr.	20
Smithyman, Ralph,	Pewaukee	Reg. & Gr.	20
Springmeadow Farms,	Genoa City	Registered	30
Stallman, John F., & Sons,	Elk Mound	Registered	30
Stapleton, Tom,	Hartland, R. 1	Reg. & Gr.	20
Steiger, Carl,	Oshkosh	Reg. & Gr.	33
Steinhoff, A. J.,	Eagle	Grade	22
Steinke & Mellahn,	Eldorado	Grade	28

ELK MEADOW FARM REGISTERED GUERNSEYS

*T. B. and Bang's Accredited Herd
Continuous D. H. I. A. Testing*

We have male calves for sale; sired by either Boulder Bridge Sunlight 274911 or McDonald Farms Forceful 308216 with dams having good butterfat records.

JOHN F. STALLMAN & SONS
Eau Claire telephone

Elk Mound, Wis.
Dunn Co.

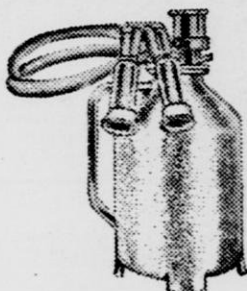
More Milk and Butterfat

WITH LESS TIME AND LABOR

HINMAN

**ONLY 10
INCHES
VACUUM**

**LOWEST
VACUUM
MILKER**



HINMAN proven the world's fastest milker.

HINMAN the only milker designed for fast milking.

HINMAN SPEED MILKING

1. Increases production.
2. Promotes udder health.
3. Saves time.

HINMAN EXTREME SIMPLICITY

HINMAN SERVICE UNEQUALLED

THE PROOF—Ask any Hinman User.

For further information see your local Hinman dealer or write to

J. C. MARLOW CO., Distributor

Write for Literature

MANKATO, MINNESOTA



Femco Almas Only Son

Breed artificially to Femco Alma's Only Son, only sire in the world whose first two dams hold world's records in their class over all breeds.

Femco Alma, his dam, a Junior 2-yr.-old, 1,002 lbs, fat; 4.9% test.

Carnation Ormsby Butter King, the sire's dam, only 1,400-lb. fat cow in world.

First two dams records average 30,788 lbs. milk, 4% test, 1,229.95 lbs. fat, one a Junior 2-year-old.

VERY REASONABLE SERVICE FEE

Photographs, Pedigree, All Information Sent Upon Request

J. C. MARLOW
Mankato, Minnesota

Name	Address	Reg. & Gr.	No.
Stewart, Milton N., Roberts	Reg. & Gr.	11
Studds, Mary Lindsay, Pewaukee, R. 1	Grade	13
Sugden, Frank, Mukwonago, R. 1	Reg. & Gr.	15
Suttner, Louis, Appleton, R. 1	Grade	14
Swan, Wm. D., Pewaukee, R. 2	Reg. & Gr.	34
Swendson, E. A., Lake Beulah	Registered	19
Sy, Fred, & Son, Kiel, R. 2	Registered	26
Taylor, Art, Appleton, R. 2	Grade	10
Taylor, Neal, River Falls	Reg. & Gr.	25
Tecklin, Walter, Appleton, R. 3	Grade	15
Tetzlaff, Ewald, Black Creek, R. 2	Grade	13
Thatcher, C. B., & Son, Clear Lake	Registered	30
Thomas, James, Oconomowoc, R. 4	Grade	14
Tim, Art, Appleton, R. 2	Grade	15
Tratt, Ralph, & Sons, Whitewater, R. 1	Registered	30
Trollen, Martin E., Hudson	Reg. & Gr.	46
Ulness, Orin, Valders, R. 1	Grade	26

OZAUKEE COUNTY GUERNSEY BREEDERS' ASSOCIATION

An Active Organized County Association
for 31 Years

70 Active Guernsey Breeders

60% of Active Members Doing D.H.I.A.
Testing

Grades and Pure Breds For Sale

FIELDMAN TO ASSIST

ALV. HINTZ, President

CEDARBURG

ERWIN J. RIEMER, Secretary

CEDARBURG

Utschig, Joe, Appleton, R. 2	Grade	25
Volgt, Elmer T., Reedsville, R. 2	Registered	25
Vollmer, Carl, Mukwonago, R. 1	Grade	28
Von Rueden, Katherine, Eagle, R. 1	Grade	21
Wagner, Ed. A., Hartland, R. 1	Grade	20
Wagner, Joe, Fond du Lac, R. 1	Reg. & Gr.	35
Webber, Joseph P., Sturtevant	Reg. & Gr.	37
Wein, Otto, Hartland, R. 1	Reg. & Gr.	31
Weis, Rudolph, Waukesha, R. 2	Reg. & Gr.	22
Welch, Edmund T., Grimsms	Reg. & Gr.	17
Welles, Theodore, Rosendale	Reg. & Gr.	36
Wellstein, Benjamin, Knapp	Reg. & Gr.	24
Wellestein, Daniel, Menomonie	Reg. & Gr.	14
Wey Acres, Thiensville	Registered	15
Wiepking, Martin, Cedarburg	Reg. & Gr.	24
Wilde, Theo., Thiensville	Reg. & Gr.	18
Wilder, Bertha, Menomonie	Reg. & Gr.	40
Wilkins, Charles, & Son, Platteville	Registered	90
Wille, Percy H., Pewaukee	Grade	18
Williams, Arthur, Waukesha, R. 1	Grade	32
Williams, W. D., & Owen, Waukesha, R. 1	Grade	16
Wilson, Harlan J., Rush Lake	Registered	35
Winkler Bros., Burlington, R. 4	Grade	40
Woyak, Tom, Neenah, R. 3	Grade	11
Wulff, Wm., Thiensville	Reg. & Gr.	27
Zaiser, C. J., Oconomowoc	Registered	10
Younggren, Wilmer, River Falls	Grade	16



J&J QUALITY MILK PRODUCTION CLINICS DEMONSTRATE SUPERIOR PERFORMANCE OF RAPID - FLO.

Dairy sanitarians field men, regulatory officials and plant technicians from coast to coast endorse the superior filtration characteristics of Rapid-Flo filter disks — as demonstrated at Quality Milk Production Clinics conducted by J&J Field Service Men.

At these instructive meetings, the value of J&J research,

technical skill and continuous farm testing is clearly shown. The safer construction of the improved Fibre-Bonded Rapid-Flo filter disk is proved, as well as its effectiveness as a reliable Farm Sediment Check-Up, which shows farmers how to improve milk quality and avoid loss.

Fibre-Bonded Rapid-Flo Filter Media is available in disks, rolls and strips. You are invited to write for data on the Rapid-Flo Farm Sediment Check-Up and the invaluable service it is supplying to the Dairy Industry.



Johnson & Johnson
FILTER PRODUCTS DIVISION
4949 W. 65th St., Chicago 38, Illinois

Get Top Condition

INCREASE MILK PRODUCTION

With
OCCO

EVERETT W. LINDSAY, Cuba City, Wisconsin, writes: I use Occo Mineral Compound and gladly recommend it to any dairyman.

O. T. BOICE, Menomonie, Wisconsin, states: When I put my cows on Occo, they immediately began increasing in milk flow and in flesh.

EDWARD H. MUELLER, Livingston, Wisconsin, says: I find the extra service I get from my Occo Service Man a big item in raising productive livestock.



. . . decreased milk flow . . . slow growth . . . depraved appetite . . . these and many other costly hazards in a dairy herd can result from mineral starvation. Throughout the mid-west are hundreds of dairymen who have found that the way to combat mineral starvation is by the use of Occo Mineral Compound. Take their advice and adapt Occo to your feeding program. Your nearby Occo Service Man will tell you how. Get in touch with him at once. If you do not know his name, you can get it by writing to the Oelwein Chemical Company, Oelwein, Iowa.

Occo
MINERAL COMPOUND

OELWEIN CHEMICAL CO.
Oelwein, Iowa

MORE Milk, Eggs, Meat

WITH LESS LABOR AND FEED



FORT ATKINSON, WISCONSIN

CONCRETE

DAIRY IMPROVEMENTS

AID MILK PRODUCTION

A concrete milk house, cooling tank, or dairy barn will help you step up milk production. Concrete's sanitary features meet health board requirements; keep your cows healthier; make your work easier.

The Portland Cement Association has prepared designs for these and other farm structures which will give many years of economical service. Concrete is low in first cost and upkeep. Construction is easy. Materials usually available locally.

Write for the Helpful Free Booklet
"Dairy Farm Improvements of Concrete"

PORTLAND CEMENT ASSOCIATION

735 N. Water St., Milwaukee 2, Wis.



TODAY'S FAST SELLING

MILKER

PORTABLE and TRACK MODELS

Ben. H. Anderson Mfg. Co., Madison 3, Wis.

DON'T MISS

The 73rd Annual Convention of the Wisconsin Dairy-men's Association — Oldest Dairy Organization in America, founded in Watertown, Wisconsin in 1872.

The Date—February 5 and 6

The Place—Hotel Retlaw, Fond du Lac

WE'LL BE LOOKING FOR YOU!



PUREBRED HOLSTEINS

Build a herd you can own with Pride and Profit.

No one can meet competition with inferior producing units!

Dairy farmers of America have proved through long experience that the registered Holstein cow makes MORE milk and fat from farm-grown feed.

Experiment stations have proved that the "largest" cow makes the least expensive 100 lbs. of milk.

Ask the Man Who Milks Purebred Holsteins

You will find him proud of his registered herd and profiting through the efficient use of his farm-grown feed by means of these Holsteins.

You put your time, your labor, your dreams for the future into your dairy herd. Why not build with the type of animal known to be best for the purpose? You owe it to yourself to study the purebred registered Holstein cow as a profit producer for your farm.

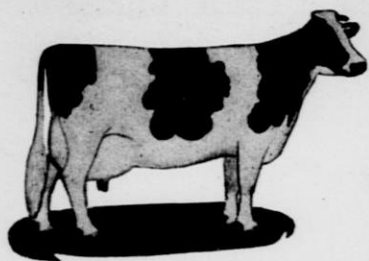
Write for Illustrated Literature

**The Holstein-Friesian Association
Box 2097, Brattleboro, Vermont**

Please send me full particulars about the profit-making Holstein-Friesian breed of dairy cattle.

Name

Postoffice **State**



Holstein Breeders

Active Members of the Wisconsin Dairymen's Association

Name	Address	Reg. & Gr.	No.
Acheson, Geo. H., Oconomowoc, R. 4	Grade	16
Adams, Delbert, Waukesha	Grade	16
Anderson Bros., Neenah, R. 3	Grade	20
Anschuetz, Geo., Cedarburg	Grade	20
Appleton, Chester, Kaukauna, R. 2	Grade	20
Arlington Farm, Bristol	Registered	33
Atwood & Davison, Brandon	Registered	18
Averbeck, Art, Van Dyne, R. 1	Reg. & Gr.	19
Baas, Alfred, Waukesha, R. 3	Grade	19
Baas, Clarence, Waukesha, R. 3	Grade	15
Baird Bros., Waukesha, R. 2	Registered	50
Baker & Stone, Ripon	Reg. & Gr.	15
Baker, Lester, Hudson	Grade	14
Baker, T. S., & Son, Hudson	Grade	25
Ballbach, John, Milwaukee, Sta. D., R. 2	Reg. & Gr.	22
Bartell, Nathan, St. Cloud	Grade	21
Barthel, Wm., & Sons, Salem	Reg. & Gr.	25
Barthels, George, Sr., Two Rivers, R. 2	Reg. & Gr.	28
Bathke, Fred H., Hudson	Reg. & Gr.	27
Batterman, Elwood, Rosendale	Reg. & Gr.	22
Bauer, Frank, Campbellsport	Grade	32
Baumgarten, Joseph, Onida, R. 1	Grade	12
Bayley, Ralph H., Lake Beulah	Reg. & Gr.	23
Bayley, Wallace, Lake Beulah	Registered	19
Behling, Oscar, Lake Beulah, R. 1	Grade	38
Bellke, Walter, & Son, Fairwater	Registered	36
Benke, Paul O., Hales Corners, R. 2	Grade	18
Bennett Bros., River Falls	Grade	26
Bennett, Harold, Oakfield	Registered	23
Benzinger, John, Mishicot, R. 1	Reg. & Gr.	16
Berge, Mark, Valdres	Grade	13
Bergel, Frank, Two Rivers, R. 2	Grade	30
Berndt, Emil, Grafton	Grade	38
Berres, Alvin, Campbellsport, R. 2	Grade	25
Beshta, Art, Hortonville, R. 1	Grade	12
Beshta, Elmer, Hortonville	Grade	16
Beule, E. A., Fox Lake	Reg. & Gr.	25
Binversie, Henry, Kiel, R. 1	Reg. & Gr.	20
Bird, Bennett S., Oakfield, R. 2	Registered	18
Bird, Robert A., Oakfield, R. 2	Registered	24
Bird, S. H., & Son, South Byron	Registered	29
Blackmore Bros., Campbellsport, R. 3	Reg. & Gr.	34
Bloedorn, Herbert, Black Creek, R. 2	Grade	18
Blohm, Fred, Seymour, R. 1	Grade	25
Bohl, George, Appleton, R. 3	Grade	21
Bohl, Robert, Beaver Dam	Grade	25
Boldt, Harold, Mukwonago, R. 2	Grade	14
Bonness, Jos. D., Waukesha, R. 4	Registered	23
Borchardt, Arthur, Brandon	Grade	16
Borchardt, Herman, Brandon	Grade	13
Boss, U. C., Oshkosh	Grade	35
Boyle, F. H., Peebles	Registered	50
Brath & Yankow Bros., Campbellsport, R. 3	Grade	33
Bray, Elmer, Van Dyne	Reg. & Gr.	19
Bruenig, Raymond, Mishicot	Grade	32
Brunnquell Bros., Port Washington	Registered	18
Bumby & Smith, Rosendale	Reg. & Gr.	37
Burhop & Armand, Grafton	Reg. & Gr.	24
Busch, Wm., & Sons Farm No. 1, Burlington, R. 3	Grade	33
Busch, Wm., & Sons Farm No. 2, Burlington, R. 3	Grade	22
Buss, Lawrence, Appleton, R. 2	Grade	17
Buss, Victor, Appleton, R. 3	Grade	23
Buttles, Lee, Lake Beulah, R. 1	Grade	25
Byrnes, John, Appleton, R. 3	Grade	26
Carpenter, Charles, Hortonville, R. 1	Registered	14
Chadek, Chas. J., Franksville	Reg. & Gr.	25
Chapman, John, Mukwonago, R. 1	Grade	20
Chase, Frank, Waupun	Reg. & Gr.	22
Clack, Harry, Boyceville	Grade	19
Clark, B. A., Mukwonago, R. 2	Reg. & Gr.	30
Clark, F. T., Waupun	Grade	22

Name	Address	Reg. & Gr.	No.
Clausen Bros., Kenosha		Registered	35
Clausen & Hansen, Sturtevant		Registered	37
Clausen & Roeder, Sturtevant		Reg. & Gr.	34
Clusen, Reinhold, Manitowoc, R. 5		Reg. & Gr.	24
Coughlin, Chas., Saukville		Registered	15
Cowles, Verne, South Byron		Registered	13
Cuff, O. P., Hortonville		Grade	16
Culbertson, Merle, Medina		Grade	14
Cull, A. J., & Son, Pewaukee, R. 1		Registered	27
Daniels, Emil, Kansasville		Grade	34
Daniels, Mrs. Laura, & Son, Bristol		Grade	21
Daniels, Max, Union Grove, R. 2		Reg. & Gr.	18
Daul, Joseph, Kaukauna, R. 1		Grade	
Dibble, R. A., & Ben, Pewaukee, R. 1		Registered	17
Dick, Geo., Waukesha, R. 4		Grade	15
Dineen, Chas., Cedarburg		Registered	12
Dittmar, Roland, So. Milwaukee		Registered	16
Dix, Harry, Menomonie		Registered	30
Dobberstien, John, Hortonville		Grade	22
Donovan, Leo, Van Dyne		Grade	36
Doral Farms, Waukesha, R. 5		Registered	30
Dorn, Leo, Seymour, R. 1		Grade	17
Dorschner, Ronald, Hortonville		Grade	15
Draeger, Harold W., Ft. Atkinson, R. 1		Registered	13
Dretzke, H. R., & Son, Manawa		Grade	27
Dudzek, John, Dousman		Grade	21
Duffek, Frank, Black Creek, R. 1		Grade	13
Dunn Co. Asylum, Menomonie		Registered	56
Dusek Bros., River Falls		Grade	23
Ebben, John W., Kaukauna, R. 2		Grade	22
Eble, Roy F., Waukesha, R. 4		Registered	30
Eckardt, Herman E., Mishicot		Reg. & Gr.	34
Edquist, Iver, Somers		Reg. & Gr.	21
Edwards, Wm. K., Nashotah, R. 1		Reg. & Gr.	19
Egan, Simon, Shiocton, R. 2		Grade	20
Ehlers, Edwin, Cedarburg		Reg. & Gr.	17
Ehm, Wm., Greenville		Grade	22
Ehrhardt Bros., Knowles		Grade	24
Elliott, Marsden J., Delafield		Reg. & Gr.	25
Elverman, John, Burlington, R. 3		Reg. & Gr.	29
Ernst, Lorenz, Thiensville		Reg. & Gr.	34
Evans, David F., Nashotah		Grade	34
Fassbender, Elmer, Hortonville, R. 1		Grade	18
Feerick, Alexander, Milwaukee, R. 12		Registered	23
Feider, G. J., Belgium, R. 1		Registered	42
Feller Bros., Roberts		Grade	33
Fetting, Arnold, Appleton, R. 2		Reg. & Gr.	10
Fickau & Swan, Mukwonago		Grade	38
Fleming, Charles, Jefferson, R. 2		Registered	23
Flitter, Jos. G., Campbellsport		Grade	16
Foley, Francis, Seymour		Grade	16
Fond du Lac Co. Asylum, Fond du Lac, R. 2		Registered	60
Fowler, Horace, Bristol		Reg. & Gr.	26
Frisbie Bros., Juneau		Reg. & Gr.	36
Fuller Bros., Hartland, R. 1		Registered	32
Fuller, F. Wm., River Falls		Grade	12
Funk, Floyd, Hartland, R. 1		Grade	16
Gallman, Woodrow, Ft. Atkinson, R. 2		Reg. & Gr.	16
Gallun, Albert F., Jr., Hartland, R. 1		Reg. & Gr.	50
Gallun, A. F., Hartland		Grade	18
Garvey, Michael, W. De Pere, R. 2		Registered	15
Gehring, Oliver, Appleton		Grade	17
Gengler, E. J., Milwaukee 9, Sta. F, R. 1		Reg. & Gr.	22
Gerrits, Herbert, Neenah, R. 3		Grade	13
Gillihan Bros., River Falls		Grade	25
Gilmore, B. J., Bristol		Registered	30
Gilmore & Powell, Kenosha		Reg. & Gr.	28
Gilson, Leonard, Mukwonago, R. 1		Grade	16
Glassbrenner, Charles, Appleton, R. 2		Grade	12
Glover Farms, Ft. Atkinson, R. 1		Registered	35
Graf, Wilmer H., Kiel, R. 1		Grade	29
Grahl, Wilbert, Eden, R. 1		Grade	34
Gramling, Dr. E. H., Dousman		Registered	20
Gramling & Longley, Dousman, R. 1		Registered	34
Greenwald, Victor, Oconomowoc		Grade	14
Grienert, Harold, Hortonville, R. 1		Grade	22
Griesbach, Bob, Hortonville, R. 1		Grade	18
Griesbach, Henry, Greenville		Grade	10
Griffith, Thos. J., Dousman		Grade	20
Groff, Joe, & Sons, Kenosha, R. 2		Reg. & Gr.	11
Gross, Lloyd, Knapp		Registered	18
Grosse, L. H., & Son, Rosendale		Reg. & Gr.	25
Grossen Bros., Campbellsport, R. 1		Grade	22
Gruenewald, Harry, Thiensville		Grade	18
Guderyon, H., Hartland, R. 1		Reg. & Gr.	50
Guenther, Allen, So. Milwaukee		Grade	14
Gulla, Emil, Rice Lake, R. 3		Grade	16
Gygax Bros., Waukesha, R. 2		Registered	25
Haas, Roy, Jefferson, R. 1		Registered	20
Haas, Roy H., Hartland, R. 1		Registered	20
Habeck, Mrs. Bertha, & Sons, Eden, R. 1		Registered	28
Habermann, Erwin, Chilton, R. 4		Reg. & Gr.	25

Crescent Beauty Holsteins Produce ...

★ SIRES of MERIT

★ **HOLWIS FIELD BUTTER BOY**

D.H.I.A. Index 442 lbs. Fat, 4.0% Test

★ **CRESCENT FIELD BUTTER BOY**

D.H.I.A. Index 411 lbs. Fat, 3.6% Test

★ **CRESCENT BUTTER BOY PRINCE**

D.H.I.A. Index 456 lbs. Fat, 3.6% Test

★ **CRESCENT KING BUTTER BOY**

D.H.I.A. Index 618 lbs. Fat, 3.9% Test

★ **CRESCENT BUTTER BOY SEGIS**

D.H.I.A. Index 606 lbs. Fat, 4.0% Test

Let us help you build your herd with one of our line bred Crescent Beauty bulls, backed by generations of outstanding proven sires and from good typed dams with high life-time production.

ALLEN HETTS

FORT ATKINSON

R. A. & BEN DIBBLE

PEWAUKEE

Name	Address	Reg. & Gr.	No.
Haferbecker, Melvin, Appleton, R. 2		Grade	22
Hammen, Allmen, Ripon		Reg. & Gr.	12
Hammen, Arnold, Ripon		Registered	10
Hammen, Louis, Ripon		Registered	14
Handschke, Alfred, Hortonville, R. 1		Grade	28
Hansman, H. F., Knapp		Registered	30
Harvedale Farms, Oconomowoc		Registered	16
Hasselkus Bros., Dousman, R. 1		Reg. & Gr.	27
Hatch & Spoerl, Campbellsport, R. 1		Grade	22
Hayes, Carl, & Sons, Campbellsport, R. 1		Reg. & Gr.	35
Hayes, Marvin, Campbellsport, R. 1		Reg. & Gr.	15
Hean, August, Mishicot, R. 1		Reg. & Gr.	20
Heinrich, Walter, Hales Corners		Reg. & Gr.	16
Heltpas Dairy, Appleton, R. 3		Grade	69
Heltpas, Wm., Kaukauna, R. 1		Grade	14
Helmer, Wayland, Campbellsport, R. 2		Grade	8
Helms, Kenneth, Grafton		Reg. & Gr.	18
Henning & Loehr, Eldorado		Grade	24
Hering, Dr. Russell, Grafton		Reg. & Gr.	15
Herman, Alfred, Black Creek, R. 1		Grade	12
Herman, Dr. David, Hartland		Grade	24
Hermann, Dr. W. C., Hartland		Grade	22
Hesprich, John, Lomira, R. 1		Reg. & Gr.	28
Hetts, Allen, Ft. Atkinson		Registered	18
Hoffman, Fred, Pound		Registered	14
Hoffman, Henry, Burlington, R. 4		Grade	17
Hogan & Merchant, Genoa City		Reg. & Gr.	29
Hollander & Crossman, Rosendale		Grade	22
Hood, Walter, North Prairie		Reg. & Gr.	39
Hooyman, Herbert, Appleton, R. 4		Grade	
Howard & Cramer, Dousman, R. 1		Registered	21
Howard, Henry, & Son, Campbellsport, R. 1		Grade	15
Hunter, Clark, Hudson		Registered	13
Hurtgen, Richard C., Pewaukee, R. 1		Registered	20
Huss, Norbert, Kaukauna, R. 1		Grade	
Iding, Harvey, Eden, R. 1		Grade	22
Ihlenfeldt, Stanley, Two Rivers, R. 1		Grade	21
Immel, Albert C., & Son, Fond du Lac, R. 4		Registered	31

ALBERTVILLE HOLSTEIN FARM

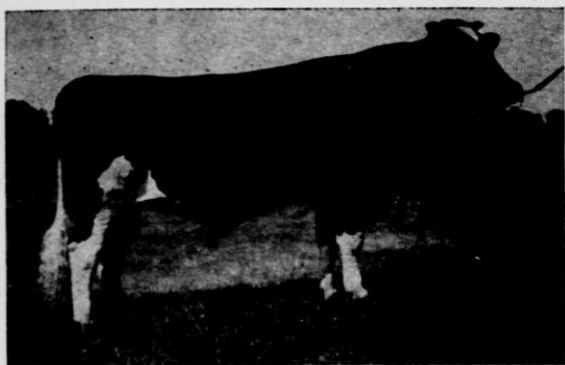
16 YEARS IN CONTINUOUS D.H.I.A.

Herd headed by Sensation Montvic Pathfinder. He is a son of Montvic Sensation and from a daughter of Pathfinder. Snowball's life production to date—6156.7 fal. We have her 4-yr.-old son for sale.

Young Stock for Sale — Accredited and Certified

CHRIS. C. JENSEN, R. 3, Colfax, Wis.

Improved Farms, Genesee Depot	Grade	20
Jackley, Nick, Kenosha, R. 3	Grade	22
Jacque, Nic., Pt. Washington	Grade	32
Jaeger Bros., Ixonia, R. 1	Registered	29
Jaeger, Harley, Watertown	Reg. & Gr.	22
James Farms, Ft. Atkinson	Reg. & Gr.	69
Jefferson Co. Farm, Jefferson	Registered	81
Jensen, Chris., Colfax	Registered	24
Jindra, Alvin, Mishicot, R. 1	Grade	20
Johannes, Albert, Jr., Two Rivers, R. 1	Reg. & Gr.	28
Johns, Harvey, Oconomowoc, R. 4	Grade	10
Jones & Powers, Racine	Reg. & Gr.	25
June-Roy Farm, Bristol	Reg. & Gr.	27
Junk, Joe F., Manitowoc, R. 5	Reg. & Gr.	35
Kaiser Bros., Fond du Lac, R. 1	Grade	31
Kappelman, Wm. C., Manitowoc, R. 2	Grade	20
Kau, George, Eagle, R. 1	Grade	40
Kelley, Thos., Farm Corp., Menomonie	Reg. & Gr.	45
Kemp, Donald, Bear Creek, R. 1	Grade	12
Kessler, Harold, Burlington, R. 4	Grade	23
Kiesler, J. B., Sr., Bristol	Reg. & Gr.	26
King, Stephen, Eden, R. 1	Grade	30
Klofanda, Reuben, Racine	Reg. & Gr.	19
Klussendorf, Fred E., Waukesha, R. 5	Registered	16
Knickel, M. R., Campbellsport	Grade	28
Knuth, Wilfred, Thiensville	Reg. & Gr.	17
Koenig, Jacob, Valders, R. 1	Grade	21
Kohlwey, Ben., Grafton	Registered	20
Kohlwey, Martin, Grafton	Grade	26
Komp, Edwin, Hortonville, R. 1	Grade	17
Konop, Charles, Jr., Cato, R. 2	Registered	14
Korf, David M., Kenosha	Reg. & Gr.	35
Kortz, Herman, Kaukauna, R. 1	Grade	19
Kostechka, Jos. W., Cato	Reg. & Gr.	19
Kraft & Magee, Genoa City	Reg. & Gr.	54
Krahn, Albert, Seymour, R. 3	Reg. & Gr.	16
Krahn, La Vern, Seymour, R. 1	Grade	16
Krahn, Lester, Seymour, R. 1	Reg. & Gr.	22
Krahn, Roy, Seymour, R. 1	Reg. & Gr.	13
Kreuscher, Roy, Union Grove	Reg. & Gr.	22
Kreuziger Bros., Roberts	Reg. & Gr.	20



PABST ROAMER

BORN 10-27-42

**Sired by a Grand Champion Sire—
WISCONSIN ADMIRAL BURKE
LAD (Utah 1937)**

**Out of a Grand Champion Dam—
PABST CASCADE PRILLY WAYNE
(Minn. 1937)**

**This inheritance of good type from his
dam and sire is very apparent in his own
appearance.**

**D. H. I. A. members will be interested to
know that his sire is also a Gold Medal
Proven Sire with an index of 21,100 lbs.
of milk, 3.9% and 827 lbs. of fat on 3x
on 15 pairs. Roamer's dam is also by a
Gold Medal Proven Sire, Carnation
Sensation.**

**His dam is one of the best of our splendid
Wayne family and has 664 lbs. of fat at
2 years, 3.8% and has two tested
daughters.**

**Pabst Roamer's sons will be available to
head good herds about January, 1945.
They will bring good breeding into any
herd which they head.**

Write us for pedigrees and prices.

PABST FARMS

ACC. & NEG.

OCONOMOWOC, WIS.

RENNEBOHM DAIRY FARM

LOCATED

**3 Miles North of Madison on U. S.
Highway 151 and State Highway 19**

1944

Junior Champion

Wisconsin State Fair



RENNEBOHM ORMSBY TIDY ROMEO

**A practical producing herd of
pleasing type, good udders, and a
high level of production.**

**The herd is being built on North
Star Joe Homestead and the for-
mer Baltz Hoesly Blood Lines.**

RENNEBOHM DAIRY FARM

OSCAR RENNEBOHM, Owner

MADISON, WISCONSIN

Name	Address	Reg. & Gr.	No.
Krfft, Wm., & Lois, Leonard, Burlington, R. 3		Grade	26
Kroes, George, Kaukauna, R. 1		Grade	22
Krueger, Henry, Hartland, R. 1		Reg. & Gr.	20
Krueger, Theo., & Sons, Elk Mound		Reg. & Gr.	24
Krueger, Walter, Appleton, R. 1		Grade	12
Kummrow, Edward H., Oconomowoc, R. 4		Grade	27
Kurtze, Lloyd, Hales Corners		Registered	16
Laden Acres Farm, Burlington, R. 3		Reg. & Gr.	52
Laird, George, Black Creek, R. 2		Grade	18
Lamers, Gordon, Kaukauna, R. 3		Grade	15
Laper, John, Jr., Markesan		Grade	16
Laursen, Lauritz, Union Grove		Registered	30
Lautenschlager, Ervin, Black Creek, R. 2		Grade	10
Lawson & Hill, Rosendale		Grade	19
Leith, Ray H., Van Dyne		Reg. & Gr.	17
Lemberger, Harold, Cato, R. 1		Registered	20
Lemberger, Joe, Cato, R. 1		Reg. & Gr.	16
Lemke, Ed., Appleton		Grade	
Lemke, Louis, Thiensville		Grade	16
Lemmenes, Andrew, Chester		Grade	17
Lesselyoung, Louis, Kaukauna, R. 3		Registered	10
Lippold, Milton, Hortonville		Grade	19
Lohrenz, Alvin, Black Creek, R. 1		Grade	21
Loth, Walter, & Son, Waukesha, R. 5		Grade	18
Lundt Bros., Palmyra, R. 1		Registered	12
Lutzke, Melvin, Kiel, R. 1		Reg. & Gr.	24
Maas, Alvin, Ft. Atkinson, R. 1		Registered	22
Maas, Harvey, Seymour		Reg. & Gr.	32
Madens, John, Burlington, R. 4		Reg. & Gr.	36
Magarich, Joseph, Hales Corners, R. 2		Grade	18
Malone, John, West Allis 11		Reg. & Gr.	11
Mann, Samuel L., Waukesha, R. 2		Grade	35
Marlen, Nolan, Seymour, R. 1		Grade	21

CORRECTION FOR PRODUCTION

For the last 15 years our herd average has been
from 430 lbs. to 504 lbs. fat on 50 or more cows.
So if you want a 400 lb. butter fat bull, write us.

Milwaukee Co. House of Correction
Sta. F., Milwaukee 9, Wisconsin

Martin, Everett, & Son, Mukwonago	Registered	20
Matzek, Ed., & Collins, Howard, River Falls	Grade	50
Meiselwitz, Wilfred, Elhart Lake, R. 1	Reg. & Gr.	20
Meissner, Harold H., Hartland, R. 1	Grade	15
Merrill, Donald, Shiocton, R. 1	Grade	15
Messman, Alfred, Two Rivers, R. 1	Grade	17
Messman, Herbert, Two Rivers, R. 1	Grade	29
Metzlg, August, Fremont, R. 1	Grade	34
Meyer, Hubert C., Colgate	Grade	17
Meyer, John P., Manitowoc, R. 5	Grade	16
Milford Meadow Stock Farm, Lake Mills	Registered	92
Miller, Francis, Oconomowoc, R. 2	Grade	22
Milwaukee Co. House of Correction, Milwaukee 9	Registered	56
Milwaukee Co. Insts. Farms, Milwaukee 13	Registered	135
Moehrke, Oscar G., Chilton, R. 1	Registered	33
Morgan, Robert F., Oconomowoc, R. 3	Grade	22
Morris Bros., Oconomowoc, R. 4	Grade	31
Mueller, Hilmer, Seymour	Registered	26
Mundt Bros., Ft. Atkinson, R. 1	Reg. & Gr.	24
McClain, Robert C., Oakfield, R. 2	Registered	23
McLachlan & Frey, Cambridge, R. 1	Reg. & Gr.	24
Nelson Bros., Nashotah, R. 1	Grade	40
Nelson, Geo., Dousman, R. 1	Grade	21
Nelson, Harvey A., Union Grove	Registered	46
Nelson, Manning, Shiocton, R. 2	Reg. & Gr.	14
Nelson, Stanley, Oconomowoc, R. 1	Grade	18
Neuser, Elmer, Manitowoc, R. 4	Grade	21
Newhouse, Emmet, Appleton	Grade	21
Nielsen, Arne, Waukesha, R. 1	Grade	22
Nieman, Edwin J., Cedarburg	Registered	72
Norris Farms, Mukwonago, R. 2	Registered	45
Northey, Richard, Dousman, R. 1	Grade	20
Noyes, Alvin, Ft. Atkinson, R. 2	Registered	12

Name	Address	Reg. & Gr.	No.
O'Brien, George, Eden, R. 1	Reg. & Gr.	26
O'Brien, John T., Eden, R. 1	Grade	26
Ogie, John C., Fond du Lac, R. 2	Grade	20
Olson, Rudolph, Kenosha, R. 2	Registered	36
O'Neil, Dale, & Son, Rosendale	Registered	13
O'Neil & Hardgrove, Rosendale	Grade	28
Oswald, Jos., Manitowoc, R. 5	11
Oudenhoven, Henry, W. DePere, R. 2	Grade	26
Outagamie Co. Asylum, Appleton, R. 1	Grade	57
Owens, Lloyd G., Dousman, R. 1	Grade	15
Owens, Wm. H., Oconomowoc, R. 4	Grade	25
Palmbach, George, Appleton, R. 1	Registered	12
Palmer, Alvin, Oakfield	Registered	20
Paltzer, Robert, Appleton, R. 3	Registered	18
Paskey & Scholten, Rosendale	Reg. & Gr.	25
Peebles Bros., Oconomowoc, R. 2	Grade	30
Pester, Clarence J., Whitewater, R. 3	Registered	20
Pester, W. J., Whitewater, R. 3	Reg. & Gr.	23
Peters, Clarence, Appleton, R. 4	Grade	16
Peters, Gilbert, Appleton, R. 4	Grade	14
Petersen, Raymond, Oconomowoc, R. 1	Grade	28
Peterson, Maurice, Mukwonago, R. 2	Grade	51
Petry, Earl, Waukesha, R. 5	Grade	18
Pipkorn, Emil, Thiensville	Grade	35
Pipkorn, Louis, Thiensville	Grade	16
Pipping & Krug, Calvary	Reg. & Gr.	38
Poehlman, Kermit, Sugar Bush	Grade	25
Ponzer, Reinhart, Bear Creek	Grade	12
Pribyl, George, Tisch Mills	Reg. & Gr.	21
Priepke, Ed., Eldorado, R. 1	Grade	33
Pritzl, Harold, Cato, R. 1	Registered	18
Probert, E. W., Dousman	Grade	24
Prunty, Kimm, Shiocton, R. 2	Grade	17
Pucker, Albert, Rosendale	Grade	23
Racine Co. Asylum, Racine	Reg. & Gr.	84
Radichel, Alvin, Hortonville	Grade	16
Radue, Walter, Thiensville	Registered	22
Rahmlow Bros., Appleton, R. 3	Grade	19
Rahmlow, Edw., Appleton, R. 3	Registered	18

FOR SALE...

PURE BRED and HIGH GRADE HOLSTEIN COWS . . . HEIFERS . . . and BULLS

JOSEPH PANIS

Star Route, NORWAY, MICH.

Reese, Mrs. H. H., 3421 Circle Close, Shorewood Hills, Madison	Reg. & Gr.	45
Reis, George M., Manitowoc, R. 5	Reg. & Gr.	16
Reiter, Wendolyn, Bristol	Reg. & Gr.	16
Richter, Ben H., & Son, Union Grove, R. 3	Grade	24
Richter, Elmer, Burlington, R. 3	Grade	30
Richter, Frank, Burlington, R. 3	Grade	28
Richter, John, Bristol	Registered	10
Riehl, Lloyd, Black Creek, R. 2	Grade	18
Riewesthal, Alfred, Hales Corners	Registered	19
Ritchie, A. W., & Son, New London, R. 3	Registered	40
Roehl, Fred, Van Dyne	Registered	15
Roets, Joseph E., Hartland, R. 1	Grade	20
Roitt, J. M., Kiel, R. 2	Grade	10
Roquet, Athmel, Kiel, R. 2	Reg. & Gr.	13
Rossler, Frank, & Son, Menomonie	Reg. & Gr.	32
Ruby Farms, Waukesha, R. 5	Grade	48
Rudolph, Harold, Mukwonago, R. 1	Grade	23
Rudy, Fred P., Kenosha, R. 2	Reg. & Gr.	27
Ruud, Ed., & Son, Menomonie	Reg. & Gr.	24
Ryder & Klawitter, Ripon	Registered	14
St. Bonaventure College, Sturtevant	Grade	21
St. Charles Boys Home, Milwaukee 13	Registered	11
Salter, Arthur, Fond du Lac, R. 2	Reg. & Gr.	15
Sambs, Mrs. Mary, Hortonville, R. 2	Registered	25
Sampson, Clifford, Oakfield	Grade	20
Sar Berth Farm, Inc., Hales Corners	Reg. & Gr.	18
Scannell, James, & Son, Eden, R. 1	Reg. & Gr.	25
Schaefer, Henry, Appleton, R. 1	Registered	26
Schlender, John A., Oconomowoc, R. 4	Grade	20
Schlicher, Walter H., Hartland, R. 1	Registered	15
Schmidt & Stoffel, Campbellsport, R. 1	Grade	13
Schmidt, Ellis P., Bristol	Reg. & Gr.	25
Schmidt, Roy J., Two Rivers, R. 1	Reg. & Gr.	31
Schmitz, Martin, Fond du Lac, R. 2	Grade	26
Schoenherr, Herman, Hales Corners	Registered	24
Schroeder, H. F., & Sons, West Bend	Registered	52
Schroeder, Hugo, Mukwonago	Registered	18
Schroeder, Ted, & Son, Menomonie	Registered	27

Name	Address	Reg. & Gr.	No.
Schroeder, Walter, Appleton, R. 1		Grade	22
Schrubee, Arnold, Wauwatosa 13, R. 8		Grade	23
Schueler, Herb., Seymour, R. 2		Grade	15
Schuelke, A. R., Manawa		Reg. & Gr.	50
Schuler, Arnold, Valdars, R. 1		Reg. & Gr.	17
Schultis, Allan, Waukesha, R. 2		Reg. & Gr.	26
Schultz, Arthur, Manitowoc, R. 2		Reg. & Gr.	28
Schultz Bros., Menomonie		Registered	18
Schultz, Lloyd, Hortonville, R. 2		Grade	16
Schuster, Emil E., Manitowoc, R. 2		Grade	13
Schuyler, Elias, Oconomowoc		Grade	22
Schwahn, Carl, Reedsville, R. 2		Grade	21
Schwanz, Herman G., Mukwonago, R. 1		Grade	20
Seffern, Wm., Van Dyne		Grade	24
Siemers, Harvey R., Cleveland, R. 1		Registered	25
Sievert, Howard A., Roberts		Registered	25
Simmons, Henry, Viola		Reg. & Gr.	26
Smith, A. E., Waupaca		Registered	47
Smith, Arthur, Bear Creek		Grade	30
Smith, George J., Eldorado, R. 1		Grade	19
Smith, Sam A., Oakfield, R. 1		Registered	27
Sontag, Mrs. Louise, Stillwater, Minn.		Grade	23
Sorenson, James, Kenosha, R. 1		Grade	35
Southcott, Roy, Oconomowoc		Registered	22
Spaude, Elmer, Seymour, R. 1		Grade	16
Stahl, John, Chilton, R. 4		Reg. & Gr.	16
Stangel, Richard, Mishicot, R. 1		Grade	14
Steel Bros. & Vogt, Lyons		Grade	22
Steffen, Clarence, Appleton, R. 2		Grade	17
Steinke, Albert C., Waukesha, R. 3		Grade	17
Steinke & Mellahn, Eldorado		Grade	28
Stender, Clarence, Mukwonago		Grade	23
Stichtman, H. C., New London		Registered	12
Stollenwerk, Oscar, Union Grove		Grade	28
Strutz, Fredrich, Two Rivers		Reg. & Gr.	20
Stuckert, Erwin H., Oconomowoc, R. 1		Registered	19
Sunny Lea Farm, Grafton		Reg. & Gr.	24
Swenson, Alfred, Oconomowoc		Grade	34
Sykes, Lewis, Black Creek, R. 2		Grade	15
Tans, Lyle W., Waukesha, R. 2		Reg. & Gr.	40
Taylor, Carl, Waukesha, R. 2		Registered	20
Tecklin, Walter, Appleton, R. 3		Grade	15
Tetslaff, Ewald, Black Creek, R. 2		Grade	13
Tiedt, Alvin, Black Creek, R. 2		Reg. & Gr.	23
Timm, Art, Appleton, R. 2		Grade	15

Save That Milk

SAVE MESS
AND
MONEY, TOO

MANAMAR

CALF PELLETS and CALF MEAL

- Save up to 1,500 lbs. of milk per calf raised
- Every dollar invested in pellets or meal saves you \$3 to \$5 worth of milk badly needed for human use
- No mess of mixing gruel —no pails to wash nor water to heat
- See your local dealer, or write for details

YES . . .

**Cattle ManAmar
is back! See your
local dealer or
write us direct.**

PHILIP R. PARK, Inc.

608 S. Dearborn
Chicago, Illinois

Name	Address	Reg. & Gr.	No.
Timm, Norman, Appleton, R. 3	Grade	12
Traeder, Wm., Sullivan, R. 1	Reg. & Gr.	17
Trueloff, Clarence, Fort Atkinson, R. 1	Reg. & Gr.	26
Tubbs, Frank, Seymour, R. 2	Grade	20
Twohig, Robert, St. Cloud, R. 1	Reg. & Gr.	27
Uhlenbrauck, Emil, Appleton	Registered	20
Uhlenbrauck, Melvin, Appleton, R. 3	Registered	18
Vandeleygraaf, John, Kaukauna	Grade	16
Vanderwerff, Tim, Bristol	Reg. & Gr.	18
Van Liere, John, Salem	Reg. & Gr.	27
Ventnor Farms, Oconomowoc	Registered	16
VerBoomen, Andrew, Kaukauna, R. 2	Grade	42
Voelkerling, John J., Burlington, R. 3	Registered	23
Voight & Rhein, Lomira, R. 1	Registered	34
Volkman, Ed., Black Creek, R. 2	Grade	23
Vorpahl, Arthur W., Kiel, R. 2	Grade	23
Vos, Hugo B., Burlington, R. 3	Grade	40
Wachal, Milas, Two Rivers, R. 1	Grade	15
Wagner, Henry J., Calvary	Registered	36
Wagner, Joe, Fond du Lac, R. 1	Reg. & Gr.	35
Waldschmidt, Henry, Campbellsport, R. 1	Grade	26
Waldson, Carl N., Fond du Lac, R. 1	Registered	15
Ward Bros., Fort Atkinson	Registered	20
Warner, Wm. H., Bristol	Registered	25
Warren, Robert, Burlington, R. 3	Grade	26
Wasserbach, Leon, Appleton, R. 1	Grade	18
Watson Bros., Oconomowoc, R. 1	Grade	40
Waukesha Co. Asylum, Waukesha	Registered	40

**If interested in the purchase of pure-bred
Holsteins, we will be glad to assist you in
selecting same from the oldest established
herds in Wisconsin. Services of**

**W. L. BAIRD ARTHUR BENNETT
HARVEY SWARTZ**

of the

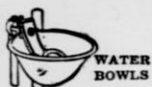
**INTER-COUNTY DAIRY CATTLE
ASSOCIATION**

WAUKESHA

WISCONSIN

Weber, M., & Sons, Merton	Reg. & Gr.	35
Wegner, Harry, Ripon	Grade	19
Wehrman, Lewis, Black Creek, R. 2	Grade	11
Weidman, Geo., Cedarburg	Registered	12
Weiffenbach, Howard, North Lake	Reg. & Gr.	25
Wels, Rudolph, Waukesha, R. 2	Reg. & Gr.	22
Welker, Jake, & Son, Union Grove, R. 2	Reg. & Gr.	16
Wentker, Edward, Mishicot	Registered	16
Wenzel, Roy, Sullivan, R. 1	Reg. & Gr.	26
Westcott, Nathan, Union Grove	Reg. & Gr.	17
Weyers, Joe, Kaukauna, R. 2	Grade	26
Weyers, Wm., Seymour, R. 1	Grade	18
Weyker, Ed., Dousman	Registered	14
Whiting & Hill, Brandon	Registered	17
Whitney, Raymond, Eldorado	Grade	17
Wichman, Wm., Appleton, R. 3	Grade	25
Wleckert, Walter, Appleton, R. 2	Registered	25
Wienke, Elmer, Bristol	Grade	18
Wilkom, Elmer, Sturtevant	Reg. & Gr.	21
Williams, Alvin, Eagle, R. 2	Grade	26
Williams, Louis, Bristol	Reg. & Gr.	20
Wilsle, Walter, Brandon	Registered	21
Wilson, Earl, Darlington	Registered	18
Winnebago Dairy, Fond du Lac, R. 4	Reg. & Gr.	42
Wis. Home & Farm School, Dousman, Box 27	Registered	20
Wis. Indus. Home for Women, Taycheedah	Registered	33
Wis. Industrial School for Boys, Waukesha	Registered	65
Wis. St. Prison Farm, Waupun	Reg. & Gr.	146
Woehler, Wm., Appleton, R. 1	Grade	16
Woodworth, H. G., Cedarburg		
Worcester, E. L., (Groseneck)		
Waukesha, R. 3	Registered	18
Worm & Stearns, Waupun	Grade	17
Yahnke, George & Lenard, Burlington, R. 4	Grade	25
Zaiser, C. J., Oconomowoc	Grade	22
Zickert Bros., Rosendale, R. 1	Grade	36
Ziegler, Ed., Appleton	Grade	22
Zimmer, Floyd, Appleton, R. 1	Grade	10
Zoberlin & Webb, Plymouth	Registered	32

A WARTIME "Must" THAT IS — A PEACETIME Necessity



WATER
BOWLS



LITTER CARRIERS



STALLS
AND STANCHIONS

**LOUDEN LABOR - SAVING BARN EQUIPMENT —
YOU ALSO SAVE FEED AND MAKE MORE MONEY**

It's vital in wartime to make all your farm animals produce the most . . . on less feed . . . with less help. In peace, it's a necessity . . . if you are to make the most profit.

In a Louden equipped barn your animals enjoy clean, comfortable quarters. Sanitary drinking cups furnish temperate water always. There's no food robbing . . . little wasted feed. Warm, fresh air circulates without drafts. Then Louden litter and feed carriers and other equipment help lighten your load . . . enable you to do barn work in about half the time. Your animals produce more — you make the most money. And the years have proved Louden lasts longer.

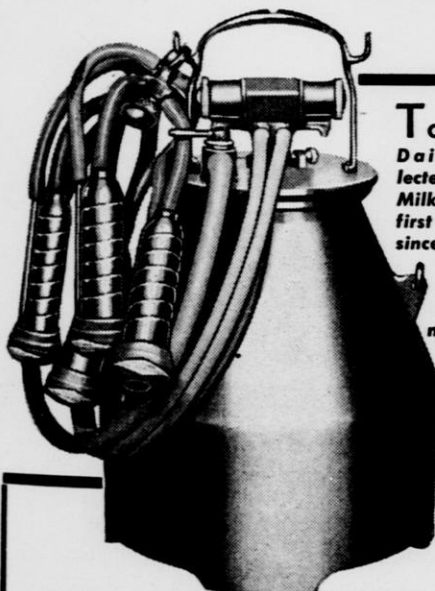
That's why in wartime or peacetime, it's wise to Loudenize your barn. See your Louden dealer today or write us about availability.

**THE LOUDEN MACHINERY CO. (Est. 1867)
FAIRFIELD, IOWA**

A COMPLETE LINE OF MODERN BARN EQUIPMENT — Steel Stalls and Stanchions — Water Bowls — Feed and Litter Carrier Systems — Ventilating Systems — Hay Unloading Tools — Sliding Door Track — Hog House Equipment — Horse Stable Fittings — Barn Plan Service.

LOUDEN

"EVERYTHING FOR FARM BUILDINGS"



TO WISCONSIN
Dairymen who selected the Perfection Milk Master as their first choice — our sincere appreciation.

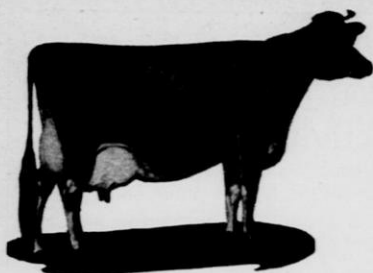
Others who are interested should see our nearest dealer before his allotment is sold.



PERFECTION

MANUFACTURING CORPORATION

MINNEAPOLIS, MINNESOTA



Jersey Breeders

Active Members of the Wisconsin Dairymen's Association

Name	Address	Reg. & Gr.	No.
*Bartlett Sisters, Janesville	Registered	50
*Brackett, Richard, Elk Mound	Registered	51
Cisler, J. E., Valders	Grade	46
Clark & Squires, Sturtevant	Registered	23
*Craig, J. A., Janesville	Registered	40
*Crolley, W. R., Kenosha, R. 1	Reg. & Gr.	19
Fryda, Ernest A., Sussex, R. 1	Registered	28
*Gil-Bar Farms, Janesville	Registered	135
Halstrom, Richard W., Waukesha, R. 1	Registered	31
Heltz, Warner, & Sons, Fort Atkinson, R. 1	Registered	10
*Holloway, Charles, Union Grove	Reg. & Gr.	24
*Holloway, John, Union Grove	Reg. & Gr.	25
*Howell, Harold, Waukesha, R. 1	Registered	23
Jensen, H. P., & Sons, River Falls	Reg. & Gr.	46
Jensen, Wm., River Falls	Reg. & Gr.	46
*Johnson, Thorval, Union Grove	Reg. & Gr.	10
*Kelly, Charles S., Hudson	Registered	17
Keup, Ed., Cedarburg	Registered	24
Kinney, Robert, & Sons, Hudson	Reg. & Gr.	45
Kirchner, Wm., River Falls	Grade	29
*Kolb, John, Cleveland, R. 1	Grade	22
*Ling, Clarence, Union Grove	Reg. & Gr.	17
Neumann, A. W., Cleveland, R. 1	Grade	24
Peterson, Harley, Hudson	Reg. & Gr.	13
*Polsl, Wm., Union Grove	Registered	16
*Price, George, Kenosha, R. 3	Registered	18
Price, Orval, Kenosha, R. 4	Grade	24
*Pritzl, Othmar, Cato	Reg. & Gr.	14
Quilling, Geo. A., Menomonie	Reg. & Gr.	27
*Reedal, John, Phillips	Registered	30
*Rhelneck, Dr. A. F., Oconomowoc	Registered	35
*Saugstad, E. J., Prop., Westby	Registered	40
*Shepherd, Fred H., Oconomowoc, R. 4	Reg. & Gr.	20
Smith, Raymond, River Falls	Grade	15
*Steffanus, P. N., Delavan	Registered	40
*Stefl, Hilbert, Mishicot, R. 1	Grade	21
Steinkraus, Alvin A., Mukwonago, R. 1	Grade	18
*Stoecker, W. J., Mukwonago, R. 1	Reg. & Gr.	32
Styer, Grant, Knapp	Grade	31
*Svacina, Roman, Cato	Reg. & Gr.	24
*Wiegand, Kurt T., Cleveland, R. 1	Registered	24
Wiegand, Mrs. Otto R., Cleveland, R. 1	Registered	21
*Woostenberg, Henry, Appleton, R. 3	Registered	15

*Also active member of the Wisconsin Jersey Cattle Club.

CRAIGKNOLL FARM

Estab. 1927
Janesville, Wis.

JOSEPH A. CRAIG, Owner

Breeder of Registered Jersey Cattle

1. Our blood lines run to Volunteer and Blonde families.
2. All our Herd Sires are Star Bulls from 2 to 4.
3. We have several Gold and Silver Medal cows.
4. Our herd average last year on 20 cows—over 400 lbs. fat.
5. Some of our older cows ran over 500 lbs.
6. Star Bull Calves from tested dams for sale each year.

CORRESPONDENCE SOLICITED

Additional Active Members of the Wisconsin Jersey Breeders' Association Not Already Listed.

(Reported by State Secretary as of December 1, 1944)

Name	Address	Name	Address
Albert V. F., Sawyer		Manitowoc	
Amberg, J. C., Hillsboro		Helwig, Walter, Eau Claire	
Ausman, S. A. B., Elk Mound		Hepburn, Howard, Prairie	
Bayerl, J. L., Gllman		Farm	
Belanger, Albert, Luxemburg		Holley, Verlin, Beloit	
Blank, Alvin, Grafton		Jensen, Emmett, River Falls	
Block, Alton Dale, Eau Claire		Jensen, Harvey, River Falls	
Brick, Norbert, Manitowoc		Johnson, Howard, Beloit	
Buss, James, Burlington		Johnson, Tom, Livingston	
Christenson, A. E. & Austin,		Jorgensen, Roy, Janesville	
Soldiers Grove		Kelsey, Forrest B., Delavan	
Clark, Wm., Racine		Kemper, Louls, Lancaster	
Curtis, Dr. Dell, Neenah		Ketterer, Donald, Fennimore	
Dimick, Richard, Alma		Koodrick, Jr., Geo. Lr,	
Divall, Ray, Fennimore		Peshtigo	
Dow, Parker, Whitewater		La Barre, Kenneth, 35-31	
Eddy, Fred, Beloit		221st St., Bayside, Long	
Finn, Chas., Bridgeport		Island, N. Y.	
Franzway, Carl, Mondovi		Latimer, A. J., Viroqua	
Gilbertson, Oscar, Fennimore		Lorentz, Conrad, Tony	
Glaeser, Will & Son, Montfort		Love & Love, Burlington	
Godfrey, Marvin, Mineral Pt.		Marquardt, Jean, Blair	
Groves, Alba, Viroqua		Marsden, Stanley, Edgerton	
Gulbrandson, Dr. Lars,		Mason, Herman, Viroqua	
Viroqua		McMahon, Richard, Lancaster	
Gulbrandson, Martin, Viroqua		Miller, Ed., Ridgeland	
Haeuser, Donald, Fountain		Mode, Harry, Fort Atkinson	
City		Moss, Francis, Whitewater	
Haeuser, Merlin R., Cochrane		Moy, W. S., Mondovi	
Haeuser & Kammueeller,		Mullen, Steve, Seymour	
Fountain City		Mulrooney, L. J., Fennimore	
Hahn, Frank, Salem		Nagel, Raymond, Elkhart	
Hartkopf, Morris R.,		Lake	
Mukwonago		O'Brien, M. A., Reedsville	
Hartman, Mrs. Anna,		Oldenburg, Arnold, Westby	

YOU, TOO, CAN OWN THE ★ STAR ★ BREED JERSEYS OF COURSE

**Star
Rated
Bulls**

★ ★ ★ ★



**Gold
Star
Herds**

★ ★ ★ ★

Insist on your next Herd Sire having a Selective Registration Certificate. His registration paper means pure ancestry plus Classification and 400 lbs. fat production.

Write for Breeder Lists to

WISCONSIN JERSEY CATTLE CLUB

GEORGE PRICE, Secretary

ROUTE 3, KENOSHA, WISCONSIN

GIL - BAR FARMS

REGISTERED JERSEYS

Janesville, Wis.

Name	Address	Name	Address
Paulson, Hjalmer, Westby		Styer Bros., Knapp	
Pellett, Orval J., Viola		Tollackson Bros., Viroqua	
Peterson, Chas. A., Rosendale		Umland, Fred W., III, Beloit	
Peterson, J. Alvin, Shell Lake		Vandervort, Rollie, Tomah	
Peterson, John H., Westby		Vernon Co. Asylum, Viroqua	
Remington, Merl O., Mauston		Walker, Guy, Fennimore	
Rusdal, Martin, Viroqua		Warmington, P. G., Honey Creek	
Santosky, Arthur, Pine River		Washburn, G. E., Oshkosh	
Schleis, Jr., Frank J., Kewaunee		Waste, George, Mondovi	
Schneider, Henry, Waunakee		Wehrle, Lester, Fennimore	
Sczpanski, Alfred, Independence		Whitworth, Chas. H., Mondovi	
Seyforth, F. J. & Son, Mondovi		Wilkins, Lee R., Livingston	
Sordahl, Albon, Viroqua		Wilkins, Vivian, Livingston	
Staflsen, Melvin, Viroqua		Yindra, Anton, Maribel	
Stern Bros., Cochrane		Zelsmer, B. H., Clinton	

ELK LAKE FARM JERSEYS

HERD SIRES

Brampton Favorite Royal 382599

CLASSIFIED GOOD PLUS

By Right Royal 79285 C. J. C. C., Gold and Silver Medal. Out of Brampton Favorite Girl 164965 C. J. C. C., Medal of Merit, Gold and Silver, with 1,020 lbs. butterfat.

Brampton Royal Aim High 391550

CLASSIFIED VERY GOOD — JR. CHAMP. MINN. 1939

By Valiant Aim P. S. 7133 H. C. First on Jersey, 1936. Classified Very Good. Out of Brampton Royal Vicki 94606 C. J. C. C. 544 lbs. butterfat as 4-year-old. Reserve Junior Champion, Grouville-St. Saviour.

RICHARD BRACKETT

ELK MOUND, WISCONSIN



MOWER MAGIC!

*Allis-Chalmers Model C, the
first self-greasing tractor,
with A-C Full Control Safety
Mower Attachment.*

Timely clipping of permanent pasture can double its feeding value. The protein content of hay can be increased as much as 65 per cent by mowing at an earlier stage of bloom. These facts alone make the *speed* and *efficiency* of your mowing outfit vitally important in the production of good dairy feed.

With the Allis-Chalmers tractor-mounted mower, your pasture clipping or hay mowing goes fast—at the right time! Even on steep hillsides, this mower gives you full control, full safety and comfort. It is completely engineered for modern tractor speeds.

If mowing must be interrupted for a quick draw-bar job, simply clamp the cutter-bar in transport position and go to it!

Talk to your Allis-Chalmers dealer about this key farm tool. He may be able to help you.

ALLIS-CHALMERS
TRACTOR DIVISION • MILWAUKEE 1 U S A

BARTLETT PARK FARMS

HERD SIRES

VISTALINDA LOCHINVAR 437370—By Boutillier Rotherwood Lad 376826. A 4-Star bull. Classifield Excellent. Double grandson of Boutillieres Brampton Lad. Grand Champion bull, Kentucky Class, Kentucky State Fair 1940. His dam, Vistalinda Mary Dee 1169013, in April of last year was the highest testing cow in America, giving 114.84 lbs. butterfat in that month.

WILLONYX GOLDEN SIGNAL 445413—A 4-Star bull. Son of Golden Stream Signal 396490, whose sire is Signal Estella Volunteer 346193, 4-Star bull, Superior Sire, Gold and Silver Medal, Tested Sire rating 764.11 lbs. butterfat on 22 Register of Merit daughters, out of Observer.

WILLONYX ELSIE 1389308—By Dreamy Kiss Observer, 4-Star bull, Classified Good Plus.

EDITH V. BARTLETT, Owner

1221 W. Milwaukee St.

Janesville, Wis.

Mixed Breeds

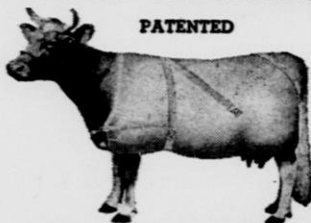
Active Members of the Wisconsin Dairymen's Association

Name	Address	Reg. & Gr.	No.
Bishop, R. B.,	Mukwonago, R. 1	Grade	100
Bolzenthall, Walter,	Two Rivers, R. 2	Grade	16
Brookhill Farms,	Genesee Depot	Reg. & Gr.	400
Drews, Marvin A.,	Mukwonago, R. 1	Grade	13
Evert, Clarence,	Pewaukee, R. 2	Registered	14
Fromm, Howard A.,	Pewaukee, R. 1	Grade	16
Grandy, Nelson,	Black Creek, R. 1	Grade	10
Hoffmann, H. T.,	Lake Beulah, R. 1	Grade	40
Keystone Farms,	Waukesha, R. 1	Reg. & Gr.	114
King, Chas.,	Mukwonago	Grade	39
Mitchell, John A.,	Milwaukee, R. 12	Grade	11
Neilson, N. P.,	Bear Creek	Grade	21
Petersen, Byron,	Oconomowoc, R. 1	Grade	16
Schwahn, Ehrfried,	Reedsville, R. 2	Grade	20
Struck, John,	Hartland	Grade	14
Wern Farms,	Waukesha, R. 1	Reg. & Gr.	450
Wonoski, Albert C.,	Dousman, R. 1	Grade	16

KANT-KOM-OFF

COW COVERS

PATENTED



**Write for Illustrated
Price List**

R. LAACKE CO.

1654 N. Third Street
Milwaukee 12, Wis.

HOW TO SPARE THE MILK *and* SAVE THE CALF



With Security Calf Food on duty, there's no need of holding back milk for feeding which Uncle Sam could be using. Send it to market: MILK is MILITARY POWER. . . Since 1900 Security Calf Food has given service on thousands of dairy farms. A 25 lb. pail will help four calves through the dangers of the first six weeks—and the saving over milk will amaze you. A New Free Folder is yours upon request!

SECURITY FOOD COMPANY

MINNEAPOLIS 15, MINNESOTA



Miscellaneous

Active Members of the Wisconsin Dairymen's Association

Name	Address
Beach, Dr. B. A., College of Agriculture	Madison
Clausen, Earle A., Instructor	Pulaski
Cramer, A. J., College of Agriculture	Madison
Harris, Roy T., College of Agriculture	Madison
Sasman, L. M., Dept. of Voc. & Adult Education	Madison
Vergeront, G. W., College of Agriculture	Madison
Weavers, Harvey, Department of Agriculture	Madison

BURLAP . . . COTTON . . . PAPER

.. BAGS ..

*When in need or have a surplus to dispose
of . . . SEE US!*

FREDMAN BAG COMPANY

330 E. Clybourn St., Milwaukee 2, Wis.

ESTABLISHED 1889

WE'RE HERE TO HELP YOU, SO MAKE YOUR PROBLEM OUR PROBLEM

The purpose of the Wisconsin Dairymen's Association is identical with that of all major dairy breed associations—to assist in every way possible to develop Wisconsin's dairy herds.

WE CAN HELP YOU:

- *Locate production bred males and females of your particular breed.*
- *Work out a breeding program.*
- *Plan a bull paddock.*
- *With your herd management problems.*
- *Organize Cooperative Bull Testing Associations.*
- *By presenting Hoof Trimming demonstrations.*

CALL ON US

FRANKLIN

VACCINES AND SUPPLIES

FOR MASTITIS

FRANKLIN SULFAN-OL

A mineral Oil Suspension of Sulfanilamide for Mastitis in cows.

Both streptococcic and staphylococcic forms of mastitis usually respond promptly.

One official test showed a cure in nearly 90% of cows treated.

250 cc Bottle \$2.00. Special infusion tube 30c.

FRANKLIN UDDER-EZE

FOR SORE TEATS

FRANKLIN UTERINE CAPSULES

FOR RETAINED AFTERBIRTH

Dozens of other valuable aids to prevent losses from disease and parasites. Send today for 80 page free illustrated catalog.

O. M. FRANKLIN SERUM CO.

Livestock Ex. Bldg., Denver, Colo., or Kansas City, Mo.

Is your D.H.I.A. or Co-op Testing Association a member of the Wisconsin Dairymen's Association? If not, why not?

Write the Wisconsin Dairymen's Association, Fort Atkinson, Wisconsin, for full details on how your association may become an active member.

Wisconsin Dairy Herd Improvement Associations

Counties Operating on Central Co-op. Plan

(AS OF DECEMBER 1, 1944)

County	County Agent	Address
Brown	J. N. Kavanaugh	Green Bay
Calumet	C. H. Neltzke	Chilton
Dodge	W. H. Henthorn	Juneau
Dunn	J. L. Wenstadt	Menomonie
Eau Claire	Chester Dumond	Eau Claire
Green	E. O. Baker	Monroe
†Jefferson	G. L. Wright	Jefferson
Juneau	Manly Sharp	Mauston
Lafayette	Gordon B. Reuhl	Darlington
Langlade	Ira V. Goodell	Antigo
†Manitowoc	Truman Torgerson	Manitowoc
Oconto	O. G. Woelfel	Oconto
*Outagamie	J. F. Magnus	Appleton
Ozaukee	C. C. Gilman	Port Washington
Pierce	H. G. Seyforth	Ellsworth
Polk	Earle Sanford	Balsam Lake
Price	A. S. Peterson	Phillips
Rusk	Erle E. Barber	Ladysmith
Sauk	D. H. Williams	Baraboo
Shawano	Kenneth Wallin	Shawano
Sheboygan	G. W. Lycan	Sheboygan
Vernon	O. G. Johnson	Viroqua
*Waukesha	J. F. Thomas	Waukesha
Waupaca	V. H. Quick	Waupaca
Winnebago	Frank Wilkinson	Oshkosh

*Associations now having 100% active membership in Wisconsin Dairy-
men's Association.

†Associations now having partial membership in Wisconsin Dairymen's
Association.

Counties Operating on Standard D.H.I.A. Plan

(AS OF DECEMBER 1, 1944)

County	County Agent	Address	No. of Ass'ns.
Barron	I. O. Hembre	Barron	1
Chippewa	H. G. Horne	Chippewa Falls	1
Clark	W. R. Marquart	Neillsville	2**
Columbia	O. G. Claflin	Portage	1
Crawford	Myron Jeglum	Prairie du Chien	1
Dane	R. V. Hurley	Madison 3, 353 W. Johnson St.	2
Douglas	C. O. Eßling	Superior	1
*Dunn	J. L. Wenstadt	Menomonie	1
†Fond du Lac	G. F. Massey	Fond du Lac	2
Grant	W. C. Voskuil	Lancaster	1
Iowa	W. B. Noyes	Dodgeville	2
Jackson	W. D. Bean	Black River Falls	1
†Kenosha	E. V. Ryall	Kenosha	2
Kewaunee	V. W. Peroutky	Kewaunee	1
La Crosse	W. E. Spreiter	La Crosse	2
Lafayette	Gordon B. Reuhl	Darlington	1
Lincoln	Gus Sell	Merrill	1
Marathon	W. J. Rogan	Wausau	1
*Milwaukee	S. S. Mathisen	Milwaukee 13, Farm Ext. Bldg.	1
Monroe	A. D. Begley	Sparta	2
Outagamie	J. F. Magnus	Appleton	3
*Racine	E. A. Polley	Rochester	3
Richland	A. V. Miller	Richland Center	1
Rock	R. T. Glassco	Janesville	4
Rusk	Erle E. Barber	Ladysmith	1
*St. Croix	Omer Peck	Baldwin	2
Trempealeau	Arnold Wochos	Whitehall	3
Walworth	J. G. Beattie	Elkhorn	2
Washington	E. E. Skallskey	West Bend	2
Waukesha	J. F. Thomas	Waukesha	2
Wood	H. R. Lathrope	Wisconsin Rapids	1

*Associations now having active membership in Wisconsin Dairymen's
Associations.

†Two associations now having 100% active membership in Wisconsin
Dairymen's Association.

**One Mail Order.

Departments of Vocational Agriculture and F. F. A. Chapters

Name of School or Chapter	Address	Instructor or Advisor
Abbotsford H. S., Abbotsford		Wm. Jackson
Albany H. S., Albany		Victor U. Elmer
*Algoma F. F. A., Algoma		Roy R. Koss
*Alma Center F. F. A., Alma Center		F. C. Janisch
*Amery F. F. A., Amery		G. E. Niccum
*Antigo F. F. A., Antigo		V. L. Peterson
*Arcadia Jr. D. H. I. A., Arcadia		Parker B. Hagg
Arena H. S., Arena		Ivan H. Ley
Argyle H. S., Argyle		Roy Simpson
Arkansaw H. S., Arkansaw		E. L. Howard
Ashland H. S., Ashland		Peder Pedersen
Ondossagon H. S., Ashland, R. 3		A. J. Salquist
*Athens H. S., Athens		A. C. Hanneman
Baldwin H. S., Baldwin		N. S. Niccum
*Baraboo F. F. A., Baraboo		Arley Heinze
*Barron Jr. D. H. I. A., Barron		D. A. Hendrickson
Bear Creek H. S., Bear Creek		Irl Poehlman
*Beaver Dam F. F. A., Beaver Dam		L. R. Larson
*Belleville F. F. A., Belleville		R. J. Rensink
*Belmont H. S. & F. F. A., Belmont		Arthur Foster
Beloit H. S.—V. S., Beloit		R. A. Perkins
*Berlin F. F. A., Berlin		L. A. Blackburn
*Black Riv. Fls. H. S., Black River Falls		C. O. Nenzel
*Blair H. S., Blair		B. M. Smith
*Bloomer F. F. A., Bloomer		M. F. Stelzer
*Bloomington F. F. A., Bloomington		George Lins
*Blue River F. F. A., Blue River		C. M. Holtan
*Bonduel H. S., Bonduel		D. C. Aderhold
*Boscobel F. F. A., Boscobel		O. T. Baker
Bowler H. S., Bowler		G. P. Williams
*Brillion F. F. A., Brillion		O. W. Meyer
*Bruce H. S., Bruce		Wm. Doyle
*Cadott F. F. A., Cadott		H. W. Duxbury
*Cameron H. S., Cameron		M. S. Murray
*Campbellsport F. F. A., Campbellsport		A. Pynnonen
Cashton H. S., Cashton		Donald Hart
*Chetek F. F. A., Chetek		R. W. Gotham
*Chilton F. F. A., Chilton		Donavan Hohman
*Chippewa Falls V. S., Chippewa Falls		H. E. Rogers
Clayton H. S., Clayton		J. A. Gunning
*Clear Lake F. F. A., Clear Lake		E. E. McKenzie
*Clintonville F. F. A., Clintonville		E. A. Hutchinson
*Clinton H. S., Clinton		Donald Mullen
Cobb H. S., Cobb		M. H. Gundlach
Cochrane H. S., Cochrane		Ray Scholl
*Colby F. F. A., Colby		Wm. Jackson
*Colfax H. S., Colfax		Harlan Stone
*Columbus H. S., Columbus		V. W. Matthias
Cuba City H. S., Cuba City		Paul Oehrlein
*Cumberland H. S., Cumberland		H. C. Hunt
*Darlington H. S., Darlington		Archie Johnson
*Deerfield F. F. A., Deerfield		
*DeForest F. F. A., DeForest		E. H. Abraham
Dodgeville H. S., Dodgeville		Kenneth Fox
*Dorchester F. F. A., Dorchester		G. L. VandeBerg
*Durand F. F. A., Durand		O. R. Hanson
*Eau Claire F. F. A., Eau Claire		D. C. Aebischer
*Edgar H. S., Edgar		
*Edgerton H. S., Edgerton		
*Ellsworth F. F. A., Ellsworth		Kenneth Wall
*Elmwood F. F. A., Elmwood		Albert Zahradka
*Elroy F. F. A., Elroy		W. J. Pierick
*Endeavor H. S., Endeavor		Jack Whirry
*Fennimore F. F. A., Fennimore		L. D. Kolar
*Gibraltar F. F. A., Fish Creek		Sidney Telfer
*Ft. Atkinson H. S. F. F. A., Ft. Atkinson		M. F. Ross
*Ft. Atkinson Voc. F. F. A., Ft. Atkinson		
*Frederic H. S., Frederic		W. J. Steneman
*Galesville F. F. A., Galesville		J. O. Beadle
*Gays Mills F. F. A., Gays Mills		A. L. Cummings
*Gilmanton H. S., Gilmanton		Eugene King
*Glenwood City F. F. A., Glenwood City		R. C. Wall
*Granton H. S., Granton		
*Grantsburg F. F. A., Grantsburg		Bernard Hylkema
Green Lake H. S., Green Lake		John Dolata
*Greenwood H. S., Greenwood		James Mohr
*Hartford F. F. A., Hartford		Neal Nicholson
Highland H. S., Highland		

Name of School or Chapter	Address	Instructor or Advisor
Hillsboro H. S., Hillsboro		C. M. Johnson
*Hixton F. F. A., Hixton		Merrill Pinch
*Holmen H. S., Holmen		Tim Main
*Hortonville H. S., Hortonville		Allen Peterson
Independence H. S., Independence		Logan Creswell
*Janesville H. S., Janesville		J. W. Wiseman
*Jefferson F. F. A., Jefferson		Robert Larson
*Johnson Creek H. S., Johnson Creek		H. P. Stephan
Kaukauna H. S., Kaukauna		H. A. Stumpf
Kendall H. S., Kendall		Francis Mayfield
*Kewaunee F. F. A., Kewaunee		H. H. Kasten
*Ladysmith F. F. A., Ladysmith		
*La Farge F. F. A., La Farge		Fred Mercer
*Lake Geneva F. F. A., Lake Geneva		J. S. Smith
Lake Mills H. S., Lake Mills		A. A. Zurbuch
*Lancaster H. S., Lancaster		
*Laona H. S., Laona		
Lodi H. S., Lodi		Gordon Suthers
Lone Rock H. S., Lone Rock		Frank Halloran
*Loyal F. F. A., Loyal		Carl Lawrenz
*Luck F. F. A., Luck		A. B. Cordes
*Luxemburg F. F. A., Luxemburg		G. V. Gregor
*Little Wolf F. F. A., Manawa		H. P. Barrington
*Marion H. S., Marion		N. K. Aderhold
*Marshall F. F. A., Marshall		
*Marshfield F. F. A., Marshfield		Arnold Bluemke
*Mauston F. F. A., Mauston		Keith Weittenhiller
*Mayville F. F. A., Mayville		Gregory Buechel
Mazomanie H. S., Mazomanie		Ivan Ley
*Medford H. S., Medford		Wm. Waterman
*Melrose F. F. A., Melrose		Albert Dickie
*Dunn Co. Agr. F. F. A., Menomonie		F. J. Haugh
Merrill V. S., Merrill		M. J. Burkhardt
*Middleton F. F. A., Middleton		R. W. Davis

Valuable Information Relative to Building Herd Efficiency

on

GOOD FEEDING AND HERD MANAGEMENT Is Yours for the Asking.

— Write —

WISCONSIN DAIRYMEN'S ASSOCIATION

FORT ATKINSON, WISCONSIN

*Milltown Jr. D. H. I. A., Milltown	Myron Johanson
*Milton F. F. A., Milton	J. P. Green
Mindoro H. S., Mindoro	Tim Main
*Mineral Point F. F. A., Mineral Point	Stanley Hore
*Mishicot H. S., Mishicot	Donald Halada
*Mondovi F. F. A., Mondovi	F. N. Abrams
*Monroe F. F. A., Monroe	Robert Davenport
*Montello H. S., Montello	Jack Whirry
Montfort H. S., Montfort	M. H. Gundlach
*Mt. Hope F. F. A., Mt. Hope	
Mt. Horeb H. S., Mt. Horeb	R. H. Henkel
Muscoda H. S., Muscoda	J. W. Griffiths
*Neillsville F. F. A., Neillsville	J. W. Perkins
Nelson H. S., Nelson	Ray Scholl
New Glarus H. S., New Glarus	Dale F. Doering
New Holstein H. S., New Holstein	R. F. Hemauer
*New London H. S., New London	Leonard Warner
New Richmond H. S., New Richmond	T. J. Madden
*Oconomowoc H. S., Oconomowoc	O. W. Dobratz
*Oconto Falls F. F. A., Oconto Falls	Harold Kinyon
*Omro F. F. A., Omro	R. B. Locke
*Ontario F. F. A., Ontario	
Oregon H. S., Oregon	H. J. Morrissey
*Osceola F. F. A., Osceola	Howard Askov
*Oshkosh Jr. D. H. I. A., Oshkosh	F. J. Miller
*Lincoln Hill H. S., Osseo	E. H. Barber
*Owen F. F. A., Owen	Everett Jacobson
Palmyra H. S., Palmyra	Glen Brigham
*Phillips H. S., Phillips	V. O. Horne

Name of School or Chapter	Address	Instructor or Advisor
*Pittsville F. F. A., Pittsville	Plainfield H. S., Plainfield	Arthur Mullen
Platteville H. S., Platteville	Plum City H. S., Plum City	L. A. Bensend
*Plymouth H. S., Plymouth		Richard J. Delorit
*Portage F. F. A., Portage		A. H. Splitgerber
*Port Wing H. S., Port Wing		M. J. Framberger
Poynette H. S., Poynette		W. J. Landry
Prairie du Sac H. S., Prairie du Sac		Donald Rowe
*Prairie Farm F. F. A., Prairie Farm		H. T. Shields
Prescott H. S., Prescott		Wilson Penberthy
Princeton H. S., Princeton		A. L. Jepsen
*Pulaski F. F. A., Pulaski		John Dolata
*Randolph H. S., Randolph		E. A. Clausen
Readstown H. S., Readstown		P. J. Ronnerud
*Reedsburg F. F. A., Reedsburg		Newton Boggs
Rib Lake H. S., Rib Lake		T. R. Lathrope
*Rice Lake F. F. A., Rice Lake		Keith Zintz
*Richland Ctr. F. F. A., Richland Ctr.		Norman Kahl
*Ithaca F. F. A., Richland Ctr.		Leo P. Keegan
*Ripon F. F. A., Ripon		C. H. Tinkham
*Riv. Falls Herd Testing Members, Riv. Fls.		C. B. Campbell
*Racine Co. Agr. School, Rochester		A. E. Dittbrenner
		H. G. Klumb
*Rosendale Jr. D. H. I. A., Rosendale		Guy Ralph
*St. Croix Falls H. S., St. Croix Falls		Vernon Hanson
Sauk City H. S., Sauk City		H. T. Shields
Seneca H. S., Seneca		Stanton Martinson
*Seymour F. F. A., Seymour		W. T. Reese
Shawano H. S., Shawano		A. V. Dreier
*Shell Lake F. F. A., Shell Lake		V. G. Geiger
Shlocton H. S., Shlocton		John Collier
Shullsburg H. S., Shullsburg		Paul Oehrlein
*Sparta F. F. A., Sparta		D. L. Peterson
*Spooner F. F. A., Spooner		Harold Enloe

**A Complete Line of
DAIRY
AND ANIMAL HUSBANDRY
EQUIPMENT AND SUPPLIES**

ORDER FROM THE

**NATIONAL AGRICULTURAL SUPPLY
COMPANY, INC.**

FORT ATKINSON, WISCONSIN

CATALOG WILL BE SENT ON REQUEST

Spring Green H. S., Spring Green	R. C. Melvin
Spring Valley H. S., Spring Valley	Otto Thompson
*Stanley F. F. A., Stanley	
Stevens Point H. S., Stevens Point	R. A. Gilbertson
*Stoughton V. S., Stoughton	B. F. Schaefer
*Stratford H. S., Stratford	A. C. Hannemann
*Sturgeon Bay H. S., Sturgeon Bay	E. B. Barden
Sevastopol Cons. H. S., Sturgeon Bay	C. P. Habermann
Superior V. S., Superior	Karl L. Helwig
*Taylor H. S., Taylor	
Thorp H. S., Thorp	Roy Swanson
Tomah H. S., Tomah	Arthur Weiner
*Tony F. F. A., Tony	
*Turtle Lake F. F. A., Turtle Lake	Olaf Pederson
*Valders F. F. A., Valders	Lenard Turnell
*Viola F. F. A., Viola	C. M. Blakely
*Viroqua F. F. A., Viroqua	B. A. Power
*Wabeno H. S., Wabeno	R. J. Schlomann
*Waterloo H. S., Waterloo	
Watertown H. S., Watertown	C. S. Grundahl
*Waukesha F. F. A., Waukesha	D. N. McDowell
*Waupaca F. F. A., Waupaca	Howard Deetz
*Waupun H. S., Waupun	Howard Turner
*Wausau V. S., Wausau	I. J. Corey
Wausaukee H. S., Wausaukee	H. J. Gorz
Wautoma H. S., Wautoma	
*Wauzeka F. F. A., Wauzeka	C. H. Rae
*West Bend F. F. A., West Bend	A. E. Kurtz
*Westby F. F. A., Westby	R. M. Cooper

Name of School or Chapter	Address	Instructor or Advisor
Westfield H. S., Westfield		Norman Jennings
*West Lima H. S., West Lima		Fred Mercer
West Salem H. S., West Salem		N. N. Rowe
*Weyauwega F. F. A., Weyauwega		Glenn Ketchum
*Weyerhauser H. S., Weyerhauser		Wm. Doyle
Whitehall H. S., Whitehall		W. C. Foth
*Whitewater F. F. A., Whitewater		H. W. Chapman
*Wilmot H. S., Wilmot		Glenn Pacey
*Wilton F. F. A., Wilton		E. A. Bergemann
*Winneconne H. S., Winneconne		Willis Di Vall
Winter H. S., Winter		Ed. Sirek
*Wis. Dells H. S., Wis. Dells		Michael Drozdz
Wis. Rapids H. S., Wis. Rapids		M. C. Kelley
*Wittenberg H. S., Wittenberg		L. E. Dean
Wonewoc H. S., Wonewoc		A. E. Varley
*Active member of Wisconsin Dairymen's Association.		

Bull Testing Associations

Guernsey

DOUGLAS COUNTY NO. 1—

Organized 1941

- Members: 1. Paul Anderson, Poplar
2. Roger Elm, Wentworth
3. Wm. Holmen, So. Range
4. Erwin C. Alberts, Wentworth

DOUGLAS COUNTY-DAIRYLAND—

Organized 1942

- Members: 1. James Snelson, Kingsdale, Minn.
2. C. A. Carlson, Kingsdale, Minn.
3. Henry Souerbrey, Kingsdale, Minn.
4. Roy Hadlock, Kingsdale, Minn.
5. Elmond Chilstrom, Kingsdale, Minn.
6. Laurence Johnson, Kingsdale, Minn.
7. Ayner L. Norstrom, Kingsdale, Minn.
8. Al. Young, Kingsdale, Minn.

DOUGLAS COUNTY-MANITOU FALLS—

Organized 1942

- Members: 1. Abe Britton, Sta. B-R. 1, Superior
2. Lawrence Britton, Foxboro
3. Clyde Will, Foxboro
4. Leroy Conley, Sta. B-R. 1, Superior

MANITOWOC COUNTY-MICHICOT NO. 1—

Organized 1938

- Members: 1. Hans Beyer, Mishicot
2. Oscar Samz, Mishicot
3. Roland Samz, Mishicot
4. Calvin Barta, Two Rivers

MANITOWOC COUNTY-VALDERS—

Organized 1939

- Members: 1. Otis Marken & Son, Valders
2. Otis I. Berge & Son, Valders
3. Anton O. & Oley E. Berge, Valders
4. H. L. Fisher & Son, Valders

MONROE COUNTY-WILTON

Organized 1936

- Members: 1. Dwyer Bros., Kendall
2. Alfred Johnson, Sparta
3. Henry Steinhoff, Wilton
4. George Steinhoff, Wilton
5. John Ford, Wilton

OUTAGAMIE COUNTY NO. 1—

Organized 1939

- Members: 1. Melvin Haferbecker, Appleton
2. Otto Zschaechner, Appleton
3. Jamison Bros., Appleton
4. Victor Leppla, Appleton

OUTAGAMIE COUNTY NO. 2—

Organized 1939

- Members: 1. Stanley Jamison, Appleton
2. O. H. Breitrick, Appleton
3. Ed. W. Dietz, Appleton
4. John Fredrich, Appleton

OUTAGAMIE COUNTY NO. 3—

Organized 1939

- Members: 1. Jamison Bros., Appleton
2. O. H. Breitrick, Appleton
3. Otto Zschaechner, Appleton
4. Victor Leppla, Appleton
5. Ed. W. Dietz, Appleton

OZAUKEE COUNTY-MEQUON—**Organized 1941**

- Members: 1. Henry W. Riemer, Thiensville
 2. Theo. Wilde, Thiensville
 3. Edgar Wille, Thiensville
 4. Erwin J. Riemer, Cedarburg

OZAUKEE COUNTY-PLEASANA—**Organized 1938**

- Members: 1. Herbert Clausing, Grafton
 2. Mrs. Julius Clausing, Grafton
 3. Armin Clausing, Grafton
 4. Bernard Behrens, Grafton

ST. CROIX COUNTY NO. 1—**Organized 1939**

- Members: 1. Emmet Jensen, River Falls
 2. Newton Pearson, River Falls
 3. Bernard Casaw, Hudson
 4. Ralph Katner, Hudson

ST. CROIX COUNTY NO. 2—**Organized 1943**

- Members: 1. John Parslow, River Falls
 2. Alfred Kusilek, River Falls
 3. Maurice Simon, Hudson
 4. Ed. Day, River Falls

TREMPEALEAU COUNTY-GALESVILLE NO. 2—**Organized 1939**

- Members: 1. M. E. Oynes, Galesville
 2. L. E. Oines, Galesville
 3. Blaine G. Paulson, R. 3, Melrose
 4. Bert C. Congdon, Galesville

WAUPACA COUNTY-IOLA—**Organized 1939**

- Members: 1. Walter Biedermann, Iola
 2. Biedermann Bros., Iola
 3. Wolberg Bros., Iola
 4. H. & N. Wolberg, Iola

WINNEBAGO COUNTY NO. 1—**Organized 1938**

- Members: 1. R. W. Harness, Neenah
 2. Harlan J. Wilson, Rush Lake
 3. Fahrwald Farm, Oshkosh
 4. Carl Steiger, Oshkosh



MAKES ANY BULL **SAFE!**

Combined Bull Halter and Controller tames any bull. Turn your herd sire out with complete safety. Stops fence jumpers. Saves work, feed. Money-back guarantee. Don't risk life and limb—act today!

RUSSELL MFG. CO.
PLATTEVILLE, WIS.

WRITE FOR FREE BOOKLET

Holstein

COLUMBIA COUNTY-COLUMBUS NO. 1—**Organized 1938**

- Members: 1. B. A. Conlin, Columbus
 2. Louis Trapp, Columbus
 3. Sam Austin, Columbus
 4. Arthur Biedermann, Columbus
 5. Arthur Weiner, Columbus

DODGE COUNTY NO. 1—**Organized 1938**

- Members: 1. E. A. Beule, Fox Lake
 2. Harley Jaeger, Watertown
 3. Frisbie Bros., Juneau
 4. Robert Bohl, Beaver Dam

DOUGLAS COUNTY-CLOVERLAND—**Organized 1942**

- Members: 1. Fred Hertzog, Maple
 2. Ed. Pearson, Maple
 3. Carl Pearson, Maple

MANITOWOC COUNTY-MISHICOT NO. 1— **Organized 1941**

Members: 1. Alvin Jindra, Mishicot
2. George M. Reis, Cato
3. Herman Echardt, Cato

MANITOWOC COUNTY-MISHICOT NO. 2— **Organized 1943**

Members: 1. John Benzinger, Mishicot
2. August Hean, Mishicot

ST. CROIX COUNTY NO. 1— **Organized 1941**

Members: 1. Clark Hunter, Hudson
2. Mrs. Louise Sontag, Stillwater, Minn.
3. Dusek Bros., River Falls
4. Bennett Bros., River Falls

TREMPEALEAU NO. 1— **Organized 1938**

Members: 1. Mike Skroch, Independence
2. C. A. Scharlau, Arcadia
3. Geo. Lund, Arcadia
4. R. A. Lamberson, Whitehall
5. Julius Nilsestuen, Arcadia

WINNEBAGO COUNTY NO. 1— **Organized 1944**

Members: 1. U. C. Boss, Oshkosh
2. August Metzsig, Oshkosh

Is There A

BULL TESTING ASSOCIATION

In Your Community?

For Detailed Information and Help in Organization, Write

**B. R. Dugdale, Extension Fieldman
WISCONSIN DAIRYMEN'S ASSOCIATION**

Fort Atkinson, Wisconsin

Jersey

ST. CROIX COUNTY NO. 1— **Organized 1939**

Members: 1. Jensen Bros., River Falls
2. Wm. Jensen, River Falls
3. Wm. Heebink, Baldwin

ST. CROIX COUNTY NO. 2— **Organized 1944**

Members: 1. Marvin E. Nelson, River Falls
2. Harley Peterson, Hudson
3. Geo. E. Holmes, Hudson
4. Raymond Smith, River Falls
5. Fredrick Brunner, River Falls

Notes

Buy War Bonds



Congratulations . . . **WISCONSIN DAIRYMEN!**

You're conducting a magnificent "battle" on the home front. Against tremendous difficulties you're turning out the greatest flood of milk known in history.

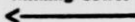
We Purina dealers and field men are proud to be a part in your great battle. We're bending every effort to keep feed rolling into your barns. With your good cows and good care . . . and good supplements to balance your grain . . . we know you'll keep the torrent of milk flowing to help lick the Axis.

PURINA MILLS and WISCONSIN PURINA DEALERS

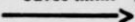


*Two feeds
from the
Purina line:*

*Grain balancer
for
Milking Cows.*



*Calf builder.
Saves milk.*



WISCONSIN
DAIRYMEN'S ASSOCIATION
FORT ATKINSON, WIS.



Organized 1872

BUILDING
WISCONSIN
DAIRY HERD
INCOME

Sec. 504, U. S. L. & R.
U. S. POSTAGE
PAID
PERMIT NO. 10
Ft. Atkinson, Wis.

