



# LIBRARIES

UNIVERSITY OF WISCONSIN-MADISON

## **Orchestra part: small drum. Set no. 6 [1910-1919]**

Bizet, Georges, 1838-1875; Meilhac, Henri, 1831-1897; Halévy,  
Ludovic, 1834-1908

Paris: Choudens, Pere et Fils, [1910-1919]

<https://digital.library.wisc.edu/1711.dl/4HPLGP3IGKYLM82>

Based on date of publication, this material is presumed to be in the public domain.

For information on re-use see:

The libraries provide public access to a wide range of material, including online exhibits, digitized collections, archival finding aids, our catalog, online articles, and a growing range of materials in many media.

When possible, we provide rights information in catalog records, finding aids, and other metadata that accompanies collections or items. However, it is always the user's obligation to evaluate copyright and rights issues in light of their own use.



12

Jamboune  
Small Drum.

Carmen.

Dear Sir:  
Should  
polate nu  
black penc. (make c use s  
very lightly) so that we can  
erase same, and please refrain from  
mutilating this book.

Your consideration will be very much  
appreciated. Yours truly,

Arthur W. Tams Music Library

WITMARK, Inc.

818 V. 46th ST., N. Y. C.



IMPORTANT

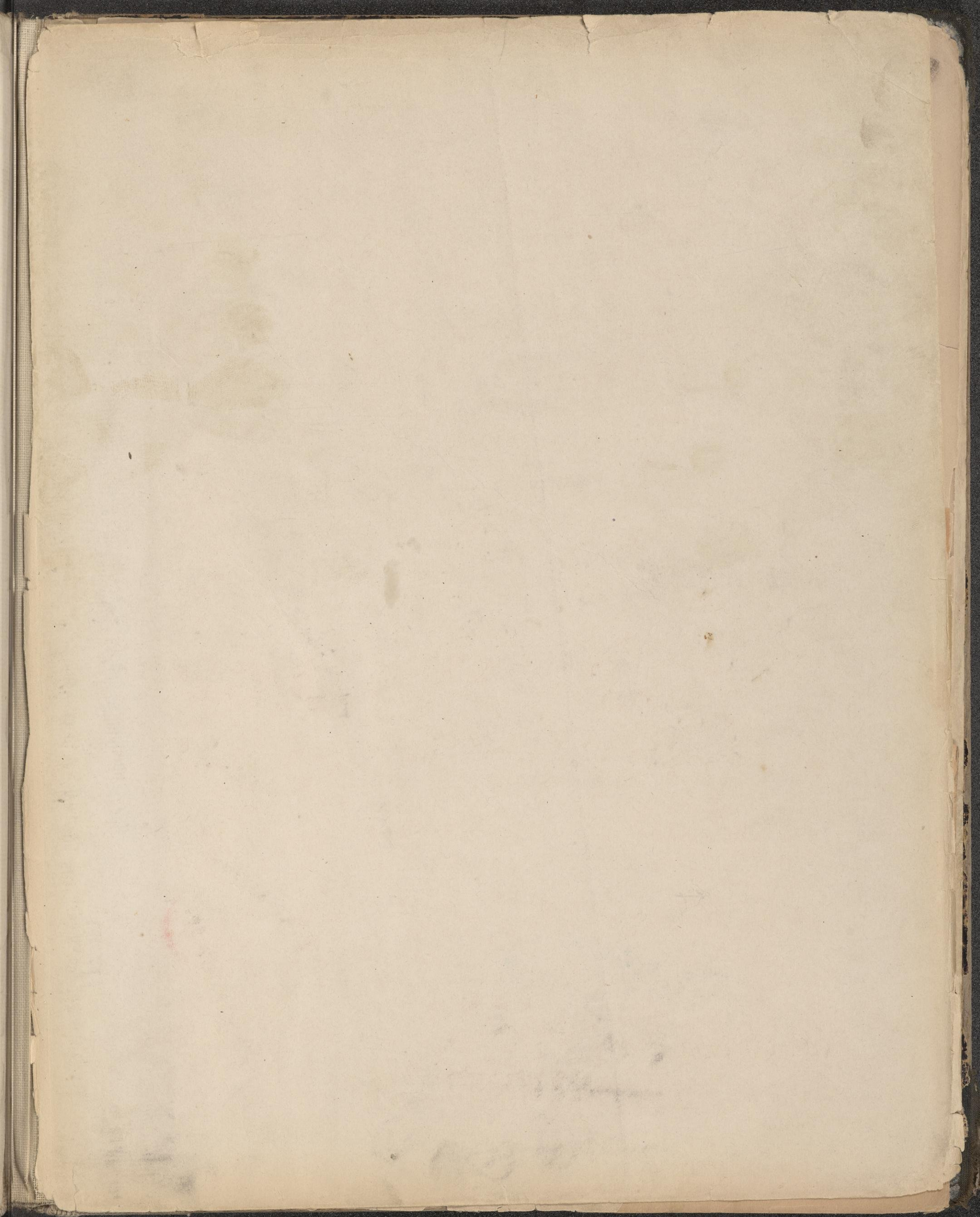
part.

Black Lead Pencil,

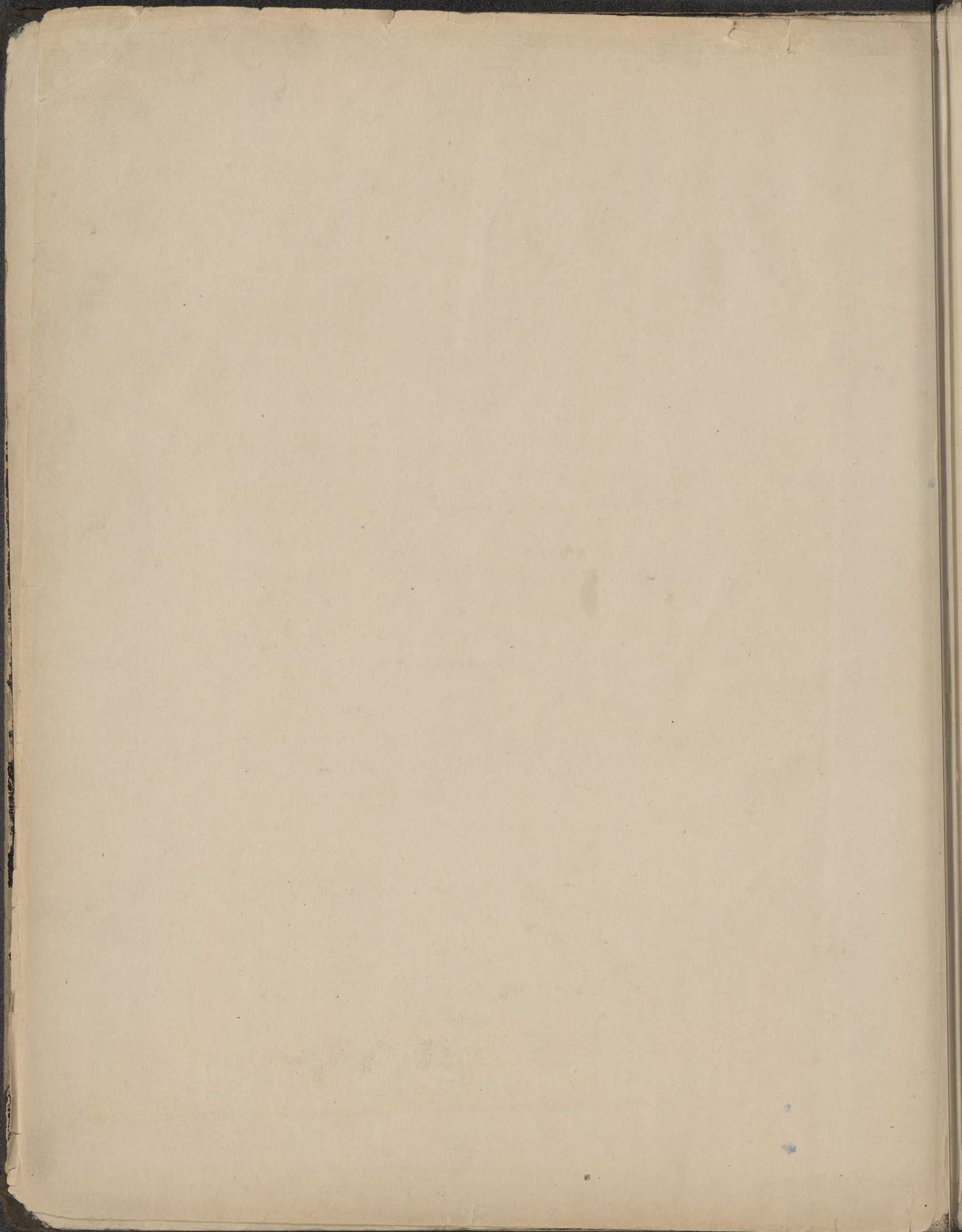
pencil

1/11/11















2

TAMBOURS.

All<sup>o</sup> mod<sup>o</sup>  
TAMBOUR.

ENTR' ACTE.

*p* *pp* *moins p* *pp* **23** **8** *tr* **23** **8** **4** *ppp*

ACTE II.

And<sup>no</sup> **50** **12** **10** **3** **3** **14** **15** **16**  
CHANT.

*Here* **12**

T. de *tr* BASQUE.

**17** *pp* *tr* *tr* *tr* *tr* **1** *suivez.*



TAMBOURS.

a Tempo.

1 2 3 4 5 6 7 8 9 10 11 12 13

sempre pp

14 15 16 17 18 19 20

1 2 3 4

T. de BASQUE.

suivz.

a Tempo più animato.

5 6 7 8 9 10 11 12 13 14 15 16

cres - - cen - - do.

17 18 19 20

1 2 3 4

T. de BASQUE.

Più animato.

CHANT.

5 6 7 8 9 10 11 12 13 14 15 16 17 18 19 20

1 2 3 4 5 6 7 8 9 10 11 12 13 14 15 16 17

18 19

LE RESTE DE L'ACTE

ACTE III TACET.

*Tacet*

*Part 2*

*(Handwritten notes and markings)*

*17*

*18*

*19*

*20*

*21*

*22*

*23*

*24*

*25*

*26*

*27*

*28*

*29*

*30*

*31*

*32*

*33*

*34*

*35*

*36*

*37*

*38*

*39*

*40*

*41*

*42*

*43*

*44*

*45*

*46*

*47*

*48*

*49*

*50*

*51*

*52*

*53*

*54*

*55*

*56*

*57*

*58*

*59*

*60*



Acte IV

4

TAMB. de BASQUE. All<sup>o</sup> vivo. TAMBOURS.

$\frac{3}{8}$

ENTR' ACTE.

*No TRILL*

*ff* di -

*p* *pp* *6*

*pp* *6*

*f*

*p* *f* *p*

*dim.* *pp* *poco cresc.*

*p* *6*

*cresc.* *f* *7 Vn* *f*

TAMB.

*ff*

*mf* *6* di - mi - nu - en -

*p* *pp* *3 HAUT.* *TAMB.*

*smorz.* *ppp* *1 1 2*



ACTE IV.

*Andantino*

146

25 A.

All<sup>o</sup> vivo e deciso.

TAMBOURIN. 1 2 3 4 5 6 7 8 9 10 11 12 13 14 15

25 B.

*ppp* a poco a poco *cres* - - - *cen* - - - *do*.

16 17 18 19 20 21 22 23 24 25 26 27 28 29 30 31

*mf* *cresc.* *cres* - - - *cen* -

32 33 34 35 36 37 38 39 40 41 42 43 44 45 46 47

*f* *cres* - - - *cen* - - - *do*. *cres* - -

48 49 50 51 52 53 54 55 56 57 58 59 60 61 62 63

*cen* - *do*. *cres* - - - *cen* - - - *do*. *cres* - - - *cen* - -

64 65 66 67 68 69 70 71 72 73 74 75 76 77 78 79

*do*. *ff*

80 81 82 83 84 85 86 87 88 89 90 91 92 93 94 95

*ff*

96 97 98 99 100 101 102 103

*ff*

And<sup>te</sup>  
TAMBOURIN. 1 2 3 4 5 6 7 8 9 10 11 12 13 14 15

25 C.

*sempre pp*

16 17 18 19 20 21 22 23 24 25 26 27 28 29 30 31

32 33 34 35 36 37 38 39 40 41 42 43 44 45 46 47

*f* *dim.* *p*

48 49 50 51 52 53 54 55 56 57 58 59 60 61 62 63

*f* *dim.* *p* *dim.* *pp* *smorzando.*



# JOLIE FILLE DE PERTH

OPÉRA EN 4 ACTES.

DANSE BOHÉMIENNE.

GEORGES BIZET.

## TAMBOUR.

25

*Andantino molto. Poco più mosso.*

*Quasi all<sup>to</sup>*

D

ac - ce - le - ran - do - e

- cre - scen - do - mol - to.

*All<sup>o</sup> non troppo.*

*All<sup>o</sup> vivo.*

cre - scen - do - ed - ac - ce - le - ran - do.

*Presto.*

*f* sempre cre - scen - do - ed - accelerando. *ff*

*fff*

*To Music Library*  
*250*



JOHN W. HILL FIDELITY

1850

1850

1850

1850

1850

1850

1850

1850

1850

1850

1850

1850

1850

1850



