



# LIBRARIES

UNIVERSITY OF WISCONSIN-MADISON

## **A souvenir of Chippewa Falls, Wisconsin. 1908**

United Commercial Travelers, Chippewa Council, no. 335  
[s.l.]: [s.n.], 1908

<https://digital.library.wisc.edu/1711.dl/53IKFF3B4FYKB8Z>

Based on date of publication, this material is presumed to be in the public domain.

For information on re-use, see

<http://digital.library.wisc.edu/1711.dl/Copyright>

The libraries provide public access to a wide range of material, including online exhibits, digitized collections, archival finding aids, our catalog, online articles, and a growing range of materials in many media.

When possible, we provide rights information in catalog records, finding aids, and other metadata that accompanies collections or items. However, it is always the user's obligation to evaluate copyright and rights issues in light of their own use.



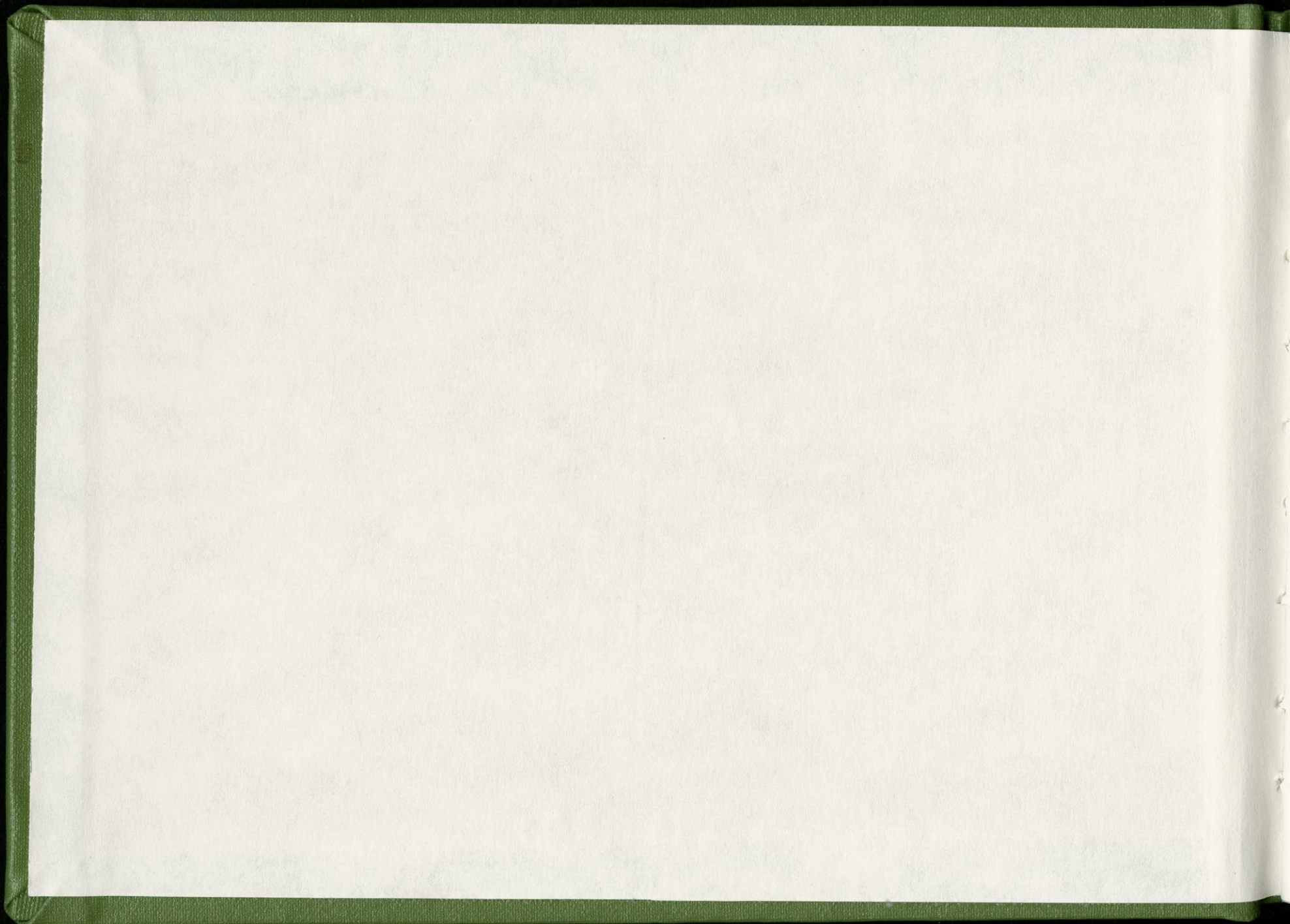
CHIPPEWA FALLS PUBLIC LIBRARY



3 3394 00032 9274

53



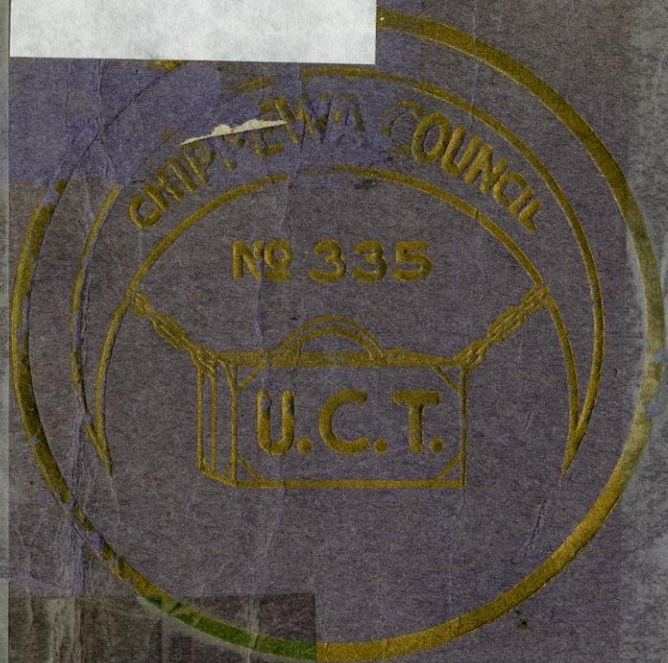








[Redacted]



A Souvenir of

Chippewa Falls  
Wisconsin

W.C.  
REF  
977.53

Sou

September 14-18, 1898



**REFERENCE BOOK**  
**NOT TO BE TAKEN FROM LIBRARY**

---

Call No. W.C.  
Ref  
977.53  
Author Sou

Title A souvenir of  
Chippewa Falls, Wis-  
consin

---

**PUBLIC LIBRARY**  
Chippewa Falls, Wisconsin

CHIPPEWA FALLS PUBLIC LIBRARY



Presented by

WINIFRED GLASS



*Donated to the Chippewa Public Library  
November 29, 1986 by Winifred Glass  
(Mrs. George)*



N presenting our readers with our little souvenir it is with the idea of impressing them with the picturesque beauty, progress, and healthfulness of our "City of Pure Water". We trust they will study its pages as they do their "Rand-McNally", remembering that "All Roads run to Chippewa".

¶ Our progressive merchants and manufacturers join us in bidding you a welcome, and one that you cannot wear out. Within these pages a few of our pleasure resorts are pictured and a few of our manufactories and various enterprises are shown.

¶ We also take this opportunity to invite all visiting brothers and members to our lodge and council rooms, and to our regular meetings, occurring on the second and fourth Saturdays of each month.

Fraternally,

CHIPPEWA COUNCIL, No. 335.





**Birdseye View of Chippewa Falls**



## Halter Bros Tilden Mills



THIS, the week of Sept. 14-18, 1908, is the week of Chippewa's great "Home Coming. Our little souvenir edition will greet not only many "old timers" but many visiting members of the United Commercial Travelers. "Fore" being the watchword, we believe it pardonable to dwell briefly upon the "old town" but to detail the many advantages to be enjoyed here, and the progress being made, in our new city, the "Chippewa of 1908."

Seventy years ago a voyager from old France, fond of viewing Nature in her wildest loveliness, paddled his canoe up the Chippewa River until he reached the falls. Then standing on the lofty bluff that overlooked the roaring waters, tumbling over the granite rocks, his eye swept the country round, sleeping in its pristine beauty.

There before him was the mighty river rolling away to the southward, great oak trees to the west; eagle prairie fringed with timber stretching to the north, the thick groves of pine reached to the horizon on the east; then at the foot of the bluff, where the McDonnel Memo-



*By Amoco. 1972*

**GROW SUGAR BEETS---Returns \$75.00 to \$100.00 Per Acre**

*A Sure Crop  
Rain or Shine*

*No Speculation*

*Sell Before  
Planting*



*Not Injured  
by Frost*

*Adds to Crop  
Rotation*

*Easy on the  
Land*

**For Contracts and Further Particulars Address**

**CHIPPEWA SUGAR COMPANY, Chippewa Falls, Wisconsin**



rial School and the Catholic Church now stand, the Frenchman beached his canoe, laid down his pack, built his shanty, around which, in after years, he saw the little village grow into a city and spread out far beyond his fondest expectations.

At this time "Jeff" Davis came to the Chippewa for lumber to build the government fort at Prairie du Chien. This called attention to the pine forests, and these forests became the magnet to draw the pioneer to seek a fortune in lumber. H. S. Allen and his associates were the first to undertake the venture. They were confronted by the problem of controlling the river for driving and storing the logs. For a time success followed their efforts, but failing, others undertook this difficult project. The Pound Brothers, Al and Thad, Tom Halbert and their associates undertook the mammoth work and in this connection, were foremost in developing the water power, constructing booms, railroads, erecting school houses and various necessary works.

After a time floods and other disasters defeated their undertakings, when they were succeeded by Weyerhauser and his associates, under the capable management of William Irvine; their efforts succeeded. Pictures are vivid and looking upon the picture of the old ferry, the steamer Chippewa will suggest to the reader conditions existing here a half century ago. It is a fact that in the early days more than a dozen steamboats plied the Chippewa from its mouth to Chippewa Falls and the certain promise of the future is that navigation will be restored and greatly improved and that Chippewa Falls will be the head of navigation of the best natural navigable tributary





Entrance to Glen Loch, Irvine Park



## WE KEEP THE STANDARD UP

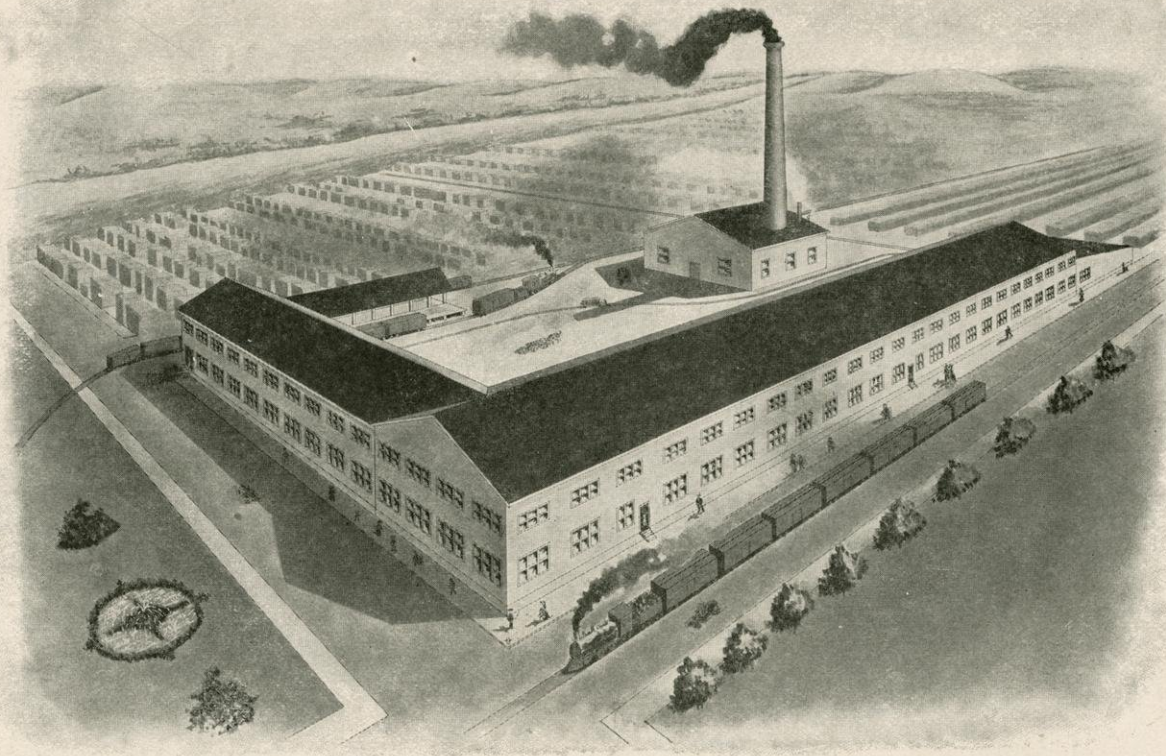
**P**RODUCTS of the *Chippewa Falls Woolen Mills* are made of absolutely pure fleece wool, the same as 20 years ago. The quality does not vary whatever the price of wool may be; some years through high prices, profits disappear, but our reputation is more valuable to us than temporary profits and we *keep the grade up*. When you want *pure woolens* think of the *Chippewa Falls Woolen Mills*.

*The growing demand for our Quilt Size Fleece Wool Batting speaks for its splendid quality. We are making Blankets this year and they are the real "CHIPPEWA" grade.*



*Burned down*

*Flats*



### Chippewa Falls Furniture Company

ROBERT H. SHOOK,  
President and Gen. Mgr.

J. A. MARR,  
Vice-President

W. B. CASTENHOLZ,  
Sec. & Treas.



of the Mississippi River, insuring a population in the near future of not less than 50,000 people.

To hasten with our story, leaving it to the imagination of our readers to fill in the events that transpired during the years after the establishment of this great lumber industry, which naturally brought with it stumpage ground which was colonized and farmed. Chippewa Falls is now a city of 11,000 inhabitants.

It is substantially built on both sides of the Chippewa River, which is spanned by one wagon and foot bridge and three railway bridges, with the assurance of another up-to-date bridge. It also embraces within its boundaries Duncan Creek, a handsome stream with many powers and spanned by a half-dozen bridges from its entrance into the city until its junction with the Chippewa River at the foot of the falls. No city of its size in the world has more natural and artificial conveniences and advantages. Its water works are unrivaled and carry into the city an abundance of excellent water from two large springs two miles above the city. The city is lighted with gas and electricity and has handsome streets, paved and macadamized and lined with shops, stores and manufactories of metropolitan size and appearance. Besides this, the city has many costly public buildings which would do honor to a much larger place, about which we must speak later on.

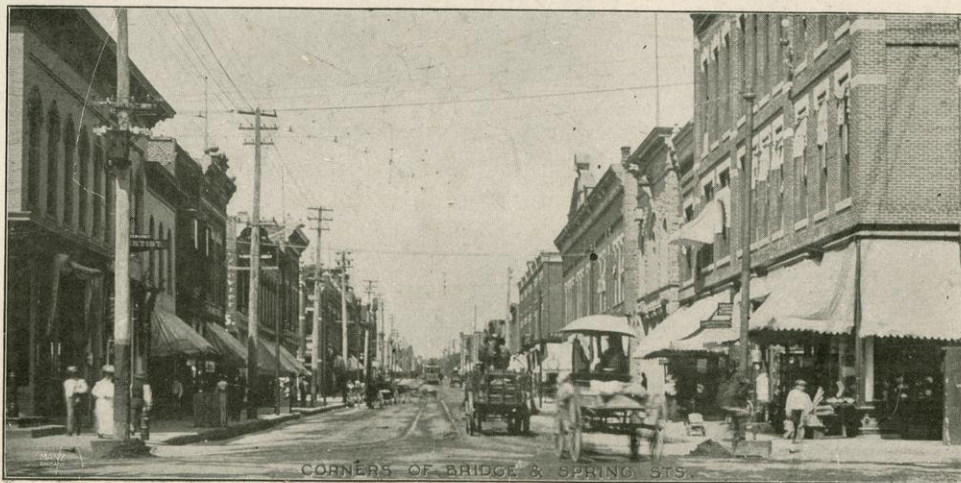
The water power here is very great and is used to run the big lumber mill, furnish electric power, flouring mills, shoe factories and many other enterprises giving employment to hundreds of men. Adjoining the city, on one side of the Chippewa, is the County Insane Asylum; on the other side, the State Home for the Feeble Minded with buildings erected at a cost of \$750,000.00.





*The "Old  
Town" of  
Chippewa*

*A View of  
Chippewa Falls  
Today*



CORNERS OF BRIDGE & SPRING STS.





ST JOSEPH'S HOSPITAL

CONDUCTED BY THE SISTERS OF ST. FRANCIS

ALL MODERN IMPROVEMENTS. ACCOMMODATIONS FOR 150 PATIENTS

CHAPLAIN REV. J. RICHET C.S.S.

## St. Joseph's Hospital

Prescription and Drug Department in Charge  
of Nolte & Ihle, 212 Bridge St.

(Known as the Collette Drug Store)

# NOLTE & IHLE

Quality  
Drug  
Store

Where  
all  
Doctors'  
Prescriptions  
are  
Filled



# Chippewa Challenges the World for Purity



Chippewa Springs Park

**Chippewa, the purest water in the known world, is shipped thruout the U. S. and abroad. It is the only water sold accompanied by a test for its purity.**

**Excellent territory open to wholesalers. For booklets, terms, etc., address  
CHIPPEWA SPRINGS CO., Chippewa Falls, Wis.**



The facilities for communication with the outer world are excellent. In all, thirty-six passenger trains enter and leave Chippewa Falls daily; besides these the Interurban Railway runs cars between here and Eau Claire, two cars hourly. Three railroads enter our city, two being trunk lines. Needless to say, local and long distance 'phone connection is complete, which, coupled with an unusually excellent mail service, renders Chippewa Falls a veritable "Hub City." The country for fifty miles west, east and north of Chippewa exhibits as rich a display of various agricultural products as can be found anywhere.

We are passing the period lightly when Chippewa Falls, according to all those who remember, was the wild and reckless Chippewa of logging days when money came and went easily. From the pen of an artist might come the portrayal of those good old days when the town was full of lumber-jacks bent on spending their money; when Indians traversed our streets and (Indian-like) traded their blankets for rum; when the great boom was on and men made money even against their will,—but this we will not attempt. It is the same period that must come to any good town located as was Chippewa Falls. With the cutting of the pine and the slow (at first) settlement of the country, came the great cry that Chippewa Falls would be blotted from the map. What timber could be manufactured to advantage at this point was gradually purchased by one company and the sawing of logs was finally centered in one big mill. With the disappearance of the lumberman and his free and easy way of spending money, there came this lull in business activities of the community. People became discouraged and their fears, voiced at home and upon





Familiar Scene in the Pineries



the street, added to the general discouragement. Even property values decreased until it was impossible to sell real estate even at a sacrifice.

But Chippewa Falls had men of enterprise, energy and foresight who were fully conversant with the abundant, undeveloped resources of the city and surrounding country and were keenly alive to the possibilities of development if the citizens could only be induced to act unitedly toward a common cause. With this thought in mind a meeting was called, and today there stands the "Progressive League of Chippewa Falls" as the result. Their motto was "We help those who help us." Banded together in this common cause Chippewa Falls experienced a pleasant reaction. People had more faith in Chippewa and found it easy to induce others to believe in the possibilities here. Through the medium of our Progressive League one industry after another has been induced to locate here until today the hum of machinery is heard on every hand and the inability to get enough men to keep its many manufactures running to capacity has caused Chippewa Falls to be known both east and west as "The City that Does Things."

The manufactures that have located here are many and various. One of the first was the Hand Made Boot and Shoe Company, manufacturing boots and shoes for lumbermen and drivers on the rivers, for cruisers, sportsmen and miners; the quality of their output has brought them so many large contracts that yearly they have expanded until today they are employing a great number of men. Next came the Harshman Shoe Company, now the C. Gotzian Company of St. Paul, who own their factory, four stories high, 40x160 feet,





Be as judicious in the selection  
of the “weed” you smoke as  
you are in the selection of your  
table diet : : : :

For Excellence, Aromatic Fra-  
grance, Mildness and Quality of  
Stock, the Famous “Prinz  
Heinrich” Cigar is Without a  
Peer. You will Find it on Sale at all  
Leading Cigar Counters and Bars.

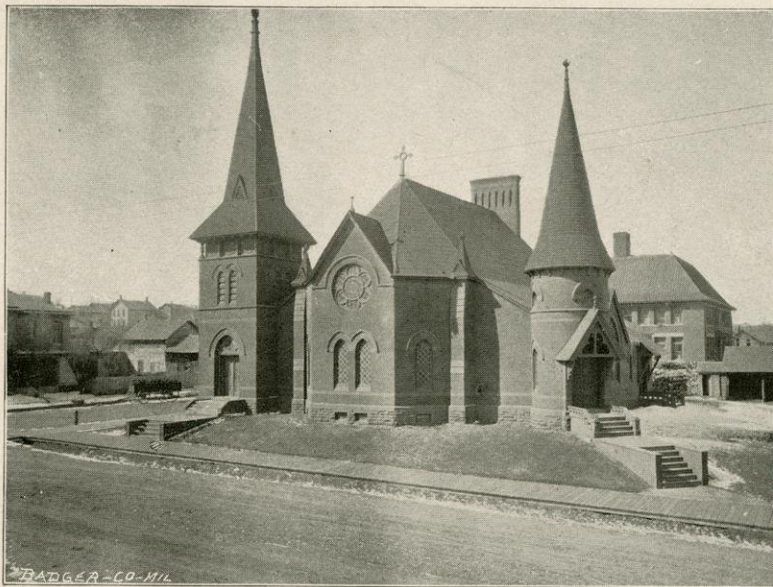
*Insist  
upon  
the*



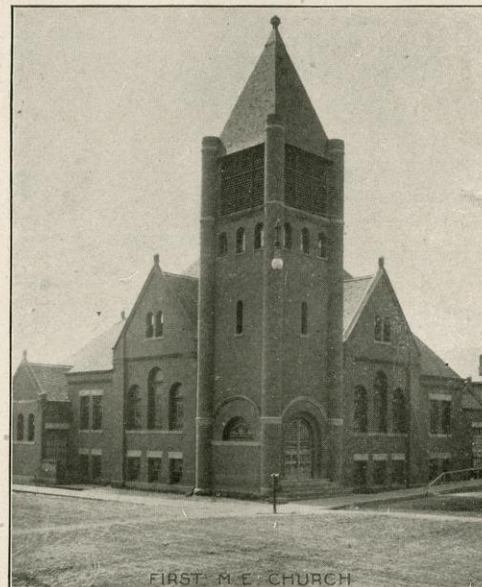
**“Prinz Heinrich”**

—Three Sizes—



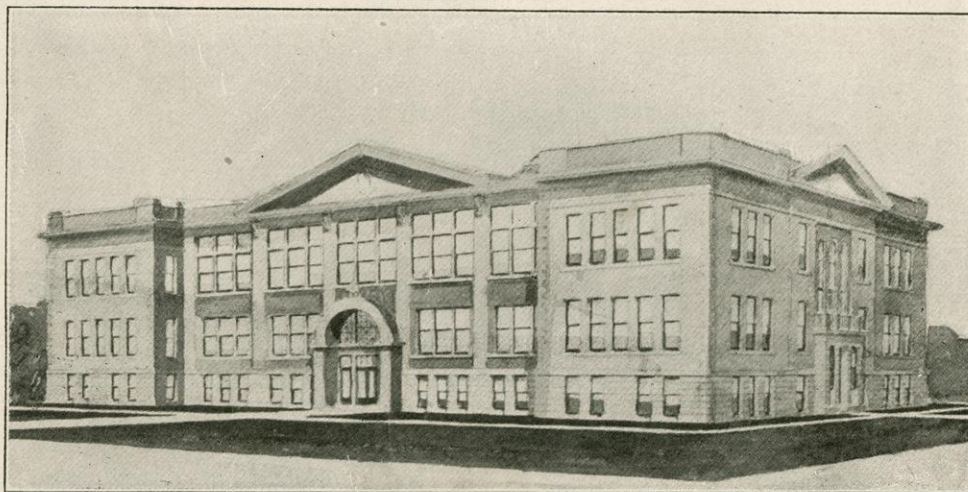


**Presbyterian Church**



**First Methodist  
Episcopal  
Church**

**Our New High  
School**





# First National Bank of Chippewa Falls, Wis.



## OFFICERS

L. C. Stanley, President

J. B. Kehl, Vice-President

L. M. Newman, Cashier

T. M. Cary, Assistant Cashier

++++

## DIRECTORS

F. Weyerhaeuser

R. D. Marshall

L. C. Stanley

J. B. Kehl

James McKennon

L. J. Rusk

August Mason

T. M. Cary

L. M. Newman

++++

**ESTABLISHED 1873**



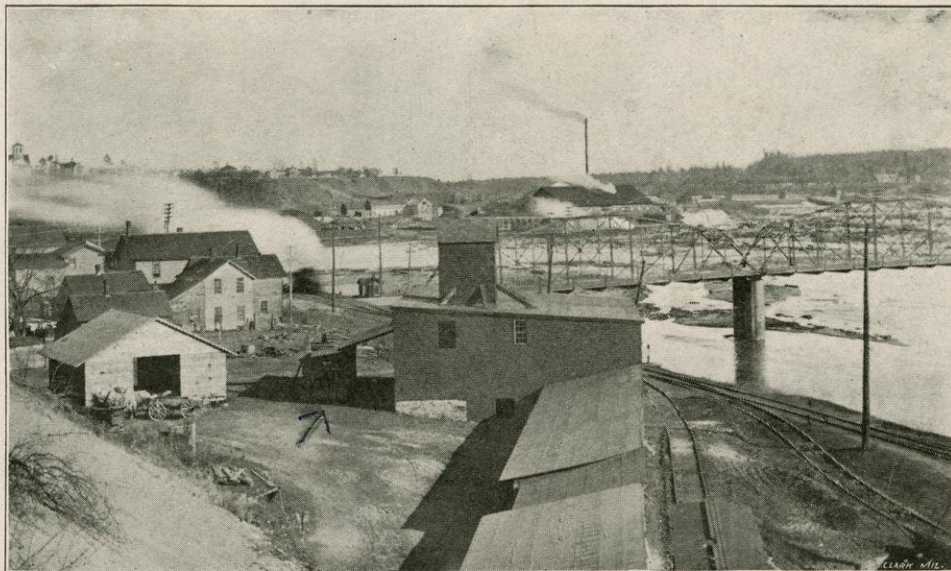
*Schmidmayer Brewery further west of this picture  
against Lake Hill.*

# Clark Grain and Fuel Company

INCORPORATED

*Members of  
National Hay  
Association*

*Chicago  
Board of Trade*



*Elevators  
and  
Warehouses  
Chippewa Falls  
Eagle Point*

*→ Monks spot off first gas pump  
later on*

*Took a silver dollar for 5 gals.*

*Worked automatically*

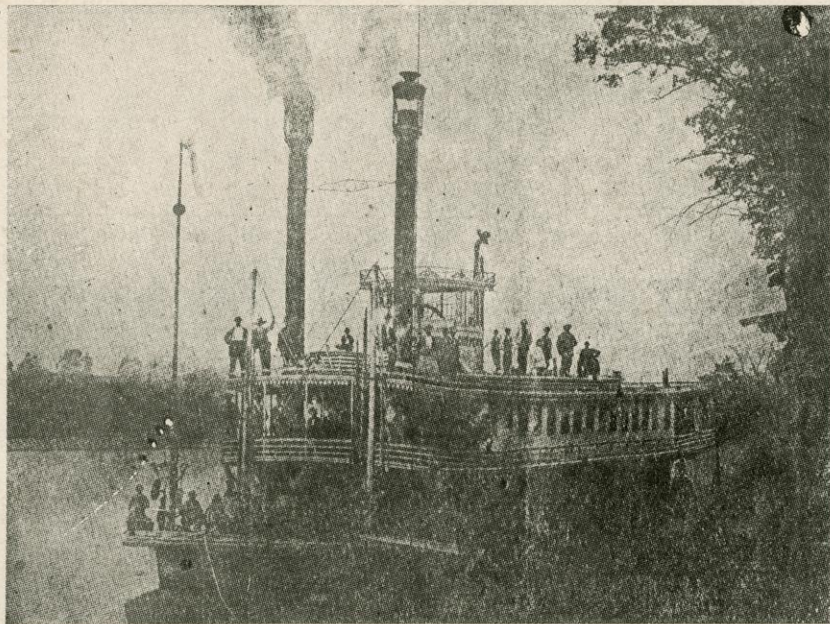
Shippers and Jobbers

**ROBERT B. CLARK,**

**President and Manager**

**CHIPPEWA, FALLS**





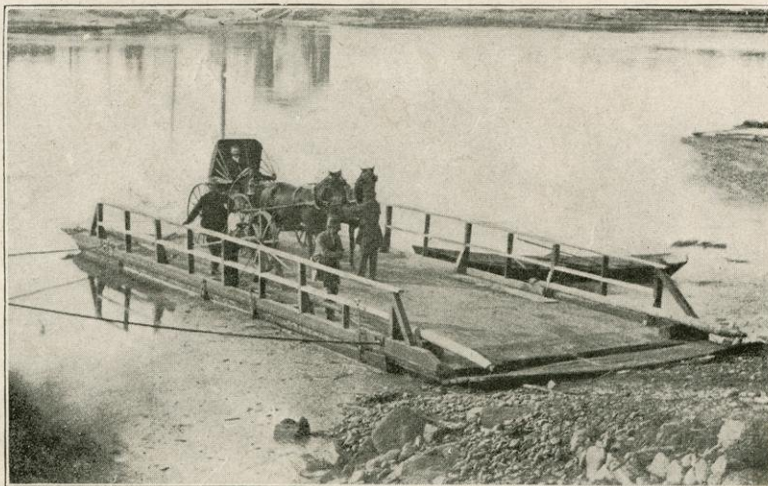
Steamboat on the Chippewa in the Early Days

The Steamboat "Chippewa" and

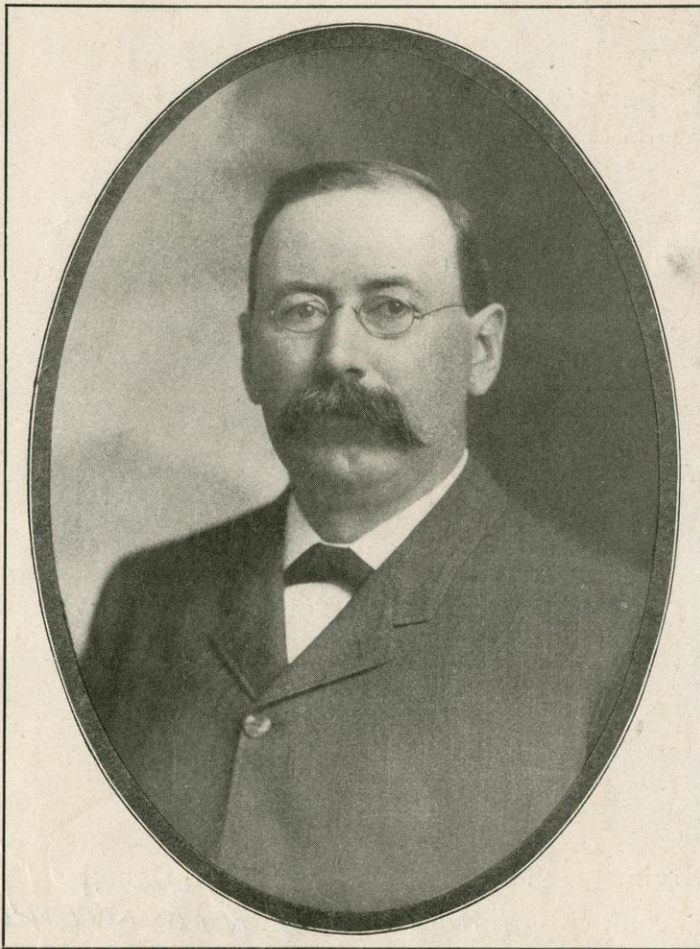
*South Side*

First Ferry on the Chippewa River

The First Ferry Will Recall Events of  
A Half Century Ago to "Old Timers"







# G. B. McCALL

Wholesale and Retail Dealer in  
**Cigars and Tobaccos**

---

---

---

Choicest Brands of HAVANA  
AND DOMESTIC CIGARS

---

Corner Bridge and Central Sts.



# LUMBERMENS NATIONAL

OF CHIPPEWA FALLS

U. S. DEPOSITARY

---

Capital . . . . .	\$100,000.00
Surplus . . . . .	\$100,000.00

---

## OFFICERS

A. B. McDONELL, President

E. RUTLEDGE, Vice President

S. B. NIMMONS, Cashier

F. G. MARTIN, Assistant Cashier

## DIRECTORS

F. Weyerhaeuser

E. Rutledge

Wm. Irvine

Thos. Irvine

A. B. McDONELL

Thos. Gaynor

Louis Goulet

Frank G. Martin

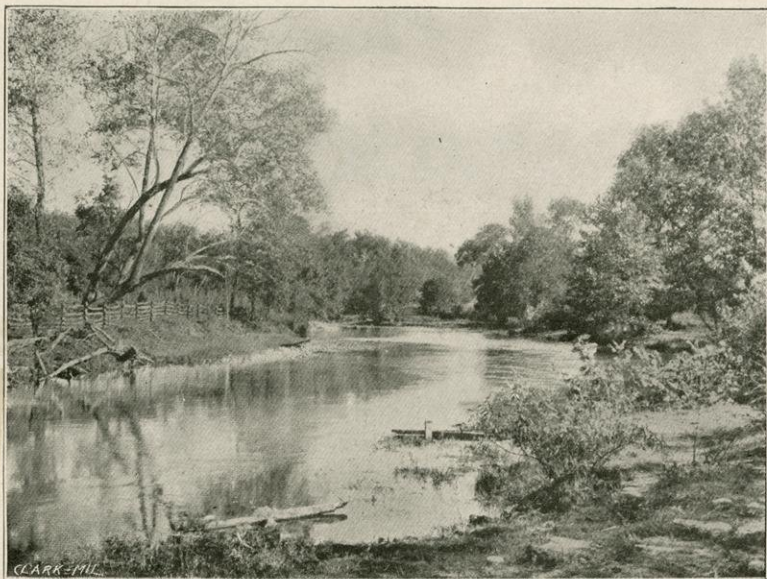
S. B. NIMMONS



entirely modern and ... people. Then came

the Chippewa Shoe Company and then the Mason Shoe Manufacturing Company, the latter being the last established factory, yet making so numerous an article that its output is being handled by the majority of enterprising establishments from here to Seattle. But space will not allow us to dwell separately upon the many manufacturing and commercial advantages to be enjoyed here. The mention of a partial list may be quite timely at this juncture. They are all perhaps as important as those above mentioned in detail. Among them are F. G. & C. A. Stanley Company, foundry and manufacturers of sash, doors and blinds, also making a specialty of contract work. North Wisconsin Manufacturing Co., contractors and manufacturers of sash, doors and blinds. Consolidated Milling, Elevator and Power Company, manufacturers of the famous "Snow Drift" flour. J. Leinenkugel Brewing Company, whose pure spring water beer is known even in Milwaukee. Chippewa Woolen Mill, makers of "All Wool" woolens. E. G. Pannier Carriage Factory. Felber & Misfelt Carriage Factory. C. Hall, Attractive Sign Artist. Chippewa Lumber & Boom Co., lumber, shingle and planing mills, the "Big Mill" being pictured herein. The Chippewa Sugar Factory. Chippewa Chair Factory. Chippewa Furniture Company, Weinberg Shoe Factory; Hebert Bros., manufacturers of the famous "Prinz Heinrich" cigar; L. W. Bethke, manufacturer of the "Northwestern" cigar; Helland Bros. Violin Factory; Chippewa Glove and Hat Company; Chippewa Canning Factory; Chippewa Brick Manufacturing Co., and the Theriault "Red Brick" Manufacturing Co. Also might be mentioned the Chippewa Springs Company.





Scenes from Irvine Park

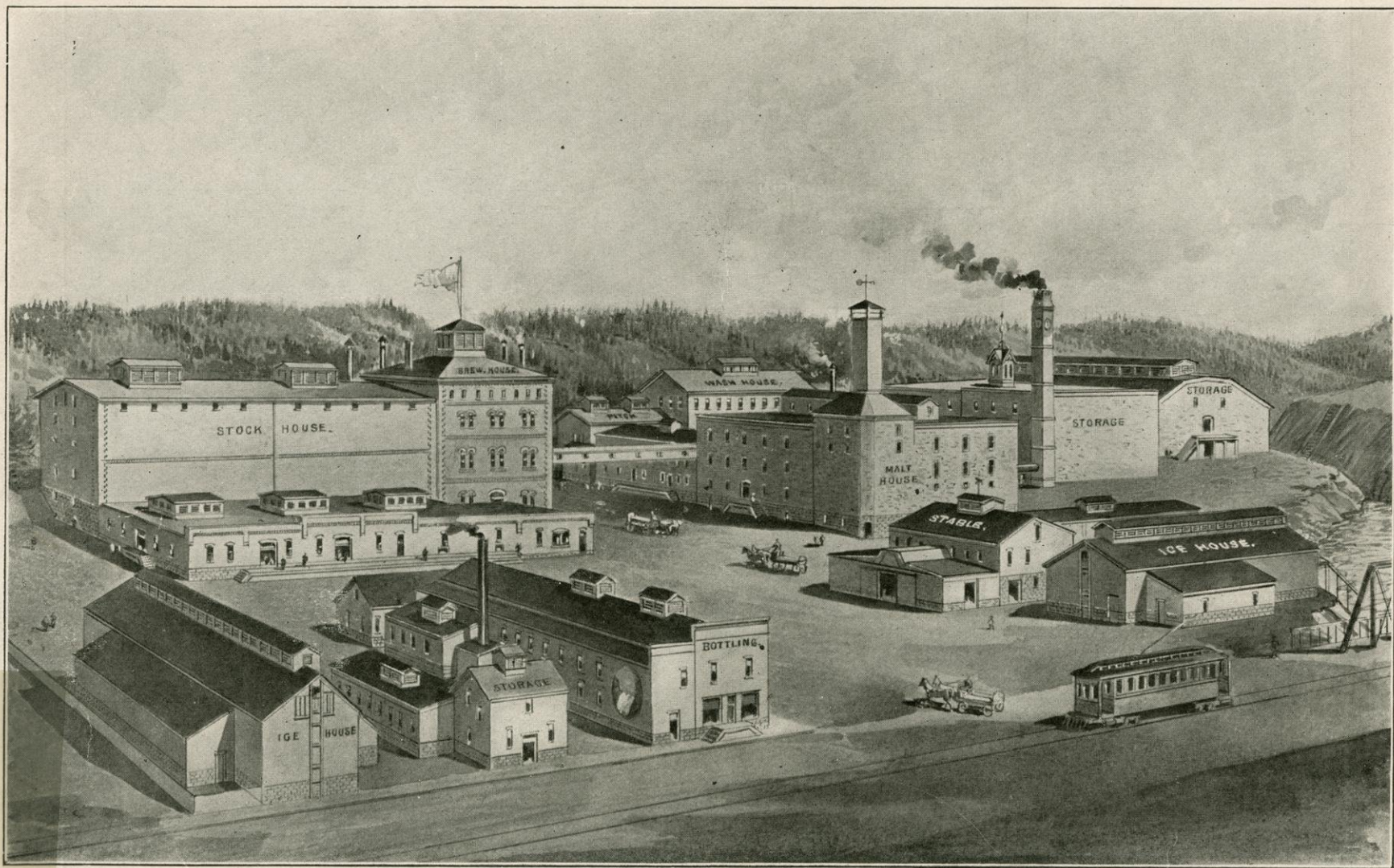






Frank Hanzlik's Fancy Grocery





J. Leinenkugel Brewing Company—Brewers of the Famous "Chippewa's Pride"



and distributors of the famous Chippewa Spring water, which is being distributed all over the world and which has brought much prominence to Chippewa Falls.

Let us suggest a half-hour's drive to the stranger visiting our city. He will desire to see our mammoth sugar beet factory, with its daily capacity of 800 tons of beets, paying over \$3,000,000.00 to the farmers annually and over \$50,000 for labor. While down there he must see the furniture and chair factories,—the former manufacturers of mission furniture and kitchen cabinets, a thoroughly modern plant whose product is shipped to nearly every state in the Union. The chair factory, though a new concern, is finding a ready market for its excellent product and many cars have already been shipped.

Now a word, friends: this booklet is your "Guide" and not an index to the little advertising compiled therein. We want you to *know* "The City Beautiful" and believe us when we say its beauty, healthfulness, picturesqueness and metropolitan air has attracted many, all of whom are now boosters for our wonderful city of progress.

You will want to see the "big mill," employing some six hundred men and sawing, grading, dressing, piling and shipping millions of feet of pine and hemlock lumber. You will want to see our woolen mill, near the big flour mill, and across the creek from the big spring brewery. The mammoth plant of the F. G. & C. A. Stanley Company is worthy of attention and from there up the hill to the canning factory and down past the McDonnell Memorial School. Our various churches, new school buildings, library and residences, over our wide and well-kept streets will take some time and then the drive



# “MASON’S”



Hardware, Furniture and Sporting Goods

308-312 Bridge Street

Chippewa Falls, Wisconsin



# JENKINS BROS.

## DRY GOODS AND MEN'S FURNISHINGS

---

Boasting is not at all in our line, but to say a few things in regard to our new up-to-date store will not be amiss at this time. The Home Comers who remember our small narrow store on Spring Street can get some idea of our advancement by comparing our present magnificent building with the one they saw in 1886. Then again there was our store on the corner where we are now located, where we did business for seventeen years; we thought that was all that could be desired when we first got into it but our store today is four and one half times the size of that one and equipped as a modern store should be. We have the lightest store possible, then we have a waiting room in the balcony, ladies toilet and wash room under the balcony, electric lighted show cases, pneumatic tube cash system and in fact everything complete for a first class store. It's one of Chippewa's points of interest. Special attention given to visitors.

**JENKINS BROS., CHIPPEWA FALLS, WIS.**





Scene on the Drive



across the bridge and past the famous Chippewa Spring,—the purest water in the world,—will bring you to the State Home, over its beautiful grounds and to its magnificent buildings.

And after skipping so many good things that you must find for yourself, we have left the best for the last,—our *natural resources*. Chippewa Falls might burn to the ground, its “artificial resources” be destroyed and yet it would be fully insured of “new life” because of Nature’s endowments. Jump into the auto and come with me for a few moments; here we are, driving west out of town. We scud along the road between overhanging boughs and heavy grain fields as far as the eye can reach, the monotony broken by an occasional hill and grove or dotted here and there with a well-kept farm house, the stillness broken by the whirr of the partridge as we scare him from the roadside. We turn to the north and take the “wood road.” We pass a fine herd of cattle on the way to pasture, taking their time as the children loiter to pick the monstrous blackberries along the road, and now we cross a little stream and,—what, fishing tackle along? All right. You know the kind of a place,—swift creek, high bank, a fly, a strike,—a trout, so soon? Weigh a pound, yes, anyway. But to hurry on,—the road turns a little to the east; here is a farmer threshing from the shock and farther on a plow in the field. And yet another stream, and then a woodland through that past a pasture of sleek looking stock and we’re on the way home. Running slow along the bank we descend the hill and enter Irvine Park. And then Chippewa’s “natural resource” is surely personified. Irvine Park, the gift of Hon. William Irvine, is the pride of our hearts and the wonder of our visitors. Nestling between two



# Northwestern State Bank

Chippewa Falls, Wisconsin

---

CAPITAL AND SURPLUS \$83,500.00

## Officers

S. C. F. COBBAN, President

P. T. FAVELL, Cashier

THOS. KELLEY, Vice-President

GEO. T. PLEHN, Asst. Cashier

## Directors

S. C. F. COBBAN

THOMAS KELLEY

H. B. COLEMAN

P. T. FAVELL

W. B. BARTLETT

D. G. COLEMAN

M. A. POZNANSKI

J. H. McGRAW

W. M. BOWE

FRANK JOAS

ANDREW HANSON



How I love  
 The McClure

a J. M. Wilson  
 Bob Wiley  
 brother of all the Wiley



James Mc. Kinnon

August Mason



# Mason Shoe Manufacturing Co.

MAKERS OF

## “CHIPPEWA’S BEST”

HAND-MADE DRIVING, CRUISING, SPORTING, WORKING  
AND MINING SHOES

Correspondence Solicited With Dealers Desirous  
of Handling A Strictly Hand-Made Shoe

Chippewa Falls, Wisconsin



high banks lies a gently undulated tract, through which flows Duncan Creek, falling in a beautiful stream over the dam at Glen Loch, a few rods distant. From its extreme southern boundaary for a distance of two miles north, its beauty is marvelous. The Park Commissioners have worked untiringly to make this a "place of rest" and have succeeded beyond measure in even aiding Nature to beautify this, the beautiful. A zoo has been established, a new pavilion is under way, swings and hammocks for the children, chairs and benches for the elders, and picnic tables for all, are promiscuous in their arrangement.

Beautiful drives are possible on the highland to the west of the park and boatrides on Glen Loch, to the north, are continually indulged in. Trout abound in the stream running through the park.

And now for a brief summary: A well-kept city, clean streets, pure air and *pure water*, beautiful scenery, progressive and congenial people,—we offer you this. To the sportsman, deer and bear, grouse and partridges, trout and bass. To the *stranger*,—a welcome.

No man struggles under a greater handicap than he who lacks *health*. Without health the rich are unhappy. With it the poor are as kings. Without it the horizon of a man's accomplishments closes in upon him. With it there opens before him possibilities as boundless as the path of planets. Behold, I will show you a road to the land of Health. A road that is easy and straight and that all men may follow. A road that leads not by the house of the doctor nor the shop of the apothecary. A road whereon *Nature* walks hand in hand with the traveler, assisting him on his way. And the guide-board on this road says, "TO CHIPPEWA FALLS."



# *The* Consolidated Milling, Elevator *and* Power Co.

THE LARGEST MILL AND GREATEST CAPACITY  
—FOR STORING GRAIN IN THE COUNTRY—

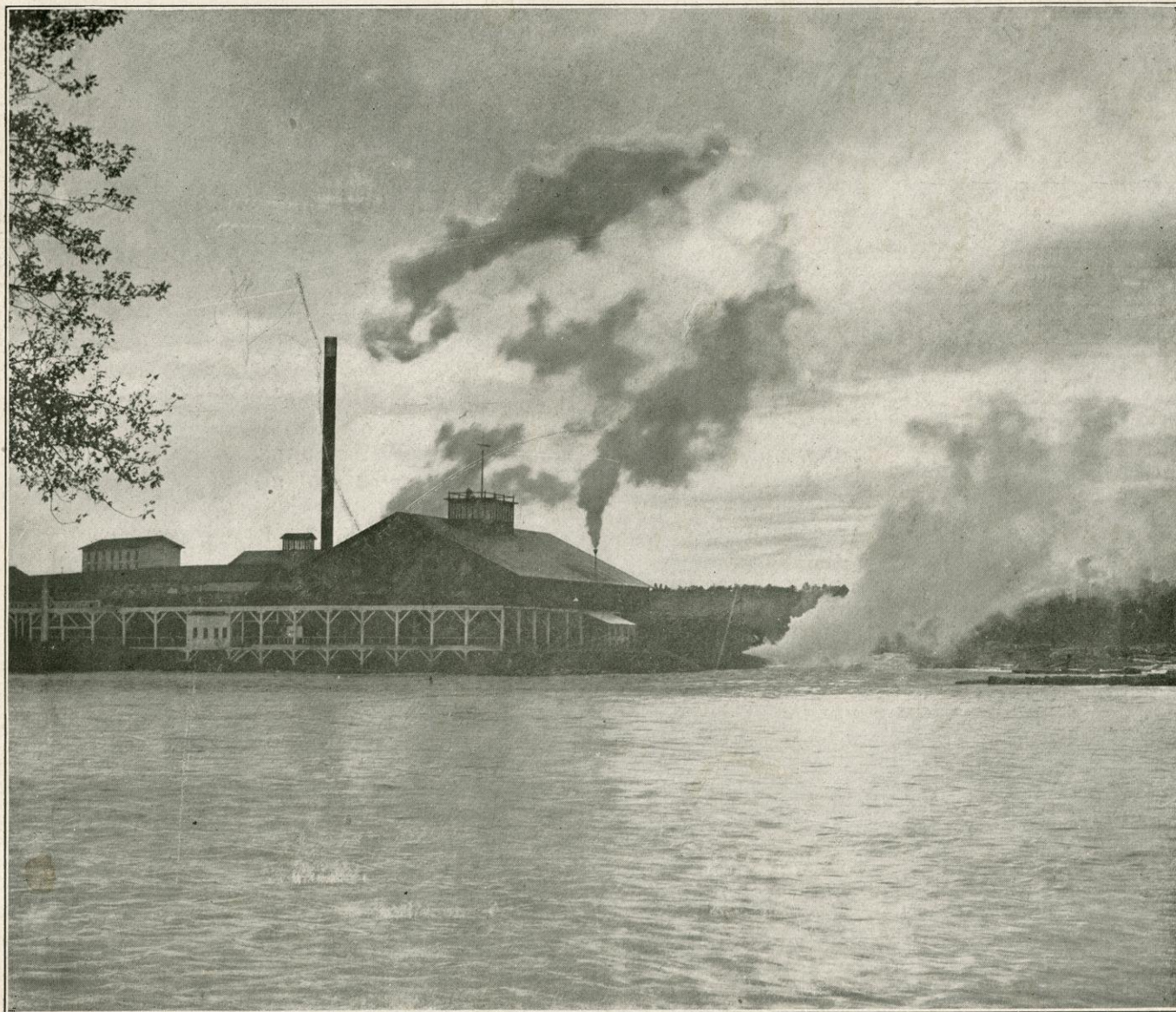


As we have dealt with  
the public for twenty  
years, they know us.

Scene on Duncan Creek, Near Mill

**I**T IS A MISTAKE to suppose you can't afford to buy good flour. The product of our mills has gained a popularity that is wide-spread and deserved. It is at once economical, pure and of uniformly high standard. Our "SNOW DRIFT" is noted for its excellence and has no superior.





**Chippewa  
Lumber  
and  
Boom  
Company**

---



---

**Chippewa  
Falls  
Wisconsin**





**Last of the Pines**



# **F. G. & C. A. STANLEY COMPANY**

---



**Sash  
Doors  
Blinds  
Lumber  
Lath  
and  
Shingles**

---

**Machine  
Shops  
and  
Foundry**

---

**CHIPPEWA FALLS, WISCONSIN, U. S. A.**





✦ "THE CORNER SHOE STORE" ✦

# FRED PITSCHE & COMPANY

CHIPPEWA FALLS, WISCONSIN



Everything that's good, desirable  
and stylish in footwear for Men,  
Women, Boys, Misses, Children  
and Infants.











HECKMAN  
BINDERY INC.



OCT 95

Bound To Please® N. MANCHESTER,  
INDIANA 46962



