



LIBRARIES

UNIVERSITY OF WISCONSIN-MADISON

Kanga shinan. Nihen = 漢畫指南. 二編. [v.2] [1811?]

Kawamura, Bunpō, 1779-1821 (河村文鳳, 1779-1821)

Kyōto (京都): Hishiya Magobē (菱屋孫兵衛), [1811?]

<https://digital.library.wisc.edu/1711.dl/6HERO3CSZ5SLF8S>

<http://rightsstatements.org/vocab/NoC-US/1.0/>

For information on re-use see:

<http://digital.library.wisc.edu/1711.dl/Copyright>

The libraries provide public access to a wide range of material, including online exhibits, digitized collections, archival finding aids, our catalog, online articles, and a growing range of materials in many media.

When possible, we provide rights information in catalog records, finding aids, and other metadata that accompanies collections or items. However, it is always the user's obligation to evaluate copyright and rights issues in light of their own use.

漢畫指南二編

地

#2

KÖHLER ART LIBRARY

WP66
+B88
2

7.

久遠



浮世文庫

浮世文庫

冬嶺



牛毛皴



荷葉陂

晚晴



推路



披麻絞



竹樹溪亭



雨點皴

寒岬



林屋



亂麻坡

茅舍倚巖



大斧劈

雲頭皴



幽林卜居





小芥磨

月夜鼓
竹扉



山莊



馬牙皺





解索皴

夏山林館





攀頭皴

前赤壁圖

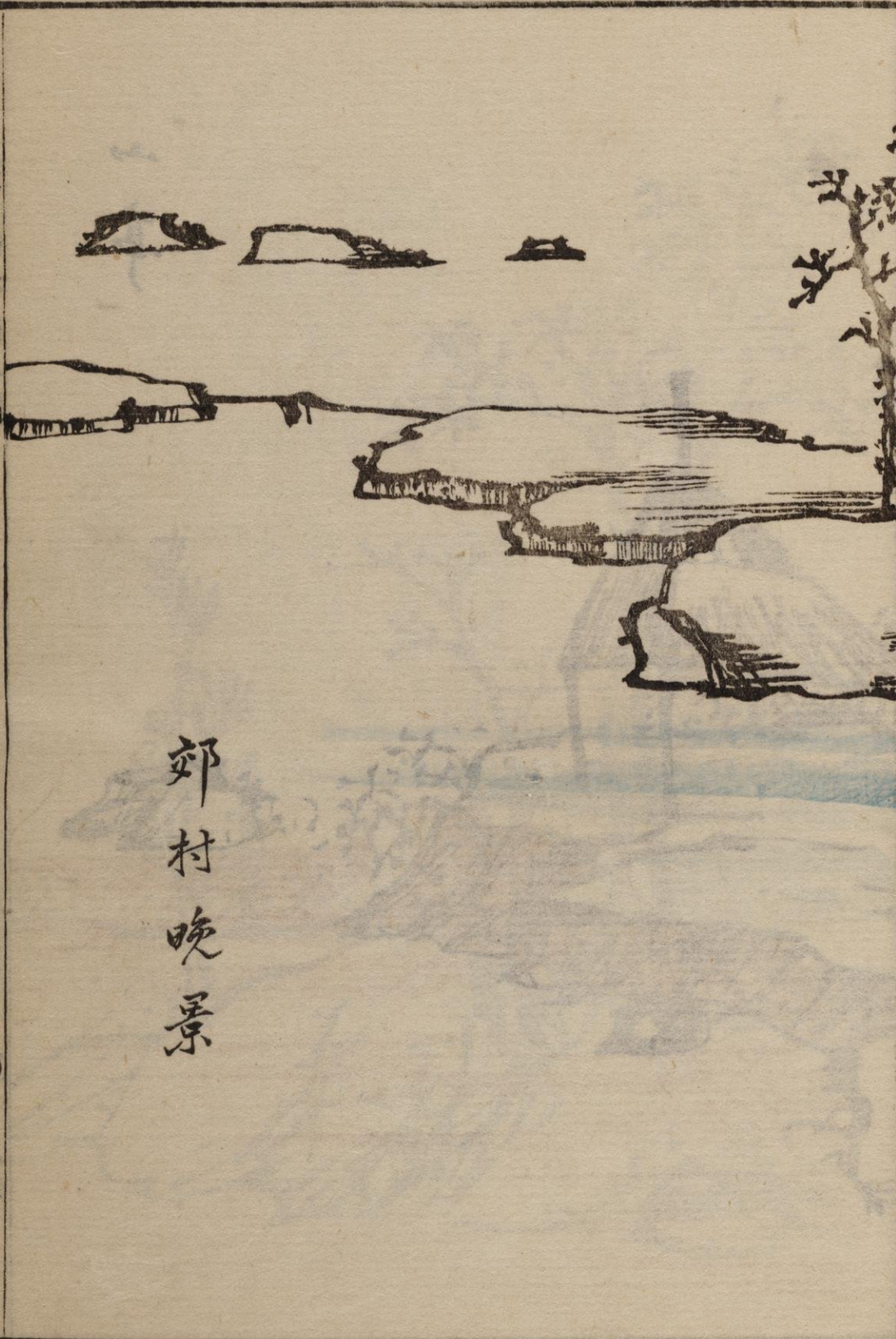




平川

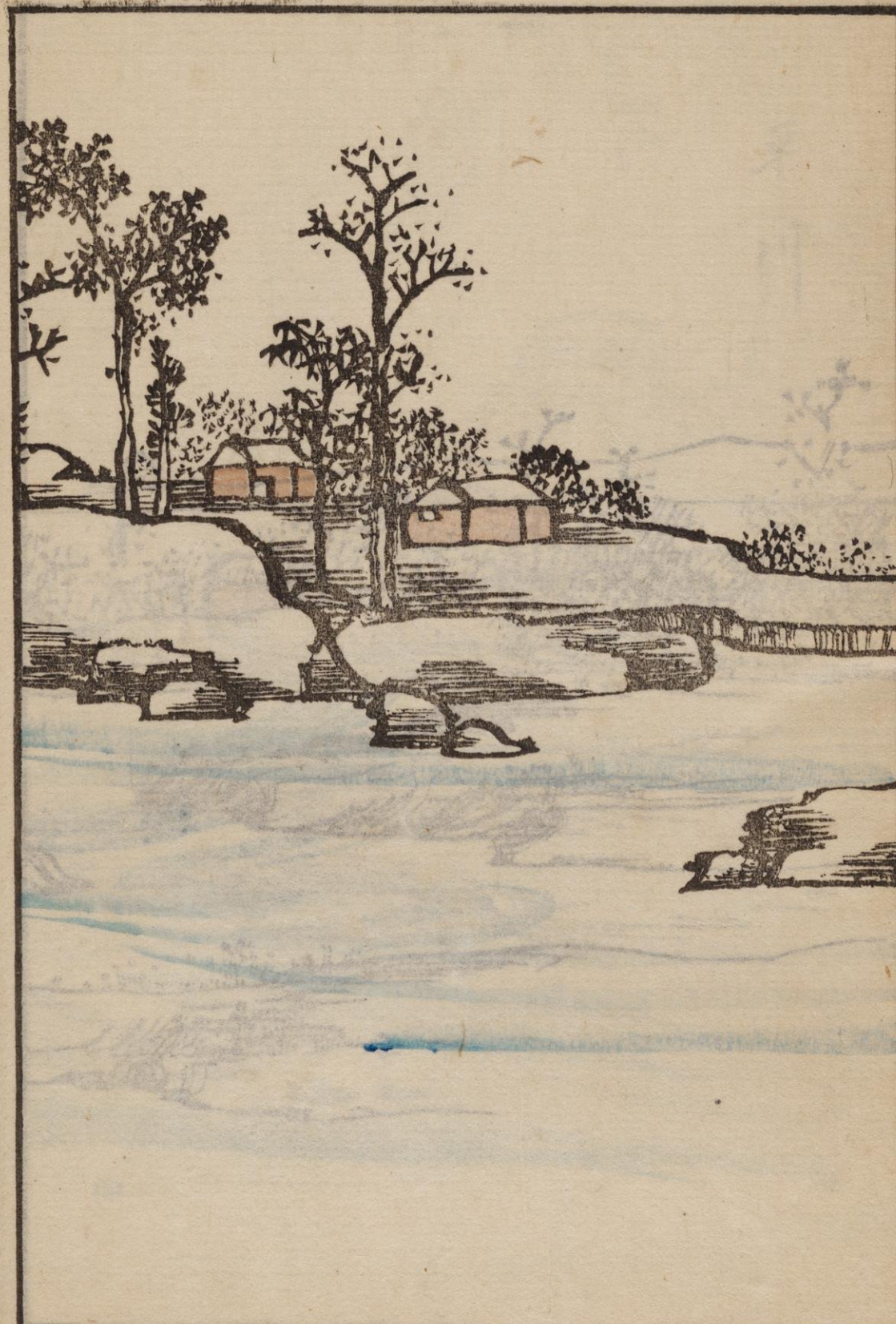


漢書音義



郊村晚景

漢書音義



漢書音義



山
亭



山阿茅宇

漢書地理志二編

卷之二



漢書地理志二編
卷之二

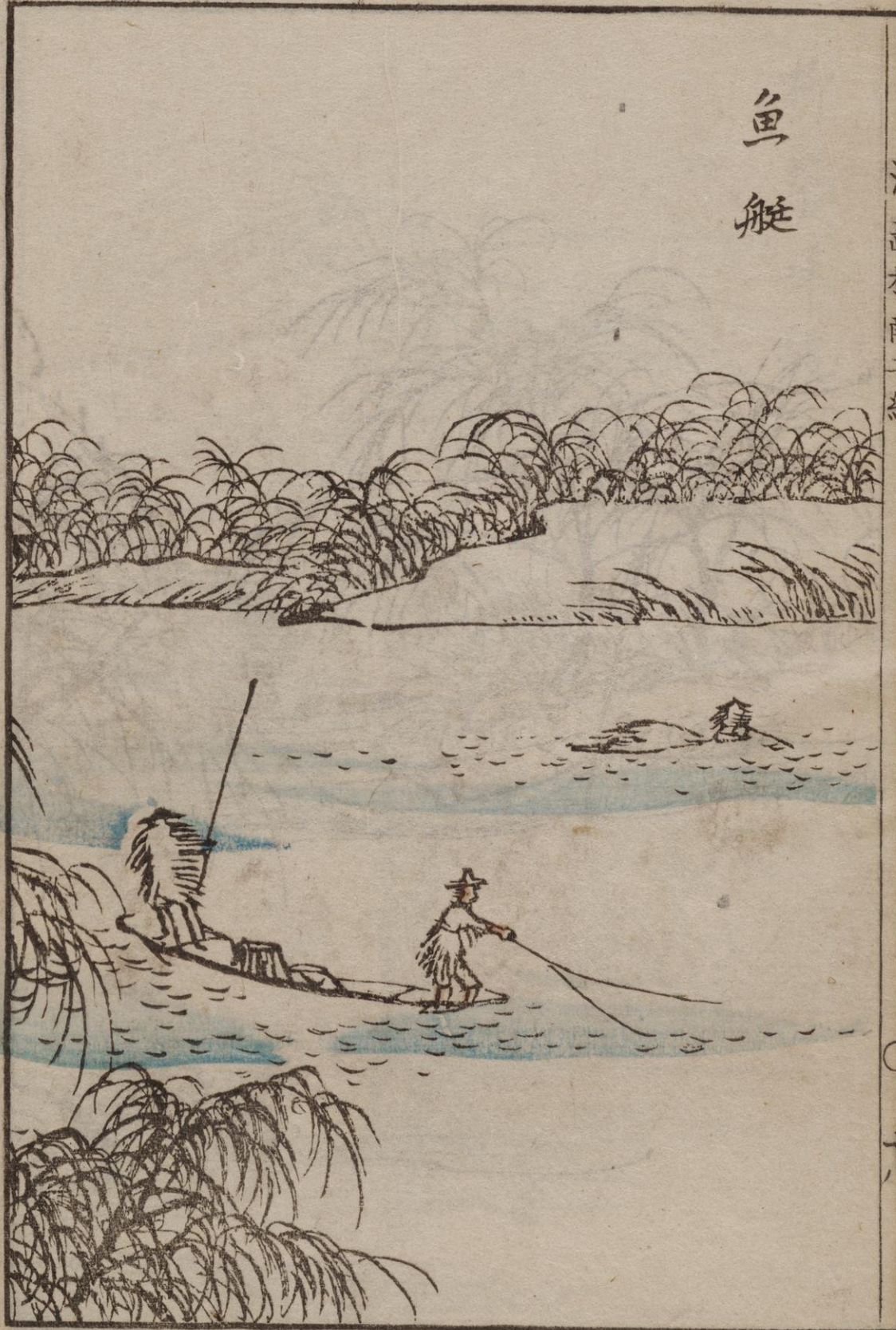


柳蔭呼渡





魚艇



衡門臨湖



衡門臨湖

東海道志



冬林

清見村南二



三九

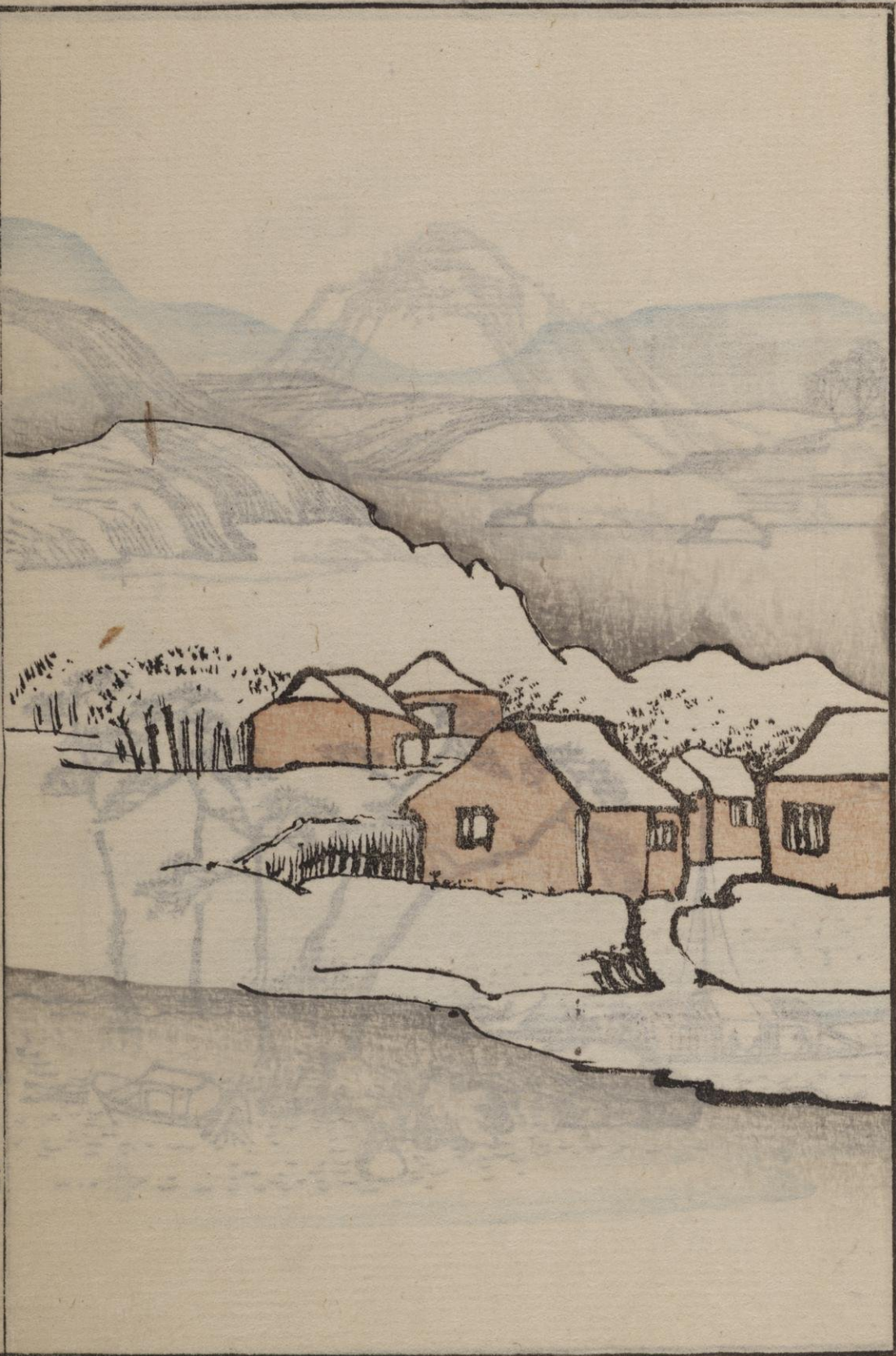
遠村





古溪寒月





山村雪





平湖魚舟



山閣迎月



平院夏景



世天 世西 世南 世北



蘆邊魚家



漢書地理志卷之九十八



九十八

山下一路傍溪水



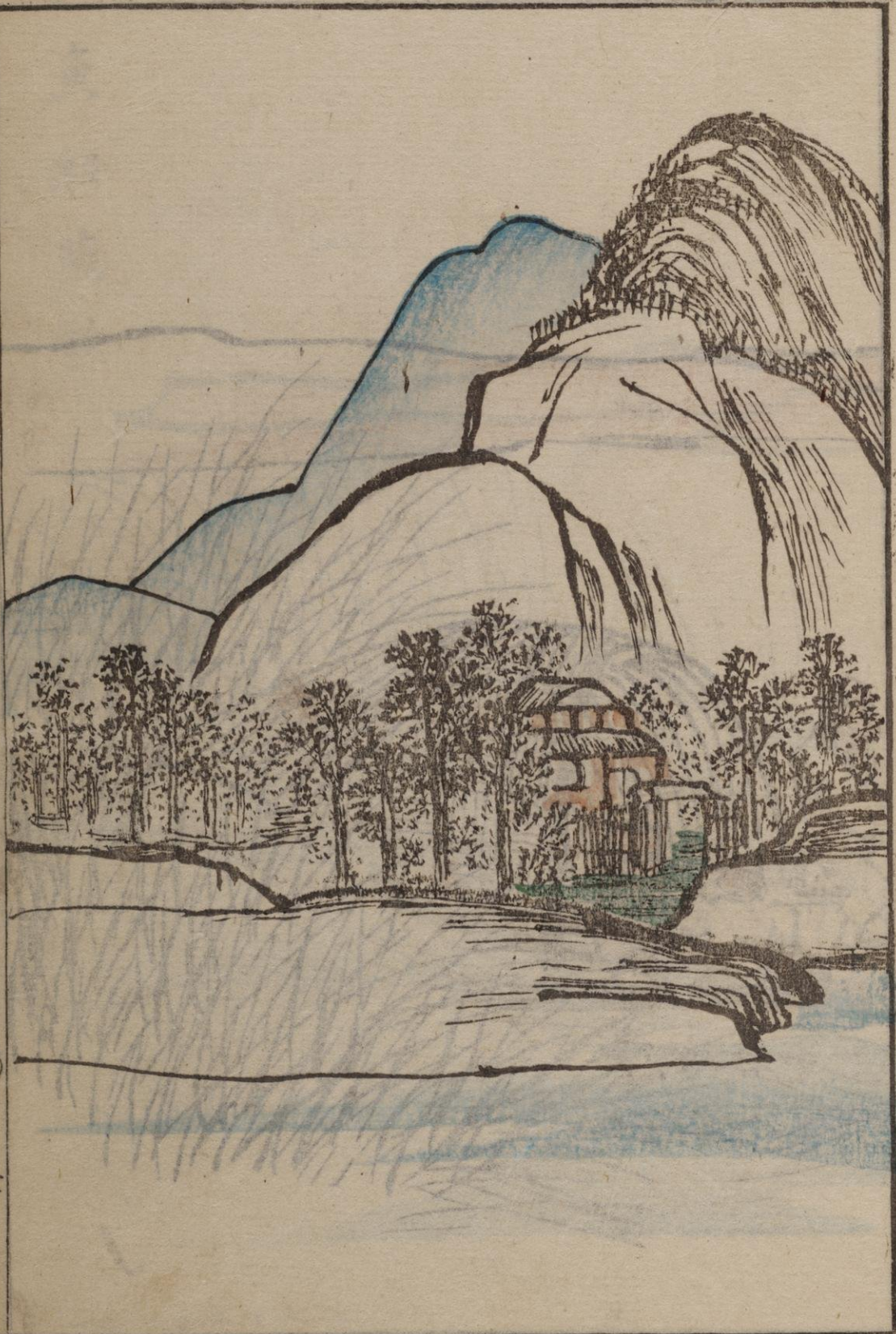
漢書地理志卷之九十八

九十八



綠樹谿居





疊山積翠



魚船燕歌



漢書指海二編

世



漢書指海二編

世



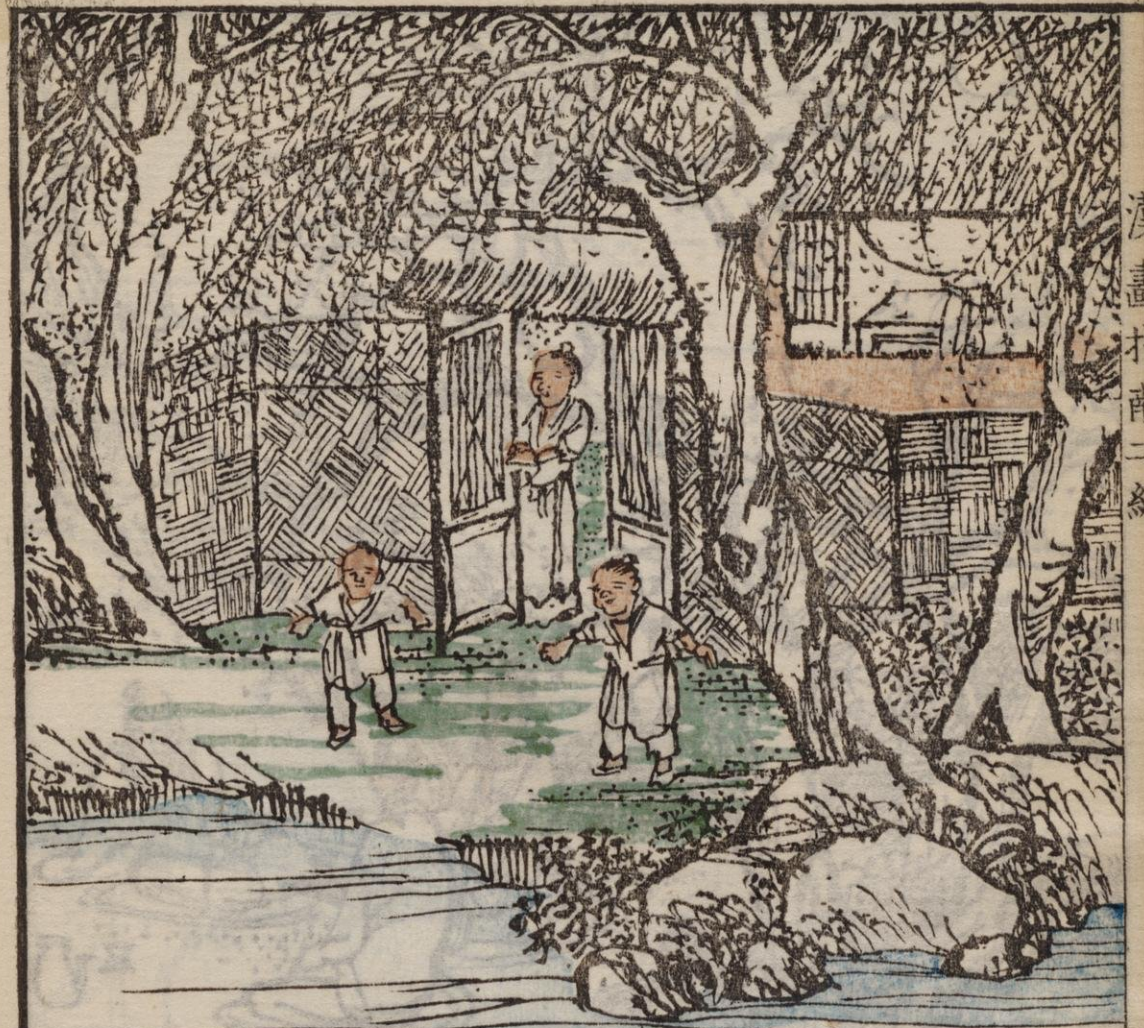
疎影橫斜



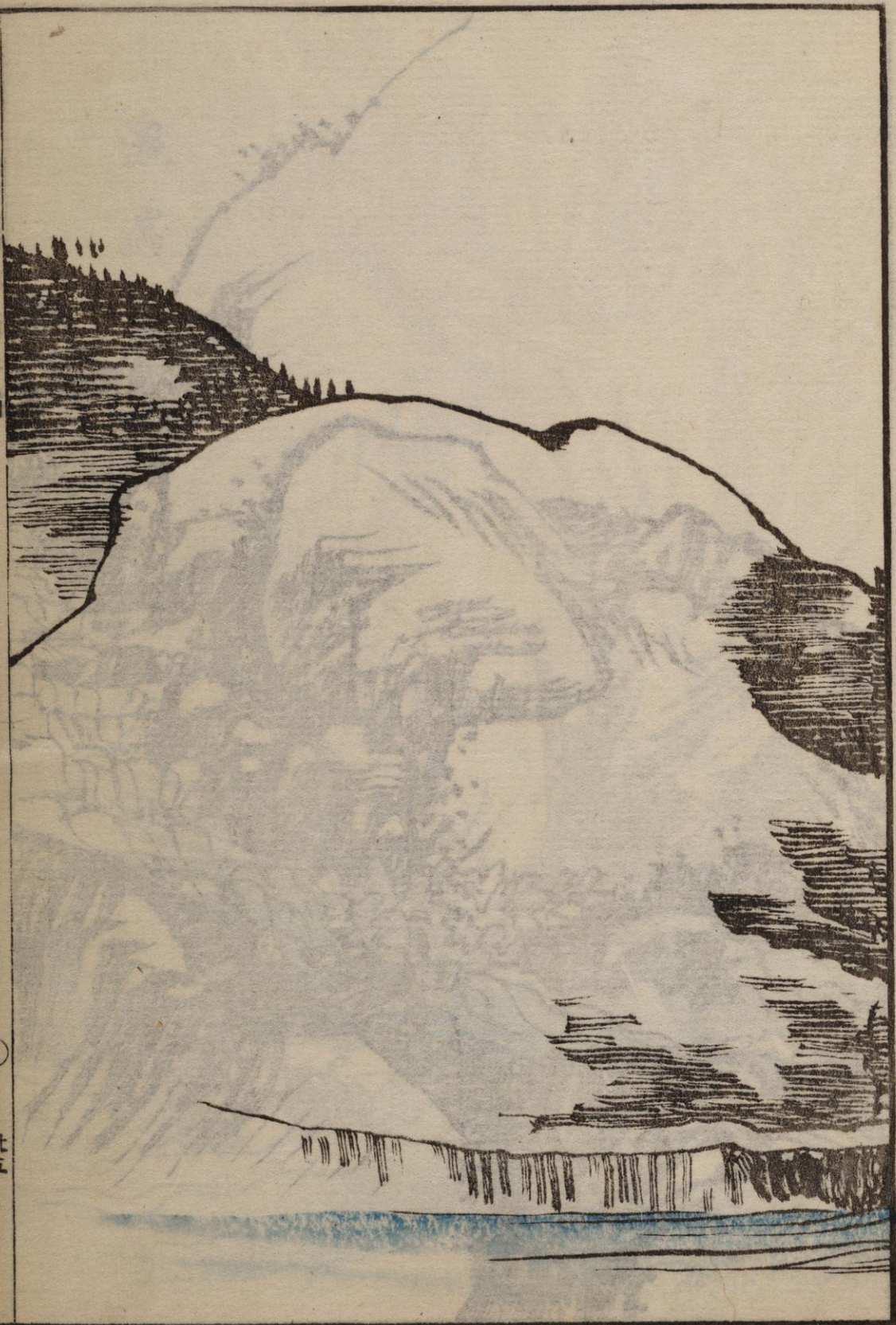


桃李園





歸去來圖



小溪入湖





激湍碎玉





斜視瀑布



正視懸泉

徐嘉新





漢畫村南二家

廿八

Bumps

Vol. 2
20

3