



LIBRARIES

UNIVERSITY OF WISCONSIN-MADISON

Program for "Button, button": the thirty-second annual production of the Haresfoot Club. 1930/1932

[s.l.]: [s.n.], 1930/1932

<https://digital.library.wisc.edu/1711.dl/ROTZHEQPETCAO9D>

Based on date of publication, this material is presumed to be in the public domain.

For information on re-use, see

<http://digital.library.wisc.edu/1711.dl/Copyright>

The libraries provide public access to a wide range of material, including online exhibits, digitized collections, archival finding aids, our catalog, online articles, and a growing range of materials in many media.

When possible, we provide rights information in catalog records, finding aids, and other metadata that accompanies collections or items. However, it is always the user's obligation to evaluate copyright and rights issues in light of their own use.

"Button, Button"



Thirty-second annual production of the
HARESFOOT CLUB
University of Wisconsin



PARIS CHICAGO VIENNA

"Foremost Creators

of

*Fashions for the
Footlights"*

COSTUMES

For any and all occasions, - - -
masquerades, plays, balls, re-
vues, parties, operas,
fraternities and
sororities



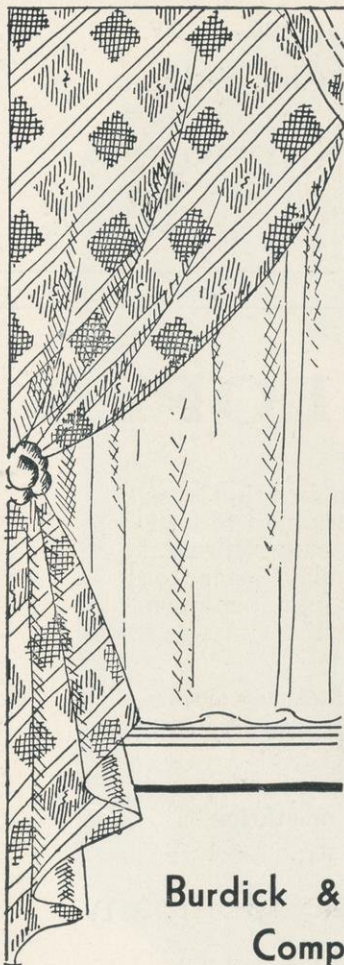
14 W. Lake St. - Chicago, Illinois



Vernon Hamel

*This is the fellow that won the
first prize & was good.*

Lester
Ltd.

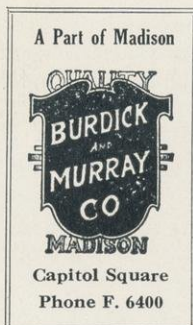


STAGE DRAPERIES

—for all Haresfoot Plays—for the last seven years—furnished and made up by

BURDICK & MURRAY CO.

There is a personal interest back of all drapery work turned out by the Burdick & Murray Co. - IT MUST BE RIGHT!



VISIT OUR MODERN DRAPERY DEPT.

One of the largest selections of drapery fabrics in the state of Wisconsin from which to choose.

Burdick & Murray Company

—have had many years of experience in furnishing and making up draperies for University of Wisconsin Sororities, Fraternities, and some of Madison's most beautiful homes.

—Take advantage of the services offered by our Home Beautiful Service Department.



VERNON
HAMEL
from Oshkosh, B'gosh
in "Button, Button"!

Madison Fuel Company

E. J. FRAUTSCHI
General Manager and Treas.

Telephone Badger 3
MADISON, WISCONSIN

*Here's the Button
and many
Chic Fashions*

Simpson's

on the
Square

at the
Co-Op

GOOD ENVELOPES

The making of good envelopes is our business. They carry the message of business man to business man. For that reason they truly represent you individually. Make the "display space" on your envelopes carry more of your individual message. It will surely create good will for you as a business man.

Our experience in envelope manufacture corroborates this daily—"The best is the cheapest in the long run—"

When in need of envelopes specify "Western States" envelopes of your printer or stationer.

Western States Envelope Company

740-752 South Pierce Street
MILWAUKEE, WISCONSIN

*Compliments
of the*

French Battery Company

Makers of
Ray-O-Vac Flashlights, Ray-O-Vac
Radio Batteries, Ray-O-Vac Dry
Cells, and Ray-O-Vac Radio Tubes.

Hotel Athearn

Welcomes
1930 Haresfoot Club
to
Oshkosh



A Haresfoot performance, while it may not quite fit into the conventional picture of things academic, is nevertheless, not an escape from educational discipline, but an expression of educational discipline. For, after all, the qualities of intensive application, emotional control, poise of body, and precision of mind and speech that make a good performance are qualities that mark an educated youth.

Haresfoot is on tour with the University's blessing.

Glenn Frank

There's no mystery about

Mirro Aluminum

**Vapo-Seal
Utensils!**



**Splendid for Delicious
Modern Cooking**

They are more Healthful, Efficient, Economical!

**Aluminum Goods Manufacturing Co.
Manitowoc, Wisconsin**



... if it's the BEST
NORTH WESTERN
has it!

Splendid all-steel trains with
luxurious lounges—comfortable
observation parlor cars—most
modern Pullmans—excellent
dining car service.

THE FAVORITE ROUTE to and from Madison

Always, the favorite route for
student travel, Chicago & North
Western provides "the Best of
Everything" in modern travel
comfort and luxury to all im-
portant points West, North
and Northwest.

Route of "the two finest trains in the world"—
North Western Limited, Corn King Limited.

For full information and illustrated literature
about any trip West, North or Northwest apply
to ticket agents or write

C. A. CAIRNS
Passenger Traffic Manager
400 W. Madison St., Chicago, Ill.

992

CHICAGO & NORTH WESTERN RY.

THE HARESFOOT CLUB
of the
UNIVERSITY OF WISCONSIN
presents
"BUTTON, BUTTON!"

A Musical Comedy in Two Acts

Book by
J. ROBERT DEHAVEN '29

Lyrics by
GORDON SWARTHOUT '31, IRVING D. TRESSLER '30,
FRANKLIN W. PRINZ '30

Music by
DAVID WELTON '32

Dances and ensembles conceived and staged by
EDGAR I. SCHOOLEY

Entire production under the personal supervision of
WILLIAM H. PURNELL '22

CAST

(In the order of appearance)

Jeeves	Edward P. Roemer '30
Arthur Button.....	Gordon Swarthout '31
Jerry Button.....	Gilbert D. Williams '30
Blossom Button.....	R. Freeman Butts '31
Bill Button.....	Franklin W. Prinz '30
Glory Green	James D. Porter '31
Earnest Smart } detectives.....	{ J. Robert DeHaven '29
Wallace Smart }	{ David W. Willock '31
Patsy Pratt.....	Vernon Hamel '29
Hans.....	Marcus Ford, Jr. '30

LOCALE

Act I—Drawing Room, Button Manor—7 P. M.

Act II—The Promenade, Button Manor—Later that evening.

Song Hits of "BUTTON, BUTTON!" will be on sale in the lobby. Single numbers—\$.35; 3 for \$1; 4 for \$1.25.

Haresfoot "Ladies"

They do buy Men's wear—but only the newest and smartest—so they choose

The University Co-Op
"The Student's Store"

Overheard at Langdon and Henry

"—and our pledges are always careful of their appearance. Take stockings, for instance. A good-looking pair will get you to a lot of spring formals."

Just some good advice from a sorority "mother" to her "daughter". Allen-A Hosiery was probably specified, but Dean Nardin's 10:30 rule prevented us from hearing the rest of the conversation.

And Allen-A Hosiery for Men can be found on feet perched on desks in the best fraternity houses. Not to mention the popularity of the new Allen-A shirts and shorts,—comfortable because they fit.

But now, as "Sunny" Pyre would say: "Up with the curtain! On with show."



THE ALLEN-A COMPANY
Kenosha, Wisconsin



*An
Ideal
Gift*

Cooks Eggs *right at the table*

The Hankcraft Electric Egg Cooker cooks eggs just the way you want them, right at the table. Starts in 5 seconds, shuts off automatically. Nothing to get out of order. Ask your department store, your electrical dealer or your hardware store.

Manufactured by

Hankcraft Company

MADISON, WISCONSIN



Fairchild 334

**531
State
Street**

**Capital City
Rent-A-Car Co.**
Madison, Wisconsin

THE HARESFOOT CLUB



FRANKLIN W. PRINZ '30
President



WILLIAM H. PURNELL '22
Director



WILLIAM W. GARSTANG '30
Manager

OFFICERS

<i>President</i>	Franklin W. Prinz '30
<i>Vice-President</i>	Vernon Hamel '29
<i>Secretary</i>	Orrin Evans '31
<i>Treasurer</i>	Joseph Blatecky '29
<i>Manager</i>	William W. Garstang '30
<i>Keeper of the Haresfoot</i>	Samuel Steinman '32
<i>Director</i>	William H. Purnell '22

PRODUCTION STAFF

Assistant Business Manager.....	John L. Dern '31
Program Manager	Eldon Cassoday '30
Production Manager.....	Orrin Evans '31
Orchestra Leader.....	Joseph Blatecky '29
Dancing Coach.....	Edgar I. Schooley
Musical Coach.....	Al Butler
Advance Representative	Fred Evans '25
Master Carpenter.....	Oscar Vetter
Master of Properties.....	Willard Lauck
Master Electrician	Douglas Gauntlett
Master Mechanic.....	Edward Spranger
Mistress of Make-up.....	Louise Reuter Sweeney
Mistress of Wardrobe.....	Mae Schultz
Transportation Director.....	Carl Dahnke—C. M. St. P. & P.
Public Relations Director.....	Samuel Steinman '32

(Continued on second page following)

Superior quality and style
alone are responsible for
the traditional reputation of

Pete E. F. Burns.

IMPORTED HABERDASHERY CLOTHES AND SHOES

Bunde & Upmeyer Co.

Jewelers-Milwaukee

Plankinton Arcade Building

Where Quality Is As Represented

Diamonds—Watches—Jewelry—Silverware—Stationery
Manufacturers of Official Haresfoot Club Insignas

The **UNIVERSITY PHARMACY**

H. W. LEONARD

Where the student demand for
quality and service at a reasonable
price is satisfied.

Cor. State and Lake

Brown's Business College

An Accredited School

Offers Specialized Training for
Future Executives and
Private Secretaries

Expert Instructors, Modern Equipment,
Reasonable Rates. The school for young
people with real ambition. Day and evening
school. Enroll any Monday.

C. J. HARVEY

Owner and Manager

240 South Jefferson St. PEORIA, ILL.

All Haresfoot Cuts

furnished by

**Brock Engraving
Company**

Madison, Wisconsin

Kennedy Dairy Co.

Perfectly Pasteurized

Milk, Cream, Butter, Butter-
milk, Cottage Cheese,

Milcolate, Velvet Ice Cream

Madison

Wisconsin



Pabst-ett Flavor

Is almost tantalizing enough to set to music.

As Irv. Berlin might sing:—"Pabst-ett is eaten,
but the flavor lingers on!"

TRY IT TONIGHT IN A WELCH RAREBIT!
PLEASANT DREAMS !

Pabst Corporation

Milwaukee



Wigs and Make-up for **BUTTON! BUTTON!**

Furnished by
Herman Reuter Company
45 Juneau Ave. Milwaukee

MUSICAL NUMBERS

Orchestra under direction of Joseph Blatecky '29

Al Butler—Coach

Piano—David Welton '32; Drums—Rollo Laylan '32; Trumpets—Frank J. Fischer '31, Norman Kingsley; Trombone—Harold O. Schneider '31; Saxaphones—Victor Hauprich '30, Edward McKenzie '28, Marvin W. Krueger '28; Violins—John E. Garland '31, Karl Peters '31, Maurice Wolkomir '31, Grant N. Lewis '33, Jack D. Williams '33; Viola—Fred Baumann '29; Bass—Norman Phelps '33.

Act 1

1. Opening Chorus-----Ensemble
2. We're Smart-----Wally and Ernie
3. Oh, That Burns Me Up!-----Jerry and Show Girls
(Specialty—Philip Colehour '30)

(Continued on second page following)



Visit the Beautiful New
Studios of
Paul Stone-Raymor, Ltd.

Entire 4th Floor
430 North Michigan
(Opposite Tribune Tower)

PAUL STONE
Official Photographer
Haresfoot Club

Campus Soda Grill

THE PLACE
That Malted Milk Made
Come in After the Show

Madison, Wis. 714 State St.

For six years we
have typed the

"Haresfoot Play"

College Typing Co.
515 Campus Arcade

A

Coopers
REGISTERED PAT. OFF.

Style Scout

had a bright idea—and Coopers Polo Shirts — ribbed-knit for close fit—became America's favorite campus garment. Coopers style-scouts are also to be thanked for the up-to-the-minute style of every garment in Coopers underwardrobes — hose, snappy shirts and shorts, easeful knitted underwear, and gay, comfortable pajamas. Demand Coopers—at good shops—and you'll be in style.

Coopers, Incorporated
Kenosha, Wisconsin

Pantorium Co.

Your Master
Cleaner

\$5.00 in advance
gives \$7.00 credit

558
State

B1180

2126½
Regent

▲▲▲more than 20
years of service to
Wisconsin students

State Street Branch

State Bank of Wisconsin

State at Gilman

Hommel Bros., Inc.

"Wisconsin's Finest
Food Store"

Madison, Wisconsin

Call Fairchild 12
And Get a Nice New
RENT-A-CAR
College Rent-A-Car
315 N. Henry St.
MADISON, WISCONSIN

For 55 Years the Best
Steaks « Chops « Fish
Phone Your Order
St. Nicholas Cafe
(Back of the Park Hotel)
120 West Main Badger 922
Madison, Wisconsin
FRED HICKS, Proprietor

4. Roaming Alone----- *Bill*
 5. What's The Ice Without The Iceman-- *Patsy, Dancers and Boys*
 6. Can't Help Loving You----- *Bill and Ensemble*
(Specialty—Philip Colehour '30)
 7. Finale—Where There's A Will, There's A Way-----
----- *Bill and Ensemble*
- Act 2
8. Opening—Legs ----- *Patsy and Ensemble*
 9. It's Fascination----- *Patsy and Boys*
 10. Don't Ask Me Why----- *Bill and Ensemble*
(Specialty—Philip Colehour '30)
 11. Dance of the Spirits----- *Ensemble*
 12. Finale----- *Entire Company*

(Continued on second page following)

Chicago and Alton Railroad

"Perfect Passenger Service"

Chicago, St. Louis, and Kansas City are only a day . . . or a night . . . apart by fast, direct and comfortable Chicago & Alton trains.

Take the daylight train to enjoy the panorama that stretches over the long flat green stretches of Illinois . . . the richest soil and the most expensive farm acreage in the world . . . the land where Abraham Lincoln lived . . . and view the picturesque country that forms the Mississippi and Missouri Valleys. An ideal train for the lover of scenery.

Take the night train if it's necessary to reach your destination between the close of one day and the dawn of the next . . . leave in the evening after dinner, enjoy a restful night's sleep on the train and arrive the next morning at breakfast time. Ideal trains for business people.

Full information can be secured from

Chicago and Alton Railroad
CHICAGO, ILLINOIS

W. H. Abel
Passenger Traffic Manager

Roy A. Pearce
General Passenger Agent

Trunks and Leather Goods

Wehrmann's

TWO STORES

508 State St. 116 King St.

Wisconsin Students'
New Banking Home

University Avenue
National Bank

"Nearest the Campus"

Affiliated with the
First National Bank

Compliments

of

Wilson's
Milk

Especially Adapted for Students

HORLICK'S

The Original

MALTED MILK

Taken as a Hot Food -- Drink

Upon arising in the morning, supplies
the food, heat and energy needed to
START the day right.

A cupful, hot, upon retiring, ENDS the
day right by inducing restful sleep.

Established 1880

Paine, Webber & Co.

MEMBERS

NEW YORK STOCK EXCHANGE
NEW YORK COTTON EXCHANGE
CHICAGO STOCK EXCHANGE
CHICAGO BOARD OF TRADE
BOSTON STOCK EXCHANGE

E. J. FURLONG, Resident Partner
367-373 Broadway Phone Broadway 8700
MILWAUKEE

The Haresfoot accounts are
handled by the **Ronald Mattox
Co.** who also handle the ac-
counting for more than forty
other student organizations on
the Wisconsin campus. Branches
are maintained at Ohio State,
Indiana, and Purdue.

Compliments of

Carl H. Feltman, '22

and

Ernest J. Galbraith, '09

**"Sporting Goods
for Sportsmen"**



Felton Gun Stores

120 E. Wash. Ave. (uptown store)
321 N. Randall (westside store)

*Madison's Oldest and Largest
.. Sporting Goods Stores ..*

Come Over to Our House
Leath & Co.

**Furnishers of Beautiful
Homes—famous for
"Castle" built
Furniture**

THE DANCERS

E. Richard Abert '30, J. Donald Reeke '30, Robert B. McCormick '30, Daniel W. Jones '31, Girard B. Secker '31, Winfred E. Griebing '30, Bernard Cahn '32, T. Carroll Sizer '32, Charles Ludlow '33.

THE SHOW GIRLS

Lee E. Gulick '30, Holley J. Smith '31, Richard W. Harrison '31, Harold Housman '31, George M. Parker '31, Gordon Sinykin '31, James R. Bolton '31, John I. Eales '32, Rollo H. Roberts '33.

THE BOYS

Robert F. Hagerty '31, John P. Swansen '30, Raymond L. Rome '31, Frederick S. Harbridge '30, Mark S. Catlin, Jr., '31, Charles S. Lueth '31, Francis L. Lavengood '32, Philip L. Holliday '32, Robert S. Schacht '32.

(Continued on following page)

First Choice

University men and alumni form an exacting clientele in matters of dress. Their preference for clothes by . . .

HOAK & DUNN

is significant.

Custom tailored...whether Ready-to-Don or to Individual Measure

644 State Street

Compliments of

**Madison Clearing
House**

**Banks and Trust
Companies**

L U M B E R

for the

Haresfoot Sets

furnished by

Doyon & Rayne Lumber Co.

638 W. Mifflin St. Madison, Wis.

When you come toward Madison, write ahead for a room » » » to Porter Butts, '24, House Director (not detective).

» — «

The Wisconsin Union

THE COLLEGE MUSICAL COMEDY LEAGUE OF AMERICA

Presents

The Black Friars (1904) of the University of Chicago in their twenty-sixth annual production—

SMART ALECK

The Hasty Pudding Club (1795) of Harvard University in their eighty-fourth annual production—

FACE THE MUSIC

The Mask and Wig Club (1889) of the University of Pennsylvania in their forty-second annual production—

JOHN FAUST, PH. D.

The Mimes (1906) of the University of Michigan in their twenty-fourth annual production—

MERRIE-GO-ROUND

The Triangle Club (1893) of Princeton University in their thirty-fifth annual production—

THE GOLDEN DOG

The Haresfoot Club (1898) of the University of Wisconsin in their thirty-second annual production—

BUTTON, BUTTON!

The Haresfoot Club is a member of the College Musical Comedy League of America which is composed of the six oldest and foremost college musical comedy leagues in America.

Acknowledgments

Costumes designed and executed by Lester, Chicago.

Shoes and hosiery by Grossman, Chicago.

Men's modern clothes by Hoak and Dunn, Madison.

Wigs and make-up by Herman Reuter Co., Milwaukee.

Scenery materials by Burdick & Murray, Madison.

Photographs by Paul Stone-Raymor Studios, Chicago.

Settings designed by Ben Duggar '30.

Scenery by Haresfoot Workshop under the direction of Oscar Vetter.

Mailing lists by courtesy of the Bureau of Graduate Records, Madison.

Rehearsals courtesy of University Y. M. C. A., Memorial Union, and Garrick Theater, Madison.

Orchestrations by Al Butler, Chicago.

Poster by Frank J. Unger '32.

Music Cover by Ben Duggar '30.

Cuts and Engravings by Brock Engraving Company.

Publicity and advertising matrices by The Capital Times.

The Haresfoot Club is indebted to Al Thompson, Madison, for assisting in recruiting the orchestra.

Haresfoot Alumni Board

President.....	Donald Tyrell '17	Vice-President.....	Milton Blair '10
	Secretary.....		Walter Frautschi '24
Treasurer.....	Jerome H. Coe '07	Member-at-large.....	C. Harold Ray '21

VISIT—

The New Home of the Photoart House

413 STATE STREET

WM. J. MEUER, President

The better
University, College
and High School
Annuals are printed
on S. D. Warren Co.'s
Standard Papers

The W.F. Nackie Paper Co.

Distributors

Milwaukee, Wisconsin



We Present Our Annual Bouquet»»

To the Haresfoot Club whose annual productions have come to be
a symbol for supreme entertainment
and whose members are in truth
ambassadors of good will to
University of Wisconsin alumni and
friends » » » » » » » » » » » » »



Democrat Printing Co.

114 South Carroll Street ♦ Badger 486
MADISON, WISCONSIN

CHICAGO
MILWAUKEE
ST. PAUL
AND PACIFIC

THE SCENIC ROUTE

Surprisingly
Moderate
in Cost



in the

Glorious Northwest

Escorted Tour Parties or Independent Travel

This very day decide where you will vacation this summer. Choose the Northwest wonderland, the home of enchantment, romance and nature's marvelous handiwork. Select the travel mode that pleases you: independent travel; paying as you go... or escorted, all-expense tour parties—one cost covering train and steamer fares, meals, hotels, sightseeing and courteous guides to look after all details en route.

Cost? Surprisingly moderate! Well within your means... thanks to low summer fares. Glance over the wonderland's offerings elsewhere on this page. Can you conceive of anything more thrilling or enjoyable than a visit to this great vacationland?

Give us an inkling of your ideas, and we will submit sample escorted tours—or plan itineraries if you would prefer to travel independently.

J. C. PRIEN, General Agent
405 E. Water St., Milwaukee, Wis.

C. F. DAHNKE
City Passenger Agent, Madison, Wis.

The MILWAUKEE ROAD

ELECTRIFIED OVER THE ROCKIES TO THE SEA

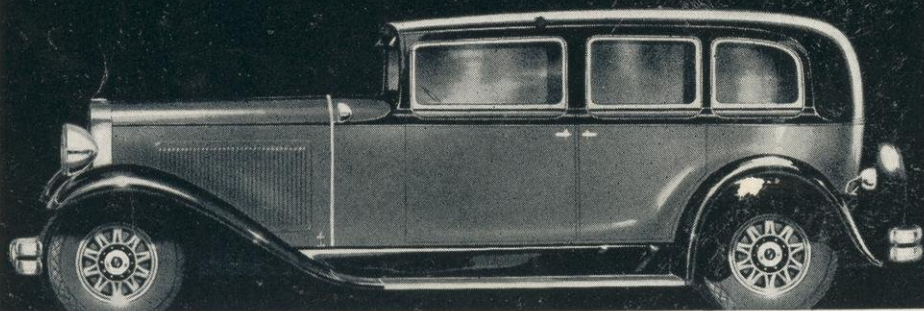
798

*Lots to see!
Lots to do!*

Yellowstone through new Gallatin Gateway, 170 mile motor trip without added cost... Spokane (Inland Empire)... glacier cloaked Rainier... Seattle and Tacoma, world ports... old English Victoria and Vancouver. Olympic Peninsula's Indians, big game, ocean beaches... snow clad Mt. Baker... Alaska's "Midnight sun"... Canadian Rockies... California... picturesque dude ranches. Lots to do—riding, hiking, mountain climbing, mid-summer coasting, motoring, sailing, dancing, cruising, sight-seeing.



1930 NASH "400"



TWIN-IGNITION EIGHT SEDAN

DEMAND "SUPERIOR PERFORMANCE"

WHEN you are ready for your new car, Nash is ready to show you the best that money can buy. ¶ The new Twin-Ignition Straight-Eight motor, with its 9-bearing integrally counterweighted, hollow-crankpin crankshaft, aluminum pistons and connecting rods, is so superior to other straight-eight and V-eight motors you will recognize it instantly. ¶ Likewise, the Twin-Ignition Six motor surpasses anything in its particular field. ¶ And the Single Six, high compression, 7-bearing motor is far superior to any other motor in the low priced field. ¶ Each of these cars—even the very moderately priced Single Six—has centralized chassis lubrication, built-in, automatic radiator shutters and the world's easiest steering. ¶ The Twin-Ignition Eight and Six introduce lifetime-lubricated springs with steel spring covers. ¶ And the Twin-Ignition Eight has Duplate non-shatterable plate glass in every door, window and windshield—priceless protection at no extra cost!

THE NASH MOTORS COMPANY, Kenosha, Wisconsin

(1703)

TWIN-IGNITION EIGHT • TWIN-IGNITION SIX • SINGLE SIX