



LIBRARIES

UNIVERSITY OF WISCONSIN-MADISON

Wisconsin alumnus football bulletin. Volume 63, Number 1 Sept. 8, 1961

Madison, WI: Wisconsin Alumni Association, Sept. 8, 1961

<https://digital.library.wisc.edu/1711.dl/QGZB5COYM65WR83>

This material may be protected by copyright law (e.g., Title 17, US Code).

For information on re-use, see

<http://digital.library.wisc.edu/1711.dl/Copyright>

The libraries provide public access to a wide range of material, including online exhibits, digitized collections, archival finding aids, our catalog, online articles, and a growing range of materials in many media.

When possible, we provide rights information in catalog records, finding aids, and other metadata that accompanies collections or items. However, it is always the user's obligation to evaluate copyright and rights issues in light of their own use.

WISCONSIN ALUMNUS FOOTBALL BULLETIN



Serials Dept.
% Memorial Libr., Univ. of Wis.,
Madison 6, Wis.

VOL. 63 SEPTEMBER 8, 1961 No. 1

WISCONSIN ALUMNI ASSOCIATION

EXPECTED U.W. ENROLLMENT - 30,325

Advance registrations for the fall semester indicate that total enrollments may go over the 30,000 mark for the first time in University history.

It is too soon, of course, to give you final registration figures. However, University officials are predicting fall enrollments as follows: Madison campus—19,600; UW-M—8,425; Extension Centers—2,300. Total—30,325.

As the University welcomed this army of students, the Wisconsin Alumni Association started its second century of service to the University and its alumni.

This FOOTBALL BULLETIN is your first publication for the current fiscal year which started September first. BULLETIN No. 2 will cover the first three games of the 1961 season: Utah in Madison on September 23; Michigan State in Madison on September 30 and Indiana at Bloomington on October 7.

No. 3 will cover Oregon State at Madison on October 14 and Iowa at Iowa City on October 21. No. 4 will cover the Homecoming game with Ohio State in Madison on October 28 and Northwestern at Evanston on November 11. No. 5 will cover the last two games of the season: Illinois at Madison on November 18 and Minnesota at Minneapolis on November 25.

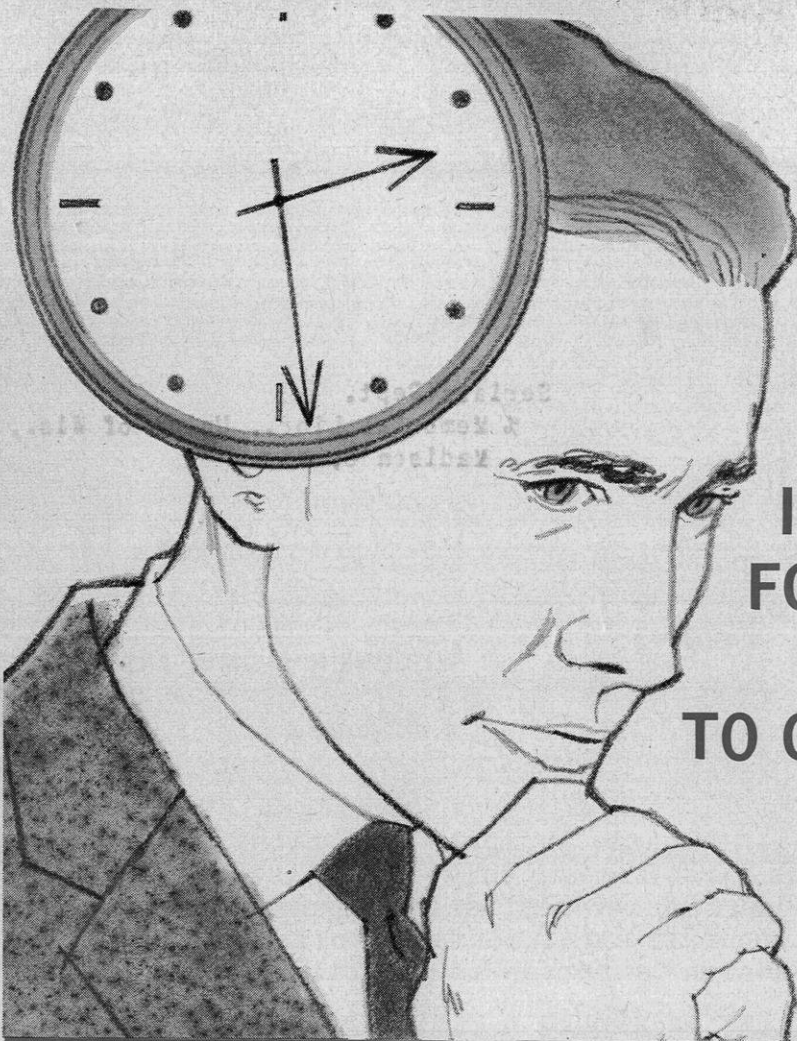
These FOOTBALL BULLETINS are published by the Wisconsin Alumni Association as a special service to you and your fellow members. Most of the copy for these BULLETINS will be written for us by Jim Mott, assistant director of the UW Sports Information Department. Working with Jim will be our editor, Arthur Hove, who is starting his third year as editor of the WISCONSIN ALUMNUS. Your first issue of the WISCONSIN ALUMNUS this fall will be the October issue. The ALUMNUS is published monthly except in August and September.—John Berge, Executive Director.

WISCONSIN ALUMNI ASSOCIATION

770 LANGDON STREET

MADISON 10, WISCONSIN

THE WISCONSIN ALUMNUS, published once monthly in December, January, February, March, April, May, June, July and September and three times monthly in October and November. Entered as second class matter at the post office at Madison, Wis., under the act of March 3, 1879. Subscription price (included in membership dues of the Wisconsin Alumni Association) \$2.50 a year; subscription to non-members, \$5.00 a year. Editorial and business offices at 770 Langdon St., Madison 6, Wis. If any subscriber wishes his magazine discontinued at the expiration of his subscription, notice to that effect should be sent with the subscription, or at its expiration. Otherwise it is understood that a continuance is desired.



IS THIS THE TIME FOR YOU TO TAKE THE BIG STEP TO GENERAL AGENT?

It's time now for you to seriously consider your qualifications as a General Agent for one of America's aggressive insurance companies—National Guardian Life! Right now the Company is expanding in Illinois, Indiana, Iowa, Kansas, Michigan, Minnesota, Nebraska, North Dakota and South Dakota. If you have a minimum of two years' experience in life insurance, you may qualify and receive

- exceptional general agent's contract
- financing available for agency formation
- effective modern sales aids
- complete home office co-operation
- a complete line of life, business and group insurance policies

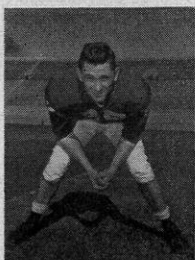
write to us...we'll keep it in complete confidence

Mr. A. G. Schmedeman, Vice President
National Guardian Life Insurance Company
P. O. Box 1191, Madison 1, Wisconsin

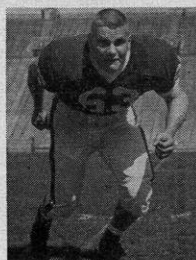
National Guardian Life
INSURANCE COMPANY

BOX 1191
MADISON 1,
WISCONSIN

AP
W 812
A 471
63-64



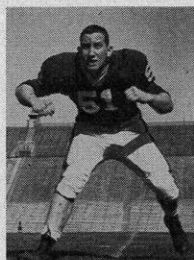
Ron Staley
LE—18



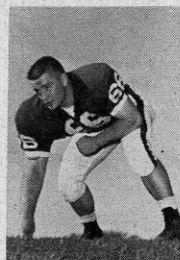
Dale Matthews
LT—72



Don Schade
LG—62



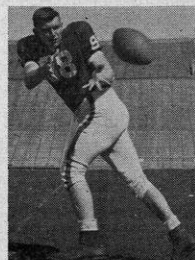
Dick Baer
C—55



Jim Schenk
RG—66



Brian Moore
RT—79



"Pat" Richter
RE—88

The 1961 Football

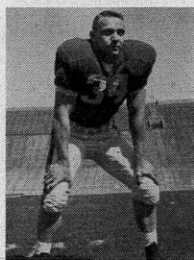


Ron Miller
QB—9

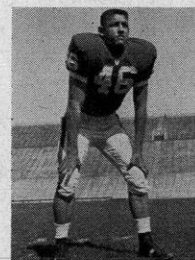
Wisconsin Team



Louis Holland
LH—27



Neil Fleming
FB—36



Merritt Norvell
RH—44

THE 1961 UNIVERSITY of Wisconsin football team will be a vastly improved aggregation from the 1960 team that won four games, lost five, and fell from 1959's championship rung all the way to ninth place in last year's final Big Ten standings.

The Badgers start their sixth season under their likeable head coach Milt Bruhn, and the prospects appear bright for a number of reasons—

1) Experience available with 19 major "W" award winners and five junior varsity award winners returning;

2) The presence of quarterback Ron Miller and a flock of fine ends, including Pat Richter, who ranks with Miller as a prime candidate for All-American honors, insures the Badgers a top flight passing game;

by Jim Mott

UW Sports News Service

3) Backfield speed—long a Wisconsin shortcoming—is invested in sophomore speedsters Jim Nettles, Bill Smith, and Louis Holland, plus veteran Merritt Norvell, and hopes are high that the speed will 'beef-up' Wisconsin's rushing attack, and allow for a tighter defensive backfield alignment.

The experienced lettermen returning might indicate a wealth of experience, but Bruhn and his staff are quick to point out that only five starters are among the veterans available, though several others were starters at certain points of last season when injuries took their toll.

STARTERS FROM the final game returning include left end Ron Staley, left guard and co-captain Don Schade in the line, quarterback Ron Miller, left halfback Merritt Norvell, and right halfback Erv Kunesh in the backfield.

Bruhn has five lettermen ends available—Richter, a fine all-around athlete ("W" awards in football, basketball, and baseball as a sophomore), Ron Staley (19 receptions for 215 yards and 3 TD's), Ron Carlson (10 receptions for 101 yards) Elmars Ezerins (5 receptions for 80 yards and 2 TD's) and Dave Bichler, who was a defensive standout in 1960.

Richter, 6-5½, 229 pounds, was Wisconsin's prime aerial target through the first five games last year, and seemed well on his way to smashing all pass

catching records in the Wisconsin football book, when he suffered a broken collarbone on the third play of the game against Michigan—a play on which the big end caught a 36 yard pass to set up Wisconsin's first score in a 16-13 victory.

Even so, he caught 25 passes for 362 yards and one TD for his limited action, tying a school record for most passes caught in a season. Twice, against Stanford and Purdue, he caught seven passes to establish a school record for passes caught in a single game.

In addition, sophomore Larry Howard, possessing fine speed, appears able to offer added depth behind the already experienced Badger wingmen.

Four lettermen are available for tackle duty, though herein lies Bruhn's biggest problem for 1961. Tom Downham, Dick Grimm, and Brian Moore, all seniors, saw less than 100 minutes of action in 1960. A fourth tackle—Dale Matthews played that position in high school, but was a guard last season, playing 154½ minutes.

The development of depth at tackles must come from sophomores Roger Pirlath, 6-3, 234, Coleman, Wis., and Andy Wojdula, 5-11, 210, Chicago Heights, Ill., and 1960 squadmen Jim Jax, 6-1, 220, Wisconsin Dells, and Jerry Westbeld, 6-3, 207, Miamisburg, Ohio.

Co-Captain Don Schade and junior Steve Underwood both saw plenty of action at guard last year, with Schade one of three letterwinners still available from Wisconsin's 1959 championship team (Moore and Jim Bakken are the others). Both are good blockers, have aggressiveness, and have speed and ability for linebacking chores, as well.

Don VanderVelden, who saw action at end and tackle last season, made the change to guard in the spring, and showed fine promise. Newcomer Jim Schenk, a junior who missed last year's action due to an eligibility problem, should move in as a starter opposite Schade, and will give the Badgers strength at the linebacking position as well.

Senior Dick Baer came strong at season's end a year ago to cement his claim on the 1961 center position, and will get good competition from sophomore Ken Bowman, youngest man on the squad, who has good strength and aggressiveness in the vital pivot slot.

The Badgers are well stocked at quarterback, with Miller returning for his final season of competition, Jim Bakken, team co-captain, and John Fabry, a junior who drew one starting assignment a year ago, all available.

Miller, one of the best passers in the school's history (he was drafted 4th by the Los Angeles Rams last winter), paced the Big Ten in passing and total offense as a first year man last year, though hampered during the final five games with ankle injuries.

With Miller at the helm, the Badgers unleashed the second best passing attack in the nation—169.2 yards per game, and also set the pace in the Big Ten through the air.

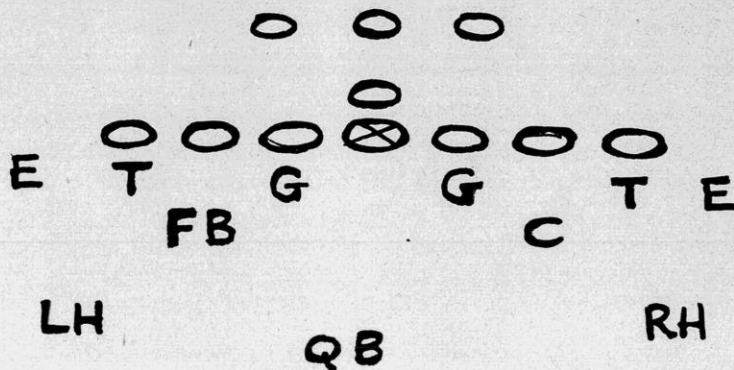
Bakken suffered a knee injury against Iowa, and saw little action except for punting chores thereafter. Even so, he rated as the Big Ten's leading punter with a 41.5 yards per kick average, and placed seventh among the nation's punters with a 41.9 average. He also place-

(Continued on page 7)

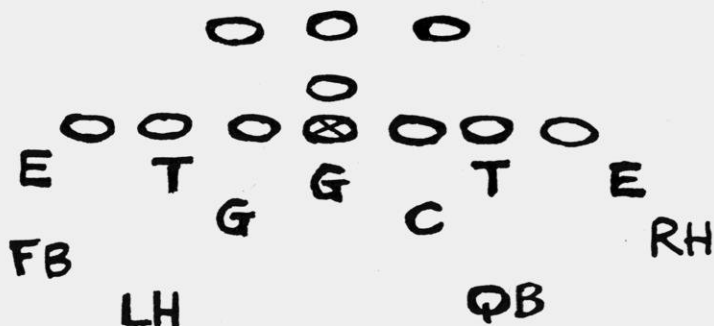
Freshman Coach, Fred Jacoby, discusses—

Basic Defenses

Most teams will operate from two or three basic defenses with variations for short yardage, goal line, and sure passing situations. Two of the most popular defenses are shown below:



This is a balanced defense known as a wide tackle 6, or a 6-2-2-1. Adjustments can be made relatively easy from this defense to meet various offensive formations. This particular defense is weak on running plays up the middle, while it is strong against end runs and passes. To compensate for the weakness inherent in the middle of the line, stunting maneuvers are used in each position to pose blocking problems to the offensive team.



This defense is popularly known as the 5-4-2. It is fairly strong against running and passing plays and became popular when it was first used against the split-T formation. One of the main advantages of this defense is that it places nine men close to the line of scrimmage to cope with any running threat.

On this and the following page

1961 Schedule and Squad Roster

Composite Big 10 Schedule for 1961

September 23

Utah at Wisconsin
Purdue at Washington
Indiana at Kansas State

September 30

Michigan State at Wisconsin
("W" Club Day)
Texas Christian at Ohio State
Boston College at Northwestern
Missouri at Minnesota
UCLA at Michigan
California at Iowa
Washington at Illinois

October 7

Wisconsin at Indiana
Notre Dame at Purdue
UCLA at Ohio State
Northwestern at Illinois
Oregon at Minnesota
Stanford at Michigan State
Army at Michigan
Iowa at Southern California

October 14

Oregon State at Wisconsin
(Band Day)
Miami (Ohio) at Purdue
Illinois at Ohio State
Minnesota at Northwestern
Michigan State at Michigan
Indiana at Iowa

October 21

Wisconsin at Iowa
Purdue at Michigan
Ohio State at Northwestern
Minnesota at Illinois
Notre Dame at Michigan State
Washington State at Indiana

October 28

Ohio State at Wisconsin
(Homecoming)
Iowa at Purdue
Northwestern at Notre Dame
Michigan at Minnesota
Indiana at Michigan State
Illinois at Southern California

November 4

Purdue at Illinois
Iowa at Ohio State
Indiana at Northwestern
Michigan State at Minnesota
Duke at Michigan

November 11

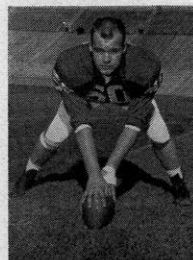
Wisconsin at Northwestern
Michigan State at Purdue
Ohio State at Indiana
Minnesota at Iowa
Michigan at Illinois

November 18

Illinois at Wisconsin
(Dad's Day)
Purdue at Minnesota
Oregon at Ohio State
Northwestern at Michigan State
Iowa at Michigan
Indiana at West Virginia

November 25

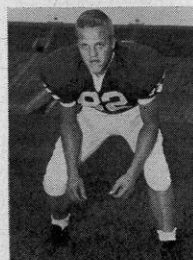
Wisconsin at Minnesota
Purdue at Indiana
Ohio State at Michigan
Northwestern at Miami, Fla.
Illinois at Michigan State
Notre Dame at Iowa



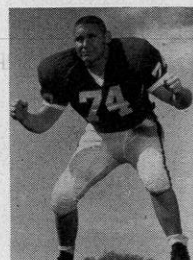
Tom Downham
RT—77



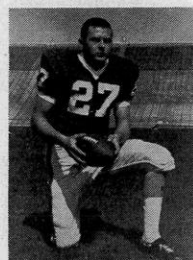
Larry Howard
LE—81



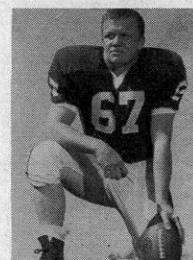
Elmars Ezerins
LE—82



Jim Jax
LT—74



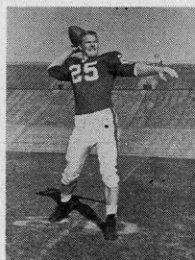
John Fabry
QB—24



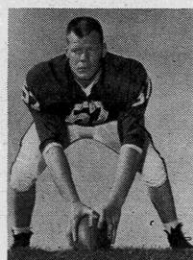
Dion Kempthorne
IG—67

1960 SCORES

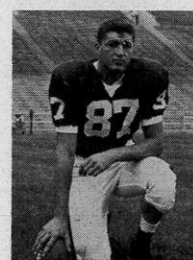
Wisconsin 24, Stanford 7
Wisconsin 35, Marquette 6
Wisconsin 24, Purdue 13
Wisconsin 21, Iowa 28
Wisconsin 7, Ohio State 34
Wisconsin 16, Michigan 13
Wisconsin 0, Northwestern 21
Wisconsin 14, Illinois 35
Wisconsin 7, Minnesota 26



Jim Bakken
QB—21



Ken Bowman
C—57

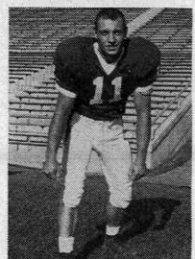


Dick Grimm
LT—75

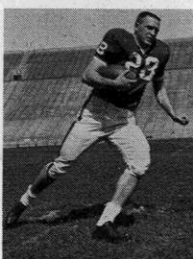


Gary Kroner
LH—47

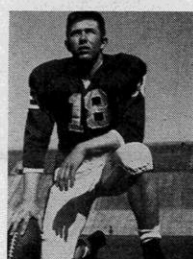
Athletic Director—Ivan B. Williamson
Business Manager, Athletics—William H. Aspinwall
Director of Athletic Ticket Sales—Oscar C. Damman
Team Physician—Dr. John L. Bentley
Team Trainer—Walter Bakke
Equipment Manager—Art Lamboley
Stadium Manager—Joe Betlach
Student Manager—Albert T. Keefer



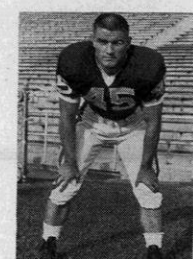
Dave Bichler
RE—11



Ron Carlson
RE—28



Bill Hess
QB—19



Erv Kunesch
RH—45



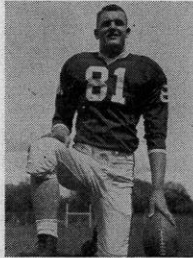
Gerald McKinney
FB—33



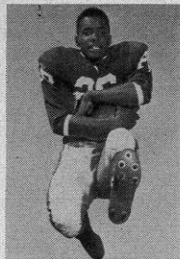
Steve Underwood
RG—60



Ken Montgomery
LH—41



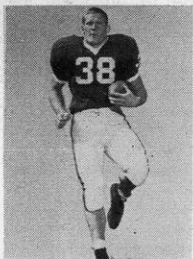
Don VanderVelden
LG—64



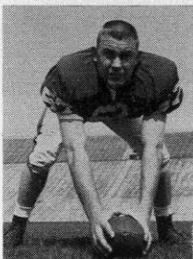
Jim Nettles
LH—26



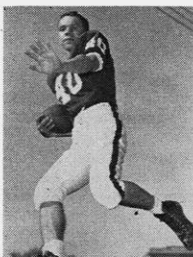
Chuck Vesel
LG—91



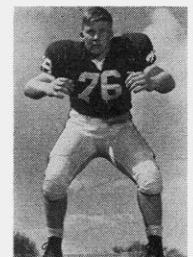
Jim Purnell
FB—38



Ron Wildman
RG—53



Bill Smith
RH—40



Andy Wojdula
RT—76

The Badger Squad

No.	Name	Pos.	Wt.	Ht.	Age	Class	Home Town	Prev. Award
14	Asher, Charles W.	RH	170	5-9	19	So.	Sturgeon Bay	None
55	*Baer, Richard B.	C	208	6-1½	21	Sr.	Mansfield, Ohio	W-60
21	*Bakken, James L. (CC)	QB	195	5-11	20	Sr.	Madison	W-59, 60
46	*Bangert, Donald L.	FB	184	5-9	20	Jr.	Green Bay	W-60
16	Barnett, William R.	LH	164	5-9½	20	Jr.	Crown Point, Ind.	Num-59
57	Bowman, Kenneth B.	C	215	6-2	18	So.	Rock Island, Ill.	Num-60
11	*Bichler, David W.	RE	189	6-0	21	Sr.	Belgium, Wis.	W-60
78	Bruhn, Peter C.	RT	210	6-2	20	So.	Madison	Num-60
28	*Carlson, Ronald W.	RE	211	6-3	21	Jr.	Rockford, Ill.	W-60
42	Cicerello, Jack J.	RH	154	5-10	20	Jr.	Milwaukee	None
77	*Downham, Thomas A.	RT	230	6-1	20	Sr.	Marinette	W-60
82	*Ezerins, Elmars P.	LE	211	6-3	21	Jr.	Union Grove, Wis.	W-60
24	Fabry, John J.	QB	188	6-2	22	Jr.	Green Bay	JV-60
36	Fleming, Neil J.	FB	198	5-11	22	Sr.	Marshfield	JV-60
71	Fox, John L.	LT	217	6-0	20	Jr.	Madison	Num-59
87	Gantert, Michael J.	RE	196	6-1	19	So.	Wonder Lake, Ill.	Num-60
75	*Grimm, Richard T.	LT	197	6-3	24	Sr.	Elkhorn, Wis.	W-60
65	Gross, Michael P.	LG	207	5-9	21	So.	Waterloo, Wis.	Num-60
90	Hearn, Napoleon W.	LE	175	6-2	22	Jr.	Chicago, Ill.	Num-58
56	Henrici, Ronald C.	C	205	6-2½	21	Jr.	Morton Grove, Ill.	JV-60
19	*Hess, William L.	QB	189	6-1	21	Sr.	Ft. Atkinson	W-60
27	Holland, Louis A.	LH	177	5-9	19	So.	Union Grove, Ill.	Num-60
81	Howard, Larry F.	LE	187	6-2	19	So.	Maywood, Ill.	Num-60
12	Howey, Gregory B.	QB	160	5-11	19	So.	Sycamore, Ill.	Num-60
74	Jax, James R.	LT	220	6-1	20	Jr.	Wisconsin Dells	Num-59
67	Kempthorne, Dion Q.	LG	204	6-1	19	Jr.	Dubuque, Ia.	None
86	Kern, Robert W.	LE	185	6-1	19	So.	Minneapolis, Minn.	Num-60
47	Kroner, Gary L.	RH	186	6-1	20	Jr.	Green Bay	Num-59
45	*Kunesh, Ervin K.	RH	175	5-9	21	Sr.	Marinette	W-60
89	Mang, Tonis	LE	198	6-3	19	So.	Racine (Park)	Num-60
72	*Matthews, Dale F.	LT	216	6-2	20	Jr.	South Bend, Ind.	W-60
34	McGhie, Kenneth G.	LH	190	5-10	19	So.	Elgin, Ill.	None
33	McKinney, Gerald	FB	192	5-11	20	So.	Milwaukee	Num-60
43	Mellen, Jule R.	RH	172	5-10	20	So.	Green Bay	Num-60
9	*Miller, Ronald R.	QB	190	6-0	22	Sr.	Berwyn, Ill.	W-60
41	Montgomery, Kenneth A.	LH	164	5-10	20	Jr.	Dubuque, Ia.	JV-60
79	*Moore, Brian P.	RT	238	6-1½	20	Sr.	Great Lakes, Ill.	W-59, 60
26	Nettles, James A.	LH	161	5-10	19	So.	Muncie, Ind.	Num-60
44	*Norvell, Merritt J.	RH	180	6-0	20	Jr.	Jacksonville, Ill.	W-60
98	O'Donnell, Jerry L.	RT	205	6-3	19	Jr.	Hillsdale, Ill.	Num-59
85	Oleson, Steven H.	RE	200	6-2	19	So.	Chippewa Falls	Num-60
63	Parr, Ronald V.	LG	191	5-11	19	So.	Crystal Lake, Ill.	Num-60
51	Paddock, Dale M.	RG	190	6-0	19	So.	Augusta	None
61	Palmer, Roger J.	RG	196	6-0	20	Jr.	Rhineland	Num-59
70	Pillath, Roger A.	LT	234	6-3	19	So.	Coleman, Wis.	Num-60
15	Posewitz, Thomas A.	QB	184	6-0	19	So.	Sheboygan	Num-60
38	Purnell, James F.	FB	197	6-2	19	So.	Evanston, Ill.	Num-60
10	Quaerna, Arnold E.	QB	171	5-10	19	So.	Janesville	Num-60
88	*Richter, Hugh V. 'Pat'	RE	229	6-5½	20	Jr.	Madison	W-60
62	*Schade, Donald F. (CC)	LG	200	5-11	21	Sr.	Chicago, Ill.	W-59, 60
66	Schenk, James J.	RG	195	5-11	20	Jr.	Cleveland, O.	Num-59
40	Smith, William R.	RH	156	5-10	19	So.	Sycamore, Ill.	Num-60
18	*Staley, Ronald G.	LE	191	6-3	21	Sr.	Madison	W-60
97	Svitavsky, Leo C.	LT	196	6-3	19	So.	Racine	Num-60
52	Tomlinson, Thomas J.	C	236	6-3	19	So.	Madison	Num-60
60	*Underwood, Steve C.	RG	196	5-9	20	Jr.	Madison	W-60
64	*VanderVelden, Donald J.	LG	219	6-2	21	Sr.	Kimberly	W-60
22	Vollmer, David A.	LH	158	5-8	19	So.	Detroit, Mich.	Num-60
73	Westbeld, Jerome P.	RT	207	6-3	20	Jr.	Miamisburg, Ohio	Num-59
53	Wildman, Ronald J.	RG	192	6-2	20	Jr.	Antigo	JV-60
54	Wittig, Richard D.	C	218	6-1	21	Sr.	Green Bay	Num-58
76	Wojdula, Andrew G.	RT	210	5-11	18	So.	Chicago Hgts., Ill.	Num-60
91	*Vesel, Charles A.	LG	208	6-0	21	Jr.	Greenwood	W-60

* Denotes major "W" winner.

1961 Broadcast Schedule

Wisconsin football fans not fortunate enough to be at the scene of action will have plenty of opportunity to hear play-by-play accounts of each game, if they live in or near the state. Again this fall, six originating broadcasts will provide coverage of each home game for close to 65 stations in the state. All of these stations will also carry away games.

Originating broadcasts at Camp Randall will be WHA-FM, the University of Wisconsin station; WIBA, Madison; WTMJ, Milwaukee; WEMP, Milwau-

kee; WFHR, Wisconsin Rapids; and WKOW, Madison. These stations will also originate all games away from Madison for Badger football followers.

At this writing, one University of Wisconsin football game will be televised, that against Illinois on November 18 on a national basis. There is a possibility, depending on the outcome of the World Series, that the October 28 game between Wisconsin and Ohio State will be televised on a regional basis.

1961 Badgers (continued)

kicked four field goals, one a 44 yard effort against Marquette, and another won the Michigan game with less than two minutes to play.

Billy Hess, a 6-1, 189 pound letterman from Fort Atkinson, and Tom Posewitz, a 6-0, 184 pound sophomore from Sheboygan are counted upon for defensive safety duties as "wild card" substitutions for the offensive quarterbacks.

THE HALFBACKS appear to be well-manned, with sophomores holding the key to the Badgers launching a successful rushing attack in 1961.

Newcomers Jim Nettles, 5-10, 161, Muncie, Indiana, and Louis Holland, 5-9, 177, Union Grove, Ill., appear to be set at left halfback. Both have speed and the open field running ability so necessary to become a star in the Big Ten.

Letterman Merritt Norvell has been shifted to right halfback from left halfback, and has good speed, and more size than sophomore Bill Smith, a speedster, who is 5-10, 156 pounds, from Sycamore, Ill.

Squadman Gary Kroner, 6-1, 186, Green Bay, made a good impression in spring drills with his pass catching ability, and will be a "swing man" between the left and right halfback positions as plans now stand.

The Wisconsin Alumni Association and the Memorial Union are pleased to announce that the popular and convenient pre-game luncheons served at the Breese Terrace Cafeteria will be continued this year.

Situated just one block from Camp Randall Stadium, the Breese Terrace Cafeteria will be serving a special football luncheon on Saturday, prior to every home game, from 11:30 a.m. to 1 p.m. Alumni will appreciate the convenience of the location and the reasonable cost of the meal. For just \$1.25, you can enjoy a hearty luncheon consisting of entree, potato, vegetable, salad, bread and butter, choice of beverage, and dessert.

Plan to take advantage of this special service and lunch in the shadow of the Stadium. When you have finished eating, it's just a matter of a short stroll before you arrive at the Stadium in plenty of time for the opening kickoff.

The Coaching Staff



Milt Bruhn

Fullback Neil Fleming won a junior varsity award in 1960 as understudy to the graduated Tom Wiesner. He has added weight and with fair speed, makes a good 'belly' series type fullback. Behind him is sophomore Jim Purnell, a hard-running power type fullback, who excels on defense.

Defense proved to be Wisconsin's ace card in 1958 and 1959 (Badgers won 14, lost 3, tied 1), and Bruhn must establish another team of equal defensive stature to match the team's offensive capabilities for the coming season.



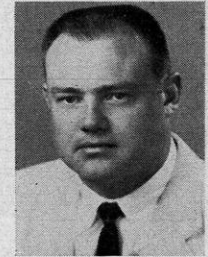
Fred Jacoby



Fred Marsh



Paul Shaw



Deral Teteak

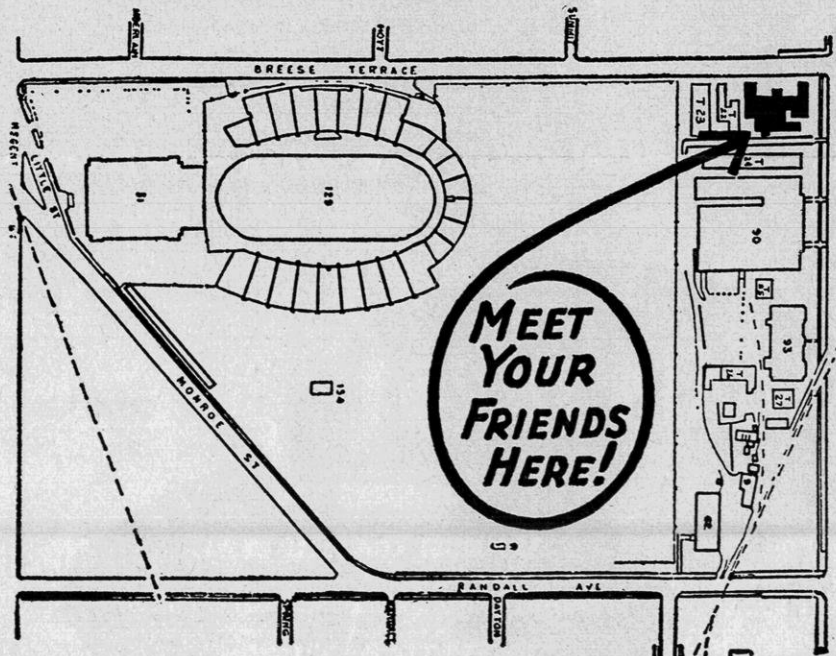


LaVern Van Dyke



Clark Van Galder

Pre-Game Luncheon Service



"TIME OUT" *with Oliver Kuechle*



Almost every Big Ten football season produces a surprise team. This fall, it could well be Wisconsin which a year ago, after a Rose bowl appearance the season before, sank to ninth place. It was a frustrating sort of campaign because of severely crippling injuries in midseason. Actually, it started out well enough with victories over Stanford, Marquette and Purdue in the first three games and a thrilling 28-21 television game with Iowa which was lost only on the very last play on a long, deflected but completed pass into the end zone.

More than the game was lost that afternoon in Iowa City. Quarterback Ron Miller suffered a badly twisted ankle late in the game, and while he didn't miss any of the subsequent games, he was never quite himself again. Ron suffered another twisted ankle (the other one) in the Michigan game.

In the Michigan game, also, Wisconsin lost end Pat Richter on the third play, as he caught a pass with which he tied the school record of 25 for a season set by Jerry Witt in 1952. In the Northwestern game, Wisconsin lost halfback Ted Rogenski with ligament injuries which required surgery.

Two plays after Miller was injured in the Iowa game, No. 2 quarterback Jim Bakken, the finest punter in the league, was also helped off the field and never fully recovered.

There were other injuries, for it never rains but it pours. So the season which had started out so well went down as one of frustration and discouragement.

But this could be the year in which Wisconsin surprises. Wisconsin, obviously, will need a little better playing luck than it had last year, but if it gets this, there is no telling how far it will go.

Miller is back and last year, despite his injuries, he led the league in passing and total offense. Richter is back. Bakken is back and last year, despite his injuries, he led the league in punting.

And for the first time in a long while, Wisconsin this year will have a new quality of backfield speed. Three particularly promising sophomores provide it—Jim Nettles, Lou Holland and Bill Smith.

All told, Wisconsin has 20 lettermen back.

The problem lies with the defense and especially with the tackles, although even here there is hope. Against Rose bowl bound Minnesota in the final game last year, Wisconsin in defeat did not yield a first down in the second or third quarters.

We of The Milwaukee Journal anticipate a particularly exciting season and want to attend it accordingly. Our plans are to give Wisconsin the most extensive and the most complete coverage we ever have—and the best. Be with us.

Oliver Kuechle

SPORTS EDITOR OF THE MILWAUKEE JOURNAL

AGAIN IN '61

**BRINGING YOU
THE MOST COMPLETE NEWS,
FEATURES AND BROADCAST COVERAGE OF
UNIVERSITY OF WISCONSIN
FOOTBALL**

THE MILWAUKEE JOURNAL

WTMJ

WTMJ-TV