



LIBRARIES

UNIVERSITY OF WISCONSIN-MADISON

Man of sorrows.

Philadelphia: Hatch Music Co., 1899

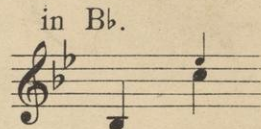
<https://digital.library.wisc.edu/1711.dl/LOBUYOI7KKCLE83>

<http://rightsstatements.org/vocab/NKC/1.0/>

The libraries provide public access to a wide range of material, including online exhibits, digitized collections, archival finding aids, our catalog, online articles, and a growing range of materials in many media.

When possible, we provide rights information in catalog records, finding aids, and other metadata that accompanies collections or items. However, it is always the user's obligation to evaluate copyright and rights issues in light of their own use.

L. Maude Raymond.



THE MAN OF SORROWS.

S O N G

Words by

WILFRID MILLS

MUSIC BY

JOSEPH H. ADAMS

Price 40 cents.

PUBLISHED BY
HATCH MUSIC COMPANY
PHILADELPHIA

THE MAN OF SORROWS.

Words by WILFRID MILLS.

Music by JOSEPH H. ADAMS.

Andante affettuoso.

PIANO

mf *rall. e dim.*

mf

1. A - far in dark Geth - sa - man - e The Sav - iour knelt in anguished
 2. The dark - ness hung on Calvary's hill, Where rang the Saviour's bit - ter

a tempo

con molto espress.

2d verse
 Fa - ther! if it

pray'r; And strove with bit - ter a - go - ny While His dis - ci - ples slumber'd
 plea: - "Oh be Thy will, Grant that this cup may pass from

there, To save them from the aw - ful power Of sin and last - ing death He
 me!" The Fa - ther's face seemsturned a - way, Though He who pleads is God's own

Also published in Key of B^b for Alto or Baritone.

came; They could not watch with Him one hour! And what are we that we should
 Son; Yet strength is giv'n that He should pray:— "Lord! not My will but Thine, be

rall.

1 *Andante con espressione.*

blame? done!" Was there e - ver sor - row, Lord! like un - to Thine?

Was there e - ver pit - y So ten - der and di - vine? Lead us in the

f

path - way That Thy feet have pressed; When this life is o - ver,

ritard.

Grant to us thy rest! Was there e - ver

Andante con espres

colla voce *mf* *rall.* *pp*

sione.
sor - row, Lord! like un - to Thine? Was there e - ver pit - y So

Lead. * *Lead.* * *Lead.* *

ten - - der and di - vine? Lead us in the path - way

f

Lead. * *Lead.* *

That Thy feet have pressed; When this life is o - ver Grant to us Thy

colla voce

Lead. *

Moderato.

rest. And still, when those, for whom He

a tempo

rall. *a tempo* *mp*

died, Heed not the words He spoke of yore. The Lord a-gain is cru-ci-

espress.

fied, And drains the bit-ter cup once more, Dear Sav-iour by Thy pity-ing

rall. *a tempo* *fp*

grace. Oh! cleanse our sin-ful lives from stain! That

mf *p* *mf*

The Dawn of Judgment Morn.

Words by DONALD SMEDT.

50 cents
Music by GEO. L. SPAULDING

Andante Moderato.

mf *dim.* *rall.*

His robe is peace—His crown is love, He beck- ons from a -
Though bent, like reed, by weight of woe, Which through life's path you've

p. *a tempo*

far; His chil - dren tread through light a - bove, In his
borne, The prince and pau - per, proud and low, Stand a -

steps from star to star. Each soul is free, none
like, - on Judg - ment Morn, Peers of a Realm where

Copyright, MCMVII, by The Hatch Music Co.

Amid the Shadows.

Words by Mrs. JANE CREWSDON.

40 cents.
Music by GEO. B. NEVIN.

Moderato.

PIANO.

Con molto espressione.

Oh, for the peace which flow-eth like a riv - er

h tempo.

Oh, for the faith to grasp heav'n bright "for ev - er"

a tempo.

rit.

Mak - ing lifes des - ert plac - es bloom and smile!

rit.

A - mid the shad - ows of earth's "lit - tle while!" A lit - tle while for

rit. *a tempo.*

Copyright MDCCLXXIX by Hatch Music Co.

To Him That Overcometh.

W. H. GARDNER.

60 cents

F. H. BRACKETT.

Andante moderato.

mp

The

mf *cresc.*

wea - ry day was end - ed, the day - light fad - ed fast, As

on a lone - ly pil - grim toiled up a - gainst the blast. Then

as he reached the hill - top, A glad sight met his eyes. And

cresc.

Copyright MCMVI by Hatch Music Co.

NOW THE DAY IS OVER.

VOICE.

Andante.

40 cents

by W. F. SUDDS

1. Now - the day is o - - ver,
2. As our steps draw near - - er

PIANO
OR
ORGAN

p

Night - is draw - ing nigh, Shad - ows of the
To - our fi - nal home, May the view grow

eve - ning steal a - cross the sky.
clear - er of bright joys to come.

Je - sus give the wea - - ry Calm and sweet re -
Through the long night watch - - es May - thine an - gels

Copyright MDCCLXXVIII by Hatch Music Co.

COMPLETE COPIES CAN BE HAD WHEREVER MUSIC IS SOLD