



# LIBRARIES

UNIVERSITY OF WISCONSIN-MADISON

## **Annual reports of the officers of the Madison Park and Pleasure Drive Association for the years ending January 1, 1917 and January 1, 1918, respectively, with report of annual meetings held May 15, 19...**

Madison, Wisconsin: [s.n.], [s.d.]

<https://digital.library.wisc.edu/1711.dl/P7NWUZALYHOUB80>

Based on date of publication, this material is presumed to be in the public domain.

Original material owned by Madison Public Library.

For information on re-use see:

<http://digital.library.wisc.edu/1711.dl/Copyright>

The libraries provide public access to a wide range of material, including online exhibits, digitized collections, archival finding aids, our catalog, online articles, and a growing range of materials in many media.

When possible, we provide rights information in catalog records, finding aids, and other metadata that accompanies collections or items. However, it is always the user's obligation to evaluate copyright and rights issues in light of their own use.

---

**The Madison Park and  
Pleasure Drive Association**

---

---

**ANNUAL REPORTS FOR 1917-1918**

---

---

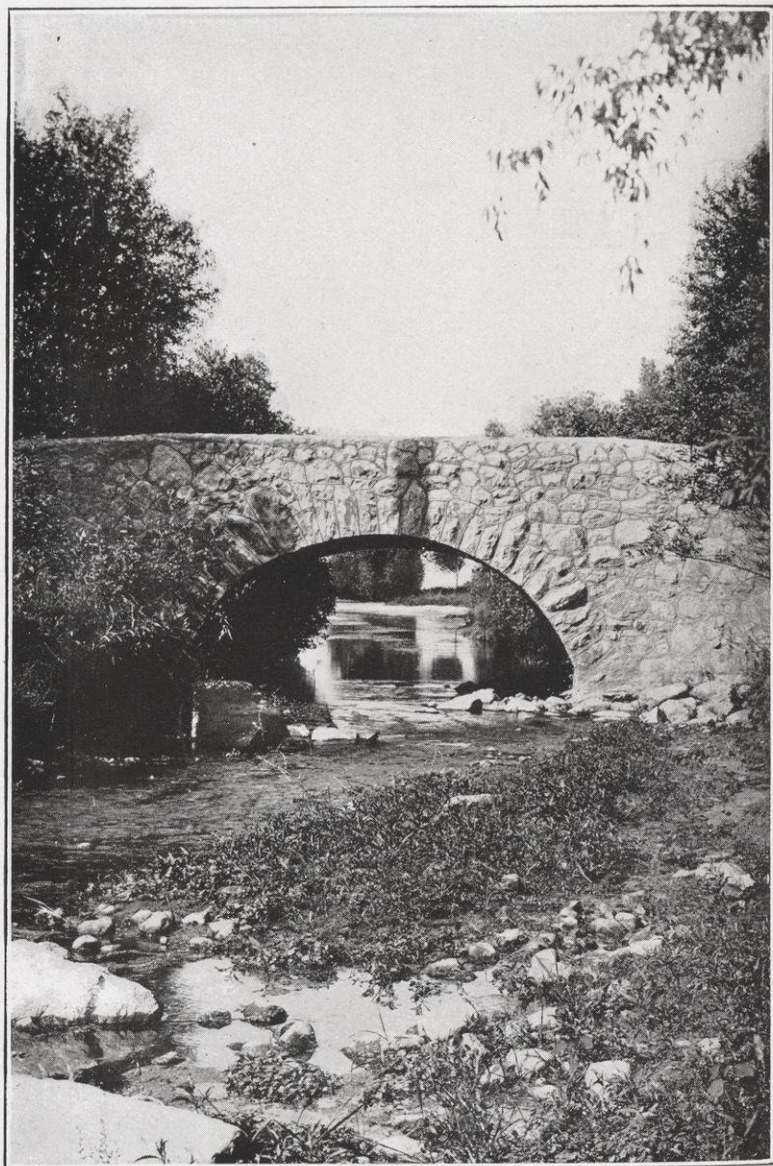












SPRING HARBOR BRIDGE

# Annual Reports

of the

Officers of the

## Madison Park and Pleasure Drive Association

For the Years Ending January 1, 1917, and  
January 1, 1918, Respectively

With

Reports of Annual Meetings

Held May 15, 1917, and May 8, 1918



ENGRAVINGS BY  
THE PRINT SHOP



**The Annual Meeting**  
of the  
**Madison Park and Pleasure Drive  
Association**

**Held May 15, 1917**

---

The annual meeting of the Madison Park and Pleasure Drive Association was held at the Auditorium in the City Library May 15, 1917.

The meeting was called to order by Ernest N. Warner, President.

On motion of John C. Prien, chairman of the nominating committee, the following officers were elected for the ensuing year:

President, Ernest N. Warner.

Vice-President, Charles N. Brown.

Secretary, John L. Bourke.

Treasurer, Frank W. Hoyt.

Directors, Corydon G. Dwight, John C. Prien, Edward J. Reynolds, Fred M. Schlimgen, Frank W. Hoyt.

The report of the treasurer duly audited was read and placed on file.

The report on behalf of the board of directors was made by President Ernest N. Warner.

On motion the meeting adjourned.



ENTRANCE TO MEMORIAL PARK. DEDICATED BY THE STATE OF WISCONSIN TO SOLDIERS OF THE CIVIL WAR WHO CAMPED ON THESE GROUNDS



# President's Report

1917

## Made on Behalf of the Board of Directors of the Madison Park and Pleasure Drive Association

To the Members of the Madison Park and Pleasure Drive Association:

At a recent meeting of the board of directors of the association the expression of the board was unanimous that the next published report of the association should cover two years of the association's activities as did our last report. Pursuant to the direction of the board the financial statement for the fiscal year ending December 31, 1916, has been mailed to every member of the association, together with the call for this meeting. No further published report will be made this year.

The members of the association are, however, entitled to know something more in detail of the work of the association for the past year and its plans for the future. Your directors have administered in addition to the subscription fund, included in the treasurer's report which you have received, the city's park budget of \$51,608.27.

### Tenney Park and Bahara Parkway

No new structures have been erected in Tenney Park during the past year. The Tenney Park bathhouse has been supplied with sixty-eight additional new lockers, and for the season of 1916 was accommodated with one hundred lockers moved from Brittingham Park bathhouse for the season's use. This bathhouse was taxed throughout last summer's season much beyond its capacity. Many days it was used by more than fifteen hundred people. The total attendance for ten weeks is stated at 53,078 or an average daily attendance of 756 throughout the season.

The tennis courts built in Tenney Park were so popular that parties came at daylight to secure their use and parties were in waiting to use the courts throughout the day.



The temporary wooden bridge from Sherman Avenue to the island has been rebuilt this spring. It is hoped that a permanent bridge can be constructed here at an early date as the need is great.

The snow was kept clear from the ice in the lagoon in Tenney Park the past winter, and these protected ice fields proved a great attraction and were freely used for skating. By use of the new ice planers it has been possible to reduce the rough places in the ice and make attractive skating fields no matter how rough and uneven the surface when first frozen.

### **Rutledge Street Bridge**

A bridge of pleasing design of concrete has been completed across the Yahara at a cost of \$10,497.00 as a part of the city's improvement of Rutledge Street. With the completion of this improvement through the Groveland plat to Lake Front Park a new and delightful drive, only a short distance from Lake Monona's shore, will be opened to the public.

No part of the city is developing more rapidly than the portion of the city in the vicinity of this drive. The city already has about five acres of land and some two thousand feet of water frontage at Lake Front Park, and the opportunity to secure an additional half mile of lake shore frontage is still before the council in the Olbrich offer. The people at the east end of the city are earnestly desirous that the city purchase the land offered by Mr. Olbrich and the experience of the city in providing and developing park lands would seem to amply justify its taking over this area.

### **Brittingham Park**

Brittingham Park has been maintained the past year at an expense, exclusive of the boathouse and bathhouse maintenance, of \$4,084.01. The bathhouse was not opened to the public during the past season on account of the condition of the lake. The boathouse was open to the public and used by increased numbers.

The drive extending from Brittingham Park along the lake shore to the Chicago & North Western tracks at South Madison

has never been formally taken over by the association but at a recent meeting of the board of directors the park foreman, at the request of the owners of property adjacent and of a committee of citizens from South Madison, was directed to exercise police jurisdiction over this drive and to maintain it as a park drive in so far as his powers and the means at the disposal of the board would permit. An outlet from the easterly end of this drive to Lakeside Street has been promised by South Madison people. During the present season Brittingham Park will be restored to its natural beauty and usefulness by grading and reseeded the portions torn up in the building of the sewer main.

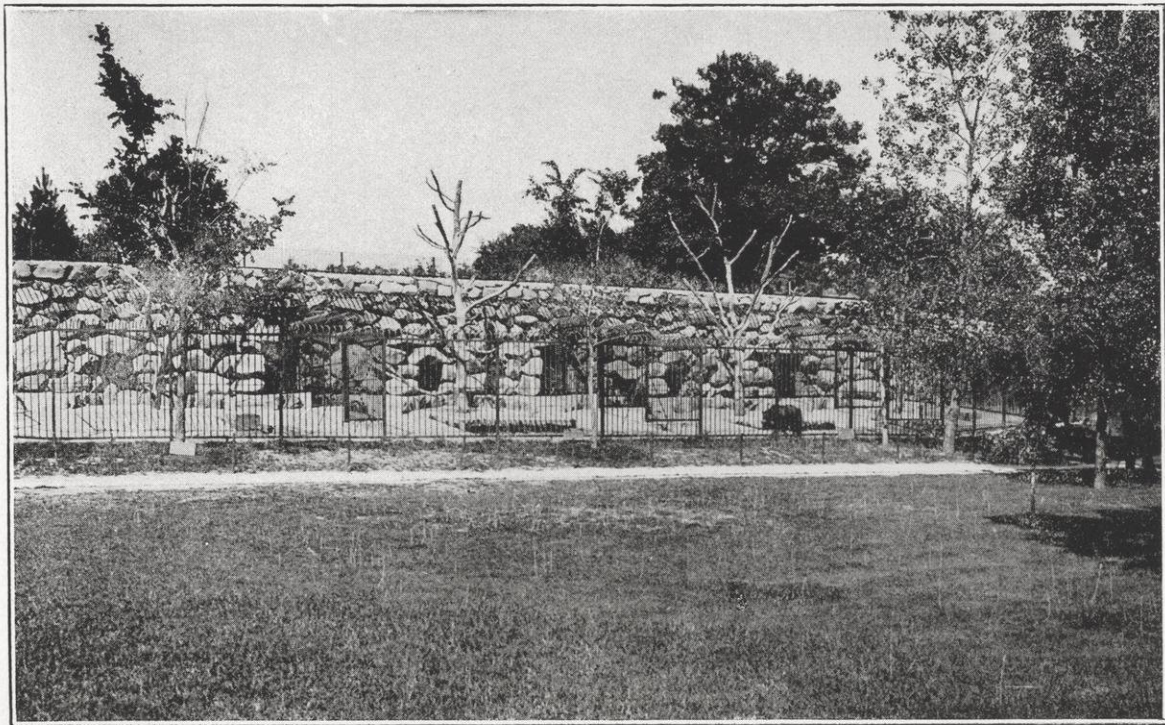
### **Henry Vilas Park**

This park continues to be the park that draws the largest number of people and requires the largest expenditure both by way of development and for maintenance. There was expended in this park last year, exclusive of the zoo, \$11,249.08. New construction consisted of the final payments upon the two bridges from the mainland to the island and the building of a drive from the bird house to the bridge and for a distance of about four hundred feet along the lake shore to the eastern boundary of the park.

The zoo in Henry Vilas Park has continued to develop in advance of provisions made for its maintenance and construction. There was expended on the zoo last year \$15,603.06, a sum of \$8,075.65 in excess of the budget provision for last year. More than \$7,500.00 of city funds was expended in the erection of structures, dens, cages, fencing, and pools for the housing and use of the birds and animals that are now cared for in this park. The feed item in the zoo for last year was \$2,829.11, being \$1,808.11 in excess of the budget provision, which for 1917 is \$4,336.00. With the increased cost of feed it will be a problem for the park board to keep within the provision. The expenditure of this increased amount seems justifiable, for the people of the city are thoroughly interested in the zoo, and, therefore, the council is anxious that it shall be maintained. Individuals in the city are willing to make liberal contributions towards it.

We all recall the inspiring address of Dr. Charles H. Vilas at our last annual meeting on the enjoyment and instructional





THE BEAR DENS



value of a zoo. Dr. Vilas during the past year has shown his great interest in the development of a really superior zoological exhibit at Henry Vilas Park by the offer to construct a lion house at an estimated cost of \$13,500.00. This building is now in process of construction and should be completed within the next few weeks. It will be a noble structure 88 feet long and 44 feet in extreme width.

The offer of Dr. Vilas to make this large gift for this purpose was by your board of directors referred to the city council with the request that the council approve the acceptance by the board of the gift. On the 8th day of December, 1916, the council unanimously approved the acceptance of the gift by the adoption of the following resolution:

*“Resolved, That the acceptance by the Park and Pleasure Drive Association of the gift from Dr. C. H. Vilas of approximately \$11,000 for the erection of a building in Henry Vilas Park to be used as a lion house, be and hereby is approved by the common council.”*

### **Annie C. Stewart Memorial Fountain**

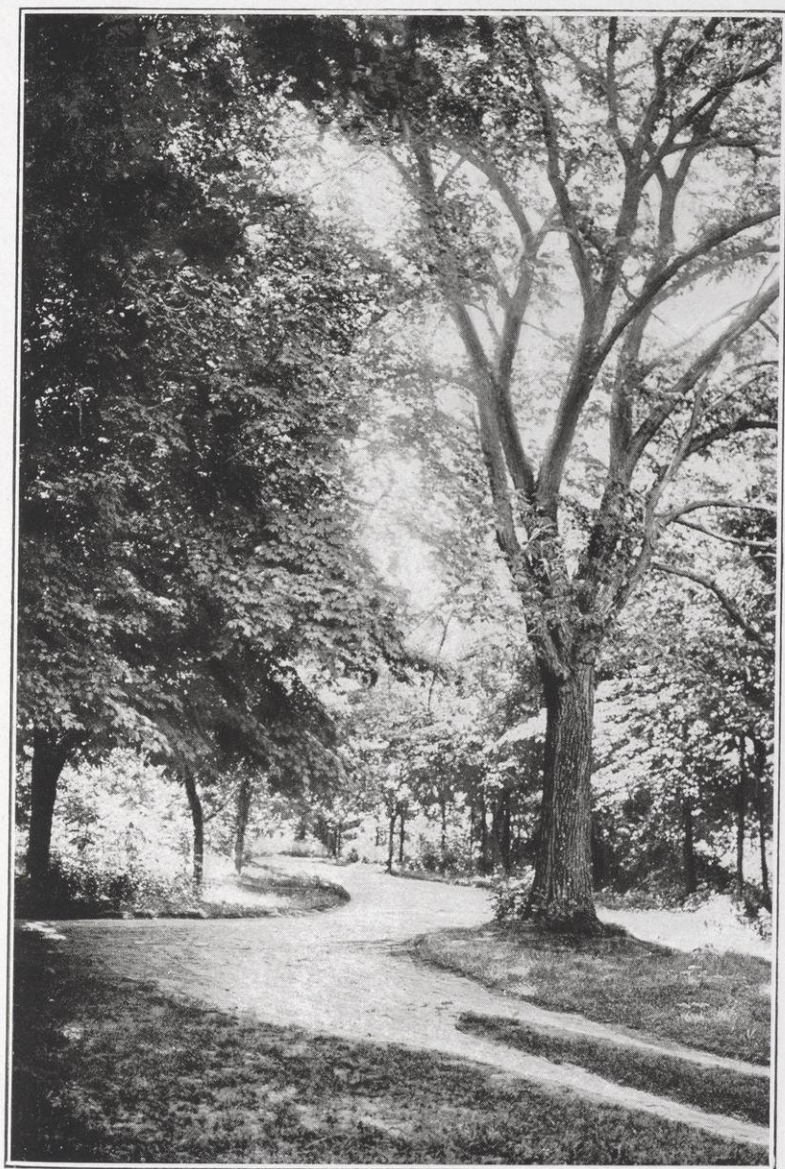
In 1906 the association acknowledged a gift of Mrs. Mary C. Stewart of \$2,000.00 to be used in constructing and erecting at some appropriate place within the city of Madison a drinking fountain in memory of her deceased daughter, Annie C. Stewart. This fund kept at interest has increased until it now has reached the sum of \$2,990.62. It has long been the wish of the directors to carry out the trust imposed upon them in this gift, but the inability to agree upon a suitable site and the heavy cost of water which would be chargeable to the board if a fountain were erected, has kept them from acting in the matter. During last year suggestions and models for a drinking fountain to be erected on the crest of the hill in the new addition to Henry Vilas Park were invited. A committee of the board consisting of Mr. Hoyt, Dr. Dwight and Mr. Schlingen studied the proposals and invited suggestions and criticisms of artists and students of art designs. They finally recommended to the board the acceptance of a design submitted by Mr. Frederick J. Clasgens, an artist of Cincinnati, Ohio. Mr. Clasgens had maintained an

art studio in Paris until the outbreak of the recent war when he returned to the United States, as he supposed for a short time, until the war should be over. His residence in this country at this time affords Madison an excellent opportunity to engage his personal supervision in the construction of the fountain. The design submitted by Mr. Clasgens and approved by the board consists of a circular bowl 24 feet in diameter, in the center of which on a raised pedestal will be figures of dolphins and sea nymphs. Two groups of like figures will adorn the outer wall of the bowl. These two groups represent little Tritons emptying water from their conch shells into small basins, each of which contains a bubble for drinking purposes. The central pedestal will support a shallow basin from which a sheet of water will flow to the outer edge and thence through outlets into shells, and from these trickle into the large basin. The fountain will be constructed of white concrete. This work will be done by Mr. T. C. McCarthy of our city under Mr. Clasgens' direction. The figures will be cut from white marble by Mr. Clasgens and his associates. The construction of the fountain at this place is desirable because of the slightly location. By locating the fountain at the top of the hill in Henry Vilas Park there will be no increased expense for water because of the demand for water in the zoo. All the water used in the fountain will be conducted to the dens and pools in the zoo, where an amount equal to what the fountain will use, will have to be provided. The contract price of the fountain is \$2,800.00. The city is to be congratulated on the fine artistic structure it shall thus secure.

### **Neighborhood Parks**

The small parks and playgrounds have all been kept up during the past year. The permanent improvement of Regent Street made possible additional small triangles at the junction of Regent and Monroe Streets. These have been filled with dirt contributed by the Illinois Central Railroad Company. The grading, seeding and planting has been done by the employees of the association.





CREST OF MAPLE BLUFF-FARWELL DRIVE

### **Spoooner Street Viaduct**

The approaches to Spooner Street viaduct have been cared for by our employees and in co-operation with the Tenth Ward Association and the Illinois Central Railroad Company additional planting is now being done to beautify the stretch of right-of-way of the Illinois Central Railroad lying between the Spooner Street viaduct and Breese Terrace. A fine view of the city with the Capitol in the foreground is afforded from the viaduct and a little planting to screen objectionable buildings will do much to make more attractive this vista.

### **Farwell Drive**

Commencing at the entrance to the Golf Club grounds and extending on through Maple Bluff, Farwell Drive was last year rebuilt at a cost of over \$2,800.00. The traffic on this drive last season was unusually heavy owing to the fact that the Westport road was under process of construction. The long spell of hot, dry weather following the reconstruction of this drive and the heavy travel upon it contributed largely to the undoing of our work. The improvement of the public road into Westport will relieve our drives of much traffic and we ought this year to be able to restore the drive to a good condition and oil it. The beneficial results of the good job of oiling done in 1913 are still apparent.

### **Lake Mendota Drive**

Spring Harbor bridge was reconstructed last year and a considerable stretch of Lake Mendota Drive rebuilt. The portion of the drive that was last year rebuilt is in excellent condition and will need very little attention this year. The tile culverts that have been used on our drives are too small and too frail to serve the purpose for which they are intended and concrete culverts are being built to replace them. Three such culverts at a cost of about \$60 each have this spring been constructed a little west of the rustic bridge on this drive.

A considerable portion of Lake Mendota Drive should this season be oiled. The Town of Madison officials offer to cooper-



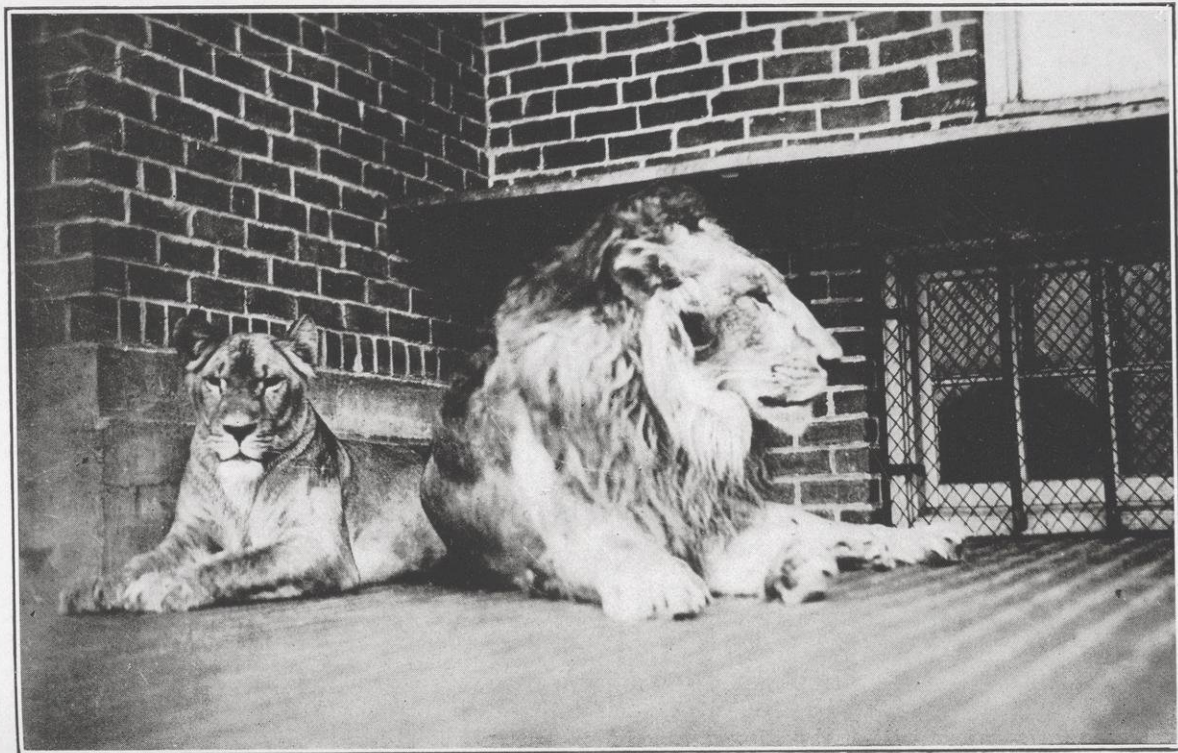
ate in this matter on account of the considerable use of the western end of this drive by the general public. This use of the drive through Mendota Beach has resulted from the almost impassable condition of the Sauk road at the Mendota Beach viaduct. The money is provided and it is merely a matter of getting labor and material for the building of a concrete surface over the viaduct and its approaches. When this is done Lake Mendota Drive will be relieved from much general traffic. The approaches to the viaduct on the Sauk road were on Arbor Day of this year planted by the Mendota Beach community assisted by the employees of the park board. What has so far been an unsightly structure ought under the planting and care which the Mendota Beach community will assist in giving it to become an attractive feature of the public highway in a natural drive to the city from the Capital Avenue terminus of Lake Mendota Drive. The funds of the association available for this season justify a reasonable anticipation that the drives may be put in condition for oiling, oiled where necessary and the macadam surface of Owen Parkway Drive extended from its present terminus west to the Mineral Point road.

The council continues liberal in its appropriations for the work of the association within the city and for the past two years has appropriated \$3,000 per year to the maintenance of the drives outside the city.

The subscriptions from members of the association have come in freely and cordially the past year, \$2,664.45 having been subscribed by return postal card in answer to the circular letter call this spring making the total amount of voluntary contributions by individuals to the work of this association to the present time \$341,504.95.

Respectfully submitted,

ERNEST N. WARNER,  
President.



THE LIONS



**The Annual Meeting**  
of the  
**Madison Park and Pleasure Drive  
Association**

**Held May 8, 1918**

---

The annual meeting of the Madison Park and Pleasure Drive Association was held in Room A in the City Library May 8, 1918.

The meeting was called to order by Ernest N. Warner, President.

On motion of Mr. John M. Olin the following officers were elected for the ensuing year:

President, Ernest N. Warner.

Vice-President, Charles N. Brown.

Secretary, John L. Bourke.

Treasurer, Frank W. Hoyt.

Directors, Corydon G. Dwight, John C. Prien, Edward J. Reynolds, Fred M. Schlingen, Frank W. Hoyt.

The report of the treasurer was read and accepted.

The report on behalf of the board of directors was made by Ernest N. Warner.

On motion the meeting adjourned.

# President's Report

1918

## Made on Behalf of the Board of Directors of the Madison Park and Pleasure Drive Association

To the Members of the Madison Park and Pleasure Drive Association:

This meeting marks the twenty-sixth anniversary of the work carried forward by the public spirited citizens of Madison, at first through committee and in 1894 incorporated as the Madison Park and Pleasure Drive Association. The city council has not as yet seen fit to take advantage of Chapter 180 of the Laws of 1915 which authorizes it by ordinance to create of Madison a park district and to take over the work of this association as a regular municipal function. The city has preferred rather to make available to this voluntary organization the funds to be expended on parks, drives and playgrounds in and about Madison. The published report will this year cover two years of the work of the association and will contain the financial statements of the treasurer for the two fiscal years 1916 and 1917. The report of the board of directors made at the annual meeting in 1917 appears in full and covers the work done in 1916 and outlines the work for 1917. It will not be necessary in this report of the work for 1917 to go into detail on matters covered in the report of one year ago. The program outlined in that report has been carried forward but some of the plans therein announced have not yet been fully completed.

Skating rinks have been maintained in Tenney Park, at Brittingham Park and at Lake Front Park. The Rutledge Street bridge has been completed and a splendid piece of concrete street has been built from beyond this bridge through Groveland plat to Lake Front Park. The hope for such a street along the northern shore of Lake Monona has been expressed for many years and no improvement which the city has made has contributed so much to pleasure driving within the city limits as this improvement of Rutledge Street, the Rutledge



Street Bridge and boulevarded street on Lake Front Park along the north of Lake Monona. The public highway near Lake Monona and on its south side has now been surfaced with concrete from Lakeside Street along the westerly side of the Chicago, Milwaukee & St. Paul Railway and then by a viaduct over the railroad right-of-way at Harloff's crossing and on through the Town of Blooming Grove to the McFarland road. These with well oiled macadam roads heretofore constructed along the east side of Lake Monona complete a delightful driveway encircling Lake Monona.

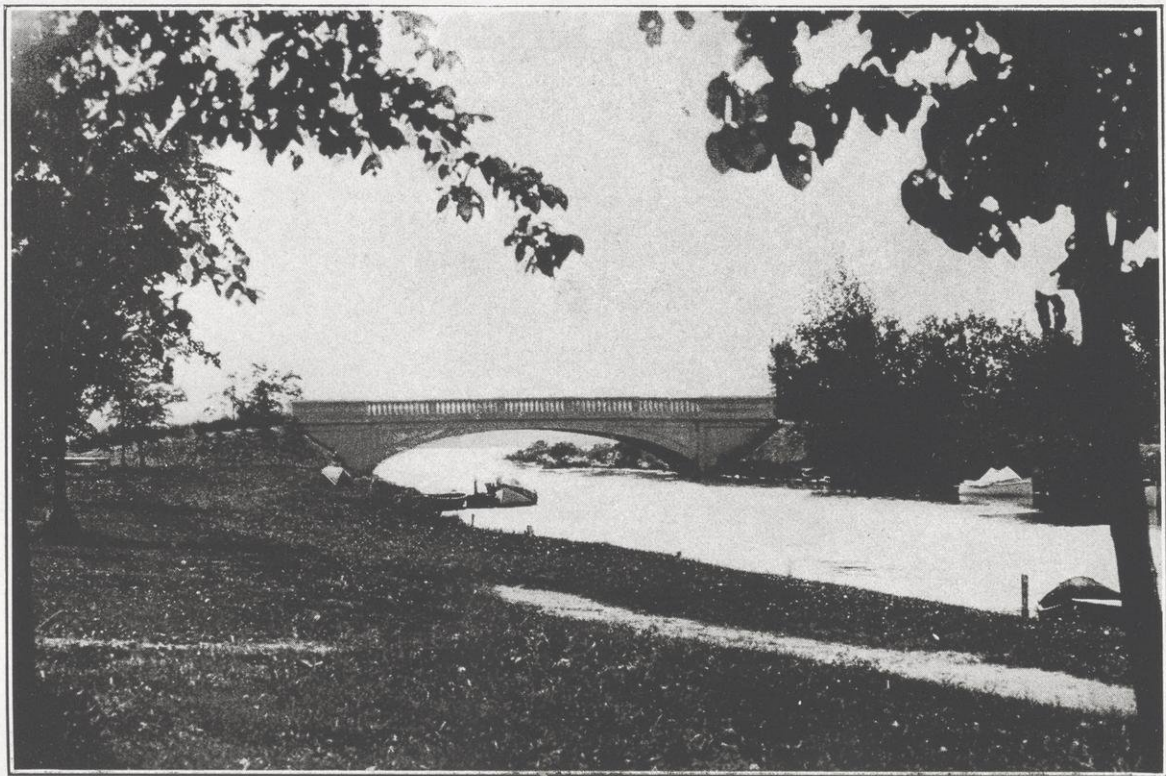
### **Tenney Park**

Through the munificence of Mr. Daniel K. Tenney whose death is recorded in our last published report the city has received the sum of five hundred dollars and is assured of a like contribution annually. This fund at the suggestion of Mayor Sayle has been set aside by the council to be accumulated and used in the construction of a memorial bridge to Mr. Tenney extending from Sherman Avenue across to the island in Tenney Park. It will be a fitting memorial and a complement to Marston Bridge, the gift of Mr. Tenney during his lifetime.

Tenney Park bathhouse has been vastly over taxed. The large numbers using this bathhouse and beach, reaching fifteen hundred per day at times, testify to the great popularity of bathing as a recreation and constitute a most urgent call upon the city to provide additional beaches and additional bathing facilities. It is not uncommon on summer evenings to find people in their bath robes taking the car from the Fair Oaks part of the city, coming down to the square, changing cars and going out to Tenney Park for a swim and similarly clad to take the car back to the center of the city and out to the east end on their way home. It would seem with Lake Monona lapping the shores of Lake Front Park and the Morrison Street Park at the eastern portion of the city that prompt steps should be taken to supply this large and rapidly increasing population with bathing facilities.

### **Lake Front Park**

Reference was made in the report of one year ago to the possibility of securing an additional half mile of lake shore



RUTLEDGE STREET BRIDGE



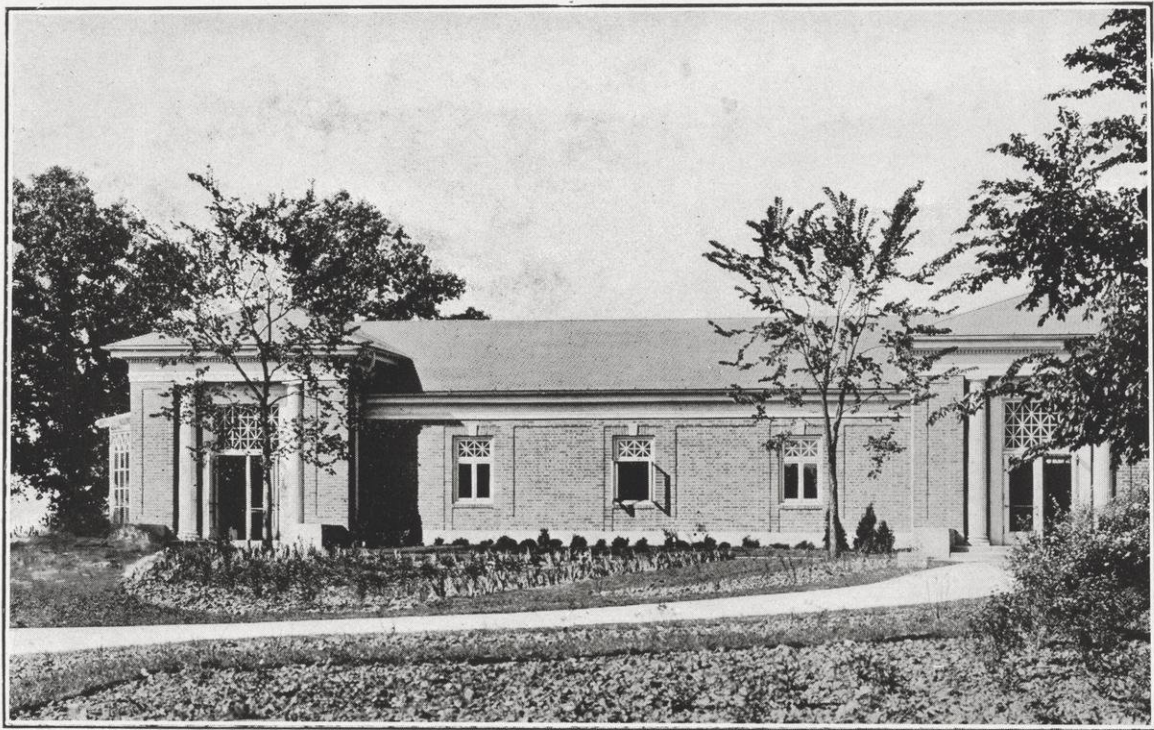
frontage adjoining Lake Front Park. The Olbrich offer was not accepted but no buildings have yet been constructed upon this lake frontage and it is confidently believed that the time will come when the demand for additional park facilities at the eastern end of the city will become strong enough to bring about this wise extension of Lake Front Park. It is to be hoped that Mr. Olbrich will hold this lake front strip intact until such time as the city may be willing to take it over.

### **Brittingham Park**

The lawn in Brittingham Park during the past year was restored by grading and reseeding the portions torn up in the building of the sewer main. The boathouse and bathhouse were both maintained and open to the public. Repeated requests have come to the board of directors for an additional bath house and an additional boathouse in Brittingham Park and those actively pressing for an additional boathouse are willing to subscribe in advance for rentals for a period of years to assure the interest on the cost of construction by the city.

### **Henry Vilas Park**

It is doubtful if, in any single year in the history of its development, Henry Vilas Park has undergone so many changes as it has in the last twelve months. The Erin Street approach to Henry Vilas Park from Brittingham Park is under-going an attractive and permanent improvement. Sidewalks and gutters have been built into the park and Erin Street graded through the new addition to the park in readiness for the permanent surfacing. All fences have been removed from the addition to the park, the Indian mounds have been restored, the Stewart Memorial Fountain has been located and its basin of white concrete and also the pedestal upon which will be placed the figures in marble now being prepared by Mr. Frederick J. Clasgens have been completed. Yards have been enclosed on the lake slope of the high bluff, the bear dens have been completed, much grading and planting has been done. Walks are being constructed through the new addition to the park. Several acres of the low land in the main portion of the park have been



LION HOUSE HENRY VILAS PARK



graded and seeded and this year should see the completion of the grading and seeding of the low or filled portion of the park. Inasmuch as the children are using the lagoons for wading and bathing, an attendant should be provided for them and at the earliest possible date a bathing beach and bathing facilities should be provided. A thousand shrubs and a thousand trees have been set out in this park this spring; and the most notable structure as yet erected in any of the parks, the lion house, the gift of Dr. Charles H. Vilas, has been completed at a cost of \$15,500. Grading and planting have been done about the lion house and within the formal entrance to this park on a raised mound has been placed a boulder marked by bronze tablet with the inscription

HENRY VILAS PARK  
the Gift of  
COLONEL AND MRS. WM. F. VILAS  
In Memory of  
their Son  
Henry Vilas

A list of the animals and birds now in the zoo will be found in a table in the appendix of this report. Suffice it here to say that there has been added during the past year among the specimens a pair of Royal Bengal tigers, one aoudad, a pair of Abyssinian lions, a pair of India leopards, a pair of sacred cattle from India, a pair of sacred white deer, five young black bears, one jaguar, many birds and small animals.

Suitable acknowledgment should be made to our fellow, director, the president of the Zoological and Aquarium Society—Doctor Corydon G. Dwight, for the large expenditure of time and money and for the untiring energy which he has expended in making the zoo the notable success it is conceded to be. Madison may justly be proud that she is possessed of a zoo of such significant size, so complete in the number and kinds of specimens and so admirably equipped.

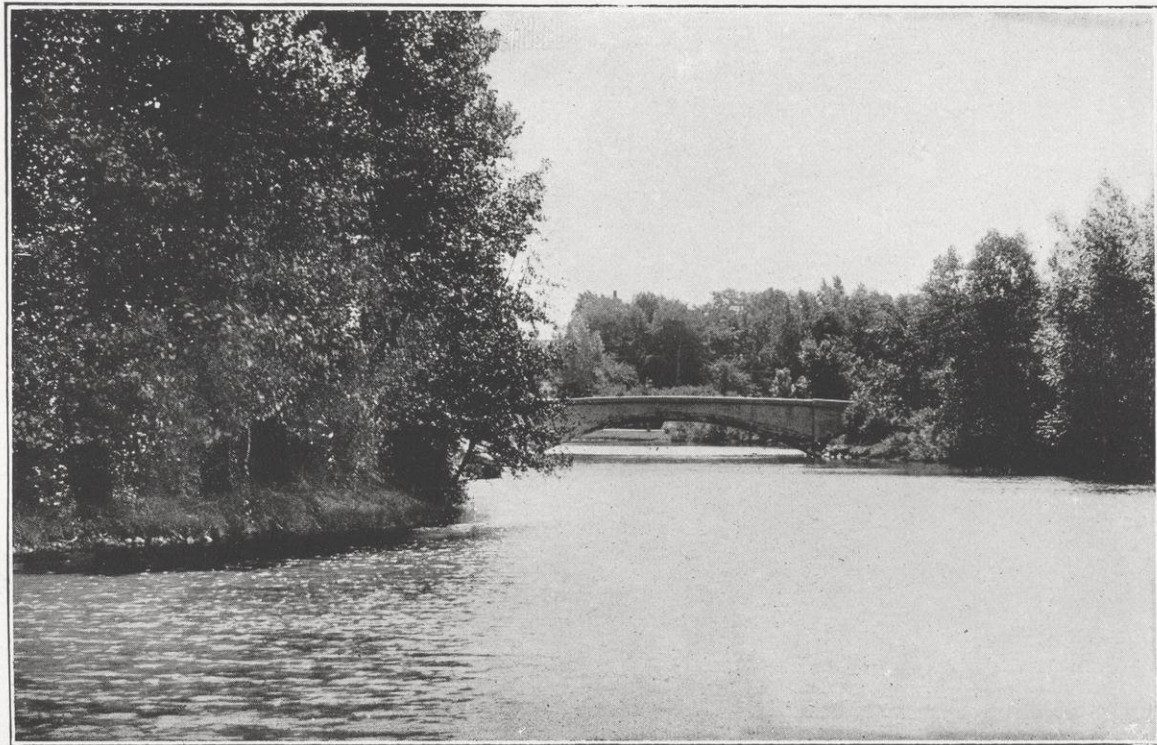
## **Level of Lake Wingra**

During the summer of 1917 the Lake Forest Land Company constructed a barge in Lake Wingra, and in order to float it into a channel which they were dredging in their property south of the lake, opened the dike which had been constructed several years ago along the south edge of the lake, intending after their barge had been floated through this opening, to fill up the opening and restore the level of Lake Wingra to its accustomed height. Naturally this opening in the dike allowed the water of Lake Wingra gradually to lower and it presently sought the level of Lake Monona or approximately that, dropping down perhaps two feet from the level at which it had been maintained for several years. This low level of the lake exposed the shore line for several feet out into the lake. The shore line was unsightly and unsanitary, and it affected Henry Vilas Park by reducing the water in the lagoons so low that they became stagnant and offensive, and they could not be used for boating.

Action was brought before the Railroad Commission by interested parties to determine the normal level of Lake Wingra. The Railroad Commission in an application to fix the levels of the water in Lake Monona decided on June 28, 1917, that the normal level of Lake Monona when referred to sea level datum is 844.65. In the hearing upon the application to fix the level of Lake Wingra, testimony was produced showing the level of this lake for many years past, but all of the levels testified to were from three to five feet higher than the level determined for Lake Monona. Testimony upon this hearing showed that with the lock made useless and the ordinary dike obstructions removed, Lake Wingra would rapidly seek a level almost as low as Lake Monona. The position taken at this hearing by the directors of the Madison Park and Pleasure Drive Association, this being the same position taken by the City of Madison as represented by members of the council and Mr. Ryan, the city attorney, who attended upon the hearing, is that the Railroad Commission is authorized only to find what is the natural level of Lake Wingra; that the Madison Park and Pleasure Drive Association in co-operation with the City of Madison expended considerable money in the improvement of Henry Vilas Park



with reference to what at the time of making the improvements was deemed to be the natural level of the lake. In making these improvements it was not the intention on the part of the association or the city to change the level of Lake Wingra, and upon the evidence presented the association submitted that the natural level of the lake lies somewhere between 847.58 and 847.84. Placed at 847.65 the level of Lake Wingra would naturally be three feet above the normal level of Lake Monona as fixed by the Commission. The Commission has not announced its decision upon this hearing. There are many citizens who believe that the public interest is best promoted by a level of Lake Wingra substantially lower than that which has maintained for the past several years. The testimony upon the hearing did not disclose that the level had been permitted for any length of time to go below 847.58 as referred to sea level datum. If restored to this level it will be necessary to rebuild the lock at the outlet of the dredged channel in Lake Wingra or to build a dike or dam, and thus shut off all possibility of boats traveling between Lakes Wingra and Monona. Should neither dike, dam, nor lock be maintained to preserve the normal level of Lake Wingra and should the waters of Lake Wingra be permitted to seek freely the level of Lake Monona, the level of Lake Wingra would, when Lake Monona is normal, go to 844.65 which is from twelve to fifteen inches lower than it is today; and while Lake Monona's normal level is determined to be 844.65, it may at times recede below the normal level as well as at times exceed the normal level so that in the absence of any dike, dam, or lock to hold the waters of Lake Wingra, there would be nothing to prevent this lake going to a point below 844.65. Should Lake Wingra be permitted to seek the level of Lake Monona, the lagoons in Henry Vilas Park would be of no value and would become a nuisance unless redredged. Were there to be no lagoons the bridges that have been built would prove a large and unnecessary waste of money. The whole plan and scheme of Henry Vilas Park would be so altered as to amount to serious loss and detriment to the improvements already made. It would seem that a lock must necessarily be maintained at the outlet of Lake Wingra. Many advantages would come from a normal level of Lake Wingra, not exceeding



TENNEY PARK LAGOON LOOKING TOWARDS MARSTON BRIDGE



three feet above the normal level of Lake Monona. Positive disadvantage, much expense, and constant dread of broken dikes would come from a normal level determined at any point much above 847.65. It is to be hoped that the Railroad Commission will study the situation upon the premises and invite, as your board of directors have confidence they will, the suggestions, advice, opinions, and assistance of all persons interested in determining the appropriate normal level of Lake Wingra.\*

### **Neighborhood Parks**

More and more in the platting of additions to the city small open spaces at the intersection of streets are being designed for beauty and for usefulness. The employees of the association have the past year treated a small triangle at the junction of Rowley Avenue and Commonwealth Avenue by grading it, seeding it, and planting shrubs. The association welcomes suggestions from any part of the city as to small public areas that could be improved to enhance the beauty and attractiveness of the locality. The triangles and open spaces at the junction of Regent and Monroe Streets continue to be maintained as do the approaches to Spooner Street viaduct. The activity of the Tenth Ward Association has had much to do with securing the co-operation of the association in the beautifying of public ways and areas in that portion of the city.

### **Spaight Street Park**

No large improvement has been undertaken at Spaight Street Park, but the old posts along Spaight Street have been removed and protection to the driving public has been provided by the placing of boulders along the edge of the bank. An excellent dirt fill is being delivered along this bank and plantings of shrubbery will follow to make at least the upper portion of Spaight Street Park attractive. It is to be hoped that the people of this locality will catch the spirit of improvement and cease the delivery of ashes and tin cans to this otherwise sightly spot. Repeated efforts have been made to secure a dredging proposal

---

\*The Railroad Commission in its decision dated July 19, 1918, requires the maintenance of a lock at the outlet of Lake Wingra and that the level of the spillway should be 847.68.

for this park, but the persons who have been doing the dredging in Lake Monona have been engaged away from Madison for the past two seasons. The development of this park should come, as soon as opportunity to do the necessary work is found.

### **Owen Parkway**

Owen Parkway was graded, patched, and oiled throughout the extent of the macadam at a cost of \$622.63. It is in excellent condition this spring. The season closed last year before the improvement could be made from the present terminus of the macadam on to the Mineral Point road. It is to be hoped that nothing will interfere with surfacing this stretch the present season.

### **Lake Mendota Drive**

A most thorough and excellent piece of patching, building a concrete culvert, and oiling was done on the Lake Mendota Drive from Eagle Heights to the Capital Avenue terminus. Capital Avenue was rebuilt and oiled by the association's force of men but at the cost of the Town of Madison.

Three hundred dollars was appropriated by the Regents of the University towards regrading and rebuilding the difficult hill at Eagle Heights. The association contributed a like amount, and this hill, which has been a menace to pleasure driving for many years, is now in excellent condition. Some further work must be done upon it this present season, but the easy grade, the wide continuous stretch of macadam, and concrete culvert at the foot of the hill built in 1917 completes the heavy portion of this reconstruction. The drive over the Bay Road and through the University Farm purchased from Mr. Raymer is the worst piece of drive on our entire system. The Regents, entirely satisfied with the co-operation of the association, have appropriated \$500 to assist in the further rebuilding of this drive this year. It is one of the important pieces of work immediately ahead of the association. In addition to this appropriation for the use of the association the University has done a great deal of work in the way of hauling cinders, and widening and repairing the Bay Road.



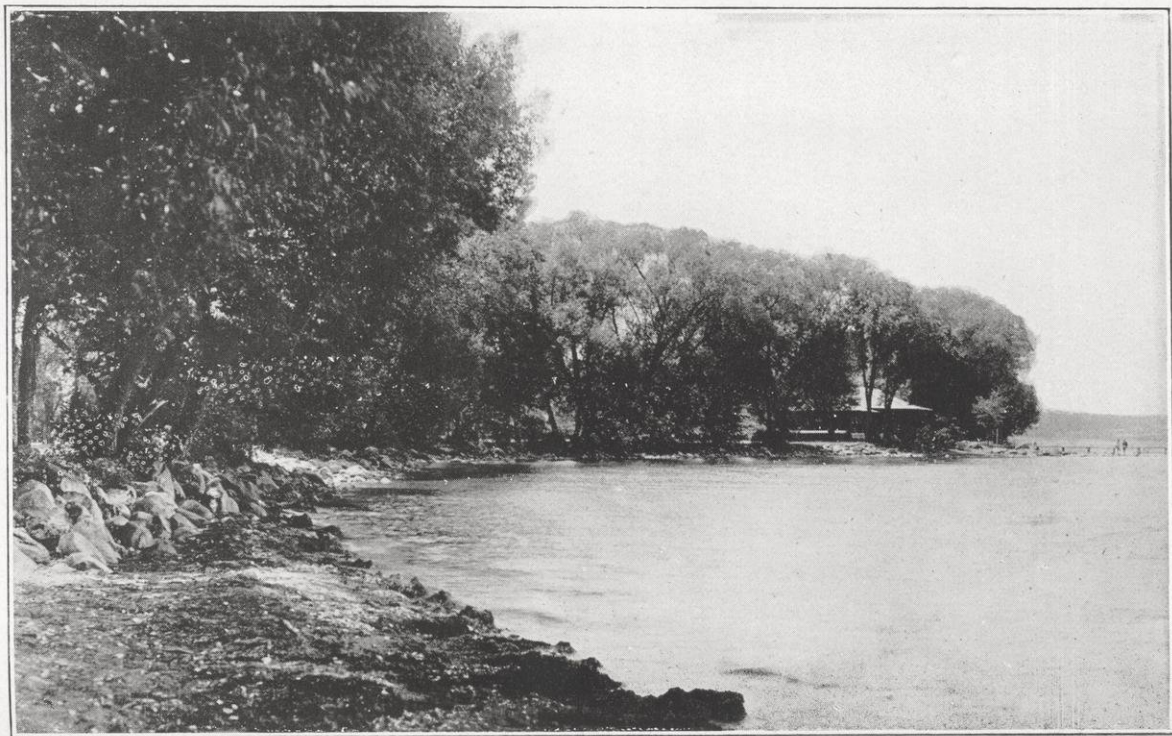
At the Merrill Farm the public have necessarily been admitted to the use of the drive because of the impassable condition of the Sauk Road over the viaduct. The rebuilding of the Sauk road from Allen Street in the City of Madison over the viaduct to the Madison town line, known as Project No. 8 of the Federal Aid Road projects of the state, has been approved by the War Department as a necessary enterprise for this year. The plans and specifications for a concrete road over this entire stretch have been approved and recommended to the Public Roads Department at Washington by the District Superintendent, Mr. Hathaway, at Minneapolis. It is urgently hoped that nothing may interfere with the prompt construction of this very important Federal Aid Project during the present season. When completed this road will very substantially lift the burden of public travel from portions of the Lake Mendota Drive. In the meantime the Madison Town Board has assured your board of directors of its willingness to contribute to the repair and rebuilding of such portions of our drive as have been necessarily subjected to public travel during portions of the year.\*

### **Farwell Drive**

From the end of the J. P. Woodward farm along the lake shore through Woodward's Grove and to the hospital terminus of Farwell Drive a most excellent work of patching and reconstructing was done last year. Much planting was also done along the lake shore stretch of this drive. A concrete culvert, 22 feet in length with an opening 4x5 feet, at a cost of \$425.00 was built at the ravine in Woodward's Grove, replacing the entirely inadequate tile culvert. A well organized force of men and equipment is now at work building a stretch of macadam from Maple Bluff to the end of the Woodward farm. The association is finding that macadam bound with a heavy oil is much more enduring than when merely finished as a water bound macadam. The oil for this stretch of macadam was bought and distributed last year and will be used, as it was used in other patching and macadam work last season to such good advantage. It would be desirable if funds were available to oil Farwell Drive the present season over its entire extent.

---

\*Contract for the construction of the road known as Project No. 8 has been let since the date of the annual meeting.



TENNEY PARK BATHING BEACH



The association is indebted to the common council of the City of Madison and its several officers not only for the \$3,000 appropriated for use upon the drives outside the city but for constant helpfulness in many ways. It is likewise indebted to the State Highway Commission for plans, specifications and blue prints, and occasional engineering services, to the County Highway Commission and County Road Committee for the use of its machinery and the opportunity to purchase materials under its contracts, to the Town of Madison officials who were generous in extending to the association many favors that contributed to the association's work and the promotion of its plans of improvement, and to the Regents of the University and to University officials and employees. A very considerable satisfaction and compensation for the time and thought given to the work of the association by its officers and directors comes from the cordial support which the association receives, not only from its members and individuals throughout the city, but also from all officials with whom it has dealings, and the uniform willingness to exchange courtesies to promote the work for which this association exists, makes working for the association worth while. The recapitulation of contributions will be found in the tabulated statements in this report.

Respectfully submitted,

ERNEST N. WARNER,  
President.

## Appendix

### Officers and Members of the Board of Directors of the Madison Park and Pleasure Drive Association Since its Organization\*

1894.

President . . . . . John M. Olin  
 Vice-President . . . . . John Hess  
 Secretary . . . . . Charles N. Brown  
 Treasurer . . . . . Frank W. Hoyt  
 Directors—C. F. Cooley, Frank  
 G. Brown, Julius Zehnter.

1895.

President . . . . . John M. Olin  
 Vice-President . . . . . John Hess  
 Secretary . . . . . Charles N. Brown  
 Treasurer . . . . . Frank W. Hoyt  
 Directors—C. F. Cooley, Frank  
 G. Brown, Julius Zehnter.

1896.

President . . . . . John M. Olin  
 Vice-President . . . . . Frank S. Warren  
 Secretary . . . . . Charles N. Brown  
 Treasurer . . . . . Frank W. Hoyt  
 Directors—C. F. Cooley, Frank  
 G. Brown, L. S. Hanks, Frank M.  
 Wootton.

1897.

President . . . . . John M. Olin  
 Vice-President . . . . . Frank S. Warren  
 Secretary . . . . . Charles N. Brown  
 Treasurer . . . . . Frank W. Hoyt  
 Directors—C. F. Cooley, Frank  
 G. Brown, L. S. Hanks, Frank M.  
 Wootton.

1898.

President . . . . . John M. Olin  
 Vice-President . . . . . Frank S. Warren  
 Secretary . . . . . Charles N. Brown

Treasurer . . . . . Frank W. Hoyt  
 Directors—C. F. Cooley, Frank  
 G. Brown, L. S. Hanks, Frank M.  
 Wootton.

1899.

President . . . . . John M. Olin  
 Vice-Pres. Andrew R. Kentzler, Jr.  
 Secretary . . . . . Charles N. Brown  
 Treasurer . . . . . Frank W. Hoyt  
 Directors—L. S. Hanks, F. M.  
 Wootton, F. G. Brown, C. F.  
 Cooley, W. F. McConnell.

1900.

President . . . . . John M. Olin  
 Vice-Pres. Andrew R. Kentzler, Jr.  
 Secretary . . . . . Charles N. Brown  
 Treasurer . . . . . Frank W. Hoyt  
 Directors—L. S. Hanks, F. M.  
 Wootton, W. S. Main, Carl J.  
 Hausmann, Daniel K. Tenney.

1901.

President . . . . . John M. Olin  
 Vice-President . . . . . Andrew S. Brown  
 Secretary . . . . . Charles N. Brown  
 Treasurer . . . . . Frank W. Hoyt  
 Directors—L. S. Hanks, F. M.  
 Wootton, W. S. Main, Carl J.  
 Hausmann, Daniel K. Tenney.

1902.

President . . . . . John M. Olin  
 Vice-President . . . . . Andrew S. Brown  
 Secretary . . . . . Charles N. Brown  
 Treasurer . . . . . Frank W. Hoyt  
 Directors—W. S. Main, D. K.  
 Tenney, C. J. Hausmann, R. C.  
 Vernon, Halle Steensland.

---

From January, 1892, until July 10, 1894, a citizens' committee consisting of John M. Olin, Chairman, Prof. C. S. Slichter, Carl Hausmann, John L. Erdall, L. S. Hanks, C. F. Cooley, M. R. Doyon, J. A. Aylward, M. S. Klauber, H. J. Veerhusen, A. L. Sanborn, secured subscriptions and disbursed moneys for the construction of the Bay Road and the Rustic Bridge. Mr. J. J. Suhr, now deceased, acting as treasurer of the committee.



1903.

President . . . . . John M. Olin  
 Vice-President . . . Andrew S. Brown  
 Secretary . . . . . Charles N. Brown  
 Treasurer . . . . . Frank W. Hoyt  
 Directors—Carl J. Hausmann,  
 Wm. R. Bagley, Halle Steensland,  
 Magnus Swenson, Arthur O. Fox.

1904.

President . . . . . John M. Olin  
 Vice-President . . . Andrew S. Brown  
 Secretary . . . . . Charles N. Brown  
 Treasurer . . . . . Frank W. Hoyt  
 Directors—Carl J. Hausmann,  
 Wm. R. Bagley, Halle Steensland,  
 Magnus Swenson, Arthur O. Fox.

1905.

President . . . . . John M. Olin  
 Vice-President . . . Andrew S. Brown  
 Secretary . . . . . Charles N. Brown  
 Treasurer . . . . . Frank W. Hoyt  
 Directors—Carl J. Hausmann,  
 Wm. R. Bagley, Halle Steensland,  
 Magnus Swenson, Arthur O. Fox.

1906.

President . . . . . John M. Olin  
 Vice-President . . . Andrew S. Brown  
 Secretary . . . . . Charles N. Brown  
 Treasurer . . . . . Frank W. Hoyt  
 Directors—Wm. R. Bagley, Carl  
 J. Hausmann, J. M. Naughtin,  
 Halle Steensland, Magnus Swen-  
 son,\* W. D. Curtis.†

1907.

President . . . . . John M. Olin  
 Vice-President . . . Andrew S. Brown  
 Secretary . . . . . Charles N. Brown  
 Treasurer . . . . . Frank W. Hoyt  
 Directors—Mayor J. C. Schubert,  
 and Ald. John C. Prien, ex-officio,  
 Wm. R. Bagley, Wm. D. Curtis,  
 John M. Naughtin, Fred M.  
 Schlimgen, Halle Steensland.

1908.

President . . . . . John M. Olin  
 Vice-President . . . Andrew S. Brown  
 Secretary . . . . . Charles N. Brown  
 Treasurer . . . . . Frank W. Hoyt  
 Directors—Mayor J. C. Schubert  
 and Ald. John C. Prien, ex-officio,  
 Wm. R. Bagley, Wm. D. Curtis,  
 John M. Naughtin, Fred M.  
 Schlimgen, Halle Steensland.

1909.

President . . . . . John M. Olin  
 Vice-President . . . Andrew S. Brown  
 Secretary . . . . . Charles N. Brown  
 Treasurer . . . . . Frank W. Hoyt  
 Directors—Mayor J. C. Schubert  
 and Ald. C. W. Constantine, ex-  
 officio, Wm. R. Bagley, John M.  
 Naughtin, Fred M. Schlimgen, Halle  
 Steensland, W. D. Curtis.

1910.

President . . . . . J. C. Schubert  
 Vice-President . . . Andrew S. Brown  
 Secretary . . . . . Charles N. Brown  
 Treasurer . . . . . Frank W. Hoyt  
 Directors—Ald. Geo. Smith, ex-  
 officio, W. D. Curtis, Fred M.  
 Schlimgen, F. W. Cantwell, Frank  
 W. Hoyt, G. M. Fisk.

1911.

President . . . . . J. C. Schubert  
 Vice-President . . . Andrew S. Brown  
 Secretary . . . . . Charles N. Brown  
 Treasurer . . . . . Frank W. Hoyt  
 Directors—Ald. Geo. Smith, ex-  
 officio, F. W. Cantwell, W. D. Cur-  
 tis, Frank W. Hoyt, Fred M. Schlim-  
 gen, Ernest N. Warner.

1912.

President . . . . . Ernest N. Warner  
 Vice-President . . . Charles N. Brown  
 Secretary . . . . . E. J. B. Schubring  
 Treasurer . . . . . Frank W. Hoyt  
 Directors—Mayor John B. Heim  
 and Ald. Milo Kittleson, ex-officio,  
 John L. Bourke, Ben F. Mautz,  
 Fred M. Schlimgen, F. W. Cant-  
 well, Frank W. Hoyt.

\* Resigned May 19, 1906.

† Succeeded Magnus Swenson.

<p>1913.</p> <p>President . . . Ernest N. Warner          Vice-President . Charles N. Brown          Secretary . . . Eugene C. Smith          Treasurer . . . Frank W. Hoyt          Directors—Mayor John B. Heim          and Ald. Arthur O. Utter, ex-officio,          John L. Bourke, Ben F. Mautz,          Fred M. Schlingen, John C. Prien,          Frank W. Hoyt.</p>	<p>1916.</p> <p>President . . . Ernest N. Warner          Vice-President . Charles N. Brown          Secretary . . . John L. Bourke          Treasurer . . . Frank W. Hoyt          Directors—Mayor George C.          Sayle, and Ald. Arthur O. Utter,          ex-officio, Corydon G. Dwight,          John C. Prien, Edward J. Reynolds,          Fred M. Schlingen, Frank W.          Hoyt.</p>
<p>1914.</p> <p>President . . . Ernest N. Warner          Vice-President . Charles N. Brown          Secretary . . . Eugene C. Smith          Treasurer . . . Frank W. Hoyt          Directors—Mayor A. H. Kayser          and Ald. Arthur O. Utter, ex-officio,          John L. Bourke, Ben F. Mautz,          Fred M. Schlingen, John C. Prien,          Frank W. Hoyt.</p>	<p>1917.</p> <p>President . . . Ernest N. Warner          Vice-President . Charles N. Brown          Secretary . . . John L. Bourke          Treasurer . . . Frank W. Hoyt          Directors—Mayor George C.          Sayle and Ald. Arthur O. Utter,          ex-officio, Corydon G. Dwight,          John C. Prien, Edward J. Reynolds,          Fred M. Schlingen, Frank W.          Hoyt.</p>
<p>1915.</p> <p>President . . . Ernest N. Warner          Vice-President . Charles N. Brown          Secretary . . . Eugene C. Smith          Treasurer . . . Frank W. Hoyt          Directors—Mayor A. H. Kayser,          and Ald. Arthur O. Utter, ex-officio,          John L. Bourke, Ben F. Mautz,          Fred M. Schlingen, John C. Prien,          Frank W. Hoyt.</p>	<p>1918.</p> <p>President . . . Ernest N. Warner          Vice-President . Charles N. Brown          Secretary . . . John L. Bourke          Treasurer . . . Frank W. Hoyt          Directors—Mayor George C.          Sayle and Ald. Thomas Quinn, ex-          officio, Corydon G. Dwight, John C.          Prien, Edward J. Reynolds, Fred          M. Schlingen, Frank W. Hoyt.</p>

**Private Contributions, Receipts Since Organization**

For the years 1892 and 1893 . . . . .	\$6,888 86
Amount contributed by Prof. Owen in 1892, in addition to above . . . . .	3,000 00
For the year 1894 . . . . .	655 00
For the year 1895 . . . . .	995 00
For the year 1896 . . . . .	1,580 00
For the year 1897 . . . . .	10,160 23
For the year 1898 . . . . .	2,171 32
For the year 1899, excluding gifts for Tenney Park . . . . .	\$3,231 50
Gifts for Tenney Park, exclusive of the \$1,500 appropriated by the city . . . . .	5,778 00
	9,009 50
For the year 1900 . . . . .	5,313 20
For the year 1901 . . . . .	5,286 00
For the year 1902 . . . . .	5,409 00
For the year 1903, for the general work of association . . . . .	\$5,036 75
For the year 1903, for the Yahara River im- provement . . . . .	20,621 24
	\$25,657 99



For the year 1904, for the general work of the association.....	\$5,665 50	
For the year 1904, for the Yahara River improvement.....	4,658 50	\$10,324 00
<hr/>		
For the year 1904, gift of Mr. and Mrs. Wm. F. Vilas for the purchase of Henry Vilas Park.....		18,000 00
For the year 1904, special subscription for improving Henry Vilas Park.....		10,171 00
For the year 1904, special subscription for improving Monona Lake Park.....		1,100 00
Amount contributed by D. K. Tenney for constructing foot bridge in Tenney Park.....		368 00
Amount contributed by Julius Zehnter for same purpose...		50 00
Amount contributed for all purposes for the year 1905, as follows:		
For the general work of the association...	\$5,663 25	
For the extra work of the association.....	5,338 00	
For securing the addition to Tenney Park	5,600 00	
For improving Henry Vilas Park, contributed by Wm. F. Vilas.....	10,000 00	
For improving Brittingham Park, contributed by T. E. Brittingham.....	8,000 00	
<hr/>		\$34,601 25
Amount contributed for all purposes for the year 1906, as follows:		
For the general work of the association...	\$7,841 08	
For improving Henry Vilas Park, contributed by William F. Vilas.....	5,000 00	
For improving triangle, contributed by T. E. Brittingham.....	4,000 00	
Legacy of Mary C. Stewart for constructing drinking fountain.....	2,000 00	
<hr/>		\$18,841 08
Amount contributed for all purposes for the year year 1907, as follows:		
For the general work of the association...	\$8,741 25	
For improving Henry Vilas Park, contributed by William F. Vilas.....	2,000 00	
For improving Brittingham Park and Parkway to South Madison, contributed by T. E. Brittingham subsequent to annual meeting held April 23, 1907.....	5,000 00	
<hr/>		\$15,741 25
Amount contributed for all purposes for the year 1908, as follows:		
Amount contributed by D. K. Tenney—five lots which were sold by the association for \$5,000—for improving addition to Tenney Park.....	\$5,000 00	
Amount contributed by association for improvement of addition to Tenney Park, being the excess realized on sale of fifteen lots over and above the \$5,000 heretofore stated as paid for the land for this addition to the Park.....	9,400 00	

Amount contributed by T. E. Brittingham to erect a public bathhouse in the year 1909.....	\$7,500 00	
	<hr/>	\$29,966 32
Amount contributed in 1909 by 827 subscribers for general work.....	\$7,119 00	
Amount contributed by D. K. Tenney for improvement of addition to Tenney Park.....	2,500 00	
Amount contributed to secure general city plan.....	1,500 00	
Special contributions for the improvement of Tenney Park.....	1,875 00	
Special subscriptions for macadamizing road to Owen Park.....	350 00	
Value of gift of 12 acres of land under will of George B. Burrows.....	15,000 00	
	<hr/>	\$28,394 50
Amount contributed for 1910, as follows:		
Subscriptions.....	\$5,042 50	
Legacy of Sarah J. Riebsam.....	500 00	
Gift of Mrs. Anna M. Vilas.....	25,000 00	
	<hr/>	\$30,542 50
Amount contributed for 1911, as follows:		
Subscriptions.....	\$3,700 00	
Bequest of A. H. Hollister (estimated)....	10,000 00	
	<hr/>	\$13,700 00
Amount contributed for 1912, as follows:		
Subscriptions.....	\$3,355 00	
Gift of Marston Bridge by D. K. Tenney..	3,321 00	
Subscriptions paving Capital Avenue.....	1,146 37	
	<hr/>	\$8,122 37
Amount contributed for 1913, as follows:		
Subscriptions.....	\$4,989 50	
Mrs. A. H. Hollister estate confirming A. H. Hollister bequest, and in excess thereof.....	2,203 09	
	<hr/>	\$7,192 59
Amount contributed for 1914, as follows:		
Subscriptions.....	\$3,925 55	
Dividends and interest.....	233 67	
	<hr/>	\$4,159 22
Amount contributed for 1915, as follows:		
Subscriptions.....	\$2,518 50	
Dividends and interest.....	265 87	
	<hr/>	\$2,784 37
Amount contributed for 1916, as follows:		
Subscriptions.....	\$2,562 00	
Dividends and interest.....	533 95	
Through Madison Zoological and Aquarium Society, Mrs. Anna M. Vilas, bird house and aquarium.....	6,900 00	
	<hr/>	\$10,085 95



Amount contributed for 1917, as follows:

Subscriptions.....	\$2,664 45	
Dividends and interest.....	372 50	
Through Madison Zoological and Aquarium Society, Dr. Charles H. Vilas, lion house.....	15,500 00	
		<u>\$18,536 95</u>

Total contributions up to 1918.....\$338,807 45

Contributions for 1918:

Subscriptions for 1918 to date.....	\$2,197 50
Daniel Kent Tenney bequest (annually) ..	500 00

Total to date for 1918.....\$2,697 50

Grand total to date.....\$341,504 95

### Appropriations by the City of Madison

For land for which no bonds were issued .....\$8,000 00

For improving streets fronting on parks:

Main Street.....	\$1,875 00
Washington Avenue.....	1,500 00
Drake Street.....	1,935 00
Johnson Street.....	2,500 00
Brittingham Park.....	2,326 00
Brittingham Place.....	1,675 00
Marston Avenue.....	2,965 00
Sherman Avenue.....	2,517 00

\$17,293 00

For streets within parks:

Burr Oak Drive, Henry Vilas Park.....	\$2,900 00
Bay View Drive, Brittingham Park.....	7,153 00
Bay View Drive, Brittingham Park.....	4,900 00

\$14,953 00

For storm sewers extending through parks.....3,266 00

For boathouse, Brittingham Park .....5,000 00

Total for permanent improvements.....\$48,512 00

In addition to this the city has paid out since 1902 for park maintenance including principal and interest on bonds issued.....112,808 00

General maintenance, 1912.....16,000 00

Filling at Brittingham Park.....214 50

Taxes on streets abutting park property.....4,269 75

Improving Henry Vilas Park Addition.....5,000 00

Tenney Park Bathhouse .....5,400 00

Filling Burrows Park.....1,800 00

Reported by city auditor for park purposes for the year 1913.....32,086 85

Reported by city auditor for park purposes for the year 1914.....45,512 14

Reported by city auditor for park purposes for the year 1915.....54,756 30

Reported by city auditor for park purposes for the year 1916.....51,608 27

Reported by city auditor for park purposes for the year 1917.....48,276 74

Making a total of.....\$426,244 55



NEW CONCRETE CULVERT WOODWARD'S GROVE



# Treasurer's Report

---

To the Members of the Madison Park and Pleasure Drive Association:

GENTLEMEN: The following is a condensed statement of the financial transactions for the year ending Dec. 31, 1916.

1916

### Receipts

Balance from last annual report.....	\$ 447 03
Interest Mr. and Mrs. A. H. Hollister Park Fund.....	533 95
1916 subscriptions.....	2,545 00
1915 subscriptions.....	63 00
1914 subscriptions.....	20 00
Damage to trees.....	160 00
City of Madison appropriation.....	3,000 00
Annual dinner.....	2 00
Reports sold.....	3 26
Removing shrubs.....	7 00

### Disbursements

Farwell Drive.....		\$2,820 24
Lake Mendota Drive.....		2,886 19
Owen Parkway.....		305 63
Miscellaneous.....		322 28
	\$6,781 24	\$6,343 34
Balance on hand.....		437 90
	\$6,781 24	\$6,781 24

## Mr. and Mrs. A. H. Hollister Park Fund

Statement January 1, 1917, for 1916

1916			
Jan.	1	By balance from last annual report.....	\$12,779 27
Jan.	6	By Interest on Judgments vs. A. H. Hollister Estate..	\$405 66
Feb.	21	By interest from First Na- tiona! Bank, certificate... ..	2 25
March	21	By interest from Joseph Hornung to Mar. 22, 1916	275 00
April	10	By Interest From A. F. Menges to April 18, 1916..	27 50
Aug.	17	By Interest from A. & R. Heilman to Aug. 17, 1916..	55 00
Sept.	22	By Interest from Joseph Hornung to Sept. 22, 1916	275 00
Oct.	18	By Interest from A. F. Menges to Oct. 18, 1916..	27 50
		-----	1,067 91
Sept.	20	By additional amount received from Kate E. V. Hollister estate to be added to the original inventory... To paid Madison Park and Pleas- ure Drive Association one-half of income \$1,067.91.....	212 75
		\$533 95	
		13,525 98	
		-----	\$14,059 93
		-----	\$14,059 93
1917			
Jan.	1	By Balance.....	\$13,525 98



*Madison Park and Pleasure Drive Association*

The foregoing balance is invested in the name of the Madison Park and Pleasure Drive Association as Trustee of the Mr. and Mrs. H. A. Hollister Park Fund as follows:

Joseph Hornung, mortgage 5 1/2%...	\$10,000 00
A. F. Menges, mortgage 5 1/2%.....	1,000 00
A. & R. Heilman, mortgage 5 1/2%..	2,000 00
First National Bank, certificate 2 1/2, 3, 4%.....	120 73
First National Bank, certificate 2 1/2, 3, 4%.....	13 75
First National Bank, certificate 2 1/2, 3, 4%.....	27 50
First National Bank, certificate 2 1/2, 3, 4%.....	212 75
First National Bank, certificate 2 1/2, 3, 4%.....	137 50
First National Bank, certificate 2 1/2, 3, 4%.....	13 75
	\$13,525 98

Principal received from Hollister estate Sept. 17, 1913.....	\$12,279 61
Additional principal received from Hollister estate Sept. 20, 1917....	212 75
	\$12,492 36
One-half income received to Jan. 1, 1917.....	1,033 62
	\$13,525 98

### The Mrs. Stewart Bequest

1916		
Jan.	1 Balance on hand.....	\$2,875 60
Dec.	30 Interest 1 year at 4%.....	115 02
	Balance.....	\$2,990 62
		\$2,990 62    \$2,990 62
1917		
Jan.	1 Balance on hand.....	\$2,990 62

Respectfully submitted

FRANK W. HOYT, *Treasurer.*

I hereby certify that I have examined the accounts of Frank W. Hoyt, treasurer, for the year 1916 and find them correct in all particulars.

ROBERT C. O'MALLEY.

Dated May 14, 1917.

## Subscriptions for 1916

Allen, C. E. . . . .	\$ 5 00	Drives & Struck . . . . .	\$10 00
Allen, Katharine . . . . .	3 00	Drew, Walter . . . . .	5 00
Averill, A. L. . . . .	10 00	Dudgeon, R. B. . . . .	10 00
Aylward, John A. . . . .	15 00	Dwight, C. G. . . . .	12 50
Babcock, S. M. . . . .	10 00	Dye, A. A. . . . .	25 00
Bagley, Wm. R. . . . .	25 00	Ela, Emerson . . . . .	10 00
Barton, A. O. . . . .	1 00	Electrical Supply Co. . . . .	5 00
Benson, B. M. . . . .	1 00	Ellman, George . . . . .	2 00
Birge, E. A. . . . .	5 00	Erdahl, G. L. . . . .	5 00
Bitney, J. C. . . . .	10 00	Ewing, A. A. . . . .	5 00
Blackburn, A. C. . . . .	10 00	Farrington, E. H. . . . .	10 00
Blackwelder, Eliot . . . . .	5 00	Fauerbach Brewing Co. . . . .	25 00
Boelsing, Carl . . . . .	3 00	Ferguson, W. F. . . . .	10 00
Bourke, John L. . . . .	5 00	Fessler, George J. . . . .	5 00
Boyce, S. R. . . . .	5 00	Findorff, J. H. . . . .	15 00
Boyd, Joseph M. . . . .	5 00	Fischer, Richard . . . . .	5 00
Boyd Co., Joseph M. . . . .	25 00	Fish, Carl Russell . . . . .	5 00
Bradley, Mrs. H. C. . . . .	15 00	Fish & Schulkamp . . . . .	5 00
Breitenbach, G. H. . . . .	5 00	Flint, Albert S. . . . .	5 00
Brittingham, T. E. . . . .	25 00	Forward Oil Co. . . . .	10 00
Brown, Charles N. . . . .	25 00	Fox, J. H. . . . .	5 00
Brown, Frank G. . . . .	15 00	Fox, Philip . . . . .	15 00
Brown, Fred M. . . . .	15 00	Frautschi, E. J. . . . .	5 00
Buell, C. E. . . . .	10 00	Frederickson, A. D. & J. V. . . . .	20 00
Burger, Peter . . . . .	5 00	Frish, A. M. . . . .	5 00
Butler, H. L. . . . .	15 00	Fuller, Eugene A. . . . .	5 00
Cantwell, J. R. . . . .	15 00	Gallagher, John . . . . .	5 00
Cantwell Printing Co. . . . .	25 00	Geffert, Louis A. . . . .	3 00
Castle & Doyle . . . . .	10 00	Gernon, G. E. . . . .	15 00
Chapman, C. B. . . . .	10 00	Giddings, W. E. . . . .	15 00
Chorlog, J. K. . . . .	5 00	Gilman, Stephen A. . . . .	5 00
Cnare, George C. . . . .	5 00	Gill, G. E. & A. J. . . . .	5 00
Cochran, Joseph . . . . .	5 00	Gordon, J. O. . . . .	5 00
Collins, W. H. . . . .	10 00	Gregory, Charles Noble . . . . .	10 00
Commons, J. R. . . . .	10 00	Grimm, John J. . . . .	5 00
Conover, Allan D. . . . .	10 00	Grinde, John . . . . .	10 00
Cork & Holt . . . . .	5 00	Haak, William . . . . .	5 00
Corscot, G. J. . . . .	5 00	Hall, F. W. . . . .	5 00
Corscot, John . . . . .	10 00	Halligan, B. J. . . . .	10 00
Cramer, P. D. . . . .	10 00	Hammersley, E. C. . . . .	15 00
Crescent Clothing Co. . . . .	5 00	Hanks, L. M. . . . .	10 00
Cole, Leon J. . . . .	3 00	Hart, Walter W. . . . .	10 00
Collyer, B. B. . . . .	5 00	Hastings, E. G. . . . .	6 00
Cross, F. L. . . . .	5 00	Hatch, K. L. . . . .	3 00
Crowe, B. C. . . . .	5 00	Hausmann Brewing Co. . . . .	25 00
Crowley, F. M. . . . .	25 00	Hefty, T. R. . . . .	5 00
Dean, Joseph . . . . .	15 00	Herfurth, Theodore . . . . .	10 00
Dennis, A. L. P. . . . .	10 00	Hill, Carl N. . . . .	5 00
Doescher, John . . . . .	3 00	Hoffman Feed Co. . . . .	10 00
Doyon, B. H. . . . .	15 00		



Holmes, George C. ....	\$5 00	Metz, Anton. ....	\$15 00
Hotchkiss, W. O. (account) ..	5 00	Moore, R. A. ....	5 00
Hoyt, F. W. ....	25 00	Moseley, H. L. ....	15 00
Humphrey, George C. ....	5 00	Morris, T. S. ....	5 00
Hurd, R. W. ....	5 00	Morris, W. A. P. ....	10 00
Hyland, John. ....	5 00		
Ingersoll, L. R. ....	5 00	Neckerman, George M. ....	5 00
		Nelson, George. ....	10 00
Jacobs, Frank W. ....	10 00	Nelson, R. N. ....	5 00
Jarvis, C. W. ....	3 00	New York Store. ....	10 00
Johnson, M. I. ....	25 00	Noe, Mrs. W. C. ....	5 00
Jones, Burr W. ....	25 00	Norsman, O. S. ....	5 00
Jones, L. R. ....	5 00		
Jones, Richard Lloyd. ....	10 00	Oakley, F. W. ....	15 00
		Olbrich, M. B. ....	10 00
Karstens, F. W. ....	10 00	Olin, John M. ....	25 00
Kayser, A. H. ....	10 00	Olson, Oscar C. ....	5 00
Kenney, A. P. ....	1 00	Olson & Veehusen Co. ....	25 00
Kerr, Alexander. ....	5 00	Orpheum & Fuller Amuse-	
Kindschi, George W. ....	5 00	ment Co. ....	10 00
Kingsley, G. P. ....	5 00	O'Shea, M. V. ....	5 00
Kirchoffer, W. G. ....	10 00	Overton, J. B. ....	10 00
Kney, E. O. ....	5 00	Owen, Ray S. ....	5 00
Kney, Paul. ....	5 00	Owen, W. C. ....	10 00
Knox, P. B. ....	10 00		
Kornhauser, Alexander. ....	10 00	Palmer, J. H. ....	10 00
Krauskoff, Francis C. ....	2 00	Parker, W. N. ....	5 00
Kroncke, George. ....	10 00	Paunack, A. O. ....	5 00
Krueger & Tandvig. ....	10 00	Pepper, John W. ....	5 00
Kundert, Alfred. ....	5 00	Phi Gamma Delta Fraternity	5 00
		Pickford, H. W. ....	5 00
Laird, A. G. ....	5 00	Pieh, John F. ....	5 00
Larson, A. C. ....	5 00	Pierce, Caroline S. ....	5 00
Lawrence, R. E. ....	5 00	Pierstorff, Frank L. ....	10 00
Legler, F. E. ....	5 00	Prien, John C. ....	5 00
Lewis, Henry. ....	5 00	Proudfit, A. E. ....	12 50
Loomis, Mrs. Frances L. ....	5 00		
		Qualey, R. N. ....	2 00
McAssey, Carl P. ....	5 00	Quinn, George. ....	5 00
McCaffery, M. E. ....	5 00		
McConnell, F. T. ....	10 00	Ramsay, J. B. ....	10 00
Mack, J. A. ....	5 00	Ratcliff, H. H. Co. ....	5 00
Mack, John G. D. ....	5 00	Rayne, George T. ....	15 00
Madison Gas & Electric Co. ....	25 00	Reber, Louis E. ....	5 00
Madison Realty Co. ....	100 00	Rigby, John. ....	25 00
Madison Sanitarium. ....	5 00	Riley, E. F. ....	10 00
Mansfield-Caughey Co. ....	5 00	Rogers, Alfred. ....	25 00
Marlatt, A. L. ....	5 00	Roloff, E. L. ....	5 00
Marling, W. A. ....	5 00	Ross, E. A. ....	6 00
Marschall, A. J. ....	10 00	Runge, A. E. ....	5 00
Marshall, Wm. S. ....	10 00	Ryan, William. ....	10 00
Mason, E. C. ....	5 00		
Mason, Vroman. ....	10 00	Sammis, J. L. ....	2 00
Mautz Bros. ....	15 00	Sanborn, A. L. ....	25 00
Mead, Daniel W. ....	15 00	Sater, M. H. ....	5 00
Menges, A. F. ....	20 00	Sayle, George C. ....	10 00
Messerschmidt, J. E. ....	10 00	Scanlon Morris Co. ....	10 00
		Scherer, John J. ....	5 00

Schlingen, Fred M. ....	\$15 00	Thompson, H. L. ....	\$5 00
Schmitz, Fred J. ....	10 00	Thorkelson, H. J. ....	5 00
Schmitz, August J. ....	5 00	Thorp, Juliet C. ....	5 00
Schoen, Frank. ....	5 00	Thwaites, F. T. ....	10 00
Schubring, C. P. ....	5 00	Tormey, T. S. ....	5 00
Schubring, E. J. B. ....	15 00	Tressler, A. W. ....	10 00
Schumacher, Wm. ....	5 00	Turneure, F. E. ....	10 00
Seastone, C. V. ....	5 00		
Sharratt, Henry F. ....	5 00	University Co-Operative Co.	25 00
Sheldon, Charles S. ....	5 00	Utter, Arthur O. ....	5 00
Sheldon, Walter H. ....	5 00		
Sherwood & McWilliams. ....	5 00	Vance, J. W. ....	5 00
Siebecker, Robert G. ....	5 00	Van Deusen & Son, A. ....	5 00
Siggelko, Herbert S. ....	5 00	Van Hise, C. R. ....	25 00
Simon, Fred N. ....	5 00	Van Vleck, E. B. ....	10 00
Slichter, Charles. ....	5 00	Vilas, Mrs. Anna M. ....	75 00
Smith, Howard L. ....	5 00		
Smith, Lathrop E. ....	5 00	Wagner, George. ....	10 00
Smith, Walter M. ....	5 00	Walton, J. H., Jr. ....	3 00
Smythe, H. A. ....	5 00	Warner, E. N. ....	10 00
Snow, B. W. ....	5 00	Wehrman, Charles & Son. ....	5 00
Steensland, E. B. ....	25 00	West, J. P. ....	5 00
Steensland, M. M. ....	8 00	Willis, C. H. ....	5 00
Steve, W. F. ....	5 00	Winkley, F.D. ....	25 00
Stevens, Mrs. B. J. ....	25 00	Wolff, Kubly & Hirsig. ....	10 00
Stevens, E. Ray. ....	20 00	Wood, Kent T. ....	5 00
Stidgen, George. ....	2 00	Woolworth Co., F. W. ....	5 00
Stitgen, Ben. ....	5 00		
Suhr, F. W. ....	5 00	Young, Edward J. ....	10 00
Sumner & Morris. ....	20 00	Young, Karl. ....	3 00
Sumner, Edwin. ....	5 00		
Swenson, Magnus. ....	25 00	Zoelle, F. J. ....	5 00
Teamsters Union. ....	15 00		
Teckemeyer, W. J. ....	15 00	*Total. ....	\$2,545 00

### Subscriptions Paid in 1916

Aylward, John A. (1915)....	\$15 00	Waterman & Son (1915)....	10 00
Cole, Leon J. (1915) ....	3 00	Groves, John W. (1914)....	5 00
Haswell Furniture Co. (1915)	5 00	Harloff, Paul F. (1914)....	10 00
Riley, George C. (1915)....	5 00	Smith, E. C. (1914).....	5 00
Schubring, E. J. B. (1915)...	15 00		
Schwoegler, Wm. (1915)....	5 00	Total. ....	\$83 00
Smith, E. C. (1915).....	5 00	Grand Total. ....	\$2,628 00

\* The above statement shows 1916 subscriptions paid during year.



# Balance Sheet

By City Auditor

STATEMENT OF DETAIL OPERATION, MAINTENANCE, AND OUTLAY EXPENDITURES OF PUBLIC PARKS AND PLAYGROUNDS FOR PERIOD JANUARY 1, 1916, TO DECEMBER 31 1916.

Account	Expenditure	Budget Appropriation	Unexpended Balance	Deficit
<b>ADMINISTRATION</b>				
Salaries and Wages				
Foreman.....	\$1,312 00	\$1,080 00		\$232 00
Clerk.....	300 00	300 00		
Landscape Advice.....	87 00	150 00	\$63 00	
Editing Annual Report.....	50 00			50 00
Printing, Stationery, Office Expense.....	563 30	600 00	36 70	
	\$2,312 30	\$2,130 00	\$99 70	\$282 00
<b>TENNEY PARK AND PARKWAY</b>				
Salaries and Wages				
Maintenance.....	\$2,695 47	\$2,859 00	\$163 53	
Care of Trees and Rinks.....	101 29	150 00	48 71	
Music.....	325 00	325 00		
General Supplies and Expense.....	55 69	110 00	54 31	
Laundry and Janitor Supplies.....	11 82			\$11 82
Heat, Light, Power, Water.....	116 14	225 00	108 86	
Dry Goods, Bedding, Clothing.....	17 63			17 63
Repairs and Replacements.....		946 00	946 00	
Apparatus and other Departmental Equipment.....	12 00			12 00
Real Estate and Structures (Outlay).....	1,485 96	1,496 65	10 69	
	\$4,821 00	\$6,111 65	\$1,332 10	\$41 45

STATEMENT OF DETAIL OPERATION, MAINTENANCE, AND OUTLAY EXPENDITURES OF PUBLIC PARKS AND PLAYGROUNDS FOR PERIOD JANUARY 1, 1916, TO DECEMBER 31, 1916, CONTINUED.

Account	Expenditure	Budget Appropriation	Unexpended Balance	Deficit
<b>TENNEY PARK BATHHOUSE</b>				
Salaries and Wages				
Maintenance	\$882 44	\$880 00		\$2 44
Printing, Stationery and Office Expense	23 25	22 50		75
Rent and Insurance	28 00	60 00	\$32 00	
General Supplies and Expense	194 80	46 75		148 05
Laundry and Janitor Supplies	102 31	57 50		44 81
Heat, Light, Power, Water	48 34	80 50	32 16	
Dry Goods, Bedding, Clothing		36 00	36 00	
Repairs and Replacements		85 00	85 00	
Real Estate and Structures (Outlay)	583 47	565 00		18 47
	\$1,862 61	\$1,833 25	\$185 16	\$214 52
<b>TENNEY PARK LAVATORIES</b>				
Laundry and Janitor Supplies		\$17 80	\$17 80	
Medical Supplies		10 50	10 50	
Heat, Light, Power, Water		90 00	90 00	
Dry Goods, Bedding, Clothing		5 00	5 00	
Repairs and Replacements		2 00	2 00	
		\$125 30	\$125 30	



STATEMENT OF DETAIL OPERATION, MAINTENANCE, AND OUTLAY EXPENDITURES OF PUBLIC  
PARKS AND PLAYGROUNDS FOR PERIOD JANUARY 1, 1916, TO DECEMBER 31, 1916, CONTINUED

Account	Expenditure	Budget Appropriation	Unexpended Balance	Deficit
<b>GENERAL PARK EQUIPMENT</b>				
Salaries and Wages				
Maintenance.....	\$51 13			\$51 13
General Supplies and Expense.....	203 49	\$118 50		84 99
Stable and Garage Expense.....	588 89	1,461 50	\$872 61	
Repairs and Replacements.....	165 64	741 50	575 86	
Heat, Light, Power, Water.....		100 00	100 00	
Apparatus and other Departmental Equipment (Out- lay).....	836 73			836 73
	\$1,845 88	\$2,421 50	\$1,548 47	\$972 85
<b>BRITTINGHAM PARK</b>				
Salaries and Wages				
Maintenance.....	\$2,089 04	\$2,539 00	\$449 96	
Care of Trees and Rink.....	56 45	150 00	93 55	
General Supplies and Expense.....	158 52	361 50	202 98	
Heat, Light, Power, Water.....	5 26	80 00	74 74	
Dry Goods, Bedding, Clothing.....		12 00	12 00	
Real Estate and Structures (Outlay).....	1,774 74	2,182 50	407 76	
	\$4,084 01	\$5,325 00	\$1,240 99	

STATEMENT OF DETAIL OPERATION, MAINTENANCE, AND OUTLAY EXPENDITURES OF PUBLIC  
PARKS AND PLAYGROUNDS FOR PERIOD JANUARY 1, 1916, TO DECEMBER 31, 1916, CONTINUED

Account	Expenditure	Budget Appropriation	Unexpended Balance	Deficit
<b>BRITTINGHAM PARK BOATHOUSE</b>				
Salaries and Wages				
Maintenance	\$501 62	\$480 00		\$21 62
Printing, Stationery and Office Expense	22 63	22 50		13
Rent and Insurance	120 00	60 00		60 00
General Supplies and Expense	7 51	27 15	\$19 64	
Medical Supplies		5 00	5 00	
Laundry and Janitor Supplies	4 11	5 75	1 64	
Heat, Light, Power, Water	81 35	34 00		47 35
Dry Goods, Bedding, Clothing		8 00	8 00	
Repairs and Replacements	2 31	52 50	50 19	
	\$739 53	\$694 90	\$84 47	\$129 10
<b>BRITTINGHAM PARK BATHOUSE</b>				
Salaries and Wages				
Maintenance	\$7 25	\$660 00	\$652 75	
Printing, Stationery and Office Expense		22 50	22 50	
Rent and Insurance	68 00	60 00		\$8 00
General Supplies and Expense	5 20	4 80		40
Laundry and Janitor Supplies	9 04	78 50	69 46	
Medical Supplies		11 00	11 00	
Dry Goods, Bedding, Clothing		24 00	24 00	
Heat, Light, Power, Water	165 65	64 00		101 65
Repairs and Replacements	33 50	243 00	209 50	
	\$288 64	\$1,167 80	\$989 21	\$110 05



STATEMENT OF DETAIL OPERATION, MAINTENANCE, AND OUTLAY EXPENDITURES OF PUBLIC PARKS AND PLAYGROUNDS FOR PERIOD JANUARY 1, 1916, TO DECEMBER 31, 1916 CONTINUED.

Account	Expenditure	Budget Appropriation	Unexpended Balance	Deficit
<b>HENRY VILAS PARK</b>				
Salaries and Wages				
Maintenance	\$3,842 84	\$2,789 00		\$1,053 84
Damages and Injuries	99 49			99 49
Skating Rink	135 38	150 00	\$14 62	
Music	715 00	325 00		390 00
Real Estate and Structures (Outlay)	*2,434 68			2,434 68
Printing, Stationery and Office Expense	32 93			32 93
General Supplies and Expense	261 28	244 35		16 93
Laundry and Janitor Supplies	2 28			2 28
Heat, Light, Power and Water	480 42	200 00		280 42
Dry Goods, Bedding and Clothing		18 00	18 00	
Real Estate and Structures (Outlay)	3,244 78	6,768 69	3,523 91	
	\$11,249 08	\$10,495 04	\$3,556 53	\$4,310 57

\* Note.—The item for labor (\$2,434.68) is included in budget under real estate and structures.

STATEMENT OF DETAIL OPERATION, MAINTENANCE, AND OUTLAY EXPENDITURES OF PUBLIC  
PARKS AND PLAYGROUNDS FOR PERIOD JANUARY 1, 1916, TO DECEMBER 31, 1916, CONTINUED.

Account	Expenditure	Budget Appropriation	Unexpended Balance	Deficit
HENRY VILAS PARK ZOO				
Salaries and Wages				
Maintenance	\$3,479 06	\$2,345 00		\$1,134 06
Real Estate and Structures (Outlay)	*2,603 48			2,603 48
Printing, Stationery and Office Expense	3 20	47 00	\$43 80	
Freight and Express	3 75	22 50	18 75	
General Supplies and Expense	360 70	480 40	119 70	
Laundry and Janitor Supplies	2 15	25 50	23 35	
Medical Supplies	23 69	55 00	31 31	
Heat, Light, Power and Water	1,354 40	355 75		998 65
Dry Goods, Bedding, Clothing	18 75	17 00		1 75
Stable and Garage				
Animal Feed and Bedding	2,829 11	1,021 00		1,808 11
Repairs and Replacements	5 17	45 00	39 83	
Rent and Insurance	15 00			15 00
Real Estate and Structures	4,904 60	3,390 00		1,514 60
	\$15,603 06	\$7,804 15	\$276 74	\$8,075 65

\* Note.—The item for labor (\$2,603.48) is included in budget under real estate and structures.



STATEMENT OF DETAIL OPERATION, MAINTENANCE, AND OUTLAY EXPENDITURES OF PUBLIC PARKS AND PLAYGROUNDS FOR PERIOD JANUARY 1, 1916, TO DECEMBER 31, 1916, CONTINUED.

Account	Expenditure	Budget Appropriation	Unexpended Balance	Deficit
<b>HENRY VILAS PARK LAVATORIES</b>				
Laundry and Janitor Supplies .....		\$17 00	\$17 00	
Medical Supplies .....		10 50	10 50	
Dry Goods, Bedding, Clothing .....		5 00	5 00	
		\$32 50	\$32 50	
<b>ORTON PARK</b>				
Salaries and Wages				
Maintenance .....	\$99 89	\$175 00	\$75 11	
Furniture and Fixtures .....	1 36	50 00	48 64	
	\$101 25	\$225 00	\$123 75	
<b>WASHINGTON BOULEVARD</b>				
Salaries and Wages				
Maintenance .....	\$96 00	\$75 00		\$21 00
<b>BURROWS PARK</b>				
Salaries and Wages				
Maintenance .....	\$476 95	\$500 00	\$23 05	



LAKE MENDOTA DRIVE NEAR MERRILL SPRINGS



STATEMENT OF DETAIL OPERATION, MAINTENANCE, AND OUTLAY EXPENDITURES OF PUBLIC  
PARKS AND PLAYGROUNDS FOR PERIOD JANUARY 1, 1916, TO DECEMBER 31, 1916, CONTINUED.

Account	Expenditure	Budget Appropriation	Unexpended Balance	Deficit
MADISON GENERAL HOSPITAL				
Salaries and Wages				
Maintenance of Grounds.....	\$80 25	\$200 00	\$119 75	.....
General Supplies and Expense.....		25 00	25 00	.....
	\$80 25	\$225 00	\$144 75	.....
KENDALL FIELD				
Salaries and Wages.....		\$40 00	\$40 00	.....
Real Estate and Structures.....	\$497 84	335 88	.....	\$161 96
	\$497 84	\$375 88	\$40 00	\$161 96
SPAIGHT STREET PARK				
Real Estate and Structures.....	\$101 75	.....	.....	\$101 75
CARE OF TREES				
Salaries and Wages.....	\$58 50	.....	.....	\$58 50
OLIVE JONES FIELD				
Real Estate and Structures.....	\$165 70	159 54	.....	\$6 16

STATEMENT OF DETAIL OPERATION, MAINTENANCE, AND OUTLAY EXPENDITURES OF PUBLIC  
PARKS AND PLAYGROUNDS FOR PERIOD JANUARY 1, 1916, TO DECEMBER 31, 1916, CONTINUED.

Account	Expenditure	Eudget Appropriation	Unexpended Balance	Deficit
OWEN PARKWAY				
Salaries and Wages				
Maintenance .....	\$70 72	\$150 00	\$79 28	.....
EVERGREEN PARK				
Salaries and Wages				
Maintenance .....	\$2 75	\$25 00	\$22 25	.....
BURR JONES FIELD				
Real Estate and Structures .....	\$348 16	\$339 66	.....	\$8 50
SPOONER STREET VIADUCT				
Salaries and Wages .....	\$4 75	.....	.....	\$4 75
EDGEWOOD DRIVE				
Salaries and Wages				
Maintenance .....	\$41 75	.....	.....	\$41 75
LAKESIDE PARK				
Salaries and Wages				
Maintenance .....	\$312 50	\$420 00	\$107 50	.....
Apparatus and Equipment .....	.....	75 00	75 00	.....
	\$312 50	\$495 00	\$182 50	.....



STATEMENT OF DETAIL OPERATION, MAINTENANCE, AND OUTLAY EXPENDITURES OF PUBLIC PARKS AND PLAYGROUNDS FOR PERIOD JANUARY 1, 1916, TO DECEMBER 31, 1916, CONTINUED.

Account	Expenditure	Budget Appropriation	Unexpended Balance	Deficit
COASTING				
Salaries and Wages.....	\$112 10			\$112 10
SIXTH WARD PARK				
Salaries and Wages.....		\$50 00	\$50 00	
General Supplies and Expense.....		30 00	30 00	
Real Estate and Structures.....	\$65 60			\$65 60
	\$65 60	\$80 00	\$80 00	\$65 60
SEWAGE DISPOSAL GROUNDS				
Salaries and Wages.....	\$117 37	\$41 25		\$96 12
MAPLE PARK				
Salaries and Wages.....	\$42 86	\$75 00	\$32 14	
WASHINGTON OVAL				
Salaries and Wages.....		\$125 00	\$125 00	
PUBLIC PIERS				
Salaries and Wages.....	\$85 25			\$85 25
General Supplies and Expense.....	105 29			125 29
	\$190 54			\$190 54

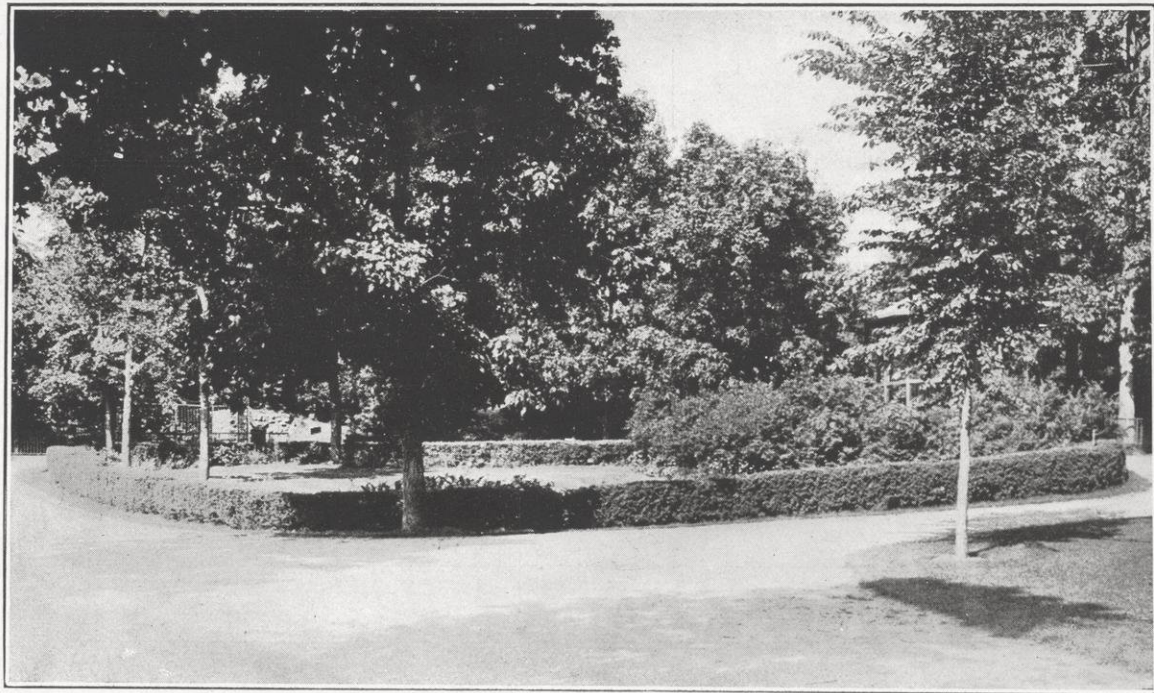
STATEMENT OF DETAIL OPERATION, MAINTENANCE, AND OUTLAY EXPENDITURES OF PUBLIC  
PARKS AND PLAYGROUNDS FOR PERIOD JANUARY 1, 1916, TO DECEMBER 31, 1916, CONTINUED.

Account	Expenditure	Budget Appropriation	Unexpended Balance	Deficit
<b>FARWELL AND LAKE MENDOTA DRIVES</b>				
Appropriation.....	\$3,000 00	\$3,000 00		
Lake Mendota Drive Bridge Repairs.....	18 96			\$18 96
	\$3,018 96	\$3,000 00		\$18 96
<b>YAHARA LOCKS</b>				
Salaries and Wages.....	\$397 00	\$360 00		\$37 00
Repairs and Replacements.....	12 08	500 00	\$487 92	
	\$409 08	\$860 00	\$487 92	\$37 00
<b>CELEBRATIONS</b>				
Memorial Day Observance.....	\$109 98	\$100 00		\$9 98
Fourth of July.....	469 95	500 00	\$30 05	
	\$579 93	\$600 00	\$30 05	\$9 98



STATEMENT OF DETAIL OPERATION, MAINTENANCE, AND OUTLAY EXPENDITURES OF PUBLIC PARKS AND PLAYGROUNDS FOR PERIOD JANUARY 1, 1916, TO DECEMBER 31, 1916, CONTINUED.

Account	Expenditure	Budget Appropriation	Unexpended Balance	Deficit
MONONA PARK				
Salaries and Wages				
Maintenance.....	\$693 69	\$780 00	\$86 31	
Music.....	65 00	390 00	325 00	
Printing, Stationery and Office Expense.....	11 54	18 00	6 46	
Rent and Insurance.....	120 00	183 90	63 00	
General Supplies and Expense.....	58 03	206 00	147 97	
Laundry and Janitor Supplies.....	75	30 00	29 25	
Heat, Light, Power, Water.....	127 46	250 00	122 54	
Stable and Garage Expense.....	45 10	72 00	26 90	
Repairs and Replacements.....	653 08	875 00	221 92	
Furniture and Fixtures.....	25 00	164 00	139 00	
Real Estate and Structures.....	87 20	500 00	412 80	
	\$1,886 85	\$3,468 90	\$1,581 15	
GRAND TOTALS.....	\$51,608 27	\$48,960 42	\$12,423 01	\$15,070 86
TOTAL EXPENDITURES.....			\$51,608 27	
TOTAL BUDGET.....				\$48,960 42
NET DEFICIT.....				2,647 85
			\$51,608 27	\$51,608 27



IN THE CENTER OF THE ZOO—HENRY VILAS PARK



# Treasurer's Report

To the Members of the Madison Park and Pleasure Drive Association:

The following is a condensed statement of the receipts and disbursements of the association for the year ending Dec. 31, 1917.

1917

## Receipts

1917		
Jan. 1	Balance from annual report.....	\$437 90
	Interest from Mr. and Mrs. A. H. Hollister Park Fund.....	372 50
	1914 subscriptions.....	5 00
	1916 subscriptions.....	17 00
	1917 subscriptions.....	2,664 45
	Reports sold.....	1 60
	Appropriations City of Madison....	3,150 00
	Trees sold.....	154 90
	Refund.....	20 16
	Work done by park men:	
	University of Wisconsin..\$300 00	
	Wesley Avenue..... 106 25	
	Capital Avenue..... 189 43	
	Miscellaneous..... 101 61	
		697 29

## Disbursements

Owen Parkway.....		\$622 63
Lake Mendota Drive.....		1,911 21
Farwell Drive.....		2,348 17
Miscellaneous.....		486 38
Town of Madison, Wesley Avenue..		106 28
Capital Avenue..		189 43
Stewart Memorial Fountain .....		259 12
Henry Vilas Park Improvement....		153 15
University Drive.....		621 28
Equipment Account.....		441 43
		\$7,520 80
Balance on hand.....		381 72
		\$7,520 80
		\$7,520 80

## Mr. and Mrs. A. H. Hollister Park Fund

Statement January 1, 1918, for 1917

1917			
Jan.	1	By balance from annual report.....	\$13,525 98
Feb.	19	By Arthur Heilman, interest to Feb. 17, 1917..... \$ 55 00	
March	21	First National Bank, interest on certificate..... 4 83	
March	21	By Joseph Hornung, interest to March 22, 1917..... 275 00	
April	18	By A. F. Menges, interest to April 18, 1917..... 27 50	
April	19	By First National Bank, interest on certificate..... 55	
June	9	By First National Bank, interest on certificate..... 8 58	
Aug.	18	By Arthur Heilman, interest to Aug. 17, 1917..... 55 00	
Sept.	20	By Joseph Hornung, interest to Sept. 22, 1917..... 275 00	
Oct.	18	By A. F. Menges, interest to Oct. 18, 1917..... 27 50	
Oct.	31	By Nellie Halberslaben, interest to Oct. 31, 1917... 16 04	
			745 00
To Paid Madison Park and Pleasure Drive Association one-half of income \$745.00 used on drives outside of the city.....			\$372 50
To Balance.....			13,898 48
			\$14,270 98
			\$14,270 98

1918

Jan.	1	By Balance.....	\$13,898 48
------	---	-----------------	-------------

The above balance is invested in the name of the Madison Park and Pleasure Drive Association as Trustee of the Mr. and Mrs. A. H. Hollister Park Fund as follows:

Joseph Hornung, mortgage 5½%..	\$10,000 00
A. F. Menges, mortgage 5½%.....	1,000 00
A. & R. Heilman, mortgage 5½%..	2,000 00
Nellie Halberslaben, mortgage 5½%	875 00
First National Bank, certificate 2½, 3, 4%.....	15 46
First National Bank, certificate 2½, 3, 4%.....	8 02
	\$13,898 48



Original Capital:	
Principal Sept. 17, 1913.....	\$12,279 61
Principal Sept. 20, 1917.....	212 75
	<hr/>
	\$12,492 36
One-half of income to Jan. 1, 1918..	1,406 12
	<hr/>
	\$13,898 48

### The Mrs. Stewart Bequest

1917		
Jan. 1	Balance on hand.....	\$2,990 62
Dec. 31	Interest at 4%, 1 year.....	119 62
	To Balance.....	\$3,110 24
		<hr/>
		\$3,110 24
		<hr/> <hr/>
1918		
Jan. 1	By Balance.....	\$3,110 24

Respectfully submitted,  
FRANK W. HOYT, *Treasurer.*

I hereby certify that I have examined the accounts of Frank W. Hoyt, treasurer, for the year 1917 and find them correct in all particulars.

ROBERT C. O'MALLEY.

Dated January 31, 1918.

## Subscriptions for 1917

Ackley, C. R.....	\$ 5 00	Dudgeon, R. B.....	\$ 5 00
Allen, C. E.....	5 00	Dwight, C. G.....	12 50
Allen, Miss Katharine.....	5 00	Dye, A. A.....	25 00
Arnold, Victor H.....	10 00		
		Ela, Emerson.....	15 00
Babcock, S. M.....	10 00	Ellman, George.....	2 00
Badger State Shoe Co.....	15 00		
Bagley, W. R.....	25 00	Farrington, E. H.....	10 00
Baskerville Estate.....	10 00	Fauerbach Brewing Co.....	25 00
Birge, E. A.....	5 00	Ferguson, W. F.....	5 00
Blackburn, A. C.....	10 00	Findorff, J. H.....	15 00
Boelsing, Carl.....	3 00	Fischer, Richard.....	5 00
Boyce, S. R.....	5 00	Fish, Carl R.....	5 00
Boyd, Joseph M.....	10 00	Fish & Schulkamp.....	5 00
Boyd, Joseph M. Co.....	25 00	Flint, A. S.....	5 00
Bradley, Mrs. H. C.....	25 00	Forward Oil Co.....	10 00
Brietenbach, George H.....	5 00	Fox, J. H.....	5 00
Brittingham, T. E.....	25 00	Fox, Phi'ip.....	15 00
Brown, C. N.....	25 00	Frautschi & Sons.....	5 00
Brown, Fred M.....	25 00	Frautschi, E. J.....	5 00
Brown, Frank G.....	25 00	Frederickson, A. D. & J. V.....	20 00
Buell, C. E.....	10 00	Frish, A. M.....	5 00
Burch, L. W.....	5 00	Fritz, Carl B.....	5 00
Burger, Peter.....	5 00	Fuller, Eugene A.....	5 00
Butler, H. L.....	15 00		
		Gay, Leonard W.....	10 00
Cantwell Printing Co.....	25 00	Geffert, Louis A.....	3 00
Capital Wire Co.....	3 00	Gernon, G. E.....	15 00
Castle & Doyle.....	10 00	Giddings, W. E.....	15 00
Chapman, C. B.....	10 00	Gifford, W. E.....	5 00
Chare, George C.....	5 00	Gigous, Howard S.....	5 00
Cochran, Joseph M.....	5 00	Gill, G. E. & A. J.....	5 00
Colby, John L.....	5 00	Gilman, Stephen.....	5 00
Cole, L. J.....	3 00	Gordon, J. O.....	5 00
Collins, W. H.....	10 00	Gregory, C. N.....	10 00
Collyer, B. B.....	5 00	Grimm, John J.....	5 00
Commons, J. R.....	10 00	Grinde, John.....	10 00
Conklin & Sons.....	25 00		
Conover, Allan D.....	10 00	Halligan, B. J.....	10 00
Cork & Holt.....	5 00	Hammersley, E. C.....	15 00
Corscot, G. J.....	5 00	Hammersley, Fay.....	10 00
Corscot, John.....	5 00	Hanks, L. M.....	15 00
Crescent Clothing Co.....	5 00	Hastings, E. G.....	6 00
Critton, J. M.....	5 00	Hatch, K. L.....	5 00
Cross, Frank L.....	5 00	Hausmann Brewing Co.....	25 00
Crowley, F. M.....	25 00	Hefty, T. R.....	5 00
		Herfurth, Theo.....	10 00
Davis, F. A.....	5 00	Hill, Carl N.....	10 00
Dean, Joseph.....	15 00	Hokanson, Emil.....	15 00
Doyon, B. H.....	15 00	Holmes, George C.....	5 00
Drew, Walter.....	5 00	Hoppman, A. C.....	5 00
Drives & Struck.....	10 00	Hotchkiss, W. O.....	5 00
Dudgeon, M. S.....	10 00	Hoyt, Frank W.....	25 00



Hudson, Charles H.	\$ 5 00	Metz, Anton	\$10 00
Humphrey, G. C.	5 00	Moore, R. A.	3 00
Hurd, R. W.	5 00	Morris Co., T. S.	5 00
Hyland, John G.	5 00	Morris, W. A. P.	10 00
		Moseley, H. L.	15 00
Icke, John F.	10 00	Mueller, W. H.	5 00
Ingersoll, L. R.	3 00		
		Neckerman, George M.	5 00
Jacobs, F. W.	10 00	Nelson, George	10 00
Jarvis, C. W.	3 00	Nelson, R. N.	5 00
Johnson, Carl	25 00	Netherwood, H. C.	5 00
Johnson, Hobart S.	25 00	New York Store	10 00
Johnson, M. I.	25 00	Nichols, H. E.	5 00
Jones, Burr W.	25 00	Norsman, O. S.	5 00
Jones, L. R.	5 00		
Jones, Richard Lloyd	10 00	Oakley, F. W.	15 00
		Olbrich, M. B.	10 00
Karstens, F. W.	10 00	Olin, John M.	25 00
Kayser, A. H.	10 00	Olson, Oscar C.	5 00
Kenney, A. P.	2 00	Olson & Veerhusen Co.	25 00
Kerr, Alexander	5 00	O'Malley, R. C.	5 00
Kessenich, Frank	15 00	Orpheum & Fuller Amuse-	
Kindschi, George W.	5 00	ment Co.	10 00
Kingston, Paul	5 00	O'Shea, M. V.	5 00
Kirchoffer, W. G.	10 00	Overton, J. B.	15 00
Kney, E. O.	5 00	Owens, William C.	10 00
Kney, Paul	5 00		
Knox, P. B.	10 00	Parker, W. N.	5 00
Koltes, Joe	3 00	Parkinson, J. B.	5 00
Kornhauser, Alex.	10 00	Parkinson, Marshall M.	10 00
Krauskopf, Francis	2 00	Pepper, J. W.	5 00
Kroncke, George	10 00	Pickford, H. W.	5 00
Kroepf, R. R.	10 00	Pieh, John F.	5 00
Kreuger & Tandvig	5 00	Poole, D. C.	10 00
		Prien, J. C.	5 00
Laird, A. G.	5 00		
Larson, A. C.	5 00	Quinn, George M.	5 00
Legler, F. E.	5 00		
Loomis, Mrs. Frances	5 00	Radke, Christ	5 00
Lyons, Thomas E.	10 00	Ratcliff, H. H. Co.	5 00
		Rayne, George T.	15 00
Mack, J. G. D.	5 00	Reber, Louis E.	5 00
Madison Gas & Electric Co.	25 00	Reynolds, E. J.	10 00
Madison Realty Co.	100 00	Richards, H. S.	5 00
Mansfield-Caughey Co.	5 00	Rigby, John	25 00
Marlatt, Miss A. L.	3 00	Riley, Charles	5 00
Marling, W. A.	5 00	Riley, E. F.	10 00
Marschall, A. J.	10 00	Riley, George C.	5 00
Marshall, Wm. S.	10 00	Rodolf, Charles F.	5 00
Mason, Edwin C.	5 00	Roesch, Wm.	5 00
Mason, Vroman	10 00	Rogers, A. T.	25 00
Mautz Bros.	15 00	Ross, E. A.	6 00
Mayers, Andrew A.	10 00	Runge, A. E.	5 00
McCaffrey, M. E.	5 00	Russos, Louis	5 00
McConnell, F. T.	10 00	Ryan, William	10 00
Mead, D. W.	15 00		
Menges, A. F.	10 00	Sanborn, A. L.	25 00
Messerschmidt, J. E.	10 00	Sater, M. H.	5 00

Sauthoff, Harry	\$ 5 00	Swenson, Magnus	\$25 00
Sayle, George C.	10 00	Swenson, Wm.	10 00
Scanlan & Morris	10 00		
Scherer, John	5 00	Taylor, Richard F.	5 00
Schlimgen, Fred	15 00	Teamsters' Union	15 00
Schmitz, A. J.	5 00	Teckemeyer, W. J.	15 00
Schoelkepf, L. F.	25 00	Tenney, C. H.	10 00
Schoen, Frank	10 00	Thompson, H. L.	5 00
Schubring, C. P.	5 00	Thorkelson, H. J.	10 00
Schubring, E. J. B.	15 00	Thorp, Miss Juliette	5 00
Schulz, Herman	5 00	Thwaites, F. T.	5 00
Schumacher, W. G.	5 00	Thwaites, Mrs. R. G.	5 00
Seastone, C. V.	15 00	Tressler, A. W.	10 00
Sheldon, C. S.	5 00	Turneaure, F. E.	15 00
Sheldon, W. H.	5 00		
Sherwood & McWilliams	5 00	Union Transfer & Storage Co	5 00
Siebecker, R. G.	5 00	Utter, A. O.	5 00
Simon, Fred N.	5 00		
Slichter, C. S.	10 00	Van Deusen & Son	5 00
Small, A. E.	5 00	Van Vleck, E. B.	10 00
Smith, Edward H.	5 00	Vilas, Mrs. Anna M.	25 00
Smith, Howard L.	5 00		
Smith, Lathrop E.	5 00	Wagner, George	10 00
Smith, Walter M.	5 00	Walton, James J., Jr.	3 00
Smith & Wilhelm	1 95	Warner, Harry M.	5 00
Snow, B. W.	5 00	Warner, Ernest N.	10 00
Spooner, P. L.	25 00	Wehrman, Charles & Son	5 00
Stark, P. E.	10 00	Welton, C. Rex	5 00
Statz, Matt	5 00	Wiedenbeck-Dobelin Co.	25 00
Steensland Land Co.	30 00	Wolcott, Walter A.	5 00
Steve, W. F.	5 00	Wolff, Kubly & Hirsig	10 00
Stevens, Mrs. B. J.	25 00		
Stevens, E. Ray	10 00	Young, Edward J.	10 00
Stidgen, George	2 00	Young, Karl	3 00
Stitgen, Ben	5 00		
Stoerber, Mary	5 00	Zoelle, J. F.	5 00
Stuart, S. H.	2 00		
Suhr, Fred W.	5 00		
Sumner & Morris	20 00		
		Total	\$2,664.45

### Subscriptions Paid in 1917

Woodward, W. L. (1914)	\$ 5 00
Hotchkiss, W. O. (Bal. 1916)	2 00
Rodolf, C. F. (1916)	5 00
Sauthoff, Harry (1916)	5 00
Small, Alvan E. (1916)	5 00
Total	\$22.00
Grand Total	\$2,686.45



# Balance Sheet

By City Auditor

STATEMENT OF DETAIL OPERATION, MAINTENANCE, AND OUTLAY EXPENDITURES OF PUBLIC  
PARKS AND PLAYGROUNDS FOR PERIOD JANUARY 1, 1917, TO DECEMBER 31, 1917.

Account	Expen- diture	Budget Appropriation	Unexpended Balance	Over- draft	Read- justment
<b>ADMINISTRATION</b>					
Salaries and Wages					
Foreman .....	\$1,200 00	\$1,400 00	*\$200 00		
Clerk .....	300 00	300 00			
Landscape Adviser .....	243 50	200 00		\$43 50	
Printing, Stationery, Office Expense					
Record Books and Forms .....	10 70			10 70	
Postage .....	40 75	100 00	59 25		
Printing .....	36 50	100 00	63 50		
Annual Report .....		450 00	450 00		
	\$1,831 45	\$2,550 00	\$772 75	\$54 20	

\* Included under General Equipment.

STATEMENT OF DETAIL OPERATION, MAINTENANCE, AND OUTLAY EXPENDITURES OF PUBLIC PARKS AND PLAYGROUNDS FOR PERIOD JANUARY 1, 1917, TO DECEMBER 31, 1917, CONTINUED.

Account	Expenditure	Budget Appropriation	Unexpended Balance	Overdraft	Readjustment
<b>TENNEY PARK AND PARKWAY</b>					
Salaries and Wages					
Caretakers.....	\$2,763 11	\$1,655 00		\$1,108 11	
Skating Rinks.....	128 74			128 74	
Piers.....	19 25			19 25	
Music.....	240 00	325 00	\$85 00		
Team Hire.....	7 00			7 00	
General Supplies and Expense.....	73 40	129 00	55 60		
Heat, Light, Power.....	39 09	320 00	280 91		
Repairs and Replacements.....	75 68	650 00	574 32		\$150 00
Stable and Garage Expense.....	2 77			2 77	
Laundry and Janitor Supplies.....	8 25			8 25	
Real Estate and Structures.....	1,225 19	150 00		1,075 19	
	\$4,582 48	\$3,229 00	\$995 83	\$2,349 31	\$150 00
<b>TENNEY PARK BATHHOUSE</b>					
Salaries and Wages					
Caretakers.....	\$717 63	\$642 50		\$75 13	
Printing, Stationery, Office Expense.....	6 53	22 50	\$15 97		
General Supplies and Expenses.....	172 20	58 78		113 42	
Laundry and Janitor Supplies.....	38 23	44 25	6 02		
Heat, Light and Power.....	13 50	64 00	50 50		
Dry goods, Bedding, Clothing.....	22 64	36 00	13 36		
Repairs and Replacements.....	80 36	166 00	85 64		
Rent and Insurance.....	28 00			28 00	
	\$1,079 09	\$1,034 03	\$171 49	\$216 55	



STATEMENT OF DETAIL OPERATION, MAINTENANCE AND OUTLAY EXPENDITURES OF PUBLIC PARKS AND PLAYGROUNDS FOR PERIOD JANUARY 1, 1917, TO DECEMBER 31, 1917, CONTINUED.

Account	Expenditure	Budget Appropriation	Unexpended Balance	Over-draft	Read-justment
<b>TENNEY PARK LAVATORY</b>					
Salaries and Wages.....	\$2 00			\$2 00	
Laundry and Janitor Supplies.....		\$20 00	\$20 00		
Medical Supplies.....		2 00	2 00		
Heat, Light, Power.....		90 00	90 00		
Dry Goods, Bedding and Clothing.....		10 00	10 00		
Repairs and Replacements.....	11 00	15 00	4 00		
	\$13 00	\$137 00	\$126 00	\$2 00	
<b>LAKE PIERS</b>					
Salaries and Wages.....	\$32 82			\$32 82	
General Supplies and Expense.....	56 85			56 85	
	\$89 67			\$89 67	
<b>GENERAL PARK EQUIPMENT</b>					
Salaries and Wages.....	\$322 41			\$322 41	
Laundry and Janitor Supplies.....	80			80	
General Supplies and Expense.....	88 62	\$778 85	\$690 23		\$200 00
Stable and Garage Expense.....	1,237 35	1,243 00	5 65		
Heat, Light and Power.....	120 23	100 00		20 23	
Repairs and Replacements.....	54 86			54 86	
Apparatus and Equipment.....	400 00			400 00	
	\$2,224 27	\$2,121 85	\$695 88	\$798 30	\$200 00

STATEMENT OF DETAIL OPERATION, MAINTENANCE, AND OUTLAY EXPENDITURES OF PUBLIC  
PARKS AND PLAYGROUNDS FOR PERIOD JANUARY 1, 1917, TO DECEMBER 31, 1917, CONTINUED.

Account	Expen- diture	Budget Appropriation	Unexpended Balance	Over- draft	Read- justment
<b>BRITTINGHAM PARK</b>					
Salaries and Wages.....		\$2,255 00		\$598 43	
Caretakers.....	\$2,685 41				
Skating Rinks.....	168 02				
General Supplies and Expense.....	5 17	112 50	\$107 33		
Heat, Light, Power.....		80 00	80 00		
Repairs and Replacements.....	44 28	200 00	155 72		
Real Estate and Structures.....	1,685 77	1,046 25		639 52	\$400 00
	\$4,588 65	\$3,693 75	\$343 05	\$1,237 95	\$400 00
<b>BRITTINGHAM PARK BOATHOUSE</b>					
Salaries and Wages					
Caretaker.....	\$549 00	\$520 00		\$29 00	
Printing, Stationery, Office Expense.....	22 91	22 50		41	
General Supplies and Expense.....	42 47	3 22		39 25	
Laundry and Janitor Supplies.....	3 24	5 50	\$2 26		
Medical Supplies.....		3 50	3 50		
Heat, Light, Power.....	56 70	34 00		22 70	
Dry Goods, Bedding, Clothing.....		8 00	8 00		
Repairs and Replacements.....		55 00	55 00		
	\$674 32	\$651 72	\$68 76	\$91 36	



STATEMENT OF DETAIL OPERATION, MAINTENANCE, AND OUTLAY EXPENDITURES OF PUBLIC PARKS AND PLAYGROUNDS FOR PERIOD JANUARY 1, 1917, TO DECEMBER 31, 1917. CONTINUED.

Account	Expenditure	Budget Appropriation	Unexpended Balance	Overdraft	Readjustment
<b>BRITTINGHAM PARK BATHHOUSE</b>					
Salaries and Wages					
Caretaker.....	\$582 50	\$642 50	\$60 00		
Printing, Stationery, Office Expense.....	10 50	22 50	12 00		
General Supplies and Expense.....	41 79	60 78	18 99		
Laundry and Janitor Supplies.....	18 42	40 25	21 83		
Heat, Light, Power.....	75 70	64 00		\$11 70	
Dry Goods, Bedding, Clothing.....	35 50	62 00	26 50		
Repairs and Replacements.....	253 03	380 00	127 97		
	\$1,016 44	\$1,272 03	\$267 29	\$11 70	
<b>HENRY VILAS PARK</b>					
Salaries and Wages		\$3,800 00		\$1,377 93	
Caretakers.....	\$3,128 09				
Skating Rink.....	131 87				
Music.....	615 00				
Outlay.....	1,302 97				
General Supplies and Expense.....	250 25	704 50	\$454 25		
Laundry and Janitor Supplies.....	11 25			11 25	
Heat, Light, Power.....	641 06	200 00		441 06	
Dry Goods, Bedding, Clothing.....	9 30	24 00	14 70		
Stable and Garage Expense.....	3 78			3 78	
Repairs and Replacements.....	58 92	225 00	166 08		
Real Estate and Structures.....	1,979 76	7,085 00	5,105 24		
	\$8,132 25	\$12,038 50	\$5,740 27	\$1,834 02	



MAPLE BLUFF FROM WOODWARD'S GROVE.



STATEMENT OF DETAIL OPERATION, MAINTENANCE, AND OUTLAY EXPENDITURES OF PUBLIC PARKS AND PLAYGROUNDS FOR PERIOD JANUARY 1, 1917, TO DECEMBER 31, 1917, CONTINUED.

Account	Expenditure	Budget Appropriation	Unexpended Balance	Over-draft	Read-justment
<b>HENRY VILAS PARK LAVATORY</b>					
Laundry and Janitor Supplies.....		\$16 00	\$16 00		
Medical Supplies.....		6 00	6 00		
Dry Goods, Bedding, Clothing.....		5 00	5 00		
		\$27 00	\$27 00		
<b>HENRY VILAS PARK ZOO</b>					
Salaries and Wages					
Caretakers.....	\$4,325 46	\$2,900 00		\$1,924 52	
Outlay.....	499 06				
Printing, Stationery, Office Expense.....	27 90	167 00	\$139 10		
Freight and Express.....		2 50	2 50		
Rent and Insurance.....	144 50	100 00		44 50	
General Supplies and Expense.....	680 21	766 35	86 14		
Laundry and Janitor Supplies.....		56 70	56 70		
Medical Supplies.....	52 30	50 00		2 30	
Heat, Light and Power.....	2,044 78	2,582 00	537 22		
Dry Goods, Bedding, Clothing.....	6 90	32 00	25 10		
Zoological Supplies.....	5,548 07	4,336 80		1,211 27	
Repairs and Replacements.....	177 34	180 00	2 66		
Departmental Equipment.....	46 01			46 01	
Real Estate and Structures.....	4,546 51	3,935 00		611 51	
	\$18,099 04	\$15,108 35	\$849 42	\$3,840 11	

STATEMENT OF DETAIL OPERATION, MAINTENANCE, AND OUTLAY EXPENDITURES OF PUBLIC PARKS AND PLAYGROUNDS FOR PERIOD JANUARY 1, 1917, TO DECEMBER 31, 1917, CONTINUED.

Account	Expenditure	Budget Appropriation	Unexpended Balance	Overdraft	Readjustment
<b>SPAIGHT STREET PARK</b>					
Salaries and Wages.....	\$253 78			\$253 78	\$1,000 00
	\$253 78			\$253 78	\$1,000 00
<b>SIXTH WARD PARK</b>					
Salaries and Wages.....	\$11 00	\$50 00	\$39 00		
General Supplies and Expense.....	2 50			\$2 50	
Real Estate and Structures.....	63 05			63 05	
	\$76 55	\$50 00	\$39 00	\$65 55	
<b>LAKE FRONT PARK</b>					
Salaries and Wages.....	\$268 36	\$490 00	\$221 64		
	\$268 36	\$490 00	\$221 64		
<b>OWEN PARKWAY</b>					
Repairs and Replacements.....	\$150 00	\$150 00			
	\$150 00	\$150 00			
<b>EVERGREEN PARK</b>					
Salaries and Wages.....	\$21 29	\$25 00	\$3 71		
	\$21 29	\$25 00	\$3 71		



STATEMENT OF DEATIL OPERATION, MAINTENANCE, AND OUTLAY EXPENDITURES OF PUBLIC PARKS AND PLAYGROUNDS FOR PERIOD JANUARY 1, 1917, TO DECEMBER 31, 1917, CONTINUED.

Account	Expen- diture	Budget Appropriation	Unexpended Balance	Over- draft	Read- justment
MADISON GENERAL HOSPITAL					
Salaries and Wages.....	\$112 00	\$75 00	.....	\$37 00	.....
	\$112 00	\$75 00	.....	\$37 00	.....
WASHINGTON BOULEVARD					
Salaries and Wages.....	\$94 25	\$75 00	.....	\$19 25	.....
	\$94 25	\$75 00	.....	\$19 25	.....
BURROWS PARK					
Salaries and Wages.....	\$574 65	\$300 00	.....	\$274 65	\$200 00
	\$574 65	\$300 00	.....	\$274 65	.....
MAPLE PARK					
Salaries and Wages.....	\$61 39	\$75 00	\$13 61	.....	.....
	\$61 39	\$75 00	\$13 61	.....	.....
KENDALL FIELD					
Salaries and Wages.....	\$11 13	\$40 00	\$28 87	.....	.....
Real Estate and Structures.....	468 63	335 88	.....	\$132 75	.....
	\$479 76	\$375 88	\$28 87	\$132 75	.....

STATEMENT OF DETAIL OPERATION, MAINTENANCE, AND OUTLAY EXPENDITURES OF PUBLIC  
PARKS AND PLAYGROUNDS FOR PERIOD JANUARY 1, 1917, TO DECEMBER 31, 1917.

Account	Expenditure	Budget Appropriation	Unexpended Balance	Over-draft	Read-justment
<b>ORTON PARK</b>					
Salaries and Wages.....	\$196 88	\$175 00		\$21 88	
	\$196 88	\$175 00		\$21 88	
<b>OLIVE JONES FIELD</b>					
Salaries and Wages.....	\$16 50			\$16 50	
General Supplies and Expense.....	17 60			17 60	
Real Estate and Structures.....	173 70	\$159 54		14 16	
	\$207 80	\$159 54		\$48 26	
<b>BURR JONES FIELD</b>					
Salaries and Wages.....	\$5 25			\$5 25	
General Supplies and Expense.....	10 92			10 92	
Real Estate and Structures.....	324 27	\$339 66	\$15 39		
	\$340 44	\$339 66	\$15 39	\$16 17	
<b>WASHINGTON OVAL</b>					
Salaries and Wages.....	\$99 87	\$125 00	\$25 13		
	\$99 87	\$125 00	\$25 13		
<b>SPOONER STREET VIADUCT</b>					
Salaries and Wages.....	\$9 06			\$9 06	
	\$9 06			\$9 06	

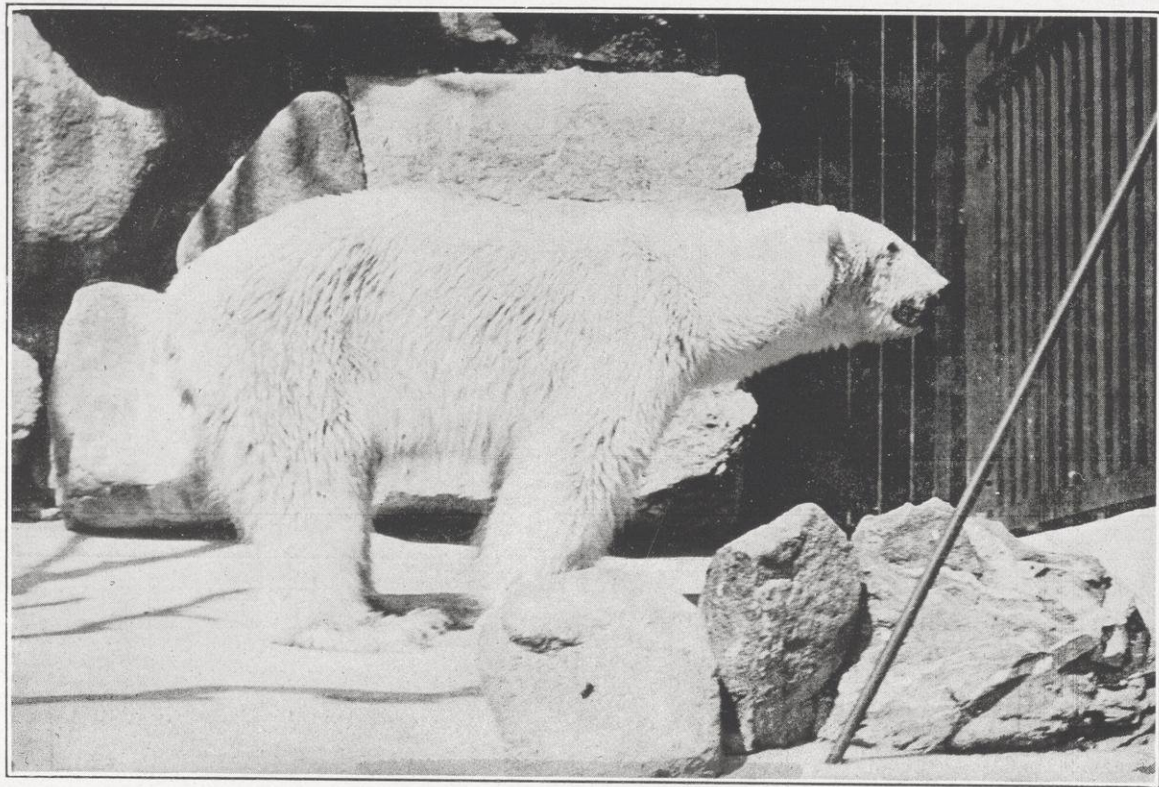


STATEMENT OF DETAIL OPERATION, MAINTENANCE, AND OUTLAY EXPENDITURES OF PUBLIC PARKS AND PLAYGROUNDS FOR PERIOD JANUARY 1, 1917, TO DECEMBER 31, 1917.

Account	Expenditure	Budget Appropriation	Unexpended Balance	Over-draft	Read-justment
FARWELL AND MENDOTA DRIVES					
Appropriation.....	\$3,000 00	\$3,000 00	.....	.....	\$1,000 00
	\$3,000 00	\$3,000 00	.....	.....	\$1,000 00
TOTAL.....	\$48,276 74	\$47,278 31	\$10,405 09	\$10,403 52	\$2,950 00

SUMMARY

Budget Appropriation.....	\$50,228 31	
Less Readjustment.....	2,950 00	
	<hr/>	
Added Appropriation for Improvement of Spaight Street Park.....	\$47,278 31	
	500 00	
	<hr/>	
Net 1917 Budget Appropriation.....	\$47,778 31	
Total Expenditure.....		\$48,276 74
Excess of Expenditure over Appropriation.....	498 43	
	<hr/>	
	\$48,276 74	\$48,276 74



POLAR BEAR



## Henry Vilas Park Zoo

## Complete List of Animals and Birds to January 1, 1918

No. Animals	Year Accessed	No. Animals	Year Accessed
2 Aoudad	1916	2 Eagles, Bald	{one . . . . . 1916
1 Baboon, Long-Armed			{one . . . . . 1917
Yellow	1914	1 Eagle, Golden	1917
1 Baboon, Mandrill	1917		{one . . . . . 1914
1 Badger, American	1912	3 Elk, American	{one . . . . . 1916
2 Bears, Ant	{one . . . . . 1916		{one . . . . . 1917
	{one . . . . . 1917	2 Foxes, Red	1912
5 Bears, Black	1917	3 Fowls, Japanese Silky	1917
2 Bears, Cinnamon	1916	2 Geese, African, Wild	1914
2 Bears, Russian Brown	1916		{one . . . . . 1914
2 Bears, Silver-Tip Grizzly	1914	4 Geese, Canadian	{one . . . . . 1916
2 Beavers, American	1916		{two . . . . . 1917
40 Birds, Small	1917	2 Geese, Chinese Wild	1917
2 Bison, American	1916	2 Geese, Egyptian	1917
2 Carouso, South American	1917	1 Gross Beak	1916
2 Cats, Civet	1916	2 Hawks, Cooper	1914
2 Cockatoos, Large Sulphur		2 Heron, Blue	1916
Crested	1914	2 Heron, Crested Night	1916
2 Cockatoos, Lesser Sulphur		2 Jackasses, Laughing	1917
Crested	1917	2 Kangaroos	1917
2 Cockatoos, Deadbeater	1917	2 Leopards, India	1917
5 Cockatoos, Rosa	1914	2 Lions, Abyssinian	1917
2 Deer, Fallow	1913	2 Lions, Mountain or Pumas	1916
2 Deer, Barisaugha	1916	3 Llamas	{one . . . . . 1916
2 Deer, European Red	{one . . . . . 1914		{two . . . . . 1917
	{one . . . . . 1917	1 Lynx, Bay	1916
2 Deer, Japanese Sika	1916	2 Macaws, Blue and Yellow	1917
2 Deer, Sacred White	1916	1 Macaw, Red and Blue	1915
2 Deer, Virginia White-tailed	1917	2 Monkeys, Java	1917
2 Doves, Crested	1917	2 Monkeys, Large Gray	
1 Dove, Pearl Neck	1917	Spider	1917
1 Dove, Emerald	1917	1 Monkey, Mangabey Gray	1914
6 Doves, Turtle	1915	1 Monkey, Sooty Mangabey	1914
2 Ducks, Black Cyouga	1916		{ten . . . . . 1913
4 Ducks, Black Mus-	{two . . . . . 1914		{four . . . . . 1915
covy	{two . . . . . 1917	19 Monkeys, Rhesus	{one . . . . . 1916
2 Ducks, Canvas-Back	1917		{four . . . . . 1917
2 Ducks, Crested White	1917	6 Monkeys, West African	1917
	{two . . . . . 1914	2 Ostrich, African	1917
6 Ducks, Mandarin	{two . . . . . 1916	1 Owl Artic	1915
	{two . . . . . 1917		{one . . . . . 1914
2 Ducks, Pintail	1914	4 Owls, Big Horned	{two . . . . . 1916
2 Ducks, Swedish Gray	1916		{one . . . . . 1917
1 Duck, White Cawl	1916	7 Parakeets	1914
16 Ducks, White Muscovy	1914	8 Parakeets, Ring-Neck	1917
	{four . . . . . 1914	6 Parakeets, Yellow	1917
16 Ducks, Wild Mallards	{six . . . . . 1915	1 Parrot, Cuban	1916
	{six . . . . . 1917	1 Parrot, Eclectus	1916
2 Ducks, Wood	1917	2 Parrots, Red-Head	1916
3 Eagles, American	{one . . . . . 1911	5 Parrots, Yellow-Headed	1914
	{two . . . . . 1916	1 Peacock	1915

## Henry Vilas Park Zoo

### Complete List of Animals and Birds to January 1, 1918

Continued

No. Animals	Year Accessioned	No. Animals	Year Accessioned
1 Peacock, Persian.....	1917	1 Sea-Lion, California.....	1916
1 Pelican, White.....	1916	4 Sparrows, White Java.....	1915
2 Pheasants, English.....	1916	4 Sparrows, Gray Java.....	1915
3 Pheasants, Golden.....	1916	2 Tigers, Royal Bengal.....	1917
2 Pheasants, Lady Amhurst..	1916	2 Swan, Black.....	1917
2 Pheasants, Reeves.....	1917	2 Swan, European White....	1917
3 Pheasants, Ring- {two.....	1913	1 Swan, White.....	1914
Neck..... {one.....	1917	2 Thar, Himalayan.....	1917
2 Pheasants, Silver.....	1916	5 Vultures, Turkey.....	1916
12 Pigeons, Wild.....	1916	4 Woodchucks {three.....	1911
50 Pigs, Guinea.....	1915	{one.....	1914
2 Porcupines.....	1917	1 Wolf, American Timber....	1914
4 Prairie Dogs.....	1917	4 Wolves, Prairie {two.....	1914
6 Quails, Bob-White.....	1916	{two.....	1917
4 Quails, California Valley..	1917	1 Wolf, Russian Timber.....	1916
25 Rabbits, Common {two.....	1911		
{six.....	1912	Aquaria	
{sevent n.....	1917	Bass, Silver	Gold Fish
5 Racoons {four.....	1912	Carp	Kivers
{one.....	1914	Dog Fish	Trout, Brook
2 Sacred Cattle, India.....	1917		Trout, Rainbow
5 Seagulls.....	1914		



### Present Park Areas with Water Frontage

Parks.	Acres	Water Frontage
Brittingham Park . . . . .	27	4,370 ft.
Burr Jones Field . . . . .	1.5	.....
Burrows Park . . . . .	12	550 ft.
East Monona . . . . .	6	5,000 ft.
East Washington Ave. Parkway . . . . .	10	.....
Elmside and Lake Front Park . . . . .	5.1	2,000 ft.
Henry Vilas Park . . . . .	62.6	6,000 ft.
Highlands . . . . .	11	.....
Kendall Park . . . . .	1.5	.....
Monona Park (Assembly Grounds) . . . . .	30	1,350 ft.
Olive Jones Field . . . . .	1.5	.....
Orton Park . . . . .	3.6	.....
Owen Parkway . . . . .	6	.....
South Madison Boulevard . . . . .	5	4,800 ft.
Spring Harbor . . . . .	1	270 ft.
Spaight Street Park . . . . .	1.5	600 ft.
Tenney Park . . . . .	44.2	3,800 ft.
Washington Oval . . . . .	.9	.....
Wingra Monona Parkway . . . . .	33	6,000 ft.
Yahara Parkway . . . . .	16.9	7,200 ft.
Totals . . . . .	280.3	41,940 ft.



