



LIBRARIES

UNIVERSITY OF WISCONSIN-MADISON

A directory of the city of Stoughton, and the villages of Edgerton, Milton and Milton Junction. 1882

Sneath, Thomas S.

Madison, Wisconsin: Sneath & Wilson, 1882

<https://digital.library.wisc.edu/1711.dl/RLDBUH32YYVE48Z>

Based on date of publication, this material is presumed to be in the public domain.

For information on re-use, see

<http://digital.library.wisc.edu/1711.dl/Copyright>

The libraries provide public access to a wide range of material, including online exhibits, digitized collections, archival finding aids, our catalog, online articles, and a growing range of materials in many media.

When possible, we provide rights information in catalog records, finding aids, and other metadata that accompanies collections or items. However, it is always the user's obligation to evaluate copyright and rights issues in light of their own use.

DIRECTORY

STOUGHTON,
EDGERTON,
MILTON,
AND
MILTON JUNCTION.

MADISON CITY ADVERTISEMENTS.

ESTABLISHED 1852.

WM. J. PARK & CO.,
Booksellers and Stationers,
BOOKBINDERS,
Rulers, Blank Book Manufacturers,
AND DEALERS IN DECORATIVE
WALL PAPERS,
Window Shades, Musical Merchandise, Etc.
PIANOS AND ORGANS TO RENT
9 and 11 King Street, Madison, Wisconsin.

**SLIGHTAM'S
DINING ROOMS.**

C. F. SLIGHTAM & BRO., Proprietor.

Day board and lodging per week \$4 and \$5.00
Day board per week..... 3.00
Regular meals35

Oysters and Warm Meals Served at all Hours.
Journal Block, Madison, Wisconsin.

Madison Eye & Ear Infirmary

DR. LINDSAY S. BROWN,




Oculist and Aurist



Room 2, Brown's Block.

Have permission to refer to :

DR. JOHN FAVILLE, DR. J. A. JACKSON, DR. J. J. BROWN,
DR. WM. HOBBS, DR. WM. JACOBS, DR. J. A. MACK,
DR. O. M. TWITCHELL.

 Nachet's Trial Lenses for Fitting Spectacles.

Address P. O. Box 1166, MADISON, WIS.

MADISON CITY ADVERTISEMENTS.

When You go to Madison,

IF YOU WANT A GOOD TIME,

AGlassofGoodBeer

AND PROMPT ATTENTION, CALL IN AT

MIKE NEWMAN'S,

MAIN STREET. NEAR PINCKNEY,

ROBINSON & KOLLOCK,

DENTISTS

Corner Pinckney and Mifflin Streets,

MADISON, - WISCONSIN.

**Dr. Kollock Will be in Stoughton on Tues-
day of Each Week.**

OFFICE WITH DR. ROWE, OVER HALE'S STORE.

OLSON, WINDEN & VEERHUSEN,

MERCHANT TAILORS,

*READY-MADE CLOTHING, FURNISHING
GOODS, HATS, CAPS, ETC.*

Custom Work a Specialty.

The Largest Stock in Southern Wisconsin.

42 Pinckney Street,

- Madison, Wis

C. H. Dickinson.

Edgerton,

Wisconsin.

Dickinson

A decorative flourish consisting of a central vertical line with symmetrical, swirling, leaf-like or scroll-like elements extending outwards and upwards from the top and downwards from the bottom.

Sherman

A DIRECTORY

—OF—

THE CITY OF STOUGHTON,

AND THE VILLAGES OF

Edgerton, Milton and Milton Junction.

CANVASSED AND COMPILED BY

THOMAS S. SNEATH.

PUBLISHED BY
SNEATH & WILSON,
Madison, Wis., September, 1882.

Extract

LIBRARY
OF THE
CITY OF BOSTON

25 Jan. 1925.

13189

Preface.

IN presenting to the citizens of Stoughton the first city directory of their community ever published, we beg to call their attention to a few of the many interesting facts which the compilation of the work has developed. On counting up the names of the citizens we have registered in Stoughton we find 591, and calculating upon a basis of 31-16 population to each name of the number, we have, as the present population of Stoughton, 1,810, which we believe to be accurate. The 31-16 basis is used in reckoning the growth of their cities by almost all eastern directory publishers and when their figures are compared with the census taken each decade they will be found to be very nearly correct.

Reference to our business directory will show 105 separate firms engaged in business in the city. Some transact several kinds of business; a large number of the merchants handle more than one kind of goods, and there are but few among the storekeepers who make a specialty of one branch of trade. The following list comprises the various branches of business pursued here and the number of firms engaged in each:

Agricultural implements, 2; architect, 1; barbers, 2; blacksmiths, 4; boarding houses, 4; boot and shoe dealers, 3; builders, 5; wagon manufacturers, 3; cigar manufacturer, 1; draymen, 3; dentists, 2; dressmaker, 1; druggists, 3; dry goods, 2; express agent, 1; flour, feed, etc., 2; furniture, 1; general merchandise, 6; gunsmith, 1; harness, 1; hardware, 2; hats and caps, 2; hotels, 2; painter, 1; insurance agents;

3; jewelers, 2; libery stables, 2; lumber dealer, 1; marble dealer, 1; markets, 3; milliners, 5; organs and sewing machines, 1; paints and oils, 2; photographer, 1; physicians, 6; printing offices, 2; pumps, 1; restaurants, 2; saloons, 3; spring beds, 1; stoves and tinware, 1; tobacco, 5.

There are many of the firms in the business directory who are each classed under several headings, but they are entitled to this when dealing in the goods specified.

We find that Stoughton has 25 streets; 9 tobacco warehouses; 85 stores and offices; 1 school house; 8 churches; 1 grain elevator; 2 grist mills; 3 wagon factories; 1 cigar factory; 2 newspapers; 1 bank; a postoffice; 4 boarding houses; 2 hotels; a station house; 7 places where liquor is sold, a lot of people full of pluck and enterprise, and no debt.

The historical sketch contains all the material we were able to collect from many sources.

We relied on officers of churches and societies for much information promised us, but a large share of which never came to hand.

The remuneration derived from the work will not be so much that the publisher will be bewildered where to invest it. We heartily thank the business men of the city who have encouraged us with information, advertisements and subscriptions.

STOUGHTON

City Directory.

ALEXANDERSON Agennes, farmer, h. rear Main, over R. R
Aleckson G. blacksmith, h. Main, cor. Page
Aleckson Walter M. blacksmith, h. Main, cor. Page
Almond William, carpenter, h. South, near Monroe
Allen Mrs. Frank, h. Page, cor. Washington
Allen Louis, bookkeeper. b. Page, cor. Washington
Allen Rufus S. carpenter, h. Monroe
Allend Enes, wagonmaker, h. South
Allend Hulver, teamster, h. Page
Allengson Guttang, blacksmith, h. Main
Ames A. R. (Johnson, Tusler & Co.) b. Hutson house
Ames George Q. bookkeeper, b. Brown's hotel
Amlondson Peter, bartender, b. Sixth
Amundson Peter, bartender, b. Fifth
Anderson Andrew, blacksmith, h. Mandtville
Anderson A. E. (Jacobson & A.) h. Fifth
Anderson A. H. mechanic, b. National hotel
Anderson Clement, wagonmaker, h. Jefferson
Anderson Edward, teamster, h. South, near Fourth
Anderson Gunder, bartender, h. Washington, near E. Water
Anderson Martin, wagonmaker, h. Fifth
Anderson Nels, helper, h. Page
Anderson Nels N. clerk, National hotel

- Anderson Ole J. woodworker, h. Forest
Anse Ole, wagonmaker, h. Forest, cor. Jefferson
Aplin E. H. law student, b. Washington
APLIN REV. N. J. pastor M. E. Church, h. Washington
Appleton Nels, laborer, h. South, near railroad
Armit James, plasterer, h. Main, over railroad.
- BAHR F. b. Sixth, cor. Jefferson
Baker J. G., U. S. Ex. agent, Main, h. Jefferson
Barenson George, woodworker, h. Division
Barenson Samuel, wagonmaker, h. Division
Barnes Caleb, painter, b. Main, cor. Fourth
Barron Sam, wagonmaker, h. Division
Barron Y. b. Division, cor. North
Brasste Christian, bookkeeper, b. Jefferson, cor. Seventh
Beardsley E. physician, h. Main
Beattie Thomas, h. Fifth, cor. Jefferson
Becker George W. builder, h. Washington, cor. Forest
Belden S. bartender, h. Main, cor. Forest
Benson Peter, laborer, b. National hotel
Berg Ole J. clerk, b. Division
Bergeson Charles, wagonmaker at Mandt's
Bergeson William, painter, b. Main
Bock Gustav, barber, b. Washington
Bocken Peter, wagonmaker, h. South
Booth William, ostler, b. Hutson house
BREDESEN REV. ADOLPH, pastor Norwegian Luth-
eran Christ Church, h. Main, over railroad
Brickson C. clerk, h. Washington
Brickson John, grocer, Main, h. Page
Brickson J. E. (B. & Lothe) h. Main
Brickson Ole, b. Division, cor. North
Brickson & Lothe, general merchandise, Main
Briggs William, wagonmaker, b. Division, cor. Jefferson
Bronson C. A. (Severson & B.) res. Milwaukee

Brown Chris, h. Main

BROWN MISS ELLA, millinery and fancy goods, Main,
cor. Forest, h. Main

Brown Mrs. L. Brown's hotel, Main, near Forest

Brown William F. bookkeeper, b. Brown's hotel

Buckman D. T. mechanic, h. Main

Buckman Fred. A. blacksmith, Main, near bridge, h. Jefferson

Burdick Charles F. printer, b. Fourth

Burns John, bartender, Hutson house

Burnett George M. builder, h. Page

Burul Ole, wagonmaker, b. Sixth.

CAMP D. D. (D. D. & Son) h. Main

Camp D. D. & Son, jewelers, Main, near Division

Camp Perry P. (D. D. Camp & Son), h. Main

Carpenter J. W. b. Fourth, cor. Jefferson

Carrier Zadoch L. woodsawyer, h. Main

Chappell Franklin, h. Madison, cor. Jefferson

Chappell Porter, h. Main

Chase Sydney (Hutson, Chase & Co.) h. Jefferson

Chidester Jerome, drayman, h. Washington

Chidester Samuel, h. Jefferson

Childs Fred. B. telegrapher, b. Fourth, cor. Jefferson

Christenson Christian, jeweler, Main, cor. Division

Christofferson Andrew, moulder, b. Page

Christofferson C. (Forthun & Co.) h. Main

Christofferson Mrs. B. h. Main, near bridge

Christofferson Peter, blacksmith, h. Main

Christopher O. (Lawson & C.) h. Division

Christy Robert, wagonmaker, h. Fourth

Clancy J. N. attorney, b. Fourth cor. Jefferson

Clark John, mason, b. Page

Clark L. D. physician, Main, cor. Prairie, h. Prairie, cor.
Washington

Clark William, h. Main, cor. Prairie
 Coates William, teamster, h. Division
 Cold Jens, h. Fifth.
 Cole John M. carpenter, h. Main
 Collin John, Farmer, h. Page
 Congregational Church, Fifth, cor. Jefferson
 Conlon Peter, blacksmith, h. Main
 Courier Office, Main, near bridge

GEO. W. CURRIER, General Insurance Agent, represents fire insurance companies with over \$50,000,000 assets. American, of Pa.; Continental, of N. Y.; Fire Association, of Pa.; Sun, of London; Hartford, of Conn; Home, of N. Y.; Ins. Co. of North America, of Pa.; Phoenix, of Conn.; Phoenix, of N. Y.; Springfield, of Mass.; St. Paul, of Minn.; Queen, of Liverpool; North British and Mercantile, Eng.; Milwaukee Mechanics; Niagara and Westchester. the Northwestern Mutual Life Ins. Co., of Milwaukee, the best Life Company in the world. The Accident Ins. Co., Hartford, Conn.; The German-American Hail Ins. Co., St. Paul, Minn. First class insurance at as low rates as absolute indemnity will allow. Office in Bank Building, Stoughton, Wis.

CURRIER GEORGE W. principal high school, insurance agent, Forest, cor. Main, h. Forest
 Cutler Curt, wagonmaker, h. Main, cor. Madison.

DAHL Andrew, moulder, h. Main.
 DAHL REV. T. H. pastor Norwegian Lutheran Church, h. Washington, cor. Fourth
 Dalaker John, tailor, h. Jefferson
 Damoth Mr. carpenter, h. Main, cor. Fourth
 Davis Charles, carpenter, b. Main
 Davis Charles, carpenter, h. Page
 Daws James, drayman, h. Main

JOHN DAWS,

DEALER IN

HARDWARE,

Tinware, Stoves, Cutlery, Guns, Etc.

36 Main Street,

-

-

Stoughton, Wis.

DAWS JOHN, hardware, 36 Main, h. Main

Daws Ned, teamster, h. Main

Daws William, farmer, h. Main

O. A. DEAN, M. D.,
Physician and Surgeon,
MAIN ST., STOUGHTON, WIS.

Residence Main Street, Beattie's Block. Office over Scheldrup's Drug Store. Office hours from 8 to 10 a. m., from 1 to 2, and 7 to 8 p. m. (Fourteen years experience in N. Y.)

DEAN O. A. physician, Main, h. Main

Dearborn Charles L (Lormer, D. & Co.) h. Main

Dehly Ferdinand, machinist, h. Main

Devoe Charles D. carpenter, b. Main

Dixon John, cigarmaker, b. Hutson house

Doolittle John, farmer, h. Fourth, over bridge

Doty Milton H., mechanic, h. Main, over railroad

Dow George, (Norris & D.) h. Washington, cor. Prairie

Dow Robe, cashier Stoughton State Bank, h. Fourth, near mill

Dumond W. H. restaurant, 48 Main, h. Main

Duller Alfred H. plasterer, h. Monroe

Duruld Ole, planer, h. Sixth.

EGELAND C. O. planer, h. Main

Emerson Moses, street commissioner, h. Fourth, over bridge

Enge C. C. tailor, h. Division

Enge C. T. wagonmaker, h. Division

Enge Martin, tailor, h. North

Eliarsen Christian, machinist, h. rear Main, near depot

Eliarsen Martin, woodworker, h. Mandville

Erickson Alex. teamster, b. Sixth, cor. Jefferson

Erickson Alfred, bookkeeper, b. Jefferson, cor. Fourth

- Erickson Andrew, furniture, Main, h. Washington
 Erickson Ever, painter, h. rear Main, over railroad
 Erickson Kanute, wagon mfr. Main, cor. Seventh, h. Jefferson, cor. Sixth
 Erickson Ole, h. Sixth, cor. Jefferson
 Erickson Ole, cabinetmaker, b. Washington
 Erickson Ole, clerk, h. Washington, cor. Fourth
 Erickson Ole, machinist, b. Fifth
 Erickson Ole H. shoemaker, h. Division
 Erickson Mrs. A. T. h. Jefferson, cor. Fourth
 Erickson Robert, bookkeeper, b. Fourth, cor. Jefferson
 EVANS GEORGE, grocer, billiards, Main, opp. Hutson house, h. Jefferson
 Evans Walter, miller, b. Main, cor. Fourth
 Evens John, b. rear Main, over railroad
 Evens Samuel, carpenter, h. Main, over railroad
 Everett Charles K. helper, b. Main
 Everson Erne, wagonmaker, h. North

FALKS' DRUG STORE.

In Stoughton, Wis., at Falks' Drug Store.
 You can find what you want, and very much more.
 We keep drugs of all kinds, right side up with care
 To cure all diseases to which we are heir.

Of Stationery, Wall Paper and Perfumery our stock is complete;
 For Oils and Paints, mixed and unmixed, we cannot be beat.
 Our medicines, always, when brought to the test,
 By good judges are esteemed and pronounced the best.

- FALK BROS. druggists, Main
 Falk Fred. (Falk Bros.) Main, b. Division, cor. North
 Falk Ole N. (Falk Bros.) h. Washington
 Falkenberg Johannes, sawyer, b. South
 Ferman William A. photographer, Main, cor. Fourth, h. Fourth
 Fimreit Iver, blacksmith, h. Fifth, cor. Main
 Fish John, h. Page, cor. Seventh

Fisher J. L. blacksmith, b. Fourth, cor. Jefferson
 Fix Julius, cigarmaker, b. Division, cor. Jefferson
 Flatt Hayhaw, farmer, h. Washington
 Flood Jas. S. blacksmith, h. Main

A. FLYTE,

MANUFACTURER OF

Wagons, Carriages, CUTTERS, ETC.

MAIN ST., NEAR BRIDGE. STOUGHTON, WISCONSIN.

Repairing done in the best of style and on short notice for reasonable prices. Satisfaction guaranteed. Horseshoeing and Blacksmithing by as good workmen as can be found in the state.

FLYTE AMOS A. blacksmith, Main, cor. Division, h.
 Washington, cor. Fourth

Forthun B. D. (F. & Christofferson) h. Main

Forthun & Christofferson, bakery, Main

Forthun John K. blacksmith, h. Main

Forton Ole O. (O. O. F. & Co.) h. Page oo

FORTON O. O. & CO. general merchandise, Main. See
 page 29

Foss Ole, laborer, b. Main

Frankson F. (F. & Gilbert) h. Forest, cor. Jefferson

Frankson M. F. clerk, Hutson house

Frankson & Gilbert, saloon, Main

Freeman William H. moulder, b. National house

Fricke August H. barber, Main, h. Main

Frushe Thomas W. warehouseman, h. Main near bank

Fuller Mrs Jane, h. Main

Funiset Ole, painter, h. Jefferson, near Seventh.

GENDER, C. C. cigarmaker, b. Hutson house

Gellerhust Ole J. helper, h. rear Main, over railroad

Gilderhouse Mrs. Annie, h. South, near Sixth

Gilbert Ole, (Frankson & G.) b. Forest, cor. Jefferson

Gjerston Ole, tailor, b. South

Gjerston Thomas, carpenter, h. South
 Glines Perry, wagonmaker, b. Main, cor. Fourth
 Goldkup, Aane, shoemaker, h. Sixth
 Gould P. S. woodworker, h. South

WILLIAM GOULD, CONTRACTOR AND BUILDER

MAIN STREET, COR. JEFFERSON.

*CONTRACTS TAKEN BY THE DAY OR JOB
 DRAUGHTS, PLANS AND SPECIFICATIONS
 AT REASONABLE RATES.*

GOULD WILLIAM, builder, h. Madison, cor. Jefferson
 Graham Eli, farmer, b. North
 Graham James, h. North
 Grand Andrew, carpenter, b. Main
 Grane Bendik, sawyer, h. Jefferson, cor. Seventh
 Grane Louis, (O. O. Forton & Co.) h. North, cor. Forest
 Grane Theodre, woodmaker at Mandt's
 Greenbank Nelson, marble dealer, h. Jefferson, cor. Forest
 Gregerson Severson, clerk, b. Division, cor. North
 Griffin A. B. printer, b. Fourth, cor. Jefferson
 Griggs Charles L. cigarmaker, h. Page
 Griggs Mrs Louis, boarding house, Division, cor. North
 Grueter Theodore, tinner, h. Monroe
 Gudbrandson Peter, woodworker, h. South
 Gullikson Even, wagonmaker, h. Washington
 Gullikson John, blacksmith, h. Division
 Gunderson O. (A. Jenson & Co.) h. Main, over railroad

HAGAN Erick, blacksmith, h. Main
 Hahn, William, laborer, h. South
 Hale H. W. dry goods, Main, h. Fourth, cor. North
 Hale Percy, clerk, b. Fourth, cor. North
 Halvorson Osmon, saloon, Main, cor. Forest, b. Washington

Ham Henry A. butcher, h. highway, near Monroe
 Ham John, mason, h. highway, near Monroe
 Hanson Amund N. oiler, h. rear Main
 Hanson Carl, teamster, b. National hotel
 Hanson Christian, h. Main, over railroad
 Hanson Hans R. wagonmaker, h. Main
 Hanson Hendrick, b. Division
 Hansen H. T. merchant, Main, cor. Sixth, h. do
 Hanson James, bartender, h. Main
 Hanson Johann, h. Division
 Hanson Johans, wagonmaker, h. Fifth, cor. South
 Hanson John, wagonmaker, h. Fourth
 Hanson Ole, packer, h. Fifth
 Hanson Rasmus, blindmaker, h. Division
 Hanson Simon, tailor, b. Main, cor. Fourth
 Harrington C. O. leaf tobacco, h. Page
 Hateman Andrew, b. Main, near depot
 Haug, Ole E. shoemaker, h. Division
 Haugan Paul, machinist, h. North
 Haugason Ole, woodworker, h. Forest
 Hauland Ole, laborer, h. South
 Helikson C. machinist, h. Mandtville
 Hellikson Ole, tailor, b. Division
 Hennessey Timothy, barber, b. Washington
 Hermanson Elling, wagonmaker, h. South
 HIBBARD J. M. postmaster, b. Main, near Prairie
 Hill Frederick G. carpenter, b. Page
 Hill Mrs. Jane, h. Page

CHAS. M. HINTZE,

MANUFACTURER OF

CHOICE HAVANA AND DOMESTIC
 CIGARS,

Main Street, cor. Division,

W. A. McFarlane, Salesman. Stoughton, Wis.

HINTZE CHARLES M. cigarmaker, Main, cor. Division,
h. Fifth, cor. Jefferson

Hippenmeyer Charles, barber, b. Hutson house

Hoen Andrew, packer, b. National hotel

Hoff Iver, painter, h. Fourth, over bridge

Hoff Julius, shoemaker, h. Main

Hoffman F. J. wagonmaker, b. Main, cor. Fourth

Honstar Even, sawyer, h. Mandtville

Holo John, blacksmith, h. Jefferson

Holten G. A. wagonmaker, h. Forest, cor. Jefferson

Holverson John, laborer, h. Page

Homestead John, carpenter, b. Main

Homme Ole O. woodworker, h. Sixth

Hotchkiss D. H. mason, b. Fourth, cor. Jefferson

Hoverson H. A. justice, h. Washington, cor. Forest

HUB THE, newspaper, cor. South and Forest

Huestmark Adolf, painter, b. Fourth, cor. Jefferson

Hulverson Steiner, farmer, h. Main, over railroad

Hurd Floyd, carpenter, b. Fourth, cor. Jefferson

HUTSON, CHASE & CO. livery, Division, next to Hutson
house. See page 28

HUTSON HOUSE STABLES, next to Hutson house

Hutson J. S. (H. & Wood) h. Hutson house

HUTSON & WOOD, Hutson House, Main, cor. Division

INGBRETSON Torwell, gardener, h. Page

Ireson John, blacksmith, h. South

Isham Chauncey, farmer, h. Fourth, over bridge

Isham Ogden, h. Fourth, over bridge

Iverson Alexander, carpenter, h. Main

JACOBSON Jergan, sawyer, h. Forest

Jacobson Lars, (J. & Anderson) h. North

Jacobson Martin, planer, b. Sixth

Jacobson & Anderson, tinware, Main, cor. Division

- Jargo Mrs. H. O. h. Fifth, near North
JENSON, ANDREW & CO. leaf tobacco, Main, near depot
Jensen Ben. W. wagonmaker, h. Fifth
Jensen Hans, sawyer, h. Mandtville
Jensen Jens, shipper, h. South, near Fourth
Jensen Louis, shoemaker, h. Page, cor. Washington
Jensen Mrs. Sarah, h. Division
JENSEN N. boots and shoes, Main, h. Fourth, cor. North
See page 32
Jensen Sever, cigarmaker, b. Page, cor. Washington
Jerde Mrs. Carrie, h. North
Jerston Rev. J. P. h. Washington, cor. Fourth
Johnson Alexander, wagonmaker, h. Madison
Johnson Andrew L. (Lillesand & J.) h. Main
Johnson Anton F. tobacco sampler, h. Main, over railroad
Johnson Bros. meats, Main
Johnson Charles A. sawyer, h. Jefferson
Johnson Charles. packer, h. Main
Johnson Christian, planer, h. Main
Johnson Elling, laborer, h. rear Main, over railroad
Johnson Fred, painter, h. Washington, cor. Division
Johnson Hans, wagonmaker, h. South
Johnson Holstein, machinist, h. Madison
Johnson Johann, shoemaker, b. Main
Johnson John, harnessmaker, b. East Water
Johnson John, shoemaker, h. rear Main, near depot
-

J. C. JOHNSON,

DEALER IN

FINE WINES AND LIQUORS,
CIGARS, ETC.

*Basement Melaas' Block, Main Street,**Stoughton, Wis.*

JOHNSON JOHN C. saloon, Main, h. Page, cor. Main
Johnson John B. (Johnson Bros.) h. rear Main, over railroad
Johnson John F. wagonmaker, h. Main, over railroad
Johnson John P. cutter, h. Fourth
Johnson Julius, (Johnson Bros.) Main, h. South
Johnson Louis, wagonmaker, h. South
Johnson M. & Co. tobacco warehouse, Main, near depot
Johnson M. F. wagonmaker, b. Main, cor. Fourth
Johnson Mathew, (J., Tusler & Co.) (J. & Melaas) (M., J. & Co.) h. Page, cor. South
Johnson Michael, blacksmith, h. Fourth, over bridge
Johnson Mrs. Inger, h. North
Johnson Mrs. Martha, h. East Water
Johnson Michael, blacksmith, h. Mandtville
Johnson Michael B. blacksmith, h. South, cor. Fifth
Johnson & Melaas, clothing, Main
Johnson Olaus, blacksmith, h. Madison
Johnson Ole, helper, h. rear Main, over railroad
Johnson Ole C. clerk, b. Page
Johnson Otto, laborer, h. Page
Johnson Peter, laborer, b. Page, cor. South
Johnson Tosten, National hotel, Main
JOHNSON, TUSLER & CO. general merchandise, 39
Main. See page 31

KAGAN Eric, blacksmith, h. Main
Kanitson Julius, blacksmith at Mandt's
Kanutson Even, packer, b. Sixth
Kerr Edward, blacksmith, h. Division
Key W. W. h. Fourth over bridge
Kilmaster Robert, jobber, h. Fifth cor. North
Kimball G. W. roofer, b. National hotel
King E. D. grocer, billiards, Main, b. Main, cor. Fourth
Kirby Samuel, engineer, h. Sixth, cor. Jefferson
Kitleson Nels, laborer, h. Page

Knox Henry H. carpenter, h. Fourth, over bridge
Kollien O. A. blacksmith, h. Forest
Kollock George, dentist, Main, cor. Forest
Kroken O. C. wagonmaker, h. Jefferson

LADD Mrs. E. I. millinery, Main, h. Main
Ladd Prof. Ludwig, veterinary surgeon, h. Fourth
Laning Jasper, h. South
Laning William, carriage trimmer, b. South
Lambert Charles, blacksmith, b. Main, cor. Fourth
Larson Andrew, laborer, h. Fifth
Larson Christopher, agricultural implements, Main, cor.
Fifth, h. do. See page 28
Larson John, Shoemaker, h. South
Larson Mrs. Carrie O. h. Fourth
Larson Mrs. Ingabot, h. Sixth
Larson Magnus, bookkeeper, b. Page
Larson Nels, stonemason, h. Monroe, cor. South
Larson Nels K. bartender, h. Main, cor. Sixth
Larson T. D. blacksmith, h. Division, cor. North
Laughlin Thomas, laborer, h. South, cor. Seventh
Laws F. F. physician, Main, h. Washington, cor. Fourth
Laws Yngvar, drug clerk, b. Washington, cor. Fourth
Lawson L. T. (L. & Christopher) b. Division, cor. North
Lawson & Christopher, general merchandise, Main
Lee Frank, moulder, h. Fourth, over bridge
Lee Ole, farmer, h. South, cor. Madison
Leedle William H. groceries, flour, feed, Main, cor. East
Water, h. Main. See page 30
Legreid Sven, blacksmith, h. North
Lieber Johann, miller, b. South
Lien Henry K. woodworker, b. North
Lindstrum J. G. tinner, b. Main, cor. Division
LILLESAND & JOHNSON, meats, Main, near Fourth
Lillesand Johu, (L. & Johnson), h. Main

Livingston John, blacksmith, b. Page
 Livingston John A. blacksmith, b. Main
 Lobben Louis, fireman, b. Main
 Lormer Thomas, (L., Dearborn & Co.) h. Fifth
 Lormer, Dearborn & Co., agricultural implements, Main
 Lothe Michael H. (Brickson & L.) h. Main
 Lowry James, shoemaker, h. Page
 Lowry William, printer, b. Page
 LUND C. T. supt. for T. G. Mandt, editor The Hub, h. Forest

L. K. LUSE,
ATTORNEY AT LAW,
 STOUGHTON, WISCONSIN.
 Collections Promptly Attended To.

LUSE L. K. attorney, Forest, cor. Main, h. Main

DR. A. P. LUSK,
DENTIST.
STOUGHTON, WIS.

Sixteen years study and practice. Teeth extracted without pain by use of Vitalized Air. Gold Fillings warranted. Examination and advice gratis.

LUSK ALBERT P. dentist, Main, cor. Fourth, h. Main
 Lusk J. W. P. ins. agent, Main, h. Main, bet. Fourth and Forest
 MADSON H. J. moulder, h. Mandtville
 McComb Robert B. farmer, h. highway, near Monroe
 McEckren Mrs. h. Jefferson, cor. Division
 McFadyon C. S. carriage painter, h. Main, near Forest
 McNeil Charles, stock buyer, h. Main, cor. Fourth

McNeil David, drayman, h. Madison
 Mandt Gunder, h. Sixth
 Mandt Gunder, trav. agent, h. Main
 MANDT T. G. wagon manufacturer, South, h. Forest, cor.
 Washington

Mandt T. O. clerk, b. Main, cor. Sixth
 Maloney Louis, tailor, h. Main
 Martin Miss L. dressmaker, Main, h. Main
 Martinson Martin, painter, h. South
 Mathison Farwell C. blacksmith, h. South, cor. Madison
 Mathiason Olaus, packer, b. Forest
 Meerun Ole, shoemaker, h. Main, near depot
 Melaas C. J. (Johnson & M.) h. Washington, cor. Forest
 Melaas O. O. druggist, Main, h. Washington, cor. Forest
 Merritt David, carpenter, b. Monroe
 Methodist Episcopal Church, East Water, cor. Washington
 Merritt Oliver, carpenter, b. Monroe
 Michelson John, stonemason, h. South
 Michelson Mikkell, machinist, h. Sixth
 Mikkelson K. merchant, Main, h. Division
 Miller C. printer, b. Main, cor. Fourth
 Miller Mrs. Julia, boarding house, Main, cor. Fourth
 Minkler G. R. roofer, b. National hotel
 Mizo George, clerk, b. Fourth, cor. Jefferson
 Morfenson Andrew, blacksmith, h. Madison
 Mosey Miss Mary (M. & Stoughton), h. Washington, cor.
 Fourth

Mosey & Stoughton, millinery, Main
 Mussen Hendrik, h. Division
 Myron Ole, shoemaker, h. rear Main over railroad

NALAN Edward, clerk, 48 Main
 Nalan Peter, mason, h. Washington
 Narson Hans, laborer, h. Main, over railroad
 Naset J. J. architect, h. Washington, cor. Forest

- National hotel, Main, Tosten Johnson
Neilson Christian, farmer, h. Main
Neilson Methias, blacksmith, b. Main
Nelson Andrew, clerk, h. Washington
Nelson Nels J. shoemaker, h. Main
Nelson Ole, tailor, b. Main, cor. Fourth
Nelson Peter J. shoemaker, h. rear Main near depot
Nelson Thomas M. wagonmaker, h. Main over railroad
Nigh A. E. clerk, b. Main
Nigh J. H. meats, Main near bridge, h. do
Norby Charles, painter, h. Sixth
Norman Andrew, clerk, b. Seventh
Norman Christian, cooper, h. Seventh
Norris James (N. & Dow), h. Washington, cor. Fifth
Norris & Dow, Stoughton mills, Main near depot, Fourth
near bridge
NOTT MRS. C. M. boarding house, Fourth cor. Jefferson
Nowel George P. printer, h. Fifth cor. North
- O'BRIEN Thomas, laborer, h. South near railroad
Olson Andrew, driller, b. Sixth
Olson Christian, wagonmaker, b. South
Olson C. O. blacksmith, h. Main
Olson Eric, laborer, h. Jefferson
Olson H. J. sawyer, b. Washington
Olson Isaac, h. North
Olson Jens, stonemason, h. Washington cor. Division
OLSON KANUTE, harness, Main, h. rear Main over railroad
road
Olson Kanute, tailor, h. Fourth
Olson Lars, h. rear Main over railroad
Olson Levi, harnessmaker, b. Main over railroad
Olson Mrs. Sauvy, h. Seventh
Olson Nels, patternmaker, h. Main
Olson Ole, blacksmith, h. Forest

- OLSON OLE T. planer, h. Main over railroad
Olsen Severt, gunsmith, h. Jefferson near Seventh
Olson Tourgee, b. North
Omen Fred, butcher, h. Main
Orenson Ole, wagonmaker, h. Fifth
Orman Fred, butcher, h. Main
Ouellet John, tinner, b. Fourth, cor. Jefferson
Ovren August, carriagemaker, h. North
- PALMER Fred. carpenter, b. Jefferson, near East Water
Palmer O. E., stockbuyer, h. Jefferson, cor. Fouth
Parrish C. E. editor Courier, h. Main
Parrish George, h. Jefferson
Parrish William, h. Fifth, cor Washington
Parrish W. H., carpenter, b. Fourth, cor. Jefferson
Persjan Jordan, filer, h. Main
Pest House, rear Main near Norwegian Christ Church
Peterson Alexander, harnessmaker, h. near Main, over rail-
road
Peterson Charles, laborer, h. Page
Peterson Iver, blacksmith, b. Page
Peterson Iver, welldigger, h. rear Main, over railroad
Peterson Jacob, blacksmith, at Mandt's
Peterson John, h. Division
Peterson John, machinist, h. Page
Peterson Jordan, wagonmaker, b. Page
Peterson Mrs. Annie, h. Washington, cor. Division
Peterson Mrs. Cynera, h. rear Main, over railroad
Peterson Ole, h. Main, near bank
Peterson Peter, laborer, h. rear Main, over railroad
Peterson Peter R., streetsprinkler, h. Seventh
PETTIT REV. M. H. pastor Baptist church, h. Main, near
Monroe
Philipson Philip, miller, h. Sixth
Powellson Andrew, helper, h. Mandtville

Putnam Harry, foreman, b. Fourth, cor. Jefferson

QUALE Alexander, blacksmith, b. South, cor. Monroe

Quale Andrew, painter, b. South, cor. Monroe

Quale John, farmer, b. South, cor. Monroe

Quale Nels, farmer, b. South, cor. Monroe

Quale Nels A., lamplighter, h. South, cor. Monroe

CARL RASMUSSEN,

MANUFACTURER OF AND DEALER IN

BOOTS and SHOES.

Division St., Opposite Williams' Block, Stoughton, Wis.

A full stock of ready-made boots and shoes always on hand.
Repairing neatly done. Custom work a specialty.

RASMUSSEN CARL, shoe store, Division, b. Division cor.
North

Rasmussen Lars, h. rear Main over railroad

Rasmussen Nels, blacksmith, h. Division

Rasmussen Ole, wagonmaker, b. Page

Rasmussen Sever, clerk, h. Main over railroad

Rasmussen Seymour, stonemason, h. Sixth

Renwick Martin, blacksmith, h. Madison

H. J. RHODES,

PROPRIETOR

BARBER PARLORS.

HOT AND COLD BATHS.

MAIN STREET,

Basement of Camp's Block,

—

Stoughton, Wis.

RHODES HENRY J. barber, Main, h. Washington

Rinje Hulver, clerk, b. Main cor. Fourth

Riley John, ostler, b. Main

Riley Miss Ellen, milliner, Main near bridge, h. do

- Rinden H. T. clerk, h. Main
 Robinson George, farmer, h. South
 Rosendahl J. O. shoe store, Main, h. Main
 ROWE W. H. physician and surgeon, Main cor. Forest,
 h. do
 Rugar Fred, wagonmaker, h. Fourth
 Russell Charles, h. Main
 Rutlin Lars L. clerk, h. Sixth
 SAMPSON Ole, woodsawyer, h. Sixth
 Sampson Sams A. laborer, h. Main, over railroad
 Sarbacker George, harnessmaker, h. Washington, near Di-
 vision
 Sarenson Mads, mason, h. Main
 Sayre T. E. (S. & Wallin) h. Fifth
 Sayre & Wallin, hardware, Main
 SCHELDROP ANDREW F. drugs, Main, cor. Division,
 h. Page
 Scheldrup Herman E. blacksmith, h. Fourth
 Scheldrup Herman, blacksmith, h. Seventh
 Scheldrup Mrs. R. h. Jefferson
 Schroede Fred, section boss, h. South
 Schumaker William, moulder, b. National hotel
 Semerson Mrs. Isabel, h. North
 Sether Chr. physician, Main, h. Washington
 Severson Louis, h. Main, over railroad
 Severson Mrs. Sarah, h. East Water
 Severson Sever H. (S. & Bronson) h. Cambridge highway
 SEVERSON & BRONSON, lumber, Fassett blinds, Main,
 near depot. See page 30

F. SCHELDROP.

DEALER IN

**Drugs, Paints, Oils, Perfumery,
 Stationery and Glassware.**

Main Street, cor. Division,

—

Stoughton, Wisconsin.

Sewell Mrs. E. h. Fifth cor. North
Shetter J. W. blacksmith, Main near bridge, h. Main
Showers Charles A. mason, h. Washington, cor. Prairie
Shutter John, blacksmith, h. Page
Sickenger George, telegrapher, b. Fourth cor. Jefferson
Sigleco Richard, farmer, h. Fourth, over bridge
Skillman Mrs. M. R. h. Page cor. Washington
Smeaton John, gardener, h. Monroe
Smith Reuben, roofer, b. National hotel
Snyder John, coachman, b. Prairie, cor. Washington
Snyder Mrs. Julia, h. Main, cor. Madison
Snyder Mrs. Sarah, h. Main, cor. Madison
Snyder Philo, mechanic, b. Main, cor. Madison
Snyder Seth, cigarmaker, b. Main cor. Madison
Soby Charles M. foreman, h. Forest
Solberg Peter, wagonmaker, h. Mandtville
Souby Osmund, trunkmaker, b. Main, cor. Fourth
SQUIRES MRS. J. C. milliner, Main, cor. Forest, over bank
Stanson Edward, porter, Hutson house
Stanton Patrick, laborer, h. South
Stanton William, baggage master, b. Fourth, cor. Jefferson
Stead, William T. moulder, b. National hotel
Stedje Ole, buggy maker, b. Jefferson
Stocker Andrew, milk pedler, h. Main, over railroad
Stoughton George, h. Fifth
Stoughton Mills, Norris & Dow, Main, near depot and Fourth
Stoughton Mrs. Eliza, h. Page, cor. South
Stoughton Mrs. George, (Mosey & S.) h. Fifth
STOUGHTON STATE BANK, cor. Main and Forest. See
Stromberg John, painter, b. Forest [page 29
Stromberg Julius, painter, b. Forest
Stromberg Theodore, painter, h. Main
Strong, W. W. engineer, h. Jefferson, cor. Division
Strovalson, Hans, laborer, h. Sixth, cor. Jefferson
Subey, A. J. pumps, Main, cor. Fifth, b. Main

HANS H. SWAN,

EXCLUSIVE DEALER IN

PIANOS AND ORGANS.

*All Kinds of Sewing Machines Cleaned and Repaired.
Twenty Years' Experience.**Division Street, — — Stoughton, Wis.*

SWAN HANS H. organs, sewing machines, Division, h.
Page

Swenson Ole, carpenter, h. Main

Sylvester William, farmer, h. South near railroad

TANNERT Paul, leaf tobacco, b. Hutson house

Taylor Herman, carpenter, b. Jefferson near East Water

Thompson Ananias, stonemason, b. Sixth

Thompson Ben, blacksmith, h. Division

Thompson George, laborer, h. Sixth

Thomas John, miller, b. Main cor. Fourth

Thompson Nels, deputy sheriff, h. Main cor. Forest

Thompson Simon, farmer, h. rear Main over railroad

Thompson William, sawyer at Mandt's

TIPPLE O. F. livery, Main, h. do. See page 29

Tolson Johannes, wagonmaker, h. rear Main near depot

Tollefson John, painter, h. Fourth over bridge

LOUIS TOLLEFSON,

HOUSE, SIGN AND

DECORATIVE PAINTING.

KALSOMINING IN ALL TINTS.

FOURTH STREET

I make a specialty of paper hanging, and can supply Wall Paper
of any quality and latest designs. Work neatly done.

TOLLEFSON LOUIS, painter, Fourth, b. Fourth cor. Jef-
ferson

- Tollefson Ole, painter, h. Jefferson cor. Seventh
 Tollefson Rev. J. C. pastor Norwegian M. E. church,
 h. North
 Torensen Anton, carpenter, h. rear Main over railroad
 Torsthenson Fred. photographer, b. Fourth, cor. Jefferson
 Trautman Fred. painter, b. Main, cor. Fourth
 Turner Frank A. station agent, h. Fifth
 TURNER ORVIN M. (Johnson & T.) president Stoughton
 Bank, h. North
 Turner Solomon, laborer, h. South near railroad
 Tusler James, h. Main, cor. Monroe
 Tusler Herbert M. (Johnson, T. & Co.) h. Main, cor.
 Monroe

UNITED States express agency, Main near Division
 Urie Mrs. Annie, h. Division, cor. Jefferson

VAKLESON Huan, wagonmaker, h. Sixth

A. VAN VALKENBERG

PROPRIETOR OF THE

TEMPERANCE RESTAURANT,

AND LADIES' DINING HALL.

**WARM MEALS, LUNCHES, ICE CREAM, LEMONADE,
 ETC., SERVED AT ALL HOURS.**

Under King's Billiard Hall, Main St., Stoughton, Wis.

VAN VALKENBERG A. temperance restaurant, Main,
 h. do

- Vingom Nels, laborer, h. South
 Vingom Nels N. stonemason, h. Sixth
 Vingom Lars N. carpenter, h. Sixth
 Vingom Ole, blacksmith, h. Sixth
 WAGNER, C. E. carpenter, h. Main, over railroad
 Walker Rankin R. h. Fifth, cor. Jefferson
 Wallin J. E. (Sayre & W.) h. Division

Warren E. (W. & Woodcock) h. Main

Warren E. H. clerk, b. Main

WARREN & WOODCOCK, Contractors and Builders

**SPECIFICATIONS AND ESTIMATES GIVEN. WORK
TAKEN BY THE DAY OR JOB.**

SATISFACTION GUARANTEED.

Prairie Street, near Washington, - Stoughton, Wis.

WARREN & WOODCOCK, contractors and builders,
Prairie

Watson George, farmer, h. Fourth, over bridge

Way Charles, roofer, b. National hotel

Weckerson Henry, harnessmaker, b. Brown's hotel

Wettleson Jacob (Lormer, Dearborn & Co.) h. Washington

Wettleson John, blacksmith, h. Seventh

Wilcox L. F. miller, h. Mandtville

Willard Harrison P. h. Main, cor. Monroe

Williams David, miller, b. Hutson house

Wood W. S. (Hutson & W.) h. Hutson house

Woodcock Hollis, (Warren & W.) h. Jefferson, near East
Water

Wyman, Mrs. M. J. h. Forest, cor. Jefferson

Zenke Albert, cooper, h. Main, cor. Division

HUTSON HOUSE,

STOUGHTON, WIS.

HUTSON & WOOD, Proprietors.

Free 'Bus to and from the Cars. First-Class in every respect. Good Sample Rooms. Special Attention Given to the wants of the Traveling Public.

FIRST CLASS LIVERY IN CONNECTION.

Hutson, Chase & Co.

PROPRIETORS OF

LIVERY, BOARDING & SALE STABLES

In Connection With the Hutson House, Stoughton, Wis.

Elegant Rigs, Low Rates, Careful Drivers.

FUNERAL OUTFITS A SPECIALTY.

A fine Hearse, the only close carriage in the city, and five two-and-three seated carriages, at the lowest living rates.

CHRISTOPHER LARSON,

MANUFACTURER OF

STEEL, IRON AND WOOD-BEAM

PLOWS, CULTIVATORS, ETC.

Main Street, Corner Fifth, Stoughton, Wis.

All my work is made of the best and fully warranted materials. Repairs of all kinds attended to promptly, and done on short notice.

ALL MY WORK IS WARRANTED

Call and examine my Plows and Cultivators before purchasing elsewhere.
CHRISTOPHER LARSON.

O. O. Forton & Co.,
 DEALERS IN
DRY-GOODS,

Hats and Caps, Boots, Shoes and Clothing,
GROCERIES, CROCKERY, NOTIONS, ETC.,

MAIN STREET, STOUGHTON, WIS.

We would be pleased to have you call at our store and
 examine our stock, as we will offer you Great Bargains.
 Remember the name and place.

City Livery Stable,
Main Street, Stoughton, Wis.

FIRST-CLASS RIGS
 ON REASONABLE TERMS.

Particular Attention Paid to Funerals
ENTRUSTED TO MY CARE.
O. F. TIPPLE.

STOUGHTON STATE BANK,
STOUGHTON, WIS.

Does a General Banking Business.

COLLECTIONS A SPECIALTY.

DIRECTORS.

O. M. TURNER, Stoughton;

GEO. DOW, Cambridge;

M. JOHNSON, Stoughton;

H. H. GILES, Madison.

O. M. TURNER, President; M. JOHNSON, Vice Pres.; ROBE DOW, Cashier

\$1,000 REWARD

FOR ANY BLIND THAT WILL BEAT

Fawcett's Patent Blinds

For Comfort, Utility, Economy and Beauty Combined.

Acknowledged by all to be the Only Perfect Blind Made.

Protect your homes from the summer's heat and the winter's cold. We have manufactured these blinds for the past three years, and given entire satisfaction to every customer. Some have gone so far as to remove their old blinds and substitute ours. We have the exclusive right of sale in Wisconsin and Minnesota. Send for descriptive price list.

In connection with the Blind Manufactory, we also carry a complete stock of

Building Lumber at Lowest Market Prices

SEVERSON & BRONSON,

Main St., Near Depot, Stoughton, Wis.

WILLIAM H. LEEDLE,

DEALER IN

FLOUR AND FEED,

Groceries, Confectionery,

Canned Goods,

Tobacco, Cigars,

Notions, &c.



A LARGE SUPPLY OF

FINE, COARSE AND DAIRY SALT

ALWAYS ON HAND.

WHEAT, CORN AND OATS

Purchased at the Highest Market Price.

 All Goods Delivered in the City, Free. 

AT THE OLD GRANGE STORE,

Main, cor. East Water Streets, - - - STOUGHTON, WIS.

Our Stock is Now Complete in All Lines,

AND WE INVITE THE TRADE TO INSPECT OUR GOODS BEFORE PUR-
CHASING ELSEWHERE. WE HAVE IN STOCK A LARGE LINE OF

CARPETS,

WHICH WE ARE SELLING CHEAP.

WE HAVE THE LARGEST LINE OF

Dress Goods and Trimmings,

WE HAVE EVER CARRIED.

WE HAVE A LARGE LINE OF

LADIES' AND GENTS' SHOES,

THAT WE CAN SELL CHEAP.

GIVE US A CALL.

JOHNSON, TUSLER & CO.

N. JENSEN

MANUFACTURER OF AND DEALER IN

BOOTS & SHOES*IN ALL STYLES AND PRICES.*

GENTS', YOUTHS' AND CHILDREN'S

FINE SHOES.

Reynold's Celebrated Ladies' Fine Shoes.

SEWED AND PEGGED BOOTS

MADE TO ORDER.

Gents' Furnishing Goods,

HATS, CAPS, GLOVES AND MITTENS,

MAIN ST., NEAR FOREST, STOUGHTON, WIS.

BUSINESS DIRECTORY.

AGRICULTURAL IMPLEMENTS.

LARSON CHRISTOPHER, Main cor. Fifth. See
page 28

Lormer, Dearborn & Co. Main

ARCHITECTS.

Naset J. J. Washington cor. Forest

ATTORNEYS.

Clancy J. N. Fourth cor. Jefferson

Luse L. K. Forest cor. Main

BAKERS.

Forthun & Christofferson.

BANK.

STOUGHTON STATE BANK, Main cor. Forest. See
page 29

BARBERS AND HAIRDRESSERS.

Fricke August H. Main

Rhodes Henry J. Main

BILLIARDS.

Evans George, Main cor. Division

King E. D. Main

HUTSON HOUSE, Main cor. Division. See page 28

BLACKSMITHS.

Buckman Fred A. Main near bridge

Flyte Amos, Main near bridge

LARSON CHRISTOPHER, Main cor. Fifth. See
page 28

Shetter J. W. Main

BLINDS, DOORS & SASH.

SEVERSON & BRONSON, Main near depot. See page 31

BOARDING HOUSES

Griggs Mrs. Louis, Division cor. North

Miller Mrs. Julia, Main cor. Fourth

Nott Mrs. C. M. Fourth cor. Jefferson

Brown Mrs. L. Main near Forest

BOOTS AND SHOES.

Forton O. O. & Co. Main

JENSEN N. Main. See page 32

Johnson & Melaas, Main

Rasmussen Carl, Division

Rosendahl J. O. Main

JOHNSON, TUSLER & CO. Main. See page 31

BUILDERS.

Becker Geo. W. Washington cor. Forest

Burnett Geo. M. Page

Gould Wm. Madison cor. Jefferson

Warren & Woodcock, Prairie

CARRIAGE AND WAGON MANUFACTURERS.

Erickson Canute, Main cor. Seventh

Flyte Amos A. Main near bridge

Mandt T. G. South

CIGAR MANUFACTURER.

Hintze Charles M. Main cor. Division

DRAYMEN.

Chidester Jerome, Washington

Davis James, Main

McNeil David, Madison

DENTISTS.

Kollock George, Main cor. Forest

Lusk Albert P. Main cor. Fourth

DRESS MAKERS.

Martin Miss L. Main

DRUGGISTS.

Falk Bros. Main

Melaas Q. O. Main

Scheldrup Andrew F. Main cor. Division

DRY GOODS.

Hale H. W. Main

Lawson & Christopher, Main

EXPRESS AGENTS.

Baker J. G., U. S. Express, Main

FLOUR, GRAIN, ETC.

LEEDLLE WM. H. Main cor East Water. See page 30

Norris & Dow, Main and Fourth

FURNITURE.

Ericksen Andrew, Main

GENERAL MERCHANDISE.

Brickson & Lothe, Main

FORTON O. O. & CO. Main. See page 29

Hanson H. T. Main, cor. Sixth

JOHNSON, TUSLER & CO. 39 Main. See page 31

Lawson & Christopher, Main

Mikkelson K. Main

GROCERS.

Brickson John, Main

Brickson & Lothe, Main

Dumond W. H. 48 Main

Evans George, Main

Forton O. O. & Co. Main

King E. D. Main

Lawson & Christopher, Main

LEEDLE WM. H. Main cor East Water. See page 30

Mikkelson K. Main

GUNSMITH.

Olson Severt, Jefferson near Seventh

HARNESS, SADDLE, ETC.

Olson Kanute, Main

HARDWARE.

Daws John, 36 Main

Sayre & Wallin, Main

HATS AND CAPS.

Forton O. O. & Co. Main

Jenson N. Main

HOTELS.

Hutson House, Main cor. Division

National Hotel, Main

HOUSE PAINTER.

Tollefson Louis, Fourth

INSURANCE AGENTS.

Currier George W. Forest cor. Main.

Lund C. T. Forest cor. South

Lusk J. W. P. Main

JEWELERS.

Camp D. D. & Son, Main near Division

Christenson Christian, Main cor. Division

LIVERY STABLES.

HUTSON, CHASE & CO. Division. See page 28

TIPPLE O. F. Main. See page 29

LUMBER.

SEVERSON & BRONSON, Main near depot. See
page 31

MARBLE DEALER.

Greenbank Nelson, Jefferson cor. Forest

MARKETS.

Johnson Bros. Main
Lillesand & Johnson, Main
Nigh J. H. Main

MILLINERS,

Brown Miss Ella, Main cor. Forest
Ladd Mrs. E. I. Main
Mosey & Stoughton, Main
Riley Miss Ellen, Main
Squires Mrs. J. C. Main cor. Forest

NEWSPAPERS.

Courier, Main
The Hub, Forest cor. South

ORGANS, SEWING MACHINES.

Swan Hans H. Division

PAINTS, OILS, ETC.

Falk Bros. Main
Melaas O. O. Main
Scheldrup F. Main cor. Division

PHOTOGRAPHER.

Ferman Wm. A. Main cor. Fourth

PHYSICIANS.

Beardsley E. Main
Clark L. D. Main cor. Prairie
Dean O. A. Main
Laws F. F. Main cor. Forest
Rowe W. H. Main cor Forest
Sether Chr. Main

POST OFFICE.

Hibbard J. M. postmaster, Forest cor. Main.

PRINTERS.

Courier office, Main
Hub office, Forest cor. South

PUBLIC LIBRARY
STOUGHTON, MASS.

88188
/

PUMPS.

Subey A. J. Main cor Fifth

RESTAURANTS.

Dumond W. H. 48 Main

Van Valkenberg A. Main

SALOONS.

Frankson & Gilbert, Main

Halvorson Osmon, Main cor. Forest.

Johnson John C. Main

SIGN PAINTERS.

Tollefson Louis, Fourth

SPRING BEDS.

Blunt J. E.

STOVES, TINWARE.

Daws John, 36 Main.

Jacobson & Anderson, Main

Sayre & Wallin, Main

TOBACCO DEALERS.

Harrington C. O. Page

JENSON ANDREW & CO. Main near depot.

Johnson M. & Co. Main near depot

McNeil Charles, Main cor. Fourth

Tannert Paul, Main cor Division

Historical Sketch.

In 1847 Mr. Luke Stoughton, perceiving the advantages to be derived from the natural water power of the Yahara River, purchased of Daniel Webster a large tract of land covering the site of the present village to which he has given his name. Very soon after he made the purchase he began the erection of a sawmill by the river bank and platted a portion of his land into village lots. To settlers who would locate in the place he held out special inducements, and Alvin West was the first to take advantage of these. On the site of the present Hutson House Mr. West erected an inn and moved into it his family, constituting the first household in the village. As the road to Madison passed near by the infant settlement the house was often patronized by travelers. The spring of 1848 brought men desirous of settling in the place, and the harsher sounds of man's industry mingled with the sweet music of feathered songsters. Houses began to fill vacant spaces, and Colton and Westcott erected the brick building near the upper bridge and became the first blacksmiths. In the same year Mr. Stoughton opened a general merchandise store which was a great convenience to the inhabitants.

In 1849 Amos Flyte paid a visit to the settlement and decided a tie vote in favor of erecting a school house. The meeting was held in West's inn and Flyte attended as a mere looker-on. When it was found the ballot stood even Levi Houghman perceived him and asked him if he had voted, and receiving a negative reply, said: "What are you doing over there, then? Come over here." His vote was not questioned. In the following year the brick school house,

yet standing at the corner of Main and Page streets, was built and Miss Fannie Duncan, who had a short time before opened a school on the east side, moved into in. In the same year (1850), Mr. Stoughton put up a small grist mill with one run of stone, but after a time, this proving insufficient for the wants of the people, a larger one, of brick with two run of stone, was constructed.

In 1852 Amos Flyte opened his wagon shop and blacksmithing establishment beside the smoothly flowing Yahara. About this time H. Holley took possession of a building erected by C. Robey, and hung out the sign of the Crockett House. The railroad survey and the prospect of its speedy completion to the town materially increased its prosperity. In 1853 Mr. West completed a brick hotel suited to the wants of the time. In 1855 Dr. W. W. Blackman and J. R. Boyce erected a brick building from whence issued in after years drugs and medicines warranted to scare death. This year of 1855 served as a landmark in after times for many of the inhabitants of the village as it marked the date of the destruction of the grist-mill, which was undermined by water-rats and fell in the early hours of a spring morning—a complete ruin. Mr. Stoughton being enfeebled in health at the time, felt unequal to the task of rebuilding and sold the site and water power to Ray Jenkins, who erected the present Stoughton mills. These have since successively been owned by Walker, Williams & Co., Norris & Beattie, and Norris & Dow.

In the year of 1855 the first addition was made to the town by Mr. Stoughton. In the next decade the progress of the village was something remarkable, but we have not the space to follow it at length. Many fine residences and business blocks were added, the opera house built and improvements made in all directions. A newspaper, *The Independent*, was published in 1857; the Universalist church was

erected in 1858; the present magnificent school in 1862; the Congregational church in 1863.

In 1865, with \$100 capital, T. G. Mandt built himself a shed in Stoughton and embarked in the manufacture of wagons, employing no help. He has in seventeen years, in spite of a period of financial depression unequaled in our history succeeded in steadily increasing his business until at the present time he employs 200 men; his buildings cover seven acres of ground and the present facilities of his factory are such that he can turn out a complete farm wagon every twenty minutes. He claims for his wagons a superiority over all others in point of workmanship, skill of construction and durability and the fact that he sells annually thousands of Stoughton wagons, would seem to bear out all he claims for them.

In 1867 the Norwegian Lutheran church was erected, and in the same year the planing mill near the depot was put up by F. J. Leavitt. The present proprietors of it, Messrs. Severson & Bronson, besides carrying on an extensive lumber business, manufacture annually 8,000 pairs of the Fossitt patent blind, for the sale of which they have the exclusive control in the states of Wisconsin and Minnesota.

Stoughton was incorporated as a village in 1868, and its first officers were: Trustees, James Norris, Mathew Morison, Mathew Johnson, J. C. Chidester, H. J. Everest; President, James Norris; Clerk, Frank Allen; Marshal and Street Commissioner, A. E. Nott; Treasurer, A. C. Croft; Poundmaster, N. Washburn.

The commerce in tobacco, now the second largest industry of the city, may be said to have began in 1871, when Mathew Johnson made a shipment on his own account and became the first local buyer. As little tobacco was grown that year and as Edgerton was the main shipping point for the product, the Stoughton shipment was but

25,000 pounds. For several years Mr Johnson was the only local buyer, but eastern buyers came out each season and some of them established agencies. The first warehouse built was that of James Hutson, and at present there are nine warehouses in use, with a united storage capacity of 10,000 cases of 400 pounds each. The handling of the tobacco at the warehouses in the winter season affords work for two hundred hands.

The future magnitude of the business will be something enormous if it increases in the same ratio it has for the ten years past, and if there is sufficient enterprise to manufacture a considerable portion of the product at home it will aid greatly to increase the population and wealth of the community. Charles M. Hintze is already manufacturing cigars on a considerable scale, employing some fifteen hands, and finds a ready market for his product. The capitalists of the vicinity will not be always blind to the fact that the profit now made in handling the leaf is but a small portion of what awaits them when they shall band together to prepare the leaf for the consumer.

The Catholic church was completed in 1868; the Norwegian Evangelical Lutheran in 1875; the Norwegian Methodist Episcopal in 1882. In 1875 the limits of the village was enlarged by an addition by O. M. Turner, and a further addition has since been made by T. G. Mandt. The *Hub* newspaper came into existence in 1881. Stoughton was incorporated as a city in 1881. Among the men who have been engaged in business almost from the date of settlement to the present time are A. Flyte, Andrew Johnson, John Daws, and N. Jensen. Of all the knights of the razor who have located here H. J. Rhodes appears to have put in the longest term of years. The citizens of Stoughton who have represented Dane county in the legislature have been: Samuel H. Roys, Hiram H. Giles, Jonathan Mosher, John H. Johnson, William W. Blackman, William M. Colladay,

Nelson Williams, William Seamonson, Thomas Beattie, and Louis K. Luse.

With a healthy and picturesque location; with the best of facilities for education and religious worship; with good streets, fine residences and business blocks; with industrial and commercial resources which are at once the envy and admiration of larger communities, and, above all, with citizens of means, intelligence and public spirit, the future of Stoughton is full of promise.

CHURCHES.

M. E. CHURCH.

The M. E. church of Stoughton has never existed as an independent one, but is embraced in a charge as a circuit which at one time was composed of four congregations. At the present time the charge consists of the Stoughton church and one at Wheeler Prairie. We have been unable to ascertain the precise date the society was organized at Stoughton, but meetings were held in the brick school-house on the corner of Main and Page streets as early as 1820. In 1853 Samuel Dodge was the circuit preacher and among those who have succeeded him are Revs. Lyman, Brown, Beecher, Holcomb, Potter, Frink, Howd, Salisbury, Bosworth, Hubbs, Kelly, Turner, Brooks, Lang, Blackburn, Ames, Goldthorp, Leavitt, Wilson and N. J. Aplin. Their present edifice was erected in 1867 and is a plain unpretentious building of wood, painted white and crowned by a steeple about thirty feet in height. The interior of the church is very neat and tasty, the walls being of a neutral tint and bordered by a fringe of paper which looks like fresco. There are about forty pews. The present number of members is sixty and the annual election

occurs after the last quarter of each quarterly conference year. The society is under the jurisdiction of the Janesville district of the Wisconsin conference. The present officers of the church are: Pastor, N. J. Aplin; Trustees, Amos Flyte, John Fish, Clark Hubbard A. J. Atkinson. Stewards, Amos Flyte, S. S. Howland, Clark Hubbard.

Sunday School.—Clark Hubbard, superintendent; Clarence Miller, Librarian; Miss Julia Snyder, Treasurer; Mrs. Carrier, Mrs. McEckren, Mrs. A. C. Aplin, Mrs. Allen, Miss Emma Hill, Miss Julia Snyder, Teachers.

Church services are held at 10:30 a. m. and 7:30 p. m. Sunday school after the morning service.

CHRIST CHURCH.

(Norwegian Lutheran.)

In May, 1875, the so-called Stoughton and McFarland districts of the old West Koshkonong Church formally severed their connection with the parent church for the purpose of organizing independently and as a separate charge. J. J. Naset, Andrew Quale and Jacob Wettleson were chosen trustees, and thirty-two families became connected with the organization. The first pastor was Rev. C. M. Hvistendahl, of San Francisco, Cal., who was installed in September, 1875. The erection of a church was begun in 1874 which was finished in 1878, and dedicated June 6th of that year. The church has a seating capacity of 600, is the finest building of its kind in the city, and cost about \$5,000, all of which is paid. The parsonage was built in the fall of 1876, at an expense of \$2,200, and is paid for. In July, 1881, Mr. Hvistendahl resigned his charge and returned to Norway. Rev. Adolph Bredesen, of Perry, Dane county, Wisconsin, became his successor and was installed in September, 1881. On January 1, 1878, the membership of this church was 326, and the number of souls connected with it 355. January 1, 1881, the members were 267 and the num-

ber of souls 425. At present, September, 1882, the members number about 280 and the souls connected 450,

The present officers of the church are: Pastor Rev. Adolph Bredezen; Trustees, J. J. Naset, Kanute Olson and Andrew Quale.

Sunday School.—O. Christopher, Superintendent; Teachers, Ole Erickson, I. Erickson, I. H. Fimreit, A. Lobben, M. O. Larsen, Miss Hattie Erickson, Miss Susan Wettleson, Miss Annie Forson. Average attendance 50.

The Norwegian Lutheran church of McFarland was organized in May, 1875, and is connected with Christ church. This church edifice was begun in 1869, finished in 1875, and dedicated January 23, 1876. The society is clear of debt. Both churches are connected with the Norwegian Synod of the Lutheran church, and through it with the Evangelical Lutheran Synodical Conference of North America.

BAPTIST CHURCH.

The Baptist Church of Stoughton was organized in 1853 and re-organized in 1857. Their house of worship was erected in 1862, and is a building 35x50 feet with a tower in front. Repairs have been made at various times and during the past summer the interior has been changed from a plain white to a black-walnut finish giving the house a neat and comfortable appearance. Mr. Cheney, previous to his death, donated to the society a house and lot on West Main street. Since the occupation of it as a parsonage by the present pastor, new blinds have been placed upon it and the house has been painted. The following is a list of the pastors who have been settled with the church and the length of their pastorate: Rev. L. Mills, three years; Rev. Mr. Star, one year; Rev. L. Smith, five years; Rev. Mr. Hendrick, five years and was ordained here by a council which met for that purpose; Rev. G. O. Snell, two years; Rev.

Mr. McLeod, two and one-half months; Rev. M. H. Pettit, the present pastor, who came in May, 1882 and has since been ordained by a church council called for that object. The present church membership is fifty-seven. The present church officers are: Rev. M. H. Pettit, Pastor; James Allen, Dr. O. A. Dean, Deacons; H. M. Turler, J. M. Sampson, Trustees.

Sunday School.—J. R. Hibbard, Superintendent; Rev. M. H. Pettit; J. R. Hibbard, Secretary; Mrs. H. M. Tusler, Treasurer; Mrs. Fred. Buckman, Librarian; Dr. O. A. Dean, Mrs. H. Tusler, Mrs. Johnson, Mrs. Dr. Clark, Mrs. Everest, Mrs. M. J. Wyman, Miss Wyman, Mrs. John Smeaton, Teachers. Church services are held at 11 a. m. and 7:45 p. m. Sunday School after morning service. Prayer-meeting on Wednesday evening at 7:45 p. m.

NORWEGIAN LUTHERAN CHURCH.

Organized October 6, 1866, by Professor Haselquist, President of the Scandinavian Augustana Synod. The first trustees were T. G. Mandt, J. G. Baker, C. Hanson, and L. T. Lawson. On October 7th the first services were held; October 27th Rev. O. J. Hantlestad was chosen pastor, J. G. Baker Secretary, and L. T. Lawson, J. G. Baker, and Johann Asmundson, Deacons. Services were held once in four weeks, and Mr. Hantlestad had charge of the congregation till the 21st of April, 1867, when he resigned and was succeeded by J. M. Eggen, a theological student. Mr. Luke Stoughton having donated a lot to the society, the erection of a church was commenced which was completed in 1872, at a cost of \$2,800. Rev. J. M. Eggen has been succeeded by Revs. A. Weenaas, M. Falk Gjertsen, and the present pastor, Rev. T. C. Dahl. A parsonage was purchased in 1874, and the church was enlarged in 1877 at an additional cost of \$2,000. The society is free from debt, and the church has a membership of 325 and 600 souls are

connected with it. The present officers of the church are: Rev. T. H. Dahl, Pastor; Kanute Erickson, Dr. F. F. Laws, Lars Vingom, Trustees; Rasmus Hanson, K. Mikkelson, Samuel Barron, Louis Rutlien, A. Erickson, Jacob Mathison, Deacons; A. Erickson, Secretary and Treasurer.

Sunday School.—K. Mikkelson, Superintendent; C. Norman, Librarian; Louis Rutlien, C. Norman, E. Mellum, Miss Josie Johnson, Miss Anna Hoverson, Teachers. Scholars, 80.

UNIVERSALIST CHURCH.

The first Universalist meetings were held in the brick school house on the corner of Main and Page streets, and a society was organized in 1857. In 1858 the neat church of cream-colored brick on Page street was erected at a cost of \$4,000. The building was often rented for public uses, and a small body of Spiritualists in the vicinity at times assembled in it to listen to some exponent of their philosophy whom they induced to visit the locality. The various pastors of the church have been Revs. B. F. Dodge, Mr. Peck, B. F. Rodgers, Miss Swartz, J. C. Crawford, Mr. Horne, L. B. Mason, E. Garfield, S. W. Sutton, and Rev. Edgar Leavitt. June 1st, 1879, a church organization was formed with E. E. Roberts, F. Isham, Mrs. Sophronia Willard, Mrs. Ellen Hale, Mrs. Adaline Higbee, Mrs. Jane Fuller, Mrs. Jane Goff, Mrs. Delia Everest, Mrs. Roxana Sawin, Mrs. Helen Warren, Mrs. Elvira Stoughton, Mrs. Ann Galley, Mrs. Mary Gilman, Miss Mary Nelson, and Miss Ida Lyon as constituent members. The present membership is about 50, and Rev. Edgar Leavitt is Pastor. Services are held each alternate Sunday at 11 a. m. and 7 p. m. Sunday School at 12:15 p. m.

CONGREGATIONAL CHURCH.

April 19th, 1857, the members of the Cookville Presbyterian church unanimously voted to remove their place of meeting to the village of Stoughton. The first meeting was

held at the new location on Sunday, May 3^d, of that year. The members of the organization were Abner Barlow and wife, James Gillis and wife, George Gillis and wife, Mrs. Elizabeth Hume, Daniel Gillis and wife, Mrs. Betsey B. Johnson, Andrew Erskine and wife, Luke Joslyn and wife, L. M. Van Buren and wife, Mrs. Sarah L. Boyce and Mrs. Maria Dawes. James Gillis, Luke Joslyn and L. M. Van Buren were chosen elders and Rev. Robert Sewell, the founder of the church, pastor. May 29th, 1863, the name of the church was changed to the "First Congregational Church of Stoughton," and the rules and forms of the Congregational church were adopted. The society erected their house of worship in 1863. With the exception of one year, during which Rev. M. M. Martin acted as supply, Rev. Robert Sewell was the only pastor. With his death which occurred in 1874, the strength of the church passed away and since that time no regular pastor has been in charge of the flock and services at present are irregular.

PUBLIC SCHOOLS.

Miss Fannie Duncan has the honor of being the first school teacher in Stoughton. She opened the first school on the east side of the river in 1850, but on the completion of the brick school house at the corner of Main and Page streets in the same year, was duly installed in it as teacher. In 1862 a new school house was built on Albion street which was further enlarged in 1877 by the addition of a wing which gave three more rooms. This building, it is believed, has a capacity for 600 pupils. Almost from the first a graded system was adopted, and in pursuance of a law passed in 1875 a free High School was established in connection. The present value of the school building and grounds is estimated to be \$10,000.

There are 492 children in the school district between the ages of four and twenty, 228 of whom are males, and 264 females.

The present teachers are: George W. Currier, principal; Miss N. J. Henry, Miss Mary Nelson. Miss De Ette Allen, Miss D. Greenbank and Miss Annette Nelson, assistants. The teachers' wages are fixed at \$800 per year for the principal and \$360 per year each for the lady teachers. The school opens for the fall term on Monday, September 25th.

SOCIETIES.

Ladies Baptist Mission Circle.—Mrs. M. H. Pettit, president; Mrs. H. M. Tusler, Secretary; Mrs. M. J. Wyman, treasurer.

Children's Baptist Mission Band.—Miss Blanche McNeil, president; Miss Luella Carrier, Secretary; Willie Dearborn, Treasurer.

M. E. Social Society.—Mrs. Carrier, President; Mrs. A. P. Lusk, secretary; Mrs. James Norris, Treasurer. Meets once in two weeks at houses of members.

Kegonsa Lodge, A. F. & A. M.—Dispensation granted March 7, 1856. Charter granted June 12, 1856. Members about 50. Regular communications the first and third Tuesday evenings of each month, at their hall in third story of Cold's Block. O. E. Palmer, W. M.; E. K. Cutler, Secretary.

Social Lodge, No. 60, I. O. O. F.—Instituted September 19, 1851. Reorganized March 1, 1876. Members 75. Meets every Thursday evening at 7:30 p. m., at their hall, third floor of Cold's Block. J. G. Chidester, N. G.; E. K. Cutler, Secretary.

Yahara Lodge No 333, I. O. of G. T.—Meets every Wednesday evening at 7:30 at the Grange Hall.

POST OFFICE

The first postmaster of Stoughton was Forest Henry, appointed in 1848. His successors have been Thomas Howland, E. Beardsley, Emerson F. Giles, Squire Sibley, John R. Boyce, A. C. Croft and the present incumbent J. M. Hibbard.

The present mail arrangements are as follows: Mails for the west close 5:15 p. m., arrive from the west 12:40 p. m.; mails for the east close 12:30 p. m., arrive from the east 5:40 p. m. Mails for Cambridge, Christiana and Utica by stage close Mondays, Wednesdays and Fridays at 2:00 p. m., and arrive on same days of the week at 11:00 a. m. Office open daily except Sundays and legal holidays, from 8 a. m. to 8 p. m., on legal holidays from 8 to 9 a. m., and from 12 m. to 2 p. m. and from 4 to 6 p. m.

CITY OFFICERS.

Mayor—Jacob Wettlesen.

Clerk—Ole Christoffersen.

Treasurer—J. G. Baker.

Attorney—L. K. Luse.

Marshal—H. J. Rhodes.

Deputy Marshal—Edward Davis.

Justices—1st Ward, H. A. Hoverson; 2d Ward, M. E. Emerson.

Street Commissioner—M. E. Emerson.

Assessor—H. A. Hoverson.

Supervisors—First ward, Carl Rasmussen; Second ward, C. E. Parrish.

City Council—J. S. Hutson, T. G. Mandt, K. Olson M. Johnson.

Preface.

In the accompanying pages we present to the citizens of Edgerton a directory of their village which will be found complete in every particular. The historical information was collected with great care, and the matter relating to churches, societies, etc., we obtained of responsible officers connected therewith. In registering the citizens we have been careful to get each name correct and locate it properly. We find 347 names in our book, and reckoning on a 3 and 1-16 basis, we find the population of the village to be 1,062. There are 90 separate business firms, some of whom are engaged in several branches of trade, for instance selling groceries as well as dry goods. We append a list of the various branches of business pursued, with the number engaged in each: Agricultural implements, 4; attorney, 1; bank, 1; barbers, 2; billiards, 2; blacksmiths, 4; stationery, 1; boots and shoes, 8; brick, 1; builders, 5; carpet weavers, 4; cigar manufacturers, 3; clothing, 6; dentists, 1; dressmakers, 1; druggists, 2; dry goods, 6; furniture, 1; flour and feed, 2; general merchandise, 6; grocers, 8; hardware, 2; harness, 1; hats and caps, 6; hotels, 2; ice dealers, 1; jewelry, 2; leaf tobacco, 15; live stock, 2; livery, 3; lumber, 2; painters, 1; photographers, 1; physicians, 5; markets, 3; milliners, 2; music teacher, 1; newspaper, 1; restaurants, 2; saloons, 7; tailors, 2; tinware, 2; wagonmakers, 3.

Sept 1882
347 names

EDGERTON VILLAGE DIRECTORY.

Albion Union Co-Operative Association.

DEALERS IN

Groceries, Teas, Coffees, Spices, China,
Glassware, Boots, Shoes, Hats, Caps, and Dry Goods.

Front Street, 3d door west of Bank,

EDGERTON, — — WISCONSIN.

ALBION UNION CO-OPERATIVE ASSOCIATION,
general merchandise, Front

Alverson G. W. teamster, h. Lawton near bridge

Alverson R. E. farmer, h. Lawton near bridge

AMERICAN HOUSE,

Front Street, corner Albion, Edgerton, Wis.,

MRS. D. L. CLATWORTHY, Prop.

Terms One Dollar Per Day.

AMERICAN HOUSE, Front cor Albion

Arthur Eben (Sutton & A.) h Main

Arthur Ernest, blacksmith, h. Main

Arthur John, h. Main

Ash John, laborer, h. Albion

Attlesey Robert, meats, Front cor Swift, h. Swift

Attlesey Robert, Sr. h. Swift

E. W. BABCOCK,

DEALER IN

GENERAL MERCHANDISE,

FRONT STREET, CORNER SWIFT,

EDGERTON, - - - WISCONSIN.

BABCOCK E. W. general merchandise, Front, h. Albion
cor Rollin

Babcock W. E. clerk, b. Albion

BANK OF EDGERTON, Front cor Main

BANKS C. H. druggist, Front, h. Catlin

Banks Mrs. W. C. h. Main

Baptist Church, Albion

Bardeen Aden, packer, h. Washington

BARDEEN H. L. leaf tobacco, warehouse 1, depot grounds,
h. Catlin

Barness B. J. packer, h. rear Lawton near bridge

Barness Ben (A. F. Reuterskiold & Co.) h. Croft's addition

BARNSON P. B. wagonmaker, h. North Second

Barts Charles, laborer, h. Henry

Barts William, laborer, h. Rollin

Bartz Julius, laborer, h. Lawton

Beach H. G. teamster, h. Main over railroad

Beaton William, farmer, h. Main over railroad

Bentley A. W. leaf tobacco, warehouse 9, depot grounds, h.
Rollin

Bentley Charles, h. Fulton

Bentley William P. leaf tobacco, warehouse 9, depot
grounds, h. Rollin,

Berroi Andrew, wagonmaker, h. Front

Bingle William, carpenter, b. United States hotel

ANK F. → BOWE REV. J. F. pastor Catholic church, h. highway
near church

Bowen John, mechanic, h. Front cor Swift

Bowen Z. H. town clerk, h. Albion cor Randolph

Brimmer Leonard, h. Rollin cor Broadway

Brierley Thomas, h. Rollin

Brown Clark, carpenter, h. Mechanic

BROWN C. L. livery, Albion, h. do

Brown Lewis, clerk, h. Rollin

Brown Mrs. Randolph, h. Washington

Brown P. C. (R. R. B. & Sons) h. North First

Brown Penuel, laborer, h. Pleasant cor North Third

Brown R. R. (R. R. B. & Sons) h. Albion

Brown R. R. & Sons, lumber, grain, live stock, Main near
depot

Brown W. R. cigar manuf, depot grounds, h. Main over
railroad

Brown W. S. (R. R. B. & Sons) b. Albion

BULLIS ALBERT S. flour, feed, Main near depot

Burdick B. physician, h. North Second

Burdick Blanche, music teacher, Rollin cor Swift, h. do

Burdick Bradford, h. Albion

Burdick B. F. carpenter, h. Albion

Burdick C. W. (N. D. B. & Son) h. Rollin cor Broadway

BURDICK E. A. postmaster, h. Pleasant

Burdick F. W. b. North Second

Burdick N. D. (N. D. B. & Son) h. Fulton near Front

BURDICK N. D. & SON, blacksmiths, Fulton

Burdick P. C. shoes, hats, Front cor Swift, h. cor Rollin

Burnham Charles L. asst. cashier Bank of Edgerton, h. Al-
bion

Burns John, laborer, h. Main over railroad

CARTER R. C. h. Rollin

Case A. tinware, Front cor Henry, h. Main
Chamberlain, J. L. carpenter, h, Lawton cor Catlin
Chamberlain Nelson, welldigger, h. Broadway
Child H. W. (W. W. & H. W. Child) h. Albion
Child W. W. (W. W. & H. W. Child) h. Albion.
Child W. W. & H. W. leaf tobacco, warehouse 11, depot
grounds
Clark John, mason, h. Washington cor North First
Clark Spencer, mason, h. Randolph
CLARKE W. H. furniture, Albion, h. do
Clatworthy Henry, tailor, Front cor Swift, h. Rollin
Clatworthy Mrs. Desire L. proprietress American House,
Front cor Albion
Clatworthy Thomas, painter, h. Rollin
Collins Charles, farmer, h. Broadway cor Chauncey
Condon William, laborer, h. West
Connors Richard (W. & Connors) h. Lawton
Connors Richard, Jr. b. Lawton
COON D. F. builder, Albion, h. Albion cor Rollin
Coon F. W. Wisconsin Tobacco Reporter, Front cor Swift
Coon Stephen, h. Albion
Cordner Thomas J. (C. & Houghton) h. Albion.
Cordner & Houghton, meats, Front
Crandall H. B. h. Albion
Crandall W. G. bartender, h. Main cor High
Crapsey Holton F. telegrapher, h. Albion
Crapsey James, depomaster, h. Albion
CROFT JAMES, dry goods, Front, h. Front cor Catlin
Croft J. C. (J. C. C. & Co.) h. Front cor Catlin
CROFT J. C. & Co. groceries, drugs, Front cor Henry
Croft Miss M. M. (J. C. C. & Co.) h. Front cor Catlin
Croft William, wagonmaker, h. Washington
Culton John J. ice dealer, h. Fulton
Culton Charles, ice dealer, h. Fulton

DAHLMAN Fred, laborer, b. Lawton
 Dahlman John, laborer, h. Main cor Rollin
 Davis W. J. barber, Front, h. Fulton
 Demming James, laborer, h. Main over railroad
 Dickerson Alonzo, farmer, h. Chaucer
 Dickinson C. H. (D. & Sherman) h. Stoughton highway
 Dickinson H. H. livery, (D. & Robinson) Albion, h. Fulton
 DICKINSON & ROBINSON, leaf tobacco, warehouse 2,
 depot grounds. See page 66
 DICKINSON & SHERMAN, painters, Fulton
 Donahoe F. H. saloon, Henry, h. Albion
 Donnegan Mrs. B. h. Albion
 Downing Mrs. Julia A. h. Main over railroad
 Duffy James, farmer, h. Lawton
 Dunn Charles, carpenter, h. Lawton

EARLE D. A. (E. & Maltpress) b. United States hotel
 EARLE & MALTPRESS, leaf tobacco, brick, warehouse
 13, depot grounds
 Eddy Adelbert, tailor, b. United States hotel
 Edgerton Charles, laborer, h. Washington
 Edgerton Elijah, h. Washington
 Edwards D. C. saloon, Front, h. do
 Edwards Mrs. h. Washington cor North Second
 Eldridge Frank, manager "Wisconsin Tobacco Reporter,"
 b. Fulton
 Eldridge J. C. printer, b. Fulton
 Emberson Louis, h. Henry

FINNEY Mrs. James, h. Main cor High
 Flagg A. S. clerk, h. Front

GASLEY John, builder, h. Swift
 German Lutheran Evangelical Church, High
 Gladwin Mrs. Susan, h. Front

Goss J. B. packer, b. Rollin

Goss Mrs. N. A. h. Rollin

Gough Philip, laborer, b. Henry

Gove S. E. (G. & Harris) leaf tobacco, depot grounds

GOVE & HARRIS, leaf tobacco, depot grounds. See page

67

GRANGE STORE, Front opp. depot

Green David, blacksmith, h, Main over railroad

Gwalter Mrs. Laura A. h. Lawton

HAIN J. B. jeweler, Front, h. Main

J. B. HAIN,

DEALER IN

Jewelry, Clocks and Plated Ware.

Latest designs in Shawl, Scarf and Breast Pins. Heavy Plated and Solid Gold Studs and Sleeve Buttons.

Watch Chains and Charms in Great Variety.

Front Street, Opposite Depot, Edgerton, Wis.

Hain J. D. hardware, Front, h. do

HAKES WESLEY, blacksmith, Fulton near railroad, h. do

Hardan John, h. rear Main near bridge

Harmon Joseph, butcher, Albion cor Pleasant

Harris A. H. (Gove & H.) h. North Second

Hanson Gilbert, blacksmith, h. Front

Harrison James, laborer, h. Fulton cor Mechanic

Harrison John, laborer, h. Lawton

Hatch E. Scott, clerk, b. Albion

Head Douglas, h. Washington cor North Third

Head S. C. carpenter, h. Washington cor North Third

Henderson James, mason, h. High

Heritage J. A. harness dealer, Front opp. depot, h. Albion

HILL JAMES H. carpenter, Albion, h. Lawton cor Catlin

Hopkins E. C. station agent, h. Catlin

Houghton F. W. (Cordner & H.) h. Albion
 Howard Ira M. saloon, Front, h. do
 Huhn Andrew, packer, b. Lawton
 HUMPHREY S. C. livery, Swift near Front, h. Swift
 Hurd Silas, president Edgerton Bank, Front cor Main
 Hutson James, h. Main
 HUTSON N. J. restaurant, fancy grocer, oyster saloon,
 Front, h. do
 Hutson Thomas, cashier Edgerton Bank, leaf tobacco, de-
 pot grounds, h. Main
 Hutson William, laborer, h. Main
 Hyland F. B. magnetic physician, h. Rollin near Albion
 Hynes John E. carpenter, h. Main near bridge
 INCOBAR Mrs. carpetweaver, h. Rollin Ingebor Ingebretson
 Isaac William, laborer, h. High

JENSEN Andrew (Andrew J. & Co.) h. Rollin
 JENSEN ANDREW & CO. leaf tobacco, warehouse 10,
 depot grounds. See page 66
 Jessup Lewis, carriage painter, h. Fulton
 Johaneson Henry, cigarmaker, b. Fulton
 Johaneson John, harnessmaker, b. Fulton
 Johaneson Mrs. Caroline, h. Fulton
 Johaneson Nels, shoemaker, b. Fulton
 Johnson J. A. shoemaker, h. Fulton
 Johnson Jacob, shoemaker, h. Henry
 Johnson Ole, farmer, h. Fulton cor West
 Judd H. H. physician, surgeon, Front, h. Rollin

Kapp

KAPP Ferdinand, ostler, b. Albion
 Kaufman Henry, butcher, h. Henry
 Keller Charles, farmer, h. Rollin
 Keller Joseph, farmer, h. Rollin
 Keizer J. M. farmer, h. Main

Kellogg Mrs. Margaret, h. Fulton cor. Mechanic
Kinney Charles, miller, h. Washington cor. North Second
Kinney Mrs. Sarah, h. Mechanic cor. Fulton
Knox George A. tinner, b. Washington

LANGWORTHY Mont. live stock buyer, b. United States hotel
La Plante Fred. farmer, h. North Second
La Plante Mrs. nurse, h. North Second
Larson Nels. packer, h. Henry
Lawler Frank, carpenter, h. Randolph
Lawler James, carpenter, h. Randolph
Leary John, laborer, h. North Third
Learn Miss Clara (Walker & L.) h. Front
LEAVITT REV. I. S. pastor M. E. church, h. Albion cor
Rollin

Lidicker
Leisenger Fred. painter, h. North Second
Lidaker Herman, blacksmith, h. Fulton
LINTVEDT HOLVER O. blacksmith and wagonmaker,
Front, h. Catlin

Litney Mrs. Sarah, h. Lawton
LORD JAMES, physician, Albion, h. do
LORD SIMON, physician, Albion, h. do
Lundrigan Patrick, h. Lawton
Lusk Charles H. clerk, h. Main
Lusk John I. lumber, Main near depot, h. Main
MABLESON George, proprietor United States hotel, Front
Mabbett & Perry, general merchandise, Front
Mackintosh James, tailor, Henry near Front, h. Randolph
McInnis
Maginnis Mack, packer, b. United States hotel
Markham
Malcom Thomas, sexton, h. High
Maltpress John, h. High
Maltpress R. J. (M. & Earle) h. Fulton
Marsden Bros. leaf tobacco, warehouse, depot grounds
Maxon H. W. h. Main
Mayhew William, laborer, h. Henry

Mendelson M. clothing, Front, h. do
 Methodist Episcopal church, Albion
 Miller John, bed springs, b. American house
 Morehead Robert, laborer, b. Henry
 Mooney Thomas, laborer, h. Lawton
 McDonnell Mrs. Kate, h. Mechanic
 McGiffin G. F. clerk, h. Swift
 McGiffin H. S. clerk, h. Henry near Front

NAIDEN Mrs. Mary, h. Fulton
 Nicholson A. P. dentist, Front, h. North Second
 Newton Lafayette, clerk, b. American house

O'CONNOR Mrs. Mary, h. Broadway
 Ormsby Sundra, mason, h. Rollin

PALMER Ephraim, h. Albion
 Palmiter E. S. salesman, h. High
 Patridge Delano, laborer, h. Main
 Pease F. H. (P. & Pyre) Main near depot
 PEASE & PYRE, tobacco dealers, warehouse 6, depot
 grounds
 Peck Mrs. Harriet, h. Fulton cor Mechanic
 Pelton M. (Pomeroy & P., Wm. T. Pomeroy & Co.) h. Catlin
 Pells George M. farmer, h. lane near North First
 Perry T. A. (Mabbett & P.) h. Rollin
 Peterson S. blacksmith, h. High
 Peterson Samuel, blacksmith, h. Henry
 Pierce Clark, packer, h. Main cor High
 Pierce J. F. clerk, b. Front
 Pomeroy William T. & Co. leaf tobacco, warehouse 8, depot
 grounds
 Pomeroy W. T. (P. & Pelton) h. Main
 Pomeroy William T. (W. T. P. & Co.) res. Janesville

POMEROY & PELTON, cigar dealers, warehouse 8, depot grounds. See page 67

Poole Charles, packer, b. United States hotel

Poole J. W. carpenter, b. United States hotel

Price George, carpenter, h. Lawton

Price William, carpenter, h. Croft's addition

Pyre P. (Pease & P.) Main near depot. See page 67

QUARNE Edward, helper, b. Catlin

Quigley James, laborer, h. Lawton

Quigley Mrs. Daniel, h. rear Lawton

Quigley Mrs. Kate, h. Main over railroad

RATZ William, ostler, b. Fulton

Ratzlaff Ratzlaff August, laborer, h. Lawton

Readdy John, laborer, h. Lawton

Reagan Andrew, laborer, h. Mechanic

Reagan Michael, laborer, h. Mechanic

Reuterskiold A. F. (A. F. R. & Co.) h. Croft's addition

Reuterskiold A. F. & Co. saloon, billiards, Henry

Reed Mr. carpenter, h. Fulton

Reels Henry, barber, Henry, h. near mill, rear Lawton

Riley Joseph, clerk, b. Front

MISS M. RILEY,

DEALER IN

**Groceries, Candies, Crockery, Teas, Coffees
and General Merchandise.**

Front Street, Next to Bank,

—

Edgerton, Wis.

Riley Miss M. general merchandise, Front near Main, h. do

Rich Frank, ostler, b. American house

Roarty John, laborer, h. Henry

Robinson R. G. (Dickinson & R.) h. Main

Robinson Roswell, farmer, h. Main
Rogers Lester W. clerk, b. Washington
Rogers Rev. Cortland, h. Washington
Rooney Mrs. Bridget, h. Henry
Root Charles D. cigarmaker, b. High
Root Fred, b. High
Ryerson Mrs. Isabel, h. Rollin

SCHAPENBERG^{RE} Casper, laborer, h. Lawton
Sherman B. B. shoemaker, Front, h. Albion
Sherman E. F. (Dickenson & S.) h. Rollin near Broadway
Sherman G. D. grocer, Front, h. Albion
Shints H. J. h. North Second
SKINNER JAS. B. builder, h. Catlin
Smelling Ferdinand, laborer, h. Lawton
Smith Edward, farmer, h. Rollin
Son Harry, clerk, b. Lawton
Son H. C., U. S. express agent, Main near depot, h. Lawton
Sowle W. E. telegrapher, h. Rollin
SPENCER JOHN, jeweler, tinware, Front cor Swift, h.
Washington
Spencer Leland, mason, h. North Second
Spencer Miss Sarah, printer, b. Washington
Sprague Mrs. E. E. carpet weaver, High, h. do
Springer D. B. laborer, h. Lawton
Springer Durfee, blacksmith, h. Lawton
SQUIRES E. R. (Taylor & S.) h. Albion
Stafford James, laborer, h. Main over railroad
Stark Charles, laborer, h. Lawton
Stark Fred, farmer, h. Fulton
Stephens William, laborer, h. Washington
Stewart Charles, laborer, h. Main over railroad
Stewart Edward, carpenter, h. Main over railroad
Stewart James, restaurant, Swift cor Front, h. do
Stewart William, laborer, h. Main

STILLMAN HENRY W. books, stationery, Front, h.
Washington

T. L. STILLMAN,

Manufacturer of and Dealer in

Carriages, Wagons & Cutters,

Painting, Trimming, Smithing and Repairing Done to Order.

Front Street, between Main and Catlin, Edgerton, Wis.

STILLMAN T. L. wagonmaker, Front, h. Washington

Stonck Henry, laborer, h. Washington

Stoughton Henry, shoemaker, Henry, h. do

Strandberg Charles, tailor, b. United States hotel

Stricker Albert, laborer, h. Rollin

Sutton Charles (S. & Arthur) h. Croft's addition

Sutton & Arthur, leaf tobacco, warehouse depot grounds

TALL BILL, saloon, Henry, h. do

Tallmadge F. A. photographer, Front, h. Washington

Tallmadge Mrs. Anna, h. Washington

Taunton James, farmer, h. Randolph

Taylor A. F. (Walbridge & T.) b. American house

Taylor Nelson (T. & Squires) h. Main cor Front

TAYLOR & SQUIRES. leaf tobacco, warehouse 4, depot grounds. See page 66

Torgerson Jul. saloon, Henry, h. do

Toiton Harry, packer, b. United States hotel

Towne J. P. attorney, Front cor Swift, h. Washington

Towne L. H. b. Washington

Towsley Albert. h. North Second

TOWSLEY ALMOND, pumps, agricultural implements,
Fulton, h. Washington

Towsley Mrs. Lenora, h. Fulton

True Mrs. Mary E. h. Albion

Twing S. I. teamster, h. near brickyard

UNITED STATES HOTEL,

Opposite the Depot, Edgerton,

GEO. MABLESON, Proprietor.

This house has been entirely refitted, and many comforts added, and travelers will get the best of accommodations at reasonable prices.

Billiard Hall in connection with the house. Also, good Livery in attendance.

UNITED STATES HOTEL, Front

VAKINGER Fred. butcher. h. Washington

Vayette Frank, laborer, h. rear Main near bridge

WALBRIDGE Clinton (W. & Taylor) h. Front

Walbridge & Taylor, general merchandise, Front

Walker Miss Jennie, (W. & Learn) h. Front

Walker & Learn, dressmakers, milliners, Front cor Swift

Walters James, blacksmith, h. Washington

Walters John, blacksmith, h. Henry

Ward John F. painter, h. Henry

THOMAS WARREN & SON, CARPENTERS AND BUILDERS.

*Contracts Taken by Day or Job. Specifications Furnished and
Estimates Given.*

Washington, cor North First Street, Edgerton, Wis.

WARREN THOMAS, h. Washington cor North First

Warren Thomas & Son, builders, Washington cor North
First

Welch John (W. & Connor) h. Front
 Welch Mrs. Catharine, h. High
 Welch Phillip, laborer, b. High
 Welch & Connors, saloon, Front
 West Mrs. Fulton cor Mechanic
 Westlake Thomas, blacksmith, wagonmaker, rear Fulton, h.
 North Second
 Whitcomb Mrs. M. M. h. Fulton
 White George, farmer, h. North First
 White Mrs. Ada, h. North First
 Whittet James, h. Catlin
 WILDERMUTH REV GEORGE, pastor German Luther-
 an church, h. Albion
 Williams Mrs. Martha, h. Croft's addition
 Williams William W. farmer, h. Swift
 Wilson Dexter, clerk, b. Front
 Wilson P. J. farmer, h. Rollin
 Wilson Nerva, millinery, Front h. Rollin
 Wilson Richard, barber, h. Main over railroad

THE WISCONSIN TOBACCO REPORTER,

Devoted to the interests of the Tobacco Growers of Wisconsin, and
 the local interests of Edgerton and vicinity.

F. W. COON, Editor and Proprietor.

Terms—\$1.50 a year; \$1.65 a year if outside of Rock County.
 Office over Babcock's store.

WISCONSIN TOBACCO REPORTER, F. W. Coon,
 prop. Front cor Swift

ZIMMERMAM Mrs. Hester, h. Catlin cor High

TAYLOR & SQUIRES

DEALERS IN AND PACKERS OF

FINE LEAF TOBACCO.

EDGERTON, WISCONSIN.

*Tobacco Bought and Sold on Commission.**Warehouse No 4, Depot Grounds.*

D. A. EARLE

R. J. MALTPRESS.

EARLE & MALTPRESS,

SHIPPERS AND DEALERS IN

LEAF TOBACCO,

EDGERTON, WISCONSIN.

*Tobacco Bought and Sold on Commission. Also Dealers in
Brick, Wood and Coal.**Warehouse No. 13,**Depot Grounds*

A. JENSON, Edgerton.

O. GUNDERSON, Stoughton

ANDREW JENSON & CO.,

PACKERS AND DEALERS IN

LEAF TOBACCO.*WAREHOUSE NO. 10, DEPOT GROUNDS,
EDGERTON, WISCONSIN.**Tobacco bought on commission. Also packing and buying at
Stoughton. Plenty storage room at both places.*

GOVE & HARRIS,

Dealers in and Packers of

LEAF TOBACCO.

*Tobacco Bought and Sold only on Commission. Wisconsin
Agents for Phillips, Eggert, Hull & Co., Tobacco
Inspectors, New York.*

Warehouse, Depot Grounds, - - Edgerton, Wis.

POMEROY & PELTON,

Dealers in and Shippers of

LEAF TOBACCO.

Also Manufacturers of and

DEALERS IN CIGARS.

Warehouse 8, Depot Grounds, Edgerton, Wis.

F. H. PEASE.

FRANK PYRE.

PEASE & PYRE,

DEALERS IN AND

PACKERS OF LEAF TOBACCO

Tobacco Bought and Sold on Commission.

Warehouse No. 6, Depot Grounds.

Edgerton, Wis.

BUSINESS DIRECTORY.

AGRICULTURAL IMPLEMENTS.

Tousley Almond, Fulton

Case A. Front cor Henry

Hain J. D. Front

ATTORNEYS.

Towne J. P. Front cor Swift

BANK.

Bank of Edgerton, Front cor Main

BARBERS AND HAIRDRESSERS.

Davis W. J. Front

Reels Henry, Henry

BILLIARDS.

Reuterskiold A. F. & Co. Henry

United States Hotel, Front

BLACKSMITHS.

Burdick D. N. & Son, Fulton

Hakes Wesley, Front near railroad

Lintvedt Holver O. Front

Westlake Thomas, Fulton

BOOKS, STATIONERY, ETC.

Stillman Henry W. Front

BOOTS AND SHOES.

Albion Union Co-operative Association, Front

Babcock E. W. Front

Burdick P. C. Front cor Swift

Grange Store, Front opp. depot

Mabbett & Perry, Front

Sherman B. B. Front

Stoughton Henry, Henry

Walbridge & Taylor, Front

BRICK.

Earle & Maltpress, warehouse 13, depot grounds

BUILDERS.

Coon D. F. Albion

Gasley John, Swift

Hill James H. Albion

Skinner James B. Catlin

Warren Thomas & Son, Washington cor North First

CARPET WEAVER.

Emberson Miss Louise, Henry

Incobar Mrs. Rollin

Keller Miss, Rollin

Sprague Mrs. E. E. High

CIGAR MANUFACTURERS.

Brown W. R. depot grounds

Bowen P. A. Front cor Swift

Pomeroy & Pelton, depot grounds

CLOTHING.

Albion Union Co-operative Association, Front

Babcock E. W. Front

Grange Store, Front

Mabbett & Perry, Front

Mendelson M. Front

Walbridge & Taylor, Front

DENTISTS.

Nicholson A. P. Front

DRESS MAKERS.

Walker & Learn, Front cor Swift

DRUGGISTS.

Banks C. H. Front

Croft J. C. & Co. Front cor Henry

DRY GOODS.

Albion Union Co-operative Association, Front
Babcock E. W. Front
Croft James, Front
Grange Store, Front opp. depot
Mabbett & Perry, Front
Walbridge & Taylor, Front

FURNITURE.

Clarke W. H. Albion

FLOUR, FEED, ETC.

Brown R. R. & Sons, Main
Bullis Albert S. Main near railroad

GENERAL MERCHANDISE.

Albion Union Co-operative Association, Front
Babcock E. W. Front
Grange Store, Front opp. depot
Mabbett & Perry, Front
Riley Miss M. Front
Walbridge & Taylor, Front

GROCERS.

Albion Union Co-operative Association, Front
Babcock E. W. Front
Croft J. C. & Co. Front cor Henry
Grange Store, Front opp. depot
Hutson N. J. Front
Mabbett & Perry, Front
Riley Miss M. Front
Walbridge & Taylor, Front

HARDWARE.

Hain J. D. Front
Case A. Front cor Henry

HARNESS AND SADDLES.

Heritage J. A. Front opp. depot

HATS AND CAPS.

Albion Union Co-operative Association, Front
Babcock E. W. Front
Burdick P. C. Front cor Swift
Grange Store, Front opp. depot
Mabbett & Perry, Front
Walbridge & Taylor, Front

HOTELS.

American House, Front cor Albion
United States Hotel, Front

ICE DEALERS.

Culton Bros. Fulton

JEWELRY.

Hain J. B. Front
Spencer John, Front cor Swift

LEAF TOBACCO.

Bardeen H. L. warehouse 1, depot grounds
Bentley A. W. warehouse 9, depot grounds
Bentley W. P. warehouse 9, depot grounds
Child W. W. and H. W. warehouse 11, depot grounds
Dickinson & Robinson, warehouse 2, depot grounds
Earle & Maltpress, warehouse 13, depot grounds
Gove & Harris, depot grounds
Jensen Andrew & Co. warehouse 10, depot grounds
Marsden Bros. warehouse, depot grounds
Pease & Pyre, warehouse 6, depot grounds
Pomeroy William T. & Co. warehouse, depot grounds
Taylor & Squires, warehouse 4, depot grounds
Hutson Thomas, warehouse, depot grounds
Sutton & Arthur, warehouse, depot grounds
Pomeroy & Pelton, warehouse 8, depot grounds

LIVE STOCK.

Brown R. R. & Sons, Main
Langworthy Mont. United States hotel

LIVERY STABLES.

Brown C. L. Albion
Dickenson H. H. Albion
Humphreys S. C. Swift near Fourth

LUMBER.

Brown R. R. & Sons, Main
Lusk John I. Main

PAINTERS.

Dickinson & Sherman, Fulton

PHOTOGRAPHERS.

Tallmadge F. A. Front

PHYSICIANS.

Burdick B. North Second
Hyland F. B. Rollin
Judd H. H. Front
Lord James, Albion
Lord Simon, Albion

MARKETS.

Attlessey Robert, Front cor Swift
Cordner & Houghton, Front
Harmon Joseph, Albion cor Pleasant

MILLINERS,

Walker & Learn, Front cor Swift
Wilson Nerva, Front

MUSIC TEACHER.

Burdick Blanche, Rollin cor Swift

NEWSPAPER.

Wisconsin Tobacco Reporter, F. W. Coon proprietor,
Front cor Swift

RESTAURANTS.

Hutson N. J. Front
Stewart James, Swift cor Front

SALOONS.

Edwards D. C. Front
Howard Ira M. Front
Reuterskiold A. F. & Co. Henry
Tall Bill, Henry
Torgerson Jul, Henry
Welch & Conners, Front

TAILORS.

Clatworthy Henry, Front cor Swift
Mackintosh James, Henry

TINWARE.

Case A. Front cor Henry
Spencer John, Front cor Swift

WAGONMAKERS.

Burdick & Son, Fulton.
Lintvedt Holver O. Front
Stillman T. L. Front
Westlake Thomas, Fulton

Historical Sketch.

The village of Edgerton, in the township of Fulton, is situated on the line of the Milwaukee & St. Paul railroad, seventy-one miles west of Milwaukee, one and a half miles from Rock river, twenty-six miles east of Madison, and one mile south of the line of Dane county. The first settlers within the vicinity of the village were Robert and Daniel Stone and William Squires, who arrived about 1836. In 1843 Thomas Quigley located and claimed sixty acres, a portion of which included the land now occupied by the railroad depot. Lucius M. Page next purchased eighty acres on the north side of the depot. In 1853 the village was laid out by L. M. Page, H. S. Swift, Adin Burdick, and Dr. C. R. Head. The first building erected within the limits of the platted village was a shanty built by Dr. Head for the accommodation of the laborers working in his brickyard and stood on Albion street. The first dwelling house was erected by D. F. Coon in the spring of 1853, and was built of the lumber which composed his house at Newville. This house stood on Albion street, on the lot now occupied by Mr. Mabbett. In the fall of the same year Roswell Robinson brought from Catfish the lumber of a malt house and constructed the dwelling in which he still resides on Main street. Ira Pierce, the first builder who located in the village, constructed the next two houses erected, which were those of Ferdinand Davis and Wm. C. Hall. Mr. Coon was then in Pierce's employ and recollects that the lumber came from Milwaukee to Whitewater, then the terminus of the railroad, and from that point was teamed to Edgerton. When Wm. Hall brought

his wife to the town to select a lot and she found it covered with a grove of oaks and acres of hazel-nut bushes, the amazed woman exclaimed: "Well, this *is* speculation." A Front and back lot on Front street then cost \$25. The first child born in the village was Frank C. Hall, who made his debut January 24, 1854. The first to cross the shadowy river was a man named Hakes and he was succeeded by Rev. Mr. Thorington, of Ohio, who while passing through had learned that Charles Clark, an old friend, was located in the place, and taking the opportunity offered by a few minutes' stop ran over to see him. On his return the train had started and in attempting to board it he slipped and fell under the wheels. The earliest matrimonial alliance seems to have been between John Quigley and Miss Theresa Malian. In the winter of '53-54 Nelson Coon moved an old barn frame from Fulton into the settlement and hung out the sign of Exchange Hotel. It was used by the general public for some time before it was partitioned. The earliest religious meetings were held by the primitive Methodists in the depot before it was completed. William C. Hall opened the first store and became the first grocer. Ferd. Davis followed in his wake and displayed a stock of general merchandise.

The depot was completed in the winter of 1854-55 and the first station agent, who stopped but a short time, has been forgotten, but the second to occupy the position was O. D. Peck, of Oskosh. He resided with his family in the upper part of the building. The year of 1855 was marked by considerable development in the infant village as settlers had began to arrive. Ferd. Davis built two brick stores; Nelson Coon erected the United States Hotel and D. F. Coon a steam grist mill, which in after years he turned into a sash, door and blind factory. In this year John Fassett donated to the village three acres of land for burial purposes. This year saw also the erection of the first school house which stood on the site of the present one and served for a

long time as the meeting house for all denominations. The first blacksmith to locate is said to have been John Dunn, and his shop stood at the corner of Fulton and Mechanic streets. The first resident physician is said to have been Dr. Slocum. To Dr. Head belongs the honor of making the first brick, but the clay used was that obtained on the surface which made red brick, until D. F. Coon in digging a well for his grist mill discovered yellow clay a lump of which being placed in the kiln burned white. Among the deaths which occurred in the early settlement of the village were those of Wm. C. Hall and a lady named Moore. The former died while on a visit to Whitewater and the latter was crushed by the cars.

The first freight was shipped from the village by rail November 25th, 1853; the postoffice was established in 1854; the first school-house erected and the Masonic Lodge organized in 1855; the American House opened in 1856; Swift's block built, 1857; the Baptist church organized, 1858; Catholic church erected, 1859; first tobacco shipment of importance, 1860; Methodist church incorporated, 1863; first Methodist church purchased, 1867; Odd-Fellows Lodge organized, 1867; first tobacco warehouse built in 1869; German Lutheran Evangelical church organized, 1872; Good Templars formed, 1874; first newspaper, 1874; Fulton Grange instituted, 1875; German Lutheran church erected, 1879; present Methodist church dedicated, 1880.

The manufacture of brick in Edgerton was first begun by Dr. C. R. Head in 1852-3 and his product was red brick made from the surface clay. After the discovery that immense beds of clay from which white brick could be made existed beneath the surface, Dr. Head formed a joint stock company which began the manufacture on an extensive scale, but after an existence of several years the company sold out to Lilibridge Barber, who continued the business for several years and then sold to James Culton. The latter ex-

tended the business to considerable proportions and the brick became widely known and were exported as far as Prairie du Chien, where they entered into the construction of one of the best hotels. With the death of Mr. Culton, however, his yard dwindled and finally collapsed. The manufacture of brick, however, did not cease, for in the summer of 1879 John Maltpress & Son started in the business and for several years have turned out a half million white brick annually. This season the firm name has been changed to Earle & Maltpress; machinery capable of producing one million of bricks each season has been added and the manufacture of drain tile will be pursued in connection with the business. Thus far the demand has exceeded the supply, and no doubt another season increased facilities will be needed.

Among the resources of the village not yet developed is a superior pottery clay which an English potter lately said was as fine as any he ever saw. It is to be hoped that in the near future some capitalist will develop this important source of wealth.

Messrs. Edward Hall and Robert Johnson are said to have been the first to grow tobacco in the vicinity of Edgerton in the summer of 1853, but being somewhat in the dark in respect to its proper care, lost the first crop. A few years later Ralph Pomeroy, who had tilled the weed in Ohio, planted and reared a crop with success. Light crops were grown in the neighborhood up to 1858, but unusually late and heavy frosts that year destroyed the young plants and the experimenters were mostly disgusted. In 1860, however, 400 cases were exported, and in the Milwaukee and Chicago markets brought from 4 to 6 cents per pound. The quality of the tobacco was a surprise to the buyers and the fame of the new tobacco region penetrating eastward brought representatives of leading houses west to inspect the field. William T. Pomeroy became the first local buyer

for Messrs. Shohn & Ritzenstein, of New York. Soon after William P. Bentley took the field for James Mayer & Sons, of New York; he was followed by C. H. Wheeler, for Becker Brös., of Baltimore, and Rothschild, Schrader & Elial, of Chicago; after him W. W. Child set in for Wintermeyer & McGowan, of Hartford, Conn., and Thomas Hutson became the agent of Schroder & Bond, of New York. The last named firm erected the first warehouse in Edgerton, in 1869, the building having a capacity of 2,500 cases.

The agents were not slow in convincing the farmers that a ready market was near for all the tobacco they could raise and an immense impetus was given to the industry. According to census bulletin No. 193, of the national census of 1880, the acreage of tobacco in Wisconsin in 1870 was 770 acres, and the production for that year in the state was 960,813 pounds. Wisconsin then stood as fifteenth in the list of tobacco producing states. In 1880, according to the same authority, the acreage of tobacco grown in this state was 8,811 acres, and the product amounted to 10,878,463 pounds. From the fifteenth state in point of production she had advanced to the tenth. From statistics compiled for the secretary of state of Wisconsin of the acreage for 1881 we find that thirty-six counties in the state raised tobacco that year, and that the total number of acres planted was $12,585\frac{7}{8}$, or an increase of 3,775 acres in a single year, a percentage of 47. If the increase in 1882 is in the same proportion, and there is every reason to believe it is, the acreage of tobacco in Wisconsin this year will exceed 16,000 acres, or in other words over 19,000,000 pounds.

The Wisconsin tobacco is known in trade parlance as cigar leaf. When first grown Connecticut seed was mostly used, but the later introduction of Spanish proved so successful that the present crop is mostly of that variety. The quality and fineness of the leaf has improved perceptibly

year by year, and the tobacco is now much used by manufacturers in so-called "Havana" brands of cigars.

Of the 12,585 acres grown in the state in 1881, Dane county produced 5,864 acres, and Rock county 5,704. Christiana, in Dane, took the lead of every other town in the state with 1,125 acres, and Porter, in Rock, stood second, with 1,118 acres. The five towns of Christiana, Pleasant Springs, and Dunkirk, in Dane, and Porter and Fulton, in Rock, produced half of the crop grown in the state.

Edgerton has from the first taken the lead as a shipping point for the tobacco grown in this portion of the state and has shipped an average of 16,000 cases every year during the ten years past. At present there are fifteen firms engaged in the business of buying and shipping leaf tobacco, fifteen warehouses are standing on the depot grounds, whose united capacity is fully 30,000 cases, and fully three hundred persons are employed in the winter months in the warehouses, assorting and packing the leaf. Many of these are non-residents, a large proportion females, and during the packing season the village presents a scene of life and animation seldom witnessed in so small a community.

The position of the tobacco merchants is at present a peculiar one. Their warehouses are all built on land belonging to the railroad company. About a year ago the railroad company compelled them all to sign an agreement by which they are obliged to pay a nominal rent of one dollar per year and to vacate the grounds at thirty days notice. The extortionate freight charges of the company which is 25 cents per hundred for all tobacco shipped to Milwaukee, a distance of but seventy-one miles, lead to some of the buyers teaming a portion of what they purchased to Milton Junction, where it was shipped by the Northwestern railroad. As a punishment to these and a warning to others the ironclad agreement above alluded to was enforced by the St. Paul company.

There are at present three firms engaged in the manufacture of cigars in the village and their trade is one of considerable proportions. The largest, Pomeroy & Pelton, send their goods into all portions of the country, even as far as New Mexico, and the combined firms furnish employment for about twenty persons, though at times there are double that number employed.

CHURCHES.

✱ M. E. CHURCH.

This church was incorporated February, 1863, by Moses J. Locksley, J. I. Lusk, Wm. Short, Job Allen, F. Van Patten and C. B. Harding. The congregation at first met in the school house, but in February, 1867, bought and fitted up as a church the brick building now occupied as a furniture store by W. H. Clarke. The first trustees were Randolph Brown, Wm. Short, J. P. Towne, Joseph Locksley and F. Van Patten. From 1862 to date the ministers have been Revs. J. H. Jennie, Henry Sewell, W. W. Case, George W. Wells, Samuel Lugg, J. H. Brooks, W. W. Warner, L. H. Baker, H. S. Chamberlain, W. Darwin Ames, A. White, W. F. Teeter and I. S. Leavitt.

The present edifice was erected in 1879-80, and dedicated by A. J. Meade, presiding elder of the Janesville district in September, 1880. The building is of Edgerton white brick, substantially constructed, and the exterior appearance is very neat and tasty. The building is carpeted throughout; the pews are of walnut and ash arranged in circular form, and the seating capacity is 250. Stained windows and a beautifully frescoed ceiling add great impressiveness to the interior. The basement is used for the Sunday school, and the whole building is furnacc heated. The pulpit is of the latest design and finish, being black walnut upholstered in ma-

room velvet. The cost of constructing and furnishing the edifice was but \$5,000.

Adjoining the church is the parsonage, just completed. The building is of wood, two stories in height and with piazza and bay window. The rooms are airy and commodious to an eminent degree; the graining of the woodwork really artistic, and the folding-doors, bay window, and high ceiling gives one the impression that the designers constructed the building to compare with the broad, liberal hospitality for which the people of this church are remarkable. The congregation is indebted to the aid association, and to many of the leading citizens of Edgerton and vicinity, irrespective of creed, for the material prosperity which they now enjoy.

The present officers of the church are: Pastor, I. S. Leavitt; trustees, J. P. Towne, John Walters, D. H. McChesney, James Henderson, W. H. Pomeroy, E. W. Babcock, Henry Warner; stewards, W. H. Pomeroy, D. H. McChesney; treasurer, E. W. Babcock.

Sunday School.—W. H. Pomeroy, superintendent; Miss De Son, secretary; Mrs. Lee Brown, Mrs. I. S. Leavitt, Miss Susan Maltpress, Miss Sarah Maltpress, Miss Bertha Babcock, Miss Anna Warren, Miss Della Sherman, Miss Sarah Spencer, Miss Lizzie Markham, Miss Tillie Ash, teachers; John Spencer, leader in singing.

Services are held as follows: Preaching every Sunday at 10:45 a. m., and alternate Sundays at 8 p. m. Class meeting after the morning service. Prayer meeting every Thursday evening at 7. Sunday school, 9:30 a. m.

BAPTIST CHURCH OF EDGERTON.

The Baptist Church was organized about 1858 and Rev. George Ford is believed to have been the first pastor. Among the families first connected with the church were those of Lilibridge Barber, Randolph Brown, James Culton,

Asa Root and Raselas Bardeen. The successive pastors after Mr. Ford have been Revs. Geo. Nutley, Douglas, of Janesville, Jas. Buchanan, Douglas, of Stoughton, Horton, Hall and Martin, who was the last settled preacher, and who resigned the charge after six months service in the spring of 1877. Unfortunately the character of some of the pastors was not above criticism and their influence was not of the kind to hold a church together and this combined with the death of some of the most prominent members and the moving away of others had the effect of greatly weakening the society and several years ago regular services were discontinued. Occasionally neighboring pastors addressed the few who assembled, but for some time there have been no meetings of any kind. A year ago last winter, however, a movement was started among some of the old members of the society to reorganize and pay off the debt on the church and complete the building of it. About the same time the Methodists were making strenuous efforts to pay for their church and erect a parsonage. After discussing the matter it was decided best to discontinue their efforts for the present and to unite as far as possible to aid the other denomination. The Methodists succeeded in placing their society on a sound financial basis, and while discussing the result with a lady visitor, a short time since, Deacon Ephraim Palmer said he wished there was enough energy among the ladies of the village to place the Baptist society on its feet again. The lady went home, thought over the idea, became enthusiastic, suggested it to other ladies, a meeting was called, officers elected and the Ladies' Christian Union came into existence with twenty members. The lady who was the prime mover would not accept office, but is one of the most efficient members of the organization. This society now has 80 members; is made up of all denominations and has assumed the debt of the church. The

church society will soon be called together again and the outlook is excellent for the re-opening of the edifice.

PRIMITIVE METHODISTS.

This sect held the first religious gatherings in Edgerton, meeting in the railroad depot before it was inclosed. Their meetings were for a long time held in the school house but the congregation now meet for worship at Croft's Hall. Their pastors have been Revs. Hewitt, Thos. Jervis, Teal, Dawson, Thos. Shutt, Parker, Geo. Wells, Bullenwick, Cliff, Fox, C. Hendra and J. Hardcastle, the present pastor.

ST. JOSEPH'S ROMAN CATHOLIC CHURCH.

This church was erected in 1859, and was the first church finished in the village. There was an organization and pastoral visits previous to the building of the church. The first settled pastor was Rev. James Haggerty, who was followed by Revs. Arthur O'Connor, Murphy, Butler, C. Devine and the present pastor, Rev. J. F. Bowe, who took charge of the church February 15, 1858. Since the beginning of his pastorate Father Bowe has expended \$3,500 in improvements, building the pastorate, enlarging the church, placing a bell of 900 pounds weight in the belfry and grading and beautifying the grounds of the church and pastorate. The church edifice is of wood, painted white, and crowns the summit of a hill a quarter of a mile from the railway station; the seating capacity of the church is not more than sufficient for the seventy-five families that compose the congregation.

ST. JOHN'S GERMAN EVANGELICAL LUTHERAN CHURCH.

This church was organized in 1872 and held their first meetings in Croft's Hall. Their present edifice was erected in 1879 and dedicated by Rev. John Schlerf, of Janesville, in June of that year. There are 57 active members and many more who attend the services. The church is under the jurisdiction of the Missouri Synod, which is comprised

of 800 ministers and of which Rev. H. C. Schwan is president.

The church is of wood, painted white, and is situated on an eminence about a quarter of a mile from the depot. The interior is neatly finished and contains 45 pews and a gallery. A choir furnishes vocal music in connection with the melodeon used in the church.

Next to the church is the parish school, erected this year. The first school term began in April and there are about 50 pupils. The system of education embraces a secular and religious one. The secular studies are similar to those pursued in our public schools, and the pupils are also educated in the faith and tenets of their church, which instruction qualifies them to become members of it at the age of 14. There are in the Missouri Synod 423 parish teachers, not all of whom occupy the position of minister and teacher as does the Edgerton pastor.

The officers of the church are: Rev. George Wildermuth, pastor; John Dallmann, Charles Brummond, trustees; C. Bartz, William Affeldt, deacons; John Dallmann, treasurer; William Affeldt, president of congregation.

SOCIETIES.

F. and A. M. Fulton Lodge, No. 69.—Organized August 8th, 1855, at Indian Ford. About 60 members. Meets first and third Wednesdays of each month at Masonic Hall, at 7 p. m. J. M. Keizer, W. M.; Wm. P. Bentley, S.W.; H. H. Judd, J. W.; W. W. Child, Secretary; P. C. Burdick, Treasurer; C. W. Burdick, Deacon; E. C. Hopkins, Junior Deacon; C. H. Dickinson, Tyler.

Edgerton Lodge, No. 133, I. O. O. F.—Organized September 27th, 1867. Members, 70. C. O. Shannon, N. G.; H. H. Judd, R. S. Meets every Saturday evening at 7 p. m. at Croft's Hall

Edgerton Union Lodge, No. 145, I. O. G. T.—Organized February 5th, 1874. Members about 50. W. H. Pomeroy, W. C. T.; F. A. Sherman, W. R. S. Meets every Tuesday evening at 7 p. m. in Baptist Church.

Father Matthew T. A. B. Society.—The object of this society is to promote religious and industrious habits; to discourage the use of intoxicating drinks by example and advice; to assist mutually in case of sickness and to provide in necessity for the wants of the members. Organized June 4th, 1882. Members 80. Rev. J. F. Bowe, President; C. W. McCarthy, Vice President; Frank Lawlor, Recording Secretary; James Roherty, Financial Secretary; John Burns, Treasurer; John Horton and N. Pound, Marshals. Meets first Sunday of every month in St. Joseph's Church.

Fulton Grange, No. 195, Patrons of Husbandry.—Organized 1875. Henry Brace, Master; Mrs. D. E. Hopkins, Secretary. Meets on the second and last Friday of each month at 7 p. m. at Croft's Hall.

This society has a large store in Edgerton called "The Grange," containing several thousand dollars' worth of general merchandise, which is owned among the members of the society. Annual dividends are declared among those holding certificates of stock. The society now numbers about 50 members, of whom about 20 are stockholders.

Wisconsin Tobacco Growers' Association.—Organized 1878. This society, though at present languishing somewhat, has done much to elevate the standard of Wisconsin tobacco among manufacturers. It does not seem to have made much headway as yet toward the primal purpose for which it was organized, which was to place tobacco growers in direct communication with manufacturers, and leave the brokers out in the cold. Its present officers are: Dr. S. L. Lord, President; T. J. Atwood, Vice President; Henry Marsden, Secretary; George Rumrill, Corresponding Sec-

retary; E. Squires, Recording Secretary; T. J. Atwood, Treasurer.

Ladies' Christian Union.—Organized December, 1881. Membership 80. Mrs. Jas. Croft, President; Mrs. Austin Burdick, Vice President; Mrs. Lee Brown, Secretary; Mrs. Sarah Mabbett, Treasurer.

St. Ann's R. C. Ladies' Society.—The object of this society is to provide the church with decorations and ornaments. Organized in 1878. Members about 125. Meets monthly at church.

Ladies' M. E. Aid Society.—Mrs. J. P. Towne, President; Mrs. P. S. Leavitt, Vice President; Mrs. Mary True, Secretary and Treasurer. Meets Wednesday afternoon of each week at the residences of members.

Young Ladies' M. E. Aid Association.—Miss Lizzie Markham, President; Miss Sarah Maltpress, Vice President; Miss Sarah Spencer, Secretary; Miss Tilly Ash, Treasurer. Organized 1880; members, 15; meet every Wednesday at the residences of members.

M. E. Church Choir.—Henry Warner, leader. Members, 12. Meets every Friday at M. E. church.

Edgerton Band.—Organized April, 1879. Members, 15. L. K. Jessup, leader. Election once in six months. Meets twice weekly in hall over Dickinson & Sherman's paint shop on Fulton street. This band has lately invested in new silver mounted instruments and new uniforms, and present a fine appearance. Their music is well rendered and does credit to the practice they have had, as many of the members have but lately joined. No other organization gives such an appearance of life and enterprise to a community as a good band, and the Edgerton band deserves well of the village.

CEMETERIES.

FASSETT CEMETERY ASSOCIATION.

This association was organized March 10, 1857. Mr. John Fassett had presented the town with three acres of land for burial purposes and it was thought necessary to take action to lay out and care for the donation. John Hutson, John Fassett, Elias Downing, P. F. Davis, J. O. Slocum, R. Robinson, Guy Stoughton, Stiles Hakes and William C. Banks were elected trustees and the cemetery laid out and declared open to the public. The first interment in it was the remains of the Rev. Mr. Thorington, who died of injuries received in the attempt to board a moving train in the village. The present area of it is seven acres, and it is situated on the highway about three-quarters of a mile from the village, occupying a ridge or swell sufficiently elevated to make its shade trees, shrubbery and gleaming white gravestones a notable feature of the landscape. The spot is well worth visiting, and if, instead of erecting costly monuments, nature's adornments are bestowed with a more lavish hand it must take rank with the most beautiful of the cemeteries of our land. The present officers of the Association are:

President, E. W. Babcock; Secretary, Dr. H. W. Stillman; Treasurer, J. I. Lusk; Trustees, E. W. Babcock, J. I. Lusk, H. W. Stillman, J. P. Towne, T. A. Perry, Thomas Hutson, C. E. Langworthy, Wm. Pomeroy. Annual meeting in February.

ST. JOSEPH'S ROMAN CATHOLIC CEMETERY.

This cemetery is situated three-quarters of a mile from the village on the road to Janesville and is opposite the Fassett cemetery. The lots are 11x30 and the first person buried in the cemetery was a man named Burns. There have been about sixty interments. The place is well filled with shrubbery and shade trees and is a beautiful spot of consecrated ground.

THE POST OFFICE.

The Edgerton post office came into existence in 1854, and William B. Hall was the first postmaster. The gentlemen succeeding him have been Charles Clark, Schuyler Fassett, Byron Coon, L. M. Kellogg and E. A. Burdick, who still continues in the position. The office is designated as a separating one, and the mails of a dozen outlying villages are assorted by the Edgerton postmaster. As the salary is derived from the commissions on the sale of stamps, with a moderate compensation for the assorting of outside mails, the position is hardly a sinecure. The following are the present mail arrangements: Mails for Janesville, Milwaukee, Chicago and the east close 12:45 p. m. Night service by way of Madison for Milwaukee, Chicago and the east close 5:10 p. m. Mails for the west via Madison close 5:10 p. m. Mails arrive from Madison and the west 1 p. m.; from Milwaukee and the east 5:20 p. m. Mails from Albion arrive 11:30 a. m., close 5:30 p. m.; from Evansville, Union, Cookville, Stebbinsville, Fulton, Indian Ford, arrive 12 m.; close 1 p. m.

PUBLIC SCHOOLS.

The first school in Edgerton was erected in 1855 on the site of the present one and for a long time was used as a school, public hall, and a house of religious worship for all denominations. The present structure is of brick, two stories in height, and contains four rooms. The several departments are graded as High School, Grammar, Intermediate and Primary. The high school embraces Latin, physiology, the higher mathematics and philosophy. The school report for the year ending April 28, 1882, gives the average attendance as follows: High School, 26; Grammar, 32; Intermediate, 33; Primary, 50. There are at present 337 school children between the ages of 4 and 20 in the district. The present school teachers are: Miss Eliza Nagle, Principal; Miss Harriet E. Brown, Intermediate; Miss Frankie Bryan and Miss Vinnie Clark, Primary.

Mich	
1875	
34	26
30	32
34	33
44	50
142	141

Preface.

When we commenced this book we did not advertise to include old Milton, but we came to the conclusion it would not do to leave it out in the cold. Finding some difference of opinion regarding its first settlement, we have tried to present the facts impartially. A much fuller sketch of the township we had prepared was crowded out for want of space.

We have tried to make our miscellaneous information as complete as possible, and if any society is not mentioned it is because the persons who promised us information concerning it never kept their word.

Our canvass has developed the following interesting facts: There are nearly 200 adult male citizens of the village; 44 separate firms are engaged in business; the village has a flourishing college; a fine public school; a punch factory, nursery, cheese factory, grist mill, grain elevator, tobacco warehouse, egg pickling industry and two hotels.

We have to thank many of the citizens for kind treatment and substantial encouragement.

MILTON. VILLAGE DIRECTORY.

ALEXANDER Archibald, farmer, h. Goodrich ave
Allen O. physician, h. Janesville ave cor Madison
Allen Abram O. mechanic, b. Janesville.ave cor Madison
Anderson J. B. (J. B. A. & Co.) h. High.

J. B. ANDERSON, GRAIN DEALER.

Excellent facilities for Receiving and Storing Grain.

DEPOT GROUNDS, — MILTON, WIS.

ANDERSON J. B. & CO. grain dealers, depot grounds
Anderson Mrs. Clara, h. Goodrich ave
Anderson William, tinsmith, h. Goodrich ave
Atherton Alonzo, laborer, h. Goodrich ave
Atherton Herman, baggage master, b. Milton house

BABCOCK E. S. well-driller, h. High cor Janesville ave
Babcock Mrs. A. C. h. High
Babcock Mrs. D. b. High
Bacon Henry, farmer, h. Bailey cor Greenman
Bacon Victor H. laborer, h. Plumb
Bailey Rev. James, h. College cor Bailey
Baldwin L. G. carpenter, h. Collins
Baldwin Miss May, teacher of painting, Milton College

BALL CHARLES C. hardware, Goodrich ave, h. do

CHARLES BALL,

DEALER IN

❖ HARDWARE, ❖

OF ALL DESCRIPTIONS,

Stoves, Tinware, Cutlery, Nails, Agricultural Tools, &c.

Goodrich Block, No. 5, - - - MILTON, WIS.

Ballard Benj. F. blacksmith, Goodrich ave, h. do

Blaisdel George, laborer, h. Goodrich ave

Bond Miss J. C. teacher in English department, Milton
College

Borden House, Goodrich ave

Borden L. S. prop. Borden house, Goodrich ave

BORDEN W. H. physician, lumber, depot grounds, h. Janes-
ville ave

Boss Mrs. A. F. h. Bailey

Bullis Ira, farmer, h. High

Burdick A. Delos, painter, h. Madison

Burdick D. C. morocco factory, Janesville, h. Janesville ave

Burdick E. H. photographer, Janesville ave, h. do

Burdick E. J. carpenter, h. College

Burdick G. S. h. Madison

Burdick Miss Ella, music teacher, h. Janesville ave near
High

Burdick M. S. farmer, h. College

CHAPMAN Fred, landscape gardener, h. Janesville ave

Clarke Wellington, farmer, h. Greenman

Clarke E. P. notary, h. Madison

CLARKE W. P. postmaster, druggist, Post Office buiding,
Janesville ave, h. Madison

W. P. CLARKE, P. M.,

REGISTERED PHARMACIST,

DEALER IN

DRUGS AND MEDICINES,

*Perfumery, Toilet Articles, Artists' Materials,
Fruit and Confectionery,*

Post Office Building, Janesville Ave., - MILTON, WIS.

Clarke W. W. stationery, books, Post Office building, Janesville ave, h. Madison

W. W. CLARKE,

—DEALER IN—

Books, Stationery, Jewelry,

TRUNKS AND BAGS,

FANCY GOODS, CIGARS, TOBACCOS, ETC., ETC.

Janesville Ave., Post Office Building, Milton, Wis.

Cole William, farmer, h. Janesville ave

Collins Nels, farmer, h. Goodrich ave

CORY W. H. general merchandise, Janesville ave cor. College, h. Janesville ave cor High

Craig Joseph, teamster, h. Janesville ave

Craig Samuel, laborer, h. Goodrich ave

Crandall E. h. Madison

Crandall Mrs. D. C. h. College

Crane D. W. shoemaker, Janesville ave, h. Madison

Crumb C. W. livery, Madison, h. Goodrich ave

Crumb Mrs. h. Goodrich ave

Curtis Mrs. Mary, nurse, h. College

DAVEY Sam. railroader, h. Janesville ave

Davidson J. C. stock buyer, h. Madison

Davidson J. E. carpenter, h. High

Davidson Louis, butcher, h. Janesville ave
Davidson Nathan, carpenter, h. High, rear M. E. church
Davidson Thomas, farmer, h. High
Davidson William H. farmer, h. High
DAVIS BROS. punch machines, Plumb
DAVIS EVAN (Davis Bros.) h. High
Davis Ezra, laborer, h. Goodrich ave
Davis Jed, carpenter, h. College
Davis Joseph, farmer, h. Madison
Davis Mrs. D. K. h. Janesville ave
Davy Ezra F. fireman, b. Goodrich ave
Davy Hiram, carpenter, b. Goodrich ave
Davy John W. ostler, b. Goodrich ave
Davy Mrs. Charlotte, h. Goodrich ave
Davy Oren P. carpenter, b. Goodrich ave
Day Homer, laborer, b. Milton house
Dunbar E. S. clerk, h. Greenman
Dunbar Alfred, clerk, h. Greenman
Dunn F. C. clerk, b. Goodrich ave
Dunn F. E. (P. M. Green & Co.) h. Goodrich ave
Dunn Miss Clara M. teacher of elocution, Milton College
Dunn Rev. E. M. pastor Seventh Day Baptist church, h.
Greenman cor Sweet

ELLIS E. S. student, h. Greenman
Evanson Edmund, school teacher, h. High
Evenson Prof. Edward H. teacher Latin language, Milton
College

FLAGLER Mrs. L. P. h. High
Flagler Mrs. Mary, h. rear High
Flood Daniel, painter, h. Goodrich ave
Fridell Oliver A. blacksmith, Goodrich ave, h. do
Fross William, carpenter, h. College
Fuller C. H. bakery, Janesville ave, h. do

Fuller Menzo, tinsmith, h. Janesville ave

Fuller Mrs. Hannah, h. Goodrich ave

GIFFORD Alfred, laborer, h. Greenman

GOODRICH EZRA, proprietor Milton House, Goodrich
ave cor Madison

Goodrich & Phillips, cheese factory, High

Grey Louis, mason, h. Goodrich ave

Green Mrs. S. h. Janesville ave

Green P. M. (P. M. G. & Co.) h. Goodrich ave

Green P. M. & Co. egg picklers,, merchants, Goodrich ave

Greenman Mrs. Caroline, h. Madison

Greenman Henry, student, b. Madison

HALL Mrs. L. M. h. Janesville ave

Hamilton E. T. ne plus ultra spring beds, h. Madison

Hamilton H. C. carpenter, h. Madison

Hamilton R. printer, b. Janesville ave

Hamilton W. G. h. College

Harvey D. H. farmer, h. Greenman

Harvey Frank B. farmer, b. Greenman

Hawkins Thomas, mason, h. Madison

Higbee Ezekiel, blacksmith, b. College

E. A. HOLMES,

GENERAL DEALER IN

Dry Goods, Notions, Ready Made Clothing,

Boots and Shoes. Crockery, Glassware, &c., &c.

The largest stock, best assortment and lowest prices of any
house in town.

Goodrich Ave., South Side of R. R., Milton, Wis.

HOLMES E. A. dry goods and general merchandise, U.

S. express office, Goodrich ave, h. do

HULLINGER REV. F. W. pastor Congregational church

h. High

JACKSON H. laborer, h. Madison
Jordan Mrs. E. M. h. Janesville ave

KINGSLEY A. R. h. Janesville ave cor Greenman

LANE W. H. miller, Madison, h. do
Langworthy Abdigal, h. Greenman

MARQUETTE P. h. Madison
McEwan James, h. Janesville ave
McEWAN WILLIAM, h. High
McNitt W. H. (McN. & Moore) h. Janesville ave

McNITT & MOORE,

DEALERS IN

Fresh and Salt Meats, Bologna Sausage,
Poultry and Lard.

Cash for Hides, Pelts, Poultry, &c. Our meats are always
fresh and of first-class quality. Call and see us.

Janesville Ave., MILTON, WIS.

McNITT & MOORE, meats, Janesville ave
Melcher J. J. harnessmaker, h. College
Melcher Mrs. D. dressmaker, College, h. do
Milton Cemetery, Goodrich ave

MILTON HOUSE

GOODRICH AVENUE, A FEW RODS FROM DEPOT.

FIRST-CLASS ACCOMMODATIONS.

Terms \$1.00 per Day. EZRA GOODRICH, Prop.

MILTON HOUSE, Goodrich ave cor Madison, Ezra Good-
rich, proprietor.

Millar Rev. W. T. pastor M. E. church, h. Goodrich ave cor
High

Millard B. W. painter, Janesville ave, h. College

MILLARD H. groceries, notions, Janesville ave, h. do

Moon Mrs. S. G. h. Goodrich ave

Moore Frank L. (McNitt & M.) h. Janesville ave

OBOURN Samuel S. wagonmaker, Goodrich ave, h. do

Obourn William, mason, h. Goodrich ave

PALMITER E. carpenter, h. Janesville ave

PALMITER MRS. L. E. millinery, Janesville ave, h. do

Piltington Mrs. Julia, h. Goodrich ave

Place Prof. W. Frank, teacher of Natural Sciences, Milton
College

Plumb J. C. (J. C. P. & Son) h. College cor Plumb

Plumb M. J. (J. C. P. & Son) h. Plumb st

PLUMB J. P. & SON, Green Hill Nurseries, College cor
Plumb. See page 99

Pollay H. H. meat market, Goodrich ave

Post Mrs. Mary, h. Janesville ave

Pthick R. D. farmer, h. Goodrich ave

REYNOLDS Nelson, farmer, h. Madison

Richardson Lyman A. farmer, h. High

Richardson R. traveling agent, h. Madison

Rockford T. section boss, h. Greenman

Rogers E. B. jobber, b. Madison

SAILER John M. valve maker, Plumb, h. do

Sanborn J. C. tailor, Goodrich ave, h. do

Saunders Freeman, farmer, h. Goodrich ave

Saunders H. C. farmer, h. Goodrich ave

Seaver Jessie, h. Greenman

Seventh Day Baptist Church, Madison

Sickels, M. A. cheesemaker, b. Milton house
 Smith Frank, clerk, b. High
 Smith R. D. farmer, h. High
 Soverhill & Earle, leaf-tobacco, depot grounds
 Sowl David D. farmer, h. Goodrich ave
 Spaulding John A. farmer, h. near Congregational church

D. L. SPRAGUE,

PRACTICAL WATCHMAKER AND DEALER IN

Watches, Clocks, Jewelry,

Stationery, Notions, Cigars and Candies,
 Janesville Ave., next to Telephone Office,
MILTON, WIS.

SPRAGUE D. L. jewelry, notions, Janesville ave, h. do
 Stannard A. C. washing machines, h. College
 STANNARD F. P. gunsmith, College, h. do. See page 99
 Starkweather Mrs. H. H. h. Goodrich ave cor Madison
 Stockman Prof. J. B. teacher penmanship, Milton College
 Stone Allen, laborer, h. Goodrich ave
 Stone Frank, mason, h. Greenman
 Stone R. mason, h. Greenman
 Stone Trueman, sexton, h. Goodrich ave
 Stone Willard, mason, b. Greenman

THE WEEKLY TELEPHONE.

Published Every Thursday Afternoon at Milton, Rock Co., Wis.

J. C. BARTHOLF, Editor and Proprietor.

TERMS: \$1 25 per year in Advance. Six Months, 65 Cents.
 Outsid of Rock County, \$1.40 a Year.

The subscription list of **THE TELEPHONE** is constantly increasing, and its success as the newspaper of the northern part of Rock County is assured. Our office is well equipped for fine book and job printing, and all work will receive prompt attention.

TELEPHONE THE, J. C. Bartholf, proprietor, Janesville
 ave

Tenney Rev. G. C. h. Madison

Thomas W. D. student, b. Bailey

Tompkins Peter, station agent, h. Goodrich ave

VINCENT Lucy, dressmaker, Bailey, h. do

Vincent Mrs. Sophronia, h. Madison

Vincent Oran, farmer, h. College

WALKER Mrs. Jane, h. Janesville ave

Waterman H. H. stock buyer, h. College

Weaver Andrew J. builder, h. Janesville ave

Weaver Levi B. carpenter, h. Janesville ave

Weaver W. H. carpenter, h. Janesville ave

Weaver W. H. mechanic, h. Janesville ave

Webb W. H. bakery, Goodrich ave, h. Madison

Wells A. J. farmer, h. Goodrich ave

Wells Frank, farmer, b. Goodrich ave

Wells Fremont C. student, b. Goodrich ave

Wells William B. mechanic, h. Janesville ave

Whitford Mrs. Chloe C. teacher German, b. College

Whitford Prof. Albert, teacher of mathematics and Latin
language, Milton College, h. Madison

WHITFORD WILLIAM C. President of Milton College,
h. College

WIEGEL E. F. barber, Janesville ave, h. do

Wilbur F. M. laborer, h. Plumb

Wilbur Henry, carpenter, h. Plumb

Williams Dennis, stock buyer, h. Madison

Wilbur E. H. carpenter, h. Plumb

Williams Mrs. Sarah, teacher, h. College

Williams N. Wardner, teacher, b. College

Williams Robert (P. M. Green & Co.) h. Goodrich ave

Wood Mrs. Abbie, h. High

F. P. STANNARD,



GUNSMITH

— DEALER IN —

Breech-Loading Shot Guns, Sporting Goods,
Ammunition, Shells, &c.

REAMING GUN BARRELS FOR CLOSE AND EVEN SHOOTING

— A SPECIALTY. —

Our references are among the best known sporting men in the country, and we will take pleasure in forwarding their address on application.

Goods sent us by Express will Receive Prompt Attention.

College Street, near Janesville Ave.,
MILTON, WISCONSIN.

HARDY FRUITS!

ORNAMENTAL TREES,

Shrubs and Evergreens.

*New Native Russian and Siberian
Apples for the Northwest.*

CATALOGUE FREE.

J. C. PLUMB & SON,
MILTON, WIS.

BUSINESS DIRECTORY.

BAKERS.

Fuller, C. H. Janesville ave

Webb W. H. Goodrich ave

BARBERS.

Wiegler E. F. Janesville ave

BLACKSMITHS.

Ballard Benj. F. Goodrich ave

Fridell Oliver A. Goodrich ave

Stannard F. P. College

BOOKS, STATIONERY, ETC.

Clarke W. W. Janesville ave

BUILDERS.

Weaver Andrew J. Janesville ave

CHEESE FACTORY.

Goodrich & Phillips, High

DRESS MAKERS.

Melcher Mrs. D. College

Vincent Lucy, Bailey

DRUGGISTS.

Clarke W. P. Janesville ave

GENERAL MERCHANDISE.

Cory W. H. Janesville ave

Green P. M. & Co. Goodrich ave

Holmes E. A. Goodrich ave

Millard H. Janesville ave

GUNSMITH.

Stannard F. P. College near Janesville ave. See page 99

GRAIN, FLOUR, FEED, ETC.

Anderson J. B. & Co. depot grounds

Lane W. H. Madison

HARDWARE.

Ball Charles C. Goodrich ave

HOTELS.

Milton House, Goodrich ave cor Madison

Borden House, Goodrich ave cor Madison

JEWELRY.

Sprague D. L. Janesville ave

LEAF TOBACCO.

Soverhill & Earle, depot grounds

LIVE STOCK.

Davidson J. C. Madison

Waterman H. H. College

Williams Dennis, Madison

LIVERY STABLE.

Crumb C. W. Madison

LUMBER.

Borden W. H. depot grounds

MEAT MARKETS.

McNitt & Moore, Janesville ave

Pollay H. H. Goodrich ave

MILLINERS,

Palmiter Mrs. L. E. Janesville ave

MUSIC TEACHER.

Burdick Miss Ella, Janesville

NEWSPAPER.

Telephone The, J. C. Bartholf, proprietor, Janesville ave

NURSERIES.

Plumb J. C. & Son, College cor Plumb. See page 99

PAINTERS.

Millard B. W. Janesville ave

PHOTOGRAPHERS.

Burdick E. H. Janesville ave

PHYSICIANS.

Allen O. Janesville ave

Border W. H. Janesville ave

SHOEMAKER.

Crane D. W. Janesville ave

TAILOR.

Sanborn J. C. Goodrich ave

TINWARE.

Anderson William, Goodrich ave

Fuller Menzo, Janesville ave

WAGONMAKERS.

Ballard Benj. F. Goodrich ave

Obourn Samuel, Goodrich ave

Historical Sketch.

The village of Milton, or old Milton, as it is sometimes called, is situated on the line of the Milwaukee & St. Paul Railroad, 48 miles from Milwaukee, 33 from Madison, and 100 from Chicago.

The first settler in the immediate vicinity of the village arrived in 1837, in the person of Peter McEwan, who left Milwaukee in company with ten others, in the summer of that year, and tramped westward in search of land. At Rock river they split, McEwan and five others pursuing their way in the direction of Koshkonong lake, where they spent a night at the camp of Teboe, a French trader. To Teboe they told the object of their expedition, and the next morning he guided them through the oak groves, which then flourished west of the village, to the edge of Du Lac Prairie. When McEwan reached the elevation on which Milton rests and viewed the landscape about it, he instantly exclaimed: "This is good enough for me!" Finding a claim already located by the presence of a furrow, in what seemed to him the most desirable portion, he set off to Janesville and acquired title to it, and on his return at once constructed a house of logs some 20 feet long and broad in proportion. The house stood on the site of a frame one now standing on Janesville avenue, 400 yards from the public square. Mr. McEwan's purchased claim amounted to 160 acres, but he subsequently claimed and held possession of much more.

In 1838, Joseph Goodrich, of Allegany county, New York, and James Pierce, arrived at the place. Mr. Goodrich had walked from the lake shore at Milwaukee with a pack on his back, and a spade in his hand to test the soil,

and pleased with "Little Prairie," and being solicited to locate by Messrs. McEwan and N. G. Storrs, who had settled on the prairie east of the village, purchased of, or was donated by them, 220 acres of land, all of which lay north of the railroad track. Subsequently, when the time for the sale of the land by the government drew near, Peter McEwan, finding he had claimed more land than the law allowed, sold to Mr. Goodrich the south half of the northeast quarter of section 27, which comprises the present park, depot grounds, and much of the land west of Janesville avenue.

Mr. Goodrich erected in 1838, the first frame house in the township. He had calculated, by drawing air lines on a map, about where the public roads between Chicago and Madison and Janesville and Fort Atkinson would form a junction, and time has shown that the estimate was not far out of the way. The house is still standing, clad in its original oak clap-boards, with the word "Store" still visible, just in the rear of the Milton House.

In September, 1838, William and James McEwan, their mother and four sisters arrived, and late in the fall Orrin Sprague, a blacksmith of Allegany county, New York, came to the village, and was induced to settle by Peter McEwan, who presented him a lot, the same now occupied by Peter Tompkins. This lot was a part of the south half of the southeast quarter of section 27, the claim to which McEwan afterwards sold to Goodrich; and when the settler's committee adjusted claims at the government sale, Sprague received a deed of it, on the ground of the improvements he had made.

As early as 1838 a meeting was held at the house of Peter McEwan to petition the government for a post office, but as Prairie du Lac, the name submitted, so closely resembled Prairie du Sac, another post office, the petition was refused, to avoid confusion. In the meantime, Joseph Goodrich

had opened a store and a tavern, and a year after the first meeting another was called at Goodrich's house, at which S. D. Butts moved that the place be called Milton, which motion was carried. The petition was then granted, and Joseph Goodrich appointed the first postmaster.

In 1839, Mr. Goodrich staked out on the wild prairie a plat of 22 acres, which he gave verbally to the public for a public square, and around it he platted village lots, giving to mechanics who would settle in the village, a lot to build upon. In after years he also gave grounds for a school house, a church, the college, the cemetery, and the right of way through his farm for a railroad.

The first organized religious meetings held in the village were those of the Seventh Day Baptists, held at the house of Joseph Goodrich, in March, 1839.

The first child born in the village was Daniel L. Sprague, April 23, 1840. The first death was that of Mrs. Hezekiah Waterman, in the fall of 1839.

The first marriage was that of James Murray to Margaret McEwan, January 1, 1840.

The first school in the village was opened in the house of Joseph Goodrich, and taught by Enos Dickinson, in the winter of 1839-40.

The first church organized in the village was the Seventh Day Baptist, in 1840, its articles of faith being drawn up by Joseph Goodrich.

The Prairie du Chien railroad was finished to Milton in 1852, and William P. Strong, now president of the Atchison, Topeka and Santa Fe railroad became the first station agent. He was succeeded by Peter Tompkins, who has held the post over 25 years.

During the years subsequent to 1840 the settlement of the village and vicinity progressed rapidly and advances and improvements in all directions have been made in a corresponding ratio. In 1844 Joseph Goodrich erected a build-

ing of lime and mortar at a cost of \$300 in which was opened a select school and which became the foundation of Milton College. It was incorporated as the Du Lac Academy in 1846-8, and as Milton Academy in 1854. In February, 1867, the legislature passed an act incorporating Milton College, into which the Academy was merged. Though the commercial interests of Milton have never been extensive the amount of business transacted will compare favorably with that of surrounding villages.

The Green Hill Nurseries of J. C. Plumb & Son, have grown up with the village and the millions of ornamental and fruit trees sold by this firm throughout all the north-western states has done much to spread the fame of Milton. The nurseries are pleasantly situated on and about the bluff at the foot of college street and at present the firm have over sixty acres in cultivation.

The Union flour mill of W. H. Lane was erected in the summer of 1877, at a cost of \$7,000, is three run, thirty-horse power, and has a general capacity of 400 bushels per day.

The cheese factory of Goodrich & Phillips has been in operation five years. As milk cannot be obtained in paying quantities through the winter months, the factory is only active five months in the year. About 1,800 pounds of milk per day is used and the product is a fine quality of cheese. Each cheese weighs 57 pounds and the factory has produced 1,625 since it has been in operation, a total of 92,825 pounds.

The firm of Davis Bros., manufacturers of the Burdick Press, Shear and Iron Shrinker, are building up a business which does credit to the village. Over 3,000 of the Burdick machines have been sold and are scattered from Florida to California. The firm have also begun the manufacture of the Sailer Press and Shear, a new and powerful invention of a mechanic of the village, and are general agents for the

Sailer Patent Reversing Gear, a new and useful invention to be applied to steam engines.

FIRST CONGREGATIONAL CHURCH.

August 1st, 1838, a few enterprising pioneers of Christian civilization, met at the house of Ansel Dickinson, on Rock Prairie, near Mount Zion, in the town of Milton, choosing Jason Walker, Chairman, and Nathan G. Storrs, Clerk, and adopted resolutions expressive of the importance of "combining Christian influence for the purpose of sustaining religious worship and gospel ordinances in the growing settlements of the west."

Ansel Dickinson, N. G. Storrs, and A. Fletcher were appointed as a committee to effect such organization, under a Congregational form of government.

August 16th, of the same year, with Rev. William Adams as Moderator, and N. G. Storrs as Clerk, the organization was effected, taking the name of the "First Congregational Church of Rock County." Its members were: Ansel Dickinson and wife, Lucilla A. Dickinson; Nathan G. Storrs and his wife, Sarah D.; Phineas Arms and wife, Maria; Jason Walker, Aaron T. Walker, and Jeremy D. Warner.

Articles of faith were adopted, A. Dickinson and N. G. Storrs chosen Deacons, Mr. Storrs, Clerk, and the sacrament of the Lord's Supper was observed.

The first church edifice, erected on the southwest corner of section 36, was 20 by 30 feet and cost \$500. This church was subsequently removed to Milton village, in the winter of 1845-6.

In October, 1839, Rev. Daniel Smith became the first regular pastor, and December 2d of the same year the society auxiliary to the church was organized, and has been continued to the present.

May 3rd. 1840, the first accession by profession of faith

was made to the church and on July 14th and of the same year the first infant baptism was recorded.

October 1st, 1840, Ansel Dickinson was chosen as the first delegate from the church to the first Congregational convention held in the state, on the 6th inst., at Troy, Walworth county.

The various pastors of the church for the first ten years of its existence, and the dates of their commencing pastoral work, are as follows. Rev. Daniel Smith, October, 1839; Rev. R. R. Snow, October, 1841; Rev. W. W. Thayer, November, 1842; Rev. E. W. Hewitt, November, 1843; Rev. H. Foot, November, 1845; Rev. S. S. Bicknell, Dec., 1846.

Subsequently the church was ministered to by the following clergymen: Revs. Alpha Warren, M. Montague, S. S. Bicknell, Beriah King, O. W. Smith, N. D. Graves, N. J. Goodhue, H. Fowle, S. W. Powell, A. H. Post, L. P. Frost, R. Swinton, J. S. Norris, John Fassett, A. L. P. Loomis and F. W. Hullinger, who is at this date the pastoral supply.

Early in the year 1853 the work of raising funds for the erection of a new house of worship was commenced and the work completed, and the present brick church building was dedicated February 26, 1857.

The present church officers are: Rev. F. W. Hullinger, Pastor; S. Decatur Butts, Alfred Walker, Henry Bowers, Deacons; M. J. Plumb, Secretary and Treasurer. The trustees of the Society are: James McEwan, President; J. C. Plumb, Secretary; Henry Bowers, Treasurer; Alfred Walker, Peter Tompkins. Present number of members, 90.

Sunday School.—Miss Lucy Walker, Superintendent; Miss Belle Walker, Secretary and Treasurer; Miss Alice Tompkins, Librarian. Members, 60. Annual election in June.

Church Services.—Preaching 10:30 a. m. and 8:00 p. m. each Sabbath. Sunday School at 12:00 m. Prayer meeting each Thursday at 8:00 p. m.

SEVENTH DAY BAPTIST CHURCH.

This church held the first religious meetings in Milton village, their first meeting being held at the house of Joseph Goodrich the first seventh day of March, 1839, and at that meeting they organized by forming a Bible class, and prayer meeting, appointing a leader and times for weekly worship. In 1840 they organized as a church and were visited in that year by Elder Stillman Coon, who in 1841 became their first regular pastor. As his first year's salary 40 acres of land at Milton Junction was purchased for him at the motion of Joseph Goodrich, and Mr. Coon lived to see this land become very valuable property.

The various pastors of this church with the time of their services are as follows: Elder Stillman Coon, 1841-45; Elder Zuriel Campbell, 1846-47; Elder Varnum Hull, 1847-50; Elder William C. Whitford, 1850-56; Elder O. P. Hull, 1856-59; Elder D. E. Maxson, 1859-63; Elder L. C. Rogers, 1871-74; Elder Elston M. Dunn, 1876-82.

This church is at present erecting a new house of worship on Madison street. The building will be of wood, the main upright part of which is to be 42 feet high, 34 wide and 52 deep. A square tower will rise at the front to the height of 58 feet; the west wing will be 28x30 and the eastern projection 28x6. The architecture resembles French Gothic. The church will contain a main auditorium and rooms for the Sunday school and primary classes. The whole will be furnace-heated, and an ingenious system of ventilation after the method of Ruttan will be used. The windows will be stained, the ceiling frescoed and the interior finished in a manner to correspond. The church, when finished, will no doubt be the finest in this section of the state. The cost of erection will be about \$7,000, and there will be seating capacity for 500.

The present officers of this church are: Elder E. M. Dunn, Pastor; W. F. Place, Clerk; Ezra Crandall, Treas-

urer; Charles Cornwall, E. B. Rogers, Stillman Burdick, Trustees; Levi H. Bond, Henry Estee, Truman Saunders, Deacons. Members, 200.

Sunday School.—F. C. Dunn, Superintendent; A. C. Dunn, Secretary; Miss Eda Crandall, Treasurer; N. W. Williams, Choirister; Miss M. J. Havens, Organist; Elder E. M. Dunn, F. W. Saunders, Rev. James Bailey, E. P. Clarke, Miss May Boss, Mrs. R. H. Whitford, Miss M. J. Havens, Miss Mary Bailey, Mrs. E. B. Rogers, Mrs. S. J. Clarke, Miss Alice Collins, Teachers. Scholars, 96.

M. E. CHURCH.

This church was organized in 1846. The first members were Abraham Buttis and wife, Wm. P. Ind and wife, Jacob Bowers, Mrs. D. Soles, Miss C. C. Atherton and Rev. A. Warren and wife. The church services were held at the school house and at the residences of the members until the erection of the church, in 1854. The ground upon which the church is built was donated by Mr. Peter McEwan, and the original cost of the building was \$1,500. The church is of wood, with a basement of stone, and has a seating capacity of 225.

The following are the names of the pastors who have occupied the pulpit since the date of organization: 1846, Rev. Mathew Bennett; 1848, Rev. J. M. Walker; 1849, Rev. R. E. Thomas; 1850, Rev. Lewis M. Cochrane; 1852, Rev. Hiram Hersey; 1853, Rev. Joseph Anderson; 1855, Rev. Frederick Curtis; 1857, Rev. C. C. Mason; 1858, Rev. Robert Blackburn; 1859, Rev. Leander Halleck; 1861, Rev. George A. Smith; 1863, Rev. James Lavelle; 1864, Rev. E. D. Farnham; 1866, Rev. A. A. Hoskins; 1868, Rev. Wm. C. Kelley; 1869, Rev. A. Moore; 1870, Rev. S. C. Lamb; 1871, Rev. Wm. H. Sampson; 1872, Rev. S. W. Coggeshall; 1873, Rev. G. D. Gaskill; 1874, Rev. William T. Millar; 1876, Rev. F. C. Haddock; 1877, Rev. M. V. B.

Bristol; 1878, Rev. I. S. Eldridge; 1880, Rev. William T. Millar.

A parsonage was built in 1848, but being deemed insufficient for the needs of the pastor, in 1876 the present parsonage was purchased.

The officers of the church are: Rev. W. T. Millar, pastor; W. McEwan, R. Richardson, S. S. Obourn, T. Wilcox, D. Walsh, W. H. Cory, O. Friddell, Trustees; R. Richardson, N. Wilcox, N. Reynolds, W. Ind, O. Friddell, William McEwan, Stewards; O. Friddell, Treasurer. The present membership is 80.

Sunday School—S. S. Obourn, Superintendent; W. E. Millar, Librarian; Miss Ida Davidson, Secretary; Mrs. D. Williams, Treasurer; Bible class for elderly people, William McEwan; Bible class for young people, W. H. Cory; Miss Ella Richardson, Miss Alice Millar, Miss Josie Sowle, Miss Carrie Davidson, Teachers; Miss Josie Sowle, chorister.

MILTON COLLEGE.

Nothing reflects so much credit upon the early settlers of Milton as the attention paid by them to the subject of education. Their primary school was established almost as soon as their dwellings were finished, and the schoolmaster seems to have ante-dated the minister. In 1844, while as yet but four houses were standing in the village, Joseph Goodrich began the erection of a select school at his own expense. The building stood near the northwest corner of the public square, was built of lime and mortar so mixed as to become almost as hard as stone, was one story in height, and was surmounted by a belfry. The cost of construction was \$300. At the invitation of Mr. Goodrich, Rev. Bethuel C. Church, of Michigan, opened it for public instruction, the terms of tuition being \$3 per term, and Mr. Church deriving his salary from this source. No rent was charged him. Mr. Church continued the school for two terms, having an

average of sixty pupils in attendance. He was succeeded by Rev. S. S. Bicknell, a Congregational clergyman, and a graduate of Dartmouth College, who laid the foundation of an academic course, and brought the attendance up to seventy. Many of the students came from a distance, and board was furnished them for \$1.50 per week. The facilities it offered for education was an inducement for emigrants to settle in the vicinity, and its presence had a marked influence on the growth of the village. In the winter of 1847-8, the citizens combined to secure for the school a charter, and it was incorporated as "The Du Lac Academy." Seven trustees were appointed, and among the rules made by them was one to the effect that no instruction should be given nor meeting of the corporation held on either the seventh or first day. The free use of the building erected by Mr. Goodrich was granted by him on condition that a college graduate should be hired as principal. This was complied with. The attendance at the academy steadily increased with each year and the accommodations proving insufficient in 1853 the school was suspended two-thirds of that year. New interest in the school was awakened, a larger association of citizens formed and a new charter applied for and granted. The new name chosen was Milton Academy. The school was reorganized, and a fine building of brick erected on the bluff in the southwestern part of the village, at a cost of \$4,000. Under the new management the school augmented in strength and in 1856 it numbered 212 students. In 1857 the Goodrich Hall was erected at a cost of \$5,000; in 1858 a Normal department was added; in 1863 a wooden building, three stories high with twenty-two rooms was erected and in 1866 the capacity of the main building doubled. July 2, 1867, the Academy was incorporated as Milton College.

For the thirteen years of its existence the Academy made astonishing progress. Three courses of study had been

sustained—the Normal, English and Scientific. From an attendance of 100 students per year it had increased to 421. During the last eight years nearly 100 teachers were annually prepared for the public schools. Hundreds had graduated to fill honorable professions and when the war-cloud burst over the land 311 students and graduates of the Academy gathered around the old flag. Forty-three of them sacrificed their lives.

The College is governed by a board of twenty-seven Trustees composed of the first citizens of the vicinity. The instruction pursued unites the Academic and Collegiate Courses. The rates of tuition are very low and board is furnished the students for \$1.50 and \$2.00 per week including room rent. The present number of students is about 150, and the sexes are about evenly divided. The College possesses a library of about fifteen hundred volumes and the College societies have nearly a thousand more. The mineralogical, geological and botanical cabinets are very complete and interesting and the collection of implements belonging to the stone and copper ages, many of which were found in this vicinity, is a very valuable one.

The present faculty of the College is as follows: Rev. W. C. Whitford, President; Albert Whitford, Professor of Mathematics and Latin Language; W. Frank Place, Professor of Natural Sciences; Edward H. Evenson, Professor of Latin Language and in English Department; Miss Jane C. Bond, Teacher in English Department; Mrs. Chloe C. Whitford, Teacher of German Language; N. Wardner Williams, Professor of Vocal and Instrumental Music; Miss Clara M. Dunn, Teacher of Elocution; Miss May Baldwin, Teacher of Painting; J. B. Stockman, Teacher of Penmanship and Bookkeeping.

Ladies' Seventh-Day Baptist Aid Society.—Miss Alice Collins, President; Mrs. P. M. Green, Vice President; Miss Ella Burdick, Secretary; Mrs. Lucy Clark, Treasurer.

Members, 100. Meets once in two weeks at residences of members.

Ladies' Seventh-Day Baptist Benevolent Society.—Mrs. P. M. Green, President; Mrs. W. Crumb, Secretary; Mrs. Robert Williams, Treasurer. Organized 1879. Members, 25. Meets once in two weeks at residences of members.

Ladies' M. E. Aid Society.—Mrs. D. Williams, President; Mrs. S. S. Obourn, Vice President; Miss Alice Millar, Secretary; Mrs. C. Gifford, Treasurer. Organized 1878. Members, 20. Meets on alternate Wednesdays at M. E. church.

Ladies' Congregational Aid Society.—Mrs. E. Kelty, President; Mrs. Nora Flagler, Vice President; Miss Alice Tompkins, Secretary and Treasurer. Organized 1868. Members, 25. Annual election in September.

Milton Lodge, No. 91, I. O. G. T.—Organized April 25th, 1882. Members, 35. W. B. Wells, W. C.; Mrs. S. S. Obourn, W. V.; M. J. Plumb, P. W. C.; J. C. Sanborn, Lodge Deputy; Frank Millar, Secretary; W. H. Cory, Financial Secretary; Mrs. Ella Plumb, Treasurer; S. S. Obourn, Chaplain; E. D. Kelty, Marshal; Mrs. W. H. Cory, S.; Charles Flagler, G. Meets Tuesday evening of each week at Hamilton Hall, at 7:30 p. m.

College Cadets.—Organized November, 1881.—J. W. McGowan, President; E. Wheeler, Secretary and Treasurer; C. A. Armstrong, Captain; C. M. Post, First Lieutenant; Frank D. Hall, Second Lieutenant; J. F. Johnson, Orderly; W. P. Clarke, Drill Master.

PUBLIC SCHOOL.

To Enos Dickenson is due the honor of being the first school teacher in the village and his school was opened in the winter of 1839-40. Though the college has absorbed much attention the public school interests have not been neglected. The present school has a charming location in

the public park, its course of instruction is graded and the present teachers are: Miss Minnie Douglas, Miss Bessie Tompkins and Miss Della Burdick. The average attendance is about 150 pupils.

POST OFFICE.

In 1838 the people of Milton petitioned the government for a post office, but the name of the place then submitted (Prairie du Lac) so closely resembled that of another post-office in the state (Prairie du Sac), the petition was refused to avoid confusion. In the succeeding year the name of Milton was adopted and a second effort made which was successful, Joseph Goodrich being appointed the first post-master. Mr. Goodrich has been succeeded by Wm. T. Morgan, W. G. Hamilton P. M. Green and W. P. Clarke, who has held the office since April last. The office was made a money order one in 1863, and is designated as a transfer one for the interchange of registered matter to and from the Mineral Point and Prairie du Chien divisions. The office has been in its present quarters since 1861. The presence of the college adds much to its business. The stamp sales average \$300 per quarter. There are two mails to and from Chicago and all points east, south and west of Chicago daily, and two daily mails for Madison and all points west. Eastern mails close at 1 p. m. and 6 p. m.; western mails close at 4:30 and 6 p. m.; eastern mails arrive 10:25 a. m. and 5 p. m.; western, 10:25 a. m. and 1:20 p. m.

TOWN OFFICERS.

Board of Supervisors.—R. J. Greenman, Chairman, H. H. Stockman, Kimble Killam.

Town Clerk.—L. T. Rogers.

Treasurer.—J. C. Rogers.

Assessor.—P. Marquart.

Justices.—E. P. Clark, F. C. Buten.

Constables.—W. H. Davidson, B. B. Keith.

MILTON JUNCTION VILLAGE DIRECTORY.

ALLEN L. farmer, h. Lake
Austin E. W. h. Albion cor Second

BAUKIN Martin P. cigar m'fg, Third cor Vernal ave
Bliss & Maxon, agricultural implements, Merchants' Row
Bliss J. C. (B. & Maxon) Merchants' Row
Bond L. H. farmer, h. Third
Bond R. farmer, h. Lake
BRANDT F. shoemaker, Merchants' Row, h. Lake
Brown N. R. wagonmaker, Merchants' Row, h. Front
Bullis I. P. mechanic, h. First cor Vernal ave
Burdick Albert, harnessmaker, Merchants' Row, h. Lake
Burdick A. C. carpenter, h. Lake
Burdick Mrs. h. Lake
Burdick R. P. mechanic, h. Albion cor Lake
Buten F. C. postmaster, stationery, Merchants' Row, h. do
Button C. S. clerk, h. Vernal ave cor Merchants' Row

G. H. BUTTON,

DEALER IN

Dry Goods, Clothing, Groceries,

Drugs, Medicines, Boots and Shoes, Crockery, Hardware, &c.

VERNAL AVENUE, COR. MERCHANTS' ROW, MILTON JUNCTION

BUTTON G. H. general merchandise, drugs, Merchants'
Row, h. Vernal ave

CATLIN C. W. clerk, b. Third
Catlin Orrin, h. Third

C. E. CARY,
 DEALER IN ALL KINDS OF
FARM MACHINERY,
PUMPS, WIND MILLS, ETC.

Sleighs, Wagons and Carriages.

MERCHANTS' ROW, - MILTON JUNCTION, WIS.

CARY C. E. agricultural implements, Merchants' Row, h.
 s. w. of railroad

Carroll John, laborer, h. Lake

Coakley James E. physician, Merchants' Row, h. First

Cole P. H. station agent N. W. R. R. h. Vernal ave

Collins. William P. teacher, b. Merchants' Row cor Vernal

Cowling Abram, agricultural implements, Vernal ave, b.
 Merchants' Row cor Vernal ave

Coon A. L. farmer, h. Vernal ave

Coon G. N. farmer, h. Albion cor Janesville road

Coon H. W. furniture store, Vernal ave, h. do

Cramer, H. E. laborer, b. Albion cor Second

Crandall E. S. farmer, h. Vernal ave

DAGGETT Frank, ostler, h. Lake cor railroad

Daggett J. E. clerk, h. First

Daggert N. F. h. Lake cor railroad

Davis Jasper, farmer, h. Front

Davis L. peddler, h. First

Dolan Michael, laborer, b. Morgan house

Dolan Patrick, section boss, b. Morgan house

Douglas Robert, farmer, b. Merchants' Row

Downie George H. agent, h. Vernal ave

Dood William A. h. Albion

ELLIS F. W. Vernal ave

THE FARMERS' MERCANTILE ASSOCIATION

—DEALERS IN—

GENERAL MERCHANDISE.

M. HAZARD, AGENT.

Merchants' Row, Milton Junction, Wisconsin.

FARMERS' MERCANTILE ASSOCIATION, Merchants'

Row, M. Hazard, manager
 Foster Frank, h. Albion cor Front.
 Foster Mrs. M. A. h. Albion
 Frink A. D. carpenter, h. Albion
 Frink C. D. carpenter, h. Albion
 Frink H. B. physician, h. Vernal ave
 Frink Russell A. carpenter, h. Third

GAGE Newton. baggage master, b. Morgan house
 Garthwaite Lucius, sexton, h. Second
 Garthwaite William, clerk, b. Morgan house
 Gates W. H. drug clerk. b. Vernal ave
 Gilbert J. S. jeweler, Merchants' Row, h. Albion

R. J. GREENMAN,

DEALER IN

Pine Lumber, Door and Window Frames,

Sash, Doors, Mouldings, Window Glass, &c.

MERCHANTS' ROW, - MILTON JUNCTION, WIS.

GREENMAN R. J. lumber dealer, Merchants' Row, h. Albion

Grinnin James, farmer, h. Albion

HAZARD Mrs. M. manager Farmers' Mer. Asso'n. h. First cor Crandall

Hazard Stewart (Stockman & H.) h. Albion

Heacock Newland, farmer, h. Lake

Hill Roswell, farmer, h. First

Hodge N. E. agricultural implements, Vernal ave, h. do

Holmes Charles, carpenter, h. First

Holmes Edward, carpenter, b. First

Hughes Edward, section boss, b. Morgan house

Hughes Owen, laborer, b. Morgan house

Huggins Edward, agent St. Paul R. R. b. Morgan house

ISING L. F. barber and confectioneries, Merchants' Row

L. F. ISING, **Barber and Hairdresser,**

ALSO DEALER IN

FRUITS, CONFECTIONERY, TOBACCO,

CIGARS. NUTS, ETC.

Merchants' Row, cor. Vernal Ave., Milton Junction, Wis.

JEFFERS Mrs. Harriet, h. Albion cor Janesville road

KAHOE Bartle, ostler, b. Merchants' Row cor Vernal ave

Keith B. B. painter, h. Lake

Kelley Israel, laborer, h. Second

Kelley Patrick, telegrapher, h. Lake cor railroad

Kidder —, h. Vernal ave

Killam Miss C. I. dressmaker, b. Vernal ave

Killam Mrs. H. K. dressmaker, Vernal ave, h. do

LARKIN George S. farmer, h. Albion

Larkin M. I. teacher, b. Albion

Livingston John, h. Albion

McADAMS Mrs. Hannah, h. Lake

McCarthy Daniel, blacksmith, Merchants' Row, b. Morgan house

Merrett Mrs. Mary, h. Albion cor Third

Miller Robert, farmer, h. Second

Mills George, carriage maker, b. Vernal ave

Mills J. S. builder, Vernal ave

Morgan House, J. C. Stetson, proprietor

Morgan Isaac P. h. Albion cor Front

Morgan William T. h. Vernal ave cor Merchants' Row

Morris Frank, baggage master, b. Morgan house

MISS ELLA NEFF,

 **DRESSMAKER,** 

Merchants' Row, near Vernal Av., Milton Junction.

Latest Styles of Patterns; Dresses Guaranteed to
Fit; Customers will Receive
Prompt Attention.

NEFF MISS ELLA, dressmaker, Merchants' Row, h.
Vernal ave

OTT John, telegrapher, b. Morgan house

PARTRIDGE Delano, sorghum mfr, Milton highway, b. Mer-
chants' Row cor Vernal ave

Paul Alexander, farmer, h. Albion

Paul William, livery stable, Merchants' Row, b. Vernal ave
Perry N. A. b. Vernal ave

Public school house, Lake cor Albion

ROGERS L. T. town clerk, Albion cor Janesville road

SMALLEY F. M. farmer, h. Merchants' Row

Smalley Mrs. F. M. boarding house, Merchants' Row cor
Vernal ave

S. O. SOPER,

—DEALER IN—

HARDWARE, IRON, STOVES

Tinware, Nails, Cutlery, Ammunition, Fence-Wire, &c.

MERCHANTS' ROW, - MILTON JUNCTION, WIS.

SOPER S. O. hardware, Merchants' Row, h. Albion

Spaulding A. B. shoe store, Merchants' Row, h. Albion

Stellman C. G. physician, Vernal ave, h. do

Stetson John C. b. Morgan house

Stockman P. H. agricultural implements, Vernal ave

Stockman Robert (S. & Hazard) lumber, etc. Merchants'
Row

STOCKMAN & HAZARD,

DEALERS IN

GRAIN, LUMBER, SHINGLES,

Lath, Lime, Brick, Salt, Coal, Etc.

MERCHANTS' ROW, - MILTON JUNCTION, WIS.

Stockman & Hazard, lumber, coal, grain, etc. Merchants' Row

TANNER K. W. flour and feed, Merchants' Row

Thompson A. D. h. Vernal ave

Thorpe D. E. general merchandise, Merchants' Row, h. First

Thorpe G. D. meat market, Merchants' Row, h. First

Thorpe Rollin, farmer, h. Vernal ave

Thorpe Warren, h. Warren ave

VAKINGER Fred, butcher, h. Washington

Vayette Frank, laborer, h. rear Main near bridge

WARDNER Nathan, pastor Seventh-Day Baptist church, h. Albion cor Third

Weed C. S. blacksmith, Albion cor Front

Williams Henry, farmer, h. Albion

Milton Junction.

The first settler in the vicinity of the Junction was Stephen D. Butz, who arrived in 1836. In the following year the first woman arrived in the person of Hannah Bowers. In 1839-41 Henry Crandall and Elder Stillman Coon located in the neighborhood. P. McAdams seems to have opened the first hotel which stood about where the present Foster House now is. When the Northwestern road arrived G. W. Mathews built the Mathews House, a small one story frame structure which stood on the site of the Morgan House. The first dwelling house erected on the site of the present village must have been one belonging to Charles Badger, standing on Vernal street near the corner of Merchants' Row.

The village was founded by Wm. T. and I. P. Morgan. The former bought the Mathews House in 1861 and erected in its place a fine eating house and hotel at a cost of \$18,000, and in the year following I. P. Morgan purchased of Silas Crandall 34 acres of land which included nearly all of the present village. The land was surveyed and platted into lots by Rev. W. C. Whitford, and the brothers became joint partners in the sale of it.

The first house erected after the village was platted was one put up by R. J. Greenman, at the corner of Albion street and First lane. Mr. Greenman also erected the first building on Merchants' Row, which was a lumber office for himself. It is hardly necessary to say that he was the first lumber merchant. The first blacksmith was I. P. Bullis, and John W. Wood opened the first store and became the first postmaster. The second store is believed to have been opened by Buten & Bliss, who dealt in general merchandise. The first depot master for the Northwestern road was a man named Smith, and he at that time acted for both roads. His successors for the Northwestern road have been Messrs, Farnham, Walker, M. J. Holmes, and the present incumbent, P. H. Cole.

In 1861 I. P. Bullis started a carriage factory. In 1868 a frame school house was erected at a cost of \$4,000. In 1869 J. C. Rogers erected the planing mill. December 24, 1872, the Morgan House was burned to the ground, and the next year the present magnificent house was erected.

The growth of the village has been a gradual one, and

the population steadily increases with each year. The building lots on Merchants' Row, two rods by six, sold in 1862 for \$75 each, but the property has so appreciated in value that the last sold brought \$200. The present population of the village is 375; and it has 33 business firms. The following list comprises the various kinds of business pursued here and the number engaged in each: Agricultural implements, 5; barber, 1; blacksmiths, 2; stationery, 1; builder, 1; cigar manufacturer, 1; dressmakers, 2; drugs, 1; flour and feed, 2; furniture, 1; general merchandise, 3; hardware, 1; harness, 1; hotel, 1; jeweler, 1; livery, 1; lumber, 1; market, 1; physicians, 3; shoemakers, 2; wagonmaker, 1. There are three church organizations and two church edifices, a fine school, a tobacco warehouse, a circulating library and two good public halls. The shipments of grain, tobacco and live stock are considerable and must increase in the future, and the outlook for the village is decidedly promising.

CHURCHES.

UNIVERSALIST CHURCH.

The Universalists of the vicinity meet at the Methodist Church once in four weeks. There is as yet no church organization, but the Ladies' Aid Society, composed of ladies who are Universalists, are at present the moving factor which sustains the gatherings. This society raises and contributes a fund for the support of preaching. It was organized in 1880, with Mrs. Frank Foster as President; Mr. I. Kelly, Vice President; Mrs. Blanche Thompson, Secretary and Mrs. George Button, Treasurer. Its present officers are: Mrs. Frank Wilbur, President; Mrs. Beach, Vice President; Mrs. B. B. Keith, Secretary; Mrs. Hannah Langley, Treasurer. The present membership of the society is 24. The present pastor engaged by them is Rev. M. G. Todd.

POST OFFICE.

The citizens of the junction petitioned for a post office in 1862 and in that year John W. Wood received the appointment of postmaster. His successors have been: Miss Frances Bullis, Israel Castel, and F. C. Buten, who was appointed in April, 1868. The office is a transfer one but is not designated as such. Mails close as follows: east, 1 p. m., west, 4:30; arrive from the west, 1:17, from the east, 5:05.

SEVENTH-DAY BAPTIST CHURCH.

This society was incorporated November 6, 1879, the following persons being the first Trustees: L. T. Rogers, T. S. Larkin, Thomas Price, R. J. Greenman, Clark Needham, and A. G. Burdick:

The church organization was effected December 19, 1875, and at that date the membership numbered about 75; the present membership is 173. The church in which they now worship is situated on the corner of Third street and Vernal avenue. It is built of wood and was erected in 1877 at a cost of about \$5,500, and has a seating capacity of nearly 400. The interior of the church is finely finished, the seats being cushioned in fine plush. The windows are of the finest stained glass, and taken as a whole will compare favorably with any church outside of the larger cities of the state.

The present officers of the church are: Rev. Nathan Wardner, Pastor; George Larkin, James Pierce, E. Brown and Silas G. Burdick, Trustees; A. B. Spaulding, superintendent of Sunday School. Church services every Sabbath at 11:00 a. m.; Sabbath school at 10:00 a. m.; Bible study at 3:30 p. m.; prayer meeting at 8 p. m.

Auxiliary Tract Society of Seventh Day Baptist church meets alternate Wednesdays. Miss Clara Maryatt, President; Miss Flint, Secretary.

Ladies' Aid Society of Seventh Day Baptist Church meets alternate Thursdays. Mrs. G. Clarke, President.

MILTON JUNCTION.

Milton Lodge, No. 65, I. O. O. F.—Organized January 19, 1871, A. S. Dunham, N. G.; Allen Osmond, V. G.; C. F. Lane, R. S.; A. C. Stannard, P. S.; F. Brandt, Treasurer; H. H. Stockman, P. G. Meets Thursday evening of each week, at Odd Fellows' Hall, Milton Junction. Members, 65.

Milton Junction Literary Association.—Organized 1870. Members, 50. Mrs. R. J. Greenman, President; Delano Rogers, Secretary; Miss Myrtie Larkin, Treasurer. Volumes in library, 275.

Milton Anti-Horse Thief Association.—Organized March 8, 1860, with 17 members. J. G. Carr, President; L. T. Rogers, Secretary; S. C. Carr, Treasurer. Members from one to two hundred. Meets quarterly at Hamilton Hall.

Milton Lodge, No. 161, F. and A. M.—Peter Trainor, W. M.; G. B. Markey, S. W.; William Morgan, J. W.; D. Williams, Treasurer; J. E. Coakley, Secretary; C. D. Merrifield, S. D.; Stewart Hazard, J. D.

Du Lac Grange, No. 72, P. of H.—Organized March 7, 1863. Members, 100. C. W. Cornwall, Master; J. G. Carr, Overseer; L. E. Bond, Chaplain; J. Almony, Secretary; Robert Stockman, Treasurer; Miss Clara Smith, Lecturer; Mrs. C. W. Cornwall, Ceres; Mrs. S. C. Carr, Flora; Mrs. Betsey Stockman, Pomona; Miss Rebecca Stockman, Lady Assistant. Meetings on second and fourth Saturdays of each month, at the Grange Hall, Milton Junction.

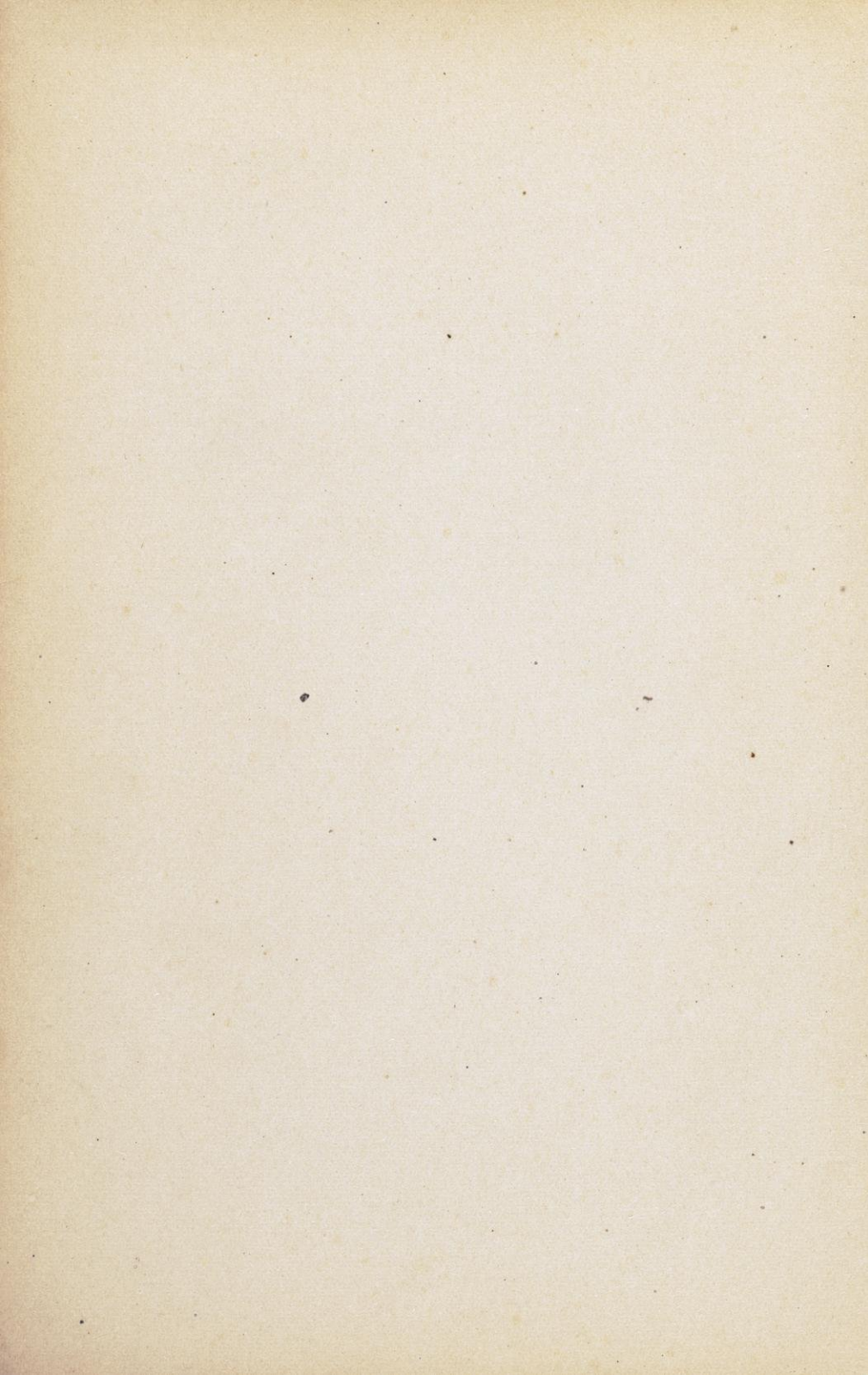
Farmers' Mercantile Association.—The Association is an outgrowth of the Grange, and was founded for the purpose of affording fairer facilities for the purchase of the necessities of life. The first step toward gaining this object was the formation of a co-operative society, which was incorporated in 1877, but after a year's experiment it was decided to change it to a joint stock company, and the Association was incorporated as such in 1878. The present officers are: S. C. Carr, President; James Dennet, Vice President; L. T. Rogers, Secretary; M. Hazard, Treasurer; Lucius Bingham, S. C. Carr, James Dennet, L. T. Rogers, M. Hazard, Alex. Paul, John Stockman, Robert Stockman, George Mackey, Directors. There are about twenty members who hold certificates of stock. Annual election, 2d Tuesday in January.

Ladies' Golden Star Institute of Temperance.—This society, though organized primarily in the interests of temperance, has a much broader field of usefulness, and is really a social science club, seeking to obtain and diffuse knowledge concerning all the important subjects of life. Members contribute papers on various questions which arise, and these papers are filed for reference. The society has the beginning of a well-selected library, and the list of members is steadily augmenting. The first originators of the formation of the institute were Mrs. R. J. Greenman, Miss Maggie Mouit, and Mrs. M. Hazard. The club was organized in June, 1878, with 18 members. The first officers were: Mrs. R. J. Greenman, Matron; Mrs. Sarah Hinckley, Right Matron; Mrs. M. Hazard, Left Matron; Mrs. Kate Button, Treasurer; Miss Viola Brandt, Secretary; Miss Maggie Mouit, Corresponding Secretary. The

present membership is 55, and the society meets on the second and fourth Tuesday evenings of each month at Odd Fellows' Hall.

PUBLIC SCHOOLS.

The first school in the vicinity of the Junction was taught by Miss Olive Hall at the house of S. D. Butz, as early as 1839. The present fine school house was erected in 1872 at a cost of \$4,000. The spacious grounds attached to it are surrounded by shade trees and a hedge through the center of it divides the play-grounds of the boys and girls. The present principal of the school is Wm. P. Collins and his able assistant is Miss Myrtie Larkin. The course of instruction is graded into primary, intermediate and grammar. The average attendance is about 95, and the present school committee are: D. E. Thorpe, R. J. Greenman and L. T. Rogers.



MADISON CITY ADVERTISEMENTS.

JOSEPH HAUSMANN,
PROPRIETOR OF THE
Capital Brewery,
MANUFACTURER OF AND DEALER IN
Ale, Lager and Bottled Beer,
STATE STREET,
MADISON, - - WISCONSIN.

TURKISH, RUSSIAN,
SULPHUR,
Warm and Cold Baths,
STEAM DYE WORKS.

Gentlemen's garments cleaned and dyed. Shawls, Ribbons, Silks and Dresses cleaned and dyed to look like new.

N. T. PETERSON,
Opera House Block, - Madison, Wis.

THE
Wisconsin State Journal,
THE OFFICIAL STATE PAPER.

Terms per year—Daily..... \$10 00
Tri-Weekly 5 00
Weekly..... 1 50

Book and Job Printing, Stereotyping, &c.

DAVID ATWOOD, PROPRIETOR,
MADISON, WISCONSIN.

This Book may be kept

FOURTEEN DAYS

A fine of 1 CENT will be charged for each day
the Book is kept over time.

N 28 '25	Oct 13 '33		
D 26 '25	Apr 2 '34		
Ma 9 '26	May 12 '35		
F 19 '26	My 5 '37		
Dec 1 '26			
Apr 6 '27			
Jul 21 '27			
Sep 12 '27			
Oct 12 '27			
Oct 13 '27			
Sep 24 '28			
Oct 3 '28			
Jan 6 '31			
Jan 27 '31			
Feb 21 '31			
Mar 5 '31			
Mar 22 '32			
Jul 9 '32			

Library Bureau Cat. No. 1137.14

13188

977.587

Sneath

Sn2

Directory of Stoughton &

Edgerton

13188

977.587

Sneath

Sn2

Directory of Stoughton &
Edgerton Public Library

Edgerton, Wisconsin

RULES

1. Books may be kept two weeks and may be renewed once for the same period, except 7 day books and magazines.

2. A fine of two cents a day will be charged on each book which is not returned according to the above rule. No book will be issued to any person incurring such a fine until it has been paid.

3. All injuries to books beyond reasonable wear and all losses shall be made good to the satisfaction of the Librarian.

4. Each borrower is held responsible for all books drawn on his card and for all fines accruing on the same.



