



FRIENDS *of*
WISCONSIN
STATE PARKS

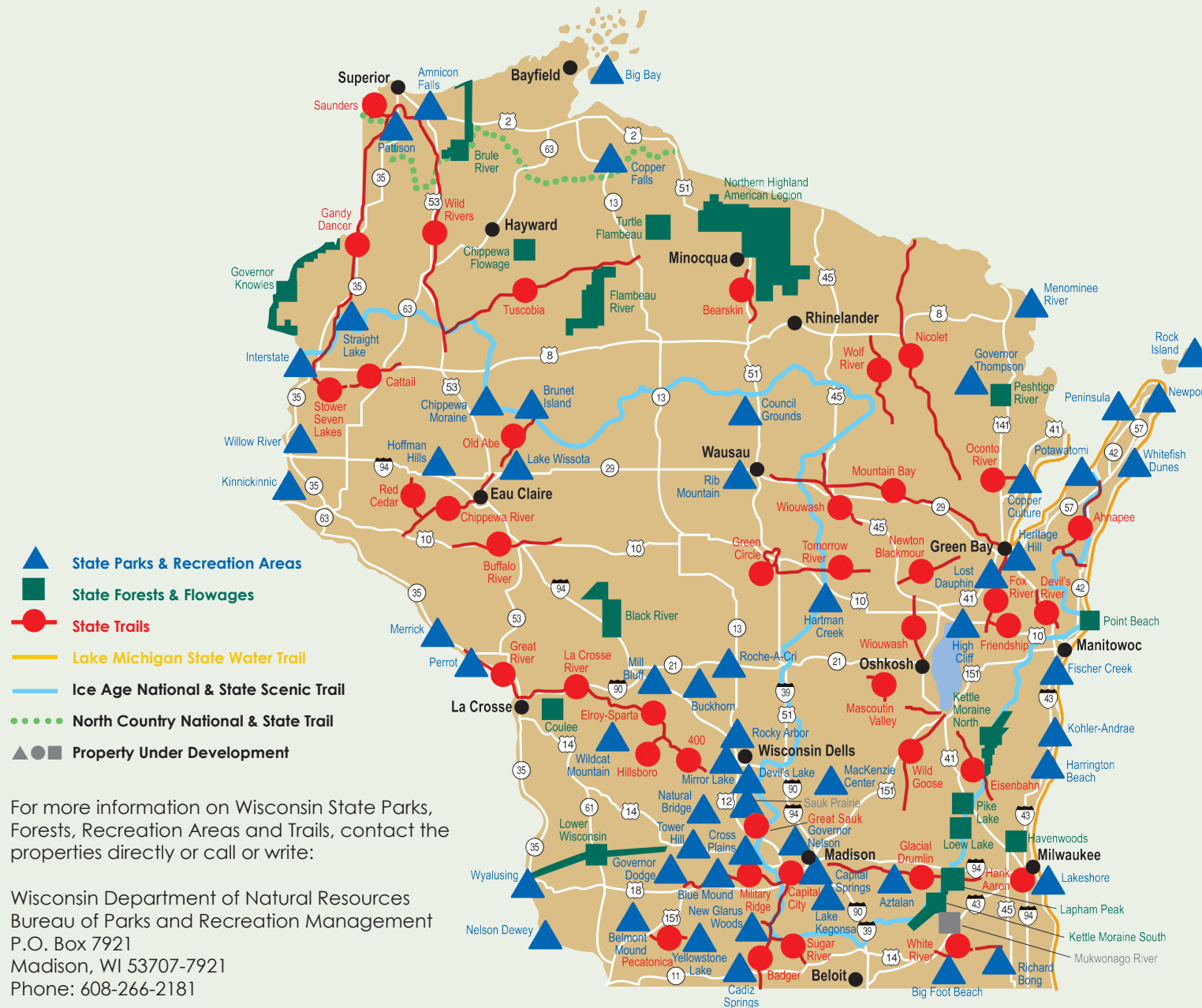
2019 CALENDAR





The mission of the Friends of Wisconsin State Parks is to **preserve, protect, promote** and **enhance** Wisconsin's state parks, forests, trails and recreation areas for future generations. FWSP accomplishes this mission by strengthening its network of local Friends groups and by enhancing the relationship between the DNR and partner groups.

STATE PARKS AND OTHER PROPERTIES



Email: DNRWisconsinParks@wisconsin.gov
Website: wiparks.net

LETTER FROM THE PRESIDENT



The Friends of Wisconsin State Parks are honored once again to partner with *Wisconsin Natural Resources* magazine and to have the 2019 FWSP Wisconsin State Parks Calendar included with the Winter issue. The photos used in the 2019 calendar were winning entries from the 2018 FWSP photo contest, and this year contest entries were offered in large numbers by users of the Wisconsin State

Park System properties. Contest photos included state parks, trails, forests, recreation areas and natural areas. We are only able to select 13 winning photos for the calendar, but the photos submitted are all winners and can be viewed on our website, FWSP.org.

The Friends of Wisconsin State Parks are very proud of the support we and our local Friends groups have given to the state park system in order to help accomplish our mission to "preserve, protect, promote and enhance" these properties over the last year. FWSP also is proud of the joint promotions this past year involving Department of Natural Resources staff, local Friends groups and FWSP for the new OutWIGO initiative to promote a healthy lifestyle while using state park system properties.

To maintain the level of the beautiful Wisconsin State Park System that we have learned to enjoy, please consider a tax-deductible donation to FWSP to help support these jewels of Wisconsin and the 2019 projects and programming. Some would say we are lucky to have this great state park system, but it really is due to the forward thinking of our Wisconsin leaders and their efforts to develop and maintain a state park system that is an envy across the nation! If your local state park system property doesn't have a Friends group, either rally the local users and start a Friends group or contact FWSP and volunteer as an individual to promote and maintain the property.

Let's all work together to preserve, protect, promote, enhance and enjoy these great jewels of Wisconsin in 2019!

Bill Zager
President
Friends of Wisconsin State Parks

We hope to see you this year!

Friends groups and individuals contribute their time, energy and talents to preserve and improve the state properties they cherish. You can support this work by joining a Friends group or volunteering as an individual. See the back of this calendar for a list of all FWSP Friends groups. We hope to see you in 2019!

2018 Gold Seal Award Winners

The Friends of Wisconsin State Parks would like to congratulate the 2018 Gold Seal Award winners. Every year, state park visitors vote for their favorite parks in 10 different categories. These parks are then honored at the FWSP annual meeting and awards banquet in November.



1. Best state park system property for eagle watching: **Wyalusing State Park**
2. Best state park system property for single-track mountain biking: **Hartman Creek State Park**
3. Best state park waterfall: **Copper Falls State Park**
4. Best state park system property for stand-up paddle boarding: **Mirror Lake State Park**
5. Best state park system property for school trips and presentations: **Richard Bong State Recreation Area**
6. Best state park system beach: **Peninsula State Park**
7. Best dog-friendly state park system property: **Governor Thompson State Park**
8. Best rock formations at a state park system property: **Devil's Lake State Park**
9. Best state park system group camping area: **Council Grounds State Park**
10. Best rail-to-trail in the state park system: **Elroy-Sparta State Trail**

Don't forget to vote for your favorite parks in 2019.

Friends of Wisconsin State Parks photo contest

Photographs from the Friends' photo contest are used to produce the annual FWSP calendar and may be used in other DNR publications, presentations, websites and displays. Your photos help promote the Wisconsin State Park System and all seasons are needed. You can submit your photos throughout the year. The submission deadline for the 2020 calendar is Aug. 31, 2019. For more information, visit FWSP.org.



Above: Peninsula State Park
Photo by **TIM SWEET**

It's a new year!

The Friends of Wisconsin State Parks offer a convenient way to purchase state park admission stickers and state trail passes as part of gift packages through the Friends online store at FWSP.org. You also can renew your membership or join a Friends group near you. January is a great time to take photos for FWSP's annual photo contest or to check out a candlelight ski or hike.



Northern Highland-American Legion State Forest

Park events

Visit dnr.wi.gov and search "Get Outdoors" for a complete list of nature programs and events happening in the parks.

JANUARY 2019

SUNDAY	MONDAY	TUESDAY	WEDNESDAY	THURSDAY	FRIDAY	SATURDAY
DECEMBER 2018 S M T W T F S 1 2 3 4 5 6 7 8 9 10 11 12 13 14 15 16 17 18 19 20 21 22 23 24 25 26 27 28 29 30 31		1 Take a First Day hike!	2	3	4	5 New Moon
6 Keep backyard birdfeeders full.	7	8	9	10	11	12
13	14 First Quarter Moon	15	16 Bald eagle viewing.	17	18	19 Free Fishing Weekend. See dnr.wi.gov .
20 Free Fishing Weekend. See dnr.wi.gov . Full Moon	21 Martin Luther King Jr. Day	22	23	24	25	26
27 Last Quarter Moon	28	29	30	31 Be aware of ice safety.		FEBRUARY 2019 S M T W T F S 1 2 3 4 5 6 7 8 9 10 11 12 13 14 15 16 17 18 19 20 21 22 23 24 25 26 27 28

Support the Friends of Wisconsin State Parks by purchasing state park sticker packages online at **FWSP.org**.



Above: Potawatomi State Park
Photo by **EVAN MILLER**

Enjoy winter!

Friends groups sponsor many winter candlelight events. These may include lighted trails for classic- and skate-style cross-country skiing, snowshoeing and hiking. There are usually fires for warming up and the Friends groups may sell concessions with proceeds benefiting the parks. The Friends also may help put on cross-country ski clinics, races and other special events and assist park staff in grooming trails.



Amnicon Falls State Park

Park events

Visit dnr.wi.gov and search "Get Outdoors" for a complete list of nature programs and events happening in the parks.

FEBRUARY 2019

SUNDAY	MONDAY	TUESDAY	WEDNESDAY	THURSDAY	FRIDAY	SATURDAY
JANUARY 2019 S M T W T F S 1 2 3 4 5 6 7 8 9 10 11 12 13 14 15 16 17 18 19 20 21 22 23 24 25 26 27 28 29 30 31					1	2 Groundhog Day
3	4 ● New Moon	5 Squirrels mating.	6	7	8	9 Black bear cubs being born.
10	11	12 ◐ First Quarter Moon	13	14 Valentine's Day	15	16
17	18 Presidents' Day	19 ○ Full Moon	20	21	22	23
24 Great horned owls nesting.	25	26 ◑ Last Quarter Moon	27	28		MARCH 2019 S M T W T F S 1 2 3 4 5 6 7 8 9 10 11 12 13 14 15 16 17 18 19 20 21 22 23 24 25 26 27 28 29 30 31

Support the Friends of Wisconsin State Parks by purchasing state park sticker packages online at **FWSP.org**.



Above: Whitefish Dunes
State Park
Photo by **KAREN GERSONDE**

Join a local Friends group!

Friends members and volunteers help park staff with spring cleaning projects, including trail brushing and clean up, repairing fences, cleaning up park grounds and making information signs. The Friends also assist with carpentry projects such as building birdhouses, constructing kiosks, repairing benches and picnic tables, and cutting and stocking firewood. Many Friends groups sell firewood with proceeds going back to the parks.



Lake Kegonsa State Park

CONNIE JO ZWETLER

Park events

Visit dnr.wi.gov and search "Get Outdoors" for a complete list of nature programs and events happening in the parks.

MARCH 2019

SUNDAY	MONDAY	TUESDAY	WEDNESDAY	THURSDAY	FRIDAY	SATURDAY
FEBRUARY 2019 S M T W T F S 1 2 3 4 5 6 7 8 9 10 11 12 13 14 15 16 17 18 19 20 21 22 23 24 25 26 27 28	APRIL 2019 S M T W T F S 1 2 3 4 5 6 7 8 9 10 11 12 13 14 15 16 17 18 19 20 21 22 23 24 25 26 27 28 29 30				1 Fishing licenses on sale soon.	2
3	4	5 Bald eagles migrating.	6 Ash Wednesday New Moon	7	8	9
10 Daylight Saving Time Begins	11	12	13	14 First Quarter Moon	15	16
17 St. Patrick's Day	18	19	20 Spring Begins (Vernal Equinox) Full Moon	21	22 Maple sap running soon.	23
24	25 Robins and bluebirds arriving.	26	27 Last Quarter Moon	28	29	30
31						

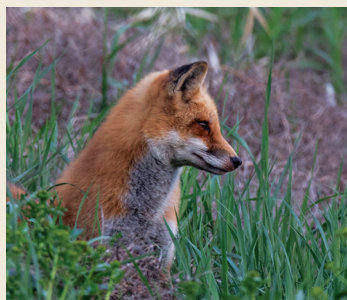
Support the Friends of Wisconsin State Parks by purchasing state park sticker packages online at **FWSP.org**.



Above: Gibraltar Rock
State Natural Area
Photo by **TAILOR HARTMAN**

Celebrate Earth Day!

FWSP hosts several Work*Play*Earth Day events in April and May. Volunteers at these events help the parks by cleaning up picnic and campground areas, planting trees, clearing park trails and removing invasive species such as garlic mustard. The Friends groups typically provide lunches to say thanks to everyone who has volunteered for the day. Trail-building crews also are out getting the park trails ready for summer users. Many volunteers even "adopt a trail" and do regular trail work throughout the year.



Lakeshore State Park

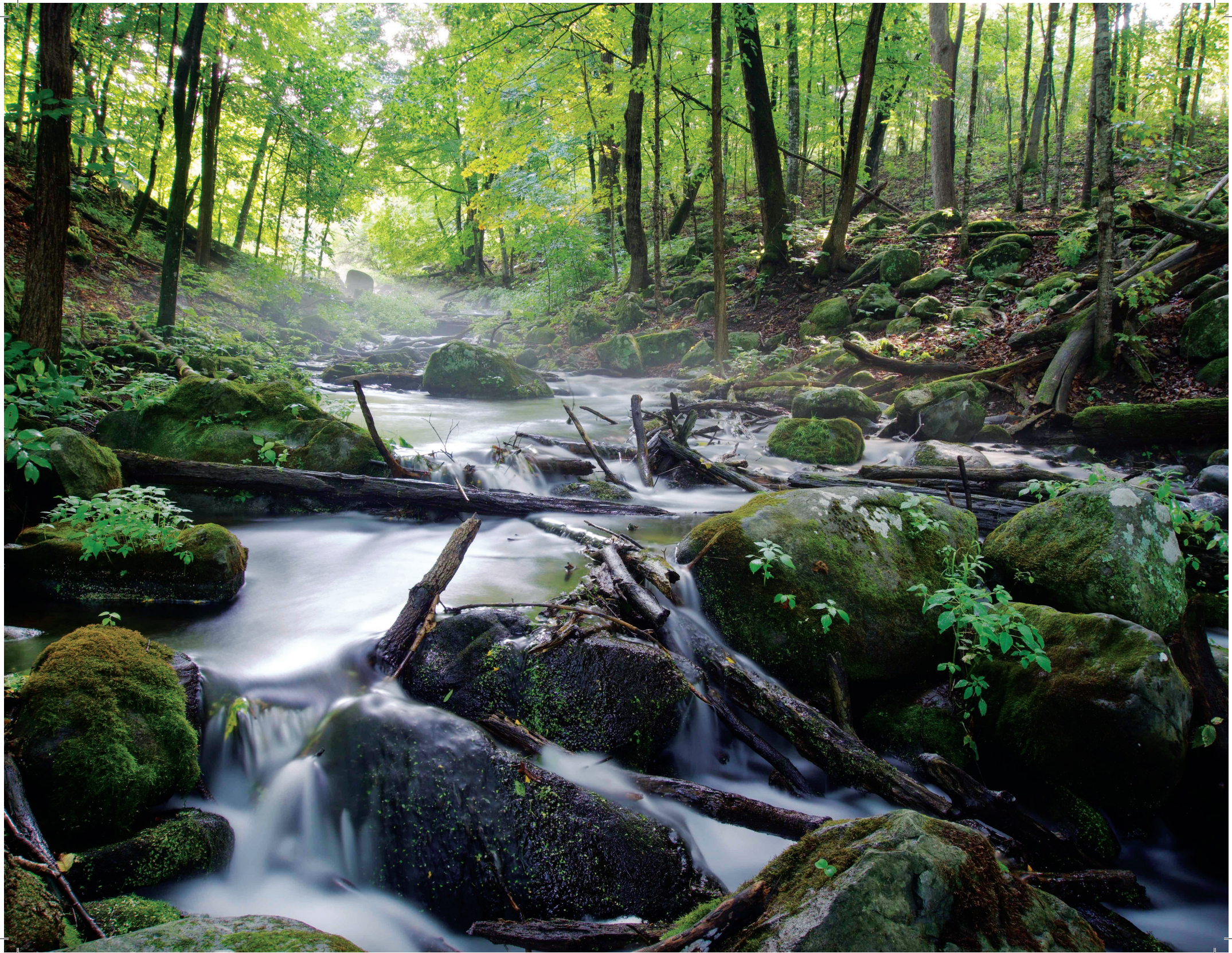
Park events

Visit dnr.wi.gov and search "Get Outdoors" for a complete list of nature programs and events happening in the parks.

APRIL 2019

SUNDAY	MONDAY	TUESDAY	WEDNESDAY	THURSDAY	FRIDAY	SATURDAY
<div>MARCH 2019</div> <div>S M T W T F S</div> <div>1 2</div> <div>3 4 5 6 7 8 9</div> <div>10 11 12 13 14 15 16</div> <div>17 18 19 20 21 22 23</div> <div>24 25 26 27 28 29 30</div> <div>31</div>	<div>1</div> <div>April Fools' Day</div>	<div>2</div>	<div>3</div>	<div>4</div>	<div>5</div> <div>New Moon</div>	<div>6</div> <div>Canada geese and bald eagles nesting.</div>
<div>7</div>	<div>8</div>	<div>9</div>	<div>10</div>	<div>11</div> <div>Walleyes spawning.</div>	<div>12</div> <div>First Quarter Moon</div>	<div>13</div>
<div>14</div> <div>Palm Sunday</div>	<div>15</div> <div>Tax Day</div>	<div>16</div>	<div>17</div>	<div>18</div>	<div>19</div> <div>Good Friday</div> <div>Passover Begins at Sundown</div> <div>Full Moon</div>	<div>20</div>
<div>21</div> <div>Easter Sunday</div>	<div>22</div> <div>Earth Day</div>	<div>23</div>	<div>24</div> <div>Crappies moving into shallow water.</div>	<div>25</div>	<div>26</div> <div>Arbor Day</div> <div>Last Quarter Moon</div>	<div>27</div>
<div>28</div>	<div>29</div>	<div>30</div>		<div>MAY 2019</div> <div>S M T W T F S</div> <div>1 2 3 4</div> <div>5 6 7 8 9 10 11</div> <div>12 13 14 15 16 17 18</div> <div>19 20 21 22 23 24 25</div> <div>26 27 28 29 30 31</div>		

Support the Friends of Wisconsin State Parks by purchasing state park sticker packages online at **FWSP.org**.



Above: Osceola Bedrock Glades
State Natural Area
Photo by **THEODORE SADLER**

Learn about nature!

In May, the Friends of Wisconsin State Parks announce the winners of the Incentive Grants, which are awarded to local Friends groups to support naturalist programs. The grants help provide new educational materials at parks and nature centers. May also is a popular time for school field trips, and the Friends help the parks by presenting programs, conducting workshops and leading guided nature walks for school groups.



Peninsula State Park

Park events

Visit dnr.wi.gov and search "Get Outdoors" for a complete list of nature programs and events happening in the parks.

MAY 2019

SUNDAY	MONDAY	TUESDAY	WEDNESDAY	THURSDAY	FRIDAY	SATURDAY
APRIL 2019 S M T W T F S 1 2 3 4 5 6 7 8 9 10 11 12 13 14 15 16 17 18 19 20 21 22 23 24 25 26 27 28 29 30	JUNE 2019 S M T W T F S 1 2 3 4 5 6 7 8 9 10 11 12 13 14 15 16 17 18 19 20 21 22 23 24 25 26 27 28 29 30		1	2	3	4 General inland fishing season opener. New Moon
5 Ramadan Begins at Sundown	6	7	8	9 Orioles arriving.	10	11 First Quarter Moon
12 Mother's Day	13	14 Lilacs blooming.	15	16	17 Look for morel mushrooms.	18 Armed Forces Day Full Moon
19	20	21	22	23	24	25 Monarch butterflies arriving.
26 Last Quarter Moon	27 Memorial Day	28	29 Deer fawns being born.	30 Smallmouth bass spawning.	31	

Support the Friends of Wisconsin State Parks by purchasing state park sticker packages online at **FWSP.org**.



Above: Point Beach State Forest
Photo by **ROBERT MALINOWSKI**

Enjoy the night!

During summer, Universe in the Park programs are scheduled at parks around the state for learning about and viewing the night sky. Friends groups often plan additional events to coincide with these programs, including nightly campfire talks, sing-a-longs and visits by Smokey Bear. The Friends may bring in singers and musicians or even perform themselves. Campground hosts help with these events and other park projects and are available to make sure campers enjoy their stay.



ALYSSA WHITMORE

Newport State Park

Park events

Visit dnr.wi.gov and search "Get Outdoors" for a complete list of nature programs and events happening in the parks.

JUNE 2019

SUNDAY	MONDAY	TUESDAY	WEDNESDAY	THURSDAY	FRIDAY	SATURDAY
MAY 2019 S M T W T F S 1 2 3 4 5 6 7 8 9 10 11 12 13 14 15 16 17 18 19 20 21 22 23 24 25 26 27 28 29 30 31	JULY 2019 S M T W T F S 1 2 3 4 5 6 7 8 9 10 11 12 13 14 15 16 17 18 19 20 21 22 23 24 25 26 27 28 29 30 31					1 Free Fun Weekend. See dnr.wi.gov . National Trails Day
2 Free Fun Weekend. See dnr.wi.gov .	3 New Moon	4	5	6 Watch for baby loons.	7	8
9	10 First Quarter Moon	11	12	13	14 Flag Day	15
16 Father's Day	17 Full Moon	18	19 Lightning bugs are out.	20	21 Summer Begins (Summer Solstice)	22
23 30	24	25	26 Big brown bats giving birth to offspring.	27	28	29
		Last Quarter Moon				

Support the Friends of Wisconsin State Parks by purchasing state park sticker packages online at **FWSP.org**.



Above: Wyalusing State Park
Photo by **SHAWN MILLER**

Explore the outdoors!

During summer, many Friends groups sell concessions and rent canoes, kayaks, boats and bicycles at the parks. Firewood and ice also are often sold by the Friends with proceeds staying at the property. If you're exploring the parks and need equipment or supplies, make sure to stop by the park concessions. Wisconsin's state parks and forests also offer many reservable shelters and are popular places to hold family reunions, birthday parties and weddings



MARK BURNS

Hartman Creek State Park

Park events

Visit dnr.wi.gov and search "Get Outdoors" for a complete list of nature programs and events happening in the parks.

JULY 2019

SUNDAY	MONDAY	TUESDAY	WEDNESDAY	THURSDAY	FRIDAY	SATURDAY
<div>JUNE 2019</div> <div>S M T W T F S</div> <div>1</div> <div>2 3 4 5 6 7 8</div> <div>9 10 11 12 13 14 15</div> <div>16 17 18 19 20 21 22</div> <div>23 24 25 26 27 28 29</div> <div>30</div>	1	2	3	4	5	6
7	8	9 <div>New Moon</div>	10 <div>Goldfinches gathering thistle down.</div>	11 <div>Independence Day</div>	12	13
14	15	16 <div>First Quarter Moon</div>	17	18	19 <div>Steelhead moving into Lake Michigan tributaries.</div>	20
21	22	23 <div>Full Moon</div>	24	25	26	27
28	29	30 <div>Deer antlers nearing peak size.</div>	31 <div>New Moon</div>	<div>AUGUST 2019</div> <div>S M T W T F S</div> <div>1 2 3</div> <div>4 5 6 7 8 9 10</div> <div>11 12 13 14 15 16 17</div> <div>18 19 20 21 22 23 24</div> <div>25 26 27 28 29 30 31</div>		

Support the Friends of Wisconsin State Parks by purchasing state park sticker packages online at **FWSP.org**.



Above: Governor Dodge
State Park
Photo by **LORI BROSE**

Don't forget the camera!

Wisconsin's state parks, forests, recreation areas and trails are popular places for special events such as marathons, bike competitions, triathlons and endurance races. Friends groups help park staff plan and organize these events. The end of August also brings the FWSP photo contest to a close. Don't miss your chance to submit your best photos or to vote for your favorite parks for FWSP's Gold Seal awards. Winning photos appear in the FWSP annual calendar.



STEVEN THOMPSON

Havenwoods State Forest

Park events

Visit dnr.wi.gov and search "Get Outdoors" for a complete list of nature programs and events happening in the parks.

AUGUST 2019

SUNDAY	MONDAY	TUESDAY	WEDNESDAY	THURSDAY	FRIDAY	SATURDAY
JULY 2019 S M T W T F S 1 2 3 4 5 6 7 8 9 10 11 12 13 14 15 16 17 18 19 20 21 22 23 24 25 26 27 28 29 30 31	SEPTEMBER 2019 S M T W T F S 1 2 3 4 5 6 7 8 9 10 11 12 13 14 15 16 17 18 19 20 21 22 23 24 25 26 27 28 29 30			1 Wisconsin State Fair begins.	2	3
4	5	6 Blackberries and elderberries ripening.	7 First Quarter Moon	8	9	10
11	12	13	14 Monarch butterflies begin migrating south.	15 Full Moon	16	17
18	19	20	21	22	23 Last Quarter Moon	24
25	26 Hummingbirds migrating.	27	28	29	30 New Moon	31 FWSP photo contest deadline.

Support the Friends of Wisconsin State Parks by purchasing state park sticker packages online at **FWSP.org**.



Above: Lakeshore State Park
Photo by **JONATHAN CIZAUSKAS**

Thank you volunteers!

The annual Friends of Wisconsin State Parks Fall Jamboree is held in early September. The jamboree gives FWSP and park staff the opportunity to thank all the Friends, campground hosts and volunteers who have helped out at the parks throughout the year. All who have volunteered during the year are invited to attend this fun, educational and social gathering. There are campfires, dinners, entertainment, informative discussions and more.



MARGIE KEULER

Peninsula State Park

Park events

Visit dnr.wi.gov and search "Get Outdoors" for a complete list of nature programs and events happening in the parks.

SUNDAY	MONDAY	TUESDAY	WEDNESDAY	THURSDAY	FRIDAY	SATURDAY
1	2 Labor Day	3	4	5 First Quarter Moon	6	7 Sumac leaves showing signs of red.
8 Grandparents Day	9	10 White-tailed bucks shedding velvet.	11 Patriot Day	12	13 Full Moon	14
15	16	17	18	19	20	21 Last Quarter Moon
22	23 Autumn Begins (Autumnal Equinox)	24	25	26 Oaks are raining acorns.	27	28 New Moon
29 Rosh Hashanah Begins at Sundown	30			AUGUST 2019 S M T W T F S 1 2 3 4 5 6 7 8 9 10 11 12 13 14 15 16 17 18 19 20 21 22 23 24 25 26 27 28 29 30 31		OCTOBER 2019 S M T W T F S 1 2 3 4 5 6 7 8 9 10 11 12 13 14 15 16 17 18 19 20 21 22 23 24 25 26 27 28 29 30 31

Support the Friends of Wisconsin State Parks by purchasing state park sticker packages online at **FWSP.org**.



Above: Blue Mound State Park
Photo by **MICHAEL KNAPSTEIN**

OCTOBER 2019

Celebrate fall!

Autumn is in full swing in October, and there is no better time to take some amazing photographs of Wisconsin's state parks and forests at peak color. Nature centers are busy with activities and crafts for kids and Friends groups also hold many programs to celebrate fall and Halloween. There may be candlelight hikes with trails lit with jack-o-lanterns, non-scary night events and more.



Amnicon Falls State Park

Park events

Visit dnr.wi.gov and search "Get Outdoors" for a complete list of nature programs and events happening in the parks.

SUNDAY	MONDAY	TUESDAY	WEDNESDAY	THURSDAY	FRIDAY	SATURDAY
SEPTEMBER 2019 S M T W T F S 1 2 3 4 5 6 7 8 9 10 11 12 13 14 15 16 17 18 19 20 21 22 23 24 25 26 27 28 29 30	NOVEMBER 2019 S M T W T F S 1 2 3 4 5 6 7 8 9 10 11 12 13 14 15 16 17 18 19 20 21 22 23 24 25 26 27 28 29 30	1	2	3	4	5
6	7	8 Yom Kippur Begins at Sundown	9	10	11 Fall leaf color show on full display.	12 First Quarter Moon
13 Full Moon	14 Columbus Day	15	16	17 Snakes disappearing into winter dens.	18	19
20	21 Last Quarter Moon	22	23	24	25	26 Black bears begin hibernating.
27 New Moon	28	29	30 Tundra swans arriving.	31 Halloween		

Support the Friends of Wisconsin State Parks by purchasing state park sticker packages online at **FWSP.org**.



Photo: Devil's Lake State Park
Photo by **MARK BURNS**

Support the Friends!

Friends groups raise money for matching funds so they can apply for grants through the Knowles-Nelson Stewardship Program to aid in habitat restoration and the construction of park and trail facilities. Previous Friends projects have included the construction of shelters, playground equipment, boardwalks, trails, accessible cabins and interpretive exhibits, as well as invasive species removal and prairie and woodland restoration. Nov. 15 is the deadline for applying for Friends stewardship grants.



Lake Kegonsa State Park

Park events

Visit dnr.wi.gov and search "Get Outdoors" for a complete list of nature programs and events happening in the parks.

NOVEMBER 2019

SUNDAY	MONDAY	TUESDAY	WEDNESDAY	THURSDAY	FRIDAY	SATURDAY
OCTOBER 2019 S M T W T F S 1 2 3 4 5 6 7 8 9 10 11 12 13 14 15 16 17 18 19 20 21 22 23 24 25 26 27 28 29 30 31	DECEMBER 2019 S M T W T F S 1 2 3 4 5 6 7 8 9 10 11 12 13 14 15 16 17 18 19 20 21 22 23 24 25 26 27 28 29 30 31				1 Get your blaze orange ready.	2
3 Daylight Saving Time Ends	4 First Quarter Moon	5 Election Day	6	7	8	9
10	11 Veterans Day	12 Full Moon	13	14	15	16
17	18	19 Last Quarter Moon	20	21	22	23 Opening day of regular gun deer hunting season.
24	25	26 New Moon	27	28 Thanksgiving	29 Hang suet and stock birdfeeders.	30

Support the Friends of Wisconsin State Parks by purchasing state park sticker packages online at **FWSP.org**.



Above: Kettle Moraine
State Forest-Northern Unit
Photo by **EVELYN REGAN**

Time to renew!

Just in time for the holidays, the Friends of Wisconsin State Parks offer online sales of state park admission stickers and state trail passes as part of gift packages through the Friends online store at FWSP.org. December also is the perfect time to join or renew your membership with the Friends of Wisconsin State Parks. A list of all local Friends groups is on the back of this calendar. We hope to see you in 2020!



Peninsula State Park

GABRIELE WILLIAMS

Park events

Visit dnr.wi.gov and search "Get Outdoors" for a complete list of nature programs and events happening in the parks.

DECEMBER 2019

SUNDAY	MONDAY	TUESDAY	WEDNESDAY	THURSDAY	FRIDAY	SATURDAY
1 <small>2020 Wisconsin state park stickers available.</small>	2	3	4 <small>First Quarter Moon</small>	5	6	7 Pearl Harbor Remembrance Day
8	9	10	11 <small>Full Moon</small>	12 <small>Get snowblowers and shovels ready.</small>	13	14
15	16	17	18 <small>Last Quarter Moon</small>	19	20	21 Winter Begins (Winter Solstice)
22 Hanukkah Begins at Sundown	23	24	25 Christmas Day <small>New Moon</small>	26 Kwanzaa Begins	27 <small>Beware of ice safety.</small>	28
29	30	31 New Year's Eve		NOVEMBER 2019 S M T W T F S 1 2 3 4 5 6 7 8 9 10 11 12 13 14 15 16 17 18 19 20 21 22 23 24 25 26 27 28 29 30	JANUARY 2020 S M T W T F S 1 2 3 4 5 6 7 8 9 10 11 12 13 14 15 16 17 18 19 20 21 22 23 24 25 26 27 28 29 30 31	

Support the Friends of Wisconsin State Parks by purchasing state park sticker packages online at **FWSP.org**.

Thank you!

Local Friends groups join with the Friends of Wisconsin State Parks and other volunteers to work together to preserve, protect, promote and enhance the state properties around Wisconsin by providing on-the-ground work, monetary support and advocacy for our most special places. Our park properties simply would not be what they are today without the continued help and support of all our Friends and volunteers

You can join the Friends of Wisconsin State Parks online at FWSP.org

The Friends of Wisconsin State Parks include:

Black River Forest Trail Foundation
(Black River State Forest)
Bong Naturalist Association
(Richard Bong State Recreation Area)
Brillion Nature Study Center Association
(Brillion State Wildlife Area)
Chiwaukee Prairie Preservation Fund
(Chiwaukee Prairie State Natural Area)
Equestrian Friends of Governor Knowles
State Forest
Friends Into Spooner Hatchery (FISH)
Friends of the 400 State Trail
Friends of the Ahnapee State Trail
Friends of Aztalan State Park
Friends of the Badger State Trail
Friends of Big Foot Beach State Park
Friends of the Bird Sanctuary
(Douglas County State Wildlife Area)
Friends of Blue Mound State Park
Friends of Buckhorn State Park
Friends of Cadiz Springs
State Recreation Area
Friends of Capital Springs
State Recreation Area
Friends of Cedarburg Bog
State Natural Area
Friends of the Chippewa River State Trail

Friends of Copper Falls State Park
Friends of Council Grounds State Park
Friends of Crex Meadows State
Wildlife Area
Friends of Devil's Lake State Park
Friends of the Elroy-Sparta State Trail
Friends of the Fox River State Trail
Friends of the Friendship State Trail
Friends of the Glacial Drumlin State Trail
Friends of Governor Dodge State Park
Friends of Governor Thompson State Park
Friends of the Great River State Trail
Friends of the Hank Aaron State Trail
Friends of Harrington Beach State Park
Friends of Hartman Creek State Park
Friends of Havenwoods State Forest
Friends of High Cliff State Park
Friends of the Horicon Marsh International
Education Center
Friends of Interstate State Park
Friends of the Kettle Moraine State Forest
(Northern Unit)
Friends of Kohler-Andrae State Park
Friends of the La Crosse River State Trail
Friends of Lake Kegonsa State Park
Friends of Lake Wissota State Park
Friends of Lakeshore State Park

Friends of Lapham Peak, Kettle Moraine
State Forest
Friends of the MacKenzie Environmental
Center
Friends of McGilvray Road
(Van Loon State Wildlife Area)
Friends of the Mead/McMillan
State Wildlife Area
Friends of the Military Ridge State Trail
Friends of Mill Bluff State Park and Ice Age
Scientific Reserve
Friends of Mirror Lake State Park
Friends of the Mountain-Bay State Trail
(Marathon County)
Friends of New Glarus Woods State Park
Friends of the Old Abe State Trail
Friends of Pattison and Amnicon
State Parks
Friends of Peninsula State Park
Friends of Perrot State Park
Friends of Pike Lake, Kettle Moraine
State Forest
Friends of Point Beach State Forest
Friends of Potawatomi State Park
Friends of the Poynette Game Farm
Friends of the Red Cedar State Trail
Friends of Rib Mountain State Park

Friends of Roche-A-Cri State Park
Friends of Rock Island State Park
Friends of Sandhill State Wildlife Area
Friends of Stonefield State Historic Site
and Nelson Dewey State Park
Friends of the Stower Seven Lakes State Trail
Friends of the Sugar River State Trail
Friends of the Tuscobia State Trail
Friends of Vernon Marsh State Wildlife Area
Friends of the Wild Goose State Trail
(Dodge County)
Friends of Whitefish Dunes State Park
Friends of the White River State Trail
Friends of Wildcat Mountain State Park
Friends of Willow River and Kinnickinnic
State Parks
Friends of Wyalusing State Park
Friends of Yellowstone Lake State Park
Heritage Hill Foundation
(Heritage Hill State Park)
Kettle Moraine Natural History Association
(Southern Unit)
Merrick State Park TURTLES
Navarino Nature Center Inc.
(Navarino State Wildlife Area)
Newport Wilderness Society (Newport State Park)
Seth Peterson Cottage Conservancy



**FRIENDS of
WISCONSIN
STATE PARKS**

For membership information, contact
Patty Loosen at **608-294-0810** or
patricia.loosen@fwsp.org
or visit **fwsp.org**

Friends of Wisconsin State Parks
P.O. Box 2271
Madison, WI 53701-2271



To subscribe
to Wisconsin
Natural Resources
magazine, visit us
online at **wnrmag.com**
or call
1-800-678-9472

