



LIBRARIES

UNIVERSITY OF WISCONSIN-MADISON

Bay Leaves. Volume 5, No. 14 April 8, 1937

Williams Bay, Wisconsin: Frank M. Van Epps, April 8, 1937

<https://digital.library.wisc.edu/1711.dl/7UOYYNUJPAMTM8M>

This material may be protected by copyright law (Title 17, US Code).

For information on re-use see:

<http://digital.library.wisc.edu/1711.dl/Copyright>

The libraries provide public access to a wide range of material, including online exhibits, digitized collections, archival finding aids, our catalog, online articles, and a growing range of materials in many media.

When possible, we provide rights information in catalog records, finding aids, and other metadata that accompanies collections or items. However, it is always the user's obligation to evaluate copyright and rights issues in light of their own use.

P.L.&.R.562
Permit No. 1

Stons B. Barrett

2644 Second St N.

St Petersburg, Fla



BAY LEAVES

Vol. V

Williams Bay, Wis. April 8, '37

No. 14



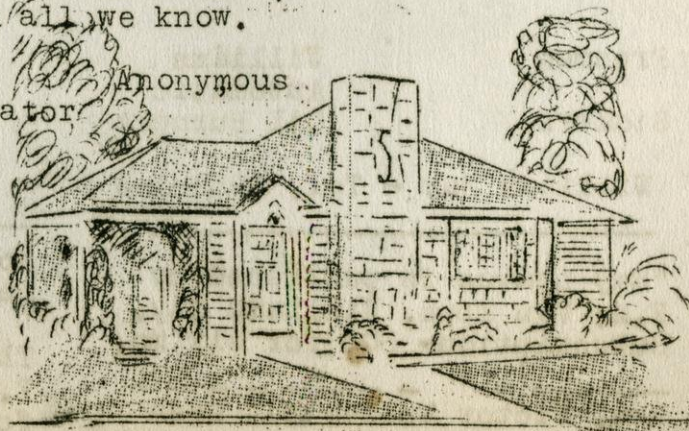
A PRAYER FOR A LITTLE HOME

God send us a little home
To come back to when we roam—
Low walls and fluted tiles,
Wide windows, a view for miles,
Red firelight and deep chairs,
Small white beds upstairs;
Great talk in little nooks;
Dim colors, rows of books.

One picture on each wall,
Not many things at all.
God send us a little ground,
Tall trees standing around
Homely flowers in brown sod
Overhead, Thy Stars, O God!
God bless, when winds blow,
Our home and all we know.

London Spectator

Anonymous



MANSION OR COTTAGE- IT'S HOME

To own a home has been and always will be one of the natural desires of every young couple starting out together on life's journey.

It may be the humble cottage or the stately mansion, but where love dwells, it is a home.

Selection of a site, choosing an architect, letting the contract, watching the workmen build it, deciding on interior decorations and choosing furnishings are great fun.

This spring is the time to build and have the new home ready for summer. Prices are advancing on building costs, heating plants, and plumbing fixtures. You can save by placing your orders now.

Now is also the time to change that partition and make a large living room, add a porch, put in the new bathroom, or replace the old with modern fixtures. Modernize your lighting in the home and you will enjoy living in it that much more. Then new draperies and rugs will be needed to add that modern touch.

You will find many suggestions in the advertisements in this issue of BAY LEAVES to which we invite your attention.

H A R R Y B R E E N

Planning to Build?

PLUMBING & HEATING

See

ERIC WERNER

Freeman

Williams

GENERAL CONTRACTOR

Stokers

Automatic
Oil Burners

Williams Bay- Phone 1267-R-3

Williams Bay - Tel. 1259-J-2

"Bay Leaves is published by
F.M. Van Epps, Williams Bay.
Subscription- 50¢ for six mo.

Rev. Victor Keiser has been

confined to his home by ill-
ness is reported better .

The Blake Burtons have leased the
T.J. Johnson house, Loch Vista ,
formerly occupied by the Freytags.

NEWS ITEMS

The Study Club will meet at Rose Lane Hotel, Tuesday evening, April 13. Mrs. Karen Steele, hostess.

Mr. J.C. Lovetere, artist and lettering man, who has been employed this past winter in a large Chicago studio, has returned to be with the Midwest Sign Co., Lake Geneva, for the coming season.

Mesdames Chauncey Grimm and Harry Cook will entertain the members of the E.O.T. Club at a dinner on Thursday evening, April 8 at the latter's home.

Mr. F.M. Rice and Mr. Fred Rice and family, Chicago, were at the D.J. Oetjen home on Sunday. Mrs. Rice senior is visiting in California.

Mrs. Sidney Kachel, Wms Bay, who is chairman of the Spring Flower Show being sponsored by the Town and Country Garden Club of Lake Geneva, had her committee meet at her home last Thursday to formulate plans for the third annual show, which is to be held this Spring when the tulips are at their best. Date to be announced later.

Mr. and Mrs. Harold Buckles moved last week Thursday to the C.E. Nichoff estate on the lake shore where they will be employed.

DIRECTORY

BEAUTY SHOPPE

LAUREL BEAUTY SHOPPE
Phone - 1219-R-1

CARPENTER WORK

REMODELING REPAIRING

AXEL TULANE WMS BAY
Phone - 1274-R-3

V. FORMANEK

SHOE REPAIRING HAT BLOCKING
TOOL and CUTLERY SHARPENING

BEAU SKEETER CLUB TO HOLD ANNUAL BANQUET, SATURDAY NIGHT APRIL 10

The Beau Skeeter Club has chosen Clarendell Inn for its Annual Trophy Dinner and most of the forty-five members are planning to be on hand Saturday evening to applaud the winners of the dozen or more trophies.

The champion of the championships for the season on the combined system of scoring was Harry Nye with his iceboat "Gale". Chet Granath with "Skip It", was second, and H. Fitzcharles with "High Voltage III", took third place. The club furnishes these trophies.

Winners of the trophies which will be presented Saturday night, are:

F.A. Anderson-"War Horse Too"-
Tune-up Race.

H. Fitzcharles-"Hi Volatge III"-
Christmas Day Race

F.A. Anderson-"War Horse Too"-
Lincoln's Birthday Race

Don Waterbury-"Blue Bill V"-
Vilas Trophy.

Jack Vilas Jr.-"Sue Jack II"
Spence Trophy

Donald Campbell-"Holy Smoke"-
Granath Trophy

Harry Nye-"Gale"-Melges Trophy

" " " -Campbell Trophy

" " " - Nye Trophy

" " " - Wms Bay Trophy

Don Waterbury-"Blue Bill V"

SEASON WINNERS LADY SKIPPERS

Vera Granath 1st place
Mrs. Harry Nye 2nd place
Mrs. H. Fitzcharles 3rd place

Don Waterbury is Commodore of the Club Mrs. Edith Koehler, Secretary.

Editors Note- Beau Skeeters Club is to be congratulated on the fine publicity the club has given to Williams Bay in newspapers, magazines and even movietones. A particularly attractive full page in colors was in a recent Sunday edition of the Milwaukee Journal.

Word has been received from persons seeing movies of the iceboat races in Florida, California and other places. In fact the movies were exhibited all over the country.

THE DIFFERENCE BETWEEN

A PLACE TO STAY

AND

A HOME

IS where Bradley's come into the picture with expert services they can render on what is right. To give just that touch that makes a room inviting and liveable, such services can be had at no greater cost than for a poorly appointed one.

See that your windows carry that right appearance from the outside as well as from the interior.

Or there may be rooms that need brightening up with new linoleum or new rugs.

Bradley's are always ready to give estimates and help you solve that question-- "What shall I do to make this room or home more homelike?"

W.W. BRADLEY & CO.

DELAVER

WISCONSIN

With the memory of the severe winter season of 1935-36 still fresh in our minds; the winter just past has seemed quite mild. It is true that we have not had the extreme and prolonged cold, the severe storms or the heavy snows that we had last year, but the Yerkes Observatory records show that the average temperature for the winter was slightly below the winter average for the past twenty years.

November was cool, with the temperature for the month 3 degrees below the average and with very little rain.

December started out cold and crisp, but the last part of the month was unusually warm, bringing the average for the month 4.5 degrees above the normal. December 25 was the warmest Christmas Day in the Observatory records. There were several heavy rains during the last week.

The mean temperature for January was less than a degree above the normal. There was scanty snow but an excess of rain. Several times the rain froze as it fell resulting in a very solid coating of ice over the ground everywhere. Skidding autos on the highways were to be expected, but the sight of the younger folk skating to and from school on the main road and taking short cuts across lawns and flying up to the doorsteps on skates could be called "unusual".

February's rain and snow was nearly normal. The average temperature for the month was 2 degrees below the normal.

March also was cool, with a temperature nearly 4 degrees below the 20-year normal, and a usual amount of rain and snow.

The west end of the lake froze on January 9, three days earlier than the average for the last 36 years. The average date for the breaking up of the ice is March 29. As this report is being written (April 7) the lake is still covered with ice. This does not indicate an unusually mild winter!

(continued)

SALE!

"GOLD SEAL"

9 X 12

CONGOLEUM RUGS

— \$6.39

A Fine Selection of 20 Tile and Rug Patterns. Every Rug with the gold seal guarantee of Satisfaction. Worth much more.

SPECIAL ! 24 X 48 " OVAL RUGS.
Made of fine woven thread.
Guaranteed Washable. — 59¢

THE CHICAGO STORE

Quality Merchandise -

Reasonably Priced

ELKHORN, WIS.

SCHOOL OF DANCE AND MUSIC

has opened in Williams Bay

GENE EICHAR

of the FERNANGENE school of the theatre is conducting classes in

PIANO, ACCORDION and

TAP - ACROBATICS - BALLET and

BALLROOM DANCING

Any information can be obtained of Mrs. Wesley Lockwood, at whose residence instruction is temporarily being given.

Here is a splendid opportunity for any one interested to get the same training as obtained at any big city school.

The American Novel prize of \$4000 has been awarded to John T. McIntyre for his "Steps Going Down", published last September.

WINTER WEATHER (Con't)

Taking the winter as a whole we find that in spite of the unusually warm period in December, the average temperature for the five months, November, December, January, February and March, was 0.7 of a degree below the 20-year normal. There were 11 zero days, five less than the average. The precipitation (rain and melted snow) during these months was 10.10 inches, which is 1.22 inches more than the 35-year average. The total snowfall, 22 inches, was 10 inches less than the average for a season. This is considerably more than in the winter of 1933-34 when the snowfall was 8.8 inches, which was the least snowfall for any winter since the records have been kept at the Yerkes Observatory.

All this helps to show us how truly unusual the season of 1935-1936 was. A few figures for comparison will be of interest. In that winter the temperature for the same five months was 5.0 degrees below the normal. There were 37 zero days; on five of these the temperature was 20 degrees below zero or colder. The lake froze on December 27, 1935, and was clear of ice on March 26, 1936. (March was a warm month last year). The total precipitation was 9.81 inches. Most of the time the weather was too cold for rain, and the total snowfall was 75 inches.

Last year we complained because the snow blocked our highways. This year we complained because there was not enough snow for winter sports. Are we ever satisfied, or is the old jingle right?

As a rule a man's a fool.
When it's hot he wants it cool;
When it's cool he wants it hot;
Always wanting what is not.

Mary R. Calvert.

The planet Venus can now be seen in daylight, about 3 o'clock in the afternoon. It is located approximately 60 degrees above the horizon directly south.

GENEVA THEATRE
LAKE GENEVA, WIS.

Thurs-April 8-

"WE WHO ARE ABOUT TO DIE"
with Preston Foster-Ann Dvorak
Friday-April 9- DOUBLE FEATURE
John Wayne in "SEA SPOILERS"
and

John Milijan- Buster Crabbee
in "ARIZONA MAHONEY"

Saturday-April 10-DOUBLE FEATURE
Edw Arnold in -"JOHN MEAD'S WOMAN"
and

Ralph Bellamy in "COUNTERFEIT LADY"
Sun-Mon-Tues-April 11-12-13

Mat. Sunday-2:30

Gary Cooper, Jean Arthur in
"THE PLAINSMAN"

Wed-April 14-DOUBLE FEATURE
Edmund Lowe - Gloria Stuart in
"THE GIRL ON THE FRONT PAGE"
and Charles Starret in
"DODGE CITY TRAIL"

DEHAVAN THEATRE
DEHAVAN, WIS.

Thurs-April 8- DOUBLE FEATURE
Lew Ayres in "SPENDTHRIFT" and
Ralph Bellamy in "COUNTERFEIT LADY"

Friday-April 9-
Dorothy Lamour in
"THE JUNGLE PRINCESS"

Saturday-April 10- DOUBLE FEATURE
Edw. Ev. Horton in
"LET'S MAKE A MILLION"

and Charles Starrett in
"DODGE CITY TRAIL"

Sun-Mon-Tues- April 11-12-13
Mat. Sunday-2:30

Gary Cooper-Jean Arthur in
"THE PLAINSMAN"

Wed-April 14-
Charles Ruggles-Alice Brady
in "MIND YOUR OWN BUSINESS"

Thurs-Fri-April 15-16-
Ruby Keeler in "READY WILLING
AND ABLE."

SPRAGUE THEATRE
Elkhorn, Wis.

Thurs-Fri- April 8-9

Dorothy Lamour in
"JUNGLE PRINCESS"

Saturday-April 10-
William Boyd-in "BORDERLAND"

Sun-Mon-Tues April 11-12-13-
Gary Cooper, Jean Arthur in
"THE PLAINSMAN"

SPRAGUE THEATRE (Con't)

Wed-Thurs- April 14-15
Bing Crosby in "PENNIES FROM
HEAVEN"

NEWS ITEMS

Mr. and Mrs. Martin Peters of Chicago were at their cottage in Oakwoods Estates on Sunday. They will return to the Bay on April 15 to live in their home for a year. Mr. Peters has a years' leave of absence from his business in Chicago.

Mr. and Mrs. O.A. Rosboro, Chicago, were at their new lake shore home in Oak Woods Estates on Sunday.

Mr. and Mrs. William Rockefeller, Chicago, visited with the latter's mother, Mrs. Louise Rockefeller, Saturday and Sunday, and enjoyed helping to celebrate her birthday.

Miss Ragnild Nelson and mother returned home last Thursday from a two weeks vacation. Miss Nelson visited with friends at Omaha, Neb., Her mother stayed with her daughter, Mrs. Richardson, at her home in Chicago.

Mrs. Ned Grimm has taken over Lee's Kitchen and will operate it under the same name.

Mr. and Mrs. Robert Anderson went to Milwaukee last Sunday to see the former's mother, Mrs. Andrew Anderson, who is a patient in Sacred Heart Sanitarium. She is enjoying her stay there, and feels quite improved already.

Mr. and Mrs. George C. Blakslee returned last Wednesday from Tucson, Arizona where they have been for the past three months with their daughter, and son-in-law, Mr. and Mrs. Franklin C. Roach and family. They also visited their son Alpheus Blakslee and family in Pasadena, Cal.

The Alfred Piehls' returned on Thursday from St. Petersburg, Fla. They enjoyed the sunny south but are happy to be back in the Bay.



GRANZOW & PETERSON'S

Fri. April 9th.

Sat. April 10

QUALITY-FOOD-SHOP

A sure sign of Spring is to see and hear our feathered friends who are back with us again. Well we can't sing for you every day, but we like to bring you a message of SPECIALS which we hope will be as welcome as the birds.

PURE CANE SUGAR 10 lbs 57¢

BANANAS (firm fruit) 3#, 17¢

HILLS BROS COFFEE 2# tins 57¢

LaGRANGE BUTTER
2-lbs. 71¢

GOLDEN B. CORN
2-20-oz. tins, 29¢

PEAS or CORN
2-20-oz. tins, 23¢

KIDNEY BEANS
2-20-oz. tins, 25¢

EGG NOODLES
2-8-oz. pkgs. 17¢

BEECHNUT SPAG.
2-1-lb. tins, 19¢

MAC. or SPAGH.
2-1-lb. pkgs. 17¢

PUFFED WHEAT
per pkg. 09¢

BROWN SUGAR
4-lbs. 22¢

POWDERED SUGAR
3-lbs. 23¢

MIXED PICKLES
Qt. jars, 27¢

DILL PICKLES
Qt. jars, 20¢

BABO (cleanser)
2-tins, 23¢

SHRIMPS (wet pack)
2-5½-oz. tins, 33¢

GRAPE FRUIT
4 and 7 for 25¢

LAMB SHOULDER, per lb. 30¢
VEAL " " 23¢
POT ROASTS, " 24¢
PORK LOINS, " 30¢
" BUTTS, " 28¢
" SAUSAGE, " 22¢
HAM ENDS, " 18¢
Fresh Fish on Friday

KELLOGG'S CORN FLAKES 13oz
2-large pkgs. 21¢

WHOLE CRAB APPLES (spiced)
2-29-oz. tins, 43¢

PILLSBURY'S CAKE -
FLOUR, 2-lb. 4oz. pkgs. 27¢

RICHELIEU TOMATO JUICE
3-13½-oz. tins, 25¢

AMBROSIA BAKING CHOCOLATE
2-½-lb. bars, 25¢

CHASE and SANBORN COFFEE
2-1-lb. sacks, 55¢

RICHELIEU FANCY PRUNES
3-lb. pkgs. 35¢

RICHELIEU FANCY KETCHUP
14-oz. bottles, 18¢

CAMPBELL'S TOMATO SOUP
3-10½-oz. tins, 25¢

Carrots, Cauliflower, Celery,
SPINACH, Cucumbers, TOMATOES,
Green Beans, Sweet Spuds,
Broccoli, Brussell Sprouts,
Pineapples, Rhubarb, etc.
Fresh Radishes 3-bchs. 10¢
SPECIAL COFFEE CAKES Sat.

CORN ON THE COB
18oz. 4-ears) 18¢

SEEDLESS GRAPES
2-11oz. tins, 29¢

RED RASPBERRIES
20-oz. tins, 23¢

KEIFER PEARS
2-30-oz. tins, 41¢

SLICED PEACHES
2-30-oz. tins, 39¢

PURE GRAPE JAM
2-lb. jars, 26¢

AMBROSIA COCOA
2-lb. tins, 17¢

APPLE SAUCE
2-20-oz. tins, 23¢

ASST'D COOKIES
2-lbs. 41¢

COCOANUT (bulk)
per lb. 26¢

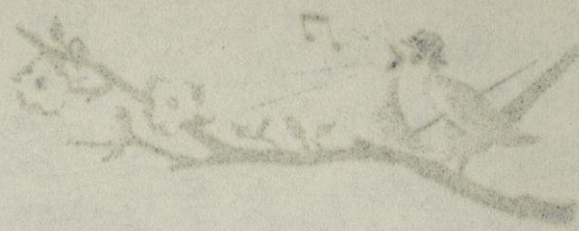
EVAP. APRICOTS
per lb. 25¢

SEEDLESS RAISINS
2-lbs. 19¢

SUPERSUDS
3-10-oz. pkgs. 28¢

CHLOROX
2-pint Bot. 25¢

Cal Oranges
28 and 39¢ Doz.



GRANOW & PETERSON'S

Est. April 10 1911

QUALITY-FOOD-SHOP

A sure sign of Spring is to see and hear our feathered friends who are back with us again. Well we can't sing for you every day, but we like to bring you a message of SPECIALS which we hope will be as welcome as the birds.

HILLS BROS COFFEE		PURE CANE SUGAR	
10 lbs 37c		10 lbs 37c	
BANANAS (1/2 lb fruit) 37c, 17c		BANANAS (1/2 lb fruit) 37c, 17c	
LARD SHOULDERS, per lb. 30c		LEONARD BUTTER, 2-lbs. 71c	
VEAL, " " 33c		GOLDEN B. CORN, 2-20-oz. tins, 23c	
POT ROASTS, " " 34c		PEAS or CORN, 2-20-oz. tins, 23c	
PORK LOINS, " " 30c		KIDNEY BEANS, 2-20-oz. tins, 23c	
" BUTTS, " " 28c		EGG NOODLES, 2-8-oz. pkgs. 17c	
" SAUSAGE, " " 28c		BEECHWUT SPAG., 2-1-lb. tins, 19c	
HAM ENDS, " " 18c		MAC. or SPAGH., 2-1-lb. pkgs. 17c	
Fresh Fish on Friday		PUTTED WHEAT, per pkg. 09c	
KELLOGG'S CORN FLAKES 130c		BROWN SUGAR, 4-lbs. 23c	
2-lb. large pkgs. 21c		POWDERED SUGAR, 3-lbs. 23c	
WHOLE GRAIN ATLES (spiced) 2-20-oz. tins, 43c		MIXED PICKLES, 2-lb. jars, 27c	
PILLS, SMOOTHER CAKE - FLOUR, 2-1-lb. pkgs. 27c		DILL PICKLES, 2-lb. jars, 20c	
RICHELLE TOMATO JUICE, 2-13-oz. tins, 25c		EABO (oleomargarine), 2-tins, 23c	
AMERSONIA BAKING CHOCOLATE, 2-1-lb. bars, 25c		SHRIMPS (wet pack), 2-8-oz. tins, 33c	
CHASE and SANBORN COFFEE, 2-1-lb. seaks, 25c		GRAPE FRUIT, 4 and 7 for 23c	
RICHELLE FANCY PRUNES, 3-1-lb. pkgs. 35c			
RICHELLE FANCY KETCHUP, 14-oz. bottles, 15c			
CAMPBELL'S TOMATO SOUP, 3-10-oz. tins, 25c			
Carrots, Cauliflower, Celery, SPINACH, Cucumber, TOMATOES, Green Beans, Sweet Spuds, Broccoli, Brussels Sprouts, Pineapples, Rhubarb, etc.			
Fresh Apples 3-bons. 10c			
SPECIAL COFFEE Cakes Sat.			
CORN ON THE COB, 180c. 4-ears) 18c			
SEEDLESS GRAPES, 8-11-oz. tins, 23c			
RED RASPBERRIES, 20-oz. tins, 23c			
KIDNEY PEAS, 2-30-oz. tins, 41c			
SLICED PEACHES, 2-30-oz. tins, 33c			
PURE GRAPE JAM, 2-lb. jars, 25c			
AMERSONIA COCOA, 2-lb. tins, 17c			
APPLE SAUCE, 2-20-oz. tins, 23c			
ASST'D COOKIES, 2-lbs. 41c			
COCONUT (milk), per lb. 26c			
EVAP. APRICOTS, per lb. 25c			
SEEDLESS RAISINS, 2-lbs. 19c			
SUPPER SUDS, 2-10-oz. pkgs. 23c			
CHLOROX, 2-pint bot. 25c			
Cal. Oranges, 28 and 33c Doz.			

CALL

BURTON BROS.

PHONE 818-J-3

For ICE CREAM SPECIALS

THIS WEEK END

LUICK

VENETIAN BRICK

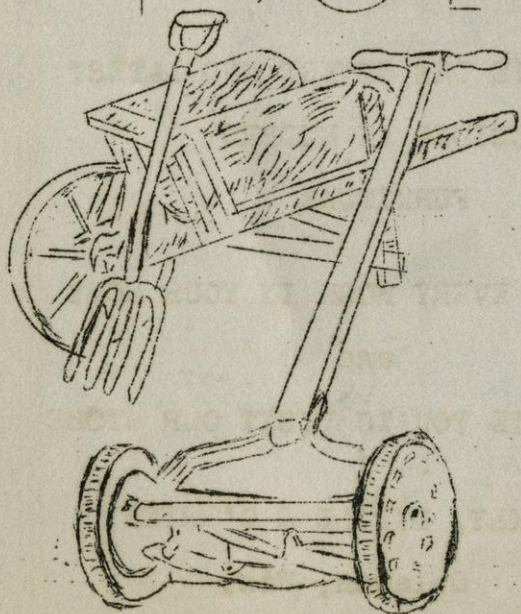
Another Luick Sealtest famous three-layer brick-- luscious strawberry ice cream, refreshing pineapple ice, delicious New York ice cream-- three taste treats in one.

GRIDLEY

MAPLE PECAN
VANILLA AND LEMON
ICE CREAM

A Delicious 3-Layer Brick

R.E. BURTON GARDEN TOOLS



WILLIAMS BAY HIGH SCHOOL NOTES

NEWS

Plans are in progress for a Mother-Daughter Banquet to be held April 23rd. It is sponsored by the Girls Club as part of their activities for the year. All the girls are looking forward to taking their mothers out to dinner.

Parent conferences were held Tuesday and Wednesday afternoon of this week. These conferences are for the purpose of acquainting the parents with the progress of their children.

Wednesday afternoon there was an Indian program and lecture at school. The program was very interesting and was given by two full blooded Indians and a papoose.

JOKES

"Pennies from Heaven"	Jeanne Delap
"Everybody Step"	Fire Drill
"Funeral Blues"	The Examinations
"I'm Headin' for the Last Roundup"	The Office
"Three O'clock in The Morning"	Closing Time of H.S. Parties
"I Aint Gonna Be Nobody's Fool"	The Modern Miss
"Listening"	Keeper of Study Hall

Mr. Plimpton- "Arthur, give me a good example of density."
Arthur W.- "I don't know."
Mr. Plimpton- "A very good illustration indeed, Arthur!"

WHAT IF IT WOULD HAPPEN!

Emma- "Mildred, what time is it?"
Mildred R.- "I don't know, my watch has dandruff on the hair spring and its hands are scratching."

Miss Hussa- "What is the difference between a sentence and a cat?"
June Featherstone- "One has its pause at the end of its clause, and the other has its claws at the end of its paws."

Eloise and Emma.

PAINT

We Sell it.

PAINT

We Mix it.

PAINT

We Decorate with it.

Only good material combined with good workmanship
at reasonable prices will stand the test for 29 years.

We have that record.

B J O R G E ' S H O M E D E C O R A T I N G & C R A F T S H O P

P H O N E 1 2 7 0 - R - 4

Wall paper

Brushes

SELECT QUALITY "HOME"
FURNISHINGS

AT THE QUALITY SHOP

RUGS..... LINOLEUMS
WINDOW SHADES... BRASS RODS
VENETIAN BLINDS

DRAPERIES
CURTAINS

BUCKNALL BROTHERS
LAKE GENEVA WISC.

BETTER HOMES

Deserve and Require

BETTER FURNITURE

WE HAVE THE NEWEST AND LATEST
DESIGNS IN MODERN
FURNITURE

FOR EVERY ROOM IN YOUR HOME
and

INVITE YOU TO VISIT OUR STORE

LACKEY, LIDDLE & O'BRIEN

Delavan, Wis.

CALL

ANDERSON BROS.

GENERAL

CONTRACTORS

If you wish to

build or remodel

All work guaranteed

Reasonable prices

Phones 1267-J-2

1259-J-3

CLAYTON'S

STANDARD SERVICE GARAGE

A

COMPLETE SERVICE

Sub-Agency FORD SALES

WILLIAMS BAY

LAUNDRY

Telephone 1253-R-1

SOFT WATER- QUICK SERVICE

* * * * *

NEWS ITEMS SENT IN BY YOU

ARE WANTED EACH WEEK.

CHURCHES

GOSPEL TABERNACLE

Rev. R.K. Kinney

Pastor

Morning Worship 10:30

Sunday School 11:30

Classes for ALL ages.

Junior and Senior Young Peoples
will hold a joint meeting at 7:00

Evening Service 8:00

Wednesday evening Prayer and
Bible Study at eight o'clock.

"Give diligence to present thyself
approved unto God, a workman that
needeth not to be ashamed, hand-
ling aright the word of truth."

Ladies Aid Society will meet
Thursday afternoon, April 15, 2:30,
with Mrs. Alfred Piehl and Miss
Elsie Piehl. All ladies are invit-
ed to attend.

CONGREGATIONAL CHURCH

Rev. Victor Keiser

Pastor

Morning Worship 10:45

Sunday School 9:30

Young Peoples Society will meet
on Wednesday evening.

ST. BENEDICT CATHOLIC CHURCH

Fontana, Wis.

MASS- Sunday

9 A.M.

The Men's Community Club has
appointed M.T. Peterson, Robert
Anderson and Wm Elbert as a Comm-
ittee to which the business men
or other persons might refer re-
garding solicitors and the merits
of their cause.

Are you planning to build or remodel your home this Spring?

If so, we would be pleased to give you estimates on your plumbing and heating. We handle Crane, Kohler and Standard plumbing fixtures and all the leading heating systems.

Now is the time to install an oil burner and enjoy automatic clean heat during the cool days this Spring and Summer. We will be glad to show you some of our Heil and our Timken burner installations which we have made.

Visit our showrooms and inspect the Sta-Rite pump and let us show you the new 1937 Norge ice boxes, electric and gas ranges, ironers, electric washers and oil burning space heaters.

A Norge ice-box will pay for itself in a very short time.

Let us tell you about our time-payment plan.

B. W. CHRISTIAN AND COMPANY

Delavan and Williams Bay

Delavan 'Phone 122

Williams Bay 'Phone 360-W-3

HOLLISTER LUMBER CO.

wants to furnish you

Your

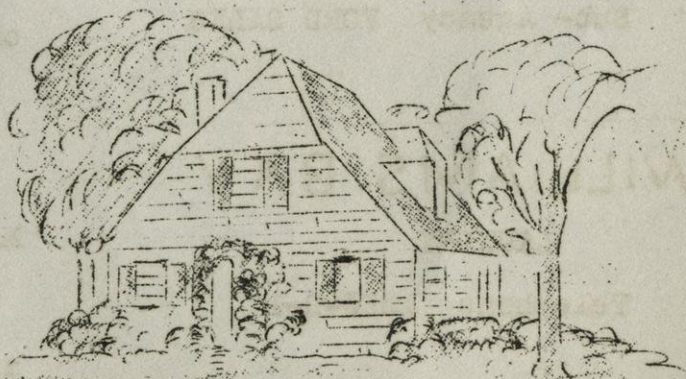
Lumber, Millwork

and

Building Material for

your new home and

remodeling job



Williams Bay - Phone 818-W-1

WMS BAY GARDEN CLUB MEETS

Mrs. G.W. Moffitt was hostess to the Wms Bay Garden Club on Tuesday afternoon.

Mrs. Selden P. Spencer gave a very interesting talk on Chinese Gardens, she having lived in China for thirteen years, made it that much more interesting.

In China, no matter how unpretentious a home is, there must be a garden and water or a pool on the grounds. Even the humble class of people who live in boats, have plants growing in pots, fastened to the boats. The poor in China have no yards.

Among the higher class, the gardens are formal and contain statues (some life size) of animals and birds. The houses are built with court yards and the gardens is planted to resemble an outdoor living room.

Many varieties of flowers are grown, the same as in America. Lilies, chrysanthemums, peonies and carnations. Azalias are planted on the hillsides and are visited during the Chinese New Year, when the gardens are at their best.

The club meets on May 4 with Mrs. Walter Beauvais, "The Gardens", in Fontana.

The Club members will attend the International Flower & Garden Show in Milwaukee, Tuesday, April 13. Members meet at the library bld'g at ten A.M.

THE BELFRY PLAYERS

wish to remind those who are interested in their contest for original radio scripts that the closing date of the contest is April 15, and that all scripts should be in the hands of Mrs. H.F. Reynolds, Walworth, on or before that day.

The Belfry Players have been invited to put on a half hour of entertainment for the district convention of the Federated Woman's Clubs, in the afternoon, April 21, in the Lake Geneva Auditorium. Esther Hotton director, has selected a one act play.

BE PREPARED FOR SPRING

SCHOBLE HATS

DEVONSHIRE CLOTHES

ARROW SHIRTS

NUNN BUSH &

EDGERTON SHOES

INTERWOVEN HOSE

KOHN & JENNINGS

LAKE GENEVA

WIS.

FOR ECONOMICAL AND



COMPLETE

HOT WATER

SERVICE .

Get information
on the " Proof
Payment Plan "
on the " Hot

Point " Electric Water Heater

Call Louis Kaphengst, Williams
Bay Representative, 1267-R-2

WISCONSIN POWER & LIGHT COMPANY

FEDERATED WOMEN'S CLUBS, FIRST DISTRICT, PROGRAM

On Tuesday and Wednesday, April 20 and 21 at Lake Geneva, will be held the convention of the First District Wisconsin Federated Women's Clubs.

On Tuesday, April 20, at 12:15 a luncheon will be held at the Y.M.C.A., at which time, Mrs. Walter Karll, State chairman of Drama, will talk on "The Play is The Thing."

1:30- there will be music and Mrs. A.L. Blackstone, State President of the Federation, will speak on "The Federation Marches On." Following will be a talk by Mr. Clark G. Koebbler of Northwestern University, subject-"Can We Keep the Peace." Music. Talk by Mrs. F.H. Clausen, Director of "Wisconsin Womens Clubs, subject- Our Federation and Its Service."

6:30- Federation Banquet at the Y.M.C.A.

Talk by Mrs. Robert A. Elder, State Chairman American Citizenship, subject-"What Price Citizenship". Followed by a lecture-"Cobblestones to Cathedrals", by Mrs. Wm H. Eppens, Chicago; lecturer.

On Wednesday morning at 9 A.M. there will be a very interesting talk by Mr. E.J. O'Meara, Traffic Engineer State Highway Commission of Wisconsin..

1:30- a one act play by the Belfry Players.

All club women of the First District and friends are welcome to attend the convention sessions as given. Reservations for the luncheon and banquet on Tuesday must be made in advance. Call Mrs. Robert Anderson, Pres. Williams Bay Womens Club.

A Townsend National Recovery Plan meeting for Walworth County will be held in Elkhorn, Friday, April 9, 8 P.M. in the Circuit room in the old Court House Bld'g.

Speakers will be from Kenosha and Racine. All residents of Walworth County who are interested are asked to come.

_____ Mrs. Geo. Van Velzer. Mr. and Mrs. H.M. Algeo, Cedar Point Pk., returned Thursday after a winter spent at Daytona Beach, Fla.

RESULTS OF ELECTION IN WILLIAMS BAY

The second largest vote ever cast in a Williams Bay election was recorded last Tuesday, April 6. The roster showed when the polls closed at 5:30 P.M. 390 voters. The highest was last November Presidential election when 414 votes were cast.

The Referendum vote regarding the sale of intoxicating liquors as a beverage in Wms Bay was, for license-234; against license- 164, making a majority of 60 for license.

The local vote for the judicial and school ticket, state and county was as follows-

Judge of Superior Court-	
Joseph Martin	164
Fred M. Wylie	105
Glen P. Turner	42

State Supt. of Schools	
William A. Hansen	200
John Callahan	112

Judge of Circuit Court	
Judge E.B. Belden	182
Wm L. Seymour	180

County Judge, Walworth Co.	
Judge Roscoe Luce	317
Max Cichon	45

County Supt. of Schools	
Laura McDougall	300

VILLAGE OFFICERS

President-John E. Atkins,	253;
J.S. Hotton	116

Trustees- Elected- L.A. Rasmussen 284; H.A. Bradt, 282; Roy Johnson 207; (C. Madison 143; A. Pederson 201.)

Clerk-Frank M. Van Epps-349;

Treasurer: O.M. Waterbury- 362;

Assessor; Albert Anderson, 216;

Charles Sawyer, 151

Constable: August Fleming, 195;

Theodore Johnson, 184

Supervisor: Victor Hansen; 352;

Justice of Peace: Phil Fogle, 239;

Dave Moeller, 119.

"All the ideals, moral and physical, which America hoped for in entering the World War, were never realized."

Henry Van Dyke.

McCLELLAN and SHERMAN

ELECTRIC SHOP

LAKE GENEVA, WIS.

Phone 484

"FRIGIDAIRE "

"WESTINGHOUSE "

"MAYTAG "

"HOOVER "

"PHILCO "

"TOASTMASTER "

ELECTRIC HOUSEHOLD EQUIPMENT

LIGHT FIXTURES

ELECTRIC WIRING CONTRACTORS

CHAS. SAWYER - WILLIAMS BAY, Representative

1270-J-1

LAKE GENEVA SAND and GRAVEL CO.

Fontana, Wis.

Telephone 94 M Res. Tel-Y 63

We have for sale Sand & Gravel
for Concrete purposes. Roofing
gravel or Pea gravel. Road gravel
and Crusher Chips, also Filling
and large boulders.

We deliver large or small
orders at reasonable prices. Come
to see us, or phone.

I wish to thank the voters of
Williams Bay for their loyal sup-
port at the Election last Tuesday.

I appreciate it and am ready
to serve you to the best of my
ability.

Oscar M. Waterbury

Village Treasurer.

HAND EMBROIDERED

BABY CLOTHES

25¢ to \$1.00

NORTHWOODS GIFT SHOP

Main St.

Lake Geneva

Thanks for your generous
support last Tuesday. You will
find me always ready to assist
you in any way regarding inform-
ation or service you may need.

Frank M. Van Epps

Village Clerk...

FISH LINE STORE

SPECIALS FOR FRIDAY AND SATURDAY -APRIL 9 and 10

ROSEMARY MILK 4- 14 $\frac{1}{2}$ oz Jans 25¢	GILT EDGE B U T T E R 2 lbs for 67¢	Large RINGO 2 Pkg's- 39¢
10 Bars AMERICAN FAMILY SOAP 55¢	Fresh Northern SMELT 2 lbs- 15¢	GRANULATED SUGAR 10# Cloth Bag- 53¢
<u>Extra Special</u> B A N A N A S 5¢ per lb	BONELESS VEAL ROAST 22¢ per lb	JOHNSTON'S Assorted Chocolates (Regular 60¢ pr lb) SPECIAL- 29¢ per lb
PABST-ETT CHEESE 2- 6 $\frac{1}{2}$ oz Pkg's- 29¢	PORK LOIN ROAST 2 $\frac{1}{2}$ to 3# average End Cuts- 25¢	SILVER LEAF SWIFT'S LARD 16¢ per lb
HAPPY VALE PEAS Size 3 2- 19 oz Cans- 25¢	SPARE RIBS nice and lean 17¢ per lb	CALIFORNIA CARROTS (extra large bunches) 5¢ EACH
SEEDLESS RAISINS 2 lb Pkg- 17¢	SLICED BACON $\frac{1}{2}$ # Pkg- 15¢	Fine Silk TOILET TISSUE 6-1000 sheet rolls-25¢
LONGHORN or BRICK C H E E S E 22¢ per lb	LARGE FRANKFURTERS 2 lbs- 35¢	CLOROX 2 pint Bottles- 25¢
BIG VALUE DOG FOOD 1# Can- 5¢ EACH	QUAKER OATS Quick or Regular 48 oz Pkg- 19¢	LIBBY'S BEST P E A C H E S Sliced or Halves 2- 29 oz Cans- 39¢