

## **The daily cardinal. Vol. LXXI, No. 1 Section 3 [September 7, 1960]**

[Madison, Wisconsin]: [s.n.], [September 7, 1960]

<https://digital.library.wisc.edu/1711.dl/YSX6ORO7MD6K38E>

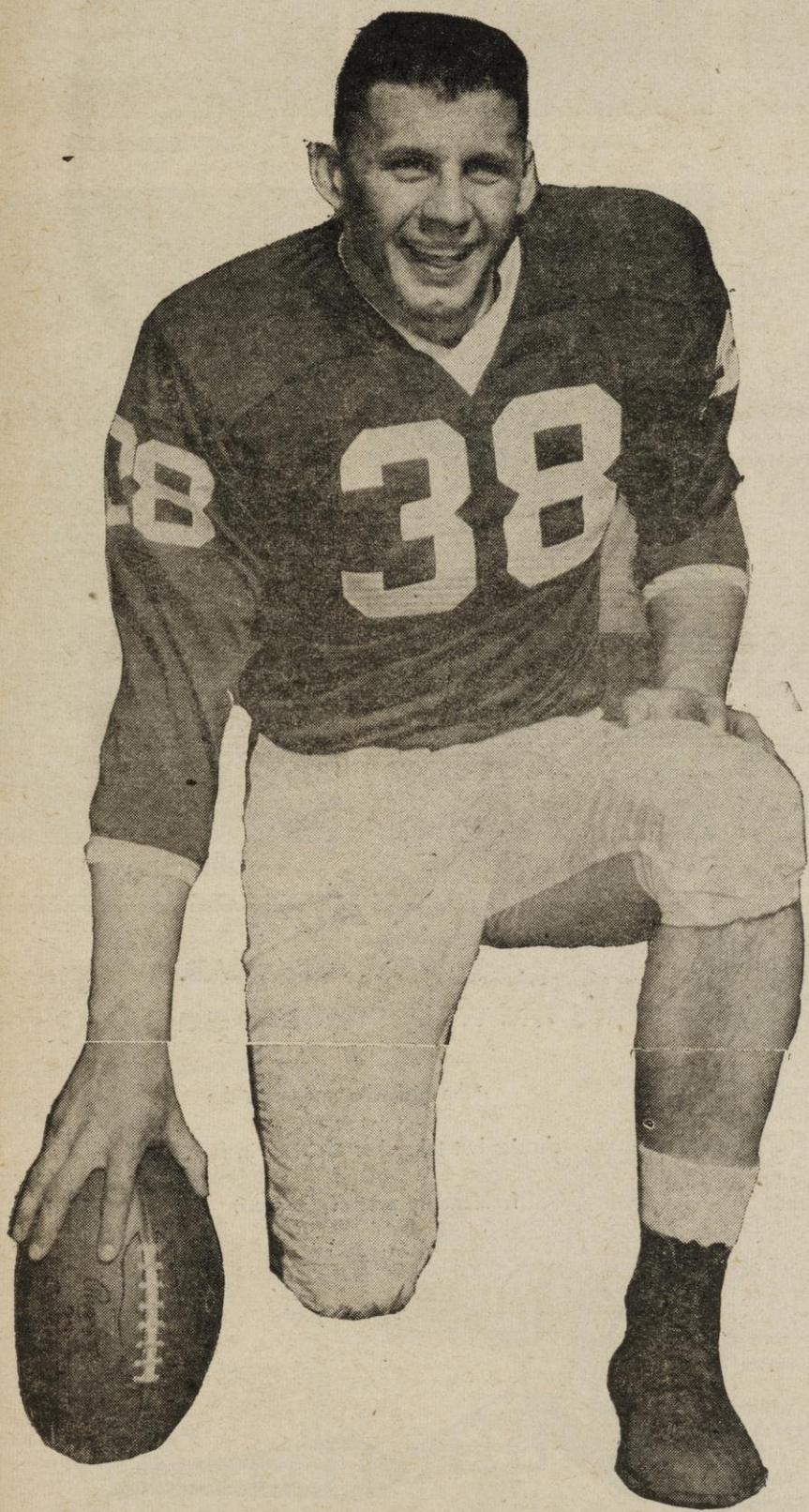
<http://rightsstatements.org/vocab/InC/1.0/>

The libraries provide public access to a wide range of material, including online exhibits, digitized collections, archival finding aids, our catalog, online articles, and a growing range of materials in many media.

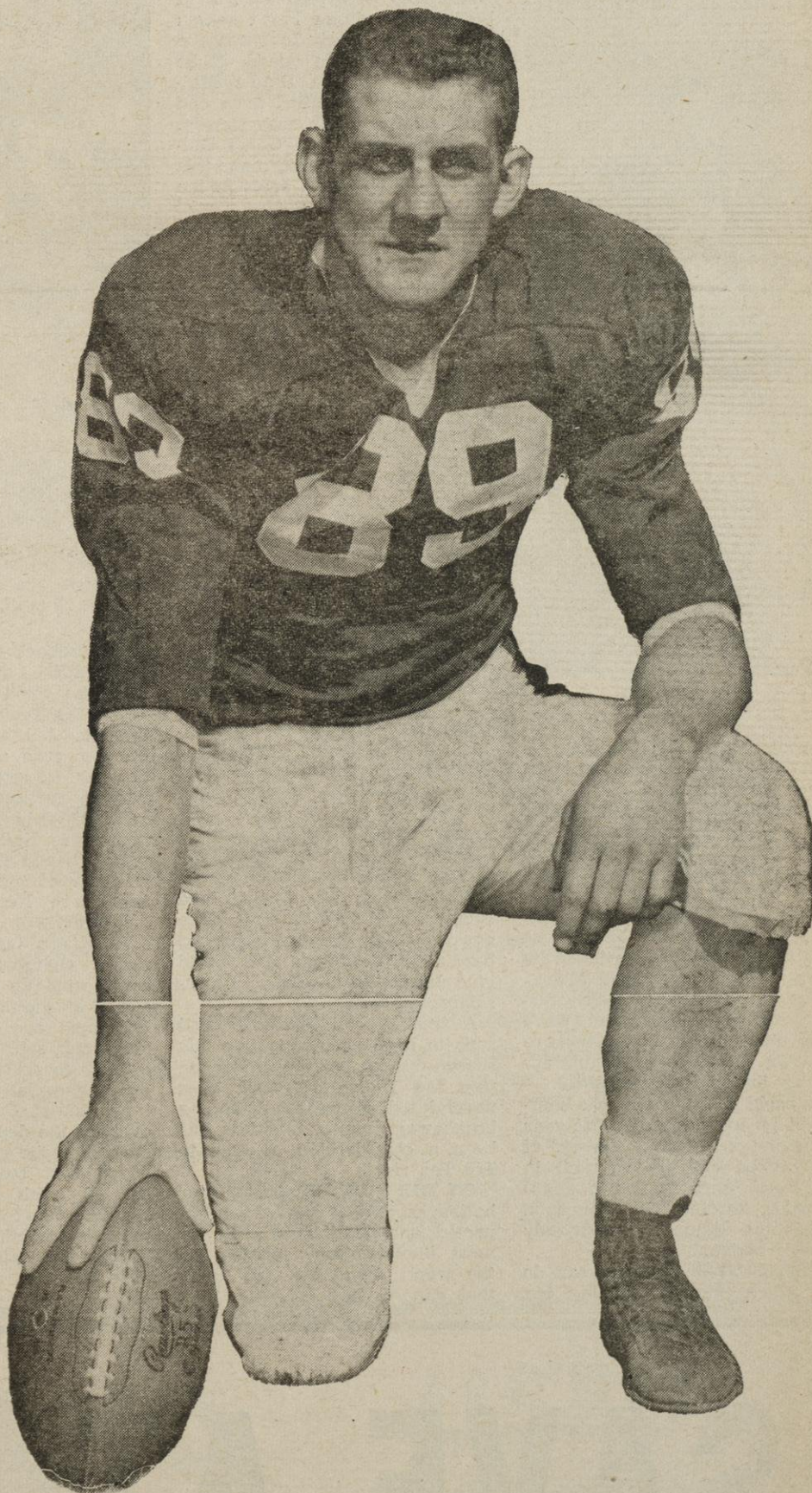
When possible, we provide rights information in catalog records, finding aids, and other metadata that accompanies collections or items. However, it is always the user's obligation to evaluate copyright and rights issues in light of their own use.

# BADGER SPORTS

Tom Wiesner



Henry Derleth



## Derleth and Wiesner Lead Gridiron Team

Henry Derleth, letterman right end from Beaver Dam, and Tom Wiesner, letterman fullback from Neenah, are the co-captains of the 1960 Wisconsin football team.

Derleth, a junior in physical education and a member of the 1959 Big Ten All-Academic football honor team, was the leading pass catcher for the Badgers in the 1959 football season, snaring 12 for 183 yards, and in the Rose Bowl game caught three passes for 34 yards. He started every game for Wisconsin at right end last year, logging 451 minutes.

Wiesner, a hard running fullback, ranked as the Badgers

third leading rusher in 1959, gaining 293 yards in 84 carries, and ranked third in scoring with 24 points in four touchdowns. He also scored Wisconsin's lone tally in the Rose Bowl game. He played 220 minutes in 1959, sharing the fullback duties with Eddie Hart. Wiesner is also majoring in physical education.

The naming of co-captains for the 1960 season marks the third consecutive year that Wisconsin's football teams will be led by co-captains; prior to the 1958 season, co-captains had been named only three times in Badger football history—1938, 1942, and 1953.

# Badgers Lack Speed, Experience

## Only Nine Veterans Back for '60 Squad

By PAT ZIER  
Co-Sports Editor

Nine returning lettermen. That tells a big part of the story as Wisconsin's Big Ten football champs begin preparations for another conference season. The Badgers, who fought their way to the top of the heap during a rugged campaign last year, may have given fans an indication of things to come with their Rose Bowl performance January 1.

Briefly, the Badgers lack speed, depth, and experience. Not many teams in the Big Ten can even reach the first division without speed, depth, and experience, so it's easy to see that the Badgers have plenty of work cut out for them.

**WISCONSIN** has two starting linemen back, co-captain Hank Derleth at end and Ron Perkins at guard. These two will anchor the line, the rest of which will be made up of an assortment of returning varsity players, lettermen, and sophomores.

By the end of the season, one of the Badger's strong points could be the ends. Derleth is big and tough and has good hands; in addition he has two years of varsity play under his belt and is a veteran of the Big Ten wars.

The other end will probably be

the real problem here is who is going to spell them. The Badgers lost six tackles from last year's team, most of whom were lettermen, and this plus the unexpected loss of Fox, one of the top sophomore prospects, has created a major problem.

In spite of the loss of "Sparky" Stalcup, the guard positions are pretty well manned. Ron Perkins, who started last year, is back and he will receive help from another letterman, Don Schade.

Perkins is a steady performer who took a back seat to some of the more publicized members of the Badger line last season, but he is a fine guard in his own right.

**SCHADE** SHOWED flashes of brilliance at times last season and may be ready to become a top-notch Big Ten guard. If he falters, sophomore Dale Matthews, who was shifted from end during spring drills, may step in.

Another letterman, Gerry Kulcinski, and Dick Wittig make this one of the strongest spots in the Badger forward wall.

**JOHN GOTTA**, who lettered behind Bob Nelson at center last year, is fighting a number of candidates for Nelson's former position. Dick Baer and sophomore Ron Wildman are among those providing the competition.

The Badger backfield is in pretty much the same shape as the line, with only two returning lettermen. They are co-captain and fullback Tom Wiesner and quarterback Jim Bakken.

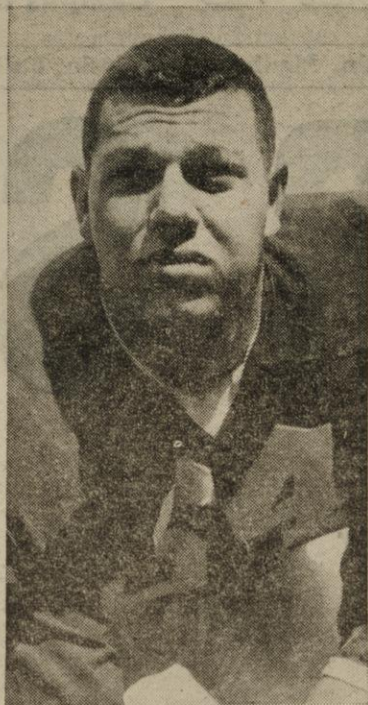
Bakken passed up spring drills for baseball, and as a result two new men have moved up to challenge him for the top slot at quarterback. They are Ron Carlson and John Fabry, both sophomores. Both showed well in spring drills, but by the time the season's opener rolls around Bakken will probably be the number one man again.

**BAKKEN** SHOWED tremendous potential as a freshman, but disappointed some last season. He can throw with the best when he wants to and is also a good runner. An improved Bakken could do much to help the Badgers this year.

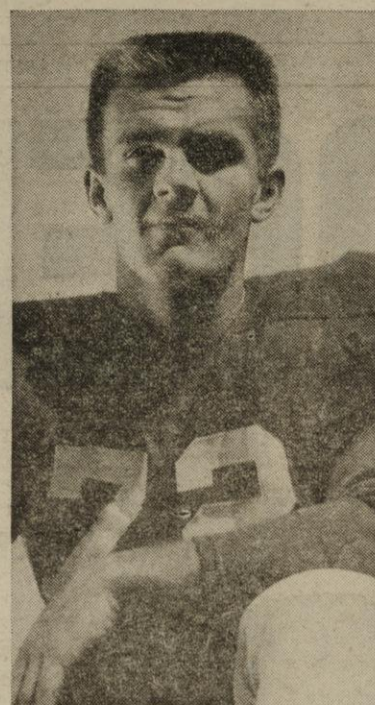
With targets like Derleth and Richter, a good passing game could open up the middle for the hard driving Wiesner and would give Wisconsin's offense a considerable boost.

A trouble spot last year and sure to be a problem again this season are the halfbacks. For the past few years, Wisconsin has never had a really outstanding breakaway runner, and this has been a considerable comfort to Big Ten rivals.

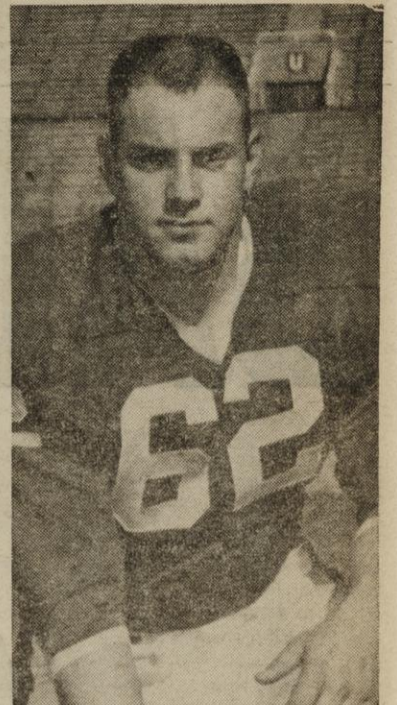
**ON TOP OF THIS**, the top four halfbacks of last year have departed, and this is sure to be the most inexperienced position on the team. About the only thing that can be said here is that



RON PERKINS



TERRY HUXHOLD



DON SCHADE



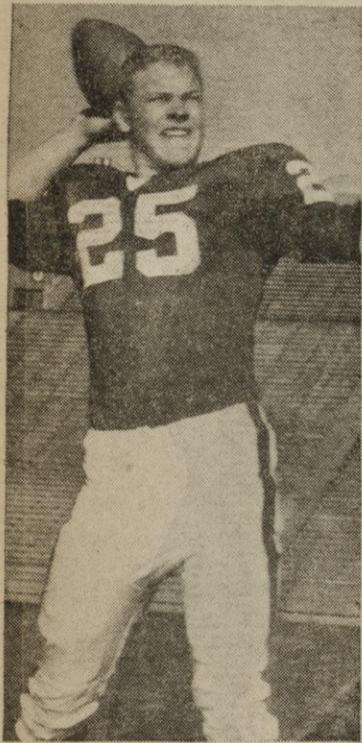
BRIAN MOORE



GERALD KULCINSKI



JOHN GOTTA



JIM BAKKEN

sophomore Pat Richter, an outstanding prospect. Richter, who stands 6-5 and weighs 225 lbs., has all the equipment but lacks the experience of Derleth.

**THE BADGERS** are hurting at tackle. All-American Dan Lanphear and his running mate, Jim Heineke, have departed and left gaping holes in the line. There places will probably be taken by Terry Huxhold and Brian Moore.

The tackle situation took a further turn for the worse when John Fox, a 220 lb. sophomore prospect, failed to regain his eligibility during summer school.

Huxhold, a letterman, was hampered by injuries early last year but came on strong at the end of the season and played well in the Rose Bowl. Moore, a 230 pounder, lettered last year as a sophomore although he saw only limited action.

**THESE TWO** probably can do the job as starting tackles, but

there probably will be a lot of different faces at the position.

Among the many sophomores who will probably see action at this spot are Brad Armstrong, Merritt Norvell, and Ted Rogen-ski.

The fullback spot is in the capable hands of rugged Tom Wiesner, who could prove to be one of the Big Ten's best before he's through. A seasoned performer, Wiesner runs very hard and is tough to stop once he gets through the line.

**HE ALSO** has strong support in sophomore Neil Fleming, a fine prospect, and Tom Anthony, who was injured most of last season, and Tom Neumann, a reserve last year.

This is a team, which, while not a championship contender, could wind up in the first division if all the pieces fall in place. But there are many pressing problems. Will the sophomores be able to provide the necessary depth, especially at halfback and tackle slots? Can Bakken take over for the departed Dale Hackbart? Can the generally inexperienced first team compete successfully with more experienced Big Ten foes? Upon the answer to these and other questions rests Wisconsin's fate in the conference this year, and only time will tell.

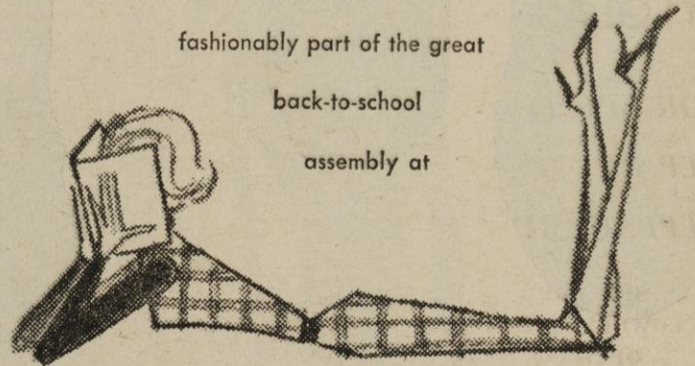
A-DILLER A-DOLLAR  
WHO'S THE WELL-DRESSED SCHOLAR?

\*the girl who majors in the  
classics but takes her electives in fun...all

fashionably part of the great

back-to-school

assembly at



Suburbia

SHOP

Ladies Balcony—The HUB, Ed Schmitz & Sons

# SAVE AT BROWN'S

## 'W' Club Fund Totals \$3,000

### Plans To Collect More Money Set

The Charles Mohr Memorial scholarship fund has a total of \$3,000 collected as a tribute to the university boxer who died last spring as a result of injuries received in a boxing match.

Charlie Mohr, All-American boxer, was injured April 9 in a bout with Stu Bartell of San Jose State and died a week later. He was unconscious for the week before his death.

Several weeks later the faculty voted to discontinue boxing on an inter-collegiate level here.

THE "W" club initiated the scholarship fund to honor Charlie Mohr. According to Dick Van Eerden, president of the "W" club, the highest contributions have come from the Homecoming committee (\$1,000) and the National "W" club (\$500).

Van Eerden also said that plans have been made for further collections this fall. At the Oct. 1 Wisconsin-Marquette football game, "W" club day, members of the "W" club will "pass the hat" during the halftime, Van Eerden said.

The band will include a tribute to the drive in its halftime show.

UNDER provisions of the fund, as accepted by the Board of Regents, "the recipients should be students whose thoughts and actions in their daily living are motivated by those high ideals and traits of character exemplified by Charles Mohr, and who have exhibited those qualities of leadership which hold the good of all as their unwavering goal."

Recipients will be chosen by a committee composed of the president of the "W" club, the director of intercollegiate athletics, and the director of loans and scholarships. The first winners will be announced at the "W" club athletic banquet next spring.

The awards must be a minimum of \$250 annually, and shall not exceed \$749, according to the provisions.

#### ALL-AMERICAN ACADEMIC TEAM

1952—Bob Kennedy (G)  
1953—Alan Ameche (FB)  
1954—Alan Ameche (FB) and  
Clar Stensby (G)  
1955—Pat Levenhagen (HB)  
1958—Jon Hobbs (FB)  
1959—Dale Hackbart (QB) and  
Henry Derleth (E)

## BROKEN EYEGLASSES!!

FOR SPEEDY REPAIR OR REPLACEMENT

SEE YOUR LOWER CAMPUS OPTICIAN

PRESCRIPTIONS FILLED  
LENSES DUPLICATED

**MITCHELL**  
OPTICAL DISPENSARY

629 State St. AL 6-6875



CHARLES MOHR

# Boxing Will Be Continued In 'U' Phy. Ed. Classes

Although intercollegiate boxing has been discontinued by the university, the sport will continue here as a part of the physical education program, Vernon E. Woodward, last year's varsity boxing coach, has told the **Daily Cardinal**.

Training in fundamental boxing skills will be available to all interested students this year, he said. Freshmen will be able to take the sport as a quarter of their physical education program, while upperclassmen will be able to take it as an extra-curricular activity.

However, no boxing instruction will begin until Nov. 1, the usual starting time for boxing, Woodward, who will teach the sport in both programs, explained.

THE END of intercollegiate boxing at Wisconsin came last May 9, when the university faculty decided it should be dropped immediately. Less than a month before their decision university

boxer Charles Mohr died of injuries received in a match April 9.

Prof. David Fellman offered the resolution which the faculty adopted with a large majority vote. It stated that "boxing is not an appropriate intercollegiate sport."

Before adopting the resolution, faculty members rejected a recommendation from the Athletic board to postpone a decision until possible rule changes in the sport were made.

WOODWARD will continue teaching boxing, but will not be coaching teams for interschool competition. "I would like to see as many boys out for the boxing instruction as possible," he said, "because not only I, but other members of the physical education and athletic departments, would like to see active interest in boxing continue here."

He mentioned the possibility that, if enough interest is shown

by students, an intramural boxing program might be started. "But that wouldn't be this year," he stated.

Another possibility is to continue the all-university and contenders tournaments, he said. "But, again, nothing at all definite has been planned," he emphasized.

UNTIL BOXING instruction begins in November, Woodward will be helping out with football coaching, as he has each year since 1949.

Returning varsity boxers, with no chance for intercollegiate competition, may decide to box as amateurs outside university jurisdiction, Woodward said. "They would be entirely on their own, and would not be representing the university," Woodward said, "so it would not violate the faculty decision."

## Filters for flavor

—finest flavor by far!



THE TAREYTON RING MARKS THE REAL THING!



Tareyton has the taste—  
**Dual Filter**  
does it!



#### HERE'S HOW THE DUAL FILTER DOES IT:

1. It combines a unique inner filter of ACTIVATED CHARCOAL... definitely proved to make the taste of a cigarette mild and smooth...
2. with a pure white outer filter. Together they select and balance the flavor elements in the smoke. Tareyton's flavor-balance gives you the best taste of the best tobaccos.

NEW DUAL FILTER **Tareyton**

Product of The American Tobacco Company—"Tobacco is our middle name" © A. T. Co.

# BUY BROWN'S USED BOOKS

# WARDS

MONTGOMERY WARD



## WARD'S Welcomes Students

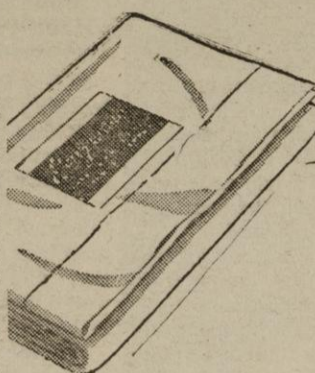
### OPEN MONDAY & FRIDAY TILL 9:00 P.M.



#### PRICE CUT! CASUAL SUITS

**\$27<sup>50</sup>**

Fashion favorites for campus and casual wear. Expertly tailored cotton corduroy suits with reversible vest. Tan, black, loden green. All sizes.



#### Treasure Chest fine percale sheets

81x108"

**2.59**

Combed yarns for light weight, smooth finish . . . yet strong for long wear. White.

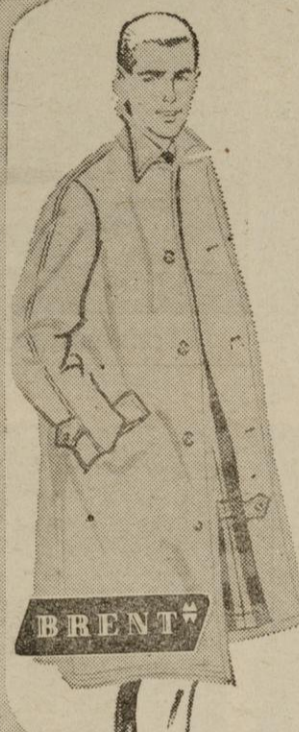
#### 63" DRAPES Plain or Pattern

**\$4<sup>98</sup>**

PILLOWS — Many colors to Choose . . . \$1 up

BED SPREADS — Bright Plaids or Chenilles . . . \$4.98

TOWELS — Terry Cloth in Stripes & Plains . . . 79c ea.



#### SAVE ON MEN'S RAINCOATS

**\$14<sup>95</sup>**

100% combed cotton poplin styled in new University model. Fly front, flap pockets. Black or natural tan, plaid lined. Regulars, longs.

#### BULKY ORLON® CARDIGANS

**\$5<sup>98</sup>**

Zig-zag, popcorn, novelty knit Orlon® Acrylic! Red, purple, blue, white, gold, white, green, black in group. 34-40, some 42's!



#### SALE! MEN'S IVY SLACKS

**\$4<sup>98</sup> & \$3<sup>98</sup>**

Styled for good-looks on the campus or at home. Wash 'n wear Dancord® combed cotton cords rarely need ironing. Zelan® finish repels stain. 29-38.



#### REVERSIBLE KNEE TICKLER SKIRT

**\$6<sup>98</sup>**

and up

Two washable plaid skirts in one! 65% carefree Orlon® Acrylic—35% wool, hip-stitched in a flurry of pleats. Plaids for all sweater colors. 7-15.



#### SALE! MEN'S BULKY SWEATER

**\$8<sup>98</sup>**

Luxuriously soft lamb's wool-Orlon® Acrylic blend. Popular shawl collar coat styling. Two roomy pockets. Four Fall colors. S-M-L.



#### 3-Speed Hawthorne English Tourist

**\$38<sup>88</sup>**

Made for easy pumping and handling. Caliper rim brakes. Black double steel frame. Chrome trim.

#### ROYAL TYPEWRITERS

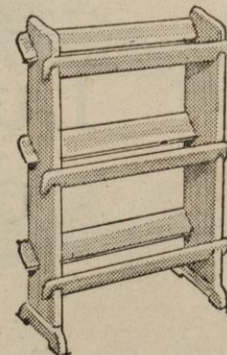
ROYAL HERITAGE

Magic margin, twin pak ribbon, Pica or Elite type . . . **\$89<sup>88</sup>**

ROYAL DART

only 3" high  
Full Key Board

**\$46<sup>88</sup>**



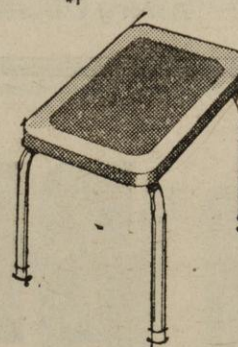
#### SPECIAL! 3-TIER BOOK-STAND

**\$6<sup>88</sup>**

Carefully detailed bookcase provides lots of room for books. Choose walnut or oak finish.

#### SALE! FORMICA- TOP STEP-STOOL

Sturdy frame of chrome finish steel tubing. Tops in assorted colors. **\$2**



# Statistics, Be in the Know

## Team Line Up, 3-Deep...

### ALL-TIME ATTENDANCE RECORDS

Single Game  
At Home: 65,256 (vs. Ia. in 1959)  
On Road: 91,202 (vs. Mich. in 1950)  
101,500 (Rose Bowl, 1953)

Single Season  
At Home: 4 games—180,000 (1946 and '50)  
5 Games—276,263 (1958)  
6 Games—265,000 (1948)  
On Road: 3 Games—181,200 (1948)  
4 games—262,203 (1958)  
5 Games—333,300 (1950)

Best Entire Season  
Regular season of 9 games—538,466 in 1958.  
Season of 10 Games (Including Rose Bowl) 585,749 in 1959.  
Recapitulation 1946-1959 (14 yrs.) (Ave.)  
69 Home Games 3,397,048 49,232  
59 Home Games 3,348,671 56,757  
128 Game Totals 6,745,719 52,701

### NORTH-SOUTH SHRINE GAME

(At Miami, Fla.)  
1950—Bob Radcliffe and Ken Huxhold  
1951—Hal Faverty, John Coatta, and Deral Teteak  
1953—Harland Carl and Mark Hoegh  
1954—Alan Ameche, Norm Amundsen, and Gary Mesner  
1955—Wells Gray and Jim Miller  
1956—Dave Howard  
1958—Dave Kocourek

## How We Compare

### ALL-TIME BIG 10 CONFERENCE STANDINGS

School	Won	Lost	Tied	Pct.
Michigan .....	183	81	11	.685
Ohio State .....	157	82	18	.646
Michigan State .....	24	17	1	.583
Minnesota .....	163	124	23	.563
Chicago .....	123	103	14	.542
Wisconsin .....	150	142	32	.512
Illinois .....	164	158	22	.509
Purdue .....	120	155	26	.442
Iowa .....	102	152	16	.407
Northwestern .....	122	188	18	.399
Indiana .....	78	181	20	.315

### ALL-TIME WISCONSIN RECORD AGAINST 1960 OPPONENTS

Series	Started	W	L	T	Opponent	Last Victory	Last Defeat
1959	1	1	0	0	Stanford	1959	....
1904	31	4	0	0	Marquette	1959	1943
1892	22	13	6	0	Purdue	1958	1959
1894	24	13	0	0	Iowa	1959	1958
1913	7	18	4	0	Ohio State	1959	1958
1892	5	18	1	0	Michigan	1959	1950
1890	28	15	4	0	Northwestern	1959	1956
1895	17	14	5	0	Illinois	1958	1959
1890	23	38	8	0	Minnesota	1959	1955

Pos. No.	First Team Line-up	Wt.	Ht.	Age	Class	Awards
LE 88—	Richter, Hugh V. 'Pat'	227	6-5	19	So.	Num-59
LT 78—	Huxhold, Terry W.	211	6-4	22	Sr.	W-58, 59
LG 63—	Matthews, Dale F.	205	6-2	19	So.	Num-59
C 55—	Baer, Richard B.	210	6-2	20	Jr.	Num-58
RG 64—	Perkins, Ronald L.	225	5-10	21	Sr.	W-58, 59
RT 79—	Moore, Brian P.	231	6-1	19	Jr.	W-59
RE 89—	Derleth, Henry M.	215	6-3½	21	Sr.	W-58, 59
QB 27—	Fabry, John J.	190	6-2	19	So.	None
LH 44—	Norvell, Merritt J.	177	5-11	19	So.	Num-59
RH 40—	Nena, Gerald	180	6-½	18	So.	None
FB 38—	Wiesner, Thomas N.	206	6-0	21	Sr.	W-58, 59

Pos. No.	Second Team Line-up	Wt.	Ht.	Age	Class	Awards
LE 18—	Staley, Ronald G.	191	6-2	20	Jr.	Num-58
LT 76—	Harms, Gary R.	207	6-2	21	Jr.	Num-57
LG 62—	Schade, Donald E.	204	5-10	20	Jr.	W-59
C 36—	Henrici, Ronald C.	204	6-2½	20	So.	Num-59
RG 66—	Kulcinski, Gerald L.	198	6-1½	20	Sr.	W-58, 59
RT 71—	McMillin, James A.	195	6-1½	18	So.	Num-59
RE 12—	Kellogg, William L.	185	5-11	21	Sr.	Num-57
QB 21—	Bakken, James L.	197	5-11	19	Jr.	W-59
LH 48—	Rogenski, Theodore J.	180	5-10½	19	So.	Num-59
RH 47—	Hearn, Napoleon	175	6-½	21	So.	Num-58
FB 34—	Fleming, Neil J.	195	6-0	20	Jr.	None

Pos. No.	Third Team Line-up	Wt.	Ht.	Age	Class	Awards
LE 11—	Bichler, David W.	191	6-0	20	Jr.	Num-57
LT 70—	Hubbard, J. Timothy	191	6-3	19	So.	Num-59
LG 65—	Wittig, Richard	215	6-½	20	Jr.	Num-58
C 53—	Wildman, Ronald J.	190	6-1	19	So.	Num-59
RG 69—	Suits, William H.	203	5-11	20	Jr.	Num-58
RT 73—	Westbeld, Jerry	195	6-3	19	So.	Num-59
RE 85—	VanderVelden, Donald	208	6-1	20	Jr.	Num-57
QB 25—	Armstrong, Ronald	169	6-0	20	Jr.	Num-58
LH 15—	VanderKelen, Ronald	169	6-0	20	Jr.	Num-58
DH 17—	Kroner, Gary L.	189	6-0	19	So.	Num-59
FB 33—	Vesel, Charles A.	200	6-0	20	So.	Num-58

\*Denotes Major "W" award winner.

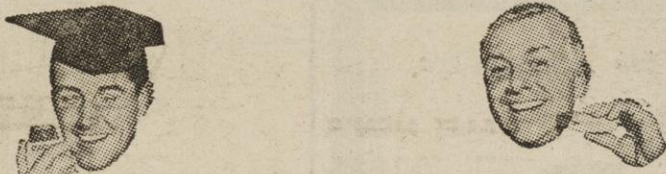
### 1959 MAJOR LETTERMEN RETURNING (9)

Name	Play Time	Pos.
Bakken, Jim .....	210	QB
Derleth, Henry .....	451	RE
Gotta, John .....	61	C
Huxhold, Terry .....	48½	RT
Kulcinski, Gerald .....	65	RG
Moore, Brian .....	82	RT
Perkins, Ron .....	448	LG
Schade, Don .....	88	LG
Wiesner, Tom .....	220	RB

### SPECIALISTS

Passing—John Fabry, Jim Bakken, Ron Vanderkelen  
Punting—John Fabry, Jim Bakken, Tom Wiesner, Don VanderVelden  
Kickoffs—Henry Derleth, Gary Kroner, John Fox.  
Conversions (by kicking)—Henry Derleth, Jim Bakken, John Fox.

### FACTORY AUTHORIZED SERVICE



All Makes of Electric Shavers

and

PENS—Repaired and Sold

Free Estimates—Trade-In Allowance

ELECTRIC SHAVER & PEN SERVICE

436 State Street under the canopy Dial AL 5-2273

Campus-Right...

Budget-Right

FOOTWEAR

Madison's most complete selection of College-Type Shoes.

Your Campus Foot-Quarters

COLLEGE BOOT SHOP

614 State

on the campus

COLD BEVERAGES TASTE BETTER

WITH CRYSTAL-CLEAR

OSCAR MAYER ICE CUBES

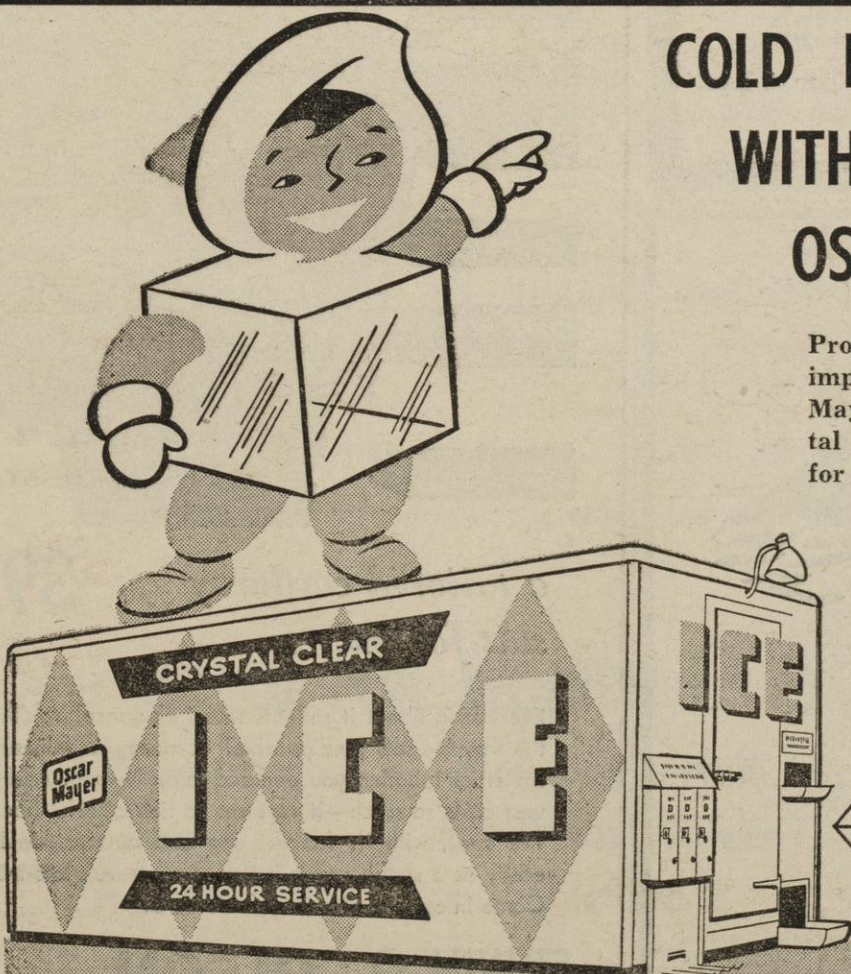
Prove it to yourself! Delight your family and friends by improving cold drinks with pure, crystal-clear Oscar Mayer Ice Cubes. Scientific processing makes them crystal clear and taste-free. A large, water-repellent bag for only 40c.

Why Oscar Mayer Ice Cubes are Better:

1. Taste-free — no icebox odor.
2. Frozen hard. All air is removed.
3. Longer lasting — last almost twice as long.
4. Pure, crystal clear.

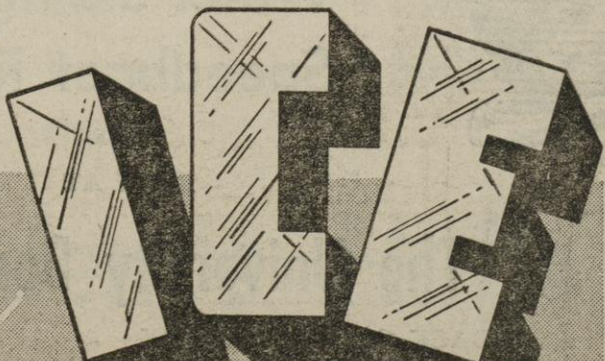
There is an Ice Vendor near you...

or get Crystal-Clear Ice Cubes at your favorite beverage store.



OSCAR MAYER

Crystal Clear



## Marty Gharritty Raises Grades, Eligible Again

Marty Gharritty, university sophomore basketball star who was dropped from school last spring because of scholastic deficiencies, has become eligible for athletic competition again by passing two summer school courses.

Success in summer courses has also made five Badger football prospects eligible for play this fall.

But John Fox, a sophomore tackle last year, got a failure during summer school while taking credits he didn't need for eligibility, and thus has been lost to the squad.

Gaining eligibility were Dick Baer, center; Gerald Nena, halfback; Neil Fleming, fullback; Jerry Westbeld, tackle; and Elmars Ezerins, end. All are sophomores this year except Fleming, a junior transfer student from Miami (Fla.) university.

Gharritty and Tom Hughbanks, another sophomore, led the Badgers' basketball scoring last year with 312 points each. Gharritty was also a member of the varsity golf team.

Among the football players mentioned, Baer and Nena are ranked on the first team in a tentative three-deep lineup. Fleming is on the second team, and Westbeld on the third team.

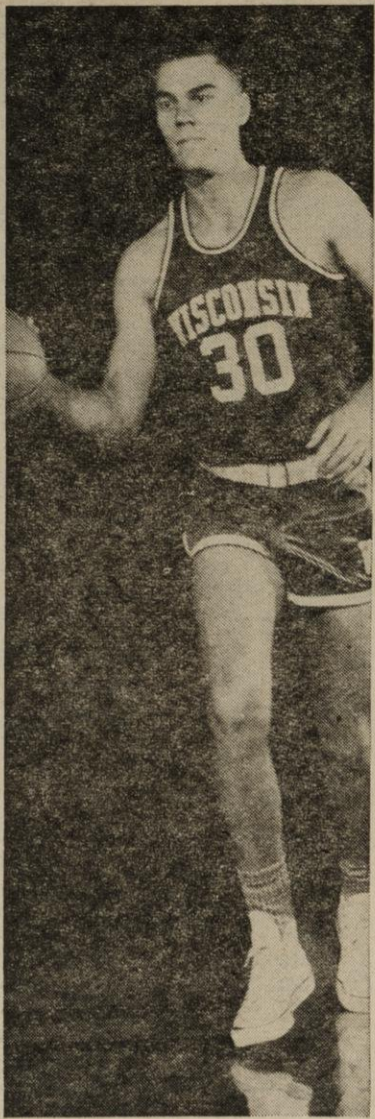
## Sophomores Carry Load

By JERRY SHEA  
Co-Sports Editor

Milt Bruhn must depend on sophomores to carry the load in football this season and the Big Ten has never been a "sophomore" league. Only two regulars return from the 1959 champions; end Hank Derleth and guard Ron Perkins.

To make up for the lack of experience, Bruhn will use the three-platoon system that was highly successful at Michigan last year. The first team will be a two-way unit playing on both offense and defense until late in the first period. A second team of offensive specialists will then be used followed by a third team of defensive stalwarts.

Bump Eliot got the most out of mediocre talent at Michigan last fall using this system. The Wolverines didn't belong on the same field as Wisconsin last year but they almost upset the Badgers when the third or "defensive" platoon kept Wisconsin bottled up deep in its own territory throughout the last half.



**BACK AGAIN**—Marty Gharritty, who was declared ineligible because of grades last spring, regained his eligibility by passing two courses this summer. Gharritty is a basketball and golf star.

## 102 Varsity, Frosh Athletes Maintained At Least 'B' Averages Last Semester

A total of 102 university varsity and freshman athletes scored a "B" or better in their second semester classroom work last year, according to Ivan B. Williamson, athletic director. The list of athletes doing well in the classroom included seven athletes who made a straight "A" average for the semester's work, including crew coxswain Palmer Taylor, who achieved a straight "A" for the seventh semester during his four year career at Wisconsin. Taylor is a pharmacy student.

Two varsity swimmers gained straight "A" recognition for the second semester, including the 1960 honorary swimming captain, A. David Link. Teammate Donald Pansch also had straight "A". Four freshmen athletes, (now sophomores) scored straight "A", including Roger Molander, and James Nelson. Both showed promise of helping the track team, with Nelson being a 13 foot pole vaulter, and Illinois State high school champion in 1959. Molander is a hurdler.

Wrestler Peter Springberg, and fencer Forrest Nielsen, also attained a perfect record.

Varsity athletes achieving an overall average of 3.8 or better for the second semester of work include baseball pitcher Bill Lyon, football co-captain Henry Derleth, and basketball forward Tom Hughbanks. Basketball team manager, John Stack, also had a 3.8 average.

The "B" or better list of athletes includes:

**BASEBALL** — David Basco, Timm Hurst, William Lyon, William Marshall, John Moran, Ken-

neth Schuring, John Simon, Michael Simon, and Jan Weisberg;

**BASKETBALL** — James Biggs, Fred Clow, Tom Hughbanks, James Mortensen, John Stack, John Stone, Dave VanderMeulen, Robert Wittig, and John Zwakman;

**BOXING** — John Brennan, John Drye, James Ellison, Otto Peucker, Peter Putzier, Marshall Rand, Kenneth Schaaf, Gordon Sensiba, and Robert Strazel;

**CREW** — James Bowen, William Brauer, Donald Erbach, John Haag, Dennis Hammill, Larry Hurwitz, Randall Jablonic, Edgar Jacobi, Douglas Knudson, George Newman, Kenneth Olen, Charles Pope, Dale Sharpee, Michael Shakman, Palmer Taylor, and Thomas Wegmann.

**FENCING** — Jack Anderson, William Gee, David Mantik, Forrest Nielsen, and Gerald Wiviott;

**FOOTBALL** — Ronald Adamson, Thomas Anthony, Frank Corrado, Henry Derleth, Ronald Henrici, Gerald Kulcinski, Milton Lambert, Earl Schmidt, John Stiska, and Lee VanderVelden;

**GOLF** — Edward Garvey, Gerald Moore, Thomas Nelson;

**GYMNASTICS** — John Bargren, George Hess, Joel Jennings, William Mauthe, Hermann Munni-

chow, Frank Paudler, Clay Stebins, Richard Tenser;

**SWIMMING** — William Birmingham, Tom Dewing, Robert Easton, David Link, Donald Pansch, Gene Stulgaitis, and Eugene Eidenberg;

**TENNIS** — George Gary, Vincent Rideout, Martin Rubinowitz, and Martin Semmelhack;

**TRACK and Cross Country** — Robert Devlin, James Fey, James Fisher, Foster Friess, Carl Hoyer, Rudolph Kohnle, Ted Kramer, John Larson, Donald Loker, Carl Marschke, Roger Molander, Steve Muller, James Nelson, Wayne Rudolf, Albert Walker, and Dave Zarwell;

**WRESTLING** — Grant Hartman, Gayle Hoyer, Duane Quale, John Sears, Peter Springberg, and Donald Wesenberg.

### CAPACITIES OF BIG TEN STADIUMS

School	Capacity
Michigan	101,001
Ohio State	79,658
Michigan State	76,000
Illinois	71,119
WISCONSIN	63,435
Minnesota	63,255
Iowa	60,000
Northwestern	55,280
Purdue	50,362
Indiana	50,000

Edwin O. Olson & Son

the style is new!

the colors are new!

### VESTED SUIT IN LUXURY CORDUROY



a tailored corduroy  
suit for only . . . **39<sup>95</sup>**

Everything about it reflects smart elegance! You'll like the way the soft (and durable!) corduroy lends itself to the strict tailoring you demand in an Ivy suit. And the vest adds so much—it reverses to rich colorful flannel. The coat, with its fancy lining and buttons, doubles easily as a stylish sports jacket. And there's lots more! Come in and see its many features at

**EDWIN O. OLSON & SON**

555 STATE at FRANCES

FREE CUSTOMER PARKING Town/Campus Bldg.

Relax and Enjoy the Fine Atmosphere

of the

# PAD

ESPRESSO COFFEE HOUSE

FAMOUS FOR OUR FINE COFFEE  
AND ORIGINAL, DELICIOUS

## SUBMARINE SANDWICHES

527 State St.

Open Mon.-Fri. 8 p.m.-3 a.m.

Sat. & Sun. 4 p.m.-3 a.m.

## IT'S BOATING TIME!

Enjoy the Sun in a

- Canoe
- Sailboat
- Rowboat
- Outboard



Also Enjoy

- Water Skiing
- Speedboat Riding

RENT AT

## The University Boat House

BACK OF THE ARMORY

DIAL AL 6-9728

# Badger Pigskin History Varied

Wisconsin football got its start during the season of 1889. There are reports that a football team existed earlier, but there are no names or records to substantiate these claims.

The 1889 "11" was not successful, however, since the squad dropped the two contests it played. In the first contest, the Badgers lost to Calumet club, 27-0.

**THE NEXT** year, a league including Beloit, Northwestern, Lake Forest, and Wisconsin was formed. The season opened with the Badgers winning their most decisive victory in history with a 106-0 rout over Whitewater Normal.

The next time the Badger grid-ers cleated the gridiron it was a different story. This time another record was set—as Wisconsin suffered its most embarrassing defeat, 63-0, at the hands of Minnesota.

Phil King, Princeton's all-American quarterback for two years, arrived on the campus in 1896 to coach the Badgers. King began a new era of football that season. The material available suited his system of play, and with his ability to make the most of the players present, King built up a seven year record of 57 wins, nine losses, and one tie.

**THE WESTERN** conference was organized in 1896, and Wisconsin promptly walked off with the first football championship, whipping Chicago, 24-0, edging Minnesota, 6-0, and battling Northwestern to a 6-6 tie.

The Badgers won the conference crown again in 1897, and in 1901, 1906, and 1912, but then the long famine set in that was to last 40 years before another football championship would be won in 1952.

# Football Team Leaders—1945-1959

RUSHING									
Year	Name	No.	Yds.	Ave.	Year	Name	No.	Yds.	Ave.
1959	Dale Hackbart	98	366	3.7	1959	Dale Hackbart	6	6	0
1958	Jon Hobbs	117	401	3.4	1958	Dale Hackbart	9	2	0
1957	Dan Lewis	95	611	6.4	1957	Dan Lewis	6	0	0
1956	Dan Lewis	100	554	5.4	1957	Dale Hackbart	6	0	0
1955	Charles Thomas	98	477	4.9	1956	Dan Lewis	3	0	0
1954	Alan Ameche	146	641	4.4	1955	Charles Thomas	6	0	0
1953	Alan Ameche	165	801	4.9	1954	Alan Ameche	9	0	0
1952	Alan Ameche	205*	946*	4.6	1953	Jim Miller	6	0	0
1951	Alan Ameche	157	824	5.2	1952	Alan Ameche, Harland Carl, and Jerry Witt	7	0	0
1950	Rollie Strehlow	101	398	3.9	1951	Jerry Witt	8	0	0
1949	Bob Teague	96	521	5.4	1950	John Coatta	1	17	0
1948	Ben Bendrick	64	327	5.1	1949	Lisle Blackburn	2	24	1
1947	Clarence Self	75	526	7.0*	1948	Wally Dreyer	4	0	0
1946	Earl Maves	92	538	5.9	1947	Lisle Blackburn	3	15	2
1945	Ben Bendrick	136	695	5.1	1946	Ben Bendrick	5	0	0

\*School records.

PASS RECEIVING									
Year	Name	No.	Yds.	TD	Year	Name	G	Att.	Comp.
1959	Henry Derleth	12	183	0	1959	Dale Hackbart	9	83	40
1958	Ron Steiner	11	171	1	1958	Dale Hackbart	9	99	46
1957	Dan Lewis	12	171	1	1957	Sid Williams	9	54	25
1956	Dave Howard	16	247	2	1956	Sid Williams	6	19	10
1955	Pat Levenhagen	17	178	1	1955	Jim Haluska	9	132	71
1954	Ron Locklin	22	218	2	1954	Jim Miller	9	88	46
1953	Norbert Esser	19	238	2	1953	Jim Miller	7	69	36
1952	Jerry Witt	25*	341	4	1952	Jim Haluska	9	199*	112*
1951	Jerry Witt	17	371	3	1951	John Coatta	9	185	91
1950	Gene Felker	23	266	1	1950	John Coatta	9	108	65
1949	Hal Haberman	17	194	2	1949	Bob Petruska	9	106	45
1948	Jim Embach	5	92	0	1948	Bob Petruska	9	26	11
1947	Tom Bennett	7	95	1	1947	Earl Girard	9	55	25
1946	Tom Bennett	6	124	0	1946	Lisle Blackburn	9	25	10
1945	Jack Mead	10	203	3					

\*School record.

NOTE: Dave Schreiner holds school mark for yardage on receptions: 386 yards on 18 receptions in 1942.

SCORING									
Year	Name	TD	PAT	FG	Tot.	Year	Name	TD	PAT
1959	Dale Hackbart	6	6	0	42	1959	Dale Hackbart	6	6
1958	Dale Hackbart	9	2	0	56	1958	Dale Hackbart	9	2
1957	Dan Lewis	6	0	0	36	1957	Dan Lewis	6	0
1956	Dan Lewis	3	0	0	18	1956	Dan Lewis	3	0
1955	Charles Thomas	6	0	0	36	1955	Charles Thomas	6	0
1954	Alan Ameche	9	0	0	54	1954	Alan Ameche	9	0
1953	Jim Miller	6	0	0	36	1953	Jim Miller	6	0
1952	Alan Ameche, Harland Carl, and Jerry Witt	7	0	0	42	1952	Alan Ameche, Harland Carl, and Jerry Witt	7	0
1951	Jerry Witt	8	0	0	48	1951	Jerry Witt	8	0
1950	John Coatta	1	17	0	23	1950	John Coatta	1	17
1949	Lisle Blackburn	2	24	1	39	1949	Lisle Blackburn	2	24
1948	Wally Dreyer	4	0	0	24	1948	Wally Dreyer	4	0
1947	Lisle Blackburn	3	15	2	39	1947	Lisle Blackburn	3	15
1946	Ben Bendrick	5	0	0	30	1946	Ben Bendrick	5	0
1945	Don Kindt	6	0	0	36	1945	Don Kindt	6	0

\*School record is 72 points by Pat Harder in 1941.

PASSING									
Year	Name	G	Att.	Comp.	Yds.	Pct.	TD		
1959	Dale Hackbart	9	83	40	589	.482	2		
1958	Dale Hackbart	9	99	46	641	.465	4		
1957	Sid Williams	9	54	25	451	.463	4		
1956	Sid Williams	6	19	10	216	.526	0		
1955	Jim Haluska	9	132	71	1036	.538	6		
1954	Jim Miller	9	88	46	608	.523	5		
1953	Jim Miller	7	69	36	683	.522	6		
1952	Jim Haluska	9	199*	112*	1410*	.563	12*		
1951	John Coatta	9	185	91	1154	.492	8		
1950	John Coatta	9	108	65	727	.602*	6		
1949	Bob Petruska	9	106	45	620	.424	6		
1948	Bob Petruska	9	26	11	125	.423	0		
1947	Earl Girard	9	55	25	322	.455	4		
1946	Lisle Blackburn	9	25	10	175	.400	1		

\*School records.

## TRANSFER STUDENTS

### AVAILABLE

#### Backfield

John J. Fabry, Green Bay (Pre Montre), Wis., quarterback, from Minnesota, and Neil J. Fleming, Marshfield, Wis., fullback, from Miami (Fla.)

We Invite You  
to visit us—

Coryell's Jewelry Store

FULL LINE OF COSTUME JEWELRY

(expert watch repairing too)

521 State Street

## STATE STREET WEE WASH IT

We specialize in Student Laundry

SHIRTS  
DRY CLEANING

Washed and Dried Individually

BETTER and QUICKER!  
TRY US

LAUNDRY—Same Day Service  
State at Gilman

## Dorm Staff Welcomes Students

*The staff of the University Residence Halls extends a welcome to all students and especially the 4,000 students living in the Halls.*

*House Fellows, House Officers and New Student Week Committee workers will be on hand to welcome you to your campus homes.*

### HALLS FOR WOMEN

Barnard  
Cole  
Chadbourne  
Elm Drive Hall  
Elizabeth Waters  
Slichter

### HALLS FOR MEN

Adams  
Elm Drive  
Kronshage  
Tripp  
Sullivan

The University Residence Halls



## 1960 Football Team

**FIRST ROW**, left to right: Brian Moore, 79; Donald Schade, 62; Ronald Perkins, 64; Co-Capt. Tom Wiesner, 33; Co-Capt. Henry Derleth, 89; Terry Huxhold, 78; Gerald Kulcinski, 66; James Bakken, 21; John Gotta, 54.

**SECOND ROW**: David Bichler, 11; Thomas Neumann, 35; Richard Wittig, 65; William Suits, 69; Ronald VanderKelen, 25; Thomas Mettlich, 22; Gary Harms, 76; William Hess, 19; William Kellogg, 12; Ronald Staley, 18; Ervin Kunesch, 45.

**THIRD ROW**: Hugh Richter, 88; Dale Matthews, 60; Richard Baer, 55; John Fabry, 24; Merritt Norvell, 44; Gerald Nena, 40; Ronald Henrici, 56; James McMillen, 71; Theodore Rogenski, 48; Napoleon Hearn, 47; Neil Fleming, 34.

**FOURTH ROW**: Ronald Wildman, 53; Jerome Westfeld, 73; Bradley Armstrong, 15; Charles Vesel, 33; Donald VanderVelden, 85; Gary Kroner, 17; Ronald Carlson, 28; William Bynum, 32; Kenneth Montgomery, 41; Thomas Downham, 77; James Raffini, 63; Donald Bangert, 46.

**FIFTH ROW**: Richard Grimm, 75; Eliot Elmer, 68; Ross Gettrust, 14; Steve Underwood, 37; Thomas Anthony, 36; Carlton Olsen, 87; Earl Schmidt, 94; Lloyd Bishop, 96; Jack Cicerello, 10; William Barnett, 16; Paul Lange, 26; Ronald Miller, 90; James Novak, 86.

**SIXTH ROW**: John Strassburger, 28; David Affeldt, 93; Dion Kempthorne, 42; Howard Hippmann, 49; Roger Palmer, 50; Larry Skaff, 51; Edward Dolly, 57; Michael Whitacre, 61; Terry Voss, 67; James Jax, 74; John Mowery, 81; Elmars Ezerins, 82; David Kussow, 84.

**SEVENTH ROW**: Jerry O'Donnell, 98; George Wastila, assistant trainer; Arthur Lamboley, equipment manager; Fred Jacoby, assistant coach; Clark Van Galder, assistant coach; Paul Shaw, assistant coach; Milt Bruhn, head coach; Fred Marsh, assistant coach; Deral Teteak, assistant coach; Lee VanderVelden, manager; Frank Ibbotson, 91.

—Wisconsin State Journal photo

# ON, WISCONSIN!



## Football Cheers For the Intellectual

### FOR CREATING TEAM SPIRIT

Subjugate them!  
Captivate them!  
Treat them just like dirt!  
Crucify them!  
Damnify them!  
We will not be hurt!

### AFTER A FUMBLE

Lummox, lummox, hopeless wretch!  
Butterfingers syphilitic!  
Leper, cardiac case! Bumpkin!  
Quit! Quit! Quit!  
Hissssssssss!

### WHEN ONE OF THE MEN IS A HERO

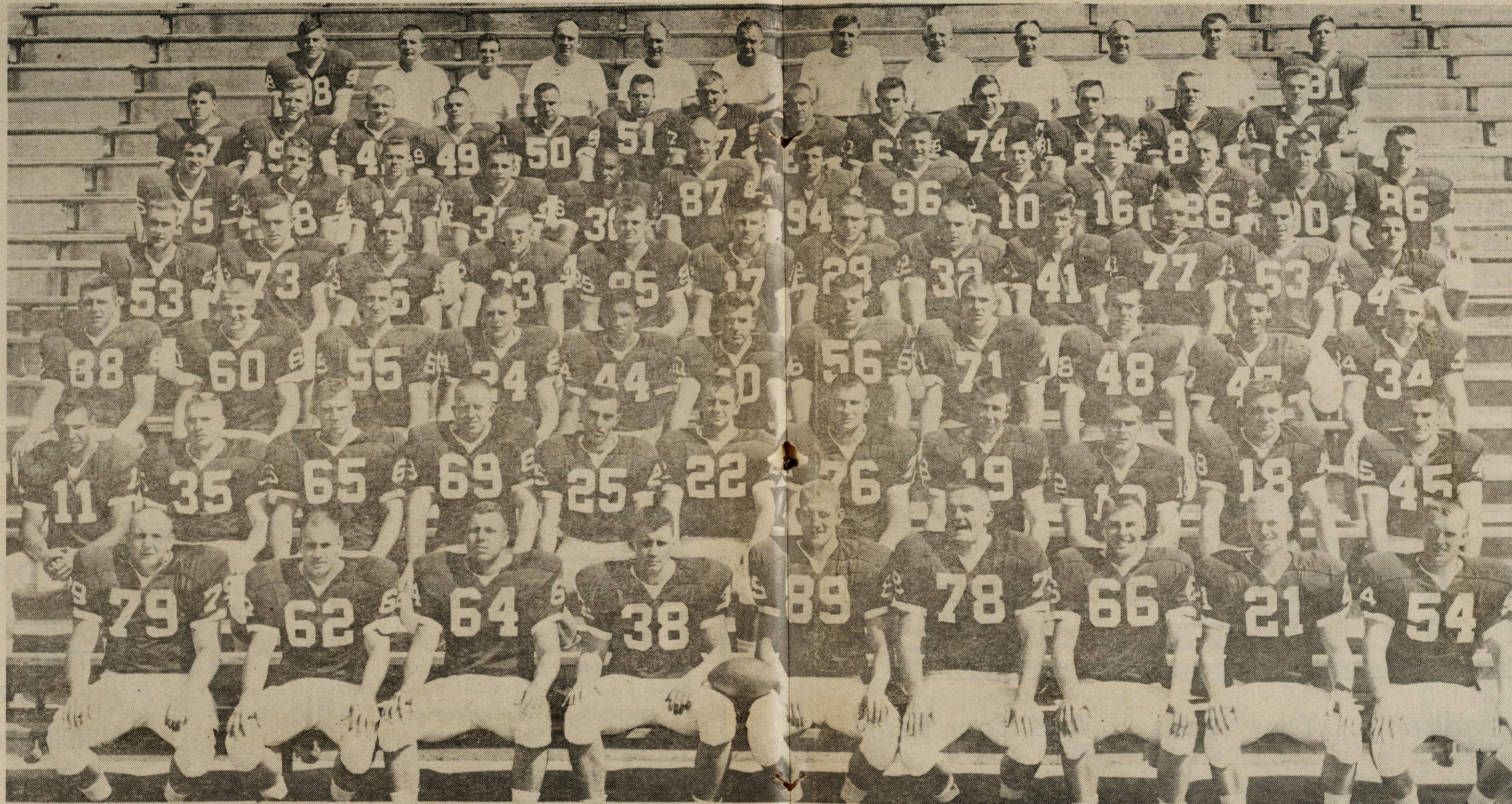
Biceps, biceps, big and tough;  
Skulls two inches thick;  
Leg bones, leg bones, huge and rough—  
Heroes make me sick!  
To the showers!  
Off to the showers!

### BEATNIK CHEER I

(with bored sound)  
Crudescent corpi,  
What a drag man,  
What a drag . . .  
Like squares, squares, squares, dad.  
Time out, time out, time out, fudgehead.

### BEATNIK CHEER II

Man, let's dig out.  
Hit the roads, toads.  
Man, like I'm tired.  
So we should pay to see this?  
Martha Peterson!  
Theodore Zillman!  
LeRoy Luberg!  
Stop the show!



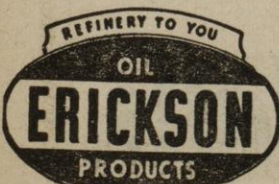
# 1960 BADGERS

## Welcome Students! Registration Week Special

CIGARETTES — 20c per pack  
WITH GASOLINE PURCHASE  
(Offer Good Sept. 9, 10, 11)

HI-TEST REG.	31 <sup>9</sup>	Without Items or Cash Coupons
HI-TEST REG.	32 <sup>9</sup>	Includes Household Items or Cash Coupons
PREMIUM ETHYL	33 <sup>9</sup>	Without Items Or Cash Coupons
PREMIUM ETHYL	34 <sup>9</sup>	Includes Household Items or Cash Coupons

Don't Settle For Less—Buy The  
Best At Your Friendly



**ERICKSON**  
SERVICE STATION  
Wm. L. Kapke, Mgr.  
2216 UNIVERSITY AVE.  
Open 'Till Midnight

## BOOKS

For Better Bargains

Deal with  
JERRY BRATLIE

AT  
**BRATLIE'S BOOKSTORE**

807 University Ave.

"COME IN AND BE CONVINCED"

## Football Schedule

**September**  
24—Stanford  
**October**  
\*1—Marquette ('W' club day)  
\*8—Purdue (Dad's day)  
15—Iowa  
22—Ohio State  
\*29—Michigan  
**November**  
\*5—Northwestern (Homecoming)  
12—Illinois  
\*19—Minnesota  
\* Home engagements

### 1959 SQUADMEN RETURNING (12)

Name	Play Time	Pos.
Bichler, Dave	3½	RE
Grimm, Dick	1	LE
Harms, Gary	3½	RT
Hess, Billy	1½	WB
Kellogg, Bill	13	LE
Kunesch, Ervin	11½	WB
Mettlich, Tom	1½	QB
Neumann, Tom	8	RB
Staley, Ron	4½	WB
Suits, Bill	1½	LG
VanderKelen, Ron	1½	QB
Wittig, Dick	4½	C

## KOLLEGE KLUB

714 State St.

- Open for Breakfast at 8:30 a.m.
- Continuous music for your enjoyment
- Noon Lunches
- Your Favorite Beverage on Tap

COME IN AND RELAX

"Where Kollegians Kongregate"



ULTIMATELY

MacNeil and Moore

FOR UNSURPASSED

ELEGANCE IN MEN'S

AND WOMEN'S

EXCLUSIVE FASHIONS

THE SHOPS OF

MacNeil and Moore  
STATE AT FRANCES

# Milt Bruhn Starts 5th Year As Badger Football Coach

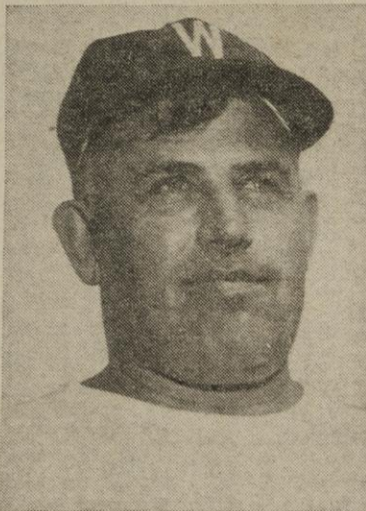
Wisconsin's football fortunes rest in the guidance of Milt Bruhn, starting his fifth season as head football coach at the university.

Under Bruhn the Badgers attained their first undisputed Big Ten title since 1912 in last year's rugged Big Ten race (the Badgers shared the 1952 crown with Purdue), and their sixth place ranking in the final national polls was their best since a third place rating in 1942. Coupled with a second place finish in the Big Ten in 1958, it marked the first time since the

1906-07 seasons that Wisconsin football teams had ranked that high in successive years (Badgers won the 1906 title, finished second in 1907) in Big Ten play; and the 1958 national ranking was eighth, giving Wisconsin successive years in the top 10 teams of the nation, a feat accomplished by no other Wisconsin football coach.

**BRUHN IS** the 21st coach to head up varsity football at Wisconsin since that sport was inaugurated in 1889 on the Madison campus. Bruhn realizes the big job that faces him in keeping the

Badgers among the nation's football elite, and knows it will not be an easy task. He and his staff have again prepared for the season, and are thoroughly familiar with the abilities of the squad (continued on page 16)



MILT BRUHN

Imported Ceramic  
Ash Trays  
See LOU at

**The Tobacco Bar**  
617 State Street

ATTENTION! Grad Students—Foreign Students—Budget Stretchers

## YWCA ENCORE SHOP

306 N. Brooks

FOR SALE AT VERY LOW PRICES—  
LARGE STOCK NEW & USED CLOTHING—GOOD CONDITION

Women's blouses, sweaters, skirts, suits, dresses—35c to \$1.50  
Men's jackets, slacks, suits—small to very large—50c to \$3.50

Many useful household articles—cheap!

Linens, drapes, rugs, tables, chairs, pots, pans,  
dishes, appliances.

SHOP ENCORE & SAVE

## Basketball Slate Includes Far West Classic Tourney

The university will play a 14 game Big Ten schedule in 1961. The Badgers, who placed ninth in the 1960 race with a record of four wins and 10 defeats, will open their season Jan. 7 at Michigan State, while the first home Big Ten game will be Jan. 9 when the Badgers host Iowa in the Fieldhouse.

Wisconsin's 1961 conference schedule lists home-and-away games against Iowa, Ohio State, Indiana, Northwestern, and Purdue, while single games at Madison against Minnesota and Michigan, and road single games against Michigan State and Illinois, complete the schedule.

The 1961 season will end in an unusual manner for the Badgers, because they will play their final game of the season on a Friday night at Lafayette, Indiana, against Purdue.

The Badgers will meet 10 non-conference foes, including a trip to the Far West classic at Portland, Ore., during the Christmas recess.

Three of the Badgers' 10 non-conference games will be home appearances, with initial meetings with Air Force Academy and Nevada highlighting the schedule. The Badgers will meet Air Force in the home opener Dec. 3, and will meet Nevada's Wolfpack Dec. 20. The other home game in December is against arch-rival Marquette Dec. 10.

The Badgers will compete with seven other teams for honors in the Far West classic in Oregon Dec. 28, 29, and 30. Other teams

entered are Washington State, Oregon, Oregon State, Seattle, Portland university, Idaho, and Arizona State.

Other non-conference foes to be met include Butler in the season's opener Dec. 1, Iowa State, Bradley, and Loyola (Chicago),



**COACH—John Erickson** will be coaching the Wisconsin basketball team for his second year. He replaced Bud Foster, who is now a university professor.

who they will meet Jan. 28 in the Chicago stadium as part of a double-header.

### BIG TEN CONFERENCE

Jan. 7—at Michigan State  
Jan. 9—Iowa  
Jan. 30—Ohio State  
Feb. 4—Purdue  
Feb. 6—at Illinois  
Feb. 11—at Northwestern  
Feb. 13—at Iowa  
Feb. 18—Indiana  
Feb. 20—Minnesota  
Feb. 25—at Ohio State  
Feb. 27—Michigan  
March 4—Northwestern  
March 6—at Indiana  
March 10—at Purdue

### NON-CONFERENCE

Dec. 1—at Butler  
Dec. 3—Air Force  
Dec. 5—at Iowa State  
Dec. 10—Marquette  
Dec. 17—at Bradley  
Dec. 20—Nevada  
Dec. 28—Far West classic  
Dec. 29—Far West classic  
Dec. 30—Far West classic  
Jan. 28—Loyola (Chicago) at Chicago stadium.

WELCOME STUDENTS

Stop In at

## THE PUB



TASTY HAMBURGERS

CHEESE & HERRING PLATES

PITCHERS OF BEER

HOT DOGS—2 for 25

Special Party Room

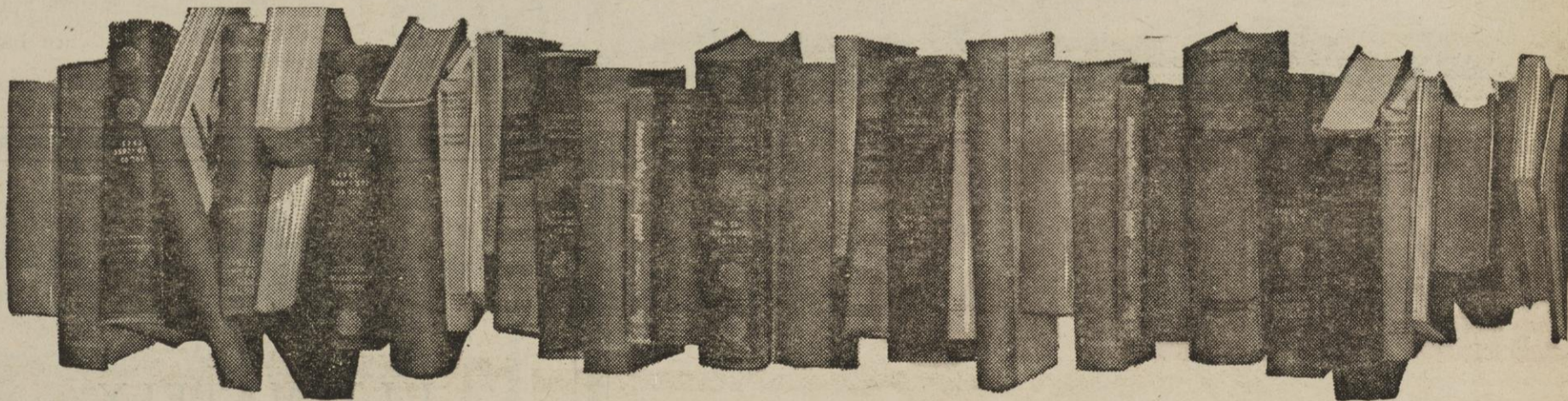
## THE PUB

552 State St.

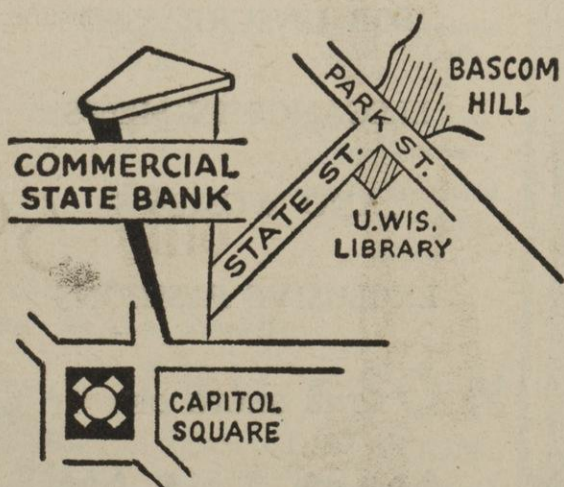
Dial AL. 6-1636

completely air-conditioned

## Things To Know In Madison ... Your Books ... And Your Bank!



- Local bank checks are more quickly accepted
- No minimum balance required
- Cancelled checks are proof of payment
- Only 5c per check service charge
- Statements mailed monthly
- Convenient Bank by Mail Service



State Street at the square

Member, Federal Deposit Insurance Corporation

Hoosiers Face  
Some Lost Income

In disciplinary action taken against Indiana university, the Big Ten has cut the Hoosiers off from any share of television receipts and has declared that none of the games they play will have any effect on conference standings.

The action was taken on the basis of violations of rules in recruiting football players.

Last April, the National Collegiate Athletic Association (NCAA) placed Indiana on a four-year probation, making the school ineligible to enter teams or athletes in NCAA championship competition. The probation also bans the Hoosiers from participation in NCAA-controlled television programs.

THE BIG TEN action actually affects other conference teams as well. Michigan State will have only five conference games as a result, and they could miss out on the Big Ten championship even if they won all five, provided one of the other eight schools won six conference games.

Only Wisconsin will play seven conference games this fall. Playing six will be Illinois, Michigan,

Football Standings  
Listed; 70 Years  
Includes 7 Firsts

Year	W	L	Rank In Conf.
1889	0	2	....
1890	1	3	....
1891	3	1	....
1892	4	3	....
1893	4	2	....
1894	5	2	....
1895	5	2	....
1896	7	1	1st
1897	9	1	1st
1898	9	1	3rd
1899	9	2	2nd
1900	8	1	3rd*
1901	9	0	1st*
1902	6	3	6th
1903	6	3	8th*
1904	5	3	7th*
1905	8	2	5th
1906	5	0	1st*
1907	3	1	2nd
1908	5	1	3rd
1909	3	1	4th
1910	1	2	5th*
1911	5	1	3rd
1912	7	0	1st
1913	3	6	6th*
1914	4	2	4th*
1915	4	3	6th
1916	4	2	6th*
1917	4	2	3rd*
1918	3	3	7th
1919	5	2	4th*
1920	6	1	2nd
1921	5	1	4th
1922	4	2	4th
1923	3	3	7th
1924	2	3	10th
1925	6	1	2nd*
1926	5	2	5th
1927	4	4	9th*
1928	7	1	2nd
1929	4	5	10th
1930	6	2	4th*
1931	5	4	6th
1932	6	1	3rd
1933	2	5	8th*
1934	4	4	5th*
1935	1	7	9th*
1936	2	6	8th*
1937	4	3	4th*
1938	5	3	5th*
1939	1	6	9th*
1940	4	4	4th*
1941	3	5	5th
1942	8	1	2nd
1943	1	9	8th
1944	3	6	7th
1945	3	4	6th
1946	4	5	8th
1947	5	3	2nd
1948	2	7	9th
1949	5	3	4th
1950	6	3	2nd*
1951	7	1	2nd
1952	6	3	1st
1953	6	2	3rd
1954	7	2	2nd*
1955	4	5	6th
1956	1	5	9th
1957	6	3	4th*
1958	7	1	2nd
1959	7	3	1st
Totals	331	194	

\*Indicates share of position.

Minnesota, Northwestern, Ohio State, Purdue, and Iowa.

Wisconsin and Iowa do not have any football games scheduled with Indiana, so are not directly affected by the Big Ten ruling.

THE BIG TEN could have been more severe. The conference handbook states that in such a case as the Indiana violation the school must show cause why its conference membership should not be ended if it employs or retains an athletic staff member who has violated recruiting rules.

If this provision had been enforced, Indiana might have had to either fire football coach Phil Dickens or drop out completely from the Big Ten.

Kenneth L. (Tug) Wilson, Western conference athletic commissioner, in explaining the leniency, stated:

"It is only because I cannot bring myself to employ circumstantial evidence in so serious a matter as one involving a person's livelihood that I do not, in the present circumstances, cite Indiana university under (this provision)."

Indiana will probably be hurt greatly financially. Besides their loss of television money, an attendance decrease at their home and away games because of their non-conference status is also expected to cut down considerably on their athletic income.

HOOSIER COACH

Indiana Coach Phil Dickens has a "wait-and-see" policy regarding possible effects of the Big Ten action which removed the Hoosiers from the conference race.

"We'll have to wait for the first game for an answer to that," he said. "We hope they'll react to play even a little harder, but, while our pre-season practice may give some indication of how it affects them, we won't really know until that first game."

Wildcats' Hopes  
Pinned on Sophs

EVANSTON, Ill. —Sophomores are a key factor in Northwestern's hopes for employing the platoon system during the 1960 football season.

Twenty-three sophomores were on the 61-man squad that opened practice at Dyche stadium Sept. 1. The balance of the squad consists of 18 lettermen, six of them starters, and 20 squadmen from last season.

The Wildcats' No. 2 team — which could include as many as seven sophomores—will have to prove itself if Coach Ara Parseghian expects to give his first stringers consistent relief during the rugged nine-game schedule.

The pre-season depth chart lists an all-letterman starting lineup. However, if any sophomore earns a first string assignment, it most likely will be at tackle, where two outstanding newcomers — Jack Cvercko and Bill Deegan—are expected to press veterans for the top positions.

Another top prospect in the interior line is the youngest player on the squad, 18-year old Burt Petkus, who has been shifted from tackle to guard. Sophomore Dick Machalski will understudy Elbert Kimbrough at right end.

Sophomores could make up three-fourths of the second team backfield. John Dickey, a 190-pound fullback, will vie with letterman Jim Knowles for first call behind veteran Mike Stock. Fighting for second team status at halfback will be two newcomers, Bob Snider and Paul Flatley.

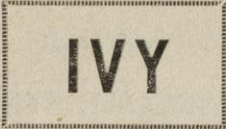
Other promising sophomores are Ed Caplinger and Dave Cox, ends; Chuck Urbanic, guard; Dell Pendergrast and Jerry Goshgarian, centers; Larry Benz and Fred Quinn, quarterbacks; and Elliott Williams and Chuck Brainerd, halfbacks.

Spoo  
and Son

MADISON'S  
LARGEST STORE  
EXCLUSIVELY  
FOR MEN

18 North Carroll

this fall .... it's the  
Authentic Natural Look  
of the



Continental



In popular HOPSACKINGS and DIAGONAL WEAVE SHETLANDS, these latest models in men's fall fashions feature a MATCHING REVERSIBLE VEST (the reverse side is plaid). Other distinctive features include rounded forward hacking pockets with a patch on the breast pocket. Side vents ... And the rounded point vest with metal buttons ...

A suit certain to be seen on every campus and wherever well-dressed young men gather. Select from charcoal greys, olive and gold, burnished brown.

The medium weight insures maximum comfort.

only 59<sup>50</sup>

WELCOME STUDENTS!



MONEY SAVING  
MAGIC

★ Shirts Expertly Finished  
With Bundle of Wash, Dry, and Fold 12c per lb. 8 lb. min.  
(cash & carry) 19c each

★ All Finished Laundry Service  
Everything Expertly Pressed  
Buttons replaced—rips & tears mended

★ Expert Fast-Dry Cleaning Service  
One Day Service on Shirts and Dry Cleaning if desired

★ Free Pick-up & Delivery

Cardinal Campus Laundry  
809 University Ave. AL. 5-8296

# '60 Football Promises Color, Action

The football Badgers will play a nine game schedule this year. The opener will be against Stanford at Palo Alto, Calif., Sept. 24.

Last year the Badgers edged the Indians 16 to 14. This year Stanford has 19 lettermen returning and expects to start two sophomores, Chris Jessen and Chet Hinshaw at end positions, and sophomore C. B. Simons will make a strong bid for the right tackle position.

Quarterback Dick Norman, who led all of the nation's passers last year with 1,963 yards, and fullback Skip Face, who tallied 100 points on an assortment of touchdowns, field goals, and extra points appear to be the mainstays for the 1960 Indians, who hope to give Coach Jack Curtice

his first winning season at Stanford.

In the line, left guard Ron Fernandes and center Doug Pursell are the only 1959 regulars returning, and Curtice will have to count on last year's reserves, plus newcomers for help from end to end.

**THE TRADITIONAL** Marquette game in Madison is set for Oct. 1. The Warriors, coached by Lisle Blackburn, were defeated 44 to 6 by the Badgers last season. Eighteen lettermen are returning.

**ON OCT. 8** Wisconsin will try to reverse last year's 21 to 0 loss to Purdue. The Boilermakers, coached by Jack Mollenkopf, lost 23 lettermen and have 19 returning.

Tackles Jerry Beabout, Dale Rems, and Pat Russ, plus guards Ron Maltony and Stan Sczourek will give the Lafayette team a good nucleus for another fine line when they meet the Badgers in Madison.

They will, however, have to develop top flight ends to replace departed starters, and must find an adequate center. Bernie Allen, at quarterback, will provide a good passing attack, while backfield speed is emphasized by the presence of Jim Tiller at left halfback. Fullback Willie Jones appears to be capable of giving Purdue a rugged, plunging fullback with power.

**THE BADGERS** will travel to Iowa City to face the Hawkeyes Oct. 15. Last year Iowa was on the low end of a 25 to 16 score. Coach Forest Evashevski has 15 lettermen returning and only three starters from the 1959 team—guards Mark Manders and Sherwyn Thorson, and tackle Charles Lee. Two sophomores who should make their mark in Big Ten play early are fullback Joe Williams, a ten second 100 yard dashman, and end Jim Winston, who has ability as a top notch pass receiver.

**THE FOLLOWING** week, Oct. 22 the Badgers will again be on the road—this time to Columbus, Ohio, to meet the Buckeyes, who lost to Wisconsin 12 to 3 last year. Coach "Woody" Hayes has 22 lettermen returning and will follow the trend to the multi-team system.

He will have a good nucleus of veteran talent, and promising sophomores available. Line standouts include end Tom Perdue, tackle Jim Tyrer, and guard Mike Ingram, the latter being a great defensive player.

In the backfield, both quarterbacks, Jerry Fields and Tom Matte, are returning, with the latter rated the better passer and

runner. Fullback rates the strongest backfield position with Roger Detrick, who ended the 1959 season with some outstanding performances. The Buckeyes expect added strength from in both the line and backfield from sophomores.

**THE MICHIGAN** team will be in Madison Oct. 29 to meet the Badgers. Last year the Badgers won, 19 to 10.

The Wolverines have the largest number of lettermen returning—31. Ends John Jalstead and Bob Johnson head the strong list of veteran flankmen. Center and captain Gerald Smith will anchor the line, and will be backed by rugged Todd Grant. Best bet for stardom is left halfback Bennie McRie, second leading Wolverine rusher last year. The problems will be at quarterback and guard posts.

**WISCONSIN'S HOMECOMING** game Nov. 5 will be played against Northwestern. Last year the Badgers won, 24 to 19. Eighteen lettermen will be returning

for the Wildcats, including an all-veteran backfield. Interior line starts will have to come from newcomers if Coach Ara Parseghian is to have a winning team.

After two weeks in Madison, Wisconsin will meet Illinois at Champaign Nov. 12. The Badgers will be smarting from a 9 to 6 defeat last year.

**THE FIGHTING** Illini have 24 lettermen returning, although the loss of both regular guards, the center, and right end will pose a problem.

**THE LAST** game against Minnesota will be played at Madison Nov. 19. The rival Gophers have 22 lettermen returning and appear well set at guards and center. Right end Tom Hall could win All-American recognition this year, and backfield stars of promise are Sanford Stephens at quarterback, Bill Kauth and Judge Dickson at halfbacks, and Tom Robbins at fullback.

## BOB LESKE'S SUPPER CLUB

featuring:

CHARCOAL STEAKS  
CHICKEN & SEA FOOD

"Try our famous Salad Bar"

—at very reasonable prices—

CAL CALLAWAY at the Hammond Organ Nightly

JUNCTION OF

Hwys. 12, 18, and Monona Drive

AC. 2-1919

## Where will you eat this semester?

join the

## Green Lantern Eating Co-op<sup>☆</sup>

lunches & suppers daily

mon. thru. sat. — \$6.75

breakfasts—\$1.50 extra

Co-ed membership      grads & undergrads

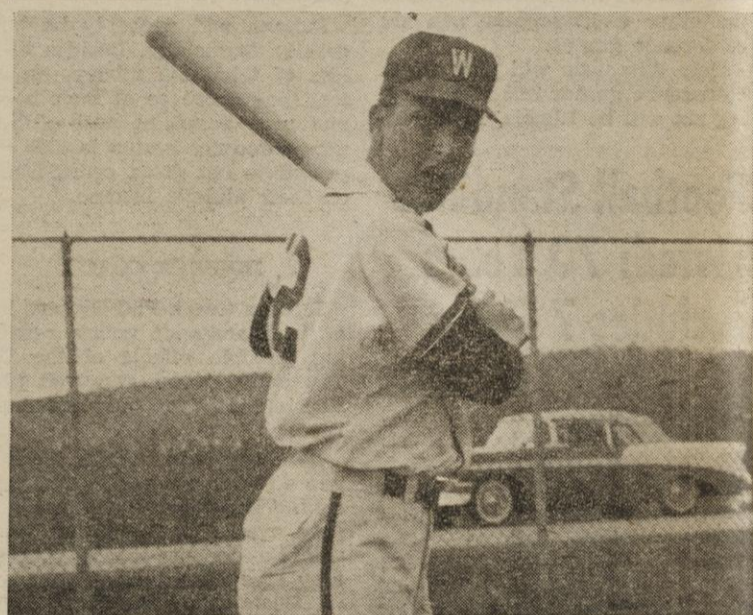
20% laundry and 35% dry-cleaning discounts

1 block from campus

1102 W. Johnson St. (corner of Mills St.)

AL 6-4184

☆ To join or for more information stop in or call on Wed., Thurs., or Fri., Sept. 7, 8, or 9 between 7 and 10 p.m. or any school day between 11 a.m. and 1 p.m. or 5 and 7 p.m.



**CAPTAIN**—University baseball Captain for the 1961 season is Dick Van Eerden. Van Eerden played shortstop for the 1960 Badgers, batting .190, and batting across eight runs for the year, and in the field he handled 77 chances with four errors for a .948 fielding average. As a sophomore in 1959, Van Eerden batted .216, while playing third base. Van Eerden is also "W" club president and Daily Cardinal business manager.

## WELCOME

## STUDENTS

Try our convenient call office

at 771 University Avenue

# 3-F

## Laundry

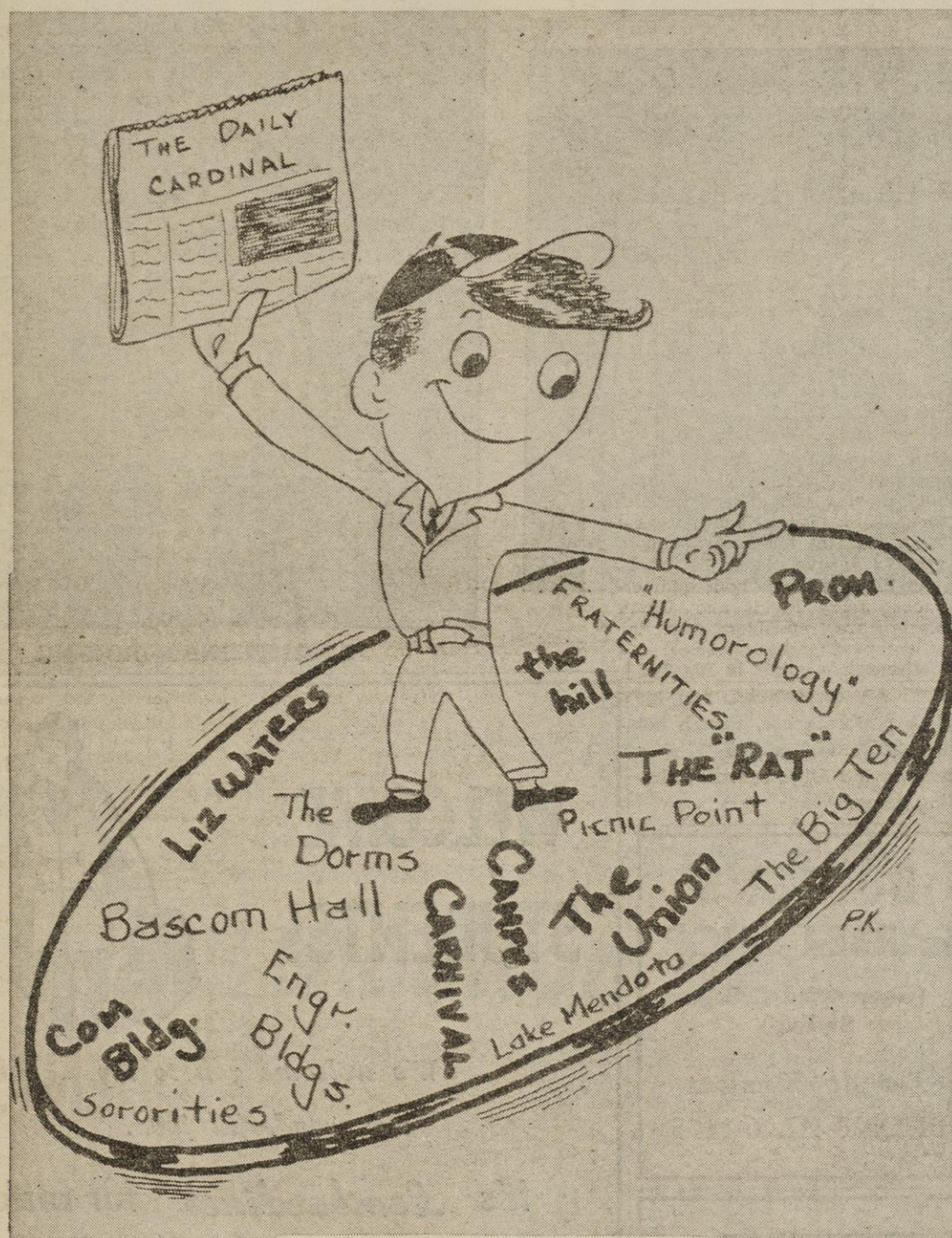
and

## Dry Cleaning

10% DISCOUNT FOR CASH and CARRY

771 University Ave. AL. 6-3141

# Watch the Campus Go 'Round Every Day With The Daily Cardinal



Each year Freshmen entering the University of Wisconsin face a student body of 18,000, more buildings than anyone could count, and more activities than any one person could remember. These, besides one of the best educations in the world are to be yours.

Perhaps the best purchase you can make as you face the University community is a subscription to the official campus newspaper. Printed every morning, Tuesday through Saturday, THE DAILY CARDINAL presents all the news of campus activities, important announcements, and interesting sidelights that are so important to your success at Wisconsin.

THE DAILY CARDINAL is owned and operated by the student body with complete independence.

*Everyone Reads* **THE DAILY CARDINAL**

## THE DAILY CARDINAL

Journalism Hall — AL. 6-5474

### Subscription Blank

Date .....

Name .....

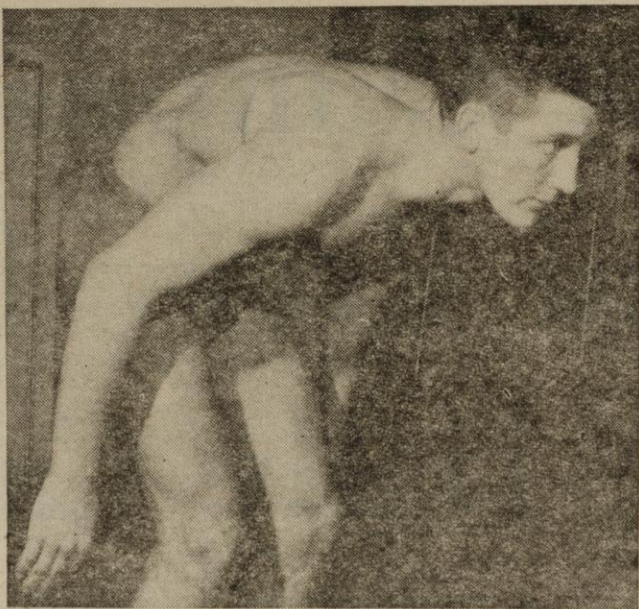
Madison Address .....

2 SEMESTERS \$6.00 — 1 SEMESTER \$3.50

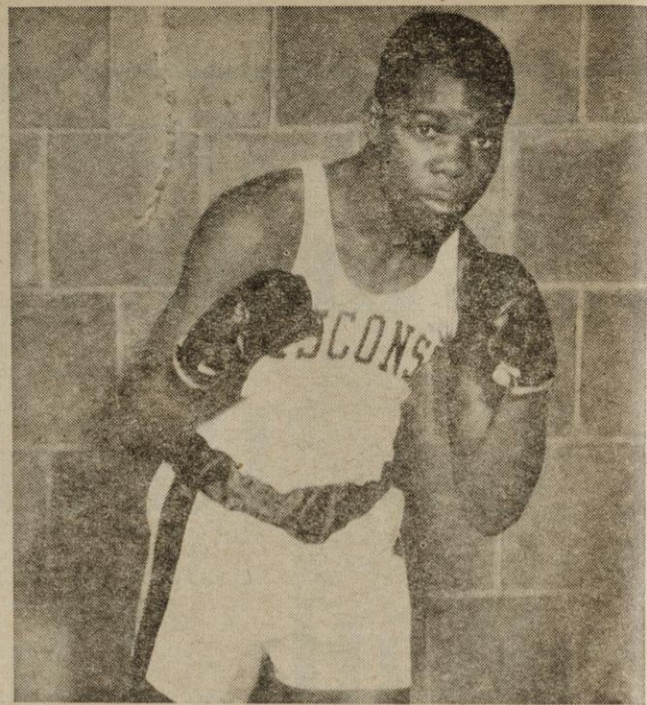
# 1959-60 Athletic Greats



DANNY LANPHEAR—FOOTBALL



RON McDEVITT—SWIMMING



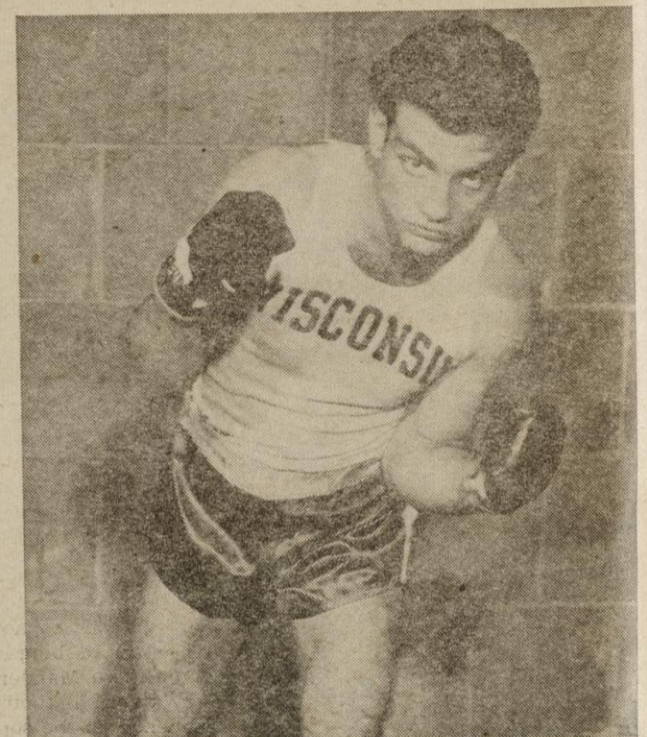
BROWN McGHEE—BOXING



KARL HOLZWARTH—FOOTBALL



FRED RITTSEHOF—WRESTLING



JERRY TURNER—BOXING

## All Americans . . .

### Badgers Win Recognition

Wisconsin's 1959-60 athletic school year was highlighted by the performances of the athletes pictured on this page.

Football tackles Dan Lanphear and Karl Holzwarth played vital roles in leading the Badgers to the 1959 Big Ten championship; Lanphear's play earned him a berth on the 1959 All-American team, while Holzwarth set a new NCAA record by kicking seven field goals during the 1959 campaign. He also ranked fifth among the nation's scoring leaders by tallying 31 points for the season.

Boxers Brown McGhee, 132 pounds, and Jerry Turner, 156 pounds, won NCAA titles and brought Wisconsin's total of NCAA individual boxing titles to 38 in the 20 NCAA tournaments in which the team participated.

Wrestler Fred Rittsehof, 115 pounds, won his weight division championship in the Big Ten meet in March, giving the Badgers an individual champion in the sport for the second consecutive year, and the seventh individual champion produced by Coach George Martin in his tenure.

Swimmer Ron McDevitt scored

all Wisconsin's points in Big Ten and NCAA competition, and his NCAA performances, though not winning times, earned him a place on the All-American swimming team.

### DOCTER'S BARBER SHOP

(Guaranteed College  
Styling)

For Appointment  
PHONE AL 6-1155

## WELCOME STUDENTS!



We welcome you to try  
our wonderful food.

It's *Lombardino's* for real  
Italian pizza and Italian-American  
food.

- ★ Pizza
- ★ Lasagna
- ★ Spaghetti
- ★ Lobster Tail

- ★ Chops
- ★ Steaks
- ★ Shrimp
- ★ Chicken

## Lombardino's

Garden Restaurant



Nationally known for  
Genuine Italian cooking.

Hours: Tues., Wed., Thurs.—4 p.m. to 1 a.m.—Fri. and Sat.—  
open 'til 2 a.m.—Sunday—11 a.m. to 1 a.m.—Closed on Mondays

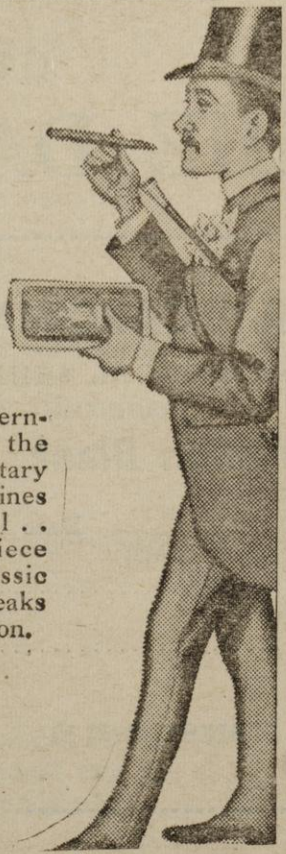


Only  
the Vest  
is good  
enough

Gentlemen of discernment appreciate the touch of Parliamentary eloquence to the lines of British apparel . . witness this 3-piece vested suit of classic herringbone that speaks with quiet distinction.

\$69.50

**SPETH'S** *Casual Wear*  
222 STATE STREET



# Sports Editor Picks Illinois First, Wisconsin Last

THE DAILY CARDINAL—15

By PAT ZIER  
Co-sports editor

Another tough race that could go all the way down to the wire is in the makings for this season in the Big Ten. Like last year, several teams are title contenders and the outcome probably won't be determined until the final conference game is played.

Besides the quality of the teams, other factors will be involved in determining the new Big Ten champion. Not the least of these is the suspension of Indiana, which eliminates them from Big Ten competition and also invalidates all games with other conference opponents.

**THIS HURTS** several teams' chances, especially Michigan State, which now has only five conference games on its schedule. Assuming that every conference team will lose at least one game, a five game slate could prevent the Spartans from sharing or winning the championship because another contender might win one more game than the Spartans.

**TAKING INTO** consideration the above mentioned points, plus the schedules and the merits of the individual teams and adding a little bit of guess-work, we would pick the teams to finish in the following order: Illinois, Ohio State, Minnesota, Northwestern, Michigan State, Iowa, Michigan, Purdue, and Wisconsin. There was little doubt at the end of last season that Illinois was one of the best, if not the best, team in the Big Ten. The Illini have 25 lettermen, including six starters, back from last year's team.

This, plus the availability of several fine sophomores, makes Illinois the team to beat. The Illini have one of the finest backfields in the conference with Johnny Easterbrook and Mel Meyers at quarter, Ethan Blackaby and Marshall Starks at half, and the Brown boys, Bill and Jim, at full.

**THE LINE** is headed by five rugged tackles, including Cliff Roberts and Joe Rutgens, and end Ed O'Bradovich and center John Stapleton, back after a year's lay-off.

Right behind the Illini we rate Ohio State. The Buckeyes had a rough season last year and that seldom happens twice in a row at Ohio State.

Heading up the Buckeye backfield are Bob Ferguson at full, quarterbacks Jerry Fields and Tom Matte, and Jim Herbstreit and a host of talented sophs at halfback.

The line suffered some heavy losses, but there is still plenty of material around. Tackles Jim Tyrer and Bob Vogel have size and ability, and Mike Ingram and Oscar Hauer are a pair of fine guards.

**EIGHT** starters lead a bevy of returning lettermen back to the football wars at Minnesota. The Gophers, who have been somewhat of a disappointment the past several years, should cause somebody some trouble this time.

Minnesota has one of the finest interior lines in the conference,

headed by guard Tom Brown, center Greg Larson, and tackle Francis Brixius. Another standout is end Tom Hall.

The backfield is also potent, with a pair of line-shattering fullbacks, Roger Hagberg and Tom Robbins; halfbacks, Judge Dickson and Bill Kauth; and quarterbacks, Sandy Stephens and Bob Johnson.

**A STRONG** darkhorse in the championship race will be Northwestern. Dick Thornton and Albert Kinbrough are back after being hurt last year, and if they have no ill effects from their injuries Northwestern will be dangerous.

Thornton should be the best quarterback in the Big Ten this season. He can run, pass, and kick and is a terrific all-around performer. Kimbrough, a halfback, is capable of filling the shoes of Ron Burton if he is up to par. These two, plus powerful Mike Stock at fullback, give the Wildcats a very potent backfield.

The line should also be tough, with ends Elbert Kimbrough and Irv Cross, tackle Fate Echols, and guards Russ Asala and Wayne Chamberlain. Depth is the big problem, and if the sophs come through Northwestern could take it all.

**MICHIGAN STATE'S** big problem is to come up with a replacement for Dean Look at quarterback; if the Spartans do that they will also be very tough. Herb Adderley and Gary Ballman are two very fine half backs, and ends Fred Arbanas and Art Brandstatter are perhaps the finest in the conference.

Some of the best sophomores in the Big Ten are pushing lettermen like center Dave Manders, guard Mickey Walker, and others. Too much depends on the sophs, however, and State is probably a year away.

Iowa has too many holes to be considered a strong title contender, but no team coached by Forest Evashevski can be rated much lower than sixth. The line will be led by tackle Charlie Lee and guards Mark Manders and Sherwyn Thorson.

**OVER THE** past few years, the

Hawkeyes have had some of the finest quarterbacks in the conference, and this has had much to do with their success. This year should be no exception, with Wilburn Hollis inheriting Olen Treadway's old spot. Halfback Jerry Mauren is also a standout.

Michigan has a large number of lettermen returning, but they will have to show a lot of improvement to move the Wolverines much higher in the standings. Reid Bushong, a halfback, and Bob Chandler, a soph quarterback, should head up the backfield corps.

In the line, John Halstead is a good end and teams with center Jerry Smith and guard Dick Syring to form the nucleus of the Wolverine's forward wall.

**A SOLID** middle line and a clever quarterback carry most of Purdue's hopes for this season. Bernie Allen is a capable Big Ten quarterback and Jim Tiller can run at half, but the picture isn't so clear after that.

A pair of excellent guards, Stan

Sczurek and Ron Maltoney, top the line, with help from tackles Jerry Beabout and Dale Rems.

Wisconsin will be rebuilding completely after last year's championship, and not too much can be expected of the Badgers, especially early in the season. However the Big Ten is full of surprises, and the Badgers might spoil somebody's plans before the season's over.

**INDIANA**, whose games will not count in the conference standings this year, has a large line and will provide stiff competition for all its opponents. Top players are end Earl Faison, blocking back Will Scott, and halfback Richie Bradford.

Humidors  
for the  
Man of Distinction  
See LOU at  
**The Tobacco Bar**  
617 State Street

## Prepare for A BUSINESS CAREER

in the following courses:

- ☆ Business Administration—100 Weeks
- ☆ Executive Secretarial—80 Weeks
- ☆ Court Reporting—90 Weeks
- ☆ Stenographic—20 to 40 Weeks
- ☆ Secretarial—40 to 60 Weeks
- ☆ Bookkeeping for Women—40 Weeks

FALL SESSION OPENING SEPTEMBER 12

Accredited by The Accrediting Commission for Business Schools, Washington, D.C.—Free Placement Service

**Madison Business College**

215 W. Washington Ave.

Phone.AL. 6-7794

## Madison Mobile Homes SALES AND PARK

WISCONSIN'S LARGEST  
MOBILE HOMES SALES DISPLAY

Students Get Preferred Service

Build In Equity  
For Your Future Home  
instead of dead rent receipts

500 S. Beltline—AL. 5-1607

Student Parking Available IMMEDIATELY

Closest park  
to University

Chet Bible, Pres.  
Bob Hull, Gen. Mgr.

POCKET  
BOOKS  
1/2 PRICE

Why Pay More?

**BRATLIE'S**  
BOOKSTORE

807 Univ. Ave.

THE DEPARTMENT STORE  
FOR STUDENTS

**CO-OP**  
at state and lake

Don't Forget  
Your Official  
University

C  
A  
L  
E  
N  
D  
A  
R

FREE

It's A Must For  
All Students!

THE DEPARTMENT STORE  
FOR STUDENTS

**CO-OP**  
at state and lake

## 'U' Instructor . . .

## Pete Barrett Competing in '60 Olympics

Pete Barrett, a university mechanics instructor, has had the honor of competing in the 1960 Olympic games this summer.

He has been the only skipper representing the United States in the Olympic Finn monotype class sailing in Naples, Italy.

At the time of this writing, he was competing for the six best times in a series of seven heats. He had withdrawn from the first heat because of mast trouble.

Barrett won the Olympic berth in a seven-race trial series in

Marblehead, Mass., in July. He was declared top point-gainer after a protest disqualified another competitor in the last race, and Barrett moved from tenth to ninth place in that race, giving him enough total points to lead the field.

**THE FINN** class boat which Barrett has been using is 14.9 feet long and four feet wide. Its only sail carries 114 square feet.

The skipper does not actually ride in the Finn. He has toe straps that hold his feet in the boat, but all of his body from the knees up hangs over the side of the craft, putting tremendous strain on the knees.

Hanging over the side is called "hiking," and the straps that hold the feet are "hiking straps."

**BARRETT**, a native of Madison, came to the university after studying at Cornell university and the Webb Institute of Naval Architecture. He got a degree in mechanical engineering, and then went into Law school. He became an instructor to help defray ex-

penses.

After Barrett won the Olympic trials in Marblehead, he returned to Madison and trained here before going to Italy. He borrowed a Finn from the president of the Finn association, and sailed it on Lake Mendota.

Normally the smallest boats on the lake here are Cubs, which measure about 16 feet long and six feet wide, but their two sails carry a total of only 110 square feet, compared to the 114 feet of the single Finn sail.

Barrett also trained with "hiking straps" built on his back porch at 428 N. Livingston st., where he lives with his wife and their 17-month-old son.

**THE UNIVERSITY** instructor tried out for the 1956 Olympic races, but lost in the trials.

Olympic races are just over seven miles long over a six-leg course—three windward, one downwind, and two reaches (slightly crosswind). It usually takes around two hours to finish a race.

## Bruhn . . .

(continued from page 10)

members they will be working with.

Bruhn's Wisconsin teams the past three years featured the "finesse" attack on offense, operating off the straight-T formation, and used a rock-ribbed defense to contain the opponents. Only twice since Bruhn became head coach has an opposing team scored more than three touchdowns against Wisconsin (Michigan State in 1956, 33-0, and Washington in the 1960 Rose Bowl game, 44-8).

**COACHING HAS** been Bruhn's life. As he tells it, he first became interested in coaching at Minnesota. "When I first went there I didn't have a lot of confidence

in myself so far as becoming a Big Ten player. But after I learned I could play the game, I decided to stay with it. I've always liked to work with young men."

Bruhn, 1936 graduate of the University of Minnesota, was appointed head football coach at Wisconsin succeeding Ivan Williamson, when the latter moved to the position of athletic director following the death of Guy Sundt. Bruhn, however, did not assume responsibilities until Jan. 1, 1956. He had been varsity line coach at Wisconsin since 1949.

**AT MINNESOTA** he was left guard when they won Big Ten championships in 1934 and 1935 and had unbeaten records. Bruhn also was catcher on the baseball team which won the Big Ten championship in 1935.

## 1960 Schedule Of TV Series

Sept. 17—Georgia at Alabama  
Sept. 24—Michigan State at Pittsburgh  
Oct. 1—Syracuse at Kansas  
Oct. 8—Washington at Stanford  
Oct. 15—Air Force at Navy  
Arkansas at Texas  
Wisconsin at Iowa (Mid-West)  
Oct. 22—Notre Dame at Northwestern  
Oct. 29—Louisiana State at Mississippi  
Ohio State at Michigan State (Mid-West)  
California at Oregon State  
Nov. 5—Syracuse vs. Army (New York City)  
Illinois at Michigan (Mid-West)  
Denver at Air Force  
Nov. 12—Ohio State at Iowa  
Nov. 19—Yale at Harvard  
Illinois at Northwestern (Mid-West)  
Stanford at California  
Nov. 24—Texas A&M at Texas  
Nov. 26—Army at Navy (Philadelphia)  
Dec. 3—Duke at UCLA

## PAISAN'S FOR PIZZA

P  
I  
Z  
Z  
A



P  
I  
Z  
Z  
A

821 UNIVERSITY AVENUE

\$ \$ SAVE \$ \$

on

COTTON SHIRTS

COMPLETE LAUNDRY AND  
DRY CLEANING SERVICE

One Stop

24 hr. Service

HERBERT YEE

NEW LOCATION

622 S. PARK ST.

AL. 6-7822

Three Convenient Locations

**BROWN'S BOOK SHOP**

5%

CASH  
REBATE

EASY SELF SERVICE

**TEXT BOOKS**

and

**SCHOOL SUPPLIES**

5%

CASH  
REBATE

**Used Books 25-50% Off**

State at Lake

1319 University Ave.

712 State St.