



LIBRARIES

UNIVERSITY OF WISCONSIN-MADISON

Box 22, Folder 4: Scrapbooks - "Mike's Munising Memories," ca. 1997. 1997

[s.l.]: [s.n.], 1997

<https://digital.library.wisc.edu/1711.dl/NO3IJUD56QWLR8G>

<http://rightsstatements.org/vocab/InC/1.0/>

For information on re-use see:

<http://digital.library.wisc.edu/1711.dl/Copyright>

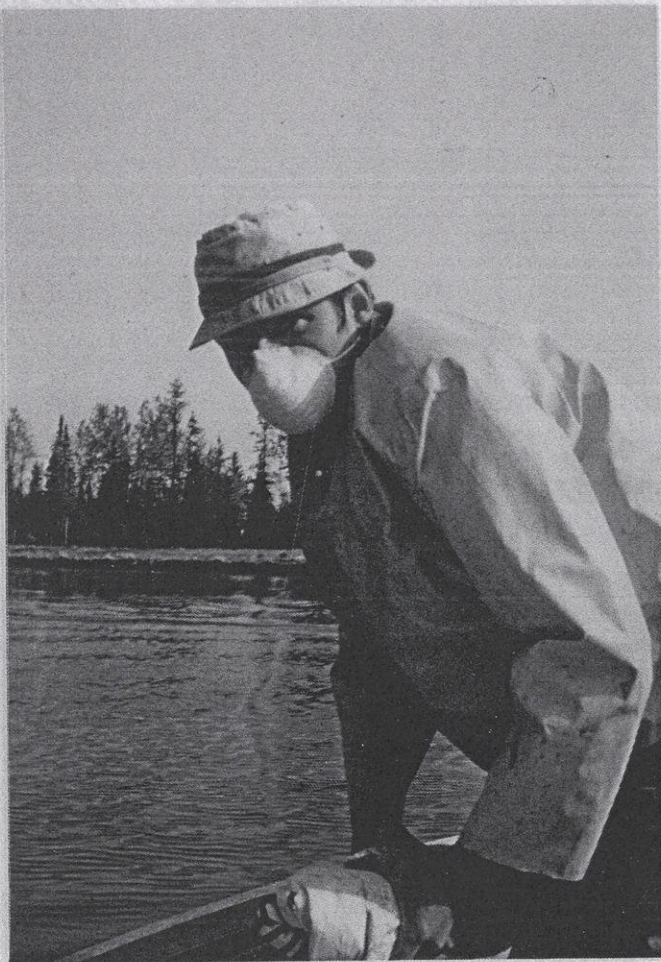
The libraries provide public access to a wide range of material, including online exhibits, digitized collections, archival finding aids, our catalog, online articles, and a growing range of materials in many media.

When possible, we provide rights information in catalog records, finding aids, and other metadata that accompanies collections or items. However, it is always the user's obligation to evaluate copyright and rights issues in light of their own use.

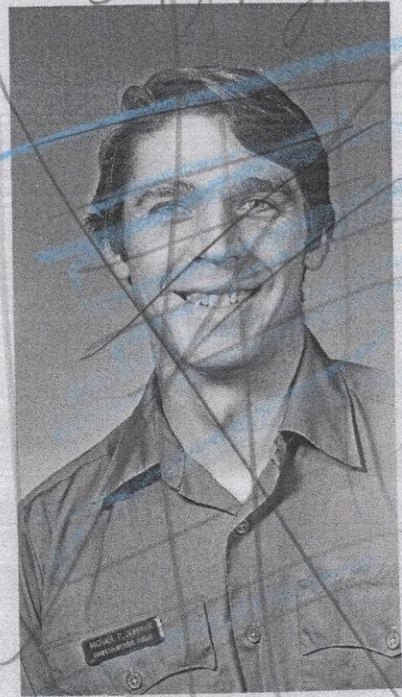
MIKES

MUNISING

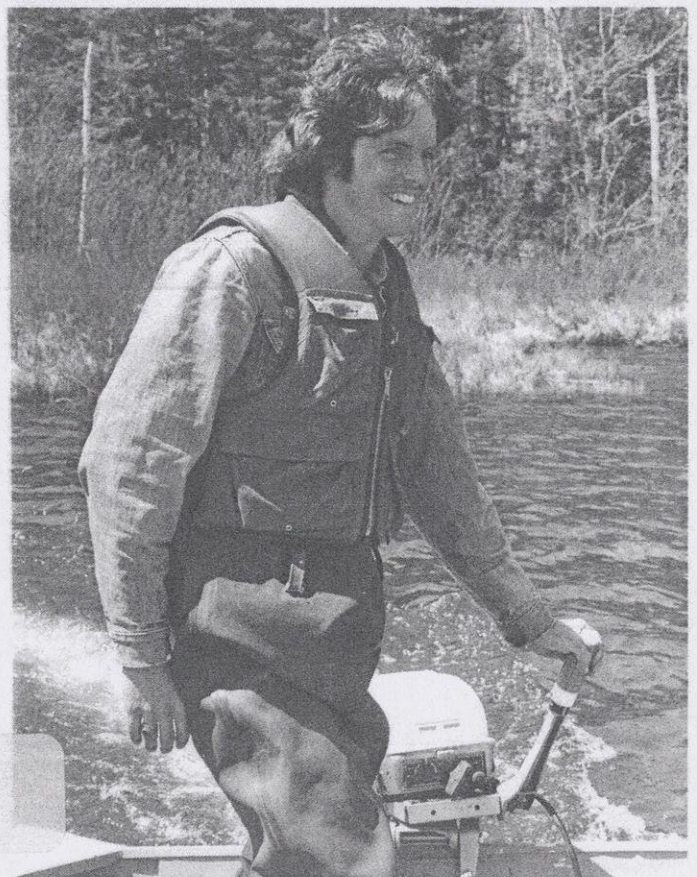
MEMORIES



WHO IS THAT MASKED MAN?



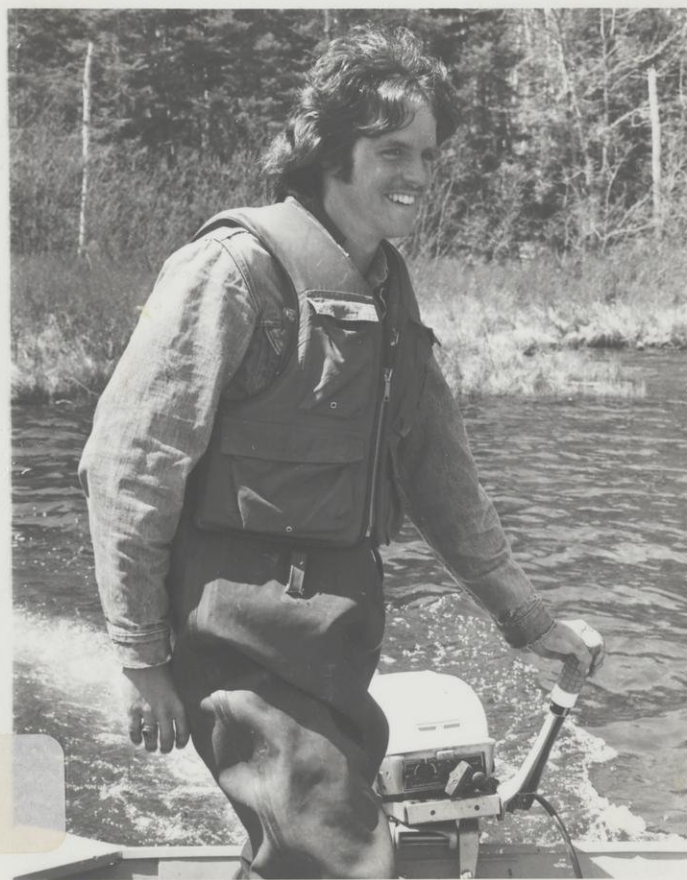
(NMATE # 1234 FISH
"NETS" DOMBECK



MY BOATS FASTER THAN YOUR
BOAT.

GEORGE MADISON

2-10-68 4-10-68



R

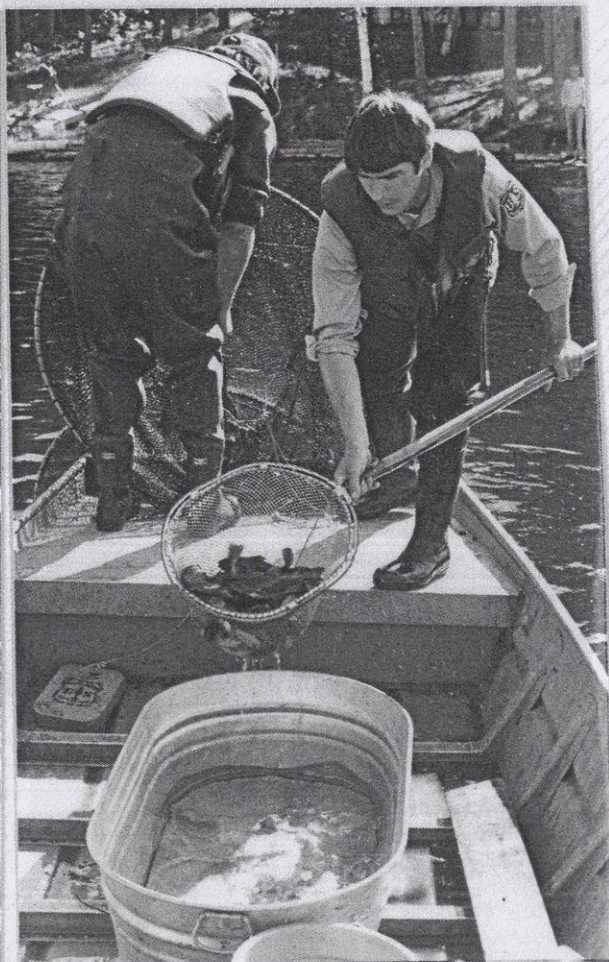
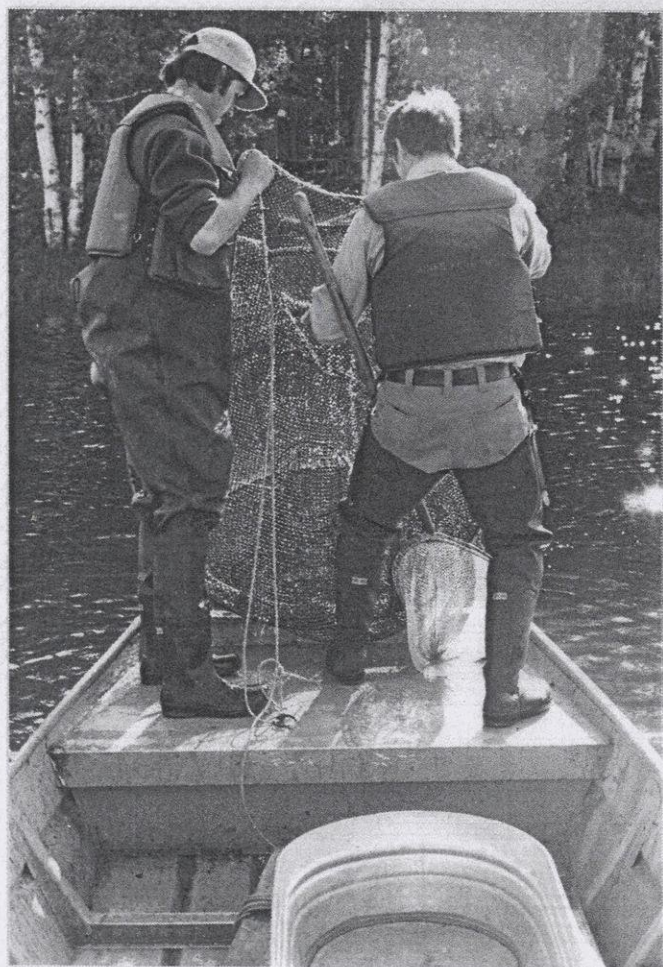
N

6/81

George Madison
Bio. Test.



SMILIN FACES OF LOST LAKE



HEY JEFF, WERE WE PUTTIN
THESE IN OR TAKIN um out?
DOMBECK + JEFF EDDER

Ted Bovais
Water Hydrologist

Spring
80

Don Elsing
w/k Bio

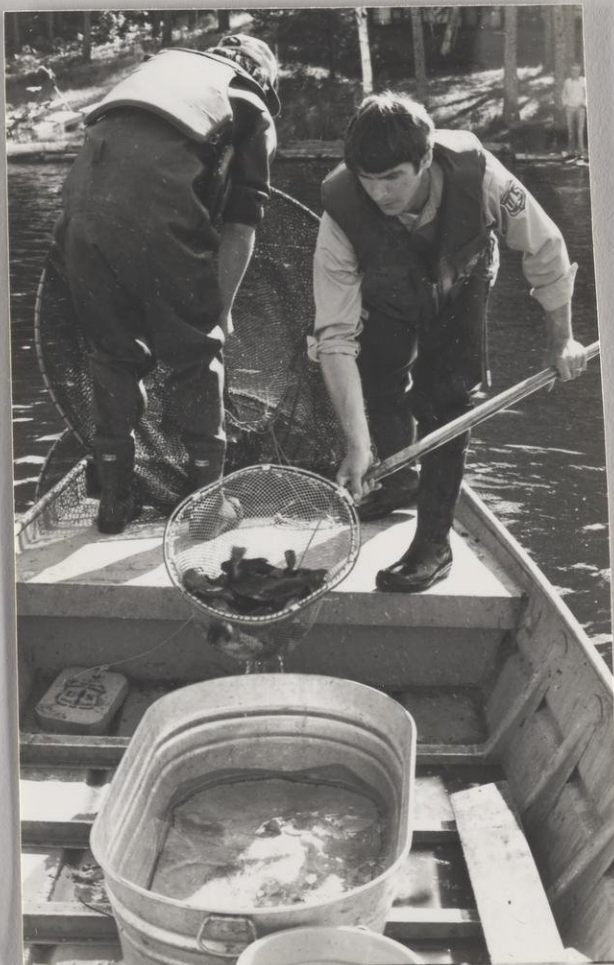
Torrey Wiggan
Soil Scientist

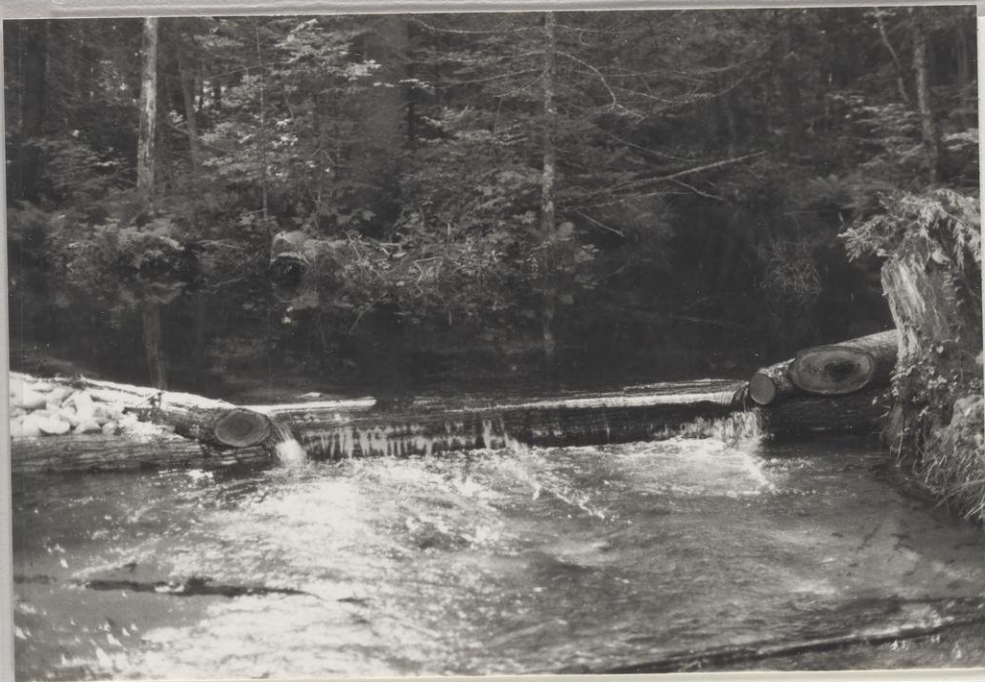
Dewayne Campbell
Fish Bio

Tom Hubbard
Rec. Staff O.

Mike Dombek
Fish Bio

Laura Ferguson
Landscape Arch





~~Reprints~~

6/81

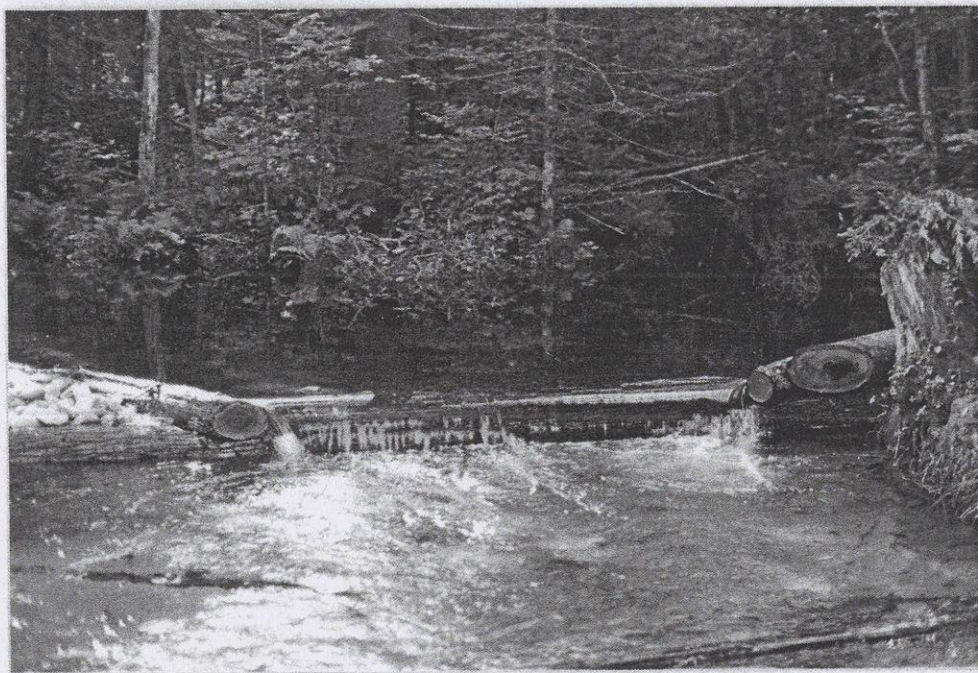
Bullheads in pail after removal
from fyke nets on Lost Lake

6/81

Jeff Eder intern & Mike Dombek, Bio.
remove bullheads from fyke net on
Lost Lake survey.



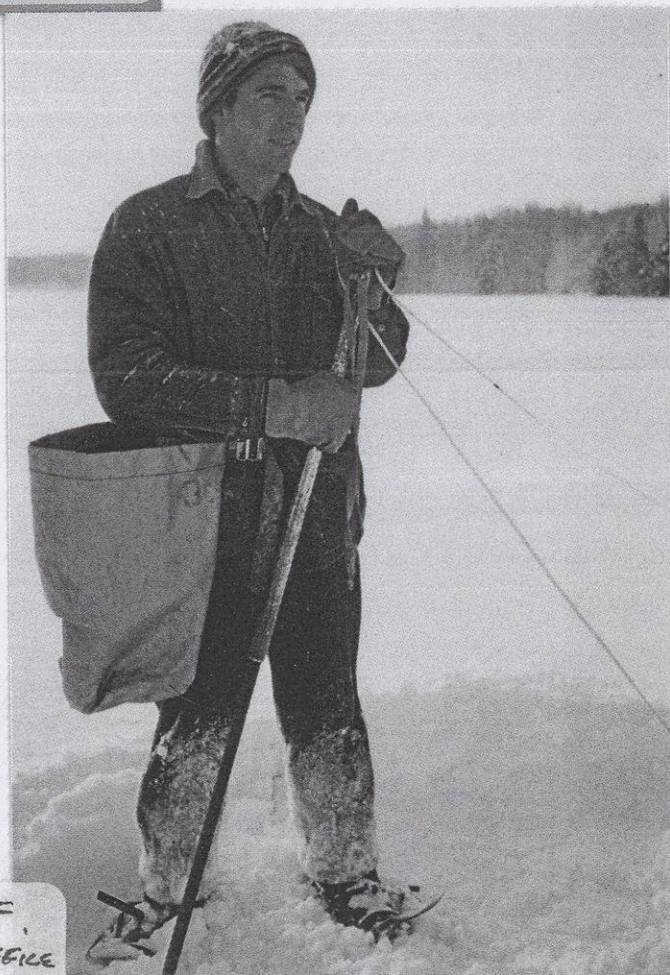
MILLER, ELISING, WIGGER, CAMPBELL,
HUBBARD, DOMBECK,
? BASSET



K-DAM ON BUCK BAY CREEK



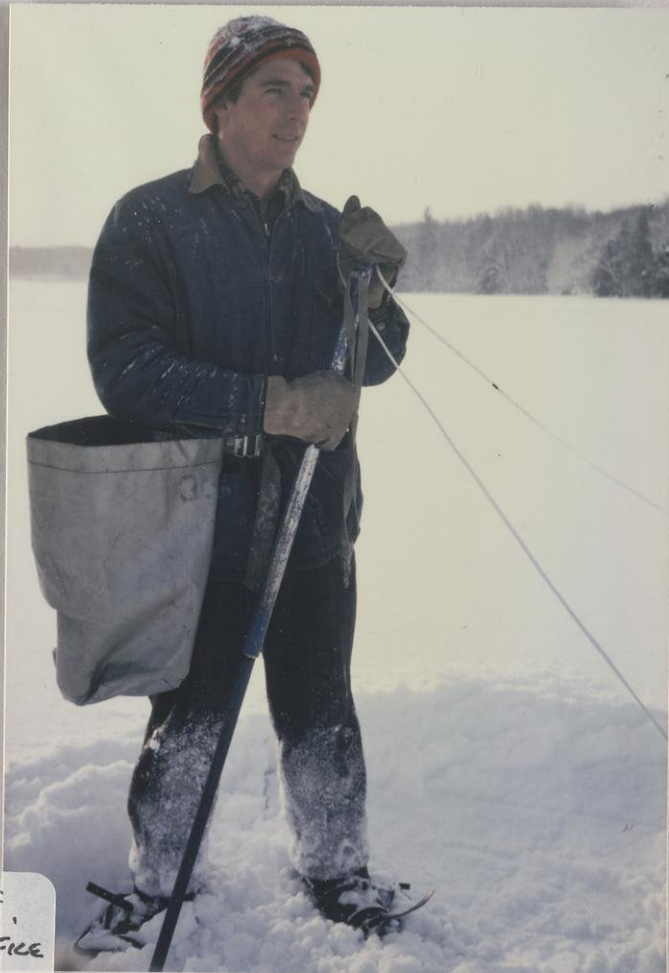
I WONDER IF THEY WILL EVER
MAKE ONE OF THESE WITH A MOTOR
ON IT.



IF I EVER GET TO BE CHIEF,
I'M GOING TO HAVE A NICE WARM OFFICE

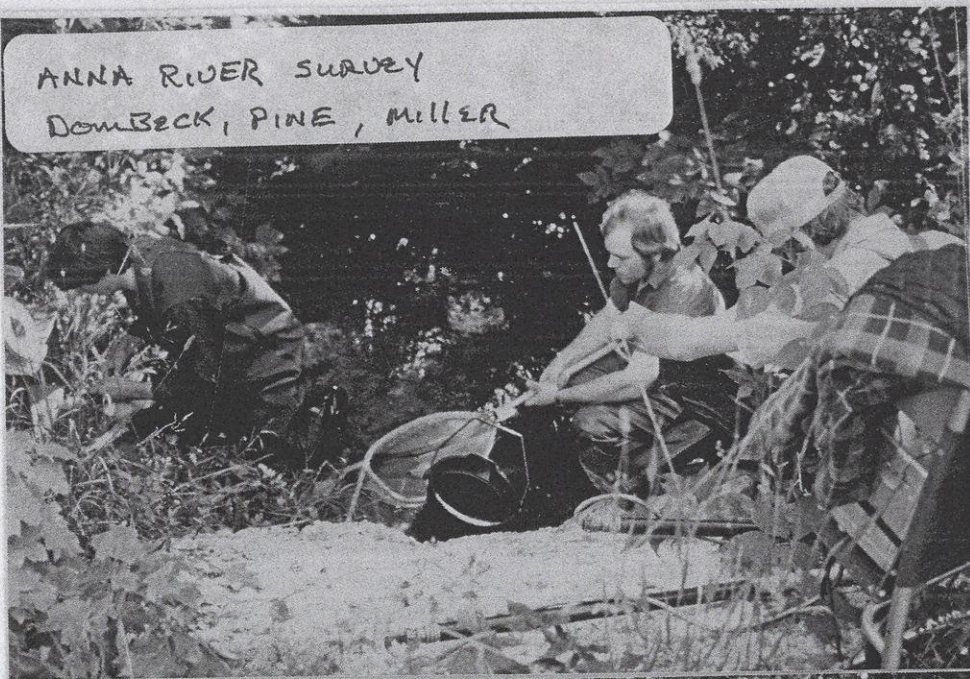


I WONDER IF THEY WILL EVER
MAKE ONE OF THESE WITH A MOTOR
ON IT.

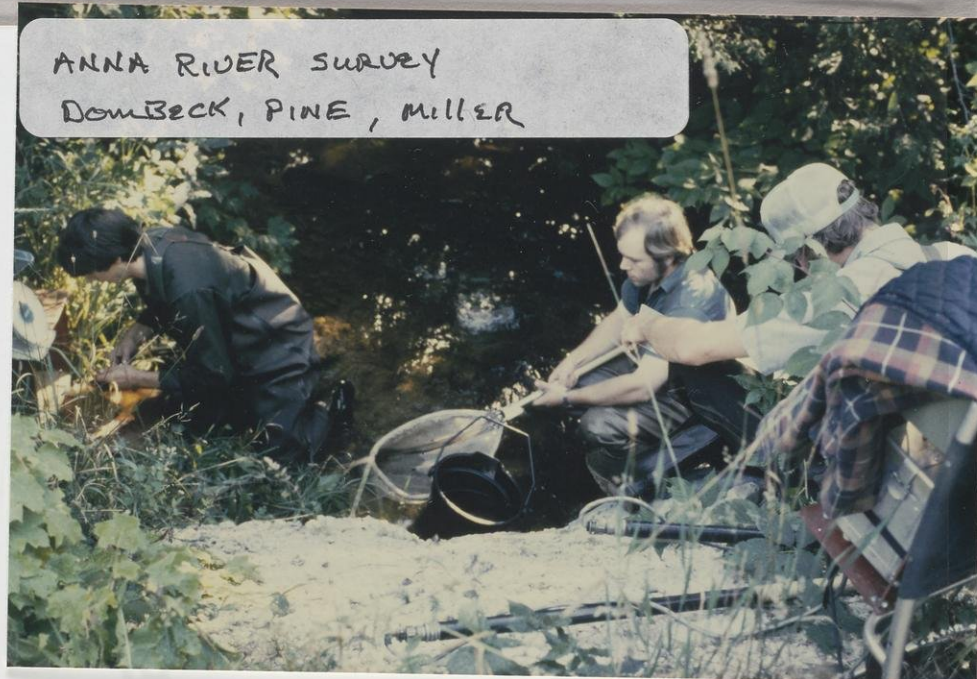


ICE

ANNA RIVER SURVEY
DOWBECK, PINE, MILLER



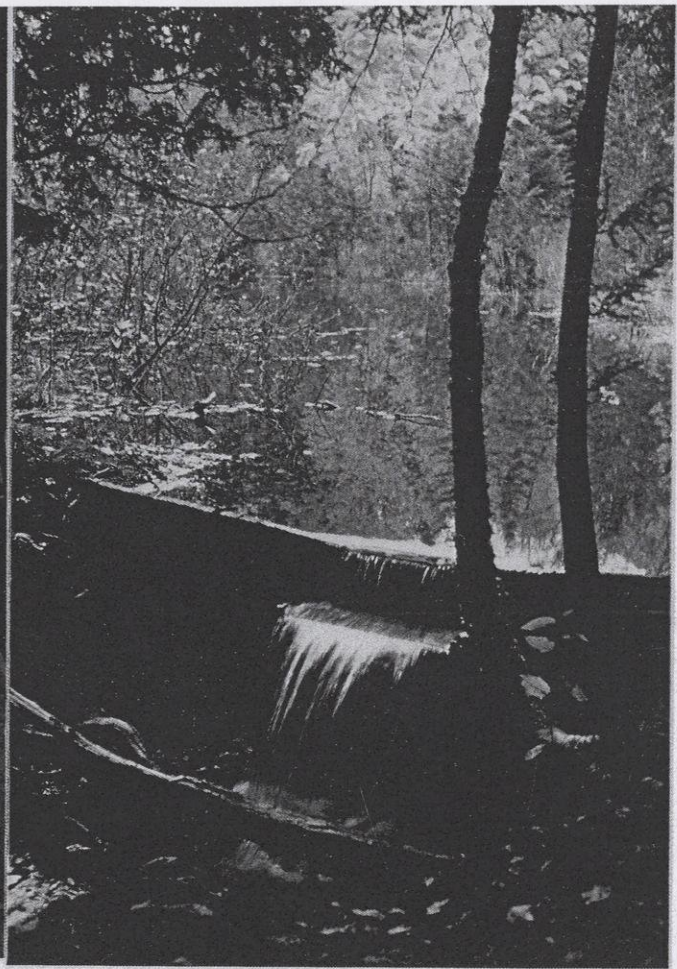
ANNA RIVER SURVEY
DOMBECK, PINE, MILLER







ANNA RIVER BROOKIE



VALLEY SPUR POND -

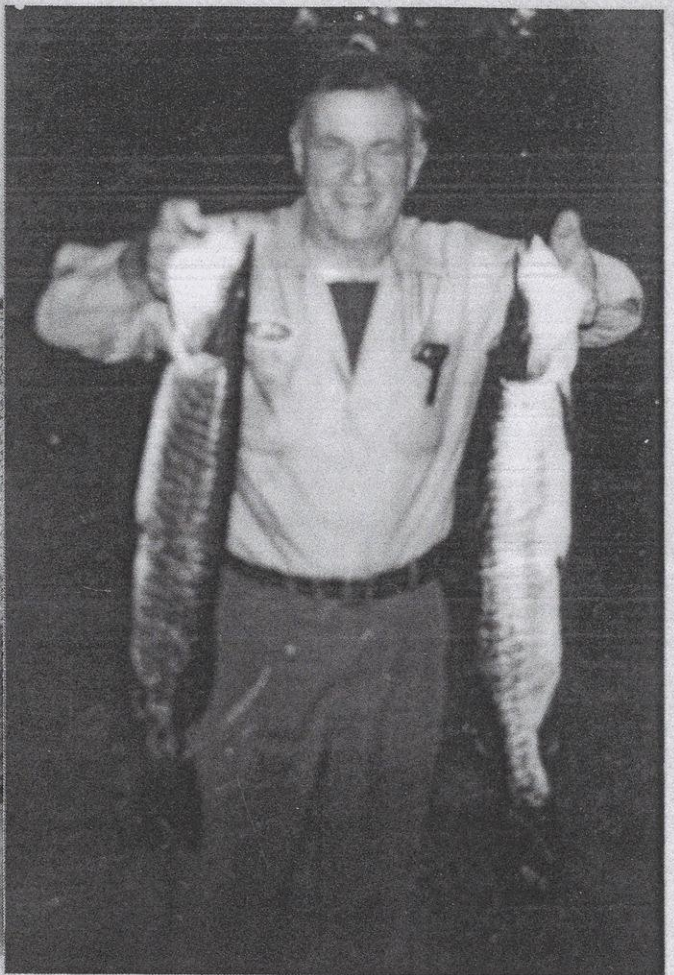


"HOOKLESS FISHING"

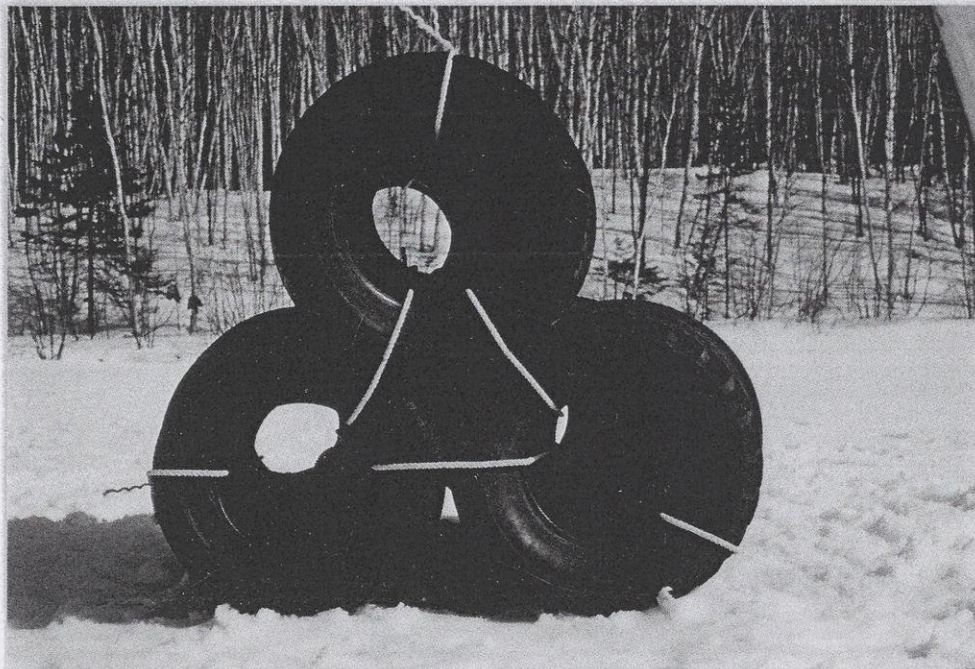
Bob Miller, Mike Dombek



AND THEY SAY SOME PEOPLE LOOK
LIKE THEIR PETS -

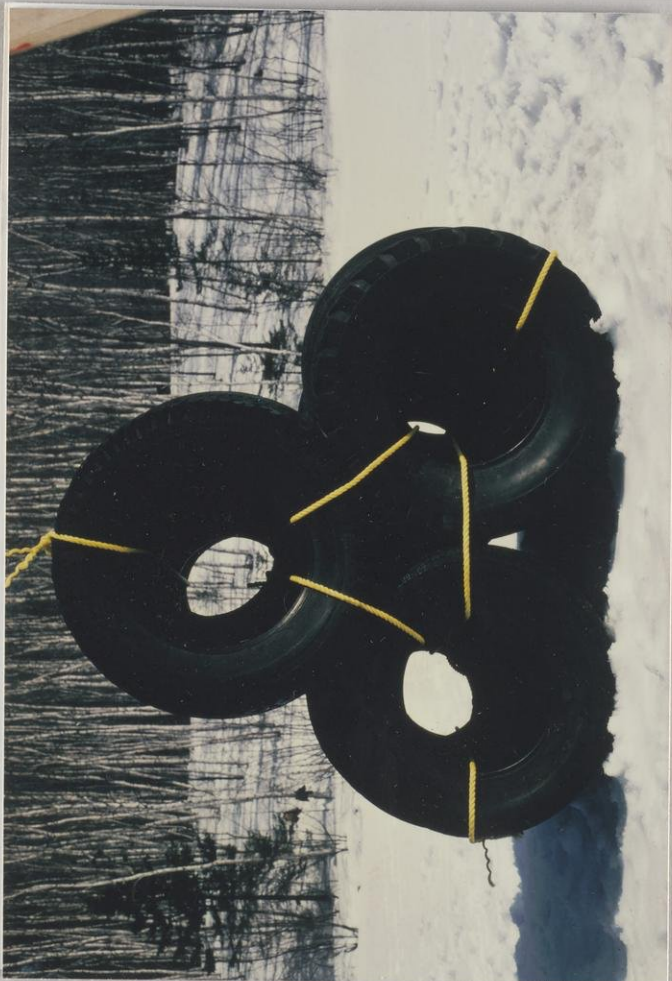
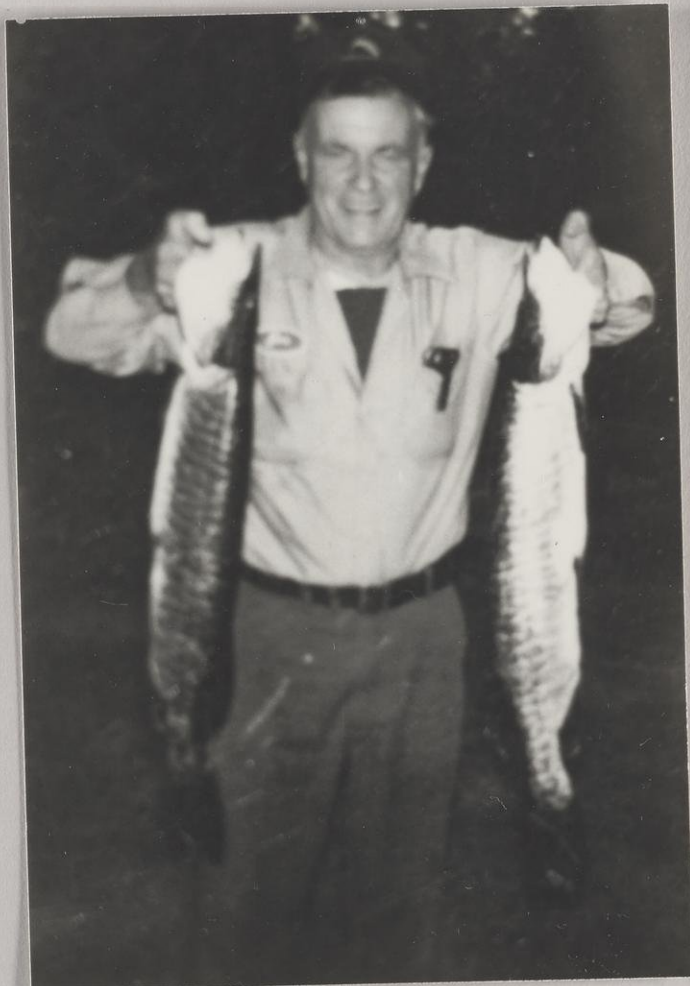


GOT THESE TWO OUT OF McKEEVER
TWO DAYS AFTER DOM BECK LEFT
TOWN.



NO WONDER WE CATCH SO MANY
TIRES, THE FEDS PLANT UM IN
SCHOOLS.

STATION 45-68





Moskies Caught McKean
 Lake July 1983. 3 1/4 x 32"
 by Joe Tedlowe.
 Planted ~~in~~ Summer of
 1986.



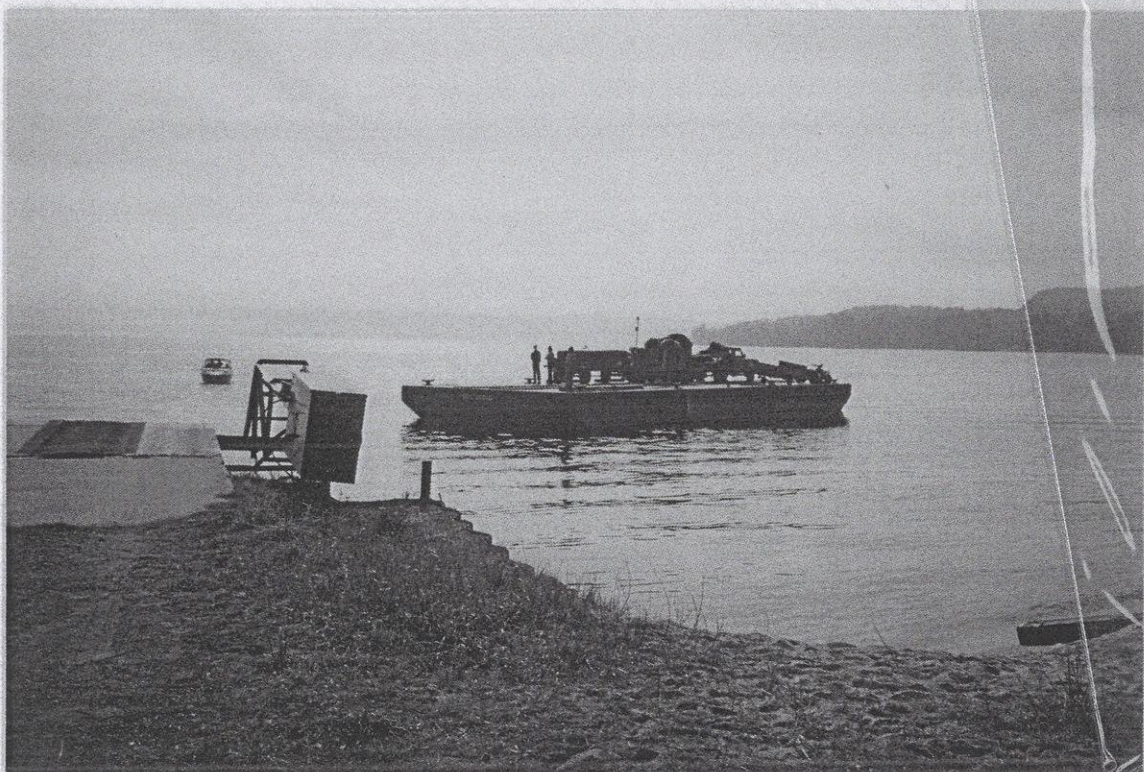
FISH EXPERTS WATCHING FISH
GROW - ~~1980~~ FALL 1980



STILL WATCHING, BUT SOME
LOST INTEREST - FALL 1981



- RANGERS AT WORK -
JIM BRUCE, DAVE WOREL, GRAND
ISLAND

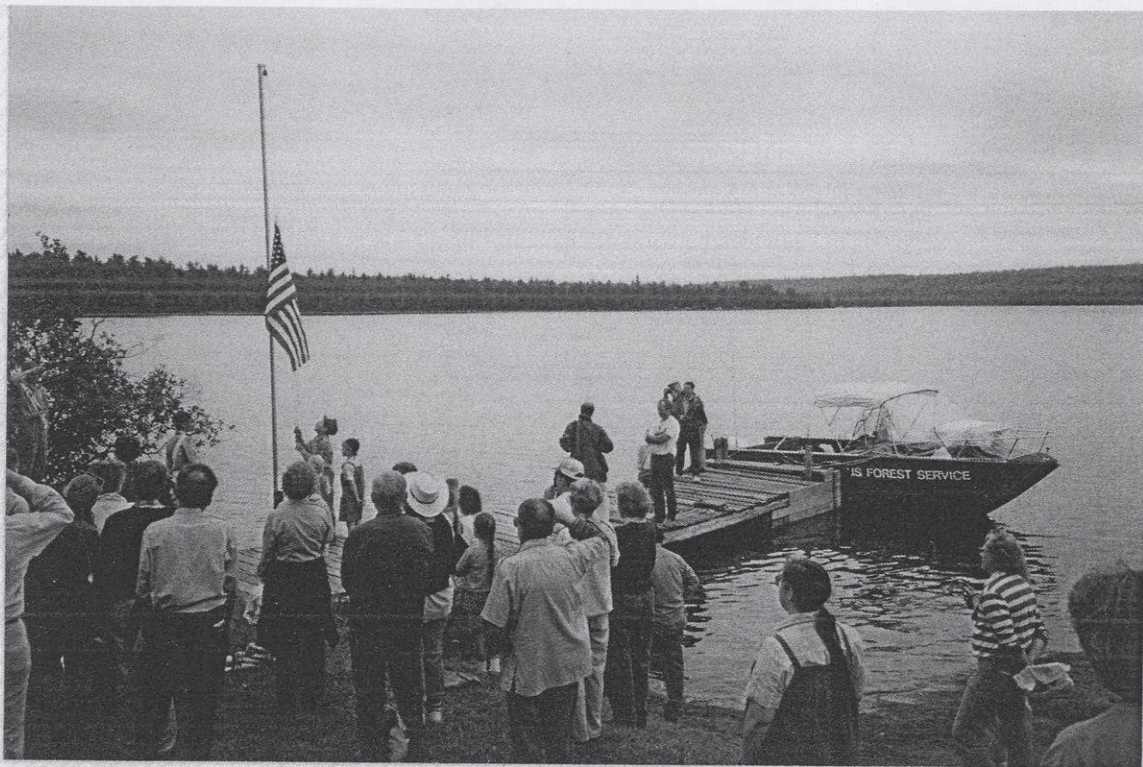


ANYONE KNOW WHAT THE FOR
IS FOR A BARGE & TUG.



807 PHOTO 120154 1113 N H H 13 2

Transporting horses/wagons/
equipment across for
61 Celebration 8/27/90



BIRTH OF A NATL REC
AREA - GRAND ISLAND



BOB + JEFF ON THE
LITTLE INDIAN RIVER



The flag raising

61 Celebration

Stone Quarry Cabin

8/27/90

Munising Ranger District

Welcome back to Munising, Mike! We just wanted to share with you some of the changes that have taken place since you were last here. First and most obvious, perhaps, is our new office! Built in 1989, the Munising District office is in an ideal location for reaching visitors to the area and other customers. The Visitor Information Center, jointly operated with the National Park Service, serves 45,000 to 50,000 visitors per year and provides information, interpretation, and sales items.

While the district staff increased for several years during the 1980s, it is currently approximately the same size as it was while you were here. The mix of skills, however, has changed noticeably; today's staff is quite diverse. In addition, we are erasing district boundaries and sharing positions/skills across the entire westside of the Forest.

Who's still here?! Names like Marv June, Wally Jurinen, Al Saberniak, Dave Worel, Kevin Pine and Tim Baker should all ring a bell!

Read on for more changes and highlights!

Public Services

* * *

Grand Island National Recreation Area

Congress designated Grand Island National Recreation Area in 1989, directing the US Forest Service to develop a management plan. Working with an advisory board and numerous interested citizens, the Forest Service released that plan in July 1994. That plan envisions an island which provides a range of recreation opportunities while also preserving and protecting the outstanding natural and cultural resources for which the island was designated. Recreation use on the island includes hiking and mountain biking on old logging roads, camping, fishing, hunting, boating and sightseeing.

Since release of the plan, we have been active implementing projects. Projects include providing accessible boardwalks, overlooks and a visitor contact station and stabilizing and protecting historic buildings. Also, concessionaires now provide passenger ferry service and tours on the island.

Wild and Scenic Rivers

The Michigan Scenic Rivers Act (1991) designated five river segments as Wild and Scenic on the Hiawatha. Also the Act identified four study river segments. On the west side of the Forest, the Whitefish, Indian and south portion of the Sturgeon rivers were designated scenic and recreational and the West Branch Whitefish and northern portion of the Sturgeon Rivers are study river segments.

Wilderness Areas

The Michigan Wilderness Act designated two wilderness areas on the west unit of the Hiawatha, both of which lie on the Munising District. The 6,000-acre Big Island Lake Wilderness is popular for fishing and for lake to lake canoeing. The 4600 acre Rock River Canyon Wilderness includes unique geologic and botanic features.

Interpretation and Environmental Education

- *Clear Lake Camp* - Through partnership with Delta-Schoolcraft Intermediate School District, Clear Lake camp is being utilized as an outdoor science learning center. This partnership has been ongoing since 1989 and was formalized in 1992. The Forest Service, as well as other organizations, work with the school district to design curriculum and teach courses to students from 4th through 12th grades. Future plans include winterizing the camp which would allow for year-round use.
- *Hiawatha Interpretive Association* - Hiawatha Interpretive Association (HIA) is a non-profit Forest Service cooperating association dedicated to supporting and enhancing interpretive and environmental education activities on the Hiawatha National Forest. Despite the Association's fledgling status (we officially began operations October 95), HIA has already dedicated profit share dollars to interpretive signing and map publication projects. We are happy to have the support of this local/regional association and look forward to the many positive impacts it can make on the Forest.
- *Environmental Education in the schools* - In the past several years, the District has expanded its efforts to reach local youth and educators with environmental education programs. On our own, and in cooperative efforts with other agencies (primarily National Park Service), we have provided several teacher workshops and numerous programs for students. Programs have ranged from classroom activities and outdoor field trips through the schools, to summer youth and community oriented activities. In FY96, approximately 1,350 individuals participated in the districts EE programs.

Recreation Facilities

- *McKeever Area* - The McKeever Cabin, a log rental cabin on McKeever Lake, is a very popular get-away. In the summer, anglers and campers enjoy its scenic location and proximity to fishing and hiking/biking trails. Winter visitors take advantage of the 17 miles of traditional skiing at the adjacent McKeever Hills Ski Trail.
- *Valley Spur* - Like McKeever Cabin, the Valley Spur Day Lodge was built through cooperative partnership efforts. Located at the trailhead for the Valley Spur Trailhead, this log structure is used in the summer by mountain bikers, and in the winter by cross country skiers. The mountain bike trail is 26 miles long, while the ski trail offers 25 miles of traditional skiing and 17 miles of skating trail.

Natural Resources

* * *

The ecosystem approach to resource management is strong on the district. A combination of new thinking and new expertise has allowed us to find many new successes utilizing this "whole" approach. The Forest takes a collaborative approach to natural resources programs; wildlife research, fish surveys and projects, prescribed burning and environmental education all are marked by strong coordination with other agencies such as the Michigan DNR, Pictured Rocks National Lakeshore and Seney National Wildlife Refuge.

Wildlife

In the past 10 years or so, we have witnessed many wildlife-related success stories on the District and Forest. Working together with other agencies and organizations, we have played active roles in these projects. In particular, many of these are related to T & E species. Species whose populations were successfully reintroduced or augmented include:

- Pine marten
- Fisher
- Wolf
- Bald Eagle
- Trumpeter Swan
- Peregrine Falcon

Also, we are currently partnering with universities and other agencies on a black bear study and a woodlands raptor survey. The Forest now has a strong botanical inventory and native plant program. We have also entered into a unique partnership with Michigan Natural Areas Council in order to help us gather baseline data for Grand Island NRA.

Fisheries The fisheries program continues to be an important part of our natural resources program. In recent years, we have strengthened our relationship with Michigan Department of Natural Resources; this renewed understanding has led to a more cooperative and supportive approach to projects and policies.

Ecosystem Approach to Regeneration We have significantly increased the amount of natural regeneration used on the District. In addition, regeneration using jack pine, white pine, canada yew and oak have been on the rise. Efforts to integrate white pine back into the ecosystem have been particularly successful.

MIKE,
Best of luck AS
the Chief

Wally

Mike
I always knew
you would go far
Dave World

Sammi
J. Jones

Congratulations
MIKE
Leo Carri

Congratulations Mike -
I'm glad a Resource
oriented man got the job!
Best of Luck!!

Don Elving

Best of luck Mike
and congratulations!
Kevin Pine

Good Luck, Mike!
you came from a
great district!
" Louise Congdon

Welcome back
to the USFS Mike!
Tom Baker

Mike
Best wishes
Al + Sandy
Salermike
+ Family

3498