



# LIBRARIES

UNIVERSITY OF WISCONSIN-MADISON

## **Marathon County, Wisconsin : home of ready-to-start-farms. [192-?]**

Madison, Wisconsin: Agricultural Literature Department, National Land Colonizing Company, [192-?]

<https://digital.library.wisc.edu/1711.dl/PPASBLDCCXH7M8F>

This material may be protected by copyright law (e.g., Title 17, US Code).

For information on re-use, see

<http://digital.library.wisc.edu/1711.dl/Copyright>

The libraries provide public access to a wide range of material, including online exhibits, digitized collections, archival finding aids, our catalog, online articles, and a growing range of materials in many media.

When possible, we provide rights information in catalog records, finding aids, and other metadata that accompanies collections or items. However, it is always the user's obligation to evaluate copyright and rights issues in light of their own use.

R13W7

# Marathon County, Wisconsin Home of Ready-To-Start-Farms



**Dairying Makes Marathon County Prosperous**

Dairying in this fine clover and timothy country makes Marathon County very prosperous. Our Land is going up in value very rapidly. You can come to Marathon County and get a productive and valuable dairy farm for yourself.

AGRICULTURAL LITERATURE DEPARTMENT  
NATIONAL LAND COLONIZING COMPANY  
MAIN OFFICE—MADISON, WISCONSIN

LIBRARY  
COLLEGE OF AGRICULTURE  
UNIVERSITY OF WISCONSIN  
MADISON

# MARATHON COUNTY, WISCONSIN

## INTRODUCTION

To sit down and try to paint a word picture of this country where a man can get a Ready-To-Start-Farm is an almost impossible task. There is so much to tell that one hardly knows where to start. There are prosperous towns, with their fine schools and churches and stores. There are the highly improved, up-to-date farms that men have already developed, with their beautiful buildings and their big herds of dairy cows. There are large numbers of new men who have just recently taken Ready-To-Start Farms right next to these older settlers. There are the Ready-To-Start-Farms, with rich soil, still waiting for the wise men from the outside to pick out and make into valuable farms. There is unexcelled soil, well drained, rich, and covered with a thick coat of black leaf mold, the richest of all fertilizers. We could tell about all of these things, or we could tell of the histories of hundreds of farmers who have come and made a small start in this rich country, who year after year raised bigger and bigger crops, and who now are wealthy and living on big beautiful farms that were nothing but brush a few years ago. There is so much to tell, that one does not always feel sure of what he should put in and what he should leave out. To us men who have always lived here and who know every road and corner in this good farming district it seems strange that there should be anyone who does not know about this valuable land that can be bought so very cheaply.

That is the way it is in every rich new country. Those who live there wonder how it is possible that all the outside world does not flock in to get farms, while those on the outside, plugging along day after day with their work, never hear of these rich spots where they can get a good farm for themselves. And if they do hear of the new country, many doubt the truth of the reports, and rather than spend a few dollars for carfare to go and investigate with their own eyes, they continue to drag along

in their rut and let the opportunity pass over their heads.

But there is another type of man, the fellow who stands on his own feet, who goes to see things with his own eyes, and who wants to get off of the rented farm where he is wasting his life, or who wants to get out of the city where he is simply a slave working for enough to keep alive. This kind of men on the farms and in the cities are the fellows we want to tell about these wonderful lands of ours up in the heart of the greatest dairy region in the world. We want to tell them how we will help them start on a fine farm of their own, a rich, gently rolling, well located place that they can make into a valuable farm for themselves. We can not tell all about this country, but we will tell as much as possible, and we extend an invitation to all such men to come and visit our farms, talk with the many men already on the land, and see if they want to pick out a place for themselves.

## MARATHON COUNTY

These Ready-To-Start-Farms are located in Marathon County, one of the best known and richest counties in Wisconsin. Year after year, this county has won first in sweepstakes at the Wisconsin State Fair. The county is located in the north central part of the state. The climate is bright and healthful. The summers are warm, with a long satisfactory growing season.

The county seat of Marathon County is Wausau, a beautiful town of about twenty thousand. Mosinee is a beautiful town located close to the colony, and a little south of Wausau. Mosinee has beautiful residences, good streets, and factories. It is a rapidly growing town, settling up quickly just like the rich lands around it, and it is expected to become a large town. Mosinee is located on the main line of the Chicago, Milwaukee, and St. Paul railroad. This line



**The Greatest Hay, Clover, and Dairy Country in the World**

We believe that we grow the greatest hay and clover in the United States. Our stands of hay are almost unbelievable. There are no crop failures, the big yields always recurring each year.

## HOME OF READY-TO-START-FARMS

has direct connections to Chicago, Milwaukee, and St. Paul, together with many other smaller cities along this large railroad system. These cities give good markets, and there is a local market for all produce at the creameries, cheese factories, and potato and grain warehouses.

### OUR FIELD OFFICE

Our field office is located in Mosinee. The main business district of Mosinee is across the river from the railroad station. Our offices are located on the second floor of the Mosinee State Bank Building, which is the largest business building in town and you can not miss it. If you come to Mosinee, you will find men in the office, ready to take care of you and show you around the country. As you leave Mosinee in an automobile, you will be surprised at the big well developed farms that you see, with their splendid dairy herds. When you see the fine buildings and the big fields, you will hardly be able to believe that these valuable farms are owned by men who came to this country only five to ten years ago.

### THE READY-TO-START-FARMS

All the farms that you see will be of the richest soil, with no sand or hills. After you have driven a few miles from Mosinee, you will come to the big tracts owned by the National Land Colonizing Company, which it has made into Ready-To-Start-Farms. Here you will find exactly the same rich soil, lying in the same well drained gentle rolls.

Now, as you drive along over the good roads, you will see dozens and dozens of new settlers on all sides of you. You will find good schools and stores located right in the middle of the tract, and the locations where the cheese factories are going in.

You will be surprised at the progress that these new men are making, and you will want to get out and talk with them, and see their crops, and their cows, and find out what they raised in the first year, and how they like the country, and if they are making any money, and how long it takes them to clear ten acres. After all, there is only one way to find out about a country, and that is to spend a few dollars for car fare, and come and see for yourself. Driving around, talking to the farmers on the land, and seeing the fields they got in the first year, and the crops they raise, means more than all the literature and government reports in the world.

### PICKING OUT YOUR OWN FARM

Then, after you have talked with these families who will be your neighbors, you can go over the farm that you think you would like for yourself. We can tell you about it, but the only way is to come and see it yourself. Go over it and see if you like the valuable standing timber on the back end. Figure out the best place for you to make your first clearing with a brush scythe, so that you can get in at least ten acres of crops the first year. Dig down into the rich clay loom soil which is covered with rich leaf mold, and figure out if you want that farm for yourself. Go over the part where you will put in your pasture and hay by simply sowing clover broadcast without plowing. Go to the building site, and sit down there in the shade of the trees, and figure out if you would like us to put up a nice set of new buildings under those trees for you, or whether you would rather put up your own buildings. If there is a creek crossing your farm, follow along its banks and drink its fresh cool water. Find the open places on

(Continued on page 6)



### You Do Not Need to Take Out the Stumps to Raise Valuable Hay Crops

This picture shows clover and timothy planted between the stumps. It gives quick and productive returns. Going over the land with a spring tooth harrow is all that is necessary to prepare it for cropping. Potatoes, Marathon County's big cash crop, are also often planted between the stumps by the settler just starting. The brush is cut by hand, the down logs burned, and the land put to crops.

# HOW TO MAKE A TRIP T

## YOU ARE ALWAYS WELCOME AT MOSINEE.

There is only one way to find out the truth about Marathon County, and that is to take a day or two off and come and pay us a visit.

We extend a special invitation to you to visit us.

We will be glad to meet you, and we will do our best to show you around the country and to make your trip both a pleasant and a profitable one.

It is very easy to get here on the Chicago, Milwaukee & St. Paul R. R.

Your ticket agent can tell you the best connection, or you can easily figure it out yourself.

If you visit us, and pick out a farm, we will credit you with your railroad fare, thus saving you this expense.

Make your plans now to come and see us.

Unless you act at once, all of the good farms that we have up here will be gone.

Why not make yourself one of the fortunate men who will get one of these fine farms?



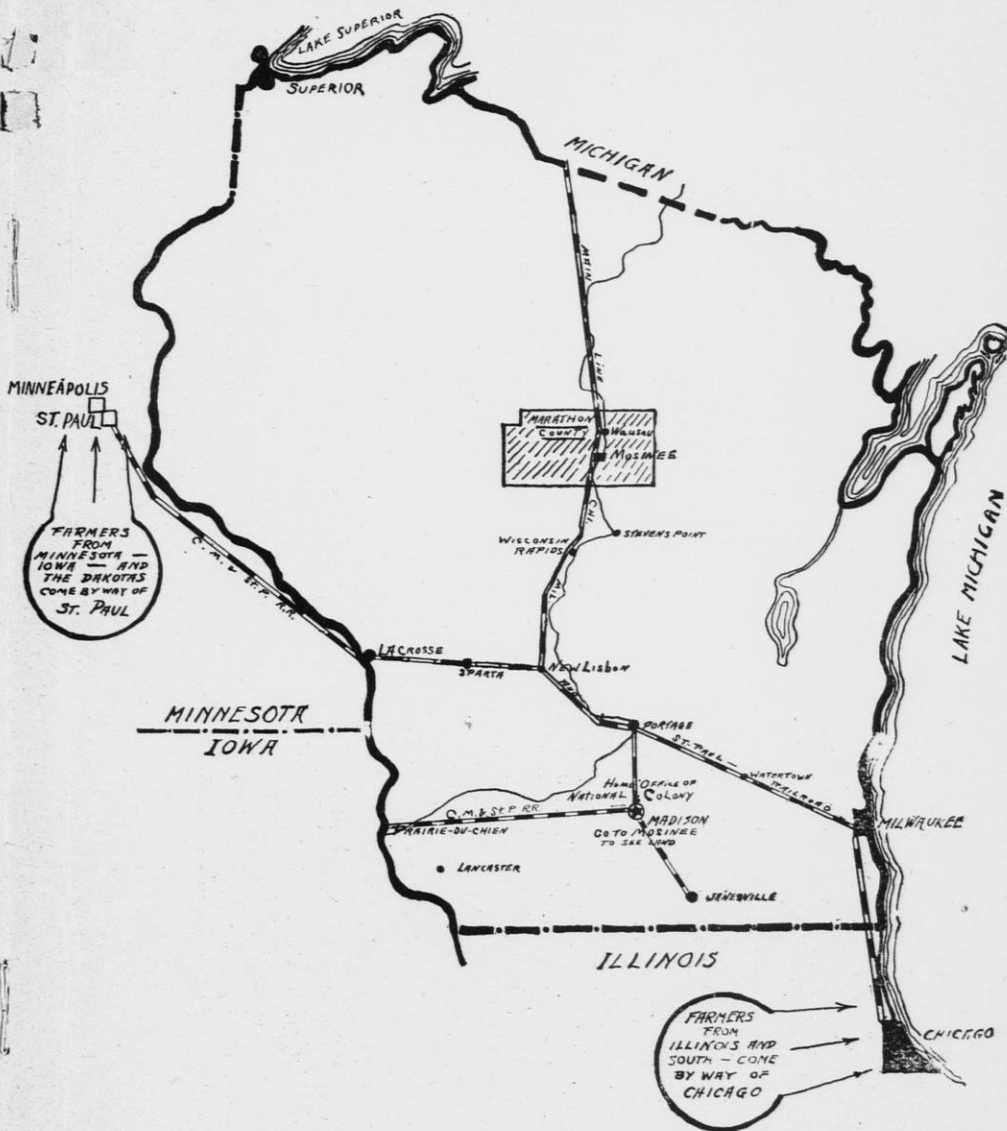
### OUR OFFICE AT MOSINEE IS IN THE MAIN BUSINESS BUILDING IN TOWN

When you get off the train at Mosinee, you walk across the river to the main part of town, where you will find our office on the second floor of the Mosinee State Bank Building. This is the large brick building shown on the right.

You will always find our men there, ready to take you out and show you around the country, and to show you our Ready-To-Start-Farms.

# TO MOSINEE, WISCONSIN

## THE MAIN RAILROAD CONNECTIONS TO MOSINEE.



The heavy black lines on this map show the main lines of the Chicago, Milwaukee & St. Paul railroad running through Mosinee. This railroad runs direct from Chicago, Milwaukee, St. Paul, Minneapolis, and many other smaller cities directly to Mosinee. It is easy to figure out the connections from other places onto these main lines.

## MARATHON COUNTY, WISCONSIN

(Continued from page 3)

your farm, and see the clover growing wild, ready for pasture right now. This is the kind of a farm you can get up in Marathon County. We can tell you about it. And we can guarantee to buy it back at \$100.00 an acre when it is cleared and plowed. And we can guarantee to pay all your traveling expenses and pay you for your time if you come to Marathon County and find a single misrepresentation in our literature or in our pictures. But still, we can not make you see it as it actually is, for that requires a trip on your part, but we can try to do our best. As you read this, you probably are thinking of Marathon County as a backwoods country, with medium soil, and poor farms, when as a matter of fact, it is a district of rich farms, and the farm you can get will probably grow more to the acre than any land you have ever seen. Remember that this big colonizing company has bought the best land that it could find in Upper Wisconsin, and that is saying a whole lot. If you come to pick out a Ready-To-Start-Farm, remember that you could start out and travel for days and not find land the equal of this. Strong statements these are! But all we want you to do is to come and see this country with your own eyes, and see if you do not want to own one of these farms of such exceptional quality and which you can get so cheaply, and on such easy terms.

### THE REASON THESE RICH FARMS ARE NOT SETTLED

Now many people wonder why it is that these tracts of rich land should be left unfarmed if they are of such exceptionally high agricultural value. It is hard to believe that there is land in the United States today, cen-

trally located, right close to the big markets, where men are buying land so cheap that the potatoes they can raise on an acre will pay for the land, or where the pickles raised and sold at the pickling station will bring more than double the cost of the land they were raised on, or where clover seed and hay will do the same thing per acre. Why, people ask, if this land is so good, does it happen to be left? Oh, there's a nigger in the woodpile some place, they think.

But there is no joker. This land was formerly owned by big lumber companies. They wanted to keep the taxes down as much as possible. If, as they cut the timber, they sold the cut-over forties right away, the men to whom they sold it would develop fine farms. This made all the lands go up in value, and made the taxes on the lumber company's land take a big jump. Now, these companies knew the land would be just as valuable after they had all their timber cut, as if they sold a little each year, so they would not sell any, thus holding the country back and keeping down their taxes. This was the policy of many Wisconsin lumber companies. Right today, there are lumber companies who would not sell part of their cut-over land in their big tracts to settlers for love nor money. They don't want settlers. It took twenty to thirty years to cut the timber off of some of these tracts. This tract of ours consisting of thousands of acres is the last big tract near Mosinee. We bought it as soon as it was ripe for settlement.

There is also another reason why this rich land is still left for settlement. The timber on this land used to be worth much more than the land itself. As settlers came in, they would start fires wilfully or by accident, that would sometimes burn up thousands and thousands of dollars worth of the surrounding timber of the company. These fires cost the lumber men more than they ever made by



### Potatoes Will Bring in Cash

Potatoes yield heavily, and can be planted the first year. They are the best cash crop you can raise and will supply your own table. Potatoes mean money in your pocket. They can be planted between the stumps the first year and are a sure and profitable crop.

## HOME OF READY-TO-START-FARMS

selling part of their land to a farmer. And so it is that here in Wisconsin there are still left a few places where a farmer can get rich on soil that has never had a plow in it. He can be the first farmer to buy it, getting it at the ground floor price, and making all the big riches and absolutely sure increase himself.

### HOW TO START FARMING IN MARATHON COUNTY

You probably want to know how a man starts farming in Marathon County and the kind of crops that he raises. This also is hard to tell about, for different men start in different ways. Some get forty acre farms and go in for potatoes and a few cows, and some get a larger acreage and raise hay and grain and stock. Some get forty acres and raise chickens, fruit, strawberries, and pickles. But by far the most, and in fact, almost all, buy 80 to 120 acres and start dairy farming.

The dairy farmer, month in and month out, makes more money and has a steadier income than any other type of farmer. The dairy cow is preferred to other livestock, because she provides a cash income right from the start. A dairy cow brings in the first check two weeks from the time her owner starts in the dairy business. Besides, these farms are in the heart of the greatest dairy belt in Wisconsin, and dairying is probably the easiest way to get started.

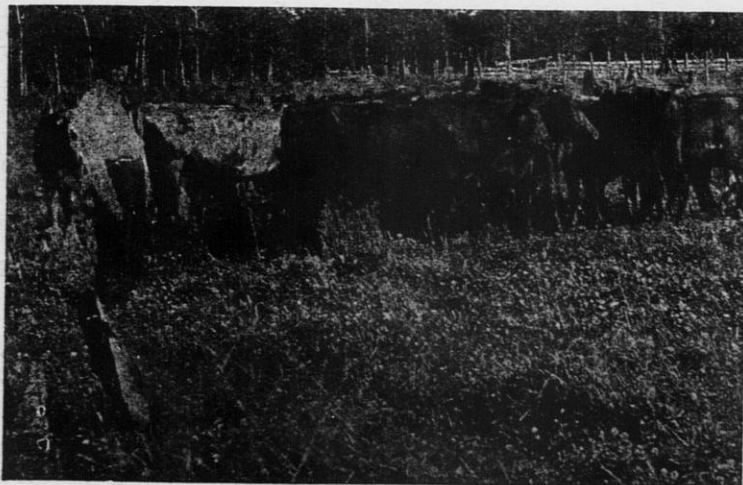
If you bring no dairy stock with you when you come, the National Land Colonizing Company will let you have one good dairy cow for the family's use right away, making you a loan, or adding the cost of the cow to your contract. Then each time you brush five acres and plow two acres, the company will make you a loan for another good dairy cow. This, with careful breeding, allows you to develop a dairy herd quickly. Just think what it means to be able to come and get one of these valuable rich farms, and then, on top of that,

have a big organization behind you that will help you get good Wisconsin dairy cows to put on your farm.

By brushing the land with a hand scythe, you can get in clover and timothy at once, and you can do this without plowing. Any of the land will furnish luxuriant pasture in the summer, and the clover and root crops will carry the cows through the winter. Roots are the most important crop to get in the first year. They are succulent and healthy, and are used in all the best dairy countries. A man can not get up a silo the first year, but root crops will carry his stock just as well. Up in this country root crops are called "Settlers Silage." They can be planted among the stumps, and a small patch will do the business, for they will produce upwards from 500 to 800 bushels to the acre in this country. With such water, hay, and root crops, this country seems to be providentially created for a dairy country. Rutabagas, turnips, carrots, and mangels are the favorite root crops, with rutabagas and mangels in the lead. These two with care will produce 500 to 800 bushels to the acre, and fortunately they can be raised the first year right along with hay, which is a great aid to the new farmer.

### PORK

Dairying is so satisfactory and profitable in Wisconsin, that hogs are seldom considered in a big way. However, pork can be produced very cheaply on this low cost land for either home use or the market. Pigs should go on the market at about 180 pounds, and should be produced in eight months. These pigs can be put on clover pasture in the spring, then turned into rape, and finally hogging down any of the grains or corn that produce so well on this land. Hogs also greatly relish the half sugar mangel which can be grown in such large quantities. The old idea that roots were mostly water has long since been found an error, and with roots producing eight to six-



### Pasture the Land and Let the Stumps Rot Out

Instead of showing you pictures of the finely developed farms, we have tried to show you pictures of men just starting. This shows a farm where the stock is being pastured on clover pasture among the stumps. Clover is actually a weed in this country.



## MARATHON COUNTY, WISCONSIN

teen tons to the acre, hogs as well as dairy cows can be carried over the winter very cheaply.

### POTATOES A GOOD CASH CROP

Potatoes are one of the best crops for a farmer to get in at the start, and is second only to hay. They grow fast and ripen quickly, and not only furnish a big bulk of food for the family, but can be sold for cash in town. The quality of potatoes grown in this new land is excellent. The virgin soil, rich with vegetable matter, gives yields into the hundreds of bushels per acre. The potatoes grown in this country are of such high quality that they are always in demand, and the outside buyers come in each fall, buying them for the big city markets.

### GRAINS

All the grains yield abundantly. Oats and barley are probably raised the most, and both yield heavily. Many new settlers plant oats and field peas together and cut them green for a forage crop. Corn always produces well. Many farmers from the so-called "Corn Belt" often find it hard to believe that corn does well. Since other crops produce so heavily, corn is usually raised only for silage in Wisconsin. Big yields for this purpose can always be relied on.

To try to tell of the yields of all these crops per acre, to tell of the fruits, the strawberries, the money in dairying, or chickens, or bees, is a more or less useless task, as we said in the beginning. We ourselves know this wonderful country so well and know how hundreds have got our Ready-To-Start-Farms and made good, that we do not know just what the outsider wants to know. Just the little point about which he would like information is probably the one we have missed. And we know that if you just come to take one look at the country that you will see in five minutes that it is one of the garden spots of the Central States, and so we would not need figures and statistics to prove it.

### WE INVITE YOU TO VISIT US

So, all we can do is to invite you to come to our office at Mosinee and pay us a visit. Come and let us take you in a car and show you this wonderful country. Come and let us introduce you to the pleasant neighbors you will have. Let us show you one of the rich farms you can get. Go over it, dig down into the soil, and consider if you can buy a better more fertile farm any place, regardless of price, or if you can find a more pleasant neighborhood in which to live and raise your family and make your new friends.

Then, when you have considered all these things, if you want the farm, drive back into town to the field office and talk over the details of your payments. Decide if you want us to put buildings on your farm, and if you want us to furnish some good dairy stock with the farm. Figure out how much you want to pay down and when you want to move onto your farm. This is the only way to get a place. Come and visit us and see and believe yourself. It will cost you only a very few dollars for railroad fare. You can get rate from most places, and we will allow you your fare if you pick out a farm. Remember that the one object of this big colonization company is to place you on the highest grade farm you can possibly find in Wisconsin. Remember that these farms of ours have already been snapped up faster than we could keep up with the buildings. A few more months—not years—and all these farms will be gone. Be one of the lucky ones, take our word for it, and come and see the kind of a farm you can get. And do not wait and let this opportunity slip by, and thereby make the rest of your life a failure, just because of lack of the little initiative required to make the trip. Make your plans right now, this month, this week, to accept our invitation to pay us a visit. Come before it is too late or you have lost your one big opportunity. Become the owner of a piece of the great dairy state, Wisconsin. Adopt for yourself our state's motto, "On Wisconsin".



### Land Like This Means Money

Don't you think it is worth while for a man to spend a few years clearing such land? Do you think we are taking any chances on helping you to start on such land, and giving you a deed as soon as you clear five acres? Where hundreds of others have started with little and developed valuable farms, you can be sure that you can do the same. If you have any questions about it, come and see what others have done.