



LIBRARIES

UNIVERSITY OF WISCONSIN-MADISON

1959 hi-lites. 1959

Barneveld, Wisconsin: The Senior Class, Barneveld High School, 1959

<https://digital.library.wisc.edu/1711.dl/ANTLIQEUSNLLX8A>

This material may be protected by copyright law (e.g., Title 17, US Code).

For information on re-use, see

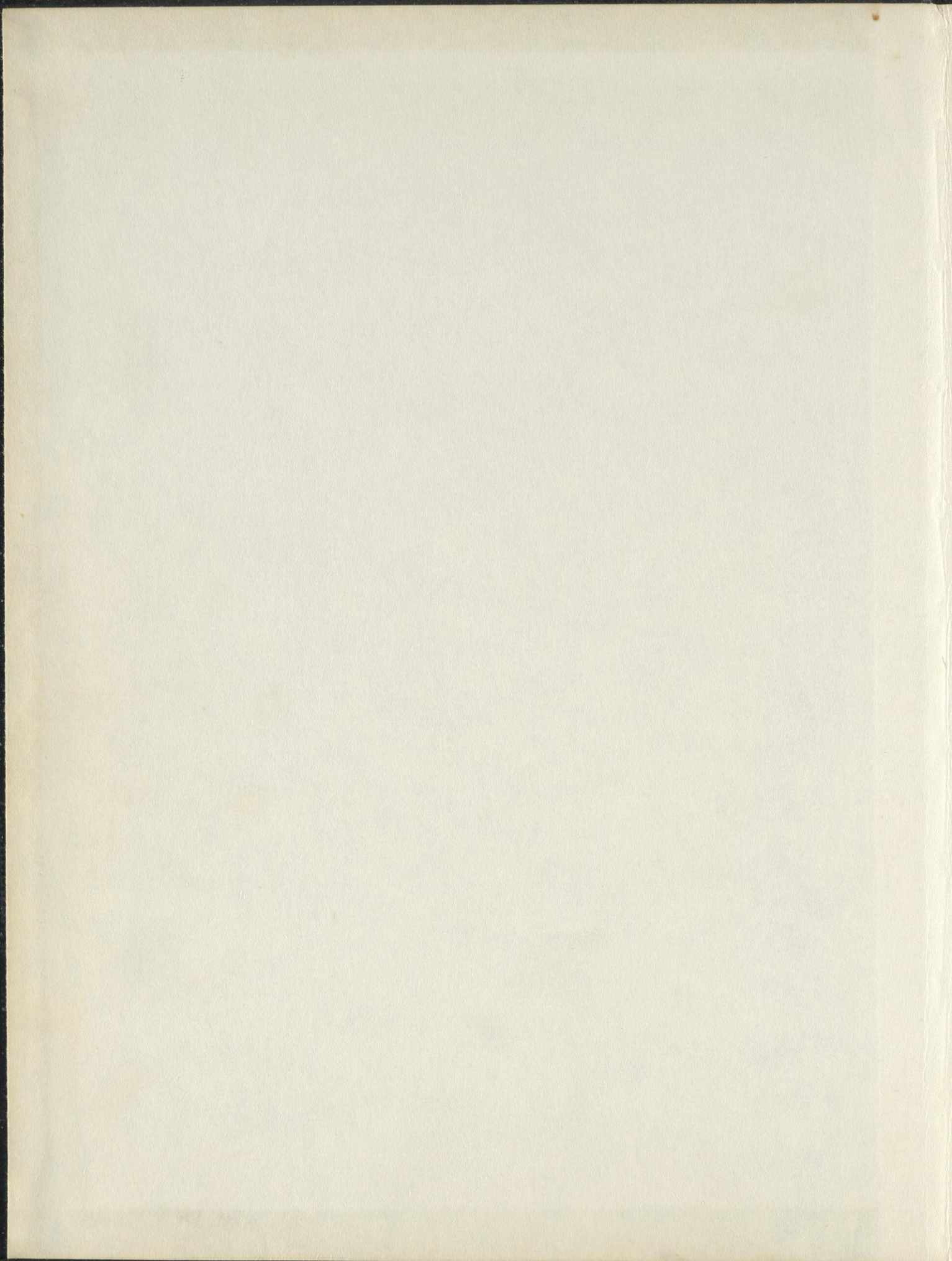
<http://digital.library.wisc.edu/1711.dl/Copyright>

The libraries provide public access to a wide range of material, including online exhibits, digitized collections, archival finding aids, our catalog, online articles, and a growing range of materials in many media.

When possible, we provide rights information in catalog records, finding aids, and other metadata that accompanies collections or items. However, it is always the user's obligation to evaluate copyright and rights issues in light of their own use.

'59

HILITES



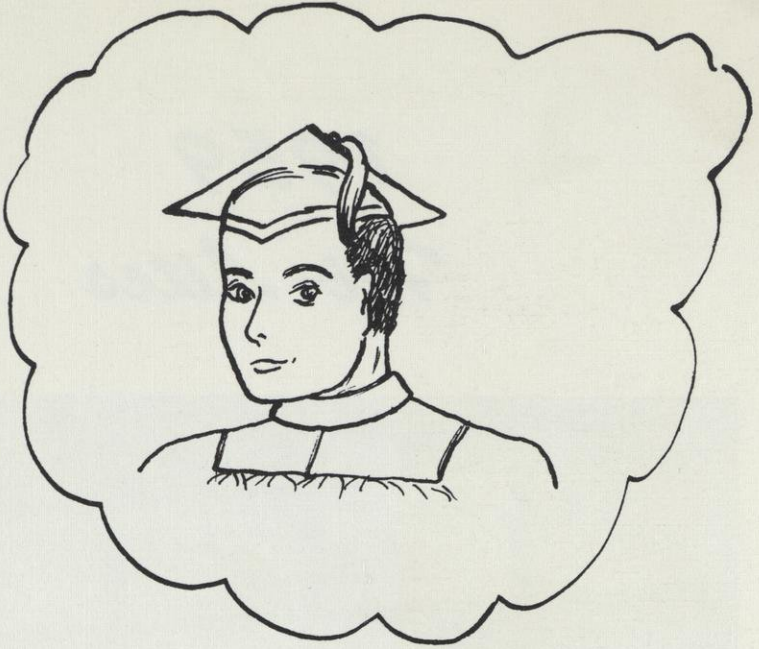
1959

Hi-Lites



Published by
THE SENIOR CLASS
BARNEVELD HIGH SCHOOL
Barneveld, Wisconsin

D
e
d
i
c
a
t
i
o
n



We, the Class of 1959, dedicate this annual to our parents.

Principal's Message



WILLIAM ERNST
Social Studies
University of Wisconsin
(B. S. , M. S. degrees)

Once again it is my privilege to reflect with you the results of a year's efforts. An annual is, and should be, the objective report of the "spiritual fibre" of a school. I believe this book will illustrate our beliefs, our hopes, and our aspirations. I only pray that these might become an accomplished fact. At that time we can raise our heads and proudly say with the Seniors, "Not at the Top, but Climbing."

ELLEN DANIELSON
Business Education
State College
Whitewater (B. E.)

Advisor's Message

In life, as in a play, no one has a small part to perform. Whether your part in life is big or small depends entirely upon you. If, while you are on the stage of life, you utilize each minute and your native ability to the utmost, your part in life will be big. Each one of you has ability in some field - search diligently until you find it; then, and only then, will you truly be able to play your part well.





Faculty



MRS. MATTIE OWENS
Superior State College
University of Wisconsin, B. E.
Math, Physics, Library



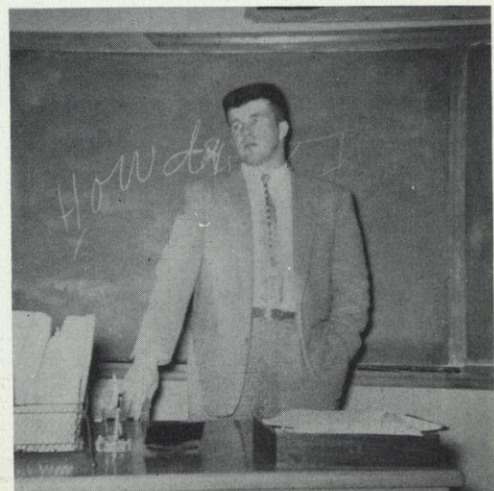
MISS MARCIA MEKELBURG
University of Wisconsin, B. S.
English



MR. JAMES KOWALSKY
University of Wisconsin,
B. M.
Band, Chorus

MR. THEODORE BOUCHER
Northland College, B. A.
Biology, History, Physical Education

MR. MAURICE McCORMICK
Platteville State, B. S.
Agriculture, Shop, Science





Seniors



JUDY ARNOLD

"It pays to be good, not much, but it pays."

Class Play	3, 4
Class Officer	1, 2, 3
Annual Staff	4
Prom Court	3
Chorus	2
Newspaper Staff	2, 3, 4
Forensics	1, 2, 4
Library Club	3
Dramatics Club	3, 4
Glee Club	3, 4
Fair Court	3



LORI BUDD

"Smart, happy, and in demand. She says no man will get her hand."

Class Play	3, 4
Class Officer	3
"B" Club	1
Annual Staff	4
Prom Court	1, 3
Prom Queen	1
Cheerleader	1, 2, 3, 4
Chorus	1, 2
Newspaper Staff	2, 3, 4
Forensics	1, 2, 3, 4
Library Club	3, 4
Dramatics Club	3, 4
Glee Club	2, 3, 4
Student Council	1

Class Motto

"Not At The Top,
But Climbing."

BETTY CAMPBELL

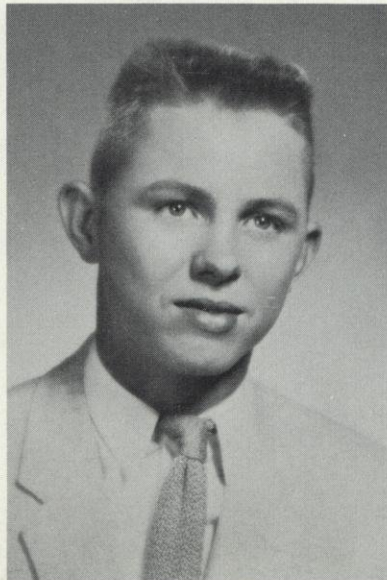
"Mischievous or work she's always there. A gal like her is very rare."

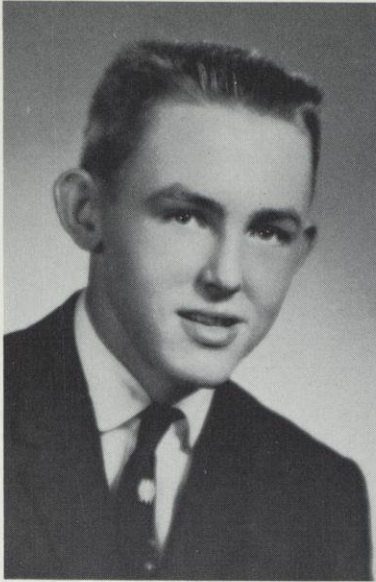
Class Play	3, 4
Class Officer	2, 3, 4
Chorus	1, 2
Newspaper Staff	3
Forensics	2, 3, 4
Library Club	3
Dramatics Club	3
Band	1, 2, 3, 4
Glee Club	2, 3, 4
Student Council	3

KENNETH BRATTLE

"Here I am, you lucky girls."

Class Play	3
"B" Club	1, 2, 3, 4
Prom Court	3
Chorus	1
Basketball	1, 2, 3, 4
Baseball	1, 2, 3, 4
Football	1, 2, 3, 4
FFA	1, 2, 3
Dramatics Club	3
Fair Court	2
Fair King	2





WILLIAM CARDEN

"Einstein was great, but just give me time."

Class Play	3
Class Officer	1
"B" Club	1, 2, 3, 4
Annual Staff	4
Prom Court	3
Prom King	3
Chorus	1
Basketball	1, 2, 3, 4
Baseball	1, 2, 3, 4
Football	1, 2, 3, 4
FFA	1
Dramatics Club	3



DONNA CLERKIN

"The harder I try the gooder to be, the worser I am."

Class Play	3, 4
Class Officer	4
Prom Court	4
Chorus	2
Newspaper Staff	1, 2, 3, 4
Forensics	1, 2, 3, 4
Library Club	3
Dramatics Club	3, 4
Band	2, 3, 4
Glee Club	2, 3, 4

Class Colors

Black and Silver

LINDA GILBERTSON

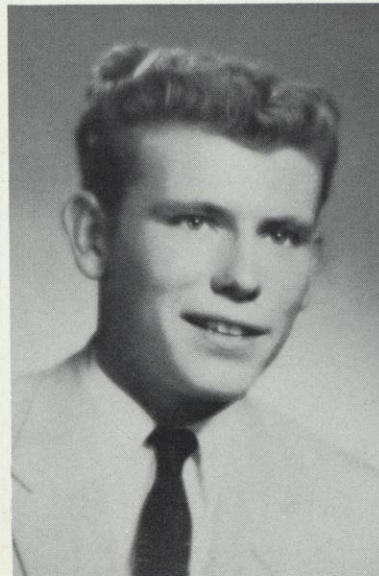
"Keen sense, common sense, always room for nonsense."

Class Play	3, 4
Class Officer	1, 3
Prom Court	3
Prom Queen	3
Cheerleader	2, 3, 4
Chorus	1, 2
Newspaper Staff	1
Forensics	1, 2
Library Club	3, 4
Dramatics Club	3, 4
Glee Club	2, 3, 4
Fair Court	2
Fair Queen	2

RONALD CUSHMAN

"It's better to sleep in class than to waste a perfectly good night."

Class Play	3, 4
Class Officer	1, 2
"B" Club	1, 2, 3, 4
Homecoming Court	4
Homecoming King	4
Chorus	1
Basketball	1, 2, 3, 4
Baseball	1, 2, 3, 4
Football	1, 2, 3, 4
FFA	1
Dramatics Club	3





SHIRLEY JONES

"In school she's shy and demure. Outside we're not so sure."

Chorus	1, 2
Newspaper Staff	3
Library Club	3
Glee Club	3

JANET HELGESON

"I believe everyone should have exercise. That's why I'm always giving the devil a run."

Class Play	3, 4
Class Officer	2, 3, 4
Annual Staff	4
Prom Court	3
Homecoming Court	1, 4
Chorus	2
Newspaper Staff	3, 4
Forensics	2, 3, 4
Library Club	2, 3, 4
Dramatics Club	3
Band	2, 3, 4
Glee Club	2, 3, 4
Student Council	2

Class Flower

White Camelia

BARBARA KOLE

"You'd never know to look at me, that I am filled with devilry."

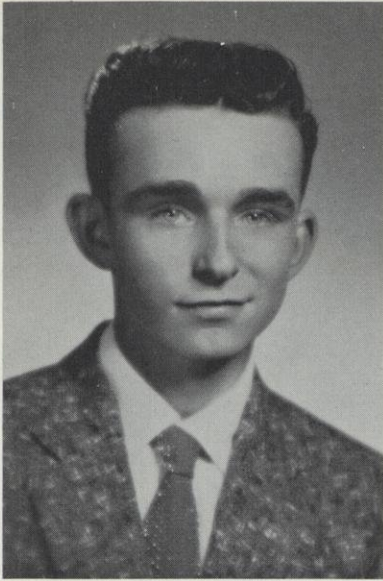
Class Play	3, 4
Class Officer	4
Annual Staff	4
Chorus	1, 2
Newspaper Staff	1, 2, 3, 4
Forensics	1, 2, 3, 4
Library Club	2, 3, 4
Dramatics Club	3
Band	1, 2, 3, 4
Glee Club	3, 4

SHARON KIELY

"She looks safe and sound, but so does gunpowder."

Chorus	3
Newspaper Staff	3, 4
Glee Club	4





THOMAS MASSEY

"The good die young, so why should I worry?"

Class Play	3, 4
Class Officer	4
"B" Club	1, 2, 3
Chorus	1, 2
Basketball	2, 3, 4
Baseball	1, 2
Football	1, 2
FFA	1, 2, 3, 4
Dramatics Club	3
Band	2, 3, 4
Fair Court	3
Fair King	3
Student Council	4



EILEEN MOEN

"When there's mischief to be done, she's always there to join the fun."

Class Play	3, 4
Cheerleader	3, 4
Chorus	1, 2
Newspaper	3, 4
Forensics	1, 2, 3, 4
Library Club	2
Dramatics Club	3, 4
Glee Club	2, 3, 4
Fair Court	4

LAWRENCE MYERS

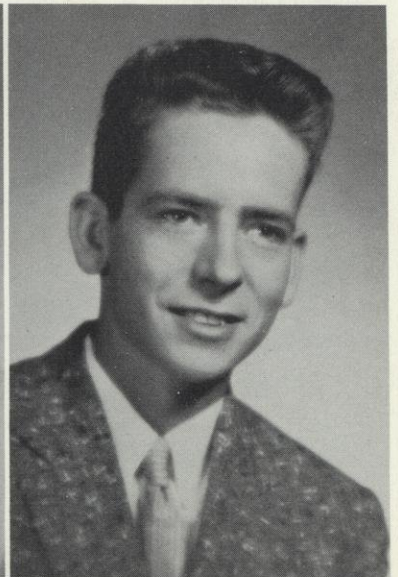
"When joy and duty clash, let duty go smash."

Class Play	3, 4
Class Officer	2
"B" Club	2
Homecoming Court	2
Chorus	1, 2
Basketball	1
Football	2
Dramatics Club	3
Band	1, 2, 3, 4

DONNA MOYER

"The more I see men the better I like dogs."

Chorus	1, 2
Newspaper Staff	3
Library Club	3
Glee Club	1





LINDA NELSON
 "A blonde - but not light-headed."

- Class Officer 3
- Chorus 1, 2
- Forensics 1, 2
- Glee Club 3

JOANN RANNEY
 "Sometimes quiet, sometimes shy, but the rest of the time, Oh, my!"

- Class Officer 1
- Chorus 1, 2
- Glee Club 2, 3
- Fair Court 1

MARILYN SEGEBRECHT
 "School days are considered best. When I get out I'm going to rest."

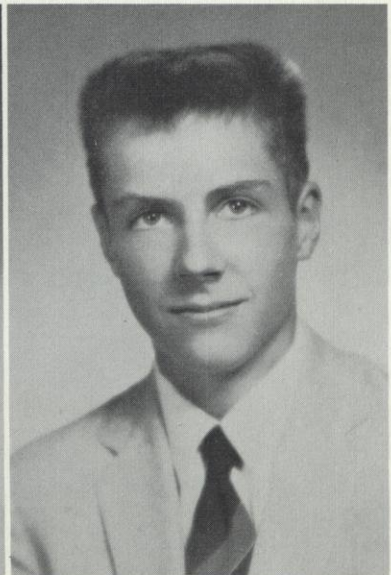
- Chorus 2
- Forensics 4
- Band 1
- Glee Club 2, 3, 4

KAREN POWELL
 "Love 'em all. You might miss a good one."

- Class Play 3, 4
- Homecoming Court 4
- Homecoming Queen 4
- Cheerleader 3
- Chorus 1, 2
- Newspaper Staff 3
- Forensics 2, 4
- Dramatics Club 3
- Band 3, 4
- Glee Club 2, 3, 4

WESLEY WATRUD
 "The devil's right-hand man."

- Class Play 3
- "B" Club 3
- Annual Staff 4
- Chorus 1
- Baseball 3
- Football 1, 3
- FFA 1, 2, 3, 4
- Dramatics Club 3



As We Were



BARBARA



KAREN



LARRY



JOANN



LINDA N.



LORI



BETTY



BILLY



JANET



EILEEN



DONNA M.



MARILYN



LINDA G.



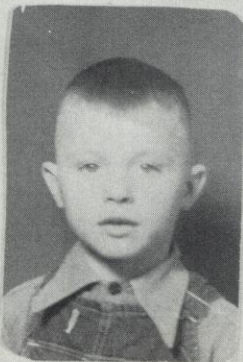
WESLEY



DONNIE



TOMMY



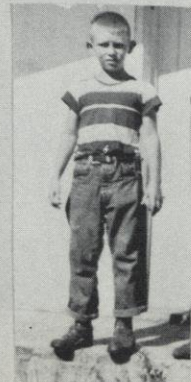
KEN



SHIRLEY



JUDY



RON



DONNA C.

FORGET US NOT

Little characteristics each Senior got,
Little things to think of, so you'll forget us not.
Judy Arnold remembered for her ability so rare,
That when there's Fritz or trouble she's always there.
Betty Campbell famous for music and wit,
When it comes to telling jokes she'll never quit.
We'll remember Barbara Kole for her sneaky way,
She can't hide her deviltry, try as she may.
Janet Helgeson in days, athletic and smart,
Also at night (just ask Denny) she played her part.
Marilyn Segebrecht is remembered for her quiet manner,
When it came to helping, she deserved a banner.
Ken Brattlie in studies didn't seem prone to shine,
Life, love, and sports were more his line.
Pants hung low, after girls like a shark,
Add hichies and sports, you have Bill Carden's trademark.
Ron Cushman, a laughable character, with sports ability rare,
Plus he and Sandy made a real cute pair.
Sharon Kiely, who a dare would never refuse,
We'll remember for her love-life, she'll never lose,
Eileen Moen we'll remember for riots and cute ways,
And how she made her nights as fun as her days.
When you hear car tires squeal,
You'll know Don Dimpfl is behind the wheel.
Donna Moyer for her men, especially Kelter Bros.,
Also Roger, Hunce and many others.
Wesley remember for his slow dragging style,
Also remembered for his bluff and wile.
Studious, quiet, bashful as can be,
This (unless speaking of girls) is Tom Massey.
Blonde, nice, with a quick-witted head,
Is what about Linda Nelson can be said.
Ready for a good time, and full of fun,
That is Jo Ann Ranney, the engaged one.
If auctioning for cuteness, Linda Gilbertson will sell,
P. S., to her friends, she's known as Rebel.
Snirley Jones, a brain, a riot, a real tire squealer,
But when it comes to a favor, she's a real fair dealer.
Romances and brains and a little French blood,
Add wit and trouble, you have smart Loris Budd.
A little short, a little dark, a little darey,
Add a little Ford you have Myers Larry.
Karen Powell stands for mischief, is a riot to know,
She also stands for sweetness and a lot of blow.
Donna Clerkin, talent extraordinary in dates and sports,
Gives devilish DJ both good and bad reports.
We've had riots and fun and some trouble, ah yes---
But friends, forget us not at B. H. S.

Class Poem

Class History

In September, 1955, we the '59 Senior Class charged into the brand new BHS building. We were here for four years and we let the world know of it. Some of this cockiness was knocked (and I mean knocked) out of us, however, on Initiation Day. But we had our advisor, Mr. McReynolds, to protect us so we all pulled through with minor injuries. The people elected to lead our bunch were: President, Bill Carden; Vice President, Ron Cushman; Secretary, Joanne O'Neil; Treasurer, Larry Meyers; Student Council, Lori Budd; and Class Reporter, Linda Gilbertson. Somehow we managed to get through that hectic first year.

Well, September '56 and we were back for more. Now we even had some of the other classes agreeing with us that we were doomed for greatness. Somewhere between Freshman and Sophomore years Nancy Burkhalter, Joanne O'Neil, and Max Czerwonka took leave of us. Mr. Lippert had the privilege of advising us and our class officers were: President, Ron Cushman; Vice President, Betty Campbell; Secretary, Judy Arnold; Treasurer, JoAnn Ranney; Student Council, Janet Helgeson; and Class Reporter, Lori Budd. Somehow, again we pulled through.

Well, '57, and we were big shots now - Juniors! The first big deal was getting our class rings. We'd no more than gotten over our big-headedness from that and "zoom" we initiated the Freshmen - that was really a riot! We sure scared the poor little devils. And then came our class play, "Hillbilly Weddin'." It was pretty great if we do say so ourselves. Finally came the dream of every high school class - Junior Prom. Our Japanese theme, "Sayonara," went over big and was really beautiful (expensive, too). Linda Gilbertson and Bill Carden were king and queen. Somewhere along the '57-'58 year we lost Julie Theobald and Dorothy Walstad. Miss Danielson got the honor of being class advisor (notice the gray hair). Our class was steered by: President, Lori Budd; Vice President, Judy Arnold; Secretary, Janet Helgeson; Treasurer, Linda Gilbertson; Student Council, Betty Campbell; and Class Reporter, Linda Nelson.

Finally came fall of '58. That dashing class that began in '55 were now on their last legs. We were the big shots of the school, and boy, we knew it. We had a million things to do before we left BHS and we were trying our best to do them well. Our Homecoming was a big success with Karen Powell and Ron Cushman as king and queen. Leon Marty, Donna Peterson, and Gary Burdick departed from the class and Don Dimpfl entered. The officers privileged to lead this lively class out were: President, Donna Clerkin; Vice President, Gary Burdick; Secretary, Betty Campbell; Treasurer, Janet Helgeson; Student Council, Tom Massey; and Class Reporter, Barb Kole. But before we left we wanted to leave a beautiful memory. So everyone dived into the work of putting out an extra good annual. To top everything off, we had a riot with our Senior Class Play - "The Cannibal Queen."

Well, '59 came to a close in May. Actually, we did love every minute of our four wonderful years at BHS (almost every minute, that is). This, then, is the background of the proud and mighty seniors of '59.

We, the Senior Class of '59, Barneveld High School, in the county of Iowa and the State of Wisconsin, being of sound mind (?) and memory after many long years of studying, so make this our last will and testament.

Judy Arnold wills her constant good humor and "why" to Mary Zepplin.

Donna Clerkin wills her ability to get away with practically anything to Harvey Durest.

JoAnn Ranney wills everything she has to anyone who wants it, except her ring and man.

Shirley Jones wills her "farming abilities" to Bev D. so she can help Ken out.

Donna Moyer wills her ability to say the wrong thing at the wrong time to Wanda Humphery.

Karen Powell wills her "more bounce to the ounce" to Edie D.

Eileen Moen wills her art equipment to Elayne M. to use for better or for worse.

Marilyn Segebrecht wills her quiet, studious ways to Fred M. - who needs them.

Barbara Kole wills her "halo and pitchfork" to Beatrice K. who, we're sure, will make good use of them.

Janet Helgeson wills her ability to get along with anyone and everyone to Lois Marty.

Betty Campbell wills her trombone to anyone who promises to make good use of it.

Linda Nelson wills her homemaking ability to Charlene H.

Linda Gilbertson wishes to retain all she acquired during her first seventeen years of earthly torture.

Loris Budd wills all (and we mean ALL) of her ex-boyfriends to the first 50 girls in need.

Bill Carden wills his successful teasing to Dave G. who's already got a good start.

Ron Cushman wills his pitching arm to Charles Theobald, if he promises to make as good use of it as Butch did.

Wesley Watrud wills his "preacher-like" ways to Dave R.

Tom Massey wills his "Horeb" girls to any one of the boys who wants them.

Larry Myers wills his "mechanical-know-how" to Herman K.

Don Dimpfl wills his mustache to Ron Jabs - also his custom-built razor in case the girls object too much.

Ken Brattle wills his crutches to the girls' Physical Ed Class.

Sharon Kiely wills her Club 18 memories to Helen Marty who's got quite a stack of them already.

We, the Senior Class, do hereby bequeath our "wise cracks" to the Freshmen; our BRILLIANT minds to the Sophomores; our old books to the Juniors; and our cheerful "goodbyes" to the teachers.

Class Will

Class Prophecy

- Judy Arnold: The Al Curls have just had their third pair of twins. Big plans are being made for a major league team in Black Earth.
- Ken Brattlie: Starting with the "Old Homestead," Ken has done well in real estate. He now owns all the village of Barneveld and Clay Hill, too.
- Lori Budd and Betty Campbell: Attractive stewardesses for Trans-World Airlines, have just retired and are settling down in Ridgeway and Platteville, respectively.
- Larry Myers, Wes Watrud, and Bill Carden, all four-star generals in the Air Force, have flown around the world in 24 hours - and next time they're going to use a plane.
- D. J. Clerkin: Her girls' basketball team, comparable to the Globe Trotters, have defeated all opposition in America. They are now headed for Russia!!!
- Ron Cushman, a road constructor, has just completed a new highway between Barneveld and Madison. It now only takes him 15 minutes to get to State Street.
- Don Dimpfl: He has just completed building three photography studios in New York, Chicago, and Hollywood. You thought Bob Cummings was bad!!!
- Linda Gilbertson: She has just completed 2 years in the WACS. Radio electronics interested her, too.
- Janet Helgeson: She and her husband have just finished building a new home and cheese factory. Business is growing by "leaps and bounds," just like the family is.
- Shirley Jones: She has just been chosen as Postmaster General of the United States; easier for handling her mail for the boys in the Armed Forces.
- Barb Kole: After receiving her B. A., B. S., B. M., B. E., M. A., M. S., Ph.D. degrees she is now working for her MAN!!!
- Sharon Kiely and Donna Moyer: They have just built their own Club 18; more economical that way.
- Eileen Moen: She is now raising a family of little Arndt's in the sunny San Fernando Valley in California.
- Tom Massey, an engineer, makes Chevy space rockets. He is now operating on a world-wide basis.
- Marilyn Segebrecht: With her sewing ability, she is now designing dresses for the Queen of England.
- Kay Powell: After searching the Western Hemisphere for a suitable husband, she is now concentrating her efforts on Europe (to start with).
- Joanne Ranney: They, Jo and Arlin, are now living in a home overlooking Niagara Falls, where they have fond memories of a certain June day.
- Linda Nelson: She is now married to Don and lives in Minnesota. Need we say more?
- The first ten years after our graduation from high school will have been very successful. What will the next ten years bring?

NAME	NICKNAME	PET PEEVE	FAVORITE SAYING	FAVORITE PASTIME
Ronald Cushman	"Butch"	Fender Benders	Madison, here I come!	Going Steady!!
Eileen Moen	"Cleo"	Bragging Irish	All rightie!	Dates!!
Barbara Kole	"Barb"	Nothing to do	Like wow!	Driving a red Buick
Donna Moyer	"Moyer"	Staying home	Oh, shoot!	Going to club
Shirley Jones	"Shirl"	Work	Darn, darn, double darn	Going to Club 18
Donald Dimpfl	"Diamond Don"	When they say no	Oh, va	Rodding
Donna Clerkin	"DJ"	Teachers	Oooh, baby	Teasing teachers
Janet Helgeson	"Jan"	Unfriendly people	Oh, my word	Sports
Ken Brattlie	"Pete"	Girls that tickle	Oh, heck	Parking
Linda Nelson	"Lin"	Homework	Oh, for heaven's sake	Out-of-State dates
Loris Budd	"Lori"	Conceited Norwegians	That's the way it goes	Dancing
Bill Carden	"Chico"	Teachers	Eat, drink, and be merry	Deer and dear hunting
Sharon Kiely	"Sha-Kay"	Not going to club	Oh, ya	Going to club
Marilyn Segebrecht	"Maryland"	Kid brothers	Oh, gosh	Sewing
Judith Arnold	"Judie"	Night jobs	We won't sweat that	Seeing Al
Betty Campbell	"Bet"	Fords	Really!	Playing piano
Larry Myers	"Cat-hair"	Teachers	Is that right	Working on cars
Karen Powell	"Kay"	Interruptions	I dare you	Dave
JoAnn Ranney	"Jo"	Waiting	Real gone	Going to club
Linda Gilbertson	"Rebel"	Getting up in the morning	I couldn't care less	Arguing
Thomas Massey	"Tom"	Staying home nights	What's on tonight	Driving around
Wes Watrud	"Sam"	Women drivers	I'll try anything once	Doing what comes naturally



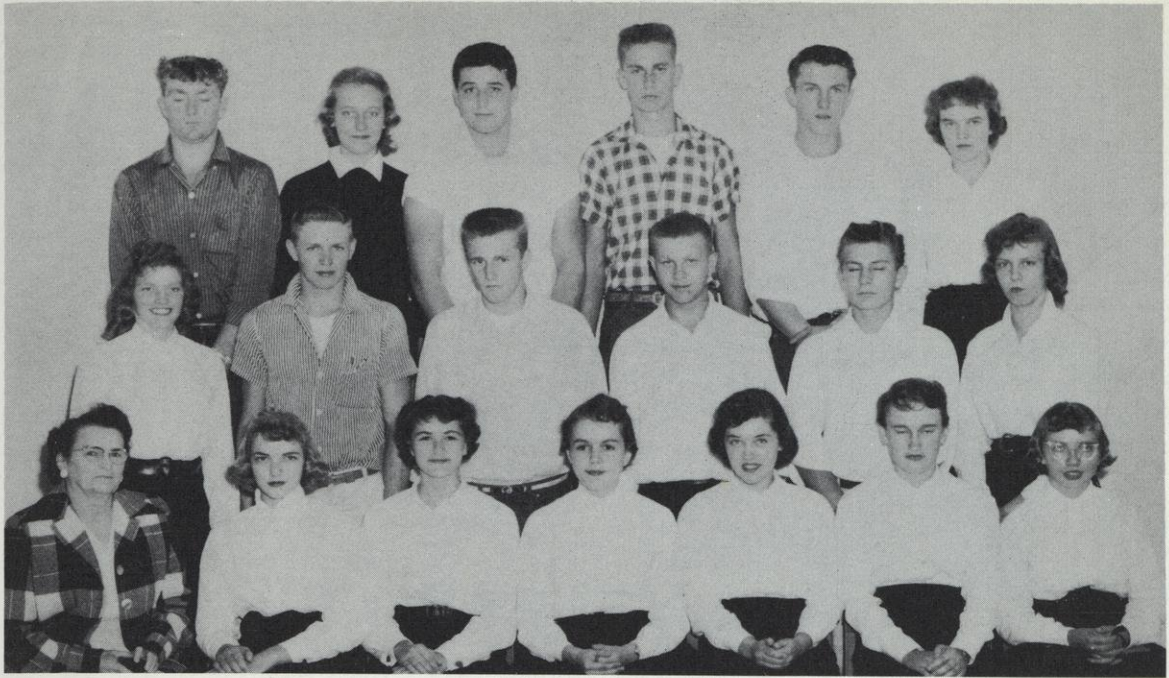
Class Interviews



JUNIOR SENIOR
PROM



Juniors



FIRST ROW: Mrs. Owens, L. Marty, H. Marty, A. Weck, B. Leuthold, C. Humphrey, K. Friedli. SECOND ROW: R. Amble, L. Marty, R. Pollack, D. Moen, D. Ranney, F. Budd. THIRD ROW: H. Knight, B. Kole, F. Meyers, K. Powell, R. Jabs, W. Anderson.

- President - - - - - FAYE BUDD
- Vice President - - - - - RUTH AMBLE
- Secretary - - - - - ANN WECK
- Treasurer - - - - - BETTY LEUTHOLD
- Student Council - - - - - FRED MEYER
- Class Reporter - - - - - WANDA ANDERSON





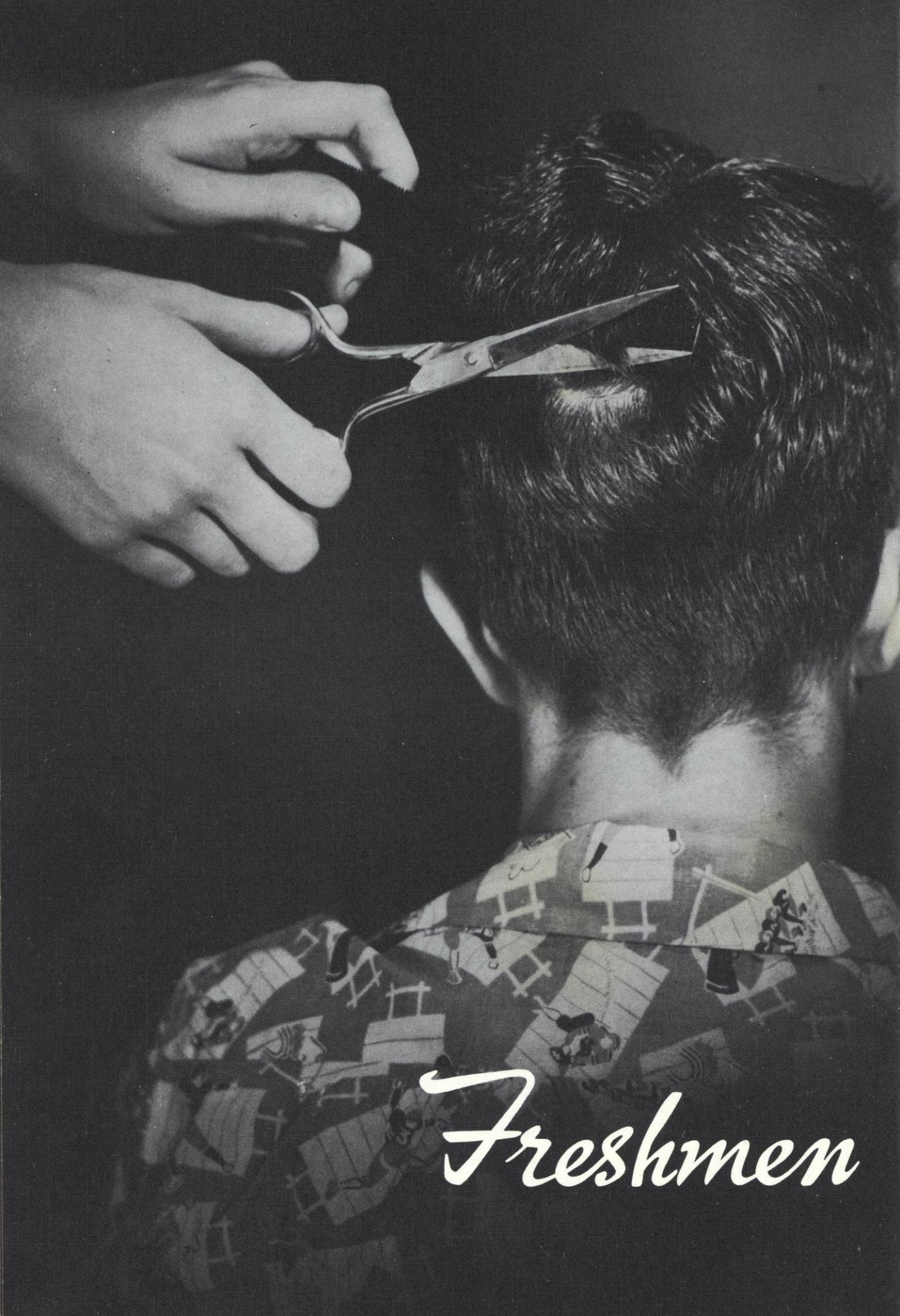
Sophomores



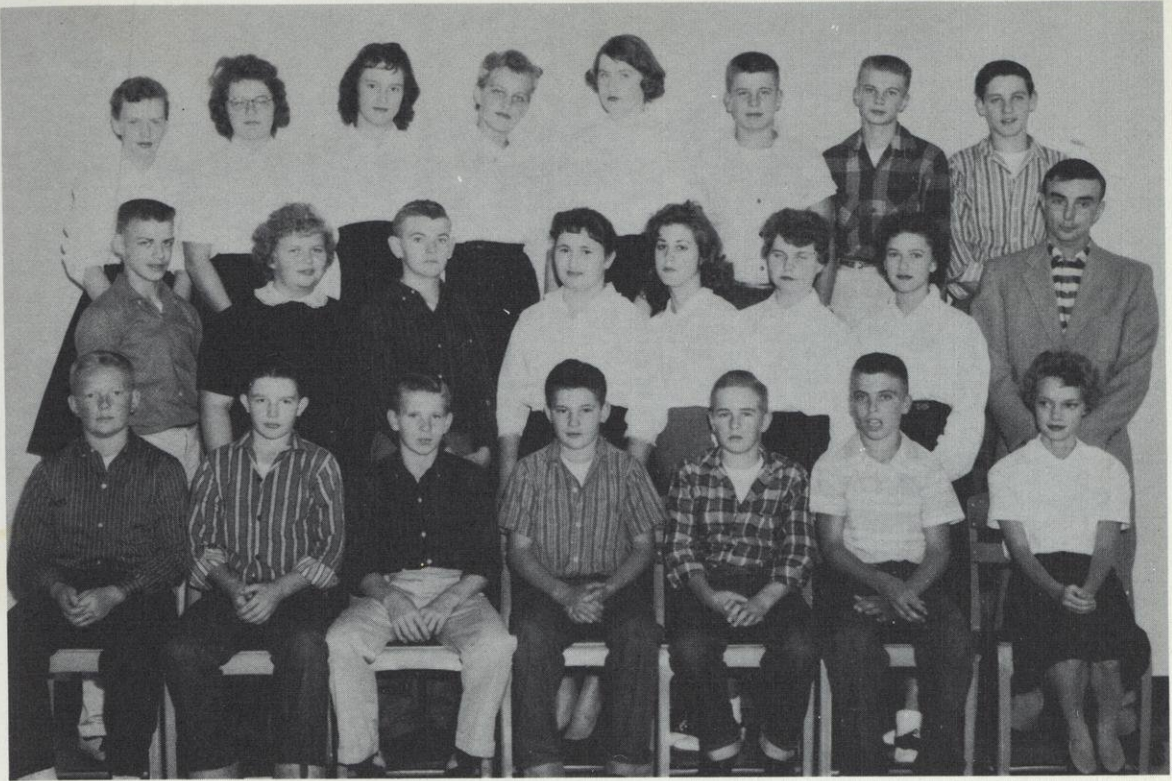
FIRST ROW: C. Theobald, L. Arneson, D. Leuthold, E. Moen, D. Budd, H. Duerst.
 SECOND ROW: E. Osborn, S. Harris, D. Gilbertson, J. Helmenstein, J. Burreson, L.
 Theobald. THIRD ROW: R. Moyer, B. Hughes, B. Dodge, M. Zeppelin, C. Carden,
 Mr. Kowalsky.

- President - - - - - - - - - - -BILL HUGHES
- Vice President - - - - -CHARLES THEOBALD
- Secretary - - - - - - - - - -JOANN BURRESON
- Treasurer - - - - - - - - - -SANDY HARRIS
- Student Council - - - - - - - -BEVERLY DODGE
- Class Reporter - - - - - - -LANE THEOBALD





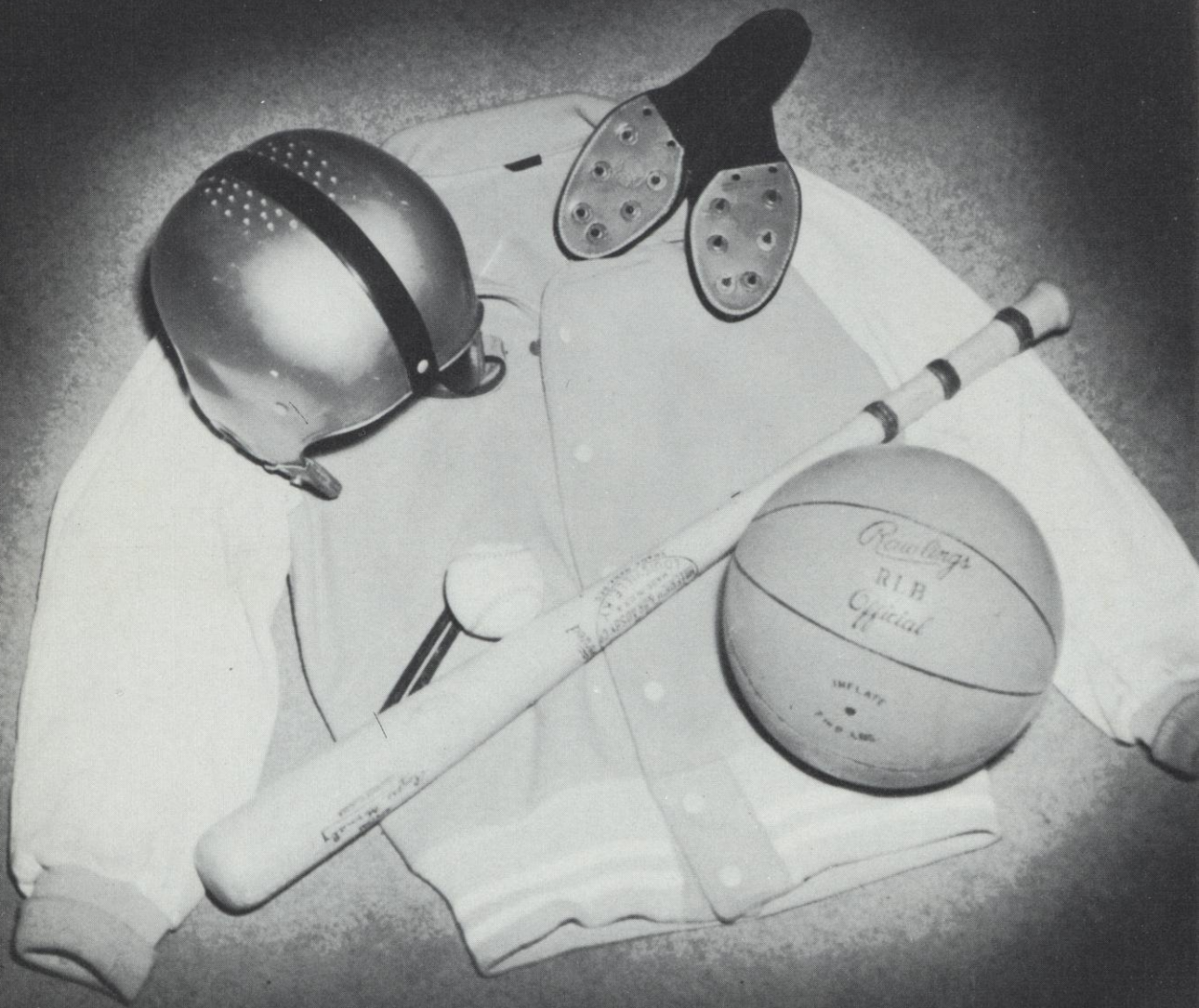
Freshmen



FIRST ROW: T. Arneson, B. Harris, N. Ranney, J. Hughes, L. Marty, F. Frame, S. Arneson. SECOND ROW: D. Theobald, J. Olsen, A. Doescher, D. Holmes, J. Osborn, D. Jones, K. Burdick, Mr. Boucher. THIRD ROW: S. Burns, R. Watson, W. Humphrey, L. Nelson, M. Stenseth, D. Williams, L. Paulson, J. Darrow.

President - - - - - DONNA JONES
 Vice President - - - - - WANDA HUMPHREY
 Secretary - - - - - JOHN HUGHES
 Treasurer - - - - - DIANE HOLMES
 Student Council - - - - - DOUG THEOBALD
 Class Reporter - - - - - LARRY MARTY





Athletics

Football



FIRST ROW: R. Pollock, R. Jabs, B. Carden, H. Knight, F. Meyer, K. Powell, D. Budd. SECOND ROW: B. Hughes, D. Theobald, D. Williams, C. Theobald, R. Cushman, D. Gilbertson, W. Watrud, D. Leuthold, Coach Boucher.

			WE	THEY
September	13, 1958	Cobb	20	7
September	20, 1958	Monfort	6	57
September	26, 1958	Arena	7	12
October	4, 1958	Hollandale	18	12
October	10, 1958	Livingston	13	45
October	17, 1958	Highland	20	27
October	24, 1958	Black Earth	19	33

Compliments of DR. MARSHALL



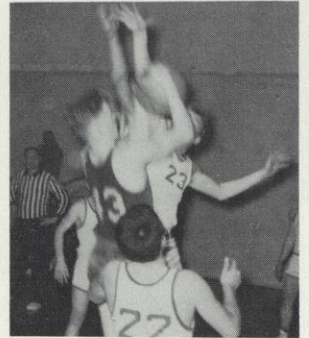
"A" Team

FIRST ROW:

F. Meyers
 R. Cushman
 B. Carden
 K. Brattlie
 R. Jabs

SECOND ROW:

Mr. Boucher
 R. Pollock
 C. Theobald
 K. Powell
 B. Hughes
 D. Theobald



Basketball Teams



"B" Team

FIRST ROW:

D. Gilbertson
 D. Theobald
 B. Hughes
 D. Leuthold
 J. Helmenstine
 Mr. Boucher

SECOND ROW:

R. Moyer
 D. Williams
 D. Budd
 J. Hughes
 J. Darrow
 T. Arneson
 L. Paulson

Black Earth, Barneveld Win

SAUK CITY — Barneveld and Black Earth won first round games Monday night and gained the semi-finals of the Sauk City sub-district high school basketball tournament.

Barneveled nipped Arena, 35-33, to gain a berth in Friday's semi-finals against Mazomanie, while Black Earth edged Lodi, 59-55, and will meet Sauk City.

Pete Thorson's 27 points sparked Black Earth's triumph, triggered by a 25-16 first-half scoring advantage.

Barneveld trailed Arena at half-time, but rallied with a 23-15 scoring edge in the second half to win.

Arena—33			Barneveld—35				
	fg	ft	pf		fg	ft	pf
Peterson,f	4	2	3	Cushman,f	5	0	3
Baker,f	1	0	3	Carden,f-c	4	6	1
Ranum,c	3	2	4	Powell,c	0	0	1
Drah'brg,s-c	1	2	1	Hughes,s-f	0	4	0
J.Murphy,s	3	1	0	C.Theobald,s	2	0	4
Anding,s	1	0	0	Pollock,s	1	1	4
G.Murphy,s	0	0	0				
Totals ...	13	7	11	Totals ...	12	11	13
Score by Periods							
Arena	10	8	3	12—33			
Barneveld	9	3	10	13—35			
FTM: A 11, B 2.							



Champion Montfort turned back Barneveld, 61-55, Friday night and finished the Iowa County High School League's basketball race with a two-game lead over the pack.

Mike Larson scored 24 points for Coach Bob Schultz's Hilltop-

Barneveld—55				Montfort—61			
	fg	ft	pf		fg	ft	pf
Cushman,f	9	2	2	McVey,f	1	0	4
Carden,f	6	3	2	Larson,f	10	4	2
Powell,c	2	1	4	Mathews,c	1	0	2
Hughes,s	0	3	2	Gundlach,s	7	4	1
Theobald,s	1	0	0	Johns,s	2	2	0
Pollock,s	4	2	2	Murray,s	2	3	2
				Novotony,s	1	0	3
Totals ...	22	11	12	Totals ...	24	13	14
Score by Periods							
Barneveld	15	15	7	18—55			
Montfort	9	14	15	23—61			
FTM: B 5, M 5							
B Teams: M 37, B 34 (overtime)							



Linden—58				Barneveld—69			
	fg	ft	pf		fg	ft	pf
Fauli,f	5	2	3	Hughes,f	2	5	3
Crapp,f	0	0	0	Powell,f	0	0	3
Liddicoat,f	6	1	4	Carden,c	4	4	4
T.Hackett,c	0	1	4	Cushman,s	12	6	4
Alderman,s	2	0	0	C.Theobald,s	2	2	4
A.Hackett,s	7	2	5	Pollock,s	5	2	2
Rothwell,s	4	4	2	D.Theobald,s	0	0	0
Totals ...	24	10	18	Totals ...	26	19	20
Score by Periods							
Linden	15	17	9	17—58			
Barneveld	8	20	19	22—69			
FTM: L 15, B 7.							
B Teams: L 43, B 31.							

Basketball Snaps

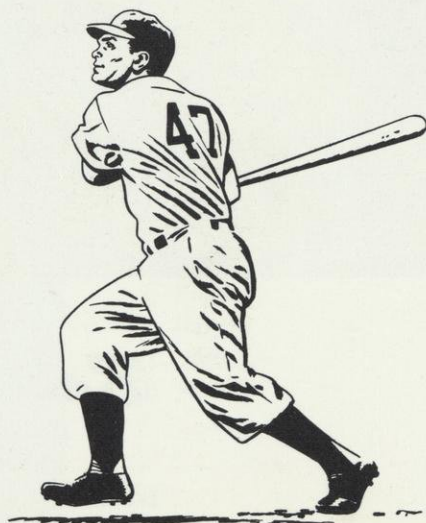
DR. MARTELL, Dentist, Dodgeville, Wisconsin
 DR. D. R. DUNBAR, Dentist, Dodgeville, Wisconsin



FIRST ROW: R. Pollock, J. Helmenstine, D. Gilbertson, C. Theobald, W. Watrud,
 D. Ranney, D. Leuthold, D. Budd. SECOND ROW: K. Brattlie, R. Moyer, K. Powell,
 F. Meyers, R. Jabs, B. Carden, B. Hughes, R. Cushman, Mr. Boucher.



*B
a
s
e
b
a
l
l*



PHIP'S BOWLING ALLEY
 Mount Horeb, Wisconsin
 COLLINS & HYING
 Dodgeville, Wisconsin

Football Cheerleaders

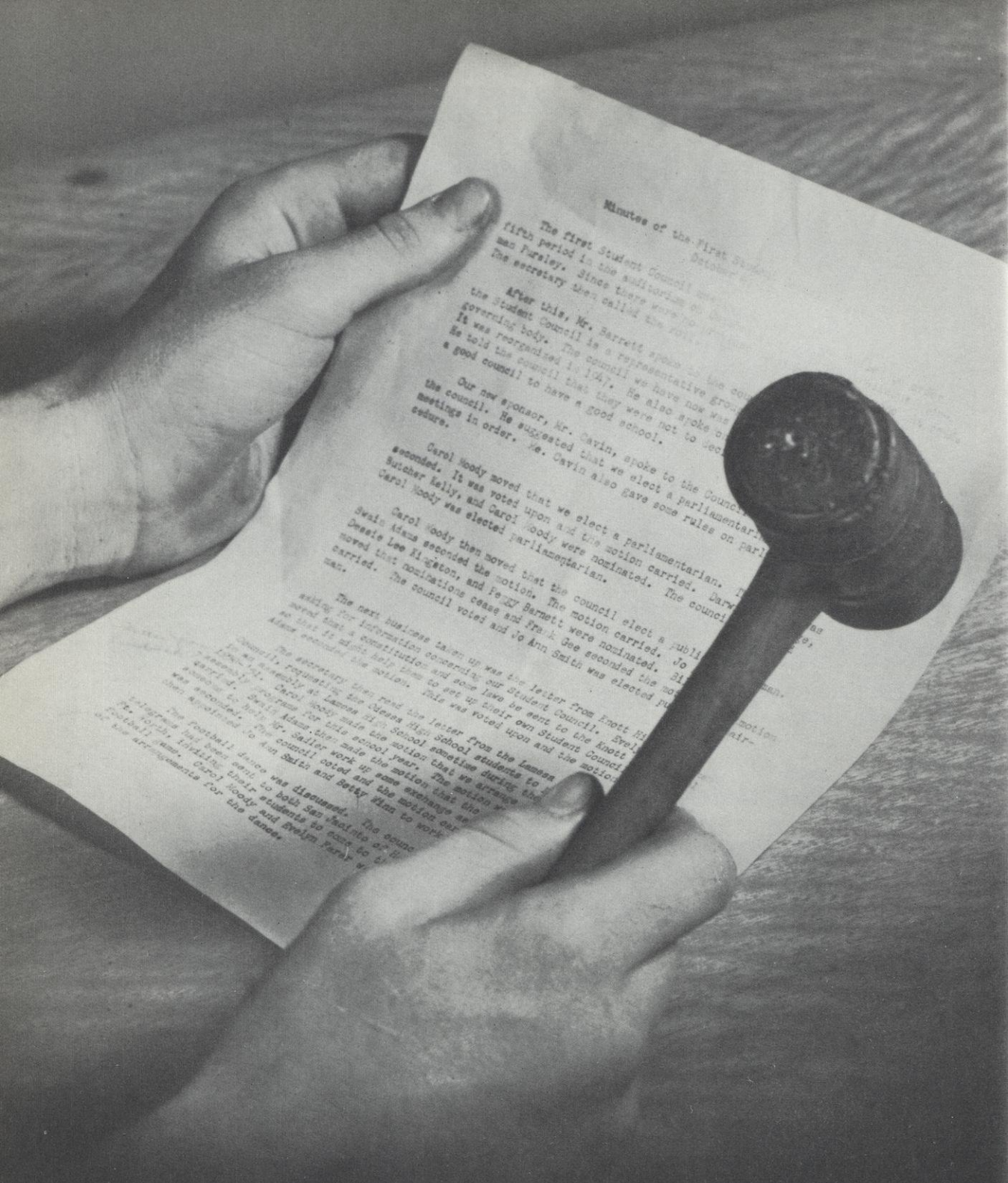


FIRST ROW: Betty Leuthold, Ann Weck, Linda Gilbertson. SECOND ROW: Lori Budd, Sandy Harris, Ruth Amble.

Basketball Cheerleaders



FIRST ROW: Linda Gilbertson, Sue Arneson, Ann Weck. SECOND ROW: Lori Budd. THIRD ROW: Eileen Moen, Jo Burreson, Betty Leuthold.



Minutes of the First Student Council Meeting
October 1947

The first Student Council meeting was held during the fifth period in the auditorium of the school building. Mr. Barrett, the secretary, then called the roll.

After this, Mr. Barrett spoke to the council and the Student Council is a representative governing body. The council was now recognized as the governing body. He also spoke on the fact that they were not to be a good council to have a good school.

Our new sponsor, Mr. Gavin, spoke to the council. He suggested that we elect a parliamentarian in order. Mr. Gavin also gave some rules on procedure.

Carol Moody moved that we elect a parliamentarian. The motion was seconded. It was voted upon and the motion carried. Darryl Satcher Kelly, and Carol Moody were nominated. Carol Moody was elected parliamentarian.

Carol Moody then moved that the council elect a public seal. Adams seconded the motion. The motion carried. Jo Desale Lee Kingston, and Frank Gee were nominated. The motion carried. The council voted and Jo Ann Smith was elected public seal.

The next business taken up was the letter from Ernest E. Adams, requesting the class high school students to meet at the assembly at Lamesa High School during the year. Carol Moody made the motion that we arrange to meet at Lamesa High School during the year. The motion was seconded. The council voted and the motion carried. The council voted and the motion carried.

The secretary then read the letter from the Lamesa High School students to the class high school students to meet at the assembly at Lamesa High School during the year. Carol Moody made the motion that we arrange to meet at Lamesa High School during the year. The motion was seconded. The council voted and the motion carried. The council voted and the motion carried.

Organizations

Chorus



FIRST ROW: M. Stenseth, S. Arneson, D. Moyer, B. Leuthold, H. Marty, D. Holmes, L. Gilbertson, L. Budd, J. Osborn, K. Burdick, D. Jones, K. Friedli. SECOND ROW: Mr. Kowalsky, S. Burns, J. Olsen, A. Weck, E. Moen, R. Watson, L. Marty, F. Budd, L. Nelson, M. Segebrecht, R. Amble, C. Humphrey. THIRD ROW: D. Clerkin, K. Powell, S. Kiely, J. Arnold, M. Zeppelin, C. Carden, W. Humphrey, W. Anderson, J. Bureson, S. Harris, B. Dodge, B. Kole, B. Kole, J. Helgeson.

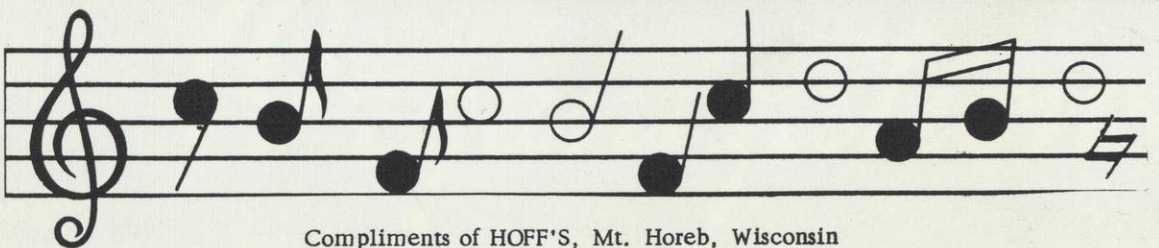
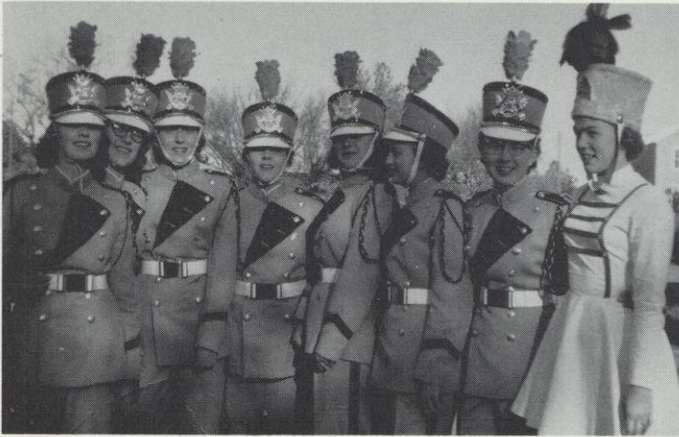
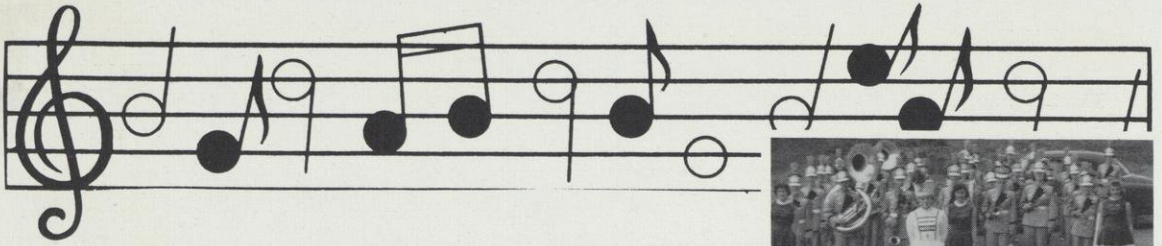
Chorus Officers



President - - - - - BEATRICE KOLE
Vice President - - - - - DONNA CLERKIN
Secretary-Treasurer - - - SANDRA HARRIS

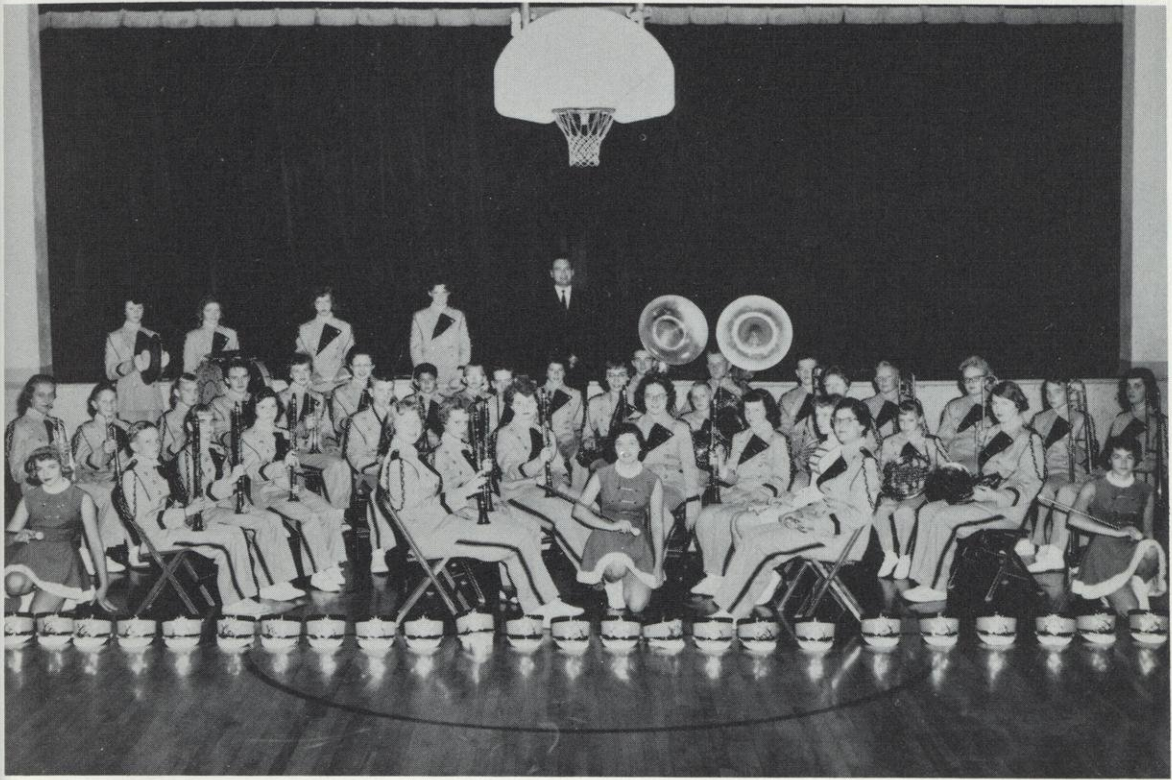
Compliments of OLSON'S RESTAURANT AND BAKERY

Band Snaps



Compliments of HOFF'S, Mt. Horeb, Wisconsin

Band



MAJORETTES: L. Marty, B. Leuthold, H. Marty. FIRST ROW: J. Helgeson, S. Arneson, D. Jones, B. Watson, S. Harris, W. Anderson, M. Zeplin. SECOND ROW: H. Durest, J. Watson, D. Leuthold, D. Williams, L. Myers, B. Kole, L. Komplin, E. Osborn, S. Arneson, M. Stenseth. THIRD ROW: B. Kole, W. Arneson, S. Arneson, C. Humphery, J. Bureson, S. Harris, B. Schaller, L. Anderson, E. Duesler, T. Massey, D. Dimpfl, J. Segebrecht, T. Arneson, L. Arneson, B. Williams, B. Campbell. FOURTH ROW: K. Powell, R. Amble, F. Budd, D. Clerkin, Director: Mr. Kowalsky.

Band Council



FIRST ROW: L. Myers, B. Campbell, J. Helgeson. SECOND ROW: L. Arneson, B. Kole, R. Amble. THIRD ROW: B. Watson, B. Kole, W. Anderson, S. Arneson.



Library Club

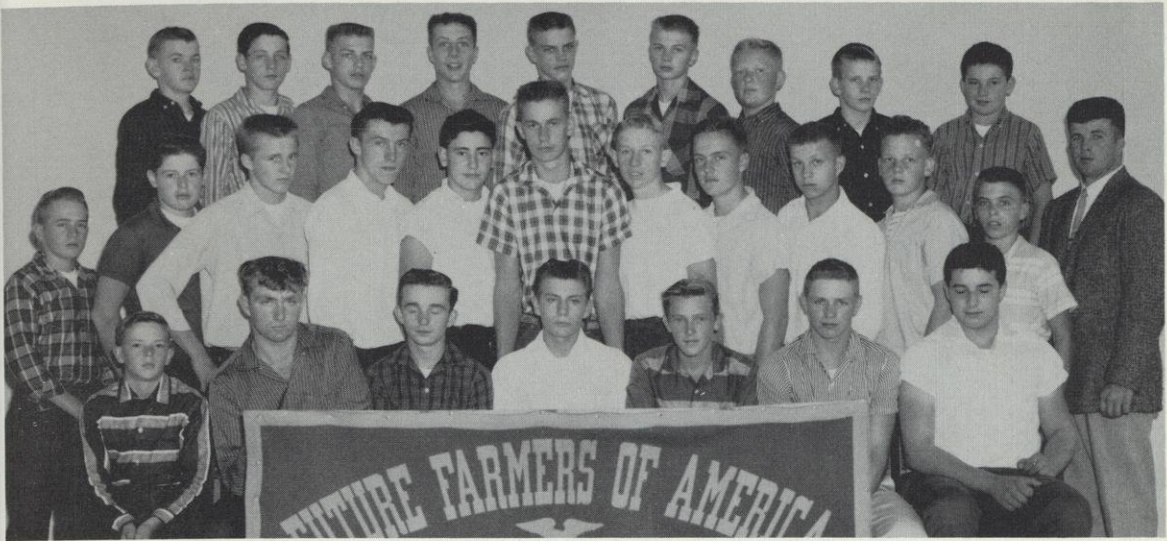
FIRST ROW: D. Holmes, B. Kole, W. Anderson, A. Weck, B. Kole, L. Gilbertson, Mrs. Owens. SECOND ROW: S. Harris, J. Burreson, F. Budd, L. Budd, D. Ranney, J. Olsen, L. Marty. THIRD ROW: L. Theobald, B. Dodge, F. Meyers, M. Stenseth, J. Helgeson.



Student Council

B. Dodge, F. Meyers, Mr. Ernst, T. Massey, D. Theobald.

F.F.A



FIRST ROW: H. Duerst (Sentinel), H. Knight (Reporter), T. Massey (Secretary), D. Ranney (President), G. Burdick (Vice President), L. Marty, F. Meyers (Treasurer).
SECOND ROW: L. Marty, C. Theobald, R. Pollock, R. Jabs, B. Hughes, K. Powell, R. Moyer, J. Helmenstein, D. Moen, D. Gilbertson, F. Frame. THIRD ROW: E. Doescher, J. Darrow, D. Theobald, W. Watrud, L. Theobald, L. Paulson, T. Arneson, N. Ranney, J. Hughes, Mr. McCormick.

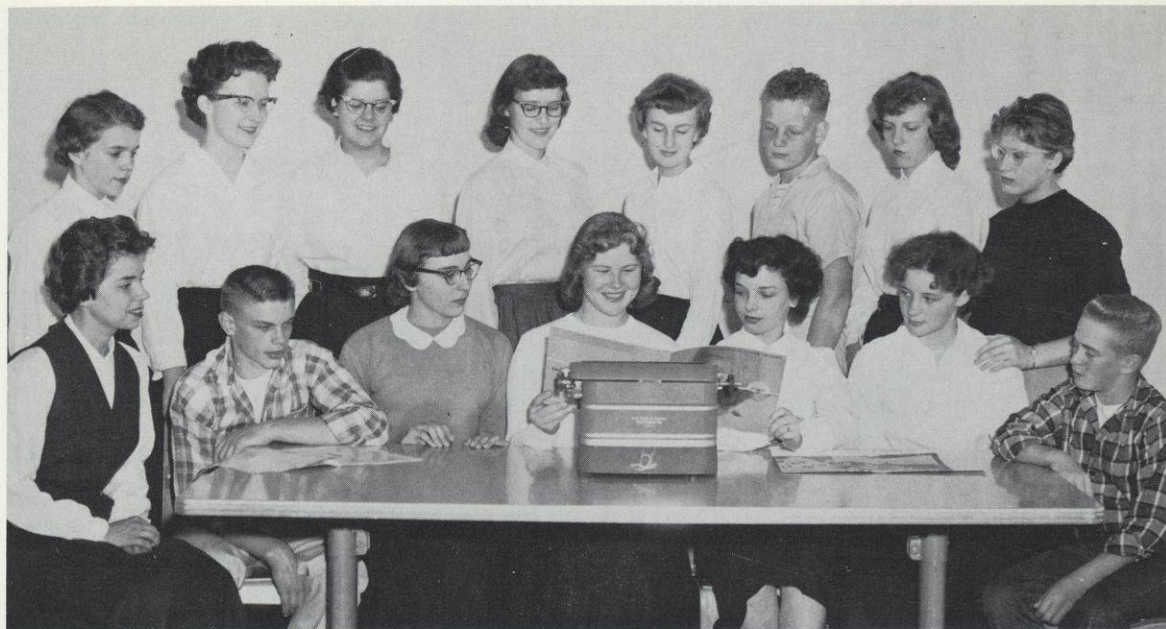
"B" Club



FIRST ROW: D. Theobald, J. Helmenstein, R. Cushman, W. Watrud, B. Carden, D. Budd, Mr. Boucher. SECOND ROW: R. Pollock, K. Brattlie, D. Ranney, R. Moyer, D. Leuthold, C. Theobald, D. Gilbertson. THIRD ROW: H. Knight, F. Meyers, K. Powell, R. Jabs, B. Hughes, D. Williams.



Activities



Newspaper Staff

FIRST ROW: Miss Mekelburg, Advisor, L. Theobald, B. Kole, J. Helgeson, L. Budd, D. Clerkin, L. Marty. SECOND ROW: A. Weck, S. Harris, M. Zeppelin, B. Dodge, J. Burreson, D. Gilbertson, F. Budd, E. Osborn.



Newspaper Typists

FIRST ROW: L. Marty, H. Marty, B. Leuthold, C. Humphrey, D. Moyer, K. Friedli. SECOND ROW: R. Amble, W. Anderson, B. Kole, Miss Danielson, Advisor, J. Arnold, F. Budd.



FIRST ROW: E. Moen, S. Burns, J. Darrow, L. Gilbertson, B. Leuthold, E. Moen, B. Harris, J. Hughes. SECOND ROW: Miss Danielson, J. Arnold, W. Humphrey, L. Nelson, L. Budd, D. Ranney, J. Olsen, D. Holmes, E. Osborn, Mr. McCormick. THIRD ROW: B. Hughes, M. Stenseth, D. Clerkin, C. Carden, S. Harris, J. Bureson.

THE SUMMONS OF SARIEL
Characters

The Clay - - - - - JERRY DARROW
 The Spirit - - - - - JO ANN BURESON
 The Graduate - - - - - SANDRA HARRIS
 Sariel, The Angel of Death - - - - - DAVE RANNEY
 The Suicide - - - - - DONNA CLERKIN
 The Old, Old Women - - - - - LAURETTA NELSON
 The Young Mother - - - - - ELAINE MOEN
 The Guardian Angel - - - - - JOHN HUGHES
 The Blind Child - - - - - LINDA GILBERTSON



Dramatics
Club



Forensics

HUMOROUS

Joanne Bureson

Sharon Burns

Eileen Moen

Janet Helgeson

Betty Campbell

Donna Clerkin

Karen Powell

SERIOUS

Sandra Harris

Judy Olsen

Betty Leuthold

Carol Carden

Judy Arnold

Mary Stenseth

Beverly Dodge

Lauretta Nelson

Dianne Holmes

ORIGINAL ORATION

Barbara Kole

FOUR-MINUTE SPEECH

Mary Zeplin

Wanda Humphery

NON-ORIGINAL ORATION

Loris Budd

Beatrice Kole

INTERPRETIVE SPEECH

Marilyn Segebrecht

SAM ARNESON, Insurance Agency, Barneveld, Wisconsin

CYRIL B. BURNS, Studios of Photography, Mt. Horeb, Wisconsin



Prom Court



Loris Budd, Judy Arnold, Janet Helgeson, Ann Weck; Queen, Linda Gilbertson; King, Bill Carden; Marcia Carden, Roger Jabs, Ted Theobald, Denny Carden, Kenneth Powell, Ken Brattlie.



QUALITY FOOD STORE, Barneveld, Wisconsin
DAVIES CLOTHING STORE, Dodgeville, Wisconsin

Prom Snaps



Prom Court



Queen: LINDA GILBERTSON
King: BILL CARDEN



Howard Kenny Band



Lori Budd and Ken Brattlie
(Members of Court)



Beatrice Kole and Darlene Beckwith
(Admission Takers)
Faye Budd (Guest)



Karen Powell and Barbara Kole
(Hostesses)

#1 Hillbilly Wedding



CAST OF CHARACTERS

Paw Belsnickle -----LARRY MYERS
 Maw Belsnickle -----JANET HELGESON
 Ceelie Belsnickle -----DONNA CLERKIN
 Bonnie Mae Belsnickle -----LORI BUDD
 Juney Mae Belsnickle ----- LINDA GILBERTSON
 Four Belsnickle -----DOROTHY WALSTAD
 Five Belsnickle ----- KAREN POWELL
 Six Belsnickle ----- BETTY CAMPBELL
 Obeey Upschlager ----- BILL CARDEN
 Chiz Upschlager ----- TOM MASSEY
 Ronald Maxwell ----- RONALD CUSHMAN
 Lucy Maxwell ----- BARBARA KOLE
 The Reverend -----WESLEY WATRUD
 Cousin Zeke ----- LEON MARTY
 The Cousins ----- DONNA PETERSON
 JUDY ARNOLD
 EILEEN MOEN
 KEN BRATTLE
 JULIE THEOBALD

TICKET SELLERS

SHARON KIELY

DONNA MOYER

USHERS

LINDA NELSON

MARILYN SEGEBRECHT

PROMPTING, LIGHTING, AND SOUND EFFECTS

JULIE THEOBALD, EILEEN MOEN, SHIRLEY JONES, GARY BURDICK,
 and JOANNE RANNEY.



*Our Junior
 Class Play*

BARNEVELD LUMBER COMPANY
 Eggum & Johnson, Mt. Horeb, Wis.



Homecoming Snaps



Homecoming Court



Sammy Eggum Band



K. Collins, D. Powell



King: Ron
Queen: Karen



King: Ron Queen: Karen



Royalty

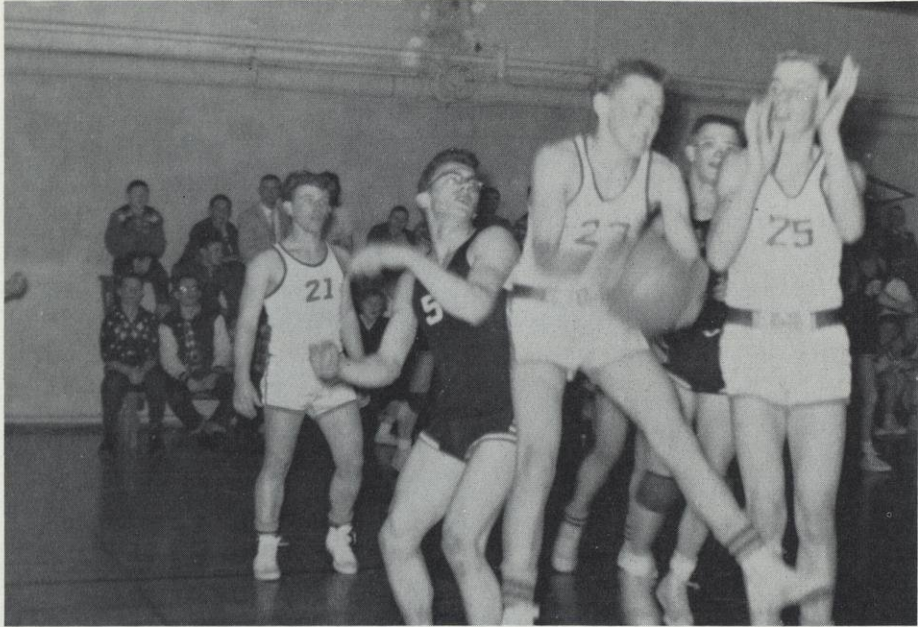
DR. B. M. ZIBOLSKY
Chiropractor
Dodgeville, Wisconsin

Senior Homecoming



Dennis Powell, Karol Collins, Donald Budd, Kenneth Powell, Dennis Carden,
King - Ronald Cushman, Queen - Karen Powell, Janet Helgeson, Beatrice
Kole, Sue Ann Arneson, Darcy Powell, Karon Collins.

Homecoming Game



That's the way, Bill!!!



Russ



Senior Stars

Linda, Ann, Lori

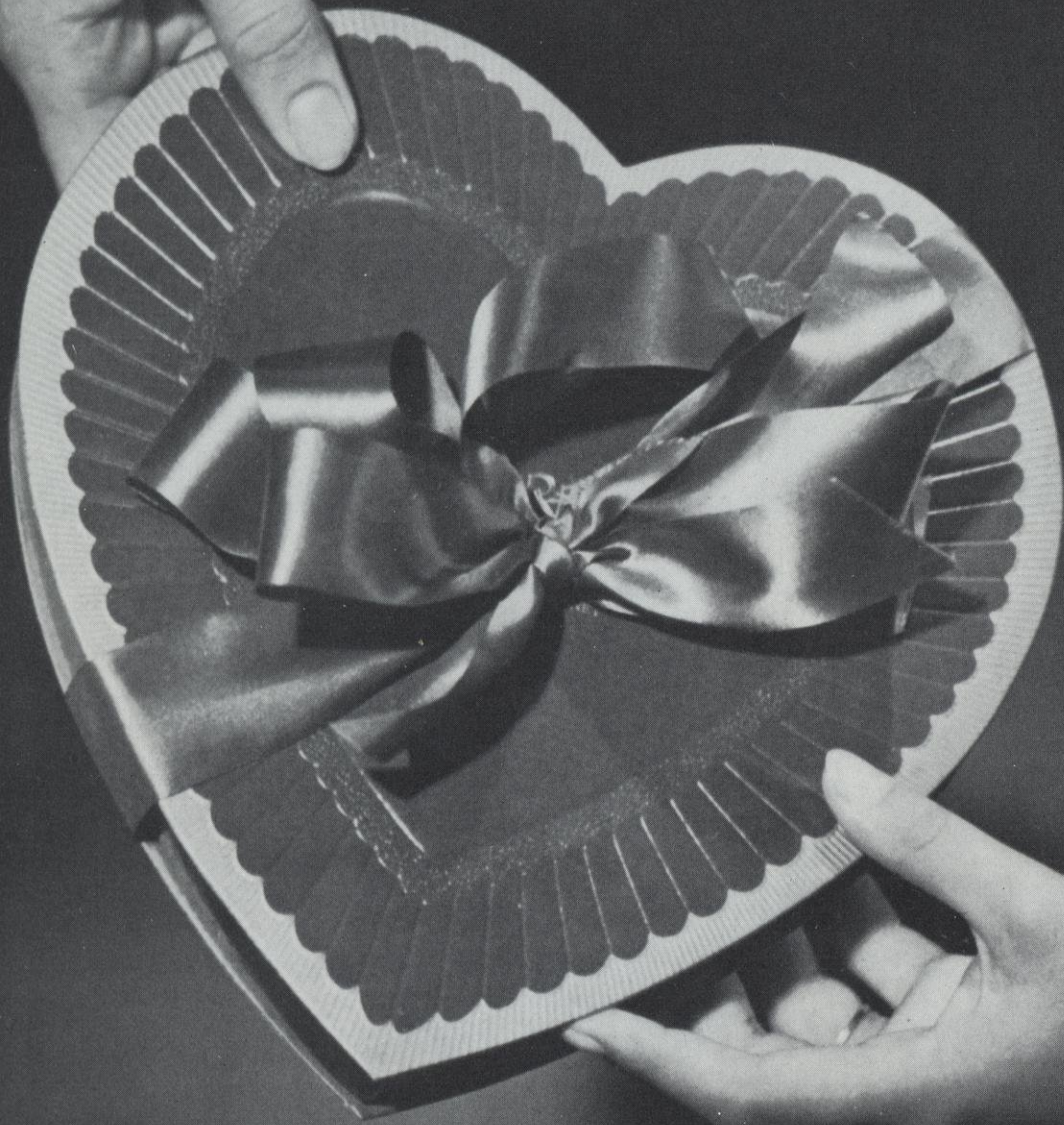




Annual Staff

Adviser - - - - - MR. ERNST
 Co-Editors - - - - - JANET HELGESON
 BARBARA KOLE
 Business Managers - - - - - LORI BUDD
 JUDY ARNOLD
 Sports Editor - - - - - BILL CARDEN
 Lay-out - - - - - WES WATRUD



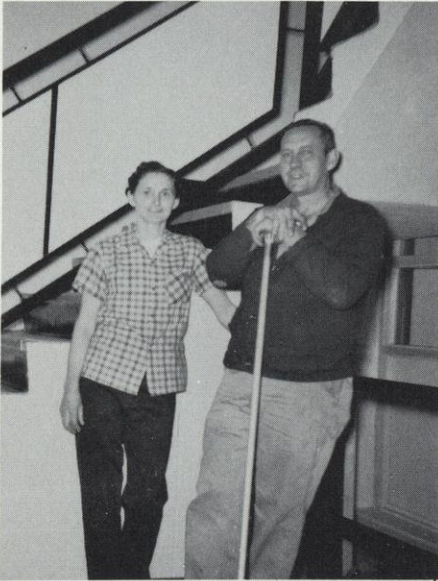


Favorites

School Personnel



Mrs. Watson, Mrs. Powers



Vi and Speed Carden

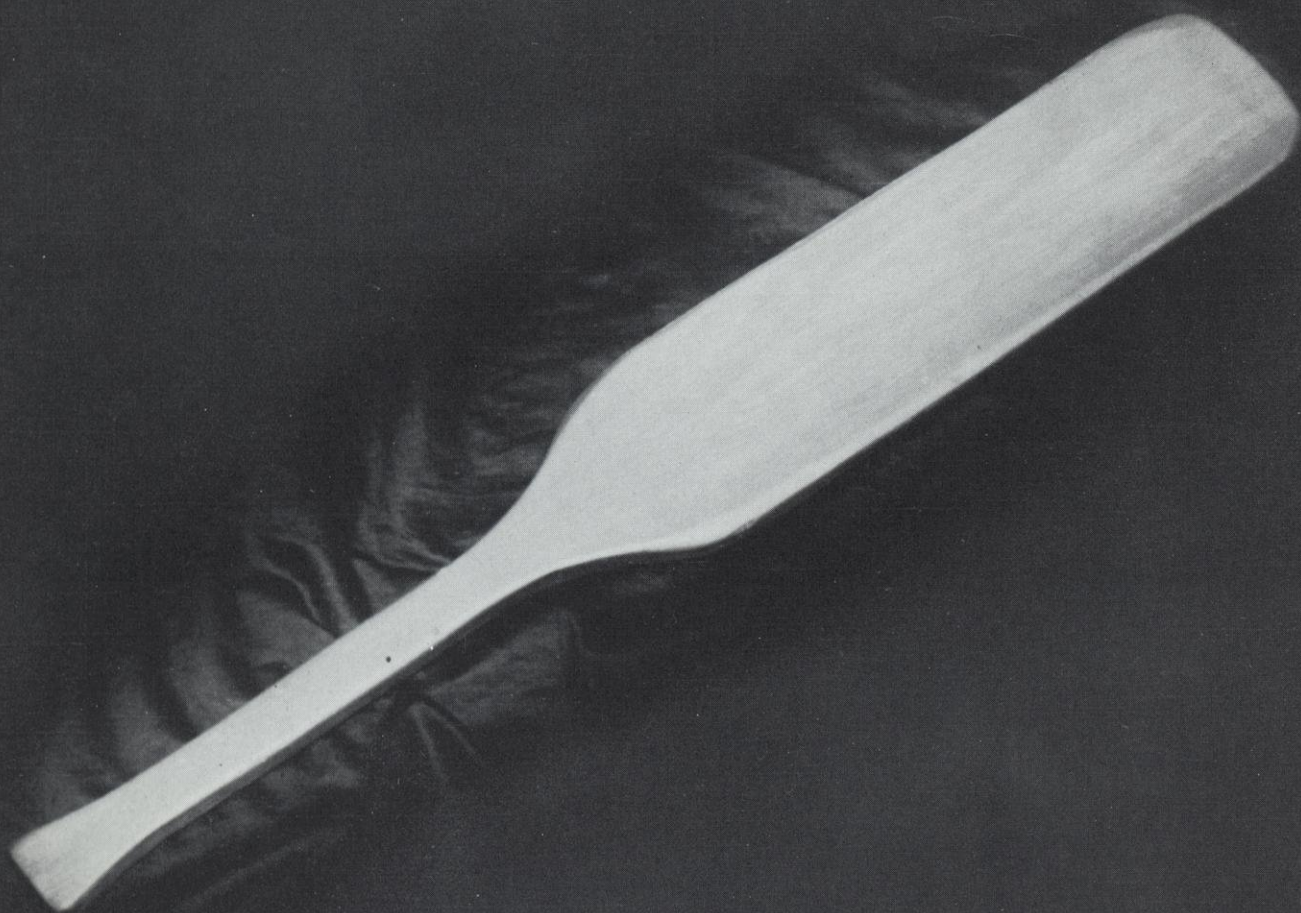


Alice Carden and Verna Arneson



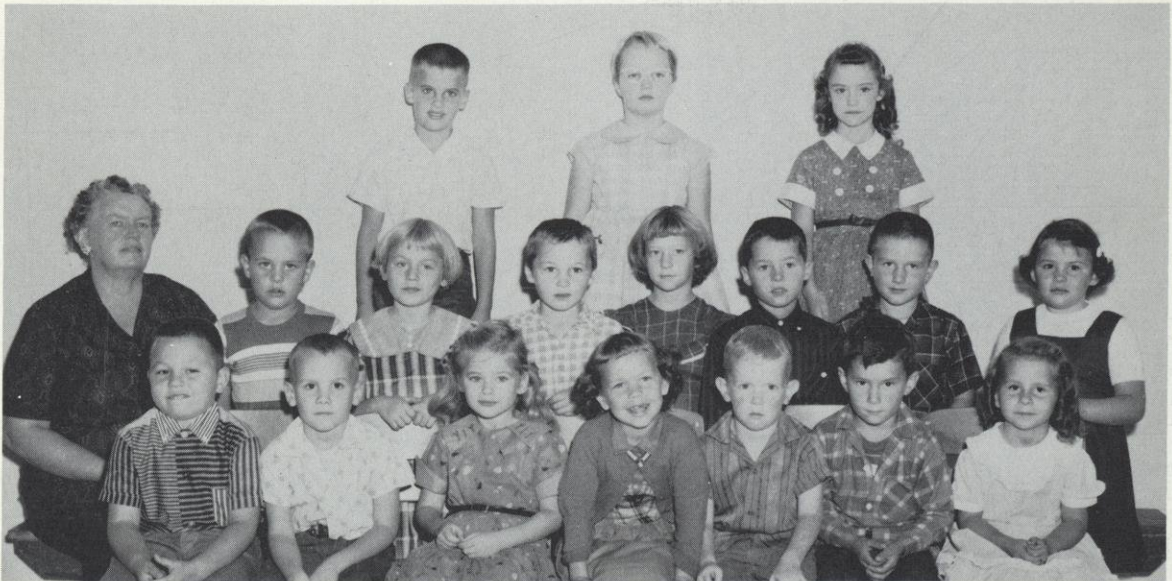
Doell, Adolph, Maynard





Elementary

First Grade



FIRST ROW: D. Powers, G. Vollen, R. Reeson, D. Dimpfl, S. Arneson, G. Hughes, J. Eveland. SECOND ROW: Mrs. Owens, J. Williams, M. Forbes, L. Yapp, J. Myers, J. Thousand, B. Harris, K. Collins. THIRD ROW: B. Zepplin, N. Hill, C. Czerwonka.

Second Grade



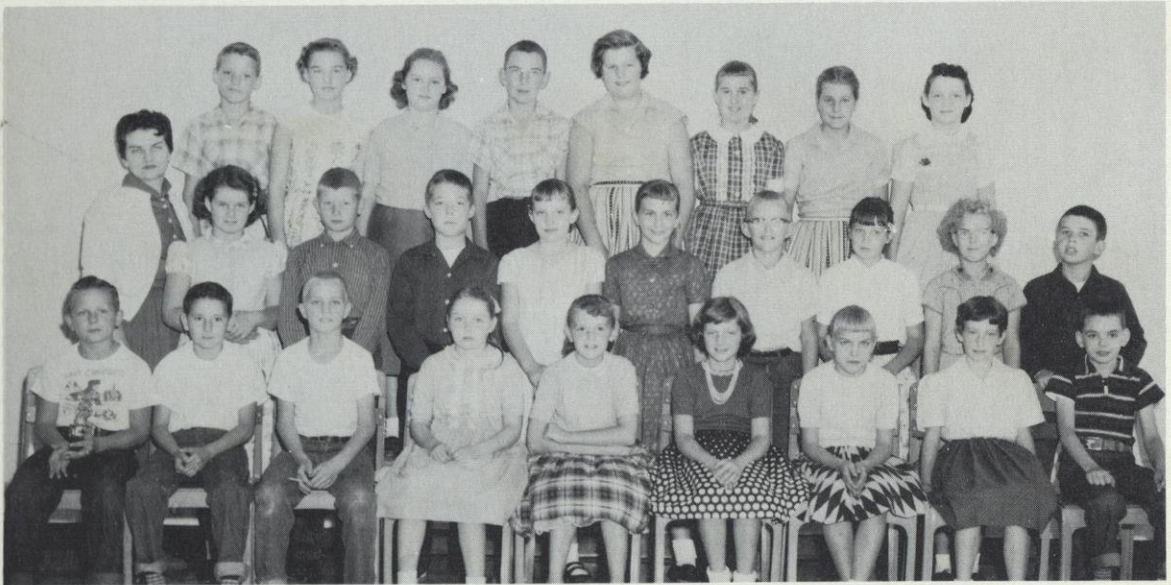
FIRST ROW: Mrs. Harpold, R. Miller, J. Kelly, R. Jabs, G. Klusendorf, L. Komplin, K. Bohle, D. Budd, S. Arneson. SECOND ROW: K. Rue, N. Campbell, S. Buckingham, G. Osborn, B. Forbes, H. Norby, J. Eveland, J. Arneson, D. Meyers.

Third and Fourth Grades



FIRST ROW: D. Forbes, R. Venden, J. Eveland, S. Toni, S. Arneson, K. Yapp, S. Thousand. SECOND ROW: S. Abplanalp, T. Tilley, D. Yapp, G. Gerke, R. Callahan, B. Watson, E. Stenseth, D. Burkhalter. THIRD ROW: Mrs. Honer, B. Budd, D. Miller, G. Hill, G. Stratman, S. Forbes.

Fifth and Sixth Grades



FIRST ROW: J. Eveland, B. Hughes, L. Komplin, L. Stenseth, V. Tilley, L. Squires, G. Komplin, D. Myer, G. Uren. SECOND ROW: Miss Kennedy, J. Callahan, R. Thousand, B. Miller, L. Campbell, M. Myer, L. Anderson, P. Osborn, N. Norby, D. Jones. THIRD ROW: B. Clerkin, P. Forbes, C. Carden, K. Eveland, B. Williams, J. Zeppelin, P. Williams, P. Callahan.

7th and 8th Grade



FIRST ROW: W. Arneson, D. Burkhalter, B. Jones, D. Leuthold, L. Hughes, R. Schaller, D. Arneson, S. Arneson, M. Osborn. SECOND ROW: Mrs. Vinje, D. Vollen, K. Callahan, L. Budd, G. Bureson, S. Harris, E. Duesler, F. Leuthold, T. Redel, J. Budd, J. Watson. THIRD ROW: R. Anderson, D. Forbes, L. Pollack, W. Clerkin, J. Kole, J. Segebrecht, B. Osborn, W. Jones, M. Meyer, R. Williams.

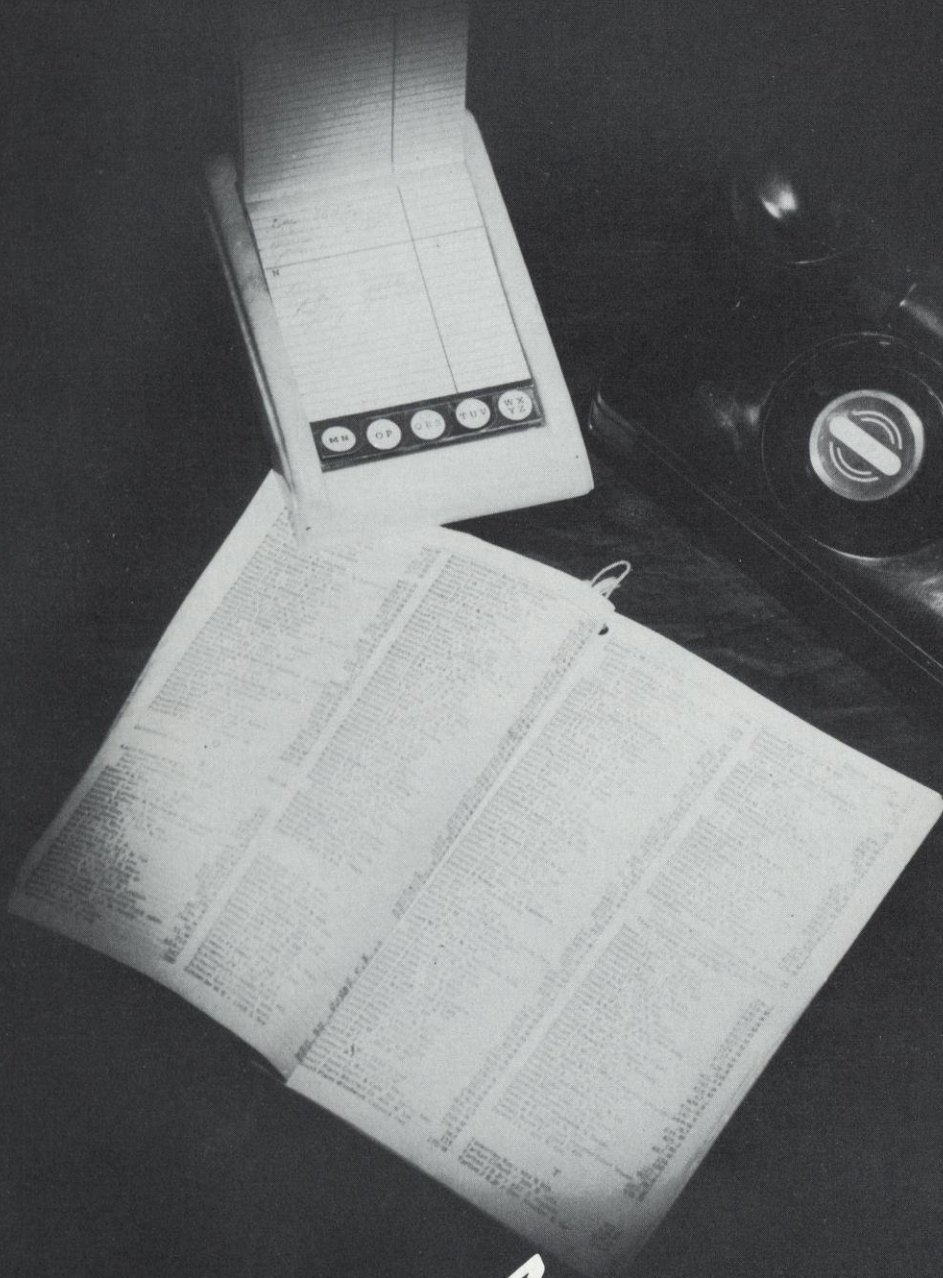
Grade Cheerleaders and Team

IOWA
COUNTY



LEAGUE
CHAMPS

DR. R. L. GUENVEUR, OPTOMETRIST, Mt. Horeb, Wisconsin
MAJESTIC SALES COMPANY, Mt. Horeb, Wisconsin



Advertisers



A Safe Bank With a
Good
Record

Barneveld, Wisconsin, Phone 2711

BARNEVELD



STATE BANK

Complete Banking Service

Loans

Savings Accounts

Safe Deposit Boxes

Checking Accounts

Insurance of All Kinds



<p>Compliments of</p> <p>THE CHEESE COLONY</p> <p>ARCH G. CAMPBELL</p>	<p>KLUSENDORF'S</p> <p>CHEVROLET COMPANY</p> <p>Mt. Horeb Phone 73</p> <p>Chevrolet and Buick Company</p> <p>Dodgeville, Phone 4341</p>
<p>THONI'S</p> <p>FEEED AND FUEL</p> <p>Phone 2811</p>	<p>Compliments of</p> <p>STRONG'S BANK</p> <p>Dodgeville, Wisconsin</p> <p>Member of F. D. I. C.</p>
<p>DODGEVILLE STATE BANK</p> <p>Dodgeville, Wisconsin</p> <p>Member of F. D. I. C.</p>	<p>DONAHUE'S</p> <p>GENERAL STORE</p> <p>Groceries Dry Goods Meats Fruits Shoes</p>
<p>BARNEVELD</p> <p>CAFE</p> <p>24 Hour Film Service Camera, Film, and Supplies School Supplies Shurtleff's High Quality Ice Cream</p> <p>MAX THEOBALD</p>	<p>AYERS</p> <p>FUNERAL HOME</p> <p>Ridgeway, Wisconsin All Licensed Funeral Directors by Wisconsin State Board of Health</p>

FARM
SERVICE AGENCY

State Bank Building
Mt. Horeb, Wisconsin
Phone 345

JONES

HARDWARE
Barneveld, Wisconsin
Maytag and Speedqueen
Washers and Dryers
Duotherm and Superflame
Heaters
Ben Hur Freezers
Plumbing and Water Systems

MYERS
OIL CO.

Phone 2481
Barneveld, Wisconsin

Complete Insurance Service

ALFRED SCHURCH

Mt. Horeb, Wisconsin
Phone 376

BARNEVELD
IMPLEMENT CO.
Case and New Ideas
Farm Equipment

Conde--Worlds Finest Milkers
Acorn Barn Cleaners
We Are in Business to Serve
YOU
RUSSELL--ERNIE--VAN

BARNEVELD
CO-OP CO.
Flour, Feed, Seed, Salt
Hardware
Gasoline and Oils
Complete L. P. Gas Service
Cylinders and Bulk
Phone 2261

Barneveld, Wisconsin

THE
CAVE OF MOUNDS

Visit the Beautiful

Blue Mounds, Wisconsin

Visited by More Than Two Million People

New Rooms Opened Recently

WISCONSIN'S UNDERGROUND WONDER

Open Daily

U.S. Highways 18-151

25 Miles West of Madison

BOWMAN

FARM DAIRY

Fish Hatchery Road
Madison 5, Wis.
Phone Alpine 5-0016

Milk Cream
Butter Cheese Eggs

GARDNER

BAKING CO.
Madison 4, Wis.
Phone Cherry 4-4747

Bread Rolls
Buns Donuts
Cookies Cakes
Coneys Pies

LEFFLER'S

SERVICE STATION

Dodgeville, Wisconsin

Phone 3111

JERRY'S

SUPER MARKET

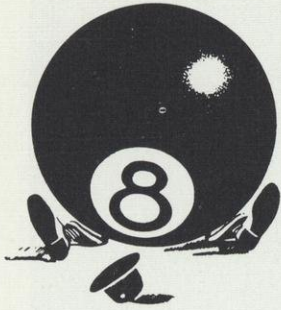
Locker Service

Barneveld, Wisconsin

Phone 2911

AUTOGRAPHS

Autographs



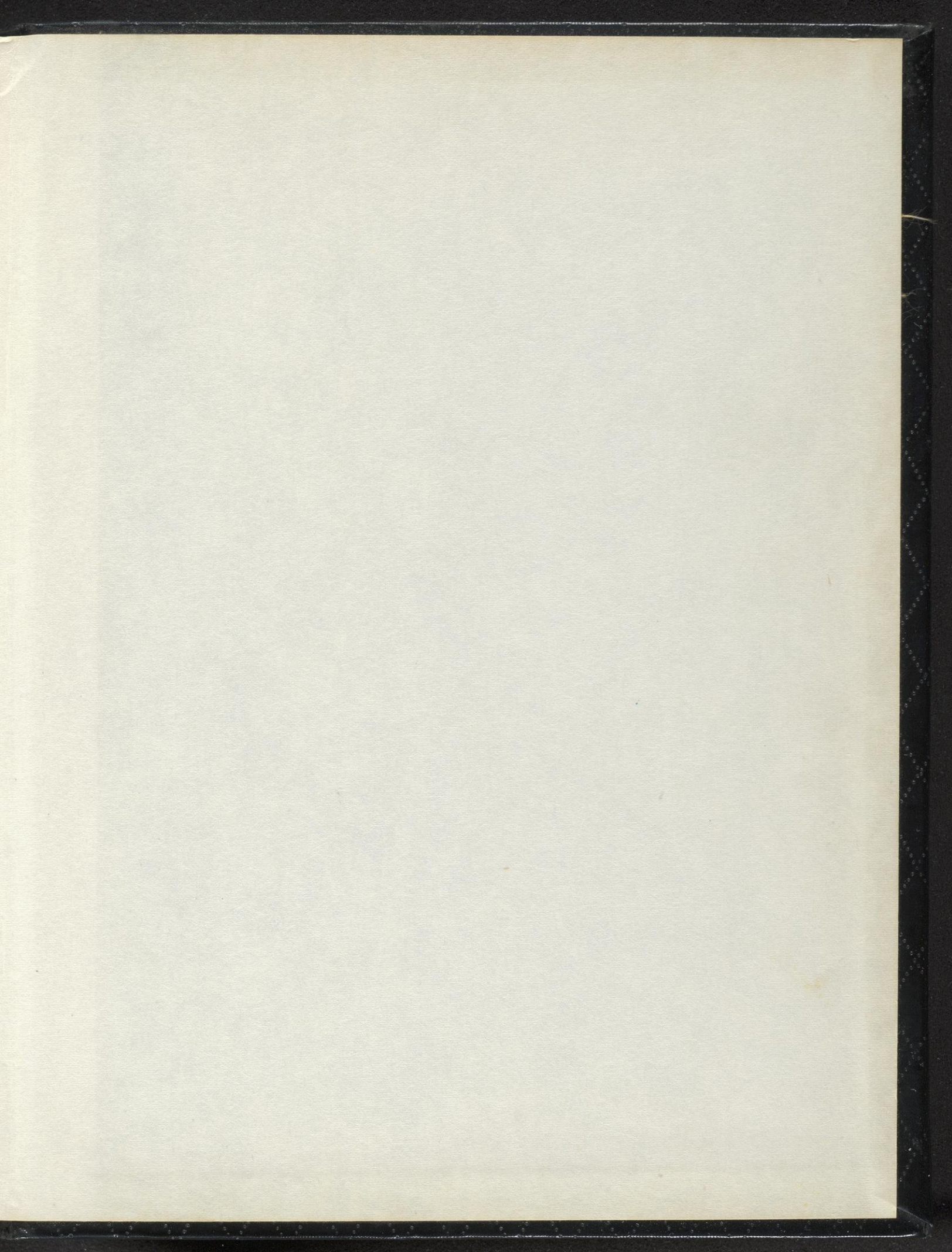
Editor's Message



Work, Work, Work, there was plenty of it, but we loved it. Our Hi-Lites was going to be more than just passable--we wanted the best. It was a challenge, along with being interesting, educational, and enjoyable.

We'd like to thank the staff and the typists for their time and effort. Thanks, also, to those who bought ads and annuals, and to those who have helped in any other way to make this annual a success.

Barbara Kole, Janet Helgeson



MADE IN
ENGLAND