



# LIBRARIES

UNIVERSITY OF WISCONSIN-MADISON

## Wisconsin farm crop report. 1913

Wisconsin State Board of Agriculture

[Madison, Wisconsin]: Wisconsin State Board of Agriculture, 1913

<https://digital.library.wisc.edu/1711.dl/7BHLTOTGFHMWV8V>

Based on date of publication, this material is presumed to be in the public domain.

For information on re-use, see

<http://digital.library.wisc.edu/1711.dl/Copyright>

The libraries provide public access to a wide range of material, including online exhibits, digitized collections, archival finding aids, our catalog, online articles, and a growing range of materials in many media.

When possible, we provide rights information in catalog records, finding aids, and other metadata that accompanies collections or items. However, it is always the user's obligation to evaluate copyright and rights issues in light of their own use.

2

---

---

Wisconsin Farm Crop Report

---

May 15, 1913

---

Issued by the Wisconsin State Board of Agriculture

---

---



## WISCONSIN FARM CROP REPORT

---

OFFICE OF WISCONSIN STATE BOARD OF AGRICULTURE,

Madison, May 15, 1913.

A special effort was made to get reports of crop conditions from every County in the State, but in this we were disappointed, there being five Counties from which no reports were received.

The condition of crops in May 1913 is much more favorable than for the same period in 1912, the general average condition of Winter Wheat being 90 per cent in 1913 as against 86 per cent in 1912; Winter Rye 93 per cent against 91 per cent; Alfalfa 87 per cent against 82 per cent; Clover Meadows 88 per cent against 84 per cent; Timothy Meadows 91 per cent against 88 per cent; Pastures 88 per cent against 86 per cent.

The acreage comparison is equally encouraging with the exception of Winter Rye and Barley. The increase is as follows: Winter Wheat 95 per cent as compared with 91 per cent in 1912; Spring Wheat 91 per cent against 90 per cent; Spring Rye 89 per cent against 82 per cent; Oats 101 per cent against 101 per cent; Clover Meadows 101 against 94; Timothy Meadows 98 against 96. The percentage of acreage of Winter Rye in 1913 is 95 per cent as compared with 97 per cent in 1912, and the acreage of Barley in 1913 is 95 per cent as against 102 per cent in 1912. The acreage of Alfalfa for the year 1913 is reported at 107 per cent, showing a substantial increase in acreage. The percentage of abandoned Winter Wheat acreage for the entire State is 14 per cent, and the percentage of abandoned acreage of Winter Rye is 6 per cent.

14 per cent of the 1912 hay crop was still in the hands of the farmers on May 1st, and the report shows that 85 per

cent of the entire Hay crop of the state will be consumed on the farms producing it. 16 per cent of the 1912 Corn crop was still in the hands of the farmer May 1st, and 94 per cent of the total crop of Corn produced in Wisconsin will be consumed on the farms producing it. The report shows a loss of silage amounting to approximately 5 per cent of the whole. Various causes are given for this loss, principally freezing and improper filling, and in some cases the loss was caused from defective silos. Soil conditions were reported generally favorable, although there was very little rain-fall during the month of April. The soil contained sufficient moisture, however, so that the growth of crops was not retarded. Subsequent to the first of May a general rain-fall throughout the entire State has improved conditions materially.

The prospects for a record-breaking Fruit Crop in Wisconsin were never better than at the present time.

The percentage of Spring Pigs saved as compared with previous years is 96 per cent, and Spring Lambs 97 per cent.

The wages paid for farm labor vary from \$25.00 to \$37.00 per month, the general average throughout the State amounting to \$31.00 per month.

WISCONSIN STATE BOARD OF AGRICULTURE,

J. C. MACKENZIE,

*Secretary.*

A complete detailed report of the conditions etc., is shown by the following tables:

May, 1913.	CONDITION OF CROPS.					COMPARATIVE ACREAGE.							
	Winter wheat.	Winter rye.	Alfalfa.	Clover meadows.	Timothy meadows.	Pastures.	Winter wheat.	Acraege abandoned.	Winter rye.	Acraege abandoned.	Spring wheat.	Spring rye.	Oats.
Ashland.....	100	100	100	100	100	100	.....	.....	.....	.....	.....	.....	.....
Barron.....	90	98	80	85	85	83	90	105	.....	88	100	100	100
Bayfield.....	100	100	.....	100	100	100	100	100	.....	100	100	100	100
Burnett—no report.	75	70	50	80	80	70	80	10	85	.....	50	.....	85
Chippewa.....	.....	90	.....	95	80	100	.....	100	.....	.....	.....	.....	100
Door.....	.....	90	.....	95	80	100	.....	100	.....	.....	.....	.....	100
Douglas—no report.	90	93	85	90	90	73	100	.....	100	.....	100	90	85
Dunn.....	.....	90	.....	95	90	90	.....	90	.....	.....	.....	.....	.....
Florence.....	.....	.....	.....	93	95	95	125	.....	.....	120	.....	.....	133
Forest.....	100	.....	.....	90	90	80	.....	95	.....	.....	.....	.....	100
Iron.....	.....	95	.....	90	90	90	.....	.....	.....	.....	.....	.....	.....
Langlade.....	100	100	.....	100	100	100	80	20	120	.....	.....	.....	.....
Lincoln.....	.....	100	.....	85	98	90	.....	100	.....	50	.....	.....	110
Marathon.....	90	94	75	95	98	98	100	.....	105	90	100	100	110
Marinette.....	90	92	77	95	92	99	20	100	100	100	.....	.....	105
Oconto.....	90	90	.....	100	80	100	100	.....	100	.....	.....	.....	.....
Oneida.....	95	96	100	100	100	100	100	2	100	1	100	100	100
Polk.....	100	100	.....	100	100	100	120	.....	105	90	.....	.....	98
Price.....	.....	100	85	100	100	100	.....	85	.....	.....	.....	.....	110
Rusk.....	100	100	100	100	100	100	110	.....	120	.....	110	.....	120
St. Croix.....	100	100	95	100	98	100	10 0	.....	100	.....	100	80	93
Sawyer—No report.	.....	.....	.....	.....	.....	.....	.....	.....	.....	.....	.....	.....	.....
Shawano.....	75	100	.....	75	80	75	75	25	100	.....	75	80	100
Taylor.....	.....	90	.....	70	80	70	.....	.....	100	.....	.....	.....	110
Vilas.....	.....	.....	85	100	100	100	.....	.....	.....	.....	.....	.....	.....
Washburn.....	.....	100	100	90	85	100	.....	.....	105	.....	90	85	80

NORTHERN DIVISION.	COMPARATIVE ACREAGE.				Plowing done May 1st.	1912 hay crop on farms May 1st.	1912 hay crop consumed on farms.	1912 corn crop on farms May 1st.	1912 corn crop consumed on farms.	Silage lost.	FARM ANIMALS.		FARM LABOR
	Barley.	Alfalfa.	Clover meadows.	Timothy meadows.							Spring pigs saved.	Spring lambs saved.	
Ashland.....	.....	.....	.....	.....	70	.....	.....	.....	100	.....	.....	.....	.....
Barron.....	95	.....	.....	83	80	10	68	5	95	.....	68	95	30
Bayfield.....	100	100	105	110	70	10	60	10	70	.....	100	100	.....
Burnett.....	No report	.....	.....	.....	.....	.....	.....	.....	.....	.....	.....	.....	.....
Chippewa.....	90	80	80	80	88	10	90	15	90	.....	75	100	29
Door.....	100	60	125	95	50	.....	80	20	90	.....	100	100	25
Douglas.....	No report	.....	.....	.....	.....	.....	.....	.....	.....	.....	.....	.....	.....
Dunn.....	85	108	100	90	75	8	83	.....	88	2	75	95	35
Florence.....	.....	.....	.....	.....	75	5	90	.....	.....	.....	100	.....	.....
Forest.....	100	100	98	110	20	20	75	.....	100	10	100	100	23
Iron.....	.....	.....	.....	.....	75	15	100	15	100	.....	80	.....	23
Langlade.....	.....	.....	.....	.....	75	20	75	.....	.....	.....	.....	.....	.....
Lincoln.....	100	.....	108	95	80	15	88	.....	100	.....	105	75	23
Marathon.....	100	.....	115	110	70	8	83	.....	99	4	113	100	28
Marinette.....	105	80	108	105	70	13	88	4	95	8	90	95	26
Oconto.....	.....	.....	.....	.....	75	.....	100	.....	.....	.....	100	100	33
Oneida.....	100	125	110	100	50	10	80	5	100	.....	100	100	33
Polk.....	108	.....	113	110	95	10	85	20	85	.....	110	100	36
Price.....	100	115	115	100	.....	18	75	.....	100	.....	75	100	35
Rusk.....	110	200	150	150	25	.....	60	.....	100	.....	75	100	30
St. Croix.....	92	100	105	103	93	10	83	4	99	5	93	93	34
Sawyer.....	No report	.....	.....	.....	.....	.....	.....	.....	.....	.....	.....	.....	.....
Shawano.....	95	.....	75	80	75	25	75	10	100	5	75	90	30
Taylor.....	100	.....	110	110	80	10	80	.....	100	.....	100	100	25
Vilas.....	.....	.....	.....	.....	50	10	90	5	100	.....	.....	.....	.....
Washburn.....	.....	.....	90	80	40	.....	.....	.....	.....	.....	100	105	30



SOUTHERN DIVISION.	CONDITION OF CROPS.						COMPARATIVE ACREAGE.					
	Winter wheat.	Winter rye.	Alfalfa.	Clover meadows.	Timothy meadows.	Pastures.	Winter wheat.	Acres abandoned.	Winter rye.	Acres abandoned.	Spring wheat.	Spring rye.
Columbia.....	85	85	88	70	70	85	83	.....	83	75	83	90
Crawford.....	90	95	70	60	75	50	100	10	90	110	75	97
Dane.....	85	93	90	83	84	81	100	.....	95	100	95	108
Dodge.....	90	98	100	100	95	93	90	.....	90	80	.....	100
Grant.....	100	100	100	100	100	100	100	.....	.....	100	.....	100
Green.....	.....	85	75	75	90	90	.....	.....	.....	.....	.....	100
Iowa.....	100	90	98	100	90	88	.....	85	.....	100	.....	100
Jefferson.....	100	100	100	102	96	94	95	.....	100	90	.....	92
Kenosha.....	90	95	88	95	100	95	80	.....	80	.....	.....	100
La Fayette.....	90	90	95	95	90	80	100	.....	100	.....	.....	100
Milwaukee.....	90	90	75	85	85	90	90	.....	85	100	.....	100
Ozaukee.....	100	100	90	100	101	100	100	.....	100	100	100	100
Racine.....	85	90	78	93	98	90	100	.....	90	83	.....	100
Richland.....	90	94	100	88	93	78	100	5	100	.....	.....	100
Rock.....	90	95	85	70	95	60	100	.....	100	95	95	90
Sauk.....	98	98	99	99	99	95	100	.....	100	.....	.....	95
Vernon.....	100	100	100	85	90	90	100	.....	100	100	.....	105
Walworth.....	90	100	65	95	83	83	100	.....	100	.....	.....	90
Washington.....	60	70	60	75	90	100	100	20	100	75	.....	110
Waukesha.....	90	86	84	93	90	85	93	.....	108	95	100	113

SOUTHERN DIVISION.	COMPARATIVE ACREAGE.				Plowing done May 1st.	1912 hay crop on farms May 1st.	1912 hay crop consumed on farms.	1912 corn crop on farms May 1st.	1912 corn crop consumed on farms.	Silage lost.	FARM ANIMALS.		FARM LABOR
	Barley.	Alfalfa.	Clover meadows.	Timothy meadows.							Spring pigs saved.	Spring lambs saved.	
Columbia.....	100	95	86	92	60	18	85	18	88	2	83	33	
Crawford.....	90	75	90	110	70	10	95	20	90	10	60	30	
Dane.....	102	103	100	95	63	17	91	25	98	7	92	35	
Dodge.....	85	105	100	105	50	20	65	18	78	15	90	33	
Grant.....	100	110	105	103	65	5	100	5	100	3	108	37	
Green.....	90	110	80	65	70	5	98	10	99	.....	100	33	
Iowa.....	90	150	100	90	65	10	93	10	93	2	103	34	
Jefferson.....	90	100	105	100	50	10	95	20	95	.....	105	30	
Kenosha.....	95	105	105	100	75	18	65	10	65	2	105	28	
La Fayette.....	100	110	120	100	70	5	95	10	100	2	100	35	
Milwaukee.....	105	110	100	100	60	5	90	5	100	.....	100	34	
Ozaukee.....	100	110	100	100	75	25	100	25	100	.....	100	.....	
Racine.....	99	93	100	100	75	20	80	30	80	15	90	28	
Richland.....	90	150	100	100	60	15	90	15	95	1	140	34	
Rock.....	95	100	90	100	60	10	98	20	98	5	70	30	
Sauk.....	95	113	95	100	80	8	85	15	92	.....	110	34	
Vernon.....	100	110	90	100	80	20	100	20	100	.....	100	36	
Walworth.....	90	90	100	88	60	13	95	15	100	18	100	50	
Washington.....	90	100	125	100	75	10	100	10	90	.....	100	29	
Waukesha.....	90	120	135	97	60	20	91	21	99	4	106	39	



②

---

---

# Wisconsin Farm Crop Report

---

June 15, 1913

---

Issued by the Wisconsin State Board of Agriculture

---

---

Wis. Historical Library

JUL 11 1913

Public Documents Dept.



## WISCONSIN FARM CROP REPORT.

---

OFFICE OF WISCONSIN STATE BOARD OF AGRICULTURE,

Madison, June 1, 1913.

While heavy rains and continued cold has delayed the planting of corn and potatoes, the condition of crops June 1st, 1913, is even more favorable than the crop report conditions issued from this office May 1st. The general average condition of Winter Wheat in the State is 93.4 percent of normal; Spring Wheat 95.1; Winter Rye 95.4; Spring Rye 93 percent; Barley 95.1 percent; Oats 97.3 percent; Clover Meadows 93.8 percent; Timothy Meadows 96.3 percent; Alfalfa 92.4 percent; Pastures 101 percent.

The reports predict an Apple crop of 90 percent of normal, and Small Fruits 91 percent of normal. The damage to fruit trees by insects over the entire state is only 9 per cent; the damage to fruit trees and small fruits by frost 16 percent.

It is estimated that the Corn acreage will be equal to that of 1912 regardless of the backward season, the percentage planted June 1st being 73 percent of the total. The potato acreage as compared with 1912 shows a gain of two percent, with 55 percent of the total acreage planted June 1st. Sugar Beet acreage will show a falling off of 15 percent; Tobacco 16 percent, and Flax 10 percent. Peas, Beans, and Cabbage will show an acreage almost equal to that of 1912.

Reports from the Northern Section of the State show an increase of 12 percent in cleared lands during the past 12 months. Crop conditions are excellent with prospects better than the average at this season of the year. The reports further show that farm improvement is moving forward rapidly. Modern farm buildings are replacing the old structures, and large quantities of woven wire are being used for fencing.

It is gratifying to note that many farmers are realizing the necessity of providing for future wood supply by giving careful attention to second growth timber and practicing rigid economy with the present supply, although in many localities very little thought or attention is given to the conservation of the timber lot on the farm.

While quite heavy frosts have been reported in some sections of the State, apple trees and small fruits have suffered no serious damage.

WISCONSIN STATE BOARD OF AGRICULTURE,  
J. C. MACKENZIE,  
*Secretary.*

A complete detailed report of the conditions, etc., is shown by the following tables:



CONDITION OF CROPS.

CENTRAL DIVISION.	Winter wheat.	Spring wheat.	Winter rye.	Spring rye.	Barley.	Oats.	Clover meadows.	Timothy meadows.	Alfalfa.	Pastures.	Apple crop predicted.	Small fruit crop predicted.	Damage to fruit trees by insects.	Damage by frost to fruit trees and small fruit.
	Adams	78	75	85	83	75	75	90	90	.....	95	67	88	.....
Brown	88	90	92	.....	82	85	90	92	67	89	80	78	.....	12
Buffalo	95	90	100	100	100	95	90	100	.....	100	80	95	5	29
Calumet	88	83	85	.....	85	93	85	83	75	98	75	85	.....	.....
Clark	95	90	95	.....	90	100	90	90	80	100	75	80	.....	25
Eau Claire	.....	88	95	90	95	92	63	85	86	98	78	90	.....	25
Fond du Lac	90	95	95	100	100	100	100	100	100	100	90	95	5	10
Green Lake	90	.....	98	.....	95	95	60	95	110	100	100	100	.....	.....
Jackson	85	93	95	93	90	93	83	98	75	95	77	92	.....	15
Juneau	90	95	90	95	94	85	94	.....	97	90	88	88	.....	5
Kewaunee	78	64	100	.....	75	100	75	79	65	75	75	75	10	10
La Crosse	95	.....	97	.....	102	103	107	100	100	105	100	88	.....	.....
Manitowoc	90	100	95	.....	95	100	100	100	90	105	105	100	5	10
Marquette	97	92	87	80	92	90	98	98	90	98	75	75	15	15
Monroe	90	90	100	.....	100	100	60	90	95	100	100	95	.....	.....
Outagamie	75	80	90	50	100	100	100	100	85	100	100	80	10	.....
Pepin	100	100	100	100	90	100	100	100	90	100	100	80	.....	.....
Pierce	75	85	90	.....	95	100	80	80	.....	85	103	84	.....	.....
Portage	90	90	100	80	86	93	60	100	.....	100	100	95	.....	.....
Sheboygan	90	100	95	.....	100	105	95	100	90	100	50	95	.....	.....
Trempealeau	110	100	100	60	80	100	40	70	.....	100	40	60	.....	.....
Waupaca	100	90	100	80	100	90	100	100	100	100	100	100	.....	.....
Waushara	.....	.....	90	100	.....	100	80	100	90	90	100	80	.....	20
Winnebago	90	100	93	.....	50	88	70	75	112	85	100	88	30	20
Wood	86	90	96	.....	94	96	99	98	.....	93	78	85	6	16

COMPARATIVE ACREAGE.

CENTRAL DIVISION.	Corn—acreage.	Per cent planted.	Potatoes—acreage.	Per cent planted.	Sugar beets—acreage.	Tobacco—acreage.	Flax—acreage.	Peas—acreage.	Beans—acreage.	Cabbage—acreage.	Corn for canning—acreage.	Peas for canning—acreage.	Timber lots—decrease in acreage in past five year period.
	Adams	100	63	85	18	.....	.....	.....	80	85	.....	.....	.....
Brown	100	41	92	45	82	.....	100	90	100	78	.....	73	.....
Buffalo	100	90	100	70	.....	.....	.....	.....	100	.....	.....	.....	10
Calumet	100	42	85	46	100	.....	.....	98	.....	.....	10	93	25
Clark	100	100	80	90	80	.....	80	75	.....	.....	.....	.....	.....
Eau Claire	103	98	95	79	80	50	.....	110	105	95	95	97	.....
Fond du Lac	100	40	90	35	80	.....	.....	102	100	90	100	104	5
Green Lake	100	33	100	25	80	.....	.....	100	90	.....	.....	100	8
Jackson	105	90	95	56	90	82	90	100	90	80	100	.....	.....
Juneau	103	75	100	18	.....	100	.....	.....	.....	.....	.....	.....	25
Kewaunee	80	25	83	25	61	.....	67	75	73	72	.....	69	5
La Crosse	100	89	84	36	80	.....	.....	91	.....	.....	.....	101	5
Manitowoc	105	100	100	100	75	.....	.....	100	.....	.....	.....	100	.....
Marquette	110	82	92	15	.....	.....	.....	.....	.....	.....	.....	.....	10
Monroe	115	90	100	80	.....	.....	.....	.....	.....	.....	.....	.....	.....
Outagamie	90	84	95	78	85	.....	.....	60	100	100	.....	.....	10
Pepin	100	80	100	90	.....	.....	.....	.....	.....	.....	.....	.....	.....
Pierce	100	87	100	83	110	.....	75	77	100	100	.....	.....	25
Portage	110	92	105	68	.....	.....	.....	.....	.....	.....	.....	.....	11
Sheboygan	105	10	100	10	75	.....	.....	100	.....	.....	100	105	.....
Trempealeau	110	80	80	30	.....	40	.....	.....	.....	80	.....	.....	.....
Waupaca	100	80	100	80	40	.....	50	80	90	50	60	60	.....
Waushara	110	85	100	12	.....	.....	.....	.....	100	.....	.....	.....	20
Winnebago	110	25	100	68	225	.....	.....	.....	.....	100	50	.....	25
Wood	101	98	100	77	88	.....	100	100	100	99	.....	.....	.....



---

---

Wisconsin Farm Crop Report

---

July 15, 1913

Issued by the Wisconsin State Board of Agriculture

---

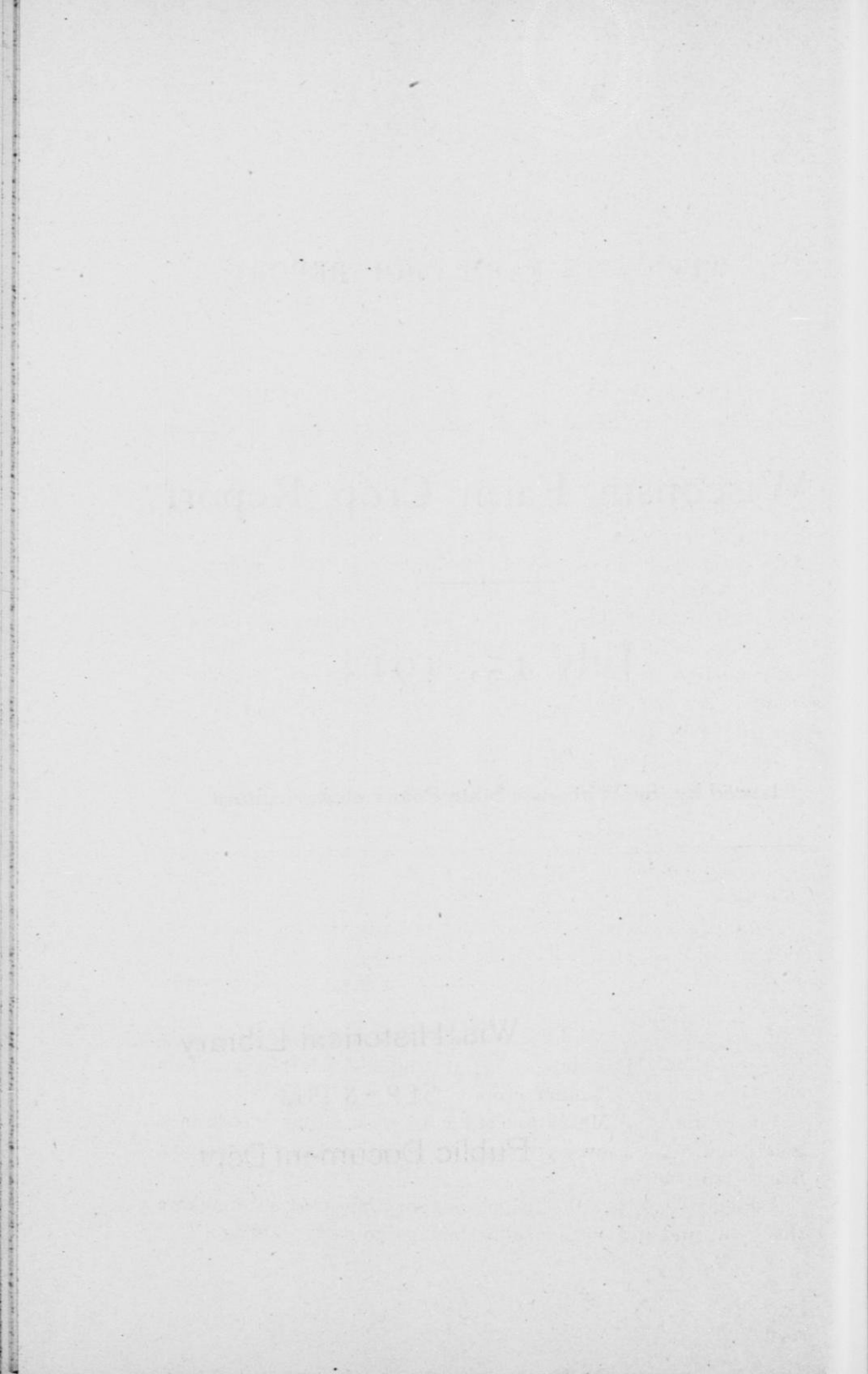
---

Wis. Historical Library

SEP - 8 1913

Public Document Dept.





# WISCONSIN FARM CROP REPORT

---

OFFICE OF WISCONSIN STATE BOARD OF AGRICULTURE.

Madison, July 1, 1913.

The average condition of crops in the State on July 1st, 1913, is as follows: Winter Wheat 92.3 per cent; Winter Rye 96.6; Spring Wheat 91.8; Spring Rye 93.3; Barley 93; Oats 94; Corn 93.8; Peas 94.1; Potatoes 94.6; Cabbage 91.5; Tobacco 91.2; Sugar Beets 91.4; Pastures 101.1; Apples 88.6; Small Fruits 89.4; Alfalfa 92.9; Tame Hay 94.2. The average yield per acre of Alfalfa is 1.6 tons; Tame Hay 1.6. The acreage of Tobacco as compared with 1912 is 99.6; Buckwheat 90.3. Tobacco plants were damaged by frost or from other causes to the extent of 7.8 percent.

Through a typographical error, our June Crop Report placed the damage to Apple Trees and Small Fruits in Bayfield County at 25 per cent, while the actual damage was not over 5 per cent.

Correspondents in various counties of the State report as follows:

Langlade County: "The general prospect better than ever, except apples and a few old meadows."

Marathon County: "All crops looking fine. Weather conditions good for growing."

Rusk County: "Recent rains have put crops in exceptionally fine condition. Haying has begun and yield is heavy. This county will have a banner crop."

Vilas County: "May was cold with frost; June has been a good month for growing crops. Acreage increased in county five to ten per cent."

Ashland County: "Cabbage maggot appeared in numbers this year, and did considerable damage to early cabbage."

Forest County: "Crops generally backward but coming on nicely now."

Marinette County: "Meadows looked strong a month ago, but have not developed as it appeared they would. Small fruits were very promising June 1st. Heavy frost June 7th, 8th and 9th did serious damage to small fruits and also damaged the apple crop. Corn is looking good now but is about ten days behind. Cabbage badly injured, many plants having to be replaced."

Polk County: "All crops except Corn and Hay are above average. Corn is now gaining rapidly and will no doubt develop an average good crop."

Monroe County: "Never have seen corn grow as fast in the last three weeks as it has this year. Alfalfa turned out a big crop of hay. All crops improved much since the first of June."

Clark County: "Barley is the best crop seen in years,—clean and good growth."

Portage County: "Grasshoppers are doing considerable damage to grain and grass crops. Have had too much rain for Potatoes."

Sheboygan County: "Corn and Potatoes are looking good; backward on account of late planting due to rains."

Waupaca County: "Crops are doing fine. Better than in 1912 at this time."

Eau Claire: "Hay, Oats and all small grains injured by drouth. Corn coming on very finely."

Fond du Lac County: "The prospects for good crops at this time is fine. Pastures were never better. Hay good. A good stand of Corn,—though late."

La Crosse County: "Hay crop on last year's seeding is very good. Old meadows are poor especially so where seed was taken off last fall."

Wood County: "The season although cold and backward all through April, May and first part of June, has since been unusually favorable and all crops look splendidly, except some winterkilled winter grain."

Crawford County: "All crops look fine. Never better."

Columbia County: "We have had plenty of moisture and all crops are looking fine."

Dane County: "Tobacco stands fine except a little that was planted late."

Rock County: "On the whole we think the Tobacco crop up to average. The early planted tobacco lived well and is making rapid growth. Plants set out during the extreme hot weather did not live well and much resetting had to be done in these fields."

Grant County: "At present the prospects for quantity and quality of all small grains is excellent. Nothing but extreme heat and rains will keep us from having a splendid crop. Corn was late in being planted. The favorable rains and most favorable warm weather has rushed it so that, unless some unforeseen accident comes, it ought to be an average crop. It is a better stand than last year and thus far less damage by cutworms and grubs. Alfalfa hay fields are young but look fine and when seeded longer, I think will produce much better."

Waukesha County: "On June 1st this section reported condition of Apples and Small Fruits at 100. We had four consecutive frosts ending June 10th, which damaged Small Fruits fully 25% and Apples 20%. The regular June drop of Apples has been heavy."

WISCONSIN STATE BOARD OF AGRICULTURE,

J. C. MACKENZIE,

*Secretary.*

A complete detailed report of the conditions, etc., is shown by the following tables:

CONDITION OF CROPS.

NORTHERN DIVISION.	Winter wheat.	Winter rye.	Spring wheat.	Spring rye.	Barley.	Oats.	Corn.	Peas.	Potatoes.	Cabbage.	Tobacco.
	Ashland	100	100	110	.....	100	110	90	100	100	100
Barron	85	100	90	.....	93	100	100	94	104	71	105
Bayfield	100	100	100	94	100	100	96	100	100	100	.....
Burnett	72	77	75	.....	75	75	58	.....	77	.....	100
Chippewa	83	85	83	.....	95	95	90	86	88	77	85
Door	.....	100	.....	.....	95	95	75	100	90	77	.....
Douglas	.....	100	95	.....	90	97	85	.....	85	80	.....
Dunn	90	96	91	88	93	89	100	.....	98	96	97
Florence	98	100	100	.....	98	103	105	85	98	95	.....
Forest	90	100	95	100	100	100	102	97	103	100	.....
Iron	.....	110	.....	.....	105	100	100	100	100	.....	.....
Langlade	.....	90	.....	.....	100	100	110	90	95	.....	.....
Lincoln	.....	100	75	.....	140	100	101	1 8	190	105	.....
Marathon	100	93	102	100	100	107	103	104	104	100	.....
Marquette	100	96	97	100	99	98	99	102	103	90	.....
Oconto	100	100	.....	.....	100	100	100	100	100	.....	.....
Oneida—No report.	.....	.....	.....	.....	.....	.....	.....	.....	.....	.....	.....
Polk	.....	100	100	.....	101	99	97	100	98	100	.....
Price	.....	90	100	100	80	90	100	100	100	100	.....
Rusk	100	100	98	97	100	100	96	100	38	.....	80
Sawyer—No report.	.....	.....	.....	.....	.....	.....	.....	.....	.....	.....	.....
Shawano	90	100	85	90	100	95	90	100	95	.....	.....
St. Croix	.....	100	100	100	100	95	100	100	100	100	.....
Taylor	.....	90	.....	.....	70	90	.....	80	90	.....	.....
Vilas	100	100	97	100	100	195	105	110	110	100	.....
Washburn	100	105	100	100	.....	90	100	100	100	100	.....

CONDITION OF CROPS.

COUNTIES.	Sugar beets.	Pastures.	Apples.	Small fruits.	Alfalfa	Yield per acre	Tame hay	Yield per acre.	COMPARATIVE ACRE-AGE.		Damage to tobacco plants by frost or from other causes.
									Buckwheat.	Tobacco.	
Ashland	.....	110	90	83	100	2.	110	.....	.....	.....	.....
Barron	102	110	93	105	95	2.3	.....	1.5	95	100	5
Bayfield	100	102	100	110	.....	.....	100	.....	100	.....	.....
Burnett	.....	.....	.....	.....	.....	.....	.....	1.	75	100	.....
Chippewa	77	94	80	78	75	1.	75	1.	79	.....	.....
Door	75	113	100	75	.....	.....	1 2	1.5	100	.....	.....
Douglas	.....	100	90	92	2.4	85	1.3	.....	.....	.....	.....
Dunn	95	96	81	70	83	1.1	75	1.5	93	110	10
Florence	.....	105	75	95	78	1.	95	2.	.....	.....	.....
Forest	.....	108	75	89	.....	.....	100	1.6	90	.....	.....
Iron	.....	90	110	105	.....	.....	100	1.5	.....	.....	.....
Langlade	.....	113	72	100	100	.....	100	.....	.....	.....	.....
Lincoln	.....	111	105	100	.....	.....	81	1.4	100	.....	.....
Marathon	.....	110	87	94	100	.....	102	2.3	100	.....	.....
Marquette	92	102	93	93	98	1.7	97	1.9	98	.....	.....
Oconto	.....	100	100	100	.....	.....	90	1.5	.....	.....	.....
Oneida—No report.	.....	.....	.....	.....	.....	.....	.....	.....	.....	.....	.....
Polk	100	103	.....	90	95	.....	95	.....	90	.....	.....
Price	100	102	100	80	80	.....	90	.....	.....	.....	.....
Rusk	80	110	100	100	100	2.8	100	2.	100	100	.....
Sawyer—No report.	.....	.....	.....	.....	.....	.....	.....	.....	.....	.....	.....
Shawano	90	95	90	95	75	1.	95	1.5	.....	.....	.....
St. Croix	90	100	.....	68	.....	.....	.....	.....	.....	.....	.....
Taylor	.....	100	.....	.....	.....	.....	80	1.4	.....	.....	.....
Vilas	.....	110	.....	110	110	.....	100	1.8	.....	.....	.....
Washburn	105	103	100	100	100	.....	.....	.....	110	.....	.....

CONDITION OF CROPS.

CENTRAL DIVISION.	Winter wheat.	Winter rye.	Spring wheat.	Spring rye.	Barley.	Oats.	Corn.	Peas.	Potatoes.	Cabbage.	Tobacco.
	Adams.....	75	80	70	80	70	80	80	92	90	
Brown.....	89	83	90		84	87	88		87	82	
Buffalo.....	90	95	90	90	85	90	100		95		
Calumet.....	90	93	85		88	103	78	90	88		
Clark.....	98	97	95	100	100	100	160	98	37	100	100
Eau Claire.....	90	95	86	84	90	79	92	87	93	95	100
Fond du Lac.....	100	95	100	100	96	99	84	98	88	90	
Green Lake.....	100	100			110	110	105	100	100		
Jackson.....	90	98	95	95	95	95	100	100	93	83	95
Juneau.....	95	100	90	90	95	81	95	85	92	75	95
Kewaukee.....	71	85	90		85	90	90	67	100	100	
La Crosse.....	92	95			100	102	97	96	91	100	
Manitowoc.....	90	95	98		95	90	100	95	95	100	
Marquette.....	96	96	92	93	90	92	98		97		
Monroe.....	100	95			100	97	99		100		
Outagamie.....	96	95	95	91	95	93	100	90	93	88	
Pepin.....	90	90	90	90	80	80	100				
Pierce.....	90	85	100		95	98	100	100	100	100	
Portage.....	90	100	80		80	90	100		100		
Sheboygan.....	90	100			105	100	95	75	95		
Trempealeau.....	85	80		90	90	80	100	70	74		68
Waupaca.....	95	100	95	90	95	90	93	80	92	90	
Waushara.....		90			90	83	97		95		
Winnebago.....	95	95	88		90	85	95		95		
Wood.....	87	91	90	98	97	96	94	97	89	90	

CONDITION OF CROPS.

CENTRAL DIVISION.	Sugar beets.	Pastures.	Apples.	Small fruits.	Alfalfa.	Yield per acre.	Tame hay.	Yield per acre.	COMPARATIVE ACREAGE.		Damage to tobacco plants by frost or from other causes.
									Buck-wheat.	Tobacco.	
Adams.....		90	90	85			85		50		
Brown.....	89	103	88	70	70	1.2	99	.5			
Buffalo.....		84		90			100	2.			
Calumet.....	87	100	70	78	75	2.4	90	2.3			
Clark.....	95	105	95	85	85	1.	95	1.5	90	100	
Eau Claire.....	95	98	92	60	74	1.	78	1.4	100	115	10
Fond du Lac.....	84	105	70	84	100	2.	100	2.	100		
Green Lake.....	100	114	75	75	111		110				
Jackson.....	70	97	80	93	80	1.5	85	1.5	105	85	
Juneau.....		98	100	80	95		80	1.5	78		
Kewaukee.....	85	100	73	90			95	1.8			
La Crosse.....		105	75	85	100	1.5	107	1.5			
Manitowoc.....	95	100	90	95	95		100				
Marquette.....		98	82	85	92	1.5	97	1.5	60		
Monroe.....		100	100	100	100	1.5	84	1.	90		
Outagamie.....	80	100	90	75	87		85		90		
Pepin.....		84					80				
Pierce.....	100	91	107	101	100		78	1.5	100		
Portage.....		100	90	90			85	1.5	100		
Sheboygan.....		110	100	100		1.	105	1.6			
Trempealeau.....		83	80				70		60	60	
Waupaca.....	90	100	95	100	90	1.5	95	1.4	80		
Waushara.....		90	100	71	84	1.	74	1.3	80		
Winnebago.....	90	90	71	75	88		85				
Wood.....	80	100	88	85	100	2.	91	1.6	87		

CONDITION OF CROPS.

Southern Division.	Winter wheat.	Winter rye.	Spring wheat.	Spring rye.	Barley.	Oats.	Corn.	Peas.	Potatoes.	Cabbage.	Tobacco.
	Columbia.....	83	95	80	85	93	89	92	95	87	.....
Crawford.....	90	95	105	100	110	112	75	85	90	70	90
Dane.....	87	98	85	93	98	98	91	95	100	85	91
Dodge.....	95	98	87	.....	94	95	93	93	98	.....	.....
Grant.....	.....	90	.....	.....	98	101	95	92	90	80	.....
Green.....	.....	.....	.....	.....	90	87	90	.....	85	.....	.....
Iowa.....	95	100	90	.....	93	90	93	.....	95	90	.....
Jefferson.....	100	100	100	.....	98	96	94	98	100	.....	100
Kenosha.....	90	90	.....	90	85	88	95	75	84	70	.....
La Fayette.....	90	70	75	.....	75	75	85	.....	90	.....	.....
Milwaukee.....	75	90	95	.....	98	95	90	100	85	.....	.....
Ozaukee.....	100	110	100	100	110	100	92	110	100	.....	.....
Racine.....	95	90	90	.....	75	90	83	100	92	87	.....
Richland.....	95	97	.....	.....	95	103	90	.....	100	.....	85
Rock.....	90	90	80	80	80	89	95	100	98	100	95
Sauk.....	100	100	95	97	98	100	95	96	100	.....	.....
Vernon.....	100	100	100	.....	100	100	80	.....	100	.....	75
Walworth.....	100	90	85	.....	77	80	85	.....	88	100	.....
Washington.....	95	100	95	.....	100	100	93	100	100	.....	.....
Waukesha.....	95	97	96	80	90	88	89	.....	84	.....	.....

CONDITION OF CROPS.

SOUTHERN DIVISION.	Sugar beets.	Pastures.	Apples.	Small fruits.	Alfalfa.	Yield per acre.	Tame hay.	Yield per acre.	COMPARATIVE ACREAGE.		Damage to tobacco plants by frost or from other causes.
									Buckwheat.	Tobacco.	
									Columbia.....	93	
Crawford.....	.....	112	72	100	90	2.4	110	2.2	95	110	.....
Dane.....	95	110	98	97	98	1.	110	2.	95	105	12
Dodge.....	100	104	91	96	90	1.5	108	1.9	.....	.....	.....
Grant.....	.....	102	73	85	100	1.3	100	1.8	.....	.....	.....
Green.....	.....	100	100	100	95	1.2	90	1.	.....	.....	.....
Iowa.....	.....	100	93	92	97	1.4	90	1.5	.....	.....	.....
Jefferson.....	100	105	90	100	100	1.5	112	3.	.....	100	.....
Kenosha.....	90	100	79	83	84	1.5	95	1.9	.....	.....	.....
La Fayette.....	.....	90	100	95	99	1.5	95	1.8	.....	.....	.....
Milwaukee.....	98	98	70	80	100	1.5	100	1.5	.....	.....	.....
Ozaukee.....	.....	112	100	108	90	.....	110	.....	.....	.....	.....
Racine.....	88	98	91	81	85	2.4	105	2.	100	.....	.....
Richland.....	.....	110	90	91	105	1.2	100	1.7	100	90	.....
Rock.....	95	100	75	90	100	1.5	90	1.3	85	95	5
Sauk.....	100	105	101	104	108	1.6	110	1.7	80	.....	.....
Vernon.....	90	100	100	100	100	.....	.....	1.4	100	100	.....
Walworth.....	.....	100	77	90	92	1.9	100	1.7	100	.....	.....
Washington.....	100	100	70	75	90	.....	100	1.5	.....	.....	.....
Waukesha.....	.....	99	91	74	97	2.2	92	1.9	.....	.....	.....

---

---

Wisconsin Farm Crop Report

---

August 1, 1913

---

Issued by the Wisconsin State Board of Agriculture

---

---

Wis. Historical Library  
SEP - 8 1913  
Public Document Dept



Wisconsin Farm Crop Report

August 1, 1913

Issued by the Wisconsin State Board of Agriculture

Wis. Historical Library

259-2713

Public Document Dept.

## WISCONSIN FARM CROP REPORT.

---

OFFICE OF WISCONSIN STATE BOARD OF AGRICULTURE.

State Fair Park, West Allis, August 1, 1913.

The average condition of crops in the State on August 1st, 1913, is as follows: Corn 94.2 per cent; Peas 93.8; Potatoes 93.1; Cabbage 93; Beans 93.8; Tobacco 87.7; Sugar Beets 93.7; Pastures 102.3; Buckwheat 94.1; Alfalfa 95.7. The average yield per acre of Alfalfa, second cutting, was 1.3 tons.

The principal Buckwheat producing centers report prospects for an average crop.

Correspondents in various counties of the state report as follows:

### NORTHERN DIVISION:

Ashland: "Crops generally above average. Oats especially fine. 20% increase in production of cabbage. New early Ohio potatoes yielding 160 bu. per acre."

Barron: "Bumper crop except hay. Corn never looked better. Pastures good."

Chippewa: "Early planted tobacco did not get a good start. Prospects for light crop." "Peas blighted by rust and hot wave. Corn looks good."

Dunn: "Corn and pastures good. New seeding excellent. Peas a light crop."

Douglas: "If frost holds off until Sept. 10th, best corn crop in 25 years. All root crops fine."

Florence: "Noted for fine quality of potatoes. Crop not up to average."

Langlade: "Corn and potatoes hurt by cold wet weather. A new thing is spoiling Apple Orchards, something that looks

like blight. Many orchards have all of the twigs killed and apples drop off."

Marathon: "All crops considerably above average. This is particularly true of corn, peas, potatoes, beans and pastures. Buckwheat good."

St. Croix:

Taylor:

Vilas: "Average crop."

CENTRAL DIVISION:

Adams: "Early potatoes short crop by reason of heat and drouth in June. Late plantings good. Crop promises to be light yield."

Brown: "Immense crop of white clover. Pastures best ever known. Potatoes promise full crop."

Calumet: "Barley not as good as in former years. Dairying getting to be prime factor in county; farmers giving more attention to stock raising and dairying."

Eau Claire: "15% of hay lost in curing by rain. Some damage to crops by hail. Peas good quality and yield better than average. Tobacco uneven and late. As a whole, crops above average. Small grains exceptionally fine quality. Sweet corn for canning purposes exceptionally fine. Cannery preparing for a heavy run."

Fond du Lac: "Hot wave early in July damaged Barley crop 40%, but boosted Corn in about the same proportion."

La Crosse: "Pastures, corn and clover fine. Alfalfa above average."

Monroe: "Corn above average. Alfalfa good. Barley not as good as expected early in the season. Oats No. 1."

Pierce: "Hail did much damage in Southern section of County July 14th. Hay crop damaged by frequent heavy rains. Difficulty in curing crop."

Portage: "Some rye threshed. Average about 14 bu. to the acre. Oats light crop. Hay good crop."

Sheboygan: "Early peas poor. Late peas big crop. Alfalfa looks good."

Waupaca: "Stand of potatoes very poor in some sections of

the county, but on the whole there will be nearly an average crop."

Wood: "Corn a trifle behind. About normal stand. Pastures A—1. Farmers who have been persistent in growing Alfalfa meeting with very good success. 15% to 20% Hay crop damaged in curing by frequent heavy rains."

#### SOUTHERN DIVISION:

Columbia: "Tobacco damaged by wind and hail. Potato stand poor."

Crawford: "Prospects for an exceptionally large crop of corn."

Dane: "The State Prison binder twine appears to be giving satisfaction. The cost to farmers laid down in Dane county is 8½c per lb." "Corn stand in some cases thin owing to failure of seed to germinate. Tobacco very uneven in places." "Tobacco affected by heat and hail." "Some Tobacco fields are very good, some very poor."

Dodge: "Second cutting Alfalfa nearly equal to first crop. All crops fully up to average."

Fox Lake, Dodge Co: "Some Barley being threshed yielding from 17 to 25 bu. per acre. Early planted corn fine." "Early peas good. Hot weather cut the late crop."

Grant: "Harvest well along in Southern section of State. Threshing has begun. Oats good quality, but not good yield."

Green: "Barley a disappointment. Oats not as good as expected a month ago."

Iowa: "Harvest almost completed. Alfalfa not as good second crop as anticipated."

Jefferson: "Barley about 90% crop. Oats a little better than 94. Spring and Winter Wheat better than average."

Kenosha: "All crops look good. Some Alfalfa winter-killed, crop will be about 75%."

Richland: "Local hail-storm did damage in South Richland Center; an area of 4 to 6 square miles in extent, nearly ruining all crops. Other sections of county exceptionally good crops."

Sauk: "Apples abundant and of good quality. Oats uneven. Poorer quality than expected."

Vernon: "Sugar Beets small acreage but good."

Waukesha: "Corn conditions improved wonderfully since July 1st. Barley deteriorated, threshing results being about 20 bu. per acre. Some indications of potato blight."

No Crop Report will be issued by this department for the month of September.

**WISCONSIN STATE BOARD OF AGRICULTURE.**

**J. C. MacKENZIE,**

*Secretary.*

A complete detailed report of the conditions, etc., is shown by the following tables:

**CONDITION OF CROPS.**

<b>NORTHERN DIVISION.</b>	<b>Corn.</b>	<b>Peas.</b>	<b>Potatoes.</b>	<b>Cabbage.</b>	<b>Beans.</b>	<b>Tobacco.</b>	<b>Sugar beets.</b>	<b>Pastures.</b>	<b>Buckwheat.</b>	<b>Alfalfa.</b>	<b>Yield per acre second cut- ing.</b>
Ashland.....	97	105	105	104	100	.....	100	106	80	105	1.3
Barron.....	96	100	100	93	95	95	92	97	105	85	1.0
Bayfield.....	96	160	98	100	.....	.....	100	106	.....	.....	.....
Burnett.....	84	.....	88	.....	.....	.....	100	102	.....	90	1.0
Chippewa.....	87	74	91	82	94	85	90	90	95	90	1.0
Door.....	83	108	98	.....	85	.....	80	110	100	100	1.3
Douglas.....	83	95	88	90	.....	.....	.....	104	85	80	1.0
Dunn.....	95	70	94	100	95	95	95	94	93	95	1.2
Florence.....	95	100	96	100	.....	.....	.....	110	.....	.....	.....
Forest.....	98	110	110	100	98	.....	.....	110	97	.....	.....
Iron.....	97	100	98	.....	.....	.....	.....	100	105	.....	.....
Langlade.....	90	100	80	.....	.....	.....	.....	100	.....	100	1.2
Lincoln.....	98	100	107	100	100	.....	.....	110	100	.....	.....
Marathon.....	98	105	106	104	110	.....	.....	110	105	100	2.1
Mainette.....	88	98	95	90	100	.....	85	105	100	96	1.0
Oconto.....	97	100	100	.....	100	.....	.....	102	100	.....	.....
Oneida.....	82	89	90	85	.....	.....	.....	104	100	100	1.5
Polk.....	98	75	100	95	100	.....	97	98	97	.....	.....
Price.....	98	100	95	100	100	.....	100	102	100	85	1.1
Rusk.....	96	100	98	.....	.....	.....	85	108	.....	100	1.5
Sawyer--No report.	.....	.....	.....	.....	.....	.....	.....	.....	.....	.....	.....
Shawano.....	90	100	100	95	.....	.....	85	107	90	90	.9
St. Croix.....	97	.....	100	98	.....	.....	97	100	.....	.....	.....
Taylor.....	90	90	92	.....	.....	.....	.....	100	.....	.....	.....
Vilas.....	85	100	96	88	100	.....	.....	108	97	100	1.3
Washburn.....	97	96	105	100	98	.....	100	108	100	105	1.5

**CONDITION OF CROPS.**

CENTRAL DIVISION.										Yield per acre second cut- ting.	
	Corn.	Peas.	Potatoes.	Cabbage.	Beans.	Tobacco.	Sugar beets.	Pastures.	Buckwheat.		Alfalfa.
Adams.....	100	95	78	85	90	.....	.....	100	97	100	1.2
Brown.....	90	95	96	90	87	.....	85	110	100	100	1.5
Buffalo.....	100	.....	95	.....	.....	.....	.....	100	.....	.....	.....
Calumet.....	90	88	90	90	90	.....	90	100	.....	90	1.7
Clark.....	97	100	97	95	108	96	100	110	97	100	1.1
Eau Claire.....	98	100	98	95	90	75	100	107	88	80	1.2
Fond du Lac.....	90	100	95	100	98	.....	100	110	95	110	1.4
Green Lake.....	100	110	80	.....	.....	.....	95	110	.....	100	.9
Jackson.....	100	85	95	90	92	90	90	95	100	90	1.8
Juneau.....	97	.....	90	85	85	72	.....	100	92	90	1.1
Kewaunee.....	90	90	95	98	97	.....	77	100	95	95	2.
La Crosse.....	100	99	88	90	.....	.....	90	.....	.....	100	1.
Manitowoc.....	95	95	100	98	98	.....	95	110	.....	95	1.3
Marquette.....	98	.....	82	.....	90	.....	97	90	98	98	1.3
Monroe.....	103	.....	95	90	.....	100	.....	10	97	98	1.3
Outagamie.....	90	75	95	90	85	.....	90	100	80	75	1.
Peplin.....	80	90	80	100	80	.....	80	100	.....	.....	.....
Pierce.....	88	90	95	80	75	.....	87	100	90	100	1.2
Portage.....	95	.....	100	.....	80	.....	.....	100	80	.....	.....
Sheboygan.....	100	105	100	.....	100	.....	105	.....	.....	90	.9
Trempealeau.....	94	75	80	.....	.....	74	.....	91	.....	.....	.....
Waupaca.....	95	100	80	95	100	.....	95	100	90	85	1.7
Waushara.....	98	.....	85	.....	100	.....	.....	110	100	90	.9
Winnebago.....	100	.....	95	100	98	.....	90	90	.....	90	1.
Wood.....	94	96	.....	90	95	.....	92	100	98	98	1.2

**CONDITION OF CROPS.**

Southern Division.										Yield per acre second cut- ting.	
	Corn.	Peas.	Potatoes.	Cabbage.	Beans.	Tobacco.	Sugar beets.	Pastures.	Buckwheat.		Alfalfa.
Columbia.....	83	80	75	68	90	78	80	98	80	90	1.2
Crawford.....	100	90	70	80	75	95	.....	110	75	.....	.....
Dane.....	90	93	100	95	83	80	100	108	90	97	1.
Dodge.....	98	90	93	.....	100	.....	100	110	98	102	1.4
Grant.....	85	80	65	75	.....	.....	.....	90	.....	100	1.0
Green.....	100	.....	.....	.....	.....	.....	.....	100	.....	100	1.
Iowa.....	100	100	100	90	95	.....	.....	100	.....	100	1.
Jefferson.....	98	90	98	.....	.....	98	100	105	.....	105	1.
Kenosha.....	95	.....	90	95	.....	.....	100	98	.....	85	1.2
La Fayette.....	93	.....	92	.....	.....	.....	.....	96	.....	95	1.8
Milwaukee.....	85	90	80	100	.....	.....	98	100	97	95	1.3
Ozaukee.....	100	97	100	90	.....	.....	98	110	.....	100	1.5
Racine.....	93	88	90	85	94	.....	90	98	85	97	1.2
Richland.....	98	105	100	.....	.....	90	.....	110	110	105	1.5
Rock.....	95	80	85	90	95	90	98	100	90	100	1.2
Sauk.....	95	90	95	100	97	.....	100	110	.....	105	1.5
Vernon.....	95	.....	100	.....	.....	90	98	100	97	100	1.3
Walworth.....	85	80	90	.....	.....	.....	93	100	90	95	1.3
Washington.....	95	.....	90	.....	.....	.....	30	100	.....	100	1.
Waukesha.....	100	97	95	100	98	.....	90	110	.....	94	1.5

---

---

WISCONSIN FARM CROP REPORT

---

October 15, 1913

---

Issued by the Wisconsin State Board of Agriculture

---

---

Wis. Historical Library

NOV 7 1914

Public Document Dept.

# WISCONSIN FARM CROP REPORT.

---

OFFICE OF WISCONSIN STATE BOARD OF AGRICULTURE.

Madison, Oct. 15, 1913.

The year 1913 has been highly productive to the farmers of the State of Wisconsin, this State leading all other States in the Union in the production of grains and grasses. This is accounted for by favorable climatic conditions, and the fact that Wisconsin farmers are giving more attention to the selection of seed and the preparation of the soil for planting, and cultural practices throughout the season. The corn crop has been particularly good. Monroe county reports the heaviest yield of corn in the history of the county, and several other counties equal or exceed the production of any previous year.

The average yield of wheat for the state is 19.2 bushels, the Central and Southern Divisions showing a yield of 19.4 as against 18.7 for the Northern Section. The average yield of rye in the Northern Division is 17.9 bushels; Central Division 17.5; Southern Division 18.2; the general average for the State being 17.9. The average yield per acre of Barley for the entire State is 28.7 bushels, each division of the State showing about the same yield per acre. This is also true of oats, the general average yield per acre for the entire State being 39.3 bushels. The yield per acre of corn (shelled) is 38.1 bushels, the Northern Division of the State showing a yield of 36.8 bushels; Central Division 38.3; Southern Division 39.2. The average yield of buckwheat is 15.8 bushels per acre; flax 14.6 bushels per acre; beans 15.9 bushels per acre; peas 19.9 bushels per acre. Blight and early frost damaged potatoes to a considerable extent in some of the larger potato producing counties. The average yield for the entire State is 130.4 bushels.



The yield in the principal tobacco producing counties of the State is as follows: Dane county 1275 pounds; Vernon county 1150 pounds; Rock county 1100 pounds; Columbia county 1100 pounds; Crawford county 975 pounds. Cabbage yielded at an average of 8.1 tons per acre. The Southern Division of the State shows an average yield of 12.8 tons per acre of sugar beets. The average yield for the entire State is 11.5 tons per acre. The average yield of tame hay is 2.2 tons per acre; alfalfa 2.9 tons. 27.9 per cent of the total corn acreage was cut for silage.

J. C. MacKENZIE,  
*Secretary.*



NORTHERN DIVISION.	Tobacco.		Cabbage.		Sugar Beets.		Tame Hay.		Alfalfa.		Percentage total corn acreage planted cut for silage.
	Yield per acre in pounds.	Quality of product.	Yield per acre in tons.	Quality of product.	Yield per acre in tons.	Quality of product.	Yield per acre in tons.	Quality of product.	Yield per acre in tons.	Quality of product.	
Ashland.....			8	96			3	95	2.5	98	50
Barron.....			4	86	11.2	87.4	2.3	80	1.9	90	25
Bayfield—No report.											
Burnett.....							2.4	80	2.5	80	10
Chippewa.....	1.250	90	6	74	12.7	94.1	2.5	94	2.5	100	22
Door.....					8	95.5	2.5	110	3.5	100	20
Douglas.....							2.8	100	3.1	98	25
Dunn.....	800	90	10	92.5	12	85	2.8	80	3.1	90	25
Florence.....							2.8	100			
Forest.....							2.8	105			10
Iron.....							2.5	98.5			70
Langlade.....							2.8	100			30
Lincoln.....							2.7	90			11
Marathon.....			10	94			2.8	108	3.2	100	10
Marquette.....					11.5	97.3	2.8	102	3.1	105	10
Oconto.....							2.8	100			35
Oneida.....			8	80			2.8	90	3.5	90	5
Polk.....							2.8	100			25
Price.....							2.8	90	2.6	90	30
Rusk.....							2.9	96	3	96	30
St. Croix.....			5	80			2.9	95			20
Sawyer.....							2.9	95			25
Shawano.....			4	75	10	98	2.9	97.5	2	98.2	25
Taylor.....							2.9	95			5
Vilas.....							2.9	95			5
Washburn.....							2.9	80	3	90	35

CENTRAL DIVISION.	Wheat.		Rye.		Barley.		Oats.		Corn (shelled)	
	Yield per acre in bushels.	Quality of product.	Yield per acre in bushels.	Quality of product.	Yield per acre in bushels.	Quality of product.	Yield per acre in bushels.	Quality of product.	Yield per acre in bushels.	Quality of product.
Adams.....	18	91	15	92.5	30	92	35.2	95	35.4	94
Brown.....	15	87.5	17.5	98	24	85	37.8	85	37.9	88
Buffalo.....	15.1	85	16	95	30.3	85	40	94.7	34.5	100
Calumet.....	20	95	19.4	95	30	95	43.9	95	39.5	80
Clark.....	22.5	100	23.1	98.9	33.4	75	43	100	39.8	103
Eau Claire.....	19	95	19.7	105	29.3	100	45	110	40	110
Fond du Lac.....	20	90	19	95	28	80	45	90	41	89
Green Lake.....			18	97	30	67	42.1	90	40	71.3
Jackson.....	21	97.5	17.5	95	35	90	40	97.4	39.2	100
Juneau.....			15	95			35	88	35	89
Kewaunee.....	19	94	16	96	30	90	40	93.7		
La Crosse.....	20.3	101	20	98.7	30	92	42.5	91.5	38.7	98
Manitowoc.....	22.7	98	18.5	100	28.7	98.3	37.4	98	35.8	99.5
Marquette.....	18.3	97	15.9	96	25	85	42.7	78.8	39.2	98
Monroe.....	17.5	100	15.3	98.9	29.1	88.5	42.5	105	38.5	75
Outagamie.....	20	88	18	92.5	28.1	75	40.2	90	37.3	96.5
Pepin.....	18	99.4	12.9	90	24.5	80	35.3	95	38.1	90
Pierce.....	25.3	100	15	98.3	23	85	42.6	99.1	42.2	105
Portage.....			14	97.5			30	82.5	42	95
Sheboygan.....	15	75	20	80	32.5	85	41.3	100		
Trempealeau.....	24.7	90	18.4	100	30	80	35	82	36.4	98.3
Waupaca.....	19.5	95	17.3	95.7	30	97.5	41.5	87.5	39.8	90
Waushara.....	20		15	100	25		30	98.7	33.9	96.5
Winnebago.....	16.5	90	18	95	26	80	35	90		
Wood.....	18.7	89.2	21.2	96.5	30.5	94	40.3	98.8	37.9	97.5

CENTRAL DIVISION.	Buck-wheat.		Flax.		Beans.		Peag.		Potatoes.	
	Yield per acre in bushels.	Quality of product.	Yield per acre in bushels.	Quality of product.	Yield per acre in bushels.	Quality of product.	Yield per acre in bushels.	Quality of product.	Yield per acre in bushels.	Quality of product.
Adams.....	15	90							75	74
Brown.....	18	80			18	90	25	98	100	97
Buffalo.....									100	90
Calumet.....									95	80
Clark.....	21	95.2	12	94.9			27	100	175	107
Eau Claire.....									170	100
Fond du Lac.....	20	85			18	95	20	100	100	95
Green Lake.....					16	90	18	75	110	95
Jackson.....	19.5	95			18	80	18		137	100
Juneau.....	20	95							100	88
Kewaunee.....							18	92	135	94
La Crosse.....									150	
Manitowoc.....							21	95	134	100
Marquette.....	16.3	90			12	95			125	96
Monroe.....	20	99							128	90
Outagamie.....									150	85
Pepin.....									120	80
Pierce.....							20	75	163	100
Portage.....	13.9	97.3							75	92.5
Sheboygan.....									178	95
Trempealeau.....									140	95
Waupaca.....	12	82.5	8		10	98.8			100	90
Waushara.....	10	98.5			10				75	84
Winnebago.....									115	90
Wood.....	14.5	93.3	13	95	15	95	15	94.5	125	93

CENTRAL DIVISION.	TOBACCO.		CABBAGE.		SUGAR BEETS.		TAME HAY.		ALFALFA.		Percentage total corn acreage planted cut for silage.
	Yield per acre in pounds.	Quality of product.	Yield per acre in tons.	Quality of product.	Yield per acre in tons.	Quality of product.	Yield per acre in tons.	Quality of product.	Yield per acre in tons.	Quality of product.	
Adams.....							2	90			10
Brown.....			8	85	13	95	1.9	105	2.5	95	60
Buffalo.....							1.8	85	3.4	90	
Calumet.....					12	90	2.2	90		95	50
Clark.....					10	90	3	85			60
Eau Claire.....							1.7	107	3.2	90	100
Fond du Lac.....					12	95	2.2	90	3.2	90	42
Green Lake.....							1.5	90	3.2	90	25
Jackson.....							2.5	96	3.2	90	23
Juneau.....							2.8	93	2	90	22
Kewaunee.....			8.4	95	10.5	91	1.7	94.5			35
La Crosse.....							2.3	103	3.1	98.5	27
Manitowoc.....			9.1	93	11.5	94	2.7	98.4	3.2	97.9	
Marquette.....							2	95	1.9	92	20
Monroe.....							1.7	97.4	3.9	100	20
Outagamie.....			10	65	8.5	78	1.8	92.5	3.5	92	30
Pepin.....							1.5	100			
Pierce.....					10	90	1.8	89.1	3	75	40
Portage.....							2.2	95			15
Sheboygan.....							2.4	100	2	95	60
Trempealeau.....							2.8				
Waupaca.....							2.2	96	2.7	98.7	50
Waushara.....							2.9	93	2.4		20
Winnebago.....							2.5	100	3.8	100	
Wood.....			8	80	10.5	92.5	1.9	94.5	2.4	100	35



SOUTHERN DIVISION.	TOBACCO.		CABBAGE.		SUGAR BEETS.		TAME HAY.		ALFALFA.		Percentage total corn acreage planted cut for silage.
	Yield per acre in pounds.	Quality of product.	Yield per acre in tons.	Quality of product.	Yield per acre in tons.	Quality of product.	Yield per acre in tons.	Quality of product.	Yield per acre in tons.	Quality of product.	
Columbia.....	1,100	89.4			9	94	1.7	87	1.8	89	19
Crawford.....	975	90					2	110	2.4	90	8
Dane.....	1,275	86			12	98	1.9	96	3.7	98	12
Dodge.....					17.5	97.5	2.8	98.5	3.9	99.1	20
Grant.....							2.1	100	3	100	.....
Green.....							1.5	98	3	99	18
Iowa.....			10				1.8	97.8	3	96	15
Jefferson.....					10	99	3.1	100	3.4	104	38
Kenosha.....			9	98	9.5	70	1.7	95	3.2	95.4	65
LaFayette.....							2	70	3	90	10
Milwaukee.....			5	70			2	90	3	70	65
Ozaukee.....					15		1.5	99.4	2	98.3	50
Racine.....			10	85	12	85	2.2	100	2.5	103	30
Richland.....	1,000	90					2	90	3.4	100	10
Rock.....	1,100	100			18	98	2.5	100	3.2	102	17
Sauk.....							2.3	97.3	3.4	104	10
Vernon.....	1,150	100					1.8	100	3	99.5	20
Walworth.....							2.4	100	2.3	98	18
Washington.....					12	94.5	2.5	95	3.3	100	25
Waukesha.....							1.8	100	3.2	100	40

---

---

# Wisconsin Farm Crop Report

November 20, 1913

Issued by the Wisconsin State Board of Agriculture

---

---

Wis. Historical Library

JAN - 7 1914

Public Document Dept.

Wisconsin State Journal

1914

Wisconsin Historical Library

1914

Public Document Dept



# WISCONSIN FARM CROP REPORT

---

OFFICE OF WISCONSIN STATE BOARD OF AGRICULTURE,

MADISON, November 20, 1913.

In submitting this, our last Crop Report for the year 1913, with an abundant crop and soil conditions the best in years, our Reporters are fully justified in taking an optimistic view of agricultural conditions in Wisconsin.

The average yield of Clover Seed for the State is 2.8 bushels as compared with the yield of 2.7 bushels in 1912, and the quality of the product is 93.8 per cent. The average yield of Timothy Seed is 6.1 bushels as compared with 6. bushels in the year 1912, and the quality of the product is 96 per cent.

The percentage of the 1913 products still remaining in the hands of the farmer on the date of this report is as follows: Wheat 80.8 per cent. Rye 73; Barley 74.4; Oats 82.3; Corn 89.6; Buckwheat 73.8; Flax 75.3; Clover Seed 85.8; Timothy Seed 87.2; Beans 81.3; Peas 46.6; Potatoes 62.5; Sugar Beets 17.3; Tame Hay 83.

The acreage and condition of seeding for the season 1913 is as follows: Acreage timothy 96.8, Condition 98.5; Clover acreage 98.8, Condition 97.8; Alfalfa acreage 103.5, Condition 96.4; Winter Wheat acreage 93.3, Condition 97.5; Winter Rye acreage 97.7, Condition 98.2.

There remains in the hands of the farmer but 3.8 per cent of the 1912 corn crop. The percentage of cattle fed for market as compared with 1912 is 96.5; The percentage of Sheep 97.8; Swine 98.4. The percentage of loss from Hog Cholera throughout the State was 3.6 per cent. The percentage of plowing done November 10th was 65.3; The weather conditions subsequent to said date, however, have been most favorable, and the percentage

of plowing done December 1st will be fully up to the average of previous years.

A close canvas of the State shows that there is a total of 42,821 silos on the farms in Wisconsin. Approximately one-fourth of the farmers of the State are using silos, and the indications are that double this number will be in use within the next two years.

The following notes from correspondents will prove both interesting and instructive.

WISCONSIN STATE BOARD OF AGRICULTURE,

J. C. MACKENZIE,

*Secretary.*

## NOTES FROM CORRESPONDENTS

---

(Each sentence ending with a period is from one correspondent, the next sentence from another correspondent, and so on for each county.)

**Adams Co.**—Fall grains and clover seeding looks fine; Best corn crop ever grown here.

**Ashland Co.**—Climatic conditions generally have been very good this season; Have had no serious drouth or over supply of rain; Potatoes are good and all harvested; Young pigs were very short supply last spring; Several cars of dairy cattle have been brought in this season; The increased amounts of acreage is not due to any particular change in crops, but to the fact that considerable new breaking is being done every year; The increase of dairy stock necessitates a general increase along various lines.

**Bayfield Co.**—About 1200 head sheep shipped from two townships alone in Bayfield County this year; There is probably double the alfalfa raised this year compared with last year; Normal acreage is small compared with the Southern part of the State, but is increasing rapidly.

**Brown Co.**—Crops of all kinds exceptionally good this year, and prices high; Farmers in general are fairly prosperous and those heavily engaged in dairying and stock raising are making money; Farm lands are increasing in value rapidly, some selling as high as \$150.00 per acre, doubled in value in ten years; A great many silos were put up this year, barns remodeled and better prepared for dairying.

**Buffalo Co.**—As in nearly all Counties in Wisconsin, Buffalo County has been favored with a bountiful crop, especially corn, oats, and hay; Clover is a fine stand and promises much for 1914; Plowing well advanced.

**Calumet Co.**—The agricultural conditions are good.

**Chippewa Co.**—The farmers have their fall work well along; plowing about all done and eighty per cent of corn husked; We have had ideal weather this fall; The entire crops were harvested in good condition and are all No. 1 quality. We have had a good year; Everything looks fairly well but rye, and that is very backward. Crops of all kinds will exceed the average of the last ten years; While the yield of corn and potatoes is not up to the phenomenal yield of 1912, the increased acreage will make it as large a crop; Prices, Wheat 85 to 90, Rye 55 to 68, Barley 50 to 60, Oats 34 to 37, Corn (new) 55, Buckwheat 100 lb.—1.40; This has been an

excellent fall for work and farmers have practically completed all fall work and plowing.

- Clark Co.**—There has been very little of the 1913 crop sold; Farmers are all busy and have disposed of very little; Oats fine quality and yielding from 50 to 75 bushels to acre, machine measure; Winter wheat was good, berry yielding 25 bushels to acre; Corn yielding 100 baskets; Potatoes fine, 150 to 200; New seeding best in years; Barley yielded 30 to 40, good quality; Hay was light. Year 1913 one of the best, if not the best in the history of the county.
- Columbia Co.**—A fair average crop has been harvested; Wet weather causing some damage and much delay, the bean crop being damaged more than others. The farmers in this vicinity are not thoroughly woke up to their needs; Not many silos as yet, but will add them very rapidly in the next two years. The farmers are considerably behind with their farm work this fall, due to so much wet weather; The fall grain was sown very late on the same account; It will take the general run of farmers until December 1st to catch up with their work.
- Crawford Co.**—Fall has been pretty wet, but corn matured fine; Never in the history of Crawford County was a better corn, oats, wheat, and hay crop raised; The high prices of corn is causing many to sell hogs off small and not well fattened, but few cattle will be on feed in the County this year; Fall pasture has been good and cattle and horses in good condition for winter; Feed plentiful.
- Dane Co.**—South and South West of Oregon, hog cholera has prevailed seriously, much vaccinating done with fair results following, and yet some failure; The season has been wet, autumn especially, delaying work of season; Potato crop mild, some good, some poor, below average; Hail, washed out, worms, scab, etc., cause of failures. On account of wet weather, fall work is farther behind than for many years past.
- Dodge Co.**—Corn husking is nearly finished, except some to be shredded. Conditions are fairly good considering all the wet weather; Hay crop was splendid; Corn fairly good, and only for the early frost would have been a hummer; Hog cholera making itself felt to quite an extent, but the live farmers are having them vaccinated.
- Door Co.**—The general conditions in the County are much improved over 1912; Crops are on the whole very good, and weather conditions have enabled farmers to harvest and save all in good condition; Farm work is in good condition everywhere. Farming in general is good; Everybody is well pleased; Our best product is potatoes. I believe that over 100 thousand bushels were raised in this County this year.
- Dunn Co.**—Crop conditions in this section have been very favorable; Potatoes a good yield; 20% lost by the early freeze in October; Corn is of high quality and above the ten year average yield; Peas are a near failure and lost the farmers thousands of dollars in this section; Many farmers have built silos this season and more will be erected next season; Several herds of swine died of cholera, but it did not spread to any great extent. I think we will have a great alfalfa county in time.

Farm conditions are better this season than in many years; We have good crops which bring good prices; All kinds of stock is in demand at fair prices; Plenty of feed to winter stock through.

**Eau Claire Co.**—Fall work is well advanced; Farmers seem to take more interest in caring for their crops; Land is still raising in price. From this locality all report exceptionally good crops and especially so in oats, beans, corn and cabbage; Reports of corn yielding 80 to 100 bushels per acre frequent; Weather and soil conditions fine for seeding. A few potatoes lost from early freeze; More cattle being fed than usual, but mostly young stock, which will not be ready for market before 15 months; Farmers having silos are feeding 20 to 30 per cent more stock.

**Florence Co.**—Our potato crop was below the average of the last few years, but our crop has been better than elsewhere, as our County is noted for potato raising; Our oat crop was better than it has ever been before, both in quantity and quality; Our farmers are beginning to raise more hogs and beef cattle than heretofore; A few years ago I sold as a merchant hundreds of dollars worth of pork and beef; Now the farmers offer me the same products for sale.

**Fond du Lac Co.**—25 per cent more than the usual amount of plowing to be done at this time of the year; Cattle, sheep, and hogs generally healthy; Some horse distemper.

**Forest Co.**—Soil in fine working condition; The few winter crops sown are doing finely; Pasturage in good shape and green yet, and still growing Nov. 8th. Potatoes averaged 200 bushel to acre, and of fine quality; New seeding has done fine; Corn has done the best I ever saw it do here for the last twelve years; There has been more land cleared in 1913 and wild land bought than before.

**Grant Co.**—I am glad to report that the farmers of Grant County have every reason to be thankful for their 1913 crop conditions; In West Grant especially; Some of the small grain was not up to the average yield in quantity but was of an excellent quality; Hay was a heavy crop and as an average was put in the barns in fine condition; A large crop of clover and timothy seed has been harvested and is of a good quality; The acreage of the several crops as near as I can judge remains about as usual; Farmers in this county rotate their crops and although they may vary somewhat it is safe to place it at an average of 100 taking one year with another; Pasturage has been excellent most of the season, and stock is going into the winter in fine condition; Surely the silo is being appreciated more and more each year and the number is going to increase more rapidly; No grain is shipped out of the county; A large quantity of corn is shipped in each year. The outlook for the future is very promising; Manures all cleaned up and spread upon the land and plowed in, except where the spread has been put on meadows; Threshing about all done, and straw well stacked to keep for future use; Farms are well fenced and have every appearance of neatness and prosperity.

**Green Co.**—Season of 1913 the best in 20 years of general crop and pastures; October a disagreeable wet month, retarding

the drying of corn, but good for fall grain growth; Very little corn husked or shredded Nov. 10th; Most all of corn well matured, good yield and quality; Green County being a dairy county, but very little grain or feedstuffs shipped out with the result that most all grain and hay is held for home consumption; I think on the whole agricultural conditions are at their best now in Green County.

**Iowa Co.**—Generally good; Corn affected by the frost on September 22nd; Proved to be more damaging to both fodder and grain than was earlier anticipated; Potatoes much smaller crop than expected, although all around a bounteous crop will have been harvested. This has been one of the most satisfactory crop seasons in many years, the yield and quality of all cereals being good and pastures have never been exceeded; Pastures fine at present; No violent storms but an abundance of precipitation; Mortality among stock very low. Plenty of moisture in ground; Grass land in prime condition; Plenty of Hay and Corn; Potatoes scarce, the only poor crop of the season; Many farmers will have to buy some; Some hog cholera in the county.

**Iron Co.**—It has been a very wet fall for securing the potato crop, and at this writing there are some potatoes left in the ground that are not dug.

**Jackson Co.**—Dairying is becoming the main thing in this County; A good share of the tobacco sheds are being made over into cow barns; More farmers becoming interested in pure bred dairy stock.

**Jefferson Co.**—Corn mostly husked and cribbed in good shape; Fall plowing done in good condition.

**Juneau Co.**—The cranberry production in Northern section of county was about 75 per cent of the yield of 1912, condition about 90 per cent; The ground goes into winter quarters with plenty of moisture to start the 1914 crops, even if we have a dry winter.

**Kenosha Co.**—Most of the seeding in good condition; More clover and alfalfa sown and less timothy. Conditions are good in general; Cabbage and beets well out of the way at good prices; Dairy products up to the average and at better prices for milk; Fall work is well along and farmers in good spirits.

**Kewaunee Co.**—Spring wheat yielded well, even better than winter wheat; Rye did not yield heavily, but quality of grain is better than that of last year; Peas yielded rather poor; Barley in general had short stems and on richer grounds lodged before seed developed; Oats was very good and of fine quality; In fact the best of all the grain raised.

**La Crosse Co.**—All crops were good; Hay good; Pastures good; Corn good. Fall was quite dry for early plowing, so not very much winter grain sowed; Hired help scarce.

**Lafayette Co.**—Conditions have been very favorable most of the year; Pastures exceptionally good all season; Oats and barley not a heavy crop and considerable smut; Corn a good crop, better than usual; Large hay crop, and more alfalfa is being grown each year; Lafayette County is farming better every succeeding year.

**Langlade Co.**—Agricultural conditions in this County are booming; Our crops were good and were saved in fine condition; Prices are high and prosperity in the rural districts is everywhere to be seen.

**Lincoln Co.**—Outlook is good; New seedings very good; Most old sod has been turned over for next years corn and potatoes. The agricultural condition is good; Have had fine weather for plowing, which is about all done and ground in good shape.

**Manitowoc Co.**—Sugar beets a fair crop this year; Farmers complain of price and future prospects; Crops on the average last season have been very good; This is a dairy county and silos are built rapidly; Nearly every farmer has one; Nearly all corn raised goes into the silo; Some is saved for cattle and hogs, but I think more corn is shipped in than goes out; Very little sold; Planting of alfalfa is increasing; Farmers have begun raising more calves than for many previous years, especially heifers of milk breeds.

**Marathon Co.**—Am only familiar with local conditions in southern part of Marathon County; Nearly every farmer has from 500 to 1,000 bushel of potatoes, and have only marketed what they are unable to store, about 10 per cent; All corn raised is fed on the place, as is also most of the oats and barley; No winter wheat raised, but considerable rye, about usual amount, looks good; Farmers in this section have had a fairly prosperous year; No drouths, floods, or storms, and good prices.

**Marinette Co.**—This season has been very satisfactory especially for small grain and corn; Potatoes did not produce as heavily as usual. 1913 has been considered a splendid year for farmers in Marinette County, nearly all crops have averaged good; The hay crop in general was very good owing to plenty of rain-fall during growing season; This applies to pasture which was the best ever known; This county is becoming quite a potato growing section; The acreage was larger than usual, but the yield not quite so good as last year; Potatoes have been marketed very freely this fall; There has been more marketed up to this time this year than any year in the past; This has been a good fall for plowing and there appears to be about 80 per cent of all plowing done; There are no cattle being stall fed in this county for market, but the farmers are rearing about the usual amount; This also applies to sheep, as there are but few flocks of any consequence in the county, and the surplus is marketed in the fall; There are more hogs raised in the County this year than usual; They have had hog cholera in several sections of the County, but the loss has not been heavy, and the disease has not been general; There have been more new silos erected this year than any previous year in the history of silo building in this County.

**Marquette Co.**—The farm work in this county is nearly finished; Corn is nearly all husked, some fields waiting for the shredder; With two weeks more good weather, plowing will be done; Hulling of clover is backward, but a good deal of it is in the stack. The conditions are very satisfactory; The seeding looks good and a good stand; The ground is in good condition for winter and the work is quite well advanced.

**Milwaukee Co.**—Conditions generally favorable; Seeding never better.

**Monroe Co.**—The crops of Monroe County with the exception of clover and timothy were very good, the corn crop being the most bountiful ever raised in Monroe County; The potato crop was also good; The tobacco crop, although but a little was planted, was very good. A good cranberry crop was harvested, and in good condition; The biggest handicap to the farming here is the lack of good laborers; The grass crops are good and the soil is in good condition for winter; Lots of corn still in shock for lack of shredders, and some of them held up for lack of men to run them.

**Oconto Co.**—The agricultural condition in Oconto County has gained 25 per cent in the last two years.

**Oneida Co.**—Season one of the best ever enjoyed; Corn fine; Barley good; Rye good; Oats splendid; Potatoes good; Cattle and hogs looking good; Much fall plowing; About 20 silos built this summer, and will double the number next summer; Alfalfa excellent and more will be seeded next spring; Better seed will be used all along the line.

**Outagamie Co.**—The best season the farmers in this locality have had for years, all crops have been good; Pastures the entire season fine; Prices very satisfactory for all farm products. Farmers are feeling very well satisfied with existing conditions; There are less cattle, swine, and sheep in the feeders' hands than last year.

**Ozaukee Co.**—The agricultural conditions in this county never were better.

**Pierce Co.**—Our principal line of agriculture is dairying, raising hogs, and some sheep; As all crops have been good and prices good, farmers are prosperous and reasonably contented, and as a consequence all lines of business are prospering; The only cause for complaint the farmers have is the difficulty of obtaining farm labor.

**Polk Co.**—Agricultural conditions in general are very good in this County; Farmers are very prosperous; Banks of County hold on time deposit made by farmers over one million dollars; This represents money held in reserve and saved up on the farms above what is needed by the farmer in his business; Dairying and feeding stock is the principal money maker.

**Portage Co.**—Timothy and clover (especially clover) seeding in 1913 were badly damaged in localities by grass-hoppers.

**Price Co.**—The general conditions are good; More stock is being kept and dairying is increasing rapidly; Each year the acreage of potatoes and clover is increased materially, and also the acreage of corn.

**Racine Co.**—Central Racine County and in fact the whole county has had the best growing season in its history; Corn was an excellent crop and well matured; Fall feed is abundant and farmers have on hand an enormous crop of hay and other forage for winter feeding and sale. Farmers in Racine County are dissatisfied in raising sugar beets, or rather in the way some have been tared; The onion crop has been good and will be increased in acreage next year; New milk cows bring from \$75 to \$110 each at sales.



**Richland Co.**—General conditions are about the average.

**Rock Co.**—A good season; Rather cold in spring; Small grain needed rain just at heading, and crop shortened somewhat thereby; Well cultivated corn is good; Rock County has a big crop; Potatoes below average; Hay good and alfalfa a success; Rather large amount of tobacco in this County is not conducive to improved agriculture and stock raising; Farmers are prospering and contented.

**Rusk Co.**—Agricultural conditions are very good, above normal; Fall plowing well along and prospect is very encouraging; The percentages here will increase very greatly as this County is undergoing a great growth and the development in consequence is very big.

**Sauk Co.**—Best corn crop ever harvested; Much seed corn for sale; This has been a very good season for alfalfa; Farmers induced to hold potatoes for better prices. This has been generally a good season for farmers; Much hindrance from rains and more than average amount of weeds; Meadows and pastures in fine shape; Potatoes and corn a splendid crop where conditions were not too wet.

**Shawano Co.**—This has been a banner year for Shawano County, and the farmers are prospering.

**Sheboygan Co.**—Have had very favorable conditions the past season; Crops of all kinds were good and were secured under favorable weather conditions; Pasture was unusually good owing to frequent rains.

**St. Croix Co.**—Crops excellent; Fall work well in hand; Many silos built this year; Farmers induced to feed more stock.

**Trempealeau Co.**—Everything in this section good, good quality and yield; Clover seed very light.

**Vernon Co.**—Conditions are very favorable; No diseases among stock; Never had better crops; Prices good (except sheep); Not as much fall plowing as usual owing to the wet weather of September and October.

**Vilas Co.**—Conditions here are a little above normal in general.

**Walworth Co.**—In general the prospect is good.

**Washburn Co.**—I have kept close watch for the past 10 or 12 years and I do not think that agricultural conditions have ever been better in Washburn County than at this time.

**Washington Co.**—Much unfavorable weather in October, consequently farm work is behind; Crops were all good except Alsike clover seed of which there was an unusually large acreage in this County.

**Waukesha Co.**—As a rule farm work is very backward at the present time; There is much corn to husk and but 50% of plowing done; Fruit trees and small fruits are going into winter quarters in very good shape.

**Waupaca Co.**—The conditions are good and improving every year, as in traveling over this county once a year in the fall I can see the improvement in crops and also the improvement the

farmers are making in their buildings. Crops generally good; Potatoes very uneven; Yield, and quality universally good.

**Wauashara Co.**—Clover seeding hurt by grass-hoppers.

**Winnnebago Co.**—1913 has been very successful year for our County; We shall want more pure bred seed and cattle, better roads and schools, and we will all do our best to aid you and others who are trying to push the work. Crops generally good; Barley light in yield, also wheat and rye, oats fair, corn good; Hot weather at time of filling injured small grain.

**Wood Co.**—Season of 1913 best, as regards all crops, since 1895; Quantity and Quality of grains, corn, and potatoes excellent; Hay abundant and quality good; Winter grains planted look good; No hog cholera, and no unusual stock diseases; Pastures not as good now as usual, and milk production falling off more than usual (this is almost entirely a dairy country) perhaps 25 to 30 per cent off. Crops good; Well harvested; Weather conditions favorable. Fall work somewhat behind; Large increase in number of silos erected; Corn crop best in several years; Grain yields heavier than usual and quality better; Co-operative buying of commodities by farmers and co-operative cheese factories and creameries and farmer's stock shipping associations are being successfully managed, producing increased net revenues; No contagious diseases of farm animals. Crops in 1913 were very good as a whole; Farmers are all prosperous and well satisfied.

A complete detailed report of the conditions, etc., is shown by the following tables:

NORTHERN DIVISION.	Clover seed.		Timothy seed.		Percentage of 1913 products still remaining in hands of farmer.									
	Yield per acre in bushels.	Quality of product.	Yield per acre in bushels.	Quality of product.	Wheat.	Rye.	Barley.	Oats.	Corn.	Buckwheat.	Flax.	Clover seed.	Timothy seed.	Beans.
Ashland.....					75		90	60				100	100	75
Barron.....	2.5	75	5.	80	75	80	90	90	90	80	100	100	100	75
Bayfield.....					90	90	90	75	90	90	95	95	95	75
Burnett-No report														
Chippewa.....	2.	98			80	40	50	80	90	40	70			
Door.....	1.3	100				50	65	88	85	90	75			70
Douglas.....					95			90						
Dunn.....	2.8	97	5.	100	70	85	82	88	95	53	78	95	95	90
Florence.....						75	90	50	90					
Forest.....					90	90	90	80						90
Iron.....	1.5	90			70	50		75	85	50	85			
Langlade.....					60	65	50	90	88					100
Lincoln.....	2.	110	3.	100	90	75	80	70	80	80	75	75		
Marathon.....					100	75	90	90	90	50				90
Marinette.....	4.5	95			70	75	60	80	95	94	100			85
Oconto.....	5.	100	8.	100	50	50	50	80	80	50	80	80	80	50
Oneida.....	3.5	90			95	90	95	90	95	95	100			
Polk.....	5.	100	8.	100	90	99	95	75	90	87	100	100		50
Price.....	3.5	100			50	55		75	77	50	75			
Rusk.....	4.	100	8.	100	90	75	75	88	87	50	100	100	100	50
Sawyer.....						87	80	90	60	75				40
Shawano.....	4.	90	4.	90	75	50	25	75	75	85	50	50		
St. Croix.....					53	53	62	54	75	55	50			
Taylor.....						90	95	90						
Vilas-No report														
Washburn.....	2.5	100			75	60		95	90	90	95	90		75

NORTHERN DIVISION.	PERCENTAGE OF 1913 PRODUCT STILL IN HANDS OF FARMER.				ACREAGE AND CONDITION OF SEEDING, SEASON 1913.									
	Peas.	Potatoes.	Sugar beets.	Tame hay.	Timothy.		Clover.		Alfalfa.		Winter wheat.		Winter rye.	
					Acres.	Condition.	Acres.	Condition.	Acres.	Condition.	Acres.	Condition.	Acres.	Condition.
Ashland.....		50		67	110	100	120	100			110	100	110	100
Barron.....	20	40		90	100	100	95	100	100	100	75		95	100
Bayfield.....	75	60		75	120	110	125	110			110	100	110	100
Burnett.....	No report.													
Chippewa.....		30	10	80	90	100	98	100	90	100	100	100	90	100
Door.....	75	20	0	78	100	103	115	100	110	105	90	100	95	100
Douglas.....		20		75	100	100	100	100						
Dunn.....	10	40	10	87	97	95	92	90	105	75	90	90	103	95
Florence.....		40		50	105	95	100	90			80	100	85	95
Forest.....	10	70		90	107	100	90	105			125	100		
Iron.....	50	75		50	95	53	100	100			95	95	95	96
Langlade.....	75	75		100	100	95	95	95	150	95	78	98	85	90
Lincoln.....	75	42		92	100	97	110	104					100	95
Marathon.....	75	90		90	100	100	100	110	100	100			100	100
Marinette.....	78	65	30	77	103	110	102	108	90	95	100	95	100	100
Oconto.....		30		100	100	98	100	100			80	95	100	95
Oneida.....		50		95	120	100	125	100	30	95				
Polk.....	50	50		75	100	100	100	100	110	100	100	100	100	100
Price.....		25	0	73	100		125		200	100	100	100	100	
Rusk.....	25	50	25	75	150	98	150	97	100	105	125	100	150	100
Sawyer.....		45		85	100	100	110	100					100	100
Shawano.....	10	35	50	75	95	100	95	100	85	95	90	90	95	100
St. Croix.....				75	95		100		101		98		100	
Taylor.....	80	80		90	105	95	105	90					105	100
Vilas.....	No report.													
Washburn.....	50			75	110	105	100	102	100	105	100	98	100	97

NORTHERN DIVISION.	Estimated num- ber of silos in county.	Percentage of 1912 corn crop on farms Nov. 10, 1913.	Percentage of cat- tle fed for mar- ket as compared with 1912.	Percentage of swine fed for market as com- pared with 1912.	Percentage of sheep fed for market as com- pared with 1912.	Percentage of loss from hog cholera.	Per cent plowing done Nov. 10th.
Ashland.....	55		125	75	110	0.	65
Barron.....	500	0.	90	110	80	0.	65
Bayfield.....	25	0.	200	100	200	0.	90
Burnett.....	No report t.						
Chippewa.....	315	15.	80	105	100	0.	70
Door.....	200	5.	85	98	115	0.	
Douglas.....	6						75
Dunn.....	100	5.	93	98	90	2.	70
Florence.....	10		110	125	100	2.	90
Forest.....	3	3.	105	97	100	0.	80
Iron.....	7	0.	190	100			75
Langlade.....	200	0.	85	105	105	0.	55
Lincoln.....	45	0.	100	100	100	0.	75
Marathon.....	200	5.	100	110		0.	15
Marinette.....	150	1.	100	95	100	3.	77
Oconto.....	1,180			100	50	0.	65
Oneida.....	40		105	100	104	0.	70
Polk.....	400	0.	150	150	100	0.	68.
Price.....	45	0.	100	90	100	5.	82
Rusk.....	400	0.	200	200	200	0.	75
Sawyer.....	20	0.		75		0.	75
Shawano.....	100	5.	90	100	100	0.	85
St. Croix.....	815	0.	100	100	100	0.	75
Taylor.....	75		100	100	100	0.	80
Vilas.....	No report t.						
Washburn.....	75	0.	100	100	90	0.	60

CENTRAL DIVISION.	Clover Seed.		Timothy seed.		Percentage of 1913 products still remaining in hands of farmer.									
	Yield per acre in bushels.	Quality of product.	Yield per acre in bushels.	Quality of product.	Wheat.	Rye.	Barley.	Oats.	Corn.	Buckwheat.	Flax.	Clover seed.	Timothy seed.	Beans.
Adams.....	2.3	95	.....	.....	75	80	.....	90	95	50	.....	80	.....	80
Brown.....	3.	105	8.	100	95	95	88	80	98	100	80	80	75	80
Buffalo.....	1.5	90	4.	100	50	65	50	75	95	.....	.....	40	80	85
Calumet.....	2.3	95	.....	.....	70	75	50	90	95	.....	.....	70	80	85
Clark.....	3.	95	7.	95	77	82	73	85	95	95	90	98	97	98
Eau Claire.....	3.2	98	6.	106	90	90	75	77	85	93	70	70	60	65
Fond du Lac.....	.....	.....	15.	100	80	85	70	80	75	80	.....	.....	90	85
Green Lake.....	2.	100	4.	100	50	70	70	65	90	.....	.....	60	90	60
Jackson.....	3.	100	6.	100	80	50	50	80	75	90	.....	80	90	90
Juneau.....	4.	95	6.	98	80	80	80	90	90	85	.....	80	95	80
Kewaunee.....	2.	100	5.	100	80	60	50	50	90	.....	.....	90	90	80
La Crosse.....	1.8	99	.....	.....	70	60	93	94	95	75	.....	80	75	.....
Manitowoc.....	2.3	98	.....	.....	70	80	80	90	95	.....	.....	60	.....	.....
Marquette.....	2.	84	9.	95	73	67	75	80	90	45	.....	90	90	82
Monroe.....	1.5	80	6.	90	83	65	55	85	92	50	.....	50	80	80
Outagamie.....	2.	85	3.5	87	70	60	80	60	90	80	.....	100	90	90
Pepin.....	.....	.....	.....	.....	90	80	90	90	95	85	.....	.....	.....	.....
Pierce.....	.....	.....	.....	.....	75	80	50	67	60	60	.....	100	100	100
Portage.....	.....	.....	8.	98	.....	60	.....	90	90	60	.....	.....	100	100
Sheboygan.....	4.	105	.....	.....	90	80	75	90	95	50	.....	70	.....	.....
Trempealeau.....	2.5	60	5.2	80	85	90	80	80	90	60	60	95	100	.....
Waupaca.....	2.	100	6.	100	65	70	90	80	95	85	100	95	80	50
Wausara.....	1.8	90	10.	100	90	55	40	95	92	60	.....	90	80	50
Winnebago.....	3.3	97	6.	95	95	90	83	80	97	100	.....	90	97	.....
Wood.....	3.2	90	7.	97	88	80	75	85	92	93	100	188	92	72

CENTRAL DIVISION.	Percentage of 1913 products still remaining in hands of farmer.				Acreage and Condition of Seeding Season 1913.									
	Peas.	Potatoes.	Sugar beets.	Tame hay.	Timothy.		Clover.		Alfalfa.		Winter wheat.		Winter Rye.	
					Acreage.	Condition.	Acreage.	Condition.	Acreage.	Condition.	Acreage.	Condition.	Acreage.	Condition.
Adams.....	.....	75	.....	80	100	95	100	95	.....	.....	100	90	100	90
Brown.....	50	65	15	65	95	100	105	105	98	100	90	95	93	95
Buffalo.....	60	60	.....	95	100	100	100	100	90	100	75	100	100	100
Calumet.....	40	80	20	90	95	98	95	100	95	97	90	100	90	98
Clark.....	67	45	25	70	95	100	100	100	95	95	90	100	89	100
Eau Claire.....	.....	35	17	90	85	100	91	103	100	110	100	101	102	100
Fond du Lac.....	15	70	10	70	90	100	100	100	110	100	90	95	.....	.....
Green Lake.....	.....	60	.....	75	85	95	90	98	100	97	80	95	.....	.....
Jackson.....	.....	50	.....	80	90	100	100	100	100	60	90	100	100	100
Juneau.....	.....	70	.....	83	100	100	90	100	.....	.....	.....	.....	100	100
Kewaunee.....	80	90	50	90	100	100	95	95	75	92	100	100	90	90
LaCrosse.....	.....	63	.....	93	95	98	105	94	130	110	80	100	88	95
Manitowoc.....	70	86	80	75	100	95	95	100	102	95	90	90	90	98
Marquette.....	.....	64	.....	88	75	93	83	97	80	78	73	87	80	95
Monroe.....	.....	55	.....	67	90	90	90	90	110	92	90	95	100	100
Outagamie.....	.....	70	.....	70	60	97	50	92	40	90	40	88	70	100
Pepin.....	.....	80	.....	90	100	100	100	100	.....	.....	90	100	90	100
Pierce.....	.....	83	5.	85	100	100	100	100	.....	.....	.....	.....	100	95
Portage.....	.....	85	.....	65	90	100	95	100	.....	.....	.....	.....	95	100
Sheboygan.....	.....	80	.....	95	100	105	100	110	100	100	90	100	75	100
Trempealeau.....	.....	60	.....	80	80	95	70	90	.....	.....	100	100	100	100
Waupaca.....	80	63	0.	90	90	100	82	100	82	80	78	90	100	100
Wausara.....	.....	48	.....	97	110	100	90	70	130	100	.....	.....	110	112
Winnebago.....	.....	50	20	80	78	99	92	100	98	100	100	100	87	82
Wood.....	80	70	0	86	108	97	112	98	140	115	98	94	97	95

CENTRAL DIVISION.	Estimated num- ber of silos in county.	Percentage of 1912 corn crop on farms Nov. 10, 1913.	Percentage of cat- tle fed for mar- ket as compared with 1912.	Percentage of swine fed for market as com- pared with 1912.	Percentage of sheep fed for market as com- pared with 1912.	Percentage of loss from hog chol- era.	Percent plowing done Nov. 10th.
Adams.....	200	7.	100	100	100	0	60
Brown.....	1,250	3.	95	100	95	5	85
Buffalo.....	210	10.	90	100	100	0	75
Calumet.....	1,000	10.	100	100	75	0	75
Clark.....	400	2.	80	100	90	0	85
Clark.....	1,295	6.	100	110	98	2	70
Eau Claire.....	1,800	2.	110	85	90	0	70
Fond du Lac.....	435	2.	100	100	100	2	75
Green Lake.....	300	2.	90	100	100	0	50
Jackson.....	250	2.	100	100	100	0	42
Juneau.....	75	4.	50	80	25	10	98
Kewaunee.....	300	3.	90	105	90	0	60
La Crosse.....	2,500	1.	90	90	80	0	90
Manitowoc.....	190	10.	65	70	67	3	38
Marquette.....	225	10.	100	105	100	0	82
Monroe.....	1,100	5.	90	80	80	20	65
Outagamie.....	40	10.	100	100	60	0	60
Pepin.....	110	5.	110	108	80	13	78
Pierce.....	250	5.	80	100	100	0	90
Portage.....	2,450	2.	100	105	100	0	90
Sheboygan.....	2,500	10.	50	70	45	0	50
Trempealeau.....	2,670	10.	100	90	70	0	35
Waupaca.....	300	2.	80	90	100	0	35
Waushara.....	600	3.	100	100	100	1	77
Winnebago.....	600	1.5	100	96	104	1.	88
Wood.....	600						

SOUTHERN DIVISION.	Clover seed.		Timothy seed.		Percentage of 1913 products still remaining in hands of farmer.									
	Yield per acre in bushels.	Quality of product.	Yield per acre in bushels.	Quality of product.	Wheat.	Rye.	Barley.	Oats.	Corn.	Buckwheat.	Flax.	Clover seed.	Timothy seed.	Beans.
Columbia.....	1.5	95	6.7	97	65	60	60	72	92	85	90	76	75	88
Crawford.....	3.	65	5.	95	90	95	80	75	90	80	95	95	95	80
Dane.....	3.	100	3.	100	80	83	85	88	85	85	100	90	90	100
Dodge.....	2.2	88	6.7	95	93	93	80	85	92	10	82	60	.....	.....
Grant.....	2.6	95	7.	100	95	80	90	95	95	100	100	100	.....	.....
Green.....	1.7	96	5.6	98	75	85	75	90	99	.....	106	100	.....	.....
Iowa.....	1.8	94	5.5	90	97	90	77	82	87	.....	100	95	.....	.....
Jefferson.....	2.5	106	4.2	97	80	90	95	85	95	.....	100	100	100	.....
Kenosha.....	.....	.....	.....	.....	90	25	50	90	96	.....	.....	.....	.....	.....
Lafayette.....	4.	95	9.	90	100	75	75	80	95	.....	100	100	.....	.....
Milwaukee.....	2.	85	.....	.....	80	85	60	90	95	.....	100	.....	.....	.....
Ozaukee.....	4.	100	.....	.....	100	90	80	90	95	.....	40	.....	.....	.....
Racine.....	5.2	80	9.	110	100	95	80	92	94	100	50	100	100	100
Richland.....	2.	75	3.	80	75	60	50	75	100	90	60	75	.....	.....
Rock.....	5.	100	5.	80	95	35	80	95	95	20	100	80	.....	.....
Sauk.....	3.	100	8.	100	75	65	80	85	95	.....	100	100	.....	.....
Vernon.....	1.8	100	4.5	100	90	.....	80	90	90	100	.....	85	65	.....
Walworth.....	2.5	100	4.	100	.....	75	75	80	95	100	75	60	.....	.....
Washington.....	1.9	92	.....	.....	90	80	80	90	95	.....	90	.....	.....	.....
Waukesha.....	2.	88	.....	.....	80	78	75	87	85	.....	97	.....	.....	.....

SOUTHERN DIVISION.	Percentage of 1913 products still remaining in hands of farmer.				Acreage and Condition of Seeding. Season 1913.									
	Peas.	Potatoes.	Sugar beets.	Tame hay.	Timothy		Clover.		Alfalfa.		Winter wheat.		Winter Rye.	
					Acreage.	Condition.	Acreage.	Condition.	Acreage.	Condition.	Acreage.	Condition.	Acreage.	Condition.
Columbia.....	25	70	50	93	92	90	90	88	106	94	95	98	100	85
Crawford.....	85	70	.....	85	105	110	90	105	60	75	110	95	105	100
Dane.....	10	87	0	85	70	78	105	105	100	100	.....	.....	100	100
Dodge.....	15	75	30	87	98	99	103	100	110	98	97	100	98	100
Grant.....	72	85	.....	94	100	105	100	105	105	105	102	98	102	99
Green.....	.....	85	.....	95	50	100	50	100	125	100	100	100	100	100
Iowa.....	.....	85	.....	87	103	100	98	97	100	104	85	100	100	100
Jefferson.....	10	90	0	85	100	100	110	100	115	100	100	100	100	100
Kenosha.....	.....	50	0	90	70	100	110	100	103	100	.....	.....	100	100
Lafayette.....	.....	95	.....	85	100	95	100	95	120	100	.....	.....	100	100
Milwaukee.....	.....	50	30	70	100	100	105	100	100	95	70	90	80	95
Ozaukee.....	.....	50	10	90	100	100	100	100	100	100	110	100	100	100
Racine.....	.....	65	10	85	100	110	105	110	110	105	95	105	110	115
Richland.....	.....	75	.....	80	90	100	100	100	100	100	100	100	100	100
Rock.....	10	90	0	65	100	100	75	65	120	90	100	100	110	100
Sauk.....	.....	60	10	85	100	100	95	100	125	100	90	100	95	100
Vernon.....	.....	90	.....	95	100	100	100	100	125	100	100	100	100	100
Walworth.....	.....	40	.....	75	100	65	100	60	100	70	.....	.....	100	100
Washington.....	.....	80	.....	90	.....	.....	100	95	110	95	100	97	100	97
Waukesha.....	.....	72	.....	93	100	100	100	95	102	95	75	90	73	90

SOUTHERN DIVISION.	Estimated number of silos in county.	Percentage of 1912 corn crop on farms Nov. 10, 1913.	Percentage of cattle fed for market as compared with 1912.	Percentage of swine fed for market as compared with 1912.	Percentage of sheep fed for market as compared with 1912.	Percentage of loss from hog cholera.	Percent plowing done Nov. 10th.
Columbia.....	385	7.	70	85	88	9.	45
Crawford.....	260	5.	60	75	80	0.	25
Dane.....	1,420	2.	70	90	92	12.	58
Dodge.....	800	5.	90	85	90	3.	75
Grant.....	1,750	1.	100	89	90	3.	30
Green.....	630	2.	92	90	88	7.	60
Iowa.....	210	3.	97	90	95	3.	45
Jefferson.....	940	5.5	100	105	.....	0.	40
Kenosha.....	1,000	1.5	.....	88	100	10.	50
Lafayette.....	400	4.	95	100	100	.....	45
Milwaukee.....	200	1.	80	70	75	10.	80
Ozaukee.....	1,000	1.	100	110	.....	0.	80
Racine.....	1,500	10.	75	120	120	5.	75
Richland.....	300	10.	80	100	75	10.	50
Rock.....	900	5.	100	100	200	20.	90
Sauk.....	550	3.	90	95	.....	1.	45
Vernon.....	600	4.	100	100	125	.....	75
Walworth.....	1,700	5.	100	50	125	35.	50
Washington.....	480	5.	100	100	100	.....	50
Waukesha.....	1,780	5.	80	100	.....	3.	50



