



# LIBRARIES

UNIVERSITY OF WISCONSIN-MADISON

## **Wisconsin alumnus football bulletin. Volume 62, Number 1 Sept. 12, 1960**

Madison, WI: Wisconsin Alumni Association, Sept. 12, 1960

<https://digital.library.wisc.edu/1711.dl/QGZB5COYM65WR83>

This material may be protected by copyright law (e.g., Title 17, US Code).

For information on re-use, see

<http://digital.library.wisc.edu/1711.dl/Copyright>

The libraries provide public access to a wide range of material, including online exhibits, digitized collections, archival finding aids, our catalog, online articles, and a growing range of materials in many media.

When possible, we provide rights information in catalog records, finding aids, and other metadata that accompanies collections or items. However, it is always the user's obligation to evaluate copyright and rights issues in light of their own use.

# WISCONSIN ALUMNUS FOOTBALL BULLETIN

Serials Dept.  
% Memorial Libr., Univ. of Wis.,  
Madison 6, Wis.

RECEIVED  
SEP 13 1960  
UNIV. WIS. LIBRARY

VOL. 62      SEPTEMBER 12, 1960      No. 1

WISCONSIN ALUMNI ASSOCIATION

## SILVER ANNIVERSARY

Here is your first *Football Bulletin* for the 1960 football season. This series marks the 25th anniversary of this publication.

From the first issue in 1936, this *Bulletin* has been published by the Wisconsin Alumni Association as a special service to its members. Twice during this quarter century the name and format of the *Football Bulletin* has been changed. Its objective, however, has not changed. Its primary objective still is to bring you Badger football news that will keep you abreast of gridiron activities at the University of Wisconsin.

During the first thirteen years, most of the copy was written for us by Harry Stuhldreher. Since Ivy Williamson took over the coaching job in 1949 most of the copy for these *Football Bulletins* has been written for us by sports news editors of the UW athletic staff. Art Lentz did an outstanding job for us until he went to New York in 1956 to work for the Olympic Foundation. Since his departure, this work has been handled very effectively by James Mott, assistant director of the Sports Information Department. With Jim writing this football copy for us, you can count on another fine series of *Football Bulletins* during the 1960 season. Working with Jim on all these *Bulletins*, of course, will be our editor, Arthur Hove. Art is starting his second year as editor of the *Wisconsin Alumnus*.

This Silver Anniversary series will bring you four more *Bulletins* this fall. *Bulletin No. 2* will cover the first three games: Stanford at Stanford on September 24; Marquette at Madison on October 1, and Purdue at Madison on October 8. *No. 3* will cover two tough games: Iowa at Iowa City on October 15 and Ohio State at Columbus on October 22. *No. 4* will cover Michigan at Madison on October 29 and the Homecoming game with Northwestern at Madison on

November 5. *No. 5* will cover the last two games of the 1960 season: Illinois at Champaign on November 12 and Minnesota at Madison on November 19.

By the time you get this *Bulletin* the fall semester will be in session with the largest enrollment in University history. This includes 6,800 freshmen; 3,800 on the Madison campus, 1,800 at the University of Wisconsin-Milwaukee and 1,200 at the various Extension Centers around the state.

The next publication you will get as a WAA member will be the October issue of the *Wisconsin Alumnus*. The *Alumnus* is published monthly except in August and September.

The fiscal year which started on September first also marks the beginning of the 100th anniversary of the Alumni Association - - 100 years of service to the University and its alumni.

The best way to commemorate this Centennial is to make the Wisconsin Alumni Association increasingly effective as the strong right arm of the University.

Centennial activities to commemorate this 100th anniversary of WAA will get under way with a Kick-Off Dinner in Tripp Commons in the Memorial Union on Friday evening, October 7. Dinner tickets—\$3.50 per person. Checks should be made payable to the Wisconsin Alumni Association.

This Kick-Off Dinner is scheduled for the evening before the Wisconsin-Purdue game at Camp Randall—the first conference game in the 1960 schedule. The athletic department has reserved a block of tickets for alumni attending this Kick-Off Dinner. So— if you need tickets for the Wisconsin-Purdue game please send your order to Oscar Damman, Ticket Sales Manager. Tickets - - \$4 each, plus 25 cents for mailing costs. Checks should be made payable to UW Athletic Department and sent to 1440 Monroe Street, Madison 6.

—JOHN BERGE, *Executive Director*

WISCONSIN ALUMNI ASSOCIATION

770 LANGDON STREET

MADISON 10, WISCONSIN

THE WISCONSIN ALUMNUS, published once monthly in December, January, February, March, April, May, June, July and September and three times monthly in October and November. Entered as second class matter at the post office at Madison, Wis., under the act of March 3, 1879. Subscription price (included in membership dues of the Wisconsin Alumni Association) \$2.50 a year; subscription to non-members, \$5.00 a year. Editorial and business offices at 770 Langdon St., Madison 6, Wis. If any subscriber wishes his magazine discontinued at the expiration of his subscription, notice to that effect should be sent with the subscription, or at its expiration. Otherwise it is understood that a continuance is desired.

# ON YOUR WAY UP, YOUNG MAN?

THE LADDER TO SUCCESS must be chosen carefully — Exceptional opportunities in the insurance sales field are open to career-minded men at the National Guardian Life Insurance Company. As a trained insurance counselor you will have the respect and good will of the business community, plus an excellent chance to greatly increase your standard of living. Openings now exist at our rapidly expanding service centers in Illinois, Indiana, Iowa, Michigan, Minnesota, Missouri, and Wisconsin. If you are between 25 and 45, married, and interested in a career of your own, investigate the many advantages of being a National Guardian man — write:

*Agency Vice President*

**NATIONAL GUARDIAN LIFE  
INSURANCE COMPANY**

*Box 1191, Madison 1, Wisconsin*



*National Guardian Life*  
*Insurance Company*

Box 1191  
Madison 1, Wis.

# Badgers Face Rebuilding Task for '60

by Jim Mott

*UW Sports News Service*

**W**ISCONSIN MUST REBUILD its football forces after a championship season in 1959 the school's first undisputed football championship in Big Ten play since 1912.

Rebuilding is nothing new to Wisconsin football coach Milt Bruhn. He's accomplished the feat before, and as recently as 1957 took a squad dominated by underclassmen and molded it into a first division team, winning four, losing three in conference play.

The sophomores of 1957 developed into the seniors of 1959 that won the Big Ten championship and produced a 14-6-1 record for three seasons of Big Ten play. All of them have completed their college careers, and only nine lettermen were on hand to greet Bruhn and his staff when autumn drills started on September 1. The losses included all-conference performers Dale Hackbart, quarterback; Jerry Stalcup, right guard; and Dan Lanphear, left tackle, who also won consensus All-American honors following the 1959 season.

Under Bruhn the Badgers attained their first undisputed Big Ten title since 1912 in last year's rugged Big Ten race (the Badgers shared the 1952 crown with Purdue), and their 6th place ranking in the final national polls was their best since a third place rating in 1942. Coupled with a second place finish in the Big Ten in 1958, it marked the first time since 1906-1907 seasons that Wisconsin football teams had ranked that high in successive years (Badgers won 1906 title, finished second in 1907) in Big Ten play; and the 1958 national ranking was 7th, giving Wisconsin successive years in the top ten teams of the nation, a feat accomplished by no other Wisconsin football coach.

Bruhn's Wisconsin teams the past three years featured the 'finesse' attack on offense, operating off the straight-T formation, and used a rock-ribbed defense to contain the opponents (goal line stands were not uncommon to his



Pictured here is the 1960 University of Wisconsin football coaching staff. These men who will guide the yearling Badgers through a formidable season are, from left, front row: Fred Jacoby; head coach Milt Bruhn; and Fred Marsh; rear row: Deral Teteak; LaVern Van Dyke; Paul Shaw; and Clark Van Galder.

1957-1958-1959 teams). Only twice since Bruhn became head coach has an opposing team scored more than three touchdowns against Wisconsin (Michigan State in 1956, 33-0, and Washington in the 1960 Rose Bowl game, 44-8).

Of the nine lettermen returning, only four of them played over 200 minutes in 1958 action—end Henry Derleth (451) and guard Ron Perkins (448) in the line, and the only two backfield lettermen available, quarterback Jim Bakken (210), and fullback Tom Wiesner (220). The others, tackles Brian Moore (82) and Terry Huxhold (48½), guards Don Schade (88) and Jerry Kulcinski (65), and center John Gotta (61) played lesser roles in the 1959 success story.

Sophomores, then, hold the key to Wisconsin's football success in 1960. A total of forty-one sophomores will report for this year's squad, along with twenty-five juniors and six seniors.

In planning for the 1960 season,

Bruhn and his assistants contemplate using a "pro-type" offense designed to open up the Wisconsin attack, and to take advantage of the speed present in the fine group of sophomore backfield candidates.

Bruhn also expects to employ the 'three' platoon system which has worked successfully at other schools in recent years. The first team will be the regulars, boys that excel both offensively and defensively; the second team will be composed of players whose skills are basically suited to the offense; the third team will be made up of defensive specialists.

A look at Bruhn's three-deep line-up at the present—and always subject to immediate change—shows the pre-dominance of sophomores available, and points out the thinking behind Bruhn's change to the three platoon system. "You can get a sophomore ready to play one way, offense or defense, but not both ways, unless it's an exceptional player, and we figure to get more help

from our sophomores using this system in 1960," says Bruhn.

Three of the veterans, Derleth, Perkins, and Wiesner, appear set for starting berths in 1960, while a fourth, Bakken, will have plenty of competition for the starting job at quarterback from transfer student John Fabry (Minnesota) and a 1959 reserve quarterback, Ron VanderKelen, who played just 1½ minutes.

The presence of Fabry and the emergence of VanderKelen as qualified quarterbacks should bring out the best in Bakken, a disappointment during his sophomore year after being highly touted. Perhaps the fine all-around play of the departed Dale Hackbart dulled the lustre of Bakken's credentials. Coach Bruhn and his staff hope that is the case. Fabry appears an excellent passer for the pro-type offense planned, while VanderKelen is the best running quarterback on the squad.

Lettermen Huxhold and Moore made good progress in spring drills, though

the competition was rugged from sophomores on the tackle squad. Veteran Jerry Kulcinski will play behind Perkins at right guard, while an outstanding sophomore, Dale Matthews, 6-2, 205, from South Bend, Indiana, moves in at left guard. Matthews is strong, agile, and a fine blocker.

At left end, another sophomore, Hugh 'Pat' Richter, from the same school that produced Dale Hackbart (Madison East) appears set for college stardom. He has been labeled by end coach Paul Shaw as one of the finest college end prospects to appear on the Wisconsin scene in a long time, and the Badgers have had some outstanding ends in recent years.

Sophomores will handle both halfback positions, with outstanding newcomers including Merritt Norvell, 5-11, 177, Jacksonville, Ill.; Gerald Nena, 6½, 180, East Peoria, Ill.; Ted Rogenski, East Moline, Ill.; and Brad Armstrong, 5-11, 181, Janesville, Wis., all showing promise in spring drills. All have much

needed speed and open field running ability.

Behind the veteran Wiesner at fullback, Wisconsin's third leading rusher in 1959, much is expected from Neil Fleming, a junior from Marshfield, via transfer from Miami (Fla.), and Chuck Vesel, switched from the end position he played last year until a face injury sidelined him before the start of play.

Problems facing Bruhn seem quite apparent—lack of necessary experience, which won't be available until the sophomores have had their 'baptism of fire' and a lack of depth, which will be solved by the success of the "three-platoon" system.

Defense was Wisconsin's trump card in 1958 and 1959, and Bruhn would like to establish another team of the same defensive stature. Defense, geared to produce bone-crunching tackles, clean, hard blocks, and agile, consistent linebackers, and the "pro-type" offense will be equally stressed in the "re-building" of Wisconsin's football fortunes.

as the season begins

## Some Football Trends

This year, due to lack of sufficient depth and experience at many key positions, Wisconsin will be employing a form of "platoon" football. Coach Milt Bruhn will have three teams of varying capabilities—an offensive-defensive team which will go both ways, and separate offensive and defensive units. The novice Badgers proved that this type of football could produce plenty of excitement when they gained an eleventh hour, 20-17, triumph over a rugged alumni team last spring.

A liberalized substitution rule which will be in effect this year will help the Badgers offset their lack of depth, and give more boys an opportunity to play than did last year when Bruhn was forced to go most of the way with his seniors. The new "wild card" substitution rule says, in effect, that although a player may only enter the game twice in each quarter, he may return to the game singly between any successive downs and, as long as he doesn't affect the game clock, will not be charged with an official entry. This will permit coaches to "shuttle" key players in and out of

the game without having them necessarily use up their allotted substitutions. The new ruling then opens up the game considerably, and gives evidence of a growing trend towards a return to the era of wholesale substitution when the specialists dominated play.

Elsewhere, some self-appointed Cassandra's have been forecasting the downfall of the Big 10 football dynasty. Such coaches as Indiana's Phil Dickens and Northwestern's Ara Parseghian have gone on record against the grant-in-aid program which they say has considerably weakened the Big 10's ability to attract top high school athletes away from the independent and Big Eight schools.

Speaking of the grant-in-aid, which gives an athlete a scholarship fixed on either his scholastic ability or his need, Parseghian said, "It's an idealistic program on paper, but not in actuality." Dickens on the other hand said last winter that Wisconsin's embarrassing loss to Washington in the Rose Bowl was a prime example of the grant-in-aid program's failure to provide the Big 10 with top athletic talent.

While the controversy continues over the stringency of the Big 10's financial assistance policies, one of its member schools has been soundly disciplined by the National Collegiate Athletic Association (NCAA) for violation of recruiting policies. The NCAA has placed Indiana University on probation for four years, denying them the right to participate in any NCAA championship or post-season events. Following suit, the Big 10 recently took a similar disciplinary move. This year, Indiana will be denied the right to compete for the football championship and will not receive its share of the conference television receipts which usually amount to \$75,000 or more.

This means that all Big 10 teams playing Indiana in football this year will not have that particular game count in the final conference standings. Thus Wisconsin, because it does not play the Hoosiers, will be the only team playing seven conference games this year.

In many camps, the growing tendency towards an unbending enforcement of rules that tend to take the game away from the players and the coaches is cause for great rejoicing. In other quarters, the ominous shadows of the decline of a "golden era" seem to be growing longer.

# The 1960 Wisconsin Football Team

## 1959 Scores

Wisconsin 16, Stanford 14  
Wisconsin 44, Marquette 6  
Wisconsin 0, Purdue 21  
Wisconsin 25, Iowa 16  
Wisconsin 12, Ohio State 3  
Wisconsin 19, Michigan 10  
Wisconsin 24, Northwestern 19  
Wisconsin 6, Illinois 9  
Wisconsin 11, Minnesota 7

## Rose Bowl

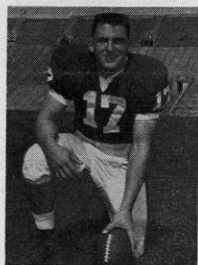
Wisconsin 8, Washington 44

Athletic Director—Ivan B. Williamson  
Business Manager, Athletics—William H. Aspinwall  
Director of Athletic Ticket Sales—Oscar C. Damman  
Team Physician—Dr. John L. Bentley  
Team Trainer—Walter Bakke  
Equipment Manager—Art Lamboley  
Stadium Manager—Joe Betlach  
Student Manager—Lee R. VanderVelden

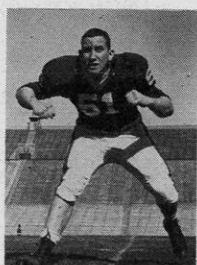
## Squad Roster

No.	Name	Pos.	Wt.	Ht.	Age	Class	Home Town—High School	Prev. Award
93	Affeldt, David G.	RE	208	6-4	19	So.	LaCrosse (Central)	None
36	Anthony, Thomas B.	FB	205	6-0	20	Jr.	New Rochelle, N. Y.	None
15	Armstrong, Bradley D.	LH	181	5-11	19	So.	Janesville, Wis.	Num-59
55	Baer, Richard B.	C	210	6-2	20	Jr.	Mansfield, Ohio	Num-58
21	*Bakken, James L.	QB	197	5-11	19	Jr.	Madison (West)	W-59
46	Bangert, Donald L.	RH	179	5-8	19	So.	Green Bay (East)	Num-59
16	Barnett, William R.	LH	162	5-10	19	So.	Crown Point, Ind.	Num-59
11	Bichler, David W.	LE	191	6-0	20	Jr.	Belgium, Wis. (Port Washington)	Num-57
96	Bishop, Lloyd F.	LT	210	6-1	20	So.	Tomahawk, Wis.	Num-57
32	Bynum, William L.	FB	206	5-10	19	So.	Sidney, Ohio	Num-59
28	Carlson, Ronald W.	QB	209	6-3	20	So.	Rockford, Ill. (East)	Num-59
10	Cicerello, Jack	LH	165	5-10	19	So.	Milwaukee (Lincoln)	None
89	*Derleth, Henry M.	RE	215	6-3½	21	Sr.	Beaver Dam	W-58-59
57	Dolly, Edward D.	C	225	6-1	20	Jr.	Farmington, Ill.	Num-58
77	Downham, Thomas	LT	220	6-0	19	Jr.	Marinette	Num-58
68	Elfner, Eliot S.	LG	189	5-11	19	So.	Madison (West)	Num-59
82	Ezerins, Elmars P.	LE	214	6-3	20	So.	Union Grove (Racine Co. Agg.)	Num-59
24	Fabry, John J.	QB	190	6-2	21	So.	Green Bay (Premontre)	None
34	Fleming, Neil J.	FB	195	6-0	21	Jr.	Marshfield, Wis.	None
14	Gettrust, Ross P.	LH	170	5-10	20	Jr.	Stoughton	None
54	*Gotta, John D.	C	215	6-0	21	Jr.	Kenosha (Mary Bradford)	W-59
75	Grimm, Richard T.	LT	200	6-2½	23	Jr.	Elkhorn	Num-55
76	Harms, Gary R.	LT	207	6-2	21	Jr.	Aurora, Ill. (West)	Num-57
47	Hearn, Napoleon W.	RE	175	6-½	21	So.	Chicago (Harrison)	Num-58
56	Henrici, Ronald C.	C	204	6-2½	20	So.	Morton Grove, Ill.	Num-59
19	Hess, William L.	LH	189	6-1	20	Jr.	Fort Atkinson	Num-58
49	Hippmann, Howard B.	LH	170	5-8	19	So.	Rockford (East)	Num-59
78	*Huxhold, Terry W.	LT	211	6-4	22	Sr.	Milwaukee (Rufus King)	W-58-59
91	Ibbotson, Frank W.	RG	180	5-8	19	So.	Chicago, Ill. (Schurz)	None
74	Jax, James R.	RT	214	6-1	19	So.	Wisconsin Dells	Num-59
12	Kellogg, William L.	RH	185	5-11	21	Sr.	Peoria, Ill. (Wayland Academy)	Num-57
42	Kempthorne, Dion Q.	RG	190	6-1	18	So.	Dubuque, Iowa (Senior)	None
17	Kroner, Gary L.	RH	179	6-0	19	So.	Green Bay (Premontre)	Num-59
66	*Kulcinski, Gerald L.	RG	198	6-1½	20	Sr.	LaCrosse (Central)	W-58-59
45	Kunes, Ervin K.	RH	181	5-9	20	Jr.	Marinette	Num-58
84	Kussow, David K.	RH	173	5-10	19	So.	De Pere (East)	Num-59
26	Lange, Paul R.	QB	176	6-0	19	So.	Silvis, Ill. (East Moline)	Num-59
60	Matthews, Dale F.	LG	205	6-2	19	So.	South Bend, Ind. (Central)	Num-59
71	McMillin, James A.	RT	195	6-1½	18	So.	East Moline, Ill.	Num-59
22	Mettlach, Thomas A.	QB	186	5-11	20	Jr.	Arcadia	Num-58
90	Miller, Ronald	QB	185	5-11	21	So.	Lyons, Ill. (Morton)	Num-57
41	Montgomery, Kenneth A.	RH	169	5-10	19	So.	Dubuque, Iowa ((Senior)	None
79	*Moore, Brian P.	RT	231	6-1	19	Jr.	Great Lakes, Ill. (North Chicago)	W-59
81	Mowery, John J.	LE	180	6-0	20	Jr.	Cuba, Ill.	Num-58
40	Nena, Gerald	RH	180	6-½	18	So.	East Peoria, Ill.	None
35	Neumann, Thomas J.	FB	202	5-10	20	Jr.	Peshtigo, Wis.	Num-58
44	Norvell, Merritt J.	LH	177	5-11	19	So.	Jacksonville, Ill.	Num-59
86	Novak, James K.	LE	194	6-0	18	So.	Peoria Heights, Ill.	Num-59
98	O'Donnell, Jerry L.	RT	200	6-3	18	So.	Hillsdale, Ill.	Num-59
87	Olsen, Carlton E.	RE	200	6-1½	20	Jr.	Chicago, Ill. (Fenger)	Num-58
50	Palmer, Roger J.	C	185	5-11	19	So.	Rhineland	Num-59
64	*Perkins, Ronald L.	RG	225	5-10	21	Sr.	Racine (Horlick)	W-58-59
63	Raffini, James P.	LG	222	5-11	19	So.	Racine (Park)	Num-59
88	Richter, Hugh V. "Pat"	RE	227	6-5	19	So.	Madison (East)	Num-59
48	Rogenski, Theodore J.	LH	180	5-10½	19	So.	East Moline, Ill. (Alleman)	Num-59
62	*Schade, Donald E.	LG	204	5-10	20	Jr.	Chicago (Parker)	W-59
94	Schmidt, Earl W.	RE	195	6-1	24	Jr.	Biramwood, Wis.	None
51	Scaff, Larry L.	C	196	5-11	19	So.	LaCrosse (Central)	Num-59
18	Staley, Ronald G.	LE	191	6-2	20	Jr.	Madison (East)	Num-59
27	Strassburger, John H.	QB	203	6-0	19	So.	Chicago (Amundsen)	Num-59
69	Suits, William H.	LG	203	5-11	20	Jr.	Waupaca, Wis.	Num-58
38	Underwood, Steven C.	RG	188	5-9	19	So.	Madison (East)	Num-59
25	VanderKelen, Ronald	QB	169	6-0	20	Sr.	Green Bay (Preamble)	Num-58
85	Vandervelden, Donald	RE	208	6-1	20	Jr.	Kimberly	Num-57
33	Vesel, Charles A.	FB	200	6-0	20	So.	Greenwood, Wis.	Num-59
67	Voss, Terrence B.	RG	179	5-10½	19	So.	LaCrosse (Aquinas)	Num-59
73	Westfeld, Jerome P.	RT	195	6-3	19	So.	Miamisburg, Ohio	Num-59
61	Whitacre, Michael J.	RG	193	5-9	19	So.	Springfield, Ohio (Catholic)	Num-59
53	Wildman, Ronald J.	C	190	6-1	19	So.	Antigo, Wis.	Num-59
38	*Wiesner, Thomas N.	FB	206	6-0	21	Sr.	Neenah, Wis.	W-58-59
65	Wittig, Richard D.	LG	215	6-½	20	Jr.	Green Bay (East)	Num-58

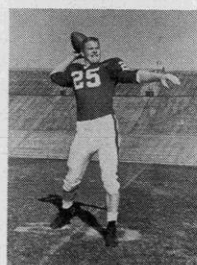
\* Denotes major "W" winner.



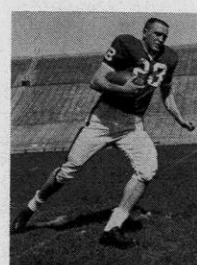
Brad Armstrong  
15—LH



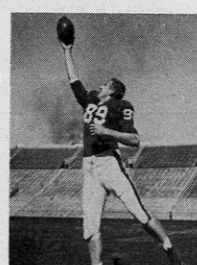
Richard Baer  
55—C



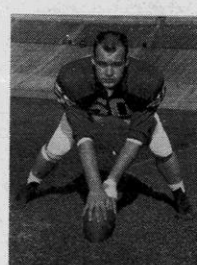
James Bakken  
21—QB



Ron Carlson  
28—QB



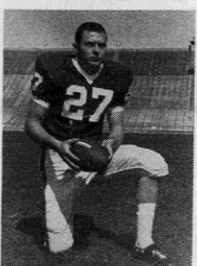
Henry Derleth  
89—RE



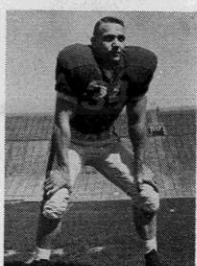
Thomas Downham  
77—LT



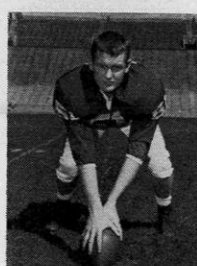
Eliot Elfner  
68—LG



John Fabry  
24—QB



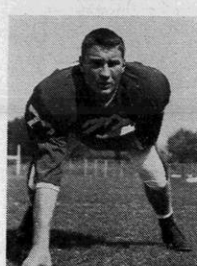
Neil Fleming  
34—FB



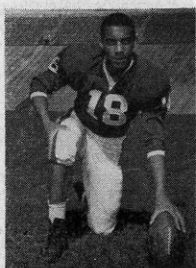
John Gotta  
54—C



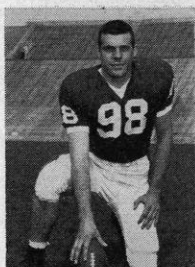
Richard Grimm  
75—LT



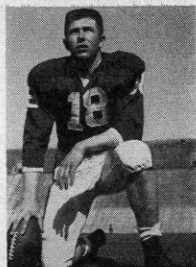
Gary Harms  
76—LT



Napoleon Hearn  
47—RH



Ronald Henrici  
56—C



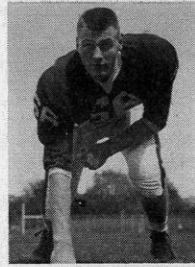
William Hess  
19—LH



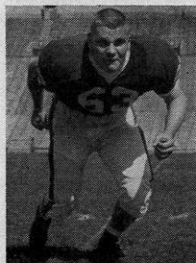
Terry Huxhold  
78—LT



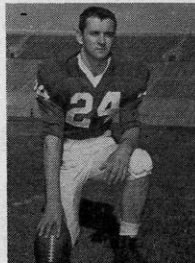
William Kellogg  
12—RH



Gerald Kulcinski  
66—RG



Dale Matthews  
60—LG



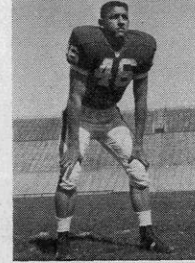
Thomas Mettlach  
22—QB



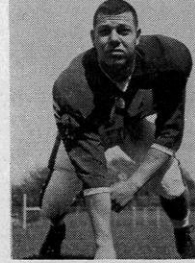
Brian Moore  
79—RT



Thomas Neumann  
35—FB



Merritt Norvell  
44—LH



Ronald Perkins  
64—RG

### Radio-TV Schedule

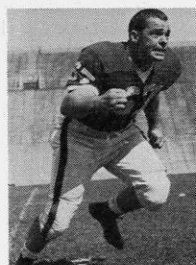
Wisconsin Football fans not fortunate enough to be at the scene of action will have plenty of opportunity to hear play-by-play accounts of each game, if they live in or near the state. Again this fall, five originating broadcasts will provide coverage of each home game for close to 65 stations in the state. All of these stations will also carry away-from-home game broadcasts.

Originating broadcasts at Camp Randall will be WHA-FM, the University of Wisconsin station; WIBA, Madison; WTMJ, Milwaukee; WEMP, Milwaukee; and WFHR, Wisconsin Rapids. These stations will also originate all games away from Madison for Badger football followers.

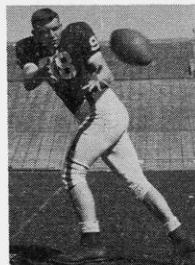
Only one Wisconsin game in 1960 will appear on network television, and it will be the October 15 clash with Iowa at Iowa City. The game will be telecast as part of regional coverage.

## Composite Big 10 Schedule for 1960

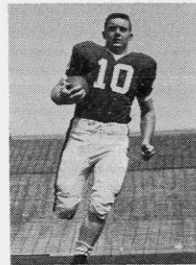
<p>September 24 Wisconsin at Stanford Oregon State at Iowa Oregon at Michigan Michigan State at Pittsburgh Minnesota at Nebraska Northwestern at Oklahoma Southern Methodist at Ohio State UCLA at Purdue Indiana at Illinois</p> <p>October 1 Marquette at Wisconsin (W Club Day) West Virginia at Illinois Indiana at Minnesota Iowa at Northwestern Michigan at Michigan State Southern California at Ohio State Purdue at Notre Dame</p> <p>October 8 Purdue at Wisconsin (Dad's Day) Ohio State at Illinois Oregon State at Indiana Iowa at Michigan State Duke at Michigan Northwestern at Minnesota</p>	<p>October 15 Wisconsin at Iowa Illinois at Minnesota Marquette at Indiana Northwestern at Michigan Ohio State at Purdue Michigan State at Notre Dame</p> <p>October 22 Wisconsin at Ohio State Penn State at Illinois Michigan State at Indiana Purdue at Iowa Minnesota at Michigan Notre Dame at Northwestern</p> <p>October 29 Michigan at Wisconsin Illinois at Purdue Northwestern at Indiana Kansas at Iowa Ohio State at Michigan State Kansas State at Minnesota</p>	<p>November 5 Northwestern at Wisconsin (Homecoming) Illinois at Michigan Indiana at Ohio State Iowa at Minnesota Michigan State at Purdue</p> <p>November 12 Wisconsin at Illinois Indiana at Michigan Ohio State at Iowa Michigan State at Northwestern Purdue at Minnesota</p> <p>November 19 Minnesota at Wisconsin Illinois at Northwestern Indiana at Purdue Iowa at Notre Dame Michigan at Ohio State Detroit at Michigan State</p>
----------------------------------------------------------------------------------------------------------------------------------------------------------------------------------------------------------------------------------------------------------------------------------------------------------------------------------------------------------------------------------------------------------------------------------------------------------------------------------------------------------------------------------------------------------------------------------------------------------------------------------------------------------------------------------------------------------------	-------------------------------------------------------------------------------------------------------------------------------------------------------------------------------------------------------------------------------------------------------------------------------------------------------------------------------------------------------------------------------------------------------------------------------------------------------------------------------------------------------------------------------------------------------	----------------------------------------------------------------------------------------------------------------------------------------------------------------------------------------------------------------------------------------------------------------------------------------------------------------------------------------------------------------------------------------------------------------------------------------------------------------------------------------------------------------



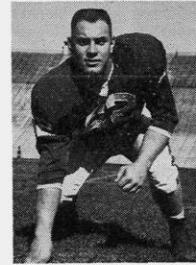
James Raffini  
63—LG



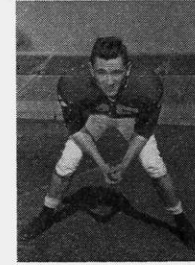
Pat Richter  
88—RE



Theodore Rogenski  
48—LH



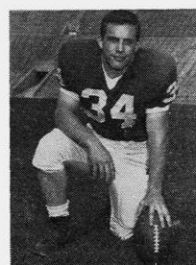
Donald Schade  
62—LG



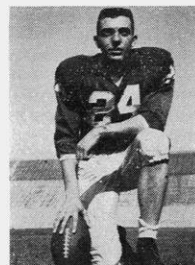
Ron Staley  
18—LE



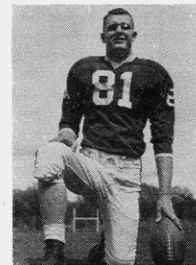
William Suits  
69—LG



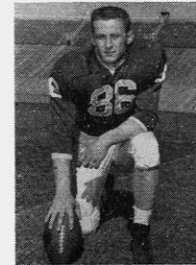
Steven Underwood  
37—RG



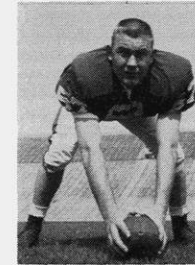
Ron VanderKelen  
25—QB



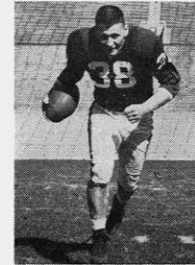
Donald Vander-  
velden  
85—RE



Charles Vesel  
33—FB



Ronald Wildman  
53—C



Thomas Wiesner  
38—FB

## UW—M CARDS TO GO WITH AERIAL ATTACK

Last year, under Armin Kraeft, the University of Wisconsin—Milwaukee compiled a 4-4 won-lost record—one of its best showings in many years. This year, under the guidance of newly-appointed Head Coach Wally Dreyer, the Cardinals of Milwaukee are looking forward to an even better showing.

Dreyer, who will be assisted in his coaching duties by Bill Ritter and Dick Geske, welcomed over 50 candidates on the opening day of the fall practice. Included in this number were the 14 lettermen whom Dreyer hopes to use as a nucleus for a solid 1960 team.

Because of the proven ability of junior quarterback Ron Stanton, Dreyer plans to pattern his play around a strong aerial attack, using the split "T" formation with wide flankers. John Swanson and Ken Moe, a couple of last year's dependable receivers, are considered prime targets for Stanton's passes. Other returning lettermen include: tackles Myles Riley and Bob Rodich; guards Frank Johnson, Spencer Stone, and Jack Drier; center Frank Lutz; halfbacks Phil Mirasola, Ron Bekken, and Bill Reynolds; and fullbacks Jim Bass and Hans Widera.

Coach Dreyer cautions that it might take a while for the UW—M offense to "get rolling" but the Cards are planning plenty of surprises for their opponents.

The schedule:

**Home Games** (all home games begin at 1:30 p.m. at Pearse Field)

Sept. 17 Ferris Institute  
24 \*Eau Claire

Oct. 15 \*Stevens Point (Homecoming)  
20 \*Whitewater

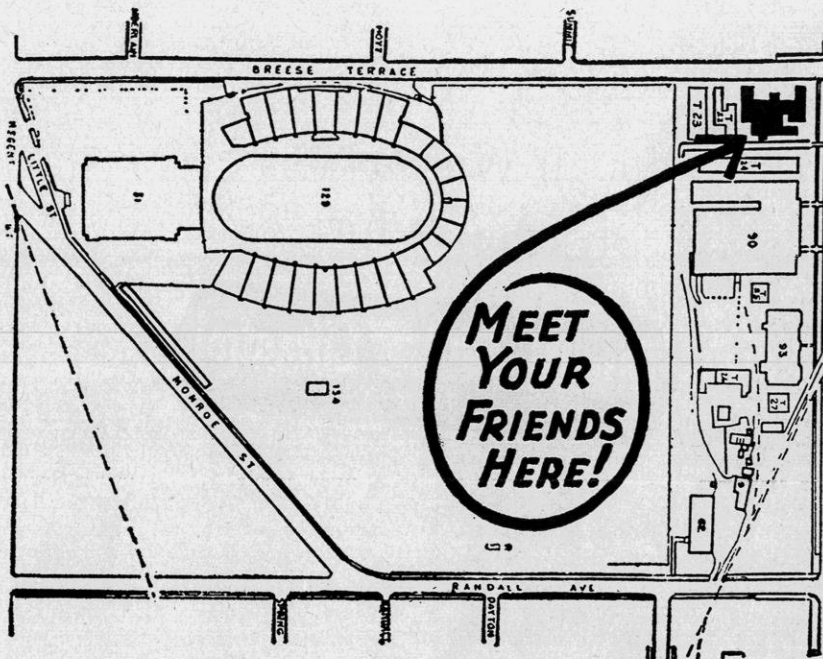
**Away Games**

Oct. 1 \*At Platteville  
8 \*At Superior (night)  
22 \*At Oshkosh

Nov. 5 At Bradley University

\* Denotes conference game.

## A Popular Pre-Game Service



As part of a growing tradition, the Wisconsin Union and the Wisconsin Alumni Association are again happy to announce the continuation of the convenient pre-game luncheons which will be served from 11:30 a.m. to 1 p.m. at the Breeze Terrace cafeteria before all home football games.

Located just a block from Camp Randall Stadium, the Breeze Terrace cafeteria offers you an excellent meal at reasonable prices plus the tremendous convenience of being close to the Stadium. This means that you can eat your noon meal in leisure and still have plenty of time to make it to the Stadium before the opening kick-off.

Don't get caught in that last minute football flurry—plan now to take your time and *enjoy* your pre-game luncheon at the handy Breeze Terrace cafeteria.

## The Badgers Three-Deep

(Based on Known Ability to Date)

First Team (offense-defense)	Second Team (offense)	Third Team (defense)
LE—Richter, Hugh "Pat"	LE—Staley, Ronald	LE—Bichler, David
LT—Huxhold, Terry	LT—Harms, Gary	LT—Downham, Thomas
LG—Matthews, Dale	LG—Schade, Donald	LG—Wittig, Richard
C—Baer, Richard	C—Henrici, Ronald	C—Wildman, Ronald
RG—Perkins, Ronald	RG—Kulcinski, Gerald	RG—Suits, William
RT—Moore, Brian	RT—McMillin, James	RT—Westbeld, Jerry
RE—Derleth, Henry	RE—Kellogg, William	RE—Vandervelden, Donald
QB—Fabry, John	QB—Bakken, James	QB—VanderKelen, Ronald
LH—Norvell, Merritt	LH—Rogenski, Ted	LH—Armstrong, Bradley
RH—Nena, Gerald	RH—Hearn, Napoleon	RH—Kroner, Gary
FB—Wiesner, Thomas	FB—Fleming, Neil	FB—Vesel, Charles



**NATIONAL RANKING  
— a reward for top  
performance**

Great football teams are given national ranking for their consistent, outstanding performance. And so it is with heating equipment. Mueller Climatrol has earned its nationwide reputation for quality in the same way.

For over 100 years, Mueller Climatrol units have brought healthful comfort to millions. That's why Mueller Climatrol is so far ahead of any other brand in Wisconsin.

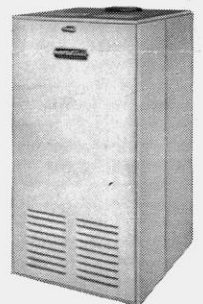
Get the best, get "Climate Control for Healthful Living." Call your Mueller Climatrol dealer or write us for his name and complete details. Mueller Climatrol, 2005 West Oklahoma Avenue, Milwaukee 1, Wisconsin.

*Two members of the complete  
Mueller Climatrol Team*



"Traditional" Winter Air Conditioner. The last word in quality warm air heating. Designed for economical addition of summer cooling.

Quality Gas Boiler. For hot water or steam heating. Compact, efficient, dependable. Oil-fired boilers also available.



Plus summer air conditioning for any home or small business.

Joyce Cole, top national model, Miss Mueller Climatrol of 1960.

